

Historic, archived document

Do not assume content reflects current scientific knowledge, policies, or practices.

FALL, 1939 - SPRING, 1940



PARTIAL VIEW OF OVER 50,000
OF OUR SPECIMEN CAMELLIAS

— WHOLESALE ONLY —

Kiyono Nurseries

Crichton, Alabama

Shipping Point - Semmes, Ala.



W H O L E S A L E P R I C E L I S T
F A L L , 1 9 3 9 — S P R I N G , 1 9 4 0

Kiyono Nurseries

R. F. D. CRICHTON, ALA.

(15 miles north-west of Mobile, Ala. on Moffat Road)

Long Distance Telephone—Mobile, Ala., Juniper 7621

SHIPPING POINT, SEMMES, ALA.

PRICES IN THIS LIST CANCEL ALL PREVIOUS
QUOTATIONS, AND ARE SUBJECT TO CHANGE
WITHOUT NOTICE.

TERMS AND CONDITIONS OF SALE

Prices—5, 50 and 500 of same variety and size at 10, 100 and 1000 rates respectively.

Car-load Orders — and if trucks are sent to our nurseries for B&B plants when we do not have to pack plants, we will be pleased to offer very attractive prices on B&B plants.

Specimen Stock selected or marked by our customers in the Nursery will be charged for according to its value, and higher than listed prices.

Terms of Payment—Cash with order, from unknown people or those who prefer to earn discount. When cash with order, we offer discount of 3% and boxing free, which means total saving of about 10%. If remittance is by Post Office Money Order, it should be made payable to us at Mobile, Ala.

C. O. D. shipment will be considered as cash order, only when deposit of 25% is sent with order.

For charge accounts, our terms are 60 days net, boxing at cost. New accounts opened only upon receipt of trade references, allowing time for investigation.

Transportation—Please state whether you want your shipments by parcel post, express or freight. When no instructions are given, we will use our best judgment in selecting best method of shipments. We make no charge for delivery to railroad station, but our responsibility ceases when goods are turned over to carrier and risk and cost of transportation belong to purchaser.

Claim—If there is any mistake or any reason to complain, please write immediately upon receipt of goods and we will be pleased to adjust matter.

Condition of Sale—We accept all orders upon condition that they shall be void should any injury befall stock from causes over which we have no control.

— W H O L E S A L E O N L Y —

AZALEAS

Azaleas are without doubt the most beautiful flowering plants we have in the South. Their season of blooming is very long, beginning with Winter flowering Vittata Fortunei and extending into June when the pretty dwarf Azalea Macrantha is covered with its soft, orange-pink blossoms. All azaleas are profuse bloomers and in the Spring each plant is a solid mass of color.

Azaleas of all types are easily grown, if a few rules are followed. They require a good, well drained soil that has a slight acid reaction. The addition of leaf mould, peat and in very heavy, stiff soil a small quantity of sand is always beneficial. Leaf mould and peat help maintain an acid soil and a mulch of leaves is good to retain moisture and to furnish plant food for the next year. Azaleas are shallow rooted and an abundance of water in dry weather is necessary, especially with young plants. Watering among foliage with a hose is desirable as a strong spray holds thrip and red spider in check.

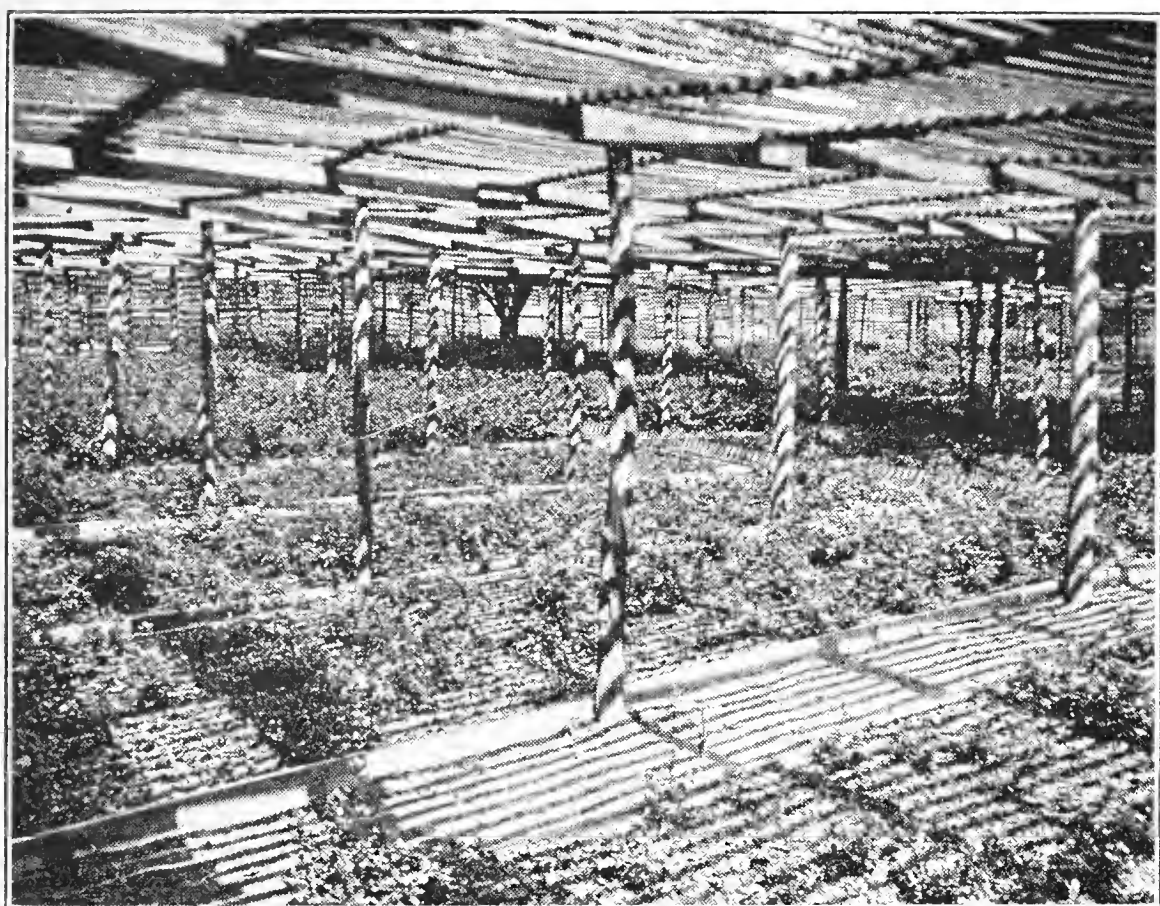
Partial shade is desirable in planting, but dense shade should be avoided. A lath house is well suited for growing plants in nursery. They should be fertilized sparingly; light application of cotton seed meal about three times a year, is one of the best treatments. It is to be remembered that plants that have a quantity of large sappy growth produce far less flowers and are much more likely to be killed by freezing weather than slower growing plants of the same variety.

Lining out size Azaleas offered here were rooted last Spring and planted in beds early in Summer, giving plenty of space for full development of strong root systems and bushy tops and are far superior to 2½ inch potted plants, having roots enough to fill 3 inch pot which has twice the capacity of 2½ inch pot.

We have thousands of lining out size azaleas ready for immediate delivery, but since these small plants have much tender growth and are easily damaged by frost, we advise protecting them against the frost this winter. Extra expense of frost protection will be more than repaid by better growth you will gain by early planting, but those who are not prepared to protect them will do well to let us book orders and make delivery in Spring after all danger of frost is over, without any additional expense to our customers.

AZALEA INDICA

The Indica group which are fast growers with masses of large flowers are especially adapted for landscape planting all along the Gulf Coast up to the Atlantic seaboard of North Carolina. Around Mobile, Charleston and some other sections, there are plants seventy to one hundred years old, with spread from twenty to thirty feet across, apparently without any special care, showing they are perfectly at home and easy to grow. Nurserymen in this entire section



SECTION OF AZALEA HOUSE

have a golden opportunity to give most lasting satisfaction to their customers and incidentally enrich themselves by planting extensive collections of these showy plants in their nurseries, because azaleas will sell themselves when your customers see them in full bloom. We are listing the most of important varieties, eliminating weaker growers or inferior flowers when the same color can be had in better varieties.

BRILLIANT—A good grower with small, dark green leaves. Deep watermelon color, being intermediate of *Pride of Mobile* and *Pride of Dorking*. Very good variety.

COCCINEA MAJOR—Brilliant orange-red of a little taller growth than *Prince of Orange*.

CRITERION — Compact grower. flowers color of strawberry ice cream, streaked with deeper pink and margin of white. Late bloomer and very attractive.

CROEMINA—Fast growing, light pink flowers of large size early in season.

DUC DE ROHAN — Compact grower, with pretty small leaves and profuse bloomer of beautiful salmon-pink flowers. One of the best varieties for pot culture.

ELEGANS—Fast and rather upright grower, similar to *Formosa*, with light colored pink flowers early in season.

FLAG OF TRUCE—Good size double white flowers with ruffled edge petals. Compact grower.

FORMOSA — Very fast grower with large dark leaves and large purplish pink flowers which have less purple than *Phoenicia*.

GEORGE FRANC—Early bloomer with extra large salmon pink flowers with deep red throat. Very showy.

GLORY OF SUNNYHILL — Compact grower, with shiny narrow leaves and one of the latest to bloom. Vivid orange-red color.

INDICA ALBA—Rather upright grower, with dull colored hairy leaves. Pure white flowers in mid-season and very hardy.

IVERYANA—Similar to Criterion, except this variety has pink stripes on pure white instead of pink shade ground of Criterion.

LADY EDITH—Very similar to Criterion, blooming late, of almost identical flowers, but having more glossy leaves than Criterion.

MME. DOMINIQUE—One of the largest size indicas, similar in color to Criterion, but of taller growth; very compact and blooms almost as late as Macrantha. Very hardy.

ORCHID—Upright grower, with light orchid colored flowers of medium size, very early.

PHOENICIA—Fast grower with medium size leaves and flowers of purplish-pink which is not often wanted with other colors, but very nice with white flowers and this variety will probably withstand more heat and sun than any others.

PRIDE OF DORKING — One of the deepest red of entire group. Blooms late in season and while not very hardy, yet one of the best kind.

PRIDE OF MOBILE—Fast grower with large leaves similar to Formosa but of lighter color. Some of the largest and choicest azaleas in the Mobile section are of this variety and were known formerly as "Watermelon Pink" but we gave the name "Pride of Mobile" several years ago which was immediately adopted by all. Plants over 70 years old, standing over 15 feet high, smothered by countless beautiful pink flowers is a sight that cannot be equaled by any. Very hardy, fast grower, most brilliant color, mid-season profuse bloomer makes this one of the outstandingly good and profitable varieties for Nurserymen and Florists to handle.

PRESIDENT CLAY—Good grower with orange-red flowers in mid-season.

PRINCE OF ORANGE — Spreading grower with deep orange-red flowers a little after mid-season. Very nice kind.

PRINCE OF WALES—Bushy, compact grower with deep pink flowers. Rather late.

SALMON — Known locally as "Daphne Salmon." Mid-season bloomer with pleasing salmon-colored medium size flowers. Very hardy, staying more dormant during winter months. An ideal variety for forcing in greenhouse.

VIOLACEA RUBRA—Beautiful shade of wine red color with dark green leaves.

VITTATA FORTUNEI—Fast, upright grower, with pale colored leaves. White and lavender variegated and light lavender flowers intermixed. Starts blooming in fall and continues all winter and Spring.

WILLIAM BULL — Very hardy, upright grower, which will not grow compact when small, but after a few years, will form nice compact form. Very double orange-red flowers will last a long time and one of the best.

The supply of blooming-size Azaleas has been somewhat limited for the last two years, due to the strong demand brought on by increased plantings all over the country. As a consequence, we have only a small stock in certain varieties and sizes, and we urge our customers to place their orders early to avoid disappointment.

Prices of Azalea Indica:	Each	10	100
6-8 inch, bed grown -----		\$.80	\$ 6.00
8-10 inch, with buds, B&B--	\$.30	2.50	20.00
10-12 inch, with buds, B&B--	.40	3.50	30.00
12-18 inch, with buds, B&B--	.50	4.50	40.00
18-24 inch, with buds, B&B--	.75	7.00	65.00
2-3 feet, with buds, B&B----	1.50	13.50	125.00

HARDY JAPANESE AZALEA

The following list of Hardy Japanese and Kaempferi Azaleas covers probably a larger collection of real money making varieties for the Nurserymen and Florists of the Southern half of the United States, than any other group of plants. All of them are hardy, and all are evergreen, except a few which lose their leaves in the New England States. The color range is large,—white, pink, salmon, orange, red, lilac and variegated; and the blooming season is an extended one,—some are early, some are late; each producing characteristic bloom of its own.

The whole country is sick and tired of evergreens and common flowering shrubs. They are wanting bright colors early in Spring and something different and what is better than this group of hardy evergreen azaleas? Most Nurserymen in this large section of the country do not know themselves what a big opportunity is waiting for them to stimulate their trade by offering this bright flowering plant to their customers.

Azaleas under this heading are not dwarf like Hinodegiri or Kurumes, but are fairly fast growers, reaching ultimate heights of ten to twelve feet and are hardy in all parts of New Jersey and even farther North.

AMOENA—One of the hardiest, compact grower, with small leaves and rather small size, rosy-purple hose-in-hose flowers. Can stand a great deal of neglect.

AMOENA SUPERBA — Similar to above with the exception of dark purple flowers, shading darker toward center.

FLAME—Bright orange-red flowers early in season.

FUJIMOYO—Small size hairy leaves. Medium size beautiful shade of double lilac flowers.

HARDY FIREFLY — Compact growing, very hardy azalea, with good size single flowers of most brilliant fiery red. One of the very best.

HINOMAYO — Fast growing, upright branches are clothed with small size light colored leaves. Beautiful shade of soft pink flowers will hide the plant. Blooms early.

INDICA ROSEA—(Magnificia)—Fast grower, with large size hairy leaves. Large single white flowers tinted with rose.

KAEMPFERI—This evergreen Azalea will lose its leaves farther North, where it can stand the winters of Boston without any protection, and does splendidly in lower South, making large size plants. The large size, single red flowers are borne profusely rather late in season.

KIMNAZOI — Compact grower with long, narrow leaves. The deep orange-red flowers with five separate narrow petals are entirely different from any other Azalea.

LILACINA — (Akebono, meaning dawn) — Delicate lilac shade of orchid is the color of Eastern sky at dawn. Strong grower, with large size leaves.

MACRANTHA — Compact grower, with roundish leaves with single medium size pink flowers late in season. Very hardy.

MACRANTHA, ORANGE RED — Similar to above, with narrow leaves and orange-red flowers. Very good.

MACRANTHA DOUBLE FLOWERING — One of the above type with double salmon-red flowers. Rather new.

MACROSTEMON SALMONEANA — Medium size Salmon-red flowers produced late in season very freely.

MAXWELLI—Leaves and flowers are as large as most of the Indicas and the carmine-red single flowers are of large size and very attractive.

YAYEGIRI—Fast grower with shiny narrow leaves. Beautiful salmon-red hose-in-hose flowers in mid-season. Very young and profuse bloomer.

YODOGAWA — A semi-evergreen with narrow willow-like leaves and purplish-pink double flowers early in Spring.

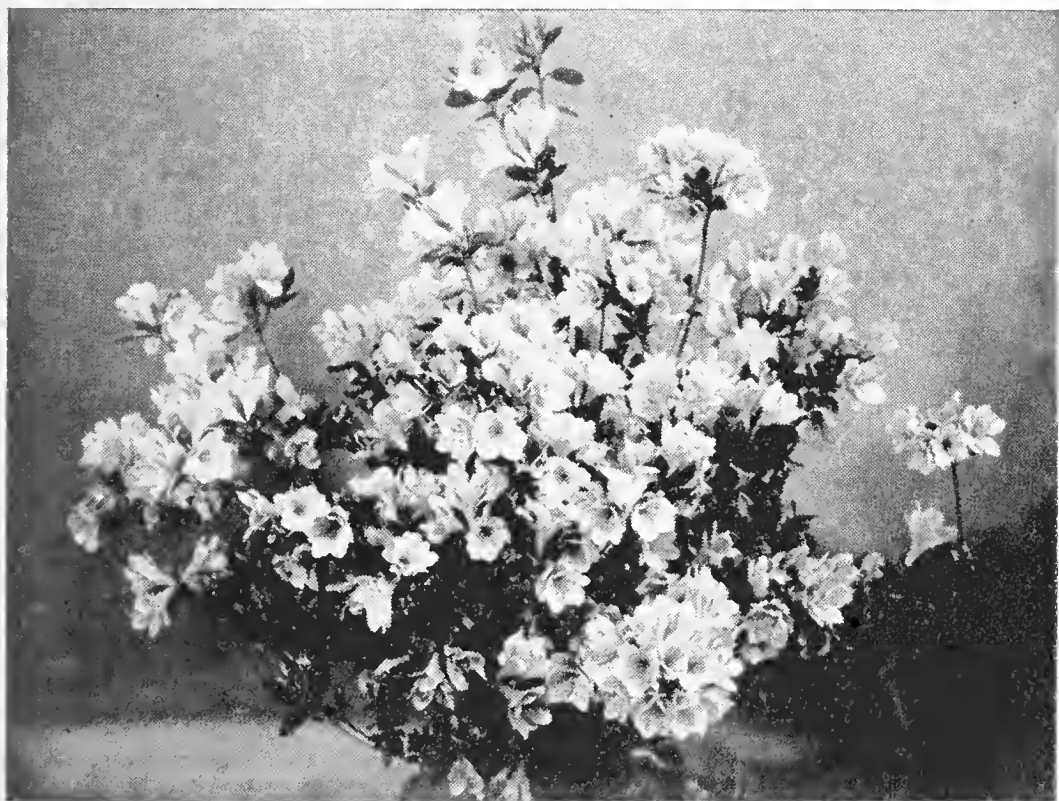
Prices of Hardy Japanese Azaleas, and Kaempferi hybrids, such as Cleopatra, Feodora, Carmen, Othello:

	Each	10	100
6-8 inch, bed grown -----	\$.80	\$ 6.00	
8-10 inch, with buds, B&B--	\$.30	2.50	20.00
10-12 inch, with buds, B&B--	.40	3.50	30.00
12-18 inch, with buds, B&B--	.50	4.50	40.00
18-24 inch, with buds, B&B--	.75	7.00	65.00
2-3 feet, with buds, B&B----	1.50	13.50	125.00

KURUME AZALEAS

This group, known botanically as *Azalea Obtusum Japonicum*, includes varieties that are more dwarf in their habit of growth, and not quite so hardy as the Hardy Japanese group, but all Kurumes will stand the winters of almost all sections of the Southern states without any protection, and much farther North with a little protection. Their popularity is increasing rapidly as they become better known, especially in the cooler sections of the country where the more tender Indicas are injured by cold. Used singly, or in groups by themselves, or in combination with Indicas or Hardy Japanese varieties, they give most pleasing landscape effects, and a range of color that could not otherwise be obtained.

The demand for Kurume Azaleas as pot plants from Eastern and Northern Florists has been growing by leaps and bounds. When plants are received from us, all you have to do is to pot them in light peaty soil, keep in moderately warm houses, and spray with strong force of water daily to keep down red spiders and they will come into full bloom in



CORAL BELLS—10-12 inch Size

about 60 days. They are a very quick and profitable crop. We are now growing thousands of excellent Kurumes for Florists use, paying particular attention to the leading Florists' varieties, such as Coral Bells, Salmon Beauty, Hinodegiri and Snow.

APPLE BLOSSOM—Hose-in-hose pink flowers are the color of apple blossoms.

BRIDESMAID—Salmon-pink, large size flowers are borne in large clusters. Very good grower.

CARMINE PRINCE — Large size hose-in-hose carmine-red flowers are produced very freely. Medium height, compact.

CATTLEYA — Delicately lilac-tinted hose-in-hose petals are pointed at end and mauve-pink at the edges. Good grower.

CHERRY BLOSSOM—Delicate shade of pink melts into white toward center. Large size flowers.

CHRISTMAS CHEER—Compact grower with small shiny leaves. Deepest crimson flowers are small but very attractive, and one of the best varieties.

CORAL BELLS—Compact grower with small round glossy leaves, having dainty, bell-shaped, pink flowers which are not large but a very profuse bloomer and one of the best favorites with florists.

DAPHNE—Very compact, slow grower, with delicate light lavender flowers fading white in center.

DOUBLE MAUVE—Compact grower with delicate mauve flowers fading to white in center. Hose-in-hose type and real nice for pot plants.

HEXE (Firefly)—Slow, compact grower with showy deep scarlet, hose-in-hose flowers. Small sizes only to offer this year.

HINODEGIRI—Slow, compact grower, but its fiery red flowers will literally smother the entire plant, even when they are very small, making it one of the most desirable pot plants.

HORTENSIA — Good size, soft pink hose-in-hose flowers are produced in large trusses. Medium height.

LAVENDER QUEEN—Large size, single light lavender flowers with white stamens. Dark, large size leaves.

MAUVE BEAUTY—Delicate mauve shade flowers, literally cover entire plant. Compact, dwarf grower.

ORANGE BEAUTY—Compact grower, with orange-pink flowers of hose-in-hose type, produced in very large clusters.

PEACH BLOW—One of the fastest growing Kurume varieties with medium size, single, salmon-pink flowers of delicate peach shade.

PINK PEARL—Large size, most beautiful salmon-rose color, shaded lighter toward center, with prominent markings. Borne in large clusters.

SALMON BEAUTY — Large size, hose-in-hose salmon-pink flowers with light green foliage.

SALMON QUEEN — Large size, single flowers of salmon-pink are produced in great profusion in mid-season. One of the most attractive.



SALMON QUEEN—6-8 inch Size

SNOW—Purest white, good size hose-in-hose flowers among beautiful glossy leaves. Liked by all.

SUNSTER — Medium size, single, dark rose-pink flowers are borne very heavily. Small, dark green leaves and medium height.

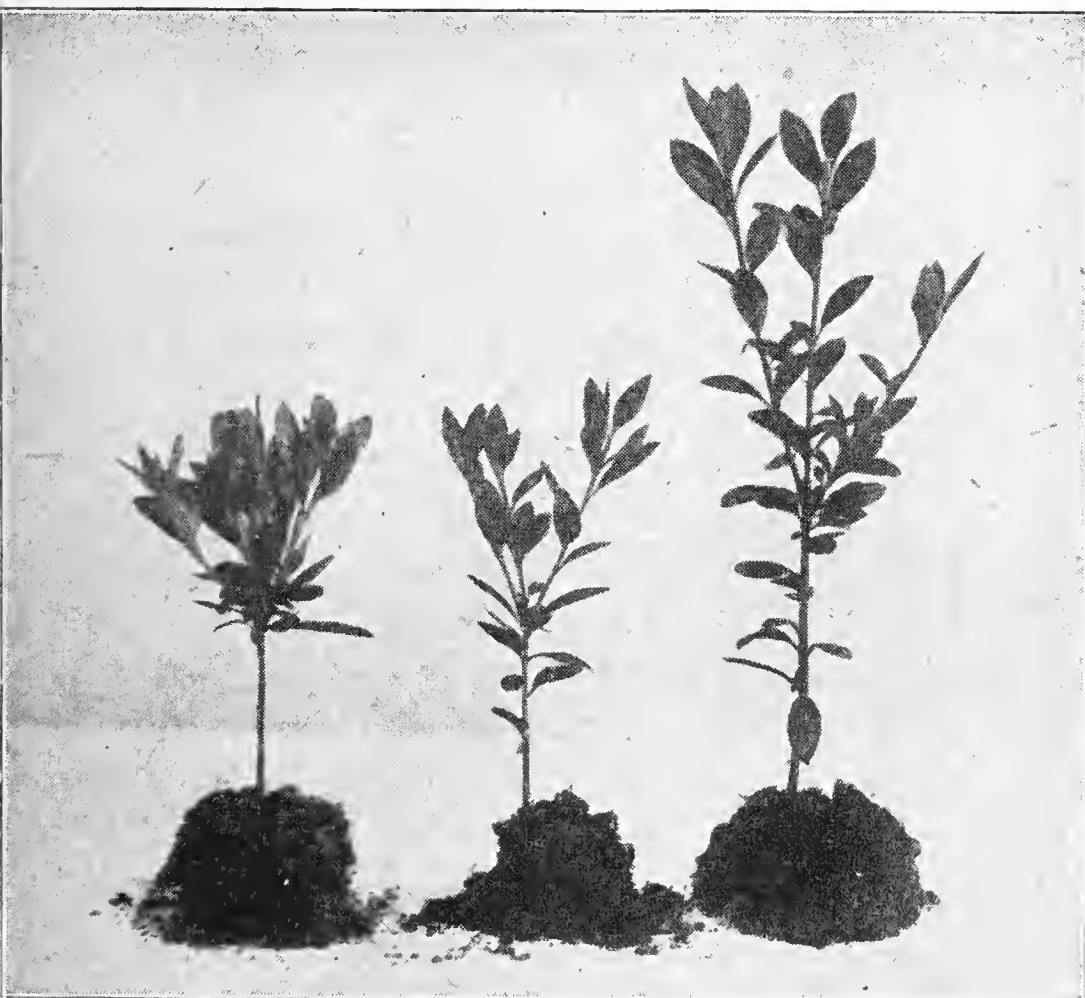
SWEET BRIER—Compact grower, with leaves similar to Peach Blow. Medium size, single pink flowers are very attractive. One of the hardiest Kurumes known.

VESUVIUS — Large size, bright orange-red, single flowers. Good grower, with dark green leaves.

VIVID—Hose-in-hose, large size flowers are deep vivid red, without any cast of purple, but similar to Hexe, which has a purple tint. Small leaves and a compact grower.

Prices of Kurume Azaleas:	Each	10	100
4-6 inch, bed grown-----		.80	6.00
4-6 inch, compact & budded--	.30	2.50	20.00
6-8 inch, with buds, B&B --	.40	3.50	30.00
8-10 inch, with buds, B&B --	.60	5.00	45.00
10-12 inch, with buds, B&B --	.75	6.50	55.00
12-18 inch, with buds, B&B --	1.00	9.00	80.00
18-24 inch, with buds, B&B --	1.75	15.00	125.00

Our 4-6 inch, bed grown Azaleas are recommended and sold to Nurserymen and Florists only for the purpose of lining out and growing on into larger sizes. They do not have flower buds and are of no value for immediate effect.



4-6 and 6-8 inch Bed Grown Azaleas
Shown with 3-inch pot.

We grow and sell thousands upon thousands of these small plants every year and, due to our facilities and equipment for quantity production, customers find it cheaper and more satisfactory to purchase from us than to maintain a propagating department for their own needs.

CAMELLIA JAPONICA

Horticultural names of *Camellia Japonicas* are so badly confused that we are still not sure of many of them, but we have enough kinds which are recognized by leading nurserymen by such names as we list, that we are offering these named *Camellias* under three classes.

We are the fortunate possessors of "Nouvelle Iconographie des Camellias", published in 1848-1860, with more than five hundred natural colored illustrations with names and we follow their names as far as possible.

Many names, however, will have to be revised yet, and in order not to mislead you, we are illustrating several types of flowers and by referring to them, you can form a better idea of what we mean by "peony form", "very double", etc.

Camellias are not difficult to grow. Many fine old specimen plants are to be found scattered throughout the lower South, where they have been growing for years with but little care, and thriving on practically all types of land characteristic to the region. However, they prefer, and do best on a good, well drained soil that has a slight acid reaction. Good garden soil is suitable, but it can be made better by adding leaf mold and peat moss. In heavy, stiff soils a small quantity of sand is also beneficial. Leaf mold and peat help to maintain an acid condition and a mulch of leaves is good to retain moisture and to furnish plant food the next year. The addition of sand makes stiff soils more porous and provides better drainage.

In most soils, especially on clay lands, cotton seed meal alone, or used with acid phosphate, is an excellent fertilizer. Other good fertilizing materials which are likewise acid in their reaction are well rotted cow manure, tankage, castor pomace, sulphate of ammonia and muriate of potash.

The *Camellia* is less subject to disease and insect enemies than most other evergreen shrubs, but sometimes the foliage is attacked by scales. When this occurs, they should be sprayed with a miscible oil preparation and care taken to thoroughly wet the underside of the leaves as well as the top. Volk, used at the rate of 1 part to 50 parts of water has proven very effective.

The *Camellia* is the handsomest and finest of all the broad leaved evergreen blooming plants for Southern gardens. It is long lived and its beauty and monetary value increases rapidly as the plants grow older. The many new and fine varieties of recent introduction have added enormously to its popularity and its use as an aristocratic cut flower has greatly enhanced its prestige and opened up a much broader field for its distribution.



Upper Left—Pink Perfection Upper Right—Kellingtonia
Lower—Herme

POTTED CAMELLIAS

To keep pace with the rapidly increasing demands of Florists, we have more than doubled our supply of potted Camellias for this season, and are again offering selected varieties of bushy plants in 6 and 7 inch pots, which can be retailed as potted plants or used to furnish cut flowers. These plants are mostly 18-24 inch for dwarf kinds, and 24-30 inch for taller growing sorts. All of them have more than half a dozen well developed flower buds, and some have double that number.

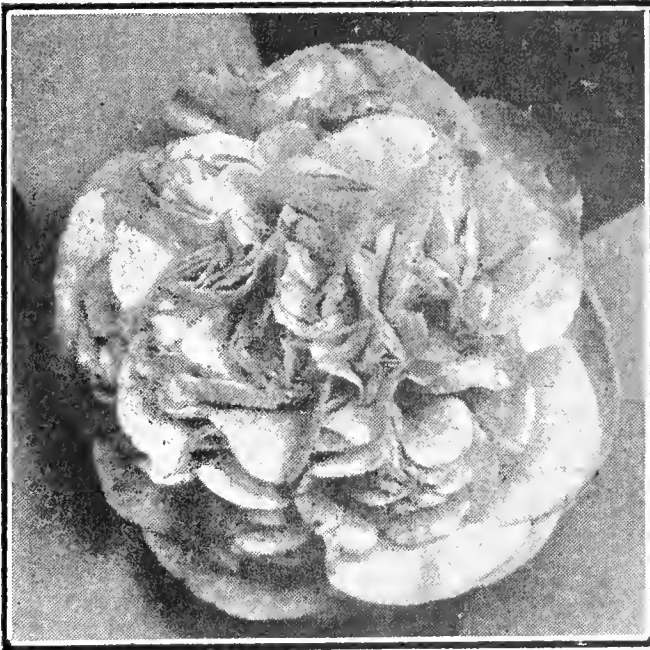
Florists who first bought our potted Camellias, continue sending repeat orders, and many have advised us that they find them more profitable and more satisfactory than any other plants they have ever handled. In view of these facts, and notwithstanding the increase in production, we anticipate our whole supply will again be sold out quickly and we urge our customers to order early, so they will not be disappointed.

Camellias with advanced flower buds should be kept in a very cool house. Carnation and Cyclamen houses are suitable, with a temperature of not much more than 50 degrees. Camellias are winter blooming plants and may shed off their buds in very warm houses.

Prices of potted Camellias:—

\$15.00; \$17.50 and \$20.00 per ten plants, depending upon size, kinds and number of buds.

RARE CAMELLIAS



DEBUTANTE

We offer again this season a few of the most choice and outstanding varieties of Rare Camellia Japonicas, which every grower should have in his collection. We can supply them only in connection with our STANDARD SORTS; only a limited number to a customer; and no reduction in price, regardless of size of order. New and Rare sorts of today will be the real money makers of tomorrow, and we urge our customers to order early before they are sold out.

VICTOR EMANUEL—Most highly prized Camellia of today. Very large, deep red peony form of late season.

Prices on Victor Emanuel

10-15 inch, pot	\$ 5.00 each
15-24 inch, B&B	10.00 each

APPLE BLOSSOM—Single, small pink flowers are not showy, but quite fragrant. Sizes up to 15-24 inches.

COLONEL FIREY (Wm. S. Hastie)—Very double flowers, with many small size petals of glowing rich crimson. Very large, and a late bloomer. All sizes.

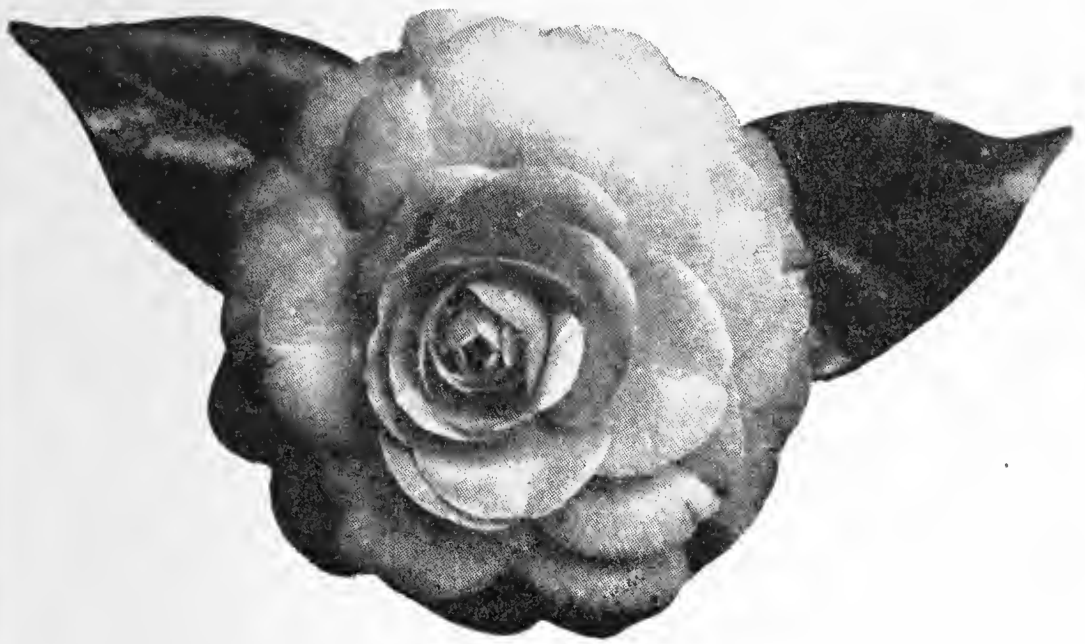
DEBUTANTE (Sarah C. Hastie)—Delicate shade of solid pink, large peony form and very hardy. All sizes.

ETHLINGTON WHITE—Semi-double white, tissue paper-like texture, of large size flowers. All sizes.

FANNY BOLLIS—Very large single red flowers are blotched with white. Sizes up to 15-24 inches.

FRED SANDERS—Flowers single, of medium size and crinkled at the edges. Otherwise, it resembles Tri-color, both in color and formation. All sizes.

GIGANTEA — Very large leaves and spreading branches. The red and white flowers are Peony form and of good size. Sizes up to 15-24 inches.



PURPLE EMPEROR

GOSHOGURUMA—Upright grower. Good sized, semi-double, deep red flowers with yellow anthers, making a most attractive color combination. All sizes.

KIMBERLY—Upright grower. The brilliant red, single flowers have very prominent red stamens instead of white stamens like other Camellias. A collector's variety. All sizes.

KUMASAKA—Large size peony form of deep pink, of late season. All sizes.

LADY CLARE—Immense size single pink flower is probably largest of all Camellia. Sizes up to 10-15 inches.

MARCHIONESS of EXETER — Early blooming, large size pink flowers of peony form, is similar to Debutante, but a little deeper in color. All sizes.

MRS. WILLIAM THOMPSON—Large, semi-double white of great beauty. Recent importation from Europe. All sizes.

PURPLE EMPEROR (Mathotiana Rubra, Purple Dawn, etc.)—One of largest flowers of rose form deep pink, but as the flower gets older, outer edge turns purple. All sizes.

SNOWDRIFT—Beautiful form of large size, semi-double, pure white. All sizes.

SUPRESSE NOBILISSIMA — Semi-double, white flowers are very light in texture and elegant. Sizes to 15-24 inches.

ST. ELMO (Cabbage Head)—Upright grower, with thick shiny leaves. Flowers deep pink, thick peony form, of good size and one of the earliest to bloom in fall. All sizes.

Prices on all Rare Camellias, except Victor Emanuel:

8-10 inch, pots	\$1.50 each
10-15 inch, pots	2.00 each
15-24 inch, B&B	4.00 each

Specimens, B&B at \$15.00 to \$25.00 each, and limited number in larger size.

CLASS A CAMELLIAS

ALBA PLENO—Snow white, very double, good size flowers. Very early, but poor grower, and does not set buds when young. 12-18 and 18-24 inch only.

BROOKLYANA—A bushy grower, with large light-colored leaves. Flowers of medium size, very double, color pink, mottled with white.

CHANDLERI ELEGANS—One of the largest peony flowering Camellias, cherry-red, with white variegation. Some are thick peony flowers with 500 petals, but some flowers are loose peony form with yellow stamens. See illustration.

CHANDLERI
ELEGANS

Peony Form



CLEVIANA—Compact and fast grower, with medium size solid deep pink flowers of thick peony type.

EMPRESS OF INDIA—Very late, dahlia-shape flowers having unusually pleasing salmon color which is not often found in any other Camellia.

ENRICO BETTONI — Very fast grower, making great deal of summer growth. Flower is clear, light pink, but form varies from semi-double to peony form on same bush, but always very large.

HERME—Very large, loose peony form of elegant shape. Pink and red variegated with white margin. Has faint scent. One of the very best.

LADY HUME'S BLUSH—Very double and symmetrical petals are delicately blushed with flesh-color, which is much lighter than Pink Perfection. Because of extremely slow growth and difficulty



MONARCH

in propagation, prices of this variety will be at double of our listed Class A Camellias.

MONARCH—Deep pink flowers of enormous size, having many clusters of stamens and petals, inside of larger outer petals, making a single flower equal to a bouquet. Beautiful foliage and compact grower. Since this variety is a very dwarf and spreading grower, prices of specimen plants will be at one grade higher than listed prices. For example, price of 18-24 inch Monarch will be at listed price of 24-30 inch.

OTOME—Similar to Pink Perfection, with much larger flowers with each end of petals fading to lighter shade of shell pink.

**SEMI-DOUBLE
BLUSH**

Light Semi-
Double



PINK PERFECTION—Very double, clear shell-pink, of dainty form, liked by many. Blooms very early, but continues for a long time. Starts blooming very young and heavy bloomer.

PROF. C. S. SARGENT—Very thick, peony form of solid crimson of medium size.

SEMI-DOUBLE BLUSH — Not sure of name, but from stock plant imported from France. Elegant shaped, light semi-double petals have identical color of Lady Hume's Blush, with beautiful yellow stamens; making one of noblest and simplest in form and coloring. See illustration.

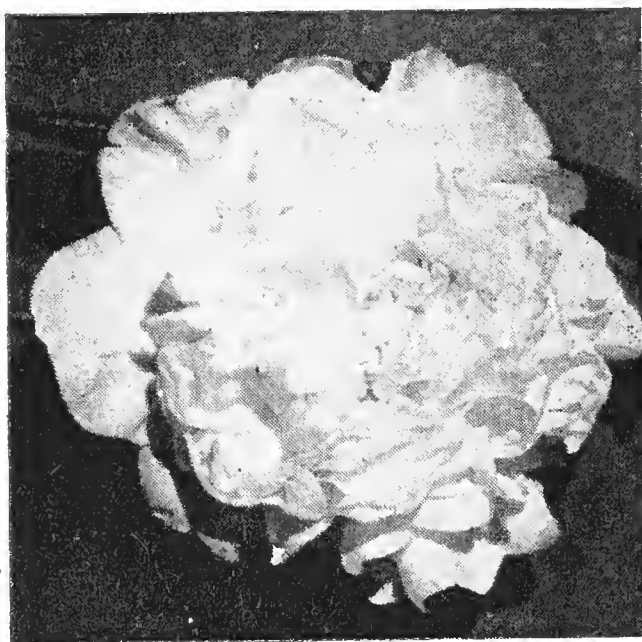
SOPHIA—Habit of growth and color of flower are very much like Chandleri Elegans, but form of flower is more cup-shaped and center petals are less in number and larger. Set buds young and is a heavy bloomer.

Prices of Class A Camellias:	Each	10	100
3-5 inch, pot or from greenhouse benches		\$ 1.50	\$12.00
6-8 inch, B&B or Pot		3.00	25.00
8-12 inch, B&B or Pot		4.00	35.00
12-18 inch, branched, B&B ...		5.50	50.00
18-24 inch, branched, but without buds, B&B		10.00	85.00
18-24 inch. specimen, B&B ...	2.25	20.00	
24-30 inch, specimen, B&B ...	3.50	30.00	
30-36 inch, specimen, B&B ...	4.50	40.00	
3-4 feet, specimen, B&B	6.50	60.00	
4-5 feet, specimen, B&B	8.50	80.00	

CLASS B CAMELLIAS

This class includes some of the best kinds, often as good as our A Class, but because of a little more plentiful supply, we are listing these excellent varieties at much lower prices.

MRS. ABBY WILDER—Peony shaped white flowers, medium to large, with tiny splashes of pink. Compact and good grower. (See illustration).



MRS.
ABBY
WILDER

AUSTILL PINK — Semi-double pink of medium size, stamens often intermixed with smaller petals in center. Compact, but fast grower.

BEALLI ROSEA—Very double flowers of Pink Perfection shape, of about same size, but color is a deeper pink. Fast and very compact grower with rather small leaves. Plants 3 feet high usually have spread of same dimension.

BROWN'S RED—Probably darkest red Camellia of semi-double form, with pointed dark green leaves.

CANDIDISSIMA — Star-shaped, very double pure white flowers are not large, but very profuse bloomer. Slow, compact grower. Season late.

COMTE DE GOMER — Very double creamy petals are dotted with numerous pink spots. Early season, compact, but slow grower.

ELIZABETH
Very Double



COUNTESS OF ORKNEY—Light pink, with stripes of red, very double flowers of rather early season. compact, but slow grower. Profuse bloomer while very small.

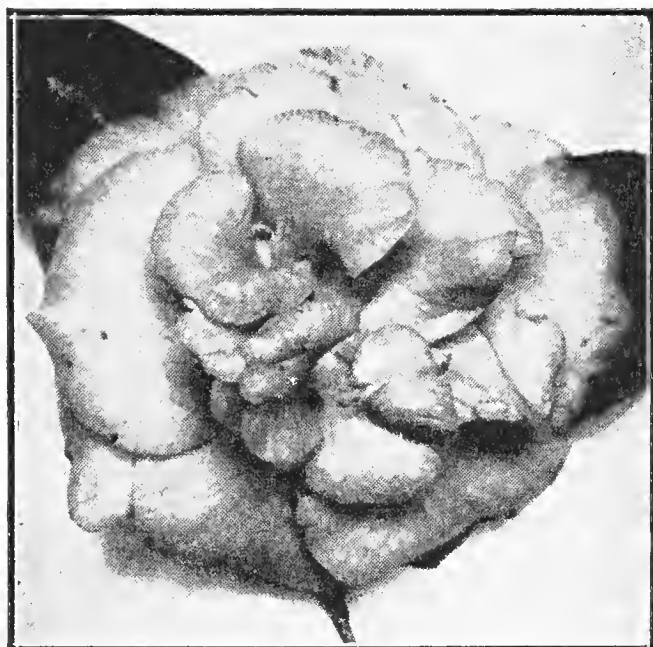
DUC DE BRETAGNE—Red with blotch of semi-double. Large, heavy leaves.

DUKE DE ORLEANS — Creamy white, with tiny specks of pink. Good size peony form, stamens intermixed with inner petals.

ELIZABETH (Tutonia) — Very double pure white petals are crinkled at end and once in a great while, pure pink flowers of same form will appear. Leaves are very dark, thick green and a strong grower. One of best. (See illustration page 16.)

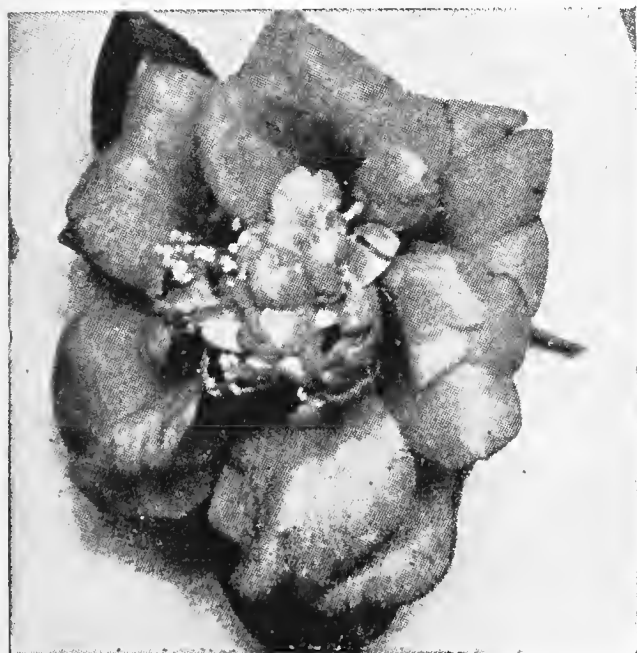
**GLOIRE de
NANTES**

Center Petals
Twisted



GLOIRE DE NANTES (Leana Superba) — Large size semi-double cerise, center petals often twisting. Very large dark green leaves, with bold large flowers make this one of the most attractive on bush. (See illustration).

JARVIS RED— Deep blood-red, semi-double flowers with golden stamens makes this flower very attractive among dark green foliage. One of the most popular kind. (See illustration).



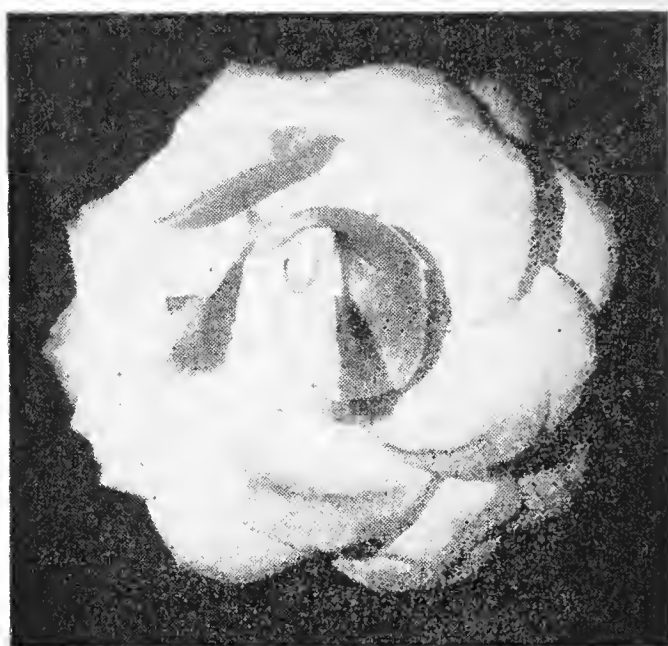
JARVIS RED
Semi-Double

KELLINGTONIA — Orange-red, with stripes or blotches of white, open peony type. Always blooms heavy and has extra good foliage.

MADAM STREKALOFF—Peony formed, light pink petals are streaked with small stripes of crimson. Stiff upright grower.

MATHOTIANA

ALBA



MATHOTIANA ALBA—Good size very double white with large light colored leaves. Rather late in season. (See illustration).

NAPOLEON D'ITALIE—Medium size, double rose-red, with very dark, almost blackish stripes. Compact, excellent grower.

NOBILISSIMA—Early white petals intermixed with stamens. Good grower and bloomer.

PRINCE EUGENE NAPOLEON (Pope Pius IX)—Good size, very double scarlet flowers; early to mid-season. Good compact grower.

RAINY SUN—Twisted, rather narrow leaves. Flowers large, semi-double and rose-red in color.

REV. JOHN BENNETT — Orange-red, semi-double flowers of good size, often stamens twisted with petals. Rather small, roundish, dark green foliage and very compact, but a good grower.



**TANNER-
WILLIAMS
RED**

Semi-Double

ROSE EMRY—Crimson peony form of medium size, early in season.

SINGLE RED No. 1 — Large size, single red with extra large foliage.

TANNER WILLIAMS RED—Not sure of name, but we are naming after place where the original plant was found. Semi-double, orange-red, with prominent stamens. Very compact grower and profuse bloomer. (See illustration on page 18.)

T. K. VARIEGATED—Semi-double, light pink, with darker pink margin, somewhat like Criterion Azalea. Elegant form and coloring, with large cluster of yellow stamens. Small leaves, compact, but fast grower.

THERESA MOSSINE—Very narrow, pleasing shell-pink petals are very double. Small size leaves and very compact grower.

TRI-COLOR — Semi-double flowers of almost pure white to red and intermediate colors on same bush. Dark green glossy leaves.

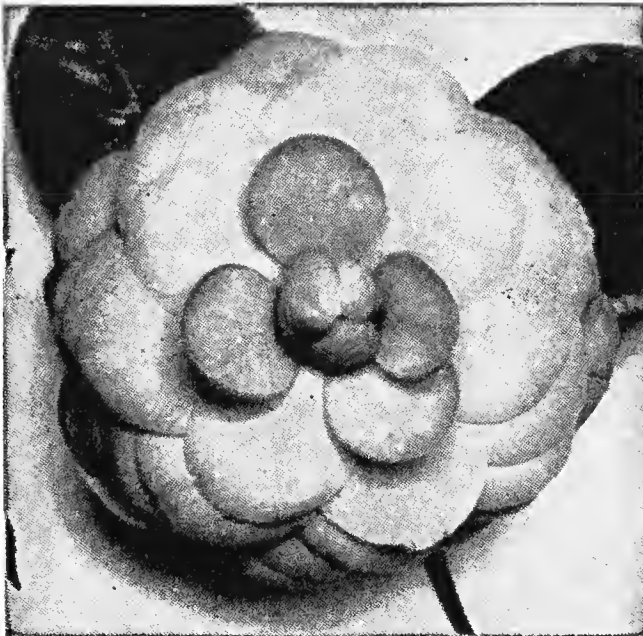
Prices on Class B Camellias:—	Each	10	100
3-5 inch, pot or from greenhouse benches		\$ 1.20	\$10.00
6-8 inch, B&B or Pot		2.50	20.00
8-12 inch, B&B or Pot		3.00	25.00
12-18 inch, branched, B&B....		4.50	40.00
18-24 inch, branched, but with no buds, B&B		7.00	60.00
18-24 inch, specimen, B&B....	2.00	17.50	
24-30 inch, specimen, B&B....	2.50	20.00	
30-36 inch, specimen, B&B....	3.50	30.00	
3-4 feet, specimen, B&B.....	5.00	45.00	
4-5 feet, specimen, B&B.....	7.00	65.00	
5-6 feet, specimen, B&B	9.00	80.00	

CAMELLIA, 18-24 inch, branched, but with no buds.



CLASS C CAMELLIAS

Includes more common double flowering kinds such as **Lady Campbell**, a double red of good size; **Sarah Frost**, double rose-red and very good compact grower (see illustration); **Lily**, double white of medium size and fast grower; **Sangdon**, semi-double shell pink and fast grower; several variegated kinds. As a class, most of the varieties are very fast growers and harder than more choice sorts.



**SARAH
FROST**

Double Rose

We also offer at this class price, several very good double flowering kinds. names of which are not known to us, so we offer them by color: Red, Pink, Variegated and White.

Prices of Class C Camellias:	Each	10	100
3-5 inch, pot or from green-house benches,		\$ 1.00	\$ 8.00
6-8 inch, B&B or Pot		2.00	15.00
8-12 inch, B&B or Pot		2.50	20.00
12-18 inch, branched, B&B....		4.00	35.00
18-24 inch, branched, but without buds, B&B		6.00	50.00
18-24 inch, specimen, B&B ...	1.50	12.50	
24-30 inch, specimen, B&B ...	2.00	17.50	
30-36 inch, specimen, B&B ..	3.00	25.00	
3-4 feet, specimen, B&B	4.00	35.00	
4-5 feet, specimen, B&B	6.00	55.00	

3-5 inch, Bench Grown
and
8-12 inch Pot



ORIENTAL MAGNOLIAS

Some of the most beautiful flowering trees in the world belong to this group of deciduous Magnolias. Most of them are hardy in nearly all parts of the United States, and planting of these beautiful trees should be encouraged by nurserymen, especially when they can be had at such reasonable prices as we list below.

MAGNOLIA LILIFLORA (M. Obovata) — Tulip-shaped, large size purplish-pink flowers before leaves appear. Many stems from ground and makes a large size bush. (See illustration page 23).

MAGNOLIA SOULANGEANA NIGRA—Blooms later than Soulangeana and is darker in color.

Prices of Magnolia Liliflora and M. Soulangeana Nigra:

	Each	10	100
2½ or 3 inch pots (1 yr.)--\$.15	\$ 1.25	\$10.00
2½ or 3 inch pots (2 yr.)--	.20	1.50	12.00
12-18 inch, C. T.-----	.20	1.50	12.00
18-24 inch, C. T.-----	.30	2.50	20.00
2-3 feet, bushy, B&B-----	1.25	10.00	
3-4 feet, bushy, B&B-----	1.50	12.50	
4-5 feet, bushy, B&B-----	1.75	15.00	

MAGNOLIA SOULANGEANA LENNEI — Leaves are much larger than Soulangeana, having cup-shaped, larger size, bold flowers, which open later than other Soulangeana, deep reddish-purple outside, and white inside. Very choice.

3-inch pot, C. T.-----	\$.35	\$ 3.00	\$25.00
18-24 inch, B&B-----	1.50	12.50	
2-3 feet, B&B-----	2.00	17.50	
3-4 feet, B&B-----	2.50	22.50	
4-5 feet, B&B-----	3.00	27.50	

MAGNOLIA RUSTICA RUBRA — New introduction from England. Large, cup-shaped flowers are dark reddish-purple and great new addition.

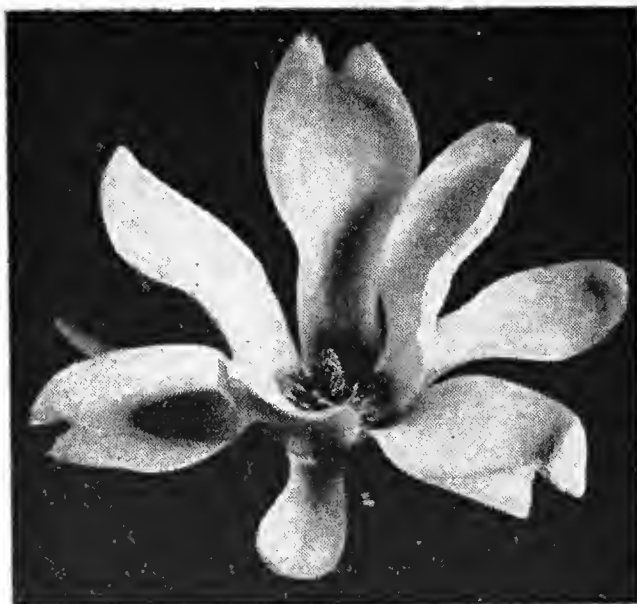
Similar to Lennei, with handsome seed pods of more than six inches long. (See illustration.)

3-inch pot -----	\$.35	\$3.00	\$25.00
------------------	--------	--------	---------



MAGNOLIA RUSTICA RUBRA

MAGNOLIA SOULANGEANA — Small size tree, with large, nine petal pinkish flowers before leaves come out in Spring, and one of the most beautiful flowering trees.



**MAGNOLIA
SOULANGEANA**

MAGNOLIA SOULANGEANA ALBA SUPERBA — Similar to above, with almost white flowers of larger size, with rounder leaves and a more upright grower.

Prices of Magnolia Soulangeana and Alba Superba:

	Each	10	100
2½ or 3 inch pots (1 yr.)	\$.25	\$ 1.75	\$ 15.00
2½ or 3 inch pots (2 yr.)	.30	2.50	17.50
* 12-18 inch, C. T.	.30	2.50	17.50
* 18-24 inch, C. T.	.40	3.50	25.00
* 18-24 inch, B&B	1.00	9.00	80.00
2-3 feet, B&B	1.25	10.00	90.00
3-4 feet, B&B	1.75	15.00	125.00
4-5 feet, B&B	2.25	20.00	175.00
5-7 feet, B&B	2.50	22.50	200.00

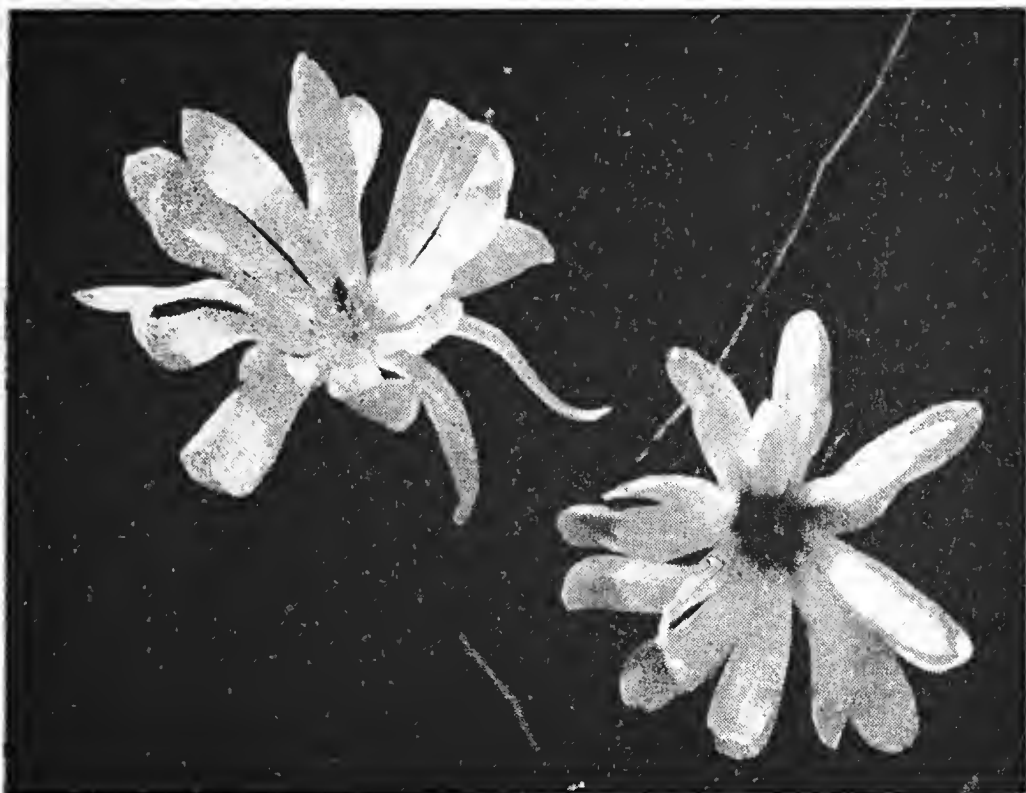
* Soulangeana only.



**ILEX CORNUTA
FEMINA**
2½ inch Pot

**MAGNOLIA
STELLATA**
3 inch Pot
(2 yrs.)

**MAGNOLIA
SOULANGEANA**
3 inch Pot
(2 yrs.)



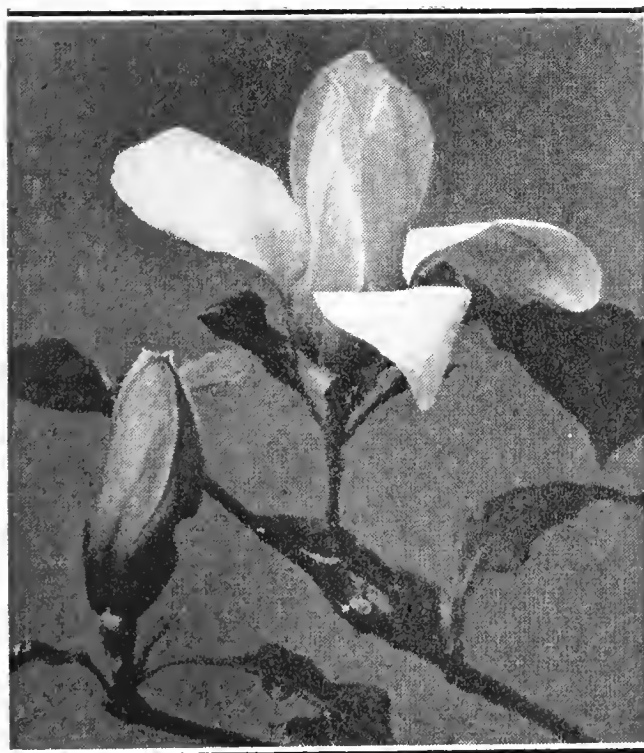
MAGNOLIA STELLATA

MAGNOLIA STELLATA (Star Magnolia)—A dwarf grower, with numerous delicate pinkish-white water-lily-like flowers early in Spring. One of the most beautiful of all.

	Each	10	100
2½ or 3 inch pots (1 yr.) --	\$.25	\$ 2.00	\$17.50
2½ or 3 inch pots (2 yr.) --	.30	2.50	20.00
12-18 inch, C. T.-----	.30	2.50	20.00
18-24 inch, Bushy, B&B--	1.75	15.00	
2-3 feet, Bushy, B&B ----	2.25	20.00	
3-4 feet, Bushy, B&B ----	3.50	30.00	
4-5 feet, Bushy, B&B ----	5.00	45.00	

MAGNOLIA VEITCHII—Hybrid of Magnolia campbelli and M. denudata. Strong upright grower, with much larger leaves than M. denudata. Lovely blush pink flowers are almost twice the size of Soulangeana. Very rare but valuable.

Price of 5 inch and 6 inch potted plants in 18-24 inch size at \$2.50 each.



**MAGNOLIA
LILIFLORA**

BROAD-LEAVED EVERGREENS

Legend: — S—Seedling, C—Cutting, T—Transplanted, B&B—Balled and burlapped.

We have many varieties not listed here and solicit your inquiries.

ABELIA GRANDIFLORA

	Each	10	100
12-18 inch, C. -----		1.25	10.00
18-24 inch, bushy -----		1.50	12.00
2-3 feet, bushy -----		2.00	17.50
3-4 feet, bushy -----		3.50	30.00

We can ball last three grades of especially selected plants at 15c extra each.

AUCUBA JAPONICA

Beautiful dark green leaves on green branches reaching ultimate height of ten feet. Hardy South of Philadelphia but in lower South, they should be planted in shade where they will thrive in almost any degree of shade.

6-8 inch, S. T. -----	1.00	8.00
12-18 inch, S. T. -----	2.00	15.00

AZALEAS (See pages 3-9)

BERBERIS ATROCARPA

One of the best evergreen barberries in the lower South, with about one-inch long spiny leaves. Compact grower.

6-8 inch, C. T. -----	.60	5.00
8-12 inch, C. T. -----	.75	6.00
12-18 inch, C. T. -----	1.00	8.00
12-18 inch, B&B -----	\$.60	5.00
18-24 inch, B&B -----	.75	6.00
2-3 feet, B&B -----	1.00	9.00

BERBERIS THUNBERGI ATROPURPUREA (Red leaved Japanese Barberry)

Leaves are dark bronze-red, making an excellent contrast with other green shrubs.

6-8 inch, C. T. -----	.60	5.00
8-12 inch, C. T. -----	.75	6.00
12-18 inch, C. T. -----	1.00	8.00
12-18 inch, B&B -----	.60	5.00
18-24 inch, B&B -----	.75	6.00
2-3 feet, B&B -----	1.00	9.00

BUXUS JAPONICA

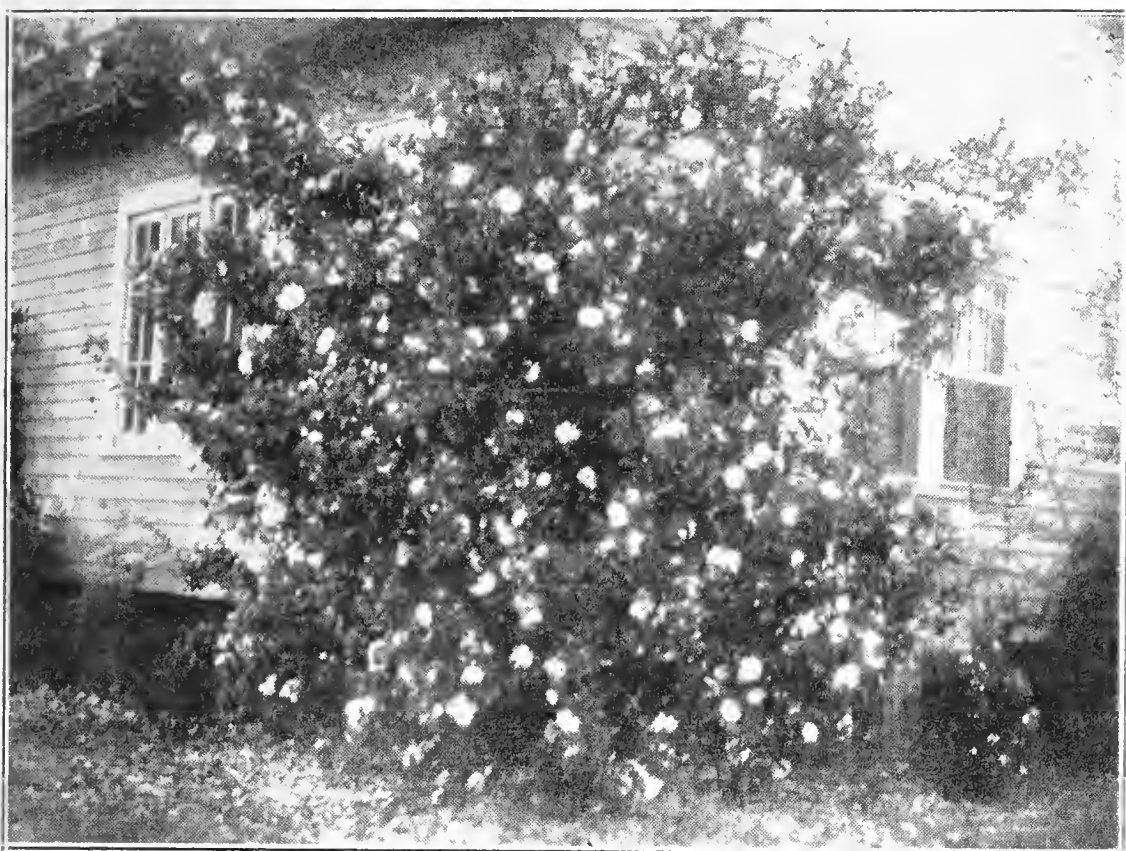
Fairly fast growing box with light colored roundish leaves. Does well in full sun.

BUXUS SEMPERVIRENS

Slow growing, compact box with deep green pointed leaves. There are several strains of this variety, but we offer the most compact growing kind.

Prices of Both Buxus:—

4-6 inch, C. T. -----	.65	5.00
6-8 inch, C. T. -----	.80	6.00
8-10 inch, C. T. -----	1.00	8.00
10-12 inch, C. T. -----	1.25	10.00
12-18 inch, B&B -----	.85	7.50
18-24 inch, B&B -----	1.00	9.00
2-3 feet, B&B -----	1.50	12.50



**ORIGINAL IMPORTED CAMELLIA SASANQUA, MINE-NO-YUKI
CAMELLIA SASANQUA**

One of the newer and finest of all the broad-leaved evergreens. Similar to *Camellia Japonica*, but looser and faster growing. Very profuse bloomers, the flowers commencing to open the latter part of September and continuing on through November,—a time when very few flowers can be had. From many thousands of seedling plants, we have originated a few outstanding kinds, which we offer in the following list under numbers.

CLEOPATRA

Large, beautiful cherry-red flowers, often double, and having crinkled petals. Foliage thick, dark and glossy. A vigorous and compact grower.

MINE-NO-YUKI — Double white, similar to Carnation flower. (See illustration)

ROSEA—Large, single deep pink, upright grower.

No. 1—Large single shell pink, fast grower.

No. 2—Single variegated, pink and white.

No. 4—Single blush of good size.

No. 5—Pink and white variegated, but deeper than

	Each	10	100
No. 2.			
6-8 inch, C. T. -----		1.50	12.50
8-12 inch, C. T. -----		1.75	15.00
12-18 inch, C. T. -----		2.00	17.50
2-3 feet, B&B -----	1.50	12.50	
3-4 feet, B&B -----	2.50	22.50	
4-5 feet, B&B -----	3.50	30.00	

CAMELLIA SASANQUA (Seedlings)

Seedling Sasanqua are usually of single white flowers, but often with pink and red, which will bloom very profusely in October and November, when there are so few other flowers. Fast and free grower and will make excellent hedge and also under-stock to graft more valuable *Camellia*.

4-6 inch, seedlings -----	.60	5.00
6-8 inch, S. T. -----	.80	6.00
8-12 inch, S. T. -----	1.00	8.00

CALLISTEMON (Bottle Brush)

Strong 3-inch pot -----	1.25	10.00
-------------------------	------	-------

CAMELLIA THEA (Tea Plant)

White, sweet-scented flowers in late Fall. Commercial tea is made out of these leaves.

6-8 inch, S. -----	.40	3.00
8-12 inch, S. -----	.60	5.00

CLEYERA JAPONICA

An excellent, compact growing, medium sized evergreen, with thick glossy leaves which turn red before falling. Creamy-white flowers in late Spring. Our plants are cutting grown from selected specimens of exceptional merit.

	Each	10	100
8-12 inch, C. T. -----		1.00	8.00
12-18 inch, C. T. -----		1.25	10.00
2-3 feet, B&B -----	1.25	10.00	
3-4 feet, B&B -----	1.75	15.00	
4-5 feet, B&B -----	2.25	20.00	

COTONEASTER FRANCHETI

One of the best cotoneaster in the lower South, compact, free growing, with deep orange berries.

6-8 inch, S. -----		.75	6.00
8-12 inch, S. -----		1.00	8.00
18-24 inch, B&B -----	.75	6.00	
2-3 feet, B&B -----	1.00	8.50	
3-4 feet, B&B -----	1.25	10.00	
4-5 feet, B&B -----	1.50	12.50	

COTONEASTER PANNOSA

Similar to above, with silvery colored leaves.

Prices are same as Francheti.

ELAEAGNUS FRUITLANDI

Fast growing Eleagnus with large green leaves.

6-8 inch, C. T. -----		.80	7.00
8-12 inch, C. T. -----		1.00	9.00
2-3 feet, B&B -----	1.00	8.50	
3-4 feet, B&B -----	1.25	10.00	
4-5 feet, B&B -----	1.75	15.00	

ELAEAGNUS PUNGENS

Transplants easily, doing well in either sun or shade.

6-8 inch, C. T. -----		.75	6.00
8-12 inch, C. T. -----		1.00	8.00
2-3 feet, B&B -----	.90	7.50	
3-4 feet, B&B -----	1.25	10.00	
4-5 feet, B&B -----	1.75	15.00	

ELAEAGNUS AUREA MACULATA

Highly colored yellow variegation of the leaves will not fade in full sun, but hold color all year round.

2½ inch pots -----		1.50	12.50
6-8 inch, C. T. -----		1.00	8.00
8-12 inch, C. T. -----		1.25	10.00
18-24 inch, B&B -----	1.00	8.50	
2-3 feet, B&B -----	1.25		

ERIOBOTRYA JAPONICA (Loquat)

Hardy, small size evergreen tree, with large leaves which are coated with thick, tiny gray colored hair underneath. Clusters of fragrant white flowers followed by yellow delicious fruit of about plum size.

6-8 inch, S. -----		1.00	8.00
8-12 inch, S. -----		1.25	10.00
12-18 inch, S. -----		1.50	12.00
2-3 feet, B&B -----	1.25	10.00	
3-4 feet, B&B -----	1.75	15.00	
4-5 feet, B&B -----	2.50	20.00	

EURYA JAPONICA

Slow, compact growing shrub, clothed thickly with dark green, glossy, small leaves of highly ornamental value. Those who are seeking a newer evergreen will do well to try it.

	Each	10	100
6-8 inch, C. T.75	6.00
8-12 inch, C. T.		1.00	8.00
12-18 inch, C. T.		1.25	10.00
2-3 feet, B&B	1.25	10.00	
3-4 feet, B&B	1.50	12.50	

EUONYMUS RADICANS VEGETA.

Very satisfactory, trouble free, ground cover plants with pretty evergreen leaves.

6-8 inch, C. T.75	6.00
8-12 inch, C. T.		1.00	8.00

EUONYMUS RADICANS

Very hardy creeper with dark green leaves, doing well in lower South.

8-12 inch, C. T.		1.00	8.00
-----------------------	--	------	------

FEIJOA SELLOWIANA (Pineapple Guava)

Compact growing shrub with light green leaves of silvery color underneath. Handsome purplish flowers in late Spring. Stands about zero weather.

6-8 inch, S. T.		1.00	8.00
8-12 inch, S. T.		1.25	10.00
12-18 inch, S. T.		1.50	12.50
2-3 feet, B&B	1.00	7.50	
3-4 feet, B&B	1.25	10.00	
4-5 feet, B&B	1.50	12.50	

GARDENIA FLORIDA (Cape Jasmine)

We offer excellent values in this popular flower plant. Our B&B plants are all with flower buds.

6-8 inch, C. T.60	5.00
8-12 inch, C. T.85	7.00
12-18 inch, C. T.		1.00	9.00
18-24 inch, B&B50	4.00	
2-3 feet, B&B75	6.00	
3-4 feet, B&B	1.00	7.50	

GARDENIA HADLEY

Large flowering winter forcing Gardenia of recent introduction. Highly prized as cut flowers and commands much higher price than G. Veitchii.

2½ inch pots		1.50	12.00
3 inch pots		2.00	17.50

GARDENIA "MYSTERY"

Flowers are larger and more attractive than ordinary Gardenia Florida, and an excellent grower.

2-inch pots		1.25	10.00
3-inch pots		2.00	15.00
8-12 inch, C. T.		1.50	10.00
12-18 inch, C. T.		2.00	15.00
18-24 inch, B&B	1.00	7.50	
2-3 feet, B&B	1.25	10.00	

GARDENIA RADICANS

Dwarf growing Cape Jasmine with small size variegated leaves and waxy-white, fragrant flowers.

4-6 inch, C. T.60	5.00
6-8 inch, C. T.75	6.00
8-12 inch, C. T.		1.00	8.00
12-inch spread, B&B65	5.00	

GARDENIA VEITCHII

Winter-blooming Gardenia, used extensively by florists. Our strain blooms almost continually. Can stand but a few degrees of frost. We offer well pinched pot bound plants only.

	Each	10	100
4-6 inch, 2-inch pot		1.00	7.50
6-8 inch, 2½-inch pot		1.25	9.00
8-10 inch, 3-inch pot		1.75	15.00
12-18 inch, bushy, with numerous buds, B&B	1.00	8.50	

Strong rooted cuttings, \$4.00 per 100; \$30.00 per 1000

ILEX CASSINE (Dahoon Holly)

Similar to following kind with the exception of wider leaves, of paler color. These are well berried plants at following prices.

	Each	10	100
8-12 inch, C. T.		1.00	8.00
2-3 feet, B&B	1.00	8.50	
3-4 feet, B&B	1.25	10.00	

ILEX CASSINE ANGUSTIFOLIA

Leaves are narrow and two to three inches long. Bear deep red berries very young and most profusely. Having smaller leaves than above kind, berries show up better and one of the very best berry bearing plants.

6-8 inch, C. T.80	6.00
8-12 inch, C. T.		1.00	8.00
18-24 inch, B&B, with berries	1.00	8.50	
2-3 feet, B&B, with berries ..	1.25	10.00	
3-4 feet, B&B, with berries ..	1.50	12.50	
4-5 feet, B&B, with berries ..	1.75	15.00	

ILEX CASSINE MYRTIFOLIA

Similar to Ilex C. Angustifolia, but with narrower leaves, and profuse berry bloomer.

8-12 inch, C. T.		1.00	8.00
12-18 inch, C. T.		1.25	10.00

ILEX CRENATA

Dwarf, slow growing holly of extreme hardiness.

6-8 inch, S. T.75	6.00
8-12 inch, S. T.		1.00	8.00

ILEX CRENATA BULLATA

An excellent new variety with leaves of high gloss and convex in center. Slow and dwarf and ideally suited for rock and Japanese gardens. (See illustration page 30).

6-8 inch, C. T.75	6.00
8-12 inch, C. T.		1.00	8.00
12-18 inch, B&B, clipped ..	.75	6.00	
18-24 inch, B&B, clipped ...	1.00	7.50	
2-3 feet, B&B, clipped	1.50	12.50	

ILEX CRENATA MICROPHYLLA

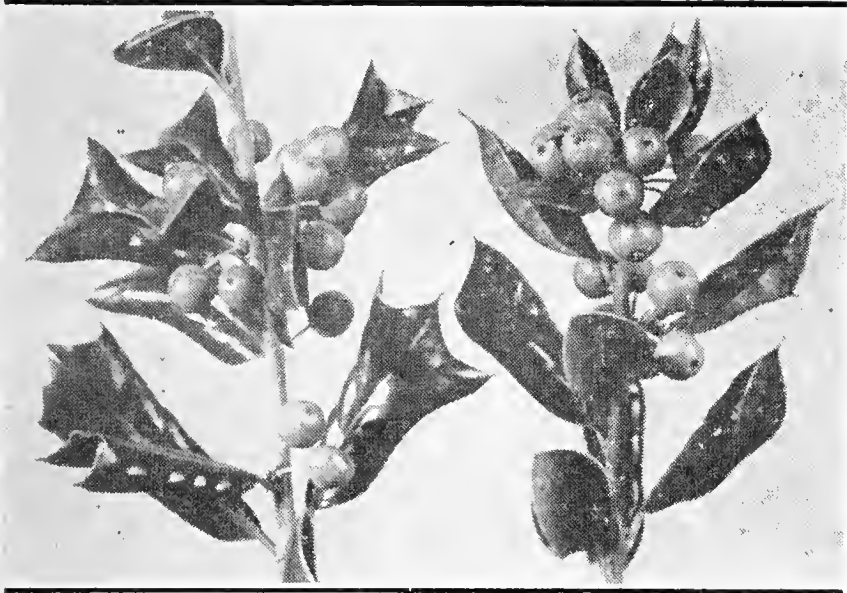
Very small leaved type of Crenata used extensively in East.

4-6 inch, C. T.75	6.00
6-8 inch, C. T.		1.00	8.00
8-12 inch, C. T.		1.25	10.00
12-18 inch, B&B, clipped75	6.00	
18-24 inch, B&B, clipped ...	1.00	7.50	
2-3 feet, B&B, clipped	1.50	12.50	

ILEX CRENATA ROTUNDIFOLIA

Very hardy holly with black berries and round box-wood-like leaves. Very desirable. (See illustration page 30.)

	Each	10	100
6-8 inch, C. T.75	6.00
8-12 inch, C. T.		1.00	8.00
12-18 inch, B&B65	5.00	
18-24 inch, B&B	1.00	7.50	
2-3 feet, B&B, clipped	1.50	12.50	



Ilex Cornuta Femina Ilex Cornuta Burfordi

ILEX CORNUTA BURFORDI

ILEX CORNUTA FEMINA

Showiest holly in the South and perfectly at home from the Gulf Coast to New Jersey. Cuttings from bearing plants with highly glossy leaves. Some plants have regular holly-shaped leaves with several spines, but some have entire shiny leaves, without any spines, except one and are known by some nurserymen as "Burfordi". We can offer both kinds at same price.

	Each	10	100
6-8 inch, C. T.		1.00	8.00
8-12 inch, C. T.		1.25	10.00
8-12 inch, 2½-inch pot		1.50	12.00
2-3 feet, B&B	1.75	15.00	
3-4 feet, B&B	2.50	20.00	
4-5 feet, B&B	3.00	25.00	
5-6 feet, B&B	4.50	40.00	
6-7 feet, B&B	6.00	55.00	

ILEX OPAÇA FEMINA (American Holly)

Seedling holly cannot be depended upon to bear fruit because there are both male and female plants, but we propagate from cuttings of best bearing female plants. (See illustration page 30.)

	Each	10	100
6-8 inch, C. T.		1.00	8.00
8-12 inch, C. T.		1.25	10.00
12-18 inch, C. T.		1.50	12.00

ILEX VOMITORIA FEMINA (Yaupon)

Cuttings were taken from heavy bearing plants to insure best bearing.

8-12 inch, C. T.		1.25	10.00
12-18 inch, C. T.		1.75	15.00
2-3 feet, B&B	1.50	12.50	
3-4 feet, B&B	1.75	15.00	



Ilex C. Bullata Ilex Opaca Ilex C. Rotundifolia

ILLICIUM ANISATUM (Anise Tree)

Beautiful upright evergreen with clean broad leaves which are highly scented when bruised. Very hardy.

	Each	10	100
6-8 inch, C. T.		1.00	8.00
8-12 inch, C. T.		1.25	10.00
2-3 feet, B&B75	6.00	

JASMINUM FLORIDUM

Arched branches are clothed with dark green leaves and yellow flowers good part of Summer. Hardy South of Washington.

JASMINUM PRIMULINUM (Primrose Jasmine)

Very graceful, fast growing, semi-erect evergreen, with yellow flowers.

Prices of above two kinds:—

6-8 inch, C. T.60	5.00
8-12 inch, C. T.85	7.00
12-18 inch, C. T.		1.00	9.00
18-24 inch, B&B50	3.50	
2-3 feet, B&B75	5.00	

LAUROCERASUS CAROLINIANA (Cherry Laurel)

6-8 inch, S.40	3.00
8-12 inch, S.60	5.00
8-12 inch, S. T.		1.00	8.00
12-18 inch, S. T.		1.25	10.00
2-3 feet, B&B75	5.00	
3-4 feet, B&B	1.00	7.50	
4-5 feet, B&B	1.50	12.50	
5-6 feet, B&B	1.75	15.00	

LAURUS OFFICINALE (English Laurel)

Medium size shrub, doing well from Gulf Coast to Virginia. Dark green large leaves.

6-8 inch, C. T.75	6.00
8-12 inch, C. T.		1.00	8.00
12-18 inch, C. T.		1.25	10.00
18-24 inch, B&B75	6.00	
2-3 feet, B&B	1.00	7.50	
3-4 feet, B&B	1.25	10.00	

LIGUSTRUM CORIACEUM

Very dwarf ligustrum with crinkled, thick dark foliage making it suitable for rock gardens.

6-8 inch, C. T.		1.00	8.00
8-12 inch, C. T.		1.25	10.00
12-18 inch, C. T.		1.50	12.00
12-18 inch, B&B75	6.00	
18-24 inch, B&B	1.00	8.50	
2-3 feet, B&B	1.50	12.50	

LIGUSTRUM JAPONICUM

Fast growing, large size shrub suitable for back ground and border, etc.

	Each	10	100
6-8 inch, S.35	2.00
8-12 inch, S.50	3.00
12-18 inch, S.75	5.00
2-3 feet, B&B75	6.00	
3-4 feet, B&B90	7.50	
4-5 feet, B&B	1.25	10.00	

LIGUSTRUM CILATUM VARIEGATUM

Spreading shrub with round variegated leaves.

LIGUSTRUM LUCIDUM COMPACTUM

Well known Wax Privet so extensively planted in last few years. There is hardly any other broad-leaved evergreen that has received greater attention by public in recent years, but its use can still be increased. Our Wax Privets are well known to have exceptionally good color and texture of foliage and compactness of bush. Our field grown plants are well pinched and shapely.

LIGUSTRUM LUCIDUM PYRAMIDALIS (Upright Privet)

There are several types of Pyramidal form of Wax Privet, but ours has dark green foliage of roundish form and very thick and while decidedly upright in form, yet quite compact.

LIGUSTRUM LUCIDUM REPANDA (Crinkle Privet)

Rather upright and spreading, with waxy crinkled narrow leaves and very graceful.

Prices of above four Ligustrums:—

4-6 inch, strong rooted cuttings40	2.50
6-8 inch, C. T.60	5.00
8-12 inch, C. T.85	7.00
12-18 inch, C. T. Beds		1.00	9.00
12-18 inch, C. TT. Field.....		1.75	15.00
18-24 inch, C. TT. Field.....		2.50	17.50
18-24 inch. B&B50	4.00	
2-3 feet, B&B65	5.00	
3-4 feet, B&B	1.00	8.50	
4-5 feet, B&B, specimens.....	1.50	12.50	
5-6 feet, B&B, specimens.....	2.00	17.50	

LIGUSTRUM QUIHOU

Evergreen summer blooming Ligustrum of upright form used widely for landscape use. This Ligustrum is immune from the attack of nematode and is used for grafting other varieties of Ligustrum, especially in Florida, where soil is sandy.

2-3 feet, branched	1.25	10.00
3-4 feet, branched	1.50	12.00

LIGUSTRUM QUIHOU PENDULUM (Weeping Everblooming Chinese Privet)

Will make ideal ground cover plants, especially on banks. Very hardy and little known.

8-12 inch, C. T.	1.00	8.00
12-18 inch, C. T.	1.50	12.00
2-3 feet, B&B	1.00	8.00

MAGNOLIA FUSCATA (Banana Shrub)

Noted for its yellowish-white flowers of banana-like fragrance. Very attractive shrub.

	Each	10	100
2½ inch pots -----		1.50	12.50
6-8 inch, C. T. -----		1.00	8.00
8-12 inch, C. T. -----		1.25	10.00
12-18 inch, B&B -----	.60	5.00	

MAGNOLIA GLAUCA

Well known, native "White Bay" of Southern United States. Blooms young and is hardy in central U. S.

6-8 inch, S. -----		.80	6.00
8-12 inch, S. -----		1.00	8.00
12-18 inch, S. -----		1.25	10.00

MAGNOLIA GRANDIFLORA (Bull Bay)

Our specimen plants were transplanted two and three times.

6-8 inch, S. -----		.80	6.00
8-12 inch, S. -----		1.00	8.00
12-18 inch, S. -----		1.25	10.00
2-3 feet, B&B -----	.90	7.50	
3-4 feet, B&B -----	1.25	10.00	
4-5 feet, B&B -----	1.75	15.00	
5-7 feet, B&B -----	2.50	20.00	

MAGNOLIA SOULANGEANA (See page 22)

MAHONIA BEALI (M. Japonica)

Thick green foliage, spread out in Nandina fashion. Clusters of yellow flowers in winter are followed by attractive purple berries. Does best in partial shade.

2-4 inch, S. -----		.60	5.00
4-6 inch, S. -----		.75	6.00
6-8 inch, S. T. -----		1.00	8.00
8-12 inch, S. T. -----		1.25	10.00

MALPIGHIA GLABRA (Barbados Cherry)

Small Crape Myrtle-like pink flowers are followed by bright red berries, often blooming and bearing at the same time. Rather tender, but when killed back to ground they will shoot up in Spring and bloom in same Summer.

3-inch pots -----		2.50	20.00
-------------------	--	------	-------

NANDINA DOMESTICA

Well known red berry bearing plants. Our B&B plants are with several canes and with berries early in season.

4-6 inch, S. T. -----		.75	6.00
6-8 inch, S. T. -----		.85	7.00
8-12 inch, S. T. -----		1.25	10.00
18-24 inch, B&B -----	.60	5.00	
2-3 feet, B&B -----	1.00	8.00	
3-4 feet, B&B -----	1.50	12.50	
4-5 feet, B&B -----	1.75	15.00	

OSMANTHUS AMERICANA

Fast growing shrub with three-inch long leaves with fragrant white flowers in Fall. Can stand zero weather.

OSMANTHUS FORTUNEI (Tea Olive)

Hardy south of Washington, D. C. Beautiful holly-like leaves and fragrant white flowers in late Fall. One of the best broad-leaved evergreens.

OSMANTHUS FRAGRANS AUREA (Yellow Flowering Sweet Olive)

Similar to Sweet Olive, with orange colored flowers which are highly scented and more profuse bloomers than Sweet Olive. Blooms only once in Fall, however. Very new and rare plants.

OSMANTHUS FRAGRANS (Sweet Olive)

Similar to above two kinds, but blooms almost continually all winter and very fragrant. We have this year splendid lots of both lining out and specimen plants to offer.

Prices of all Osmanthus:—

	Each	10	100
6-8 inch, C. T. -----		1.00	8.00
8-12 inch, C. T. -----		1.25	10.00
12-18 inch, C. T. -----		1.50	12.00
18-24 inch, B&B -----	.75	5.00	
2-3 feet, B&B -----	1.00	8.50	
3-4 feet, B&B -----	1.50	12.50	

PHOTINIA GLABRA Each 10 100

New growth of this plant is vivid red and very attractive among other evergreens during growing season. Should be clipped often to induce more new growth.

6-8 inch, C. T. -----		.75	6.00
8-12 inch, C. T. -----		1.00	8.00
12-18 inch, C. T. -----		1.25	10.00
2-3 feet, B&B -----	1.00	7.50	
3-4 feet, B&B -----	1.25	10.00	

PHOTINIA SERRULATA (Low Photinia)

Large shrub with dark green, good size, serrulated leaves, which will often turn red in Fall. Cluster of white flowers followed by red berries.

6-8 inch, C. T. -----		.75	6.00
8-12 inch, C. T. -----		1.00	8.00
12-18 inch, B&B -----	.50	4.00	
18-24 inch, B&B -----	.75	6.00	

PITTOSPORUM TOBIRA

6-8 inch, C. T. -----		.60	5.00
8-12 inch, C. T. -----		.85	7.00
12-18 inch, C. T. -----		1.00	8.00
18-24 inch, B&B -----	1.00	8.50	
2-3 feet, B&B -----	1.25	10.00	

PYRACANTHA LALANDI

Winter berried plants are getting more popular all the time, and especially Pyracanthas. Lalandi is very hardy and safe south of Philadelphia. Orange colored berries after August.

PYRACANTHA FORMOSANA

By far the showiest of all Pyracanthas, but is not very hardy, and unsafe north of Montgomery. Largest clusters of bright red berries.

PYRACANTHA KANSUENSIS

Berries are small, but very heavy bearer of deep red berries which cover the entire plant.

PYRACANTHA YUNNANENSIS

Spreading type with coral-red berries and quite hardy. Very popular.

Prices of all Pyracanthas:—

2½ inch pots -----		1.50	12.50
6-8 inch, C. T. -----		.75	6.00
8-12 inch, C. T. -----		1.00	8.00
12-18 inch, C. T. -----		1.25	10.00
2-3 feet, B&B -----	1.00	8.50	
3-4 feet, B&B -----	1.50	12.50	

ROSA ROULETTI

Very dwarf form of Rose, which is evergreen in lower South, with small rose-pink flowers almost continually. Quite a novelty as pot or rock garden plants. All our plants are with flower buds.

2-inch pot	1.00	8.00
2½-inch pot	1.25	10.00
3-inch pot	1.75	15.00

SERISSA FOETIDA VARIEGATA

Dwarf spreading shrub with small variegated leaves and Abelia-like flowers most of Summer. Makes an excellent hedge.

	Each	10	100
8-12 inch, C. T.75		6.00
12-18 inch, C. T.	1.00		8.00

STRANVAESIA DAVIDIANA

Very hardy evergreen, with large clusters of red berries. Old leaves also turn red.

6-8 inch, C. T.	1.00	8.00
8-12 inch, C. T.	1.25	10.00
2-3 feet, B&B	1.25	10.00

VIBURNUM MACROPHYLLUM

Small size tree with large size, very glossy leaves and clusters of white flowers.

6-8 inch, C. T.85	7.00
8-12 inch, C. T.	1.10	9.00
18-24 inch, B&B75	6.50
2-3 feet, B&B	1.00	8.00
3-4 feet, B&B	1.25	10.00

VIBURNUM ODORATISSIMUM

Similar to above with more rounded leaves of lighter color, not glossy. Looks much like English Laurel and is a fast grower.

6-8 inch, C. T.75	6.00
8-12 inch, C. T.85	7.00
12-18 inch, C. T.	1.25	10.00
18-24 inch, B&B50	4.00
2-3 feet, B&B75	6.00
3-4 feet, B&B	1.00	8.50
4-5 feet, B&B	1.50	12.50

VIBURNUM SUSPENSUM

Dwarf growing, compact bush, with clusters of suspended white flowers in late Fall.

6-8 inch, C. T.80	6.00
8-12 inch, C. T.	1.00	8.00
18-24 inch, B&B	1.00	8.50

VIBURNUM TINUS (Laurestinus)

Compact growing shrub, with small shiny leaves. Clusters of pinkish-white flowers at terminals of shoots during Winter months. One of the most desirable plants.

6-8 inch, C. T.75	6.00
8-12 inch, C. T.	1.00	8.00
18-24 inch, B&B75	6.00
2-3 feet, B&B	1.00	8.50
3-4 feet, B&B	1.25	10.00
4-5 feet, B&B	1.50	12.50



Jun. C. Sargenti Jun. Communis Jun. C. Pfitzeriana

CONIFERS

Legend: — S—Seedling, C—Cutting, T—Transplanted, B&B—Balled and burlapped.

We have many varieties not listed here in smaller quantity, but will be pleased to quote on them.

CEDRUS DEODARA

	Each	10	100
6-8 inch, S.75	6.00
8-12 inch, S. T.		1.00	8.00
12-18 inch, S. T.		1.25	10.00
18-24 inch, B&B60	5.00	
2-3 feet, B&B	1.00	9.00	

CUNNINGHAMIA LANCEOLATA (Chinese Fir)

4-6 inch, S50	4.00
6-8 inch, S.75	6.00
8-12 inch, T. S.		1.25	10.00
12-18 inch, bushy, T. S.		1.75	15.00
2-3 feet, B&B85	7.50	
3-4 feet, B&B	1.25	10.00	

JUNIPERUS CHINENSIS ALBO VARIEGATA

Slow growing, conical shaped Juniper with much creamy-white variegation, making a very attractive subject.

4-6 inch, C. T.		1.25	10.00
6-8 inch, C. T.		1.50	12.00
8-12 inch, C. T.		1.75	15.00
18-24 inch, B&B	1.00	8.50	
2-3 feet, B&B	1.50	12.50	

JUNIPERUS CHINENSIS Densa GLAUCA

Similar to above, but with solid deep blue hue which will not turn brown in coldest weather. More silvery-blue than Silver Red Cedar, and much more compact.

Prices are same as above.

JUNIPERUS C. FEMINA (J. Sylvestris)

One of the best conifers in the South, with light green leaves of both scale-like and smooth types. Can withstand city conditions and very hardy.

4-6 inch, C. T.		1.00	8.00
6-8 inch, C. T.		1.25	10.00
8-12 inch, C. T.		1.75	15.00
2-3 feet, B&B	1.25	10.00	
3-4 feet, B&B	1.50	12.50	
4-5 feet, B&B	1.75	15.00	
5-6 feet, B&B	2.25	20.00	

JUNIPERUS C. JAPONICA PROCUMBENS
(Creeping Juniper)

Very hardy, prostrate Juniper, with scale-like leaves of blue-green.

	Each	10	100
4-6 inch spread, C. T.80	6.00
6-8 inch spread, C. T.		1.00	8.00
8-12 inch Spread, C. T.		1.25	10.00
2-3 feet, B&B	1.25	10.00	
3-4 feet, B&B	1.50	12.00	

JUNIPERUS CHINENSIS PFITZERIANA

Our specimen Pfitzers are very shapely; spreading to four directions. (See illustration page 35).

4-6 inch spread, C. T.		1.00	8.00
6-8 inch spread, C. T.		1.25	10.00
8-12 inch spread, C. T.		1.50	12.00
12-18 inch spread, B&B75	6.00	
18-24 inch spread, B&B	1.00	8.50	
2-3 feet spread, B&B	1.50	12.50	

JUNIPERUS C. SARGENTI

One of the best creeping Junipers, of great hardiness. (See illustration, page 35).

Prices are same as Creeping Juniper.

JUNIPERUS COMMUNIS

Column type English Juniper, of bluish hue, withstanding heat of Southern sun and hardy in extreme North.

(See illustration, page 35).

6-8 inch, C. T.80	6.00
8-12 inch, C. T.		1.00	8.00
2-3 feet, B&B75	6.00	
3-4 feet, B&B	1.00	8.00	
4-5 feet, B&B	1.25	10.00	

JUNIPERUS C. DEPRESSA PLUMOSA
(Andorra Juniper)

Light green summer foliage will turn into deepest plum color in Winter. Decidedly prostrate growth.

Prices are same as Creeping Juniper.

JUNIPERUS CONFERTA (Shore Juniper)

Spreading Juniper, with pea-green foliage, will not turn brown in Winter and will do well on sandy soil or clay.

Prices are same as above.

JUNIPERUS COMMUNIS DEPRESSA VASE SHAPED.

Semi-erect Juniper of Vase shape.

6-8 inch, C. T.75	6.00
8-12 inch, C. T.		1.00	8.00

JUNIPERUS EXCELSA STRICTA (Spiny Greek)

Symmetrical grower of conical outline.

4-6 inch, C. T.75	6.00
6-8 inch, C. T.		1.00	8.00
18-24 inch, B&B60	5.00	
2-3 feet, B&B75	6.00	
3-4 feet, B&B	1.00	8.50	

JUNIPERUS JAPONICA OBLONGA

Semi-erect dwarf Juniper of unique shape, with fine smooth leaves.

6-8 inch, C. T.		1.00	8.00
8-12 inch, C. T.		1.25	10.00

JUNIPERUS SABINA

Semi-spreading Juniper of rather formal shape of slow growth.

6-8 inch, C. T.		1.00	8.00
8-12 inch, C. T.		1.25	10.00
3-4 feet, B&B	1.50	12.50	
4-5 feet, B&B	1.75	15.00	

JUNIPERUS SABINA VON EHROH

Similar to Pfitzer Juniper, but a little more upright and a fast grower. Excellent, newer addition.

Prices are same as Juniperus Sabina.

PODOCARPUS SINENSIS (Japanese Yew)

One of the largest leaved conifers with two to three inch long and half inch wide leaves, looks almost like broad-leaved evergreen. Can be pruned to any desired shape and will do well in either sun or dark shade.

	Each	10	100
4-6 inch, S. T.50	4.00
6-8 inch, S. T.75	6.00
8-12 inch, S. T.		1.00	8.00

RETINOSPORA ERICOIDES

Fast and upright grower with feathery-bluish foliage. Can be pruned into Royal Italian shape and our specimen sizes are sheared plants.

6-8 inch, C. T.60	5.00
8-12 inch, C. T.80	6.00
12-18 inch, C. T.90	7.00
3-4 feet, B&B75	6.00	
4-5 feet, B&B	1.00	8.50	
5-6 feet, B&B	1.25	10.00	

RETINOSPORA PISIFERA FILIFERA

Thread-like, green foliage presents unique appearance and does not burn out like most other Retinosporas.

6-8 inch, C. T.75	6.00
8-12 inch, C. T.		1.00	8.00

RETINOSPORA P. FILIERA AUREA

The above form of very yellow color, which will not turn green all year around.

6-8 inch, C. T.		1.00	8.00
8-12 inch, C. T.		1.25	10.00

RETINOSPORA PLUMOSA AUREA

Very feathery growth, tipped with golden color during growing season.

RETINOSPORA SQUARROSA VEITCHII

Rapid grower, with silvery foliage and very handsome. Shear well.

Prices of above two Retinosporas:—

6-8 inch, C. T.75	6.00
8-12 inch, C. T.		1.00	8.00

THUYA ORIENTALIS AUREA CONSPICUA

Upright and columnar, with golden-yellow foliage.

6-8 inch, C. T.		1.00	8.00
8-12 inch, C. T.		1.25	10.00
12-18 inch, C. T.		1.50	12.00

THUYA O. AUREA NANA (Berckman's Golden)

Well known dwarf Golden Arborvitae. Our lining out size plants were rooted in greenhouses and transplanted in open beds under full sun and are compact, hardy plants.

6-8 inch, C. T.		1.25	10.00
8-12 inch, C. T.		1.50	12.00
12-18 inch, C. T.		2.00	17.50
2-3 feet, B&B	1.00	8.50	
3-4 feet, B&B	1.25	10.00	

THUYA O. BAKERI

Upright, fast grower. Well hardened bed and field grown plants.

	Each	10	100
6-8 inch, C. T.75	6.00
8-12 inch, C. T.		1.00	8.00
12-18 inch, C. T.		1.25	10.00
2-3 feet, B&B60	5.00	
3-4 feet, B&B85	7.50	
4-5 feet, B&B	1.25	10.00	
5-6 feet, B&B	1.50	12.50	

THUYA O. BONITA

Compact and round. Will retain light green color all year round.

6-8 inch, C. T.75	6.00
8-12 inch, C. T.		1.00	8.00

DECIDUOUS PLANTS

CYDONIA JAPONICA (Japanese Quince)

12-18 inch, T.	1.50	12.50
18-24 inch, T.	2.00	17.50
2-3 feet, T.	3.00	25.00

GINKGO BILOBA (Maiden Hair Tree)

6-8 inch, 3-year seedlings ----	1.00	7.00
8-12 inch, 3-year seedlings --	1.25	10.00
12-18 inch, 4-year seedlings --	1.50	12.50
2-3 feet, T.	3.00	25.00

LAGERSTROEMIA INDICA (Crape Myrtle)

Watermelon, Red and Pink.

1-2 feet	1.50	12.00
2-3 feet	2.00	17.50
3-4 feet	3.00	25.00

LONICERA FRAGRANTISSIMA (Winter Honeysuckle)

Fragrant creamy-white flowers in mid-season. Strong compact upright grower.

12-18 inch, C. T.	1.25	10.00
18-24 inch, C. T.	2.00	15.00
2-3 feet	3.00	25.00
3-4 feet	4.00	35.00

MAGNOLIAS, (See pages 21, 22-23)

PUNICA GRANATUM RUBRA (Red Flowering Pomegranate)

12-18 inch, C. T.	1.50	12.00
18-24 inch, C. T.	2.00	17.50
2-3 feet, C. T.	3.00	25.00

PRUNUS GLANDULOSA (Double-flowering Almond)

In early Spring, before leaves appear, the entire bush is covered with small beautiful double pink flowers.

12-18 inch, C. T.	1.75	15.00
18-24 inch, C. T.	2.50	20.00
2-3 feet, bushy	3.50	30.00

ROSA ROULETTI (See Page 34)

SPIREA ANTHONY WATERER

12-18 inch, very bushy, TT..	1.75	12.50
18-24 inch, very bushy, TT..	2.25	17.50

SPIREA REEVESIANA

	Each	10	100
12-18 inch, field -----		1.25	10.00
18-24 inch, field -----		1.75	15.00

SPIREA THUNBERGII

12-18 inch, Field -----		1.25	10.00
18-24 inch, Field -----		1.75	15.00
2-3 feet, Field -----		2.50	20.00

WISTERIA MULTIJUGA ROSEA (Pink Wisteria)

2-year, Grafted, Field -----		6.00	50.00
3-year, Grafted, Field -----		8.50	75.00

PALMS, VINES, BULBS, ETC.**AMARYLLIS VITTATA**

Hybrid of all sorts, ranging in color from white to deepest red and intermediate colors. Very large flowers with wide petals.

	Each	10	100
Three-year old seedlings....		1.00	7.00
4-5 year old blooming bulbs		3.00	25.00

ASPIDISTRA LURIDA

Price per good leaves -----		.50	3.00
-----------------------------	--	-----	------

BAMBUSA ARGENTEA

A clump bamboo with small green canes with green leaves. Very nice for screen.

Good size clumps, B&B -----		3.00	25.00
-----------------------------	--	------	-------

BAMBUSA DISTICHA

Smaller than above with ultimate heights of 12 feet, with very fine leaves of highly ornamental value.

Good size clumps, B&B -----		3.00	25.00
-----------------------------	--	------	-------

CHAMAEROPS EXCELSA PALM (Wind-Mill Palm)

Very hardy, fan-shaped leaf palms with slender trunk, well adapted for street plantings.

Specimen sizes from field:

	Each	10	100
18-24 inch, B&B -----	2.00	15.00	
2-3 feet, B&B -----	3.00	25.00	

COCOS AUSTRALIS PALMS

Recurved leaves are glaucous and very graceful. This is a rather slow grower, but never gets out of bounds and is ideal for lawn specimens. Can stand much more cold than Washingtonia and Phoenix palms.

8-12 inch, 2-year S. -----		.75	6.00
2-3 feet, B&B -----	2.25	20.00	
3-4 feet, B&B -----	3.00	25.00	
4-5 feet, B&B -----	4.00	35.00	

CORTADERIA ARGENTEA (Pampas Grass)

We offer both Pink and White kinds.

Good size clump	3.50	25.00
Good size division	2.00	15.00

HEDERA HELIX (English Ivy)

8-12 inch, 2-inch pot85	7.00
12-18 inch, 2½-inch pot	1.25	9.00

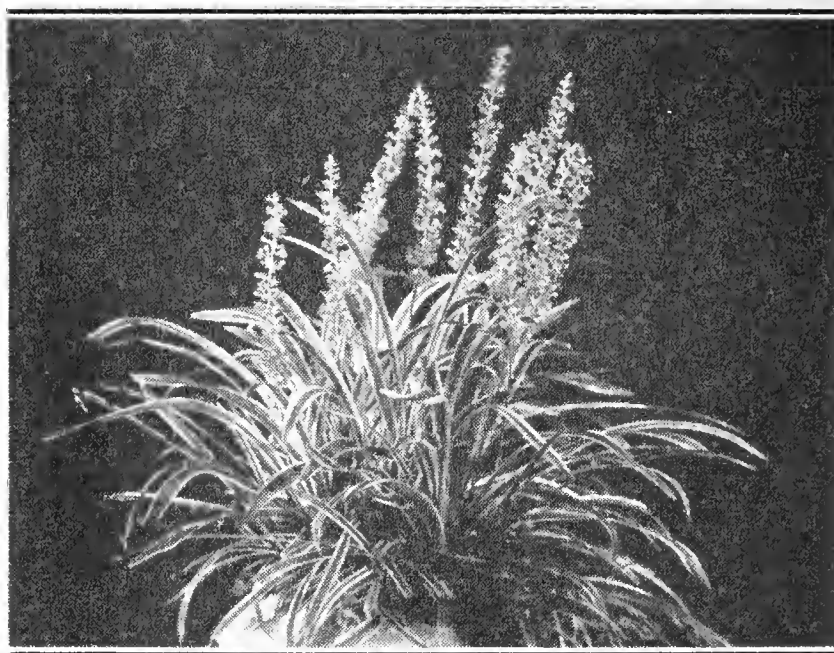
HEMEROCALLIS (Day Lily)

Medium division	1.00	8.50
-----------------------	------	------

LIRIOPE MUSCARI DENSIFLORA (Big Blue Liriope)

Similar to *Ophiopogon Japonicum*, but with much broader and longer leaves of about 12 inches and larger spikes of blue flowers. Excellent for edging and porch plants.

Medium clumps	2.00	15.00
---------------------	------	-------



LIRIOPE MUSCARI VARIEGATA

LIRIOPE MUSCARI VARIEGATA (Variegated)

A variegated form of *Densiflora*, with leaves beautifully striped with creamy-white. Pretty spikes of blue flowers in July and August make these very attractive as out of door or potted plants.

Medium clumps	3.00	25.00
---------------------	------	-------

MILLETIA JAPONICA (Formosa Wisteria)

Vines with compound evergreen leaves and deep purple flowers produced freely during Summer months, very much like ordinary *Wisteria*. Only offered by two or three firms in this country yet.

6-8 inch, C. T.	1.25	10.00
8-12 inch, C. T.	2.00	12.00
18-24 inch, C. TT., Field ...	3.00	20.00

OPHIOPOGAN JAPONICUS (Dragon's Beard)

A very low, grass-like evergreen, with spikes of purple flowers, doing well either in dark shade or in full sun. Very valuable as border plants and for ground cover.

Small division	2.00	
Large division	3.00	

PHILOSTOCHIS AUREA (Giant Japanese Bamboo)

Large growing, hardy bamboo, well adapted for Southern United States.

Underground canes	1.50	10.00
-------------------------	------	-------

WISTERIA, (See page 39)**JELLOW JESSAMINE (Gelsemium Sempervirens)**

Slender vines with shiny evergreen leaves, and fragrant yellow flowers early in spring. Hardy from central Texas and south.

6-8 inch, C. T.75	6.00
8-12 inch, C. T.	1.00	8.00



AZALEAS ARE UNSURPASSED FOR
WEALTH OF BLOOM AND BEAUTY

KIYONO NURSERIES
CRICHTON, ALABAMA