

## **Historic, archived document**

Do not assume content reflects current scientific knowledge, policies, or practices.



62.83

1923

INDEXED

LIBRARY  
 RECEIVED  
 MAR 21 1923  
 U. S. Department of Agriculture

*Annual Catalog*

# The Plainview Nursery

Plainview, Texas

## D. C. AYLESWORTH

PROPRIETOR

### High Grade Nursery Stock



Plainview Nursery, Plainview, Texas.



## Present Prices of Plainview Nursery Stock.

These prices abrogate all former prices: The each price must apply on all trees up to 12; the 12 rate on all trees up to 100; and the 100 rate on all trees up to 1000.

### Prices on Cherries, Plums, Pears and Apricots:

	Ea.	12	100	1000
AA, Extra Large .....	\$1.25	\$12.50	\$100.00	\$750.00
A, Large .....	1.00	10.00	75.00	600.00
4 to 5 feet .....	.75	7.50	60.00	500.00
3 to 4 feet .....	.50	5.00	40.00	350.00

### Prices on Peaches, Apples, Nectarines:

	Ea.	12	100	1000
AA, Extra Large .....	\$1.00	\$10.00	\$75.00	\$600.00
A, Large .....	.75	7.50	60.00	500.00
4 to 5 feet .....	.50	5.00	40.00	350.00
3 to 4 feet .....	.35	3.50	30.00	250.00

### Prices on Grapes Vines:

	Ea.	12	100	1000
Two Year Old Vines .....	\$.35	\$3.00	\$20.00	
One Year Old Vines .....	.25	2.40	15.00	

### Prices On Berries, Blackberries and Dewberries:

	25	50	100	1000
	\$1.50	\$2.50	\$4.00	\$40.00

### Prices on Gooseberries, Currants, Himalaya Berries:

	Ea.	12	100	1000
	\$.25	\$2.40	\$15.00	

### Prices on Quince:

	Ea.	12	100	1000
Extra Large .....	\$1.00	\$10.00	\$75.00	
4 to 5 feet .....	.75	7.50	60.00	
3 to 4 feet .....	.50	5.00	40.00	
2 to 3 feet .....	.35	3.50	30.00	

### Prices on Figs:

	Ea.	12	100	1000
Large .....	\$.75	\$7.50	\$60.00	
Medium .....	.50	5.00	40.00	
Small .....	.35	3.50	30.00	

### Prices on Budded Pecans:

	Ea.	12	100	1000
5 to 6 feet .....	\$3.00	\$30.00	\$250.00	
4 to 5 feet .....	2.00	20.00	150.00	
3 to 4 feet .....	1.50	15.00	125.00	

### Prices on Pecan Seedlings:

	Ea.	12	100	1000
5 to 6 feet .....	\$1.50	\$15.00	\$100.00	
4 to 5 feet .....	1.25	12.50	75.00	
3 to 4 feet .....	1.00	10.00	60.00	
2 to 3 feet .....	.75	7.50	50.00	

### Prices on Mulberries:

	Ea.	12	100	1000
6 to 8 feet .....	\$1.00	\$10.00	\$75.00	
4 to 6 feet .....	.75	7.50	60.00	
3 to 4 feet .....	.50	5.00	40.00	

### Prices on Evergreens, Balled and Burlapped:

	Ea.	12	100	1000
30 to 40 in. ....	\$4.00			
24 to 30 in. ....	3.00			
18 to 24 in. ....	2.00			

<b>California Privet:</b>	<b>Ea.</b>	<b>12</b>	<b>100</b>	<b>1000</b>
One Year Old .....			\$5.00	
Two Year Old .....			6.00	
<b>Flowering Shrubs:</b>	<b>Ea.</b>	<b>12</b>	<b>.100</b>	<b>1000</b>
Two Years Old .....	\$.50	\$5.00		
One Year Old .....	.35	3.00		
<b>Everblooming, Field-grown Roses:</b>	<b>Ea.</b>	<b>12</b>	<b>.100</b>	<b>1000</b>
Two Years Old .....	\$.60	\$6.00		
<b>Peonies:</b> .....	.40	4.20		
<b>Tuberose</b> .....		1.50		
<b>Dahlia</b> .....	.20	2.00		
<b>Crysanthemum</b> .....	.25	2.50		
<b>Gladiolus</b> .....	.10	1.00		
<b>Golden Glow</b> .....	.15	1.00		
<b>Climbing Vines:</b>	<b>Ea.</b>	<b>12</b>	<b>100</b>	<b>1000</b>
One Year Old .....	.25			
Two Years Old .....	\$.35			
<b>Ornamental Grasses:</b>				
Small Plants .....	.35			
Large Plants .....	.50			
<b>Prices on American Persimmons:</b>	<b>Ea.</b>	<b>12</b>	<b>100</b>	<b>1000</b>
4 to 5 feet .....	\$.75	\$8.00		
3 to 4 feet .....	.50	5.00		
2 to 3 feet .....	.25	2.50		
<b>Forest Seedlings: Black Locust, also Russian Mulberry, Catalpa,     Bois 'Darc, Box Elder:</b>	<b>Ea.</b>	<b>12</b>	<b>100</b>	<b>1000</b>
12 to 18 in. ....			\$10.00	
18 to 24 in. ....			20.00	
<b>Prices on Shade Trees:</b>	<b>Ea.</b>	<b>12</b>	<b>100</b>	<b>1000</b>
4 to 5 feet .....	\$.35			
5 to 6 feet .....	.50			
6 to 7 feet .....	.75			
7 to 8 feet .....	1.00			
8 to 10 feet .....	1.50			
1½ in. to 2 in. dia. ....	2.00			
2 in. to 2 ½ in dia. ....	2.50			
2½ in. to 3 in. dia. ....	3.00			
3 to 4 in dia. ....	3.50			

#### TO OUR PATRONS.

We hate to raise the price on Nursery Stock, but with the high cost of labor, packing material and other things, we are compelled to do it or quit the business. However, our prices are not any higher or as high as other responsible nurseries. With the effort and expense that we have made to produce trees adapted to the climate and will beat the best, we think, our trees are cheap.

Thanking everyone that has ever patronized us, we will appreciate all future orders.

Yours very truly,

**THE PLAINVIEW NURSERY.**

L. N. DALMONT, Proprietor.

## *Suitable Distances For Planting Trees*

---

We recommend for mixed orchards, for family use, without irrigation, that trees be planted 20 feet each way, which takes 108 trees per acre, and with irrigation, 24 feet east and west and 12 feet north and south, which takes 140 trees per acre. This way the sun shines on both sides of the row every day, and one tree shades the body of the other; also protects each from the frost, high winds, etc. If practicable, run water north and south.

## *Suitable Distances For Planting Small Fruits*

---

Grapes ..... 6 by 12 feet	Blackberries..... $2\frac{1}{2}$ by 6 feet
Currants..... $2\frac{1}{2}$ by 4 feet	Dewberries..... $2\frac{1}{2}$ by 6 feet
Gooseberries.. .. $2\frac{1}{2}$ by 4 feet	Strawberries..... 1 by 4 feet
Raspberries ..... $2\frac{1}{2}$ by 5 feet	Asparagus..... 1 by 3 feet
Rhubarb..... 2 by 3 feet	

## *A Table Showing The Number of Trees or Plants to The Acre*

---

Distance—	No. of Trees.	Distance—	No. of Trees.
1 foot apart each way....	43,560	13 feet apart each way.....	257
2 feet apart each way....	10,800	14 feet apart each way.....	222
3 feet apart each way....	4,840	15 feet apart each way.....	193
4 feet apart each way....	2,702	16 feet apart each way.....	170
5 feet apart each way....	1,742	17 feet apart each way.....	150
6 feet apart each way....	1,210	18 feet apart each way.....	134
7 feet apart each way....	888	19 feet apart each way.....	120
8 feet apart each way....	680	20 feet apart each way.....	108
9 feet apart each way....	537	25 feet apart each way.....	69
10 feet apart each way....	434	30 feet apart each way.....	48
11 feet apart each way....	360	35 feet apart each way.....	35
12 feet apart each way....	302	40 feet apart each way.....	28

**Rule.**—Multiply the distance in feet between the rows by the distance the plants are apart in the rows, and the product will be the number of square feet for each plant or hill, which, divided into the number of feet in an acre (43,560), will give the number of plants or trees to the acre.

## *Introduction*

**I**N PRESENTING this Catalogue to my patrons and the public, I wish first to thank them for past favors and show them my appreciation of all future orders enough to try to give value for every dollar received. We shall endeavor to maintain our reputation for fair dealings and to give prompt attention and best selection to all orders entrusted to us. I am endeavoring to send out strictly home grown trees of such varieties as have been tested and found in my thirteen years' experience in the nursery business here on the Plains to be best suited to the Plains and Southwest. We are better prepared this year than ever before to serve our friends and the public, as we have increased our nursery business in every department, having now growing in our nursery the best lot of trees to be shown on the Plains.

When we make mistakes we stand ready to correct them. The worst mistake that can be made, in my estimation, is the buying and planting of foreign trees, as experience has taught me that native trees will stand transportation and are longer lived and are not likely to have any disease so common to fruit trees.

We use every precaution to keep our stock in a clean, healthy, growing condition. We dip and fumigate, before using, all scions and seedlings that are used in propagation.

Entomologist certificate accompanies each shipment.

I have in my sixty-acre test orchard many varieties of all the different fruits, and I believe, after thirteen years close watching, that I am in a measure capable of judging the varieties that are best suited to the Plains and Southwest. I find that an orchard can be



grown, with good cultivation, as easily as any other crop, and will stand the dry seasons just as well and will give larger returns for amount of land occupied than any other crop.

We have had for the last four years M. S. Keller as foreman of the Nursery and D. A. Redding as assistant foreman. These men are men of experience, Mr. Keller having been engaged in the Nursery business ever since he was seventeen years of age; held a position with one of the most prominent nurseries in Oklahoma for six years, and has had seven years experience in the nursery business on the Plains. All who have dealt with him have been well pleased. D. A. Redding is an efficient business man in every respect. He was engaged as foreman for seven years with one of the largest nurseries in Kansas. We feel that with the help of these men, the stock that we have, and the equipment we have to handle it, we ought to be able to handle our trade in a satisfactory manner to our customers.



ROW OF APPLE TREES IN DALMONT TEST ORCHARD

### *Instructions to Planters*

**B**UY DIRECT from some reliable nursery, or from a local agent that you know to be honest. By this plan you will save money and have a source of redress in case there is anything wrong with your order. It is a good plan to send in your order early, while the nursery's list of varieties is complete. Another thing—if you wait until late in the season the chances are you will be rushed with other work and neglect to order at all, and thus lose a years growth on your orchard. As soon as trees are received, the box or bundle should be

unpacked and the roots of the trees soaked in a barrel or tank of water for 6 hours before planting. Don't leave them in water longer than this.

If you are not ready to plant at once, they may be heeled in moist dirt. Firm dirt well around the roots, and cover two-thirds of the trees, to keep roots and tops in good condition.

### *Instructions For Planting And Growing an Orchard*

**B**REAK YOUR LAND DEEP the previous season where you are going to plant your trees, and thoroughly cultivate during the year, so as to have ground in good condition and plenty of moisture when ready to plant. A good way is to break land the last time so as to plant in water furrows, plowing a strip the second time six or seven feet wide. Plow out deep, so as to make it easier to dig holes; then dig holes large enough to give roots natural position. In planting this way you will avoid getting trees on a ridge. Take your trees up just as you plant them, and with a sharp knife trip all the roots to where they are sound and sappy. Be sure to make a cut that will be turned down when the trees are set; then set in holes, inclining very slightly to the southwest, fill hole with good soil, pour in enough water to settle the soil around roots. When the water has soaked in, fill up with moderately dry soil, pressing it with foot; then rake a coating of loose dry soil on top.

Head your yearling trees, that have no limbs, by cutting the tops off 18 to 20 inches; 2 year-old, above the best limbs from 24 to 30 inches; prune all buds for twelve inches above the ground, and on northeast side, 18 inches. Prune and grow tree with a view to throwing as much growth to the south and west as possible, so the tree will shade itself and keep balanced against our southwest winds.

Two-year-old trees—turn the lowest and best limbs toward the southwest; then with a sharp knife cut all limbs to stubs, from trunk of tree, 4 to 6 inches. Cut from north side up to where there is a good bud on the south side. Prune all limbs on the north side the highest with a view to throwing as much growth to the southwest as possible.

### *Our Facilities*

**O**UR NURSERY and packing grounds are located two and one-half miles north of Plainview, adjoining the Seth Ward College grounds. Visitors are cordially invited. Our digging is done with the latest improved tree diggers. We use best material in packing, labeling and handling. Shipping begins November 15th and lasts until the following May. In ordering, write the name and number of each variety plainly, so as to avoid errors, and use order sheet in back of catalogue. In filling orders, we reserve the right, in case we are out of a variety ordered, to substitute another of equal merit, unless

customer writes "No Substitution" in order, and recommend purchasers to leave the selection of varieties with us as far as possible, as our experience enables us to select such sorts as are best suited to the locality. It is also better to order early and have stock reserved. We are glad to book orders at any time of the year, and make shipment when desired.

We are equipped with storm-proof packing sheds, which enable us to handle our business in most any kind of weather without exposure of our stock. We also have an abundance of water, which is a great requisite for handling nursery stock.

### *Special Notice*

We pay transportation charges to any point Texas when the order amounts to \$5.00, and to any point in the United States if the order amounts to \$10.00; and replace at one-half (each price) all stock that dies within one year from date of delivery.

**As to our responsibility,** we are pleased to refer you to any of the following Plainview Banks: First National Bank, Citizens' National Bank, Third National Bank, or any commercial firm in Plainview.

### *Apples*

This seems to be the natural home of the apple, as nearly all varieties that have been tested do well. The trees make good growth and the fruit is of excellent quality.

#### *Prices on Apples*

Specials .....	50c each .....	\$6.00 per dozen .....	\$30.00 per 100
5-6 feet .....	35c each .....	4.00 per dozen .....	25.00 per 100
4-5 feet .....	25c each .....	3.00 per dozen .....	20.00 per 100
3-4 feet .....	20c each .....	2.40 per dozen .....	15.00 per 100
2-3 feet .....	15c each .....	1.80 per dozen .....	10.00 per 100
	Extra heavy, 50c to \$1.00 each.		

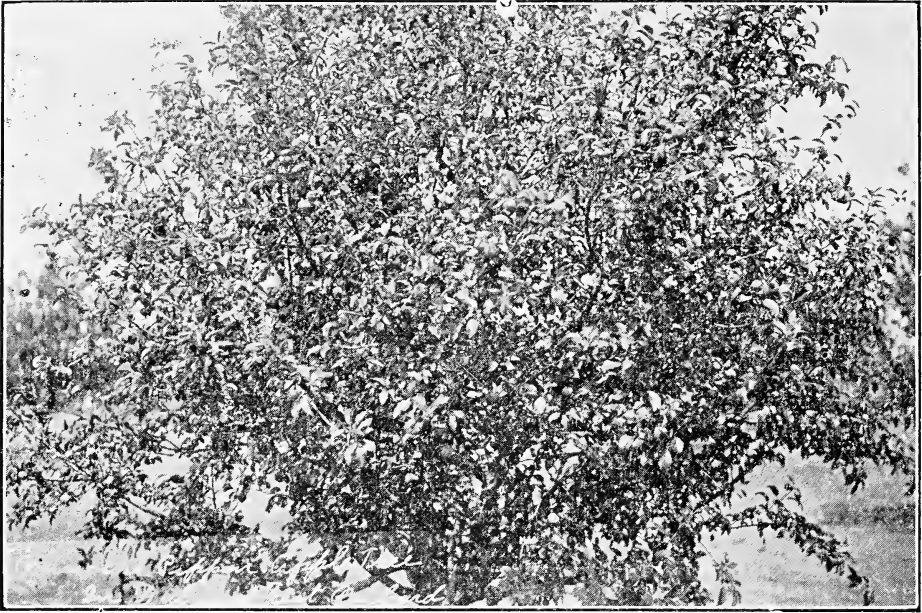
**Mammoth B. Twig.**—Similar to Arkansas Black. Apple growers recommend its extensive planting, as we do; but we prefer Arkansas Blank.

**Yellow Horse.**—Large, yellow; fine flavor and a good cooking apple, but a rather shy bearer with us. Tree a vigorous, upright grower. July to August.

**Red Astrachan.**—Large, bright red; crisp, juicy, sub-acid; tree a vigorous grower; has not been tested extensively on the Plains.

**Arkansas Black.**—A remarkably handsome dark red apple; medium to large; perfectly smooth and roundish flat; lightly dotted with white. The flesh is yellow, juicy and delicious, keeping late; always brings top prices on the market.

**Bismark.**—Whitish yellow, striped with crimson; chief value is in young bearing; large; good fall apple.



MISSOURI PIPPIN TREE IN DALMONT TEST ORCHARD

**Missouri Pippin.**—Stands at the head of all other varieties here on the Plains. It often bears at two years old. For quick returns and certain money, I consider it has no equal over all the Plains and Panhandle country. It is medium to large, bright red, flesh yellow, moderately tender and juicy, often bearing a good crop when others fail. Good keeper; its season, November to February.

**Jonathan.**—A good standard variety, which has made a good record on the Plains, and is being very extensively planted. Fine quality, and should be in every orchard. Is a beautiful bright red; season, October to December.

**Wine Sap.**—An old, standard variety; fruit medium to large; wine red; flesh yellow; fine grain, firm, crisp and sub-acid; October 1st to February.

**Limber Twig.**—Medium to large; very prolific; a pale yellow, striped with red; keeps well and is of good flavor.

**Grimes Golden.** Tree vigorous, upright, spreading; a good early annual bearer; fruit above medium, regular surface, rich golden yellow; firm, crisp, aromatic, sub-acid; quality the best; September to January.

**Wealthy.**—Fruit large, yellow, with crimson stripes and splashes; flesh white, often stained with red; tender, very juicy. We would recommend Red Winter Cluster instead.

**Ben Davis.**—A well known and splendid variety; tree a thrifty grower.

**Maiden Blush.**—Of uniform good size, smooth and handsome, flushed with red on creamy, yellow ground; flesh tender, pleasant,

but not so well adapted to the Plains as Yellow Cluster. August 1st to October 1st.

**Red June.**---One of the earliest medium-sized red apples; should be planted in moderation, for early purpose.

**Early Harvest.**---A good, yellow apple; better than Red June, but not so good as Yellow Cluster.

**N. W. Greening.**---Tree a splendid grower, quite hardy; fruit large to very large; green, becoming yellowish when thoroughly ripe; flesh yellow and fine grained; flavor good, sub-acid; very smooth and attractive, but not so good as Rome Beauty.

**Huberdton or ("None Such").**---Large, handsome; yellow overlaid with red; flesh tender, with distinct, delightful flavor; strong grower and regular bearer. Not so good as Yellow Cluster.

**Gano.**---Similar but superior to Ben Davis. It has all the good qualities in a higher degree. The tree is vigorous and hardy, a rapid grower and bears young; color, bright red; large and even size. Has not succeeded as well as the Red Winter Cluster. November to March.

**Wolf River.**---One of the largest apples grown; color, reddish green, with stripes and splashes of carmine; very handsome and showy; flesh, nearly white; flavor, fair, sub-acid. Tree vigorous and fairly productive. Would prefer planting the Lively's Choice. October to March.

**Bledsoe.**---A good, large apple that has made an exceedingly good record in the Lockney community, and we believe it should be extensively planted.

**Banana ("Winter Banana").**---Is a new apple that we have fruited just a few years. It promises to be one of our most successful apples, ripening in the late fall, fine appearance, light yellow with red blush. The quality is first class. Trees bear young. We feel sure it will prove to be one of our best apples.

**Smokehouse.**---A very large, greenish apple; an abundant bearer and long keeper.

**Cole's Quince.**---Medium, round, pale yellow; flesh, yellow; tender, sub-acid. June and July.

**Gravenstein.**---Large, red-striped; fine flavor. July.

**Yellow Transparent.**---Beautiful, crisp, fragrant; table and market. June 1st.

**Twenty Ounce.**---Very large; red stripes. August.

**Rambo.**---Medium to large; yellow, marbled red. October.

**Lincoln.**---Medium, flat; green, with red blush; fine cooking and market.

**York Imperial.**---Medium; white, shaded crimson; one of the best. October to April.

**White Winter Permain.**---Medium, flat; light yellow; fine quality. Griffin's Permain, of the Toyah Valley, Texas, are most noted and popular. October to April.

**Rome Beauty.**---Tree thrifty, upright grower; fruit is large to very large; roundish oblate; pale yellow, striped and mixed with red; sub-acid; quality, good. November to January.

**Ingram.**—A seedling of Rawles' Jannett; tree upright, fruit medium, yellow, striped with red, tender juicy, sub-acid; late bloomer, long keeper---February to June.

**Jannett.**—Tree good grower. fruit medium; mixed and striped on yellow and green; crisp, fine-grained, juicy; latest of all bloomers. February to June.

**Huntsman Favorite.**---Thrifty grower, good bearer, fruit large, color a rich yellow, acid, very good. Season, November to March.

**Fleming ("Snow Apple").**---Tree hardy, vigorous and productive, a fine apple, of medium size, pale yellow, nearly covered with red, flesh, snow white, tender and fine, mild, sub-acid, good.

**Summer Queen.**---Tree vigorous, large productive, medium, surface yellow, red and scarlet, flavor acid spicy, quality very good. July and August.



FOUR-YEAR-OLD YELLOW CLUSTER TREE IN DALMONT TEST ORCHARD.

### Specials

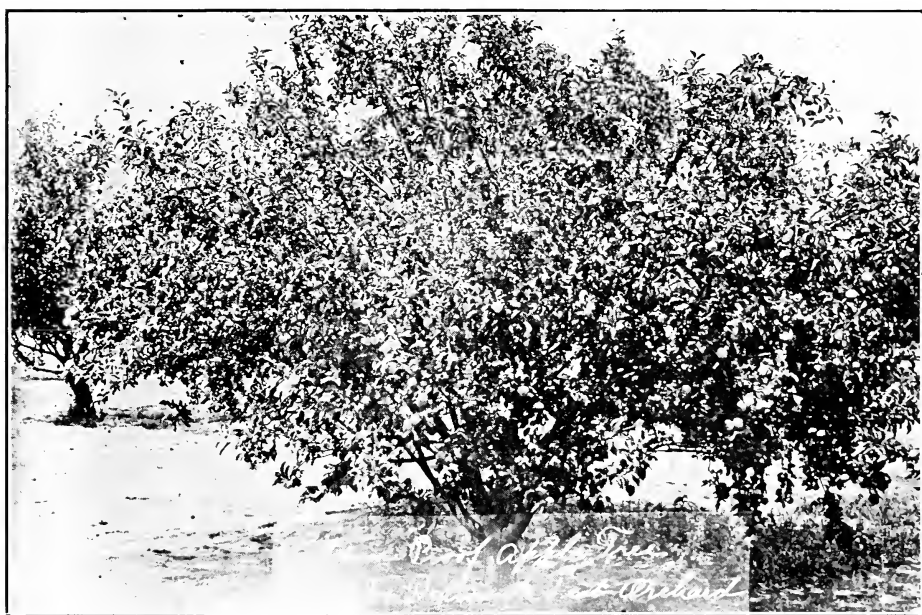
**Yellow Cluster.**---Supposed to be of local origin, hardy, stocky grower, very resistant against high winds, fruit large, yellow, with red cheek when exposed to the sun, sub-acid, of fine flavor, comes into bearing when young. I consider this one of the very best early apples of the Plains country, being one of the surest bearers. Ripe August to September. 50c to \$1.00, according to size.

**Hale County Beauty.**---A beautiful, large, red apple, with yellow background, of the most delicious flavor. In quality it is unsurpassed, in flavor it is sweet, slightly touched with acid, but only

enough to make it all the more pleasing, with an aroma delightfully fragrant; the flesh is fine grained, very crisp, exceedingly juicy and delicious; an extra good keeper 50c to \$1.00 according to size.

\* **Red Winter Cluster ("Kinnards Choice").**---A type of the Wine Sap, but far superior; large, dark-red apples of excellent quality. Those it has fruited for at Hale Center say it should be in every orchard. The tree grows upright and stately, showing to be strong and vigorous. 50c to \$1.00, according to size.

**Yellow Bellflower.**---A yellow, pear-shaped apple, noted for its excellent flavor. We think, when better known will become one of the leading apples, as the tree is very vigorous and bears very young. 50c to \$1.00, according to size.



STORM-PROOF APPLE TREE IN DALMONT TEST ORCHARD

+ **Stormproof.**---One of Hale County's best stand-bys, bearing heavy crops when others fail, being justly titled Stormproof, carrying its heavy crops through severe storms. It is a medium-sized, lightgreen, sweet apple; a good keeper, gets very mellow; tree shapely and strong. 50c to \$1.00 according to size.

**Lively's Choice.**---A very young bearer; especially recommended for quick results, skin strong, golden yellow, beautifully striped and shaded with red; flesh firm and juicy, sub acid. For quick and sure profits, this apple has few equals; it is unexcelled as a keeper and will always command a good price. 50c and \$1.00, according to size.

**Seedless.**---Price, \$1.00 each.

## Crab Apples

### Prices on Crab Apples

4 to 5 feet .....	25c each .....	\$3.00 per dozen .....	\$20.00 per 100
3 to 4 feet .....	20c each .....	2.00 per dozen .....	10.00 per 100
2 to 4 feet .....	15c each .....	1.50 per dozen .....	10.00 per 100

**Florence.**---Immensely productive; tender, acid, creamy; splashed with red. Ripe in July.

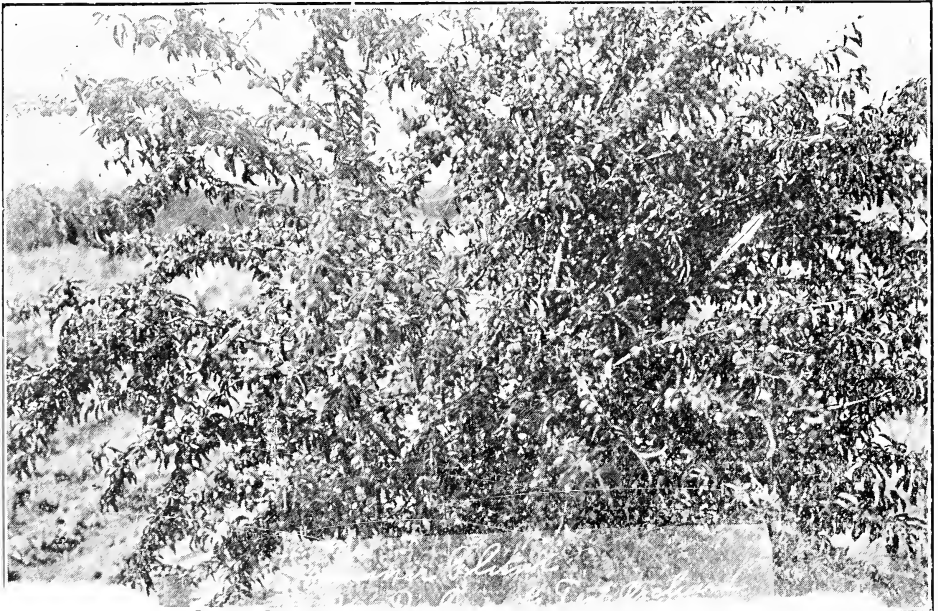
**Whitney.**---Vigorous, productive; striped, large; fine for cooking; sweet. Ripe in August.

**Transcendent.**---A beautiful crab; acid; good for sweet pickles and jelly.

**Hyslop.**---Hardy, productive; fruit in clusters; very acid; dark red. Ripe in September.

**Martha.**---Large, flat, transparent, yellow; very good. Ripe in September.

**Yellow Siberian.**---Bears very young; crisp, acid; good for jelly and preserves.



FOUR-YEAR-OLD HAMMER PLUM IN DALMONT TEST ORCHARD

## Plums

The American or Chickashaw and European types of plums are most all adapted to this climate. For these classes we urge their extensive planting, as they generally bear heavy, profitable crops at



an early age. We have given our best energy toward propagating the varieties that are succeeding the best throughout the country. For quality, beauty, perfection and freedom from rot, better fruit has never been grown on the Plains near Plainview, without water other than the natural rainfall, and good cultivation. There are markets totally unsupplied which would consume such fruit by the trainloads. Such fruits can be grown most abundantly and economically on cheap lands on the Plains and Panhandle of Texas. In the following list we only mention the varieties that have been thoroughly tested and that we can recommend.

### Prices on Plums

Extra heavy .....	50c, 75c, and \$1.00 each
4-5 feet..... 35c each .....	\$4.00 per dozen.....\$30.00 per 100
3-4 feet..... 30c each .....	3.50 per dozen..... 25.00 per 100
2-3 feet..... 25c each .....	2.50 per dozen..... 20.00 per 100
1-2 feet..... 15c each .....	1.80 per dozen..... 10.00 per 100
Specials, 50c each.	

**Golden Beauty.**—It is sometimes called the "Neverfail"; medium size; golden yellow when ripe; quality good; very prolific; ripe in September, when most other plums are gone.

**Whittaker.**—Medium to large, fine flavor, and a good keeper. Ripe July to August.

**Pool's Pride.**—A medium, oblong; very prolific; young tree often bends with its fruit; very valuable on the Plains.

**Arkansas Lombard.**—Medium-sized red plum, and very prolific bearer; similar to Wild Goose, but a good deal hardier, not so prolific as Wonder.

**America.**—Very productive; first yellow, then red, when fully ripe, a good kind, but not so good as Hammer.

**Bradshaw.**—Very large; dark red; flesh yellowish green, juicy and pleasant. Tree vigorous and productive.

**Lombard.**—Medium; roundish oval; violet red; a valuable market sort; tree hardy and always produces a crop.

**Early Sun.**—One of the earliest plums; a handsome, red, delicious plum. We recommend it for first ripening of the season. Rather tender.

**Captain.**—Firm, yellow; slightly larger than Golden Beauty, and of better quality. August.

**De Soto.**—Medium; bright red; sweet, rich, of fine quality. Extremely hardy and productive.

**Yellow Egg.**—Large; a beautiful yellow plum; excellent grower; fine for cooking and canning, and very productive. August.

**Eagle.**—Introduced by Baker Bros., who claim this an everbearing plum; fruit medium to large; clear yellow, slightly tinged with red; sweet, juicy and of excellent quality. July.

**Wooten.**—Similar to Wild Goose, but later and far superior. It has made friends from Maryland to California, and is one of the most popular varieties on the Plains.

**Omaha.**—One of the best large plums that we have fruited, bears young and is hardier than any variety of plums that we have ever tested that has any Japan blood in it. We recommend Omaha.

**Miner.**---Medium size, red, handsome, splendid for canning and cooking, and sells well, tree vigorous and hardy. September.

**Burbank (Japan Plum).**---Very large, greenish purple, ships well, sells well, solid flesh, most too tender for West Texas. August.

**Shropshire Damson.**---A plum of fine quality, rich, dark purple, flesh amber color, juicy and sprightly, very productive. September.

**Shipper's Pride.**---Originated in Western New York, has never been known to freeze back in the severest winters. Size large, dark purple, flesh firm and excellent quality. September 1st.

### *Specials*

**The Wonder.**---Introduced by Mr. Horlacher, the first nurseryman on the Plains. It is truly wonderful how it bears, often bearing at two years old. Fruit medium sized, bright red, one of the best for this section, ripening through June and July. 50c to \$1.00, according to size.

**Hammer.**---Medium to large; crimson, with yellow dots; a very valuable sort, as the tree is hardy and an immense bearer. Will always command a good price on the market. 50c to \$1.00 according to size

**Blue Damson.**---A late bloomer, seldom being killed by the late freezes, one of the best for preserving and other culinary purposes. 50c to \$1.00 according to size.

We also have an assortment of good varieties of plums on their own roots, suitable for chicken yards, hog pastures, or anywhere it doesn't hurt if they sprout from the roots, to sell at 15c, or even cheaper in quantities.

---

### *Prunes*

#### *Prices on Prunes*

4 to 5 feet.....	35c each.....	\$4.00 per dozen.....	\$30.00 per 100
3 to 4 feet.....	30c each.....	3.50 per dozen.....	25.00 per 100
2 to 3 feet.....	25c each.....	2.50 per dozen.....	20.00 per 100

**German.**—A large, long, oval variety; much esteemed for drying; color, dark purple; very agreeable flavor; vigorous. Ripens in September.

**Giant.**---A prune of great size; produced by Mr. Burbank; promising; bearing well here.

---

### *Pears*

We believe that the pear industry is destined for a greater future than has been expected, as in the last few years we have been astonished to see some of the trees growing and bearing good crops under unfavorable circumstances, one of these especially bearing on the pioneer home of Major Donohoo, in Plainview. We think that it is some standard variety, but list it as the "Donohoo".

*Prices on Pears*

Extra heavy . . . . .	\$1.00 each . . . . .	\$10.00 per dozen	
5-6 feet . . . . .	40c each . . . . .	4.50 per dozen . . . . .	\$35.00 per 100
4-5 feet . . . . .	35c each . . . . .	4.00 per dozen . . . . .	30.00 per 100
3-4 feet . . . . .	30c each . . . . .	3.50 per dozen . . . . .	22.50 per 100
2-3 feet . . . . .	20c each . . . . .	2.00 per dozen . . . . .	15.00 per 100

Specials, 50c to \$1.00 each, according to size.

**Bartlett.**---Large size, with beautiful blush next to the sun; but-tery and very juicy; highly flavored; tree a strong grower; bears early and abundant; in September.

**Duchess.**---Very large; greenish yellow; makes a beautiful tree and bears well a good crop of melting, sweet fruit.

**Early Wilder.**---A medium to small, greenish yellow, with browned cheeks; melting, very sweet; tree a vigorous grower; and sure and regular bearer.

**Koonce.**---Medium; yellow, with blush; quality good, handsome and valuable; tree vigorous and an upright grower; resists blight. July.

**Early Harvest.**---Large, yellow, roundish; very showy; has borne well on the Plains. July.

*Specials*

**Anjo.**---Brown, with blush; medium size; of good quality Price, 50c to \$1.00, according to size.

**The Alamo.**---A seedling of Texas origin, probably a cross between the Bartlett and the old Bergamont. It is showing itself to be one of the best on the Plains. 50c to \$1.00, according to size.

**The Donohoo.**---Has borne in the town of Plainview good crops when all others failed. It is a beautiful pear, resembling the Flemish Beauty. 50c to \$1.00, according to size.

*Peaches*

Peach trees grow and do well and develop fine fruit when not killed by late frost, which may be overcome in the future by smudg-ing (and winter irrigation).

*Prices on Peaches*

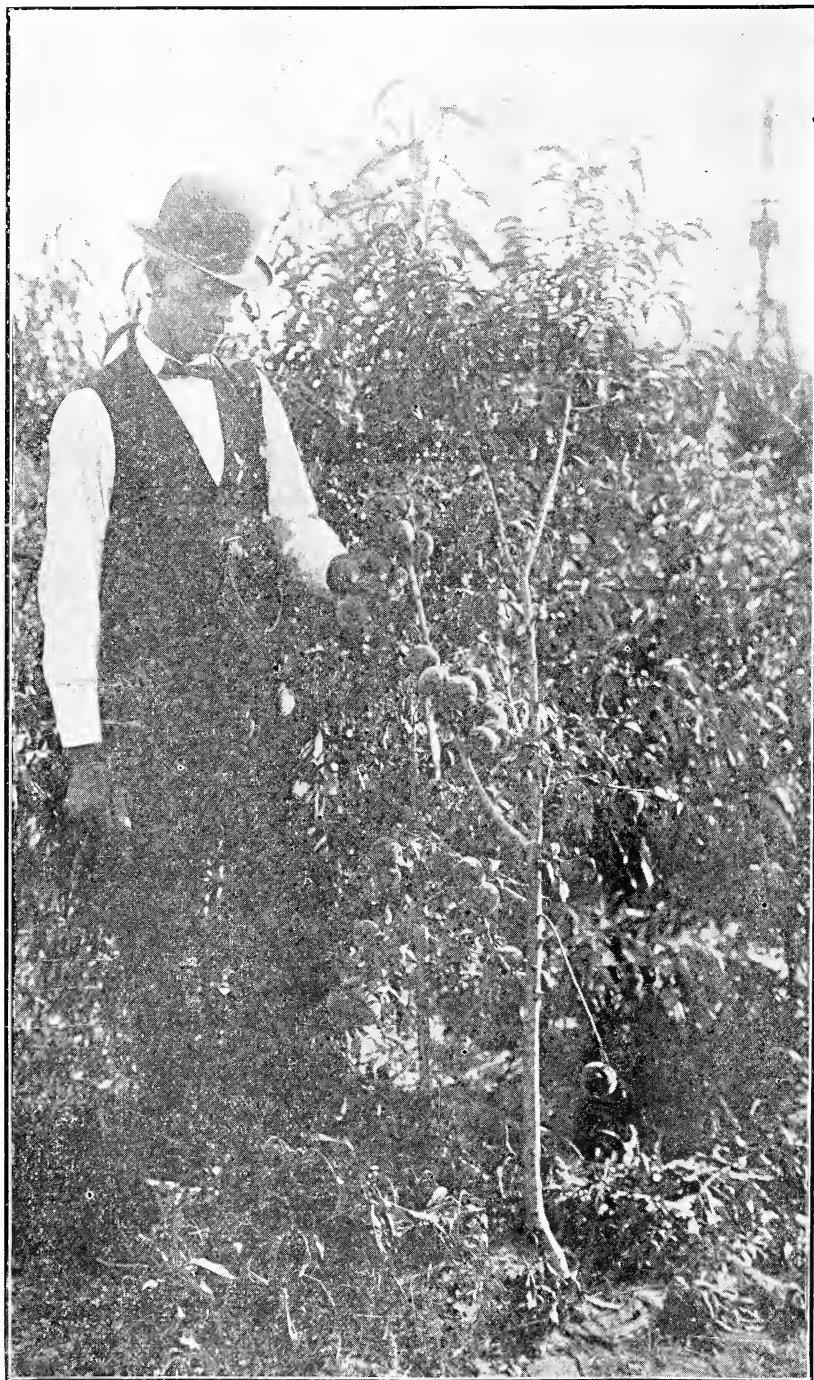
Extra heavy . . . . .	50c each . . . . .	\$5.00 per dozen . . . . .	\$30.00 per 100
5-6 feet . . . . .	35c each . . . . .	4.00 per dozen . . . . .	25.00 per 100
4-5 feet . . . . .	25c each . . . . .	3.00 per dozen . . . . .	20.00 per 100
3-4 feet . . . . .	20c each . . . . .	2.50 per dozen . . . . .	15.00 per 100
2-3 feet . . . . .	15c each . . . . .	1.80 per dozen . . . . .	10.00 per 100
1-2 feet . . . . .	10c each . . . . .	1.20 per dozen . . . . .	8.00 per 100

Specials, 50c to \$1.00 each.

Seedlings, 10c each; \$5 00 per 100.

**Alexander (cling).**---Medium to large; greenish white, nearly covered with red, flesh sweet and juicy; tree vigorous and productive; a good early sort.

**Annie Williams (S. C.).**---July 25th. Pale yellow; flesh yellow, fine grained; one of the best of its season; tree upright and vigorous grower.



THE TRIUMPH PEACH TREE BEARING IN NURSERY ROW.

**Alton (freestone).**—August 15th. White; medium size: a good Plains Peach.

**Triumph (freestone).**—June 15th. Medium size; yellow, with red cheeks where exposed to the sun; flesh yellow; very prolific; a good early kind.

**Arp Beauty, or "Early Elberta" (freestone).**—June 15th. A large, yellow, freestone peach; red cheeked, yellow flesh, with distinctive yellow peach flavor; it is a regular and heavy cropper; chance seedling of the Chinese type.

**Elberta (freestone).**—August 10th. Very large; yellow fleshed, red cheeked. This peach has been planted commercially more extensively than any other peach.

**Carman (S. C.).**—August 1st. Large, resembles Elberta in shape; creamy white; skin tough, making it a good market sort; said to be nearly frost proof.

**Mamie Ross (S. C.).**—July 15th. Large, white, red cheek; wonderfully prolific; regular in its bearing, sweet and juicy.

**Old Mixon Cling (cling).**—August 30th. Large, white, with blushed cheeks where exposed to sun; very firm and juicy; keeps well, and is one of the very best in its season.

**Gen. Lee (cling).**—August 15th. White, with slight blush red next to seed: a seedling of Chinese Cling, and a much better bearer.

**Horlacher (cling).**---September 10th. Medium to large, oblong, creamy white, with red cheeks, seedling resembles the Chinese kind.

**Victor.**---Large, pure white, with blush cheek, about the earliest peach known, ripens thoroughly to seed.

**Stump of the World** ---An old reliable variety, which succeeds well here.

**Champion.**---Fruit large, beautiful in appearance, flavor sweet, rich and juicy. skin creamy white, freestone, extremely hardy. Well adapted to West Texas and the Plains. August.

**Crawford's Early.**---Beautiful, yellow peach, oblong, blush cheek, juicy, sweet and prolific. July 15th.

**Mayflower.**---Very early, large size, pale red, fine flavor, very productive, a good shipper. June.

**Greensboro.**- -Origin, North Carolina. Ripens with Alexander, but much larger, round, flesh white, very juicy, of good quality, bright red, over yellow, a promising market variety.

---

### Specials

**Dalmont's Favorite.**---A large, handsome, white peach with dark red cheek. It is firm and juicy, red next to seed, resembling in some respects the Gen. Lee, but showing some Indian blood; tree vigorous and an annual bearer; a cling that ripens the last of August. 50c to \$1.00, according to size.



A ROW OF FOUR-YEAR-OLD PEACH TREES IN PLAINVIEW NURSERY  
BENDING WITH FRUIT AFTER LATE FROSTS

**Krummel's Late.**—Is a very large, yellow, freestone peach of excellent quality; one of the very best late varieties; ripe last of September. 50c to \$1.00, according to size.

**Judge Kinder.**—A peach that has created quite a sensation in Plainview on account of its large size, beautiful appearance and vigor of tree. 50c to \$1.00, according to size.

---

### *Nectarine*

---

#### *Prices on Nectarines*

4-5 feet.....	25c each.....	\$2.50 per dozen.....	\$20.00 per 100
3-4 feet.....	20c each.....	2.00 per dozen.....	15.00 per 100
2-3 feet.....	15c each.....	1.80 per dozen.....	10.00 per 100

**White English.**—A large, creamy white; fine flavor; sweet and delicious; thrives wherever peaches grow.

**Red Roman.**—Large; roundish; greenish yellow; reddish brown cheek; rich, firm, high flavor.

**Boston.**—Large; deep yellow, with a bright blush and mottlings of red; sweet and peculiar; pleasant flavor; freestone; vigorous. August.

---

### *The Compass Cherry*

---

A new fruit that originated in the cold regions of Minnesota.

It is a combination of plum and cherry. We planted it as an experiment, and are most agreeable surprised in their young-bearing and vigorous growth. They bore the second year after planting, although we had a heavy frost while in bloom. We believe they are going to be one of our most successful fruits. We are glad to recommend them to our patrons.

**Compass Cherry.**—Cross between plum and cherry; bears young and is very hardy; very prolific. When more widely known, this fruit will become very popular.

Small trees, 50c; large trees, 75c.

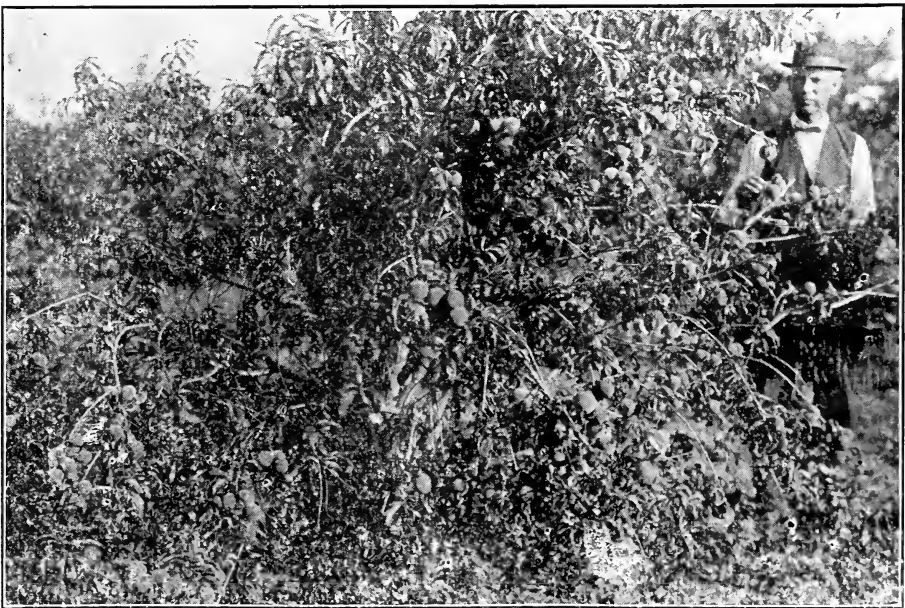
**Cherries**

We think that this splendid early fruit should be planted more extensively in the future than it has been in the past, as the trees do well and annually bear a good crop of early fruit, coming in before other fruits are ripe.

**Prices on Cherries**

Extra heavy .....			50c to 75c each
4-5 feet .....	35c each .....	4.00 per dozen .....	35.00 per 100
3-4 feet .....	30c each .....	3.50 per dozen .....	25.00 per 100
2-3 feet .....	25c each .....	2.50 per dozen .....	20.00 per 100

**Montmorency.**—Large; roundish; red; flesh tender, acid and good quality. Larger than Early Richmond, and about ten days later; one of the most popular sorts. Late June.



THE TRIUMPH PEACH

**Early Richmond.**---June. Medium sized; dark red, melting and juicy, one of the valuable and popular of the acid cherries.

**Morello.**---August. Medium to large, nearly black when fully ripe, flesh purplish red, meaty and juicy, very productive.

**New Century.**---Thought to be a combination of the Morello and Duke types, originated in Grayson County, Texas. Fruit medium to large, tree upright, vigorous grower. Its dark green foliage makes it also valuable as a shade tree.

**Wragg.**---The Wragg Cherry has of late years come into popularity more than any other cherry, especially in the West. It is especially famous for its early and prolific bearing, bearing often heavy crops at from two to three years old. We are going to propagate the Wragg Cherry heavily, and expect after this year to keep a good stock on hand.

## *Apricots*

Apricots are one of the most vigorous growers of all fruit trees, many specimens being found in old, neglected orchards, where other trees have died, bearing good fruit, when not killed by frost; also valuable for shade and windbreaks.

### *Prices on Apricots*

Budded—

Extra large.....	50c each.....	\$4.80 per dozen.....	\$35.00 per 100
4 to 5 feet.....	35c each.....	3.50 per dozen.....	25.00 per 100
3 to 4 feet.....	30c each.....	3.00 per dozen.....	20.00 per 100

Seedlings—

2 to 3 feet.....	15c each.....	\$1.50 per dozen.....	\$10.00 per 100
1 to 2 feet.....	10c each.....	1.00 per dozen.....	5.00 per 100

**Cluster Apricot.**---Universally one of the most successful of all apricots throughout this country. Also well suited for shade tree.

**Plainview Apricot.**---Originated here at Plainview, Texas, with W. B. Martine, from seed, and has proven one of the surest and most prolific bearers; fruit handsome in appearance and of good quality and size.

**Apricot Seedlings.**---Make nice shade and frequently bear fine crops of fruit. We recommend their planting for windbreaks around the orchard or farm, as they make a good growth, and will not sprout, often bearing splendid crops of delicious fruit.

## *Mulberries*

### *Prices on Mulberries*

7 to 8 feet.....	50c each.....	\$5.00 per dozen	
6 to 7 feet.....	40c each.....	4.00 per dozen	
5 to 6 feet.....	35c each.....	3.50 per dozen	
4 to 5 feet.....	25c each.....	2.50 per dozen	

**Hick's Everbearing.**---Large, black, sweet and prolific.



**Black English.**—Large, black, excellent flavor; prolific and very early.

**Downing.**—Large, rich, sub-acid; valuable. Ripe July and August.

**Russian Mulberry.**—This is one of the hardiest varieties for this location, being used for windbreaks and shade trees; also for chicken and hog pastures. Non-bearing. One of the most popular mulberries.

**American Persimmons**

The American persimmon is growing well on our grounds, and we believe will give satisfaction for both fruit and shade trees, as we believe they will be a blessing through generations to come.

**Prices on American Persimmons**

Extra large	50c each	\$5.00 per dozen	\$40.00 per 100
4-5 feet	35c each	3.50 per dozen	30.00 per 100
3-4 feet	30c each	3.00 per dozen	25.00 per 100
2-3 feet	25c each	2.50 per dozen	20.00 per 100

**Quince**

**Orange.**—Large, roundish, somewhat irregular, with a small and short neck at the base; fine, golden-yellow flesh of excellent flavor.

**Champion.**—Very large and handsome, flesh cooks as tender as an apple, without hard spots; flavor delicate, tree very handsome and bears abundantly, one of the most valuable sorts, color greenish yellow.

**Prices on Quinces**

4-5 feet	35c each	\$3.50 per dozen	\$30.00 per 100
3-4 feet	30c each	3.00 per dozen	25.00 per 100
2-3 feet	25c each	2.50 per dozen	20.00 per 100

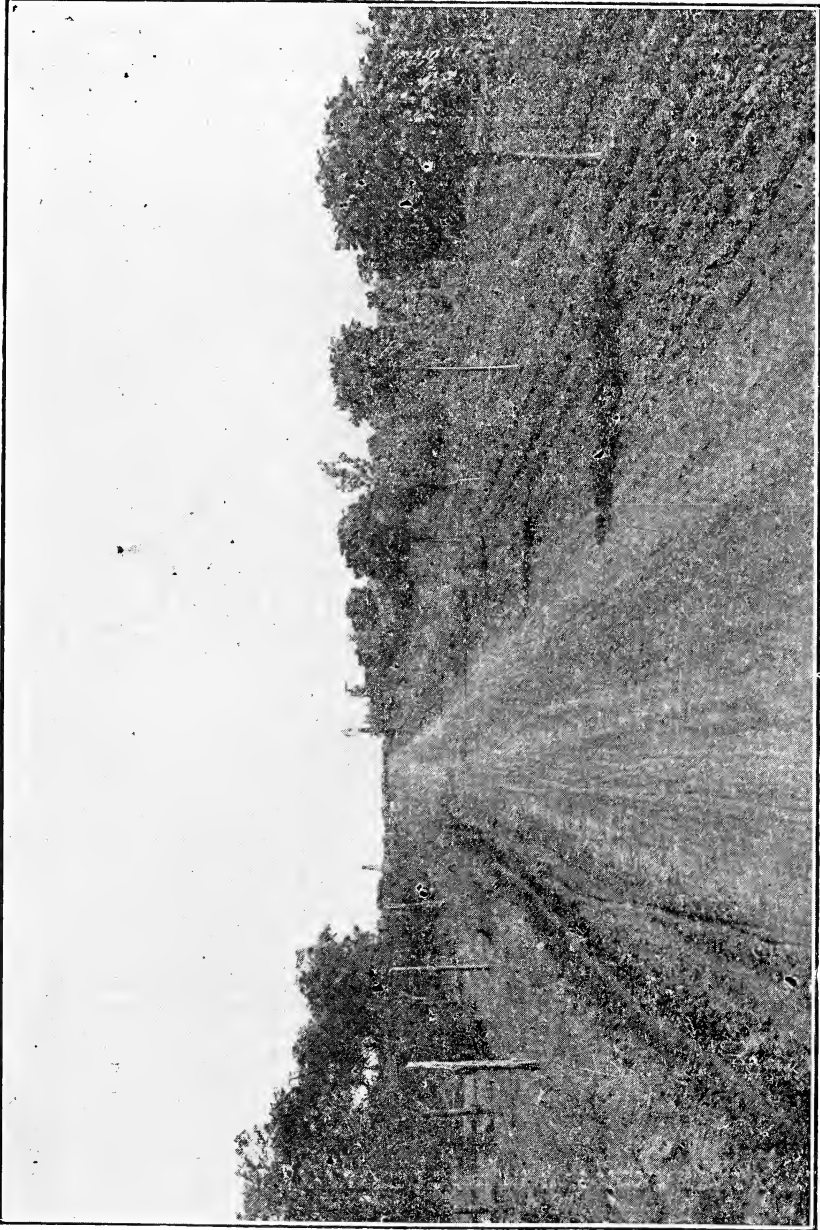
**Shade Trees**

**Prices on Shade Trees**

3 to 4 inches in diameter, each	\$3.00
2½ to 3 inches in diameter, each	2.50
2 to 2½ inches in diameter, each	2.00
1½ to 2 inches in diameter, each	1.50
8 to 10 feet	1.00
7 to 8 feet	75c
6 to 7 feet	50c
5 to 6 feet	35c
4 to 5 feet	25c

I believe the Plains can and will be made one of the most beautiful countries in the world, and every person should be in hearty accord to make it so, by planting shade trees and ornamental trees. This country being naturally destitute of timber, trees and shrubbery

THE PLAINVIEW NURSERY



SHADE TREES ALONG DRIVE IN PLAINVIEW NURSERY

show up to better advantage than anywhere. When trees get large they will break the force of the wind and make the country more pleasant, besides having a tendency to cause more rain. A home looks desolate without being surrounded with trees. Let us plant our share. Our list contains those that have done the best.

**Black Locust.**---Has shown itself one of the best trees yet planted on the Plains for shade and forest trees, also valuable for windbreaks, fence posts, etc. Being leguminous in its habits, it makes a good growth on dry soils. We recommend its extensive planting.

**Thornless Honey Locust.**---We think will prove itself a grand success in this section, as it has all the good points of the Black Locust, yet has no thorns and does not sprout from the roots. We think this will take the place largely of the Black Locust as a shade tree.

**Soft Maple.**---A beautiful, hardy tree that does well on the Plains.

**The Sycamore.**---Does well here. Its beautiful, broad foliage and upright growth gives it a beautiful appearance.

**The American Ash.**---Is a fixture for our climate, holding its beautiful, glossy green leaves through severe dry seasons.

**Box Elder.**---Makes a beautiful, fast-growing tree, perfectly hardy, and its limbs resist the winds as well as Black Locust, is a favorite with a great many people on the Plains.

**Elm.**---Does remarkably well and makes a beautiful tree which is very resistant against storms or winds.

**Speciosa Catalpa (hardy).**---Is being extensively planted for shade and forest trees. It is especially recommended for high altitudes.

**Silver Poplar.**---It is very much admired for its silvery foliage.

**Norway Poplar.**---Is one of the fastest-growing trees, from which it is sometimes called "the sudden saw log," one of the best of the poplar family.

**Lombardy Poplar.**---A handsome, fast-growing, stately tree, towering high above any other tree of its age.

**Weeping Willow.**---It is a surprise to see how fast it grows in our high altitude, making a fast ornamental appearance.

**Dog Wood.**---Does moderately well, its large, green foliage with its cluster of white, fragrant flowers makes it very attractive in the early spring.

**Hackberry.**---Rather slow, dwarfish growth on the Plains, but makes a good tree when once established.

**Tamarack.**---We have the large kind, that makes a large tree with less moisture than most any tree we have grown, and will make a good ornamental shade tree. It is especially well adapted, when planted close, for windbreak around orchards, also will afford good protection for stock and homes.

### *Nut Trees*

---

**The Big Black Walnut.**---Has shown itself to be one of the best of the nut-bearing trees for this climate. Makes a fairly good growth, and will be appreciated through generations to come.

**Pecan.**---Rather slow growth in the West. Might be recommended for special locations.

#### *Prices on Nut Trees*

Pecans (budded) .....	50c per foot
Pecans (Seedling) .....	25c per foot
Black Walnuts .....	25c per foot

---

### *Grapes*

---

For sure and quick returns, at from two to four years, of the most healthful, delicious food for man, they seem to be especially hardy and free from all disease. Grapes have never been known to mildew on the Plains. We believe that the planting of a vineyard is one of the most profitable investments.

#### *Prices on Grapes*

One Year .....	15c each .....	\$1.80 per dozen .....	\$10.00 per 100
Two year .....	25c each .....	3.00 per dozen .....	20.00 per 100

**Niagara.**---Large, greenish white, semi-transparent; quality good; a seedling of Concord; successful over a large range of territory; one of the best.

**Concord.**---Almost too well known to need description; large, black, excellent quality.

**Moore's Diamond.**---Large, white, of fine quality; one of the best American grapes; a seedling of Concord, to which it is superior.

**Moore's Early.**---Very large, very early; black; of good quality; a good market grape; healthy and prolific.

**Herbemont.**---Medium size, not good when it first turns black, but delicious when fully ripe, vine robust and long lived.

**Goethe.**---Large, oblong, pale amber color, sweet.

**Agawam.**---Large, amber color, medium, highly aromatic.

**Wyoming Red.**---Large, red, of good quality; vine vigorous grower.

**Delaware.**---Small; finest flavor; clear red; a standard of excellence for table and market; good grower.

**Neils.**---A good early sort; fine for pies.

**Arbor.**---Dark red; good quality; a very rank grower; suitable for arbor.

**Merrell.**---Has been bearing in the orchard of M. E. Merrell for a long time, and has given perfect satisfaction.

**Pocklington.**---We don't recommend California varieties, but they might be made to succeed by careful attention. We have the Thompson Seedless.

**Thompson's Seedless.**---Greenish yellow; the best seedless raisin grape  
**Black Cornichon.**---Very large, long; light blue, with very pleasant  
 flavor.

**Emperor.**---Light red; late variety; firm; rich color; and good  
 keeper.

**Flame Tokay.**---Light red; firm and sweet; very large bunches.

**Muscat.**

**Sultana.**---Black, tender; fine table grape.

### *Instructions for Planting And Growing Grapes And Berries*

A good way is to break your land the last time in lands the distance you want to plant your grapes and berries, plowing the water furrow the second time as deep as possible; then harrow land down good, so as to get it well pulverized, and then plant in water furrow. Trim the ends of the roots so as to have a fresh, smooth cut on bottom side; give roots natural position. Fill holes two-thirds full of dirt and put in 3 or 4 buckets of water, and after water has soaked in fill up again with loose top soil, pressing it firmly with the foot, so that the soil will come in close contact with the surface of the roots; then hill up with more top soil that you leave loose. Cut all the tops off within 2 or 3 inches of the ground, for grapes and berries. For grapes, when the buds start and get 6 to 12 inches long, select the best shoots and cut all the rest off close, so they will not sprout any more. Put up smooth line wires, putting first wire 4 feet 4 inches high, second wire 3 feet 2 inches, and third or bottom wire 2 feet. Then train the young vines up to the line wires, and when they have reached top line wire cut them off and let them branch both ways. After the side branches have grown to be more than 2 feet long, each winter along about December 1st cut the side branches back to about 2 feet, and each subsequent year add 3 buds of the new growth.

Blackberry vines do not fruit well but 1 year on same stalk, so the best system is, as soon as they have fruited, to cut them down, so the new growth will bear the next year.

Remember that thorough cultivation and close attention are the essentials to success in fruit growing.

### *Currants*

**Victoria.**---This variety seems to be the latest bloomer we have; best for the Plains.

**Red Dutch.**---An old, highly esteemed sort; hardy and reliable; fruit medium size, bright red and best quality.

Prices, 15c each; \$1.50 per dozen; \$10.00 per 100.

### *Gooseberries*

Prices---15c each; \$1.50 per dozen; \$10.00 per 100.

**Downing.**---Medium, round, smooth; greenish white, with thin, transparent skin.

**Hughton.**---Medium size, pale red sweet and juicy, abundant bearer.

### *Blackberries*

Leading sorts. Blackberries are among the best known and most valued of our berries.

Prices, \$1.00 per 25; \$3.00 per 100.

**Early Harvest.**---The earliest blackberry in cultivation, and a compact grower, sending out short laterals. The fruit is small, but of fine quality, its earliness makes it a very desirable kind.

**Kittatinny.**---One of the old popular varieties. Cones erect, strong and vigorous, very productive, fruit of best quality, large and handsome. Rippens in mid-season.

**Dallas.**---The standard in Texas; combines all good points; large, fine quality, productive. Early to mid-summer.

**Blower.**---Has long fruiting season; very prolific. When more widely known will be very popular.

**Logan.**---Very large berry; hardy, prolific. There is good commercial demand for this variety.

**Himilaya.**---Originated in Himilaya Mountains of Asia, in a very high and cold altitude, hence its hardiness. Makes a growth of from thirty to fifty feet a year. Does not bear full the first year, but with proper attention it is a very heavy yielder thereafter.

### *Dewberries*

**The Austin May.**---Has proved a success with us, being large, glossy, shining; black in color, unsurpassed in flavor. We believe it could be profitably grown for market purposes throughout this country.

Prices—\$1.00 per 25; \$3.00 per 100.

### *Raspberries*

**Columbian** —Large, purple, hardy; prolific; one of the best. Prices—\$1.00 per dozen; \$4.00 per 100.

**St. Regis.**---A very large, red berry; vine has no thorns; very fruitful and hardy for the Plains. \$1.20 per dozen; \$8.00 per 100.

### *Strawberries*

**Varieties.**---Texas, Dunlap, Klondyke and Lady Thompson.

Strawberries can be successfully grown in any good garden soil. It is easily placed in the front ranks among small fruits.

Prices—\$1.50 per 100; \$10.00 per 1,000.

**Garden Roots**

**Rhubarb, or Pie Plant.**—We grow the leading varieties. \$1.00 per dozen; \$5.00 per 100.

**Asparagus.**—Leading kinds. Every garden should contain a generous supply. 60c per dozen; \$3.00 per 100.

**Horse Radish.**—Fine to grate in vinegar and use over fresh meat; also medical purposes. 60c per dozen; \$3.00 per 100.

**Coniferous Evergreens**

Prices on Evergreens, 50c to 75c per foot.

**Pyramidal.**—Shaping itself perfectly in a pyramid; a fast grower and one of the most beautiful. Retains a bright green color almost the year round.

**Arborvitae Rosedale.**—A new seedling; evidently a hybrid between Golden Arborvitae and Red Cedar; beautiful pale green; of compact habit.

**Arborvitae-Chinese.**—A very rapid grower; dark green foliage; symmetrical in habit.

**Golden Arborvitae.**—This is a very popular variety; compact, retaining its habit naturally, and has a somewhat golden hue, superceding the bright green.

**Red Cedar.**—One of the fastest growers and hardiest of all the evergreen species.

**Instructions to Plant Evergreens When Baled or Burlapped**

Set in holes; leave burlap on; fill around ball with loose dirt, then water enough to settle soil, then hill up with loose soil; put box or barrel over them, with both ends out; line between barrel and evergreens with some kind of moist packing, straw, moss, or sacks that have been soaked. Keep moist by sprinkling of evenings, but don't keep too wet; keep this up until the hard dry winds are over in the spring. Don't keep soil around the roots too wet, but water good about once per week. Keep packing in barrel moist, but not too wet.

**Ornamental Hedge Plants**

**California Privet.**—A very popular hedge plant North, South and West. Its good habits for shearing and its hardiness and durability are greatly in favor.

**Euonymus.**—An attractive, broad-leaved evergreen; bears shearing into any shage desired.

**Prices on California Privet And Euonymus**

8 to 12 inches .....	\$4.00 per 100
12 to 18 inches .....	5.00 per 100
18 to 24 inches .....	6.00 per 100
24 to 30 inches .....	7.00 per 100

**Bulbs and Tubrous-Rooted Plants**

**Cannas.**---25 cents each; \$2.00 per dozen. The advancement made in Cannas is wonderful. They are gorgeous in their foilage and in their great trusses of flowers. In spring and summer is very brilliant, and varying colors.

**Golden Glow.**---Price, 15c each. One of the finest perennials; very hardy.

**Gladiolus.**---10 cents each. Are among the most popular of all the bulbuos plants which flower in summer.

**Mexican Tube Roses.**---10 cents each.

**Everblooming Tritoma.**---25 cents each.

**Dahlias.**---A beautiful and constant bloomer, in different colors. 20c each, \$2.00 per dozen, \$15.00 per 100.

**Paeonias.**---Flowers of immense size, in many beautiful colors. Price, 25c each, \$2.50 per dozen, \$20.00 per 100.

**Chrysanthemums.**---A very popular, fragrant flower of many colors, blooming from early to late summer. Price, 25c each, \$2.50 per dozen.



FRUIT TREES BEARING IN DALMONT TEST ORCHARD, JULY 1914

**Roses**

The queen of all flowers; should be planted in every yard and along each walk, to beautify the home and brighten the lives of the inmates. Beautify your home, that your children may remember their childhood scenes of beauty and love.

**Prices on Roses**

One-year-old ..... 35c each ..... \$4.00 per dozen  
 Two-year-old ..... 50c each ..... 5.00 per dozen



**American Beauty.**—Has large, well shaped bud and rose, but shy bloomer in this altitude.

**Grus an Tiplitz.**—Deep, rich, velvety crimson; very fragrant; free grower and a profuse everbloomer.

**Meteor.**—Deep, rich crimson everbloomer; plant strong and vigorous grower.

**Papa Gontier.**—Rich, cherry red; strong, vigorous grower, with remarkable fragrance.

**Baby Rambler.**—New dwarf, everblooming crimson Rambler. It is a constant bloomer; seldom attains a height of more than 18 inches.

**Duchess of Albany.**—A lovely shade of deep rose or pink; ever-bloomer.

**Helen Gould.**—A strong grower and free bloomer. As a red rose, it is a favorite of many.

**La France.**—A very beautiful pink; fragrant; flowers large and double.

**Etoile de Lyon.**—A very beautiful yellow rose; the flowers are of good size, deep, full; very sweet scented; rich golden yellow.

**Perle des Jardines.**—A very beautiful, deep yellow rose; makes grand buds; open flowers extra large and perfectly double.

**Safrona.**—A vigorous and healthy rose; rich golden yellow; has splendid and abundant flowers.

**Bride.**—A pure white rose of perfect form and fine size; the buds are long and pointed; the flowers open up beautifully and full; very fragrant.

**White Cochet.**—Extremely large, rounded and full; an everbloomer; very valuable for its beautiful buds.

**White Baby Rambler.**—It blooms in clusters; the flowers are pure white and double; and blooms freely; a fine little rose.

**Crimson Rambler.**—Succeeds everywhere and is perfectly hardy; makes strong, heavy shoots; runs 10 to 20 feet in one season. The flowers are produced in large clusters, and are fine for boquets or decorations.

**Climbing Meteor** ---Very hardy, everblooming, climbing red rose; makes shoots 3 to 4 feet in one season.

**Mrs. Robert Peary.**—A fine, cream-colored climbing rose; profuse bloomer; a favorite of many.

**Marechal Neil.**—Deep sulphur yellow; very large and extremely fragrant.

---

### *Deciduous Flowering Shrubs*

Prices, 25c, 35c and 50c.

We consider these the cream of the world. All are hardy outdoors and will bloom from April until frost, if given sufficient attention to keep them growing.

**Althea, or Rose of Sharon.**—Altheas are among our most valua-

ble flowering shrubs. They bloom in the early fall, when most other shrubs are out of bloom, and have a long blooming season.

**Lilac.**—Lilacs are a well-known and popular class of large shrubs which have been greatly improved. Who does not remember and cherish the flowers of exquisite purple and delightful fragrance of the old lilac bush?

**Flowering Willow (*Chilopsis Linearis*).**—Native of the dry section of Western Texas and New Mexico. Bloom constantly from May to late fall, and bloom profusely during dry, hot weather; long lived and hardy. Price, 50 cents.

**Spirea (*Bridal Wreath*).**—Single and double; a bank of white in spring. Also several other colors; some bloom in spring, others in mid-summer. Price, 35 cents.

**Snowball.**—Produces large, globular clusters of white flowers in April and May; an old favorite. Price, 50 cents.

**Crepe Myrtle.**—Blooms throughout the summer; colors crimson, bright red, pink, purple and white. Price, 35 cents.

**Syringea.**—A handsome shrub having a profusion of white flowers in early summer. Price, 35 cents.



### *Climbing Vines*

Prices, 25c and 35 cents.

**Honey Suckle.**—An old and favorite shrub; known for its fragrance and beauty.

**Chinese Evergreen.**—Red. Also Japan Everblooming; yellow.

**Silk Vine.**—A very rapid climber, with glossy, green leaves. We consider this one of the best climbing vines for galleries and arbors.

**Wisteria.**—A strong-growing vine of good foliage, and with a profusion of bunches of purple pea-shaped flowers in spring.

Salesman Will write Customers

name here

DATE

191

Occupation

Amount Real Estate and location

Amount other Property and location

Residence from delivery Miles

# The Plainview Nursery

You may deliver to me or us at

THE NURSERY STOCK NAMED BELOW, for which I or we promise to pay the prices set opposite when it arrives at destination. I or we agree not to countermand this order. No Contract Recognized Unless Written on This Order and Approved by the Plainview Nursery, Plainview, Texas.

	Ea	Total
Peach Trees, Std. To Ft.		
Peach Trees, Spec. To Ft.		
Plum Trees, Std. To Ft.		
Plum Trees, Spec. To Ft.		
Pear Trees, Std. To Ft.		
Pear Trees, Spec. To Ft.		
Apple Trees, Std. To Ft.		
Apple Trees, Spec. To Ft.		
Apple Trees, Crab. To Ft.		
Apricot Trees To Ft.		
Prune Trees To Ft.		
Cherry Trees To Ft.		
Quince Trees To Ft.		
Mulberry Trees To Ft.		
Persimmon Trees To Ft.		
Grape Vines		
Grapes, Special		
Blackberry Plants		
Dewberry Plants		
Currants		
Gooseberries		
Strawberry Plants		
Raspberry Plants		
Rhubarb		
Asparagus		
Rose Bushes		
Flowering Shrubs		
Climbing Vines		
Shade Trees To Ft.		
Evergreens To Ft.		
Nut Trees To Ft.		
Privet To Ft.		
Forest Trees To Ft.		
Bulbs		
Total Amount of Order	\$	
Credit By	\$	
Balance Due	\$	

We reserve the right to substitute with as good or better varieties.

And it is understood and agreed by me or us that I or we have signed said order after due deliberation, and in case I or we refuse to receive or pay for said order as herein named this said order becomes a note for the full amount herein named, payable at Plainview, Texas to the order of said Plainview Nursery; and I or we further agree to pay for having said order delivered at my or our residence if I or we fail to be at destination to receive said order when it is to arrive; and if said order does not arrive on date named herein, I or we agree to accept and pay for said order if it is delivered in good condition at destination before the expiration of the planting season; it is also understood and agreed that said Plainview Nursery is to replace at half each price all stock dying within one year from date of delivery; it is also understood that if any of the said stock is not true to name it is to be replaced free of the amount paid for same is to be returned, but no further damages to said Plainview Nursery.

## APPLES

- Ark Black
- Bledsoe
- Ben Davis
- Bismarck
- Early Harvest
- Fameuse
- Gano
- Grimes' Golden
- Hubbardson N. Such
- Hale Co. Beauty
- Huntsman's Fav.
- Janett
- Lively's Choice
- Limber Twig
- M. B. Twig
- Mo. Pippin
- Maiden Blush
- N. W. Greening
- Rambo
- Red June
- R. W. Cluster, 50c
- Rome Beauty
- Red Astrachan
- Seedless
- Summer Queen
- Sperm Proof
- Winesap
- Wolf River
- Winesap (Stayman)
- W. Winter Pearman
- Yel Bell Flower
- Omaha
- Yel. Horse
- Winter Banana

## PLUMS.

- America
- Ark. Lombard
- Bradshaw
- Captain
- Early Sunrise
- Eagle
- Golden Beauty
- Green Gage
- Gold Coin
- Hammer
- Miner
- Omaha
- Pool's Pride
- Red June
- Wonder
- Wooten
- Whittaker

## PEARS.

- Alamo
- Bartlett
- Donohoo
- Early Harvest
- Early Sugar
- Keiffer
- McWhorter

## CHERRIES.

- Compass
- Early Richmond
- English Morello
- Montmorency
- New Century
- Wragg

## APRICOTS.

- Cluster
- Moor Park
- Plainview Apricot
- Royal
- Seedling Apricot

## PEACHES.

- Annie Williams
- Alton
- Alexander
- Arp Beauty
- Champion
- Chinese Cling
- Crawford's Early
- Crawford's Late
- Carman
- Crosby
- Delmont's F.
- Elberta
- Family F.
- Gov. Lanham
- Henrietta
- Heath Cling
- Horlacher
- Judian Cling
- Judge Kinder
- Krummels Late
- Lee
- Mamie Ross
- Mixon Cling
- Mayflower
- Stump of the World
- Triumph
- Victor
- Fred Crawford
- Nectarines

## CRAB APPLE.

- Florence
- Whitney

## SHADES.

- Catalpa Bungei
- Ash
- Box Elder
- Black Locust
- Catalpa Speciosa
- Cottonwood
- Elm
- Honey Locust
- Hackberry
- Maple (soft)
- Poplar (Car)
- Poplar (Lom.)
- Poplar (Nor.)
- Poplar (S. L.)
- Sycamore
- Tamarac
- W. Mulberry
- Siberian Tea-Tree

## GRAPES.

- Arbor
- Agawam
- C Concord
- B. Cornicou
- Champion
- Citawba
- Carman
- Delaware
- Elvira
- Flame Tokay
- Goethe
- Herbement
- Moore's Diamond
- Moore's Early
- Merrill
- M. Seat Sultana
- Niagara
- Pocklington
- Thompson Seed
- Warden
- Wyoming Red

## QUINCE.

- Champion
- Orange

## NUT TREES.

- Pecan
- Walnut, black

## GOOSEBERRY.

- Downing
- Houghton

## BLACKBERRY.

- Blowers
- Early Harvest
- Himalaya
- Lo-an
- Lawton
- Robinson

## DEWBERRY.

- Austin
- Lucretia
- McDonald

## STRAWBERRY.

- Dunlap
- Excelsior
- Klondyke
- Lady Thompson
- Mixed
- Texas

## EVERGREENS.

- Arbor Vitae (C)
- Arbor Vitae (R)
- Arbor Golden
- Privet (Cal.)
- Red Cedar

## BULBS.

- Cannas
- Carnations
- Calla Lily
- Chrysanthemum
- Dalilas
- Everblooming
- Tijoma
- Goldenglow
- Gladiolus
- Mexican Tube
- Roses
- Paeonies
- Yel. Day Lily

## FLOWERING SHRUBS

- Althea (pink)
- Althea (white)
- Althea (red)
- Flg Willow
- Syringea
- Lilac (white)
- Lilac (purple)
- Redbud
- Snowball
- Spiraea
- Hydrangea
- Crape Myrtle

## PRUNES.

- German
- Giant

## ROSES.

- American Beauty
- Bride
- Bridesmaid
- Crimson Rambler
- Etoile de Lyon
- Francis E. Willard
- Gen. Jaquimot
- Helen Gould
- Kaiserina
- La France (pink)
- La France (red)
- M. Rob. Peary
- Malmaison
- M. Washington
- Meteor
- Meteor (climbing)
- M. Nel
- Papa Contier
- Pearl of Garden
- Paul Neyron
- Safrona
- Seven Sisters
- Tipton
- White Crocnet
- W. Baby Rambler
- R. Baby Rambler

## CLIMBING VINES.

- Cinnamon Vine
- Clematis
- Honeysuckle (Evergreen)
- Honeysuckle (red)
- Ivy
- Silk Vine
- Trumpet Creeper
- Wistaria

## MULBERRY.

- English Black
- Hicks
- Rus. Mulberry
- Non Bearing

## RASPBERRY

- Cardinal
- Kansas
- St. Regis

## CURRANTS.

- Fay's Prolific
- Lee's Prolific
- Red Duches
- Victoria
- Versailles
- White Grape

## FOREST TREES

- (Seedlings)
- Bois d'arc
- Black Locust
- Box Elder
- Catalpa
- Elm
- Honey Locust (thornless)
- Maple (soft)
- Rus. Mulberry
- Speciosa

## ORNAMENTAL GRASSES

- Donox
- Pampas
- Zebra
- Asparagus
- Rhubarb

## MISCELLANEOUS

NOTICE We handle Arsenate of Lead, manufactured by the Grasselli Chemical Co.; the Eclipse Spray Pump, manufactured by Morrill & Morley Manufacturing Co.; also Warnock's Tree Paint, which is guaranteed to protect trees from rabbits, bark insects, and disease. We have given these lines a thorough trial and recommend their use. We can fill your order from Plainview.



**Virginia Creeper.**—High-climbing vine for wall, chimney, tree trunks, etc.

**Trumpet Flower.**—Hardy, with large trumpet flowers during summer.

**Kudzu Vine, or Jack and the Beanstalk.**—Hardy; its dense foilage makes it beautiful; will run 50 feet in a year.

### *Ornamental Grasses*

**Pampas Grass.**—Green leaves, with large white plumes with long stems. 50c each; \$5.00 per dozen.

**Pampas Grass (pink).**—Compact growth, with plumes a delicate pink; free bloomer. 50c each; \$5.00 per dozen.

**Zebra Grass.**—Varigated; hardy growth; leaves green. with gold stripes running across; light, feathery plumes. 30c each \$2.50 per dozen.

**Donax Grass.**—Very hardy, making growth of 10 to 15 feet per year. Head resembles white plums.

### *Forest Tree Seedlings*

As the Plains are destitute of tree growth, we think there is no place where the planting of forest and shade trees is more needful than here, as they will beautify our homes and the appearance of the country in general, besides making good windbreaks, which will reduce the force of the wind and make the climate more pleasant, and probably adding to the rainfall, and will in time serve as posts and fuel. Let everybody plant more trees.



Results from Pumpage Irrigation

### *Prices on Black Locust*

4- 6 inches .....	\$ 3.00 per 1,000
6-12 inches .....	5.00 per 1,000
12-18 inches .....	6.50 per 1,000
18-24 inches .....	10.00 per 1,000

### *Prices on Russian Mulberry, Elm, Soft Maple, Speciosa, Catalpa, Osage or Bois D'Arc, Box Elder and Other Forest Tree Seedlings*

4- 6 inches .....	\$1.00 per 100	\$ 5.00 per 1,000
6-12 inches .....	2.00 per 100	7.50 per 1,000
12-18 inches .....	3.00 per 100	10.00 per 1,000
18-24 inches .....	4.00 per 100	15.00 per 1,000

### *Keep Your Orchard Free From Insects*

We are agents for the Grasselli Chemical Company, which is one of the largest dealers and manufactures of chemicals in the United States. All who buy from us will get a booklet telling what to spray, when to spray, and what to spray with.

We also represent the Eclipse Spray Pump people, who, we think manufacture among the best spraying pumps and fittings on the market.

We represent the Kenyon Killibug insecticide. It is a success and we offer it to our patrons.

Also Warnocks tree paint, which protects your trees from rabbits.

### *For a Family Orchard*

We would recommend for a family orchard fruit varieties as follows:

APPLES	PLUMS	PEACHES
Missouri Pippin	Omaha	Early Richmond
Yellow Cluster	Wonder	English Morello
Wine Sap	Whitaker	
Janett	Miner	
Limber Twig	Arkansas Lombardy	Triumph
Storm Proof	Gold Coin	General Lee
Grimes Golden	Golden Beauty	Dalmont's Favorite
Early Harvest	Eagle	Mixon Cling
Red Astrachan	Pool's Pride	Arkansas Beauty
Red June	Captain	Mamie Ross
Summer Queen		Victor
Rome Beauty		May Flower
York Imperial	CHERRIES	Horlacher
Jonathan	Compass	Heath Cling
Stamen Wine Sap	Wragg	Crawford's Late
Delicious	Montmorency	Krummel's Late

PEARS

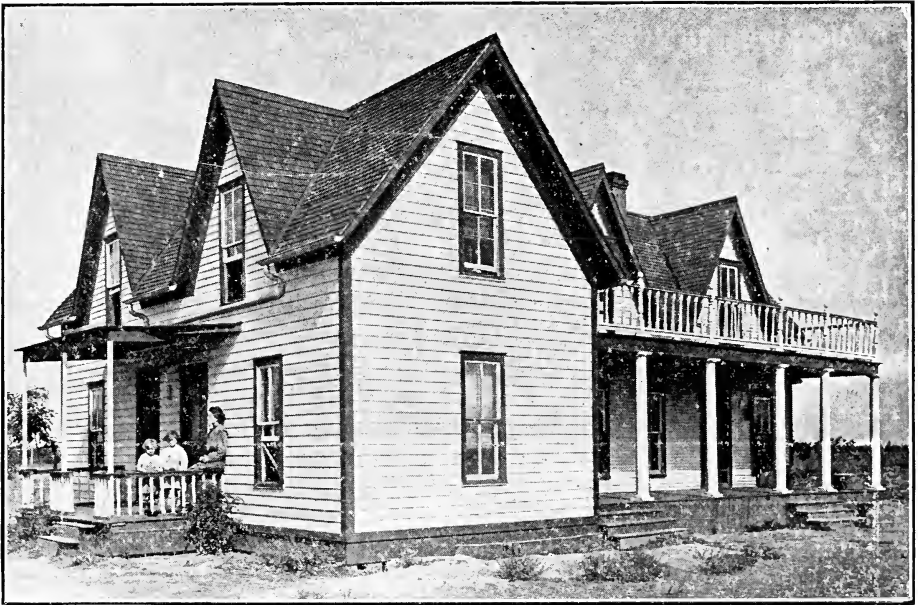
Donhoo  
Bartlett  
Early Harvest  
Alamo

GRAPES

Moore's Diamond  
Agawam, Worden  
Niagara  
Concord  
Moore's Early  
Catawba

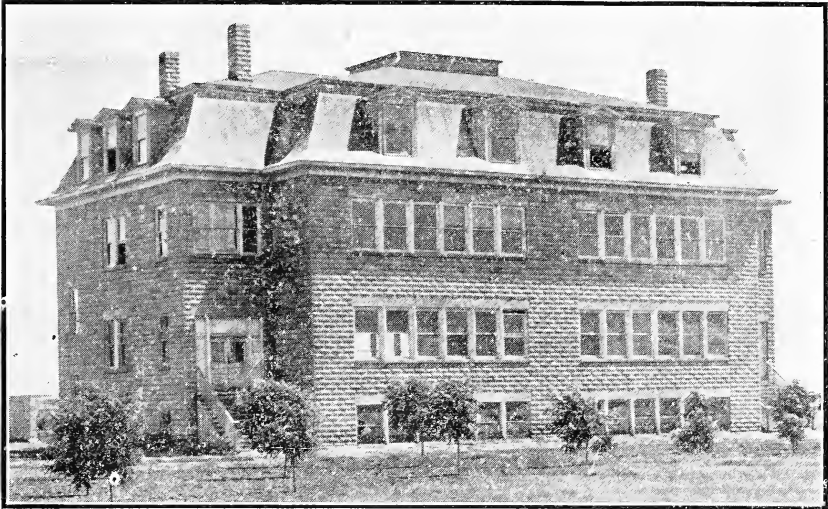
BERRIES

Austin Dewberry  
Blowser and Early  
Harvest Blackberries  
St. Regis Raspberry  
Klondyke and Texas  
Strawberries



HOME OF PLAINVIEW NURSERY

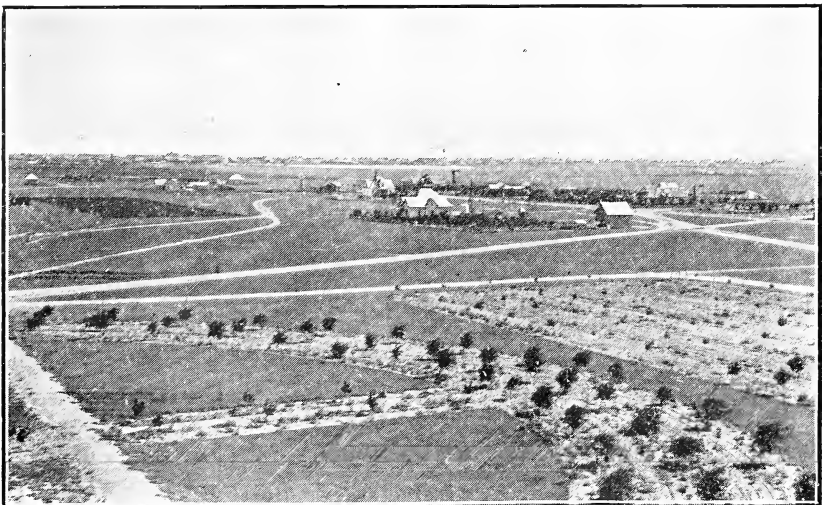
## THE PLAINVIEW NURSERY



MAIN BUILDING SETH WARD COLLEGE

Seth Ward College is a Methodist institution, situated on a beautiful elevation one-half mile of the Plainview Nursery. Is equipped with good buildings and first-class faculty, with Rev. C. L. McDonald as President. Our high altitude and healthy, invigorating climate insures students to be able to do first-class work.

We would recommend Seth Ward College to our patrons.

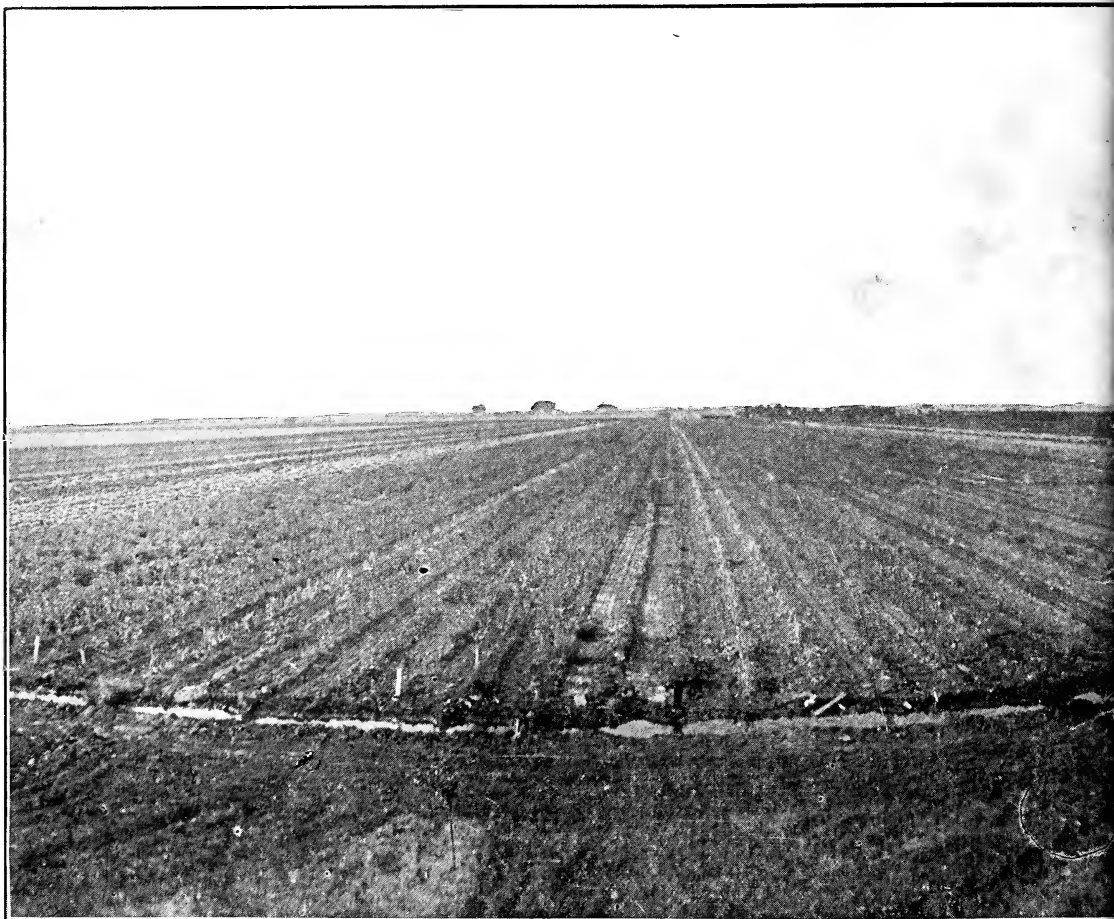


CAMPUS SETH WARD COLLEGE





*Grower and Propagator of Fruit, Shade  
and Ornamental Trees Best Adapted  
to the Plains and the Southwest*



Henry Print, Lubbock, Texas

**Birds Eye View of a Part of the Pl**