

Historic, archived document

Do not assume content reflects current scientific knowledge, policies, or practices.

1 ♦ 9 ♦ 3 ♦ 9

LIBRARY
RECEIVED
☆ SEP 5 1939 ☆
U. S. Department of Agriculture



CALIFORNIA GOLD blooming in the Salbach Gardens

SELECTED
SEED
SPECIALTIES

●
ALSO
TULIPS AND
DAFFODILS

GERMAN OR BEARDED

IRIS

AS WELL AS
DUTCH, SPURIA, JAPANESE
AND OTHER TYPES

CARL
SALBACH

●
657
Woodmont Ave.
Berkeley
California



CASQUE D'OR



SUNBURST



FAR WEST



CHARM



NARANJA



LIGHTHOUSE

NOTE: Edges of standards should be "red" like falls, not "pink".



MONADNOCK — with Summer Cloud, inset



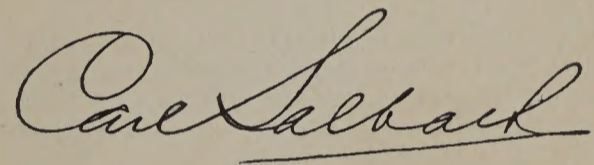
GOLDEN BEAR

"IT COSTS NO MORE TO GROW THE BEST"

You will notice that the Salbach list of varieties is comparatively small, but at the same time, you will find that we list practically every iris of real importance. This is because of our strict adherence to the Salbach policy of "If we list it, it's good." We ourselves must see every variety in bloom before it is listed, and all poor or mediocre varieties are promptly "junked" as soon as they flower, regardless of the ballyhoo that such varieties may have been given elsewhere.

On the other hand, we make a most strenuous effort to secure new kinds. We are continually visiting other gardens in search of new iris, and have never failed to purchase any outstanding variety that we have found, regardless of price. Many, too, we have bought on recommendation; of these many have bloomed as well worth listing, others have proven to be expensive junk, which we have promptly discarded.

In view of this fact, it is even truer than usual that any selection from a Salbach catalog will be a good one — for it is impossible to get a "bad buy" when you make your choice from a listing which contains all of the good ones and none of the mediocre or poor kinds.



MEMBER OF

ALAMEDA COUNTY FLORAL SOCIETY
ALAMEDA DAHLIA SOCIETY
AMERICAN DAHLIA SOCIETY
AMERICAN IRIS SOCIETY
BRITISH GLADIOLUS SOCIETY
BRITISH IRIS SOCIETY

CALIFORNIA GLADIOLUS SOCIETY
CENTRAL CALIFORNIA NURSERYMEN'S ASSOCIATION
DAHLIA SOCIETY OF CALIFORNIA
DAHLIA SOCIETY OF SOUTHERN CALIFORNIA
EAST BAY GLADIOLUS SOCIETY
NEW ENGLAND GLADIOLUS SOCIETY

FELLOW ROYAL HORTICULTURAL SOCIETY



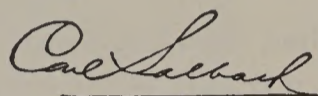
Color Classes	6
Daffodils (Narcissi)	27
Dutch Iris	27
General Information	6
General Iris List	7 - 24, inclusive
How to Order	32
Miscellaneous Iris	26
New Introductions	4 and 5
New Iris (See also General List)	2, 4 and 5
Selected Seeds	28 - 31, inclusive
Special Iris Collections	25
Tulips	26

OUR POLICY--AND NEW IRIS

It has always been our policy to list the best, nothing but the best, and all of the very best. In view of this policy, we did not hesitate to pay \$100.00 for a single iris rhizome last season; and it is with this same thought in mind that we travel North, South, or East each year visiting iris gardens, searching for outstanding new varieties.

■

Through our iris trips, and through recommendations we receive from outstanding critics in various sections of the country, we have seen to it that we have secured practically all of the truly outstanding iris. We are so anxious to limit our list to nothing but outstanding varieties that even after we purchase stock, it is our rule never to list an iris without first seeing it in bloom. As a result, every iris in our list is a top-notch variety. This is your assurance that you will get the greatest possible iris value when you purchase from our catalog.



■

Thanks partly to our extensive travels in iris time, and partly to our extensive trials of new varieties, we again have an unusually fine set of new iris. Excluding our own set of new introductions, the following are, in our opinion, the very finest new iris of all:

■

WHITES — Sierra Snow without doubt heads our list in its class. It was distinctly far ahead of one highly praised white we tried, but two others, ranked among the best, failed to bloom for us this season. However, it hardly seems possible that they can better Sierra Snow. Snow King takes first rank as the finest massing white, Mount Washington is the tallest and an all-around rival to Sierra Snow, Bridal Veil the daintiest, and Silent Waterfall the most distinctive. Easter Morn and Purissima are the best buys in California and elsewhere where the winters are mild, however — thanks to their much lower price, but their tenderness eliminates them from top rank in the East and Mid-West.

■

CREAM AND LIGHT YELLOWS — Carved Ivory is a beauty, and William Carey Jones is kept from perfection only because its blooms tend to bunch. Snoqualmie and Elsa Sass, both on the borderline between cream and light yellow, are two of the finest iris grown. Happy Days, Song of Gold, and Eclador are the best of the light yellows.

■

DEEPER YELLOWS — Golden Bear is very rich in tone, and has the clearest color of all. Sunburst is a soft deep yellow, very tall. California Gold, with its bold, vivid coloring, is most brilliant, and Naranja is a distinct tone in yellows — clear yellow, faintly overlaid orange on the haft. No group of deeper yellows is complete, however, without Golden Majesty, deep glistening yellow, and probably the finest yellow of all. Fair Elaine, I mention here, although it is in a class by itself. This new "break" in iris has clear creamy standards, and deep yellow falls, one of the finest iris we have ever introduced.

■

COPPER TONES — Radiant, vivid coppery orange, and strictly a sensation wherever I saw it, stands as a real champion. Copper Lustre is a most unusual iris, a true copper in color. Copper Piece, is a blend of coppery violet, and E. B. Williamson is a most attractive new color in iris — coppery red. Lighthouse, a huge iris of coppery rose, with yellow heart, is a "knockout".

REDS — Among the bigger varieties, I rank Garden Magic as the best (since Red Velvet, our new introduction is not considered here). Next, I would choose the blended red, Junaluska. The Red Douglas, too, is a fine iris, the biggest of all the reds. Of medium size, Charm qualifies as the most distinct of tone, having a pleasing strawberry hue. Setting Sun and Berkeley Fire are two others that are very bright. Piute, with its unusual, dusky coloring, is most outstanding, and it and Ouray, with its glowing ruby tone, head the list of small reds.

■

BLUE VIOLET — This section I divide into two groups, the first being the veined type, headed by Ormohr, a real champion and the boldest iris of all. Grace Mohr, and the deeper Mohrson are also fine (all three being William Mohr seedlings). The second group has two headliners — William A. Setchell, probably the biggest iris of all, and Ethiop Queen, the new iris with a touch of rich, lustrous black.

■

BLUES — Gloriole, Blue Triumph, and Exclusive are the best of the very pale blues; Shining Waters is a beauty in light blue, hampered only by a faint touch of tenderness, with Anitra nearly as beautiful, but hardier. Eleanor Blue is a slight shade deeper than these two, and not quite as tall, but is one of the best blues of all. Missouri and Sierra Blue are head and shoulders ahead of any other mid-blues; and Brunhilde is alone among the cobalt-blues.

■

PINKS — Very much a new color, with Miss California a big advance. Morocco Rose is a fine pale orchid pink, and China Maid is good. There are good lavender pinks, of course, but they are not new.

■

PLICATAS — Royal Coach, Bonanza, and Ruth Pollock, three new Sass varieties give us, at last, top-notch yellow plicatas. Orloff and Seduction are the two other plicatas that I place among the very best.

■

VARIEGATAS — Showy and vivid, City of Lincoln still leads this group. Casque d'Or, deeper, Portola, lighter, are also fine. Frank Adams and Neon, near-variegatas, and Marquita, technically of this class, but actually cream with falls almost rose color, are also leaders.

■

YELLOW BLENDS — Midwest Gem and Moonglo both rank as fine iris.

■

MISCELLANEOUS — Flesh Blends include two beautiful iris in Matula and Portland; Bronzy-Gold finds Aida and Golden Amber as two fine new "breaks" to this new shade; Bronzino is a fine new Bi-color Bronze; Monadnock is a fine, big, vivid Rose-red; with Amigo and Wabash easily the finest blue Amoenas.

EDWARD SALBACH.

For Fragrance

For delightful fragrance, Bronzino, Frieda Mohr, Hidalgo, J. J. Dean, Mabel Taft, Meldoric, Miss California, Mount Washington, and Shining Waters head the list. Not far behind are: Alta California, Charm, Dauntless, Gloriole, Lady Paramount, Mata Hari, Persia, Piute, President Pilkington, Rosy Asia, Rubeo, San Francisco, Sierra Blue, Sir Michael, Tenaya, Tiger-Tiger, and Tioga.

For Hardiness--Try Iris

Few plants are hardier than iris. They endure the severest winters without requiring undue protection. Nearly all iris are perfectly hardy everywhere, although two factors in early iris breeding did produce a few varieties that did not winter well, except in regions such as California, where the climate is mild. Fortunately, both of these factors have been practically eliminated, and those few varieties in our list which are tender where winters are severe are so noted in the descriptions.

First of the factors was that the strain carrying whiteness of color was inherently unable to withstand severe winters. Breeders finally overcame this fault, however, and the new whites are all perfectly hardy anywhere; in fact all the whites we list are hardy, except Easter Morn and Purissima, which thrive only in California and similar regions.

The other factor came from breeders use of mesopotamica. This variety always produced much of its growth in the fall, and as a result, blighted and died consistently in the Eastern winters, but lived in California. Many of its offspring tended to produce some fall growth, but took set-backs under severe winter weather. However, it has been many years since we have introduced any iris with enough mesopotamica blood to cause fall growth and, correspondingly, tenderness.

Since 1932, iris of our own and of Sydney B. Mitchell's (introduced exclusively by ourselves) have averaged less than 9% mesopotamica. Peacemaker (1/4 mesopotamica) and Brunhilde (3/16 mesopotamica) have been the only varieties having more than 1/8 mesopotamica blood. Both Peacemaker and Brunhilde are completely hardy and most vigorous everywhere.

Tenderness, then, is no longer a factor in the iris of our listing, except for a few of the older varieties, like Purissima and San Francisco, which are described as tender in our catalog listing. Even these two varieties are successfully grown in many Mid-Western and Eastern gardens—and, of course, do perfectly in regions where winters are mild or even moderately severe.

EXTRA ENERGY

Nowhere are conditions better for growing iris and for shipping them great distances than our Berkeley, California, location. Our gentle sloping hillside location gives us the fine drainage that makes firm, hardy rhizomes; and our climate adds to your assurance of vigorous stock — for the mild winter and early spring give our plants a healthy growth early in the season, and the fact that we have no summer rains matures our rhizomes perfectly—permitting us to ship fully matured but dormant rhizomes. With our most careful packing, we send rhizomes all over the world, and they arrive in perfect condition.

Evidence of the splendid manner in which our shipments reach, and then grow in far parts of the world is ample. Comments from our customers include many like the following:

FROM ITALY—"You pack extremely well, and I am sure you iris could travel anywhere . . . I have planted them here in the mountains (3,000 ft.)—they do so well, and are so fine all during June."

FROM IOWA—"I want to let you know that *every* iris I bought from you . . . is . . . doing fine—in fact, making better growth than those bought in this part of the Mid-West."

FROM NEW ZEALAND—"Irises just to hand in excellent condition. They are fine roots, and credit to your firm."



ORMOHR

FROM OHIO—"The iris purchased from you . . . are as perfectly ripened and as nicely packed as any lot of plants I have received during more than twenty-five years of buying iris."

FROM NEW YORK—"Comparing the growth of Mid-Western and Eastern rhizomes with that from ours: "Your California grown iris . . . gave more certainty of blooms the first year after planting, due to the extra stored up energy in a well grown root."

FROM PENNSYLVANIA—"I have had the greatest pleasure in all iris ordered from you—they are such strong plants."

FROM IOWA—"I want to tell you about the iris I got from you last year. You sent 52 roots, and of the lot, 48 of them bloomed this, the first season. I consider that very fine, since most of my own that I divided and moved at the same time did not bloom."

FROM SOUTH AUSTRALIA—"The second parcel of iris arrived, and as usual, were in good sound condition, for which I thank you."

FROM ENGLAND—"Many thanks for the fine iris roots received today."

FROM ILLINOIS—"Your plants have always seemed to have more vitality than those I have obtained elsewhere."

FROM NEBRASKA—"Writing to tell you how happy I am with the lovely iris I bought last year. Every kind bloomed and my friends are so enthused about them."

1939 INTRODUCTIONS

Generally, it is impossible for any one firm to introduce six outstanding, worthy iris in any one season. However, our output has always been selected from choicest varieties from the best breeders from California to Washington, and as a result, our introductions are numerically great without the least sacrifice in quality. (We have introduced all of what we considered were the best varieties of our own and of five other outstanding coast iris breeders, and in addition have added a surprise new variety from a previously unknown breeder.) Under the circumstances, it is not so hard to realize that each and every one of our new introductions is "a champion in its own right."



DEEP VELVET

SNOW FLURRY (Rees 1939) — (Purissima x Thais) — Early this season a local iris lover brought us two single blooms that were the most beautiful, most striking we had ever seen. They were perfectly formed, beautifully ruffled, and simply huge (one bloom being 7" x 7", the other nearly as large), and deliciously scented. As we later viewed this variety in the garden, it was 50" tall, with blooms huge, (as large as San Diego) and with the same perfect, ruffled form of Santa Clara (or Thais), but much greater size. The color was pure ice white, with the faintest cast of blue, but with a definite light blue shade to the unopened buds.

This magnificent beauty sets a new standard as the boldest iris of all — for it stood out as if alone, although planted in a garden containing such varieties as California Gold, San Diego, Happy Days, Purissima, Easter Morn, and many other fine iris. It is just as much a complete "break" in white iris as the magnificent Purissima when it first bloomed at its California best. There is nothing comparable. It is an iris that is the most distinct, most different of all the whites (if not of all iris.)

Heavy substance, blooms of perfect semi-flaring and very bold form, and heavily, beautifully ruffled. One of the most delightfully scented of all iris. One stalk carried seventeen gigantic, bold blossoms, with 8 to 11 the usual number. The blooms are placed fairly high on the stalk, but this fact adds to its striking boldness in the garden or for show.

As to hardiness: Dr. R. E. Kleinsorge reports that two seedlings and one introduction of his that were half Purissima were perfectly hardy in the coldest sections, and a whole series of half Purissima seedlings thrived in George Brehm's Seattle garden with no coddling. Early mid-season, 50 inches. Stock limited, not more than one to a customer. **\$25.00**

See Note under Deep Velvet.

DEEP VELVET (Salbach 1939) — (San Diego x Seedling) x Modoc — Carries the rich velvetiness of Modoc into a bigger, taller flower of better form of a new shade. Deep Velvet is both smooth and rich, yet at the same time is the liveliest of dark toned iris. Not only the most regal iris imaginable, but an iris possessing the same glowing "color from the depths" as richest velvet — hence the name.

Not comparable to the ordinary dark iris, for although it falls in the blue-black class, it has a red-violet cast that gives it both regalness and great vibrancy. Particularly notable is its smooth finish, although it is a top-notch in every other way — having good form, substance, and habit. Color (by Ridgway) — Nigrosin violet, with haft of rich blackish red-purple, shading to frosty claret-brown. Dusky gold beard. Early mid-season. 38-inch. **\$20.00**

NOTE: Both SNOW FLURRY and DEEP VELVET are sold subject to the fact that we are now preparing to apply for plant patents. Permission is given to grow Snow Flurry and Deep Velvet for the personal enjoyment of the purchaser, but no stock may be sold, leased, given away or transferred without the written consent of Carl Salbach.

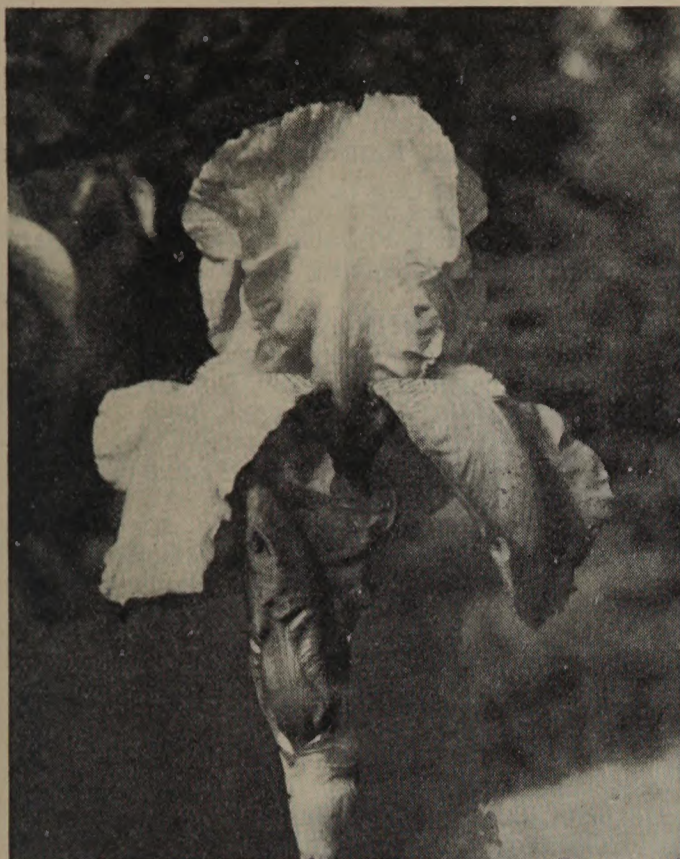
Details of our new marketing plan for growers given on request.

NARADA (Brehm 1939) — Purissima x (El Capitan x Bruno) — Described in the A. I. S. bulletin as a clear blue El Capitan, this huge new iris bids fair to make a real mark among other iris.

This fine new variety owes its outstanding quality to three factors — (1) Its huge size; (2) Its clear, light blue color; (3) Its fine airy, flaring fall form — with all three being equally important. In all these features, it outranks El Capitan, Buechley Giant, and other similar varieties, and it at least equals them in all other points. Hardy without protection in its creator's Seattle garden. Late. 40-inch. **\$15.00**

GROUP COLLECTION

One Each: Copper Cascade, Deep Velvet, Narada, Red Velvet, and Redwood
\$75.00



NARADA



REDWOOD



SNOW FLURRY

Two seasons ago, we purchased from Dr. Kleinsorge the four varieties that we considered to be his most outstanding creations. Of these, Portland and Sierra Snow were introduced last season; Copper Cascade and Red Velvet we offer this year. Again last season we made a careful check over the Kleinsorge garden, and this time we judged his No. 239 to be the best, most outstanding and distinct of all his un-introduced seedlings, (not considering Copper Cascade and Red Velvet.) As a result, we purchased it, and introduce it as Redwood this season.

COPPER CASCADE (Kleinsorge 1939)— Treasure Island x Far West. Unique in being the only copper colored iris that is at once rich, soft and bright. A complete color break in that it is pure copper, but with a glistening golden undertone that “makes” the iris. Self colored, with orange beard.

Like water cascading down a gorge of pure copper — hence the name. The closest match by Ridgway fails to show its brightness, but if you have an average imagination, you can look at the plate for “Ferruginous”, then imagine the undertone, and you have Copper Cascade.

Good habit and form in every way, and of good size — a top-notch iris. Mid-season. 36-inch. \$15.00

RED VELVET (Kleinsorge 1939) — ((King Tut) x (Purissima x Dolly Madison)) x ((Pioneer x Bruno) x (Pioneer x Bruno)) — The reddest of all the big reds we have seen and at the same time a very rich, velvety iris. Large, perfectly branched, and ideal in form and habit in every way, it is a magnificent new creation — a variety that will be a top-notch for many years to come. Heavy substance, and stands up well.

Remarkable as much for its bold form and fine domed standards as for its great advance in color, Red Velvet is definitely a most worthy, showy iris. Completely distinct from any other reds — a real blue ribbon iris. Well-branched, large blooms. Standards live Van Dyke red, suffused redder at the edges; falls velvety carmine to ox-blood red. See color picture, page 16. Late. Mid-season. 36-inch. \$20.00

A Real Garden

“My garden is only a small one,” a customer told me, “but I spend about \$20.00 a year for water and fertilizer. If I buy cheap seeds, plants and bulbs, I can have a lot of pretty flowers—but if I spend about \$5.00 more for good stock, like yours, I can have a real garden — something outstanding that I can be proud of, and which I will enjoy to the utmost.” Certainly a most logical conclusion, particularly when one considers that in addition to the actual cost of growing, one invests a good many hours of toil and thought in planning, preparation and care of a garden.

REDWOOD (Kleinsorge 1939) — (Rebellion x Treasure Island) — This means 1/4 each, Yakima, Burning Bronze, Jean Cayeux, and 1/8 each, Purissima and Dolly Madison. Our selection as the very finest new seedling in Dr. Kleinsorge’s garden last year, Redwood is a break to an entirely new color in iris. It is reminiscent of the old Rose Ash gladiolus, and so aptly described by the term “rose ash” that we would have given it that name, had it not been taken. It is a “smoky” red of great character — a worthy new iris that will hold its own in any company.

Large, very tall, perfectly branched, and ideal in habit in every way. See picture for form of flower.

Perhaps the only way to depict the rare beauty in the color of Redwood is to picture the result of a rich red or carmine water-color paint softened by a light touch of chocolate. Being the first live, rich, and colorful “smoky” iris offered, it is a variety that will be in great demand. Late. Mid-season. 42-inch. \$15.00

IN ADDITION

to our own exclusive introductions, we offer five 1939 releases from the Sass Brothers.

They are: Bonanza, Elsa Sass, Matula, Royal Coach, and Ruth Pollock. See general list.

“I think you are to be congratulated on having such an outstanding group of recent iris introductions. I know of no other hybridizer or agent of hybridizers who has brought forth so many good new iris in the last few years. Keep up the good work.”— New York iris critic. — Name on request.

GENERAL INFORMATION

For instructions as to how to order, see page 32.

The iris following are tall bearded iris, practically all of the "pogon" type. The exceptions are the hybrids, William Mohr, Mohrson, Ibpall, etc., which are only part "pogon". Other types of iris are listed elsewhere in the catalog.

The color range of the bearded iris is unbelievably large, as the introductions of recent years have given many new shades. However, there are no pure salmon pinks, and the "reds" are on the violet and brown shades, rather than flame or scarlet. The blues range from the palest tones, to the deep rich velvety tones, and the yellows are available in practically all of the possible variations. There are no pure oranges, although a very few varieties have an orange cast.

A bicolor is an iris that has standards of one shade and falls of another, usually considerably darker. A blend, as the name indicates, is a suffusion of several colors. A plicata is a light colored iris, the edges of which are flushed, lined or dotted with color. A self carries the same shade throughout the whole flower. A variegata has yellow standards and reddish brown falls.

The standards are the three upstanding petals; the falls the three lower petals. Names in parenthesis following the iris are those of the originators.

IRIS AWARDS: Heading the list is the W. R. Dykes Medal. In France and England, the Iris Societies give this award yearly to the finest new iris. In America, no iris is eligible until it has been in commerce five years. Award of Merit (A. M.) and Honorable Mention (H. M.) are the other awards, the A. M. being the highest ranking of the two. Occasionally in England and quite often in America, when no eligible iris was adjudged worthy, the Dykes Medal awards have been passed.

The following abbreviations used in noting awards refer to different societies: A. I. S., American Iris Society; B. I. S., British Iris Society; M. H. S., Massachusetts Horticultural Society; R. H. S., Royal Horticultural Society, England; S. N. H. F., Societe Nationale d'Horticulture de France.

The prices in this catalog cancel all previous quotations.

Cultural Directions included with every order.

COLOR CLASSES

Many iris whose coloring border between two different classes all but defy classification. We have placed each one in a definite color group, however.

In explanation, we note that all the pinks, blues and reds contain some violet, but their range is far greater than is generally realized. The classes:

LILAC TO RED VIOLET: Avondale, Coppersmith, Germain Perthuis, Grace Mohr, Jean Aicard (bi-color), Lady Lilford, Ormohr, William Mohr.

PINK TO ROSE: Angelus, China Maid, China Rose, Day Dream, Dogrose, Eros, Frieda Mohr, Frivolite, Miss California, Morocco Rose, Pink Opal, Pink Satin, Rose Mitchell.

PLICATAS: Alameda, Bonanza, Los Angeles, Nassak, Orloff, Pink Jadu, Royal Coach, Ruth Pollock, Sacramento, San Francisco, Seduction, Siegfried, Spring Cloud.

VARIEGATAS AND NEAR-VARIEGATAS: Casque d'Or, City of Lincoln, Crown Prince, Frank Adams, Lodestar, Marquita, Neon, Portola, President Lebrun, Rialgar (yellow in effect.)

LILAC TO BLUE TONED BLENDS: Anna Marie Cayeux, Persia, President Pilkington, Rosy Asia.

PEARLY OR BUFF-PINK BLENDS: Berkeley Belle, Mary Geddes, Matula, Midwest Gem, Ophelia, Portland, Prairie Sunset, Rameses.

YELLOW, BUFF TONED BLENDS: Euphony, Far West, Golden Amber, Golden Light, Gold Top, Midgard, Moonglo, Plurabelle, Sandalwood, Sunol.

YELLOW: Alta California, Berkeley Nugget, California Gold, Crysoro, Desert Gold, Eclador, Elsa Sass, Fair Elaine, Fortuna, Gaynelle, Golden Bear, Golden Bow, Golden Majesty, Happy Days, Happy Gift, Helios, Jasmania, Lady Paramount, Mirasol, Moonbeam, Naranja, Song of Gold, Sound Money, Sunburst, W. R. Dykes.

LIGHT BLUES: Anitra, Blue Banner, Blue Triumph, Eleanor Blue, Exclusive, Jacqueline Guillot, Gloriole, Leonato, Pale Moonlight, Peacemaker, Shining Waters.

MEDIUM BLUES: Blue and Gold, Castalia, Elizabeth Huntington, J. J. Dean (bi-color), Missouri, Pacific, Santa Barbara, Santa Clara, Sensation, Sierra Blue.

DEEP BLUE: Brunhilde.

DEEP VELVETY BLUE-VIOLET: Black Wings, Blue Velvet, Creole Belle, Ethiop Queen, Mabel Taft, Mata Hari, Meldoric, Mohrson, Mrs. J. L. Gibson, Peshawar, San Diego, Tioga, Valor, William A. Setchell, Winnishiek.

LAVENDER BLUES: Buechley's Giant, El Capitan, Hidalgo, Nereus, Ozone, San Gabriel.

BLENDS: Evolution, Valiant.

WHITES: Berkeley Ace, Bridal Veil, Mount Washington, Purissima, Shasta, Sierra Snow, Silent Waterfall, Snow King, Snow Maiden, Zua.

CREAMS: Carved Ivory, Natividad, Snoqualmie, William Carey Jones.

WINE OR VIOLET REDS: Cardinal, Dark Horse, Irma Pollock, Joycette, Legend, Monadnock, Padre, Prof. S. B. Mitchell, San Luis Rey, Tenaya, Tipo Red.

REDS: Berkeley Fire, Charm, Cheerio, Dark Knight, Dauntless, Garden Magic, Junaluska, King Tut, Ouray, Piute, Red Dominion, Red Radiance, Rob Roy, Ronda, Rubeo, Setting Sun, Taos, The Red Douglas, Tiger-Tiger.

BRONZE AND TAN: Aida, Aviator Nungessor, Berkeley Bronze, Bronze Beacon, Bronzino, Bruno, China Lantern, Depute Nomblot, Grace Sturtevant, Indian Chief, Indian Love Call, Ingenieur Winnsinger, Jean Cayeux, Jeb Stuart, King Midas, Moki, Mrs. Valerie West, Spokane, Suntan, Vert-Galant, Ukiah.

BLENDS: Clara Noyes, Copper Piece (violet), Natoma (cinnamon).

COPPER: Copper Lustre, E. B. Williamson, Radiant.
BLEND: Lighthouse.

BLUE, LIGHT BLUE; OR BLUE-WHITE BI-COLORS: Amigo, Lycaena, Sir Michael, Wabash.

Our exclusive 1939 introductions (Pages 4 and 5) and our New "H" Group (page 14) not included above.

COMPLETE LIST OF NEW AND STANDARD VARIETIES

The prices unless otherwise designated are for single roots. The group price as with Alameda, 3 for \$1.00, is applicable only to three Alameda, not to three different varieties at the same price.

It is much quicker and easier to ship three roots of one variety than one root of three different varieties that may have to be dug in three different gardens.

AIDA (Mitchell 1938). (Yellow seedling X King Midas). Named for the beautiful dusky heroine of Verdi's famous opera Aida, this iris combines delightful form with rich bronzy coloring. The standards are golden bronze, the falls showing a darker tint, as of tobacco. Entirely distinct from those of the Jean Cayeux type, being more on the copper shades than those of the latter. Appropriately named; for it is a most attractive, beautiful iris.

Standards pure rich frosted bronze with a fine glint; falls rich copper-bronze. Altogether a very live colored variety, very pleasing, and completely distinct. Large flowers, heavy substance, good placement and a free bloomer. Mid-season. 36-inch. \$5.00

ALAMEDA. Not quite as tall as San Francisco and Los Angeles, but very fine and in such demand that it has been sold out during each of the past two seasons. Standards and falls both heavily suffused blue violet on white; in fact the standards carry so much blue that one could almost describe this part of the flower as blue, suffused white. A profuse bloomer. Mid-season. 34-inch. 25c; 3 for 50c

ALTA CALIFORNIA (Mitchell). First of the big, tall yellows. Alta California is still one of the best. Tallest of all the yellows, and a variety which has been recognized as outstanding wherever grown.

Striking for mass planting, and excellent in every way. Color bright bronzy yellow, form of bloom perfect, and branching habit ideal. H. M., A. I. S. Mid-season. 48-inch. 35c

AMIGO (Williamson). So rich in color that it is often compared to a blue-purple pansy of the very richest color. The standards are of light lavender-blue, and the falls, which give the flower its regal richness, are of deepest violet-purple, set off by a narrow white margin. Flowers large. Described in the A. I. S. bulletin as "Rich as a pansy; a very stunning iris — I cannot praise it too highly." Mid-season. 28-inch. \$3.00

ANITRA (H. P. Sass). Although our personal choice as the best light blue is Shining Waters, our catalog would not be complete without Anitra. This is because Shining Waters is slightly tender, while Anitra will grow and bloom any place. However, there is room for both in every garden, for Anitra, though not as tall as the latter, has larger (simply huge) blooms. Good form and habit. Color, light blue. Mid-season. 36-inch. \$5.00



BERKELEY ACE

ANGELUS (Egelberg). A big silvery lavender pink of fine habit, and unusual, bold form. Particularly outstanding in that it is one of the very latest varieties of all to bloom, thus extending the season. 38-inch. \$10.00

ANNA-MARIE CAYEUX. Not as well publicized as some of the other fine French introductions, but nevertheless one of the most outstanding European originations ever produced. Completely distinct from any other iris we know.

Beautifully blended in colors almost impossible to describe, perhaps pinkish-violet in effect. Heavy texture and blooms for many days. Described as pigeon-throat violet and closest match in Ridgway's color chart is Chinese violet. Mid-season. 32-inch. 35c; 3 for 75c

AUREA. Tall "spuria" type often known as butterfly iris. See page 26.

AVIATOR NUNGESSOR. Most popular in our own garden. Standards light frosty bronze, falls Van Dyke red. Early. 40-inch. 35c; 3 for 75c

AVONDALE (Hans Sass). A very large and bold flower of subdued shades of copper, red-bronze, and violet, beautifully blended. The colors form a soft, rich combination that merits it a place among the very best iris. We had never seen or heard of this unheralded variety until our '36 trip, but consider it to be one of the discoveries of that iris trip. H. M., A. I. S., 1936. Mid-season. 36-inch. \$1.00

BERKELEY ACE. (Morning Splendor X seedling). One of the best hardy whites, ranking with Bridal Veil, Snow King, etc. A good sized clear white about the size of Shasta, but with perfect branching and form of bloom. Gold haft reticulations and beard. Mid-season. 38-inch. Sold in "Berkeley Group", below, or separately at \$2.50

BERKELEY BELLE. A fine opalescent blend which was bred from two Mitchell seedlings. Standards iridescent, frosty light golden bronze. Falls lavender, almost lilac, with bronze yellow haft and falls edged iridescent yellow. An early bloomer, and of splendid habit. 44-inch. Sold in "Berkeley Group", below, or separately at \$1.50

BERKELEY BRONZE (Bruno X Dominion x seedling). A decided improvement over Grace Sturtevant, having generally better form, taller and with a much smoother finish. Standards copper bronze, falls deep mahogany. Strong yellow beard with no white haft markings. Free bloomer. 38-inch. Sold in "Berkeley Group", below, or separately at 75c; 3 for \$2.00

BERKELEY FIRE (Dominion X seedling). Standards fiery coppery red, the brightest we have ever seen on any iris. Beard gold, falls maroon, almost black. One of the brightest reds of all. Had this been a perfectly formed flower, it could have been introduced at \$25.00 each, but kept in the "Berkeley Group" because the flower form is rough. 36-inch. See "Berkeley Group", below, or sold separately at \$1.50

BERKELEY NUGGET. (Alta California X King Midas). A large flower resembling Alta California in form, but colored a brighter yellow. This one was well worth introduction in 1935 and again in 1936 at \$10.00 each, but was withheld because we felt that such champions as California Gold, Happy Days, and Naranja should have the spotlight alone. Sold in "Berkeley Group", or separately at 75c; 3 for \$2.00

BERKELEY GROUP — The five best of a group introduced as a unit in 1936. All five are outstanding, and decidedly new. **ENTIRE BERKELEY GROUP** (one rhizome each, all five) \$4.25
PARTIAL GROUP (one each, except Berkeley Ace) \$3.00

Naranja — "As seen in two places many miles apart . . . becomes a new color in iris. Everybody seemed to feel it was as fine an iris as I did. To me, it was one of the four really great iris that I saw this year."



BRONZINO

Standards are actually browner



BRIDAL VEIL

BLACK WINGS. Produced by Chancellor Kirkland, one of the Nation's best known iris breeders, this splendid variety was runner-up to Sierra Blue for the 1935 W. D. Dykes Medal award. With its rich velvety darkness, Black Wings makes a most showy clump, and the individual specimens are just as outstanding. Good size and form, with flaring falls 4½ inches by equal height. Color almost black, owing to the black veining on Fluorite violet. Hardy, and does not fade. One of the standouts in our garden — an iris which we can give full commendation. Mid-season. 30-inch. 40c; 3 for \$1.00

BLUE AND GOLD. A very showy blue iris from the gardens of Mr. E. O. Essig. Its deep rich color, set off by the vivid orange-yellow beard gives this fine iris a brilliance not found in other blue iris. Mid-season. 36-inch. 35c

BLUE BANNER. Also a Kirkland introduction, this iris is a great improvement over all of the older varieties of this type. Most popular, its clear light blue standards and violet falls, edged blue, form a striking combination. Large blooms, branched, and medium tall. Mid-season. 27-inch. 15c; 3 for 35c

BLUE TRIUMPH (Grinter). A tall, clear pale ice-blue, having a smooth, velvety finish. An iris of great dignity, considered by many to be the finest light blue; certainly one of the best. Tall and well branched. A. M., A. I. S., 1936. Mid-season. 40-inch. \$1.50; 3 for \$4.00

BLUE VELVET. A very beautiful flower, most appropriately named, being a deep blue velvet. Well branched, and carrying fine big blooms, this variety was introduced as one of the very finest, and has proven to be a good doer everywhere. A vigorous grower and a rapid increaser. Late. 30-inch. 25c; 3 for 60c

BONANZA (Jacob Sass 1939). Fine new yellow plicata. Yellower than most of this type. \$10.00

BRIDAL VEIL (Mitchell 1936). Easily the most delicately beautiful white of all. Hardy everywhere. Not in competition with Snow King, as Bridal Veil is a dainty variety, perfect in form, beautiful in its clarity, which is enhanced by the clear, but tiny gold edging at the haft. See color picture.

Occasionally one bloom to a stalk; flowers with only two standards — but summer watering tends to eliminate this fault. Perfect, graceful, branching. Substance excellent. Early mid-season. 36-inch. \$2.50

BRONZE BEACON (Salbach). One of the very latest of all to bloom, extending the season two full weeks. Coppery bronze of splendid texture. Low branching flower stalks. Falls velvety Indian lake, with glowing bronze standards which give this extremely tall iris its beacon-like attributes. 50-inch. 50c; 3 for \$1.25

BRONZINO (Salbach 1937). Named for the famous creator of bronzes, and this iris is so beautiful that even Bronzino himself would consider it a masterpiece. Tall, rich, and ideal in form and habit, Bronzino, a remarkable new iris, adds a splendid note of new color to the garden. Standards frosty golden bronze, falls rich coppery bronze — a color combination of great character and richness. Ideal low branching, leathery substance, domed standards, large flowers — in fact, Bronzino merits a ranking of "good" in every particular. A real standout. In our opinion the best of all the bronze iris. Strikingly rich in color. See color picture. Mid-season. 40-inch. \$6.50

BRUNO. Rich, velvety bronze, blossoms fragrant, and form of bloom, as well as branching habit, excellent. Does particularly well in California. Late. 30-inch. 25c; 3 for 50c

Reputation

We have always tried to deserve a reputation of offering and delivering nothing but that which is of the highest quality. It seems to us that our measure of success in this respect is indicated by the fact that one garden authority definitely considers our iris introductions to be the finest offered. A Flower Grower-author characterizes our reputation as "unimpeachable", and a Canadian grower ridicules the necessity of our giving reference for a credit purchase.



BRUNHILDE (Salbach 1934). Introduced as setting a new standard for iris of its type, Brunhilde has now definitely established itself as one of the top-notchers, having performed ideally everywhere. Its outstanding quality is perhaps best described by an A. I. S. judge from Minnesota, who says of Brunhilde: (It is) "A classic in its color section."

This remarkable iris has "everything", for it merits front rank consideration any way you consider it. In color it is rich cobalt blue, the only iris of this tone in commerce, the others being either lighter blue or a darker blue-violet. In form, it is ideal, despite the poor shape shown in the color picture, and it carries as many as twenty blooms and buds on a single stalk. Blooms unusually large, and a tall, vigorous grower.

Most intense coloring (dark soft bluish violet by Ridgway) enhanced by its blue beard. Free blooming, and even better under artificial light than outdoors. Particularly welcome because, in addition to its intensity, it is an iris with an unusually smooth finish. A most magnificent iris. A. M., A. I. S., 1937. Mid-season. 40-inch. \$2.00

BUECHLEY'S GIANT. A simply huge light lavender blue bi-color that has been called a glorified Lord of June. One of the largest iris grown, and considered by at least one grower to be his best seller. Mid-season. 40-inch. 50c

CARDINAL. Rich claret crimson purple of wonderfully glossy texture. Stalks low and widely branched. Early. 30-inch. 20c; 3 for 40c

CARVED IVORY (Essig 1937). An exquisitely beautiful cream colored iris of fine form, size, and growing habit. Perfect performance in England, indicates complete hardiness.

Pure cream with deeper heart (rich creamy ivory) and beard of creamy yellow — all perfectly blended. Delightfully formed flowers with perfect branching. Early mid-season. Substance good. 36-inch. \$3.00

"Brunhilde is a most unusually impressive, well-branched large bluish-violet self. The standards are particularly luscious in that they are very silky in appearance."

CALIFORNIA GOLD (Mitchell 1933). A true "super" iris, being the brightest in color of any yellow iris, having been nicknamed "Brazen Hussy" in view of its luminous, gleaming coloring. One of the most sensational new varieties ever introduced, and those who have grown it have been just as enthusiastic as we who introduced it. A few of the comments about this marvelous variety include: "It was the tops"; "Newer productions seem not to supersede California Gold, which I rate highest among the yellows I have seen"; "The best yellow I have seen . . . can it be better?" "Easily the outstanding iris in our collection"; "The darkest clear, tall golden yellow iris that I have ever seen"; "The very best yellow in the garden"; "I like California Gold as well as anything I have seen in the yellows and it is truly a beautiful iris."

In addition, California Gold often blooms in the fall in California.

Color deepest yellow. Form of bloom excellent, with very large blossoms. Branching good, height medium. Texture good, and does not fade. A. M., and runner-up for W. R. Dykes Medal Award. A. I. S., 1937. Late blooming. 36-inch. \$1.50; 3 for \$4.00; 12 for \$13.25

Carl Salbach...

CASQUE D' OR (Jacob Sass 1937). We are most pleased to have been able to help introduce this magnificent iris. It is a most stunning, richly colored variegata, entirely different from City of Lincoln. The great value of Casque d' Or arises from its richness, while City of Lincoln is most striking because of its unusual brightness.

Casque d' Or is best described as a larger, taller Aurex; very bold. Tall and well branched — a fine iris in every respect. H. M., A. I. S., 1937. Mid-season. 40-inch. \$15.00

CASTALIA (Williamson) — Considered the "bluest" iris of all. Good size, perfect form, heavy texture. Fragrant. H. M., A. I. S., 1936. Mid-season. 50c

CHARM (Mitchell 1937). Although competing in the crowded red field, Charm is so distinct that it is not only worthy of introduction, but is most apparently headed for many future triumphs. Chief of its many points of distinction is that it is a glowing light strawberry red while the other varieties are mostly on the deeper tones.

Color by Ridgway — Standards Jasper red, falls Pompeian red. Well branched, of good form, and with heavy texture. Hardiness is assured, as Charm was produced from a Helios x King Midas cross. Late. 33-inch. \$4.00

CHEERIO (Ayres). In general effect, Cheerio is a red — one of the very richest in existence. Actually, the standards are red, flushed dull gold. Tall and rich, and having a very smooth finish. Considered one of Dr. Ayres best creations. H. M., A. I. S., 1936. 40-inch. \$1.50

CHINA LANTERN (Essig). A very tall, well branched iris having frosty bronze standards and Van Dyke red falls. 44-inch. 60c; 3 for \$1.50

CHINA MAID (Milliken). One of the finest new pinks, being soft lilac pink blended golden bronze. Large, and of good form and habit, but particularly outstanding because of its smooth, even texture. Mid-season. 48-inch. \$5.00

CHINA ROSE (Salbach 1934). A "little Frieda Mohr" except that it is warmer in color and has a most delicate antique appearance. Colors exquisitely blended, and blooms are the most orchid-like of any iris. Described as orchid-rose warmed by a bronze undertone at the bottom of the standards. A decided favorite which flowers early and continues through the season. See color picture. Mid-season. 36-inch. 40c

CITY OF LINCOLN (Hans Sass). Tall and brilliant, it is a real standout — the brightest variegata that we know of. As we saw City of Lincoln blooming in the gardens of the Sass brothers, it stood out like a beacon-light; the most vividly colored variety of all. Standards clear bright yellow, falls rich red. Well branched. Fine substance. Stock very limited. H. M., A. I. S., 1937. Mid-season. 40-inch. \$20.00

CLARA NOYES. An unusual variety with colors blended much as in a Talisman rose. Low growing, but so distinct that it is entirely different from any other iris. Standards tan, falls reddish bronze, lined deeper bronze. Yellow beard and haft undertone of the same color.

Decidedly popular. A. M., A. I. S., 1932. Rhizomes naturally small. Mid-season. 22-inch. 25c

COPPER LUSTRE (Kirkland). Considered Chancellor Kirkland's most outstanding iris. (Winner, 1938 Dykes Medal Award). A new "break" in breeding, described as "The outstanding iris of the century. Color definitely copper, the shade being best described as soft copper-bronze similar to, but brighter and richer than a used penny." Very definitely copper colored, and one of the most noteworthy new iris. A. M., A. I. S., 1937. Mid-season. 30-inch. \$3.00; 3 for \$8.00

COPPER PIECE (Kellogg). A fine new iris, in the red tones, but with rich violet and bronzy violet undertones which make it one of the most unusual of the newer iris. H. M., A. I. S., 1936. Mid-season. 34-inch. \$6.50

CROWN PRINCE. Very rich. Standards yellow, falls deep bronze, almost black. Late. 32-inch. 50c; 3 for \$1.35

CREOLE BELLE (Nicholls). A most unusual blue-black iris which gains its distinction from the dark brown haft markings. Most attractive and very popular. H. M., A. I. S., 1936. 36-inch. 75c; 3 for \$2.00

CRYSORO. One of the intermediate type, low growing and early blooming. Very bright brassy gold color. Not in conflict with the larger and taller California Gold, which is a late bloomer. H. M., A. I. S., 1932. 20-inch. 25c; 3 for 60c

DARK HORSE (Mitchell 1936). Rich dark red-violet, a strikingly colored iris. Most distinctive.

Coloring by Ridgway — Standards bright glowing Mars Violet, falls deep Violet Carmine overlaid pure, velvety black. A dusky gold beard adds to the richness of flower. A Wotan in the red shades. Mid-season. 28-inch. 75c; 3 for \$2.00

DARK KNIGHT (Salbach 1934). This magnificent mahogany red iris is the richest we have seen in its color class, and is a fine bold grower with large, well formed blooms.

The color impression created by this majestic iris varies with the light—for at times it appears as inky black as Dr. Kirkland's Black Wings, yet from other angles it offers a rich ruby glow, the like of which we have found in no other iris.

A tall, noble flower that is a "stand-out" in any company. Perfectly formed blooms and the deep rich color carry clear across the garden. Unusually fine smooth substance and finish. Retains its outstanding color qualities under light. H. M., A. I. S., 1936. Late. 45-inch. \$1.00; 3 for \$2.50; 12 for \$8.25

DAUNTLESS. Color a velvety rose red. Very luminous and still one of the best in its color class. Has been one of our best-sellers. Does well everywhere and valuable for breeding. A parent to Copper Piece, Miss California, and Red Radiance.

One of the few American iris that have received the Dykes Medal Award. Mid-season. 40-inch. 35c; 3 for 90c

DAY DREAM. One of the most beautifully colored of all blends. Standards of pale iridescent lilac, faintly suffused bronze yellow. Beard and reticulations of yellow, and falls of lilac pink. Mid-season. 42-inch. 25c; 3 for 50c

DEPUTE NOMBLLOT. This magnificent iris is an imposing giant of greatest vigor, strong foliage, with a stout firm spike of many blooms. Well branched. Blooms enormous, with wide spreading falls. Color light glowing rosy bronze. French Dykes Medal, 1930, and A. M., A. I. S., 1936. Late. 36-inch. 25c; 3 for 60c

DESERT GOLD. A fine yellow with smooth finish and perfect form, and most pleasing luminous coloring. A light yellow deepening toward the center of the flower. Good size, well branched, and of unusual substance. Comes into bloom just as the intermediates, such as Gaynelle, Crysoro, Soledad, etc., are fading, bridging a gap before the fine new Mitchell yellows reach their zenith of bloom. Fine from every standpoint, being one of the best "buys" in yellow iris. A parent of Miss California, it is also excellent for breeding. Early. A. M., A. I. S., 1932. 28-inch. 35c

DOGROSE. A fine lavender pink iris that is a shade deeper than Pink Satin, and distinct from the other iris in this color shading. Very tall, and striking in a clump. A prolific bloomer with many flowers to each stem. 40-inch. 40c; 3 for \$1.00

EASTER MORN. A giant white, easily one of the finest inexpensive whites, even though it needs special protection where winters are severe. Different from Purissima in that it has flaring falls, and is a warm white, with yellow center. Immense blooms on tall, well branched stalks. Absolutely distinct. A. M., A. I. S., 1933. Mid-season. 48-inch. 50c; 3 for \$1.25

As Others See Us

From judges comments, authorship various:

Brunhilde — "An iris that you won't forget, another of the four really great 1936 iris."

California Gold — "The most outstanding yellow in size, color, and height."

... Finest Iris

E. B. WILLIAMSON (Cook 1937). An iris that earns the distinction of being a definite color break, and a most welcome one, too. The plant growth is tall, the form of flower is good, and the color, very rich, resembles soft coppery-red silk, or brocade. In addition to its splendid color, this flower is blessed with an unusually lustrous, silky texture. Well branched. All factors considered, E. B. Williamson ranks as a real standout — one of the finest introductions of 1937. Fragrant. Mid-season. 36-inch. **\$15.00**

ECLADOR (Cayeux). A splendid light lemon yellow that owes much of its distinction to its fine, bold, rounded flower form, and to its clarity of color. Late. 36-inch. **\$1.00**

EL CAPITAN. One of the largest iris grown, supreme in its color class, graceful and well proportioned, this magnificent giant is an iris of dignity and grandeur. Striking for garden effect, and each of the candelabrum type stalks carry a large number of the immense blooms, giving it signal value as a cut flower. No garden should be without this most outstanding long-blooming, light violet blue iris. H. M., A. I. S., 1929. Early. Mid-season. 38-inch. 35c; 3 for 75c; 6 for \$1.35; 12 for \$2.50; 50 for \$8.50

ELIZABETH HUNTINGTON. An early blooming intermediate that is as crinkled as Zua — like a flower fashioned out of colored crepe paper. Deep blue bi-color. 14-inch. 25c; 3 for 60c

ELEANOR BLUE (Salbach 1933). A real champion, ranking with the very best, just coming into its own. Received H. M., A. I. S., 1936, and described as "One of the beautiful blues" — Mass.; "The best blue in my garden" — Iowa; and "I think it should be in every garden, for we need more irises of these clear blue tones." — Mass.

Fills a long felt want for an outstanding blue iris of medium height. Possesses the same delicate coloring and smooth finish as Hoogiana, but of good size and Santa Barbara form. The general coloring, plus the brown haft undertone, make this one of the warmest and best "wearing" blues. See color picture. A very free bloomer.

Coloring — Soft champanula blue with a flush of deeper chicory blue in the center of the falls. Soft brown haft and prominent yellow beard. A distinct iris of real refinement.

The warmth of this iris makes it most valuable; the more times one sees it the better one likes it. Entirely distinct from the other fine new blues. Does every bit as well everywhere as in California. Mid-season. 32-inch. 50c; 3 for \$1.35

EMPEROR — See page 26.

ELSA SASS (H. P. Sass 1939) — This beautiful new iris has taken the iris critics by storm. It is a complete new "break" in yellows, coming in an entirely new shade. Sometimes called lemon yellow, sometimes sulphur yellow. Fine bold form, and good all around habit. Stock limited. **\$40.00**

EROS (Mead). A fine flower characterized by iridescent shades of near-pink with warm yellow haft and beard, giving a definite garden effect of salmon pink. Silky texture, and reported with as many as 12 flowers on a 38-inch stem. A. M., A. I. S., 1936. Mid-season. 36-inch. **\$1.00**

ETHIOP QUEEN (Schreiner). There have been quite a number of new dark toned varieties introduced recently, and each has its coterie of boosters. To date, however, we have heard of no concert of praise for Ethiop Queen, but we feel that it is highly probable that, when it is distributed and seen in various sections of the country, Ethiop Queen will be easily recognizable as the best of its type. At any rate, it is an outstanding iris, completely distinct.

In addition to being a very tall iris of good form and habit, Ethiop Queen is the only hardy "black" iris. Not completely black, of course, but the standards are deepest royal blue, with the falls actually rich, glistening velvety black. 40-inch. Mid-season. **\$10.00**

EVOLUTION. A striking French iris, dominated by the rose-blue flush in the center of the falls. Blended tones of violet and bronze, high-lighted by a brilliant orange beard, add to the fascination of this most attractive iris. Mid-season. 25c

EUPHONY. A very unique blend that is always in demand. Its coloring, which consists of bronzy yellow standards, with a rosy bronze blending in the falls, is fascinating. Unsurpassed as a free bloomer. Good sized blooms on fairly short stalks — a bewitching variety for the small garden, and a gem in large plantings. Mid-season. 22-inch. Rhizomes always small. 25c; 3 for 50c



SONG OF GOLD, left;
MOUNT WASHINGTON, center;
CARVED IVORY, right.

EXCLUSIVE (Grant). One of the most talked of new blue iris of recent introduction. Very light blue, but completely distinct from other light blues, such as Anitra, and Shining Waters — for it is very light, almost silvery blue — technically called "powder blue." Fine growth, good habit. Late mid-season. 38-inch. **\$6.00**

FAIR ELAINE (Mitchell 1938) (Happy Days X California Gold). The greatest break in breeding since Sydney Mitchell opened up the big yellow field, and at the same time, the most delightfully beautiful new iris that has been introduced for years. Having standards of palest soft cream, almost white, and falls of deep, rich yellow, it carries the soft blending quality of a creamed toned iris, and at the same time, has all the vividness of a bright yellow.

From time immemorial, white and yellow have been one of the most delightful of all color combinations, and Fair Elaine combines these two tones perfectly. Actually, the standards are creamy, close up, but from a distance, the standards seem white. Either way, it is one of the prettiest iris we have ever known. A showy orange beard adds to the attractive contrast. Tall and large, of good substance, and perfectly branched.

Fair Elaine establishes itself as alone in an entirely new color class, and at the same time sets a standard for beauty that indicates that it will rank as one of "the" iris for many, many years to come. One-half the hardy California Gold and only one-quarter Dykes, its hardiness is practically assured. In view of these factors, we believe that Fair Elaine is one of the finest introductions we have ever listed.

One of four iris that has demanded an introductory price of more than our customary top price (\$25.00), yet in such great demand that it was sold out before the end of July. Mid-season. 40-inch. **\$25.00**

FAR WEST (Kleinsorge). A huge blend of soft gold, light bronze and palest salmon. Of bold, sturdy growing habit, with large blooms on fine 40-in. stalks. H. M., A. I. S., 1937. **\$6.00; 3 for \$15.00**

FORTUNA (Mitchell). A low growing, large flowered clear amber yellow. The falls are somewhat lighter yellow but faintly reticulated red brown at the haft. A most outstanding and popular flower which does not fade. Late blooming. 28-inch. 25c; 3 for 50c

FRANK ADAMS (Lapham). Probably the finest of many outstanding Lapham creations. Reported to us as one of the three best new iris seen in the East last year, and certainly a top-notch. Standards maize yellow, falls "crushed raspberry." 47-inch. **\$10.00**

"In the light blue class: Shining Waters; Eleanor Blue in a slightly darker tone; Sierra Blue in a medium blue tone; and Brunhilde, a very dark tone, make up a quartet of blues shading from light to dark and set a very high standard." A. I. S. Bulletin.



GARDEN MAGIC

FRIEDA MOHR. If you have an iris garden and haven't Frieda Mohr, you still haven't an iris garden. Introduced by ourselves many seasons ago, Frieda Mohr has definitely proven itself to be the most outstanding iris ever raised. When introduced, it absolutely eclipsed anything in its color range. What is more remarkable, Frieda Mohr today remains the same standout in its class—absolutely without competition. Grows well everywhere, unexcelled for any purpose — an all-around iris that is the most popular variety existing. Beautiful lavender or orchid pink.

We have naturally been most proud of having introduced this grand iris.

In addition to its qualities of size, color, etc., Frieda Mohr is noteworthy because its fragrance is as delicious as that of any iris—the exquisite perfume of the locust. The flowers measure 6½ inches from the top of the standards to the tip of the falls, and 6 inches horizontally. The plants average 50 inches in height with the clean straight foliage in proportion, making it equally satisfactory as a specimen plant or for massing. Blooming time from mid-season till very late. The flower substance is heavy, the branching rather high but well spaced, the growth vigorous and the increase very rapid. The luminosity of the flowers makes this variety especially desirable for landscape planting. Should be in every garden.

25c; 3 for 50c; 12 for \$1.50; 50 for \$5.75



MIDWEST GEM

FRIVOLITE. A very fine French origination. Medium sized blooms. Standards orchid pink, falls rose. Delightful. Mid-season. 32-inch. 35c

GARDEN MAGIC (Grinter). Very definitely one of the best "red" iris in commerce. In our opinion, Garden Magic and Red Velvet (see new introductions) are the two best big reds now in commerce. The two, however, do not compete with each other, for while both are very rich, and also very red, we find that Garden Magic is "the richest big red, and very 'red'", while Red Velvet is "the 'reddest' big red, and very rich."

Garden Magic is a very smooth dark velvety red, lit by orange beard and possessing a very smooth, lacquer-like finish. Large blooms, fragrant, and well branched. H. M., A. I. S., 1937. Mid-season 33-inch. \$20.00

GERMAIN PERTHUIS. An enormous rich violet purple self with striking orange beard. Tall, well branched. Mid-season. 36-inch. 25c; 3 for 50c

GAYNELLE. This splendid intermediate is most outstanding, due particularly to the fact that it is the very earliest of the yellows. Very free bloomer. Makes a solid mass of pale gold at blooming time. 20-inch. 25c; 3 for 50c

GLORIOLE (Gage). A very fine, large light blue. Simply huge in size, and with ruffled petals. Self-colored. An outstanding variety with extra heavy texture capable of withstanding both rain and sun. A. M., A. I. S., 1935. Mid-season. 40-inch. \$3.50

GOLDEN AMBER (Sturtevant). A most outstanding and unusual variety selected by Edward Salbach as Miss Sturtevant's finest seedling when he visited her gardens in 1936. The general color impression follows the name, with the standards being lighter, almost pure yellow, and the falls deeper, more on the amber. Ideal branching. Orange beard. Mid-season. 36-inch. \$10.00

IRIS INFORMATION

At last! A clear, simply told story of the iris. Deals chiefly with the bearded iris, but gives the essential information about the important other types, too. Full cultural directions, a comprehensive chapter on breeding, a discussion of the types and differences between the major breeds of iris, are some of the important features. Except for the chapter on breeding, which is invaluable to anyone planning to make a single iris cross, the book is entirely non-technical, planned for the average gardener and the reasonably new iris enthusiast. Written by Edward Salbach, whose articles on Iris and other horticultural subjects have appeared in the American Home, The Flower Grower, Homes of the West, and other publications, this most worth-while book is published as the "SALBACH IRIS MANUAL." 50c postpaid



PORTOLA

GOLDEN BEAR (Mitchell 1936). Without question, the clearest yellow iris of all — glistening rich gold that is soft, yet rich in tone. Completely distinct in tone, form, and habit from all other yellows.

The color is much like that of Pluie D'Or, but Golden Bear is a good-sized iris, tall, and ideally branched. In fact, it has every quality necessary to make it a top ranking iris, such as substance, form, etc. Has never shown any tendency to fade, and is completely hardy everywhere. H. M., A. I. S., 1937. Mid-season. 36-inch. \$2.50

GOLDEN LIGHT. Probably the very best small flowered iris in commerce, thanks to its beautiful combination of colors. Its beauty is practically impossible to describe, for it is a harmonious blend of apricot yellow, cinnamon, light yellow, faintly suffused pink, and light orange. Best possible comparison is to say that the colors are very much like those of an apricot, part light yellow, part rich and ruddy. Nicely branched stems. 38-inches tall. H. M., A. I. S., 1936. \$1.00, 3 for \$2.50

Of course, there are many yellows being introduced these days, but we point out that those we have selected have been the careful choice from actually thousands of fine upstanding yellows in the gardens of Sydney B. Mitchell, E. O. Essig, and ourselves. Our past yellows, such as Naranja, California Gold, Happy Days, Alta California, Song of Gold, Sunburst, and Golden Bear have all been distinct, and each one has proved itself to be of the same championship rank that we predicted when it was introduced. Despite these past achievements, we consider Golden Majesty to be the finest of all — a truly "five-star" iris.

As to hardiness—the half Dykes introductions have done reasonably well, some perfectly so. Golden Majesty is one-quarter Dykes, and its other three grandparents are among the hardiest iris of all.



GOLDEN MAJESTY

GOLDEN MAJESTY (Salbach 1938). (Dauntless x W. R. Dykes) X the variety Natoma, which is Alta California X King Midas. We very definitely regard this iris as the best all-purpose yellow ever introduced, for it has "everything". First, it has color—softer, yet richer than we had dared to hope for in an iris; then add perfect form, branching, substance, and you have Golden Majesty. The flowers are very large and of perfect, well-domed form; it does not fade; the finish is smooth and glistening; the substance is good; the branching perfect; it is a free bloomer with many blooms (usually nine) to each stalk; and its height brings its rich beauty to a spotlight position — an iris of gleaming gold, standing out as if alone even among the other finest iris.

No other iris can be of deeper yellow and still be "yellow", and the tone is so rich and glistening that we have found no color on the chart that can match it. The entire stalk is perfectly balanced to give the iris great poise as well as beauty, and in addition, it is deliciously fragrant and stands up perfectly against both wind and rain.

One of four iris that we have ever adjudged as demanding a higher introductory price than our customary top price (\$25.00), and in such great demand that all rhizomes for last season were sold before the end of July. It is, we feel, the "ultimate" in yellow iris. Stock limited; not more than one to a customer. Late. 42-inch. \$25.00

Carl Salbach...

GOLD TOP (Salbach). A very rich and elegant flower with standards of old gold that are set off by red violet falls edged with gold. The blending of colors is most artistic, and is greatly enhanced by the style arms and beard, which afford another touch of gold. Blooms early and continues through the season. Tall and well branched. A consistent fall bloomer in California. Early mid-season. 36-inch.
25c; 3 for 50c

GOLDEN BOW (Jacob Sass). A large flowered deep yellow intermediate of fine form and habit. Considered to be the very best of the deep toned early blooming yellows. Most attractive and decidedly desirable. H. M., A. I. S., 1936. 26-inch. 50c; 3 for \$1.35

GRACE MOHR (Jory 1935). Most certainly a sensational iris — a William Mohr seedling, almost identical in its beautiful coloring and delicate veining, but on tall, branching, 40-inch stems.

Completely hardy everywhere. Truly William Mohr grown up. Described as "exceptionally fine . . . a new break in breeding," and "A beautiful violet with darker veinings, which I rated 95."

Color—pale lilac, veined manganese lilac. Forty inches tall with many huge blooms — each as large as a flower of William Mohr, but appearing even bigger, due to the flaring falls.
\$7.50

GRACE STURTEVANT. A dark, richly colored variety that is at the same time one of the showiest in existence, thanks to as brilliant an orange-yellow beard as is possible. Standards dark red brown with rich velvety falls that are still darker, almost black at the tip. Grows slightly taller outside of California, but a good doer and an outstanding variety anywhere. Very valuable to breeders, being one of the parents of California Gold. Mid-season. 30-inch. 25c; 3 for 50c

"H" GROUP. In view of the popularity of our **BERKELEY GROUP**, introduced three seasons ago, we again plan grouping those iris which might well have been introduced at \$2.50, \$3.00 or \$5.00 each, to sell in a group. This set, all sold for the first time last year, consists of seven first-class iris, and sells for \$6.00

HAVERHILL (Salbach 1938). A beautifully colored variety of pure lilac, kept from regular introduction only because of its open standards. It is Bronze Beacon x San Francisco, and derives great height from Bronze Beacon. Late. 48-inch. Not sold separately; see "H" Group, following.

HAWAII (Salbach 1938). (Anna-Marie Cayeux x Alta California). A rich, duskier edition of Anna-Marie Cayeux. Smoky violet with gun metal blue to violet flush. Very rich. Tall and of good substance. Well branched. Very fragrant. Late. 40-inch. Not sold separately; see "H" group, following.

HAYWARD (Mitchell 1938). The most distinct white of all, as it is set off by the most striking orange beard we have ever seen on any iris. Clear white with yellow haft markings. Form of flower and branching habit excellent. Parentage lost. Late mid-season. 36-inch. Not sold separately; see "H" group, below.

HARLEM (Salbach 1938) (Black Wings Seedling). A red-toned Black Wings. Same broad form, etc., as Black Wings, but red-black instead of blue-black. Lit by bronze undertone at center. Yellow beard. 36-inch. Not sold separately; see "H" group, below.

HAPSBURG (Salbach 1938) (Grace Sturtevant x Berkeley Cream). A very tall brown and gold variegata (yellow standards and light brown falls.) Good large flowers and well branched, very tall. We held debate after debate before we decided whether to introduce this one at \$10.00 or include it in the "H" Group. Late. 50-inch. Not sold separately; see "H" group, below.

HARTFORD (Salbach 1938). A bronzy pink iris; close to the strawberry tone of Charm, but a trifle closer to pink. The standards are of bronzy pink, the falls strawberry red. A striking, yet stately iris, ideally branched. (King Tut x Bronze Beacon X King Midas.) 44-inch. Not sold separately; see "H" Group, below.

HARVARD (Salbach 1938). A redder Dauntless, bred from Dauntless x seedling; having redder standards, and falls, otherwise almost identical to Dauntless. Very fragrant. Not sold separately.

"H" GROUP. Due to the fact that iris introduced at less than \$10.00 each never seem to attract enough attention to bring us an appreciable financial return, we "saved up" to release a set sold only as a group, which we introduced three seasons ago as the "Berkeley Group." Since this plan was distinctly popular, we have again "saved up", and last season offered another set, which we again rank as one of the greatest "buys" ever offered in new iris — the "H" Group. This set consists of seven really outstanding new iris offered in 1938: (Hawaii, Haverhill, Hayward, Harlem, Hapsburg, Hartford, and Harvard).
One rhizome each \$6.00

HELIOS. A big, luminous pale creamy yellow. Fine form and finish. Falls lined faint brown. A most vigorous grower, free blooming. An excellent variety for use in hybridizing. C. M., and prize as one of the three best iris of 1929, S.N.H.F. Mid-season. 36-inch.
25c; 3 for 50c

From South Carolina, one of our customers, viewing his 1937 blooming of Happy Days, reports "I regard it (Happy Days) as the best iris I have ever seen."

Neon — "A sparkling bright flower — a vivid clump to catch the eye across the garden."

HAPPY DAYS (Mitchell 1934). Breathtaking in its startling beauty, this sensational yellow has sky-rocketed across the sky of the iris world, blazing a record of achievement that will long be remembered.

The list of admirers who have reveled in rapt delight on viewing this marvelous creation includes most of the famous names in the American Iris World, and we have on file a list of remarks in praise of Happy Days to fill a column. They are all similar in vein to the following: "This flower marks one of the great steps in iris achievement." "It was more admired than any variety in my garden. Cutting it as I could in every particular, it rated HIGH in the 90's." "One of the most sought in the garden, and one that the iris connoisseurs were most enthusiastic over." "When the flower bloomed in all its glory, it was by far the richest and proudest in the garden . . . a pure yellow. A sight to behold."

An immense clear yellow most easily described as a yellow El Capitan, although in established plantings the bloom will be slightly larger than those of the latter.

Perfectly branched, with each stalk carrying seven or eight massive blooms. Color, clear pinard yellow, with the falls being a shade deeper than the standards, and the beard an attractive orange yellow. Unusual glistening finish. See color picture.

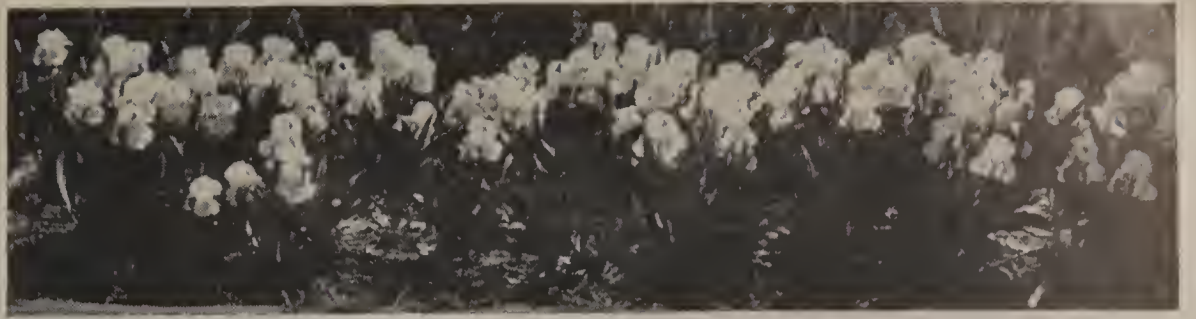
Blooms measure 7¼ inches from top to bottom, and 3¼ inches across the falls. A. M., A. I. S., 1937. Early through mid-season. 40-inch.
\$1.50; 3 for \$3.75; 12 for \$12.50

Free premium with each order for three or more rhizomes — See "Happy Gift."

HAPPY GIFT (Salbach 1939) (Dauntless X W. R. Dykes). Huge in size, and clear of color, this outstanding big Dykes yellow is by far the best Dykes yellow we have seen, excepting only Happy Days. It does not have quite the smooth finish of Happy Days, but otherwise is in every respect as good — it is a variety that we have grown for several years, but did not care to introduce to the detriment of Happy Days. Therefore we finally decided to include it as a premium to "back up" Happy Days rather than to compete with it. We do not have reports on the behavior of this new yellow in the East, but its lack of lush winter or early spring growth, plus its Dauntless parentage indicate that it will probably do well anywhere.

Color pinard yellow, branching perfect, and flowers huge. Not sold separately under any circumstance, but **ONE RHIZOME OF HAPPY GIFT WILL BE GIVEN AS A PREMIUM WITH EACH RETAIL ORDER FOR THREE RHIZOMES OF HAPPY DAYS.** (Two Happy Gift with an order for six Happy Days, four with an order for twelve, etc.)

... Finest Iris



SNOW MAIDEN: Pure white, and so free blooming that it covers the ground like a drift of snow.

HIDALGO. A very large lavender blue of unusually broad shape. The stalks carry so many blooms open at one time that it is comparable to a spike of gladiolus. Particularly fine for floral decorations, as under electric light it becomes pink as Frieda Mohr. Delightfully fragrant. Mid-season to late. 48-inch. 25c; 3 for 50c

HOOGIANA — See page 26.

INDIAN CHIEF. Without a peer among the medium tall red-bronzes, and blooms earlier than most when good "red" iris are scarce. Bronzy violet standards with falls of dahlia carmine. Excellent indoors, as it shows up unusually well under artificial light. A good doer everywhere, and should be in every garden. Early. 32-inch. 25c; 3 for 50c

INDIAN LOVE CALL (Salbach 1938). A very rich new iris of the Ukiah type, having leathery substance. Color very dark brown. Branching ideal. A Dauntless x Modoc seedling that gets its habit from the former, its rich darkness from the latter. Late. 38-inch. \$1.00

INGENIEUR WINSSINGER. A beautiful French creation of deep bronze. Rich in color and of fine finish. Both standards and falls carry out the velvety brown tones of the iris, with the falls being slightly the darker. Mid-season. 30-inch. 35c; 3 for 75c

IRMA POLLOCK. A luxurious velvety carmine, slightly lighter at the margins. Heavy substance and fine flaring form. Fine garden effect. Mid-season. 30-inch. 25c; 3 for 60c

JACQUELINE GUILLOT. Well formed blooms of pure lavender blue with lustrous surface. Fragrant, and so free blooming that it makes a solid mass of bloom. Well branched stalks. Late blooming. 28-inch. 20c; 3 for 40c

JASMANIA (Ayres). A huge yellow from the East which merits a place among the championship yellows. Has been highly praised, and selected by Edward Salbach as the best Eastern yellow he saw in his Coast to Coast trip of 1936. The color is soft and luminous. Well branched. A. M., A. I. S., 1937. Mid-season. 40-inch. \$10.00

JEAN AICARD. A French importation, produced by M. Denis, which we introduced to America. Clearer, brighter color than the old but popular Magnifica. Standards possess a translucent quality not found in Magnifica, and the falls are broad and stiff — two factors that stamp it as definitely a big improvement over Magnifica, even though the latter is slightly taller. Early mid-season. 36-inch. 35c; 3 for 75c

JEAN CAYEUX. Beautiful blending of Havana or coffee brown, with golden glint. Very rich, and still unsurpassed in its class. Considered one of the finest iris ever imported from France, including among its many laurels the W. R. Dykes medal. Mid-season. 34-inch. 60c; 3 for \$1.50

JEB STUART (Washington). A deep brownish red, intensified by an orange beard. Very rich, and tall and stately. Particularly fine in New England, where it performs ideally, standing out as a real highlight even in gardens containing the newest varieties. A. M., A. I. S., 1935. Late. 38-inch. \$1.50

J. J. DEAN. Large, tall, and well branched, this iris is both attractive and showy. The standards are light violet, the falls deeper velvety blue. Delightfully fragrant. A real "buy" at the price. Mid-season. 32-inch. 20c; 3 for 40c

JOYCETTE. Big and bold, this majestic iris is very fine. Its plum red coloring carries well in the garden, and its height adds to its showiness. Large, well formed flowers on 42-inch stems. Heavy substance, and blooms over a long period. Mid-season. 75c; 3 for \$2.00

JUNALUSKA (Kirkland). Best described as a "blended red." Standards yellow, suffused bronze, with falls velvety maroon. Yellow beard. A striking iris, very effective in the garden. Ideal form, and remains in bloom for a long period of time. Runner-up for the 1938 Dykes Medal, and in our opinion, it is a more deserving iris than the winning variety — we feel that Junaluska is easily the best of many fine Kirkland productions, and rank it as one of the very finest iris grown. 38-inch. \$3.50

Information

About irises can best be obtained through membership in the American Iris Society. The quarterly bulletins are well worth while, including valuable criticisms, descriptions, and latest growing suggestions. The dues are \$3.00 a year. Checks and applications should be made to the American Iris Society. They may be mailed to B. Y. Morrison, 821 Washington Loan and Trust Building, Washington, D. C.

KALINGA (Kleinsorge). A giant cream that adds a real accent to any garden. Carries as many as 12 to 15 flowers to a stem. A giant iris, 48 inches tall. H. M., A. I. S., 1936. \$1.00

KING MIDAS. We thoroughly recommend this iris as one which belongs in every garden, large or small. The standards are golden buff, the falls iridescent garnet brown, lighted by golden orange beard and golden haft, from which the name was chosen. A flower of fine finish and heavy substance.

A low-growing variety, but so richly colored that it ranks among the very best, as is shown by the fact that it first sold at \$50 per single rhizome. One of the very finest for breeding, being a parent to Natoma, Sunol, Berkeley Copper, and Berkeley Nugget. Early mid-season. 24-inch. Stock limited. 35c; 3 for 75c

KING TUT. One of the very brightest of the "red" iris on the market, producing this effect by its golden standards and beard, and its bright Hessian brown falls. Valuable to breeders because of its bright coloring. Mid-season. 25-inch. 25c; 3 for 50c

LADY LILFORD. Part oncocyclus, the same type of hybrid as William Mohr. Heavily veined. Sometimes produces blooms with 4 standards and 4 falls. A distinct flower of lavender purple. Mid-season. 18-inch. 25c; 3 for 60c

LADY PARAMOUNT (White). An immense light yellow, nearly as large as Happy Days. Bred from W. R. Dykes, which is also one of the parents of the sensational Happy Days.

Plants large and tall, well branched, with many blooms to a stalk. A. M., A. I. S., 1936. Mid-season. 40-inch. \$2.00

LEGEND. Similar to Cardinal, but improved in every way — being taller, larger, better branched, and carrying many more very large, perfect blooms to the stalk. Very rich velvety crimson claret, with standards beautifully veined violet-blue. Its brilliant yellow beard is one of the most striking known to any iris, setting off the magnificent blooms in a fascinating manner. Late mid-season. 40-inch. 40c

LEONATO. Pale lavender to silvery heliotrope. Shapely and well proportioned. Early flowering. Very fragrant. 40-inch. 15c; 3 for 35c



OURAY



SIERRA SNOW



CHINA ROSE

THE PICTURES ON THESE PAGES ARE, THANKS TO NEW TECHNICAL PROCESSES, UNCANNILY ACCURATE IN COLOR.

Carl Salbach...



DARK KNIGHT



MISS CALIFORNIA
Huge and tall — one of, if not the pinkest big iris grown.

LIGHTHOUSE (Salbach 1936). A fine bold iris given its name because the whole center of the flower lights up as if there were an electric light bulb hidden among the style branches. Standards old rose (Ridgway) except for the gold that lights the whole bottom-central portion of the standards. The "lighthouse" effect is increased by the gold of the beard and style branches. Falls slightly redder than the standards, being coppery-red (Eugenia red by Ridgway). Flowers simply huge. See color picture.

Unquestionably bound for real popularity, due to its entrancing contrast of colors. Decidedly distinct, very showy, and the color combination is exquisite. Large, well branched, and with standards well domed. Falls flaring and substance heavy. Ranks with Radiant, Brunhilde, and Golden Majesty as one of the finest Carl Salbach iris creations. Described by one of the A. I. S. judges as "A real stand-out — as beacon-like in the garden as its name would indicate." Of unquestioned hardiness, being bred from Helios X Rameses, and having grown well everywhere. H. M., A. I. S., 1937. Late blooming. 36-inch. \$5.00

LODESTAR. Easily the best and brightest of the small variegatas. A fine doer everywhere and not only bright, but very rich. Bright yellow standards, clear red-brown falls, highlighted by vivid golden edging. Very clear in color, and although a small iris it is one of the most outstanding of all iris — one that should be in every garden. Rhizomes always small. A. M., A. I. S., 1927. 24-inch. 35c; 3 for 75c

LOS ANGELES (Mohr-Mitchell). This giant plicata, introduced with the Dykes Medal winner, San Francisco, alternates in favor with the latter — one person preferring Los Angeles, the next San Francisco. Los Angeles has more white and less of the blue plicata markings than San Francisco, and is a good doer everywhere.

Great white flowers of fine shape and substance, the standards faintly edged blue with the blue style arms adding a note of clear blue in the center. Tall and widely branched. Most outstanding. Early. 40-inch. 25c; 3 for 60c

LYCAENA. White standards with rich purple falls with paler margin. Refreshingly attractive for a small iris. Mid-season. 27-inch. 20c; 3 for 40c

MABEL TAFT. Bi-color blue. One of the largest of all iris. Very bold form, and a truly showy iris. Mid-season. 48-inch. 35c; 3 for 75c

"If We List It, It's Good"

In addition to offering the finest stock, we list only the very best varieties obtainable. We receive yearly reports from many iris experts, and buy those most highly recommended. These we grow in our garden until we have blooms for comparison to our other iris. Only those that are distinct and come up to our standard are offered in our catalog. The others are discarded.

. . . Finest Iris

SEE NEW INTRODUCTIONS, PAGES 4 AND FIVE FOR DETAILS ABOUT RED VELVET, BIG NEW RED.



Top — GOLDEN BEAR
Front — RED RADIANCE



JUNALUSKA
Runner-up for 1938
Dykes Medal



RED VELVET

MARQUITA (Cayeux). One of the finest French iris ever produced — a remarkable variety which should eventually find its way into the gardens of all iris lovers. Described by one of the A. I. S. judges as: "One of the most unique of all . . . America should give it its highest award."

Overlooked in the awarding of the French Dykes Medal because it was so late of bloom that most of the judges missed it. Perhaps the largest of all variegatas, but so distinctly different in coloring from the average variegata that it hardly seems to belong under the same classification. Simply huge blooms, standards of clear creamy yellow, frostily lustrous, and with falls of cream, but so heavily lined rose pink that it seems more like a suffusion than a lining at the end of the petals. Late. 42-inch. A. M., A. I. S., 1936: \$1.25

MARY GEDDES (Washington). Considered by many to be the most fascinating of all the soft blends because of its unusual coloring — a blending of lovely soft tones that approaches salmon pink. A Dykes Medal winner.

Best described as a lighter, taller King Midas. Standards light bronze with just a suggestion of flesh color. Falls coral rose with yellow haft, lined bronze. Medium in size, but nevertheless a most appealing variety. Stock limited. Mid-season. 36-inch. 60c; 3 for \$1.50

MATA HARI (Nicholls 1937). We are very pleased at having been able to help introduce this variety, for it is one of Col. Nicholl's finest productions.

Standards very rich deep blue, falls rich pansy purple. Inconspicuous brown veinings almost cover the haft, with beard of dull gold. Well branched, with flaring falls. 40-inch. Late. \$10.00

MATULA (H. P. Sass, 1939). Standards a flesh shade of bronze, falls bronze, brown, and red, suffused. The tone in the center is on the violet-red shades. Haft brown. A very delightful iris. Late mid-season. 38-inch. \$25.00

MELDORIC. Flowers of blue-black, and very large. Gold beard. Good habit and branching. Hardy everywhere. Mid-season. 30-inch. H. M., A. I. S., 1931. 60c; 3 for \$1.50

MIDGARD. Not a large flower, but very delicate in its orchid tones, obtained from a blending of yellow and pearly pink. 25c; 3 for 60c

MIDWEST GEM. (Hans Sass 1937). Another most attractive Sass variety that we were privileged to help introduce. A very luminous, boldly formed iris of real character — something unusual in a pearly blend. Strikingly beautiful. Pale frosty gold, enhanced by the pinkish Midgard type flush down the center of the falls. Large Blooms. Substance heavy. H. M., A. I. S., 1937. Mid-season. 36-inch. \$10.00



NATIVIDAD



CALIFORNIA GOLD

MIRASOL (Mitchell). This one is "the buy" of the lower priced deep yellows. Grows ideally everywhere, and of reasonably good size; in fact it did so well that twice during our "iris wanderings" of 1936 we mistook Mirasol for one of the newer, high-priced yellows.

Flowers of pure deep chrome yellow, with fine form and finish. Well branched, and many blooms to each stem. Mid-season. 30-inch.
25c; 3 for 50c

MISS CALIFORNIA (Salbach 1937). At last, a beautiful and entirely distinct tone of pink in a fine, upstanding iris. The color, lilac pink (Tyrian pink to amaranth pink by Ridgway) was most popular and certainly marvelled at by our garden visitors last season. The flowers were of Dauntless form, but larger, and it is taller than either Dauntless or Desert Gold, its parents. Produced from a cross definitely planned for pinks, Miss California was easily the choice from among a number of pink-toned seedlings, and coming from two hardy parents, its own hardiness is assured. Growth vigorous, flowers very large, and of perfect form and excellent substance. Branching good, and substance very heavy. Flowers very large for an iris of any color; simply huge when compared to most pinks. Mid-season. 48-inch. \$10.00

MISSOURI (Grinter). A very fine rich blue having a smooth, enamel-like finish. Highly praised in the Mid-west, and without question, one of the best new blue iris. Raised by a breeder who has made a specialty of blue iris. Standards clear vivid blue; falls slightly darker. Mid-season to late. W. R. Dykes Medal, A. I. S., 1937. 36-inch. \$2.50

MOHRSON (White). A sensational production of Mr. C. G. White. A seedling of William Mohr which received Honorable Mention by the A. I. S. in its first season of introduction (1935). As huge as William Mohr, but 40 inches tall in established clumps, this noteworthy variety has been described as "A great swashbuckling cavalier clad in silken tapestry."

Color deeper than that of William Mohr, being blackish red-violet. Bold flowers. Foliage definitely "pogon", and bears pollen and therefore useful for breeding. Mid-season. \$2.00

MOKI (Thole 1938). (Zuni X Depute Nomblot.) A fine new variety that is a vastly improved Zuni — having very big, bold flowers, smooth and well rounded, plus the same rich brown-bronzy color of the latter. Medium tall, and of fine branching habit. In our estimation, Moki is the finest of all of Mr. Thole's introductions.

We purchased Moki intending to introduce it at a price of \$10.00 per rhizome, but we received a much larger stock than we expected, and it gave us good increase. In view of this fact, we introduced Moki at a new low introductory price, and now it is selling at a record low for a second year iris. Early mid-season. 30-inch.
75c; 3 for \$2.00

MONADNOCK (Salbach 1937). This magnificent new creation, certainly one of the showiest iris in existence, is a real addition to the field. The color, completely new in iris, is rose-red, and is so vivid that Monadnock can be perfectly matched for color at a distance of sixty yards. It is self-colored with yellow beard, and the flowers are simply gigantic. The color by Ridgway is "Indian Lake", a term in no way descriptive, but we give it merely for those who wish to check it with the chart. See color picture.

Bred from Marquita x Dark Knight, it has two hardy parents. It inherits its huge blooms from Marquita, and its height from Dark Knight, and is more vigorous than either parent. This iris will undoubtedly rank as one of the finest we have introduced, and will unquestionably be a leader in its class for many years to come. Sturdy substance, and of good form and habit. Late. 44-inch. \$8.00

MOONBEAM. An outstanding intermediate of clear light yellow. Makes a splendid mass of color. A low growing variety of even height, and so free blooming that it is ideal for borders or parkings. A robust grower. Deliciously scented. Very early. 16-inch.
20c; 3 for 40c

MOONGLO (Williamson). A splendid golden blend, one of the few yellow iris enriched by blending, having a distinct and attractive pinkish-violet flush. One of the finest of the Williamson introductions. A. M., A. I. S., 1936. \$1.50; 3 for \$4.00

MOROCCO ROSE (Loomis 1937). A very delicate flower of palest orchid. A large flower, yet very delicate. Has been highly praised as an added step toward the production of an ideal pink toned iris. Mid-season. 38-inch. \$10.00

MOUNT WASHINGTON (Essig 1937). Huge and tall, this remarkable iris is so outstanding that it automatically earns for itself a notch among the best whites, ranking, in our estimation, as one of the finest whites. Very pure and clear.

Mount Washington is a pure warm white with golden beard, attractive haft markings of gold, and semi-flaring falls. The form is halfway between that of Purissima and Easter Morn — most pleasing. Even greater size than the latter, and much taller. Has a most pleasing odor, similar to that of wild plum. Heavy substance; well branched. Mid-season. 50-inch.
\$10.00

MRS. J. L. GIBSON. Rich blue-violet standards and deep royal blue falls. Dusky beard. Silver Medal, B. I. S., A. M., R. H. S. Mid-season. 36-inch.
\$1.50

MRS. VALERIE WEST. The crowning achievement of Mr. Bliss, the great English breeder. A rich, lustrous iris whose grandeur is recognized wherever it is grown.

Broad massive bronze standards with falls of deep velvety maroon purple. Stems well branched, and free blooming. Mid-season. 36-inch. 25c; 3 for 50c

NATIVIDAD (Mitchell). "Combines purity, gracefulness and brightness in a manner that I have never seen in any other iris." A delightful iris, probably as pleasing and perfect as any medium sized, medium tall iris grown. One of Sydney B. Mitchell's favorites among his many super-fine productions. Often blooms in the fall in California.

Standards and falls creamy white, with center lighted clear soft yellow which is concentrated at the base of the standards and falls. Yellow beard. Very long blooming period. Unusual substance and texture. This iris has all the poise and distinction of old ivory. The beauty of the iris Natividad is best told perhaps, by the enthusiasm of some of our customers. One says: "I consider Natividad one of my outstanding irises . . . Without question, it has always been one of the most admired of some two hundred and fifty varieties which I have in my garden." Another says: "I don't think I had a much better iris in the garden than Natividad. It is magnificent, and I am surprised that I haven't heard more about how good it is."

See color picture. Early. 30-inch.
75c; 3 for \$2.00

NARANJA (Mitchell 1935). "A bell-ringer," says one Mid-Western iris expert — certainly an apt description, for this variety surely has met with an enthusiastic response. Similar opinions include the following:

"The hit of the show (N. Y.) was Naranja, the orange iris." "Naranja . . . has no rival. I have seen no iris with its coloring, but if another does appear it will have to go far to meet Naranja's other characteristics." — Nebraska. "Easily stands out as the most popular iris in the garden." — Washington. "Of the newer iris I saw in New England, Naranja was the most distinctive"; "Naranja was a gorgeous thing . . . an orange that attracted you way across the garden" — Mass.; "Probably the most outstanding recent introduction" — No. Carolina. "The most striking color break in years." — Mass.

Richest of all the yellows, thanks to the definite orange cast of the falls. Distinctly orange while in bud, and so striking in color and size that it brought the first offer before the first bud had started to unfurl. Stands tall and straight, with huge blooms, having excellent substance. See color picture.

Dominated by the orange coloring of the falls, which, matched to the Ridgway color chart, are "zinc orange" at the haft, with yellow markings in center, and remainder of falls "ochraceous orange." Standards bright emerald yellow, with orange yellow beard. Has all the attributes of color, form and habit necessary to rank this remarkable iris as one of the standouts of recent breeding. Vigorous and hardy everywhere. A. M., A. I. S., 1937. Late. 40-inch. \$3.50

... Finest Iris

NASSAK (H. P. Sass). Probably the best new blue-white plicata in commerce, but introduced with no fan-fare, hence little known. White, with bright blue stitchings, and of proven hardiness, even in Nebraska. \$1.50

NATOMA (Salbach 1935). Very unusual in its color, and a top-notch garden iris, since it is a very free bloomer. Standards bronze, falls soft coral red. The complete effect is of glowing old rose — a flower that, like Eleanor Blue, wears well. Well branched. Late. 36-inch. 75c; 3 for \$2.00

NEON (Salbach 1934). One of the brightest iris in the garden, hence the name. Due to the bronzy gold of the standards and the velvety carmine of the falls, Neon offers a glowing richness that we know of in few iris of this type. The bright gold of the beard and on the haft blend into the bronzy-gold of the standards to give the flower its attractive brilliance. See color picture.

Some idea of the high repute that has been accorded this comely iris is shown by the comments, some from California, some from the Mid-West, and others from New England, as quoted: "A glowing accent to any garden . . . and with its unquestioned hardiness an acquisition for California"; "A wonderfully brilliant iris — belongs always in the must haves"; "I rated it . . . 'A'"; "Outstanding, attracting the eye clear across the garden." Late. H. M., A. I. S., 1936. \$1.00; 3 for \$2.50; 12 for \$8.25

NEREUS. Light blue bi-color. Large flowers, on fairly tall, well branched stalks. The best in this class at its own price level. Very fine in clump plantings. Early mid-season. 30-inch. 20c; 3 for 40c

OCHROLEUCA. See page 26.

OPHELIA. A charming blend of pastel tints — old gold, pink and pale blue. A fine flower in the garden and excellent for table bouquets. Mid-season. 22-inch. 25c

ORLOFF (Hans Sass 1937). A delightfully different plicata that we had the pleasure of helping to introduce. Most aptly described as an iris of "brownish red finely stippled on a creamish background, like cinnamon in egg nog." The standards are so heavily veined that they appear as rich brown, with the whole center of the iris lit rich golden bronze. The falls are cream, stitched bronze, greatly enhanced by two little spots of yellow, one at each side of the haft. Personally, we rank it with the striking Siegfried, although it is not as large as the latter.

Habit and form excellent throughout. Stock very limited. H. M., A. I. S., 1937. Mid-season. 33-inch. \$15.00



ORLOFF



AMIGO



MISSOURI

ORMOHR (Kleinsorge 1937). Without a shadow of a doubt this iris is a real sensation. Tall and bold. It is definitely the greatest of the William Mohr seedlings to date; in fact it bids fair to end up as the most outstanding release of 1937.

Ormohr retains the veined orchid-like type of bloom of its parent, William Mohr, in a shade just barely lighter than that of the latter, but its flowers are of much bolder form, and its tall stems carry a whole cluster of blooms — a combination which makes Ormohr the showiest, boldest iris we have ever seen — yet it is a beautiful flower with the utmost delicacy. The blooms are simply huge, and there are many to a stalk; and we have twice seen it stand up as if untouched after heavy Oregon rains. A champion that is a real "must have". One of its parents (Anakim) is definitely hardy; therefore, there is every reason to expect complete hardiness (Mohrson and Grace Mohr, also William Mohr seedlings have been perfectly hardy; they are, to our knowledge, the only William Mohr seedlings tested for hardiness).

Unlike William Mohr, Ormohr produces seed readily, so it will be of great value to breeders.

Color — Deep lilac, veined manganese violet, not far away from the color of William Mohr, as shown in our color picture. Stock limited. Mid-season. 40-inch. \$20.00

OURAY (Thomas-Thorup 1937). Although neither large nor tall, this iris is nevertheless striking because of its unusual color tone — gleaming ruby red — the brightest red iris we have seen. Had this iris been the size of some of the other new red-toned varieties, it would unquestionably merit as high a price as we have ever placed on any iris.

That others think as well of it as we do is shown by the following quotation: "I want to tell you how much attention Ouray created here. It was planted in the first position in the Guest Iris row and was worthy of the place and created as much favorable comment as the Red Douglas, Angelus, Cortez and Siegfried."—Kentucky.

We have always admired this iris, but the more we see of it, the more we like it; in fact, so much so that we purchased the entire stock, and thus became its exclusive introducer, although originally we had planned being only co-introducers. Mid-season. 28-inch. \$1.50; 3 for \$4.00

OZONE (Jacob Sass). An attractive, large lavender that is both beautiful and distinctive due to its warm brown haft. White beard tipped orange. Large flowers on well branched 36-inch stem. Mid-season. \$2.50

PACIFIC. This fine big iris combines all the qualities of clear clean color, substance, carriage, vigor and garden effect. It blooms very early and continues for a long time. The color is light bluish violet. Falls flaring, stems straight and slender. The first noteworthy Essig blue — very fine. Mid-season. 32-inch. 35c

PADRE (Mitchell). This dignified iris is tall, well branched, vigorous of growth and remarkable for its long period of bloom. The dominating color is the rosy purple of the silky falls flushed bright blue. As many as ten blooms to a spike. Mid-season. 40-inch. 25c; 3 for 50c

PALE MOONLIGHT (Essig). A very tall, stately iris of palest blue — a shade lighter than Shining Waters. By far the best of its shade, and will bloom in the East, although it needs special protection to winter well where the climate is severe. Mid-season. 45-inch. 75c; 3 for \$2.00

PEACEMAKER (Mitchell 1934). A softly beautiful iris which gains in popularity as it ages. Has been highly praised throughout the East, and is a good doer everywhere. Described by one of the A. I. S. judges as an iris "a lot of us have been missing." A clean, smooth iris on the most perfectly proportioned stalks in the garden. It is a stylish porcelain colored iris with a pale lavender blue flush in center of falls. Very refined. Excellent as an aid in garden blending, because its pale shades make it a colorful substitute for white. Tall, well branched, with large blossoms. Blooms in mid-season. 42-inch. 60c

PESHAWAR (Schreiner). Exotically beautiful, this very early blooming oncocylus hybrid is also an easy doer and a rapid increaser. The standards are rich violet, the falls reddish brown, overlaid glistening black, the beard is a dusky brown. Altogether a very striking flower of medium size and fine form. Rhizomes naturally small. 14-inch. \$3.00

PERRY'S BLUE. See page 26.

Shining Waters — "A beauty — hardy and blooms over a long range of time." — Georgia, in A. I. S. Bulletin.



BRUNHILDE



CITY OF LINCOLN

One of the most vivid iris of all

PERSIA. This variety, of which little was heard in the first years of its introduction, has come to be considered one of the very finest of Dr. Ayres' fine productions. Its refined and subdued colorings rank it as one of the most pleasing of all.

Very large blooms with falls that are a blend of bluish lavender, and standards of iridescent steel blue. Brown haft and yellow beard. Smooth finish. H. M., A. I. S., 1928. Mid-season. 36-inch. 35c

PINK JADU. A small plicata having a suffusion of lavender pink that makes it the pinkest plicata in the garden. Small rhizomes. Mid-season. 20-inch. 25c; 3 for 60c

PINK JEWEL. Withdrawn for the season to increase stock.

PINK OPAL Tallest of the lavender pinks. Individually, this variety is technically at fault in that its attractive blooms tend to bunch near the top of the stalk. Actually, this is a distinct asset, as far as clump plantings are concerned, as it presents a solid mass of color. Lavender-pink, not as deep as that of Dogrose, but its color is on a par with the others of this type. Blooms large. Mid-season. 48-inch. 35c; 3 for 75c

PINK SATIN. Probably the most refined of all the pink-toned iris. Aptly named for the smooth satiny texture. A suave slender iris on tall stalks, well branched. A different type of iris than Pink Jewel, just as attractive in its own fashion. A most entrancing iris. H. M., A. I. S., 1931. 36-inch. 25c; 3 for 60c

PIUTE (Thomas-Thorup). For those that do not demand the huge giants, Piute is definitely one of the finest reds grown. Of medium size, it is characterized by its most distinct coloring — not as bright, but richer than Ouray. Bordeaux red to violet-carmine, with standards slightly lighter. Dusky orange beard.

Very heavy of texture, and smooth of finish. Mid-season. 36-inch. \$10.00

PLURABELLE (Cayeux). Distinct and effective, one of the very finest new French irises, somewhat on the order of Day Dream, but on more slender, graceful stalks. A most enchanting iris whose exquisite color tones are hard to describe. Standards of golden yellow, and falls a blending of gold and pinkish mauve. An elegant iris, refreshingly different. Late. 38-inch. \$1.00; 3 for \$2.50

Quality

"Altogether it is a rare privilege to deal with you. One is ever so certain of the best in your line"; from Indiana, "One must take advantage of Salbach's quality coupled with such prices"; and from another Californian, speaking of a gift she was making, "I want her to have the best seeds obtainable, hence 'Salbach Seed'."

Carl Salbach...

PORTLAND (Kleinsorge 1938). (Conquistador x Cardinal) x Carfax X Rameses. Standards frosty gold, falls coral rose — very close to being a giant Mary Geddes. The main difference in coloring of the two is that the standards of Portland are slightly lighter gold and the falls are more of a self color, lacking the gold haft lining.

Or, to describe Portland in another way, one could say that it is a highly colored Rameses, for it has bright colors, while Rameses is more on the pearly type. Showy, standing out clear across the garden — and tall enough to give it unusual garden value.

Mid-season to late. 45-inch. A good stock permits the second season price of \$5.00

PORTOLA (Mitchell 1935). "Fro grown up." A fine tall, branching variegata that matches Fro two for one in size, number of blooms and height. Not in competition with the striking new Sass variegatas, as City of Lincoln and Casque d'Or have falls that are respectively, one and two shades darker than those of Portola.

Yellow standards and chestnut red falls, edged yellow. See color picture. Fine habit. Late. 33-inch. \$1.00; 3 for \$2.50

PRAIRIE SUNSET. Not for sale this season.

PRESIDENT LEBRUN (Cayeux). This fine, bright iris, was named in honor of the President of France, at his wish while visiting the Cayeux gardens in Paris. Large blooms on well branched stalks, with standards of coppery gold, and falls a blend of garnet and reddish copper shades. A near-variegata with bright rich coloring. Late. 28-inch. \$1.00; 3 for \$2.50

PRESIDENT PILKINGTON. Large, of bold form, well branched, many buds to stalk, and medium tall. Standards vinaceous buff underlaid old gold, with falls of soft violet faintly edged silvery brown.

The elegant dignity of this iris gives it a charm that is difficult to describe. Mid-season. 40-inch. 25c; 3 for 50c

PROF. S. B. MITCHELL (Cayeux). A new French variety, named for Sydney B. Mitchell, one of, if not the most distinguished of American iris hybridists. Simply huge red-violet flowers which attracted a great deal of attention in our trial beds of the newest iris. Very popular, being by far the largest of its color. Mid-season. 30-inch. \$1.00; 3 for \$2.50

Finest Iris . . .

PURISSIMA (Mohr-Mitchell). Although introduced many seasons ago, this remarkable iris still blooms as the most perfect white, handicapped only by a touch of tenderness when grown in regions of severe wintering. Latest reports indicate perfect wintering in many regions, but it is definitely erratic in its bloom in the Midwestern and Eastern regions of the United States. Grows ideally where winters are mild. However, it has been discovered that Purissima's tenderness comes from its lush early growth, which can be checked by various methods of keeping the plants dry in the fall and early winter.

Pure white with great poise, fine form, and heavy substance. With the sun shining through it, it has the appearance of frosted glass. Ideal branching. Where the climate is mild, or where the quest for perfection outweighs the risk of no blooms, Purissima will be every bit as good or better than the new and hardy leaders in white. Early. 50-inch.

35c; 3 for 75c; 12 for \$2.50

Right — **RADIANT.** Vividly brilliant, Radiant stands alone in its vivid brilliance, being a complete "break" in color.

Below, left — **SNOQUALMIE.** Soft smooth creamy yellow — the best of its class. Large and tall.

Below — **OZONE.** Large lavender blue with brown haft, which gives it unusual distinction.



RADIANT (Salbach 1936). Richly colored and strikingly brilliant, this sensational iris is without question "on its way." It falls in the copper orange tones, and has a vividness that is above comparison with any other iris of this tone — in fact without limit to color, only very few iris, such as the giant Happy Days, the gleaming California Gold, the showy City of Lincoln, and perhaps the beaming Lighthouse can stand in the same class as Radiant for pure brilliance.

Radiant is perfectly at home everywhere, and has definitely established itself as a consistent fall-bloomer here on the coast.

As to the qualities which make Radiant a definite top-notch, regardless of fall-blooming possibilities, color takes first rank, well backed-up, however, by good form and habit. It combines vivid brilliance and rich solid tones in a manner that seldom is, and seldom will be, equalled in any other iris. The standards are of burnished golden orange, and the broad falls are of glowing coppery red, forming as gleaming and as showy an iris as one could imagine. Many large sized blooms to the stalk, and a very free bloomer, having given as many as five bloom stalks per single rhizome. 33-inch.

\$10.00



RAMESES. One of the few iris to win the coveted American Dykes Medal Award. Good sized blooms on medium tall but well branched stalks. Outstanding because of its striking blend of colors. Rich gold, and pale pink are most artistically blended in this flower to give an iris of majestic elegance. Mid-season. 30-inch.

25c; 3 for 60c

RED DOMINION. A beautiful clear, deep ox-blood red. Standards violet-red, falls rich velvety purple red, nearly black. One of the most popular iris grown. Large flowers with fine velvety finish. Buds open like rosebuds. H. M., A. I. S., 1931. 40-inch.

50c

Ludicrous

"It is ludicrous to have you ask me to approach Steele Briggs, etc., for references. Anyone in this continent who does not know Mr. Salbach ought to be ashamed of himself." This extract from a letter written us by a Canadian grower to whom we had given business references tells the story of our business reputation better than anything we can say.

RED RADIANCE. A beautiful red, somewhat similar to Dauntless, but deeper and of an entirely different tone. Decidedly striking in block plantings. 38-inch. 50c

RIALGAR. One of the very brightest of the smaller iris. Deepest buttercup yellow standards which gleam clear across the garden. Bronze striping on falls. One of the showiest of all for borders. Rhizomes naturally small. Mid-season. 22-inch. 20c; 3 for 40c; 12 for \$1.35

ROB ROY. This fine iris, which merits a place among the best reds on form, color, etc., alone, is of great additional value because it is such an early bloomer, being the first big red to show color in our garden. Dominating color is bordeaux, a color of great carrying quality. Texture excellent and does not fade. 38-inch. 25c; 3 for 60c

RONDA. So vividly colored that it shines clear across the garden. A low growing iris, making it ideal for borders, etc. — and what a glowing, "different" parking bed it would make. Heavy texture and beautifully proportioned. Color tones very much like those shown in color picture of Rubeo. Late. 24-inch. 25c; 3 for 60c

ROSE MITCHELL. A very lovely orchid colored iris originated by Professor Essig. Tall, and unusually colored. Late. 48-inch. 35c

ROSY ASIA (Mitchell 1934). A pinker edition of Asia, with broader falls and fine full form. A most delicate and delightful blend which is at its best under electric light. Large blooms. Falls pale Chinese violet, flushed deeper in center, with warm lilac standards and bright yellow beard. 40-inch. 25c; 3 for 50c

ROYAL COACH (H. P. Sass 1939). One of the new yellow plicatas selected from among many raised by the Sass brothers. \$10.00

RUBEO (Mitchell). A magnificent plant with huge flowers beautifully poised on strong stems 48 inches high. The standards are deep glistening rose, the broad thick textured falls are of deep maroon. The color cut does not show the full velvety richness that characterizes the falls.

It is hardy, as it never seems to die out anywhere, although its one fault is that it is not a prolific bloomer, particularly where winters are most severe. This fault, however, is largely overcome if the rhizomes are transplanted every second year. Mid-season. 48-inch. 50c; 3 for \$1.25; 12 for \$4.15

RUTH POLLOCK (H. P. Sass 1939). Regarded by the Sass Brothers as their finest "yellow" plicata. This is tantamount to being the finest of all yellow plicatas to date. A brand new release this season which we are most privileged to be able to offer this year. Yellow ground with red markings. \$40.00

SACRAMENTO (Mitchell). This plicata, though related to San Francisco and of comparable size and habit, is absolutely distinct from anything previously introduced. Its large flowers have a white ground, the standards heavily edged red purple, the falls reticulated with the same color. Orange beard. H. M., A. I. S., 1931. Late. 40-inch: 35c; 3 for 75c

SANDALWOOD (Hans Sass 1937). A very fine coffee colored blend that is greatly enlivened by the yellow undertone and is very suave in appearance. Good branching and habit. Technically — standards vinaceous tawny, falls army brown. 34-inch. Mid-season. \$5.00

SAN DIEGO (Mitchell). Derives its huge size from El Capitan, one of its parents, and its deep rich color from Souv. Mme. Gaudichau. Very showy, deep rich blue-violet. Lack of stock in comparison to the demand has always kept our stock too low to display this one well, but even without stock enough to give us a very large planting, San Diego has always been a most compelling, regal iris. Surpassed only by the new and startling variety Brunhilde. H. M., A. I. S., 1931. Mid-season. 46-inch. 40c; 3 for \$1.00

SAN FRANCISCO (Mohr-Mitchell). Tall stems, branching low and wide like a candelabrum, carry large white flowers, of which both standards and falls are distinctly edged lavender. In size, shape and substance, there is nothing to approach it among the older plicatas, only the color pattern tells us it should be classed with them. Awarded Dykes Memorial Medal as best American introduction 1927. Similar to Los Angeles, but with wider blue edging.

Slightly tender in regions of severe winters, so we suggest the beautiful Los Angeles, which is hardy, instead. Grows perfectly on the Pacific Coast and elsewhere where the winters are mild. Mid-season. 40-inch. 25c; 3 for 60c

SAN GABRIEL. A very large pinkish lavender of high excellence adding to its other merits the virtue of being early and long blooming. Well branched and very graceful. Contains half mesopotamica, and although some varieties having as much mesopotamica blood are hardy, San Gabriel is tender and does not winter well except in mild climates. Fragrant. 60-inch. 25c; 3 for 50c

SAN LUIS REY. A large violet-red iris of beautifully rounded form and rich heavy substance, set off by a golden beard and a yellow center. 20c; 3 for 40c

SANTA BARBARA. This is the finest of the low-priced lavender blues. The size, substance, spreading horizontal falls, well branched stalks and the vigor of growth entitle this beautiful iris to be rated with the highest. A. M., R. H. S. Early. 40-inch. 25c; 3 for 50c; 12 for \$1.50

SANTA CLARA (Mitchell). Tall, medium high branched, perwinkle blue self of noble and beautiful form. The flower is very large, flaring as to falls, heavy as to substance and has ruffled edges. Being bred from Santa Barbara and Gaudichau, it carries the fine quality of the former into a darker flower. This comely iris ranks with the newer and more expensive varieties — one of the leading blues in commerce. Ideally branched. Mid-season. 44-inch. 25c; 3 for 60c

SEDUCTION (Cayeux). A splendid new plicata from France that has lived up to its advance reports. As unusual as any plicata we have ever seen. Large and of good form, it is completely distinct from both the Mitchell giant plicatas and Spring Cloud, the new Stafford Jory origination. The growth, size of bloom, and fine branching habit of these other plicatas is present in Seduction, but the flowers have veinings and stitchings of lilac, rather than of blue. Ground color, white. Late. 44-inch. A. M., A. I. S., 1937. \$2.00; 3 for \$5.00

SENSATION (Cayeux). A beautiful self-colored aniline-blue of great poise and elegance. The substance is heavy, the standards beautifully arched, the falls flaring and the stems tall and sturdy. Fragrant. Late. 36-inch. 25c; 3 for 50c

SETTING SUN (Kirkland 1937). A rich, vivid, yet smooth red that is one of the most brilliant iris yet introduced. Not one of great size, but so bright that its color gains it ranking over many larger iris. Standards fiery coppery red, blending to yellow approaching the center; falls rich, smooth velvety red. Definitely a leader among red-toned iris. Mid-season. 30-inch. \$6.50

SHINING WATERS. To our minds this iris is the very finest of Professor Essig's many striking blue iris. Aptly described by one of the A. I. S. judges as: "The outstanding pale blue, a lovely color, not too pale to have character, with beautiful texture, splendid substance and a great tall stem, well branched." Another says, "The blue that stole the show here, though, was Shining Waters, and now that it is down in price, no garden should be without it. Shining Waters is just about as near perfect as I have ever seen an iris." Tall and stately, Shining Waters carries twelve or more buds to each of its well branched stalks. "A reflection of the clear blue Western skies in still, shining waters." An iris of great poise. Needs special protection where winters are severe, but well worth the effort. A. M., A. I. S., 1935. Mid-season. 48-inch. 75c; 3 for \$2.00

Finest Iris . . .

SHASTA (Mitchell). Entirely distinct from the immaculate Purissima, this splendid white, which is hardy everywhere, still ranks as one of the very best whites. It is most floriferous, its stalks are high, but well branched, and it is a rapid increaser—a combination which establishes it as unexcelled when planted in large clumps and beds — for it makes a solid mass of white when in bloom. Mid-season. 36-inch.

25c; 3 for 50c; 12 for \$1.50

SIERRA BLUE (Essig). The most outstanding all-climate blue of all. A Dykes Medal winner that was well worthy of the honor, and an iris which will hold its own for many, many years. Clear in color, and unusually tall and stately, with huge, showy blooms, Sierra Blue is truly a Championship iris, an iris without competition in its class.

Probably the tallest blue in commerce, and so vigorous of growth that it stands up under wind or rain, despite its tremendous height. The color is soft, clear blue, the form most graceful, and there is no veining to the flower. A slow increaser, and in strong demand — therefore stock is definitely limited. Early. 50-inch. 75c

SIERRA SNOW (Kleinsorge 1938) (Purissima x Rameses) X Far West. Although there are many new whites, we feel that Sierra Snow is definitely "The" all-climate white. Although only one-quarter Purissima, it carries the beauty of that variety into a white iris that, at last, is hardy. In addition, it blooms later in the season than does Purissima, therefore does not compete with it, even in California.

We realized that Sierra Snow was an outstanding iris, but the more we saw of it, the more we liked it — but our catalog was already on the press before we realized the full value of Sierra Snow — too late to give it the \$25.00 introductory price it really deserved.

In addition to its fine form and habit, Sierra Snow has a beautiful translucent quality that sets it apart from all other whites, and which is the particular quality that causes one to like Sierra Snow better with time. It is tall, candelabrum branched, and is as smooth as Purissima, and in almost the same shade of white, just a shade warmer and clearer, and with just as fine a finish — plus its unusual translucence.

Its behavior in its creator's Oregon garden shows its hardiness, and it has none of the lush or early growth of Purissima. This, coupled with the fact that Kalinga, half Purissima, has proven hardy, and two other half-Purissima seedlings of Dr. Kleinsorge have thrived when tried in South Dakota, practically certifies that it will be as hardy as its ancestor, Rameses. Sierra Snow is only one-quarter Purissima. Stock limited. Mid-season to late. 45-inch. \$15.00

SIEGFRIED (Hans Sass). A most unusual development in a new type of plicata. Very tall, very striking, and decidedly distinct. This new iris has created a distinct furore among the iris fans of the nation and, to date, stock has been exceedingly scarce.

The standards are of rich golden bronze, the falls white with purple stitchings. Good form and habit, and fine branching. H. M., A. I. S. Mid-season. 45-inch. \$15.00

SILENT WATERFALL (Essig 1936).

A very large tall iris of unusual coloring; standards white with distinct cast of blue, reminding one of the stream of a mountain waterfall, and falls creamy white, like the white spray drifting from the fall. Beard white. Finely formed and the blooms are as large as Easter Morn. Broad, domed standards, falls semiflaring. Stalks tall and ideally branched. Tested and found hardy under severe wintering. Late blooming. 40-inch. \$2.00

SIR MICHAEL. Described by one prominent grower as "Unquestionably the finest blue bi-color in the world," an opinion shared by most critics. Very handsome, medium tall, with large blossoms, and raised from the ranks by a rich golden beard which adds a striking note of contrast, which, at the same time, gives the flower a carrying quality seldom found in blue iris. The standards are clear blue, and the falls are a bright, live shade of violet-blue. Very late. 38-inch. 35c; 3 for 75c

SNOQUALMIE (Brehm 1938). (William Carey Jones X seedling). Pronounced Snow-Kwal-Me. The Bruno blood of William Carey Jones carries on to give us a championship iris of leathery substance, and rich, smooth creamy coloring — and in a tall iris of excellent form and perfect branching.

Rich, smooth cream to lightest yellow, shading to lighter cream at the top-center of the falls. Our choice as easily the finest cream of its type; distinct from William Carey Jones in its greatly improved form and its slightly warmer shade of cream. Distinct from Carved Ivory as it is taller and rich and smooth, while Carved Ivory is soft and frosty.

One of the most valuable of all for garden use, as it acts as a relief between the other iris colors and adds to their beauty besides standing out as an aristocrat itself. Mid-season. 45-inch. \$10.00

SNOW KING (Jacob Sass). A clear, large pure white. Very big and bold. Excellent branching, flowers finely formed. Easily the finest of its type, ranking with the best hardy whites, and for mass planting, it is ahead of the field, a tremendous advance over Shasta. H. M., A. I. S., 1936. Mid-season. 40-inch. \$5.00

February, 1937, Iris Society Bulletin: "Natividad, an exquisite creamy white that looks as though a yellow candle was behind it, gleaming through the standards and falls."

SNOW MAIDEN A pure white intermediate which we introduced to America. Being bred in Canada, it is naturally a good doer in even the severest climates. Pure white in color, on ten-inch stems, its extreme floriferousness results in a solid mass of bloom — resembling a drift of new snow. As fine a border planting as can be imagined. One of the very earliest. H. M., A. I. S., 1936.

35c; 3 for 75c; 12 for \$2.50

SONG OF GOLD (Essig 1937). A clear, large flowered yellow iris that merits a front row spot along with the Champion yellows we have previously introduced. A vigorous grower, very distinct, clear of color, well branched, and magnificent as a clump. Differs from all our other yellows in that it is of Santa Barbara flaring fall type, and in that its color is distinct — clear and soft, just a shade deeper than that of Happy Days. Very large, ideally branched, of non-Dykes form, and color (by Ridgway) clear yellow, deeper at haft. Orange beard. Firmest texture, and deliciously scented. Early mid-season. 38-inch. \$6.00

SOUND MONEY. A clear yellow pumila hybrid that blooms, in established plantings, like a carpet of brilliant gold. Has been described as a yellow counterpart of Snow Maiden. Sometimes blooms in the fall. H. M., A. I. S., 1936. Earliest of all to bloom. 6 to 9 inches. 35c; 3 for 75c; 12 for \$2.50

SPRING CLOUD (Jory 1935). "A worthy companion to Los Angeles and San Francisco," which has been described by one of the nation's most capable iris critics as "Stately and indispensable."

Standards heavily suffused blue on white, with falls clean white, except for a few inconspicuous blue markings. Hardy everywhere. Mid-season. 48-inch. 75c; 3 for \$2.00

SPOKAN (Jacob Sass). A giant red-brown blend with yellow haft and prominent orange beard. Standards brown, overlaid reddish brown; falls ox-blood red, overlaid blackish brown. A very rich and bold iris. Mid-season. 36-inch. H. M., A. I. S., 1936. \$1.50

SUNBURST (Mitchell 1937). Tested in three regions — the Pacific Northwest, the Mid-West, and New England, and definitely proving itself a real headliner in each case, this fine iris is a fit companion for Sydney B. Mitchell's other championship yellows. Reports, in fact, include the opinions of one very competent judge to the effect that Sunburst is Sydney B. Mitchell's finest yellow. Certainly a muchly desired iris, for it is of a new tone, and entirely distinct in form. The color is a deep rich yellow self, deeper than California Gold, but soft instead of bright, and yet a pure yellow. Good low branching, and has endured particularly hard seasons and proven that it is not only perfectly hardy, but very vigorous in every case. Of entirely different parentage from any of the other new yellows, therefore completely distinct. Mid-season. 42-inch. \$2.00; 3 for \$5.00

SUNOL (Mitchell). A very popular honey yellow. "A real 'must have' blend" according to one of our East Coast customers; and another says "Sunol was my pride and joy."

Soft honey yellow with the faintest flush of lavender in the center of the falls. In form of bloom, Sunol is a model for any iris of equal height — for the stalks are low and ideally branched, each stalk carrying eight to nine beautiful flowers. First award, California Spring Garden Show, 1932. (Given only on rating of 90 or over). Mid-season. 37-inch. 50c; 3 for \$1.25

SUNTAN (Mitchell 1935). One of the very finest garden clumps imaginable—perhaps the finest of all recent introductions for that purpose.

Standards deep glistening gold, and beard of orange. Falls rich brown. The combination of bright yellow standards and bronze falls gives the flower the attractiveness of a beautifully tanned bathing girl. H. M., A. I. S., 1936. Mid-season. 27-inch. \$1.00; 3 for \$2.50

TAOS (Mitchell 1935). A rich, ruddy blend of yellow and coppery red, giving an effect of russet red. Standards a pinkish bronze suffusion, with yellow beard, and falls of corinthian red. Like a larger, brighter King Midas. 30-inch. \$1.00; 3 for \$2.50

TENAYA. Larger, taller and better branched than the colorful Modoc, we regard Tenaya as one of Prof Essig's finest introductions. Has the same glowing velvety blackish red-purple as Modoc, but with the better qualities mentioned above. Mid-season. 30-inch. H. M., A. I. S., 1936. 60c

THE RED DOUGLAS (Jacob Sass 1937). Tall, well branched, and of fine form with a general color effect of bright red-purple, brightened by its showy orange beard. Brown haft markings. Blooms immense. Very highly rated in the Mid-West, having received its first award, an H. M. from the A. I. S. before it was introduced. Mid-season. 40-inch. \$20.00

TIOGA (Salbach 1931). This fine deep velvety blue and violet bi-color has received much praise, both in our own and other gardens. A tall, well branched iris that is most regal in appearance. The large broad falls are horizontal and both falls and standards are well proportioned. Heavy substance and smooth texture, and delightfully fragrant. Blooms over a long period. Mid-season. 40-inch. 35c; 3 for 75c

TIPO RED. After "sitting on the fence" undecided about what to do with this vividly colored iris, we tested it by placing it in our show garden. The result was so many requests for the iris that we sold a great many plants in the garden under the designation "Red-toned seedlings." Most floriferous. Well and low branched. Color: rose-red. Early mid-season. 36-inch. 35c; 3 for 75c

TIGER-TIGER. A fine large flowered brown iris from the Wareham collection. Very bright, and of good size and habit. Bronze standards, velvet red falls. Late. 24-inch. 50c; 3 for \$1.35

UKIAH (Essig). A tall deep velvety brown iris well named for a tribe of California Indians, as its rich tones remind one of the ruddy brown face of the Indian. Bred from Mrs. Valerie West, and retaining the vigor and fine habit of this parent, Ukiah, in our estimation, is the leader in its color class. H. M., A. I. S., 1935. Mid-season. 38-inch. \$1.25; 3 for \$3.00

VALIANT (Sturtevant 1937). A very distinct new iris with standards of iridescent old gold (Ridgway) with strong orange beard and haft of old gold with balance of falls wistaria violet. Perfectly branched and proportioned, with well domed standards. This was from a cross Miss Sturtevant made while visiting Mr. Mitchell's gardens some years ago — and which has proved itself very fine in both Miss Sturtevant's garden and our own. Early mid-season. 36-inch. \$2.00; 3 for \$5.00

VALOR. A very tall and handsome deep blackish blue violet bi-color. Well branched, carrying bold flowers ideally formed. Striking in large plantings, easily a leader in its color class. A. M., A. I. S., 1936. 40-inch. 50c

VERT-GALANT. Coppery red, shading to garnet, with yellow throat, reticulated brown. The oval flower has a fine, smooth finish. The plants are tall and husky. Awarded Dykes Medal in France, 1929. Mid-season. 40-inch. 40c

WABASH (Williamson 1936). For a long time we have been looking for a good big iris with white standards and falls deep blue. Wabash fills the bill in every particular. It is described by the introducers as "A sensation in Iris of this type. You can see it a city block," and comments by A. I. S. judges include: "One of the most beautiful irises ever introduced," and "Far ahead of others in the amoena class." Technically described as standards white, falls hyacinth violet, edged white. H. M., A. I. S., 1937. 40-inch: \$5.00

WILLIAM CAREY JONES (Brehm). Our choice as the best dollar for dollar buy in a cream colored iris. Sturdy growth, with flowers of clear cream. Inherits a heavy, leathery texture and an unusually smooth finish from its Dominion ancestry. Growth excellent and ideal in every way. Created by George Brehm, a Seattle amateur. Little known to date because it is sparsely distributed. Nevertheless it ranks with the best of the new cream colored iris. An unexcelled "buy" at the prevailing price. 30-inch. 60c; 3 for \$1.50

WINNISHIEK. An intense deep blue bi-color. Fine texture, well branched, and perfectly shaped. Very floriferous. One of the most popular iris in these shades. Mid-season. 36-inch. 35c; 3 for 75c

Carl Salbach . . .

WILLIAM A. SETCHELL (Brehm 1938). One of the most showy iris we have ever grown, a variety which is winning for itself as much attention and praise as did the first big yellows — for it is far and away the largest iris ever grown, being both tall and broad. Actual measurements show the flower to be consistently seven inches tall, with immense falls 3½ inches wide and 4 inches long.

In addition, its color is compellingly regal and rich. The color is: standards of steel blue and falls of violet-blue, adding great strength to its appearance of mammoth size. Tall, and well branched, with an ample quota of blooms, it flowers out with three of its immense flowers open at once with more to come — a magnificent specimen. The flower holds up as well as could be expected in view of its tremendous size.

Bred in Seattle, Washington, this new giant flowered in perfect ease, thereby indicating complete hardiness.

Named for Professor William A. Setchell, of the University of California, by Mr. George Brehm, who is a camp-mate of the latter's at the Bohemian Club Grove. Mid-season. 42-inch. \$17.50

WILLIAM MOHR. Most orchid-like of all iris, this unusual hybrid is the most distinct variety grown. Only Grace Mohr, the giant Ormohr, and Mohrson are at all similar, and they were achieved only after years of effort. The foliage and leaves of William Mohr are always small, but the blooms are simply immense. Well portrayed by the color picture. Does best when fertilized and watered, but must have excellent drainage. Should be moved every two seasons. The ground color is pale lilac, standards flushed darker, the whole flower beautifully veined manganese violet. Substance and shape of the very best, a very large flower; actual measurements showing standards 3¼-in. by 2¼-in., and falls 3-in. by 2-in. Stems strong and rigid, 20-in. to 24-in., usually four flowers on each. Splendid in mass and a rapid increaser. Practically the only iris which can be grown in window or other boxes or pots. A. M., R. H. S. Rhizomes naturally small. Early. 35c; 3 for 75c

W. R. DYKES. A big, though short yellow that is wonderful for breeding, but is now surpassed for garden purposes. An erratic doer, even in California. Early mid-season. 24-inch. 60c

ZUA. Most unusual, this pale porcelain blue iris, so light in color it approaches white, is most enchanting. The petals are crinkled like crepe paper. Not well known because it blooms before the bulk of the iris flower, but delightful. Would be most fitting in a rockery. Very early. 14-inch. 25c



SALBACH GARDENS IN IRIS TIME

SPECIAL COMBINATION OFFERS

Sent by prepaid post. All varieties carefully labeled.

Note: No substitutions will be allowed in these collections.

POPULAR FAVORITES

El Capitan — Blue
Frieda Mohr — Pink

Indian Chief — Bronze-red
Los Angeles — White, stitched blue

Moonbean — Light yellow
Shasta — White

One rhizome, each, all six iris above, labeled.....\$1.25

NEW FAVORITES

Anna Marie Cayeux — Violet-pink
Cryosoro — Bright yellow

Grace Sturtevant — Rich bronze
Padre — Tall Rose-purple

Sir Michael — Blue bicolor
Sunol — Honey yellow

One rhizome, each, all six iris above, labeled.....\$1.60

BOTH NEW AND POPULAR FAVORITES COLLECTIONS

(12 iris, labeled).....\$2.65

NOVELTY COLLECTION

Dark Knight — Mahogany
Indian Love Call — Bronze

Natoma — Cinnamon
Neon — Bronze and yellow

Portola — "Red" and yellow
Sunburst — Rich yellow

One rhizome each, all six iris above, labeled.....\$4.00

MASSING COMBINATION

12 El Capitan — Blue

12 Rialgar — Small, bright yellow

12 Frieda Mohr — Pink

Twelve rhizomes, each, all three above, each variety labeled (36).....\$4.25

"YOUR CHOICE" COLLECTION

Your Choice, from all varieties catalogued at 25c (or less) per single rhizome, excepting Clara Noyes, Cryosoro, Depute Nomblot, Irma Pollock, Midgard, Mirasol, Mrs. Valerie West, Pink Satin, Santa Clara, and Zua.

Any ten, labeled — \$1.85

Any fifteen, labeled — \$2.60

Any twenty-five, labeled — \$3.75

BLUE RIBBON TEN

Berkeley Nugget
Ronda

El Capitan
Frieda Mohr

Padre
Purissima

Rob Roy
Rubeo

San Francisco
Santa Barbara

One rhizome, each, all ten, labeled\$2.75

Three rhizomes, each, all ten, labeled (30)\$6.50

UNUSUAL, MIXED TYPE, IRIS SET

(Including 1 Siberian, 1 Spuria, 1 Dwarf, 1 Oncocyclus Hybrid, 1 tall Bearded Iris, and two other types).

Aurea (Spuria)
Babet (Siberian)
Kermesiana
Pseudacorus Gig.

} See page 26

} September Delivery

Snow Maiden (Page 23)
Peshawar (Page 20)
Moki (Page 18)

} Ready
June 1

All seven different iris (above), labeled, (\$9.75 value) — for \$3.90

MISCELLANEOUS TYPES OF IRIS AND TULIPS

JAPANESE IRIS

For several years we have been searching for outstanding, "different" Japanese iris. We have located about a dozen that come up to our standards, but unfortunately, we have been able to obtain sufficient stock to list only seven of these this season. Japanese iris, which bloom just after the bearded iris, are water lovers, but can be easily grown in the ordinary garden if they get plenty of water.

The varieties:

- No. 12.** Deep rich navy blue shading to royal purple. Three-petalled, with broad falls. 50c
- No. 13.** Clear deep blue, marked with gold stripe. A true blue and gold combination. Six petals. 75c
- DREAM.** Pale orchid lavender with tiny lavender pink standards. An outstanding beauty. \$1.00
- KOMOCHI GUMA.** Very striking, being a big, round and broad dark blue, veined red-violet. The coloring greatly resembles the pattern of the bearded iris William Mohr, although it has more the appearance of a bit of priceless China than the latter. \$1.00
- MOMIJI NO TAKI** — Lilac Pink markings on white gold center. Six petals. \$1.00
- OLYMPIA.** Very broad white petals with a few blue lines. Small standards of lavender pink. 75c
- WAVES ON MOONLIGHT.** Fine big double white. 50c
- GROUP COLLECTION.** One rhizome each, all seven. \$4.50

SPURIA OR TALL BEARDLESS IRIS

Bright and showy, on tallest of stems, and easily grown, the spuria iris (often confused with the bulbous Dutch and Spanish iris) are most useful for any purpose. The spurias grow four feet tall on slender stems with blooms somewhat resembling the Dutch and Spanish iris, but are propagated and sold from root divisions.

Culture is nearly opposite that of the bearded iris. Planting time is late fall, they bloom after the bearded iris, they do best in moist soil and the crowns should be planted about three inches below the surface. They do, however, require sun. September delivery.

The varieties:

- AUREA.** Finest of the yellows, having a gleaming deep yellow color, brighter than Monnieri. 40c; 3 for \$1.00
- MONNIERI.** Splendid yellow, surpassed only by Aurea. Flowers large, color deep golden yellow. Very brilliant. 25c; 3 for 50c
- OCHROLEUCA.** Creamy white with gold yellow center. Very showy. 25c; 3 for 50c

TULIPS

We have selected eleven varieties, each as the finest in its particular color, and the eleven forming a group that adequately covers the full available color range.

Our stock is imported from a Holland firm of highest repute. Delivery in October, postpaid. Six at the dozen rate.

- AMBROSIA** — Coppery salmon.
15c each; 3 for 30c;
12 for 90c; 50 for \$3.00
- CARRARA** — Finest white.
15c each; 3 for 35c;
12 for \$1.10; 50 for \$4.00
- CLARA BUTT** — Clear pink.
10c each; 3 for 20c;
12 for 65c; 50 for \$2.25
- FARNCOMBE SANDERS** — Rose scarlet.
10c each; 3 for 20c;
12 for 65c; 50 for \$2.25
- INGLESCOMBE PINK** — Salmon rose.
10c each; 3 for 20c;
12 for 65c; 50 for \$2.25
- INGLESCOMBE YELLOW** —
Canary yellow 10c each; 3 for 20c;
12 for 65c; 50 for \$2.25
- PRIDE OF HAARLEM** — Rose red.
10c each; 3 for 20c;
12 for 65c; 50 for \$2.25
- SPATULATUM MAJOR** — Crimson.
10c each; 3 for 20c;
12 for 65c; 50 for \$2.25
- LOUIS XIV** — Bronzy violet.
10c each; 3 for 25c;
12 for 75c; 50 for \$2.75
- MOONLIGHT** — Pale yellow.
10c each; 3 for 25c;
12 for 75c; 50 for \$2.75
- ORANGE KING** — Orange.
10c each; 3 for 25c;
12 for 75c; 50 for \$2.75

MISCELLANEOUS IRIS

Both Pseudacorus and Kermesiana thrive in damp spots. The former is very tall, the latter short. Delivery for both is made in September.

KERMESIANA. A very interesting form of the iris Versicolor in the claret red tones. Grows and looks very much like the Siberian type. Suitable for a wet or swampy location, but will grow anywhere if kept well watered. 40c; 3 for \$1.00

PSEUDACHORUS GIGANTEA. Deep rich yellow with broad flat blooms styled like those of a Japanese iris; most unusual. Prefers a damp spot, and may be used in water gardens. 50c; 3 for \$1.35

STYLOSA. Plants are low growing with long grass-like foliage. Flowers lavender blue with orange tongue. Delightfully fragrant. Begins blooming in September on the Pacific Coast and continues throughout the winter.

Unusual for borders, as the grassy evergreen foliage is very attractive even when no flowers are in bloom. Delivery from June 1, on. 25c; 3 for 50c

SIBERIAN TYPE IRIS

A beautiful, graceful type of small beardless iris. Daintier than the Spuria type, as the foliage grows half as high.

The stem is 15 to 25 inches for Perry's Blue, and 18 to 28 inches for Emperor. The Siberian iris grow in fine clumps from fibrous roots, and, like the Japanese iris, like plenty of water. Their culture is almost identical to that of the Japanese iris.

BABET (Nesmith 1937). This delicate new creation is most distinctive and attractive. Color — lavender-lilac, perfectly set off by its delightful yellow haft markings. A real gem. \$3.00

EMPEROR. Rich glowing reddish violet blue. Very floriferous. A delightful specimen in the garden and unexcelled for strikingly distinct table and other decorations. Tall. 35c; 3 for 75c

NEW BLUE. An outstanding variety which we received without a record of its name, hence we call it "New Blue." It is the clearest blue of all the Siberians, being deeper in color than Perry's Blue. An outstanding variety. \$1.00

PERRY'S BLUE. Beautiful flowers of light lavender blue with white markings on the falls, which are almost horizontal. Ideal for clump planting on edge of a pool. A. M., R. H. S. 35c; 3 for 75c

RED EMPEROR. Rich red violet. The reddest Siberian. 50c

SNOWCREST. A large and attractive new waxy white variety. Easily the best white Siberian. H. M., A. I. S., 1936. 60c; 3 for \$1.50

GROUP COLLECTION. One each, Babet, Emperor, Perry's Blue, Red Emperor, and Snowcrest. \$3.25

REGELIA TYPE IRIS

(Rock Gardeners' Delight)

Although particularly adaptable for rockeries, because of the slender, well-proportioned foliage, the blooms of this type of iris resemble those of the pogon (tall bearded) iris, except that the falls and standards are slightly narrower and the rhizomes slightly slenderer. The treatment is almost identical to that of the pogon type. We list only Hoogiana, which is by far the most outstanding variety:

HOOGIANA (Regelia Type). Brought to America from Turkestan — an original species. A prize for the rock garden if there ever was one. The blooms are of clear, soft blue, with texture as smooth as silk, with very slender falls and standards. Plant and bloom perfectly proportioned, and both the foliage and bloom are ideal to give a striking natural effect in a rock cranny. Plant where there is plenty of earth for the long roots, however. Color soft, suave chicory blue. Blooms early through mid-season. 22-inch. 60c

DUTCH

This year, we are listing two sizes of bulbs, large and medium. For outside and for cold glass, medium will give splendid results in most cases. Generally, they will flower nearly as well as the large, but the difference, of course, will be noticeable if the growing conditions are unfavorable. The large bulbs will stand a little more abuse. Please note, however, that Golden Bronze and Golden Lion are of a different type (Spanish) and the bulbs are not as large as those of the others. Wedgewood grades two sizes larger than the rest although the results will be the same. The Dutch iris are unsurpassed as cut flowers,



GOLDEN LION

as they keep from ten to fourteen days and their hardiness and wide color range have made them most popular for garden purposes. The varieties we are offering

IRIS

are the best of the world famous DeGraff hybrids, and are a distinct improvement over the other Dutch and Spanish iris commonly sold. As with the bearded iris, we send out only the finest stock. Each variety will be labeled unless specified otherwise. Planting season for Dutch iris is from September 15 to November 15. Dutch iris are grown from small bulbs, and have long, wiry stems. They can be planted in very small space, and are most easily grown, and require little care. They are hardy except in the extremely cold sections of the country, where they should have a good mulch of salt hay or tree boughs during the winter.

(L. equals large bulbs; M equals medium sized bulbs; J. equals Jumbo sized bulbs; E. L. equals extra large sized bulbs; 5 at the 10 rate; 100 bulbs of a single variety at 8 times the ten price)

	Each	3	10	25		Each	3	10	25
A. Bloemaard: Standards dark blue, falls lighter blue. Large flower. Early.	L. 10c	25c	70c	\$1.50	Huge Blue: Giant new blue.	L. 50c	\$1.35
Blue Horizon: Soft sky blue with narrow orange stripe. Outstanding.	M.	20c	45c	1.00	Indian Chief: Violet, tinged bronze. "Different".	L. 10c	25c	70c	\$1.50
Gerrit Van Hees: Huge flowers of deep blue with pale yellow stripe. Standards and falls very broad.	M.	15c	35c	75c	Jacob De Wit: Deep vivid blue.	M.	20c	45c	1.00
Golden Bronze: One of the finest of all. Standards dark violet, falls attractive golden bronze.	L. 10c	25c	70c	\$1.50	J. W. Wilde: Large light yellow.	L. 10c	25c	70c	\$1.50
Golden Lion: New. A fine yellow, most distinct because of its frills and lacinations.	M.	20c	45c	1.00	Leonardo Da Vinci: Standards white, falls deep yellow.	M.	15c	35c	75c
Golden Sunshine: Fine new yellow. Very large.	L. 15c	30c	80c	\$1.65	Polar Snow: New giant, showy white.	L. 10c	20c	60c	\$1.30
Heemskerk: Very early blooming and richer in color than any other yellow Dutch iris. Large blooms. Very fragrant.	L. 20c	45c	\$1.25	Violet Queen: Finest lilac-lavender of all. Excellent.	M.	15c	40c	85c
	L. 75c	\$2.00	Wedgewood: Medium blue. The first of all to bloom. Vigorous.	L. 50c	\$1.35
	M. 50c	1.35	White Excelsior: Pure white, set off by narrow yellow stripe on falls.	L. 15c	30c	80c	\$1.65
	L. 15c	30c	80c	\$1.65	Yellow Queen: Pure golden yellow.	M.	20c	45c	1.00
	M. 10c	20c	55c	1.20		L. 10c	25c	70c	\$1.50
						M.	20c	45c	1.00

GROUP COLLECTIONS OF DUTCH IRIS

Finest Assortment — Not labeled, including varieties in blue, yellow, white, and lavender.

Large Size Bulbs.....25 for \$1.25; 50 for \$2.35; 100 for \$4.50

Medium Size Bulbs.....25 for 90c; 50 for \$1.70; 100 for \$3.25

NEWEST VARIETIES COLLECTION — In large bulbs — Ten each, labeled, of Gerrit van Hees, Golden Bronze, Heemskerk, and J. W. Wilde (40 bulbs).....\$2.50

NEWEST VARIETIES COLLECTION — In medium sized Bulbs—Ten each, labeled, Gerrit van Hees, Heemskerk, and J. W. Wilde (30 bulbs).....\$1.10

LANDSCAPE AND CUT-FLOWER COLLECTION — Twelve each, labeled, of the following, all in medium sized bulbs: Blue Horizon, Jacob de Wit, Indian Chief, Leonardo da Vinci, Violet Queen (60 bulbs)....\$2.00

COMPLETE COLLECTION — Each variety listed, except Golden Lion, Golden Sunshine, Huge Blue, Polar Snow. 3 bulbs each, large size (labeled) (39 bulbs).....\$2.75

NARCISSI

Our narcissi come from the most reliable sources (American grown) and are all double nosed bulbs. Delivery in fall. We have limited our list to the "best buys", those narcissi that are truly outstanding. Novelties are now lower in price, and outstanding new varieties, such as Hector Treub, Lucinius, Silver Star, and John Evelyn are now priced low enough for ordinary garden use. Post-paid to anywhere in the 11 Western states; add 1c per bulb for additional postage elsewhere.

HECTOR TREUB — Bigger King Alfred with better form, and almost as deep a yellow. Very showy. 20c; 3 for 50c; 10 for \$1.25; 25 for \$2.60

KING ALFRED — Deepest golden yellow. Large. 20c; 3 for 50c; 10 for \$1.25; 25 for \$2.60

LUCINIUS — Soft, deep yellow. Small cup, full broad perianth. A fine garden variety, and the best late blooming yellow. 15c; 3 for 35c; 10 for \$1.00; 25 for \$2.25

TRESSERVE — Huge, with deep yellow trumpet, lighter yellow perianth. 15c; 3 for 35c; 10 for \$1.00; 25 for \$2.25

SPRING GLORY — Large. Trumpet yellow, perianth white. 10c; 3 for 25c; 10 for 80c; 25 for \$1.75

LA VESTALE — Best of the creams. Trumpet ivory, perianth white. 35c ea.; 3 for 90c; 10 for \$2.75

GERTIE MILLAR — Very large, with short, very broad primrose cup, white perianth. 50c; 3 for \$1.25

SILVER STAR — Improved Kitchener. White perianth, light yellow cup. 25c; 3 for 60c; 10 for \$1.50; 25 for \$3.30

TUNIS — Very large. Creamy white, except for broad cup edging of clear primrose. Like a King Alfred in a new color. 50c; 3 for \$1.25

JOHN EVELYN — Immense pure white perianth, large frilled (short) lemon yellow cup. 25c; 3 for 60c; 10 for \$1.50; 25 for \$3.30

MRS. NETTIE O'MELVENNY — Very large pure white perianth, very small light yellow cup. 15c; 3 for 30c; 10 for 95c; 25 for \$2.50

ORANGE QUEEN — Jonquil hybrid. Intense orange in color, with two or three flowers to the stem. Flowers small, growth short. 15c; 3 for 35c; 10 for \$1.00; 25 for \$2.25

SALBACH SELECTED SEED SPECIALTIES

Fertilizer will help, and so will regular cultivation — but dollar on dollar spent for plant food, and hour on hour of garden work will not produce prize winners if the plants come from inferior seed strains. That is why we are confident that no real

gardner will begrudge the few extra cents required to secure the seeds of the finest rare strains — and that is why we have purchased seeds that actually cost us from two to ten times as much as would the ordinary strains.

NOTE — Seeds are of annuals unless marked otherwise: "P" — Perennials.

AQUILEGIA (*Columbine*). P. *Waller-Franklin strain*. Simply immense blooms with extra long spurs. A magnificent strain, described by Sydney B. Mitchell in "From a Sunset Garden" as the finest American strain equal to that of any foreign firm. We have received more than one report from customers to the effect that this strain has produced flowers that have attracted garden lovers from miles away.

Blue Shades Superb (*Waller-Franklin*). Long spurred. Beautiful clear blues.....pkt. 25c; 1/16 oz. 75c

Crimson Star. Long spurred. A large and brilliant variety with long crimson spurs and white corolla. Semi-dwarf growth.....pkt. 25c; 3 pkts. 60c

Pink Shades Superb (*Waller-Franklin*). Long spurred. In variations of pink.....pkt. 25c; 1/16 oz. 75c

Waller - Franklin Hybrids. Long spurred, mixed — in orange, scarlet, yellow, pink, rose and white shades. 25c; 1/16 oz. 75c

Group Collection. One packet each, Blue Shades Superb, Pink Shades Superb and Crimson Star.....60c

Remarkable Strains

Leaders in the quest for perfection are these remarkable strains, each of which is the result of many years of painstaking effort. Each, we feel, ranks as a supreme achievement in its field.

Aquilegia, Waller - Franklin Strain (*Columbine*) — with its fine colors and large blooms, creates a sensation wherever grown.

Delphinium, Vetterle and Reinelt Strain — A new standard in delphinium, an epoch making achievement of a master hybridist.

Helianthemum — Taken from selected plants grown from seed from the world's two finest *Helianthemum* collections.

Iceland Poppies, Santa Maria Inn strain and re-selection—Grown by Frank J. McCoy, the most famous of Iceland Poppy lovers.

Pansy — "Best-by-Test" strain, selected after "blind-fold" plantings in our own test garden.

Ranunculus, Tecolote Giant Strain — Used extensively by commercial growers throughout America — and more satisfactory than plantings from bulbs.

Viola — New "Brilliant Mixture"— Full of rich, bright shades.

It Is Perfect

"Early this spring . . . I purchased 1/8 oz. of your hand-pollinized delphinium seeds. Those that are now coming into bloom are the finest I have ever seen." — Illinois customer.

"My delphinium plants from your seed have just started to bloom, and they are wonderful — far ahead of anything I have ever grown . . . There is one (white) has bloomed, and it is perfect. I would not sell that one for any amount." — Pennsylvania customer.

BABY BLUE EYES (*Nemophila Insignis*). This delightful native of California ranks with the poppy as the finest of wild-flowers suitable for domestic use. Bright little blue flowers with white center. Attractive foliage, easily grown, and ideal for naturalizing. pkt. 10c; 3 pkts. 20c; 1/2 oz. 35c

BROOM (*Cytisis*). P. For Westerners who wish colorful and unusual shrubs, we have secured a limited supply of hybrid broom seeds. Can be grown on the Pacific Coast and elsewhere where the winter is not too severe. Full color assortment, variegated, in brilliant shades of red, pink, gold, apricot, brown, rose, orange and other colors. The shrubs are literally covered with myriads of the bright little pea-shaped flowers. Drought resistant. Gathered from Sydney B. Mitchell's own garden. We consider it most significant that "Pomona", one of the brooms from which our seed is gathered, was given the 1936 California Spring Garden show award as the finest new horticultural creation shown. Stock limited.....pkt. 50c

BROOM, Dwarf (*Cytisis*). P. As above in full new color range but selected from plants, 1½ to 2½ feet high. 80% at least, will be dwarf....pkt. 40c

COREOPSIS, Double New Gold. P. Blooms as large, and colored as bright as the single varieties, but better and more brilliant, thanks to the doubling of petals.....pkt. 15c; 1/8 oz. 50c

Re Testimonials

We do not care to embarrass our customers by using their names in connection with the testimonials we publish in our catalog. However, we have each quotation in our files, and will gladly give the names of the authors of each to anyone requesting them.

DELPHINIUM (*Pacific Strain*). P. Several years ago, we had the pleasure of being the exclusive introducer of this sensational strain, and can report that our sales have increased many times over since it has been possible to compare the spikes with those of other hybridists.

The largest spikes from Pacific delphinium seed are well over five inches in diameter, yet they retain a graceful and balanced appearance, and are most attractive in color. The plants are tall, the spikes full-blooming, and the individual florets range up to 3 inches in diameter.

With his growing fields close to the ocean, Mr. Reinelt has had to pay particular attention to mildew resistance — hence the Pacific Delphinium offer an unusually strong mildew resistance.

(All seed from originator's stock).
NEW SEED OF ALL DELPHINIUM READY JULY 1.

Lavender Shades. Color range from clear lavender to lilac lavender with contrasting white bees. Individual florets 2½ to 3 inches in diameter. Slender strong stems with well spaced florets, long spikes and good branching habit. Mildew resistance 60 to 80%. pkt. 50c; 1/16 oz. \$1.50

Pastel Shades. Color range from light lavender to deep smoky lavender, generally of two tone combinations, with brown or black bees. Individual florets 2 to 3 inches in diameter. Slender woody stems with beautifully formed spikes. Mildew resistance 80 to 90%. pkt. 50c; 1/16 oz. \$1.50

Light Violet Shades. Color range from light to medium violet with white bees. Individual florets 2½ to 3 inches in diameter. Huge well formed spikes. Mildew resistance 20 to 40%. pkt. 50c; 1/16 oz. \$1.50

Dark Violet Shades. Very dark velvety violet with black bees. Individual florets 2½ to 3 inches in diameter. Huge long spikes. Mildew resistance to 80%. Pkt. 50c; 1/16 oz. \$1.50

Clear Blue Shades. Color range from light to medium blue with white, fawn, and black bees. Individual florets 2 to 2½ inches in diameter. Excellent growing habit. Mildew resistance 40 to 60%.....pkt. 50c; 1/16 oz. \$1.50

Dark Blue Shades. Color range from medium to dark blue with white and dark bees for contrast. Thin woody stems, long well-formed spikes. Individual florets 2 to 2½ inches in diameter. Mildew resistance 40 to 60%. pkt. 50c; 1/16 oz. \$1.50

White Mixture. Fine strong whites, obtained from inter-crossing with the sturdier blues....pkt. 60c; 1/16 oz. \$1.85

Balanced Assortment. Including seeds from the pastel, violet, blue, and lavender mixtures, listed above. pkt. 50c; 1/16 oz. \$1.50

Finest Iris . . .

DELPHINIUM — New Color Series (*Pacific Strain*). Selections from the finest in Pacific delphinium, 90% true to name from seed, except for slight variations within the color. The most outstanding novelty releases in years of delphinium breeding, and available at popular prices for the first time.

King Arthur. Brilliant Royal Violet with large white bee. Individual florets 2½ to 3 inches in diameter, with very thin woody stems and small foliage. Very long, graceful spikes. Mildew resistance from 80 to 90%
pkt. \$1.50; ½ pkt. 75c

Guinevere. Light lavender self with white bee. Individual florets 2½ to 3 inches in diameter, large spikes. Excellent branching habits. Mildew resistance 50 to 70%.
pkt. \$1.50; ½ pkt. 75c

Summer Skies. Perhaps the most sensational release of the series. Clear-est light blue with white bee. Individual florets 2 to 2½ inches in diameter. Slender woody stems with very strong branching habits. Mildew resistance 40 to 60%.
pkt. \$1.50 ½ pkt. 75c

Group Collection. One-half packet each, (King Arthur, Guinevere, and Summer Skies)\$2.00

1939 Introductions

Black Knight. The darkest of them all. Individual flowers 2½ to 3 inches in diameter of beautiful round form with heavy velvety texture which gives the color luminosity and vividness not seen before in delphinium. Very long well formed spikes — a true show flower.....pkt. \$2.00; ½ pkt. \$1.00

Blue Jay. Every delphinium lover seeks the true blue color which is so rare in nature and so difficult to obtain. This series is our bid toward attaining it.

The color is striking clear medium to dark blue very intense and alive with dark contrasting bee.
pkt. \$2.00; ½ pkt. \$1.00

Galahad. Giant new race of whites having all the good quality formerly lacking in white delphinium. Individual flowers 3 inches in diameter, large well formed spikes, high percentage of mildew resistance.
pkt. \$2.00; ½ pkt. \$1.00

Lancelot — Pure lilac with white bee. An entirely new color.
pkt. \$2.00; 1/2 pkt. \$1.00

Deserving Attention

You who plant these outstanding novelties will have something new, something different, and something really worthwhile:

Broom, Tall and Dwarf — will give those whose climate permits, a shrub

Below — A spike of **WHITE DELPHINIUM** from the Pacific Strain. Whites are now available with the size and sturdiness of the other colors.



that is as striking and colorful as one could imagine.

Delphinium — Now obtainable in colors new to delphinium. All from the famous "Pacific" strain, of course.

Godetia — Kelvedon Glory — The finest variety of all godetia.

Stock — the Giants of California varieties in their fine, outstanding habit.

Pansy — Goldelse and Coronation Gold, the two new rich gold varieties.

Viola — Blue Butterfly, the viola with the same beautiful light blue, dark blue-violet tones as the iris Amigo.

COLUMBINE, from the outstanding Waler-Franklin strain.



DELPHINIUM—Special Hand-Pollinated Seed. "Pacific" strain. The hand-pollinated seed is taken from selected crosses made personally by Mr. Reinelt and, judging from every trial we have made, and from the reports we have heard, will produce delphinium that are without question, the very finest.

We have segregated the colors into groups and are offering 10 different shades, classing the self-colors with mostly white bees and the pastel combinations with dark bees. The blues are approaching in size and clearness of color the ultimate standard in Delphiniums of today.

COLORS:

- Clear lavender shades
- Lilac lavender shades
- Light blue shades
- Dark blue shades
- Blue violet shades
- Light violet shades
- Soft violet shades
- Dark violet shades
- Lavender pastel shades
- Smoky pastel shades
- White — Very pure, but flowers not quite as large as those of Galahad
- White — Black bee

Separately — Any color, above —
pkt. \$2.00; ½ pkt. \$1.00

Group Collections —

- One pkt. each, any five — \$8.00
- Half pkt. each, any five — \$4.00

Mixture — Colors above, excepting whites, in balanced mixture
pkt. \$2.00; ½ pkt. \$1.00

DELPHINIUM — New Color Series (*Pacific Strain*), Hand-Pollinated seed. Improved over the general listing (Page 29) in such factors as trueness, color, size, habit, etc.

King Arthur, Hand-Pollinated
pkt. \$3.00; ½ pkt. \$1.50

Guinevere, Hand-Pollinated
pkt. \$3.00; ½ pkt. \$1.50

Summer Skies, Hand-Pollinated
pkt. \$3.00; ½ pkt. \$1.50

Group Collection, all three, above—
1 pkt. each \$8.00; ½ pkt. each, \$4.00

1939 Introductions

Black Knight, Hand-Pollinated
pkt. \$5.00; ½ pkt. \$2.50

Blue Jay, Hand-Pollinated
pkt. \$5.00; ½ pkt. \$2.50

Galahad, Hand-Pollinated
pkt. \$5.00; ½ pkt. \$2.50

Lancelot, Hand-Pollinated. Pure lilac with white bee. An entirely new color in delphinium.
pkt. \$5.00; ½ pkt. \$2.50

ESCHSCHOLTZIA (California Poppy).

Dazzler. Deeper in color than Fire-flame—rich, glowing blood red. Silver foliage, a striking contrast. A British novelty which is the finest "California" poppy of all.
pkt. 15c; 1/4 oz. 60c; oz. \$1.50

Hybrida Mixture. Of dwarf erect varieties, containing new colors in Eschscholtzia, including soft pink, scarlet, chrome, copper, red, claret, and royal purple.
pkt. 15c; 1/4 oz. 60c; oz. \$1.50

GERANIUM ZONALE. Fancy Hybrids.

P. Easily raised from seed, this fine strain will give some blooms the first year. Immense, large flower heads in pink, rose, scarlet, and other shades.
pkt. 25c

GODETIA, Kelvedon Glory.

A new color in godetia, introduced by the same hybridists who released the striking Sybil Sherwood. Vigorous and practically covered with deep glowing salmon blossoms. Imported from England.
pkt. 15c; 1/16 oz. 35c; 1/8 oz. 60c

HELIANTHEMUM (Sun-rose). P.

A most delightful dwarf evergreen perennial, three to six inches tall. Spreading, dense matly growth. Covered with brightly colored flowers resembling miniature single roses. Yellow, bronze red, pink, rose, apricot, orange and similar shades. Has attracted constant attention in our garden. Splendid for rock gardens.

We are fortunate enough to secure exclusive sale of the seed from Sydney B. Mitchell's own garden. His stock was obtained from John Nichols of Scotland, and W. M. Christy of England, who, between them, raised most of the named forms given awards at the R. H. S. trial gardens at Wisley, England. In mixed colors.....pkt. 25c



AS BIG AS A HOUSE?

Not quite, but a good sample of the great size and fine form of Pacific Delphinium.

ICELAND POPPIES (*Nudicaule*).

You who are in the habit of visiting the beautiful Santa Maria Inn half-way between San Francisco and Los Angeles are no doubt familiar with the remarkable strains of these most effective cut-flowers developed by Frank J. McCoy, manager of the Inn. Mr. McCoy has built an international reputation for the Inn by filling it with exquisitely arranged bouquets of the most gorgeous flowers obtainable. Most of these blooms he grows himself, and Iceland Poppies have been his particular hobby. He has scoured the world for seeds and has selected and re-selected until he has developed a strain that is unquestionably the finest in America and probably unexcelled anywhere.

Stand frost even when other plants wither and blacken. Very floriferous with long stems, most excellent cut-flowers. At their best sown either where they will flower or in boxes and transplanted when young.

Apricot. Probably the most beautiful colored individual variety of all Iceland Poppies — delicate apricot. Flowers of good size with long stems.
pkt. 25c; 1/32 oz. 50c; 1/16 oz. 90c

Coonara Pinks. A new strain of Iceland Poppies. Very fine. 95% pink.
pkt. 25c; 1/16 oz. 60c

Emperor. Large flowered orange.
pkt. 15c; 1/16 oz. 50c

Yellow Wonder. Large flowered bright yellow. Very long stems.
pkt. 15c; 1/16 oz. 50c

Santa Maria Inn Mixture (*Frank J. McCoy re-selections*). Re-selected from the finest strains obtainable anywhere — the best mixture you could possibly have. Orange, yellow, white, pink and other shades.
pkt. 25c; 1/16 oz. 60c

Group Collection. One packet each, Apricot, Coonara Pinks, Emperor, and Yellow Wonder (four).....60c

Selected Seeds

LINARIA, Fairy Bouquet. — (New) — (Wild Snap-Dragon). Very showy, eight to ten inches high, colors rose, yellow, pink, lavender, carmine, red, white and violet mixed. A gem for border or rock garden.
pkt. 15c; 1/16 oz. 50c

PANSY, Best-by-test Strain. We secured seeds of ten strains generally recognized as the world's finest, for testing purposes. To avoid any possible prejudice, we ran our tests "blindfold"—that is, grew and planted them under number so that even we ourselves did not know which strain was best until the test was completed. Three strains led the group, but one was easily the best of the three. We immediately tried the three best a second time, with the same strain again proving to be most outstanding.

As a result, we offer our first choice as our "Best-by-Test" Pansy strain — it was the first to bloom, the most gorgeous, had a color range as bright, but richer than those of any others, and produced by far the largest flowers.
pkt. 40c; 3 pkts. \$1.00; 1/16 oz. \$2.00

PANSY, Coronation Gold. Huge flowers in various shades of gold. Some of the blooms are as rich as those of Goldelse (below), and the remainder are of good color.....pkt. 25c

PANSY, Goldelse. Imported from Switzerland. The finest yellow colored pansy we know, but the flowers are not large. Burnished golden yellow, shading to rich vivid orange gold at the centerpkt. 25c

RANUNCULUS. A bright showy flower usually grown from tubers, but actually more satisfactory from seed, as the latter are disease resistant.

Blooms in showiest yellow, red, scarlet, orange, white, and other autumn colors, in varying degrees of doubleness.

We have been fortunate enough to secure a supply from the famous Tecolote Giant Strain, mixed colors.

Easily raised from seed sown from August to November, depending on when the cool weather starts. Can be grown on like winter flowering stocks and set out in autumn. One packet does the work of dozens of tubers, and for onlypkt. 50c

Results

One customer testifies, "All the Seeds I have had from you have been of super quality and have given excellent results." Another says, "I have had such exceptionally good results from the seeds you sent me"; and still a third says, "I am a firm believer in your slogan—Anything I buy from Salbach is good."

Carl Salbach...

Fortunately For Us

The major portion of the flower seeds in the United States are grown in California. We make frequent trips to visit the wholesale seed farms while the flowers are in bloom, and a careful study enables us to choose for our listing the most noteworthy varieties and novelties.

In addition, we conduct our own trial gardens in which we grow test plantings of novelties and strains from Europe and elsewhere so that we will be sure not to miss anything worth while. Large flowering dahlias, dwarf dahlias, and other seeds of our own raising are the best that can be had — backed by Carl Salbach's full personal knowledge of hybridizing.

This careful, planned effort to obtain the very best assures you that seeds of our listing will give you the finest, most outstanding plants that you could raise.

SCHIZANTHUS (*Butterfly Flower*). Attractive blooms, colored and formed like miniature orchids. Showy in the garden and fine in small bouquets.

New Sunset Hybrids. A well balanced blend, consisting of bright rose and carmine shades, each butterfly-like flower marked with gold or white. Two-foot plants, covered with blooms. Fine for potting, massing, or cutting. Easily grownpkt. 25c

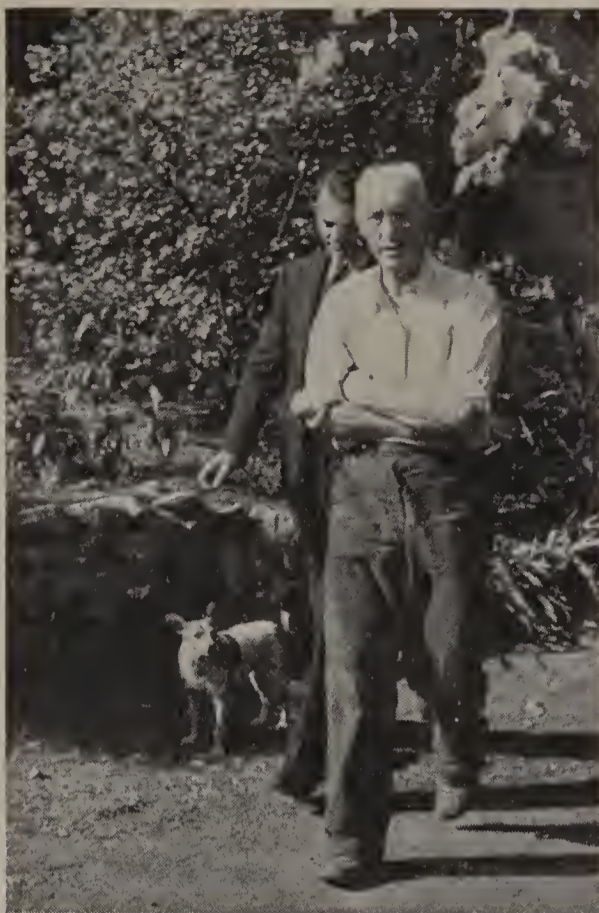
Rock Garden Hybrids. A new strain with colors similar to the Sunset hybrids, but compact in growth. Ideal for rockeries or pot plants, as they grow only six inches high.....pkt. 25c

STOCK, Giants of California. Best habit, and ideal for use wherever winter flowering is desired. Golden Gate (Cream), New Orchid (Orchid Pink), Pacific (Lilac Blue), Redwoods (Blood Red), Santa Barbara (Chamois), Santa Maria (White), Sequoia (Rose Carmine), or Tahoe (Lavender) — priced individually at pkt. 15c; 3 pkts. (of same variety) 35c; 1/16 oz. 60c

Group collection. All eight varieties, above85c

Mixture. In full color range. pkt. 15c; 3 pkts. 30c; 1/16 oz. 50c

In addition to seed items, a few iris are particularly suited to rock garden use. Perhaps the best of all are Hoogiana, slender stalked clear blue; Snow Maiden, dwarf white; and Sound Money, dwarf yellow.



CARL SALBACH, followed by FRANK REINELT, creator of Pacific Delphinium.

The dog is Sally, the Salbach dog.

THALICTRUM DIPTEROCARPUM (*Meadowrue*). P. Tall graceful perennial that freely produces its lacy sprays, each of which is covered with a myriad of diminutive lilac flowers. Especially desirable in gardens where a natural effect is desired and a graceful filler for cut-flower arrangements. pkt. 25c

VIOLA. Like small pansies, but perennial. We list only the showiest, largest, individual varieties, and our mixture is most excellent.

Just a Few Pennies

An advertisement of a few years ago carried the title "What a whale of a difference a few cents make," but in terms of your garden, this statement wouldn't tell half the story. After all, it takes just as much garden space, just as much water, and just as much weeding for you to grow a poor plant as a prize-winner. But those few extra pennies on your original purchase determine whether your garden is one that your neighbors truly envy, or whether it is "just another garden."

The item above, in one of our recent catalogs, brought this comment from one of our customers: "Referring to your heading of page 30, your catalog, cut out 'No real gardener will begrudge the few extra cents required to secure the seeds of the finest rare strains.' Your prices are much more reasonable than I find I have to pay for inferior strains." This, we believe, speaks for itself, with no further comment from us.

Blue Butterfly. An outstanding new two-toned blue that has a charm all its own — light pearly blue set off by deep rich blue, almost purple. pkt. 25c; 3 pkts. 60c

Chantreyland. Larger and generally improved over the "Apricot" viola, but the same rich apricot in color. pkt. 25c; 1/16 oz. 60c

Brilliant Mixture. A new strain that is much brighter and gayer. Very large and generally improved. Far ahead of any other Viola strain that we have ever seen. A real achievementpkt. 25c; 1/16 oz. 50c

DIRECTIONS FOR GROWING SEEDS

When sown outdoors, most seeds should be scattered over well pulverized ground then covered lightly with a layer of finely pulverized soil or sand. Large seeds, such as nasturtiums, should be covered about twice their thickness. Keep ground moist during germination and while plants are small. Thin if plants are too thick.

If seeds are started in boxes or flats, be sure to see that the bottom of the flat provides good drainage. The soil should be made up of equal portions of leaf-mold (or peat), sand, and good garden loam. This should be screened to remove any hard lumps, stones or other coarse material. Wet the soil, preferably with boiling water the day before planting. When the soil has dried out sufficiently to permit planting, loosen the top slightly and plant seeds, not too close together. Barely cover with light soil, then firm the ground with a smooth piece of board. Cover the top of the flat with a newspaper or cheesecloth. If the ground is moist at time of planting, it will not be necessary to water at planting time. Too much water is apt to cause trouble. The ground should be kept "moist" not "wet". When the seeds begin to come up, gradually lift the paper or cheesecloth to permit air and light.

The plants should be transferred to other boxes when they begin to show the second pair of leaves. Prepare the soil as when seeds are just planted, but it is well to add a little well decayed manure to stimulate the growth of the young plants. Transplant to open ground when the young plants are two to four inches high, depending on the natural growth of the various plants.

HOW TO ORDER

Please Read Carefully Before Ordering

Order Early—Early orders are solicited to prevent disappointments in case the variety selected should be sold out.

Please write your **name and address** plainly.

Shipping time for iris is June 1 to October 1, to suit customers' convenience and proper planting time.

The **stock** we ship is all first quality and rhizomes are of blooming size. Because of our long rainless summers and our well-drained hillside gardens, the plants are well matured and fully dormant before shipping time.

Substitutions — We do not substitute unless directed to do so. If late in the season, we suggest you indicate a second choice, or that you permit us to substitute with equal or greater value.

Terms — Remittance should accompany order unless shipment is to be sent C. O. D. or satisfactory credit references are given. Remit by Postal or Express Money Orders or by drafts on American banks when ordering from Canada and other foreign countries. 25 per cent will hold orders till shipping time, when they will be sent C. O. D. for balance unless otherwise arranged.

Postage — seed orders of any amount sent postpaid. On bulb orders or combination seed and bulb orders of less than \$1.00, add 15c for packing and postage. All retail orders amounting to \$1.00 or over will be delivered free to all points reached by regular Parcel Post, except for stock cataloged with a notation specifying otherwise.

Sales Tax — Add 3 per cent to cover tax on all goods delivered in California. All sales delivered to other states not subject to tax.

Non-Warranty — We give no warranty, express or implied, as to description, quality, productiveness, or any other matter of seeds, bulbs, rhizomes or plants sent out by us and will not be responsible in any way for the crop. If the purchaser does not accept the goods on these terms no sale thereof is made and purchaser must return them at once, and money will be refunded.

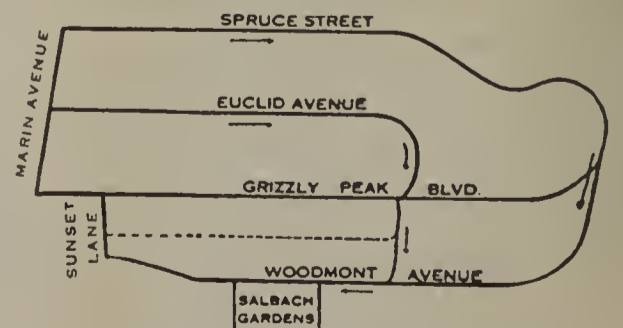
References — For our business standing, please refer to **Bank of America National Trust and Savings Association; American Trust Co. Berkeley, Calif.; Farmers and Merchants Savings Bank, Oakland, California.**

Our finest seedling gladiolus, and our rarest new varieties* will be in bloom during June, July, and earliest August; our dahlias from August to November; iris, April and May. Map, below, indicates the best routes to our gardens which are located in the hills, north of Berkeley proper. To reach Spruce Street: North on Shattuck, right three blocks on Rose, turn left onto Spruce. To reach Euclid Avenue: College Avenue extension, north across U. C. Campus, two blocks left, turn right onto Euclid. By street car — Take Euclid line, marked Cragmont; transfer to bus at end of car line and ride to Sunset Lane. (Buses run from 6:51 to 9:51 a. m., and from 3:31 p. m. to 6:31 p. m., excepting Sundays and holidays, when they run from 10:31 a. m. to 5:51 p. m.)

**Most of our standard varieties are planted at our growing fields.*

Note to Local Customers: We are open regularly for Sunday business from 9:00 a. m. to 1:00 p. m. During the iris season (April 1 to May 30) we will be open from 8:00 a. m. to 5:30 p. m. on Sundays.

If you expect to come to the gardens for iris rhizomes on Sunday, we request that you call us on the telephone or send in your order during the week so we can dig the rhizomes Saturday. We will not always be able to dig iris on Sunday.





DUTCH IRIS
JACOB
DE WITT



HAPPY DAYS



WILLIAM MOHR
NOTE: Ormoir is similar
in tone, though slightly
lighter.



DUTCH IRIS
GOLDEN
BRONZE



BEST-BY-TEST PANSIES



RUBEO



ELEANOR
BLUE