

Historic, archived document

Do not assume content reflects current scientific knowledge, policies, or practices.

2.47

LIBRARY
RECEIVED
★ MAR 1 1940 ★
U. S. Department of Agriculture.

BANNING'S GARDEN NEWS 1940

TO OUR CUSTOMERS:

A new planting season is at hand and we present to customers our list of everything for garden and home planting. We have been building this business for many years and have witnessed an increase in satisfied customers from a few to many thousands. We have been able to do this by handling only true-to-name varieties of seeds, plants and nursery stock.

We endeavor to fill all orders promptly and correctly, but errors do occur. PLEASE FEEL FREE TO CALL ANY ERROR to our attention, and we are more than glad to correct it.

We invite you to visit our new display grounds and make selections from our stock. Anything that is not listed, we will be glad to quote prices; also, on larger quantities.

We appreciate the business given us in 1939 and trust that we will be able to merit your business in 1940.

BANNING'S SEED AND NURSERY HOUSE
Wholesale and Retail
Brookfield, Missouri

In 1940 we expect to place our plants and seeds for sale in the following towns other than Brookfield:

THE HOME STORE—Seeds and Plants.....Laclede, Mo.
KING & BARGAR—Seeds and Plants.....Meadville, Mo.
FARMERS' STORE—Seeds.....Linneus, Mo.
STEPHENS GROCERY—Plants.....Linneus, Mo.
L. M. ELLIOTT—Plants.....Purdin, Mo.
J. C. LAWSON GROC.—Seeds and Plants.....Bucklin, Mo.
FARMERS EXCHANGE—Plants.....New Cambria, Mo.
C. W. HENDERSON GROC.—Seeds and Plants.....Ethel, Mo.
NEETS STORE—Seeds and Plants.....Ethel, Mo.
THE TURNER STORE—Seeds & Plants.....Goldsberry, Mo.
CORUM PRODUCE—Plants.....New Boston, Mo.

WALLACE PRODUCE—Plants.....Winigan, Mo.
FARMERS EXCHANGE—Plants.....Keytesville, Mo.
TEMPLE STEPHENS—Plants.....Brunswick, Mo.
LOVELESS GROC.—Plants.....Triplet, Mo.
BITTIKER GROC.—Plants.....Mendon, Mo.
MORRIS EXCHANGE—Plants.....Rothville, Mo.
THARP-LITTRELL CO.—Plants.....Wheeling, Mo.
THRIFT STORE—Plants.....Trenton, Mo.
BEVANS GROC.—Plants.....Spickard, Mo.
THRIFT STORE—Plants.....Princeton, Mo.

Special Notice

Our business is subject to the 2% Missouri state sales tax. Please add this amount to your order.

Prices quoted are subject to change without notice, and cancel any previous price list.

Guarantee

"On proper proof, we guarantee to replace or refund the amount paid on any seeds, nursery stock or plants which are not true to description under which they are sold. However, in no case shall we be liable for any sum greater than the original purchase price of such seeds, nursery stock or plants."

Free Seeds

With any order for nursery stock, seeds or plants amounting to \$1.00 or more, we give free one packet of popcorn or flower seed, your choice.

Nursery Stock

We offer a complete line of true-to-name stock. We do not offer cheap, undeveloped trees or shrubs. Our stock will make excellent growth the first year. Our grounds are inspected each year by the Missouri State Department of Agriculture.

We guarantee satisfaction upon arrival of your order. If you should receive any unsatisfactory stock, hold it subject to our disposal, and we will replace it free. All claims must be made within ten days after arrival of order.

Postage On Mail Orders

On all orders except for seed, add 12c for any order less than \$1.00. For larger orders add 10c for each additional dollar. All seed orders mailed postpaid.

All small sized nursery stock can be mailed but large trees, etc., go by express, charges collect.

Banning's Seed and Nursery House

Phone 141

Brookfield, Mo.

914 Meade St.

VEGETABLE SEED

TESTED FOR PURITY AND STRENGTH

All seed in packages under our name in convenient sizes. Insist on Banning's Quality Seed. All seed postpaid.

Snap Beans

¼ lb. 10c, ½ lb. 15c, 1 lb. 24c,
2 lbs. 40c.

BUSH VARIETIES—Burpee's Stringless Green Pod, Giant Stringless Green Pod, Bountiful, Pinto, Red Kidney, Golden Wax, Pencil Podded Black Wax, Dwarf Horticultural, Navy Beans.

POLE VARIETIES—Kentucky Wonder, Missouri Wonder, King's Mammoth Horticultural, Red Speckled Cut Short, Kentucky Wonder Wax, Dutch Case Knife.

Lima or Butter Beans

¼ lb. 10c, ½ lb. 15c, 1 lb. 25c,
2 lbs. 45c.

BUSH VARIETIES—Burpee's Fordhook, Henderson's Baby Lima, Jackson Wonder (Calico).

POLE VARIETIES—King of the Garden, Carolina Small Lima, Mammoth Florida Lima.

Beets and Swiss Chard

Pkt. 5c, oz. 12c, ¼ lb. 40c, ½ lb. 65c
Detroit Dark Red, Swiss Chard, Lucullus.

Carrot

Pkt. 5c, oz. 12c, ¼ lb. 45c.
Chantenay Red Coreless, Danvers.

Cauliflower

Pkt. 10c
Chicago Snowball.

Cabbage

Our cabbage seeds are all wilt resistant strains that have been developed to produce crops in wilt infected gardens, but do equally as well in disease free soil. This seed is expensive and will not be found in many seed stores.

Any variety, pkt. 5c, oz. 40c.

Early Jersey Wakefield, Copenhagen Market (Marion Market) All Head Early, All Seasons, Wisconsin Hollander, Red Cabbage.

Celery

Pkt. 5c, ½ oz. 25c.
Golden Self Blanching, Easy Blanching, Giant Pascal.

Sweet Corn

All varieties except noted otherwise:
¼ lb. 10c, ½ lb. 15c, 1 lb. 25c,
2 lbs. 40c, 5 lbs. 90c.

Improved Golden Bantam, Leonard's Early, Early Evergreen, Stowell's Evergreen, Country Gentleman.

HYBRID SWEET CORN—New productive and drought resisting sweet corn. Roots deeply, which protects growing plants from wind, heat and drought. Excels in yield over standard strains of seed.

TENDERGOLD—Four days earlier than Golden Bantam and generally twice as productive. The 8 inch, 12 rowed ears command a premium for their quality.

Pkt. 10c, ½ lb. 20c, 1 lb. 35c.

GOLDEN CROSS—Bright yellow 8 inch ears. Quality fully equal to Golden Bantam, two or three times as productive and only six days later.

Pkt. 10c, ½ lb. 20c, 1 lb. 35c.

Pop Corn

Pkt. 10c, ½ lb. 12c, 1 lb. 20c.

Japanese Hulless (white), Dynamite (yellow).

Cucumber

Pkt. 5c, oz. 12c, ¼ lb. 40c, ½ lb. 70c.

Early Fortune, Chicago Pickle, Improved Long Green.

Lettuce

Pkt. 5c, oz. 12c, ¼ lb. 45c.

Black Seeded Simpson, Prize Head, Hanson, Grand Rapids, Big Boston.

Egg Plant

Black Beauty.
Pkt. 5c, oz. 40c.

MELON SEED

Muskmelons

Pkt. 5c, oz. 12c, ¼ lb. 40c, ½ lb. 70c.

Rockyford, Hoodoo or Hearts of Gold, Tip Top, Hackensack, Banana.

Watermelon

Pkt. 5c, oz. 12c, ¼ lb. 30c, 1 lb. 75c.

Kleckley's Sweet, Stone Mountain, Dixie Queen, Golden Honey, Citron.

Mustard

Giant Curled.
Pkt. 5c, oz. 12c, ¼ lb. 30c.

Onions

Pkt. 5c, oz. 20c, ¼ lb. 70c,
½ lb. \$1.25, 1 lb. \$2.00.
Red Globe, White Globe, Prizetaker.

Bermuda

Crystal White or Yellow Bermuda.
Pkt. 5c, ½ oz. 25c

Onion Sets

JAPANESE SETS—Mild variety of onions that make fine green spring onions or large dry bulbs for winter use. Our sets are small and clean.

Qt. 12c.

By mail: 2 qts. 35c, 4 qts. 65c.

Parsnips

Pkt. 5c, oz. 12c, ¼ lb. 35c.
Hollow Crown, Guernsey.

Peanuts

Virginia.
¼ lb. 10c 1 lb. 35c.

Peas

¼ lb. 10c, ½ lb. 15c, 1 lb. 23c,
2 lbs. 40c.

Large Alaska or Claudet, American Wonder, Little Midget, Little Marvel, Laxtonian, Potlatch or Fillbasket, Tall Telephone.

Peppers

Pkt. 5c, oz. 40c.

Ruby King, Harris' Early Giant, California Wonder, Neapolitan, Pimento, Hot Cayenne.

Pumpkin

Pkt. 5c, oz. 12c, ¼ lb. 35c, ½ lb. 60c.

Kentucky Field, Sugar or Pie, Connecticut Field, Green and White Cushaw.

Radish

Pkt. 5c, oz. 12c, ¼ lb. 30c, 1 lb. 90c.

Saxa, Sparkle White Tip, French Breakfast, Crimson Giant, Icicle, Strasburg, White China (winter).

Salsify

Salsify or Oyster Plant.

Pkt. 5c, oz. 15c.

Spinach

Pkt. 5c, oz. 12c, ¼ lb. 30c, ½ lb. 50c.

Victoria, Bloomsdale, New Zealand.

Squash

Pkt. 5c, oz. 12c, ¼ lb. 45c.

Warty Hubbard, Fordhook, Banana, Acorn, Sweet Potato, Early White Bush, Giant Crookneck.

Turnip

Pkt. 5c, oz. 12c, ¼ lb. 30c,
½ lb. 49c, 1 lb. 79c.

Purple Top White Globe, Purple Top Strap Leaf, White Milan, Rutabaga.

Tomato

We list several of the new wilt resistant varieties in certified seed strains.

Pkt. 5c, oz. 40c.

Earliana, Break O' Day, Pritchard, Rutgers, Marglobe, Norton Stone, Giant Ponderosa, Beef Steak, Oxheart, Golden Queen and Golden Ponderosa.

Select Varieties

Each per Pkt. 5c.

BROCCOLI—Green sprouting.

BRUSSELL SPROUTS.

DILL—Mammoth.

ENDIVE—Green curled.

KOHL-RABI.

KALE or BORECOLE.

LEEK—Broad London.

OKRA—Dwarf green.

CHINESE CABBAGE.

PARSLEY—Moss curled.

SAGE—Broad leaved.

SUMMER SAVORY, SWEET MAJORAM, THYME.

BANNING'S FLOWER SEED

A home can be a very attractive place where it is surrounded by many of the quick growing and colorful summer flowers. Select a few packages and have that bed of annual flowers this year.

Any Packet 10c.

AGERATUM.

ASTER—Tall Branching, mixed.

Queen of the Market, mixed.

ALYSSUM—Little Gem.

BALSAM—Lady's Slippers.

BACHELOR BUTTONS.

SCARLET RUNNER BEANS.
BLUE LACE FLOWERS.
BELLIS or ENGLISH DAISY.
CALENDULA—Orange King.
CANTERBERRY BELL.
COXCOMB—(Celosia).
CANDYTUFF.
CARNATION—Marguerite.
CASTOR BEANS.
CHINESE LANTERN.
COSMOS.
CARDINAL CLIMBER.
CYPRESS VINE.
FORGET-ME-NOT.
FOUR O'CLOCKS—Marvel of Peru.
GYPSOPHILA—Baby Breath.
HYACINTH BEAN—Delichos.
HOLLYHOCK—Perennial.
KOCHIA—Burning Bush.
KUDZU VINE.
LARKSPUR.
LOBELIA.
MARIGOLD—Dwarf French.
MARIGOLD—Tall African.
MARIGOLD—Gold.
MIGNONETTE.
MORNING GLORY.
MOONFLOWER—Giant White.
MOONFLOWER—Heavenly Blue.
NASTURTIUMS—Burpee's Gleam
 Hybrids, Burpee's Gorgeous Dwarf
 Mixed, Fordhook Tall.
PANSY—Swiss Giants.
PHLOX DRUMMONDI.
PETUNIAS—Blue, red, pink, purple,
 fringed and mixed hybrids.
PINKS—Chinese Double Mixed.
POPPY—Iceland.
PORTULACA—Moss Rose, Double
 and single.
PYRETHRUM—Persian Daisy.
SHASTA DAISY—Alaska.
SALVIAS—Flowering Sage.
SALPIGLOSSIS—Painted Tongue.
SCABIOSA—Pincushion Flower.
SNAPDRAGONS—Mixed.
STRAWFLOWERS—Helichrysum.
SWEET PEAS—The Burpee's Blend
 Mixture. Pkt. 10c, oz. 25c.
SWEET PEAS—Grandiflora Mixed.
 Pkt. 10c, oz. 15c.
SWEET SULTAN—Giant Mixed.
SWEET WILLIAMS.
VERBENAS—Mixed Giant Flower-
 ed.
ZINNIAS—Our zinnia seed is all
 Burpee grown. Red, Rose and Orange
 Dahlia Flowered in separate colors.
 Oz. 75c.
 Mixed Dahlia Flowered — Burpee
 blend of all the best colors. Oz. 75c.
POMPON—Baby or Lilliput Zinnias.
 Mixed. Oz. 75c.

LAWN SEED

Our lawn seeds are all high quality and free of noxious weeds. Lawn Mixtures do not contain any cheap, quick growing annuals, but are blended with the finest permanent grasses that will give a velvety lawn with a minimum of care.

CHICAGO PARKS—15 oz. sifter top can. Each 45c.

SHADY NOOK—½ lb. 30c, 1 lb. 55c.

SPECIAL LAWN—1 lb. 35c, 3 lbs. \$1.00.

BLUE GRASS—Heavy seed, 1 lb. 35c, 3 lbs. \$1.00.

WHITE CLOVER—¼ lb. 30c, 1 lb. \$1.00.

VEGETABLE PLANTS

All plants except sweet potatoes are transplanted, making a sturdier plant with a heavy root system.

Tomato

EXTRA EARLY—Earliana, Pritchard, Break O' Day.

SECOND EARLY—Rutgers, Marglobe, Golden Queen.

MAIN CROP—Ponderosa, Beef Steak, Stone, Oxheart, Golden Ponderosa.

All Tomato Plants: Doz. 15c, 2 doz, 25c, 100 for 95c.

POTTED PLANTS—All varieties 50c per doz. By mail 75c per doz.

Cabbage

All our cabbage plants are grown from wilt resistant strains of seed. They are all sturdy, frame grown and well hardened to outdoor weather conditions.

Jersey Wakefield, Copenhagen Market, Early Allhead, All Seasons and Wisconsin Hollander.

Doz. 10c, 3 doz. 25c, 100 for 65c.

Cauliflower

Early Chicago Snowball.

Doz. 10c.

Sweet Potatoes

Nancy Hall, Porto Rico.
50 for 20c, 100 for 35c, 300 for \$1.00.

Peppers

Ruby King, California Wonder, Harris' Early Giant, Neapolitan, Pimentos and Hot Cayenne.

12 for 15c.

Sage

Mammoth leaved, transplanted.

Doz. 25c.

Egg Plant

Black Beauty.

12 for 15c.

Celery

Golden Self Blanching and Early Blanching for fall, and Giant Pascal for winter. Plants ready early in May.

Doz. 10c, 3 doz. 25c, 100 for 65c.

GREENHOUSE PLANTS

PANSIES—Maple Leaf and Swiss Giants. 12 for 50c.

Salvias or Scarlet Sage, Snap Dragons, Verbenas, Petunias, Geranium, Coleus, Ferns, Porch Box Plants, Fuchsia, Lantanas and other varieties.
Each 8c to 50c.

PORCH BOXES AND URNS—Called for, Filled and Delivered.

FLOWERING BULBS

CANNAS—King Humbert, Yellow Humbert, The President, City of Portland.

Dry Bulbs, 3 for 25c.

Plants, 20c each, 3 for 50c

GLADIOLI—Mammoth, 12 for 50c, 4 dozen, \$1.75.

Large, mixed, 12 for 35c, 4 doz. for \$1.25.

BLEEDING HEART, DICENTRA—Each 49c.

PEONIES—Strong 3-5 eye divisions in red, pink and white, all large double blooms. Each 39c, 3 for \$1.00. Prepaid.

IRIS—Many blends of several colors. Postpaid, each 10c, 12 for \$1.00.
PHLOX—Hardy; red, purple, pink, white and rose. Heavy field grown plants. Each 49c.

SELECT NURSERY STOCK FRUIT TREES

9-16 to 11-16 up.

Apple, Cherry, Pear, Plum, Peach.
 Your choice assorted.

Each 59c, 3 for \$1.65, 6 for \$3.19.

Apples

EARLY SUMMER—Yellow Transparent, Duchess, Early Harvest, Live-land Raspberry, Sweet Bough.

LATE SUMMER AND FALL—Red Astrachan, Maiden Blush, Jonathan, Grimes Golden, Wealthy.

WINTER—Delicious, Yellow Delicious, Ben Davis, Winesap, Stayman Winesap, Janet.

Crab Apples

Hyslop, Whitney.

Plums

Lombard, Burbank, Waneta, Dams-son, Reine Claude, Green Gage.

Cherries

Early Richmond, Montmorency, Eng-lish Marelo, Yellow Glass (sweet).

Peaches

Mayflower, Champion, Carmen, J. H. Hale, Elberta, Heath Cling.

Pears

Bartlett, Douglass, Duchess, Lincoln, Seckel, Kieffer.

Currants

Two-year No. 1, each 25c, 5 for 99c.
 Cherry, Perfection.

Grapes

Fine heavy rooted, two-year No. 1 vines. Each 20c, 4 for 60c, 12 for \$1.25, 25 for \$2.25.

Concord, Moore's Early, Worden, Niagara, white, Brighton, red.

Gooseberries

Two-year No. 1, each 25c, 5 for 99c.
 Champion, Downing.

Blackberries

Root cutting plants, 10 for 65c, 25 for \$1.09, 100 for \$3.69.
 Snyder and Eldorado.

Raspberries

10 for 65c, 25 for \$1.09, 100 for \$3.69
 Cumberland, black, Latham, red.

Asparagus

Two year roots, 12 for 39c, 25 for 65c, 100 for \$1.96.
 Washington.

Rhubarb

Two sizes: Each 10c, 3 for 25c, 12 for 98c.

Each 15c, 2 for 25c, 12 for \$1.29,
 Victoria.

Strawberries

June bearing strawberries, 25 for 25c,
 100 for 85c, 200 for \$1.60, 500 for \$3.50.
 Senator Dunlap, Premier, Blake-
 more, Aroma.

Everbearing Strawberries

25 for 45c, 100 for \$1.50.
 Gem, Mastodon.

EVERGREENS

For complete and perfect landscape planting around the home USE EVERGREENS. They can be used for foundation or border plantings, as individual specimens, as hedges and in rock gardens. We have in our display ground Arbor Vitaes, Junipers, Pines and Spruce in a number of varieties. Prices quoted upon request.

ORNAMENTAL TREES

Trees listed have good smooth bodies, well branched head and good roots. Any variety 10 per cent discount for three or more. We will quote special prices on larger orders.

ASH, Green—5-6 ft. 99c, 6-8 ft. \$1.49.

ASH, Mountain—5-6 ft. \$1.79, 6-8 ft. \$2.29.

BIRCH, White—5-6 ft. \$1.49, 6-8 ft. \$1.99.

BIRCH—Cutleaf Weeping — 5-6 ft. \$2.29, 6-8 ft. \$2.79.

ELM, Chinese—40-50 ft. Fine trees. Each 25c, 35c, 49, 79c, 99c, \$1.25, \$1.49, \$1.79, \$1.99 and up for large specimens.

ELM, American—5 ft. 49c, 6 ft. 79c, 8 ft. 99c. Larger sizes \$1.25, \$1.50, \$1.75 up.

ELM, Moline—6-8 ft. \$1.25, 8-10 ft. \$1.79.

MAPLE, Cut Leaf—6-8 ft. \$1.49, 8-10 ft. \$1.99.

MAPLE, Hard or Sugar—6-8 ft., \$1.99, 8-10 ft. \$2.29.

MAPLE, Norway—6-8 ft. \$1.99, 8-10 ft. \$2.29.

MAPLE, Rubrum—5-6 ft. \$1.19, 6-8 ft. \$2.29.

OAK, Pin—6-8 ft. \$2.29, 8-10 ft. \$2.49.

POPLAR, Lombardy—Each 35c, 49c, 79c, 99c, and \$1.25.

POPLAR, Carolina—Each 49c, 79c, 99c and \$1.25.

TULIP TREE—Each 5 ft. \$1.25, 6 ft. \$1.79, 8 ft. \$2.29.

SMALL GROWING TREES

ARALIA, Devil's Walking Stick—Each \$1.49 and \$1.79.

CRAB-HOPA, Red Flowering—Each \$1.29 and \$1.49.

CATALPA, Umbrella Bungei—Each 98c and \$1.39.

RED BUD—Each \$1.29 and \$1.49.

THORN, Paul's Scarlet—Each \$1.99 and \$2.29.

WILLOW, Weeping Wisconsin—Each 79c, 99c, \$1.29 and \$1.79.

WILLOW, Niobe Weeping—Each 79c, 99c, \$1.29, \$1.79.

WILLOW, Pussy—Each 49c, 79c, 99c.

ORNAMENTAL SHRUBS

We submit a complete list, all well branches and with heavy root systems. There is a great difference in sizes and grades of shrubs. We stock only two large sizes that will make a real show the first season after setting, but can furnish prices on smaller sizes on request. Prices as follows, UNLESS NOTED OTHERWISE.

Large, 49c each; Medium 39c each; 3 or more, 10% discount.

ALTHEA, Rose of Sharon.

ALMOND, Pink or White.

BARBERRY, Thumbergi.

BARBERRY, Red Leaved.

BUTTERFLY BUSH.

CORALBERRY or SNOWBERRY.

DEMODIUM, Purple Bushlover.

DOGWOOD.

DEUTZIA, Lemoine.

DEUTZIA, Pride of Rochester.

ELDER, Golden Leaved.

FORSYTHIA, Golden Bell.

HONEYSUCKLE, Fragrant.

HONEYSUCKLE, Tartarian.

HYDRANGEA, A. G. (Hills of Snow).

HYDRANGEA, P. G. (Large Flowering).

JAPAN QUINCE, Cydonia Flowering.

LILAC, Purple or White.

LILAC, Persian.

LILAC, French Budded. Large, \$1.25, Medium, \$1.00.

MOCK ORANGE or SYRINGA—Golden Virginalis, Lemoine, Sweet Garland.

SNOWBALL, Virburnum.

SPIREAS, Anthony Waterer, Billard, Thumbergi, Froebel's Van Houtti.

TAMARIX, African.

TAMARIX, Hispado.

VIBURNUM, High Bush Cranberry.

WEIGELA, Rosea (Pink); Eva Rathke, (Red).

ROSES

Monthly Bloomers

Fine large two year No. 1 field-grown specimens, Each 49c, 3 for \$1.39. Red, pink, white, yellow, rose, and two-toned.

Climbing Roses

Red, pink, white, yellow.

Climbing Vines

All vines, unless noted, 2 year. No. 1, Each 49c.

BOSTON IVY.

CLEMATIS, White.

CLEMATIS, Purple. Each 99c.

BITTERSWEET.

HONEYSUCKLE, Hall's.

HONEYSUCKLE, Scarlet.

SILVER LACE.

TRUMPET VINE.

WISTERIA

Hedging

PRIVET, Amur River North—Hardy hedge plant with attractive foliage. Can be sheared to any shape desired. Fine branched plants. 18-24 inch.

3 canes up—25 for \$1.75, 100 for \$6.49.

2 canes up—25 for \$1.50, 100 for \$5.49.

BARBERRY, Japanese.

Seedlings—25 for \$1.79, 100 for \$5.99.

Bushy Transplants—25 for \$1.99, 100 for \$6.49.

SPIREA VAN HOUTTI.

12-18 inch—25 for \$1.69, 100 for \$6.19.

18-24 inch—25 for \$1.99, 100 for \$7.19.

FERTILIZER

Vigoro

Vigoro is clean, odorless, sanitary, and easy to apply.

100 lb. bag \$4.00 10 lb. pkg. 85c

50 lb. bag 2.50 5 lb. pkg. 45c

25 lb. bag 1.50 1 lb. pkg. 10c

SHEEP MANURE—5 lb. sack 25c,

10 lb. sack 45c, 25 lb. sack 90c, 50 lbs.

\$1.50, 100 lbs. \$2.50.

BONE MEAL—5 lb. sack 35c, 25 lbs.

\$1.25, 50 lbs. \$1.90, 100 lbs. \$3.50.

INSECTICIDES

SLUG SHOT—1 lb. 25c, 5 lbs. \$1.00.

NICOTINE SULPHATE—Kills sucking pests by contact. A sure check on Aphids and Plant Lice. 1 oz. bottle, 35c.

ARSENATE OF LEAD—1 lb. 25c.

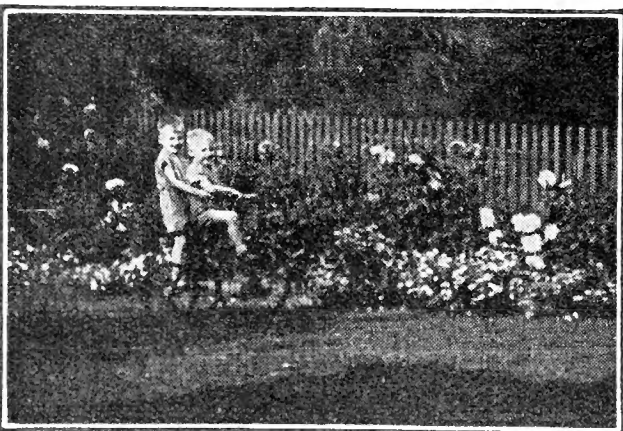
BORDEAUX MIXTURE—1 lb. 29c.

LIME SULPHUR—1 lb. 39c.

DUSTING SULPHUR—1 lb. 25c.

DOG SKAT—2 sizes, 15c and 30c

each.



BANNING'S 1940 LIST FOR HOME PLANTING

Sec. 562, P. L. & R.

Postmaster:
Return Postage
Guaranteed.