

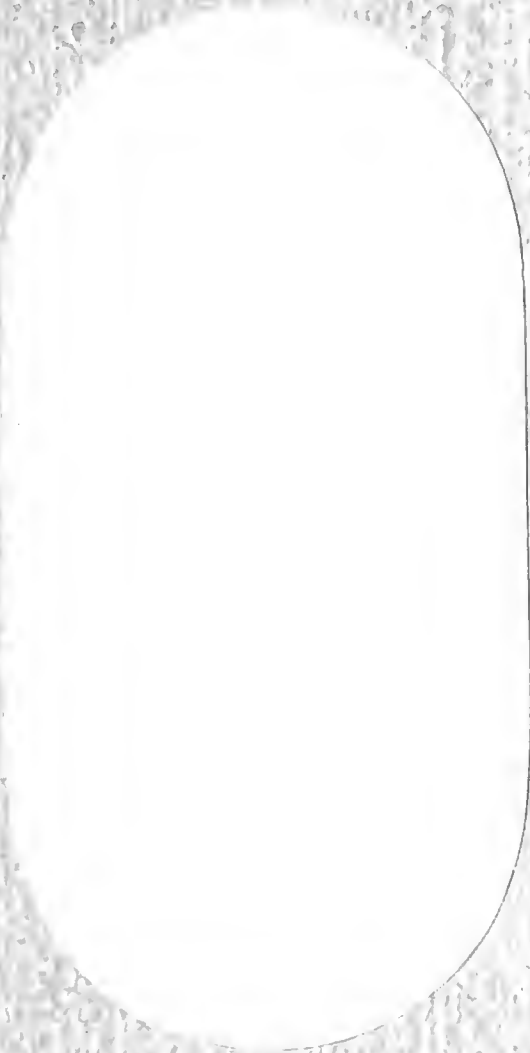
## **Historic, archived document**

Do not assume content reflects current scientific knowledge, policies, or practices.



62771

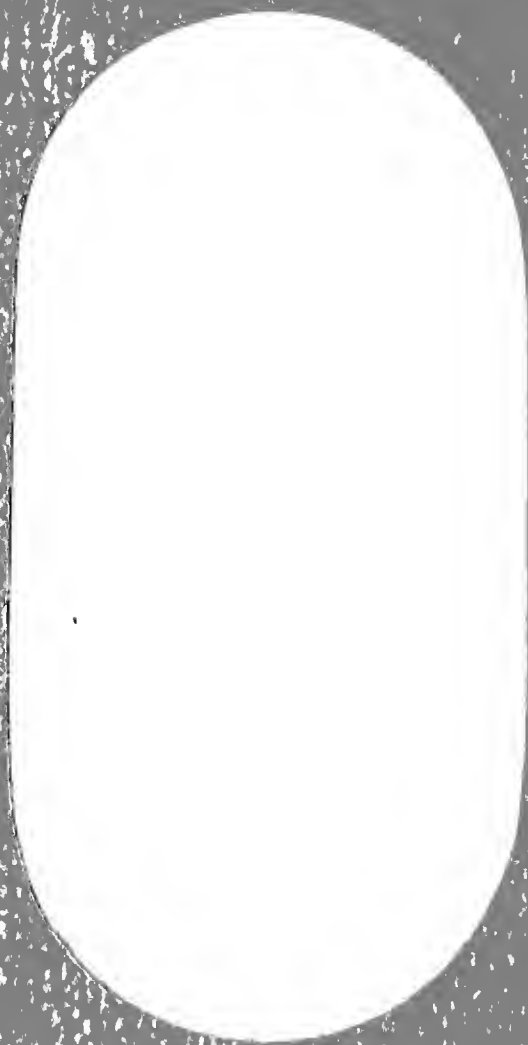
# DELPHINIUM INFORMATION BOOK



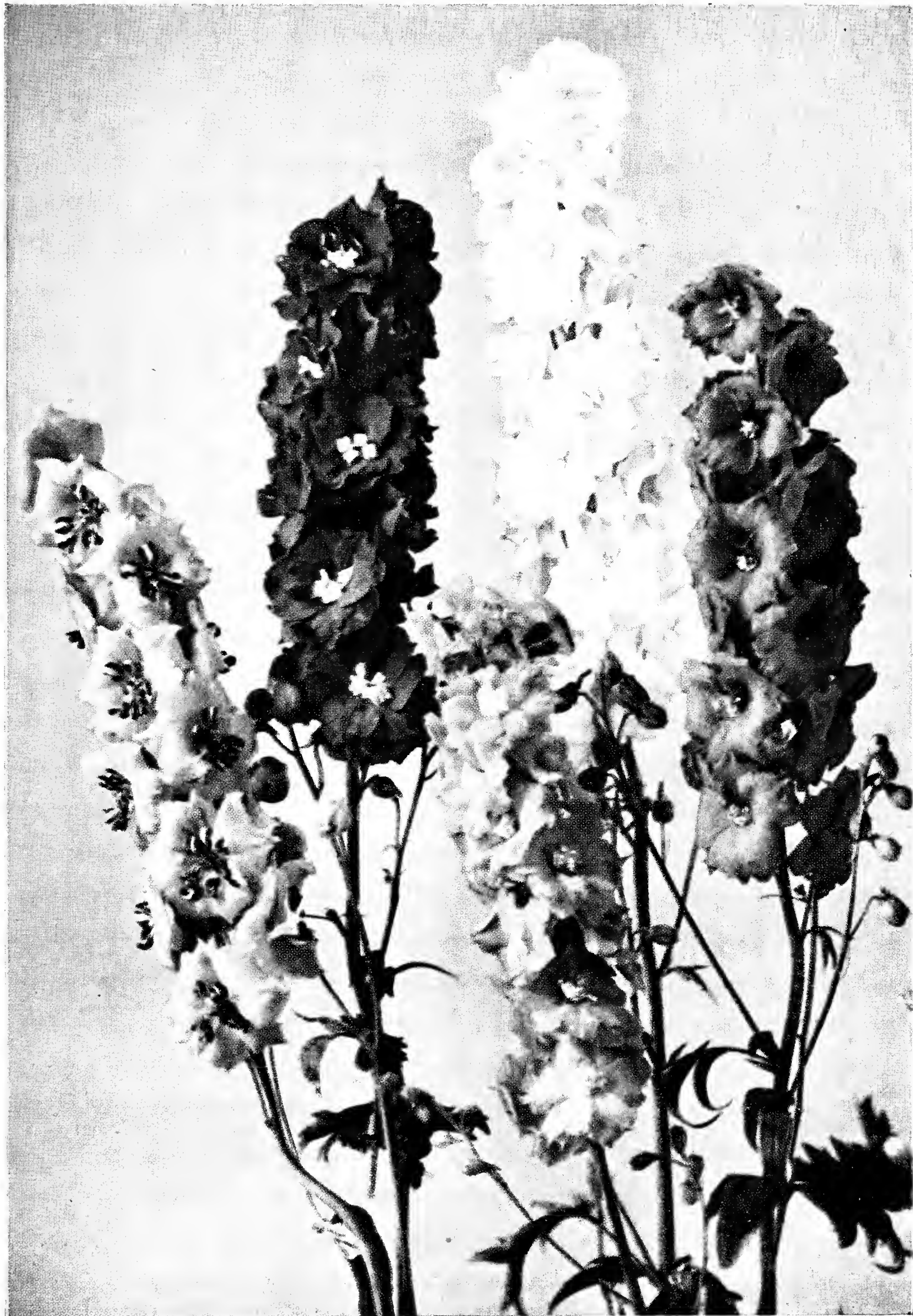
LIBRARY  
JUL 19 1939  
U. S. Department of Agriculture

## HOODACRES Originating Gardens

SUMMER 1939  
SPRING 1940



SOME COLORS IN HOODACRES DELPHINIUMS



# HOODACRES ORIGINATING GARDENS

Where the Tall Delphiniums Grow

First home of the world's only double pure WHITE DELPHINIUMS and where other new plants burst forth from the unseen into earth life. Some of these are announced in this catalog and other introductions will follow. Many new colors and new forms are born here.



I wish to thank those who have reported results on the plants or seeds from Hoodacres, and add that any help I am able to give on your plant problems will be cheerfully rendered.

Unusual interest centers about HOODACRES WHITE varieties and the rare new shades made possible only through them. I shall appreciate any items from those growing them, as well as any interesting clippings relating to Delphiniums.

HOODACRES is located directly on the famous Columbia River Highway, easy to reach from Portland. Take Sandy Boulevard to Birdsdales Avenue and the large "Hoodacres Delphiniums" sign on the corner. (Midway between Portland city limits and Troutdale.) The largest displays of Delphiniums in bloom are through June, September and October. Visitors always welcome.

Flower catalogs in general assume the "poetic license" to embellish with exaggerations. We strive to make Hoodacres products better than the descriptions. Let us know if you think we have not succeeded.

**CHAS. F. BARBER**

(Mail and wire address) **Troutdale, Oregon**

Phone, Gresham (LD) 5071.

---

**A REQUEST** — Should the person receiving this Delphinium booklet have no need for it, a double favor will be conferred by passing it on to someone who may be interested.

---

## **BEST OF CARE AND LOTS OF LOVE**

Lake Bluff, Ill.: "Have had hundreds of visitors in my garden and everyone asks 'How do you do it?' My answer is always the same, 'The best of care and lots of love.' They are a wonderful sight, about three hundred delphiniums in bloom, all staked up nicely. I love them more than anything in life. Yes, I raise wonderful plants from your seeds and follow your cultural directions to the letter."



A section of sunken Alpine Garden and Pool at Hoodacres.

# CHASTE WHITE DELPHINIUMS

## The New HOODACRES WHITES

One of the loveliest flowers imaginable is a well grown White Delphinium. Its beautiful formation and glistening purity charm when other white flowers do not appeal, and even one spike introduced in a vase of others makes the high-light, so essential to a perfect picture. Upon the vigorous foundation stock of Hoodacres plantings has been born a new race, called HOODACRES WHITES, a revelation to the world and the dream of many come true; the most surprising Delphinium development of the century.

Albinos of the past have been weak and of little worth. Quite as by magic these white creations came, leaving the hybridizers puzzling as to how it was brought about. But the Unseen is a world of actuality and there all things first exist. All we can do is to co-operate in making the conditions on this plane suitable for the reception of such new things.

---

Be wary of counterfeit "HOODACRES WHITE" Delphiniums. We can be in no way responsible for the character of seeds not grown and packeted here.

---

### MOST BEAUTIFUL EVER SEEN

Great Falls, Mont.: "The Pearl Necklace seedling you sent last year was one of the most beautiful things I have ever seen."

---

### THE VITALITY OF YOUR STOCK

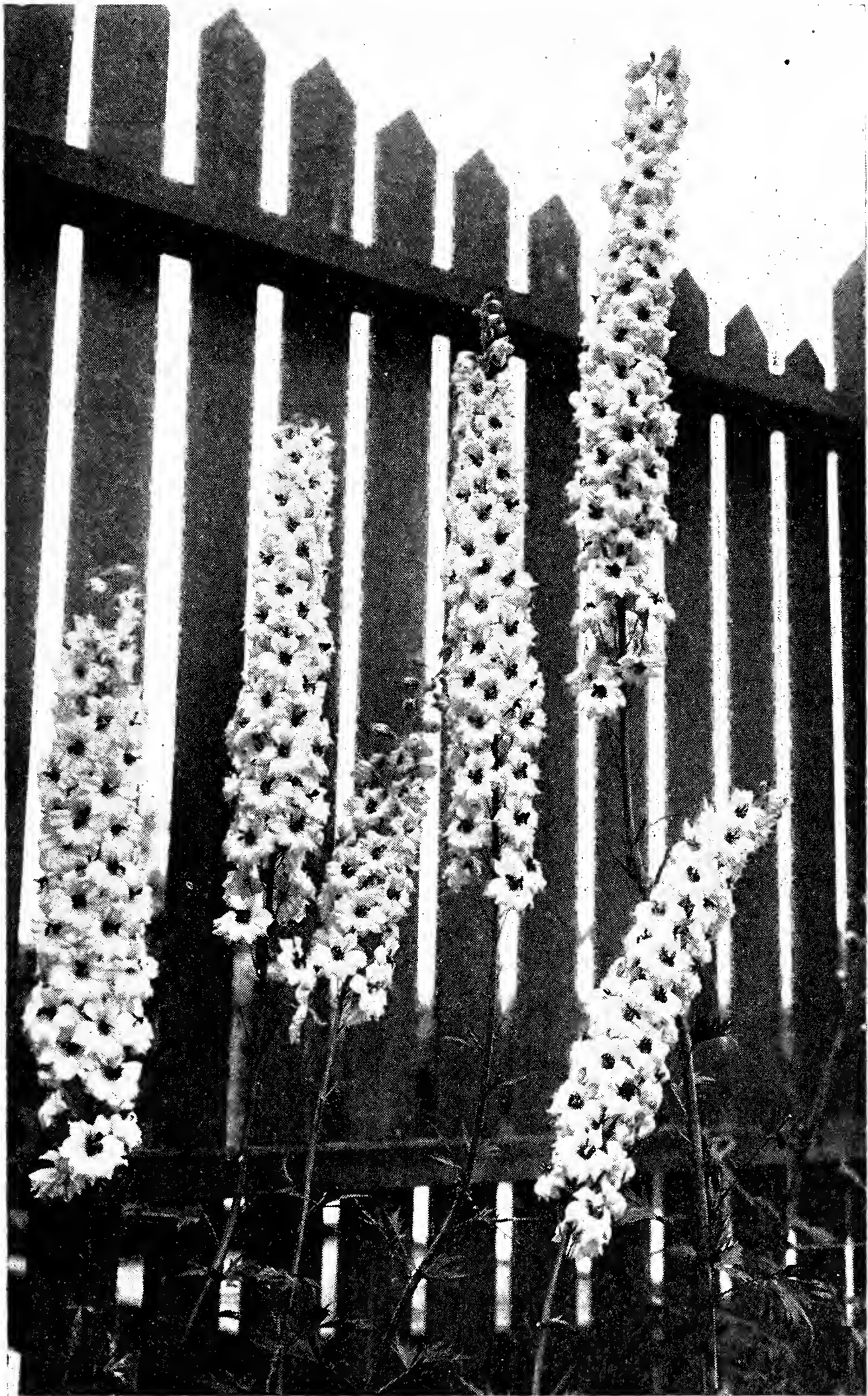
Hamburg, N. Y.: "Wish to report on the White Delphinium seeds purchased from you last August. Germination was about 100 per cent and what plants I have this spring! Cannot be beat for size and root growth. Seeds purchased elsewhere and planted in the same cold-frame and at same time, have nothing to transplant from them this spring. That speaks volumes for the vitality of your stock."

---

### DIFFICULT GROWING CONDITIONS

Tuberose, Saskatchewan, Can.: "Delphiniums in this part of Sask. with a clay soil and dry conditions, growing only two to four feet high, but are very floriferous and hardy. Never lost a plant yet from cold, yet we get 40 below zero with little snow protection."





HOODACRES WHITE, VELVABEE Vaulting an Eight-Foot Fence.

## WHITE VARIETIES

**Pearl Necklace:** Large flowers of the purest glistening white and carried on a splendid size spike. This is an outstanding creation with its vigorous growth and luxuriant foliage. Strong plants \$8.00 each.

**Angel's Breath:** The same double, pure white large flowers as above but with a center of fawn. Beautiful combination. Strong plants \$8.00 each.

**Velvabee:** Clear white double flowers with centers black. For the charm of vivid contrast and purity this variety excels. Specimens attain a height of seven and eight feet, with spikes of proportionate lengths. \$10.00 each.

**The Bride:** Imagine a Pearl Necklace Delphinium with a charming blush in place of the pure white blossom and you have a picture of The Bride. \$5.00 each.

**Bridal Gown:** A Hoodacres white with single blossoms. Handsome flowers and excellent plants. \$3.00 each.

**Pearl Necklace Seedlings:** Excellent specimens; large, pure white and double, but with slight variations from the parent that only the very critical would recognize. Although of greater value they are placed in one class to meet the demand for a true Hoodacres White at \$3.00 each. 15% off on 6 or more.

**Velvabee Seedlings:** Of the same quality as Pearl Necklace Seedlings but possessing the Velvabee characteristics. \$3.00 each.

For **Young Seedlings**—White—see page 9.

White Seeds, page 11.

---

### IN ENGLAND, ALSO

Wellsboro, Pa.: "I saw some Hoodacres Whites flowering in England and they were a revelation to me."

---

### OF COURSE, THE JUDGES KNOW

Littleton, Mass.: "Took first at our Flower Show on your Delphiniums and Columbines. And the Judges were kind enough to write on my card, 'Outstanding Horticultural Excellence'."



The HOODACRES WHITE varieties represented above are, in order of placement: VIKING, PEARL NECKLACE, ANGEL'S BREATH, VESTA, VELVABEE and a many-petaled specimen.

# PLANTS — COLORED VARIETIES

## OF HOODACRES HYBRIDS

Cannot be too highly recommended. From many thousands of plants, we select each season, at time of blooming, by a system of careful checking and labeling, a limited number of exceptional merit that are distinguished into light, medium and dark shades. These are grown into strong blooming specimens before they are sent out and are known as **SELECTED HOODACRES HYBRIDS** and **HOODACRES-WREXHAM HYBRIDS**.

**SELECTED HOODACRES HYBRIDS** — \$1.00 each, 3 for \$2.75, 12 for \$10.00.

**HOODACRES-WREXHAM HYBRIDS** — Superior for size, coloring and general excellence. \$2.00 each, 3 for \$5.00, 12 for \$18.00.

**UN-NAMED HOODACRES HYBRIDS** are sold from the general planting, after all doubtful ones have been eliminated when in bloom. Many forms and colors. These give remarkable satisfaction and frequently single specimens are found to be worth the cost of a dozen. The price is low enough to encourage liberal planting. \$3.00 dozen, 2 dozen \$5.00.

**Hoodacres White:** Prices on page 6.

---

**NOTICE** — We now make free delivery on plant shipments to any destination in the United States, when the amount is \$1.00 or more. Our system of packing carries them in good order. **Fall shipment is strongly advised for mature plants.** Young seedlings in spring.

---

### A REAL GARDENER

Madison, Conn.: "My Delphiniums were the envy of all my friends; the White varieties were especially admired. Some were seven feet tall. And my Columbines were simply gorgeous. I raise all my plants from seed myself, transplant them and do a great deal of the cultivating."

---

### LONG BLOOMING HOODACRES DELPHINIUMS

Hudson, Ill.: "Having had such marvelous Delphiniums from seeds I bought of you I am again sending an order. One outstanding thing about your plants that I haven't noticed mentioned in your testimonial is their extremely long blooming character, double that of any strain I have ever grown."

## PLANTS — YOUNG SEEDLINGS

Topmost quality. Spring shipment, before June first. Good condition arrival guaranteed. The demand each spring for small unbloomed plants is now met. They are from August sowings, carried through winter in outdoor frames, insuring splendid vigor for late summer blooming. Prepared to ship safely anywhere on the North American continent. From following seed stock, specimen plants:

**Complete Range** of Shades and Forms.

**Light Shades** only, finest varieties.

**Dark Shades** only, finest varieties.

12 for \$1.50, 24 for \$2.50. Less than 12 and 4 or more 25c each. We pay parcel post charges.

## YOUNG SEEDLINGS — WHITE

Seeds taken from choicest White plants. \$3.00 per dozen, 2 dozen \$5.00, 3 plants \$1.00. Percentage of white plants not guaranteed but produce 80 per cent here.

---

## HOODACRES PACIFIC COAST DELPHINIUMS

—have been developing over a period of more than 25 years. Remarkable for great range of rarest coloring, variety of floret forms and towering spikes of luxuriant bloom, these features rest on the great constitutional vigor of the strain. We are constantly complimented on the root system carried by our plants. And they are grown without irrigation. Also, they bloom twice in the season.

Earlier in our extensive growing of Delphiniums we employed stakes made of spruce  $\frac{5}{8}$ -inch size and  $4\frac{1}{2}$  feet in length. Later we had them made six feet long and now our seven-foot ones are none too tall for some of the plants. We use them as insurance against unlooked-for storms.

You can now buy genuine Hoodacres Delphinium plants, grown in our own fields and delivered, **transportation free**, in as perfect condition as from 50 miles distant, and at no greater cost than seedlings of indifferent parentage.

---

From Emily Post, Edgartown, Mass.: "The plants were too wonderful—I have never seen such splendid clumps. I am sure they will 'behave' beautifully and be a credit to us both."

# SEEDS—OF HOODACRES DELPHINIUMS

One of the most exacting operations at Hoodacres is the protection and collection of seeds from prepared specimen plants. Only such are used—we do not gather from the general planting. All seeds we send out are from the latest harvest season and therefore as fresh as possible. The new crop ready for distribution about August first.

All Hoodacres seeds are from double flowers, unless otherwise stated, and their seedlings are notably free from the rogues, culls, which too often develop from over-praised stock. Our seeds bring pleasing surprises at every turn.

**COMPLETE RANGE** of Shades and Forms. From finest individual plants. Not the ordinary "mixture" of left-overs. Into this class we are putting each year seeds of the newest things, some of which we have insufficient stock to offer separately. **Nowhere in the world is there offered a mixed packet of Delphinium seeds so filled with new colors and highest quality.** Liberal packet \$1.00.

**BOUNTY BLEND:** A generous packet carefully chosen from field specimens, representing all colors. Not the "mixty-maxty" sort commonly put up. (This supplants our ALLTYPES packet as an improvement.) Pkt. **50c.**

**BLUE BOY:** As a splendid advance over Gentianet we have perfected the deep blue tones and now offer their seeds. They are well represented by the illustration, page 19. To get perfect blue in both front and back sepals is a real achievement, and these plants are splendid vigorous specimens, some growing to eight feet. The coloring may be described as bright gentian. Pkt. \$3.00.

**CONSPICUA:** Extraordinary centers, surprising contrasts. Some of these are deep blue or purple carrying extra large white centers; others are medium shades with immense jet black and all are beautiful. Seeds only, \$2.00 pkt.

**REX OREGONUS:** A class having broad tapering spikes, in the various color tones. A marked improvement over previous pyramidal forms. \$2.00.

**GENTIANET:** Among the double-flowered Delphiniums self blues are not frequently found and the above represents the finest deep shade in this segregated class. It is the color of the gentian flower on sturdy well-developed plants. Pkt. \$2.00.

**MISTLAND BLUE:** In double-flowered Delphiniums self blues are rare. This is a charming medium tone, between azure and intense blue and sometimes called "powder blue." Pkt. \$2.00.

**OPALSPIRE:** As the name indicates, the tones run close to opal effects. They suggest also mother-of-pearl, delicate pink and pastel shadings. A beautiful development through the Hoodacres Whites. Pkt. \$1.50.

**PINK RAPTURE:** Utilizing the other good qualities of Sunrise Pink, great improvement has been made towards color perfection, as well as size of flowers. It is a charming mauve pink. The name well conveys its character. See page 36. Pkt. \$2.00.

**RED RAMA:** A color that stands out strongest among Delphiniums. The petalage is intense violet-red in contrast to the white center. Pkt. \$2.00.

**VIOLET ROBE:** After extended tests this variety shows not only a splendid constitution but is also a most reliable and attractive bloomer. It is a self violet in lighter tone. \$2.00.

**THE WONDROUS:** From an assembly of specimen Delphiniums, extraordinary for size of florets, we have selected a group of the best for seed parents, the standard of size being at least two and one-half inches and running light to very dark. \$2.00.

---

## SEEDS OF HOODACRES WHITE

### Originator's True Stock

**DOUBLE WHITE VARIETIES:** Carefully selected mixture from choicest plants. Pkt. \$3.00.

**PEARL NECKLACE:** The Queen of all White kinds. Pkt. \$3.00.

**ANGEL'S BREATH:** The fawn-centered White. Pkt. \$3.00.

**VELVABEE:** The flower of contrast, Black and White. Pkt. \$3.00

**SHIP'S MAST:** Clear white throughout, tall and magnificent. Pkt. \$3.00.

**THE BRIDE:** A pink tinged Pearl Necklace. \$2.00.

**WHITE COMPANY:** Seeds from fine White specimens, grown in the fields with colored kinds. \$2.00.

---

**Any seed order from this catalog amounting to \$6.50 for \$5.00. Amounts in excess of \$6.50 at 25% discount. (This does not apply to plants.)**



SHIPS MAST, Hoodacres White, one plant.



## SEEDS OF CLASSIFIED VARIETIES, DOUBLE

These separate shades are from our high-class stock and include some kinds that were formerly listed under distinct names.

### LIGHT

**NAVAJO:** White centers, and  
**OTTAWA** with dark or black centers.

### MEDIUM

**PAWNEE:** White centers, and  
**QUAPAW** with dark or black centers.

In this class are the true mauves.

### DARK

**RAMA:** White centers, and  
**SHASTA** with dark or black centers.

These represent the rich purples, violets and blue-violets. Packets, separate only, \$1.00 each, the six for \$5.00.

---

### ALL DOING WELL, THANK YOU

Towaco, N. J.: "The Tower Bells and Columbines came in fine condition and are growing well in spite of the awful weather. The Delphs from your seed last fall are wonderful."

### KING OF THE GARDEN

Highlands, N. C.: "Am planting in my greenhouse now some 85 varieties of plants, but I feel that the Delphinium is the King of the garden. Nothing else is quite so wonderful and beautiful."

### IN ENGLAND OR ANYWHERE

Thomaston, Conn.: "I should like to mention that the seeds you sent me last year were EXCELLENT. I have never seen larger or finer flowers, both in the blue shades and whites, in England or anywhere."

### NEXT JULY LOOKS FAR AWAY

Wawa, Penna.: "The fine strong roots of Japanese Iris, as also the two Hemerocallis, have reached us. Our anticipation of the beauty we shall find in the blooming of these new arrivals makes next July look far away."

### BABIES CAN TRAVEL, TOO

Woodcliff Lake, New Jersey: "I received the seedlings in good shape. It is remarkable how they can be sent for such a distance and still arrive in good condition."

Detroit, Mich.: "I am so delighted with the delphinium seedlings which you shipped to me last year I wish you would please send 24 more."

## How to Grow Delphiniums from Seeds

Hoodacres seeds are harvested throughout the month of July and are ready to send out the first week in August, just in time to be sown for carrying over winter.

The seed-bed, whether flat, cold-frame or open ground, cannot be too carefully prepared. Avoid any risky element in the soil. We must both encourage the seeds to germinate and have congenial conditions ready for the sensitive infant plants. When pots or flats are used put ample drainage material at the bottom, shards or gravel, and over this some sphagnum or peat moss. A good seed soil is two parts virgin soil or its equivalent; one part leaf-mold from deciduous trees, one part sharp sand (more in heavy soil). Mix well, sift and put in enough to bring the layer to within an inch or so of the finished surface. On this strata sprinkle a light mixture of fine charcoal and sulphur in about equal parts, and add remainder of the soil.

Level and press smooth before planting the seeds. The soil should be neither wet nor dry but just nicely moist. Sow the seeds in shallow drills, never more than one-fourth inch deep, and fill with fine clean sand, or sand and soil. **Never let the seed-bed dry out for even a moment**, nor should it be kept soggy. Cover lightly and shade till plants appear, then gradually give stronger light.

Seeds in a temperature below 60 degrees or above 75 may not be harmed if the condition lasts only a short time but these are danger lines.

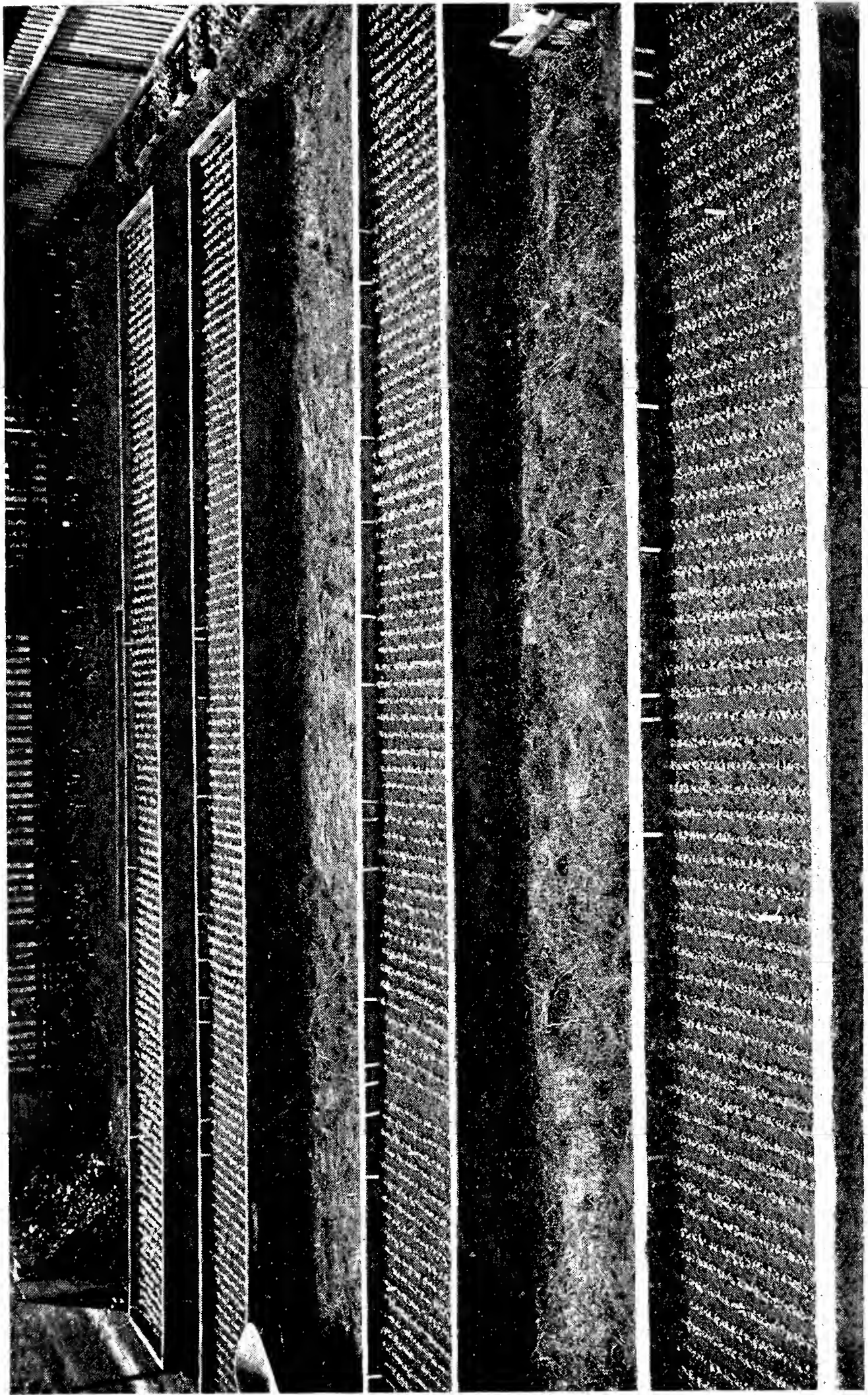
For August sowing a cold frame is best and except in severe climates no sash is required; the plants can remain in them until time to set in permanent places. They will flower the following summer. Very early spring sowing in gentle heat (greenhouse or hotbed) will often produce bloom the same season.

A half-inch layer of sand on top of seed-bed will afford winter protection, and discourage slugs.

It is unsafe to sow out-of-doors after August (except in California and similar climates), as frost will lift the too small plants.

Delphinium seeds are only at their best when fresh and should not be counted upon when more than one year old. The fresher they are the more prompt will be germination. We never send out old harvesting. Count on an average of two weeks for Delphinium seeds to show germination.

**TRANSPLANTING** of August-sown seedlings should be deferred until spring in most sections.



**August-sown Frames at Hoodacres.** More than forty varieties of *Delphinium* seeds. Note the remarkable uniformity in germination. The one row in second frame which failed was a hand-pollinated cross with a rare foreign species.

# The Coldframe

It does not take much training in garden practice to recognize the importance of a cold-frame for seed sowing, yet many side-step this valuable garden aid. Perhaps they fail to sense the principle of the thing and its implications, thinking only of a pictured affair made by the carpenter with factory sash on hinges, plus a good-sized cost bill to pay. That kind is fine for some but for others a large wooden box, donated by the hardware man or grocer, will do wonders when its bottom is knocked out. What we are really after is protection and control.

Locate your improvised or full-fledged frame in a southern exposure if possible, for it is easier to do some shading if necessary than to shift the sun. Fill at least six inches above outside level with ordinary soil to insure perfect drainage and ease of operation. (We use a foot or more.) Two inches of special seed soil will afterwards be placed on top of this. In places where moles spade their way underground, wire mesh should be tacked to the bottom of the frame. Our own concrete frames are floored with concrete, perforated for drainage. In heavy winds the sides help to break the shock.

(Excerpt from article by Chas. F. Barber in the 1938 Year Book of the American Delphinium Society on "From Dry Seeds to Living Delphiniums.")

---

## DELPHINIUMS IN A CHURCH GARDEN

Port Huron, Mich.: "Your Velvabee and Pearl Necklace, which I had the opportunity of seeing recently, are the most gorgeous blooms I have ever seen. Was so impressed that we are starting a Delphinium garden in the rear of our church grounds."

---

## Note on Japanese Iris

Long lists of Japanese Iris do not by any means imply marked distinctions in color and form, while much depends upon the inherent vigor of the plant itself. We are continually eliminating varieties which are defective in this respect. And we do not hesitate to discard any kind which has been superseded by a better. In blossom size we have practically doubled that of yesterday, and new colorings also are appearing. The reddish, or russet, tones are now coming in, and pinkish mauves.

# Delphinium Pests

The clean garden discourages many enemies, especially the bacterial ones. Decaying litter provides them a good home.

Avoid fresh manure near plants as you would the pestilence. And use any high-powered fertilizer with extreme caution. It is safer to stick to the plain old-fashioned foods that we all know how to deal with.

Before the Delphiniums start growth in spring a lime-sulphur soaking of the soil, at the orchard strength of ten to one, is an excellent precautionary measure.

In some sections there are spasmodic attacks of the so-called "Blight" or "Blacks"; technically it is known as "cyclamen-mite." It produces distortion and blackening of the growing plant. As the roots may not be affected, the plant should be cut to the ground and burned. A weekly spray of "Rototox"\* should keep it in check. Our Oregon stock is free from this pest.

If there is a tendency to mildew or black-spot, adding Black-leaf 40 to the lime-sulphur at the rate of one tablespoon to three gallons of water, is recommended. Fortunately, Hood-acres is quite free from these disturbances.

Slugs will sometimes leave home merely by the use of sharp sand strewn over the ground, but more persistent breeds may need copper sulphate crystals crushed fine and scattered where they raid. This is very poisonous and must be handled accordingly.

---

## THE REAL DIRT GARDENER

Independence, Ohio: "One of the Hoodacres-Wrexhams is a rich deep purple and very fragrant. It is singled out by visitors as an unusual plant. . . . I tell people that the display of bloom was the result of years of work by plant breeders and all I did was to grow them; but that to grow good delphiniums one must first secure the best obtainable. Lots of attention given to the plants while small will reward you with prize winning blooms when the plants mature. I spray and dust to PREVENT disease."

---

## LOVELIEST EVER SEEN

New Cumberland, W. Va.: "While in Midland, Ontario, last week I saw the loveliest delphiniums I've ever seen. They had come from you."

---

\*Rototox Company, East Williston, N. Y.

## Delphinium Culture

Mature plants are safely moved throughout the fall and very early spring. Except in very wet, cold soils, autumn planting is strongly recommended. They are not checked when spring growth starts.

After getting well-grown plants, allow a two-foot space for each and open the earth to same depth, and 12 inches in breadth, filling the lowest foot with a mixture of very old manure and garden soil, with a good sprinkling of raw bone meal, thoroughly incorporated with the soil, then tamp.

Where the sub-soil is very heavy, dig the hole six inches deeper and fill that depth with coarse gravel to insure perfect drainage. If the soil is of a clayey nature, incorporate sand and peat moss with a little ground limestone. Then for the upper half add to your very best garden soil a good half pint of this mixture: raw bone meal, commercial potash and sulphur, equal parts. If soil is naturally acid include a little lime. Set crowns two inches below the surface, the roots well spread and soil firmed against them before leveling. Avoid dense shade, roots of trees, and stuffy locations.

When growth first starts in spring, dig around each plant a trowel of bone meal, mixed with an equal amount of hardwood ash or commercial potash. Cut faded spikes to prevent seeding. It is the nature of hybrid Delphiniums to bloom a second time in the season and as the second growth appears the old stalk yellows, is no longer required, and should be cut down. After a short resting period, give another supply of bone meal and ash, being careful not to destroy the fine surface-feeding roots, and water as needed. If the weaker growths are removed when plants are a few inches high, the remaining ones will benefit. Well-grown Delphiniums will bloom the first season after planting and, being true perennials, should, with favorable conditions, increase in size and grandeur each year.

In much heated sections, as the Southern States and Southern California, the best time for watering Delphiniums seems to be in very early morning, as evening sometimes proves unsafe. Frequent ground-stirring is better than heavy watering in such sections.

As figs do not grow on thistles, no matter how we tend them, no more can you expect show spikes on your Delphiniums if stock is procured from unskilled growers.

If all fertilizers are first mixed with a larger amount of dry soil they will work without injury.



**THE BLUE BOY**

New clear strong blue, in both front and back sepals of semi-double flowers. (Double form not perfectly illustrated in color plate). Seeds only this season.

## DOUBLE BLOOMING

The hybrid perennial Delphinium is urgent to repeat its early summer performance and bloom again later. This generosity on their part suggests that we give them a good feeding when the first display passes and not neglect watering.

All Delphinium plants, except Small Seedlings, are one to two years old. **No charge for packing or transportation.**

Fall shipments begin about the middle of September and continue into November.

The Hoodacres method of preparing and packing plants for shipment fits them to stand long journeys in good condition.

**The Test of Seed Trueness:** In a solid planting of seedlings, 60 x 60 feet square, from seeds gathered in our regular white section and bloomed out in 1935 for the first time, 83% of all the plants were White. Such a record for a new Delphinium variety has probably never before been made.

Turning Delphinium seeds over to the regular florist to germinate is often risky. We give growers the benefit of over thirty years specializing with them, but the professional resents being told. As aristocrats the Delphinium race insists upon having its own way, too.

---

**Unless otherwise demanded, all seed orders received after June 1st will be filled from the new crop, ready about August 1st. August planting will bloom the following summer.**

---

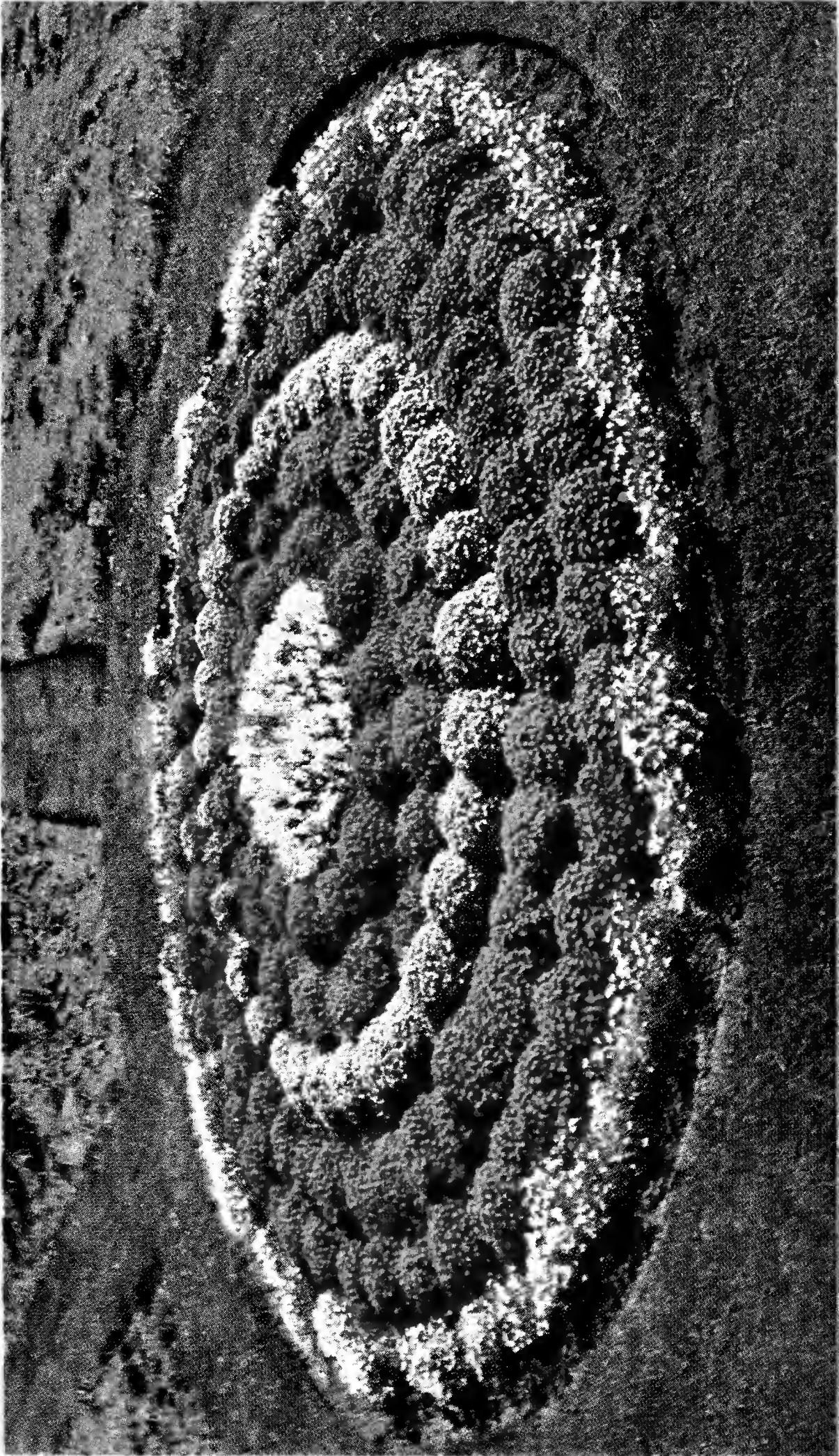
## AUSTRALIAN PLANT AUTHORITY REPORTS ON HOODACRES SEEDS

"I was very pleased to receive yours of September 3d with Delphinium seeds enclosed, which you will be interested to know have germinated well. I must congratulate you on your care in packing your seeds. It is probably partly due to this method of packing that the germination is 100% after the long sea voyage.





One Plant of REX OREGONUS



Hoodacres large-flowered Aubrietias. Bloom a long period in spring.

## HOODACRES AUBRIETIAS

Semi-trailing alpine perennials. The catalogs list wall, rock-garden and edging plants by the thousands and merit must attach to each one for somebody, somewhere, sometime; but when the casual visitor comes into your garden in spring it will be to ignore most of the demure things, but a good planting of Aubrietias will be a feast for all, and one can afford to forget their congeners for the time. They just will not be outdone in liberality of bloom and insist upon getting started bright and early to carry on for a couple of months and scatteringly still longer. Their hillocks of solid color, violet, purple, blue, crimson and pink tones are glorious. The pale shades from imported seeds are not effective. Our development of these plants over a long period has brought exceptional size and coloring. Note their effectiveness in mass.

**Pink Parachute:** Soft dianthus pink. Mounds beautifully.

**Purple Knoll:** Rich glowing violet-purple.

**Red Boulder:** Penetrating ruby red, exceedingly attractive.

Plants 40c each, 3 for \$1.00, dozen \$3.75.

**SEEDS** of the various colors, mixed, 50c packet.

---

## LITHOSPERMUM (Gromwell)

### Heavenly Blue

The rock garden is really incomplete without this incomparable blue plant. It is evergreen and trails as a small prostrate shrub. Its mats are covered in May and June with blossoms the size and shape of large Aubrietia flowers, but "heavenly blue" in color. 50c each, 12 for \$5.00.

---

## COREOPSIS Grandiflora fl. pl.

This splendid double form of the hardy bright yellow border plant is rarely seen. Our stock produces full double flowers. To maintain its perfect doubling the plants should be divided every third spring. 50c, 3 for \$1.25.

# HOODACRES GIANT JAPS

## PICTURESQUE JAPANESE IRIS FOR AMERICAN GARDENS

Their form, their markings and their color effects are distinctly Oriental, and strike a new and captivating note of garden pleasure. The foliage is upright and ornate, in contrast to the coarse leafage of some other plants.

It is difficult to express by words the many variations in tone that result from nature's use of violet shades and white, embellished with gold, which are the prevailing base colors of the class. Yet they run from the most intense red and blue violets or purple down through their most delicate shadings to pure white. Many of our newest hybrids are particularly charming in tender orchid tones.

Their culture is easy, but exacting as to their simple wants. The soil must be deeply dug and on the acid side which excludes lime and bone meal. Leaf mold and manure may be used quite freely for richness, and to create greater acidity apply in spring a light dressing of Aluminum Sulphate. Then be sure that before and during the blooming season there is no lack of moisture in the soil and if your plants are well chosen you will marvel at their size and opulence. But do not expect them to be at their best the first season after planting. Best planted in full sun.

This list of Japanese Iris is truly one of outstanding originations and not of out-dated mediocrities. Many named varieties have been discarded as too far below our standard and thousands rogued for the same reason. Too many growers are loth to eliminate stocks which have been superseded in quality. If out of a thousand hand-crossed seedlings we get two or three of rare merit we are pleased, but such plants cannot be sold at the price of the ninety-and-nine.

We are now prepared to distribute some of the splendid new blue varieties evolved here at Hoodacres; they are large and impressive. Good blues have been a need in the Japanese class.



## Our Visitors from Japan

**Azure** (68): Great wavy petals of mauve-blue deepening towards the golden arrow at base. Double. 50c.

**Barona** (157): Rich strong blue with fine white veins towards center. Double. \$1.25.

**Blemona** (3): Three falls petals violet veins on white, standards all violet, conspicuous. 50c.

**Blue Danube** (82): Large double, indigo-blue with violet. Rays of white from base. Showy. 50c.

**Blue Giant** (90): Semi-double blue, shaded violet. 75c.

**Blue Skies** (66): Light orchid blue, large attractive double. \$1.00.

**Charlotte** (27): Bright violaceous-blue with gray-white mottling, yellow bar. Beautiful single. 50c.

**Cloisonne** (31): Tyrian blue and purple, white feathering towards base with orange arrow. Double. 50c.

**Close of Day** (179): Six beautiful deep blue petals. 50c.

**Dancing Girl** (S84): Mulberry purple, large crest. Double. \$1.

**Dorothy Boynton** (S51): White with violet veins and crested deeper violet. 75c.

**Elbrus** (23): New clear lavender, near azure. Double. \$1.50.

**Escutcheon** (64): Fine medium blue with heavy gray veins. Double. \$1.00.

**Fra Elburtus** (200): Intense blue-violet six. Deepest coloring, yet holds in sun. Large double. \$1.25.

**Fujisan** (51): A perfect flower. Plants most vigorous and abundant bloomer. Shades of fine light blue-lavender. Large double and fairly tall. \$1.00.

**Glorywine** (107): Winy veins on gray white, winy halo to gold shaft. Unusual coloring. Double. \$1.00.

**Joyeuse** (39): Soft veined pink. Double. 50c.

**Ho-o-jo** (169): Large double, "velvety rose". \$1.25.

**Ki-ko-to** (210): Very large bluish violet. Double. \$1.25.

**Kin Lee** (148): Fine large medium-toned double; deep orchid. Holds color well. 50c.

**Lao Tsze** (196): Light wistaria violet, large double. Deeper and larger than Elbrus. \$1.25.

**Lena Rivers** (HA49): Very large single, broad white petals, surmounted by lightly veined standards. 30 inches. 50c.

**Light-in-the-Opal** (22): The newest, finest and largest in pink Japs. Double. \$2.00.

**Lucie Marshall** (69): A spectacular large double. Pansy-violet intensified with broad gold spear, surrounded white and white pistils. Universally admired. 50c.

**Mahogany Glory** (S82): Fine double, rich mahogany red. 75c.



IN A SUNKEN GARDEN

The Japanese Iris look particularly well by the waterside.

**Morning Mist** (S87): Fine single white with faint blue over-cast. \$1.00.

**Mrs. Fred Honey** (Sm90): Large double flower of velvety mulberry purple, prominent gold bars. Beautiful new variety. 75c.

**Mrs. John Hawker** (Sm45): Unique in its distinct and rare coloring of coerulean blue. Flowers double. Highly valuable to the connoisseur. \$1.50.

**Mu-ra-Saki** (S83): Very large, blue haze, mottled white. Six petals. Double. Outstanding. \$1.00.

**Norma** (45): Fine lavender pink touched with blue halo. Double. \$1.25.

**Oriflamme** (187): Falls of three petals violet orchid, standards all violet. 75c.

**Pink Mantle** (Sm85): Three very large pink petals with a silver sheen. Deeper standards and pale lavender pistils add to its beauty. \$1.00.

**Plaisance** (46): Light violet with gray veins and halo. Large double. 75c.

**Pygmalion** (143): Light orchid pink, slight blue halo. Larger, taller, Norma. Double. \$1.25.

**Perfect Peace** (S18): A marvelous new flower. Purest white throughout, very large, with tall frilled crest in place of the usual standards. Its waxy purity is most captivating. \$1.25.

**Priscilla** (S41): Double white with purple veins. 75c.

**Redhof** (119): Reddish tone of purple. Double. 50c.

**Rose Hugh** (65): Double russet red and white, bright and tall. \$1.00.

**Shin Ran** (222): Glowing orchid, large, crested and double. Fine blue halo. \$1.50.

**Smith's Glory** (Sm93): Strikingly large and imposing. Purple with winy veins, giving a russet cast. Bright gold bars. Double and one of the newest. 75c.

**Tamisra** (165): Extra large, double, strong blue violet. Holds color in sun. \$1.25.

**Triumphus** (224): Deep blue double, crested. \$1.00.

**Ucaygua** (212): Large reddish, gray white midribs and styles. Double, large. 75c.

**Violet Tower** (197): Much blooming, "Manganese Violet," large, tall and double. 75c.

**Whistling Indian** (226): Large three petal "petunia violet" with gray white spray from throat. 75c.

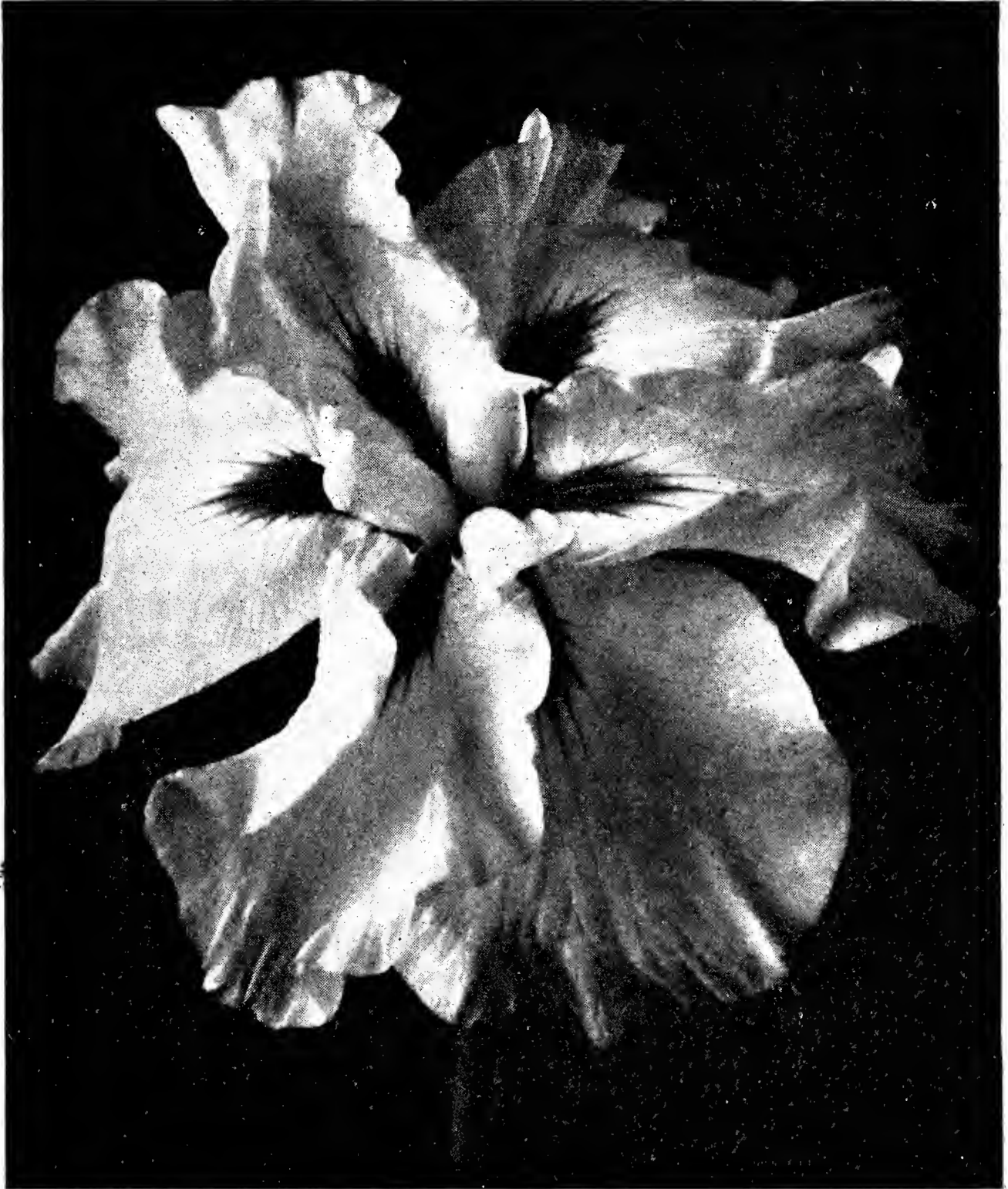
**White Dress** (84): Tall double white, prolific bloomer over long season. Golden spades at base. 75c.

**Discount:** 15% off on 5 or more, from prices quoted above.



## IRIS—Continued

**Bounty Collection:** In addition to above we are growing many varieties ranging from 50c to \$1.00 each, of which we have insufficient stock to list. These together with surplus of our regular kinds we are including in this collection, well balanced for color. \$2.50 for 10. Delivered.



A Hoodacres Achievement: FUJISAN

# HOODACRES HYBRID HEUCHERA

(Pronounce it HOY'-KER-A)

## "Coral Bells" or "Fairy Flowers"

A new race of these sparkling flowers. Greater size and vigor, many new colors and improved blooming quality. Handsome evergreen foliage, many wiry stems clothed with bells of rich and vivid red shades, also soft pinks and white. Height 12 to 18 inches. Much more vigorous and prolific of bloom than the older kinds offered by the general nursery. An ideal edging plant for all the year and brilliant with color over a long period. An ornament in the rock garden and a lasting cut-flower. When this plant is grown in colonies it becomes a revelation of beauty. One of our specialties.

**CULTURE OF CORAL BELLS** — Soil that is not too heavy and preferably somewhat sandy. Bone meal and potash reliable as fertilizers, but use sparingly and spade in thoroughly.

**Important** — Taking some divisions each spring from the older plants will insure vigorous blooming stock. Cut them out close to main root and each piece will be found to have roots attached. Shade these and keep watered; all should grow.

**Albatross:** Clear white and effective for contrast.

**Angelus Bells:** Charming medium tone of coral.

**Bobolink:** Bright rosy pink, medium height.

**Carillon:** Near to Queen of Hearts color, but smaller flowers.

**Coralie:** Bright rose red, seedling Q. of H.

**Flambeau:** Brilliant coral scarlet.

**Florabelle:** Shade deeper than Melody, fine.

**Hermes:** Spray-like flowers, tall, flesh pink.

**Jewel of Allah:** Light pink or "Begonia Rose".

**Light of Allah:** Enchanting tall "Rose Red".

**Matin Bells:** Bright pink, medium tall. Half dwarf.

**Maybird:** Rose pink, half dwarf, profuse.

**Melody:** Light, an abundant bloomer, fine for massing.

**Mission Bells:** Light rose red. Half dwarf.

**Pink Delight:** New, "Begonia Rose". Profuse.

**White Crescent:** Taller than Albatross; creamy white.

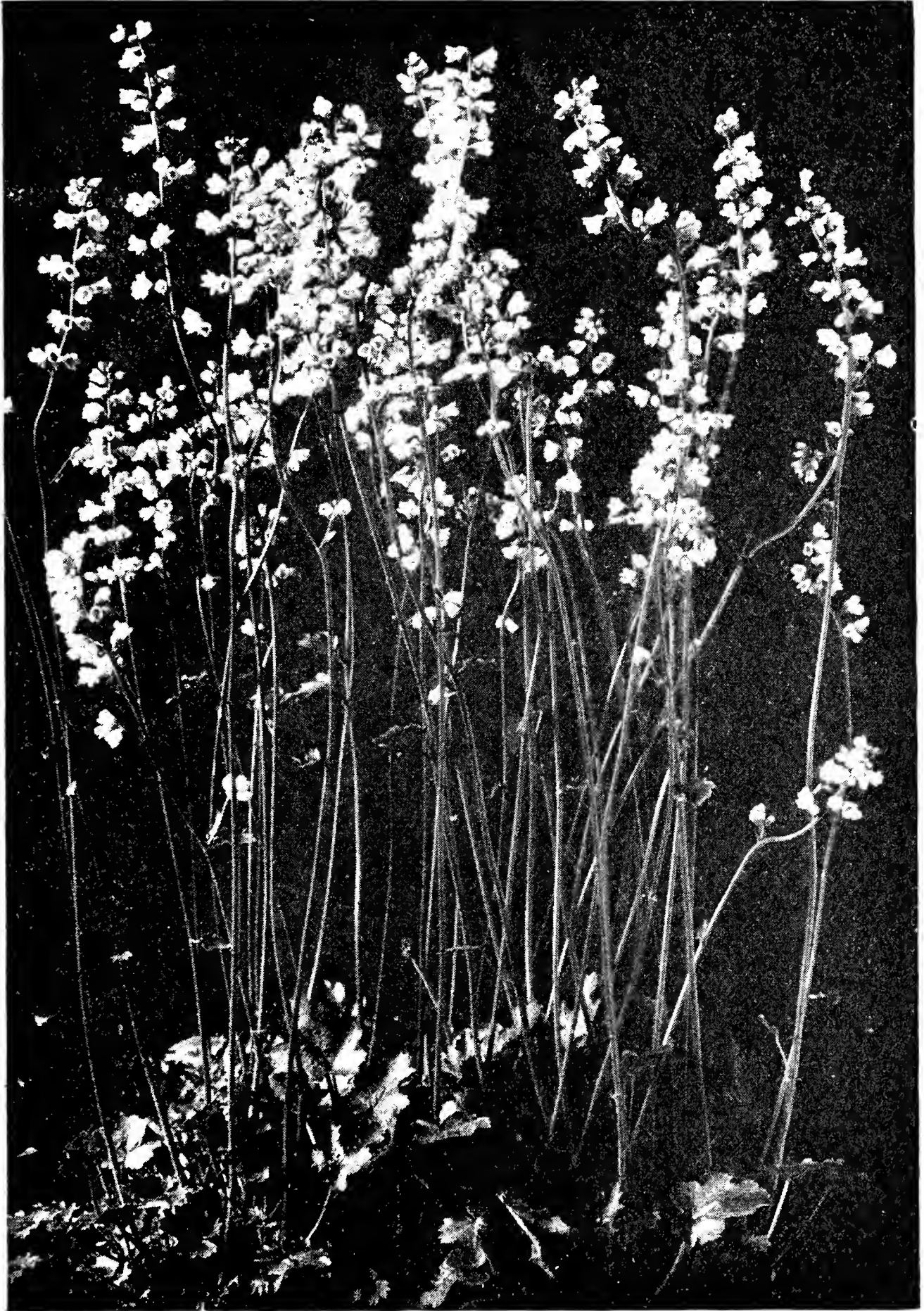
Above varieties 30c each, three for 85c, 12 for \$3.00.

**Connie Bell:** Very light pink, deeper base color, beautiful new variety. 60c.

**Lavalier:** Charming color and form. Warm pink, light blossom centers, and long blooming. A new development. 50c.

**Queen of Hearts:** Deepest glowing coral coral-scarlet. Long blooming. 50c each, 12 for \$5.50.

**HEUCHERA SEEDLINGS:** Varying shades, mostly corals, \$2.00 per dozen, 6 for \$1.25, 100 for \$12.50.



Hoodacres Hybrid Heuchera

## ORIENTAL POPPIES

For splendor they occupy a place of their own. We have eliminated from our plantings all the old small-flowered and common orange kinds.

Plant in neutral soil of good quality, deeply dug, where they are to remain. Their roots are long and brittle.

**For best results the Orientals should be moved in late August, as they make a fall growth and should not be disturbed afterwards.**

**Australia:** Immense size, rich, deep carmine bowls standing three feet in height. \$1.25.

**Joyce:** Attractive and reliable, cerise. 50c.

**Kyneton:** Upstanding orange-scarlet; holds when cut. Australian origination. 50c.

**Lady Moore:** Glowing salmon-pink. Keeps its color and blooms along with Delphiniums; remarkable color combination, Holds when cut. 24 in. \$1.00, 3 for \$2.25.

**Lord Lambourne:** Deeply fringed petals, heavily blotched black at throat. 50c.

**Lulu Neeley:** Very strong erect stems, carmine red. Dr. Neeley's best in the color. 75c.

**Mandarin:** Large Chinese red; one color throughout, no black and holds good when cut. \$1.00.

**Mrs. Stobart:** A new and rare English introduction, soft old rose. \$1.50.

**Ponderosa:** Large scarlet-orange, new. \$1.00.

**The Chosen:** Tall and distinct new variety, delicate shrimp pink. Holds well when cut. \$1.00.

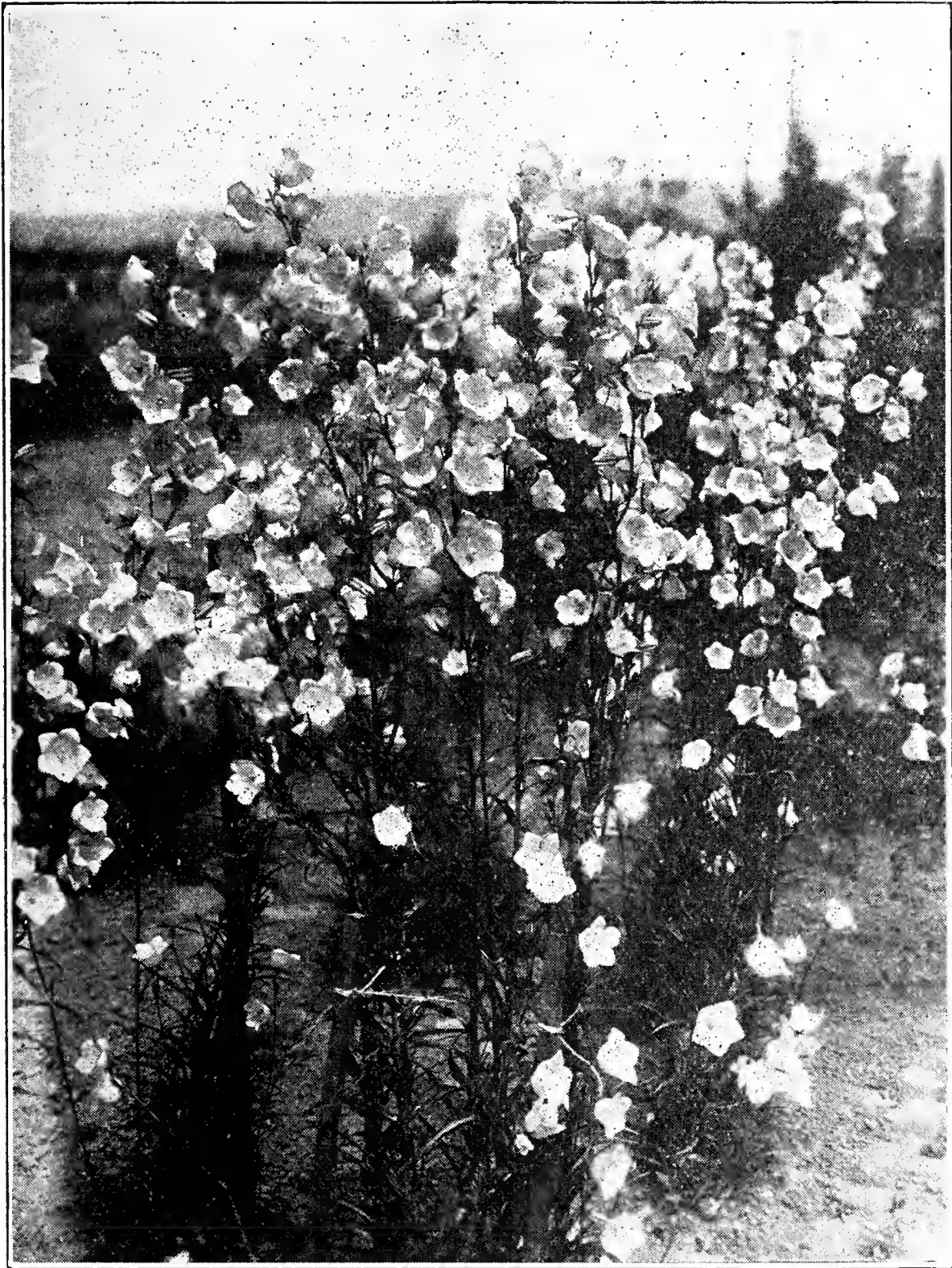
**Trilby:** Another outstanding Oriental. Large shapely blossoms of lustrous red, petals crinkled. An important feature is its late-blooming quality which happily extends the season. \$1.00 each. Holds cut.

---

### HEUCHERAS BLOOMING GAYLY

Orange, N. J.: "The Heucheras purchased from you last fall are blooming gayly, and are very beautiful."

Davenport, Wash.: "My Heucheras, 'Queen of Hearts,' bought from you last fall, has been and still is a grand sight."



## TOWER BELLS

Campanulas of the new "Giant" peachbells class, standing four to five feet high with tough stems, clothed their length with great bells of Wistaria Violet. Splendid Delphinium companions, hardy and long blooming. 40c each, 3 for \$1.00, dozen \$3.50.

# HOODACRES Strain of AQUILEGIAS (Columbines)

The plants with beautiful foliage and always charming flowers, for sun or shade. The Hoodacres strain is notable for its large flowers and long spurs, but especially its new deep colors. Packets contain the deeper colors along with medium and light shades, well proportioned, as Eastern Prince, Copper Queen, Silver Queen, Myrose, Golden Shore, Red Spur, etc. Pkt. 50c. Some of these varieties can be supplied separately.

**SEEDLINGS** from our finest stock, blooming size. \$2.50 per dozen, \$1.50 for 6.

## FROM PUBLIC GARDENS, KYNETON (Near Melbourne), AUSTRALIA

"I am pleased with your strain of Aquilegias, now in full bloom. Unique colors among them. Mr. D—— sent me seeds of several English strains at about the same time, so I am comparing them. So far yours are much the best. Your Heucherias are also blooming and are fine."

(Later) "Re Aquilegias: I gave a lecture on these flowers at the last meeting of the Horticultural Society and you may like to know that I took a large bunch of Hoodacres Strain, which proved a revelation to the Society for the beautiful new colors."

## HOODACRES LONG-SPURRED AQUILEGIAS

Elizabethtown, Pa. "The Columbines I grew from your seeds are the finest I have ever seen, hence the order for additional ones."

---

## ACROSS THE WATER WITH HOODACRES

Princeton, N. J.: "You will be glad to know that the seeds sent to Dr. Rideal in Cambridge, England, about a year ago have given much pleasure there. Only last week Mrs. Rideal wrote that the white delphiniums were in grand shape."

## ARE THEY GRAND?

Paulding, Ohio: "I have 190 of your plants, three years old and, Oh, Boy! are they grand? Have them in my back yard; they were all about seven feet tall."

## SAW NOTHING IN ENGLAND TO COMPARE

Coeur d'Alene, Idaho: "Was in England last year and saw nothing to compare with your Delphiniums."

## THE WHITES CATCH VISITORS' FANCY

Arkona, Ontario: "Your delphiniums were particularly fine this year. If everybody that took your name wrote for seeds you should have many orders. The Whites seem to catch the visitors' fancy. Your Columbines are also fine; have had many interested visitors while they were in bloom."



Individual plant of Hoodacres *Aquilegia*. Typical for size of blossom and length of spur.

## WHEN DELPHINIUMS BLOOM

If you have seen a garden of Delphiniums in full flower, ranging from the hue of a starless twilight to that of cloudless summer noon, you will know that gardeners could not think wholly of profit and grow Delphiniums.

It is simple enough to lose one's heart to any flower. The loveliness of it grows in the loam of one's heart and blooms there until the season of that flower is anticipated and a hunger comes for the witnessing of it. And the flower stalk rises from amid the foliage, and buds appear, and eagerness hovers the miracle. It will be soon, now. It is in this wise that gardeners watch the Delphinium, and more observantly than any other of the garden's guests.

There are tints past dreaming, as must ever be the case when the creative artistry vies with the fancy of mortals. To walk among them is to feel that providence is not unmindful of beauty, that it takes thought of the nurture of the spirit, and that the Delphiniums hold speech with you. Ben Hur Lampman, the Oregon poet.



PINK RAPTURE. Seeds only 1939.



## TO OUR CUSTOMERS ABROAD

The reports coming from our growers in various parts of the world show especially the adaptability of Hoodacres Delphiniums to many varying conditions. This is due to the inherent vigor of our strain, a quality which is being constantly built up by our method of breeding.

---

### ENGLISH ADMIRERS

Newcastle-on-Tyne, England: "I have at different times sent your seeds to friends in England, from my home in Canada, and they are all very enthusiastic."

---

## DELPHINIUM LANTERN SLIDES

### Beautifully Colored

For loan to Garden Clubs when DELPHINIUMS are to be featured.

The set numbers 60 artistic and exceptionally well executed subjects, mostly Delphiniums, with carefully prepared notes and a Delphinium talk. They are available to any accredited Garden Club, without charge, except payment of transportation one way.

In order to make sure of suitable dates application should be made as far in advance as possible.

The usefulness and appreciation of this set of Delphinium reproductions is attested by the fact that they are so often called on for repeat engagements.

---

### ENJOYING THE HOODACRES COLORED SLIDES

Cleveland Heights, Ohio: "We have just had the privilege of your exquisite Delphinium slides and they were thoroughly enjoyed by each and everyone in the Lake Shore Garden Club."

Lake Forest, Ill.: "Thank you for the use of the lovely Delphinium slides. We enjoyed them so much and all the Garden Club members were enthusiastic about them—the notes and cultural directions contained in the talk."

Drexel Hill, Penna.: "I hope the next Club will enjoy the slides as much as did the Garden Club of Drexel Hill. They were simply gorgeous and we thank you very much for the privilege of having them."

North Wilbraham, Mass.: "The Delphinium slides were very much enjoyed by the Garden Group of the Wilbraham Women's Club. To many they were a revelation of what the Delphinium offers. We liked the slides showing their use in the garden with other plants."



BEAUTY BELLS, the large double peach-bells.

## BEAUTY BELLS

Double flowered Campanulas, in the TOWER BELLS class but like one wistaria-violet cup inside another, and extra large. They are free flowering, standing erect, not quite so tall as Tower Bells. 40c each, \$4.00 dozen.

## HEMEROCALLIS — The DAYLILY

Most effective border plants in their greatly improved forms, that bloom after the plethora of flowers is past. Tones of yellow and gold and heights from eight inches to four feet. New shades and largest blossoms. Deeply dug soil, well enriched, will show in size and abundance of blossoms.

We have screened out many of the new varieties which have had fictional praise and list here such as our own tests have demonstrated worthy to recommend.

**Ajax:** Splendid orange-apricot coloring; fairly early blooming. \$1.00.

**Calypso:** Large lemon-yellow; the finest of its shade. A Burbank origination. \$1.00.

**Cinnabar:** Effective when established. Cadmium yellow with fulvous tones. 75c.

**Cressida:** One of Betcher's best; deep orange with reddish band. 80c.

**Dover:** A splendid deep orange, medium height, good-sized flowers. 50c.

**Dumortieri:** Low growing, rich cadmium yellow. 50c

**Flava:** The "Lemon Lily" of other days. Still a good doer, even if the blossoms are not equal to size of newer kinds. Blooms nearly a month in advance of other kinds. 25c.

**George Yeld:** A highly praised English variety. Large orange flowers. \$1.50.

**Golden Dream:** Well named, deep golden yellow. 80c.

**Hyperion:** Large finely finished canary yellow. Received A.M. from the RHS. \$2.00.

**J. A. Crawford:** So outstanding in color, form and performance that we rate it indispensable. Very large rich apricot yellow, fine height and most vigorous. \$1.00 each, 3 for \$2.50.

**Kwanso flore pleno:** Effective and long blooming yellow and fulvous. 50c.

**Margaret Perry:** Originated by Amos Perry, England, and conspicuous for its attractive two-color petals and profuse blooming habit. \$1.00 each.

**Mikado:** Among Dr. Stout's originations this is the best doer here. Flowers large orange, with a fulvous ring midway of the petals. Medium height. Our stock is sufficient to offer this at a low price. \$1.00 each.

**Queen of May:** Broad prolific bloom of apricot orange. 80c.

**The Gem:** Fine yellow; a real gem. 75c.

**The entire collection of 13 varieties subject to 15% discount.**



SOME HEMEROCALLIS TYPES

---

### THE STAMINA OF HOODACRES HEUCHERAS

Wilmette, Ill.: "You asked me to report on the Coral Bells sent during this hot weather (late June). When they arrived the moss was almost dry, the leaves slightly yellowed and there was a touch of mildew on one root. I heeled them in, in the shade, for a day or so and when I took them up for planting they were already sending out new roots. Now they have new leaves so I am sure they are all right."

SWFENEY, STRAUB & DIMM, HORTICULTURAL PRINTERS  
PORTLAND, OREGON

(Photographs by Chas. F. Barber)



**DELPHINIUM**  
**JAPANESE IRIS**  
**HYBRID HEUCHERA**  
**ORIENTAL POPPIES**  
**AUBRIETIAS**  
**DAY LILIES**  
**AQUILEGIAS**

•

**CHAS. F. BARBER**  
**TROUTDALE, OREGON**