

Historic, archived document

Do not assume content reflects current scientific knowledge, policies, or practices.



Bessie Boston
1925

Greeting to Dahlia Lovers

EVERYBODY can have the pleasure of flowers. The person whose pocket-book is slim, if he lives in the city, enjoys them displayed in a florist window. If he is more fortunate and lives in the country, there are wild flowers in the Spring and gardens everywhere. The greatest joy in flowers is in the growing of them, and the effort is the best exercise in the world, infinitely better than doing the "daily dozen", or counting calories.

Why not grow dahlias? They will produce more blossoms for a longer period than any other plant.

As a Californian, I cannot imagine life without flowers. Some variety blooms every month in the year in this part of the world. I fell in love with dahlias at the first show I attended. This love grew with the succeeding years, and finally I became a professional grower.

Many people have the impression that a woman dahlia grower does nothing but walk around the beautiful flowers, and while admiring them, direct her employees. But on the contrary, I work as hard as anybody. During the blooming season, I begrudge every minute spent away from the garden. Have you ever seen your dahlias at six in the morning when they are fresh with dew? That is the time they are the most beautiful.

Flowers are a bond between people in all positions in life. In the big California State prison at San Quentin, is the Garden Beautiful, entirely supported by flower lovers all over the United States. I had the privilege of visiting this famous garden last fall, and was impressed with its influence for good. Over two thousand men pass it several times a day, and after lock-up, the women inmates get their daily exercise in it.

As the Garden Beautiful receives no state aid, money is most acceptable, and here is an opportunity for flower lovers and humanitarians to become members of the Abou ben Adhem club, composed of donors. Kindly forward all gifts or communications to Captain S. L. Randolph, Assistant Warden, or Patrick Tyrone, the gardener, at San Quentin, California.

A friendly suggestion for improvement. Join your State Dahlia Society, also, the American Dahlia Society. Mr. H. T. Hennig, 621 Third Avenue, San Francisco, is secretary of the Dahlia Society of California. He issues an excellent Bulletin on general dahlia news several times a year and is always happy to enlist new members.

A very happy New Year to everybody.

ELIZABETH W. LYMBERY.
Formerly Bessie Boston.

P.S.—Mr. Curtis Redfern of San Francisco, sent a box of dahlia blossoms to the New York Show by air mail. These blossoms arrived in perfect condition. Four of the six large flowers sent were Bessie Boston originations, namely, Kittie Dunlap, Rookwood, Cinderella and Champagne. The blossom of Kittie Dunlap was reported in perfect condition four days after its arrival.

E. W. L.

ORDER EARLY—Order early to prevent disappointment.

SUBSTITUTION—We do not substitute excepting by permission.

FORWARDING—We ship at your planting time unless otherwise requested.

TERMS—Remittance with order. We prepay transportation on all retail orders.

CULTURE—With every shipment we enclose growing instructions.

SEEDS—We have no seeds for sale.

GUARANTEE—We guarantee tubers are true to name and are grown from roots, not cuttings.

CORRECTION

—:0:—

The color plates Decorative Dahlia "Champagne" and Decorative Dahlia "El Dorado" should have their titles interchanged.

LIA FARM, SAN MATEO, CAL.

3

ias of Our Own Introduction

flower, full to the centre in the early season, flat, somewhat loosely arranged petals with

★**AMULET** (Oliver-Bessie Boston)—"A new color and difficult to describe" has become a most hackneyed term. Will somebody please suggest something different? We use it with regret as there seems to be no other. We have watched this dahlia growing with particular interest for three seasons as Miss Elsie Oliver considered it her best seedling of the previous fall when she sent it to us. One year old seedlings often are a failure, but this is one of the exceptions, it has grown better every year, and we consider it one of the very best dahlias. But to go back to the color, which is a rich deep brown slightly suffused with gold, the shade of autumn foliage. We have every shade of red and we compared Amulet with all varieties of that color in the garden, and then decided it was a distinct brown and an incomparable addition to autumn colored dahlias. While new coloring is important, Amulet has every other good quality, such as large deep flowers, very long, branching stems, freedom of production, a center which remains closed, and best of all, the flower will remain fresh in a bouquet when all the rest of the bunch is ready for the compost heap. The type is rather confusing, as it is formed exactly like Shower of Gold, which the A. D. S. used among its examples of hybrid cactus. Here in the West, we classify it as decorative. Bushes grow tall and are among generous producers of flowers which start to bloom early. \$10.00.

★**ARGONAUT** (Bessie Boston)—This gold has an apricot centre and a suffusion of the same shade. Large, deep flower, of perfect form and stem, but the petals are slightly irregular, so the flower is not stiff. This was the first of the new dahlias to bloom, and the row of low growing bushes were smothered with flowers. There are as many shades of gold in dahlias as there are reds, but all the golds combine charmingly in a basket or vase. This cannot be said of the reds. A decorative that never shows centre. We were particularly struck with the beauty of this dahlia under artificial light. \$5.00.

★**BACIO** (Bessie Boston)—It is hard for California dahlia lovers to believe that the blooms of dahlias are limited in the East. Here, many varieties are a mass of color for several months. This is a decorative which is a perpetual bloomer, meaning in San Mateo endless work in disbudding and removing wilted flowers. One of the first to bloom and a mass of full centered flowers until cold weather. A large, well formed flower with a perfect stem. Color, a majenta pink deepening towards the centre. This variety might be described as a paler colored J. W. Davies, and will be found delightful in a basket or bouquet of American beauty shades. \$5.00.

★**BEAU BRUMMEL** (Bessie Boston)—Perhaps, you have visited a dahlia garden and suddenly been overwhelmed with the magnificence of the coloring, and wandered through the paths bewildered and unable to decide what you wanted. If you have had this experience, you can sympathize with the person who has to write descriptions of the flowers. Beau Brummel is a flower of pure royal purple which does not fade nor burn on the hottest day. Stands erect on an incomparable stem. Grows on low spreading bushes. Produces the entire season a super-abundance of very big, deep blossoms. An all around excellent dahlia of a rare color, and can be recommended for any purpose. \$5.00.

★**BLACK CAT** (Bessie Boston)—Black felines are common, but black dahlias are scarce, so don't let the name prevent you from liking this admirable dahlia. As we look over the exhibition garden from the dining room, we cannot help noticing how Black Jack and Black Cat make the deep color note so necessary in the brilliant display of flowers. But why the name? It was suggested by a customer as he watched a cat sleeping in the sun. This decorative is a large, deep colored maroon, with a velvety sheen to the petals. Stem long and straight. An excellent cut flower with pleasing keeping qualities. Plant grows very tall with very dark green foliage. Will always bear innumerable flowers. \$3.50.

★**CADIZ** (Bessie Boston)—Have you ever held up a dahlia and admired the way nature had blended its colors, and then with pencil and paper start trying to describe it? Have you ever found two blossoms on a bush that were exactly alike, or have you ever noticed how people disagree on a color? Some dahlia combinations are bewildering. Cadiz is one of these. Picture a flower, if you

NEW DECORATIVE DAHLIAS OF OUR OWN INTRODUCTION

(Continued)

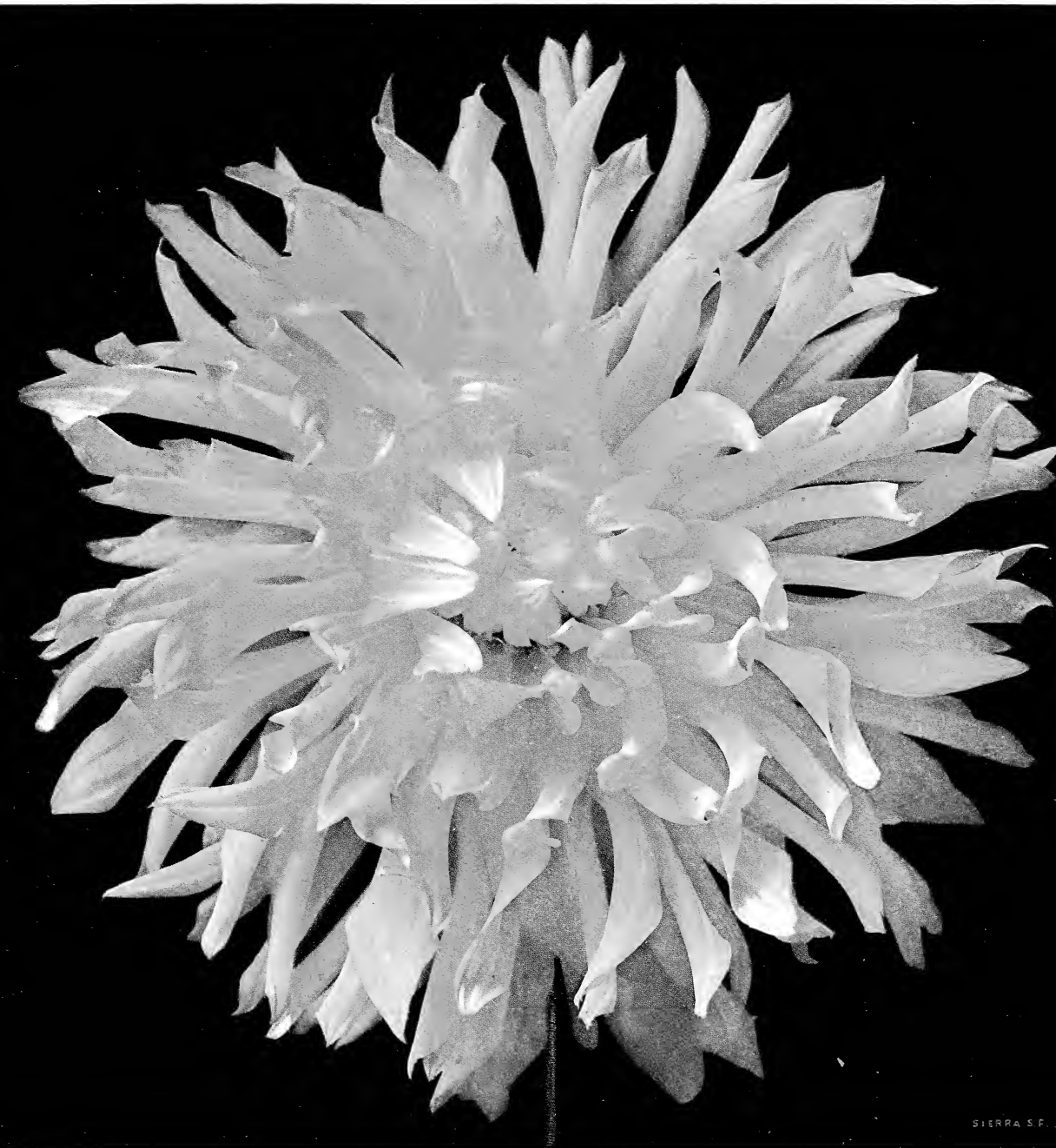
can, of reddish orange, shading to chrome yellow at the base of the petals, with a reflex of pale gold. Note how the petals twist and turn, so much of the reverse is visible. A novel and attractive blend of colors, and to use an old phrase, "impossible to describe". This is a profuse bloomer, with splendid stems. Late flowers will be equally as large and good as early ones. \$5.00.

★**CHERI (Bessie Boston)**—Fancy dahlias, or dahlias of two distinct colors, like Le Grand Manitou, have a trick of producing an occasional bloom of solid color on a bush. People who prefer them and who describe them as odd, usually resent this trick of mother nature. Cheri, at a glance, resembles a fancy, but is a purple with a reflex of a lighter tint. The petals are shaded with white and curl enough to show the paler reverse. The effect is a white tip. First flowers are so big, they will make you gasp, and secondary blooms, are big enough for exhibition. This decorative is equally good early and late, as the centres always remain closed. Flowers freely on excellent stems. \$5.00.

★**FAITH GARIBALDI (Garibaldi-Bessie Boston)**—COVER CUT. This is the story of this superb rose pink decorative. Mr. Garibaldi brought us three roots of several of his seedlings to test out in the San Mateo climate, away from the sea fogs of San Francisco. They were planted late, and before the buds unfolded, everybody began to ask us, "Have you seen Garibaldi's pink?" You see Mr. Garibaldi plants early and has a Florist Shop, where he displays his blooms. When we saw the first crown flower in our garden, we fell in love with it, and bought the entire stock of it. We named it for his wife over his protests, and urged him to enter it at the show for the Gold Medal. We might add, he offered to bring us the blooms so it could be entered under our name, but we think the originator of a fine dahlia should receive the glory and credit of producing it. We did not even enter a dahlia in competition, for the best six blooms shown on stems of a three year old seedling. Of course, Faith Garibaldi won the Gold Medal. The colored picture on the cover is only a fair reproduction of this deep, rose colored decorative. The flower growing here is several shades paler, and shaded lighter on the outer petals. It has great depth as well as large size, and is held up straight on a long, stiff stalk. There are always several splendid flowers on a bush. Began blooming about the middle of August, and continued until the frost. Every flower produced was perfect. Does not require heavy disbudding for immense blooms. We saw this decorative many times daily and gave it close observation. We found later blooms were as large and fine as the first crown flower which tempted our purchase. The stem was always exceptionally strong, centre closed the entire season, and the blossoms remained on the bushes a very long period, and also lasted nearly a week in the house. \$10.00 Net.

★**HIS MAJESTY (Bessie Boston)**—Oh yes, we know everybody is tired of red dahlias. We heard that again and again in the garden last fall, nevertheless, everybody and his wife ordered this scarlet decorative. Nobody could resist the sight of a row of tall branching bushes laden with immense blooms. Many people protest that dahlias are getting too big, and then with inconsistency, which is not altogether a feminine trait, they never fail to buy a variety which is productive of huge blooms. This is one of our biggest introductions, and flowers remain large all season. A giant flower, with a long branching stem, which does not bend. An extravagantly free bloomer, and later flowers will retain their size, centre, and substance. Does not require heavy disbudding to obtain size and stem. Some dahlias are just naturally big. The biggest blooms we gathered from His Majesty were from bushes which had been only slightly disbudded, and which grew on new and unfertilized soil. The formation of the petals is slightly irregular. The color is a bright scarlet, lighter and more brilliant than the colored illustration. \$10.00.

★**MISS BROWN (Bessie Boston)**—Professor Norton has given us a most helpful book listing the names of 7000 dahlias. Now, we are hoping somebody will give a list of 7000 new and suggested names for dahlias. This is a preamble in regard to the name, Miss Brown. Among ourselves, this was called the brown dahlia, so in desperation for a new name, we prefixed a Miss to the Brown. It is a golden russet shading to a golden tan centre. The flower is resplendent with a metallic lustre. A large, but not an immense flower, and a wonder for cutting.



SIERRA S.F.

New Hybrid Cactus Dahlia "Nichu"

NEW DECORATIVE DAHLIAS OF OUR OWN INTRODUCTION

(Continued)

Stems are astonishingly long, nearly leafless, and firm as a ramrod. Bushes grow very tall and produce prodigiously of flowers. Recommended highly for florists, household decoration, or for a tall basket in a show. \$2.50.

- ★**SEMPERVIREN** (Bessie Boston)—This has been locally known as our tree dahlia, for we have grown it eight feet tall with the centre stalk cut out. All dahlias grow taller in the East and Southern California than here, so we advise giving this decorative plenty of room to grow, as the plants are sturdy and branching, as well as tall growing. The main stem is thicker than the average man's wrist. Does not begin blooming until the last of August, but will bloom freely thereafter, and all blossoms will have excellent stems. Flower is a soft rose pink with faint suffusions of white. The tips of the broad petals are white. This is a great big, deep flower. Apropos of the name, Sequoia Semperviren is the coast redwood which beautifies the woods of this part of the state. Semperviren means ever strong, and this is very descriptive of this dahlia. \$5.00.

Decorative Dahlias—*Novelties and Standards*

The Prices are for Strong Tubers

Introducers' Names are in Parenthesis

Those Starred are California Dahlias

- ★**ALBION** (Bessie Boston)—The color is white shading towards the centre to greenish cream. The petals are narrow and curling. It is an exceedingly fine bloomer and will keep a person busy disbudding and cutting off dead flowers. One of its other pleasing characteristics is closed centre always, and late blossoms will be as large and perfect as early ones. Grows very tall with a striking dark green, crinkly foliage, resembling a thornless blackberry. After a day's work in a garden which is riotous with color, it sometimes pleases the writer to come into the house and be greeted with a refreshing bunch of white dahlias, so we have used Albion for this effect most successfully. \$3.50.
- ★**AMERICANA** (Bessie Boston)—A dahlia which will always make an appeal to the lovers of beautiful flowers. A lovely color of soft unshaded rose pink, different from any we have seen. The large deep flower is composed of many shell like petals, so arranged to avoid a formal effect. The stiff stems are practically leafless for three or four feet, therefore the tall bushes should not be disbudded too freely. A specially fine variety for cutting and splendid for the exhibition table where long stemmed blooms are required. \$3.50.
- ★**AMIGO** (Bessie Boston)—Have you grown San Mateo, the monster bi-color? If you have, let us state, Amigo resembles it in everything but color. The flower has the same size, substance, petal formation, and long stem. Grows very tall and carries its blooms well above the foliage. But the charm about this new decorative, is its marvellous coloring, gold, illuminated with a sunset glow. The cleft or staghorn petals add much to its attraction. The centre remains closed the entire season and late blossoms are often better than early ones. \$3.50.
- ★**AMUN RA** (Seal)—A stunning flower of copper and orange with a reflex of scarlet. Very large and full and with an incomparable stem. The bushes make strong, healthy growth, and will bloom most freely all season. This decorative has won many prizes in California and in the East, but not all blooms will have a perfect exhibition centre. \$2.50.
- ★**ANNA MAIER** (Bessie Boston)—A huge decorative of most peculiar coloring, one of those shades so difficult to do justice to in description. A pinkish red like old velvet, varying to soft yellowish red towards the centre. The blossoms are borne aloft on long wiry stems well above the foliage. \$1.00.
- ★**AURORA B.** (McWhirter)—A decided novelty in color and formation and a combination of the decorative and collarette types. The large flower is royal purple, but filled with contrasting white collarette petals. Stem is excellent. Blossoms freely and lasts well when cut. Unusually lovely. \$1.00.

DECORATIVE DAHLIAS—*Novelties and Standards (Continued)*

- ★**AZALEA (Bessie Boston)**—A big bloom formed of many rows of long narrow florets, giving it an unusually attractive, as well as uncommon shape. The color is soft, creamy yellow, and the outer row of petals is tinged pink. 75c.
- ★**BAZAAR (Oliver-Bessie Boston)**—Honor to whom honor is due. This splendid decorative was originated by Miss Oliver. An extraordinarily big blossom, averaging nine-inch flowers with closed centres from beginning to end of the flowering period. A combination of California sunset shades, soft chrome yellow overlaid with red. These colorings are delicately blended so neither predominates. \$3.50.
- ★**BEAUTY (Bessie Boston)**—If there is another dahlia of this name, we will be glad if you will call ours the Bessie Boston Beauty. We love it and think the name most descriptive. The color is distinctive, very pale mauve or pinkish lavender, shading gradually lighter to a white centre. The flower is large and deep and beautifully formed. Stems, hard, long and stiff. Another tall, robust grower, which is a generous producer of blossoms. \$5.00.
- ★**BENARES (Bessie Boston)**—This decorative will appeal to the person who likes an early and free bloomer. The bushes are the first to bloom and give a superabundance of blossoms the entire season which are excellent for cutting, as the stems are absolutely perfect. The fine big flower is a delightful combination of autumn tints, pale gold heavily flushed red. \$3.50.
- ★**BERCEUSE (Bessie Boston)**—A salmon that is different, pure color early in the season without a touch of yellow, but which changes later to salmon suffused with gold. Petals are of medium width with a slight inward roll. It is large, with best possible stem and free flowering. \$1.50.
- ★**BESSIE BOSTON (Leedham)**—A decorative which is always in demand because of its splendid stem and lasting qualities when cut. Looks like a big red sunflower with cleft petals. 50c.
- ★**BIJOU (Bessie Boston)**—We have never had but one seed pod from Shudow's Lavender, and Bijou is the only result from that planting. The color is cream, but close examination will show this deepens to yellow at the centre and at the tips. The petals have a peculiar curl and twist, which make a most unusually graceful and enchanting flower of a form new to us. Grows at the top of the stem like *Insulinde*. Flowers are large and produced with greatest freedom. The height is moderate and the foliage is the most beautiful we have ever seen. The leaves are very large and cut as fine as a fern. \$5.00.
- ★**BLACK JACK (Dressler-Hodgens)**—The deepest maroon dahlia of any type. Color is so dark, it might almost be described as black. Flowers are very large and full, and carry the blossoms well above the leaves. Bushes grow tall and blossom generously. This most excellent 1924 introduction will be found an attractive addition in the garden, as well as on the exhibition table. \$5.00.
- ★**BON (Bessie Boston)**—Many people on seeing this deep red blossom exclaimed good, so finally we gave it the French equivalent for the name. It is a splendid large blossom with perfect centre. Stems are strikingly long and firm. Recommended highly as a cut flower. Produces flowers freely for months. \$2.50.
- ★**BONANZA (Bessie Boston)**—There has been a friendly rivalry among the California growers to produce a new red decorative better than some excellent ones on the market. We sincerely believe we have that new red in this dahlia. The form is perfect and unusual, as the shell-like petals have a tendency to curve backward, the centre is good, the stem hard and long, carrying the blossom aloft. The color is a very deep crimson. Early and free. \$2.00.
- ★**BONITA (Bessie Boston)**—Good, as the name signifies. Pale bronze with gold lights is the unique coloring. Large, deep bloom, carried above an exceedingly long, stiff stem. Heavy disbudding is not advisable. A charming cut flower. \$2.50.
- BOSTON WHITE (Murphy)**—A big, regularly formed decorative which is much prized in the East, where it originated. Excellent for exhibiting. \$5.00.
- ★**BURGUNDY (Bessie Boston)**—Many decoratives are formed so regularly as to be stiff, and while heaps of people prefer this type, many customers are asking for flowers which are more artistic. Burgundy, while a true decorative, has a slight irregularity of form which gives it grace. The large flower has good depth and is pure Burgundy color with no shadings or variations. The stems are long, hard and straight. The plants grow to great height and bear a wealth of blooms. \$2.50.



Decorative Dahlia "Champagne"

DECORATIVE DAHLIAS—*Novelties and Standards (Continued)*

- ★**CALIFORNIA SUPERBA** (Wintjen-Bessie Boston)—Several Eastern letters have praised it extravagantly. It has won several prizes in California shows for the biggest and best blossom. We still believe it is the largest light pink dahlia ever produced. The flower is composed of narrow petals of a delicate shade of pink without any blue tone, and shades gradually to a white centre. The stem is stiff and holds the blossom up straight. Blooms freely and retains its centre all season. \$4.00.
- CAMBRIA**—Many people getting up catalogues, use our original descriptions. We are often amused to find one of our descriptions, used with but slight alteration, to describe another dahlia. This is a lovely English decorative, and we are quoting from C. Louis Alling's catalogue. "This, I consider, one of the finest dahlias grown. It is a fine clear pink of large size and extra strong stems." \$2.50.
- ★**CARMENCITA** (Bessie Boston)—The most graceful and beautiful of the fancy decoratives. The yellow blossom is regularly striped red. The plant is a dwarf grower but forms a fine compact bush which is a mass of flowers all season. The formation of the enormous flower is uncommon and graceful. The stems are all to be desired. \$1.00.
- ★**CHAMPAGNE** (Bessie Boston)—In 1923 this world beater won the first prize for the best twelve blooms in the show at Oakland, California, and was judged the best dahlia of California origin in Seattle, Washington. Champagne is the largest dahlia we have ever produced, but size, while a strong feature in a dahlia, is not everything. This decorative seems blessed with all the dahlia qualities to make it a success. Color is delightful, warm autumn shades, varying from burnished copper to a dull golden champagne and chamois. Stem is heavy and holds the massive flower absolutely upright, and the bushes are plentiful producers of blooms. May we add, we are mighty proud of the success of this dahlia in different climates. The color picture will give a good idea of the flower, but in many places the deeper shades will prevail and the lighter tones will almost disappear. \$5.00.
- ★**CHOU** (Bessie Boston)—Pink of the old fashioned rose, but heavily shaded with white until the cool fall days, when the flower is without shadings. Very deep and large, and full centered at all times. Regularly formed. Stem is stiff and holds the immense blossom up firmly. Honesty compels us to say, however, that the first blooms of this variety will on close inspection show multiple buds at the back of the flower. These can be removed with a sharp knife as the flower unfolds if it is wanted for exhibition purposes. This decorative will make a strong appeal to the admirers of giant flowers. \$3.50.
- ★**CLAUDE HARLAN** (Spacher)—A large flower of pure lilac, of graceful petal formation, which will be found excellent for exhibiting. A 1924 introduction. \$4.00.
- ★**COMSTOCK** (Bessie Boston)—This is a new type of decorative which the American Dahlia Society classifies as hybrid cactus. The petals are slightly fluted, forming a beautiful flower of great substance. The long straight stem is excellent and the flower fine for cutting. An immense yellow. \$1.00.
- ★**CONCHITA** (Bessie Boston)—"Ah, the enchanting color." How will we convey it to you without an odious comparison? We are going to risk it and compare this introduction with our favorite dahlia, Rookwood, for in coloring it is a pale pink Rookwood without the lavender suffusion. One flower is suggestive of the other in shade but vastly different when the flowers are placed together. Alike and very unlike are these pinks. The formation of the large deep blossom of Conchita is irregular enough to be charming. The plants grow moderately tall and the bushes will break under the weight of flowers if they are not generously cut. Stems are long and stiff. \$4.00.
- ★**CROESUS** (Bessie Boston)—A striking combination of yellows. The prevailing shade is buttercup, but this deepens to a golden apricot at the centre. Suggestive of Shower of Gold, but the blooms are twice the size. Formation is similar, and it would be classed in the East as a hybrid cactus, but in California as a decorative. The loosely rolled petals are slightly tubular and have peculiar recurring formation. The flower has depth as well as great size. Flowers freely on perfect stems, plants are low and bushy and will be improved by cutting out the central stem. \$3.50.
- DARKEYE**—Flesh pink, with a dark centre like an eye before the flower is fully developed. A large, splendid blossom with depth and admirable stem. 75c.

DECORATIVE DAHLIAS—*Novelties and Standards (Continued)*

- ★**DIXIE (Bessie Boston)**—A salmon suffused with bronze. Big flower, which grows right out of the bush on stout, lengthy, leafless stem. A cheery blossom which is always in bloom. May be used for any purpose, but can be highly recommended to commercial growers of cut flowers. \$2.50.
- ★**DOLLY VARDEN (Bessie Boston)**—This is one of Dickens' most lovable characters, and may we add, this dahlia is as bewitching as the sprightly Dolly herself. At last, we have a real pink as beautiful as *Delice*. The color is relieved, however, by a creamy pink centre. Formation of petals is irregular, and while we are classing it as a decorative, it follows closely the hybrid cactus lines, as the outer petals roll, while the inner ones broaden out. They twist and curl, delightfully. The bushes are of medium height and always bear a wealth of blossoms. Pink is dear to the heart of a woman, and as you well know, is the most difficult shade to obtain in dahlias. Of course, the stem of *Dolly Varden* is of the finest quality. The flowers, while large, are not immense, but we believe by the sacrifice of several laterals, blooms could be produced of exhibition size. We will add, however, it is the best true pink we have ever seen for cutting. \$3.00.
- ★**DR. TEVIS (Pelicano)**—A magnificent blossom of a blend of copper, old rose and old gold. Immense flower with the best possible stem. Has a tremendous record as a prize winner. 75c.
- ★**DREAMLIGHT (Bessie Boston)**—See *Peony Dahlias*.
- ★**EARLE WILLIAMS (Doolittle)**—An immense scarlet, tipped white. Deep, regularly formed blossom, borne on a fine stem. An exceptionally fine variety of most brilliant coloring. This dahlia differed with us from *Nobilis*, inasmuch as the red predominated. Prize winner. \$2.50.
- ★**EL DORADO (Bessie Boston)**—Size, stem and color of this variety are of the best, and, after all, these are three characteristics which interest a person most in a dahlia. Picture a low-growing bush with immense golden blooms which stand up and look you in the face, and you have *El Dorado*. A strong feature of this beauty is, the depth corresponds to the size. It has greater substance than any variety we have ever seen. And, then, there is the wonderful exclusive color—we say exclusive, because we have never seen a blossom of such vivid gold coloring, which is emphasized by the deeper tones at the base of the petals. This was the winner of the First Prize in the 1922 San Francisco show for the best six dahlias of California origin. *El Dorado* has been a success everywhere and is always featured in the Eastern shows where it has won many prizes. \$7.50.
- ★**ELIZA CLARKE BULL (Bessie Boston)**—"Oh boy! It has gotten all the whites beaten and I grew them all this year," wrote E. W. Darling of New Bedford, Mass. From the catalogue of W. H. Waite, Rumson, N. J., we quote, "Easily the very best white that has ever been sent from California, and probably the best white in existence. The flowers are large, of splendid formation, stem and growth perfect." We have quoted two prominent Eastern growers, because we made last year the rather boastful assertion, that in the opinion of our California friends, *Eliza Clarke Bull* was the largest and best white. In the 1923 show given in San Francisco by the Dahlia Society of California, we entered this decorative and won the beautiful *Rookwood* vase offered by Mr. John Dee Wareham of Cincinnati, "for the best white dahlia, at least three years old and new to commerce, three or more shown with their stems." It also won the previous year for the best two year old seedling. This is one of the biggest and deepest flowers of its class. The form is perfect and the petals are just enough irregular to prevent it from being stiff. It has, however, a heavy, firm stem, which carries the flower erect and out of the foliage. Blooms generously on bushes of medium height. In explanation of the name, for many years, Mrs. E. C. Boston, a white decorative introduction of ours, has been a leading prize winner. We named this for our mother. Now, we feel we have a much superior white, so have given it our mother's maiden name. \$7.50.
- ★**GLORIANA (Hodgens)**—A huge bloom of color much in demand for household decoration. A pure old gold heightened by a slight reddish glow in the centre. Exceedingly long stems. Blooms freely. Good for exhibiting. \$1.50.
- ★**GRENADIER (Bessie Boston)**—If you saw this dahlia growing you would want it, as it stands alone in color and form. It is easy to say it is different but another thing is to describe that difference. It is a purplish maroon shade combined with silver. The petals on one side are purple and the other pale silver. Owing to

DECORATIVE DAHLIAS—*Novelties and Standards (Continued)*

- the out of the way construction, the flower shows both colors. The petals quill and turn back, and the whole construction is unique. It is a monster flower and very deep. The stems are heavy and hold up the blooms at all times. They are very lengthy and grow right out of the bushes without a leaf. It has a delightful fashion of producing flowers liberally. \$10.00.
- ★**HALVELLA (McWhirter)**—A charming soft old rose slightly brighter than salmon. Flower is deep and well formed and perfect after the first blooms. Stem is excellent. Blooms freely and is a particularly good cut flower. \$2.50.
- ★**ISIS (Bessie Boston)**—Isis is a large, well formed flower of a most pleasing shade of pale lilac and the formation of narrow petals gives it grace and beauty. A delightful addition for household purposes and a most attractive plant in the garden, as it is very free flowering and will bloom early as well as late in the season. \$3.00.
- ★**JANE SELBY (Bessie Boston)**—This dahlia scarcely needs an introduction, it has scored so many successes. Every time it is exhibited it captures a first prize. The blossom is as large as any dahlia grown, a delicate mauve pink of great substance and beautiful formation. Stem is wonderful, long and stiff. \$1.00.
- ★**JESSIE K. PRESCOTT (Bessie Boston)**—Nature is so lavish in her use of colors in many of the new dahlias, it is impossible to do some of them justice in descriptions. This decorative is one of them. The color is deep orange at the centre, gradually shading to a creamy orange on the rows of outer petals. The formation is unusual, as the long, narrow petals have an inclination to roll backward. The tall bushes are branching and productive of masses of splendid flowers with exceptionally long, good stalks. \$3.50.
- JUDGE MAREAN**—An eastern variety which is the equal of many California introductions. An immense, deep flower, carried on an upright stem. The blending of color is attractive. Cream, heavily suffused with pink. \$2.00.
- ★**JUNIOR (Estes-Seal)**—The demand is always greater than the supply for this gigantic decorative. Color, a lovely deep lavender. This is a Millionaire seedling which will be found useful in exhibiting. \$2.50.
- ★**J. W. DAVIES (Bessie Boston)**—The coloring is novel and difficult to convey an idea of in cold type. The deepest shade of cerise at the centre graduating to a lighter tint, this blending of two shades of cerise creates an entirely new effect. The giant flower has depth, as well as size, the stem is perfect, making it as good for cutting as exhibiting. It blooms profusely all season. \$3.00.
- ★**KATHERINE (Hodgens)**—Mulberry color with a reflex of silvery white. This odd color combination is new. An extremely large, well built flower, with a good stem. Blooms freely and late flowers will be the equal in size with earlier ones. Received the highest award at the Berkeley trial gardens. \$2.50.
- ★**KITTIE DUNLAP (Bessie Boston)**—Is not only a beauty, but has every characteristics which endears it to a dahlia grower. Blooms freely all season, has excellent keeping qualities, long firm stems, immense size, and great substance. It is of the delightful shade of the American Beauty rose. The petals are broad but have a slight tendency to roll, the long stems are practically without leaves. Kittie Dunlap won the first prize for the best fifty blooms, San Francisco, 1922, and in 1923 received the award for the best twenty-five blooms in Oakland, and a blue ribbon in Cincinnati. The best basket shown by an amateur at Saint Louis, 1924, was composed of Kittie Dunlap. \$3.00.
- ★**LA MASCOTTE (Bessie Boston)**—Dahlia growers are always looking for something different in color or formation and nothing gives more joy than to find a dahlia which is unusual. The unique coloring is a two-toned effect as the petals are a silvery white with a deep violet reverse. This was judged the best Californian, shown on a stem, in the 1924 show at Doylestown, Penna. \$2.00.
- ★**LEAH M. GLEADELL (Gleadell-Morse)**—Copper, illuminated with gold. A decorative that everybody admires and all California growers are praising. Splendid keeper. Stems are A1. Blooms freely on tall, luxuriant bushes. A very fine 1924 introduction. \$5.00.
- LE GRAND MANITOU (Charmet)**—White ground striped and speckled violet; blooms freely on long erect stems. One of the most popular dahlias. 50c.

DECORATIVE DAHLIAS—*Novelties and Standards (Continued)*

- ★**LOGAN'S WHITE (Logan)**—An all round excellent pure snow white. Our blooms never showed the tinge of any color. Form perfect, size large and stem stiff. Floriferous. Highest award in the Berkeley trial gardens of 1922. \$2.50.
- ★**LOTUS (Bessie Boston)**—Lotus is a favorite with us and we can recommend it highly as a cut flower. We know our dahlias and keep a house full of blooms, and this dahlia proved its worth every week in the season. The color is a luminous flame, or a lively orange, intensified with a metallic lustre. Stem long and straight. The blossom is large and of the new shape described as water-lily. \$1.50.
- ★**MABEL B. TAFT (Bessie Boston)**—This is not a lazy fellow's dahlia and if you disbud it carefully, you will be rewarded by a super-abundance of large, perfectly formed blooms which will last a week when cut. The coloring is novel, yellow, suffused with pinkish apricot, lighter in the centre and shading deeper towards the outer petals. Lovely under artificial light. Stems are long and absolutely stiff and straight. Prize winner. 75c.
- ★**MARY C. BURNS (Bessie Boston)**—This is a sensational dahlia which will immediately arrest attention because of its extraordinary coloring. The outside of the petals are old gold and the reverse a dull red. Stem is admirable, and it is a wonderful free bloomer. The size is enormous. This introduction has made us many friendly customers. \$1.50.
- ★**MARY MORSE (Hodgens)**—This brilliant scarlet decorative can be recommended for any use. Flower is large and full petalled. Stem is excellent. Blooms freely on tall bushes. This is a brief description of one of the best 1924 introductions. \$2.50.
- ★**MEADOW LARK (Burns)**—A slender petalled decorative of large size. Pale gold, with a reverse of pinkish lilac. Grows tall and blooms freely. A 1924 introduction. \$5.00.
- ★**M. H. DE YOUNG (Bessie Boston)**—Pure old gold, with scarcely any variation in color except perhaps the centre is illuminated with a slightly brighter shade. The first flowers do not perceptibly vary from the last ones in coloring. Always a mass of immense deep blossoms, which are borne high on absolutely stiff stems, which have a pleasing habit of growing well out of the foliage. This superlative dahlia has bloomed well everywhere. \$7.50.
- MILLIONAIRE (Stillman)**—This is undoubtedly one of the largest dahlias grown. The color is lavender, shading to white; stems are good. 75c.
- ★**MISS WORN (Bessie Boston)**—Burnished copper suffused with old rose, a blending of favorite shades which is different. A very large, deep flower, composed of shell like petals. Stiff, leafless stems of great length make this a most pleasing cut flower variety. A flower which will please the most fastidious. \$3.50.
- ★**MODOC (Bessie Boston)**—The chief characteristic of this variety is the long leafless stem with the flower topping it, or in other words, it grows like a chrysanthemum at the top of a rigid stalk. Color is a deep purplish cerise, decidedly more on the purple tones than the cerise. The exceedingly long petals have a trick of curling. The flower is both large and deep and has an unusually attractive formation. The centre never opens. One of the finest bloomers we have ever seen. \$3.50.
- ★**MRS. CARL SALBACH (Salbach)**—This variety is a mauve pink shading to white. The flower is very large, with long stout stems. This Californian is deservedly a continuous prize winner in the shows from coast to coast, and also a popular cut flower variety. \$1.00.
- ★**MRS. E. A. OLIVER (Spacher)**—The flower is a giant and held aloft on a stiff stem. The color is a deep old rose, enhanced by a golden suffusion. Our bushes bore a profusion of flowers, and everybody who saw it, wanted it in his bouquet. Recommended also highly for exhibiting. \$4.00.
- ★**MRS. E. C. BOSTON (Bessie Boston)**—Best standard white decorative. Large regularly formed flower with good stem. This is recommended for all purposes. Has been grown well in every locality. \$1.00.
- ★**MRS. ELEANOR MARTIN (Pelicano)**—If you have a cool, foggy climate, you can grow this decorative to ten and eleven inches in diameter, but you will not get the wondrous, rich coloring, of flowers grown in the sunshine. We like Mrs.

DECORATIVE DAHLIAS—*Novelties and Standards (Continued)*

Eleanor Martin the best of all the 1924 introductions of other growers, which we grew, and cheerfully recommend it. The color has been well described as mulberry. The petals are a peculiar rose with a reverse of violet. There is nothing like it in color. Stem is long and stiff, and bushes are always well covered with big flowers. \$5.00.

- MRS. I. de VER WARNER (Marean)**—Delightful color, of soft orchid or deep mauve. Flower is of the largest size and holds its centre well. Stems are good. Bushes sturdy and produce flowers very freely. We can recommend it highly for all purposes. \$3.00.
- ★**MRS. W. D'ARCY RYAN (Bessie Boston)**—A lovely autumn-tinted decorative. What color is it exactly? This is rather hard to answer, as the bushes bear blossoms of gleaming old gold and also copper-colored ones. Flowers are large and regularly formed and hold their heads up proudly on perfectly stiff stalks. \$3.50.
- ★**NOBILIS**—Startling combination of scarlet and white, with white predominating. Large, bold blossom, on robust stem. A beauty which differs from Earle Williams. \$2.50.
- ★**NOUVELLE (Hodgens)**—"A very beautiful and novel shading of pink and cream. A huge flower with a perfect stem. The bushes were very tall and sturdy and laden with blossoms throughout the season." This is the originator's excellent description. \$2.50.
- ★**OSAM SHUDOW (Bessie Boston)**—The original Osam Shudow was our friend and associate who worked so energetically to bring fame to Bessie Boston dahlias before his untimely death in 1918. The big, heavy, loose petals produce a flower more like a gigantic rose than a dahlia. Color, a delightful old rose slightly suffused with lilac and shading to yellow at the centre. No bloom has ever been less than 9 inches in diameter and most of them larger. The bush is very sturdy and tall and the main stalk is the thickest we have ever grown. The flower stem is long, thick and heavy and the blossom comes well above the attractive foliage. One bloom is a bouquet. Won the prize for the largest dahlia, Denver, 1922. \$3.50.
- ★**PAUL MICHAEL (Michael)**—Can be grown to majestic size for exhibition if shaded a week before showing. Has been awarded the prize as the largest blossom in shows. Color, pure gold, and sometimes sold under the name, California Gold. \$2.00.
- ★**PEERLESS (Bessie Boston)**—The best clear sulphur yellow decorative. This is seemingly a broad and somewhat boastful statement. But we have been trying for such a dahlia for years and have destroyed many of our own as well as those of others we have tried. The blossom is of the largest size, very deep, regularly formed, and stands erect on a hard, stiff stem. Centre is always perfectly filled. The bushes grow tall and are always smothered with blooms. \$5.00.
- ★**PIONEER (Bessie Boston)**—To describe it, ah, there's the rub. It approaches brown, but we think it a dark mahogany red. The immense bloom is formed of large, almost flat petals. Centre formation is of the best. Stem long and wiry. Produces blooms in profusion. Ornamental foliage of dark bronze green. \$3.00.
- ★**POLAR BEAR (Howard & Smith)**—A good, long stemmed white of medium size. A fine commercial dahlia for Eastern trade. Regularly formed flower which does not burn. Blooms freely. \$1.00.
- PRESIDENT WILSON or THE PRESIDENT**—A large, striking flower, of maroon tipped white, the best of its coloring. An Eastern dahlia which has been much admired in California. Blooms freely on fine stems. Stock limited. \$2.00.
- ★**PRINCESS PAT (McWhirter)**—This is a charming flower of old rose, sometimes will be splashed with red. Blossoms are large and carried on excellent stems. \$1.00.
- ★**QUEEN MAB (Bessie Boston)**—The name is somewhat suggestive of the fairy-like blossom of this variety of pale pink shading to a white centre. The petals are long, narrow, and semi-quilled. The stems are thin and wiry and hold the flower up firmly. Early and profuse. \$2.50.

DECORATIVE DAHLIAS—*Novelties and Standards (Continued)*

- ★**RAINBOW** (Bessie Boston)—One of the flowers very difficult to adequately describe—old gold, heavily suffused with oriental red. A splendid, big blossom with incomparable stem. \$1.00.
- ★**RIENZI** (Bessie Boston)—Big, bold flowers of great depth and of unique coloring, bright scarlet verging on vermillion, with a reverse of gold. The peculiar petal formation makes these contrasting colors most striking. The bushes are low growing and compact, and we advise cutting out the central stem so the plant will branch freely. The only bloom we measured was ten inches. Stem is stiff. \$3.50.
- ★**ROMANCE** (Bessie Boston)—Orange at the base and heavily speckled, striped and splashed with carmine. A fascinating and startling blend of Oriental colorings which only nature could mix artistically. The large size flowers are carried upright on stiff, long stalks out of the ornamental foliage. Blooms very freely. This won the prize for us for the second time, in 1924, for the best six blooms of a fancy. \$3.00.
- ★**ROOKWOOD** (Bessie Boston)—For sheer beauty there is no dahlia like Rookwood, and we acknowledge it is a prime favorite of ours. It has been a most persistent prize winner. In 1923 in San Francisco we won with it the award for the best twelve blooms of one variety. Also in 1923, among other winnings, it won at Montclair, N. J., for the best vase of pink; at Cincinnati for the best five of one color, and in St. Louis, for the best vase of five of one variety. Several years ago, after winning a prize offered by Mrs. S. H. Taft of Cincinnati, this dahlia was named after the famous Rookwood Pottery. This decorative is of an entirely new shade of pink, and, of course, difficult to describe. The color is more like the popular Mrs. Charles Russell rose than any flower in commerce; it is pure bright cerise rose, without the faintest touch of magenta, and is as beautiful under artificial light as the Russell rose. The flowers are immense, with good depth, and are held aloft on splendid straight stems. The bushes grow low and spreading and are always a mass of blooms. \$4.00.
- ★**ROSA NELL** (Broomall)—A most beautiful and satisfactory dahlia. Color is a bright clear rose, flowers are large and well formed. Stem is excellent, and it blooms most freely. \$1.00.
- ★**SAN MATEO** (Bessie Boston)—A monster bi-color of deep yellow heavily striped and splashed scarlet. A flower of great substance and good stem. Grows very tall and bears its blossoms well above the foliage. Won the prize for us for the best fancy dahlia in the San Francisco show in 1923. \$1.50.
- ★**SAVOY** (Bessie Boston)—Savoy improves as the season advances, the color deepens, the flowers increase in size, and the stems stiffen. A lovely flower of bright mauve with a prevailing pink tone. Large blossom with good stem. Blooms freely. \$2.50.
- ★**SERPOLETTE** (Bessie Boston)—Everyone agrees that Serpolette is A No. 1, for it has most beautiful coloring and extra fine stems. It is one of the deep lavenders where the blue instead of the pink tints prevail, and would be described under the liberal classification of mauve in English catalogues. Flowers have great size and depth and bloom most generously. \$3.00.
- ★**SHEBA** (Bessie Boston)—Women visitors to the garden invariably liked this decorative which they said was a deep cerise. Possibly a brilliant rosy lake would be a better description for men readers. The form is artistic, as the petals are placed with slight irregularity. Flower is large and deep, the stems are splendid. Charming when grouped in the garden or arranged with Kittie Dunlap, Mrs. I. de Ver Warner, J. W. Davies and others of approaching shades. \$4.00.
- ★**SHOWER OF GOLD** (Bessie Boston)—This large decorative is a brilliant yellow, deepening to soft apricot toward the centre. A new type, with slightly fluted petals. Very strong stem and blooms freely. One of the best cut flowers. A ruling of the A. D. S. places it in the hybrid cactus class. \$1.00.
- ★**SHUDOW'S LAVENDER** (Bessie Boston)—The prize winnings of this dahlia are too many to list. No picture will do justice to this variety, for the color is changeable in different lights and seasons. It was Mr. Shudow's favorite seedling, hence the name. The very large bloom is a silvery lavender slightly shading to white. In hot weather, the white will be more marked, but as the season advances will almost entirely disappear. The stem is absolutely perfect,



Hybrid Cactus Dahlia "El Granada"

DECORATIVE DAHLIAS—*Novelties and Standards (Continued)*

- long and stiff, and holds erect the big blossom. It will bloom constantly and freely from early to late season and never show a centre, and also has excellent keeping qualities as a cut flower. One of its most unusual features is the attractive lace-like foliage. The plant is a very tall and robust grower and it often grows to the height of eight feet. Gold medal variety. The vase of Shudow's Lavender on the back cover was picked late in the autumn. \$4.00.
- ★**ST. FRANCIS (Bessie Boston)**—Soft cream color brightened with a pinkish glow on the outer petals, creating a delightful blossom, which can be used for all purposes. A flower which will be most useful when cut owing to its keeping qualities and rigid stem. Admirable for exhibition because of its size, and incomparable in the garden because of its beautiful coloring and freedom in producing flowers. \$5.00.
- ★**SUFFRAGETTE (Hodgens)**—A decorative which is well worth growing, for it will at all times produce an abundance of big canary yellow flowers on strong stems. An occasional blossom will come with white tips. The two-colored bloom is striking and beautiful, watch out for it, if it comes at show time you are in luck. \$2.50.
- ★**SUSAN G. TEVIS (Bessie Boston)**—An exceptional dahlia, which will produce an abundance of flowers throughout the season. Will be among the first to flower, and will produce as good specimen blooms at the end of the season as in the beginning. This beautiful variety should fill a long-felt want, for there has been a need for some years for a lilac blue flower. This decorative has a distinctive new color tone, best described as a deep shade of lilac with a bluish sheen. The blossoms are regularly formed of narrow, flat, pointed petals. It is a very large, graceful bloom, of fine depth. A very vigorous grower of dark, bronze foliage, which makes a striking contrast to the dark lilac flowers. We just defy anyone to produce a better stem. Recommended for all purposes. A Cincinnati grower received a special prize for a blossom he described as "nine inches in diameter and six inches deep." \$7.50.
- ★**T. A. LEONARD (Bessie Boston)**—One of our very best and good for every purpose. An exceptional cut flower because of its stem and freedom of blossoming. We never grew a dahlia which continuously produced so many immense flowers. Color is a deep cerise, or a bright carmine rose, different from anything we have grown. The flower is a giant, with fine centre and a peculiar petal formation which is quite original. \$3.00.
- ★**TANFORAN (Bessie Boston)**—A huge scarlet with peculiar twisting and curling petals. True it is another red, but this is the most popular color with the average man, and the dahlia is a man's flower. Seventy-five per cent. of our customers are men. We destroy several thousand red seedlings every year, but every now and then, there is one which is so extraordinarily good, it is reserved for trial. If after four years, its excellent qualities are maintained, it is put in the year's introductory garden and catalogued. So we believe we are justified in offering an occasional red. Tanforan is a towering bush which carries a wealth of bright blooms all the fall months. The rigid stems hold the big deep blossom upright. Its centre formation is perfect at all times. Tanforan was a sensation in the 1924 Eastern shows, and took the prize for the three best blooms of one variety at Montclair, N. J. Was also in a prize winning class at Short Hills, N. J. \$3.50.
- THE EMPEROR (Marean)**—A big, bold flower, of bright maroon or burgundy, which is excellent under all weather conditions. Stem is stiff. Free flowering. A first class variety in every respect. \$3.00.
- ★**THEODORE VAIL (Bessie Boston)**—A color much in demand, old gold shading to apricot. Stem is long and straight and borne well above the foliage. 75c.
- ★**TITANIA (Bessie Boston)**—Cream, so heavily suffused with pink as to give it the effect of bridesmaid pink. The coloring is opalescent, and many visitors suggested it resembled an opal. This effect is intensified by artificial light. The flower while large is not of exhibition size, but splendid stems make it a good cut flower. \$2.50.
- ★**TOMMY ATKINS (Bessie Boston)**—There never was such a starting color—flaming scarlet—so full of metallic lustre that it fairly glistens in the sunshine. Absolutely, there is no dahlia which even resembles it in color. The customers who

DECORATIVE DAHLIAS—*Novelties and Standards (Continued)*

- were tired of reds bought it on sight. The name was given it because of its stunning coloring, which is like the British soldier's tunic. The large deep blossom is attractively formed, and is not stiff and formal. The centre remains closed until the bushes are cut down by frost. And oh, yes, the stem is quite as stiff as the cane the British soldier swaggers with, and it blooms very early and continuously. "Some red, it does not seem as if nature could make such a vivid color," wrote a Connecticut amateur. Tommy Atkins was judged the best decorative shown by an amateur in the 1924 St. Louis show. \$3.50.
- ★**VALENTINE (Bessie Boston)**—A truly wonderful exhibition and garden flower of tremendous size and a lovely color of pure cerise. The blossom is composed of many flat, very narrow petals, giving it substance and an uncommon appearance. Flower is sometimes too heavy for the stem. A twelve inch bloom won the prize for the largest flower in the 1923 Oakland show. \$2.00.
- ★**VANITY (Bessie Boston)**—One of the entrancing varieties of a glowing coral pink. Many visitors who saw it growing exclaimed, "Oh, how lovely!" A big, but not enormous flower. The highest grade cut flower and combined with its charming and unique coloring, is a stem, long and cane like. \$1.50.
- ★**VIVANDIERE (Bessie Boston)**—See Peony Dahlias.
- ★**VIVIAN BUTLER (Estes)**—Dark maroon color. A dahlia which is large and deeper colored when grown in a warm climate. Flower large and regularly shaped, stem long and stiff. \$1.00.
- ★**W. D'ARCY RYAN (Bessie Boston)**—Named for the man who made the P. P. I. E. famous. A striking fancy of violet purple heavily tipped white. A characteristic of this dahlia is that it is always tipped white. It never has a blossom on the bush of solid color like the usual fancies. Stem is good, size is large and it is free-flowering. \$1.00.
- ★**W. E. COOPER (Bessie Boston)**—The blossom is huge and carried in profusion on perfectly rigid stalks, and the color is not the least of its attractions, a clear true pink with no suggestion of lavender or mauve. The pink of this dahlia is pleasing and different. Correspondents write us enthusiastic reports about this variety and state they have found it as excellent for cutting as exhibiting. \$3.50.
- ★**WIZARD OF OZ (Doolittle)**—An immense blossom, which has won many prizes for the largest flower in the shows. The color is a pleasing shade of salmon rose shading to yellow. Stems were long and good in our garden, where it was an early and continuous bloomer. \$10.00.
- ★**YUM YUM (Butler)**—1925 introduction. Tan ground suffused with pink, heavily striped and splashed with garnet, is the combination of colors which compose this uncommon and attractive flower. Size is large, stem upright. A free producer of blossoms. This is a fancy which will be found different from any other. \$2.50.

New Cactus Dahlias of Our Own Introduction

The cactus always will be a favorite with many people because of its unique formation of petals, which make it look like a chrysanthemum. The petals are long, narrow, pointed, twisted or fluted. The hybrid cactus is becoming popular; it is a large bold flower, of coarse petals.

American Cactus is a California new type. The petals are coarser than the English exhibition but not heavy enough to form a hybrid. Good stems feature strongly in this new class. In the East, flowers of this type are still permitted in the cactus collections.

- ★**ANTOINETTE (Bessie Boston)**—Very free blooming dahlias in this part of the world are more of an aggravation than a pleasure, for they require constant care. Every morning the dead blooms have to be cut, and the buds and laterals removed. When a variety only grows 3½ feet high, this is a back breaking job. Fortunately, for dahlia lovers, other climates do not produce such masses of blooms. Yes, Antoinette is one of these floriferous plants, with huge straight

NEW CACTUS DAHLIAS OF OUR OWN INTRODUCTION (*Continued*)

stemmed flowers. A hybrid cactus composed of many, narrow, rolled, recurved petals. The earliest flowers are so deep, the blossom is almost the shape of a huge ball. The color is distinctly unlike any we have introduced, a delicate rose pink, or pinkish lavender. Moreover, while this is a prolific bloomer, it retains its centre and size throughout the season. Is as delightful cut as it is in the garden. \$5.00.

- ★**BIZERTA (Bessie Boston)**—An introductory prize winner, as this was among our twelve hybrid cactus which won the coveted prize for us. A dainty straw color, illuminated with sunset pink. Large and well formed. While the inner petals are long and straight, the outer petals wave and twist, so the form is graceful. Stems are extra long, and while slender, hold the flower stiffly. A most luxuriant, tall growing plant, which will always be in bloom. A dahlia which never shows an open centre. \$5.00.

LOUISE SURTES (Leonard-Bessie Boston)—With great pleasure we are introducing this choice Eastern hybrid cactus. This was sent to us three years ago by Mr. James Leonard, of Yardley, Penna., for trial. We found it a worth while dahlia in every respect, and with Mr. Leonard's aid, have accumulated stock. Louise Surtes is a fancy of a decidedly new combination of colors, white, heavily pencilled with carmine rose. Some petals are also heavily splashed with the same delightful color. Flower is perfect incurved form, borne on a first class stem. Blossoms are large and deep, and with careful disbudding can be grown to immense size. Bushes are always a picture as they are covered with flowers the entire autumn. A splendid exhibition hybrid, and will be found attractive when cut. This is the first dahlia of Eastern origin we have ever introduced. \$5.00.

- ★**MAKU (Bessie Boston)**—The name is the Chinese word for fairy, and well named. Most delicate shell pink, which will deepen in a cool climate, and will not bleach in hot sunshine. Very long, strong stem, which holds the flower upright. Form, absolute perfection. Graceful incurved bloom. Just like a high typed English cactus, but with heavier petals. The pale pink deepens towards the centre, and all the petals are suffused with deeper color, just as if they had been daintily touched with a painter's brush. This was among our winners in the twelve hybrid cactus in the Palace Hotel show last autumn. \$5.00.

★**MARIAN MOORE (Bessie Boston)**—People's taste in dahlias varies. Some prefer the cactus, which they describe as spiders or chrysanthemums, others will grow nothing but decoratives, a few think there is nothing so fine as the old fashioned shows. And again, others like the golden centre of peonies, and in California at least, almost everybody is crazy over pompons. Customers' likings in colors are most pronounced also. Marian Moore is a dahlia which was a great favorite in the garden last fall. The women raved over the color, a clear pinkish cerise with no tintings of blue. Lots of persons rave over majenta bougainvilleas, and others turn in horror at the mere suggestion of a majenta flower. Marian Moore is a clear, pinkish cerise, with no majenta tones. The reverse of the petals is a lighter tint. This hybrid cactus is of perfect incurved formation. Flower is large, and stem will suit even the most fastidious. A free and early bloomer. \$5.00.

★**MERCEDES (Bessie Boston)**—A few people grow dahlias to exhibit in a show, so are satisfied with the English type of cactus which usually has a weak stem. But most of us enjoy cutting our flowers, as well as exhibiting them, so welcome the new American type of cactus with a straight stem. Mercedes is of this latter type and was one of three varieties which won us the prize in the last show given by the Dahlia Society of California. It is a very gay and entrancing flower of creamy yellow suffused with sunset pink. The reverse of the straight petals is splashed with deeper pink. Flower is exhibition size. One of the earliest and freest bloomers we have ever grown. \$5.00.

★**NICHU (Bessie Boston)**—Do you remember Yellow King? Perhaps some of you grow it yet and are rewarded with a very few lovely flowers. But disappointment comes when you dig your plant and find nothing but a mass of strings for roots. Nichu is a new Yellow King, but blooms abundantly and has a decent crop of tubers. It has been our pleasure to try several similar hybrid cactus with the privilege of buying the stock, and we have destroyed a hundred of our own seedlings in an effort to get this dahlia. The blooms are immense, of very incurved shape. Flower is held erect on a strong stalk. A cheerful bloomer, which will produce at all parts of the season, a mass of clear yellow blossoms,



Hybrid Cactus Dahlia "Mariposa"

NEW CACTUS DAHLIAS OF OUR OWN INTRODUCTION (*Continued*)

with closed centres. This is another hybrid which attracted much attention among our prize winning twelve. Animals appeal to some people as much as flowers, and it seemed appropriate to name this flower, which is shaped like a big chrysanthemum, after a Pekinese dog owned by Miss Lydia Hopkins, which had never been beaten in the many Pacific Coast shows in which she had been entered. \$10.00.

- ★**NOAH (Bessie Boston)**—The striking characteristic of this big hybrid cactus is its depth. The flowers are almost ball shaped, but not stiff and formal, owing to the formation of narrow, recurving petals, which curl gracefully. One of those constant bloomers which Eastern dahlia fans love. Stems are very straight and strong. The color is the hard part of the description. We have never seen anything like it. Perhaps, a dusty maroon will best describe it, as it grows in the warm sunshine of San Mateo. \$5.00.
- ★**ROSE ASH (Bessie Boston)**—This is a new color in dahlias. The outside of the petals is tan, heavily overlaid with pink and shaded with chrome yellow. The reverse of the petals is smoky pink, and the effect of this peculiar blending of colors, is ashes of rose. If you like Rose Ash, the beautiful California gladiola, you will love Rose Ash, the dahlia, and appreciate the fitness of the name. A producer of a wealth of blooms from early to late season, and perhaps owing to this characteristic will not keep its centre in California the entire season. However, reports from Eastern sources of other dahlias which did likewise in San Mateo, prove they behave admirably in a warmer climate. California peonies are usually decoratives in the East, so we have no hesitancy in recommending this wonderful, big hybrid cactus, which has a fine stem for cutting. \$5.00.
- ★**SERENADE (Bessie Boston)**—Some dahlias attract by their wondrous beauty of color and form. This hybrid cactus charmed more than any other novelty of the 1924 season. If you could only have heard the ah's and oh's, as visitors stopped in front of a row of Serenade, you would realize the public's appreciation, and the difficulty of a word sketch of it. Form is perfect incurved, and the flower resembles a water lily more than a dahlia. The color is an iridescent old rose which shimmers in the sunlight, and under electric lights, like changeable silk. The pale old rose petals have a reverse of violet. This effect of two colors is very marked in the outer petals, while the central petals are shaded with gold suffused with soft rose. Flower is large and was among our prize winning twelve hybrids at the Palace Hotel show last fall. Stem is long and straight but has a slight crook at the neck, but this defect is scarcely noticeable. You can use Serenade effectively as a cut flower and you will not have to place it on a high shelf to admire it. If you like dahlias for table decoration, float several flowers of this in a flat bowl, and note how much they resemble a pond lily of odd coloring. \$5.00.
- ★**ZANTE (Bessie Boston)**—One of the big fellows which attracted all classes of buyers in the garden. The man who could not see a flower except it had exceptional size, the woman with a color scheme, and the florist whose chief requisite was stem, all ordered it. Another gold, but decidedly different, as it is heavily suffused with apricot pink. The centre is of the deeper shading. The coloring remains true all season but the gold deepens as the season advances. The blooms are very deep and very large. The stem is stiff as a poker and holds the flower erect. This is a perfect type of hybrid cactus. The blossom is built of heavy, evenly rolled petals, which run to a point at the tips. In many varieties, early blooms will not be perfect, but Zante is a dahlia which produces fine exhibition flowers from the beginning to the end of the season. Never shows an open centre. Bushes are always covered with flowers. This is a good flower for cutting as it is for exhibiting, and we consider it an all around fine dahlia which will become most popular. \$10.00.

Cactus Dahlias — *Novelties and Standards*

The prices are for strong tubers.

Those starred are California dahlias.

Introducers' names are in parenthesis.

- ★**ABBIE E. WILKINS (Bessie Boston)**—A hybrid cactus of the true type with a delightfully new and fascinating combination of two colors. The rolled petals

CACTUS DAHLIAS—*Novelties and Standards (Continued)*

- are a light flesh with a reverse of cerise. A high quality variety with all the good points strongly marked, as large size, good depth and straight stem. \$1.00.
- ★**AMBER GLOW** (Bessie Boston)—A cactus of the highest English type, petals are long, narrow and straight. Size immense. The color is bright yellow, deepening to pale orange at the center. An incomparable exhibit blossom which is also good for cutting. This is the dahlia which was awarded Mrs. C. H. Stout's prize for the best Californian of the English type, shown on long stem. \$1.50.
- ★**ARTHUR TWITCHETT** (Bessie Boston)—If you like dainty coloring, you will love this American cactus. The coloring is flesh or blush pink. A large, perfectly formed incurved flower with faultless stem. Masses of lovely blossoms the entire season will be the reward for growing this fine cactus which can be used for exhibiting as well as cutting. \$1.50.
- ★**BALLET GIRL** (Bessie Boston)—The highest English type of cactus, but with a better stem than most of those imported. A bush will contain such a variety of blooms that it is no fun to describe it. The biggest percentage of the flowers are orange with a white edge, but there are pure orange blooms, white flowers shading to orange, white flowers, edged orange and other variations all on the same bush. All are beautiful and very large. \$1.50.
- ★**BONNIE G.** (Bessie Boston)—American cactus of the scarcest shade in dahlias, a true pink, paler than *Delice*, and deeper than E. F. Hawes. *Bonnie G.* is a tall grower and produces very large flowers with great freedom. \$2.00.
- ★**CALIFORNIA ENCHANTRESS** (Bessie Boston)—A monster bloom of great substance and a delightful shade of pale pink. Hybrid cactus are greatly in demand because of their size and erect stems. This has both these admirable qualities, combined with freedom in flowering. "A splendid dahlia in every way," is the way it is described in a large Eastern catalogue. \$1.00.
- ★**CARMEL** (Bessie Boston)—"I would like to comment on the peony dahlia, Carmel, which came hybrid cactus with me all season. It was one of the finest flowers in the garden," wrote a Massachusetts grower. We classified this variety last year as a peony, but added it was suggestive of the hybrid cactus. Delicate shell pink, shading to white. Immense blooms on good stems. \$2.00.
- ★**CID** (Bessie Boston)—Sometimes, we are between the devil and the deep blue sea, in classifying a variety to satisfy both our Eastern and San Francisco customers. The city of the Golden Gate has months of delightful sea fogs which develop open centres to decorative and cactus varieties, while in the warm weather in the East, dahlias remain true to form. So, in the beginning, we are going to advise you that this hybrid cactus will probably be a peony in San Francisco. The color would make it popular in any form, as it is a flaming orange exactly the shade of a ripe pomegranate. The flower is very big and of rather loose formation. The bushes are low growing. It is a perpetual bloomer on an excellent stem. \$3.50.
- ★**CIGARETTE** (Bessie Boston)—A hybrid cactus more vividly colored than *Ballet Girl*. Best described as creamy white, heavily edged orange, but no two flowers are exactly alike. The petals are long and narrow and inclined to roll. Bloom is large and of good substance. Stems are of the best quality. The name is that of one of the greatest heroines in fiction. \$3.50.
- ★**CINDERELLA** (Bessie Boston)—No difficulty in classifying this as it is a hybrid cactus which is almost perfect in type. The long outer petals are tubular and pointed, but towards the centre the florets have a tendency to flatten. An immense, deep, full flower of incurving formation. The sturdy, tall bushes are always covered with flowers on long stems, which stand up and look you in the face. Flowers which are full to the centre even late in the autumn. We must admit the color of the picture is not exactly to our liking. We would describe it as pale salmon, or fawn pink shading to a tan centre. \$7.50.
- ★**DADDY BUTLER** (Bessie Boston)—This is a large hybrid cactus of the truest form for exhibition. The many petals are perfectly rolled. The color is of the American Beauty rose shades, or rosy carmine. The reverse of the petals is a lighter tint, giving a variation of color. We know of no other dahlia like it. Stem is perfect and we never grew a dahlia which was a heavier producer of blossoms. We all know there are perhaps twelve dahlias which will last a week when cut, and this is one of them. *Daddy Butler* has proven one of the most popular of our introductions. \$3.00.

CACTUS DAHLIAS—*Novelties and Standards (Continued)*

- ★**DR. RAYMOND (Feeney-Bessie Boston)**—We are rather tired of the phrase, the color is different, but know no other way of describing this new dahlia. The flower is pink, suffused with yellow, and heavily splashed and striped with very deep crimson. Rarely, if ever, produced a bloom of solid color. Stem has necessary length and stiffness for cutting. The medium height bushes are productive of immense and many high class blossoms. \$4.00.
- ★**EL GRANADA (Bessie Boston)**—“Your El Granada is far more beautiful than I expected it to be,” wrote the originator of Jersey Beauty. This is the briefest of the many enthusiastic reports we have received on this variety which was a 1924 introduction. We take great pride in this immense hybrid cactus, for not only has it been a producer of beautiful blossoms for us, but has won a first prize in every entry. As the best six blooms of a three year old seedling, it won the Gold Medal of the Dahlia Society of California in 1922. In the show in 1923 it had the unusual honor of taking two first prizes, for the best twenty-five blooms and Dr. Tevis’ prize for the best and most artistic dahlia. The San Francisco show is usually two weeks too early for our best blooms, but El Granada is an early bloomer, and we had the pleasure of winning with it for the best twenty-five blooms in 1924. The color is a vivid orange, and the petals twist and interlace, showing at the tips a creamy yellow reverse. The long stem grows well out of the foliage and is absolutely stiff and faultless. The high bushes are covered with large, deep flowers with closed centres, from early until late season. No colored cut is perfect, and the picture of El Granada, while excellent in form, does not give a proper idea of the great depth of the flower. The orange coloring is much too vivid in the picture also. While El Granada is a generous producer of roots, our sales of it, were greater than the supply last season. We have never propagated it, so our roots are limited. \$10.00 net.
- ★**ELISE DREXLER (Bessie Boston)**—Hybrid cactus. A deep velvety maroon bloom of huge size, borne on top of a straight long stem. The inner petals roll very closely and form almost a star in the centre. Has always produced plentifully of attractive blooms. Prize winner. \$2.00.
- ★**ELIZABETH BUTLER (Butler-Bessie Boston)**—This is an adorable flower. We are told this adjective can be applied to a dahlia named after a lovable woman. The color is the same as the old favorite, Futurity, except it shades to a soft yellow as the petals recede toward the centre. This hybrid cactus has large size and splendid stem. The tall bushes are productive of a wealth of blooms which are ideal for cutting. \$3.50.
- ★**ELSIE OLIVER (Bessie Boston)**—If you can visualize an enormous creamy pink hybrid cactus, this is Elsie Oliver. Pink dahlias are scarce, and this is a delicate new pastel blend of pink and cream. It is a creamy pink shading to cream in the centre. But while the color is an exquisite feature, a blossom of any color would be a prize winner with its immense size and formation. Perfect hybrid cactus, with long evenly rolled petals and a good centre. Free bloomer with good stems. Good everywhere, and one grower enthusiastically wrote, “The most perfect type of hybrid cactus we have ever grown.” \$4.00.
- ★**EMPIRE (Bessie Boston)**—American cactus type. Occasionally a dahlia appears with a beautiful, bewildering color, then we fall back upon our friends to classify the shade of color. Two artists agreed with us that Empire was raspberry red. The bold large flower is composed of many perfectly rolled, incurved petals. The color is deeper at the centre and gradually lightens to pure raspberry. The bushes were laden with immense blossoms, full to the centre, until Jack Frost came. Prize winner. \$3.50.
- ★**ESTHER HUNT (Bessie Boston)**—Hybrid cactus change their types in different climates. Where it is cool and foggy, they often become peony, and where the weather is exceedingly warm, they resemble the decorative. This, however, is such a well defined type, it does not vary wherever grown. The large blooms are composed of long, well rolled petals with serrated tips. The centre might be said to be perpetually perfect. Even when the flower has faded, and the outer petals are falling, this hybrid cactus never shows centre. The vivid colored flowers of oriental orange make a most striking bouquet. This variety created a sensation in the New York shows. \$3.50.
- F. W. FELLOWES (Stredwick)**—The blossom is huge and composed of long, narrow, straight petals. The color is unusual, orange or terra-cotta. The stem is long and straight. 75c.



SIERRA SF.

Hybrid Cactus Dahlia "Cinderella"

CACTUS DAHLIAS—*Novelties and Standards (Continued)*

- ★**GALATEA (Bessie Boston)**—Was the Gold Medal Dahlia for 1923 as it received that award for the best six blooms of a three-year-old seedling at the show given by the Dahlia Society of California. This is always a coveted honor. The color which we see is a soft yellow embellished with a suffusion of pink on the outer petals until the waning season, when the bloom loses its pink flush. The large blooms are composed of long, wavy, narrow petals. The centre remained closed until the last flower. Stem upright and long. Plants grew tall and were smothered with flowers all the blooming months. An Eastern grower wrote, "I like Galatea immensely. It has been a very free bloomer and its shape and stem are fine. It is the best of the eight yellow hybrids we grew." \$7.50.
- ★**GEORGE WALTERS**—Always a prize winner. This is a monster hybrid cactus of lovely coloring, pinkish-salmon shading to a yellow base. 75c.
- ★**GLADYS BATES (Bessie Boston)**—American cactus, one of the popular dahlias in contrasting shades. Immense, heavy blooms of incurved petals of tan, with a reverse of rose. Perfect form, closed centre, long, straight stems, and a profusion of blooms. This dahlia is but slightly removed from the English class. Prize winner. \$1.50.
- ★**GLADYS SHERWOOD (Broomall)**—An immense white prize winning hybrid cactus, recommended for the garden and the show. 75c.
- ★**GOLDEN WEST (Broomall)**—American cactus of great merit because of its size, coloring, stem and keeping qualities. Striking old gold. 50c.
- ★**GONDOLIER (Bessie Boston)**—The color of this hybrid cactus is puzzling, and while the description may seem reminiscent of other varieties, we want to state it is entirely different. It is a clear old rose deeper than salmon, and suffused with golden lights. The formation as well as the shade, is distinctive and enticing. The many petals are closely rolled at the base of the flower, but broaden out towards the tips. They turn outwardly and form a substantial flower of large size. Stem is excellent, bush grows moderately high and produces blossoms with great freedom. \$4.00.
- ★**GRISSETTE (Bessie Boston)**—Grisette is a joy to grow. Form, stem and color are ideal. The flowers are large and deep, and composed of countless heavy but not coarse, closely rolled petals. The tall bushes will produce an abundance of blossoms on stems so excellent as to endear it to all lovers of cut flowers. This hybrid has excellent exhibition size and formation also. The color is a fascinating old gold, heavily flushed pink, and is different from any we have seen. \$5.00.
- JEAN CHAZOT**—A French dahlia which it is a pleasure to grow and to recommend. A delightful autumn coloring of golden bronze suffused with nasturtium red. Flower is large and graceful and held erect on long, strong stems. A most beautiful blossom for any use. Especially fine for cutting. American type. \$1.00.
- ★**JUNE (Bessie Boston)**—American type cactus of finer petals than usual, and by the way, this type of dahlia is being used in all the prize winning cactus selections in the East. June is composed of many fine petals, so incurved as to hide the centre. The color is creamy tan faintly suffused with pink on the outer petals. Flower is large, with good depth. Stems are wiry but strong. \$2.50.
- ★**KIKU (Bessie Boston)**—The formation of this American cactus is distinctive and unlike any we have ever seen. The flower is very large for the type and the petals narrow. But these incurve to such an extent, they at last form a tangled mass more like an exhibition variety of a Japanese chrysanthemum than a dahlia. So we have given it the Japanese name for chrysanthemum. The color is bright yellow, and the bushes bear such a wealth of blossoms, that at times, the green foliage is scarcely visible. Stem is first class and bushes grow fairly low. \$4.00.
- ★**KOH-I-NOOR (Bessie Boston)**—Maroon, and at times so dark as to be nearly black. perfect type of hybrid cactus, as the petals roll closely and run to a point at the tip. The flower texture has a pronounced velvety sheen which adds greatly to its beauty. Blossoms are very large and deep, and can be grown for the largest flower in the show. Centre perfect throughout the season. Stem as stiff as a cane. Blooms abundantly at all times. The very dark green foliage on the tall growing bushes is a pleasing contrast to the rich colored blooms.

CACTUS DAHLIAS—*Novelties and Standards (Continued)*

Following is a quotation from a recent letter received from an Eastern grower: "Koh-I-Noor was covered with immense flowers from early until late, and I can readily see how we could easily grow this variety for the largest in the show. It is such a red dahlia that I have been looking for, for some time, buying many, only to discard them. It caused a lot of comment in N. Y. where I sell our flowers." This took the first prize for, the best vase of red dahlias by an amateur, at Plainfield, N. J., 1924. \$7.50.

- ★**LA FAVORITA (Lohrmann)**—Large hybrid cactus of a new and distinct coloring, a most brilliant orange. Each bloom carried on a long stem. Always full to the centre. \$1.00.
- ★**LOLITA VELASCO (Bessie Boston)**—"The most perfect white cactus," to quote A. T., the well-known dahlia authority, in the Bulletin. The petals are extremely long and straight, the centre excellent, and the size immense. The stem is very long and stiff, so the flower stands up and looks at you. American type cactus which always wins prizes. \$5.00.
- ★**MARIPOSA (Bessie Boston)**—"Nearly every dahlia grower has two or three favorites and it is not surprising to find this shaggy lavender-pink hybrid-cactus as a general favorite. It comes sometimes more pink than lavender but late in the season the coloring is most likely to be shaded a pure lavender. It is like a piece of beautiful art work." The foregoing is a clipping from the December number of the Garden Magazine and Home Builder. Mariposa is one of the best known dahlias, as it has been exhibited in every show since its introduction in 1922, and has won innumerable prizes. This splendid variety heads the list of the fourteen most popular prize winners of the 1923 show of the American Dahlia Society, held in New York City. Colors of flowers vary in different climates, and while the picture does not do justice to the flower, it has the California coloring, and we are adding a description as we grow it in San Mateo. A perfectly formed hybrid type composed of long, narrow incurved petals which twist and curl so they baffle a photographer. A delightful shade of true pink which is intensified by a deeper colored centre. A faint violet suffusion adds to the effect. The veining of the petals heightens the beauty and increases the novelty of the coloring. One of the gigantic California introductions which has depth as well as diameter. An absolutely firm, stiff stem, which rises at least a yard out of the foliage. A centre which is regular and perfect throughout the season. Blooms early and keeps full of flowers the entire fall. \$4.00.
- MERIDIAN**—New. A free flowering English cactus of sulphur yellow. Petals are very fine. Flower is large, stem is stiff. Good for exhibiting and cutting. \$2.50.
- ★**MINAMOTO (Minamoto-Bessie Boston)**—A bright velvety scarlet hybrid cactus of enormous size and fine depth. Keeps its centre throughout the entire season. Blooms freely on a tall growing, sturdy plant. Flower stem is long and stiff and the flower keeps well when cut. \$1.00.
- MRS. C. COOPER (Burrell)**—This is one of the largest cactus grown. The florets are of immense length, slightly incurved. Color is a brownish tan. 75c.
- ★**MRS. EDNA SPENCER (Spencer)**—An American cactus. Color, lavender shading to white. Blossom large with strong stem. Free flowering and nothing better for cutting. \$1.00.
- MRS. HUBERT BLACKMAN**—Beautiful pinkish mauve shading to white. A good sized flower composed of very fine petals. Very free blooming. Needs heavy disbudding for exhibition flowers. Stem is excellent. English cactus. \$1.00.
- ★**MRS. RICHARD LOHRMANN (Lohrmann)**—A most excellent dahlia for all purposes. Pure golden yellow hybrid cactus. \$1.50.
- ★**OBERON (Bessie Boston)**—Here is something new in coloring. But you will really have to take our word for this, as we simply cannot give an adequate description of it. We know it is a deep old rose with a most pronounced violet suffusion. Immense well built, deep flowers, which will remain double the entire season. A splendid free flowering variety, with strong, upright stems. Hybrid. \$3.00.
- ★**PAPILLON (Bessie Boston)**—One of the big fellows which has been grown successfully everywhere and has been in many prize winning collections. A beautiful shade of old rose with golden lights. An incessant bloomer. Stems, of course, are strong and long, and carry the flower well. It received the award as the



Decorative Dahlia "Shudow's Lavender"

CACTUS DAHLIAS--*Novelties and Standards (Continued)*

- best Californian shown at Bridgeton, N. J. in 1923, and won first as the best hybrid cactus at the County Fair, held at Bridgeton, N. J. In 1924, this hybrid cactus made two more winnings at Bridgeton shows. \$3.50.
- ★**PARADISE (Bessie Boston)**—A bold, massive flower of the well known George Walters formation. The special feature of this hybrid cactus is its branching stems of great length and stiffness. The coloring is decidedly different, creamy old rose suffused with gold, so blended as to give a striking brown tone. A vigorous grower, and blooms with more than ordinary freedom in San Mateo where nearly every variety is a mass of flowers. If you can imagine a brown George Walters with a stem as stiff as a walking stick and three times as long as the original, you can see Paradise, a dahlia we are justly proud of having created. \$4.00.
- PENNANT**—An English cactus of the coloring of F. W. Fellowes, described variously as coral and orange. Petals are exceedingly fine. A free bloomer with excellent stem. \$1.00.
- ★**REGENT (Bessie Boston)**—American type prize winner. No blossom was less than eight inches and every bush was weighted with blooms. The stem was all that could be desired and the color was new in cactus. A clear mauve pink. The incurved formation of the flower was particularly pleasing. \$1.50.
- ★**ROMANY (Bessie Boston)**—A splendid addition to the hybrids, as the formation is flawless. Long, closely rolled, incurved petals, form a large, substantial bloom. The color is a bright geranium scarlet and will not burn in the hottest sunshine. A variety which loves to produce a wealth of blossoms all season. Stems are first class. \$2.00.
- ★**SEÑORITA (Lohrmann)**—A giant hybrid cactus of very dark maroon. The originator of this dahlia describes it as a decorative, but for two seasons the petals have distinctly rolled with us. Stems are long and strong. The plant grows low but produces many high-typed, beautiful blooms. \$2.00.
- SILVER HILL PARK (Stredwick)**—A new English cactus of decided merit. The large white bloom is composed of many very fine petals. Stem is long, and while not perfectly stiff with us, we found the blooms could be cut for bouquets. Free blooming, tall growing bushes. An English prize winner which is fine for exhibition purposes. \$2.50.
- ★**SINBAD (Bessie Boston)**—We like everything about this dahlia but the name, but it is difficult to get new names when there are twenty thousand or more named varieties. The color is a bright maroon, but not deep enough to be described as "black". The reverse of the petals is of a lighter shade, and as they twist and turn, the effect is a blossom tipped with mauve. The form is distinctly incurved. The petals are many and slender for a hybrid cactus. The stem, while long and wiry, is perfectly stiff. Blooms freely. Stock very limited. \$5.00.
- ★**SNOWDRIFT (Howard & Smith)**—A very large, finely formed, white cactus, with good stem, and wonderful keeping quality. American type. \$1.00.
- ★**SPA (Bessie Boston)**—This hybrid cactus is a prolific and continuous producer of immense flowers. The bushes are very dwarfed and should be planted in the outer row of a dahlia patch. The blossom is of the deepest shade of lilac or mauve and stands erect on a fine stem. \$1.50.
- ★**ST. CLAIRE (Ballay)**—A dahlia which likes the sunshine. A fine, big, deep hybrid cactus of attractive coloring. Pink, softening to cream at the centre. Bushes grow of medium height and bloom freely. A pleasing 1924 introduction. \$5.00.
- SYDNEY JONES (Stredwick)**—New. A perfect English cactus. This may seem a rather positive statement but we have been growing this variety for the past three seasons, and have never discovered it had any faults. Flower is very, very large. Petals are fine but do not burn. Formation is incurved and stem is absolutely unbending. Bushes grow tall and are heavy producers of flowers. Color is of a soft rose pink, shading to yellow at the base of the petals. A perfect dahlia, is equally good for cutting and exhibiting. \$2.50 Net.
- ★**TALISMAN (Bessie Boston)**—If you are looking for a new combination in autumn tints, here it is. This big, full hybrid cactus, has a brownish red color, with a reverse of tan. The petals are long and many, incurve slightly, and open at the tips showing plainly the tan at the back. The centre is also tan, so the effect is most striking. The foliage is a very dark green which makes an attractive setting for the countless flowers. The form is perfect hybrid cactus.

CACTUS DAHLIAS—*Novelties and Standards (Continued)*

Stems excellent. We have received an extraordinary lot of letters commending this dahlia, which was a sensation in 1924 at many of the Eastern shows. \$3.50.

- ★**TOM LUNDY (Fenton)**—A big, bold crimson hybrid, which has won many prizes since it was introduced in 1915. Good stem, and floriferous. 75c.

New Peony Dahlia of Our Own Introduction

The Peony Dahlia is a semi-double flower showing a yellow centre. To be perfect in type, the centre should be surrounded by small petals, or petaloids.

- ★**LE SOIR (Bessie Boston)**—A good peony should be flat, with a yellow pollinated centre surrounded with small petaloids. This type of flower is scarce among our seedlings. California peonies have a tendency to become decoratives in Eastern climates. We have watched Le Soir most carefully and believe it will keep its original form, no matter where it is grown. The color is maroon, shaded crimson, and the back of the petals is pink. These tints are well blended. The bushes are tall. The stems strong as well as long. You can depend on an abundance of flowers from this variety the entire blooming period. \$3.50.

Peony Dahlias—*Novelties and Standards*

The prices are for strong tubers.

Those starred are California dahlias.

Introducers' names are in parenthesis.

- ★**AGNES BOSTON (Bessie Boston)**—The coloring and shape of this incomparable flower would make it a winner anywhere. A royal purple shading to white. The petals are long and curling and the tiny petals are numerous and twisted. Extremely large with fair stem. \$3.00.
- BILLIONAIRE (Stillman)**—Large, gold colored flower with pendant stem. \$1.00.
- ★**BLACK BEAUTY (Bessie Boston)**—Dark dahlias are scarce and there is always a demand for them. It is the biggest and blackest peony we have ever seen. The stems are long and stiff. \$1.00.
- ★**BLOSSOM (Bessie Boston)**—A dainty flower of great size and exquisite coloring, pure white with a suggestion of pink like a fruit blossom. Bush grows tall and is laden with blooms throughout the season. Last flowers are as good as the first. \$1.00.
- ★**BLUE BIRD (Bessie Boston)**—An exceptional color of the deepest tone of lilac, which in certain lights has a bluish sheen. A simply huge blossom held on stems long and as stiff as bamboo. The bushes are always laden with blooms. \$1.00.
- ★**CERISE**—Irresistible because of stem, color and keeping qualities. A deep cerise bloom which grows right at the top of an exceedingly long stem. Large. 75c.
- ★**CHANSON (Bessie Boston)**—The color is the deepest lilac with a bluish sheen, which is especially noticeable late in the year. A heavy peony which has never produced a decorative flower in San Mateo. However, we question if this, like some other California peonies, may not take the decorative form in the East. It will always be beautiful whatever type it develops. Petals are numerous, broad and flat, giving substance. Stem irreproachable. Floriferous. \$1.50.
- CITY OF PORTLAND (Gill)**—A fine acquisition to the peony type, immense clear yellow blooms on good stems. A prize winner. \$1.00.
- CREAM KING (West)**—A soft cream, as the name would indicate. The stem is very long, which makes it an excellent cut flower; it blooms freely all season. The size is immense. A decorative outside of California. 75c.
- ★**DREAMLIGHT (Bessie Boston)**—A large full flower composed of many narrow flat petals of a lovely shade of pale old rose, illuminated with yellow at the base. Numerous twisted and curled petaloids around the yellow disc, make the peony formation perfect and this dahlia most attractive. Medium height bushes are laden early and continuously with immense blooms on perfect stems. Dreamlight produced beautiful decorative blooms in the East. \$2.50.



Decorative Dahlia "El Dorado"

PEONY DAHLIAS—*Novelties and Standards (Continued)*

- ★**ELEANOR HERRICK** (Bessie Boston)—A marvellously large peony with a long straight stem. Flowers will average nine inches. Light maroon color. \$1.00.
- ★**ELIZABETH BOSTON** (Bessie Boston)—The best and biggest peony of its coloring that has so far been produced. Enormous blooms are of deep crimson, shading to old gold at the tips, and will hold its color the entire season. The centre is surrounded with tiny, curly petals which make this introduction perfect of its type. Stems are exceedingly long and cane-like. Tall growing and very floriferous. Won, for the best peony in the 1923 Salem, N. J., show, and was awarded a blue ribbon in the Cincinnati show (1923). \$3.00.
- GEISHA** (Hornsveld)—The most popular of all dahlias. This is the dahlia which made the peony famous. A stunning mixture of scarlet and gold. \$1.00.
- ★**GORGEOUS** (Bessie Boston)—This is the most wonderful peony we have ever seen, because it has tremendous size, great depth, stiff long stems, and will bloom freely throughout the season. Late blossoms will be as large and good as the early ones. The color is yellow, shading to bright scarlet. With scarcely any disbudding it will produce ten-inch flowers on stems five feet long. Plant grows very tall. The blossoms, because of their unusual substance, last longer when cut than the average bloom of this popular type. "How gorgeous! What is it?" was the frequent query of visitors to the garden. This has been a perpetual prize winner. \$2.50.
- ★**HAL CURTIS** (Bessie Boston)—A favorite because of its splendid stem and its lovely shading of old rose and salmon. It is the best type of peony with a centre nearly hidden with clusters of tiny petals. Flowers are large, and it is one of the freest bloomers. \$1.00.
- MEYERBEER** (Nonin)—The demand is always greater than the supply for this dahlia. An immense bloom of fascinating purple. Unexcelled formation and stem. 75c.
- ★**MRS. E. A. TROWER** (Seal)—A California peony which may take a decorative form in the East. Old rose, shading to yellow. Prolific bloomer with good stems. \$1.00.
- ★**MRS. JESSIE L. SEAL** (Gleadell)—The largest flower of its coloring, which is a magnificent old rose with golden shadings. Stem is particularly long. The blossom is borne well above the foliage. \$1.00.
- ★**MRS. JOHN BRAY** (Bessie Boston)—A most distinctive fancy peony of a white ground, speckled, striped and splashed with maroon, forming a good contrast to the yellow disc. One of our biggest sellers. Habit exceptional, flowering early and constant, stem long and stiff. \$1.00.
- ★**MY LADY** (Bessie Boston)—Is an uncommon beauty and difficult to describe. An unusual red, somewhat of the shade of a sun-ripened tomato with a faint cerise suffusion and slightly tipped gold. Its formation is of the best and its stem is as rigid as a cane. Its blooms are immense and profuse. \$1.00.
- ★**NATALIE MAI** (Bessie Boston)—A blossom so unusual in coloring that it is quite impossible to do it justice in description. A deep burgundy with maroon suffusion shading to a creamy pink at the edge. This is a very large flower with a cluster of tiny petals around the centre. \$1.00.
- ★**OSAKA GEISHA** (Bessie Boston)—To begin, this is nothing like the old favorite Geisha. The flower is huge and the stem long and absolutely stiff. The color is dull red and creamy yellow, the formation is unique. The long petals roll inward from the centre and flatten towards the pointed edge of the petals. The front of the petals is yellow and the back dull red. \$1.00.
- ★**PEARL RUGGLES** (Ruggles)—An exquisite coloring of cerise pink, splendid formation and stem. Free blooming. Nothing better in the peonies. \$1.50.
- ★**PITTI-SING** (Bessie Boston)—A most beautiful and fascinating dahlia, which attracts great attention. It is the most brilliant oriental red with a gold suffusion. The flower is large and beautifully formed. 75c.
- ★**THE ORIOLE** (Burns)—A stunning big blossom of an attractive mixture of colors, burnt orange, red and yellow. Some flowers on the bush are tipped white. Blooms freely on good stems. Takes the decorative form in the East. \$1.50.
- UNCLE SAM** (Meachem & Sherman)—An immense peony. Flower is very heavy but true to form wherever grown. A long, straight stem holds the flower upright. Blooms freely. A well known Eastern prize winner of bronze color with old rose suffusions. \$5.00.

PEONY DAHLIAS—*Novelties and Standards (Continued)*

- ★**VIVANDIERE** (Bessie Boston)—Cerise carmine, shading lighter at the tips of the petals. The flower has a peculiar velvety texture that makes it most desirable. An immense deep peony, with the centre surrounded with petaloids. Eight-inch blooms are attainable without disbudding. The stems are excellent, and the bushes began blooming early and were smothered with flowers. This is a perfect decorative in a warm climate. \$2.50.

Collarette Dahlias—*Novelties and Standards*

The prices are for strong tubers.

Those starred are California dahlias.

Introducers' names are in parenthesis.

These are single dahlias with a collar of small petals surrounding the yellow disc. Fine for cutting.

- ABBE HUGONARD** (Rivoire)—A giant in its class. The coloring is a striking purple with a distinct white edge to the petals. Collar is white. 50c.
- AMATEUR CHARVANET**—A bright flame color, with a collar of lighter tint. Blooms at the top of long, straight stems. 50c.
- ★**AMATO** (Bessie Boston)—New 1925. Deep cerise, shading to gold at the base of the petals. Collar, cream, deepening to yellow. Very large, regularly formed blossom. \$1.50.
- AMI NONIN** (Charmet)—one of the most beautiful flowers of its type. Color is a charming, shaded old rose. A great favorite as a cut flower. 50c.
- ★**ANJOU** (Bessie Boston)—New 1925. A brilliant, but not violent, majenta, which gradually shades lighter until the tips are almost white. Collar is white, shaded majenta. Most attractive. \$1.50.
- ★**BIZET** (Bessie Boston)—New 1925. This was among the collarettes which won our prize in the 1924 show. It is one of the biggest flowers of its type. Purplish cerise shading lighter at the tips. Collar petals are very long, white shaded cerise. \$1.50.
- ★**CHARTREUSE** (Hodgens)—1924 introduction. Large flower of a new greenish yellow with a collar of contrasting buttercup. Excellent. \$1.50.
- ★**COROT** (Bessie Boston)—New 1925. This pure white collarette with a yellow disc is as lovely as a lily. It is large and symmetrically formed. This helped us to win the prize for dahlias of this French type. \$1.50.
- DIOMEDE** (Charmet)—Deep carmine, purple-suffused, and edged white, lighter collar; large, very tall and fine. 50c.
- ★**DOMINIC** (Bessie Boston)—New 1925. Gorgeous coloring of yellow, suffused and splashed red. Yellow collar shading lighter. \$1.50.
- ★**DUMAS** (Bessie Boston)—New 1925. A rich warm yellow, heavily suffused with brownish red. Collar is deep yellow. Flower is very large and regularly formed. \$1.50.
- ETOILE DE MONT PLAISIR**—A large collarette of the star formation purplish crimson in color, with a collar shaded rose and white. 50c.
- ★**FRANK HARRIS** (Hodgens)—New 1924. A distinctive coloring of reddish brown. The second largest collarette we have ever seen. Very long, straight stems. Blooms freely. A decided acquisition to this type of dahlias. \$1.50.
- ★**GASCON** (Bessie Boston)—New 1923. A handsome blend of coloring. Bright crimson, heavily tipped and edged with creamy yellow. The flower is very large and regular. 75c.
- GEANT DE LYON** (Rivoire)—An enormous flower of velvety maroon, with a white collar. Everybody exclaims upon seeing it: "How like velvet!" This is the dahlia which has made the collarette famous in California. \$1.00.
- ★**HOOT MON**—Delightful cerise or rosy carmine is the lovely color of this big bloom. The pure white collar makes a fine contrast. 50c.

COLLARETTE DAHLIAS—*Novelties and Standards (Continued)*

- ★**MON AMI (Bessie Boston)**—A flaming scarlet blossom lightly tipped with gold. The collar is a fine contrast and is yellow, with a gradual shading of vermilion. 50c.
- ★**MT. LASSEN (Bessie Boston)**—Fiery red with yellow collar. This is a very sturdy grower and is a mass of blooms all season. 50c.
- ★**RAFAEL VELASCO (Bessie Boston)**—A striking and beautiful dahlia which will reward the grower with loads of blooms. Deep maroon, collar white. 75c.
- ★**SAN MATEO STAR (Bessie Boston)**—An extraordinary flower and the biggest collarette ever produced. The color is a clear cerise, the petals edged white, and the collar white. The formation is a distinct star. Like all blossoms of this type, is a cheerful bloomer with good stems. \$1.00.
- SOUV. BEL ACCUEIL (Rivoire)**—This orange-red with a yellow collar should be seen to be appreciated. One of the largest and most beautiful. 50c.
- ★**VAUBAN (Bessie Boston)**—New 1923. One of the blackest dahlias and the darkest colored collarette. The color is the deepest maroon, the petals have a soft, velvet-like texture, the flower is large and of elegant form. 75c.
- ★**WILLIAM WELSH (Bessie Boston)**—The best and largest yellow. Appears in all the winning collections. Collar is also yellow. 50c.

Show Dahlias—*Novelties and Standards*

The prices are for strong tubers.

Those starred are California dahlias.

Introducers' names are in parenthesis.

These are old-fashioned, quilled double flowers. The giant, or hybrid shows, are becoming favorites because of their tremendous size.

- ★**ANNA REHORST (Rehorst-Bessie Boston)**—A most wonderful hybrid show of the deepest shade of purple. 50c.
- BIG BEN (Doty)**—A splendid, large, deep crimson hybrid. Fine stem. \$1.00.
- COLONIST**—Chocolate and fawn. Excellent for exhibition. 50c.
- COUNTESS**—Cream-tipped lilac rose; perfect form. 50c.
- ESMOND**—Biggest and best yellow. 50c.
- ESTELLE CHRISTY**—Immense yellow hybrid. \$1.00.
- FLORENCE TRANTER**—Bluish white, edged with rose. Fine. 50c.
- ★**GENERAL HAIG (Kettlewell)**—Best scarlet show. Pure English exhibition type. Remarkably fine. \$1.00.
- GLORY OF LYONS**—The best white show in existence. 50c.
- GOLD MEDAL**—Yellow, striped red; good fancy. 50c.
- KATHERINE KERNAN**—White, shading to pink; large and good hybrid. \$1.00.
- KING OF PURPLE**—Deep purple of fine formation. 50c.
- LES AMOURS DE MADAME**—Cerise striped darker. Large. 50c.
- MME. MARIE AGNOSTOKI**—Large pale pink. 50c.
- ★**MARITANA (Bessie Boston)**—Lilac or mauve shade. The highest English type of show, with closely quilled petals. The flowers are large. \$1.00.
- MRS. BOTTOMLEY**—Rosy peach, extra fine. 50c.
- MRS. C. D. ANDERSON**—Large, rich, purplish crimson hybrid. 75c.
- YUBAN (Doty)**—Yellow, striped red. Very large hybrid and one of the best Eastern dahlias. \$1.00.



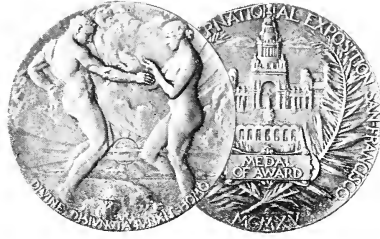
New Decorative Dahlia "His Majesty"

Pompon Dahlias—*Novelties and Standards*

The prices are for strong tubers
Those starred are California dahlias
Introducers' names are in parenthesis

Tiny, compact flowers of quilled petals. Very floriferous, and do not require dis-budding. Splendid for cutting.

- ★**AIMEE** (Bessie Boston)—A wee flower of bronze; coloring is entirely new and charming. Blossoms freely on exceedingly long stems. 50c.
- ★**ARTHUR** (Bessie Boston)—New 1925. Brilliant scarlet, and the very best in this coloring. Flower is small, regularly formed. Stem is particularly long. Floriferous. \$1.00.
- ★**BOB** (Bessie Boston)—Dull red, small round compact bloom of an unusual shade. 50c.
- ★**CLEO** (Bessie Boston)—Yellow, tipped lightly with red; small and good. 50c.
- ★**DAINTY** (Bessie Boston)—Tiny pointed petals of white shading to pink; fine for cutting. 50c.
- ★**DANDY** (Bessie Boston)—Perfect orange in every respect. Small, well formed and free. 75c.
- ★**DEE DEE** (Estes)—Decidedly good. Small. Well formed pale lilac. \$1.00.
- EDWARD MORRICK**—A combination of red, orange and white. 50c.
- GIRLIE**—Excellent lilac; very popular. 50c.
- GLOW**—Charming old rose; greatly in demand. 50c.
- ★**GOLDIE** (Estes-Seal)—A dainty gold which is most desirable. 75c.
- HYPATIA**—Well-formed blossom of salmon shading to pink. 50c.
- IDEAL**—Yellow; always good. 50c.
- JESSICA**—Yellow, tipped red. Incorrectly called Kittie Barrett. 50c.
- ★**JOAN** (Bessie Boston)—A beautifully formed small blossom of clear yellow suffused with pinkish red. Extra fine. 50c.
- ★**JOE FETTE** (Bessie Boston)—The best white for all purposes. 50c.
- JOHNNIE**—The tiniest of all; very dark red. 50c.
- ★**KIM** (Bessie Boston)—An orange which will hold its centre where it is warm. 50c.
- LILIAS**—New. One of the loveliest of this type. Cream ground heavily suffused with pinkish mauve. \$1.00.
- LITTLE BEESWING**—Tiny and beautifully formed. Red, shading to yellow. 50c.
- ★**LITTLE DAVID** (Twitchett)—New. The deepest shade of orange. Small, perfectly shaped blossom. Very free blooming. One of the best. \$1.00.
- LITTLE DONALD**—An excellent bright red. 50c.
- ★**MAJOR** (Bessie Boston)—Deepest shade of old rose, shading to soft yellow; very fine. 75c.
- ★**MAVIS** (Bessie Boston)—Palest amethyst in color. A perfect little beauty. \$1.00.
- MIDGET**—Peachy salmon. Small and good. 50c.
- ★**MIKE** (Bessie Boston)—New 1925. A charming new color of burnt orange, shading lighter at the outer petals. Flower is small and round. A profuse bloomer. \$1.00.
- MILDRED**—White, heavily tipped pink. Good. 50c.
- NELLY FRASER**—Admittedly the best pink; always scarce. 50c.
- ★**OMEGA** (Bessie Boston)—Amethyst, faintly tipped white, small, regular and compact. 50c.
- ★**PANSY** (Bessie Boston)—Violet or King Tut purple. Very striking color. 75c.
- PERFECT**—Well named. Yellow, tipped pink. 75c.
- ★**PEE WEE** (Bessie Boston)—Soft yellow with a centre shading to brown. 50c.
- ★**PETITE** (Bessie Boston)—Deep amethyst. A small bloom composed of tiny pointed petals. Scarce. \$1.00 Net.
- ★**RENO** (Bessie Boston)—Beautiful old rose, shading to old gold. Attractive new coloring in pompons; good. 75c.
- ★**TOM** (Bessie Boston)—New 1925. Small and compact flower of bright yellow, tipped sunset red. Produces masses of blossoms. Incomparable in a basket or bowl of autumn colored pompons. \$1.00.
- ★**TOM THUMB** (Pelicano)—Absolutely the tiniest, perfectly formed dahlia. A winner in the smallest flower class. Color, a garnet red. 50c.



GRAND PRIX

HIGHEST AWARD

PANAMA-PACIFIC INTERNATIONAL EXPOSITION

SAN FRANCISCO, 1915

PRIZES WON

Dahlia Society of California Show, September, 1924.

First Prize—Best Collection Hybrid Cactus Dahlias.

First Prize—Best Collection American Cactus Dahlias.

First Prize—Best Collection Collarette Dahlias.

First Prize—Best Twenty-Five Blooms of One Variety.

First Prize—Best Six Fancy Dahlias.

First Prize—Best Collection of Unregistered Seedlings.

First Prize—Best 1924 Seedling.

Second Prize—Best Collection Decorative Dahlias.

Second Prize—Best Twelve Blooms of One Variety.

Second Prize—Best Fifty Blooms of One Variety.

Second Prize—Best 1923 Seedling.

Third Prize—Best General Display.

Third Prize—Best Collection Pompon Dahlias.

Third Prize—Best Collection of California Dahlias.

Third Prize—Best Basket of Pompon Dahlias.

Third Prize—Best Basket of Pink Dahlias.

Exhibit Was Entirely Composed of Bessie Boston Originations.

PRESS OF
THE HANSEN PRINTING CO
SAN FRANCISCO





GRAND PRIX DAHLIAS