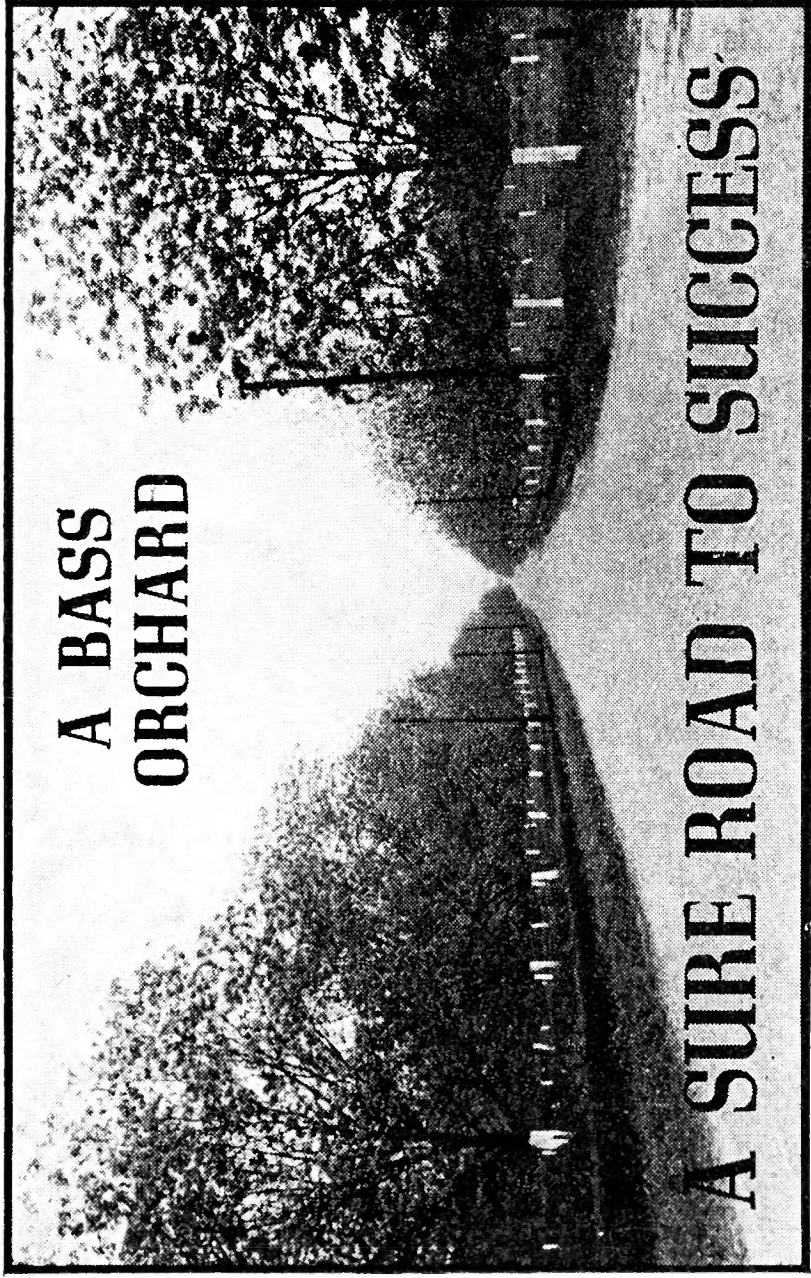


Historic, archived document

Do not assume content reflects current scientific knowledge, policies, or practices.

NEW CATALOGUE



A BASS
ORCHARD

A SURE ROAD TO SUCCESS

From **THE BASS PECAN CO.**, Lumberton, Miss.

"The world's largest growers of papershell pecan trees"

U. S. D.

Sec. 562, P. L. & R.

U. S. POSTAGE

1c Paid

LUMBERTON, MISS.

Permit No. 1

BB1

U.S. Dept. of Agriculture
Washington, D.C.

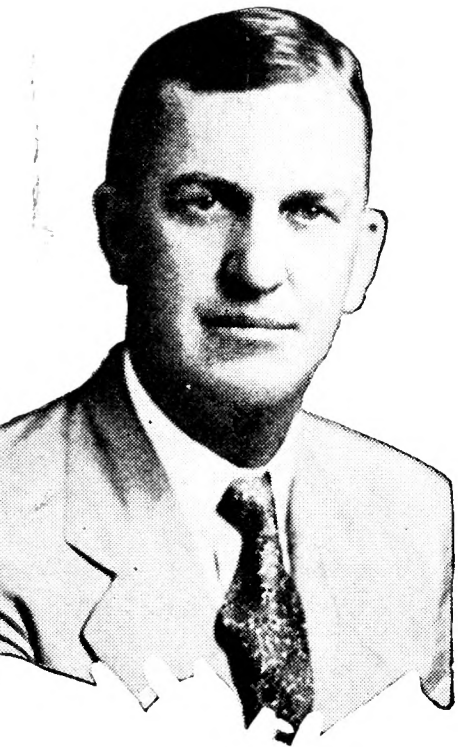
PECANS WILL MAKE YOU MONEY . . .

WE KNOW FROM EXPERIENCE. Thirty years ago we thought they would make us money; today we know it. Our pecan trees have made good money every single year of this depression. Year in and year out they have wiped out losses sustained by other crops, taxes and investments.

Thousands of families could have been enjoying the profits of pecans just as we have, had they looked ahead and planted our early-bearing strain of Papershell pecans and given them the care and attention they deserve. Here we own orchards for which we would not take \$1,000 per acre — planted on land worth only \$10 per acre without the pecan trees.

Come see our orchards and nurseries! We should delight in showing you orchard trees bending and almost breaking with fine Papershell pecans — and in showing you our nursery stock; thousands of little trees bearing in the nursery rows — straight, thrifty, vigorous, well-rooted and highly bred-up from early and heavy-bearing parent trees. These are the kind of trees that will live well for you, grow fast and bear early.

Yes, they will make you money. Plant them.



I. H. BASS
President, Bass Pecan Co.



J. H. Bass and J. H. Bass, Jr., Inspecting One of Our Pecan Groves



BASS TREES HOLD WORLD'S RECORD!

This is the remarkable bearing record of nine of our Extra Special pecan trees set out the last of February by Dr. D. B. Stevenson of Lumberton, Miss. Most all of these trees bore pecans the first year set out. They were our largest size trees and have been given the very best of attention by Dr. Stevenson. He has fertilized the trees very heavily with barnyard manure and worked around them often, so that weeds and grass would not get the fertilizer. Results have been remarkable.

The record that follows was carefully kept by Dr. Stevenson, who is one of the best known physicians as well as loved and respected citizens of South Mississippi, and is absolutely authentic as he gathered and weighed the pecans himself. The trees bearing the heaviest crops were the ones most favorably located. Trees with smallest yields were greatly handicapped by being near big oaks, sidewalks, etc. The nuts were gathered in October and November two years and eight months later — actually before the trees had been set in the ground three years.

<i>Trees No.</i>	<i>Age</i>	<i>Yield</i>
Tree No. 1	2 years 8 mos. after planting	25½ lbs.
Tree No. 2	2 years 8 mos. after planting	15 lbs.
Tree No. 3	2 years 8 mos. after planting	16 lbs.
Tree No. 4	2 years 8 mos. after planting	17½ lbs.
Tree No. 5	2 years 8 mos. after planting	28¼ lbs.
Tree No. 6	2 years 8 mos. after planting	12 lbs.
Tree No. 7	2 years 8 mos. after planting	10 lbs.
Tree No. 8	2 years 8 mos. after planting	4½ lbs.
Tree No. 9	2 years 8 mos. after planting	4 lbs.

**Plant Our Extra Special Sizes for Earlier and
Heavier Bearing!**



Home of I. H. Bass, President of the Bass Pecan Company
The beautiful trees shown in this picture are pecan trees

FOR YOUR HOME, COMBINE THE BEAUTY AND PROFIT OF PECAN TREES

No other tree can offer you so much for your money as the pecan tree. By planting it you get beauty, permanence and profit at the same time. Because of this, more and more people are buying pecan trees to plant in their yards, around their homes, to provide shade and add to the grace and beauty of the house itself.

Study the picture above carefully. It is the home of I. H. Bass, the president of the Bass Pecan Company. The trees are pecan trees, selected for planting solely on their merits as shade trees. Notice the graceful trunks, the wide spread of the branches, the abundance of shade.

Picture These Trees at Your Home

Think how much these beautiful pecan trees would add to the attractiveness of your home, how much cooler it would be in the hot summer. If you need trees in your yard, plan to make those trees pecans. Pecans are not only beautiful, they are long lived and remember—*each pecan tree serves a double purpose.* Each tree offers you a *certain and permanent source of income.*



Photograph of the grounds of the I. H. Bass home
Pecan trees can help make your home look like this

A PAGE FROM THE RECORD OF PECANS

Whether you plant pecans for beauty or for profits, the result is both. The following instances, selected at random from the experiences of thousands of pecan growers, point out a certain path to profits for you.

Pecans Have Paid Others Big Money— They Could Pay You, Too!

A colored farmer in Texas has averaged 800 pounds of nuts from one tree bringing about \$300 and as much clear money as all of the rest of his sandy farm of 120 acres. He has refused \$1,000 for the tree.

A tree produced \$80 worth of nuts in its 18th year alone, although it started bearing the third year. Now the tree produces more than 240 pounds each year. It was one of our \$1 trees.

A tree in San Saba, Texas, more than 1000 years old, it is claimed by tree experts, produces an annual crop of from \$500 up to even \$1,000.

In Hollandale, Miss., there is a 38-year-old tree that produced in one year 1200 pounds of nuts which sold for \$480.

Twenty years ago an acquaintance bought 5 acres of land for \$20 per acre. After planting in Bass trees he refused the price of \$1,000 per acre a few years later.

A Mississippian got 200 pounds of nuts from an 18-year-old tree, and another produced 273 pounds one year as an 18-year-old tree, and two years later 330 pounds off the same tree.

It is said five dollars invested in 5 trees produced in 18 years \$6,336.41.

One of our customers bought two trees for shade, and eight years later got 100 pounds of nuts off the two trees, selling half of them for \$25.

A woman customer wrote she would not take less than \$30,000 for her grove of Bass bred-up trees.



Cows and pecans mix nicely—to their owner's profit

PECANS AND CATTLE

A Great Combination for Immediate and Future Income

Our own orchards and nurseries make excellent proving grounds. First, by experiment, and then by actual practice we have learned that pecans and cattle make a most profitable combination. The land between the rows of trees is thus utilized, and as the livestock graze, keeping down the grass and weeds, they fertilize that land. We have saved thousands of dollars on fertilizer alone through this method. Also we do not need extra grazing land, nor do we have to tie up land solely for pasture, keeping it otherwise idle. Good clover will produce good milk and good meat and thus bring in an immediate income while your pecan trees are growing, and as they bear nuts there will be that double income.

Nature's Insurance That Pays Dividends from the Very Beginning!

When you plant pecan trees and plan to give them the attention they deserve, you are really taking out an insurance Policy with Nature! This policy will start maturing in just a few years time and provide a regular income for you. It will prove to be a trust fund, furnishing you a steady income whereby you may retire and become completely independent.

The only "premium" to be paid, after planting the finest of trees is to keep the ground properly cultivated, and by planting crops between the rows, or clover for cattle, you will be paying that premium in an easy way, the income from which crop or cattle will produce immediate revenue.

From the very beginning, Nature starts paying dividends, for your land increases in value as soon as trees are planted, and the older they become the greater its value. Nature is kind to those who have the foresight to look ahead — to plan — and to plant!

AN INVESTMENT

Safer Than Stocks — Better Than Bonds

It's much better and healthier to clip your own "coupons" from pecan trees. Stocks and bonds are subject to someone else's management—the honesty and ability of strangers. How many instances there are of people who have invested their life earnings in worthless paper, whereby an even smaller investment in paper-shell pecans would have made it possible for them to retire early in life, be independent, care-free and happy!

Stocks and bonds fluctuate in value, and there's always that risk of them going down, whereby a pecan orchard is ever increasing in value. And they grow for centuries!

We could cite many instances of marvelous investments in pecans. Just a few typical ones may be found on Page 30. Pecan trees have withstood the test of time, depression and the elements, and many Southern fortunes have been begun, and built, with these precious nuts.

Pecans Paid Better Than Any Other Crops During the Depression

Pecans proved to be the only crop during the depression that paid well. You didn't hear any talk about plowing up the third row of pecans or cutting down every third tree!

It is true that the growers didn't get the price they had been getting, but other things were low, too—cotton, corn, wheat, hogs, etc. At the same time, labor costs were lower—don't forget that!

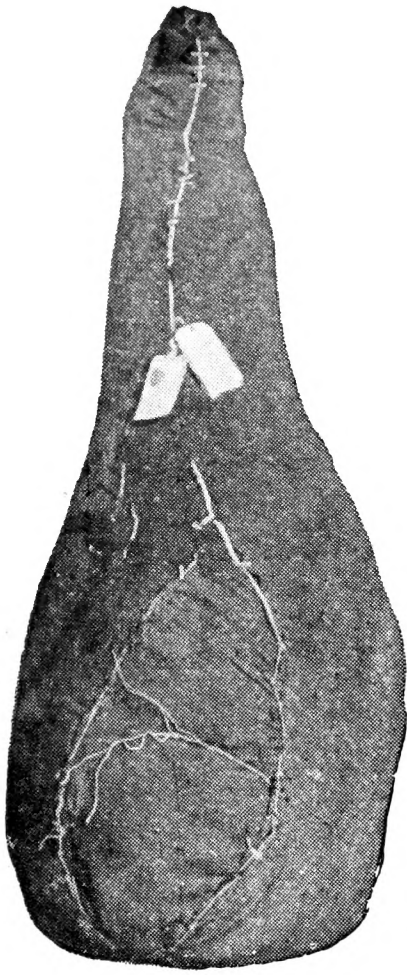
And remember this! All during that time, the trees were growing, thus adding to their own productiveness and value for the forthcoming years, and increasing the value of the land.

We'd rather grow pecans at 10c a pound than cotton at 25c.



One of Our Heavy Bearing Pecan Orchards

IT PAYS TO PLANT ONLY THE FINEST TREES . . .



Trees ready for shipment

Why Take a Chance on "Bargains"?

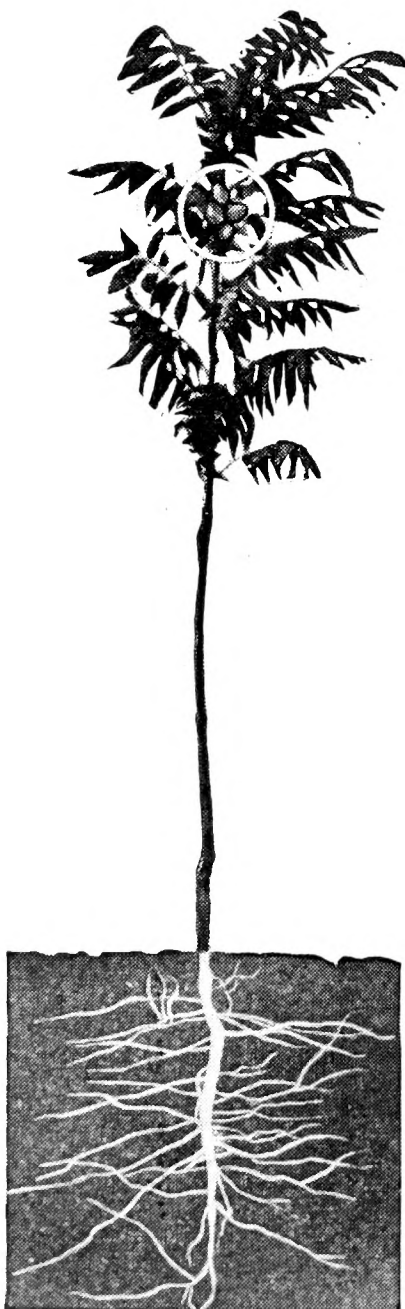
You have much at stake when you plant pecan trees. If you buy what looks like a bargain because the price is less, or from an agent who may be a perfect stranger to you, you take a great chance. You won't know whether those trees will live (or bear if they do) until long after he has gone and until you may have wasted several years of valuable growing time. When you can buy Bass trees, you get proved early and heavy bearing pedigreed stock, backed by guarantees that protect you. (See page 27).

Bass Trees Have Well Developed Root Systems!

You are definitely assured well-developed roots, good, strong, straight trunks and bred-up stock from known bearing parents. This typical Bass tree (see illustration), growing vigorously in our nursery, has a heavy foliage, a healthy look, and is even bearing nuts. Note the root system—a good hardy tap root with a fine spread of lateral roots. Furthermore, we do not charge you for the roots, as some do. Our trees are measured from the ground up instead of from the tip of the tap root to the top of the tree. Our three- to four-foot trees, therefore, are often as large as others' five- to six-foot trees. You pay us for a smaller sized tree, you see! See references to pruning, Page 19.

Healthy, Hardy, Thrifty Trees Plus Careful Packing

After good trees are grown they must be treated with kindness and not killed by carelessness. Trees may be fine in the nursery, but when they reach you, their roots may be dried out, or they may have been bruised or damaged in transit unless properly packed and shipped. No other nursery anywhere, packs trees as we do! We dig deeper to get a fine root system and then we pack them carefully with damp moss. The upper parts of the tree are packed so as to protect them from being skinned or bruised. The roots of the trees are then wrapped in waterproof and airproof paper to keep the moisture in and the air out, and are then securely covered with burlap to keep out the sun, wind, and air. Such packing requires experts. Thus the trees are well protected to reach you in excellent condition.



A Bass bred-up tree less than three feet high, already bearing pecans.

We measure our trees from ground up.
You pay only for this!

You do not pay for the roots.

WARNING!

Call for trees as soon as they arrive, as we pack them to reach you in excellent condition if taken out immediately upon arrival. Inspect trees at the station, and refuse if in bad order, so we may make claim against railroad. If any damage has been done in shipping, have agent write on express receipt that they were damaged. Send us damage receipt and we'll promptly replace trees.

BE SURE YOU BUY ONLY THE BEST TREES!

Your profits on pecans depend upon getting good nursery stock to begin with. And remember — all nursery stock is not the same.

Look at the two pictures below.

In the Circle you see neglected, stunted, dwarfed and diseased stock from a rival nursery.

At Bottom of Page you see a portion of the Bass nurseries. It is from thrifty, vigorous, well cared for and early bearing trees like these that you realize the most profits. Be sure you buy Bass trees, best by the test of time.

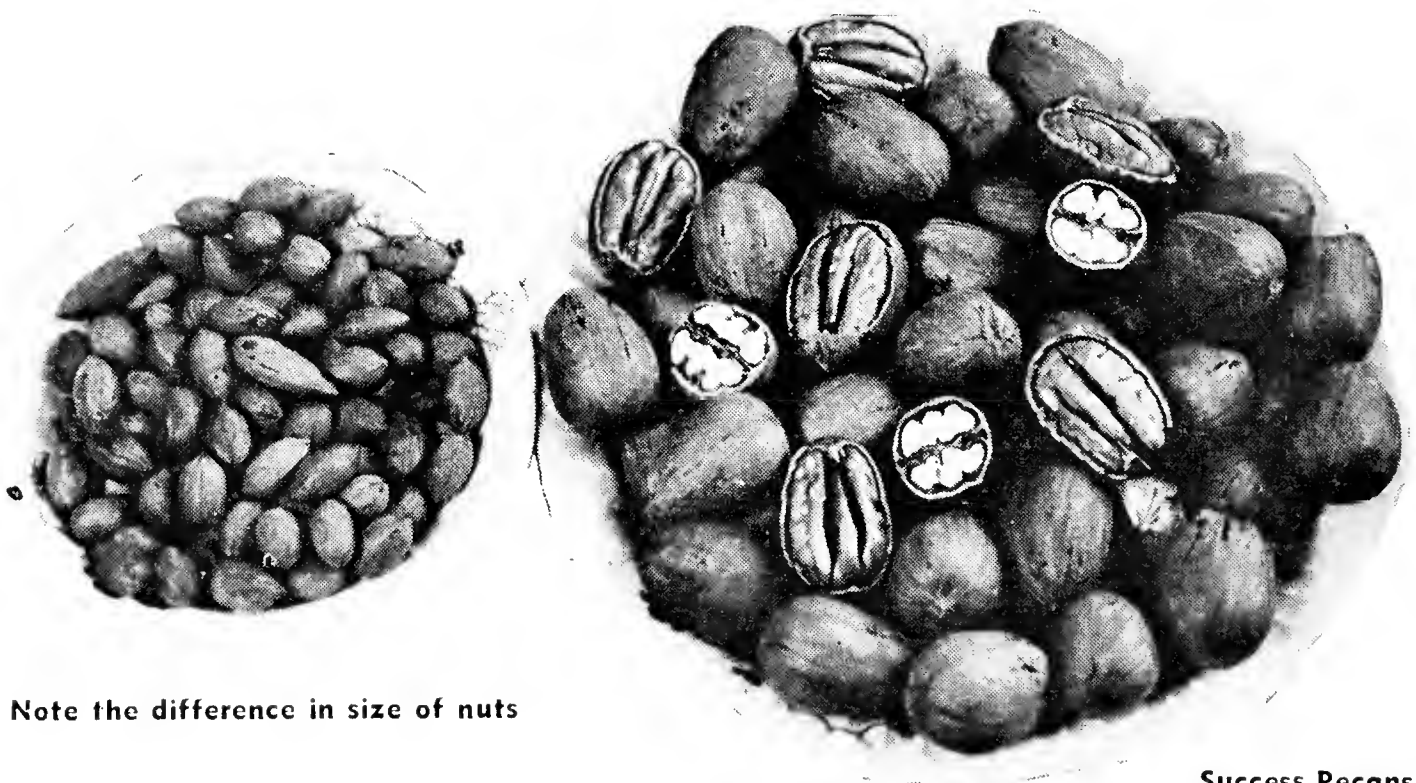


ALL BASS TREES ARE BUDDED OR GRAFTED

These two saucers of nuts show another reason why Bass trees are such sure and heavy producers. Pecan trees have that natural tendency to revert back to the way they were produced ages ago, and even a large pecan planted is almost certain to bear a tiny nut later. Ordinarily a nurseryman will plant these tiny nuts, depending upon their buds or grafts to produce the larger nuts.

In our nursery we plant the larger nuts, which cost us several times as much as the smaller ones. We get the proper start for our trees assuring quality for you.

To produce large and profitable pecans, the young trees must be budded or grafted. Some prefer the budded, and others the grafted, but each method is equally as valuable and productive, and we do both. We do not buy buds or grafts from unknown sources, but produce them ourselves from heavy bearing parents in our orchards. Therefore we know their history. We take the grafts and buds, not from prunings off nursery stock, as is often customary, but from branches of our own bearing trees, thereby causing us to lose thousands of pounds of nuts each year from our own crop.



Note the difference in size of nuts

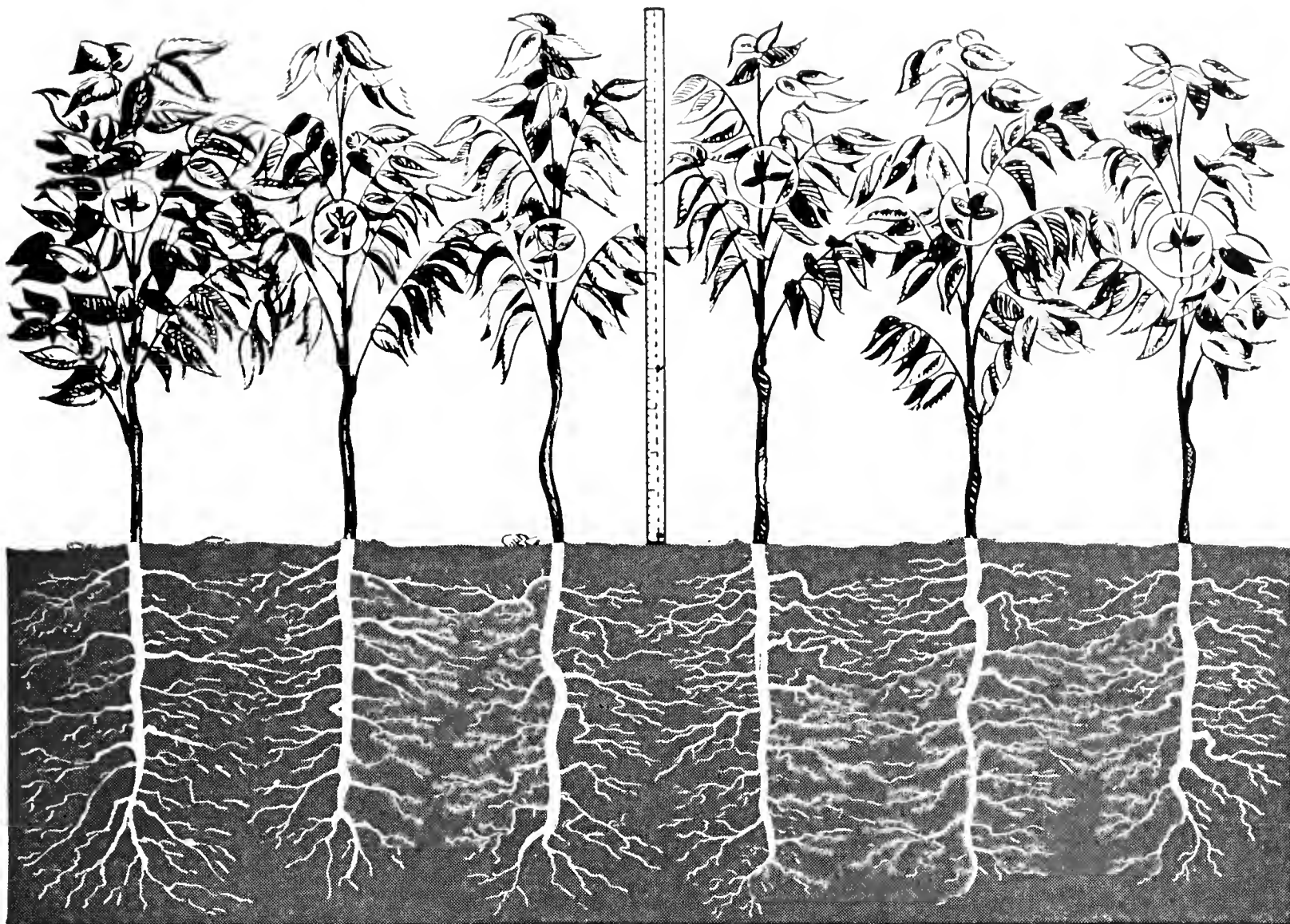
Success Pecans

Three Generations of Culture

It takes years of training, cultivation, experiments and experience, to produce thrifty pecan trees. The Bass Nursery has behind it two generations, with a third ready to carry on. These trees are a science and a life business for us. For 30 years we have served the South, and trees sold even in our first year are now in great producing groves.

Bass Trees Not Confined to the South!

"Have been buying pecan trees from various nurseries for the past five years but have had rather bad luck in getting good trees. Have never bought from you because was afraid your trees grown too far south for this climate. Have changed my mind since seeing the trees you sold to W. E. Carruth of this city. They are now heavy producers and the fruit is of good quality." The One Gallas Farmer, Cushing, Okla., Oct. 22, 1935.



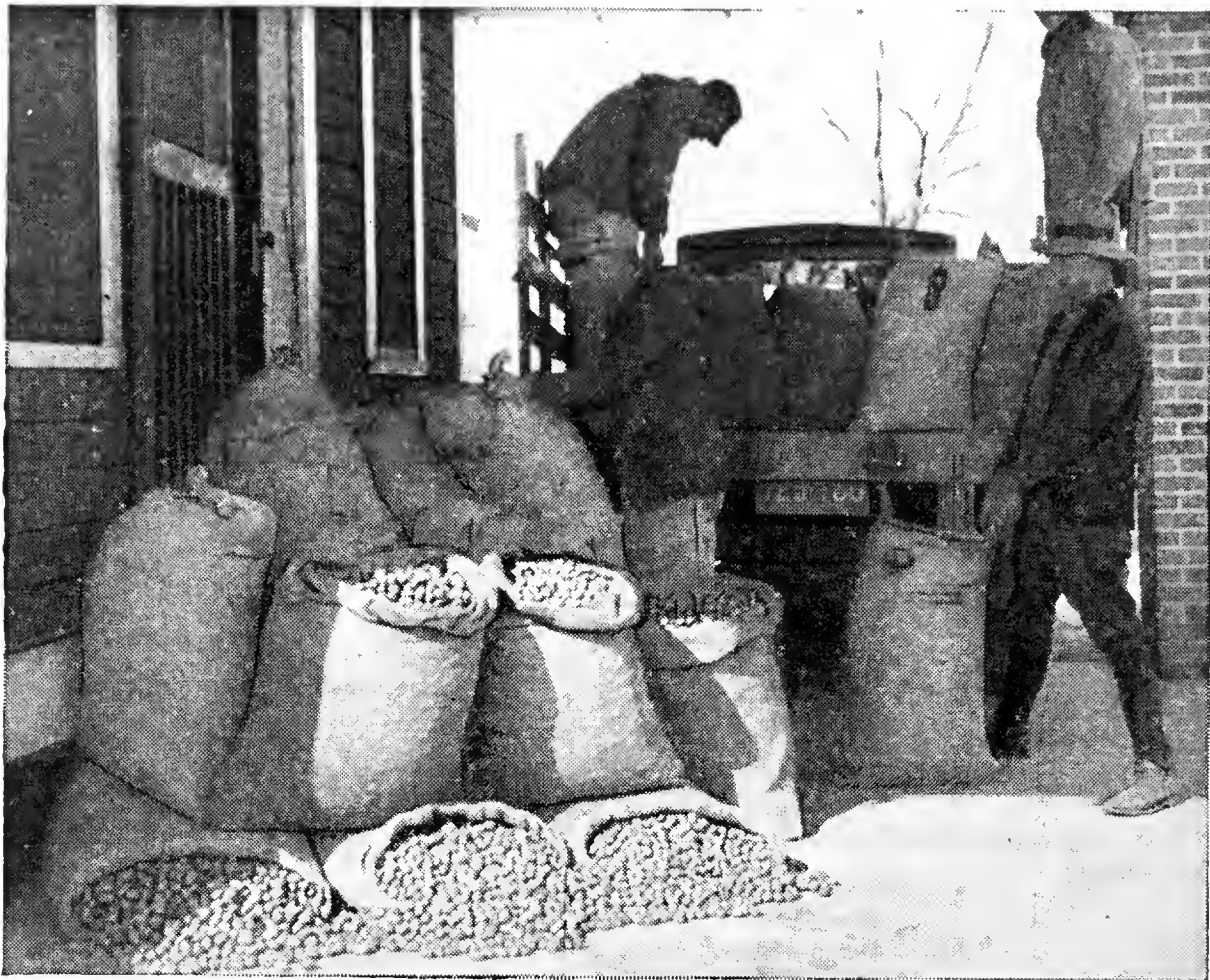
BASS PECANS ARE EARLY BEARING!

It is important that the pecan trees you buy will begin to bear as early as possible. And Bass pecans do exactly that.

Notice the picture above. These pecan trees are less than a yard high. It is only three months after they have been grafted — *Yet they are already bearing nuts!* Remember — Bass pecans begin to bear earlier and hence produce revenue sooner. They are your best buy!

Compare the Income from Pecans to the Income from Any Other Crop!

One acre of pecans will equal twelve acres in cotton — based on cotton at 10c with a bale to the acre . . . both of which price and yield are high. At only 30c a pound for nuts, an acre of 20-year old trees, each producing only 200 pounds of nuts, and figuring on only ten trees instead of the usual twelve, would equal \$600 per acre. Taking several year averages of crop prices, it would require 35 acres of corn to equal that \$600 acre value of nuts, or 46 acres of oats, 13 acres of rice and the value of 24 average cows, or as many calves as from 40 head of cows. A young pecan tree often produces more income than a bale of cotton. These figures are based on averages — not on the abnormal prices of 1931!



THERE'S ALWAYS A MARKET FOR PECANS!

The most popular nuts are pecans. Because growers realize that the market has hardly been scratched, cooperative associations have been formed to further their sale. Pecans have sold on their own merits because of their delightful taste and flavor, and food value. There is no telling what the demand will be when they are advertised.

But regardless of the future market, the immediate consumption is enormous. Confectioners, Hullers, and Salters use them by the carload. Fruit cakes, so popular in the Fall, require tons. Bakeries use them all year round. Cracking companies — and by the way, that is a comparatively new industry which can be carried on in the home — cannot always secure enough nuts. Chain and grocery stores sell them. Pecans and Pecan Pralines may be advertised and sold by mail from the home.

So there is already a tremendous and ever increasing market for pecans, and the industry is yet in its infancy! Grow along with it as the consumption increases.

Papershell Pecans for Sale!

Our own pecan groves produce thousands of pounds of papershell pecans each season which we offer for sale. Prices are as follows: 5-pound box of fine Papershell nuts prepaid, \$2.00; 10-pound box as above, \$3.50; and 100 pounds delivered by Express, \$25.00, prepaid.

WORLD'S LARGEST CLUSTER OF STUART PECANS

This cluster of nuts is, in our opinion, the world's largest cluster of Stuart pecans. We have never been able to learn of a larger cluster of this variety.

This bunch of nuts was grown from one of our trees, sold to a customer at Purvis, Miss., the county seat of Lamar county.

There were sixteen nuts in this cluster. Compare the size of the bunch to the hand holding them.



A Pecan Grove Is an Asset to Any Farm

Every farm should have a pecan grove to serve as insurance for later on and provide a "reserve" for independence and old age. Or certainly each farm should have at least a few trees. The nuts will furnish food for the family and friends and also be a fine cash crop and bring in some ready money. If these trees are planted near the house they will insure lots of shade and beautify the grounds, also attract the birds. So if you don't want to grow pecans in a big way, even a few trees on your place will prove to be a valuable asset.

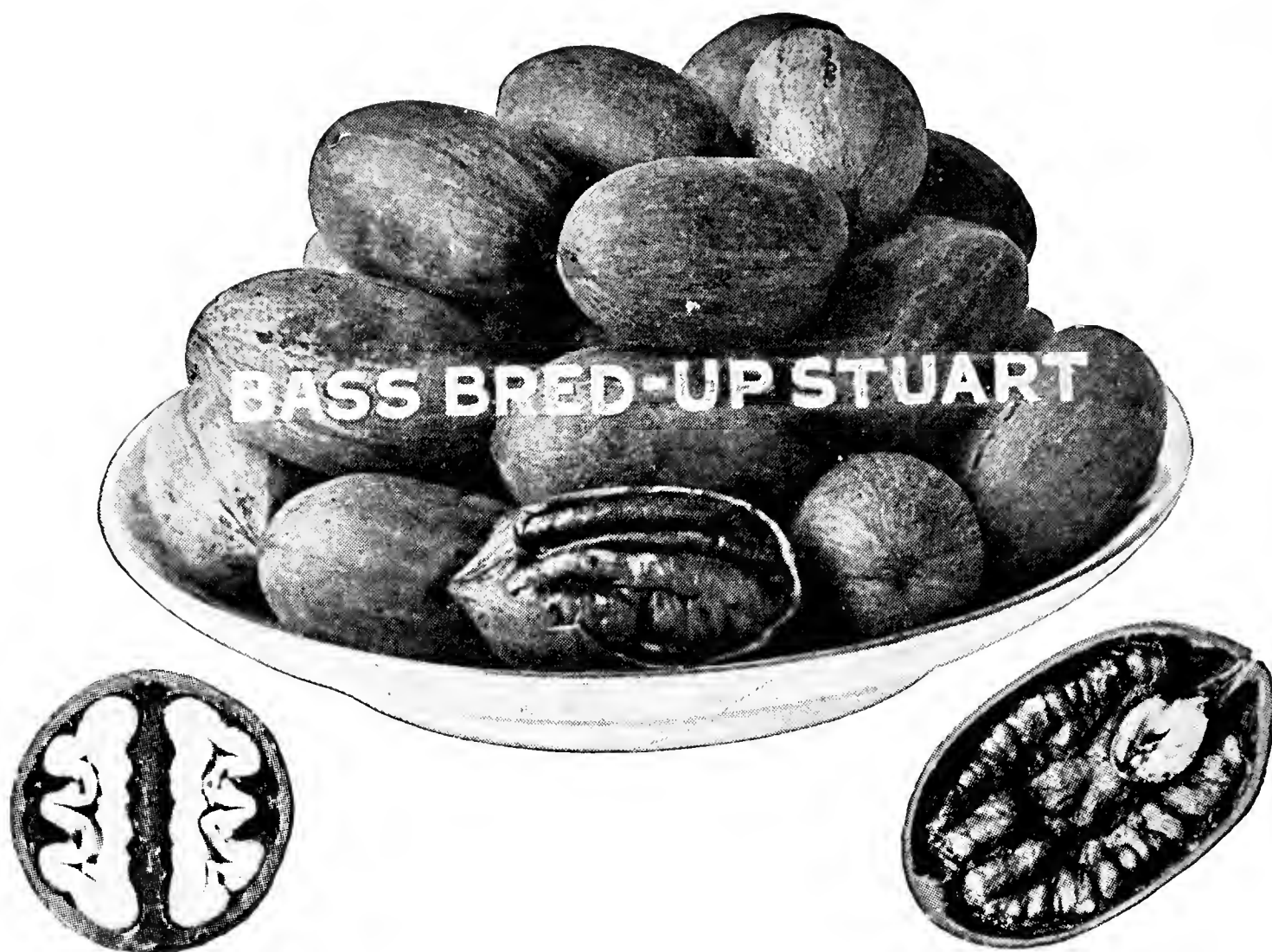


This \$1.00 Bass tree now produces over 240 pounds of nuts annually, with a steadily increasing yield

This Is Good Farm Logic

Pecan trees will assure you a good income. Should you have a short crop you will be out virtually nothing, for the trees are constantly growing and will produce heavier the following year so one doesn't lose in the end. Trees need occasional rest periods anyway. It would be much better if we could control their production — and then heavier crops would be had the next season.

Each year your land becomes more valuable with pecans, whereby with other crops you will have been depleting the soil!



BASS BRED-UP STUARTS ARE BIG PRODUCERS . . .

The *Stuart* is our first choice, and incidentally it is the most popular of all the improved variety of pecans. This nut has been planted more extensively than any other. The trees are vigorous, bear regularly, and resist scab. They are early and heavy bearers. The nuts are large and well filled, the kernels being plump, with a meat content of 49%, and of good flavor. Note the actual photograph of the inside of a Stuart pecan.

These nuts are the easiest to grow, sell well on the market, and bring a higher market price.

We recommend the Bass Bred-Up Stuarts, as the most profitable and satisfactory of the pecan trees. We have an unusually fine stock of our large trees in this variety — it would pay you to plant them in preference to others.

Pecan Trees Planted by Washington Are Still Bearing

Just to show you how long pecan trees will live and grow — and bear — and to further prove the foresight and wisdom of the Father of our Country, about the year 1785, and when George Washington lived at Mt. Vernon, he planted some pecan trees which are still alive, in fine condition, and bearing. Washington was a wise man in planting trees that were to become permanent.

"If I had my way I would straightway deed an acre of these magnificent, generous food-bearing trees to every worthy, ambitious young man and woman in this country. It would prove a solid foundation for life's success — both as an investment for pecuniary profit and an investment in health and happiness."

Said a GEORGIA BANK DIRECTOR.



ANOTHER SUCCESSFUL VARIETY ... BASS BRED-UP SUCCESS

Our second choice is the SUCCESS pecan, and a mighty popular variety, 40 to 45 to the pound, This tree is also an excellent grower, and heavy bearer in fertile soil. It bears early, too. The nuts, as you can see, are large, though are not the largest, but the kernel has proved to be the heaviest in a test of 14 varieties made recently. The meat is plump, and of excellent flavor. The nut itself is ovate in form, has a thin shell, and cracks easily. This variety does well in most sections, and the nuts bring a high market price. The Bass Bred-Up *Success* trees are among our biggest sellers of our fine Papershell Pecan Trees. Plant our larger size trees and save that initial growing period.

Plant Fruit Trees Between the Rows. See Pages 20, 21, 22 and 23.

The World's Largest Nursery Will Remain Such!

Ours is not only the largest pecan nursery in the world but we believe we have more fine young pecan trees growing than all other pecan nurserymen put together. There are over 2,000,000 trees growing in our nursery at all times.

We intend to retain our title. During the depression, when some nurseries didn't even plant any trees or take care of the ones they had, we continued to plant and cultivate as in normal times, regardless of the sale of trees. We were building ahead and now that conditions are rapidly becoming normal, we still have the kind we can sell you with a clear conscience and those which you may buy with full confidence.



BASS BRED-UP SCHLEY PAYS BIG DIVIDENDS

Our third choice is the SCHLEY. This is also a popular nut on account of its thin shell, excellent cracking qualities, beautiful color, and unusual flavor, and the market price is very satisfactory. The fact that we grow and sell this nut shows our confidence and our recommendation.

In some localities, however, the SCHLEY has a tendency to scab a little, so before purchasing this variety be sure that they grow in your section without this disease. If so, you will find these to be profitable nuts; excellent and full nuts with 61% meat, and a kernel that can be easily removed without breaking. The tree itself while an early bearer is a slender grower — smaller than STUART or SUCCESS, and not quite as hardy.

Mississippi Giant Papershell Pecans

Very large early and heavy bearing new pecan. Sold at high prices by some as Mahan. We make no extra charge for this new pecan. Only have a few thousand—so buy early.

To Answer Your Questions:—

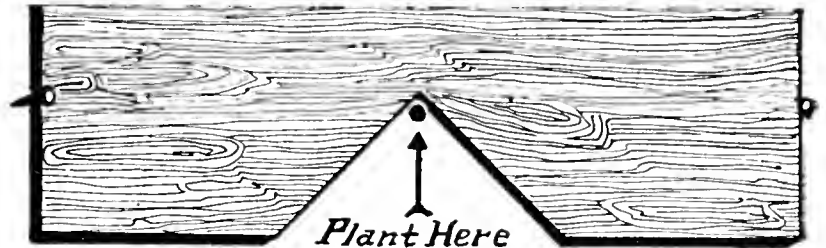
HOW TO PLANT PECAN TREES

(How Many Trees to the Acre, etc.)

Two usual questions asked us are how many trees to plant to the acre, and what kind of soil in which to plant them.

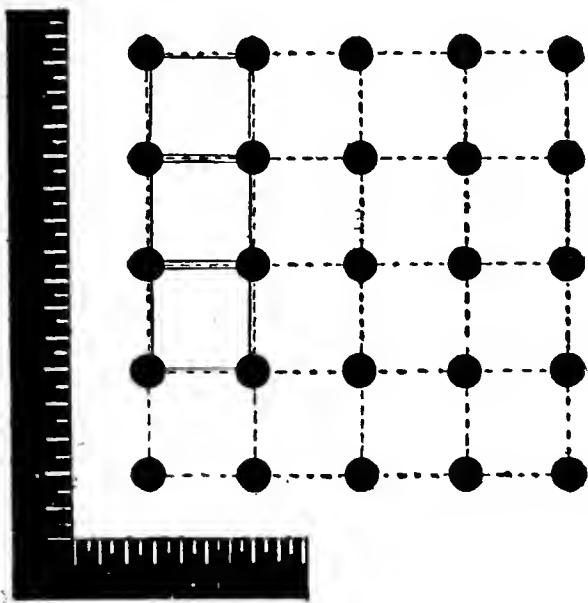
On lands of only fair fertility, plant trees every 50 feet, but we generally recommend 60x60. If the ground is very rich, plant farther apart, such as 70x70, but for the average, figure on every 60 feet — 12 trees to the acre. Please refer just below. You can get more trees to the acre by the triangle method of planting (14 as against 12).

As to soils — land that will grow hickory or oak trees will grow fine pecans. It has been well said that any land that will grow cotton will grow pecans. Well drained land is needed for best results. Practically any average land in the South will grow fine pecans.



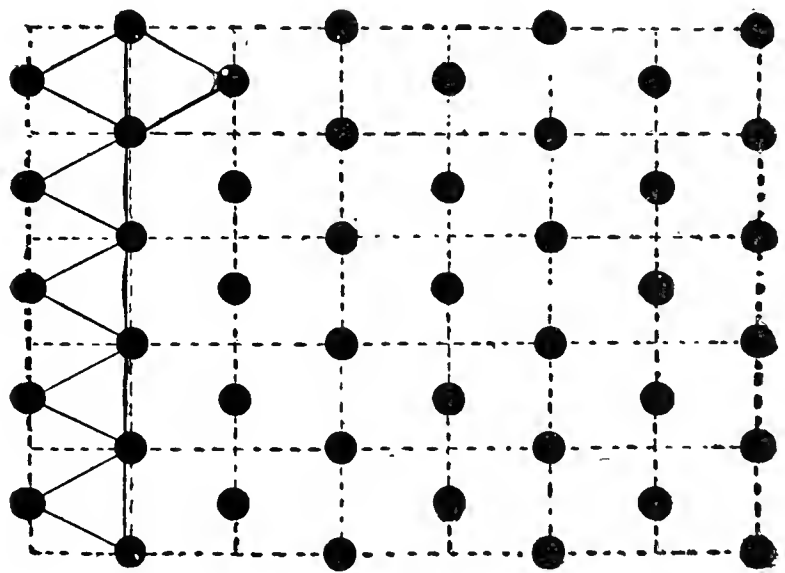
The sooner you set out your pecan trees the better will be your prospects for them living, the more vigorous will they grow up, and the earlier they will begin to bear. Set out pecan trees as soon as possible after the leaves shed in the Fall, in November, December, January, February or March. Even if you cannot set your trees early, *book your order now so we may reserve some of our finest trees for you.*

Use a planting board in setting your trees. This is easily made by taking any board or plank about six feet long and cutting a V-shaped groove in the center of it. This groove in the planting board is made to fit down over the stake you have driven down in the ground where the tree is to be planted. Then at each end of the planting board place a small peg. When you dig the hole for the tree, all you will have to do is to lay this planting board across the hole dug so that each end will be against the pegs and your tree will come right in the groove and be exactly in line. If you do not use a planting board it is hard to get the trees in line again after the holes are dug, even if lined up exactly right to start with.



SQUARE METHOD

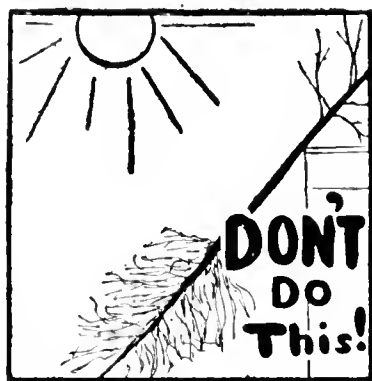
To plant the square method, take an ordinary L-square and place on the ground in order to get your lines true. Sight and place a stake sixty (preferably) feet away on each line until you reach the ends of the field. Then stake off on parallel lines at every sixty feet and plant trees at each stake. Planting sixty feet apart, you have 12 trees to the acre.



TRIANGLE METHOD

By planting the triangle method you get more trees to the acre, and besides all trees are exactly sixty feet apart in ALL directions. To get a true equilateral triangle easily, drive a stake in the corner of the field. Then with the aid of an L-square find stakes along the outside lines. In order to get proper and exact distance inward toward the field, get a wire sixty feet long. Attach to stake. Get another wire of same length and attach to next stake. Let one man make an arc with his wire, and another man an arc with his. When the two wires meet, properly taut, drive stake for tree. Work from that stake and so on until field is covered.

RULES FOR SETTING PECAN

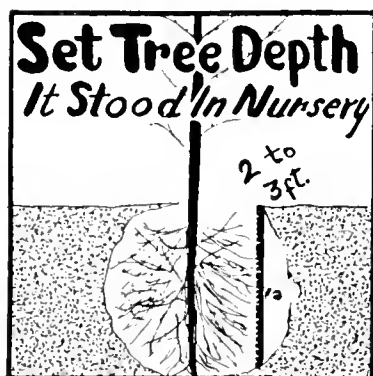


Protect the Roots

Never allow the roots of the trees to become dry or exposed to the atmosphere for any length of time from the time they reach you until they are set in the ground.

Wet the bundle just as soon as you can and if not ready to set out at once, dig a hole and put the roots in and cover up well. Place in a shady place if possible.

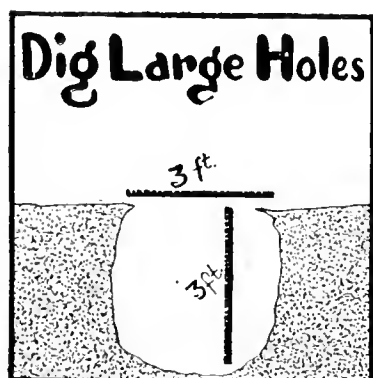
Set your trees at once upon arrival or heel-in promptly as above.



Plant as Deep as in the Nursery

Set the tree about the same depth it stood in the nursery.

Fill in the hole with the best top soil, packing the dirt well around the roots, especially the tap root. Keep the roots of the trees out straight in their natural position and do not bend them down by the tree.



Dig Large Holes—Protect the Roots

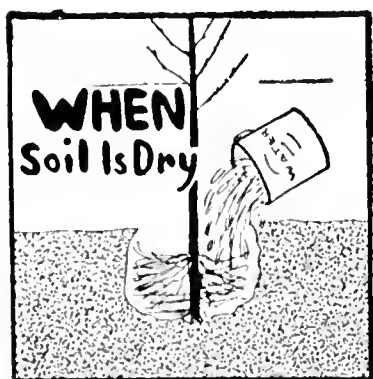
Have a large hole for your tree. Three feet wide and three feet deep will not be too large for pecans. Holes about 12 inches wide and one to two feet deep will do for fruit trees.

Mix thoroughly with the soil to be used to fill in the hole a peck or half bushel of well-rounded manure or compost or some good guano, being very careful not to allow it to come into contact with the roots in ANY QUANTITY, for if it does it will scald them and do more harm than good.



Fertilize Properly

If you desire to plant on land rather poor in fertility, thoroughly mix with the soil two or three shovelful of well-rotted compost when you plant the tree, or one or two pounds of bone meal. The best fertilizer after the tree is planted is to scatter manure around the trees. The more the better — one-half to one bushel to the tree, if possible. Do not bank it up around the tree, but scatter it around for two or three feet. When it rains the substance will be taken down to the roots. Put this around your trees in the late winter, if possible, so that the trees will be able to get a fine growth in the spring. When the trees are old enough to bear, use potash in some form — wood ashes will do.



If the Soil Is Dry . . .

If the soil is dry when the trees are set, it is a good idea to pour a bucketful of water to each tree when the hole is nearly filled, and then fill the hole completely up.

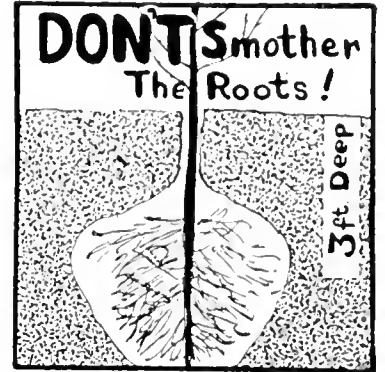
Pour one bucketful of water to each tree once a week during very dry spells in Summer. Make a basin-like hole at the base of the tree. Pour water and as soon as it is soaked in good, fill completely up with dry dirt. This holds in the moisture and also keeps the ground from baking. If you cannot pull soil back, covering the wet earth well, DO NOT water at all. Water poured on top of the ground and left this way does more harm than good, as it causes the earth about to bake and the tree to scald.

Cultivate for four to six feet around each tree thoroughly all during the Summer. Never let grass or weeds grow up around your trees. Keep the ground dug up and soft at all times.

AND FRUIT TREES RIGHT

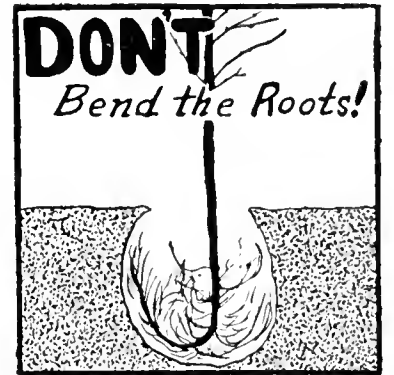
Cultivate the Ground

Cultivate for four to six feet around each tree thoroughly all during the Summer. Pecan trees do best where the land is cultivated well. Our own experience has taught us that no tree responds to care and cultivation better than the papershell pecan. Frequent shallow cultivation is best. Keep the weeds and grass down, for they take the moisture and nourishment needed badly by the young growing pecan trees.



Special Notice About Fertilizer

Recent experiments in our own orchards have shown us that one pound of Nitrate of Soda or Sulphate of Ammonia for each year the tree has been planted will be of great benefit and cause the trees to grow very fast. Merely spread it around the trees for two or three feet and hoe or dig in well. This can be done at any time from April 1st to the last of June, usually the earlier the better.



Care of Young Trees

No pruning is necessary after you once get the trees branching high enough. The larger trees we sell will branch high enough anyway, but the smaller trees have to have sprouts cut off occasionally that come out on the body of the tree until the branches get high enough. This may be done at any time required, either summer or winter. We do not let our own pecan trees start branching lower than shoulder high. They look better and you can work around them where they are not allowed to head too low.



Bass Trees Come Pruned, Ready to Plant

We endeavor to send out properly pruned trees, just as if we were going to plant them ourselves, leaving the planter nothing to do but to set them out. The taller grades of trees should be top-trimmed, as it balances the top against unavoidable loss of some roots when the tree is transplanted. Proper pruning insures the tree living and a good growth. Where trees are properly pruned, handled and planted, there is no reason why any of them should die. *Our prices are made on the height of the trees when dug. When properly top-trimmed, the height is often materially reduced. Therefore if the height of a trimmed tree, when received, is less than the catalog height, this is the explanation.* We measure our trees from the ground up and not from the top of the tap roots as many nurserymen do. Our 3 to 4 feet trees are often as large as their "5 to 6 feet" trees — we don't charge for roots. You pay us for a smaller size tree. See Page 9.



Advice on Pecan Culture

Ask us all the questions you wish to in regard to pecan growing. We will gladly give you our opinion. And as experts, let us advise you not to put off setting out your pecans. Remember the loss of a year's time in getting started means the loss of a year's splendid income later on, at a time when you may appreciate it most. And speaking of the time element, it would pay you to buy and plant our larger trees, for you would save that initial growing period. Let Bass solve your pecan problems.

For further information or definite instructions on Pecan growing, write the U. S. Department of Agriculture, Washington, D. C., for free Farmers' Bulletin Number 700, on "Pecan Culture," and Number 1501, on "Nut-Tree Propagation," and other available bulletins on Pecans.

WHY WE SELL FRUIT TREES, TOO

Because we were asked so often to recommend or buy fruit trees for our customers who wanted to plant them along with pecans — or otherwise — we decided for their accommodation to handle a few fruits. This is good, strong, hardy stock, with well-developed root systems. We can relieve you of much trouble and extra expense if you order fruit trees along with pecans. The selection may be left to our judgment. Write for **SPECIAL PRICES ON LARGE QUANTITIES.**

BASS GUARANTEE ON FRUITS Some of our fruit trees and berry plants are supplied by reputable nurseries. We guarantee them to be true to name, high in quality, good healthy stock, free from disease. Stock damaged in transit, if notified immediately, will be replaced, if express or freight receipt indicates damage. Should any stock prove not true to name, we will return money or replace it with our other stock, but are not liable for any damages beyond this.

NOTICE. If your order calls for a variety we do not have on hand, we shall, unless advised to the contrary, substitute another which should prove as satisfactory. Thus we save you disappointment and loss of time. Ask for our special prices on large orders.

Japanese Persimmons

The Japanese Persimmon can be grown on as wide a range of soil as the native Persimmons, and will succeed with the minimum care and attention. The trees are vigorous, prolific, and have few enemies. As the fruit keeps and ships well, it can be placed on the market in good condition. It meets with ready sale.

We recommend the TANE-NASHI variety. In high favor. Large fruit, flesh yellow and seedless. Vigorous, prolific; uniform size — most desirable to market.

	<i>Each</i>	<i>10</i>
3 to 4 feet.....	\$.50	\$4.50
4 to 5 feet.....	.60	5.00

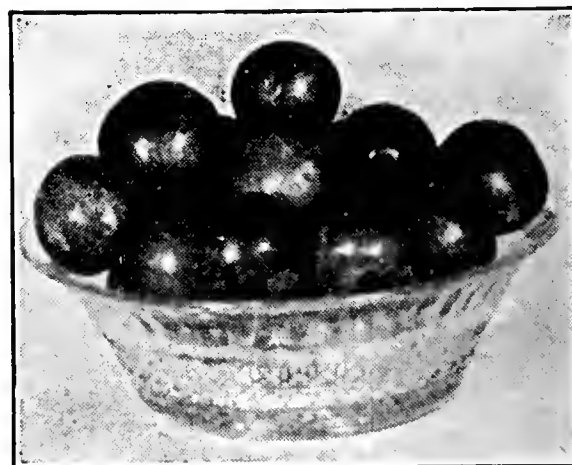


Plums

Red June. Early market plum, large size, deep vermilion red color. Good variety, very firm. Flesh light yellow. Free from rot. Very heavy bearer and easy to grow. A wonderful plum, in our estimation.

	<i>Each</i>	<i>10</i>	<i>100</i>
3 to 4 feet.....	\$.50	\$4.50	\$30.00
4 to 5 feet.....	.65	6.00	40.00

*Let your land do double duty — Plant Pecan trees
between the rows*



PLEASE Because of our care in inspecting, packing and shipping, and the huge expense to which we are put, it hurts to fill orders that amount to less than \$5.00. So please order enough, even for friends, to make at least that much of an order. However, we will fill your order amounting to less than \$5.00 if you cannot increase it, rather than disappoint you.



Peaches

We need not elaborate on the eatability and marketability of Peaches. Plant this profitable fruit between the rows of your pecan orchard or in your garden.

RED BIRD. Very early, hardy grower, good bearer; has large fruit of bright glowing color and splendid quality. Ripens last of May or early June. Cling.

HILEY BELLE. Very rapid grower, prolific bearer, with a fresh, firm, excellent creamy white flesh and real peach flavor. Ripens in June. Freestone.

ELBERTA. Large, yellow, with red cheeks; juicy and of good flavor; flesh yellow. Ripens middle of July. This is an excellent shipping variety. Freestone.

PRICES — ALL VARIETIES

	<i>Each</i>	<i>10</i>	<i>100</i>
June buds 1 to 2 feet.....	\$.20	\$1.50	\$12.50
3 to 4 feet.....	.30	2.50	20.00
4 to 5 feet.....	.60	5.00	35.00

Apples

EARLY RED BIRD. Very beautiful early and heavy bearer of large red apples—good quality. Very early bearer.

DELICIOUS. No new variety gained popularity in so many different sections so quickly. Fruit large, nearly covered with brilliant dark red; flesh fine grained; crisp, melting, juicy, with delightful aroma; highest quality. Splendid keeper and shipper. Tree one of hardiest, vigorous grower, with good foliage. Regular annual bearer.

	<i>Each</i>	<i>10</i>	<i>100</i>
3 to 4 feet.....	\$.30	\$2.50	\$20.00
4 to 5 feet.....	.60	5.00	35.00



Bass Grapes

Grow your own grapes for the table or your own grape juice, wine or jelly.

CONCORD. The most widely grown, most popular of all grapes, for vineyards. Black. Healthy, hardy vigorous vine, large bunch and berry, and a good yielder. Grows quickly. Our Concord this year are extra fine.

NIAGARA. Leading white grape. Widely planted. Bunch large; handsome, juicy and fine flavor.

<i>2-Year</i>	<i>Each</i>	<i>10</i>	<i>100</i>	<i>1000</i>
No. 1	\$.25	\$2.00	\$15.00	\$100.00

Bass Figs

The fig-canning industry is gradually extending throughout the South. Since several tons of figs can be produced on an acre of ground, it is profitable to give them intensive culture. The fresh fig is quickly finding its way into market, and meeting with ready sale.

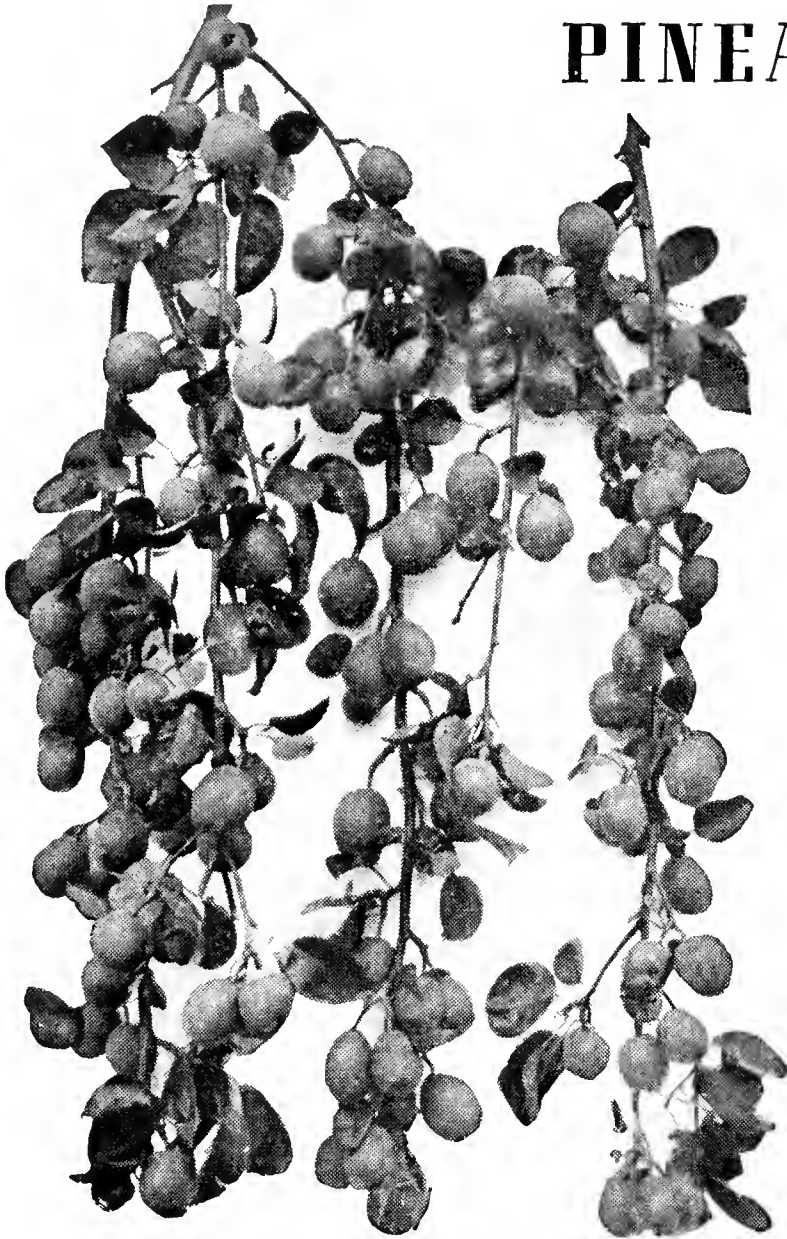
Figs require little or no cultivation. Our favorite is the **CELESTE**, one of the hardiest varieties. Very desirable for canning and preserving. Small to medium, pear-shaped, ribbed. Flesh firm, juicy, sweet, excellent quality.

	<i>Each</i>	<i>10</i>	<i>100</i>
3 to 4 feet.....	\$.35	\$3.00	\$20.00
4 to 5 feet.....	.50	4.50	35.00



PROSPER WITH BASS BLIGHT PROOF

PINEAPPLE SAND PEARS



Branches of our Blight-Proof Pineapple Pears loaded to capacity.

Another profitable fruit to grow, and yet one which has not been sufficiently publicized to be more in demand, is the Pineapple Sand Pears. We first grew Pineapple Sand Pears for our own use, and finding them of such prolific growth, such fine fruit, such a ready market, and such a splendid profit, we decided to pass on our experience to our customers and grow these trees for them. 40 to 75 bushels per year from many of the older trees in our section is nothing unusual and some orchards yield over 1,000 bushels to the acre. One orchardist produced 400 bushels on 2½ acres, one year, and two years later gathered over 3,000 bushels.

So we now produce these pear trees for our customers, and have thousands of young, thrifty growing trees ready for shipment. These trees, when mature, will be better than our own old trees, since they have been propagated from our producing trees; thus fine parent stock, and a better start than our own trees had.

The Bass Pineapple San Pears grow rapidly — they are extremely hardy. All trees have a well developed root system.

We suggest that you plant our Extra Special size, so beautifully headed.

GUARANTEE

The Bass Pineapple Sand Pears are guaranteed not to blight in any section.



One of our Beautiful Blight-Proof Pineapple Pear orchards in full bloom

PINEAPPLE SAND PEARS

	Each	10	100
3 to 4 feet.....	\$.45	\$ 4.00	\$ 30.00
4 to 5 feet.....	.55	5.00	40.00
5 to 6 feet.....	.70	6.00	50.00
6 to 7 feet.....	.90	7.00	60.00
Large Size	1.15	10.00	75.00
Extra Special Size	1.50	12.50	100.00



STRAWBERRIES WILL MAKE YOU MONEY!

There is nothing like having strawberries growing about the home for pleasure and PROFIT. Besides home use and the market for strawberry preserves, the sale of strawberries themselves is enormous. Whole communities have been built by their profits. On one acre, an Arkansas man made \$422.80 net. One farmer made more than \$5,000 net on 17 acres. A Mississippi county sold \$80,000 worth of berries from 140 acres, netting each farmer an average of \$571 per acre. And so on.

Grow berries for your own use or for market. Set out 16 to 18 inches apart in 3½ foot rows. It will require about 7,500 plants per acre — and will pay you to follow these planting instructions. Ours are healthy plants with good established root systems. We ship plants from October 15th to April 1st, from our grower in Tennessee or Arkansas.

The New Blakemore Strawberry

This is a new berry that has been recommended highly by the Department of Agriculture at Washington, D. C. It is claimed that ninety per cent of the fruit will run as No. 1's. The Blakemore is firm, well colored, deliciously flavored — very productive and marketable fruit.

Mastodon

EVERBEARING. This is the finest everbearing strawberry. New large fall-bearing berry. Mammoth berries. Eighteen of the larger ones fill a quart. Big strong plants. Firm berries, highly flavored, very sweet. Most productive and profitable of all everbearers. We recommend them above all everbearers.

Improved Klondike

This variety is planted more in the southwest than any one variety grown today. Season is second early, and the Improved Klondike is bred up and is more productive than the old original Klondike.

	POSTPAID			EXPRESS COLLECT				
	25	50	100	250	500	1,000	5,000	10,000
Imp. Klondike	\$.60	\$.75	\$1.25	\$1.50	\$2.50	\$3.50	\$13.50	\$25.00
Blakemore	.75	1.00	2.00	3.00	5.00	9.00	40.00	75.00
Mastodon	1.00	1.75	3.00	4.00	7.50	15.00	65.00	125.00

YOUNGBERRIES

Here's a unique berry that is becoming most popular. It is a cross between a Loganberry and a Dewberry. This berry is remarkable for its dessert, beverage, preserving and cooking qualities. Fruit is large, deep wine-color, sweet, juicy. The plants are vigorous, propagate freely and resist disease. The U. S. Department of Agriculture recommends this variety. Keep up with the times and plant Youngberries for the increasing market. We grow our own Youngberries for our customers.

Single lots	25c each	50 plants	15c each
10 plants	20c each	100 plants	10c each

OTHER BASS SERVICES:

Large Orchard Planting

We are in position to not only sell you our choice bred-up trees, but to set out and care for large orchards by our own experts. Thus a positive assurance of not only good trees, but the attention they need to get a good start. Write us for our very reasonable terms.

Tree Topping

Poor trees are high at any price. Many have bought them elsewhere that won't bear a nut, and we've had to come in to save the wreck by tree-topping and budding with our bred-up stock. Top-grafting and budding is a special craft and we are prepared to perform this service, going anywhere to rejuvenate non-bearing orchards, provided there is a large number of trees to topwork.

Pecan Buds and Grafts for Sale

Thousands of grafts and buds are cut and sold by us each year from our early and heavy bearing pecan trees. Do not top-work your trees with poor scions—insure success in your work with our buds, grafts, and prepared wax. Grafts furnished during December, January, February and March not kept in cold storage are \$2.00 per 100, or \$15.00 per 1,000. In lots of 5,000 and up at \$10.00 per 1,000. Cold storage grafts kept for late top-working in April, May and June are \$3.00 per 100, or \$25.00 per 1,000. Buds furnished during July, August and September are \$1.50 per 100 or \$10.00 per 1,000. Varieties are Stuart, Success, Schley, Bass Papershell, Nelson, Haie, Frotscher's Eggshell, Pabst, Dependable, Moneymaker. No less than 100 of a kind sold.

Prepared Wax, ready to use, 50c per pound.

We Have 15,000 Acres of Fine Land for Sale!

Here at Lumberton, where pecan growing conditions are so ideal, we have for sale 15,000 acres of fine land. This land is well located—lots of it right along gravel highways that are soon to be concreted at no extra cost to the landowner. It is extra fine land for Papershell pecans, peaches, pears, plums, grapes, figs, Satsuma oranges, all kinds of early and late vegetables and truck growing, and also excellent land for cotton, corn, peas, beans and other farm crops. This is a wonderful climate, being warmed in the winter by a breeze from the warm Gulf stream and cooled in the summer by light winds most all the time. No finer section can be found for cattle, sheep and horse grazing—ample rainfall to make grasses grow fast and stay tender. Green feed for stock can be had every day in the year. Health conditions are unusually fine—Lamar County ranking right among the healthiest counties in the United States. Fine schools, churches, good gravel roads, good citizens and as fine water as you can find in the country—water is pure, odorless, tasteless and clear and soft—most ideal. This land is cheap—priced at from \$5.00 to \$15.00 per acre for uncleared land. This land is easy to clear—usually costing from \$5.00 to \$10.00 per acre. *Easy terms are offered by us.*

If You Have Land for Sale

Perhaps you have land that you want to sell. Plant it in pecan trees! You will immediately increase the value of your land and, anyway, make it more salable. Twenty years ago a person of our acquaintance bought five acres of land at \$20.00 per acre. A few years later he planted the land in Bass trees and was offered \$1,000 per acre, which price was refused. He realized that by planting pecan trees he had increased the value of his land by \$950 per acre, for he could have got only \$50 an acre for the land as he bought it. His land, taxes, and trees were readily paid for in the actual increased value, and it was worth a big difference besides.

PRICES

Top Grade (No. 1) Pecan Trees — All Varieties

	Each	Six	Twelve	Sixty	100	1000
2-3 Feet	\$.80	\$ 4.20	\$ 7.80	\$ 36.00	\$ 60.00	\$ 500.00
3-4 Feet90	5.10	9.60	42.00	70.00	600.00
4-5 Feet	1.00	5.70	10.80	48.00	80.00	700.00
5-6 Feet	1.20	6.90	13.20	60.00	100.00	900.00
6-7 Feet	1.35	7.80	15.00	72.00	120.00	960.00
7 Feet to Large	2.00	10.80	19.80	90.00	150.00	1200.00
Large	2.50	14.40	27.00	120.00	200.00	1600.00
Extra Large	3.50	20.40	36.00	165.00	275.00	2200.00
Extra Special	4.00	22.80	42.00	195.00	325.00	2600.00

We recommend the planting of our large trees. They bear earlier

Special Price on Large Orders

One to five trees take the each rate price; six to eleven trees take the six rate price, twelve to forty-nine take the twelve rate price; fifty and up take the one hundred rate price; 500 and up take the 1,000 rate price. Special prices cheerfully quoted on larger lots.



All Prices F. O. B. Lumberton, Miss.



For prices on Bass Pecan buds, grafts, and prepared wax, see page 24

Plum—Red June

	Each	10	100
3 to 4 feet.....	\$.50	\$4.50	\$30.00
4 to 5 feet.....	.65	6.00	40.00

Figs

	Each	10	100
3 to 4 feet.....	\$.35	\$3.00	\$20.00
4 to 5 feet.....	.50	4.50	35.00

Peaches

All Varieties

	Each	10	100
June buds 1 to 2 feet..	\$.20	\$1.50	\$12.50
3 to 4 feet.....	.30	2.50	20.00
4 to 5 feet.....	.60	5.00	35.00

Grapes

Both Varieties

	Each	10	100	1,000
2-Year No. 1	\$.25	\$2.00	\$15.00	\$100.00

Pineapple Sand Pears

	Each	10	100
3 to 4 feet.....	\$.45	\$4.00	\$30.00
4 to 5 feet.....	.55	5.00	40.00
5 to 6 feet.....	.70	6.00	50.00
6 to 7 feet.....	.90	7.00	60.00
Large size	1.15	10.00	75.00
Extra Special size	1.50	12.50	100.00

Japanese Persimmons

	Each	10
3 to 4 feet.....	\$.50	\$4.50
4 to 5 feet.....	.60	5.00

Apples

All Varieties

	Each	10	100
3 to 4 feet.....	\$.30	\$2.50	\$20.00
4 to 5 feet.....	.60	5.00	35.00

Strawberries

	POSTPAID			EXPRESS COLLECT				
	25	50	100	250	500	1000	5000	10,000
Imp Klondike	\$.60	\$.75	\$1.25	\$1.50	\$2.50	\$3.50	\$13.50	\$ 25.00
Blakemore75	1.00	2.00	3.00	5.00	9.00	40.00	75.00
Mastodon	1.00	1.75	3.00	4.00	7.50	15.00	65.00	125.00

Youngberries

Single Plants	25c each	50 plants	15c each
10 Plants	20c each	100 plants	10c each

We urge you not to wait until the last minute to order, as many people do, and after our better trees have been selected. Place an order now for shipment later. If you want to plant your trees on a holiday or week-end, we can time the shipment to reach you then.



PLEASE MAKE YOUR ORDER FOR \$5.00 OR MORE IF POSSIBLE



ORDER BLANK

TO

BASS PECAN COMPANY

Largest Pecan Nursery in the World
LUMBERTON, MISSISSIPPI

For prices, see page 25 and for complete descriptions, please refer to the following pages:

Pecans Page 14	Japanese Persimmons Page 20
Pears Page 22	Grapes Page 21
Plums Page 20	Figs Page 21
Peaches Page 21	Strawberries Page 23
Apples Page 21	Youngberries Page 23

KIND	QUANTITY	SIZE	PRICE
PECANS			
Stuart_____			
Success_____			
Schley_____			
PEARS			
Pineapple Sand Pear_____			
PLUMS			
Red June_____			
JAPANESE PERSIMMONS			
Tane-Nashi_____			
PEACHES			
Red Bird_____			
Hiley Belle_____			
Elberta_____			
FIGS			
Celeste_____			
APPLES			
Early Red Bird_____			
Delicious_____			
GRAPES			
Concord_____			
Niagara_____			
STRAWBERRIES			
Blakemore_____			
Improved Klondike_____			
Mastodon Everbearing_____			
YOUNGBERRIES			
Pecan Buds_____			
Pecan Grafts_____			
Prepared Wax_____			

SEE OPPOSITE PAGE FOR PRICES—Also Terms and Conditions of Sale (Page 27)

Total Amount of Bill _____

I Guarantee to Take This Order and Pay For It.

Signed _____

Street or R. F. D. _____

Post Office _____

Express Office _____

Date to Ship _____



THESE GUARANTEES FULLY PROTECT YOU

It's easy for anyone to make any guarantee, but have you assurance that the guarantee will be carried out? No other nursery has dared duplicate our guarantee above or any of our other guarantees or propositions listed on this page. It pays to deal with the largest Pecan Nursery in the world.

Should any of our No. 1 pecan die within one year—if properly cared for—we'll share the loss with you and replace the trees for one-half the regular catalog prices.

If you're in doubt as to the quality of our trees, we'll ship them to you in competition with any others and allow you to select the trees with the finest developed root systems. Does anybody else have such confidence in their trees? **WE KNOW OUR TREES AND THOSE OF OTHERS.**

If you will visit us, especially in order to be sure about the trees you buy, we shall pay all expenses and pay you liberally for your time *if you do not find our nursery to have more and better pecan trees than any nursery anywhere.* You might care to visit around to make comparisons.

If we were not positive about our own trees, would we dare to make such an offer?

Our Pineapple Sand Pears are positively blight-proof. They are guaranteed not to blight in any section.

We grow most all our fruit trees, but some are supplied by reputable nurseries. We guarantee them all to be true to name, high in quality, good healthy stock, free from disease. Stock damaged in transit, if notified immediately, will be replaced, if express or freight receipt indicates damages. Should any stock prove not true to name we will return money or replace it with other stock, but are not liable for damages beyond this.

REFERENCES: Dun or Bradstreet; Lamar County Bank, Purvis, Miss.; First National Bank of Hattiesburg, Miss.; and thousands of our customers.

TERMS AND CONDITIONS OF SALE

Terms Are Cash With Order. We pay spot cash for everything and sell the same way. It saves us a lot of bookkeeping and annoyance and enables us to sell our high-grade, bred-up trees cheaper. Some prefer to have goods sent C. O. D., but why pay that extra collection fee? Why not send money with order? Prices are F. O. B. Lumberton, unless otherwise stated.

How to Send Money. Send money any way that is most convenient for you. Why not send the money and save the C. O. D. fee? We prefer money orders.

We cannot ship trees by mail except smallest pecans and fruits.

Our Shipping facilities are exceptionally good. We are near the depots of two railroads and have open stations both day and night. Also have long distance telephone and telegraph service at all times. You can get us over telephone any time.

Our Trees Always Freshly Dug. We can dig and ship your trees any day.

Order Early. The demand for our high-grade, bred-up trees far exceeds the supply, and it is very imperative that you send in your order early. Those who order early naturally receive the choicest stock.

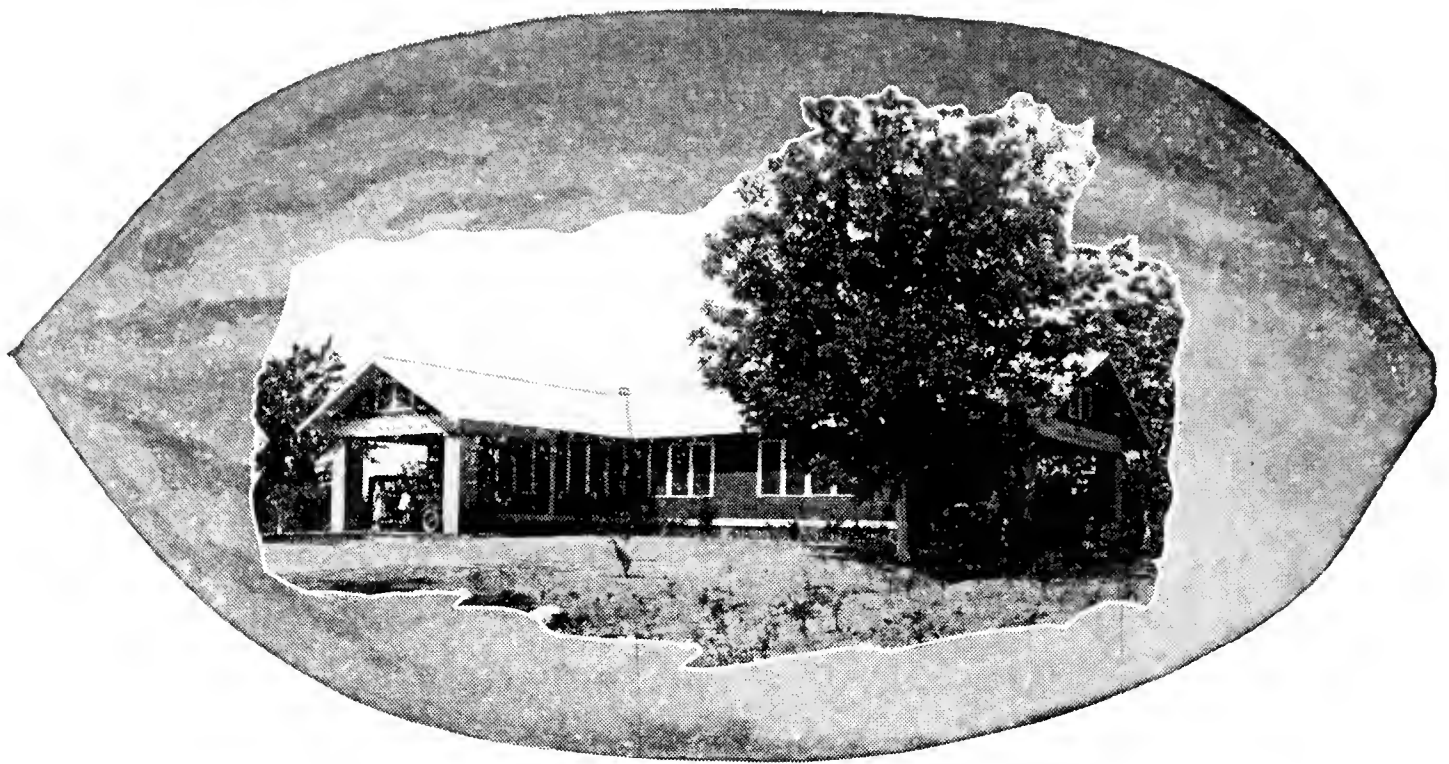
Time of Shipment. Unless otherwise instructed, orders received during the shipping season, November 1st to April 1st, will be forwarded as soon as possible after receipt of the order.

Substitution. If out of the varieties ordered, we will send the ones we think to be the equal or superior unless instructed not to substitute.

No Charge for Packing. We carefully pack and tag all trees free of charge.

Our Trees Free of Disease. A certificate of inspection of the Mississippi State Entomologist certifying our trees to be free of disease accompanies each bundle of trees. All inspection laws of other States are complied with.

We Are Not Connected With Any Other Nursery. We Do Not Employ Agents.



Our Office Building — Notice the Pecan Trees

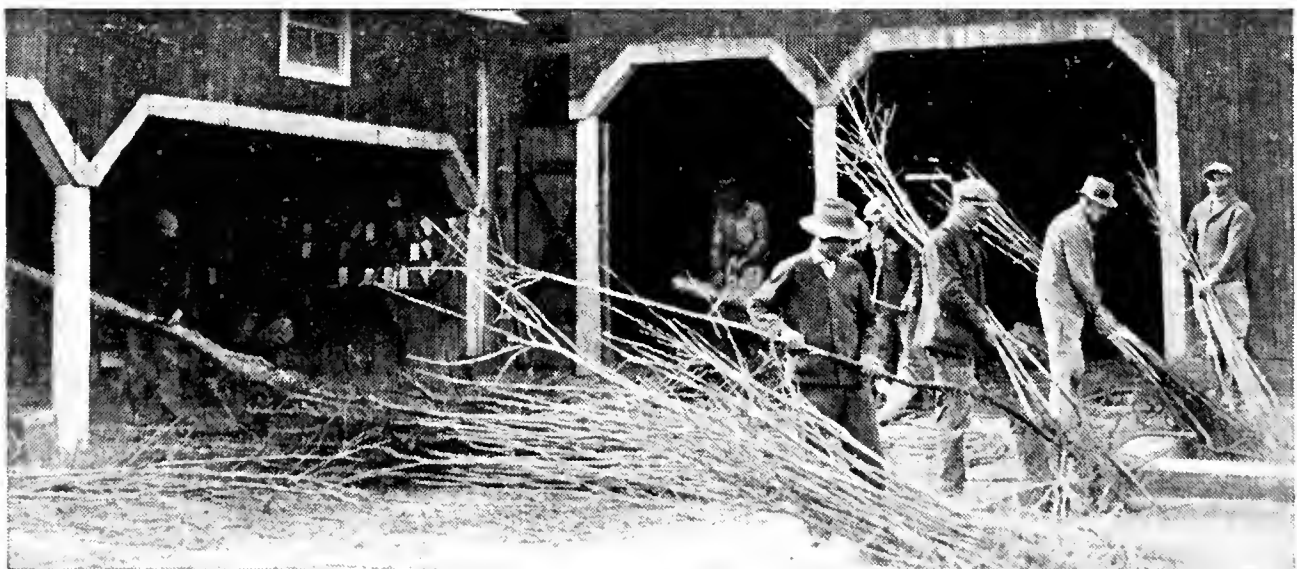
AN INSTITUTION TO SERVE YOU!

Our sole business, which has been our life's work, is the growing and selling of pecan trees. It requires our attention 365 days a year. This is not a company which buys trees each year for resale, or sends out agents to peddle them, but a large organization operating throughout the year, and selling our own trees direct to the customer for cash only. Nor is it a one-man, one-truck concern, nor a backyard "nursery." This nursery comprises 15,000 acres, of which 1,000 is planted in orchards and nurseries, and in which over 2,000,000 trees are growing at all times.

From 50 to 100 men are employed the year round, many of whom have been with us since we began business. They live in their own homes, which we furnish, and are happy, contented laborers, who take pride in our trees and whose hearts are in their work. Thirty mule teams and all kinds of farm machinery are used on our place.

Each Tree Individually Inspected

Below is a familiar scene. The man in the foreground does nothing but inspect trees. This official inspector is a trained and expert nurseryman, and it is his job not to let a single tree pass that is in any way inferior, defective in root system or trunk. The trees are first placed in the vat of water to wash the dirt off the roots, so they may be inspected and properly packed for shipment. The other men gather and tie the trees carefully, packing as described on page 9. As the trees are growing the entire nursery is inspected every week. The inspection is daily, but it requires a week to walk through all the rows of all the fields. Trees are carefully watched to keep free of any pests and diseases, and to see that they are in fine growing condition.



Each tree individually inspected. Imperfect trees are thrown out AND BURNED.

NATURE'S TRUST FUND



The beauty, the permanence and profit of a Pecan grove can not be duplicated in any other investment you make. Start that grove now — and look forward to a life time of profit!

PLAN FOR THE YEARS TO COME!

In thinking about the desirability of planting a pecan grove consider the permanence of such an investment. Pecan trees grow in size, in value and in productivity every year. When you plant them you plant not only immediate profit for yourself but security and income for your children and your children's children.

There are records of pecan trees *living for a thousand years*. Trees that George Washington planted at Mount Vernon when America was young are still bearing full crops. Your pecan grove will be a permanent thing, a thing of beauty and a means of realizing your hopes for the future. Start it — with Bass time tested trees today!

HERE'S PROOF THAT BASS PECANS WILL GROW ALL OVER THE SOUTH

(Names of Following Furnished on Request)

ABERDEEN, N. C. "Several years ago we ordered some pecan trees from you and they have grown and borne well."

KISSIMMEE, FLA. "The trees are growing nicely. One has seven pecans on it. Thank you. (Planted less than six months)."

DES MOINES, IOWA. "I plan a little later to about duplicate the order for trees that I made about a year ago — 100 trees, etc."

MEMPHIS, TENN. "The trees we ordered from you arrived O. K. The finest and biggest trees for the money I have ever seen."

EDGEFIELD, S. C. "I bought a few trees of yours last fall, and am very much pleased with them. I will send you an order for a few more this fall. My trees are near the street and are very much admired."

SEALE, ALA. "I am so glad you sent me your catalogue. Some years ago I bought three pineapple pears from you at 1.50 each and this year they were loaded just as picture, and I must say made the most delicious preserves and best flavored canned pears I ever have eaten. Proud of my trees."

BRACEY, VA. "I already have four of your trees; one had two nuts for first time, another a year older had two dozen, another had a peck or more. If you haven't heard from him, send catalogue to....."

PORTSMOUTH, VA. "Since sending you my order a short time ago I have decided to add a few more trees to my grove, and I don't know of any better trees than yours."

KANSAS CITY, MO. "The pecan trees ordered from you on November 29 and shipped to me at Camden, Arkansas, by Railway Express Agency, were received in good order and immediately set out. I want to say that I am indeed pleased with this shipment of trees."

BALTIMORE, MD. "About this time last year I ordered 100 of your "Large Stuart" pecan trees — the trees were par-excellence."

I was over to see the trees about April and they were all that could be expected. I was extra well pleased with them, and quite a few of them put out blooms so I would be surprised if they do not make a few nuts this coming year."

REFORM, ALA. "Some years ago I bought of you some pecan trees and they are now bearing and some of the finest I have ever seen. I have nuts that will measure about one and three quarters of an inch, and have a neighbor that bought of other nurseries that has nothing but small nuts that would take four or five to equal one of mine. Am well pleased with my trees though I had hard luck with them. After planting the freeze killed them down near the graft, though I have the original trunks which are now bearing nicely and I am surely proud of my trees. My neighbor has one tree that came from..... Nursery, but it will not compare with mine, so I think you are the fairest and best anywhere and can honestly recommend you to any desiring to plant out pecans."

HENDERSON, TEXAS. "The 6 pecan trees ordered from you came yesterday and were planted right away. They are the finest trees I have ever seen for the money — and have very many more roots than some I paid quite a bit more for a year ago."

GALVESTON, TEXAS. "Shipment of pecan trees arrived O.K. and in fine shape. Many thanks for the good selection of trees and the splendid way in which they were shipped. Not a branch was broken on any of the 12 trees."

LEWISBURG, W. VA. "I have just been advised by my father that the shipment of pecan trees reached Pinckard, Ala., in a most excellent condition, and that they have been acclaimed the finest ever shipped into that section."

NEW ORLEANS, LA. "I received my trees in good condition and I am well pleased. Thank you."

GREENVILLE, S. C. "I received my trees O.K. Saturday and to an inexperienced orchardist like myself I must say they certainly looked good."

LAGRANGE, GA. "The trees that I put out last year are the finest I ever saw. I believe they will bear a few nuts this year."

GAFFNEY, S. C. "If you have a record will you please advise me as to when we ordered first order, either four or five years ago. Had nice little crop this year on them and third year to bear, doing fine."

ALEXANDRIA, LA. "My order for pecans, pears, figs and plums arrived yesterday in good condition and they are a fine lot of trees. I am highly pleased with them. My only regret just now is that I did not order enough."

TUSCALOOSA, ALA. "Thanks for the beautiful trees. The root growth is astonishing for that size tree. Inclosed find another order."

AMITE, LA. "Your trees you have shipped me have been better than you describe."

GREENWOOD, S. C. "I have purchased something like 200 or more trees from you in the past and I would like to say they are doing unusually well. So many people admire them."

ROSEPINE, LA. "We have 150 of your trees, partly Stuart and partly Success that average between 30 and 45 feet in height. Three years ago we had 3,000 pounds of nuts."

JACKSON, MISS. "Thirteen years ago I purchased three Success pecan trees from you and set them out on my premises here in Jackson. The trees have thrived and have borne several crops of pecans and I am well pleased with them."

CUERO, TEXAS. "A friend gave me your catalogue and I became interested in your trees which bear so quick. The neighbor's trees did fine and are now bearing nuts. Would appreciate very much receiving your new catalog."

PICKENS, S. C. "It is a real personal privilege to thank you for that nice and fine bundle of trees you sent me. They reached me in perfect condition. They were far beyond my expectations. At first I thought the price was too high — now I can't understand how you sell such trees so cheap. I am pulling up my small pecan and pear trees and planting Bass trees. No wonder Bass Pecan Company can guarantee their trees."

SOMERVILLE, TENN. "Last February two years ago I bought from you two pecan trees. One is the most perfect tree I ever saw, only two years old and had some pecans on it this year. I want to compliment you on your early bearing trees. If I can recommend you to anyone I shall be glad to do so."

JNO. W. TISDALE, Mayor

J. W. MAXEY, Clerk

TOWN OF CLARKSVILLE

MAYOR'S OFFICE

Bass Pecan Company
Lumberton, Miss.

Clarksville, Virginia
August 23, 1939

Gentlemen:

Bass Pecan Trees are worthy of the very highest recommendation. The first so called Improved Pecan Trees planted in this section were planted on a farm near Clarksville, Mecklenburg County, Virginia, in the year 1911. These trees are now from three to five inches in diameter at the ground. I think there are about fifteen trees in the grove. Several of these trees have never borne a nut. Several bear nuts about the same size of the pecans borne on trees in this section planted before the Revolution. The other trees bear a few fair size nuts from time to time.

The results of the planting caused the people in this section, Southern Piedmont Virginia, to reach the conclusion that this section was too far north to grow Improved Bred-Up Pecans.

In the year 1918 I ordered several pecan trees from Bass Pecan Company of Lumberton, Miss. to be planted purely as an experiment. At the time I was advised by friends that it would be better to throw the price of the trees in Roanoke River. That Improved Pecans could not be grown this far north; that the trees would not bear, and that the nuts could not mature before frost.

The trees were duly received and I was amazed at the wonderful root system. These trees, planted on average land, are 8 to 10 inches in diameter; are heavy bearers of nuts fully as large as the best nuts shipped from the Southern States, and of excellent quality.

Bass Pecan Trees have convinced the people in this section that Improved Bred-Up Pecans can be successfully grown in this section.

I have ordered and planted Bass Pecan Trees nearly every year since 1918, and have always found Bass Pecan Trees to be of the same high quality. They are inherently early bearers, many of my trees produced a few nuts the second year after they were planted. They are vigorous growers, and all of the nuts are fully matured before frost.

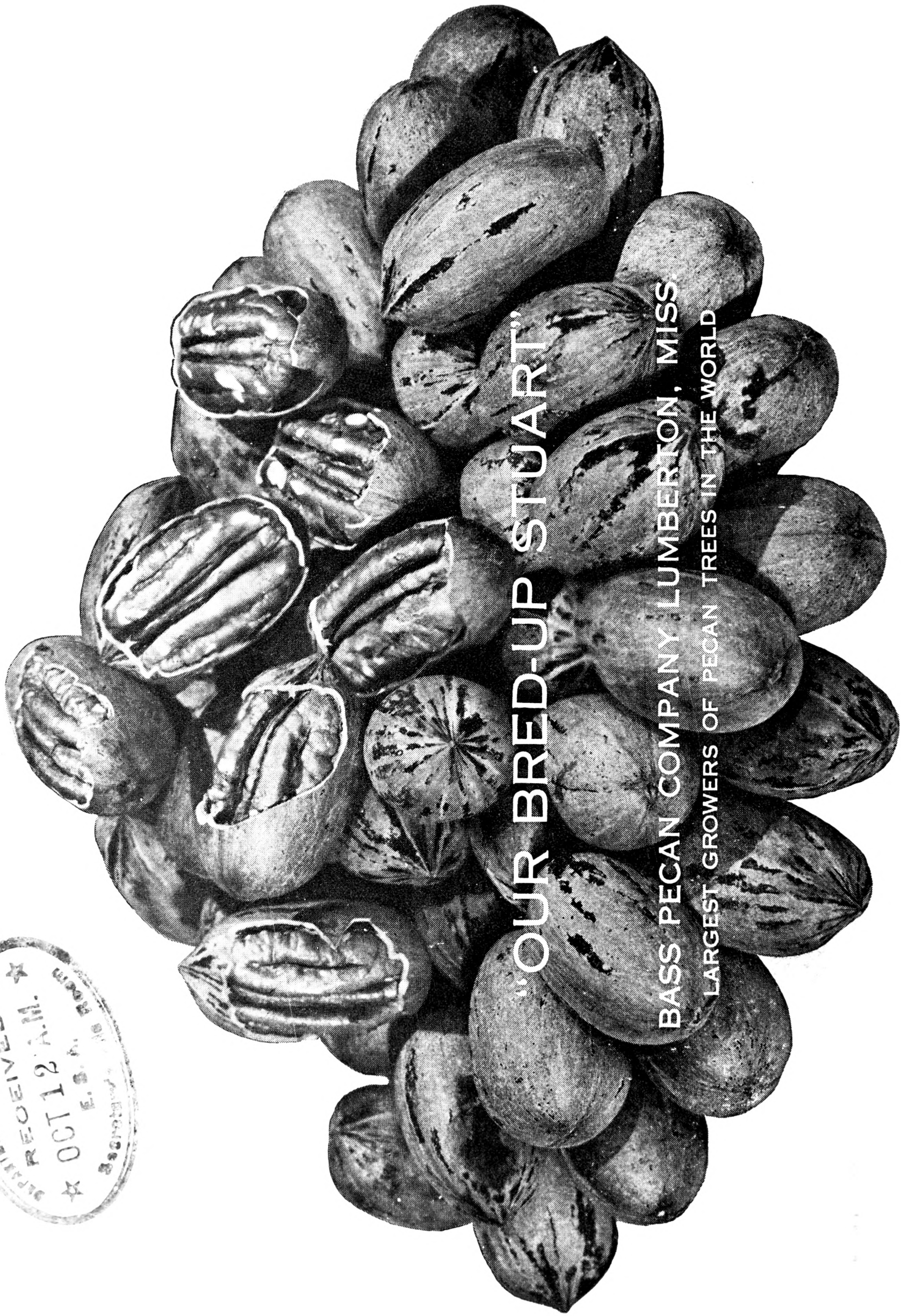
Many people in this section have planted Bass Pecan Trees and without a single exception are highly pleased.

I have yet to see the first Bass Pecan Tree that was not everything and more than claimed for it by Bass Pecan Company.

Very truly yours,
(Signed) Jno. W. Tisdale

JWT:AN

DEPARTMENT OF AGRICULTURE
RECEIVED
★ OCT 12 A.M. ★
E. S. H. H. B. B.
Secretary



"OUR BRED-UP STUART"

BASS PECAN COMPANY LUMBERTON, MISS.
LARGEST GROWERS OF PECAN TREES IN THE WORLD