

Historic, archived document

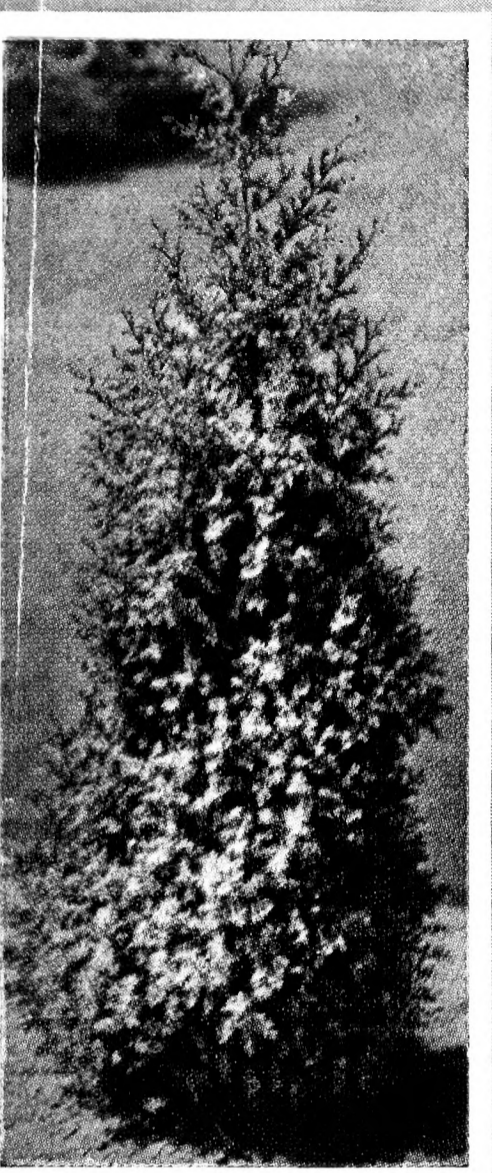
Do not assume content reflects current scientific knowledge, policies, or practices.



J. V. Bailey Nurseries

DAYTON'S BLUFF
STATION
ST. PAUL, MINN.
PHONE LA SALLE 9364

LIBRARY
RECORDED
★ MAR 2 1940 ★
U. S. Department of Agriculture



SILVER CEDAR

★
NORTHERN GROWN
HARDY NURSERY
STOCK... direct from
grower to you... suited
to your own climate!

1940



PYRAMIDAL ARBORVITAE



BLACK HILLS SPRUCE



COLORADO BLUE SPRUCE

A personal message from J. V. BAILEY



J. V. Bailey

As another Spring Season approaches, we are fortunate to have the **finest lot of nursery stock we have ever offered!** Due to favorable weather the past season, our stock has developed unusually well . . . and ideal growing conditions during the fall matured plants so they went into the winter full of vigor and vitality. These factors all contribute to successful transplanting—and favorable results. Through our modern storage and packing facilities, we are prepared to furnish best quality stock . . . guaranteed to reach you in prime condition for planting.

We grow our own stock. When you buy from Bailey's, you not only save commissions paid to agents . . . but are assured of getting **high quality plants**, properly handled from the time they are dug, until they reach you.

We have a large stock of many varieties that we are offering at greatly reduced prices this season . . . the same high quality stock that has given us thirty-two years of successful nursery business.

We are grateful for the loyalty of our customers, and it is our hope that these pleasant relations will continue.

Read Our Liberal Guarantee and Terms of Sale

Any material failing to grow, will be resupplied at one-half the original cost of the stock, provided we are informed of such failure prior to October 1, 1940.

Cash with order or will accept one-fourth of purchase price in advance and ship goods C. O. D. for the balance. All stock priced f.o.b. St. Paul or at nursery except where otherwise stated.

We are careful to keep our varieties true to name and will replace any portion of the stock that may prove otherwise or refund the price paid for such portions. It is agreed that the original price shall be the maximum damages the purchaser is entitled to.

A Certificate of Inspection Accompanies Each Order.

CARE OF NURSERY STOCK

When the stock is received, open the bundle in the shade out of the wind and, if you are not ready to plant immediately, heel the roots in the ground, soaking them well as you do. If well heeled in, they can be kept without damage for a reasonable time. Ask for our free booklet on planting and care of nursery stock.

PARCEL POST

Many of the smaller items can be shipped by parcel post at less expense than by express. Include 10 per cent for packing and postage if desired by parcel post. Windbreak trees are prepaid. 4-5 ft. and 5-6 ft. fruit trees cannot be sent by mail.

IRRIGATION

We have over 50 acres under irrigation. Our fruit trees have all been produced on this tract and are really in exceptionally vigorous condition. By irrigating properly, we maintain a steady growth throughout the season. Without irrigation, trees are often checked with every little dry spell and serious dry spells like we have had in recent years are very apt to weaken the stock. It is during these first two or three years after grafting that the young trees need this special care.

When you plant BAILEY'S Fruit Trees you have stock that is ready to start growth with the first warm weather.

LOCATION OF OUR NURSERIES—Our Nursery is located just off Highway 61, at the St. Paul city limits, across the river from South St. Paul. We invite our customers to come and select their own stock. However, mail orders receive our personal attention and we assure you that we will select your stock with the utmost care.

INDEX

Apple and Crab Apple	3-7	Pears	7
Apricots	11	Plums	8-9
Asparagus	14	Raspberries	12-13
Bush Cherries	11	Roses	26
Cherries	10	Rhubarb	14
Currants	13	Shrubs	20-24
Evergreens	15-18-29-30-31	Strawberries	11
Gooseberries	14	Trees, Ornamental	27-28
Grape	14	Trees, Windbreak	16-19
Hedge Plants	25	Vines, Climbing	26

APPLES

... hardy Northern-Grown Trees Direct from Grower to You!

Our trees are all 3 years old and are of the varieties that we consider best for our climate. We graft our own apples on roots that we grow ourselves, which assures you of the hardiest stock available and trees that will withstand severe drought conditions.

Due to ideal growing weather last summer we have a good supply of high quality trees. Plant your orchard this year with Bailey's hardy apples grown on our own hardy roots. Order early while our list is still complete.

We offer fruit trees at **GREATLY REDUCED PRICES** this year. This is made possible because of our increased production and modern methods of growing.

ANOKA—Early bearing, often fruiting the second year after planting. Introduced by Prof. Hansen of South Dakota. Quality is good. Season—Very early. The tree is very hardy, fruit is green heavily covered with red streaks.



Red Duchess Apples

DELICIOUS—High quality, bright red, a good winter keeper. We recommend planting Delicious in a sheltered location.

RED DUCHESS—An improved selection of the standard Duchess. Fruit bright red, ripens early August. Perfectly hardy.

ERICKSON—This apple was originated at Aitkin, Minnesota, a few years ago and is proving a real success as an early apple. The fruit which ripens about the same time as the Duchess, is very large and a deep red in color.

FLUKE—About the same season as Wealthy, fruit very large, deep red, good quality. Keeps until January. Tree is very hardy and a vigorous grower.

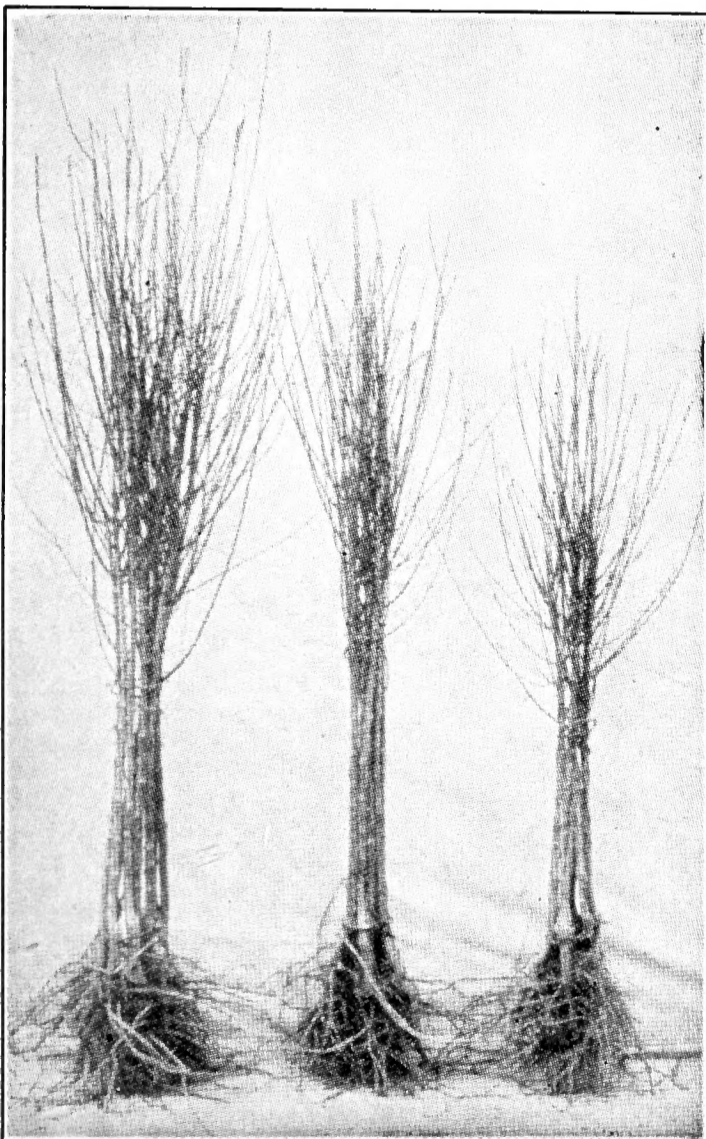
HIBERNAL—An extremely hardy apple recommended for the most Northern sections. Also used quite extensively for top-working. These trees on our hardy roots are ideal for top-working and planting in sections where the weather is extremely severe.

JEWELL WINTER—A very attractive, bright red apple. Quality good, keeping until mid-winter. A good commercial and home orchard apple.

MALINDA—One of the hardiest longer keeping apples that can be grown in this locality. Flesh is yellowish-white, juicy, and keeps until late winter. Good quality.

McINTOSH—McIntosh has been grown for many years in the East, but has just recently been found to be hardy in Minnesota and the Northwest. We have had trees fruiting for the past ten years in our orchards and find them very satisfactory and feel safe in recommending McIntosh for planting in all sections except Northern Minnesota. It is a very attractive, well colored apple of exceptionally high quality. The fruit keeps until late winter.

NORTHWESTERN GREENING—A late winter apple. The tree is a vigorous grower and fairly hardy. Fruit is very large, yellowish green, when ripe. An excellent pie and baking apple.



5 to 6 ft. 4 to 5 ft. 3 to 4 ft.

Apple Trees

BAILEY'S

HARALSON

A Proven Leader in Minnesota
and the Northwest

It has Everything:

1. Color—Bright red.
2. Quality—Good.
3. Size—Large.
4. Season—Late fall.
5. Keeping—Excellent until April and May.
6. Yield—Yields heavy and often bears fruit the second year after planting.
7. Hardiness—Is recommended throughout Minnesota and is found thriving in Canada.

The Leading Commercial Apple

In addition to being almost a perfect apple for the home orchard HARALSON is being planted extensively in commercial orchards. Wide-awake planters are switching to Haralson.

It is the first apple we have ever had that we sincerely say can be grown on a commercial scale in competition with Jonathan and similar apples shipped into this territory.

Haralson in Great Demand

The market demands a good sized, red, long keeping apple. Haralson fully satisfies all these qualifications and in addition, stands handling and shipping well.

Bears Young

Haralson is a prolific bearer, and the orchard trees yield very young. They often start bearing the second year after planting. The tree is strong and they carry heavy loads without splitting the branches. Originated and introduced by the Minnesota State Fruit Breeding Farm.



Haralson Apple

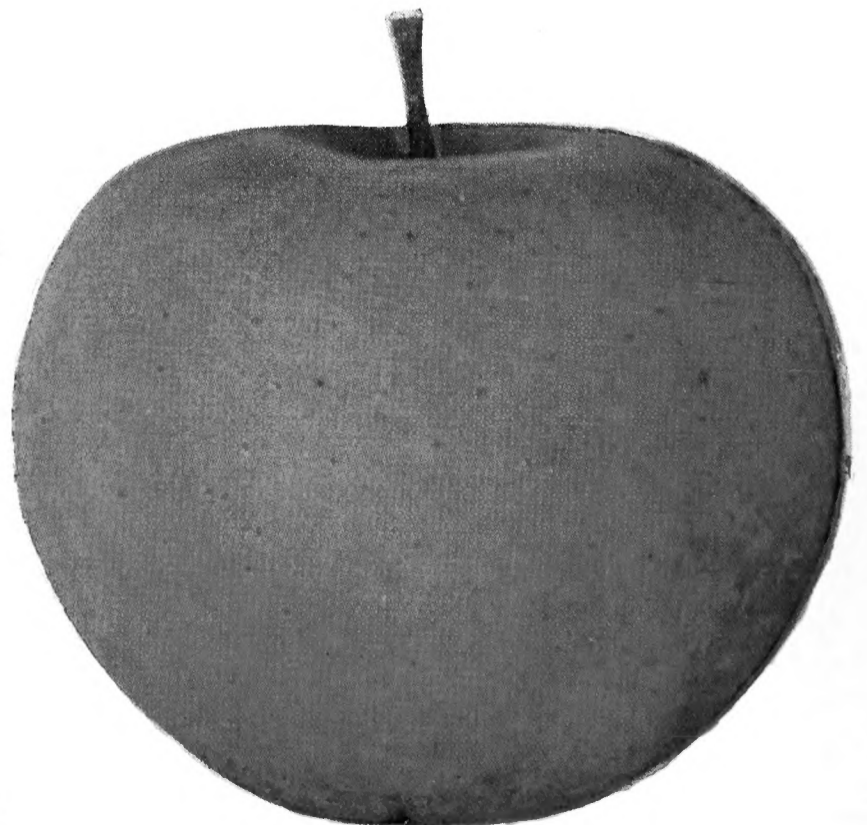
PATTEN'S GREENING—This apple is popular on account of its hardiness and heavy yielding qualities. Fruit is large, green with pink blush. Tree is thrifty and grows in a spreading form. Season—September.

WEDGE—An apple of about the same season as Wealthy. An exceptionally good apple for baking and the demand from restaurants and other sources is increasing for this particular apple. Fruit is medium to large and of uniform size.

TABLE SHOWING NUMBER OF TREES OR PLANTS TO AN ACRE

Distance Apart	No. Required
2 x 4 ft.—Strawberries	5,445
5 x 5 ft.—Raspberries, hills	1,742
3 x 6 ft.—Raspberries, hedge	2,420
5 x 7 ft.—Currants	1,244
8 x 10 ft.—Grapes	544
15 x 20 ft.—Fruit Trees	145
15 x 24 ft.—Fruit Trees	121
15 x 30 ft.—Fruit Trees	96
17 x 18 ft.—Fruit Trees	142
18 x 18 ft.—Fruit Trees	134
30 x 30 ft.—	48

RULE—Multiply distance apart each way in feet, divide 43,560 by the product. Quotient is number of trees or plants needed to set an acre.



Northwestern Greening Apple

Northern-Grown Apples . . . on HARDY ROOTS

BEACON

The New All-Red Eating Apple

A recent introduction of the Minnesota State Fruit Breeding Farm that promises to take the place of Duchess. Beacon ripens with Duchess or a few days later. Fruit is completely red and of uniform fair size. Excellent eating apple and good cooking apple.

Hardy . . . Heavy Cropper

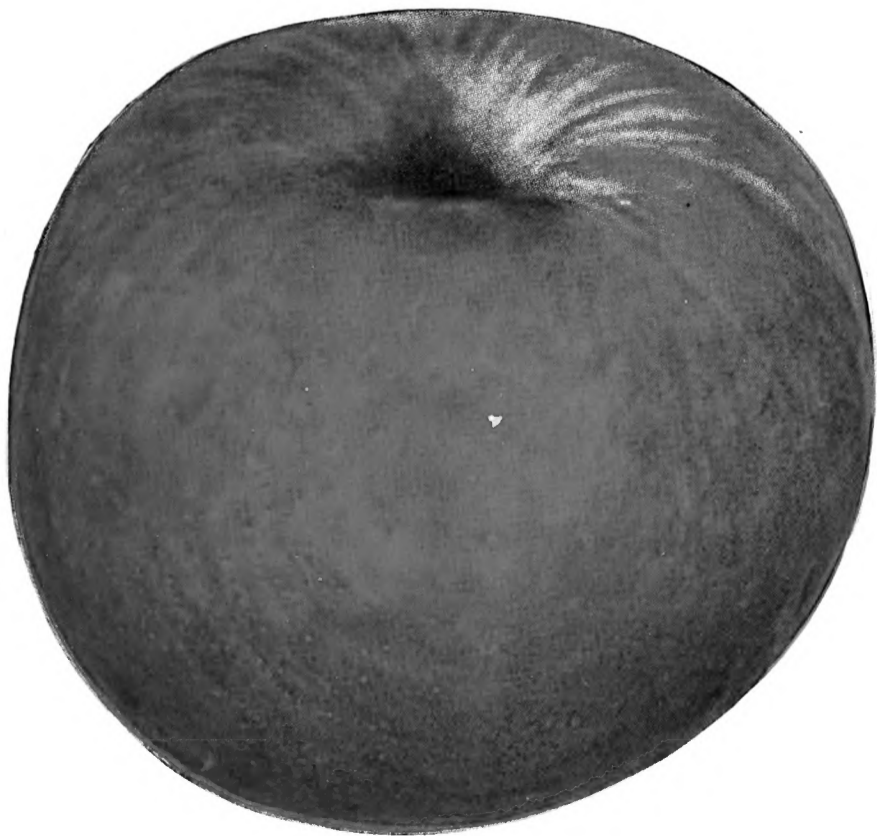
We feel that Beacon is superior to other apples of the same season and will undoubtedly replace them largely. In our own trial orchards, as well as other reports we have had, it has proven to be perfectly hardy and a heavy annual cropper. Tree is upright in growth and a vigorous grower.

Best Early Variety for Storing

Unlike most of the early apples which last for a short time, Beacon can be stored in an ordinary cellar for two months. The advantages of this from a commercial standpoint, are obvious, as they can be marketed whenever the price and demand is favorable.

Equally Good for Home or Market

Its splendid quality and appearance, uniform size, and good handling qualities are sure to make Beacon a valuable apple for home use and in the commercial orchard. It fills the demand for a quality apple that comes in before the Wealthy, Haralson and other apples of similar season.



Wealthy Apple



Beacon Apple

CARE OF NURSERY STOCK

When the stock is received, open the bundle in the shade out of the wind and, if you are not ready to plant immediately, heel the roots in the ground, soaking them well as you do. If well heeled in, they can be kept without damage for a reasonable time. Ask for our free booklet on planting and care of nursery stock.

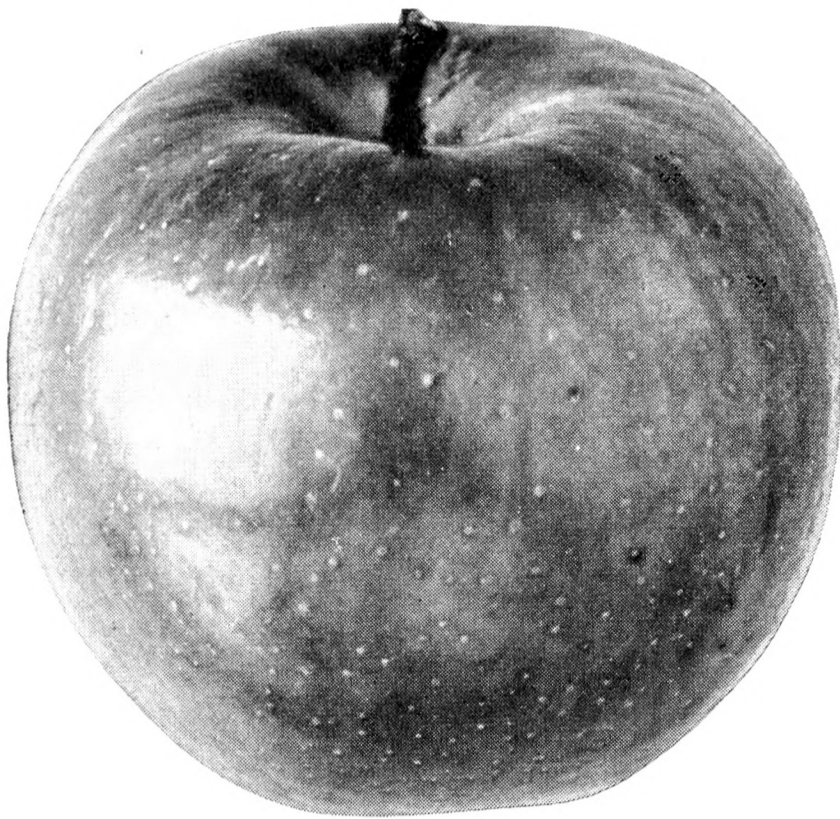
ORDER EARLY

Order early while our assortment is complete. We have a very fine lot of stock this year but as the season progresses we always run short of some varieties. Be sure to specify on your order whether or not we can substitute equally desirable varieties provided we are out of some of the items.

WEALTHY—Wealthy is still our leading apple of its season. Ripens in early September and keeps until the Holidays. Wealthy has undoubtedly made more money for the commercial growers in Minnesota and adjoining states than any other variety. The fruit is medium to large in size, and colors up to a beautiful red. Quality—exceptionally good. Tree is very hardy and a heavy yielder.

LOCATION OF OUR NURSERIES—Our Nursery is located just off Highway 61, at the St. Paul city limits, across the river from South St. Paul. We invite our customers to come and select their own stock. However, mail orders receive our personal attention and we assure you that we will select your stock with the utmost care.

Plant *Bailey's* HARDY APPLES



Minn. No. 1007 (Prairie Spy) Apple

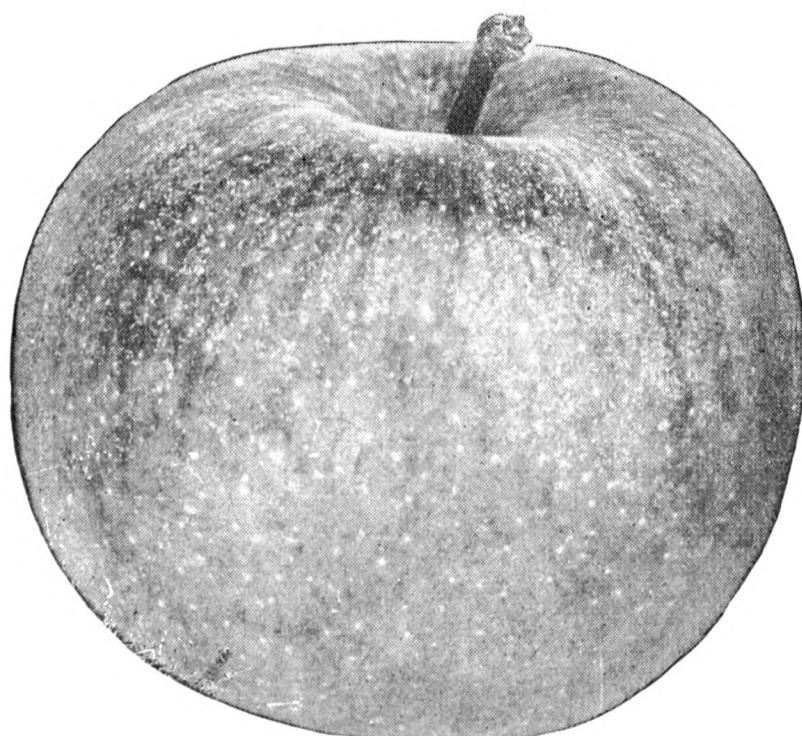
MINNESOTA No. 1007

The New—Long Keeping—High Quality
Red Apple

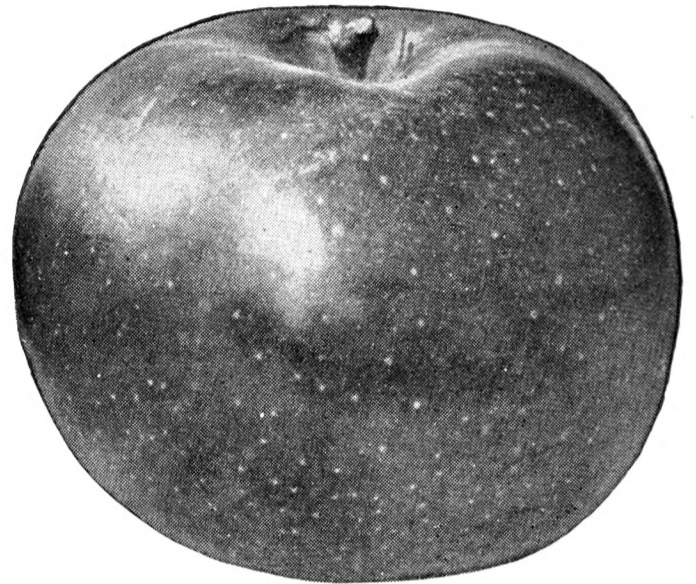
No. 1007, or more recently known as Prairie Spy, is a very promising apple and in our opinion is probably the best of the recent introductions of the Minnesota State Fruit Breeding Farm.

It is a medium to large apple, ripening late, and an exceptionally good keeper. It keeps, with ordinary storage, even better than Haralson. Fruit is completely covered with carmine red stripes and is very attractive. Quality is very good.

The tree apparently is perfectly hardy, but we do not recommend planting it in Northern Minnesota as the season is not long enough to properly mature the fruit. We suggest you try some of these in your orchard.



Jewell Winter Apple



McIntosh Apple

PRICES OF APPLES AND CRAB APPLES (Unless Otherwise Priced)

	Each	Per 5	Per 10	Per 50
2 to 3 ft.	\$.20	\$.90	\$1.50	\$ 6.75
3 to 4 ft.	.30	1.25	2.25	9.75
4 to 5 ft.	.40	1.90	3.50	15.50
5 to 6 ft.	.50	2.40	4.50	20.50

PRICES OF HARALSON, DOLGO WHITNEY

	Each	Per 5	Per 10	Per 50
2 to 3 ft.	\$.25	\$1.15	\$2.00	\$ 9.25
3 to 4 ft.	.40	1.90	3.50	15.50
4 to 5 ft.	.50	2.40	4.50	20.50
5 to 6 ft.	.60	2.90	5.50	25.50

PRICE OF MINNESOTA No. 1007 (PRAIRIE SPY)

	Each	Per 5	Per 10	Per 50
3 to 4 ft.	\$.50	\$2.40	\$4.50
4 to 5 ft.	.60	2.90	5.50
5 to 6 ft.	.75	3.50	6.50

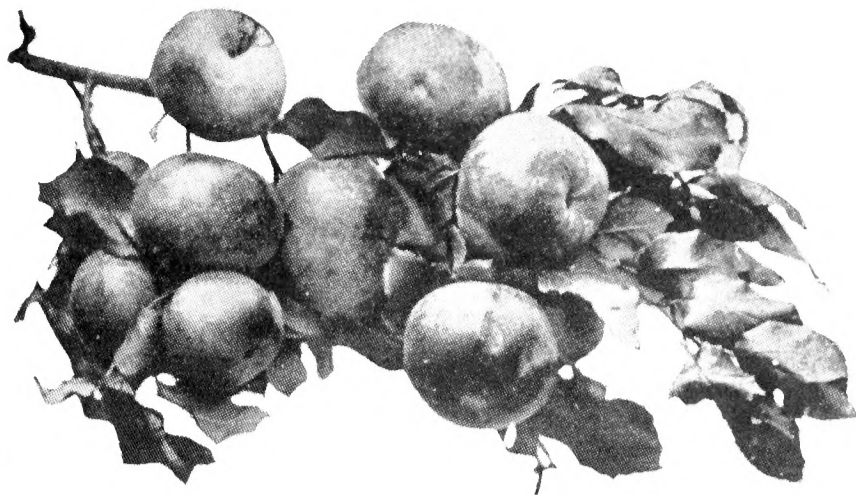
To get the REDUCED QUANTITY RATES order 5, 10, or 50 of a single variety.

PARCEL POST

Many of the smaller items can be shipped by parcel post at less expense than by express. Include 10 per cent for packing and postage if desired by parcel post. Windbreak trees are prepaid. 4-5 ft. and 5-6 ft. fruit trees cannot be sent by mail.

CRAB APPLES

Choice . . . Hardy!



Virginia

DOLGO—Fruit is oblong, of real beauty and peculiar lemon-acid in flavor. Entirely different from any other crab apple and far superior for jellies, producing a transparent bright red jelly of high quality. The fruit is distinctly beautiful, borne in great profusion. Dolgo is a beautiful lawn tree, in addition to producing fruit of superior quality. It is a striking thing to see the masses of bright red fruit clustered along the branches.

STRAWBERRY—An early crab. Very hardy and good yielder. Used for eating fresh and canning.

SWEET RUSSET—Somewhat larger than the other crab varieties. A heavy yielder. Fruit is green, ripening to yellow and is covered with a light mottling of russet, very sweet and tastes very much like pear. Good for canning.

TRANSCENDENT—The old favorite jelly and pickling crab. Tree a vigorous grower and heavy yielder.

VIRGINIA—A very hardy and vigorous grower. Fruit fully as good as Transcendent for pickling or jelly. A prolific annual bearer.

WHITNEY—A large bright red crab. Good for eating fresh and an excellent canning crab. Whitney is one of the best eating apples in its season and many people will eat nothing else while they last. Tree is perfectly hardy and a heavy yielder. Whitney is the best of all sweet crab apples. It ripens in August and has a definite place in any commercial or home orchard.

Bailey's PEARS . . . delicious . . . easily grown

Pears require the same soil and cultivation as apples. Pruning and spraying also similar. Why not plant a few Hardy Pears with your other orchard trees?

We bud (or graft) our Pears on *Pyrus ussuriensis* seedlings. This is a hardy root that stands our climate very well. This is an important feature which is sometimes overlooked when buying pears for our Northern climate.

PARKER—This probably is our most dependable pear. Introduced by the Minnesota State Fruit Breeding Farm and has proven of real value. We recommend it for general planting in the South half of Minnesota and in favorable locations in Northern Minnesota. Fruit is large, color is yellow with distinct blush. Flesh tender and juicy. Quality very good.

MENDEL—Mendel is another hardy pear. Tree is a vigorous grower and practically resistant to blight. Fruit is medium size and good quality. Color, yellow. Mendel yields heavy and is considered by many to be equal to Parker.

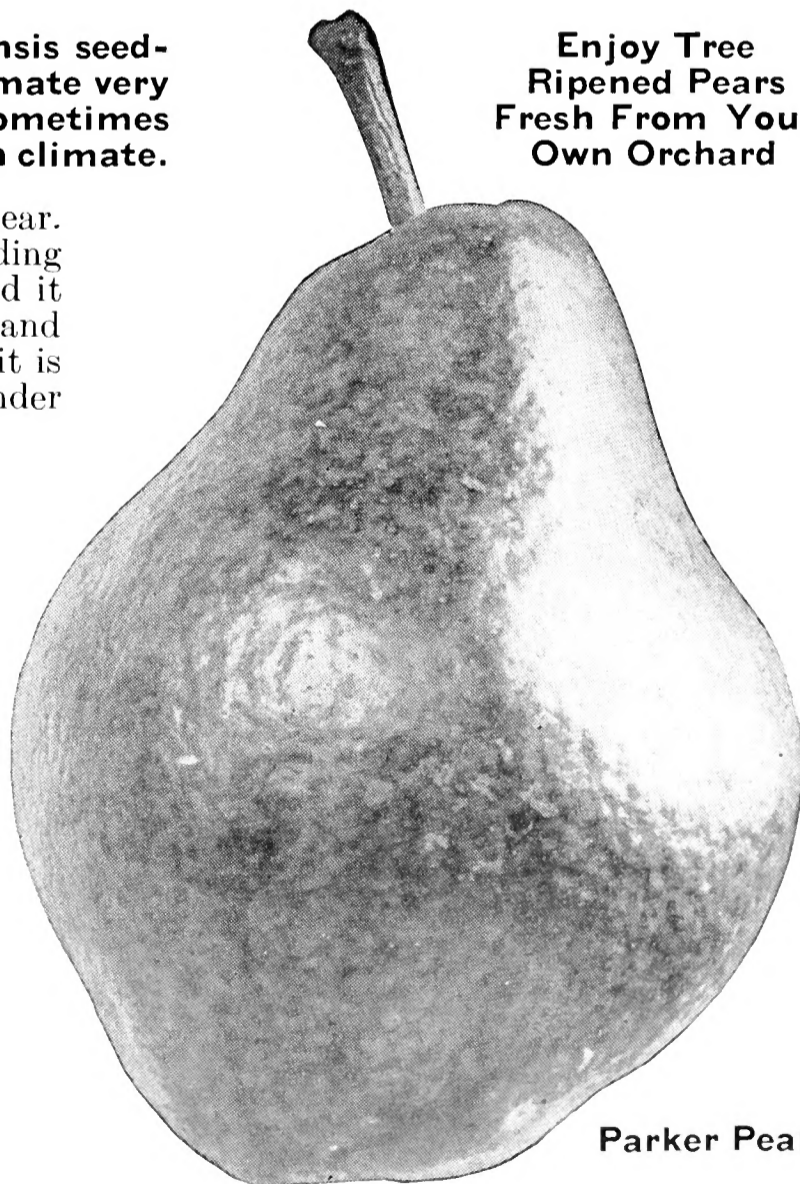
MINNESOTA No. 3 (BANTAM)—A heavy yielder of medium to small size fruit. Tree is considered the hardiest pear and very resistant to blight.

PRICES OF PEARS

	Each	Per 5	Per 10	Per 50
2 to 3 ft.	\$.25	\$1.15	\$2.00	\$ 9.25
3 to 4 ft.	.40	1.90	3.50	15.50
4 to 5 ft.	.50	2.40	4.50	20.50
5 to 6 ft.	.60	2.90	5.50	25.50

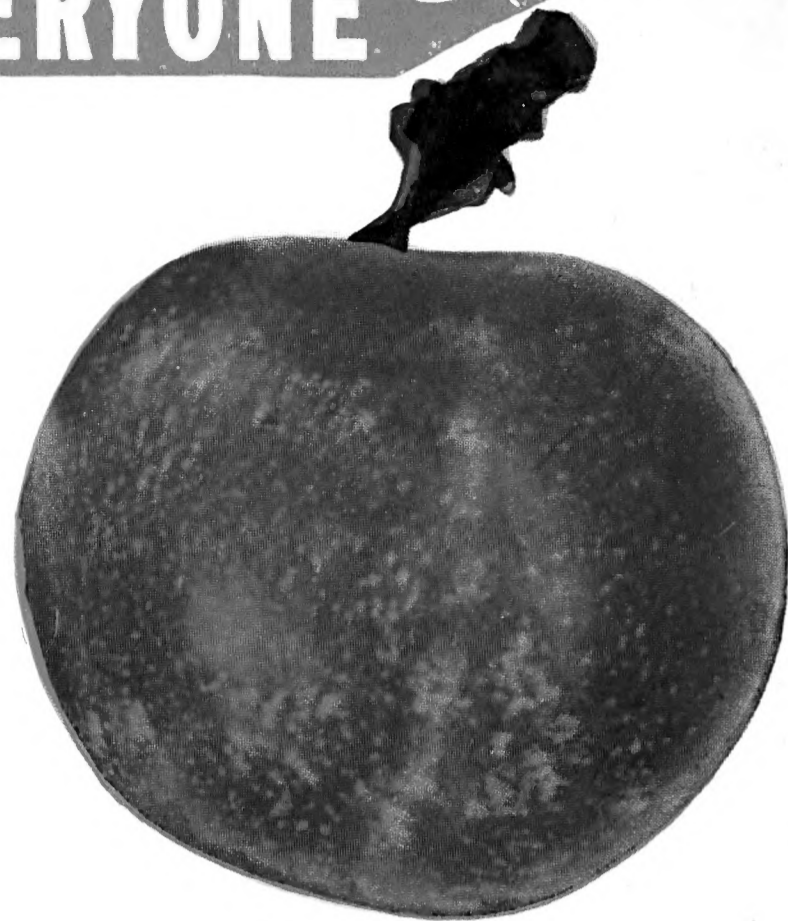
To get the reduced QUANTITY RATES order 5, 10, or 50 of a single variety.

Enjoy Tree
Ripened Pears
Fresh From Your
Own Orchard



Parker Pear

PLUMS FOR EVERYONE



Monitor Plum

The following varieties of plums are far superior to the older varieties, and we feel perfectly safe in recommending them. They are very fast growing and usually come into bearing the second year after setting. They are perfectly hardy in our climate and we have selected and propagated the following varieties which have shown exceptional qualities.

We graft our Plums and Cherries on *Prunus Americana*—our native hardy roots. This insures you hardy trees that will stand up under extreme conditions.

We have a good supply of Plums and Cherries this year and offer them at attractive Prices.

ELLIOTT—A large, dark red plum, firm flesh. Freestone. Tree a heavy yielder and hardy.

EMBER—One of the more recent plums introduced by the Minnesota State Fruit Breeding Farm. Ember is a large late plum and has exceptionally fine dessert and canning qualities. It is yellow with attractive red blush. Two outstanding and valuable features are that the fruit hangs to the trees, even after thoroughly ripening, and after picking will keep well for two or three weeks. This is a late plum and should be planted along with some of the earlier varieties to extend the season.

FIEBING PRIZE—One of our leading plums that is rapidly gaining popularity. Fruit is very large, firm, and of excellent canning quality. Dark red and ripens mid-season to late. Tree is a vigorous grower and yields heavily.

HENNEPIN—A dark reddish-purple plum covered with a dense bloom giving it a distinct and attractive appearance. Good eating fresh, especially good for canning and preserving because of its rich purplish-red flesh. Hennepin is a heavy yielder. Ripens early August.

KAHINTA—A large firm dark red plum with yellow flesh. Freestone. High quality.

LaCRESCENT—A very high quality, yellow plum. Flesh is very tender, and is a delicious plum for eating fresh or canning. We heartily recommend LaCrescent for the home orchard but the flesh and skin are too tender to stand handling and extensive hauling to market.

MONITOR—A late mid-season variety, a vigorous well shaped tree, producing large, dark red, firm fleshed fruit of high quality. Heavy annual bearer.

RED WING—One of the largest plums, ripens mid-season, with beautiful red, freestone fruit of high quality.

SUPERIOR—This sensational new plum was originated by the Minnesota State Fruit Breeding Farm, and after being tested thoroughly, was very appropriately named SUPERIOR. Its very name is a challenge, and it is considered by many to be our best plum in its season. Superior ripens mid-season, fruit is large, beautiful red, firm flesh, and of exceptional quality. You can peel it as you would a peach. We do not hesitate in recommending Superior for an early red plum. Freestone.

TERRY—One of the old standard varieties. Fruit is large, with a small pit. Dark red. Ripens mid-season.

TONKA—An extremely productive variety producing large, round, red fruit of firm flesh and good quality. Freestone.

UNDERWOOD—Undoubtedly the most widely planted of the Minnesota introductions. Underwood is valuable because of its large early fruit and annual bearing. Fruit is large, bright red and semi-freestone. A delicious fruit for eating fresh and for canning. The tree is a vigorous grower and one of the hardiest. The fruit ripens early making it exceptionally well adapted to Northern parts of Minnesota and North Dakota.

PLANT HARDY PLUMS FOR PROFIT

WANETA—"Prof. Hansen's Masterpiece." Fruit is immense in size, delicious quality, beautiful red color, small pit. Tree bears very heavy and young. At four years it is not uncommon for a Waneta to produce four bushels of plums. Waneta is undoubtedly the most popular plum introduction of Prof. Hansen from Brookings, So. Dak.

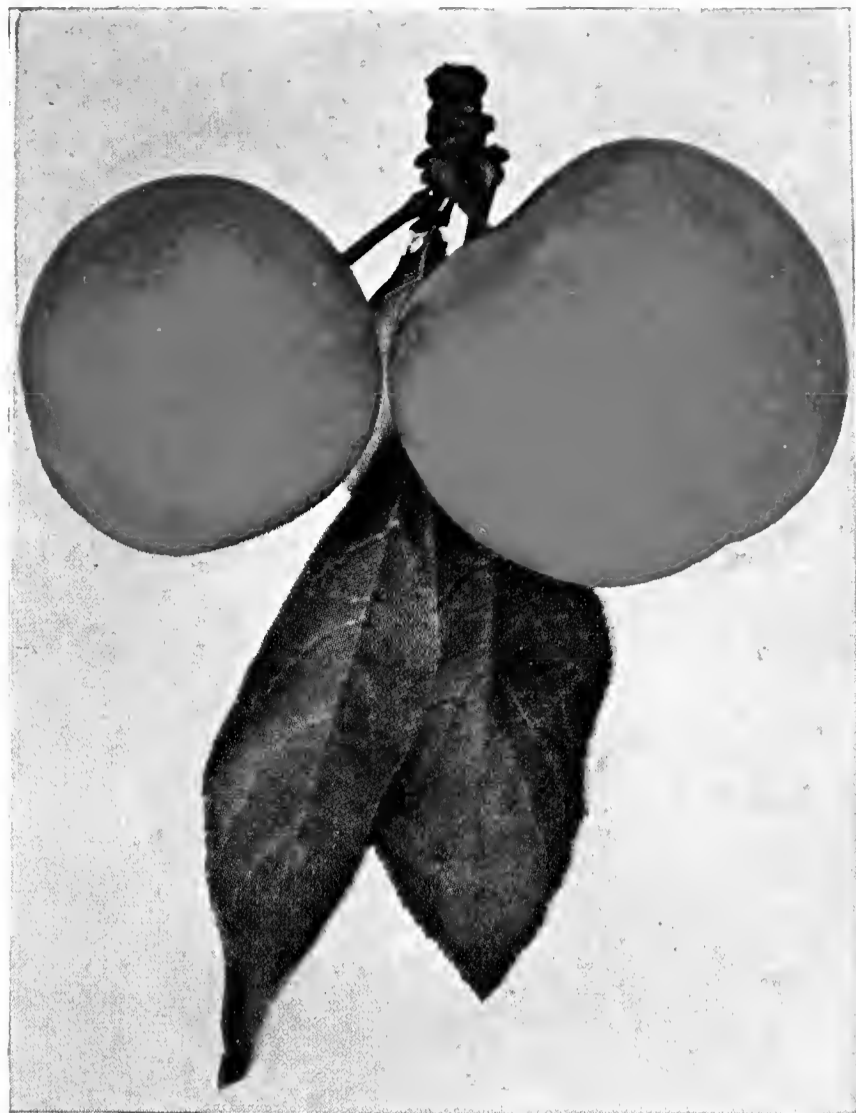
MINNESOTA No. 17—A large red freestone plum of excellent quality for canning. Season—early.

MINNESOTA No. 218—Another of the new Minnesota Plums. Yellow in color with a red blush. Flesh is yellow and excellent quality. Ripens about August 10th.

Pollenizers for Minnesota Plums

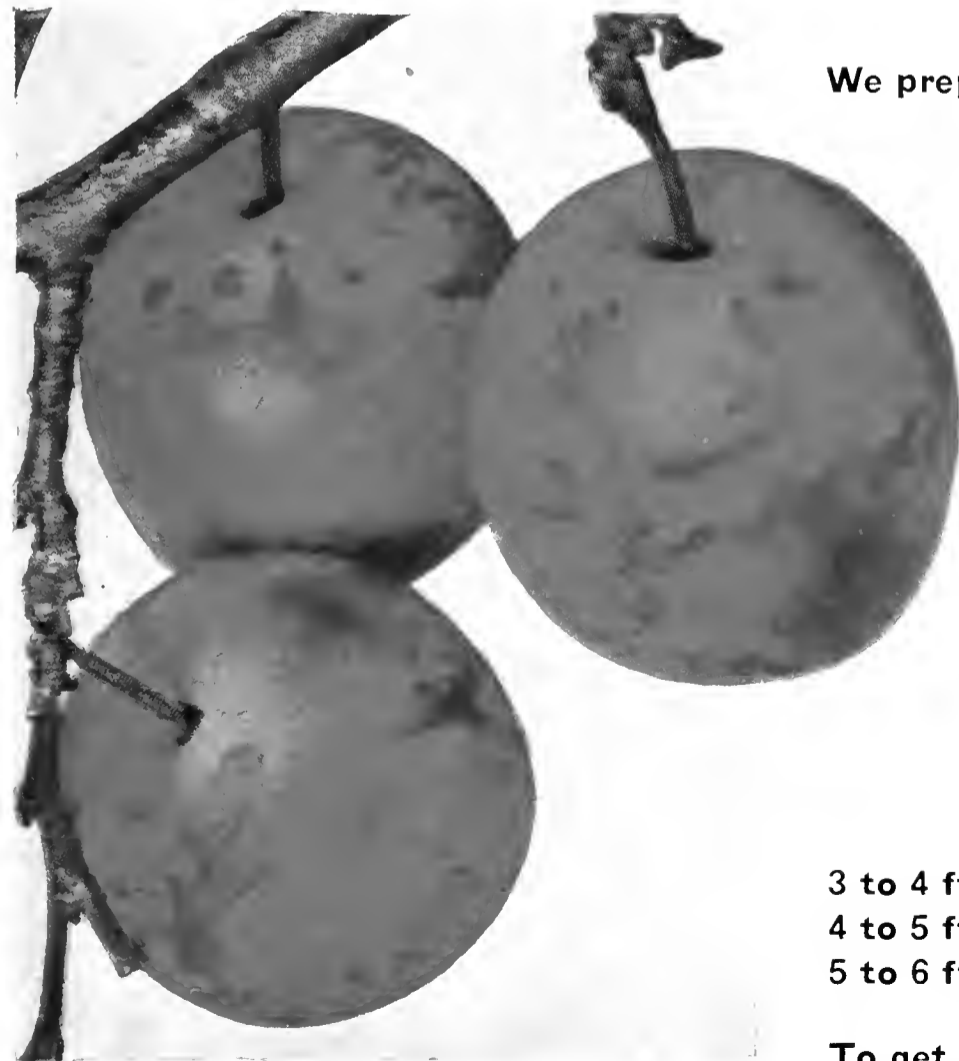
It is necessary to plant one or two pollenizing plums with any of the Minnesota hybrids in order to get good yields. It has been found that the Minnesota Hybrids do not fertilize one another and we recommend either one of the following varieties which will effectively pollenate the standard varieties.

HANSKA—A plum with an apricot flavor. The fruit is medium sized, bright red color, flesh is firm, yellow, good flavor. Very desirable for canning and preserving. Freestone.



Tonka Plum

SURPRISE—A valuable variety for pollenization of the standard varieties. Fruit is attractive red and of high quality. Surprise is a light yielder and we recommend planting only a few trees to take care of pollenizing other varieties.



Underwood Plum

FREE DELIVERY

We prepay transportation charges on all orders of \$25.00 or more (Except balled and burlapped evergreens) within 500 miles of St. Paul.

PRICES OF PLUMS

(Unless Otherwise Priced)

	Each	Per 5	Per 10	Per 50
2 to 3 ft.	\$.20	\$.90	\$1.50	\$ 6.75
3 to 4 ft.	.30	1.25	2.25	9.75
4 to 5 ft.	.40	1.90	3.50	15.50
5 to 6 ft.	.50	2.40	4.50	20.50

PRICES OF MINNESOTA

Nos. 17 and 218

	Each	Per 5	Per 10	Per 50
3 to 4 ft.	\$.50	\$2.40	\$4.50
4 to 5 ft.	.60	2.90	5.50
5 to 6 ft.	.75	3.50	6.50

To get the **QUANTITY RATES**, order 5, 10, or 50 of a single variety.

HYBRID CHERRIES

Heavy yielders . . . fine for canning



**Oka
Cherry**

OKA—This is one of the best of the Hybrid Cherries recently introduced by Prof. Hansen. An unusually hardy cherry excellent in both the South and as far North as you wish to plant. Skin is black and flesh red. Fruit is very attractive, a heavy bearer, and produces large quantities of fruit the first year after planting. The tree is of bushy habit and should be grown as a low shrub.

SAPA—Introduced by Prof. Hansen and it has become increasingly popular. Sapa is a large sized cherry with a small pit. Fruit is dark red with wine-red flesh. Excellent for sauce and preserves. Tree is exceptionally hardy and produces fruit the year after planting. Very prolific yielder.

ZUMBRO—Originally introduced by the Minnesota State Fruit Breeding Farm. Zumbro is a heavy bearer and fruit is excellent for canning.

PRICES OF CHERRIES

	Each	Per 5	Per 10	Per 50
2 to 3 ft.	\$.20	\$.90	\$1.50	\$ 6.75
3 to 4 ft.	.30	1.25	2.25	9.75
4 to 5 ft.	.40	1.90	3.50	15.50
5 to 6 ft.	.50	2.40	4.50	20.50

To get the **QUANTITY RATES**, order 5, 10, or 50 of a single variety.

EARLY RICHMOND CHERRY

Hardest of all pie cherries. This is the only true cherry that we offer. The fruit is of medium size and is borne in great quantities. Excellent for canning and pie. Fruit is dark red.

	Each	Per 5	Per 10
3 to 4 ft.	\$.40	\$1.90	\$3.50
4 to 5 ft.	.50	2.40	4.50

The Hardy Cherries that we offer are results of crosses between plum and cherry. The trees are hardy. The fruits possess the cherry flavor and are not bothered by the birds. They are heavy yielders and are excellent for canning. Trees may be planted as close together as 8 ft. by 8 ft.

COMPASS—Compass is an early fruiter, bearing the second year. It is indispensable as a pollinizer for Sapa and Oka. It is a very hardy tree and thrives in nearly any sort of location. The fruit is especially good for jams and for canning. Heavy yielder.

NICOLLET—A very hardy, thrifty, upright growing tree. Should be planted with Zumbro for cross pollenization. Fruit is bright red.

OPATA—Similar to Sapa except that the flesh is green. A heavy yielder. Fruit is good quality especially for canning.



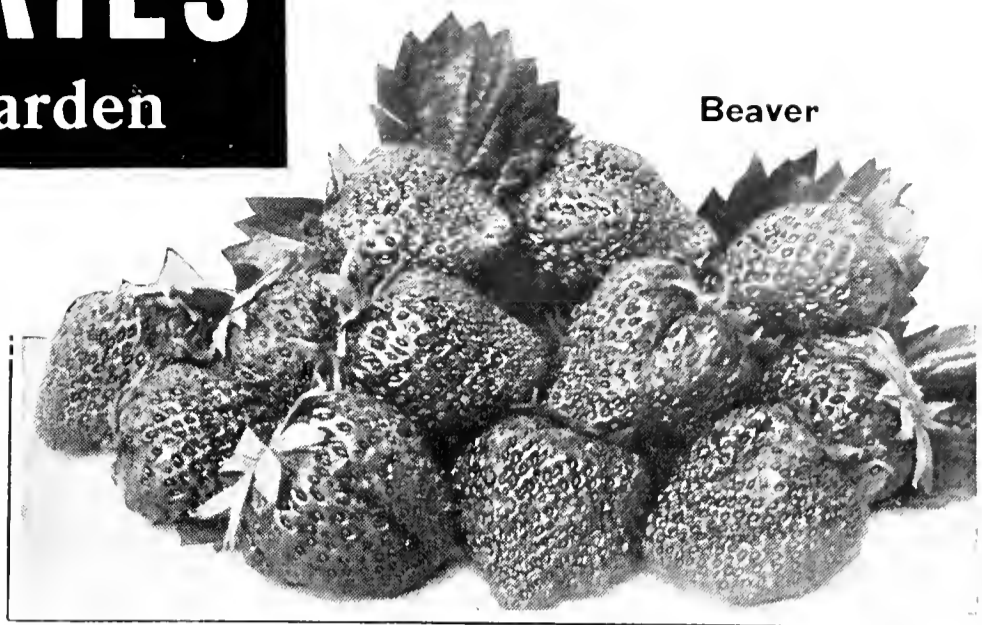
Sapa Cherry

STRAWBERRIES

Fresh From Your Garden

... for table or market!

Special care should be taken in the preparation of the soil before the plants are set. The strawberry has a comparatively shallow root system. For this reason moist soil is necessary when the plants are set. We make every effort to send strawberry plants out in the best of condition.



JUNE BEARING VARIETIES

BEAVER—Beaver is a very dependable hardy strawberry rapidly gaining in popularity both for commercial and home use. Very heavy yielder, bright red, firm fruit. Season—early. Plants are thrifty and set runners profusely.

PREMIER—Plants grow large and are wonderfully productive. The berries are large and of a beautiful glossy red color. We have never found so many good qualities in an early berry.

SENATOR DUNLAP—Undoubtedly our most dependable June Bearing Variety. Ripens early, fruit is large and of good quality. Plants are exceptionally thrifty.

EVERBEARING

Everbearing Strawberries will provide luscious fruit throughout the summer and early fall, and we urge you to plant one of these varieties.

MASTODON—We have tried out many varieties of Everbearing Strawberries and have found Mastodon the best. It is a large strong plant

which does well on any soil type. The fruit is large and of high quality. It is a variety we recommend as being superior to any other ever-bearer for commercial or home planting.

MINNESOTA No. 1166—We have been fruiting No. 1166 for the past few years, and it promises to surpass anything in Everbearing Strawberries in this section. In addition to being a heavy yielder No. 1166 is a thrifty plant and produces an abundance of young plants. Fruit is large, bright red, quality is good. Commercial growers recommend this variety as being particularly resistant to drought.

PRICES OF STRAWBERRIES

	25	100	500	1000
June Bearing				
Dunlap and Beaver	\$.50	\$.90	\$ 3.25	\$ 5.00
Premier	.50	1.25	4.75	6.75
Everbearing				
Mastodon and Minn. No. 1166	1.25	2.75	12.75	20.00

HANSEN BUSH CHERRIES . . . for delicious preserves

Easy to grow and perfectly hardy. Good to eat fresh and make delicious preserves. Bear early, heavy, and annually. A dwarf growing bush, needing little room. Plant 5 to 7 feet apart. A dual purpose plant—Plant a hedge of HANSEN BUSH CHERRIES and enjoy the fruit.

2 yr. 18 to 24 inch—30c each, \$2.25 per 10, \$18.00 per 100

Hardy, drought-resistant HANSEN APRICOTS

We offer for the first time Hansen's sensational hardy apricots just recently introduced by Prof. Hansen of South Dakota, who has been working many years to produce hardy apricots that would be good eating and large size and still would withstand the rigors of the Northwest.

These new apricots have been proven exceptionally hardy and very drought resistant producing heavy crops in the driest years.

Strong, Two Year Old Trees—\$1.25 each, 3 for \$3.50

Latham



Bailey's RASPBERRIES

For Home and Commercial Use

Our raspberries are certified and, like the rest of our stock, carry a Certificate of Inspection with each shipment. Raspberries are very rigidly inspected by our State Inspector several times each year, and have been pronounced "Mosaic Free" and in excellent condition.

Raspberries produce big yields and are sure profits. Returns run as high as \$400.00 to \$800.00 per acre in a single year.

CHIEF—Chief has already established itself as a berry filling an important place, and is undoubtedly the most popular early raspberry. The fruit, medium in size, bright red, is firm. Ripens early and extends over a long period. Quality of fruit is excellent. The plants are vigorous in growth, perfectly

hardy and seem to be resistant to mildew and mosaic. The wood ripens early and is a good plant maker. Chief has the good qualities looked for in a raspberry: earliness, quality of fruit, and yield.

LATHAM—That great Minnesota Introduction—holds unchallenged first place as the leading commercial and home variety of Red Raspberry. It is hardy everywhere, bushes are sturdy, upright, and vigorous, particularly resistant to diseases of all kinds. The fruit is very large, dark red, and firm. Latham is an excellent shipper, heavy yielder, easy picker. It has the qualities that make it the leading Red Raspberry of the day.

NEWBURGH—Newburgh is an extremely promising variety and in our own planting has shown up exceptionally well along side of Chief and Latham. It is our experience that they are a very heavy yielder having produced about twice as much fruit per acre as either Chief or Latham in the past season. The berries are very large, firm, and of rather dry texture, which makes Newburgh highly desirable as a commercial berry. The fruit holds its color very well which makes it possible to hold it over or leave without picking for two or three days without injury. The season is about the same as Latham.

For Pleasure
and Profit
Plant
Plenty of
Bailey's
Selected
Raspberries



Chief

CUMBERLAND BLACK RASPBERRY—Very high quality and our hardiest Black Raspberry. Plant in a sheltered location or mulch over winter.

ALFRED BLACKBERRY—Blackberries do best in low ground as they require considerable moisture. Mulch over winter if possible.

PRICES OF RASPBERRIES

Chief

	25	100	500	1000
Medium		\$1.35	\$ 5.50	\$ 9.75
No. 1	\$.75	2.10	9.00	15.50
Extra Heavy	1.10	2.75	12.50	22.50
Transplants	1.50	4.50	21.00	

Latham, Newburgh

	25	100	500	1000
Medium		\$1.50	\$ 6.50	\$11.00
No. 1	\$.90	2.50	10.00	17.50
Extra Heavy	1.25	3.50	14.50	25.00
Transplants	1.60	5.00	22.50	

Alfred, Cumberland

	25	100	500	1000
Heavy	\$1.25	\$3.50	\$14.50	\$25.00



Red Lake Currant

FREE DELIVERY

We prepay transportation charges on all orders of \$25.00 or more (except balled and burlapped evergreens) within 500 miles of St. Paul.

**PLANT
NORTHERN - GROWN
STOCK**

Currants • THE IDEAL JELLY FRUIT

RED LAKE

This new Currant was originated by the Minnesota Fruit Breeding Farm, and promises to replace all other varieties in the cherry currant class. The berry is very large and is borne on long stems forming exceptionally long, well filled bunches. The quality of fruit is very good, the ripening season is medium and the plant a heavy yielder. While this variety produces large berries on long bunches, its most valuable quality is the sturdy upright type of bush. This character is lacking in many of the older varieties. Because of the above qualities, Red Lake is the leading currant today.

MINNESOTA No. 70

We offer a limited supply of this new currant. No. 70 is a very large currant, the bush a thrifty upright grower yielding heavy. This is a very promising variety and seems to be superior to Red Lake in some respects. We advise at least a few of this new variety.

PRICES OF CURRANTS

Red Lake

	Each	Per 5	Per 10	Per 100
1 yr. No. 1	\$.25	\$1.15	\$2.00	\$12.00
2 yr. No. 1	.35	1.50	2.75	18.00

Minnesota No. 70

	Each	Per 5	Per 10	Per 100
1 yr. No. 1	\$.35	\$1.50	\$2.75	\$18.00

Grapes Always Bear

We propagate our Grapes in quantities which permit us to offer them at exceptionally low prices. **PLANT BAILEY'S** heavy rooted grapes for more and better fruits.

BETA—An excellent grape for Minnesota and the Northwest. The vines are as hardy as the wild grape, which means they do not require protection in the winter as many of the other varieties do. Fruit is of the best quality to use for jelly and juice, as it has the wild grape flavor. Fruit is nearly as large as Concord, and a much better yielder in this climate. Ripens the first of September.

ALPHA—Alpha is quite similar to Beta but in some soils ripens a week to ten days earlier.

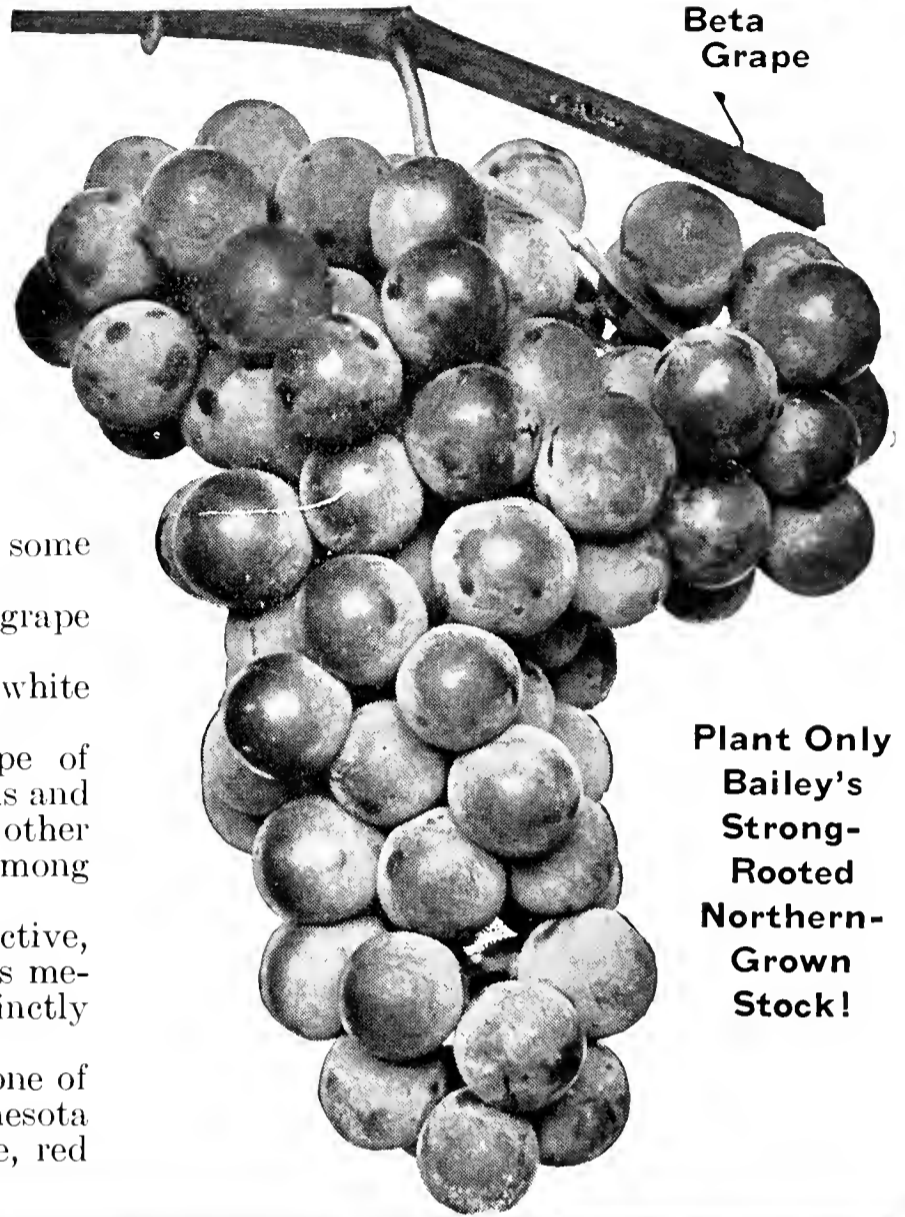
CONCORD—A well-known variety of purple grape which is semi-hardy in Minnesota.

WHITE NIAGARA—A large variety of white grape that is semi-hardy in Minnesota.

MINNESOTA No. 66—A large green grape of medium quality. The vine is especially vigorous and the foliage resistant to mildew. There is no other hardy green grape equal to this in quality among our standard varieties.

MINNESOTA No. 69—A very vigorous, productive, hardy, purple grape. Berries are large, clusters medium large, very compact. It is, however, distinctly superior to such varieties as Beta and Alpha.

MINNESOTA No. 45—This is undoubtedly one of the best of the recent introductions of the Minnesota State Fruit Breeding Farm. A very fine, large, red grape of exceptional high quality:



Beta Grape

Plant Only
Bailey's
Strong-
Rooted
Northern-
Grown
Stock!

PRICES OF GRAPES

		Each	Per 10	Per 25	Per 100
Beta	} 2 yr. No. 1	\$.20	\$1.50	\$2.75	\$ 9.75
		.15	1.15	2.25	7.00
Alpha	} 2 yr. No. 2				
Concord					
White Niagara	} 2 yr. No. 1	Each	Per 10	Per 25	Per 100
Minnesota No. 66		\$.40	\$3.50	\$5.50	\$19.50
Minnesota No. 69					
Minnesota No. 45					



Delicious RHUBARB .. for sauces and pies

GIANT VICTORIA—Produces large, early, tender, red stalks.

15c each, \$1.00 per 10, \$2.20 per 25, \$8.00 per 100

McDONALD—A strong growing plant having heavy brittle leaf-stalks. The red skin colors the sauce a rich pink color. Very productive and hardy for this section.

40c each, \$3.50 per 10

GOOSEBERRIES

CARRIE—Very prolific bearer, practically thornless, vigorous grower. Hardy, not susceptible to mildew. Medium size fruit.

2 yr. No. 1 plants, 30c each, \$2.50 per 10

COMO—Vigorous grower, productive, perfectly hardy, not susceptible to the Gooseberry diseases. The ripe fruit is as green in color as it is before ripening.

2 yr. No. 1 plants, 40c each, \$3.50 per 10

MARTHA WASHINGTON ASPARAGUS

The Market Gardeners Choice. Very high quality asparagus producing large stalks free from rust. We recommend this variety for the small garden, or to grow for market. Bailey's offer only heavy roots.

	25	100	1000
1 yr. No. 1	\$.50	\$1.25	\$ 9.50
2 yr. No. 1	.65	1.50	12.50

ORNAMENTAL EVERGREENS FOR THE HOME GARDENER

We are again offering a complete line of ornamental evergreens in the smaller sizes. This is an economical way of obtaining this class of stock and proves very interesting for the garden enthusiast.

These trees are furnished bare rooted and can be handled very successfully in this manner. They are ideal for planting in the rock garden or to be put in the garden and grown for two or three years before planting into the permanent landscape.

NOTE: Care should be exercised in handling these trees that are not balled and burlapped. It is essential that the roots be protected at all times. Plant as soon as possible after receiving and avoid exposure to hot, dry winds while handling. Plant in any good soil and water thoroughly.



Pyramidal Arborvitae

For Descriptions See Pages 29-31.

THESE ORNAMENTAL EVERGREENS ARE ALL PREPAID

		Each	Per 10
ARBORVITAE			
American	9-12 in.	\$.25	\$2.25
Globe	6- 9 in.	.40	3.50
Pyramidal	9-12 in.	.50	4.50
Siberian	6- 9 in.	.40	3.50
FIR			
Douglas	9-12 in.	.30	2.50
JUNIPER			
Andorra	9-12 in.	.50	4.50
Pfitzer	6- 9 in.	.45	4.00
Savins	9-12 in.	.45	4.00
Silver	12-18 in.	.55	5.00
Waukeegan	9-12 in.	.50	4.50



Austrian Pine



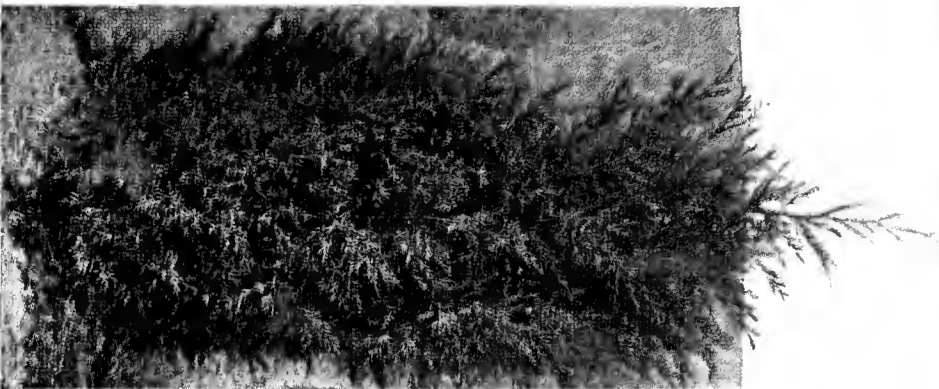
Mugho Pine

		Each	Per 10
PINE			
Austrian	12-18 in.	\$.35	\$3.00
Mugho	6- 9 in.	.35	3.00
Ponderosa	12-18 in.	.30	2.50
SPRUCE			
Black Hills	9-12 in.	.40	3.50
Colorado	9-12 in.	.40	3.50



HARDY EVERGREENS . . .

for Windbreaks and Woodlots



Red Cedar

Evergreens offer permanence and year around beauty in the windbreak. With the proper selection of varieties you will find they will thrive and stand dry weather just as well as the deciduous trees. A good Evergreen Windbreak about the farm house is one of the best investments you can make. It stops the wind and snow, and makes the farmstead more comfortable and pleasant to live and work in. Evergreen Windbreaks are a permanent investment that increase in value each year.

Plant Evergreens in a double row with the rows 12 to 15 feet apart. The trees 4 to 6 feet apart in the row.

Evergreens are slower in developing to a size where they offer protection from the winds. To overcome this we recommend planting a few rows of fast growing deciduous trees such as Siberian Chinese Elm or Green Ash. These can be taken out as the Evergreens develop and will furnish a good supply of wood in addition to their value as a windbreak.

We list two classes of Windbreak Evergreens: Seedlings and Transplants.

SEEDLINGS

Seedlings are out of the seed beds and we recommend that they be planted in the garden or some place where they can be given good care and cultivation. They can be planted close together (from 4 to 8 inches) before setting in the permanent windbreak. Shading is not necessary or recommended. We grow large quantities of this stock and offer it at **new low prices.**

Transplants are strong field grown stock, and are ready to plant right into the permanent windbreak. They have been grown in the open field for three years in addition to 2 or 3 years in the seed beds. This develops an abundance of fibrous roots and the tops are well branched.

TRANSPLANTS

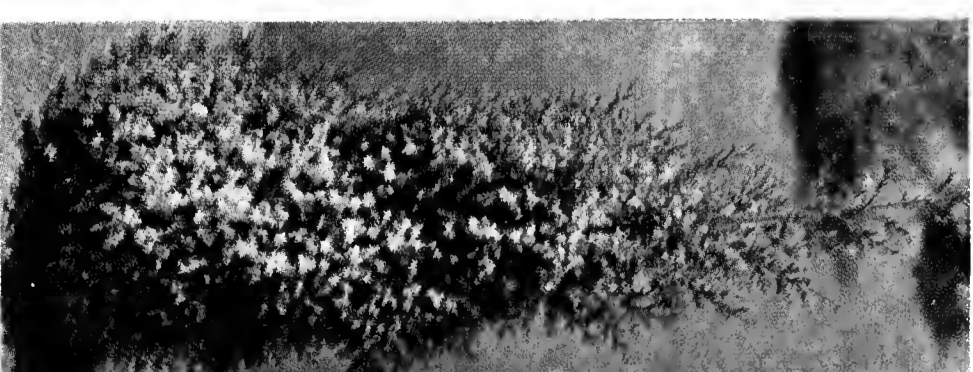
NOTE: Seedlings are tied in bundles of 25 only. All Windbreak Evergreens are PREPAID.

ADDITIONAL AAA BENEFITS NOW AVAILABLE FOR WINDBREAK AND WOODLOT PLANTING

The 1940 AAA farm program sets up a special allowance of \$30 for every farm (North Central Region) which can be earned only by planting trees. This is in addition to regular soil conservation practices. See your local AAA committeeman for details on how you can earn \$7.50 per acre and start a profitable crop at the same time. A woodlot, a farmstead shelterbelt, or a field windbreak can be yours for the planting this year. Do not fail to take advantage of this immediately.

We offer on these pages a complete line of windbreak stock in various sizes. Note: Our prices include Transportation Charges along with our usual guarantee and service.

Minnesota county agents can also supply two illustrated leaflets about the correct planting and care of trees. One is Extension Bulletin 196, titled "Planting the Standard Windbreak;" the other is a new folder, "Meet Your Tree Needs Now."



Silver Cedar



Ponderosa Pine

A

WINDBREAK for EVERY FARM

A COMPLETE WINDBREAK!

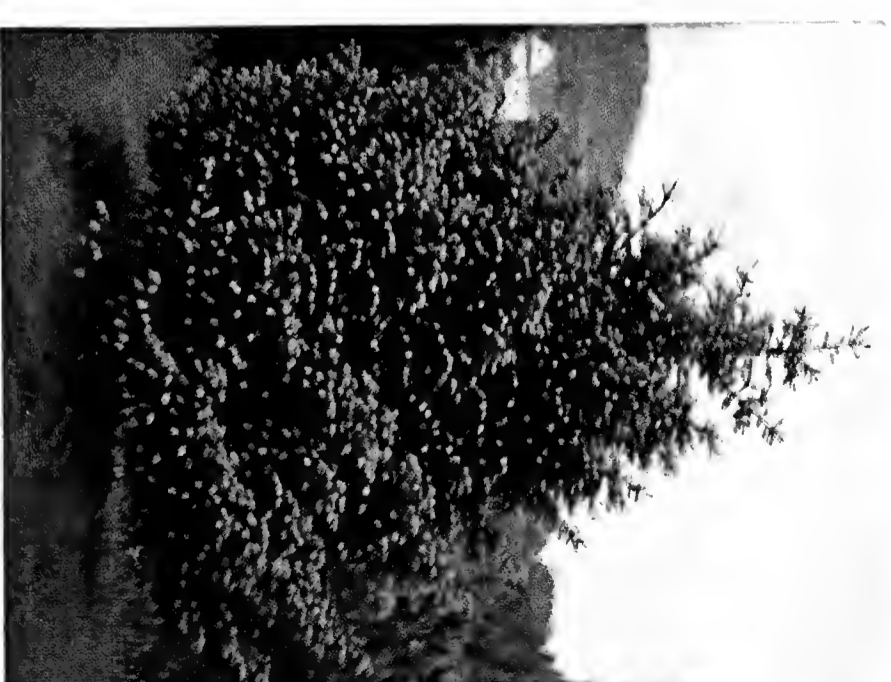
These 4 Choice Varieties Grouped Together at an Amazingly Low Price

25 Colorado Blue Spruce 3 years old, 25 Black Hills Spruce 3 years old, 50 Ponderosa Pine 2 years old, 100 Siberian Chinese Elm 1 year old

200 Trees for \$3.15
Prepaid

50 Colorado Blue Spruce 3 years old, 50 Black Hills Spruce 3 years old, 100 Ponderosa Pine 2 years old, 200 Siberian Chinese Elm 1 year old

400 Trees for \$6.15
Prepaid



Douglas Fir

Bailey's **LOW PRICED WINDBREAK TREES**

FIR, DOUGLAS—An exceptionally hardy tree. Fast growing, attaining a height of 60 to 80 feet. Easily transplanted and stands drought well. Foliage deep green.

RED CEDAR—Red Cedar is a very good tree and has withstood the recent dry years exceptionally well.

PINE, AUSTRIAN—A very sturdy tree of symmetrical growth. Not quite as fast growing as some of the other Pines.

PINE, NORWAY—One of the hardier Pine, bright, dark green foliage.

PINE, PONDEROSA—Sometimes called Yellow or Bull Pine. A very vigorous growing, drought resisting tree. One of the best in dry locations. Has large graceful needles, bluish-green in color.

PINE, SCOTCH—The qualities of the Scotch Pine are similar to the Ponderosa Pine. Needles are shorter and brighter green.

PINE, WHITE—A very well-known variety. Fast growing attaining heights of 60 to 100 feet.

SPRUCE, BLACK HILLS—Our most popular Windbreak Evergreen. They have withstood the droughts very well. They make a beautiful compact windbreak.

SPRUCE, COLORADO—A very popular tree equally as desirable as the Black Hills Spruce although not quite as fast growing. We do not select the blue trees out of this stock to be sold at a higher price; but take them the way they come in the field. This assures you a high percentage of blue trees.

SPRUCE, NORWAY—A rapid growing tree. Will not stand drought quite as well as the Black Hills and Colorado.

SPRUCE, WHITE—Similar to Black Hills Spruce but a little faster growing.

PRICES OF WINDBREAK EVERGREENS

All Windbreak Evergreens are **PREPAID**

Seedlings (Sdlgs.) are tied in bundles of 25 only

		10	25	100	500	1000		10	25	100	500	1000]
FIR, DOUGLAS							PINE, WHITE					
Sdlgs.	2- 4 in.	\$.75	\$2.50	\$11.85	\$22.85	Sdlgs.	4- 6 in.	\$.60	\$1.95	\$ 9.25	\$17.85
Sdlgs.	4- 6 in.	1.00	3.25	15.00	29.50	Sdlgs.	6- 8 in.	.75	2.50	11.85	22.85
Trans.	3- 6 in.	\$.75	1.45	5.25	24.75	Trans.	3- 6 in.	.65	1.25	4.50	20.35
Trans.	6- 9 in.	1.00	1.85	6.75	31.50	Trans.	6- 9 in.	.85	1.85	6.50	30.35
							Trans.	9-12 in.	1.10	2.25	8.25	39.50
RED CEDAR							SPRUCE, BLACK HILLS					
Sdlgs.	2- 4 in.	1.00	3.50	Sdlgs.	2- 4 in.	.65	2.25	10.35	19.85
Sdlgs.	4- 6 in.	1.50	5.25	Sdlgs.	4- 6 in.	1.00	3.50	17.25	33.00
Sdlgs.	6- 8 in.	1.75	6.50	Sdlgs.	6- 8 in.	1.25	4.75	20.85	39.50
PINE, AUSTRIAN							SPRUCE, COLORADO					
Sdlgs.	2- 4 in.55	1.85	8.85	17.15	Sdlgs.	2- 4 in.	.65	2.25	10.35	19.85
Sdlgs.	4- 6 in.65	2.25	10.35	19.50	Sdlgs.	4- 6 in.	1.00	3.50	17.25	33.00
Trans.	3- 6 in.	.65	1.25	4.50	20.35	38.85	Sdlgs.	6- 8 in.	1.25	4.75	20.85	39.50
Trans.	6- 9 in.	.85	1.85	6.50	30.35	58.50	Trans.	3- 6 in.	.85	1.75	6.50	30.35
Trans.	9-12 in.	1.10	2.35	8.25	39.50	75.00	Trans.	6- 9 in.	1.20	2.65	8.75	40.50
Trans.	12-18 in.	1.50	3.50	12.00	55.00	100.00	Trans.	9-12 in.	1.85	3.95	13.50	63.75
PINE, NORWAY							SPRUCE, NORWAY					
Trans.	3- 6 in.	.65	1.25	4.50	20.35	38.85	Sdlgs.	4- 6 in.	.55	1.85	8.85	17.15
Trans.	6- 9 in.	.85	1.85	6.50	30.35	58.50	Sdlgs.	6- 8 in.	.65	2.25	10.35	19.50
Trans.	9-12 in.	1.10	2.35	8.25	39.50	75.00	Sdlgs.	8-10 in.	1.00	3.50	17.25	33.00
PINE, PONDEROSA							SPRUCE, WHITE					
Sdlgs.	4- 6 in.65	2.25	10.35	19.50	Sdlgs.	2- 4 in.	.45	1.25	5.25	9.50
Sdlgs.	6- 8 in.75	2.50	11.85	22.85	Sdlgs.	4- 6 in.	.55	1.85	8.85	17.15
Sdlgs.	8-10 in.90	3.25	15.00	27.50	Sdlgs.	6- 8 in.	.65	2.25	10.35	19.50
Trans.	3- 6 in.	.65	1.25	4.50	20.35	38.85	Sdlgs.	8-10 in.	1.00	3.50	17.25	33.00
Trans.	6- 9 in.	.85	1.85	6.50	30.35	58.50	Trans.	3- 6 in.	1.00	3.50	17.25	33.00
Trans.	9-12 in.	1.10	2.35	8.25	39.50	75.00	Trans.	6- 9 in.	.75	1.45	5.25	24.75
Trans.	12-18 in.	1.50	3.50	12.00	55.00	100.00	Trans.	9-12 in.	1.00	1.85	6.75	31.50
Trans.	18-24 in.	1.75	4.00	14.50	69.50	Trans.	12-18 in.	1.25	2.25	8.25	39.50
PINE, SCOTCH												
Sdlgs.	4- 6 in.60	1.95	9.25	17.85	Sdlgs.	2- 4 in.	.45	1.25	5.25	9.50
Sdlgs.	6- 8 in.75	2.50	11.85	22.85	Sdlgs.	4- 6 in.	.55	1.85	8.85	17.15
Sdlgs.	8-10 in.	1.00	3.25	15.00	29.50	Sdlgs.	6- 8 in.	.65	2.25	10.35	19.50
Trans.	3- 6 in.	.65	1.25	4.50	20.35	38.85	Sdlgs.	8-10 in.	1.00	3.50	17.25	33.00
Trans.	6- 9 in.	.85	1.85	6.50	30.35	58.50	Trans.	3- 6 in.	1.00	3.50	17.25	33.00
Trans.	9-12 in.	1.10	2.25	8.25	39.50	75.00	Trans.	6- 9 in.	.75	1.45	5.25	24.75
Trans.	12-18 in.	1.50	2.95	10.00	47.50	87.50	Trans.	9-12 in.	1.00	1.85	6.75	31.50
							Trans.	12-18 in.	1.25	2.25	8.25	39.50



Chinese Elm Windbreak

PLANT BAILEY'S HARDY, NORTHERN-GROWN DECIDUOUS WINDBREAK TREES

All Deciduous Windbreak Trees are **PREPAID**

ASH—One of the most dependable Windbreak and Woodlot trees. Very resistant to drought.

CARAGANA—Sometimes called Siberian Pea Tree. The best tree for Hedges, low windbreaks, and snow catches. Perfectly hardy, stands the most extreme dry conditions of the Northwest. Thrives in any soil.

ELM, AMERICAN—A hardy tree of quite rapid growth. One of our most popular native trees.

ELM, CHINESE—Siberian Type or Northern strain. We offer only the hardy Siberian type of Chinese Elm. This is a fast growing strain that is acknowledged as being perfectly hardy and drought resistant. You can have an effective windbreak in 3 years time. In that time the Siberian type of Chinese Elm will range from 10 to 15 feet high. Chinese Elm is our most popular and, in our opinion, undoubtedly the best tree for a fast growing, effective windbreak or woodlot. Plant 6 to 8 feet apart each way.

POPLAR, LOMBARDY—Valuable tree where a quick screen or windbreak is desired. An upright growing tree. Plant 4 to 6 feet apart.

POPLAR, NORWAY—One of the most dependable of the faster growing trees. Drought resistant.

OLIVE, RUSSIAN—The Russian Olive branches close to the ground, attaining an ultimate height of about thirty feet. Space 3 to 5 feet apart in the row and these trees will develop a solid wall of silvery green foliage. Thrives under the most adverse conditions of soil and climate. Russian Olive is ideal for a snow cache planted outside the taller trees.

WILLOW, GOLDEN—One of the best trees for wet soils where many other varieties do not thrive.

	10	50	100	500	1000
ASH, GREEN					
6-12 in.		\$.65	\$1.00	\$ 4.00	\$ 6.85
12-18 in.		1.00	1.50	6.85	11.85
18-24 in.		1.15	2.00	8.00	15.00
2- 3 ft.		1.25	2.25	10.35	19.35
CARAGANA					
6-12 in.65	1.00	4.00	6.85
12-18 in.		1.00	1.50	6.85	11.85
18-24 in.		1.15	2.00	8.00	15.00
ELM, AMERICAN					
6-12 in.45	.80	3.00	5.00
12-18 in.65	1.15	5.50	9.00
18-24 in.		1.00	1.60	6.75	11.00
2- 3 ft. \$.50		1.25	2.25	9.85	17.85
ELM, CHINESE (SIBERIAN)					
6-12 in.45	.80	3.00	5.00
12-18 in.65	1.15	5.50	9.00
18-24 in.		1.00	1.60	6.75	11.00
2- 3 ft. .50		1.25	2.25	9.85	17.85
3- 4 ft. .60		2.00	3.75	16.50	30.00
HACKBERRY					
6-12 in.		1.00	1.50	6.85	11.85
12-18 in.		1.15	2.00	8.00	15.00
LOCUST, BLACK					
12-18 in. .60		1.00	1.50	6.85	11.85
LOCUST, HONEY					
12-18 in. .60		1.00	1.50	6.85	11.85
MAPLE, SOFT					
12-18 in.		1.00	1.50	6.85	11.85
POPLAR, LOMBARDY					
1- 2 ft.		1.50	2.50	10.50
2- 3 ft. .75		3.00	4.85	19.50
3- 4 ft. 1.00		4.50	7.50	32.50
POPLAR, NORWAY					
1- 2 ft.		1.15	2.00	8.00
2- 3 ft. .50		1.85	3.25	15.00
3- 4 ft. .65		2.50	4.50	19.85
4- 5 ft. .85		3.25	6.00	27.50
OLIVE, RUSSIAN					
6-12 in.65	1.15	4.75	8.95
12-18 in. .50		1.25	2.25	9.85	17.85
18-24 in. .60		2.00	3.75	16.85	30.00
2- 3 ft. .65		2.60	4.50	20.35	38.85
WALNUT, BLACK					
12-18 in. .60		2.00	3.75	16.50	27.50
WILLOW, GOLDEN					
1- 2 ft.		1.25	2.00	8.85
2- 3 ft. .50		1.85	3.25	15.00
3- 4 ft. .65		2.50	4.50	19.85

HARDY FLOWERING SHRUBS

for all season's bloom

Our homes become homes in the true sense, only when they are planted. Ornamental shrubs are the foundation of all landscape plantings. They lend a charm and grace to the home grounds that is invaluable. One can have a continuous succession of bloom from early in April to the days when frost nips the flowers of the very latest to bloom. Send for our complete Planting Instruction Booklet

ALMOND, DOUBLE FLOWERING (*Prunus glandulosa*)—Double rose-like, pink flowers cover the branches early in May. Somewhat superior to Flowering Plum except for hardiness.

BARBERRY, JAPANESE (*Berberis thunbergi*)—Low growing plant best used as border where view of other objects is not to be obscured. A spreading plant with beautiful foliage turning to scarlet in the latter part of the season. Hardy plant requiring little attention in landscape planting.
*See Hedge Plants also.

BARBERRY, REDLEAF (*Berberis thunbergi atropurpurea*)—A plant similar to Japanese Barberry except the leaves are red all summer. Its deep red leaves add color and contrast to your planting.

BUCKTHORN, COMMON (*Rhamnus cathartica*)—A vigorous growing shrub attaining a height of about 8 feet.
*See Hedge Plants also.

BUCKTHORN, DAHURIAN (*Rhamnus davurica*)—A large leaved upright growing shrub attaining a height of 6 to 8 feet.
*See Hedge Plants also.

BUCKTHORN, GLOSSY LEAF (*Rhamnus frangula*)—Quite similar to common Buckthorn except that the leaves are more shiny and produces red berries in late summer.
*See Hedge Plants also.

BUTTERFLY BUSH (*Buddleia*)—Blooms profusely first year planted, starting in July and lasting through August. Flower, deep purple similar to lilacs. Height 6 feet.



Red Barberry



Rothomagensis Lilac

BURNING BUSH, WINGED (*Euonymus alatus*)—Spreading in growth with peculiar corky bark along branches. Small, oval leaves. Very ornamental scarlet berries. The foliage turns a beautiful crimson in Autumn. Height about 6 feet.

CARAGANA, ARBORESCENS (Siberian Pea Tree) (*Caragana arborescens*)—Light green foliage. Extremely hardy and also stands dry exposed positions. Height 6 to 10 feet.
*See Hedge Plants also.

CARAGANA, DWARF (*Caragana Pygmaea*)—An attractive dwarf shrub not getting more than 18 to 24 inches in height. Very small leaves giving the appearance of a delicate, graceful shrub.
*See Hedge Plants also.

COTONEASTER, PEKING (*Cotoneaster acutifolia*)—Attractive, beautifully formed shrub with thick, glossy leaves turning to red in the fall. Small white flowers in early summer followed by large black berries which remain on the bush nearly all winter. Perfectly hardy.
*See Hedge Plants also.

CRAB, BECHTEL'S FLOWERING, DOLGO, HOPA, AND RED SILVER (See Pages 27-28).

CRANBERRYBUSH, EUROPEAN (*Viburnum opulus*)—A very ornamental shrub with white flowers in late spring followed by bright scarlet berries. Height 8 feet.

CURRENT, ALPINE (*Ribes alpinum*)—A dense growing shrub with fine dark green leaves. Height 3 to 4 feet. Very desirable plant where the soil is well drained.
*See Hedge Plants also.



Hydrangea, Peegee

DOGWOOD, GOLDEN TWIGGED (*Cornus stolonifera lutea*)—Similar to Red Twiggged except that the bark is yellow and the bush is more dense in its habit of growth.

DOGWOOD, GRAY (*Cornus paniculata*)—Clusters of white flowers and fruit. Gray bark. Desirable in moist locations.

DOGWOOD, PAGODA (*Cornus alternifolia*)—A small tree-like shrub reaching a height of 8 to 10 feet. Red bark.

DOGWOOD, RED TWIGGED (*Cornus siberica*)—Ultimate height of 8 to 10 feet with clusters of white flowers, succeeded by ornamental berries in the fall. Stem and branches turn a blood red in winter.

DOGWOOD, VARIEGATED (*Cornus mas elegantissima*)—Similar to Red Twiggged except the leaves are green with white stripe through center. A very desirable shrub for group planting.

ELDER, CUTLEAF (*Sambucus canadensis acutiloba*)—About the same habits of growth as common Elder with green foliage which is very deeply cut. Adds a delicate appearance to a group of shrubs.

ELDER, GOLDEN (*Sambucus canadensis aurea*)—Of medium height with bright yellow foliage. Valuable in group planting in contrast to the mass of green foliaged plants.

HAWTHORNE, DOTTED (*Craetagus punctata*)—Red berries in the fall. Height 8 feet. Attractive to birds.

HONEYSUCKLE, MORROW (*Lonicera morrowi*)—Blooms freely, covered with bright red berries from August until winter. Pink blossoms. Height 5 to 6 feet.



Pink Tatarian Honeysuckle

HONEYSUCKLE, TATARIAN PINK (*Lonicera tatarica rosea*)—Very attractive shrub that produces an abundance of fragrant flowers in the spring, and bright red berries in autumn. Upright in growth and attains height of about 8 feet.

*See Hedge Plants also.



Philadelphus Virginal

SHRUBS

will

BEAUTIFY YOUR HOME

HYDRANGEA, PEEGEE (*hydrangea paniculata grandiflora*)—Every home should have some of these in the yard. Blooms in late summer. Flowers white at first, turning to pink and later purple. Does well in partial shade.

HYDRANGEA SNOWHILL (*Hydrangea arborescens grandiflora*)—Excellent for borders or low foundation planting. Blooms profusely in July and first of August. Height 3 to 5 feet. Well adapted to shady places.

LILAC, COMMON PURPLE (*Syringa vulgaris*).

LILAC, FRENCH HYBRIDS (*Syringa vulgaris*—*Horticultural varieties*)—The bushes are smaller than the Common Lilac. Flower stalks of the hybrids are many times as large as the common lilac. It is not uncommon to see flower spikes fifteen inches long. The beauty of these shrubs is appreciated by the public as is shown by the great demand.

Belle De Nancy—Produces great panicles of satiny rose blooms with red centers.

Mme. Abel Chatenay—Double White.

Victor LeMoine—One of the better white lilaes.

LILAC, ROUEN (*Syringa rothomagensis*)—A very profuse blooming, red lilac. The plants do not grow more than 5 to 6 feet high.

MAPLE, GINNALA (*Acer ginnala*)—A rather tall growing very attractive shrub. Height about 8 feet with attractive leaves turning to a beautiful red fall coloring.

MOCKORANGE, GOLDEN (*Philadelphus aurea*)—A compact shrub of an ultimate height of 4 feet with very brilliant yellow foliage. It is a mass of white flowers in

May and June.

MOCKORANGE, LARGE FLOWERED (*Philadelphus grandiflora*)—A very large flowered variety of Mockorange. Excellent as screen and in the shrub border. Height 8 to 10 feet.

MOCKORANGE, LEMOINE (*Philadelphus lemoine*)—A dwarf variety attaining a height of 4 feet. Very fragrant.

MOCKORANGE, SWEET SCENTED (*Philadelphus coronarius*)—One of the older varieties and truly a noble one. It is GOOD ENOUGH WITHOUT IMPROVING. Flowers are pure white, very fragrant and are borne very freely on the large shrub. This variety is extra hardy, growing about 6 to 8 feet high and is one of the most popular shrubs planted today.

MOCKORANGE, VIRGINAL (*Philadelphus virginal*)—Medium height, attractive foliage and compact habit. Flowers are large, double, and semi-double.

Handy Reference List of Ornamental Shrubs

Dwarf Shrubs—Up to 5 ft.

Barberries
Alpine Currant
Butterfly Bush
Dwarf Caragana
Snowhill Hydrangea
Lemoine Mockorange
Golden Mockorange
Dwarf Ninebark
Snowberry
Spireas

Medium Shrubs—5 to 8 ft.

Flowering Almond
Burning Bush
Caragana Arborescens
Cotoneaster
Cranberrybush
Variegated Dogwood
Morrow Honeysuckle
Peegee Hydrangea
Mockoranges
Flowering Plum
Cistena Plum
Snowball
Tamarix

Tall Shrubs—8 ft. and up

Bechtel's Crab
Buckthorns
Dolgo Crab
Hopa Crab
Red Silver Crab
Dogwoods
Elders
Ginnala Maple
Minnesota Purple Plum
Newport Plum
Tatarian Honeysuckle
Russian Olive

Shrubs for Low Foundations

Spireas
Alpine Currant
Barberry
Snowberry
Hydrangea
Golden Mockorange

Shrubs for Screening

Purposes
Honeysuckles
Lilaes
Mockoranges
Elders
Dogwoods
Flowering Plums
Flowering Crabs
Buckthorns

Attractive Bark

Dogwoods
Burning Bush
Russian Olive

Shrubs with Colored Leaves

Golden Elder
Golden Mockorange
Redleaf Barberry
Cistena Plum
Newport Plum
Minnesota Purple Plum
Variegated Dogwood

Shrubs that do well in Shade

Spireas
Japanese Barberry
Hydrangeas
Honeysuckles
Dogwoods
Elders
Snowberry
Alpine Currant

Produce Attractive Berries

Barberries
Burning Bush
Cranberrybush
Honeysuckles
Snowberry

Bailey's HARDY FLOWERING SHRUBS

NINEBARK, DWARF (*Physocarpus opulifolia nana*)—A very compact dwarf growing shrub attaining a height of 3 to 4 feet. Foliage a very attractive bright green staying on late in the fall.

OLIVE, RUSSIAN (*Elaeagnus angustifolia*)—Large shrub with attractive silver gray foliage. Desirable in large group plantings.

PLUM, CISTENA (*Prunus cistena*)—A compact shrub with bright red foliage. Height 6 to 8 feet.

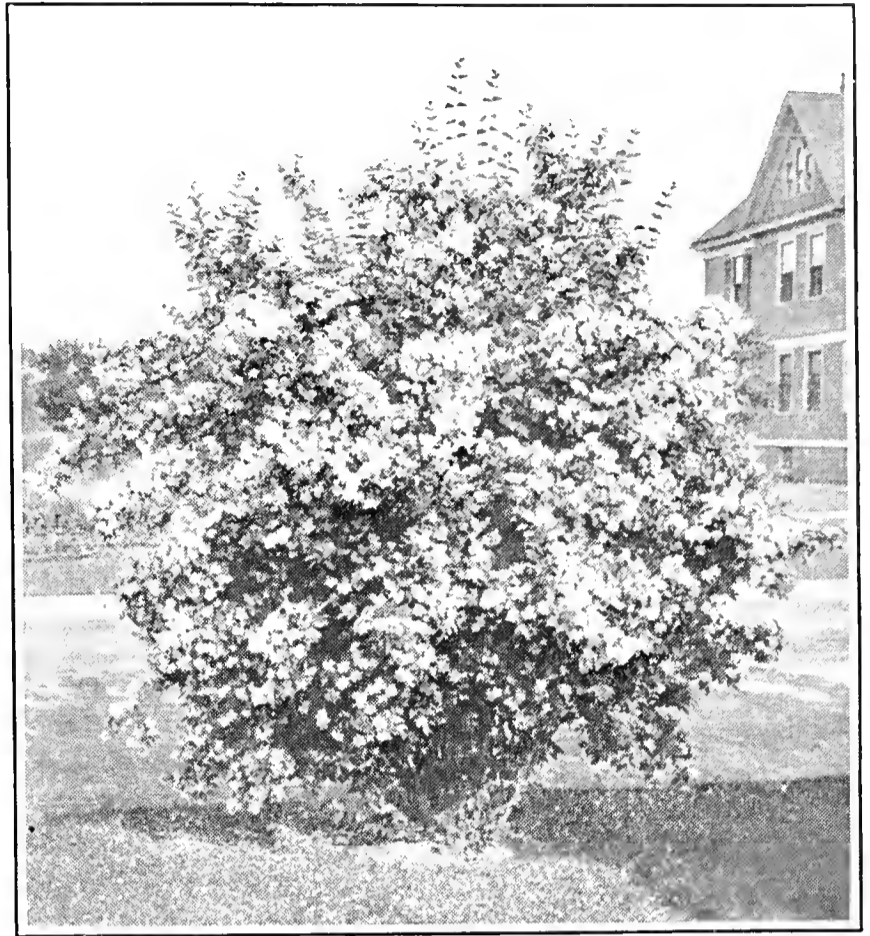
PLUM, DOUBLE FLOWERING (*Prunus triloba plena*)—Dwarf in habit, producing masses of double pink flowers in early spring. It is very much like the Pink Double Flowering Almond but is hardier in our climate. Height 6 to 8 feet.

PLUMS, NEWPORT AND MINNESOTA PURPLE (See Page 28.)

SNOWBALL (*Viburnum opulus sterile*)—A popular shrub attaining a height of 6 to 8 feet and having large, round, compact, clusters of white flowers in May and June.

SNOWBERRY, RED (*Coralberry*) (*Symphoricarpos vulgaris*)—A dwarf shrub similar to White Snowberry producing an abundance of bright red berries. Foliage has reddish tinge.

SNOWBERRY, WHITE (*Symphoricarpos racemosus*)—Valuable shrub in group plantings. Conspicuous on account of the masses of snow white berries produced in September and remaining on the bushes into the winter months. Height 4 to 5 feet. Pink flowers in July.



Sweet Scented Mockorange

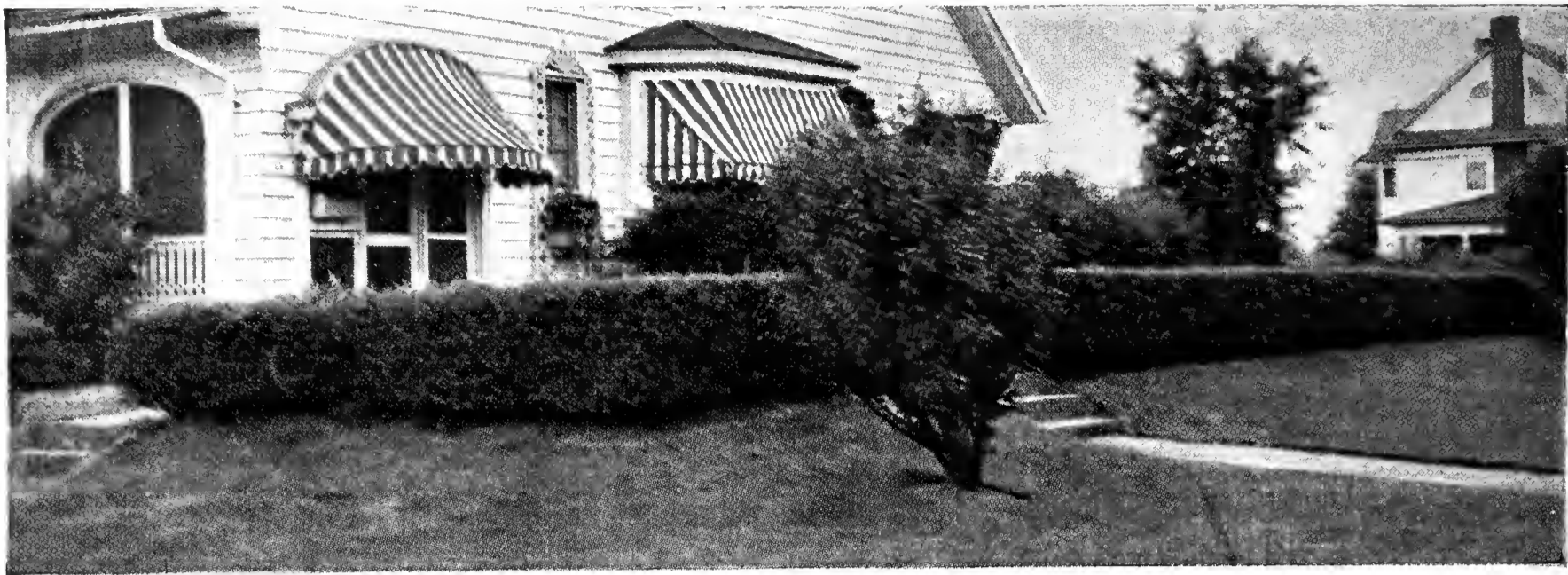
SPIREA, ANTHONY WATERER (*Sp. bumalda Anthony Waterer*)—Beautiful dark small foliage of dense, rounded growth. Produces an abundance of rose crimson flowers during July and August. Height about 2 feet. Well adapted for foundation and low border plantings.

PRICES OF SHRUBS

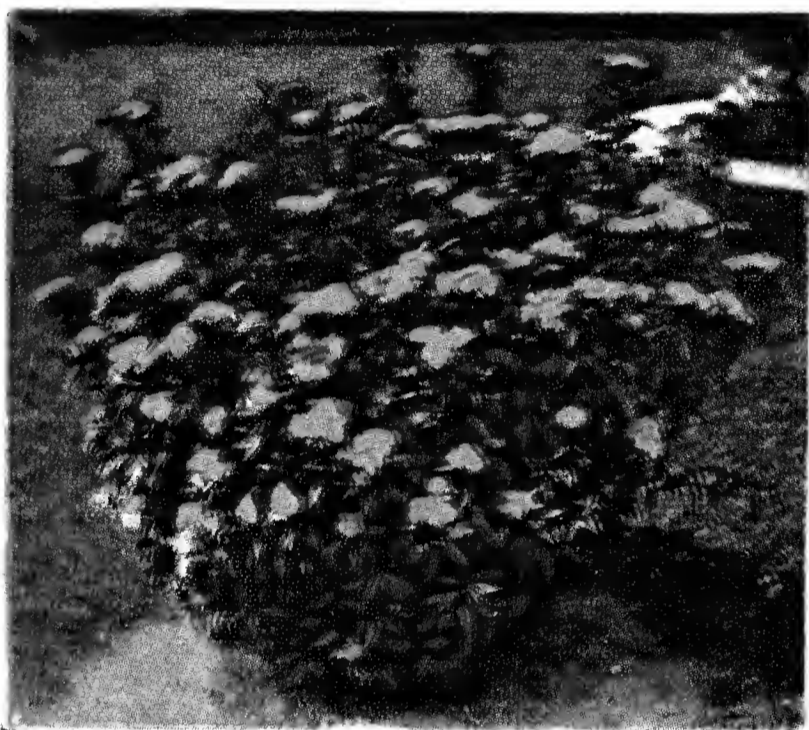
When ordering 5 or more of a variety and size, deduct 10% from these prices.

	12-18"	18-24"	2-3'	3-4'		12-18"	18-24"	2-3'	3-4'
Almond, Pink					Maple, Ginnala.....	\$.20	\$.25	\$.50	\$
Flowering.....	\$	\$.30	\$.60	\$	Mockorange, Golden..	.60	.85
Barberry, Japanese...	.25	.35	.50	Mockorange, Large				
Barberry, Redleaf....	.50	.75	Flowered.....		.35	.50	.75
9-12 in. 35c					Mockorange, Lemoine			.50
Buckthorn, Common..	.15	.20	.35	.50	Mockorange, Sweet				
Buckthorn, Dahurian..35	.50	Scented.....		.35	.50	.75
Buckthorn, Glossy Leaf		.30	.50	.75	Mockorange, Virginal.	.25	.50	.60	.75
Butterfly Bush.....		.30	.35	Ninebark, Dwarf.....	.20	.35	.50	.75
Burning Bush, Winged		.75	1.00	1.25	Olive, Russian.....			.50	.75
Caragana, Arborescens	.20	.25	.50	4-5 ft. \$1.00				
Caragana, Dwarf.....	.50	Plum, Cistena.....			.75	1.00
Cotoneaster, Peking..	.25	.35	.50	.75	Plum, Double				
Crab, Bechtel's.....		.50	.75	1.25	Flowering.....		.35	.50	.75
Crab, Dolgo.....			.50	.65	Plum, Newport.....			.50	.75
Crab, Hopa.....				.75	Plum, Minnesota				
Crab, Red Silver.....				.65	Purple.....			.50	.75
Cranberrybush,					Snowball.....	.20	.35	.50
European.....	.20	.35	.50	.75	Snowberry, Red.....			.50
Currant, Alpine.....	.35	.50	Snowberry, White....	.20	.35	.50
9-12 in. 20c					Spirea, Anthony				
Dogwood, Golden.....		.35	.50	.75	Waterer.....	.35	.50
Dogwood, Gray.....		.35	.50	.75	9-12 in. 20c				
Dogwood, Pagoda....			.50	.75	Spirea, Ash-Leaved...		.35	.50	.75
Dogwood, Red Twigged		.35	.50	.75	Spirea, Billiard.....		.35	.50	.75
Dogwood, Variegated..		.50	.75	1.00	Spirea, Callosa Alba..	.35	.50
Elder, Cutleaf.....		.35	.50	.75	9-12 in. 20c				
Elder, Golden.....		.35	.50	.75	Spirea, Froebel.....	.35	.50	.65
Hawthorne, Dotted...			.75	1.00	Spirea, Garland.....	.20	.35	.50
Honeysuckle, Morrow		.30	.40	.50	Spirea, Golden.....		.35	.50	.75
Honeysuckle, Tat. Pink		.30	.40	.50	Spirea, Thunberg.....	.20	.35	.50
Hydrangea Peegee....	.35	.50	.75	1.00	Spirea, Vanhoutte....		.20	.35	.50
Hydrangea Snowhill..	.35	.50	.75	Sumac, Cutleaf.....		.35	.50
Lilac, Common Purple		.30	.50	.75	Tamarix, Kashgar....			.50	.75
Lilac, French Hybrids		.50	.75					
Belle de Nancy, rose									
with red centers									
Mme. Abel Chatenay									
double white									
Victor Lemoine, white									
Lilac, Rothomagensis.		.35	.50	.75					

We grade our shrubs according to standards adopted by the American Association of Nurserymen. This assures you of the size shrubs that you will get when ordering from Bailey Nurseries. Our shrubs are transplanted to the field when one or two years old where they are grown with plenty of room to allow for proper development.



Cistena Plum and Barberry Hedge



Spirea Anthony Waterer

SPIREA, ASH-LEAVED (*Sp. sorbifolia*)—One of the earliest shrubs to come into leaf in the spring. Long white spikes of flowers in June and July.

SPIREA, BILLIARD (*Sp. billiardi*)—An upright growing shrub with narrow, dense spikes of bright pink flowers in July and throughout August. Height 5 to 6 feet.



Cranberrybush



Bridal Wreath

SPIREA, CALLOSA ALBA—Similar to Anthony Waterer in growth and habit. Produces an abundance of white flowers June to August.

SPIREA, FROEBEL (*Sp. froebeli*)—Somewhat similar to Anthony Waterer except it is a stronger grower and reaches a height of three feet. Pink flowers in August.

SPIREA, GARLAND (*Sp. arguta*)—Very fine textured, light green foliage. producing an abundance of small white flowers early in the spring. Height about 4 feet.

SPIREA, GOLDEN (*Physocarpus opulifolia*)—Rapid growing variety reaching a height of 8 to 10 feet. Tips of branches are bright yellow turning to bronze in fall.

SPIREA, THUNBERG (*Sp. thunbergi*)—Foliage is similar to Garland. Attains height of about three feet. Abundance of white flowers in early spring.

SPIREA, VANHOUTTE (*Bridalwreath*) (*Sp. vanhouttei*)—Very desirable on account of its beautiful foliage and graceful habit of growth as well as the masses of white flowers.

*See Hedge Plants also.

SUMAC, CUTLEAF (*Rhus glabra laciniata*)—An extremely graceful shrub when in leaf. Leaves are long and deeply cut. Height about 6 feet.

TAMARIX, KASHGAR (*Tamarix hispida*)—Fine foliage producing a fern-like effect. Attains a height of 6 to 8 feet. Pink flowers in July and August.

For boundary, screen, or barrier, there is nothing more pleasing than a hedge. With their bright green leaves they bring a feeling inspired by the fresh foliage of spring. Whether when formally trained or left to develop naturally, their arched branches, colored foliage, and bright berries are more pleasing than the mechanical effect obtained by the use of a wooden or metal fence. Most hedges are permanent and with the exception of occasional shearing they need little attention after being established.

HEDGES

beautify and protect your grounds

PLANTING

Spacing varies with the variety used, but, for most of them 10 to 12 inches is the recommended distance. Honeysuckle and Bridalwreath should be about 1½ feet apart. Most hedges should be severely pruned at the time of planting and after that, an occasional shearing to keep it in shape is all that is necessary.

BARBERRY, JAPANESE (*Berberis thunbergi*)—Low growing plant, best adapted for a hedge used as a border where view of objects is not to be obscured. Plant is spreading, turning scarlet at end of season. May be trimmed or left informal.

BUCKTHORN, COMMON (*Rhamnus cathartica*)—Probably the best hedge plant where a rather high hedge or screen is wanted. This plant is very hardy, a vigorous grower, standing pruning exceptionally well.

BUCKTHORN, GLOSSY LEAF (*Buckthorn frangula*)—Similar to Common Buckthorn except that it is not susceptible to the Oat Rust.

BUCKTHORN, DAHURIAN (*Rhamnus davurica*)—This plant is very hardy, a vigorous grower and stands pruning very well. Leaves are large, light green. A very desirable hedge plant. Not susceptible to Oat Rust.

CARAGANA, DWARF (*Caragana Pygmaea*)—Ideal for a small form of hedge where it is not necessary to have a hedge over 18 inches high. Stands very dry conditions and will thrive in some of the poorer soils.

CARAGANA, SIBERIAN PEA-TREE (*Caragana arborescens*)—Extremely hardy and also stands dry exposed positions. Trims to a nice hedge from 3 to 8 feet high.

COTONEASTER, PEKING (*Cotoneaster acutifolia*)—The thick glossy leaves of this beautiful shrub turn to an attractive red in the fall. Stands trimming well. A medium height hedge.

CURRENT, ALPINE (*Ribes alpinum*)—This is an exceptionally desirable hedge plant. It retains its dark green foliage very late in the fall. Stands trimming well and produces a very good hedge from 1 to 3 feet high.

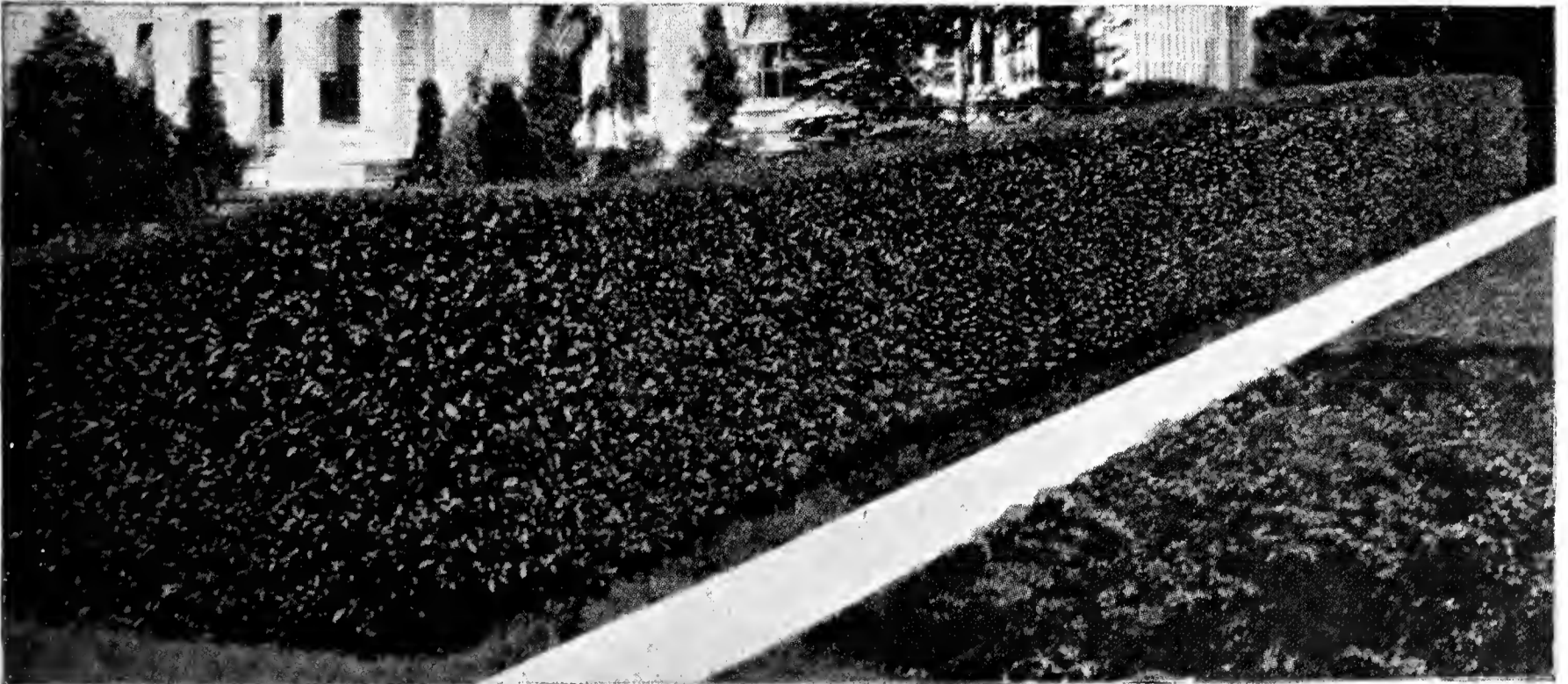
HONEYSUCKLE, TATARIAN PINK (*Lonicera tatarica*)—Foliage an attractive dark green. Makes a medium to tall hedge, more attractive when left informal.

SPIREA, VANHOUTTE (*Bridalwreath*) (*Sp. Vanhouttei*)—A very beautiful hedge requiring no trimming.

PRICES OF HEDGE PLANTS

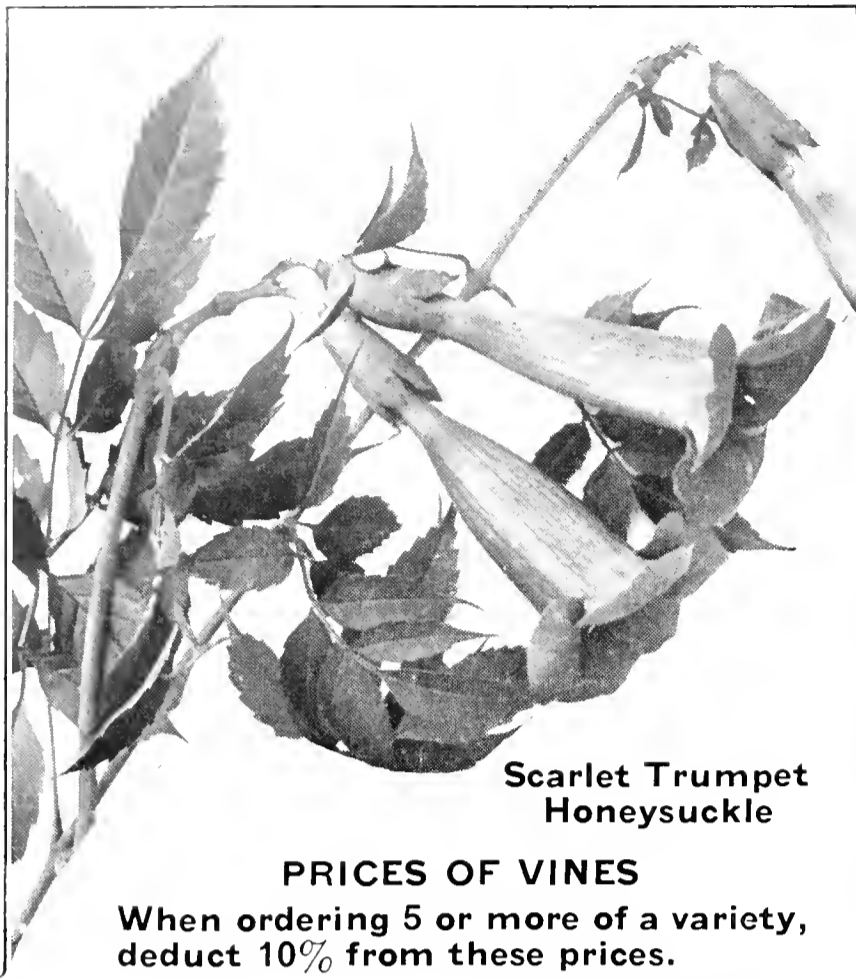
	Price per 100				
	9-12"	12-18"	18-24"	2-3'	3-4'
Barberry, Japanese.....	\$ 7.00	\$20.00	\$25.00	\$27.50	\$.....
Buckthorn, Common.....	5.00	10.00	12.50	17.50
Buckthorn, Dahurian.....	12.50	17.50
Buckthorn, Glossy Leaf....	5.00	10.00	12.50	17.50
Caragana, Arborescens...	4.00	5.00	10.00	15.00
Caragana, Dwarf.....	25.00
Cotoneaster, Peking.....	15.00	22.50	27.50	32.50
Currant, Alpine.....	15.00	30.00	40.00
Honeysuckle, Tat. Pink.....	12.00	22.50	27.50	35.00
Spirea, Vanhoutte.....	10.00	15.00	20.00	30.00

Chinese Hedgewood (Chinese Elm)—See Page 19 for Prices.



Buckthorn Hedge

VINES . . . for permanent beauty and privacy



Scarlet Trumpet Honeysuckle

Vines add charm and beauty to a landscape when properly used. They frequently provide the finishing touches to a planting with variations of foliage, blossoms, and grace.

BITTERSWEET (*Celastrus scandens*)—Produces an abundance of bright red berries that are used for decorative purposes in the winter. Very hardy.

CLEMATIS, JACKMAN (*Clematis Jackmani*)—Produces an abundance of large, violet purple blossoms in July and August.

DUTCHMAN'S PIPE (*Aristolochia siphon*)—Exceptionally large, heart shaped leaves. Brownish flowers resembling pipes. Rapid grower.

ENGELMAN IVY (*Ampelopsis engelmanni*)—There is none better for a clinging vine. Grows very fast and clings to any rough surface.

MATRIMONY VINE (*Lycium*)—Small purple flowers followed by red fruit.

HONEYSUCKLE, HALL'S JAPANESE (*Lonicera japonica halliana*)—Flowers are an intermingling of white and yellow, extremely fragrant. A hardy fast growing flowering vine.

HONEYSUCKLE, SCARLET TRUMPET (*Lonicera sempervirens*)—A strong grower, with deep green foliage. Very free flowering and fragrant. Good for covering banks or trellises.

PRICES OF VINES

When ordering 5 or more of a variety, deduct 10% from these prices.

	1 yr. Strong	2 yr. Strong
Bittersweet	\$.25	\$.50
Clematis Jackman		1.00
Dutchman's Pipe		1.00
Engelman Ivy25	.50
Matrimony Vine25	.35
Honeysuckle, Hall's Jap.25	.50
Honeysuckle, Scarlet Trumpet25	.50

BAILEY'S Heavy Rooted ROSES

RUGOSA HYBRIDS

The RUGOSA HYBRID Roses are greatly improved over the ordinary Rugosa Rose. They are exceptionally hardy and we offer a nice selection of colors. Flowers are all double.

AGNES—The best yellow. Profuse bloomer. Bush is dwarf in habit.

BLANC DE COUBERT—A wonderful white rose.

GROOTENDORST—A beautiful rose producing an abundance of blooms similar to Crimson Baby Rambler. Absolutely hardy and continues to bloom late in the fall.

HANSA—Early flowering, combining the ornamental qualities of its Rugosa foliage with the blossom beauty and the perfume of the hybrid perpetuals. The flowers are cup shaped, crimson, and especially fine. Blooms throughout the season.

CLIMBING ROSE

EXCELSA—A red climbing rose similar to Dorothy Perkins. The beautiful crimson scarlet, double flowers are borne in large clusters and set in glossy, shining foliage.

MISCELLANEOUS ROSES

HUGONIS—An early blooming shrub Rose, producing an abundance of single yellow flowers.

RUBRIFOLIA—A shrub Rose of medium height. Foliage and branches are red.

PRICES OF ROSES

When ordering 5 or more of a variety, deduct 10% from these prices.

	Each
Agnes	
Blanc de Coubert	2 yr. heavy \$.85
Grootendorst	2 yr. medium .60
Hugonis	2 yr. heavy .50
Rubrifolia	2 yr. medium .35
Hansa	2 yr. heavy .60
Excelsa	2 yr. medium .50
	2 yr. heavy .75



Grootendorst Rose

BAILEY'S TREES

Give a lifetime of
Comfort and Beauty

WHERE TO PLANT TREES

Trees planted about the house should accomplish the two-fold purpose of framing the view of the house, and providing shade at the right place and at the time of day when it is needed. Trees planted nearer the corners of the house, rather than directly in front, will greatly enhance the appearance of the home and provide needed shade.

Ordinarily trees should be planted sufficiently far apart to allow them to develop naturally. An exception is when they are used for screening out some unsightly view or for windbreak purposes. Small, ornamental trees display their flower or fruit to advantage either on lawn or in the border.

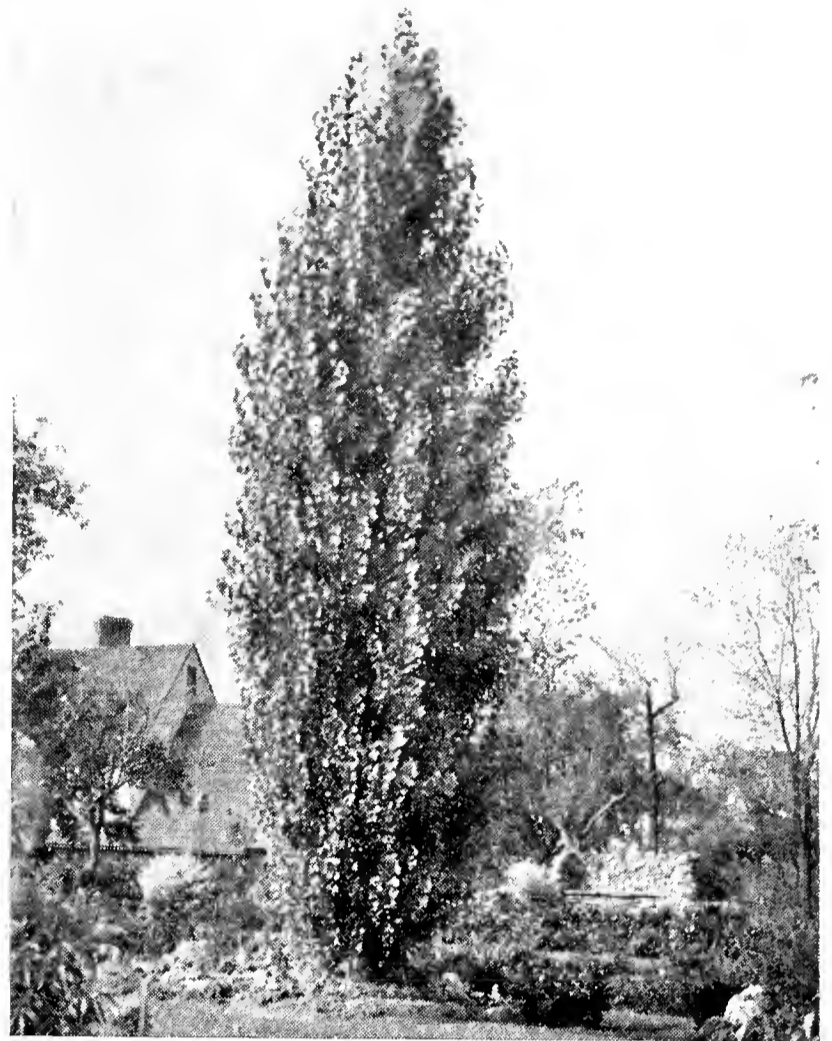
ASH, GREEN (*Fraxinus lanceolata*)—A good fast growing tree. Perfectly hardy and stands drought well.

ASH, EUROPEAN MOUNTAIN (*Sorbus aucuparia*)—A beautiful lawn tree which is very attractive the latter part of the summer, when it is covered with masses of red berries. Height 15 to 18 feet.

ASH, WEEPING MOUNTAIN (*Sorbus aucuparia pendula*)—A novel tree for lawn planting. Its long drooping branches nearly reach the ground.

BASSWOOD (*American Linden*) (*Tilia americana*)—A very hardy tree that is used extensively in place of the Catalpa in our Northern climate.

BIRCH, CUTLEAF WEEPING (*Betula pendula gracilia*)—A striking, erect tree with slender drooping branches and finely cut leaves. The bark is white like the ordinary native Birch. There is no tree to take the place of Cutleaf Birch for individual planting on the lawn.



Lombardy Poplar

BIRCH, AMERICAN WHITE (*Betula alba*)—A medium sized tree native to Minnesota with beautiful white bark.

BUTTERNUT (*Juglans cinerea*)—A well-known hardy, nut bearing tree.

CATALPA, WESTERN (*Catalpa speciosa*)—Very fragrant attractive flowers in large panicles. Large, heart shaped leaves.

CRAB, BECHTEL'S DOUBLE FLOWERING (*Malus ioensis flora plena*)—A large shrub or small tree attaining a height of about 10 feet. Produces an abundance of double pink flowers in May, resembling miniature roses. Very fragrant. Hardy.

PRICES OF DECIDUOUS TREES

When ordering 5 or more of a size and variety, deduct 10% from these prices. Note that the larger sizes are quoted according to caliper.

	2-3'	3-4'	4-5'	5-6'	6-8'	8-10'	1 1/2"
Ash, Green	\$.		\$.35	\$.50	\$.75	\$1.00	\$.
Ash, European Mountain		.65	1.00	1.50	2.00	2.50
Ash, Weeping Mountain					3.00 (2 yr. head)		
Basswood, 2 1/2" \$4.00, 3" \$5.50			.50	.75	1.00	1.50
Birch, American White			.75	1.25	1.75	2.50
Birch, Cutleaf Weeping		1.50			3.25	4.25	5.50
Butternut					1.75	
Catalpa					1.25	
Crab, Bechtel's Flowering	.75	1.25	2.00			
Crab, Dolgo, Specimen	.50	.65	1.25	1.75		
Crab, Hopa		.75	1.25	1.75	2.50	
Crab, Red Silver		.65	1.25	1.75		
Elm, American				.50	.75	1.00	2.00
2" \$2.50, 2 1/2" \$3.50, 3" \$5.00, 3 1/2" \$8.00, 4" \$12.00							
Elm, Chinese, 2" \$2.50, 2 1/2" \$3.50		.25	.35	.50	.75	1.00	2.00
Maple, Norway, 2" \$5.00					2.00	3.00	4.00
Maple, Schwedler				2.25	3.00	
Maple, Soft or Silver				.75	1.00	1.25
Maple, Sugar or Hard				1.50	2.00	3.00
Mulberry, Russian				1.00		
Plum, Cistena	.75	1.00				
Plum, Double Flowering	.50	.75				
Plum, Minnesota Purple	.50	.75	1.00	1.25		
Plum, Newport	.50	.75	1.00	1.25		
Poplar, Bolleana				.75	1.00	1.50	2.00
Poplar, Lombardy, 2" \$2.00, 2 1/2" \$3.00, 3" \$4.00		.20	.35	.50	.75	1.00	1.50
Walnut, Black				1.25	2.00	
Willow, Golden		.25	.40			
Willow, Niobe Weeping				.75	1.00	1.50

Bailey's TREES are the best investment any home owner can make!



Double Flowering Plum

CRAB, DOLGO (*Malus*)—A very ornamental crab producing an abundance of brilliant red fruits that stay on late in the fall.

CRAB, HOPA—A good upright growing ornamental crab. Small brilliant red fruit remaining on tree until autumn. Leaves are dark green with red cast. Beautiful, single, red blossoms cover the tree in early spring. Hardy, blooms young.

CRAB, RED SILVER—Cut leaved, maroon red, and silver foliage. Bright red fruit. Tree reaches an ultimate height of 25 to 30 feet.

ELM, AMERICAN (*Ulmus americana*)—A magnificent tree growing 60 to 80 feet high, with drooping, spreading branches. One of the grandest of our native trees.

ELM, CHINESE (*Ulmus pumila*)—A fast growing tree. Foliage very fine textured. A very good ornamental and windbreak tree which stands the drought exceedingly well.

*For smaller sizes, see Windbreak Trees.

MAPLE, NORWAY (*Acer platanoides*)—A hardwood tree resembling Sugar Maple in appearance. Dark green foliage. Makes a beautiful shade or street tree.

MAPLE, SCHWEDLER'S REDLEAF (*Acer platanoides schwedleri*)—A very ornamental hardwood tree. Foliage is bright red in the early part of the summer and then again in autumn.

MAPLE, SOFT OR SILVER (*Acer dasycarpum*)—One of the best rapid growing shade trees.

MAPLE, SUGAR OR HARD (*Acer saccharum*)—Symmetrical tree with a round dense head. Bright green foliage that turns to red in the fall.

MULBERRY, RUSSIAN (*Morus alba tatarica*)—A low growing, very bushy topped small tree. Leaves are small and many lobed. The edible fruit is sweet and resembles a blackberry.

PLUM, CISTENA (*Prunus cistena*)—See Page 23.

PLUM, DOUBLE FLOWERING (*Prunus triloba plena*)—See Page 23.

PLUM, MINNESOTA PURPLE—Very brilliant dark red foliage. A large shrub or small tree maturing at about 8 feet. One of the best of the purple foliated plants.

PLUM, NEWPORT (*Prunus Newport*)—Small tree with shining purple leaves which hold their color well during the summer.

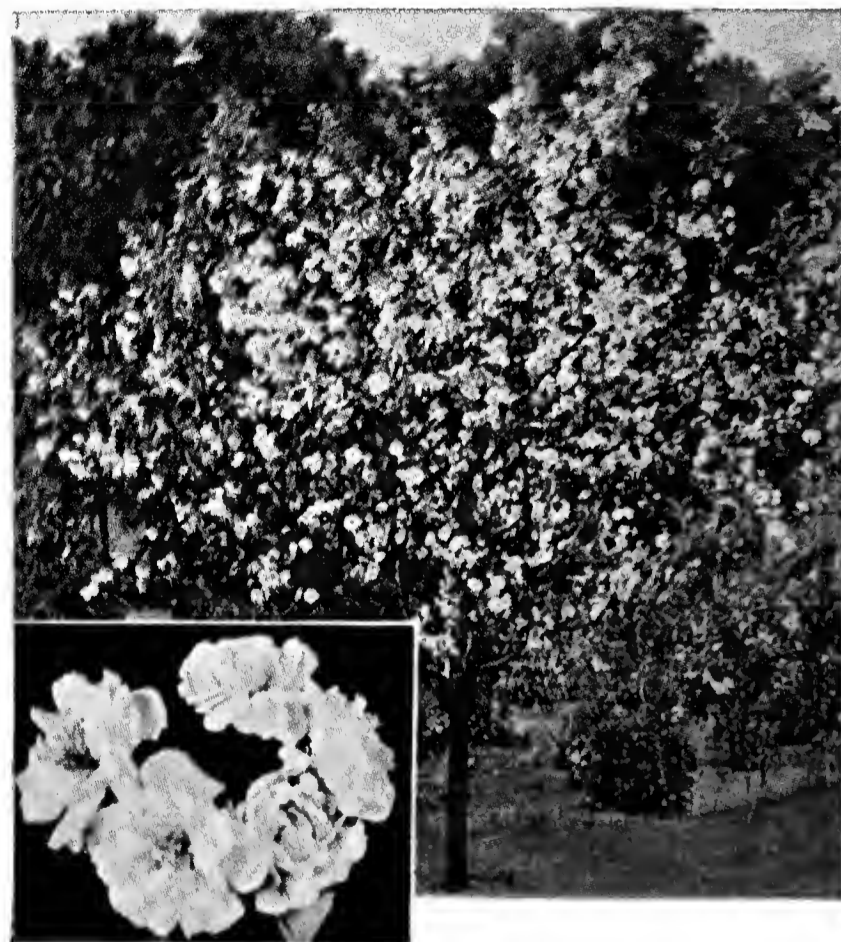
POPLAR, BOLLEANA (*Populus alba bolleana*)—One of the most desirable upright growing poplars. A tall, slender tree, leaves deeply cut and bright silver underneath. Bark is an attractive green throughout the year.

POPLAR, LOMBARDY (*Populus nigra italica*)—A very slender tree which grows to a great height. Used very effectively in landscape plantings where some point is to be emphasized or to screen off some undesirable scene.

WALNUT, BLACK (*Juglans nigra*)—One of the hardier nut-bearing trees.

WILLOW, GOLDEN (*Salix alba*)—A fast growing willow that thrives in moist locations. Bark is bright yellow.

WILLOW, NIOBE WEEPING (*Salix alba fragilis*)—A small tree with graceful, golden, drooping branches. One of the best.



Bechtel's Double Flowering Crab

HARDY, ORNAMENTAL

EVERGREENS

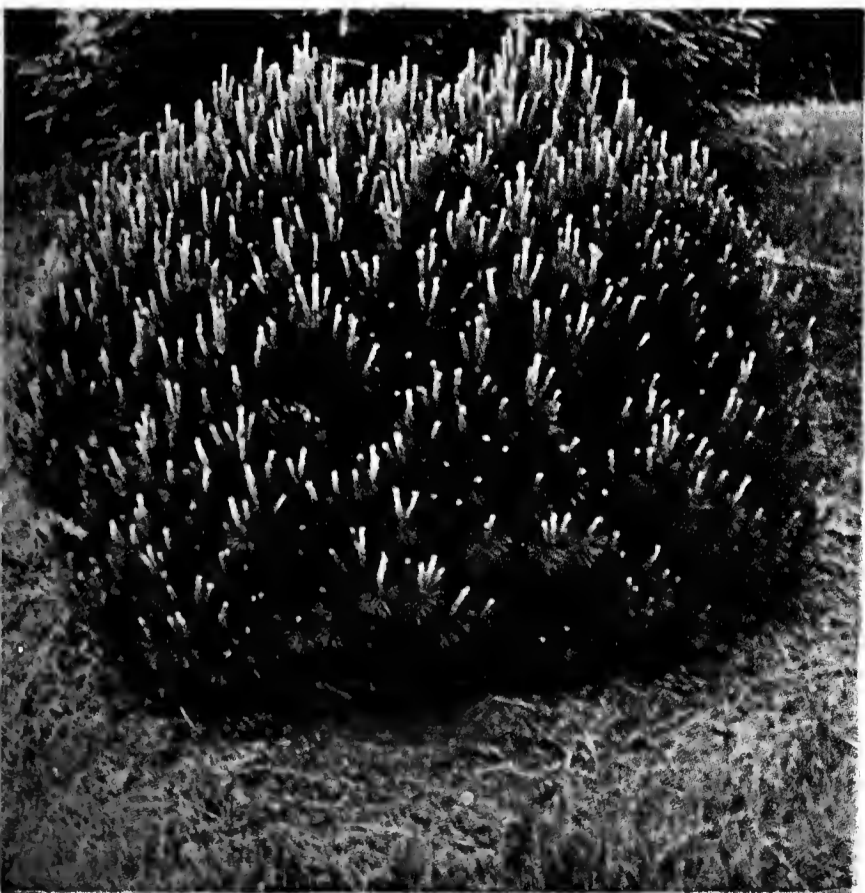
"FOR YEAR AROUND BEAUTY"

Evergreens present a broad opportunity for plant lovers to produce rich and beautiful effects that cannot be surpassed by any other class of plants. Evergreens are used as specimens on lawns, also extensively for massing, shelterbelts, screens, hedges, etc. Many varieties adapt themselves and are indispensable in your foundation planting. They form perfect backgrounds for the flowering shrubs of early spring, for the berries of autumn and winter's tracery of bright bark and twigs. Beautiful beds of permanent color are formed by grouping together sorts of moderate growth with contrasting foliage.

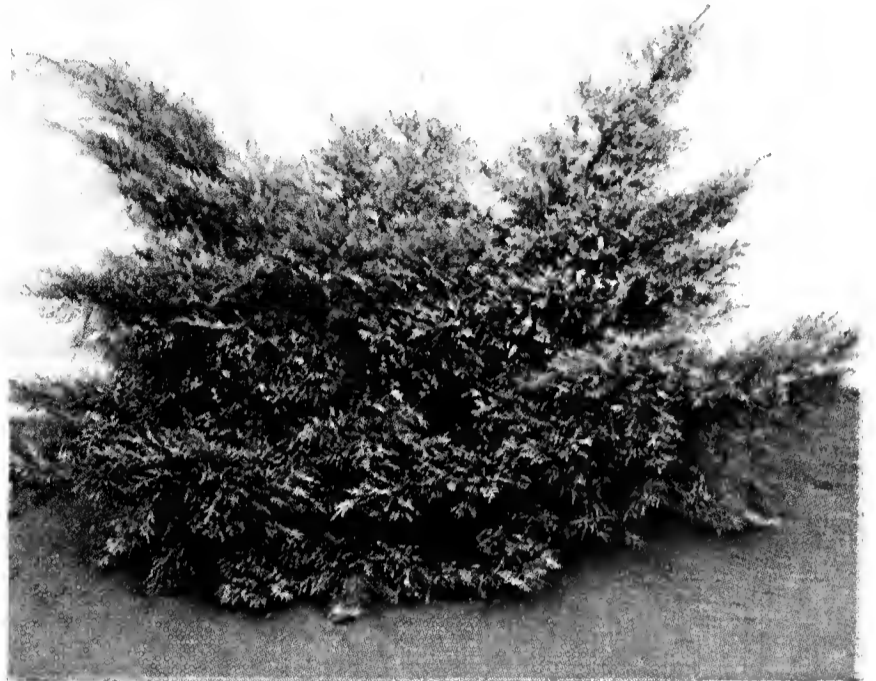
To be successful in planting evergreens, the planter should use great care to obtain stock that has been frequently transplanted while growing to insure a thick, fibrous root system. We are very careful to offer only such stock as will measure up to these very important requirements, thereby saving our customers from disappointment.

In the larger size Evergreens it is necessary, for the best results, to ball and burlap the roots. This consists of digging the trees with a solid ball of dirt and wrapping in burlap so that the roots are not disturbed.

We keep a large assortment of evergreens in our sales yard, dug fresh every day, and



Mugho Pine



Pfitzer's Juniper

consequently, it is not necessary to go out into the fields to select your trees.

ARBORVITAE

AMERICAN (*Thuja occidentalis*)—Does well in a sunny location but will stand some shade. A moist location is preferred.

GLOBE (*Thuja occidentalis globosa*)—A globe shaped Arborvitae which does not require pruning to retain its shape. Dwarf in habit.

PYRAMIDAL (*Thuja occidentalis pyramidalis*)—Undoubtedly the most popular form of Arborvitae today. This tree fills a real need in landscaping and has a place of importance in practically every evergreen planting. Thrives best in a south or east exposure.

FIR

CONCOLOR (*Abies concolor*)—An upright, symmetrical tree. Striking foliage varying from light green to deep soft blue.

JUNIPER

CANNART (*Jun. virginiana cannarti*)—A pyramidal tree with rich, green foliage. Used sometimes in place of Pyramidal Arborvitae because of its hardiness.

CHINESE (*Jun. chinensis*)—Pyramidal tree of extremely robust nature.

CHANDLERS SILVER (*Jun. scopulorum Chandler's Silver*)—A compact grower with very silvery foliage.

Bailey-Grown EVERGREENS

DUNDEE (*Jun. virginiana pyramidiformia hillii*)—A recent introduction which has proven hardy and valuable in any landscape planting. It is superior to the Red Cedar because of its symmetrical compact growth and attractive coloring. Foliage is a bluish-gray in the spring and summer and changes to a plum-like color in the fall and winter. Reaches a height of about 15 feet unless sheared.

GLAUCA (*Jun. virginiana glauca*)—Similar in habit of growth to Cannart. Foliage a bright silver.

MEYERS' (*Jun. squamata meyerii*)—A unique plant of recent introduction with irregular growth. A very odd evergreen that can be used in an informal foundation planting. Height about 3 feet.

PFITZER (*Jun. chinensis pfitzeriana*)—A very hardy dwarf evergreen with spreading branches. A fine ornamental evergreen for informal plantings.

RED CEDAR (*Jun. virginiana*)—This tree is valuable for group plantings as well as for specimen trees. As winter comes on, the tips of the new foliage present a brownish appearance and make a very beautiful picture.

SAVIN (*Jun. Sabina*)—A beautiful dwarf spreading Cedar. Dark green foliage. One of the best dwarf evergreens for foundation and group plantings.

SILVER (*Jun. scopulorum*)—Similar to Red Cedar except that it is a beautiful silvery color.

PINE

AUSTRIAN (*P. nigra*)—A very symmetrical upright growing Pine. One of our best Pines for specimen or group plantings.

MUGHO (*P. montana mughus*)—Of low, dense, spreading growth, with very dark green foliage. Very hardy. Ideal as dwarf specimen plants.

NORWAY (*P. resinosa*)—An ornamental Pine for quick growth. It is also an exceptionally fine windbreak tree.

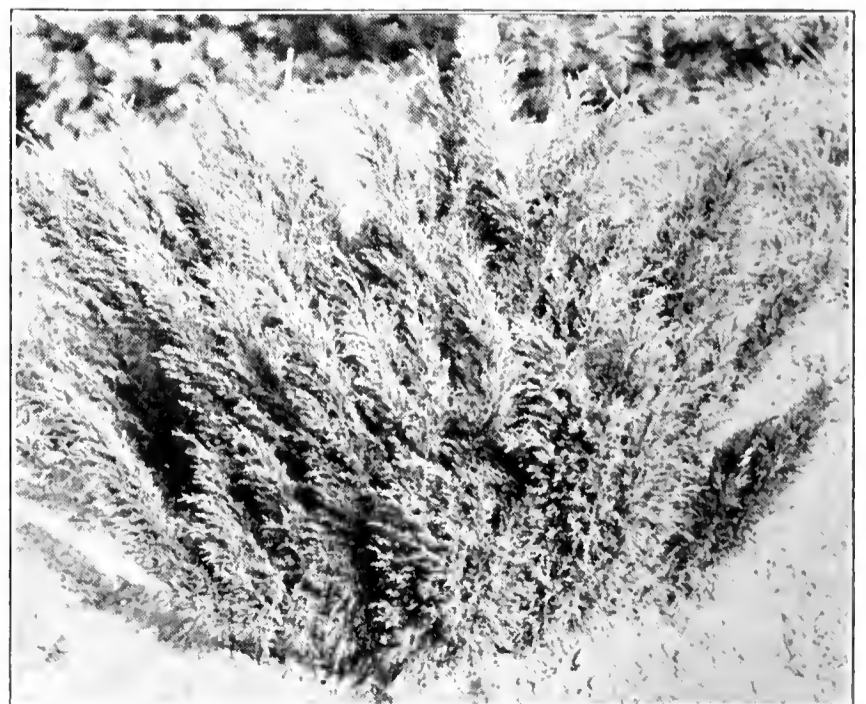
SCOTCH (*P. sylvestris*)—This is a rugged grower and will stand a great deal of wind and drought. A very good windbreak tree.



Pyramidal Arborvitae



Colorado Blue Spruce



Savin Juniper

are well-rooted, specimen trees

SPRUCE

BLACK HILLS (*Picea canadensis albertiana*)

—Next to the Colorado Spruce these trees are the most popular of the Evergreens. They are noted for their deep green color and symmetrical habit of growth.

COLORADO BLUE (*Picea pungens glauca*)

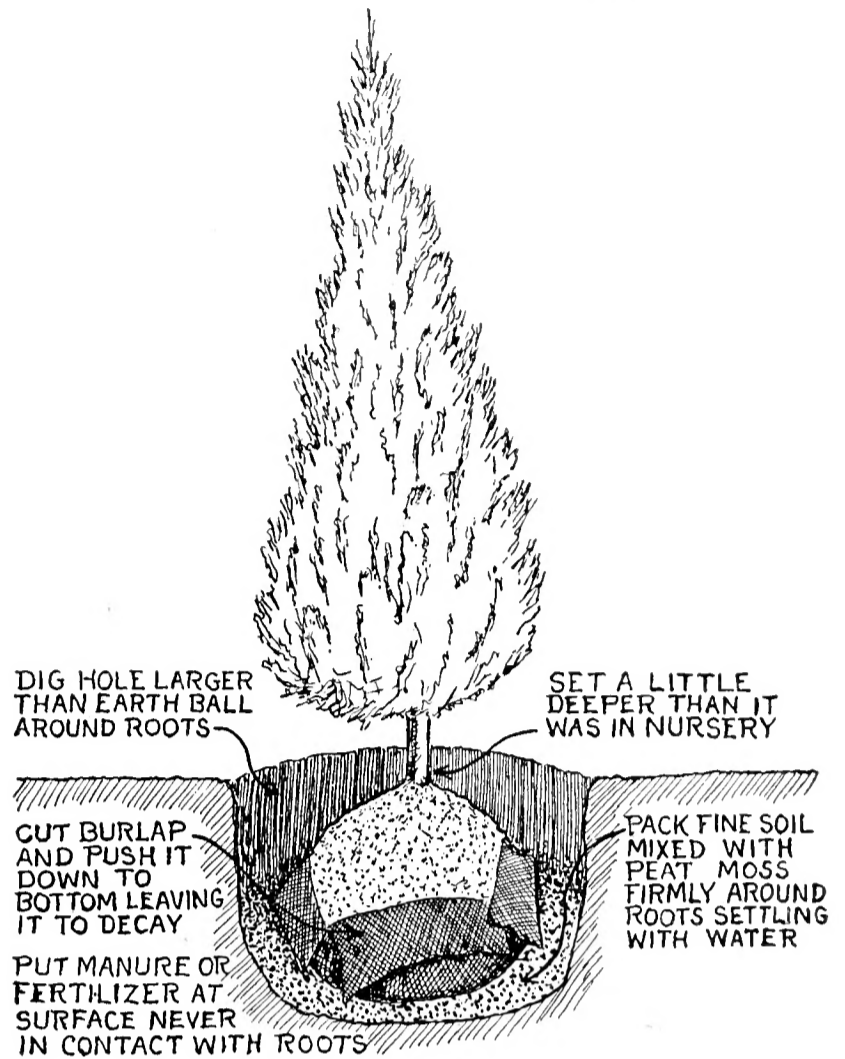
—This is the most popular Evergreen for specimen planting. Color of the foliage ranges from green to a silvery blue. We have a very fine large stock of this variety and offer unlimited selection.

NORWAY (*Picea excelsa*)—The fastest growing variety of Spruce.

WHITE (*Picea canadensis*)—Somewhat similar to Black Hills Spruce but growth is faster and more open.

FREE DELIVERY

We prepay transportation charges on all orders of \$25.00 or more (Except balled and burlapped evergreens) within 500 miles of St. Paul.



How to Plant Evergreens

PRICES OF EVERGREENS

Prices of Evergreens include balling and burlapping. 5 or more of a variety and size entitles you to a 10% discount from these prices.

	12-18"	18-24"	24-30"	30-36"	3-4'	4-5'	5-6'	6-7'
ARBORVITAE								
American	\$	\$1.25	\$1.50	\$2.00	\$2.50	\$4.00	\$ 5.00	\$ 7.50
Globe	2.00	3.00	4.50	5.00	5.00	5.50	6.00	7.00
Pyramidal	1.75	2.25	2.75	3.00	3.50	4.00	4.50	5.00
FIR								
Concolor	2.00	3.00	4.00	5.00	6.00	7.00	8.00	10.00
JUNIPERS								
Cannart	4.00	5.00	6.00	7.00	8.00	9.00	10.00	13.00
Chinese	3.50	4.00	4.50	5.00	5.50	6.00	7.00	8.00
Chinese Pyramidal	4.00	5.00	6.00	7.00	8.00	9.00	10.00	13.00
Chandler's Silver	5.00	6.00	7.00	8.00	9.00	10.00	11.00	13.00
Dundee	4.00	5.00	6.00	7.00	8.00	9.00	10.00	13.00
Glauca	4.00	5.00	6.00	7.00	8.00	9.00	10.00	13.00
Horizontal	2.00	2.50	3.00	3.50	4.00	4.50	5.00	6.00
Meyers'	2.50	3.00	3.50	4.00	4.50	5.00	5.50	6.00
Pfitzer	2.25	3.00	4.00	5.00	6.00	7.00	8.00	10.00
Red Cedar	3.50	4.00	4.50	5.00	5.50	6.00	7.00	8.00
Savin	2.25	3.00	4.00	5.00	6.00	7.00	8.00	10.00
Silver	5.00	6.00	7.00	8.00	9.00	10.00	11.00	13.00
PINE								
Austrian	2.50	3.00	3.50	4.00	4.50	5.00	6.00	7.50
Mugho	2.25	3.00	4.00	5.00	6.00	7.00	8.00	10.00
Norway	3.00	4.00	5.00	6.00	7.00	8.00	9.00	10.00
Scotch	3.00	4.00	5.00	6.00	7.00	8.00	9.00	10.00
SPRUCE								
Black Hills	1.50	2.00	2.50	3.00	4.50	7.00	9.00	12.50
Colorado Blue	2.50	3.00	4.00	5.00	6.00	7.00	15.00	22.50
3-3½ ft.	\$ 6.50							
3½-4 ft.	8.00							
4-4½ ft.	10.00							
4½-5 ft.	12.50							
Colorado Green	1.50	2.00	3.00	4.00	5.00	6.00	12.50	17.50
3-3½ ft.	\$ 5.00							
3½-4 ft.	6.00							
4-4½ ft.	8.00							
4½-5 ft.	10.00							
Norway	2.00	2.50	3.00	3.50	4.00	5.00	6.00	7.00
White	1.00	1.50	2.50	3.00	4.00	5.00	6.00	7.00



Monitor

La Crescent

Underwood

Bailey's

BARGAIN PLUM SPECIAL

2 La Crescent Plum 4 Underwood Plum
 2 Monitor Plum 2 Ember Plum
 2 Superior Plum

ALL 12 FOR ONLY \$2.70

3 TO 4 FEET BRANCHED TREES

Please order "Plum Special"

A lifetime APPLE SUPPLY

AT BAILEY'S BARGAIN PRICES

4 Wealthy Apple 2 Beacon Apple
 4 Haralson Apple 1 Whitney Crab
 1 Virginia Crab

12 3 to 4 Ft. Branched Trees \$3.25

Please order "Apple Special"

CHERRY TREE SPECIAL

3 Compass Cherry 1 Opata Cherry
 1 Nicollet Cherry 2 Sapa Cherry
 2 Oka Cherry 1 Zumbro Cherry

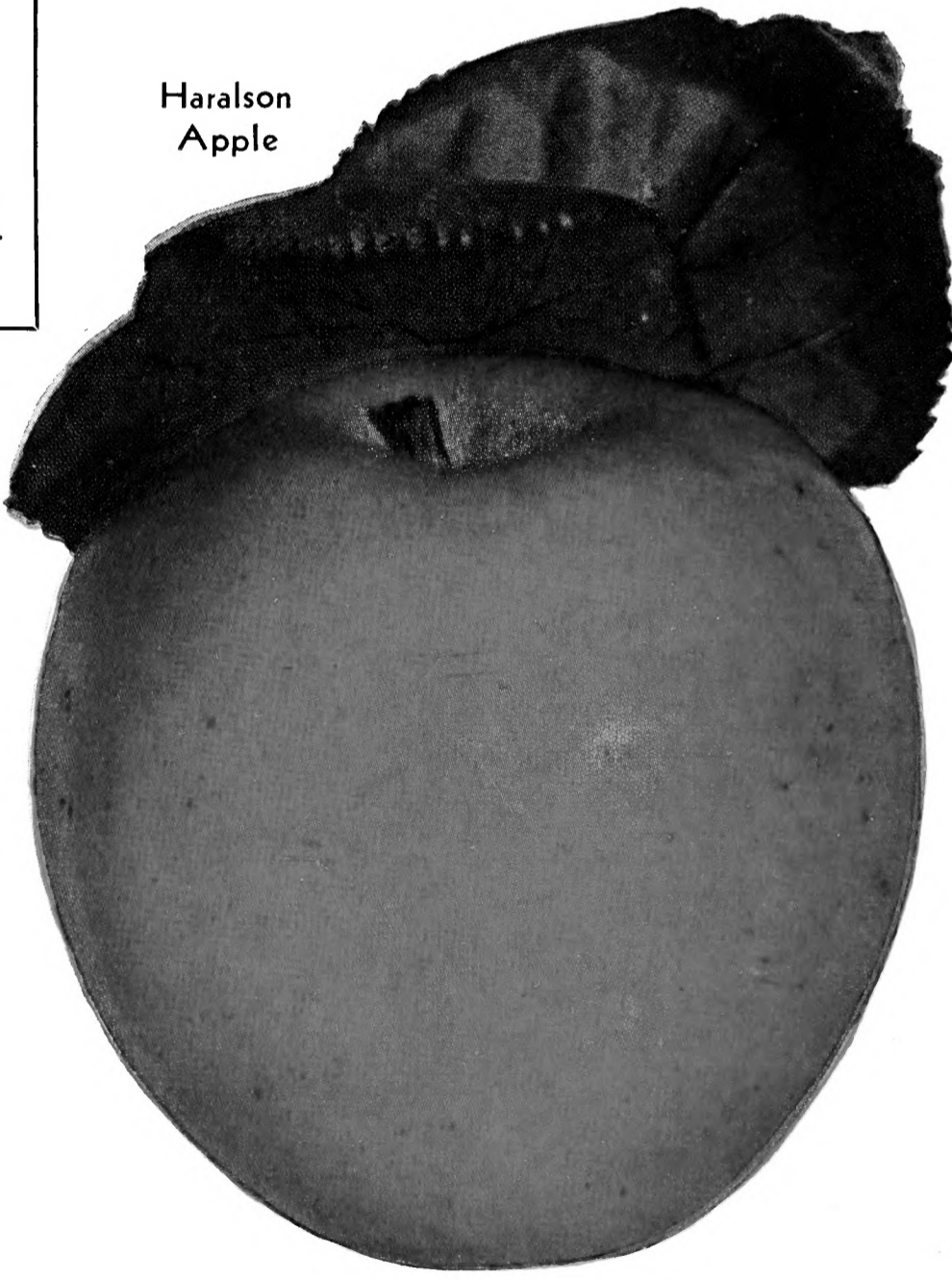
10 3 TO 4 FEET BRANCHED TREES \$2.25

Please order "Cherry Special"

THE YEAR'S BEST VALUE!

All 3 Special Offers on this page
 12 Plum Trees, 12 Apple Trees
 and 10 Cherry Trees

34 3 TO 4 FT. HARDY TREES—ONLY \$7.75



Haralson
Apple