

Historic, archived document

Do not assume content reflects current scientific knowledge, policies, or practices.

Bolen Florist and Camellia Gardens

P. O. Box 175

LUCEDALE, MISSISSIPPI



Return Postage Guaranteed



Sec. 435 1/2 P. L. & R.



LUC

Permit No. 8

LIBRARY RECEIVED FEB 16 1940 U. S. Department of Agriculture

U. S. DEPARTMENT OF AGRICULTURE,

WASHINGTON, D. C.

BUREAU OF PLANT INDUSTRY Fruit and Vegetable Crops and Diseases

PRO 8-3591

U. S. G. N.

RARE VARIETIES OF CAMELLIAS

We are offering for the first time a few of our much prized rare camellias. We can only furnish a limited number of these this season. These prices are net. (NO DISCOUNT ON RARE VARIETIES regardless of how many ordered.)

The grafted plants we are offering were grafted on understock four and five years old.

MATHOTIANA RUBRA (Purple Emperor, Purple Prince, etc.)

Very large full double red, showing some purple on outer edges of petals.

	Each
1-Year grafted plants, Light, B&B-----	\$ 7.50
1-Year grafted plants, Heavy, B&B-----	10.00
2-Year grafted plants at from-----	\$12.50 to \$25 00
According to size.	

No. 107, (RED CHANDLERII)

Flowers same size and shape as Chandlerii Elegans, but is a very dark red, occasionally showing small white spots, this is a very rare variety and one of our choicest.

	Each
5- 8 inches, B&B -----	\$ 1.00
8-10 inches, B&B -----	1.50
10-12 inches, B&B -----	2.00
1-Year grafted plants, B&B -----	7.50
2-Year grafted plants, B&B -----	12.50 to 15.00
According to size.	

LEONA BOLEN

This variety originated from a seedling, it is a large semi-double, blood-red with stamens in center, rich velvety texture.

	Each
5- 8 inches, B&B -----	\$ 1.00
8-10 inches, B&B -----	1.50

PINK MATHOTIANA ALBA

This variety originated from a sport of Mathotiana Alba, it is a beautiful, large double pure shell-pink. Fine as specimen plant or for florist work.

	Each
2-Year grafted plants, 42-48 inches, B&B -----	\$10.00

No. 106

Large, semi-double to Peony-type flowers, beautiful soft salmon-pink.

	Each
8-10 inches, B&B -----	\$ 1.00
10-12 inches, B&B -----	1.50
12-18 inches, B&B -----	2.00

CAMELLIA JAPONICAS

THE ARISTOCRAT OF THE SOUTHERN GARDENS

Delightful winter-flowering evergreen that is increasing in popularity each year. Ideal cut flower for florists.

We specialize in growing Camellias, and after many years of propagating and growing them we pride ourselves on the vigorous, healthy plants we have to offer this season.

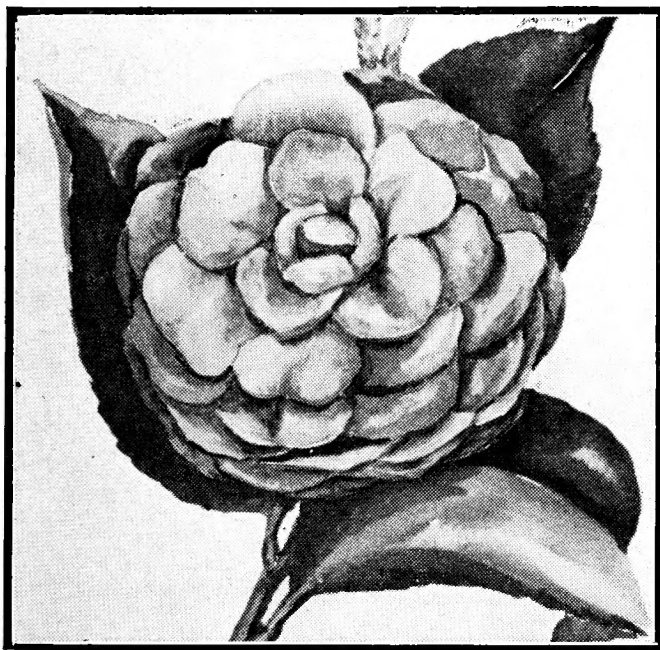
Because of the scarcity of some varieties, we do not have enough plants yet to list, but will list them as soon as can have stock available.

OUR CLASS A-1 CAMELLIAS

These are the usual best standard varieties.

ALBA SUPREME

Large, full double, very pure white, blooms from mid-season until late, one of the best cut flowers for florists. (Can furnish sizes up to 24-30 inches.)



BOLEN'S No. 4

BRILLIANT

Very double, large bright red. Blooms early mid-season, one of the best double-red Camellias, good compact grower. (Can furnish sizes up to 5-8 inches and 30-36 and up.)

BOLEN No. 4

Deep shell pink, medium size blooms, some larger than Pink Perfection. Late mid-season.

CHANDLERII ELEGANS

One of the finest and largest of the peony-type Camellias. Cherry-red, variegated with white and rose.

COUNTESS POLYANNA MAGII

Very large, double-white, with an occasional pink spot, blooms from mid-season until late.

DUCHESS de CASSI

Very double peony-type, white variegated, with orchid and pink, very attractive and unusual variety.

DUCHESS de ROHAN

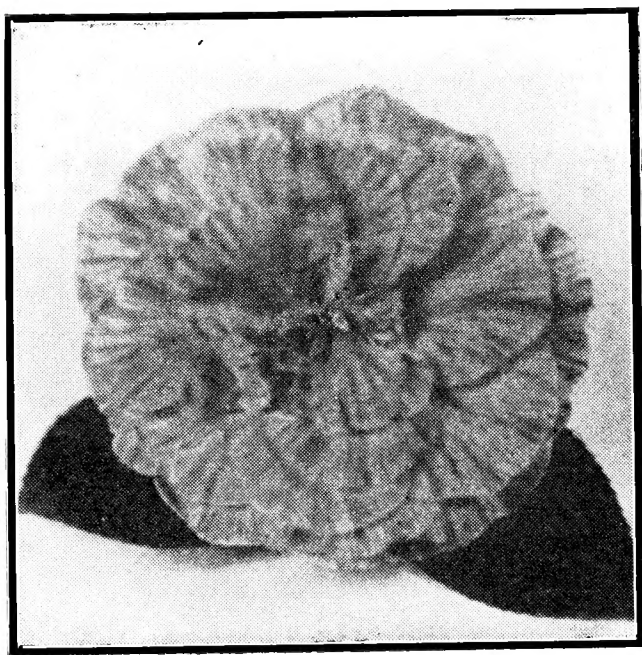
Fluffy, peony-type pink, same shade of pink as the Mrs. Chas. Bell Rose. Blooms mid-season until late.

ELLEN McKINSEY

Flowers double, fluffy, peony-type, pink striped and spotted with white, has a very few stamens intermixed with petals. Begins blooming very early and continues throughout the season.

ENRICO BETTONI

Very large, clear light pink. Varies in form from semi-double to peony-form on same bush.



**MADAM
STREKALOFF**

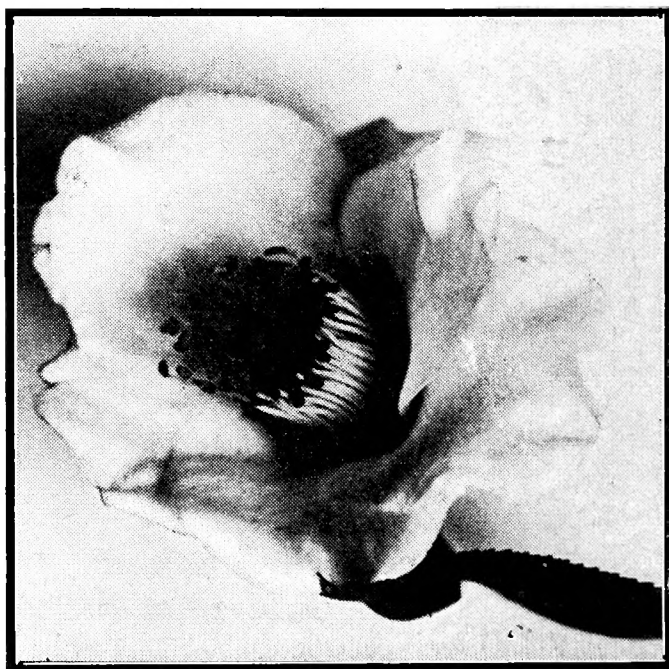
GLOIRE de NANTES (LEANA SUPERBA)

Very large, semi-double cerise, has long yellow stamens, center petals often twisted. Beautiful dark green foliage, that makes the plant unusually attractive as an evergreen, the blooms stand out above the foliage in a way that we have not seen in other varieties.

GUNNELLI (MONARCH)

Very large, heavy peony-type deep pink, sometimes has some white spots, has good foliage, dwarf spreading grower, as this variety is more compact and does not grow tall as fast as other varieties. The price of specimen plants will be one grade higher than other varieties: for example the price of 18-24 inches will be listed price of 24-30 inches. This is one of the best.

**MISS DORA
McCARTER**



-

HERME

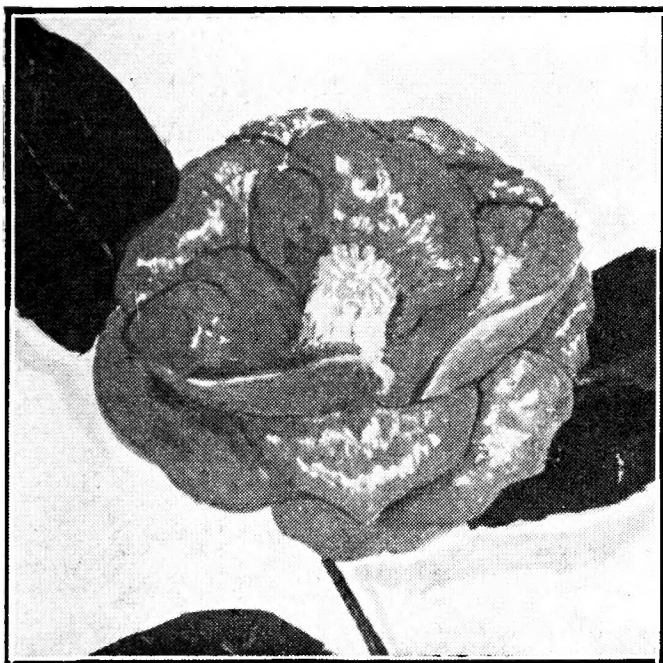
Large, loose peony-type variegated white and pink. A beautiful flower, but the plant does not grow as compact in the nursery as many other varieties. (Can furnish sizes up to 30-36 inches).

JEANERETTE PINK

Large, semi-double to peony-type solid pink. (Can furnish specimen size plants 18-24 and 24-30 inches.)

VARIEGATED JOHN BENNETT

Semi-double loose petals with center petals intermixed with stamens. Salmon-pink and white variegated. (Can furnish sizes 24-30 inches and up.)



No. 101

MADAM STREKALOFF

Beautiful large double soft rose with very small stripes of crimson. Has about 60 outer petals and 24 to 30 smaller petals in center.

MISS DORA McCARTER

Large single white flowers with yellow stamens. This is the best single white Camellia we have seen. We named this variety in honor of the one in whose garden it originated.

NATCHEZ

Large red, has large outer petals with smaller petals in center, has white spots on some of the blooms. (Can furnish sizes 8-12 inches and 36-42 and 42-48 inches.)

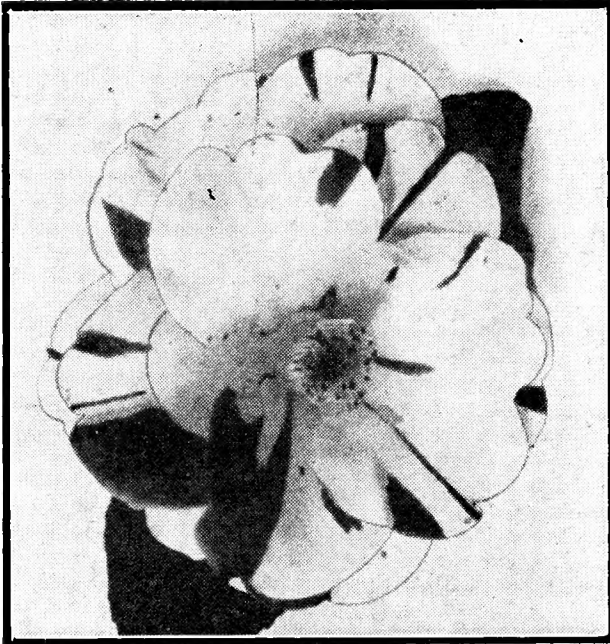


PROFESSOR
C. S. SARGENT

Semi-double, deep cherry-red, mottled and marbled with white, has prominent stamens in central compact ring. We have been growing this variety as Donklaeri, but have learned that this is not the true Donklaeri, the type of bloom is the same, but not quite so large, and the foliage is different. This is a very fine variety.

OTOME

Double shell pink, larger than Pink Perfection and shows veins of slightly deeper pink. (Can furnish sizes up to 24-30 inches.)



**BOLEN'S LATE
TRI-COLOR**

PINK PERFECTION

Very double, medium size flowers of delicate shell pink. One of the first to begin blooming during the Camellia season.

PROFESSOR C. S. SARGENT

Beautiful, very double, peony-formed flowers, rich deep-crimson, begins blooming early in the season, has about 20 outer petals and a tuft of 240 or more smaller petals in center.

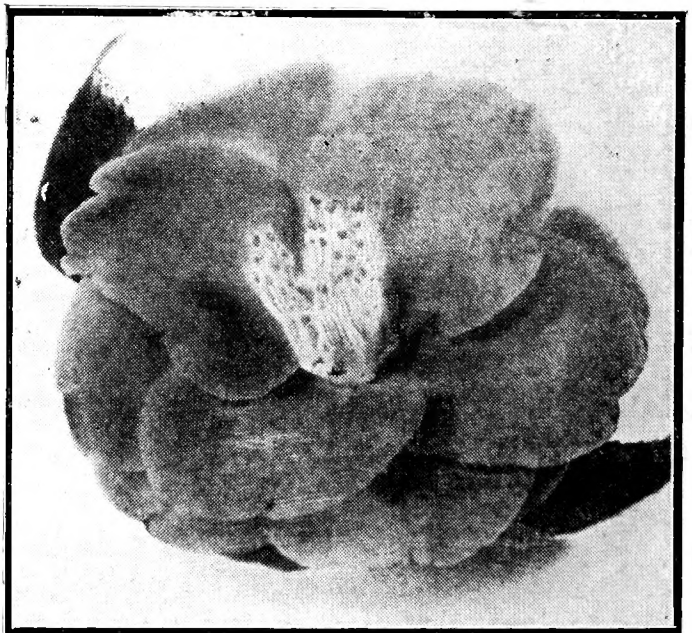
BOLEN'S LATE TRI-COLOR

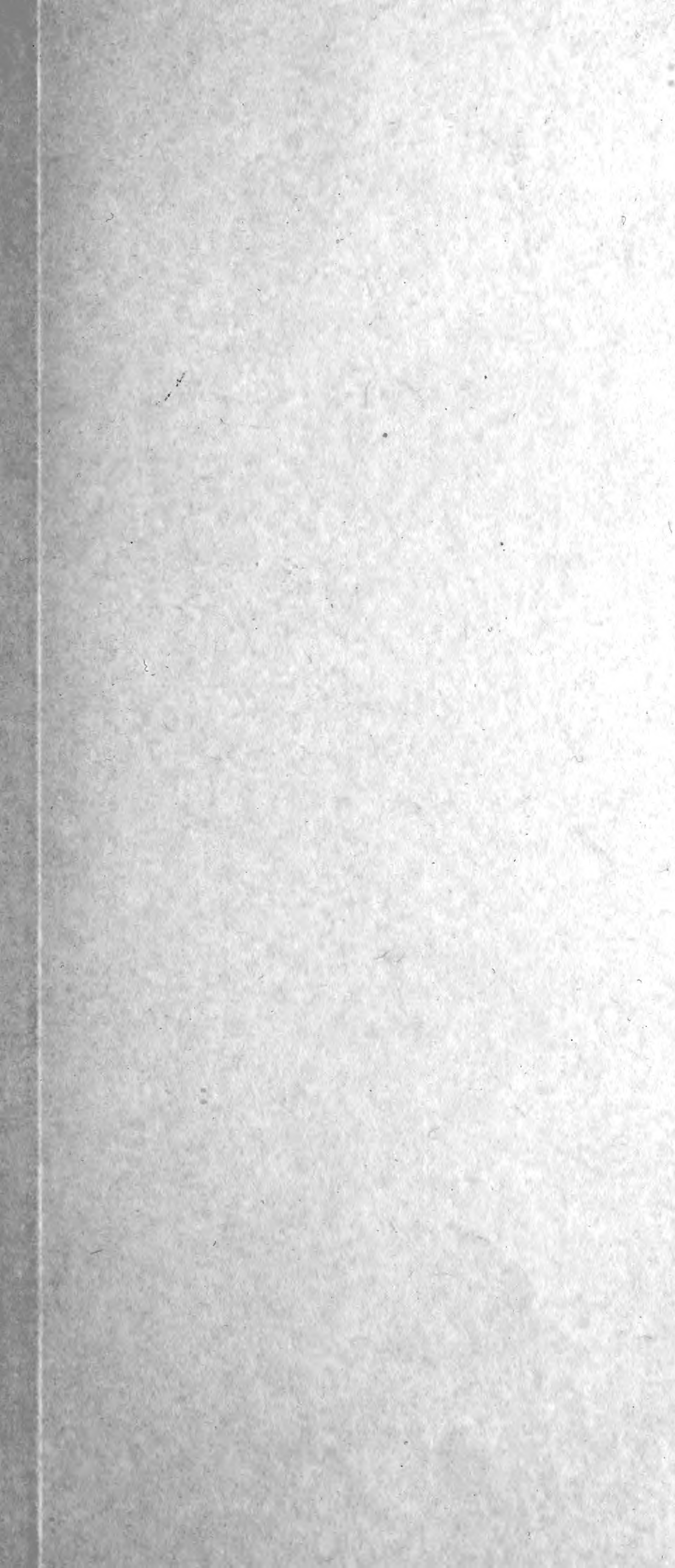
Semi-double flowers, usually pure white with red or pink stripes or spots, with occasionally a solid red or white bloom on same bush, blooms late.

RED TRI-COLOR

Same as above, only flowers are solid red. (Can furnish sizes 24-30 inches and up.)

**RED
TRI-COLOR**





PRICES ON CLASS A-1 CAMELLIAS

	Each	Per 10	Per 100
3- 5 inch, puddled roots, Lining out stock -----		\$ 1.50	\$10.00
5- 8 inch, B&B, Lining out stock--		3.00	25.00
8-12 inch, B&B, Lining out stock--		4.00	35.00
12-18 inch, B&B, Lining out stock--		5.50	50.00
18-24 inch, B&B, Lining out stock--		10.00	85.00
18-24 inch, B&B, Specimen plants--	\$2.25	20.00	
24-30 inch, B&B, Specimen plants--	3.50	30.00	
30-36 inch, B&B, Specimen plants--	4.50	40.00	
36-42 inch, B&B, Specimen plants--	5.50	50.00	
42-48 inch, B&B, Specimen plants--	6.00	55.00	

CLASS A CAMELLIAS

This class is good, standard varieties. Some are as good as Class A-1, but are more plentiful and can be sold cheaper.

MRS. ABBEY WILDER

Very double white, good grower, free bloomer from early January into March. (Sizes 36-42 and 42-48.)

DUCHESS de ORLEANS

Very double white, good grower, free bloomer from early January into March. (Can furnish sizes 36-42 inches and up.)

DUKE de ORLEANS

Very large peony-formed flowers, creamy-white flaked and dotted with rose, one of the earliest to begin blooming and continues to bloom throughout the season. Has Azalea-like odor. (Can furnish sizes 36-42 inches and up.)

HARLEQUIN

Full double peony-formed flowers, variegated white and pink. Form and size of flower resembling Prof. C. S. Sargent.

JARVIS RED

Semi-double, dark red with yellow stamens, intermixed with petals, narrow, dark green foliage. (Can furnish sizes 18-24 Specimens and up.)

NOBLISSIMA

Full double peony-type white, petals intermixed with yellow stamens, begins blooming early in the season. (Can furnish sizes 18-24 Specimens and up.)

REV. JOHN BENNETT

Double, salmon-pink, large loose petals with center petals intermixed with stamens, good compact grower. (Can furnish sizes 24-30 inches and up.)

T. K. VARIEGATED

Semi-double, light pink with darker pink stripes, cluster of stamens in center. (Can furnish sizes up to 24-30 inches.)

PRICES ON CLASS A CAMELLIAS

	Each	Per 10	Per 100
3- 5 inch, Puddled roots, Lining out stock -----		\$ 1.20	\$ 8.00
5- 8 inch, B&B, Lining out stock--		2.50	20.00
8-12 inch, B&B, Lining out stock--		3.00	25.00
12-18 inch, B&B, Lining out stock--		4.50	40.00
18-24 inch, B&B, Lining out stock--		8.00	70.00
18-24 inch, B&B, Specimen plants--	\$1.75	15.00	
24-30 inch, B&B, Specimen plants--	2.00	17.50	
30-36 inch, B&B, Specimen plants--	3.00	25.00	
36-42 inch, B&B, Specimen plants--	4.00	35.00	
42-48 inch, B&B, Specimen plants--	5.00	40.00	

HEAVY SPECIMEN CAMELLIA PLANTS

Priced according to shape and size of plant.

PROF. C. S. SARGENT

	Each
7½ feet tall, 4 feet through -----	\$50.00
7 feet tall, 4 feet through -----	40.00
6½ feet tall, 4 feet through -----	30.00
6½ feet tall, 3½ feet through -----	25.00
6 feet tall, 4 feet through -----	25.00
5½ feet tall, 2½ feet through -----	15.00

GLOIRE de NANTES

	Each
6 feet tall, 3½ feet through -----	\$30.00
6 feet tall, 3 feet through -----	25.00

ELLEN McKINSEY

	Each
5½ feet tall, 3½ feet through -----	\$25.00
5½ feet tall, 3 feet through -----	20.00

DUCHESS de ORLEANS

	Each
6 feet tall, 3½ feet through -----	\$25.00
6 feet tall, 3 feet through -----	20.00

Have number of other varieties in Camellias, but not in large enough quantities to justify us in listing them.

LIGUSTRUM LUCIDUM

	Each	Per 10	Per 100
2-3 feet at -----	\$.50	\$4.50	\$40.00
3-4 feet at -----	.85	7.50	60.00

WATERMELON RED CREPE MYRTLE

	Per 100
3-4 feet -----	\$20.00
4-5 feet -----	25.00

WHOLESALE PRICE LIST

Packing Grounds and Office on Mill Street

P. O. Box 175

Phone 97

BOLEN FLORIST and CAMELLIA GARDENS

LUCEDALE, MISSISSIPPI

We thank our customers of the past for their business and nice letters expressing their appreciation of our plants, service, etc., and we will appreciate the business of all new customers. Our aim is to give the best plants and service it is possible to give.

A Certificate of Inspection will accompany each shipment.

Our terms are cash, or one-fourth cash and balance C. O. D. 3% discount and packing free when cash accompanies order. Where plants are selected from the nursery, and just the heavy plants selected, they will take a higher price rate than the regular nursery row run of plants.

Attractive discounts on truck or car-load lots. We invite you to visit our nursery and make your own selection.

In lining out plants 5 each of one variety takes the ten rate; 10 each of one variety takes the 100 rate. In specimen plants we can furnish one plant of each variety up to ten plants at the ten rate.
