

Historic, archived document

Do not assume content reflects current scientific knowledge, policies, or practices.



62.41

U. S. Department of Agriculture
☆ FEB 10 1940

Dass Plant Guide



Season
Of
1940

PREMIER
The Early Berry
Without A Fault

Featuring

Dependable, High
Quality Stock at
Reasonable Prices

DASS NURSERY Co.
Bridgman, Michigan

The Best Stock ^{is} _{the} Cheapest

But DASS Offers You A DOUBLE SAVING

Since we have been farmers ourselves for a great many years and understand fully the difficulties that beset the fruit grower, the Dass Nursery Company would be the last to recommend any stock but the best. In comparison with the other items which enter into the cost of a well-established fruit farm, the cost of plants is not great.

Times being what they are, however, any saving is worth making, so it is the policy of the Dass Nursery Company to offer its customers the best possible plants and at the ABSOLUTE MINIMUM OF COST.

Our farms are rich, sandy loam which grow the finest of plants with large, well-developed root systems. We keep them well cultivated, fertilized and drained, as any good farmer should. Our methods of farming, digging and packing are the best and most efficient possible, making our costs very low. We advertise efficiently rather than lavishly, as this low-cost folder will testify, trusting our many good friends to spread the fame of Dass Plants. All these savings we pass on to you to lower your own costs of doing business.

Help us to keep our costs down by ordering early. If full amount cannot be sent when ordering, you may send one-third with order and the balance any time before shipping date. Not only we will allow you liberal discounts for early orders, as described below, but you will be sure to have your plants reserved before the big rush starts during the shipping season.

ALL STRAWBERRY ORDERS FOR 100 PLANTS OR LESS WILL BE PREPAID—A SAVING TO YOU OF FROM 12c TO 30c.

A Guarantee That Really Protects You

We guarantee every plant, tree, or shrub that we ship out to be free from injurious disease, true-to-name, and to arrive in perfect growing condition and hold ourselves ready to replace any stock proved defective or of the wrong variety. Of course, since we cannot control the growing conditions, we cannot be responsible for the stock after it is planted, nor for the crop, but you will find us willing to do everything possible to make EVERY CUSTOMER A SATISFIED CUSTOMER.

Reserve Your Dass Plants Early and Make an Extra Saving

When we receive orders well ahead of our shipping season, we can handle our office work, digging and packing much more efficiently. We have figured what this saving is and we are anxious to have your orders early so that we may pass this saving on to you. Just another indication that Dass wants to give the BEST PLANTS AT LOWEST COST.

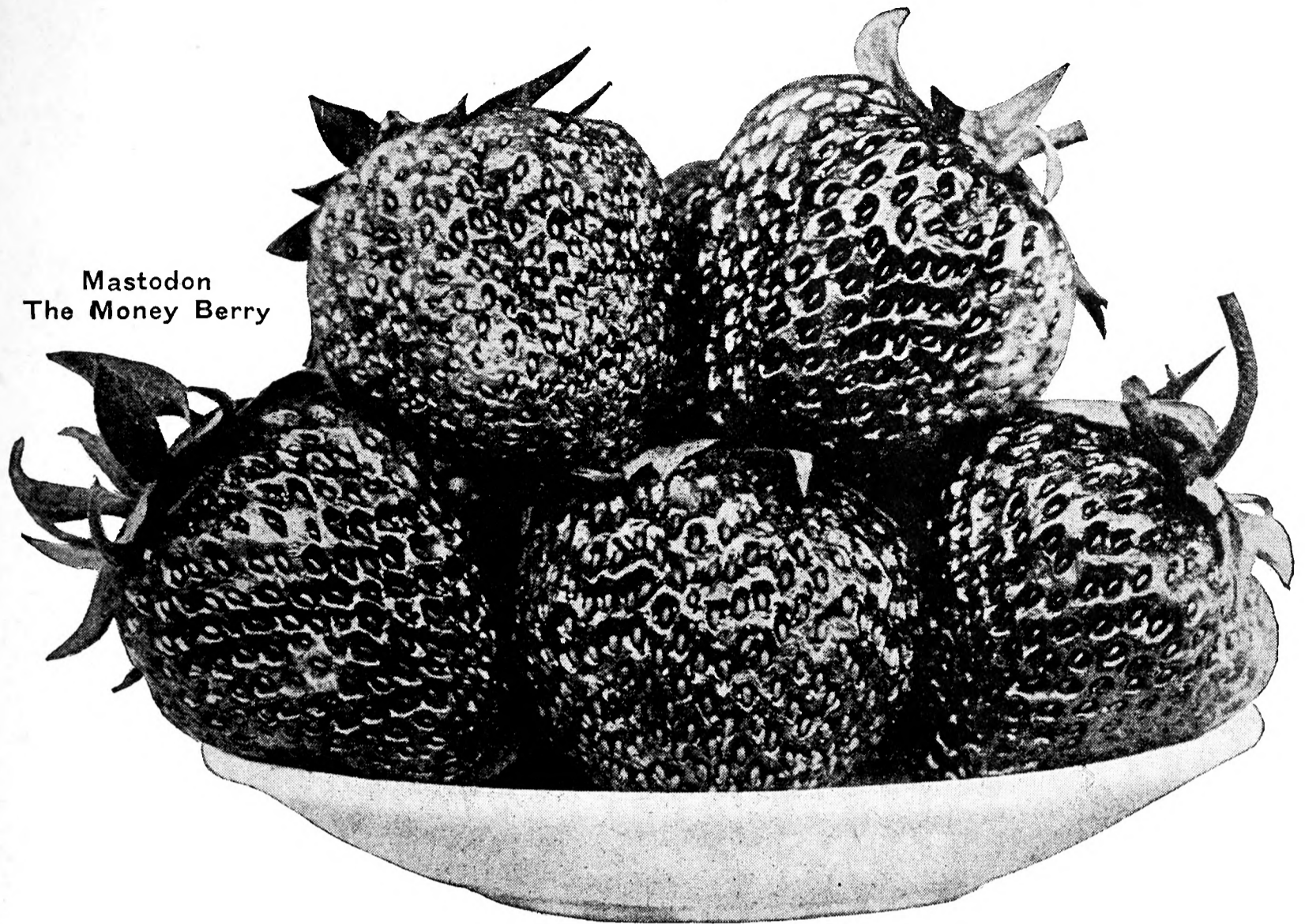
10%

DISCOUNT on all orders mailed before March 1.

5%

DISCOUNT on all orders mailed before March 15

Everbearing Strawberries



Mastodon
The Money Berry

Mastodon

The Giant Everbearer

PLANT MASTODON THIS YEAR. Why plant common sorts when with Mastodon you can get three crops in the same time you would get one with the June-bearing varieties? Our selected Mastodon bear a heavy crop the same summer planted, a crop the following spring that equals or surpasses any of the June-Bearers that we grow, and a heavy crop that following fall. Why wait a full year before getting returns?

A variety such as Mastodon cannot be adequately described in words. This berry, as a common or June-bearing sort, is so firm that it will carry hundreds of miles in perfect condition and command the highest prices. The big green calyx of this wonder variety gives it an appearance that only Mastodon has, and these facts, coupled with the extreme large size, the tremendous bearing capacity and its valuable everbearing characteristics, readily show why you should include Mastodon in your order this year. Others of our growers are making big money on this variety, and the farmer who plants one or more acres now for a June-bearing crop should get the cream of the profits in the future.

This Man Was Glad He Ordered from Dass

Dass Nursery Co.:

The 1,000 Mastodon Strawberries arrived quite safe, and I am writing to tell you I am very pleased with them; also I must say they were packed wonderfully neat. I have them all planted and they all look very healthy. I am sure I will have good results, if not, it will not be your fault.

WALTER DILWORTH.
MELVIN, MICH.

Wayzata

||| The Honey Sweet Strawberry

A New Everbearer that is different. We might call it a real "Hill Berry" for the reason that it does not produce more than three to four runner to a plant. A decided advantage to the grower, as he does not have to remove first blossoms or runners. Each rooted crown set out this spring starts multiplying new crowns at once, until it has up to 20 or 25 crowns to a plant. It has ripe berries fully a month ahead of other everbearers. These plants are not affected by wet weather which usually ruins everbearers by hindering pollenization.

Berries are extremely large, very dark red, delicious sugary flavor. Heavy producers, continuing to bear long after other everbearers have been stopped by frosts. Try some this year, and we know you will be back next year with a large order for Wayzata.

Gem

For High Quality—High Yield

Discovered by Frank J. Keplinger on his fruit farm in north central Michigan, the parent plant from which this remarkable strain has been propagated apparently was one of those miracles that happen in the berry industry once in a lifetime.

In an old patch of Everbearers there was a great, thrifty, husky plant with luxuriant dark green foliage, sparkling with vitality—loaded with beautiful bright red berries and growing lustily in the poorest soil in the whole field. The original Gem plants and 12 runner plants produced 25 quarts of berries and over 200 new plants the first season in new raw muck where other Strawberry plants were unable even to survive.

Premier

"First" of all Strawberries

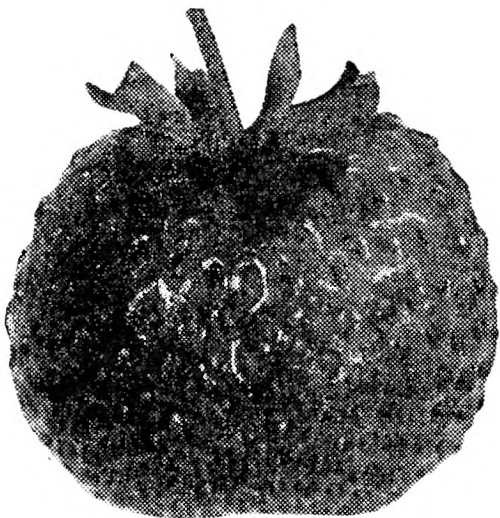
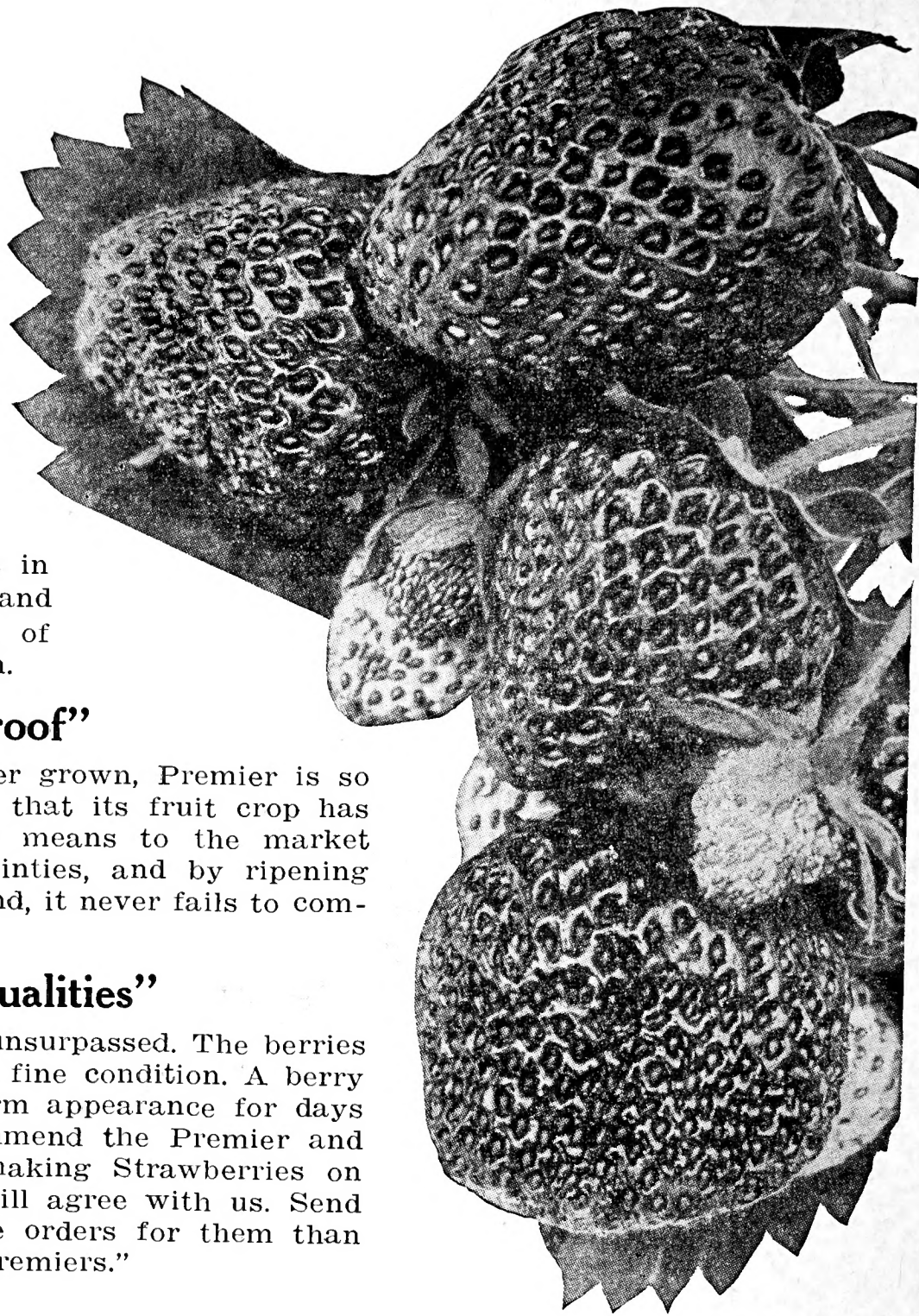
Premier means first, and that describes the Premier Strawberry perfectly. When compared with other varieties it is first in everything. It is one of the first in size, first in yield, first in productiveness, first in flavor, and last but not least, first to ripen. Growers have wanted a variety possessing these qualities. If you plant Premier you will get the first berries on the market. They bear heavily before other varieties begin. You will be picking quantities of them when berries are in demand and bringing the top price; and Premier keeps on producing big crops of beautiful berries until late in the season.

"Is Practically Frost-Proof"

While it is the earliest Strawberry ever grown, Premier is so frost-resistant in both bud and blossom that its fruit crop has never been destroyed. Think what that means to the market grower. Premier eliminates crop uncertainties, and by ripening five days to a week ahead of any other kind, it never fails to command the highest price.

"Splendid Shipping Qualities"

As a long distance shipper, Premier is unsurpassed. The berries are firm and will arrive at the market in fine condition. A berry that will stand up and keep its fresh, firm appearance for days will sell itself in any market. We recommend the Premier and Mastodon as being the biggest money-making Strawberries on the globe, and after you try them you will agree with us. Send your order early as we always get more orders for them than we can fill and the "early bird gets the Premiers."

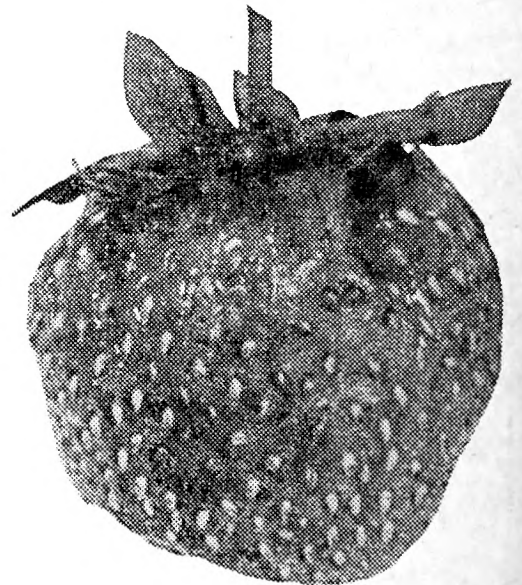


Fairfax

FAIRFAX is more vigorous than Premier and holds up better through the fruiting season. It is fully as healthy and free from disease. Considered just as productive as Premier under normal weather conditions, and more productive in dry seasons. The berries are larger and firmer and the quality much superior to Premier. Fairfax is a very attractive bright red. It is a moderate runner maker but better than Premier. Those who appreciate quality berries and want to get started with the best should plant Fairfax and Dorsett.

Dorsett

Compared to Premier is just as free from disease, and is a better plant maker. It is more vigorous than Premier and able to hold up the size of the fruit better through the season. It is a little heavier fruiter under normal moisture conditions and bears considerably better than Premier under dry conditions. The berries are dark red, larger and firmer and more attractive than Premier and command 25c to 50c per case more than Premier on the market. One of the exceptional features of Dorsett as well as of Fairfax is the exceptional top price on the market. It is freely predicted that when plants are more plentiful, Dorsett and Fairfax will be our leading commercial as well as home berries. Supply very limited this spring; order early.

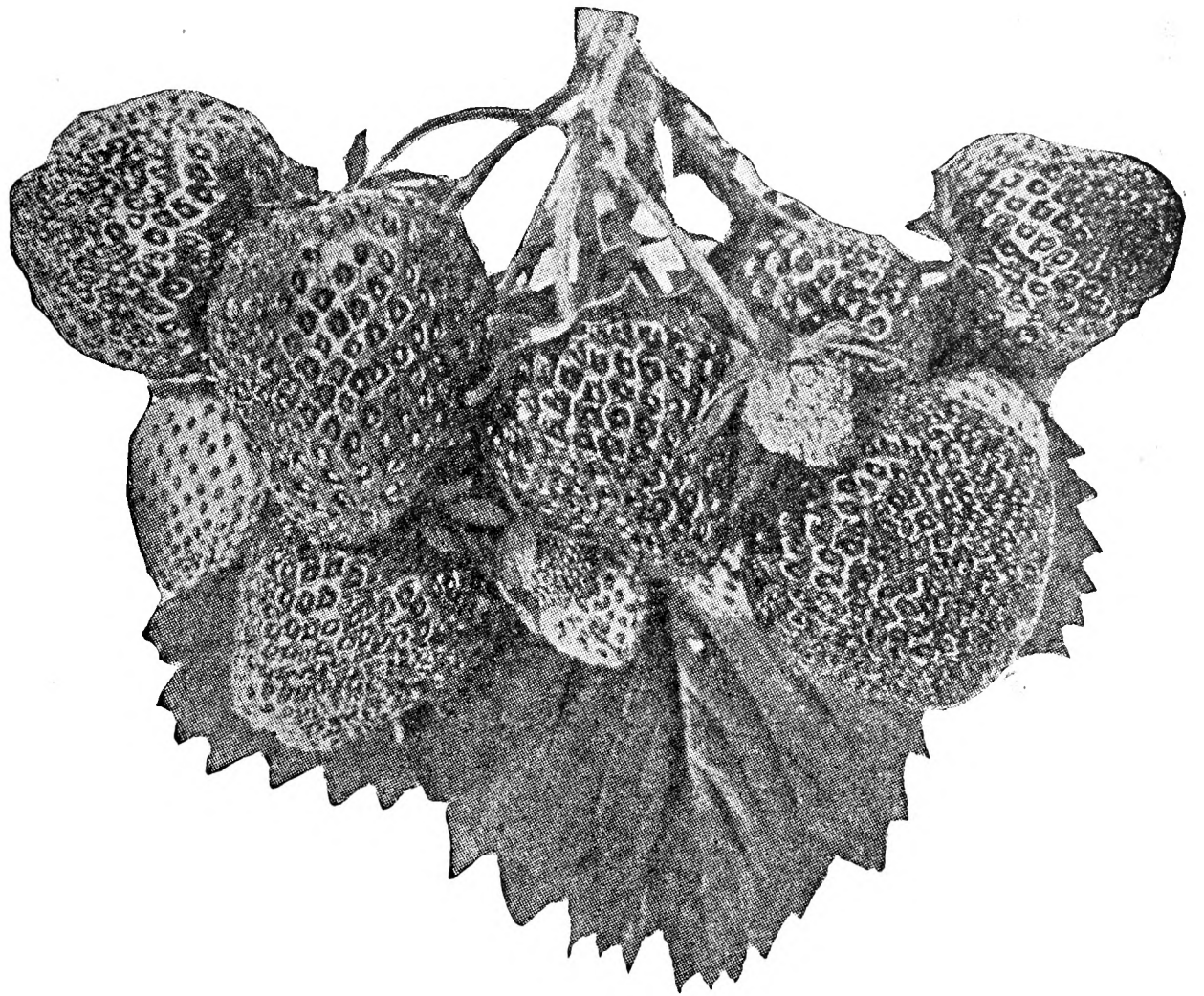


Chesapeake—Another Good Late Variety. The large berries of Chesapeake hold their size well to the end of the season. Flavor is unsurpassed. A leading market variety which sells at highest prices because of its lateness, size, quality, firmness and fine appearance. Strong, healthy foliage. Practically frost-proof because of its late blooming. To obtain best results, grow on rich soil or land that is well manured, and give good care.

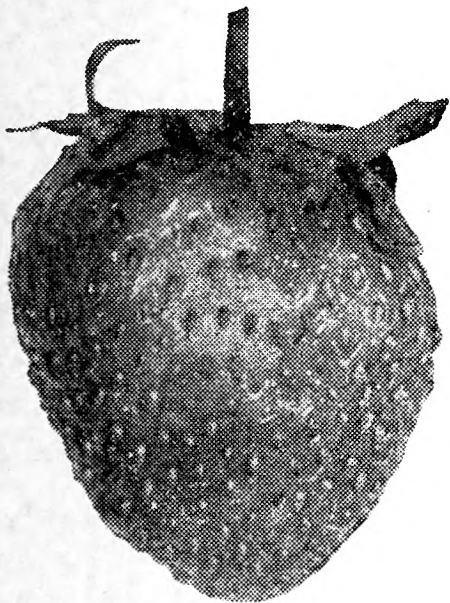
Dunlap

King of the Canners

If you love shortcake, you will appreciate one made with Dunlap, and a can of them during the winter months is a treat. Both the canning factories and the housewife demand this variety on account of its splendid flavor and dark, rich, beautiful color. During the past two decades Dunlap has made more money for Strawberry growers than any other variety. The plants are medium in size, hardy long rooted, very prolific and will more than hold their own under any rough-and-tumble method of cultivation. In fact, the Dunlap is the best berry for the beginner, as it is the easiest Strawberry to grow. Bears early, and is very productive.



Catskill



This variety was introduced a few years ago by the New York Expt. Station. Catskill is a cross between Marshall and Premier and like Premier can be successfully grown in all sections of the country. Does well on any kind of soil—we have fruited Catskill all this year and were pleasantly surprised by the size, beauty and quality of

berries produced this extremely dry season.

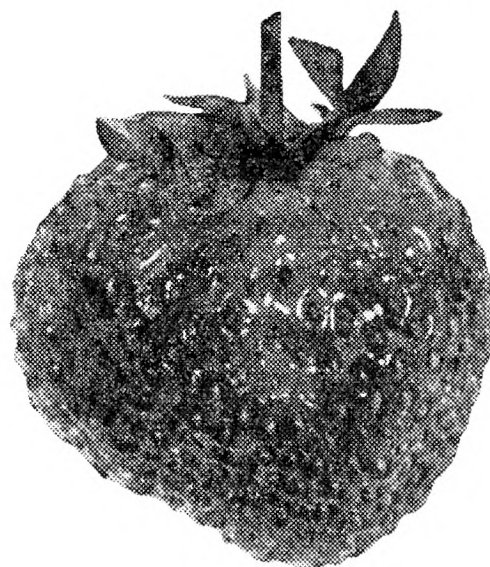
Gibson

Is a very strong grower, with long roots that withstand dry weather. As a drought resister it is a wonder. It has plenty of dark green foliage to protect its enormous crops of fruit from the sun. The vines are loaded with berries. You will hardly understand how the plants can produce such quantities of fruit. The berry is extra large and beautiful, dark glossy red. The calyx is bright green, which adds to its beauty and market value. It has a fine tart flavor, good for table use and canning purposes. This berry originated in Bridgman, and has held its place as the leading commercial variety for many years.

Cooper

Beyond question this variety yields the biggest Strawberries ever produced. Its large, bushy plants are full of vigor and vitality that enable it to be grown successfully in all soils and climates. The flavor of its fruit is delicious, often being compared with that of the wild Strawberry. Cooper produces its crop early in the season, and is especially adapted to fancy local market trade, where its large size and attractive appearance result in quick sales at big profits. Is a splendid berry for table use, its wonderfully sweet flavor making it one of the best for sauce, shortcake, etc. Include some in your order.

Grand Champion



Greatest money-making Strawberry ever introduced; no crop failure on account of frosts. Has produced over 5000 quarts on one-half acre, in spite of heavy spring freezes. ALL-SEASON BEARER, Commences to ripen with the Premier, the earliest berry, and produces fancy berries with

the Aroma, which is a late berry. Plants are large, extra heavy, healthy foliage; berries are bright red, very large in size, and have a fancy appearance. By all means, try a few in your locality. Supply is very limited. Order early to avoid disappointment.

For a Strawberry Garden at Minimum Cost DASS CUT-PRICE PLANTS

It has always been our custom to thoroughly clean out our packing house every day during the shipping season, and as it is impossible to dig the exact number of plants required to fill the day's orders, we frequently find that we have a surplus of some varieties. If you are not particular about varieties, just want good Strawberry plants, this will enable you to plant a patch at a big saving.

When ordering use the term: Cut Price Plants

Some of Our Best Varieties
of Strawberry Plants

\$2.50 PER 1000

Superior Raspberry Plants

Every Raspberry plant carries a certificate of Double Inspection—and our guarantee to be free from disease, true-to-name and productive. Your success is assured when you plant this healthy, vigorous stock as you will harvest big, paying crops of first quality fruit for many years. Remember that every plant is absolutely guaranteed to be free from Mosaic, Root Gall, Blue Stem, and other deadly Raspberry diseases; furthermore, they will be fresh dug and shipped direct to you—there are no storage cellars on our farms, all stock dug and shipped fresh and guaranteed to arrive in perfect growing condition.



LATHAM
Most Profitable
Raspberry

foliage is a healthy, dark green, tough and leathery, highly resistant to insects. Ripens about the same time as Cuthbert and covers a longer fruiting season than any other Raspberry. Color a dark, rich red; quality of the best, with full Raspberry flavor.

Chief —A seedling of Latham and has turned out to be by far the finest early Red for general planting. The fruit is not quite as large as Latham but is brighter red, very firm and a tremendously heavy yielder, producing 20 per cent more than Latham in the Minnesota test plots. The Chief is practically immune from mosaic and mildew and is even hardier and of better flavor than Latham. Raspberry growers have long looked for a good early Red Raspberry. They have tried King, Miller, Early June, etc., and although fairly good in many respects they have not been very profitable. It now looks as though the new Chief is going to meet most of the requirements and become the greatest moneymaker of them all—ripening 10 days before Latham, firmer, same good color, fine flavor and a heavy yielder.

BLACK RASPBERRIES

Black Raspberries should be planted on a rather high soil for best results. Gravelly and loamy soils are best. They are planted about 3 feet in the row, rows being from 6 to 7 feet apart. The young shoots each year are tipped or cut off when about 24 inches high, and the laterals are trimmed to about 6 or 8 inches in length the following spring. Leave about five good, strong shoots per bush.

Cumberland—Without question the most profitable and popular black Raspberry grown; the one safe and reliable commercial variety, because you can depend on a big paying crop regularly. We call it the "**Business Blackcap**" because it succeeds everywhere—light or heavy soils—East, West, North or South—wherever you find Raspberries grown, this is the leading black variety, and it never fails to produce its customary big crop every year. It is perfectly hardy, tremendously productive, the bushes are vigorous, upright, strong and healthy. Berries extra large, glossy black, not equalled by any other variety in quality, flavor and appearance. It's good to eat and good to sell.

Plum Farmer—Is very popular with many growers on account of its earliness, and ability to mature its customary big yield in a very short time, usually from 12 to 16 days. The plants are healthy, canes strong growers. Produces plenty of bearing wood which insures a heavy crop of fruit. The berries, which are produced in clusters, are large, well colored and of first quality. Plum Farmer will give satisfaction everywhere. Ripens nearly a week earlier than Cumberland and can be worked in nicely with that variety.

The New LOGAN—The most dependable early black Raspberry. Ripens one week earlier than Cumberland. Berries are extremely large, delicious, and the pickings from first to last are of uniformly high quality. New Logan holds up well through drought, and is highly disease-resistant. Free from seediness and a tendency to crumble.

Red Raspberries

Red Raspberries will do equally well on light or heavy soil; however it should be well drained. For field culture, Red Raspberries should be planted about 3 feet apart in the row, with the rows 7 feet apart, requiring about 2000 plants per acre. In the spring, all canes should be cut back to about 3 feet and branches trimmed to about 6 inches.

Six or seven good strong canes are sufficient to a bush, and the berries will be higher in quality.

Latham—Although a comparatively new variety, it is entirely past the experimental stage, and we unhesitatingly recommend it as one of the best Raspberries ever grown. It was originated in Minnesota, and has never been known to winter-kill even though exposed to 45 degrees below zero. The sensational yields of this variety have attracted the attention of growers everywhere, and everyone who has given it a trial is praising the many unusual features found in Latham. Is a tall, vigorous grower; the canes are extra heavy, well able to support the tremendous load of fruit. The

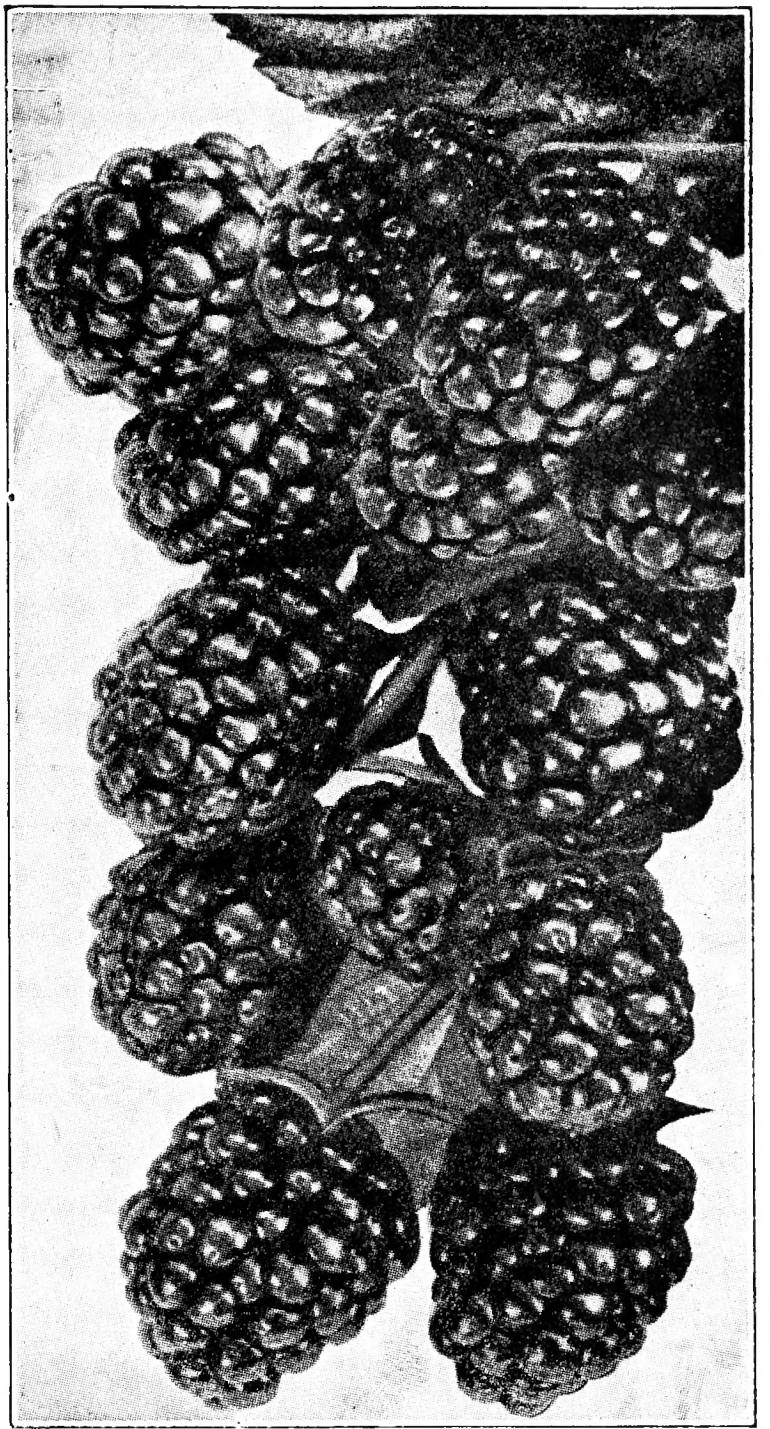
Blackberries

Always Dependable

Blackberries thrive equally well on any light or heavy soil and as they are practically immune from all disease and insects, one planting will provide a big income for a number of years. For field culture, Blackberries are usually planted 4 feet apart in the row, with the rows 7 feet apart, requiring about 1600 plants per acre. For best results they should be confined to hills, allowing only five or six strong shoots per hill. The new growth each summer should be trimmed down to about 24 inches and allowed to branch—this gives a stronger, sturdier bush.

Alfred—This Blackberry has become a favorite for home use and market. The fruit is of the finest quality for table use, as it is nearly seedless and coreless. The flavor is sweet and enticing. Berries grow to immense size. Ripens early, perfectly hardy, a vigorous grower.

Eldorado—Never winter-kills and always produces a full crop of jet black berries of enormous size. The hardiest and prettiest of all Blackberries, with that delicious aroma and flavor which can only be found in a wild Blackberry. It is valuable for all purposes, both home and commercial, being so very firm that it will remain in good condition for three and four days, and can be sent to distant markets where it always commands the highest prices.



Alfred

Dewberries

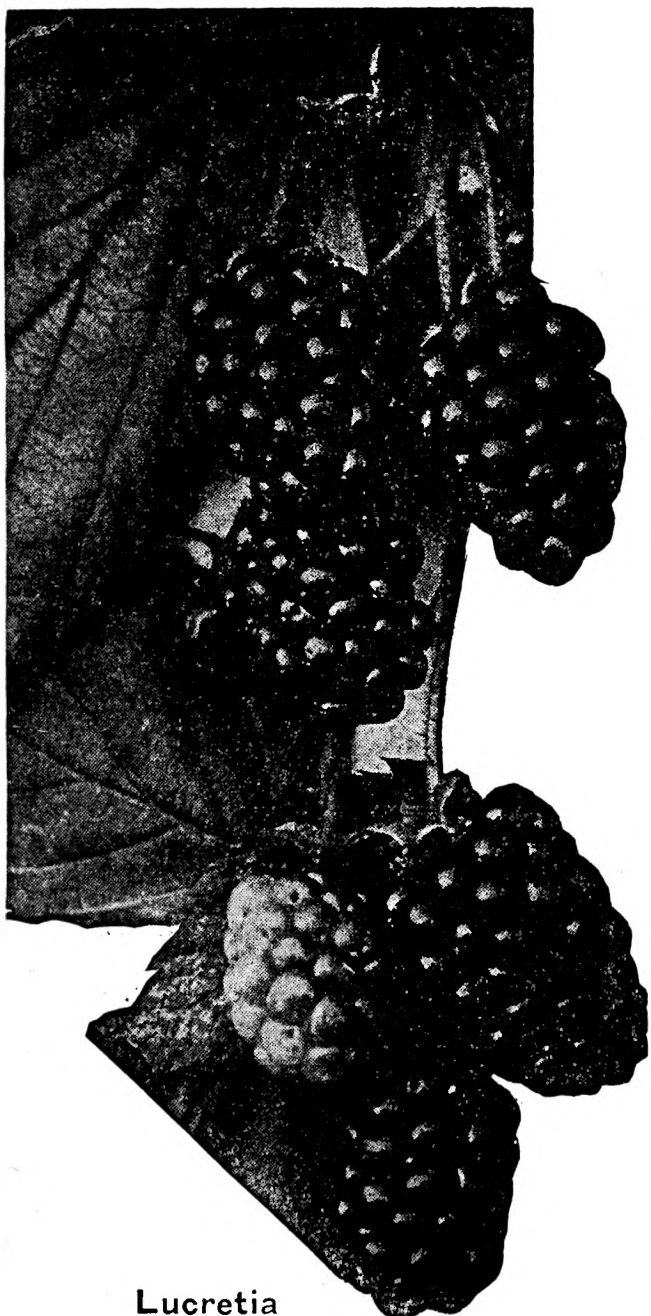
To Increase Your Profits

These are a sort of Blackberry, but the vines are not self-supporting, as are the Blackberries. The usual method of propagation is as follows: They are set 3 feet in the row, rows 6 feet apart. Short posts are set about every fifth vine and a wire stretched about three feet from the ground. Each spring all strong vines are tied to the wire, and the ends that are too long are cut off about ten inches above wire.

Lucretia—This is the best variety of Dewberry that we have fruited and is one that gives universal satisfaction. Berries are very large, in fact, being larger than any Blackberry grown. They are jet black, coreless, sweet and juicy. Dewberries are free from rust and all other fungous diseases. Plant at least a few for home use.

Ripens a week to ten days before the earliest ordinary blackberries. This, and the fact that they are unquestionable one of the finest looking berries of their kind and of such big, uniform size makes them topnotchers on price in any market. Dewberries are especially productive in light soils. Plant Lucretia and such land will make you a profit.

Your dollar has twice its usual purchasing power when dealing with us, the growers, for the middleman's and agent's commission remains in your own pocket.



Lucretia

GRAPES

Are Easy to Grow—Good for a
Lifetime—Very Productive

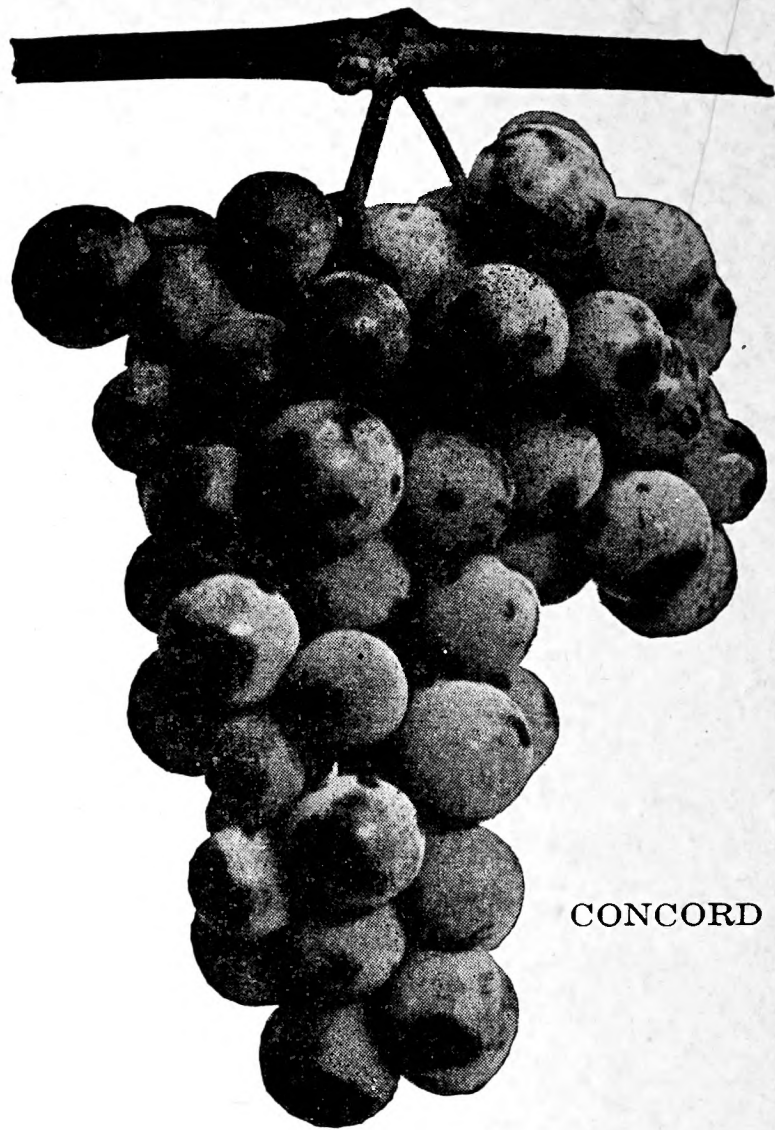
The Grape is perfectly hardy and can be grown almost anywhere. It must have well drained soil, but it is not particular as to the kind of soil. They grow equally well in heavy clay, light sand or loam. Should be planted about 8 to 10 feet, requiring 485 plants per acre. Should receive regular trimming, cutting off of all the new growth but four laterals, two each side of the main stalk, and these trellised on the wire so they nearly meet the laterals reaching from the next vine, making it one continuous line, one on each wire; no side shoots of any kind.

Concord—This is the standard of quality and comparison on all markets. It is perfectly hardy, very productive and will succeed anywhere. The bunches are large and compact; berries large, bluish black color. Foliage healthy and tough, and hangs on very late. The one all-purpose Grape; we heartily recommend it for both home use and market.

Worden—Very hardy, healthy and productive. In vigor and health is surpassed by no other variety; is practically immune from fungous diseases, and a sure, heavy cropper. A few days earlier than Concord. Jet black.

Niagara—This is the late leading white Grape throughout the country. Berries large, yellowish green when ripe. The bunch is large and compact. Is vigorous and hardy, and fully as productive as Concord. Fine flavored.

Portland—A new white grape developed in Fredonia, N. Y. Ripens earlier than any other known grape, which permits its being planted over a wide range of territory. Berries large, and have that beautiful yellowish color. Quality excellent, equal to the Niagara and other later Grapes. It contains much sugar and can be eaten before it is fully ripe. Vine hardy and productive. You will be pleased with this new Grape. Makes a beautiful showing with Fredonia.



CONCORD

Delaware—Beautiful light red to amber colored berries, small in size and sweeter than any other Grape. Bunches small and compact, sometimes shouldered. Flesh is juicy and spicy and of finest quality for table use, jellies, etc.

Caco—A new red Grape originated in Delaware. Its quality is excellent, ripening in September. The fruit is very large, and handsome. A rich wine-red color. Flavor of the finest, very rich and sweet.

Moore's Early—Ripens about ten days earlier than Concord. A fine table Grape, as the fruit is sweet and delicious. Berries and bunch extra large and firm; quality excellent. A fine Grape for home use and market. Black with light blue bloom.

A VINEYARD—FOR PLEASURE AND PROFIT

Grape Culture—Dig a wide deep hole. Set vines about 9 or 10 feet apart in the row, with the rows about the same distance apart. Tie the plant to a stake the first year. The second year set posts and stretch one wire. The third year, another wire should be added about 10 inches above the first wire, allowing the plant to grow just one stem up to the second wire, then cut plant off even with this second wire. This forces the plant to send out side branches or shoots to grow out onto the wires. Old wood should be cut away each year, allowing the new wood to grow along the wires to produce the following year's crop. Trim in early winter or early spring.

Linnaeus Rhubarb

Rhubarb should be grown in every garden, as it provides material for early spring pies and fresh table sauce. It is also valuable for canning. Plant a few roots this spring and you will have a fresh supply of this early "fruit." This variety differs greatly from the old "pie plant," in that it has larger, more tender stalks and a milder sub-acid flavor. Our roots are strong and priced right. Include a few of them in your order this spring.

LINNAEUS RHUBARB ROOTS

Strong, 2-year, 6 for 50c; 25 for \$2.00; 100 for \$6.00.

Martha Washington Asparagus

This new pedigreed, rust-resistant Asparagus is the result of breeding by the United States Bureau of Plant Industry.

We are listing this one variety only as that is the best and are listing it in only one size, the two-year, which we consider to be the best Asparagus buy in the country. Why let a few cents difference in price keep you from having the best, both as to variety and size? See Price List.

Pears of Proven Varieties

The Pear tree will grow on almost any good soil, but thrives best in a rather heavy clay or loam. Soil should be well drained and kept under cultivation for best results. Standard varieties are planted about 18 to 20 feet apart for permanent orchards and the dwarfs about 10 feet. Dwarfs must be planted deep enough to cover the junction of Pear and Quince about two or three inches.

PRICES: 5 to 6 feet trees, 50c each; \$4.50 per 10; \$40.00 per 100.

Bartlett—This is the most popular Pear, both for home use and market, that the world has ever known. It is buttery and rich with a high flavor. The tree is strong and vigorous in growth. Bears young and abundantly. It is a leader among canning Pears, and when well grown is the universal favorite and commands top prices.

Clapp's Favorite— A superb, large, long yellow Pear, highly flavored and richly flushed with russet-red next to the sun. The flesh is fine grained, juicy, melting and buttery. A fine grower and enormously productive. Comes about two weeks earlier than Bartlett.

Sheldon—One of the most highly prized late Pears; comes on some time after Bartlett. Roundish shaped and greenish russet with richly shaded cheek. Flesh a little coarse, melting, juicy with a very brisk vinous, highly perfumed flavor. A vigorous grower and a good bearer, even while quite young.

Seckel—Often called the Sugar Pear. Is small in size, one of the richest and highest flavored Pears grown, always in demand for desserts and luncheons. Tree makes a somewhat slow, but stout and erect growth.

Kieffer—Sometimes known as Winter Bartlett. Is a sure cropper, heavy yielder and has exceptional shipping qualities. While not of the best quality for out-of-hand eating, it is a favorite for canning and preserving. The early bearing, heavy cropping trees make it desirable for quantity.

Duchess Dwarf—This is the king among the dwarf Pears, and the one that gives the most satisfaction to growers everywhere. Does not require much space for planting and bears enormous loads of high quality fruit. When fully ripe is a golden yellow, with a dull blush on the sunny side. When properly trimmed it does not grow over five or six feet high, which feature makes it valuable for back-yard gardens and city lots.

Plums

In general, Plum trees thrive best in a sandy or clayey soil, that is well drained. They are usually planted about 18 feet apart in permanent orchards, or where a wagon sprayer is used about 20 feet. Many varieties of Plums produce so abundantly that the best results are obtainable only by careful thinning. If allowed to grow naturally the trees will be weakened and the fruit will be smaller.

PLUM PRICES

5-6 ft. trees 60c each; \$5.50 per 10; \$50.00 per 100

Abundance—Fruit large, showy, beautiful amber turning to a rich, bright cherry-red color, with a decidedly white bloom, and highly perfumed. Flesh light yellow, exceedingly juicy and tender, of a sweetness impossible to describe. Stone small and parts readily from flesh. For canning it is of greatest excellence. Its season is very early, ripening in advance of other Plums, thus adding to its value.

Green Gage—Medium sized, round, skin green, becoming yellowish green usually with reddish brown dots and network at base. Flesh pale green, melting, juicy, sweet and rich, and unequalled in flavor.

Lombard—Tree a medium sized, vigorous grower. Fruit medium to large, roundish oval, dark red; flesh yellow, juicy and pleasantly flavored. Is hardy and a valuable commercial sort.

Monarch—Large, vigorous tree, begins fruiting young. Fruit very large, brilliant, bluish purple. Flesh is pale golden green and juicy. About two weeks later in season than Lombard.

Bradshaw—A very large and fine early Plum; dark violet, red, juicy and good. Trees erect and vigorous; very productive; valuable for market. The quality is excellent, and it is one of the most popular Plums for canning, while its attractive color, good quality and shipping properties make it sought for as a market variety.

Yellow Egg—Golden yellow in color with thick bloom. Flesh golden yellow, rather juicy and very highly flavored. Tree large, productive.

Italian Prune

A European Variety

Giant purple, oblong plum which ripens in September. Beautiful and very delicious. Regular cropper. Fine for drying, canning, storage.

Everyone Should Plant an Orchard

Every land owner should plant at least a small orchard. The blossoms alone would more than repay for the trouble, even the shade it might afford. The land scape effect it gives to the homestead is invaluable, as no real homestead could be complete in appointment without its orchard; it's the one dear spot in the memory of everyone reared on the farm that has its orchards. Still some people neglect such an important feature in laying out their home grounds, and with all these benefits you may have fruit fresh from the tree at your pleasure with a flavor that cannot be had in ones from a distant market. Could there be greater inducements for planting an orchard?

THERE IS A DIFFERENCE!

In a good many nursery catalogs you will find trees listed at extremely low prices, and this is the reason. They are the so-called Mail Size trees, that are little, scrawny, one-year grafts or two year runts, that in our opinion are unfit for planting. The biggest loss is in the growth, as plantings made with these are from one to three years behind in growth, when planted with standard size trees. Also, the little trees are so small and low-branched that it is practically impossible to trim them and have a good shaped tree with branches where they should be. We do not plant the small trees, do not recommend them and absolutely do not sell them, as we feel that it would be a blot on our reputation to take anyone's good money for such stock. The hog and cattle feeders have learned long ago that it is a pretty risky proposition to buy "runts," and we do not believe that any planter should let a few cents difference in first cost persuade him to plant any other than the high grade standard size trees that we offer.

Dass' Time-Tried Apples

In late years the cost of bringing an orchard of Apples into bearing has been materially reduced by using peach and other fillers in the orchard. The Apples are planted from 33 to 40 feet apart and the fillers between. These fillers to be removed in from 10 to 15 years. Any land that is well drained and not too dry will raise Apples, and the varieties we list are time-tried and proven.

Prices of 5 to 6 ft. trees, all varieties: 50c each; 10 for \$4.50; 100 for \$40.00.

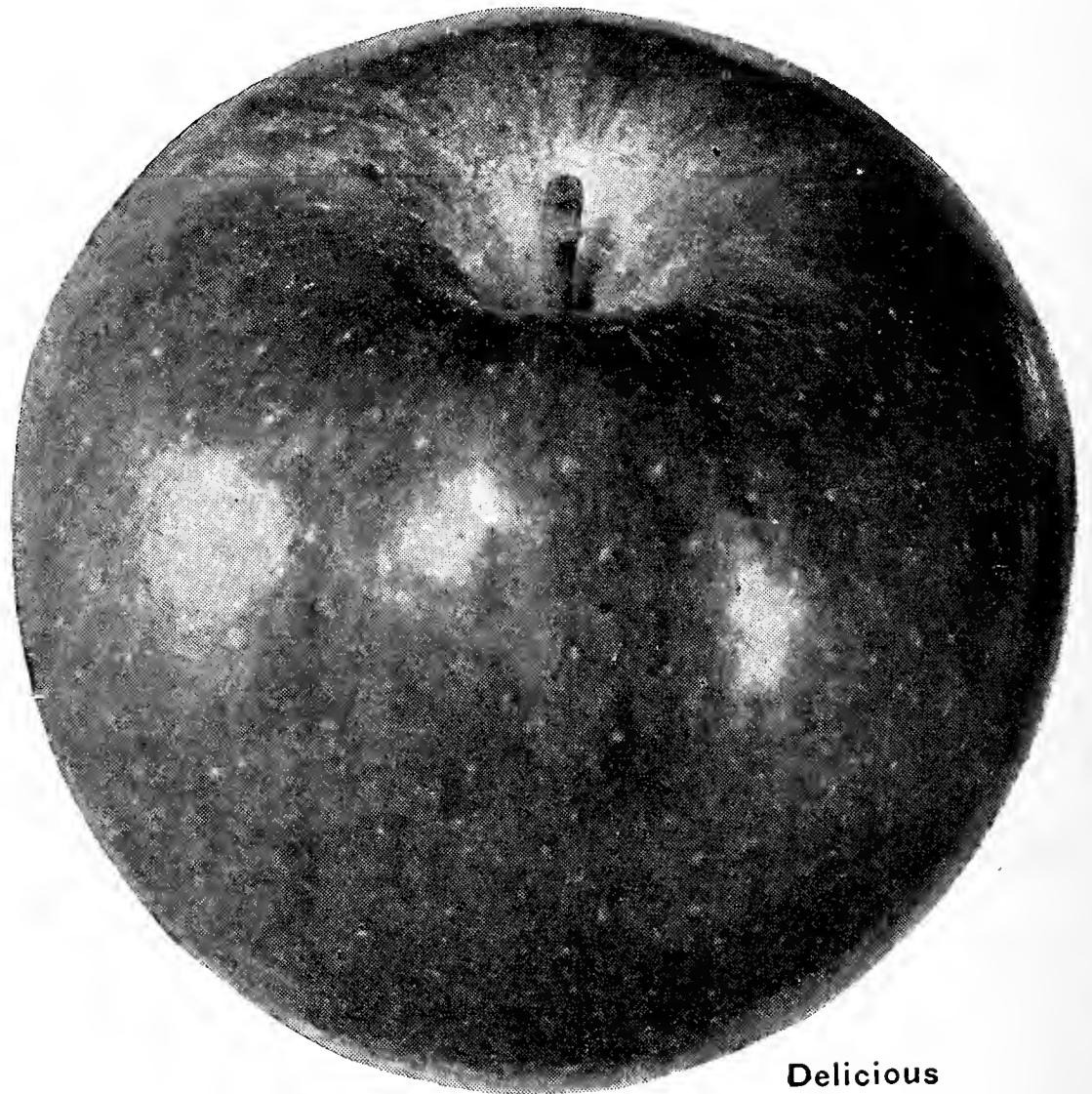
Summer Apples

Yellow Transparent—This is the best of all early summer Apples; excellent for both cooking and eating. Fruit large, crisp, tender, juicy, mildly sub-acid. Skin yellowish white when ripe. Tree medium sized, vigorous, hardy and quick growing. It is excessively productive and bears at an early age. Brings top prices on all markets, and is excellent for home use.

Autumn Apples

McIntosh Red— A medium sized, deep crimson Apple that is very beautiful. The tree is very hardy, vigorous, and quick growing. Will do well in all sections of the country. Flesh is pure white, tender, juicy and has a splendid flavor. In fact, we know of no fall Apple that is its equal. It originated in Canada and is, therefore, very hardy. Plant at least a few trees and have good Apples while winter Apples are ripening. These will keep in storage for several months.

Wealthy— Large in size when full grown, and a good cropper. Fruit is red with light streaks. Quality good, juicy, an excellent cooker and canner. Is a hardy tree, and a good, quick grower. Bears young.



Delicious

Winter Apples

Grimes Golden—The nearest to perfection of any yellow winter variety now in general cultivation. Is a large sized, golden yellow Apple, with extra fine flavor, and good keeping qualities. Tree a quick grower, and bears young. Don't fail to include some in your orchard.

Stayman's Winesap—This Apple is now attracting attention everywhere as a profitable market variety. It has large size, dull red color, great productiveness and best quality. The tree is a vigorous grower and is irregular and drooping in habit, and adapts itself readily to different soils and climates.

Baldwin—The great commercial late winter Apple. Tree a large, vigorous, open grower, upright in tendency and very productive. Fruit large, rounded, deep red. Flesh juicy, crisp and rich.

Delicious—No new variety has ever gained popularity in so many different Apple sections as the Delicious. Fruit extra large. A brilliant bright red; flesh fine grained, crisp and juicy with a delightful aroma. Is of very highest quality. Tree one of the hardiest and a quick grower and bears young.

R. I. Greening—This is the old-fashioned Greening that sells readily at good prices on all markets. The best Apple for cooking purposes that there is grown, and also excellent for dessert use. Large in size; flesh firm, fine grained and crisp. Tree grows large and spreading; does well in any soil and climate.

Jonathan—A beautiful all-red Apple, medium in size, highly flavored, and of excellent quality, being tender, juicy, spicy and rich. A splendid market and family sort. Tree long lived, productive and an early bearer. Will keep well without special care, and will stand much handling.

Northern Spy—This is a fine Apple for culinary use and its exceptionally fine flavor makes it invaluable as a dessert Apple. Fruit extra large, firm, tender, crisp and juicy; mild sub-acid flavor. Skin pale yellow with bright pinkish red, and mottled with carmine. Tree large and vigorous.

New Cortland—The young bearing habit of this fine new fall Apple has astonished growers everywhere. It has proven to be one of the greatest eating, shipping, and market Apples ever introduced. The trees are large, healthy, and immensely productive. Fruit large and handsome. Flesh fine grained, crisp, and juicy.

Double Red Delicious—This variety is like Delicious in every respect excepting that it has added color. As the name implies this is a solid red, highly colored Delicious. It is recommended especially for locations where Delicious does not have sufficient color. The tree is hardy, healthy, vigorous and bears regular annual crops. Flesh is fine grained, crisp, melting and juicy. Quality is very good and the season is November to March. Delicious is a wonderful eating Apple.

Plant Peaches for Quick Returns

This fruit brings returns sooner than any other tree that can be planted. It is very desirable also for use as a filler in Apple, Plum or Cherry orchards, because it comes into bearing so soon and makes the orchard show a profit before the slower growing trees reach their bearing age. They are usually planted from 15 to 20 feet apart in permanent orchards, and do best on light, well drained soil. Trees should be severely pruned when planted, allowing them to make new branches on the planted trunk.

Extra fine, 5 to 6 ft. trees, the best size to plant: 35c each; \$3.00 per 10; \$25.00 per 100.

Elberta—The standard market Peach of the whole country. Perfectly hardy and a strong growing disease-resistant variety. Color yellow with red cheek, flesh yellow and highly flavored; freestone; skin exceedingly tough and will stand long shipments better than any other Peach. There are more acres of Elberta now bearing than all other varieties combined in the great middle-west Peach belt, and we feel certain that it will hold this place for many years.

South Haven—Our stock of South Haven was budded from bearing trees and they certainly are fine. This great variety has been out-selling all early Peaches on the market for the past several years and we recommend it without hesitation as being an extra fine sort. Is large sized, freestone, yellow flesh and skin with red cheek; tree a quick, upright grower.

Champion—A white-fleshed Peach, very excellent in quality; attractive fruit; large Creamy white, tender flesh, very pleasant flavor, having a peculiar honey taste. Stone semi-free to free. Ripens with St. John; three weeks before Elberta.

J. H. Hale—Fruit averages one-third to one-half larger than the Elberta; ripens about five days earlier and is much superior in flavor. Color a beautiful golden yellow with carmine blush. Is only partially self pollenizing, so should be planted with some other variety such as Elberta. Freestone.

Hale-Haven—This new Peach is a cross between South Haven and J. H. Hale, two of the greatest Peaches. It is an exceptionally early, heavy yielding, frost-resistant variety. Two weeks earlier than Elberta. The flesh of Hale-Haven is thick, wholesome and delicious. Freestone. A real dependable money-maker.

Rochester—This wonderful new Peach originated near Rochester, New York, and is of the Crawford type. However, it precedes the Early Crawford by a week, is more prolific, hardier, larger, prettier and fully its equal in quality. Its skin is thick and tough which makes it a good shipper. Light yellow to orange, blushed with dark red. Well adapted for both home use and market. Freestone.

Quince

Orange—We list only this one Quince, as we consider it the best by far. The trees commence to bear very young and produce big crops. Fruit is excellently flavored, orange shape and of large size. Tree a dwarf grower, planted about 12 feet apart in orchards.

PRICES: 4 to 5 ft. trees, 60c each; \$5.75 per 10; \$60.00 per 100.

Apricot

Moorpark—Very large, orange-yellow fruit with red cheek; flesh yellow, sweet, juicy and delicious; freestone; very productive; extra good for either market or dessert. Will thrive and produce an abundance of fruit anywhere that a peach or plum will thrive.

PRICES: 4 to 5 ft. trees, 60c each; \$5.75 per 10; \$55.00 per 100.

Cherries

Cherries succeed best in sandy or gravelly soil, but it must be well drained. The Sweet varieties grow more rapidly, and make more pyramidal trees. Sour varieties are more dwarf and can be planted about 18 feet apart in permanent orchards. Sweet Cherries should be planted about 24 feet apart. The roots and tops of Cherry trees should be severely pruned when planted, to secure best results.

CHERRY PRICES

Sweet, 5-6 ft. trees, 60c each; \$5.50 per 10; \$50.00 per 100.

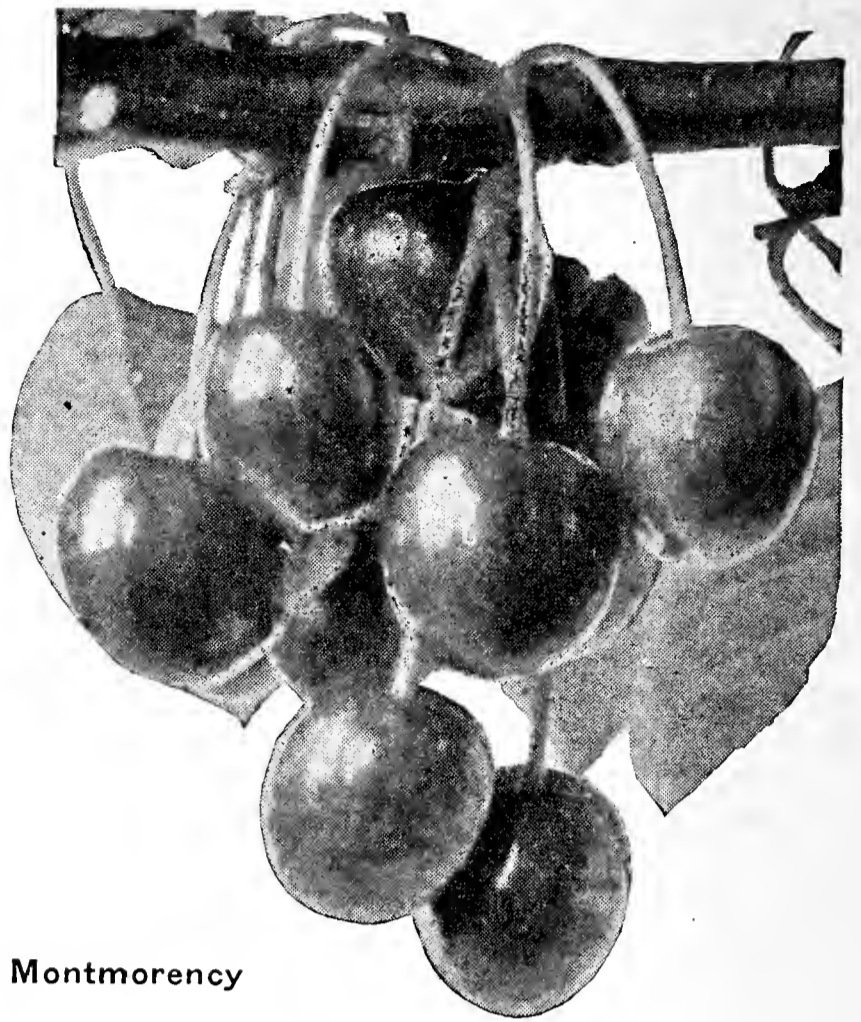
Sour, 50c each; \$4.50 per 10; \$40.00 per 100.

Early Richmond— (Sour). This is the earliest and best sour variety, and a well known standard sort. Tree is hardy, vigorous and an upright grower. Is very productive and regular in bearing. Fruit a clear bright red, of medium size, acid, rich, and one of the best for canning and pies.

Montmorency— (Sour). The finest sour Cherry grown. Is large, juicy, very bright red, acid. There is greater demand for this Cherry on the market than any other. The trees are the cleanest and best growers and are less subject to disease, wet weather and rot than any other sour variety. Ripens about a week later than Richmond.

Bing— (Sweet). Trees hardy and a strong grower, especially adapted to the East, although it came from Oregon. Fruit extra large, black, very fine and excellent for commercial purposes.

Black Tartarian— (Sweet). Tree vigorous, upright grower and immense bearer. Fruit very large, purplish black, heart-shaped; flesh mild and sweet, and quality considered of the best for market and dessert.



Montmorency

Napoleon— (Royal Ann). (Sweet). Of fine appearance and very largest size. Color yellow and amber, with bright red blush; flesh firm, juicy and delicious. Profitable for market, finding a ready sale for canning and dessert. Bears enormous crops.

Schmidt's Bigarreau— (Sweet). . . New remarkably hardy and productive. Fruit of largest size, a deep mahogany color; flesh dark, tender, juicy, very rich, excellent flavor. Stone small and separates easily from flesh.

Windsor— (Sweet). New seedling originated at Windsor, Canada. Fruit large, liver colored, quite distinct; flesh remarkably firm and of fine quality. Tree hardy and very prolific. Most valuable late variety for market or family use.

Currants

**Fine for Jelly—Easy to Grow—
Very Productive**

The Currant is one of the most valued of small fruits. Being very hardy, they do not winter-kill, are easy of cultivation, requiring little care.

Perfection— Cross of Fay's Prolific with White Grape and combines the best qualities of both parents. In color it is beautiful bright red and of a size larger than the Fay; the clusters average longer and the size of the berries is maintained to the end of the bunch. It is one of the most productive Currants we have ever known.

London Market— A fine red Currant. Quality excellent with mild flavor. Bush healthy and vigorous.

PRICE: Each, 20c; 10 for \$1.75; 100 for \$15.00.

Gooseberries

**There's Nothing Quite Like the Pies
and Preserves from Gooseberries**

Very profitable, for they are strictly for the North and require a cold climate; easy to plant and care for, and bring good returns. They require feeding, and when given a good mulch of stable manure in the late fall, will repay you well.

Houghton— Small, dull reddish brown fruit, tender, juicy, sweet and pleasant, ripening soon after midsummer. Profuse bearer.

Downing— Medium to large, pale green. Quality good. Upright, productive bush. Midseason. The most widely grown variety.

PRICE: Each 20c; 10 for \$1.75; 100 for \$15.00.

We cannot ship Gooseberries and Currants after April 10th, as the law requires that they must be shipped when dormant. The State Inspector makes a spring inspection of Gooseberry and Currant plants, consequently orders should be in by April 10th, to guarantee shipment.

Selection of Ever-Popular Roses

Graceful Climbing Roses

Price of heavy, well rooted, 2-year climbers:
30c each; 4 for \$1.00.

American Beauty—The famous American Beauty Rose in climbing form. Has all of the characteristics of its relative, including form and color, a bright rich, red. Healthy foliage and has strong climbing habit of growth.

Crimson Rambler—Will attain a height of 10 to 20 feet in a season; produces a marvelous profusion of rich and glowing crimson clusters during June and July. The flowers are grown in pyramidal panicles, each carrying 30 to 100 blooms.

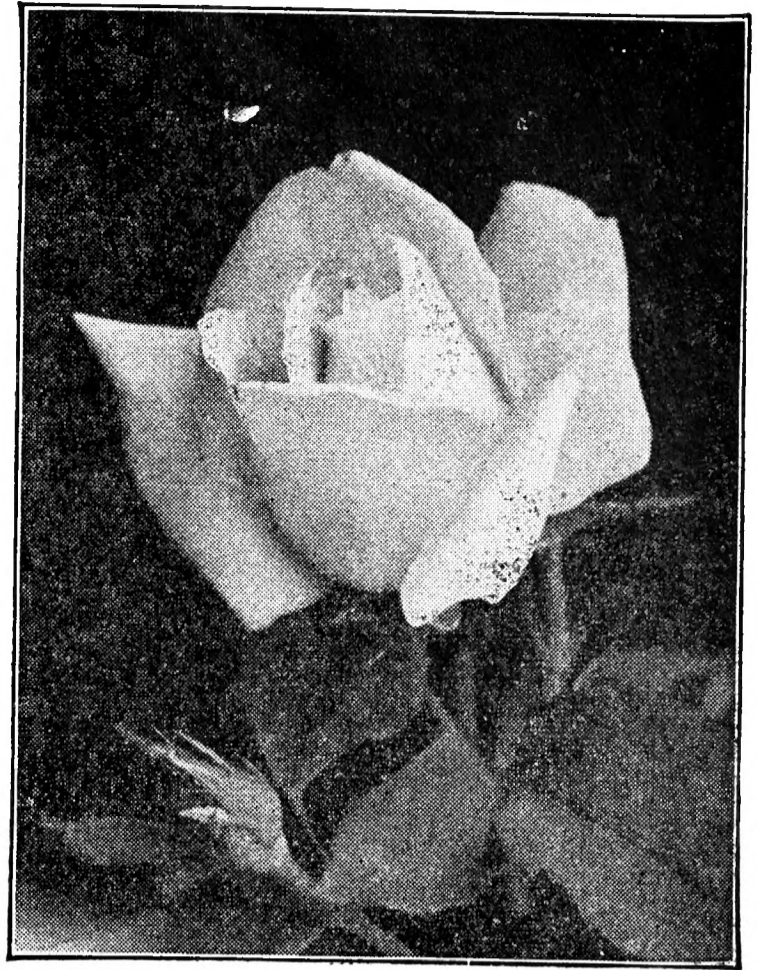
Gardenia—Yellow climber. A most beautiful Rambler, being different from the Dorothy Perkins in color only. Flowers borne in large clusters of small, double blooms, and are very sweet scented.

Dorothy Perkins—A most beautiful shell-pink, and the thriftiest and showiest of all pink ramblers. Strong in growth; a profuse bloomer.

Los Angeles—(Hybrid Tea). Beautifully shaped, fragrant flowers of pale salmon-pink, richly shaded with deep rose and gold.

Kaiserin Augusta Victoria—(Hybrid Tea). Most popular white Rose. Large double, very fragrant flowers borne on long, stiff stems.

Talisman—Most astounding Rose novelty produced in many years. Its brilliant orange-red buds open to large, fragrant, high-pointed bloom of glowing golden yellow strained with copper-red and orange-rose on inside of petals. As the petals unfold, they become apricot-gold, deep rose-pink or old rose, and unlike most roses, the color becomes brighter as the flowers develop. Plants are vigorous, healthy and hardy growers.



Paul's Scarlet—A wonderful rose for trellis or pergola. Winner of Gold Medal as best new climbing Rose. Flowers are scarlet, shaded crimson. Blooms very long, holding its flowers after many June bloomers have dropped their petals.

Sunkist—For cut-garden display, this Rose has no superior, as it blooms so freely. The lovely flowers are yellow tinged orange, perfectly, shaped and come singly on long stems.

Paul Neyron—(Hybrid Perpetual). Largest Rose in cultivation. Color bright cerise-red, very fragrant. June until October. Flowers full and double.

Ready to Bloom Field Grown Shrubs

Hydrangea P. G.—A very handsome shrub which will often grow six or more feet high. The foliage is very beautiful. The flowers bloom in the early part of August, continuing for several weeks, and if the flowers are cut in the late fall, before freezing, they may be used as winter bouquets. Flowers in immense panicles of white, later turning a light pink on some tips.

Price, 2-yr. plants, 30c each; 4 for \$1.00

Snowball—A magnificent tall growing shrub, reaches a height of about 8 to 10 feet, and about 8 feet in diameter. This is the old-fashioned Snowball with round clusters of pure white, sterile flowers. Blooms latter part of May. Very hardy in sun or shade.

Price, 2-yr. plants, 30c each; 4 for \$1.00.

Barberry, Red Leaf—The new shoots of the plants that are planted in the sun are red, but the older leaves are what we would call a deep maroon-purple. It is beautiful and we do not think the coloring is equalled by any other shrub. The habit of growth and general characteristics are the same as the regular Japanese Barberry. Should be planted in the sun and not too close together.

Price, 2-yr. plants 30c each; 4 for \$1.00.

Bush Honeysuckle—(Pink Tartarian Honeysuckle). Perfectly hardy, an upright bush form, growing to a height of eight or ten feet at maturity, yet can be kept trimmed to any height desired. It is covered with beautiful delicate pink flowers about the time of Decoration Day, but its chief claim is its wealth of orange and red berries, which literally cover the plant in summer and autumn.

Price 30c each; 4 for \$1.00.

Spirea Van Houttei—Commonly called Bridal Wreath. This is the most popular of all shrubs. During May and June the branches are covered with a mass of flowers, and the dark green foliage gives a beautiful effect until winter. Thrives equally well in shade or sun. Plants attain a height of about five feet, and when in bloom are a mass of white, and never fail to attract attention.

Price, 3-yr. plants, 3 to 4 ft., 15c each; 10 for \$1.00.

Here Are Those Money-Saving Dass Prices

Strawberry Prices

	25	50	75	100	150	200	250	300	400	500	1000
Cut Price	\$.25	\$.60	\$.60	\$.75	\$1.00	\$1.10	\$1.20	\$1.30	\$1.40	\$1.50	\$2.50
Dunlap25	.45	.65	.75	1.00	1.20	1.35	1.55	1.65	1.75	3.00
Premier50	.75	.90	1.00	1.10	1.20	1.40	1.75	2.00	2.25	4.00
Dorsett50	.75	.90	1.00	1.10	1.20	1.40	1.75	2.00	2.25	4.00
Fairfax50	.75	.90	1.00	1.10	1.20	1.40	1.75	2.00	2.25	4.00
Grand Champion50	.75	.90	1.00	1.10	1.20	1.40	1.75	2.00	2.25	4.00
Cooper50	.75	.90	1.00	1.10	1.20	1.40	1.75	2.00	2.25	4.00
Gibson50	.75	.90	1.00	1.10	1.20	1.40	1.75	2.00	2.25	4.00
Catskill50	.75	.90	1.00	1.10	1.20	1.40	1.75	2.00	2.25	4.00
Chesapeake50	.75	.90	1.00	1.10	1.20	1.40	1.75	2.00	2.25	4.00
Wayzata	1.25	2.00	2.75	3.50	4.75	6.00	7.50	9.00	10.00	11.00	20.00
Mastodon50	.75	1.00	1.25	1.50	1.75	2.00	2.50	3.00	3.50	6.00
Gem50	.75	.85	1.00	1.25	1.50	1.75	2.00	2.50	2.75	5.00

Red Raspberry Prices

	25	50	75	100	200	300	400	500	1000
Latham, 1-yr., No. 1	\$1.00	\$1.50	\$2.00	\$2.50	\$4.25	\$6.00	\$7.25	\$8.50	\$16.00
Latham, 1-yr., No. 275	1.00	1.40	1.75	2.75	3.75	4.75	5.50	10.00
Latham, 2-yr., No. 1	1.75	2.50	3.50	4.50	7.75	10.25	13.25	15.00	29.00
Chief, 1-yr., No. 1	1.00	1.50	2.00	2.50	4.25	6.00	7.25	8.50	16.00
Chief, 1-yr., No. 275	1.00	1.40	1.75	2.75	3.75	4.25	5.50	10.00

Black Raspberry, Blackberry and Dewberry Prices

	25	50	75	100	200	300	400	500	1000
Cumberland	\$1.00	\$1.50	\$2.00	\$2.50	\$4.25	\$6.00	\$7.25	\$8.50	\$16.00
Plum Farmer	1.00	1.50	2.00	2.50	4.25	6.00	7.25	8.50	16.00
New Logan	1.00	1.50	2.00	2.50	4.25	6.00	7.25	8.50	16.00
Alfred Root Cutting	1.00	1.50	2.00	2.50	4.25	6.00	7.25	8.50	16.00
Eldorado Root Cutting	1.00	1.50	2.00	2.50	4.25	6.00	7.25	8.50	16.00
Eldorado Transplants	1.75	2.50	3.50	4.50	7.75	10.25	13.25	15.00	29.00
Lucretia	1.00	1.50	1.90	2.30	3.50	4.90	6.10	7.25	14.00

Grape Prices

	Each	25	50	75	100	200	300	400	500	1000
Concord, 1-yr.	\$.10	\$1.25	\$1.75	\$2.50	\$3.00	\$5.50	\$7.75	\$9.25	\$10.50	\$20.00
Concord, 2-yr.10	1.50	2.70	3.75	4.75	8.25	12.00	15.00	17.50	35.00
Niagara, 1-yr.10	1.10	2.00	3.00	4.00	6.50	8.75	11.00	13.00	25.00
Niagara, 2-yr.10	2.00	3.75	4.75	6.00	10.50	14.50	17.50	20.00	40.00
Moore's Early, 1-yr.10	1.10	2.00	3.00	4.00	6.50	8.75	11.00	13.00	25.00
Worden, 1-yr.10	1.10	2.00	3.00	4.00	6.50	8.75	11.00	13.00	25.00
Delaware15	2.50	4.50	6.25	8.00					
Caco15	2.50	4.50	6.25	8.00					
Fredonia15	1.00	1.50	3.00	5.00					

Asparagus Prices

	25	50	75	100	200	300	400	500	1000
Martha Washington, 1-yr., No. 1	\$.40	\$.75	\$1.00	\$1.10	\$1.50	\$2.00	\$2.50	\$3.00	\$5.00
Martha Washington, 2-yr., No. 175	1.00	1.25	1.50	2.50	3.00	3.50	4.00	7.50

Boysenberry

The New Money-Maker

A crop of the blackberry, raspberry and loganberry, Boysenberry is far more vigorous than any of its parents. Huge, plump, juicy, delicious berries, 1½ to 2 inches long, are borne in profusion. If you could taste them you would agree that in flavor they stand supreme. Whether eaten fresh or with cream, or canned for sauce, jam or preserves, or in pies, it is superior in every way to any other berry grown. Color dark wine-red. Boysenberry is almost seedless; is firm and therefore

a good shipping berry. Produced in large clusters on long stems that stand away from the canes.

Fine For Jams, Jellies, Pies

Boysenberry is a real money-maker because of its outstanding features of immense size, exceptional productiveness, unusual flavor and fine appearance—it is impossible to realize how far superior in all of these qualities it is until you have seen it. Market growers are greatly increasing their Boysenberry plantings because these larger, better berries are proving big money-makers for them.

PRICES

1-yr., No. 1, 6 for 65c; 12 for \$1.00; 25 for \$1.75; 50 for \$3.25; 100 for \$5.95; 250 for \$13.25.

2-yr., No. 1 Trans. Bearing Age, Each 45c; 6 for \$2.25; 12 for \$4.00.

Blueberries

Deliciously Sweet, Giant Size Berries

Who doesn't like Blueberry pie—delicious, juicy, and rich? Here's an unusual opportunity to obtain some prized Blueberry plants for your own garden. They do well on any fairly rich well-drained soil, preferring some acid and plenty of nitrogen.

Bushes are loaded with fine fruit the second year after planting, and bear indefinitely, year in, year out.

RANCOCAS. Midseason. Hardy, vigorous, productive; very large, firm berries of excellent sweet flavor.

RUBEL. Late. Hardy, vigorous and very productive, upright grower; large, extra firm berries of good quality.

HARDING. Late. Sweetest of all. Hardy, very productive; spreading growth.

PRICES OF BLUEBERRY PLANTS

2-yr., No. 1, Sure to Grow; Start to Bear Second Season 2 for \$1.50; 4 for \$2.65; 6 for \$3.80; 12 for \$6.85; 25 for \$13.75.

Grow
Your
Own
Fruits

There Is . . .
A GOOD DASS VARIETY
For Every Market, Climate
or Personal Preference

Make
Home
Gardening
Your
Hobby

