

## **Historic, archived document**

Do not assume content reflects current scientific knowledge, policies, or practices.



—FROM—

# Gates Nursery

Hardy Plants from the Black Hills

Rapid City, South Dakota

FORWARDING AND RETURN POSTAGE GUARANTEED

## 1937 Sale Catalog

Choice -- Offering -- of -- Quality -- Stock

U. S. DEPARTMENT OF AGRICULTURE,

WASHINGTON, D. C.

BUREAU OF PLANT INDUSTRY  
Fruit and Vegetable Crops and Diseases

OPG S-3591

### PRICES FOR YEAR OF 1936

**GUARANTEE**—Our nursery stock is guaranteed for one year with free replacement where properly planted, given care and attention during that time. Free planting instructions sent out with orders.

**TRANSPORTATION**—We prepay all transportation charges where cash is sent in previous to time of delivery except on balled and burlapped evergreen stock, which is generally shipped by freight, f. o. b. Rapid City. Where orders are left to our judgment we will adopt the best method of transportation.

**PAYMENT**—Payment may be made by check, money order, bank draft or cash. 25 per cent down on C. O. D. orders, balance at time of delivery.

**LANDSCAPE SERVICE**—We are rendering free landscape service upon the request of our customers. Guy Howard is our new man in charge of this work. He is well qualified to handle all your problems. Give us a ring or notify us and we will be glad to draw plans for foundation plantings, back yards, rock gardens and lawns. If within the radius of the Black Hills, we can plant stock ordered from us at a small additional cost. We have been doing considerable lawn work and will be glad to give you a price on a good job.

**TREE TRIMMING**—We are equipped to handle your tree trimming and tree surgery work. If your trees are not healthy and require attention, call upon us and we will be glad to advise as to the best of our ability.

**SPRAYING**—We are equipped with a barrel spray outfit and can spray your fruit and shade trees. All fruit trees require one or two sprayings if you expect to have fruit free from worms and scab. Local people get in touch with us and we will advise as to the best time to spray. Leaf rollers and aphids are very bad on American Elm and will injure the trees if not controlled. Trees should be sprayed early, just after the leaves open and again later. Keep your trees healthy.



E. A. GATES  
Proprietor Gates Nursery

### EVERGREEN TREES

#### BLACK HILLS SPRUCE

(*Picea canadensis albertana*)

Specimen trees, priced balled and burlapped:

7-8 ft., \$10.00 each; 6-7 ft., \$7.50 each; 5-6 ft., \$6.00 each  
4-5 ft., \$1.50 each; 3-1 ft., \$3.00 each; 2-3 ft., \$2.00 each  
18-24 in., \$1.25 each; 12-18 in., 75c each.

Write for prices on large quantities.

#### COLORADO BLUE SPRUCE

(*Picea pungens glauca*)

Prices balled and burlapped:

2½ ft. trees \$5.00 each; 18-24 in., \$3.00 each; 15-18 in., \$2.00 each; 12-15 in., \$1.25 each.

#### SILVER CEDAR

(*Juniper scopulorum*)

Prices on clipped specimens, balled and burlapped:

5-6 ft., \$10.00 each; 4-5 ft., \$7.50 each; 3-4 ft., \$5.00 each;  
2-3 ft., \$3.00 each; 18-24 in., \$2.00 each; 12-18 in., \$1.00 ea.

#### RED CEDAR

(*Juniper Virginiana*)

Prices on clipped specimens, balled and burlapped:

4-5 ft., \$6.00 each; 3-4 ft., \$1.00 each; 2-3 ft., \$2.50 each;  
18-24 in., \$1.50 each; 12-18 in., \$1.00 each.

#### BULL PINE

(*Pinus ponderosa*)

Prices on balled and burlapped stock:

6-8 ft., \$5.00 each; 4-5 ft., \$3.00 each; 3-4 ft., \$2.00 each;  
2-3 ft., \$1.00 each; 12-18 in., 60c each, \$6.00 doz.

#### PFITZER'S JUNIPER

(*Juniper Pfitzeriana*) Dwarf spreading

Balled and Burlapped:

2-3 ft. spread, \$6.00 each; 18-24 in., \$4.00 each.

#### SAVIN JUNIPER

(*Juniper savina*) Dwarf spreading, more upright

than Pfitzer's.

Prices same as for Pfitzer's.

#### MUGHO PINE

(*Pinus Mughus*) Dwarf ornamental pine

Prices balled and burlapped:

24-30 in. spread, \$6.00 each; 18-24 in., \$4.50 each;  
12-18 in., \$2.50 each.

### Deciduous Shade Trees

#### CHINESE ELM, AMERICAN ELM, GREEN ASH,

#### HONEY LOCUST

Prices of above varieties: 4-5 in. caliper \$10.00 each;  
3-4 in. caliper, \$7.50 each; 2-3 in. caliper, \$5.00 each;  
1½-2 in. caliper, \$3.00 each; 8-10 ft., \$2.00 each, \$20 doz.;  
6-8 ft., \$1.25 each, \$12.50 doz.; 5-6 ft., 75c ea., \$7.50 doz.;  
4-5 ft., 40c each, \$4.00 doz.; 3-4 ft., 20c each, \$2.00 doz.  
Seedlings—2-3 ft., \$7.00 per 100; 18-24 in., \$5.00 per 100;  
12-18 in., \$3.00 per 100; 6-12 in., \$1.50 per 100.

#### POPLAR BOLLEANA, MOUNTAIN ASH,

#### HACKBERRY

Prices on above: 8-10 ft., \$3.00 each; 6-8 ft., \$2.00 each;  
5-6 ft. at \$1.00 each.

#### CUT-LEAVED WEEPING BIRCH

Prices, balled and burlapped: 8-10 ft., \$7.50 each; 6-8 ft., \$5.00 each; 5-6 ft., \$3.00 each.

#### SILVER OR SOFT MAPLE

Price: 8-10 ft., \$1.60 each.



Block of Chinese Elm

#### HORSE CHESTNUT OR BUCKEYE

Price: 7-8 ft., \$4.00 each.

#### SILVER POPLAR, NORWAY POPLAR, COTTONWOOD

Price of above varieties: 2 in. caliper and up,  
\$1.00 each; 8-10 ft., 50c each, \$5.00 doz.; 6-8 ft., 20c  
each, \$3.50 doz.; 1-6 ft., 25c each, \$2.50 doz.

#### NORTHWEST POPLAR

The best poplar for the northwest  
Price: \$1.00 each, 8 ft. tall.

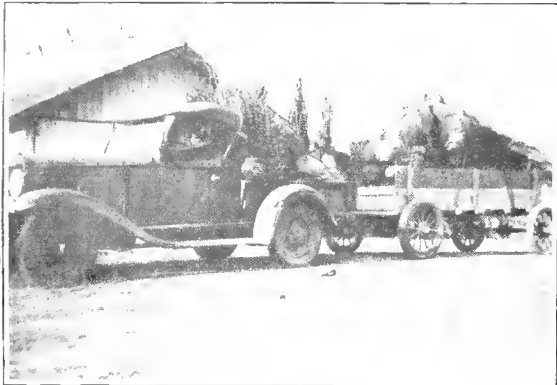
#### RUSSIAN OLIVE AND CARGANIA

For windbreaks

Prices: Russian Olive, 6-8 ft., \$1.00 each.  
Prices on both: 3-4 ft., 25c each; 2-3 ft., 20c  
each; 18-24 in., \$10.00 per 100; 12-18 in., \$5.00  
per 100; 6-12 in. seedlings, \$2.50 per 100.

## Special Windbreak Offer

100 CARGANIA for outside  
100 RUSSIAN OLIVE for center  
100 CHINESE ELM for inside windbreak  
All 12-18 in. size  
All for  
**\$8.50**  
Regular price \$13.00



A delivery of Nursery Stock to Northern Hills

# SHRUBS

## SHRUBS

**SPIREA VAN HOUTTEI**—Bridal Wreath.  
Prices: 4-5 ft., \$1.00 each; 3-4 ft., 75c each, \$7.50 doz.; 2-3 ft., 40c each, \$4.00 doz.; 18-24 in., 25c each, \$20.00 100

**SPIREA BILLARDI**—Pink Spirea

**SPIREA ARGUTA**—Snow Garland. Dwarf, spreading.

**SPIREA THUNBERGI**—White. Fine foliage.

**SPIREA ANTHONY WATERER**—Dwarf red.

**SPIREA FROBELLI**—Dwarf pink.

**SPIREA SORBIFOLIA**—Upright. White blooms.

**SPIREA COLLOSA ALBA**—Dwarf white.

Prices of above: Large size, 75c each, \$7.50 doz.; small size 40c each, \$4.00 doz.

**SPIREA OPULIFOLIUS**—Ninebark. Tall, white, late bloomer.

**CORNUS SIBERICA DOGWOOD**—Red branched dogwood. Red berries.

**CORNUS STOLENIFERA DOGWOOD**—Golden branched.

**CORNUS ELEGANTISSIMA DOGWOOD**—Variegated dogwood.

**PRUNUS TRILIBA**—Double pink flowering plum.

**PRUNUS GLANDULOSA**—Siberian flowering almond. Early double pink flowers.

**PRUNUS CISTENA**—Hansen's Purple leaved plum.

**PRUNUS NEWPORT**—Similar to Cistena.

**WAHOO**—Burning bush. Red berry clusters in fall.

**HIGHBUSH CRANBERRY**—White flowers. Scarlet berries.

**COMMON SNOWBALL**—Double white flower clusters.

**HYDRANGIA A. G.**—Everblooming snowball.

**GOLDEN ELDER**—(Canadensis aurea). Yellow leaves, white flowers.

**BEAUTY BUSH**—(Kolkwitzia). Small pink flowers in June. Attractive foliage.

**YELLOW FLOWERING CURRANT**—Yellow flowers. Black berries, edible.

**SMOOTH STIMAC**—(Rhus Globra). Attractive foliage and berries in fall.

**TAMARIX**—(Odessa). Light silvery foliage. Light pink flowers.

**BUTTERFLY BUSH**—(Buddleia). Lavender blooms. Require winter protection.

Prices of above: Large size, \$1.00 each, \$10.00 doz.; small size 50c each, \$5.00 doz.

**MOCK ORANGE**—(Philadelphus lemonne). Dwarf. \$1.00 or 50c each

**MOCK ORANGE**—(Philadelphus coronarius).

**MOCK ORANGE**—(Philadelphus virginia). Double white blooms.

**TARTARIAN HONEYSUCKLE**—Pink, red or white blooms.

**LILACS**—Common purple, common white or Persian purple.

Prices: Extra large \$1.50 each; large size \$1.00; medium size 50c or \$5.00 doz.

**SNOWBERRY**—White berries in fall.

**CORALBERRY**—Red snowberry.

**JAPANESE BARBERRY**—Thorny bush. Red berries in fall.

**COTOSEASTER**—Dark green foliage. Black berries.

**BUFALLO BERRY**—Light foliage. Red berries in fall.

Prices of above: Large size, 75c each, \$7.50 doz.; medium size 40c each, \$4.00 doz.

### Shrubs Suitable for Hedging

**BUCKTHORN**—Dark green foliage. Ideal for hedge.

**CARGANIA**—Siberian Pea Tree. Pale green leaves. Yellow bloom.

**RUSSIAN OLIVE**—Silver green foliage. Tall hedge or windbreak.

**PURPLE LILAC**—Makes a dense hedge of medium height.

Prices of above: 3-4 ft., 25c each; 2-3 ft., 20c each; 18-24 in., \$4.00 per 100; 12-15 in., \$5.00 per 100.

**TARTARIAN HONEYSUCKLE**—Makes a dense hardy hedge.

Price: 18-24 in., 25c each.

**COTOSEASTER**—Dark green foliage. Best of low hedges

Price: 18-24 in., 40c each.

### VINES—For porches, trellises, etc.

**AMERICAN IVY**—Fast growing vine suitable for screen

Price 50c each

**ENGLISH IVY**—Fast growing hardy clinging vine.

Price 50c each

**BOSTON IVY**—Vetchi. Tight clinging vine on stone or brick walls.

Price 75c each

**BITTER SWEET**—Native twining vine. Orange berries in fall.

Price 75c each

**CLEMATIS JACKMANI**—Large purple flowers. Give protection in winter.

**CLEMATIS MME. EDWARD ANDREE**—Large red flowers.

Price of above: \$1.50 each. Potted plants.

**CLEMATIS PANICULATA**—Small white fragrant flowers. Late summer.

**SCARLET TRUMPET HONEYSUCKLE**—Twining vine. Red berries in fall.

Price of above: 75c each.

# ROSES

## EVERBLOOMING TEA

**GRUS EN TEPLITZ**—Scarlet crimson, medium size, continuous bloomer.

**TALISMAN**—Golden yellow stained with copper, red inside petals.

**RADIANCE RED**—Bright red, continuous bloomer.

**RADIANCE PINK**—Deep pink, beautiful bloomer.

**WILLOWMERE**—Rich shrimp pink.

**E. G. HILL**—Massive blooms of deep maroon.

**JOHANIA HILL**—Light yellow, bronze shading in center

**MARGARET McREDDY**—Orange scarlet.

**LUXEMBURG**—Bronze yellow on long stems.

**K. A. VICTORIA**—Snowy white with pale lemon yellow.

**QUEEN ALEXANDRIA**—Inside petals vermilion, outside old gold.

## HYBRID PERPETUAL

**AMERICAN BEAUTY**—Well known popular crimson variety.



E. A. Gates Standing in Rows of Cargania

**FRAT KARL DRUSKI**—Large snow white blooms.

**PAUL NEYRON**—Deep rose, immense size.

**MAGNA CHARTA**—Bright pink overspread carmine.

## RUGOSA AND HYBRIDS

### Hardy Varieties

**GROOTENDORST**—Pink or red clusters, small bloom.

**SIR THOMAS LIPTON**—Large double white.

**HANSA**—Heavy bloomer of large red flowers.

**RUGOSA RUBRA**—Single red, extremely hardy, attractive foliage, large red berries in fall.

**HUGONIS**—Light yellow flowers born along slender branches.

## ROSES

### BABY ROSES

Dwarf Polyanthia

**GEO. ELGER**—Medium size, double golden yellow.

**IDEAL**—Dark red, free bloomer.

**CATHERINE ZEIMET**—Pure white.

### CLIMBERS

**CRIMSON RAMBLER**—Clusters of bright red flowers in mid-summer.

**DOROTHY PERKINS**—Large pink blooms in small clusters.

**MARY LOVELL**—Large white waxy flowers.

Prices of roses: 2 year No. 1, \$1.00 ea., \$10 doz., 2 year No. 2, 60c ea., \$6.00 doz.



Tree Digger at Work

# HARDY FRUIT TREES FOR THE NORTHWEST

## APPLES—Summer Varieties

**YELLOW TRANSPARENT**—Yellow variety. Tree upright, hardy.

**DUCHESS**—Striped red apple. Old standard hardy variety.

**ANOKA**—Dr. Hansen's early bearing dwarf tree. Fruit red striped.

**RED BIRD OR CRIMSON BEAUTY**—Canadian bright red apple.

## APPLES—Winter Varieties

**WEALTHY**—One of the best red striped apples for the northwest.

**McINTOSH RED**—Fruit medium size, good keeper, best of quality.

**RED DELICIOUS**—Late bearer. Fruit medium to small in this climate.

**HARLSON**—Tree hardy, early bearing. New red variety from Minnesota.

**WAGNER**—High quality red striped apple, medium size.

**HIBERNAL**—Hardy thrifty tree. Fruit fine cooking.

## APPLES—Crabs and Ornamentals

**WHITNEY**—Large red striped crab. Tree upright, very hardy.

**TRANSCENDENT**—Medium size crab, ripening late summer.

**DOLGO**—Small bright red crab from S. D. State College. Fine for pickling and jelly. Ornamental.

**RED FLESH**—Red fruited and red leaved from State College, Brookings.

**HOPA CRAB**—Similar to Red Flesh except fruit much smaller. Ornamental.

**MAPLE LEAVED CRAB**—Red leaves resembling maple. Small red fruit. Ornamental.

Prices for apples: 6 ft. and up, \$1.50 each.

5-6 ft., \$1.00 each, \$10.00 doz.

1-5 ft., 75c each, \$7.50 doz.

3-4 ft., 55c each, \$5.50 doz.

2-3 ft. whips, 35c each, \$3.50 doz.

## PLUM AND PLUM HYBRIDS

**RED WING**—Fruit large, flat, yellow overlaid red. From Minnesota.

**WANETA**—One of Dr. Hansen's best plums. Fruit large, red.

**HANSA**—Fruit medium size, red, solid, apricot flavor. From Brookings.

**KAGA**—Very similar to Hansa.

**DESOTA**—Fruit yellow overlaid with red. Heavy bearer. Wisconsin.

**TECUMSAH**—Early dark red variety. Fine for market. Brookings.

**WASTESA**—Native plum of very good quality. Heavy annual bearer.

**OPATA**—(Plum sandcherry hybrid). Fruit purplish green. Green flesh. From Brookings.

**SAPA**—Similar to Opata except flesh red instead of green.

## FRUIT TREES

- COMPASS CHERRY**—Old favorite from Minnesota. Red fruit. Good bearer.
- OKA CHERRY**—Hybrid. Fruit large, dark purplish red. Tree dwarfish and bushy. From Brookings.
- NICOLLET**—Cherry type hybrid. Fruit medium, sweet, orange red. Minnesota.
- ZUMBRA**—Sandcherry type. Fruit purplish red with green flesh. Minnesota.
- Prices for plums: Same as for apples.

## PEAR TREES

- Mini. No. 1**—Fruit fairly large, good quality. Tree hardy, rapid grower.
- PATTEN**—Originated in Iowa. High quality fruit.
- TAIT NO. 1**—Fruit medium to small, fine quality. Hardy tree from Canada.
- TAIT NO. 2**—Fruit medium, roundish. Sweet, fine quality
- Prices for Pear trees: 5-6 ft., \$1.00 each.  
4-5 ft., 75c each, \$7.50 doz.  
3-4 ft., 55c each, \$5.50 doz.

## PIE CHERRY

- EARLY RICHMOND**—Does best on sandy or upland soil
- MONTMORENCY**—Similar to Early Richmond except ten days later.
- Prices: 4-5 ft., \$1.00 each, \$10.00 doz.  
3-4 ft., 70c each, \$7.00 doz.  
2-3 ft., 40c each, \$4.00 doz.

## SMALL FRUIT

### NATIVE SAND CHERRY

- Does very well under cultivation. Makes excellent pies.
- Price: 2-year transplants, 25c each, \$2.50 doz.  
1-year seedlings, 10c each, \$1.00 doz.

### CURRANTS

- PERFECTION**—Fruit large, borne on long clusters. Fine quality and flavor.

### GOOSEBERRY

- CARRIE**—Has few thorns. Fruit medium size. Heavy bearer.
- HOUGHTON**—Bush bears small abundant fruit. Hardy and thrifty.
- JOSSELYN**—Bears large berries of good quality.
- PIXWELL**—New N. D. variety. Quite large fruit born on long stems making them easy to pick. Few plants at 50c each.
- Prices for Currants and Gooseberry except Pixwell:  
2-yr. plants 35c each; \$3.50 doz.  
1-yr. plants 20c each, \$2.00 doz.

### RASPBERRY PLANTS

- LATHAM**—Best of the red varieties for this territory. Fruit large.  
Price: \$1.00 doz., \$5.00 per 100
- ROBERTSON'S BLACK CAP**—Found in John Robertson's orchard at Hot Springs as seedling. Fruit extra large and sweet.  
Price: 20c each, \$1.00 per six.



View at Gates Nursery

- THORNLESS DEWBERRY**—Fruit large, black, resembling blackberry. Easy to pick on account of having no thorns. Should have winter protection.  
Price: 20c each, six for \$1.00.

### GRAPES

- BETA**—Medium sized black fruit. Hardy and thrifty vine.
- LUCILE**—Large red variety of best quality.  
Price: 2-yr. plants 35c each, \$3.50 doz.  
1-yr. plants 20c each, \$2.00 doz.

### STRAWBERRY PLANTS

- PROGRESSIVE EVERBEARING**—Old standard ever-bearing variety.
- MASTADON EVERBEARING**—Large berries which market well.
- SEN. DUNLAP**—Old standard one-crop plant.

## STRAWBERRY PLANTS

- GOLDEN HARVEST**—New variety one-crop plant. Heavy bearer of good quality fruit. Ten days later than Dunlap.
- Prices: Progressive, \$2.00 per 100; \$15.00 per 1000  
Mastadon, \$3.00 per 100; \$20.00 per 1000  
Sen. Dunlap, \$1.00 per 100; \$7.00 per 1000  
Golden Harvest, \$1.50 per 100; \$10.00 per 1000

## ASPARAGUS PLANTS

- MARTHA WASHINGTON**
- Price: 2-yr. plants, 2 doz., \$1.00; \$3.00 per 100  
1-yr. plants, 2 doz., 50c; \$1.50 per 100

## RHUBARB

- VICTORIA**
- Price, large roots, \$1.00 per doz.



A Small Rock Garden and Lily Pool Built at Gay Service Station, Belle Fourche

## PERENNIALS

### PHLOX

- MRS. WM. JENKINS**—White. One of the best propagators.
- SCARLANDER**—Attractive shade of lavender.
- REINLANDER**—Salmon pink, scarlet eye.
- VAN HOCKBERG**—Medium grower, prolific bloomer, dark red.
- ATHIS**—Salmon pink.
- WIDAR**—Reddish violet, white margin.
- BRIDESMAID**—White with red eye.
- BRIILLIANT**—Scarlet flower with dark eye.
- FUERBRAND**—Cerise and vermilion flamed with orange.
- Price of phlox: 30c each, \$3.00 doz. Any assortment. Our assortment \$2.00 doz.

### LARKSPUR (Delphinium)

- BELLADONNA**—Tall light blue.
- BELLAMOSA**—Tall dark blue.
- CHINENSIS**—Dwarf white.
- WREXHAM STRAIN**—Various colors. Price 50c each.  
Price: except Wrexham, 25c each, \$2.50 doz.

### COLUMBINE (Aquilegia)

- MRS. SCOTT ELLIOTT'S** long spurred hybrids. Colors in scarlet, orange, red, blue, pink, white, and yellow.  
Price: 30c each, \$3.00 doz.

### MISCELLANEOUS PERENNIALS

- HOLLYHOCK**—Althea rosea. Colors: double red, yellow, white and rose.  
Price 25c each, \$2.50 doz.
- SIESTA DAISY**—Alaska. Large white flowers in July.

- PAINTED DAISY**—All colors. Medium tall.  
Price 25c each, \$2.50 doz.

- BLEEDING HEART**—(Disentra spectabilis). Best in shade.

Price: large plants 60c each.

- BLEEDING HEART**—(Dis. Exonia). Dwarf. Fern leaves. 12 in. tall.

Price: 35c each.

- SWEET WILLIAM**—(Dianthus barbatus). Assorted colors, July-Sept. 12 in. tall.  
Price: 25c each, \$2.50 doz.

- CARNATION PINKS**—(Dian. car.) Assorted colors, July-Sept. 12 in. tall.

Price: 25c each, \$2.50 doz.

- BABY BREATH**—(Gypsophelia compacta). Small, pinkish white. 25c each.

- BABY BREATH**—(Bristol Fairy). Grafted. Select \$1 ea.
- GOLDEN GLOW**—Double dahlia-like flowers, golden. Tall. 20c each.

- PERENNIAL SWEET PEA**—Assorted colors, red, pink, white. Price: 25c each.

- ORIENTAL POPPY**—Scarlet crimson, black spot at base. Price 35c each.

- LUPINES**—Blue, white and pink. Blooms June, July. 3 ft. tall. 30c each.

- CANTERBURY BELLS**—(C. Car). Blue. Blooms in July. 2 ft. tall. 35c each.

- BLACK HILLS FERNS**—(Aspidium). 2-3 ft. tall. 25c ea.

- BLANKET FLOWER**—(Gaillardia). Blood red. Blooms all summer. 30c each.

- COREOPSIS**—(Lanceolatin grand). Yellow. July-Sept. 2 ft. tall. 25c each.

## LILLIES

- BALLOON FLOWER**—(Platycodon). Blue or white. July-Aug. 2 ft. 30c each.
- ADAMS NEEDLE**—(Yucca glauca). Cream color. July 25c each.
- HARBY ASTERS**—(Alpinus). Blue, red and purple. 6 in. tall. 35c each.
- ROCK MADWORT**—(Alyssum Sax). Golden yellow in May. 30c each.
- ROCK CRESS**—(Arabis Alpina). White flowers in May. 6 in. tall. 30c each.
- ROCK OR SUN ROSE**—(Helianthimum). All colors. July and August. 6 in. 15c each.
- HARDY CANDYTUFF**—(Iberis semper). For foliage. 8 in. tall. 30c each.
- HARDY PHLOX**—(Linum perenne). Blue in Aug.-Sept. 18 in. tall. 25c each.
- FORGET-ME-NOT**—(Myssolis alpestris). Deep blue. Blooms all summer. 30c each.
- PHLOX**—(Sublata alba and rosea). White and pink. June-July. 25c each.
- LIVE FOREVER**—(Sedum Acre). Bright yellow. For rock gardens. 30c each.  
(Sedum Album). White. 30c each.  
(Sedum Roseum). Purplish red. 30c each.
- HOUSELEEK** or (Semp. alberti). Bronze leaves.
- HEN AND CHICKENS**—(Semp. globiferum). Grey green leaves. Yellow flowers.  
(Semp. tectorum). Reddish brown foliage. Red flowers.  
All 30c each.
- CELONE BARBATT'S**—Red bloom. Midsummer. Price: 30c each.

- AURATUM**—White with band of gold, spotted crimson. 50c each
- CANDIDUM**—Pure white, known as Madonna Lily. 50c each
- ELEGANS**—Reddish orange, 2 ft. tall. 35c each.
- HENRYI**—Orange flowers with green bands. 50c each.
- REGAL**—Flushed yellow center shaded off to white. 50c each
- REBRUM**—Rich carmine on white ground shaded off to white. 60c each.
- TENNIFOLIUM**—Deep scarlet, waxen, recurved flowers. 40c each.
- TIGRINUM**—Single tiger lily. 35c each.  
Double Tiger Lily, 40c each.
- DAY LILY**—Tall, pink. 25c each.
- LILY-OF-THE-VALLEY**—Small dainty flower, white. Give part shade. 50c per clump.

### PEONIES

- COURONNE D'OR S.I.**—Cream colored compact flower.
- EDLIE'S SUPERBA**—7.6—Clear mauve-pink. Fragrant.
- FESTIVA MAXIMA**—9.3—Purest white, petals slightly tipped with carmine.
- FELIX CRAUSSE**—8.1—Rich dazzling ruby red.
- FRANCOIS ORTEGAT**—6.7—Dark red with yellow anthers.
- KOCHES**—Bright shade red.
- PRINCESS ELIZABETH**—Nice shade of white.
- QUEEN VICTORIA**—7.2—White with faint bluish tint.
- CANDIDA FLORA PLENA**—Red shade.
- ROSEA COREANA PLENA**—Pink shade.
- REINE DE FLUER**—Pink.
- GRAND RUBRA**—Dark red.



Starting a Rock Garden and Lily Pool

- NEPLUS ULTRA**—Nice shade of red.
- ALEXANDER DUMES**—7.4—Early pink.
- BENJ. FRANKLIN**—8.1—Brilliant carmine.
- DUCHESS DE NEMOUS**—8.1—Sulphur white, green reflex.
- Price of above peonies: 50c ea., \$5 doz. Any asst.
- MONS. JILLES ELIE**—9.2—Glossy lilac pink shaded to deeper rose. 80c.
- MARY BRAND**—Crimson with silky sheen. 80c.
- RICHARD CARVEL**—8.8—Uniform shade of crimson. Bomb shape. \$1.00 each.
- BRAND'S MAGNIFICENT**—8.2—Deep dark red, bluish shade. \$1.00 each.
- LA FRANCE**—9.0—Enormous pink. \$1.50 each.
- MARTHA BULLOCK**—9.1—Mammoth rose pink. \$1.25 each.
- SALANGE**—9.7—Deep orange salmon, delicate cream. \$1.50 each.
- THERESE**—9.8—Satiny pink, large. \$1.25.

