

Historic, Archive Document

Do not assume content reflects current scientific knowledge, policies, or practices.

LIBRARY
RECEIVED
★ MAY 1 1946 ★
U. S. Department of Agriculture

21970
GARRED'S
ALPINE GARDENS

CoLo. Springs Colo.
Main 2627-J
M 2627-J

- | | |
|-------------------------|--|
| Aethionema stylosum | Dry and sunny location - Rosy pink |
| Allysum saxatile | Dry and sunny location - Yellow |
| Allysum citrinum | Dry and sunny location - Yellow |
| Allysum idaeum | Gray-Green foliage - Yellow creeper |
| Androsace sarmentosa | Mats of rosetts - Sun - Pink |
| Androsace villosa | Mats of rosetts - Sun - White flowers |
| Androsace Pubescens | Mats of rosetts - Sun - White with yellow eye |
| Aquilegia | Colorado Columbine - True alpine type - Blue |
| Aquilegia helenae | European - Blue violet |
| Aquilegia hybrida | Long spurred varieties - Mixed colors |
| Anemone hepatica | Bloom in early Spring - Mixed shades |
| Armeria lauchiana | Sun - Dwarf habit - Crimson |
| Asperula odorata | Semi-shade - Flowers white - Fragrant |
| Aubrietia grandiflora | Sunny position - Lavender |
| Calamintha alpina | Dwarf - Purple |
| Campanula allioni | Pale violet - blue - Dwarf - Alpine |
| Campanula carpatica | White or blue bells |
| Campanula Miss Willmott | Pale blue bells - Easy and beautiful |
| Campanula garganica | Trailer - Flowers blue - Star shaped |
| Campanula longistyla | Violet blue - Light, shade or sun |
| Campanula raddeana | Rare - Purple bells - Shade or sun |
| Campanula sarmatica | Pale blue bells - Late bloomer - Sun |
| Chenopodium capitatum | Beautiful alpine - Easy - Rare - Bright red |
| Convallaria | Lily of the Valley - Shade |
| Corydalis micranitia | Fern like foliage - Yellow flowers |
| Dianthus allwoodii | Varied colors - Sun |
| Dianthus alpinus | Very dwarf (rare) - Rosy purple |
| Dianthus arvenensis | Grey foliage - Tufted pink flowers - Beautiful |
| Dianthus barbatus | Mixed colors |
| Dianthus caesius | Dry banks and walls - Pink - Sun |
| Dianthus caucasicus | Deep rose - Sun |
| Dianthus glacialis | Bright rosy purple - Alpine - Sun |
| Dianthus knappi | Very rare - Yellow flowers |
| Dianthus neglectus | Cherry red - Indispensible - Sun |
| Dianthus plumaris | Mixed colors - Sun |
| Dianthus superbus | Pale purple - Fringed petals - Fragrant - Shade or sun |
| Erodium amanum | Grey foliage - White flowers - Sun |
| Erodium supracanum | Silvery foliage - Pink flowers - Sun |
| Funkia caerulea | Violet and blue flowers - Shade or sun |
| Gentiana acaulis | Dwarf - Blue cup shaped flowers |
| Gentiana septemfida | Beautiful blue flowers |
| Gentiana lutea | Limestone soil - Flowers yellow |
| Gentiana farreri | Pale blue with white throat |
| Gentiana phlogifolia | Creeper - Dark blue flowers - Many other varieties will be ready next fall |
| Geranium cinereum | Pale purple - Sun |
| Geranium argenteum | Silvery foliage - Rosey pink - Sun |
| Geranium sanguineum | Dark, purple red - Trailer. These are marvels in the rock garden and like sunshine |
| Globularia cordifolia | Dwarf - Spreads like carpet over rocks or sunny places - Bluish lilac flowers |
| Globularia pyrenaeana | Mana - Blue flowers - Dry limestone |
| Gypsophila repens | Trailer - White and pink - Dry, sunny |

*Gentians as listed \$3.50 per dozen
*All other plants as listed above \$2.50 per dozen. \$12.00 per hun.

All seeds 15¢ per packet

Yellow
Yellow
Yellow
Yellow

Yellow
Yellow
Yellow
Yellow

Yellow
Yellow
Yellow
Yellow

Yellow

Yellow
Yellow
Yellow
Yellow
Yellow
Yellow
Yellow
Yellow
Yellow
Yellow

Yellow

Yellow
Yellow
Yellow
Yellow

Yellow
Yellow
Yellow

Yellow
Yellow
Yellow
Yellow
Yellow
Yellow
Yellow
Yellow

Yellow

GARRED'S
ALPINE GARDENS
CoLo. Springs Colo.

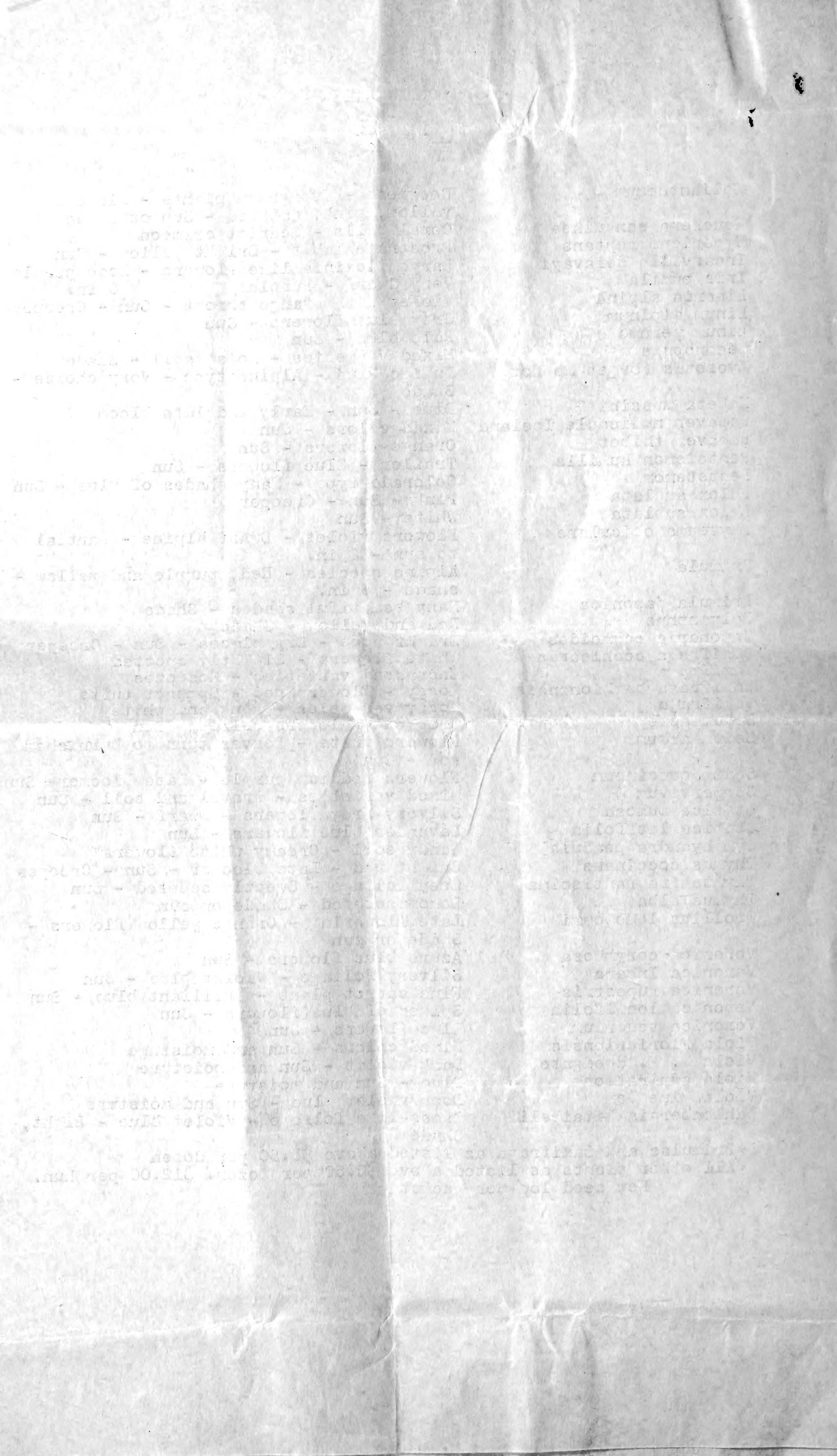
M 2627-J
 Main 2627-J

Helianthemum	Rockrose - Evergreen plants - Flowers yellow, pink, and red - Sun or shade
Heuchera sanguinea	Coral bells - Scarlet crimson
Hypericum reptans	Prostrate habit - Bright yellow - Sun
Incarville delavayi	Large Cloxinia like flowers - Rose purple
Iris pumila	Very dwarf - Purple 6 in.
Lineria alpina	Violet with orange throat - Sun - Creeper
Linum alpinum	Grey blue flowers - Sun
Linum pereme	Pale blue - Sun
Meconopsis	Mixed varieties - Moist soil - Shade
Myosotis Forget Me Not	Indigo blue - Alpine type - Very choice - Shade
Hepeta mussini	Blue - Sun - Early and late bloom
Papaver nudicaule Iceland	Mixed colors - Sun
Papaver thibet	Orange flowers - Sun
Pentstemon humilis	Trailer - Blue flowers - Sun
Pentstemon	Colorado type - Many shades of blue - Sun
Phlox sublata	Pink - Sun - Creeper
Phlox sublata	White - Sun
Phyteuma obiculare	Flowers violet - Dwarf alpine - Partial to sun - 8 in.
Primula	Alpine species - Red, purple and yellow - shade - 6 in.
Primula japonica	Many beautiful shades - Shade
Polyanthus	Red and yellow - Shade
Saponaria ocymoides	Bright rose - Dry places - Sun - Creeper
Saxifraga cochlearis	White flowers - Slightly spotted
Saxifraga	Encrusted varieties - Roseetes
Saxifraga bathionensis	Mossy - Flowers red - Compact tufts
Saxifraga	Mossy varieties - Pink and white
Sedum acre	Creeper - Flowers yellow - Sun
Sedum album	Flowers white - Leaves turn to burnished red - Sun
Sedum coccineum	Flowers reddish purple - Late bloomer - Sun
Sempervivum	Mixed varieties - Gravel and soil - Sun
Statice Dumosa	Silvery grey flowers - Dwarf - Sun
Statice latifolia	Lavender blue flowers - Sun
Symphandra pendula	Sandy soil - Creamy white flowers
Thymus coccineus	Bright red - Late bloomer - Sun - Creeper
Thymus fragrantissima	Grey foliage - Sweetly scented - Sun
Thymus alba	Lemon scented - Shade or sun
Trollius ledebouri	Late flowering - Orange yellow flowers - Shade or sun
Veronica corymbosa	Azure blue flowers - Sun
Veronica Incana	Silvery foliage - Violet blue - Sun
Veronica rupestris	Fine carpet plant - Brilliant blue - Sun
Veronica lonifolia	Spikes of blue flowers - Sun
Veronica teucrium	Blue flowers - Sun
Viola Floriariensis	Mixed colors - Sun and moisture
Viola W. H. Woodgate	Dark violet - Sun and moisture
Viola admiration	Blue - Sun and moisture
Viola Blue Gem	Deep violet blue - Sun and moisture
Wahlenbergia kitaibelii	Grass-like foliage - Violet blue - Light, Shade

*Primulas and Saxifraga as listed above \$5.50 per dozen

*All other plants as listed above \$2.50 per dozen. \$12.00 per hun.

New seed 15¢ per packet



GARRED'S
ALPINE GARDENS
CoLo. Springs Colo.

LIBRARY
 RECEIVED
 ☆ MAY 1 1940 ☆
 U. S. Department of Agriculture

Main 2627-J
 Colorado Springs, Colo.
 Main 2627-J

The following grafted cacti are dependable, easy to care for and make a gorgeous display during blooming season.

Epiphyllum - Tropical red, pink and white, large flowers 8 inches to 1 foot across	1.00 ea.
Chamacereus silvestrii - Orange red	.75 ea.
Aporocactus or rattail - Pink beautiful on tall stock 18" " " " " " 3 ft.	.75 2.00
Peniocereus greggii - Hight. blooming cereus 1 ft. " " " 6"	1.00 .50
Echinocereus rigidissimus - or rainbow Not grafted	.75 ea. .30 ea.
Echinocereus fendleri - Purple 8"	.60 ea.

The following cacti are not grafted:

Echinocereus engelmannii 8"	.30 ea.
Echinocereus merkerii - Purple 3"	.25 ea.
Echinocereus uncinatus - Yellow 4"	.25 ea.
Echinocereus millerii - Pink 3"	.20 ea.
Opuntia microdasys - Yellow 1 ft.	.25 ea.
Opuntia basilaris - Pink 8"	.25 ea.
Hamato cactus setispennis - Yellow	.20 ea.
Echinocactus wislizenii - Pink 5"	.40 ea.
Ferocactus acanthodes - Barrel cactus 5"	.40 ea.
Carnegiea gigantea - Tall cactus of Arizona	1.00 ea.
Opuntia aborescens - Tall stock per ft.	x .20
Selenicereus spinosus - Tall stock per ft.	x .20
Cereus peruvianus - Tall stock per ft.	x .20
Nyctocereus serpentinus - Tall stock per ft.	x .20
Harrisia martinii - Tall stock per ft.	x .20
Trichocereus spachianus - Tall stock per ft.	x 1.00
Acanthocereus pentagonus - Tall stock per ft.	x .30
All seeds 15¢ per packet	

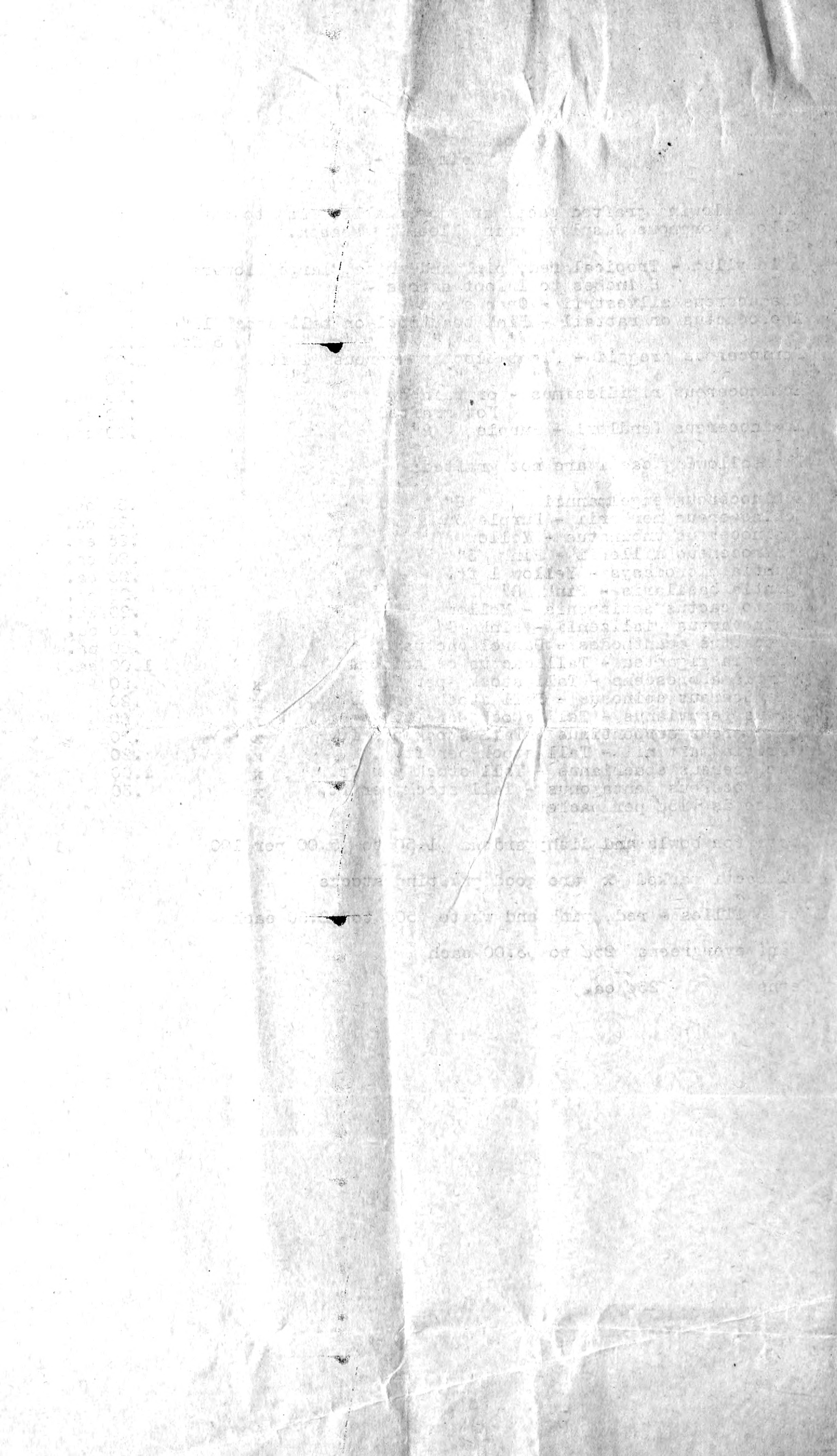
Cacti for bowls and dish gardens \$1.50 to \$5.00 per 100

All cacti marked x are good grafting stocks

Water lilies - red, pink and white 50¢ to \$2.50 each

Dwarf evergreens 25¢ to \$3.00 each

Ferns 25¢ ea.



Faint, illegible text, likely bleed-through from the reverse side of the page. The text is mirrored across the central crease and is mostly unreadable due to fading and the quality of the scan.