

Historic, Archive Document

Do not assume content reflects current scientific knowledge, policies, or practices.

63.1

C/3400

LIBRARY
RECEIVED
U. S. Department of Agriculture

Lancashire Virgin Sea-washed Turf

FOR
BOWLING GREENS, LAWNS, Etc.

PICTORIAL PROOF OF QUALITY

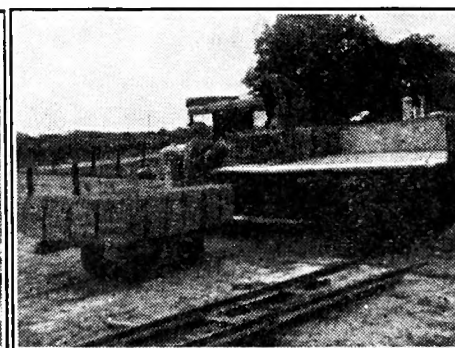
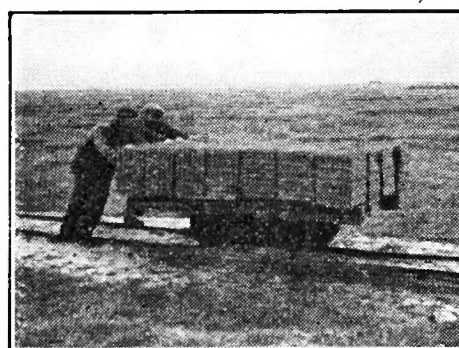
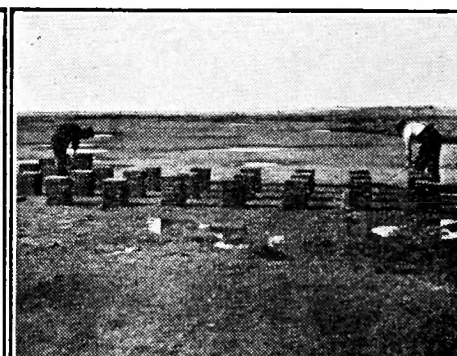
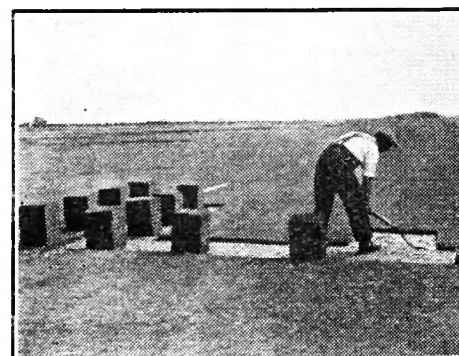
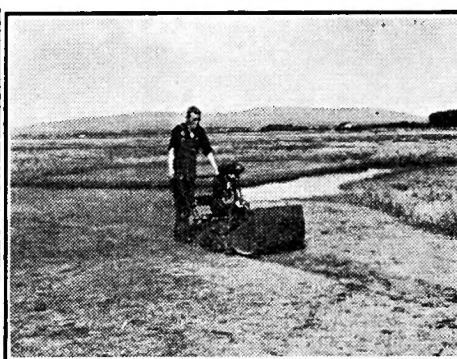


Showing the remarkable fibre resulting
from
CENTURIES OF GROWTH

MAXWELL M. HART LTD
CHRONICLE BLDGS., MANCHESTER
162 BUCHANAN ST., GLASGOW, C.2
39 VICTORIA ST., LONDON, S.W.1

OPERATIONS ON MARSH

PRIOR TO DESPATCH BY ROAD OR RAIL



Photographs show preparation of the marshes by scythe, motor mower and hand mower ; ritting, cutting and lifting in 12 inch squares and boxing of the turves to uniform thickness (9 pieces to one square yard) ready for transport by road or rail. The turf is much improved before lifting by special cultural operations so that it is despatched in a semi-established condition. This gives it a marked advantage over turf from marshes which are merely grazed before lifting and the grasses on which are coarser.

Lancashire Virgin Sea-washed Turf and its Advantages

The unusually fine texture of this turf is due to the predominance of some of the most desirable fescue grasses, including "Creeping Red Fescue" with a proportion of "Agrostis Stolonifera." Being a natural product it is not, of course, weed-free, but the weeds indigenous to this turf are not difficult to deal with under cultivation.

The extraordinary root growth (see illustration on front page) is a sound guarantee of age. Such fine fibrous root growth is seldom found in inland turf, and seeds could not reproduce such a sward until after many years of establishment.

This density of fibre is specially favourable to Bowling Green construction as the turf handles and transports well with little loss by breakage. Also on account of its uniform consistency a greater degree of accuracy in the playing surface is possible than by other means.

Best results are obtained by laying Sea-washed Turf on sand on top of ashes or sand and soil compost rather than on soil alone. Too great a depth of soil tends to promote a rank and soft growth, easily damaged, particularly by the delivery of the bowls and is liable to encourage the action of worms. When laid on sand or compost of sand and soil, the natural characteristics of the turf are retained, producing a verdure of fine wiry grasses of uniform texture.

DELIVERIES

Our average daily output during the winter months is 1,000 yards, so that prompt and regular delivery against all orders is guaranteed, thereby enabling clients to accurately estimate the cost of laying and obviate any loss in wages through delay in delivery.

High tides, covering the marshes, suspend work for two days each month, but by means of surface drainage we are enabled to resume operations immediately the tides recede. It is advisable, however, to notify requirements in advance to enable us to anticipate the tides.

A member of our staff is permanently resident at the marshes to ensure prompt attention to all orders, large or small.

CONSTRUCTION, RENOVATION OR REMAKING

It is our business to study bowling green turf of every variety and its needs under all circumstances, and our opinion may save you pounds if we are consulted in time.

When in doubt about the condition of your green, it is always advisable to have expert opinion. Experiments by inexperienced practitioners are always risky and too often positively disastrous. Our advice is based on knowledge of problems arising in actual practice from the conditions under which the turf is laid and maintained and not from localised experiments under specialist control.

Our expert Assistants will inspect and report on the best treatment for a nominal fee covering travelling time and out-of-pocket expenses.

EQUIPMENT AND SUPPLIES

Every bowling green depends for its success on the way it is maintained. Maintenance in order to be successful must embody not only the best materials, but ensure efficiency in their application and working. We will gladly advise and quote you at keenest prices for your requirements in

**TURF, SEEDS, SANDS OF EVERY VARIETY,
ROLLERS, MOWERS, IMPLEMENTS,
FERTILISERS, DITCH GRAVEL, ETC.**

ENQUIRIES

To save delay enquiries should be addressed as under :—

TO GLASGOW OFFICE from Scotland, Northumberland and Cumberland, and Northern Ireland.

TO MANCHESTER OFFICE from area between and including Durham and Westmorland on the north, and Cardigan, Radnor, Salop, Stafford, Leicester, Rutland and Lincoln, and Isle of Man.

TO LONDON OFFICE from all areas south of the foregoing.

Lancashire Sea-washed Turf supplied by us for 500
Greens in Great Britain and Ireland to the following
among many other clients

MUNICIPAL AUTHORITIES

ABERDEEN	HASTINGS	SHEERNESS
BELFAST	HOVE	SOUTHPORT
BISHOP AUCKLAND	HULL	SOUTHEND-ON-SEA
BLACKPOOL	ILFORD	STOCKTON-ON-TEES
BOOTLE	MARGATE	STRATHAVEN
BOURNEMOUTH	MIDDLESBROUGH	SUNDERLAND
BOGNOR	MONIFIETH	SUTTON
CHESTER-LE-STREET	MORECAMBE	THORNABY-ON-TEES
CONISBROUGH	NEWCASTLE-ON-TYNE	TORQUAY
CROYDON	PEMBROKE	TONBRIDGE
DARLINGTON	PENZANCE	TYNEMOUTH
DEAL	PLYMOUTH	WANDSWORTH
EASTBOURNE	PORTSMOUTH	WATFORD
EALING	PORTADOWN	WHITLEY and
GATESHEAD	PRESTWICK	MONKSEATON
GLASGOW	REDCAR	WORKINGTON
GOSPORT	REDRUTH	WORTHING, Etc. Etc.

MINERS' WELFARES

BOWERS	KILSYTH	STIRLING
CARFIN	KINGLASSIE	STONEBURN
CLARA VALE	MOTHERWELL and	SHOTTS
COWDENBEATH	WISHAW	TWECHAR
COXLODGE	NEWCRAIGHALL	WELLWOOD
GLEN VILLAGE	NEW HERRINGTON	Etc. Etc.
JEWEL	NORTH BIDDICK	

H. M. OFFICE OF WORKS
HYDE PARK BOWLING GREEN

The Miners' Welfare Association Headquarters, London, specify our
Lancashire Turf for all their schemes. We have supplied turf for
200 of their greens.

Lancashire Turf supplied by us for over 300 Private Clubs in all parts of
Britain and Ireland.

**SITES INSPECTED AND REPORTED
ON IN ANY PART OF THE COUNTRY**

MAXWELL M. HART LTD
CHRONICLE BLDGS., MANCHESTER
162 BUCHANAN ST., GLASGOW, C.2
39 VICTORIA ST., LONDON, S.W.1

Another list of our latest users of Lancashire Sea-washed Turf

PRIVATE GREENS

Conservative Club, Altrincham	The Bowling Club, Ilford
Liberal Club, Atherton	Marlborough Bowling Club, Ipswich
The Bowling Club, Belfast	The Bowling Club, Kintore
Forth River Bowling Club, Belfast	Summerhill Bowling Club, Newcastle-on-Tyne
Walnut Tree Hotel, Bootle	People's Refreshment Houses, Ltd.
Windham Hotel, Bootle	The Royal Chelsea Hospital
Cheltenham Original Brewery Co.	Temple Bowling Club
Freemasons' Bowling Club, Chester	Cuminestown Playing Fields, Turriff
Three Spires Bowling Club, Coventry	St. Fergus Bowling Club, Wick
Moray Bowling Club, Elgin	Wick National Playing Fields
Arngask Bowling Club, Glenfarg	Springfield Hotel, Wigan
Royal Hospital School, Holbrook	Newtown Conservative Club, Wigan

INDUSTRIAL SCHEMES

Albion Motor Car Co., Ltd.	Manchester Corporation Tramways
J. & P. Coats, Ltd.	North British Distillery Co., Ltd.
Clark & Co., Ltd.	Patons & Baldwins, Ltd.
Courtnaulds	Ransomes, Sims & Jefferies, Ltd.
Co-op. Society Sports Club	Transport and General Workers' Union
Civil Service Sports Club	Tollemache Brewery
Ewart's Recreation Ground	United Glass Bottle Works Sports Club
Eldridge, Pope & Co.	Vauxhall Motors, Ltd.
Fairfield Shipbuilding Co.	Watney, Coombe and Reid
Ford Motor Works	G. & J. Weir, Ltd., Etc. Etc.
Glover Bros.	
Imperial Chemical Industries, Ltd.	

