

## **Historic, archived document**

Do not assume content reflects current scientific knowledge, policies, or practices.



Fall 1939 - Spring 1940  
Our 98<sup>th</sup> Year

LEXINGTON, KY  
DEC 4 1939  
U.S. Department of Agriculture



**HILLENMEYER**  
*Nurseries*

**LEXINGTON, KENTUCKY**

98 Years is indicative of

Dependable Stock  
Honest Dealing  
Service  
Value

We deeply appreciate your continuous patronage and are striving to merit a continuance of your good will.

HILLENMEYER NURSERIES, Lexington, Ky., Phone 279

NURSERYMEN

HORTICULTURISTS

LANDSCAPE ARCHITECTS

## Let us help you plan

A WELL PLANNED and planted home is the cherished hope of every American family. Pleasing and satisfactory results are only attained through a careful study of your grounds, the selection and planting of the proper material. Hundreds of Kentucky homes, both large and small, have been successfully landscaped from plans and service rendered by our firm. Because of our knowledge, experience and training we are in a position to serve you well. Satisfactory results are assured at surprisingly low cost. LET US HELP YOU.

### No Charge for Consultation at Nursery

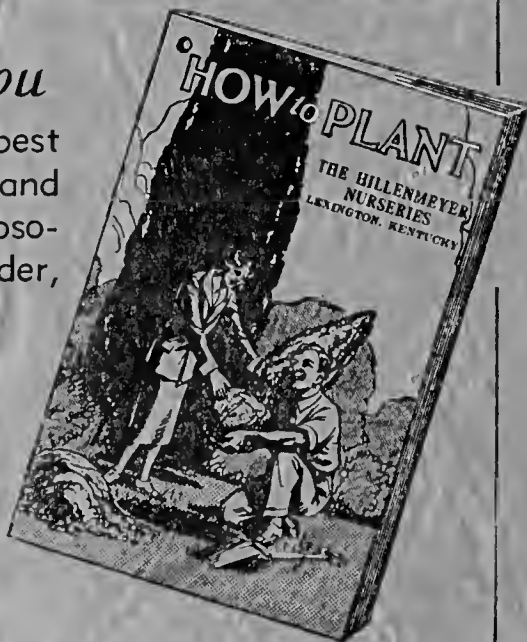
There are no charges for consultation or suggestions at the nursery. If you will bring your plans, measurements, pictures, etc., we will be pleased to give you valuable assistance.

## A Gift for You

To help you get the best results from your plans and plants we will send, absolutely free with every order, a copy of this booklet:

### "HOW TO PLANT"

The instructions are clear and cover planting, pruning, feeding, spraying, cultivating, and other details. This is a part of the service we give that you may have the greatest success and joy from Hillenmeyer stock. If other questions arise from time to time, write us—we are at your service.



### Making of Plans

As the time required to make a plan depends on so many things, it is impractical to give an estimate unless we have sufficient information.

Where simple plans are required locally we make no charge when we furnish the nursery stock.

In cities close by we make no charge for a plan if the resultant business justifies the trip.

Where consultation or advice only is requested out of the city we will be glad to furnish this at a nominal fee, based on distance and time required.

We make many plans for customers who cannot come to the nursery or who live too far distant to justify a personal call. If you will send the dimensions of your property, location of house (with blue prints if possible), the direction it faces, trees, drives, walks and a Kodak picture we can usually make a very satisfactory plan. For plans through the mail we ask a deposit of \$5.00 which will be deducted when sufficient stock is purchased. For simple suggestions through correspondence there are no charges and we are always ready and pleased to render such service.

### When to Plant

We usually start to plant evergreens in September and continue until late spring except during those times in winter when the ground is frozen or it is too wet.

Shade Trees, Shrubs, Small Fruits and Roses are best planted after we have had sufficient frost to kill the foliage and make them dormant.

Perennials are best planted in early fall or spring.

### Liberal Payment Plan

While we sell for cash, credit will be extended to responsible customers with satisfactory references. For those who want to buy or plant and cannot pay all at one time we will be glad to arrange a deferred payment plan. Tell us about how much you want to spend, how much you want to pay at a time and no doubt suitable arrangements can be made.

### No Agents

We sell direct and our contacts are usually made by appointments. Refuse to buy from anyone who represents himself or herself as our agents. **WE HAVE NO AGENTS.** When dealing direct you get full benefit of our facilities.

# Evergreens

FOR wonderful effect both winter and summer, the Evergreen has no superior. Succeeding in almost any soil, with their range of color, form and habits of growth they find a place in almost any landscape plan. Our trees are all several times transplanted, dug with a ball of earth, and the finest to be had.

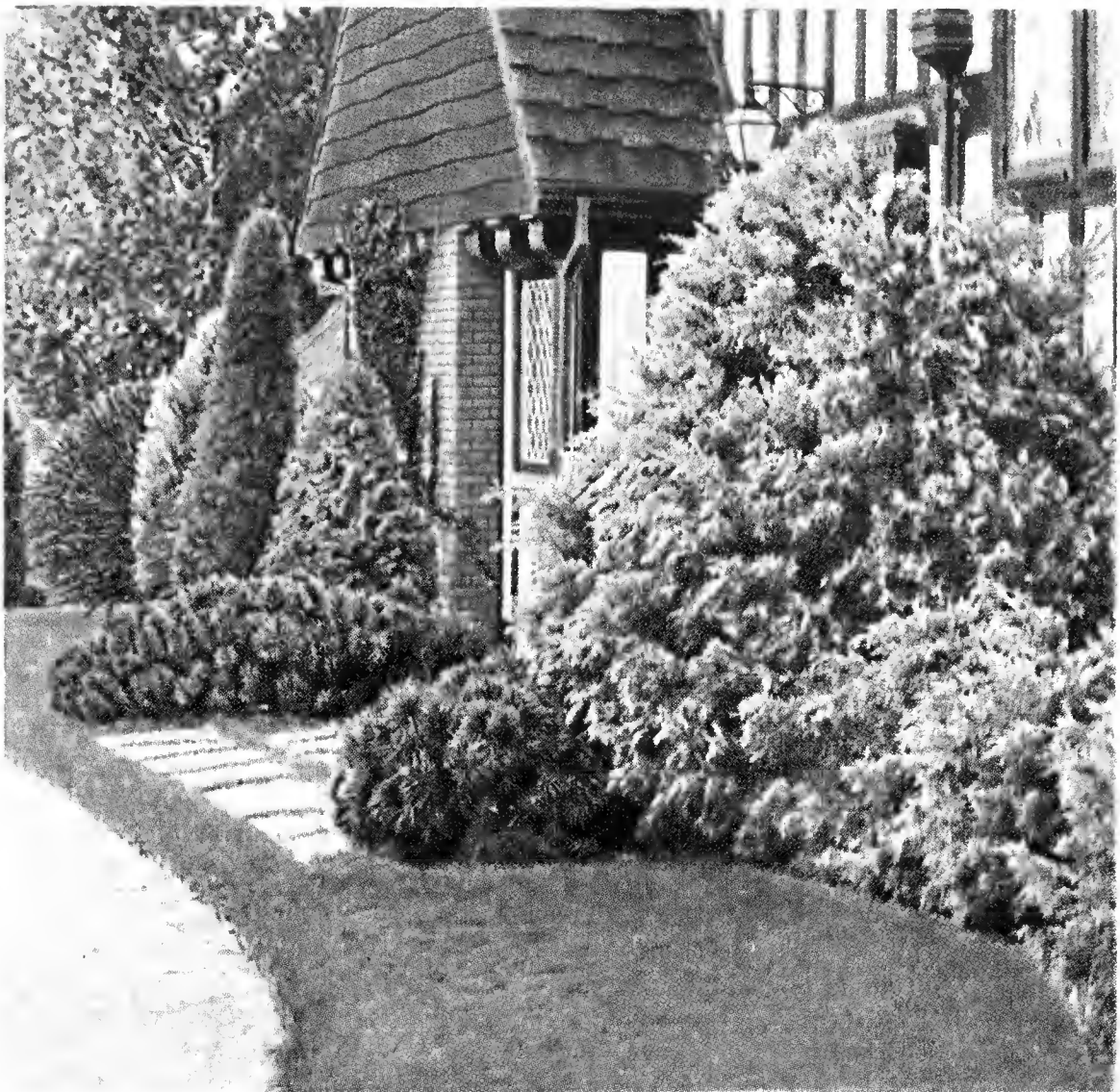
## Abies - Fir

**Abies concolor.** Silver or White Fir. The best of the Firs, and rivals Colorado Blue Spruce in showiness. We think it is one of the choicest of Evergreens and an ideal specimen plant. In colors it ranges from pale blue-green to blue, the needles being attractively distributed around the branches. Once established it is better able to withstand drought, as well as the soot and dust of city conditions. Of comparatively slow growth but as hardy as an oak.

	Each		Each
2 to 3 ft. . . .	\$3.00	4 to 5 ft. . . .	\$5.00
3 to 4 ft. . . .	4.00	5 to 6 ft. . . .	6.00

**A. fraseri.** Fraser Fir. Forms a narrow pyramid of deep green foliage, with under side lighter green. Perfectly hardy and free of all winter or insect injury.

	Each		Each
2 to 3 ft. . . .	\$2.00	4 to 5 ft. . . .	\$4.00
3 to 4 ft. . . .	3.00	5 to 6 ft. . . .	5.00



Evergreen Planting

## Chamaecyparis (Japanese Cypress)

**Chamaecyparis pisifera.** Sawara Cypress. The foliage somewhat resembles that of the Arbor-Vitae except that the tree is more graceful. Light green, silvery beneath, and of erect growth. Can be used in foundation planting or as a specimen.

**C. pisifera oure.** Golden Sawara Cypress. Has all the characteristics of the preceding except that the foliage is of a lighter green and is bordered with yellow in early spring.

**C. pisifera plumosa.** Plumed Cypress. Feathery green foliage, broad, symmetrical and dense. Stands shearing well.

**Chamaecyparis pisifera plumosa oure.** Golden Plumed Cypress. Similar to the preceding except that the young foliage is golden in early summer.

### Prices of the above 4 Chamaecypari:

	Each		Each
2 to 3 ft. . . . .	\$2.00	5 to 6 ft. . . . .	\$5.00
3 to 4 ft. . . . .	3.00	6 to 7 ft. . . . .	6.00
4 to 5 ft. . . . .	4.00		

**C. lawsoniana glauca.** Blue Lawson's Cypress. One of the hardiest of this type, and prized for its beautiful bluish foliage. Not as robust as the pisiferas but fine for foundation planting.

	Each
1½ to 2 ft. . . . .	\$2.50
2½ to 3 ft. . . . .	3.00
3 to 3½ ft. . . . .	4.00

**C. obtusa.** Hinoki Cypress. Bright green lustrous foliage. This is an ancient variety in Japan, and has been cultivated for centuries. Much used in topiary work.

	Each
18 to 24 in. . . . .	\$2.50
2 to 3 ft. . . . .	3.00

**C. pisifera filifera.** Thread-branched Cypress. One of the best dwarf Evergreens. Unusual foliage, drooping and graceful, resembling cords or threads of green. Compact; fine in color both winter and summer.

	Each
2 to 3 ft. . . . .	\$3.50
3 to 4 ft. . . . .	4.00
4 to 5 ft. . . . .	5.00



Abies Concolor

**QUALITY as well as PRICE  
Should be considered  
in buying Evergreens**



Residence of Dr. and Mrs. Rufus Alley, Barrow Road—Henry Fletcher Kenny, Landscape Architect. Hillenmeyer Stock Did Much to Give It Added Charm.

**Juniperus chinensis mascula.** Green Chinese Juniper. A select green type that is hardy and of good form. Branching habit, slightly more open than others; the unusual terminal growth makes it highly desirable in winter. Holds its color when other Evergreens are dull.

	Each	Each
3 to 4 ft. ....	\$3.00	5 to 6 ft. .... \$5.00
4 to 5 ft. ....	4.00	

**J. chinensis pfitzeriana.** Pfitzer Juniper. The most popular of the spreading types. The branches spread horizontally, with the terminals slightly drooping. It lies close to the ground, and for edging larger plantings has no superior, supplying the flowing lines demanded in landscape plantings. Foliage gray-green in summer and winter and will withstand the soot and dust of cities.

	Each	Each
1½ to 2 ft. ....	\$2.00	3 to 3½ ft. .... \$3.50
2 to 2½ ft. ....	2.50	3½ to 4 ft. .... 4.00
2½ to 3 ft. ....	3.00	4 to 4½ ft. .... 5.00

**Juniperus virginiana cannarti.** Cannart's Juniper. A fine pyramidal, compact-growing Evergreen with wonderful winter color, and the best of its type. It is perfectly hardy and never suffers winter-burn, common to some other Junipers.

**J. virginiana glauca.** Blue Juniper. One of the best trees offered today. It grows pyramidal but has graceful, spreading branches if left untrimmed. When sheared, a perfect column may be had. In color, a light blue and a distinct contrast to any other of this group.

## Juniperus - Juniper

**Juniperus japonica.** Japanese Juniper. 4 to 5 feet. This is another of the spreading Junipers which Japan has contributed to the gardens of America. Light green in color, perfectly hardy and especially good for borders.

	Each
2 to 2½ ft. ....	\$3.00
2½ to 3 ft. ....	3.50

**J. communis depressa plumosa.** Purple Spreading Juniper. A very unusual variety, remaining close to the ground and in summer has a silvery reflex to the otherwise gray-green foliage. In fall and winter assumes a purplish cast that is unusual in Evergreens. Fine for rockwork or low planting.

	Each
18 to 24 in. ....	\$2.50
2 to 2½ ft. ....	3.00

**J. communis hibernica.** Irish Juniper. Of decided columnar form and immediately attracts attention. For formal work, especially in contrast with other plants, it has decided advantage over anything you can use for such work. It is slender in habit and needs no shearing.

	Each
2½ to 3 ft. ....	\$2.00
3 to 3½ ft. ....	2.50
3½ to 4 ft. ....	3.00

**J. excelsa.** Greek Juniper. An unusually attractive, dwarf, pyramidal tree with compact, bluish green foliage. It is vigorous in growth and not particular as to soil. Its good characteristics are rather difficult to describe but it is very pleasing wherever used.

	Each
1 to 1½ ft. ....	\$1.50
1½ to 2 ft. ....	2.50
2 to 2½ ft. ....	3.50



Juniperus Virginiana Pyramidaliformis



Juniperus Virginiana Glauca

**J. virginiana keteleeri.** Keteleer's Cedar. Makes a compact pyramidal tree, well proportioned as to density and height. The foliage has the appearance of being more fleshy than most Junipers. Its slate-colored berries are large and make an attractive showing against the foliage.

**J. virginiana pyramidaliformis.** Hill's Dundee Juniper. A rather new, pyramidal, compact-growing Evergreen of much merit. Bluish green foliage in spring, changing to plumlike color in early autumn. Stands shearing well. Excellent for formal planting.

**J. virginiana schottii.** Schott Red Cedar. A rather formal light green variety which stands shearing well.

<b>Prices of above 5 Junipers:</b>		<b>Each</b>
3 to 4 ft. ....		\$3.50
4 to 4½ ft. ....		4.00
4½ to 5 ft. ....		4.50
5 to 5½ ft. ....		5.00
5½ to 6 ft. ....		5.50
6 to 7 ft. ....		6.00

*Hillenmeyer Trees  
are Freshly Dug*



Juniperus Pfitzeriana



Residence of Mr. and Mrs. Ira McLaney, Chevy Chase Showing effect obtained in a few months when Hillenmeyer's plants and service were used.

## Picea - Spruce

**Picea canadensis.** White Spruce. A very hardy Evergreen with light green foliage, and similar in many respects to the Norway Spruce, except that it is decidedly slower growing in our locality and can safely be used where a medium-sized or small tree is wanted.

**P. excelsa.** Norway Spruce. The most popular of the Spruce family as it is easy to transplant, hardy, and grows rapidly. Pyramidal in shape, and when used as a specimen is very fine. For screen, windbreak, and hedges, they are equally appropriate. The needles are dark green.

### Prices of the above 2 Piceas:

	Each		Each
2 to 3 ft. ....	\$ 2.00	6 to 7 ft. ....	\$ 6.00
3 to 4 ft. ....	3.00	7 to 8 ft. ....	8.00
4 to 5 ft. ....	4.00	8 to 10 ft. ....	10.00
5 to 6 ft. ....	5.00		



Picea Excelsa

**P. pungens.** Blue Spruce; Colorado Blue Spruce. This grand tree has been much admired for its fine form and color. It varies from light green to blue. However, in spring, when new growth covers the tree, they all have a pronounced blue color. Where you are not so particular as to color, this tree is one to please. However, if you want the pronounced shades, you should select Koster's, as described below.

	Each
3 to 4 ft. ....	\$3.00
4 to 5 ft. ....	4.00
5 to 6 ft. ....	5.00

**P. pungens kosteri.** Koster's Blue Spruce. This is the most beautiful of all the Blue Spruces. Being a grafted variety, it is of uniform blue color. The aristocrat of the Blue Spruces.

	Each
2 to 3 ft. ....	\$ 5.00
3 to 4 ft. ....	8.00
4 to 5 ft. ....	10.00

## Pinus - Pine

**Pinus montana mughus.** Mugho Pine. An excellent dwarf Pine, globe-shaped and erect branching. It is especially attractive in the spring, when the new growth, which looks like miniature candles, completely covers the bush.

	Each
1x1½ ft. wide .....	\$2.00
1½x2 ft. wide .....	3.00
2x2 ft. wide .....	4.00
2½x3 ft. wide .....	5.00

**P. strobus.** White Pine. A familiar, tall majestic native Evergreen. Grows rapidly as Evergreens go, and with its long, flexible, light green, pendulous needles proves one of our best trees. Can be used as a windbreak or specimen.

**P. sylvestris.** Scotch Pine. One of the best Pines offered. Very quick to establish itself, grows rapidly, and has ability to grow luxuriantly on high and dry ground. Its needles are shorter than either White or Austrian Pine, its habit more compact, the foliage dark green. Where quick effect is wanted, this variety is one of the best.

### Price of the Above 2 Pinus:

	Each
3 to 4 ft. ....	\$ 3.00
4 to 5 ft. ....	4.00
5 to 6 ft. ....	5.00
6 to 7 ft. ....	6.00
7 to 8 ft. ....	8.00
8 to 10 ft. ....	10.00

## Pseudotsuga - Fir

**Pseudotsuga douglasi.** Douglas Fir. A Colorado tree. Soft green foliage, resembling the hemlock or spruce, but of a blue cast. Makes a compact tree, and can be used as a specimen or in group plantings.

	Each
7 to 8 ft. ....	\$ 8.00
8 to 10 ft. ....	10.00
10 to 12 ft. ....	12.00

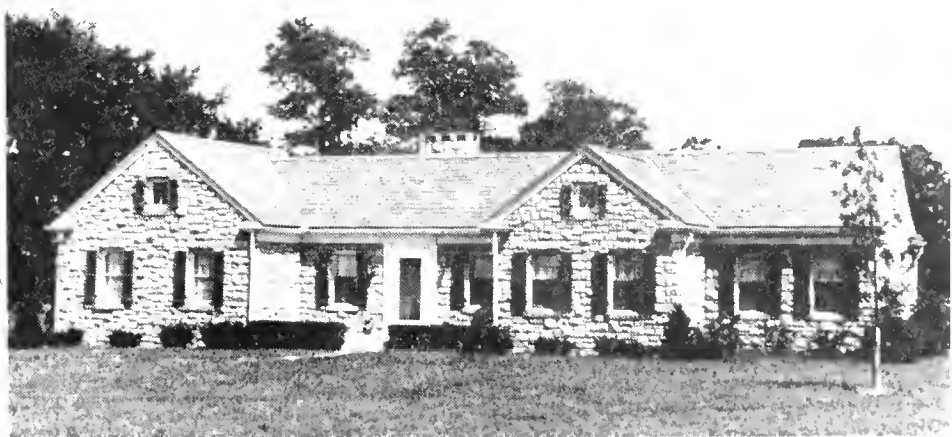
Let Hillenmeyer  
Help You Plan



Residence of Dr. and Mrs. George Wilson, Deepwood  
Showing how a few well-selected and arranged Hillenmeyer plants will give added character to a beautiful home.



Pseudotsuga Douglasi



Residence of Mr. and Mrs. Nat Hall, Nicolasville Road  
A beautiful low, Kentucky River Stone house, made more beautiful by Hillenmeyer plants and service. Less than a year's growth.

# Taxus ~

## THE DISEASE-PROOF EVERGREEN

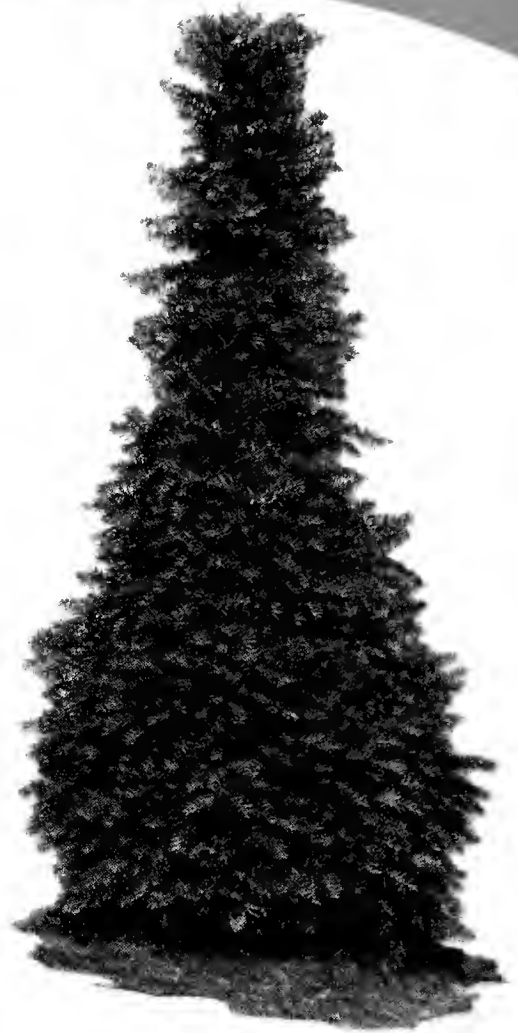
NO family of Evergreens has gained such popularity in recent years as the Yew. Their dark rich color, hardiness, variety of form, ease to transplant, adaptability, freedom from disease or insects has merited this position. They all do well in the shade. We have one of the largest stocks in the South, and are using it in quantities for foundation planting and to replace boxwood, which freezes so often.



**Taxus Cuspidata**

**Taxus canadensis.** Canada Yew. A spreading form from Canada which will burn unless planted in the shade. Hardy and has bright red fruit. Likes moist soil. Each 18 to 24 in. .... \$3.00 2 to 2½ ft. .... 4.00

**T. cuspidata.** Spreading Japanese Yew. Low, rather spreading type which is usually broader than high. Can be pruned into compact form to look like boxwood or made into a hedge if desired. Withstands heat and cold and perfectly hardy in our climate. Can be grown in sun or shade. One of the finest spreading Evergreens. Each 1½ to 2 ft. .... \$ 3.00 2 to 2½ ft. .... 4.00 2½ to 3 ft. .... 5.00 3 to 3½ ft. .... 7.50 3½ to 4 ft. .... 10.00



**Taxus Cuspidata Capitata**

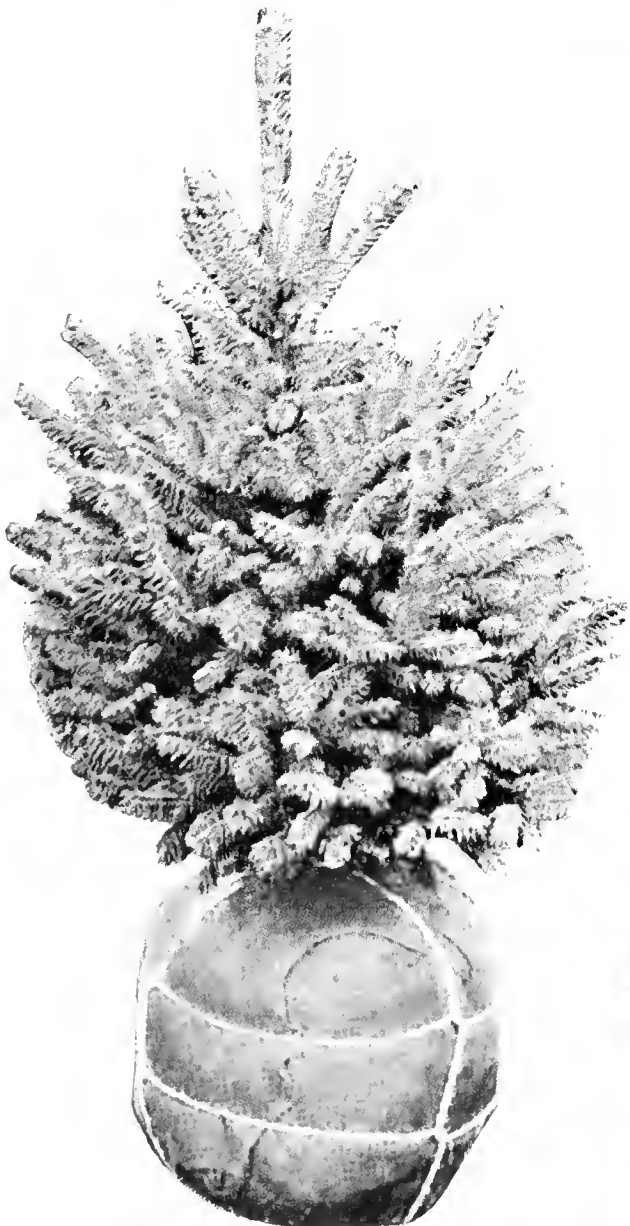
**T. cuspidata nana.** Dwarf Japanese Yew. A low picturesque form of much merit. Can be used as a specimen or hedge when you want a quality plant. Each 12 to 15 in. .... \$3.00 18 to 24 in. .... 4.00

**T. cuspidata capitata.** Upright Japanese Yew. An upright cone-shaped form of medium growth. Desirable for foundation planting or hedge. The most desirable variety of this type.

**T. media hicksi.** Hicks' Yew. Decidedly upright, forming a column of deepest green foliage. Slow-growing and never spreading more than one-fourth of its height. Very compact.

**Prices of the above 2 Taxus:** Each 2½ to 3 ft. .... \$4.00 3 to 3½ ft. .... 5.00 3½ to 4 ft. .... 6.00 4 to 4½ ft. .... 7.50

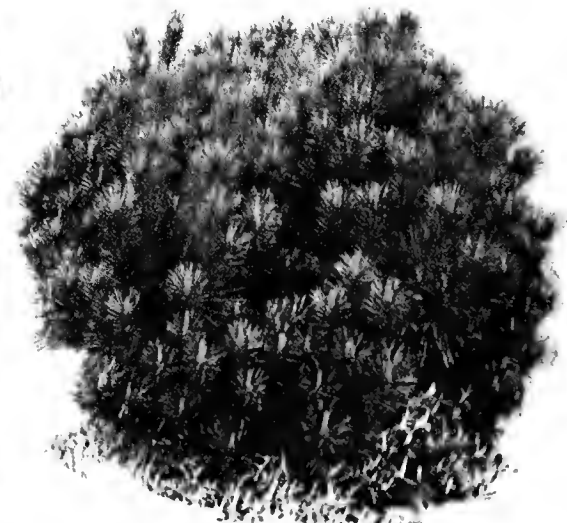
**T. repandens.** Spreading English Yew. A low, spreading form from England which prefers a northern or eastern exposure. Dark, rich green. Each 18 to 24 in. .... \$4.00 2 to 2½ ft. .... 5.00



**Picea P. Kosteriana**



**Pinus Sylvestris**



**Pinus Mughus**



## Thuja - Arbor-Vitae

**Thuja occidentalis.** American Arbor-Vitae. One of the most popular Evergreens because it grows well under adverse conditions, and as a specimen or hedge plant it is very attractive. It is inclined to be conical in growth, and while it is not green during the winter as most of the other varieties, it is one of the most popular because of its many good qualities.

Each	
2 to 3 ft. ....	\$1.50
3 to 4 ft. ....	2.00
4 to 5 ft. ....	3.00
5 to 6 ft. ....	4.00
6 to 7 ft. ....	5.00
7 to 8 ft. ....	6.00

**T. occidentalis globosa.** Globe Arbor-Vitae. Usually develops into a perfect, globe-shaped plant, the spreading equaling the height. The foliage is light green and attractive. These are largely used for front-line planting, as specimens in urns or vases, and in formal work where symmetry is desired.

Each	
1x1½ ft. ....	\$1.50
1½x2 ft. ....	2.00
2x2½ ft. ....	2.50
2½x2½ ft. ....	3.00
3 ft. ....	4.00

**T. occidentalis lutea.** George Peabody Arbor-Vitae. Similar to the American Arbor-Vitae, except that the foliage is golden when exposed to the direct rays of the sun. It is by far the best of the American Golden types.

Each	
2 to 2½ ft. ....	\$2.50
2½ to 3 ft. ....	3.00
3 to 3½ ft. ....	3.50

**T. occidentalis pyramidalis.** Pyramidal Arbor-Vitae. Strikingly attractive, spreading very little at its base, and retaining its shape without shearing. The color is deep, rich green. Like all Arbor-Vitae is easy to transplant. For corners, in front of pillars, center or background of group plantings, no dwarf Evergreen is quite so popular.

Each	
2 to 3 ft. ....	\$1.50
3 to 4 ft. ....	2.00
4 to 5 ft. ....	3.00
5 to 6 ft. ....	4.00
6 to 7 ft. ....	5.00

**T. occidentalis wareana.** Ware Arbor-Vitae. A small globe variety, and its unusually dark green color makes it very useful. The darkest green of all the American Arbor-Vitae. It can be sheared to a perfect globe, though naturally it is oblong.

Each	
1 to 1½ ft. ....	\$1.50
1½ to 2 ft. ....	2.00
2 to 2½ ft. ....	2.50
2½ ft. ....	3.00

**T. orientalis aurea conspicua.** Goldspire Arbor-Vitae. One of the most conspicuous of the golden pyramidal Arbor-Vitae. Holds color throughout the winter.

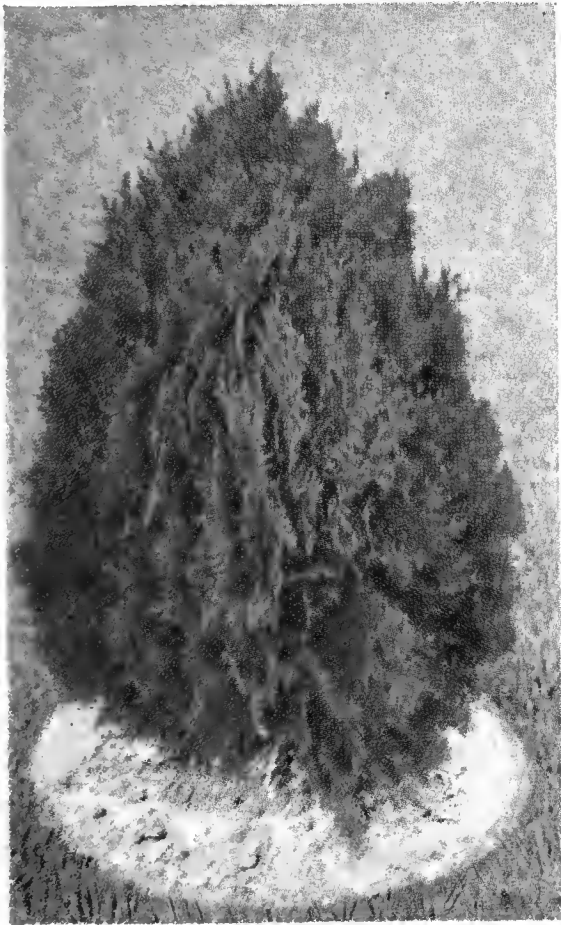
**T. orientalis elegantissima.** Yellow Column Arbor-Vitae. Of rather pyramidal form though broader at base than Aurea conspicua. Golden color in summer, turning a pleasing bronze at the approach of cold weather.

**Prices of above 2 Thujas:**

Each	
2 to 3 ft. ....	\$2.00
3 to 4 ft. ....	3.00
4 to 5 ft. ....	4.00

**T. orientalis aurea nana.** Berckmann's Golden Arbor-Vitae. A beautiful, dwarf, compact variety of golden color. For urns, small gardens, cemetery lots or brightening up foundation plantings.

Each	
15 to 18 in. ....	\$2.00
18 to 24 in. ....	2.50
2 to 2½ ft. ....	3.00



Thuja, Berckmann's Golden

Thuja—  
Pyramidal  
and Globosa



Tsuga—Hemlock

## Tsuga - Hemlock

**Tsuga canadensis.** Canada Hemlock. We consider the Hemlock one of the best of all Evergreens. Grows rapidly and can be used either as a specimen, in foundation planting, or as a hedge. Can be pruned often and severely. While the Hemlock prefers a good rich soil, with moisture, it will grow almost anywhere. Its sweeping branches are most graceful, and when sheared becomes rather compact. Always retains a rich green color, summer or winter. We have a saying, "When in doubt, plant a Hem'lock."

Each	
2 to 3 ft. ....	\$ 1.50
3 to 4 ft. ....	2.50
4 to 5 ft. ....	3.50
5 to 6 ft. ....	4.50
6 to 7 ft. ....	6.00
7 to 8 ft. ....	7.50
8 to 9 ft. ....	9.00
9 to 10 ft. ....	11.00
10 to 11 ft. ....	13.00
11 to 12 ft. ....	15.00

See page 23 for Hemlock Hedge.

**T. caroliniana.** Carolina Hemlock. A more pendulous variety than Canada Hemlock, and of only moderate growth. Foliage a deep green, borne in miniature whorls about the branches. It has proved hardy and quite attractive, and is found in few plantings, thus adding novelty as well as true worth.

Each	
5 to 6 ft. ....	\$5.00
6 to 7 ft. ....	6.00

### EVERGREEN QUALITY

Every Evergreen has been transplanted to increase the root-system, and sheared to make it compact. Height does not indicate compactness and shapeliness, nor does price indicate VALUE—seeing is believing!

# Broad-Leaf Evergreens

Not many home-owners know what this title means! Think of the hollies and the laurels as examples. We should sorely miss the glossy green foliage of the Broad-leaved Evergreens in early spring, the deeper colors of summer, and the cheerful contrast they give to dull winter scenes. They may be used around the house foundations, planted with tall evergreens or in the shrub border. You will be delighted with their beauty all the year—and you will like the plants we supply.

**B&B** means the roots are in a ball of earth wrapped in burlap—the safest and best way of moving all Evergreens.

## Abelia - Bush Arbutus

**Abelia grandiflora.** Few shrubs are of greater value than the Abelias for planting at house foundations, for specimens about the yard, or grouped in corners or curves of walks and drives. The dainty blush-white flowers come in late May or June and continue until frost. While not "evergreen" the rich green foliage has a special charm, as it remains most of the year.

	Each
18 to 24 in. ....	\$0.75
2 to 3 ft. ....	1.00
3 to 4 ft. ....	1.50

B&B 25c extra.

## Berberis - - Holly Barberry

**Berberis ilicifolia.** Semi-evergreen foliage that resembles that of the Holly, takes on a reddish cast in the fall, and does not drop until the new leaves appear. Very hardy, defying our most severe winters. 5 to 6 feet. Each

4 to 5 ft. (B&B) .....	\$3.00
2 to 3 ft. (B&B) .....	1.50

**B. julianae.** The best of the evergreen Berberis. Holds its broad, green leaves on golden stems throughout the winter. Each

18 to 24 in. (B&B) .....	\$2.00
2 to 2½ ft. (B&B) .....	2.50

**B. mentorensis.** This new, patented, semi-evergreen, rather upright Barberry is useful as an individual specimen or hedge.

<b>Specimen</b>	Each
1½ to 2 ft. (B&B) .....	\$1.00
2 to 3 ft. (B&B) .....	1.50

<b>Hedge</b>	
15 to 18 in. ....	\$0.50
18 to 24 in. ....	.60



**Viburnum Rhytidophyllum**

## Buxus - Boxwood

**Buxus sempervirens.** The old English Bush Box, with its shiny green foliage, is a plant that can be used in many ways. As a hedge it gives character to every place; in an informal group it has no rivals; it may be clipped or trained to pyramid form, globe shapes, or allowed to grow naturally. Box is used freely in window-boxes, urns, and for garden edgings. They should be planted in good soil and fed with sheep or cow manure. Cultivate lightly and do not disturb the roots.

	Each
12 to 15 in. specimens .....	\$1.25
15 to 18 in. specimens .....	2.50
1½ ft. specimens .....	3.50
2 ft. specimens .....	5.00
2½ ft. specimens .....	6.00

Special prices in quantity for hedge purposes.

## Euonymus - Evergreen Wahoo

**Euonymus patens.** Introduced recently from China. Splendid foundation groups, growing well in shade. Grows 3 to 4 feet high, with green stems and dark green leaves which remain all winter. The greenish white flowers are small, but the wealth of coral-red berries (similar to the native Bittersweet) make the plant very showy. Each

18 to 24 in. (B&B) .....	\$1.00
2 to 2½ ft. (B&B) .....	1.25
2 to 3 ft. (B&B) .....	1.50

## Ilex - Holly

**Ilex crenata** Japanese Holly. (F.) An intricately branched evergreen shrub with small, glossy leaves very much resembling a Boxwood. Its blue-black berries are unlike most Hollies. One of the best evergreen shrubs for foundation planting or compact hedges. Each

18 to 24 in. (B&B) .....	\$2.00
2 to 3 ft. (B&B) .....	2.50
3 to 4 ft. (B&B) .....	3.00

**I. crenata rotundifolia.** Round-Leaf Japanese Holly. Has longer, glossier leaves than crenata. A dwarf, spreading hardy form which is excellent for foundation planting. Each

1½ to 2 ft. (B&B) .....	\$2.00
2 to 2½ ft. (B&B) .....	2.50

**I. glabra.** Inkberry. A rather loose-growing evergreen shrub which will succeed either in the shade or sun. Leaves turn a somewhat purple shade in the fall. When planted in mass the shining black berries are most effective. Each

1½ to 2 ft. ....	\$2.00
2 to 2½ ft. ....	2.50

**I. opaca.** Everyone knows the native Holly with its large, glossy leaves and red berries. It is not appreciated as it should be, for it can be sheared into compact specimens like Boxwood or left to develop naturally into a bush or small tree that is wonderful at all seasons of the year. Those who have seen the Hollies in Cave Hill Cemetery, Louisville, need no other description. Some plants do not bear berries. Nursery-grown plants are comparatively easy to transplant if planting directions are followed. Each

3 to 4 ft. (B&B) .....	\$3.00
4 to 5 ft. (B&B) .....	4.00
5 to 6 ft. (B&B) .....	5.00
6 to 7 ft. (B&B) .....	6.00
7 to 8 ft. (B&B) .....	7.00
8 to 9 ft. (B&B) .....	8.00

Plants with berries furnished at 40% additional.

## Laurocerasus - Cherry Laurel

**Laurocerasus caroliniana.** A fine evergreen shrub growing 7 to 9 feet high, with glossy leaves of deepest green. Ornamental, useful and desirable. Each

2 to 3 ft. (B&B) .....	\$2.50
3 to 4 ft. (B&B) .....	3.00
4 to 5 ft. (B&B) .....	4.00
5 to 6 ft. (B&B) .....	5.00



**Ilex Glabra**

## Mahonia

(Oregon Holly-Grape)

**Mahonia aquifolium.** The thick, glossy leaves resemble Holly, but are much larger and far more attractive. Makes a compact bush, and when cut to the ground every few years will become an indescribable mass of green and bronze foliage. Yellow blossoms in June followed by blue berries. Thrives in shade especially. Each

1½ to 2 ft. (B&B) .....	\$1.50
2 to 3 ft. (B&B) .....	2.00

**M. japonica.** Japanese Mahonia. This Asiatic form has large, rather spiny shining leaves and is most attractive. Yellow flowers in spring followed with black berries. Does best in partial shade. Each

18 to 24 in. (B&B) .....	\$1.50
2 to 3 ft. (B&B) .....	2.00

## Nandina

**Nandina domestica.** A semi-evergreen with numerous, upright, reedlike stems. Each cane has a tuft of spreading foliage, clear green except the very young growth, which is tinted pink to copper. In August, white panicles of flowers appear, followed by masses of red berries in trusses. In autumn, strong, coppery tints cover the foliage, making it a most pleasing combination. While not entirely evergreen, it is nearly so. Each

2 to 2½ ft. (B&B) .....	\$1.25
2½ to 3 ft. (B&B) .....	1.50

## Osmanthus

**Osmanthus americanus.** 6 to 8 feet. A fast growing evergreen shrub with long narrow leaves and fragrant white flowers. Rather open growth. Not generally listed but one of the hardiest and best. Each

2 to 3 ft. (B&B) .....	\$1.50
3 to 4 ft. (B&B) .....	2.00

## Viburnum

**Viburnum rhytidophyllum.** Leather-leaf Viburnum. Large, leathery leaves resembling the rhododendron, except it will grow in any kind of soil. Yellowish white flowers followed by red berries. A valuable unique plant. Each

2 to 3 ft. ....	\$2.50
3 to 4 ft. ....	3.00

**V. burkwoodi.** This new fragrant "Evergreen Carlesi" is in demand everywhere. If you want something new and outstanding order burkwoodi. Each

2 to 3 ft. ....	\$3.00
3 to 4 ft. ....	4.00



MOVING A MAPLE IN FULL LEAF JULY 9TH

We are equipped to transplant large trees, 20 to 40 feet, and while best done in the dormant period, we often move in full leaf. If interested in saving 10 to 20 years, and getting immediate effect, consult us

# Trees for Shade and Shelter

WHEN hot summer sun beats down, you long for the welcome shade of a Maple, an Oak, or a broad-spreading Elm. But to have and enjoy such shade and shelter, you must plan ahead. The trees must be planted in fall or spring when the weather is cool. Then the roots take hold, the tree flourishes, and in a surprisingly few seasons the outspreading branches give the protection you desire.

We can supply—at very low prices—large trees that will give immediate effect, as well as smaller specimens from 6 to 15 feet high, which need a little more time to develop after moving to your place. Our trees are well grown, root-pruned, and transplanted several times; they are truly Hillenmeyer standard.

## Acer - Maple

**Acer dasycarpum** Silver or Water Maple. Because of its quick growth and good foliage, this tree is in great demand. The leaves appear early in spring, are light green on the upper side, silvery beneath, and remain until late fall. Small flowers open before the leaves appear. For planting as temporary trees—that is, alternating between the hard-wooded and slower growers, such as oaks, elms, sugar maples, gums, etc.—the Silver Maple is highly recommended.

	Each	Five
7 to 9 ft., 1 1/4 in. cal. ....	\$1.50	\$ 6.75
8 to 10 ft., 1 1/2 in. cal. ....	2.00	9.00
10 to 12 ft., 1 3/4 in. cal. ....	2.50	11.25
12 to 14 ft., 2 in. cal. ....	3.00	13.50
12 to 15 ft., 2 1/2 in. cal. ....	4.00	18.00

**A. platanoides.** Norway Maple. Resembles the Sugar Maple in character but with darker and larger foliage, round and spreading in habit of growth. It is really the European Hard Maple and retains this character here. For lawn specimens or shade to plant on streets, in parks, cemeteries, avenues, or arching over roadways, this tree is highly recommended. Sometimes the trunks are slightly crooked when young, but they overcome this unsightliness in a few years when planted in the open.

**A. platanoides schwedleri.** Schwedler's Maple. Similar to the Norway Maple, except in early spring the foliage is a bright purple, changing to bronze and then to dull green. In the fall it turns bronze before defoliating.

**A. rubrum.** Red Maple. A native tree which is not appreciated and one of the most attractive as a lawn specimen. The young shoots are bright red in winter. Flowers red, appearing before the leaves, which in fall vie with the oaks, sassafras, gum, sumac, or sugar maples for magnificence in color.

**A. saccharum.** Sugar Maple. Known everywhere and extremely popular. The tree grows to great size, erect, conical form, is perfectly hardy, withstands any sub-normal weather conditions, and is adaptable to nearly all types of soil. The tree yields valuable timber, as well as maple sugar. Foliage is deep green, turning in fall to indescribable colors.

Prices—Norway, Schwedler's, Red, and Sugar Maples:

	Each	Five
7 to 9 ft., 1 1/4 in. cal. ....	\$2.50	\$11.25
8 to 10 ft., 1 1/2 in. cal. ....	3.00	13.50
10 to 12 ft., 1 3/4 in. cal. ....	4.00	18.00
12 to 14 ft., 2 in. cal. ....	5.00	22.50
12 to 15 ft., 2 1/2 in. cal. ....	6.00	27.00

## Betula - Birch

**Betula alba.** European White Birch. Tree of moderately quick growth, erect, with terminal branches slightly drooping. Bark almost white. As a specimen, and especially contrasted with evergreens, it makes a valuable tree for the lawn. Native of moist places, but will do well when planted on dry ground.

	Each	Five
7 to 9 ft., 1 1/4 in. cal. ....	\$2.50	\$11.25
8 to 10 ft., 1 1/2 in. cal. ....	3.00	13.50
10 to 12 ft., 1 3/4 in. cal. ....	4.00	18.00
12 to 14 ft., 2 in. cal. ....	5.00	22.50
12 to 15 ft., 2 1/2 in. cal. ....	6.00	27.00

**B. alba pendula gracilis.** Cut-Leaf Weeping White Birch. Those who know and admire the distinctive characteristics and beauty of the White Birch know it is unusual and do not expect to find it among ordinary listings of popular trees. It forms a pyramidal tree of moderately rapid growth, and as it grows

older the younger branches become pendulous, drooping decidedly toward the ground. We have splendid specimens that are offered at very low price.

	Each	Five
6 to 8 ft. ....	\$3.00	
8 to 10 ft. ....	4.00	
10 to 12 ft. ....	5.00	

**B. nigra.** River Birch. This is a native tree with darker bark but in foliage and general characteristics resembles the other Birches.

**B. populifolia.** American White Birch. A medium sized tree with papery white bark and slender, pendulous branches. More vigorous than the European form and will grow in almost any soil.

Prices of B. nigra and B. populifolia:	Each
8 to 10 ft., 1 1/2 in. cal. ....	\$2.50
10 to 12 ft., 1 3/4 in. cal. ....	3.00
12 to 14 ft., 2 in. cal. ....	4.00
12 to 15 ft., 2 1/2 in. cal. ....	5.00



Betula Alba (White Birch)

## Trees in Quantity Lots

For Five or More of a Kind Deduct 10% from Each Price



Acer Saccharum (Sugar Maple)

## Aesculus

**Aesculus carnea.** Red-Flowering Horse-Chestnut. A handsome tree with red or scarlet flowers borne in panicles 6 to 8 inches long. Much prized for this highly ornamental value. Trees must be grafted and are rather scarce.

3 to 4 ft. ....	Each \$3.00	6 to 7 ft. ....	Each \$5.00
4 to 5 ft. ....	4.00		

**A. glabra.** Ohio Buckeye. A native round-topped tree of good habit. Cream blossoms borne in clusters 5 to 6 inches long.

5 to 6 ft. ....	Each \$2.00	8 to 10 ft. ....	Each \$4.00
6 to 8 ft. ....	3.00		

## Cladrastis - Yellow-Wood

**Cladrastis lutea.** So called because the wood was formerly used to make a yellow dye. A native tree of spreading habit with foliage generally resembling the ash. It produces great drooping panicles of white pealike blossoms not unlike wisteria. Foliage brilliant yellow in autumn.

5 to 6 ft. ....	Each \$3.00	7 to 8 ft. ....	Each \$5.00
6 to 7 ft. ....	4.00		

## Carpinus - Hornbeam

**Carpinus betula pyramidalis.** Pyramidal European Hornbeam. A narrow, stately tree of columnar habit with Beech-like foliage. For a formal specimen or making an alley it is of much value.

5 to 6 ft. ....	Each \$ 5.00	7 to 8 ft. ....	Each \$ 8.00
6 to 7 ft. ....	6.00	8 to 10 ft. ....	10.00

**C. caroliniana.** Hornbeam or Blue Beech. This attractive, slow growing tree deserves wider planting. In foliage it resembles the native Beech but is much more compact and graceful in habit of growth. The terminal growth has a reddish cast, and foliage colors scarlet to orange-yellow in the fall. Fine where a small, compact specimen is wanted.

5 to 6 ft. ....	Each \$2.50	8 to 10 ft. ....	Each \$4.00
6 to 8 ft. ....	3.00		

## Castanea - Chinese Chestnut

**Castanea mollissima.** Chinese blight - resistant Chestnut. Small symmetrical tree, valuable for shade or nuts. With our native variety practically extinct this will take its place. Foliage beautiful in summer changing to yellow in fall.

Fruits early and prolifically and is of good quality.

3 to 4 ft. ....	Each \$1.00
4 to 5 ft. ....	1.50

## Feed Your Trees

Like other plants, trees should be fed for best results. See our Plant Foods listed on inside back cover.



Cercis—Redbud

## Celtis - Hackberry

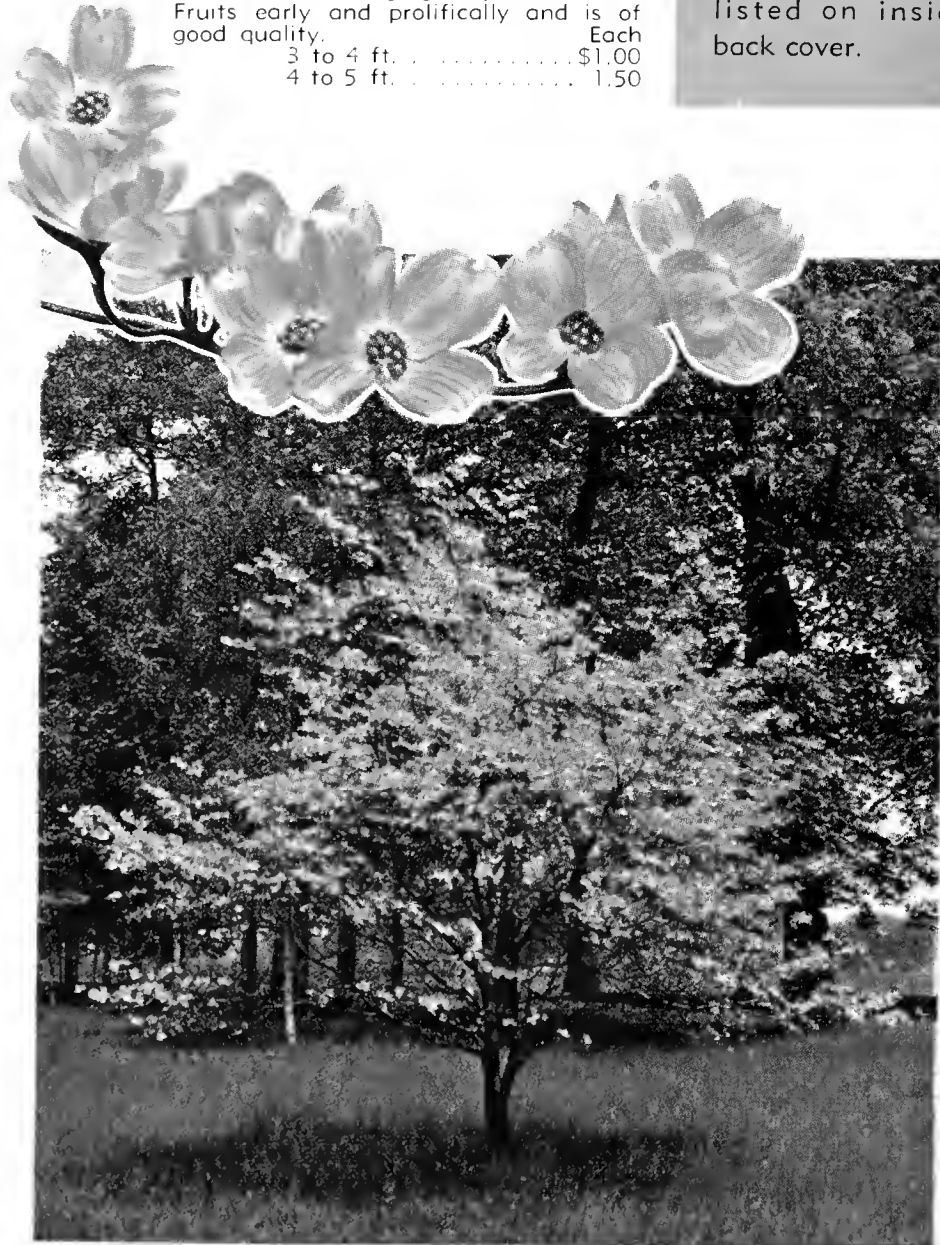
**Celtis mississippiensis.** The Hackberry is one of our best trees. It is not rapid in growth, but is comparatively free of disease and reaches a height of 40 to 60 feet. Grows on either dry or wet soil, and the fruits are attractive to birds and children.

7 to 9 ft., 1 1/4 in. cal. ....	Each \$2.00
8 to 10 ft., 1 1/2 in. cal. ....	2.50
10 to 12 ft., 1 3/4 in. cal. ....	3.00
12 to 14 ft., 2 in. cal. ....	4.00
12 to 15 ft., 2 1/2 in. cal. ....	5.00

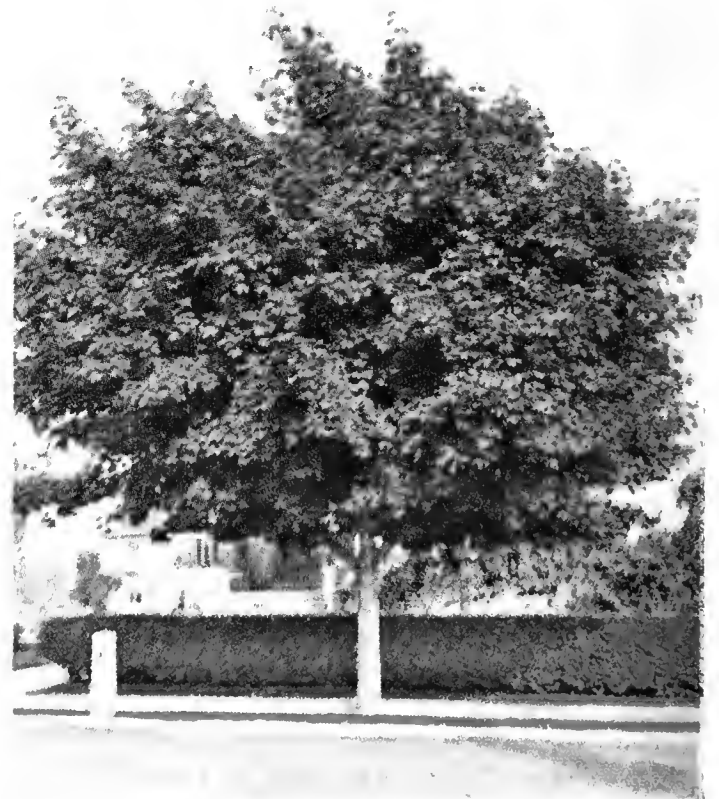
## Cercis - Judas Tree

**Cercis canadensis.** Redbud or Judas Tree. Spring's early harbinger, blooming in April, and literally covered with red or pink blooms before the leaves appear. It is a small, shapely tree, with large, deep green leaves. May be used in heavy mass planting of shrubs, with white-flowering dogwood or against evergreens or white birch, to furnish contrast.

	Each	Five		Each	Five
3 to 4 ft. ...	\$0.75	\$3.40	7 to 9 ft. .	\$2.00	\$9.00
4 to 5 ft. ...	1.00	4.50	8 to 10 ft. .	3.00	13.50
6 to 8 ft. ...	1.50	6.75			



Cornus—Flowering Dogwood



Acer—Norway Maple



Papulus—Lambardy Poplar

## Cornus - Dogwood

**Cornus florida.** White-Flowering Dogwood. A native tree, well known to everyone. It is beautiful all the year, and there is hardly a woody plant quite as useful as our native Dogwood. Its blossoms are conspicuous, coming early in the spring. The foliage is attractive all summer, and in the fall colors beautifully, with red berries that hang on most of the winter. It can be used as a specimen, or in groups as a background for shrub borders. In contrast with bright, flowering trees like redbud, it is especially showy.

Each	
2 to 3 ft.	.....\$0.75
3 to 4 ft.	.....1.00
4 to 5 ft.	.....1.50
5 to 6 ft.	.....2.50
6 to 7 ft.	.....3.50
7 to 8 ft.	.....5.00

Three small sizes (B&B) 25c extra.  
Three large sizes (B&B) 50c extra.

Ask for prices for quantity lots and specimen.

**Cornus florida rubra.** Pink-flowering Dogwood. This is not a new or uncommon tree but one too often overlooked as a means of beautifying home grounds. The common white variety may be better known but this pink-flowering type affords the loveliest display. Our trees are shipped balled and burlapped to insure safe and sure growth. Once started, they need but simple care. Like the white-flowering kind, the leaves of this Dogwood color attractively in the fall.

Each	
2 to 3 ft. (B&B)	.....\$1.50
3 to 4 ft. (B&B)	.....2.00
4 to 5 ft. (B&B)	.....3.00
5 to 6 ft. (B&B)	.....4.50
6 to 7 ft. (B&B)	.....6.00

## Diospyros - Persimmon

**Diospyros virginiana.** Persimmon. 20 to 25 feet. It has value both for shade and fruit. The foliage is glossy and shining, the coloring yellow in the fall. Its fruit is valued after frost time and is an old favorite. It is a tree too well known to describe.

Each	
6 to 7 ft., 1 1/4 to 1 1/2 in. cal.	.....\$1.50
7 to 9 ft., 1 1/2 to 1 3/4 in. cal.	.....2.00
9 to 10 ft., 1 3/4 to 2 in. cal.	.....2.50

## Fagus - Beech

**Fagus americana.** American Beech. One of our loftiest and grandest shade trees. Admired for its smooth gray bark, strong spreading branches and handsome foliage which turns brilliant yellow in autumn. Produces sweet nuts, borne in burrs, which are eagerly sought by children and grown-ups.

Each	
7 to 9 ft.	.....\$4.00
8 to 10 ft.	.....5.00

## Fraxinus - Ash

**Blue, Green, and American Ash.** We offer these three varieties which are not unlike in appearance and which are all native. The whole group succeeds in dry, moist, alkaline soils. These should be more generally planted, especially in the paddock and for reforestation purposes.

Each	
7 to 9 ft., 1 1/4 in. cal.	.....\$2.00
8 to 10 ft., 1 1/2 in. cal.	.....2.50
10 to 12 ft., 1 3/4 in. cal.	.....3.00
12 to 14 ft., 2 in. cal.	.....4.00
12 to 15 ft., 2 1/2 in. cal.	.....5.00

## Ginkgo - Maidenhair Tree

The Ginkgo is one of the oldest living things in the world. It is a hang-over from prehistoric ages and has no relatives in the plant kingdom. A tall, picturesque, hordy tree with horizontal branches and small maiden-hair-fern-like leaves which usually hang in clusters of three or more from the branches. The foliage changes to golden yellow in the fall. A unique tree which is worthy of a place on any lawn.

Each	
7 to 8 ft., 1 1/2 in. cal.	.....\$2.50
8 to 9 ft., 1 1/4 in. cal.	.....3.00
9 to 10 ft., 1 3/4 in. cal.	.....4.00
10 to 11 ft., 2 in. cal.	.....5.00
11 to 12 ft., 2 1/2 in. cal.	.....6.00

## Gymnocladus - Kentucky Coffee Tree

**Gymnocladus dioica.** A native of noble proportions, growing rather irregular in shape, with blue-green foliage. Resembles the walnut tree. Fine for heavy clay soils.

Each	
7 to 9 ft., 1 1/4 in. cal.	.....\$2.50
8 to 10 ft., 1 1/2 in. cal.	.....3.00
10 to 12 ft., 1 3/4 in. cal.	.....4.00
12 to 14 ft., 2 in. cal.	.....5.00
12 to 15 ft., 2 1/2 in. cal.	.....6.00

HALESIA, Silver Bell. See page 15.

## Juglans - Walnut

**Juglans cinerea.** Butternut. This native tree is perhaps the most precious of the nut-bearing trees. It is rapid in growth, quickly making a round-headed tree. If you want nuts quickly, plant Butternuts.

**J. nigra.** Black Walnut. One of the noblest of our native forest trees and in great demand for planting.

Prices of Walnuts:	Each
5 to 6 ft., 1 1/4 in. cal.	.....\$1.00
6 to 7 ft., 1 1/2 in. cal.	.....1.50
7 to 9 ft., 1 3/4 in. cal.	.....1.75



Tilia—American Linden



Malus—Flowering Crab

## Koelreuteria - Varnish Tree

**Koelreuteria paniculata.** Frequently called "Golden Rain Tree" because of the many yellow blossoms. It grows 20 to 30 feet high and is of globular shape. In its young stages it is not so shapely but develops into an interesting specimen. Each

5 to 6 ft. ....	\$2.00
6 to 8 ft. ....	2.50
8 to 10 ft. ....	3.00
10 to 12 ft. ....	4.00

## Larix - Larch

**Larix europaea.** European Larch. A tall, conical tree with soft light green leaves which resemble the short needles of a pine. Valuable for screen or ornamental purposes. Among the first trees to start growth in the spring. B&B 50c extra. Each

6 to 7 ft. ....	\$3.00
7 to 8 ft. ....	4.00

## Liquidambar - Sweet Gum

**Liquidambar styraciflua.** Another native tree not appreciated. It is not of rapid growth nor especially easy to transplant, but the glossy foliage in summer, the brilliant color in the fall, and the unusual appearance of the young branches with corky bark in the winter are qualities which make it especially valuable. Each

7 to 9 ft., 1 1/4 in. cal. ....	\$2.50
8 to 10 ft., 1 1/2 in. cal. ....	3.00
10 to 12 ft., 1 3/4 in. cal. ....	4.00
12 to 14 ft., 2 in. cal. ....	5.00
12 to 15 ft., 2 1/2 in. cal. ....	6.00

## Liriodendron - Tulip Tree

**Liriodendron tulipifera.** Tulip Poplar. Belongs to the magnolia family, and is one of the finest native trees, growing to be very large, and bearing tulip-shaped, yellowish blossoms. Its leaves are large and very dark green. Grows quickly when established. Each

7 to 9 ft., 1 1/4 in. cal. ....	\$2.00
8 to 10 ft., 1 1/2 in. cal. ....	2.50
10 to 12 ft., 1 3/4 in. cal. ....	3.00
12 to 14 ft., 2 in. cal. ....	4.00
12 to 15 ft., 2 1/2 in. cal. ....	5.00



Taxodium—Bald Cypress

## Magnolia

**Magnolia acuminata.** Cucumber Tree. A well-known native of our mountains, conical in shape and with large, glaucous leaves, making it attractive. The flowers are fragrant, usually a dull white color, followed by elongated green seed clusters which later turn coral. Very satisfactory. Each

6 to 8 ft., 1 1/4 in. cal. ....	\$2.50
8 to 10 ft., 1 1/2 in. cal. ....	3.00
10 to 12 ft., 1 3/4 in. cal. ....	4.00
10 to 12 ft., 2 in. cal. ....	5.00

**M. grandiflora.** Southern Magnolia. While this grand southern evergreen attains great height in the South it grows to be only a medium size tree in Kentucky. The large waxy, evergreen leaves resemble the Rubber Plant. Has large white blossoms followed by scarlet seed. Sometimes a little difficult to get established, but well worth the effort. Each

3 to 4 ft. (B&B) ....	\$2.50
4 to 5 ft. (B&B) ....	3.00
5 to 6 ft. (B&B) ....	3.50

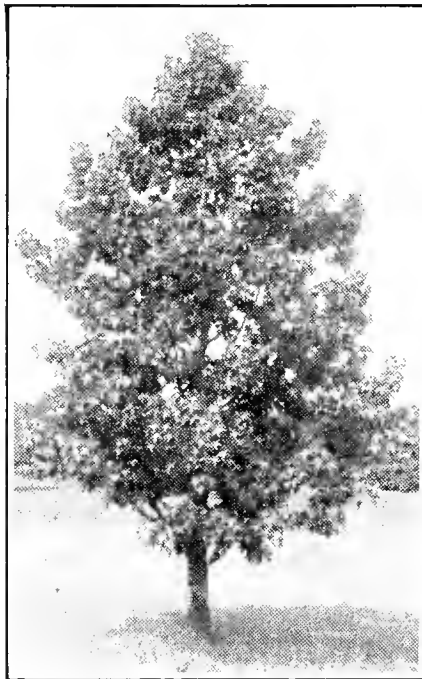
**M. tripetala.** Umbrella Magnolia. A wide, spreading tree with stout branches and large leaves, sometimes attaining a width of 8 to 9 inches and 15 to 20 inches long. Flowers creamy white, fragrant, and 8 to 10 inches across. A native tree to most of eastern Kentucky. Each

6 to 8 ft., 1 1/4 in. cal. ....	\$2.50
8 to 10 ft., 1 1/2 in. cal. ....	3.00
10 to 12 ft., 1 3/4 in. cal. ....	4.00
12 to 14 ft., 2 in. cal. ....	5.00

Magnolia—Other varieties see page 17.

**MAGNOLIA soulangeana.** Saucer Magnolia. See page 17.

**M. glauca.** Sweet Bay. See page 17.



Liquidambar—Sweet Gum



## Malus - Flowering Crab

The Flowering Crabs have few rivals among the gorgeous spring-flowering trees. They are hardy, of easy culture, and will thrive in almost any soil. They are available in many shades and when used as specimen or mass plantings are most effective. Many kinds bear very ornamental fruit. No lawn is complete without one of these gems.

**Malus cleyi.** Ely Crab. 12 to 15 ft. The best of the purple or red-leaf crabs. Covered in spring with clusters of large pink flowers followed by showy red fruit.

**M. floribunda.** Japanese Flowering Crab. 12-15 ft. A small, spreading tree with graceful arching branches. Buds rosy red changing to light pink. Fruit reddish and showy. One of the best.

**M. hopa.** Hopa Crab. 18 to 20 ft. Strong, healthy tree, rose-pink flowers. Fruit red inside and out.

**M. ioensis plena.** Bechtel's Crab. 12 to 15 ft. Rather slow grower with upright, spreading branches. Its double pink flowers resemble clusters of small roses.

**M. niedzwetkyana.** Redvein Crab. 15 to 20 ft. A Russian variety with purplish red flowers, twigs, leaves, and fruit. A rather larger spreading tree than most varieties.

**M. scheideckeri.** Scheidecker Crab. 10 to 15 ft. Compact upright growth with small, bright single rose blossoms borne in profusion.

**Price of all Crabs:** Each

3 to 4 ft. ....	\$1.25
4 to 5 ft. ....	1.75

## Morus - Mulberry

**Morus tatarica.** Russian Mulberry. This makes a round-headed tree, quick of growth and with profuse foliage. It is wonderfully productive, and for anyone wishing to attract birds and for chicken rows it cannot be surpassed. Fruit smaller than our native variety. Each

8 to 10 ft., 1 1/4 in. cal. ....	\$1.50
10 to 12 ft., 1 1/2 in. cal. ....	2.00
12 to 14 ft., 1 3/4 in. cal. ....	3.00
12 to 15 ft., 2 in. cal. ....	4.00

## Nyssa - Sour Gum

**Nyssa sylvatica.** Tupelo Gum. One of the finest trees known for fall coloring. It has long, narrow, glossy leaves, and is rather slow growing. Very attractive at all seasons. Not often offered nursery grown. Each

5 to 6 ft. ....	\$2.00
6 to 7 ft. ....	3.00

**OXYDENDRUM.** See page 17.

## Phellodendron - Cork Tree

**Phellodendron amurense.** Chinese Cork Tree. A handsome corky bark tree with spreading branches, compound leaves, and round top. Looks much like a Black Walnut but has dark berry-like fruit. Rapid grower, hardy, and unusual. Each

5 to 6 ft. ....	\$2.00
6 to 7 ft. ....	3.50

## Platanus - Sycamore

**Platanus occidentalis.** A native Sycamore which is not appreciated. However, if you want a tree of rapid growth, rugged in character, picturesque in winter with its white bark, you should not overlook this grand old tree. Fine for woodland and paddocks. Tolerant of soot and smoke, and therefore, is much used as a street tree in cities. Each

7 to 9 ft., 1 1/4 in. cal. ....	\$1.50	\$ 6.75
8 to 10 ft., 1 1/2 in. cal. ....	2.00	9.00
10 to 12 ft., 1 3/4 in. cal. ....	2.50	11.25
12 to 14 ft., 2 in. cal. ....	3.00	13.50
14 to 15 ft., 2 1/2 in. cal. ....	4.00	18.00

## Spraying and Tree Feeding

We are now equipped to spray and feed large trees, using modern equipment and scientific methods. If your favorite shade tree is being destroyed by insects or is starving you may need expert advice and treatment. Write and consult us when in need of this service.

Like other plants, trees should be fed for best results. See our Plant Foods listed on inside back cover.

## Populus - Poplar

**Papulus nigra italica.** Lombardy Poplar. A tall, slender tree of rapid growth, reaching great height and not to be confused with Carolina Poplar. Specimens often reach 50 feet, with a spread of less than 10 feet, and for this reason when trees are needed for narrow places, between buildings, congested lawns, narrow avenues, Lombardy Poplar may be used to advantage. Because of its great height and quick growth it is recommended for backgrounds of buildings, to add character to plantings or to offset straight or bare lines; for screening unsightly views, fire protection from close buildings, or wind-breaks—and for quick effects we recommend it.

	Each	Five
5 to 6 ft., 1/2 in. cal. ....	\$0.60	\$2.50
6 to 8 ft., 3/4 in. cal. ....	.75	3.00
7 to 9 ft., 1 in. cal. ....	1.00	4.50
8 to 10 ft., 1 1/4 in. cal. ....	1.25	5.60
10 to 12 ft., 1 1/2 in. cal. ....	1.50	6.25
12 to 15 ft., 2 in. cal. ....	2.00	9.00

**P. bolleana.** Bolleana Poplar. Just because the Carolina Poplar is an enormous weed and nothing else, one should not discriminate against all the Poplar family. Bolleana Poplar has glittering green leaves, silvered underneath, and makes an attractive display against the sky when they are set in motion by a gentle breeze. The bark is gray, giving a pleasing winter effect. It is a fast growing, slender, columnar tree, a little wider than Lombardy, which it resembles at a distance and for which it should be used as a substitute.

	Each	Five
7 to 9 ft., 1 in. cal. ....	\$1.50	\$ 6.75
8 to 10 ft., 1 1/4 in. cal. ....	1.75	7.85
10 to 12 ft., 1 1/2 in. cal. ....	2.25	10.25
12 to 15 ft., 2 in. cal. ....	3.00	13.50

## Prunus - Flowering Cherries

**Prunus subhirtella pendula.** Weeping Japanese Flowering Cherry. As a lawn tree this can hardly be excelled. Its sweeping, pendulous branches are literally studded with single pink bloom early in spring. An ornament in any lawn.

**Double Weeping Cherry.** A double form of the above with darker blossoms.

**Prices of the above Weeping Cherries**

	Each
Grafted 5 to 6 ft. from ground .....	\$3.50

**Prunus serrulata.** Japanese Flowering Cherry. No other flowering tree has the beauty of these wonders of the Orient.. As the demand increases our variety list will grow, but the ones named here are the choicest. Like all Cherries, they are shallow-rooted, and do not necessarily have to have rich ground in which to thrive.

**Naden.** Large, double, blush-pink variety. Midseason. Tree of medium growth.

**Shirofugen.** Very large, double, pinkish white flowers.

**Kwanzan.** Deep pink, shading into old rose; late; very double.

**Prices on the above three Cherries:**

	Each
4 to 5 ft. ....	\$2.50
5 to 6 ft. ....	3.00

B&B 50c extra

## Quercus - Oak

**Quercus alba.** White Oak. One of the grandest of all the Oaks. Rather difficult to transplant and of slow growth, but "patience brings a perfect reward." Leaves silver to purplish red in autumn.

**Q. coccinea.** Scarlet Oak. A beautiful symmetrical tree very much resembling the Pin Oak. Not quite as rapid in growth, leaves somewhat smaller and deeply lobed. Colors brilliantly in the fall.

**Q. macrocarpa.** Burr or Mossy-Cup Oak. A native variety of slow growth, but becomes a stately tree well covered with thick, dark green foliage of heavy texture. For permanency it has no superior. Prefers a moist or deep soil.

**Q. nigra.** Water Oak. A round-topped tree of good form. Will grow in either moist or dry soil. Foliage green until late fall.

**Q. palustris.** Pin Oak. The most popular of all the Oaks. Its beautiful glossy, deeply lobed green leaves change to gorgeous shades of purplish red and scarlet in the autumn. It is symmetrical, easy to transplant and of rapid growth. For street, avenue or as a lawn specimen there is nothing superior. Where a desirable hardwood tree is wanted we **unhesitatingly recommend a Pin Oak.**

**Q. rubra.** Red Oak. Not as compact nor does it color as brilliantly as the Pin Oak. Somewhat more difficult to transplant but will grow in almost any soil when once established. One of the fine Oaks.

**Prices for all varieties of Oaks:**

	Each	Five
7 to 9 ft., 1 1/4 in. cal. ....	\$2.50	\$11.25
8 to 10 ft., 1 1/2 in. cal. ....	3.00	13.50
10 to 12 ft., 1 3/4 in. cal. ....	4.00	18.00
12 to 14 ft., 2 in. cal. ....	5.00	22.50
12 to 15 ft., 2 1/2 in. cal. ....	6.00	27.00

## Salix - Willow

**Salix babylonica.** Babylon Weeping Willow. One of the most graceful of all the Willows. Makes a round-topped tree, and when it attains some size its long, pendant branches are most effective.

**S. elegantissima.** Thurlow Weeping Willow. Of rather upright growth when young but as it attains height and age its long, drooping silvery branches make it the most effective of all the Willows. Rapid grower in either moist or other good soil. Fine for specimens or screens. Best of the Weeping Willows.

**S. niobe.** Golden Weeping Willow. The best of the Golden Willows. Slender leaves, green above and silvery below. Twig and bark golden.

**Prices of above 3 varieties:**

	Each
6 to 8 ft. ....	\$1.50
7 to 9 ft. ....	2.00
8 to 10 ft. ....	2.50

**S. caprea.** Pussy Willow. See page 18.

## Sophora Japonica - Pagoda Tree

A medium size tree with spreading branches forming a symmetrical compact head. Native of China and Japan. Flowers creamy white borne in large loose panicles expanding in midseason. A handsome tree with green-barked twigs.

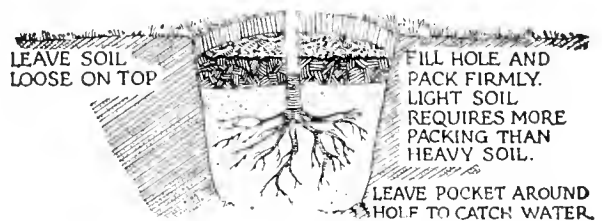
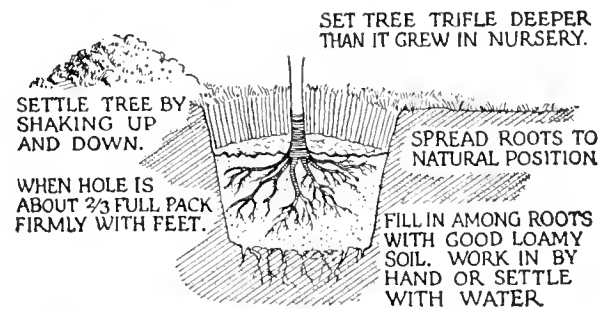
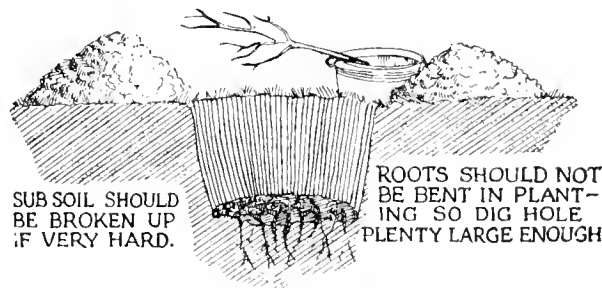
	Each		Each
5 to 6 ft. ....	\$2.00	7 to 8 ft. ....	\$4.00
6 to 7 ft. ....	3.00	8 to 10 ft. ....	5.00



Ulmus—American Elm

## How to Plant a Tree

SET TREE IN TUB OF WATER WHILE DIGGING HOLE.

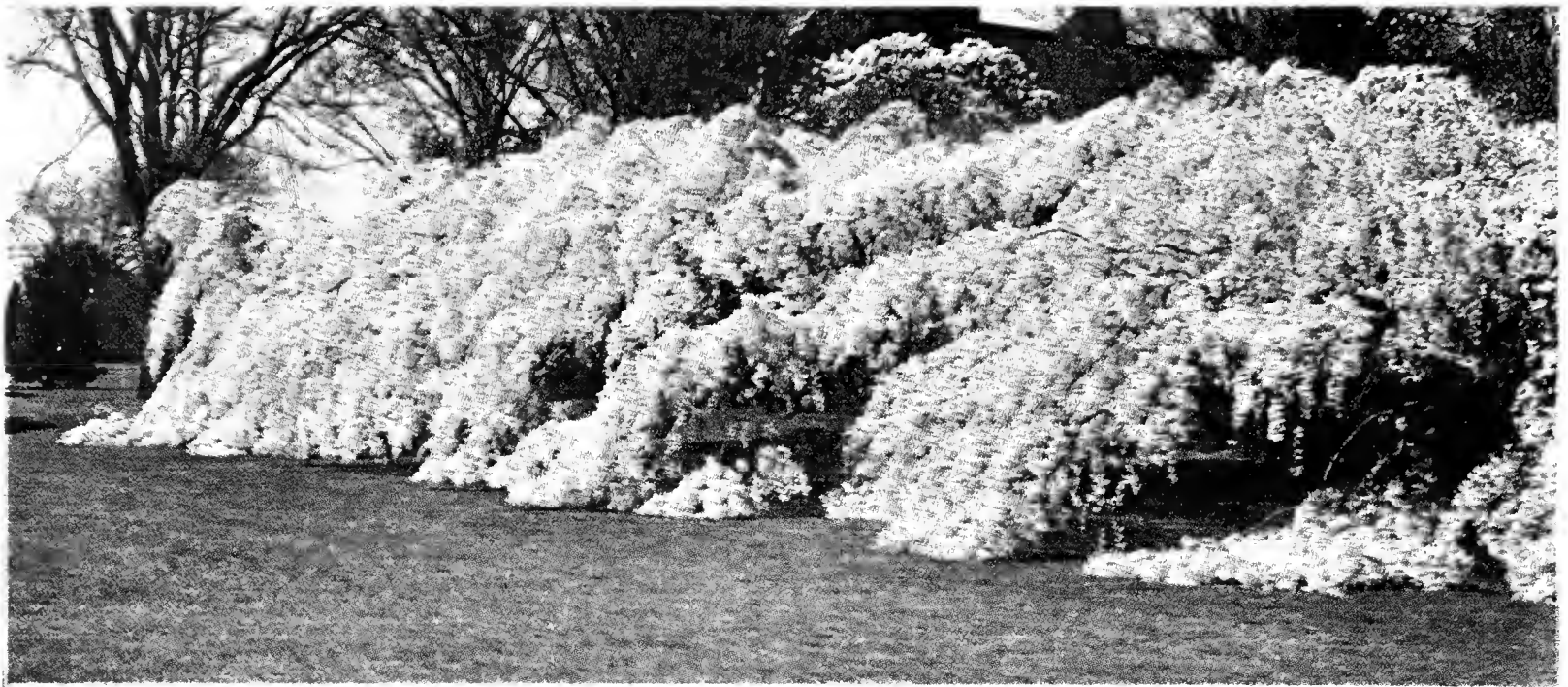


IMPORTANT: WE DO NOT ENCOURAGE THE USE OF MANURE. IF WELL DECAYED AND MIXED WITH SOIL IT SHOULD BE USED ONLY ON THE TOP

## Taxodium - Bald Cypress

**Taxodium distichum.** The great lumber tree of the far South, but native and perfectly at home here. Will grow in dry or wet soil and blends well in either deciduous or evergreen plantings. The light green foliage is needle-like and the general shape of the tree resembles a spruce. Considered slow growing, but very symmetrical and as durable as an oak, in fact the lumber is called the "wood eternal."

	Each
6 to 8 ft., 1 1/2 in. cal. ....	\$3.00
7 to 9 ft., 1 3/4 in. cal. ....	4.00
8 to 10 ft., 2 in. cal. ....	5.00
10 to 12 ft., 2 1/2 in. cal. ....	6.00



Weeping Japanese Flowering Cherry (See Prunus)

## Ulmus - Elm

**Ulmus americana.** American Elm. A vigorous native tree. It is rapid in growth, with long, spreading, and pendant branches forming giant arches over roads and streets; as a lawn tree is quick to make a marked effect. The wood is tough, the leaves are moderate in size, and make a permanent tree for shade. The beetle that defoliates the European Elms usually avoids these.

	Each	Five
8 to 10 ft., 1½ in. cal. ....	\$2.00	\$ 9.00
10 to 12 ft., 1¾ in. cal. ....	2.50	11.25
12 to 14 ft., 2 in. cal. ....	3.00	13.50
12 to 15 ft., 2½ in. cal. ....	4.00	18.00

**U. americana maline.** Moline Elm. We graft this type because its singular upright characteristics make it invaluable in narrow spaces. Its clean growth, large, deep green, heavily plaited leaves, added to its sturdiness and solidity, will make it increasingly popular when it becomes known. We have a fine stock and invite your inspection.

	Each	Five
7 to 9 ft., 1¼ in. cal. ....	\$2.00	\$ 9.00
8 to 10 ft., 1½ in. cal. ....	2.50	11.25
10 to 12 ft., 1¾ in. cal. ....	3.00	13.50
12 to 14 ft., 2 in. cal. ....	4.00	18.00
12 to 15 ft., 2½ in. cal. ....	5.00	22.50

**U. pumila.** Chinese Elm. A new, rapid-growing tree that does especially well in difficult situations, like city soot and gases, dry and poor ground, narrow street plots, etc. Leaves smaller than our native Elm, habit more pendant, and of course, much more rapid. Only drawback possible is sheet damage and Elm-beetle injury. Plant for twenty to thirty years' duration. We have the North China strain only and it will make up as quickly as a willow.

	Each	Five
8 to 10 ft., 1½ in. cal. ....	\$2.00	\$ 9.00
10 to 12 ft., 1¾ in. cal. ....	2.50	11.25
12 to 14 ft., 2 in. cal. ....	3.00	13.50
12 to 15 ft., 2½ in. cal. ....	4.00	18.00



Quercus Palustris—Pin Oak

## Tilia - Linden

**Tilia americana.** American Linden. Sometimes known as Basswood. This native tree is very attractive and will grow rapidly when planted in low ground. The leaves are distinctly larger than other varieties. Branches pendulous in habit of growth. Makes an excellent shade tree under favorable conditions.

	Each
8 to 10 ft., 1½ in. cal. ....	\$2.50
10 to 12 ft., 1¾ in. cal. ....	3.00
12 to 14 ft., 2 in. cal. ....	4.00
12 to 15 ft., 2½ in. cal. ....	5.00

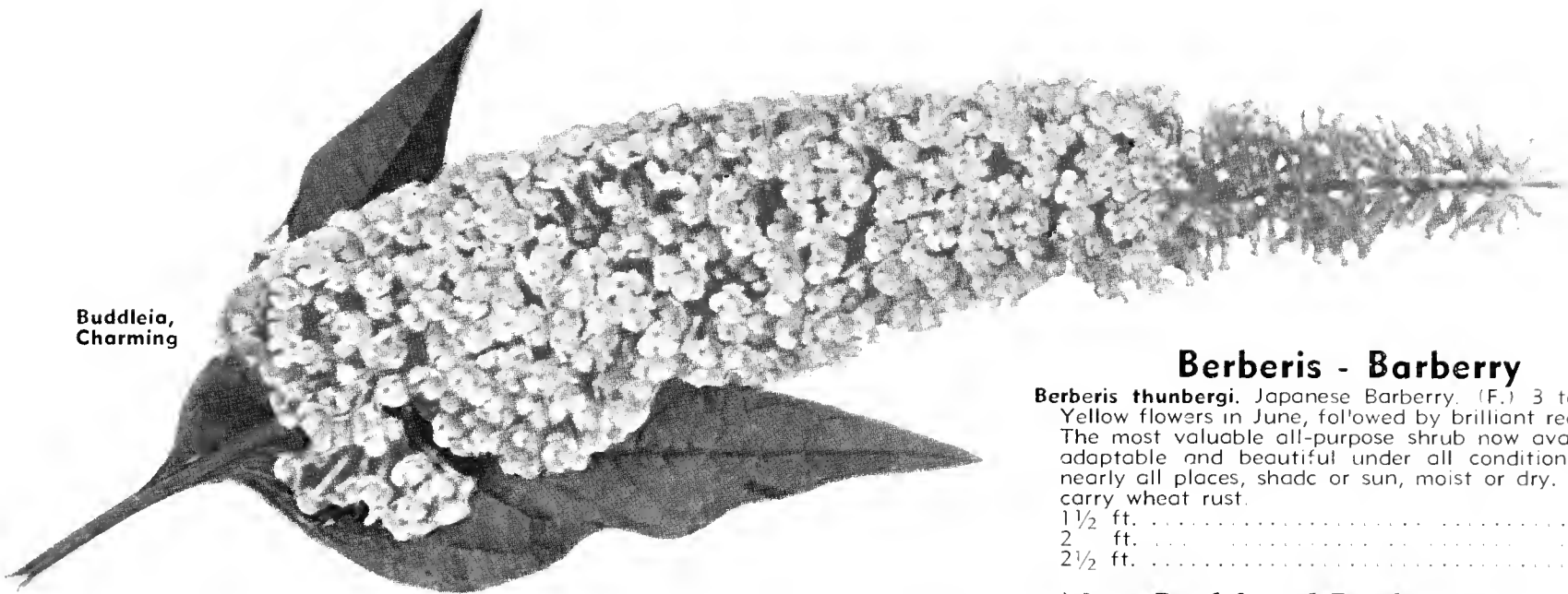
**T. vulgaris.** European Linden. Similar to the American Linden except the leaves are smaller and the tree is more compact, developing into a shapely specimen.

	Each
7 to 9 ft., 1½ in. cal. ....	\$3.00
9 to 10 ft., 1¾ in. cal. ....	4.00
10 to 11 ft., 2 in. cal. ....	5.00
11 to 12 ft., 2½ in. cal. ....	6.00



Salix—Weeping Willow





**Buddleia,  
Charming**

## Berberis - Barberry

**Berberis thunbergii.** Japanese Barberry. (F.) 3 to 4 feet. Yellow flowers in June, followed by brilliant red berries. The most valuable all-purpose shrub now available. Is adaptable and beautiful under all conditions and in nearly all places, shade or sun, moist or dry. Does not carry wheat rust.

	Each	Five
1½ ft. ....	\$0.40	
2 ft. ....	.50	
2½ ft. ....	.60	

## New Red-Leaf Barberry

Introduced several years ago, this new plant, **Berberis thunbergii atropurpurea**, has become immensely popular. It resembles the Japanese Barberry in growth, but the foliage is brilliant blood-red in spring. The color holds all summer in sun, but in shady places it becomes a beautiful bronzy green. Its winter charm is enhanced by red berries that remain until spring. Few shrubs attract so much attention, or add so much color to a dull border. We consider it one of the best newer plants, and our stock is strong and vigorous. This year the price is so low that the Red-Leaf Barberry should be used freely.

	Each	Five
15 to 18 in. ....	\$0.40	\$1.75
1½ to 2 ft. ....	.60	2.50
2½ to 3 ft. ....	.75	3.50

## Benzoin

**Benzoin aestivale.** Spice Bush. 3 to 10 ft. Yellow flowers in March and April that produce clusters of brilliant scarlet berries. Aromatic leaves turn scarlet in autumn.

	Each
2 to 3 ft. ....	\$0.50
3 to 4 ft. ....	.60

# Flowering Shrubs

**T**HERE is some place for flowering shrubs around every home—cottage, mansion, or palace. A corner needs a little color, a foundation wall needs to be concealed, a garage should be screened. In all these places flowering shrubs are adaptable, and useful.

From our fields this year we shall take the finest shrubs possible to grow—large, well developed, with good roots, and not by any means like the shrubs sold on "bargain" counters, which in many cases are of unknown origin. In fact, Hillenmeyer shrubs carry several canes, and only the small sizes can be sent by parcel post—others go by express.

In the descriptions "F" indicates adaptability for foundation planting. The figures following the name indicate height at maturity.

## Abelia

**Abelia grandiflora.** See page 6.

## Acanthopanax

**Acanthopanax pentaphyllum.** Five-leaved Aralia. 6 to 8 feet. Yellow flowers in June. A rugged shrub, thriving under trees and in cities where nothing else will grow. Prickly, upright canes.

	Each
2 to 3 ft. ....	\$0.50
3 to 4 ft. ....	.60
4 to 5 ft. ....	.75

## Aesculus

**Aesculus pavia.** Red Buckeye. A shrub from our native Buckeye, with showy red spikes produced early in the spring. Foliage not always the best but well worth its place in any planting because of its striking effect when in bloom.

	Each
3 to 4 ft. ....	\$0.75
4 to 5 ft. ....	1.20

B&B 25c extra

## Amygdalus - Flowering Peach

**Amygdalus persica.** 15 feet. Small trees, covered in April with red flowers.

	Each
4 to 5 ft. ....	\$0.75
5 to 6 ft. ....	1.00



**Aronia—Red Chokeberry**

## Aralia

**Aralia spinosa.** Hercules Club. 15 to 18 feet. An unusual shrub for tropical effects; white flowers in summer, followed by dark purple berries.

	Each
3 to 4 ft. ....	\$0.50
4 to 5 ft. ....	.75
5 to 6 ft. ....	1.00

## Aronia

**Aronia arbutifolia.** Red Chokeberry. 5 to 6 feet. White flowers in June, followed by shining red berries and fine fall color. Will endure shade and moist places.

	Each
1½ to 2 ft. ....	\$0.45
2 to 3 ft. ....	.50

### Special Shrub Assortment

Five of any 75-cent size for \$3.50  
 Five of any 60-cent size for \$2.75  
 Five of any 50-cent size for \$2.25  
 Five of any 40-cent size for \$1.75

These are our regular plants, and carry the Hillenmeyer guarantee



**Hydrangea P. G.**



Cydonia—Flowering Quince



Forsythia—Golden Bell

### Calycanthus

**Calycanthus floridus.** Sweet Shrub. 4 to 5 feet. An old-fashioned shrub with sweet-scented, chocolate-brown flowers nearly all summer. The red-brown stems carry large, glossy green leaves. Each

1½ to 2 ft. ....	\$0.40
2 to 3 ft. ....	.50
3 to 4 ft. ....	.60

### Buddleia - Butterfly Bush

**Buddleia, Charming.** A distinct new variety of outstanding merit. The lovely pink spikes are produced from midsummer until autumn, and it is the first to be offered of this color. 75c each.

**B. davidi.** Butterfly Bush or Summer Lilac. 4 to 6 feet. Attractive violet flowers from July to September. Tips freeze back in winter, but renew promptly in spring. No other shrub so attractive for its season. Each

2 to 3 ft. ....	\$0.40
3 to 4 ft. ....	.50

**B., Ile de France.** A splendid, vigorous variety carrying throughout the summer masses of brilliant rosy violet-purple flowers on long spikes. One of the best. Each

2 to 3 ft. ....	\$0.40
3 to 4 ft. ....	.50

### Callicarpa

**Callicarpa purpurea.** Beauty-Berry. 3 feet. Pink tinted flowers in August, followed by violet-purple berries. May be killed to the ground in severe winters, but will start new growth in spring. Each

1½ to 2 ft. ....	\$0.40
2 to 3 ft. ....	.50

### Cercis - Red Bud

**Cercis canadensis.** See page 8.

### Chionanthus - White Fringe

**Chionanthus virginica.** 15 feet. A favorite native small tree producing white, tassel-like flowers in May. Worthy of a permanent place in any border. Each

2 to 3 ft. ....	\$0.75
3 to 4 ft. ....	1.00

### Clethra

**Clethra alnifolia.** Sweet Pepper Bush. A sturdy, compact shrub producing creamy white, fragrant flowers in erect panicles during late summer. Each

1½ to 2 ft. ....	\$0.50
2 to 3 ft. ....	.60

### Cornus - Dogwood

**Cornus florida.** White Dogwood. See page 9.

**C. florida rubra.** Pink Dogwood. See page 9.

**C. mas (mascula).** Cornelian Cherry. 10 to 15 feet. An upright, dense growing shrub. Foliage colors to burnt-orange in fall. Yellow flowers in March before the leaves appear, followed by bright red fruit. Each

3 to 4 ft. ....	\$0.60
4 to 5 ft. ....	.75

**C. sibirica.** Red-Twigged Dogwood. 6 to 8 feet. Greenish white flowers in June. Grown because of its conspicuous red winter twigs. Cutting out old wood increases color brilliance of new growth. Each

2 to 3 ft. ....	\$0.40
3 to 4 ft. ....	.50
4 to 5 ft. ....	.60

### Corylus

**Corylus americana.** Hazelnut. A vigorous shrub with numerous upright branches, attaining a height of 4 to 8 feet. Leaves heart-shaped, dark green, more or less downy on both surfaces. Nuts large, enclosed in ruffled husks, with sweet and edible kernels. Very prolific. Each

4 to 5 ft. ....	\$1.00
5 to 6 ft. ....	1.25

### Cotoneaster

**Cotoneaster acutifolia.** Peking Cotoneaster. 6 to 8 feet. Slender, spreading branches with small, shining foliage. Small-clustered pink flowers, followed by shining black berries. Each

2 to 3 ft. ....	\$0.60
3 to 4 ft. ....	.75

**C. divaricata.** Spreading Cotoneaster. 4 to 5 feet. A semi-evergreen variety with good foliage and scarlet fruit. Each

2 to 3 ft. (B&B) ....	\$1.50
3 to 4 ft. (B&B) ....	1.75

**C. francheti.** Franchet Cotoneaster. 6 to 7 feet. An upright, graceful type with persistent silvery foliage which changes to orange in fall. The orange-red fruit is quite showy. One of the best. Each

2 to 3 ft. (B&B) ....	\$1.50
3 to 4 ft. (B&B) ....	1.75

### Crataegus - Thorn

**Crataegus cordata.** Washington Hawthorn. 15 to 18 feet. One of our most attractive large shrubs or small trees. The white blossoms are followed by bright red berries which stay on the tree well into the winter. Brilliant autumn foliage. Each

3 to 4 ft. ....	\$1.00
4 to 5 ft. ....	1.25
5 to 6 ft. ....	1.50
6 to 7 ft. ....	2.00

**C. crus-galli.** Cockspur Thorn. 12 to 15 feet. Covered with a mass of white blooms in spring, and in fall with clustered red fruits amid orange-scorlet foliage. Sharp thorns and glossy leaves give all-season interest. Each

3 to 4 ft. ....	\$1.00
4 to 5 ft. ....	1.50

**C. oxyacantha pauli.** Paul's Scarlet Thorn. 12 to 15 feet. Notable for its deep pink or red flowers. Distinct from any other shrub when in full bloom. Makes a superb specimen. Each

4 to 5 ft. ....	\$2.00
-----------------	--------

### Cydonia - Flowering Quince

**Cydonia japonica.** Japanese Quince. 6 to 8 feet. Early blooming, spreading shrub with large masses of brilliant scarlet blossoms produced just as leaves are opening. Foliage dark glossy green. Each

2 to 3 ft. ....	\$0.40
3 to 4 ft. ....	.50
4 to 5 ft. ....	.60

**C. japonica pygmaea.** Dwarf Japanese Quince. (F.) 3 feet. A dwarf form of Cydonia with flesh-pink flowers which are most attractive. A fine variety where a low type is desired. Each

15 to 18 in. ....	\$0.50
18 to 24 in. ....	.60

### Cytisus

**Cytisus scoparius.** Scotch Broom. An interesting shrub of upright growth with long, slender green branches. Bright yellow flowers borne in profusion along the stems. Very showy and handsome. Each

2 to 3 ft. ....	\$0.75
3 to 4 ft. ....	1.00
4 to 5 ft. ....	1.25

### HOW TO PLANT

With every order we will send absolutely free a book which, by word and picture, will show just how to plant a tree or shrub. The instructions are clear, and if followed, your plants should grow and thrive. We send the booklet free with every order.



Residence of Mr. and Mrs. David Ades, Richmond Road  
Taxus (Yews) were extensively planted in place of boxwood. Hillenmeyers have the largest stock of Yews in the South.

## Deutzia

**Deutzia gracilis.** Slender Deutzia. (F.) 2 to 3 feet. A graceful, dwarf shrub which covers its arching branches with small racemes of white flowers in early spring. Sometimes caught by late freezes, and best used in protected places. Each  
15 to 18 in. ....\$0.40  
1½ to 2 ft. .... .50

**D. lemoinei.** Lemoine Deutzia. 4 to 6 feet. Up-standing shrub that is exceedingly free-blooming in April and May, with stems completely covered with white blossoms. Stems droop as they age. Each  
15 to 18 in. ....\$0.40  
1½ to 2 ft. .... .50  
2 to 3 ft. .... .60

**D. magnifica.** Giant Snowflake Deutzia. 6 to 10 feet. A Japanese form producing in June a profusion of good white flowers in racemes. Suggests a double form of Lily-of-the-Valley. Useful for quick effect and screen planting. Each  
2 to 3 ft. ....\$0.40  
3 to 4 ft. .... .50  
4 to 5 ft. .... .60

**D. scabra, Pride of Rochester.** (F.) 6 to 8 feet. Covered in June with pinkish white, showy flowers. Hardy, upstanding, distinct in form, and adaptable to all locations and all soils. Each  
2 to 3 ft. ....\$0.40  
3 to 4 ft. .... .50  
4 to 5 ft. .... .60

## Elaeagnus

**Elaeagnus angustifolia.** Russian Olive. 15 feet. A curious shrub with dark green bark and silvery foliage. Fragrant, deep golden yellow flowers, followed by ornamental olive fruit. Valuable for contrast with green foliage plants. Each  
3 to 4 ft. ....\$0.60  
4 to 5 ft. .... .75  
5 to 6 ft. .... 1.00

## Euonymus

**Euonymus alatus.** Cork-Barked or Winged Euonymus. 8 to 10 feet. A distinct shrub carrying shiny green foliage which colors to brilliant rose in fall. Produces small red berries, and is attractive in winter by reason of its curious corky bark. Adaptable to shade or sun, an admirable shrub. Each  
2 to 3 ft. ....\$0.60  
3 to 4 ft. .... .75

**E. alatus compactus.** Compact Euonymus. 5 feet. Similar to the preceding, but is dwarf. Each  
2 to 3 ft. ....\$0.75  
3 to 4 ft. .... 1.00

**E. americanus.** Brook Euonymus; Strawberry Tree. 7 to 8 feet. Has attractive pink fruit in the fall. Foliage colors well in autumn. While it grows under ordinary conditions its native habitat is moist locations. Each  
2 to 3 ft. ....\$0.50  
3 to 4 ft. .... .60

**E. atropurpureus.** Burning Bush. 8 to 10 ft. A large native shrub with upright branches, small purple flowers in slender nodding clusters, medium leaves which turn pale yellow in autumn. Fruit red, persisting on branches until mid-winter. Each  
2 to 3 ft. ....\$0.40  
3 to 4 ft. .... .50  
4 to 5 ft. .... .60

**E. europaeus.** European Euonymus. 10 to 15 feet. A tall, slender shrub with green bark and deep green foliage that colors in autumn. Prized for the wealth of coral fruit in fall. Each  
3 to 4 ft. ....\$0.75  
4 to 5 ft. .... 1.00  
5 to 6 ft. .... 1.25

**E. patens.** Evergreen Wahoo. See page 6.

## Exochorda

**Exochorda grandiflora.** Pearl Bush. 8 to 10 feet. One of the most pleasing spring-flowering shrubs, having a mass of white blooms in April. Should be used extensively in mass plantings. Prune severely at planting time for best results. Each  
3 to 4 ft. ....\$0.45  
4 to 5 ft. .... .50

## Forsythia - Golden Bell

A charming group of shrubs which are admired for their graceful habits, good foliage, and early yellow blossoms which precede any new growth. We have selected the best of the group.

**Forsythia fortunei.** Fortune's Golden Bell. 6 to 8 ft. One of the hardiest and best.

**F. spectabilis.** Showy Border Golden Bell. 5 to 8 feet. Much like fortunei, except not quite as vigorous or hardy, but because of its showy flowers, which are borne in great profusion, is the most popular.

**F. suspensa.** Drooping Golden Bell. 4 to 6 ft. A weeping form much used to plant over walls or as a low spreading specimen.

**Price of all Forsythias:** Each  
2 to 3 ft. ....\$0.40  
3 to 4 ft. .... .50  
4 to 5 ft. .... .60

## Halesia

**Halesia tetraptera.** Silver Bell. 15 to 18 feet. Blooms with the Dogwood. Great mass of snow-white, bell-shaped flowers are most attractive. Each  
3 to 4 ft. ....\$0.75  
4 to 5 ft. .... 1.00  
5 to 6 ft. .... 1.25

## Hamamelis

**Hamamelis virginica.** Witch-Hazel. 10 to 12 feet. Ribbon-like, yellow flowers in late autumn. Good for natural planting and shady places. Each  
2 to 3 ft. ....\$0.50  
3 to 4 ft. .... .60

## Hibiscus - The Altheas

**Hibiscus syriacus.** Rose of Sharon. 10 to 12 feet. Blooms from June to frost. Upright in growth and rarely spreads over 3 feet. It does astonishingly well in cities or congested areas where other plants fail.

**Ardens.** Double; mottled pink.

**Boule de Feu.** Double; red.

**Jeanne d'Arc.** Double white.

**Single Pink.** Clear pink.

**Totus Albus.** Single; white.

**All Hibiscus:** Each  
2 to 3 ft. ....\$0.40  
3 to 4 ft. .... .50  
4 to 5 ft. .... .60



Deutzia, Pride of Rochester



Cytisus—Scotch Broom



Euonymus Alatus Compacta—Cork-Barked Euonymus



Viburnum—the Snowball

## Hydrangea

Grand, free-flowering shrubs with large clusters or panicles of showy white flowers. They are admirably adapted for border or foundation planting, either as specimens or in masses. Like a fertile, moist soil with full or partial exposure.

- Hydrangea arborescens grandiflora.** (F.) Hills of Snow; Snowball Hydrangea. 3 to 4 feet. A continuous bloomer with flower resembling a Snowball. Much used in foundation planting. Each
- |                   |        |
|-------------------|--------|
| 18 to 24 in. .... | \$0.40 |
| 2 to 3 ft. ....   | .50    |
| 3 to 4 ft. ....   | .60    |
- H. paniculata grandiflora.** Peegee Hydrangea. (F.) 4 to 5 ft. The old standard variety with large blossoms opening in August which turn pinkish under favorable weather conditions. Each
- |                   |        |
|-------------------|--------|
| 18 to 24 in. .... | \$0.40 |
| 2 to 3 ft. ....   | .50    |
| 3 to 4 ft. ....   | .60    |
- H. quercifolia.** Oak-Leaved Hydrangea (F.) 4 to 5 ft. A distinct and handsome variety with short, stiff spreading branches. Leaves deeply lobed, dark green above, silvery and downy beneath, which somewhat resembles an Oak. A very fine useful shrub. Each
- |                   |        |
|-------------------|--------|
| 18 to 24 in. .... | \$0.75 |
| 2 to 3 ft. ....   | 1.00   |
| 3 to 4 ft. ....   | 1.25   |



Spirea Thunbergi

## Hypericum

- Hypericum moserianum.** St. John's-Wort; Gold Flower. (F.) 1 to 2 feet. A unique, low-growing shrub. Rich yellow flowers, borne on slender stems from July to September; are surrounded with roundish, leathery green leaves. During severe winter often kills to the ground but next spring will come back more vigorous than before. Each
- |                   |        |
|-------------------|--------|
| 12 to 15 in. .... | \$0.40 |
| 15 to 18 in. .... | .50    |

## Ilex

- Ilex verticillata.** Winterberry. 5 to 6 feet. Has handsome sprays of brilliant red berries which stay on well into the winter. Birds do not eat the fruit. Prefers a moist soil. Each
- |                 |        |
|-----------------|--------|
| 2 to 3 ft. .... | \$0.60 |
| 3 to 4 ft. .... | .75    |

## Jasminum

- Jasminum nudiflorum.** Winter Jasmine. 2 to 3 feet. Golden yellow flowers appearing before foliage in March and April. Stems green and leaves small and glossy. Creeping habit. Each
- |                   |        |
|-------------------|--------|
| 18 to 24 in. .... | \$0.50 |
| 2 to 3 ft. ....   | .60    |

## Kerria - Globe Flower

Attractive shrubs, native of Japan with slender green branches and showy yellow flowers. Will grow in any well-drained soil.

**Kerria japonica.** Single.

**K. japonica flore pleno.** Double.

All Kerria:

- |                 |        |
|-----------------|--------|
| 2 to 3 ft. .... | \$0.50 |
| 3 to 4 ft. .... | .75    |

## Kolkwitzia - Beauty Bush

**Kolkwitzia amabilis.** Beauty Bush. 6 to 10 ft. One of the most desirable introductions from Asia. Strong canes develop into graceful, sweeping branches. The flowers are shell-pink to deep pink, with yellow streaks, and produced in great profusion all over the plant. Might be called a much-refined Weigela. Deeply admired. Each

- |                 |        |
|-----------------|--------|
| 2 to 3 ft. .... | \$0.75 |
| 3 to 4 ft. .... | 1.00   |

## Ligustrum - Privet

For Hedge Plants, see page 23.

**Ligustrum sinense.** Chinese Privet. (F.) 6 to 10 ft. The small-leaved, almost evergreen Privet, much used for hedges, and also very desirable for landscape work because of its rapid growth, good foliage, and graceful branching. Is not particular about soil, and for screening and mass planting is unexcelled. We are very partial to its use in the South. Hardy where California Privet will succeed. Each

- |                 |        |
|-----------------|--------|
| 2 to 3 ft. .... | \$0.40 |
| 3 to 4 ft. .... | .50    |
| 4 to 5 ft. .... | .60    |

**L. ibota regelianum.** Regel's Privet. (F.) 5 to 7 ft. White. June. Low, spreading, and very twiggy, with dense foliage not so glossy as the California Privet. Because of its graceful appearance, hardiness, and adaptability to any soil and shady places, it is the most widely used Privet for landscape work. Each

- |                   |        |
|-------------------|--------|
| 18 to 24 in. .... | \$0.40 |
| 2 to 3 ft. ....   | .50    |
| 3 to 4 ft. ....   | .60    |

For Extra Large Shrubs Write Us!



Vitex—Chaste Tree

## Lespedeza

**Lespedeza formosa.** Purple Bush Clover. An attractive, August-blooming, herbaceous shrub, with reddish purple, sweet-scented, pealike flowers, borne on arching branches, and lasting several weeks. Very graceful; makes a good "forward" plant for shrub border. The tops may freeze in a severe winter, but come back each spring. Each Strong 2-yr. plants .....\$0.60

## Lonicera - Honeysuckle

**Lonicera fragrantissima.** Fragrant Bush Honeysuckle. (F.) 7 to 10 ft. So called because of its very fragrant white blossoms in April. The foliage is deep green and glossy. Grows well in partial shade, poor soil, or in cities where tender plants fail. Almost evergreen. Excellent for screens, specimens, or hedges. One of our best and most useful shrubs.

For Hedges, see page 23.

**L. maacki padocarpa.** Late Honeysuckle. 8 to 10 ft. A large, handsome shrub with pinkish blossoms followed by quantities of bright red berries which are fine for birds. Much prized for screen and mass planting.

**L. tatarica.** Tatarian Honeysuckle. 7 to 9 ft. Blooms in April, and is one of the few early pink-flowering shrubs. Has bright red berries that stay on all summer.

<b>All Loniceras:</b>	<b>Each</b>		<b>Each</b>
2 to 3 ft. ....	\$0.40	4 to 5 ft. ....	\$0.60
3 to 4 ft. ....	.50		

## Magnolia

**Magnolia glauca.** Sweet Bay. A fine, large American shrub with glassy, laurel-like, almost evergreen foliage. The richly fragrant white flowers come in June and are followed by attractive fruits.

	<b>Each</b>		<b>Each</b>
3 to 4 ft., B&B .....	\$2.50	5 to 6 ft., B&B .....	\$4.00
4 to 5 ft., B&B .....	3.00		

**M. grandiflora.** Southern Magnolia. See page 10.

**M. saulangeana.** Saucer Magnolia. All of the saulangeana type have large Tulip-shaped blossoms which expand early in the spring before the leaves. Very ornamental, and a garden treasure. The true saulangeana is pink on the outside with white inside. The best known and most popular.

**M. saulangeana alba superba.** Large saucer Magnolia. A pure white variety of outstanding merit.

**M. saulangeana lenne.** Lenne's Magnolia. Outside rosy or reddish purple. White within. Later than the type.

**M. saulangeana nigra.** Purple Magnolia. Dark purple on outside with shades of pink on inside. Flowers later and somewhat hardier than the type.

<b>All the above:</b>	<b>Each</b>		<b>Each</b>
3 to 4 ft., B&B .....	\$3.00	5 to 6 ft., B&B .....	\$6.00
4 to 5 ft., B&B .....	4.00	6 to 7 ft., B&B .....	7.50

**M. stellata.** Star Magnolia. Native of Japan. Shrubby habit with fragrant, semi-double, starlike flowers which appear before the leaves. One of the best.

	<b>Each</b>		<b>Each</b>
2 to 3 ft., B&B .....	\$3.00	4 to 5 ft., B&B .....	\$5.00
3 to 4 ft., B&B .....	4.00		

**M. acuminata.** See page 10.

**M. tripetala.** See page 10.



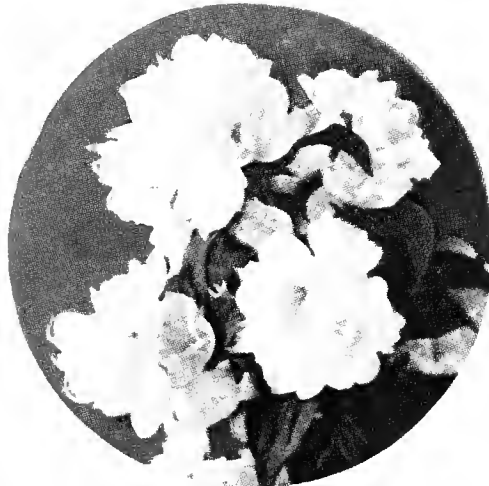
Tamarix

**MAHONIA aquifolium.** See page 6.

## Oxydendrum - Sourwood

**Oxydendrum arborescens.** 10 to 12 ft. The Lily-of-the-Valley-like flowers are borne in panicles in July and August. Its foliage is particularly brilliant in fall.

	<b>Each</b>
3 to 4 ft. ....	\$1.00
4 to 5 ft. ....	1.25
5 to 6 ft. ....	1.50
6 to 7 ft. ....	2.00



Philadelphus, Virginal

## Philadelphus - Mock Orange

**Philadelphus grandiflorus.** Large flowering Mock Orange. 7 to 10 feet. Its white blossoms in June are larger than most, and very attractive. Where a tall plant is wanted, few are better than this. Succeeds under all soil conditions.

	<b>Each</b>
2 to 3 ft. ....	\$0.40
3 to 4 ft. ....	.50
4 to 5 ft. ....	.60

**P. lemoinei.** Lemoine's Mock Orange. 4 to 5 feet. Of good, compact, upright habit, leaves smaller than most and blooms sweetly scented. Highly recommended for foundation or other low planting.

	<b>Each</b>
2 to 3 ft. ....	\$0.50
3 to 4 ft. ....	.60

## Everyone Should Grow This Mock Orange

**Philadelphus, Virginal.** Virginal Mock Orange. 7 to 9 feet. The finest of all the Mock Oranges. While it produces flowers intermittently throughout the growing season, its great value lies in its magnificent spring display. The pure white, fragrant flowers are amazingly large, often 2 inches across, are semi-double, and borne in such profusion that the branches are weighted down. The plant is an erect and vigorous grower. No one should be without this delightful shrub—the best of the Mock Oranges.

	<b>Each</b>		<b>Each</b>
2 to 3 ft. ....	\$0.50	4 to 5 ft. ....	\$0.75
3 to 4 ft. ....	.60		

## SPECIAL SHRUB ASSORTMENTS

Five of any 75-cent size for \$3.50  
 Five of any 60-cent size for \$2.75  
 Five of any 50-cent size for \$2.25  
 Five of any 40-cent size for \$1.75

These are our regular plants, and carry the Hillenmeyer guarantee.

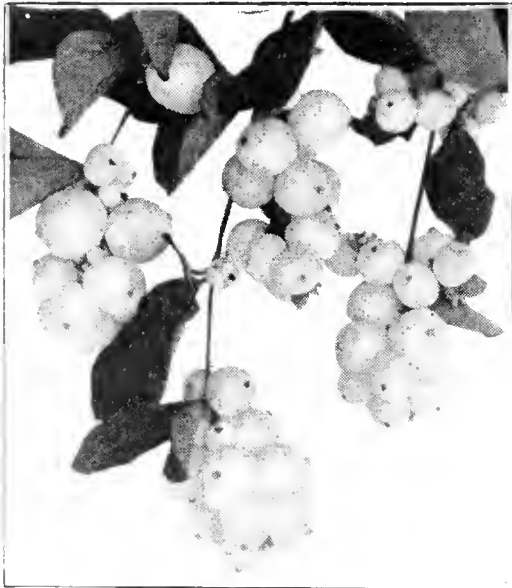
Hillenmeyer Shrubs are transplanted and cut back to increase root-systems and bushiness. Don't confuse such shrubs with "straggly", sickly shrubs offered in many places. Size means more than height; quality more than mere price.



Red-Leaf Barberry



Spirea Trichocarpa



Symphoricarpos, Snowberry

### Robinia - Locust

**Robinia hispida.** Rose Acacia; Moss Locust. 6 to 8 feet. Foliage resembles that of our native Locust but the mass of long, graceful deep rose-pink flowers in May make it most attractive. Each  
 2 to 3 ft. ....\$0.40  
 3 to 4 ft. .... .50  
 4 to 5 ft. .... .60



Hydrangea Arborescens, Hills of Snow

### Photinia

**Photinia villosa.** Red-berried Photinia. 10 to 12 feet. An unusual shrub, not often available. It has deep green, glossy foliage and is of dense, branching habit. The foliage colors brilliantly in the fall, and the small flowers produced in June, are followed by attractive red berries that hang on until taken by b-rds. Each  
 4 to 5 ft. ....\$1.00  
 5 to 6 ft. .... 1.25  
 6 to 7 ft. .... 1.50

### Prunus

**Prunus glandulosa.** Double-flowering Almond. (F.) 3 to 4 feet. Rose-pink. The attractive plants are thickly studded in April with medium-sized, double, pink flowers from base to tip of branch. Grown on plum or peach stock, and must be set deeper than other shrubs. Each  
 1 to 2 ft. ....\$0.60  
 2 to 3 ft. .... .75

**P. pissardi.** Purple Plum. We have a new variety of this called Cistena, valued chiefly because of its deep, rich purple foliage in the spring. Each  
 3 to 4 ft. ....\$1.00  
 5 to 6 ft. .... 1.25

### Rhodotypos

**Rhodotypos kerrioides.** Jetbead. (F.) 4 to 5 feet. Ornamental shrub with bright green serrated leaves and large white flowers one-half to one inch across in May and June. These are followed by shining black fruits that adhere practically all winter. A desirable shrub. Each  
 2 to 3 ft. ....\$0.50  
 3 to 4 ft. .... .60  
 4 to 5 ft. .... .75

### Rhus

**Rhus aromatica (canadensis.)** Fragrant Sumac. 4 to 5 feet. Yellow flowers in clusters, followed in summer with coral-red fruits. Pleasant, aromatic foliage. Fine as an undershrub or in dry, shady rocky places. Each  
 2 to 3 ft. ....\$0.40  
 3 to 4 ft. .... .50  
 4 to 5 ft. .... .60

**R. copallina.** Shining Sumac. 7 to 10 feet. The native variety that colors so wonderfully in the fall. It is not as robust a grower as some of the others, but is most desirable. Each  
 3 to 4 ft. ....\$0.40  
 4 to 5 ft. .... .50  
 5 to 6 ft. .... .60

**R. cotinus.** Purple Fringe; Smoke Tree. 10 to 12 feet. An old favorite having unusual and attractive foliage. When in bloom the tree is virtually a mist of minute smoky lavender flowers, suggesting a cloud of smoke. 5 to 6 ft., \$1.00 each.

### Salix - Willow

**Salix caprea.** Pussy Willow. 15 to 20 feet. Large shrub that grows on either dry or wet soil, and valued because of their silky catkins that appear before the foliage in the spring. Winter-cut twigs may be forced indoors. Each  
 2 to 3 ft. ....\$0.40  
 3 to 4 ft. .... .50  
 4 to 5 ft. .... .60  
 5 to 6 ft. .... .75

### Spiraea - Spirea

**Spiraea, Anthony Waterer.** (F.) 2 feet. A compact, low-growing shrub with dense foliage, usually deep green with occasional variegated leaves of pink and white on young growth. The bright pink flowers are borne in full, flat clusters on erect stems in June and July. If these are cut away when they fade, the shrub will bloom during the summer. Valuable for edging in front of shrubbery and sometimes used as a dwarf hedge. Each  
 1 to 1½ ft. ....\$0.50  
 1½ to 2 ft. .... .60

**S. arguta.** Garland Spirea. 4 to 5 feet. Very free flowering in April. Its small, soft green foliage gives it a billowy appearance and makes it one of the most attractive plants. Very much like **S. thunbergi**, but grows slightly larger. Each  
 2 to 3 ft. ....\$0.50  
 3 to 4 ft. .... .60

**S. douglasi.** 6 to 8 feet. Terminals of each branch crowned with deep pink flower-spikes 6 inches long in July. Each  
 2 to 3 ft. ....\$0.40  
 3 to 4 ft. .... .50  
 4 to 5 ft. .... .60

**S. prunifolia.** Plum-Leaved Spirea. (F.) 5 to 6 ft. An old-fashioned variety with white, double flowers borne close to the slender, erect branches in April and May before the foliage appears. Each  
 2 to 3 ft. ....\$0.40  
 3 to 4 ft. .... .50  
 4 to 5 ft. .... .60

**S. reevesiana flore pleno.** (F.) 4 to 5 ft. Reeves' Double Spirea. The double white flowers are borne in clusters along the branches in May and the shrub resembles Spirea Van Houttei except the flowers are double and the leaves are longer and narrower. Foliage persistent in the fall. Each  
 2 to 3 ft. ....\$0.50  
 3 to 4 ft. .... .60

**S. thunbergi.** Snow Garland. (F.) 2½ to 3½ ft. A graceful shrub with slender, arching branches and small, narrow, light green leaves which change to shades of orange in fall. White, minute flowers appearing in great profusion in early spring. Fine for low foundation planting. Each  
 15 to 18 in. ....\$0.40  
 1½ to 2 ft. .... .50  
 2 to 3 ft. .... .60

**S. trichocarpa.** Korean Spirea. (F.) 4 to 6 ft. A rather new Spirea which resembles the well-known **S. Van Houttei** except that it is coarse in every way. The blooms are borne on recurved branches about 2 or 3 weeks later. Each  
 1½ to 2 ft. ....\$0.40  
 2 to 3 ft. .... .50  
 3 to 4 ft. .... .60

**S. Van Houttei.** Bridal Bower; Bridal Wreath. (F.) 4 to 6 ft. This shrub should need no description as it is planted and known all over America. The rather slender arching branches are literally covered with clusters of small white flowers in early spring. Good foliage and form, but should be planted where it does not have to be cut back too severely. Can be used as specimen, in masses, or for a graceful hedge. Have a wonderful stock of plants. For hedges or quantity lots ask for special prices. Each  
 2 to 3 ft. ....\$0.35  
 3 to 4 ft. .... .40  
 4 to 5 ft. .... .50

### SPECIAL SHRUB ASSORTMENTS

Five of any 75-cent size for \$3.50  
 Five of any 60-cent size for \$2.75  
 Five of any 50-cent size for \$2.25  
 Five of any 40-cent size for \$1.75

These are our regular Hillenmeyer guaranteed plants.

## Styrax

**Styrax japonica.** Snowbell. 8 to 12 ft. An attractive Japanese shrub with small fragrant flowers in numerous drooping racemes. Resembles white bells. Upright growth with bright green foliage. Does well in moist soil and shade. Each

3 to 4 ft. ....	\$0.75
4 to 5 ft. ....	1.00
5 to 6 ft. ....	1.25

## Symphoricarpos Coralberry; Snowberry

**Symphoricarpos chenaultii.** 4 to 6 ft. An improved form of Coralberry, of more upright growth, smaller leaves and coral fruit. Each

2 to 2½ ft. ....	\$0.40
2½ to 3 ft. ....	.50
3 to 3½ ft. ....	.60

**S. racemosus.** Snowberry. (F.) 4 to 5 ft. Small pinkish flowers in July, followed by white berries in winter. Each

2 to 2½ ft. ....	\$0.40
2½ to 3 ft. ....	.50
3 to 3½ ft. ....	.60

**S. vulgaris.** Coralberry. 4 to 5 ft. A native shrub that in many localities grows in great masses. Bell-shaped white flowers in June, followed by coral berries. Each

2 to 2½ ft. ....	\$0.40
2½ to 3 ft. ....	.50
3 to 3½ ft. ....	.60

## Syringa - Lilac

**Syringa josikaea.** Hungarian Lilac. 8 to 10 ft. It produces violet flowers later than ordinary Lilacs; the rounded, heavy foliage is not subject to mildew. Each

2 to 3 ft. ....	\$0.75
3 to 4 ft. ....	1.00

**S. persica.** Persian Lilac. 8 to 10 ft. A rich lilac color; blooms later than the old-fashioned sorts. Each

2 to 3 ft. ....	\$0.75
3 to 4 ft. ....	1.00

**S. villosa.** Late Lilac. 6 to 8 ft. The latest to bloom. Pale pinkish lilac flowers are very fragrant. Plants bushy and compact. Each

2 to 3 ft. ....	\$0.75
3 to 4 ft. ....	1.00

**S. vulgaris.** Common Purple Lilac. 6 to 8 ft. The old familiar Purple Lilac of grandmother's garden, and which has lost none of its charm. Entirely hardy; blooms in April.

**S. vulgaris alba.** Common White Lilac. 6 to 8 ft. This is the old-fashioned White Lilac. Blooms in April.

**Above two varieties:** Each

2 to 3 ft. ....	\$0.50
3 to 4 ft. ....	.60
4 to 5 ft. ....	.75

## French Lilacs

The so-called French Lilacs have been derived by crossing the best of the species. There are many wonderful varieties and after much testing we have selected the following as the best for our section.

**Alphonse Lavallee.** Light purple; double.  
**Ludwig Spaeth.** Reddish purple; single.  
**Chas. Tenth.** Single, bluish violet-red.  
**Mme. Casimer Perier.** Double creamy white.  
**Michel Buchner.** Pale lilac; double.  
**William Robinson.** Deep pink; double.

**All French Lilacs:** Each

2 to 3 ft. ....	\$1.00
3 to 4 ft. ....	1.25

## Tamarix

Graceful shrubs with few branches, feathery foliage and showy flowers. Will grow in very dry soil.

**Tamarix pentandra.** French Tamarix. 6 to 8 ft. Beautiful blue-gray foliage, pink flowers in panicles during June and scattered throughout the summer.

**T. africana.** African Tamarix. 7 to 10 feet. The lavender flowers are borne along the branches in spring before the leaves. Strong grower and excellent for a background.

**Prices of both varieties:** Each

2 to 3 ft. ....	\$0.40
3 to 4 ft. ....	.50
4 to 5 ft. ....	.60

## Vitex

**C. macrophylla.** Chaste Tree. A beautiful late-blooming shrub with lilac-blue spikes similar to Butterfly Bush. Graceful, showy and should be planted more. Each

3 to 4 ft. ....	\$0.75
4 to 5 ft. ....	1.00

## Viburnum - The Snowballs

**Viburnum carlesi.** Fragrant Viburnum. 3 to 4 feet. A notable distinct shrub with rounded leathery foliage and waxy pink flowers. Their very delightfully fragrant blossoms unfold with the leaves in spring. It is a real aristocrat, and should be in every garden where quality is appreciated. Each

18 to 24 in. ....	\$1.25
2 to 3 ft. ....	1.50

**V. burkwoodii.** See page 6.

**V. americanum.** American Cranberry Bush. Is preferred to the more common European variety. It fills the need for a bush with large bunches of scarlet berries.

**V. dentatum.** Arrow-wood. 10 to 12 ft. Flowers creamy white in flat clusters in May and June. Berries blue-black. Foliage purple and red in fall. Grows in wet soil.

**V. lantana.** Wayfaring Tree. (F.) 10 to 12 ft. A vigorous shrub with soft, heavy leaves and large clusters of white flowers in May. Red berries turn black as they ripen.

**V. opulus.** Highbush Cranberry. 8 to 10 ft. Belongs to the Snowball family. Its bright berries attract birds in midsummer, and its color effect in the fall is brilliant. White flowers in May.

**V. opulus sterile.** Common Snowball. 10 to 12 ft. The old-fashioned variety, well known to all. In May the balls of pure white flowers cover the bush.

**V. prunifolium.** Black Haw or Stag Bush. A large bushy shrub or small tree with horizontal, twiggy branches and dark green leaves which color brilliantly in the fall. White flowers borne in stakeless clusters followed by smooth, glaucous bluish black fruit. A valuable variety.

**V. tomentosum plicatum.** Japanese Snowball. (F.) 6 to 8 ft. The pure white flowers are borne among the clean plaited healthy foliage, making it one of the showiest and most beautiful. Fine for specimen or mass planting.

**V. sieboldi.** Siebold Viburnum. 10 to 12 ft. A fine free growing shrub with light green shining foliage and white flowers produced in broad pyramidal clusters. Berries pink changing to black.

**V. wrightii.** Wright's Viburnum. 8 to 10 ft. Upright shrub with broad leaves, clusters of white flowers followed by persistent beautiful red berries. Very showy.

**Prices of all Viburnums except Carlesi:**

	Each
2 to 3 ft. ....	\$0.50
3 to 4 ft. ....	.60
4 to 5 ft. ....	.75

**V. rhytidophyllum.** See page 6.



Magnolia Soulangeana



Kolkwitzia—Beauty Bush

## Weigela

Hardy free-flowering shrubs of spreading habit with bell- or trumpet-shaped flowers. Thrive in moist soil, and will grow in partial shade.

**Weigela candida.** 4 to 5 ft. The best white.  
**W. desboisi.** 6 to 7 ft. Rose-pink, free bloomer.  
**W. floribunda.** 3 to 4 ft. Best red. Superior to Eva Rathke.  
**D. rosea.** (F.) 4 to 5 ft. Delicate pink.

**All Weigelas:** Each

2 to 3 ft. ....	\$0.40
3 to 4 ft. ....	.50
4 to 5 ft. ....	.60



Syringa—French Lilacs

# Roses ~

MANY ROSES which succeed in the North and other parts of the country do not do so well in Kentucky. Almost every Rose listed in our catalog has been tested on our own grounds and proven satisfactory and dependable. We have discarded or do not carry many which will be described favorably in other lists. Why spend your money and time on doubtful kinds when you can buy our "Tried and Tested" Roses?

No flower is so much loved, appreciated and enjoyed as the Rose. It is still the "Queen of Flowers." If properly sprayed and cultivated during summer, protected over winter, you will find a planting of Roses one of the most satisfactory expenditures for your garden.

## Twelve New and Select Roses

The following were selected as the best of the newer varieties. All have distinct merit, and we recommend them to those who are looking for something new and beautiful.

No. 1, 2-year plants, 75c each; \$3.50 for 5; \$8.00 per doz.

For postage and insurance, add 10 per cent.

### PINK

**Cynthia.** Rich orange-pink. Free flowering, good habits. Has performed well for us.

**Glowing Carmine.** Its name is a good description of this new Rose. Strong grower, blooms freely, and is very showy.

**Picture.** Beautiful with its warm undertone of salmon. Perfect form with pointed petals. Vigorous, continuous bloomer. Fragrant. It really is a picture.

**Pink Dawn.** Perfect formed buds, opening to a lovely shade of pink, tinged with orange.

### RED

**Grenoble.** This Gold Medal variety is fast becoming popular. Glowing scarlet-crimson with long stems. Vigorous and healthy.

**Rouge Mallerin.** Wonderful pointed buds of brilliant red, opening to 3- to 3½-inch blossoms of glowing scarlet. Fragrant. The plant is healthy with lovely new bronze foliage which turns to a rich green when mature.

### TWO-TONE

**Hinrich Gaede.** A brilliant colored Rose with long-pointed buds of rich luminous vermilion shaded with gold. A showy free bloomer, fragrant, with excellent foliage.

**Madame Joseph Perraud.** Award of honor "The Most Beautiful Rose in France for 1934." The long slender buds when open shade from pink at the edges to orange at the center. Enraptured visitors were in accord as to its merits.

### WHITE

**McGredy's Ivory.** Creamy ivory-white, sometimes with a faint tinge of pink in the center. Large, fragrant and one of the best.

### YELLOW

**Golden Rapture.** Long lasting, well-shaped buds and fully double blooms of rich yellow on long, strong stems. A vigorous grower. This has been wonderful in our gardens.

**McGredy's Yellow.** This bright buttercup-yellow is admired by all who see it. Good form, fragrant and strong grower.

**Phyllis Gold.** Beautiful clear yellow with nicely shaped buds, tinged red, opening to large fragrant high-pointed flowers of great substance. Strong upright grower with good foliage.

## Quality Stock

Do not confuse quality plants with cheap stock. There is a difference and you will be convinced if you plant HILLENMEYER'S ROSES.



Grenoble

*"Say It with ROSES"*

A Birthday Anniversary or Christmas Present of Hillenmeyer Roses Always Pleases



Cynthia



# Hillenmeyer Tried and Tested Roses

There are more than 2000 Roses in general cultivation and to list any large percentage of these would be out of the question. We have, therefore, tried and tested all of the best to save you time and expense. The list which follows is the result of our effort and represents the "Cream of the Crop." Plant any of them with confidence.

**Strong, two-year plants, 50c each; \$2.25 for 5.  
For postage and insurance, add 10 per cent.**

## Pink

**Betty Uprichard.** H.T. Two-color, copper-red buds, opening into semi-double, salmon-pink blooms. A good bloomer and an outstanding variety.

**Dame Edith Helen.** H.T. One of the largest and most perfectly shaped pink Roses known. Flowers uniformly well shaped. Has attracted unstinted praise. The most perfumed of all pink Roses.

**Edith Nellie Perkins.** H.T. One of the best. Long pointed buds of cream, orange, and pink, overspread with gold flush. Very prolific flowering; strong grower. Foliage healthy.

**Editor McFarland.** Deep pink. We think this the finest pink garden Rose grown today. Its pointed buds on nice long cutting stems last longer and retain their form wonderfully well. A Rose that should be in every garden.

**Mrs. Charles Bell.** H.T. Famous salmon-pink sport of Radiance, with all its good qualities. No other Rose has just the same lovely color.

**Radiance.** H.T. This is a most reliable Rose. It has no serious faults and is the best variety for this section. Brilliant rose-pink buds opening into well-formed blooms with silver tints on reverse of the petals. Blossoms are fragrant and plant makes vigorous growth. Our most outstanding reliable Rose.



Editor McFarland



Soeur Therese

## Red

**E. G. Hill.** H.T. A great red Rose. Massive blooms of deep crimson and scarlet, velvety on inside. Splendid for cutting. Foliage unusually healthy. Of vigorous habit.

**Etoile de Hollande.** H.T. It is said that this is the best red Hybrid Tea. Its gigantic flowers of velvety crimson color hold up remarkably well, getting lighter in shade instead of "bluing" with age. Thrives everywhere and produces a fine lot of blooms throughout the season.

**Red Radiance.** H.T. Read the description of Radiance and apply the good things said of it to this variety, except the color, which is a deep rose-red. Blooms until frost and is the best all-round red Rose in existence.

## Two-Tone

**Candesa de Sastago.** Vivid colorings of gold, copper, and yellow. This matchless Spanish novelty causes everyone to stop and admire it. Healthy and upright in growth. Admired by all.

**Duquesa de Penaranda.** Coppery apricot. A Spanish beauty with long-pointed buds which open into luminous shades defying description. A wonderful Rose.

**President Herbert Hoover.** H.T. A most popular Rose. It is maroon, orange, and gold, rioting in a most contrasting fashion. Long, pointed buds; rigid stems. A fine garden Rose, blooming well in the autumn. By far the best of its color, and superior to Talisman as an outdoor Rose.

**Talisman.** H.T. Multi-colored. Glorious combination of orange, yellow, and rose-red. The fragrant flowers are much more highly colored in autumn.

## White

**Caledonia.** H.T. Purest white, perfectly formed buds on strong stems, opening to large flowers that retain their form until petals fall. No white Rose can surpass this perfect variety.

**Edith Krause.** Pure white, long buds and large double blooms on strong stems. A tall grower with dark, healthy foliage.

**Kaiserin Auguste Viktoria.** H.T. Well-formed, cream-colored buds opening into white flowers. Free blooming; hardy.

## Yellow

**Golden Dawn.** H.T. Large, straw-yellow buds opening to pale lemon-yellow, double flowers, with slight old rose markings. Rarely out of bloom. Bronzy foliage, free of disease.

**Mrs. E. P. Tham.** H.T. Superior yellow garden Rose. The fine long buds are perfectly shaped. Flowers rich lemon-yellow. Very vigorous and a constant bloomer.

**Mrs. Pierre S. du Pont.** H.T. Winner of more medals than any other outdoor Rose. Long, pointed, rich red-gold buds, opening to well-formed blossoms that hold long. Foliage ornamental, healthy, and disease-resistant.

**Soeur Therese.** Yellow. Long pointed buds of chrome-yellow with markings of carmine. The open flower is rich Daffodil-yellow. Blooms freely on long cutting stems. One of the finest yellow Roses of recent introduction.



E. G. Hill

# Patented Roses

Many of the finest of the new Roses are being patented. This naturally regulates, to a large extent, the propagation, description, and sale.

We are licensed to distribute these Roses and use the greatest of diligence to see that they reach you in prime condition. However, we cannot be held responsible for their description or other things beyond our control.

We have listed only a few kinds which we know are among the best, but can supply almost any other variety you may wish at their established price. Let us include any you may want with your Rose order.

**Countess Vandal.** H.T. U. S. Plant Patent No. 38. Copper, pink, and gold with long, pointed buds. Petals curl into a beautiful open blossom. The best patented Rose which has come under our observation. We recommend it with confidence. \$1.00 each.

**Eclipse.** U. S. Plant Patent No. 172. The long streamlined bud enhanced by ornamental sepals, is of rich gold without shading. International sensation of 1936. \$1.25 each.

**Gloaming.** U. S. Plant Patent No. 137. Large salmon-pink buds, with overcast of gold at base of stems, which open into full double fragrant blossoms. Good foliage and vigorous. One of the most charming Roses to date. \$1.00 each.

**McGredy's Triumph.** U. S. Plant Patent No. 190. Glistening cerise overcast with pink. Large blossoms, healthy reddish bronze foliage and a robust grower. We think it one of the best. \$1.25 each.

**Signora.** U. S. Plant Patent No. 201. Long bud of warm burnt sienna opening to a lighter hue toward mandarin. Tall growing with every bloom on a long stem. \$1.25 each.

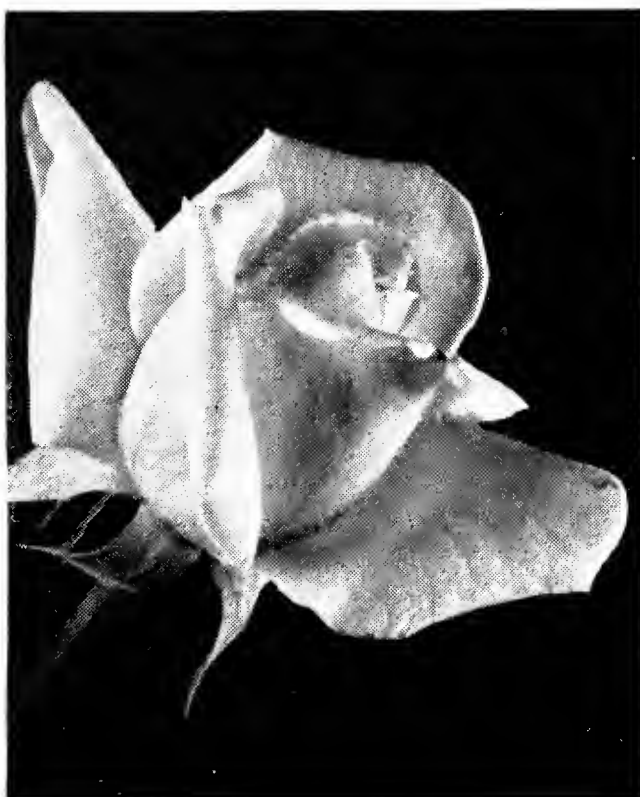
**Sterling.** U. S. Plant Patent No. 21. A magnificent glowing pink flower of superb form in bud and when open. Base of petals is orange or yellow, giving it a richness which is seldom seen. Good foliage, strong and a continuous bloomer. A sterling variety. \$1.50 each.



Paul's Scarlet Climber



Polyantha Roses



Gloaming



Climbing American Beauty



Hugonis

## Climbing Roses

Strong 2-yr. plants, 50c each; \$2.25 for 5, except the patented varieties.

**Chaplin's Pink Climber.** (Pink.) Rich double pink with a touch of salmon. Holds its color and remains attractive longer than any Rose in our list.

**Dr. W. Van Fleet.** (Pink.) Large flowers of exquisite flesh-pink, borne on long stems. The outstanding large-flowered pink climber.

**Mary Wallace.** (Pink.) Clear brilliant pink flowers on long stems. The outstanding large-flowered pink climber.

**New Dawn.** (Pink.) U. S. Plant Patent No. 1. An everblooming Dr. W. Van Fleet. \$1.50 each.

**Blaze.** (Red.) U. S. Plant Patent No. 10. An everblooming Paul's Scarlet Climber. \$1.00 each.

**Climbing American Beauty.** (Red.) Extremely beautiful in bud, and flowers of light crimson. Very fragrant.

**Paul's Scarlet Climber.** (Red.) Vivid scarlet-red that can be "seen a mile." Holds its color.

**Silver Moon.** (White.) Semi-double flowers. The showy yellow stamens make it doubly attractive.

**Gardenia.** (Yellow.) Buds rich creamy yellow, opening a pleasing yellow that fades to cream.

**Mermaid.** (Yellow.) Very large, single blooms of clear, light yellow. Very attractive.

For Postage and Insurance on all Roses, add 10 per cent.

## Shrub Roses

2-yr. plants, 50c each; \$2.25 for 5.

**Hugonis.** "Golden Rose of China." The finest Shrub Rose known. Blooms in May, its arching branches covered to the tips with single, yellow, cup-shaped flowers. Unsurpassed for mass effects and in the shrub border.

## Polyantha Roses

These dwarf everblooming Roses are fine for bedding, edging, and are quite hardy. Can also be used with striking effect in landscape plantings.

50c each; \$2.25 for 5.

**Catherine Zeimet.** Pure white, fragrant, borne in large clusters.

**Chatillon.** Vigorous, bushy grower, immense clusters of clear pink blooms. Profuse.

**Gloria Mundi.** Orange-scarlet. A flaming color unmatched in any other class of Roses.

**Ideal.** One of the best dark reds. A good grower and continuous bloomer.

# Hedges

## The Friendly Way To Fence

A thrifty, green hedge gives more character and beauty to home grounds than any fence ever devised. The first cost of a hedge is less than that of a fence; trimming costs less than painting; if the hedge is permitted to grow tall it shuts out unpleasant views and is decorative all the year. In cities a hedge is an effective boundary marker, a wall of living green that protects the world within from the world without. The different hedge plants here listed are adapted to a variety of uses—and the plants themselves are in every way Hillenmeyer standard.



Japanese Barberry

### Chinese Privet (*Ligustrum Sinense*)

Semi-evergreen; grows quickly. Occasionally it freezes to the ground in a severe winter, but always comes back with renewed vigor.

	10	50	100
18 to 24 in. . . . .	\$1.00	\$3.00	\$ 6.00
2 to 3 ft. . . . .	1.25	4.00	8.00
3 to 4 ft. . . . .	1.50	5.00	10.00

### California Privet (*Ligustrum Ovulifolium*)

Semi-evergreen, with thick, shining foliage. A rapid grower and may be planted without much expense and trouble by anyone needing a quick hedge. When planting, cut away most of the top to get a bushy hedge. The plants may be pruned to any desired form. We have a very fine stock of California Privet.

### Ibodium Privet (*Ligustrum Ibodium*)

This comparatively new Privet has proved hardy under the severe tests of the past few years. It has the characteristics of the California Privet and is as hardy as its other parent, the Ibotia Privet. This superior Privet is a welcomed addition since it can be grown and sold at the price of California Privet.

Prices of California and Ibodium:	10	50	100	1000
12-18 in., 2 or more branches . . .	\$0.60	\$2.00	\$4.00	\$30.00
18-24 in., 3 or more branches . . .	.85	2.50	5.00	40.00
2-3 ft., 3 or more branches . . . . .	1.00	3.00	6.00	50.00
3-4 ft., 3 or more branches . . . . .	1.25	4.00	8.00	60.00

Plant above Privet 6 to 12 in. apart.

### Hemlock Hedge

The aristocrat of the Hedges. While a great many plants have been used from time to time in making hedges, there is none for all-round purposes which is superior to the Hemlock. Its rich green color in winter or summer, softness of texture, compactness, hardiness, ability to thrive in shade or open exposure, freedom from disease, are some of its outstanding qualities. In the past Hemlocks have been rather expensive to use for this purpose, but we have grown them by the thousands, and now have what we believe is as fine a stock as can be found in the United States. Our trees have been several times transplanted, and every one is a specimen. Can furnish in heights of from 2 to 10 feet. Write for prices, giving distance to be planted, and we shall be pleased to quote special prices.

### Other Plants for Hedges

Many other shrubs make useful hedges, giving both protection and color. We shall be happy to give special prices on quantities and in hedge size.

**Abelia.** See page 6.

**Arbor-Vitoe.** See page 5.

**Boxwood.** See page 6.

**Hibiscus.** See page 15.

**Red Barberry.** See page 13.

**Lilac.** See page 19.

**Privet, Regel's.** See page 16.

**Spirea.** See page 18.

### Japanese Barberry (*Berberis Thunbergi*)

Each year sees an increased use of Japanese Barberry as a hedge plant. It is graceful, ornamental, serviceable, and hardy—four points that place it at the top of the list. The foliage unfolds in early spring, followed by yellow flowers, and later by red berries that remain all winter. In autumn the whole plant assumes a red tone. The drooping branches are thickly set with small spines that will turn cats or dogs. Japanese Barberry is excellent for foundation planting or for massing in corners. It thrives in bright sun and does well in shade.

	10	50	100
12 to 15 in. . . . .	\$1.50	\$6.00	\$12.00
15 to 18 in. . . . .	2.00	7.50	15.00

Plant 18 to 24 in. apart.

### Fragrant Bush Honeysuckle

(*Lonicera Fragrantissimo*)

The very best tall-growing hedge ever offered, and the best for screening purposes. It is almost evergreen, holding its foliage all season in mild winters. It blooms in March and has a most fragrant blossom. Makes a strong, bushy, dense plant and normally grows into a hedge 6 to 12 feet. Requires very little pruning and will grow anywhere.

	10	50	100
18 to 24 in. . . . .	\$1.50	\$5.00	\$10.00
2 to 3 ft. . . . .	2.00	7.50	15.00
3 to 4 ft. . . . .	2.50	10.00	20.00

Plant 18 to 24 in. apart.



California Privet

# Hardy Garden Plants THAT BLOOM FOR YEARS



Canterbury Bells



Digitalis, Foxglove



Gaillardia, Burgundy

**ANCHUSA italica.** Tall spikes of beautiful blue flowers in June and intermittently during summer. 3-4 ft.

**ANCHUSA myosotidiflora.** A charming dwarf variety with clusters of blue flowers resembling Forget-me-nots. Effective in either shady or sunny situations, flowering in May and June. 12 inches. 30c each; 4 for \$1.00.

**ANEMONE.** Japanese Windflower. Large open flowers excellent for massing and cutting, blooming from September to November. Prefers a good deep, rather moist soil and partial shade. 2-3 ft.

**A., Queen Charlotte.** Semi-double, silvery pink. 30c each; 4 for \$1.00.

**A., Whirlwind.** An excellent semi-double white. 30c each; 4 for \$1.00.

**AQUILEGIA.** Columbine. One of the most stately and hardy perennials, growing in semi-shade or full sun. Blooms over a long period and invaluable for cutting. We offer Mrs. Scott Elliott's Hybrids, with wonderful colors and very long-spurred flowers.

**ARTEMISIA, Silver King.** Striking silver-leaved plant. Very effective in the border and as a filler for bouquets. 3 ft.

**ASTER.** Hardy Michaelmas Daisy. Many new and dwarf hybrids are being offered and we have selected the best by testing and offer in a wide range of color. Autumn flowering. Hardy. Fine for borders.

**A., Climax.** Large blue with golden center. 3-4 ft.

**A., Frikarti.** Outstanding new hybrid. Lavender-blue, blooming from July to frost. Fine for cutting. 2-2½ ft. 50c each.

**A., Mauve Cushion.** Soft mauve, silvery reflex. 12 inches.

**A., Nancy.** Pale flesh-pink. Excellent for edging. 12 inches.

**A., Ronald.** Showy. Bright lilac-pink. 12 inches.

**A., St. Egwin.** Rosy pink. Compact. 2½ ft.

**BAPTISIA.** False Indigo. Dark blue pealike flowers in May and June. Hardy. 2-3 ft.

**CAMPANULA.** Canterbury Bells. Ever-popular biennial doing best in rich well-drained soil. Protect in fall or plant in spring. Lovely mixed shades. 2-3 ft.

**CERASTIUM tomentosum.** Snow-in-Summer. A low, spreading plant with silvery foliage and white flowers in May. Fine for rockeries or border.

**CHRYSANTHEMUMS.** Hardy. Few fall flowers give as much satisfaction as the old-fashioned hardy Chrysanthemum. We offer the ones which have proven best with us. September and October. Pink, Red, White, and Yellow.

**CHRYSANTHEMUMS, Cushion.** A group of low-spreading 'Mums blooming from September to frost. 10-12 inches. Bronze, Pink, and Yellow. 30c each; 4 for \$1.00.

**CHRYSANTHEMUMS, Korean.** Because these have frozen out so completely with us when planted in the fall we will only have to offer in the spring. See our Spring Supplementary Catalog for varieties.

**CHRYSANTHEMUM maximum.** See Shasta Daisy.

**COREOPSIS.** Yellow, hardy, daisy-like perennial, valuable for border or cutting. June-August. 2-3 ft.

**DELPHINIUM.** Larkspur. One of our finest and most popular garden flowers with their long terminal spikes of various shades surmounting the deeply lobed leaves. Plant in well-drained soil and top-dress with lime or old plaster.

**D., Belladonna.** Light blue. The most popular of its shade. 2-3 ft.

**D. bellamosum.** Improved dark blue. 2-3 ft.

**D., English Hybrids.** Stately spikes with a wide range of fascinating colors. 3-4 ft.

## Prices of All Perennials

Except as noted.

Each, 20c    6 for \$1.00    100 for \$15.00  
For Post and Insurance, add 10%.

### DICENTRA, Bleeding Heart.

**D. eximia.** A dwarf plant with fernlike foliage. Blooms over a long period. Shade or sun. 30c each; 4 for \$1.00.

**D. spectabilis.** An old-fashioned favorite with its heart-shaped, rose-colored flowers in drooping racemes. Prefers semi-shade. 30c each; 4 for \$1.00.

**DIGITALIS.** Foxglove. Popular biennial with terminal clusters of bell-like flowers in the best mixed shades. Protect over winter. 3-4 ft.

**DORONICUM.** Leopard's Bane. Large, bright yellow Marguerite-like flowers, 2½-3 inches, in May. Invaluable for the border and as a cut flower. 2 ft. 30c each; 4 for \$1.00.

### EULALIA, Hardy Grasses.

**E. japonica.** A strong grower with light green leaves. 5-6 ft.

**E. gracillima.** The most graceful and most popular. 3-4 ft.

**E. variegata.** Long narrow leaves with white stripe. Medium grower. 3-4 ft.

**GAILLARDIA.** Blanket Flower. Does well in any soil, good for cutting, blooms all summer.

**G., Burgundy.** Deep red tinted yellow.

**G., Dazzler.** Large golden yellow and maroon.

**G. Hybrids.** Coppery scarlet margined yellow.

**GYPSOPHILA.** Baby's Breath. Noted for their small airy sprays of starry white or pink flowers. Excellent for borders or cutting.

**G., Bristol Fairy.** Double white. 30c each; 4 for \$1.00.

**G. paniculata.** Single white. 20c each; 6 for \$1.00.

**G., Rosy Veil.** Best double pink. 30c each; 4 for \$1.00.

**HELENIUM, Riverton Gem.** Sneezewort. Terra cotta and gold flowers resembling small Sunflowers blooming in clusters August to October. 3-4 ft.

**HELIOPSIS pitcheriana.** Orange Sunflower. Deep golden yellow. Useful for border and cutting. July to August. 3 ft.

**HEMEROCALLIS.** Day Lily. Beautiful hardy Lilies invaluable for cutting and borders.

**H., Hyperion.** New. Soft yellow with large, fragrant, waxy blossoms. One of the best. July and August. 50c each.

**H. flava.** Lemon Lily. Clear yellow, fragrant. 2½ ft. June.

**H. kwanso.** Double. Rich golden bronze. Aug.

**H. thunbergi.** Pale yellow blossoms in July.

**HEUCHERA.** Coralbells. Neat graceful plants producing bell-like flowers on slender stems.

**H. brizoides.** Pale pink. 12-15 inches. May.

**H., Rosamundi.** Coral-pink. 12-15 inches. June to September.

**H. sanguinea.** Crimson. 15-18 inches. June to September.

**HIBISCUS.** Mallow Marvels. In July and August produce flowers 6 to 8 inches across. We can furnish in White, Pink, Rose and Red. Order by color.

**HOLLYHOCKS, Double.** "Powder puff-like" flowers borne along stems in June and July. Mixed colors.

**IBERIS sempervirens.** Hardy Candytuft. A dwarf plant with evergreen foliage and white blossoms in early spring. Fine for rockery and edging. 8-10 inches.

## IRIS GERMANICA

(German Iris)

These well-known "Old-fashioned Flags" have been improved until we now have thousands of new varieties. Ours are selected as the best and carry a high rating by the American Iris Society.

In planting, do not cover the roots more than 2 inches, nor use manure as a plant food. Bone meal may be used sparingly.

**25c each; \$1.25 for 6; \$2.50 per doz.**

The figures (9.4 and others) indicate rating.

**Ambassadeur.** 9.4. Standards purplish bronze; falls velvety maroon.

**B. Y. Morrison.** 8.8. Standards pale lavender-violet; falls velvety purple bordered lavender.

**Caprice.** Light magenta; fragrant.

**Cluny.** 8.8. Standards pale lilac-blue; falls deeper.

**Coronation.** Large, rich, deep golden yellow.

**Corrida.** 8.8. Standards sky-blue with deeper shadings.

**Dauntless.** A beautiful red-toned Iris, with darker, velvety falls. 50c each.

**Desert Gold.** NEW. An exceptionally fine straw-yellow Iris. Large, early and fragrant.

**Dolly Madison.** 9.3. Standards mauvette, shading out to yellow at the base. Falls ageratum-blue and old gold.

**Dream.** 8.5. A solid, soft, clear pink color.

**Gold Imperial.** A very fine deep yellow.

**Her Majesty.** 7.7. Standards lilac-pink; falls darker.

**La Nieve.** 8.3. Pure, glistening white.

**Lent A. Williamson.** 9.6. Standards lavender-violet; falls pansy-purple.

**Lohengrin.** 8.2. Uniform lilac-rose.

**Lord of June.** 8.7. Unusually large, standards soft lavender-blue; falls rich violet-blue.

**Mary Geddes.** NEW. Beautiful and unusual. Standards and falls orange-salmon. Very floriferous. \$1.00 each.

**Morning Splendor.** Large flowers of rich red tone and heavy substance.

**Mrs. Valery West.** Standards smoky tan. Falls deep velvety purple.

**Opera.** 8.4. Standards reddish lilac; falls velvety violet.

**Pallida Dalmatica.** 8.8. Clear, deep lavender; very large.

**Parc de Neuilly.** 8.1. Rich plum-purple.

**Princess Beatrice.** 9.5. Soft lavender.

**Rose Dominion.** Standards a beautiful rose-pink bicolor with flaring falls, and a vivid golden beard. Unlike all others.

**Selene.** A tall, pure luminous white with a yellow beard. Large flowers of heavy substance.

**Souv. de Mme. Gaudichau.** 9.8. Standards dark purple; falls brilliant blackish purple.

**Susan Bliss.** 8.8. Orchid-pink.

**Sweet Lavender.** 8.8. Heavily ruffled; pale lavender-blue standards and flaring Chinese violet falls.

**True Charm.** 8.4. White standards suffused with lavender; falls creamy white edged with lavender.

**Wedgewood.** Large flower of rich Wedgewood-China-blue.

**White Queen.** The purest white Iris in cultivation.

## Iris Kaempferi

(Japanese Iris)

Later than the German Iris and should be in every garden. Wonderful display of color when in bloom. We have selected outstanding varieties for this section and you will be pleased with them. Prefer a moist soil but will grow anywhere.

**Good clumps at 35c each; 3 for \$1.00.**

**Gekko-no-nami.** White, base of petals and veins yellow.

**Hizakwa.** Purple, with 6 frilled petals.

**Sakata.** Delicate lavender, veined purple; 3 petals.

**Zedo Kagin.** Rose with purple markings; 3 petals.

**Surprise.** Blue-lavender and mauve markings; 6 petals.

**Yama Yama.** White flushed lavender, with a narrow hair-line edging of bright violet on the standards.

## Iris Sibirica

(Siberian Iris)

Follow the German Iris. These smaller blossoms when nestling in the long, narrow, graceful foliage are showy and beautiful. Fine for cut flowers. We offer in two colors—Blue and White. 25c each; 6 for \$1.25.

**LINUM perenne.** Flax. Attractive, both in foliage and bloom. Flowers a lovely blue. For border or rockery. 1½-2 ft.

**MERTENSIA.** Virginia Bluebell. Attractive native plant with showy blue flowers opening in early spring. Prefer a shady location but will grow anywhere. 12-18 inches.

**MYOSOTIS.** Forget-me-not. Rich blue flowers with a yellow eye. Prefer a moist situation. 6 inches.

**PAPAVR ORIENTALE.** Oriental Poppy. We offer a few of the best after testing many. Plant in fall. 6 named varieties.

**30c each; 4 for \$1.00.**

**Beauty of Livermore.** Dark crimson, black blotch.

**Mrs. Perry.** Salmon-pink.

**Apricot Queen.** True apricot.

**Delicata.** Old-rose-pink.

**Perry's White.** White, dark maroon base.

**Wurtembergia.** Brilliant rose-red.

**Old-Fashioned Red.** 20c each; 6 for \$1.00.

**PENTSTEMON tarreyi.** Beard Tongue. Graceful spikes of tubular scarlet flowers. Midsummer. 2-3 ft.

## Phlox

One of our most popular perennials with spikes of single showy blossoms produced off and on through the summer. Keep dead blossoms cut and do not water foliage. We have selected some of the best.

**PHLOX AUGUSTA.** Brilliant cherry-red.

**PHLOX COLUMBIA.** Loveliest pink.

The above introduced and patented by Wayside Gardens. Our plants come from the originators. 50c each; 3 for \$1.25.

**PHLOX, B. Comte.** Unusual burgundy-red.

**P., Beacon.** Brilliant cherry-red.

**P., Frau G. von Lassburg.** Late. White; immense panicles.

**P., Miss Lingard.** Earliest white; long, graceful panicles.

**P., Mrs. Milly Van Hoboken.** Bright pink, suffused mauve.

**P., Thor.** Deep salmon-pink, aniline-red eye.

**P. subulata rosea.** Moss or Mountain Phlox. Dwarf, early, pink with mosslike semi-evergreen foliage. Thrives in hot dry locations. Fine for rockeries or ground covering.

**PINKS.** Old-fashioned Hardy Pinks. Indispensable in both border and rockery. Mixed colors. 12 inches.

**PRIMULA.** Primrose. Attractive rosettes of foliage from which rise clusters of single velvety flowers. Good in moist semi-shaded places.

**P., Moerheim Hybrids.** Lovely shades from cream to crimson.

**P. Vulgaris.** The true yellow Primrose. Fragrant.

**All Primulas: 30c each; 4 for \$1.00.**

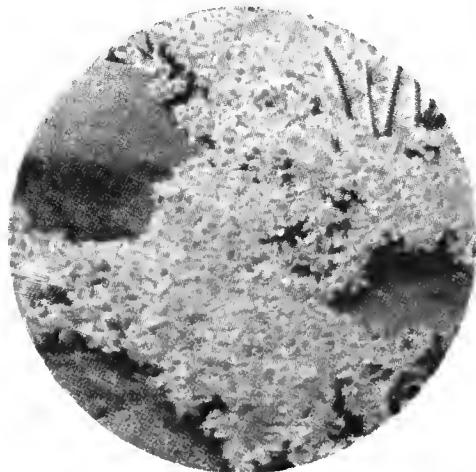
**PYRETHRUM.** Painted Daisy. Daisy-like flowers, excellent for cutting. Mixed shades. May and June. 2 ft.



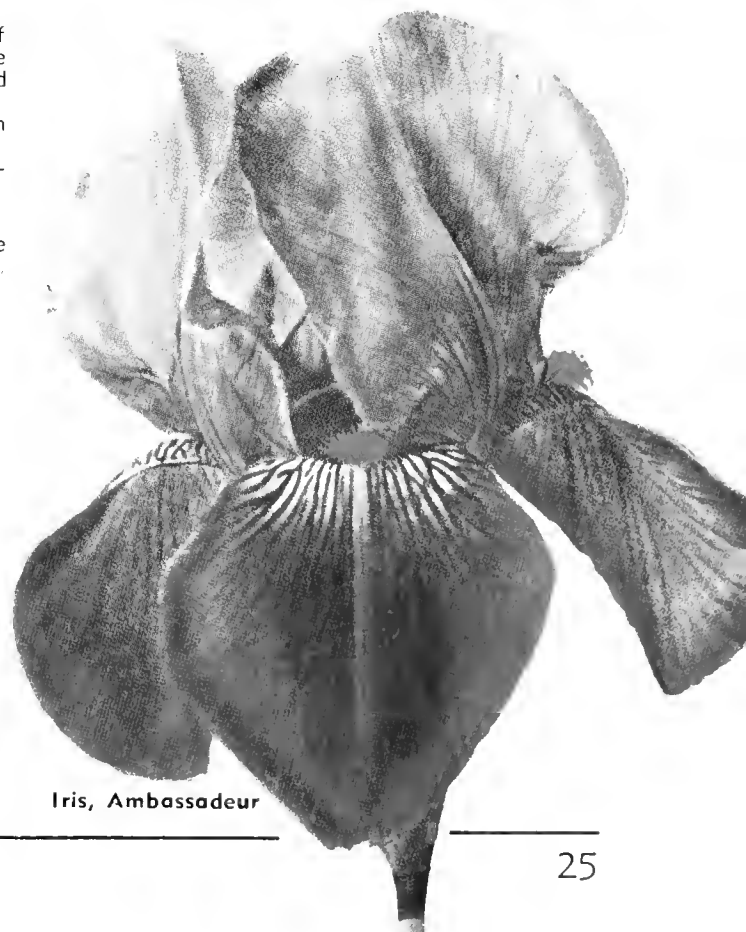
Japanese Anemone



Anemone



Phlox Subulata Rosea



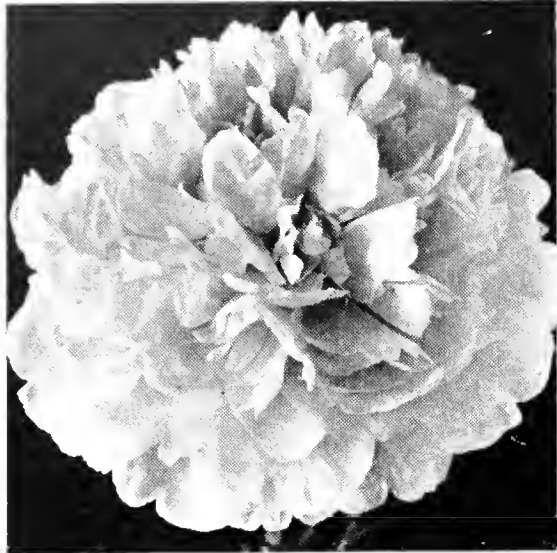
Iris, Ambassadeur

## Prices of All Perennials

Except as noted.

Each, 20c    6 for \$1.00    100 for \$15.00

For Post and Insurance, add 10%.



Peony, Reine Hortense



Yucca—Adam's Needle



Sweet William



Vinca—Periwinkle



Shasta Daisy

## PEONIES

### The Flowers For Everybody

There are few flowers which have been improved more than the Peony. From the old-fashioned reds and pinks, familiar in our grandmothers' gardens, we now have marvelous varieties with better color, form, and all-around quality.

They are at home and should be in every garden. Plant the crowns about 2 or 3 inches deep, use bone meal, see that they get sufficient water at blooming time, and you will be more than pleased if you use HILLENMEYER'S CHOICE ROOTS.

— LOOK AT THESE PRICES —  
STRONG DIVISIONS—YOUR ASSORTMENT  
35c each; 3 for \$1.00.

For Parcel Post and Insurance, add 10 per cent.

### PINK PEONIES

**Asa Gray.** Midseason. Soft shell-pink, mottled and veined rose. Vigorous.

**Edulis Superba.** Early. Deep rose. Valued for its fragrance and freedom of bloom.

**Lady Alexandra Duff.** An unusual delicate flesh-pink. One of the most striking of all Peonies, with extra-large, cup-shaped flowers.

**Livingstone.** Late. Clear pink. Very fine.

**Marguerite Gerard.** Midseason. Delicate pink. Large and vigorous.

**Mons. Jules Elie.** Early to midseason. Large, compact; lilac-rose with lighter pink base petals; fragrant. Extra fine.

**Reine Hortense.** Midseason. Large, flat; flesh to shell-pink; very fragrant. One of the finest.

**Samuel Hughes.** Late. Fine upright variety with unusual style and color combination—silver-pink. Excellent new variety.

**Sarah Bernhardt.** Late. Very large flowers of apple-blossom-pink, with silver-tipped petals. Vigorous.

**Solange.** Late. Large, compact. Outer petals delicate, waxy white, deepening toward the center with shades of golden brown. A strong, free bloomer.

**Venus.** Midseason. Pale hydrangea-pink; large; compact.

### RED PEONIES

**Felix Crousse.** Midseason. The most pleasing velvety red, fading to lighter shades as the blossom fades.

**Francois Ortegat.** Midseason to late. Very dark rose-red with yellow stamens; large, on strong stems. Extra good.

**Karl Rosenfield.** Late midseason. Large, showy, rich velvety crimson. Color striking.

### WHITE PEONIES

**Baroness Schroeder.** Midseason. Delicate flesh-pink; fading to white with suggestion of heliotrope and gold.

**Couronne d'Or.** Late. Cream-colored, compact and very desirable.

**Festiva Maxima.** Early. The grandest white Peony. The extra large flowers are pure white, except petals tipped carmine.

**Marie Jacquin.** "Water-Lily Peony." Semi-double; favorite with everyone.

**Mme. de Verneville.** Early. Desirable, free-blooming variety that should be in every collection.

### SINGLE PEONIES

Unusual bargains, 35c each; 3 for \$1.00.

**Clairette.** Large white flowers of unusual beauty; prominent tuft of golden stamens.

**Duchess of Portland.** Delicate shade of flesh-pink; large.

**L'Etincelante.** Rose-pink, margined silver. One of the best.

**Perle Rose.** Light pink, petals edged silver-rose.

**Rosy Dawn.** Large, snow-white, with very delicate blush shading in the bud.

**The Moor.** Very attractive deep rich red of unusual beauty; stamens yellow and striking.

### JAPANESE PEONIES

35c each; 3 for \$1.00.

**Akalu.** Guards deep American Beauty shade; petaloids conspicuous saffron-yellow, margined rose.

**Ruigegno.** Dark maroon, with petaloids of most pleasing yellow. Very showy.

**Snow Wheel.** Large, pure white petals and petaloids. Our best white Japanese variety.

**SEDUM.** Stonecrop. Low-growing plants with fleshy leaves and showy masses of flowers. Fine for rockery. August and September.

**SEMPERVIVUM.** House Leek. Fleshy-leaved mat-forming rosettes which produce heavy stemmed clusters of flowers. Excellent for dry, sunny places and rockery. Mixed.

### SHASTA DAISY.

**Alaska.** Excellent. Large, glistening white flowers. May and June.

**Early Shasta.** Hardest with smaller flowers than other varieties.

**Mrs. C. Lothian Bell.** Large single white flowers, excellent for cutting.

**STATICE latifolia.** Sea Lavender. Minute purplish blue flowers in late summer. 2 ft.

**SWEET WILLIAM.** Old favorites, bearing their sweet clove-scented flowers in profusion during May and June. Mixed shades.

**Newport Pink.** The best salmon-pink to date.

**TRITOMA.** Red Hot Poker. Bright red cone-like heads from July until frost. 2-3 ft.

**VERONICA.** Speedwell. One of the best hardy perennials with various colored spikes. Fine for rockery, border and cutting.

**V. incana.** Deep blue silvery foliage. 12-15 inches. July and August.

**V. longifolia subsessilis.** Blue. One of the best. 18-24 inches. July and August.

**V. spicata.** Violet-blue. All summer. 2-2½ ft.

**VINCA minor.** Periwinkle or Trailing Myrtle. A trailing evergreen plant used as a ground cover under trees or other shady situations.

**YUCCA filamentosa.** Adam's Needle. Spikes of creamy white flowers borne on tall stems. Best for shrubby border, large rockeries or planted in masses. June.

# Climbing and Creeping Vines

These are the draperies that Nature gives us to cover porches, arbors, fences, and to disguise unsightly buildings and old trees. All the varieties here named are strong growers, with either bright flowers in summer or brilliant berries in fall. Use vines freely to make the landscape more beautiful. They thrive almost anywhere, cost little, and give a large return in comfort and pleasure.

Far Parcel Post and Insurance, add 10 per cent.



Lonicera—Scarlet Trumpet

## Ampelopsis

**Ampelopsis quinquefolia engelmanni.** Virginia Creeper. This is the Five-leaved Ivy that is so valuable for covering walls, fences, etc. It will grow anywhere and colors brilliantly in the fall.

35c each; \$1.50 for 5.

**A. veitchii.** Boston Ivy. The best of the self-clinging vines. Foliage is small, deep green, and very dense, covering any object completely. Colors beautifully in the fall. Slow to start, but vigorous when established.

35c each; \$1.50 for 5.

## Bignonia

**Bignonia radicans.** Trumpet Vine. A vigorous, woody vine, bearing scarlet flowers followed by long pods. It is a native of this section, easy to establish, and grows luxuriantly. Valuable for covering any kind of shelter or rustic work.

35c each; \$1.50 for 5.

## Celastrus

**Celastrus scandens.** Bittersweet. An unusually attractive native vine because of its showy berries in the fall and early winter. Vigorous.

35c each; \$1.50 for 5.

## Clematis

**Clematis jackmani.** The most popular Chinese Clematis. Has large purple flowers. Exquisite when it can be grown.

60c each; \$2.50 for 5.

**C. paniculata.** The small-flowered, fragrant, white "star" variety that blooms so profusely. Easy to establish and attractive in foliage as well as blossoms.

35c each; \$1.50 for 5.

Every item in this catalog is true to name, and up to specifications in every way. Hillenmeyer stock with the Hillenmeyer guarantee is sold only direct from the nursery. We have no agents—you buy direct from the producers.



Polygonum—Lace Vine

## Euonymus

**Euonymus radicans.** Winter Creeper. A slow-growing vine that adheres to masonry and remains deep green all winter.

35c each.

**E. radicans coloratus.** Bronze Winter Creeper. A comparatively new vine, growing more rapidly than others of this family. It has long, vigorous shoots, well covered with small, sharply pointed leaves. Clings exceptionally well and makes an artistic effect on a bare wall or chimney. Turns a rich bronze during the winter months.

35c each; \$1.50 for 5.

**E. radicans vegetus.** Big-leaf Winter Creeper. Another evergreen, clinging vine of moderate habit, perfectly hardy, and especially valuable because of the profusion of red berries that hang on for several weeks.

35c each; \$1.50 for 5.

## Hedera

**Hedera helix.** English Ivy. The most popular evergreen vine. Has large, deep green, glossy foliage, and is unexcelled for covering walls in shady and cool places. Can be sheared into edging for walks or covering for graves, or used as a most satisfactory ground-cover under trees or in shady places; adds beauty and dignity.

25c each; \$1.00 for 5.

## Lonicera

**Lonicera japonica halliana.** Hall's Japanese Honeysuckle. An evergreen, twining vine that is so much used for fences and trellises. Blooms continuously, is fragrant, and very easy to establish. Used largely to hold roadside banks from rain erosion, and will flourish in poor soil.

25c each; \$1.00 for 5.

**L. sempervirens.** Scarlet Trumpet Honeysuckle. Attractive, trumpet-shaped flowers of bright scarlet.

35c each.

## Polygonum

**Polygonum auberti.** Silver Lace Vine. A new, quick-growing, twining vine with small, attractive foliage. The flowers are very small and lacy and when the plant blooms it is a perfect mass of silvery white; there is no other vine of anything like the same effect. Blooms from August to frost.

50c each.

## Vines for Special Uses

### To Cover Top of Pergola or Lattice

Kudzu Vine  
Wisteria  
Silver Lace Vine

### For Covering Brick or Stone Walls

English Ivy  
Boston Ivy  
Virginia Creeper  
Euonymus

### For Graceful Twining on Pergolas

Bittersweet  
Clematis in variety  
Honeysuckle  
Climbing Rose

### For Solid Screen Effects

Virginia Creeper  
Trumpet Vine  
Honeysuckle  
Kudzu Vine



Wisteria

## Pueraria

**Pueraria thunbergiana.** Kudzu Vine. The most rapid-growing, twining vine known today. It is marvelous how it will cover fences, pergolas, or similar objects. The large, purple flowers are sweetly scented. Belongs to the pea family, and the foliage is dark green.

35c each; \$1.50 for 5.

## Wisteria

**Wisteria sinensis.** Chinese Wisteria. A rampant, clinging vine that has the robust vigor of a wild grape and the matchless beauty of a rare exotic. Flowers in large, drooping clusters. There is so much complaint of Wisteria not blooming that we are offering, this year, plants that are grafted from blooming wood. This insures blossoms. We offer the Blue or White variety in 2-year-old plants that can be depended on, though Wisteria always needs to be well established to bloom freely.

60c each; \$2.50 for 5.

## Tree Wisteria

These lovely vines are most effective when grown in tree form. Much more satisfactory than tree roses, and as standards, are unsurpassed. Both Purple and White.

4 to 5 ft., \$2.00 each.



Clematis Jackmani

# HILLENMEYER *Kentucky Grown Fruit Trees*

Fruits—The Money-Makers Are Coming Back to Southern Farms and Gardens

Wisely, many are again planting fruits. Changes during the past few years have shown clearly that farmers and gardeners who had a few bearing fruit trees were making a little money—or if they did not sell the fruit, they certainly did not have to buy at the store or on the market at high prices. So, the man who "raised his own" was ahead of the game any way you look at it.

For many years we have given special attention to fruit trees and small fruit plants. This year we offer with great pride and confidence our Kentucky-grown trees, produced with the utmost care and skill, from fruiting trees of known parentage. Likewise, with equal pride, we point to our low prices for these

high quality trees—priced low because our costs have been lower. Hillenmeyer trees are good trees, honest trees, and sold direct from the nursery—not by agents whose commission you pay without getting a penny's worth of added value in the stock. As we sell direct to you we do not ask fancy prices.

We propagate our fruits under careful conditions, taking every precaution to have them true to name, for we believe dependability of variety is our very best sales argument. We guarantee every variety to be as described and hold ourselves ready to replace, without charge, any tree that accidentally proves untrue to name. In addition to this dependability, our trees are suited to nearby conditions as we test all varieties before offering them for sale.

Delicious



## Summer Apples

**DUCHESS.** (Often called "Oldenburg"). An outstanding variety following Early Transparent, is equally productive, and best of its season. Ours is the "Red" strain. Early bearing.

**EARLY HARVEST.** Pale yellow; sub-acid. Regular bearer and the most popular of the older general-purpose varieties.

**EARLY TRANSPARENT.** Waxy yellow; tart; excellent. Very early bearer; productive. Valuable for either home or market. Blights on rich soil, however.

**GOLDEN SWEET.** Yellow. The best Sweet we know. Vigorous grower; productive. Hasn't a fault.

**HYSLOP CRAB.** The very best hardy Crabs, producing a heavy crop of tart, bright red fruits that are unexcelled for culinary purposes. Bears early and productively.

**MAIDEN'S BLUSH.** A grand old favorite. Waxy yellow, pleasing red blush. Ripens over a long period, making it valuable for home orchards.

**POLLY EADES.** A Kentucky developed variety, while not well known, is superior to Maiden's Blush. Plant this on our recommendation and you will never regret it.

### Fruit Trees by Post

Due to their length, nothing longer than the 4- to 5-ft. trees can be sent by Post.

For Post and Insurance add 10%

## Apples

No other fruit is so dependable and generally desirable as the Apple. They will thrive in almost any well drained soil. Its period of ripening extends from early July until frost and then they can be kept through the entire winter. For family use there is no fruit so indispensable. With moderate care they will pay a handsome return on your efforts and investment. We have kept our list of varieties up to date and you can plant any of them with confidence.

HILLENMEYER APPLE TREES ARE FINE THIS YEAR AND YOU CAN'T FIND BETTER.

2- and 3-year-old trees:	Each	5	50
2½ to 4 ft. ....	\$0.35	\$1.50	\$12.50
4 to 5 ft. ....	.45	2.00	17.50
5 to 6 ft. ....	.55	2.50	20.00
6 to 7 ft. Super Size .....	1.00	4.50	40.00

## Fall Apples

**GRIMES' GOLDEN.** The very best fall Apple. A recent survey showed this to be the most popular Apple of any season. Fruit golden yellow. Matures early and is heavy bearer. This variety is troubled with canker, which shortens the life of the tree. We offer "Double Grafted" Grimes' Golden at 25c extra.

**WEALTHY.** Large; shaded to dark red; quality good, tender. Productive. Early to bear, and very satisfactory.

**WOLF RIVER.** An attractive, large, striped Apple, ripening in September. Owing to its size it finds a ready market. Cooks well. Matures early.

## Winter Apples

**BALDWIN.** Red; large; fine quality. Tree vigorous. The Eastern commercial Apple.

**DELICIOUS.** Large and uniform in size; distinct because of five lobes on blossom end. Quality unexcelled, and peculiar to it. Early and heavy bearer. For market and home it takes a high place.

**JONATHAN.** An early-bearing and long-keeping Apple; red; medium size, quality good. Tree never large, but productive.

**McINTOSH.** A fine early winter sort that has won its way because of its productiveness and extra high quality. Bright red; smooth. Plant it liberally in Kentucky.

**PADUCAH.** A Kentucky product which very much resembles the Rome Beauty. About two or three weeks earlier, with more color, more prolific and a regular bearer. This variety stands at the top of the list as to production at the Kentucky Experiment Station.

**RED DELICIOUS.** This is just like the old standard Delicious except that it has extra red color. Sold under other trade names but ours is the true type.

**RED STAYMAN.** An improvement over the ordinary Stayman as to color. Other than this it is the same.

**ROME BEAUTY.** Large; red; tender, sub-acid. Early bearer and productive. A popular sort in most sections.

**STAYMAN WINESAP.** Dark, rich red, indistinctly striped; larger than old Winesap. High quality; good keeper. Tree productive, stands drought. The most extensively grown and the most abundant bearer, with more good qualities in its favor than anything we offer for Kentucky.

**TURLEY.** A seedling of Winesap which it somewhat resembles. Conical, rich red and of highest quality. A recent introduction, bears early and is fast gaining popularity.

**WINESAP.** Medium sized, dark red, productive variety. Excellent quality; crisp and juicy; sub-acid.

**YELLOW DELICIOUS.** A yellow type of the old standard Delicious which has become deservedly popular throughout the country. Looks same and of highest quality.

**YORK IMPERIAL.** A late keeping commercial Apple, shaded red on yellow skin. Flesh firm. Tree healthy. Regular and heavy bearer. Plant for profit or for home.

## APRICOT

The varieties, **Talbert** and **Alexander**, we offer are selected for their hardiness. They bear early and are of excellent quality.

	Each	5	50
4 to 5 ft. ....	\$0.70	\$3.25	\$25.00
5 to 6 ft. ....	.80	3.75	30.00



# Cherries

Not difficult to grow, but the trees are happiest in well drained, rich soil. The Saur varieties grow more readily than do the Sweets, but you can have both if the location is good. Be sure to plant the trees as soon as they arrive—don't let them lie around. Press the dirt firmly around the roots; tramp it **hard**. Prune the same as apples or pears but do not cut the central leader.

<b>2- and 3-year-old trees:</b>	<b>Each</b>	<b>5</b>	<b>50</b>
4 to 5 ft. ....	\$0.70	\$3.25	\$25.00
5 to 6 ft. ....	.80	3.75	30.00

## CLUSTER AND SUB-ACID

You may plant one of these varieties, and you will be rewarded. This group seldom fails to bear a good crop.

**EARLY RICHMOND.** This old standard Cherry has been the favorite for years. The fruit is tart and very valuable for canning purposes. Yields nearly every year and reddens the tree with its wonderful crop. It succeeds everywhere Cherries will grow and is the earliest in season.

**MAY DUKE.** Ripens a little earlier than Early Richmond, and while not quite so vigorous in tree, the fruit is slightly superior. Has been tested and found worthy of a place in all Cherry plantings.

**MONTMORENCY.** Gradually supplanting Early Richmond because of its size. Except for being a little later it is practically the same. Not quite as acid; when ripe is good to eat from hand. The tree is hardy, blooming late, and frequently will make a crop when the sweet varieties fail.

## SWEETS OR "HEART"

This group grows luxuriantly, makes a fine showing for a few years, and then if not in soil that is exactly suitable, may die. These varieties are the hardiest of the group.

**BLACK TARTARIAN.** Perhaps the most popular of the sweet varieties. Fruit is large, black, and heart-shaped. High quality. The tree is vigorous in suitable soil.

**GOVERNOR WOOD.** Few Cherries are superior to it in quality or productiveness. Fruit medium size, soft, and of fine flavor; pale yellow with blush.

**YELLOW SPANISH.** Later. Large, yellow, firm, and high quality. It is not quite as tender as some others, but the fruit can be adapted to a multitude of uses. Not planted as it should be.



Black Tartarian

# Peaches

A home garden without Peaches? Can you imagine such a thing! Just think what you are missing—luscious fruit from late June to mid-October if you select an early, a midseason, and a late sort. One tree of each is better than none, but if you have space, plant five of each class. For a commercial orchard you need a special selection and several varieties—better write us and ask our advice.

## PLANTING AND CARE

The Peach is the quickest maturing of fruit trees, often bearing the second year after transplanting. Plant only in well drained soil but otherwise follow methods recommended for other fruit trees.

When planting, prune very severely, removing all side branches to short stubs and head low. The tree gets top-heavy if allowed to develop a high head. Subsequent orchard pruning consists of shortening the terminal growth and keeping the tree compact and shapely.

The borer which hibernates right below the ground line and frequently girdles the trunk should be removed annually. A new chemical, Para-dichlorobenzene may be used to control this pest. Our orchard growing and nursery experience is always at your service. Write us your questions and we will try to help you.

<b>Well grown 2-year-old trees:</b>	<b>Each</b>	<b>5</b>	<b>50</b>
2½ to 4 ft. ....	\$0.30	\$1.25	\$10.00
4 to 5 ft. ....	.40	1.75	15.00
5 to 6 ft. ....	.50	2.25	20.00

Ask for prices on quantity lots

## ARRANGED IN THEIR ORDER OF RIPENING

**HALE-HAVEN.** (Free.) An excellent new Peach introduced by the Michigan Experiment Station. A cross between J. H. Hale and South Haven. Large, midseason, yellow with blush. Good quality tree, healthy and hardy. August 10.

**EARLY ELBERTA.** (Free.) Clear yellow, with blush; fine grained and sweet. Tree a strong grower with a tendency to thin itself, carrying moderate loads of fruit. August 10.

**VALIANT.** (Free.) A new, extra hardy outstanding variety of good quality. August 10th.

**J. H. HALE.** (Free.) Fruit large, yellow, almost covered with red; more highly colored than Elberta; flesh firm, melting, and of best quality. Ripens August 10 to 15.

**ELBERTA.** (Free.) Fruit large, yellow, shaded with deep red. Elberta has been the standard Peach for years, and is just as good today. More than 80 per cent of commercial plantings are of Elbertas. August 15.

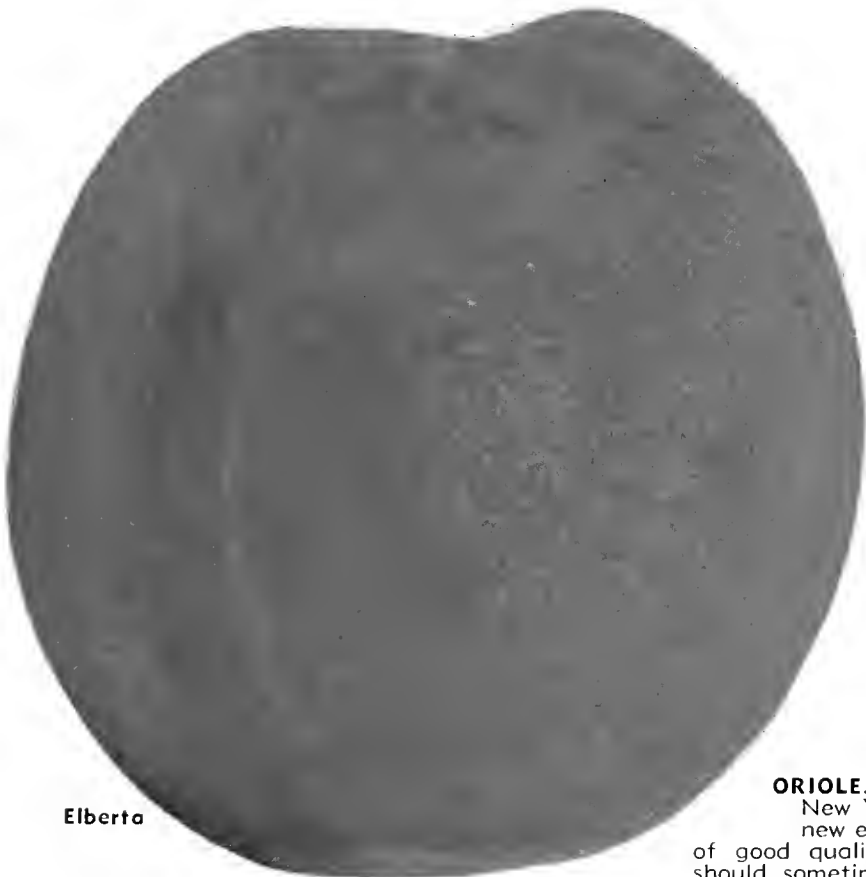
**HEATH.** (Cling.) White, tinged next to the sun. A large, firm, juicy Peach of most pleasing flavor. Well known. October 1.

**ORIOLE.** (Free.) Originated by the New York Experiment Station. This new early yellow Peach is hardy and of good quality. Tends to over-bear and should sometimes be thinned. Excellent for home use, local market or short shipments. Ripens last of July.

**HILEY.** (Free.) Follows Carman, and is an early Belle of Georgia. White flesh, firm, sweet, of good quality, and best of its season. July 30.

**SOUTH HAVEN.** (Free.) Better color and quality than Elberta. Larger and ripens 10 to 14 days earlier. Has been much harder than other yellow Peaches and because of our tests we recommend it highly. August 5th.

**BELLE OF GEORGIA.** (Free.) White, with decided blush; excellent quality. Heavy and regular bearer. The best white-fleshed Peach for home or market. August 5.



Elberta

**MAYFLOWER.** (Free.) The earliest ripening Peach we grow. Very hardy and productive and red all over. June 25.

**CARMAN.** (Free.) White, with red blush. Extra hardy. Bears every year, and when it fails all else fails, too. Tree a robust grower and produces heavily. Carman should be considered next to Elberta. We are partial to it. July 10 to 15.

**GOLDEN JUBILEE.** (Free.) A new, large, early Peach, highly recommended by the Kentucky Experiment Station and other leading authorities. Yellow with a distinct blush. Quality fine. July 15.

# Pears

This old standard fruit is still being planted by many. Blight is its chief enemy, and as it is worse on deep, rich soil, do not over-stimulate by feeding. Planted in the back lawn it will make a beautiful tree in foliage, blossom and fruit.

2-year-old trees:	Each	5	50
4-5 ft. ....	\$0.70	\$3.25	\$25.00
5-6 ft. ....	.80	3.75	30.00

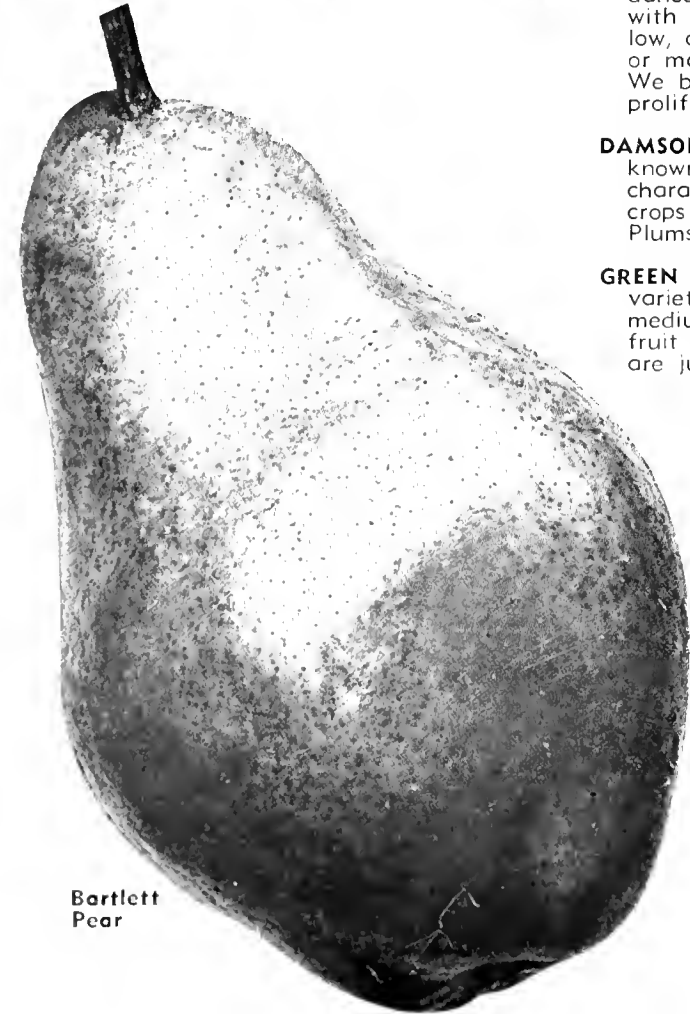
**BARTLETT.** August 15. The favorite eating Pear of America, East or West. Large; beautiful yellow, with soft blush; high flavor. Tree bears quite young. On account of its popularity everywhere it is the most sought after of the European Pears.

**KIEFFER.** September 10 to 15. The most popular Pear for our section. Fruit is large, golden yellow, sometimes tinted red on the sun-exposed side. Flesh is firm, crisp, juicy and for canning purposes it is especially prized. From the tree it is not good to eat, and to properly ripen, gather carefully and place in a dry place of even temperature. The quality improves and it is then desirable. For keeping longer, pack in shallow trays or wrap the fruit in paper and store in a room free from frost. In this manner it can be kept until Christmas.

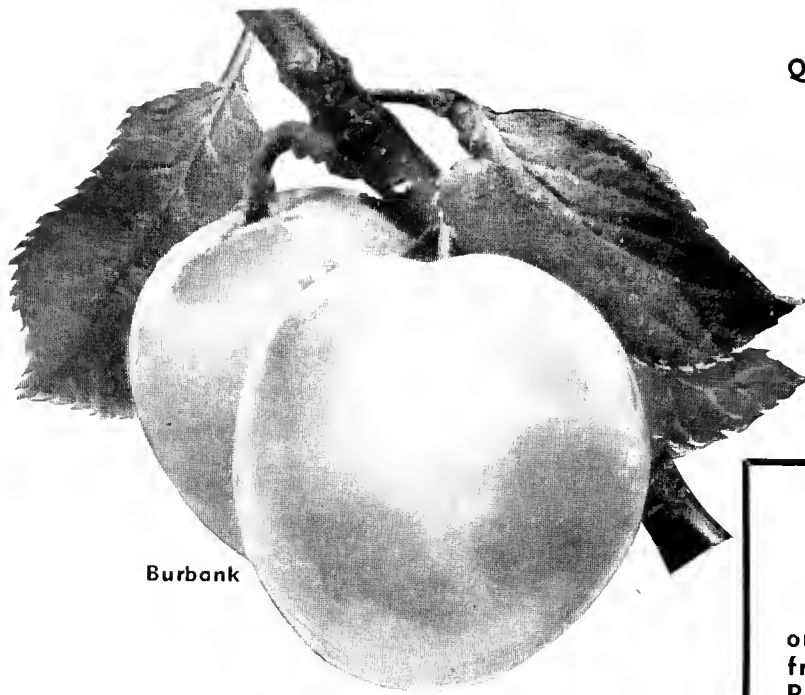
**LINCOLN.** As blight-resistant as Kieffer, and bears regular crops. Perfectly hardy and quality almost equals Bartlett. Season of ripening about September 1. Plant with confidence. Considered by many the best of the Pears.

**SECKEL.** September 15. This small, high-quality, yellowish brown Pear is one of the most popular of the September fruits. Of melting, juicy, and sugary quality (frequently called the "Little Sugar Pear"). Tree is of slow growth but lives long and is needed in every home garden.

**Hillenmeyer Trees  
are  
True To Name**



Bartlett Pear



Burbank

# Plums

Japanese Plums are best for general southern planting, but you cannot neglect Damson, Green Gage, and the newer Omaha. The trees grow almost anywhere—garden, chicken-run, or orchard. Usually the trees are loaded with fruit, so it is wise to thin the green fruit when about as big as an acorn. Prune the trees same as apples.

2- and 3-year-old trees:			
	Each	5	50
4-5 ft. ....	\$0.70	\$3.25	\$25.00
5-6 ft. ....	.80	3.75	30.00

(E) indicates European and (J) Japanese Plums.

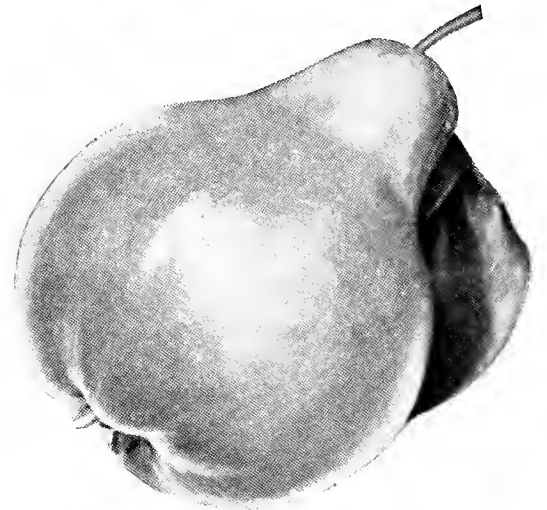
**ABUNDANCE.** (J.) July. One of the best and hardiest of the Japanese varieties. Fruit is large, oval, and in color amber changing to cherry. Quality good. Tree hardy.

**BURBANK.** (J.) Late July. Later than Abundance. Fruit large, violet to light purple, with occasional shades of yellow. Flesh yellow, of excellent quality. For either canning or marketing this is the most popular sort. We believe it to be the hardiest and most prolific of the Japanese varieties.

**DAMSON.** (E.) A standard for years too well known to describe. Trees are upright in character of growth and usually bear great crops in congenial soil. Succeeds everywhere Plums will grow.

**GREEN GAGE.** (E.) Another outstanding old variety. It ripens in mid-August and its medium sized, yellow-green, high quality fruit makes it a standard by which others are judged. Tree moderate grower; healthy.

**OMAHA.** (Hybrid.) A promising sort, vigorous in growth and free from disease. Being an American-Japanese hybrid, it inherits hardiness and productiveness from each parent. Produces great crops of coral fruit, yellow fleshed and of good quality.



# QUINCES

For preserves and jelly there is nothing better. Its delightful flavor and aroma have been admired for years. Every home should have a Quince tree. 4 to 5 ft., 80c each.

**98 Years**  
That's How Long We Have Grown  
Hillenmeyer Quality, True-to-Name  
Fruit Trees

### Distances Apart to Plant Fruits

APPLES .....	30 to 40 feet	PLUM .....	25 feet
APRICOT .....	20 to 25 feet	PEAR .....	25 feet
CHERRY (Sweet) .....	30 feet	QUINCE .....	12 to 15 feet
CHERRY (Sour) .....	25 to 30 feet	GRAPES .....	8 feet
PEACH .....	20 to 25 feet		

	Plants	Rows
BLACKBERRIES .....	3 to 5 feet	6 to 8 feet
BLACK RASPBERRIES .....	2 to 3 feet	6 feet
RED RASPBERRIES .....	2 to 3 feet	5 to 6 feet
GOOSEBERRIES .....	4 to 5 feet	5 to 6 feet
CURRENTS .....	3 to 4 feet	5 feet
STRAWBERRIES .....	1 1/2 feet	3 1/2 to 4 feet
ASPARAGUS .....	1 to 1 1/2 feet	5 to 6 feet
RHUBARB .....	2 to 3 feet	3 to 4 feet

The above distances are approximate

# Grape Vines

Other crops may fail but you never lose all the Grapes—unless the boys get them. Grapes are a sure crop. Vines bear every year, need little attention except training, lots of sunshine, and plenty of plant food. In the home garden, use sheep manure or bone meal; in the vineyard, use well-rotted manure.

## Black Grapes

**CONCORD.** The best general-purpose Grape grown. Berry large; bunches shouldered and compact. Should be the "backbone" of your planting. Special prices on large quantities.

**MOORE'S EARLY.** An extra-early variety. Medium bunch; large black berry. Vine is hardy, very reliable, and does well wherever planted.

**WORDEN.** A seedling of Concord. Better quality; ripens 10 days earlier. Bunch and berry large; compact. Not quite so hardy or long-lived, but is needed in every collection.

## White Grapes

**MARTHA.** Medium berries with soft skins which can be eaten. An old standard.

**NIAGARA.** The best white Grape. Bunch and berry large, meaty and juicy; flavor perfect. Medium season.

**PORTLAND.** The best early white for home and market. Vine moderately vigorous, fruit large and of excellent quality.

## Red Grapes

**CACO.** An amber-red variety of unusual quality. It is a cross between Catawba and Concord and is different from either. Vine vigorous and bears very early. Fruit sweet.

**CATAWBA.** Standard late red Grape that has lost none of its popularity. Season and quality make it indispensable.

**DELAWARE.** A well-known red Grape. Bunch and berry small; compact. Flavor unsurpassed. Must be given good, rich soil.

**LINDLEY.** Of exceptionally good quality; large; ripening in midseason. Vigorous of vine and hardy.

**LUCILLE.** A new Grape of decided merit. Bunches very compact; color light red. Very hardy. Likely to overbear if not pruned severely.

**LUTIE.** Best extra early Grape of its color, and good size.

**WYOMING.** Small berries with compact shouldered bunches. Distinct flavor and will produce more fruit than any variety we sell. Good for wine.

	Each	5	50
2-year-old vines .....	\$0.25	\$1.00	\$7.50

For Postage and Insurance, add 10 per cent.

## As Experienced Fruit Growers We Suggest

That you plan for a succession of fruit, increasing quantities where you expect to market or store. It is inadvisable to plant too many varieties in the average orchard. There is no reason why you cannot have fresh fruit from the time that cherries ripen in May until well into the winter. We will help you plan your list if you will ask us.

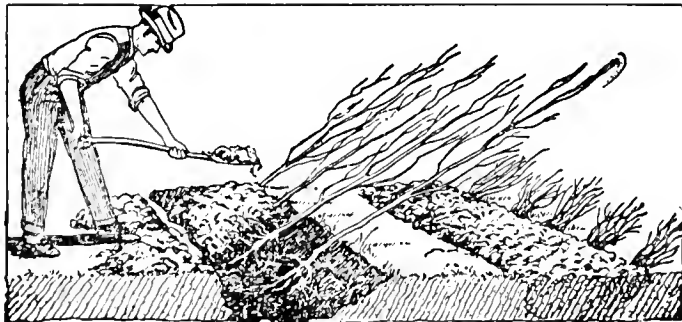
That you cultivate your newly planted trees, for it is just as important to cultivate them as it is to cultivate a tomato or tobacco plant. Only after the tree has become well established should cultivation stop. Even then, your trees will respond to fertilization and cultivation.

That you feed young trees to promote health and vigor. Nitrate of soda, sulphate of ammonia, bone meal, manures, or similar soil-builders applied in moderation often spell the difference between success and failure. Strong, vigorous trees can stand unfavorable weather conditions, frost, and even disease. Good soil means early maturity and heavy yields.

That where space is scarce, you plant quick-maturing trees like Peach, Plum, and Cherry, in the center of the squares between late-maturing trees. The former should be taken out when the permanent trees begin to crowd. Don't plant too closely.

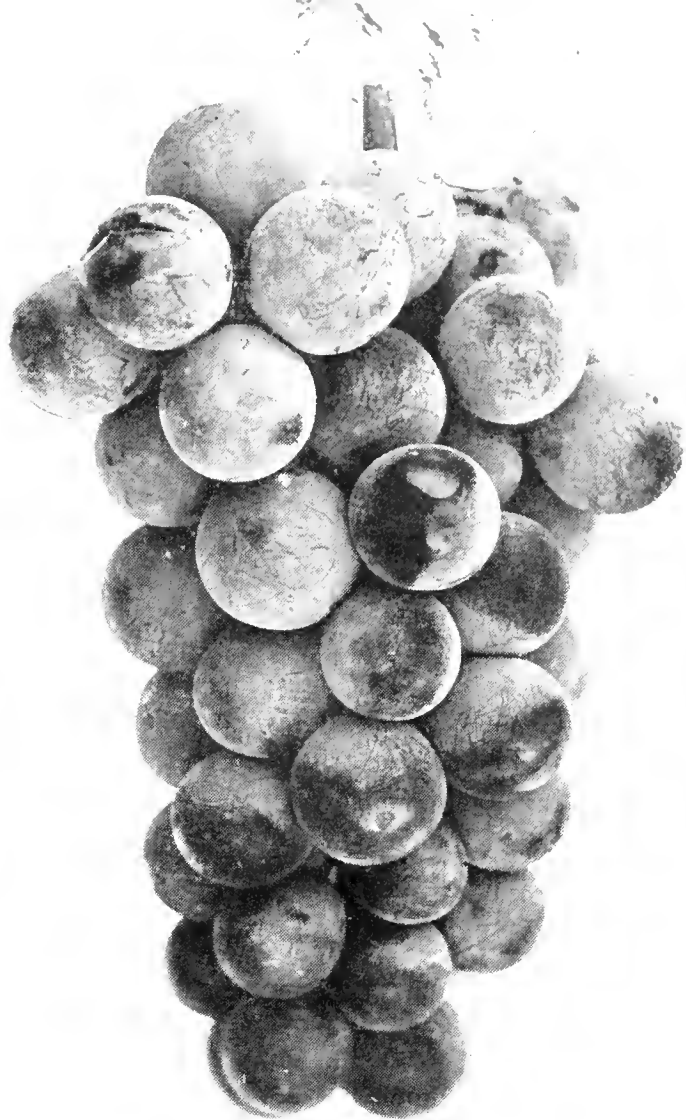
That you renew your plantings of Peach trees every four or five years to keep a continued crop coming on.

**HOW TO PRUNE.** In pruning Apple, Plum, Cherry, and Pear trees, cut the side branches to 6- to 8-inch stubs and do not leave more than five to a tree. See that these are distributed around the trunk. The Peach tree requires a little more severe pruning. One-year trees are simply headed to whatever height they are wanted. Try not to have two branches nearly opposite. They will form a bad crotch when the tree is older.



## Heeling In Trees and Shrubs

Heel in your trees as soon as received. Dig a trench deep enough and wide enough to take the root-system and then cover the roots, firming the soil so as to contact each root. If some of the trunk (or branches, in case of shrubs) is covered with soil, the protection is double. A little water applied to dry soil is helpful. Trees heeled in may be kept several weeks in perfect condition.



Concord Grapes

## HILLENMEYER'S Famous Kentucky Blue Grass Seed

Here in the heart of the famed Blue Grass Section of Kentucky the best seed in the world is produced. Hillenmeyer's seed is from the best crops and of highest quality. Why gamble with poor seed—plant the best!

### Special Lawn Mixture

For sowing new lawns or where you have a thin stand we recommend our Special Lawn Mixture. This consists of Blue Grass and other varieties for quicker effect.

Sow 2-3 lbs. to 1000 sq. ft. on thin lawn; 4-6 lbs. to 1000 sq. ft. on new lawn.

Prices on Blue Grass or Lawn Mixture:

1 lb. ....	\$0.35
3 lbs. ....	1.00
10 lbs. ....	3.00

Ask for prices on larger quantities. For Postage and Insurance, add 10%.

## SEED POTATOES

We are making a specialty of **Seed Potatoes**, and in the spring will send out a catalog offering these at market prices.



Premier

## STRAWBERRIES

As Strawberry plants heave out of the ground when fall planted, we advise and **sell only in the spring**. We issue a special booklet then with full cultural instructions. We will book your order now and bill and ship you at the proper planting time. We repeat, fall planting is not satisfactory.

### Varieties:

**Dorsett  
Gandy  
Blakemore**

**Fairfax  
Premier  
Gem Everbearing**



Eldorado

## RASPBERRIES

We have tested many kinds of Raspberries and after due consideration are listing only three. These have proven best under our Kentucky conditions and we recommend them with confidence. Raspberries should be planted in every home garden as they require small space and produce an abundance of our finest table fruit. Contrary to general belief, Raspberries and Blackberries want good rich soil.

**CUMBERLAND.** Black. Decidedly the best of it's color to date. Large, prolific, sweet and a good grower.

**LATHAM.** Red. Fruit large, of finest quality and a good clear pink. Plants robust and hardy. While Chief is a few days earlier, Latham will produce 50 per cent more fruit. The best red.

**ST. REGIS.** Red Everbearing. While we do not "bank" on its everbearing qualities, it is the best of this type. It ripens early in the season just before Latham and with good growing conditions will give quite a quantity of fruit during the late summer and early fall.

### Prices all Raspberries:

Sold only in bunch of 25.

25 for ..... \$ 1.00  
100 for ..... 3.00  
500 for ..... 10.00

For Post and Insurance, add 10 per cent.

## BLACKBERRIES

**ELDORADO.** Has stood at the head of the list for many years, and its position still is not in danger. It is later than Early Harvest, is not so subject to disease, and makes heavy, vigorous canes that hold the leaves and fruit well. Given a favorable season with moisture, or grown under mulch, it produces very large, long fruits that are a pride and joy to the grower. Plant with confidence.

**EARLY HARVEST.** Extra earliness and productiveness make this the leading commercial and home variety. Is through with its crop when the wild ones begin to ripen. Hangs well onto the canes and is a money-maker.

### Prices of Blackberries:

25 for ..... \$ 1.00  
100 for ..... 3.00  
500 for ..... 10.00

For Post and Insurance, add 10 per cent.



Houghton

## CURRENTS

**RED DUTCH.** By far the most productive of the many kinds we tested. Color a brilliant red; large berries borne in long clusters along the stems; quality excellent. The white varieties have proved worthless in this climate.

## GOOSEBERRIES

**DOWNING.** Fruit almost round, large, and juicy; best quality; whitish green color. Does especially well in the North.

**HOUGHTON.** Round, medium size; dark red when ripe; juicy, sweet. Thin, smooth skin. The bush is hardy, very productive, free from mildew, and the best for general purposes in this section.

**Prices of Currants and Gooseberries:**  
Each ..... \$0.25  
10 for ..... 2.00  
100 for ..... 15.00

For Post and Insurance, add 10 per cent

## ASPARAGUS

**WASHINGTON.** This is the best known variety. It is a strong grower, producing stocks of large size, fine quality, and tender. The fact that it is rust-resistant makes it the ideal Asparagus for all. Our plants, produced on heavy soil, are superior to the little seedlings grown in sand. Every plant is graded and all are large, fleshy roots that, with proper care, will be ready to cut the second year. We are large growers of roots and can make attractive prices to commercial growers. These plants, after 2 years' acclimation in our soil, will grow off much better than imported plants.

### Strong 2-year plants:

25 for ..... \$0.50  
50 for ..... 1.00  
100 for ..... 2.00

Ask for special prices on larger quantities. For Post and Insurance, add 10 per cent.

## RHUBARB

**EXCELSIOR.** Very early, with long stem. Plants vigorous and dependable. Planted 4 by 3 feet, with eye 4 inches below the surface, on clean soil, success is assured.

Each ..... \$0.10  
5 for ..... .50  
100 for ..... 8.00

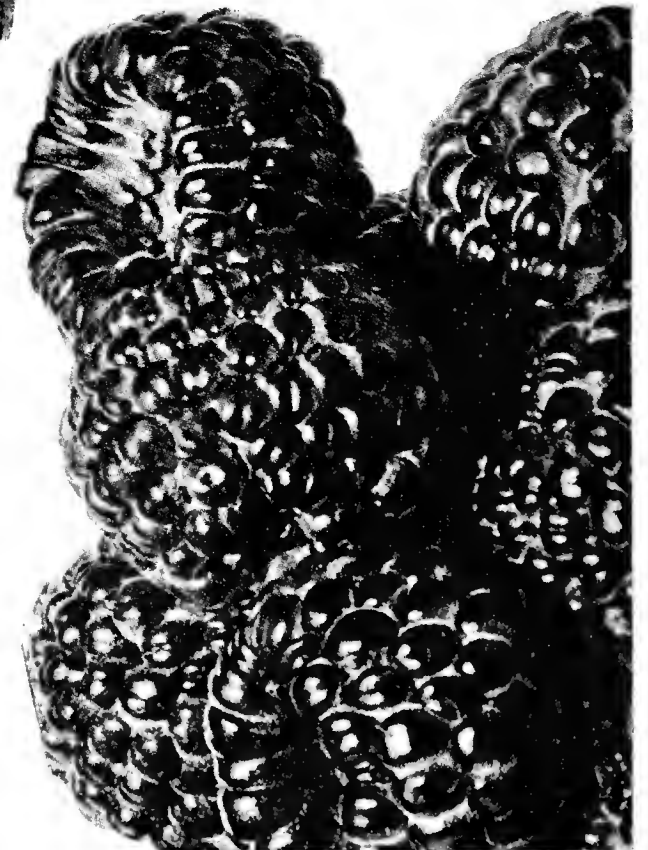
For Post and Insurance, add 10 per cent

## DEWBERRIES

We consider Lucretia the best Dewberry, making a very vigorous growth and fruiting early. The berries are large, jet black, and of fine flavor. May be allowed to develop on the ground or trained, in either case producing large crops.

25 for ..... \$ 1.00  
100 for ..... 3.00  
500 for ..... 10.00

For Post and Insurance, add 10 per cent.



Cumberland

# Plant Food and Mulching Materials



## Bone Meal

A safe and satisfactory fertilizer for many purposes. Not high in plant food but does not burn nor injure either roots or foliage. Rather slow in action but lasts a long time. Use a handful to each small plant or 25 to 30 pounds per 1000 square feet.

10 lbs., 50c; 25 lbs., \$1.00; 100 lbs., \$3.50.

## "Chicknure"

A Hillenmeyer combination of chicken manure and peat moss, finely ground and dehydrated. An excellent well balanced plant food and soil conditioner. Do not put in direct contact with roots. Work in soil or use as a top dressing. Use 50 to 100 pounds per 1000 square feet.

25 lbs., \$1.00; 50 lbs., \$1.75; 100 lbs., \$3.00.

## Golf Fertilizer

(Swift's 12-6-4)

After years of experimenting, Swift & Co. have prepared this special fertilizer which is recommended for large estates and golf courses. A high grade, well balanced plant food which has given wonderful results. Water-in if grass is tender, or apply just before a rain or run the back of a rake over the blades of grass after applying. Use 10 to 15 pounds to 1000 square feet.

25 lbs., \$1.50; 50 lbs., \$2.50; 100 lbs., \$4.00.

## Peat Moss

No other material is quite its equal for soil-conditioning. It will retain 6 to 10 times its dry weight in water, and is free of all weed seeds. As a mulch, especially for roses and perennials, it has no equal. Sold in bales of approximately 20 bushels which will cover 300 square feet 1 inch deep. Spaded in with manure it has the ability to absorb enormous amounts of fertility which the plants readily take up. Indispensable to the good gardener. **There is a difference in the quality—buy the best.**

Bale, \$3.75; 5 bales, \$17.50; per bushel, 50c.

## Sheep Manure

One of the best organic plant foods. Can be used for almost all purposes at any time. Excellent for top dressing and incorporating in the soil. Not especially high in food elements but well balanced and valuable for humus. Use 50 to 100 pounds per 1000 square feet. 25 lbs., \$1.00; 50 lbs., \$1.75; 100 lbs., \$3.00.

## Sulphate of Ammonia

Contains only nitrogen which is one of the most important elements. Encourages rapid, succulent growth and where the other essential elements are present will give wonderful results. Tends to create a slight acid condition. Use 10 pounds to 1000 square feet.

10 lbs., 50c; 25 lbs., \$1.00; 100 lbs., \$3.50.

## Turf Builder

(Scott's 10-6-4)

This is especially made for feeding grass, though it can be used whenever a complete fertilizer is needed. It is not all chemical but contains fifty per cent vegetable matter, thereby giving immediate and lasting results. Because of its concentration will go much farther than most other fertilizers. If grass is tender, "water-in." Can also be used for tree feeding and for this we recommend three (3) pounds per diameter inch. For broadcasting use 10 to 20 pounds per 1000 square feet. 25 lbs., \$2.00; 50 lbs., \$3.50; 100 lbs., \$6.00; 500 lbs., \$25.00.

## Vigoro

Vigoro is not just an ordinary fertilizer but a complete balanced, scientifically prepared plant food containing all eleven of the elements necessary for proper development. Use 25 to 50 pounds per 1000 square feet on lawns, one handful to each square foot around roses, shrubs and evergreens. Water-in after applying. 10 lbs., 85c; 25 lbs., \$1.50; 50 lbs., \$2.50; 100 lbs., \$4.00.

# How We Do Business

## Delivery

No charge for local delivery in city and subdivisions adjacent thereto. Truck delivery beyond this can usually be arranged satisfactorily, depending on quantity and distance. On orders to be shipped, prices are f. o. b. Lexington depots.

## Prepay Transportation Charges

For Parcel Post and Insurance, add 10 per cent of your order, on all nursery stock which can be sent through the mails. Fertilizers are excepted. For express, truck or freight shipments, add 10 per cent on everything except shade trees and balled and burlapped plants. On shade trees, add 15 per cent. On balled and burlapped stock, add 20 per cent.

When stock is ordered by Post, we reserve the right to send by other carriers if too large.

## Guarantee

We guarantee every item to be true to name, up to grade and in good condition when it leaves here. As there are so many forces beyond our control, such as weather, soil and care, which may cause stock to die, we cannot be responsible for losses which occur. However, we will absolutely refund or replace, without charge, any stock which is not satisfactory if complaint is made upon arrival.

## Substitution

When out of a variety of fruit trees or roses we sometimes substitute, giving you the closest to it. If this is not satisfactory, mark "No Substitutes" on your order.

## No Agents

We have no agents. All selling contacts are by appointment only. Call or write us if you wish one of our men to call on you.

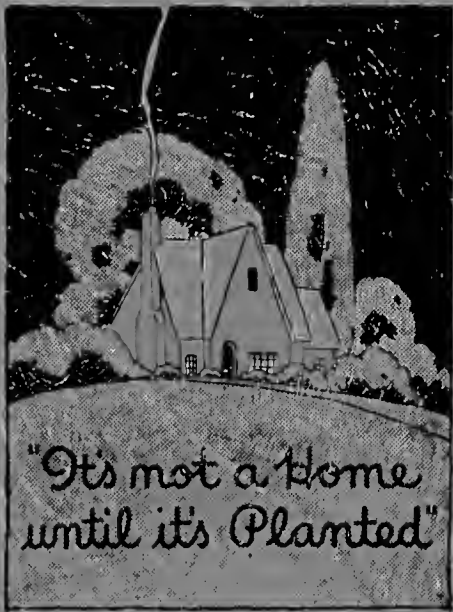
Many transient salesmen represent themselves as being our agents and adopt many ruses in proof of this statement. In view of the fact that nursery stock is so perishable, must be handled promptly, must be grown right, must be carefully propagated to insure trueness of variety, we have held tenaciously to the same policy for 98 years—**no agents**. You can be assured of Hillenmeyer stock only by direct order.

# INDEX

Abelia .....	6	Celtis .....	8
Abies .....	1	Cerastium .....	24
Acanthopanax ...	13	Cercis .....	8
Acer .....	7	Chamaecyparis ..	1
Aesculus .....	8, 13	Chaste Tree .....	19
Althea .....	15	Cherries .....	29
Ampelopsis .....	27	Cherry Laurel .....	6
Amygdalus .....	13	Chinese Chestnut ..	8
Anchusa .....	24	Chionanthus .....	14
Anemone .....	24	Chokeberry .....	13
Apples .....	28	Chrysanthemums ..	24
Apricot .....	28	Cladrastis .....	8
Aquilegia .....	24	Clematis .....	27
Aralia .....	13	Clethra .....	14
Arbor-Vitae .....	5	Coralberry .....	19
Aronia .....	13	Coreopsis .....	24
Artemisia .....	24	Cork Tree .....	10
Ash .....	9	Cornus .....	9, 14
Asparagus .....	32	Corylus .....	14
Aster .....	24	Cotoneaster .....	14
Bald Cypress .....	11	Crataegus .....	14
Baptisia .....	24	Cucumber Tree ..	10
Beauty-Berry .....	14	Currants .....	32
Beauty Bush .....	16	Cydonia .....	14
Beech .....	9	Cytisus .....	14
Benzoin .....	13	Delphinium .....	24
Berberis .....	6, 13, 23	Deutzia .....	15
Betula .....	7	Dewberries .....	32
Bignonia .....	27	Dicentra .....	24
Birch .....	7	Digitalis .....	24
Bittersweet .....	27	Diospyros .....	9
Blackberries .....	32	Dagwood .....	9
Boxwood .....	6	Doronicum .....	24
Broom .....	14	Elaeagnus .....	15
Buckeye .....	13	Elm .....	12
Buddleia .....	14	Eulalia .....	24
Burning Bush .....	15	Euonymus .....	6, 15, 27
Bush Arbutus .....	6	Evergreen Wahoo ..	6
Buxus .....	6	Exochorda .....	15
Callicarpa .....	14	Fagus .....	9
Campanula .....	24	Fir .....	1, 3
Carpinus .....	8	Flowering Almond ..	18
Castanea .....	8	Flowering Cherries ..	11
Celastrus .....	27	Flowering Crab ..	10
		Flowering Peach ..	13

Flowering Quince ..	14	Judas Tree .....	8
Forsythia .....	15	Juglans .....	9
Fraxinus .....	9	Juniperus .....	2
Gaillardia .....	24	Kentucky Coffee ..	
Ginkgo .....	9	Tree .....	9
Globe Flower .....	16	Kerria .....	16
Golden Bell .....	15	Koeleruteria .....	10
Gooseberries .....	32	Kolkwitzia .....	16
Grape Vines .....	31	Kudzu Vine .....	27
Grass Seed .....	31	Larch .....	10
Gymnocladus .....	9	Larix .....	10
Gypsophila .....	24	Laurocerasus .....	6
Hackberry .....	8	Lespedeza .....	17
Halesia .....	15	Ligustrum .....	16, 23
Hamamelis .....	15	Lilac .....	19
Hazelnut .....	14	Linden .....	12
Hedera .....	27	Liquidambar .....	10
Hedges .....	23	Liriodendron .....	10
Helenium .....	24	Locust .....	18
Heliopsis .....	24	Lonicera .....	17, 27
Hemerocallis .....	24	Magnolia .....	7, 10
Hemlock .....	5, 23	Mahonia .....	6
Heuchera .....	24	Maidenhair Tree ..	9
Hibiscus .....	15, 24	Malus .....	10
Holly .....	6	Maple .....	7
Holly Barberry ..	6	Mock Orange .....	17
Hollyhocks .....	24	Morus .....	10
Honeysuckle .....	17, 23	Mulberry .....	10
Hornbeam .....	8	Nandina .....	6
Horse-Chestnut ..	8	Nectarine .....	30
Hydrangea .....	16	Nyssa .....	10
Hypericum .....	16	Oak .....	11
Iberis .....	24	Oregon Holly-Grape ..	6
Ilex .....	6, 16	Osmanthus .....	6
Inkberry .....	6	Oxydendrum .....	17
Iris .....	25	Pagoda Tree .....	11
Ivy .....	27	Painted Daisy .....	25
Japanese Cypress ..	1	Peaches .....	29
Jasminum .....	16	Pearl Bush .....	15
Jetbead .....	18	Pears .....	30

Pepper Bush .....	14	Snowberry .....	19
Peonies .....	26	Sophora .....	11
Perennials .....	24-26	Sour Gum .....	10
Persimmon .....	9	Sourwood .....	17
Phellodendron ..	10	Spiraea .....	18
Philadelphus .....	17	Spruce .....	3
Phlox .....	25	Statice .....	26
Photinia .....	18	St. John's Wort ..	16
Picea .....	3	Strawberries .....	32
Pinks .....	25	Strawberry Tree ..	15
Pinus .....	3	Styrax .....	19
Platanus .....	10	Sumac .....	18
Plums .....	30	Sweet Boy .....	17
Polygonum .....	27	Sweet Gum .....	10
Poplar .....	11	Sweet William ..	26
Populus .....	11	Sycamore .....	10
Primrose .....	25	Symphoricarpos ..	19
Primula .....	25	Syringa .....	19
Privet .....	16, 23	Tamarix .....	19
Prunus .....	11, 18	Toxodum .....	11
Pseudotsuga .....	3	Taxus .....	4
Pueraria .....	27	Thorn .....	14
Purple Bush Clover ..	17	Thuja .....	5
Purple Plum .....	18	Tilia .....	12
Pyrethrum .....	25	Tritoma .....	26
Quercus .....	11	Tsuga .....	5
Raspberries .....	32	Tulip Tree .....	10
Redbud .....	8	Ulmus .....	12
Rhodotypos .....	18	Varnish Tree .....	10
Rhubarb .....	32	Veronica .....	26
Rhus .....	18	Viburnum .....	6, 19
Robinia .....	18	Vinca .....	26
Rose-Acacia .....	18	Vines .....	27
Roses .....	20-22	Vitex .....	19
Russian Olive .....	15	Walnut .....	9
Salix .....	11, 18	Weigela .....	19
Sedum .....	26	White Fringe .....	14
Seed Potatoes .....	31	Willow .....	11, 18
Sempervivum .....	26	Winterberry .....	16
Shasta Daisy .....	26	Winter Creeper ..	27
Silver Bell .....	15	Wisteria .....	27
Silver Lace Vine ..	27	Witch-Hazel .....	15
Snowball .....	19	Yellow-Wood .....	8
Snowbell .....	19	Yew .....	4
		Yucca .....	26



*Hillenmeyer Nurseries*  
*Lexington, Kentucky*