

Historic, Archive Document

Do not assume content reflects current scientific knowledge, policies, or practices.

633

1940

RECEIVED
★ JUN 17 1946 ★
U. S. Department of Agriculture



MARK OF QUALITY

HULSEBOSCH SEED & BULB COMPANY
MILFORD AND NEW YORK



TRADE MARK



THE MARK OF QUALITY

Hulsebosch' Seed & Bulb Company

HILLEGOM and NEW-YORK

HOLLAND ADDRESS:

HILLEGOM
HOLLAND

AMERICAN ADDRESS:

c/o HOLLAND HOUSE, Room 418
10 ROCKEFELLER PLAZA NEW YORK



SPECIALITIES:

Dutch Bulbs

(HYACINTHS IN PARTICULAR)

Binnewies' Cyclamen Seeds

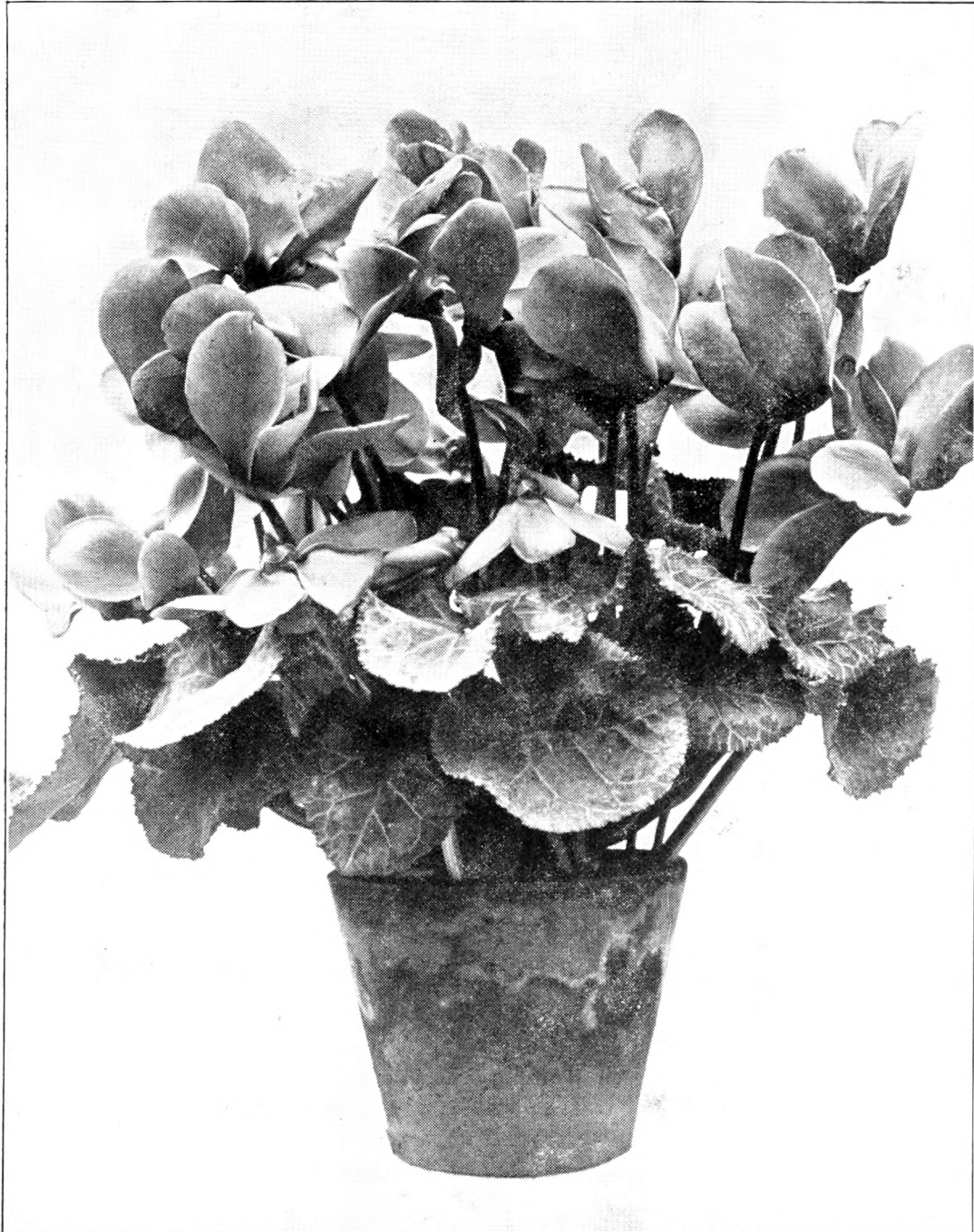
(SOLE-AGENT FOR U.S.A.)

TERMS OF SALE.

1. All goods are sold loco Warehouses Holland and travel at purchaser's risk and expense.
2. Unless contrary orders are given, forwarding and only marine insurance will be provided for at purchaser's costs, without any responsibility for the seller.
3. Costs of cases and packing together with freight, forwarding, insurance charges and duty will be collected on delivery.
4. All accounts are strictly due three months after date of invoice; 3 pct. discount is allowed for payments within 30 days after date of invoice. On overdue accounts 6 pct. interest per annum will be charged, together with the collection expenses.
5. Complaints and claims about the quality of the goods cannot be entertained, unless made **immediately upon receipt** of same. If the goods are damaged, the claim must be accompanied by a Lloyd's affidavit stating all particulars.
6. No warranty express or implied will be given and the seller will not be in any way responsible for the results of planting or forcing of any bulbs and roots delivered.
7. If at the time of shipment any account payable by the buyer to any person or to members of the Holland Bulb Exporters' Association be overdue, or the financial standing of the buyer does not appear satisfactory to the seller, the seller reserves the right to cancel any part or all of this order, without stating his reasons for doing so, nor shall the buyer have any redress whatsoever for any damages which he may sustain through this action on the part of the seller.
8. Cancellation of orders or part of same will only be accepted when buyer agrees to pay seller his loss of profit, in no case less than 20 pct. of the amount cancelled; alterations may be allowed if both parties agree.
9. Verbal agreements cannot be considered, unless confirmed by letter.
10. Complete or partial failure of the general crop owing to frost, loss by fire, or through other causes beyond seller's control, entitles the seller to wholly or partly cancel this agreement at his own discretion without further recourse on the part of the buyer.
11. **Accounts for Cyclomen Seeds in variation to clause 4 are strictly due 30 days after date of invoice.**
12. By placing orders, buyer is considered to agree with these terms.

HULSEBOSCH' SEED & BULB COMPANY — HILLEGOM & NEW-YORK

WORLD'S BEST
CYCLAMEN-SEEDS.
BINNEWIES' STRAIN.



STOCKED BY ALL LEADING SEEDSMEN AND DEALERS.

Distributed through Seedsmen
and Dealers only.



**SOME OF THE HIGH TROPHIES AWARDED
TO BINNEWIES' STRAIN:**

- 1927: Gold Medal of the "Deutsche Gartenbau-Gesellschaft" at national Show in Berlin.
- 1928: The three highest awards at the International Show at Gent, Belgium.
- 1929: Gold Medal of the "Deutsche Gartenbau-Gesellschaft" at the National Show at Berlin.
- 1930: The highest awards of merit at the Great Winter Flower Show in Berlin for the best Cyclamen.
The highest awards at the Great International Flower Show in Stockholm, Sweden.
The highest prizes at the International Show in Edinburg, Scotland.
- 1931: Gold Medal of the "Deutsche Gartenbau-Gesellschaft" at the National Show in Berlin.
- 1935: The highest award at the International Agricultural Show at Oslo, Norge.

SOME OPINIONS OF TRADE PAPERS.

The editor of the "Gartenwelt" says:

"The results obtained the last few years by E. Binnewies in his Cyclamen Culture are undoubtedly the greatest progress ever made to the improvement of varieties and colors. Binnewies' Cyclamen culture is the most extensive of its kind in the world."

Gartenflora:

"The large quantity of perfect and beautiful plants which was shown to us, proves the great ability of the grower, who's equal is not to be found. It is wellknown that Binnewies has accomplished more in Cyclamen growing than any other person in the world."

Möllers Gärtnerzeitung:

"The Binnewies' strain is especially known for giving the largest flowers and strongest plants, the greatest progress is made again in the Salmon colors, a new variety of this strain is MOZART which is a deep pink variety; ORANGE BEAUTY is also a large flowering variety of splendid colour; we also got acquainted with the new variety SAFFRON RED, silver edged which makes a sturdier plant and is very free blooming."

BINNEWIES' SEED IS A SUPERIOR STRAIN AND THE CULMINATION OF 50 YEARS EXPERIENCE



A Binnewies' House — measuring 100 x 15 yards — with the varieties Nr. 10 and 11
(Salmon Light and Salmon Dark)



Flowers of the Binnewies' variety Nr. 13, Rokoko erecta.



Flowers of the Binnewies' variety Nr. 20, New Ruffled, Dark red.



Flowers of the Binnewies' variety Nr. 20, New Ruffled, Carmine-rose.

FIFTY YEARS CULTIVATION OF CYCLAMEN

Approximately 30 years ago on occasion of a large exhibition, the editor of „Mollers Gärtner Zeitung“ drew the special attention of export-growers to the extraordinary value of the new Binnewies' Cyclamen strain.

Mr. E. Binnewies, who studied the improvement of cyclamencultivation since boyhood, had reached already then splendid results. However he did not stand still at that stage but proceeded and with the aid of his gained experience in the previous 30 years he has meanwhile reached such results that now at 50 years existence of business Binnewies' strain is acknowledged by all experts to be the best.

The development during the last few years reached its special aim through capturing the trade with several entirely new varieties and colours, bringing Binnewies' strain to further perfection.

This monopoly of new types enabled the firm Binnewies to rebuild old ones and also add regularly to her establishment new cultivation houses fitted up in the most up to date manner and according to requirements based on lifelong experience, so that Binnewies' business is now in its kind world's most modern and largest, bar none. It is now possible to give the desired treatment to the 10 million élite plants, which are selected there every year and which through the careful attention, given to them individually, stamp the speciality of Binnewies' produce.

Through the above results together with a lifelong experience to guide us, our customers can rest assured that Binnewies' seeds shall easily maintain not only their recent standard of perfection, but also in the near future new progress can be expected in the perfection of colours and assortment.

„The future crop lays hidden in its seed“ is a very true old saying.

Best seeds give largest profits; every expert grower is convinced of this. Initial buying cost may be a trifle higher but the biggest item „cost of production“ remains the same in the case of less reliable seed but final results far outstanding in favour of the best class of seed.

BUY BINNEWIES' SEEDS —
— WORLD'S BEST CYCLAMEN STRAIN

The best is always cheapest.

For our high class
DUTCH BULBS

please

Apply to page 19



Large acreage under Cultivation
at HILLEGOM (Holland)

When over in Europe please inspect our Holland nurseries
and modern storage equipment.



No, this is **no** Binnewies House. This picture is to show the difference between an average Cyclamen House and the perfectness of the Binnewies Cyclamen Houses on the other pages.



Binnewies' House with the variety Nr. 15, Saffron Red.



Binnewies' Type of the variety *Striata*, Nr. 17.



Different Ruffled types of Binnewies' strain.



Binnewies' variety Nr. 22, Rose of Alfeld (salmon-red, especially for cutting).



Binnewies' variety Nr. 23, Flamingo (only limited quantity available).



Binnewies' variety Nr. 16, Saffron, Red silver edged.

Opinion of Mr. Winterich, Cyclamen specialist, Lakewood, Ohio.

"Binnewies' Cyclamen seeds spell success from the very start to the developed plants. Well built, strong growing plants and large flowers, carried on good firm stems above well colored foliage, are the outstanding results of the superb Binnewies' strain.

We have grown this strain for the last 19 years, aside of other reputed Cyclamen seedgrowers' strain, and have found Binnewies' strain and seed always true to name, and the top-notch in every particular."

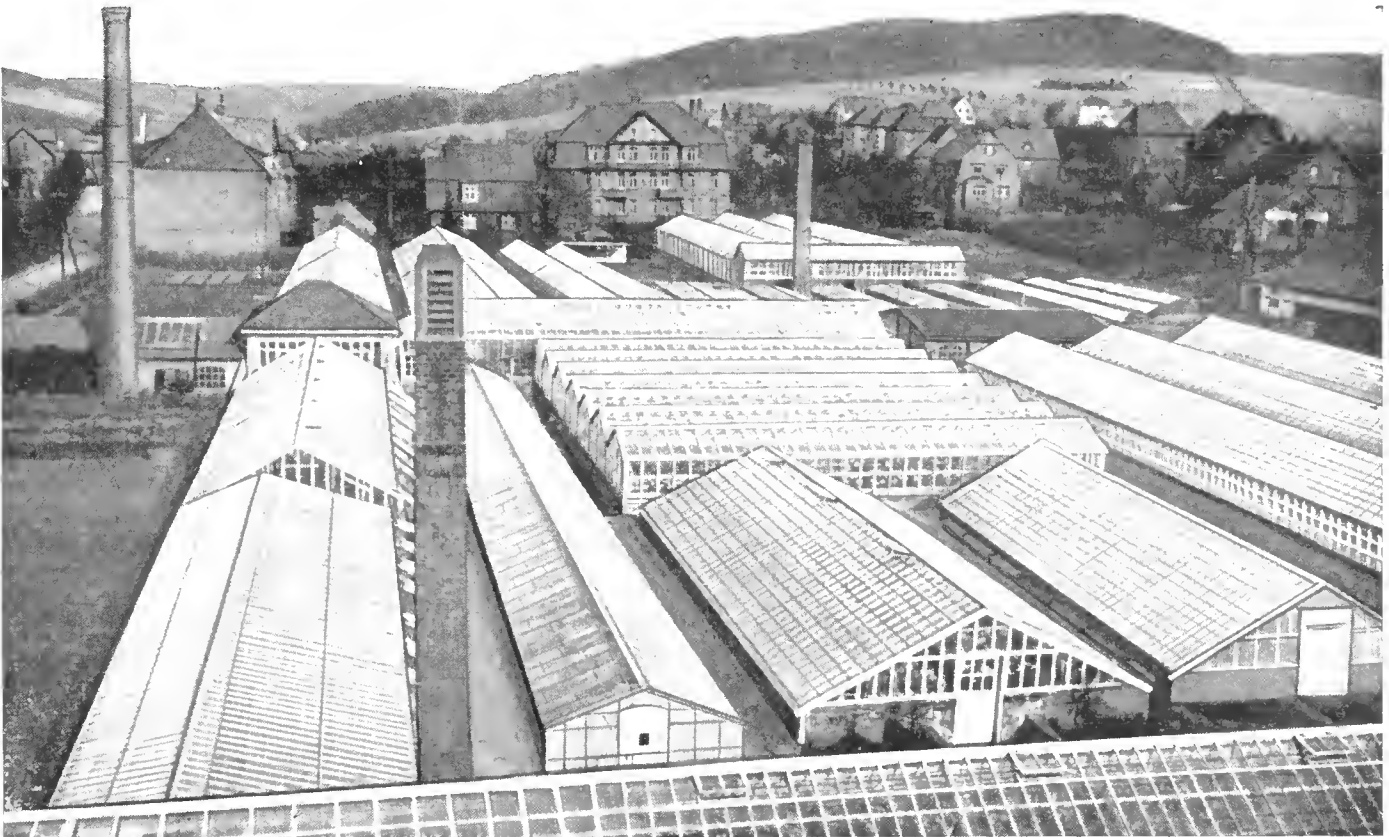
The Binnewies' place is the largest and best equipped in the world exclusively devoted to the growing of Cyclamen and production of seeds.

From Binnewies' Seeds, you get the largest and strongest plants.

The plants grown from Binnewies' seeds have better colors and better shaped flowers than any other strain in the world.

One of our largest customers says: After several years side by side comparisons we decided that the Binnewies' strain was unquestionably the best for the commercial grower; we now handle it exclusively.

THE BEST IS ALWAYS CHEAPEST.



Partial view of Binnewies' place.

CYCLAMEN SEEDS

- No. 1. Dark Blood Red
" 2. Bright Red
" 3. Pure Rose
" 4. Soft Rose with carmine Eye
(Impr. Rose of Marienthal)
" 5. White with carmine Eye
" 6. Pure White
" 7. Bonfire, Brilliant Salmon
" 8. Salmon Scarlet (**Improved America**)
" 9. New Salmon Rose Improved
" 10. Salmon colour, dark
(Glory of Wandsbek or Perle of Zehlendorf)
" 11. Salmon colour, light (See coloured picture)
(Rose of Zehlendorf)
" 12. Orange Beauty, orange vermilion, **extra**
" 13. Rokoko erecta (See coloured picture)
Dark Red, Light Red, Cattleya, Carmine Red,
Carmine Rose, White with carmine Eye, Pure
White, Salmon colour.
" 14. Morning Red
" 15. Saffron Red (See coloured picture)
" 16. Saffron Red, silver edged (See coloured picture)
" 17. Striata, mixed varieties (See coloured picture)
" 18. Mozart, deep Pink (Novelty)
" 19. Lavender Colour
" 20. New Ruffled, in different colors (See coloured picture)
" 21. Pink pearl, Salmon Pink (Novelty)

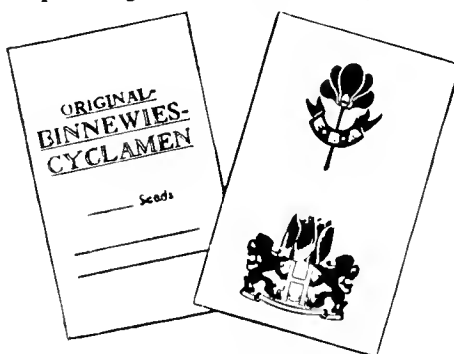
New best novelty's for season 1940.

Only for our best customers in small quantities:

- No. 22. Rose of Alfeld, Novelty! (Salmon-red especially for cutting)
" 23. Flamingo, Novelty! (See coloured picture)
" 24. Golden Salmon (Salmon dark, white border, big flowers)
" 25. Silver Salmon (Salmon light, white border, big flowers)
" 26. Silver Loaf (in the several Salmon colors)
" 27. Cristated Varieties (in pure white and deep Pink)

To ensure genuineness, all seeds are sent out in Original Binnewies Sealed Packages, as shown below.

Seeds are packed in packages of 100, 250, 500, 1000, or more as required.



PLEASE NOTE:

It has come to our knowledge that some unscrupulous dealers sell our strain but get their supplies elsewhere, when in such cases complaints were lodged direct to us about bad results, we learned that the execution of these orders had not been made by us.

E. BINNEWIES.



Binnewies' Modern Block-House with Salmon Shades.



Binnewies' variety Nr. 1, Dark Blood Red.



Binnewies' House with Bright Red Nr. 2.



Binnewies' Salmon colour, light, No. 11.

SOME HIGHLY RECOMMENDED NOVELTIES.

By crossing with Rokoko-blood various magnificent Binnenwies'-novelties have been raised, which were introduced to the trade in the last few years:

NEW PINK (Nr. 22) is unequalled in its colour: a soft salmon pink undercolour, overlaid with a delicate lilac shade, giving the flower an unusual lovely appearance, without making a blueish shade.

AMERICA IMPROVED (Nr. 8) is recognised to be the most brilliant colour of all Cyclamen varieties hitherto raised; moreover it does not fade as the flower ages, which adds much to the special value of this variety.

SAFFRON RED (Nr. 15). The unequalled value of this variety is due to the charming orange shade, which appears on a brilliant red ground colour and which shows us the flower one time as a red and another time as a salmon shade, according to the affect of lighting. This novelty has already been selected in two shades: light and dark.

SOFT ROSE WITH CARMINE EYE (Nr. 4). (Improved Rose of Marienthal) has a more pure color than the old variety „Light pink with Eye“, therefor an improved substitute. It has taken us years of special care and pain to select this novelty in this real pure shade.

All these novelties have already been introduced and were highly recommended in the Trade Papers. Equal to all other types of my strain, they are of a special strong growth and very free-blooming



Binnewies' Cyclamen Seeds are distributed by all first class Seedsmen and Dealers. If your Dealer should not stock them, please write direct to us:

Hulsebosch' Seed & Bulb Company

U.S.A. Sole-Agents for Binnewies' Cyclamen Seeds

HILLEGOM and NEW-YORK

HOLLAND ADDRESS:

HILLEGOM

HOLLAND

AMERICAN ADDRESS:

c/o HOLLAND HOUSE, Room 418

10 ROCKEFELLER PLAZA NEW-YORK

THE MARK
OF QUALITY



TRADE MARK

HULSEBOSCH' BULBS AND BINNEWIES' SEEDS,
THE CULMINATION OF FIFTY YEARS EXPERIENCE.

THE BEST IS ALWAYS CHEAPEST.

DUTCH BULBS.



TOPICS ON GROWING

1. For Forcing buy nothing but the very best quality of bulbs.
2. Mention to our salesmen whether you need the bulbs for „indoor forcing“, „outdoor planting“ or „counter sale“.
3. Unpack bulbs immediately upon arrival and before planting keep same in a dry cool place for a few days. Avoid draught as bulbs are very sensitive.
4. Do not use soil in which bulbs have been grown before or soil on which the used bulbs of previous years have been left to decay. All the vitality in this soil has disappeared and our experience has often shown the most disastrous results when this soil is used for bulbs again.
5. Avoid the use of fresh manure, also new pots or pans or bulb-cellars next to boiler-rooms. When bulbs are planted in flats be certain to have sufficient drainage.
6. Do not take bulbs inside for forcing unless they are well rooted and the buds far enough advanced.
7. Avoid the watering of bulbs towards the evening and keep a steady temperature as much as possible.
8. Take care of good ventilation in bulb-cellars and in the greenhouses.

DATES OF EASTER:

1940	MARCH	24 TH
1941	APRIL	13 TH
1942	„	5 TH
1943	„	25 TH
1944	„	9 TH
1945	„	1 TH
1946	„	21 TH

Articles quoted per 100, we supply 25 at 100 rate.

Articles quoted per 1000, we supply 250 at 1000 rate.

Smaller quantities 10 pCt. higher.



Jos Pe Kleurentoto. Arnhem

Single blue Hyacinth
„Perle Brillant“

Single Light and Dark blue p. 1000
\$

- BISMARCK**, light skyblue, large truss, excellent of early forcing
BLEU AIMABLE, (new), clear pearl blue 100.—
DR. LIEBER, deep blue, excellent for early forcing
DR. STRESEMANN, (new), clear sky blue 120.—
Duchess of Westminster, deep purple blue, white centre
Electra, light porcelain blue
GRAND MAITRE, fine deep porcelainblue, very large broad well
 formed spike, on strong stem. It is the most popular of all blue
 Hyacinths
KING OF THE BLUES, deep glossy blue, splendid well formed
 large spike, on short stem
Marie, deep purple blue, slightly white striped, large broad spike
Myosotis, pale blue
PERLE BRILLANTE, fine light blue, extra large spike, a grand
 novelty which deserves attention
QUEEN OF THE BLUES, fine light blue with beautiful silvery shade
Schotel, porcelain blue, grand large spike, good forcer

Single Yellow and Orange Yellow

- CITY OF HAARLEM**, bright golden yellow, large spike, extra
PRINCE HENRY, clear yellow, early forcer
YELLOW HAMMER, pure golden yellow, large broad well shaped
 spike, forces easily

Single Violet

- LORD BALFOUR**, dark lilac, broad fine shaped large truss, well
 set with large waxy bells
Mauve Queen, mauve, good spike
ROYAL BLUE (new), violet, short broad truss 100.—
Sir William Mansfield, bright purple, good truss, forces easily, good
 bedder

Double Hyacinths

in the following colours: **Red, Rose, White, Dark Blue, Light Blue and Yellow** of the varieties obtainable.



Single early Tulip
„Flamingo”

Single Early Tulips—continued.

p. 1000

	\$
Hobbema (Sarah Bernhardt, La Rêve) , rosy lilac, a unique colour ..	30.—
IBIS , splendid deep rose, large flower, very early	28.—
Jonköping , deep orangered, new	35.—
Joost van den Vondel , rosy red and white; a bedding tulip ..	35.—
KEIZERSKROON , bright red with broad golden yellow border, extra large flower on tall strong stem, fine for forcing, very effective for bedding	34.—
KIMBERLEY , rich deep yellow, early forcer	50.—
King of the Yellows , deep golden yellow, early forcer	28.—
Lady Boreel , snowwhite, large flower	30.—
LADY MOORE , dark terra-cotta, extra	25.—
LA REINE , white and if grown cool, rose shaded	25.—
La Reine Maxima (Rose Hawk) , large white flower, slightly edged pink	30.—
Le Matelas , bright rose, fine shape, very early	30.—
Madame Gevers , primrose, large flower	35.—
Max Havelaar , orange red, forcing variety	30.—
MON TRÉSOR , pure golden yellow, very large flower	28.—
Olympiade , yellow, strong stem	40.—
ORANGE HAWK , goldenbrown and orange, fine	40.—
Orange Queen , beautiful orange, new	35.—
Pelican , pure white, good flower, extra	30.—
Pink Beauty , deep rose with white flush outside, very large well formed flower, useful for late forcing	40.—
Pink Perfection , fine rose	30.—
PRINCE CARNAVAL , sport of Prince of Austria, spotted yellow ..	50.—
PRINCE OF AUSTRIA , fine orange, red outside, brilliant scarlet inside; extra large globular flower of great substance, very sweet scented. Excellent for forcing and bedding	25.—
Princess Juliana , beautiful light pink	30.—
PROGRESSION , splendid deep rose, large flower, very early .. .	30.—
PROSERPINE , bright carmine-rose, very large and early	32.—
PROSPERITY , brilliant dark rose, extra for forcing, flower of me- dium size; best commercial variety	25.—
QUEEN FLORA , splendid deep rose, for forcing	28.—
QUEEN MARY , brilliant dark rose, lighter rose edged, splendid forcer	30.—
RED MOORE , very early	30.—
RISING SUN , fine deep yellow, large flower, good for forcing .. .	28.—
Rose Gris de Lin , delicate rose, shading to white at the base .. .	25.—
ROSE LA REINE , shape as La Reine, very deep pink, early forcer	25.—
ROSE LUISANTE , beautiful deep rose, large flower of great sub- stance. Largely used for Easter pans	30.—
Rose Précose , rose, forces easily	30.—
SATURNUS , apricot orange, early	50.—
SOLITA , bright orange-red, splendid forcer, extra	35.—
SPRING GLORY , golden-yellow, very early, well shaped bold flower, long and substantial stem. Forces earliest of all yellows . Our own rewarded novelty	30.—

Double Early Tulips—continued

p. 1000

\$

PEACH BLOSSOM , dark pink, fine for forcing, sport of Murillo ..	23.—
Prince of Orange , brilliant orange, very distinct flower	40.—
Rubra Maxima , dark red, excellent for bedding	30.—
Salmonetta , salmon color, sport of Murillo	32.—
Scarlet Cardinal , scarlet, early	60.—
SCHOONOORD , snowwhite, sport of Murillo	35.—
TEAROSE (Brimstone, Safrano) , sulphur yellow, sport of Murillo, when fully developed it is slightly orange shaded	28.—
Titian , red with yellow border, good for forcing and for bedding ..	30.—
Tournesoll , bright red with yellow edge, large flower	30.—
TRIUMPHATOR , dark pink, white base	30.—
VUURBAAK , dazzling scarlet, large flower. The best for medium early and later forcing	35.—
Fine Mixed , all colors	22.—
Fine Mixed , in separate colors	24.—
Collection of 25 best named sorts , extra fine	30.—
Collection of 10 best named sorts , extra fine	25.—

Breeder Tulips

Breeders are the unbroken forms of the old Florist tulips. Most of the varieties are purple maroon or terracotta colored. They are of enormous size and vigorous growth. These Tulips are very valuable for the garden, producing by their refined colors a most artistic effect.

p. 1000

\$

Abd-el-Kader , dark bronze with broad light edge, when forced light olive bronze	30.—
ADMIRAL TROMP , bright orange-red, shaded salmon, large strong flower, a fine Breeder. Height 29 inches	150.—
ALICE KEITH , beautiful orange red with bronze border	40.—
Annie Mac Gregor , dark rosy red, pure white centre	40.—
Apricot , apricot orange, large flower	28.—
ATTRACTION (Xeixes) , bluish violet, inside glowing purple on a white base	30.—
AURORA , violetruse, large	50.—
BACCHUS , dark plum color, immense large flower	30.—
BARODA , a new shade of claret red	100.—
BLACK DIAMOND , dark brown black, edged lighter	35.—
Brocade , golden yellow, bronze on the outside	40.—
BRONZE KING , reddish bronze, good forcer	30.—
BRONZE QUEEN (Clio) , bisquit color	25.—
CARDINAL MANNING (Goliath) , rosy violet	25.—
Catalfalque , light blue	50.—
Cherbourg , golden yellow, outside bronze	60.—
Chestnut , velvety brown with narrow pale edge	25.—
CICERO , brilliant red	60.—

Breeder Tulips — continued

p. 1000

	\$
CLIO (BRONZE QUEEN) , bisquit color	25.—
COLONEL ASTOR , bluish violet	30.—
COPERNICUS , dark coppery bronze, old rose, extra	35.—
CORDOVA , bright rose pink with lighter edge; a large flower of fine form and strong substance; height 29 inches . . . each \$ 1.—	
Coridion , yellow, tinged bronze on the outside	32.—
CORINNA , dark plum colour, shaded bluish purple with lighter edge and white base, a robust variety. Height 28 inches . . .	30.—
CREATION , a splendid combination, of orange and bronze; a large strong flower of great beauty and substance, height 28 inches	40.—
Crusader, (new) a beautiful medley of bronze	200.—
Cunera , plum color, bronze edge, very large	200.—
DILLENBURG , bright salmon orange, shaded lilac rose; large flowers on strong stiff stems. Height 27 inches	28.—
DOM PEDRO , coffee color	30.—
Duke of Edinburg , dark violet	35.—
FAIRY NYMPH , cherry red with yellow border, very large . . .	120.—
FEU ARDENT , mahogany red, extra	30.—
Garibaldi , yellowish bronze, lighter edged, long shaped flower . .	30.—
George Grappe , soft mauve, large and tall each \$ 1.50	
GODET PARFAIT , dark violet, clear white centre	32.—
GOLDEN BRONZE , old gold and bronze	25.—
Goldfinch , tortoise color, bronze and orange, large flower	30.—
GRAND CONQUERANT , purpur-violet, enormous flower	30.—
HELOISE , bronzy wine red, very exquisite colour	50.—
HERCULES , mahogany, yellow centre	200.—
INDIAN CHIEF, (MEYERBEER) , coppery-red, large flower of exquisite form, long stem	80.—
JAMES A. McDONALD , beautiful reddish brown	50.—
James Watt , deep brown, inside glowing purple mahogany, extra	35.—
Jaune d'Oeuf , rose lilac, broadly edged yellow	25.—
JESSY , chestnut brown, shaded violet	200.—
Jupiter , violet blue, large flower	50.—
Klopstock , a refined violet blue tulip, extra	25.—
LA HABANA , chestnut red, strong stems each \$ 2.—	
LA JOYEUSE , heliotrope	60.—
LA SINGULIERE, (Curzon) , silvery white, spotted violet, when in full bloom dull violet	40.—
LE MIROIR , very shining violet blue	40.—
LEONARD BARRON , orange, flushed with carmine-red	30.—
LOUIS XIV , dark purple flushed with bronze, to the edge golden brown, inside purple	30.—
Louis XVI , dark blue	100.—
LUCIFER , bright orange red, extra	35.—
Madame Lethiery , salmon	40.—
Maréchal Victor , bright blue, brown edged	32.—
MARIA LOUISE , salmon edged orange, very refined	25.—

Breeder Tulips—continued.

p. 1000

	\$
MEDEA , rosy carmine, tinged salmon, large flower	25.—
MELVA , dull lilac with yellow border, very large and tall	25.—
MICHAEL ANGELO , deep red	50.—
MRS. BEECHER STOWE , sky blue	40.—
Neptunus , rosy violet, large	25.—
NEWTON , sky blue, very tall	250.—
OLD TIMES , yellowish bronze	32.—
ORANGE DELIGHT , a blending of orange and canary yellow, very tall, large, p. 100 \$ 75.—	
PANORAMA , reddish mahogany, very large flower	28.—
PERICLES , chestnut, violet nuances	150.—
PERLE ROYALE , white passing to rosy crimson, tall handsome flower	30.—
Pink Pearl , satin rose, large white base, extra	30.—
POLYDORIS , violet, tinted bronze p. 100 \$ 50.—	
PRINCE ALBERT , shining mahogany brown	25.—
PRINCE OF ORANGE (Orange Beauty) , golden orange	28.—
PROFESSOR SCHOTEL , bright violet blue	28.—
PYRAMUS , olive and orange, flushed lilac, attractive	50.—
Queen Alexandra , sulphur yellow, brown reflex	30.—
RAYON D'OR , bright golden-bronze, edged bronzy-yellow with olive base; large well formed flower of great substance. Height 28 inches	50.—
RED MONARCH , glowing scarlet, very large	200.—
REMBRANDT , bronze, late	30.—
REVE D'OR , bright terra-cotta orange with golden-yellow edge; large well formed flower on strong stem. Height 28 inches . .	30.—
ROI DE SIAM , purple violet, very fine	30.—
Roi Soleil , dark violet blue with bronze	30.—
SALOMON , clear lilac	25.—
SAPPHO , sky blue	80.—
SOCRATES , clear carmine-purple	30.—
SOUTHERN CROSS , yellow, edged orange p.100 \$ 20.—	
ST. JAMES , rosy-gold, bronze edged, large very fine	28.—
SUNBEAM , reddish orange, edged bronze	30.—
SUNDANCE , dark bronze, lighter edged	30.—
TANTALUS , light cadmium yellow, overlaid with slaty-violet; very large cup shaped flower of great beauty; one of the finest varieties. Height 30 inches p. 100 \$ 20.—	
THOMAS STEPHENSON , soft lavender blue each \$ 100.—	
TITANIC , violet shaded bronze, tall each \$ 1.50	
TURENNE (Mac. Mahon) , purplish brown, edged soft yellow, enormous flower	30.—
Velvet King (Dreadnought) , purple violet	50.—
VICTOR , fiery red	40.—
VINDICTIVE , orange, beautiful	30.—
VULCAIN , carmine violet, orange bordered	30.—
WILBERFORCE , buff orange, conspicuously flushed rose, edged yellow, extra	40.—

Breeder Tulips—continued.

p. 1000

	\$
Willem de Zwijger, large bluish lilac	130.—
YELLOW PERFECTION , olive yellow color	28.—
Collection of 10 best named varieties	25.—
Mixed varieties	22.—

Darwin Tulips

„The Aristocrats of Tulipdom”

p. 1000

	\$
AFTERGLOW , bright orange, lighter edged, splendid, bright centre	25.—
AGNETA , lilac, large strong stem	30.—
ALICE TIPLADY , apricotcolour, large, an outstanding variety	each \$ 3.—
ALLARD PIERSON , dark red, the earliest of all Darwins, highly recommended	28.—
ANNIE VAN EES , red, a variety with many good qualities	250.—
ANTON MAUVE , large mauve violet, silvery lilac edged	25.—
ANT. ROOZEN , vivid rose-pink with white base marked blue, extra forcer	30.—
APHRODITE , silvery rose, extra	30.—
ARISTOCRAT , soft rose, large, strong	p. 100 \$ 75.—
AVALANCHE , pure white, large flower, strong stem, extra	35.—
Avanti , clear pink	p. 100 \$ 150.—
AVIATOR HAWKES , dark rose, large flower	40.—
BARONNE DE LA TONNAYE , bright rose, margined blush-rose	25.—
BARTIGON , carmine-red, grand forcer, very early	25.—
Beppy , soft rose, lemon base, very dainty	30.—
Betsy , lovely canary-yellow, cerise edged	30.—
Black Eagle , deep purple	28.—
BLANCA , the purest white of all tulips; a large flower of splendid form and substance; an outstanding variety; height 26 inches,	each \$ 1.—
Bleu Aimable , bright violet-purple	25.—
BLUE GEM , violet, very large, tall, vigorous growth	120.—
BLUE PEARL , deep purple-violet, large, very strong, late	100.—
BLUE RIBBON , light violet, very large, tall and strong	400.—
BONA EST , citron-yellow, very large, can be forced	25.—
BONFIRE , lively rose	40.—
BURGEMEESTER SANDBERG , clear red, shaded darker	50.—
CALCUTTA , dark rose, lighter edged, long well shaped flower	80.—
Campfire , deep red	70.—
CAROLINE TESTOUT , soft rose with large white base; a flower of perfect shape and great lasting qualities; height 30 inches	p. 100 \$ 70.—
CENTENAIRE , vivid deep pink, blue centre, forces easily	30.—
Chant du Cygne , lively red, large flower	30.—
CHARLES NEEDHAM , a glorious, brilliant scarlet flower of exceptionally fine form; height 26 inches	400.—

Darwin Tulips—continued.

p. 1000

	\$
CHIC , dark rose, large	500.—
Citronella , citron yellow, tall strong stem	35.—
CITY OF HAARLEM , beautiful red, large flower, splendid forcer . .	35
CLARA BUTT , clear self-colored salmon rosy pink	25.—
COQUELIN , tall, rose	40.—
DARIUS , an enormous flower of splendid form and substance; the colour is a pleasing shade of brick red; splendid novelty, height 28 inches p. 100	\$ 50.—
DARLINGTON , rose, extra, large	250.—
DAWSON CITY , deep yellow	50.—
DEDAN , rose, lighter edged, very strong	40.—
DEMETER , deep blue, very large, long strong stem, very early, novelty each	\$ 1.—
Dream , beautiful soft uniform lilac, large flower	25.—
DRESDEN CHINA , a well chosen name indicates the unusual colouring of this exceptionally fine variety; elegantly shaped flower of a very delicate rose with lighter borders	60.—
DUCHESS OF HOHENBERG , large violet blue, extra	50.—
Duke of Portland , dark red, large flower	50.—
ECLIPSE , dark fiery red, black centre	90.—
Edmée , vivid cherry rose, edged soft old rose	30.—
ELDORADO , golden-yellow	25.—
ELZA HARTZ , rose, extra	300.—
EUNICE , clear rose, strong, tall, extra fine	100.—
Europe , glowing salmon-scarlet, shaded rose, a beautiful flower . .	30.—
FARNCOMBE SANDERS , fiery rose-scarlet, inside vivid cerise scarlet with white centre marked blue, large broad petalled flower of perfect shape; splendid forcer	25.—
FAUST , dark satiny purple with blue base, very large and well formed	30.—
FEU BRILLIANT , bright glowing red, dark base, extra	35.—
FLAG OF WAR , scarlet, large flower, tall p. 100	\$ 50.—
FRANS HALS , blueish violet, large	30.—
GAZELLE , dark rose, tall, strong	30.—
GEO H. DICKS , salmonrose, very large each	\$ 2.—
GIANT , dark violet, large flower	40.—
GLACIER, (WILDLUST) , a very large oval shaped flower of strong texture and remarkable keeping qualities; the flowers are white throughout with white anthers p. 100	\$ 15.—
GLORIA SWANSON , rosy-red, becoming a clearer red as the flower ages; white base, a tall strong stemmed variety of great lasting qualities; height 32 inches	100.—
GOLDEN AGE , bright golden-orange; slightly tinted orange-bronze, giving it a double-tone effect; a large flower of remarkable substance; height 28 inches p. 100	\$ 30.—
Golden Beauty , golden yellow, late	30.—
Golden Fleece , golden yellow, burnt orange points	25.—

Darwin Tulips—continued.

p. 1000

	\$
GOLD LAKE , deep golden-yellow with slight brown tips; a good sized flower; height 26 inches	40.—
HELEN MADISON , cherry-rose, large p. 100	\$ 40.—
HELEN WILLS , fine blue-lavender, large flower of perfect form	40.—
HERODIADE , light rose, good forcer	28.—
INSURPASSABLE , a very large lilac flower of fine form and great substance; a tall and strong growing variety; height 28 inches	150.—
JACOB MARIS , vermilion red	50.—
JUBILEE , purplish violet, extra	40.—
Kathleen Parlow , silvery pink, large flower	80.—
KING GEORGE V , brilliant carmine red, a Royal Tulip	35.—
King Harold (Mahony) , deep purple-red with white base	25.—
KING MAUVE , a beautiful shade of mauve, shaded rosy-purple and blue, with bright blue base, a large flower of exceptionally fine form; height 30 inches	60.—
La Candeur (White Queen) , lovely soft white	25.—
La Fiancée , soft lilac rose, excellent for forcing	30.—
LA FRANCE , soft rosy-pink with white base; a large and strong flower on stiff stem; height 28 inches	60.—
LA SALLE , creamy white, a splendid forcer	40.—
LA TULIPE NOIRE (The Black Tulip) , very large flower	28.—
LADY HILLINGDON , beautiful apricot p. 100	\$ 30.—
LE NOTRE , bright rose, early forcing variety	30.—
LILAC WONDER , clear porcelain-lilac with white base, strong, height 28 inches	45.—
Louise de la Vallière , splendid salmon red	35.—
MADAME KRELAGE , bright lilac-rose, margined pale silvery rose	25.—
MARCH BEAUTY , deep pink, short stems	30.—
MARGAUX , deep wine red, lighter edge large flower	120.—
MARITZA , one of the best pink Bartigon sports	60.—
MARY O'DAY , salmon-orange with orange margin; a splendid flower carried on a strong stem; height 30 inches	150.—
Massachusetts , vivid pink, white centre, large flower	25.—
Mesdag , lilac purple, light bordered, very large flower	30.—
MOUNT EREBUS , the best white each	\$ 2.—
MR. HOOVER , lilac, Novelty	100.—
MR. VAN ZYL , dark rosy-pink with broad white margin and white base; height 27 inches	80.—
MRS. MALVERN PATTERSON , delicate lavender-rose with lighter edge white centre; height 28 inches	70.—
MRS. MANDEL , violet-blue flushed lilac, white base, a good forcer and a fine garden variety; height 28 inches	35.—
Mrs. Potter Palmer , bright purplish violet, fine large flower	30.—
Mystery , black, blue base, large flower	50.—
NELL GWYN , bright rose, inside rosy-red with white centre, very large, height 28 inches	50.—
NIPHETOS , light lemon yellow turning to creamy-white as flower ages; perfect form, well lasting each	\$ 1.50

Darwin Tulips—continued.

p. 1000

	\$
Oranges & Lemons , refined and delightful blending of orange and lemon yellow	40.—
Orange Perfection , orange red	100.—
OSSI OSWALDI , creamy white with pink edges, changing to soft pink when ripening	120.—
Peking , beautiful golden yellow, early	30.—
Petrus Hondius , fine bright carmine rose	30.—
Philip de Commines , velvety dark purple, large flower	28.—
President Garfield , purple-blue, very large	100.—
PRESIDENT HARDING , bright lilac, shaded purple, edged violet; a large flower on very strong stem; height 28 inches	30.—
PRESIDENT TAFT , deep red, tall, fine	50.—
PRIDE OF HAARLEM , bright rose suffused with purple, enormous flower, for groups this variety is unsurpassed	25.—
PRIDE OF ZWANENBURG , rose-pink, flushed salmon, inside light red, very large flower of strong texture on strong stem; height 29 inches	400.—
Prince of Wales , bright red, extra	30.—
PRINCESS ELISABETH , vivid rosy pink, very beautiful forcer	28.—
PRINCESS MARY , vivid rosy red, light pink edged, novelty	100.—
PROF. RAUWENHOFF , full cherry rose with ivory white and blue star at base, excellent forcer	25.—
PURPLE PERFECTION , dark violet-purple	30.—
REVEREND EWBANK , vivid heliotrope-lilac, with lighter tint at margin	25.—
Richmond , bright red sport of Clara Butt	35.—
ROI D'ISLANDE, (MATCHLESS) , splendid rose, enormous large flower	25.—
ROSE COPLAND , pink sport of Wm. Copland, early forcer, extra	30.—
Salmonea , salmon	50.—
SANTA ROSA , pink sport of Bartigon	30.—
Scarlet Beauty , scarlet, very fine flower	40.—
Scarlet Perfection , orange red, extra	30.—
Scotch Lassie , deep lavender, inside still deeper tone with striking blue base, good lasting	80.—
SEAFOAM , pure white, very tall	40.—
Sieraad van Flora , bright red with a blue base, early forcer	25.—
Sundew , see under Parrot tulips	
SUNKIST , brilliant golden-yellow, large flower of splendid form and great substance; height 27 inches each	\$ 0.50
Sunshine , golden yellow, strong stem, large each	\$ 0.50
THE BISHOP , sky blue, fine	60.—
THE PEACH , one of the finest pinks p. 100	\$ 50.—
The Sultan , glossy maroon-black	25.—
Tilly Luss , rose purple, large pointy flower	40.—
Tokio , large golden yellow, very late	150.—
Toplight , creamy-yellow, strong	30.—
Tricolor , lemon yellow, edged lilac	40.—

Darwin Tulips—continued.

p. 1000

\$

TUBERGEN'S GLORY , deep salmon-rose with blue centre, very large flower of great substance; height 29 inches p. 100	\$ 5.—
TURNER , carmine, extra large flower	30.—
Valentine , blue violet	30.—
Venus , beautiful rose	30.—
VICTOIRE D'OLIVIERE , red, good and early forcer	25.—
VILLA FRANCA , a fine shade of clear rose-pink with pure white centre, large flower on strong stem, perfect form	750.—
W. A. Viruly Verbruggen , red, extra forcer	30.—
Whistler , fiery scarlet, extra	30.—
WHITE CITY , pure white, yellow stamens	70.—
WHITE GIANT , pure white, Exquisite shape p. 100	\$ 10.—
WILLIAM COPLAND , bright violet, beautiful early forcer	25.—
WILLIAM PITT , brilliant crimson red, splendid forcer	30.—
YELLOW GIANT , very large, tall stem, extra	30.—
ZEV , blue-violet, lighter edged, very large	30.—
Zulu , rich velvety purple-black, large egg-shaped flower	25.—
ZWANENBURG , pure white	32.—
Collection of 10 best named varieties, our choice	25.—
Splendid mixture	22.—

Rembrandt Tulips

p. 1000 \$

Apollo , rosy lilac, feathered white and carmine	
Beatrix , striped red and white	
Butterfly , soft lilac, striped carmine	
Centenaire , striped dark purple on lilac ground	
Crimson Beauty , crimson flamed red and white	
Eros , white and lilac striped	
Esopus , on a white ground, flamed bright red	
Hebe , white and lilac, striped maroon	
Julienne , striped carmine and white	
La Coquette , lilac, striped dark purple	
Le Printemps , lilac and white striped scarlet	
Marco Spado , striped fiery red on white ground	
Procles , flamed dark violet and white on a clear violet ground	40.—
Purity , pale violet flamed on a creamy ground	
Quasimodo , flamed and striped maroon	
Red Prince , flamed fiery red on a pink ground	
Rose Gem , striped rosy and white on a red ground	
Salome , flamed rose on a red ground	
Semele , fine pink, feathered darker	
Thetis , bright scarlet, flamed pale sulphur	
Titania , lilac, pink and white with a red flush	
Vesta , striped white and carmine	
Victor Hugo , deep crimson, flamed on a cream ground	
Zenobe , amaranth and white striped maroon	
In 10 named varieties	35.—
Superfine mixed	25.—

Late and Cottage Tulips

p. 1000

(See also Lilyflowered Tulips.)

\$

ADVANCE , fiery red with purple shade on outside of petals and glittering black centre; an enormous flower; height 30 inches	150.—
Aegir , orange red, cerise tinged	28.—
ALBINO , pure white, large flower	35.—
Alcmene , soft rosy red	28.—
Amber , light amber color	28.—
Ambrosia , bronze with lilac-rosy glow	28.—
ARETHUSA , fine canary yellow, tall	35.—
ARGO , yellow, orange spotted, good forcer	28.—
Avis Kennicott , deep yellow tall stem	28.—
Barbara Pratt , cherry pink, lighter edged	50.—
BATAVUS , waxy ruby-red, a large and splendid flower; height 26 inches	80.—
BELLE JAUNE , fine deep yellow, a very large and long flower of excellent form; height 30 inches p. 100 \$ 50.—	
BOUTON D'OR (Ida) , golden yellow, great substance	30.—
Caledonia , orange vermilion, distinct. Very fine for outdoor	25.—
Caméleon , on a creamy ground flaked maroon, conspicuous by flushed heliotrope to the edges, lasts very long	40.—
CARRARA , white, large flower	35.—
Columbus (Gala Beauty) , velvety crimson, striped with gold	30.—
DIDO , orange red, cerise tinged, large flower, new	25.—
DUCHESS OF YORK , orange-brown with slight lilac shade on the outside; very large flower; height 24 inches	40.—
Eclatant , orange rose, extra, large	25.—
ELLEN WILMOTT , lemon yellow	25.—
Fairy Queen , soft heliotrope, amber-yellow margin	25.—
FORMOSA , soft yellow and green, improved <i>Viridiflora præcox</i> , unique colour. Award of Merit Haarlem 1926. Our own novelty	30.—
Fulgens , brilliant carmine red	30.—
GARDEN LOVE , satinrose, shaded salmon	25.—
GEISHA , an exquisite shade of greyish-lilac, inside purplish violet, a very large and attractive flower; height 25 inches	50.—
General French , cerise pink, large flower, extra	25.—
Gesneriana lutea , golden yellow, large fine shaded flower	25.—
" lutea pallida , lemon yellow	30.—
Spathulata , the true well known <i>Gesneriana</i> . Dazzling scarlet with deep bluish base, large flower, a gem for bedding and cutting	28.—
Golden Age , dark yellow, turning to orange p. 100 \$ 20.—	
GOLDEN HARVEST , lemonyellow, large flower of good qualities, height 28 inches p. 100 \$ 20.—	
GOLDEN STATUE , a very tall and large stately golden yellow Novelty p. 100 \$ 30.—	
GRAND YELLOW , a fine clear yellow tulip on strong stem; equally good for garden use as for mid-season forcing; height 24 inches p. 100 \$ 20.—	

Late and Cottage Tulips—continued.

	p. 1000
	\$
GRENADIER , dazzling vermilion, large flower	25.—
G. W. LEAK , bright vermilion scarlet with yellow base, a fine flower on good stem; height 26 inches	80.—
Inglescombe Pink (Salmon Queen) , salmon pink with blue base ..	25.—
" Scarlet , scarlet with black base, large flower	28.—
INGLESCOMBE YELLOW , large pure yellow, nice form	25.—
ILLUMINATOR , yellow with light rose border, delicate colour, large flower	32.—
Isabella (Shandon Bells or Blushing Bride) , cream color, turning to carmine red, large flower	25.—
JEANNE DÉSOR , orange yellow and scarlet, large	50.—
John Ruskin , rich apricot orange, flushed pink and gold	25.—
La Merveille , orange red, large flower	25.—
Leda , dark rosy red, fine flower	28.—
MARSHALL HAIG , brilliant scarlet red, inside bright red with yellow centre, a very large flower of splendid form; height 27 inches p. 100 \$	15.—
MAYFLOWER , one of the largest tulips in existence, fiery scarlet with black base, one of the earliest varieties for flowering outdoors; height 20 inches p. 100 \$	15.—
MAZEPPA , rosy red, very substantial p. 100 \$	15.—
MISS BLANCHE , white, large	25.—
MONGOLIA , dark yellow, very large flower, new .. p. 100 \$	50.—
MONS. S. MOTTET , bunchflowering, white	28.—
MOONLIGHT , sulphur yellow, large	30.—
MOTHER'S DAY , pale primrose, long flower	60.—
Mr. Dames , pure yellow	25.—
MRS. JOHN T. SCHEEPERS , light yellow, very large well shaped flower p. 100 \$	50.—
Mrs. Kerrell , orange pink, the blue centre bordered white	25.—
MRS. MOON (Fulgens maxima lutea) , pure yellow, large flower ..	30.—
Orange King , deep orange, beautiful flower	25.—
PERSEUS , light red, strong stems p. 100 \$	15.—
PICOTEE (Maiden's blush) , white, margined pink, fine for cutting	25.—
Pink Lady , lively rose, very large	100.—
PINK PICTURE , a beautiful shade of deep rose very large, and substantial	30.—
PRESIDENT HOOVER , deep orange-scarlet, lighter inside; a flower with remarkable substance and excellent proportion, height 27 inches	60.—
PRIDE OF INGLESCOMBE , carmine-rose, white edged, tall, late ..	25.—
REFULGENS , orange red, tall stems large flowers, very substantial p. 100 \$	12.—
Retroflexa , bright yellow, recurved petals	25.—
REV. JOSEPH JACOB , scarlet red, egg shaped	40.—
ROSABELLA , soft rose, lighter edged, extra	25.—
Royal White , large pure white flower	35.—

Late and Cottage Tulips—continued p. 1000

	\$
Scarlet Emperor, brilliant scarlet	60.—
Scarlet Glory, vermilion red, large flower, extra	80.—
Sir Harry, large lavender pink, extra fine	25.—
Striped Beauty (Summer Beauty), pink with crimson and white . .	80.—
The Fawn, dove or fawn color, large flower	25.—
Themis, pure white, late forcing or bedding	35.—
Union Jack, salmon pink and lilac	30.—
Viridiflora, green and yellow	60.—
Vesta, a lovely shade of creamy yellow turning into pure white . .	40.—
Walter T. Ware, the deepest yellow late tulip, extra	40.—
WALLSTREET, golden yellow; a large flower of unusual form; height 25 inches p. 100 \$ 8.—	
YELLOW EMPEROR, a brilliant golden yellow tulip of great beauty and splendid form; height 26 inches p. 100 \$ 15.—	
Zomerschoon, salmon pink, spotted crimson	200.—
Collection in 10 best varieties	25.—
Fine mixture	22.—

Tulipa (Species)

CHRYSANTHA (stellata), small flower on long stem, yellow, exterior red	30.—
Clusiana, the Lady tulip, small flower, white, exterior crimson, dark blue base, fine for cutting	30.—
Cornuta Stenopetala, (Chinensis), yellow	100.—
Dasystemon, white and yellow, 3—5 flowers on each stem	100.—
Eichleri, splendid, large crimson scarlet flowers, yellow and black centre, very effective	30.—
Fosteriana, vermilion scarlet, centre yellow or black, extra large flowers, magnificent variety p. 100 \$ 1.—	
FOSTERIANA RED EMPEROR (MADAME LEFEBER), brilliant scarlet with large black base with yellow border; an enormous flower of a very striking beauty; without a doubt the finest tulip ever introduced; besides its great value for garden use, it is also splendid for late February forcing; height 20 inches p. 100 \$ 25.—	
Greigii, vivid orange scarlet with black centre, large flower. The leaves are mottled with brown-purplish dots per 100 \$ 80.—	
Hageri, brown orange, bronze-red tinted	35.—
Ingens, vermilion scarlet, large flowers with dark blotch p. 100 \$ 40.—	
Kaufmanniana, white and yellow, pink outside, large flower, the earliest of all	70.—
Marjoletti, pale yellow, exterior base of petals rosy red, very tall, beautiful for cutting	30.—
Praecox, scarlet, black and yellow base	50.—
Praestans, (Suaveolens sylvestris), bright orange-red	80.—
Sylvestris, (Florentina Odorata), yellow, fragrant, for wildgardening recommended	35.—
Tubergeniana, scarlet with black centre, gigantic flower p. 100 \$ 20.—	
Wilsoniana, deep vermilion red	150.—

Double Late Tulips (Mayflowering) p. 1000
\$

Belle Alliance, (Overwinnaar), violet and white	30.—
Blue Flag, (Bleu Celeste), violet blue	30.—
Mariage de ma Fille, white, feathered crimson	100.—
Superfine mixed	30.—

Mendel Tulips

The Mendel Tulip is a crossing between the Duc van Tholl and Darwin Tulips. They have the stems of the Darwins, and in forcing the earliness of Duc van Tholl varieties.

ADINDA , lilacrose, large flower, very tall, early forcer	28.—
ADORATION (Brilliancy) , coralred, very large	30.—
AIDA , satinrose, large, very early	50.—
ALCYONE , bloodred, good forcer	30.—
Alphons Diepenbroek , red, large, strong, forcer	400.—
ALSACE , rose carmine, white centre	30.—
AMAROSE , dark satinrose	60.—
Amidonette , rosy red, edged white, very nice forcer	28.—
AMSTERDAM , red, yellow bordered, good forcer	35.—
APRIL QUEEN , lively satin rose, early, late forcer	25.—
ARGOLUS , orange red, medium forcer	25.—
BACKHOUSE , cherryred, tall, good February forcer	30.—
BEETHOVEN , satin rose, early, good forcer	30.—
BORDEAUX , carminerose for cutflowers	28.—
BRAHMS , rose, white base, early forcer	24.—
BRIGHTLING , rose, very strong, large forcer for pots	40.—
CAJANIE , deep rose, for pots, February	30.—
Caruso , rose and white late forcer	35.—
CATTLEYA , cattleyarose	30.—
CERISE , light lilac rose, early	25.—
CHANTECLAIR , stoned	50.—
CHEERIO , light bronze	p. 100 \$ 20.—
CHRISTMAS SURPRISE , rose, large, very early, cutflower	28.—
CLIFFORD , salmon orange, large	25.—
CONDOR , deep scarlet, early forcer	35.—
Coronation , clear red, large, strong stem, late forcer	35.—
Crimson Beauty , bloodred	25.—
DARLING , crimson rose, tall, very early, for cutflower	30.—
DECANDOLLE , cerisered, cream bordered, for pots	50.—
DECORATOR , shining cerisered with narrow yellow border	40.—
DELICATE , cherry rose, early	40.—
DODENAEUS , dark chestnut brown, goldcolored border, for pots	30.—
DONIZETTI , dark pink, strong, medium forcer	35.—
EAGLE , orange, very bright, February forcer	30.—
EARLY QUEEN , rose, lilyflowered, very early forcer	25.—
EARLY SENSATION , lively salmonrose, very early	40.—
EARLY WONDER , rose, tall, for cutflowers	30.—
ERIKA , lilacrose, early	35.—
EXCELSIOR , terracotta, medium, early, very substantial	35.—

Mendel Tulips—continued.

p. 1000

	\$
PINK FAVORITE , extra bright rose, very early	50.—
PINK GEM , white with rose, large, very early	100.—
PIQUANTE , cerise red with yellow border	40.—
PREMIER , fine deep scarlet, January forcer	30.—
PRIDE OF THE MARKET , bright rose	30.—
PROF. BATESON , salmoncoloured orange	30.—
Professor Hugo de Vries , rose	40.—
PROF. KEESOM , extra satinrose, tall, for cutflowers	25.—
PROF. SARGENT , dark rose	30.—
Professor Van Slogteren , rose	30.—
PROF. ZEEMAN , extra orange, large, early, for pots	28.—
QUEEN AUGUSTA , salmon rose pink, for cutflowers	35.—
RED EMPEROR , red	30.—
Regide , red, large, strong	25.—
RONNIE , salmon rose, early	30.—
ROSY GEM , salmon pink, forcer.. . . .	24.—
ROSE MARIE , white changing to rose, the earliest	100.—
ROYALTY , rose red, very early	35.—
ROYAL LADY , dark satin rose	32.—
Salmoran , salmon rose	30.—
SCARLET ADMIRAL , shining red, large, strong for pots	30.—
SCARLET WONDER , extra scarletred, very early	30.—
Scintilla , white, rose edged	35.—
Serenade , scarlet	50.—
SONJA , cherry rose, early forcer	25.—
SULTANE , rose red, midseason forcer, tall	28.—
TARANTELLA , fine satiny rose, February forcer	40.—
THE QUEEN , white with pink border	30.—
THE ROSE , (Mrs. E. Lindbergh), lilac rose, substantial	25.—
TRISTAN , bright red, forcer	30.—
UTRECHT , cerisered with yellow border p. 100	\$ 25.—
VAN HALL , light orange, fine forcer	30.—
VERA , white with rose, small flower	25.—
WEBER , white with pink border, tall, extra large flower	28.—
WEMBLEY , lilac, something special in colour	25.—
WHAT JOY (Chieftain), dark satin rose p. 100	\$ 20.—
White Sail , white, (opens creamy white) p. 100	\$ 50.—
White Virgin , pure white p. 100	\$ 75.—
WILHELM KESSELRING , salmonorange-rose, early	30.—
WONDERFUL , extra bright rose, early	25.—
ZENITH , extra satin rose, large tall	40.—
ZENOBER , cochenil red, early forcer	25.—
ZIDORION , red, large, strong	40.—
Collection of 10 varieties for early forcing	30.—
Collection of 10 varieties for medium forcing	25.—
Collection of 10 varieties for late forcing	22.50
Collection of 10 varieties for outdoors	22.50
Rainbow Mixture	20.—

Triumph Tulips

The Triumph Tulip is a crossing between the early Tulips and the Darwin Tulips. They have the stems of the Darwin, and in forcing the earliness of early Tulips.

p. 1000

\$

ALARAPH , palisander-red, borders golden yellow feathered, base lemon-yellow, very fine. Height 18 inches	30.—
ALBERIO , deep wine-red, very large flower, early forcer. Height 24 inches	30.—
ALDIB , carmine-red, large round shape. Height 20 inches	30.—
ALGIEBA , purplish mauve, lighter to the edges. Height 18 inches . .	25.—
ALHENA , old rose, base inside white, large flower. Height 24 inches	35.—
ALKIS , fuchsia rose, outer petals carmine, to the base white feathered, very fine. Height 20 inches	40.—
ALUDRA , dark old rose. Height 20 inches	30.—
ANTARIS , fuchsia-rose, lighter at the base. Height 20 inches . . .	100.—
ARIZONE , reddish violet, large pointed flower. Height 22 inches . .	30.—
ARNEB , dark glossy magenta-red, lighter to the edges, base white. Height 22 inches	30.—
ASTRA , rich carmine-red. Height 20 inches	35.—
AUGUSTINA ROSA , dark fuchsia-red, light centre, very fine and large flower. Height 22 inches	30.—
AVIATEUR , shining carmine-red, white feathered edge, centre white, large flower. Height 22 inches	30.—
AZELLUS , reddish violet, to the base soft feathered, turning to pure ivory-white, large round flower. Height 22 inches	60.—
BERENICE , azure-white, to the base turning to creamy white, very soft lilac rose touched. Height 20 inches	40.—
BIXLO , dark carmine red, inside glossy, large fine shape. Height 20 inches	40.—
BOOTES , coppery red with salmon coloured and cherry-red reflection, base clear yellow, loose oblong flower. Height 18 inches	30.—
BRIGHT BEAUTY , dark orange, fine shape. Height 22 inches . . .	40.—
BUFFALO , dull purple, inside glossy, large flower, pointed form. Height 20 inches	30.—
CALIFORNIE , fuchsia-rose, from top to the base turning to pure white, medium large. Height 16 inches	30.—
CAMBRINUS , purplish red, large fine flower. Height 24 inches . . .	35.—
CAPELLA , carmine red, base inside violet blue. Height 30 inches . .	30.—
CARUSO , purple mauve, to the border lighter. Height 22 inches . .	30.—
CASTOR , dark carminish purple, large flower, extra. Height 24 inches	30.—
CHICAGO , shining carmine red, base inside faded bronze-green, loose form, very large flower, extra. Height 20 inches	30.—
CHAMBERLAIN , magenta-red, to the base turning to bluish-violet, edge light rose, white base, fine form. Height 24 inches	30.—
CHÉRON , vivid vermilion-red. Height 14 inches	30.—
CICILIE , cream to golden yellow, to the border darker, inside golden yellow, very large flower. Height 20 inches	30.—



Aviateur

Triumph Tulips—continued.

p. 1000

\$

COLORADO , egg-yellow, to the feathered border turning to pure blood-red, shapely pointed flower, lilyflowered. Height 20 inches	35.—
COLUMBIA , dark amarant-red, base greenish white, base inside yellowish white with blue, large flower, compact. Height 26 inch.	50.—
CORNIFORUS , delicate brilliant red; tall stem and vigorous grower; extra for early forcing	100.—
CRATER , deep carmine red, to the base darker, splendid flower, extra. Height 20 inches	100.—
DENBOLA , dark amarant-red, broad creamy edge, base bluish white, large round flowertype. Height 20 inches	40.—
DENEB , dark magenta-red and white, the magenta coloured border is turning to pure white. Height 24 inches	30.—
DINA , soft lilac rose, base white. Height 16 inches	30.—
DORUS RIJKERS , purplish red, white edged, base bluish white. Height 24 inches	35.—
DR. BRUNING , dark purple violet. Height 24 inches	30.—
DR. LOVINCK , very fine magenta-red, white base and centre, large flower. Height 20 inches	30.—
EDITH EDDY , purple carmine, small white edge, base white, fine flower. Height 20 inches	30.—
EILEEN DONOVAN , fuchsia-red, to the base turning to pure white, fine shape. Height 22 inches	40.—
ELISABETH EVERS , fuchsia-red, from top to base very soft silvery suffused, feathered to the base, base white, very large flower, loose form, good forcer. Height 22 inches	40.—
EL TINTORETTO , light amarant-red with lilac, feathered to the base and turning to white, white edge, round shape. Height 22 inches	30.—
ENSOR , pure orange. Height 14 inches	30.—
ESSEN , dull purple red with white edge, white base; large flower. Height 18 inches	30.—
EXCELSIOR , pure orange red, fine round shape. Height 24 inches	30.—
FAYENSE , snowwhite, large flower. Height 20 inches	30.—
FLAVIUS , orange, large flower. Height 22 inches	30.—
FLORIDA , purple carmine, loose flowershape, extraordinary large. Height 20 inches	30.—
FLORA , solferine-rose turning in apricot-orange, inside coppery red. Very large shape, very fine. Height 26 inches	30.—
FOMALHAUT , rich carmine red, base lemon-yellow, strong flower, very brilliant. Height 20 inches	30.—
GEN. SNIJDERS , dark amarant red, broad creamy edge, white base, large round shape. Height 24 inches	250.—
GOETHE , purple red, white feathered edge, base outside violet to white, base inside white with fine steelblue edge. Height 18 inch.	30.—
GOLDEN GATE , light gold-bronze with cinnamoncolour, loose form, light feathered, very large shape. Height 16 inches	50.—
GOLDINI , golden yellow, very large. Height 18 inches	40.—

Triumph Tulips—continued.

p. 1000

	\$
GOLD LAC , dark orange, lighter inside, very large flower. Height 16 inches	30.—
GOVERT FLINK , shining carmine red, sharp white feathered, large flower. Height 25 inches	40.—
GRAND LILA , glossy violet, inside lighter, very high. Height 28 inches	50.—
GROTIUS , reddish violet, to the edge turning lighter. Large shape. Extra. Height 22 inches	50.—
HARRIËT , glossy carmine red, yellow feathered edge, pointed form. Height 18 inches	40.—
HEKATE , purplered, with soft small white border, large flower. Height 20 inches	30.—
HELA , deep purplish violet, to the base turning to white, slender shape. Height 18 inches	30.—
HEROINE , fine lemon yellow. Height 20 inches	40.—
HESPEROS , dark carmine violet, darker to the base, large shape. Height 26 inches	30.—
HESTIA , fuchsia-rose, to the base turning to white. Height 20 inches	30.—
HUGO STINNES , carmine red, base golden yellow, large flower, fine shape. Height 16 inches	30.—
HULDA , deep purple violet, to the base turning lighter. Height 18 inch.	30.—
HYDRA , glossy carmine red, base white, base inside violet-black, large flower. Height 22 inches	30.—
IDAHO , old light rose, white base and centre, large flower. Height 20 inches	30.—
INDUS , dull purple violet, base outside white, base inside heavenly blue, tall flower, good forcer. Height 22 inches	30.—
JOHANNA , salmon rose, with white base, large flower. Height 22 inch.	40.—
JOH. BACH , purple red with light rose feathered edge, base inside lemon-yellow, base outside violet to white. Height 26 inches . .	30.—
JOHN. D. ROCKEFELLER , carmine rose, to the base turning to white and yellow, shapely flower. Height 20 inches	30.—
JOHN KEPLER , silvery amarant-rose, to the edge copper-coloured, base blueish violet with white, inside fuchsia-red, to the edge coppery red, base inside deep blue with green reflex. Height 24 inches	30.—
JO VAN LOON , lilac rose with silvery reflex, inside salmon rose turning to vermillion, base white, base inside canary-yellow, very large flower. Height 22 inches	30.—
JULIANA VAN STOLBERG , brilliant red, base and inside white. Height 22 inches	50.—
KANSAS , snowwhite, base inside lemon-yellow. Height 22 inches . .	30.—
KOCHAB , purplish red, with soft white very small edge, base lemon-yellow sharp pointed flower petals, large flower. Height 20 inch.	35.—
KONG HAKON , dark purple red, small white edge, base blueish to white, base inside white with steelblue. Height 18 inches . . .	25.—
KROON IMPERIAAL , palissander-red, edge gold-yellow feathered, base lemon-yellow. Height 20 inches	40.—

Triumph Tulips—continued.

p. 1000

\$

LADY CURSON , deep purplish violet, large loose-formed shape, very fine. Height 18 inches	30.—
L'INNOCENCE , silvery white. Height 22 inches	50.—
LOHENGRIN , soft lilac rose, base white. Height 30 inches	30.—
LORD CARNARVON , clear bright pink with streaks of white	25.—
LOS ANGELOS , glossy carmine red with pure white, broad red edge, base turning to sulphur-yellow, base inside golden yellow, high fierce flower. Height 22 inches	35.—
LYBRA , fine silvery rose, from the top to the base gradually turning to pure white, very fine, fierce flower. Height 20 inches	30.—
LYNX , ivory-white with soft lilac blush, fine flower. Height 22 inch.	35.—
LYRA , carmine-rose, to the base turning lighter. Height 20 inches . .	40.—
MARY GARDEN , fuchsia-red to the base, turning to pure white. Height 22 inches	50.—
MARYLAND , fuchsia-purple, to the base turning to pure white, very fine fierce flower. Height 22 inches	30.—
MAROKKO , very dark glossy red, base inside light yellow. Height 24 inches..	100.—
MEBSUTA , rose coloured carmine, outer petals to the base white feathered, very fine. Height 20 inches	40.—
MELOSINE , light yellow, fine shape. Height 18 inches	40.—
MEKBUDA , snowwhite with creamy reflex. Height 24 inches	35.—
MENSA , purple violet, to the base blueish, base inside white with light blue. Height 26 inches	40.—
MICHIGAN , purple, base white with blue edge, extra. Height 22 inch.	30.—
MIMOSA , golden yellow, fine form, large flower. Height 18 inches . .	40.—
MISSISSIPPI , glossy purple red, base blueish to white, very fine shaped form, extra. Height 18 inches	30.—
MIZAR , lilac with solpherine-red, white edge, to the base turning to lemon-yellow. Height 28 inches	30.—
MR. KERBERT , rose with white base, very large flower. Height 22 inch.	40.—
MR. ZIMMERMAN , light fuchsia-red, to the edge soft silvery reflection, the lower part to the base turning to white, base pure white, large flower, fine shaped form. Height 20 inches	25.—
MUSCA , brilliant dark reddish violet, to the base darker to purple, to the edge lighter, soft veined, base deep blue violet, base inside light blue with green reflection. Height 20 inches	30.—
NOVA , lilac rose with silvery shine, inside salmon coloured rose to vermillion, base white, base inside canary-yellow. Height 22 inch.	35.—
NUSAKAN , fuchsia-red, orange edged	30.—
OLAF , light violet, pointed flower-shape. Height 18 inches	40.—
ORANGE FLAME , beautiful shade of orange, flaked yellow	30.—
ORANGE GLOW , pure orange. Height 12 inches	30.—
PEREANDER , brilliant fuchsia-red, large and fine flower. Height 22 inches..	70.—
PICTOR , carmine red, to the base turning to gold, base golden-yellow, large shape, very fine. Height 24 inches	40.—

Triumph Tulips—continued.

p. 1000

\$

PLUVIA D'ORO , golden yellow, feathered flower, round shape, extra. Height 16 inches	40.—
POLARIS , dark magenta-red with violet reflex, to the edge feathered, turning to white, large shape. Height 24 inches	35.—
POLLUX , rich purple violet, glossy, to the base darker violet, brilliant shaped flower. Height 19 inches	30.—
PRES. DOUMER , shining carmine-red, broad creamy edge, fine flower. Height 20 inches	30.—
PRES. LEBRUN , pure white. Height 25 inches	35.—
PRES. VON HINDENBURG , purplish garnet-red, yellow edged, base grey white, large flower. Height 22 inches	35.—
PROF. KEUNEN , dull purple red, edge white feathered, base outside blueish white, inside violet blue. Height 18 inches	30.—
PYXIS , silvery ivory white, large closed form. Height 18 inches	40.—
PROF. HUGO DE VRIES , fuchsia-rose, from the top to the base turning over to pure white. Height 20 inches	30.—
PROF. NOBEL , pure garnet-red, small creamy white edged. Height 20 inches	30.—
PROF. TENDELOO , dark amarant-red with violet coloured reflection, edge dark lemon-yellow, base blueish white. Height 20 inches	30.—
RED FLAME , cherry-red with soft yellow flame, to the edge turning to orange, base greenish yellow, inside flowerpetals orange, soft red and yellow feathered	30.—
RIBERA , fuchsia-red edge, base white, fuchsia-red feathered, large shape, base inside blue-black. Height 24 inches	30.—
RICARDO , pure white, fine tall flower. Height 25 inches	40.—
RIJNLAND , yellow with broad sharp marked red border. Height 22 inches	35.—
ROSE TRIUMPH , rose with white base, long pointed shape of flower. Height 20 inches	30.—
ROTTERDAM , red with yellow edge. Height 23 inches	50.—
SAGITTA , vivid vermilion red with purple, loose form, large flower. Height 19 inches	30.—
SAGITTARIUS , white with creamy reflection, to the top turning to very soft rose. Height 22 inches	35.—
SAM PEARCE , deep rose, white centre, very large flower. Height 22 inches	40.—
SEDALIA , deep rose, inside white, very fine flower. Height 20 inches	40.—
SERTAN , brilliant bright red, to the base darker, large shape. Height 22 inches	40.—
SHENANDOAH , creamy-yellow to golden yellow, to the edge darker, inside golden yellow, good substantial, very long flower, precious shaped form, extra. Height 20 inches	30.—
SILVER WING , pure ivory white, very large shape. Height 30 inches	40.—
SIMBA , purplish granat-red, yellow edged, base outside greyish white, base inside violet blue. Height 20 inches	30.—

Triumph Tulips—continued.

p. 1000

	\$
SIRIUS , granat-coloured, to the edge gradually turning to purple, very large flower, extra. Height 22 inches	40.—
SITHAULLA , dark rose with tyrian coloured purple reflection, to the edge clear rose, inside light mauve, large slender flower, very fine. Height 24 inches	40.—
SNOW DRIFT , snowwhite, loose form, large shape. Height 22 inches	40.—
SPINOSA , dark magenta red with violet reflex, light feathered edge, large flower. Height 24 inches	30.—
STOCKHOLM , dull purple red, border pink feathered, inside violet blue. Height 18 inches	30.—
SUBRA , reddish violet, to the base turning over to white, base pure white, long flowershape. Height 22 inches	50.—
SVEN HEDIN , light orange. Height 16 inches	40.—
SYLVANUS , magenta-rose, to the base turning to white. Height 19 inches	30.—
TELESCOPIUM , reddish violet, to the base violet, turning to white, slender flower, good forcer. Height 22 inches	30.—
THUBAN , fuchsia-red, slight white edged, inside strawberry-red, base outside white, base inside lemon-yellow, large flower. Height 20 inches	30.—
TILLY , light orange, pointed shape, base yellow. Height 20 inches . .	30.—
TORNAX , pure white, with weak pink perfection. Height 24 inches . .	35.—
TOSCA , splendid purple, to the edge white feathered, base white blueish edge, very fine flower. Height 22 inches	28.—
UMBERTO , dark carmine red, glossy inside, large round flower-shape. Height 20 inches	p. 100 \$ 25.—
URSA MINOR , golden yellow, plain colour, long regular flower form, tall, good forcer. Height 18 inches	35.—
U. S. A. , carmine red, golden edged, inside coppery red, overlaid with gold	30.—
VAN LOCHEM , magenta-red, to the base violet to blue, light yellow edge. Height 18 inches	50.—
VELA , pure silvery white, large shape, fine. Height 22 inches . . .	40.—
VIRGO , rich pansy violet, to the border turning lighter, with glossy coppery coloured reflection, large strong flower, extra. Height 22 inches	30 ¹ —
WEGA , magenta-red, to the base turning to violet-blue, white edged, base white, very fine form. Height 24 inches	35.—
WISCONSIN , magenta-red, the broad red edge turns from the top to the base of the flower to pure white, inside selfcoloured magenta-red, large shape. Height 18 inches	35.—
ZENOBIA , dull purple-red, rose feathered edge, base blueish white Height 18 inches	30.—
ZIBAL , dark purple violet, large flower, beautiful shaped. Height 20 inches	35.—

Triumph Tulips—continued.

p. 1000
\$

Double varieties

ALLEGRO , red with white edge, extra double. Height 20 inches . . .	40.—
APIS , purple red blending with white, round shape of flower. Height 16 inches	40.—
ARA , outer petals scarlet red, inner petals tomato-red to orange, edge small feathered golden yellow, base greenish yellow, fierce flower. Height 16 inches	40.—
AVONDZON , blood-red, with orange reflection, to the edge turning to gold colour, inside deep orange, large flower. Height 16 inch.	60.—
BALTIMORE , dark amarant-red, base inside dark blue with green reflection, very large. Height 24 inches	50.—
CHERRY BLOSSOM , amarant-red with yellow-white edge, base yellowish. Height 22 inches	100.—
COMA , dark orange with golden yellow edges, outer petals carmine-red, very large. Height 18 inches	40.—
COXA , carmine-red, to the edge vermilion red, very small white border, large flower. Height 22 inches	40.—
DELADIER , deep carmine rose. Height 20 inches	35.—
EROS , old rose, splendid double flower. Height 20 inches. Extra . .	150.—
HERMER , amarant red with light rose edge. Height 18 inches . . .	40.—
JANE COWL , fine dark red with yellow edge. Height 18 inches . .	60.—
LIVINGSTONE , bright red, base inside light yellow. Height 18 inches	40.—
LORD DERBY , carmine red with white edge. Height 22 inches . . .	35.—
MOUNT TACOMA , pure white, very large flower, extra. Height 18 inches	150.—
OTTOWA , clear golden yellow, loose flower. Height 18 inches . .	30.—
PAPAVER , orange-red, base inside black with yellow reflex and yellow edge. Height 14 inches	60.—
PAVO , carmine red, extra double, large flower. Height 20 inches . .	40.—
PLEKDA , coppery red, to the edge turning to old gold, base canary-yellow. Height 16 inches	60.—
RED ROSE , carmine red. Height 16 inches	35.—
SNOWBALL , snowwhite, very large flower, extra double. Height 18 inches	250.—
TRIXY , fine amarant-red, very small white border. Height 22 inches	40.—
UNCLE TOM , very dark glossy red, extra double, fine flowershape. Height 22 inches	100.—

TRIUMPH TULIPS are also offered in:

- COLLECTIONS OF 10 OR 20 GOOD FORCING VARIETIES
- COLLECTIONS OF 10 OR 20 BEST FORCING VARIETIES

NARCISSUS

Single Narcissus

p. 1000
\$

- ABELLARD, (Incomparabilis), A. M.;** very large and flat, perfectly overlapping soft yellow perianth; the large bowl-shaped crown is orange-red p. 100 \$ 50.—
- ACHIEVEMENT, (Barrii),** well overlapping soft yellow perianth; the small bowl-shaped cup is deep orange, changing to red towards the edge. Most attractive and perfect flower each \$ 7.50
- ACTAEA, (Poeticus), F.C.C.;** one of the largest Poeticus in existence. Broad snow-white perianth with a very large eye, broadly margined dark red 100.—
- ADVENTURE, (Incomparabilis), A.M.;** this large, perfectly formed flower is clear soft yellow throughout, has a broadly overlapping, very flat perianth and a large expanded cup. Recommended each \$ 3.50
- AFTERGLOW, (Barrii), A.M.;** large, perfectly overlapping soft yellow perianth with a large, very flat orange-yellow cup, bordered red p. 100 \$ 60.—
- AGRA, (Incomparabilis), F.C.C.,** The very broad and overlapping creamy-white perianth measures 5½ inches across; the large spreading crown is 2 inches in diameter, and is bright orange-red. Highly recommended each \$ 4.—
- Alcida (Barrii),** fine large flower, pure white perianth large scarlet cup 100.—
- AMERICAN BEAUTY, (Trumpet Daffodil),** clear yellow, large very substantial 100.—
- AMIR, (Incomparabilis),** pale yellow perianth; rich orange crown of immense size; tall; early and vigorous p. 100 \$ 35.—
- AMBULE, (Incomparabilis),** pale yellow, perianth, delicate orange cup, large flower of best substance p. 100 \$ 40.—
- APOTHEOSE, (Ajax),** yellow trumpet, with yellow perianth, for pot culture 50.—
- Aspasia (Poetaz),** pure white, yellow eye 35.—
- AZAZEL, (Barrii),** ivory-white perianth, brilliant scarletred crown; very fine flower p. 100 \$ 200.—
- BATH'S FLAME (Barrii),** deep yellow perianth, yellow cup, edged scarlet, large flower 30.—
- BEERSHEBA, (Trumpet Daffodil), F.C.C.** The magnificent perianth is perfectly flat and stands at right angles to the trumpet, which is slightly funnel shaped and nicely flanged at the mouth. The whole flower is of the purest white. Highly recommended 100.—
- Bernardino (Incomparabilis),** creamy perianth, orange cup, frilled 30.—
- Blanca (Poeticus),** the earliest 40.

Single Narcissus—continued.

p. 1000

\$

- BLAZING SWORD, (Incomparabilis), F.C.C.** Much overlapping, very thick, soft yellow perianth; the very large and spreading cup of deepest orange is very flat each \$ 6.—
- BOKHARA, (Incomparabilis), A. M.** Perfectly overlapping, rich clear yellow perianth with a large cup of deep orange throughout, which holds its colour well each \$ 0.60
- BONFIRE, (Barrii),** yellow perianth, scarlet cup 35.—
- BONYTHON, (Bicolor Trumpet),** broad smooth pure white perianth; deep primrose trumpet rolled back at the mouth; best and early forcer p. 100 \$ 150.—
- BRIGHTLING, (Incomparabilis), A. M.** Large and flat primrose-coloured perianth; the expanded, flat orange cup has a double frilled margin of orange-red 70.—
- Brilliancy (Barrii),** deep golden yellow, large cup, edged deep scarlet 30.—
- BROTONNE, (Incomparabilis), A.M.** Large and much overlapping canary-yellow perianth of great substance; the large spreading crown is saturnine-red. Recommended each \$ 1.50
- BUNKER HILL, (Incomparabilis), A.M.** The perianth is pure white; the heavily frilled, pale yellow cup changes into soft orange, each \$ 3.50
- CARLTON, (Incomparabilis), A.M.** A beautiful Incomparabilis of largest size. The perianth is very flat, broad and much overlapping; the large expanded cup is nicely frilled at the mouth. Clear soft yellow throughout. Highly recommended (Nimrod) p. 100 \$ 50.—
- CARMENCITA, (Incomparabilis), A.M.** The large, well overlapping perianth is a very charming tint of pale apricot; the large expanded, much frilled cup is deep orange-scarlet. Highly recommended each \$ 5.—
- CARMINOWE (Barrii),** very large overlapping pure white perianth; flat intense scarlet eye p. 100 \$ 60.—
- Cassandra (Poeticus),** broad white perianth, dark red cup 25.—
- Charles, (Barrii),** creamy yellow perianth, red edged cup 35.—
- CHEERFULNESS, (Double Poetaz),** white perianth with full double centre of white and yellow, very attractive 35.—
- CHRISTMAS GLORY (Ajax),** deep yellow, perfect shape, freeflowering, very early, splendid forcer 35.—
- Cleopatra (Ajax),** dark yellow 50.—
- COPPER BOWL, (Incomparabilis), A.M.** The very smooth, clear yellow perianth is well overlapping; the expanded, shallow, bowl-shaped crown is clear glowing coppery orange-red. Highly recommended each \$ 7.50
- Cossack (Barrii),** white perianth, fiery red cup 30.—
- COVERACK GLORY, (Incomparabilis),** delicate yellow overlapping perianth; widely expanded crown, very freeflowering and early p. 100 \$ 35.—

Single Narcissus—continued. p. 1000
\$

- COVERACK PRIDE (Trumpet Daffodil)**, improved King Alfred
p. 100 \$ 40.—
- CRIMSON BRAID (Barrii)** F.C.C., pure white perianth, inclined to reflex; the large, flat yellow crown, broadly edged bright red. Very late flowering p. 100 \$ 10.—
- CROESUS (Incomparabilis)**, F.C.C., large well overlapping pale yellow perianth and expanded orange-red cup. Fine garden plant. Recommended 35.—
- DACTYL (Poeticus)**, A.M., the large pure white perianth is very smooth and thick; the flat, citron eye is sharply edged deep scarlet, late flowering p. 100 \$ 20.—
- DAISY SCHAEFFER (Giant Leedsii)**, F.C.C., very broad and overlapping creamy-white perianth; the very large cup is soft yellow, tinged green at the mouth. Probably the largest Leedsii in existence. Highly recommended 100.—
- DAMSON (Incomparabilis)**, A.M., much overlapping creamy-white perianth the base of which is suffused with yellow; the long cup is solid deep red; a very brilliant flower . . p. 100 \$ 50.—
- DAWSON CITY (Trumpet Daffodil)**, F.C.C., much overlapping and flat perianth with a very smooth trumpet, nicely flanged at the mouth. This perfect flower is golden-yellow throughout 70.—
- DICK TURPIN (Barrii)**, A.M., round and flat, ivory-white perianth; the quite flat eye is deep red; late p. 100 \$ 50.—
- DICK WELLBAND (Incomparabilis)**, A.M., pure white perianth of finest quality and perfect form; the large cup is deep orange-red. Recommended each \$ 1.—
- DORINE (Incomparabilis)**, a very large flower with creamy-white perianth, and large expanded orange cup . . p. 100 \$ 30.—
- Duchess of Westminster (Leedsii)**, large white perianth, orange yellow cup 35.—
- Duke of Bedford (Bicolor)**, pure white perianth, clear soft yellow trumpet 40.—
- DULCIMER (Poeticus)**, A.M., broad snow-white perianth of good form and substance; the large eye is broadly margined dark red; late flowering 150.—
- Eagle (Poeticus)**, the finest formed Poeticus, early 38.—
- Early Perfection, (Poetaz)**, citron yellow, early forcer, tall 50.—
- Early Surprise (Barrii)**, perianth ivory white, cup lemon yellow, edged orange red. Very early, free flowering 25.—
- ELVIRA, (Poetaz)**, pure white, orange yellow eye 40.
- EMPEROR, (Ajax)**, yellow, large flower, double nosed 35.—
" " " " " first size round 20.—
- Empire (Giant Leedsii)**, white perianth, creamy white cup, very fine flower 50.—

Single Narcissus—continued.	p. 1000
	\$
EMPRESS, (Bicolor), white, yellow trumpet double nosed	35.—
" " " " " " first size round	20.—
FAKIR (Trumpet Daffodil), A.M., deep golden yellow flower of thickest substance and perfect form per 100	\$ 50.—
Firebrand (Barrii), primrose perianth, fiery red cup	25.—
FIRETAIL (Barrii), F.C.C., large overlapping, ivory-white perianth, with a flat, crinkled eye of deep blood red; strong and tall grower	75.—
FLAMING TORCH (Incomparabilis), A.M., this giant Incomparabilis stands alone in its section, and may be considered the first real orange trumpet. The large perianth is golden-yellow and the immense trumpet deep orange-red throughout. Highly recom- mended each	\$ 1.00
FOLLY (Incomparabilis), A.M., pure white perianth, broad and over- lapping at the base, pointed at the tips and slightly recurved. The large expanded cup is bright orange-red, and holds its colour well p. 100	\$ 200.—
FORTUNE (Incomparabilis), F.C.C., universally claimed to be one of the finest flowers in existence. The clear brilliant yellow perianth is perfectly flat and much overlapping; the very large, long bold crown is glowing coppery red-orange throughout. One of the first to bloom each	\$ 1.—
FORTUNE'S QUEEN (Incomparabilis), A.M., flat and broad well overlapping pure white perianth, with large, bright orange- red cup each	\$ 1.—
GALOPIN, (Incomparabilis), A.M. Very large flower, with broad, well formed white perianth; the enormous cup is solid red throughout each	\$ 1.25
GAMECOCK (Incomparabilis), pale yellow perianth, changing to ivory-white; large crown of brilliant orange-red; tall; vigorous and early p. 100	\$ 180.—
G. H. VAN WAVEREN (Trumpet Daffodil), A.M. The perianth, which measures 6 inches across, is sulphur-yellow; the very large trumpet is golden-yellow and slightly reflexed at the mouth. Recommended	60.—
Gloria Mundi (Incomparabilis), clear yellow perianth, orange scar- let cup	30.—
GLORIOUS (Poetaz), F.C.C. The perianth of purest white, is very round and flat; the cup is brilliant orange-scarlet p. 100	\$ 40.—
Glory of Lisse (Poeticus), pure white, orange cup	25.—
GLORY OF SASSENHEIM, (Bicolor), pure white perianth, yellow trumpet, large double nosed	30.—
GLORY OF SASSENHEIM, (Bicolor), first size round	22.—

Single Narcissus—continued.

p. 1000

\$

- GODOLPHIN (Trumpet Daffodil)**, A.M., very broad and overlapping, perfectly smooth perianth, with large, at the mouth expanded trumpet. The whole flower is a pleasing shade of clear yellow. A flower of the highest quality p. 100 \$ 40.—
- GOLDEN HARVEST (Trumpet Daffodil)**, F.C.C. The largest trumpet variety in existence. The magnificent perianth, which measures fully 6 inches across, is perfectly formed and much overlapping; the trumpet is of perfect shape and proportion, and is beautifully rolled back at the brim. The colour of this truly grand flower is deep golden-yellow. Opens before Golden Spur. Highly recommended p. 100 \$ 40.—
- GOLDEN PERFECTION (Jonquille Hybrid)**, F.C.C., the largest jonquill in existence. Two and three very large flowers are carried on a strong stem. The much overlapping perianth and well proportioned cup are clear yellow. A highly recommended garden plant each \$ 1.25
- Golden Ray (Ajax)**, perianth and trumpet of a beautiful self-colour. A. M. Haarlem 1920 40.—
- GOLDEN SPUR, (Ajax)**, yellow, early, double nosed 40.—
 " " " " " double nosed ll 30.—
 " " " " " first size round 25.—
- GOLDEN SUNRISE (Trumpet Daffodil)**, A.M. Very large and perfectly overlapping perianth, with large trumpet, expanded at the mouth. Deepest golden yellow throughout. Very early p. 100 \$ 40.—
- Great Warley (Incomparabilis)**, pure white perianth, bright yellow cup, very large 35.—
- HALVOSE (Poetaz)**, A.M., well overlapping perianth, the petals of which are clearly stained with iridescent scarlet; the eye is dark orange-red 70.—
- HAVELOCK (Incomparabilis)**, F.C.C., a flower of the finest quality and most perfect form, clear yellow throughout. The perianth is very broad and overlapping, perfectly flat, and the very large cup is beautifully flanged at the mouth; highly recommended each \$ 1.50
- HARVESTER (Trumpet Daffodil)**, clear yellow trumpet of best form p. 100 \$ 70.—
- HELIOS (Incomparabilis)**, F.C.C., well overlapping and flat, deep golden yellow perianth; the very large trumpet-shaped cup opens light orange, changing to deep orange. One of the first to bloom and very free flowering 35.—
- Homer (Poeticus)**, large snowwhite perianth, deep red eye 30.—
- Homespun (Incomparabilis)**, primrose yellow 40.—
- Horace (Poeticus)**, snowwhite perianth, blood scarlet cup, very large 25.—

Single Narcissus—continued.

p. 1000

	\$
HOSPODAR (Incomparabilis) , well overlapping yellow perianth with a cup of pure apricot colour	70.—
Imperator (Ajax) , the biggest and finest white trumpet	100.—
L'Innocence, (Poetaz) , white perianth, creamy yellow cup	45.—
Invincible (Incomparabilis) , white perianth, immense flat deep orange cup. F.C.C. Haarlem 1918	70.—
Irene (Poetaz) , canary yellow, deep orange eye	40.—
IRENE BORDONI (Incomparabilis) , large creamy-white perianth with a fine cup of deepest scarlet throughout. A most distinct flower each \$ 2.—	
JOHN EVELYN (Incomparabilis) , F.C.C., large broad and much overlapping white perianth; the immense almost flat crown is soft apricot and beautifully frilled	60.—
JUBILANT (Incomparabilis) , uniform deep yellow, tall each \$ 2.—	
KILLIGREW (Incomparabilis) , F.C.C., a flower of wonderfully smooth texture and perfect show form. The bright yellow perianth is well overlapping and very flat, and the large cup is bright orange-red p. 100	\$ 40.—
KING ALFRED (Trumpet Daffodil) , the finest yellow trumpet.	
First size double nosed	35.—
First size round	25.—
KINGCRAFT (Poetaz) , ivory-white perianth, terra-cotta-red eye, large flower, tall grower	70.—
Kingdom (Leedsii) , pure white perianth with sulphur yellow cup . .	30.—
Lady Curzon (Barrii) , creamy white perianth, very flat orange scarlet cup with canary yellow centre. A. M. Haarlem 1922	100.—
LADY DERBY (Barrii) , A.M., pure white, broad and well overlapping perianth of good substance; the flat orange-yellow crown is banded bright red	150.—
LADY DIANA MANNERS (Barrii) , A.M., broad and much overlapping pure white perianth with a large, flat, orange crown, broadly margined deep red	100.—
LADY KESTEVEN (Barrii) , A.M., the perianth of purest snow-white is of unusual fine texture, while the cup is an absolute cherry-red. One of the finest flowers in existence . . . each \$ 20.—	
Lady Margaret Boscawen (Incomparabilis) , pure white perianth, yellow cup, large	35.—
Lady Moore (Barrii) , perianth ivory white, cup lemon yellow, edged clear orange red, a fine formed bloom. A. M. Haarlem 1923	35.—
La FIANCEE (Poetaz) , broad and thick pure white perianth, with a large, deep orange red eye. Very early and free	50.—
LAURENS KOSTER, (Poetaz) , pure white with charming orange cup	30.—
Lord Kitchener (Giant Leedsii) , creamy white perianth, bright yellow cup, prettily frilled	30.—

Single Narcissus—continued.

p. 1000

\$

LORD WELLINGTON (Trumpet Daffodil) , F.C.C. Enormous flower of perfect show form and self-yellow colour throughout. The large perianth is very smooth and flat and stands at right angles to the large bold trumpet	100.—
Macebearer (Incomparabilis) , creamy white perianth, large orange cup	40.—
MAGNIFICENCE (Trumpet Daffodil) , F.C.C. Very large, deep golden-yellow flower; gracefully waved perianth with deeply serrated trumpet. Opens three weeks before Golden Spur	100.—
MARQUIS (Barrii) , flat overlapping, pale yellow perianth, deep red crested crown, best forcer p. 100 \$ 25.—	
MARTHA, (Bicolor) , creamy perianth, yellow trumpet	40.—
Masterpiece (Barrii) , pure white perianth, flat orange red cup	32.—
MEDUSA (Poetaz) , F.C.C., flat, pure white perianth with large cup of bright orange-red. Splendid garden plant	35.—
MERAPI (Incomparabilis) . Immense flower of fine form and substance; large, broad, sulphur yellow perianth, and very much expanded, deep orange-red cup; very vigorous . . each \$ 1.50	
MERKARA (Incomparabilis) , A.M., very large and flat, much overlapping sulphur-yellow perianth; the large expanded crown is deep orange-red. Highly recommended each \$ 0.75	
MITYLENE (Giant Leedsii) , F.C.C., much overlapping, pure white perianth, and a large very smooth, shallow, saucershaped crown of palest primrose, fading to cream p. 100 \$ 75.—	
MME. DE GRAAF, (Ajax) , white, fine, double nosed	40.—
MME. VAN WAVEREN, (Bicolor) , one of the largest and best bicolors for pots	50.—
Mount Erebus (Giant Leedsii) , pure white perianth, ivory white cup	50.—
Mr. R. M. Tobin (Incomparabilis) , improved Lucifer both in size and substance. A. M. Haarlem 1924	40.—
Mrs. Barclay, (Barrii) , ivory white, cup edged clear orange red	50.—
Mrs. E. H. Krelage (Ajax) , the best white	45.—
MRS. H. RAE (Barrii) , deep lemon-yellow perianth of best texture; orange-red cup, best market-flower p. 100 \$ 75.—	
NOBILITY (Barrii) , A.M., the pure white and very flat perianth is somewhat star shaped; the large, bright orange eye lays absolutely flat against the perianth	45.—
Nursemaid. (Barrii) , clear white round perianth with a dark orange red cup	35.—
NUTWITH (Incomparabilis) , pale, orange-yellow perianth with orange cup; early forcer each \$ 2.50	
Oliver Cromwell (Ajax) , large yellow trumpet, with a sulphur yellow perianth. A. M. Haarlem 1922	40.—

Single Narcissus—continued.

p. 1000

	\$
Olympia (Ajax) , sulphur perianth, yellow trumpet, large	45.—
ORANGE BOY (Incomparabilis) , broad and overlapping perianth, pure white and of thickest substance; the much frilled crown is orange-red each \$ 1.	
Orange Cup (Poetaz) , yellow, deep orange eye, fringed	45.—
ORANGE GLOW (Incomparabilis) , F.C.C., a very large flower with broad and overlapping sulphur-yellow perianth; the widely expanded and frilled crown is deep orange; recommended	150.—
ORANGE PERFECTION (Incomparabilis) , A.M., the broad and overlapping sulphur-yellow perianth is slightly pointed at the tips; the narrow trumpet-shaded crown is deep orange-red; a very distinct flower each \$ 7.50	
ORNATUS, (Poeticus) , pure white, orange eye, . . . double nosed	25.—
" " " " " " " . . first size round	12.—
Ornatus Maximus (Poeticus)	30.—
Poeticus , white, orange cup	20.—
POLWYN (Barrii) , resembling a Poeticus, very large, well overlapping pure white perianth; flat eye dark red rim . . each \$ 1.50	
PRESIDENT LEBRUN (Bicolor) , deep yellow trumpet, tinged orange; overlapping pure white perianth; a large flower of best form p. 100 \$ 75.—	
PRIDE OF HILLEGOM (Trumpet Daffodil) , A.M., the well overlapping perianth is sulphur-yellow, and has a large trumpet of deep golden yellow. A flower of largest size	45.—
PRINCE OF ORANGE (Incomparabilis) , F.C.C., pure white, broad, overlapping and flat perianth; the large cup is rich bright orange-red p. 100 \$ 40.—	
PRINCESS MIRIAM (Barrii) , A.M., the pure white perianth is most perfectly formed; the dark yellow cup changes into orange-red towards the edge; very substantial each \$ 1.—	
Princess Yolande (Poetaz) , white perianth with an orange cup, fine star shaped flower	45.—
Queen of the North (Leedsii) , white perianth, pale primrose cup, extra	26.—
Red Beacon (Barrii) , pure white perianth, fiery red cup	30.—
RED CROSS (Incomparabilis) , F.C.C., a flower of largest size and most perfect form; soft yellow perianth and a large expanded crown of deep orange-scarlet; strong grower and highly recommended	100.—
RED GUARD (Barrii) , F.C.C., the orange-yellow perianth is richly suffused with red, and has a bright scarlet cup; a most charming and distinct variety, often carrying two flowers on a stem; highly recommended p. 100 \$ 10.—	

Single Narcissus—continued.

p. 1000

\$

TENEDOS (Giant Leedsii) , F.C.C., large, pure white perianth; the long trumpet shaped crown opens pale primrose, but soon fades to pure white p. 100	\$ 60.—
Thackeray (Ajax) , deep yellow, faultless form	70.—
THE FIRST (Trumpet Daffodil) , golden yellow, one of the earliest and most free-flowering trumpets, forces very easily	60.—
THERAPIA, (Barrii) , F.C.C., a magnificent Barrii of most perfect shape and quality; the pure white perianth is broad, flat and much overlapping, and the large, almost flat yellow eye, is broadly banded clear orange-red each	\$ 7.50
TRESSERVE, (Ajax) , large yellow trumpet	35.—
VAN WAVEREN'S GIANT, (Bicolor) , primrose perianth, bright yellow trumpet, very large double nosed	35.—
VICTORIA, (Bicolor) , white, yellow trumpet double nosed	35.—
" " white, yellow trumpet first size round	22.—
VILLAGE BEAUTY (Barrii) , creamy-white perianth of faultless form; the orange-yellow cup is banded bright red .. p. 100	\$ 15.—
WARSPITE (Barrii) , A.M., pure white, very round and much overlapping perianth; the large and flat yellow crown is broadly margined bright red; rather late p. 100	\$ 35.—
Weardale Perfection (Bicolor) , white perianth, soft sulphur white trumpet	40.—
WHISTLER (Trumpet Daffodil) , A.M., a flower of largest size and most perfect form; sulphur-yellow perianth, much overlapping and very stiff; the bright yellow trumpet, has a broadly flanged, serrated brim	75.—
White City (Leedsii) , a very attractive flower	30.—
White Knight (Ajax) , pure white, faultless form	150.—
WHITE NILE (Giant Leedsii) , very large flower, pure white perianth; saucer shaped cup of pale yellow passing to pure white; early; freeflowering and very lasting p. 100	\$ 15.—
WHITE SENTINEL (Leedsii) , twin-seedling to Mitylene; pure white overlapping perianth with smooth, saucer shaped primrose crown; a fine flower p. 100	\$ 25.—
Will Scarlett (Incomparabilis) , sulphur perianth, fiery orange red cup	32.—
W. P. Milner (Ajax) , perianth and trumpet pure white	90.—
WRESTLER, (Ajax) , yellow trumpet, early forcer, very freeflowering	35.—
XENOPHON (Poetaz) , A.M., a beautifully formed bright yellow perianth, and a large deep orange-red cup	70.—
YELLOW POPPY (Barrii) , primrose yellow	35.—
Mixed, all short cup varieties	20.—
Mixed trumpets	25.—
Mixed of many varieties	20.—

Ixia

	p. 1000
	\$
Althea , splendid white, purple eye	10.—
Bucephalus major , bright red, large flower	10.
Conqueror , clear orange yellow and black	8.—
Crateroides major , bright scarlet	20.—
Englishton , crimson pink	10.—
Hercules , white and pink, very robust	12.—
Hogarth , cream colour, dark brown eye	10.—
Invincible , bright crimson, distinct	10.—
King of the Yellows , pure yellow	40.
Mozart , bright yellow	15.—
Princess Alice , pure white, extra large flowers	20.—
Rosalind , rose extra	20.—
Viridiflora , green, black eye	p. 100 \$ 12.—
Vulcan , crimson and orange	10.—
Wonder (Rosea plena) , double, beautiful pink	10.—
Named varieties our choice	12.—
Mixture varieties	6.—

Lilium

The *Lilium Candidum* is practically the only Lily which is ready for shipment August-September. Other varieties are shipped later.

	p. 100
	\$
Auratum , largest selected bulbs	16.—
Brownii , white outside brownish	20.
Candidum (White Madonna Lily) , white, first size bulbs	15.—
Croceum , orange	10.—
Excelsum (Testaceum) , apricot yellow	50 —
Lancifolium album , extra strong	15.—
" Melpomene , dark crimson spotted purple	20.
" roseum , white tinted and spotted rose	20.—
" rubrum , tinted and heavily spotted red	15.—
Longiflorum multiflorum	15.—
" giganteum	20.—
Martagon , purple	15.—
Pardalinum , bright orange	15.—
Philippinense formosanum , white exterior shaded reddish brown; very long trumpet; free flowering. Good for cool glass house	5.—
Pomponium , scarlet	30.—
Regale , white, outside carmine, extra	10.—
Superbum , orange red	15.—
Tenuifolium , deep scarlet orange	5.
Thunbergianum aureum maculatum (Kikak) , orange red	8.—
" Bicolor (pictum) , orange red, spotted, purple	8.—
" Biligulatum , orange	6.—
" Sanguineum , bright red	6.—



