

Historic, archived document

Do not assume content reflects current scientific knowledge, policies, or practices.

62,41
Kellogg's

GREAT CROPS

of

STRAWBERRIES

1940

*and
Other Fruits*



R. M. KELLOGG CO.
THREE RIVERS
MICHIGAN

NEW Currant Red Lake

NOTE: Orders for Gooseberries and Currants should be sent in early. Not shipped after May 10th, because of their advanced condition at that time.

RED LAKE is brand new—far more valuable than any variety formerly grown. The berries are big and the bunches long and well filled to the tip. Exceptionally long stems make them very easy to pick. The bushes are thrifty and extremely productive. Easy to grow. Ripen in early mid-season, but hold on over a long period so can be used or marketed as desired. A splendid money-maker.

Originated in the northwest where hardiness is essential—hardy. Bear 1 year after planting. PRICES: 1 for 39c; 3 for 95c; 10 for \$2.45; 25 for \$5.25.

Copyright 1939,
R. M. KELLOGG CO.
Three Rivers, Mich.

Downing Gooseberry

Pies!—Jam!—Money!

Downing Gooseberry is the most handsome and useful Gooseberry grown. Fruit large and green with yellowish cast when fully ripened. Splendid for cooking and table use. Bears 1 year after planting.

PRICES

1 for.....	\$.31
3 for.....	.85
10 for.....	2.25
25 for.....	4.95

PERFECTION CURRANT

Large, bright red fruit. Heavy bearer. Bunches well filled to the end. Bear 1 year after planting. PRICES: 2-year plants, 1 for 31c; 3 for 85c; 10 for \$2.25; 25 for \$4.95.

Boysenberry

*A NEW TABLE
DELIGHT
and
MONEY MAKER*

This amazing new berry is destined soon to replace Blackberries and Dewberries for it is better than either of them. Not only are the berries huge in size—about 1 inch in diameter by 2 inches long—but they have an amazing flavor. Rich and appetizing—a flavor that will make you want to come back for more. They are beautiful, too, the color being a rich purplish maroon. They look appetizing and they are appetizing. Child of Youngberries.

Grow Boysenberries as you would grapes on a trellis. They are very hardy—will stand temperatures well below Zero. If you don't order them for commercial use at least order a few for home use. But you will make a mistake if you do not plant them for profit for they are a real moneymaker. Bear 1 year after planting.

PRICES

6 for	\$.60
12 for	.97
25 for	1.67
50 for	2.69
100 for	4.85

**R. M. KELLOGG
COMPANY;
THREE RIVERS,
MICH.**

Lucretia Dewberry

Early bearing—higher prices! Large berries—easier picking saves money! Practically free from disease — save spraying expense and trouble! Thrive in light, poor soils—easily grown! Productive — bigger profits! We supply you with fine one-year plants. Bear 1 year after planting.

PRICES

1-Year Plants	
12 for.....	\$.65
25 for.....	.90
50 for.....	1.50
100 for.....	2.45
300 for.....	6.25
500 for.....	10.25

Kellogg's BIG FOUR Grapes

These are the four newest varieties of grapes. Every grower should try them. They are real money-makers.

CACO

Delectable, juicy morsels, full of sweet nectar. Caco is an extra early, sweet, large Grape with long, compact bunches. The finest of all Red Grapes. Try it!

FREDONIA

Umm! What a treat awaits you in Fredonia Grape. Fine, large, plump, juicy. Two weeks earlier than Worden! This new variety threatens to displace all other Black Grapes. The supply is limited, order now.

PORTLAND

Don't they look luscious? This is the newest white Grape. Ripens earlier than any other Grape. Color same as Niagara but berries larger and better. Sugary and sweet. Can be eaten before fully ripe. Vine hardy and productive.

SHERIDAN

Luscious! Luscious! Luscious! More delicious, richer, and better than Concord. One week later. Fine for eating, fine for market. Is excellent keeper, having a thicker skin than Concord. Extra fine for shipping. By all means, try Sheridan. Latest Grape known.

Bear 1 to 2 years after planting. **PRICES:** 27c each; 3 for 50c; 6 for 85c; 12 for \$1.38; 25 for \$2.65; More than 25 @ 10c each.

PRICES

1 for \$.27
 3 for .50
 6 for .85
 12 for 1.38
 25 for 2.65
 More than 25
 @ 10c each

SPECIAL

6 Caco (red).....	\$.85
6 Fredonia (black).....	.85
6 Portland (white).....	.85
6 Sheridan (black).....	.85
Total Value.....	\$3.40
Special price only.....	\$2.65

R. M. Kellogg Co., Three Rivers, Mich.

Everyone loves grapes and they are one of the most healthful of fruits. Can be grown with very little work and attention. Plant Kellogg's grapes and have bushels of red, black, blue and white delicious grapes all season for pleasure and profit. Fruit 2nd year.



Here are your Old Favorite Grapes

CATAWBA (Red). Heavy producer of large amber-red fruit. Most dependable of all late red grapes.

DELAWARE. (Red). Hardy grower, heavy producer. The most deliciously flavored table grapes you ever tasted.

NIAGARA. (White). Most popular white grape. Large bunches. Hardy grower. Succeeds everywhere. Sweet and delicious.

WORDEN. (Black). Very hardy, healthy and productive. Fruits early, surpassed by no other variety. Very popular family grape.

MOORE'S EARLY. (Black). One of the earliest black grapes. Peculiar sweet flavor. Hardy, good bearer.

PRICES: All Grapes above, No. 1 plants, 27c each; 3 for 50c; 6 for 85c; 12 for \$1.38; 25 for \$2.65; more than 25 at 10c each.

CONCORD. (Black). Most popular of all black Grapes. Excellent quality. Hardy, heavy yielder of large bunches of juicy, sweet and tender Grapes. **PRICES:** 1 for 23c; 3 for 38c; 6 for 53c; 12 for 89c; 25 for \$1.67; more than 25 at 6½c each.

SPECIAL!

Regular price \$1.58. You get one each of Catawba, Concord, Delaware, Niagara, Worden, Moore's Early.

6 for 75c

Kellogg's **EVERBEARING**

GEM PRICES

25 —	\$.60
50 —	1.00
100 —	1.40
300 —	3.00
500 —	4.60
1,000 —	7.95
5,000 @	\$7.70M
10,000 @	\$7.45M

Now making good as money-makers.



Kellogg's **GEM**

This mighty ever-bearing variety really is making good as a commercial berry. It is one everbearing variety that will stand marketing well. Many Kellogg customers are reporting it as their best money-making variety because of its large, well shaped, well colored, and well flavored berries which come at a time when strawberries are most in demand—no competition from southern berries in the fall. Prices just above picture.

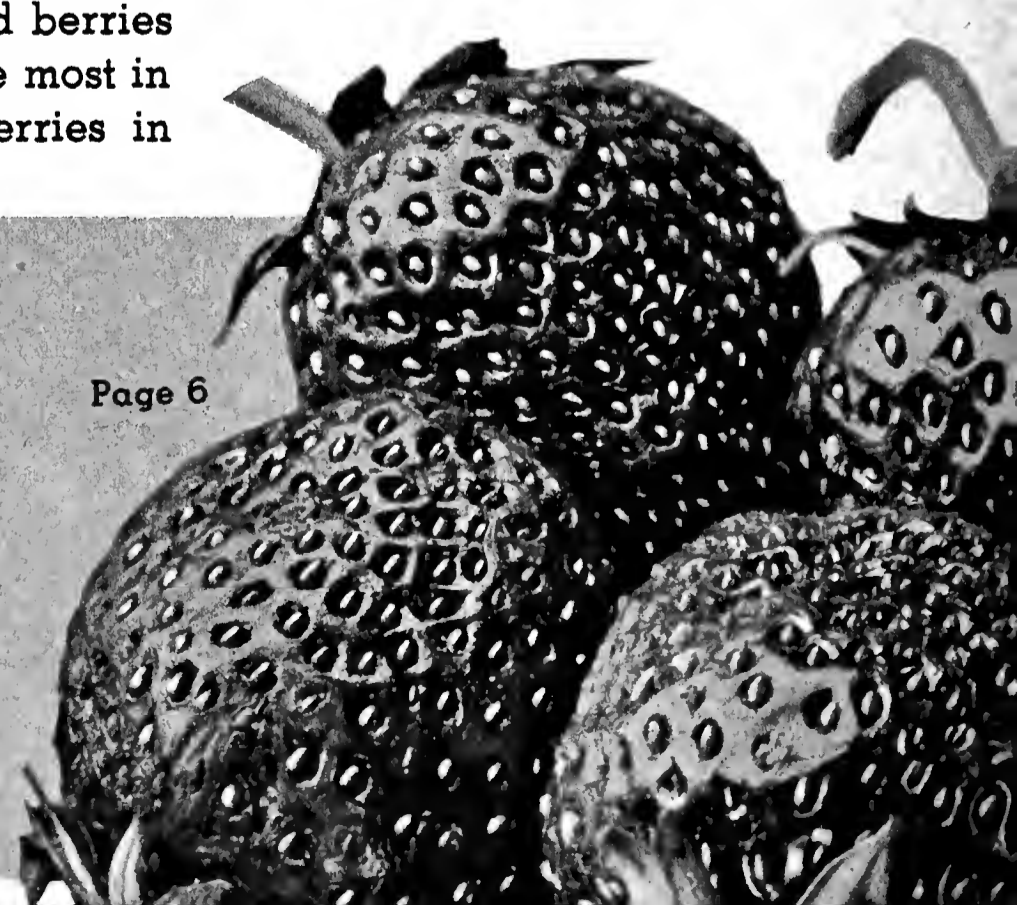
Plants are healthy, hardy, drought-resistant, easily grown, and productive. Gem will outyield your other everbearers and will compete strongly with standard varieties in June.

Mastodon Everbearer

Kellogg's extra heavy bearing strain of Mastodon are hardy, strong growing, heavy yielding; berries big, bright red and attractive. Fruits three months after planting and until light freeze. Three crops in 18 months. Splendid flavor.

MASTODON PRICES

25 . \$.70	100 . \$1.60	400 . \$4.30
50 . 1.15	200 . 2.50	500 . 5.20
75 . 1.35	300 . 3.40	1000 . 8.95



STRAWBERRIES

WAYZATA EVERBEARER

Wayzata is the sweetest, most delicious, and most sugary of all ever-bearers and also the most persistent fruiter—bears heavily first year. August to nearly November first. Two large crops second year.

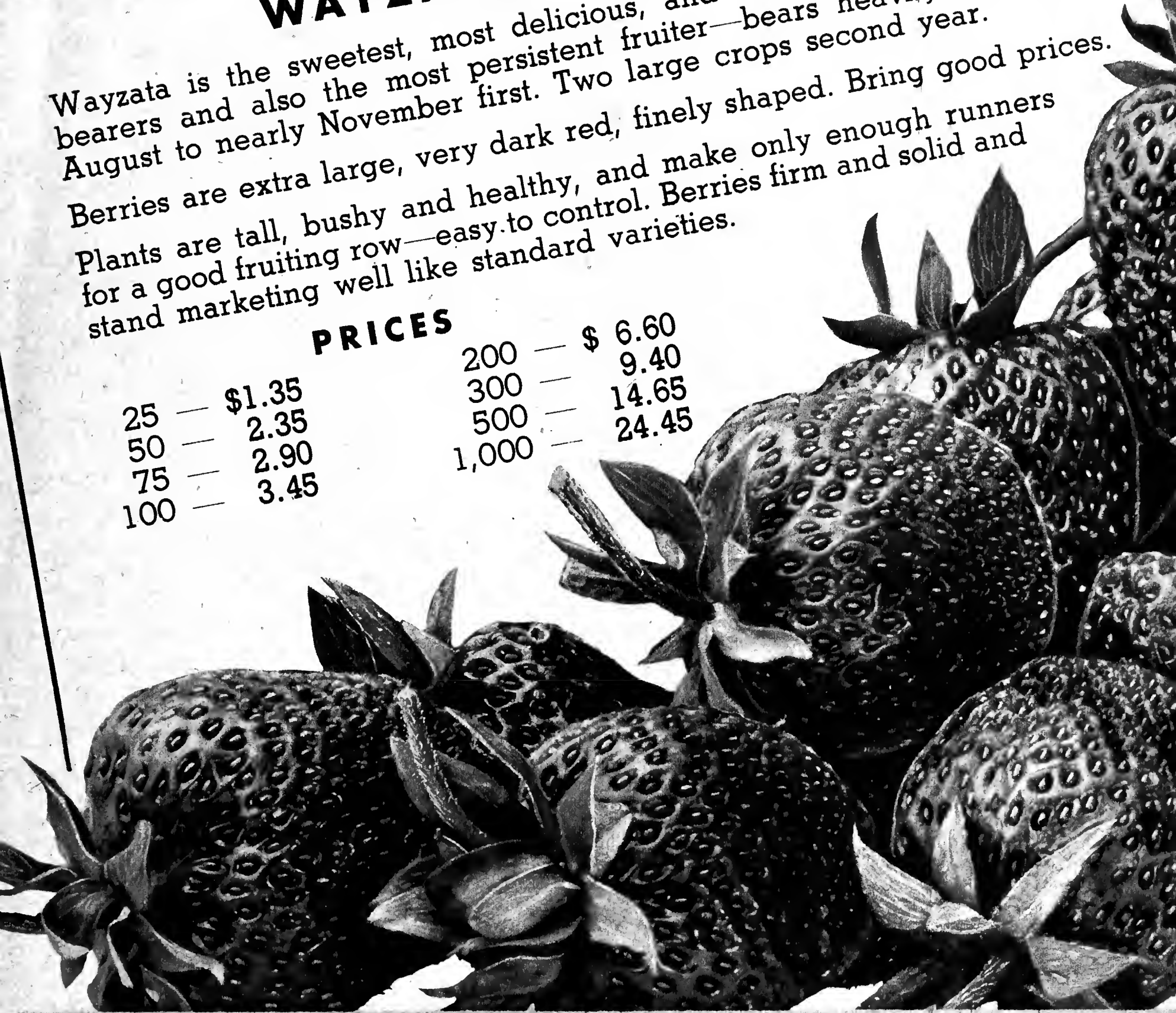
Berries are extra large, very dark red, finely shaped. Bring good prices.

Plants are tall, bushy and healthy, and make only enough runners for a good fruiting row—easy to control. Berries firm and solid and stand marketing well like standard varieties.

PRICES

25	—	\$1.35
50	—	2.35
75	—	2.90
100	—	3.45

200	—	\$ 6.60
300	—	9.40
500	—	14.65
1,000	—	24.45



Kellogg's Everbearing Garden

This garden is composed of 200 Everbearing plants—no June bearers—the best everbearing varieties our choice, and will produce all the berries your family can eat. Remember that the everbearers not only fruit in the fall but also in June. The best garden for fresh-from-the-vine eating. \$3.00 value.

200

Plants

Special Price
\$2.57



Join the

Extra care, careful selection of mother plants and extra money spent does produce more productive strawberry plants. The experiences of Kellogg customers prove it. Here are only a very few letters out of the many hundreds that we have in our files.

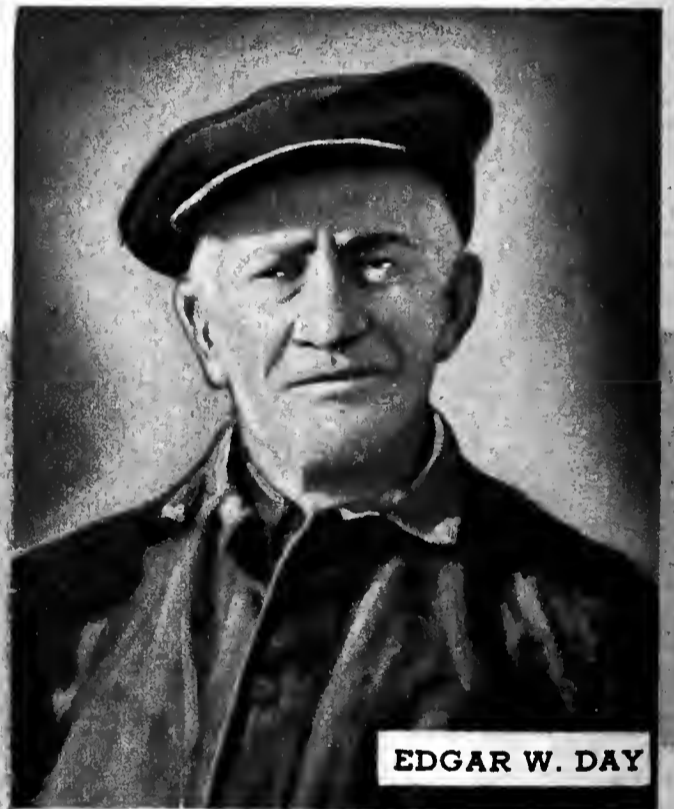
"Premier is the best variety for me. Not Premier alone but Kellogg's Premier. I have tried the Premier variety from several nurseries but find your Premier most satisfactory, in that they produce more, are larger and the picking season lasts longer. Am sure glad to speak a good word for your company." LA RUE DYRE, Indiana.

"In 1937 we put out 450 plants, lost 3, they grew fine in spite of the hot, dry summer. They were mulched good and came out in spring in fine shape. We gathered 700 quarts of fine berries.

"We have been getting our strawberries from you for the past 40 years and never had a failure.

"Your plants can't be beat. They are full of life. We like Dunlap, Gibson, Big Late, Premier, and Blakemore. No one will go wrong if they get their plants from Kellogg's."

EDGAR W. DAY,
Illinois.



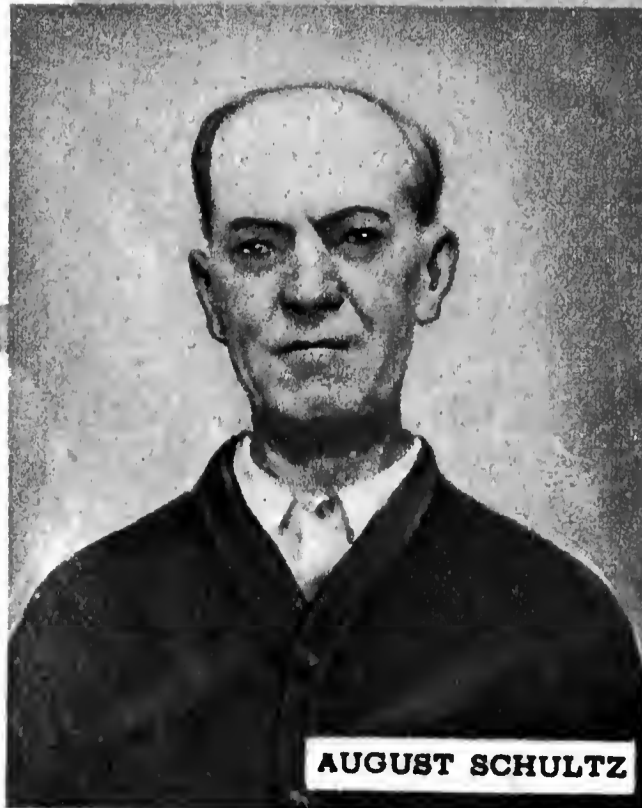
EDGAR W. DAY

Not Just
Premier, But
KELLOGG'S Premier,

says La Rue Dyre of Indiana. See Mr. Dyre's entire letter above.

**2,000 Plants—
2,000 Quarts!**

This is a yield obtained by August Schultz. Mr. Schultz' letter below.



AUGUST SCHULTZ

**450 Plants, 700 Quarts
40 Years with Kellogg**

See Mr. Day's letter above.

"I have tried many different kinds of berries but Premiers are the best. Two

years ago I set 2,000 plants, the following year I picked 2,000 quarts."

August Schultz, Mich.

Money Makers!

40 Quarts or 136—Which?

"Several years ago I planted 100 Kellogg's Premier and picked 136 quarts from them the following year. The same year a friend of mine who lives about one-half mile from me with the same kind of soil (limestone) bought 100 Premier from a firm in, he picked about 40 quarts from his. I wanted him to order Kellogg's plants but as he could buy them there at less money he would not order with me. Of course, he was the loser. I find it always pays to buy Kellogg's plants."

C. C. ROTE, Pennsylvania



\$140.00 From 1,000 Gem

"The 1000 Gem Everbearers made 970 quarts and sold for \$140.00. Picked our last berries November 7, 1938."

F. F. GOLDSBARRY, Indiana

"I have had good luck with Premier this past season. I sold over \$1,000.00 of Premier berries. I bought of you 6,000 plants. Average price received was 12½c per quart, and had 335 crates. From now on I will set only Premier plants."

JAMES R. FAUSETT, Indiana

**THIS SPACE
RESERVED
FOR
YOU!**

Once you have bought Kellogg plants and experienced their fine fruitfulness, you too will have many nice things to say about them. This space is for your letter. Or if you don't care to write a letter, tell your neighbors and friends, as many others do. Just give Kellogg plants a trial and we know that you will make just as good profits as these others have made.

\$1,000 From One Acre

James R. Fausett of Indiana made a real profit from 6,000 plants. Read his letter below.



Kellogg's Strawberry

Kellogg's Strawberry Gardens are for those who want berries for home use. Many, too, make nice profits, some well over \$100.00.



Family Garden 100 Plants

\$1.19 All the delicious strawberries that an average family can eat. Four fine varieties as follows:

25 Dunlap.....	\$0.35
25 Big Late.....	.40
25 Premier.....	.45
25 Dorsett.....	.40
Total Value.....	\$1.60
Special Price.....	1.19
You Save.....	.41



50-50 Garden June and Fall 200 Plants \$2.65

Half everbearing, half June Bearers—a \$3.40 value for only \$2.65.

50 Catskill.....	\$.55
50 Premier.....	.70
50 Mastodon.....	1.15
50 Gem.....	1.00
Total Value.....	\$3.40
Special Price.....	2.65
You Save.....	.75

Gardens

Many have all the berries they can use and a profit besides. Kellogg's Strawberry Gardens are excellent pin money makers.

Big Garden 4

100 Premier . . . \$1.00
 100 Fairfax90
 100 Big Late90
 100 Dorsett90
 Total Value . . . \$3.70
 Special Price . . 2.75
 You Save95

**400
Plants
\$2.75**



For the family that wants berries to can and preserve as well as to eat fresh from the vine.

Big Variety Garden

**\$50.00
Value
for \$2.75**

You get all varieties except Wayzata. Each variety will be labeled. Very large saving in price.

25 Gem	\$.60	25 Clermont	\$.35
25 Mastodon	.70	25 Duñlap	.35
25 Dorsett	.40	25 Blakemore	.35
25 Fairfax	.40	25 Beauty	.55
25 Premier	.45	Total Value	\$4.90
25 Big Late	.40	Special Price	2.75
25 Catskill	.35	You Save	2.15



Kellogg's BIG LATE

Prices

25 —	\$0.40
50 —	.65
100 —	.90
200 —	1.40
300 —	1.90
500 —	2.90
1,000 —	4.95
5,000 @	4.65 M
10,000 @	4.25 M

Pistillate — Mate with Catskill or S. Dunlap

One grower writes, "More than \$1200.00 from the one-half acre of Kellogg's Big Late." Kellogg's Big Late is a money-maker because it is still producing fine high quality berries after other varieties are all through. It is a strong hardy grower and extra heavy fruiter.

Berries are big, glossy, strong, dark red clear through and are delicious. We recommend that every grower have Big Late. Prices just above picture.



Kellogg Plants Work Hard

This picture shows how a Kellogg plant grown the Kellogg way will work to produce big berries and big profits for you. For over 50 years, Kellogg thoroughbred strawberry plants have been recognized as the very finest for productivity and quality of fruit. Many growers have made as high as \$1000.00 per acre and a considerable number have made even more. Page 12





Good Strong Roots and Vigorous Tops



This is the way a Kellogg thoroughbred strawberry plant looks just after it comes out of the ground ready for shipment to you. Note the good strong roots and the vigorous healthy tops. These roots and tops are the result of the extra care we exercise in selecting mother plants and the extra care we give the plants while they are growing for you in our nursery. Thousands of growers can attest to the extra vigor and productiveness of Kellogg thoroughbred strawberry plants.

KELLOGG'S BEAUTY

Named and introduced by Kellogg. Proved to be the best medium late strawberry ever grown. Tall, upright, hardy, grower. Heavy yielder of extra large, round glossy berries. Unusually solid—extra fine shipper. Tops the market wherever the berries are offered for sale. The most delicious strawberry you ever have tasted. Extra sweet with remarkable flavor. Berries often measure 6 inches in circumference. The strawberry that satisfies. Ideal for home gardens and profitable for market. Prices in panel below.



BEAUTY PRICES

25	—	\$0.55
50	—	.90
75	—	1.05
100	—	1.25
300	—	2.65
500	—	4.05
1,000	—	6.95

DORSETT

Bi-Sexual Does Not Require Mating

Every Dorsett berry is a solid beauty that will attract customers. One of the very best money-making varieties. Making profits as high as \$1,000.00 per acre, even in 1934 and 1935 when prices were not high.

Dorsett is one of those extra early varieties that laughs at Jack Frost. Likewise seems heedless of drought and excessive rainfall. Seldom are conditions so severe that Dorsett will not produce money-making crops. Berries are very large, finely shaped; plants fruit extra early to late. The berries keep, ship and hold color well—characteristics essential to a money-making variety. Deliciously sweet, fine for canning.



Prices
Only
30¢ ea.
2 for 50¢

Just push dibble straight down, then forward to make opening, insert plant, reinsert dibble just ahead and pull back; you're through.

Kellogg's
All-Metal Plant-Setting Dibble
CORRUGATED FOR STRENGTH

PRICES

25	—	\$.40
50	—	.65
75	—	.75
100	—	.90
200	—	1.40
300	—	1.90
400	—	2.40
500	—	2.90
1,000	—	4.95
5,000	—	4.65M
10,000	—	4.25M

R. M. Kellogg Co.
Three Rivers, Mich.

STRAWBERRIES

*are Delightful
and Healthful*

PRICES

Dorsett & Fairfax

25	—	\$.40
50	—	.65
100	—	.90
200	—	1.40
300	—	1.90
500	—	2.90
1,000	—	4.95
5,000	—	4.65 per M
10,000	—	4.25 per M



You should have your own patch of berries so that you can have yours fresh and delicious. They are very healthful!

FAIRFAX

Bi-Sexual—Does Not Require Mating

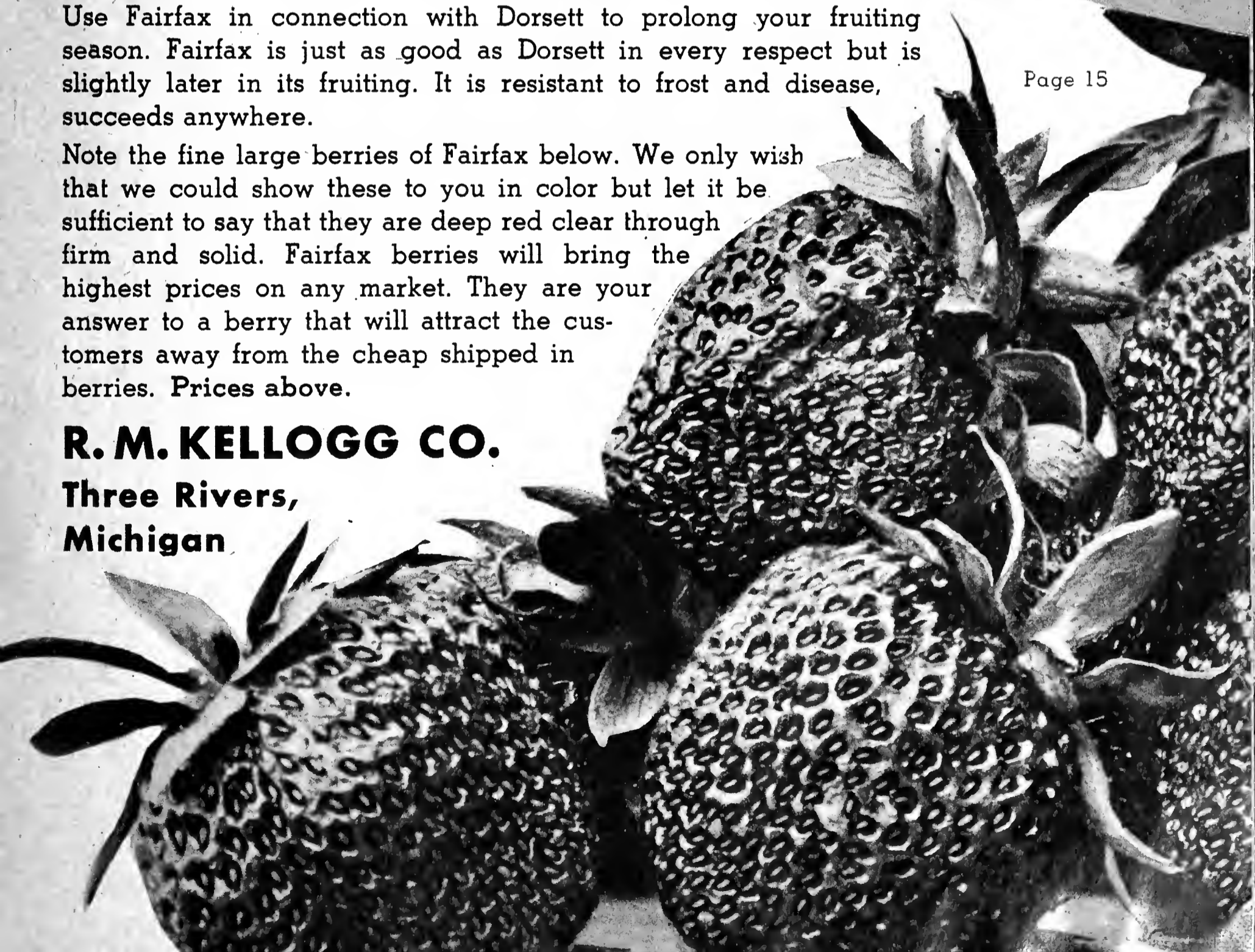
Use Fairfax in connection with Dorsett to prolong your fruiting season. Fairfax is just as good as Dorsett in every respect but is slightly later in its fruiting. It is resistant to frost and disease, succeeds anywhere.

Note the fine large berries of Fairfax below. We only wish that we could show these to you in color but let it be sufficient to say that they are deep red clear through firm and solid. Fairfax berries will bring the highest prices on any market. They are your answer to a berry that will attract the customers away from the cheap shipped in berries. Prices above.

R. M. KELLOGG CO.

**Three Rivers,
Michigan**

Page 15



Kellogg's Premier...

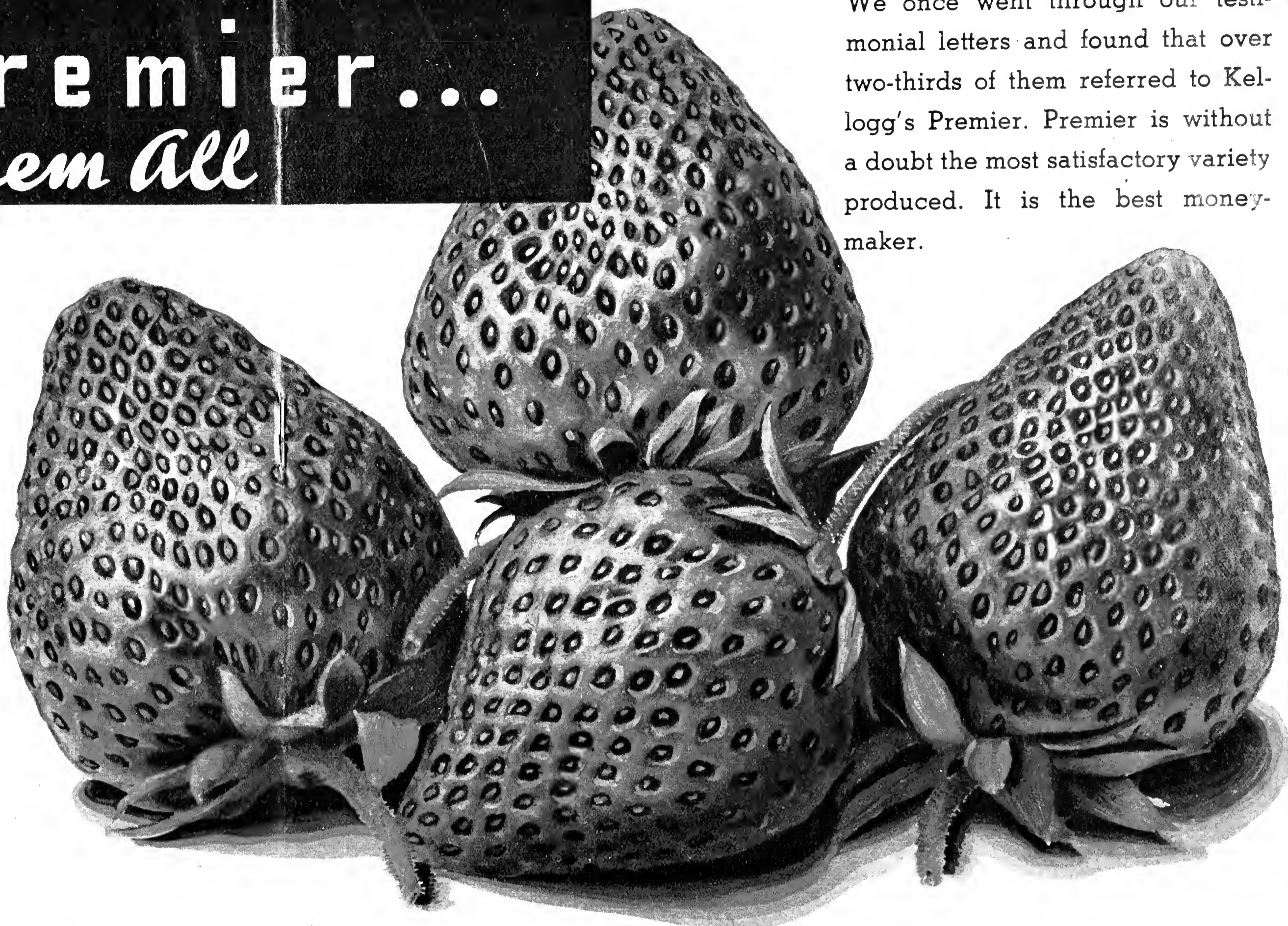
The Best of Them All

(Bi-sexual). It is a pleasure to recommend Kellogg's Premier because we know that it will make you the biggest profit you ever made from strawberries. For home use Premier gives more pleasure than any other variety.

Kellogg's Premier is without a doubt the best strawberry ever known. We introduced it in 1915 and since it has spread like wild fire to every part of the United States and Canada and many parts of the world where strawberries are grown. Now by far the largest selling strawberry variety. Kellogg's Premier has more good points than any other variety. Its twelve good points are listed in detail below.

If you should tell us that you wanted to plant only one variety and should ask us what variety to plant we would unhesitatingly say, "By all means plant Kellogg's Premier." We have more testimonials on the profit

made from Kellogg's Premier than any other variety. Hitch your wagon to Kellogg Premier's star and it will show you the way to bigger profits and complete satisfaction.



We once went through our testimonial letters and found that over two-thirds of them referred to Kellogg's Premier. Premier is without a doubt the most satisfactory variety produced. It is the best money-maker.

PRICES

25	— \$.45
50	—	.70
75	—	.80
100	—	1.00
200	—	1.55
300	—	2.10
400	—	2.65
500	—	3.20
1,000	—	5.45
5,000	—	5.25 per M
10,000	—	4.95 per M

Premier — The Twelve Point Variety — Here Are the Twelve Points

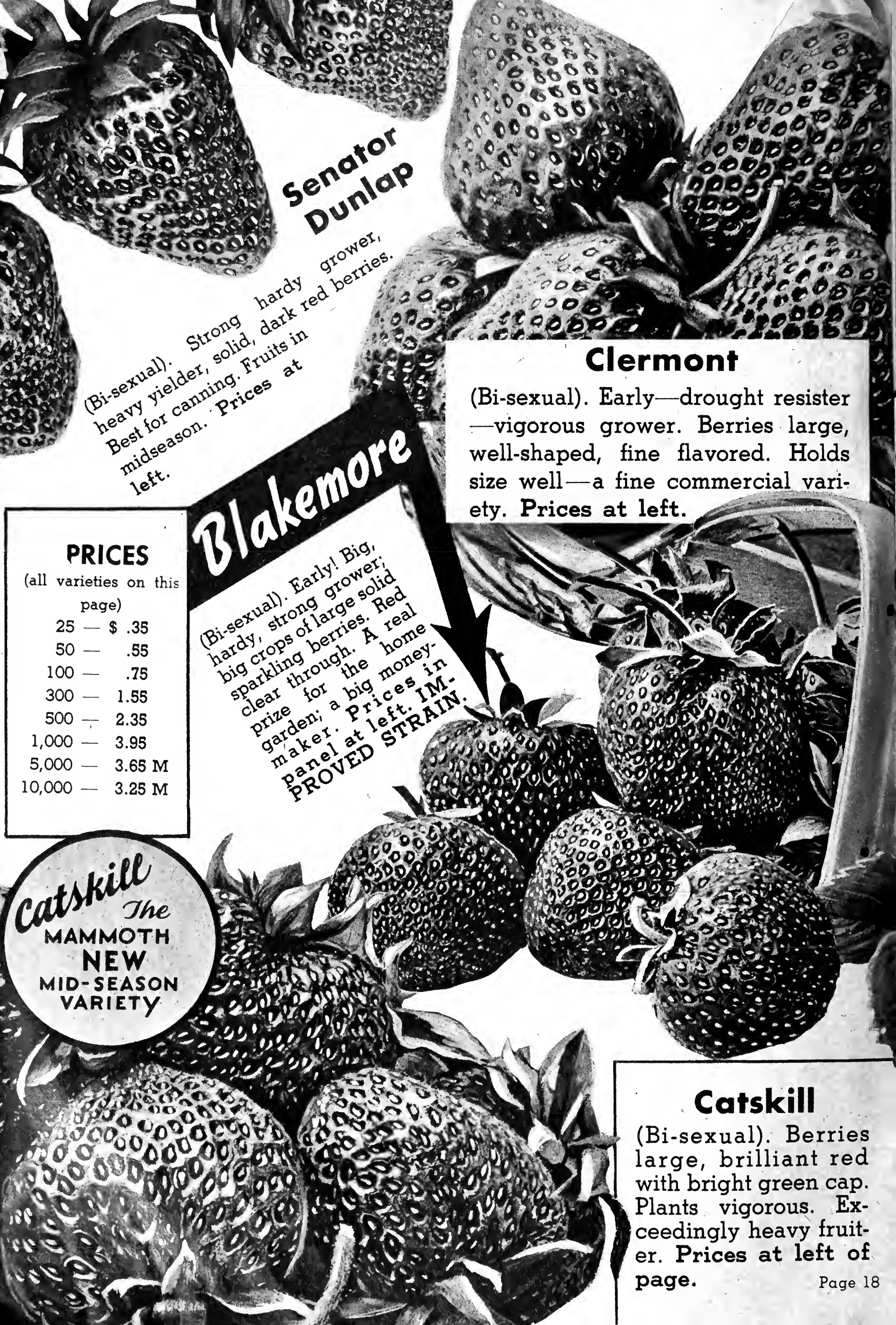
- (1) Extra early. No worthwhile variety fruits earlier. High prices—more profit.
- (2) Resists frost. Very essential with an early variety. Frost hardly touches Kellogg's Premier.
- (3) Fruits long. Nearly as late as most other varieties. Berries hold up well throughout the season.
- (4) Extra large. Size attracts attention, buyers, big profits.
- (5) Well shaped. See picture.
- (6) Solid. One of the best market varieties. Ships well for long distances.
- (7) Healthy. Seldom touched by disease. Foliage is tough, dark green, glistening and leathery.
- (8) Beautifully colored. Red clear through. Buyers delight.
- (9) Best for preserving. Retains shape and color.
- (10) Easy to grow. Withstands drought, excess moisture, does well under all conditions.
- (11) Bi-sexual. Does not require mating.
- (12) Delicious. A fine table berry. Makes customers come back again and again—profit for you.

Page 17



Page 16

R. M. KELLOGG CO.
Three Rivers, Mich.



Senator Dunlap

(Bi-sexual). Strong hardy grower, heavy yielder, solid, dark red berries. Best for canning. Fruits in midseason. Prices at left.

Clermont

(Bi-sexual). Early—drought resister—vigorous grower. Berries large, well-shaped, fine flavored. Holds size well—a fine commercial variety. Prices at left.

Blakemore

(Bi-sexual). Early! Big, hardy, strong grower; big crops of large solid sparkling berries. Red clear through. A real prize for the home garden; a big money-maker. Prices in panel at left. **IM-PROVED STRAIN.**

PRICES

(all varieties on this page)

25	—	\$.35
50	—	.55
100	—	.75
300	—	1.55
500	—	2.35
1,000	—	3.95
5,000	—	3.65 M
10,000	—	3.25 M

Catskill
The
**MAMMOTH
NEW
MID-SEASON
VARIETY**

Catskill

(Bi-sexual). Berries large, brilliant red with bright green cap. Plants vigorous. Exceedingly heavy fruiter. Prices at left of page.

JUST imagine the profit in blackberries 1½ inches long and 1 inch in diameter—beautiful glossy blackberries—and lots of them! Almost free from seeds and core and when eaten make customers come back for more, the best blackberries for eating fresh. Fine for pies and jam. **HARDY.**

Alfred Blackberry

1 Year plants
furnished.
Prices below
picture.

Eldorado Blackberry

PRICES	
1-Yr. Plants	
12 plants	\$.55
25 plants	.87
50 plants	1.55
100 plants	2.75
300 plants	7.35
500 plants	11.00
1000 plants	19.95

Eldorado

Everyone knows the big, strong, hardy Eldorado. Heavy producer. Big black delicious berries in large beautiful clusters. Seldom injured by frost.

PRICES LOGAN
One-Year plants

12 for.....	\$.61
25 for.....	.92
50 for.....	1.55
100 for.....	2.45
500 for.....	9.50

Logan

Black Raspberries
Earliest of all Blacks

LOGAN

Time is money to the fruit grower—and the grower who has the earliest fruits will make the most profits. Logan black Raspberries ripen a week ahead of the famous Cumberland. Berries are very firm and solid—no crumbling and seeding—large and glossy purplish black in color. Flavor rich and somewhat spicy and wild. Sturdy grower, heavy yielder. Easily grown.

SPECIAL!
25 Logan
25 Cumberland
\$1.57

Every good grower knows Cumberland as the best mid-season black. Hardy, fruitful, strong, tall grower. Large delicious berries. Easily grown.

PRICES CUMBERLAND

12 plants	\$.67
25 plants	1.00
50 plants	1.70
100 plants	2.70
500 plants	10.50

The Best for Midseason
Cumberland Black Raspberries

CUMBERLAND

ST. REGIS Everbearing Red

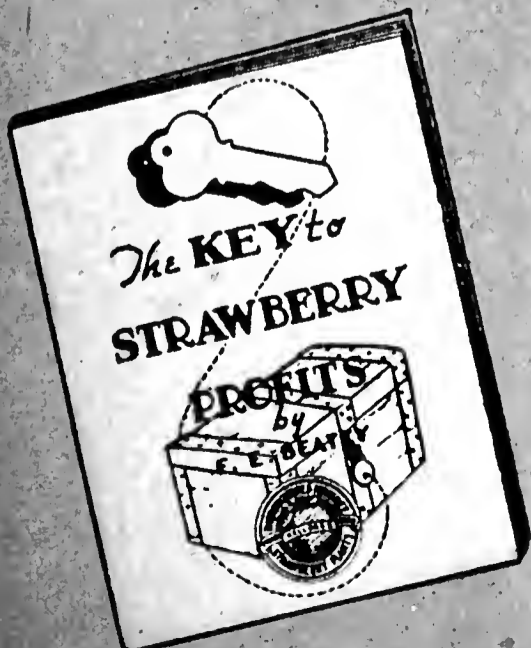


The Best Everbearing Red

Growers who are using the St. Regis Everbearing Red Raspberry are making extra profits and if you are not already growing St. Regis, you should join this group of money-makers at once. St. Regis bears fall as well as summer. It makes a good strong growth and is a heavy producer. Hardy in all soils and climates. Berries are medium large, bright red and very delicious. Wonderful for home gardens and a real novelty on the market.

PRICES

12 plants	\$0.55
25 plants	.87
50 plants	1.55
100 plants	2.75
300 plants	7.35
500 plants	11.00
1000 plants	19.95



FREE! WITH YOUR ORDER
IF YOU ASK FOR IT

This book tells you just how to grow strawberries and other small fruits for best success—biggest profit! Very plainly written and illustrated. This book is yours for the asking if you send us an order from this catalog. It will not be sent unless you ask for it so if you want the "Key to Strawberry Profits" be sure to specify that you do on your order.

R. M. KELLOGG COMPANY, Three Rivers, Michigan

Here are the Best

CHIEF

The Earliest of All Red Raspberries

Charming flavor, delicious and appetizing.

Hardy and healthy, heavy yielder of fine fruit.

Inexpensive to grow. Thrives anywhere under ordinary conditions.

Earliest of all Red Raspberries. Early berries bring big profits. Firm. Fine Shape. Fulfills all promises.

PRICES

12 plants	\$.55
25 plants	.87
50 plants	1.55
100 plants	2.75
300 plants	7.35
500 plants	11.00
1000 plants	19.95

BERRIES are deep red and large, $\frac{3}{4}$ inch in diameter. Excellent shippers. Free from crumbling. Take all the good points you can wish for in a Red Raspberry and they spell **CHIEF**. If you have never tried Chief, order now.

LATHAM

The Latest of All Red Raspberries

Just imagine the demand for these fine large berries, nearly one inch across. Beautifully colored too, deep red, not crumbly, and have a deliciously rich flavor. Latham is fine for table use or market and bears very heavily. Plants are hardy nearly everywhere. Latham fruits over a long period of years.

LATHAM PRICES

12 plants	\$.55
25 plants	.87
50 plants	1.55
100 plants	2.75

1 yr.

300 plants	\$ 7.35
500 plants	11.00
1000 plants	19.95

Page 22

New

The three varieties of Red Raspberries shown on page 23 are the newest and latest improvement. Note the low prices. Read the descriptions and try these new originations. You may find them your biggest money-makers.

R.M.KELLOGG CO.
THREE RIVERS, MICH

Red Raspberries



Taylor Red Raspberry

This new red raspberry is rapidly becoming the leading money-maker. Color, bright attractive medium red, shape conical. Flesh thick, cavities small. Berries firm, free from crumbling.

Plants tall, vigorous and productive. Canes sturdy, hold the fruit well off the ground. Hardy—stands severe temperatures.

PRICES: 6 for 50c; 12 for 75c; 25 for \$1.25; 50 for \$2.00; 100 for \$3.50.

Sodus Purple Raspberry

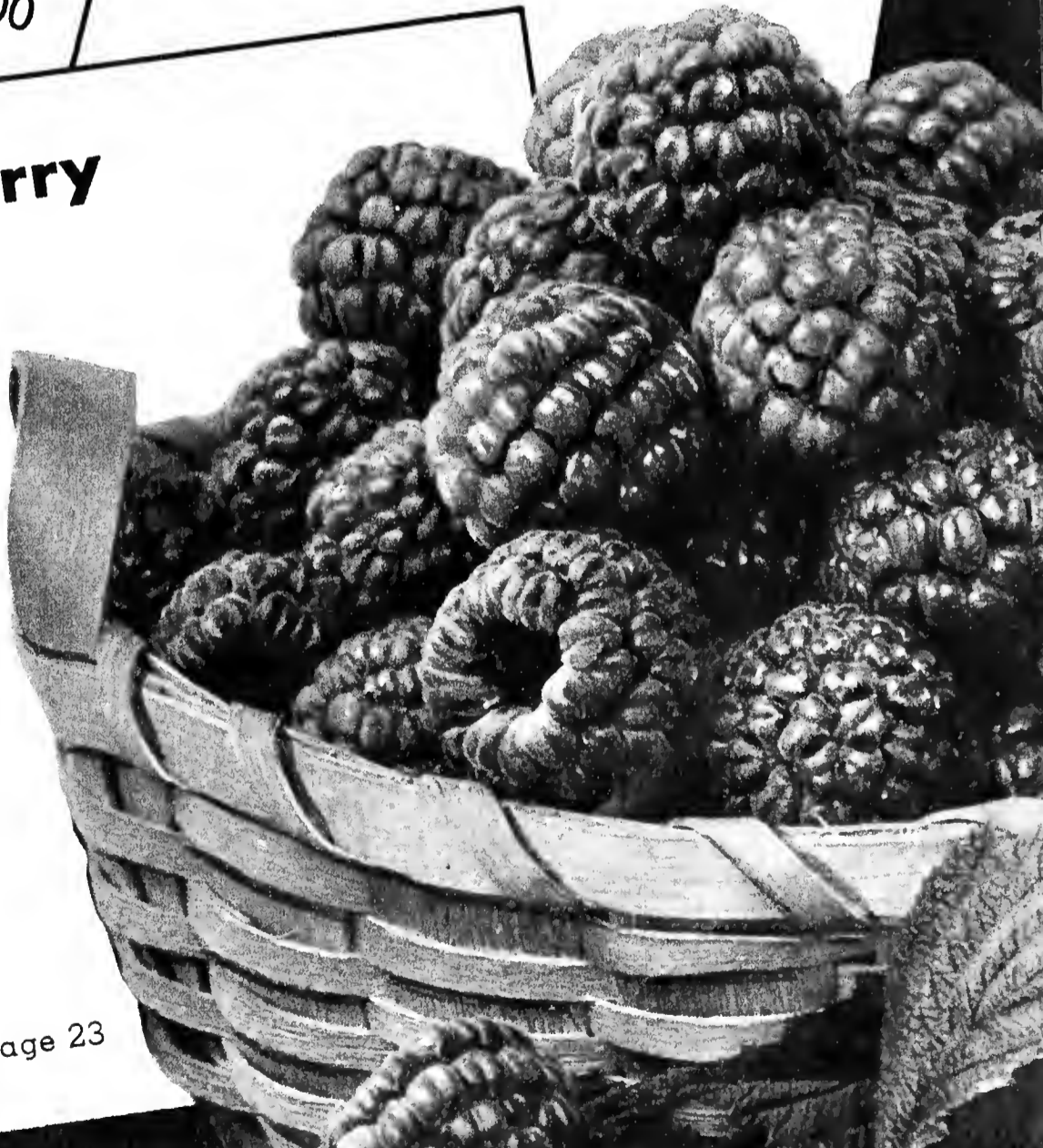
Sodus is a really worthwhile purple variety. The berries are large, firm and attractive. Much superior to other purples. Do not crumble. Plants are vigorous, hardy and productive, and not easily subject to disease. Flavor very unique and appetizing. **PRICES:** 6 for 50c; 12 for 75c; 25 for \$1.25; 50 for \$2.00; 100 for \$3.50.

Indian Summer Raspberry

This variety not only gives a summer crop but an autumn crop as well. Fine, large, delicious, medium red berries beginning early in September and continuing until stopped by frosts. Wouldn't you love to have Raspberries in the fall? This variety is bound to be a good money-maker because of the big demand for the fall berries.

Very hardy plants about medium height and vigorous. We certainly recommend that you try Indian Summer.

Prices	1 Yr.
6 for	\$ 1.60
12 for	2.85
25 for	4.95
50 for	8.95
100 for	15.00



ANOKA APPLE



**FULL CROP
IN 2 YEARS**
After Planting

Bears quickly—one year after planting—the earliest and heaviest bearing apple in the world—8 crops of apples and only 10 years old—hardy in all climates—highest quality, delicious fruit.

In one year you receive enough apples for eating and in two years you receive a fine large, full-sized crop. Where else can you find an apple that will duplicate this performance?

EARLY! Anoka bears fruit in July and August. It is the earliest fruiting apple known.

HARDY! Anoka will survive the winter in all climates. It was originated in the Dakotas.

EIGHT BIG CROPS of Apples in only ten years is the wonderful record made by Anoka. Fruit better than Duchess. Fine in flavor. Good size, well formed, beautifully colored.

Anoka Prices

All trees 7/16" caliper and up; well branched; heavily rooted and healthy.

1 for \$.65

2 for 1.00

4 for 1.85

2-yr. trees

Kellogg's

Have the Best



First class rigidly inspected trees, true to name and especially selected for hardiness and productiveness. Plant 32 to 40 feet apart.

DARK RED NORTHERN SPY. Genuine Northern Spy of vivid red. Extra good keeper and shipper.

WEALTHY. August and September. Fruit medium size, pale yellow color, some red stripes. Fine quality.

BALDWIN. Large, bright red, faint specks. Juicy and acid. December.

McINTOSH RED. Large crimson fruit, slightly acid. Extra good keeper and shipper. October.

**A NEW
EARLY
APPLE!**

Beacon will make money for you because of its earliness. Everyone loves apples and the earlier they can get them, the more they will pay.

New Beacon apple ripens with Duchess or just a few days later and will keep for a month even without cold storage. Beautiful dark red color; takes a wonderful shine. Excellent for cooking. Really a fine all around apple.

The tree is vigorous, productive, and hardy.

These points make Beacon the outstanding early apple. Beacon apples have been known to bring \$2.00 per bushel on the market when Duchess were bringing only 75c. The difference is worthwhile.

Prices: Beacon Apple, 2 year trees, 7/16 inch caliper and up, 1 for 75c; 3 for \$1.75; 6 for \$3.25; 12 for \$6.25; 25 for \$12.50.

BIGGER PROFITS WITH

**Beacon
New!
APPLE**



Quality Apple Trees

**ALL
2 YEARS
OLD**

DARK RED JONATHAN. Prolific. Bears while real young. November.

WINESAP. Heavy bearer, rich, juicy fruit. Red. Aromatic. November and December.

YELLOW TRANSPARENT. Very early. Large, yellow. Flesh white. July.

HYSLOP CRAB. Large fruit. All-over red. August.

DARK RED DELICIOUS. Deep, deep, rich red, juicy and good. Plant dark Red Delicious and reap extra profit. Sturdy.

Prices
2-yr. trees, 7/16
to
9/16" caliper.
1 for \$.45
3 for 1.15
10 for 3.00
25 for 6.95
50 for 12.50
100 for 22.50



Kellogg's PEACH TREES



EARLY CRAWFORD. Magnificent large, yellow freestone. Delicious. Fine canner. Early September.

ELBERTA. Large, oval-shaped, yellow freestone. Red cheek. Prolific, hardy. Mid-September.

HALE-HAVEN. Often bears second year. Exceedingly resistant to frost. Two weeks earlier than Elberta. Flesh, thick, wholesome, delicious—freestone.

J. H. HALE. Flesh yellow and sweet. Good canner and shipper. Largest commercial freestone. Early September.

SOUTH HAVEN. Fine flavor. Flesh yellow, sweet. Showy exterior—early. Freestone. September 1st.

CHAMPION. Best early white-fleshed freestone. Rich and juicy. Highly colored cheek. August.

New Peach Fertile Hale

Plant Patent No. 175. Large beautiful freestone, destined to be the leading money-maker. Flesh yellow, firm, well-flavored. Trees vigorous and productive. An outstanding achievement in peach breeding. A little later than Elberta. Every orchardist should try a few. **PRICES:** Fertile Hale Peach trees, 7/16" caliper, 1 for 50c; 10 for \$3.95, 100 for \$25.00.

Peach Tree PRICES

(Except Fertile Hale)
All Peach trees above,
1-year 7/16" caliper.

1 for \$.45
3 for .85
10 for 1.90
25 for 4.25
50 for 8.00
100 for 15.50

SWEET CHERRIES



PRICES

7/16" Caliper Trees

1 for \$.85	25 for \$12.30
3 for 1.99	50 for 24.00
10 for 5.25	100 for 47.50

BLACK TARTARIAN. These are the large, rich, black Cherries that everyone loves so well. Sweet and delectable. They are very popular and a quick money-maker for all growers. June.

ROYAL ANNE. Many prefer these pale yellow delicious beauties with their pretty red cheeks. The flesh is firm and tree is productive. July.

SCHMIDT'S BIGAR-REAU. Prized for its immense size. Fruit is deep rich black and flesh is dark inside. Extra fine flavor. Tree stocky. July.

WINDSOR. Valued for its lateness. Brings high prices. Fruit large and dark red. Tree a vigorous grower. An extra profitable market variety. Late July.

SWEET CHERRY PRICES ABOVE

SOUR CHERRIES

MONTMORENCY. The large, red fruit is in big demand for canning and table use. A sure bearer under any ordinary conditions. Late June.

EARLY RICHMOND. The "English Pie Cherry." Fruit medium size, red and juicy. Tree is strong grower and bears young. June.

PRICES: 7/16" caliper trees

1 for \$.75	25 for \$10.95
3 for 1.69	50 for 20.00
10 for 4.85	100 for 35.00



Kellogg's PEARS

FOR THOSE WHO WANT THE BEST

Don't overlook Pears as money-makers; or as a source of delicious, healthful, fruit. May be planted in almost any location. Plant 20 ft. apart.

We offer the four most valuable varieties, plus the brand new **SEEDLESS AND CORELESS PEAR**.

BARTLETT. Large, juicy, rich flavored. Fine to eat out of hand, universally recognized as best canning Pear. Tree strong grower and prolific bearer. Bears in September. Prices below.

CLAPP'S FAVORITE.

Very large and

New SEEDLESS PEAR

COPE'S NEW SEEDLESS PEAR. No seeds—no core—no blight. Flavor, size, shape and beautiful yellow color like Bartlett. Starts producing in three years and usually gives full crop in five years. Ripe ten days after Bartlett when good pears are scarce, hence good prices. **PRICES:** 2½ to 3 ft. well branched trees, 1 for \$1.00, 5 for \$4.50; 25 for \$17.50.

Special!

One each of Bartlett, Clapp's Favorite, Kieffer and Seckel, four in all, total value \$2.80, yours for only—

\$2.25

Prices at right apply to all pears, excepting Cope's, Seedless.



handsome Pear. Yellow with red cheek. The best of the large early Pears. Fair canner if picked before too ripe. Bears August. Prices below.

KIEFFER. Large yellow Pear noted for its keeping quality. Tree very fast grower and bears young. Bears Oct.-Nov. Prices below.

SECKEL. Small fruit, light russet, with red cheek. Very sweet and fine grained. Used extensively for pickling. Bears October. Prices below.

PRICES

7/16" Caliper	
1 for	\$.70
3 for	1.69
10 for	4.20
25 for	9.80
50 for	19.00
100 for	37.50





New! SUPERIOR PLUM

You will make most money with fruit trees if you progress and continually look for new and better varieties. Don't overlook this new Superior Plum. Note these points of superiority.

VERY LARGE FRUIT See the picture of Superior Plum at the left. The fruit is unusually large and don't forget size does influence your customers.

FIRM FLESH A good firm Plum stands up better on the market, stands handling better and is more satisfying to the palate. A firm fleshed Plum makes the best display on the market. Sells most rapidly.

BEAUTIFUL RED Everyone likes red. It is the most attractive color. They will buy red Plums. Flesh a rich yellow.

DELICIOUS This is, of course, one of the most important points. After all, people eat Plums for their deliciousness and when they are delicious they will buy more and more.

PEELS LIKE A PEACH This is important, too. Many people do not like the skins of Plums and will buy the varieties that can be peeled easily.

HARDY Superior Plum was originated in Minnesota where a tree has to be hardy to survive. Superior Plum will survive in all climates. It is easy to grow, strong, and healthy.

We urge you to try Superior Plum. **PRICES:** 7/16" to 9/16" caliper, 1 for 85c; 3 for \$2.25; 10 for \$5.00; 25 for \$11.75.

Page 29

OTHER GOOD PLUMS

BURBANK. (Japanese.) Tree grows rather flat, which makes picking easy. Very hardy and bears at an early age. Fruit large, red. Late August.

FELLENBERG. (Italian.) Good sized purple plum. A good canner and an ideal fruit for drying. September.

GREEN GAGE. Always a real favorite, either for canning or table use. Its high sugar content makes it one of the most economical sorts. September.

LOMBARD. Medium size. Fruit red. Very productive. This is a leading market variety and is grown extensively wherever plums are known. Late August.

PLUM PRICES

except Superior
7/16" to 9/16"
caliper

1 for \$.70
3 for	1.65
10 for	4.20
25 for	9.75
50 for	19.00
100 for	37.50

MOORPARK APRICOT

HARDY. Intermediate between peach and plum, delicious, easy to grow. To prevent buds from freezing, give northern exposure, which makes them bloom late, otherwise same care as plums. Hardy. **PRICES:** 7/16" caliper; 1 for 65c; 2 for \$1.15; 3 for \$1.59; 6 for \$2.60.

Now! GROW PECANS IN THE NORTH

(Seedlings). Mature in the north. Large nut, thin shell. Kernels free and plump. **PRICES:** 3 to 4 ft., 1 for \$1.00; 2 for \$1.85. 5 to 7 ft., 1 for \$1.60; 3 for \$3.84; 10 for \$9.75.

2 for \$1.85
1 for \$1.00

You can grow nuts like this.

McAllister Hican

Cross of Pecan and Hickory. Exceptionally large nuts, crack easily, good flavored kernels with hickory flavor. **PRICES:** Hardy grafted stock, 3 to 4 ft., 1 for \$4.50; 2 for \$8.50.

Ohio Walnut

Fast grower. Often have nuts in 1 year. Nuts large, shell thin. Kernels white, plump and free. **PRICES:** 3 to 4 ft. grafts, 1 yr. \$3.00 each; 2 for \$5.50.



Orange Quince

Every home owner should have a quince tree for jellies, preserves, quince honey and other uses. Also fine profit maker. Easy to grow. Hardy. **PRICES:** 7/16" caliper or larger, 1 for 75c; 2 for \$1.28; 3 for \$1.75; 6 for \$3.00.

How To Order

Use order blank if you have one. If not tabulate on any blank paper. The order blank gives spaces for shipping time. Or, we will ship at planting time.

EXPRESS OFFICE. If none in your town write the name of the nearest express office town.

ORDER EARLY and have plants reserved. Early orders have preference at shipping time.

FULL PAYMENT should accompany orders of \$5.00 or less. With larger orders you may send one-third with order, balance March 10th. No C. O. D.

SEND MONEY by postal, express or bank money order. Unregistered currency sent at your own risk. Add five cents for exchange on personal checks.

SHIPMENT, small orders, parcel post. Large orders usually by express.

YOU ARE TO PAY SHIPPING CHARGES to the express company upon delivery; on parcel post shipments you remit postage to us after shipment is completed.

IF YOU SPECIFY METHOD OF SHIPMENT we will try to follow your instructions but there is a size and weight limit to parcel post shipments, so most trees and large items go express.

CANCELLATIONS or changes not permissible during shipping season. Plants not returnable for credit.

REFILLS. Refills per guaranty below will be made during the current shipping season if reports are received in time. Otherwise they will be made during the following season.

ALL PRICES in this book expire June 30, 1940.

Guarantee

We guarantee stock to be just as represented or orders refilled free; we warrant all stock to be carefully packed and shipped in good growing condition, and if this stock is properly and carefully planted, and cared for, it will grow and give satisfactory results.

We cannot guarantee continuous growth since this depends upon the care you give the plants and also upon your local conditions. However, where failure of plants to grow is due to arrival in poor condition we will replace the unsatisfactory plants without charge, providing reports are received prior to June 30th.

After June 30th and prior to October 1st of the current year, plants will be replaced at half price. No refills after October 1st.

It is mutually agreed that in any event we will not be liable for more than the purchase price of the stock.

**R. M. KELLOGG COMPANY
THREE RIVERS, MICHIGAN**

Washington Asparagus

Giant rust-proof—big crops—tender, juicy, plump stalks in one year.



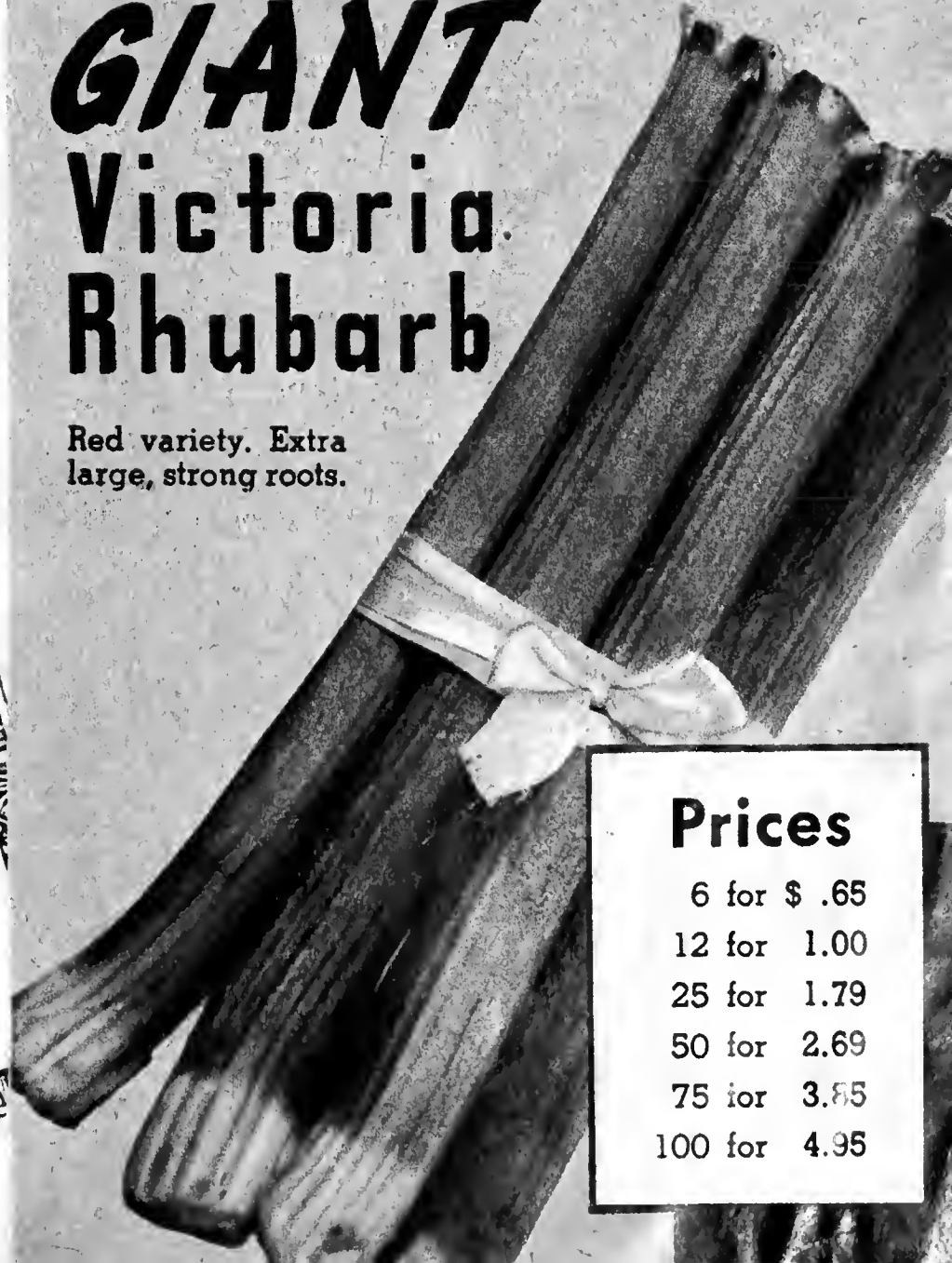
PRICES

	1 yr.	2 yr.
12	\$.35	\$.55
25	.45	.70
50	.65	1.05
100	1.15	1.75
200	1.95	2.85
500	3.50	5.25
1000	5.75	8.50

Washington rust-proof Asparagus will give you a big crop every year for 20 years. Requires very little work and attention. Asparagus is a real money-maker and starts you out with profits very early in the spring when money is welcome.

GIANT Victoria Rhubarb

Red variety. Extra large, strong roots.



Prices

6 for	\$.65
12 for	1.00
25 for	1.79
50 for	2.69
75 for	3.85
100 for	4.95

Kellogg's

MONEY MAKER Quarter Acre

The four best money making varieties for those who really want to get into the strawberry business. Produces berries that sell quickly at good prices.

500 Premier	\$ 3.20
500 Dorsett	2.90
500 Blakemore	2.35
500 Big Late	2.90
Total Value	<u>\$11.35</u>

Special Price ^{\$}8.50 ONLY

**YOU
SAVE
\$2.85**

Ask for "The Key to Strawberry Profits" with your order. See page 21.

