

Historic, Archive Document

Do not assume content reflects current scientific knowledge, policies, or practices.

62.61

-Ind.

1880 •

60TH ANNIVERSARY

• 1940

BOOK OF BARGAINS



KELLYS'
Certified
 True-to-Name Fruit Trees

Kelly Bros. Nurseries • Dansville, N. Y.



William F. Kelly
President

Our SIXTY YEARS of competent service to the fruit growers of America proves you can buy from KELLY'S with confidence.



John W. Kelly
Secretary and Treasurer

STRICTLY TRUE TO NAME

KELLY BROTHERS Nurseries
GROWERS OF GOOD TREES
ROSES • SHRUBS • EVERGREENS
FRUIT TREES OF HIGHEST QUALITY
Danville, N.Y.

WILLIAM F. KELLY
JAMES A. KELLY, EST.

Dear Friends:

On this our Sixtieth Anniversary we wish to thank you, as one of our many good customers, for the valued orders you have sent us.

By recommending us to your friends and neighbors you have made it possible for us to grow, from a very modest beginning in 1880, to our present huge proportions. In appreciation of your patronage, we are offering you this year even greater bargains than usual. Furthermore, we assure you of the same careful painstaking service as has been given you in the past.

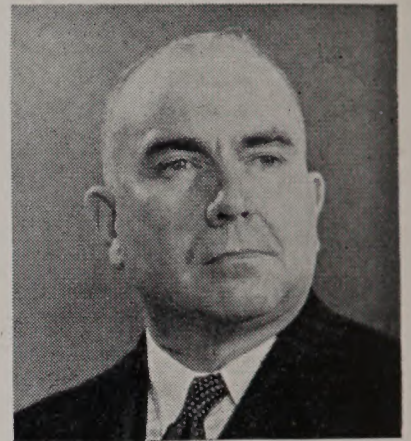
If you have not been so fortunate as to have planted Kelly's trees before, and would like to have first hand, unbiased information, write us and we will send you the names of Kelly's customers in your vicinity. Visit these orchards and you will be convinced yourself of the quality and productiveness of Kelly's trees.

In anticipation of our Sixtieth Anniversary Year, we have grown for you an abundance of the finest trees and bushes in America. We are celebrating our sixty years in business by a big reduction in prices, especially on the two leading commercial fruits, Apples and Peaches. We challenge a comparison both in quality and price. Nowhere can such splendid trees be purchased at such bargain prices. Take advantage of this real opportunity by purchasing at once. At these low prices our supply of trees will not last long.

We hope to be favored with your valued order, and await the opportunity to serve you.

Yours very truly,
KELLY BROTHERS NURSERIES.
William F. Kelly

WFK:HD



James B. Carmody
Vice-President

You have our guarantee that every tree sold by us must produce fruit that is **TRUE-TO-NAME**

Buy trees that come direct from grower to you!

A Block of 100,000 1-year Apple Trees



10%

CASH DISCOUNT If You Order Early!

On all orders received by us on or before February 25, 1940, we will allow a special 10% discount. Save money . . . and help us avoid a big rush at shipping season. It's YOUR advantage to take the discount!

NOTE: This offer applies only to orders of \$3.00 or more, and when cash accompanies the order

Important Information

ORDER EARLY—As soon as this Catalog reaches you send in your complete order with definite shipping instructions. We will then set the trees aside for you awaiting the desired shipping time. If you prefer you can leave the time of shipment to us and we will ship so as to reach you at the best time for planting in your locality.

USE ORDER SHEET—Please make your order out on order sheet enclosed. To avoid mistakes and delay write letters on a separate sheet of paper.

SEND CASH WITH ORDER—It is our cash with order—direct from nursery to planter—method of doing business that enables us to sell trees of the highest quality at such extremely low prices. Remittances should be made by post office or express money order, bank draft or registered letter. To large buyers, when satisfactory reference is given, we will ship C.O.D. provided one-fourth the amount of order is sent in cash when order is placed.

BOXING AND PACKING FREE—We make no charge for boxing or packing. Prices are f. o. b. cars at Dansville.

QUANTITY RATES—Take advantage of our lower rates for quantity purchases. For less than ten trees of any variety remit at **each** rates. A purchase of ten to fifty trees (assorted if you wish) entitles you to the ten rates, and an order for fifty trees or more entitles you to the low hundred rates.

WE STRIVE TO AVOID MISTAKES

But in the event that any nursery stock sold by us should prove untrue to name under which it is sold, we hereby agree, on proper proof of such untruthfulness to name, to replace the original order or to refund the purchase price.

SATISFACTION GUARANTEED—We guarantee every tree or bush to be up to grade specified or better. We also guarantee arrival to customer in first class condition. If through delay or mishandling in transit, trees or bushes are not in first class condition on arrival, notify us immediately, and we will make prompt, satisfactory adjustment. Our trees are not sold by height only. We grade and sell our trees both by height and caliper as we believe this is the only way of giving entire satisfaction to the planter.

DELIVERY SERVICE

Our liberal offer of **FREE DELIVERY** by one of our fleet of trucks . . . where the size of the order justifies the expense . . . has met with wide response among our customers. This year we repeat our offer to deliver large orders **FREE** by truck direct to your farm. Write us for complete details.

There is no delay in transportation and the stock reaches you within 24 hours after it is dug or taken from our modern cold storage.

OUR REFERENCES

As to our responsibility and reliability, we refer you to the Merchants and Farmers National Bank, Dansville, N. Y.; Groveland State Bank, Groveland, N. Y.; . . . to any person whose letter appears in this catalog, or to your State Experimental Station or College.

PLANTING SEASON—Trees can be planted any time during their dormant period. We ship all Winter to Southern states, but our regular Spring shipping season opens about the first of March and continues well into June. Fall planting season begins about October 15th and extends until ground freezes solid.

INDEX

	Page		Page		Page
Apples, Standard	4-10	Currants	31	Pears, Dwarf	11
Apples, Dwarf	11	Evergreens	27	Plum and Prune	19
Apricots	15	Flowering Shrubs	23-24	Quince	15
Asparagus	22	Gooseberries	22	Raspberries	20
Blackberries	20	Grapes	21	Rhubarb	22
Blueberries	31	Hedge Plants	26	Roses	28-30
Boysenberries	22	Nut Trees	31	Shade Trees	25
Cherries	16-17	Peaches	12-14	Strawberries	31
Crab Apples	10	Pears, Standard	18	Vines	26

KELLY'S CERTIFIED APPLE TREES

Delicious



. . . carry Official Certification Tags, insuring that each tree will bear True-to-Name fruit!

In addition to inspecting for trueness to name all of Kelly Brothers Apple Trees, Professor J. K. Shaw has attached to thousands of trees of each of the leading commercial varieties the Official Certification Tag of the Massachusetts Fruit Growers' Association. This tag bears on its face the name of the variety of fruit the tree is certified to bear, and on the reverse side, the official stamp of the Massachusetts Fruit Growers' Association.

Owing to the cost of attaching Certification Tags, we are obliged to make a slight additional charge for trees with Certification Tags attached.

PRICES OF CERTIFIED APPLE TREES

			Each	Ten	Hundred
2 Year	5 to 7 ft.	3/4 and up	\$.55	\$4.50	\$30.00
2 Year	4 to 5 ft.	5/8 to 3/4	.45	3.50	25.00
2 Year	3 to 4 ft.	1/2 to 5/8	.35	2.50	20.00
1 Year	3 to 5 ft.	Sturdy Buds	.45	3.50	25.00

Write for Prices on Larger Quantities

We can furnish ONLY the following list of leading Apple varieties with Certification Tags attached:

Baldwin	McIntosh Red
Cortland	Northern Spy
Delicious	Red Spy
Early McIntosh	R. I. Greening

Williamsburg, W. Va.
April 6, 1939

Kelly Brothers Nurseries,
Dansville, N. Y.

Gentlemen:

The shipment of nursery stock which you sent me arrived and has been unpacked, and is now being planted. Present at the opening of the crate was one of our leading fruit men, and he was more than enthusiastic about the fine lot of nursery stock you sent me. This will boost your nursery in this section.

I expect you will receive future orders from this area because of the trees I have purchased.

Very sincerely yours,

DR. C. F. McCLINTIC



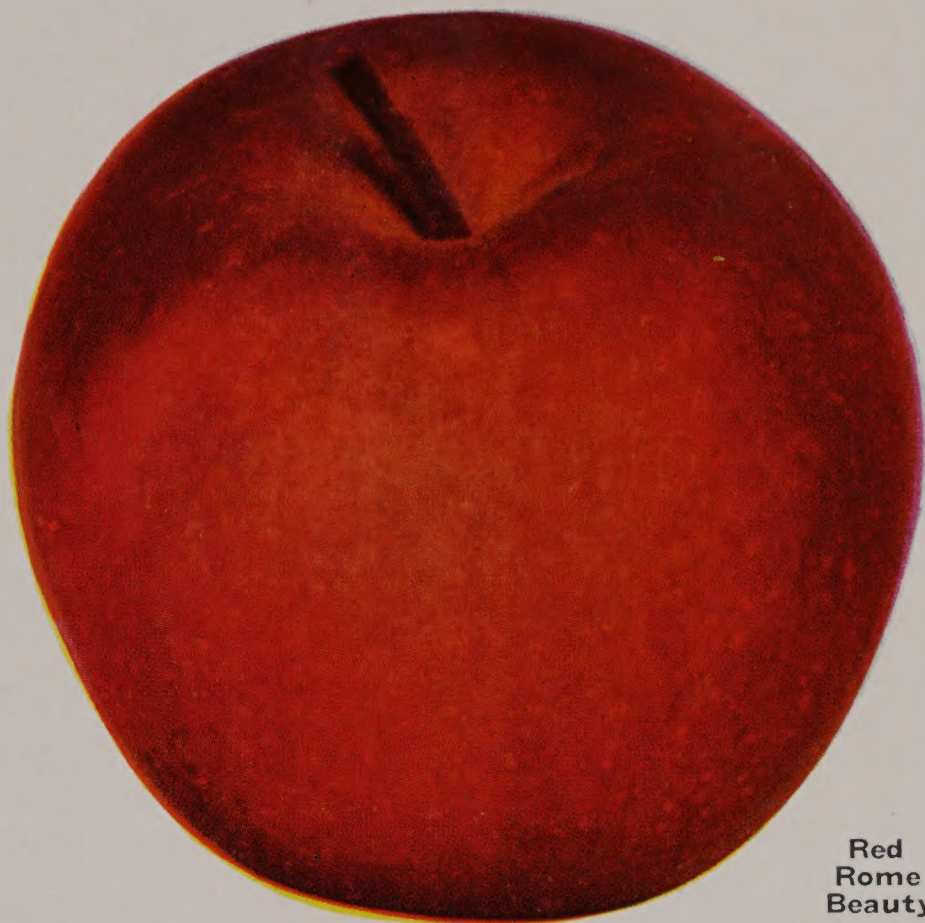
Milton

KELLY'S INSPECTED APPLE TREES

Every tree officially inspected
by recognized authorities
. . . for Trueness-to-Name

This year Professor J. K. Shaw and his assistant of the Massachusetts Agricultural Experiment Station inspected all our Apple trees for trueness to name. You will find below a letter from him verifying this statement.

To you, both our old and new customers, this means that no matter what variety of Apple tree you care to order, you can be sure of having it True-to-Name when it comes into bearing. There is nothing more important than this, when you have spent time and money raising a tree to the time of its producing fruit.



Red
Rome
Beauty

PRICES OF INSPECTED APPLE TREES

			Each	Ten	Hundred
2 Year	5 to 7 ft.	$\frac{3}{4}$ and up	\$.50	\$4.00	\$25.00
2 Year	4 to 5 ft.	$\frac{5}{8}$ to $\frac{3}{4}$.40	3.00	20.00
2 Year	3 to 4 ft.	$\frac{1}{2}$ to $\frac{5}{8}$.30	2.00	15.00
1 Year	3 to 5 ft.	Sturdy Buds	.40	3.00	20.00

Write for Prices on Larger Quantities

STATEMENT OF INSPECTION For TRUENESS-TO-NAME

Amherst, Mass.,
October 9, 1939.

To Whom It May Concern:

This is to state that all the salable apple, cherry, and one year plum stock now growing in the nurseries of Kelly Brothers Nurseries, Dansville, New York, have been examined for trueness to name by A. P. French, O. C. Roberts, and L. Southwick and, as they now stand in the nursery row all trees are, to the best of our knowledge and belief, true to name.

J. K. SHAW,
Research Professor of Pomology

KELLY'S GARDEN FRUIT TREE COLLECTION No. 1

- 1 Montmorency Cherry
- 1 Golden Jubilee Peach
- 1 McIntosh Red Apple
- 1 R. I. Greening Apple
- 1 Fellemburg Plum
- 1 Bartlett Pear

2 YEAR OLD, LARGEST
SIZE TREES

ALL
6 for \$2.²⁵
only

Kelly's TRUE-TO-NAME APPLE TREES

When you buy our Apple Trees you are buying trees that have been grown under most exacting conditions. Starting with a whole root seedling (grown from imported French seed) our trees are propagated the best and most expensive way—by the budding method. Each year we go direct to commercial bearing orchards and cut bud wood from those trees that show the best desired color and bearing qualities. We believe this to be of utmost importance in order that the trees may have a good foundation, be free from all disease, and insure a healthy permanent growth. Whether you have room for only a few trees in your yard or contemplate planting an orchard, you should plant Kelly's Apple Trees. We have discarded all varieties not profitable to the planter, and list below the following recommended varieties that cover a long ripening season.

Summer Varieties

EARLY HARVEST—An old variety still holding popularity because of its large size and early bearing qualities. Fruit is pale yellow and of fine flavor. Tree is a vigorous grower and an annual bearer. August.

GOLDEN SWEET—Large pale yellow fruit with very sweet flavor. August.

LODI—A new fruit that closely resembles one of its parents, Yellow Transparent, but the fruits are larger and ripen a little later. An annual bearer that is becoming a commercial variety. Tends to bear young. August.

MELBA—A new McIntosh seedling from Canada. Fruit is attractive, with bright crimson over pale yellow color. Good size and pleasantly flavored. Season shortly ahead of Early Me-

Intosh, thus adapted for the roadside stand and the home.

RED ASTRACHAN—Tree hardy and good bearer. Fruit very handsome, large, round, nearly covered with deep crimson, overspread with thick bloom; juicy and good, though rather acid; one of the best of the summer varieties for cooking. Ripens in August.

SWEET BOUGH—Large, pale yellow, sweet, tender, and juicy. Tree a compact grower and abundant bearer. One of the best early sweet apples.

YELLOW TRANSPARENT—Tree upright, and a very early and abundant bearer. Fruit of good size; skin clear white turning to a pale yellow; flavor acid and very good. Ripens in August.



Early
McIntosh

EARLY McINTOSH

For home orchard or commercial use this is the ideal early variety to plant. Resembles its McIntosh parent with its handsome red color and uniform round shape. The tree is a vigorous grower, hardy and productive. It is an annual bearer, and early thinning is recommended. Under favorable conditions of growth it comes into bearing at an early age. Besides pleasing the taste, this early apple pleases the eye. The flesh is white, tender, and juicy with fine flavor. Ideal dessert apple. Ripens in August.

. . . grown under the most exacting conditions to insure healthy . . . heavy-bearing . . . disease-free trees

Autumn Varieties

FALL PIPPIN—Very large, yellow, tender, juicy, and rich. A general favorite as a fall cooking apple. Pleasant, aromatic flavor when eaten. Tree is vigorous, hardy and productive.

FAMEUSE (Snow Apple)—Hardy, medium size; deep crimson; flesh is snowy white, tender, melting, and delicious. Tree vigorous with dark wood; one of the finest dessert fruits and valuable for market. Ripens in November.

POUND SWEET (Pumpkin Sweet)—A very large, round, yellow, russet apple, very sweet and rich. Tree a vigorous, rapid, upright grower; valuable. October and November.

RED DUCHESS — Red sport of Duchess. Bears at an early age, good size, juicy, subacid. Very hardy. September.

MILTON

This handsome new apple of the McIntosh type ripens with Wealthy and a month before McIntosh. The tree is hardy, vigorous and an annual bearer. Color is beautiful pinkish red with heavy bloom. Flesh white with flavor more sprightly than McIntosh.

RED GRAVENSTEIN—A new red sport, much more attractive than its parent. Differs from the old Gravenstein only in the solid dark red color of the fruit. Should be planted in place of Gravenstein.

WEALTHY—Beautiful, moderate sized, brilliant red apple, fine quality, one of the best of its season; is relatively a good keeper. Owing to the hardiness of the tree, its adaptability to cold climates and early bearing habits, can be profitably planted as a filler. Season October to January.

WOLF RIVER — Very large, yellow striped with bright crimson. Excellent for cooking and a long keeper. September to December.

Winter Varieties

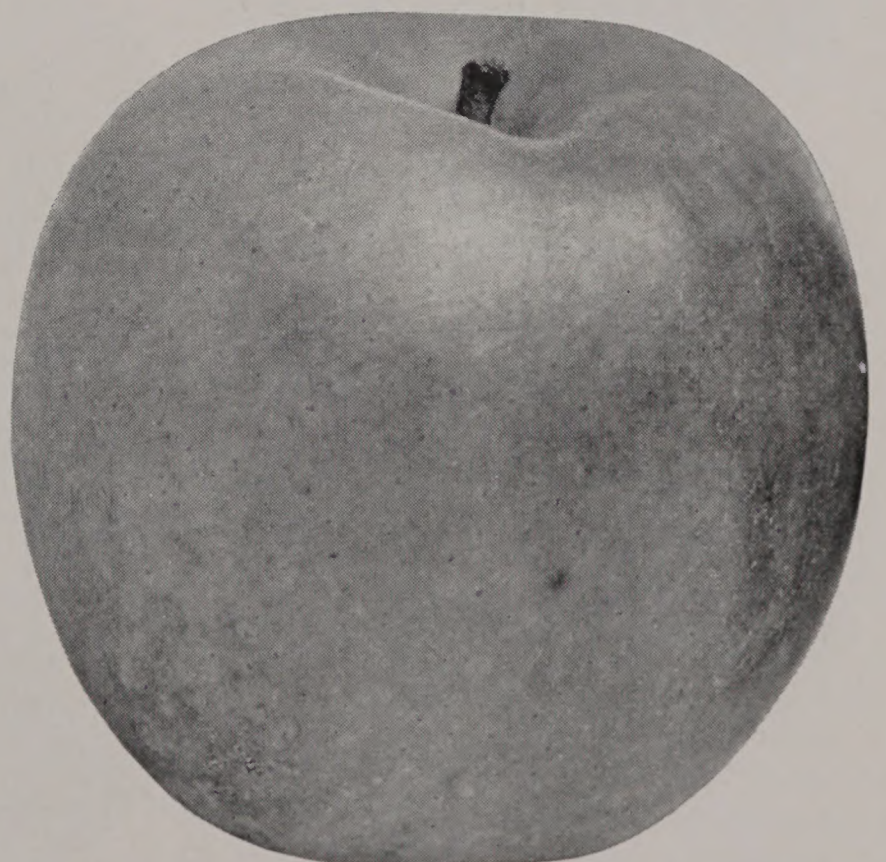
BALDWIN—Long a favorite with commercial orchardists for which no substitute has yet been found. Yields large crops and is an excellent shipper. Highly regarded as an eating and cooking apple, having a flavor all its own. Fruit is large, bright red, crisp, juicy, and rich. Tree vigorous and productive.

DELICIOUS (See illustration Page 4)—A large dark red apple with crisp, fine grained flesh of excellent quality and flavor. A splendid keeper and shipper. Tree one of the hardiest, a vigorous grower with good foliage. A regular annual bearer.

DOUBLE RED DELICIOUS—A very fine colored, solid red strain of Delicious resembling its parent in all characteristics except color.

GALLIA BEAUTY—An introduction from Ohio. This variety is an improved solid red Rome Beauty. Same shape and texture, but seemingly better quality. Truly a beautiful apple that meets with good market demand.

GANO (Black Ben Davis)—Similar but superior to Ben Davis. Large, dark red. Early bearer and good keeper. January to June.



R. I. Greening

Marcy, N. Y., April, 1939.

Kelly Brothers Nurseries,
Dansville, N. Y.

Gentlemen:

I have been buying Kelly's trees for the past forty (40) years. I have found them always true to name and first class trees.

Yours truly,

B. J. SMITH



Yellow Delicious

GOLDEN RUSSET—Attractive, yellow russeted apple. Long keeper. Tree a vigorous grower. November to April.

GRIMES GOLDEN—An apple of fine quality. Fruit medium to large, bright yellow flesh. Juicy and fine flavored. Tree vigorous grower, hardy and productive. Keeps until April.

JONATHAN—A beautiful red apple, highly flavored and of excellent quality, being tender, juicy, spicy, and rich—a splendid family sort and highly profitable for market. Tree long-lived, productive, and an early bearer. November to April.

KELLY'S
Apple Tree
COLLECTION

No. 2

6 Strong 2 Year $\frac{3}{4}$
5 to 7 Feet Trees
(Value \$3.00)

- 1 Early McIntosh
- 1 Baldwin
- 1 Delicious
- 1 McIntosh
- 1 R. I. Greening
- 1 Northern Spy

Special Price \$2.00

KENDALL—A new McIntosh seedling introduced and recommended by the New York State Experimental Station. Handsomely colored solid dark red. Fruit large with fine grained whitish flesh. Excellent quality and flavor. Ripens about the same time as McIntosh. Productive and a good keeper. October.

KING (Tompkins County)—One of the largest red winter apples. Large size and attractive color makes it desirable for home use. November to March.

LOBO—A McIntosh type of Canadian origin. Precedes its parent in season. Larger and darker red with more conspicuous dots. It is primarily adapted for southern growers.

CORTLAND

A comparatively new apple of the McIntosh type that combines the high quality and flavor of the McIntosh, the ability to stand handling of the Baldwin and ability to hang to the tree of the Ben Davis. In color it is bright red, splashed, and striped with carmine, and overlaid with a deep purplish bloom. Flesh is firm but juicy. Should be planted extensively. An excellent variety to plant with McIntosh as a cross pollinator. The best apple introduction of the twentieth century. November to February.



Cortland

McINTOSH RED

McINTOSH RED (Solid Red Strain)—Without doubt the leading commercial variety of New York and the New England States. A very attractive red apple of the highest quality. Hardy, bears young and annually. Flesh white, fine, very tender, juicy, and refreshing with attractive flavor. It is especially desirable for fancy trade.

MACOUN—A late McIntosh type apple ripening about ten days later than McIntosh. Dark red with whitish close grained flesh. Fine quality. A heavy and regular bearer. Introduced and recommended by the New York State Experimental Station. November.

MEDINA—An improved Delicious, ripening later and prolonging the season of that variety. Larger and more attractive than Delicious.

NORTHERN SPY—A leading commercial variety. Fruit is large and very attractive, being of bright red color with a delicious bloom. Flesh is juicy, crisp, and excellent for dessert or culinary uses. Its fine reputation brings high prices in the market and the fruit is always in demand. Fruit keeps well in storage until April or later.

ORLEANS—Another apple of the Delicious type. Ripening about the same time as Delicious, but a longer keeper, more attractive and larger fruit. Bears early, annually, and heavily, and is resistant to scab.

RAMBO—Red and yellow. Hardy and productive. October to December.

RED SPY—A new red sport identical with Northern Spy except that the fruit is a solid bright red without either stripe or splashes. Much handsomer than its parent. An excellent commercial sort. Tree is hardy and productive.

NORTHWESTERN GREENING—Tree a splendid vigorous grower, quite hardy. Fruit large green, becoming yellowish green when ripe. Sub-acid flavor. October to March.

OLD WINESAP—Medium size dark red apple of good quality. Bears early, abundantly, and regularly. December.

OPALESCENT—Very handsome, large, dark crimson apple. December to March.

ROME BEAUTY—Yellow and red striped apple of excellent quality. Prolific annual bearer. Early bearer and good keeper. Profitable commercial sort for New York, Ohio, Pa., and W. Va. December to May.

RED ROME—Another new red sport of Rome Beauty, and like Gallia Beauty is identical with its parent in all characteristics except fruit is a solid red color.

ROXBURY RUSSET—Yellow, russeted apple of excellent quality. December to June.

YELLOW DELICIOUS—A bright golden yellow apple of excellent quality. Firm, crisp, and very juicy. Splendid keeper. October to April.

SMOKEHOUSE—Yellow, mottled with dark red. A fine flavored dessert apple. October to March.

SPITZENBURG—High flavored, dark red. November to April.

STARK—Large, red and yellow striped. Hardy. A reliable cropper and very productive. January to May.



McIntosh Red

RHODE ISLAND GREENING

This large and superior winter apple is famous over a large extent of country, and is more highly prized for cooking and eating than any other variety. It is a good keeper, but will keep better if picked early. This Greening is a beautiful yellow color when ripe, and an abundant yielder. March to April.



Red Spy

WINTER APPLES — continued

STAYMAN'S WINESAP—Yellow striped with red. Excellent quality. Productive and an early bearer. Splendid late keeper. December to March.

SWEET McINTOSH—Resembles McIntosh in appearance, flavor and aroma. Good for baking and eating out of hand.

SWEET DELICIOUS—One of the best winter sweets. Large and attractive in size, color, and shape. Recommended for a dessert and baking variety. November to January.

TOLMAN SWEET—Yellow tinged with red. Very sweet. Hardy and productive. November to April.

TWENTY OUNCE (Collamer)—Very large, yellow striped, red, fine quality apple; good keeper. Tree vigorous grower, productive. October to January.

WAGENER—A bright light red apple of excellent quality. Very productive. October to January.

WINTER BANANA—Beautiful pale yellow apple with bright pinkish blush. Excellent quality. Prolific and an early bearer. November to March.

YORK IMPERIAL—Yellow striped with light red. Quality very good. Bears regularly and heavily. December to February.

CRAB APPLES

Besides producing much sought after fruit, the Crab Apple Tree is excellent for ornamental purposes. It will grow on a wide range of soils and will bear every year. The Crab Apple is a prime favorite with the housewife for jellies and preserves. We offer the following varieties at the same price as standard apples.

DOLGO CRAB—A handsome hardy red crab apple. Vigorous and productive. Very juicy, jellies easily, and makes a rich, ruby red jelly of beautiful color and excellent flavor. Makes exceptionally good cider. Early September.

HYSLOP—Popular because of its large size.

Beautiful deep crimson color. Tree is hardy and a reliable cropper, fruiting in September.

RED SIBERIAN—An attractive large size, all red crab apple. This variety ideal for jelly.

TRANSCENDENT—Bright yellow with bright red check. Productive. August and September.

Helpful Suggestions to Planters Setting Out Young Trees

Care of Trees on Arrival

In planting nursery stock, one must remember that he is handling a perishable article, and in order for success the trees and plants must be handled properly on arrival. If for any reason the trees cannot be planted at once, we recommend the following procedure:

Boxed shipments should be kept intact in a cool place where the trees will not dry out. They

can be kept in the box for a week to ten days without harm. Smaller baled shipments should be opened and placed in a cool, damp shelter, such as an ordinary house cellar. The roots should be kept damp and covered with burlap or other such material. Do not unpack trees and heel them in the ground where they are exposed to the drying winds and sun before planting.

POLLINATION OF FRUIT TREES

The value of pollination in the production of a fruit crop is now recognized. Although many varieties are self-fruitful and thus require no pollination from another variety, experiments show they are greatly benefited by cross pollination. Necessarily because of the lack of space available, we are only able to give brief notes on this important topic. For more detailed information, we suggest that you write to your State College or Experimental Station, the address of which we would be pleased to furnish on request. If you do not care to give attention to this detail, just write, stating the number of trees you wish to plant, and we will be pleased to be of service and suggest the best combinations.

APPLES—Varieties such as McIntosh, R. I. Greening, Red Gravenstein, and Northern Spy set little fruit without the assistance of an efficient pollinator. Good varieties to use for pollination are Cortland, Wealthy, Delicious, and Macoun.

PEACHES—With the exception of Mikado and J. H. Hale, all the varieties we offer are self-fruitful.

CHERRIES—Sweet Cherries are self-fruitful, so must be interplanted. Where Napoleon, Bing, and Lambert are to be planted together another variety such as Windsor or Black Tartarian must be added as the first three will not pollinate each other. The Sour varieties are self-fruitful.

PEARS—Most varieties of pears do not set a good crop when planted alone. Pollination is therefore necessary, and the only combination that is incompatible is Bartlett and Seckel.

PLUMS—With the exception of the Prunes, Fellemburg, German, Stanley, etc., which are self-fruitful, plums should be inter-planted to insure a set of fruit—European varieties for pollinating that class and Japanese sorts for those varieties.

Book of Complete Planting Directions Sent Free With Each Order

NEW DWARF FRUIT TREES

Dwarf Fruit Trees Bring Quick Returns Often Bear Year After Planting

FRUIT EASY TO PICK FROM DWARF TREES

On account of the low growing habit of dwarf trees you will find it very easy to pick the fruit. Practically all of the limbs can be reached from the ground. In any event, the most you will need will be a step ladder. Ease in picking is an important item, especially during the busy harvest days.

DWARF TREES BEAR WHEN VERY YOUNG

As the illustration at the right of this page will testify, you will not have to wait long for fruit from dwarf trees. Dwarf trees often bear the year after planting—in fact, it is quite a common occurrence to have fruit on dwarf trees in the nursery row, even before the trees are set out in their permanent locations.

FRUIT ON DWARF TREES LARGER THAN ON STANDARDS

The fruit produced by dwarf trees is the same color and quality as that produced by standard trees but will average larger in size. In fact, many authorities claim that fruit from dwarf trees is not only larger but of better quality.



Above illustration shows a 3 year dwarf apple tree loaded with fine crop of large apples.

DWARF APPLE TREES

BUDED ON NEW MALLING ROOTSTOCK

Our Dwarf Apple Trees are budded on the New Malling dwarf rootstock introduced recently to this country by Dr. H. B. Tukey of the New York State Experiment Station.

Now you can have several varieties growing in your yard because of the small space required. 15 x 15 is a recommended spacing.

For those who enjoy working with plants, there is a source of much pleasure in dwarf fruit culture, watching the fruit take shape and ripen over the season.

PRICES ON DWARF APPLE TREES

	Each	Ten
Large 1 Year 3 to 4 ft. . . .	\$1.25	\$10.00
VARIETIES—Early McIntosh, Red Spy, McIntosh.		

	Each	Ten
Large 2 Year 4 to 5 ft. . . .	\$2.00	\$17.50
VARIETIES—Cortland, R. I. Greening, McIntosh.		

Note—Our supply of these trees is limited, so we suggest you order early.

DWARF PEAR TREES

REQUIRE LITTLE ROOM—FRUIT EASILY PICKED—BEAR YOUNG

Although Dwarf Pear Trees have proven very profitable in commercial orchards, they are best adapted to the garden or home orchard where the space is limited, as they can be planted very close together and require little room.

The fruit is very easy to pick as the trees are low headed, and it is not necessary to wait long for returns as they come into bearing very early, usually the second or third year after planting. Pears are dwarfed by budding on Quince Stock and the trees should be planted three inches below the union.

VARIETIES THAT GROW BEST AS DWARFS

All varieties of Pears do not give good results as Dwarfs. We recommend the following varieties to be good growers and bearers and to give the best satisfaction as Dwarfs:

Bartlett **Clapp's Favorite**
Duchess **Seckel**

For complete description of above varieties kindly turn to Page 18.

PRICES OF DWARF PEAR TREES

	Each	Ten
2 Year 4 to 5 ft. 5/8 and up	\$.65	\$5.00
2 Year 3 to 4 ft. 1/2 to 5/860	4.00

KELLY'S PEACHES

Heavy Yielding . . True-To-Name Trees



Golden Jubilee

This year we are offering some of the finest Peach trees we have ever grown, at prices you cannot afford to pass up. Our trees are strong and healthy with a good fibrous root system, and can absolutely be depended upon to be true to name. We cut our buds from bearing orchards and exercise the greatest care in keeping our varieties free from any possible mixtures. For bigger profits it will pay you to plant Kelly's Peaches.

ELBERTA

The Money Maker

The leader of all peaches and the greatest commercial variety on the market; 50 per cent of the peaches planted are Elberta. In all probability no peach will succeed over so wide a range of territory as this kind. It will thrive where any peach can be grown. A beautiful peach of good quality, not only the best orchard variety but also valuable for planting in the garden. Elberta is hardier in bud than many varieties, therefore, a more uniform cropper. It is large, yellow, with red cheek, juicy and high flavor; flesh yellow, free stone. Season medium early, following quick upon Early Crawford. Early September.

See Back Cover for Illustration
in Natural Colors

VARIETIES LISTED IN ORDER OF RIPENING—IN WESTERN NEW YORK

MIKADO—The most popular very early yellow. Hardy, productive. Ripens about six weeks ahead of Elberta. Blossoms self-sterile, needs to be interplanted. Early August.

GREENSBORO—Large, bright red over yellow, flesh white. Good quality. Freestone. Late August.

MARIGOLD—Early yellow, excellent quality, semi-cling. Late August.

ORIOLE—A new early peach of high quality. Fruit medium to large in size, yellow fleshed, and a freestone. Trees vigorous and productive. Early September.

GOLDEN JUBILEE—(See Page 13 for description).

CUMBERLAND—A recent introduction of the New Jersey Experiment Station as a result of a cross between Belle and Greensboro. Vigorous grower and as hardy as Carman. Fruit is large, attractive in color and shape. Flesh is white and almost free.



One block of 150,000 peach trees

SOUTH HAVEN—Another excellent new peach well worth planting. Golden yellow with red blush. Large, meaty, and of delicious flavor. Prolific. Freestone. Early September.

HALE HAVEN—A new introduction of the Mich. Experiment Station. In season about ten days ahead of Elberta. Large, yellow freestone, highly blushed, very attractive, round, firm, and of good quality. Tree is vigorous and productive. A promising new variety.

ECLIPSE—Yellow freestone. Seedling of Belle of Georgia introduced at N. J. Experiment Station. Ripens about a week before Elberta and two weeks after Golden Jubilee. Fruit attractive, medium to large size, very hardy.

HILEY BELLE—Large white peach with bright red cheek. Rich and juicy. Excellent shipper. Freestone. Early September.

VETERAN—Large, round, yellow fleshed fruit. Freestone. Since it ripens a few days later than Valiant, it makes a desirable sort to follow that variety. Early September.

FITZGERALD—Very hardy. Large, brilliant yellow with red cheek. Early bearer. Freestone. Middle September.

CHAMPION—Large creamy white with red cheek. Excellent quality. Good shipper. Hardy and productive. Freestone. Middle September.

BELLE OF GEORGIA—Large, attractive white fleshed peach. Red cheek. Hardy and productive. Freestone. Middle of September.

CRAWFORD'S EARLY—Large yellow peach of the finest quality and flavor. Freestone. Middle of September.

EARLY ELBERTA—An excellent new variety resembling Elberta very closely, except a little rounder in shape and about ten days earlier in ripening. Freestone. Late September.

ELBERTA—See Page 12 for description.

J. H. HALE—An extra large peach, yellow overlaid with crimson. Flesh golden yellow, of delicious flavor. An excellent shipper. A fine commercial variety. Prolific when cross pollenized with some other variety. All of the varieties offered in this catalog are suitable for planting with Hale. Freestone. Late September.

SALBERTA—Large Elberta type, late peach of good quality. Freestone. Early October.

CRAWFORD'S LATE—One of the finest late varieties. Large, yellow, of excellent quality. Freestone. Early October.

SMOCK (Beers Smock)—An old variety, prized for either home use or market. Bears heavy every year. September.

SALWAY—Large; deep yellow, red cheek. Flesh yellow, juicy. October.

VISIT OUR NURSERIES

You are always welcome at our nurseries. Each year hundreds of our customers come to our storage for their trees, thus saving shipping charges, and seeing a thoroughly modern nursery organization in operation. We invite large buyers to come and pick out just the type of tree that best pleases them.

What Our Customers Say . . .

Lafayette F. R. D., N. J.,
September, 1939.

Kelly Brothers Nurseries,
Dansville, N. Y.

Gentlemen:

Just a note to record what I consider a remarkable record. Year before last I planted one of your Rochester peach trees. Last year it produced five peaches, and this year about seventy-five, or just under a basket.

Your trees seem excellent, but this one has outstripped them all.

Very truly yours,
MRS. KNUD SIGURD BAY

Plant QUINCE TREES . . . for delicious Jelly, Jam and Marmalade

Its pre-eminence as a fruit for jellies and preserves makes the quince a profitable tree for the fruit grower, the farmer, or any one having even a small garden. The quince tree does not take much room on account of its dwarfish character. Any kind of good, rich soil will give good results. It can be grown in bush or tree form. Hardly any family's fruit supply for the winter is complete without the quince. We recommend the following varieties:

CHAMPION—Fruit very large, fair, and handsome. Bears abundantly while young. Flavor delicate, imparting an exquisite quince taste.

ORANGE—Popular, extensively cultivated, reliable, and satisfactory. Roundish, bright golden yellow, very large, fine grained, fine quality. Best for cooking.

WAYNE COUNTY ORANGE—A superior new variety introduced largely through our efforts. Extra large, golden yellow, of excellent quality. Regular cropper. Ripens early September.



Orange Quince



XXX
2 Yr.
5-7 ft.

XX
2 Yr.
4-5 ft.

X
2 Yr.
3-4 ft.

The above picture clearly illustrates the three grades of 2 yr. trees we offer. They are all sturdy, well branched, with strong, fibrous root systems.

PRICES OF QUINCE TREES

	Each	Ten	Hundred
2 Year 4 to 5 ft.			
5/8 and up	\$.60	\$5.00	\$40.00
2 Year 3 to 4 ft.			
1/2 to 5/850	4.00	30.00

Apricots

This is a rich, delicious fruit, coming between cherries and peaches. It is very much like the peach in outward appearance, but like the plum in quality and texture. The apricot ripens a month or more before the best early peaches come in, which explains the reason for the great demand and prevailing high prices. It should be planted in deep, rich soil; and care should be taken to know that the sub-soil as well as the top-soil is dry.

PRICES OF APRICOT TREES

	Each	Ten
1 Year 4 to 5 ft. 9/16 and up	\$.60	\$5.00
1 Year 3 to 4 ft. 7/16 to 9/1650	4.00

HARRIS—A hardy English sort. Medium size; oblong, orange, good quality, very early. One of the best varieties in the East. July.

MOORPARK—Very large, deep yellow with red cheek. Has the highest quality and finest flavor of all apricots. August.

QUETTA (NECTARINE)—Recently introduced for trial in the East. Fruit large, highly colored red, white flesh, clingstone. August.

KELLY'S Upland Grown . . . Strong Rooted **CHERRIES**



Windsor

We are one of the largest producers of Cherry trees in the United States. Sixty years' experience—ideal soil and climatic conditions all combine to produce the finest to be had in Cherry trees. Our Cherries are all upland grown, thus assuring a healthy, vigorous root system. Cherry trees require a well drained soil.

PRICES OF SWEET AND SOUR CHERRY TREES

		Each	Ten	Hundred
2 Year	5 to 7 ft. 3/4 and up	\$.60	\$5.00	\$30.00
2 Year	4 to 5 ft. 5/8 to 3/4	.55	4.50	25.00
2 Year	3 to 4 ft. 1/2 to 5/8	.50	4.00	20.00
1 Year	3 to 5 ft. Sturdy Buds	.55	4.50	25.00

Note—TREES ON MAZZARD ROOTS 5c PER TREE ADDITIONAL

Write for Prices on Larger Quantities

MONTMORENCY . . . the leading sour cherry

LARGE MONTMORENCY "Best Pie Cherry"—Fruit is good-sized, fine flavored and bright, clear red. The canning factories are always calling for them and buy them by the hundreds of tons. The best of all sour varieties; is a good shipper, very attractive and always brings good prices. The trees are the cleanest and best growers and are less subject to disease, less affected by wet weather, and are the best bearers of all other sour varieties. Montmorency can always be depended upon for a full crop, no matter how unfavorable the season may be. Fruit ripens ten days after Early Richmond.



Large Montmorency

Sour Cherry Trees

DYEHOUSE—Very hardy, and undoubtedly the earliest cherry—ripening ten days earlier than Richmond. Fine quality, has smallest pit of any cherry known; a splendid keeper. Unsurpassed for canning and desserts. June.

EARLY RICHMOND—The good old variety that bears such large crops in the gardens. Most hardy of all varieties, uninjured by severest winters. One of the most valuable and popular varieties, unsurpassed for cooking purposes. Tree slender in growth with a roundish, spreading head. Ripens through June and bears good crops almost every year.

ENGLISH MORELLO—Fruit large, elongated; almost blackish red when fully ripe; very rich, acid; juicy and good. A splendid pie cherry. Tree very hardy, somewhat smaller than other sorts, but exceedingly productive. This fruit is in great demand by the fruit-juice manufacturers. July.

MAY DUKE—The color of this cherry gradually changes from a bright red to nearly black when fully ripe. Flesh is red, changing to dark purple later; is very juicy, rich, acid, and of superior quality. An abundant bearer and very hardy. Season very early and fruit must remain on the tree until fully ripe to develop its best character.

OSTHEIM—Large; skin red, dark at maturity; flesh liver-colored; tender, juicy, almost sweet; very good; hardy.

Sweet Cherry Trees

BLACK TARTARIAN—Fruit bright purplish black, very large, rich and juicy, half tender. Tree vigorous, erect; heavy bearer. June.

BING—Tree very hardy and vigorous, with heavy foliage. It succeeds in the East better than most sweet varieties. Fruit is large, dark brown or black, fine quality, delicious. Good shipper, ideal for commercial purposes.

GOVERNOR WOOD—Fruit light yellow, marbled light red, large, heart-shaped, rich, sweet, and juicy. Productive.

LAMBERT—Purple-red in color, rich and firm. Considered one of the largest of all cherries. Enormous crops every year. Tree grows well and is proof against fungous and insect attacks. Fine shipper.

NAPOLEON (Royal Ann)—Good for market and canning. Large size, beautiful cherry, pale yellow with bright red cheek; sweet, juicy, and firm. The leading white sweet Cherry.

SCHMIDT'S BIGGAREAU—Large size fruit of deep mahogany color. Flesh dark, very juicy, tender, and has a fine rich flavor. An excellent shipper. Fruit grows in clusters. July.

WINDSOR—Fruit very large, juicy and firm; flesh pinkish and sometimes streaked. Good quality; excellent bearer. Tree upright, vigorous, and a rapid grower. Popular for its large size and dark color; almost black. One of the leading commercial sorts. July.

YELLOW SPANISH—Pale yellow with bright red cheeks. One of the best, most beautiful, and popular of all light colored Cherries. Productive.

Cherry Tree

COLLECTION No. 4

Best Varieties for Pies and Desserts
Fruit Over a Long Season
ALL 2 Year 5 to 7 ft. Trees

1 Large Montmorency	1 Black Tartarian
1 Early Richmond	1 Napoleon
1 Windsor	

(Value \$3.00)

ALL 5 TREES

for only

\$2.40

Kelly's

PEAR TREES

The pear trees we are offering this year are some of the finest we have ever grown. No home orchard is complete without several pears. Being upright they require little room and are ideal for small lots. Kelly pear trees are budded on the finest seedlings available, and grown on the best upland pear soil in the country. Pears do best on a heavy well drained soil. Sod cultivation is recommended. The varieties below represent the best types for home and commercial orchards.

PRICES OF STANDARD PEAR TREES

	Each	Ten	100
2 Year 5 to 7 ft. $\frac{3}{4}$ and up	\$.60	\$5.00	\$40.00
2 Year 4 to 5 ft. $\frac{5}{8}$ to $\frac{3}{4}$.50	4.00	30.00
2 Year 3 to 4 ft. $\frac{1}{2}$ to $\frac{5}{8}$.40	3.00	20.00
1 Year 3 to 5 ft. Sturdy Buds.....	.50	4.00	30.00

Write for Prices on Larger Quantities

ANJOU—Is a vigorous grower, hardy and prolific. The pears are of large size, green in color, but often yellowing when thoroughly ripe. Very juicy, luscious, and of the best quality. For late fall and very early winter use, we have no better variety. October to January.

BARTLETT—Justly the leading commercial pear—a leader among canning Pears. Fruit is large, golden yellow in color with a reddish blush on the sunny side. Flesh is tender and juicy, with a delicious musky flavor. Tree is a vigorous erect grower and bears abundantly. Ripens in September.

BEURRE BOSCH—Very popular variety. Very large, gourd shaped pear, brownish yellow in color. Hangs to tree well on account of its long stem, which allows it to sway in heavy winds. White flesh, rich and delicious. Tree very productive. Will keep until Christmas.

CAYUGA (New)—A new seedling of Seckel which it resembles in shape and color. Fruit is as large as Bartlett and of high quality.

CLAPP'S FAVORITE—Large, fine, pale lemon-yellow, with brown dots; fine texture, melting, buttery, juicy, with a rich, sweet delicate, vinous flavor. Tree hardy and very productive. Thrives where other varieties fail.

DUCHESS D'ANGOULEME—A most dependable cropper, often fruiting the first season after planting. Fruit large. A dull greenish yellow, spotted russet, flesh white, rich and good quality. October to November.

FLEMISH BEAUTY—This fine old pear is still one of the hardiest and most generally successful over a wide range of country, producing good crops annually of large, handsome fruit that is exceptionally good in quality. September and October.

GORHAM (New)—Resembles Bartlett in size, color, and shape. The flavor is sweet and vinous with a very marked and pleasing aroma. Trees vigorous and productive. Fruit ripens two weeks after Bartlett.



Bartlett

KIEFFER—Large to very large. Skin yellow with light vermilion cheek. Flesh very juicy, with a marked musky aroma. Good quality.

LAWRENCE—Trees healthy, hardy, and very productive. Fruit large; skin yellow, covered with brown spots. Flesh whitish, rich, and aromatic.

SECKEL—A delicious little pear that is the standard of excellence in its class. One of the richest and highest flavored pears known. Yellowish-brown with red cheek. Very productive. August to October.

SHELDON—Large, round, russet, and red pear. Very rich and delicious. October.

VERMONT BEAUTY—Medium, yellow shaded with carmine. Good cropper. October.

WILLARD (New)—One of the best winter pears. Recommended for its high quality and lateness. Has shape and color of Bartlett. Flesh is yellowish, fine grained, tender and juicy.

WORDEN SECKEL—Fruit larger than Seckel. Shaped like Bartlett, but not as large. Yellowish-brown with red cheek. Excellent quality. October.

No other fruit tree, unless it is the cherry, produces more abundantly than a plum tree. Although they will yield crop after crop despite neglect, plum trees will readily show the result of care and modern methods of fruit growing. The commercial side of plum production has received much attention in late years, but the supply still falls short of the demand. In general, plum trees thrive best in a sandy or clayey soil. We can recommend to the planter the following varieties:

JAPANESE VARIETIES

ABUNDANCE—Fruit large, very early; amber turning to a rich, bright cherry. Flesh light yellow, exceedingly juicy and tender. Freestone. Excellent for canning.

BURBANK—Fruit is very large, bright reddish purple. Meaty and quite firm. Excellent shipper. Tree hardy, vigorous, and productive. Needs close pruning.

RED JUNE—Ripens before Abundance. Medium to large; deep vermilion-red; flesh light lemon-yellow; fine quality. Vigorous, hardy; productive.

SATSUMA—Large, globular, with sharp point, purple and red with bloom. Firm, juicy, dark red, fine quality flesh.

WICKSON—Sturdy, upright grower. Fruit handsome, deep, maroon-red. Flesh fine texture, firm, sugary, and delicious. Excellent shipper.

EUROPEAN VARIETIES

BRADSHAW—Very large, fine early plum, dark violet red, juicy and good. Very productive; valuable for market. Quality is excellent, color attractive. Good canner.

GRAND DUKE—One of the best late plums for market. Large as Bradshaw, same color, entirely free from rot. Late September.

IMPERIAL GAGE—Rather large; oval, greenish; flesh juicy, rich and delicious. Vigorous grower; very productive.

LOMBARD—Medium to large, roundish, dark red. Flesh yellow, juicy. Hardy; prolific bearer. Valuable commercial sort. August.

MONARCH—Very large, bluish-purple. Juicy, golden green flesh. Bears early and abundantly. Excellent for market. September.

REINE CLAUDE (Bavay's Green Gage)—Large, pale yellow, marked with red; good bearer. Middle of September.

SHIPPER'S PRIDE—Large, dark purple. Juicy and sweet, excellent for canning. September.

SHROPSHIRE DAMSON—Medium size dark purple fruit produced in thick clusters. Excellent canner. Tree a good grower and very productive. October.

YELLOW EGG—Golden yellow covered with thick bloom. Tree large, very productive. September.

PRUNE TREES

FELLEMBURG PRUNE—Large, pointed and tapering. Dark purple. Juicy and delicious. Early September. Freestone.

Kelly's

PLUM TREES

PRICES OF PLUM AND PRUNE TREES

	Each	Ten	100
2 Year 5 to 7 ft. $\frac{3}{4}$ and up	\$.60	\$5.00	\$35.00
2 Year 4 to 5 ft. $\frac{5}{8}$ to $\frac{3}{4}$.55	4.50	30.00
2 Year 3 to 4 ft. $\frac{1}{2}$ to $\frac{5}{8}$.50	4.00	25.00
1 Year 3 to 5 ft. Sturdy Buds	.55	4.50	30.00

Write for Prices on Larger Quantities



Fellemburg Plum
 $\frac{1}{2}$ Actual Size

GERMAN PRUNE—Fruit long, oval, purple with thick bloom. Flesh firm, sweet, and delicious. Excellent commercial sort. September. Freestone.

YORK STATE PRUNE—One of the largest and best. Dark blue, with purple bloom. Delicious. Last week in September. Freestone.

STANLEY PRUNE—Introduced by the N. Y. State Experimental Station, and is becoming a valuable commercial variety. Large dark blue with thick bloom. Flesh greenish yellow, juicy, and sweet. Bears annually. Midseason.

Raspberries

PRICES (Except as Noted)

\$1.00 per 25, \$2.50 per 100, \$20.00 per 1000



Latham

CHIEF (Red)—The finest early red raspberry for general planting. Large, firm, and a very heavy yielder. Ripens 10 days before Latham.

CUTHBERT (Red)—Large, crimson, hardy, and prolific. Fine for market or garden. Excellent quality. Midseason.

CUMBERLAND (Black)—Large, glossy black, firm, of excellent quality. Hardy and productive. Early to Midseason.

COLUMBIAN (Purple)—A fine commercial sort. Vigorous, very productive, excellent canner. Fruit large, purple, firm. Midseason.

INDIAN SUMMER—New Everbearing Red Raspberry. Berries large, conical, much superior in quality and size to any of this type. **\$1.50 per 25, \$4.50 per 100.**

LATHAM (Red)—Large, round, firm, brilliant red. Most profitable commercial variety. Hardy, very prolific, an excellent shipper and a perfect variety for canning. Early. Ripens evenly over a very long season.

MARCY (Red)—First introduced in 1936 this variety is fast gaining in prominence. Desirable for market and home use. Good quality, vigorous, productive. **\$1.50 per 25, \$4.50 per 100.**

NEWBURG (Red)—A new variety of excellent color and quality. Very large and firm. Fine keeper and shipper. Vigorous, hardy, and very productive. Three or four days earlier than Cuthbert.

PLUM FARMER (Black)—One of the best commercial sorts. Berries large, thick meated, firm. Very productive. Early Midseason.

ST. REGIS (Everbearing)—A bright crimson berry of excellent quality. Fruit commences to ripen with the earliest and continues to ripen on young canes until October.

SODUS—New Purple Raspberry from New York Experimental Station. Fruit is large, firm, medium purple color, and does not crumble. Plants hardy and very productive. **\$1.25 per 25, \$4.00 per 100.**

TAYLOR—A new Red Raspberry introduced by the New York State Experimental Station. Plants are vigorous, hardy, and productive. Long, conical shape, firm, thick flesh. Excellent quality, ripens just before Latham.

Kelly's

**Berry Collection
No. 5**

125 No. 1 Plants for
ONLY \$2.75
(Value \$3.60)

25 Latham 25 St. Regis
25 Cumberland 25 Blowers
 25 Sodus

SPECIAL PRICE

\$2.75



Cumberland

Blackberries

Blackberries thrive best on fertile loam. The rows should be about six feet apart, with each plant approximately two feet apart in the row.

PRICES

\$1.00 per 25, \$3.00 per 100, \$22.50 per 1000

BLOWERS—An upright mammoth grower. Very hardy and productive. Fruit very long, finest flavor and jet black. Fruits continuously July to September.

ELDORADO—The hardiest and sweetest blackberry. Berries are large, jet black, borne in large clusters, very sweet, and practically coreless.

Grapes

PRICES ON STRONG 2 YR. NO. 1 VINES

CONCORD—15 cents each, \$1.00 per 10, \$7.50 per 100.
ALL OTHER VARIETIES (Except as Noted)—20 cents each, \$1.50 per 10, \$12.00 per 100.

AGAWAM (Red)—A large red grape with rich aromatic flavor. A strong grower and very productive. Midseason.

BRIGHTON (Red)—A large, delicious, sweet red grape. Very juicy. Midseason.

CACO (Red)—A new wine red grape which is proving to be a great favorite. Berries very large and sweet. Early September. 25 cents each, \$2.00 per 10, \$15.00 per 100.

CAMPBELL'S EARLY (Black)—Bunches and berries large, black with purple bloom. Hardy and vigorous. Early.

CATAWBA (Red)—Dark red. Bunches large, berries medium. Best for table and wine. Late.

CONCORD (Black)—The leading commercial grape. Color blue-black. Bunches and berries large. Hardy, productive, and an excellent shipper. Succeeds over large area. Excellent for grape juice. Midseason.

DELAWARE (Red)—Bunches and berries small. Light red, unusually sweet and delicious. Early.

Portland



Kelly's Grape Collection No. 6

Ten 2 Year No. 1
Vines \$1.25
(Value \$1.90)

2 Concord	1 Catawba
2 Niagara	2 Fredonia
1 Delaware	1 Worden
	1 Portland

SPECIAL PRICE

\$1.25

FREDONIA (Black)—Recent introduction of N. Y. State Experimental Station. Medium cluster, berries large. Ripens two weeks ahead of Worden. Highly recommended.

GOLDEN MUSCAT—Wonderful new golden yellow grape. Berries large, juicy, and aromatic. Ripens after Concord. 50 cents each, \$4.50 per 10.

MOORE'S EARLY (Black)—Berries and bunches large. Black with blue bloom. Fine quality. Early.

NIAGARA (White)—The most popular white grape. Bunches and berries extra large. Vigorous, productive, and a good keeper. Midseason.

ONTARIO—Best early green grape. Large, attractive. 30 cents each, \$2.00 per 10.

PORTLAND (White)—Earliest white grape. Vigorous, hardy, and very productive. Berries large and sweet.

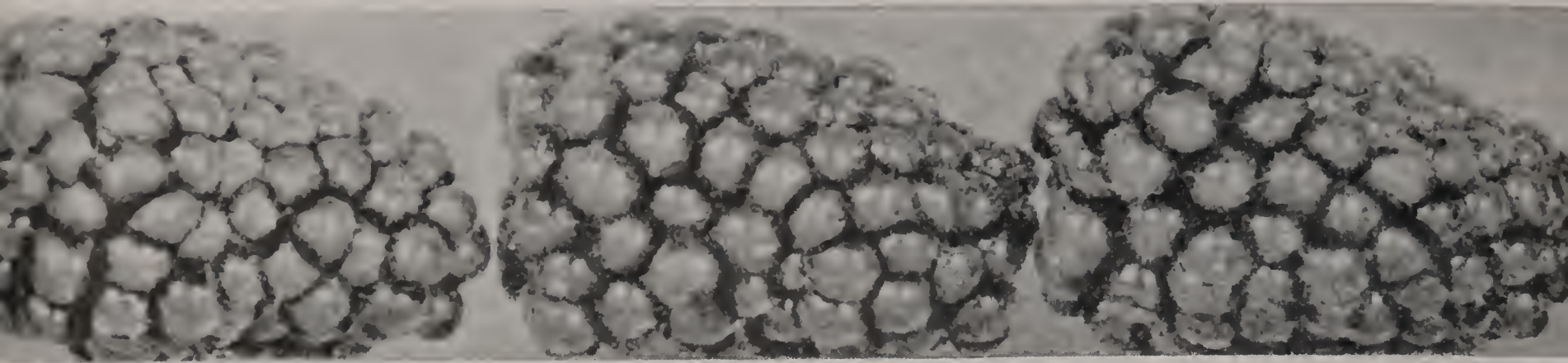
SHERIDAN (Black)—An improved Concord, with firmer, sweeter berries. Large and more compact. About a week later. 25 cents each, \$2.00 per 10, \$15.00 per 100.

WESTFIELD (Black)—New, resembling Concord, ripening just before it. Berries are medium and firm. Juice is exceptionally highly colored.

WORDEN (Black)—A large early black grape of fine quality. Berries and bunches large.



Concord



GIANT BOYSENBERRIES . . . Hardy, Heavy Bearing, Sweet

The amazing new berry, a cross of the Blackberry, Raspberry, and Loganberry, and is far more vigorous than any of its parents. It is immense in size and when you taste it, you will agree that in flavor it stands supreme. The fruit when fully ripened will literally melt in your mouth. A distinctly different, very pleasant flavor, no core and very few seeds, make it a most delicious berry for eating fresh, for pies or

for canning. If you want a real treat, here it is. It makes considerable horizontal growth as compared to its height. For easy picking, plants should be trained on a fence or wires. Plants are strong, vigorous, and quite hardy. However, we advise covering with straw or hay in Winter in cold climates to avoid Winter injury.

PRICES—Strong 1 Year Plants—15c each, 95c per 10, \$3.50 per 50, \$6.00 per 100

RHUBARB

Rhubarb is the earliest available material for pies and sauce. Every family should have a few roots, for there is nothing in the fruit or vegetable line that is so beneficial to the human system in the Spring months.

Prices of Extra Strong Two Year Roots:
20c each, \$1.75 per 10, \$10.00 per 100

MYATT'S LINNAEUS—The best known and most widely planted variety. Large, early, tender—not the least tough or stringy—with mild subacid flavor. Excellent for pies or sauce, and very desirable for canning. Plant 3 or 4 feet apart in rich garden soil.

GOOSEBERRIES

The Gooseberry is gaining in popularity every year. It has been found to be very profitable in the home market and grows readily in any good soil. The plants bear abundantly and require little care.

Prices of Extra Size Two Year Bushes:
25c each, \$2.00 per 10, \$18.00 per 100

DOWNING—A medium size whitish green gooseberry, of good quality. Strong, upright grower and quite prolific. Midseason.

RED JACKET—JOSSLYN—Light red, medium size, excellent quality. Vigorous upright grower, healthy and productive. Early.



Mary Washington ASPARAGUS

You'll be surprised how easy it is to grow Asparagus sufficient for a family of four or five. It is very healthful, rich in minerals and vitamins. Every garden should have some. Room required is very small. Complete planting and cultural directions sent free with each order.

PRICES—Extra Strong 2 Year, 60c per 25, \$1.75 per 100, \$10.00 per 1000

OUTSTANDING VARIETY

MARY WASHINGTON is, without doubt, the best variety grown at this time. It is a very strong grower, stock of giant size, green color, rich and tender. In addition to being very productive, it is rust resistant and a bed will last for years.

Kelly's Flowering Shrubs

PRICES (Except as Noted)—Strong Two Year Bushes, 2 to 3 ft. 35c each, \$3.00 per 10

ALMOND (Prunus Glandulosa)—A beautiful erect growing shrub reaching a height of 4 to 5 feet. Very attractive in May with its dainty double pink blossoms, which cover the branches in a cloud of bloom.

ALTHEA (Rose of Sharon)—Tall growing shrub from 6 to 8 feet. Very effective for group and specimen planting. Blooms freely from Mid-summer until frost. Choice of Purple, Red, White, and Pink. All double flowering.

BEAUTY BUSH (Kolkwitzia)—Beautiful bell shaped pale pink flowers during June in great profusion. Grows to about 6 feet in height and produces long arching branches. Foliage attractive. **Price—18 to 24 in. 50c each; \$4.50 per 10.**

BUTTERFLY BUSH (Buddleia, Ile de France)—A new variety of more uniform moderate growth. Violet purple clusters bloom in great abundance in midsummer. Sweet, fragrant. 4 to 5 feet.

DEUTZIA GRACILIS—One of our best low growing, flowering shrubs. White flowers in graceful upright clusters in May and June. 2 feet.

DEUTZIA PRIDE OF ROCHESTER—Grows 5 to 6 feet tall. Beautiful double white flowers tinged with rose in May. One of the best popular shrubs.

FORSYTHIA (Golden Bell)—Branches are literally covered in early spring with golden bell shaped flowers. The finest early blooming shrub. 6 feet.

HONEYSUCKLE, TARTARIAN—In May and June it is covered with charming pink flowers, followed by clusters of red berries. Attains a height of 8 feet.

HYDRANGEA ARBORESCENS (Hills of Snow)—A very beautiful and showy shrub. Ball shaped clusters of pure white flowers from July to September.

HYDRANGEA P. G.—Popular late summer blooming shrub. The immense cone-shaped blooms are white at first then turn pink and bronze. Grows in sun or partial shade and makes a shrub 4 feet tall.

HYDRANGEA, TREE FORM—The Hydrangea P. G. grown in tree form with a single stem. **Price—3 to 4 ft. 75c each, \$7.00 per 10.**

INDIAN CURRANT (Coralberry or Red Snowberry)—Dwarf shrub of graceful habit. Rose colored blossoms in June and July, followed by dull red coral colored berries.

JAPAN QUINCE (Cydonia Japonica)—Completely covered with dazzling scarlet flowers in May, followed by small quince shaped fruits. Grows 4 to 6 feet tall. No planting is complete without one of these plants.

KERRIA JAPONICA—A medium dwarf shrub with beautiful globe shaped flowers of bright orange during July. The branches are green in winter and therefore showy. Grows 4 to 6 ft.

PLUM, DOUBLE FLOWERING (Prunus Triloba)—Completely covered in May with double rose-like pink flowers. Grows medium tall and succeed everywhere. A very beautiful shrub. **Special Price—3 to 4 ft., 50c each; \$4.50 per 10.**



Snowball

SPIRAEA VAN HOUTTEI (Bridal Wreath)—Most popular flowering shrub. Suitable for hedge or specimen planting. White flowers in clusters during May and June. **Price—3 to 4 ft., 20c each, \$1.50 per 10, \$10.00 per 100.**



Spiraea Van Houttei

Kelly's **FLOWERING SHRUBS** make your home more beautiful ... more livable... more valuable



Hydrangea, P. G.



Purple Lilac

SPIRAEA ANTHONY WATERER—A crimson flowered dwarf variety. Makes low compact bush never getting higher than 2 feet. Covered with blossoms all Summer. Hardy and adapted to wide range of soils. 18 to 24 inch.

SPIRAEA CALLOSA ALBA—Similar to Anthony Waterer except that it has white flowers.

SPIRAEA THUNBERGI—A graceful shrub with bright green, fine feathery foliage which turns orange scarlet in the fall. Blooms in late April with abundant white flowers that almost cover the branches.

SNOWBERRY (Symphoricarpos R.)—A well-known shrub with small pink flowers in June, followed with clusters of waxen white berries which remain during winter. Grows about 4 feet tall. Is recommended for shady places.

SNOWBALL (Viburnum Opulus Sterilis)—Globular clusters of white flowers around Decoration Day.

LILAC (Syringa Vulgaris)—The much desired common lilac. Can furnish either the purple or white variety.

RED-LEAVED BARBERRY—A brilliantly colored shrub with its bronzy red leaves all season. Scarlet berries throughout the winter. Likes plenty of sunlight.

SYRINGA CORONARIUS (Mock Orange)—Fragrant creamy white blossoms, slightly scented, in May. Foliage large and oval. Grows to 6 feet.

SYRINGA LEMOINE—Semi-dwarf. Branches literally covered with small white blossoms in early June.

WEIGELIA CANDIDA—Blossoms very profusely from June until fall, with a large showy white flower. Vigorous grower—6 to 8 feet.

WEIGELIA EVA RATHKE—Grows from 3 to 5 feet high. Deep scarlet blossoms in June and intermittently all summer. Very distinctive and attractive.

WEIGELIA ROSEA—One of the choicest of all shrubs. Tall grower with deep pink flowers in profusion in June and throughout summer.

R. D. 2, Sussex, N. J.,
April 4, 1939.
Kelly Brothers Nurseries:
I have received your
nursery stock. The trees
arrived in good condi-
tion, and I am pleased
with them.
PAUL WESLEY



Red Barberry

Kelly's
SHRUB COLLECTION
No. 7

6 Strong 2-3 ft. Healthy Shrubs

- 1 Forsythia (Golden Bell)
- 1 Flowering Almond
- 1 Hydrangea P. G.
- 1 Red Barberry
- 1 Tartarian Honeysuckle
- 1 Japan Quince

All 6 for **\$1.50**
(Value \$2.10)



Mockorange



Forsythia, Golden Bell

Shade and Ornamental TREES increase your property value each year

AMERICAN ELM—Tall vase shaped. Fine for street planting. 6 to 8 ft., \$1.00 each, \$8.00 per 10.

BECHTEL'S FLOWERING CRAB—Lawn tree. Medium grower. Double rose shaped pink blossoms. 2 to 3 ft., 40c each, \$3.50 per 10; 3 to 4 ft., 60c each, \$5.00 per 10.

CAROLINA POPLAR—Hardy, fast growing; large leaves. 6 to 8 ft., 50c each, \$4.50 per 10.

CATALPA BUNGEI (Umbrella Tree)—Large, heart-shaped leaves making symmetrical umbrella shaped top. Two year heads. 6 to 8 ft., 95c each.

CHINESE ELM—A very rapid grower with small dense foliage. Resembles Norway Maple in shape. 8 to 10 ft., \$1.50 each; 6 to 8 ft., \$1.15 each.

CUT-LEAVED WEEPING BIRCH—Tall, slender, weeping tree. Silvery white bark. 6 to 8 ft., \$1.50 each.

GOLD BARK WILLOW—An upright growing tree with showy golden bark. Price—6 to 8 ft., 50c each.

JAPANESE FLOWERING CRAB (Malus Floribunda purpurea)—Purplish foliage, bark tinged red. Large flowers of deep pink. Very hardy. 1 year 3 to 4 ft., 75c each; 2 year 4 to 5 ft., \$1.00 each.

LOMBARDY POPLAR—Tall, fast growing spire-like tree. 8 to 10 ft., 75c each, \$7.00 per 10; 6 to 8 ft., 60c each, \$5.50 per 10.

MOUNTAIN ASH—Handsome small tree with clusters of red berries. 5 to 6 ft., \$1.25 each.

NORWAY MAPLE—Excellent street and shade tree. Strong, fast grower. 8 to 10 ft., \$1.75 each; 10 to 12 ft., \$2.25 each.

ORIENTAL PLANE (European Sycamore)—A rapid growing, lofty, wide spreading tree. 8 to 10 ft., \$1.75 each; 10 to 12 ft., \$2.25 each.

PRUNUS NEWPORT—Ultimate height 8 to 10 ft. Small in form, beautiful purple foliage, retains color well through the season. 4 to 5 ft., 75c each.

PUSSY WILLOW—Small trees 15 to 20 ft. high with catkins that appear before the leaves in the spring. 6 to 8 ft., 50c each.

SCHWEDLER MAPLE—Very attractive, with well rounded head. Reddish purple foliage in early Spring changing to deep bronze in Fall. 6 to 8 ft., \$1.75 each.

SILVER-LEAVED MAPLE—Large spreading tree. Foliage silvery underneath. 8 to 10 ft., \$1.00 each.

WEEPING WILLOW (Babylon)—Grows to about 30 ft. with pendulous branches that sweep the soil. 6 to 8 ft., \$1.25 each, \$10.00 per 10.



Bechtel's Crab



Catalpa Bungei



Chinese Elm

Woburn, Mass.,
May 4, 1939.

Kelly Brothers Nurseries,
Dansville, N. Y.

Gentlemen:

The trees and shrubs I ordered arrived in perfect condition, and I am well pleased with this initial delivery.

Yours truly,

VICTOR H. MUTTY

Every yard needs an **ORNAMENTAL HEDGE**



BARBERRY THUNBERGI The Best All Purpose Hedge

A shrub of marked excellence because of its bright green foliage which changes to brilliant colors in the Fall, and its bright scarlet berries which are very conspicuous throughout the Winter. Their habit is dwarf and regular spreading. Grows well in the shade and extensively used in landscape work. It is very hardy and has never been known to Winterkill. It bears and shears well and makes a dense hedge.

12 to 18 inches high, 10c each, 95c per 10,
\$8.00 per 100

18 to 24 inches high, 15c each, \$1.25 per 10,
\$10.00 per 100

CALIFORNIA PRIVET—Best trimmed hedge 3 to 5 ft. high. Set in single row 10 inches apart. If broad hedge is desired plant in double rows—rows 1 foot apart and bushes 1 foot apart in each row, but staggered so as to come 6 inches apart in hedge. Strong bushes, 2 to 3 ft. high, \$1.00 per 10, \$4.00 per 100. Extra strong bushes, 3 to 4 ft. high, \$1.25 per 10, \$6.00 per 100.

AMOR RIVER PRIVET—A hardy vigorous grower recommended for sections too cold for California Privet. Strong bushes, 18 to 24 in., 10c each, \$1.00 per 10, \$6.00 per 100.

KELLY'S quick growing . . . hardy . . . ornamental VINES



Dutchman's Pipe

AMPELOPSIS VEITCHI (Boston Ivy)—Bright green foliage. Clings tightly to smoothest surface. 40c each.

BITTERSWEET—Glossy foliage, creamy white flowers, large clusters orange and crimson berries retained all winter. 50c each.

CLEMATIS JACKMANNI—Very large, single purple blossoms. 75c each.

CLEMATIS PANICULATA—Fragrant, pure white blossoms in September. 40c each.

DUTCHMAN'S PIPE (Birthwort)—Large, heart-shaped leaves and quaint pipe-shaped green flowers. 75c each.

HALL'S JAPAN HONEYSUCKLE—White flowers from July until winter. 30c each.

PURPLE WISTERIA—Pale lilac flowers in abundance in May. 40c each.

SILVER LACE VINE—Quick growing thrifty climbing vine. Covered with white, silvery blossoms from early August until fall. 50c each.



Purple Wisteria

Poughkeepsie, N. Y.
May 30, 1939

Kelly Brothers Nurseries:
The trees have arrived, and it is the nicest stock I have ever had. Thank you.

Yours truly,
DR. C. H. PERKINS

Kelly's EVERGREENS

Evergreens are the aristocrats of the home grounds, and we highly recommend their use for home plantings. Our evergreens are all fresh dug with the roots balled in rich soil.

AMERICAN ARBORVITAE (White Cedar)—Soft bright green foliage. Erect, broadly pyramidal habit—a rapid grower. Can be trimmed and kept to any form or height. **Price—2½ to 3 ft., \$1.00 each.**

GLOBE ARBORVITAE—A dense, low, natural globe shaped evergreen, excellent for foundation planting or planting along walks or driveways. **Price—15 to 18 in., 90c each.**

PYRAMIDAL ARBORVITAE—A densely compact pyramidal type with deep green foliage. The most popular columnar type for home beautification. **Price—2½ to 3 ft., \$1.25 each.**

IRISH JUNIPER—A splendid columnar shaped evergreen with fine sage green foliage. Erect, compact, slender, and formal in habit. **Price—2½ to 3 ft., \$1.50 each.**

MUGHO PINE—A genuine Dwarf Pine. Very dense. Assumes a general globular form. Leaves, short, stiff, and rich green color. Fine for punctuating walls and driveways and for foundation planting. **Price—15 to 18 in., \$2.00 each.**

PFITZER'S JUNIPER—A striking, low growing, spreading evergreen, with fine dark green foliage. Fine for foundation and general purpose planting. **Price—18 to 24 in., \$2.00 each.**

COLORADO BLUE SPRUCE—One of the showiest and most impressive evergreens. A broad pyramidal shaped tree with beautiful foliage of bright silvery blue color. **Price—2½ to 3 ft., \$2.00 each.**

NORWAY SPRUCE—The evergreen most commonly used for Christmas trees. Tall, open, pyramidal shaped tree with dark green foliage. Can be kept trimmed to any size or shape. **Price—2½ to 3 ft., \$1.00 each.**

SAVIN JUNIPER—Low growing, very dwarf. Dark green foliage, very desirable. Can be kept trimmed to any desired height. **Price—18 to 24 in., \$1.50 each.**

COLORADO GREEN—Similar to Colorado Blue but range in color from green to light blue. Very showy. **2½ to 3 ft., \$1.00 each.**

SPINY GREEK JUNIPER—Attractive dwarf pyramidal tree with compact bluish green foliage. **18 to 24 in., \$1.25 each.**

PURPLE SPREADING JUNIPER—A very attractive low growing evergreen with silvery foliage that assumes a purplish cast in fall and winter. **18 to 24 in., \$1.00 each.**

ORDER EARLY

... take advantage of our special discount. See Page 3 for details.



Savin Juniper



Pyramidal Arborvitae



Globe Arborvitae



Colorado Blue Spruce

Jersey Shore, Pa.,
May 20, 1939.

Kelly Bros. Nurseries,
Dansville, N. Y.

Gentlemen.

I sent you an order the first of April for trees and grapevines. They are starting nicely and look like the best I have ever received.

Yours respectfully,
EBEN C. HARRIS,
R. F. D. 1



Amer. Arborvitae

KELLY'S *Selected* ROSES..

**"Selected Dozen"
ROSE COLLECTION**
(All illustrated in color on these pages)

Betty Uprichard
Caledonia
Etoile de Hollande
Golden Dawn
Red Radiance
Roslyn

Heinrich Wendland
Pink Radiance
Sister Therese
Pres. H. Hoover
Sensation
Dame Edith Helen

All 12 of these exquisite roses
for only **\$3.85**

AMI QUINARD—Blackish maroon buds opening into flowers of rich velvety red.
AUTUMN—Burnt orange, streaked with red. Very active bloomer.
BETTY UPRICHARD—Two tone salmon and carmine. Very fragrant.
CALEDONIA—Most desirable white. Large pointed buds, opening to very large double, long lasting fragrant flowers.
C. K. DOUGLAS—Bright crimson scarlet.
DAME EDITH HELEN—Clear pink. Very large double, fragrant bloom on long stem.
ETOILE DE FRANCE—Large double blooms of rich velvety crimson.

E. G. HILL—Dazzling scarlet, toning to deep red. Fragrant blooms on long stems.
ETOILE DE HOLLANDE—Best brilliant dark red rose. Stems almost thornless.
FRAU KARL DRUSCHKI (Hybrid Perpetual)—The White American Beauty. Pure snow white. Vigorous grower; continuous bloomer.
GLOWING CARMINE—The name appropriately describes this beautiful new rose. Strong grower, with well shaped buds.
GRUSS AN TEPLITZ—Dark rich crimson, changing to velvety fiery red.



Betty Uprichard



Caledonia

ROSE PRICES

SELECTED
Strong 2 Year No. 1 Bushes
PRICE—40c each, 10 for \$3.50

Wilton, N. H., Feb. 23, 1939.
 Kelly Brothers Nurseries
 I am sending an order for your "Selected Dozen" of roses. I have a rose garden that is the wonder and envy of all my friends, and every rose bush bought from you, so hope these will be as good as the ones I already have, and I am sure they will be.
MRS. W. B. SANBORN, R. F. D. No. 2



Etoile de Hollande



Golden Dawn



Red Radiance

hardy . . . free blooming . . . vigorous No. 1 plants grown right out in the open fields for two years before they come to you!



Dame Edith Helen



Sensation



Pres. H. Hoover

GOLDEN DAWN—Sunflower yellow with buds touched with carmine. Prolific bloomer.

HEINRICH WENDLAND—Large double flowers of reddish copper. Backs of petals rich orange.

MARGARET McGREDY—Large, double brilliant red petals with tinge of yellow at base.

MME. BUTTERFLY—Pink, mixed with apricot and yellow. Buds long lasting, fragrant.

PADRE—Copper-scarlet flushed with yellow. Long buds and very profuse bloomer.

PINK RADIANCE—Brilliant carmine-salmon color. Flowers are large, double, and delightfully fragrant. Most popular pink rose.

PRESIDENT H. HOOVER—Yellow, orange, and scarlet in a luscious blend of color.

RED RADIANCE—Clear genuine red.

ROSLYN—Beautiful golden yellow with reverse side orange.

SENSATION—Fragrant, large red rose. Plants strong, productive.

SISTER THERESE—Long pointed buds of chrome yellow.

TALISMAN—Brilliant red and gold buds, opening to well shaped blooms of scarlet, orange, and rich yellow.



Sister Therese



Pink Radiance

Kelly's
"FAVORITE SIX"

- Caledonia
- Etoile de Hollande
- Golden Dawn
- Pink Radiance
- Glowing Carmine
- Ami Quinard

All **6** for **\$2.00**



Roslyn



Heinrich Wendland

HARDY CLIMBING ROSES

PRICE—40c Each, 10 for \$3.50



Paul's Scarlet

A few climbing roses will add much to the attractiveness of your home.

APELES MESTRES—Clear yellow, full double flowers of large size.

CLIMBING AMERICAN BEAUTY—Crimson. Large fragrant flowers of fine form, borne in clusters. Blooms early.

DOROTHY PERKINS—Large clusters of double shell pink blossoms.

DR. W. VAN FLEET—Shows a mass of beautiful clustered buds which open in large shapely flowers. Delicate flesh white.

PAUL'S SCARLET CLIMBER—Large brilliant scarlet flowers. Excellent for pillars.

PRIMROSE—A pure yellow hardy climber. Full flower on long stem.

SILVER MOON—Creamy white, large semi-double flowers. Vigorous grower. Blooms in midseason.

SPANISH BEAUTY—Pearl-pink, splashed with red. One of the most attractive climbers. Blooms early.

POLYANTHUS OR BABY RAMBLERS

PRICE—40c Each, 10 for \$3.50

This group includes the dwarf bushy, everblooming cluster types that add color to the garden all year. Effective in solid beds or for borders.

BELVEDERE—Dark crimson. Large double blooms and vigorous bushy grower.

GLORIA MUNDI—Orange scarlet. Large semi-double. Very popular.

Why You Pay Less When You Buy From Kelly's

NURSERIES FAVORABLY LOCATED

Our nurseries are located in one of the most favorable growing sections found anywhere in the country. Soil and climatic conditions are so favorable, that no where can trees be grown with cleaner, straighter bodies, better balanced tops, or more abundant fibrous roots.

KELLY'S HAVE YEARS OF EXPERIENCE

Nursery work is highly specialized. During 60 years in business we have built up an organization of thoroughly competent men, that can and does produce trees of unsurpassed quality. We invite comparison.

YOU BUY TREES DIRECT FROM NURSERY

Buying through our catalog you have only one profit to pay. When you buy direct there is no unnecessary handling, there is less chance for mistakes, and the trees arrive in excellent condition.

WE GUARANTEE SATISFACTION

After all is said and done, "the proof of the pudding is in the eating." Purchase your trees from us this year, and if, when you receive them they are not fully up to standard, notify us at once, and we will see that complete satisfaction is accorded you.

DISTANCES FOR PLANTING

Standard Apples	35 ft. x 35 ft.
Standard Pears, Apricots	20 ft. x 20 ft.
Sweet Cherries	25 ft. x 25 ft.
Sour Cherries, Plums	20 ft. x 20 ft.
Quinces, Dwarf Apples, Dwarf Pears	15 ft. x 15 ft.
Peaches	16 to 20 ft. apart

	Plants	Rows
Grapes	6 to 8 ft.	8 to 10 ft.
Raspberries	3 to 5 ft.	6 to 8 ft.
Blackberries	4 to 6 ft.	6 to 8 ft.
Currants and Gooseberries	4 ft. apart	4 ft. wide
Strawberries (Field)	1 to 3 ft.	3½ ft.
Strawberries (Garden)	1 ft. apart	2 ft.
Asparagus (In Beds)	15 in. apart	3 ft.
Asparagus (In Fields)	2 ft. apart	5 ft.

NUMBER OF TREES OR PLANTS TO THE ACRE

(Square System)

Distance	No. of Trees
5 x 5 ft.	1,745
6 x 6 ft.	1,210
7 x 7 ft.	888
8 x 8 ft.	680
9 x 9 ft.	537
10 x 10 ft.	435
11 x 11 ft.	360
12 x 12 ft.	305
13 x 13 ft.	257
14 x 14 ft.	222
15 x 15 ft.	193
16 x 16 ft.	170
17 x 17 ft.	150
18 x 18 ft.	134
19 x 19 ft.	120
20 x 20 ft.	108
25 x 25 ft.	69
30 x 30 ft.	48
35 x 35 ft.	35
40 x 40 ft.	27



Please list on reverse side names of friends or neighbors who would be **1940** interested in receiving a copy of our Catalog.

PLEASE USE THIS ORDER SHEET. ADDRESS

KELLY BROTHERS NURSERIES

DANSVILLE, N. Y.

Make all remittances payable to "KELLY BROTHERS NURSERIES." Send Bank Draft, Express or Post Office Money Order, or Cash in Registered Letter.

IMPORTANT—No matter how often you have written us, always give your full address and write your name (always the same way), Post Office, County and State very plainly. By so doing you will save us much trouble and avoid the possibility of delay and mistake in filling your order.

Please send by _____

STATE HERE BY EXPRESS OR FREIGHT

Name _____

Post Office _____

County _____ State _____

Street and Number _____

or R. F. D. No. _____

Railroad Co. _____

If different from Post Office }
give name of town or city }
in which your nearest freight }
or express office is located. }

Date _____

Enclosed find \$ _____

Please Do Not Write Here

Amt.

Ck.	M. O.	Cash
-----	-------	------

Ack. Agg.

Copied—

Be Sure and Place YOUR Address Here

Name.....

Post Office.....

State.....

Place

Stamp

Here

Kelly Brothers Nurseries,

(GROWERS OF GOOD TREES)

Dansville,

N. Y.



STRAWBERRIES

PRICES—25 plants 50c, 50 plants 75c, 100 plants \$1.00, 500 plants \$4.50, 1000 plants \$8.00

All Strawberries sent Postpaid

DORSETT—An extra early self-pollenizing offspring of Premier. Does well on poor soil. Berries large, evenly matured, light bright red. Excellent for market or home use.

FAIRFAX—Another excellent new variety, ripening early, about the same time as Premier. Very vigorous and a fine plant maker.

PREMIER—An early, productive variety of unsurpassed quality. Vigorous and healthy.

CATSKILL—Plants large, very vigorous, yield very heavy crops. Berries very large, slightly irregular in shape, moderately firm, dark red, but glossy and attractive, mild subacid and good quality. Ripens in Midseason.

EVERBEARING VARIETIES

PRICES—25 for 75c, 50 for \$1.25, 100 for \$2.00, 1000 for \$12.00

GEM—Very hardy, plants freely. Berry is dark



Fairfax Strawberry

red, large, sweetish tart flavor. Plants medium in size and immune to disease.

MASTODON—Without question the finest of the Fall or Everbearing varieties. It produces an immense crop in June and an abundant crop in the fall. Most prolific of all the Fall varieties. Berries immense size, unusually good quality and color.

Cultivated BLUEBERRIES

Delicious—Profitable

PRICES—Strong 2 Year 12 to 18 in. Plants, 75c each, \$6.00 per 10

(Write for prices on larger quantities)

Cultivated Blueberries grow in large clusters, plump, tender, and practically seedless with the delightful tang of the wild fruit. In addition to bearing large crops, it is a nice bush to add attraction to a lawn or garden.

Blueberries require an acid soil which contains an abundance of peat moss or other partly decayed vegetable matter. If your soil is deficient in this material, a heavy application of peat, rotted sawdust, or other material should be made and worked into the top 6 inches of soil.

Plant 3 to 4 ft. apart in rows 6-8 ft. apart. Will produce satisfactorily for 50 years, or more. For proper pollination, plant two or more varieties. We recommend the following:

CABOT (Early)—Bush is rather low and spreading, seldom reaching a height exceeding 4 feet. One of the earliest varieties, a good producer, excellent flavor, and a good shipper. Fruit is large, firm, and attractive.

RANCOCAS (Mid-season)—Popular. Ripens about 2 weeks after Cabot. The bush is tall, vigorous, and productive. The fruit is large, light blue, firm, and attractive.

RUBEL (Late)—Tall well shaped bush, attractive appearance, excellent producer, good quality slightly tart berry.

NUT TREES

HAZEL NUT (Filbert)—A slow growing low tree that bears young and prolifically. Does well where peaches succeed. 4 to 5 ft. trees, 75c each.

BLACK WALNUT—Grows from 40 to 60 feet high. Large crops of nuts with rough hard shell containing rich, oily kernels of fine flavor. Trees 4 to 5 ft. high, 90 cents each.

BUTTERNUT—Large longish nuts with sweet, oily, nutritious kernels. Trees 4 to 5 ft., 90 cents each.

ENGLISH WALNUT—A fine lofty growing tree, producing large crops of thin shelled delicious nuts. Trees 3 to 4 ft. high, \$1.10 each.

CURRANTS

PRICES—Extra strong 2 year bushes, 20c each, \$1.75 per 10, \$12.00 per 100

Write us for Special Prices on Large Quantities

WILDER—An unsurpassed commercial sort. Bunches and berries very large, bright attractive red. Hang on bushes well and of excellent quality. Productive.

Stony Point, N. Y.,

Kelly Brothers Nurseries,
Gentlemen:

I have had very good luck with all my trees that I have purchased from you, and I am very well pleased indeed. All have been of very fine stock and I have had some very fine fruit.

Yours truly,

BERNARD GOETSCHINS

BACKED BY 60 YEARS REPUTATION



Elberta

Kelly's 60TH Anniversary

BARGAIN ORCHARD COLLECTION

50 — 2-year, 5 to 7 ft., $\frac{3}{4}$ " and up — **APPLE TREES**
25 McIntosh Red; 25 R. I. Greening

See Page 9 for description

25 — 1-year, 5 to 6 ft., $\frac{9}{16}$ " and up — **PEACH TREES**
Your choice—Elberta, J. H. Hale,

or Golden Jubilee
See descriptions inside



Northern
Spy

ALL **75** TREES
FOR ONLY
\$13.95
VALUE
\$17.00

KELLY BROS.
NURSERIES
Dansville, New York