

Historic, Archive Document

Do not assume content reflects current scientific knowledge, policies, or practices.

MICHIGAN GROWN

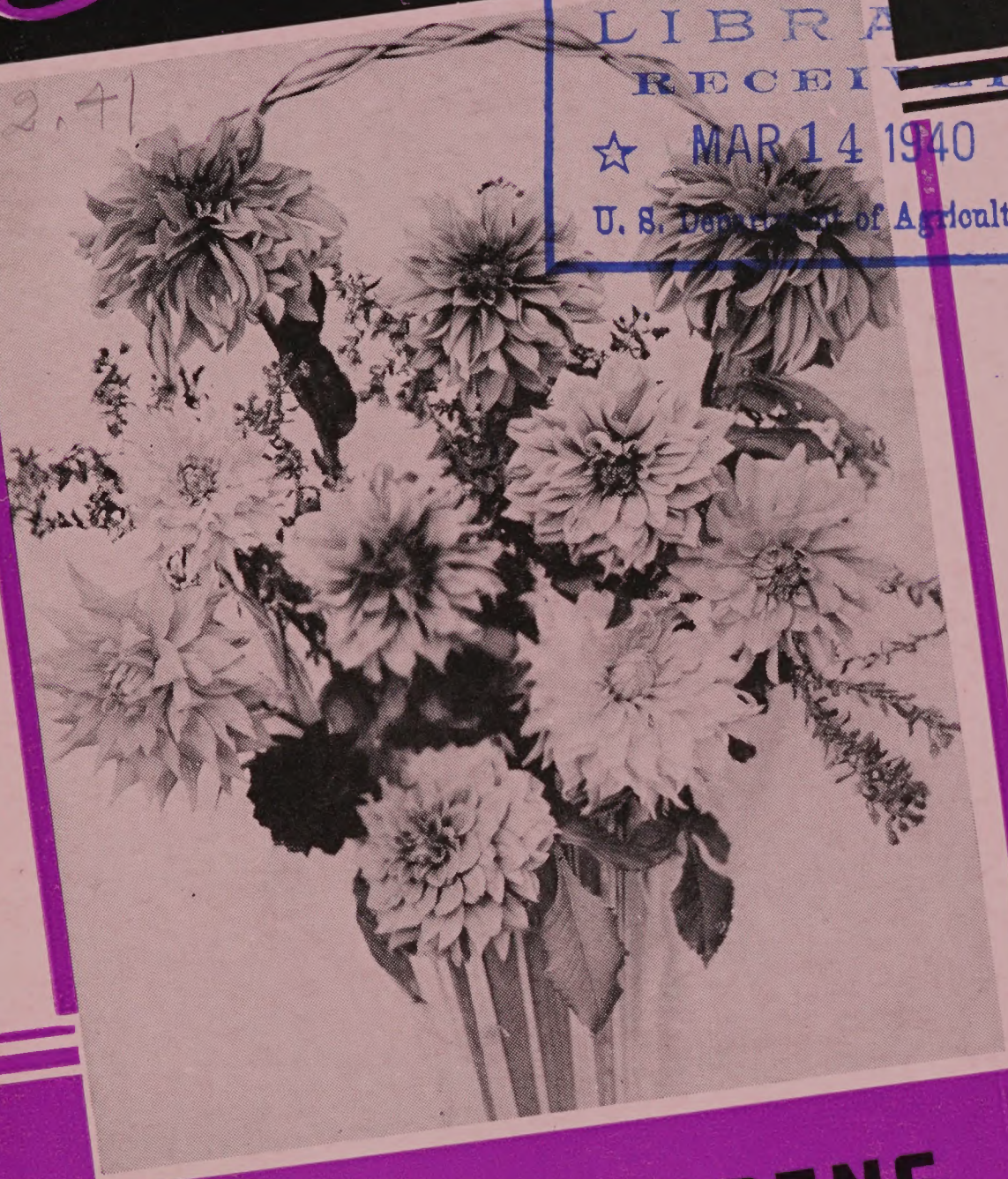
Dahlias

62.41

LIBRARY
RECEIVED

★ MAR 14 1940 ★

U. S. Department of Agriculture



**OAKLEIGH GARDENS
GRAND RAPIDS, MICHIGAN**

1940

EXTRA!



SPECIAL
\$1
COLLECTIONS

We want hundreds of new customers this year,—these Special \$1.00 Bargains will bring them. Pin a dollar bill to your order and mail TODAY. Any three Collections for \$2.75 — entire six for \$5.00, postpaid.

No. 1-A; 1 Root Each:

Jane Cowl
Jersey Beacon
Marg. W. Wilson
Jersey's Beauty
Mrs. Ide Ver Warner
Baby Royal

No. 1-D, 1 Root Each:

Sharazad
Girl of Hillcrest
Forest Fire

No. 1-B, 1 Root Each:

Josephine G.
White King
The World
Blue Jersey
Kentucky

No. 1-E, 1 Root Each:

Myra Howard
Omar Khayyam
D. W. Morrow

No. 1-C, 1 Root Each:

Forest Fire
D. W. Morrow
Twilight
Wm. Hogan

No. 1-F, 1 Root Each:

Palo Alto
Blue Jersey
Sultan of Hillcrest

OAKLEIGH GARDENS

GRAND RAPIDS, MICHIGAN
U. S. A.



(Golden Beauty)

REFERENCES

People's National Bank
Union Bank of Michigan
Grand Rapids Association of Commerce

Special Information

Please Read Carefully

AVOID disappointment by ordering early. Quantities are very limited on some varieties and you will be assured of the best selection by making prompt reservation.

Unless otherwise specified, root orders will be shipped between April 15 and May 1. Earlier shipments not recommended or guaranteed against freezing, drying out or rotting. Green plants are usually shipped between May 15 and June 10.

Please make your order amount to \$2.00 or more. It actually costs us as much to handle a \$2.00 order as it does to ship a \$5.00 or \$10.00 order. The same amount of detail work, inspection, packing, carton and handling is required.

Our quotations include all ordinary transportation charges fully prepaid. If you wish "Special Delivery", add 25c to your remittance. We recommend that green plants should travel Special Delivery to insure prompt and careful handling.

While our terms are invariably "Cash with Order", we will, as a matter of accommodation, book your order upon receipt of a deposit of 25% of the amount of the order—balance to be paid before delivery time. Special Credit Terms will be arranged for customers wishing to pay on a monthly or installment basis. If your credit is good—use it. Positively no C. O. D. orders accepted.

Usual Trade Discounts apply to all items excepting Special Collections and Bargain Offers. Commercial Growers please use business letterhead when requesting whole sale prices. Large quantity orders a matter of correspondence,—we will gladly quote on your want list.

Special Planting Instructions accompany every root or plant order. These instructions cover all of the necessary details of Dahlia culture, including: preparation of ground, planting, fertilization, disbudding and pruning, digging root crop and winter storage.

Order early and keep a copy of your order. All orders are acknowledged the same day as received by us and stock is immediately selected and reserved for you.

EXTRA STOCK ALLOWANCES

(Do not apply to Bargain Offers or Special Collections)

With every order from \$5.00 to \$10.00

— choose 15% extra stock, free.

With every order from \$10.00 to \$25.00

— choose 20 % extra stock, free.

With every order from \$25.00 to \$50.00

— choose 25% extra stock, free.

These extra Stock Allowances cannot be taken as Cash Discounts

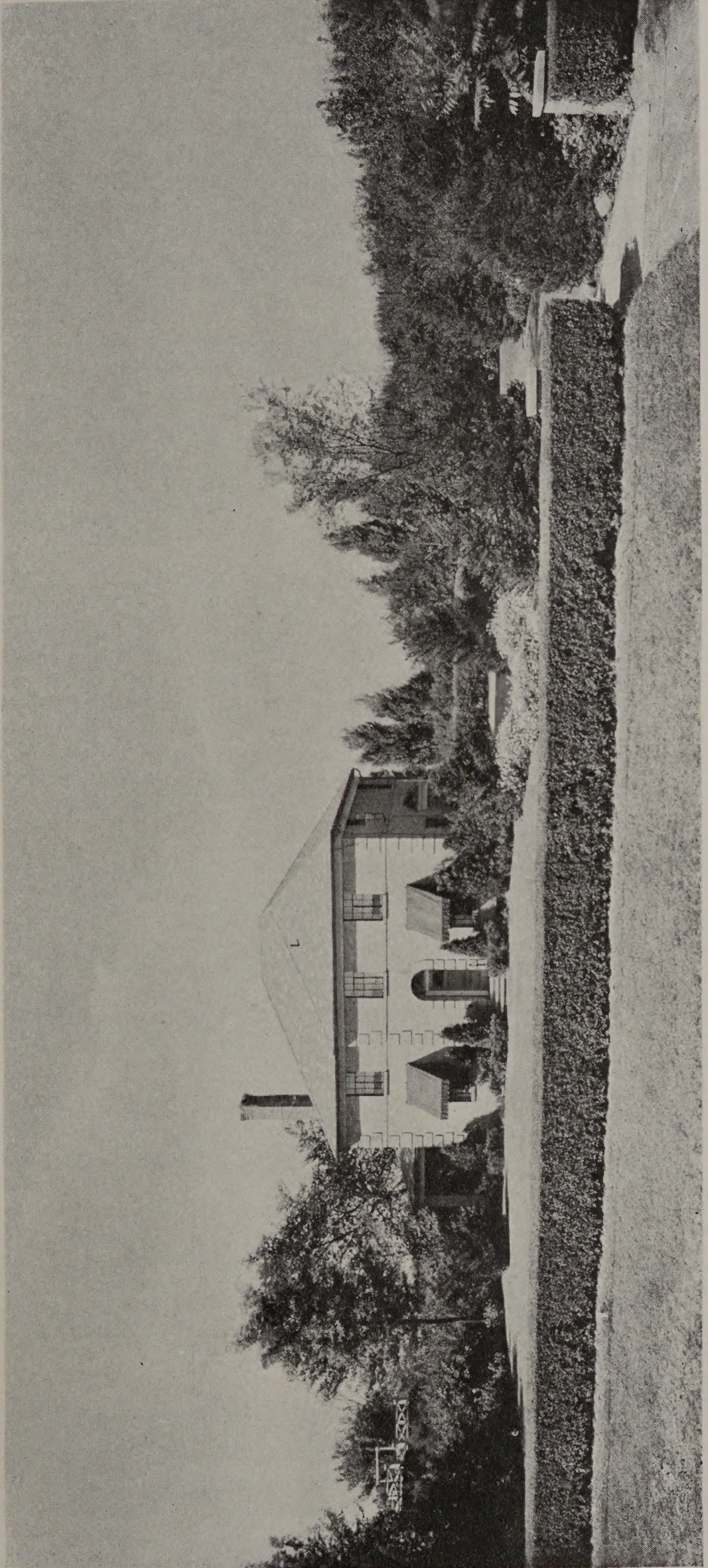
GUARANTEE

We unreservedly guarantee all stock purchased from us to be true to name and to be satisfactory in every respect. Any stock which proves otherwise will be cheerfully replaced or proper adjustment made immediately. Not responsible in any case for more than actual purchase price.

Home of Oakleigh Gardens

Located at 961 Oakleigh Road, Grand Rapids, Mich., where you will always see the newest varieties and the largest field planting of recent Honor Roll Dahlias in the Mid-West. Visitors are extended a cordial welcome to visit our Exhibition Gardens and field plantings during the blooming season.

Oakleigh Road crosses U.S.-16 one mile west of City Limits. Our phone is 7-2058.



NEW 1940 INTRODUCTIONS

The following are the best, in our estimation, of the 1940 introductions. Plants only, are available, grown from originators stock and at originators established prices. The descriptions, which follow, are according to information given us by the introducer and which we consider reliable.

AMERICAN VICTORY (American)

A formal decorative that because of its tremendous depth, looks larger than it's 8 inch diameter. It is an even tone of oxblood red that does not fade. Plant is strong and easy to grow. Clean, medium size foliage and good stems. Won two Achievement Medals and will win often in larger classes as a result of it quality. On House Beautiful 1940 Honor Roll. Plant, \$3.50

AZTEC CHIEF (Comstock)

A formal decorative of unusual light tomato red. An excellent growing plant that never stunts. It is a producer of many exhibition blooms and is easily grown to 11 and 12 inches. A very fast grower and early bloomer. Plants attain a height of five feet and blooms are held facing on long, straight stems. Won undis-seminated class at San Diego 1939 show. On House Beautiful 1940 Honor Roll.....Plant, \$3.50

BEGONIA ROSE (Golden Rule)

Called the Queen of cut flower varieties. Color described in name. This new variety in respect to popularity with florist, beauty and keeping is unquestionably in a class with Jersey's Beauty and Queen City. It's stem is long, strong and always slim. As a producer it surpasses all others, being the freest bloomer of all cut flower Dahlias and the earliest to bloom. Winner of two Certificates of Merit and Achievement Medal at Ohio Valley Dahlia show. On 1940 Flower Grower Honor Roll.....Plant, \$5.00 Net

BILLY LARCH (Etherington)

A worthy semi-cactus of large size. Color a very deep crimson, almost black at center. Blooms carried on strong, cane-like stems always facing. Foliage, dark and insect resistant. Height about 5 feet. Can be grown up to 13 inches without forcing. Winner of special cash prize at Englewood, N. J. and runner up for Achievement Medal at A. D. S. show, New York City. On 1940 Flower Grower Honor Roll...Plant, \$5.00

CHEER LEADER (Sparks)

A new formal,—unexcelled as a cut flower. Self color of rose pink with long strong stems. Size 6 to 8 inches. Prolific bloomer.....Plant, \$3.00 net

DEEP PURPLE (Stephenson-Ruschmohr)

Its name is its color. Blooms 10 to 12 inches with great depth. Good stems and splendid dark green foliage. Certificate of Merit Winner at Storrs. On 1940 House Beautiful and Flower Grower Honor Rolls.
.....Plant, \$3.50

EVELYN CHANDLER (Ballay)

A semi-cactus Dahlia growing 10 to 13 inches by 6 to 7 inches deep. Color is bright golden apricot with deeper shadings on the reverse. A straight petaled semi-cactus which has been called a Gold Satan. On 1940 House Beautiful Honor Roll.....Plant \$5.00 net

EVENTIDE (Hillside)

A distinctive and distinguished Dahlia of a rich violet purple with outer petals streaked lighter purple. An informal type with blooms 10 to 12 inches. Winner of many honors including Certificate of Merit at East Lansing. On 1940 House Beautiful and Flower Grower Honor Rolls.Plant, \$3.50

FLASH (Salem)

A truly flashy Dahlia, being a brilliant red and white, straight to incurved cactus bi-color, with tips of each petal lacerated. An early and prolific bloomer. Winner of Achievement Medal at Pittsburgh,—Award of Merit at Georgia trials and on 1940 House Beautiful and Flower Grower Honor Rolls.....Plant, \$7.50

GLAMOROUS (Kemp)

A sensationally different bi-colored Dahlia. In color a barium yellow, conspicuously blended with lavender pink, presenting a color combination of striking beauty. Blooms up to 12 inches on perfect stems. Informal decorative. On 1940 Flower Grower Honor Roll.Plant, \$3.50

GLORIA BACHER (Tudor-Guntle)

Declared by many critics the best purple Dahlia to date. A formal decorative, bush 5½ feet, tremendously vigorous, with dark leathery foliage and strong stems. Huge flowers growing 8 to 10 inches in diameter by 6 inches deep. Color is a clear, glowing rhodamine purple. Winner of many honors, including Achievement Medal. On 1940 Flower Grower Honor Roll. Plant \$3.50

KING COLE (Ballay)

An informal decorative, 12 to 14 inches in diameter by 7 to 8 inches deep. Color is a very deep maroon red with velvet-like texture and fine substance. It is a strong grower with splendid stems. Won Medal for best 1940 introduction at San Fransisco show. On 1940 House Beautiful and Flower Grower Honor Rolls.Plant \$5.00 net

MANHATTAN (Veile)

A large orange-red informal that has probably won more honors than any other new variety. Flowers average 12 inches by 7 inches on fine stems and with excellent foliage. Tall grower. Winner of Achievement Medal at New York, Peekskill and Wilmington,—also Derrell W. Hart Memorial Medal at New York and many other honors. On 1940 House Beautiful and Flower Grower Honor Rolls.....Plant, \$7.50

MAFFIE (Johnson)

Called the sensation of the season. Massive blooms of intense red, having perfect semi-cactus form. A clean, strong growing plant of 6 feet with insect resistant foliage. The giant blooms, averaging 13 inches, are held on long, strong stems well above the foliage. Winner of many honors as the "biggest and best" variety. Also Achievement Medal winner and on 1940 House Beautiful Honor Roll.....Plant, \$5.00

MAESTRO (Ballay)

A fine new semi-cactus Dahlia in a deep glowing beet red color. Grows 10 to 12 inches wide by 6 deep. A well formed and beautiful flower on an erect graceful stem. On 1940 House Beautiful Honor Roll.Plant \$5.00 net

MRS. HOWARD C. PHILLIPS (Northbrook)

A fine, new ivory white informal decorative. A very free bloomer and a vigorous grower. A splendid variety with blooms of real quality and size, on the best of stems.....Plant, \$3.50

PACIFICA (Ballay)

Another semi-cactus yellow, but an odd shade with the yellow deeper at the center and creamy white on reverse of petals. Its form is distinctive and the blooms average 12 to 13 inches. A prolific bloomer, growing 5 feet and free branching. Winner of best undisseminated semi-cactus at San Fransisco show. On 1940 House Beautiful and Flower Grower Honor Rolls.

.....Plant \$5.00 net

PASADENA (MacDonald)

A splendid, tall growing and vigorous Formal Decorative that holds its giant, rose pink blooms well above the foliage. In this variety is combined the substance and keeping qualities desired by the florist and size and perfection of form that captivates the Judges. Winner of many honors including Achievement Medal. On 1940 Flower Grower Honor Roll.....Plant \$2.00

PINK AMELIA (Springhill)

Represented as one of the best semi-cactus varieties to date. A true pink Amelia Earhart. Blooms from 7 to 12 inches without disbudding or extra care. Winner of many honors. On 1940 Flower Grower Honor Roll.

.....Plant, \$4.00

PROGRESS (Salem)

An exhibition informal type of immense size and excellent quality. Color is rosy mauve with petals twisted and curved. This variety has everything,—size, perfect stems and good growth habits. On 1940 House Beautiful and Flower Grower Honor Rolls...Plant \$7.50

RED CHALLENGER (Kemp)

A carmine red formal decorative, very large and of good depth, blooms averaging 11 to 12 inches by 6 to 7 in depth. Stiff stems hold the blooms well above the foliage, which is dark green and leathery. An early and continuous bloomer. On 1940 Flower Grower Honor Roll.....Plant, \$3.50

THE GOVERNOR (Dahliadel)

A bright sulphur yellow Formal Decorative with wide heavy petals that roll back at the tips. It easily grows 11x6 inches with long, erect stems and strong, rugged insect resistant bushes about 5 feet tall. Winner of many Blue Ribbons at leading Shows and on 1940 House Beautiful and Flower Grower Honor Rolls.

.....Plant, \$2.50

THUNDERBOLT (Mad River)

A dark scarlet incurved cactus with blooms 10 inches and larger. Stems are strong and hold the giant blooms well above the foliage. Winner of Achievement Medal at Chicago, Milwaukee, Racine and Cleveland. On 1940 House Beautiful and Flower Grower Honor Rolls.

.....Plant, 5.00 Net

TOWN TOPIC (Hulin)

Something really sensational in a new Dahlia. General color is magenta purple, shading to petunia purple,—many blooms come tipped white. Bush is very rugged and the giant blooms are held well out of foliage on stems like broom sticks. Flowers have fine keeping qualities. On 1940 Flower Grower Honor Roll.

.....Plant, \$3.50

VICTORY (Asther)

An unusually fine Pink formal decorative. Blooms 11x7 inches. Excellent keeping qualities. Fine stems and insect proof foliage. Winner of many Blue Ribbons at leading Shows. On 1940 House Beautiful and Flower Grower Honor Rolls.Plant, \$3.50

General Description of Varieties

FOREWORD . . . On account of limited catalog space, our descriptions are necessarily brief, being confined primarily to the color and special growing characteristics. While all of the varieties we list are nationally known and recognized as outstanding leaders of the Dahlia world, we will be glad to supply more complete descriptions upon request.

Abbreviations: FD — Formal Decorative;
ID—Informal Decorative; SC—Semi Cactus

ADORABLE (ID)

A splendid Dahlia in all respects. Color a vivid peach, shading to an orange yellow. Petals are long, broad and twist gracefully near the tips.....Roots \$.50

AUTUMN MIST (FD)

A fine, large Bi-color of oyster white with bright purple lines. Vigorous in growth with long strong stems, —flowers facing out. Blooms 9 to 12 inches, a free bloomer and good keeper.....Plant, \$1.00; Root, \$2.50

AUTUMN SUNSET (ID)

An outstanding Dahlia with all the glory, beauty and delicate coloring of an autumn sunset. A strong, vigorous grower with enormous blooms, long stems and perfect habits.....Root, \$1.00

AURORA (FD)

A beautiful new Dahlia,—rose pink overlaid wax yellow, giving the blooms a peach pink appearance. Many blooms reach 12 inches. A strong, vigorous grower with stiff, straight stems.....Plants only \$2.50

BABY ROYAL (MIN.)

One of the best Miniatures. Color is salmon pink and apricot with gold shading .Very profuse bloomer.
.....Root, \$.25

BERNICE GEER (INC. C)

A 1938 introduction of exceptional merit. Color a deep bright rose to old rose with flowers 8 by 5 inches. Very free bloomer with fine stems and good growth habits.
.....Root \$1.00

BETSY (ID)

A very beautiful flower, white at base of petals, shading to lavender. Average size of blooms 8 by 4 which are held in an erect position on strong stems. Good for exhibition or cut flower work.....Root, \$2.00

BONNIE BELMONT (SC)

A fine semi-cactus of beautiful bright yellow, with long, stiff stems. Strong, vigorous grower and profuse bloomer.....Root, \$.25

Bargain Offer No. 3-B

Wenoka	Darcy Sainsbury
Satan	Myra Howard
Omar Khayyam	Shahrazad
Girl of Hillcrest	White King

One root each of these 8 splendid varieties for only \$3.00 postpaid.

BLUE JERSEY (FD)

A lavender Jersey's Beauty. Same shape of plant, blooms and stems. Unusually good cut flower because of keeping qualities.....Root, \$.35

BLUE RIVER (FD)

The color of this splendid Dahlia is bright mauve with blue shadings. An early and free bloomer with strong stems and beautiful blooms.....Root, \$.75

BRILLIANT LADY (ID)

A bright reddish French purple reflexed silver. Blooms are 11 to 12 inches, with good depth. Stems are extra long and straight, and bush is a very vigorous grower. Greatly admired by visitors the past season.

.....Plant, \$2.50; Root, \$7.50

BUCKEYE GLORY (ID)

The color is clear lavender. A profuse blooming variety; with long, strong stems and insect resistant foliage. Flowers average 8 inches in diameter. Root, \$.75

BUCKEYE STAR (SC)

A flower of exquisite formation with beautiful color tones of jasper pink with golden yellow center. The long stems and unusual keeping qualities of this variety make it unexcelled as a cut flower Dahlia.

.....Root, \$.75

BURCH FORAKER (ID)

A beautiful scarlet variety. Blooms 10 to 12 inches, on the finest of very long, stiff stems. Heavy, insect resistant foliage.....Plant, \$1.00; Root, \$3.00

CALIFORNIA IDOL (ID)

It is a splendid grower and the giant yellow blooms are held upright on long stiff stems. This Dahlia has many Show honors to its credit and it will be in a popular variety for years to come.....Root, \$.75

CARL G. DAHL (ID)

The largest Dahlia in our gardens in 1939,—we had many blooms up to 14 inches. Color is emberglow with golden sheen, sweet brier reverse. This Dahlia has everything—immense size, splendid formation and delightful color. If you want extreme size, order this variety.....Plant, \$1.00; Root, \$2.00

CAVALCADE (FD)

A beautiful shade of old rose or mulberry pink. One of the best cut flower varieties we grow, with 7 to 9 inch blooms on perfect stems. Cavalcade should be in every garden.....Root, \$.50

CHEROKEE BRAVE (ID)

One of the finest of the new Dahlias. A big Dahlia of oxblood red that does not fade in the sun. An early and prolific bloomer with the finest of stems and healthy plant growth. An outstanding variety. Plant only \$1.00

Bargain Offer No. 5

Blue River

Souvenir

The Fireman

Wenoka

Jersey's White Beauty

Oriental Glory

Bernice Geer

Golden Standard

Miss Oakland

Mrs. Geo. Le Boutellier

Hunt's Velvet Wonder

Monarch of the East

One root each of these 12 outstanding, big-blooming Dahlias for the low price of only \$5.00, postpaid.

(Your choice, any 6 for \$3.50)

CLARA CARDER (FD)

This variety is a beautiful shade of cyclamen pink—in a color class by itself. Blooms 10 to 12 inches on strong stems. Plant is a vigorous grower and insect proof.....Root, \$.50

COMETEER (STR. C)

A splendid new straight cactus, — early flowering and free blooming. Color is a clear bright golden buff. This variety grows from 6 to 9 inches in diameter and has unexcelled stems for cutting.
.....Plant, \$.75; Root, \$1.50

CORNELL (ID)

A fine new bi-color of garnet and white. Average size of bloom 8 to 9 inches, perfectly formed. The plant is a strong grower with heavy, tough foliage. This Dahlia commands immediate attention because of its beautiful color combination.....Plants only \$1.00

DARCY SAINSBURY (FD)

An outstanding white decorative and winner of many prizes. Blooms 8 to 10 inches on the best of stems. Strong healthy grower and very profuse bloomer. We consider this variety the BEST white decorative we have grown.....Plant, \$.75; Root, \$1.50

D. W. MORROW (ID)

An immense cardinal red Dahlia—unusually rich in color. This variety always attracts very much attention in our gardens. The massive flowers, which reach a size of 10 inches by 6 inches deep, are sometimes supported with difficulty by the stems on account of the weight.....Root, \$.50

DR. M. A. HOWE (FD)

A most attractive variety in color and form. Color is deep tyrian rose which is enhanced by the abundant dark green foliage. Flowers average 7 to 9 inches on long, stiff stems. We recommend this variety, strongly.....Plant, \$1.00; Root, \$2.00

DOLLY MADISON (ID)

The color of this fine new Dahlia is a rich viridine yellow, shading to light bronze,—Bittersweet pink reverse. Blooms 10 to 11 inches across and of good depth. Stems long and stiff, holding the flowers facing, high above the foliage.....Root, \$1.50

EVERYBODY'S FAVORITE (ID)

One of the best of the 1939 introductions. Its color is magnificent,—a soft, clear rose pink. An unusually large Dahlia and can easily be grown 12 to 13 inches in diameter. The stem is perfect and bush is very rugged and hardy. Winner of many prizes.
.....Plant, \$3.50; Root, \$10.00

EDNA FERBER (SC)

Always a winner because it has the necessary qualities of a perfect Dahlia. The color is coral shading to old gold. Blooms are large on the best of stems. Root, \$.50

ELISSA LANDI (FD)

Color is jasper pink blended with warm buff, giving an effect of brilliant orange. Blooms average 8 to 9 inches, without forcing, on stems of long length and strength. Plant is a strong grower and foliage insect-resisting.....Root, \$.50

FOREST FIRE (ID)

It is, as the name indicates, a flashy color—lemon yellow and rich scarlet. A strong grower and profuse bloomer.....Root, \$.50

FRANCE BORION (INC. C)

This foreign variety is one of the best cut flower sorts we grow. Color is delicate soft pink, yellow at center. Deep flowers, attractively formed, on perfect, long stems.....Root, \$.35

FRANCIS K. HAWKINS (SC)

One of the most beautiful cactus varieties recently introduced. Color is coral pink with faint yellow halo at base of petals. Easily grown to 8 inch diameter with good depth, and on wirelike stems. An early and profuse bloomer.....Plant, \$1.50; Root, \$3.50

FRANK WERNER (ID)

A giant informal with great depth of a warm apricot, salmon and red color. Center of flower and reverse of petals a brilliant red, suffusing the entire bloom with a warm glow.....Root, \$1.00

FREIDA GEORGE (ID)

A splendid new variety with magnificent big blooms in a most unusual color combination,—cream overlaid helio, deepening at the tips. A great prize winner and strongly recommended.....Plant, \$.75; Root, \$1.50

GALA CALIFORNIA (INC. C)

Here is a new true Cactus in a brilliant color of orange red. We know of no other Dahlia in this peculiar color combination. A profuse and continuous bloomer with fine stiff stems and perfect growth habits. Root, \$1.50

GENEVA SURPRISE (FD)

An immense orange cadmium blending to apricot yellow, slightly suffused grenadine red. The blooms are very large and can easily be grown up to 12 inches. Stems are strong and straight, holding the giant blooms well out of the foliage. An early and profuse bloomer.....Plant, \$1.50; Root, \$5.00

GERTRUDE LAWRENCE (ID)

This 1939 introduction is an early bloomer and surely one of the finest of new varieties. It has everything—giant size, beautiful color, perfect stems and rugged plant growth! Color is best described as currant red,—blooms are very large and sturdy long—jointed stems hold the bright flowers well above the brush. One of the BEST.....Plant, \$2.50; Root, \$7.50

GIRL OF HILLCREST (ID)

A fine, reliable exhibition Dahlia that always pleases. Color is cadmium orange. A strong, vigorous grower with long straight stems.....Root, \$.50

GOLDEN BEAUTY (ID)

This variety is just naturally a large flower,—we cut many blooms 10 to 12 inches in diameter, off the same bush in 1939.—always with the finest centers you have ever seen. This splendid new Dahlia grows 6 to 7 feet tall, with vigorous, healthy, dark green foliage and stems that carry the giant blooms in a erect, facing position. Color is apricot yellow splashed with jasper pink. A perfect growing variety from every view point.....Plant, \$.75; Root, \$1.50

Bargain Offer No. 3-A

- | | |
|--------------|-------------------------|
| Shahrazad | Mrs. Geo. Le Boutellier |
| Twilight | Sultan of Hillcrest |
| Bernice Geer | Forest Fire |
| Phantom | Blue Jersey |

Edna Ferber

One root each of these 9 fine Dahlias for only \$3.00 postpaid.

GOLDEN SPIKE (SC)

A pure, golden yellow variety with blooms 8 to 10 inches on strong stems that hold the bloom well out of the foliage. A rugged, insect resistant variety that always pleases.....Plant, \$1.50; Root, \$5.00

GOLDEN STANDARD (ST. C)

A splendid variety of perfect form and quality. Golden tan, blushed with tints of ember and bronze. Blooms are large, held erect facing on stiff slender stem.

.....Root, \$.50

GOLDEN GIANT (KEMP'S) (FD)

A most perfect formal decorative, a giant in size with blooms 12 inches in diameter by 6 inches in depth. Golden yellow in color with buff reverse. A very strong, husky grower with insect resistant foliage. If you want size, order this.....Plant, \$.75; Root, \$2.00

GLAMOUR (ID)

An immense true purple with each petal edged amaranth pink,—something very different and distinctive. Easily grown to 14 inches, with straight, stiff stems. Bush growth vigorous and insect resistant. One of the best of the 1939 introductions. Plant, \$3.50; Root, \$10

GRAND MARSHALL (SC)

A fine new Semi-Cactus. The color is reddish violet,—a most unusual combination which immediately attracts attention. This Dahlia will be a popular variety for years to come. Judging from its formation it is a seedling of Satan.....Plant, \$.75; Root, \$2.00

GRAND MASTER (FD)

A deep bronze shading to orange at the center. Long, strong stems and heavy leathery foliage. We consider this new variety one of the best we have ever grown and had many flowers 14 inches in diameter.

.....Plant, \$.75; Root, \$2.00

GREATER GLORY (SC)

One of the most beautiful and artistic Dahlias we have grown. A very large rose pink, shading lighter. Excellent formation and character. Stems are long and strong and plant growth very thrifty.

.....Plant, \$.75; Root, \$1.50

HILLSIDE GOLD (SC)

An early and free blooming Dahlia of rich golden yellow with an apricot glow at center. An unusually fine cut flower with fine long stems and unexcelled for basket work. Size of blooms 7 to 9 inches. A new variety of exceptional merit that will surely be mighty popular in years to come.....Plant, \$1.25; Root, \$4.00

HILLSIDE SUNSET (ID)

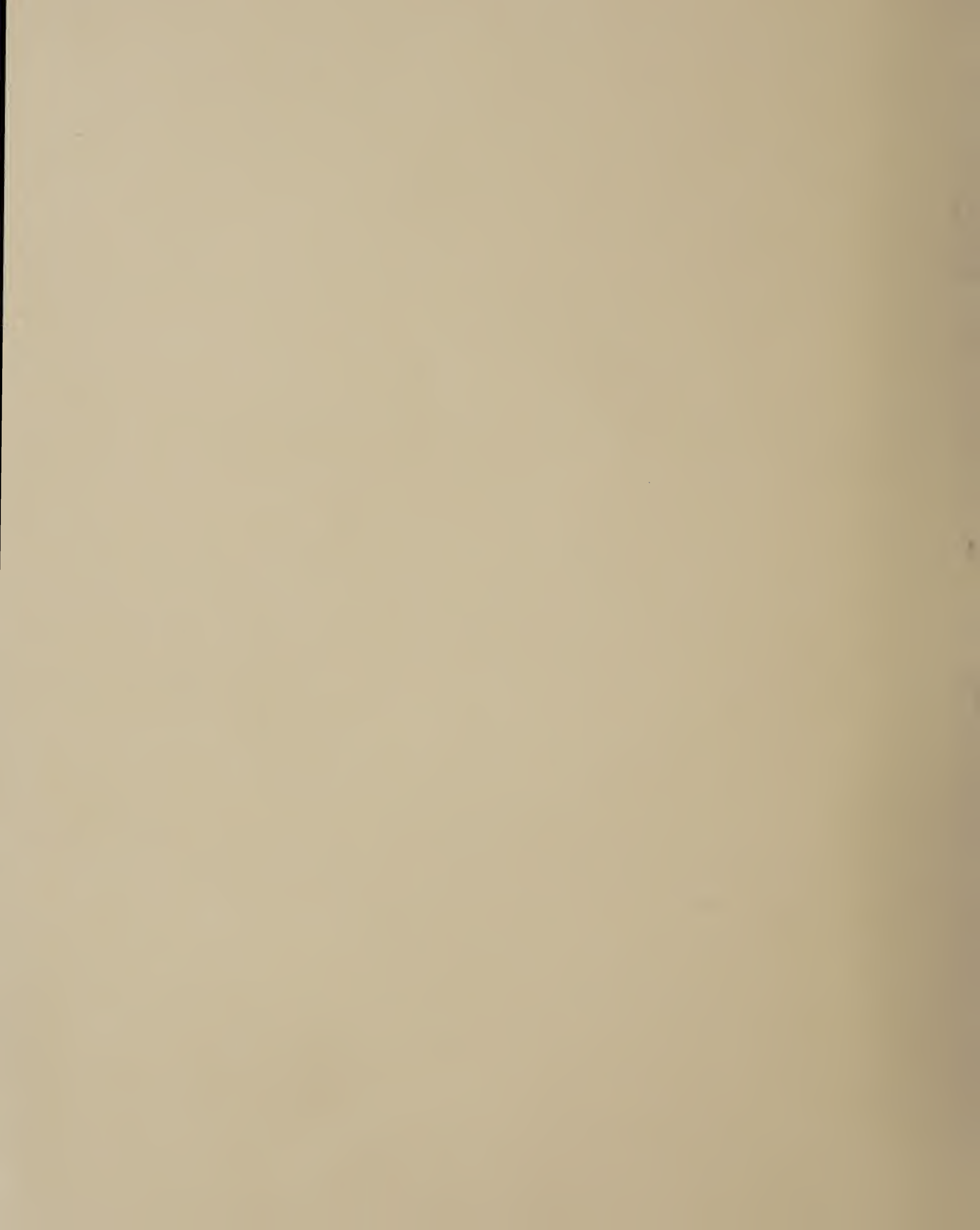
A new variety which is just naturally a giant bloomer. In 1939 we had many blooms up to 12 inches. Color is golden yellow, suffused with red. Stems are long and perfect,—plant growth rugged with insect resistant foliage. For huge size, this it IT.....Plants only \$2.00

HUNT'S VELVET WONDER (ID)

Here is a Dahlia of great size and beauty. The color is a rich violet burgundy and the stems and plant growth are unusually good. Fine for exhibition,—a sure winner.....Root, \$.50

INCADESCENT (ID)

Color is rich rosy buff, suffused yellow and light old rose. High centered, well formed flowers, 10 to 13 inches in diameter. A profuse bloomer on long, strong stems which hold the giant flowers well above the foliage. Incadescent is a seedling of Jane Cowl but larger in size and more beautiful in color and formation.....Root, \$1.00





Oakleigh Dahlias are properly protected from drought by the most modern type of automatic overhead irrigation. Just another of the many reasons for the strong, healthy appearance of our plants and the unusual quality and vitality of our tubers. Oakleigh Dahlias, being properly fertilized and irrigated, are always fully matured and easy to winter. There IS a difference.



Partial view of Oakleigh Gardens. Thousands of visitors from many States viewed this gorgeous planting in 1939. You are cordially invited to inspect our exhibition and field plantings in 1940, during blooming season, where you will always find the latest and best Dahlia introductions—prize winners by actual proof.

JANE COWL (ID)

Buff salmon and orange. Massive blooms. One of the finest and most popular Dahilas today. A perfect flower, stem and plant.....Root, \$.25

JEAN TRIMBEE (SC)

A Dahlia that really needs no introduction because it is well known and popular. The huge petunia blooms are very beautiful and artistic. The stems are unexcelled and the plant is a strong, sturdy grower.

.....Root, \$.50

JERSEY BEACON (FD)

Always popular and satisfactory. Color is Chinese red, —very showy. A prolific bloomer and one of the easy-to-grow varieties.....Root, \$.25

JERSEY'S BEAUTY (FD)

The old standby. A nationally popular Dahlia and one of the best standard pinks. Indispensable as a cut flower.....Root, \$.25

JERSEY'S DAINY (INC. C)

One of the best white Cactus Dahlias ever introduced. A very profuse bloomer with good stiff stems. Unexcelled cut flower.....Root, \$.35

JERSEY'S WHITE BEAUTY (FD)

White edition of Jersey's Beauty. Produces fine white blooms of 6 to 8 inches on the best of long stems. Splendid cut flower.....Root, \$.50

JIMMIE FOXX (ID)

A truly spectacular Dahlia of giant size, 13 x 8 inches. Color, coppery red tinged with henna. Blooms are supported by strong, straight stems. Plant is an exceptionally sturdy grower.....Root, \$1.00

JOSEPHINE G. (SC)

A most charming Dahlia in every respect. Bright rose pink which immediately attracts attention. Very profuse bloomer with excellent stems. Always a popular Dahlia and rightfully so.....Root, \$.35

JULIUS BUNGE (INC. C)

An European variety with a color all its own,—a glowing rose pink with light yellow flush at the base of petals. An early and free flowering variety with perfect stems. Unexcelled as cut flower.....Plant only \$1.00

KATIE K. (ID)

A clear pink of large size on long stems. One of the best exhibition pinks since Kathleen Norris. Winner of Certificate of Merit.....Plant, \$.75; Root, \$1.50

KENTUCKY (FD)

For a real good cut flower variety. this Dahlia can't be excelled. Bright salmon orange in color. A thrifty grower, prolific bloomer, with long, straight stems. Seedling of Jersey's Beauty.....Root, \$.25

KENTUCKY DAWN (SC)

A fine variety of soft golden buff with light peach suffusion. Grows rugged and large without forcing, —with long, strong stems. Recommended very highly.....Plants only \$1.00

KING OF THE GARDEN (ID)

A large, bright canary yellow, flushed with soft orange yellow. A grand variety with strong, erect stems, good form and perfect growing habits.....Root, \$.35

LAVENDER FORT MONMOUTH (ID)

This is a real beauty. Solid, light lavender color. Blooms 8 to 10 inches across on strong, upright stems. Tall plants and very attractive.....Root, \$.35

LEIDEN'S ORANGE (ID)

A beautiful novelty from Europe. Color is vivid orange, free flowering, good stems and plant habits. Blooms average 8 inches.....Root, \$.50

LEMON GLO (SC)

Color is a lovely lemon vellow. Blooms are full and perfectly formed. Very profuse bloomer and a splendid keeping cut flower.....Root, \$.25

LELAND STANFORD (ID)

A bright cardinal red of immense size and perfect form. Splendid plant habits with long, stiff stems and healthy foliage.....Root, \$1.00

LOIS WALCHER (FD)

This new variety is a winner of many national honors, and probably the most outstanding bi-color ever introduced. Color is deep amaranth pink that breaks sharply into pure white tips. Stems are ideal and plant growth healthy. For a unique and attractive novelty, be sure to order this fine Dahlia. **Plant, \$1; Root, \$2.50**

MARG. W. WILSON (ID)

Opalescent pink. Huge blooms of exhibition type. A favorite everywhere and always attracts attention.Root, \$.25

MAYOR FRANK OTIS (ID)

This is the sensational new variety that created so much interest in 1939. A giant, honey yellow decorative with slight copper shading. It is unusually broad and deep with artistic petal formation. We had many blooms last Season that were 14 inches in diameter. Stems are strong and straight, with vigorous, healthy bush. Don't miss this one.....Plant, \$5.00; Root, \$15.00

MICHIGAN WHITE (FD)

A new commercial white variety of genuine merit. Very profuse bloomer with long, cane-like stems. We recommend this variety for cut flower work.Plant, \$.75; Root, \$1.50

MILTON J. CROSS (ID)

Color is clear gold at center, shading to orange buff, a rich pleasing combination. Blooms up to 14 inches, on four-foot stems, held erect above foliage. This Dahlia is very strongly recommended and it will surely be popular for years to come.....Root, \$.75

MISS OAKLAND (FD)

A prolific bloomer with perfectly formed flowers 7 to 9 inches in diameter. Stems 12 to 30 inches long, holding the blooms in an erect facing position. Because of its unusual keeping qualities, this variety is unexcelled for cut flower work. Plant growth is healthy, vigorous, with dark green insect resistant foliage.Plant, \$.50; Root, \$1.50

Bargain Offer No. 10 (Plants)

- | | |
|----------------|-----------------|
| Dr. M. A. Howe | Burch Foraker |
| Russell Knight | Sunrays |
| Kentucky Dawn | Tyrian Buckeye |
| Golden Giant | Cherokee Brave |
| Autumn Mist | Your Lucky Star |

Any 5 plants for \$4.50 postpaid.

Entire 10 varieties for only \$8.75 postpaid.

With each order for entire 10 plants, your Free choice of a plant of Everybody's Favorite or Glamour

MONARCH OF THE EAST (FD)

A super giant. We had many blooms 13 to 14 inches across in 1939. Color is a warm gold with apricot and orange buff suffusion,—slight coppery red on the reverse. This sensational new Dahlia has everything—giant size, grand stems and perfect growing habits.
.....Plant, \$.75; Root, \$2.00

MRS. C. E. WILDON (FD)

Color, scarlet red with orange reverse. Blooms average 8 to 10 inches across on long, straight stems. Splendid grower with heavy, leathery foliage. Certificate of Merit and Honor Roll Dahlia....Plant, \$.75; Root, \$1.50

MRS. GEO. LE BOUTELLIER (ID)

A rich, velvety carmine, giant in size and outstanding in all respects. A healthy, vigorous grower with strong stems and insect resistant foliage.....Root, \$.50

MRS. IDE VER WARNER (FD)

Deep mauve pink. A favorite everywhere and always reliable. Size 6 to 8 inches, with long stems. Root, \$.25

MRS. M. W. CLEMENT (ID)

Can be best described as a much larger glorified Milton J. Cross. Color is gold with apricot. The formation of a high center and twisting petals makes it most pleasing. A sturdy grower with many blooms on excellent stems.....Root, \$1.50

MRS. WM. S. KNUDSEN (ID)

One of the best of the new exhibition whites. A strong, healthy grower with insect resistant foliage. Blooms up to 12 inches across by 7 inches deep. We recommend this variety.....Root, \$1.50

MURPHY'S MASTERPIECE (ID)

One of the most outstanding of recent creations—a consistent prize winner everywhere. The color is dark red and the huge blooms are held upright on stiff, strong stems. The Dahlia can be grown to 14 inches with ordinary culture.....Plant, \$.50; Root, \$1.00

MY DELIGHT (FD)

Here is a Dahlia of new and beautiful color combination—mallow purple on the outer three-fourths of the petals, while the base of each petal is white and blends with the outer color. The perfect blooms are held facing on erect, strong stems. Average size 8 to 9 inches. Plant is vigorous, prolific bloomer and foliage insect resistant. One of the nicest Dahlias we have grown.....Plant, \$1.50; Root, \$5.00

MYRA HOWARD (ID)

This is just naturally a big flower. Color is a pure gold with a rose sheen which glistens in the sunlight. The giant blooms are held upright on stiff, straight stems.....Root, \$.50

Bargain Offer No. 8

- | | |
|---------------------|-------------------|
| Darcy Sainsbury | Mrs. C. E. Wildon |
| Sultan of Hillcrest | Son of Satan |
| Phantom | Oakleigh Monarch |
| Red Sunset | Forest Fire |
| Golden Beauty | Incadescent |
| Monarch of the East | California Idol |

One root each of these 12 fine varieties for the low price of only \$7.95 postpaid.

(Your choice, any 6 for \$5.50)

NANAQUAKET (FD)

Delicate orchid-pink. A Dahlia of extraordinary beauty and a most prolific bloomer. Immense blooms on fine long stems.....Root, \$.25

OAKLEIGH MONARCH (FD)

A big, broad petaled formal type, that is all the name implies. Truly a beautiful color—a clear, brilliant cerise red. Flowers average 8 to 11 inches in diameter on strong, straight stems. Plant growth is heavy and vigorous. Blooms have unusual keeping qualities, especially for such a large flower. Always a winner in the Red class.....Plant, \$.50; Root, \$1.00

OMAR KHAYYAM (FD)

Color, Chinese red at base of petals and shading to a bright orange. A strong vigorous grower and good for exhibition or cut flower.....Root, \$.50

ORIENTAL GLORY (ID)

Cadmium orange overlaid with scarlet. Blooms are large, averaging from 8 to 10 inches. Stems are stiff and strong. Dark green foliage and insect proof.
.....Root, \$.50

PALO ALTO (SC)

This variety has finely formed flowers of bright salmon and tan combination. Easily grown to 10 inches on straight, long jointed stems. It is a fine Dahlia for exhibition or as a cut flower.....Root, \$.50

PHANTOM (FD)

A good reliable bi-color. Long, broad petals of deep violet purple with white tips. A strong, vigorous grower which always attracts pleasing comment.
.....Root, \$.75

PINK ELEGANCE (SC)

A new semi-cactus, 8 to 10 inches in diameter with corresponding depth. Holds perfect center throughout the season, with unusual keeping qualities as cut flower. The color is a beautiful, brilliant rose pink. A vigorous grower, perfect habits. Plant \$.75; Root \$1.50

PINK GRAND (ID)

A grand pink Dahlia for exhibition, recommended for gardens where Kathleen Norris does not grow well; for it is an easy variety to grow and of the same color, a soft, deep rose pink. For such a large Dahlia it has unusual keeping qualities. Stems and plant growth perfect. One of the best varieties in our 1939 planting.Plant, \$1.50; Root, \$5.00

PINK SPLENDOR (FD)

This very large formal is a rich old rose color. It grows to immense size and produces its large blooms on long, stiff stems high above the foliage. Plant is a tall grower and prolific bloomer. Plant, \$1; Root, \$2.50

PREMIER'S MAJESTIC (ID)

A beautiful new color combination,—salmon, gold and mulberry. Blooms are unusually large,—held upright on strong, cane like stems. A variety of exceptional merit and quality.....Root, \$1.00

PREMIER'S WINSOME (ID)

A most attractive pink giving an abundance of large blooms. Without forcing, we had many flowers 10 to 12 inches, on strong, stiff stems. Vigorous grower with insect resistant foliage. An easy-to-grow variety, —heartily recommended.....Plants only \$1.50

PRIMROSE (INC. C)

A new Dahlia with personality. A beautiful cactus—the color is straw yellow with rose pink reverse. Average size 8 by 4 inches, held upright on long straight stems. A splendid variety in all respects.....Root, \$1.50

RADIANT BEAUTY (ID)

This fine new variety is a seedling of Freckles and is a more beautiful Dahlia than its parent. The yellow background is brighter and the scarlet markings on the petals more vivid than the seed parent. Blooms are very large and can easily be grown 12 inches and over. One of the best 1939 introductions.

.....Plant, \$2.50; Root, \$7.50

RED PILOT (ID)

This grand red Dahlia is a seedling of Son of Satan and Oakleigh Monarch, and has the good qualities of both parents combined. Its brilliant red blooms average 8 to 10 inches and are held facing on strong, stiff stems. Plant is a very vigorous grower with dark green, insect proof foliage.....Plants, \$2.50

RED SUNSET (ID)

Blooms of giant size on long, strong stems with healthy, vigorous foliage. The color is a bright vivid scarlet. This Dahlia is bound to appeal to growers who want something unusually large, and showy. A Certificate of Merit and Honor Roll variety,—and surely worthy of these, and many more honors.

.....Plant, \$.75; Root, \$1.50

RITA WELLS (ID)

Here is the sensation of 1939 introductions. Color is buff and gold with tints of grenadine pink. The giant blooms average 12 to 13 inches in diameter and 7 to 8 in depth. A winner everywhere for exhibition and a variety we heartily recommend as one of the BEST in our list.....Plant, \$2.50; Root, \$7.50

ROBERT L. RIPLEY (ID)

This Dahlia is of immense size,—has been grown 16x12 inches, and we had many blooms in 1939 that were 14 inches across and 8 inches deep. A beautiful color combination. rhodamine purple with rose suffusions throughout the entire bloom. This Dahlia creates a sensation wherever shown.....Plant, \$.75; Root, \$2.00

ROSEMARY'S BEAUTY (SC)

A beautiful new cactus of true form with a color of pink shading to a lemon center. A very profuse and early bloomer with flowers up to 10 inches in diameter. Achievement Medal winner and Honor Roll Dahlia.....Root, \$1.00

Bargain Offer No. 9 (Plants)

- | | |
|-----------------|------------------|
| Carl G. Dahl | Jimmie Foxx |
| Lois Walcher | Freida George |
| Katie K. | Golden Beauty |
| Darcy Sainsbury | Oakleigh Monarch |
| Robt. L. Ripley | Red Sunset |

Any 5 plants for \$3.25 postpaid

Entire 10 varieties for only \$5.50 postpaid.

With each order for entire 10 plants, your Free choice of a plant of Brilliant Lady or Radiant Beauty.

RUSSELL KNIGHT (FD)

We grew this grand variety for the first time in 1939 and it made a distinct hit with us and our visitors. It is a very large, deep flower of brilliant carmine. Petal formation is perfect and the giant blooms are held upright on stems like broom sticks. A splendid variety in every respect.....Plant, \$.75; Root, \$1.50

SALLY LOU (SC)

A splendid new cactus,—unexcelled as a cut flower variety. The color is dark orange, shaded brown. Average size of flowers 8 by 5 on perfect stems. An Achievement Medal winner, well chosen.....Root, \$1.50

SAN FRANCISCO (ID)

This new giant was a sensation of our 1939 planting. It is particularly outstanding, not only because of its 12 to 15 inch blooms and beautiful shrimp pink color, but because of its well proportioned and thrifty plant growth which average 6 to 8 feet in height. Foliage is always bright and clean, with long, stiff stems which hold the huge blooms upright facing. Heartily recommended as one of the BEST.....Plant, \$2.50; Root, \$7.50

SARACEN (FD)

This new variety is one of the very few reliable purple Decoratives on the market. It blooms early and profusely with perfect 10 inch flowers on sturdy stems. The color is close to a royal purple and each petal is very thinly outlined with a light edge. A fine variety in all respects.....Plant, \$.75; Root, \$2.00

SATAN (SC)

No Dahlia has been more sensational and spectacular than this one. Horn-like petals of flaming red, touched gold, perfectly rolled and incurved, give rare form to a flower of unusual brilliancy. The immense blooms, up to 13 inches, are held uprightly on long, cane-like stems.....Root, \$.50

SHAHRAZAD (ID)

This reliable variety is a gorgeous deep pink. We call it a pink Jane Cowl because of its similar growth habits, size and splendid qualities.....Root, \$.50

SON OF SATAN

A very vigorous variety that creates a sensation where ever grown. The flame red color is hard to improve upon, being most brilliant and unusual. Blooms are very large and true Semi-Cactus. A splendid Dahlia in all respects.....Plant, \$.50; Root, \$1.00

SOUVENIR (ID)

Here is a fine new Dahlia of exhibition size and in a vivid pink, not unlike Kathleen Norris in color. An early and very profuse bloomer with perfect stems and thrifty growth habits. Strongly recommended.
.....Root, \$.50

STERN V. B. OPPELSDORF (STR. C)

A very striking German novelty of great beauty. Color cherry red on yellow background with red reverse. Has long, strong stems, a profuse bloomer and ideal for table or exhibitions.....Root, \$.50

SUNRAYS (ID)

One of the best of recent introductions. A vigorous growing variety with huge blooms of clear buff with apricot suffusions,—reverse of petals, peach red. Wonderful grower and exhibition type.....Plants only \$1.00

SULTAN OF HILLCREST (FD)

One of the largest varieties we have ever grown. Color, strontian yellow with sunrise yellow reverse. Blooms up to 14 inches are common and bush habits and foliage are perfect.....Root, \$.75

SYLVIA (MIN. FD)

A splendid little Miniature, garnet red in color. Free flowering, with bush covered with blooms all season. Honor Roll variety.....Root, \$.35

THE FIREMAN (ID)

This variety is a flashy cardinal red with golden flushes at center of flower. The growth habits are perfect, stems long and straight, and a prolific bloomer. A very popular and satisfactory variety.....Root, \$.75

THE WORLD (FD)

Color, rosy magenta with silver. An unusually beautiful Dahlia with strong, erect stems. A reliable, easy-to-grow variety.....Root, \$.25

TWILIGHT (FD)

A big, bold formal type which grew exceptionally well for us the past season. Color, Liseran purple with many petals a pale rose purple. Strong, stiff stems which hold the giant blooms at just the right angle. Foliage is tough and insect resisting.....Root, \$.25

TYRIAN BUCKEYE (FD)

This new variety blooms early and has perfect habits of growth and unusual vigor. A formal type of bright tyrian pink. Blooms are very large with splendid, long stems. Good Formal pinks are scarce and this fine variety will help fill the demand. Plant 1.50; Root \$3.50

WENOKA (FD)

The color of this splendid variety is rosy mauve and the giant blooms are held upright on stems as stiff and straight as broom handles. Foliage is like leather, —dark green and insect resisting. An outstanding Dahlia in every respect.....Root, \$.75

W. H. T. (FD)

This Dahlia always commands instant attention due to its unusual coloring of rich old rose with mauve shading on reverse. A long stemmed variety of perfect petal formation and healthy growing habits. Root, \$.25

WHITE WONDER (ID)

This Dahlia has giant blooms of pure white with long, twisted and curled petals,—size 10 to 12 inches across by 6 to 8 deep. Foliage thick, leathery-like and insect resistant.....Root, \$.25

Super-Bargain Offer No. 11 (Plants)

- | | |
|-------------------|----------------------|
| Brilliant Lady | Glamour |
| Gertrude Lawrence | Pink Grand |
| Radiant Beauty | Rita Wells |
| Yellow Supreme | San Francisco |
| Mayor Frank Otis | Everybody's Favorite |

Any 5 plants for \$12.75 postpaid.

Entire 10 varieties for only \$19.50 postpaid

With each order for entire 10 plants, your free choice of an extra plant of any of the above varieties

THE BIGGEST OFFER OF 1940

WHITE KING (FD)

A pure white, large flowering variety of beautiful form and good substance. Fine for garden, cutting or exhibition.....Root, \$.25

WM. HOGAN (FD)

Reddish purple, tipped white. A very unusual variety that always attracts attention. One of the best, reliable bi-colors.....Root, \$.25

YELLOW GLEAM (ID)

A splendid new yellow informal decorative with artistically formed blooms of large size and good substance. Stems are long and heavy. Vigorous plant growth.
.....Plant, \$1.50; Root, \$3.50

YELLOW SUPREME (ID)

Color, pinard yellow, very large and full centered. We grew this new variety up to 13 inches in diameter by 6 inches deep. Stems are strong and stiff, holding the giant blooms well out of the foliage. Plants are healthy, vigorous growers. We consider this the best yellow of recent years.....Plant, \$2.50; Root, \$7.50

YOUR LUCKY STAR (SC)

A 1939 introduction of great merit. It is a huge Cactus with soft pastel colors,—amaranth pink shading to a white center. Good stems, beautiful color and large exhibition size. Highly recommended.
.....Plant, \$1.50; Root, \$5.00



VITAMIN B-1

(pure crystalline powder)

For plants and flowers, — indoor or outdoor. Users report amazing results with this newly discovered root tonic and growth stimulant, — bigger flowers; stronger, healthier plants; new growing energy. Invaluable for transplanting. Peps up winterworn house plants. Dahlia growers report unusual growth and size of blooms.

See October - 1939 and February - 1940 issues of Better Homes and Gardens for amazing facts of Vitamin B-1.

Inexpensive — easy to use

Home Gardeners Kit—enough to make 1000 gallons of watering solution—complete with Instructions — only \$1.00 postpaid.

OAKLEIGH SUPREME MIXTURE

The Biggest Value of 1940 — Bar None

This assortment represents an exceptional and outstanding value. It is made up of certain varieties from our 1939 plantings, on which we do not have sufficient stock to list in our catalog. Because of our reduced planting program for next season, many fine varieties will also be included in this assortment. Regardless of regular catalog value, these Dahlias are being combined in one lot and sold at the sensational low price of \$2.45 for 12 roots—\$4.75 for 24 roots and \$6.95 for 36 roots—all postpaid and fully guaranteed.

A large percentage of the Dahlias in this Supreme Mixture would ordinarily sell for 75c to \$2.00 a root and we promise you that you will be delighted with their blooming qualities—or your money back. Roots will not be labeled or tagged at these low prices. We guarantee a good color assortment and every Dahlia different—no two alike. Think of it, a fine Dahlia garden for just a few dollars.

Free—

With each order for the Supreme Collection, Free Extra Stock will be included to the amount of \$1.00 for the 12-root collection—\$2.00 for the 24-root Collection and \$3.00 for the 36-root Collection. These Free roots will be named and labeled and worthy additions to any Dahlia garden.

Order one of these remarkable Collections today—enjoy the thrill of growing these exceptionally fine introductions. Merely specify Supreme Mixture—12 roots for \$2.45—24 roots for \$4.75 or 36 roots for \$6.95, all plus liberal Free extras and every variety different.



Modern storage and propagating house of Oakleigh Gardens, with a storage capacity of 40,000 clumps and facilities for growing 25,000 green plants annually. This combination greenhouse and storage building is the last word in practical and scientific production of Dahlias. Another of the many reasons for the strong, healthy appearance and quality of Oakleigh "Champion" Dahlias.

PERSONAL SERVICE OFFERS:

Big Double Values

DURING the past four seasons we have been offering our customers these Personal Service Offers with splendid success and increasing popularity. For 1940, bigger and greater values will be included in these offers and if you are undecided what varieties to order, why not leave the selection to our judgment with positive assurance and guarantee of complete satisfaction and extraordinary value for your money? While we cannot guarantee to include all of the Dahlias you might suggest, we will be glad to have your suggestions of Dahlias to be included in these Personal Service Offers. We will comply to the extent of our ability and stock.

The following Personal Service Offers will surely please the most critical buyer:

- No. 1 10 Dahlia Roots, our choice, all named and labeled, all different, total catalog value \$8.50 or more for only.....\$3.95 postpaid
- No. 2 10 Dahlia Roots, our choice, all named and labeled, all different, total catalog value \$12.50 or more for only.....\$5.75 postpaid
- No. 3 10 Dahlia Roots, our choice, all named and labeled, all different, total catalog value \$17.50 or more for only.....\$7.75 postpaid
- No. 4 10 Dahlia Roots, our choice, all named and different, total catalog value \$20.00 or more for only.....\$9.50 postpaid
- No. 5 20 Dahlia Roots, our choice, all named and different, total catalog value \$50.00 or more,—the biggest and best offer of 1940—20 sensational giants and prize winners, for only.....\$23.75 postpaid

These are the biggest values of 1940, bar none, and we give you this positive money back guarantee: "If you are not more than satisfied with this stock when you receive it, for any reason whatsoever, return it to us immediately and we will promptly refund your complete payment plus return postage charges."

POMPON DAHLIAS

During the past few seasons, the popularity of the little Pompon Dahlias has increased by leaps and bounds. Everyone should include a few Poms in their Dahlia or landscape planting.

Our range of varieties has been substantially increased during the past season and we recommend the following sorts for cutting and table work,—all are profuse bloomers.

		Per Root
Amber Queen	Amber Shades	\$.20
Edith Mueller	Apricot25
Elizabeth	Yellow Edged Carmine.....	.25
Fascination	Lavender Pink25
Fashion	Deep Amber25
Golden Queen	Yellow20
Hazel	Buff25
Jessica	Amber Tipped Red25
Joe Fette	White20
Little David	Russet Orange25
Mary Munns	Purple25
Morning Mist	Lavender25
Snowclad	White25
Vivid	Bright Red25

Your choice, any 8 of the above for only \$1.50.

One each of entire 14 varieties for only \$2.50.

Oakleigh "Super Special" Dahlia Seed

ENJOY the thrill in 1940 of growing Dahlias from seed. An interesting and enjoyable hobby. Dahlia seed planted in the spring will not only bloom the same year, but will also form a clump of roots that you can divide and plant in succeeding years.

A high percentage of germination and large double flowers may be expected from Oakleigh "Super-Special" seed as this seed is harvested from carefully selected parents and no poms or small flowering varieties are grown near the seed raising garden. Samples of each lot of seed are actually tested and germinated before seed packets are prepared, thereby insuring a high percentage of plants.

Due to the unusual demand for this high grade seed and also the fact that the quantity for disposal is somewhat limited, we urge you to order early and avoid disappointment. We guarantee your complete satisfaction in every respect, or your money refunded in full.

Prices on "Super-Special" Dahlia Seed:

20 Double Mixture Seed.....	\$1.00
50 Double Mixture Seed.....	2.00
100 Double Mixture Seed.....	4.00

EXTRA!



SPECIAL
\$2
COLLECTIONS

Our Special \$2.00 Bargains are equally popular as the \$1.00 Collections. Never before have we offered such tremendous values at such small costs. Any three Collections for only \$5.00,—entire six for \$9.00. Give Oakliegh Dahlias a trial in 1940—your order, large or small will be genuinely appreciated.

No. 2-A, 1 Root Each;

Jersey's Dainty
Cavalcade
Forest Fire
Bernice Geer
Blue Jersey
Twilight
Shahrazad

No. 2-D, 1 Root Each;

Wenoka
Twilight
Satan
Bernice Geer
Sultan of Hillcrest

No. 2-B, 1 Root Each;

Forest Fire
Myra Howard
Palo Alto
Kentucky
Omar Khayyam
Girl of Hillcrest
D. W. Morrow

No. 2-E, 1 Root Each;

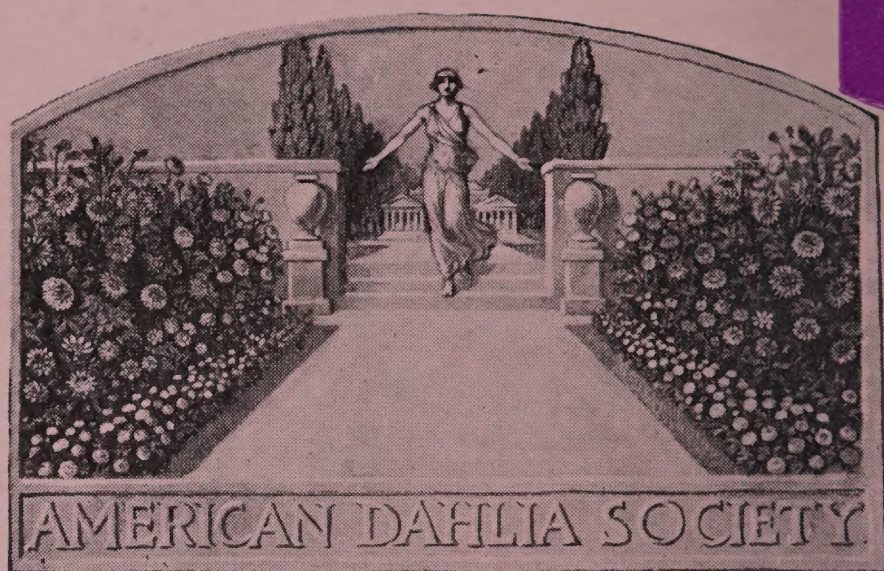
Miss Oakland
Golden Standard
Blue River
Mrs. Geo. Le Boutellier

No. 2-C, 1 Root Each;

The Fireman
Edna Ferber
Kentucky
Phantom
Girl of Hillcrest
White King
Fairy

No. 2-F, 1 Root Each;

Oakleigh Monarch
The Fireman
Bernice Geer
Shahrazad
Baby Royal



MEDAL OF A. D. S.

Highest Award of First Mid-West
Dahlia Show — Won by
OAKLEIGH GARDENS

“You can depend on Oakleigh”