

Historic, Archive Document

Do not assume content reflects current scientific knowledge, policies, or practices.

62.97

7516

Plant Now!



DAHLIAS
 GLADIOLUS
 EVERGREENS
 PERENNIALS
 STRAWBERRIES
 and
 GENERAL NURSERY
 STOCK

MYERS NURSERY
 ARCADIA, WISCONSIN



LIBRARY
 RECEIVED
 ☆ APR 27 1940 ☆
 U. S. Department of Agriculture

DSEC 562, P. L. & R.
 U. S. POSTAGE
PAID
 Permit No. 16
 ARCADIA, WIS.

U. S. DEPARTMENT OF AGRICULTURE,

WASHINGTON, D. C.

BUREAU OF PLANT INDUSTRY
 Fruit and Vegetable Crops and Diseases

MYERS HARDY EVERGREENS » »

For shelter, beauty, comfort the year through . . . the most valuable improvement to any property



PYRAMIDAL ARBOR VITAE

Just the sort of evergreen for your entrance or foundation setting. Grows naturally in slender shapely trees.

- Pyramidal Arbor Vitae—12 to 18 inch each 60c — 5 for \$2.25
- Pyramidal Arbor Vitae—2 to 3 feet each \$1.75 — 2 for \$3.00
- Pyramidal Arbor Vitae—3 to 4 feet each \$2.25 — 2 for \$4.00
- Globe Arbor Vitae—ball shape, 2 to 3 ft. each \$2.00 — 2 for \$3.50
- Siberian Arbor Vitae—ball shape, 2 to 3 ft. each \$2.00 — 2 for \$3.50

AMERICAN ARBOR VITAE

The Greatest Hedge Evergreen

- 12 to 14 inch per 10, \$1.50 — per 25, \$3.00 — per 100 \$10.00
- 2 to 3 feet each 50c — per 10, \$4.00
- 4 to 5 feet each \$2.00 — Baled, not prepaid

COLORADO SPRUCE

- Blue Shiners—2 to 3 feet each \$5.00 — Baled, not prepaid
- Green color—2 to 3 feet each \$2.00 — Baled, not prepaid

CONCOLOR FIR

Most Magnificent Lawn Tree

If you are looking for a truly grand evergreen for your lawn, by all means plant one or more of our beautiful Concolor Fir. It rivals the Blue Spruce.

- Concolor Fir—12 to 18 inch 2 for \$1.00 — 10 for \$4.00
- Concolor Fir—18 to 24 inch 2 for \$1.50 — 10 for \$6.00
- Concolor Fir—3 to 4 feet each \$2.00—2 for \$3.50. Baled, not prepaid

6 Evergreens for Entrance Planting

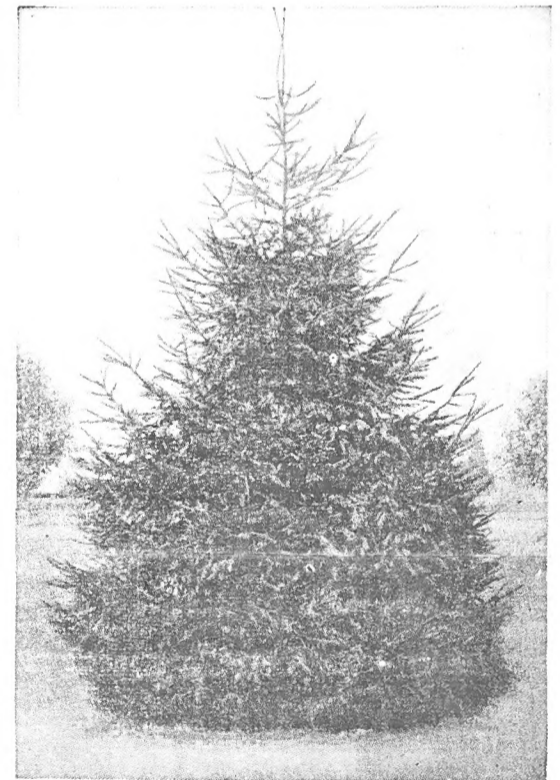
2 Pyramidal Arbor Vitae, 10 to 18 in. — 2 Mugho Pine, 10 to 12 in.
2 Savin Juniper, 10 to 12 inch

ALL SIX BEAUTIES FOR \$3.15 POSTPAID

NORWAY SPRUCE » The Most Widely Planted Windbreak Evergreen

Tall, compact, pyramids branching to the ground. Quick growing, hardy windbreaks of Myers Norway Spruce around the farm place give real protection and warmth. Bargain prices.

	Each	Per 10	Per 25	Per 100
4 to 8 Inch Norway Spruce SEEDLINGS 2 years old				
Per 50 — \$.85				
Per 100 — 1.50				
Per 500 — 6.60				
12 to 18 inch, heavy transplants, 9 years old	.25	\$2.00	\$4.00	\$14.75
18 to 24 inch, heavy transplants, 9 years old	.30	2.50	5.00	19.75
2 to 3 ft., heavy transplants 9 years old	.40	3.50	7.00	25.25
3 to 4 ft., heavy transplants, 9 years old	.60	5.00	11.00	40.00
4 to 5 ft. heavy transplants 11 years old	1.00	8.00	19.00	
5 to 6 ft. specimens, 15 years old	2.00	— Baled, not prepaid.		
6 to 8 ft. specimens, 15 years old	3.50	— Baled, not prepaid.		
8 to 10 ft. specimens, 15 years old	5.00	— Baled, not prepaid.		



6 Heavy Specimen Trees » » » FOR ENTRANCE PLANTING

Baled and burlaped » » freight paid on these to you.

- 2 Pyramidal Arbor Vitae, 4 ft.
- 2 Pfitzer Juniper, 18 inches
- 2 Savin Juniper, 15 inches

All 6 for Special Price of **\$13.50**

Bargains! SHADE TREES Bargains!

American Elm	5 to 6 ft.	\$.50	6 to 8 ft.	\$.70
Chinese Elm	5 to 6 ft.	.45	6 to 8 ft.	.65
American Green Ash	5 to 6 ft.	.40	6 to 8 ft.	.60
Hackberry	5 to 6 ft.	.70	6 to 8 ft.	.95
Birch, White Heavy	8 to 12 ft.	1.50		
Walnut, Black	5 to 6 ft.	.55	6 to 8 ft.	.75
Horse Chestnut	3 to 4 ft.	.35	4 to 5 ft.	.50
Poplar, Lombardy	3 to 4 ft.	.20	10 to 12 ft.	1.00
Poplar, Bolleana	4 to 5 ft.	.40	6 to 8 ft.	.90
Willow, Weeping Niobe	3 to 4 ft.	.20	5 to 6 ft.	.60

The above trees are all splendid trees and adapted to our locality. Beautiful lawn shade trees, all postpaid.

\$1. » Bargains in » \$1. Seedlings and Small Trees

You can choose some of each variety to make a dollar's worth if you wish. Postpaid.

Chinese Elm Seedlings	3 to 4 ft.	— 20 for \$1.00
American Elm Seedlings	3 to 4 ft.	— 20 for 1.00
Birch Paper Seedlings	2 to 3 ft.	— 15 for 1.00
Hackberry Seedlings	2 to 3 ft.	— 15 for 1.00
Lombardy Poplar	3 to 4 ft.	— 7 for 1.00
Weeping Willow	3 to 4 ft.	— 7 for 1.00
Green Ash, transplanted trees	3 to 5 ft.	— 10 for 1.00
American Elm, transplanted trees	3 to 5 ft.	— 10 for 1.00

Surround Your Home With » » » Myers Beautiful Flowering Shrubs

Spirea Van Houtte (Bridal Wreath)

	Each	Per 2	Per 5
18 to 24 inch	\$.15	\$.25	\$.50
2 to 3 ft.	.25	.45	1.00
3 to 4 ft.	.35	.60	1.25

Spirea Froebeli

Beautiful shrub, grows 4 ft. tall, red flowers during June, July and August.

	Each	Per 2	Per 5
18 to 24 inch	\$.20	\$.35	\$.75
24 to 30 inch	.25	.45	1.00

Spirea Anthony Waterer

Most popular dwarf shrub, blooms from July until frost. Splendid for low borders and foundation planting. 2 to 3 ft. at maturity.

	Each	Per 2	Per 5
12 to 18 inch	\$.15	\$.25	\$.50
18 to 24 inch	.20	.35	.75
24 to 30 inch	.35	.60	1.25

Japanese Barberry

A grand hardy, useful, medium low shrub. Very thorny, red berries, in fall very good for hedges.

	Each	Per 10	Per 50
12 to 18 inch	\$.15	\$1.00	\$4.00
18 to 24 in., heavy	.25	1.75	7.25

White Snowberry

A splendid shrub for the shady places and for its white berries in October. Grows to 5 to 6 ft. at maturity.

	Each	Per 2	Per 5
18 to 24 inch	\$.15	\$.25	\$.50
24 to 30 inch	.20	.35	.75

Hydrangea A. G.

(Hills of Snow)

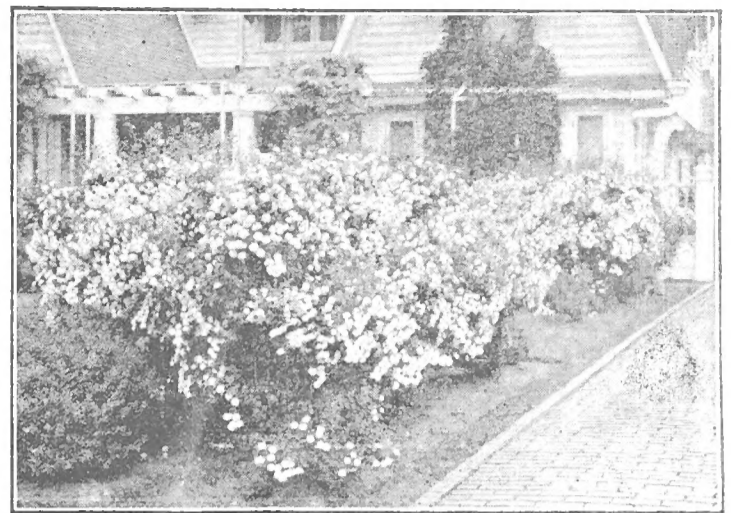
Grand summer blooming Hydrangea, blooms in June. One of the best for the north side. Thrives in shade.

	Each	Per 2	Per 5
2 to 3 ft.	\$.35	\$.60	\$1.20
3 to 4 ft.	.45	.80	1.85

Hydrangea P. G.

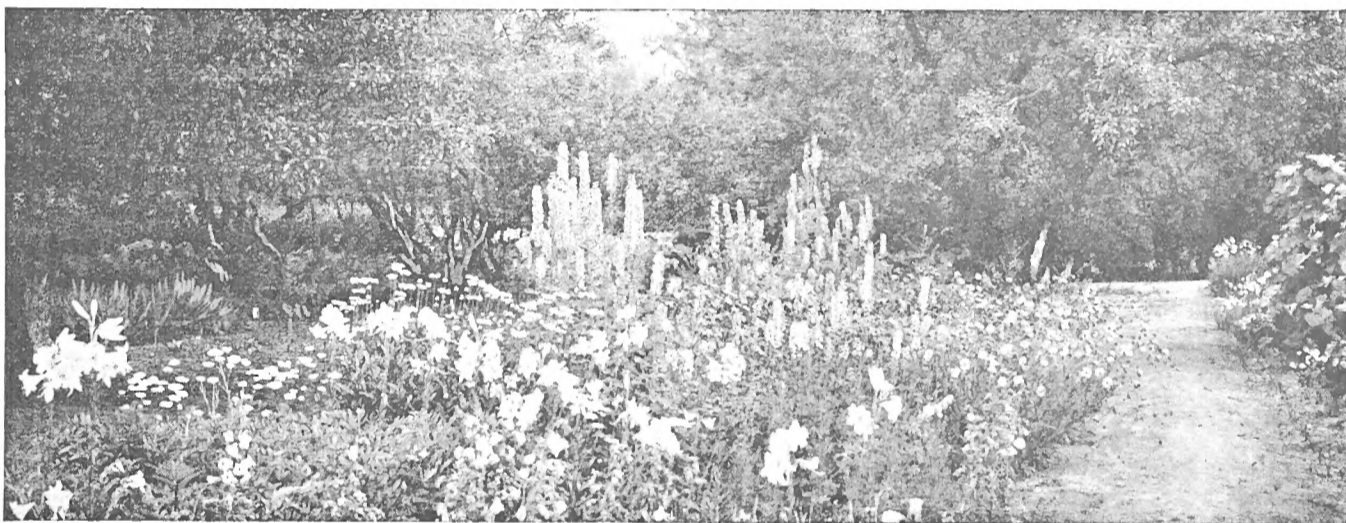
Tree Hydrangea, blooms in August.

	Each	Per 2	Per 5
2 to 3 ft.	\$.40	\$.75	\$1.75



Bargains in Perennials

No fuss with seeds or replanting. They come back year after year larger and finer. Your choice, any variety » » 15c each, 3 for 40c, 10 for \$1.00, 25 for \$2.00



- ASTER BARS — pink, hardy
- ACHILLEA — the Pearl, white
- COLUMBINE — long spurred
- DAISY — painted, red
- DELPHINIUMS — blue
- HIBISCUS — white, pink, red
- LILIES — double Tigers
- PHLOX — assorted colors
- PHYSIOSTIGEA VIRGINIA
- STATIC — purple for drying
- SWEET WILLIAMS
- VERONICA — blue
- CUSHION CHRYSANTHEMUM — in red, pink, white or yellow

LOW GROWING PLANTS » » Suitable for Borders or Rock Gardens . . prices are the same as Perennials

PHLOX SUBULATA — Creeping Phlox, pink
SEDUM STOLONIFERA — Creeping Sedum

SEDUM ALBUM
SEDUM SARMENTOSUM

SEDUM KAMTSCHATICUM
SEMPERVIVUM — Hen and Chicken

SEDUM ACRE

Fruit Trees Hardy Northern Grown Trees, Direct from Grower to You Fruit Trees

We offer fruit trees at greatly reduced prices this year. Our trees are all 3 years old and are of the varieties that we consider best for our climate.

HARALSON NEW APPLE

A proven leader in the Northwest. It has everything: color, red; quality, good; size, large; season, late fall; keeping, excellent until April and May; yield, heavy; hardiness, found thriving in Canada.

STANDARD VARIETIES

N. W. GREENING — yellow, late winter
SALOME — red, late winter
MC INTOSH — red, winter
DELICIOUS — red, winter
PEWAUKEE — red, winter
SNOW APPLE — red, fall
WEALTHY — red, fall
WHITNEY — Crab apple, red
SWEET RUSSET — Crab apple, yellow, very good eating crab, tastes like a pear.

YOUR CHOICE OF VARIETIES AT THESE LOW PRICES

Trees caliper 9-16 to 11-16 inches
6 inches above ground.
4 to 6 ft. average height.

PRICES ON APPLES AND CRABS

	Each	Per 5	Per 10	Per 25
4 to 6 ft.	50c	\$2.00	\$3.50	\$8.25

Postpaid

GRAPE VINES — CONCORD BLACK
3 for 25c, 10 for 65c, 25 for \$1.30, 100 for \$4.60

MC DONALD RHUBARB

A new one twice the size of the old kind
Heavy bearing, red ----- each 50c

ASPARAGUS ROOTS — Mary Washington
1 year roots—10 for 25c, 25 for 50c, 100 for \$1.60
All Postpaid

Other Fruit Trees . . .

HARDY PLUMS, PEARS, CHERRIES AND PEACHES

UNDERWOOD — Plum PARKER — Pear
WANETA — Plum MENDEL — Pear
COMPASS — Cherry MARQUETTE — Peach

The above fruit is all hardy and can be grown like apples. Have a variety in your orchard.

Prices Assorted — Postpaid

	Each	Per 5	Per 10
4 to 6 ft. trees	60c	\$2.75	\$5.00

Plant Myers

PRIZE DAHLIAS

Every dahlia we sell is absolutely guaranteed to be satisfactory not only when you get it but also when it blooms. With every order we send complete planting instructions. Dahlias shipped postpaid.

AMERICA'S MOST POPULAR DAHLIAS

JERSEY BEACON—

Chinese scarlet. A very free blooming dahlia, very dependable ----- Each 25c

ROSE FALLON —

Very fine flower of pleasing shades of amber, russet and salmon ----- Each 35c

ROBERT L. RIPLEY—

This dahlia is of immense size,—has been grown 16x12 inches and we had many blooms in 1939 that were 14 inches across and 8 inches deep. A beautiful color combination, rhodamine purple with rose suffusions throughout the entire bloom. This Dahlia creates a sensation wherever shown ----- Each \$2.50

WHITE WONDER—

This Dahlia has giant blooms of pure white with long, twisted and curled petals, —size 10 to 12 inches across by 6 to 8 deep. Foliage thick, leathery-like and insect resistant ----- Each 25c

SEEDLING NUMBER ONE—

This Dahlia we grow from seed is a very good one. Color lavender and white in the most pleasing combination. Have a few to spare at ----- \$1.00

HUNT'S VELVET WONDER—

The huge blooms, ten inches across, of rich true purple, will delight you. Ea. 40c

CALIFORNIA IDOL—

A bright glistening yellow. A prize winner at all shows. There has never been a yellow dahlia introduced that will equal it for large clear yellow blossoms and these in great profusion ----- Each \$1.00

10 Dahlias for \$1

This is a special "Clean-up" price. These assorted dahlias are not labeled but we actually include some which sell for as much as 50c each. If you want beautiful dahlia flowers and do not care to know the names (many will recognize choice varieties) this is our greatest dahlia offer.

\$1

POSTPAID



A. W. MYERS

OMAR KHAYYAM—

Very large Chinese red shading to bright orange ----- Each 40c

JANE COWL—

Greatest of all dahlias. A glorious flower, buff and gold with just a touch of apricot at the center ----- Each 25c

WM. H. HOGAN—

Very striking, large flowers of rich scarlet, edged and tipped white. Until you see it, you cannot realize how beautiful it is. Freely produced on fine stems ----- Each 40c

KATHLEEN NORRIS—

An outstanding dahlia very large flowers of true rose-pink toned coral --- Each 50c

JEAN TRIMBE—

Gorgeous blooms of richest royal purple. One of the world's great dahlias—Ea. 40c

AMERICAN LEGION—

Greatest of all yellow show winners. Blooms up to 13 in. not uncommon. Free bloomer ----- Each 50c

JERSEY BEAUTY—

As a pink, it still stands supreme. Large, beautiful flowers of perfect form, on long stems, freely produced. Keeps unusually long when cut ----- Each 25c

MRS. GEO. LE BOUTTEMIER—

Crimson red, large blooms, held erect on long stems ----- Each 50c

MRS. I. DE VER WARNER—

Exquisite large blooms of old rose richly suffused lilac. A free and continuous bloomer ----- Each 20c

MYRA HOWARD—

Ochreous orange. This is one of the largest full petal Dahlias grown --- Each 35c

POMPOM COLLECTION

- 1 Pamlice Prince, red
- 1 Rosa Wilmouth, pink
- 1 Catherine, yellow
- 1 Cardinal, dark red
- 1 Little Herman, red and white
- 1 Snow Clad, white

ALL 6 FOR \$1.00

These smaller flowers produce abundantly and are fine for garden and cutting. If you do not want all 6 select what you want at 25c each.

POPULAR COLLECTION

- 1 American Legion, yellow
- 1 Jersey Sovereign, buff
- 1 Mary Baker, yellow
- 1 Delwood Glory, rose pink
- 1 King of the Blacks, dark red
- 1 Ida Perkins, white

ALL 6 FOR \$1.00

(Regular price \$2.05)
These are America's most popular Dahlias.

GIANT COLLECTION

- 1 Hillcrest Swiss Rose, rose pink
- 1 Indiana Moon
- 1 Lord of Autumn, yellow
- 1 Jean Trimbe, purple

ALL 4 FOR \$1.25

(Regular price \$2.50)

Four of the finest Dahlias grown, large blooms, beautiful colors. Last year, Lord of Autumn, alone, sold for \$1.00.

MINIATURE COLLECTION

- 1 Fairy, lovely pink
- 1 Amaranth, red
- 1 Rhoda, light pink
- 1 Fay Deator, white
- 1 Baby Royal, light lavender

ALL 5 FOR 80c

These little Dahlias make a fine hedge row and flowers are lovely for cutting.

Raspberry and Strawberry Plants

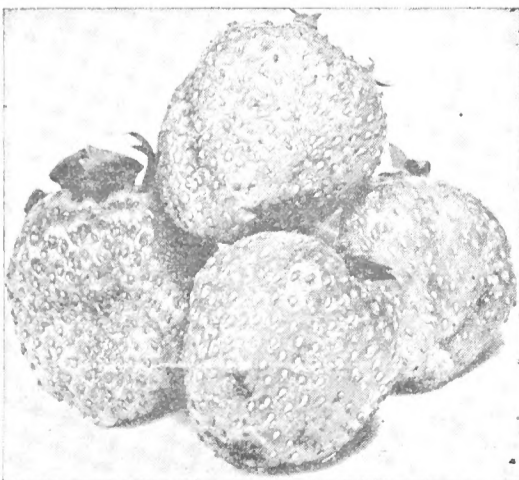
The demand for strawberry plants is so great this year that the supply of plants in the country won't be enough for the demand. Would advise early ordering of plants. On account of the dry season last year, supply is limited.

RASPBERRY PLANTS

	Per 25	Per 100	Per 300	Per 1000
Latham Raspberry	\$.75	\$1.75	\$5.00	\$15.00
Chief Raspberry	.70	1.60	4.50	13.50
New Logan Black Caps	1.00	3.35	9.00	27.00

STRAWBERRY PLANTS

	Per 25	Per 100	Per 300	Per 1000
Senator Dunlap	\$.30	\$.70	\$1.85	\$5.50
Beaver	.35	.80	2.00	6.00
Premier	.40	1.00	2.35	6.50
Gem Everbearing	.60	1.50	3.35	9.00



The Myers Guarantee

We guarantee that Myers nursery stock will reach the purchaser alive and in growing condition, and will replace, free of charge, any that does not, upon receiving your express or freight receipt with statement from the agent showing loss or damage, this damage receipt to be mailed to us immediately.

Any tree or plant that dies the first growing season, we will replace at a cost of one-half the regular price, customer to make report and have his order for replacement in our hands before October 10th, following date of purchase.

We guarantee to every Myers customer stock that is true-to-name and absolutely as represented. Any Myers stock proven not to be will be replaced free of charge or the purchase price refunded. We cannot be held liable for any damage other than herein named. All postpaid, except baled evergreens marked not prepaid.

A. W. MYERS.

MYERS NURSERY

ARCADIA, WISCONSIN



Myers Spring 1940 Bargain List

MYERS NURSERY

ARCADIA, WISCONSIN

This list is our agent. It comes to you from us at a cost of less than 2 cents instead of putting out an expensive colored catalog at a cost of 25 to 30 cents each. We are putting this saving into bargains to you. Look at the bargains. We will appreciate your orders, and you will be pleased with our service and the fine stock you receive.



18 OF THE FINEST GLADS EVER GROWN

White Orchid, turned white.
Chas. Dickens, violet purple.
Bagdad, old rose.
Mother Machree, lovely smoky.
Golden Dream, large yellow.
Maid of Orleans, new white.
La Palma, tall orange.
Pride of Wanaka, lavender rose.
Rose Ash, real smoky.
Copper Bronze, bronze.
Mormara, large smoky.
Souvenir, early yellow.
Purple Victory, large purple.
Dr. Moody, dark lavender.
Minuet, finest lavender.
Ave Maria, blue.
Giant Nymph, pink.
Picardy, salmon, apricot, gold.

PRICES ON ABOVE 18 VARIETIES YOUR CHOICE, POSTPAID

	Per 100	Per 50	Per 12
Alike or Assorted			
Large Bulbs	\$1.75	\$1.00	36c
Medium Bulbs	1.25	.75	24c

Large bulbs are 1½ inch diameter
Medium bulbs are 1 inch diameter

ASSORTED GLADS 100 FOR \$1.00
All Colors Mixed



All American **GLAD SPECIAL**

MYERS IS FAMOUS FOR GOOD GLADS

If you want a riot of color and beauty in your flower garden—if you want to live and walk with beauty this summer—if you want that indescribable something to set off your flower garden from all the rest—to make it the envy and talk of all your neighbors—your joy and pride—then friends, you'll want to take advantage of one of the most remarkable and best flower offers the Myers Nurseries have ever made.

Here it is! 80 of the finest and choicest named varieties of Gladiolus bulbs for only \$1.00, Postpaid. A flower garden that will be simply a riot of wonderful colors—truly this is an All-American Glad Collection. We send you the following:

- 8 Golden Dream—the most popular yellow.
- 8 Splendorra—the most beautiful wine black.
- 8 Ave Maria—a remarkable, beautiful blue.
- 8 Minuet—exquisite lavender.
- 8 Maid of Orleans—a giant pure white.
- 8 Bagdad—lovely old rose and ruby.
- 8 Purple Victory, large purple.
- 8 Giant Nymph, large pink.
- 8 La Palma, tall show orange.
- 8 Picardy—another blend of 3 colors, salmon, apricot and gold, and acknowledged everywhere as the very finest of all Glads.

8 of each of the above 10 varieties, 80 bulbs in all for only \$1.00, Postpaid. 10 of the greatest Glads grown, varieties which you have seen win Blue Ribbons in the large flower shows. Don't fail to order the All-American Glad Special as this is one of the most outstanding offers Myers has ever made.

**80
BULBS**

\$1

POSTPAID

The Very Newest in GLADIOLUS

If you like something new and outstanding, here it is! Blooming size, medium bulbs.

- 1 Shirley Temple
- 1 J. S. Bach
- 1 Heritage
- 1 Southern Cross
- 1 Rewi Falu
- 1 Coronation

All 6 for \$1.00

Regular price on Shirley Temple alone is 75c