

## **Historic, Archive Document**

Do not assume content reflects current scientific knowledge, policies, or practices.



HARDY AMERICAN PLANTS  
AND  
CAROLINA MOUNTAIN WILDINGS



# Gardens of The Blue Ridge

E. C. ROBBINS

ASHFORD, McDOWELL CO., N. C.

## TO OUR FRIENDS AND CUSTOMERS:

We wish to thank each and every old customer for his continued patronage. We know we have pleased most of you by the many repeat orders we have received and personal letters praising our nursery stock and service. Many of these customers have been with us right along for more than twenty years. We shall endeavor to merit and hold their confidence from season to season.

To New Customers: Those whom it has not been our pleasure to serve will please give us a trial order to convince you we grow as good stock as can be produced, and want you to know our plants and ability to serve you in a way to make for future orders and pleasure to all. We claim the largest assortment and complete stock of Native Ornamentals to be found anywhere.

FALL PLANTING TIME IS HERE: Our vast assortment covers the best in Trees, Shrubs, Ferns, Vines, Aquatic and Bog Plants, Orchids, and Perennials. All grown hardy in the high Carolina Mountains, nearly 4,000 feet in the clouds. "None Better". September and October best season for planting all these as far as practicable, unquestioned for hardiness. In the Fall, weather and soil conditions, as a rule, are better than in the early Spring. A little covering with excelsior, or forest leaves is all the winter protection required. This will enable the roots to get established before Winter, and start growing in early Spring before Spring planted stock overcomes the setback of transplanting. Do not let the first light frost in the Fall stop your garden operations. Light frosts are a help rather than a hindrance.

Recommending for your prompt consideration Variety, Quantity, Quality, Low Price, Unexcelled Service and soliciting your early order for very best handling, we are,

Yours very truly,

GARDENS OF THE BLUE RIDGE,

By E. C. ROBBINS

# Price List for Fall 1940

## Hardy Native Herbaceous Perennials

This list contains a variety of Herbaceous Plants furnishing a succession of bloom from early spring to late autumn, all having been tried out with success in cultivation. The height indicates the approximate height of each plant as found in wild state. The time of blooming naturally depends on locality.

	PRICE IN QUANTITIES			
	1 TO 9	10 TO 24	25 TO 249	250 OR OVER
ACONITUM UNCINATUM. <i>Clambering Monkshood</i> . Height 3 to 6 feet. Blue, hood-shaped flowers. Strong -----	\$ .20	\$ .16	\$ .14	\$ .12
ACTAEA ALBA. <i>White Baneberry</i> . Height 1½ to 3 feet. Flowerstalk red. White flowers and berries. Strong -----	.16	.12	.10	
ALLIUM TRICOCCUM. <i>Woodleek</i> . Height 6 to 12 inches. Flowers greenish white in early spring. Strong -----	.16	.10	.08	
AQUILEGIA CANADENSIS. <i>American Columbine</i> . Height 1 to 2 feet. Showy, cut leaves. Reddish flowers with scarlet-yellow inside in May and June. Splendid for rock-garden. Strong -----	.18	.14	.12	.11
ARUNCUS SYLVESTER. <i>Goat's Beard</i> . Height 4 to 6 feet. Cut leaves and white flowers in May and June. X strong -----	.18	.14	.11	.10
ASARUM CANADENSE. <i>Canada Wild Ginger</i> . Kidney-shaped leaves. Grows 2 to 4 inches high with single purplish flower close to the ground. Succeeds best in shady locations. Strong -----	.15	.12	.09	.08
ASARUM SHUTTLEWORTHII. <i>Mottled Wild Ginger</i> . Evergreen. Leaves large, round, heart-shaped. X strong -----	.20	.17	.14	.12
ASCLEPIAS TUBEROSA. <i>Butterfly Weed</i> . Height 1 to 2 feet. Very showy orange or red flowers. X Strong ----- Second size -----	.20 .12	.16 .10	.14 .07	.12 .06
ASTILBE BITERNATA. <i>False Goatsbeard</i> . Naturally 3 to 5 feet in height. Large, compound leaves. Yellowish white flowers. Very ornamental. Succeeds best in shady locations. X strong -----	.15	.12	.07	.06
BAPTISIA AUSTRALIS. <i>Blue Wild-Indigo</i> . 2 to 4 feet. Deciduous. Very showy plant with compound bluish green leaves, consisting of three oval leaflets. Stems usually 2 to 3 feet tall, bearing at the summit long racemes of pea-shaped indigo blue flowers. Plant in dry sunny location. X strong -----	.25	.18	.16	
BAPTISIA TINCTORIA. <i>Yellow Wild-Indigo</i> . Height 2 to 3 feet. Abundant yellow flowers in June. X strong -----	.24	.20	.16	.14
CAMPANULA DIVARICATA. <i>North Carolina Harebell</i> . Height 1 to 2 feet. Pale blue, bell-shaped flowers in July. Good for rockery. Strong ---	.16	.12	.09	.08
CAREX FRASERI. <i>Fraser Sedge</i> . Height 9 to 18 inches. Rare, broad-leaved evergreen. White flowers in spikes, in March. Best suited for shade. Strong -----	.22	.18	.14	.12

## HARDY NATIVE HERBACEOUS PERENNIALS, continued

	PRICE IN QUANTITIES			
	1 TO 9	10 TO 24	25 TO 249	250 OR OVER
CAULOPHYLLUM THALICTROIDES. <i>Blue Cohosh</i> . Height 2 to 3 feet. Yellowish green flowers in April. Fruit blue and showy. Strong -----	\$ .15	\$ .11	\$ .07	\$ .05
CHAMAELIRIUM LUTEUM. <i>Fairywand</i> . Height 1 to 2 feet. Spike of small flowers in June. Showy. X strong -----	.15	.11	.09	.08
CIMICIFUGA AMERICANA. <i>American Bugbane</i> . Height 3 to 6 feet. Snowy white flowers in August. Leaves divided. Strong -----	.18	.13	.11	.09
CIMICIFUGA RACEMOSA. <i>Cohosh Bugbane</i> . Height 4 to 8 feet. Flowers white. Decompound leaves. X heavy -----	.16	.11	.07	.06
CLINTONIA BOREALIS. <i>Bluebead</i> . Height 6 to 12 inches. Greenish yellow flowers in June. Strong -----	.15	.11	.08	.07
CLINTONIA UMBELLULATA. <i>Speckled Clintonia</i> . Height 9 to 15 inches. Fragrant white flowers in June. Strong -----	.15	.11	.08	.07
COLLINSONIA CANADENSIS. <i>Citronella Horse- Balm</i> . Height 1 to 3 feet. Leaves opposite, large- toothed, ovate, pointed. Flowers lemon-scented, clustered. Succeeds best in damp, rich woods. Strong -----	.18	.12	.09	
COREOPSIS LANCEOLATA. <i>Lance Coreopsis</i> . Height 2 to 4 feet. Free bloomer. Yellow flowers in July. Strong -----	.15	.11	.07	.06
DIPHYLLEIA CYMOSA. <i>Umbrellaleaf</i> . Height 1 to 3 feet. Large lobed leaves. White flowers in May. Purple showy fruit in bunches. Prefers moist locations. X strong -----	.15	.11	.09	.08
DISPORUM LANUGINOSUM. <i>Fairy Bells</i> . Height 1 to 3 feet. Greenish flowers in May. Fruit red. Strong -----	.15	.11	.09	.07
DODECATHEON MEADIA. <i>Common Shooting-Star</i> . Very showy pink and purple flowers. Strong --	.18	.14	.12	.11
EPILOBIUM ANGUSTIFOLIUM. <i>Blooming Sally</i> . Tall plant with spire-like clusters of purple flowers. Strong -----	.15	.10	.09	.08
EUPATORIUM PURPUREUM. <i>Joe-Pye-Weed</i> . Height 4 to 8 feet. Purple flowers in large panicles in June. X strong -----	.18	.12	.10	.08
EUPATORIUM URTICAEFOLIUM. <i>American Ager- atum</i> . Flowers white, in clusters. Strong plants	.18	.13	.12	.11
EUPHORBIA COROLLATA. <i>Flowering Spurge</i> . Height 1 to 4 feet. White flowers in August. Strong -----	.15	.11	.09	.07
GENTIANA ANDREWSI. <i>Closed Gentian</i> . Height 10 to 18 inches. Foliage green. Blue closed flowers in September. Strong -----	.15	.11	.08	.07
GERANIUM MACULATUM. <i>Wild Geranium</i> . Large showy perennial with cut leaves. Light blue flowers in April and May. Strong -----	.16	.11	.09	.07

## HARDY NATIVE HERBACEOUS PERENNIALS, continued

	PRICE IN QUANTITIES			
	1 TO 9	10 TO 24	25 TO 249	250 OR OVER
GILLENIA TRIFOLIATA. <i>Bowman's Root</i> . Height 2 to 4 feet. Handsome cut foliage. Pure white or rose-tinted flowers in June. Splendid for massing among shrubbery. X strong -----	.14	.10	.08	.06
<u>HEPATICAC ACUTILOBA</u> . <i>Sharp-lobed Hepatica</i> . Height 5 to 10 inches. White and purple flowers in March and April. X strong clumps -----	.16	.11	.09	.08
HEPATICAC TRILOBA. <i>Round-lobed Hepatica</i> . Flowers vary in color from lovely blue to pink or white. Among the earliest flowers to appear in the spring. Strong -----	.18	.12	.10	.09
HEUCHERA AMERICANA. <i>American Alum-root</i> . Height 1 to 2 feet. Large-lobed leaves beautifully mottled bronze in early winter. Flowers greenish white in June. Splendid rock-garden subject. X strong -----	.18	.12	.09	.08
HEUCHERA VILLOSA. <i>Hairy Alum-root</i> . Height 12 to 18 inches. Good for rockery. White flowers in August. X strong -----	.15	.10	.08	.07
HOUSTONIA PURPUREA. <i>Mountain Houstonia</i> . Height 6 to 18 inches. Purple flowers in July. Strong -----	.14	.10	.07	.06
HYDRASTIS CANADENSIS. <i>Goldenseal</i> . Height 10 to 20 inches. A medicinal herb of great value.				
First-size plants -----	.15	.11	.09	.08
Second-size plants -----	.10	.07	.06	.05
LIATRIS PYCNOSTACHYA. <i>Cattail Gayfeather</i> . X strong -----	.20	.14	.12	
LIATRIS SCARIOA. <i>Large Button - Gayfeather</i> . Strong -----	.16	.10	.09	
LIATRIS SPICATA. <i>Spike Gayfeather</i> . Height 3 to 5 feet. Spikes of purple flowers in August. Strong -----	.15	.11	.08	.06
<u>LOBELIA CARDINALIS</u> . <i>Cardinal Flower</i> . Height 3 to 5 feet. Showy scarlet flowers in August. Strong -----	.18	.12	.11	.10
LOBELIA SYPHILITICA. <i>Large Blue Lobelia</i> . Height 1 to 3 feet. Large blue flower in late August. Strong -----	.18	.12	.11	.10
MELANTHIUM VIRGINICUM. <i>Bunchflower</i> . Leaves linear, acuminate, inflorescent, many-flowered, paniced. Strong plants -----	.25	.18	.15	
MITELLA DIPHYLLA. <i>Bishops-Cap</i> . Stems 6 to 12 inches high, hairy. Leaves heart-shaped, lobed and toothed. Flowers white. Extra-strong plants -----	.15	.11	.09	.08
PANAX QUINQUEFOLIUM. <i>American Ginseng</i> . Root large, spindle-shaped, often forked. Stem 9 to 18 inches high. Leaves 3 in whorl, divided into leaflets. Flowers greenish white. Fruit bright red berry.				
XX largest -----	.45	.36	.30	
Strong first-size plants -----	.30	.20	.16	.14
Second-size plants -----	.15	.11	.08	.07
Third-size plants -----	.10	.06	.04	.03

---



---

**HARDY NATIVE HERBACEOUS PERENNIALS, continued**

	PRICE IN QUANTITIES			
	1 TO 9	10 TO 24	25 TO 249	250 OR OVER
PARNASSIA CAROLINIANA. <i>Carolina Parnassia</i> . Height 1 to 2 feet. Single flower, white or cream color. Leaves thickish heart-shaped ----	\$ .22	\$ .16	\$ .15	\$ .14
PHLOX DIVARICATA. <i>Blue Phlox</i> . Height 10 inches. Bears a profusion of large, fragrant, lavender flowers in May. Strong -----	.18	.14	.12	.11
PHLOX PILOSA. <i>Downy Phlox</i> . It is softly hairy with linear or lanceolate long-pointed leaves, and pink, purple or white flowers. Strong -----	.20	.16		
PODOPHYLLUM PELTATUM. <i>Common May Apple</i> . Height 1 to 1½ feet. Large, light green leaves. White flowers in May. Prefers shade. Strong --	.15	.10	.07	.06
POLYGALA SENEGA. <i>Seneca Snakeroot</i> . Height 8 to 12 inches. Leaves 1 to 2 inches long. Flowers white or greenish. Naturally adapted to rocky locations. Strong -----	.20	.16		
POLYGONATUM BIFLORUM. <i>Dwarf Solomon's Seal</i> . 12 to 18 inches. Shade or sun. Flowers greenish white underneath curved stems. Strong -----	.15	.11	.09	.08
<u>POLYGONATUM COMMUTATUM.</u> <i>Great Solomon's Seal</i> . Height 3 to 6 feet. Drooping greenish white flowers in June. X strong -----	.15	.11	.09	.07
POTENTILLA TRIDENTATA. <i>Wineleaf Cinquefoil</i> . Creeping plant with tiny, starry white flowers. Strong -----	.22	.16	.15	
SANGUINARIA CANADENSIS. <i>Bloodroot</i> . Height 5 to 8 inches. Large white flowers in early spring. Strong -----	.15	.11	.07	.06
SAPONARIA OFFICINALIS. <i>Bouncing Bet</i> . Stout grower 1 to 2 feet in height. Leaves oval, opposite. Rosy tinged flowers in midsummer. Easy of cultivation and a choice perennial. Strong	.15	.11	.09	.07
SAXIFRAGA MICHAUXI. <i>Michaux Saxifrage</i> . Height 6 to 18 inches. Deciduous. Flowers white, numerous and star-like. Strong -----	.35	.26	.23	
SILENE STELLATA. <i>Starry Campion</i> . Height 2 to 4 feet. White flowers in showy panicles in July. Strong -----	.16	.11	.09	.08
SILENE VIRGINICA. <i>Firepink</i> . Height 1 to 2 feet. Deciduous. Very large flowers, crimson or scarlet. Open woods and rocky hills. Strong ----	.18	.16	.14	
SMILACINA RACEMOSA. <i>False Solomon's Seal</i> . Height 2 to 3 feet. White flowers in June. Red speckled berries in August. Strong -----	.15	.11	.09	.08
SOLIDAGO CANADENSIS. <i>Canada Goldenrod</i> . Tall species growing in open places. Numerous small flowers in flat heads. One of the finest and most showy of all our garden friends. Strong.	.15	.11	.09	.08
SOLIDAGO ODORA. <i>Fragrant Goldenrod</i> . Height 2 to 4 feet. Yellow flowers in August and early September. Strong -----	.18	.12	.10	

---

ALL PRICES ARE F. O. B. ASHFORD, N. C.  
UNLESS OTHERWISE AGREED.



## HARDY NATIVE HERBACEOUS PERENNIALS, continued

		PRICE IN QUANTITIES			
		1 TO 9	10 TO 24	25 TO 249	250 OR OVER
SPIGELIA	MARILANDICA. <i>Pinkroot.</i> Scarlet flowers in early spring. Strong -----	\$ .20	\$ .16	\$ .14	
STENANTHIUM	ROBUSTUM. <i>Feather Fleece.</i> Long, white, delicate flowers on stems 3 to 5 feet high in late summer. Extremely ornamental and altogether one of our finest perennials. Thrives in damp situations as well as in drier soil. X heavy	.22	.16	.14	.12
	Second size -----	.15	.10	.07	.06
STOKESIA	LAEVIS. <i>Stokesia.</i> Stems branched, 1 to 2 feet high, very leafy at base. Flowers blue, resembling China Asters. Recommended for rock-gardens and other open situations. Strong ---	.20	.16	.14	
STREPTOPUS	ROSEUS. <i>Rosy Twisted Stalk.</i> Stems stout and zig-zag. Leaves taper pointed, clasping. Flowers dull purplish pink. Fruit red. Strong -----	.18	.14	.12	.10
THALICTRUM	DIOICUM. <i>Early Meadowrue.</i> Height 2 to 4 feet. Purple or greenish flowers. April, May. Elegant cut foliage. Plant in shaded spot where drainage is good. Natural rock-garden plant. Strong -----	.18	.11	.09	.08
THALICTRUM	POLYGAMUM. <i>Tall Meadowrue.</i> Height 4 to 8 feet. Leaves divided. Flowers white in large clusters. Strong -----	.18	.12	.10	.09
<u>THERMOPSIS</u>	<u>CAROLINIANA.</u> <i>Carolina Thermopsis.</i> Grows 3 to 5 feet high. Yellow flowers in terminal racemes in May and June. Very showy for massing. X strong clumps. -----	.24	.18	.16	.14
	Strong plants -----	.15	.10	.08	.07
	Two year seedlings -----	.07	.05	.04	.03
TIARELLA	CORDIFOLIA. <i>Allegheny Foam Flower.</i> Height about 10 inches. White flowers in May or June. Strong -----	.15	.11	.10	.09
TRADESCANTIA	VIRGINIANA ( <i>Montana</i> ) <i>Virginia Spiderwort.</i> Ribbon-like foliage and showy blue flowers. Strong -----	.16	.11	.09	.08
UVULARIA	GRANDIFLORA. <i>Big Merrybells.</i> Largest species with bright yellow flowers. Strong	.15	.11	.09	.08
UVULARIA	PERFOLIATA. <i>Wood Merrybells.</i> Height 6 to 18 inches. Pale yellow flowers in early spring. Strong -----	.15	.11	.09	.08
UVULARIA	SESSILIFOLIA. <i>Little Merrybells.</i> Height 10 to 20 inches. Yellow flowers in May. Strong	.15	.11	.09	.08
VERONICA	VIRGINICA. <i>Culver's-Physic.</i> Showy; 2 to 4 feet in height with long spikes of white flowers in midsummer. Strong -----	.18	.12	.09	.07
VIOLA	BLANDA. <i>Sweet White Violet.</i> Height 2 to 4 inches. Fragrant white flowers in early spring. X strong -----	.16	.11	.09	.08

5 per cent discount, including free packing, allowed on cash orders.

Packing will be charged at cost on charge orders.

---



---

**HARDY NATIVE HERBACEOUS PERENNIALS, continued**

## PRICE IN QUANTITIES

	1 TO 9	10 TO 24	25 TO 249	250 OR OVER
VIOLA CANADENSIS. <i>Canada Violet. Whitish</i> flowers, tinged with purple. X strong -----	\$ .16	\$ .12	\$ .10	\$ .08
VIOLA CUCULLATA. <i>Blue Marsh Violet. Height 6</i> to 10 inches. Blue flowers all summer. X strong -----	.15	.10	.08	.06
VIOLA HASTATA. <i>Halberd-leaved Yellow Violet.</i> Long rootstock. Creeping. Strong -----	.15	.10	.07	.06
<u>VIOLA PEDATA.</u> <i>Bird's-foot Violet. Height 3 to 7</i> inches. Showy blue flowers in May. First size	.15	.10	.07	.06
Second size -----	.10	.06	.04	.03
<u>VIOLA PEDATA BICOLOR.</u> <i>Two-color Bird's-foot</i> <i>Violet. Height 4 to 6 inches. Velvety light blue</i> <i>and purple pansy-like flowers in May. Rare</i> <i>and beautiful. First size -----</i>	.15	.10	.07	.06
Second size -----	.09	.06	.04	.03
VIOLA ROTUNDIFOLIA. <i>Round-leaf Violet. Height</i> 3 to 4 inches. Large yellow flowers in early spring. Large prostrate shining leaves. Strong	.15	.10	.09	.08
VIOLA SAGITTATA. <i>Arrowleaf Violet. Height 4</i> to 8 inches. Deep blue flowers in May. Strong	.16	.11	.09	
XEROPHYLLUM ASPHODELOIDES. <i>Turkey's-</i> <i>Beard. Height 3 to 5 feet. Long grass-like</i> <i>leaves. Attractive white flowers. Rock-garden</i> <i>subject. Strong -----</i>	.20	.16	.15	.14
YUCCA FILAMENTOSA. <i>Common Yucca. Large</i> <i>evergreen perennial. White flowers in summer.</i> Strong -----	.16	.10	.08	.07
2 year Seedling Plants -----	.10	.05	.04	.03
YUCCA FLACCIDA. <i>Weakleaf Yucca. Height 2 to 5</i> feet. Stiff narrow leaves. White flowers in June and July. Strong, 3-year -----	.25	.20	.18	
YUCCA GLORIOSA. ( <i>patens</i> ). <i>Moundlily Yucca.</i> Noble plant with flower-spike 8 feet high. Blooms rusty white or reddish. X strong-----	.60	.50	.46	.44
ZYGADENUS MUSCAETOXICUM. <i>Crowpoison.</i> Long grass-like leaves with attractive spikes or of showy white flowers in early spring. X strong -----	.16	.11	.09	.08

---

SPECIAL OFFER. 100 Assorted Perennials. furnishing a succession of flowers from  
early spring to fall, for only \$8.50.  
Selected for shady or sunny location as desired.

FALL SHIPPING SEASON begins in August and extends usually until December,  
according to weather conditions.

---

**CASH DISCOUNT 5 PER CENT**

Including free packing. Our long experience in the nursery business should  
command your careful consideration before buying elsewhere. Satisfaction  
guaranteed. Visitors are always welcome, and are invited to inspect our stocks.

Hardy Native Plants for Rock-Gardens

	PRICE IN QUANTITIES			
	1 TO 9	10 TO 24	25 TO 249	250 OR OVER
APLECTRUM HYEMALE. <i>Puttyroot</i> . Pointed green leafstalk about a foot high. Flowers large, greenish brown. Extremely hardy. Strong ---	\$ .16	\$ .11	\$ .09	\$ .08
ARISAEMA TRIPHYLLUM. <i>Jack-in-the-Pulpit</i> . Height 1 to 1½ feet. Strong, fleshy top and conspicuous greenish white flowers. First size --	.16	.11	.09	.08
CONVALLARIA MAJALIS. <i>Lily - of - the - Valley</i> . Height 6 to 18 inches. Soft green leaves. Flowers fragrant, white. Prefers partial shade. Strong -----	.16	.11	.08	.07
DICENTRA CANADENSIS. <i>Squirrelcorn</i> . Small plant growing best in shade. White flowers in early spring. Strong -----	.15	.11	.08	.07
DICENTRA CUCULLARIA. <i>Dutchman's Breeches</i> . Oddly shaped yellow-white flowers in early spring. Strong -----	.15	.11	.08	.07
DICENTRA EXIMIA. <i>Fringed Bleeding-Heart</i> . Height 6 to 18 inches. Graceful fern-like foliage and deep rose flowers nodding in slender scape-like racemes all summer. A splendid rock-garden subject. Heavy clumps -----	.36	.30	.28	.27
First size -----	.25	.18	.17	.16
Second size -----	.16	.11	.09	.08
<u>ERYTHRONIUM AMERICANUM</u> . <i>American Trout Lily</i> . Height 5 to 10 inches. Green mottled leaves. Bright yellow flowers in early spring. Flowering size -----	.12	.08	.05	.04
NARCISSUS. <i>Daffodil</i> . Best assorted varieties. Home grown. Strong blooming size -----	.12	.08	.04	.03
TRILLIUM CERNUUM. <i>Nodding Trillium</i> . White or pink flowers. April. Large, broad leaves. First size -----	.14	.10	.07	
<u>TRILLIUM ERECTUM</u> . <i>Purple Trillium</i> . Large, very ornamental plants 9 to 18 inches high. Large red fruit. Flowers brown to purple. Early, vigorous spring bloomer. Large stock ready for prompt delivery. XX largest -----	.15	.10	.08	.07
First size -----	.10	.06	.05	.04
Second size -----	.06	.04	.03	.02
TRILLIUM ERECTUM ALBUM. <i>Wax Trillium</i> . Flowers white. Blooms in early May. First size -----	.15	.11	.06	.05
Second size -----	.08	.05	.03	.02
TRILLIUM GRANDIFLORUM. <i>Snow Trillium</i> . The finest and largest species. Flowers 2 to 3 inches across, in early spring, white turning to rose color. One of the best spring bloomers. We have more than 150,000 strong flowering bulbs for prompt shipment. For woodland and border plantings. Early orders solicited. XX largest --	.15	.11	.08	.07
First size. X quality -----	.10	.06	.04	.03
Second size -----	.06	.03	.02	.01

ALL OUR NURSERY STOCK IS GUARANTEED TO BE AS REPRESENTED.

TRILLIUM UNDULATUM. *Painted Trillium*

## HARDY NATIVE PLANTS FOR ROCK-GARDENS, continued

	PRICE IN QUANTITIES			
	1 TO 9	10 TO 24	25 TO 249	250 OR OVER
TRILLIUM LUTEUM. <i>Yellow Trillium</i> . Leaves large, broadly ovate, dark mottled green, 2 to 6 inches long. Flowers lemon-yellow, having a long blooming season from April to May. Recommended for shady borders and woodland.				
Strong first size -----	\$ .15	\$ .11	\$ .06	\$ .05
Second size -----	.10	.06	.03	.02
TRILLIUM STYLOSUM. <i>Rose Trillium</i> . Height 10 to 18 inches. Large, rose-pink, nodding flowers.				
XX largest -----	.22	.18	.16	.14
Strong first size -----	.14	.09	.07	.06
Second size -----	.09	.06	.04	.03
TRILLIUM UNDULATUM. <i>Painted Trillium</i> . Strong, vigorous grower. See illustration. Height 8 to 15 inches. Earliest bloomer of all Trilliums. Large flowers with scarlet and white markings.				
XX largest -----	.16	.11	.09	.08
Strong first size -----	.12	.08	.06	.05

5 per cent discount, including free packing, allowed on cash orders.  
Packing will be charged at cost on charge orders.

### Hardy Native Orchids

	PRICE IN QUANTITIES			
	1 TO 9	10 TO 24	25 TO 249	250 OR OVER
CALOPOGON PULCHELLUS. <i>Grass-pink Orchid.</i> Height 1 to 1½ feet. Grass-like foliage. Pink flowers. Showy and succeeds well in cultivation. Strong -----	\$ .16	\$ .11	\$ .10	\$ .09
CYPRIPEDIUM ACAULE. <i>Pink Lady's Slipper.</i> Height 6 to 15 inches. Thick clusters of leaves flat on ground. Large, bright, purple-pink, upright flowers in early spring. One of the most beautiful Orchids. X strong. First size -----	.36	.30	.26	.24
Flowering second size -----	.15	.11	.06	.05
XX largest clumps -----	.65	.55	.50	
CYPRIPEDIUM PARVIFLORUM. <i>Small Yellow Lady's Slipper.</i> Fragrant. Heavy clumps -----	.50	.45	.40	
CYPRIPEDIUM PUBESCENS. <i>Common Lady's Slipper.</i> (See front cover illustration.) Height 12 to 20 inches. Flowers bright yellow in May. X first size -----	.36	.30	.26	.24
Flowering second size -----	.15	.11	.08	.07
XX largest clumps -----	.65	.55	.50	
CYPRIPEDIUM SPECTABILE. <i>Showy Lady's Slipper.</i> Height 1 to 2½ feet. Extra-strong grower in peat soils. White to rose colored flowers in June and July. By far the best of all Cypripediums. We have splendid stock of several thousand strong clumps and shipment can be made promptly. X first size, 1 to 3 crowns -----	.50	.40	.35	
Heavy clumps. 4 to 8 crowns -----	1.10	1.00	.90	
HABENARIA CILIARIS. <i>Yellow Fringe Orchid.</i> Height 2½ feet. Flowers orange or yellow, the petals and lip fringed; in 6-inch spikes. Strong -----	.24	.18	.16	.14
HABENARIA PSYCODES. <i>Small Purple Fringed Orchid.</i> Height 9 to 18 inches. Best suited to shade. Strong -----	.24	.18	.16	
ORCHIS SPECTABILIS. <i>Showy Orchis</i> Best adapted to shady locations. Height 6 to 12 inches. Flowers showy pink-purple in early spring. Strong -----	.24	.18	.16	

### Hardy Native Ferns

For shady locations, no class of plants can equal the Ferns. They are easily grown in ordinary soils and will often thrive where it is impossible to make flowering plants succeed. We handle large quantities of Ferns annually and recommend the following:

	PRICE IN QUANTITIES			
	1 TO 9	10 TO 24	25 TO 249	250 OR OVER
ADIANTUM PEDATUM. <i>American Maidenhair Fern.</i> Deciduous. One of our most distinct and beautiful. Extra strong -----	\$ .18	\$ .11	\$ .08	\$ .07
ASPLENIUM TRICHOMANES. <i>Maidenhair Spleenwort.</i> Evergreen. Strong -----	.18	.12	.10	
ATHYRIUM FILIXFEMINA. <i>Lady Fern.</i> Large, deciduous Fern. Exceedingly showy. X strong --	.18	.11	.09	.08
BOTRYCHIUM VIRGINIANUM. <i>Rattlesnake Fern.</i> Deciduous. Triangular fronds, deeply cut. Showy. Strong -----	.18	.11	.09	.08

---



---

**HARDY NATIVE FERNS, continued**

	PRICE IN QUANTITIES			
	1 TO 9	10 TO 24	25 TO 249	250 OR OVER
DICKSONIA PUNCTILOBULA. <i>Hay-scented Fern.</i> A very handsome vigorous-growing, deciduous species. Recommended for shade or open locations. Widely distributed. Extra-heavy clumps	\$ .16	\$ .10	\$ .07	\$ .06
DRYOPTERIS FILIX-MAS. <i>Male Fern.</i> Delicate, finely cut fronds. Fine effects when massed. Strong -----	.26	.21	.18	
DRYOPTERIS GOLDIANA. <i>Goldie Fern.</i> Deciduous. X strong -----	.27	.20	.18	
DRYOPTERIS HEXAGONOPTERA. <i>Winged Woodfern.</i> Deciduous. Broad triangular fronds. Strong -----	.18	.12	.10	.09
DRYOPTERIS MARGINALIS. <i>Leather Woodfern.</i> Robust, evergreen, showy species. X heavy-----	.16	.11	.09	.08
DRYOPTERIS SPINULOSA. <i>Toothed Woodfern.</i> Evergreen. Strong -----	.16	.11	.08	.07
DRYOPTERIS THELYPTERIS. <i>Marsh Fern.</i> Deciduous. Strong -----	.15	.11	.09	
ONOCLEA SENSIBILIS. <i>Sensitive Fern.</i> Deciduous. Suitable for dry or moist locations -----	.16	.11	.08	.07
OSMUNDA CINNAMOMEA. <i>Cinnamon Fern.</i> Deciduous; stately; very large. X strong -----	.18	.12	.09	.08
OSMUNDA CLAYTONIANA. <i>Interrupted Fern.</i> Deciduous. Very bold attractive species. X strong	.18	.12	.09	.08
OSMUNDA REGALIS. <i>Royal Fern.</i> Large, deciduous Fern, bearing attractive foliage. Strong -----	.18	.12	.11	.10
LYGODIUM PALMATUM. <i>Hartford Fern.</i> Climbing vine of easy culture. Should be in every rare Fern Collection. Strong -----	.36	.32		
POLYPODIUM VULGARE. <i>Common Polypody.</i> A charming little evergreen Fern. Excellent for rockery. Clumps -----	.20	.14	.10	.09
POLYSTICHUM ACROSTICHOIDES. <i>Christmas Fern.</i> Evergreen, and extremely ornamental. Much used for Florist's trade. Clumps -----	.16	.11	.07	.06
PTERETIS NODULOSA. <i>Ostrich Fern.</i> Deciduous, bold-growing Fern of immense size. X strong	.18	.14	.12	.11
PTERIDIUM AQUILINUM. <i>Bracken.</i> Deciduous; tall-growing. Strong -----	.16	.11	.07	.06
WOODWARDIA VIRGINICA. <i>Virginia Chain-Fern.</i> Deciduous. Succeeds best in moist, shady location. A strong, vigorous-growing species. Strong established plants. -----	.18	.14	.12	

---

SPECIAL COLLECTION. 100 Assorted Ferns, \$8.20; 1,000 for \$75.00.

---

**CASH DISCOUNT 5 PER CENT**

Including free packing. Our long experience in the nursery business should command your careful consideration before buying elsewhere. Satisfaction guaranteed. Visitors are always welcome, and are invited to inspect our stocks.

## Hardy Aquatic and Bog Plants

	PRICE IN QUANTITIES			
	1 TO 9	10 TO 24	25 TO 249	250 OR OVER
ASTER NOVAE-ANGLIAE. <i>New England Aster</i> . Narrow grayish leaves and many star-like lavender to purple flowers. X heavy-----	\$ .18	\$ .12	\$ .10	
ASTER PUNICEUS. <i>Swamp Aster</i> . Lilac-blue; tall. Heavy clumps -----	.16	.11	.08	.06
CALTHA PALUSTRIS. <i>Marsh Marigold</i> . Beautiful marsh plants. Flowers bright yellow. Showy. Strong -----	.18	.12	.10	.09
CHELONE GLABRA. <i>White Turtlehead</i> . Strong grower. Flowers white to rose. Suitable for dry or wet locations. X strong -----	.16	.11	.10	.09
CHELONE LYONI. <i>Pink Turtlehead</i> . Flowers red or rose. Splendid bog plant. X strong -----	.16	.12	.11	.09
CICUTA MACULATA. <i>Spotted Waterhemlock</i> . Height 3 to 5 feet. Finely cut leaves. Flowers white. Strong -----	.15	.10	.07	.06
CORNUS CANADENSIS. <i>Bunchberry</i> . Height 5 to 8 inches. Deciduous. Flowers white or yellowish. Bright red berries in clusters. Strong clumpy plants -----	.45	.35	.32	
DARLINGTONIA CALIFORNICA. <i>California Pitcher Plant</i> . An interesting bog plant. Purple flowers. Strong -----	.65	.55	.50	
DIONAEA MUSCIPULA. <i>Venus' Flytrap</i> . A strong and most unusual plant that captures flies and other insects for food. Rare and very interesting. Strong -----	.30	.24	.20	
HELENIUM AUTUMNALE. <i>Sneezeweed</i> . Height 3 to 6 feet. Deciduous. Leaves lanceolate or ob- long. Handsome fall perennial. A blaze of gold in August and September. X strong clumps ---	.18	.14	.12	
HEMEROCALLIS FULVA. <i>Tawny Day Lily</i> . Stems 2 to 4 feet high. Flowers tawny orange, very showy. Strong -----	.16	.11	.09	.08
HIBISCUS MOSCHEUTOS. <i>Common Rosemallow</i> . Stems strong and vigorous, 3 to 5 feet tall. Flowers very large, 5 to 8 inches across. light rose with a purple eye. One of the very best. Strong -----	.30	.24	.21	
IRIS PSEUDACORUS. <i>Yellow Flag</i> . Stems 3 to 5 feet high. Large, sword-shaped leaves: yellow flowers. Strong -----	.22	.16	.14	.13
IRIS VERSICOLOR. <i>Blue Flag</i> . Height 2 to 4 feet. Suitable for border planting along ponds and streams. Strong -----	.18	.11	.09	.08
MERTENSIA VIRGINICA. <i>Virginia Bluebells</i> . Height 9 to 18 inches. Green foliage and showy blue flowers. First size -----	.20	.15	.11	.10
Second size -----	.12	.09	.07	.06
XX Large -----	.30	.22	.17	.16
MONARDA DIDYMA. <i>Oswego Bee-Balm</i> . Height 3 to 5 feet. One of our most brilliant perennials. Leafy stems with bright scarlet flowers. Strong	.18	.12	.09	

## HARDY AQUATIC AND BOG PLANTS, continued

	PRICE IN QUANTITIES			
	1 TO 9	10 TO 24	25 TO 249	250 OR OVER
SARRACENIA FLAVA. <i>Trumpet Pitcher Plant</i> . Interesting bog plant. Height 1 to 2 feet. Yellowish green trumpet-shaped leaf. Large yellow flowers. X strong -----	\$ .30	\$ .25	\$ .22	\$ .20
SARRACENIA PURPUREA. <i>Common Pitcher Plant</i> . Hardy plant 9 to 15 inches high. Succeeds best in mossy bogs. Flowers purplish yellow. Strong	.30	.25	.22	.20
SARRACENIA RUBRA. <i>Sweet Pitcher Plant</i> . Height 9 to 18 inches. Flowers crimson, with scent of sweet violet. Strong -----	.36	.27	.24	.22
SAXIFRAGA VIRGINIENSIS. <i>Virginia Saxifrage</i> . Height 6 to 18 inches. Lettuce-like foliage. Flowers white. Damp locations. Strong -----	.18	.14	.11	
SYMPLOCARPUS FOETIDUS. <i>Skunk-cabbage</i> . Leaves large, 1 to 2 feet long, heart-shaped. Flowers small, mottled purplish brown and greenish yellow, packed on fleshy stems. Blooms in early spring. Strong -----	.30	.24	.20	.18
TYPHA LATIFOLIA. <i>Common Cattail</i> . 4 to 6 feet. Succeeds in shallow water, marshes, or swamps. Leaves long narrow, bright green, overtopping large brown spikes. Extra strong plants-----	.25	.21	.18	.16
VERATRUM VIRIDE. <i>American False Hellebore</i> . Height 2 to 4 feet. Yellowish green plant with large leaves. Succeeds well in either dry or moist soil. Flowers greenish white, in early spring. X strong -----	.20	.14	.12	
VERNONIA NOVEBORACENSIS. <i>Ironweed</i> . Deciduous. Stem leafy; usually tall. Leaves alternate. Flower-heads an intense red-purple, loosely clustered. Strong clumps -----	.18	.14	.12	.10

## Native Lilies for Naturalizing or Specimens

	PRICE IN QUANTITIES			
	1 TO 9	10 TO 24	25 TO 249	250 OR OVER
LILIUM CANADENSE. <i>Canada Lily</i> . Slender stems 2 to 4 feet high. Flowers in various shades of orange, yellow, and red. Very ornamental.				
First size -----	\$ .22	\$ .18	\$ .14	\$ .12
Second size -----	.11	.09	.06	.05
LILIUM CAROLINIANUM. <i>Carolina Lily</i> . A showy Lily somewhat dwarfer than <i>L. superbum</i> , with flowers a little lighter in color, but enriched with a delicate and pervasive fragrance. First size ----	.25	.20	.18	.16
Second size -----	.15	.10	.09	.08
LILIUM CATESBAEI. <i>Southern Red Lily</i> . Flowers solitary; when open they are bell-shaped, scarlet spotted with dark purple and yellow on the inside. Leaves numerous. Blooms in June and July. First size -----	.24	.18	.16	

Autumn planting is recommended for best results. This will enable the roots to get established before Winter, and start growing in early spring before spring planted stock overcomes the setback of transplanting. Autumn Planted Natives bloom well the first year and may save disappointment later.



## NATIVE LILIES FOR NATURALIZING OR SPECIMENS, continued

	PRICE IN QUANTITIES			
	1 TO 9	10 TO 24	25 TO 249	250 OR OVER
LILIUM GRAYI. <i>Gray's Lily</i> . Height 2 to 4 feet. A beautiful Lily with deep, reddish, bell-shaped flowers, orange spotted within. Exceedingly showy and continues to grow in demand.				
First-size strong flowering bulbs -----	\$ .36	\$ .28	\$ .24	\$ .22
Second-size mostly flowering bulbs -----	.18	.12	.10	.08
XX largest -----	.55	.40	.36	
LILIUM PHILADELPHICUM. <i>Orange-cup Lily</i> . Height 1 to 3 feet. Reddish orange flowers, with purple spots. Flowering size bulbs -----	.22	.16	.14	.12
<u>LILIUM SUPERBUM</u> . <i>American Turk's-cap Lily</i> . Under favorable conditions it reaches 8 feet, bearing scores of 3 to 4 inch flowers of brilliant orange-scarlet, shaded yellow and dotted and tinged with brown in the center. The petals form a turban-shaped flower which accounts for its common name, the "Turk's-cap Lily". It particularly likes to stick its head up through an opening in overhanging shrubs. Blooms in July. Early orders solicited. First size -----	.24	.18	.14	.12
Second size -----	.14	.10	.07	.06
Third size -----	.10	.05	.04	.03
XX largest -----	.45	.40	.35	

## Hardy Vines, Climbers and Creepers

	PRICE IN QUANTITIES			
	1 TO 9	10 TO 24	25 TO 249	250 OR OVER
AMPELOPSIS QUINQUEFOLIA. <i>Virginia Creeper</i> . High-climbing vine, clinging to walls and trees, with beautifully colored foliage in autumn.				
Strong -----	\$ .30	\$ .24	\$ .20	\$ .18
AMPELOPSIS TRICUSPIDATA. <i>Japanese Creeper</i> . A very useful climber, clinging firmly and densely to any hard surface. Foliage large, three-lobed and glossy. Strong -----	.35	.27	.24	.22
BIGNONIA RADICANS. <i>Trumpet Creeper</i> . Bold shrub with interesting foliage and partially climbing habit. The huge flowers are trumpet shaped and vary from bright brownish orange to vivid scarlet. 2 to 4 feet -----	.36	.30	.22	.20
CELASTRUS SCANDENS. <i>American Bittersweet</i> . High-climbing vine; very ornamental. 1 to 2 feet -----	.22	.18	.16	.14
2 to 3 feet. X strong -----	.35	.27	.24	.22
4 to 6 feet. X strong -----	.45	.40	.36	.34
12 to 18 inches. Strong seedlings -----	.11	.06	.05	.04
CLEMATIS CRISPA. <i>Curly Clematis</i> . Graceful vine. Purple flowers in midsummer. Strong -----	.24	.20	.18	.16
CLEMATIS PANICULATA. <i>Sweet Autumn Clematis</i> . Strong -----	.36	.30	.26	.24
CLEMATIS VIRGINIANA. <i>Virgin's Bower</i> . Popular for general planting. X strong -----	.15	.11	.08	.06

ALL PRICES ARE F. O. B. ASHFORD, N. C.  
UNLESS OTHERWISE AGREED.

## HARDY VINES, CLIMBERS AND CREEPERS, continued

	PRICE IN QUANTITIES			
	1 TO 9	10 TO 24	25 TO 249	250 OR OVER
COCCULUS CAROLINUS. <i>Carolina Snailseed</i> . 5 to 12 feet. Greenish, clings to smooth surfaces. Fruit red and very showy. Leaves variable in shape. A good climber. 1 to 2 feet -----	\$ .30	\$ .24	\$ .22	\$ .20
DIOSCOREA VILLOSA. <i>Yam</i> . Showy vine, with leaves turning golden yellow in autumn. Strong	.15	.10	.08	.06
EPIGAEA REPENS. <i>Trailing Arbutus</i> . Charming plant, with very fragrant, white or pink flowers. Strong clumps -----	.24	.18	.17	.16
GALAX APHYLLA. <i>Galax</i> . One of our best ground-cover plants for shady locations. The very ornamental bronze and green leaves are much used in florist's trade. X heavy clumps -----	.20	.16	.13	.12
GAULTHERIA PROCUMBENS. <i>Wintergreen</i> . Very desirable ground-cover, with brilliant green and bronze leaves. Bright red, edible fruit in winter. Strong clumps -----	.21	.17	.14	.12
HOUSTONIA SERPYLLIFOLIA. <i>Creeping Bluets</i> . 3 to 6 inches. Light blue or white, blooming about all summer. Splendid for rock-garden, potting, or border. Unlimited supply of this unusual ground-cover. Clumps -----	.24	.18	.16	
<u>IRIS CRISTATA</u> . <i>Crested Iris</i> . Splendid ground-cover for shady or open locations. Leaves green. Flowers blue. Strong clumps -----	.18	.14	.12	.11
Light plants -----	.10	.07	.06	.05
IRIS VERNA. <i>Vernal Iris</i> . Blue flowers. Ground-cover. Clumps -----	.18	.14	.12	.11
<u>LONICERA JAPONICA HALLIANA</u> . <i>Hall's Honeysuckle</i> . Very strong-growing vine. Fragrant white and yellow flowers in summer and autumn. Best for trellises and ground-cover. X strong, 3-year -----	.22	.18	.14	.12
Second size. Bargain. 2-year -----	.10	.09	.07	.06
LONICERA SEMPERVIRENS. <i>Trumpet Honeysuckle</i> . A high-climbing vine with glorious large, scarlet flowers blazing like torches in their fiery array. This splendid vine is unexcelled in hardiness, and is much used for porches, verandas, and general planting. Strong established plants ---	.36	.30	.27	.25
MITCHELLA REPENS. <i>Partridge Berry</i> . A splendid evergreen ground-cover, best suited to shady places. Flowers white or purple tinged. Berries bright red in winter. Clumps -----	.20	.16	.15	.13
PACHYSANDRA TERMINALIS. <i>Japanese Pachysandra</i> . Evergreen ground-cover. Recommended for shady locations. X strong -----	.22	.18	.15	.13
PASSIFLORA INCARNATA. <i>Maypop</i> . Tall, climbing vine. Leaves 3-lobed to about half their depth. Flowers large purple. Fruit yellow when ripe, edible. Strong -----	.40	.36	.30	
PHLOX STOLONIFERA. <i>Creeping Phlox</i> . A free-growing ground-cover. Reddish purple flowers in early spring. Strong -----	.20	.16	.14	.12

## HARDY VINES, CLIMBERS AND CREEPERS, continued

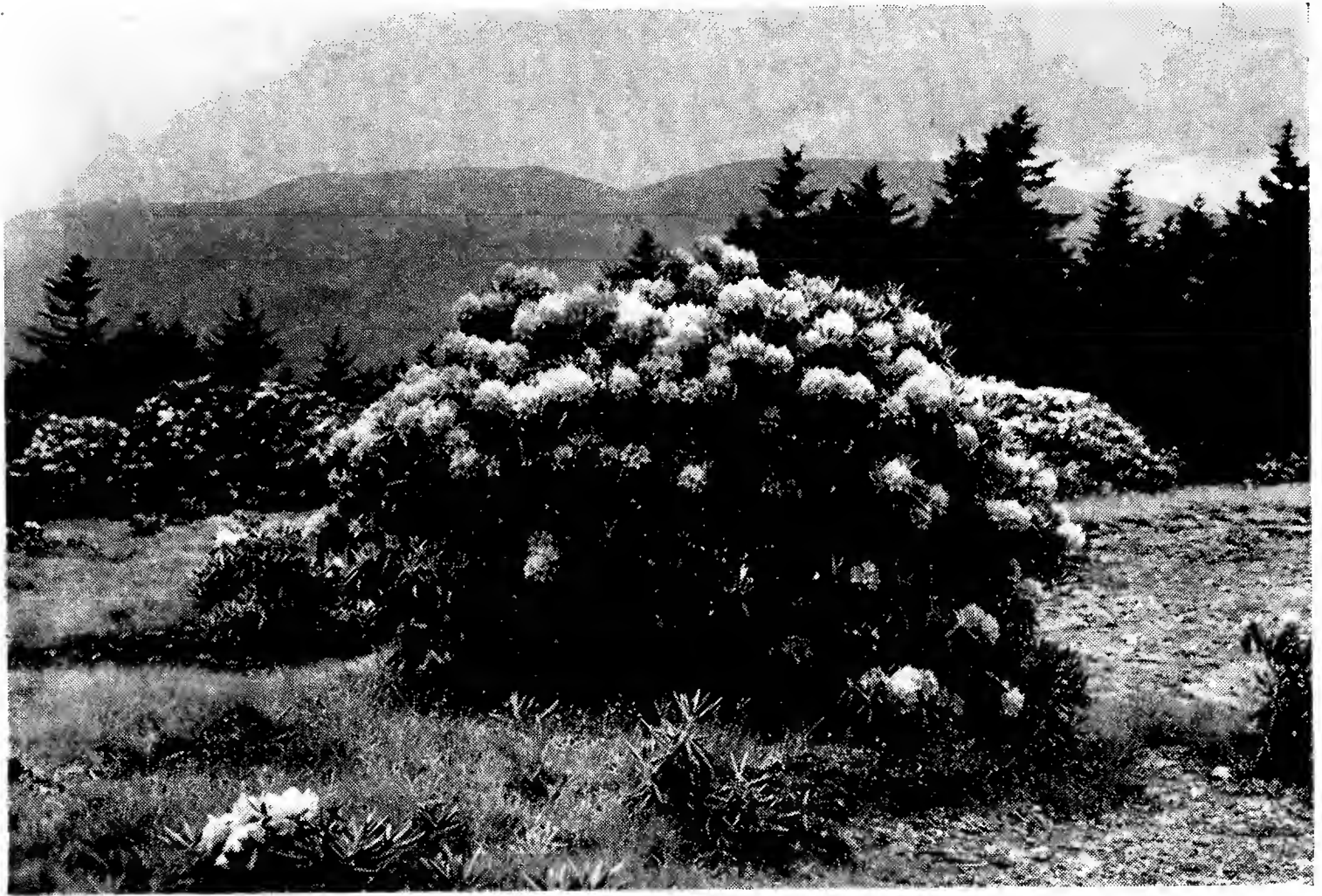
	PRICE IN QUANTITIES			
	1 TO 9	10 TO 24	25 TO 249	250 OR OVER
PHLOX SUBULATA. <i>Moss Pink</i> . Splendid for ground-cover or rock-garden. Strong clumps -----	\$ .24	\$ .20	\$ .18	\$ .16
RANUNCULUS REPENS. <i>Creeping Buttercup</i> . Splendid ground-cover. Best suited to damp, shady situations. Strong clumps -----	.18	.14	.10	.08
SEDUM TELEPHOIDES. <i>Wild Live-forever</i> . Fleshy leaves and flowers. Suitable for rockery and other dry situations. X strong -----	.22	.18	.15	
SEDUM TERNATUM. <i>Mountain Stonecrop</i> . Handsome creeping ground-cover with white flowers in early spring. Widely distributed. Strong clumps -----	.15	.11	.09	.07
SHORTIA GALACIFOLIA. <i>Oconee Bells</i> . Esteemed rare evergreen ground-cover, best suited to shade. Heavy clumps -----	.24	.18	.17	.16
Second size -----	.12	.10	.08	.07
VACCINIUM CRASSIFOLIUM. <i>Evergreen Trailing Blueberry</i> . Flowers few, almost sessile, small, rose-red, rarely whitish, in small axillary clusters. Berries black. Strong -----	.36	.34	.32	
<u>VINCA MINOR</u> . <i>Common Periwinkle</i> . Hardy, old-fashioned evergreen vine, well adapted for ground-cover and rockery. Succeeds best in cool, shady locations. Blue flowers in early spring. Foliage very dark green. Strong -----	.18	.14	.12	.10
Second size -----	.10	.06	.05	.04
X heavy clumps -----	.24	.18	.17	.16
VITIS CORDIFOLIA. <i>Frost Grape</i> . One of our most vigorous-growing American vines, often climbing to tops of tall trees. 1 to 2 feet. Strong seedling plants -----	.30	.24	.22	
WISTERIA SINENSIS. <i>Chinese Wisteria</i> . Vigorous-growing vine with beautiful sweet-scented pale blue flowers. 1 to 2 feet. -----	.25	.22	.20	.18

Write for prices on carload lots of Azalea calendulacea, Flame Azalea; Azalea canescens, Piedmont Azalea; Azalea nudiflora, Pinxter Bloom; Kalmia latifolia, Mountain Laurel; Leucithoe catesbaei, Drooping Leucothoe; Rhododendron catawbiense, Catawba Rhododendron; Rhododendron maximum, Rosebay Rhododendron.

## CASH DISCOUNT 5 PER CENT

Including free packing. Our long experience in the nursery business should command your careful consideration before buying elsewhere. Satisfaction guaranteed. Visitors are always welcome, and are invited to inspect our stocks.

OUR STOCK IS GROWN HARDY IN THE CAROLINA HIGHLANDS.  
"NONE BETTER BY TEST".



RHODODENDRON CATAWBIENSE. *Catawba Rhododendron.*

## Rhododendrons

PRICE IN QUANTITIES

	1 TO 9	10 TO 24	25 TO 249	250 OR OVER
RHODODENDRON CATAWBIENSE. <i>Catawba Rhododendron.</i> Probably the most vigorous, hardy, free-blooming variety, with gorgeous display of rosy purple flowers in early summer. Foliage dark green and exceedingly showy. Hardest of all Rhododendrons. Special price on carload orders.				
4 to 8 inches. Strong transplanted -----	\$ .24	\$ .20	\$ .18	\$ .16
8 to 12 inches. Strong transplanted -----	.34	.26	.24	.22
1 to 2 feet. Bushy B&B -----	.90	.70	.60	.55
9 to 18 inches. Heavy clumps B&B -----	1.35	1.20	1.10	1.00
1½ to 2 feet. X heavy clumps B&B -----	1.65	1.50	1.40	1.30
2 to 3 feet. X heavy clumps B&B -----	2.60	2.40	2.30	2.20
3 to 4 feet X heavy clumps B&B -----	4.40	4.25	4.10	4.00
Cut-back clumps. Established in nursery -----	.65	.55	.50	.46
4 to 12 inches. Collected seedlings -----	.15	.10	.06	.05
RHODODENDRON CATAWBIENSE COMPACTA. A compact variety of Catawba Rhododendron from high altitude. Hardest of all Rhododendrons. Rosy purple to pink. Unlimited supply.				
4 to 6 inches. X strong bushy -----	.36	.30	.28	.26
6 to 12 inches. Bushy -----	.45	.40	.36	.34
9 to 12 inches. Clumps B&B -----	1.10	.90	.80	.75
1 to 1½ feet. X heavy clumps B&B -----	1.65	1.45	1.35	1.25
1½ to 2 feet. X heavy clumps B&B -----	2.10	1.90	1.80	1.70
2 to 3 feet. Strong clumps B&B -----	3.00	2.80		
Cut-back clumps. Established in nursery -----	.70	.60	.55	.50

## RHODODENDRONS, continued

	PRICE IN QUANTITIES			
	1 TO 9	10 TO 24	25 TO 249	250 OR OVER
<b>RHODODENDRON MINUS. (<i>Punctatum</i>). Piedmont</b>				
<i>Rhododendron</i> . Bold shrub with pinkish white flowers curiously spotted with green dots.				
3 to 4 feet. X heavy clumps B&B -----	\$2.40	\$2.25		
4 to 5 feet. X heavy clumps B&B -----	2.90	2.75		
<b>RHODODENDRON CAROLINIANUM. Carolina</b>				
<i>Rhododendron</i> . A species from the southern Alleghany Mountains. Earliest flowering native Rhododendron. It is a fine bloomer, with light to deep pink flowers.				
1 to 1½ feet. Heavy clumps B&B -----	1.35	1.25	1.15	1.10
1½ to 2 feet. XX heavy clumps B&B -----	1.90	1.75	1.65	1.55
2 to 3 feet. X heavy clumps B&B -----	2.80	2.70	2.60	
3 to 4 feet. X heavy clumps B&B -----	3.60	3.40	3.30	
Cut-back clumps. Established in nursery -----	.65	.55	.50	.45
4 to 5 feet. Collected clumps B&B -----	2.50	2.40	2.25	2.15
<b>RHODODENDRON CAROLINIANUM ALBUM.</b>				
<i>White Carolina Rhododendron</i> . Dwarf, early-blooming variety from Piedmont Section. Rare and most beautiful. 1 to 1½ feet. Clumps B&B				
1½ to 2 feet. Heavy clumps B&B -----	1.75	1.60		
2 to 3 feet. Heavy clumps B&B -----	2.35	2.10		
2 to 3 feet. Heavy clumps B&B -----	2.90	2.75	2.60	
Cut-back collected clumps (Roots) -----	.75	.65	.55	.50
<b>RHODODENDRON MAXIMUM. Rosebay.</b> This is the most familiar and grandest species and most used for massing and naturalistic planting of all native broad-leaved evergreens. Flowers pinkish white, in large clusters in July. We are prepared to supply splendid plants in all sizes. Special quotations for carload shipments. Send in your list of requirements early to allow best opportunity of serving.				
4 to 6 inches -----	.16	.12	.11	.10
6 to 12 inches Bushy -----	.24	.18	.16	.14
1 to 1½ feet. X heavy clumps B&B -----	.90	.80	.70	.65
1½ to 2 feet. XX heavy clumps B&B -----	1.35	1.25	1.10	1.00
2 to 3 feet. XX heavy clumps B&B -----	1.75	1.65	1.55	1.45
3 to 4 feet. XX heavy clumps B&B -----	2.60	2.45	2.35	2.25
4 to 5 feet. XX heavy clumps B&B -----	4.50	4.30	4.15	
5 to 6 feet Clumps B&B -----	5.50	5.00	4.75	
4 to 12 inches. Collected seedlings -----	.15	.09	.06	.05
Cut-back extra-quality clumps. Established in nursery -----	.55	.46	.42	.40
1 to 2 feet. Bushy B&B -----	.85	.75	.70	.65

NOTE: Cut-back extra quality clumps, refer to cut-back spindling plants established in Nursery, with splendid root system that should bloom in one to two years. Splendid value assured for a little waiting. This stock becomes more readily acclimated under varied conditions, making larger average of specimens than where ordinary material is used.

## CASH DISCOUNT 5 PER CENT

Including free packing. Our long experience in the nursery business should command your careful consideration before buying elsewhere. Satisfaction guaranteed. Visitors are always welcome, and are invited to inspect our stocks.

## Mountain Laurel

### PRICE IN QUANTITIES

<u>KALMIA LATIFOLIA.</u> <i>Mountain Laurel.</i> This matchless Laurel is, without question, one of the most beautiful and attractive of the broad-leaved evergreen shrubs on account of its dark green, lustrous foliage and masses of glorious pink or rose-colored flowers, appearing in lavish profusion in late spring and early summer. Our stock is equal to the demand. We are able to make quick shipment.	1 TO 9	10 TO 24	25 TO 249	250 OR OVER
4 to 6 inches. X heavy -----	\$ .25	\$ .22	\$ .18	\$ .16
6 to 12 inches. X heavy -----	.35	.30	.27	.25
4 to 12 inches. Collected seedlings -----	.15	.10	.06	.05
1 to 1½ feet. X heavy clumps B&B -----	1.35	1.25	1.15	1.00
1½ to 2 feet. XX heavy clumps B&B -----	1.70	1.60	1.50	1.40
2 to 3 feet. XX heavy clumps B&B -----	2.35	2.20	2.10	2.00
3 to 4 feet. XX heavy clumps B&B -----	3.00	2.70	2.60	
4 to 5 feet Clumps B&B -----	4.00	3.75	3.60	
Cut-back clumps. Established in nursery -----	.50	.45	.40	.38

## Hardy Native Deciduous Trees and Shrubs

Abbreviations—XX, specimens; B&B, balled and burlapped

### PRICE IN QUANTITIES

	1 TO 9	10 TO 24	25 TO 249	250 OR OVER
<u>ACER DASycARPUM.</u> <i>Silver Maple.</i>				
2 to 3 feet -----	\$ .35	\$ .30	\$ .27	
3 to 4 feet -----	.50	.40	.36	
4 to 6 feet -----	.65	.55	.45	.42
6 to 8 feet -----	1.00	.90	.85	
8 to 10 feet -----	1.50	1.35	1.25	
<u>ACER RUBRUM.</u> <i>Red Maple.</i> 1 to 2 feet -----	.30	.25	.21	.20
<u>ACER SACCHARUM.</u> <i>Sugar Maple.</i> Handsome, rapid-growing tree for general use. Splendid fall coloring of foliage. 6 to 12 inches -----	.25	.20	.18	
1 to 2 feet -----	.36	.27	.25	.22
2 to 3 feet -----	.50	.40	.36	
3 to 4 feet -----	.65	.55	.45	
4 to 6 feet -----	.85	.75	.70	
8 to 10 feet -----	1.35	1.20	1.10	
<u>AESCULUS OCTANDRA.</u> <i>Yellow Buckeye.</i> Medium-sized tree. Large, vigorous foliage. Cream-colored flowers in early spring. 1 to 2 feet -----	.30	.20	.16	.14
2 to 3 feet -----	.40	.30	.24	.21
3 to 4 feet -----	.50	.40	.36	.32
4 to 6 feet -----	.65	.55	.48	.45
<u>ALBIZZIA JULIBRISSIN.</u> <i>Silk Tree.</i> Attractive tree of moderate size, with acacia-like foliage and clusters of fuzzy pink flowers followed by big pods. 6 to 8 feet -----	1.10	.90	.85	
8 to 10 feet -----	1.45	1.35	1.25	
<u>ALNUS VIRIDIS.</u> <i>European Green Alder.</i> Low shrub with attractive foliage. From high altitudes. Heavy clumps 3 to 4 feet -----	.70	.60		

## HARDY NATIVE DECIDUOUS TREES AND SHRUBS, continued

	PRICE IN QUANTITIES			
	1 TO 9	10 TO 24	25 TO 249	250 OR OVER
<b>AMELANCHIER LAEVIS.</b> <i>Allegheny Shadblow.</i>				
Very handsome small tree, with snow-white flowers in early spring. The edible fruit ripens in July. 1 to 2 feet -----	\$ .35			
2 to 3 feet -----	.50			
3 to 4 feet -----	.65			
4 to 6 feet -----	.85	.75		
<b>ARONIA ARBUTIFOLIA.</b> <i>Red Chokeberry.</i> Of larger growth than <i>A. melanocarpa</i> , with splendid bright red berries. An elegant shrub. Indifferent as to soil-acidity. Succeeds in sunny or shady locations. Attractive to birds and very ornamental. 1 to 2 feet -----				
	.35	.30	.25	
2 to 3 feet -----	.45	.36	.34	
4 to 6 feet -----	.90	.80		
<b>ARONIA MELANOCARPA.</b> <i>Black Chokeberry.</i> A very desirable ornamental shrub with white flowers in early spring and clusters of black fruit in autumn and early winter. Foliage colors dark red in early fall. 1 to 2 feet -----				
	.30	.25	.22	.20
2 to 3 feet -----	.45	.36	.34	.32
3 to 4 feet -----	.65	.55	.50	
<b>AZALEA ARBORESCENS.</b> <i>Sweet Azalea.</i> Large, fragrant, white flowers in early summer. Of easy culture and lasting beauty. 1½ to 2 feet.				
X heavy clumps B&B -----	1.90	1.75	1.65	1.55
2 to 3 feet. XX heavy clumps B&B -----	2.40	2.30	2.20	
3 to 4 feet. XXX heavy clumps. B&B -----	4.90	4.70	4.60	
4 to 5 feet. XXX heavy clumps B&B -----	6.50	6.25		
<b>AZALEA CALENDULACEA.</b> <i>Flame Azalea.</i> The most beautiful and varied native species. Flowers vary from red-orange to canary. Conspicuous in early summer throughout the Carolina mountains. 6 to 12 inches -----				
	.50	.40	.36	.34
1½ to 2 feet. X heavy clumps B&B -----	1.60	1.45	1.35	1.25
2 to 3 feet. XX heavy clumps B&B -----	1.90	1.75	1.65	1.55
3 to 4 feet. XX heavy clumps B&B -----	2.60	2.40	2.25	
4 to 5 feet. Collected clumps B&B -----	3.50	3.25	3.10	
Cut-back clumps. Established in nursery -----	.50	.45	.40	.38
12 to 18 inches. Strong B&B -----	.75	.65	.60	.55
<b>AZALEA CANESCENS.</b> <i>Piedmont Azalea.</i> Excellent rare species. Very similar to <i>A. vaseyi</i> . We are headquarters for this splendid Azalea. 1 to 2 feet. X tr. clumps B&B -----				
	1.35	1.25	1.15	
<b>AZALEA NUDIFLORA.</b> <i>Pinxter Bloom.</i> Very handsome, free-flowering shrub, with showy, deep pink flowers in profusion in early spring.				
6 to 12 inches -----	.60	.50	.45	.40
1 to 1½ feet. X clumps B&B -----	1.10	.90	.85	.80
1½ to 2 feet. XX heavy clumps B&B -----	1.65	1.50	1.40	
2 to 3 feet. XX heavy clumps B&B -----	2.25	2.10	2.00	

5 per cent discount, including free packing, allowed on cash orders.

Packing will be charged at cost on charge orders.

---



---

**HARDY NATIVE DECIDUOUS TREES AND SHRUBS, continued**

## PRICE IN QUANTITIES

	1 TO 9	10 TO 24	25 TO 249	250 OR OVER
<b>AZALEA VASEYI.</b> <i>Pink-shell Azalea.</i> A distinct and remarkably free-flowering hardy shrub of extreme rarity and beauty. The flowers are an exquisite shade of pink or rose and appear in profusion before the leaves unfold in early spring. In autumn the foliage assumes deep rich shades of red and crimson. 6 to 12 inches -----	\$ .45	\$ .42	\$ .40	\$ .38
1 to 1½ feet. B&B -----	.85	.75	.65	.60
1½ to 2 feet. B&B -----	1.35	1.25	1.15	
2 to 3 feet. X heavy B&B -----	2.00	1.80	1.70	
3 to 4 feet. X heavy B&B -----	3.00	2.75	2.60	2.50
4 to 5 feet. X heavy B&B -----	3.75	3.50	3.35	
5 to 6 feet. X heavy B&B -----	4.60	4.30	4.20	
<b>AZALEA VISCOSA.</b> <i>Small White Swamp Azalea.</i> Fragrant; late bloomer. Thrives well along streams and in varied situations.				
1 to 2 feet. Clumps B&B -----	1.35	1.25		
2 to 3 feet. Clumps B&B -----	1.60	1.50		
<b>BENZONIN AESTIVALE.</b> <i>Spice-Bush.</i> Yellow foliage and red berries. 1 to 2 feet -----	.40	.34	.30	.27
<b>BERBERIS ATROPURPUREA.</b> <i>Purple Barberry.</i> Splendid for hedge or specimen planting.				
6 to 12 inches -----	.45	.38	.35	
1 to 2 feet -----	.60	.50	.46	
<b>BERBERIS THUNBERGI.</b> <i>Japanese Barberry.</i> A graceful shrub of low dense habit. Native of Japan. Leaves entire, bright green, assuming in autumn dazzling shades of orange, scarlet, and crimson; berries brilliant red, borne in great profusion and persisting throughout the winter.				
6 to 12 inches -----	.25	.21	.18	.16
1 to 2 feet -----	.35	.30	.27	.25
<b>BETULA LENTA.</b> <i>Sweet Birch.</i> Large tree. Shining green, thick foliage. Twigs and bark fragrant. Recommended for lawn or street planting.				
6 to 8 feet B&B X quality -----	1.45	1.30		
8 to 10 feet B&B -----	2.75	2.60		
<b>BETULA LUTEA.</b> <i>Yellow Birch.</i> Yellowish silvery bark and thin, finely cut leaves. 8 to 10 feet -----	2.60			
<b>BETULA PAPYRIFERA.</b> <i>Canoe Birch.</i> 3 to 4 feet -----	.75	.65		
<b>BUDDLEIA MAGNIFICA.</b> <i>Oxeye Butterflybush.</i> Large deep rose-purple flowers with deep orange eye and the margin of the petals reflexed, panicles very dense; begins to bloom about the middle of August. 2 to 3 feet -----	.75	.65	.55	
3 to 4 feet. Extra heavy -----	.90	.80	.75	
<b>CALLICARPA PURPUREA.</b> <i>Chinese Beautyberry.</i> Desirable shrub. 2 to 3 feet -----	.70	.60	.50	

---

NOTE: Cut-back extra quality clumps. Refer to cut-back spindling plants established in Nursery, with splendid root system that should bloom in one to two years. Splendid value assured for a little waiting. This stock becomes more readily acclimated under varied conditions, making larger average of specimens than where ordinary material is used.



## HARDY NATIVE DECIDUOUS TREES AND SHRUBS, continued

	PRICE IN QUANTITIES			
	1 TO 9	10 TO 24	25 TO 249	250 OR OVER
CARPINUS CAROLINIANA. <i>American Hornbeam</i> . Leaves oval with sharp teeth on the edge; turn to golden in autumn. 8 to 10 feet -----	\$2.50	\$2.30		
CASTANEA PUMILA. <i>Chinquapin</i> . 8 to 25 feet. A large shrub or small round-topped tree, distributed from Pennsylvania southward. Leaves oblong-oval, coarsely serrate, bright green, turning dull yellow in autumn. Flowers showy, appearing in May and June. Fruit usually solitary. 6 to 12 inches -----	.35	.25	.22	.20
CERCIS CANADENSIS. <i>American Redbud</i> . A small tree with spreading branches, fast growing and wonderfully floriferous. Decidedly one of our best flowering trees and worthy of consideration. 1 to 2 feet ----- 2 to 3 feet ----- 3 to 4 feet ----- 4 to 6 feet -----	.55 .70 .90 1.25	.45 .60 .80 1.10	.42 .50 .75 1.00	
CHIONANTHUS VIRGINICA. <i>White Fringe-Tree</i> . Small tree. Free bloomer in early spring. Large white flowers in drooping panicles. 1 to 2 feet 2 to 3 feet ----- 3 to 4 feet ----- 4 to 6 feet ----- 6 to 8 feet -----	.40 .65 1.00 1.40 1.80	.36 .55 .90 1.30 1.70	.34 .48 .80 1.20 1.60	.32 .45
CLETHRA ALNIFOLIA. <i>Summersweet</i> . Sturdy, compact shrub, 3 to 5 feet tall. Leaves dark green and lustrous. Flowers creamy white, fragrant, in erect, paniced racemes. 6 to 12 inches 1 to 2 feet ----- 2 to 3 feet -----	.36 .55 .75	.32 .45 .65	.28 .40	.38
COMPTONIA ASPLENIFOLIA. <i>Sweetfern</i> . Much-branched, with dark brown bark. Very effective and recommended for dry upland, in sun or partial shade. 1 to 2 feet. Strong -----	.35	.30	.28	.26
CORNUS FLORIDA. <i>Flowering Dogwood</i> . Most beautiful small flowering trees in early spring. 6 to 12 inches ----- 1 to 2 feet ----- 2 to 3 feet ----- 3 to 4 feet ----- 4 to 6 feet ----- 6 to 8 feet X B&B -----	.30 .40 .65 .90 1.35 3.50	.25 .36 .55 .80 1.25 3.25	.21 .34 .45 .70 1.15	.18 .32 .42 .65
CORNUS FLORIDA RUBRA. <i>Red-flowering Dogwood</i> . 6 to 7 feet ----- 7 to 8 feet -----	6.00 8.50	5.50 8.00		
CORYLUS AMERICANA. <i>American Hazelnut</i> . 1 to 2 feet -----	.40	.35	.30	
CRATAEGUS COCCINEA. <i>Thicket Hawthorn</i> . Thorny shrub 10 feet high, with pretty leaves and clusters of fragrant white flowers followed by scarlet berries. 2 to 3 feet -----	.60	.50		
CYDONIA JAPONICA. <i>Flowering Quince</i> . Flowers red. 1 to 2 feet ----- 2 to 3 feet -----	.50 .70	.45 .60	.40	.38

## HARDY NATIVE DECIDUOUS TREES AND SHRUBS, continued

	PRICE IN QUANTITIES			
	1 TO 9	10 TO 24	25 TO 249	250 OR OVER
CYTISUS SCOPARIUS <i>Scotch Broom</i> . Leafless shrub of many bright green stems and twigs, adorned with bright yellow pea-blossoms in late spring.				
1 to 2 feet -----	\$ .40	\$ .35	\$ .32	
2 to 3 feet -----	.85	.75	.70	
3 to 4 feet. Heavy clumps B&B -----	1.40	1.30		
DIERVILLA SESSILIFOLIA. <i>Southern Bush Honeysuckle</i> . A shrub 4 feet high, with crowded clusters of tubular yellow flowers tinged with brown. 2 to 3 feet -----	.65	.55	.50	
DIERVILLA TRIFIDA. <i>Dwarf Bush Honeysuckle</i> . Yellow flowers. 1 to 2 feet -----	.50	.40		
<u>FORSYTHIA SUSPENS</u> A. <i>Weeping Forsythia</i> . Extremely vigorous, half-climbing shrubs bearing myriads of bright yellow, ball-like flowers in early spring. 2 to 3 feet -----	.60	.50	.45	
3 to 4 feet -----	.70	.60	.55	
HAMAMELIS VIRGINIANA. <i>Witch-Hazel</i> . Flowers yellow, in late autumn. 6 to 12 inches -----	.25	.20	.18	
1 to 2 feet -----	.40	.30	.27	
HYDRANGEA ARBORESCENS GRANDIFLORA. <i>Hills of Snow</i> . Excellent low summer-blooming shrub which produces its large, snow-white clusters of flowers in shady places. 2 to 3 feet --	.40	.35	.30	
<u>HYDRANGEA PANICULATA GRANDIFLORA</u> . <i>Large-panicked Hydrangea</i> . Hardy, tall shrub with creamy white flowers and dark green leaves. Splendid for mass planting or single specimens. Very popular. 1 to 2 feet -----	.36	.30	.27	.25
2 to 3 feet -----	.50	.44	.40	.38
HYDRANGEA RADIATA. <i>Silverleaf Hydrangea</i> . Leaves dark green above and silvery white beneath, becoming very noticeable at first touch of frost. 2 to 3 feet -----	.50	.45	.40	
HYPERICUM DENSIFLORUM. <i>Common St. John's-wort</i> . A widely distributed ornamental shrub, with narrow green leaves and clusters of bright yellow flowers. 1 to 2 feet -----	.30	.24	.22	.20
2 to 3 feet -----	.45	.36	.34	.30
HYPERICUM PROLIFICUM. <i>Shrubby St. John's-wort</i> . Vigorous, hardy shrub, with compact branches and dark green leaves. Flowers bright yellow, in terminal clusters in late summer.				
1 to 2 feet -----	.30	.24	.20	.18
2 to 3 feet -----	.45	.36	.34	.30
3 to 4 feet. X strong -----	.60	.50	.45	.40
ILEX MONTICOLA. <i>Mountain Winterberry</i> . Deciduous small tree, with spreading branches, bright green leaves and scarlet berries in autumn.				
6 to 12 inches -----	.25	.20	.18	
1 to 2 feet -----	.45	.36	.34	
2 to 3 feet -----	.65	.55	.50	
3 to 4 feet -----	.80	.70		
4 to 6 feet. X heavy -----	1.35	1.20	1.10	

## HARDY NATIVE DECIDUOUS TREES AND SHRUBS, continued

	PRICE IN QUANTITIES			
	1 TO 9	10 TO 24	25 TO 249	250 OR OVER
<b>ILEX VERTICILLATA.</b> <i>Common Winterberry.</i> The handsome sprays of brilliant berries, which are often used for decorating, justly proclaim the high rank of this grand shrub. Widely distributed. 1 to 2 feet -----				
	\$ .50	\$ .40	\$ .36	
2 to 3 feet -----	.80	.70	.65	
<b>LARIX LARICINA.</b> <i>American Larch.</i> This is the native Tamarack, a deciduous conifer which looks like an evergreen in summer, but the foliage turns yellow and drops completely each autumn. 4 to 6 feet. B&B -----				
	1.25	1.15	1.00	
6 to 8 feet. B&B -----	1.75	1.65	1.50	
8 to 10 feet. B&B -----	2.50	2.25	2.00	
10 to 12 feet. B&B -----	3.00	2.70	2.50	
<b>LIQUIDAMBAR STYRACIFLUA.</b> <i>Sweet Gum.</i>				
1 to 2 feet -----	.40	.34	.30	
2 to 3 feet -----	.60	.50	.45	
<b>LIRIODENDRON TULIPIFERA.</b> <i>Tulip-Tree.</i> Yellowish tulip-like flowers. 2 to 3 feet -----				
	.45	.35	.32	
3 to 4 feet -----	.65	.55	.50	.46
10 to 12 feet -----	3.50	3.00		
<b>LYONIA LIGUSTRINA.</b> <i>He-Huckleberry.</i> A much-branched shrub. Leaves oblong. Flowers in racemes, forming terminal panicles.				
1½ to 2 feet. Clumps B&B -----	.65	.55		
<b>MAGNOLIA ACUMINATA.</b> <i>Cucumber-Tree.</i> A tall tree with spreading branches. In May and June, it bears many greenish yellow flowers which are followed by rosy red fruits about 3 inches long.				
2 to 3 feet -----	.65	.55	.50	
3 to 4 feet -----	.75	.65	.60	
4 to 6 feet -----	.90	.80	.75	
<b>MAGNOLIA MACROPHYLLA.</b> <i>Bigleaf Magnolia.</i> 20 to 60 feet. A symmetrical tree with stout, wide spreading branches forming a wide-topped head. Leaves very large, 20 to 30 inches long, 9 to 10 inches wide, bright green above, silvery gray beneath. Flowers creamy white, fragrant, 10 to 12 inches across. Fruit 2 to 3 inches long, rose-color. A beautiful and distinct hardy tree.				
6 to 12 inches -----	.35	.25	.22	
3 to 4 feet -----	.85	.75		
<b>MAGNOLIA TRIPETALA.</b> <i>Umbrella Magnolia.</i> Immense white flowers and very large leaves.				
6 to 12 inches -----	.35	.30	.27	
1 to 2 feet -----	.45	.36	.34	
<b>MALUS CORONARIA.</b> <i>Wild Sweet Crab.</i> 15 to 35 feet. A small tree with spreading spiny branches, forming a symmetrical round head. Leaves ovate or heart-shaped. Flowers very fragrant, pink or rose-color. Fruit yellow-green, fragrant, and waxy. Frequently used for making preserves.				
3 to 4 feet -----	.90	.75		
<b>MYRICA CAROLINIENSIS.</b> <i>Northern Bayberry.</i> 6 to 12 inches -----				
	.30	.24	.22	.20

## HARDY NATIVE DECIDUOUS TREES AND SHRUBS, continued

	PRICE IN QUANTITIES			
	1 TO 9	10 TO 24	25 TO 249	250 OR OVER
<p>NYSSA MULTIFLORA. <i>Tupelo</i>. 30 to 60 feet. A tree with slender, more or less pendulous branches, forming a round-topped crown. Leaves oval or obovate, the margins entire, dark green and shining, fading in autumn with gorgeous tones of red and scarlet. Fruit dark blue. The autumnal coloring of this shapely tree commends it to many planters. 6 to 12 inches -----</p>	\$ .30	\$ .24		
<p>OSTRYA VIRGINIANA. <i>American Hop Hornbeam</i>. Slender tree; leaves oval, bright green, turning yellow in autumn; fruit clusters resembling hops. 8 to 12 feet -----</p>	1.75	1.50		
<p><u>OXYDENDRUM ARBOREUM</u>. <i>Sourwood</i>. Handsome, hardy tree that succeeds well under varied conditions. Beautiful autumn foliage.</p>				
1 to 2 feet -----	.36	.30	.26	.24
2 to 3 feet -----	.45	.40	.36	.34
3 to 4 feet -----	.65	.55	.50	.45
4 to 6 feet -----	1.00	.90	.80	.75
6 to 8 feet -----	1.40	1.25	1.10	1.00
8 to 10 feet -----	2.25	2.00	1.85	
10 to 12 feet -----	3.75	3.50	3.25	
<p>PLATANUS OCCIDENTALIS. <i>American Planetree</i>. A large and lofty tree with massive branches, forming a wide head. Leaves shallowly lobed, the borders toothed, bright green at maturity. Flowers and fruit pendulous, the latter about an inch in diameter. A rapid-growing and very beautiful tree, with picturesque white or gray bark. 1 to 2 feet -----</p>	.35	.28	.24	
<p><u>QUERCUS ALBA</u>. <i>White Oak</i>. Noble forest tree of bold outline with attractively cut foliage. Stately and permanent. 1 to 2 feet -----</p>	.30	.25	.23	.21
2 to 3 feet -----	.40	.32	.28	.26
3 to 4 feet -----	.60	.50	.40	.36
4 to 6 feet -----	.80	.70	.60	.50
<p>QUERCUS COCCINEA. <i>Scarlet Oak</i>. A beautiful tree; very symmetrical in outline. Leaves mostly 7-lobed, the divisions toothed near their apexes. They are bright red at the time of unfolding, at maturity bright green and very lustrous, turning brilliant scarlet in the autumn. 6 to 12 inch Seedlings -----</p>	.15	.11	.09	.07
<p>QUERCUS PHELLOS. <i>Willow Oak</i>. Handsome tree of moderate size with narrow, willow-like foliage. 1 to 2 feet -----</p>	.50	.40	.36	
2 to 3 feet -----	.65	.55		
3 to 4 feet -----	.75	.65		
<p>QUERCUS RUBRA. <i>Red Oak</i>. Large, rapid-growing tree. 6 to 12 inches -----</p>	.15	.12	.10	
1 to 2 feet -----	.40	.35	.30	
2 to 3 feet -----	.65	.55	.50	
3 to 4 feet -----	.85	.75	.70	

Your correspondence is invited and your orders will be given good attention.

## HARDY NATIVE DECIDUOUS TREES AND SHRUBS, continued

	PRICE IN QUANTITIES			
	1 TO 9	10 TO 24	25 TO 249	250 OR OVER
RHODORA CANADENSIS. <i>Rhodora</i> . Flowers pink; early spring. 12 to 18 inch Clumps -----	\$ .90	\$ .80		
RHUS CANADENSIS. <i>Fragrant Sumac</i> . Shrub 3 to 5 feet in height. Very sweet-scented, compound leaves, consisting of three bright green leaflets. Flowers yellow, in short spikes or clusters along branches. Fruit bright red, covered with short, silky hairs. Succeeds under various conditions and especially recommended for rock-gardens.				
4 to 8 inch seedlings -----	.10	.07	.06	.04
1 to 2 feet -----	.45	.35	.30	.27
2 to 3 feet. Heavy -----	.65	.55	.50	
3 to 5 feet -----	.90	.75	.70	
RHUS COPALLINA. <i>Shining Sumac</i> . Strong shrub with dark green, compound foliage turning dark brown in autumn. Panicles of brilliant red flowers in late summer; bright red berries in autumn. 1 to 2 feet -----	.36	.30	.27	.25
RHUS COTINOIDES. <i>American Smoke-Tree</i> . Rare shrub. 3 to 4 feet -----	1.40			
RHUS GLABRA. <i>Smooth Sumac</i> . 2 to 3 feet -----	.45	.38		
RHUS TYPHINA. <i>Staghorn Sumac</i> . Small tree or large shrub with compound, beautifully colored leaves in autumn; large spikes of crimson flowers. 1 to 2 feet -----	.30	.24	.22	.20
4 to 6 feet -----	.55	.48		
6 to 8 feet -----	.65	.55		
ROBINIA HISPIDA. <i>Rose Acacia</i> . Shrub about 10 feet tall, with drooping clusters of rose-colored, pea-blossom flowers in early summer. 1 to 2 feet -----	.36	.30	.27	
2 to 3 feet -----	.45	.38	.36	
ROSA CAROLINA. <i>Carolina Rose</i> . Bright pink, fragrant flowers. 2 to 3-foot clumps -----	.70	.60	.50	
<u>ROSA SETIGERA</u> . <i>Prairie Rose</i> . A profusion of beautiful rose-pink flowers in June, sometimes climbing or covering the ground or walls.				
1 to 2 feet -----	.26	.20	.18	.16
2 to 3 feet -----	.36	.27	.25	.22
RUBUS ODORATUS. <i>Flowering Raspberry</i> . Vigorous, upright shrub, with large leaves resembling those of the maple. Flowers rose-purple; berries light red, edible. 1 to 2 feet -----	.35	.28	.24	.22
2 to 3 feet -----	.40	.36		
SALIX BABYLONICA. <i>Weeping Willow</i> . 8 to 10 feet -----	1.50	1.35	1.20	
SALIX SALAMONI. <i>Salamon Weeping Willow</i> . 6 to 8 feet -----	1.40	1.25	1.10	
SAMBUCUS PUBENS. <i>Scarlet Elder</i> . Leaves green. White flowers. Red berries. 1 to 2 feet -----	.35	.25	.22	.20
2 to 3 feet -----	.60	.50	.45	

ALL OUR NURSERY STOCK IS GUARANTEED TO BE AS REPRESENTED.

---



---

**HARDY NATIVE DECIDUOUS TREES AND SHRUBS, continued**

	PRICE IN QUANTITIES			
	1 TO 9	10 TO 24	25 TO 249	250 OR OVER
<b>SORBUS AMERICANA. <i>American Mountain Ash.</i></b>				
Prized for its white blossoms and clusters of bright scarlet ornamental fruit in autumn and winter. 1 to 2 feet -----				
	\$ .60	\$ .50	\$ .45	
2 to 3 feet -----	.80	.70	.60	
3 to 4 feet -----	1.00	.90	.80	
4 to 6 feet -----	1.35	1.20	1.10	
6 to 8 feet -----	1.65	1.50	1.35	
<b>STEWARTIA PENTAGYNA. <i>Mountain Stewartia.</i></b>				
Splendid shrub with spreading branches. Leaves bright green, ovate in outline, fading with glowing colors. Flowers white, large and showy, with wavy, rose-bordered petals and golden anthers, opening in summer. Always in demand and should be included in all rare plant collections. 6 to 12 inches -----				
	.35	.25	.22	.20
1 to 2 feet -----	.65	.55	.50	
2 to 3 feet -----	1.00	.90	.80	
3 to 4 feet. X heavy B&B -----	1.75	1.60		
<b>SPIRAEA REEVESIANA. <i>Reeves Spirea.</i> White flowers. 3 to 4 feet. X heavy -----</b>				
	1.10	.90	.80	
<b>SPIRAEA VANHOUTTEI. <i>Van Houtte Spirea.</i></b>				
Abundant white flowers in May. 1 to 2 feet --				
	.45	.37	.34	.32
2 to 3 feet -----	.65	.55	.50	
3 to 4 feet -----	1.00	.90	.85	
<b>TILIA AMERICANA. <i>American Linden.</i> Fragrant yellow flowers. 1 to 2 feet -----</b>				
	.45	.36	.32	
2 to 3 feet -----	.60	.50	.46	
<b>ULMUS AMERICANA. <i>American Elm.</i> Large, graceful tree, vase-shaped form. 2 to 3 feet -----</b>				
	.55	.40	.36	
3 to 4 feet -----	.70	.60	.50	
4 to 6 feet -----	1.00	.90	.80	
6 to 8 feet -----	1.50	1.35		
<b>VACCINIUM PALLIDUM. <i>Blue Ridge Blueberry.</i></b>				
Best of all Blueberries and a desirable ornamental shrub. 1 to 2 feet. Clumps -----				
	.70	.60	.55	
2 to 3 feet. Heavy clumps B&B -----	.90	.80	.70	
<b>VIBURNUM ACERIFOLIUM. <i>Mapleleaf Viburnum.</i></b>				
Gorgeous autumn color. 1 to 2 feet -----				
	.45	.35	.32	
2 to 3 feet -----	.60	.50	.45	
3 to 4 feet -----	.85	.70	.65	
<b>VIBURNUM CASSINOIDES. <i>Withe-rod.</i> Very hardy flowering shrub is widely distributed. The oval green leaves color beautifully in autumn. Flowers creamy white; berries pink to black. Desirable for planting along streams and in shrubbery border. 3 to 6 inch seedlings -----</b>				
	.12	.09	.06	.05
2 to 3 feet. Heavy -----	.65	.55		
3 to 4 feet. X heavy -----	.90	.80	.70	
4 to 6 feet. X heavy -----	1.30	1.15	1.00	
6 to 8 feet. X heavy -----	1.75	1.60	1.45	
8 to 10 feet. XX heavy -----	2.35	2.00	1.85	

---

OUR STOCK IS GROWN HARDY IN THE CAROLINA HIGHLANDS.  
"NONE BETTER BY TEST"

## HARDY NATIVE DECIDUOUS TREES AND SHRUBS, continued

	PRICE IN QUANTITIES			
	1 TO 9	10 TO 24	25 TO 249	250 OR OVER
<u>VIBURNUM DENTATUM.</u> <i>Arrowwood.</i> A 15-foot shrub with white, long stemmed flowers in clusters. Fruits blue-black. 2 to 3 feet -----	\$ .45	\$ .36	\$ .32	\$ .30
3 to 4 feet -----	.55	.42	.38	.36
4 to 6 feet -----	.65	.50	.45	.40
<u>VIBURNUM LENTAGO.</u> <i>Nannyberry.</i> Small tree with flat clusters of white flowers and dark bluish fruits. 2 to 3 feet -----	.60	.50		
3 to 4 feet -----	.80	.70	.60	
4 to 6 feet -----	1.00	.90	.80	
6 to 8 feet -----	1.25	1.10		
<u>VIBURNUM PRUNIFOLIUM.</u> <i>Black-Haw.</i> White flowers. Black berries. 1 to 2 feet -----	.50	.45	.40	
<u>WEIGELA, EVA RATHKE.</u> <i>Red Weigela.</i> Excellent, small shrub. Flowers deep carmine-red, erect; very free-flowering. 1 to 2 feet -----	.38	.32	.28	.26
2 to 3 feet -----	.50	.42	.38	.36
3 to 4 feet -----	.65	.55	.50	
<u>WEIGELA ROSEA.</u> <i>Pink Weigela.</i> Charming landscape plant producing masses of soft pink, tubular flowers in late spring. 2 to 3 feet -----	.70	.60	.55	
3 to 4 feet -----	.85	.75	.70	
<u>ZANTHORHIZA APIIFOLIA.</u> <i>Yellow-root.</i> Attractive shrub, usually 1 to 2 feet tall, with yellow wood and roots. Leaves compound, consisting of about five deeply lobed, bright lustrous green leaflets. Flowers brownish purple, in drooping racemes in early spring. 4 to 6 inches. -----	.20	.14	.12	.10
6 to 12 inches -----	.30	.24	.20	.18
1 to 1½ feet. Clumps -----	.45	.36	.32	.28

## Hardy Native Evergreen Trees and Shrubs

	PRICE IN QUANTITIES			
	1 TO 9	10 TO 24	25 TO 249	250 OR OVER
<u>ABELIA GRANDIFLORA.</u> <i>Glossy Abelia.</i> Pinkish white, tubular flowers. 2 to 3 feet. X heavy clumps -----	\$ .80	\$ .70	\$ .64	\$ .60
<u>ABIES CONCOLOR.</u> <i>White Fir.</i> Handsome, pyramidal tree with bluish green foliage. Hardy northern Fir. 6 to 12 inches -----	.35	.24	.20	
1 to 2 feet -----	.50	.40	.34	
2 to 3 feet B&B -----	1.35	1.25		
3 to 4 feet -----	2.15	2.00		
<u>ABIES FRASERI.</u> <i>Fraser Fir.</i> Southern species. Very handsome tree and extremely hardy. Foliage fragrant, dark green. 6 to 12 inches -----	.25	.18	.16	
1½ to 2 feet. X heavy B&B -----	.65	.55	.50	
2 to 3 feet. X heavy B&B -----	.90	.80	.70	.65
3 to 4 feet. X heavy B&B -----	1.40	1.25	1.10	1.00
4 to 6 feet. X nice trees B&B -----	1.80	1.65	1.50	1.40
6 to 8 feet -----	2.70	2.50	2.35	
8 to 10 feet. B&B -----	4.25	3.90	3.70	3.50
10 to 12 feet. B&B -----	5.75	5.50	5.00	

## HARDY NATIVE EVERGREEN TREES AND SHRUBS, continued

	PRICE IN QUANTITIES			
	1 TO 9	10 TO 24	25 TO 249	250 OR OVER
AZALEA AMOENA. <i>Amoena Azalea</i> . Hardy evergreen Azalea. A low bushy shrub with small green leaves which change in winter to a rich bronze or coppery brown. In spring the whole plant is covered with a wealth of claret-purple flowers which continue to open for a period of two or three weeks. 12 to 18 inches -----	\$1.25	\$1.15	\$1.00	
BERBERIS THUNBERGI ERECTA. <i>Truehedge Columberry</i> . 18 to 24 inches. X strong ---	.65	.55	.50	
<u>BUXUS SEMPERVIRENS</u> . <i>Common Box</i> . Used for single specimen plants and often trimmed to desired shapes. 9 to 12 inches -----	.85	.70	.65	
1 to 1½ feet. B&B -----	1.50	1.40	1.30	
1½ to 2 feet. B&B -----	3.75	3.60	3.45	
2 to 3 feet. B&B -----	6.50	6.25	6.00	
3 to 4 feet. B&B -----	8.75	8.50	8.25	
4 to 5 feet. B&B -----	12.50	12.00		
BUXUS SUFFRUTICOSA. <i>Old English Box</i> . Fine edging plant, or the larger sizes unsurpassed for specimens in conspicuous places. Boxwood becomes more valuable every year.				
6 to 9 inches. B&B -----	1.00	.85	.75	.70
9 to 12 inches. B&B -----	1.75	1.65	1.50	1.40
1 to 1½ feet. B&B -----	3.00	2.85	2.70	
1½ to 2 feet. B&B -----	4.00	3.75	3.60	
2 to 2½ feet. B&B -----	6.75	6.50		
CHAMAEDAPHNE CALYCVLATA. <i>Leatherleaf</i> . Shrub about 5 feet high, with leathery evergreen foliage and small, urn-like white flowers.				
6 to 12 inches -----	.40	.35	.30	
1½ to 2 feet -----	.65	.55		
DAPHNE CNEORUM. <i>Rose Daphne</i> . Long, trailing pubescent branches. Leaves crowded, cuneate, oblanceolate, finally glabrous, dark green and glossy above, glaucescent beneath. Pink, fragrant flowers in April and May and often again in summer. 9 to 12 inch clumps B&B -----	1.35	1.20		
ILEX GLABRA. <i>Inkberry</i> . Upright, well-branched shrub with dark green, shining leaves retained throughout the winter. Berries black.				
6 to 12 inches -----	.70	.60	.55	.50
1 to 2 feet. Clumps B&B -----	1.00	.90	.80	.70
2 to 3 feet. Clumps B&B -----	1.35	1.20	1.10	
3 to 4 feet. Clumps B&B -----	1.70	1.55	1.45	
ILEX OPACA. <i>American Holly</i> . A handsome, broad-leaved evergreen, known to many as "Christmas Holly", and much used for holiday decorations. Easy of culture and adapts itself to varied soil conditions. 6 to 12 inches -----	.40	.35	.30	
2 to 3 feet -----	1.75	1.60		
3 to 4 feet. B&B -----	3.60	3.40	3.30	
4 to 6 feet. B&B -----	5.90	5.70	5.60	
6 to 8 feet. B&B -----	9.00	8.75		
8 to 10 feet. B&B -----	14.00	13.50		
JUNIPERUS BREVIFOLIA. <i>Dwarf Prostrate Juniper</i> . 12 to 18 inches. B&B -----	.90	.80	.70	.65



## HARDY NATIVE EVERGREEN TREES AND SHRUBS, continued

	PRICE IN QUANTITIES			
	1 TO 9	10 TO 24	25 TO 249	250 OR OVER
<b>JUNIPERUS HIBERNICA.</b> <i>Irish Juniper.</i>				
6 to 12 inches -----	\$ .40	\$ .34	\$ .30	
2 to 3 feet. B&B -----	1.35	1.25	1.15	
3 to 4 feet. B&B -----	1.75	1.65	1.50	
4 to 5 feet. B&B -----	2.60	2.40		
<b>JUNIPERUS PFITZERIANA.</b> <i>Pfitzer's Juniper.</i>				
Plume-shaped branches, covered with dull, bluish gray foliage. Used in cities. 9 to 12 inches ..	.85	.75	.65	
1 to 1½ feet. B&B -----	1.70	1.50	1.35	
1½ to 2 feet. B&B -----	2.25	2.10	2.00	
2 to 3 feet. B&B -----	3.25	3.00	2.85	
3 to 4 feet. B&B -----	4.00	3.70		
<b>JUNIPERUS SABINA.</b> <i>Savin.</i> A trailing type with erect sprays of heather-like foliage.				
1 to 1½ feet. B&B -----	.60	.50	.45	
<b>JUNIPERUS VIRGINIANA.</b> <i>Redcedar.</i> 30 to 90 feet.				
For hardiness and beauty, this evergreen is unexcelled. A most beautiful lawn tree and for border plantations, with other large evergreens.				
6 to 12 inches -----	.35	.27	.24	
<b>LEIOPHYLLUM BUXIFOLIUM.</b> <i>Box Sand Myrtle.</i>				
Neat, attractive shrub. Splendid border plants. White or pinkish flowers in early spring.				
6 to 9 inches. Clumps B&B -----	.65	.55	.50	.46
9 to 12 inches. X heavy clumps B&B -----	.80	.65	.60	.55
1 to 1½ feet. X heavy clumps B&B -----	1.00	.90	.80	.70
<b>LEIOPHYLLUM BUXIFOLIUM PROSTRATUM.</b>				
<i>Allegheny Sand Myrtle.</i> Small desirable border plant and rock-garden subject.				
4 to 6 inches. Spreading clumps -----	.50	.40	.35	
6 to 9 inches. Spreading clumps B&B -----	.65	.55	.46	
<b>LEUCOTHOE AXILLARIS.</b> <i>Downy Leucothoe.</i>				
Racemes short, dense-flowered; creamy white.				
6 to 9 inches -----	.36	.30	.26	.24
<b>LEUCOTHOE CATESBAEI.</b> <i>Drooping Leucothoe.</i>				
Hardy, graceful shrub of wide distribution. Very ornamental and much used for florist's trade. Flowers fragrant, showy creamy white.				
6 to 12 inches. Strong -----	.35	.27	.22	.20
1 to 1½ feet. X heavy clumps B&B -----	.65	.55	.45	.36
1½ to 2 feet. XX heavy clumps B&B -----	.70	.60	.55	.50
2 to 3 feet. XX heavy clumps B&B -----	1.10	1.00	.90	
Extra-quality cut-back clumps. Est. in nursery ..	.30	.26	.24	.22
<b>MAGNOLIA GRANDIFLORA.</b> <i>Southern Magnolia.</i>				
30 to 60 feet. Evergreen. A stately, pyramidal tree with short, spreading or ascending branches. Flowers fragrant, pure waxy white.				
6 to 12 inches -----	.40	.30	.27	

SEND CHECK WITH ORDER AND WE WILL ALLOW 5% DISCOUNT,  
INCLUDING FREE PACKING.

ALL PRICES ARE F. O. B. ASHFORD, N. C.  
UNLESS OTHERWISE AGREED.

---



---

**HARDY NATIVE EVERGREEN TREES AND SHRUBS, continued**

	PRICE IN QUANTITIES			
	1 TO 9	10 TO 24	25 TO 249	250 OR OVER
<b>MAGNOLIA GLAUCA.</b> <i>Sweetbay.</i> Slender tree or large evergreen shrub. Leaves oblong or oval, green on upper surface, pale or nearly white beneath. Flowers creamy white, very fragrant, cup-shaped, borne for several weeks in spring or early summer. 6 to 12 inches -----				
1 to 2 feet -----	.30	.25	.22	.20
2 to 3 feet. XX heavy B&B -----	.60	.50	.45	.40
4 to 5 feet. B&B -----	1.00	.90	.85	
5 to 6 feet -----	1.75	1.60	1.50	
	2.25	2.15		
 <b>NANDINA DOMESTICA.</b> <i>Japanese Nandina.</i> A pretty shrub for southern gardens, with willow-like foliage in great sprays, bearing great quantities of scarlet berries in autumn and throughout the winter. 6 to 12 inches -----				
1 to 2 feet. X heavy B&B -----	.55	.46	.40	.36
2 to 3 feet. X heavy B&B -----	.80	.70	.60	
3 to 4 feet -----	1.35	1.25	1.15	
	1.75	1.60		
 <b>PIERIS FLORIBUNDA.</b> <i>Mountain Andromeda.</i> Extremely hardy ornamental evergreen, and a gem for any planting. Showy white flowers produced in clusters in early spring, lasting a long time.				
8 to 12 inches. Clumps B&B -----	1.25	1.10	1.00	.90
1 to 1½ feet. X heavy clumps B&B -----	1.50	1.35	1.25	
1½ to 2 feet. Clumps B&B -----	1.90	1.80	1.70	
Cut-back clumps. Established in nursery -----	.65	.55	.50	.45
 <b>PICEA CANADENSIS.</b> <i>White Spruce.</i> Native tree of dense habit. Foliage light bluish green. Cones 1 to 2 inches long, glossy brown, attractive, shapely. 3 to 4 feet. X nice B&B -----				
4 to 6 feet -----	1.60	1.40	1.30	
6 to 8 feet. B&B -----	2.25	2.00	1.90	
8 to 10 feet. B&B -----	2.90	2.75	2.60	
	3.50	3.20	3.10	
 <b>PICEA EXCELSA.</b> <i>Norway Spruce.</i> One of our best imported evergreen trees. Handsome, hardy, and very graceful, with large brownish cones.				
1 to 2 feet -----	.45	.35	.32	
2 to 3 feet. B&B -----	.75	.65	.55	
3 to 5 feet -----	1.35	1.20	1.10	
5 to 6 feet -----	2.40	2.25	2.10	
6 to 8 feet -----	3.00	2.75	2.60	
8 to 10 feet -----	4.00	3.70	3.50	
 <b>PICEA MARIANA.</b> <i>Black Spruce.</i> Medium-sized tree. Foliage dark bluish green. Very ornamental.				
6 to 12 inches -----	.25	.20	.16	
1 to 2 feet -----	.50	.40	.36	
2 to 3 feet. B&B -----	.90	.80	.70	
3 to 5 feet. B&B -----	1.40	1.30	1.20	1.10
5 to 6 feet. B&B -----	1.90	1.70	1.60	
6 to 8 feet. B&B -----	2.40	2.25	2.00	
8 to 10 feet. B&B -----	2.90	2.70	2.60	

---

VISITORS ARE ALWAYS WELCOME AND ARE INVITED TO INSPECT  
OUR STOCKS.

## HARDY NATIVE EVERGREEN TREES AND SHRUBS, continued

	PRICE IN QUANTITIES			
	1 TO 9	10 TO 24	25 TO 249	250 OR OVER
<b>PICEA PUNGENS.</b> <i>Colorado Spruce.</i> Hardy, symmetrical tree. Very ornamental and highly recommended for general planting. 6 to 12 inches				
1 to 2 feet	\$ .25	\$ .20	\$ .18	\$ .16
2 to 3 feet. B&B	.50	.40	.36	.34
3 to 4 feet. B&B	1.25	1.15	1.05	
4 to 5 feet. B&B	1.90	1.70	1.60	
5 to 6 feet. B&B	2.75	2.60	2.50	
	3.60	3.40	3.25	
<b>PINUS STROBUS.</b> <i>White Pine.</i> Best-known American evergreen tree. Tall and most beautiful.				
5 to 6 feet. B&B	3.00	2.75		
6 to 8 feet. B&B	4.00	3.65	3.40	
8 to 10 feet. B&B	7.50	7.00	6.75	
10 to 12 feet. B&B	9.00	8.50	8.25	
12 to 15 feet. B&B	14.00	13.50	13.00	
15 to 18 feet. B&B	17.50	16.75	16.00	
<b>TAXUS CANADENSIS.</b> <i>Canada Yew.</i> A splendid evergreen rarely exceeding 2 to 3 feet in height. The slender branches are clothed with yellowish green foliage. Splendid for rock-gardens, especially in cold sections. 6 to 12 inches				
1 to 1½ feet. B&B	.50	.40	.35	.32
18 to 24 inches. B&B	.80	.75	.65	.60
	1.00	.90	.85	
<b>THUJA OCCIDENTALIS.</b> <i>American Arborvitae.</i> A beautiful symmetrical evergreen, extensively planted and too well known to need description.				
2 to 3 feet. B&B	.75	.65	.55	
3 to 5 feet. B&B	1.10	.90	.85	.80
5 to 6 feet. B&B	1.60	1.45	1.35	1.25
6 to 8 feet. B&B	2.25	2.00	1.90	1.80
8 to 12 feet	4.25	4.00	3.75	3.50
<b>THUJA OCCIDENTALIS GLOBOSA.</b> <i>Globe Arborvitae.</i> The light green foliage and dwarf, globular form make it useful in formal planting and in tubs and window-boxes. 12 to 18 inches				
18 to 24 inches. B&B	1.40	1.30		
2 to 3 feet. Heavy B&B	1.90	1.75		
3 to 4 feet. Heavy B&B	2.25	2.10		
	3.00	2.75		
<b>THUJA OCCIDENTALIS PYRAMIDALIS.</b> <i>American Pyramidal Arborvitae.</i> Of pyramidal habit, with bright green foliage; one of the tallest and hardiest varieties. 6 to 12 inches				
8 to 10 feet. B&B	.36	.30	.25	
10 to 12 feet. B&B	6.00	5.50		
	7.50	7.00		

WESTERN UNION TELEGRAPH AND LONG DISTANCE CONNECTION. WIRE ORDERS WHEN IN A HURRY TO AVOID DELAY.

5 per cent discount, including free packing, allowed on cash orders.  
Packing will be charged at cost on charge orders.

ALL OUR NURSERY STOCK IS GUARANTEED TO BE AS REPRESENTED.

---



---

**HARDY NATIVE EVERGREEN TREES AND SHRUBS, continued**

	PRICE IN QUANTITIES			
	1 TO 9	10 TO 24	25 TO 249	250 OR OVER
<u>TSUGA CANADENSIS.</u> <i>Canada Hemlock.</i> Tall, graceful tree with spreading branches; beautiful for park or landscape. One of our best hedge products and becoming more popular for general planting. 3 to 6 inch seedlings -----	\$ .12	\$ .10	\$ .09	\$ .08
6 to 12 inches -----	.24	.20	.18	.16
1 to 1½ feet. B&B -----	.80	.75	.70	.65
1½ to 2 feet. XX quality B&B -----	1.20	1.10	1.00	.90
2 to 3 feet. XX quality B&B -----	1.50	1.40	1.30	1.20
3 to 4 feet. XX quality B&B -----	2.10	2.00	1.90	1.80
4 to 5 feet. Heavy B&B -----	2.60	2.40	2.30	2.20
5 to 6 feet. Heavy B&B -----	3.90	3.70	3.50	
6 to 7 feet. Heavy B&B -----	6.25	5.90	5.65	
7 to 8 feet. Heavy B&B -----	8.50	8.30	8.00	
8 to 9 feet. Heavy B&B -----	12.50	12.00	11.50	
9 to 10 feet. Heavy B&B -----	14.75	14.00	13.50	
10 to 12 feet. Heavy B&B -----	16.50	16.00	15.50	
12 to 14 feet. Heavy B&B -----	22.50	22.00		

<u>TSUGA CAROLINIANA.</u> <i>Carolina Hemlock.</i> Queen of American evergreen trees. One of the hardiest evergreens from the Carolina mountains.				
2 to 4 inch seedlings -----	.12	.10	.07	.06
9 to 12 inch seedlings -----	.36	.32	.30	.27
1½ to 2 feet. XX strong B&B -----	1.25	1.15	1.00	.90
2 to 3 feet. XX heavy B&B -----	1.65	1.50	1.40	1.30
3 to 4 feet. XX heavy B&B -----	2.30	2.15	2.00	1.90
4 to 5 feet. XX heavy B&B -----	3.60	3.40	3.20	
5 to 6 feet. XX heavy B&B -----	4.75	4.60	4.40	
6 to 7 feet. XX heavy B&B -----	6.00	5.50	5.25	
7 to 8 feet. XX heavy B&B -----	7.50	7.00	6.75	
8 to 9 feet. XX heavy B&B -----	10.50	9.00	8.75	
9 to 10 feet. XX heavy B&B -----	13.50	13.00	12.50	

### Leaf-Mold

The Plant Food that nature intended. This material is collected from dense Rhododendron beds. It has no artificial treatment. Renovate your plantings, Azaleas, Rhododendrons, Kalmias, Leucothoe, Andromedas, Hemlocks, Pines, Orchids, Ferns, Lilies, Trilliums, Perennials, and all Natives, with Nature's own provided Plant Food. "BEST BY TEST".

This treatment will feed the Plants, and give your soil proper acid condition to insure the best in flower, foliage, and root system. Also build up your lawn with this product. Cheaper to protect than to replace.

200 lbs. \$2.00; Ton \$12.50; Carload (20 Tons) \$185.00.

---

### SPECIAL NOTE

We have no connection whatever with any other Nursery. We employ no agents. Our entire business being transacted from our office at Ashford, North Carolina. BEWARE OF PEDDLERS AND SO CALLED NURSERYMEN, CLAIMING TO REPRESENT US AND OUR NURSERY STOCK.

Our long experience in the nursery business should recommend your careful consideration before buying elsewhere. Satisfaction guaranteed.

Please Use This Order Form

GARDENS OF THE BLUE RIDGE

E. C. ROBBINS, Nurseryman  
ASHFORD, MCDOWELL COUNTY, N. C.

Hardy American Plants and  
Specimen Evergreens

Post Office \_\_\_\_\_ Date \_\_\_\_\_

Dear Sir: Enclosed please find \$\_\_\_\_\_ for the items selected from your  
GARDENS OF THE BLUE RIDGE Catalogue.

Ship to \_\_\_\_\_  
\_\_\_\_\_  
\_\_\_\_\_  
\_\_\_\_\_

Give full shipping instructions unless you wish to leave to our best judgment, but we  
assume no responsibility after delivery in good condition to carrier whether by Freight, Express,  
Truck or Parcel Post. Cash with order entitles you to special 5% discount.

Send in time to arrive on or before \_\_\_\_\_  
\_\_\_\_\_  
\_\_\_\_\_  
\_\_\_\_\_

Yours truly \_\_\_\_\_

PLANT INSURANCE: No guarantee—expressed or implied—is made that stock will grow,  
whether planted by us or not, as we have no control over after-treatment or weather  
conditions.

QUANTITY	NAMES OF PLANTS	SIZE	PRICE		TOTAL	
<b>FORWARD</b>						



# NOTE TO CUSTOMERS

## OUR LOCATION

Is in the heart of the Blue Ridge Mountains, "the most beautiful mountain region on the continent," in western North Carolina, nearly 4,000 feet above sea-level. My permanent headquarters is Ashford, McDowell County, North Carolina, on the scenic Clinchfield Railroad.

## QUOTATIONS

This list cancels all previous offers. Do not order from old catalogues.

All offers of stock are made subject to conditions beyond my control.

## PACKING AND GRADING

Will be done in the most careful way. Orders will be packed to insure arrival in good condition. Shipments will be delivered to the local freight, express, or post office at prices named in this catalogue. Packing will be charged at cost on charge orders. All shipments delivered at cost and risk of customer. Certificate of inspection attached to all shipments. We specialize in carload lots.

## REMITTANCE OR REFERENCE

Should accompany orders from unknown correspondents. Discount of 5% on cash orders. All bills due and payable 30 days from date of invoice. Interest charged after 30 days.

## SHIPPING INSTRUCTIONS

Should always be given fully, unless you prefer to leave to our best judgment. In this we assume no risk, our responsibility ceasing upon receipt of signed bill of lading by forwarders. *All claims for damage in transit must be handled by consignee.*

## CLAIMS

All claims for errors must be reported upon receipt of goods and will be rectified promptly. Unless this is done, we can accept no responsibility of any kind.

No GUARANTEE is made that stock will grow, whether planted by us or not. As we have no control over after-treatment or weather conditions, the purchaser must assume all risks after stock leaves our Nursery in good condition.

In no case shall we be held for damage exceeding original purchase price and only to this extent when proper proof is furnished that stock has been wrongly labeled.

*All orders are accepted and filled on these terms, unless otherwise agreed.*

---

FALL SHIPPING SEASON begins in August and extends usually till about December 1, according to weather conditions.

SPRING SHIPMENTS are forwarded according to customer's wishes and subject to conditions beyond our control, March 1 to May 15. PLEASE ORDER EARLY.

Send us your Want List for Quotations

LESS 33 $\frac{1}{3}$ % TO THE TRADE  
PLUS PACKING AT COST.

## SPECIAL COLLECTIONS OF FOUNDATION PLANT MATERIAL

These collections are valuable to home-owners who are not entirely familiar with Broad-leaved Evergreens. The plants are from my regular stock, and I feel sure they will please you when they arrive—and for many seasons thereafter.

### SPECIAL COLLECTION No. 9

AZALEA ARBORESCENS. *Sweet Azalea*. Fragrant white flowers in spring and early summer.

AZALEA CALENDULACEA. *Flame Azalea*. A native species. Color varies from orange to canary.

AZALEA CANESCENS. *Piedmont Azalea*. Pink and rose.

AZALEA NUDIFLORA. *Pinxter Bloom*. Deep pink flowers.

Five plants of each, 18 to 24 in. **\$19**  
(20 plants in all), for only

### SPECIAL COLLECTION No. 10

RHODODENDRON CAROLINIANUM. *Carolina Rhododendron*. The earliest flowering variety. Beautiful light to deep pink blossoms.

RHODODENDRON CATAWBIENSE. *Catawba Rhododendron*. Vigorous, hardy, free blooming. Color rosy purple.

RHODODENDRON MAXIMUM. *Rosebay*. Pinkish white flowers in July. The grandest of all Rhododendrons.

Five plants of each, 18 to 24 in. **\$14.75**  
(15 plants in all), for only

### SPECIAL COLLECTION No. 11

KALMIA LATIFOLIA. *Mountain Laurel*. A lovely native, with pink or rose flowers.

LEUCOTHOE CATESBAEI. *Drooping Leucothoe*. Flowers creamy white, drooping and showy.

PIERIS FLORIBUNDA. *Mountain Andromeda*. White flowers in clusters in April and May.

Five plants of each, 18 to 24 in. **\$14**  
(15 plants in all), for only

### SPECIAL COMBINATIONS

COLLECTIONS Nos. 9 and 10	-----	\$32.00
COLLECTIONS Nos. 9 and 11	-----	30.00
COLLECTIONS Nos. 10 and 11	-----	25.00
COLLECTIONS Nos. 9, 10 and 11	-----	45.00

*Gardens of  
The Blue Ridge*

E. C. ROBBINS

ASHFORD, McDOWELL CO., N. C.