

Historic, Archive Document

Do not assume content reflects current scientific knowledge, policies, or practices.






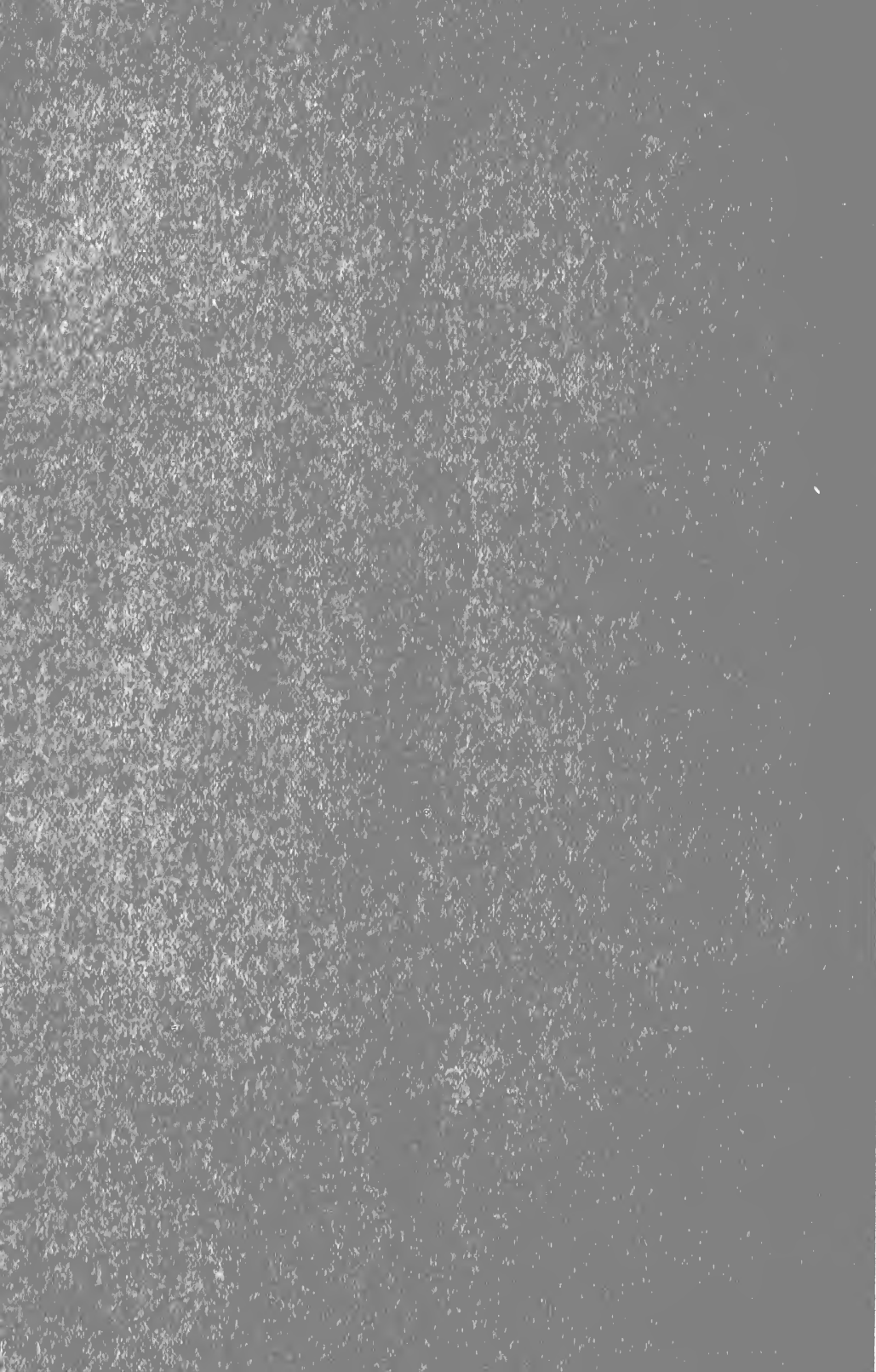
Dahlias
- and -
Gladioli

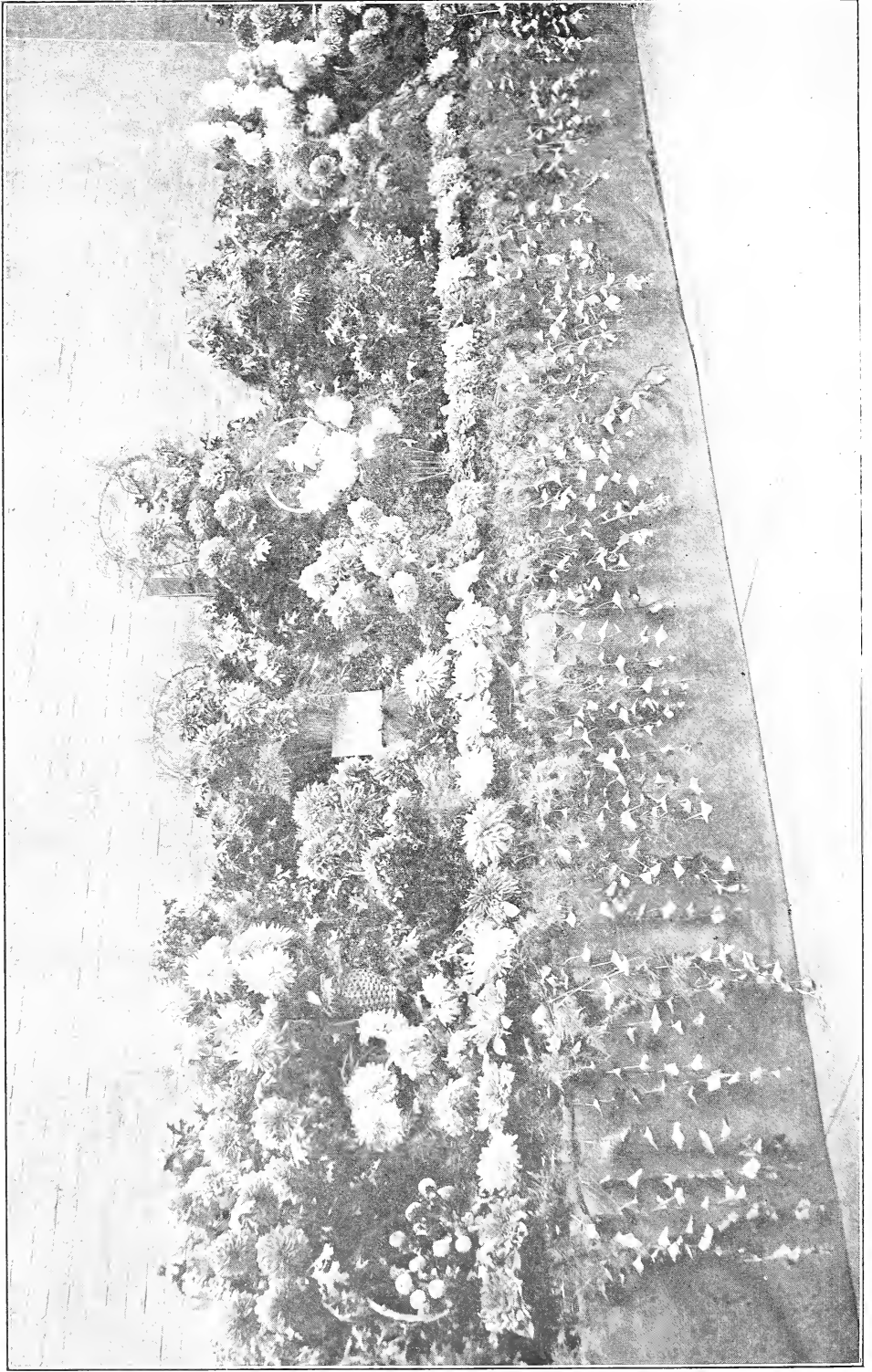
-1926-

Edgar W. Darling
1311 Purchase St.
New Bedford, Mass.

Gardens: Washington and Spring Sts.
Fairhaven, Mass.







Won Silver Medal for Best Display of Dahlias for Effect, at the Boston Show, September 12, 1925

The World's Finest Dahlias and Gladioli

Describing the best Standard Varieties and
the Latest Novelties of all the different
types and colors of these Flowers

Catalogue and Price List

FOR

1926

EDGAR W. DARLING
1311 PURCHASE ST.
NEW BEDFORD, MASS.

Gardens: Cor. Washington and Spring Streets, Fairhaven, Mass.

DAHLIA FRIENDS; GREETING

It is with great pleasure I present this, my 1926 catalogue, to my many patrons, throughout the entire country.

May I take this opportunity to extend my thanks to all that have favored me with their patronage, and trust that our business dealings have been such as to warrant a continuance of your confidence. All indications point to a most enthusiastic season, preparations are being made to make the next Fall Shows bigger and better than ever.

In this issue I am listing many new and rare novelties, many of which I feel sure will be found in the Prize Winning Exhibits at our next Dahlia Shows. You will note I list plants of the newest varieties, by our method of propagation we are able to supply healthy pot grown plants at half price of tubers, where not otherwise listed, and if given proper care will give fine results.

A suggestion: Join the Dahlia Society of New England. Dues are \$2.00 a year. The bulletin alone is worth this to any dahlia lover.

I trust you will enjoy the greatest success with your Dahlias this coming season, and wish you a very happy and prosperous year.

Sincerely yours,

EDGAR W. DARLING.

GENERAL INFORMATION

ORDER EARLY. It is well to order early as the demand for many of the newest novelties often exceeds the supply, and the best of the standard sorts are in great demand.

TERMS. Cash with order or in advance of shipment.

TIME OF SHIPMENT. Please specify the time you wish your order shipped, otherwise it will be sent at proper planting time.

GUARANTEE. I warrant all stock sent out by me to be true to name, and will replace any that may prove otherwise. In case of error on my part, it is mutually agreed that I shall not be held responsible for a greater amount than the original price of the stock purchased. All prices given are subject to stock being unsold. All prices given in this list are for bulbs or plants prepaid to your address.

CULTURE. Complete planting and growing instructions are enclosed with every order.

This list cancels all previous prices.

Write your name and address plainly, and address all mail to

EDGAR W. DARLING,
1311 Purchase Street, New Bedford, Mass.

CHOICE NEW NOVELTIES

I wish to call special attention to the following sixteen new dahlias that are being catalogued this year for the first time. Many of these won first prizes at the Dahlia Shows last fall.

All those that were tested out at the Trial Grounds, received certificates. I feel sure that they will be found all they are described to be.

The stock on most of these varieties is limited, it is advisable to order early. In most cases the following are the originator's descriptions.

Italian Sunset. (Beatrice.) This wonderful novelty, originated by Chas. A. Beatrice of Sharon, Mass., is the most striking and sensational Dahlia I have yet seen. It is very hard to describe, being possessed of many bright colors. This large decorative, is a cream to yellow background, with shades of mauve-pink, orchid, rose, and cerise, all blending, and radiating from a full center. In the hottest weather some of the flowers are likely to come lighter in color. Any of you who have had the pleasure of seeing an Italian Sunset can picture this beautiful Dahlia as it stands erect on long, straight stems. It is a vigorous grower, and has a different leaf formation. Size of flowers, 8 to 10 inches, which last well when cut, making it ideal for exhibition. Won first prize at Boston Show, September, 1925, for best vase of seedlings, of New England origin. We can offer Plants only, \$15.00 each.

America. (Beatrice.) In this we have a grand fancy decorative Dahlia, of perfect formation. The color is a light bright scarlet, evenly tipped purest white, has never produced any solid colored flowers, extra fine long, stiff stems, which hold the full-centered blossoms measuring 7 to 10 inches perfectly upright. A clean growing plant which requires very little, if any, disbudding, and is a great attraction in the garden. Plants only, \$10.00 each.

Lakehurst. (Beatrice.) This massive flower is bound to cause a sensation at our next Dahlia Shows. I shall not be surprised to find it mingling in classes with the largest flowers in the Shows. This huge full-centered decorative, is a rich velvety red, it might be termed a light maroon, fine long stems, which hold the blossoms well above the dark healthy foliage. Flowers should average at least 9 inches, and I expect it will be grown 12 inches in diameter. Plants only, \$15.00 each.

Won first prize at Boston Show, September, 1925, for best Decorative Seedling, of New England origin.

Frances Cooper of Hav-A-Look. (G. L. Fish.) The color of this immense Hybrid Decorative is shades of orange apricot, with tones of carrot red on reverse of petals, with a cadmium yellow center, which is high and full. A wonderful exhibition variety and will average 9 inches, has been grown 11 inches. This Dahlia is the most continuous bloomer I have ever grown, even the laterals producing full sized flowers. The stems are stiff and strong enough to hold the flowers, and are of good average length, placement of the flower on the stem however tends to tip slightly forward, practically its only fault. Winner of Silver Medal in undisseminated class, also the Gold Medal sweepstakes for best seedling of New England origin, at the combined Show of Mass. Hort. Society and Dahlia Society of New England, held at Boston, Sept. 13, 1925. Plants only, \$10.00 net.

Hav-A-Look Dazzler. (G. L. Fish.) The peer of all red Dahlias to date, a Hybrid Decorative, averaging about 9 inches, very high full center, with long flat petals slightly twisting at the ends, which recurve toward the back of the flower. I have grown flowers of this variety measuring 11¼ inches in diameter. The flower stands erect on a strong stiff stem of medium length, and faces you. The color is the most glowing, intense crimson scarlet yet produced; and has a velvety sheen, possessed by no other red Dahlia; in fact, in the sunlight it positively dazzles the eye—hence its name. This flower in any other color would easily be worth \$25.00 per tuber. Price per Tubers, \$10.00. Plants \$5.00.

Alice Whittier. (Reed.) Winner of the President Cup, at the Boston Dahlia Show, 1924. Certificate of Merit, Storrs, also at New Jersey, 1925. This immense Hybrid Cactus, has been grown 12 inches in New Jersey the past season. Color is a heavy primrose or sulphur yellow, flower is evenly built with long, deep spike-like petals. The flower is well placed on long, strong, erect stems. Tall plant. A wonderful exhibition flower, as it will keep for days after cutting. Price per Tubers, \$10.00. Plants \$5.00.

The Bandit. (Reed.) One of the most striking Hybrid Cactus Dahlias to date. Color spectrum red with backs of petals buff yellow, reverse petals twist and curl, which makes the large blossoms very attractive. Flowering habit profuse, stems are strong and erect, carrying the flowers on the top. Scored 88, this was the second highest scoring Dahlia at Storrs, 1924. Won first prize at Nebraska in strong class 1925. Award of Merit at New Brunswick, N. J., 1925. Price per Tubers, \$10.00. Plants, \$5.00.

Rose Fallon. (Harding.) No question but this was the most outstanding new Dahlia at the recent New York Show, where it was awarded a Silver Medal. Color is old gold, and the huge flowers are carried on the finest stems I have yet seen. Price per Tubers, \$25.00 net. Plants, \$15.00 net.

Elite Glory. (Kennedy.) W. W. Kennedy & Son's sensational new Dahlia for 1926. A monstrous flower that has been winning prizes for largest bloom in show, the color is a brilliant red without any apparent purple or maroon shading, heavy cane-like

stems which hold the gigantic blossoms erect, everyone will want to grow this wonderful Dahlia this season. Scored 92 at A. D. S. Trial Grounds. Tubers, \$25.00 net. Plants, \$10.00.

Margaret Woodrow Wilson. (F. & M.) A large decorative Dahlia having broad petals well placed, terminating in points, making a very thick flower. Color, opalescent pink (meaning the reverse of petals are so colored as to reflect a pink tone to the whole flower.) Flowers held well out of dark green foliage on perfect stems. Medium height plant. Awarded Cert. of Merit by Dahlia Society of New Jersey, 1925. Plants, \$5.00.

Sanhican's Magnate. (F. & M.) As the name indicates, this is one of the big fellows of the Dahlia Kingdom. Exhibition decorative of pale amaranth face tinged with a deeper amaranth pink, reverse of petals a solid claret color, heavily veined. The large flowers are held erect on very stiff stems, profuse bloomer, medium height plants, dark green foliage. Awarded Cert. of Merit by D. S. of N. J., 1925. Tubers, \$10.00. Plants, \$5.00.

Sanhican's Monarch. (F. & M.) A dazzling exhibition decorative Dahlia of a deep Tyrion-rose at center of flower, shading to a lighter tone at points of petals. A profuse bloomer having dark green foliage and black cane like stems which hold the flower perfectly out of foliage. A flower that never shows the center either early or late, of medium tall habit of growth. Excellent keeper. Tubers, \$7.50. Plants, \$4.00.

Roman Eagle. (F. & M.) A flower that is typically an Autumn shade which has helped make the Dahlia "King of the Autumn Season." Large exhibition decorative of a flaming, brilliant burnished copper, one of the most admired Dahlias in all of the Eastern shows. Flowers held well above dark green foliage on long stiff stems. Medium height plant. Awarded Cert. of Merit by D. S. of N. J., 1925, with a score of 89. Plants, \$2.50.

F. A. Kent. (F. & M.) A stag horn type of exhibition decorative, large flowers of amaranth pink held on rigid stems well out of dark green foliage. Medium to tall habit of growth. A large flower of exceptional beauty. Awarded Cert. of Merit by D. S. of N. J., 1925. Tubers, \$7.50. Plants, \$4.00.

Alice M. Longfellow. (F. & M.) Hybrid cactus. This Dahlia was named in honor of the youngest daughter of our beloved American poet, Henry Wadsworth Longfellow. Color a blending of shrimp pink, shading to pale gold at center of flower, each petal tipped with pale pink, shading to white. Very floriferous, dark green foliage medium to dwarf growing plants. A Dahlia that is chosen by all who love sheer beauty. Tubers, \$5.00. Plants, \$2.50.

Mildred Johnson (F. & M.) A curled and twisted petaled decorative of a beautiful wine shade, heavily veined on reverse giving a silvery effect. Plants always laden with flowers from early summer until frost, dark green foliage, perfectly stiff stems, medium to low growing plants. Tubers, \$5.00. Plants, \$2.50.

DECORATIVE DAHLIAS

- Al Koran.** Yellow, suffused with golden-rod and amber. The petals have the marcelle wave which makes it very attractive. Tubers, \$2.00
- Alex Waldie.** Very large flowers on fine stiff stems. Color a creamy ground overlaid with delicate salmon-pink. Tubers, \$1.00.
- Amun Ra.** Immense flowers, resembling a glorious setting sun. Outer petals copper and orange, shading to gold and amber and deepening in the center to a dark reddish bronze. Tubers, \$1.50.
- Amanda M. Houghton.** Large pretty pink blossom with long stiff stem. Tubers, \$1.00.
- Amulet.** The color of this new Dahlia is difficult to describe, a rich deep brown slightly suffused with gold. The flowers are large, and the stems long and stiff. Tubers, \$10.00. Plants, \$5.00.
- Argonaut.** Large perfect flower with a fine stem, color gold shading to apricot at the center. Tubers, \$4.00. Plants, \$2.00.
- Avalon.** Pure clear yellow, very large flowers always full to the center produced on long strong stems, one of the finest yellow decoratives to date. Plants only, \$2.50.
- Bacio.** This is a very early and free bloomer, color a magenta pink, perfect stems. Tubers, \$3.50. Plants, \$1.75.
- Bazaar.** The color of this beautiful Dahlia is soft chrome yellow, overlaid with red. Tubers, \$2.00. Plants, \$1.00.
- Beau Brummel.** A royal purple which does not fade or burn on the hottest day. A very free bloomer and the large blossoms are produced on the very best of stems. Tubers, \$3.50. Plants, \$1.75.
- Beauty.** The color of this Dahlia is very distinctive, very pale mauve or pinkish lavender, shading lighter to a white center, very large and fine stiff stems. Tubers, \$4.00. Plants, \$2.00.
- Bertha Jost.** Sulphur yellow blended peach-pink, very large, fine stems. Tubers, \$3.00. Plants, \$1.50.
- Black Jack.** In this we have a very large dark maroon, almost black, produced on fine stems. Tubers, \$3.00. Plants, \$1.50.
- Bonnie Brae.** A beautiful cream color, shaded blush-pink, immense flowers. Tubers, \$1.00.
- Cadiz.** Color reddish orange, shading to chrome yellow at the base of the petals with a reflex of pale gold. A profuse bloomer, with splendid stems. Tubers, \$4.00. Plants, \$2.00.
- Cheri.** At a glance, this Dahlia resembles a fancy, but it is a purple with a reflex of a lighter tint. A very large blossom that never shows a center, on the very best of stems. Tubers, \$5.00. Plants, \$2.50.

- California Superba.** A large massive blossom of a beautiful pink which shades to a white center. Fine stems. Tubers, \$3.00. Plants, \$1.50.
- Carmencita.** This is a dwarf grower and forms a compact bush, which is a mass of bloom all season. The yellow blossom is regularly striped red. Tubers, \$2.00.
- Chas. E. Hughes.** An immense yellow decorative, on long stout stems. Tubers, \$15.00. Plants, \$7.50.
- Champagne.** This is a first class Dahlia, size is large, color a golden champagne, varying to chamois, and stems hold the massive blossom very erect. Tubers, \$3.00. Plants, \$1.50.
- Chas. Stratton.** A wonderful exhibition variety. Fluffy formation of a beautiful blending of pale gold to old rose on outer petals, very stiff upright stems. This Dahlia has been awarded 16 prizes in New Jersey, for size and artistic coloring; it is a profuse bloomer. Tubers, \$7.50. Plants, \$3.75.
- City of Lawrence.** This I consider one of our best Dahlias, the blossoms are very large and deep, color is picric yellow shading to lemon yellow, vigorous plant that is a constant bloomer. Tubers, \$5.00. Plants, 2.50.
- Conchita.** The formation of this beautiful large deep pink decorative is irregular enough to be charming. Plants grow tall, and stems are long and stiff. A fine variety. Tubers, \$3.00. Plants, \$1.50.
- Copper King.** Immense coppery colored Dahlia, a most unusual shade, fine stiff stems. Tubers, \$15.00. Plants, \$7.50.
- Colleen Bawn.** The long shaggy, slightly twisted petals of this large deep pink flower faintly tinged with lavender make up a bloom which must be seen to be appreciated. Plants, \$2.50.
- Dr. Marshall A. Howe.** A magnificent large light pink, edge of petals a shade darker; for exhibition it is hard to beat. Tubers, \$2.50.
- Dr. Tervis.** Giant California variety. The color is a soft salmon rose suffused with old gold, with a fine stem. \$1.00.
- Dolly Varden.** In this we have a real pink shade, the petals twist and curl and at times it might be classed as a Hybrid Cactus; fine long stems. Tubers, \$2.00.
- Durant.** Here we have a combination of colors of yellow, buff, salmon and gold, autumn shades that everybody likes, fine cut and exhibition flower, good stems. Tubers, \$5.00. Plants, \$2.50.
- Eastern Star.** Color a soft saffron yellow with old gold shadings. Flowers of great substance and good keeping qualities, with full centers held erect on strong stems. Free flowering, and immense size. Tubers, \$10.00. Plants, \$5.00.

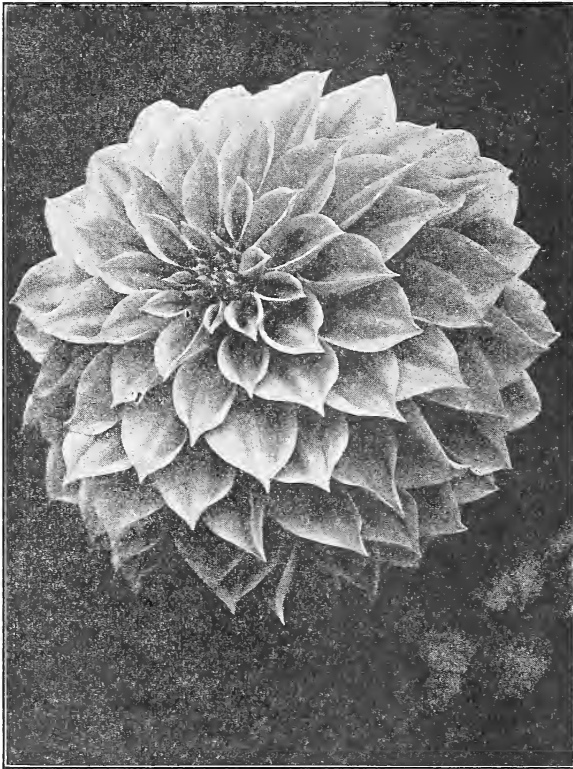
- Ellinor Vanderveer.** Jessie L. Seal's wonderful new pink seedling, this was one of the best Dahlias I grew in my garden the past season, a magnificent rose pink decorative, held erect on long stiff stems. This Dahlia is bound to be very popular this season. Tubers, \$7.50. Plants, \$3.75.
- Elsie Daniels.** Color of this wonderful Dahlia is a pale violet orchid shade on the outer petals, center white, making a magnificent combination of colors, stems are long and stiff and hold the very large flowers above the foliage, one of the finest novelties. Tubers \$5.00, plants \$2.50.
- Eliza Clark Bull.** Bessie Boston's unbeatable white decorative, for color and size, this Dahlia produced the largest white blossom in my garden the past season, it also has a fine stiff stem that holds the massive blossom very erect. Tubers, \$7.50. Plants, \$3.75.
- El Dorado.** In this we have a low growing bush with immense golden blooms which stand up and look you in the face, extra fine. Tubers, \$7.50. Plants, \$3.75.
- Earle Williams.** The colors of this brilliant crimson and white decorative are well distributed, it blooms freely and is most attractive. Tubers, \$1.00.
- Elberon Beauty.** A large exhibition flower of soft apricot shading to a slightly darker tone toward center of the flower, held erect on strong stems. Tubers, \$4.00. Plants, \$2.00.
- E. T. Bedford.** Fine exhibition flowers of purple with a lighter shading, giving it the appearance of a silvered purple tone. Tubers, \$2.00.
- Eva Cole.** This is one of Thos. J. Murphy's best seedlings, at the recent New York Dahlia Show there were some wonderful specimens of this variety shown, on fine stiff stems. Color is bright red and gold. Tubers, \$7.50. Plants, \$3.75.
- Eva Williams.** (F. & M.) A fine exhibition Dahlia of amethyst color with slight silver shadings, very full center, stems upright and rigid, free bloomer. Tubers, \$3.50. Plants, \$1.75.
- Faith Garibaldi.** Bessie Boston best 1925 introduction, a superb rose pink decorative; it has great depth as well as large size, and is held up straight on a long, stiff stalk. The blossoms are full centered and keep well when cut. Tubers, \$7.50. Plants, \$3.75.
- Firelight.** A gorgeous Dahlia, yellow tipped orange, splendid long stiff stems. Tubers, \$5.00. Plants, \$2.50.
- Francis Seaman.** A beautiful silvery rose-pink, very large finely formed flowers on strong stems. Tubers, \$3.00. Plants, \$1.50.
- Grenadier.** (B. B.) The originator of this very fine novelty describes it as a purplish maroon shade combined with silver, the petals one on one side are purple, and the other pale silver, the petals quill and turn back, and the whole construction is unique. It is a monster flower and very deep, long stems that hold the huge blossoms upright. Tubers, \$7.50. Plants, \$3.75.

- G. S. Harvey.** Color purplish magenta suffused white, one of the handsomest color combinations you would wish to see, fine for exhibition. Tubers, \$5.00. Plants, \$2.50.
- Geo. C. Meachen.** A large beautifully formed flower so deep and full that it is almost round. The face of the petals is pinard yellow overlaid with a golden sheen, reverse of outer petals is nopal red, inner petals rose dove streaked with pinard yellow. The plant is a sturdy grower and has a good stem. Tubers, \$5.00. Plants, \$2.50.
- Gloriana.** The color of this Dahlia is much in demand, a pure old gold with a slight redding glow in the center, very long stems and blooms freely all the season. Tubers, \$2.00. Plants, \$1.00 each.
- Glory of New Haven.** Large flowers with beautiful broad twisting petals, the blossom a clear lavender pink produced on long, stiff stems. An ideal cut and exhibition variety. \$1.00.
- Grace Sherman.** An exquisite combination of pink and cream colors blended charmingly together, very large size and fine stems. Tubers, \$10.00. Plants, \$5.00.
- General McRae.** (Meacham & Sherman.) The face of the petals is apricot buff, suffused with gold and the reverse light coral red, the flowers are very large and perfectly formed and are held erect on extra strong, stiff stems. Tubers, \$7.50. Plants, \$3.75.
- Grizzly.** A dark red monster, with fine stiff stems, a fine variety. Tubers, \$1.00.
- Gilda Gray.** (F. & M.) Petals of this decorative are of a pure lilac color shading to a deep tyrian rose toward center of the flower, this deepening of color gives the effect of great depth and looks as though an artist had overlaid the original petals with velvet, if this were possible. Slender stiff stems, a very striking flower that is hard to describe. Tubers, \$5.00. Plants, \$2.50.
- Harry Sheldon, Jr.** T. J. Murphy's wonder pink and white decorative, of huge size and great depth, for beauty it is hard to beat. Tubers, \$7.50. Plants, \$3.50.
- Halvella.** A charming soft old rose slightly brighter than salmon, flower is deep and well formed, stem is excellent, blooms freely and is a particularly good cut flower. Tubers, \$3.00. Plants, \$1.50.
- Hav-a-look Noontide.** Bright orange red, tinged with yellow, large size, and a very free bloomer, strong stems. Tubers, \$3.00. Plants, \$1.50.
- Hav-a-look Queen of the Autumn.** A very large deep flower on good stiff stems, a combination of autumn shades. An extra fine Dahlia. Tubers, \$10.00. Plants, \$5.00.

His Majesty. (B. B.) A giant flower, with a long branching stem, which does not bend. A very free bloomer. Color is a bright scarlet, formation of the petals is slightly irregular. This is one of Bessie Boston's biggest introductions, and flowers remain large all season. Tubers, \$10.00. Plants, \$5.00.

Ida Nolet. In this we have a beautiful cut flower, color shrimp-pink with yellow center. Fine stems. Tubers, \$1.00.

Insulinda. The blossom of this variety is placed on the top of strong, stiff stems, color is autumn tints of amber and gold. Tubers, \$1.50.



Jersey's Beauty (Waite)
Certificated A. D. S. 1923.

Jersey's Beauty. W. H. Waite's wonderful 1923 introduction and is still the Queen of all Dahlias, a perfect true pink, carried high above the foliage on very long stiff stems. The finest exhibition variety to date, also fine for commercial purposes. Tubers, \$2.50. Plants, \$1.50.

- Jersey's Gem.** Large lavender pink, long stiff stems, free bloomer. Tubers, \$3.00.
- Jersey's Jewel.** Color mallow-pink, huge blossoms on the best of stems. Tubers, \$7.50. Plants, \$3.50.
- Jersey's Beacon.** Another of Mr. Waite's very fine new seedlings, a decided novelty of Chinese scarlet with a paler reverse, giving a two toned effect. An exhibition flower of vigorous growth, excellent stem. Tubers, \$10.00. Plants, \$5.00.
- Jersey's Matchless.** A beautiful golden buff decorative flower borne high above the foliage on long stiff stems. Tubers, \$7.50. Plants, \$3.50.
- Jersey's King.** A fine grower, the immense flowers are a fine shade of carmine toning to old rose, carried erect on long stiff stems. Tubers, \$2.50. Plants, \$1.50.
- Jersey's Mammoth.** The largest of Mr. Waite's introductions, a huge blossom, color a rich golden mahogany, a fine novelty. Tubers, \$10.00. Plants, \$5.00.
- Jersey's Monarch.** Very large deep blossoms on long stiff stems, color a deep salmon, with yellow at the base of the petals. Tubers, \$5.00. Plants, \$2.50.
- Jersey's Sovereign.** A new shade and hard to describe, a beautiful orange color, flowers are good size on fine stems, free bloomer. Tubers, \$5.00. Plants, \$2.50.
- Jessie K. Prescott.** Color a deep orange at the center gradually shading to a creamy orange on the rows of outer petals. A tall plant and a free bloomer, fine stems. Tubers, \$3.00. Plants, \$1.50.
- Jim George.** T. J. Murphy's fascinating red decorative, color a dark garnet with a velvety sheen, fine stems. Tubers, \$7.50. Plants, \$3.50.
- John Lewis Childs.** The very best fancy of any type. Immense size. Color yellow, suffused, splashed and striped with brilliant scarlet, and generally tipped white. A good Dahlia for every purpose. Tubers, \$1.00.
- Judge Marean.** A well known exhibition variety. It is a riot of color, ever changing as the flower ages, salmon-pink, red, orange, yellow and pure gold. A constant bloomer, being at its best in August. A grand Dahlia. Tubers, \$2.00. Plants, 1.00.
- Junior.** An enormous flower of pure lavender, this Dahlia created a sensation at the recent shows. Tubers, \$2.00. Plants, \$1.00.
- J. W. Davies.** A very large, deep flower with a perfect stem, color a deep shade of cerise at the center, graduating to a lighter tint, a very free bloomer. Tubers, \$2.00. Plants, \$1.00 each.
- Judge Alton B. Parker.** This is a grand exhibition variety, true form, and very large flowers; color is a beautiful golden buff. Tubers, \$2.00. Plants, \$1.00 each.

- Kitty Dunlap.** In this we have the delightful shade of American Beauty Rose, very large and free bloomer, on the best of stems. This Dahlia will become very popular. Tubers, \$2.00. Plants, \$1.00.
- Lady Betty.** This is a very beautiful Dahlia; the immense blossoms produced on strong stems are very attractive, the color is creamy white with a pinkish suffusion spread as a haze over the flowers. Tubers, \$2.00. Plants, \$1.00 each.
- Lake Erie.** Immense lavender flower. Tubers, \$3.50.
- Le Grand Manitou.** White ground striped and speckled violet, a very popular and useful Dahlia. Tubers, 50c.
- Lotus.** Here we have a favorite cut flower, of a lively orange color; it is shaped like a water-lily and is sure to become very popular. Tubers, \$1.00.
- Liberty Bond.** This Dahlia is very difficult to describe, being a blending of buff, bronze and salmon shades; this Dahlia requires plenty of room when it will grow very large. Tubers, \$1.00.
- Lena Rivers Champlin of Hav-A-Look.** (G. L. Fish.) A wonderfully rich red purple Hybrid Decorative, of large size, on strong stiff stems of good length, that always face you. This Dahlia won first prize at Boston, 1922, for best undecimated seedling; it was at that time the most perfect white tipped flower ever shown in New England, but since has refused to come with white tips. Tubers, \$10.00. Plants, \$5.00.
- Margaret Masson.** (F. & M.) A beautiful silvery rose pink decorative of great depth and size; wonderful exhibition variety on account of its good keeping qualities and fine upright stems; very free bloomer. Awarded Cert. of Merit by Dahlia Society of New Jersey, 1924. Tubers, \$7.50. Plants, \$3.75.
- Mabel Thacher.** Large flowers of a pale yellow shade are borne on stiff, strong stems. They are of the finest type and considered the highest perfection attained in this shade. Tubers, \$2.00.
- Mary Curtin.** Large dark red blossom with white tips. Tubers, \$2.00.
- Mass. Fancy.** An odd mixture of yellow and red, large deep flower composed of wide petals. Tubers, \$2.00.
- Meritorious.** Color is an orange salmon and yellow, with a golden suffusion, points of petals tipped with white. Tubers, \$2.00.
- Meadow Lark.** A fine large flower of a new coloring, shadings of buff and straw, with the reverse side of the florets darker. This large sized flower is held high on extra long, straight stems, out from a tall plant with vigorous foliage. Tubers, \$4.00. Plants, \$2.00.
- M. H. De Young.** A beautiful blossom of pure old gold with scarcely any variation in color, except perhaps the center is illuminated with a slightly brighter shade. The large flower is held high on stiff stems, growing far out of the foliage. An excellent variety for exhibition and cut flowers. Tubers, \$5.00. Plants, \$2.50.

- Modoc.** The color of this new Dahlia is a deep purplish cerise, more on the purple tones than the cerise. The long petals have a trick of curling, flower is large and deep and has an attractive formation; very free bloomer. Tubers, \$3.00. Plants, \$1.50.
- Mrs. Carl Salback.** Immense lavender pink flowers on long, strong stems. This is one of the very best Dahlias in existence. Tubers, \$1.00.
- Millionaire.** One of the largest varieties in cultivation. The color is lavender shading to white. The flowers are of great depth and always attract attention. \$1.00 each.
- Mrs. E. C. Boston.** One of the best white decoratives yet raised. Flowers produced on long, stout stems with great freedom. \$1.00.
- Mrs. John T. Scheepers.** This is a wonderful variety. The flowers are very large, on stout stems; color is a clear canary yellow which gradually changes to a beautiful shade of pink suffusion on the outer petals. This is one of the best Dahlias to date. Tubers, \$3.00. Plants, \$1.50 each.
- Mr. Crowley.** The exquisite color of this Dahlia is most remarkable, being the brightest, most glowing shade of salmon-pink I have seen; the base of the petals is yellow. The habit of the plant is dwarf, flowers of medium size are held erect on strong stems. Tubers, \$1.00.
- Mrs. Geo. Elkins, Jr.** A very large Dahlia on fine stems; color a beautiful shade of apricot pink with gold suffusion. Tubers, \$2.00. Plants, \$1.00.
- Mayor Fitz.** In this we have a beautiful autumn shade, very free bloomer and the best of stems; a Dahlia of much merit. Tubers, \$3.00. Plants, \$1.50.
- Mrs. Estelle Lawton Lindsey.** Scarlet and gold, the gorgeous coloring of the well known "Geisha" reproduced in an enormous, full-centered decorative; strong stems. Tubers, \$2.00. Plants, \$1.00 each.
- Mrs. Eleanor Martin.** One of the very best Dahlias to date. The color has been well described as mulberry, the petals are a peculiar rose with a reverse of violet. There is nothing like it in color. Stems are long and stiff and bushes are always covered with large flowers. Tubers, \$5.00. Plants, \$2.00.
- Mrs. J. De Ver Warner.** A most charming color of soft orchid or deep mauve, true type and fine form, flowers are very large and hold its center well, excellent stems, free bloomer. Tubers, \$1.00.
- Mrs. E. P. Judd.** Carmine and rose suffused with cream, immense flowers carried on stiff stems. Tubers, \$3.50. Plants, \$1.50.
- Mrs. Charles Smithers.** Color a wonderful combination of magenta, purple, maroon and white suffused and clouded in such a way as to make it an outstanding variety. Tubers, \$5.00. Plants, \$2.50.
- M. F. Heaphy.** A T. J. Murphy seedling, which he claims big things of. He says it is as near perfection as nature law will allow. Color is a maroon or royal purple, large flowers on the best of stems. Tubers, \$7.50. Plants, \$3.50.

- Mrs. Geo. C. Meachen.** (M. & S.) A new decorative that is sure to be a winner. The face of the flower is iridescent shadings of picric yellow and corinthian pink with a deep rose back. Fine stiff stems. Tubers, \$10.00. Plants, \$5.00.
- Mordella.** One of our new outstanding Dahlias, it is a real art Dahlia of a bright apricot buff color; the very large flowers are held well above the foliage on long graceful stems. Tubers, \$5.00. Plants, \$3.50.
- Myra Valentine.** Golden bronze, very large on fine, long stems. Tubers, \$2.00. Plants, \$1.00.
- Nobilis.** Something new in the combination of red and white. The ground of each petal is red, shading out to white at the tips. A dwarf grower. Extra fine. Tubers, \$1.00.
- Nazareno.** A new seedling from W. F. Jost. In color it is the nearest thing to a purple that I have seen. It is very large and free flowering and holds itself erect on long stiff stems. A perfect type of decorative. Plants only, \$2.50 each.
- Our Country.** Geo. L. Stillman's seedling; he describes it as follows: The ground or main color is a very deep purple, while the florets are heavily tipped white, a very deep heavy flower, always coming with a full center and never producing any solid colored flowers; its only fault is its stem, which does not hold the large blossoms upright; but on account of its wonderful color it should be grown in every garden. Tubers, \$5.00. Plants, \$2.50.
- Olive Reed.** (J. S.) This remarkable Dahlia of mammoth size, is of a clear and pure shade of yellow, the large blooms of great substance, are held well above vigorous bush on strong and rigid stems. Tubers, \$7.50. Plants, \$3.75.
- Paul Michael.** An immense flower of bright apricot and bronze shadings. Good stems and excellent for exhibition. Has won many prizes for largest flower in show. Tubers, \$1.00.
- Paul Revere.** (Bissell.) One of the best red decoratives ever introduced. Color is a dazzling bright red, of large size, free bloomer on fine stems. Tubers, \$5.00. Plants, \$2.50.
- Perfect Beauty.** Bright light scarlet, outer ends of petals heavily tipped white. The colors are about equally divided, half red and half white. A beautiful flower of large size. Tubers, \$2.50. Plants, \$1.00.
- Peerless.** A clear sulphur yellow, the blossom is large, very deep, regularly formed, and stands erect on a stiff stem. Tubers, \$3.50. Plants, \$1.50.
- Polar Snow.** A sensational pure white decorative, full deep blossom, on a fine long stem. Splendid for exhibition. Tubers, \$10.00. Plants, \$5.00.
- Pop Stewart.** (F. & M.) This is a remarkable flower of great size, in the young state the flowers appear rosy pink, but as it matures the flower undergoes a complete transformation, toning out into a most exquisite shade of the purest lilac-pink. A fine grower with a splendid stem. Scored 90 points at Trial Gardens at New Jersey. Tubers, \$7.50. Plants, \$3.75.

- Pollyanna M.** Buff yellow, suffused red, a very large deep built flower, fine for exhibition. Tubers, \$2.00.
- Pride of New Bedford.** This handsome, large, pure white decorative was originated by J. A. Nolet; the stems are erect and stout and hold the huge blossoms well above the foliage. Plants, \$1.50.
- President Wilson.** This is one of the most attractive Dahlias I have ever raised, being a very bright crimson with each petal distinctly tipped white. On account of very large sales of this most popular Dahlia I reserve the right to ship plants in place of tubers when stock is depleted. Tubers, \$3.00. Plants, \$1.50.
- Radio.** In this we have the colors of the well known Geisha. A truly remarkable Dahlia, producing its giant flowers on the very best of stiff stems, which always look you in the face. Tubers, \$5.00. Plants, \$2.50.
- Romance.** The effect of the variety at a distance is vivid orange, but it is a fancy or variegated Dahlia; orange at the base and heavily speckled, striped with carmine. It is very large size, and a free bloomer. Tubers, \$2.00. Plants, \$1.00 each.
- Rookwood.** Now we have a charming pink decorative, one of the very best, the bushes are low growing and are a mass of blooms all season; this Dahlia should be grown in every garden. Tubers, \$4.00. Plants, \$2.00 each.
- Rosa Nell.** This I consider worth growing in every garden, a grand Dahlia. The color is a clear bright rose, the enormous blossoms always full and double are held erect on long, stout stems. Tubers, \$1.00.
- Rosemawr.** Immense flowers, rich rose pink, dwarf branching habit. A fine variety. Tubers, \$1.00.
- Robert Treat.** The outstanding variety for 1925. It is a most pleasing American Beauty Rose color and is unlike any existing variety in shade or color. It has produced flowers eleven inches across and four inches in depth. It flowers on long strong stems well above the foliage and is a profuse bloomer. Tubers, \$5.00. Plants, \$2.50.
- Rodman Wanamaker.** This produces huge blossoms of a color entirely distinct. The buds are pale lemon yellow, but it quickly develops into a golden bronzy salmon pink with a reflex of spinel pink. The plant is sturdy and is a very free bloomer, it also has a handsome glossy foliage and produces the giant blossoms on stiff upright stems. Tubers, \$5.00. Plants, \$2.50.
- Rory O'More.** Deep maroon, tipped white. Flower is large and grows on a perfectly stiff stem, blooms freely all season. Has never produced any solid colored flowers. Greatly admired in the garden. Tubers, \$3.50. Plants, \$1.50.
- Sagamore.** In this we have a wonderful long stemmed exhibition, and cut flower variety. With me it proved to be a very free flowering and dependable sort. It is a vigorous grower, and is always in bloom. Color is a golden yellow. Size is large. A grand variety. Tubers, \$7.50. Plants, \$3.50.

- Sanhican's Bluebird.** (F. & M.) The color of this Dahlia is a most uncommon shade, the outer petals at maturity are bright violet-blue, while the center retains the violet tint the nearest approach to a blue Dahlia. Strong wiry stem. Tubers, \$3.50. Plants, \$1.75.
- Sanhican's Gem.** (F. & M.) Color is a delightful shade of old rose, thickly suffused with amber in the young state. At maturity it is a clear old rose shade, petals are large and thickly placed, true staghorn type. Tubers, \$5.00. Plants, \$2.50.
- Sanhican's Ruby.** (F. & M.) Color is a deep shade of pigeon's blood, suffused with bronze, petals fluffy and pointed. Thickly placed to form a very full flower, large size and fine stem. Tubers, \$2.50. Plants, \$1.25.
- San Mateo.** A monster bi-color of deep yellow heavily striped and splashed scarlet; grows very tall and bears its blossoms well above the foliage. \$1.50.
- Scottish Chief.** The solid color blooms of deep amber of this Dahlia are lovely. Some of the blossoms are tipped pink. A novelty of merit, \$1.00.
- Susan G. Tevis.** In this we have a variety that produces an abundance of flowers throughout the season. It is among the first to bloom and holds size to the end of the season. The color is best described as a deep shade of lilac with a bluish sheen; a very large, graceful bloom of fine depth; a vigorous grower with fine, healthy foliage. Considered by many as the best 1923 novelty introduction. Tubers, \$5.00. Plants, \$2.50 each.
- St. Francis.** Soft cream color brightened with a pinkish glow on the outer petals, making a delightful blossom, which can be used for all purposes. Fine for exhibition on account of its great size and admirable for garden because of its freedom in producing flowers, also for its beautiful coloring. Tubers, \$2.00. Plants, \$1.00.
- Serpolette.** Deep lavender blossoms on extra fine stems, the immense blossoms have great depth and are produced freely. Tubers, \$3.00. Plants, \$1.50 each.
- Shudow Lavender.** Color a silvery lavender slightly shading to white, it will bloom constantly from early to late season and never show a center. The plant grows tall and has a very pretty foliage. Tubers, \$3.00. Plants, \$1.50.
- Snowdrift.** This giant white deserves its name. A very full, deep-built flower with broad, waxy petals. \$2.00. Plants, \$1.00.
- Senorita.** Giant decorative of rich velvety crimson, held erect on extra long stems. Has won many prizes. Tubers, \$2.00. Plants, \$1.00.
- St. Bernard.** This immense Dahlia is a soft creamy white suffused with a clear pink. Has a good stiff stem. Fine for exhibition. Tubers, \$3.00. Plants, \$1.50.
- Silvertips.** A white tipped variety that is very attractive. Color combination is unusual, light pink at base, to a distinct band of rose, then to pure silvery white at tips. Tubers, \$5.00. Plants, \$2.50.

- Tillamook.** Canary yellow. Magnificent in form and very large. The habit is good. Tubers, \$4.00. Plants, \$2.00.
- The General.** A deep garnet flower of unusual size with a silvery white reverse, the combination of forming a blossom of remarkable beauty and charm. Tubers, \$7.50. Plants, \$3.50.
- Tanforan.** A huge scarlet with peculiar twisting and curling petals; the rigid stems hold the big deep blossom upright. A prize winner. Plants, \$1.50.
- The Bashful Giant.** This is unquestionably the largest flowering Dahlia ever produced; the color is apricot with golden shadings; a very fine exhibition variety. Tubers, \$2.00. Plants, \$1.00.
- The Emperor.** This variety caused quite a stir at the Dahlia exhibition, its size is enormous; color a beautiful maroon of the finest type, a prize winner. Tubers, \$3.00. Plants, \$1.50 each.
- The Giantess.** One of the largest Dahlias yet raised, color a beautiful amber, bushes grow tall and the blossoms are carried on extra long stiff stems. Tubers, \$5.00. Plants, \$2.50.
- Tryphinnie.** A lovely large flower of a bright pink, shading lighter at tips of petals; at the base of the petals is a golden yellow, reverse of petals pink, a fine Dahlia. Tubers, \$1.50. Plants, \$1.00.
- Tommy Atkins.** Color flaming scarlet, a somewhat different color than any other Dahlia, fine form and full centered and very large, and strong, stiff stems. Tubers, \$3.00. Plants, \$1.50.
- Trentonian.** (F. & M.) A giant decorative of a shade that appeals and captivates at one glance; the color is that of an Indian's skin, a wonderful blending of old gold, amber and coppery bronze. This flower is highly recommended either for garden or exhibition for its size, stem and grand color. Awarded Cert. of Merit at D. S. of N. J., scoring 89 points. Tubers, \$7.50. Plants, \$3.75.
- U. S. A.** This magnificent Dahlia is a deep orange, a color most in demand by Dahlia lovers. Very free blooming, on a long stem. Tubers, \$2.00.
- Valentine.** A novelty of large size, and a lovely color of pure cerise. The blossom is sometimes too heavy for the stem, due to its great size. Tubers, \$2.00.
- Venus.** A beautiful variety and much esteemed as a cut flower. It is a splendid free grower and the flower which is a combination of pink and white is borne on strong stems. Tubers, \$1.00.
- Wizard of Oz.** Here we have an extra fine exhibition variety, of very large size, and free bloomer; color a glowing amber pink; everyone buys this one that sees it blooming in the garden. Tubers, \$3.00. Plants, \$1.50.
- W. E. Cooper.** A true pink Decorative, held erect on strong, stiff stems, blossoms are very large and blooms freely. This variety is bound to become popular. Tubers, \$3.00. Plants, \$1.50.
- Winfield Slocombe.** In this we have a beautiful orange colored Dahlia, the center is golden shading to burnt orange. It is perfect in form, stem and foliage, and very fine blooming. Tubers, \$2.00. Plants, \$1.00 each.

- Wm. Slocombe.** This is one of the best Dahlias ever raised for the price. Color canary yellow, shading to deeper yellow toward the center; very large flowers on long, stiff stems. Tubers, \$1.50. Plants, \$1.00.
- World's Best White.** This variety produces huge pure white blossoms on the best of stems, and is bound to be in great demand the coming season. Many growers proclaim it the best white Decorative Dahlia on the market. Tubers, \$4.00. Plants, \$2.00.
- Yellow Gem.** Color a beautiful shade of yellow with tips of petals white, a tall growing plant that is constantly covered with blossoms, a fine cut variety. Tubers, \$2.00. Plants, \$1.00 each.
- Zeus.** In this we have a wonderful novelty, it is nothing to cut ten-inch blossoms on a bush of this variety. The plant grows to medium height, and is a very free bloomer. The color is a rich glowing red, each petal distinctly tipped yellow. Fine stiff stems. Plants, \$3.50 each.

HYBRID CACTUS

The Hybrid Cactus is becoming more and more popular. They have broad, massive petals and are excellent for cut flowers.

- A. C. Lawrence.** This is one of the best Dahlias yet raised, it is a beautiful shade of flesh pink, the large blossoms have great depth and stand erect on fine stems. Tubers, \$2.00. Plants, \$1.00.
- Antoinette.** A hybrid cactus composed of many, narrow, rolled, curved petals, the blossom is almost the shape of a huge ball; color is a delicate rose pink, or pinkish lavender. Tubers, \$4.00. Plants, \$2.00.
- Andreas Hofer.** An imported variety of much merit. This is one of the most beautiful Dahlias I have had the pleasure of growing; color is a light pink, stems are long and stiff. Plants medium height. Plants only, \$5.00.
- Amethyst Supreme.** (Murphy.) Something new in formation and color; color a delicate amethyst shade, fine built flower on long stems, tall plant, center always closed. Tubers, \$10.00. Plants, \$5.00.
- Bizerta.** A dainty straw color, illuminated with sunset pink. Large and well formed, the inner petals are long and straight, the outer petals wave and twist, so the form is graceful. Stems are extra long, and while slender, hold the flower stiffly. Tubers, \$4.00. Plants, \$2.00.
- Cigarette.** This Dahlia is best described as creamy white, heavily edged orange, but no two flowers are exactly alike, the petals are long and narrow and inclined to roll; bloom is large and of good substance. Solid color flowers are scarce on bushes of this variety, but when they occur, are of pure orange. Tubers, \$3.00. Plants, \$1.50 each.
- Cinderella.** An immense deep, full flower of incurving formation. Color a pale salmon or fawn pink, shading to a tan center, on long stiff stems, a strong grower and free bloomer. Tubers, \$5.00. Plants, \$2.50.

- Dr. Raymond.** The color of this Dahlia is pink, suffused with yellow, and heavily splashed and striped with crimson. Good stem for cutting, bushes grow medium height, and is a very free bloomer. Tubers, \$3.00. Plants, \$1.50.
- Daddy Butler.** This Dahlia has the appearance of a variegated bloom, but it is not. Color is of the American Beauty Rose shade, the reverse of petals is a lighter tint, giving a variation of color. No other Dahlia like it. Tubers, \$2.00. Plants, \$1.00 each.
- El Granada.** An immense orange Hybrid Cactus. The color is a vivid orange and the petals twist and interlace, showing at the tips a creamy yellow reverse. The stems are long and stiff, the bushes grow quite tall and the blossoms hold their centers good even late in the season. Tubers, \$10.00. Plants, \$5.00.
- Ethel M.** The plant is always covered with large blossoms of the most pleasing and attractive shade of glowing amaranth pink at the base of the large, perfectly quilled petals, shading lighter at the tips, with white center, the form is perfect and the petals are quite long. Tubers, \$4.00. Plants, \$2.00.
- Elsie Oliver.** This is a real Dahlia, one of the most beautiful; color is a creamy pink, shading to cream in the center, but while the color is wonderful, a Dahlia of any color would be a prize winner with this size and formation. Free bloomer and good stems. Tubers, \$2.50. Plants, \$1.50 each.
- Emma Marie.** (Dahliadel.) A favorite Hybrid Cactus, because of its pleasing shade of clear pink with a creamy white center and its combination of exhibition and commercial qualities. The deep full centered blooms averaging eight inches, on very long stems. Tubers, \$6.00. Plants, \$3.00.
- Esther Hunt.** The color of this beautiful flower is an Oriental orange, the large blooms are composed of long, well rolled petals with serrated tips; always has a perfect center. Tubers, \$3.00. Plants, \$1.50.
- Frances Lobdell.** This is a low growing plant of sturdy growth, which is covered all season with very large blossoms held erect on the best of stems; color mallow-pink shading to white in centre; this Dahlia when known will be in great demand. Tubers, \$2.50. Plants, \$1.50.
- Gee Whiz.** This is a strong, vigorous grower, a free bloomer, soft buff shaded with salmon, immense size and fine form. \$2.00 each.
- Gladys Sherwood.** A monarch among Dahlias, the white supreme. Flowers are often ten inches in diameter. As a garden flower it has no equal. The first florets to open are so long, wide and satiny as to resemble white, glistening, pointed satin ribbons, which at once command admiration. Tubers, \$1.00.
- George Walters.** A standard variety; color pinkish salmon shading to yellow base. A prize winner. 75 cents each.
- Galatea.** This is a handsome Dahlia, color soft yellow with a suffusion of pink on the outer petals until late in the season, when it loses its pink flush. The large blooms are composed of long, wavy, narrow petals. An extra fine center, stems upright and long, and very free bloomer. Tubers, \$4.00. Plants, \$2.00.

- Islam Patrol.** Dark velvety scarlet, tipped and flushed with gold, a gorgeous variety; this will be among the prize winners. Tubers, \$4.00. Plants, \$2.00.
- Jersey's Radiant.** In this we have a beautiful orange shade borne on extra long stiff stems, a most charming Dahlia. Tubers, \$5.00. Plants, \$2.50.
- Koh-I-Noor.** Maroon, and at times so dark as to be almost black. Petals rolled closely and run to a point at the tip. The blossoms are large and deep and have a velvety sheen that add greatly to their beauty. It has a fine center at all times and grows on long stiff stems. Tubers, \$4.00. Plants, \$2.00.
- Louise Surtes.** In this we have a fancy of a decidedly new combination of colors, white, heavily penciled with carmine rose. Some petals are also splashed with the same delightful color, incurved form, borne on a first class stem. The blossoms are large, and it is a free bloomer. Tubers, \$4.00. Plants, \$2.00.
- Lady Helen.** This is a striking and beautifully toned pink, with slight veins of white, almost cream, running through the petals. A very free bloomer. Tubers, \$1.50 each.
- Lorna Slocombe.** An immense blossom of an unusual shade of orange beautifully blended with flame and apricot shadings; very distinct and free flowering. Tubers, \$3.00. Plants, \$1.50 each.
- Mariposa.** A perfectly formed Hybrid type, composed of long narrow incurved petals which twist and curl in a charming manner; color a beautiful pink shade produced on very long, stiff stem. Tubers, \$2.00. Plants, \$1.00 each.
- Mrs. John M. Root.** An enormous canary yellow Hybrid Cactus, the petals are long, broad and slightly twisted, giving the flower great depth. The stems are long and hold the large blooms high above your head. Has been awarded many prizes and medals. Tubers, \$5.00. Plants, \$2.50.
- Mrs. John Gardner.** A large bi-color Hybrid Cactus of dazzling brilliancy, blood red petals tipped white, full to the center and borne on long stiff stems well above the foliage, has never produced any solid color blossoms for me, and is a very free bloomer. Tubers, \$2.50. Plants, \$1.25.
- Maku.** (B. B.) Most delicate shell pink. Very long stiff stem, which holds the flower upright, fine form. The pale pink deepens toward the center, and all petals are suffused with deeper color. Tubers, \$3.00. Plants, \$1.50.
- Marian Moore.** (B. B.) Color is a clear pinkish cerise, without any lavender tints, the reverse of the petals is a lighter pink. Flower is large, and perfect incurved formation, free and early bloomer, fine stiff stems. Tubers, \$4.00. Plants, \$2.00.
- MacGregor.** This novelty is one of the "Mastick" Dahlias, a lovely nopal or soft red, with the base of the petals lemon yellow. The large flowers are carried on long upright stems. Blooms freely and keeps well when cut. Tubers, \$2.00. Plants, \$1.00.
- Miss America.** (Wolfrum.) This is one of our finest new novelties. Color is a rich orange buff, blending toward the center lemon chrome, the long petals are wavy, twisted and curled, colored on the reverse light jasper red, adding richness and beauty to this autumn shaded Dahlia. Its large size, long straight, stiff wiry stems, and splendid keeping qualities, makes it a wonderful exhibition variety. Plants only, \$3.75.

- Nichu.** (B. B.) The blooms of this Dahlia are immense, of very incurved shape, flower is held erect on a strong stalk. A cheerful bloomer, which will produce at all parts of the season, a mass of clear yellow blossoms, with closed centers. Attracted much attention in the gardens the past season. Tubers, \$7.50. Plants, \$3.75.
- Noah.** (B. B.) The flowers of this Hybrid are almost ball shaded, but not stiff and formal, owing to the formation of narrow, recurving petals, which curl gracefully; color a dusty maroon: stems are very straight and strong. Tubers, \$3.50. Plants, \$1.75.
- New Moon.** A well formed Hybrid of a canary yellow, sometimes comes tipped white, when it is a beauty. Very free bloomer on good stems. Tubers, \$2.00.
- Oberon.** In this Hybrid we have something decidedly new in coloring, deep old rose with violet suffusion, immense well built deep blossoms always double with strong, stiff stems. Tubers \$3.00. Plants, \$1.50 each.
- Papillon.** Color a beautiful shade of old rose with golden lights, extra large size and very free, good stems. Tubers, \$3.00. Plants, \$1.50 each.
- Paradise.** The coloring in this large Hybrid is decidedly different, creamy old rose suffused with gold, so blended as to give a striking brown tone, extra long stiff stems hold the huge blossoms up proudly. Tubers, \$3.50. Plants, \$1.75.
- Patience.** (Hodgens.) The dainty coloring of this Hybrid is different, imagine a flower of white shading to cream and deepening to almost yellow at the center. Very long leafless stems, which are rigid and hold the flowers aloft. The blossoms are immense and very deep, lasts well when cut, and never shows a center. Tubers, \$5.00. Plants, \$2.50.
- Queen of Whites.** (Murphy's.) Large full flower, perfectly constructed, free bloomer, strong growing plant. I dare say the greatest pistilate ever put on the market. Tubers, \$10.00. Plants, \$5.00.
- Rebecca Atkinson.** (Murphy.) A perfect spike petal, intense pink flower, with white center. Good stems. Tubers, \$2.00.
- Rollo Boy.** (Pelicano.) This large size Hybrid is carried perfectly erect on a strong stem. Color a delicate shade of amber shading to old gold. It is a vigorous grower and recommended for all purposes. Tubers, \$3.50. Plants, \$1.75.
- Rose Ash.** (B. B.) This is a new color in Dahlias. The outside of the petals is tan, heavily overlaid with pink and shaded with chrome yellow. The reverse of the petals is smoky pink, large size, and has a good stem for cutting. Tubers, \$4.00. Plants, \$2.00.
- Rubezahl.** This is an imported variety, of immense size, color is scarlet, with a glistening sheen. This variety resembles "Kalif" in form. Is held well out of the foliage on long strong stems. Plants, \$5.00.

- Serenade.** (B. B.) Form of this Hybrid is perfect incurved, color is an iridescent old rose which shimmers in the sunlight, like changeable silk. The pale old rose petals have a reverse of violet, the flower is very large, and has a long stem. This variety was much admired in the gardens. Tubers, \$3.50. Plants, \$1.75.
- Sinbad.** (B. B.) The color is a bright maroon, reverse of the petals is of a lighter shade, and as they twist and turn, the effect is of a blossom tipped with mauve, form incurved, the stem while long and wiry, is perfectly stiff, blooms freely. Tubers, \$3.00. Plants, \$1.50.
- Siskiyou.** (Broomall.) In this we have one of the largest Dahlias to date, has won that prize at nearly all Shows the past season. Color pink-tinged mauve, plants are sturdy and vigorous, and the flowers are held erect on strong stems. Tubers, \$5.00. Plants, \$2.50.
- Sun Maid.** (Spacher.) This immense Dahlia has been awarded many first prizes in California. The color is a beautiful soft blending of orange and gold. The flower has great depth, and is held erect on strong stiff stems. Tubers, \$10.00. Plants, \$5.00.
- Sunny South.** This is one of the finest pure yellow Dahlias to date; a clear yellow without any shadings, the blossoms are immense in size, fine form and very deep in the center. Plants are of medium height, and the huge flowers are held erect on long, straight, stiff stems, well above the foliage, very free blooming. Tubers, \$5.00. Plants, \$2.50.
- Talisman.** (B. B.) If you are looking for a new combination in autumn tints here it is. This big full Hybrid Cactus has a brownish red color, with a reverse of tan, the petals are long and many, incurve slightly, and open at the tips showing plainly the tan at the back. The center is also tan. Excellent stems. Tubers, \$2.50. Plants, \$1.50.
- Violetta.** (Waite.) Color is petunia-violet, very large flower which stands on top of the stem. Free bloomer and very much admired. Tubers, \$2.50. Plants, \$1.50.
- Washington City.** The gigantic, pure white, star-like flowers of this variety were greatly admired in my garden the past season. It has long stems which hold the flower erect. \$1.00.
- White Sister, H. C.** Originated by Mrs. Stout and considered the finest white Hybrid Cactus ever introduced, large blossoms are held erect on extra fine stems, plants are strong and vigorous and very free blooming. Tubers, \$3.00. Plants, \$1.50.
- Wonderland.** (Bissell.) This is one of the most distinct Dahlias in existence, for both form and color. Flowers are very large, and the front of the petals are violet carmine; reverse of petals light rose pink, petals are twisted and curled, giving a fluffy ruffles effect, that is unique, and exceedingly handsome two-toned effect. Tubers, \$7.50. Plants, \$3.75.
- Zante.** (B. B.) This is one of Bessie Boston's big fellows. Another gold, but decidedly different, as it is heavily suffused with apricot pink. Blooms are very deep and large. Stem is stiff and holds the flower erect. Fine for exhibition. Tubers, \$7.50. Plants, \$3.75.

CACTUS DAHLIAS

American and English Types

- Arthur Twitchett.** The color is flesh or blush pink. A large perfectly formed incurved flower with faultless stem, good for all purposes. Tubers, \$1.00.
- Alex Kennedy.** Very large deep crimson flowers. Extra long strong stem. Tubers, \$1.00.
- Ambassador.** In this we have the finest Cactus Dahlia to date. The color is a soft yellow buff, shaded salmon pink; flowers of pleasing form and enormous size, extra long fine stems. Tubers, \$2.00.
- Amber Glow.** This very large Cactus has long narrow petals, the color is bright yellow, deepening to pale orange at the center. Tubers, \$2.00. Plants, \$1.00 each.
- Ballet Girl.** "Bessie Boston Introduction." A bush of this variety will contain such a riot of colors that it is no fun to describe it. There will be pure orange blooms, some orange with white edges, white shading to orange. All are beautiful and very large. Fine for exhibition. \$1.00 each.
- Bonnie G.** A tall grower and produces very large flowers with great freedom. In color a true pink. Nothing has been offered so dainty and pretty since France introduced *Delice*. \$1.00 each.
- Border King.** Deep, rich, glowing scarlet, the large incurved blossoms are held erect on long stiff stems. Tubers, \$1.50.
- Carona.** Huge exhibition flower of true English type. A clear yellow on fine stems. Tubers, \$1.50.
- Canary.** Color pure yellow; the habit of the plant is erect and the flowers have good stems. Tubers, \$1.50.
- Champion.** Immense size, clear crimson scarlet, well carried on good stems. Tubers, \$2.50.
- Empire.** This bold, large flower is composed of many perfectly rolled petals, the color is deeper at the center and gradually lightens to pure raspberry, a free bloomer. Tubers, \$2.00.
- F. W. Fellows.** Pure orange scarlet, with long straight petals, large flowers on strong stems. Tubers, \$1.00.
- Guardian.** Giant glowing scarlet flowers, carried on long stiff stems. Tubers, \$1.00.
- Gladys Bates.** This is one of the popular new Dahlias. The heavy blooms, incurved petals of tan, with a reverse of rose, are very attractive. This is a perfect cactus with all the good points and is always covered with bloom. Tubers, \$1.50. Plants, \$1.00.
- Herbert Raby.** Deep wine crimson, large flower. Tubers, \$1.00.
- Independent.** This is of the extremely large incurved type that is so dear to the heart of the exhibitor. The color is a blending of soft salmon pink with yellow tips. Tubers, \$2.00.
- Ivory White.** A creamy white of extra large size, strong grower, good habit, and strong stems. Tubers, \$1.50.
- Irene Satis.** Amber, deepening to bronze, large and full, \$1.00 each.

- Johanesburg.** Bright gold, very large and free. 50c each.
- Julian.** Beautiful flesh pink, fading to almost white center. Large flowers on good stems. Plants only, \$1.00.
- Jupiter.** Very large bi-colored Cactus, yellow at base shading to pink, the whole striped and splashed crimson. Tubers, \$1.00.
- Jean Chazot.** Color is a golden bronze. An extra fine Dahlia. Extra fine long stems and free bloomer, the autumn tinted cactus. Tubers, \$1.00.
- Kiku.** The flowers are very large and incurve beautifully so they resemble a chrysanthemum. Color is bright yellow and the medium low bushes are a mass of blooms on excellent stems. Tubers, \$3.00. Plants, \$1.50.
- Laurine.** Color a deep-pink, flowers are very large and are carried on long stiff stems. The best pink Cactus to date. Tubers, \$2.00. Plants, \$1.00.
- Lolita Velasco.** The most perfect white Cactus. The petals are long and straight, very fine center, and the size immense; the stem is very long and stiff. This is bound to become very popular. Tubers, \$2.00. Plants, \$1.50 each.
- Mrs. C. Cooper.** One of the largest Cactus Dahlias yet produced. Petals are long and very narrow. The color is a charming cream-suffused salmon. \$1.00 each.
- Mrs. Margaret Stredwick.** This is a very fine Cactus Dahlia. Color is a soft pink, form is perfect and it is a very free bloomer. \$1.00 each.
- Mrs. Alfred Harvey.** The finest incurved, narrow petalled Dahlia we have ever grown. A light salmon-pink with darker shading at the base of floret, fine long stiff stems. Tubers, \$2.00.
- Mrs. C. A. Gillatt.** This is a monster Cactus, having many long fine petals. The color is yellow base deepening to rose pink with yellow at tips. Tubers, \$2.00.
- New York.** Yellow shaded pinkish-salmon, an attractive color, fine form. Tubers, \$1.00.
- Norman.** Bright orange red, large flowers, extra fine for exhibition. Tubers, \$1.50.
- Olympic.** Extra large deep crimson flowers very much incurved. Tubers, \$1.50.
- Phenomenal.** Beautiful shades of pale salmon, with yellow base and decided yellow tips. An excellent variety. Tubers, \$2.00. Plants, \$1.00.
- Pierrot.** So different from other Dahlias that it always attracts attention. Color deep amber tipped with white; flowers very large and incurved. Extra fine. 75c each.
- Regent.** This Dahlia has immense size and is a very free bloomer; color a clear mauve pink, the petals incurve so as to completely hide the center. Tubers, \$1.50. Plants, \$1.00.
- Richard Box.** A clear yellow, with long narrow petals incurved over the center. Stems stiff and straight, free bloomer. Tubers, \$1.00.
- Silverhill Park.** The finest narrow-petals incurved white cactus ever introduced. Never burns in the sun and is a beautiful cut flower variety. Tubers, \$2.00. Plants, \$1.00.

- Sussex.** Immense clear light yellow with narrow, needle-like petals, that are almost straight. Unique in form and very attractive. Tubers, \$1.50.
- Satisfaction.** A fine, free blooming variety of the largest size, with a very good stem. Color is yellow with salmon shadings. Tubers, \$2.00.
- The Imp.** The darkest cactus Dahlia. The petals are long and narrow and incurved claw-like. Tubers, \$1.50.
- Sweet Brier.** An exquisite pink. Admired by all who see it. Tubers, \$1.00.
- Sydney Jones.** "Stredwick." This is another one I imported from England. I consider this the most beautiful Cactus Dahlia I ever raised. It is very large and held erect on stiff stems. The florets are long and very narrow. Color a clear, deep pink enhanced by a disc of yellow at base and quite distinctly tipped with yellow. Plants only, \$1.50.
- Vicar of Wasperton.** An exquisite shade of soft pink, passing to cream center. Very large, incurved flowers, narrow petals. \$1.00 each.
- Valiant.** Everyone should grow this fine Cactus. Giant flowers of a brilliant crimson with long, incurved petals. \$1.00 each.
- Victory.** Large coral red; a new and unusual color, good stems. Tubers, \$1.00.
- Winter Time.** Thomas Murphy's new white cactus. An excellent variety on fine stiff stems. Very free bloomer. Tubers, \$3.00. Plants, \$1.50.

PEONY OR "ART" DAHLIAS

This type is semi-double with open center, the inner floral rays being usually curled or twisted, outer petals being either flat or more or less irregular.

- Chanson.** The color is a deep lilac with a bluish sheen, a large blossom held erect on long, stiff stems. Tubers, \$2.50. Plants, \$1.50.
- City of Portland.** A grand novelty. Color a clear, deep, rich yellow; it has every good quality; immense flowers held upright on long stems. \$1.50 each.
- Cardinal Mercier.** "1920 introduction of Geo. L. Stillman." Color a deep flesh pink with light veins of canary shooting up from the base of the petals in the centre. Then there appears a glistening silvery sheen of the white-flesh peach. The curly formation of the florets of this beautiful flower is indeed remarkable. \$3.00 each. Plants, \$1.50 each.
- Dreamlight.** A large full flower composed of many narrow flat petals of a lovely shade of pale old rose with yellow at the base; a very attractive Dahlia. Tubers, \$3.00. Plants, \$1.50.
- Elizabeth Boston.** Enormous blooms of deep crimson, shading to old gold at the tips, stems are long and cane-like. This is one of the very best. Tubers, \$3.00. Plants, \$1.50 each.

- Geisha.** A very popular Dahlia. This is the Dahlia that made the peony famous. A stunning mixture of scarlet and gold. Tubers, 75c each.
- Gorgeous.** "1920 introduction appropriately named." A gorgeous yellow and crimson; immense flowers and good stems. \$2.00 each. Plants, \$1.00.
- Susan Coe.** A splendid flower of perfect form and size, carried on long, stiff stems; outer petals a pleasing shade of rose-pink passing to a yellow center suffused salmon. A very large flower. Tubers, \$1.00.
- The Oriole.** This is a very striking peony Dahlia. Color a combination of burnt orange; red and yellow; sometimes shading to white at the tips; large flowers on good stems. Tubers, \$2.00. Plants, \$1.00.
- Uncle Sam, P.** The largest and most wonderful new Dahlia to date, a prize winner wherever exhibited. Color orange buff at base, petals shading to bitter-sweet pink at tips, all overlaid with a beautiful golden sheen, center petals mustard yellow, streaked with deep rose-pink and beautifully curled and twisted, reverse side of petals shaded spinel-red, it is immense in size and held erect on stiff stems. Tubers, \$2.50.
- Virginia Harsh.** A most unusual and pleasing shade of pink, the large flowers similar in shape to "Geisha" are borne well above the foliage in great profusion. Tubers, \$3.00. Plants, \$1.50.
- Vivandiere.** Cerise carmine, shading lighter at the tips of the petals. The flower has a peculiar velvety texture that makes it most desirable. Stems are excellent. Tubers, \$3.00. Plants, \$1.50.

SHOW DAHLIAS

- Anna Rehorst.** A wonderful Hybrid Show, of the deepest shade of purple. Tubers, 75c.
- Esmond.** Biggest and best yellow. Tubers, 75c.
- John Walker.** Fine exhibition form. Pure white. Tubers, 75c.
- Betty Bird.** Glowing rose pink with a suggestion of yellow at end of petals. The most beautiful of all Hybrid Shows. Plants only, \$2.50.
- General Miles.** An enormous flower. Color light violet, striped and spotted with purplish magenta; one of the finest exhibition varieties. Tubers, \$1.00.
- General Haig.** Best scarlet show. Tubers, \$1.00.
- Gold Medal.** Fancy, bright lemon yellow, regularly striped dark crimson. Tubers, 75c.
- Miss De Hagon.** A garden variety, quilled petals; color crushed strawberry, reverse of the petals a light shade of purple. Tubers, \$1.00.
- King George.** Immense size, color a deep shade of lavender. One of our best Show Dahlias. Tubers, \$1.50.
- Maritana.** Lilac or mauve shade. True type, large flowers, with closely quilled petals. Tubers, \$1.00.

POMPON DAHLIAS

These are the same shape as the Show and Fancy Dahlias, but are much smaller. The neat, compact flowers, are very fine for bouquets and include nearly every color but blue.

- Aimee.** A wee flower of bronze, free flowering on long stems. 50c.
Arthur. (New.) Brilliant scarlet, small flower. Regularly formed, long stems. 75c.
Barbara Purvis. A fine pure white. 50c each.
Bell of Springfield. Red, very small. 25c.
Blutrochen. Blood red, rose points. 25c.
Brunette. Crimson, showing white. 50c.
Bobby. Deep plum color. Extra fine and free. 25c.
Douglas Tucker. Golden yellow, with crimson center. A gem for cutting and exhibition. 50c.
Deedee. New. Very dainty and small, shade of pure lavender. 50c.
Dandy. Form is perfect, color orange, very small and free. 75c.
Eileen. A most lovely flower, white tipped with lilac. Indispensable for exhibition and garden. 75c.
Girlie. Mauve pink with splendid stems. Excellent for cutting, 25c.
Ganymede. Amber, tinted lilac, a novel and distinct variety. 50c.
Grauserwein. Crushed strawberry. 50c.
George Ireland. A lovely little variety. Blooms perfectly formed and of a pretty mauve color. Very free in flowering. 50c.
Glow. Charming old rose. 50c.
Goldie. Color pure gold, a tiny flower of perfect form, good stems for cutting. 50c.
Hypatia. Salmon shading to pink. 50c.
Joan. Clear yellow suffused with pinkish red; very fine, \$1.00.
Joe Fette. Extra fine white. 50c.
Jessica. Amber, edged red. 25c.
Ideal. A light yellow, of fine form, and one of the best. 50c.
Johnnie. Tiniest of all and none more perfect in form. A deep dark red. A favorite with men for button hole bouquets. 50c.
Kim. A beautiful orange color. 50c each.
Lassie. Dull old rose. 50c each.
Little Beeswing. Very tiny, red shading to yellow. 50c.
Little Jennie. Primrose yellow, very finely quilled. 25c.
Little Mabel. Amber. 25c.
Lilias. (New.) One of the loveliest of this type, cream ground heavily suffused with pinkish mauve. Each \$1.00.
Little David. (New.) The deepest shade of orange. Small, perfectly shaped blossom. Each \$1.00.
Major. Deep shade of old rose, shading to soft yellow; very fine, 50c.

- Mavis.** Palest amethyst in color, a perfect little beauty. 50c.
- Macbeth.** White tipped pink, very rare, perfect form, one of the best. \$1.00.
- Nelly Fraser.** The very best pink, stock scarce. Each \$1.00.
- Oleta.** (New.) Soft oriental red, with extra long stiff stems. Each \$1.00.
- Omega.** New, amethyst, faintly tipped white, very small. 50c.
- Pee Wee.** Soft yellow with a center shading to brown. 75c each.
- Petite.** New, small blossom composed of tiny pointed petals, a lovely new shade of amethyst. 75c.
- Red Indian.** Deep coral red, very good. 50c.
- Phoebe.** Orange and scarlet. 75c.
- Rosa.** Quite a model in size and build. The color is pretty and distinct. 25c.
- Regulus.** Excellent cerise purple of small size. 50c.
- Reno.** (New.) Beautiful old rose, shading to old gold. Each 75c.
- San Toy.** White, heavily edged, rosy carmine. 50c.
- Snow Clad.** White, free bloomer. 25c.
- Sunset.** The only orange colored pompon and very popular for cutting and exhibition. The coloring is particularly charming. 50c.
- Tiny Tim.** Smallest and most perfect pink. \$1.00.
- Wee Gracie.** A charming little pompon. It is very constant, the color is white with a faint lavender tip and edging. 25c.
- Yellow Gem.** Creamy yellow, small, fine form. Each 50c.

SPECIAL OFFERS

For those who would like a very choice collection of twelve named varieties, and are willing to leave the selection to me, I will make the following offers. These will be big values for the money, and are sure to please you.

I will send twelve strong roots of extra fine Dahlias for \$25 per dozen, \$20 per dozen, \$15 per dozen, \$10 per dozen, \$5 per dozen, \$3 per dozen, my selection, each one labeled, no two alike, prepaid.

For \$3 I will send twelve extra fine Pompons, my selection, no two alike, each one labeled.

SPECIAL FOR EARLY BUYERS

With all orders mailed before March 1st, 1926, you may select from my catalogue, Gladioli bulbs, Dahlia tubers or plants, the following values.

With all orders of \$10.00 or over select \$1.00 in value.

With all orders of \$15.00 or over select \$1.50 in value.

With all orders of \$20.00 or over select \$2.00 in value.

With all orders of \$25.00 or over select \$2.50 in value.

The above offer is not allowed when other discounts are given. I reserve the right to substitute any other variety of equal value should I be sold out on the varieties you select.

CHOICE NAMED VARIETIES OF GLADIOLI

Our customers will note in this issue many new varieties that we have tried out in our gardens and found to be worthy acquisitions. It is our practice each year to obtain plantings of the newer creations in order that our many visitors may have the opportunity to view them while growing in our fields.

CARE AND CULTURE OF GLADIOLI

Do not plant too early, as nothing is gained by planting before the ground is warm. If your soil is heavy plant four inches deep, if light and sandy, six inches is better. Place the bulbs four to six inches apart. Place the bulbs in a well worked trench in zigzag rows, and cover at first about three inches, when shoots begin to appear, work balance of dirt into the trench.

At all times keep the soil loose. If exhibition blooms are wanted Sheep Manure or Fertilizer should be worked in around the plants when hoeing.

At the time flower spikes appear abundant watering is very beneficial. In the Fall dig the bulbs as soon as the leaves turn yellow. Cut stem off half an inch above bulb. Spread bulbs out in the sun and dry thoroughly before storing. Store in a cool dry cellar.

Water Nymph. A 1926 introduction, originated by Thomas H. Hughes, New Bedford, Mass.

Color seashell pink, tinted rose on edges, bases apricot yellow stippled pomegranate purple. Form wide orchid to wide lily, with tips reflexing. Rated 93 exhibition and commercial, by Mr. Charles E. F. Gersdorff, Washington, D. C. Bulbs, \$5.00 each.

- Adeline Kent.** Delicate light rose pink, heavily ruffled, throat straw color. 50c each.
- Alice Tiplady.** A variety obtained by crossing the *Primulinus* with *Kunderdi Yellow*. Color a beautiful orange-saffron-yellow; blooms quite large. 6c each; 50c per dozen; \$4.00 per 100.
- Albania.** This is the most pleasing white variety we have yet seen, a fine spike and a healthy, vigorous grower. 20c each; \$2.00 per dozen; \$12.00 per 100; bulblets, \$2.00 per 1000.
- Anthony B. Kundred.** Well ruffled, deep cream overlaid blush-pink, lower petals primrose, edged pink; one of the best. 40c each; \$4.00 per dozen.
- Anna Eberuis.** Dark velvety purple, throat deeper shade. Flowers 6 inches in diameter; spikes, 3 to 4 feet high, fine, long and well set. 15c each; \$1.50 per dozen.
- Angola.** Prim. Large salmon pink flower with beautiful throat. 6c each; 50c per dozen; \$4.00 per 100.
- Baron Hulot.** Dark violet, bordering blue; best of all the violet shaded varieties. 10c each; \$1.00 per dozen.
- Blue Jay.** A light grayish blue with darker blue markings and having a red stripe on tongue of the lower petals. A choice variety. 10c each; 75c per dozen.
- Blushing Beauty.** Opening buds blush pink. Flower softest possible blush. Dainty pink throat lines. 35c each; \$3.50 per dozen.
- Byron L. Smith.** A delicate shade of lavender-pink on a white ground—a combination which equals in beauty many or the choice orchids. Spikes are long, giving the variety added value as a cut flower. 10c each; \$1.00 per dozen.
- Bumble Bee.** Large flower of purest salmon rose pink. Ground penciled blue. 20c each; \$2.00 per dozen.
- Bubbles.** Flesh color overlaid with a shrimp pink, large spike, fine. 30c each; bulblets, \$1.00 per 100.
- Catherina.** An unusually attractive variety with long spikes of blue-grey flowers distinctly marked with brownish red spots. Very fine. 10c each; \$1.00 per dozen.
- Carmen Sylva.** Pure snow-white, throat slightly penciled lilac, tall, slender and wiry, excellent for cutting. 20c each; \$2.00 per dozen; bulblets \$1.00 per 100.
- Charm.** Pure deep rose pink. A perfect blotch of deep red on lower petals, very fine. 50c each.
- Conspicuous.** Beautiful grey blue, with darker throat markings and a fine penciling of yellow. Very attractive. 10c each; \$1.00 per dozen.
- Crimson Glow (Betscher).** By far the most beautiful red *Gladiolus* yet on the market. A perfect scarlet of a deep tone. Very large, open flowers of the finest form and exceedingly well placed on the spike. 10c each; 75c dozen; \$5.00 per 100.
- Capt. Boynton.** A charming new lavender-blue, large flowers and long perfect spike, one of the very best in this class. 75c each; \$7.50 per dozen; bulblets \$5.00 per 100.
- Dawn (Groff).** Strong, vigorous grower. Flowers salmon shading to very light; claret stain in throat. Extra fine. 20c each; \$2.00 per dozen.

- Diener's American Beauty.** Brilliant American beauty color, with creamy yellow throat. One spike opening a large number of flowers at one time. Forms an immense bouquet. 50c each.
- Elizabeth Tabor.** This wonderful new variety is one of the earliest to bloom. Delicate rosy pink on white ground, rich dark crimson blotch on lower petals. 50c each; \$5.00 per dozen. Small size \$2.50 per dozen; bulblets \$1.50 per 100.
- Dew Drop.** Beautiful white delicately blushed. Lower petals are pastel cream, medium blotch. 20c each. \$2.00 per dozen; bulblets, \$1.00 per 100.
- Dr. W. Van Fleet.** Extra tall plant, very large flowers of a delicate rose pink, deeper at edges of petals. Throat canary yellow or cream tint, a very fine variety. 20c each; \$2.00 per dozen; bulblets, \$3.00 per 1000.
- Dr. Elkins.** A sport from Mr. Frank Pendleton; white with large throat blotch of lilac blue, very showy. \$1.00 each.
- Dorrit.** Rose lilac striped or splashed over white ground. Very large flowers, excellent variety. 20c each; \$2.00 per dozen; small bulbs \$1.00 per dozen; bulblets, 20c per dozen; \$2.00 per 100.
- Elkhart.** Lavender rose, deeper throat blotch, a rich color. 40c each; \$4.00 per dozen; bulblets \$3.00 per 100.
- Exquisite.** American beauty rose color, self color, very fine. 50c each; \$5.00 per dozen; bulblets, \$5.00 per 100.
- E. J. Shaylor.** Tall, very strong plant and large blooms. A beautiful, pure, deep rose-pink. Extra choice. 10c each; \$1.00 per dozen.
- Europa.** Snowy white, without any color mark whatever. Large flowers, compactly placed, and many open. One of the finest whites in existence. 10c each; \$1.00 per dozen.
- Evelyn Kirtland.** Very tall, slender spike. Blossoms an exquisite shade of melting pink, deepening toward the edge; brilliant scarlet blotches on lower petals. A marvelously beautiful flower and a great prize-winner. 5c each; 50c per dozen; \$4.00 per 100.
- Fern Kyle.** Large creamy white flowers, a wonderful variety. Large bulb, 40c each; small bulb, 25c each; bulblets, 50c per dozen: \$4.00 per 100.
- Flora.** Beautiful golden yellow. One of the new introductions which I consider one of the best yellows in existence. The flowers are well placed and very showy. 10c each; \$1.00 per dozen.
- "Frank J. Symmes."** Salmon-rose pink with red center, ruffled edges. Should be in every collection. 20c each; \$2.00 per dozen.
- "Gladis Plath."** Orchid flowering; lilac and red velvet blotches. Beautiful variety. 20c each; \$2.00 per dozen.
- Glorious.** Soft cream color, with a deep cream-apricot throat; extra fine blooms on long spikes. 30c each; \$3.00 per dozen.
- Giant Myrtle.** White, suffused pale rose pink. Tall, beautiful, and rare. \$1.00 each; small 50c each; bulblets \$1.00 dozen.
- Giant Nymph.** Light rose pink color with creamy yellow throat. Immense size. 50c each; \$5.00 per dozen; bulblets \$1.50 per 100.

- Golden Measure.** New. A magnificent yellow Gladiolus. Very large, open flowers, rich corn yellow; immense spike. 20c each; \$2.00 per dozen; bulblets \$3.00 per 1000.
- Gold Drop.** Pure deep yellow, with red line on petals; an extra large ruffled variety. 20c each; \$2.00 per dozen.
- Gretchen Zang.** Tall, graceful spike of soft, pleasing shade of geranium pink, with carmine throat markings. 10c each; \$1.00 per dozen.
- Glory of Noordwijk.** Clear canary yellow, large blooms, excellent habit; one of the best. 30c each; \$3.00 per dozen.
- Gold.** Pure golden yellow, large flowers, many open at one time; a grand variety. 40c each; \$4.00 per dozen; bulblets \$2.00 per 100.
- Henry C. Goehl.** Flowers large and well opened, with broad segments, of solid white slightly flushed pink. Lower segments blotched crimson. 35c each; \$3.50 per dozen.
- Highland Laddie.** Large, massive and beautiful pink of a decided and pleasing shade. 75c each; \$7.50 per dozen.
- Herada.** Flowers of immense size on tall, straight spikes. Color pure mauve, the best in its class. 50c each; \$5.00 per dozen.
- Immensity.** Tall strong plants, bright salmon color. Very fine. 35c each; bulblets \$1.00 per 100.
- Jenny Lind.** Pure, soft apricot pink, throat pale yellow; many blooms open at a time, very choice variety. 40c each; \$4.00 per dozen.
- John T. Pirie.** A sort of mahogany brown with yellow bordered brown throat. In a class by itself. \$1.00 each.
- Joe Coleman.** Very large and vigorous, color rich red. 10c each; \$1.00 per dozen.
- Jack London.** Light salmon with brilliant orange flame strips; golden yellow throat with ruby centre; a very choice variety. 10c each; \$1.00 per dozen; \$7.00 per 100.
- Jewell.** One of the most beautiful varieties. Clear salmon-pink melting to a very beautiful yellow throat. Tall, straight spike, fine cut flower, early. 25c each; \$2.50 per dozen.
- Linton.** Showy orange-red, with lower petals a lighter shade; orange-red throat. A desirable Primulinus hybrid for cutting. 6c each; 50c per dozen; \$3.00 per 100.
- Lillian.** Tall, fine plant with many wide open flowers; color white with light pink pencilings over all petals, deep rose pink blotches; extra fine. 50c each.
- Lilywhite.** The fine new pure, snow-white. Blossoms of good size, and 6 or 7 open at once. Will be in great demand, particularly with florists. Early and prolific. 20c each; \$2.00 per dozen.
- Louise.** Beautiful lavender. 15c each; \$1.50 per dozen.
- Loveliness.** Color a clear, cream-tinted sulfrano pink; very soft and delicate. The flowers are large and well placed on the spike, nearly all being open at one time. 10c each; \$1.00 per dozen.
- Marie Kundred.** Beautifully ruffled white, almost invisible pink lines in center of lower petals. 50c each; \$5.00 per dozen.

- Masterpiece.** A magnificent ruffled "American Beauty" rose color. 50c each.
- Mary Pickford.** Delicate creamy white throat; stem and calyx white. An extraordinary flower, borne on long stems. 8c each; 75c per dozen; \$4.00 per 100.
- Mary Fennell.** Beautiful light lavender, tinged soft pink, lower petals pencilled with primrose yellow. 15c each; \$1.50 per dozen.
- Mrs. F. C. Peters.** Beautiful shade of rose lilac, with dark crimson blotch, resembles an orchid. A very large fine spike, one of the choicest varieties. 40c each; \$4.00 per dozen; bulbiets \$1.00 per 100.
- Mrs. Arthur Meeker.** American beauty rose color. 50c each; \$5.00 per dozen.
- Marble Barred.** A beautiful striped on white ground, throat is elegantly stippled and flaked with finest tintings. 25c each; \$2.50 per dozen.
- "Mrs. H. E. Bothin."** Flesh-salmon pink flame scarlet center, strong; a first-class show variety. One of the loveliest color combinations in Gladioli. A great improvement on Pendleton, Jr. We recommend everyone to procure as many bulbs as possible of this variety. 20c each; \$2.00 per dozen; bulblets \$4.00 per 1000.
- Mrs. Francis King.** Salmon-pink, mottled with darker shades of the same color. Flowers are exceptionally large and heavy, and it will be of distinct advantage to provide stakes for the long spikes. 8c each; 60c per dozen; \$3.00 per 100.
- Myra.** Deep salmon over yellow ground; yellow throat with pink lines. A new and giant-flowered variety. 6c each; 50c per dozen; \$4.00 per 100.
- "Mrs. John R. Walsh."** Flesh pink, flamed colored centers; this is a seedling of Mrs. Pendleton, Jr. It is a magnificent variety that should be in every collection. 30c each; \$3.00 per dozen; bulblets \$1.00 per 100.
- Mona Lisa.** The blooms are almost self-colored, but are inclined to tints of the softest pale rose, pink or blush-white. A most dainty variety. 20c each; \$2.00 per dozen.
- Monon.** Dark rose-pink, flaked with darker pink and growing still darker in the throat; the upper portion of the throat has white markings. 10c each; \$1.00 per dozen; bulblets 50c per 100.
- "Mrs. Mary Stearns Burk."** Canary yellow overlaid with apricot; deep canary center. It is one of the finest yellows known so far. When known it will be one of the most grown varieties for cut flowers. 20c each; \$2.00 per dozen.
- "Mrs. Rudolph Spreckels."** Cream pink with old rose stripes; fine long full spikes. A-1 show and cut variety. 30c each; \$3.00 per dozen.
- Majestic.** Brilliant orange-pink, large flowers with a white throat. 15c each; \$1.50 per dozen.
- Mrs. Frank Pendleton.** A spectacular variety, producing large, well-expanded flowers, light pink, heavily blotched with blood red in throat. 50c per dozen; \$4.00 per 100.

- Myrtle.** Clear, delicate rose pink with throat tinted primrose and white, giving a peculiar cool color effect. Extremely lovely. Good form, well placed on spike. 15c each; \$1.50 per dozen.
- Mrs. Dr. Norton.** A pure soft white, with tips of petals suffused La France pink. Quite the most beautiful variety of this type on the market. Highest awards in its class wherever shown. 10c each; \$1.00 per dozen; \$4.00 per 100.
- Mrs. Watt.** Rich red, almost exactly the same shade as the American Beauty rose, making a beautiful combination when used with yellow varieties. Blooms are exceptionally large, on long spikes. 10c each; \$1.00 per dozen.
- Muriel.** A distinct color which may be termed "orchid blue," with each petal marked with purple spots. 15c each; \$1.50 per dozen.
- Marshal Foch.** Many giant flowers open at a time on very strong stem and plant, color of finest salmon-pink, extra fine variety. 20c each; \$2.00 per dozen.
- Memories.** Softest creamy white upper petals, lower petals light canary yellow, nicely traced pink. Extra choice variety. \$1.00 each.
- Mrs. Leon Douglas.** Begonia rose; striped with scarlet, lip is pale lemon slightly speckled with ruby. Very choice variety. Large bulb \$1.00; small bulb, 50c; bulblets \$5.00 per 100.
- Orange Glory.** Large, ruffled flowers. Orange with lighter throat. Rank, healthy grower. Quite rare as yet. 10c each; \$1.00 per dozen.
- Paramount.** A wonderful blending of pink and cream, winner of many awards. \$2.00 each.
- Peach Rose.** A remarkable shade of deep rose-pink, distinct and very beautiful. 35c each; \$3.50 per dozen; bulblets 50c per dozen; \$2.00 per 100.
- Peace.** A very fine white Gladioli. The blooms are almost pure snowy white, with faint lilac markings on the lower petals; a late bloomer, extra fine cut flower. 10c each; \$1.00 per dozen.
- Pink Perfection.** Delicate shade of apple-blossom pink; extra fine, large flowers arranged closely on a long spike. 10c each; \$1.00 per dozen.
- Pride of Hillegom.** Brilliant crimson; a distinct variety in color and habit of growth. 25c each; \$2.50 per dozen.
- Pink Lily.** One of the most delicately shaded of the ruffled rose-pink sorts. 35c each; \$3.50 per dozen.
- Pink Wonder.** This is the largest and finest pink Glad ever introduced. The color is a shade lighter than Panama, yellow shading at base of lower petals, overlaid with rose feathering, very much admired. 15c each; \$1.50 per dozen.
- Pearl of Dawn.** Rose-pink, deeper bordered petals, lighter toward center, large throat marks with deep red center lines. 50c each; \$5.00 per dozen.
- Peep O'Day.** Tall, beautiful, blushed pink on white ground, long feather barred throat. 50c each.
- Parexcel.** Deep salmon pink, with finest large Pelargonium like throat blotches. 20c each; \$2.00 per dozen.

- Primulinus (Hybrids).** Originated by Mr. A. E. Kundred; all choice named varieties in mixture. 6c each; 50c per dozen; \$3.00 per 100.
- Primunella.** A shade of yellow as delicate as that found in an orchid; ruffled. 10c each; \$1.00 per dozen; \$3.00 per 100.
- Purple Glory.** The giant of the Kunderdi Glory race and of remarkable color. Deepest velvety maroon red, with almost black blotches, as if burned into the petals. Beautifully ruffled, and a most extraordinary variety. 25c each; \$2.50 per dozen; bulblets \$1.00 per 100.
- Rarity.** Brilliant lavender, tinted with old rose. 10c each; \$1.00 per dozen; \$4.00 per 100.
- Rev. Eubank.** Delicate shade of porcelain-blue, with pronounced red markings in the throat. 15c each; \$1.50 per dozen; \$8.00 per 100.
- Richard Diener.** Geranium pink, with slight sprinkling of ruby on creamy yellow center. This is one of our very best Glads. Large bulb 50c each; small bulb 25c each; bulblets \$4.00 per 100.
- Rose Glory.** Color a wonderfully beautiful shade of rose-pink which changes to deeper tints in the throat. 20c each; \$2.00 per dozen.
- Roanoke.** A vigorous and large rich yellow; prim, extra good cut flowers. 6c each; 50c per dozen, \$3.00 per 100.
- Ramona.** Yellow, blushed orange, lower petals golden yellow. This is one of the very best Primis to date. 15c each; \$1.50 per dozen.
- Salmon Beauty.** Very large flowered Primulinus, deep salmon, rich salmon, yellow throat, very fine. 10c each; \$1.00 per dozen; \$4.00 per 100.
- Sweet Lavender.** A lovely combination of light lavender pink blending into creamy-yellow with very prominent magenta-red blotch. Very early. 35c each; \$3.50 per dozen; bulblets \$1.50 per 100.
- Sulphur Glow.** A beautiful shade of yellow. Many well expanded intensely, ruffled flowers open at a time. 50c each.
- Schwaben.** Delicate primrose with yellow and crimson center, large flower and spike. 10c each; \$1.00 per dozen.
- Twilight.** Beautifully blushed creamy buff with throat of grandest yellow and pink. 50c each.
- Thistle.** Large rose red of very open and perfect form, large pansy-like throat markings. Very choice. 50c each.
- Virginia Hale.** Beautiful soft creamy salmon rose, deeper towards border of all petals. 50c each; \$5.00 per dozen.
- White Giant.** A very large pure white, petals long and narrow, and flower when fully open resembles a six pointed star. 10c each; \$1.00 per dozen. \$5.00 per 100.
- Wilbrink.** This variety has everything to recommend it. Immense blooms of a delightful flesh pink, on a graceful spike. An early and profuse bloomer. A few spikes make a splendid decoration. 6c each; 50c per dozen; \$3.00 per 100.

White Glory. A gorgeous pure white, with beautiful iris blue throat, a grand variety. 10c each; \$1.00 per dozen.

White Wonder. This is a very large pure white, without any markings in the throat; this will become a leader in the white class. 15c each; \$1.50 per dozen.

Attention. We can supply bulblets of nearly all varieties. If interested, write for prices.

Your correspondence is cordially solicited.

Write for special prices on large orders, or planting stocks.

Bulblets by the dozen, hundreds or thousands.

GLADIOLUS COLLECTIONS

The following are SPECIAL COLLECTIONS made up of one bulb each of our most popular varieties, in order to give our customers the opportunity of obtaining choice collections at a greatly reduced price. Sent postpaid. Kindly order by number. Cash with order, please.

Collection No. 1

Alice Tiplady	\$.06
Byron L. Smith10
Catherina10
Crimson Glow10
Dorrit20
Europa10
Evelyn Kirtland05
Flora10
Jack London10
Mary Pickford08
Mrs. Frank Pendleton ..	.05
Mrs. Dr. Norton10
Orange Glory10
Rarity10
White Giant10

Value\$1.44

One each of above for \$1.00
Two each of above for 1.70
Three each of above for 2.30

Collection No. 2

Byron L. Smith	\$.10
Blue Jay10
White Giant10
Dorrit20
Golden Measure20
Mrs. Dr. Norton10
Marshal Foch20
Dr. W. Van Fleet20
Purple Glory25
Rarity10

Value\$1.55

One each of above for \$1.25
Two each of above for 2.25
Three each of above for 3.25

Collection No. 3

Albania	\$.20
Bubbles30
Dorrit20
Golden Measure20
Mrs. H. E. Bothin20
Marshal Foch20
Peach Rose35
Purple Glory25
Jewel25
Blushing Beauty35

Value\$2.50

One each of above for \$2.00
Two each of above for 3.75
Three each of above for 5.00

Collection No. 4

Anthony B. Kunderd ...	\$.40
Elizabeth Tabor50
Fern Kyle40
Gold40
Jenny Lind40
Mrs. F. C. Peters40
Mrs. John R. Walsh30
Peach Rose35
Twilight50
Purple Glory25

Value\$3.90

One each of above for \$3.00
Two each of above for 5.50
Three each of above for 7.50

Exhibition Mixture

Made up of many choice varieties. If bought under name would cost double the amount asked. Many a gem is found in this mixture. \$5.00 per 100. \$2.50 per 50.

Garden Mixture

Splendid for the garden, or for cut flowers. \$2.50 per 100.

