

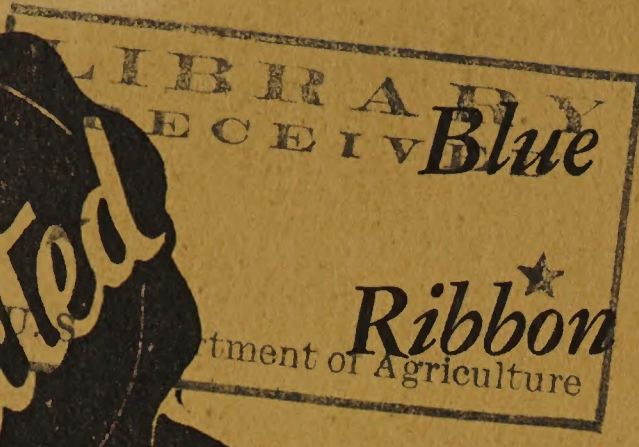
Historic, Archive Document

Do not assume content reflects current scientific knowledge, policies, or practices.



62.61

1940



Quality

Hardy, Pedigreed

Northern Field-Grown

Nursery Stock

for

City, Farm, and

Suburban Homes



PRICE LIST

No. 25-1



C. W. Stuart & Co.

ESTABLISHED 1852

Newark, New York State

It is conceded that

5%

**of the building cost of a home
invested in Nursery Stock for lawn
and yard decoration, increases
the property value at least**

20%

FALL PLANTING

In most sections everything can be planted with perfect safety in the Fall and fine results obtained.

In extremely cold sections we recommend Spring planting for Perennials, Privet Hedging, Evergreens, Everblooming Roses, Peach Trees, Raspberries and Strawberries and recommend Fall planting of everything else. This refers to Maine, New Hampshire, Vermont, Northern New York, Northern Michigan and Northern Wisconsin.

We urge Fall orders because experience shows our customers are well pleased with results when they plant in the Fall.

SPECIAL CUSTOMER BONUS on Orders of \$10.00 and over

There is a considerable saving in handling larger orders, which saving we are glad to pass along to our customers. Therefore, we will allow a *bonus of 10% in Free Nursery Stock (customer's selection) on every order of \$10.00 or more ordered at prices quoted in this Price List.*

Caution To Salesman

Customer's Bonus of 10% additional Nursery Stock given FREE OF EXTRA COST with orders of \$10.00 and over must be plainly marked on order blank, "Free Bonus Stock."

IMPORTANT NOTICE

No advance payment is required on orders of \$2.00 or over.

Due to the cost of bookkeeping and handling small accounts, orders for less than \$2.00 should be sold for cash, to be paid by the customer at the time the order is booked.

PRICE LIST INDEX

	Page		Page
Apples.....	20	Kerria.....	11
Apricots.....	20	Lantern Plant.....	5
Asparagus.....	23	Larkspur.....	5
Almond.....	10	Lilac.....	11
Althea.....	10	Linden Trees.....	18
Anemone.....	4	Lilies.....	8
Aster.....	4	Mallow.....	5
Ampelopsis Vines.....	13	Maple Trees.....	18
Bargain Groups.....	26-31	Matrimony Vine.....	13
Belgian Asters.....	4	Monarda.....	5
Barberry Hedge.....	9	Mulberry.....	18
Blackberries.....	24	Narcissus.....	7
Bleeding Heart.....	4	Ornamental Trees..	18-19
Bluebird Flower.....	4	Pampas Grass.....	5
Bulbs.....	7-8	Peonies.....	7
Butterfly Bush.....	10	Peaches.....	21
California Privet.....	9	Peach Bargain Group..	31
Cherries.....	22	Pear.....	22
Chrysanthemum.....	4	Pecans.....	19
Clematis.....	13	Perennial Plants.....	4-5
Canna.....	8	Perennial and Bulb Bar- gain Groups..	27-28-29
Catalpa.....	18	Plane Oriental.....	19
Columbine.....	4	Privet.....	9
Coralberry.....	10	Plums.....	21
Cornus.....	10	Prunes.....	21
Coreopsis.....	4	Phlox.....	5
Crocus Bulbs.....	7	Poppy.....	5
Crab Apples.....	20	Quinces.....	21
Currants.....	23	Raspberries.....	24
Dahlia.....	8	Raspberry Bargain Group.....	31
Deutzia.....	10	Rhubarb.....	22
Delphinium.....	4	Rock Plants.....	6
Digitalis.....	4	Roses.....	14-15-16-17
Dutchman's Pipe Vine..	13	Rose Bargain Groups.....	26
Elm Trees.....	18	Shade Trees.....	18-19
Forsythia.....	10-11	Shrubs.....	10-11-12
Foxglove.....	4	Shrub Bargain Groups..	30
Forest Tree Seedlings..	9	Snowball.....	11
Fruit Bargain Groups..	31	Snowberry.....	11
Gaillardia.....	4	Spirea.....	12
Gladiolus.....	8	Sweet William.....	5
Golden Elder.....	10	Syringa.....	12
Gooseberries.....	23	Strawberry Plants....	24
Grapes.....	23	Tree Roses.....	17
Grape Bargain Group..	31	Trees, Shade.....	18-19
Hedge Plants.....	9	Tritoma.....	5
Holland Bulbs.....	7	Tulips.....	7
Hollyhock.....	4	Vines.....	13
Honeysuckle Bush.....	11	Weeping Trees.....	19
Honeysuckle Vine.....	13	Weigela.....	12
Horseradish.....	23	Wisteria.....	13
Hyacinth.....	7	Yucca.....	5
Hydrangea.....	11		
Iris.....	5		
Ivy.....	13		

Group Bargains Pages 26 to 31

A COMMON-SENSE TALK ON QUALITY

Remember Topsy, the little pickaninny of Uncle Tom's Cabin?

Topsy "jest growed."

But Superior Quality Nursery Stock doesn't "jest grow."

No indeed! Superior Quality Nursery Stock is the result of ideal climate, good rich soil and exacting care combined with:

Five Points of Superiority That Result in Genuine Satisfaction to You

Pedigreed Parentage

Shield-Type Budding Protection

Scientific Root and Top Pruning

Nu-Way Spacing

Entire Root-Wrap Moisture Control

The now famous Five Point Program of Superiority is winning hosts of friends every season. That's the best proof of the Prize Winning Quality of stock produced as a result of these five scientific steps in propagation.

Pedigreed Parentage

Why does one apple tree come into bearing a year or two earlier than another? PEDIGREED PARENTAGE! Why are apples on the good tree larger, heavier, juicier, of a fine, full bodied rich flavor and of excellent keeping qualities, while from the ordinary tree that "jest growed" the fruit is sparse and small and of a decidedly poor flavor? PEDIGREED PARENTAGE!

Why does a superior quality shrub or rose in the home owner's garden develop into a vigorous, hardy, full sized plant bearing a profusion of large, strong-stemmed, brilliantly colored blooms, while the ordinary bush is a comparative weakling? PEDIGREED PARENTAGE!

Pedigreed Parentage means selecting and discarding, picking and choosing, till exactly the right seedling stock is obtained and then the union (or marriage) with it of the finest and most appropriate type of budding stock.

That is Pedigreed Parentage!

Shield Type Budding Protection

Scientific experiments have definitely shown that the methods of budding formerly employed, where this important operation was done in the cheapest way, resulted in nursery stock distinctly inferior to Pedigreed Stock.

To meet the exacting standards of Shield Type Budding Protection the cut which is made in the seedling (root stock) for the purpose of inserting the bud (variety stock), is a Shield Type incision.

The operation must be done at exactly the right time, when both the seedling and bud variety are in proper condition for growth. The bud must be of just the proper maturity to slide in the incision without forcing, which might injure the bud and weaken the plant.

SHIELD TYPE BUDDING PROTECTION is a most important factor in the production of finest quality nursery stock of genuine value.

Scientific Root and Top Pruning

Scientific Root and Top Pruning replaces the ordinary haphazard methods, which so often result in inferior grades and disappointment to the home owner, with exact scientific methods that are sure to please.

Tests have demonstrated that ideal root and top pruning are absolutely essential to the production of Nursery Stock that is really superior in quality.

Leader Removal, that is the cutting out of part of the main branch or leader, is a type of pruning essential in the case of many varieties. It retards natural growth to obtain a heavy, well-branched, well-shaped tree or plant.

In other varieties, tests have demonstrated that heavy, bushy, shapely specimens are best obtained by Multiple Top Pruning, at predetermined intervals, throughout the growing period at the Nursery Farms.

Scientific Pruning develops an unusually heavy, compact root system, that permits transplanting with a minimum degree of shock and a consequent minimum interruption to natural growth.

That is why it is possible to offer our customers the protection of an exceptionally liberal replacement guarantee.—“IT GROWS OR WE REPLACE IT FREE OF EXTRA CHARGE.”

Entire Root-Wrap Moisture Control

Superior Quality Nursery Stock, handled and packed by the New Moisture Control, Entire Root-Wrap Method, insures arrival at customers' homes in the same field-fresh, ready-to-grow condition as when dug at the Nursery Farms.

Nursery Stock that is allowed to get too dry becomes permanently damaged and results in stunted, scrawny specimens, which never develop their natural beauty and productiveness.

If packed too wet, stock may become soft—premature growth may start and overheat in transit. When planted, unnatural growth may result in lack of root nourishment to keep pace with top development—and the plant withers and dies.

The new MOISTURE CONTROL ENTIRE ROOT-WRAP METHOD eliminates all these troubles. Each shipment—each individual piece of stock—receives *exactly the right amount of moisture* for delivery as Mother Nature intended, in ideal condition for successful planting. That means satisfied customers.

(A Common Sense Talk on Quality continued on page 19)



Two Year Old Superior Strain Perennials

TWO YEAR OLD FIELD GROWN HARDY XXX PERENNIALS

For Fall or Spring Planting

Varieties marked * are especially suitable for Rock Gardens
T for tall-growing; M for medium-growing; D for dwarf-growing

	Each	3 for
Achillea, (The Pearl), white, M	\$.35	\$.95
Aconitum—Monkshood, (Sparks Aconitum), blue, T	.55	1.55
*Adam's Needle, (Yucca) white, M.....	.35	.95
*Alyssum Saxatile, bright yellow, D.....	.50	1.40
*Anchusa, Forget-me-not flowering, violet blue, T....	.55	1.55
Anemone, (Windflower), Snow Queen, snow white, T	.65	1.85
Anemone, (Windflower), Peach Glow, rose pink, T..	.65	1.85
Anemone, (Windflower), Queen Charlotte, rose, T	.65	1.85
Anemone, (Windflower), Whirlwind, white, T65	1.85
*Anemone, (Windflower), Hupehensis, dwarf, pink, D	.65	1.85
*Artemisia Silver King, white-leaved, M.....	.55	1.55
Aster, Strawberries and Cream, deep pink, T.....	.65	1.85
Aster, Gayborder Blue, blue, yellow eye, T65	1.85
*Astilbe, Queen Alexandra, light pink, T.....	.95	2.70
*Aubrietia Eyri, (Purple Rock Cress), rosy lilac, D...	.50	1.40
Aquilegia, Giant Hybrids, (New), rainbow colors, M.	.50	1.40
Blazing Star, (Gay Feather), T55	1.55
*Balloon Flower, blue, T55	1.55
Belgian Asters, in the following named varieties.....	.50	1.40
<i>Daphne</i> , bright pink, M; <i>Marjorie</i> , rose pink, M; <i>Nancy</i> , lt. pink, M; <i>Ronald</i> , lt. purple, M; <i>Skylands Queen</i> , lt. blue, T; <i>Victor</i> , lav. blue, M		
Bleeding Heart, (Dicentra), pink, M.....	.95	2.70
Bluebird Flower, (Veronica or Speedwell), blue, M..	.50	1.40
*Blue Bonnet, (Scabiosa), blue, M50	1.40
*Baby's Breath or Gypsophila, silver pink, M50	1.40
*Buttercup, (Ranunculus), double yellow, M.....	.50	1.40
Canterbury Bells, white, blue or pink, M.....	.50	1.40
*Campanula Carpatia, (Harebell), clear blue, D....	.50	1.40
*Christmas Rose, (Helleborus Negri), white-evergreen foliage	1.65	4.70
Chrysanthemums		
Following Named Large Flowering Chrysanthemum Varieties, M.....	.50	1.40
<i>Angelo</i> , lavender-pink	<i>Lorelei</i> , pure yellow	
<i>Autumn Glow</i> , crimson	<i>Louise Schling</i> , bronze	
<i>Brune Poitevine</i> , bronze	<i>Oconto</i> , white	
<i>Glamero</i> , orange apricot	<i>October Dawn</i> , pink	
<i>Glory of Seven Oaks</i> , golden	<i>Old Gold</i> , orange yellow	
<i>L'Argentuillais</i> , rose-red	<i>Red Flare</i> , rich glossy red	
<i>Lemonade</i> , yellow—opens white	<i>Ruth Cummings</i> , reddish bronze	
	<i>Tints of Gold</i> , yellow	
Following Named Pom-Pom Chrysanthemum Varieties, M.....	.50	1.40
<i>Boston</i> , golden bronze	<i>Uvalda</i> , rosy-white	
<i>Mrs. H. Harrison</i> , pink, cream center		
Following Named Cushion Type Chrysanthemum Varieties.....		
<i>Harvest Moon</i> (New) bright yellow, M		
<i>King of the Reds</i> (New) clear red, D		
<i>Master-Mum</i> , shell pink and old rose, M		
<i>Wonder-Mum</i> , pink, M		
*Coreopsis, yellow, M.....	.50	1.40
Columbine, M.....	.50	1.40
Daisy, Shasta, white, M50	1.40
Daisy, Painted (Pyrethrum), rainbow mixed colors, M	.50	1.40
Delphinium, Vanderbilt (Larkspur shades of blue), T	.50	1.40
Delphinium Hybrids, by color, following varieties, T	.75	2.15
<i>Allure</i> , deep violet	<i>Citadel</i> , lavender	
<i>Blue Danube</i> , delphinium blue	<i>Enchantment</i> , rose-mauve	
<i>Mountain Snow</i> , sparkling white		
*Dianthus, (Sweet William), pink, white, red, M50	1.40
*Dianthus Deltoides, (Maiden Pink), D.....	.55	1.55
Digitalis, (Fox-glove), purple, pink, white, rose, T50	1.40
Flame Flower, (Tritoma), orange scarlet, M.....	.70	1.95
*Forget-Me-Not (Myosotis), light blue, D.....	.55	1.55
*Garden Pinks, pink, white, red, M50	1.40
Garden Carnations, pink, white, red, M.....	.70	1.95
Gaillardia, (Giant Hybrid), shades of orange, M50	1.40
Gay Feather, purple, T55	1.55

HARDY XXX PERENNIALS

(Continued)

	Each	3 for
* Geum , (Mrs. Bradshaw), orange red, M.50	1.40
* Geum , (Lady Strathedon), double rich yellow, M.50	1.40
* Gypsophila , (Baby's Breath), M.50	1.40
Helianthus , Coronation, (new) gleaming yellow, T. . .	.65	1.85
Heliopsis , (Summer Gold), rich gold, T.65	1.85
Helenium , Chippersfield Orange, copper and gold, T	.65	1.85
* Hupehensis , (Dwarf Anemone), D.65	1.85
* Heuchera , (Rain of Fire), bright crimson, D.50	1.40
Hibiscus , (Mallow Giant Flowering), red, pink, white, T	.50	1.40
Hollyhock , double red, white, pink or yellow, T.40	1.10
Hollyhock , Orange Prince, (new) double orange, T. . .	.50	1.40
* Iberis , (Hardy Candytuft), white, D.50	1.40
Iris		
* Cristata , (Crested Dwarf), light blue, D.70	1.95
German , light purple, dark purple, yellow or white, M	.30	.85
German , Special Named Varieties, M (see plate book)	.50	1.40
* Japan , Special Named Varieties, M (see plate book).	.50	1.40
* Japanese Spurge , (Pachysandra), D.50	1.40
Larkspur , (Delphinium), shades of blue, T.50	1.40
Lantern Plant , Chinese, red seed cases, M.50	1.40
* Lupines , blue, pink, white, T.50	1.40
Lychnis , (Maltese Cross, also Ragged Robin), scarlet, T	.50	1.40
Mallow , Giant Flowering, red, pink, white, T.50	1.40
Marguerite Daisy , Painted royal purple, M.50	1.40
* Nepeta Mussini , (Ground Ivy), lavender blue, M.50	1.40
* Pachysandra , (Japanese Spurge) blue, D.50	1.40
Painted Marguerite Daisy , royal purple, M.50	1.40
* Phlox Subulata Rosea , (Creeping), pink, D.50	1.40
* Phlox Subulata Alba , (Creeping), White.50	1.40
Phlox (Garden), M		
<i>Antonin Mercier</i> , delicate lilac-blue, new shade.55	1.55
<i>Augusta</i> , New American Beauty Red, (Plant Patent 252).75	2.15
<i>B. Compte</i> , salmon, red and white eye.50	1.40
<i>Beacon</i> , brilliant cherry red.50	1.40
<i>Blazing Miracle</i> , reddest of the reds.65	1.85
<i>Blue Boy</i> , true blue.65	1.85
<i>Columbia</i> , Cameo Pink, (New Patented Prize Winner No. 118).75	2.15
<i>Count Zeppelin</i> , white, crimson eye.55	1.55
<i>Daily Sketch</i> , salmon pink.55	1.55
<i>Harvest Fire</i> , orange salmon.65	1.85
<i>Jules Sandeau</i> , pink, new shade.50	1.40
<i>Lord Raleigh</i> , royal purple.50	1.40
<i>Mia Ruys</i> , pure white.65	1.85
Poppy , Oriental, orange scarlet, M.65	1.85
Poppy , Oriental, (Cavalier), new, fiery red, M.70	1.95
* Physostegia Virginica , (Dragonhead), M.50	1.40
* Plumbago Larpentae , (Leadwort), M.50	1.40
* Primrose , Hardy Alpine, yellow, red, purple, D.50	1.40
Pyrethrum , (Marguerite Daisy), purple, red, pink, M	.50	1.40
Pyrethrum , Pink Bouquet, (new double Painted Daisy), M.75	2.15
* Ranunculus , (Double Buttercup), Golden Yellow, M.50	1.40
* Rock Cress , purple, D.50	1.40
Rudbeckia , royal purple, T.50	1.40
Salvia , (Meadow Sage), Heavenly Blue, T.50	1.40
Scabiosa , Caucasica Alba, (new), gleamy white, M.55	1.55
Scabiosa , Caucasica Isaac House, (new), lavender, M	.55	1.55
Sparks Aconitum , (Monkshood), T.55	1.55
* Sedum , Spectabilis, Brilliant, pink, D.50	1.40
* Sedum , Sieboldi, pink, D.50	1.40
Stokesia , Aster Cornflower, M.50	1.40
Sweet Pea , crimson, (a Perennial vine).50	1.40
* Sweet William , pink, white, red, M.50	1.40
* Spirea Astilbe , (Queen Alexandra), bright pink.95	2.70
Tritoma , (Flame Flower), orange-scarlet, M.70	1.95
Veronica , Blue Spires, deep violet blue, M.65	1.85
* Vinca Minor or Periwinkle, violet, D.50	1.40
* Yucca , (Adam's Needle), Evergreen cream white, M.40	1.10
Yucca Variegata , (Spanish Sword), Evergreen, white.50	1.40

ROCK GARDEN PLANTS

PERENNIALS

Medium Low Growing

	Each	Three for
Alyssum Saxatile, (Rock Madwort).....	\$.50	\$1.40
Anchusa, Forget-Me-Not flowering (new), violet blue.	.55	1.55
Anemone Hupehensis, (Dwarf Anemone).....	.65	1.83
Artemisia Silver King, white-leaved.....	.55	1.55
Balloon Flower, (Platycodon).....	.55	1.55
Baby's Breath, (Gypsophila).....	.50	1.40
Blue Bonnet, (Scabiosa).....	.50	1.40
Coreopsis.....	.50	1.40
Dianthus Deltoides, (Maiden Pink).....	.55	1.55
Garden Pink, (Dianthus).....	.50	1.40
Geum—Mrs. Bradshaw.....	.50	1.40
Geum, Lady Strathedon.....	.50	1.40
Heuchera (Rain of Fire).....	.50	1.40
Hupehensis (Dwarf Anemone).....	.65	1.85
Japanese Iris.....	.50	1.40
Lupines, (Lupinus).....	.50	1.40
Physostegia Virginica, (Dragonhead).....	.50	1.40
Sweet William, (Dianthus Barbatus).....	.50	1.40
Spirea Astilbe, (Goats Beard).....	.95	2.70
Yucca, (Adam's Needle).....	.40	1.10
Yucca Variegata, cream white.....	.50	1.40

Very Low Growing

Aubrietia Eyri, (Purple Rock Cress).....	.50	1.40
Buttercup, (Ranunculus).....	.50	1.40
Campanula Carpatica, (Harebells).....	.50	1.40
Christmas Rose, (Helleborus Negri).....	1.65	4.70
Forget-Me-Not, (Myosotis).....	.55	1.55
Iberis, (Candytuft).....	.50	1.40
Nepeta Mussini, (Catmint).....	.50	1.40
Pachysandra, (Japanese Spurge).....	.50	1.40
Phlox Subulata Rosea, (Mt. Pink).....	.50	1.40
Phlox Subulata Alba, white.....	.50	1.40
Plumbago Larpentae, (Leadwort).....	.50	1.40
Primrose, (Primula).....	.50	1.40
Ranunculus, (Double Buttercup).....	.50	1.40
Rock Cress Purple, (Aubrietia Eyri).....	.50	1.40
Sedum Spectabilis (Showy Stonecrop).....	.50	1.40
Spurge, Japanese.....	.50	1.40
Vinca Minor or Periwinkle.....	.50	1.40
Wonder Mum (Pink Cushion).....	.65	1.85

Creeping

Sedum Sieboldi, (Improved Stonecrop).....	.50	1.40
---	-----	------

FLOWERING SHRUBS

Low Growing

Deutzia Gracilis.....	.95	2.70
Spirea Froebeli.....	.95	2.70
Spirea Callosa Alba.....	.95	2.70
Weigela Eva Rathke.....	1.25	3.65

Medium Growing

Forsythia Spectabilis.....	.95	2.70
Spirea Thunbergii.....	.95	2.70
Tamarix.....	1.25	3.65
Viburnum, (Snowball).....	1.25	3.65
Witch Hazel.....	1.15	3.25

EVERGREENS

Japanese Yew.....	Spreading	(See Special Evergreen Price List)
Mugho Pine.....	Low Growing	
Prostrate Juniper.....	Creeping	

1 - 1435

Large Flowering—Fragrant Peonies

(For Fall or Spring Planting)

	Each	Three for
Peony, pink.....	\$.90	\$2.55
Peony, white.....	.90	2.55
Peony, red.....	.95	2.70
Peony, purple.....	.95	2.70

(Gold Medal Peony Blue Ribbon Bargain Group,
See Page 27)

CHOICE SPECIAL NAMED VARIETIES

Dr. Van der Tak, shell pink, new.....	1.15	3.25
Edulis Superba, dark pink.....	.95	2.70
Enchantress, rich creamy white, (New).....	1.15	3.25
Festiva Maxima, white, crimson markings, early.....	.95	2.70
Karl Rosenfield, scarlet maroon, medium.....	1.15	3.25
Louis Van Houtte, dark crimson, almost purple, late...	.95	2.70
Longfellow, bright crimson with a cherry tint.....	1.25	3.65
Lorraine, white and cream, new.....	1.15	3.25
Mary Brand, (new), true red.....	1.15	3.25
Mons. Jules Elie, pink, edged with silver, medium....	.95	2.70
Mme. De Vernville, (new), paper white with crimson markings.....	1.15	3.25
Officinalis Rubra, bright red, earliest to bloom.....	1.25	3.65
Perfection, delicate shell pink, (New).....	.95	2.70
Philomele, violet rose center, amber collar, medium...	.95	2.70
Solfatare, white, creamy yellow center, medium.....	.95	2.70
Triumphans, glowing scarlet, new.....	1.15	3.25

IMPORTED HOLLAND BULBS

 (For Fall Planting Only)

NEW GIANT SIZE "SUPER" TULIPS

(See Princess Irene Tulip Group Folder for varieties)

\$2.45 per dozen \$15.95 per 100

LARGE FLOWERING TULIPS—BEST NAMED VARIETIES

(See Plate Book and Special Tulip Folder)

\$1.75 per Dozen, \$12.95 per 100

LARGE FLOWERING TULIPS—GAY MIXED COLORS

\$1.55 per Dozen, \$10.95 per 100

PLUCKY CROCUS—NEW STRAIN, GIANT FLOWERING

89c per Dozen, \$1.75 per 25, \$6.95 per 100

blue, purple, striped, white, yellow, also rainbow mixed colors

HYACINTHS—FINEST VARIETIES FOR HOME PLANTING

ALL NAMED VARIETIES

(See Plate Book and Special Colored Folder)

3 for 95c, \$3.75 per dozen

NARCISSUS—BEST HARDY GARDEN VARIETIES

ALL NAMED VARIETIES

(See Plate Book and Special Colored Folder)

3 for 90c, \$3.45 per dozen

MUSCARI (Grape Hyacinth)

95c per 25, \$3.80 per 100

BULBS FOR CUT FLOWERS

And Garden Decoration

☞ (For Spring Planting Only)

	Each	Three for
Cannas		
<i>King Humbert</i> , orange-scarlet.....	\$.40	\$1.10
<i>Yellow King Humbert</i> , yellow.....	.40	1.10
<i>The President</i> , scarlet.....	.40	1.10
<i>Richard Wallace</i> , orange.....	.40	1.10
Dahlias		
Cactus Dahlias, Following Named Varieties.....	.50	1.40
<i>Attraction</i> , lavender		<i>Countess of Lansdale</i> , salmon
<i>Golden Eagle</i> , yellow		<i>J. H. Jackson</i> , maroon
<i>Kriemhilde</i> , deep cerise pink		<i>Spencer</i> , lavender
<i>Madam Caroline Schuman</i> , chrome yellow		
<p><i>Madam Caroline Schuman</i>—Our own creation—First time introduced. A Hybrid Cactus variety. Chrome yellow—reverse side of petals Peach. Long stems. For the first time a brand new variety introduced at a price within the reach of all. The biggest "Show" in the Garden.</p>		
Decorative Dahlias, Following Named Varieties....	.55	1.55
<i>Gorgeous Lady</i> , grenadine pink		<i>Monmouth Champion</i> , orange flame
<i>Heart of Milwaukee</i> , golden yellow		<i>Mrs. Geo. Le Boutillier</i> , mahogany red
<i>Jersey Beauty</i> , pink		<i>Pot-O-Gold</i> , daffodil yellow
<i>Kathleen Norris</i> , lafrance pink		<i>Prince of Persia</i> , poinsetta red
<i>Meadowbrook</i> , tyrian rose		<i>Snowdrift</i> , pure white
Peony Flowered Dahlias, Following Named Varieties	.50	1.40
<i>City of Portland</i> , yellow with brown center		<i>Oregon Beauty</i> , red
		<i>Wm. Reid Butler</i> , white
Show Dahlias, Following Named Varieties.....	.50	1.40
<i>Maude Adams</i> , white		<i>Miss Helen</i> , fiery red
Gladiolus, Crawford's Mixed, 79c per dozen, \$1.50 per 25; \$2.65 per 50; \$4.95 per hundred		
Gladiolus, Ruffled Aristocrat Hybrids, 79c per dozen; \$1.50 per 25; \$2.65 per 50; \$4.95 per hundred		
Gladiolus, Named Varieties (See Plate Book), \$1.45 per dozen; \$2.75 per 25; \$5.00 per 50; \$9.90 per 100.		
Gladiolus, (Special Varieties—See Show Garden Gladiolus Folder), \$1.65 per dozen; \$3.15 per 25; \$5.95 per 50; \$10.95 per hundred.		
Tuberose, white.....	.40	1.10

LILIES

Lily, Auratum, white with crimson spots and gold band (Spring Planting Only).....	.95	2.70
Lily, Carolinian, orange red (Spring Planting Only)...	.95	2.70
Lily, Day Lily, white (Spring or Fall Planting).....	.95	2.70
Lily, Lemon Lily, yellow (Spring or Fall Planting)....	.70	1.95
Lily, Lily of the Valley, strong clumps (Spring or Fall Planting).....	.70	1.95
Lily, Madonna, white (Fall Planting Only).....	.95	2.70
Lily, Regal, white (Spring or Fall Planting).....	.70	1.95
Lily, Rubrum, white spotted with crimson (Spring Planting Only).....	.95	2.70
Lily, Scarlet American, red (Spring or Fall Planting)..	.95	2.70

SUPER-QUALITY HEDGING

Extra Heavy Plants

Be sure to specify size on order blank

For Fall or Spring Planting

All sizes refer to height above roots

(Any quantity of Hedging may be sold at the 100 rate)

	Hundred
Barberry Japanese Thunbergii, Four Year Transplants	
12 to 18 in.	\$22.00
18 to 24 in.	35.00
2 to 3 ft.	59.00
Barberry Japanese Thunbergii, Two Year Seedlings	
9 to 12 in.	8.00
12 to 15 in.	12.00
No hedge is more beautiful and at the same time gives more protection than Barberry Thunbergii. Best of all it is perfectly hardy. It is practically impossible to kill it.	
Eternal Flame, New Red Leaf Barberry	
9 to 12 in.	38.00
12 to 15 in.	45.00
Locust, Honey	
18 to 24 in.	9.00
Privet, Amoor River (Very Hardy)	
12 to 18 in.	15.00
18 to 24 in.	22.50
2 to 3 ft.	30.00
Privet, California	
6 to 12 in.	4.90
12 to 18 in.	7.90
18 to 24 in.	10.90
2 to 3 ft.	13.90
Privet, Ibota, 12 to 18 in.	30.00

SEEDLINGS

For Spring Planting Only (Cannot be Shipped in the Fall)

For reforestation, fence posts, tall hedges, wind breaks and screen planting.

	Hundred
Caragana Arborescens, (Siberian Pea Tree), 2 to 3 ft.	\$16.50
Catalpa Speciosa, 18 to 24 in.	\$ 6.95
Chinese Elm, 2 to 3 ft.	12.00
Locust, black 18 to 24 in.	6.95
Locust, yellow, 18 to 24 in.	6.95
Russian Mulberry, 2 to 3 ft.	7.95
Russian Olive, 2 to 3 ft.	16.50

FLOWERING HEDGES

Colorful—Beautiful

(Any quantity over 10 may be sold at hundred rate.)

	Hundred
Althea, white, pink, purple, red, blue, 2 to 3ft.	\$55.00
Baby Rambler, crimson, XX hedging size.	85.00
Baby Rambler, Orange Perfection, XX hedging size.	85.00
Baby Rambler, Elsie Paulson, bright pink, XX size.	85.00
Baby Rambler, Ellen Paulson, rosy pink, XX size.	85.00
Spirea, Van Houtte, 12 to 18 in.	21.00

FLOWERING SHRUBS

For Fall or Spring Planting

Hardy, Two Year Field Grown, Ready-To-Bloom

All our flowering shrubs have bloomed at the nursery farm the season before marketing

VD means Very Dwarf, 2-3 ft. at maturity.
D means Dwarf, 3-4 ft. at maturity.
MD means Medium Dwarf, 4-5 ft. at maturity.
M means Medium, 5-6 ft. at maturity.
MT means Medium Tall, 6-7 ft. at maturity.
T means Tall, 8-10 ft. at maturity.
VT means Very Tall, over 12 ft. at maturity.

Varieties marked * are especially suited for Rock Gardens

Sizes given below are the height of shrubs above the roots when shipped

	Each	Three for
Althea, (Rose of Sharon), double blue, 2 to 3 ft., T..	\$.65	\$1.85
Althea, (Rose of Sharon), double white, 2 to 3 ft., T..	.65	1.85
Althea, (Rose of Sharon), double pink, 2 to 3 ft., T...	.65	1.85
Althea, (Rose of Sharon), double purple, 2 to 3 ft., T.	.65	1.85
Althea, (Rose of Sharon), double red, 2 to 3 ft., T....	.65	1.85
Althea, Tree Form, 3 to 4 ft., pink, red, purple, white, T	1.15	3.25
The Altheas are especially desirable as they furnish a profusion of bloom late in the season when other blossoms are scarce. They will bloom freely even in very dry weather, yield readily to any kind of training and are admirable for hedges, screens or individual planting.		
Almond, double pink or white, 2 to 3 ft., MD.....	.95	2.70
Barberry, Japanese Thunbergii, 2 to 3 ft., D.....	.65	1.85
Barberry, Japanese Thunbergii, 18 to 24 in., D45	1.30
Barberry, Red Leaf, Eternal Flame, 15 to 18 in., D.	.79	2.25
Barberry, Red Leaf, Eternal Flame, 18 to 24 in., D.	.95	2.70
Beauty Bush, pink, 18 to 24 in., M.....	1.65	4.70
Blue Leaf Honeysuckle, shell-pink, Blue-Green Leaves, 2 to 3 ft., T.....	1.95	5.60
Burning Bush, (Square Branches), 2 to 3 ft., MT...	1.95	5.60
Butterfly Bush, New Pink Charming, lavender-pink, MT.....	1.25	3.65
Butterfly Bush, violet blue, MT.....	.69	1.95
Butterfly Bush, Ile de France, royal violet, MT.....	.95	2.70
Calycanthus, (Carolina Allspice or Sweet Scented Shrub) chocolate brown blossoms, 2 to 3 ft., MD...	.95	2.70
Coralberry, (Is Indian Currant), delicate pink, 2 to 3 ft, D.....	.75	2.15
Cornus Siberica Alba, (Red Twig Dogwood), 2 to 3 ft. MT.....	.95	2.70
Cornus Elegantissima, or variegated, green and white leaves, 2 to 3 ft., M.....	1.45	4.15
Cornus Sanguinea, (Red Osier Dogwood), white flower, 2 to 3 ft., T.....	.95	2.70
Cornus Paniculata, (Gray Dogwood), white flower, 18 to 24 in., VT.....	.95	2.70
Crab, Flowering, (See page 18)		
Cranberry Bush, (Viburnum Opulus), white. 2-3 ft.. T	.95	2.70
Deutzia Crenata, single white, 2 to 3 ft., MT.....	.95	2.70
*Deutzia Gracilis, slender, white, 12 to 18 in., VD...	.95	2.70
Deutzia Lemoine, white, 18 to 24 in., D.....	.95	2.70
Deutzia Pride of Rochester, white, 2 to 3 ft., T....	.95	2.70
The best of the taller Deutzias. A general favorite and its popularity is well deserved.		
Dogwood, (Cornus Paniculata), gray, 18 to 24 in. VT	.95	2.70
Elder Golden, white flowers, 2 to 3 ft. T.....	.95	2.70
Eternal Flame, Red Leaf Barberry, 15 to 18 in., D..	.79	2.25
Eternal Flame, Red Leaf Barberry, 18 to 24 in., D..	.95	2.70
Forsythia Fortunei, (Drooping Golden Bell), yellow, 2 to 3 ft. MT.....	.95	2.70
Blossoms in the spring before the leaves appear. Very desirable and popular.		

Plant Blue Ribbon FLOWERING SHRUBS For Quick Results

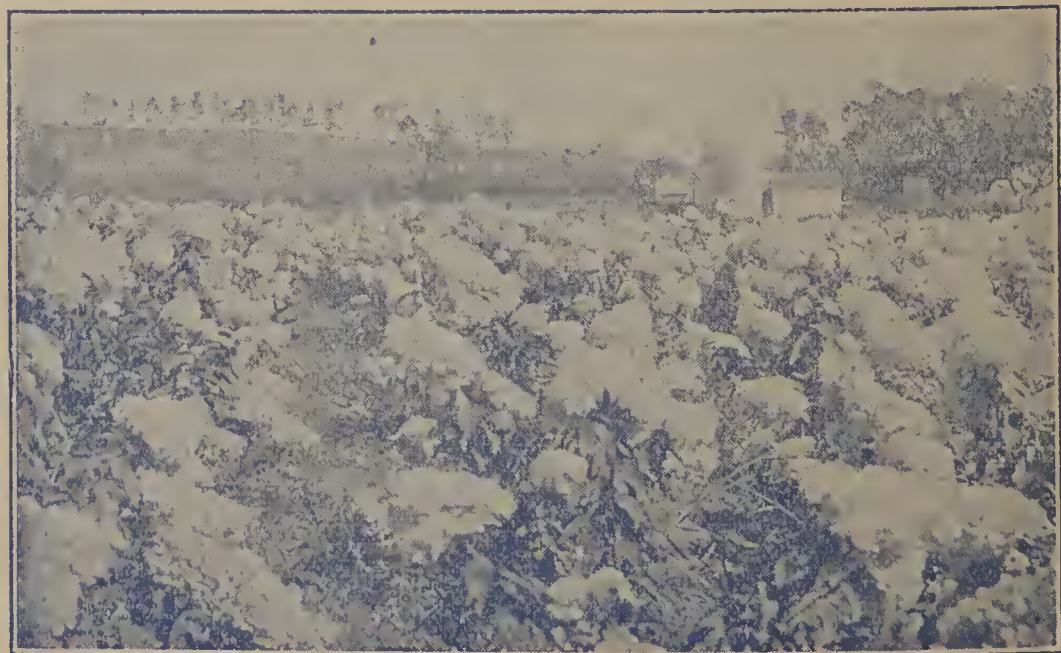
	Each	Three for
(Shrubs Continued)		
Forsythia Viridissima, (Upright Golden Bell), yellow, 2 to 3 ft. MT.....	\$.95	\$2.70
Forsythia Intermedia, yellow, 2 to 3 ft. MT.....	.95	2.70
*Forsythia Spectabilis, golden, 2 to 3 ft. T.....	.95	2.70
Fringe, purple, 2 to 3 ft. VT.....	2.45	6.95
Golden Bell, (Forsythia Fortunei), 2 to 3 ft. MT....	.95	2.70
Golden Elder, (Golden Leaves), 2 to 3 ft. T.....	.95	2.70
Golden Rose of China, (Hugonis), yellow, 18 to 24 in. MD.....	1.25	3.65
Honeysuckle Blue Leaf, shell-pink, Blue-Green Leaves, 2 to 3 ft., T.....	1.95	5.60
Honeysuckle Fragrant, bush, creamy white, 2-3 ft. M	.95	2.70
Honeysuckle Morrow's, white, 2 to 3 ft. MT.....	.95	2.70
Honeysuckle Tartarian, white, pink or red, 2 to 3 ft. T	.95	2.70
Hugonis, (Golden Rose of China), yellow, 2 to 3 ft. MD	1.25	3.65
Hydrangea Arborescens, (Hills of Snow), white, 2 to 3 ft. D.....	1.25	3.65
Hydrangea, P. G. Bush, pink, 2 to 3 ft., MT.....	1.25	3.65
Hydrangea Tree, mammoth pink, 3 to 4 ft., T.....	2.65	7.45
Hydrangea Hortensis, French, blue, 5to6 branches D	2.45	6.95
Ile de France, (Butterfly Bush), royal deep violet, MD	.95	2.70
<i>A gorgeous flowering shrub recently originated in France. Long, arched, lilac-like, violet-purple clusters bloom in great abundance in mid-summer at a time when scarcely anything is in bloom. The thickly flowered spikes are very showy in the garden and make delightful bouquets. Very fragrant. Vigorous, hardy grower.</i>		
Indian Currant, (Coralberry), 2 to 3 ft. D.....	.75	2.15
Japan Quince, scarlet, 2 to 3 ft., MD.....	1.25	3.65
<i>JAPAN QUINCE or Firebush. No shrub planting is complete without Japan Quince. Its gorgeous display of dazzling scarlet flowers in May cover the branches before the foliage appears.</i>		
Kerria Japonica (Globe Flower), yellow, 18 to 24 in. MD	1.45	4.15
Kerria White (Jet Bead), black berries, 18 to 24 in. MD	.95	2.70
Korean Spirea, white, 18 to 24 in., M.....	.95	2.70
Lilac, Adelaide Dunbar, very double red mauve, MT.	1.95	5.60
Lilac, Chas. Joly, double purplish red, MT.....	1.95	5.60
Lilac, Chas. Tenth, deep red, 2 to 3 ft. MT.....	1.95	5.60
Lilac, Edith Cavell, double pure white, MT.....	1.95	5.60
Lilac, Madame Lemoine, white, double, 2 to 3 ft. MT	1.95	5.60
Lilac, Ludwig Spaeth, dark purple, 2 to 3 ft., MT..	1.95	5.60
Lilac, Marie Legraye, white, 2 to 3 ft., MT.....	1.95	5.60
Lilac, Michael Buchner, deep lilac, dbl, 2 to 3 ft. MT	1.95	5.60
Lilac, Pres. Grevy, blue, double, 2 to 3 ft., MT....	1.95	5.60
Lilac, Persian, 2 to 3 ft., T.....	1.25	3.65
Lilac, pink or white, 2 to 3 ft., VT.....	1.25	3.65
Lilac, red, 2 to 3 ft. VT.....	1.45	4.15
Lilac, purple, 2 to 3 ft., VT.....	.95	2.70
Lilac, Villosa, pink-lilac, narrow panicles, 2 to 3 ft. MT	1.25	3.65
Pepper Bush, white, 2 to 3 ft., MD.....	1.45	4.15
Philadelphus Aurea, (Golden Syringa), 18 to 24 in., MD.....	.95	2.70
*Privet, Regal, blue berries, 2 to 3 ft., M.....	1.65	4.70
Purple Fringe, 2 to 3 ft., VT.....	2.45	6.95
Pussy Willow, French, 2 to 3 ft., VT.....	.95	2.70
Rose Acacia, pink, 2 to 3 ft. M.....	1.25	3.65
Rose of Sharon (See Althea), 2 to 3 ft., T.....	.65	1.85
*Snowball, Common, white, 2 to 3 ft., T.....	1.25	3.65
Snowball, Dentatum, (Arrowwood), 2 to 3 ft., VT..	1.25	3.65
Snowball, Japan, white, 2 to 3 ft., MT.....	1.45	4.15
Snowberry, white berries, 2 to 3 ft., MD.....	.85	2.45

The Snowberry is a shrub of great value—for its fine foliage—slender gracefully bending branches—dainty pink blossoms in June and July. It will thrive in dry barren soil—it will grow in shade so dense that almost nothing else will grow. Large white berries in Fall are very decorative.

There is a Shrub Bargain Group to meet your needs. See page 30.

We Offer Only Well Branched, Heavy Rooted, Landscape Size FLOWERING SHRUBS That Produce Quick Results

	Each	Three for
(Shrubs Continued)		
Spirea, Anthony Waterer, crimson, 15 to 18 in., VD	\$.85	\$2.45
Spirea, Aurea, (Golden), 2 to 3 ft., T	.95	2.70
Spirea, Astilbe, (A Perennial), VD	.95	2.70
Spirea, Billardi, pink, 2 to 3 ft., M	.95	2.70
Spirea, (New Korean), 18 to 24 in., M	.95	2.70
Spirea, Bumalda, light pink, 18 to 24 in., VD	.95	2.70
*Spirea, Callosa Alba, white, 12 to 18 in., VD	.95	2.70
Spirea, Douglasi, pink, 2 to 3 ft., MT	.95	2.70
*Spirea, Froebelia, pink, 12 to 18 in., D	.95	2.70
Spirea, Golden, (Aurea), 2 to 3 ft., T	.95	2.70
Spirea, Prunifolia, (Bridal Wreath) white, 2 to 3 ft., MT	.95	2.70
*Spirea, Thunbergii, white, 18 to 24 in., MD	.95	2.70
Spirea, Van Houtte, white, 2 to 3 ft., MT	.49	1.40
Spirea, Van Houtte, white, 3 to 4 ft., MT	.59	1.70
<p>The most popular of all the Spireas, especially valued because of its hardiness and the rapidity of its growth. Produces white flowers in clusters during May and June. Foliage dense deep green.</p>		
Syringa, Coronarius (Mock Orange), white, 2 to 3 ft. T	.95	2.70
Syringa, Golden (Philadelphia Aurea), 18 to 24 in., MD	.95	2.70
Syringa, Gordonianus, white, 2 to 3 ft., T	.95	2.70
Syringa, Grandiflora, fragrant, white, 2 to 3 ft., MT	.95	2.70
Syringa, Lemoine, very sweet scented, white, 2 to 3 ft., MT	.95	2.70
Syringa, Virginalis, white, 2 to 3 ft., MT	1.25	3.65
<p>Because of its rare beauty, its unusually long blooming period beginning in May, its large white individual flowers, which measure two inches or more in diameter. Syringa Virginalis should be in every planting.</p>		
*Tamarix, (Tamarisk), pink, 2 to 3 ft., VT	1.25	3.65
*Viburnum, (Snowball), white, 2 to 3 ft., T	1.25	3.65
Weigela, Amabilis, pink, 2 to 3 ft., MT	.95	2.70
Weigela, Candida, white, 2 to 3 ft., MT	.95	2.70
*Weigela, Eva Rathke, crimson, 18 to 24 in., MD	1.25	3.65
Weigela, Floribunda, dark red, 18 to 24 in., MT	1.25	3.65
Weigela, Rosea, bright rose, 2 to 3 ft., MT	.95	2.70
Weigela, Variegated, rose pink, 18 to 24 in., MT	1.25	3.65
*Witch Hazel, yellow, 2 to 3 ft., T	1.15	3.25
Winged Burning Bush, square branches, 2 to 3 ft., MT	1.95	5.60



Magnificent Blooms on Our Hydrangeas

VINES

Hardy—Clean—Fast Growing

For every purpose

Following kinds are

For Porches, Fences, Trellises and Arbors

Built of Wood (Require Support)

	Each	Two for
Bignonia, (Trumpet Flower), scarlet.....	\$1.25	\$2.40
Birthwort, (Aristolochia, Dutchman's Pipe).....	1.95	3.75
Clematis, Coccinea, coral-red.....	.95	1.80
Clematis, Duch. Edinburgh, double, white.....	1.25	2.40
Clematis, Henryii, creamy white.....	1.25	2.40
Clematis, Jackmanii, (Giant Climbing Violet) violet-purple.....	1.25	2.40
Clematis, Mad. Ed. Andre, crimson-red.....	1.25	2.40
Clematis, Paniculata, (Japanese Star), white.....	.95	1.80
Clematis, Ramona, light blue.....	1.25	2.40
Clematis Texensis, scarlet.....	.95	1.80
Dutchman's Pipe, (Is Birthwort).....	1.95	3.75
Giant Climbing Violet, (Is Clematis Jackmanii).....	1.25	2.40
Honeysuckle, Hall's Japan, white and yellow.....	.95	1.80
Honeysuckle, Monthly Fragrant, red.....	1.15	2.20
Honeysuckle, Scarlet Trumpet, bright scarlet.....	.95	1.80
Honeysuckle, Yellow Trumpet, orange yellow.....	.95	1.80
Perennial Sweet Pea, crimson.....	.50	.95
Silver Lace, foamy white.....	.95	1.80

Silver Lace Vine is covered with a foamy spray of delicate white flowers which appear late in the summer and last until frost. An exceptionally strong, rapid growing vine, often growing 25 feet in one season.

Trumpet Flower, (Bignonia), scarlet.....	1.25	2.40
Violet Giant Climbing.....	1.25	2.40
Wisteria, Purple.....	1.25	2.40
Wisteria, white.....	1.45	2.75

The following Kinds will

Cling to Buildings and Walls of Stone,

Brick, Concrete or Stucco

Ampelopsis, Veitchii, (Boston Ivy), blue berries.....	.95	1.80
Ampelopsis, Quinquefolia, (American Ivy, Virginia Creeper or Woodbine), blue berries.....	.95	1.80
Bittersweet, (Celastrus).....	.95	1.80
Euonymus Radicans, (Evergreen Bittersweet).....	1.25	2.40
Evergreen Bittersweet, (See above).....	1.25	2.40
Ivy, American, (See Ampelopsis Quinquefolia).....	.95	1.80
Ivy, Japan or Boston, (Ampelopsis Veitchii).....	.95	1.80
Ivy, English, Evergreen.....	1.35	2.55
Matrimony Vine, (Box Thorn), pinkish-purple flowers, red berries in the Fall.....	.95	1.80
Virginia Creeper, (Ampelopsis Quinquefolia).....	.95	1.80
Woodbine, (Ampelopsis Quinquefolia).....	.95	1.80

The following Kinds are

For Ground Cover on Embankments or Hillsides

Ampelopsis, Quinquefolia, (American Ivy, Virginia Creeper or Woodbine), blue berries.....	.95	1.80
Euonymus Radicans, (Evergreen Bittersweet).....	1.25	2.40
Evergreen Bittersweet, (See above).....	1.25	2.40
Honeysuckle, Hall's Japan, white and yellow.....	.95	1.80
Matrimony Vine, (Box Thorn), pinkish-purple flowers, red berries in the Fall (Bank Binder).....	.95	1.80

EVERBLOOMING ROSES

Gorgeous—Fragrant—Monthly Bloomers

Fall or Spring Planting

EXTRA LARGE SELECTED FIELD-GROWN

Two Year Old Blooming Bushes.

Guaranteed to bloom in your garden the first Summer.

All 95c Varieties (Your Selection)	\$ 9.95 per dozen
All \$1.25 (Your Selection)	11.95 per dozen
All \$1.45 Varieties (Your Selection)	13.85 per dozen

	Each
Angele Pernet, crimson and gold	\$.95
Alexander Hill Gray, deep lemon yellow	1.25
Ami Quinard, darkest of the reds	1.25
Autumn, burnt orange and coral	1.45
Briarcliff, brilliant rose pink95
Betty Uprichard, deep toned carmine and coppery orange95
Caledonia, white	1.25
Countess Vandal, coppery-bronze and pink (Plant Patent 38)	1.45
Chas. P. Kilham, scarlet orange	1.25
Columbia, rosy pink95
Copper Beauty, copper and yellow	1.45
Crusader, rich velvety crimson95
Chas. K. Douglas, flaming scarlet flushed with crimson95
Dame Edith Helen, shell pink95
Duchess of Athol, vivid orange flushed with old rose	1.25
Duchess of Wellington, intense saffron yellow	1.25
Duchess of York, shaded apricot to orange	1.25
Edith Nellie Perkins, copper, bronze and pink	1.45
Eclipse, rich golden yellow, (Plant Patent 172)	1.45
Empress, apricot and cerise95
Editor Mc Farland, glowing pink with suffusion of yellow	1.45
Etoile de France, velvety crimson95
Etoile de Holland, brilliant red95
E. G. Hill, deep maroon	1.25
Fantasy, very double pearly-pink	1.45
Frau Karl Druschki, white American Beauty95
Francis Scott Key, rich crimson red95
Gloaming, fawn-orange overlaid with salmon (Plant Patent 137)	1.45
Grenoble, scarlet	1.25
Gruss an Teplitz, the reddest of roses95
General MacArthur, glowing crimson scarlet95
Gorgeous, shades of gold	1.45
Golden Dawn, sunflower-yellow to lemon-yellow	1.45
Golden Gleam, vivid golden yellow	1.25
Golden Pernet, rich deep yellow	1.25
His Majesty, deep rich red	1.25
Hoover, suffused pink, yellow and scarlet	1.25
Imperial Potentate, shining rose pink	1.25
Joanna Hill, yellow shading to orange95
Julien Potin, deep yellow	1.45
Kaiserin Augusta Victoria, creamy white95
Killarney Brilliant, pink, almost red95
Killarney, pure white95
Killarney Queen, rosy pink95
Lady Forteviot, the orange rose	1.25
Lady Mary Elizabeth, charming brilliant carmine	1.25
Lady Alice Stanley, light silvery pink95
Lord Charlemont, scarlet glow tinged with velvet black95
Lord Calvert, brilliant cardinal red	1.25
Los Angeles, pink tinged with coral, shading to rich yellow95
Luxemburg, golden orange yellow95
Lady Margaret Stewart, golden yellow shaded with streaks of orange and red - very beautiful	1.45

EVERBLOOMING ROSES

(Continued)

	Each
Mrs. E. P. Thom, rich canary yellow	\$1.25
Mev. G. A. Van Rossem, shaded orange and apricot	1.45
Margaret McGredy, unusual orange scarlet	1.45
McGredy's Scarlet, brilliant scarlet, orange base	1.45
McGredy's Ivory, creamy white	1.45
Mrs. Sam McGredy, brilliant scarlet, coppery-orange	1.45
Mrs. Pierre S. duPont, golden yellow	1.45
Olympiad, cerise, red and gold	1.25
Ophelia, salmon flesh shading to yellow95
Pink Radiance, clear bright pink95
Red Radiance, rich non-fading red95
Rev. F. Page Roberts, golden yellow tinged with reddish buff95
Robin Hood, bright rosy-red	1.45
Romance, clear golden yellow	1.25
Rome Glory, cerise red (Plant Patent 304)	1.50
Roslyn, golden-yellow with orange splashing	1.45
Sensation, deep velvet red95
Signora, warm burnt sienna, (Plant Patented 201)	1.45
Soeur Therese, rich yellow	1.45
Souvenir de Claudius Pernet, sunflower yellow	1.25
Souvenir de Georges Pernet, oriental red shaded with yellow	1.45
Splendor, rich carmine and orange95
Sunburst, yellow deepening toward orange	1.25
Sunkist, coppery-orange, a rose kissed by the sun	1.45
Templar, clear sparkling crimson95
Talisman, vivid red and gold	1.25
Ville de Paris, rich buttercup yellow	1.45
Wilhelm Kordes, golden, copper and red tints	1.25

Always Plant Thorobred Roses

Superior quality Roses are all strong, vigorous, field-grown bushes. Not spindly, green-house or southern-grown weaklings.

Here's the reason—for propagating Pedigreed Roses, the type of root stock selected is particularly selected for the variety to be grown.

Only certain types of strong growing, disease resisting, hardy root stocks are used. Some of these root stocks are imported from Holland and France. Others are grown in certain sections of the United States.

After the hardy root stock has grown for one year or more, the desired variety is then budded, by the Shield Type Protection Budding Process.

The budded stock is then allowed to grow for two years, into a strong, vigorous bush, full of vitality and ready-to-bloom in your garden.

The "best" Roses are produced from Pedigreed Parents and budded on hardy, strong growing root stock. Therefore, you can readily see why only the "best" quality roses should be planted on your home grounds. Don't be fooled, by cheap inferior rose bushes—plant our ROSES and enjoy magnificent, lovely, fragrant Roses in you garden.

HARDY CLIMBING AND RAMBLER ROSES

For Trellis, Porch and Arbor

For Fall or Spring Planting

SECTION "A"

	Each	Two for
X Size, Medium	\$.60	\$1.10
XX Size, Regular Standard75	1.40
XXX Size, Extra Large Selected95	1.80
Blue Rambler, violet blue		
Climbing American Beauty, red		
Crimson Rambler, red		
Dorothy Perkins, pink		
Dr. Van Fleet, pink		
Excelsa, red		
Flower of Fairfield, red		
Gardenia, cream yellow		
Mary Wallace, bright pink		
Memorial, creeping, white		
Paul's Scarlet Climber, red		
Pink Rambler		
Silver Moon, large white with yellow center		
Tausendschon, (Thousand Beauties), pink		
White Rambler		
Yellow Rambler		

SECTION "B"

	Each	Two for
X Size, Medium	\$.80	\$1.50
XX Size, Regular Standard95	1.80
XXX Size, Extra Large Selected	1.25	2.40
Emily Gray, golden tan and buff yellow		
Jacotte, brilliant orange-apricot, with coppery-red tints		
Primrose, deep primrose yellow		
Rosella, Everblooming tendency, vivid scarlet		
Mme. Gregoire Staechelin, brilliant pink		
Royal Scarlet, fully double pure scarlet		
Scorcher, scorching red		
Spanish Beauty, carmine pink		

NEW PATENTED CLIMBING ROSES

	Each	Two for
XXX Size, Extra Large Selected	\$1.25	\$2.40
Blaze, (Everblooming Paul's Scarlet) Plant Patent No. 10		
XXX Size, Extra Large Selected	\$1.50	\$2.90
Doubloons (New Yellow Climber—Plant Patent 152)		



Our Roses Bloom in the Field Before Shipment

Old Fashioned Fragrant HARDY JUNE ROSES

New, Improved Strains, Exceptionally Free Blooming
For Fall or Spring Planting
(HYBRID PERPETUAL VARIETIES)
Hardy in Coldest Climates

	Each	Two for
Extra Large Selected	\$.95	\$1.90
American Beauty, (bush form), pink		
Harrison's Yellow, fine rich yellow		
Paul Neyron, clear pink		
Prince Camille De Rohan, dark red, almost black		
Ulrich Brunner, bright cherry red		

RUGOSA SHRUB ROSES

Very Hardy, Excellent for Landscaping and Flowering Hedges
For Fall or Spring Planting

	Each	Two for
Extra Large Selected	\$1.25	\$2.40
Amelia Gravereau, purple		
Conrad F. Meyer, silvery rose		
Grootendorst Scarlet		
Grootendorst Brilliant, pink		
Hansa, red		
Rugosa Rubra, red		
Hugonis, (Golden Rose of China), yellow		

EVERBLOOMING BABY ROSES

(DWARF POLYANTHAS)
For Fall or Spring Planting

	Each	Six for
Extra Large Selected	\$.95	\$5.45
Baby Rambler, red		
Gloria Mundi, orange scarlet		
Baby Rambler, white		
Jean de Arc, white		

SECTION "B"

	Each	Six for
Extra Large Selected	\$1.25	\$6.95
Betty Prior, lively red and pink (Plant Patent 340)		
Cameo, shell pink and salmon		
Ellen Paulsen, soft rose pink		
Elsie Paulsen, bright rose pink, large flowers		
Golden Salmon, orange		
Gloire du Midi, orange scarlet (Plant Patent 270)		
Orange Perfection, orange		
Orleans, red		
Permanent Wave, red, petals wavy (Plant Patent 107)		
Snowbank, large flowering white (Plant Patent 279)		

Baby Rambler Roses, THE PAULSEN ROSES especially are ideal for mass planting, hedges, and in clumps for color in shrubby beds. They are truly the rose of tomorrow. Different entirely from the more common sorts. Exceptionally strong and vigorous growers. Very free flowering.
(See Flowering Hedges, page 9 for special prices of Baby Roses for Hedging.)

TREE ROSES

(Must have Winter protection where temperature gets to 15° above zero.)
(Spring Planting Only)

	Each
Extra Large Selected, white, red, pink or yellow	\$7.45

ORNAMENTAL TREES

For Shade and Beauty

For Fall or Spring Planting

Our experience of many years has shown us that the size appearing after each variety transplants to the best advantage.

“S” means suitable for street planting. “L” suitable for lawn planting.

All sizes refer to height above roots

Be sure to give size

	Each	Two for
Althea, Tree Form, 3 to 4 ft., pink, red, purple, white, L.	\$1.15	\$2.20
Ash, American, 6 to 8 ft., S.	1.95	3.70
Ash, American, 8 to 10 ft., S.	2.65	5.00
Basswood, (See Linden)		
Bechtel's Flowering Crab, 3 to 4 ft., L.	1.95	3.70
Birch, Canoe or Paper, 5 to 6 ft., L.	3.95	7.50
Birch, White, 5 to 6 ft., L.	3.65	6.95
Box Elder, (See Maple Ash Leaved)		
Catalpa Bungeii, (Umbrella Tree), 5 to 6 ft., L.	2.65	5.00
(Looks best when planted in pairs)		
Catalpa Speciosa, 6 to 8 ft., L.	1.95	3.70
Cherry, Japan Flowering, double pink, 3 to 4 ft., L.	3.45	6.50
Crab Flowering, 3 to 4 ft., L		
Bechtel's, pink	1.95	3.70
Purple, royal purple leaves	2.45	4.65
Oriental Jewel Tree, rose flowering	2.65	5.00
Cucumber Tree, yellowish white flowers, 4 to 5 ft., L.	3.95	7.50
Dogwood, White Flowering, 2 to 3 ft., L.	1.95	3.70
Dogwood, Red Flowering, 2 to 3 ft., L.	4.45	8.45
Elm American, 6 to 8 ft., S.	1.95	3.70
Elm American, 8 to 10 ft., S.	2.95	5.60
Elm Chinese, 6 to 8 ft., S.	2.95	5.60
Elm Chinese, 8 to 10 ft., S.	4.45	8.45
Fringe, Purple, 2 to 3 ft., L.	2.45	4.65
Horse Chestnut, White Flowering, 4 to 5 ft., S.	4.95	9.30
Hydrangea Tree, Mammoth Pink Flowering		
3 to 4 ft., L.	2.65	5.00
Judas Tree (Red Bud), 3 to 4 ft., L.	1.95	3.70
Linden or Basswood, 6 to 8 ft., S & L.	4.95	9.40
Magnolia, Soulangeana, 2 to 3 ft.	4.95	9.40
Malus Floribunda, (Oriental Jewel Tree) 3 to 4 ft., L.	2.65	5.00
Maple Ash Leaved, 6 to 8 ft., S.	1.95	3.70
Maple Ash Leaved, 8 to 10 ft., S.	2.65	5.00
Maple, Japan Red Blood Leaf, 18 to 24 in. (B & B).	4.95	9.40
Maple Manitoba (See Maple Ash Leaved)		
Maple Norway, 6 to 8 ft., S.	3.95	7.50
Maple Norway, 8 to 10 ft., S.	4.95	9.30
Maple Schwedler's, 6 to 8 ft., S.	6.45	12.25
Maple Schwedler's, 8 to 10 ft., S.	7.45	14.25
Maple Silverleaf, 6 to 8 ft., S.	1.95	3.70
Maple Silverleaf, 8 to 10 ft., S.	2.95	5.60
Maple Silverleaf, 10 to 12 ft., S.	3.95	7.50
Maple Sugar or Rock, 6 to 8 ft., S.	3.95	7.50
Moss Locust, 4 to 5 ft.	3.95	7.50
Mountain Ash, American, 5 to 6 ft., L.	3.65	6.95
Mountain Ash, European, 5 to 6 ft., L.	3.65	6.95
Mulberry Russian, 4 to 5 ft., L.	1.95	3.70
Mulberry Downing, 4 to 5 ft., L.	1.95	3.70
Mulberry, New American, 4 to 5 ft., L.	1.95	3.70
Oriental Jewel Tree, (Malus Floribunda), 3 to 4 ft.	2.65	5.00
Pin Oak, 6 to 8 ft. Beautiful bright red leaves in Fall—		
Ovoid Acorns	5.95	11.50

ORNAMENTAL TREES

(Continued)

	Each	Two for
Pecan, Paper Shell, 18 to 24 in., L.....	\$1.95	\$3.70
Persimmon Tree, 3 to 4 ft., L.....	2.45	4.65
Plane Oriental, 6 to 8 ft., S.....	3.95	7.50
Plane Oriental, 8 to 10 ft., S.....	4.95	9.30
Poplar Bolleana, 6 to 8 ft., S.....	2.45	4.65
Poplar Carolina, 6 to 8 ft., S.....	.95	1.80
Poplar Carolina, 8 to 10 ft., S.....	1.45	2.75
Poplar Carolina, 10 to 12 ft., S.....	1.95	3.70
Poplar Lombardy, 6 to 8 ft., S & L.....	1.45	2.75
Poplar Lombardy, 8 to 10 ft., S & L.....	1.95	3.70
Poplar Lombardy, 10 to 12 ft., S & L.....	2.45	4.65
Plum Dbl. Flowering, (Prunus Triloba), 3 to 4 ft., L.	1.95	3.70
Prunus Newport, 4 to 5 ft., L.....	2.45	4.65
Prunus Triloba, (Plum Dbl. Flowering), 3 to 4 ft., L..	1.95	3.70
Prunus Pissardi, (Ruby Tree), 4 to 5 ft., L.....	2.45	4.65
Purple Fringe, 2 to 3 ft.....	2.45	4.65
Red Bud Tree, (Judas Tree), 3 to 4 ft., L.....	1.95	3.70
Rose of Sharon, Althea Tree, 3 to 4 ft., L., pink, red, purple, white.....	1.15	2.20
Ruby Tree, (Prunus Pissardi), 4 to 5 ft., L.....	2.45	4.65
Russian Olive, 5 to 6 ft.....	1.95	3.70
Thorn Paul's Double Scarlet, 3 to 4 ft., L.....	3.95	7.50
Tulip Tree, 5 to 6 ft., L.....	2.95	5.60
Umbrella Tree, Catalpa Bungei, 5 to 6 ft., L.....	2.65	5.00
Walnut, Black, 2 to 3 ft., L.....	1.95	3.70
Walnut, Genuine English Budded, 2 to 3 ft., L.....	2.45	4.65

WEEPING ORNAMENTAL TREES

	Each	Two for
Birch, Cut Leaved Weeping, 5 to 6 ft., L.....	\$4.45	\$8.45
Cherry, Japan Weeping, 5 to 6 ft., L.....	7.45	14.25
Mulberry, Tea's Weeping, 5 to 6 ft., L.....	4.95	9.40
Willow, Babylonica Weeping, 6 to 8 ft., L.....	2.95	5.60
Willow, Wisconsin Weeping, 5 to 6 ft., L.....	2.95	5.60

A COMMON SENSE TALK ON QUALITY

(Continued From Page 3)

Nu-Way Spacing

Have you ever noticed when driving past a piece of woods, what appeared to be a nice, shapely Evergreen or Shade Tree?

It takes your eye. You get out, walk back in the woods to examine it, but to your disappointment, find it's a fine shapely tree on one side only—and on the other side, ill-shaped, unbranched and unsightly.

What's the cause?

The shapely side enjoyed plenty of room to develop. It received its share of sunlight. The other side was crowded in a density of other growth. Crowding and lack of sunlight are sure to result in unsightly, ill-shaped trees and plants.

With NU-WAY SPACING, trees and plants have plenty of room for cross cultivation, both in the rows and between the rows. They enjoy plenty of sunlight. There is sufficient space for perfect development.

This Nu-Way Spacing method of propagation requires nearly double the acreage to grow the same quantity as compared with the Crowding plan used for growing "cheap stock."

Nu-Way Spacing produces round, bushy, shapely trees and plants—trees and plants that fulfill every expectation of our customers.

All sizes of Fruit Trees refer to height above roots.

Sure-Crop Pedigreed Parentage APPLE TREES

HEAVY BEARING STRAINS

For Fall or Spring Planting

Save Money By Ordering Trees in 3 or 12 Quantities.

S—Summer

A—Autumn

W—Winter

	Each	Three for	Per Dozen
X Size, 3 to 4 ft., Medium Size	\$1.25	\$3.45	\$13.25
XX Size, 4 to 5 ft., Regular Standard	1.50	4.25	15.95
XXX Size, 5 to 7 ft., Extra Large Selected	1.75	4.85	18.00

Baldwin, w
Banana, w
Ben Davis, w
Cortland, w
Delicious, w
Duchess of Oldenburg, a
Early Harvest, s
Fall Pippin, a
Gallia Beauty, w
Gravenstein, a
Grimes Golden, w
Jonathan, w
King, w
Maiden's Blush, a
Macoun, a
McIntosh Red, a
Northern Spy, w
N. W. Greening, w
Pound Sweet, a

Red Astrachan, s
Red Rome Beauty, w
Rome Beauty, w
Roxbury Russet, w
R. I. Greening, w
Snow, or Fameuse, a
Smokehouse, w
Stark, w
Stayman's Winesap, w
Sweet Bough, s
Strawberry, a
Talman Sweet, w
Twenty Ounce, a
Wagner, w
Wealthy, a
Wolf River, w
Yellow Delicious, w
Yellow Transparent, s
York Imperial, w

FAMILY COMBINATION APPLE TREE (One Tree Apple Orchard)

Yellow Transparent, S Red Delicious, W
McIntosh Red, A Northern Spy, W

XXX Extra Large Size 3.65 ea.

CRAB APPLE TREES

For Fall or Spring Planting

XXX Size, 4 to 6 ft., Extra Large Selected ^{Each} \$1.95

Hyslop

Transcendent

Whitney No. 20

APRICOT TREES

For Fall or Spring Planting

XXX Size, 3 to 4 ft., Extra Large Selected ^{Each} \$1.95

Early Golden

Early Moorpark

Large Early Mt. Gamet

PEACH TREES

Peach Trees Should Be Planted Only In The Spring

Save Money By Ordering in 3 or 12 Quantities.

E—Early M—Medium L—Late

	Each	Three for	Per Dozen
X Size , 2 to 3 ft., Medium Size	\$.80	\$2.25	\$ 7.50
XX Size , 3 to 3½ ft., Regular Standard	1.10	3.10	10.50
XXX Size , 3½ to 5 ft., Extra Large Selected . .	1.35	3.80	13.50

Beer Smock, L	Greensboro, E
Belle of Georgia, M	Golden Jubilee, E
Carman, E	Hale, M
Champion, M	Hale Haven, E
Crosby, M	Heath Cling, M
Crawford Early, E	Rochester, E
Crawford Late, L	South Haven, M
Elberta, M	Valiant, E
Fitzgerald, M	Yellow St. John, M

NEW PEACH INTRODUCTION FROM CANADA

	Each	Three for	Per Dozen
X Size , 2 to 3 ft., Medium Size	\$.95	\$2.65	\$ 9.25
XX Size , 3 to 3½ ft., Regular Standard	1.20	3.45	12.50
XXX Size , 3½ to 5 ft., Extra Large Selected . .	1.45	4.10	14.45

Veteran (ONE WEEK LATER THAN VALIANT)

PLUM TREES

For Fall or Spring Planting

	Each	Three for
X Size , 2½ to 3½ ft., Medium Size	\$1.35	\$3.85
XX Size , 3½ to 4½ ft., Regular Standard	1.80	5.10
XXX Size , 4½ to 6½ ft., Extra Large Selected	2.25	6.40

Abundance	Red June
Bradshaw	Reine Claude
Burbank	Satsuma
Fellenburg (Italian)—PRUNE	Stanley—PRUNE
German—PRUNE	Shropshire Damson
Imperial Gage	Wickson
Lombard	Yellow Egg

QUINCE TREES

For Fall or Spring Planting

	Each	Two for
XXX Size 3 to 4 ft., Extra Large Selected	\$2.65	\$5.00

Bourgeat
Orange
Rea's Mammoth

All sizes refer to height above roots.

CHERRY TREES—SOUR

For Fall or Spring Planting

	Each	Three for
X Size, 2½ to 3 ft., Medium Size.....	\$1.55	\$4.35
XX Size, 3 to 4 ft., Regular Standard.....	1.75	4.95
XXX Size, 4 to 6 ft., Extra Large Selected.....	1.95	5.60
Early Richmond		Montmorency, Large
English Morello		May Duke

CHERRY TREES—SWEET

For Fall or Spring Planting

(KNOWN AS OXHEARTS)

	Each	Three for
X Size, 2½ to 3½ ft., Medium Size.....	\$1.65	\$4.60
XX Size, 3½ to 5 ft., Regular Standard.....	1.95	5.60
XXX Size, 5 to 6 ft., Extra Large Selected.....	2.45	6.95
One Year, 3 to 4 ft., unbranched.....	1.95	4.95
Black Tartarian, black		Schmidt's Big, black
Governor Wood, light		Windsor, dark red
Napoleon Big, light		Yellow Spanish, light yellow

STANDARD PEAR TREES

For Fall or Spring Planting

S—Summer

A—Autumn

W—Winter

	Each	Three for
X Size, 2½ to 3½ ft., Medium Size.....	\$1.35	\$3.85
XX Size, 3½ to 4½ ft., Regular Standard.....	1.80	5.10
XXX Size, 4½ to 6 ft., Extra Large Selected.....	2.25	6.40
Bartlett, a		Flemish Beauty, a
Beurre d'Anjou, a		Kieffer, w
Clapp's Favorite, s		Seckel, a
Duchess De Ang., a		Sheldon, a

DWARF PEAR TREES

For Fall or Spring Planting

	Each	Three for
XXX Size, 3 to 4 ft., Extra Large Selected	\$2.65	\$6.40
S—Summer		W—Winter
A—Autumn		
Bartlett, a		Kieffer, w
Clapp's Favorite, s		Seckel, a
Duchess D'Angouleme, a		

RHUBARB ROOTS

(Commonly called Wine Plant and Pie Plant)

For Fall or Spring Planting

	Each	Dozen
Selected Rhubarb Roots.....	\$.35	\$3.50
Eaton's Peach Flavored		Myatt's Linneaus

GRAPE VINES

For Fall or Spring Planting

SECTION "A"

	Each	Dozen
X Medium Size.....	\$.35	\$3.25
XXX Extra Large Selected.....	.50	4.45
Concord, blue-black	Catawba, red	Niagara, white

SECTION "B"

	Each	Dozen
X Medium Size.....	\$.55	\$4.90
XXX Extra Large Selected.....	.75	7.90
Agawam, (Roger's 15), red	Moore's Early, black	
Moore's Diamond, white	Salem, red	
Worden, blue-black		

SECTION "C"

	Each	Dozen
X Medium Size.....	\$.65	\$6.90
XXX Extra Large Selected.....	.95	9.90
Brighton, red	Lucile, new bright red	
Caco, new red	Lindley, new red	
Campbell's Early, black	Portland, white	
Delaware, red	Sheridan, new black	
Fredonia, best blue-black	Vergennes, red	

SECTION "D"

XXX Extra Large Selected.....	Each	\$1.95
Golden Muscat, new golden yellow		

ASPARAGUS ROOTS

For Fall or Spring Planting

	Per 25	Per 100
Conover's Colossal, (2 year old).....	\$1.25	\$3.95
Barr's Mammoth, (2 year old).....	1.25	3.95
Pedigreed Martha Washington, (2 year old).....	1.75	4.95

(Noted for its Rust Resisting qualities)

HORSERADISH ROOTS

For Fall or Spring Planting

	Each	Dozen
Bohemian, Gold Medal variety.....	\$.25	\$2.00

CURRANTS AND GOOSEBERRIES

For Fall or Spring Planting

DO NOT, under any circumstances, take orders for Currants and Gooseberries in the following states, the sale of which is prohibited by State or Federal quarantine in these states: Connecticut, Maryland, Massachusetts, Rhode Island, Maine, Michigan, Minnesota, New Hampshire, Ohio, Pennsylvania, Vermont, Wisconsin, West Virginia, Virginia, North Carolina, New Jersey, Tennessee.

Also the sale of currants and gooseberries is not permitted in the following counties of New York State: Clinton, Essex, Franklin, Fulton, Hamilton, Herkimer, Lewis, Oneida, Saratoga, St. Lawrence, Warren and Washington Counties also Adirondack and Catskill Parks.

CURRANTS

Each	Dozen	Varieties	Each	Dozen
X Size			XXX Size	
\$.50	\$4.95	Cherry, Fay's Prolific, White Grape	\$.70	\$6.95
.70	6.95	Perfection	.95	10.95

GOOSEBERRIES

	Each	Dozen
X Size, Large.....	\$.75	\$8.00
XXX Size, Extra Large Selected.....	.95	9.50
Downing, pale green	Pearl, yellowish green	
Houghton, red	Red Jacket, red	

RASPBERRIES

Standard First Quality

Spring Planting Recommended

Doz. 100

XXX Size Only, Regular Standard.....\$1.45 \$9.90

- | | |
|--|---|
| <p>Black Diamond, black
 Chief, red (new)
 Columbian, purple
 Cumberland, black
 Cuthbert, red
 Gregg, black
 Herbert, red</p> | <p>Latham, (new), best red berry
 Newburgh, (new), superior red
 Ohio, black
 Plum Farmer, black
 St. Regis, Everbearing, red
 Sodus, New Dark Purple
 Taylor, New Best Red</p> |
|--|---|

Extra Fine Two Year Transplants

For Home Gardens

For Fall or Spring Planting

Dozen 100

XXX Size Only, Extra Large Selected.....\$2.25 \$14.95

ALL VARIETIES—SEE ABOVE

New Everbearing Red Raspberry

For Fall or Spring Planting

Doz. 100

XXX Size Only, Extra large selected.....\$2.45 \$18.00

Indian Summer, Best New Everbearing Red
 (Developed by fruit experts at New York State
 Experimental Station.)

BLACKBERRIES

For Fall or Spring Planting

Doz. 100

XXX Size Only.....\$1.45 \$9.90

Blowers	Snyder	Eldorado
Early Harvest		Lucretia Dewberry

BOYSENBERRIES

For Fall or Spring Planting

A cross of the Blackberry, Raspberry and Loganberry. Immense size, delicious flavor, heavy bearer.

Doz. 100

XXX Size Only..... 2.25 14.95

STRAWBERRY PLANTS

For Spring Planting Only
 Selected Size, Strong, Well-Rooted Plants

<p>Mastodon (Everbearing)</p> <p>25 plants by mail.....\$1.75 50 plants by mail..... 3.10 100 plants by mail..... 5.95</p>	<p>All Other Varieties</p> <p>25 plants by mail.....\$1.25 50 plants by mail..... 1.95 100 plants by mail..... 3.65</p>
---	--

Extra Early Varieties: Bellmar, Blakemore, Beaver, Premier, (Howard No. 17), Parson's Beauty, Senator Dunlap, (Dr. Burrill).

Medium Early: Bouquet, Big Joe, Marshall, Catskill, Dorset, Fairfax, Jumbo.

Late Varieties: Aroma, Gandy, William Belt, Chesapeake, Brandywine.

The original plant that produces these new plants we sell is not allowed to produce Fruit. Thus, the surplus growing strength and vigor that would ordinarily be consumed in producing strawberries is transmitted by nature from the Mother plant to her offspring, resulting in producing vigorous, heavy-rooted, top quality plants, capable of bearing profitable crops of First Quality Berries for our customer. Only the plants that develop close to the Mother plant are used. Weak, inferior quality plants that grow at the end of the runners are not used in filling our orders.

Compare these rigid methods with what could be used if our aim or motto was, "Not how good, but, how cheap."

Suppose the mother plant was allowed to produce Fruit—Sold the fruit for profit, then later sold the plants to the unsuspecting public. Naturally, we could sell such plants at low price and still be ahead.

We will not sell a customer a plant or tree of any kind that we would not plant ourselves.



WE OFFER

**Sensational
Bargain
Groups**

For Every Place and Purpose

Each group has been selected to give our customers an ideal combination of varieties that belong in every planting at special bargain prices that represent a genuine worth while saving to you. (See below, also pages 26 to 31.)

Two New Red Hot Bargain Leaders

The "Masterpiece" Garden Group

**NEW PEDIGREED VARIETIES—EXCITING COLORS
GUARANTEED TO BLOOM FIRST SEASON**

For Fall or Spring Planting

- | | |
|--------------------------------|--------------------------------|
| Strawberries and Cream | Snow Queen Anemone |
| Aster | Peach Glow Anemone |
| Gayborder Blue Aster | Chippersfield Orange |
| Coronation Helianthus | Helenium |
| King of the Reds Chrysanthemum | Orange Prince Hollyhock |
| Harvest Moon Cushion Mum | Caucasica Alba Scabiosa |
| Blue Spires Veronica | Caucasica Isaac House Scabiosa |

**ALSO FOUR DELIGHTFUL VANDERBILT
HYBRID DELPHINIUMS**

**16 Most Popular Gleaming Perennials
(1 of each) For Only.....**

\$ 7⁹⁵

REGULAR PRICE \$9.50—CUSTOMER SAVES \$1.55

New Hybrid Delphinium Group

5 TRUE SEPARATE COLORS

For Fall or Spring Planting

- Citadel, lavender
- Allure, deep violet with white eye
- Blue Danube, true delphinium blue
- Enchantment, rose-mauve
- Mountain Snow, sparkling white

**5 Delphiniums—"Newer Than Tomorrow"
(1 of each), All Different Colors, for.....**

\$ 3²⁵

REGULAR PRICE \$3.75—CUSTOMER SAVES 50c

Rose Bargain Groups

The "Glory Garden" Rose Group

For Fall or Spring Planting

Ami Quinard
Autumn
Countess Vandal
Copper Beauty
McGredy's Ivory
McGredy's Scarlet

Margaret McGredy
Mev. G. A. Van Rossem
Signora
Soeur Therese
Ville de Paris
Wilhelm Kordes

The "Cream" of Our New Rose Introductions. All 12 (1 of each) for a Limited Time Only.....

\$ 11⁹⁵

FORMERLY \$13.85

REGULAR PRICE \$17.00—CUSTOMER SAVES \$5.05

Any Six—New Low Price.....

\$ 6²⁵

The Royal "3" Rose Group

(All Patented Varieties)

For Fall or Spring Planting

Eclipse (Plant Patent 172)
Developed by J. H. Nicholas

Gloaming (Plant Patent 137)
Developed by J. H. Nicholas

Rome Glory (Plant Patent 304)
From Ricardi, Italy

A Sensational Value (1 of each).....

\$ 4¹⁵

New Aristocrat Rose Group

(See Plate Book)

For Fall or Spring Planting

Golden Gleam

Ami Quinard

Edith Nellie Perkins

These Three Roses at a Popular Price.
One of Each in XXX Size for Only..

\$ 3⁴⁵

REGULAR PRICE \$ 3.95—CUSTOMER SAVES \$.50

The "All Star" Rose Group

(See Plate Book)

Caledonia
Copper Beauty
Chas. P. Kilham

Grenoble Scarlet
Mrs. Pierre S. Du Pont
Talisman

Priced for Saving. The Above 6, 1 of Each, XXX Size for Only.....

\$ 6²⁵

REGULAR PRICE \$ 7.90—CUSTOMER SAVES \$1.65

Priced For Savings!

The Challenger Phlox Group

For Fall or Spring Planting

Blazing Miracle, reddest of the reds
Blue Boy, true blue
Harvest Fire, orange salmon
Mia Ruys, pure white

**4 Beautiful New Introductions, Huge
Blooms (1 of each), Only.....**

\$ 2²⁵

REGULAR PRICE \$ 2.60—CUSTOMER SAVES \$.35

Giant Flowering Phlox Group

(See Plate Book)

For Fall or Spring Planting

Jules Sandeau, very deep pink
Beacon, cherry red
B. Compte, ox-blood red
Count Zeppelin, white, crimson eye
Lord Raleigh, royal purple
Daily Sketch, salmon pink

**UNUSUAL BARGAIN—These "6"
For Only.....**

\$ 2⁶⁵

REGULAR PRICE \$ 3.10—CUSTOMER SAVES \$.45

Home Lover's Perennial Group

(See Plate Book)

For Fall or Spring Planting

Aquilegia (Columbine)
Whirlwind Anemone (Windflower)
Blue Bonnet (Scabiosa)
Dianthus (Double Sweet William)
Double Hollyhock
Pyrethrum (Pink Bouquet)
Giant Hybrid Gaillardia (Blanket Flower)
Tritoma (Flame Flower)

**"An Amazing Value"—Group of 8
(1 of each) For Only.....**

\$ 3⁶⁵

REGULAR PRICE \$ 4.50—CUSTOMER SAVES \$.85

New Supreme Rock Garden Group

(See Plate Book)

For Fall or Spring Planting

Artemisia Silver King
Anchusa (Forget-me-not Flowering)
Candytuft (Iberis)
Dianthus Deltoides (Maiden Pink)
Gypsophila (Baby's Breath)
Hupehensis (Dwarf Anemone)
Phlox Subulata Alba (white)
Phlox Subulata Rosea (pink)
Plumbago Larpentae (Leadwort)
Sedum Spectabilis Brilliant

Genuine Rock Garden Beauties.

**10 Choice Varieties..... (1 OF EACH
FOR ONLY**

\$ 4⁹⁵

Bulb Bargain Groups

New Princess Irene Tulip Group

For Fall Planting Only

18 GIANT SIZE "SUPER" TULIPS

- | | |
|-----------------|-----------------|
| Campfire | Adoration |
| Pink Favorite | Masterpiece |
| Black Eagle | Sunburst |
| Glacier | Niphetos |
| Scarlett O'Hara | Queen Wilhemina |
| May Flower | Mermaid |
| Jeanne Desor | Creator |
| Purple Giant | Marvelous |
| Madam Butterfly | Twilight |

Entire Group (one of each) with the
Mystery Bulb Extra For Only.....

\$ **3**⁴⁵

Pride of Holland Garden Group

For Fall Planting Only

12 MAMMOTH GARDEN NARCISSUS

- | | |
|--------------|---------------|
| Fortune | Homespun |
| Fire Tail | Orange Glow |
| Commodore | Garden Love |
| Cheerfulness | Twink |
| Red Cross | Flaming Torch |
| Rio Rita | King Alfred |

6 HUGE FRAGRANT HYACINTHS

- | | |
|----------------------|------------|
| Prince Henry | Snow Drift |
| Distinction | Blue Sky |
| King of the Belgians | Pink Pearl |

Cream of the Holland Crop—18 Se-
lected Bulbs For Only.....

\$ **4**²⁵

REGULAR PRICE \$ 5.32—CUSTOMER SAVES \$ 1.07

Genuine Dutch Bulb Group

For Fall Planting Only

- 6 HYACINTHS—Named Varieties—1 of each
24 TULIPS—Named Varieties—2 of each
20 CROCUS—Rainbow Mixed Colors

This Entire Collection of 50 Choice
Selected Bulbs For Only.....

\$ **5**²⁵

Every One A Winner

Autumn Glory Chrysanthemum Group

OLD GOLD, rich orange yellow
RED FLARE, deep, rich, glossy red
LOUISE SCHLING, single deep bronze
LEMONADE, lemon yellow opening white
LORELEI, best pure yellow
RUTH CUMMINGS, rich reddish bronze

6 of America's Finest "Mums" For Only \$ **2**⁵⁵

REGULAR PRICE \$ 3.00—CUSTOMER SAVES \$.45

Gold Medal Chrysanthemum Group

(See Plate Book)

For Fall or Spring Planting

Angelo, lavender pink	L'Argentuillais, rose
Autumn Glow, crimson	Oconto, white
Brune Poitevine, reddish bronze	October Dawn, pink
Glory of Seven Oaks, golden	Tints of Gold, yellow

A Colorful Fall Garden. 8 Large Flowering Varieties (1 of Each) For Only \$ **3**⁴⁵

REGULAR PRICE \$ 4.00—CUSTOMER SAVES \$.55

Gold Medal Peony Group

(See Plate Book)

For Fall or Spring Planting

Dr. Van der Tak, fragrant pink Solfatare, white and yellow
Triumphans, fragrant satiny red

An Amazing Value—3 Clumps (1 OF EACH) FOR ONLY \$ **2**⁴⁹

REGULAR PRICE \$3.25—CUSTOMER SAVES \$.76

Princess Beatrix Tulip Group

For Fall Planting Only

20 Big Choice Dutch Tulips (one of each) With Queen Wilhelmina Free For Only \$ **2**⁷⁵

"Breath of Spring" Garden Group

For Fall Planting Only

17 Garden Beauties (12 Narcissus and 3 Hyacinths) All For Only \$ **4**¹⁵

Shrub Bargain Groups

The Great All American Shrub Group

For Fall or Spring Planting

- | | |
|---------------------------------------|------------------------|
| Althea (Rose of Sharon) | Spirea Van Houtte |
| Forsythia Spectabilis | Spirea Anthony Waterer |
| Hydrangea P. G. Bush | Snowberry |
| Hydrangea Arborescens (Hills of Snow) | Syringa Virginalis |
| Japan Quince | Weigela Eva Rathke |
| Pink Tartarian Honeysuckle | Weigela Variegated |

12 of America's Most Popular Flowering Shrubs (1 of Each) For..... \$ 10⁹⁰

REGULAR PRICE \$12.34—CUSTOMER SAVES \$1.44

All-Season Shrub Group

(See Plate Book)

For Fall or Spring Planting

- Forsythia Fortunei (Golden Bell)
- Hydrangea Arborescens (Hills of Snow)
- Ile de France (New Butterfly Bush)
- Spirea Anthony Waterer
- Syringa Virginalis
- Weigela Eva Rathke

These "6" All-Season Beauties (1 of Each) For Only..... \$ 5⁶⁵

REGULAR PRICE \$ 6.50—CUSTOMER SAVES \$.85

New "DeLuxe" Giant Flowering Dahlia Group

For Spring Planting Only

- | | |
|------------------------|--------------------|
| Meadowbrook | Heart of Milwaukee |
| Monmouth Champion | Snowdrift |
| Mrs. Geo. LeBoutillier | Kathleen Norris |
| Gorgeous Lady | Pot-O-Gold |
| Prince of Persia | |

Nine Gorgeous Exhibition Varieties (1 of Each) For Only..... \$ 3⁹⁵

REGULAR PRICE \$ 4.95—CUSTOMER SAVES \$1.00

Show Garden Gladioli Group

For Spring Planting Only

- | | |
|-------------------|-------------------|
| Miss New Zealand | Red Knight |
| Blue Beauty | Gate of Heaven |
| J. S. Bach | Dr. C. Hoeg |
| Moorish King | Mrs. P. W. Sisson |
| Golden Flame | Early Dawn |
| Star of Bethlehem | Golden Souvenir |

12 New Prize-Winners (1 of Each) \$ 1⁶⁵

A Home Orchard Saves You Money

Thrifty Family Home Garden Group

For Fall or Spring Planting

A complete Home Orchard and Garden Planting for thrifty families.

See Special Colored Folder for varieties and prices.

Home Profit Grape Group

(See Plate Book)

For Fall or Spring Planting

Brighton, red
Caco, new red

Fredonia, best blue-black
Portland, white

ALL 4 (one of each) in the XXX size for only

\$ **3**²⁵

ALL 4 (one of each) in the X size for only

\$ **2**³⁵

Home Profit Peach Bargain Group

For Spring Planting Only

Hale

Elberta

Crawford, Early or Late

ALL 3 (one of each) in the XXX size for only

\$ **3**³⁵

ALL 3 (one of each) in the XX size for only .

\$ **2**⁹⁵

ALL 3 (one of each) in the X size for only .

\$ **2**¹⁵

Home Profit Cherry Group

For Fall or Spring Planting

Napoleon

Black Tartarian
Large Montmorency

ALL 3 (one of each) in the XXX size for only .

\$ **5**⁹⁵

ALL 3 (one of each) in the XX size for only .

\$ **4**⁹⁵

ALL 3 (one of each) in the X size for only . .

\$ **3**⁹⁵

Home Profit Raspberry Group

Extra Fancy Transplants for The Home Garden

For Fall or Spring Planting

Sodus, purple

Black Diamond, black
Indian Summer, Everbearing, red

4 of Each (12 in all) for

\$ **2**⁴⁵

Recommended Distance for Planting and Number of Trees and Plants per Acre

Apples:

36 x 36 ft.— 33 Trees
40 x 40 ft.— 27 Trees

Apricots:

18 x 18 ft.— 134 Trees
20 x 20 ft.— 108 Trees
24 x 24 ft.— 75 Trees

Blackberries:

3 x 7 ft.—2074 Bushes

Cherries—Sour:

18 x 18 ft.— 134 Trees
20 x 20 ft.— 108 Trees

Cherries—Sweet:

24 x 24 ft.— 75 Trees
30 x 30 ft.— 48 Trees
36 x 36 ft.— 33 Trees

Currants:

4 x 6 ft.—1815 Bushes
5 x 5 ft.—1742 Bushes
4 x 7 ft.—1556 Bushes
4 x 8 ft.—1361 Bushes

Gooseberries:

4 x 6 ft.—1815 Bushes
5 x 5 ft.—1742 Bushes

Grapes (on trellis):

8 x 8 ft.— 680 Vines

Grapes (arbor):

6 x 6 ft.—1210 Vines

Peaches:

18 x 18 ft.— 134 Trees
20 x 20 ft.— 108 Trees

Pears (standard):

18 x 18 ft.— 134 Trees
20 x 20 ft.— 108 Trees
24 x 24 ft.— 75 Trees

Pears (dwarf):

10 x 10 ft.— 435 Trees
12 x 12 ft.— 302 Trees
15 x 15 ft.— 193 Trees

Plums:

18 x 18 ft.— 134 Trees
20 x 20 ft.— 108 Trees
24 x 24 ft.— 75 Trees

Quinces:

10 x 10 ft.— 435 Trees
12 x 12 ft.— 302 Trees
15 x 15 ft.— 193 Trees

Raspberries (red):

2 x 7 ft.—3111 Bushes
3 x 7 ft.—2074 Bushes

Raspberries (black):

3 x 7 ft.—2074 Bushes

Strawberries:

1 x 4 ft.—10,890 Plants

To estimate the number of plants required for an acre at any given distance, multiply the distance between the rows by the distance between the plants, which will give the number of square feet allotted to each plant, and divide the number of square feet in an acre (43,560) by this number. The quotient will be the number of plants required.

AGE AT WHICH DIFFERENT TREES USUALLY FRUIT

XXX Size Only

This varies greatly with different varieties. Such apples as "Yellow Transparent" and "Duchess of Oldenburg" often fruit the second year, while "Northern Spy" seldom fruit in less than ten years after transplanting, though it is one of the best apples and a prolific yielder when of bearing age. The average time after planting is, for

Apples 2 to 6 yrs.	Plums 2 to 4 yrs.
Blackberries 1 to 2 "	Peaches 2 to 3 "
Cherries 3 to 4 "	Quinces 3 to 4 "
Crab Apples 2 to 6 "	Raspberries 1 to 2 "
Currants 1 to 2 "	Std. Pears 3 to 4 "
Dwarf Pears 2 "	
Gooseberries 1 to 2 "	
Grapes 2 "	

Good Trees Are Great Money Makers

By SAMUEL FRAZER

(From The American Agriculturist)

Think of the time and energy which the planter and his children will waste growing a scrub tree when they might be reaping dollars by caring for a good one! We never get something for nothing. It costs more to grow a tree right than to grow a scrub.

The public can get what it pays for and no more. The fruit grower who wants a tree well-grown on first-class roots, propagated with care will have to pay enough to reimburse for the additional expense in propagating.

GETTING YOUR MONEY'S WORTH

The possibility of the tree repaying the expenditure depends to an enormous extent upon the judgment used in the first purchase. If a cheap, poorly grown tree is planted, one may never get the reward.

It is interesting to note that the yield of the bearing trees of the United States is frequently one-tenth of a barrel per tree; in other words, there are a lot of drones in the orchards. For the live producers the important question is: Am I going to plant a drone tree or a producer?

PEDIGREED TREES PAY BIG

There are apple orchards which are averaging 10 barrels a tree. These orchards for a term of years will run in a gross revenue from \$20.00, to as high as \$40.00 a tree; in other words, one single apple tree will turn in as much money as an acre of beans or wheat or as much revenue as the average cow and have to feed her three times a day and milk her twice.

The same farmer who is going to buy an apple tree, when he contemplates purchasing a horse will always prefer and pay more for a well-bred, well put up, close-coupled work horse, because he can do more work. If he is well-bred he is worth more than a scrub.

He will pay more for a cow capable of producing 10,000 pounds of milk than for one whose maximum is 4,000. Why not use the same judgment in buying trees?

SPECIAL SUGGESTIONS

**Fill Out Each Order Complete
Have Prices and Varieties Right
Write Names
and Addresses Plainly**

Sell Only Varieties and Sizes Listed

It is not advisable to promise a customer a definite date of delivery. We always deliver each order at proper time for planting in the Fall or Spring.

We ship by freight, express or mail and MAKE NO CHARGE FOR PACKING.

ALL QUOTATIONS in this Price List are for immediate acceptance, and subject to our being able to supply stock at shipping time without liability to us should injury befall the stock from frost, hail, fire or other causes beyond our control. We aim to keep our varieties true to name and will replace on proper proof, all that prove otherwise, or refund the purchase price, but we do not give any warranty, expressed or implied, and it is mutually agreed between the purchaser and ourselves that we shall not, at any time, be held responsible for a greater amount than the purchase price. Fall shipments are usually made during October, November, December, and Spring shipments March, April, May, according to locality, weather and other conditions, but departure or arrival is not guaranteed at any specified time or season.

NON-WARRANTY. The descriptions in this price list are accurate to the best of our knowledge and belief, but we give no warranty thereon, expressed or implied, and we will not be responsible in any manner for any errors or omissions. If any errors in the descriptions are found, we will be very grateful to our readers if they will kindly call our attention to same so they may be eliminated in our next edition.

Prices Subject to Change Without Notice.