

## **Historic, Archive Document**

Do not assume content reflects current scientific knowledge, policies, or practices.

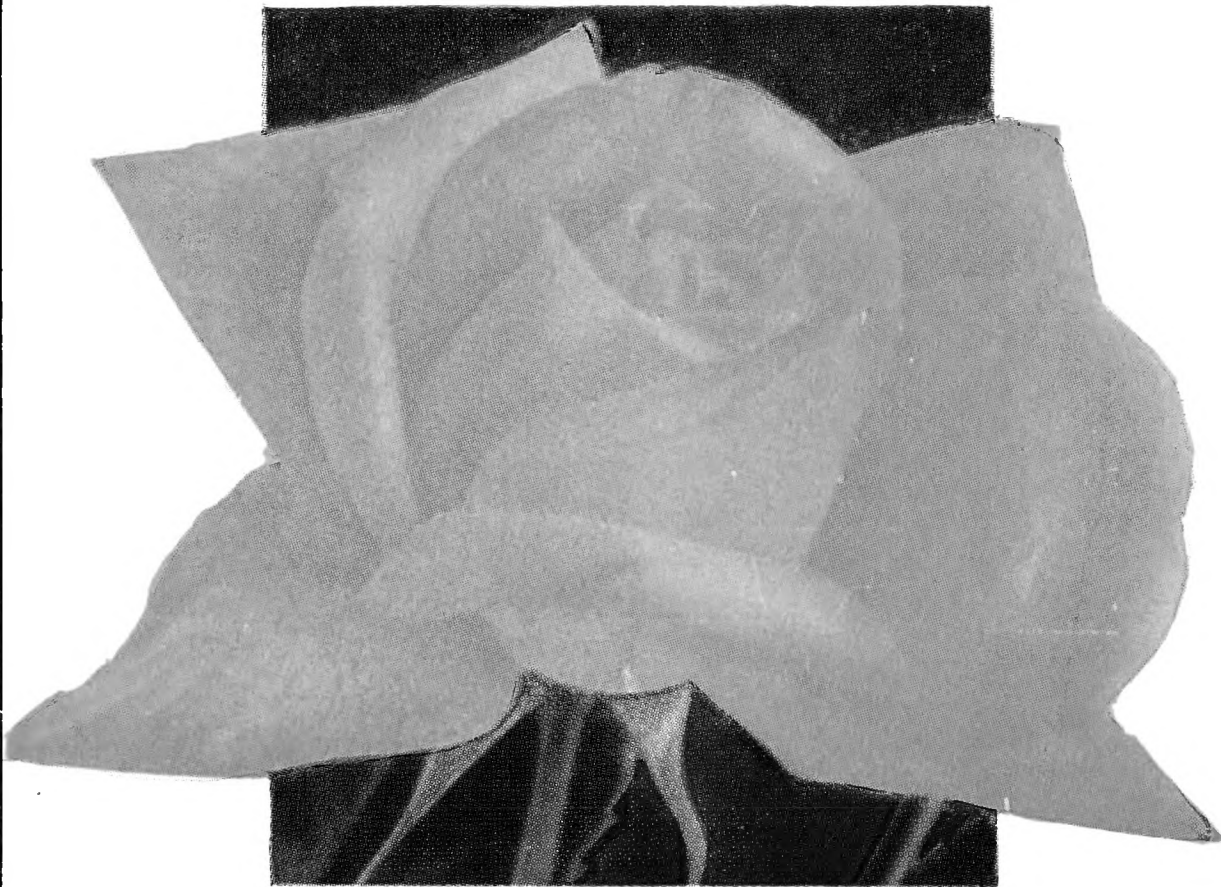


62.61  
Established  
1873

U. S. Department of Agriculture  
FEB 21 1930

# Sterlings

1940  
Catalog



©

**ALICE HARDING ROSE\***

YELLOW, LARGE - STRONG GROWING

●  
**RALPH W. STERLING**  
**CUTCHOGUE**

Suffolk Co.

Long Island

New York

Telephone Peconic 6755

\* See Page 36



*Memorial Day, 1939, at Sterling Farm*



Cutchogue, L. I., N. Y., January 15, 1940.

Greetings to all my Friends and Customers:

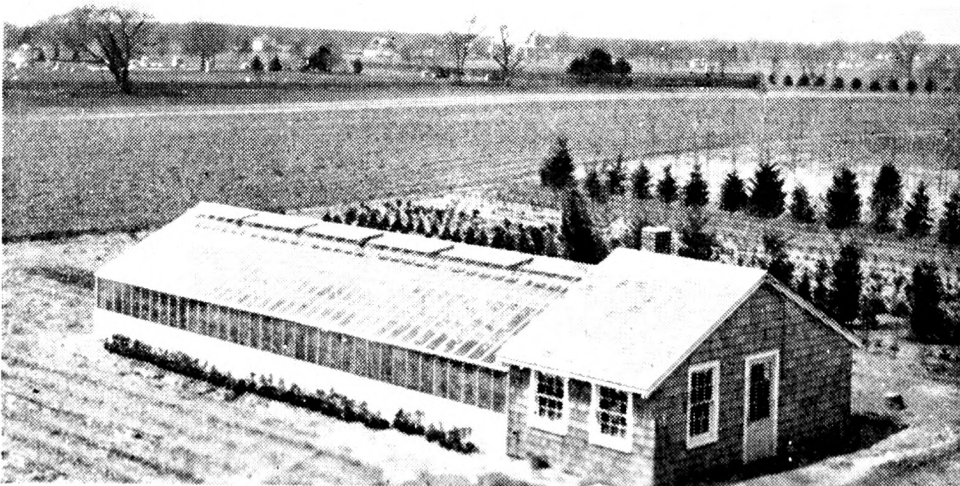
Please accept this, my new Price List and Catalog, with my very best wishes for the year of 1940.

I am striving all the time to secure the very best strains of seed and to raise the very best plants that can be grown, and only hope that this shows in your gardens and fields.

Your success means everything to us. Wishing you all a very Happy and Prosperous Year and thanking you for your continued confidence in Sterling Standard Seeds and Plants, I remain.

Sincerely yours,

RALPH W. STERLING.



*Our new Lord & Burnham Greenhouse  
The Sterling Flower Shop*

# RALPH W. STERLING

TEL. 6755 PECONIC

CUTCHOGUE, L. I., N. Y.

Amt. Enclosed \$..... Date.....

Name.....

Post Office.....

Rural Route No.....

County and State.....

Ship by.....  
(Express or Mail)

Town to Ship Express to.....

Ship about.....  
(Date to be shipped)

Quantity	Cat. Number	DESCRIPTION	Dollars	Cents

Add Postage

May I substitute if out of any kinds ordered?

Quantity	Cat. Number	DESCRIPTION	Dollars	Cents
		<b>Amount Brought Forward</b>		
		Add Postage		
		<b>Total Amount</b>		

If any of your friends or neighbors want one or more catalogs let me know. I will do the rest. TRUE TO NAME. While we use every precaution to have all plants, seeds, etc., true to name and of strong vitality, we will not be responsible for any sum greater than the cost of the order should any prove otherwise than as represented.

## DIRECTIONS

By carefully reading and observing the following directions, mistakes will be largely avoided.

Please use the enclosed Order Sheet and self-addressed envelope if possible. If you need more let me know and I will be glad to send more to you.

Write your name, address and shipping directions plainly.

Always send the cash with your order, unless otherwise agreed upon. Money may be sent by P. O. Money Order, Bank Draft or Registered Letter. Stamps may be sent for amounts under \$1.00, but be sure to put in three-cent stamps, wrapped in waxed paper.

We pay the postage on all seeds sold by the pkt., oz., and  $\frac{1}{4}$  lb. Quantities over that are priced net, to be shipped by Parcel Post, freight or express, at purchaser's expense, unless otherwise stated.

If you desire your seed sent by Parcel Post, add 8c for the first lb. and 1c for each additional lb. of your order, allowing 2 lbs. extra for package. For amount of postage on plants see Plant Department. These rates are for anywhere on Long Island.

By pricing my seeds net, postage extra, you get your seeds delivered for less money than if I quoted a Postpaid price as the 8c per lb. extra would have to be counted in and added to each single lb. priced.

$\frac{1}{2}$  lbs. will be sold at lb. rates;  $\frac{1}{2}$  bu. at bushel rates.

No charge is made for packing or packages.

NOTE:—In all orders received before April 1st we include trial packets of different kinds of seed, the number of packets depending upon the size of your order. If you find any of these of particular value we would be pleased to hear of it.

If you cannot use this catalog or receive more than one will you kindly pass it on to someone interested. Thank you.

**NOTICE—I do not warrant in any way, express or implied, the description, quality, productiveness or any other matter pertaining to any seeds, bulbs, plants, shrubs or trees sold by me, and I will not be in any way responsible for the crop.**

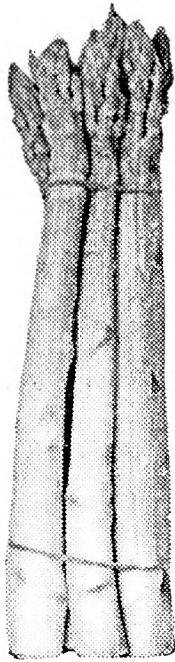
**However, all complaints are carefully looked into and I try to adjust them satisfactorily to all.**

# Seed Department

"Burpee's Seeds grow and are the best that grow." We carry Burpee's Garden and Flower Seeds and you can purchase them from us as reasonable as you can get them elsewhere.

## "STERLING STRAIN"

Follow the mark of "Sterling". We are always looking for the best strains of seed and where we find a superior one we place the sign of "Sterling" on it thus (S). All other seeds listed are direct from Burpee unless otherwise noted.



Paradise

## ASPARAGUS SEED

MARY WASHINGTON (S). Re-selected, Pedigreed Seed. Blight proof, of highest quality and heaviest yield. Pkt., 10c; 1 Oz., 25c; ¼ Lb., 75c; Lb. \$2.50. Post-paid.

Mary Washington 1-year old roots, grown from Re-selected Seed. These plants made a wonderful growth and are as large as most 2-year old roots.

See page 51 for prices on Asparagus Roots.

PARADISE. Sensational NEW, early maturing variety. Produces normal crop ONE YEAR EARLIER than other varieties and produces heavier throughout its life. Large, crisp, tender stalks with exceptionally fine, mild flavor. Is as strongly rust resistant as the Mary Washington variety. An excellent variety for home gardens, commercial growers and shipper. Pkt., 25c; 1 Oz., 60c; ¼ Lb., \$2.00.

## BUSH BEANS — GREEN POD

2 lbs. make 1 qt. 1 lb. will plant 100 feet of drill.

1 bu. will plant 1 acre in hills.

No.		Pkt.	Lb.	Pk. of 15 Lbs.	Bu. of 60 Lbs.
10	LANDRETH'S STRINGLESS GREEN POD. New improved long pod. (S) . . .	\$ .10	\$ .25	\$ 2.25	\$ 3.00
14	PLENTIFUL. New black seeded market strain. (S) . . . . .	.10	.25	2.50	9.50
16	TENDERGREEN. Imp. Full Measure (S)	.10	.25	2.25	8.00
17	BOUNTIFUL. Best for market. (S) . . . .	.10	.20	2.00	7.80
21	BLACK VALENTINE. Stringless. (S) . .	.10	.20	2.00	7.80
50	FRENCH HORTICULTURAL. Stringless. Red Podded Strain. Best for market and for shell beans . . . . .	.10	.25	2.50	9.50
25	ROBUST PEA BEAN. For baking . . . .	.10	.20	2.00	
28	RED KIDNEY. Very rich. For baking	.10	.20	2.25	
29	WHITE MARROW. Medium sized . . . .	.10	.20	2.25	
30	WHITE KIDNEY. Long. For baking . . .	.10	.20	2.25	
69	FAVA BEANS (S). BROAD SEVILLE Plant early. Extra large pods. Best kind for market . . . . .	.10	.25	2.50	9.50

Peconic, N. Y., 1939—I had your strain of String Beans and Fordhook Limas along side of two other strains. I found your strain of Limas were longer podded than another strain planted on the same soil, same time and same fertilizer.

Your String Beans were healthy and yielded better than another strain that I had.

F. K.



## BUSH BEANS — WAX POD

No.		Pkt.	Lb.	Pk. of 15 Lbs.	Bu. of 60 Lbs.
33	BRITTLE WAX. Quality. Stringless....	\$ .10	\$ .25	\$2.90	\$11.00
41	RUST PROOF GOLDEN WAX. Flat pods, tender, stringless. Early.....	.10	.25	2.75	10.00
36	SURECROP STRINGLESS WAX (S). The best for market. Extra long, straight pods. Very prolific .....	.10	.25	2.25	8.00

## POLE BEANS

1 Lb. will plant 100 poles

No.		Pkt.	Lb.
71	KENTUCKY WONDER or OLD HOMESTEAD. (S) Long green pods. Extra quality, tender and fine....	\$ .10	\$ .25
79	GOLDEN CLUSTER WAX. Sweet, tasty .....	.10	.30
80	YARD LONG. New, extra fine .....	.15	.50

## POLE LIMA BEANS

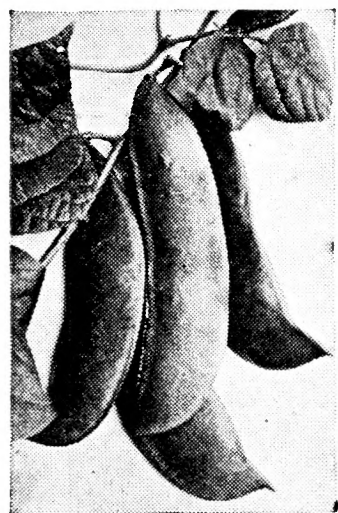
1 lb. will plant 50 poles.

No.		Pkt.	Lb.	2 Lbs.
105	BURPEE'S BEST. New, early. Thick Pods.....	\$ .15	\$ .40	\$ .75
95	BURPEE'S NEW SUNNYBROOK. Early .....	.10	.35	.65
98	GIANT PODDED. Very large .....	.10	.30	.55

## BUSH LIMA BEANS

Our Fordhooks are the best stock that we can buy. Prices quoted are net cash. Time price, \$.50 per bu. extra. Price liable to change without notice.

1 lb. will plant 100 ft. in hills or 50 ft. in drill.



Fordhook Lima Bean

No.		Pkt.	Lb.	Pk. of 15 Lbs.	Bu. of 60 Lbs.
61	FORDHOOKS (S). Best for table and market. Large, early. Fine stock .....	\$.10	\$.25	\$3.00	\$11.00
65	FORDHOOKS from Burpee, an extra choice strain from the originator .....	.10	.25	3.50	13.00
63	BURPEE IMPROVED (S). Flat, large.....	.10	.25	3.00	10.50
64	DREER'S BUSH LIMA. late, prolific (S). Thick pods .....	.10	.25	3.00	11.00
68	WOOD'S PROLIFIC. Small, early .....	.10	.25	3.00	

## BEETS — TABLE

1 oz. will sow 50 feet of drill. 1 lb. will sow 80 to 100 rods.

No.		Pkt.	Oz.	¼ Lb.	Lb.
119	EARLY WONDER (S). Earliest, fine quality, dark red. Best for home use ....	\$ .05	\$ .15	\$ .40	\$ .90
118	DARK RED EGYPTIAN (S). Extra dark .....	.05	.15	.40	1.00
111	CROSBY EGYPTIAN. Earliest .....	.05	.15	.40	.90
128	BURPEE'S IMPROVED BLOOD. Sweet .....	.05	.15	.40	1.00

**BEETS—Continued** . . . . .

No.		Pkt.	Oz.	¼ Lb.	Lb.
126	LUPTON'S PERFECTED DETROIT. DARK RED (S). New. The darkest red beet grown. Early, round . . . . .	\$ .05	\$ .15	\$ .40	\$1.00
127	BRAVO. DARK RED. Early, new . . . . .	.10	.20	.50	1.20

**BEETS — STOCK**

		Oz.	¼ Lb.	Lb.
140	GIANT HALF SUGAR (S). Rose skinned . . . . .	\$ .10	\$ .20	\$ .50
141	GOLDEN TANKARD (S). Large, solid . . . . .	.10	.20	.50
142	MAMMOTH PRIZE LONG RED (S). Largest heaviest cropping mangel of all . . . . .	.10	.20	.50

**BROCCOLI**

Hot Water Treated

No.		Pkt.	Oz.	¼ Lb.
152	ITALIAN GREEN SPROUTING (S). Does well in this section. Best for market . . . . .	\$ .20	\$1.00	\$3.00

**BRUSSELS SPROUT SEED**

Treated with Hot Water.

2 to 3 Oz. will produce enough plants for 1 Acre.

- 163 BLUE RIBBON STRAIN. This seed is grown from selected stock. The very best strain for Long Island and the Catskill section. Crop of 1938. Seed scarce.  
25c per Pkt., \$2.00 per Oz. postpaid. Cash with order or C. O. D.

Shavertown, N. Y., Jan. 9, 1940—Dear Sir: I have raised Sprouts for several years and have always had your "Blue Ribbon Strain" of seed for my main crop, but have always experimented with other kinds.

By giving them all the same care and treatment I find that the "Blue Ribbon" yield the best and are nicer sprouts.

I always find that the price and demand for "Blue Ribbon Sprouts" is the best in the City. Therefore I'm only going to grow "Blue Ribbon" this year.

K. F.

Bovina Center, N. Y., Dec. 18, 1939—The Sprout seed which I purchased from you were the best quality I ever raised.

T. L.



View from Mr. J. Avery's Brussels Sprout field in the Catskill Mts.

## CABBAGE SEED

1 Pkt. will produce 500 plants.

1 Oz. will produce from 2-3 thousand plants.

No.		Pkt.	Oz.	¼ Lb.
181	GOLDEN ACRE. Earliest. Yellows Resistant ..	\$ .10	\$ .40	\$1.20
168	EXTRA EARLY JERSEY WAKEFIELD. Select	.10	.20	.70
169	CHARLESTON WAKEFIELD. Large, pointed	.10	.20	.70
170	COPENHAGEN MARKET. Yellows Resistant...	.10	.40	1.20
190	ALL SEASON. Large, Yellows Resistant .....	.10	.40	1.00
172	EARLY SUMMER. Large, flat heads .....	.10	.20	.70
194	PREMIUM FLAT DUTCH. Large, late.....	.10	.20	.70
199	LARGE LATE DRUMHEAD. Standard. Late...	.10	.20	.70
193	DANISH BALL HEAD. Penn State. Hard .....	.10	.40	1.00
209	SAVOY. Crinkled Quality .....	.10	.20	.70
196	RED ROCK. Sure heading, large .....	.10	.20	.70
212	PE TSAI. Long head, large Chinese. Select ....	.10	.20	.70
214	CHIHILI. New, sure heading. Chinese .. .....	.10	.20	.70

My Cabbage Seed is treated with the Semi-San treatment to control Black Leg and Black Stem.

## CAULIFLOWER SEED

Treated with Hot Water.

2 to 3 Oz. will produce enough plants for 1 acre.

248 STERLING'S LARGE EARLY ERFURT. Large, white heads, heading up quite freely. One of the best strains for this section. New crop seed. Tests good and strong. Extends through a long season from early to late.

Per Pkt., 20c; 1 oz., \$1.50; ¼ lb., \$5.00; lb., \$18.00, postpaid.

EXTRA EARLY ERFURT. An early heading strain that cleans up before freezing weather. Pkt., 25c; oz., \$1.50; ¼ lb., \$5.00.

Will have a large bed of Cauliflower, Brussels Sprouts and Cabbage Plants. Will be pleased to book your orders at any time. Prices always reasonable and ready to adjust them if changes occur.

Spray your Cauliflower and Brussels Sprout Plants with Black Leaf 40 or dust with Nicotine Dust. They control Thrip and Lice.

## CORN — SWEET

1 lb. will plant 100-200 hills.

No.		Pkt.	Lb.	Pk. of 12 Lbs.
319	GOLDEN 60-DAY MAKEGOOD. (S) Extra early. The best money maker for Market gardeners	.10	.20	2.00
307	GOLDEN SUNSHINE. (S) Extra early. Large ears. Fine quality. 75 days .....	.10	.20	2.00
301	GOLDEN BANTAM. From Burpee. Sweetest ..	.10	.25	2.25
309	GOLDEN BANTAM. (S). Extra prolific .....	.10	.20	2.00
306	BURPEE. A new extra early Yellow, sweet ....	.10	.25	2.50
311	LONG ISLAND BEAUTY. (S) Large 2nd early	.10	.20	2.00
341	WHIPPLE'S YELLOW. (S) 2nd early. Large	.10	.20	2.00

---

Delhi, N. Y., Jan. 1, 1940—Please place my order for 3 ozs. of genuine Blue Ribbon sprout seed. Send the seed some time in March. I had a wonderful crop this last year.  
J. H. S.

## CORN—Continued

No.		Pkt.	Lb.	Pk. of 12 Lbs.
312	GOLDEN GIANT. (S) Large ears. Prolific . . . . .	\$ .10	\$ .20	\$2.00
315	BANTAM EVERGREEN (S) Yellow, large . . . . .	.10	.20	2.00
317	STOWELL'S EVERGREEN. (S) Standard late . . . . .	.10	.20	.200
337	COUNTRY GENTLEMAN, or SHOE PEG . . . . .	.10	.25	2.25

## HYBRID SWEET CORN

We are carrying three of the best Hybrid or Top Cross varieties of Sweet Corn this year. They are Stewart's Wilt Resistant.

		Pkt.	Lb.	10 Lbs.
302	MARCROSS. A cross of Golden Early Market and Whipple's Early. Earliest Hybrid . . . . .	\$ .10	\$ .35	\$3.00
305	GOLDEN CROSS BANTAM. 12 rowed, 8 inches long. Quality unsurpassed. Most resistant to Stewart's Disease. Heavy yielding . . . . .	.10	.35	3.00
300	KINGSCROST GOLDEN BANTAM. Market Gardeners strain. Early, prolific, sweet. . . . .	.10	.35	3.00

## CORN — FIELD, POP AND FODDER

1 peck of Field Corn will plant 1 acre in hills 4 ft. x 4 ft.

1 Bushel of Fodder Corn will plant 1 acre in drills.

- 320 LUCE'S FAVORITE FIELD CORN. A yellow hybrid, makes a leafy stalk and a very fine large ear. New seed. Northern grown.  
Shelled, per lb., 10c; 10 Lbs., 85c; per bu. of 56 Lbs., \$3.50.
- 319 CORNELL No. 11. The earliest Dent corn. Large ears. Very prolific. New seed. Northern grown. Shelled. Per Lb., 10c; 10 Lbs., 85c; Per Bu. of 56 Lbs., \$3.50.
- 353 QUEEN'S GOLDEN POPCORN. Largest and best. Buy a lb. for popping. Per Pkt., 10c; per Lb., 25c.
- 355 WHITE RICE POPCORN. Bears 3 to 4 ears to stalk. Sure popper. Per Pkt., 10c; Lb., 25c.
- 342 SORGHUM or EARLY ORANGE SUGAR CANE. Succulent and sweet. Per Lb., 20c; per 10 Lbs., \$1.50.
- 318 SWEET CORN FOR FODDER (Stowell's Evergreen). Per 10 Lbs. at 15c; 100 Lbs. at 12c.

## CARROT SEED

1 Oz. will sow 200 ft. of drill.

2 Lbs. to the acre.

No.		Pkt.	Oz.	¼ Lb.	Lb.
228	FORDHOOK PERFECTION. Ideal for Market Gardens. 6 inches long . . . . .	\$ .05	\$ .15	\$ .50	\$1.40
218	AMSTERDAM FORCING. Earliest. 4 in. . . . .	.05	.25	.80	2.50
232	TENDERSWEET. Burpee's best. 8 in. . . . .	.05	.15	.50	1.50
222	TOUCHON. Fine quality. Early. 6 in. . . . .	.05	.15	.50	1.60
226	NANTES HALF LONG. Coreless, fine . . . . .	.05	.15	.50	1.60
230	DANVER'S HALF LONG. Sterling Special Strain. Very select for main crop . . . . .	.05	.15	.40	1.20
236	CHANTENAY HALF LONG (S). Goldin-heart. Special Red Cored Strain. Heavy yielding and fine quality . . . . .	.05	.15	.40	1.20

## CELERY SEED

Burpee's Special Strains

No.		Pkt.	Oz.	¼ Lb.
266	WHITE PLUME. Earliest, self blanching .....	\$ .10	\$ .30	\$1.00
272	FORDHOOK. Burpee's Best. Dwarf, crisp .....	.10	.50	1.80
260	GOLDEN SELF BLANCHING .....	.20	.90	
282	GIANT PASCAL. Tall, crisp and nutty. Late....	.10	.40	1.50
275	WINTER QUEEN. Dwarf, heavy stalk .....	.10	.30	1.00
293	CELERIAC. Giant smooth Prague. Turnip rooted. The root is used for soup .....	.10	.25	

Will have a fine lot of transplanted Celery Plants this year. Place your orders early. All kinds listed. See page 55.

## CUCUMBER SEED

1 Oz. will plant 100 hills. 1-5 Lbs. to the Acre.

No.		Pkt.	Oz.	¼ Lb.	Lb.
387	A and C. New. Market Gardener's Best Strain. Fine color, straight and long....	\$ .05	\$ .15	\$ .40	\$1.20
377	BOSTON PICKLING. Medium sized .....	.05	.15	.40	1.20
395	BURPEE'S FORDHOOK PICKLING ....	.05	.15	.50	1.80
380	LONGFELLOW. (S) 12 in. Fine for market .....	.05	.15	.40	1.20
379	EXTRA EARLY WHITE SPINE. 7 in. ....	.05	.15	.50	1.50
383	FORDHOOK WHITE SPINE. 10 inches ..	.05	.15	.50	1.80
389	DAVIS PERFECT. (S) 10 in. Fine .....	.05	.15	.40	1.00
399	LONG GREEN. Improved. 12 inches .....	.05	.15	.50	1.80
398	EARLY FORTUNE. (S) 9 in. Fine strain. ....	.05	.15	.40	1.00
385	EVERGREEN. Productive. 11 in. ....	.05	.15	.50	1.60
396	WOODRUFF'S HYBRID. (S) Fine shipper .....	.05	.15	.40	1.00

Have a large supply of Cucumber Seed always on hand. Special prices on 5 lb. lots. Try some A and C.

## EGG PLANT SEED

No.		Pkt.	Oz.
420	BURPEE'S BLACK BEAUTY. Early .....	\$ .10	\$ .50
422	NEW YORK SPINELESS IMPROVED, large .....	.10	.50

Will have a fine lot of Egg Plants in season, well hardened.

## ENDIVE

No.		Pkt.	Oz.
430	GREEN CURLED or GIANT FRINGED. Fine flavored for salad .....	\$ .05	\$ .15
438	DEEP HEART BATAVIAN or ESCAROLE .....	.05	.20

## KALE

Plant in Spring or Fall.

No.		Pkt.	Oz.	¼ Lb.	Lb.
447	BLUE CURLED SCOTCH. Very fine ....	\$ .05	\$ .15	\$ .50	\$1.50
446	DWARF GREEN CURLED. For greens ..	.05	.15	.50	1.50

## KOHL RABI

1 Oz. will sow 300 ft.

No.		Pkt.	Oz.	¼ Lb.	Lb.
456	EARLY WHITE VIENNA. Fine quality. Cook when young. Better than turnips..	\$ .05	\$ .20	\$ .75	\$2.50



Our Mary Washington Asparagus Bed for 1940

## LEEK

1 Oz. will sow 200 ft. of drill.

No.		Pkt.	Oz.	¼Lb.	Lb.
461	BROAD LONDON. When creamed they surpass onions. Sweet. The best kind .....	\$ .05	\$ .20	\$ .75	

## LETTUCE

1 Oz. will plant 250 ft. of drill.

No.		Pkt.	Oz.	¼Lb.	Lb.
475	BIG BOSTON. Burpee's select stock .....	\$ .05	\$ .15	\$ .50	\$1.80
524	NEW YORK IMPROVED. Large size. Called Iceberg by California growers ...	.05	.15	.50	1.80
525	NEW YORK No. 12. (S) Large, quality ..	.05	.15	.50	1.50
493	EARLY CURLED SIMPSON. Black seeded. Cut and comes again. Early.....	.05	.15	.50	1.50
484	MIGNONETTE. Fine quality. Small. Early	.05	.15	.50	1.90
530	BURPEE'S ICEBERG. Stands hot weather	.05	.15	.50	1.80
522	HANSON. Large and sure heading. Fine..	.05	.15	.50	1.80
539	COS or ROMAINE. Paris White. Fine ....	.05	.15	.50	1.80
529	MIXED LETTUCE. All kinds mixed together. Per Oz., 10c.				

## MUSK MELON

1 Oz. will plant about 50 hills.

No.		Pkt.	Oz.	¼Lb.	Lb.
547	DELICIOUS. Early Bender's Surprise....	\$ .05	\$ .15	\$ .50	\$1.90
546	BENDER'S SURPRISE. (S) Large, sweet	.05	.15	.40	1.00
548	GOLDEN COMBINATION. Quality .....	.10	.25		
560	LAKE CHAMPLAIN. (S) An improved Emerald Gem. Fine, extra early .....	.05	.15	.40	1.00
570	HONEY ROCK. (S) Early. Fine quality ..	.05	.15	.40	1.00
553	HALE'S BEST. Early and Delicious.....	.05	.15	.50	1.60
581	MIXED MUSK MELON. All kinds mixed. Per Oz., 10c.				

Mattituck, N. Y., Nov. 10, 1939—Kindly place my order for 20 oz. of your Blue Ribbon Sprout seed for 1940. I am picking the best crop of sprouts that I ever raised from your Blue Ribbon seed. Just finished picking over four acres for the first picking.  
R. T.

## WATER MELON

1 Oz. will plant 25 hills.

No.		Pkt.	Oz.	¼Lb.	Lb.
588	FORDHOOK. Round, sweet, early .....	\$ .05	\$ .15	\$ .50	\$1.25
625	WONDERMELON. (S) Improved Kleckley Sweet. Large sweet. Prolific .....	.05	.15	.40	1.00
610	ICE CREAM. (S) Most popular for Long Island. Long, sweet .....	.05	.15	.40	.85
613	TOM WATSON. Largest. Good quality....	.05	.15	.50	1.25
623	STONE MOUNTAIN or DIXIE BELLE. Large, fine quality. Round .....	.05	.15	.50	1.50
645	CITRON, Colorado Preserving .....	.05	.15	.50	1.50
602	MIXED WATER MELON. All kinds mixed. Per Oz., 10c.				

## MUSTARD

1 Oz. will sow 600 ft.

No.		Pkt.	Oz.	¼Lb.
647	FORDHOOK FANCY. Large, good quality. Fine for salads. Sow every 2 weeks .....	\$ .05	\$ .15	\$ .40
650	SPINACH MUSTARD. Fine flavor .....	.05	.15	.40

## OKRA OR GUMBO

1 Oz. will plant 75 ft.

No.		Pkt.	Oz.	¼Lb.
667	PERFECTED PERKINS. Long pod .....	\$ .05	\$ .10	\$ .30
661	DWARF PROLIFIC. Rich meaty pods .....	.05	.10	.30

## ONION SEED

1 Oz. will plant 200 ft.

No.		Pkt.	Oz.	¼Lb.	Lb.
683	EARLY YELLOW GLOBE. (S) Fine .....	\$ .05	\$ .15	\$ .50	\$1.80
675	JAPANESE YELLOW. (S) Best keeper..	.05	.15	.50	1.50
681	PRIZETAKER. Large yellow. Mild .....	.05	.20	.75	2.50
686	RED WETHERSFIELD. (S) Largest red..	.05	.15	.50	1.50
699	WHITE PORTUGAL or WHITE SILVER- SKIN. (S) Flat, large, mild .....	.05	.15	.50	1.50
698	WHITE BUNCHING or WHITE WELSH. Best for scallions ... ..	.10	.20	.75	2.50

## ONION SETS

Small, hard, fancy sets. 1 Lb. makes a quart. 32 Lbs. to the bushel.

No.		Pkt.	Lb.	Lbs.	Lbs.
700	WHITE SILVER SKIN. (S) Fancy .....	\$ .10	\$ .20	\$1.30	\$4.50
702	JAPANESE YELLOW. (S) Grows better and keeps longer than any other sort. Does not shoot to seed .....	.10	.20	1.30	4.50
703.	RED. (S) Best stock procurable .....	.10	.20	1.30	4.50

Spray your onions with Black Leaf 40% or dust with Nicotine Dust and insure your crop. It is the Thrip that turns the onion tops brown.

**PARSLEY**

1 Oz. will sow 200 ft.

No.		Pkt.	Oz.	¼ Lb.
717	EXTRA CURLED DWARF or EMERALD . . . .	\$ .05	\$ .15	\$ .40
720	PARAMOUNT. Solid mass of finely divided leaves Deep green. New . . . . .	.05	.15	.40
714	PLAIN or SINGLE. Fine for soup . . . . .	.05	.15	.40
723	HAMBURG. Parsnip rooted . . . . .	.05	.15	.40

**PARSNIP**

1 Oz. will sow 150 ft.

No.		Pkt.	Oz.	¼ Lb.
725	GUERNSEY. Broad, tapering to a point . . . . .	\$ .05	\$ .15	\$ .40
728	IDEAL. (S) Improved Hollow Crown, Long . . . . .	.05	.15	.40

**PEPPERS**

No.		Pkt.	Oz.
818	NEAPOLITAN. Early, large, mild, long . . . . .	\$ .10	\$ .50
817	CHINESE GIANT. (S) Largest of all, mild . . . . .	.10	.40
832	HARRIS EARLY GIANT. (S) Large, early, prolific . . . . .	.10	.40
845	LARGE BELL or BULL NOSE. Hot, large . . . . .	.10	.50
821	RUBY KING. Large, sweet thickfleshed . . . . .	.10	.50
837	LONG CAYENNE. Hot. Long . . . . .	.10	.50
833	BURPEE'S NEW SUNNYBROOK. Imp. Cheese . . . . .	.10	.50
815	CALIFORNIA WONDER. (S) New, large, sweet . . . . .	.10	.40

Will have a fine lot of Pepper Plants in season. All kinds.

**PEAS**

THOMAS LAXTON, BLUE BANTAM, LITTLE MARVEL, WYOMING WONDER, CARTER'S DAISY and TELEPHONE are the gardener's favorites for table use and for canning. Sow these six kinds together and they will follow each other through the season.

World's Record, Gradus, Thomas Laxton and Laxton Progress are the four kinds used for market. The prices quoted below for bushel lots are cash prices. Add 50 cents per bushel for time. Even though Peas do not pay as a market crop, the vines make fine green manure for Cauliflower, Brussels Sprouts and late Limas.

1 Lb. of Peas will plant 100 ft. of row.

1 to 2 Bu. to the acre.

No.		Pkt.	Lb.	14 lbs.	56 lbs.
732	RADIO. Dwarf, extra early, fine quality. Plant in August for Fall, 1 ft. . . . .	\$ .10	\$ .25	\$ 2.50	\$ 9.50
739	ALASKA or EARLIEST OF ALL. Pick when small and they are fine. 2 ft. . . . .	.10	.25	2.50	8.50
745	GRADUS or PROSPERITY. Extra early . . . . .	.10	.25	2.50	8.50
743	GRADUS. (S) World Record Strain. One of the best for market. Extra early. Large pods. 2 ft. . . . .	.10	.25	2.25	7.50
744	THOMAS LAXTON. (S) Fine stock, Early. Large pods. 2½ ft. . . . .	.10	.25	2.25	7.50

Peconic, N. Y., March, 1939—The best peas that I had last year were from your Gradus or Prosperity seed. Will want 3 bags for this year and also 2 bags World Record and 1 bag Laxton Progress.

O. S. C.



**PEAS—Continued**

No.		Pkt.	Lb.	Pk. of 14 lbs.	Bu. of 56 lbs.
741	LAXTON'S PROGRESS. (S) Large pods, early 18 in. Good for market and table	\$ .10	\$ .25	\$2.25	\$7.50
754	BLUE BANTAM. Highest quality 15 in.	.10	.25	2.50	8.50
753	LITTLE MARVEL. Sweet, prolific, 15 in. second early	.10	.25	2.50	8.00
770	FORDHOOK WONDER, or Dwarf Alderman. Large, midseason. Quality. 26 in.	.10	.25	2.50	8.50
788	STRATAGEM IMPROVED. (S) Sweet, large. 2 ft. Main crop. Prolific	.10	.25	2.50	9.00
786	TELEPHONE. (S) Dark Pods. Best Tall	.10	.25	2.50	9.00
783	WYOMING WONDER. Best large podded late. Dwarf	.10	.25	2.50	8.50
812	MAULE'S GIANT SUGAR-POD. New early. 2½ ft. Edible pods	.10	.40		

**PUMPKIN**

1 Oz. will plant 25 hills.

No.		Pkt.	Oz.	¼ Lb.	Lb.
862	EARLY SUGAR. (S) Fine for pies	\$ .05	\$ .10	\$ .30	\$ .80
872	STRIPED CUSHAW. Long-necked	.05	.15	.50	1.50
1048	WINTER LUXURY or PIE SQUASH...	.05	.15	.50	1.50
866	LARGE CHEESE. (S) Flattened, quality	.05	.10	.30	.80
864	CONN. FIELD. (S) Large, yellow	.05	.10	.25	.75

**RADISH**

1 Oz. will sow 50 ft. of drill.

No.		Pkt.	Oz.	¼ Lb.	Lb.
890	SAXA. (S) Crisp. Extra early. RED	\$ .05	\$ .15	\$ .40	\$ .80
893	SPARKLER or SCARLET TURNIP WHITE TIPPED. Fine for bunching	.05	.15	.40	1.00
880	GLOWING BALL. Quick growing. Fine	.05	.15	.40	1.20
907	FRENCH BREAKFAST. Olive shaped	.05	.15	.40	1.00
886	CRIMSON GIANT GLOBE. Large, mild	.05	.15	.40	1.20
938	WHITE ICICLE. Crisp, tender. Best long	.05	.15	.40	1.00
891	SCARLET GLOBE. Select. (S) Early, crisp	.05	.15	.50	1.20
971	LONG BLACK SPANISH. Winter	.05	.15	.50	1.20
979	MIXED RADISH. All kinds mixed. Per oz., 10c.				

**SALSIFY OR VEGETABLE OYSTER**

No.		Pkt.	Oz.	¼ Lb.
983	MAMMOTH SANDWICH ISLAND	\$ .10	\$ .20	\$ .75

**SORREL**

No.		Pkt.	Oz.
988	NARROW LEAVED. Sour grass for greens	\$ .10	\$ .30

## SQUASH

1 Oz. will plant from 25 to 50 hills.

No.		Pkt.	Oz.	¼Lb.	Lb.
1010	EARLY WHITE BUSH. Scalloped .....	\$ .05	\$ .15	\$ .50	\$1.20
1060	ZUCCHINI BUSH. Early. Quality .....	.05	.15	.50	1.60
1011	EARLY GOLDEN CROOKNECK. (S) Bush. Extra early. Tender, sweet .....	.05	.15	.50	1.20
1015	GIANT GOLDEN CROOKNECK. Large. Use when young and tender. (S) .....	.05	.15	.50	1.20
1016	STRAIGHT NECK SUMMER. (S) Fine quality, large. 90% straight necks .. .	.05	.15	.50	1.20
1031	LONG WHITE, or VEGETABLE MAR- ROW. Very productive .....	.05	.15	.40	.90
1030	COCOZELLE BUSH. Long green. Fine ..	.05	.15	.50	1.50
1011	ACORN or TABLE QUEEN. Fine quality	.05	.15	.50	1.50
1036	BOSTON MARROW. Golden skin .....	.05	.15	.50	1.70
1038	TRUE HUBBARD. Large. Quality .....	.05	.15	.50	1.70
1022	BLUE HUBBARD. Largest of all. Up to 60 lbs. ....	.05	.20	.70	2.25
1042	RED or GOLDEN HUBBARD. One of the best for pies. Golden flesh. Early .....	.05	.15	.50	1.70

The Squash has been found to be one of the vegetables that contain a quantity of valuable vitamins. Plant squash for your children and serve it like potatoes.

## SWISS CHARD OR SILVER BEET

Swiss Chard is one of the best greens there is. Cut outside leaves and it will grow out again and again. One Oz. will sow 50 ft. of drill.

No.		Pkt.	Oz.	¼Lb.	Lb.
136	LARGE RIBBED WHITE. Smooth leaves. Serve stems like asparagus .....	\$ .05	\$ .15	\$ .50	\$1.20
140	FORDHOOK GIANT. (S) Crumpled leaves	.05	.15	.40	.90
137	LUCULLUS. Large. Fine quality .....	.05	.15	.50	1.20

## SPINACH

1 Oz. will sow 50 ft. of drill.

No.		Pkt.	Oz.	¼Lb.	Lb.
996	KING OF DENMARK. (S) Stands a long time before going to seed .....	\$ .05	\$ .10	\$ .25	\$ .55
999	SAVOY. Reselected. Fine quality, crinkled leaves. Spring or Fall .....	.05	.10	.25	.45
988	NEW ZEALAND. (S) Hot weather Spin- ach. Spreading. Use the tips or new shoots. Good till Fall .....	.05	.10	.30	.75
992	PRINCESS JULIANA. Long season ...	.05	.10	.25	.60
985	OLD DOMINION, BLIGHT RESISTANT. (S). Large crumpled leaves. Fine .....	.05	.10	.25	.50
986	NOBLE GIANT. (S) Thick leaf. Largest ..	.05	.10	.25	.50

## HERBS

No.		Pkt.	Oz.
1315	CATNIP. Perennial. For seasoning .....	\$ .10	\$ .80
1319	DILL, Mammoth. For pickles, soup and sauce .....	.05	.15
1326	TRUE LAVENDER. Perennial. For scenting .....	.10	.80
1327	MARJORAM, SWEET. Annual. Seasoning .....	.10	.60
1333	SAGE. Perennial. Seasoning .....	.10	.40
1335	SAVORY, SUMMER. Annual. Flavoring .....	.10	.30
1341	THYME. Perennial. For soups, stews, gravies, etc.	.10	.70
1321	FENNELL, SWEET. The garden favorite .....	.10	.35



Old Town Tomatoes and the Originator

## TOMATO SEED

1 Oz. will produce 2,000 plants or more.

No.		Pkt.	Oz.	¼ Lb.	Lb.
1097	SUNNYBROOK EARLIANA. Earliest...	\$ .10	\$ .50	\$1.50	\$5.75
1098	RED HEAD. Early. Livingston's stock ..	.10	.40	1.25	4.50
1126	BREAK O'DAY. Early. Certified seed...	.10	.50	1.50	5.00
1120	BONNY BEST. Early. Productive .....	.10	.40	1.25	4.50
1116	PONDEROSA. Livingston's. Large, smooth	.10	.60	2.00	6.50
1070	MARGLOBE. Wilt resistant. One of the best for main crops (S). Special strain	.10	.30	1.00	3.50
1196	PRITCHARD. New, early. Certified .....	.10	.50	1.75	6.00
1071	CLARKE SPECIAL B. (S). Improved Stone. Fine for market .....	.10	.40	1.20	4.00
1072	STONE. Livingston's Certified seed. Choice	.10	.40	1.50	5.00
1108	BURPEE'S MATCHLESS. Large, smooth	.10	.40	1.50	4.50
1072	RUTGER'S NEW WILT RESISTANT. Special strain. Fine for garden and market .....	.10	.40	1.20	4.00
1100	OLD TOWN. Scarlet. Extra large. Averaging 12-14 ounces although many weigh 16 ounces and better. High yielding. Slightly flattened. Firm, meaty and with few seeds. Newly perfected. Per Pkt. 25c; per ¼ Oz. \$1.00.				

Will have a fine lot of plants from the above strains of seed and several other kinds in season. Would appreciate your early orders if you want plants by the thousand.

## TURNIP AND RUTA BAGA SEED

No.		Pkt.	Oz.	¼ Lb.	Lb.
1161	EXTRA EARLY PURPLE TOP MILAN	\$ .05	\$ .10	\$ .40	\$1.00
1163	PURPLE TOP WHITE GLOBE . . . . .	.05	.10	.40	.90
1183	GOLDEN BALL or ORANGE JELLY, . . . . .	.05	.10	.40	.90
1191	BURPEE'S PURPLE TOP YELLOW RUTA BAGA. Standard for winter . . . . .	.05	.10	.30	.80
1192	NEYLON'S PURPLE TOP RUTA BAGA. Special strain. Fine quality . . . . .	.10	.20	.60	1 50

Cutchogue, N. Y., 1939—I want your regular strain of L. I. Purple Top Rutabaga seed. I raised Turnips from your seed last year that weighed 5 lbs. apiece.

F. Z.

## GRASS, CLOVER AND ALFALFA SEED

Prices liable to change without notice.

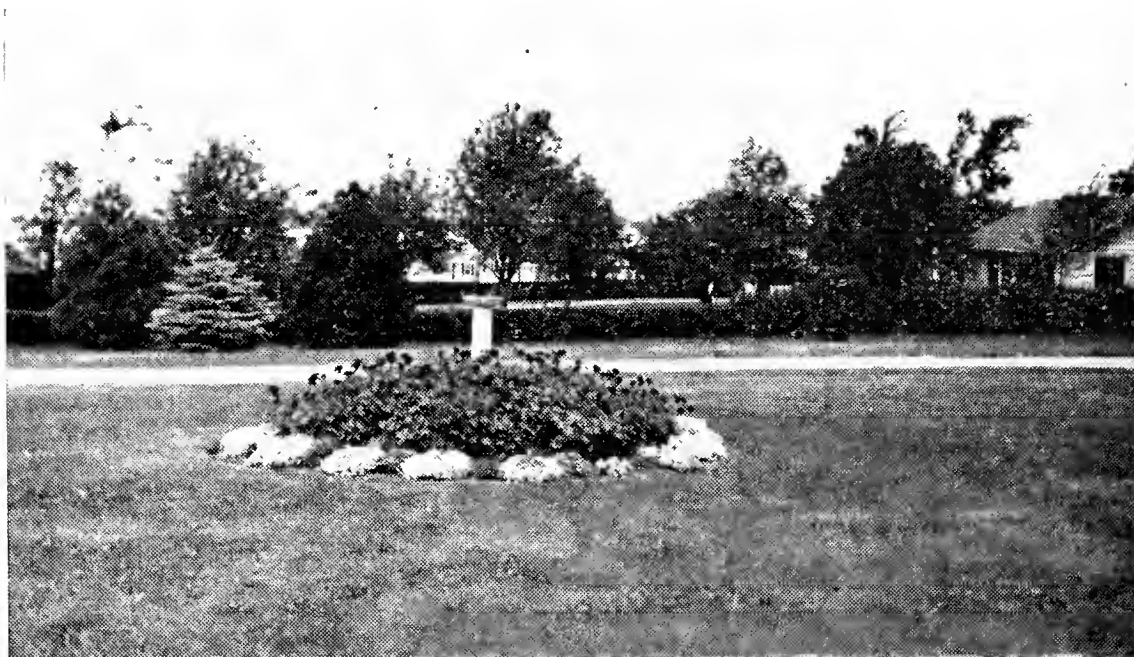
Terms strictly cash.

I make my prices just as reasonable as is possible consistent with the quality. It is the very last fraction of 1% in purity that costs money. I believe that it pays big returns, too, as it is truer in seeds than in anything else that "the best is nonetoo good."

In sowing Timothy alone without Clover use 15 to 20 Lbs. to the acre. If your land is sour and Grass and Clover does not do well as a rule, a little lime sown on top of the ground and harrowed in before sowing the seed would be a great help.

All our Clover and Alfalfa Seed, grown in the Northwest, U. S. A. Special prices on bag lots. Ask us about them.

	5 Lbs.	1
	and Over	Lb. to
	Per Lb.	4 Lbs.
TIMOTHY. The brightest and purest seed on the market 99.80% pure. \$9.50 per 100 lbs. . . . .	\$ .10	\$ .12
RED CLOVER. Domestic. Northern grown. 99.50% pure . . . . .	.26	.28
ALSIKE CLOVER. Does well where Red Clover some- times fails. Best grade. Domestic 99% pure . . . . .	.28	.30
ALFALFA. Finest. Northwestern grown. 99.5% pure . . . . .	.32	.35
ALFALFA GRIMM. Certified. Blue Tag. Stands the Winter better than most. Pure Northern grown . . . . .	.40	.42
SWEET CLOVER. White blooming. Scarified . . . . .	.12	.15
CRIMSON CLOVER. Sow in July and August . . . . .	.16	.18
WHITE CLOVER. Fine for lawn or pasture. Purity 99% . . . . .	.70	.72
NEW ZEALAND CHEWING FESCUE or RED FES- CUE. Fine for pasture or lawn. Good for shade . . . . .	.58	.60
RED TOP. Fancy re-cleaned. Fine for lawns, stump ground or pasture. Best grade. Purity 98% . . . . .	.20	.22
KENTUCKY BLUE GRASS. Does best on sweet soil. Best grade. Fine for lawns, pasture and orchard . . . . .	.30	.32
SOUTH GERMAN CREEPING BENT. Very best grade. Best for lawn or putting greens. Some Velvet . . . . .	.90	1.00
SEASIDE BENT. One of the best Native Bents . . . . .	.80	.85
ASTORIA BENT. Best Native Bent. Blue Tag. Finest quality. Grows well in acid soil . . . . .	.85	.90
ORCHARD GRASS. Earliest pasture . . . . .	.22	.25
GOLDEN MILLET. Sow in June for pasture and hay . . . . .	.07	.09



Lawn and Geranium bed at Mr. George W. McKnight's

**GRASS, CLOVER AND ALFALFA SEED—Continued**

	5 Lbs. and Over	1 Lb. to 4 Lbs.
HUNGARIAN GRASS. Easier to cure than the Golden	\$ .08	\$ .10
JAPANESE MILLET. Considered the best kind of all..	.09	.10
SUDAN GRASS. Grows something like Sorghum. 50 Lbs. for \$3.75 .....	.08	.10
STERLING PASTURE MIXTURE. 9 of the best kinds of Grass and Clover Seed, suitable for pasture. Con- tains no Orchard Grass. Use 20 to 40 Lbs. to the acre. Recleaned seed. 25 Lbs. or more at 27c per Lb.	.28	.30
LEGUME-AID for inoculating Alfalfa, } SWEET, ALSIKE and RED CLOVER } LEGUME-AID for Soy Beans, Vetches, etc. 1 Bu. size, per bottle,	} ½ Bu. size, per bottle, } 1 Bu. size, per bottle,	} 30c } 50c } 30c

**LAWN MAKING**

Our Lawn Grass Seed is mixed from the very best grass seed, re-cleaned and free from weeds, and we sell many hundred pounds all over Long Island, as there is no better grade seed on the market.

Loosen the soil in which a new lawn is to be made to a depth of at least five inches, and lighten it with humus, compost or manure if it is heavy and inclined to bake. Apply fertilizer liberally, either Sheep Manure, Bone Meal, Vigoro or our New Agrico Special High Analysis fertilizer. Use three inches of top soil or humus if too light.

Sow in the early spring when cool weather and ample rainfall will insure complete germination and a good start for the seedlings before hot dry weather comes. If seeding must be delayed, special precautions must be taken to prevent the ground drying out. Early fall is a very desirable time to seed, if moisture is sufficient.

See that the seed is well covered. Rake it into a new seed bed and roll so that the soil is firmed over the seed. Where seed is sown on an old lawn always cover it with a top dressing of sand or soil and fertilizer. Seed thrown on the top of hard ground has no chance to grow and will merely wash off.

We will do your grading and seeding for you at a very reasonable cost. We would appreciate a chance to figure on your job.

## LAWN GRASS SEED

5 Lbs. 1  
and Over Lb. to  
Per Lb. 4 Lbs.

STERLING LAWN SEED. We prepare this mixture ourselves at Sterling Farm, from the highest grade Creeping Bent, Kentucky Blue Grass, Fancy Red Top and White Clover. This mixture has given the very best satisfaction throughout Long Island. Quick growing and permanent. 25 Lbs. or more at 35c per Lb. ....	\$ .36	\$ .38
PARKWAY MIXTURE. This is my own mixture. It contains no White Clover, but large amounts of Creeping Bent and Kentucky Blue Grass with some Fancy Red Top. 25 Lbs. or more at 39c per Lb. ....	.40	.42
SANDY LAWN SEED. A special mixture doing well on light soil and in very dry places. This mixture contains 7 different kinds of grass seed. 25 Lbs. or more at 39c per Lb.....	.40	.42
SHADY LAWN. Where there is only partial shade, the other Lawn Grasses are all right, but where it is quite shady, use this special mixture. Use Vigoro in the Spring and Bone Meal in the Fall to keep a good lawn in shade, 25 Lbs. or more at 42c per Lb.....	.43	.45
WHITE CLOVER. Very best grade .....	.70	.72
CREEPING BENT GRASS. South German. True .....	.90	1.00
ASTORIA BENT. A native Bent of finest quality. Most suitable for this section. Best quality .....	.85	.90
SEASIDE BENT. One of the best.....	.80	.85
CHEWING FESCUE. New Zealand grown. For shade..	.58	.60
ROUGH STALK MEADOW GRASS. Fine for shade....	.43	.45
KENTUCKY BLUE GRASS. Fine for lawns .....	.30	.32
FANCY RED TOP. Quick growing. 98% pure .....	.20	.22
CANADA BLUE GRASS. Very hardy .....	.30	.32

---

For a good, permanent lawn, use 1 Lb. lawn seed to 400 sq. ft. 80 to 100 Lbs. to the acre. For reseeding an old or poor catch, use half that amount. For quick results use double the above quantity.

---

Peconic, N. Y., Dec. 7, 1939—I used your Blue Ribbon sprout seed this year and it did very well for me. I ship my sprouts instead of taking them to the block and find I get a better price for them as there is certainly a good demand for Blue Ribbon sprouts.

J. K.

Cutchogue, N. Y., 1939—The Scottish Chief Seed Oats purchased from you in the Spring, outyielded another kind that I sowed 2 to 1.

From one acre of Scottish Chief I harvested 32 bushel of nice oats. Pretty good for such a dry season.

C. B.

## ***Farm and Field Seed***

### **SEED POTATOES**

Use 4 to 6 sacks to the acre.

**Prices are liable to change without notice.**

We have a nice lot of Seed for Spring demand, both Cobblers and Green Mountains. All certified seed. Handsome stock.

			Sack of
		Pk.	Bu. 150 lbs.
IRISH COBBLERS. Maine grown. Certified . . . . .	\$ .60	\$2.00	\$4.50
GREEN MOUNTAIN. Maine grown. Certified . . . . .	.60	2.00	4.50

The above prices are net cash when you get the goods. Time prices are a matter of adjustment.

### **FIELD SEED**

Prices liable to change without notice.

SEED OATS. Scottish Chief. Certified. A very heavy oat that yields wonderfully well. The best for this section. Use 2 to 4 Bu. to the acre. Pk. of 8 Lbs., 60c; Bu. of 32 Lbs., \$1.85; 5 Bu. for \$9.00.

SEED OATS. Victory. A very heavy Seed Oat, Per Bu. of 32 Lbs., \$1.50. 5 Bu. at \$1.45 per Bu.

SEED WHEAT. Marquis, the best Spring Wheat. Very prolific, early. Pk. of 15 Lbs., 75c; Bu. of 60 Lbs., \$2.35.

SEED RYE. Spring Rye. Fine seed. Bu. of 60 Lbs., \$2.35. Pk. of 14 Lbs., 75c.

SPRING VETCH. For a cover crop. Mix with oats. 10 Lbs., \$1.00; Bu. of 60 Lbs., \$5.80. Inoculate your Vetch Seed with Legume-Aid.

CANADA FIELD PEAS. For cover crop. Use 1 Bu. Peas and 1 Bu. Oats to the acre. 10 Lbs., 85c; Bu. of 60 Lbs., \$4.50.

SOY BEANS. Cayuga. Very productive. 10 Lbs., 50c; Bu. of 60 Lbs., \$2.50.

SUDAN GRASS. We find this the best Grass for Pasture that we have ever tried. Use 20 to 40 Lbs. with 1 Bu. of Oats, on one acre of ground. Sow after ground warms up on good soil.

For Hay use 20 to 35 Lbs. to the acre, broadcast, or 10 Lbs. in drills and cultivate. Crops of 5 tons to the acre have been grown. Northern seed. Per Lb., 10c; 5 Lbs. or more, .08c per Lb.; 50 to 100 Lbs., @ 7½c per Lb.

**WARNING—Do not sow your Soy Beans, Sudan Grass or Spring Vetch until your ground is warmed up a little. If sown too early they will fail to germinate, or if they do sprout, they will not thrive.**

BUCKWHEAT. Japanese. Does well on sour soil. Best for this section. Very large grain. 10 Lbs., 50c; Bu. of 48 Lbs., \$1.75; 5 Bu. at \$1.70 per Bu.

RAPE SEED. Dwarf Essex. Fine for Ducks. Per Lb., 15c; 10 Lbs. or more, at 12c per Lb.

BARLEY. Wisconsin No. 38. Six Row. Makes good pasture. Does not rust like Oats. 10 Lbs., 50c; Bu. of 50 Lbs., \$2.00.

---

### **BOVUNG**

A pulverized dry Cow manure. Wonderful for lawns, roses, flowers of all kinds, shrubs and evergreens.

Packed in 25 and 50 Lb. bags.

25 Lb. bag . . . . .	\$1.00
50 Lb. bag . . . . .	1.50

### SHEEP MANURE

Fine for Lawns, Gardens and Flower Beds. Also the best thing to top-dress seed beds to insure a good crop of Cauliflower and Brussels Sprout plants. We use it on our own Plant Beds.



This is pure and free from weed seeds. Wizard Brand.

10 Lb. bag .....	\$ .50
25 Lb. bag .....	1.00
100 Lb. bag .....	3.00
500 Lb. (5 bags) .....	14.00
2000 Lb. (20 bags) .....	45.00

All the above prices are net cash.

### BONE MEAL

One of the best fertilizers for Lawns, Roses, Trees and Flowers. Best grade. Very fine, steamed Bone.

10 Lb. bag .....	\$ .50
25 Lb. bag .....	1.00
100 Lb. bag .....	3.00
500 Lb. (5 bags) .....	14.00
2000 Lb. (20 bags) very best grade .....	45.00

The above prices are net cash.

### HOLLAND PEAT MOSS, Horticultural Brand

A fine ground Peat Moss, fine for mulching trees, shrubs, perennials or mixing with soil to make it of good texture. Holds moisture well. Best thing for Rhododendrons and Azaleas.

15 Lb. bag. Horticultural Brand. The best .....	\$ 1.00
Large bale of about 150 Lbs. Same grade .....	4.50

### NITRATE OF SODA

Use 1 to 2 bags to the acre on your hay ground, in May, and for your Cauliflower and Sprouts in September. Makes a quick-growing lawn.

10 Lb. bag .....	\$ .50
100 Lb. bag .....	2.50
500 Lbs. (5 bags) .....	10.00
2000 Lbs. (20 bags) .....	Price on Application

The above prices are net cash.

### LIME

Hydrated Lime is the most easily assimilated Lime there is. This is very fine for Lawns and Gardens. Also for seeding down grass, preparing a seed bed, or your Cauliflower field.

10 Lb. bag .....	\$ .20
50 Lb. bag .....	.60
500 Lbs. (10 bags) .....	5.50
2000 Lbs. (40 bags) .....	Price on Application

The above prices are net cash and liable to change without notice.

### V. C. GARDEN FERTILIZER, 5-10-5

V. C. Brand Fertilizer, analyzing 5 per cent Nitrogen, 10 per cent Phos. Acid and 5 per cent Potash, suitable for any growing crop. Recommended by N. Y. State Agricultural Authorities.

10 lb. bag, 5-10-5 .....	\$ .40	500 lb. (4 bags), 5-10-5 .....	8.75
50 lb. bag, 5-10-5 .....	1.25	2000 lbs. (16 bags), 5-10-5. Price	
125 lb. bag, 5-10-5 .....	2.50	on application.	

The above prices are net cash. Can get other analyses if wanted.



## AGRICO FOR TREES AND SHRUBS



We are stocking this especially for your trees as it analyses

- 7% Nitrogen
- 7% Available Phos. Acid
- 5% Potash

With plenty of Organic as well as Chemical content.

5-lb. Bag	.....	\$ .45
10-lb. Bag	.....	.75
25-lb. Bag	.....	1.50
50-lb. Bag	.....	2.50
100-lb. Bag	.....	4.00

10% discount on 500 lbs. up to 1000 lbs.  
15% discount on larger quantities.

## HOTKAPS

A hothouse for every plant. Wonderful results with early crops. Try a row with and a row without and see for yourself.

1000 Hotkaps packed in carton	.....	\$10.25
250 Hotkaps. Trial Garden Package with Setter and Tamper	...	3.85
100 Hotkaps. Home Garden Package with Setter and Tamper	..	2.65
100 Hotkaps. Loose, per Doz., 25c	.....	1.50
Home Garden Package, 25 Hotkaps with Setter	.....	.50

## SOIL TESTING KITS

Sudbury Soil Testing Kits for testing the four necessary requirements of your soil:—Lime, Nitrogen, Phosphoric Acid and Potash.

New Special Priced Kit	.....	\$4.75
------------------------	-------	--------

## GOLD FISH

We carry a good supply of all kinds of Gold Fish, Guppies, Snails, Fish Greens, Aquariums, Bowls, etc.

Common Gold Fish for pools. Per Doz. \$1.00, \$1.50 and \$2.00.

## WATER LILIES AND AQUATICS

Suitable for Ponds, Pools and Aquariums.

	Each
CABOMBA. Viridifolia. For aquariums. 3 for 5c; per bunch	\$ .15
LUDWEIGIA MULERTTI. Reddish green leaves, per bunch	.15
PARROT'S FEATHER. Very graceful, bright green, per bunch	.15
THALIA DEALBATA. Tall Canna-like plant	1.00
UMBRELLA PLANT. Very artistic	.25
VARIEGATED SWEET FLAG. Green and white	.25
WATER HYACINTH. Large plants. Lilac rose flowers	.15
WATER POPPY. Yellow flowers	.25
WATER LILY. Rose Arey. Deep pink, fragrant. Almost red	1.25
WATER LILY. William Faulkner. The best red	2.50
WATER LILY. Odorata. Native white, fragrant	.50
WATER LILY. Marliacea Chromatella. Best yellow	1.50

Can get you any other kind you may want at short notice.



A setting of Annuals at Mr. George W. McKnight's

## ***Burpee's Flower Seeds - Annual***

Pkt. Mixed Flower Garden Seed given with every dollar's worth of Flower Seeds ordered. Ask for it.

The newest varieties and separate colors can be procured in all kinds listed. Ask us for them.

No.		Pkt.	¼ Oz.	Oz.
1504	AGERATUM. Blue Cap. 6 inches. Finest for border. Blooms all Summer. New .....	\$ .15	\$ .80	
1507	AGERATUM. Blue Perfection. Dark. 9 in.....	.10	.30	
3298	ASTER. Royal or Early Branching. Earliest Mixture. 2 ft. Wilt resistant. Large blooms...	.10	.30	1.00
3290	ASTER. American Beauty. Very large. Early. Mixed colors. Wilt resistant. 2½ ft.....	.10	.30	1.00
3037	ASTER. Crego Giant Mixture. Large flowers. Petals curled. 11 Colors. 2 ft. Wilt resistant..	.10	.30	1.00
3052	ASTER. Giant Branching. Very large flowers. Mixed. 11 shades. Wilt resistant. Late. 3 ft...	.10	.30	1.00
3271	ASTER. Astermums. Large flowers. 3 colors mixed. Early. Wilt resistant. Long stems ...	.10	.30	1.00
7762	ASTER. Collection. Giant Crego. Wilt resistant. Large, beautiful. 1 pkt. of each of six colors. The collection 50c. Separate colors per pkt.	.10		
1520	ALYSSUM. Sweet. White. Free blooming. One of the best for beds and borders. 8 inches....	.10	.15	.40
1523	ALYSSUM. Lilac Queen. Improved. 6 inches...	.10	.25	.75
1521	ALYSSUM. Carpet of Snow. 4 inches. Compact. Blooms all Summer. Fine for borders.....	.10	.25	.75
2265	ANTIRRHINUM. New Rust Proof Giant Snapdragons. Many colors mixed .....	.15	.75	
7641	SNAPDRAGON. Collection. 6 Giant Rust Resistant kinds. 6 of the best colors for 50c.			
1779	ANTIRRHINUM. Super - Majestic. Semi - Tall Snapdragons. New. Rust Resistant. Fine for cutting .....	.15	1.00	
1566	ARCTOTIS. Blue-eyed African Daisy. Silvery flowers, sky-blue eye. Beautiful. 2 ft. ....	.10	.20	

## ANNUAL FLOWER SEEDS—Continued

No.		Pkt.	¼ Oz.	Oz.
1766	ARCTOTIS. Giant Hybrids. A wonderful mixture. 10 inch .....	\$ .15		
1759	BALSAM. Lady Slipper. Double Camellia flowered. All colors. 2 ft. ....	.10	.20	.50
2774	BLUE LACE FLOWER. Fine for cutting. 1½ ft. Blooms all Summer .....	.10	.30	1.00
1807	CALENDULA. Double mixed. Giants .....	.10	.15	.50
1785	CALENDULA. Orange Giant. Double. Rich orange. Large blooms, long stems .....	.10	.15	.50
1824	CALENDULA. Orange Fantasy. New crested type flowers. Extra large .....	.10	.35	
1808	CALLIOPSIS. Golden Crown. Bright Yellow with a dark brown center. Annual. 20 inches .....	.10	.25	.75
1816	CANDYTUFT. Giant Hyacinth Flowered. Finest white. Needs sun. 12 inches .....	.10	.25	.50
1830	CANDYTUFT. Mixed. 6 colors. 12 inches.....	.10	.15	.40
1848	CARNATION. Marguerites. Giant mixed. Early flowering. Large. 14 inches. Fragrant .....	.10		
1864	CELOSIA. Magnificent plumed Celosia. Burpee's best. Mixed colors .....	.10		
1912	COCKSCOMB EMPRESS. Rich purple red flowers. Large combs, purple leaves .....	.10		
1885	CENTAUREA. Double Cornflower. Mixed .....	.10	.15	.50
1876	CENTAUREA. Imperialis. Giant Sweet Sultan. Mixed colors. Finest of all .....	.10	.15	.50
1942	COSMOS. Early Large Flowering. Mixed .....	.10	.15	.50
1963	COSMOS. Early Double Crested. White, pink and crimson. Mixed colors .....	.15	.50	
1935	COSMOS. Orange Flare. 3 ft. tall. Early.....	.10	.25	.75
1922	COSMOS Burpee's Sensation. New. Early Giants.	.10	.25	.75
1896	CHRYSANTHEMUM, or Painted Daisy. Single. Mixed. Fine for cutting .....	.10	.15	.50
1899	CYNOGLOSSUM. Blue Bird. Chinese Forget-Me-Not. Likes hot, dry location. Fine for cutting.	.15	.50	
1994	DIANTHUS. Mixed old-fashioned Pinks. Double Heddewigii .....	.10	.50	
1975	DAHLIA. Charm. Semi-double. All colors. Best for cutting. 2 ft. ....	.25		
2055	ESCHSCHOLTZIA or CALIFORNIA POPPY. Sunset mixture. All of the best kinds .....	.10	.15	.50
2017	ESCHSCHOLTZIA. Creamy Crinkles. New Double Cal. Poppy. Apricot and buff.....	.25		
2054	ESCHSCHOLTZIA. Delightful. Apricot-orange center. New Erect Cal. Poppy. 15 in.....	.25		
2058	EUPHORBIA. Snow on the Mountain. Makes a fine show in the Fall. 2 ft. ....	.10	.15	.45
2200	FOUR O'CLOCK. Tom Thumb. Mixed 1½ ft. ....	.10	.15	.40
2086	GAILLARDIA. Double mixed. Fine for cutting	.10	.15	.50
2953	GOURDS. Ornamental. Mixed .....	.10	.15	.40
2093	GYPSOPHILA. Annual Baby's Breath. Rose ..	.10	.15	.50
1929	GYPSOPHILA. Annual. White. King of the Market. Large flowers. Sow often.....	.10	.15	.50
2846	HELICHRYSUM. Strawflower. Mixed colors. Makes a beautiful Winter bouquet .....	.10	.25	.75

## ANNUAL FLOWER SEEDS—Continued

No.		Pkt.	¼ Oz.	Oz.
2119	KOCHIA or BURNING BUSH. Giant Christmas. Green bushes turning red in the Fall	\$ .10	\$ .15	\$ .40
2153	LARKSPUR. Giant Imperial. Double. Delphinium flowered. 3 ft. Burpee's Special Mixture	.10	.30	
2156	LARKSPUR. Early Giant Hyacinth flowered. 3 ft. ....	.10	.30	
7749	LARKSPUR COLLECTION. Tall. Branching. Double flowered. 5 colors, 1 pkt. each 35c....			
2145	LOBELIA. Crystal Palace. Compact border plant. Deep blue flowers. Blooms until frost	.10		
2146	LOBELIA GRACILIS. Deep blue. Fine for hanging baskets and window boxes .....	.10		
2162	LUPINE. Annual. July and August. Does well in the shade. Mixed colors. 2 ft.....	.10	.10	.30
2179	MARIGOLD, ORANGE ALL DOUBLE. Deep orange. Tall African. A better strain. 2½ ft.	.10	.30	1.00
2171	MARIGOLD. LEMON ALL DOUBLE. Immense double flower of lighter color. 2½ ft...	.10	.30	1.00
2199	MARIGOLD. Crown of Gold. Collarette. New Odorless foliage. Orange. 2 ft. Large flowers	.10	.30	1.00
2294	MARIGOLD. Burpee Gold. New. Carnation Flowered. Fine. 2½ ft. Odorless foliage.....	.15	.30	1.00
2307	MARIGOLD. SPANISH GOLD. New Border type. Orange. Great bloomer. 20 by 30 in...	.15	.50	
2185	MARIGOLD. DWARF ORANGE CHARM. Double French Marigold. Rich orange. 1 ft.	.10	.25	.80
2222	MARIGOLD. HARMONY. French. Golden orange center, outside petals mahogany red	.10	.25	.80
2282	MARIGOLD. Giant Peony flowered. Mixed. Beautiful large flowers. 4 inches across.....	.15		
2271	MARIGOLD. Red and Gold Hybrids. Something new and fine. Pkt. of 60 seeds .....	.10		
2226	MIGNONETTE. White Pearl. The very best white. Large sweet scented trusses .....	.10	.30	
2217	MIGNONETTE. Golden Sunset. Yellow .....	.10	.30	
2232	MIGNONETTE. FORDHOOK FINEST MIXED. A mixture of the very best kinds .....	.10	.20	.50
2354	NASTURTIUM. Burpee's Gorgeous Dwarf. Mixed. ¼ Lb., 45c; per Lb., \$1.25, postpaid..	.05	.05	.15
3110	NASTURTIUM. Fordhook Favorites. Burpee's best mixture. Tall or climbing. ¼ Lb., 45c; per Lb., \$1.25, postpaid .....	.05	.05	.15
2326	NASTURTIUM. Burpee's New Double Scarlet. Fiery orange scarlet. Sweet scented .....	.10	.10	.25
2331	NASTURTIUM. Burpee's Double Hybrids. New. All colors. Mixed. Semi-dwarf.... ¼ Lb., 60c	.10	.10	.20
2336	NASTURTIUM. Burpee's New Garnet Gem. Globe shaped. Double Bright Red.....	.15	.20	.60
2329	NASTURTIUM GOLDEN GLOBE. Double Sweet scented. Beautiful. Large .....	.05	.05	.15
2513	PANSY. Burpee's Blend of Giant and Fancy types. Unsurpassed. Waved petals. Mixed ...	.25	2.50	
2473	PANSY. Swiss Giants. New. Large, ruffled and crinkled blooms. Super-Swiss Mixture .....	.25	2.50	

ANNUAL FLOWER SEEDS—Continued

No.		Pkt.	¼ Oz.	Oz.
2570	PETUNIA. Balcony Mixed. All colors. One of the best mixtures for window boxes.....	\$ .10		\$1.00
2569	PETUNIA. Giant FLUFFY RUFFLES. Large, fringed and ruffled. Beautiful mixed colors..	.25		
2539	PETUNIA. Elk's Purple. This is the finest single, deep purple. Extra large .....	.25		
2574	DOUBLE PETUNIA. Fordhook Fancy Fringed. One of Burpee's best mixtures. Double.....	.45		
2538	PETUNIA. Rose of Heaven. Rich rose colored. Continuous bloomer. 12 in. ....	.10		
2500	PETUNIA SUNRISE. New Glowing Pink. Fine for beds and borders. Compact .....	.25		
2567	PETUNIA. Burpee's Defiance. Mixed giant ruffled, an extra large strain.....	.25		
2560	PETUNIA. Rosy Morn. Pink, white throat.....	.10		
2459	PETUNIA. Salmon. Supreme. New color. Fine for bed or border .....	.25		
2581	PHLOX DRUMMONDI. Fordhook Finest Mixed. All of Burpee's finest in mixture. Tall ..	.10	.30	1.00
2575	PHLOX. Dwarf. Compact. Mixed colors.....	.10	.50	
2630	POPPY. Double Shirley Hybrids. Beautiful ....	.10		
2635	POPPY. Chrysanthemum Flowered. Salmon Pink .....	.10		
2631	POPPY. Fordhook Hybrids. Finest. Mixed....	.10		
2659	PORTULACA. Double mixed. Brilliant mixture. Best for Rock Gardens .....	.10	.75	
2652	PORTULACA. Single mixed. Burpee's finest....	.10	.25	
2670	RICINUS or CASTOR OIL BEAN. Red Spire. Most Ornamental. Plant a few in your lawn and garden for the Ground Moles .....	.10	.10	.30
2686	SCABIOSA. Pin Cushion Flower. Burpee's Imp. Giant Hybrids. Mixed. Fine for cutting.....	.10	.25	.75
2677	SALPIGLOSSIS. Velvet Flowers. Mixed colors	.10	.30	
2691	SALVIA. America. Early flowering, very profuse blooming, and about 1½ ft. high.....	.15	1.00	
2684	SALVIA. Bonfire. Brilliant scarlet spikes, stand clear from the dark green foliage. 2 ft. high..	.15	1.00	
	Will have a fine lot of plants from both these kinds of seed.			
2730	STOCKS. Dwarf double. 10 weeks. Mixed. Fine for bedding. Early flowering. 18 in. ....	.10	.70	
2765	SUNFLOWER. Double Chrysanthemum flowered. Fine for border or hedge .....	.10	.10	.30
6075	SUNFLOWER. Large Russian. The largest of all. Per ¼ Lb., 20c; per Lb., 35c.....	.05	.05	.10

**BURPEE'S SWEET PEAS**

None Better.

Separate colors secured on order.

No.		Pkt.	¼ Oz.	Oz.
3599	SWEET PEAS. Burpee Blend. Burpee's mixture of all varieties, colors and shades. ¼ Lb., 50c; Lb., \$1.75, postpaid .....	\$ .10	\$ .10	\$ .20
3598	SWEET PEAS. Giant Ruffled Beauties. Frilled and ruffled. Beautiful, large blooms. ¼ Lb., 90c; Lb., \$2.50, postpaid .....	10.	.10	.25

## ANNUAL FLOWER SEEDS—Continued

No.		Pkt.	¼ Oz.	Oz.
3300	SWEET PEAS. Burpee's Early Flowering. Contains all the newest early flowering sorts. All shades and colors. ¼ Lb., 75c. Try some..	\$ .10	\$ .10	\$ .25
7325	SWEET PEA COLLECTION. Nine Ruffled Beauties. 1 Pkt. of each kind, \$1.00; postpaid. The choicest collection to be found.			
7320	SWEET PEA COLLECTION. Eight of the best Sweet Peas. All colors. 1 Pkt. of each kind. Will plant a 25-ft. row. 50c postpaid.			
2770	TORENIA FOURNIERI. Dark blue with yellow throat. Fine for Window Boxes .....	.15		
2780	VERBENA. New Giant Mixed. Fine for Borders, Boxes, and Beds. Everblooming .....	.15	.45	1.00
	VERBENA. Separate colors on request .....	.15		
2781	WILD FLOWER GARDEN. A mixture of showy Annuals, both tall and dwarf. Sow thickly where you want them to bloom.....	.10	.10	.25
2813	ZINNIA. Burpee's Giant Mammoth Mixture. Includes ten of the newest and best kinds....	.10	.20	.60
2878	ZINNIA. David Burpee. Mixed. Pastel shades..	.25		
2616	ZINNIA. Cut-and-Come-Again. Smaller flowers. Mixed. Fine for cutting .....	.10	.20	.60



**Grassula Aborescens in bloom.**  
Potted plants 75c to \$7.50 Each.

## ANNUAL FLOWER SEEDS—Continued

No.		Pkt.	¼ Oz.	Oz.
2899	ZINNIA. Dahlia Flowered. Fancy Tints. New. Largest of all. Blooms 5 inches across.....	\$ .10	\$ .40	\$1.20
3224	ZINNIA. New Cupid. Smallest of all. Burpee's Special Mixture. 1 ft. tall for border.....	.10	.25	
7543	ZINNIA COLLECTION. 6 Giant Dahlia Flow- ered. Six separate colors for 50c postpaid.			
7590	ZINNIA COLLECTION. Lilliput or Baby Zin- nias. 5 separate colors. 1 Pkt. each 30c.			

All the above Flower Seeds are priced postpaid. Burpee puts out separate colors of many kinds that I have not listed. Also many collections. If in need of any kind that I have not listed let me know and I will get it for you and may be able to save you time and money.

## PERENNIAL FLOWER SEEDS

Perennial Flower Seeds may be sown in February or March indoors and transplanted. If sown where you want them later and thinned out they will bloom the following year. If you want them to surely bloom this year buy our Perennial Plants listed on pages 28-29-30.

Best quality seeds from Burpee. Can get others on order if desired.

No.		Pkt.	¼ Oz.
3706	ALYSSUM. Gold Dust or Basket of Gold. Early.....	\$ .10	\$ .30
4055	AQUILEGIA or COLUMBINE. Long Spurred Hy- brids. Beautiful. Many colors. Burpee's Best.....		.20
3710	ANCHUSA. Italica Dropmore. 4 ft. Deep blue.....	.10	.25
3726	BELLIS or ENGLISH DAISY. Early, double mixed		.15
3741	CAMPANULA. Cup and Saucer Canterbury Bells. Mixed colors. Beautiful biennials .....	.10	.25
3733	CAMPANULA. Bellflowers. Single mixed .....	.10	.25
3734	CAMPANULA. Burpee's Best Double Mixed .....	.10	.25
3756	CARNATION. Chabaud Giant Improved, mixed. One of the most beautiful of all Hardy Pinks .....		.15
3763	CENTAUREA MONTANA. Hardy Cornflower. Blue. Blooms in June, July and August .....	.10	.30
3768	COREOPSIS. Grandiflora. Pure yellow. 2 ft.....	.10	.30
3770	DAISY. Shasta. Alaska. Large blooms. 2-3 ft.....	.15	.50
3771	DAISY. Burpee's Floradale. Curved, loose petals....	.15	
4080	DELPHINIUM BELLAMOSUM. Rich, deep blue...	.15	.75
3774	DELPHINIUM BELLADONNA IMP. Light blue....	.15	.75
3786	DELPHINIUM. Floradale Giant. Large spikes cov- ered with double blooms of exquisite color.....	.20	1.50
3667	DIANTHUS ROCK GARDEN. RARE SPECIES. Dwarf mixed, sweet scented. New .....		.20
3781	DIANTHUS ALLWOODI. Double, semi-double and single. Everblooming. Sweet, mixed .....		.25
3794	FOXGLOVE or DIGITALIS. Giant Shirley. Beauti- ful, tall spikes, mixed colors .....	.15	.30
3681	GAILLARDIA. King Mixture. Fine. Large .....	.10	.35
4049	GYPSOPHILA. Snowball. Fine for bouquets. New...	.20	
3799	GYPSOPHILA. Double. Beautiful, best for cutting..	.20	
3811	HEUCHERA. Coral Bells Hybrids .....	.15	
3812	HIBISCUS. Mallow Marvels. Burpee's Giant Mixed..	.10	.20
3822	HOLLYHOCKS. Double Mixed. Very beautiful.....	.10	.40

## PERENNIAL FLOWER SEEDS—Continued

No.		Pkt.	¼ Oz.	Oz.
3828	HOLLYHOCKS. Single Mixed. Very free blooming...	\$ .10	\$ .20	
7843	HOLLYHOCKS. Double. 6 color collection 45c.			
3803	HELENIUM. Riverton Beauty. Yellow flowers. 4 ft..	.20		
3829	IBERIS. Sempervirens. Hardy candytuft .....	.15		
3950	LUPINES. Improved Hybrids. Blue, pink, rose.....	.15	.35	
3899	LUPINES. Russell Hybrids. Re-selected. Beautiful..	.25		
2273	MYOSOTIS or FORGET-ME-NOT. Alpestres. Blue Basket. The darkest blue. Compact. Biennial ...	.20		
2074	MYOSOTIS. Palustris Semperflorens. Sky blue. Blooms all Summer. Biennial. Spreading .....	.15		
3851	ORIENTAL POPPY. Large scarlet flowers. The most showy of all. 2 to 3 feet .....	.10		
3847	ORIENTAL POPPY. Oriental mixed. New shades....	.10		
3870	PYRETHRUM. Roseum. One of the most graceful flowers. Rose, pink and white. Early .....	.10	.50	
3873	RUDBECKIA PURPUREA. Blooms all Summer. Pur- plish daisy-like flowers, Fine for cutting.....	.15		
3876	SCABIOSA. Caucasica. 2 ft. Soft, lavender blue.....	.15		
3892	SWEET WILLIAM. Giant Double Mixed. All colors	.10	.30	
3884	SWEET WILLIAM. Single. Mixed. Perfection.....	.10	.25	
3879	STATICE. Latifolia. Purplish blue flowers.....	.10	.50	
3882	STOKESIA. Cyanea. Hardy aster. Fine for Summer	.10		
4027	TRITOMA. New Hybrids. Various colored spikes....	.25		
3896	VIOLA CORNUTA. Mixed colors. Everblooming.....	.10		
3894	WALLFLOWER. Fine, double mixed. Sweet scented	.15		

We make a specialty of Perennial Plants. Would be pleased to have you visit our gardens. Make your selections from growing plants.

Can get any other Perennial seed that you might want at very short notice. Also can get larger quantities if you so desire.

## CLIMBING FLOWERS AND VINES

No.		Pkt.	¼ Oz.	Oz.
2906	BALLOON VINE. Balloon-like seed pods .....	\$ .10		
2923	CYPRESS VINE. Mixed. Fern-like foliage....	.10		
2912	CARDINAL CLIMBER. Brilliant. 15 ft.....	.10		
2986	MOONFLOWER. Giant Pink. Beautiful.....	.10		
2963	MORNING GLORY. Scarlet O'Hara. New.....	.20		
3021	MORNING GLORY. Burpee's Best Mixture....	.10	.10	.25
2987	MORNING GLORY. Heavenly Blue. Early ....	.10	.25	.75
3028	MORNING GLORY. Japanese mixed. Large...	.10	.10	.25
3030	MIXED VINE SEEDS. Will make a quick cover	.10	.20	

## GERANIUMS

We have the finest assortment of Potted Geraniums we ever had. Large, strong plants in bud and blossom. Potted in 3 and 4-inch pots.

These very best kinds at 25c Each; \$2.50 per Doz. Smaller plants at 15c Each; \$1.50 per Doz. and 20c Each; \$2.00 per Doz. Extra large plants at 35c to 50c Each.

BEAUTE POITEVINE. Fine, salmon pink.

FIAT. Dark salmon pink. Brilliant. Best blooming.



GERANIUMS—Continued

- LA FAVORITE. Large double white.
- MARTHA WASHINGTON. Large type. Different shades.
- POINSETTIA FLOWERED. New. Poinsettia-like flowers.
- IRVINGTON BEAUTY. New. Free blooming. Fine clear pink.
- MICHELL'S SENSATION. New. Salmon red.
- RADIO RED. A very bright red. Very free blooming.
- S. A. NUTT. Rich dark crimson. Most popular of all.
- RED BARNEY. Bright red. Free Blooming.
- LA FRANCE. Light pink. Double.

Also have Rose and Pansy Geraniums, Lemon Verbena, Heliotrope and other seasonable plants. See page 39 for other bedding plants.



Mitchel's Sensation Geranium



Gardenia Corsage made at Sterling Flower Shop

CUT FLOWERS

We strive to have a good assortment of cut Flowers always on hand or can get them at short notice. Carnations, Roses, Snapdragons, Sweet Peas, Gladioli, etc., in season.

WEDDING BOUQUETS

We have furnished many weddings with their Bridesmaids, Maid of Honor, and Bridal Bouquets, Shower Bouquets, Corsages and all extras.

FUNERAL SPRAYS, WREATHS, PILLOWS, CROSSES, HEARTS.

We are prepared to arrange any kind you might desire. Our prices are very reasonable and we deliver if you wish. We guarantee satisfaction.

Flowers from The STERLING Flower Shop are a mark of Distinction and your Satisfaction is Assured.

FLOWERING PLANTS — ANNUAL

Grown from the Best Seed obtainable. See Flower Seeds for further descriptions. Nice transplanted plants.

One plant of some new kind given with each \$1.00 worth of plants bought. Ask for it.

	Doz.	3 Doz.	100
ASTER. Royal or Early Branching. W. R.....	\$ .40	\$1.00	\$2.50
Crego Giants. W. R. Large, fine.....	.40	1.00	2.50
American Beauty. Very large. W. R.....	.40	1.00	2.50
Giant Branching. W. R. Late.....	.40	1.00	2.50
Giant Astermums. Mixed colors. W. R.....	.40	1.00	2.50

## ANNUAL FLOWERING PLANTS—Continued

	Doz. 3	Doz. 100
AGERATUM. Blue Cap and Perfection. The two best	\$ .40	\$1.00 \$2.50
AGERATUM. New, bushy, deep blue	.50	
BLUE EYED AFRICAN DAISY, 2 to 3 ft.	.50	1.40 3.50
BLUE LACE FLOWER. Lavender Blue, 1½ ft.	.50	1.40 3.50
CALENDULA. Mixed, Orange Fantasy and Giants	.40	1.00 2.50
COSMOS. Early. Double Flowered or Crested.		
Crimson, pink and white; Orange Flare and Sensation	.40	1.00 2.50
Large Early Flowering, single mixed	.30	.75 2.00
CENTAUREA. Double Cornflower. Blue or mixed	.40	1.00 2.50
CARNATION and DIANTHUS. Best Mixtures	.40	1.00 2.50
GAILLARDIA. Double. Mixed colors	.40	1.00 2.50
LARKSPUR. Double. Mixed colors. Giant Imperial	.40	1.00 2.50
LOBELIA. Crystal Palace and Gracilis, 5c Each	.50	
LOBELIA. Pumila. Blue. Green leaves	.50	
MARIGOLD. Tall African. Orange All Double	.40	1.00 2.50
Lemon. All Double	.40	1.00 2.50
Crown of Gold, Burpee Gold, New Red and Gold	.50	1.20
Spanish Gold and Dwf. Orange Charm.	.50	1.20
Dwarf French. Harmony.	.40	1.00 2.50
PANSY. Burpee Giants, Swiss Giants, and Harris Pedigreed Giants. Mixed colors	.50	1.40 3.00
PETUNIA. Fine for Window Boxes, Hanging Baskets, or Bedding. Rosy Morn, Rose of Heaven, Elks Purple, Snowball, Blue Wonder and Mixed	.40	1.00 2.50
BURPEE'S DOUBLE, GIANT FLUFFY RUFFLES, Salmon Supreme and other new ruffled and double Giants. All colors, 10c Each; three for 25c.	.80	
PETUNIA. Sunrise. New pink bedding petunia. Beautiful	.50	
PHLOX DRUMMONDI. Tall mixed and dwarf	.40	1.00 2.50
SALPIGLOSSIS or VELVET FLOWER. Mixed	.50	1.40
SCABIOSA. Pin Cushion Flower. Mixed	.50	1.40
SCABIOSA. New Heavenly Blue.	1.00	
SNAPDRAGONS. Burpee's Super Majestic and Tall Giant. Rust Resistant strains. Best kinds for cutting. Mixed and separate colors		
	.50	1.40
STRAWFLOWERS or EVERLASTINGS. Finest mixed. Pick before fully opened for Winter		
	.40	1.00 2.50
SALVIA. America. Free blooming. Fine for border	.50	1.40 3.00
Bonfire. Compact bush, scarlet	.50	1.40 3.00
SALVIA BLUE BEDDER. Clear Blue. Fine	.50	
STOCKS. Dwarf Double. Mixed colors. 10 weeks	.50	1.40
TORENIA. Fournieri. Blue flowers	.50	
TWINSPUR. A beautiful Annual. Pink	.50	
VERBENA. Giant Mixed, Blue, Rose, Red, Salmon, Pink and White. All the best kinds	.50	1.30
ZINNIA. Fancy Dahlia, Giant Flowered, Fantasy, and Lilliput. Separate colors or mixed	.40	1.00 2.50
Cut-and-Come-Again, New Cupid and Fancy Tints	.40	1.20

Will have a full supply of all the above and many more Annual Flower Plants. Come look our supply over. We are trying out many of the new novelties.

Flower Plants by Parcel Post: Add 8 cents per Doz.; 15 cents per 3 Doz., to above prices, if you want your plants sent by Parcel Post.

## PERENNIAL PLANTS

One Plant of some new kind of Perennial Plant given free for each \$1.00 worth of Perennial Plants purchased of us. Ask for it.

Our plants are best for your Hardy Border or your Rock Garden. They are grown from the choicest seed procurable and the most popular sorts. Take care of them and they will bloom for many years. Dig the bed deep, enrich with well-rotted manure, keep clean and give protection in the Winter. Nice plants, transplanted, well rooted. Top dress with Bone Meal, Vigoro, Sheep Manure or Bovung.

	Each	Doz.
ANCHUSA. Italica Dropmore. 3 to 5 ft. Blue flowering....	\$ .25	\$2.50
ANCHUSA. Smaller Plants .....	.15	1.50
ANCHUSA. Myosotidiflora. Good in shady places. Blue Forget-Me-Not flowers in May. 12 in.....	.30	3.50
ANEMONE. Hupehensis. Mauve-rose flowers. 12 in. Aug.	.25	2.50
ANEMONE. Coronaria. DeCaen. Single mixed. May.....	.25	2.50
AGROSTEMMA. Coronaria. Mullein Pink. June and July	.15	1.50
AQUILEGIA. Columbine. Long Spurred Hybrids. Blue, Pink, Crimson Star, White and mixed. Clumps .....	.25	2.50
AQUILEGIA. Hybrids. Many beautiful kinds .....	.15	1.50
ALYSSUM. Saxatile. Basket of Gold. Does well in sunny positions. Large plants. Fine for Rock Gardens .....	.25	2.50
ALYSSUM. Saxatile. Nice plants .....	.15	1.50
ALYSSUM. Argenteum. 12 in. Blooms in Summer .....	.25	2.50
ALYSSUM. Montana. Low spreading yellow .....	.15	1.50
ARMERIA. Formosa. Sea Pink. Fine for cutting. June....	.25	2.50
ASTER. Hardy. Blue and Red. August and September.....	.25	2.50
ASTER. Mauve cushion and Daphne. Fine. Late Fall.....	.30	
ASTER. Alpinus Rubra. Rose-purple flowers. 6-10 in. May	.25	
BELLIS. Perennis. English Daisy. Rose, pink, white.....	.05	.50
CARNATION. Double Mixed. Fragrant .....	.25	
CAMPANULA. Carpatica. Pale blue flowers. June-October	.25	2.50
CAMPANULA. Rotundifolia. Blue Bells of Scotland.....	.25	2.50
CAMPANULA. Single, Double, and Cup and Saucer. Pink, blue, and white. Large plants. Biennial .....	.15	1.50
CENTAUREA. Macrocephala. Yellow. Late. 3 ft. globe....	.25	2.50
CENTAUREA. Montana. Perennial cornflower. 2 ft. Blue	.25	2.50
CERASTIUM. Tomentosum. Snow in Summer. May.....	.25	2.50
CHINESE LANTERN PLANT. Very ornamental .....	.15	1.50
COREOPSIS. Grandiflora. Single yellow flowers .....	.25	2.50
COREOPSIS. Sunshine. Double yellow .....	.25	2.50
DAISY. Anthemis Keywayi. Fragrant yellow flowers.....	.10	1.00
DAISY. Double Shasta. Double and semi-double. New.....	.25	2.50
DAISY. Shasta, Alaska, single, and Dieners, double .....	.25	2.50
DAISY. Shasta Mawi. Pink. New .....	.25	2.50
DICENTRA. Spectabilis. Bleeding Heart. Large clumps....	.50	5.00
DICENTRA. Exima. Dwarf Bleeding Heart. Everblooming	.35	
DIANTHUS. Dwarf mixed double. Fine for border.....	.25	2.50
DELPHINIUM. Belladonna and Bellamosum. Light and dark .....	.25	2.50
DELPHINIUM. Pacific Giants. New. Delicate shades of blue, lavender, violet, lilac and pure white .....	.25	2.50
DELPHINIUM. Sterling's Hybrids. Large, double. Mixed ..	.25	2.50

## PERENNIAL PLANTS—Continued

	Each Doz.	
DELPHINIUM. Suttons mixed. White, Chinese and many other varieties. Extra large clumps, 50c.....	\$ .25	\$2.50
DELPHINIUM. Sterling Hybrids. Small plants.....	.15	1.50
ERIGERON. Speciosus Fleabane. Lavender. 2 ft.....	.25	2.50
EUPATORIUM. Hardy Ageratum. White and blue. 2 ft...	.25	2.50
FOXGLOVE or DIGITALIS. Giant Shirley. Mixed colors..	.15	1.50
FUNKIA. Plantain Lily. Lavender and white. August.....	.25	2.50
GAILLARDIA. Blanket Flower. Beautiful large flowers. Yellow tips with crimson centers. New varieties.....	.25	2.50
GYPSOPHILA. Baby's Breath. Single and Double .....	.25	2.50
GYPSOPHILA. Bristol Fairy. Finest double. Grafted.....	.50	
GEUM. Mrs. Bradshaw. Rich orange-red blossoms. 12 inch	.25	2.50
HELIANTHEMUM. Mixed colors. June. Fine ground cover	.25	2.50
HEMOROCALLIS. Day Lilies. Single and double yellow..	.35	
HEUCHERA. Coral Bells. Red and Pale Pink. Beautiful..	.25	2.50
HEUCHERA. Hybrids. Mixed coral bells.....	.15	1.50
HIBISCUS. Large mallows. Red, pink and white. Clumps..	.25	2.50
HOLLYHOCK. Double. Pink, yellow, red, orange.....	.25	2.50
HOLLYHOCK. Mixed single and Alleghany mixed.....	.20	2.00
IBERIS. Sempervirens. Hardy Candytuft. White and Pink	.25	2.50
LAVENDULA VERA. English Lavender. 18 in. Fragrant..	.25	2.50
LOBELIA. Cardinalis. Flaming Scarlet. July to September	.25	2.50
LIATRIS. Spicata. Tall lavender spikes. Fine .....	.25	2.50
LINUM. Pirene. Graceful blue flower. Large clumps.....	.25	2.50
LINUM. Flavum. Yellow. Blooms late .....	.25	2.50
LUPINES, White, rose and blue, mixed .....	.25	2.50
LUPINES. Russell Hybrids. Many colors. New .....	.35	3.50
LYCHNIS. Chalcedonica. Vivid scarlet. July and August..	.25	2.50
LYCHNIS. Viscaria. Rose pink. May and June .....	.25	2.50
LYTHRUM. Roseum Superbum. Blooms all Summer .....	.25	2.50
MYOSOTIS. Alpestris. Deep blue and pink Forget-Me-Not	.10	.75
MYOSOTIS. Palustris, semperflorens. Everblooming ....	.10	.75
PANSY. Harolds Pedigreed Giants, Swiss Giants and Burpee's Best. All colors. Large .....	.05	.50
PAPAVER. Oriental Poppy. Pink, deep red, salmon red...	.20	2.00
PAPAVER. Nudicaule. Iceland Poppy. Prettiest of all for Rock Gardens or Border. Mixed colors. Early .....	.20	2.00
PHLOX, Subulata. Trailing, white and pink. Clumps.....	.25	2.50
PHLOX. Subulata Rosea. Pink, white, lilac .....	.10	1.00
PHYSOSTEGIA. Virginica. July to October. Pink and white	.25	2.50
PLATYCODON. Chinese Bellflower. Grandiflora. Blooms all Summer. Blue 1½ ft. Fine .....	.25	2.50
PENTSTEMON. Hybrids. Red, pink and blue.....	.25	2.50
PLUMBAGO. Deep blue flowers in late Summer .....	.35	
POLYMONIUM. Coeruleum. Jacob's Ladder. Blue and white	.25	2.50
POLYMONIUM. Richardsoni. Dwarf blue .....	.25	2.50
PRIMULA. English and Invincible Strains .....	.25	2.50
PRIMULA. Polyanthus. Munstead strain. Mixed. Early..	.25	2.50
PYRETHRUM. Painted Daisies. Mixed. White, rose and red	.25	2.50
PYRETHRUM. Double. Mixed .....	.25	2.50

## PERENNIAL PLANTS—Continued

	Each Doz.	
RUDBECKIA. Newmanni. Black-eyed Susan. Clumps.....	\$ .25	\$2.50
RUDBECKIA. Purpurea. Purple Daisies. Large plants ...	.25	2.50
SALVIA. Azurea. 3 ft. August. Large clumps. Blue.....	.25	2.50
SAXIFRAGA. Magasea Hybrids. Rose pink .....	.20	2.00
SCABIOSA. Caucasica. Blue flowers from June to Sept.	.25	2.50
SEDUM. Spectabile. Tall, pink, large leaves .....	.20	2.00
SEDUM. Acre. Low spreading, yellow blossoms .....	.20	2.00
STOKESIA. Cornflower Aster. June to October. Large....	.25	2.50
SWEET ROCKET. Sweet scented. White and purple .....	.25	2.50
SWEET WILLIAM. Mixed colors. Single and double.....	.25	2.50
SWEET WILLIAM. Dark red and Newport Pink .....	.25	2.50
SAPONARIA. Pink. Spreading. For Rock Gardens .....	.25	
THALICTRUM. Aquilegifolium Album. June to August..	.25	2.50
THERMOPSIS. Carolina Lupin. Yellow .....	.25	
TRITOMA. Pfitzeri. Hardy. Red-hot Poker plant. Large..	.25	2.50
TROLLIUS. Orange Globe. Large globe flowers. Fine ...	.35	3.50
THYMUS. Citriodorous. Lemon yellow Thyme. June.....	.30	3.00
TUNICA. Saxifraga. Grass-like foliage. Pink flowers.....	.10	1.00
VERONICA. Maritima and Spicata. Blue spikes. July.....	.20	2.00
VALERIANA. Rubra. Mauve rose. June to October.....	.25	2.50
VALERIANA. Officinalis. Garden Heliotrope. Sweet .....	.25	2.50
VIOLA. Cornuta. Mixed colors. Large clumps .....	.10	1.00
VIOLA. Jersey Gem. Red and Mixed. Long flowering.....	.10	1.00
VIOLA. Apricot and Golden Yellow .....	.10	1.00
VIOLET. Single. Sweet. Large clumps .....	.15	1.50
VIOLET. Double Blue. Very fragrant. Spreading .....	.25	2.50
WALLFLOWER. German. Mixed. Fragrant .....	.10	1.00
WALLFLOWER. Cheiranthus. Siberian. Orange .....	.10	1.00

Have other kinds of Perennials growing in my beds. Come and look them over. Have smaller plants in many of the above kinds at lower prices.

Postage on Perennials, 12c per dozen extra, on small plants; 25c per dozen on large plants.

## CANNA BULBS

We have several new kinds of Cannas we are giving out as samples.

ENCHANTRESS. Finest Pink. 2½ to 3 ft. Green leaves. 8c each; 75c per doz. One new Apricot bulb given extra with each dozen.

KING HUMBERT. Large orange scarlet flowers with heavy bronze foliage. 4 ft. tall. Each, 8c; per doz., 75c. One extra Wintzers Colossal with each dozen.

YELLOW KING HUMBERT. Bright yellow flowers spotted with orange, bronze foliage. A few will revert to the red blossoms. 4½ ft. Each, 8c; per dozen, 75c. Postpaid. One extra Rosamund Coles with each dozen.

THE PRESIDENT. Large, bright red flowers, with green foliage. One of the best. 4 ft. tall. Each, 8c; per dozen, 75c. Postpaid. One extra Uhlberg with each dozen.

Special collection of 2 each of 4 new kinds and 1 each of 2 new kinds for \$1.00 Postpaid.

## HARDY CHRYSANTHEMUMS

We specialize in Hardy Chrysanthemums. Try a few of the new Cushion varieties. Why not come and look over our display in the Fall and select the kinds you like best. Many new kinds for 1940.

ALBERT MULLER. Double. Apricot, with pink.

BARBARA CUMMING. Yellow shading to bronze. Early.

CRIMSON SPLENDOR. Single garnet.

EMBER. Double glowing orange.

DAPHNE. Single pink Korean.

ENCHANTRESS. Large, semi-double. Clear rose.

ERMALINDA. Lavender-pink, pompon. Fine.

FRANCIS WHITTLESEY. Double bronze and garnet.

GRANNY SCOVILL. New, extra large, double flowers. Coral bronze.

EARLY BRONZE. Extra early. Bronze yellow. Fine.

INDIAN MAID. Single. Orange terra-cotta.

JEAN CUMMING. Large, pure white. Fine.

JEAN TREADWAY. Distinct and charming pink. Early.

KING MIDAS. Double soft yellow.

MARS. Single red Korean.

MOONLIGHT. Large pale blush, single.

MURILLO. Double pink.

OHIO GOLD. Yellow. Early. Large flowers.

PERSIA. Deep rosy carmine. Semi-double.

RED BUTTON. Small red.

REDSKIN. Single. Orange scarlet. Unusual.

R. MARION HATTON. Early, large yellow pompon.

SENSATION. Single yellow tipped scarlet.

SEPTEMBER QUEEN. Double white.

SILVER TIPS. Double carmine, white tips.

SYMPHONY. Double mauve rose.

THE MOOR. Double wine red.

THE TORCH. Orange scarlet. Semi-double.

UNIQUE. Carmine-rose. Semi-double.

VIVID. Rosy crimson. Early, free blooming. Double.

WHITE BUTTON. Small white.

WHITE CHARM. Large white, yellow centre.

WHITE WARRIOR. Dwarf, branching, early. One of the best.

Price 20c Each; \$2.00 per Doz. 15 assorted kinds, 1 Each, for \$2.50.

Will have several new kinds to choose from also.

## NEW CUSHION OR ASTERMUMS

AMELIA or PINK CUSHION.

ASTRID. Early dwarf flesh pink.

BRONZE CUSHION. Low growing, bronze.

RED CUSHION. New red. Low growing.

WHITE CUSHION. New white. Low growing.

YELLOW CUSHION. New yellow. Low growing.

Any of the above at 25c Each, \$2.50 per Doz. assorted.

All the above prices are postpaid.

## GLADIOLUS BULBS

We list the very best kinds that we grow. Have other kinds on hand and can get you any variety desired.

Large No. 1 Bulbs.

We made nine entries with our Gladiolus blooms last August at the Suffolk County Fair and won eight Blue Ribbons and one Red Ribbon.

Our bulbs are all treated with Naphaline Flakes to prevent attack from thrip.

Three bulbs Picardy and 1 bulb of Vagabond Prince given with each \$1.00 worth of bulbs of any kind bought. Ask for them.

AMRITA. Large ruffled clear buff.  
See cut.

No. 3 bulbs. 25c Each.

AFLAME. Large, soft red. Fine.

BAGDAD. Large flowers. Mahogany.

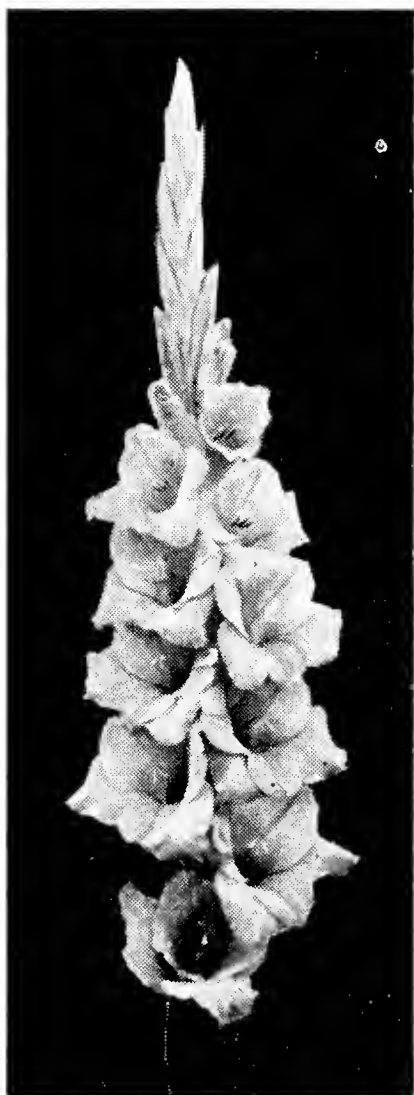
BEACON. Salmon scarlet. Large.

BETTY NUTHALL. Orange pink.

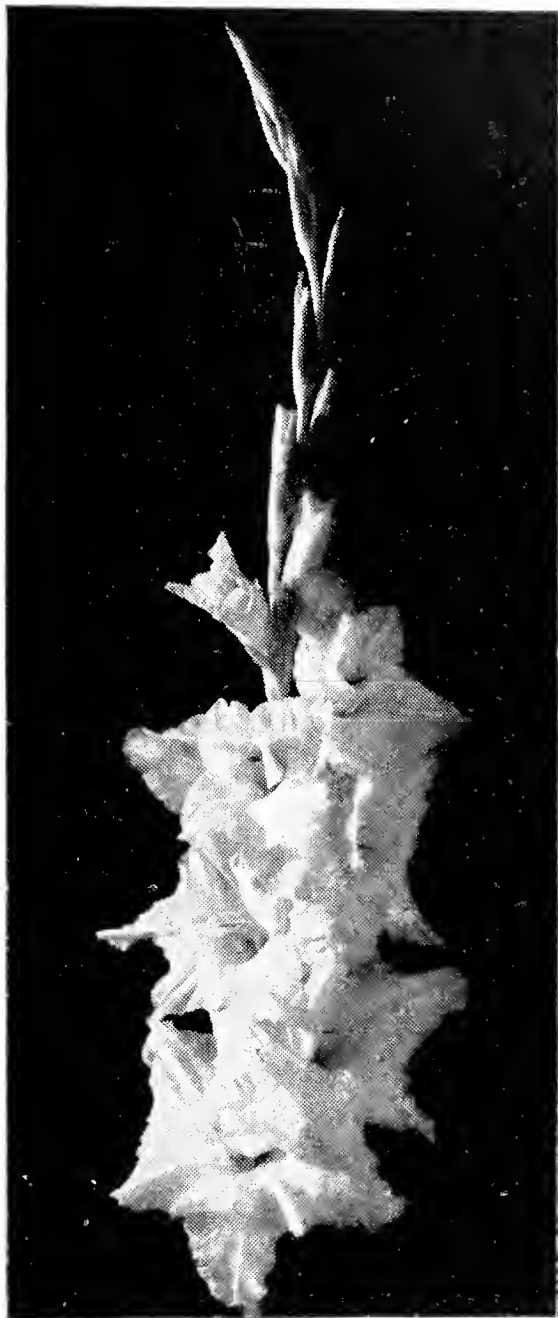
BLEEDING HEART. Pink with red throat.

CADILAC. Smoky yellow. Large.

CARMEN SYLVIA. Pure white. Pink edge.



Golden Goddess



Amrita

COMMANDER KOEHL. Massive crimson.

CRIMSON GLOW. Deep red. Fine.

DEBONAIRE. Deep pink. Large.

DORCAS ALDRICH. Smoky.

EDITH ROBSON. Salmon and peach.

GIANT NYMPH. Large salmon rose.

GOLDEN GODDESS. Fine yellow.

10c Each; 12 for \$1.00.

GOLDEN DREAM. Bright golden yellow.

JALNA. Smoky salmon.

LA POLOMA. Orange saffron. Large.

LUCIFER. Bright red. Carmine throat.

MAID OF ORLEANS. Large pure white.  
Best.

MAMMOTH WHITE. Pure white. Large.

MARY ELIZABETH. White ruffled.

## GLADIOLUS BULBS—Continued



Vagabond Prince

- MAYTIME. Light pink, cream throat.
- MARMORA. Smoky lavender. Fine.
- MINUET. Large pinkish lavender.
- MORROCO. Darkest red. Large.
- MRS. VAN KONYNENBURG. Clear blue.
- OUR SELECTION. Red with yellow spots.
- PELEGRENA. Velvety blue.
- PICARDY. Flesh pink. Large. Ruffled edge. Extra large bulbs.
- PICARDY. Most beautiful and surest to flower. Smaller bulbs @ 35c per Doz. \$2.50 per 100.
- PRIMROSE PRINCESS. Finest amber yellow.
- QUEEN HELEN. Peach color. Large.
- TOBERSUN. Lemon yellow.
- VAGABOND PRINCE. Mahogany brown. See cut.
- WURTEMBERGIA. Bright red. Large.
- YVONNE. Tall. Blush white with cerise spot.

Extra large bulbs 10c each; 75c per dozen. Collection of 1 each of 30 kinds listed for \$2.50; 3 each for \$5.50. Each kind kept separate and correctly labeled. Prepaid.

Have cheaper kinds if you want them. Ask us.

## GLADIOLUS BULBS—MIXED

STERLING MIXTURE. Most of the 36 kinds listed above and other choice varieties. Beautiful. Per dozen, 50c; per 100, \$3.50 Postpaid.

STANDARD MIXTURE. All colors. Large bulbs. Use them in any quantity. They will bloom and satisfy. Per dozen, 30c; per 100, \$2.25 Postpaid.

We will have many other kinds in our field. You are invited to come look them over. Cut flowers sold very reasonable in season.

NAPHALINE FLAKES. For dusting bulbs in storage, per Lb., 20c; 10 Lbs., \$1.50.

ROTOTOX. The best concentrated spray to control Thrip on Gladiolus. 1 Oz., 35c; 8 Oz., \$1.00; 1 Pt. can, \$1.75; 1 Qt. can, \$3.00.

## IRIS — GERMAN, DWARF, and JAPANESE

Iris can be set in early Spring right after blooming and in September and October. We have 30 standard kinds of Iris in our collection for you to choose from and 24 of the very newest and best kinds for inspection and selection this year. Look them over when in bloom, and make your selection.

GERMAN IRIS. Per Clump of 3 to 5 Rhizomes, 15c to 75c each.

DWARF IRIS. Dark purple. 20c per Clump.

JAPANESE. Blooms after German Iris are through. Purple, tall.

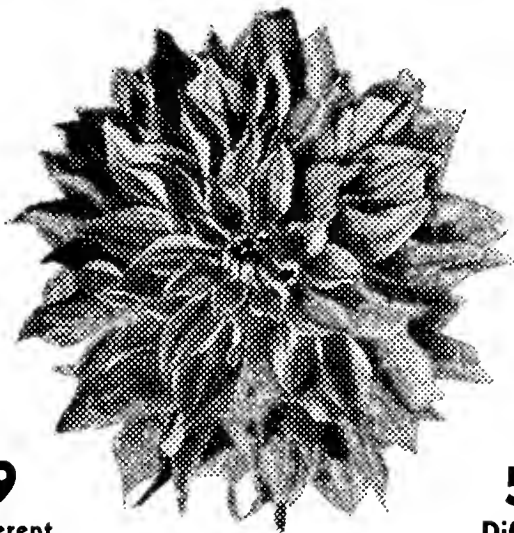
Per Clump of 3 to 5 Rhizomes, 15c; per Doz., \$1.50.

SIBERIAN. White and blue. Late. Narrow foliage. Per Clump 25c.



*Special Dahlia Collection*

**DAHLIA BULBS**



**9**  
Different  
Collections

**54**  
Different  
Varieties

**BLUE LABEL**

*Dahlias*

**50¢**  
NOW ONLY PER BOX

Six fine Dahlias in each box

- AVALON. Clear yellow.
  - GALLANT FOX. Fine red.
  - JANE COWL. Large bronze.
  - JERSEY BEACON. Large scarlet.
  - JERSEY BEAUTY. Largest pink.
  - KISS ME. Red and white.
  - MAUDE ADAMS. White.
  - RED JERSEY. Fine red.
  - WHITE WONDER. Large white.
  - SAGAMORE GOLD. Large yellow.
- Per bulb, Strong Eyes, 20c; per dozen, \$2.00 Postpaid.
- Mixed colors, all the above kinds mixed, \$1.00 per dozen. Postage 25c extra.

**SPRING BLOOMING BULBS**

HYACINTH, CROCUS, TULIP, NARCISSUS, ETC.

Will have a good supply of Spring flowering bulbs in the Fall and will be pleased to book your orders for Fall delivery. Prices will be right for No. 1 sure blooming bulbs. Look our stock over before purchasing elsewhere. Will have a nice display in the Spring.

**CLIMBING ROSES**

All my Roses are 2 to 5 years old.

	Each
ALBERTINE. Large coppery salmon. Extra large bushes. B.&B.	\$2.50
AMERICAN BEAUTY. Beautiful large red. B.&B.....	1.25
AMERICAN PILLAR. Red with white center.....	.75
BLAZE. The new Patented Everblooming Paul Scarlet Climber	1.00
CRIMSON RAMBLER. Standard dark red clusters. B.&B.....	1.25
DOROTHY PERKINS. Large clusters of beautiful pink flowers	.75
DR. VAN FLEET. Long pointed buds. Flesh pink. Rank grower	.60
GOLDEN CLIMBER. New. Finest yellow climber. Patented...	1.50
MARY LOVETT. A very fine white climber. Large bushes. B.&B.	1.50
MARY WALLACE. Large, pink flowers. Beautiful .....	.75
NEW DAWN. An everblooming Dr. Van Fleet - Patent No. 1..	1.50
PAUL'S SCARLET CLIMBER. one of the best. Nice plants...	.90



Dr. Van Fleet in full bloom.

### CLIMBING ROSES—Continued

	Each
SILVER MOON. Pure white, large flowers.....	\$ .75
SUMMER SNOW. Fine white. Patented.....	1.50
TAUSENSCHON. Soft pink, no thorns, extra large plants. B.&B.	1.50

Have larger plants in most of the above at higher prices. Also have other kinds we are trying out. Look our stock over in June.

### HYBRID TEA ROSES

Over 600 Rose Bushes for 1940 to sell and flower.

Two-year-old No. 1 plants, potted and kept in our frames, all ready to grow and bloom. These Roses bloom in June, and every month throughout the Summer and Fall. Do not confuse these fine plants with the cheap bench plants sold for little or nothing. Use our Rose Dust for Dry Dusting, and "Fungtrogen", "Black Leaf 40%" or "Triogen" for Liquid Spraying.

ALICE HARDING. Yellow, large and strong growing. \$1.50 each. Patented. See front cover.

BETTY UPRICHARD. Salmon pink. Free blooming.

BRIARCLIFF. Large, light pink.

COUNTESS VANDALL. Patented. Coppery gold. \$1.00 each.

DAME EDITH HELEN. Pink. Very fragrant.

ECLIPSE. Patented. Clear yellow. Long buds. \$1.25 each.

EDITH NELLIE PERKINS. Orange pink and gold. Fine

ETOILE DE HOLLANDE. The finest dark red. Great vigor.

GOLDEN DAWN. Sunflower yellow. Healthy .

JOANNA HILL. Yellow center, buff petals.

MARGARET McGREDY. Buds large. Finest Oriental red.

MATADOR. Red. Large, full, fragrant. \$1.00 each.  
 MISS ROWENA THOM. Brilliant rose pink. Large, fragrant.  
 PRESIDENT HERBERT HOOVER. Scarlet, orange and gold.  
 RADIANCE. Pink. Free blooming.  
 RED RADIANCE. Brilliant. Blooms through hot weather.  
 REX ANDERSON. Cream turning white. Large. \$1.50 each.  
 STERLING. Patented. An improved Radiance \$1.00.

Price of any of the above 70c Each. Assortment of 1 Each of 10 of the above \$6.50. Patented Roses excepted. All Roses priced separately are patented Roses and have to be sold at prices quoted.

We have a large supply of the above and many other kinds of Roses which we sell with bare roots at 50c each; \$5.00 per dozen

## BABY RAMBLERS or POLYANTHA ROSES

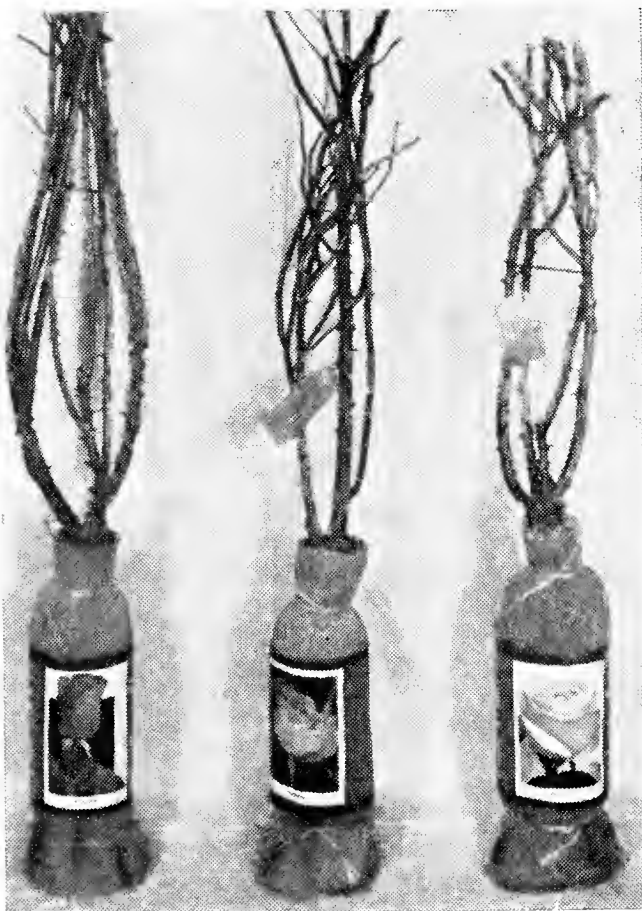
All these bloom through Summer and Fall.

BERNICE. Large buds. Cerise pink.  
 BETTY PRIOR. Red. Healthy strong grower. \$1.00 each.  
 CAMEO. New. Shell pink and salmon.  
 CECIL BRUNNER. Sweetheart rose. Light pink.  
 GOLDEN SALMON SUPERIOR. New. Beautiful. Salmon pink.  
 GRUSS AN AACHEN. Large, light pink. One of the best.  
 KIRSTEN POULSEN. Bright scarlet. Clusters.

Price of all the above 50c to \$1.00 Each, according to age and size.

DONALD PRIOR. New. Red. Some double, \$1.00 each.  
 ROCHESTER. Pink and buff. 85c each.  
 SMILES. The new salmon pink Polyanthus. 85c each.  
 SUNSHINE. Orange turning to coral. \$1.00 each.

## GARDEN GUILD SLEEVE WRAPPED ROSES



We carry this new line of Rose Bushes. Wrapped in a scientific manner, these bushes are ready for immediate delivery and setting after April 1st.

We carry 6 popular varieties and can get you any kind you want.

PETTY UPRICHARD. Pink.  
 PRESIDENT HOOVER. Copper rose.  
 ETOILE DE HOLLANDE. Dark red.  
 MRS. AARON WARD. Yellow.  
 RADIANCE. Pink.  
 RED RADIANCE. Deep rose.

Priced at 50c Each. 5 assorted bushes for \$2.25.

## PEONIES

ALBERT CROUSSE. Salmon pink. Fragrant. Late.  
 CLAIRE DUBOIS. Satiny pink. Late.  
 FESTIVA MAXINA. Best early white.  
 KARL ROSENFELD. Deep red. Best. Early.  
 LIVINGSTON. Best late pink.  
 LONGFELLOW. Large, bright crimson. Midseason.  
 MME. MARTIN CAHUZAC. Large maroon crimson. \$1.00 Each.  
 PRESIDENT ROOSEVELT. Brilliant red.  
 THERESE. Large, old rose pink. \$1.00 Each.

We have a nice assortment of Peonies, two, three and four-year old clumps. Select your color when in bloom. They can be dug and transplanted at any time if you take a whole clump. Per clump from 50c to \$1.50 according to size. Three eye divisions in the early Spring or Fall, 35c Each, 3 for \$1.00.

## HARDY PHLOX

One of the Best Summer-Blooming Perennials.

We have a fine assortment of Hardy Phlox, 1 and 2-year-old plants.

ALBERT LEON SCHLAGETER. Strong, healthy. Red. Fine. 3 ft.  
 ANTONIN MERCIE. Beautiful lavender. 3 ft.  
 BRIDESMAID. White, carmine eye. Very beautiful. 2½ ft.  
 COUNT ZEPPELIN. Large white, crimson eye.  
 GEORGE STIPP. Deep salmon. New. 2½ ft.  
 MISS LINGARD. Best white. Early, long blooming. 3 ft.  
 MRS. JENKINS. Dwarf white. 2½ ft.  
 MRS. SHOLTEN. Dark salmon pink. 2½ ft.  
 PAINTED LADY. Silver pink, cherry red eye. 3 ft.  
 ROKOKO. Soft pink. Strong grower. 2½ ft.  
 SALMON GLOW. New. Beautiful. Salmon pink. 2½ ft.  
 VON HOCKBERG. Brilliant red. 3 ft.

All the above at 25c Each; \$2.50 per Doz. Large clumps 50c Each.

HARVEST FIRE. Salmon orange. New. 50c Each.  
 TIGRESS. Orange scarlet. New. 50c Each.

## PHLOX SUBLATA

Low growing early blooming.

ATROPURPUREA. The best red dwarf. 25c per clump.  
 NIVALIS DIXIE BRILLIANT. Large rosy red. 40c per clump.  
 ALBA. Pure white. 25c per clump.

Pink, lavender and white in smaller plants @ 10c Each; \$1.00 per Doz.

## CLIMBING PLANTS and VINES

AMPELOPSIS QUINQUIFOLIA. Virginia Creeper.....	Each
AMPELOPSIS VEICHII, or Boston Ivy. Best for chimneys and walls. 2-year-old plants .....	\$ .75
ARISTLOCHIA SIPHO. Dutchman's Pipe. Large plants.....	.50
BIGNONIA RADICANS. Trumpet Vine. Large 2-year plants..	1.20
	.50

## CLIMBING PLANTS AND VINES—Continued

	Each
BITTER SWEET. Orange berries. Fall and Winter.....	\$ .50
BITTER SWEET. Very large plants.....	1.50
CLEMATIS PANICULATA. Blooms freely in August and Sep- tember. Pure white flowers. Strong plants.....	.50
CLEMATIS PANICULATA. Large plants.....	1.00
CLEMATIS JACKMANI. Beautiful purple blossoms.....	.90
ENGLISH IVY. Greenish purple leaves. Hardy. Per doz. \$2.50..	.25
ENGLISH IVY. New. Self-branching. Fine full pots.....	40c to 1.00
HONEYSUCKLE. Hall's Japanese. Very fragrant.....	.50
HONEYSUCKLE. Tartarica. Bush. Pink, red and white....	60c 1.00
HONEYSUCKLE. New everblooming. Gold Flame.....	75c 1.50
WISTERIA. Purple. Large grafted plants. 2 years and over....	.90
WISTERIA. White. Beautiful. Grafted .....	1.00

## POTTED VINES FOR WINDOW BOXES

	Each	Per Doz.
GERMAN IVY. Bright green leaves. Quick growing.....	\$ .25	\$2.50
GERMAN IVY. Smaller plants .....	.15	1.50
VARIEGATED VINCA. Green and white leaves. One of the best for Window Boxes. Smaller plants 15c.....	.25	2.50
ICE PINK. Trailing vine, pink flowers.....	.25	2.50
WANDERING JEW. Very rapid growing .....	.10	1.00
VARIEGATED ENGLISH IVY. Beautiful .....	.30	
TRAILING LOBELIA. Blue flowers .....	.05	.50
ENGLISH IVY. New. Self Branching. Fine. 3 inch pots..	.30	3.00

## BEDDING PLANTS

We will have a larger supply than ever of Bedding Plants, such as below. Best kinds, most suitable for this section.

AGERATUM. Dwarf, blue. Each, 5c; per Doz., 50c.

COLEUS. Assorted colors. Each, 15c; per Doz., \$1.50.

FUCHSIAS. A fine assortment. Each, 25c; per Doz., \$2.50.

HELIOTROPE. Very fragrant. 15c, 25 c and 35c Each.

LANTANAS. Four of the best and showiest kinds. 3 in. pots, 15c  
Each; \$1.50 per Doz.; 4 in. pot, 25c Each; \$2.50 per Doz.

LEMON VERBENA. Sweet leaves. 25c Each.

LOBELIA. Crystal Palace. Dark blue. 5c and 10c Each.

Margaretville, N. Y., Oct. 22, 1939—Please accept my order for 10 ounces of Sterling's Blue Ribbon Sprout seed for the coming year.

Due to the unusually dry weather, this year's crop did not yield as good as usual but was of excellent quality. I have enjoyed a premium price of 17c per quart since the last week of August.

Very truly yours, H. J. F.

Peconic, N. Y., Dec. 6, 1939—Kindly book my order for 6 or 8 oz. of your Blue Ribbon sprout seed. I used your strain of seed this year and really made some money from my sprouts. There were only one or two growers who could get a better price than I did at the Southold block. A. D.

## ***Nursery Department***

### **HEDGE and ORNAMENTAL SHRUBS and BUSHES**

JAPANESE BARBERRY makes a beautiful hedge or single specimen plant. Red berries in Fall and Winter.

Strong two-year-old plants, 8-12 inches. Each, 10c; per Doz., \$1.00; per 100, \$8.00.

Strong three-year-old plants, 12-18 inches. Nice bushy plants. Each, 15c; per Doz., \$1.50; per 100, \$12.00.

Strong three-year-old plants, 18-24 in. Each, 25c; per Doz., \$2.80; per 100, \$22.00.

RED BARBERRY. New Red Leaved Japanese. Rich, lustrous, bronzy-red all Summer, changing to vivid orange, scarlet and red shades in the Fall. Must be set in full exposure to the sun.

Strong two-year-old plants, 12-15 inches. Each 25c, per Doz., \$2.50.

Strong three and four-year-old plants. 60c to \$1.50 Each.

PYRAMIDAL BARBERRY. New Upright True Hedge Columnberry. Nice plants, 20-30-inch, 50c Each; \$5.50 per Doz.

PRIVET, AUREAM. Yellow leaved. Nice well branched plants, 3-4 ft. Each 50c; per Doz., \$5.00. Smaller plants, 25c Each.

PRIVET, IBOLIUM. The most hardy for this section. 18-24 in. Each 12c; per Doz., \$1.25; per 100, \$10.00.

PRIVET, CALIFORNIA. The standard for hedges. Can be trimmed to any desired height, or shape.

Two-year-old plants, 12-18 inches. Each, 5c; per Doz., 50c; per 100, \$4.00.

Three-year-old plants, 2-3 ft., Each, 10c; per Doz., \$1.00; per 100, \$7.50. 3-4 ft. Each, 12c; per Doz., \$1.25; per 100, \$10.00.

Extra large plants, 25c to \$1.00 Each, according to size.

BOXWOOD EDGING. Fine husky plants. 6-8 inches, 35c Each; \$3.50 per Doz.; 8-12 inches, 80c Each; \$7.50 per Doz.; 18-30 inches, \$1.50 to \$2.50 Each.

JAPANESE SPURGE. Best ground cover. Per root, 10c; per clump of about one square foot, \$1.00.

### **FLOWERING and EVERGREEN SHRUBS**

These are large, well-developed shrubs, grown in our nursery from 1 to 3 years. Smaller shrubs just stocked in, at lower prices.

We have many berried shrubs in this list. Look them over.

	Each
ABELIA GRANDIFLORA. Low growing, nearly evergreen. Pink blossoms, July till frost. 1 to 2 ft.....	75c to \$1.50
ACER PALMATUM ATROPURPUREA. Japanese Red Maple. Grafted stock. Good color all Summer. 18 to 30 in.....	\$2.00 to 4.50
ALMOND. Double Pink Flowering, early flowering. Bush..	.60 - 1.25
ALTHEA. Tree or Bush Form. Red, purple, pink, or white. Blooms late. Double and single blossoms. Beautiful and hardy .....	.75 - 2.25
ANDROMEDA FLORIBUNDA. Likes shade. 18-24 in.....	2.25
ANDROMEDA JAPONICA. Pieris Japonica. 15-24 in.....	2.25 - 3.50
ARONIA. Chokeberry. Red berries. Can stand wet feet.....	.75 - 1.50
AZALEA AMOENA SUPERBA. Purple flowers. Evergreen	1.00 - 2.50
AZALEA. Coral Bells. Clear pink .....	.90 - 1.75
AZALEA FLAME. Large red flowers, late.....	1.50 - 2.50



*Spirea Van Houttei* in full bloom.

**FLOWERING AND EVERGREEN SHRUBS—Continued**

Each

AZALEA HINODIGIRI. Bright red flowers. Most popular of all. 8-18 in. Nice plants in bloom for Easter in pots .....	\$ .90 - 1.50
AZALEA MOLLIS. Orange flowers before leaves. 18-36 in.	1.25 - 3.50
AZALEA SNOW. White. Beautiful. 6-8 in.....	.90
BEAUTYBUSH KOLKWITZA AMABILIS. New, pink, bell- like flowers. Late blooming. 3-5 ft. ....	.75 - 2.25
BENZOIN AESTIVALE. Spice Bush. Yellow flowers, early.....	1.00
BERBERIS JULIANAE. Evergreen. Fine.....	1.00
BOXWOOD. Nice bushy plants, sheared. 24-36 in.....	1.50 - 2.50
BUDDLEIA MAGNIFICA. Butterfly Bush. Blooms all Summer. Cut back each Spring. Different sizes .....	.50 - 1.50
BUDDLEIA ILE DE FRANCE. New. Deep purple. Fine.....	.75
BUDDLEIA. Charm. New Pink. Very graceful. Large plants	1.25
BUDDLEIA FARQUHAR. Rose with yellow center .....	.75
BUDDLEIA FORTUNE. Large, full lavender blooms.....	.75
CALLICARPA PURPUREA. Beauty Berry. Purple berries... ..	.75 - 1.25
CALLUNA. Scotch Heather. 10-12 in. Fine for Rock Gardens..	.75
CALYCANTHUS FLORIDAS. Sweet Shrub. Large flowers... ..	1.25
CARYOPTERIS INCANA. Blue Spirea. September .....	.75 - 1.00
CERCIS CANADENSIS. Red Bud or Judas Tree. 6-8 ft.....	3.50
CORNUS FLORIDA. White-flowering Dogwood. 3-5 ft.....	1.50 - 3.00
CORNUS FLORIDA RUBRA. Red-flowering. 3-5 ft.....	2.50 - 5.00
CORNUS MAS. Cornelian Cherry. Red berries. 4-6 ft.....	1.00 - 1.50
CORNUS SIBIRICA. Red-barked Dogwood. 3-5 ft.....	.60 - 1.00
COTONEASTER HORIZONTALIS. Dwarf, box-like green leaves, bright red berries in the Fall. 12-18 in.....	.90 - 1.50
COTONEASTER. Franchetti. Tall. Orange red fruit.....	1.00 - 1.50
CRAB APPLE. Betchel's. Double pink. 4-5 ft.....	2.50
CRAB APPLE. Neidzwetzkyana. leaves, flowers and fruit reddish purple .....	1.75 - 2.50

## FLOWERING AND EVERGREEN SHRUBS—Continued

	Each
CYDONIA JAPONICA. Red-flowering Quince. 2-4 ft.....	\$ .75 - 1.50
DAPHNE CNEORUM. Fragrant, pink flowering. Flowers in Spring, Summer and Fall. 9-15 inches .....	.90 - 1.50
DAPHNE. Mezereum. Early flowering 15-18 in. ....	1.00
DEUTZIA CRENATA. Pride of Rochester. 3-5 ft.....	.75 - 1.50
DEUTZIA GRACILLIS. Low-growing, white. Beautiful....	.60 - 1.00
DEUTZIA GRACILLIS ROSEA. Low-growing. Pink .....	.60 - 1.00
ELEAGNUS AUGUSTIFOLIA. Russian Olive. Silvery leaves. Fragrant blossoms. 5-6 ft. B.&B.....	3.50
ELEAGNUS UMBRELLATA. Scarlet berries. 4-5 ft.....	1.50
EUONYMOUS ALATUS. Compacta. Low growing.....	1.00
EUONYMOUS ALATUS. Winged Euonymous. Fine 2-4 ft... .	.60 - 1.50
EUONYMOUS. Variegated dwarf bush.....	.75 - 1.25
FORSYTHIA FORTUNEI. Early yellow blooms.....	.75 - 1.50
FORSYTHIA INTERMEDIA. Earliest Golden Bell .....	.75 - 1.50
FORSYTHIA SPECTABILIS. Showy large early blooms. 2-3 ft. .	.60
FORSYTHIA SUSPENSА. Weeping Golden Bell. Very large ..	2.50
HYDRANGEA ABORESCENS GRANDIFLORA. Pure white .75 - 1.50	
HYDRANGEA PANICULATA GRANDIFLORA. Large white, pointed blossoms, turning pink. Nice bushes .....	.75 - 1.50
HYDRANGEA QUERCIFOLIA. Oak leaf hydrangea.. ..	.75
HYPERICUM or ST. JOHNSWORT. Yellow blossoms .....	.60 - 1.00
KALMIA LATIFOLIA. Mountain Laurel. 1½-2 ft.....	2.00
ILEX CRENATA. Japanese Holly. 12-15 in. Black berries ..	.75 - 1.00
ILEX GLABRA. Inkberry. Black berries .....	1.00
ILEX OPACA. American Holly. Red berries. Nice bushes.. .	3.75
ILEX SERRATA. Bright red berries. 3-4 ft.....	.75 - 1.00
ILEX VERTICILLATA. Winterbury. Red berries.....	.75 - 1.50
JAPANESE WEEPING CHERRY. Beautiful graceful trees ...	3.50
LABURNUM or GOLDEN CHAIN. Tree-like shrub. Long yel- low blooms. large bushes .....	1.00 - 2.50
LESPEDEZA FORMOSA. Rosy purple clusters of flowers in September. A beautiful new shrub. 2-year-old .....	.75 - 1.25
LEUCOTHOE CATESBAEI. Evergreen. Very Ornamental ....	1.50
LILAC. Common purple. Nice plants .....	.60
LILAC. White, sweet scented. Double .....	.75
LILAC. French. Named and mixed varieties.....	1.00 - 2.50
LONICERA FRAGRANTISSIMA. Winter honeysuckle .....	.60
LONICERA TARTARICA. Bush Honeysuckle. Red berries..	.75 - 1.00
MAHONIA AQUIFOLIUM. Hollygrape. A dwarf evergreen shrub, with holly-like leaves. Beautiful. 18-24 in.....	1.50 - 2.50
MAGNOLIA.—See Ornamental Trees.	
OXYDENDRUM ARBOREUM. Sourwood. Sweet blossoms..	1.00 - 2.50
PHILADELPHUS AUREA. Yellow leaves, very ornamental....	.80
PHILADELPHUS CORONARIUS. Mock Orange. Syringa..	1.00 - 2.50
PHILADELPHUS VIRGINALIS. Pure white. Large, sweet flowers. Beautiful. 3-4 ft.....	.75 - 1.50
PRIVET. Regal. Low dense shrub. Black berries. 1½-2 ft....	.50 - 1.00
PRUNUS PERSICA. Flowering Peach. Double pink blossoms	.75 - 1.50
PRUNUS PISSARDI. Purple leaf plum.....	1.50



## FLOWERING AND EVERGREEN SHRUBS—Continued

	Each
PRUNUS SERRULATA. Japanese Cherries. Beautiful. Dble. \$3.50 - 8.00	
PRUNUS TRILOBA. Flowering almond, in tree shape . . . . .	1.00 - 1.50
PUSSY WILLOW. Earliest sign of spring. 4-5 ft. . . . .	.75
PYRACANTHA COCCINEA LALANDI. Fire Thorn. White flowers, orange scarlet berries . . . . .	1.00 - 1.50
RED LEAVED BARBERRY. (See Hedge Plants) . . . . .	.25 - 2.50
RHODODENDRON CATAWBIENSE. Purple blossoms. Blooming before the Maximum. 2-3 ft. . . . .	3.00
RHODODENDRON MAXIMUM. Pink blossoms. Nice bushy plants. 2-3 ft. Late blooming . . . . .	2.50
RHODODENDRON HYBRIDS. Deep red blossoms. 1½ ft. 4.00 - 6.00	
RHODODENDRON HYBRIDS. Boule de Naige. White. 15-24 in. Dwarf compact bush . . . . .	3.50 - 4.50
RHUS COTINUS. Old fashioned Smoke Tree . . . . .	1.00
SCOTCH BROOM. Stands dry soil. Yellow flowers . . . . .	.75
SPIREA ANTHONY WATERER. Rose-pink flowers. Late . . . . .	.60 - .75
SPIREA THUNBERGII. Early white . . . . .	.75 - 1.00
SPIREA BILLARDI. Red spikes. Late . . . . .	.60
SPIREA PRUNIFOLIA. Double Bridal Wreath. 4-5 ft. . . . .	1.00
SPIREA VAN HOUTTEI. Graceful, arching sprays. White. 3-4 ft. Bushy. Fine for hedge . . . . .	.35 - 1.00
SPIREA KOREAN. Late Van Houttei. Fine. 3-5 ft. . . . .	1.00
SNOWBERRY, WHITE. Large white berries. 3-4 ft. . . . .	1.00
SNOWBERRY, Red. Coral berry. Clusters of red berries . . . . .	1.00
TAMARIX. Grows in sandy soil. Pink . . . . .	.75 - 1.00
VIBURNUM CARLESI. Pink, sweet. Small plants . . . . .	.75
VIBURNUM OPULUS. European Cranberry Bush . . . . .	1.00
VIBURNUM AMERICANUM. American Cranberry. Large red berries. 6-7 ft. . . . .	1.00 - 2.50
VIBURNUM PLICATUM. Japanese Snowball. Nice plants . . . . .	.60 - 1.00
VIBURNUM RHYTIDOPHYLUM. New evergreen shrub . . . . .	1.50
VIBURNUM STERILE. Common snowball. Nice plants . . . . .	.50 - 1.25
VITEX MACROPHYLA. Chaste tree. Fine. Large blue . . . . .	1.00
WEIGELA ROSEA. Rose colored flowers. One of the finest shrubs. Blooms around Memorial Day. 3-5 ft. . . . .	.35 - 1.50
WEIGELA EVA RATHKE. Dark red, late blooming . . . . .	.60 - 1.00
WEIGELA NANA VARIEGATED. Very ornamental. 2½ ft. . . . .	1.00

---

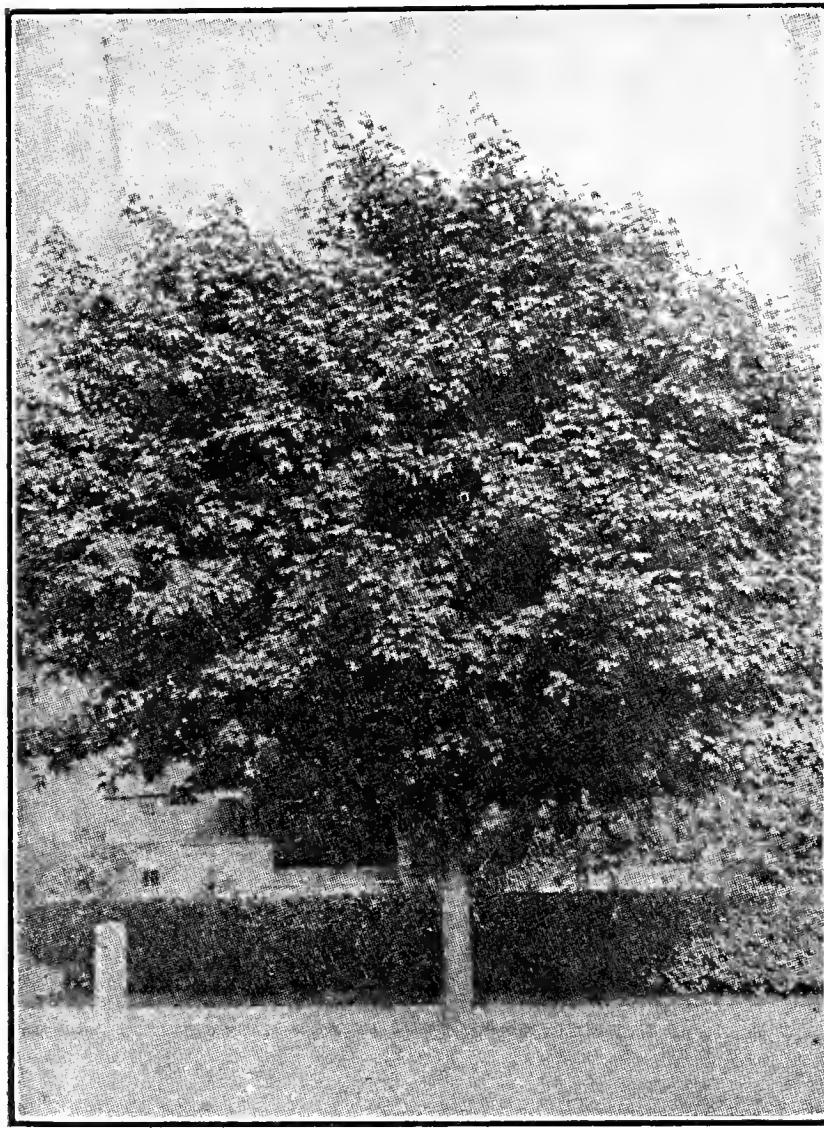
You are invited to come and look our shrubs over, as we are trying out many new kinds every year. The above are large clumps, balled and burlaped. Do not confuse these with the small whips advertised for a song. We have extra large shrubs at higher prices, and sometimes smaller ones for less money.

---

Shelter Island, N. Y., 1939—Dear Mr. Sterling: We are well pleased with the assortment of evergreens and trees that you set out for us and the manner in which they were planted. Your boys did a good job.

If we can recommend your nursery, we shall be pleased to do so.

Sincerely, W. R.



Norway Maple

## ORNAMENTAL and SHADE TREES

These trees are balled and burlaped. Look our stock over as we have many trees not listed here.

	Each
ASH. European Mountain. Orange berries. 6-12 ft.....	\$2.00 - \$3.50
BEECH. Rivers Purple. Purple leaves. 3-4 ft.....	6.00
BEECH. European. Green leaved. 3-4 ft.....	3.00
BIRCH. White. Nicely branched. Very ornamental. 6-10 ft.	2.00 - 4.00
BIRCH. White clumps. 3 to 5 stalks. Small.....	2.50
CATALPA BUNGEII or Umbrella Trees. Have a nice lot of these very ornamental trees. 4-6 yr. heads.....	1.50 - 4.50
ELM. American Upright. Vase shaped. Fine. 12-14 ft. 2½-3 in....	15.00
ELM. Chinese. Very quick growing, ornamental, drought-resis- tant. Small trees @ \$1.00 Each. 6-10 ft. and 10-12 ft.....	2.50 - 4.50
LINDEN. American. Large foliage. Good for lawn, 10-12 ft....	5.00
LINDEN. Cordata. Little leaf European. One of the best shade trees. 10-12 ft. 1¾-2 in. cal.....	4.50
LINDEN, TOMENTOSA. Silver Linden. Fine.....	3.75
MAGNOLIA. Soulangeana. True pink and white flowered Mag- nolia. 2-3 ft., \$2.50. Large size.....	7.00
MAGNOLIA. Soul. Nigra. Deep pink flowers. 6-8 ft. Late.....	8.50
MAGNOLIA GLAUCA. Sweet Bay. 4-5 ft. Fragrant .....	2.50
MAGNOLIA STELLATA. Star Magnolia. Early. 2 ft.....	2.50
MAPLE. Japanese. Beautiful red leaves. Spring, Summer and Fall. Very ornamental. Grafted trees. 18-36 in.....	2.25 - 3.50

## ORNAMENTAL AND SHADE TREES—Continued

	Each
MAPLE. Norway. Best for shade. 6-8 ft. A large assortment	\$1.00 - 2.50
MAPLE. Norway. Larger trees. 8-14 ft. 2-4 in. cal. . . . .	3.00 - 10.00
MAPLE. Silver. Quick growing. Large. 12-15 ft. 4-5 in. cal. . . . .	8.50
MAPLE. Sycamore. Large trees. Make nice shade trees . .	5.00 - 25.00
MULBERRY. Weeping. Very ornamental. 3-5 yr. heads . . . .	3.00 - 5.00
MULBERRY. American. Quick growing. Large black fruit . . . . .	2.50
MULBERRY. Russian. Hardy. Red fruit. . . . .	3.00
OAK. Red. Fine for shade and Autumn coloring. 10-12 ft. . .	4.00 - 5.00
OAK. White. Fine shade tree. 8-10 ft. . . . .	4.00 - 5.00
OAK. Pin. Fine for lawns. Do not rob adjoining ground. 8-10 ft.	3.50
ORIENTAL PLANE. One of the best shade trees for street, salt water exposure, or lawn. 8-12 ft. . . . .	3.50 - 5.00
POPLAR. Lombardy. Quick growing. Upright. 6-12 ft. . . . .	1.50 - 4.50
THORN. Paul's Scarlet. Beautiful trees for specimen. Double scarlet flowers. 6-8 ft. . . . .	3.50
TULIP TREE. Very ornamental. 8-10 ft. . . . .	3.50
WILLOW BABYLONICA. Weeping. Large well-spread trees. Makes fine setting for a pool. 6-10 ft. . . . .	3.00 - 4.50
WILLOW. Golden Upright. Yellow bark. 10-12 ft. . . . .	5.00
WILLOW. Laurel Leaf. Different. . . . .	1.50
WILLOW. Niobe. Best weeping type . . . . .	1.00
WILLOW. Ural. Fine leaved, many branches. Makes good hedge	.75
WILLOW. Wisconsin Weeping. Grows large with long weeping branches . . . . .	1.50

We have a large assortment of Norway Maples, Willows, Oaks and Chinese Elms at attractive prices. Come look our stock over.

## EVERGREENS

What adds to a place more than an Evergreen Setting? We have the Evergreens and would be glad to do your setting. Let us give you our figure. Below is a partial list of our Evergreens.

- ABIES CONCOLOR. White Fir. One of the best. Nearly blue in color. 3 to 5 ft., \$2.50-\$5.50 Each.
- ABIES FRASERI. Beautiful green fir. 15 to 30 inches. 75c to \$1.50.
- ARBORVITAE. American. Common White Cedar. Fine for specimen, hedge or windbreak. 2½ to 5 ft., Each, \$1.50-\$5.00.
- ARBORVITAE. Globe shaped. Dark green. These can be kept trimmed to a perfect ball. Very ornamental. Large 2½x2½ ft., Each \$4.00. 1 to 2 ft., \$1.25 to \$2.50.
- ARBORVITAE. Pyramidal. Tall, narrow, good color. The most popular upright tree for foundation settings. 1½ to 3 ft., Each, 75c-\$1.50; 3 to 4 ft., Each, \$3.00; 4 to 8 ft., Each, \$4.00-\$7.50.
- BIOTA AUREA NANA. Dwarf Golden Arborvitae. Good tree for Rock Gardens. 15 to 18 in., \$1.25 to \$1.75 Each.
- BIOTA ELEGANTISSIMA. Upright Golden Tipped Arborvitae. Fine. 2 to 3 ft., Each, \$2.50.
- CHRYPTOMERIA JAPONICA LOBBI. Very graceful and effective. 4 to 6 ft., \$3.50-\$5.50 Each. A few larger trees @ \$10.00 Each.
- JUNIPERUS COLUMNARIS. Pyramidal. Blue, 4 to 5 ft., Each, \$2.50-\$3.50.



Colorado Blue Spruce

**EVERGREENS**—Continued

- JUNIPERUS EXCELSA STRICTA.** Spiny Creek Juniper. Slow growing. 1½ to 4 ft., Each, \$1.00-\$3.50.
- JUNIPERUS HIBERNICA.** Irish Juniper. Tall spire-like, good green. 3 to 4 ft., \$3.50 Each.
- JUNIPERUS KETELEERI.** Dark Green Cedar. 3½ to 4 ft., \$3.50 Each.
- JUNIPERUS PFITZERIANA.** Pfitzer Juniper. Broad bushy habit. Fine for Rock Gardens. Gray-green color. 3 to 4 ft., Each, \$4.50; 1½ to 2½ ft., Each, \$1.50-\$3.50.
- JUNIPERUS VIRGINIANA.** Cannarti. Dense, dark colored Cedar, Pyramidal. 2½ to 3 ft., Each, \$3.50.
- JUNIPERUS.** Sargenti, Procumbus and other choice varieties, suitable for ground cover or foundation plantings.
- PICEA EXCELSA.** Norway Spruce. Fine for Specimen work or hedge. 1½ to 4 ft., \$1.00-\$3.50, according to size. These make fine Christmas trees. Larger trees, \$3.00 to \$15.00.
- PICEA ORIENTAL.** Oriental Spruce. Better than the Norway. 2 to 3 ft., Each, \$1.75.
- PICEA PUNGENS GLAUCA.** Colorado Blue Spruce. The finest tree of all. 12 to 18 in., \$1.25; 18 to 36 in., \$2.50-\$5.50; 4 to 8 ft., \$7.50 to \$15.00 Each. We have some nice specimens. Come look them over. They stand salt exposure well.
- PICEA PUNGENS, KOSTERIANA.** Koster's Blue Spruce. Fine Blue specimens. Stays blue all year round. 1½ to 2 ft., Each, \$3.50; 3 to 3½ ft., \$6.00 Each.

**EVERGREENS**—Continued

- PINUS THUNBERGII.** Black Pine. Vigorous. The best Evergreen for sandy, exposed places, or seaside. 4 to 5 ft., Each, \$7.50. 1½ to 2½ ft., Each, \$2.50. Small 2-3 year transplants at 50c to \$1.25 Each.
- PSEUDOTSUGA DOUGLASI.** Douglas Fir. Hardy bluish color. 15 to 24 in., \$1.00 Each. 2 to 3 ft., \$2.50 Each.
- RETINISPORA PLUMOSA AUREA.** Golden Plumed Cypress. Fine yellow effect. Grows quickly. 3 to 4 ft., Each, \$2.00-\$3.50.
- RETINISPORA PLUMOSA.** Plumed Cypress. A beautiful, fine-leaved pointed tree that can be kept trimmed to any shape or size. Bright green. 5 to 6 ft., Each, \$6.00; 3 to 4½ ft., Each, \$2.50-\$4.50.
- RETINISPORA.** Cypress. We have several other various kinds of this fine evergreen. Dwarf, Golden, Thread, Moss, etc. Priced right.
- TAXUS CUSPIDATA.** Japanese Yew. Grows medium high, spreading and of a beautiful dark green color. Can be planted in partial shade and in exposed places. 1 to 3 ft., Each, \$1.50-\$4.50.
- TAXUS CUSPIDATA BREVIFOLIA.** Dwarf Yew. Darker, closer growing than above. Fine for Rock Gardens. 1½ to 3 ft., \$2.50 to \$4.50 Each.
- TAXUS INTERMEDIA.** Dark green, spreading. Fine. 2 to 2½ ft., Each, \$3.25.
- TAXUS CUSPIDATA CAPITATA.** Upright Yew. Fine dark color. Pyramidal. 1½ to 3 ft., Each, \$2.50-\$4.50.
- TAXUS CUSPIDATA HICKSI.** Upright growing columnar. Red berries. 1½ to 3 ft., Each, \$2.25-\$3.50.
- TAXUS HUNNEWELLANA.** New, round cup shaped tree. Dark green. Fine. 2 to 3 ft., Each, \$2.50 to \$4.50.
- TSUGA CANADENSIS.** Canada Hemlock. Likes shady places. One of the best for seashore. 1½ to 3 ft., Each, \$1.00-\$3.50.

We have many other kinds of Evergreens, and advise anyone in the market for good Evergreens to look our stock over and get our prices. All our Evergreens are Balled and Burlaped. Would be pleased to set your foundation planting for you.

---

## FRUIT TREES

All my trees are Northern Grown, the only kind to plant on Long Island.

### APPLE TREES. Standard size.

Nice large trees, 2 years old.

- BALDWINS.** Standard red. Very heavy yielding. Fine quality.
- CORTLAND.** The new late McIntosh. Fine quality. Good keeper.
- DELICIOUS.** Early Winter, sweet red. Best for eating out of hand.
- FALL PIPPIN.** Large, green. Fine flavor.
- FAMEUSE.** Snow apple. Red skin. Autumn.
- McINTOSH.** Highest quality red. Late Fall.
- RED ASTRACHAN.** Earliest red. Tart. Best for cooking.
- GRAVENSTEIN.** Large striped. August.

**APPLE TREES**—Continued

ROXBURY RUSSET. Dull green, rough skin. Late.

STAYMAN'S WINESAP. Fine quality red Winter apple.

WINTER BANANA. Yellow. Fine quality. Bears young.

YELLOW TRANSPARENT. Earliest green.

Per single tree, 95c; per 5 trees, assorted if you like for \$4.50 at the farm.

3-year-old trees of the above kinds and several other choice varieties at \$1.50 Each, 5 for \$7.00, assorted.

**CHERRY TREES**

2 and 3-year-old trees. No. 1 grade 4 to 5 feet high.

BLACK TARTARIAN. Large black. Fine quality. Early.

BING. Late, dark red.

EARLY RICHMOND. The best sour cherry.

GOVERNOR WOOD. Large, early yellow.

NAPOLEON. Large, sweet, yellow, red cheek.

SCHMIDT'S BIGAREAU. Dark red. Early.

Nice trees, Each \$1.00.

**PEAR TREES**

2-year-old trees.

BARTLETT. Standard. Fine quality.

BUERRE ANJOU. One of the best. Late Winter.

BUERRE BOSC. Late Fall. Fine quality.

CLAPP'S FAVORITE. Early, juicy. Large size.

KIEFFER. Vigorous and prolific. Late.

SECKEL. Small, very sweet.

All good No. 1 sized trees. Each, 95c; 5 for \$4.50.

3-year-old trees of above kinds at \$1.50 Each, 5 for \$7.00, assorted.

**PEACH TREES**

No. 1 grade, large, healthy trees.

BELLE OF GEORGIA. White with red cheek. Prolific. Early.

CHAMPION. Best white. Extra quality. Early.

ELBERTA. Standard. Yellow. Very large. Fine.

GOLDEN JUBILEE. New. Large yellow. Early.

HARDEE. New. High quality. Yellow free-stone.

MIKADO. New early yellow. Fine.

NIAGARA. Quality yellow. Resistant to Leaf Curl.

SALBERTA. A late Elberta. Fine quality.

SOUTH HAVEN. Early, extra large. Free-stone. Yellow.

Fine stock, Each, 75c; per 5 trees assorted, \$3.50; Larger trees at \$1.00 to \$2.50 Each.

**PLUM TREES**

ABUNDANCE. Large, fine fruit. Early.

BURBANK. Medium red. Early. Very prolific.

BRADSHAW. Early purple. Sweet and juicy.

**PLUM TREES**—Continued

GERMAN PRUNE. Large black.  
 NIAGARA. Early purple. Very productive.  
 REINE CLAUDE. Large, greenish. Vigorous.  
 RED JUNE. Fair size. Early.

Large trees, Each, 95c; per 5 trees, \$4.50.

Extra large trees, Each, \$2.50.

**ASSORTED TREES**

APRICOT. Fine. Each, \$1.00.  
 QUINCE. Orange. XXX grade. Each, 90c.  
 CRAB APPLE. Transcendent, dark red. Each, \$1.00.  
 WALNUT, ENGLISH, 5 to 6 ft., Each, \$2.75.  
 WALNUT, BLACK. 1 to 2 ft., Each, 75c.

Can get you any kind of fruit tree that you might want, not listed above. Prices are all net at the Farm. Packing 20c per tree extra.

**GRAPE VINES**

The best kinds. Good two and three-year-old vines.

	Each
CONCORD. Most popular purple. Extra large plants, 50c-\$1.00..	\$ .35
DELAWARE. Red. Fine quality. Small.....	.50
NIAGARA. White. Late. Good quality.....	.35
CATAWBA. Late, pink, sweet.....	.35
WORDEN. Early. Large plants. Purple.....	.40
BRIGHTON. Reddish purple. Early.....	.45
AGAWAM. Red, large sweet .....	.35
PORTLAND. New white. Sweet. Earliest of all.....	.50
SHERIDAN. Black. Later than Concord. Fine.....	.90

Add 10 cents extra for one vine sent by P. P.; 25c for three.  
 Four and five-year-old plants at higher prices.

**CURRANTS**

PERFECTION. A beautiful bright red. Price, 20c Each; \$2.00 per Doz.  
 RED LAKE. New, large red. Finest of all. 25c Each; \$2.50 per Doz.

**GOOSEBERRIES**

CHAUTAUQUA. New. Extra large. Fine quality. 35c Each.  
 POORMAN. Largest red gooseberry grown. Fine quality. 25c Each;  
 \$2.50 per Doz.

**Bird Houses and Feeding Stations**

We have quite an assortment of Rustic Bird Houses and Feeding Stations. Priced very low considering their good workmanship and material. Only 75c each.

## ***Plant Department***

### **STRAWBERRY PLANTS — Sterling Quality**

My Strawberry Plants are raised on fresh ground and well fertilized. They are well rooted, healthy and true to name.

The Dorsett and Fairfax are unexcelled for quality and the Catskill is considered the best mid-season. Premier is the surest cropper.

All plants are from a new bed. No old plants are ever sold by me.

	25	100	300	1000
PREMIER or HOWARD, No. 17. The best kind I have ever tried for market. Begins to ripen early; large, long red berries, and keeps right on through a long season and keeps its size and color well, right up to the end of the season. Plants from new stock .....	\$ .25	\$ .80	\$2.00	\$6.00
MASTODON. The best Fall Bearing kind. Set in Spring, keep all blossoms cut off until July 1st. They will then bear until frost and bear the next Spring .....	.50	1.50		
DORSETT. Bred by the U. S. Dept. of Agriculture in their efforts to get extra quality in a good shipping berry. This is a fine, heavy-yielding kind, comes a little later than Premier. Disease free and a good plant maker. Bright red berries. Fine quality .....	.25	.80	2.25	7.00
FAIRFAX. Bred by the U. S. Dept. of Agriculture for quality, productiveness and size. Berries are very firm, dark colored, and unexcelled for home garden or market.....	.25	.80	2.25	7.00
CHESAPEAKE. New stock grown from Bunting's special strain. Fine quality. Late..	.25	.80		
LATE GIANT. New, late bearing. Large berries	.25	.80	2.25	

Have tried to list the 6 kinds named above about in their order of ripening.

All kinds have perfect blossoms and can be set alone if desired.

#### **STRAWBERRY PLANTS IN AUGUST, SEPTEMBER AND OCTOBER.**

We will have about all the kinds listed and some new kinds as well for Summer and Fall setting, from our new bed. New plants, well rooted and true to name. Write or ask for Fall Prices.

### **RED RASPBERRY PLANTS**

We are trying new kinds every year in our endeavor to get kinds that will not get Mosaic and die out in a few years. We list some that are well worth trying. Extra large plants.

NEWBURGH. A new red raspberry of superior merit. Has so far proven immune to Mosaic. It is of fine quality, early, productive, and holds its size through a long season. Each 8c; per Doz., 80c; 2 Doz., \$1.50; per 100, \$5.50.

CHIEF. A new early variety of fine quality and size. Disease free so far. Large plants. Per Doz., 75c; per 2 Doz., \$1.25; per 100, \$5.00



**RED RASPBERRY PLANTS—Continued**

- MARCY. New. Extra large berries. Good quality and very hardy. Per Doz., \$1.00. Per 2 Doz., \$1.75.
- TAYLOR. Late. New. Large, bright red berries. Better than Latham. Per Doz., \$1.00; 2 Doz., \$1.75.
- INDIAN SUMMER. The best for Fall bearing. Fine quality. Per Doz., \$1.00; 2 Doz., \$1.75.

**BLACK CAP RASPBERRY PLANTS**

- NEW LOGAN BLACK CAP. Early, resistant to Mosaic and other diseases. Heavy yielding, large berries. Per Doz., 75c; per 2 Doz., \$1.25.
- BLACK BEAUTY. Mid season. Disease resistant. New, hardy, rank growing and prolific. Per Doz., 75c; per 2 Doz., \$1.25.
- QUILLEN. Late. Resistant to Anthracnose, the worst foe of Black Caps. Medium to large berries of good quality. Worth trying. Per Doz., 75c; per 2 Doz., \$1.25.
- SODUS. Purple. New. Very large. Per Doz., \$1.00.

**BLACKBERRY PLANTS**

- ALFRED. New, long, sweet berry. Early. Each, 10c; per Doz., \$1.00.
- BOYSENBERRY. New. Heavy yielding. Large, sweet, long berries. Best quality blackberry. Low briar. Per Doz., \$1.00.

**ASPARAGUS ROOTS**

These roots are nice, healthy plants grown from selected seed. Special price on 5,000 lots. 1-year-old plants from my own beds.

Doz. 100 1000

- MARY WASHINGTON. One-year-old roots. From re-selected seed. This kind is the largest, most productive and finest flavored Asparagus yet developed. Very high branching, which makes it the best for cutting green. Rust-resistant. . . . . \$ .20 \$1.00 \$8.00

Set out Sterling Grown Roots this year, about six inches below the surface of the ground, cover with two inches of soil. As the plants grow up, fill trench with well-rotted manure and more soil, and some good garden fertilizer on top of that. Do not put fertilizer next to any kind of root or plant if you want them to live.

If properly taken care of you can cut your bed the following Spring until June 1st, letting it grow up after that and giving it more manure, feeding it well after letting it grow up.

**HORSE RADISH**

- MALINER KREN. Best kind. Per Doz., 25c; per 100, \$1.90.

**RHUBARB ROOTS**

- OLD FASHIONED PIE PLANT. Large stalks with reddish tinge. per root, 10c; per Doz., 75c; per 3 Doz., \$2.00.
- RUBY. New. Strong, vigorous grower. Ruby red color. Low acidity. Fine quality. Each, 15c; per Doz., \$1.50.

If you want Raspberry and Blackberry Plants, Horse Radish and Rhubarb Roots sent by Parcel Post add 12c to above prices for 1 Doz., 20c for 2 Doz. and 25c for 3 Doz. on Long Island.

## COLD FRAME PLANTS

### CABBAGE PLANTS

Hardy, Well-Rooted Plants re-rooted from Southern Plants.

	Doz.	100	1000
EXTRA EARLY JERSEY WAKEFIELD. Earliest pointed heads .....	\$ .10	\$ .60	\$4.50
EARLY CHARLESTON WAKEFIELD. Very large pointed heads .....	.10	.60	4.50
EARLY SUMMER. Large flat heads. These three kinds make a fine succession .....	.10	.60	4.50

### MAGGOT CONTROL

You can raise fine Cabbage without damage from Maggots if you will follow the directions given below:

Add 1 Oz. Corrosive Sublimate to 8 gallons water. Put  $\frac{1}{2}$  cupful to each plant once a week. Begin to do this in May or as soon as you see the Maggot fly. We have the Corrosive Sublimate in stock.

### LETTUCE PLANTS

Transplanted, Large, Well-Rooted Plants. Early Heading.

	Doz.	100
MIGNONETTE. Quick heading, good quality.....	\$ .15	\$ .80
NEW YORK or WONDERFUL. Large heads, quality.....	.15	.80
BIG BOSTON. Sure heading. Fine.....	.15	.80
ICEBERG. Large solid heads .....	.15	.80

### HOT BED PLANTS

Ready in May and June.

### TOMATO PLANTS

Transplanted, well-hardened, stocky plants. All my plants are grown from Certified Seed or extra selected stock from Livingston's seed. See Seed Department for more detail.

The number of days for each kind to ripen in is from Livingston's Trial grounds, from time of setting in the field.

BREAK O' DAY. The best extra early. Wilt resistant. 58 days.

EARLIANA. The very earliest. 55 days.

PRITCHARD or SCARLET TOPPER. Extra early. Wilt resistant. 60 days.

RED HEAD. Bright scarlet fruit. Early; firm, large. 62 days.

JOHN BAER. The most popular early sort. Large. 60 days.

BONNY BEST. Very productive. Early. Globe shaped. 57 days.

PONDEROSA. Livingston's Improved Strain. Very large. Fine flavored. Best for slicing. Few seeds. Mild. 84 days.

CLARK SPECIAL. An improved Stone. Fine color. Smooth.

MARGLOBE. Disease resistant. Large. Best for main crop. 60 days.

LIVINGSTON'S STONE. One of the best for table, canning or market. Very solid, smooth and fine. Good shipper. 76 days.

RUTGERS. New globe type. Large. Disease resistant.

BURPEE'S MATCHLESS. Large, smooth. Bright red. 73 days.



Starting Vegetable and Flower Plants in January

**TOMATO PLANTS—Continued**

GOLDEN PONDEROSA. Large yellow. Sweet.

TANGERINE. Burpee's new orange colored.

YELLOW PLUM. Small fruit for preserves. Round.

RED CHERRY. Smallest. Red.

All kinds at one price. 25c per Doz.; 5 Doz., assorted kinds for \$1.00; \$1.50 per 100; \$10.00 per 1000.

BURPEE'S NEW NO NAME. Burpee will give \$100.00 for a name for this tomato. Per Doz., 50c.

OLD TOWN. New. Extra large. See cut. Per Doz., 30c.

Add 9c per Doz.; 12c per 2 Doz., and 25c per 100 to your order if you want them by Parcel Post.

**PEPPER PLANTS**

Well Hardened. Strong Plants.

	Doz.	100
CALIFORNIA WONDER. New, thick. Sweet.....	\$ .20	\$1.50
HARRIS' EARLY GIANT. Very large, productive, sweet	.20	1.50
NEAPOLITAN. Early, large and sweet. Prolific.....	.20	1.50
BURPEE'S RUBY KING. One of the sweetest, large.....	.20	1.50
SWEETMEAT GLORY. Pointed, sweet. Thick-fleshed...	.20	1.50
CHINESE GIANT. Largest of all, most popular.....	.20	1.50
BURPEE'S NEW SUNNYBROOK. Sweet, small, thick...	.20	1.50
LARGE BELL or BULL NOSE. Rather warm.....	.20	1.50
LONG RED CAYENNE. Hot. Very prolific.....	.20	1.50
CORAL GEM BOUQUET. Small, hot. Very ornamental..	.20	
BURPEE'S NEW FORDHOOK. Large, fine yielding.....	.30	2.25

Add 8 cents per dozen, 15 cents per 100 to the above prices if you want them sent by Parcel Post.

## EGG PLANTS

Transplanted, Well Rooted and Hardened.

	Doz.	3 Doz.
NEW HAMPSHIRE HYBRID. New, early.....	\$ .30	\$ .80
IMPROVED NEW YORK SPINELESS. Large purple....	.30	.80
BURPEE'S BLACK BEAUTY. Large, early, prolific....	.30	.80

Add 9c per Doz., 15c per 3 Doz., if you want these plants sent by Parcel Post.

## SWEET POTATO PLANTS

Ready in May and June.

	Doz.	100	1000
YELLOW JERSEY. Productive, early.....	\$ .10	\$ .70	\$6.00
RED JERSEY. Extra quality.....	.10	.70	6.00
PORTO RICO YAM. Large, fine for baking.....	.10	.70	6.00

Add 8 cents per Doz., 12 cents per 100, 20 cents per 300, 40 cents per 1,000 if you want these sent by Parcel Post.

## FIELD GROWN PLANTS

Ready from June 20th to August 20th approximately.

All my plants are raised on fresh ground and the very best strains of seed are always used. We dust our plants with Nicotine Dust.

## BRUSSELS SPROUT PLANTS

The seed is treated with hot water for Black Stem and Blackleg and you are thus assured of strong, healthy plants free from disease. Plants are raised on fresh ground from stock seed.

	Doz.	100	1000
BLUE RIBBON STRAIN. A very choice tall strain	\$ .10	\$ .60	\$4.00

This strain brought highest prices at Southold block last year. Many who had Blue Ribbon Sprouts in 1939 are doubling their order for 1940.

Price by the thousand liable to change, depending on the season.

## BROCCOLI PLANTS

	Doz.	100	1000
BROCCOLI. Green Sprouting. Sterling Strain. This Strain of seed produces fine crops.....	\$ .15	\$ .60	\$4.00

Sterling Strain Broccoli sold well in the market last year.

## CAULIFLOWER PLANTS

My seed is treated with the hot-water treatment, insuring against Black Stem, Blackleg and Blight. Plants raised on fresh, disease-free ground. We supply many L. I. farmers with their Cauliflower seed.

	Doz.	100	1000
STERLING LARGE EARLY ERFURT. Large, snow-white heads. One of the best for main crop. Sure heading .....	\$ .15	\$ .60	\$4.00

SNOWBALL. A sure heading early strain. Good for late setting .....	.15	.60	4.00
--	-----	-----	------

Price by the thousand liable to change without notice.

Use Corrosive Sublimate treatment for Maggots in your seed bed. Pour along the row as soon as you see signs of Maggot.

Use our 1% Cubor Dust for Aphis, Thrip, Cabbage Worm and Looper. Also will carry Pyrethrum Dust.

## CABBAGE PLANTS

This seed is treated with Semesan for Black Stem. Plants are all grown from choicest seed procurable.

	Doz.	100	1000
ALL SEASON. Yellows resistant. Large, flat heads...	\$ .10	\$ .50	\$3.00
EARLY FLAT DUTCH. Best for late setting.....	.10	.50	3.00
SAVOY. Curled. Best quality.....	.10	.50	3.00
LARGE LATE DRUMHEAD. Largest heads.....	.10	.50	3.00
LATE FLAT DUTCH. Solid, large heads.....	.10	.50	3.00
PENN STATE BALLHEAD. Fine. Hard heads..	.10	.50	3.00
MAMMOTH ROCK RED. Sure heading.....	.10	.50	3.00

If you want any of the Brussels Sprout, Cauliflower or Cabbage Plants listed above sent by Parcel Post, add 8 cents per Doz., 15 cents per 100, and 8 cents for each additional 100, to above prices.

## CELERY PLANTS

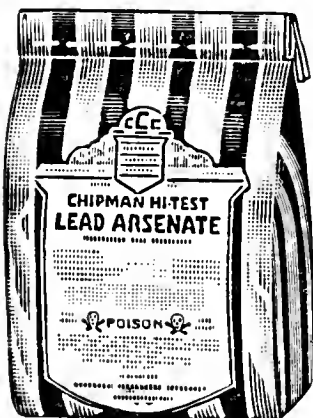
Ready in July and August. Transplanted, well rooted plants.

	Doz.	100	1000
FORDHOOK or EMPEROR. Burpee's Seed. Dwarf..	\$ .10	\$ .70	\$5.00
GOLDEN PLUME. Fine for second early or late.....	.10	.70	5.00
WHITE PLUME. Self blanching. Extra early.....	.10	.70	5.00
GIANT PASCAL. Tall Winter. Fine nutty flavor....	.10	.70	5.00
WINTER QUEEN. Stocky, very large, crisp.....	.10	.70	5.00

Add 8c per Doz., 12c per 100, and 8c for each additional 100 if you want these sent by Parcel Post.

Have early transplanted plants in above kinds at 15c per Doz.; 80c per 100.

## INSECTICIDES, SPRAY MATERIAL and SUPPLIES



### ARSENATE OF LEAD

Chipman Brand Arsenate of Lead. This is one of the best kinds, very fine, sticks well on the foliage and kills the bugs clean and quick.

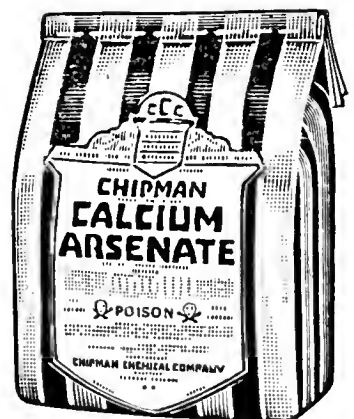
	Per Lb.
1 to 3 Lbs. ....	\$ .18
4 Lb. Pkg. ....	.15
Case of twelve 4-Lb. Pkgs. Price given on request.	

### CALCIUM ARSENATE

A light, fluffy powder, stronger and keeps in solution better than Arsenate of Lead but does not stick so well in rainy weather.

	Per Lb.
1 to 3 Lbs. ....	\$ .15
4 Lb. Pkg. ....	.12½

Case of eight 4-Lb. Pkgs. Price given on request.





## BORDEAUX MIXTURE

Bordeaux contains not less than 13% Copper. The best control for Blights and Fungi. Full directions for its use on the package.

	Per Lb.
1 to 3 Lb. ....	\$ .18
4 Lb. Pkg. ....	.15
Case of eight 4-Lb. Pkgs. Price given on request.	

## MAGNESIUM ARSENATE

The best poison for Wet Spray for Mexican Bean Beetle. Use 4 Lbs. to 100 Gals. water and spray underside the leaves. Per. Lb., 30c; 4 Lbs. for \$1.00; 50 Lb. drum, price on request. Use 2 Lbs. Kayso and 5 Lbs. lime with 4 to 5 Lbs. Magnesium Arsenate to 100 Gals. of water.

## PYRETHRUM DUST

Have a good supply of this Improved Dust for killing cabbage worms, bean beetles, etc. Priced right. This is the best dust to use late on your Cauliflower. Prices on request.

## LIME SULPHUR DRY

One of the best remedies for Leaf Curl and most all of the Fungus disorders. Mix 15 Lbs. to 45 Gals. water for dormant spray. 5 to 8 Lbs. to 50 Gals. for a good Summer spray.

	Per Lb.
1 to 4 Lbs. ....	\$ .20
5 to 10 Lbs. ....	.15
12½ Lb. Bags. ....	.13
100 Lb. Drums 8-12½ Lb. Bags. ....	.12

All prices net cash. Time price, 1c per Lb. extra.

## LIQUID LIME SULPHUR

This is sometimes used in preference to the dry form. The very best, Grasselli Brand. For Leaf Curl on Peaches use 6½ Gals. Liquid Lime Sulphur to 100 Gals. water when dormant.

	Per Gal.
Per Gal. at the Farm, bring your own container. ....	\$ .40
Per 10 Gal. at the Farm, bring your own container. ....	.35
Per 50 Gal. drum, F.O.B. N. J. ....	.25

# SULFOCID

*A Better Summer Spray*

1 5-Gal. can in case .....	\$7.50
1 Gal. can in case. ....	2.25
1 Qt. can .....	.85
1 Pt. Can .....	.50

Freight paid to any R. R. station on Long Island on orders of 5 gallons or over.

Sulfocide is a powerful summer fungicide—at low cost—for fruits, vegetables and flowers. When sprayed, it quickly decomposes, leaving a film of sulfur so fine as to be almost invisible except where drops accumulate.

1 Qt. makes 50 Gals. of spray.  
1 Gal. makes 200 Gals. of spray.  
Add ½ Lb. Kayso to each 50 Gals. of spray, putting it in the tank first.

Fall spraying with Scalecide controls psylla and peach leaf curl. Spring application controls aphids, pear thrips, leaf miner, case bearer and leaf roller. Either fall or spring spraying with Scalecide controls scale, bud moth. European red mite, fungus or blight cankers from which are spread fire blight, collar rot and root rot. And in addition, year after year use of Scalecide invigorates the trees.



Ask for Booklet.

50-Gal. Bbl. (freight paid to any R. R. station on Long Island) \$26.00  
 15-Gal. Drums (freight paid to any R. R. station on Long Island) 11.25

Drums \$3.00 extra, but returnable at same price. F.O.B.  
 Hackensack, N. J.

1 Gal. can, at the Farm ..... \$1.55  
 1 Qt. can, at the Farm ..... .65  
 Per Gal. at the Farm; bring your own containers..... .80

### CUBOR DUST 1.00%

Price liable to change without notice.



The new non-poisonous dust for dusting Cauliflower, Brussels Sprouts and Lima Beans. Leaves no illegal residue.

1% Rotenone or Cube packed in 4 Lb. pkg. \$ .60  
 Per case of 12 4-Lb. packages. Price on application.

We found Cubor Dust 1.00% killed Bean Beetles cleaner than any other dust used last year.

### SPRAY CATALIZER

Spray Catalizer is said to be the very best mixer and spreader for Lime Sulphur and Arsenate of Lead. Per 2 Lb. pkg. .... \$ .55

### KAYSO

Kayso makes the spray spread in an even, unbroken coat over every surface, thereby giving better control of pests and diseases. Price: Per Lb., 25c; per 2 Lb. Pkg., 45c; 24 2-Lb. Pkgs., packed in box, 40c per Pkg.

### TRI-GEN

A complete Insecticide and Fungicide for Roses, Hollyhocks, Hardy Phlox, Delphinium, Chrysanthemum, etc. A, Small Kit makes 16 qts., \$1.50; B, Medium Kit makes 64 qts., \$4.00; C, Large Kit makes 32 gals., \$6.00.

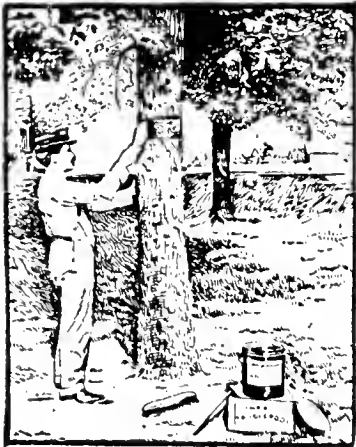
---

Hy-Grade Hose Gun. The modern Sprayer. Insert the cartridge and connect with your garden hose. Very best gun with 3 Colloidal cartridges, all ready to spray, \$3.75 and \$4.50 each. Ask for circular.

---

## MONOHYDRATED COPPER DUST

A dry powdered Blue Vitriol. Use as a Dust for control of Bean Beetle, mixing 5 Lbs. Copper Dust, 15 Lbs. Lime and 1 Lb. Magnesium Arsenate. Per Lb., 15c; per 10 Lbs. or more, 12c per Lb.



### SPRAYING LIME

A fine quality lime. Packed in 50 Lb. bags, 60c per bag; \$5.50 per 10 bags.

### SPRAY PUMPS

Have a stock of these handy Sprayers listed below on hand and can get you any kind or size you might want on very short notice. Send for catalog.

### HAND SPRAYERS

Galvanized Condensed Air Sprayers. Nicely made. Long hose, good nozzle. Holds 4 Gal. Prices on application.

### BRASS SPRAYER

One of the best on the market. Easily filled. Full brass. Long hose, extension rod, good nozzle. Holds 4 Gals. Price on application.

## TREE TANGLEFOOT

Best for banding trees to control the Canker Worm that eats the leaves off your oak trees. 1 Lb. cans 60c each; 5 Lb. cans \$3.00 each; 10 Lb. cans \$5.50 each. Have your trees banded in late fall.



## Best for Mites, Lice and Germs

Carbola is a white paint and powerful disinfectant combined in powder form. Just mix with water and you have a smooth-flowing disinfecting paint. No waiting or straining. Does not flake or peel off. One pound covers 100 square feet.

Apply Carbola to the interiors of your poultry houses, dairy barns, hog pens and outbuildings. Apply it to every surface that might harbor lice, mites and disease germs. It is live stock insurance against tuberculosis, foot and mouth, hog flue and other destructive diseases. Try it. Satisfaction guaranteed.

5 Lbs....	\$ .60	25 Lbs....	\$1.90
10 Lbs....	.98	50 Lbs....	3.50

## 2% NICOTINE DUST

The dry powdered Nicotine Sulphate. Dust it on in the heat of the day and it forms a gas and will kill all insects, if thoroughly applied. Per Lb., 20c; 5 Lbs. or more at 16c per Lb.; 50 Lb. drums at 14c per Lb.

## TOBACCO DUST

Fine ground. Used for dusting plants for Aphis, Thrip and Fleas, Hen's Nests, etc. Per Lb., 10c; per 10 Lbs., 80c; per 100 Lb. bag, \$6.00.



**Spray**  
**Black Leaf 40**  
 40% Nicotine

The Liquid Spray that controls Plant Lice or Aphis. Put ½ Lb. to 50 Gals. water, add 6 to 8 Ozs. of Kayso, and you have one of the best controls there is for sucking insects.

Per 1 Oz. Bottle, for garden use.....	\$ .35
Per 5 Oz. Bottle .....	1.00
Per 1 Lb. Bottle .....	2.25
Per 2 Lb. Tin .....	3.25
Per 5 Lb. Tin .....	5.50
Per 10 Lb. Tin .....	9.90

Special price on larger quantities.

Black Leaf 40 is the greatest louse killer for poultry on the market. Pour it on the perches just before roosting time.

**D - X**

A concentrated Pyrethrum and Rotenone Spray for the garden, farm and orchard. Kills sucking and chewing insects and is non-poisonous to humans. Send for descriptive circular, giving prices, quantities to use, etc. It really kills the bugs. 1½ Oz. bottle 35c.



C.C.C. RAT AND MOUSE KILLER. They die outside. Per can, 50c.

C.C.C. LOUSE POWDER for dusting all kinds of animals for lice, fleas, etc. Per large sifter can, 50c.


FUNGTROGEN. Best spray for Black Spot and Mildew on Roses. Pt. \$1.25; Qt. \$2.

GRAPE AND ROSE DUST. Prevents Mildew and Black Spot. This ideal dusting fungicide is **easy** and safe to use. Green in color, not unsightly. Colloidal sulphur base, combined with other fungicides. 1 Lb. can 35c.

HAMMOND'S NO-CROW. Drives birds away from your corn. ½ Pt. can, 60c; 1 Pt. can, \$1.00. ½ Pt. can will treat 1 Bu. of corn.

MOLOGEN. One of the best remedies for moles and mice. Per can, 50c; large can, \$1.25.

SLUG SHOT. Dust it on your plants for all chewing insects. Sifter top 1 Lb. can 25c. 5 Lb. can \$1.00.



**CUPROCIDE**

*The Red Copper Oxide That Stays Red*

**PROTECTS YOUR SEEDS  
FROM  
"DAMPING-OFF"**

**1 lb. CAN 90c**

CALOMEL, 4 Oz. Pkg. 85c.

CORROSIVE SUBLIMATE, 4 Oz. Pkg. 75c.

SEMESAN, JR. New Improved. For dusting Seed and Sweet Corn.  
4 Oz. can, 35c; 1 lb. \$1.00; 5 Lb. can, \$4.75.

SEMESAN. For disinfecting seeds, bulbs, soil, etc. Kill disease spores.  
2 Oz., 50c; 1 Lb., \$2.25; 5 Lbs., \$9.90.

We have other Insecticides, Weed Killer, Fly Spray, etc. Ask for prices.

### FINE GROUND SULPHUR

For dusting Potatoes, spraying and spreading on the land for Potato Scab, dusting Evergreens for Red Spider, etc.

Excelsior Brand Sublimed Velvet Flowers of Sulphur 100% pure.  
1 to 4 Lbs. 10c per Lb.; 5 to 99 Lbs. 8c per Lb.; 100 Lb. Bags \$6.50.

Superfine Commercial Dusting Sulphur 99% pure, 10 Lbs. to 99 Lbs.  
at 6c per Lb.; 100 Lb. Bags \$4.50.

### HYLITE

A fine Inside Paint at \$1.00 per Gal.

A new cold water paint for inside work. Does not rub off. Can be painted, sprayed or stippled. Comes white and can be colored any desired color. 5 Lbs. makes 1 Gal. of paint. 5 Lbs. White for \$1.00; 50 Lbs. at 15c per Lb.

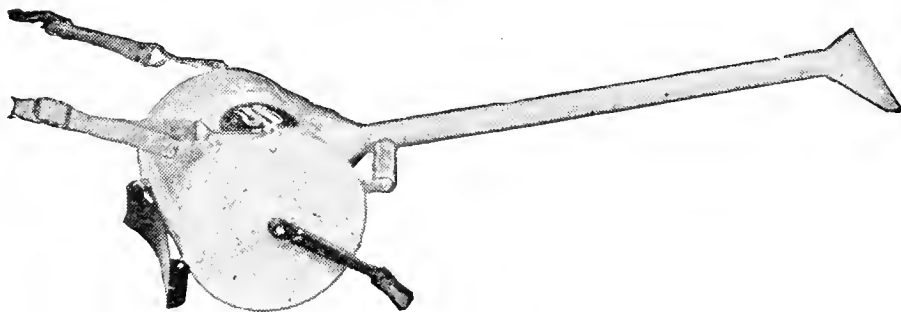
### WOODEN LABELS (Painted)

	100	1000
4-inch Pot Label .....	\$ .35	\$2.25
3½-inch Copper Wired .....	.50	3.25
12-inch Garden Label, per Doz., 20c.....	1.50	

### EARTHEN FLOWER POTS

	Each
3-inch .....	\$ .04
4-inch .....	.06
5-inch .....	.08
8-inch .....	.20
9-inch .....	.28
10-inch .....	.38

### THE FEENY HAND DUSTER



The most comfortable to carry and the easiest to operate. The feed is accurate and may be set for any dosage from less than a pound to 15 Lbs. or more to the acre. Price with Bean Beetle nozzles and flexible connection, \$15.00 Each.

#### THE FEENY D 2-QUART DUSTER

This hand duster is 50 inches long, has a flared nozzle for general use and a special nozzle for the Mexican Bean Beetle. \$2.50 Each.

PRICES—We have kept our prices down to last year's levels or lower on all lines where it could be done, along with our policy of high quality. Remember, when comparing our prices with others that we always strive to put out the highest quality in all our products.

For Growing Healthier Plants

# VITAMIN B<sub>1</sub>

(Pure Crystalline Powder)

Only the pure crystalline powder form of Vitamin B-1 is effective on plant life. The kind sold in tablets or other concentrates are not satisfactory for plants.

Garden Size Kit. Enough for many gallons of solution for watering plants. Follow directions and watch results..... Each \$1.00

## R. C. RHODE ISLAND REDS

We have a fine pen of this popular breed from one of the best laying strains in Massachusetts. Chicks from this pen should make extra good layers. Eggs priced at \$1.00 for 15 eggs. \$6.00 per 100.

Cockerels for breeding, \$4.00 Each.

## BLUE BERRY BUSHES

New, extra large fruiting kinds: Pioneer, Rubel and Cabot. Two-year-old plants, 75c Each, 10 for \$6.50; Three-year-old plants, \$1.25 Each, 10 for \$10.00; Plant 5 Pioneer, 4 Rubel and 1 Cabot for best results in pollenization. New Rancocus. 2 yr. at \$1.00 Each.



Gladiolus and Delphinium at Sterling Farm



Hurricane Hall in the Winter time

## ***Real Estate Department***

I have many choice lots, plots, houses, bunaglows and farms on my lists for sale and for rent. If you are interested in Eastern Long Island Real Estate, get in touch with me at your earliest convenience.

I am always willing to consult, advise or act as your agent if you are desirous of buying or renting out this way.

I am a Licensed Real Estate Broker and have been buying and selling Real Estate since 1926.

Instead of a long list of property this year, I am specializing in a few choice properties that are of good value at this time.

### **NASSAU FARMS**

60 acres laid out and developed by myself. There are over thirty houses and bungalows already built and occupied not only in the Summer time but some of them are year round homes.

8 large water-front lots, 70 ft. or more frontage on Bay Avenue and Baldwin's Creek and over 250 ft. in depth. These lots overlook Peconic Bay and face the west where the prevailing winds come from. Nice shade trees go with these lots. The waterfront has been improved. Sandy shore and good depth of water, in front of the lots. Priced at \$900.00 each.

2 large lots on Pine Tree Road facing Little Creek and Little Peconic Bay. These two last lots that I own in the woods are priced at \$450.00 each.

7 acre plot with large pond and island with rustic bridge. There is a good windmill suitable for irrigation or connecting with running brook and a goldfish pool. Also a stone fireplace in a fine grove of oak and cedar trees surrounding the pond. About five acres of this plot are clear. Soil is good gardening soil suitable for beans, peas, cauliflower, sprouts and such like crops. Have a long row each of asparagus, blackberries, all kinds of fruit trees and young Chinese elms already set out.

Have priced this beautiful plot with frontage on two town roads and only a few hundred feet from Peconic Bay for a quick sale at \$5,500.00.

5 acre plot of good soil, suitable for any crop. This plot has 70

ft. of frontage on Bay Avenue. 20 ft. on Baldwin Creek and is very reasonable at price of \$3,000.00. Good terms can be arranged on all the above pieces of property.

12 nice lots on Lilac Lane and Sterling Road. Some of these lots are in the woods and some are clear land. From 150 to over 200 ft. in depth. Your choice of any part of these two plots at \$5.00 to \$7.00 per front foot. Nothing less than 60 ft. front sold.

A large map showing location, size and price of all the lots and plots on Nassau Farms can be had for the asking. Ask us for one.

## HURRICANE HALL

This is the old Horton House, built over 200 years ago. I have had it moved to higher ground and rebuilt so that it is a very well built house and ready for occupancy.

Instead of giving a full description of this old salt-box type house I am extending to any one interested an invitation to stop in and look the place over.

The house stands on a large plot of ground, 140 ft. on Bay Avenue and over 240 ft. in depth. And it also includes 70 ft. of frontage on the improved waterway across Bay Avenue.

There is also a five acre plot adjoining and can be included all in one plot.

Have priced Hurricane Hall very low this year and have made the price on the whole plot containing nearly six acres of good land at a very attractive price. Ask me for price, terms, etc.

## STERLING INLET AT NASSAU POINT

Three large lots at Nassau Point, Nos. 224, 225 and 226. These lots front on Wunnewetta Harbor on the west, and there is good depth of water from these lots to Peconic Bay. Each lot has more than 100 ft. frontage on the water and over 300 ft. in depth.

Large oak trees cover the whole plot and there is a small pond in the center. The combination of high ground and low ground makes this plot one of the potential beauty spots of Nassau Point.

The three lots are to be sold in one large plot only, not separate, and I have priced them especially for a 1940 sale at only \$4,500.00. One third cash. Balance at 5% if desired.

## CARRINGTON PARK AT NASSAU POINT

Ten large lots near Horseshoe Cove, and Wunnewetta Harbor, Four of these lots, Nos. 421, 422, 423 and 424 are located on the east side of Little Peconic Bay Road and are wooded, with good elevation and I have priced these four at \$500.00 each or the four for \$1,900.00.

Six of the lots at Carrington Park are west and north of Vanston Road. They are well wooded, high and very near the Cove, as fine inside lots as can be found anywhere. Your choice of any one of these six lots for \$750.00. You can best appreciate these choice lots by looking them over.

## COUNTRY CLUB PARK AT NEW SUFFOLK

A 20 acre wooded tract overlooking Peconic Bay and adjoining the North Fork County Club Golf Course on the north.

This tract fronts on New Suffolk Avenue where there are many beautiful Summer homes. There are many choice lots along this Avenue to choose from and they all have free access to the Bay as

there is a 33 ft. roadway leading direct to the Bay owned by the same people who own Country Club Park, and the right to use this roadway to the beach and Bay goes with the title to your lot.

Here is a chance to own a large wooded lot of practically the same value as a Bay Front lot without the worry and expense of bulkheads, loss of property with high tides, and the lots are priced at about 25% of the cost of a waterfront lot.

You can purchase as much road frontage as you want at a very low price per front foot, but not less than 65 ft. for each home. The depth of the lots is 150 ft.

There are several choice lots on Moore's Lane on the west side of this property and on each side of a three rod road laid out through the center of the plot and connecting New Suffolk Avenue with the North Fork Golf Course. These lots are very attractive and can be purchased for less money than the front lots and with all their privileges.

Write me for prices and pictures of all these attractive lots. New low prices for 1940.

### THREE GOOD FARMS

35 acre farm located on the North Road at Mattituck. Good potato land, house in good repair, outbuildings fair. This farm has 350 ft. of frontage on Long Island Sound and 400 ft. on the North Road. Priced to sell for a short time only, at \$19,000.00.

100 acres on Route 25. This farm is only 60 miles from New York, has about 50 acres of cultivated land and can be purchased for about \$100.00 per acre. Half cash.

45 acre farm with wide frontage on two roads. This farm has some very good land and some lighter land suitable for truck crops. Price \$20,000.00. Terms.

### THREE BARGAIN HOUSES

5 rooms with bath, heater and all furnished ready to move in. Located at New Suffolk, near the Bay. 160 ft. on the road and the same frontage on the water. 200 ft. in depth. This is a bargain for only \$4,500.00.

House at Fleet's Neck, all furnished, with heater and other improvements. This house is on a large lot and also has a 10 ft. right of way to channel suitable for a fair sized boat. For sale or rent. Sale price \$5,250.00. Will rent from early to late for \$400.00.

Large cottage on the Bay at Nassau Point. This cottage, furnished, will be sold for the price of the lot itself. Or it can be rented very reasonably. Get in touch with us about this or other bargains at Nassau Point and vicinity before purchasing.

I have many other pieces of property on my list. Let me know what you are looking for and I will try my best to help you.

# RALPH W. STERLING

TEL. 6755 PECONIC

CUTCHOGUE, L. I., N. Y.

---

Amt. Enclosed \$..... Date.....

Name.....

Post Office.....

County and State.....

Town to Ship Express to.....

Rural Route No.....

Ship by.....  
(Express or Mail)

Ship about.....  
(Date to be shipped)

Quantity	Cat. Number	DESCRIPTION	Dollars	Cents

Add Postage

May I substitute if out of any kinds ordered?

Quantity	Cat. Number	DESCRIPTION	Dollars	Cents
		<b>Amount Brought Forward</b>		
		<b>Add Postage</b>		
		<b>Total Amount</b>		

If any of your friends or neighbors want one or more catalogs let me know. I will do the rest. TRUE TO NAME. While we use every precaution to have all plants, seeds, etc., true to name and of strong vitality, we will not be responsible for any sum greater than the cost of the order should any prove otherwise than as represented.

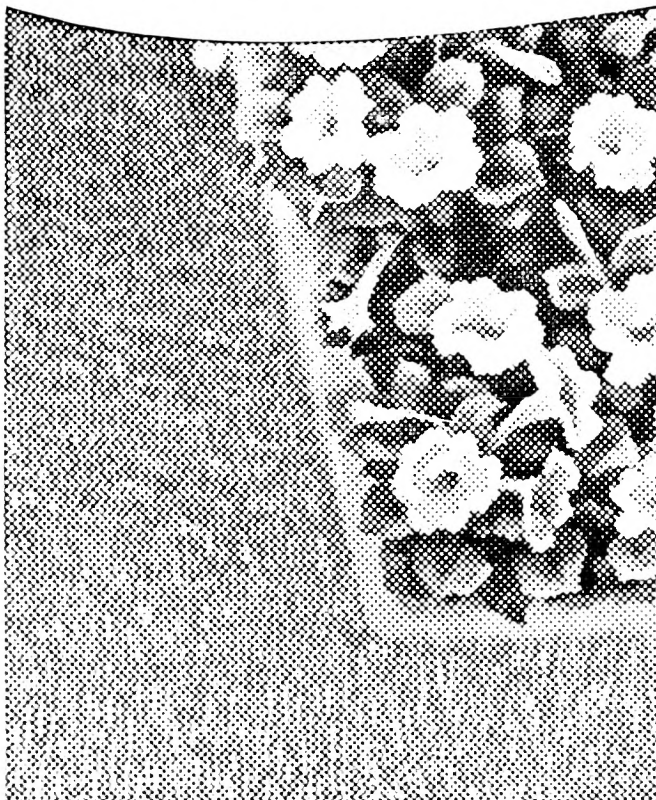




*Bing, Who Welcomes All the Cars*



**You can have grass so thick it chokes out weeds!**



● Grass becomes active earlier in the spring than weeds. If you'll give your grass a *square meal*, just as soon as frost is out of the ground, it will get such a thriving head start that weeds will find little room to grow.

But the kind of dense, heavy turf that chokes out weeds results only from feeding with a *complete* plant food like Vigoro. Your grass needs eleven different food elements from the soil. Use Vigoro to make *sure* that *all eleven* are supplied in balanced proportions.

Vigoro is sanitary, odorless, easy to apply. Gives you far more food value for your dollar. Order *now*.

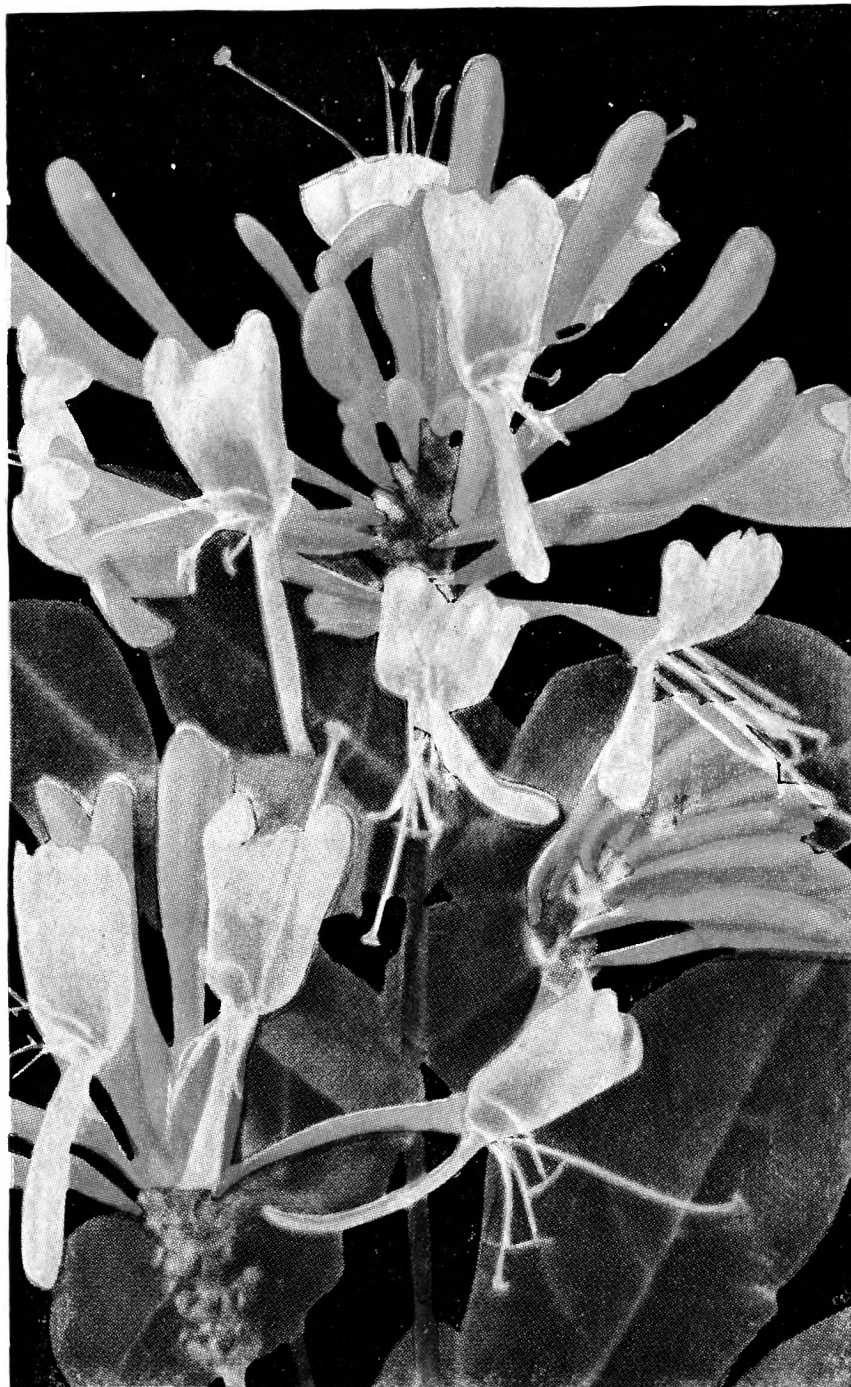
Feed everything  
you grow...with

**VIGORO**

THE COMPLETE,  
BALANCED PLANT FOOD

1 Lb. pkg. ....	\$ .10	25 Lb. bag .....	1.50
5 Lb. pkg. ....	.45	50 Lb. bag .....	2.50
10 Lb. pkg. ....	.85	100 Lb. bag .....	4.00
	1000 Lbs., price	on application.	

# *Sterling's Annual Catalog*



*Gold Flame Honeysuckle*

See Page 39

Address all communications and make all checks  
and money orders payable to

**RALPH W. STERLING**

CUTCHOGUE, L. I., (Suffolk County) N. Y.

Telephone Peconic 6755

*No Business Done on Sunday*