

Historic, archived document

Do not assume content reflects current scientific knowledge, policies, or practices.

WOLFE'S

Nursery

LIBRARY
RECEIVED
APR 22 1940 ★
U. S. Department of Agriculture.



OUR NURSERY OFFICE

Frost Resistant Fruit Trees, Nut Trees,
Ornamentals and Evergreens

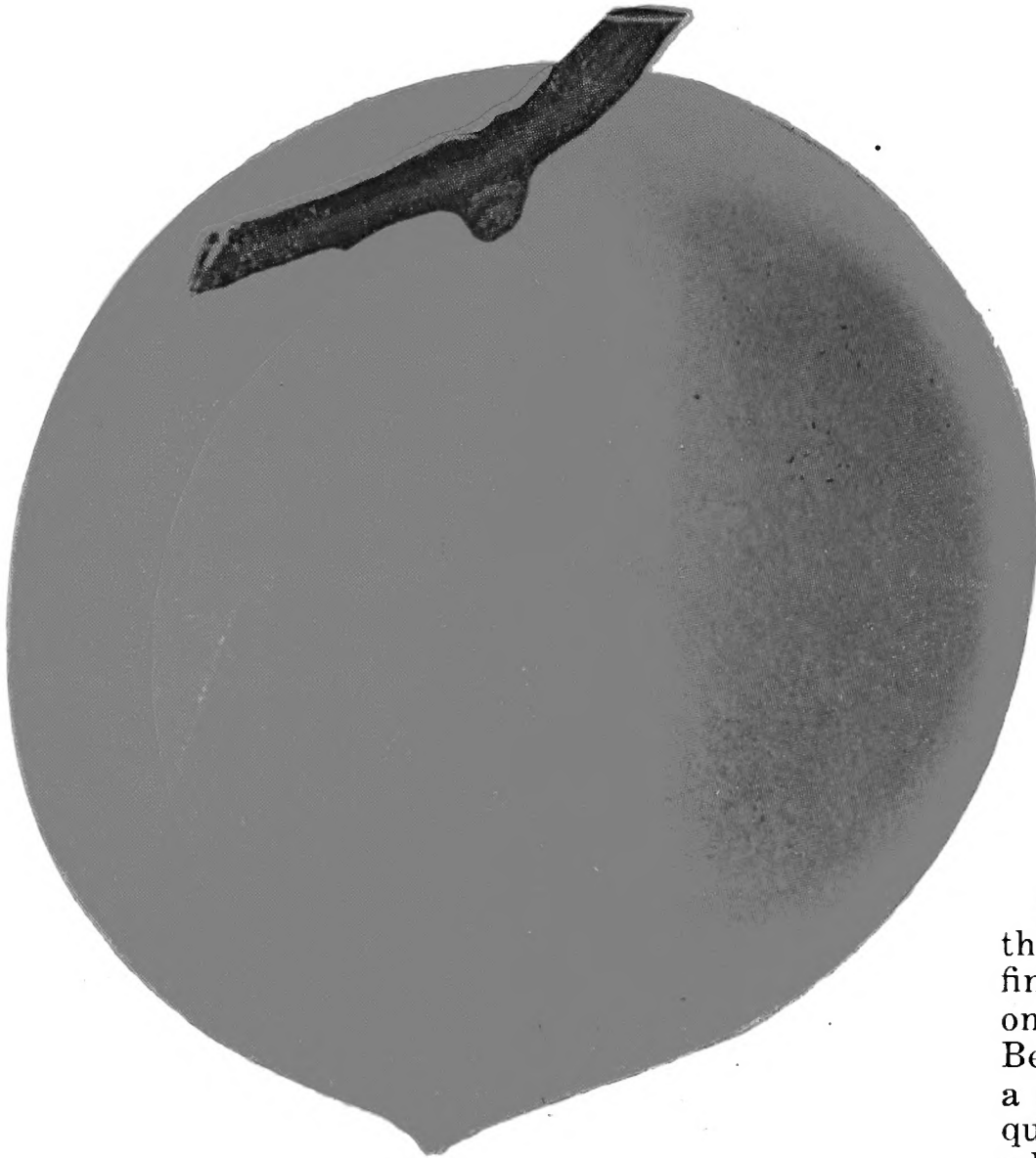
1939

1940

Telephone 2302

Stephenville, Texas

INTRODUCING

A Grand New PEACHThe New
TEXABERTA

TEXABERTA. \$\$\$\$. I consider the Texaberta Peach my greatest find. The mother tree is growing on the E. E. Griffith farm near Belton. As the name implies, it is a grand Texas Elberta, superior in quality and bears good crops even when the Elberta fails. I am hav-

ing this peach patented and for the first time it is being offered to the general public.

In the description that is given by one of our leading horticulturists in the application for plant patent it is described as deep yellow with striped and mottled red, covering 60 per cent of the surface. The skin is tough with little fuzz, sound seed and deep yellow flesh, red around the seed, extending into the flesh in streaks, juicy, fine grain, tender yet firm, even ripening and of an agreeable flavor.

Texaberta will excel the Frank in popularity as soon as the public becomes acquainted with it.

FROST RESISTANT

The mother tree of Texaberta has produced fifteen consecutive crops with only one light crop. Ripening as it does one week ahead of Elberta and being much more attractive, it will beat the Elberta to market and bring a much better price.

DEMONSTRATION ORCHARDS WANTED

As long as the trees of this variety last I want to supply leading fruit growers in different sections enough trees to demonstrate its worth. Please write me for a special offer. I want at least one demonstration orchard of 200 or more trees in each peach growing community.

PRICES ON TEXABERTA PEACH TREES, PREPAID

	1-10	11-49	50-100		1-10	11-49	50-100
1-2 ft.	\$.27	\$.23	\$.17	3-4 ft.	\$.49	\$.38	\$.31
2-3 ft.	.43	.32	.21	4-5 ft.	.58	.47	.43

More about Texaberta on page 14.

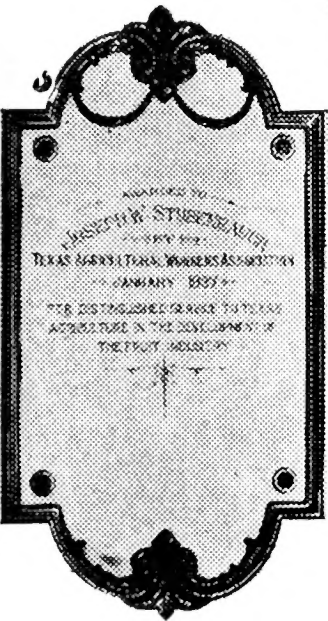
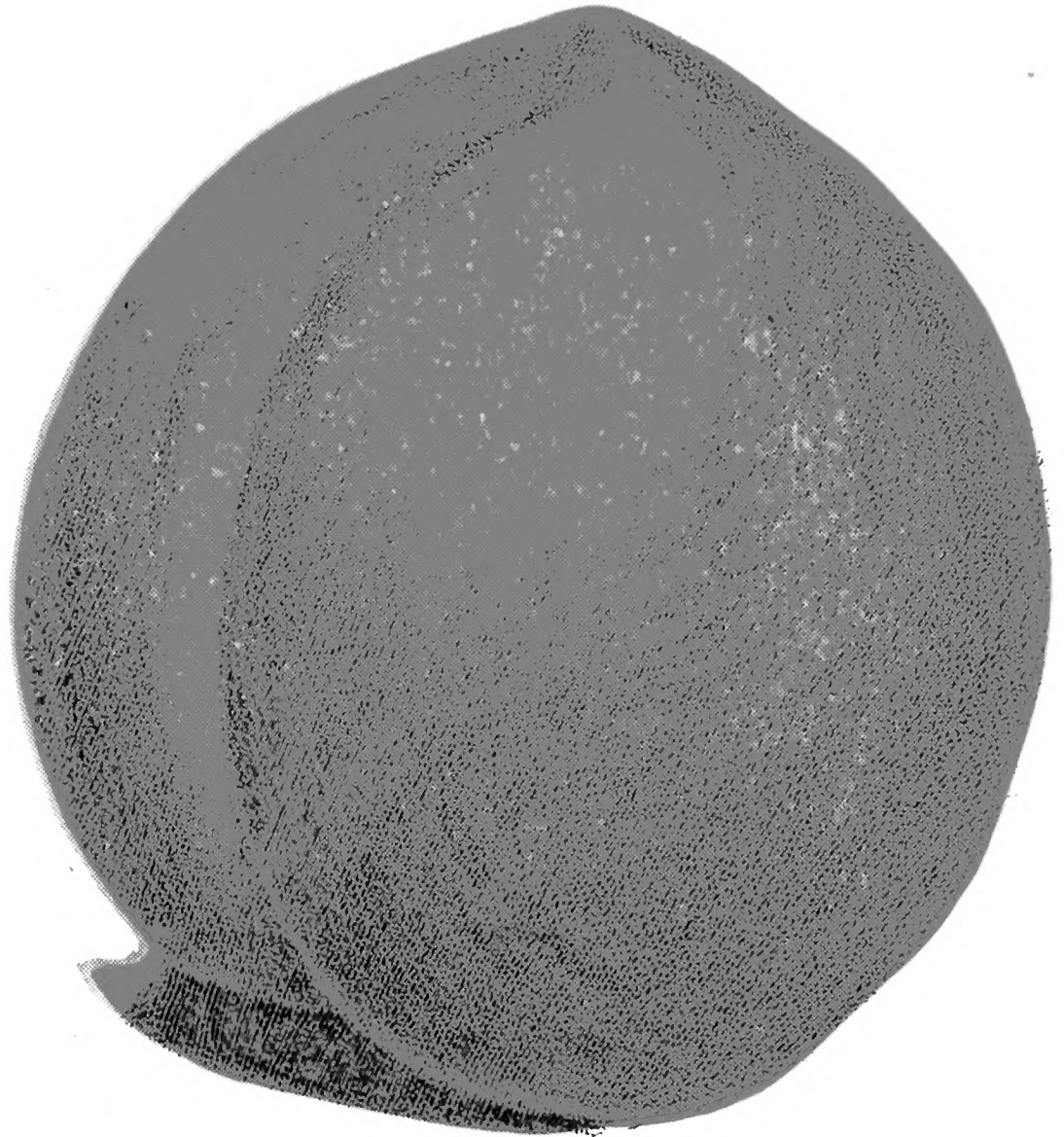
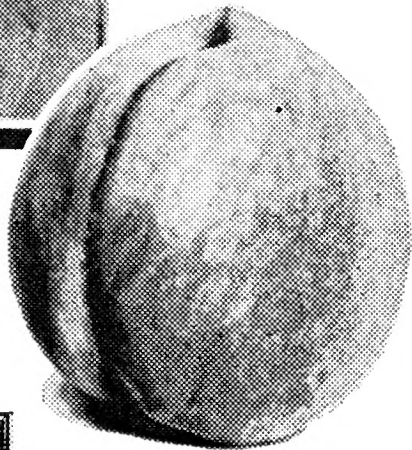
WE PREPAY EXPRESS AND PARCEL POST CHARGES ON FRUIT TREES

We Feature Stubenrauch Peaches

We arranged with Mr. J. W. Stubenrauch of Mexia, Texas, to grow his best peaches, the Frank, Katy, Tena, Frankie, Liberty, Barbara and Anna which have become popular due to their frost resistance, vigor of trees and quality of fruit.



Mr. J. W.
Stubenrauch
Mexia, Texas



Medal awarded to
J. W. Stubenrauch
by the Texas Agri-
cultural Workers'
Association for his
peach breeding
work.

THE FAMOUS FRANK PEACH Has not missed a crop in 37 years

THE FAMOUS FRANK. \$\$\$\$. I could put another \$ after Frank for frost resistance. A cross between Elberta and Bell's October that is fast becoming Texas' most popular peach. This yellow cling, named for Frank Holland of "Farm and Ranch", begins to ripen just as Elberta is playing out about August 5-10th and will hang on the trees without injury several days after it is ripe. A beautiful peach, yellow flesh, small sound seed, firm, delicious flesh and juice. The tree is an extra strong grower, early bearer and heavy producer. The fruit should be thinned (before the seeds are hard) to secure the proper size and quality. If you want the best peach on earth for home or market, plant the Frank.

PRICES ON FRANK PEACH TREES, PREPAID

	Each	4	10	25	50	100
1-2 ft.	\$.14	\$.51	\$1.21	\$ 2.78	\$ 4.98	\$ 9.89
2-3 ft. light	.17	.62	1.53	3.69	6.79	13.45
2-3 ft. heavy	.26	.94	2.08	5.49 ^{4.49}	9.98	17.95
3-4 ft.	.36	1.31	2.88	7.20	13.79	24.50
4-5 ft.	.59	2.13	5.31	12.27	23.27	45.75
5-7 ft.	.76	2.74	6.98 ^{6.78}	16.25	29.98	49.98

The Frank Peach has made our Nursery famous, see pages 6 and 11.

An Exclusive APPLE



**A wonderful
large-red
summer
apple
— it's
a real
MONEY
MAKER**

HOLLAND APPLE

(Our Introduction)

WE HAVE THE EXCLUSIVE RIGHTS ON HOLLAND APPLE.

This apple from Weatherford, Texas, was called to our attention by Mr. R. B. Alexander, the largest and most successful fruit grower in Texas. For more than 30 years it has been a consistent and heavy producer. This large, red, summer apple is firm and delicious and has two excellent commercial advantages. First, it ripens as early as the Frank peach and is ready for market before outside apples come in. Second, it hangs on the tree exceedingly well which gives the grower a longer selling season. It is a show to see this apple in production.

HOLLAND APPLE TREES, PREPAID

	Each	4	10	25	50	100
1-2 ft.	\$.36	\$1.35	\$2.95	\$ 6.25	\$11.92	\$21.48
2-3 ft.	.48	1.78	3.12	7.25 7.95	14.95	28.95
3-4 ft.	.57	1.98	4.48	10.25	19.95	37.90
4-5 ft.	.76	2.88	6.95	15.48	30.78	57.25

WE PREPAY EXPRESS AND PARCEL POST CHARGES ON FRUIT TREES

The Choice Varieties of PEACHES

Selected for Their Distinctive Performance

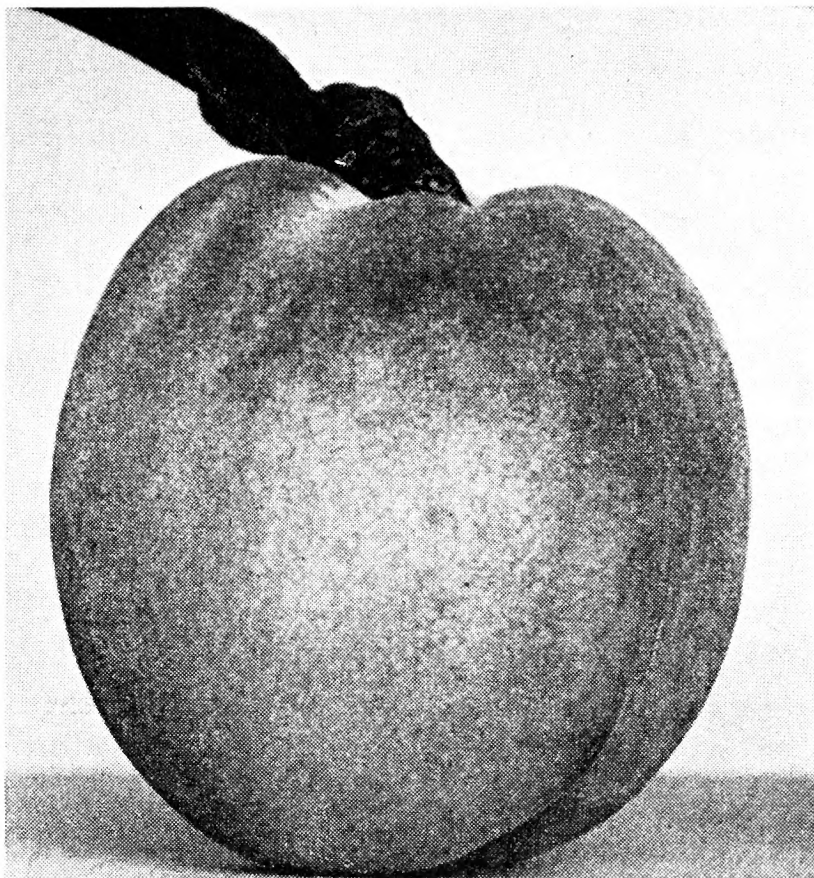
PRICES ON FRANKIE, KATY, TENA, ANNA, LIBERTY, BARBARA, BABCOCK, IMPROVED PALLAS, EARLY IMPERIAL, SUNGLOW, UNEEDA TREES, PREPAID

Height of Tops	Each	4	10	25	50	100
1-2 ft.	\$.14	\$.51	\$1.21	\$ 2.78	\$ 4.98	\$ 9.89
2-3 ft. light	.17	.62	1.53	3.69	6.79	13.45
2-3 ft. heavy	.26	.94	2.08	5.49 4.49	9.98	17.95
3-4 ft.	.36	1.31	2.88	7.20	13.79	24.50
4-5 ft.	.59	2.13	5.31	12.27	23.27	45.75
5-7 ft.	.76	2.74	6.98 6.78	16.25	29.98	49.98

FRANKIE. \$\$\$\$. This is what we have been looking for — a freestone Frank. This variety was discovered in the orchard of Kurt Schroeter of Marble Falls, which came to him in a shipment of Frank trees. It is a perfect freestone.

Mr. Schroeter has fruited this peach alongside the Frank for several years and considers it as profitable as the Frank. It is a good producer even in years of late frost. The color is beautiful, being yellow with a liberal spread of red on cheek. It is one of the best shipping peaches I have ever seen. It ripens about August 20th. I believe this peach will make peach history.

KATY. \$\$\$\$. Katy is the largest yellow freestone peach. Sometimes a single peach weighs one pound. It is a beautiful shape, color and the best of quality. Blooms late and rarely ever bit by frost or cold. It is also an Elberta and Bells October cross. It begins to ripen as the Barbara and Frank pass out.



The Frankie Peach (Our Introduction)

A REQUEST

MR. ROSS R. WOLFE,
Stephenville, Texas.

Mexia, Texas, June 7, 1938.

Dear Friend:

Realizing the active part of my life is drawing to a close, it is my desire and request that you propagate and disseminate the desirable peach varieties that I have bred and created and that you will continue the breeding work which I have done.

Signed,

J. W. STUBENRAUCH.

TENA. \$\$\$\$. Similar to Elberta in color and shape but from **one week to ten days earlier** in ripening. It has a **brighter red color** than Elberta and the quality is much better. It is a cross of Mamie Ross with Elberta. It **blooms late** with Mamie Ross and is **rarely injured by cold**. This high-class yellow freestone beats the Elberta to market.

ANNA. \$\$\$\$. A decided favorite of Mr. Stubenrauch. It is medium size, white freestone. **Small seed with red flesh** next to the seed. Very sweet, ripening about June 10th. Rather tender for long hauls and shipping.

LIBERTY. \$\$\$\$. Mr. Stubenrauch considered this one of his greatest creations. It is a **yellow clingstone** very much like Frank but **smooth and very attractive**, ripening with Elberta. Every planter should have some Liberty Peaches. It is **frost resistant**.

BARBARA. \$\$\$\$. A sister seedling of Frank but a freestone. It has the same vigor of tree and **sure bearing habit of Frank**. The peach is larger than Frank with a beautiful shape, being pointed at the lower end. It is a good canner and shipper. A fifteen-year-old tree in the Stubenrauch Orchard has a spread of 37 feet and has borne 10 bushels at several



P. B. Cate, of Mexia, Texas, grows Frank, Katy, Tena, and Barbara Peaches and likes them because they make money every year.

different times. It ripens August 10th with the Frank.

SUNGLOW. We secured this new yellow freestone from Georgia which has the characteristics of Elberta, but is claimed to be superior in every way. My trees will come into bearing next year and I want my customers to try Sunglow.

More About the Frank Peach

Sept. 11, 1939. "I was able to get some nice Frank Peaches and I have never heard people say so many good things about any peach. It seems to me the Frank is really a remarkable variety."—A Texas Horticulturist.

"In recommending the Frank Peach and the Wolfe Nursery, the sky is the limit."—A. A. Devore, Groesbeck, Texas.

Sept. 10, 1939. "The Frank Peach Trees I got from you, set two years ago produced peaches of quality and beauty. They showed they have every quality desired in size, rich dark color and unexcelled flavor, beginning to color ten days before they are ripe. It is the perfect peach for nearby and distant markets."—T. K. Murray, Ft. Worth, Texas.

Sept. 12, 1939. "I am delighted with my Frank Peaches and my customers are too. I have found your nursery to be satisfactory." L. C. Harlow, Rt. 4, Cisco, Texas.

August 28, 1939. "The Frank Peach trees are from blooming time until harvest the leaders in my orchard. I have never seen a more colorful or prolific peach. It is the truckers' delight." Ben Long, Goldthwaite, Texas.

F. O. Garrison, leading peach grower of Parker County, says: "In my opinion the Frank Peach is one of the finest varieties for this section. It outstrips any other peach that has ever been grown here."



Mr. W. H. Smith and Mr. Ross R. Wolfe standing before a 3-yr. old Frank Peach Tree which produced 4 bushels in 1939.

Sept. 4, 1939. "My three-year old Franks averaged a bushel and a half per tree this year and brought 50c per bushel more than my Elbertas."—W. H. Smith, De Leon, Texas.

Four New Choice Peaches For South Texas and the Gulf Coast

THE NEW BABCOCK PEACH. \$\$.

This is the most talked about peach in Southern California. I visited Dr. Geo. P. Weldon of Ontario, California, and saw his 40-acre Babcock orchard in 1937. The peach has high quality, beautiful with fuzzless red cheek and juicy white flesh. It is suitable for home and market use, ripening the latter part of June and will hang on the tree a month after it is ripe. It is a good shipper. The trees frequently bear the first year after planting and the tree attains large size with astonishing speed. Freestone.

EARLY IMPERIAL. This yellow free-stone of medium sized fruit is an ideal peach for South Texas. The color is beau-

tiful with extra good quality, ripening about July 1st makes it an ideal market peach.

UNEEDA. \$\$\$\$. This beautiful semi-cling peach ripens about a week after the Mayflower. It is a good size, color pinkish white with more pink next to the sun. Firm flesh, meaty and extra fine texture. It ripens at a time when early peaches are in demand.

IMPROVED PALLAS. \$\$. We have this variety from Mr. F. P. Wittman, horticulturist of San Antonio for the Missouri and Pacific Railroad. He says it is what the name implies, Pallas Improved.

FOR PRICES ON TREES OF THESE FOUR PEACHES SEE PAGE 5

THIS CATALOG LISTS THE CREAM OF HORTICULTURAL PRODUCTIONS

Two New Peaches

HOY ELBERTA. \$\$ (Our introduction 1939). This is a seedling of Elberta originated by Dr. Hoy of Bonham, Texas. It is a yellow freestone very similar to Elberta but the peach is more attractive and better quality with sound seed. It promises to be a **more regular bearer than Elberta.** I would like for all of our customers to try out this variety so that we may find out its range of adaptation.

OKLABERTA. \$\$ (Our introduction 1939.) This large yellow freestone was discovered by Otis Warren of Wynnewood, Okla. It is a heavy bearer of **very attractive fruit** of good quality and should be tried out more extensively. It has **borne good crops when the Elbertas were a complete failure.** Some of the seed split but this is true of a good many large peaches.

PRICES ON HOY AND OKLABERTA PEACH TREES, PREPAID

Height of Tops	1-10	11-49	50-100
1-2 ft.	\$.25	\$.20	\$.15
2-3 ft.	.36	.30	.20
3-4 ft.	.47	.36	.27
4-5 ft.	.56	.45	.41

Special Offer No. 9

A HOME ORCHARD 23 Plants for \$1.69

- 1 Cluster Apricot
- 1 Moorpark Apricot
- 1 Mayflower Peach
- 1 Uneeda Peach
- 2 Beauty Peaches
- 2 Elberta
- 4 Frank
- 1 Indian

All 18-24 inch trees

Free With This Offer

- 1 Niagara Grape
- 1 Carman Grape
- 2 Boysenberry Plants
- 6 Dew-Blackberry Plants

\$1.69

PREPAID



Kurt Schroeter, of Marble Falls, put Frank and Frankie at the top of the list. This Frank produced 12 bushels.

WE PREPAY EXPRESS AND PARCEL POST CHARGES ON FRUIT TREES

Standard Varieties of PEACHES

Chosen for Popularity and Adaptability

PRICES ON STANDARD PEACH TREES, PREPAID

Height of Tops	Each	4	10	25	50	100
6-12 inch				\$ 1.98	\$ 3.25	\$ 5.95
1-2 ft.			\$1.32	2.48	4.62	8.97
2-3 ft. light	\$.16	\$.53	1.53	3.27	6.29	11.92
2-3 ft. heavy	.21	.72	2.22 1.75	4.27	7.95	15.43
3-4 ft.	.33	1.03 1.30	3.12	5.95	10.98	20.92
4-5 ft.	.49	1.82	5.28 4.28	9.95	18.95	32.91
5-7 ft.	.68	2.67	7.23 6.23	14.56	25.48	49.92

NOTE: All grades of peaches up to 4 ft. are one year and all over 4 ft. are 2 year.

May Peaches

BEST MAY. \$\$\$\$. A real freestone, ripe May 20th. Origin Fayette County, Texas. Fruit is good size, of bright red color all over 10 days before it is ripe. The tree is very prolific and the fruit is a good shipper. I recommend this peach highly for Central and South Texas.

MAYFLOWER. \$\$\$\$. The earliest of all peaches and therefore valuable for both home and commercial planting. Medium size, creamy-white skin, mottled with dark red; juicy and delicious. Ripe May 20th.

June Peaches

EARLY ROSE. \$\$\$\$. I was sold on Early Rose good and hard the first time I saw one of the trees in bearing. Each year I have them fruited in my own orchard I like them better. Some years they bear so much they have to be thinned. Free from rot, good canner, brilliant red, delicious and fine for market. A clingstone ripening June 10th to 15th.

ALEXANDER. \$\$\$\$. This grand old standby produces peaches every year. The fruit is dark red, ripe the first of June and should be planted for home use only.

EARLY WHEELER. \$\$\$\$. The peach we sell for the Early Wheeler is sold by the Stark Nurseries for Red Bird Cling. The Early Wheeler is a shy bearer for me while the Red Bird Cling is a heavy bearer. It is better colored than Early Wheeler and has the same size and shipping qualities.

HOBSON CLING. \$\$\$\$. I have grown the Hobson Peach over 20 years and find it to be regular in bearing and one of my favorites. The fruit is size and color of Mamie Ross, more delicious and a good shipper. Ripe July 1st.

LEUTICHAU. \$\$\$\$. This peach is from Florida. It is adapted to sections having mild winters. It is adapted to South Texas and the Gulf Coast Region. It ripens in June, is a white freestone, colors highly, and is one of the heaviest producers. The size is medium and the flavor very sweet with no acid at all. It seems to be related to the honey peach. The tree is very vigorous.

Special Offer No. 3

A Small Home Orchard

4 trees for 79c

I have selected one peach of our finest varieties, ripening each month, which will please you.

- 1 Best May (May)
- 1 South Haven (June)
- 1 Elberta (July)
- 1 Frank (August)

2-3 ft. heavy grade.

The same varieties in the
3-4 ft. grade for

98c

PREPAID



J. E. Spencer, of Cisco, inspecting Frank Peaches of F. B. Bond, Mexia, Texas. Franks bear annually.

DR. BURTON. \$\$\$\$. I have had Dr. Burton bearing 10 years and have gotten 9 crops. It has led 73 varieties in bearing at the Iowa Park Experiment Station. The tree is a strong grower and healthy. This peach is extra large, white flesh, streaked with red and sweet but-

tery flavor. **Better shipper than Mamie Ross. Freestone. Ripens June 25th.**

HILEY. \$\$\$\$. This peach is white, dotted with pink and red, making it a beautiful market peach. It is a freestone ripening about June 30th and is fast becoming a **market variety** in sections where the winters are too mild for Elberta.

PALLAS. \$\$. This is a pure honey type that does well in the coast section. It is regarded as the **best honey peach grown.** White freestone of unusually good quality. Ripe June 25th.

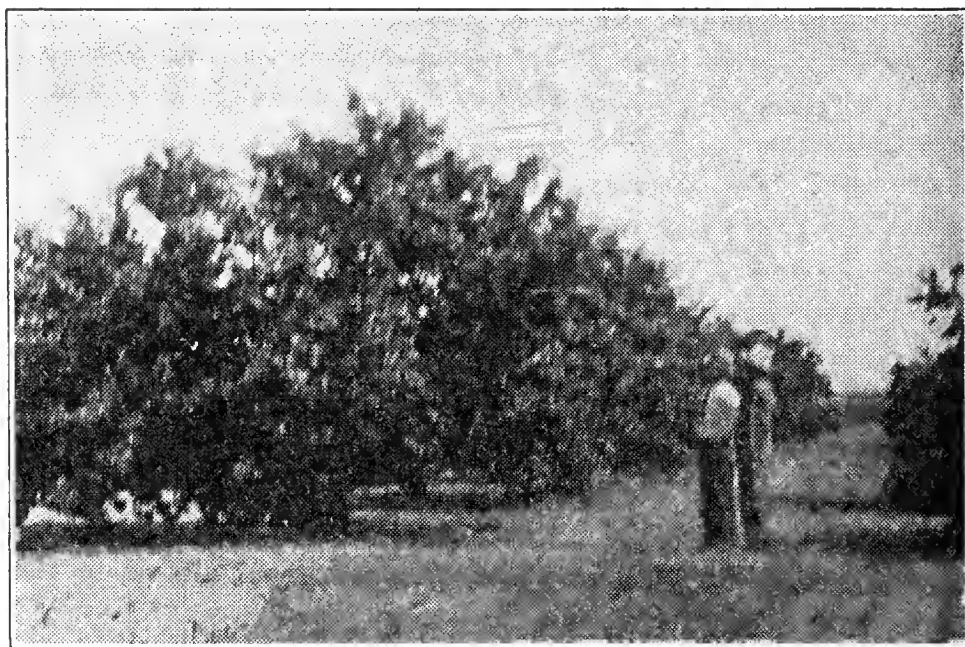
MAMIE ROSS. \$\$\$\$. Originated in Dallas County, Texas. A very successful and sure bearing variety, very prolific. Large, white with cream blush on one side. White flesh, semi-cling. Ripe June 25th.

GOLDEN JUBILEE. \$\$\$. New. Earliest **Yellow Freestone, ripening about June 20th.** A beautiful, very early, large, delicious and similar to Elberta. A better shipper than most early peaches. Blooms late and the tree is vigorous.

BEAUTY. \$\$\$\$. This peach should only have \$\$\$\$ after it when it is grown from here North. I do not recommend it for East, Central or South Texas. It is sold under several different names, some names being copyrighted. I have gone to a lot of trouble and expense to secure the finest strain of this variety. I consider it **one of the most profitable early market varieties.** It is a yellow peach

Orchard Service

We furnish soil inspection, planting, fertilization, pruning, spraying and cultural supervision on commercial orchards at reasonable prices.



Nine-year Beauty Peaches of Jess Warren, of Comanche, averaging 6 bushels to the tree.



Two-year Frank Peach Orchard of Hiram Hodge, Hye, Texas.

TWO-YEAR FRANKS AVERAGE ONE BUSHEL PER TREE

Sept. 8, 1939. "I bought 500 Frank Trees from Wolfe's Nursery in December, 1936. They produced an average of one bushel per tree and brought an average price of \$1.50 per bushel which was a higher price than my other peaches brought."—Hiram Hodge, Hye, Texas.

with a beautiful mottled red cheek, a semi-cling that begins ripening **June 10th** and ripens for three weeks. Can be hauled several hundred miles to market. The tree is remarkably free from diseases like leaf curl. It ripens at a time when the highest market prices are paid for peaches. By all means plant Beauty peaches if you live in a section as cold as Stephenville.

July Peaches

LEONA. \$\$\$\$. This is another yellow freestone, ripe **one week ahead of Elberta**. It is very popular among the peach growers, many of whom sell the fruit for Elberta. It is better in color and quality. You will like the Leona.

ELBERTA. \$\$. This yellow freestone is too well known to need description and is still our **best seller except the Frank**. I have a fine strain of Elberta. Ripe July 20th to 25th.

INDIAN CLING. \$\$\$\$. I have a neighbor who bought some Indian peach trees out of Arkansas 25 years ago. These trees are still healthy and bearing the finest large, red fleshed, blood skinned peaches I have ever seen. I have **three** of them in my office that **fill a half gallon jar**. I will pay \$25.00 for buds of a better Indian than I have. Ripe with Elberta.

J. H. HALE. \$\$. There is a big difference in Hale peaches. I got my start from F. O. Garrison of Weatherford, who won the **Grand Prize** at the Parker County Peach Show. One of the finest freestone peaches grown in color, flavor and shipping quality. Plant with Frank for pollination. Ripe July 28th.

SMITH. \$\$\$\$. This little, white freestone should be in every home orchard because it bears tremendous crops every year and because of that **honey sweet flavor**. I like to go to my Smith trees and eat the fruit right off the tree. Ripe July 10th to 15th.



Luther Cox, Mexia, Texas, has averaged over \$400 per acre on Franks for 5 years (no failures). This tree produced 20 bushels in 1936-37.

SOUTH HAVEN. \$\$\$\$. Better than average size, prolific, dependable, ripens early, about July 1st, juicy, yellow flesh and a freestone. Not as firm as Elberta but is a good canning peach and a good market peach.

BELLE OF GEORGIA. \$\$\$\$. Very large, white fleshed with red cheek; firm, juicy and excellent flavor. Very hardy and grows with equal success in both North and South. Productive, early semi-free to freestone. The most beautiful white peach grown and a good canner. Ripe July 20th.

CHILOW. \$\$\$. This pure yellow cling should be in every home orchard. There is no peach that will surpass it for eat-

ing and canning. Medium size and ripe July 25th.

ELBERTA CLING. \$\$\$. There is no need for paying three prices for this wonderful peach. D. J. Jobes of Gorman has a large planting of this variety and considers it one of his best market varieties due to its color, quality, shipping quality and production. Ripe with Elberta.

HART CLING. \$\$\$\$. This is the popular peach of Parker County, Texas. September 15th issue of "Farm and Ranch" carried a front page story of this peach. The peach is white with red next to the seed, red cheek and an extra good bearer and shipper. Fine for canning. Ripe August 10th.

Special Offer No. 14

A REAL BARGAIN IN THE BEST VARIETIES

50 Frank

20 Elberta

20 Beauty

10 Frankie

20 Early Wheeler (Red Bird cl.)

120 1-2 ft. trees \$8.98 prepaid

This offer contains the cream of peach varieties for market. With it we will include 2 apricot trees free of charge.

\$8.98

PREPAID

WE PREPAY EXPRESS AND PARCEL POST CHARGES ON FRUIT TREES

HALEHAVEN. \$\$\$\$. This peach is a cross between South Haven and J. H. Hale, a large, beautifully colored yellow fleshed peach, ripening two weeks ahead of Elberta. A perfect freestone, strong thrifty grower, splendid shipper and an extremely heavy bearer. It has an exceptionally fine flavor and is very hardy. It colors highly 10 days before ripening, therefore a good shipper. It bears early and ripens at a time when peaches are in demand. It should be in every orchard.

HENRIETTA. A fine Elberta cling, ripe in September.

ELBERTA SUPREME. \$\$\$. This is a selected strain of Elberta that has the following improvements over the original. It has more color, better quality, smaller and sounder seed, ripens a week earlier and is a much more regular and heavy bearer than the original. As I only have a limited number of trees of this variety, I would recommend that you give it a trial especially if you live in sections where the Elberta is a shy bearer.

EARLY ELBERTA. \$\$. This is one of the most beautiful peaches I have ever grown. It is one-third larger than Elberta with a delicious flavor with plenty of yellow to make it bring the highest market price. This variety does not bear so well from Fort Worth south but is very popular in North Texas, Oklahoma and Arkansas. In fact it is fast becoming one of the most popular market varie-



Geo. Robertson's, of Goldthwaite, 385 trees of 4-year Franks produced over 1,000 bushels in 1937, selling for \$1.50 per bushel.

ties over the United States. I have the genuine selected strain. It is a perfect freestone ripening 10 days ahead of Elberta.

October Peach

SURPRISE. \$\$\$\$. This large white clingstone gets ripe the latter part of October and will hang on the tree two weeks after getting ripe. It is good to eat as well as can, pickle and preserve. Due to its quality, color and time of ripening it has a great future as a market variety. It always wins in the late fall shows.

SPECIAL OFFER NO. 2

Ripe Peaches for 6 months, 8 2-3 ft. heavy trees for \$1.39. A real bargain in peach trees ripening from May until October. This offer includes:

- 1 May Flower (May)
- 1 Mamie Ross (June)
- 2 Elberta (July)
- 1 Old Indian (August)
- 1 Frank (August)
- 1 Surprise (October)

The same varieties in 3-4 ft. trees for

\$1.89

PREPAID

What Others Say about Texaberta Peaches

MR. ROSS R. WOLFE,
Wolfe's Nursery,
Stephenville, Texas.

Dallas, Texas, September 21, 1939.

Dear Sir:

We have had the Texaberta Peach in production for three years in a block of some 250 varieties of peach trees secured from throughout the United States and several foreign countries. This test block is used to guide us in our future plantings in connection with a commercial orchard consisting of twelve thousand bearing trees.

We consider the Texaberta Peach the outstanding leader in production, color, quality, and other desirable characteristics that will make it a remarkable peach for both commercial and home planting.

We will forward you an order in a few days for a sizable block of these trees for planting in our orchard this fall.

Very truly yours,

LA REUNION FRUIT FARMS.
M. L. Santerre

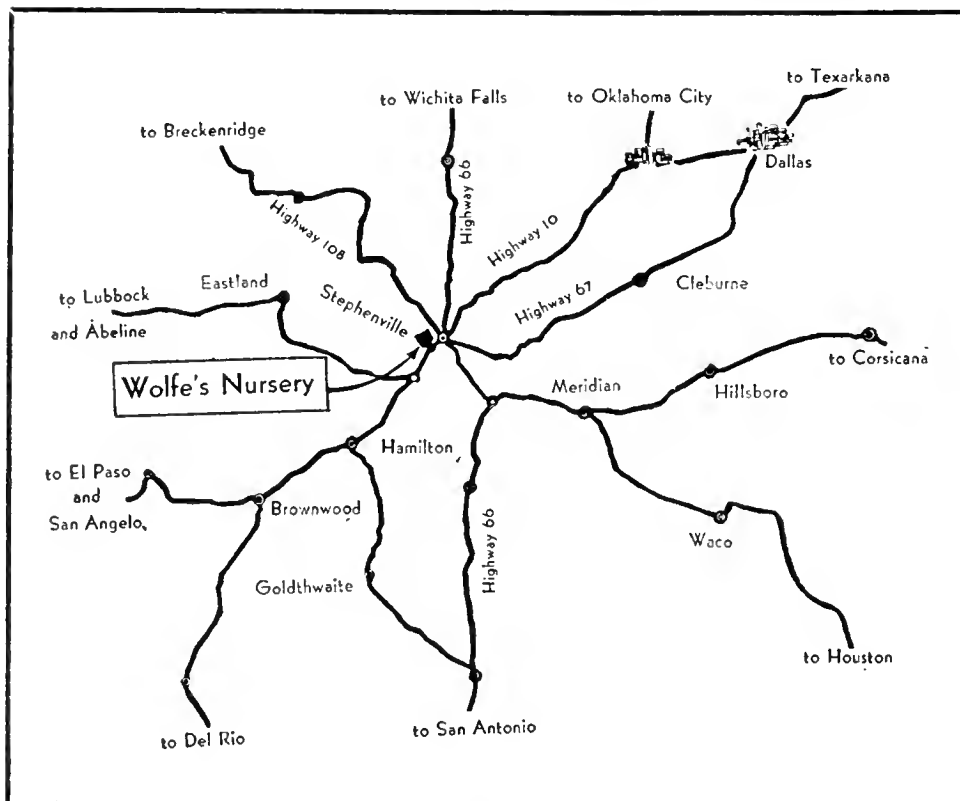
"The Texaberta Peaches which you sent me and which I saw at Stephenville were outstanding—It is very promising and worthy of careful consideration—The merit of the Texaberta will carry it along."

NOTE: The above is a statement from one of Texas' leading Horticulturists whose name can not be given due to the fact he is employed at a State school.

New Varieties Wanted

I test promising new varieties in my experimental orchards. If you have an extra fine or unusual seedling peach, plum or any other fruit or nut that you think is better than other varieties already introduced, please write me.

Visit Our Nursery and Orchards at STEPHENVILLE



69 Miles Southwest of
Fort Worth on
Highway 10.

You will enjoy a visit
with us and visitors
are always welcome.

ROSS R. WOLFE
Owner—Manager

BUY WOLFE'S NURSERY STOCK WITH CONFIDENCE

PLANT FROST RESISTANT PEACH TREES

For Best Results for Home and Market

Look for the "Frost Resistant \$\$\$\$"

\$\$\$\$ denotes Frost Resistant; \$\$\$ denotes Hardy; \$\$ denotes Reasonably Hardy; \$ denotes Easily Killed.

Selection of Peach Varieties

Best Peaches for South Texas and the Gulf Coast: Best May, Leutichau, Pallas, Improved Pallas, Smith, Uneeda, Hiley, Early Imperial and Babcock.

Best Peaches for Central Texas, Northern Louisiana and Southern Arkansas: All the varieties given above and Mayflower, Early Rose, Indian, South Haven, Dr. Burton, Mamie Ross, Golden Jubilee, Frank, Tena, Katy, Barbara, Anna, Belle of Georgia, Chilow, Elberta Cling, Leona, Texaberta, Elberta Supreme, Hobson, Liberty, Frankie, Hart Cling, Hoy Elberta and Surprise, and the following in the northern half of this district: Beauty, Elberta, Early Wheeler, J. H. Hale, Early Elberta, Oklaberta, Henrietta and Alexander.

Best Peaches for North Texas, Oklahoma, New Mexico and Northern Arkansas: Elberta, Frank, Hoy Elberta, Oklaberta, J. H. Hale, Early Wheeler, Barbara, Mayflower, Golden Jubilee, Henrietta, South Haven, Halehaven, Indian, Dr. Burton, Surprise, Katy and Alexander.

Please write me for specific recommendations, or if you can, come to the nursery. Here you can see this wonderful stock and make your own selection.

Number of Plants Required Per Acre

6x 6 feet.....	1210	15x15 feet.....	193	22x22 feet.....	90	35x35 feet.....	35
8x 8 feet.....	680	16x16 feet.....	170	24x24 feet.....	75	40x40 feet.....	27
10x10 feet.....	435	18x18 feet.....	134	25x25 feet.....	69	50x50 feet.....	18
12x12 feet.....	302	20x20 feet.....	109	30x30 feet.....	48	60x60 feet.....	12

Planting Instructions

Planting instructions will accompany each shipment of trees and plants.

Time to Plant

The best time to plant all trees is from the first frost in the fall, which is about November 15th, until April 1st. December, January and February are preferable.

Stamps Taken

We will take stamps for orders for \$2.00 or less. Please send them in denominations of 3c, 5c or 10c.

On orders for less than \$1.00 we will expect the customer to pay the postage.

COME TO THE NURSERY AND SAVE ON ALL STOCK

PLANT PAPER SHELL PECANS

For Rapid Financial Returns

VARIETIES TO USE

All Varieties Tested and Proven in Our Orchards

El Paso and Vicinity: John Garner, Western Schley and Burkett.

Oklahoma City and Vicinity: Western Schley, Sq. Delight, Burkett, John Garner and Commonwealth.

Tulsa and Vicinity: Western Schley, Sq. Delight, Stuart, Schley and Commonwealth.

Texarkana and Vicinity: Success, Schley, Stuart and Moore.

Dallas and Vicinity: Western Schley, Schley, Burkett, San Saba Improved (John Garner, Jersey in upland).

Austin and Vicinity: Western Schley, Burkett and Schley (John Garner, in upland).

Houston and Coast below 400 feet altitude: Success, Stuart, and Moore.

San Angelo, Abilene and Wichita Falls and Vicinities: John Garner, Western Schley, Burkett, Halbert, Texas Prolific and San Saba Improved.

Size of Pecan Tree to Plant

The trend each year is to plant larger pecan trees. The 4 to 5, 5 to 6, 6 to 7 and 7 to 8-foot are all good sizes for commercial planting. For yards or places where pecan trees can be cared for plant trees from 7 to 12-foot for quickest and best results.

Pollination of Pecans

If you have a few native pecans among your budded pecans they will usually take care of your pollination problem. Where the orchard is all improved varieties some late pollen shedders and some early pollen shedders should be used.

Early pollen shedders: Western Schley, Texas Prolific, Success, Halbert, San Saba Improved, Squirrel's Delight, Moore and Onliwon.

Late pollen shedders: Burkett, Schley, Jersey, Delmas, Stuart and Commonwealth. One tree will furnish enough pollen for 10 trees.

Size of Hole for Pecan Trees

In ideal pecan soils, use a post-hole digger. The hole should be dug to a depth of about three feet. In hard soils, dig a hole three feet square and three feet deep so that the roots can get started before reaching the hard soil.

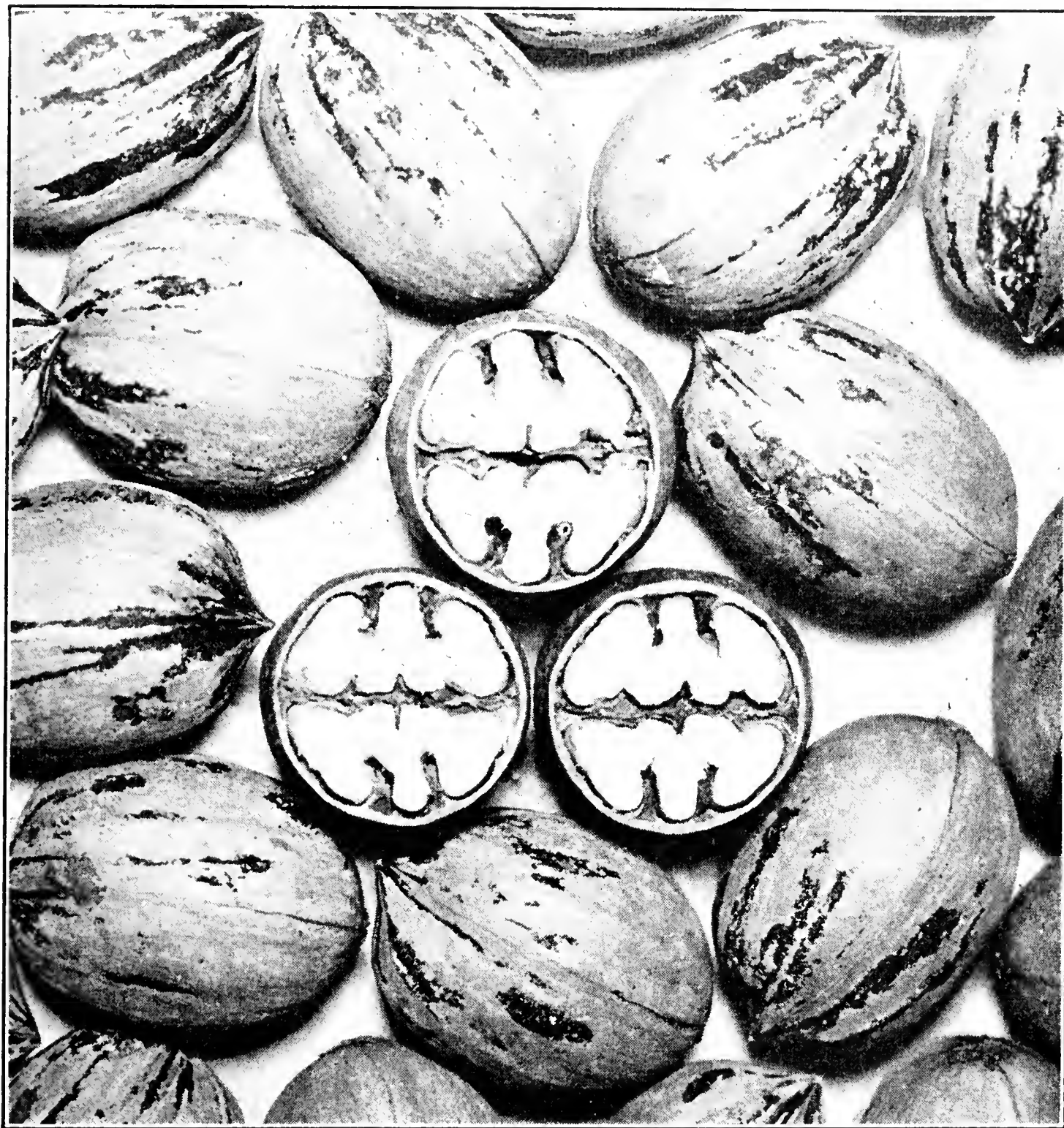
Distance for Planting Pecans

35 ft. by 35 ft. gives 35 trees per acre.
 35 ft. by 70 ft. gives 17 trees per acre.
 50 ft. by 50 ft. gives 16 trees per acre.
 60 ft. by 60 ft. gives 12 trees per acre.
 70 ft. by 70 ft. gives 9 trees per acre.

BUDS AND GRAFTS

Buds, grafts of nut and fruit trees, grape cuttings, propagating tools and supplies, together with other items of interest to my customers will be offered in my spring catalog which will be ready for mailing out by February 15th. If interested just mail me a post card saying, "Please send me your spring catalog."

No Pecan Orchard is Complete without
TEXAS' LEADER



The John Garner Pecan (Our Introduction)

41 NUTS PER POUND!

61 PER CENT MEAT!

This Pecan has the following superior qualities:

- | | |
|--|--|
| <ol style="list-style-type: none"> 1. Easy to propagate. 2. Produces nutlets the first year from buds and grafts. 3. Healthy, strong and vigorous tree. 4. Bears nuts all through the top. 5. Bears every year. 6. Puts out late in spring and ripens early in fall. | <ol style="list-style-type: none"> 7. The most beautiful nut grown. A real paper-shell, with kernels easily removed in halves. 8. Creamy plump kernels, every nut is a good one. 9. Kernels rich in oil, protein, carbohydrates, vitamins and flavor. |
|--|--|

For Prices See Page 20.

See page 16 for range of adaptation.

We Grow the Genuine Risien Gold Medal Varieties

WESTERN VARIETIES

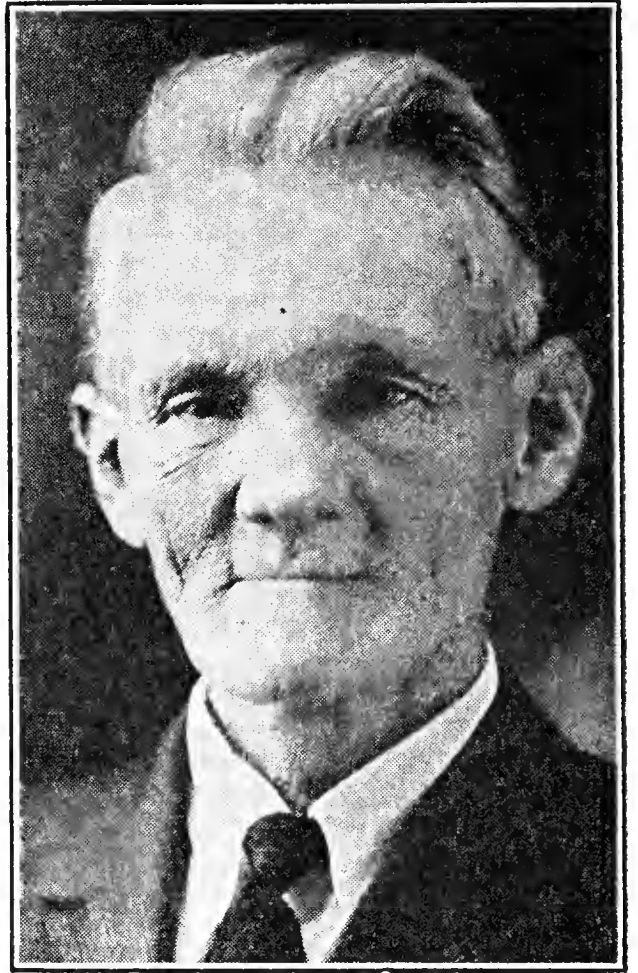
WESTERN SCHLEY. Each year I like the Western Schley Pecan better. Ten years ago I selected it as the best pecan of the Risien Varieties. I have done every thing I could to make it more popular. The tree is remarkably healthy, a strong grower, an early and heavy bearer. The dark green foliage and symmetrical growth also make it very desirable for a yard tree. Burkett is a good pollinator for Western Schley and Western Schley and John Garner are good pollinators for Burkett.

COMMONWEALTH. This is the latest variety to put on leaves and bloom of any variety in our orchard. This is a much better nut than Sq. Delight and should be tried out alongside of it. Long like Schley.

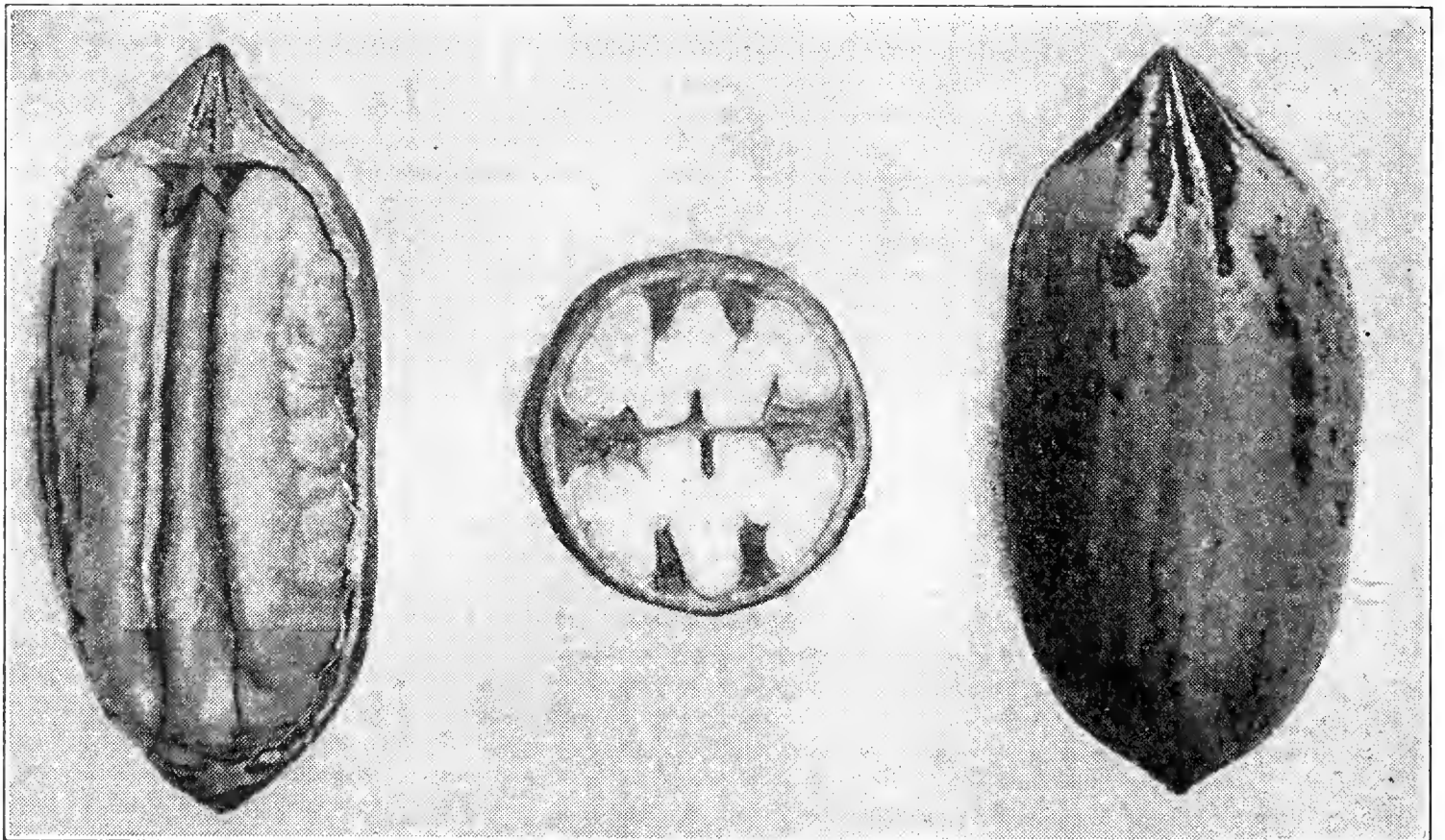
HALBERT. Young trees inclined to be crooked, but get straighter as the tree grows older. Very early and prolific bearer. Medium size nuts, very thin shell, excellent flavor. A good tree for black waxy land. Should not be set in Mississippi, Louisiana, East Texas or Eastern Oklahoma. Fifty-seven per cent meat.

SQ. DELIGHT. The chief merit of this variety is in its earliness of ripening,

making it popular in sections having short growing seasons. Very popular in Oklahoma. The nut is long like Schley.



E. R. RISIEN
World's Foremost Pecan Breeder



The Western Schley Pecan

WE PREPAY EXPRESS AND PARCEL POST CHARGES ON PECAN TREES

EASTERN VARIETIES

SUCCESS. This is the most popular Eastern variety in Texas. The nut is very large and oblong, with plump smooth creamy kernels that release perfectly from the shell. The tree is healthy and prolific and very resistant to scab. It ripens just after Stuart.

STUART. Stuart is a good bearer and the nuts are long and attractive. The shell is rather thick, but soft and the meats are sweet and brittle.

BURKETT. The Burkett has been and still is the leading Western variety. The tree is a good grower, an early and regular bearer, the nuts are large and the quality so good that they are very much in demand at top market prices. Plant John Garner or Western Schley or both with the Burkett for perfect pollination.

SCHLEY. This is the standard of excellence among pecans. The tree is healthy and is making good in the native pecan belt of Texas, Arkansas and Oklahoma in altitudes from 350 to 1,000 feet. Gaining in popularity and ripens early.



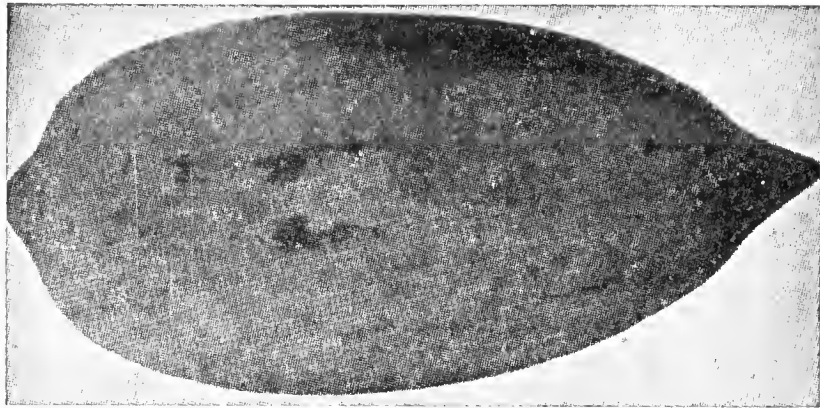
The Burkett Pecan

DELMAS. The two outstanding virtues of this variety are the beauty and prolificness of the tree and size and beauty of the nut. Its best range of adaptation is Central Texas. Ripens too late for most of Oklahoma.



The Success Pecan

Turn to
page 20
for
Prices
on
PECAN
TREES



The Meyhan Pecan

MEYHAN. I am now able to sell genuine Meyhan Pecan Trees. These trees have been \$5.00 each. Prices now the same as John Garner. We can furnish only in grades up to 6-7 ft.

**PRICES ON
JOHN GARNER AND MEYHAN
PECAN TREES, PREPAID**

Height of Top	Each	4	10	25
1-2 ft.	\$.95	\$3.48	\$ 7.95	\$18.95
2-3 ft.	1.19	4.45	10.95	24.78
3-4 ft.	1.48	5.45	12.95	29.95
4-5 ft.	1.65	6.25	14.95	34.95
5-6 ft.	1.82	6.95	16.95	38.25

BEARING SIZE TREES

Height of Top	Each	4	10
6- 8 ft.	\$2.55	\$9.60	\$23.48
8-10 ft.	4.95		
2 inch diameter	6.75		
2½ inch diameter	7.75		
3 inch diameter	9.95		

**Special Offer No. 13
FOUR PECAN TREES**

- 1 John Garner
- 1 Burkett
- 2 Western Schley, 1-2 ft.

These are the cream of Western Varieties and are arranged for perfect pollination.

\$1.98
PREPAID

FREE TREES

Free trees and stock sent with every order for \$5.00 or more. I will select something suitable for your section.

Let us prune your pecan trees ready to plant. No charge.

**PRICES ON 3 AND 4 YEAR OLD PECAN TREES, PREPAID
(Except John Garner and Meyhan)**

Height of Tops	Each	4	10	25	50	100
1-2 ft.	\$.59	\$2.24	\$ 4.95	\$11.49	\$21.39	\$ 39.92
2-3 ft.	.74	2.84	6.69	15.69	30.19	59.95
3-4 ft.	.89	3.44	8.09	19.25	37.95	73.48
4-5 ft.	1.19	4.64	10.95	26.49	51.79	99.85
5-6 ft.	1.48	5.76	13.85	33.49	65.39	119.95
6-7 ft.	1.78	6.96	15.95	38.19	76.29	149.25
7-8 ft.	2.45	9.64	20.95	50.49	98.79	174.75

PRICES ON 6 AND 7 YEAR OLD BEARING SIZE PECAN TREES

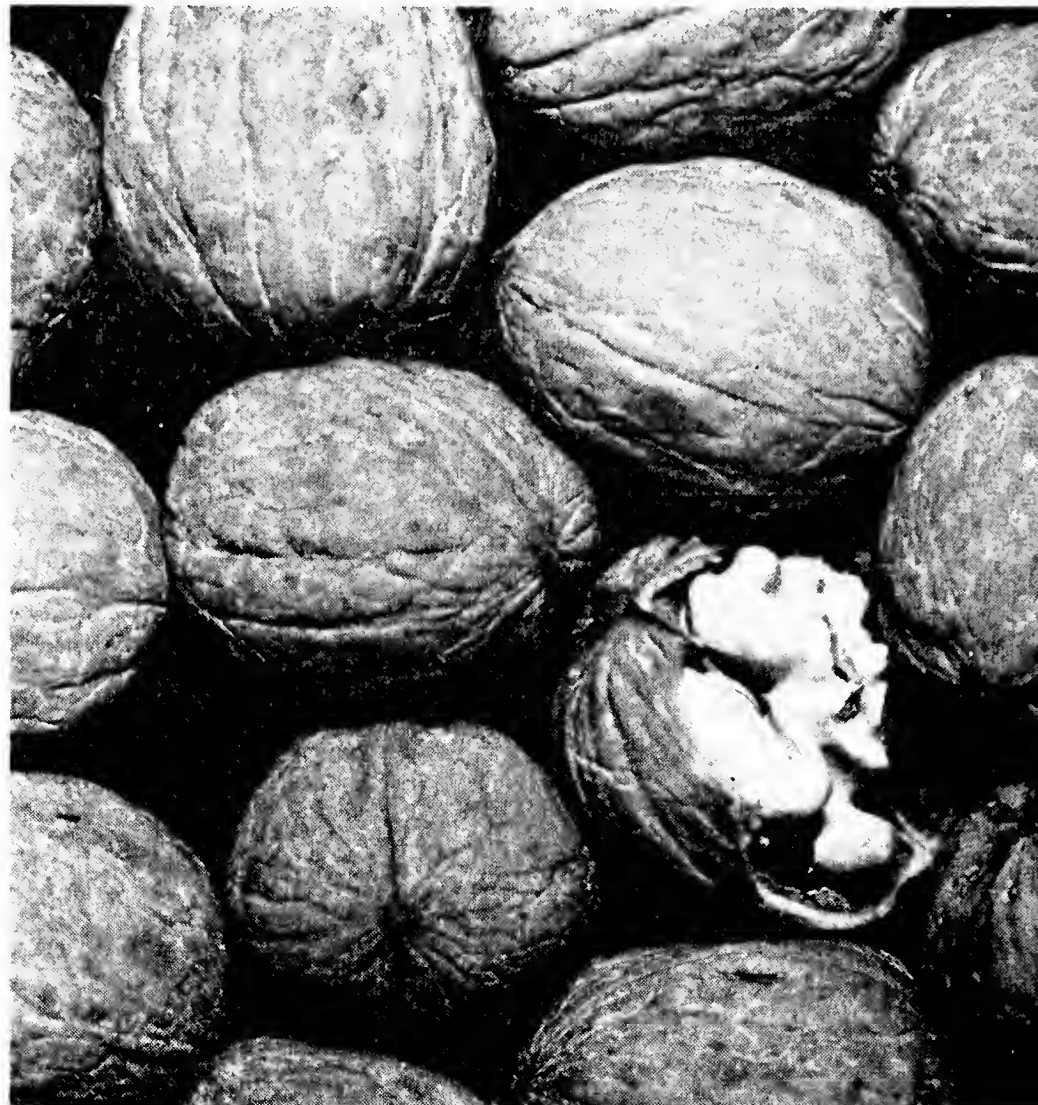
	Each	4		Each	4
8-10 ft. tops	\$4.95	\$19.20	2½ inch diameter	\$7.95	\$30.75
2 inch diameter	6.75	26.25	3 inch diameter	9.95	38.95

WE PREPAY EXPRESS AND PARCEL POST CHARGES ON PECAN TREES

WALNUTS *Are Rich in Flavor*



Thomas Black Walnut Trees
4-year root—2-year top



The Grande English Walnut

GRANDE (Our Introduction). This is a new English Walnut which originated on the Rio Grande River near El Paso from seed of the hardy French variety, the Franquette. It will bear the second year, is a heavy producer of high quality, thin shell English Walnuts. The tree grows rapidly and makes a beautiful tree for yards where it can be watered.

WILSON WONDER ENGLISH. Called the "Jumbo Walnut" because of its enormous size, the individual nuts often measuring more than 2 inches in diameter. Offered in the stores at Christmas time for very fancy prices. Bears very young and heavily. A hardy tree.

THOMAS BLACK WALNUT. The Thomas is a selected strain of Eastern Black Walnut with a comparatively thin shell which cracks easily, has light colored kernels in halves, with the same old delicious flavor which tastes so good in cakes and other confections. It makes a beautiful tree anywhere and bears heavy crops even while young.

JAPAN HART WALNUTS. Trees extremely hardy and vigorous growers. Nuts sweet and of best quality, very productive. Good pollinator for English Walnut.

PRICES ON GRANDE ENGLISH, WILSON WONDER ENGLISH, THOMAS BLACK, OHIO BLACK AND JAPAN HART WALNUT TREES, PREPAID

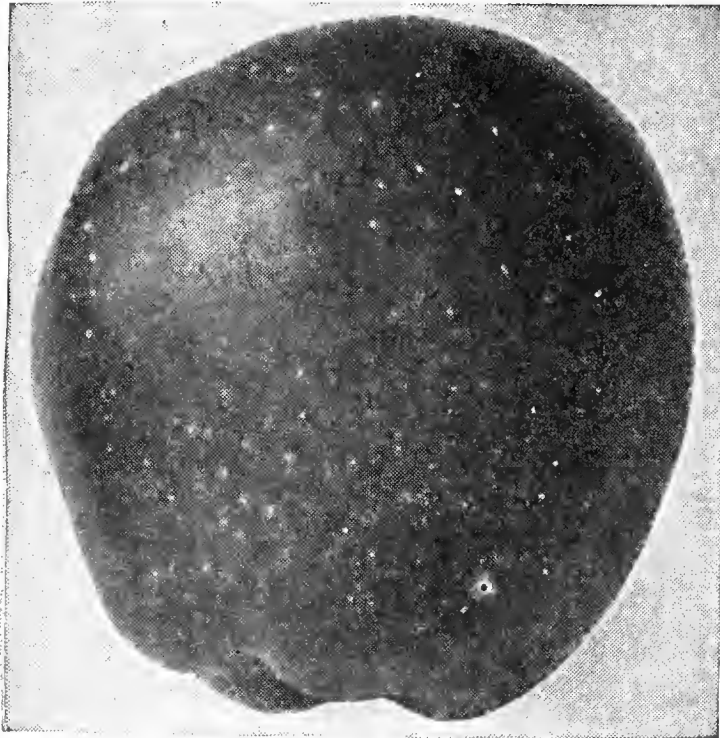
	1	4	10	25	50
2- 3 ft.	\$.98	\$3.56	\$ 8.59	\$19.49	\$35.11
3- 4 ft.	1.29	4.68	10.53	25.81	46.46
4- 5 ft.	1.78	6.44	15.49	31.79	57.23
5- 6 ft.	1.98	7.16	16.84	35.98	68.36
6- 7 ft.	2.65	9.48			
7- 8 ft.	2.98	10.76			
8-10 ft.	4.98				

Almonds

TEXAS. Now one of the most popular almonds commercially because of its extremely heavy, consistent crops of small soft-shelled plump nuts, excellent for shelled kernels. A late bloomer. Price: 79c each; 4 for \$2.75, prepaid. Medium size 49c each; 4 for \$1.65, postpaid.

WE PREPAY EXPRESS AND PARCEL POST CHARGES ON WALNUT TREES

APPLES *Increasingly Popular*



Delicious Apple

Apples

Texas is rapidly pushing to the front as an apple State. The varieties we are listing have borne very satisfactory crops of high quality fruit in this territory.

DELICIOUS. I raised Delicious apples this year that weighed nearly one pound apiece, I don't think I ever tasted a better flavored Delicious raised anywhere. Ripe in September and October.

JONATHAN. The Jonathan apple is not so large but it makes up for this in color, quality and heavy bearing. It gets ripe in this section in September.

KING DAVID. Mr. J. Frank Browning of Baird, Texas, who has the largest apple orchard in this section, places the King David as his first choice. These red apples which get ripe in August sell like hot cakes. King David and Golden Delicious are good pollinators for Delicious.

GOLDEN DELICIOUS. This apple is just like Delicious except it is a golden yellow; it is a good keeper. Yellow Delicious will make you money.

YELLOW TRANSPARENT. This mellow, yellow apple really gets ripe about June 10th. The trees are very prolific and the apple is good for cooking and for early market.

HOLLAND. See color illustration page 4.

DOUBLE RED DELICIOUS. The Double Red Delicious is just like Delicious except it has more color. \$5,000.00 was paid for the original limb. I have the genuine stock.

Crab Apple Trees

Price Same as Apples

TRANSCENDANT (Siberian). July. An attractive yellow color, splashed and striped with red; bears very young. We value it highly for preserves. Buds and blossoms exquisitely beautiful.

PRICES ON APPLE TREES, PREPAID

Height of Tops	Each	4	10	25	50	100
1-2 ft.	\$.16	\$.62	\$1.72/42	\$ 3.22	\$ 6.23	\$11.95
2-3 ft.	.21	.76	2.19/80	4.23	7.98	15.95
3-4 ft.	.29	1.04	2.59/80	4.98	9.79	19.29
4-5 ft.	.49	1.79	4.29	9.98	17.95	34.62
5-7 ft.	.62	2.21	5.98	13.48	24.95	47.48

SPECIAL OFFER NO. 15

Special Collection Adapted to Your Section
19 Trees for \$1.00, Prepaid

2 Apricots 6-12 inch \$1.00
3 Plums
14 Peach 1-2 ft. \$1.48

This collection will be made up of our best varieties selected so they will be adapted to the section for which they are ordered.

FRUITS OF EVERY VARIETY

Persimmon

"Did you know" that Japanese Persimmons originated in China and that it is one of the most delicious and healthy fruits grown? It is rich in fruit sugar, vitamin C and valuable as a laxative. The fruit hangs on until after frost and is more beautiful than oranges and delicious to eat out of the hand or in deserts or ice cream. There is a good demand for the fruit and the large persimmon orchards that are in bearing are making big money. Set your trees 20 feet apart.

TANE NASHI. If you want the finest quality to be had in a persimmon, plant the Tane Nashi. The fruit is very attractive and looks just like the picture. I have one-year old trees of this variety that are producing several fruits. It demands the highest prices of all the persimmons I raise.

DATA MARU. This is my largest persimmon and first to ripen. The fruit is yellow and one of the largest grown. I grew 60 of these fruits last year that measured one bushel.

EUREKA. If you like your persimmons soft, to be eaten as a salad fruit, you will want to plant the popular Eureka. Every year more people are enjoying in November and December ripe Eureka with sugar and lemon juice, a dish fit for a king. The Eureka is a hardy variety that bears profuse crops of fruits which look like big red tomatoes. Our strain of Eureka is almost seedless.

NEW LOW PRICES ON PERSIMMON TREES, PREPAID

(As low as 29c each, prepaid)

Height	Each	4	10	25
1-2 ft. 3/4"-4/16"	\$.29	\$1.03	\$2.42	\$ 5.52
2-3 ft.	.43	1.52	3.52	8.12
3-4 ft.	.48	1.77	3.98	9.35
4-5 ft.	.63	2.33	5.36	13.87 12.87
5-6 ft.	.79	2.83	6.93	17.77 16.77

NOTE: Persimmon Trees should be pruned heavily at planting. I will be glad to prune your trees ready to plant free of charge.

Apricots

By planting Improved Cluster and Moorpark Apricots you can have apricots ripening for a month. We have the surest bearing apricots to be had.



Eureka Persimmon Tree producing 28 fruits in the Nursery.

IMPROVED CLUSTER. \$\$\$. I believe this is a seedling of the cluster. It bears like Cluster yet it has no objectionable fiber. Ripe June 4th.

MOORPARK. \$\$\$. I like the Moorpark on account of its bearing, size and quality of fruit. The seed is small, flesh yellow and tender with a flavor unexcelled.

PRICES ON APRICOT TREES, PREPAID

Height	Each	4	10
1-2 ft.	\$.19	\$.68	\$1.59
2-3 ft.	.27	.98	2.09
3-4 ft.	.39	1.14 1.34	3.20
4-5 ft.	.51	1.95	4.48
5-7 ft.	.69	2.48	5.59

Mulberries

HICKS MULBERRY. A strong upright, fast-growing tree with dense foliage, thriving anywhere and furnishing excellent shade. Bears good sized delicious black berries. A tree for bird-lover, whether it be robins and bluebirds, or only white leghorns. Splendid for chicken runs. Prices: 6-8 ft., \$.98; 4-6 ft., 79c; 3-4 ft., 49c, postpaid.

Plant Standard PLUMS

Easy to Grow — Highly Productive

Our Plum Trees Are Unusually Fine

Best Plums for South and Southwest Texas: Bruce, Munson, Santa Rosa, Methley, Shiro, Six Weeks.

Best Plums for Central and North Texas: Bruce, America, Burbank, Gold, Methley, Santa Rosa, Shiro, Six Weeks, Munson, Compass, Sapa, Opata, Omaha, Black Beauty, Allred, German Prune, Endicott and Botan.

Plums for the Plains: Omaha, Bruce, Gold, Santa Rosa, America, Six Weeks, Compass, Hanska, Sapa, Opata, Munson and Botan.

ALLRED. See page 47.

SIX WEEKS. \$\$\$\$. The earliest good plum on the market. Large, rich red and delicious. Ripe May 20th.

AMERICA. \$\$\$\$. Tree very thrifty, symmetrical, spreading, fruit medium to large, bright golden ground with pink cheeks, flesh firm, stone medium to large, cling. Ripe June 20th. Best commercial plum.

BURBANK. \$\$\$. Large, clear purplish red, flesh deep yellow, very sweet and agreeable flavor. Very prolific. Ripens about June 25th. Prune Burbank each year for best results.

BRUCE. \$\$\$\$. Large, red, productive. A hybrid originated by Mr. A. L. Bruce of Donley County, Texas. On account of early ripening, large size, firm shipping quality, productiveness and deliciousness of flavor, we believe we should have to consider this the most profitable of all plums.

SHIRO. \$\$\$. One of the most desirable plums over a wide area. Large to

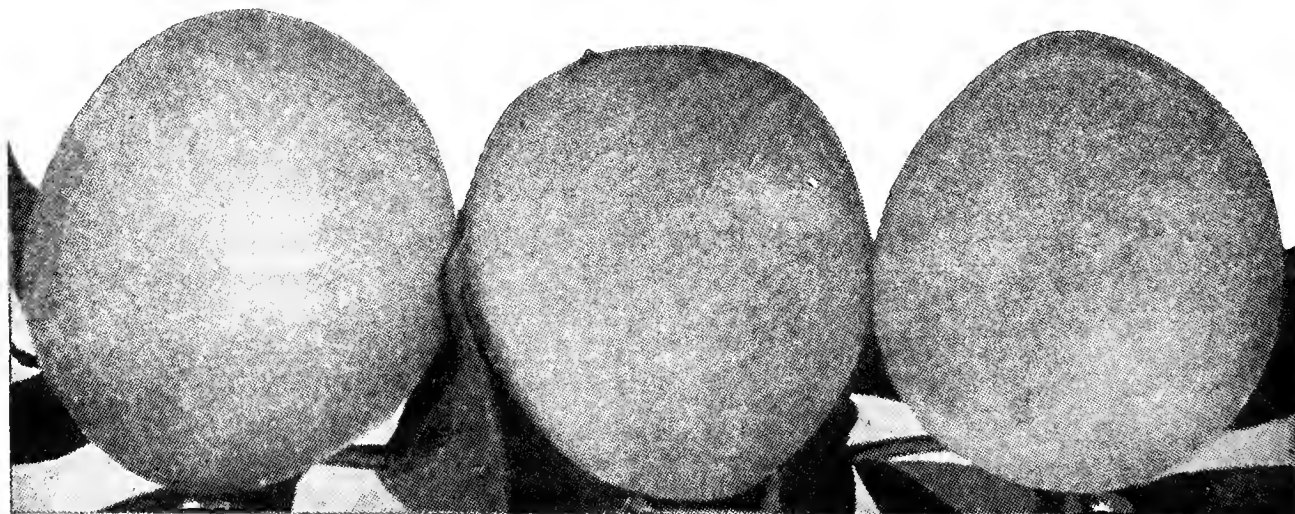
very large, oblong, clear, transparent yellow, with very small seed; firm and fine texture, quality unsurpassed for eating and for cooking purposes. Ripe in July.

BLACK BEAUTY PLUM. \$\$\$\$. Very sweet and almost black when fully ripe. Medium in size and ripe July 1st. Recommended by Charlie Denny of Comanche as one of the best commercial plums.

METHLEY. \$\$\$. This red plum is red fleshed and is more than 3 inches in circumference, was introduced from South Africa. It ripens May 25th and is growing in popularity as a good market variety. It is a good shipper.

OMAHA. \$\$\$\$. Why pay other nurseries a high price for Omaha trees when you can get the genuine from us? This red, meaty, sweet, delicious plum blooms late and escapes frost. Ripens July 10th.

GOLD PLUM. \$\$\$. Similar to America but larger and sweeter, ripening July 1st.



The America Plum

WE PREPAY EXPRESS AND PARCEL POST CHARGES ON FRUIT TREES

BOTAN (Abundance). \$\$\$\$. This large cherry red plum is a regular bearer and ripens in June. Very delicious.

ENDICOTT. \$\$. This yellow apple shaped plum bears well. It turns from yellow to black red. Ripe in May.

PRICES ON STANDARD PLUM TREES, PREPAID

Height of Tops	Each	4	10	25	50	100
6-12 inch				\$ 1.98	\$ 3.25	\$ 5.95
1-2 ft.			\$1.32	2.48	4.62	8.97
2-3 ft. light	\$.16	\$.53	1.53	3.27	6.29	11.92
2-3 ft. heavy	.21	.72	2.22 1.75	4.27	7.95	15.43
3-4 ft.	.33	1.03 1.30	3.12	5.95	10.98	20.92
4-5 ft.	.49	1.82	5.28 4.28	9.95	18.95	32.91
5-7 ft.	.68	2.67	7.23 6.23	14.56	25.48	49.92

Plum-Cherry

Prices Same as Plum

OPATA. \$\$\$\$. Tree very beautiful when in bloom and very fragrant. Fruit medium, purplish red, splashed with green, flesh greenish color and very fine flavor. Clingstone. Ripe last of June and first of July.

SAPA. \$\$\$\$. Tree dwarfish, thrifty and often sets fruit at one year of age. Fruit large, dark purple with greenish splotches, flesh rich, dark purple-red of rich flavor and with small pit. Ripe last of June and excellent for cooking.

The Opata and Sapa Plum-Cherry originated in Dakota and will stand our cold perfectly.

COMPASS. \$\$\$. Tree a vigorous grower, hardy, prolific, and bears extremely young, often fruiting in the nursery row. Fruit rather small, dark red, good for cooking purposes. Ripe in June.

HANSKA. \$\$\$\$. I have had this hardy Hansen Plum bearing a number of years and like it very much. The fruit is red with an apricot flavor and almost a free-stone. The fruit is frequently double and will hang on the tree a long time after it is ripe. Ripe in July. Be sure to buy some of our Hanska Plum Trees.

PRICES ON HANSKA PLUM TREES, PREPAID

Height of Tops	Each	4	10
2-3 ft.	\$.35	\$1.25	\$2.95
3-4 ft.	.50	1.89	4.45
4-5 ft.	.65	2.39	5.79

The Best Cherries

Best Where the Winters are Cold.

MONTMORENCY. Bright red, delicious flavor, firm fleshed for preserves, cobblers and puddings. The greatest

American canning cherry. Tree hardy, strong, disease resistant, less affected by wet weather. Young sure bearer. See color illustration on page 45.

EARLY RICHMOND. Leading early sour cherry. Ripens June 15th. Fine for pies. Be sure to plant some Early Richmond Cherry trees.

PRICES ON CHERRY TREES, PREPAID

Height	Each	4	10
1-2 ft.	\$.27	\$.98	\$2.29
2-3 ft. lt.	.33	1.19	2.92
2-3 ft. hvy.	.48	1.88	4.48
3-4 ft.	.72	2.79	6.95
4-5 ft.	.96	3.38	7.95

HANSEN BUSH CHERRY. This little bush cherry from South Dakota produces a fruit that is fine for jelly and jams. It is frost resistant, sure and abundant bearer. Bearing size plants 39c each; 3 for \$1.00.

SPECIAL OFFER NO. 4

Plum Orchard. 3 trees 2-3 feet, heavy. Selected for sure bearing, cooking and eating.

59c

1 Bruce

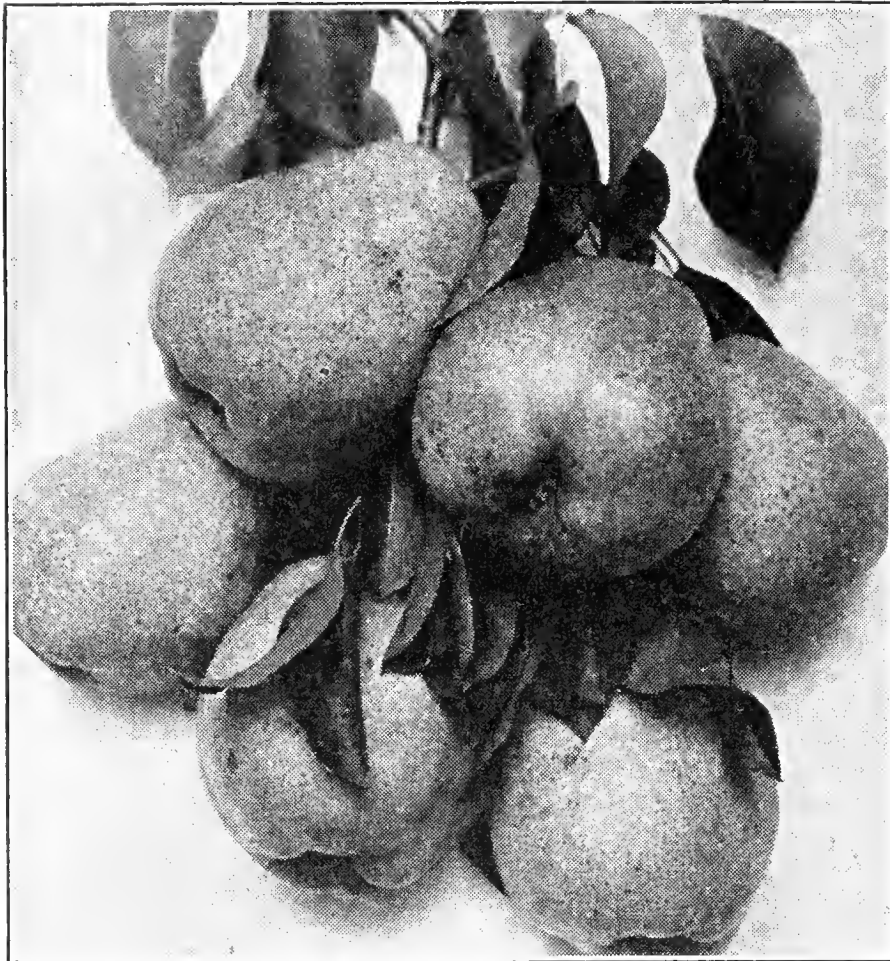
1 Burbank

1 Opata

3-4 foot trees for

73c

Everyone Enjoys Delicious PEARS



The Kieffer Pear

The trees are beautiful and live to a ripe old age. You will like our pear trees. Mellow pears are healthy. This list of select varieties has been reduced to such as have been thoroughly tested and proven valuable throughout the largest section of the South.

BARTLETT. Large, buttery, melting, of rich flavor. Very popular. Ripens last of July and during August. Adapted to dry sections.

DOUGLAS. See page 46.

GARBER. Resembles the Kieffer in size, appearance and quality, but matures here in August and between the Le Conte and Kieffer. A thrifty grower and valuable variety. Good to eat.

LE CONTE. Medium, bell shaped, creamy yellow with red cheek. A fine pear to eat right off the tree. Ripe July 25th. Preferred in Texas.

KIEFFER. Fruit large to very large, skin yellow, with a light vermilion cheek, flesh brittle, very juicy with a marked mushy aroma, quality good, matures from September to October. Tree vigorous and very prolific. Begins to bear when four years old.

PRICES ON STANDARD PEAR TREES, PREPAID

Height of Tops	Each	4	10	25	50	100
1-2 ft.	\$.16	\$.62	\$1.72 ^{1/42}	\$ 3.12	\$ 6.23	\$11.95
2-3 ft.	.21	.76	2.19 ^{1/80}	4.23	7.98	15.49
3-4 ft.	.29	1.04	2.59	4.98	9.79	19.29
4-5 ft.	.49	1.79	4.29	9.98	17.95	34.62
5-6 ft.	.62	2.21	5.98	13.48	24.95	47.48

Special Offer No. 6 EIGHT-TREE VARIETY ORCHARD

\$1.69 PREPAID

- 1 Holland Apple
- 1 America Plum
- 1 Kieffer Pear
- 1 Golden Delicious Apple
- 1 Munson Plum
- 1 Moorpark Apricot
- 1 Compass Cherry-Plum
- 1 Garber Pear

All trees 2-3 feet heavy

8 Trees 3-4 feet
Same Varieties **\$2.55** PREPAID

The Big Five New Fruits

Red Nectarine

RED NECTARINE. \$\$\$. The Nectarine is a bud sport of the peach, and is not a cross. The Nectarine tree is identical with the peach tree and its climatic and cultural requirements. Its smooth fuzzless skin, however, and distinctive and delicious flavor make it popular wherever it is known.

The fruit is medium sized, red in color, semi-cling of extra good flavor. Tree a medium grower and good bearer, earliest of the shipping nectarines. Carries well to market. Ripe in late June.

German Prune

This is an even cross between plum and prune that will grow and bear in Texas. The size of the fruit is from 1½ inches to 2 inches in diameter, round in shape, blue black in color with reddish meat and very small seed. The fruit is very delicious and is good for jelly, preserves and canning. Ripens from July 10th to 20th and will stay on the trees several days after ripening. It can be marketed with the Elberta Peach. I secured my start of this from a ten-year-old tree in Comanche, Texas, which was over one foot in diameter. It has produced a crop of fruit every year.

See illustration on page 45.

Santa Rosa Plum

\$\$ June 20th. One of the largest and most beautiful plums. Too beautiful to describe. This is the leading commer-

cial plum for Southern California, well adapted to Texas and sections having a similar climate. Two inches in diameter, purplish red inside and out.

The Munson Plum

When I tasted the Munson Plum, I said it is as yellow as gold and as sweet as honey. It gets ripe June 1st when berries are at their best. The Munson and Bruce should not only be in every home orchard, but should be raised by all having blackberries or dewberries to sell. The Munson Plum is a great find. See illustration, page 45.

Plumcot

(Half Plum and Half Apricot)

PLUMCOT. \$\$\$\$. The skin of this new and valuable fruit is the color of Burbank Plum with a combined flavor of plum and apricot. Like the apricot it is a perfect freestone. Ripe July 1st and will hang on the tree for 30 days after ripening. One of these beautiful trees should be in every planting.

PRICES ON MUNSON PLUM, RED NECTARINE, PLUMCOT, GERMAN PRUNE AND SANTA ROSA PLUM TREES, PREPAID

Size	Each	4	10	25
1-2 ft.	\$.27	\$.95	\$2.15	\$ 4.95
2-3 ft.	.35	1.19	2.69	6.39
3-4 ft.	.48	1.66	3.98	9.79
4-5 ft.	.69	2.59	5.92	14.75

Special Offer No. 16 THE BIG FIVE BARGAIN

- | | |
|----------------|-------------------|
| 1 Plumcot | 1 Santa Rosa Plum |
| 1 Munson Plum | 1 Red Nectarine |
| 1 German Prune | |

5 2-3 ft. Trees Postpaid for.....	\$1.19
5 3-4 ft. Trees Postpaid for.....	1.78
5 4-5 ft. Trees Postpaid for.....	2.79

GRAPES *of Tested Quality*

For Vineyards — Arbors — Pergolas — Fences

NOTICE—IMPORTANT

I have bought the Munson Vineyard of Denison, Texas, and now will have America's finest grapes to offer you. Mr. Munson tested over a thousand varieties of grapes and originated more than sixty kinds.

The celebrated Munson Grapes are favorably known not only in the United States but all over the civilized world.

The Government of France conferred on him a cross of honor for his work.

We offer many varieties to select from

ALBANIA. Self fertile. Vine very vigorous, berries medium. White wine grape. White skin and tough. Clusters large, compact. Latest white grape and near the best. Specially adapted to West Texas.

AMERICA. Should be planted with Beacon or Concord. Growth very strong. Bears heavily with long arm pruning. Berries black and medium size. Adapted to all section, North and South. A splendid wine grape and good for the table when fully ripe.

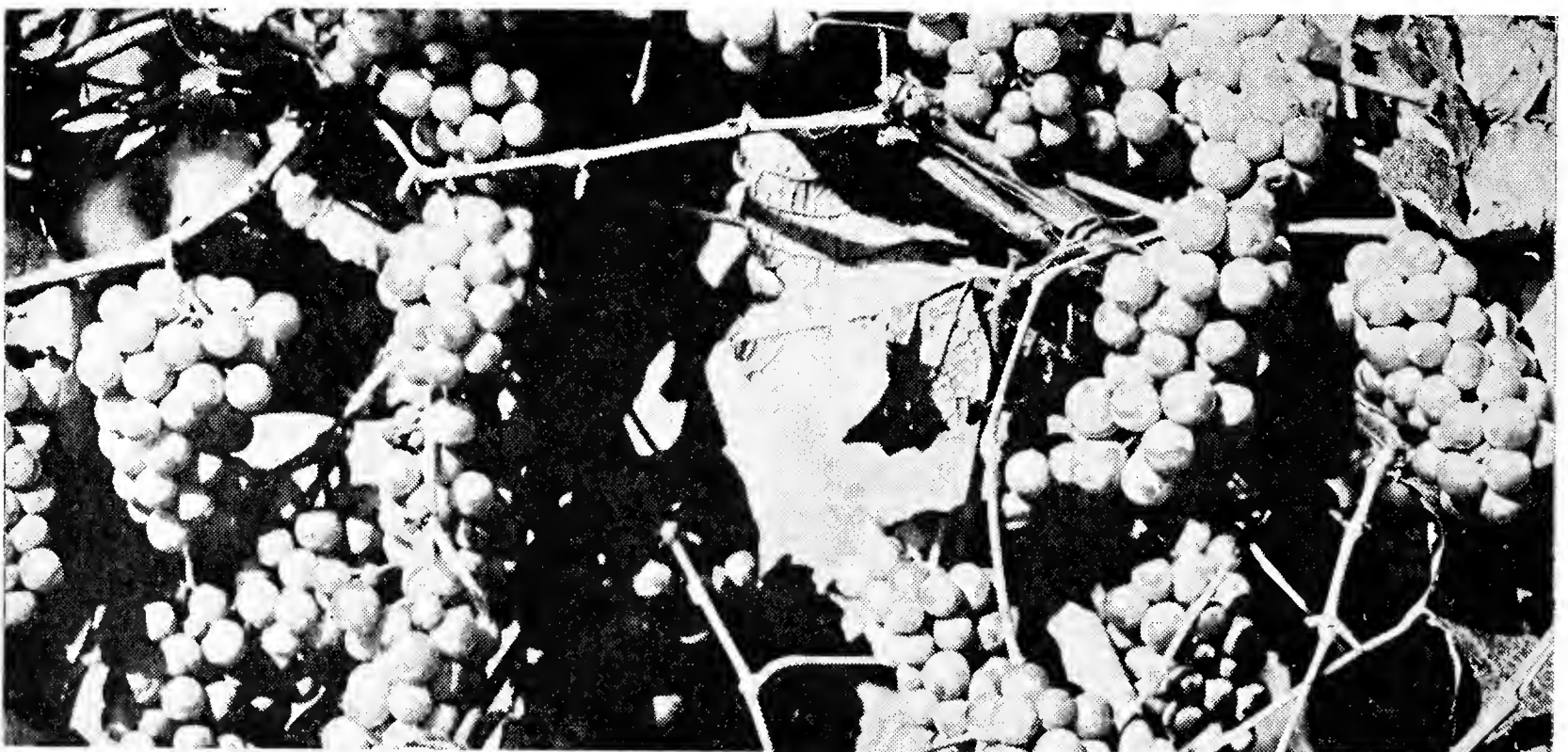
ARMALAGA. Self fertile. Vine very prolific. Large yellowish white berries. Clusters large to very large. Quality

of the best. Especially adapted to Gulf Coast area. Ripe August 10th to 20th.

BACHMAN'S EARLY. Self fertile. Vigorous growers. Quality of the very best. Berries and clusters large. Fruit black. Try this grape and you will agree that it is a winner. Ripe in early July.

BAILEY. Self fertile. Very strong grower. Large black berries. Clusters large to very large. Good quality. Well adapted to South, Central and Southwest Texas and one of the best commercial grapes. Ripe August 20th.

BEACON. Self fertile. Strong grower, very prolific. Berries large as Concord and black. Clusters moderately compact.



The Beacon Grape

ALL VARIETIES OF GRAPES ARE SHIPPED PREPAID

Skin never cracks. Bears very heavily as far north as Illinois. A profitable market grape. Ripe here July 25th. Very fine for jellies.

BELL. Vigorous, healthy vine. Sure producer. Greenish, yellow berries. Medium compact cluster. Free from mildew and leaf folder. Fine quality. Ripe July 20th.

BLACK SPANISH. Prolific. Clusters open but large with small berries. Fine for wine. Well adapted to the Southwest.

BRIGHTON. Plant near Brilliant. Vine vigorous. Berries medium to large, bright red. Cluster large and fairly compact. Thin skin, tender pulp. Profitable from Texas to Michigan. Fine quality. Ripe in July.

BRILLIANT. Self fertile. Growth strong. Berries large, color light to dark red. Clusters large. Delicious flavor. Prolific. Ripe July 10th.

CACO. A cross of Concord and Catawba. Most delicious flavor. Fair size bunches of large pink fruit. Ripe July 10th.

CAMPBELL'S EARLY. Self fertile. Rather light grower. Large black berries and with large clusters. Better than Concord. Ripe in July.

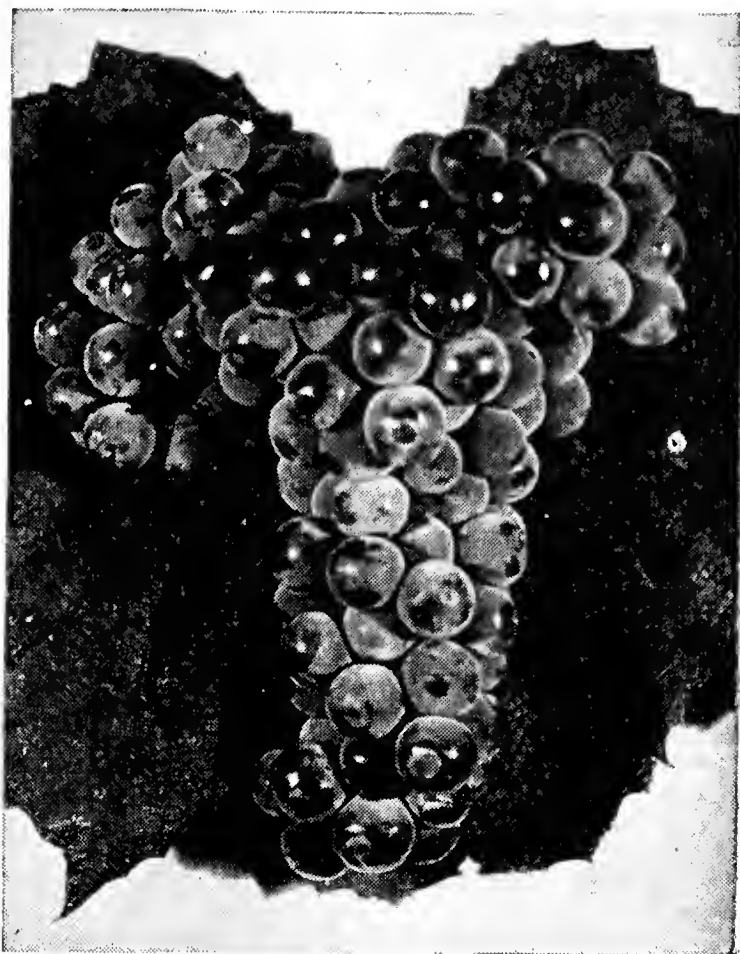
CAPTIVATOR. Self fertile. Vigorous grower. Large red berries. Large compact clusters. Skin thin but tough. Most delicious flavor. One of the very best late July grapes.

CARMAN. Blue Black with large bunches. Self fertile. Very prolific. Immune to leaf folder and mildew. Vigorous grower. Berries never crack. Quality good. Our best grape. See illustration on page 45.

CATAWBA. Self fertile. Found in 1801 in North Carolina. Vine vigorous. Berries above medium. Clear dark red. Medium cluster. Exquisite flavor. Fine table and wine grape. Ripe August 20th.

CHAMPANEL. Self fertile. Black berries, thin tough skin, tender pulp. Adapted to any soil but especially adapted to black waxy soils. Ripe with Concord. Good shipper and withstands dry, hot weather. Plant 10-12 feet apart in rows.

CLOETA. Self fertile. Very vigorous growth. Black berries of medium size. Clusters conical and fair size. A splendid wine grape. Juice claret in color.



The Bailey Grape

CONCORD. Self fertile. One of the best known grapes. Splendid market grape and very popular in Arkansas.

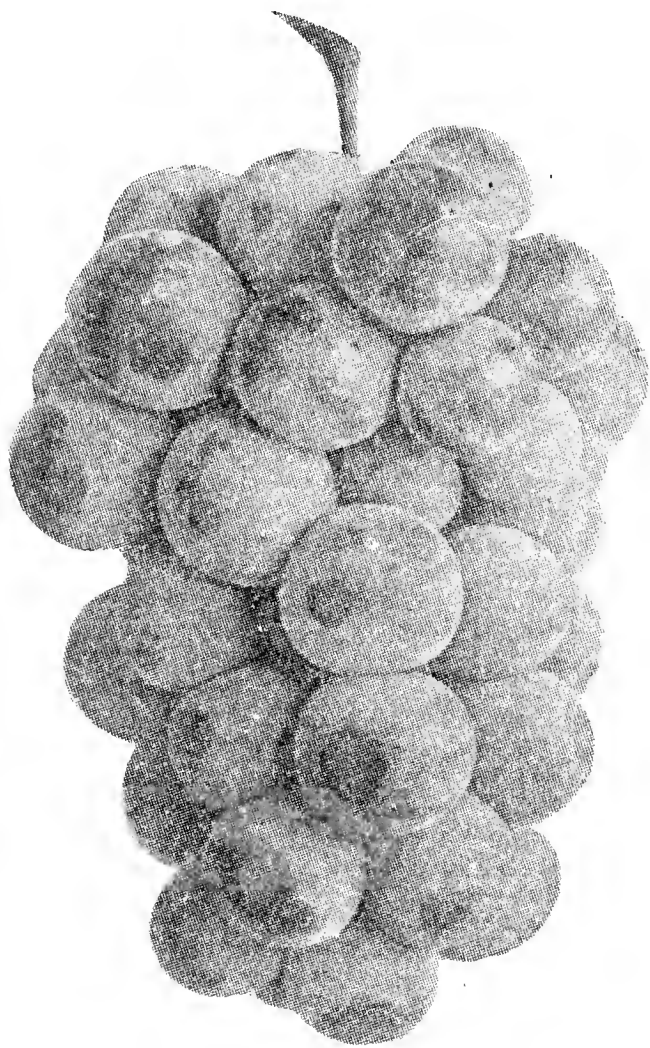
EDNA. Should be planted with Ellen Scott or Armalaga for pollination. Strong vine. Beautiful white grape. Good clusters, finest muscat flavor. Large berries. One of the best table and nearby market varieties.

ELLEN SCOTT. Self fertile. Stocky, vigorous grower, berries large to very large. Violet color. Skin does not crack. A splendid table or commercial grape of fine flavor.

EXTRA. Self fertile. Growth strong. Medium black berries. Very juicy. Hangs on late. Ripe about August 10th. Splendid for wine, juice and jellies.

FERN MUNSON. Self fertile. Growth very strong. Medium to large red purplish berries. Catawba flavor when fully ripe. Clusters large, long. Ripens late in August and hangs on until frost. Adapted to both North and South. Very hardy.

GOETHE. Self fertile. Vigorous vine. Pale pink very large berries. Fine flavor. Ripens late.



The Niagara Grape

GUMERA. Imported from Greece. Seems perfectly adapted to our climate. Berries very large, purple, thin skin with few seed. Bunches extra large, weighing up to three pounds.

FREDONIA. Vine vigorous and hardy. Large black berries. Large tapering clusters. Quality very good and is fast growing in popularity as an early black grape.

HEADLIGHT. Should be set near Beacon, Carman or Concord for pollination. A medium size berry, clear red, very sweet. Earliest American grape. Ripens latter part of June.

HERBEMONT. Self fertile. Very vigorous grower, healthy and long lived throughout the South. Prolific, berries dull brownish red, small but very juicy. High in both sugar and acid content and an excellent wine grape. Ripe three weeks ahead of Concord.

HERNITO. Self fertile. Strong vigorous grower. Berries large and black. Medium to large clusters. Hangs on vine well. Claret color juice. High in acid and sugar. Earlier than Concord.

LAST ROSE. Plant near Extra for pollination. Vine robust, healthy. Large rich red berry in large compact clusters. Thin tough skin and tender flesh. Excellent quality. Ripe late, September 20th.

LOMANTO. Self fertile. Vine vigorous and prolific. Berries black. Medium to large. Clusters large. A valuable variety for limy soils and dry hot weather. Resistant to root rot and well adapted for the coastal section. Excellent quality.

LONGFELLOW. Self fertile. Fair grower, very prolific. Berries large black. Clusters very long, up to 12 inches. One of the most attractive show grapes and quality of the highest. Adapted to all types of soil. Ripe late August.

MARGUERITE. Self fertile. Growth very strong. Immune from mildew. Cluster and berries medium in size but larger than Herbemont. Bears heavily on long arm pruning. Ripens late and will hang on through September. Makes a fine white wine. Very sweet and agreeable flavor.

MANITO. Vine vigorous, clusters small to medium. Berries black with white specks. Pulp tender and sweet. Should be planted with other varieties like Brilliant.

MERICADEL. Self fertile. Vine vigorous and very productive. Berries medium in size and purple thin skin but tough. Large compact clusters. Best quality. Table, market and juice. Ripe August 1st.

MINNIE. Self fertile. Medium growth. Large white grape. Medium clusters. Extra good flavor and quality of the best.

MISSION. Brought to America by Padres. California's finest table and wine grape. Growing very popular in Texas.

MOORE'S EARLY. Large black grape, fine quality. Vines healthy and prolific. Ripe in July.

MUENCH. Self fertile. Vigorous and free from all diseases. Clusters large and berries medium to large. Purplish black color. Ripens after Herbemont.

R. W. MUNSON. Should be planted with Concord and Brilliant for perfect

pollination. Bears heavily on long pruning. Berries black and medium to large. A good commercial variety.

NIAGARA. Self fertile. Vine medium in vigor. Berries large yellowish green at maturity. Very popular. Good quality white.

PORTLAND. This is a new white grape coming from the New York Station at Geneva. I fruited this variety the first time this year and it looks to be very promising. The plant is very vigorous and the fruit is very delicious.

PRESIDENT. Self fertile. Strong grower. Prolific. Medium size black berries. Clusters medium to large. Ripe with Moore's Early and better quality. July.

THOMPSON SEEDLESS. Strong and vigorous grower. Berries small greenish white, large compact bunches. Adapted to South and Southwest Texas. An excellent table grape.

VIOLET CHASSELAS (European Grape). Vigorous grower. Berries and clusters large, violet, beautiful and excellent quality. If sprayed will succeed all through the South. Adapted to climate like Pecos and El Paso.

ZINFANDEL. New California Grape, bearing and doing well for Mike Boyd at Ballinger, Texas. Bunches compact, very black and an enormous producer. It is worth trying for wine.

WINE KING. Self fertile. Vigorous vine. Small violet berries with thin skin, tender and juicy pulp. Long clusters. Ripe about August 1st. Best wine grape and free from disease.

PRICES ON GRAPE VINES, PREPAID

	Each	4	10	25	50
No. 1 Vines	\$.26	\$.96	\$1.95	\$4.23	\$8.12
No. 2 Vines	.14	.52	1.29	2.95	5.48

Grapes for black and limy soils: Lomanto, Bell and Champanel. For Coastal Plains and near the coast: Carman, Niagara, Beacon, Muench, Extra and R. W. Munson.

**Special Offer No. 7
GRAPE ARBOR OFFER**

6 Vines No. 1 Plants

\$1.19

PREPAID

A lifetime supply of grapes for juice, jelly, preserves, and table. Choice plants of the World's finest grapes.

- 2 Carman
- 1 Bailey
- 1 Beacon
- 1 Concord
- 1 Niagara

Three Special Grapes

GOLDEN MUSCAT. Vigorous and productive grower, large clusters, very compact, sweet and tender. Ripe after Concord. Each 45c; 3 for \$1.25, prepaid.

SOUTHERN SCUPPERNON GRAPES. Very popular in the Old South, where it is best known. Has most delicious, musky odor and taste. Berries large, golden color. Makes delicious wine. Vines very vigorous and long lived. Grow well on arbors or trellises. Plant at least 16 feet apart. Plant one male to ten female. Price, 35c each; 3 for \$1.00, postpaid.

WHITE MUSTANG (Our introduction 1939). This is just like the Mustang except the fruit is white. It is very difficult to root and I have only a few plants of two-year growth to offer at 50c each. Vines will grow from 50 to 75 feet long and produce several bushels of grapes. Makes a clear wine of unusually good quality. Plants 50c each; 4 for \$1.75, prepaid.

"The Foundation of American Grape Culture"

Written by the late T. V. Munson. This wonderful book contains 252 pages with 87 full page illustrations. Contains all the necessary information for growing grapes such as preparation of soil, planting, cultivation and pruning. It is beautifully printed and bound and contains references to all the best known varieties grown on this continent as well as some of the best known imports. If you are at all interested in grapes you cannot afford to be without this outstanding book.

REDUCED PRICE IS \$1.50 PER COPY, POSTPAID

BERRIES *for Table, Preserves and Market*

BOYSEN BERRIES. Boysen Berries are money makers. In 1935 I visited the famous Knott Berry Place at Buena Park, California, and saw a large acreage of Boysen Berries in full bearing. So many people had come to see this wonderful new berry that cars were parked up and down the highway for several hundred yards. I had to wait some time before I could get an introduction to Mr. Knott and let him describe and show me this berry which was at the peak of its ripening, June 20th. He has written me since that he has gotten 11,500 pounds of Boysen Berries per acre.

The berry looks like a Youngberry and has a very similar flavor, but the fruit is twice as large, single berries frequently measuring 2 inches long. Mr. Knott realized \$1,760.00 per acre from these berries in 1934.

The Boysen Berry Plants have been very high, 20c each, but since I am growing these plants myself, I am going to make them at a much cheaper price. Prices, Prepaid: 10 plants, \$.89; 25 plants, \$1.98; 100 plants, \$7.79.

NOTE: Our Boysen Berry plants will not be ready to ship until late in January.



The Boysen Berry

AUSTIN DEWBERRY. This is the hardiest and most prolific dewberry and is the first berry to ripen. Prices, prepaid: 10 plants, 39c; 25 plants, 82c; 100 plants, \$2.95.

YOUNGBERRIES. This is a cross between a dewberry and a loganberry originating in Louisiana. Its popularity is growing rapidly in Texas and Oklahoma. As people know this berry, its planting will increase by leaps and bounds. Prices, prepaid: 10 plants, 49c; 25 plants, 98c; 100 plants, \$3.95.

Special Offer No. 10

36 TREES AND PLANTS

\$2.48

Prepaid

- 1 Kieffer Pear
- 1 Garber Pear
- 1 Cluster Apricot
- 1 Moorpark Apricot
- 1 Ramsey Fig
- 3 Carman Grape
- 1 Bruce Plum
- 1 Munson Plum
- 1 Best May Peach
- 2 South Haven Peach
- 2 Elberta Peach
- 2 Frank Peach
- 1 Surprise Peach
- 1 Holland Apple
- 12 Dew-Blackberry Plants
- 5 Boysenberry Plants

All Trees 1-2 ft.

ALL VARIETIES OF BERRIES ARE SHIPPED PREPAID

Wolfe's DEW-BLACKBERRY

(Early Wonder)



The Famous Wolfe Dew-Blackberry
(Our Introduction)

Actual photograph. Some of the berries 1-inch in diameter. The Dew-Blackberry is far superior to any berry I grow. This berry is a cross of the dewberry and the blackberry as the name signifies. The tips will root the first year, after that it stands and handles like a blackberry.

Here are some of its good points:

1. Small seeds.
2. Self fertile.
3. Large as Austin Dewberry.
4. No bitter taste like Dallas.
5. Commences to ripen May 20th and ripens for 5 weeks.
6. Produces a crop every year.
7. Drouth resistant.
8. Will produce 1,000 to 1,400 gallons of fruit per acre.

Prices on Dew-Blackberry Vines, prepaid: 12 for 89c; 50 for \$2.69; 100 for \$4.85.

Special Offer No. 8

BERRIES AND GRAPES

25 Dew-Blackberry Plants

12 Boysen Berry Plants

1 Concord Grape

40 Plants, All No. 1

1 Niagara Grape

2 Carman Grape

\$2⁹⁸
PREPAID

FIGS — *Luscious* — *Delectable*

It is almost unbelievable to think that the Ramsey Fig will produce from 100 to 150 fruits in the nursery row the first year. They will do best when planted against buildings, near hydrants or where they have plenty of water. A few plants will furnish plenty of fruit for fresh eating and for fig preserves.

RAMSEY (Harrison). Ripens its fruit from July until frost. This variety bears on the new growth and with good care it will produce enough to pay for the plant the first year after planting. The fruit is from light straw to brown in color, medium size and very sweet. It does not crack easily. La Union Orchard of Grand Prairie has four acres in this fig that produced \$1,600. in one year. This variety is good for preserving and for fresh eating.

CELESTIAL. July. The common little blue fig. None is sweeter and very hardy.

MAGNOLIA. It is not necessary to plant two varieties of figs for good results. The Magnolia produces large brownish straw colored fruit and will bear the first year after planting. I would suggest that you plant some of this variety.

PRICES ON FIG BUSHES, PREPAID

Height	Each	4	10
1-2 ft.	\$.22	\$.81	\$1.98
2-3 ft.	.29	1.12	2.68
3-4 ft.	.41	1.53	3.48

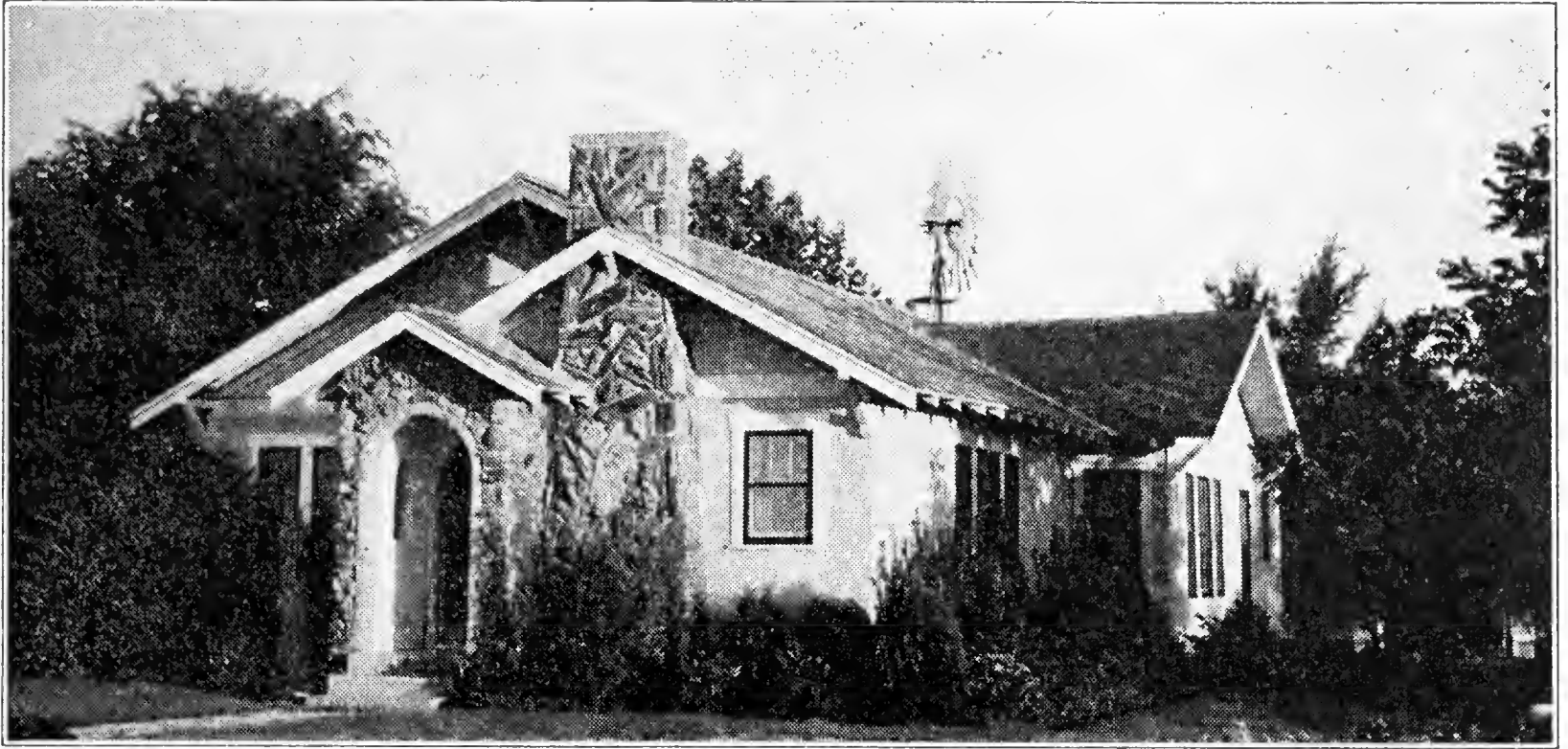


Figs are hardy and produce an abundance of fruit.

SPECIAL OFFER NO. 5

1 Ramsey Fig, 2-3 feet.....	\$.29	1 Frank Peach21
1 Allred Plum39	1 German Prune48
12 Dew-Blackberry95	1 Douglas Pear48
1 Carman Grape No. 1.....	.26	1 Holland Apple48
1 Niagara Grape No. 1.....	.26	2 Boysen Berry Plants10
1 Early Rose Peach21	1 Burkett Pecan68
1 Indian Peach21	1 Moorpark Apricot Free	
1 Texaberta Peach43		
		Value	\$5.43
26 Plants, all trees 2-3 feet, prepaid to you for.....			\$3.95
26 Plants, value \$6.66, all trees 3-4 feet, prepaid to you for.....			5.98

WE PREPAY EXPRESS AND PARCEL POST CHARGES ON FRUIT TREES



Farm Home of Ross R. Wolfe. Let us landscape your home.

LANDSCAPING

It Is Not a Home Until It Is Planted

I have a fine stock of Evergreens (about 60 varieties), shade trees, hedges, roses, vines and other material used in making homes beautiful. I will furnish cost information and complete landscape plans to homeowners in my area. I will furnish you the plants with sketches and specifications, or I can do the planting for you. Balled Evergreens can be moved from September 15th to April 1st and longer.

Special Offer No. 12

A PRIZE COLLECTION OF ORNAMENTALS

2 Pyracantha Lalandi	2 Euonymus
2 Pyracantha Yunanensis	1 Nandina
2 Wax Ligustrum	1 Photenia

All ten of the above in 2-year plants — a prize collection of the most popular broad leafed evergreens.

All Prepaid for **\$2.95**

Wolfe's Evergreens and Flowering Shrubs

To meet an increasing demand, we are offering again a complete line of evergreens prepaid to our customers. These will come bare root with roots clay puddled in sizes that will transplant successfully without baling and burlapping. For larger plants balled and burlapped, come to the nursery.

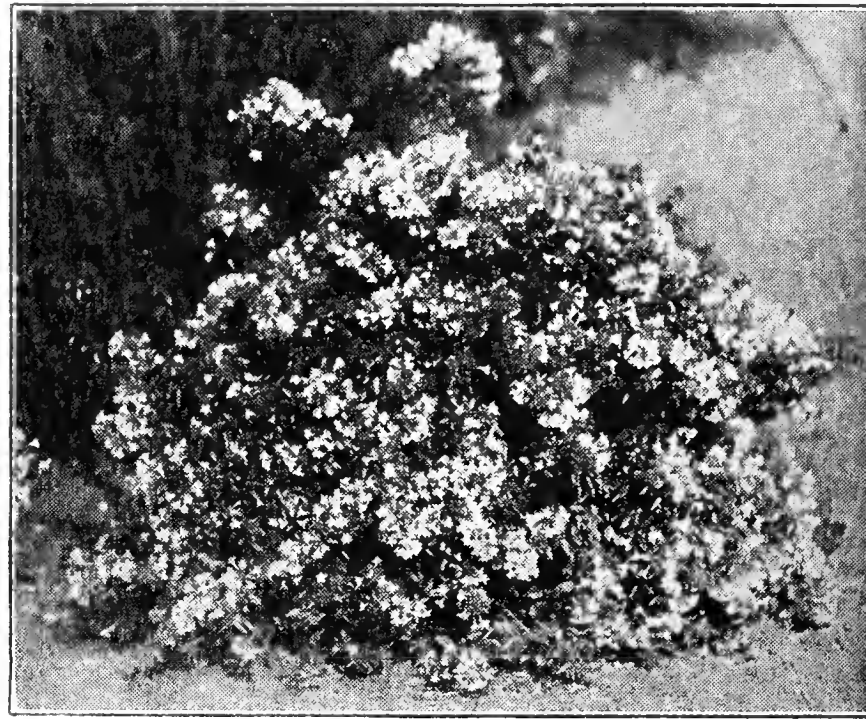
BROAD LEAFED EVERGREENS

ABELIA. A beautiful evergreen with glossy foliage that blooms from May until frost with a mass of white and pink fragrant flowers. Hardy. Nice plants 39c each; 4 for \$1.48, prepaid.

DAPHNE CNEGORUM. A very small dwarf evergreen producing an abundance of pink flowers in winter and at intervals throughout the summer. Grows to 1 ft. with a spread of 12 to 15 inches. Each \$1.00; 4 for \$3.75, prepaid.

EUONYMUS JAPONICA. A waxy, glossy, hardy evergreen that may be sheared or will cling to walls. 39c each; 4 for \$1.48, prepaid.

JASMINE FLORIDIUM. This is the best of the Jasmines, having rich green winter foliage with yellow flowers from spring until frost. 49c each; 4 for \$1.58, prepaid.



Abelia

This is a picture of our office with packing shed in the background and the following customers who came in their cars and trucks for trees February 7, 1938. All stock is packed where it will not scar the best car. . . . J. U. W. Jones, Dr. T. B. Busbee, Lee Clark and Reuben Neal of Rising Star; Q. Dittmarr, Geronimo; Amos Haynes, Sidney; R. C. Morris, Sidney; H. H. Hancock, Gordon; E. A. Stone, Hico; Frank Bryant, Mrs. J. M. Wise and C. H. Wise of Coleman; Eugene Sunvission, Melvin; J. H. Osborne, Covington; C. Rexroat, Gordon and W. M. Dunsworth, Brownwood.



LEUCOPHYLLUM. Senisa, Silverleaf. A Southwest Texas native shrub with silver leaves and lavender flowers. Each 45c; 4 for \$1.69, prepaid.

LIGUSTRUM JAPONICUM. (Japan Privet.) A large, handsome, upright shrub with broad, dark green foliage and white flowers in loose panicles followed by black berries. Each 37c; 4 for \$1.35, prepaid.

MAHONIA. (Oregon Grape Holly.) This dwarf holly has autumn color foliage both winter and summer. Plants 59c each; 4 for \$1.98, prepaid.

NANDINA. This beautiful and popular evergreen with bright red berries, with red leaves through cold weather should be in every planting. Nice Plants 43c each; 4 for \$1.59, prepaid.

PHOTENIA. One of our most beautiful broad leaved evergreens, grafted on hardy root. The leaves are dark, broad, long, with serrate edges. Beautiful, white, fragrant flowers in the spring. Each 59c; 4 for \$1.98, prepaid.

PYRACANTHA Yunnanensis. Spreading shrub, leaves bright green and in winter covered with cluster of red berries. 12-15 inch 39c each; 4 for \$1.48, prepaid.



Pyracantha Barlow



Nandina

PYRACANTHA Lalandi. Small trees, very vigorous. Plants very attractive in late summer and fall. Foliage a rich green with orange berries. 12-15 inch, each 39c; 4 for \$1.48, prepaid.

PYRACANTHA Barlow. The grandest of all Pyracanthas, semi-upright in growth with profuse and enormous quantity of red berries which are produced the second year. 12-15 inch, 49c each; 4 for \$1.89, prepaid.

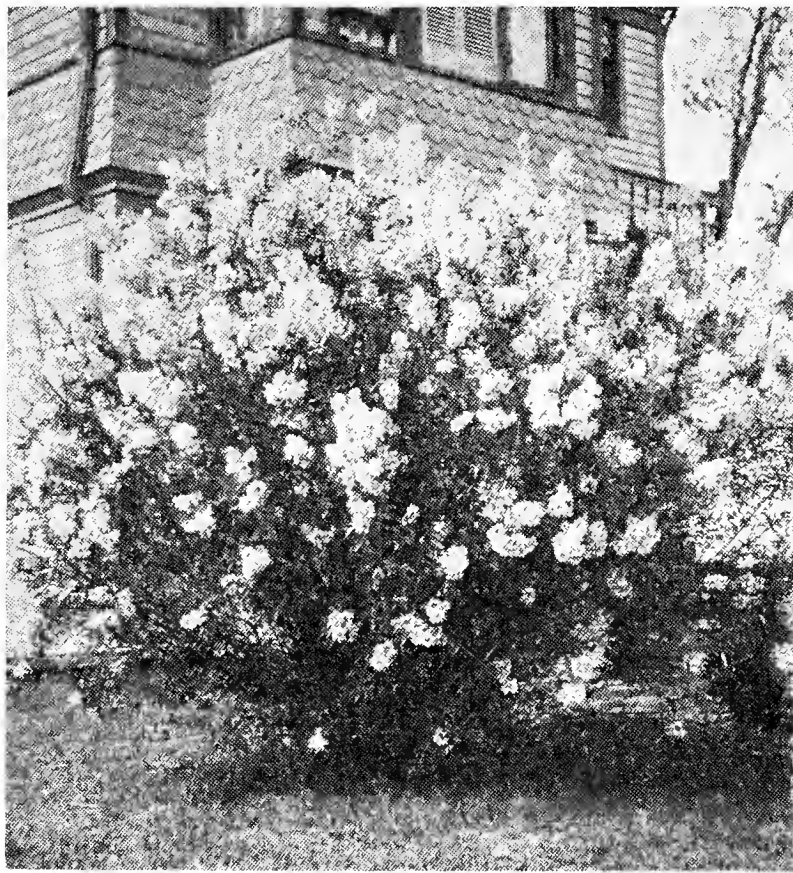
SANTOLINA. Lavender-Cotton. Low growing bordering plant with gray green foliage and yellow flowers. Each 29c; 4 for \$1.00, prepaid.

TO HELP KEEP OFF RABBITS

2 lb. Sulphur
2 lb. Yellow Ochre
1 gill Turpentine
1 gill Linseed Oil
½ pint Flour

Make into a paste with sweet milk. Apply with brush in fall or as soon as trees are put out.

FLOWERING SHRUBS



Crape Myrtle

ALTHEA. Rose of Sharon. Hardy, popular, upright growing shrub. Flowers in both double and single blooms, colors from white to pink and purple. Each 29c; 3 for 80c, prepaid.

BARBERRY. Redleaf. Low-growing plant with spreading branches. Foliage green in spring changing to bronze and red in fall. Bears clusters of scarlet berries in fall. Each 45c; 4 for \$1.69, prepaid.

BRIDAL WREATH (Spirea V. H.). Produces masses of white flowers in early spring. Each 27c; 3 for 75c, prepaid.

BUDDLEIA. Butterfly Bush. A well-shaped, bushy shrub that is covered with cone-shaped clusters of rosy-lilac blooms from July until frost. Succeeds everywhere. Each 29c; 3 for 80c, prepaid.

CAPE MYRTLE. There is no doubt that this is the best flowering shrub for the Southwest. Very hardy, withstands drought well and has soft fluffy flowers that are borne in dense heads on strong stems. We can furnish the red, pink and orchid. 1-yr. each, 19c; 3 for 50c. 2-yr. each, 29c; 3 for 81c. 3-yr. each, 45c; 3 for \$1.25, prepaid.

CYDONIA JAPONICA. Bush sprangly but covered with bright red blossoms just as the foliage starts to grow. Each 35c; 3 for \$1.00, prepaid.

FLOWERING WILLOW. A small tree with branches and foliage similar to the willow but bears trumpet shaped lilac flowers throughout the summer. Very prolific in light soils and droughty sections. Each 35c; 3 for 98c, prepaid.

GOLDEN BELL. Medium growing shrub with very showy lemon-yellow blossoms with orange centers which completely cover the bush early in the spring before the leaves appear. In most locations it is hardy. Each 29c; 3 for 81c, prepaid.

HONEYSUCKLE. Bush. A semi-shrub with dark green foliage and coral-carmine and rose-pink blooms. It is ever-blooming, and hardy and can be trained as a vine or trimmed to form a bush or hedge. A most popular evergreen in this section. Each 35c; 3 for \$1.00, prepaid.

PURPLE LILAC. There is no flowering shrub that is more beautiful than the Lilac. Large purple blossoms which are very fragrant. Each 35c; 3 for \$1.00, prepaid.

REDBUD. Small tree which is covered with rosy-purplish flowers before the leaves put forth in the spring. Very hardy. Each 30c; 3 for 85c, prepaid.

PURPLE LEAF PLUM (Prunus Pissardi). A beautiful red leafed tree with perfectly white blossoms. 2-3 ft. plants 39c each; 3 for \$1.00, prepaid.

RED FLOWERING DOGWOOD. Grows to height of 10 feet or more. Dark red showy branches with white flowers. Each 35c; 3 for \$1.00, prepaid.

SPIREA ANTHONY WATERER. Plant of dwarf type, flowers bright rose, used in front of foundation plantings. Each 29c; 3 for 80c, prepaid.

TAMARIX. Tall growing with pale green, feathery, cedar-like foliage and pink blooms. I have selected the finest variety for large plumes of pink flowers. Each 35c; 3 for \$1.00, prepaid.

**COME TO THE NURSERY
AND SAVE ON ALL STOCK.**

Evergreens, Coniferous

BERCKMAN'S GOLDEN Arborvitae. A new, dwarf, compact, almost globular arborvitae with yellowish-green foliage tipped with gold in spring. Grows to height of 6 feet. Each 45c; 4 for \$1.69, prepaid.

BAKER'S PYRAMIDAL Arborvitae. Compact and pyramidal, with dark green foliage. Grows about 10 ft. high. Each 40c; 4 for \$1.48, prepaid.

BONITA Arborvitae. A globe-shaped, dwarf-growing plant with dark green foliage, grows to 4 ft. high. Each 45c; 4 for \$1.69, prepaid.

CEDRUS DEODARA. A pyramidal plant growing to a great height. Foliage bluish green with spreading branches. Beautiful plant, hardy and should be in every planting. 12-15 in. 59c each; 2 for \$1.10, prepaid.

EXCELSA Arborvitae. A hardy, compact, broad pyramidal type with soft green foliage. Grows to height of 8 ft. Each 45c; 4 for \$1.69, prepaid.

RAMSEY'S HYBRID Arborvitae. A type very distinctive for its open pyramidal shape with dark green, cypress-like foliage of soft appearance. Grows to 15 ft. in height. Each 40c; 4 for \$1.48, prepaid.

ARIZONA CYPRESS. A tree of tall compact, pyramidal growth with soft, plummy foliage of silvery gray. Grows to 20 ft. in height. Each 45c; 4 for \$1.69, prepaid.



Juniper, Pfitzer



Arizona Cypress

ITALIAN CYPRESS. A tall narrow, columnar growing tree with soft, dark green foliage. Will attain 25 ft. in height. Each 49c; 4 for \$1.85, prepaid.

JUNIPER, Pfitzer. One of the handsomest and most popular low, spreading junipers with beautiful silvery-green foliage. Each 49c; 4 for \$1.85, prepaid.

LET US LANDSCAPE YOUR HOME

I will furnish cost information and complete landscape plans to homeowners in my area. I will furnish you the plants with sketches and specifications, or I can do the planting for you. Balled Evergreens can be moved from September 15th to April 1st and longer.

HEDGE PLANTS

As low as 3c each in lots of 10

AMUR RIVER PRIVET. The best evergreen privet hedge.

Size	10	25	100
12-18 inch	\$.30	\$.68	\$2.59
18-24 inch	.40	.89	3.48
24-30 inch	.86	1.89	6.98
30-36 inch	.99	2.37	8.95

LODENSE PRIVET. A fine little border plant where a low hedge is desired. Tiny little green leaves that stay green all winter. Especially good for cemetery planting. Two-year plants 19c each; 6 for 98c; 12 for \$1.75, postpaid.

Shade Trees

5-6 ft. shade trees as low as 59c.

There is no investment as good as a shade tree around your home, especially in the back yard.

ELM, AMERICAN. Tall, stately, beautiful branches spreading and hardy. Grows to 60 ft. and droops. 5-6 ft. each 59c; 4 for \$2.29, prepaid.

ELM, CHINESE. I have one of these stately trees in my yard that is 35 feet high and 14" in diameter at 12 years of age. 3-4 ft. each 27c; 4 for 98c. 5-6 ft. each 59c; 4 for \$2.29, prepaid.

WEeping WILLOW. The kind I have is the true Babylonian with branches that hang straight down. Lovely near water or in the back yard. 5-6 ft. each 59c; 4 for \$2.29. 3-4 ft. each 33c; 4 for \$1.05, prepaid.

SYCAMORE, AMERICAN. This is one of America's most popular and satisfactory shade trees. Hardy and resistant to root rot. Grows 50 to 60 ft. high. 5-6 ft. each 77c; 4 for \$2.98. 3-4 ft. each 48c; 4 for \$1.72, prepaid.

MIMOSA (Silk Tree). Has an umbrella-like top, feathery foliage and beautiful fragrant pink blossoms borne in summer. The leaves fold up at night like a sensitive vine. This is one of the most beautiful trees I have ever seen and perfectly hardy with me. 4-5 ft., 2-year plant 59c each, postpaid; 4 for \$2.15.

Gladiola Bulbs

10 Bulbs for 27c.

This is an exhibition mixture in a variety of colors.

Vines

QUEEN'S WREATH. A long slender vine that produces racemes of pink flowers borne in grape-like clusters from mid-summer until frost.

HONEYSUCKLE. A standard evergreen honeysuckle with yellow and white fragrant flowers, beautiful single or with roses.

VIRGINIA CREEPER. A lovely native American vine which is a fast grower. Leaves deeply cut and are crimson in the fall.

ENGLISH IVY. An evergreen vine with thick grayish green leaves mottled with white.

SCARLET TRUMPET. A rapid growing vine with flowers of orange red and trumpet shaped.

Price on all vines prepaid, each 29c; 3 for 79c; 10 for \$2.49.

Large Flowering Cannas

3 Bulbs for 29c; 10 for 75c, prepaid.

PRESIDENT. Immense flowers of rich scarlet. Reddish foliage. Grows 4 feet.

YELLOW KING HUMBERT. Yellow flowers spotted with red, grows 5 feet.

CITY OF PORTLAND. Best pink canna grows 4 feet.

Iris

CRIMSON KING. Our start of this variety cost 50c per bulb. It is the most satisfactory of all the Iris. Deep purple with light throat. Heavy bloomers over a long period of time.

6 for 25c; 12 for 45c; 25 for 85c, prepaid.

Special Offer No. 11

A REAL BARGAIN

- 36 Amur River Privet 6-12 inch.
- 1 Orchid Crape Myrtle, 1-yr.
- 1 Red Crape Myrtle, 1-yr.
- 1 Queen's Wreath Vine.

98c

PREPAID

Why not order 2 or 3 of this collection? 36 hedge plants will plant 50 feet.



Condesa de Sastago

ROSES

Roses planted this winter will bloom the next spring. Vigorous 2-year-old bushes. There is nothing so fascinating as growing roses. Our varieties bloom monthly and nothing takes their place in the garden. You will be thrilled with a rose garden of your own. Our roses are budded on the native Texas Rose which insures hardiness and long life.

PRICES ON ROSE BUSHES DELIVERED

Each 27c; 3 for 77c; 10 for \$2.29.

Pink Roses

RADIANCE. Long pointed buds of beautiful clear pink on long graceful stems open into a tulip shaped blossom.

COLUMBIA. Unequal for beauty. This rose is in bloom when all other varieties are at a standstill. Buds long pointed on long graceful stems. Flowers opening to a beautiful silvery pink blossom that is very double and lasting. My favorite in pinks.

EDITH NELLIE PERKINS. Beautiful pink with coppery red and salmon, a strong hardy grower with stems and buds suitable for cut flowers.

BRIARCLIFF. Sport of Columbia with buds somewhat longer than Columbia. Flowers 4½ inches across when well developed.

BARGAIN ROSE OFFER NO. 17

Two-year-old rose bushes: 1 white, 2 red, 1 pink, 1 two-tone, 1 yellow, labeled, postpaid, our choice. 6 bushes for \$1.33.

Also See Special Rose Collection on Back Cover (page 48).

Red Roses

AMI QUINARD. HT. Dark red, continues to improve each year. Blackish buds, open, to semi-double flowers of velvety crimson-maroon with soft black luster. Petals get darker as the rose opens. Old rose fragrance. Vigor and growth resemble Radiance. Very popular.

FRANCIS SCOTT KEY. One of the largest deep red roses and the most double.

E. G. HILL. Beautiful large buds opening to immense flowers, unusually lasting. Dazzling scarlet shading to a deeper pure red center.

ETOILE DE HOLLAND. Dark red overlaid with almost black velvet shadings. Very beautiful and a free bloomer. Hardy.

AMERICAN BEAUTY. The old standby in red.

RED RADIANCE. The hardiest growing and freest blooming of all the roses, long pointed buds on long stiff stems. Excellent for cut flowers.

White Roses

KAISERIN AUGUSTA VICTORIA. Queen of the white roses. Perfect shaped buds opening to perfect shaped blossoms.

CALENDONIA. A free continuous bloomer with large buds on long stiff stems. Very double.

Two-Tone and Yellow Roses

PRES. HOOVER. Buds large, long and pointed; flowers large, semi-double. Color, medium orange suffused with copper red and apricot. Hardy.

TALISMAN. HT. A rose of extraordinary effect. Very hardy. The urn shaped bud has a center of brownish red, exterior of gold. As the bud opens, the tints become lighter and the gold more brilliant. When in full bloom has a blend of both orange and gold. The "1933 American Rose Annual" places Talisman in the No. 1 list of roses. With widespread praise and very little criticism.

LADY HILLINGDON. Apricot yellow, a free bloomer and a beautiful long pointed bud. Very hardy.

LUXEMBOURG. Long stems, flowers deep orange. One of the best two-tone roses.

SUNBURST. A golden yellow rose that is thoroughly described in its name.

Two New Spanish Roses

CONDESA DE SASTAGO. A beautiful two-toned rose of red and yellow. Very prolific and a good bloomer. Entirely different. Imported from Old Mexico. You will like this rose.

DUQUESA DE PENARANDE. Another Spanish rose which was imported from Old Mexico. This is a beautiful rose with long buds of orange-pink color. This rose should be in every garden.

Prices Prepaid, Each 39c; 4 for \$1.48.

Climbing Roses

CL. PRES. HOOVER. Vigorous climbing sport of Pres. Hoover.

CL. RED RADIANCE. Identical with the bush Radiance.

CL. TALISMAN. Sport of Talisman.

CL. KAISERINE AUGUSTA VICTORIA. The best white climber.

PAULS SCARLET CL. Flowers scarlet shaded bright crimson, borne in large clusters.

MARECHAL NEIL. An old favorite climber, rich yellow.

CL. COLUMBIA. A true sport of Columbia. Hardy.

All these climbers are of the very hardiest varieties and will soon cover a trellis or pergola and furnish a profusion of blossoms during the spring, summer and fall.

Polyantha Roses

Beautiful for grouping and borders. Growing in popularity. Profuse bloomers.

GOLDEN SALMON. Large clusters of salmon orange and rose colored blossoms. Holds color well and a very profuse bloomer.

MISS EDITH CAVELL. Sport of Orleans Rose and the best dark red "Baby Rose", Large trusses of scarlet flowers.

ORLEANS ROSE. A very showy Baby Rose of dwarf compact growth. Huge bouquet of brilliant roses.

EBLOUISSANT. Medium sized bud, flower medium and very double. Dazzling red flowers borne in large clusters. Beautiful foliage.

These little Sweetheart Roses are becoming more and more popular for use in landscaping, rock gardens, hedges and for borders of various kinds. The most beautiful effect is obtained by using groups all of the same color. They bloom from early spring until late frost and are a source of pleasure during the entire blooming season.

Four Great Favorites



Carman Grape

THE CARMAN GRAPE. Our most popular All-Purpose Grape, excellent fruit, prolific, good for juice or wine. See page 31 for prices.



German Prune

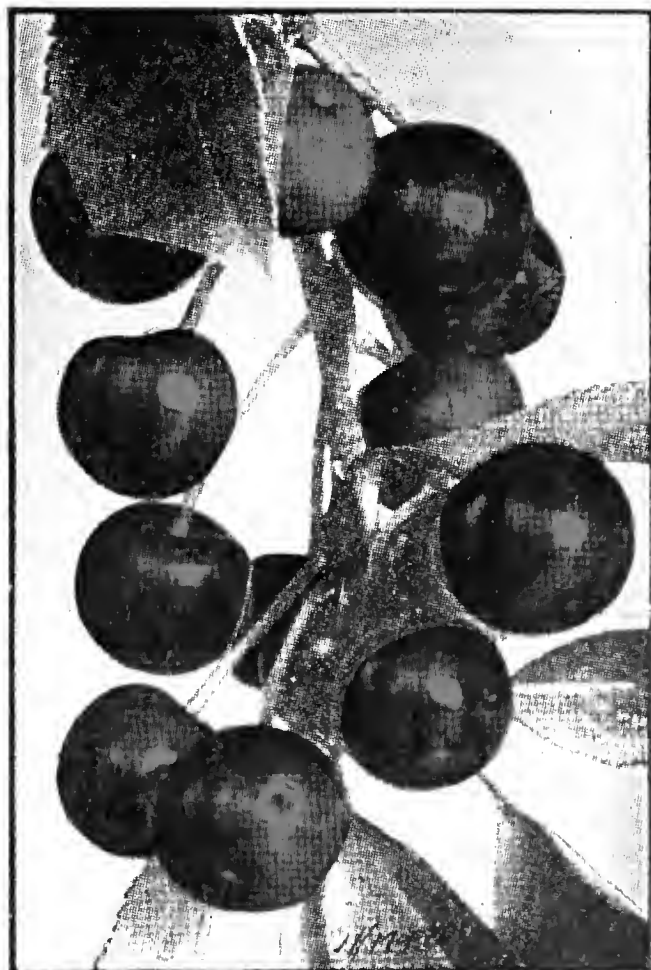
THE GERMAN PRUNE. No orchard is complete without this unusual fruit. Our variety excels all others. For prices see page 27.

THE MONTMORENCY CHERRY. America's Greatest Canning Cherry, bright red, delicious. See page 25 for prices.

THE MUNSON PLUM. Yellow as gold, sweet as honey, it is a great find. Ripens June 1 when berries are at their best and should be raised by everyone growing blackberries and dewberries. See page 27 for prices.



Munson Plum



Montmorency Cherry

PLANT SEVERAL OF EACH OF THESE GREAT FAVORITES

THE DOUGLAS PEAR

\$\$\$\$

The outstanding feature of Douglas is early and heavy bearing. Frequently 2 and 3 year old trees will be loaded with fruit. It is blight resisting and of good quality for eating, canning and preserves. Our Douglas Pears will surprise you and please you.

**START YOUR
DOUGLAS PEAR
ORCHARD NOW.**



This 8-year-old Douglas Pear tree in the orchard of Mike Boyd, of Ballinger, Texas, produced 7 bushels of No. 1 fruit in 1939.

PRICES ON DOUGLAS PEAR TREES, PREPAID

Height of Tops	Each	4	10	25	50	100
1-2 ft.	\$.36	\$1.35	\$2.95	\$ 6.25	\$11.92	\$21.48
2-3 ft.	.48	1.78	3.12	7.25	14.95	28.95
3-4 ft.	.57	1.98	4.48	10.25	19.95	37.90
4-5 ft.	.76	2.88	6.95	15.48	30.78	57.25
5-6 ft.	.87	3.24	7.29	17.19	32.98	62.79

WOLFE'S NURSERY

FROST RESISTANT FRUIT AND NUT TREES

ORNAMENTALS AND EVERGREENS

STEPHENVILLE, TEXAS



TO THOSE WHO WANT GOOD TREES

My Dear Friend:

It is a pleasure to send you my new 1939-40 catalogue. This color book was designed for the purpose of helping you select the right nursery stock for your locality. It is indexed for your convenience. Frost resistant varieties are marked. My recommendation of a variety is indicated by placing from one to four \$ marks with the name of the variety. Those that are not strongly advised will have no mark. My description of each variety is complete giving special attention to faults of the variety as well as the good points. Know what you are planting. Good varieties are just as easy

to grow as poor ones and my sincere desire is to give you the best that can be grown. Satisfying you means my success.

Here are the reasons you get the best that can be grown when you buy my trees. I have traveled over one hundred thousand miles to study the behavior of fruits and nuts and in quest of new and better varieties. Every variety sold has been thoroughly tested in my experimental grounds. Added to my collection are the Risien Gold Medal Pecans, Stubenrauch Frost Resistant Peaches and now T. V. Munson's World Famous Grapes, whose vineyard I now own. More than 50 State and Federal Experiment Stations in the U. S. and other countries have bought my varieties for their experimental work.

Please consider this letter as a personal invitation to visit my orchard and nurseries. You will be escorted through the place and be under no obligation. See for yourself the finest trees grown in the South, each row and block double tagged to avoid mistakes.

Remember every variety is propagated from a record bearing strain. Haphazard methods of propagation are discarded and Wolfe's trees are grown by expert and scientific systems which insures the best roots, best trees, best varieties and best fruits.

Prices on all trees are reasonable and compare with any dependable nursery, however make price a secondary consideration. Assure success by buying trees that you know are exactly what they should be. Buy with confidence at Wolfe's Nursery.

You will find a price list and an order blank enclosed—also a return envelope which does not require any postage. Use it right now while you are thinking about it and have the catalogue before you. Make out your order and mail it in for prompt reservation. Your stock will be tagged and reserved for shipping at the proper time for planting in your locality.

Sincerely Yours

WOLFE'S NURSERY

Ross B. Wolfe

Owner

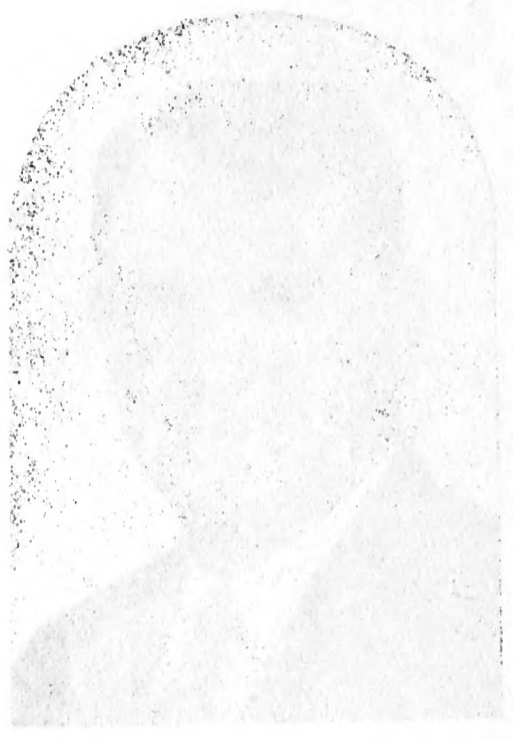
P. S. In case you want to buy more than 100 trees, fill out the enclosed postage free card and send it to me for special low prices.

BUY WOLFE'S NURSERY STOCK WITH CONFIDENCE

WOLFE'S NURSERY

ORNAMENTALS AND EVERGREENS
STEPHENVILLE, TEXAS
TWO RESISTANT FRUIT AND NUT TREES

TO THOSE WHO WANT GOOD TREES



My Dear Friend:

It is a pleasure to read you my new 1933 tree list. This color book was prepared for the purpose of showing you the right tree for your locality. It is a guide for your selection of a tree for your yard. My recommendation of a tree is based on its ability to grow in your soil and climate. The trees in this list are not only beautiful but also well adapted to the conditions of your locality. I have selected the best trees for your locality and have included the names of the trees and their prices. I am sure you will find a tree that will give you the best results.

There are the reasons you get the best that can be grown when you buy from Wolfe's Nursery. The trees are selected from the best stock available and are grown under the best conditions. The trees are shipped to you in the best possible condition and are guaranteed to be true to name. The prices are reasonable and the service is excellent. I am sure you will find a tree that will give you the best results.

Please consider this letter as a personal invitation to visit our nursery. You will be received through the gate and be taken to the nursery. We will show you the trees and the grounds. We will also show you the methods of propagation and the scientific systems which insure the best results. We will also show you the methods of shipping and the service which we give to our customers.

Remember every tree is a valuable asset to your yard. The trees in this list are selected from the best stock available and are grown under the best conditions. The trees are shipped to you in the best possible condition and are guaranteed to be true to name. The prices are reasonable and the service is excellent. I am sure you will find a tree that will give you the best results.

Place on all trees are reasonable and comparable with the trees in other nurseries. We make sure a standard condition is maintained in all our trees. We are exactly what you need for your yard. You will find a price list and an order blank enclosed with this letter. We will also send you a copy of our tree list and a copy of our price list. We will also send you a copy of our tree list and a copy of our price list. We will also send you a copy of our tree list and a copy of our price list.

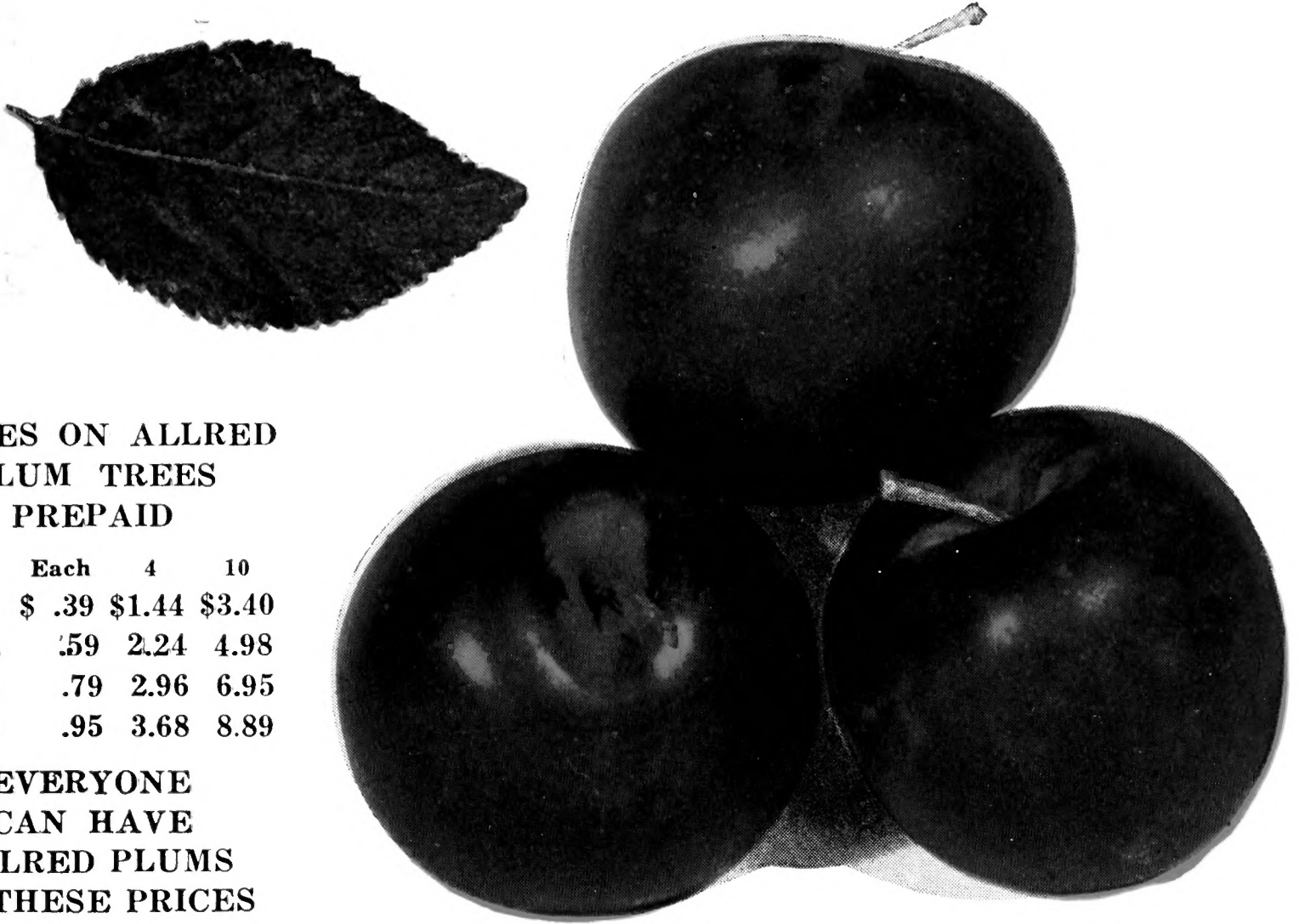
WOLFE'S NURSERY

Ross B. Wolfe

In case you want to buy more than 100 trees, fill out the enclosed postage face card and send it to us for special low prices.

BUY WOLFE'S NURSERY STOCK WITH CONFIDENCE

THE ALLRED PLUM



PRICES ON ALLRED PLUM TREES PREPAID

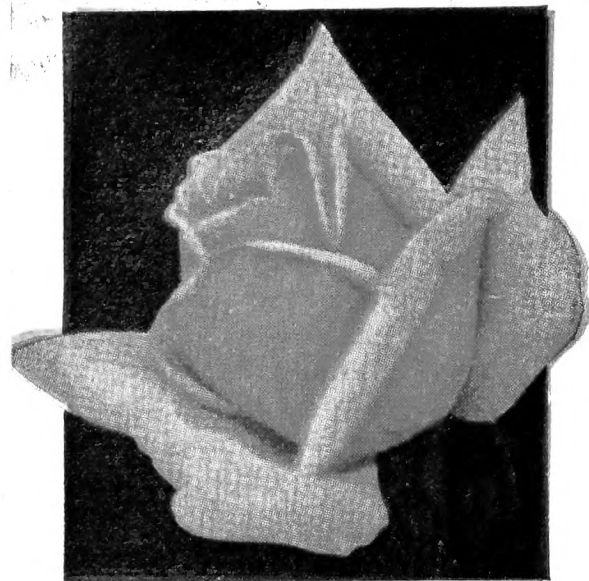
	Each	4	10
2-3 ft.	\$.39	\$1.44	\$3.40
3-4 ft.	.59	2.24	4.98
4-6 ft.	.79	2.96	6.95
5-7 ft.	.95	3.68	8.89

**EVERYONE
CAN HAVE
ALLRED PLUMS
AT THESE PRICES**

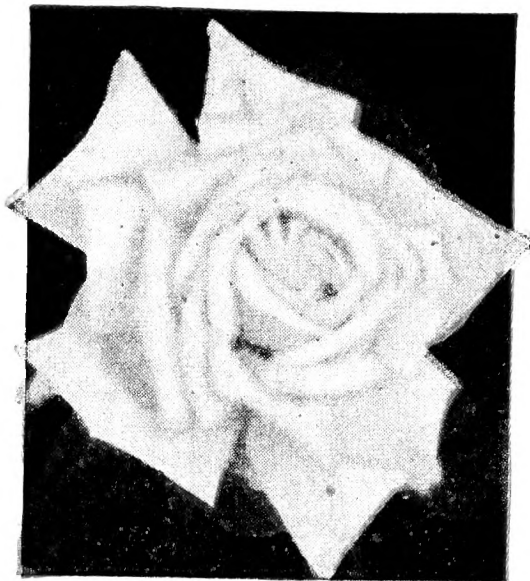
In my quest for novel and fine fruits I consider this a great find. The original tree from which I secured buds is growing in Hot Springs, Arkansas, and was brought there from Europe about 12 years ago. The leaf is a purplish red and the fruit is red inside and out. This plum is medium in size and excellent quality. This tree is highly ornamental and produces regular crops of high quality fruit.

INDEX

	Page		Page
Apples	4, 22	Keep Rabbits Off	37
Apricots	23	Landscaping	35, 39
Allred Plum	24, 47	Montmorency Cherry	25, 45
Almonds	21	Mulberries	23
Berries	32, 33	Munson Plum	27, 45
Big Five New Fruits.....	27	Number of Plants Per Acre.....	15
Boysen Berry	32	Orchard Service	10
Buds and Grafts	16	Order Blank	43, 44
Bulbs—Canna, Gladioli, Iris.....	40	Orders for Less Than \$1.00.....	15
Cherries	25, 45	Our Nursery and Orchards.....	14
Dew-Blackberry, Wolfe's	33	Peaches	2, 3, 5-15
Four Great Favorites.....	45	Pears	26, 46
Douglas Pear	46	Pecans.....	16, 17, 18, 19, 20
Evergreens, Broadleafed	36, 37	Persimmons	23
Evergreens, Coniferous	39	Planting Instructions	15
Flowering Shrubs	38	Plums.....	24, 25, 27, 45, 47
Frank Peach	3, 6	Plum-Cherries	25
Free Trees	20	Plumcot	27
Figs	34	Red Nectarine	27
Frost Resistant \$\$\$\$ Code.....	15	Risien Pecans	18
Fruits of Every Variety.....	23	Roses.....	41, 42 (Back Cover) 48
German Prune	27, 45	Santa Rosa Plum	27
Grande English Walnuts	21	Shade Trees	40
Grapes.....	28, 29, 30, 31, 45	Stamps Accepted	15
Grapes—"The Foundation of American Grape Culture", by T. V. Munson.....	31	Stubenrauch Peaches	3
Hedge Plants	40	Texaberta Peach	2
Holland Apple	4	Time To Plant	15
John Garner Pecan.....	17	Vines	40
		Walnuts	21



Edith Nellie Perkins



K. A. Victoria



Red Radiance

WOLFE'S QUEEN OF THE GARDEN ROSE COLLECTION

NO CHANGE ALLOWED IN THIS COLLECTION

Due to the greatly reduced prices offered on this collection, we cannot substitute varieties.

10 of the Finest Plants, All Two-Year-Old
Field Grown Roses

2 Edith Nellie Perkins

1 K. A. Victoria

2 Red Radiance

\$ 1 98

2 Etoile de Hollande

2 President Hoover

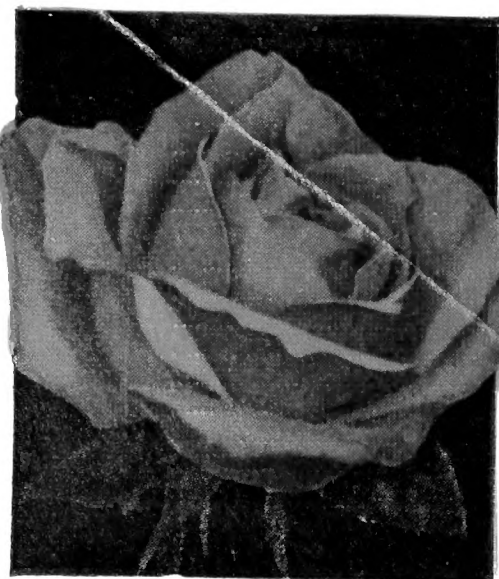
1 Pink Radiance

A collection of the finest number one two-year-old field grown, budded plants of our regular stock. Order one or more of WOLFE'S ROSE COLLECTIONS.

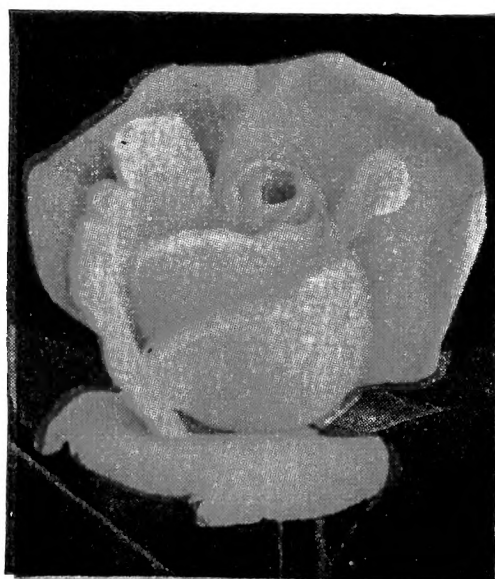
WOLFE'S NURSERY

Stephenville, Texas

Etoile de Hollande



President Hoover



Pink Radiance

