

Historic, Archive Document

Do not assume content reflects current scientific knowledge, policies, or practices.

APR 22 1940



The Wheatley Gardens

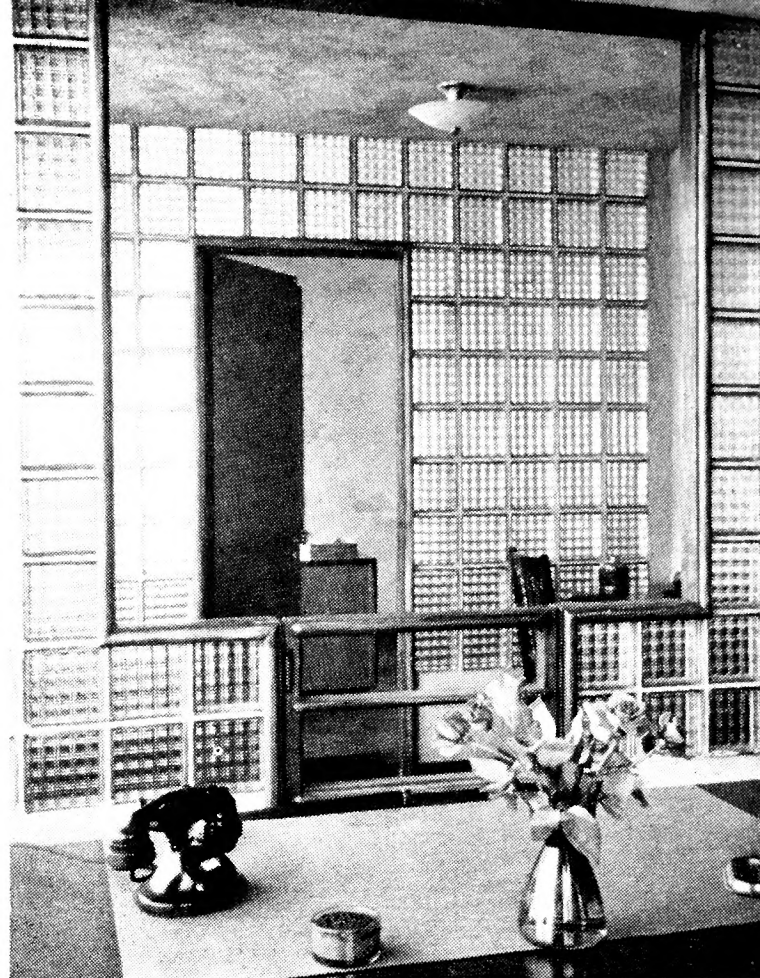
CATALOGUE *for* 1940

THE careful selection of Annuals, Perennials and Roses will enhance the beauty of your garden. We are presenting this catalogue listing plants only. The use of plants will give you almost immediate effect. The Wheatley Gardens, established in 1904, one of the largest in Long Island, have ten acres and 75,000 square feet of glass. We cordially invite your inspection of our greenhouses and gardens and we will gladly assist you in making your selections.

Cut Flower Department

Cut Flowers — Fresh — fragrant — colorful. No other gift can express your thoughts so completely, or economically, whether they are of joy, respect or affection. We grow our own Orchids and always have a large selection.

Send Flowers by "Wire"—We are members of the Florists Telegraph Delivery Association and can deliver flowers to almost any point in the United States, Canada or Europe, within an hour or two of your order.



House Plants

We carry a full line of House Plants. Also all flowering plants in season for home decoration and gifts.

Open Week Days and Sundays

The Wheatley Gardens

C. F. BERTANZEL

NORTH ROSLYN . LONG ISLAND . N. Y.



Annual and Bedding Plants

ABUTILON (*Flowering Maple*). Medium bell-shaped flowers. Pink and yellow. **35c. each, \$3.50 per doz.**

ACHYRANTHES. Brilliant foliage plant with carmine leaves. **10c. each, \$1.00 per doz., \$6.00 per 100.**

AGERATUM (*Floss Flower*).

Irwin's Beauty. Very popular Summer blooming plant. Fluffy flowers in dense blue clusters. Free bloomer. Only raised from cuttings. Compact, even growth, 8 in. to 9 in. high. Best of all Ageratum known. **2½ in. pots, \$1.25 per doz., \$10.00 per 100; 3½ in. pots, 20c. each, \$2.00 per doz., \$15.00 per 100.** (See color illustration on page 2.)

ALYSSUM (*Sweet Alyssum*). A perfect "Carpet of Snow." Produces an abundance of flowers all summer. One of the finest border plants. 3 in. to 4 in. high. **10c. each, \$1.00 per doz., \$6.00 per 100**

ANTIRRHINUM (*Snapdragon*). The best varieties of rust-resistant Snapdragon are listed below. Good for cut flowers or bedding. **12c. each, \$1.25 per doz., \$10.00 per 100.** (See color illustration on page 2.)

Apple Blossom. Rose pink, white throat.

Buttercup. Yellow.

Canary Bird. Yellow.

Copper King. Deep velvety copper shade.

Defiance. Scarlet.

Fair Lady. Apple blossom pink, white throat.

Shasta. White.

Tom Thumb, Magic Carpet. Very dwarf, compact plants, 4 in. to 6 in., covered with miniature flowers. Splendid for edgings, borders and rockeries.

ASTERS. All colors transplanted. **8c. each, 75c. per doz., \$5.00 per 100.**

BEGONIAS (Everblooming Bedding Begonias). Best bedding plants for massing, either alone or with a border of low plants; *i. e.*, Ageratum, Lobelia and Sweet Alyssum. Will stand full sun. Bloom until frost. **20c. each, \$2.00 per per doz., \$15.00 per 100; smaller plants, \$1.25 per doz., \$10.00 per 100.**

Carmen. Bright pink shade with rich bronze foliage. Compact grower.

Erfordia. Light pink, very free flowering.

Glory of Erfurt. Medium tall bright rose. Green foliage.

Luminosa. Deep bright scarlet, reddish brown foliage.

Prima Donna. Very pleasing rose-pink, medium dwarf.

Scarlet Queen. Bright scarlet. Bronzy green leaf.

White Pearl. White.

TUBEROUS-ROOTED BEGONIAS. Desirable as a midsummer pot plant. Pink, red, white, and yellow. **Prices on request.**

BROWALLIA (*Amethyst*). Rich, beautiful flowers of brilliant ultramarine blue. Fine for border, hanging baskets or vases. It is especially valuable as a pot plant for winter and early spring. **25c. each, \$2.50 per doz., \$18.00 per 100.**

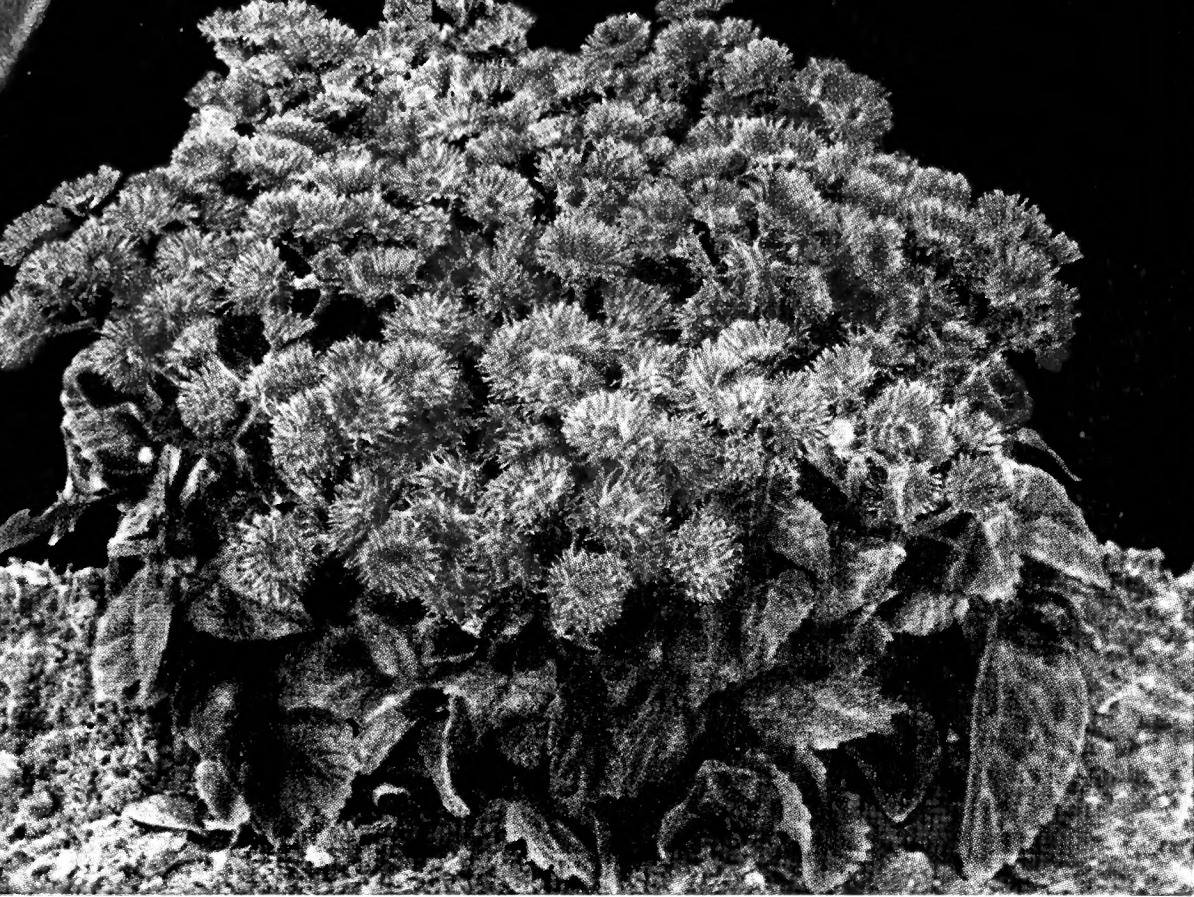
CALENDULA. Yellow and orange, double flowering. Excellent for cutting. **8c. each, 75c. per doz., \$5.00 per 100.**



Calendula



Tuberous-rooted Begonia



Ageratum (See page 1)

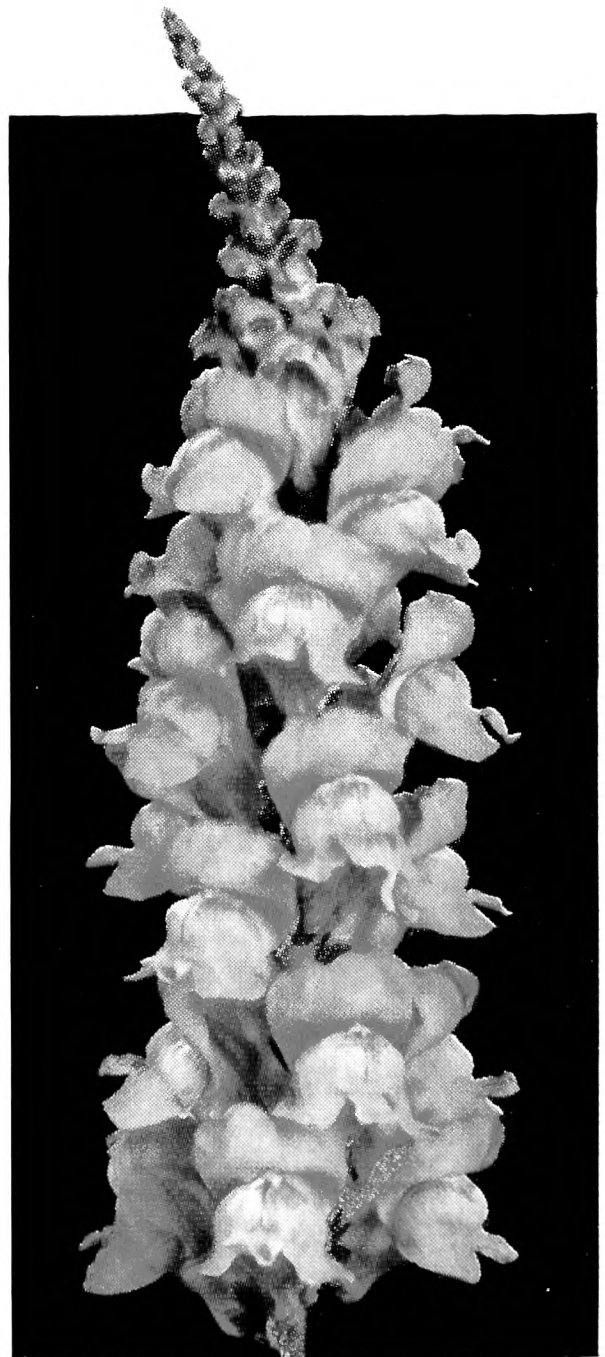


Hunnemannia (Tulip Poppy)

Annual Plants



Geranium (See page 3)



Antirrhinum (Snapdragon)

ANNUAL AND BEDDING PLANTS

CANNAS. Tallest bedding plant, tropical foliage. Effective when used in mass planting, and in mixed borders; bloom all summer. **25c. each, \$2.50 per doz., \$18.00 per 100.**

Ambassador. Cherry red blooms. 4 ft.
City of Portland. Bright pink blooms, green foliage. 3½ ft.

Eureka. Beautiful creamy white. 4½ ft.

Hungaria. Peach blossom pink, green foliage.

King Vidor. Yellow. 4 ft.

The President. Scarlet, green foliage. 4 ft.

Wyoming. Orange, bronze foliage. 6 ft.

CENTAUREA (Double Cornflower). Blue. **8c. each, 75c. per doz., \$5.00 per 100.**

COBAEA scandens (Cathedral Bells). A rapid growing vine. Flowers light green, changing to rosy purple as they open. **50c. each, \$5.00 per doz., \$35.00 per 100.**

Alba. White form of above.

COLEUS (Flame Nettle). Foliage plant, red leaf and yellow. **12c. each, \$1.25 per doz., \$8.00 per 100.**

COSMOS, Single. Pink, white, and orange. **75c. per doz., \$5.00 per 100.**

DAHLIAS. **20c. each, \$2.00 per doz., \$15.00 per 100.**

Coltness Strain. Grows 18 in. high. Single flowers in pink, yellow, red or white.

Unwin's Dwarf Hybrids. Mixed only. Flowers single and double. Height 18 in.

DRACAENA indivisa. Ornamental-leaved plant. Long, narrow, green foliage. Very large plant. **\$1.00 and \$1.50 each.**

FUCHSIAS (Ear Drops). One of the old-fashioned garden flowers. Very good in partial shade. Showy single and double pendant flowers. Excellent for mass planting, window boxes and urns. **\$3.00 per doz., \$25.00 per 100.**

GERANIUMS. Finest new varieties in all colors. 4 in. pots. **\$25.00 per 100.**

Rose-scented. **\$3.00 per doz.**

Ivy-leaf. **\$3.00 per doz.**

(See color illustration on page 2.)

GLOBE-AMARANTH (Gomphrena). Flowers resemble Clover heads which can be dried and useful for Winter decoration. **20c. each, \$2.00 per doz., \$15.00 per 100.**

HELICHRYSUM (Straw Flower). One of the best everlasting flowers. Assorted shades. **8c. each, 75c. per doz., \$5.00 per 100.**

HELIOTROPE, Royal Fragrance. A deep, rich violet blue Heliotrope. Very dwarf in growth, about 10 in. high. The individual trusses of this variety measure 15 to 18 in. across and the plants are very bushy in habit. Royal Fragrance is marvelously fragrant, as the name implies. Grown in a solid bed, it will bloom continuously from early June until frost. As a border plant it is unsurpassed, and many letters of commendation we have received on this particular variety indicate that the demand this year will exceed the supply. We suggest early ordering. **2½ in. pots, \$2.00 per doz., \$15.00 per 100; 4 in. pots, \$4.00 per doz., \$30.00 per 100.**

HUNNEMANNIA (Tulip Poppy). Bright-yellow. Very good as a cut flower. Bushy growth, attaining a height of 30 in. **15c. each, \$1.50 per doz., \$12.00 per 100.** (See color illustration on page 2.)

IMPATIENS sultani. One of the most beautiful decorative plants in the open border. For mass planting. Rosy orange; all summer. **\$3.00 per doz., \$20.00 per 100.**

IPOMOEA caerulea, Heavenly Blue (Italian Morning-glory Herculanium). Immense flowers of bright sky blue. One of the loveliest climbers for fence coverings or on pergolas. **50c. each, \$5.00 per doz.**

Scarlett O'Hara. Brilliant carmine; free flowering. **50c. each, \$5.00 per doz.**

IVY, English (Hedera helix). Full, bushy plants. 4 ft. **50c. each, \$4.80 per doz., \$35.00 per 100.**

Plants 6 to 8 ft. **Prices on request.**

German Ivy. For hanging baskets, window boxes and urns. **25c. each, \$2.50 per doz.**

Trained and Pyramid Ivy. **Prices on request.**

LANTANA. There is no similar flowering plant that can surpass Lantana. Always in bloom regardless of weather conditions. We can highly recommend Lantana for either mass or border planting. **2½ in. pots, \$1.50 per doz., \$12.00 per 100; 4 in. pots, 35c. each, \$3.50 per doz., \$25.00 per 100.**

Delicatissima. Lavender. Dwarf.

Golden Queen. Golden-yellow. Dwarf.

M. Schmidt. Orange. Medium.

Pink Perfection. Pink. Tall.

Snow White. Pure white. Dwarf.

Tethy's. Cream. Dwarf.

LARKSPUR. Valuable for cutting. 2 ft. high. Separate colors. **8c. each, 75c. per doz., \$5.00 per 100.**

LOBELIA. **10c. each, \$1.00 per doz., \$8.00 per 100.**

Crystal Palace Compacta. Rich deep blue flowers, dark foliage. 4 to 5 in.

Emperor William. Light blue.

Speciosa. Rich ultramarine blue flowers, bronze foliage. Trailing.

Tenuior compacta. Upright habit, growing 8 to 9 in. high. Bears a profusion of very large, dark blue flowers having a distinct white eye.

MARIGOLDS. **8c. each, 75c. per doz., \$6.00 per 100.**

Yellow Supreme. Bright lemon yellow.

Monarch Golden Ball. Fine golden orange. Full petaled tight double flowers.

Collarette Marigold, Crown of Gold. Chrysanthemum-like flowers; odorless.

African Varieties:

Guinea Gold. Orange gold. Double and semi-double.

Lemon Queen. Lemon yellow. Double.

Orange Prince. Orange yellow. Double.

Dwarf French Varieties:

Legion of Honor (Little Brownie). Yellow with crimson spot. Single.

Lemon Ball. Double lemon yellow.

Mahogany. Mahogany brown. Double.

Dwarf Scotch.

Single. Small, bright yellow.

ANNUAL AND BEDDING PLANTS

MARGUERITES. Very good for outdoor bedding, growing as pot plants or cutting. 50c. each, \$5.00 per doz.

Paris Daisy. Single white.

Boston Daisy. Single yellow.

MESEMBRYANTHEMUM (*Iceplant*). 20c. each, \$2.00 per doz.

Roseum. Dwarf, trailing annual plant. Flowers rose pink, icy foliage.

MYOSOTIS (*Forget-Me-Not*). 15c. each, \$1.50 per doz., \$10.00 per 100.

Palustris semperflorens. An everblooming variety. Blooms from May until frost. Large, clear, blue flowers.

NASTURTIUMS. Indispensable in every garden—for ease of culture, duration of bloom, and brilliancy of coloring. Plant in a moderately good soil in a well drained, sunny position and there will be an endless profusion of bloom. \$3.00 per doz., \$20.00 per 100.

Empress of India. Dwarf fiery crimson.

Golden Gleam. Golden yellow, double, semi-trailing.

Orange Gleam. Orange. Double.

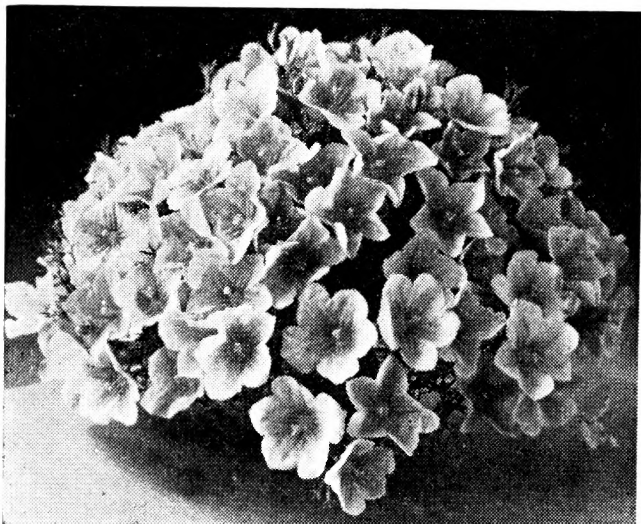
NEMESIA. Compact growth; orchidlike flowers all summer. 15c., each, \$1.50 per doz., \$12.00 per 100.

Nana compacta. Blue, red, rose, white.

NICOTIANA (*Flowering Tobacco*). Border plant. Very fragrant, tubular flowers on plants 3 ft high. 20c. each, \$2.00 per doz., \$15.00 per 100.

Affinis. Sweet-scented, white flowers.

Affinis, Crimson Bedder. Deep color.



Nierembergia

NIEREMBERGIA caerulea (*Hippomanica*). A new plant having flowers of a lovely lavender-blue shade heightened by a touch of yellow in the center. Plants are dwarf, compact, not over 5 in. or 6 in. tall, with a spread of 8 in. to 10 in. Makes an ideal edging or border plant and is unexcelled in the rockery. Blooms throughout the summer. \$2.00 per doz.

PANSIES. 60c. per doz., \$5.00 per 100.

Giant Adonis. Lavender blue.

Giant Cardinal. Rich red.

Giant Golden Queen. Pure, rich yellow.

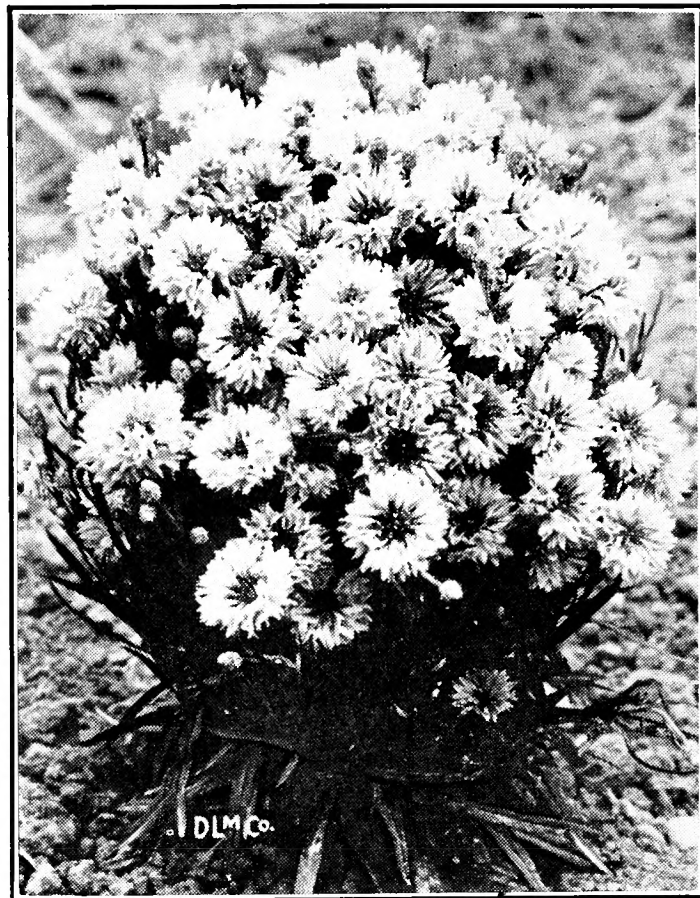
Giant Lord Beaconsfield. Deep purple violet, shading to white.

Giant Royal Blue. Rich, royal blue.

Giant Snow Queen. Pure snow white.

Giant White. Pure white with purple eye.

Giant Yellow. Rich yellow, dark center.



Centaurea (See page 3)

PETUNIAS. One of the most important garden plants; bloom uninterruptedly, early summer until frost. 3½ in. pots, 20c. each, \$2.00 per doz., \$15.00 per 100.

Apple Blossom. Shell pink, finely fringed.

Blue Bedder. Deep blue with some violet.

Celestial Rose. Rich, satiny deep rose. Unusually free blooming.

Elk's Pride. Royal purple. Dwarf.

Flaming Velvet. Deep, velvety mahogany-red; scarlet luster.

Heavenly Blue. Light silvery blue.

Lace Veil. Pure white with delicate creamy throat.

Martha Washington. Frilled portion charming flesh pink and the center is strongly veined with wine red.

Orchid Beauty. Lavender-lilac shade.

Princess of Wuerttemberg. Rose-pink.

Rosy Morn. Fairly deep rose with white throat.

Snowball. A fine true white.

Snowstorm Improved. One of the best white Petunias.

World Beauty. Beautiful pink.

White Cloud. Clear white.

The above in 2½ in. pots, \$1.25 per doz., \$10.00 per 100.

PHLOX drummondii. 15c. each, \$1.50 per doz., \$10.00 per 100.

Nana compacta. 6 to 8 in. Of dwarf, compact growth; fine for low bedding and border.

Chamois. Rose with carmine eye.

Fireball. Fiery scarlet.

Isabellina. Pure yellow.

Sky Blue. Blue with white eye.

PORTULACA (*Sun Plant*). Makes a brilliant display in low borders, edgings, beds, rock gardens, or ground cover. Blooms all summer. Height 5 to 6 in. 8c. each, 75c. per doz., \$6.00 per 100.

ANNUAL AND BEDDING PLANTS

SALPIGLOSSIS (*Painted Tongue*). These are one of the very finest annuals and are of the easiest culture, succeeding in any good, ordinary soil and in a sunny position. The plants grow from 24 to 30 in. high and produce freely, from mid-summer until frost, attractive Gloxinia-like blossoms in a very large and unusual range of colors. They are splendid for cutting, lasting well. **15c. each, \$1.50 per doz., \$10.00 per 100.**

Crimson, Primrose, Purple and Gold, Rose and Gold, Scarlet and Gold, White and Gold, etc.



Salvia

SALVIA splendens (*Scarlet Sage*). The Scarlet Sage has long been a favorite bedding plant and is undoubtedly one of the most effective plants either as individual specimens or in beds or borders of any size. Also grown for conservatory decoration, bearing long spikes of flowers in great profusion from July to frost. **15c. each, \$1.50 per doz., \$10.00 per 100.**

America. Scarlet, bushy. Height 15 in.

Blaze of Fire. The earliest flowering Salvia. Dwarf and compact. Height 12 in.

Bonfire. Scarlet. Dwarf.

Farinacea. Blue.

STANDARDS. A very charming subject for Rose, Formal and Annual Gardens. Our specialty in many kinds, such as Heliotrope, Geraniums, Fuchsias, Lantanas, the best Hybrid Tea Roses. All these Standards are in bloom from May to October and no fine garden should be without them. As it takes many years to grow large plants, it pays to have them stored for the winter months by us at a very reasonable cost.

Fuchsias, Geraniums, Lantanas, Heliotrope and Roses. Prices on request.



Scabiosa

SANVITALIA. Double creeping Zinnia. Small golden flowers, very fine dwarf edging plant. **\$1.50 per doz., \$10.00 per 100.**

SCABIOSA (*Pincushion Flower*). These are favorites with many of our customers. They grow 2½ to 3 ft. high and come into bloom early in July and continue without interruption until hard frost. The beautiful flowers in exquisite shades are borne on long stems and when cut keep in perfect condition for the best part of a week. They make effective borders or beds, and no garden is complete without Scabiosas, especially where flowers are wanted for cutting. **15c. each, \$1.50 per doz., \$10.00 per 100.**

Azure Fairy. Lavender blue.

Blue Moon. An entirely different Scabiosa. This new variety has a large flower composed entirely of broad, wavy petals. Flowers attaining 2 in. to 2¾ in. Long stems. Excellent for cutting.

Crimson. Rich rosy crimson.

Flesh Pink. Delicate tone of pink.

King of the Blacks. Velvety black purple.

Rose. Soft rose color.

White. Pure white.

STOCK. Splendid perpetual blooming. They begin flowering in July, continuing till frost, and are especially valuable during September and October, when other flowers are scarce; they throw out numerous side branches bearing very double, fragrant flowers. 2 ft. **15c. each, \$1.50 per doz., \$10.00 per 100.**

Brilliant. Blood red.

Creole. Creamy yellow.

La France. Rose.

May Queen. Lilac.

Princess Alice. White.

Sapphire. Dark blue.

ANNUAL AND BEDDING PLANTS

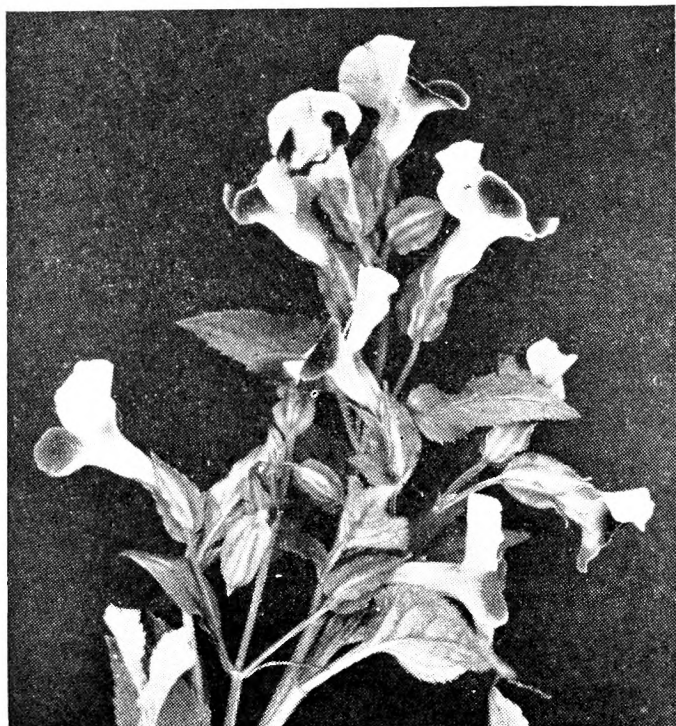
TRADESCANTIA. A graceful vine for hanging baskets. 20c. each, \$2.00 per doz., \$15.00 per 100.

TORENIA. 20c. each, \$2.00 per doz., \$15.00 per 100.

Fournieri. A very fine annual; a splendid plant for vases, hanging baskets, borders, etc. Covered the entire season with a mass of blooms. Sky blue, with three spots of dark blue, bright yellow center.

TUBEROSES. \$5.00 per 100.

Double Pearl. Richly fragrant, pearly white flowers on sturdy stems. Strong flowering bulbs.



Torenia

VERBENAS. Verbenas are the most satisfactory flowers for borders; blooming from May until late October. 15c. each, \$1.50 per doz., \$10.00 per 100.

Appleblossom. White shading to true cameo-pink.

Beauty of Oxford. Salmon pink.

Crimson Glow. Glowing crimson.

Dannebrog. Intense scarlet with large white eye.

Etna. Geranium red with light yellow eye.

Lavender Glory. Large flowering. Lavender with white eye.

Luminosa. Fiery pink shading to salmon.

Mayflower. Varying shades of pink, from light to deep.

Royale. Blue with creamy yellow eye.

Salmon Pink. Salmon pink, white eye.

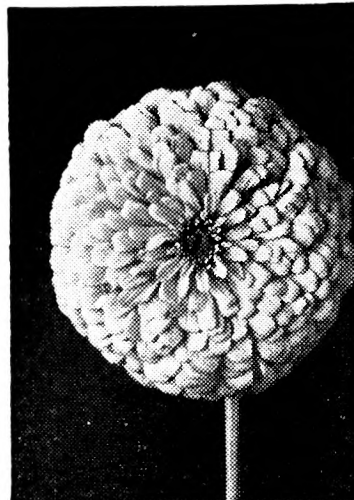
Snowball. Pure white.

Venosa. Rosy lilac.

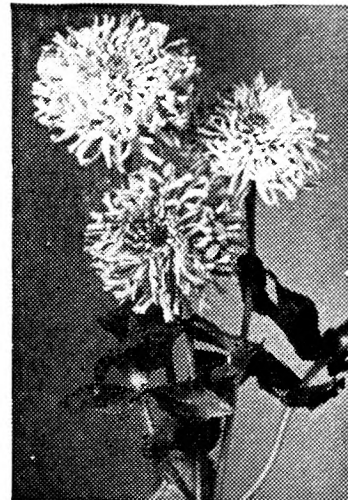
Lemon-Verbena (*Aloysia citriodora*). A well known garden plant, appreciated for the sweet, lemon-scented foliage, which is extensively used to impart a sweet scent to bunches of flowers lacking in a scent of their own. It is also used in flavoring jellies. 30c. each, \$3.00 per doz.

VINCA major variegata. Green and white variegated vine. \$35.00 per 100.

Madagascar (*Periwinkle*). Pink, white, and white with pink eye. 15c. each, \$1.50 per doz., \$12.00 per 100.



Lilliput



Fantasy

ZINNIAS. \$5.00 per 100.

California Giant or Mammoth-flowered Daffodil Improved. Canary yellow.

Enchantress. Light rose, deeper center.

Miss Willmott. Soft pink.

Purity. White, best white in Zinnias.

Salmon Queen. Salmon rose.

Youth. Soft rose.

Dahlia-flowered.

Canary Bird. Rich canary yellow.

Dream. Deep lavender.

Exquisite. Light rose, deep rose center.

Golden Dawn. Golden yellow.

Polar Bear. Large pure white.

Fantasy.

Orange Lady (New). Rich deep shade.

Rosalie (New). Bright intense rose.

Star Dust. Golden yellow.

White Light (New). White.

Gracillima (*Red Riding Hood*). A deep scarlet with miniature red flowers.

Improved Lilliput.

Crimson Gem.

Golden Gem. Golden orange.

Rosebud. Rose pink.

Salmon Gem. Salmon rose.

Valencia. Burnt orange.

White Gem.

Lilliput.

Tom Thumb. Well formed flowers of Lilliput type. 4 in. to 6 in. Red, orange, yellow, pink, rose, and pastel shades.

Picotee.

Delight Type. A fairly tall growth and attractive flower with ruffled petals. Good cut flower. Assorted shades.

Scabious-flowered.

Sunburst (New). Vivid canary yellow.



Dahlia-flowered



Scabious-flowered



Hardy Perennials

Hardy garden flowers are indispensable and respond generously to minimum care. We invite you to visit our perennial gardens where we grow large quantities of many varieties. Varieties marked with asterisk (*) are most suitable for the rock garden.

ACHILLEA (*Milfoil or Yarrow*). 20c. each, \$2.00 per doz., \$15.00 per 100.

fulgida. Deep yellow. 2 ft. July and Aug.
ptarmica, The Pearl. A profusion of small, double, white flowers. 2 ft. All summer.

ACONITUM (*Monkshood*). 25c. each, \$2.50 per doz., \$18.00 per 100.

fischeri. Dark blue flowers. 2 to 3 ft. Sept. and Oct.

***AJUGA** (*Bugle*). 25c. each, \$2.50 per doz., \$18.00 per 100.

reptans rubra. Bronzy foliage with deep blue flowers. For rockeries and ground covering, particularly in shade. 4 to 6 in. May and June.

***ALYSSUM** (*Rock Madwort*). 20c. each, \$2.00 per doz., \$15.00 per 100.

rostratum. Dense heads of bright golden flowers. June and July. 20 in.
saxatile compactum (*Basket of Gold*). Golden yellow flowers. 9 to 12 in. April to June.

saxatile, Silver Queen. Pale lemon blossoms. 6 in. April to June.

AMPELOPSIS.

veitchi (*Boston or Japanese Ivy*). See **Hardy Vine List**, page 16.

ANCHUSA (*Alkanet*). 25c. each, \$2.50 per doz., \$18.00 per 100.

italica, Dropmore. Clusters of large, snowy blue flowers. 3 ft. May and June.

***myosotidiflora**. Forget-me-not blue. 12 in. April and May.

ANEMONE (*Windflower*). 25c. each, \$2.50 per doz., \$18.00 per 100.

hupehensis. Mauve rose. 18 to 24 in. Aug. to Oct.

Queen Charlotte. Large light pink, semi-double blooms. 2 to 3 ft. Aug. to Oct.

Whirlwind. White, semi-double. 3 ft. Aug. to Oct.

ANTHEMIS (*Camomile or Yellow Marguerite*). 15c. each, \$1.50 per doz., \$12.00 per 100.

kelwayi. Aromatically scented golden yellow flowers. 2 ft. All Summer.

***AQUILEGIA** (*Columbine*). 25c. each, \$2.50 per doz., \$18.00 per 100.

***alpina**. Rich blue. 2 ft. May and June.

***alpina alba**. White. 2 ft. May and June.

***caerulea**. Long-spurred flowers, blue with white throat. 2 ft. May and June.

California Hybrids. Assorted shades. 2 ft. May and June.

HARDY PERENNIAL PLANTS



Aquilegia clematiflora

AQUILEGIA—Continued

- *chrysantha.** Fragrant yellow flowers. 3 ft. June to July.
- clematiflora.** Entirely distinct, new Columbine; flowers greatly resemble those of Clematis. Medium height, free blooming and very colorful. Mixed.
- Long-spurred Hybrids.** Blue shades. 2½ ft. May to July.
- Long-spurred Pink Shades.** 2½ ft. May to July.
- Mrs. Scott Elliott's Hybrids.** A wide range of splendid colors. 3 ft. June-July.
- Snow Queen.** Long-spurred white. 2 ft. May and June.
- *ARABIS (Rockcress).** 20c. each, \$2.00 per doz., \$15.00 per 100.
 - alpina.** Showy border plant. A profusion of pure white blooms. 9 in. April-May.
- *ARENARIA (Sandwort).** 25c. each, \$2.50 per doz., \$18.00 per 100.
 - balearica.** One of the best rock garden plants. Tiny white flowers that give a charming effect when closely viewed.
 - montana.** Trailing evergreen plant with pure white flowers. 4 to 6 in. May-June.
- *ARMERIA (Sea Pink).** 25c. each, \$2.50 per doz., \$18.00 per 100.
 - formosa.** Showy rosy pink flowers. Blooms throughout the summer and early fall. 18 in.
 - maritima.** Pale pink. 3 to 6 in. May and June.
- ARTEMISIA (Ghost Plant).** 25c. each, \$2.50 per doz., \$18.00 per 100.
 - Silver King.** Useful for borders. Silvery white foliage. Long sprays may be cut to mix with winter bouquets. 3 ft.
- *ASTERS.** 25c. each, \$2.50 per doz., \$18.00 per 100. (See color illustration on page 15.)
 - *alpinus (Rock Aster).** Violet-blue. 6 to 10 in. May and June.
 - *alpinus albus (Rock Aster).** White. 6 in. May and June.

ASTERS—Continued

Newer Varieties of DWARF ASTERS.

These low growing Asters are well suited for rockery or borders. Also can be used for mass planting. Sept. and Oct. 25c. each, \$2.50 per doz., \$18.00 per 100.

- *Constance.** Clear light pink. 12 to 15 in.
- *Countess of Dudley.** Clear pink with contrasting yellow eye. 9 in. Late Sept.
- *Diana.** Blush pink. 15 in.
- *Hebe.** Lavender-blue. 15 in.
- *Lady Henry Maddocks.** Clear pale pink. 12 in. Sept.
- *Lavanda.** Light blue. 15 in.
- *Lilac Time.** Deep violet-blue. 15 in.
- *Mauve Cushion.** Silvery mauve. 9 in. Oct. and Nov.
- *Nancy.** Flesh pink. 12 in. Late Sept.
- *Niobe.** Pure white with yellow center. 12 in.
- *Ronald.** Brilliant lilac pink. 12 in. Mid-Sept.
- *Snowsprite.** Semi-double, dazzling white. 12 in. Sept.
- *Victor.** Clear lavender blue. 9 in. Sept.

Taller Varieties of ASTERS, Fall Blooming

- Alderman Vokes.** Clear rose pink. 3 ft.
- Barr's Pink.** Bright pink. 5 ft. Sept. and Oct.
- Blue Bouquet.** Semi-double blue flowers. 2 ft.
- Blue Eyes.** Violet-blue, yellow eye. 4 ft. Sept.
- Burbank's Charming.** Delicate rosy white. 5 ft.
- Climax.** Single, light lavender blue flowers. 5 ft. Aug. to Oct.
- Mt. Everest.** Pure white. 3 to 4 ft.
- novae-angliae.** Violet-purple. 4 ft.
- Pink Nymph.** Rich rosy pink. 4 ft. Sept.
- Queen Mary.** Blue tinted lavender. 3½ ft.
- Red Rover.** Rosy red with golden center. 3 ft.
- ASCLEPIA (Butterfly flower).** 25c. each, \$2.50 per doz., \$18.00 per 100.
 - tuberosa.** Bright orange flowers. 18 to 24 in. July to Sept.
- ASPHODELUS (King's Spear).** 25c. each, \$2.50 per doz.
 - luteus.** Yellow. Spear-like foliage. 3 ft. July.
- ASTILBE (Spirea).** 40c. each, \$4.00 per doz.
 - Assorted Varieties.** 18 to 24 in. June and July.
- *AUBRIETIA (Rainbow Rockcress).** 25c. each, \$2.50 per doz., \$18.00 per 100.
 - Rainbow Hybrids.** Assorted.
- BAPTISIA (False-indigo).** 25c. each, \$2.50 per doz., \$18.00 per 100.
 - australis.** Blue. Attractive foliage all Summer. 3 to 4 ft. June and July.
- BELLIS (English Daisy).** 10c. each, \$1.00 per doz., \$8.00 per 100.
 - Assorted.** Pink, white, and red. 6 in. June-July.

HARDY PERENNIAL PLANTS

- BOLTONIA** (*False Starwort*). 25c. each, \$2.50 per doz., \$18.00 per 100.
asteroides. Pure white. 5 to 7 ft. July to Sept.
latisquama. Lilac pink. 5 to 6 ft. July to Oct.
- ***CAMPANULA** (*Bellflower*). A showy and graceful plant for borders and beds. 25c. each, \$2.50 per doz., \$18.00 per 100.
calycanthema (*Cup-and-saucer, Canterbury-bells*). Blue, pink, white. 2 to 3 ft. June and July.
- ***carpatica** (*Carpathian Harebell*). White and clear blue shades. 6 in. July.
lactiflora. White tinged blue. June to Aug.
medium (*Canterbury-bells*). Blue, rose, lilac and white. 2 to 3 ft. June and July.
persicifolia, Princess Royal. Dark blue. 2 ft. June and July.
persicifolia, Telham Beauty. Pale china blue. 2 ft. June and July.
persicifolia, Telham Beauty, White. White. 2 ft. June and July.
- CENTAUREA** (*Hardy Cornflower*). 20c. each, \$2.00 per doz., \$15.00 per 100.
macrocephala. Border plant. Golden yellow. 3 ft. July and Aug.
 ***montana** (*Mountain-bluet*). Deep blue flowers. 2 ft. June to Sept.
 ***montana alba**. White. 18 in. June-July.
- CERASTIUM** (*Snow-in-summer*). 20c. each, \$2.00 per doz., \$15.00 per 100.
biebersteini. Creeping. Grayish-woolly leaves. White flowers. 6 in. May-June.
 ***tomentosum**. White. Like beds of snow in appearance. 6 in. May and June.
- CHEIRANTHUS** (*Wall Flower*). 20c. each, \$2.00 per doz., \$15.00 per 100.
 ***allioni**. Bright orange blossoms, sweet-scented. 12 in. May to July.
- CHELONE** (*Shell Flower*). 25c. each, \$2.50 per doz., \$18.00 per 100.
barbata torreyi. Scarlet-red. 3 ft. June to Sept.
- CLEMATIS**. See **Hardy Vine List**, page 16.
- CONVALLARIA** (*Lily-of-the-valley*). 50c. each, \$5.00 per doz., \$35.00 per 100.
majalis. White. 8 in. Large clumps. May-June.
rosea. Pink form of above. New. 75c. each, \$7.50 per doz.
- COREOPSIS**. 20c. each, \$2.00 per doz., \$15.00 per 100.
lanceolata grandiflora. Pure yellow. Lovely for border. 2 ft. All summer.
Mayfield Giant. Deep golden yellow. 3 ft. All summer.
- CHRYSANTHEMUMS**. Hardy, late blooming; resplendent in harmonizing Autumn shades. Add a magnificent touch of color and beauty to the garden. Pompon, Button, Large-flowering, in all colors.
Barbara Cummings. Yellow shading to bronze. Sept.
Dazzler. Cardinal red. Oct. 10-15.
Early Bronze. Bronze Button. Sept.
Ganna. Bright pink. Oct. 12.
Granny Scovill. Coral bronze. Oct. 15.
Gypsy Girl. Chestnut crimson. Oct. 1.
Jack Bannister. Light yellow. Oct. 10.
Jean Cummings. White. Sept.
Jean Treadway. Pink dark center. Oct. 1.

- CHRYSANTHEMUMS**—Continued
Judith Anderson. Yellow Button. Oct. 1.
 (See color illustration on page 15.)
Margot. White Button. Oct. 1.
Normandie. White. Sept.
R. Marion Hatton. Canary yellow. Oct. 5.
Ruth Cummings. Reddish bronze. Oct. 1.
Wolverine. Yellow. Sept.
Yellow Normandie. Yellow. Sept.
 25c. each, \$2.50 per doz., \$18.00 per 100.

- KOREAN CHRYSANTHEMUMS**. Their earliness to bloom, the size of the individual flowers, and a wide range of carefully selected colors, will make the garden a spectacle beyond description.
Apollo. Sprays of nicely formed flowers in shades of bronze-red, old gold, and glowing salmon. Delightful cut flower.
Ceres. Lovely combination of old gold, chamois-yellow, and soft coppery bronze.
Clio. Dwarf, compact plant, producing deep carmine-rose duplex flowers.
Fortune. Striking plant of medium height and covered with curly petaled, oxblood-red flowers 3 to 4 in. in diameter.
Louise Schling. Large lemon yellow, single flowers, suffused with red.
Mars. Deep amaranth-red, changing to wine-red, overlaid with a velvety sheen.
Niobe. Clear glistening white flowers 2½ in. in diameter, with yellow disc. Blooms freely produced.
Thalia. Compact, bushy plant with duplex flowers of a lively orange shade.
Vesta. Medium height, flowers deep golden orange, 2½ in. in diameter.

CHRYSANTHEMUM

- ***arcticum** (*Arctic Daisy*). White. 8 to 10 in. Sept. and Oct. 25c. each, \$2.50 per doz., \$18.00 per 100.
Shasta Daisy, Alaska. White. 2 ft. All Summer. 20c. each, \$2.00 per doz., \$15.00 per 100.



Bed of Korean Chrysanthemums

HARDY PERENNIAL PLANTS



Delphinium Pacific Hybrids

***DAPHNE** (*Garland Flower*).
cneorum. Beautiful pink, sweet-scented dwarf spreading shrub. Early May.
\$1.50 each

DELPHINIUM PACIFIC HYBRIDS. This is the finest Delphinium yet produced. From our personal observations made during the dry season of 1939, we noted that the plants produced freely with exceptionally prolific, full flowered spikes, the individual flowers 2 to 3 in. in diameter on stems 3 to 5 ft. Under proper conditions, then, this Delphinium would be exhibition material and excellent as the tall cut flower so much in demand by Delphinium lovers. We have these in five separate varieties. **35c. each, \$3.50 per doz., \$25.00 per 100.**

***DELPHINIUM** (*Hardy Larkspur*). (See color illustration on page 15.) **25c. each, \$2.50 per doz., \$18.00 per 100.**

Belladonna. Clear turquoise blue. 2 ft. All summer.

Bellamosum. Rich dark blue. 2 ft. All summer.

Blackmore and Langdon's Hybrids. Assorted shades. Single and double. 3 to 4 ft. All summer.

De Luxe Hybrids. Blue. 3 ft. All summer.

Wrexham. Assorted shades. 3 to 4 ft. Summer.

Summer Cloud. White. All Summer.

DELPHINIUM chinense. **25c. each, \$2.50 per doz., \$18.00 per 100.** See note.*

Azure Fairy. Bright azure-blue. 1 ft. June to Sept.

Dark Blue. 18 in. All summer.

White. 18 in. All summer.

*The above price is for field clumps. We have seedlings for **\$8.00 per 100.**

DIANTHUS (*Hardy Pinks*). **20c. each, \$2.00 per doz., \$15.00 per 100.**

***allwoodi**. Assorted shades. 12 to 15 in. May to Oct.

barbatus (*Sweet-william*). White, pink, scarlet, dark red, Newport Pink, and Diadematus. 10 to 20 in. June and July.

Beatrice. A lovely pure pink. June until Sept. **\$3.00 per doz., \$20.00 per 100.**

***caesius** (*Cheddar Pink*). Compact rose-pink blooms. Sweet scented. 6 in. May to July.

***deltoides** (*Maiden Pink*). Brilliant pink flowers. 6 in. June and July.

***Mother**. Originated by C. F. Bertanzel; registered by the American Carnation Association and awarded a Certificate of Merit by the New York Florists' Club. Early flowering hardy Carnation, pure white, double, very fragrant, on long, stiff stems and one of the best varieties. 10 in. May and June. **40c. each, \$4.00 per doz.**

***plumarius** (*Grass Pink*). Lovely shade of pink. 10 in. June and July.

***Vienna Dwarf**. White. 8 in. June-July.
Vienna Dwarf Pink. Soft shade of pink. 8 in. June and July.

***DIELYTRA** or **DICENTRA**.

***eximia Formosa** (*Pink Bleeding Heart*). 1 ft. May and Aug. **25c. each, \$2.50 per doz., \$18.00 per 100.**

spectabilis. Rosy red. 2 ft. April to June. **45c. each, \$4.50 per doz., \$35.00 per 100.**



Dianthus

HARDY PERENNIAL PLANTS

- *DIGITALIS** (*Foxglove*). 20c. each, \$2.00 per doz., \$15.00 per 100.
gloxiniaeflora. White, rose, pink, purple 3 to 4 ft. June and July.
Giant Shirley. Ranges from white to dark rose, blotched with crimson, maroon, and brown. 5 to 7 ft. June and July.
lutzi Hybrids. Beautiful salmon pink flowers. 4 ft.
- DORONICUM** (*Leopard-bane*).
excelsum. Large, bright yellow flowers. 2 ft. Early Spring-April. 25c. each, \$2.50 per doz., \$18.00 per 100.
- *DRABA fladnizensis**. Yellow flowers. 4 in. March to May. 25c. each, \$2.50 per doz., \$18.00 per 100.
- ECHINOPS** (*Globe Thistle*). 25c. each, \$2.50 per doz., \$18.00 per 100.
ritro. Thistle-like plant with steel-blue flowers. 4 ft. July and Aug.
- *EDELWEISS**. 20c. each, \$2.00 per doz., \$15.00 per 100.
Alpine Plant. Small yellow flowers and silvery white leaves. 6 in. June and July.
- EPILOBIUM**. 25c. each, \$2.50 per doz., \$18.00 per 100.
Bronze Carpet. Excellent ground covering. Small, bronzy-green foliage studded with tiny white flowers.
- ERINUS**. 25c. each, \$2.50 per doz., \$18.00 per 100.
alpinus. Spring blooming plant with pale purple flowers. Valuable for the rock garden. 2 in. high.
- ERYNGIUM** (*Sea Holly*). 25c. each, \$2.50 per doz., \$18.00 per 100.
planum. Steel blue. 2 ft. July to Sept.
- EUPATORIUM** (*Mist Flower or Hardy Ageratum*). 25c. each, \$2.50 per doz., \$18.00 per 100.
ageratoides. White flowers in dense tufts. 3 to 3½ ft. Aug. and Sept.
coelestinum. Deep lavender blue. 2 ft. Aug. to Oct.
- EUPHORBIA** (*Spurge*). 25c. each, \$2.50 per doz.
***polychroma**. Yellow. 18 in. May and June.
- FUNKIA** (*Plantain Lily*). 25c. each, \$2.50 per doz., \$18.00 per 100.
lanceolata. Late flowering lilac flowers. 2 ft. Sept.
subcordata grandiflora. Very large, pure white, Lily shaped flowers. Fragrant. 2½ ft. Aug. and Sept.
variegata. Green and white striped leaf; lavender flowers. 2 ft. July.
- *GAILLARDIA** (*Blanket Flower*). 20c. each, \$2.00 per doz., \$15.00 per 100.
Burgundy. Sparkling wine-red flowers. 2½ ft. All summer.
Goblin. Large showy yellow blooms bordered with deep red. 12 to 15 in.
maxima. Yellow.
Portola Hybrids. Bronze-red with border of golden yellow. 2 ft. All Summer.
The Dazzler. Golden yellow and maroon. 3 ft. All Summer.



Geum, Mrs. Bradshaw

- GEUM** (*Avens*). 25c. each, \$2.50 per doz., \$18.00 per 100.
borisi. Vivid orange-scarlet flowers. May to Oct. 8 to 12 in.
- *Lady Stratheden**. Golden yellow. 18 in. June and July.
- *Mrs. Bradshaw**. Scarlet flowers. 18 in. June and July.
Prince of Orange. A new variety. Brilliant, glistening golden orange blooms. All summer.
- GYPSOPHILA** (*Babys Breath*).
Bristol Fairy. White, double. 2 to 3 ft. June to Aug. 50c. each, \$5.00 per doz.
oldhamiana. A splendid new dwarf variety. Suitable for border or rock garden. Lovely pinkish blooms. From July. 50c. each, \$5.00 per doz.
paniculata. White, single. 2 to 3 ft. June to Aug. 25c. each, \$2.50 per doz., \$18.00 per 100.
Rosenschleier. Light pink blooms. 2 ft. Early. 50c. each, \$5.00 per doz.
- HELENIUM** (*Sneezewort*). 25c. each, \$2.50 per doz., \$18.00 per 100.
autumnale superbum. Daisy-like golden yellow. 5 to 6 ft. Aug. to Oct.
Riverton Beauty. Rich lemon yellow. 4 ft. Aug. and Sept.
- *HELIANTHEMUM** (*Rock or Sunrose*). 20c. each, \$2.00 per doz., \$15.00 per 100.
Mixed. 1 ft. June and July.
- HELIANTHUS** (*Perennial Sunflower*). 20c. each, \$2.00 per doz., \$15.00 per 100.
Miss Mellish. A profusion of rich golden yellow flowers. 4 to 5 ft. Aug. and Sept.
- HELIOPSIS** (*Orange Sunflower or Hardy Zinnia*). 25c. each, \$2.50 per doz., \$18.00 per 100.
pitcheriana. Golden yellow. 2 to 3 ft. July to Oct.

HARDY PERENNIAL PLANTS



Hollyhock

HEMEROCALLIS (*Day Lily*). 25c. each, \$2.50 per doz., \$18.00 per 100. (See color illustration on page 15.)

flava. Fragrant lemon yellow blooms. 3 ft. June-July.

Lemon Queen. Pale lemon yellow flowers. 4½ ft. June and July.

Hybrids, Mixed Colors.

HEUCHERA (*Coral Bells*). 25c. each, \$2.50 per doz., \$18.00 per 100.

***brizoides**. Pale pink, very profuse. May.

***Sanguinea**. Bright coral red. 12 to 18 in. June to Sept.

HIBISCUS (*Rose Mallow*). Pink, red, white, white with crimson center. 5 ft. July to Sept. 25c. each, \$2.50 per doz., \$18.00 per 100.

HOLLYHOCK. 25c. each, \$2.50 per doz., \$18.00 per 100.

Double. 6 ft. Bright rose, Newport Pink, red, salmon-rose, white, yellow, maroon and chamois.

IBERIS (*Hardy Candytuft*). 25c. each, \$2.50 per doz., \$18.00 per 100.

gibraltarica. Lovely large white flowers shading to a beautiful lilac color. Blooms profusely during spring and early summer. 12 in. high.

***sempervirens**. White. 8 to 10 in. April and May.

INCARVILLEA (*Hardy Gloxinia*). 25c. each, \$2.50 per doz.

delavayi. Bright rose-pink. 18 in. June and July.

IRIS germanica (*German or Flag Iris*). 25c. each, \$2.50 per doz., \$18.00 per 100.

Alcazar. Violet to crimson-purple. 3 to 4 ft. June.

Archeveque. Reddish-purple. 2 ft. June.

Bridesmaid. Lavender and white. 2 ft. June.

Edouard Michel. Reddish violet. 3 ft. June.

IRIS—Continued

Florentina alba. Ivory white, tinged with lilac. 2 ft. June.

Foster's Yellow. 1½ ft. June.

Honorabilis. Yellow and brown. 1½ ft. June.

Isoline. Lilac, tinged bronze. 2½ ft. June.

King. Lemon yellow and maroon. 2 ft. June.

Kochi. Deep rich purple. 18 in. June.

La Tendresse. Violet-blue. 1½ ft. June.

Lohengrin. Violet-mauve. 2½ ft. June.

Loreley. Deep blue, veined with creamy white, bordered yellow. 2½ ft. June.

Mme. Chereau. White, edged violet-blue.

Nuee d'Orange. Slaty gray, bronze and purple. 2 ft.

Pallida Dalmatica, Princess Beatrice. Soft lavender. 2½ to 3 ft. June.

Parisiana. Chinese violet with white. 2½ ft. June.

Princess Victoria Louise. Yellow and plum. 2 ft. June.

Queen of May. Rosy-lavender. 2 ft. June.

Rebecca. Golden yellow and brown. 2 ft. June.

Rembrandt. Lavender-blue. 2 ft. June.

Rhein Nixe. White, violet-blue. 3 ft. June.

Sherwin-Wright. Golden yellow. 2 ft. June.

Troost. Striped pink. 1½ ft. June.

IRIS interregna. 25c. each, \$2.50 per doz., \$18.00 per 100.

Fritjof. Lavender-blue and reddish-purple. 18 in. May and June.

Helge. Creamy yellow. 18 in. May-June.

spectabilis. Violet-purple. 18 in. May-June.

***IRIS kaempferi** (*Japanese Iris*). 2 to 2½ ft. June and July. 50c. each, \$5.00 per doz., \$35.00 per 100. (See color illustration on page 15.)

Apollo. Pale lavender with purple veins.

Fascination. Double clear pink with white veins.

Hans-no-nishiki. Dark blue.

Hosokawa. Lavender and white.

Kyodaisan. Light blue.

Margaret. Deep blue with violet.

Mount Hood. Double light blue with darker shadings.

Pyramid. Double dark violet-purple, white veins.

Red Riding Hood. Single purplish-red.

Robert Craig. French gray and violet.

Rose H. Scheepers. Mauve gray and blue.

Shadow. Reddish-purple.

Schenley. Double rose-red.

Vesta. Ash gray and purple.

Violet Herrington. Violet, white veins.

IRIS pumila hybrida (*Dwarf Bearded*). 10 to 12 in. May. 25c. each, \$2.50 per doz., \$18.00 per 100.

***caerulea**. Sky blue.

***excelsa**. Delicate lemon yellow.

***Schneekuppe**. Large pure white.

IRIS ochroleuca. One of the loveliest. White, yellow, cream, blue. 3 ft. June and July. \$1.00 each, \$10.00 per doz.

IRIS sibirica. 25c. each, \$2.50 per doz., \$18.00 per 100.

Blue. 2 to 2½ ft.

HARDY PERENNIAL PLANTS

- LAVANDULA** (*Lavender*). 25c. each, \$2.50 per doz., \$18.00 per 100.
vera. Fragrant flowers. Blue. 1½ ft. July and Aug.
- LIATRIS** (*Blazing Star*). 25c. each, \$2.50 per doz., \$18.00 per 100.
pycnostachya. Rosy purple. 3 to 4 ft. July to Sept.
- LINUM** (*Flax*). 20c. each, \$2.00 per doz., \$15.00 per 100.
 **perenne*. Clear blue. 1½ ft. May to Aug.
- LOBELIA** (*Indian Paint Brush*). 20c. each, \$2.00 per doz., \$15.00 per 100.
cardinalis. Brilliant scarlet. 3 ft. Aug. and Sept.
- LUPINUS** (*Lupine*). 20c. each, \$2.00 per doz., \$15.00 per 100.
polyphyllus, Blue. 3 ft. June to Sept.
polyphyllus albiflorus. White. 3 ft. June to Sept.
polyphyllus roseum. Rose shades. 3 ft. June to Sept.
- LYCHNIS** (*Campion or Lamp Flower*). 25c. each, \$2.50 per doz., \$18.00 per 100.
 **alpina*. Rose. 4 in. June and July.
chalcedonica. Star-shaped scarlet blooms. 2 ft. June and July.
viscaria roseum. Light pink. 1 ft. June.
viscaria splendens. Rose red, double flowers. 1 ft. June.
- LYSIMACHIA**. 25c. each, \$2.50 per doz., \$18.00 per 100.
nummularia (*Moneywort*). Excellent ground cover for shady places. Yellow.
- LYTHRUM** (*Rose Loosestrife*). 25c. each, \$2.50 per doz., \$18.00 per 100.
salicaria roseum. Rose color. 2½ ft. July-Aug.
- MATRICARIA** (*Feverfew*). 25c. each, \$2.50 per doz., \$18.00 per 100.
capensis albus plenus. Double white flowers. 18 in. All summer.
- MENTHA** (*Mint*). 25c. each, \$2.50 per doz.
piperita (*Peppermint*). Herb with fragrant foliage. 12 to 18 in.
- MERTENSIA** (*Bluebells*).
virginica. 12 to 18 in. Blue flowers. April and May.
- MONARDA** (*Bergamot or Beebalm*). 25c. each, \$2.50 per doz., \$18.00 per 100.
didyma. Scarlet flowers. Aromatic foliage. 1½ to 2½ ft. June to Sept.
- MYOSOTIS** (*Forget-me-not*). 15c. each, \$1.50 per doz., \$10.00 per 100.
alba. White.
alpestris, Royal Blue. Rich, profuse indigo-blue. 9 in.
alpestris alba. White. 9 in.
palustris semperflorens. Blue. Summer flowering.
roseum. Pink. May and June.
Victoria. Clear azure blue.
- NEPETA** (*Ground Ivy, Catnip*). 25c. each, \$2.50 per doz., \$18.00 per 100.
mussini. Excellent for edging, beds, or rockery. Light lavender. May to Aug.
nervosa. Clear blue. 9 in. May to Aug.
Souvenir de Andre Chaudron. Silvery gray foliage, large, dark blue flowers. June to Aug. 14 to 18 in.



Papaver nudicaule

- OENOTHERA** (*Evening Primrose*). 25c. each, \$2.50 per doz., \$18.00 per 100.
 **missouriensis*. Large yellow flowers. 12 in. June to Aug.
 **speciosa*. White. 18 in. All summer.
- PACHYSANDRA** (*Japanese Spurge*). \$1.25 per doz., \$10.00 per 100, \$90.00 per 1000.
terminalis. Low, evergreen plant with glossy green foliage and short spikes of creamy-white flowers. Grows in dense shade or sun. One of the best ground covers. May and June. 6 to 8 in.
- PAEONIA**. Large field clumps in pink, light pink, white, and red. \$1.50 each, \$15.00 per doz.
- ***PAPAVER nudicaule**. 20c. each, \$2.00 per doz., \$15.00 per 100.
 Assorted. White and yellow.
 Coonara Pink. Pink.
 Gibson's New Orange. Improved type.
- ALL OUR ORIENTAL POPPIES ARE GROWN IN POTS**
- PAPAVER** **oriental* (*Oriental Poppy*). 25c. each, \$2.50 per doz., \$18.00 per 100.
bracteatum. Deep crimson. Early flowering. 2 to 3 ft. June.
Mrs. Perry. Soft salmon-rose shade. 2 to 3 ft. June.
Perry's White. White with crimson-maroon at base of each petal. 2 to 3 ft. June.
Scarlet. 2 to 3 ft. June.
- PENTSTEMON** (*Beard Tongue*). 25c. each, \$2.50 per doz., \$18.00 per 100.
barbata torreyi. Scarlet. 3 to 4 ft. July and Aug.
digitalis. Purple-white. 2 to 3 ft.
heterophyllus, Blue Gem. Azure blue flowers. 2 ft. June to Aug.
pubescens. Rosy-purple. 1½ ft. July and Aug.

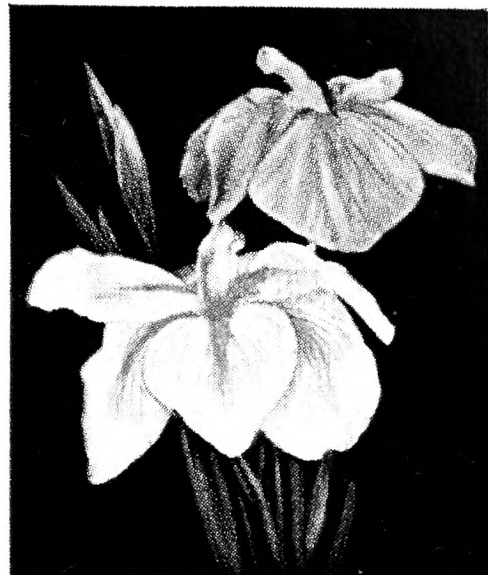
HARDY PERENNIAL PLANTS

- PHLOX.** 20c. each, \$2.00 per doz., \$15.00 per 100.
- **divaricata* (*Wild Blue Phlox*). 1 ft. May and June.
 - **subulata* (*Moss or Mountain Pink*). White, pink, lilac, blue. 4 in. May-June.
- subulata, Blue Hill.** A splendid display of showy pale blue flowers in early spring and late fall.
- PHLOX paniculata or Garden Phlox.** 1½ to 3 ft. 25c. each, \$2.50 per doz., \$18.00 per 100.
- Annie Cook.** Flesh pink.
 - Antonin Mercie.** Bluish-lilac.
 - Bridesmaid.** Pure white with light center.
 - Count Zeppelin.** Large, pure white with crimson eye.
 - Eclairer.** Rosy magenta with large lighter halo.
 - Enchantress.** Bright salmon pink, dark eye.
 - Ethel Pritchard.** Light blue.
 - Europa.** Pure white; small crimson eye.
 - Evelyn.** Soft pink.
 - Firebrand.** Brilliant vermilion-scarlet, dark eye.
 - Hauptman Koehl.** Rich deep blood red.
 - Independence.** Pure white.
 - Jules Sandeau.** Watermelon pink.
 - La Vague.** Pure mauve, red eye.
 - Leo Schlageter.** Bright scarlet, crimson eye.
 - Maid Marian.** Soft lavender.
 - Mia Ruys.** A dwarf variety with large heads of pure white blooms.
 - Milly Von Hoboken.** Soft pink.
 - Miss Lingard.** White everblooming.
 - Miss Jenkins.** White.
 - Miss Verboom.** Rose form of Miss Lingard.
 - Painted Lady.** Silver pink with red eye.
 - Professor Virchow.** Bright carmine.
 - Rheinlander.** Salmon pink with claret center.
 - Rijnstroom.** Bright carmine-rose.
 - R. P. Struthers.** Rosy carmine with claret red center.
 - Special French.** Flesh pink with red eye.
 - Stellas Choice.** Pure white.
 - Thor.** Salmon pink, overlaid with a scarlet glow.
 - Widar.** Bright reddish violet with large center.
- PHYSOSTEGIA** (*False Dragonhead*). 25c. each, \$2.50 per doz.
- virginica.* Soft pink. 2 ft. June to Aug.
- PLATYCODON** (*Balloon or Bell Flower*). 25c. each, \$2.50 per doz., \$18.00 per 100.
- grandiflorum.* Blue. 2½ ft. July to Oct.
 - grandiflorum alba.* White. 2 to 2½ ft. July to Oct.
- PLUMBAGO** (*Leadwort*). 25c. each, \$2.50 per doz., \$18.00 per 100.
- **larpentae.* Deep blue flowers. 6 to 8 in. Aug. and Sept.
- POLEMONIUM** (*Jacob's Ladder*). 25c. each, \$2.50 per doz., \$18.00 per 100.
- Blue Pearl.* 10 in. June to Sept.
 - caeruleum.* Blue. 1½ to 2 ft. June to Sept.
- ***PRIMULA** (*Hardy Primrose*). 20c. each, \$2.00 per doz., \$15.00 per 100.
- japonica, Mixed.* 1 to 2 ft. July to Sept.
 - polyantha* (*Munstead Strain*). Yellow, Giant White, Crimson King, Brilliance, Blue.
- ***PYRETHRUM** (*Persian Daisy or Colored Marguerite*). 25c. each, \$2.50 per doz., \$18.00 per 100.
- album.* White. 18 to 24 in. June and July.
 - atrosanguineum.* Dark shades of red. 18 to 24 in. June and July.
 - carneum.* Flesh color, single. 18 to 24 in. June and July.
 - hybridum roseum, James Kelway.* Large, Daisy like blooms of deep scarlet.
 - roseum.* Rose color, single.
 - Semi-double.* Mixed shades.
 - uliginosum.* White. 4 ft. June to Sept.
- RUDBECKIA** (*Cone Flower*). 25c. each, \$2.50 per doz., \$18.00 per 100.
- newmani.* Orange yellow with large black cone. 3 ft. July to Sept.
 - purpurea.* Reddish-purple with brown cone. 3 ft. July to Oct.
- ***SAGINA subulata** (*Pearlwort*). 20c. each, \$2.00 per doz., \$15.00 per 100.
- Green Moss.* Low. All summer.
- SALVIA** (*Meadow Sage*). 25c. each, \$2.50 per doz., \$18.00 per 100.
- azurea.* Blue. 3 ft. Aug. and Sept.
- SAPONARIA** (*Rock Soapwort*). 20c. each, \$2.00 per doz.
- **ocymoides splendens.* Pink. 9 in. May to Aug.
- SAXIFRAGA.** 25c. each, \$2.50 per doz.
- decipiens* (*Crimson Moss*). Dwarf mossy plant. Leaves turn crimson in winter. White flowers. May and June.
 - megasea cordifolia.* Light pink blooms. Early Spring. 12 in. 30c. each, \$3.00 per doz.
- ***SCABIOSA** (*Blue Bonnet*). 25c. each, \$2.50 per doz., \$18.00 per 100.
- caucasica.* Lilac. 3 ft. June to Sept.
 - japonica.* Blue. 24 in. July to Oct.
- SEDUM** (*Stone Crop*). 25c. each, \$2.50 per doz., \$18.00 per 100.
- acre* (*Golden Moss*). Yellow, spreading 2 to 4 in. May to July.
 - aizoon.* Bright yellow. 12 in. July and Aug.
 - anglicum.* White. 4 in. June and July.
 - kantschaticum* (*Orange Stonecrop*). Orange yellow flowers with green foliage.
 - sarmentosum.* Spreading type. Bright green foliage. Yellow.
 - sieboldi.* Bright pink flowers. Oct.
 - sieboldi variegata.* Green and yellow.
 - spectabile.* Rose colored flowers. 18 in. Late Fall.
 - spectabile Brilliant.* Bright carmine-red flowers.
 - spurium.* Rose crimson. 6 in. July and Aug.
- SEMPERVIVUM** (*House Leek*). 15c. each, \$1.50 per doz., \$10.00 per 100.
- **Assorted Varieties.*

Perennials



Delphinium (See page 10)

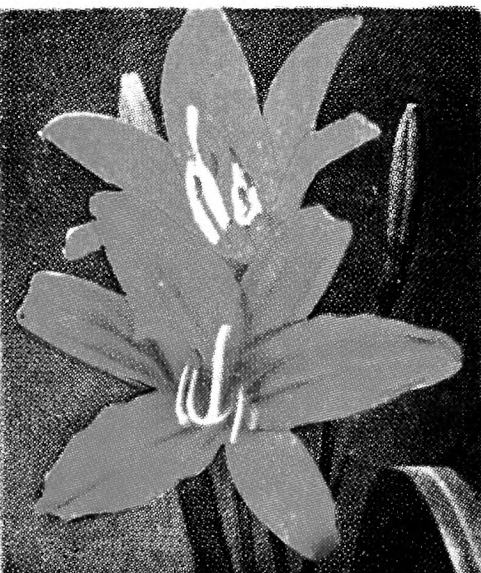


Japanese Iris (See page 12)



Chrysanthemum, Judith Anderson
(See page 9)

Aster (See page 8)



Hemerocallis (See page 12)



HARDY PERENNIAL PLANTS



Trollius

- SIDALCEA.** 25c. each, \$2.50 per doz., \$18.00 per 100.
Rosy Gem. Numerous miniature Hollyhock-like spikes of clear rose. 4 ft.
- SILENE** (*Catchfly*). 25c. each, \$2.50 per doz., \$18.00 per 100.
***schafta.** Bright pink. 4 to 6 in. July to Oct.
- STACHYS** (*Lamb's Ear*). 25c. each, \$2.50 per doz., \$18.00 per 100.
lanata. Silvery-leaved plant for borders and permanent edgings. 6 in.
- STATICE** (*Sea Lavender*). 25c. each, \$2.50 per doz., \$18.00 per 100.
latifolia. Purplish blue. 18 in. July-Aug.
- STOKESIA** (*Corn Flower Aster*). 25c. each, \$2.50 per doz., \$18.00 per 100.
cyanea, Blue. 18 in. All summer.
cyanea, White. 18 in. All summer.
- THALICTRUM** (*Meadow Rue*). 25c. each, \$2.50 per doz., \$18.00 per 100.
***adiantifolium.** White with foliage similar to Maidenhair Fern. 2 ft. June.
- THERMOPSIS.** 25c. each, \$2.50 per doz., \$18.00 per 100.
caroliniana. A tall, showy plant producing elegant long spikes set with lovely Lupine-like yellow blooms. June and July. 3 ft.
- THYMUS** (*Thyme*). 25c. each, \$2.50 per doz., \$18.00 per 100.
Creeping Thyme. Low growing ground cover. 3 in. Bluish-lavender flowers.
serpyllum. Grows in full sun or light shade. Fragrant foliage. 10 in.
- TRITOMA** (*Red Hot Poker or Flame Flower*). 25c. each, \$2.50 per doz.
Perry's Hybrids. Pale yellow to deep orange. 2½ to 3 ft. Aug. to Oct.
- TROLLIUS** (*Globe Flower*). Desirable free flowering plants with large, strong, buttercup like blossoms, ranging from pale yellow to deep orange. 18 in. May and June. 25c. each, \$2.50 per doz.
- VALERIANA** (*Garden Heliotrope*). 25c. each, \$2.50 per doz., \$18.00 per 100.
alba. White. 3 to 4 ft. June and July.
officinalis. Pink tinted white. Fragrant heliotrope odor. 3 to 4 ft. June and July.
Pink. The pink form of Alba.
- *VERONICA** (*Speedwell*). 25c. each, \$2.50 per doz., \$18.00 per 100.
amethystina. Gentian-blue. 1½ ft. June and July.
***incana.** Blue flowers, silvery foliage. 1 ft. July and Aug.
longifolia subsessilis (*Japanese Speedwell*). 2 to 3 ft. Blue. July to Sept.
***repens.** Light blue, creeping. 1 to 2 in. May and June.
Dark Blue.
spicata. Violet-blue. 24 in. All summer.
- *VIOLA** (*Tufted Pansy*). 15c. each, \$1.50 per doz., \$10.00 per 100.
***Apricot Queen.** Apricot shading to orange in center. 6 in. May to Oct.
Jersey Gem. Pure violet color. 6 in. May to Oct.
***lutea splendens.** Golden yellow. 6 in. May to Oct.
Purple Queen. A darker variety than Jersey Gem.
***White Perfection.** Pure white. 6 in.
- VIOLET.** 20c. each, \$2.00 per doz., \$15.00 per 100.
Gov. Herrick. Large, fragrant flowers; single, clear blue. 6 in.
odorata rosina. Pink and old rose shade. Superb fragrance. Spring and Fall.
- YUCCA** (*Adam's Needle*).
filamentosa. Broad evergreen foliage with long spikes of creamy white flowers. 5-year-old plants. 5 to 6 ft. June and July. 25c. and 50c. each.

Hardy Vines

- AMPELOPSIS**
veitchi (*Boston Ivy*). A popular climbing plant for covering stone or brick walls, etc. Rapid in growth. Dark green foliage in Summer, changing to crimson-scarlet in Autumn. \$4.20 per doz.
- ARISTOLOCHIA**
sipho (*Dutchmans Pipe*). \$1.25 each.
- BIGNONIA**
radicans. Brilliant orange-scarlet, trumpet-shaped blooms. 75c. each.
- CLEMATIS.** 75c. each.
crispa. Curly Clematis. Blue.
henryi. Large, creamy white.
jackmani. Rich purple.
Mme. Edouard Andre. Rosy carmine.
paniculata. Sweet-scented pure white flowers.
Ramona. Light blue.
texensis (coccinea). Scarlet.
- ENGLISH IVY** (*Hedera helix*).
 Full, bushy plants. 50c. each, \$4.80 per doz., \$35.00 per 100.
- VINCA**
minor (*Trailing Myrtle*). Excellent ground cover for shady places. \$1.50 per doz., \$12.00 per 100.



Hardy Hybrid Tea Roses

\$9.00 per Dozen (All our Roses are potted to insure better growth)

Ami Quinard. Velvety crimson. Medium, semi-double flowers. Very fragrant.

Autumn. Moderately fragrant burnt-orange blossoms, streaked with red. Compact, double, with heavy foliage. A continuous bloomer.

Betty Uprichard. Delicate salmon-pink. Vigorous.

Charles P. Kilham. Long pointed buds, opening fully double to coral-red with orange base.

Dame Edith Helen. Glowing pure pink; very large, full, double, and intensely fragrant. A hardy and continuous bloomer.

Duchess of Wellington. Tapering buds of golden yellow, opening to sweetly fragrant saffron flowers. Free blooming.

Etoile de Hollande. The most fragrant of all red Roses. Large crimson velvety flowers.

Frau Karl Druschki. Exceptionally large buds and blooms of snow white. Vigorous.

Grenoble. Large, brilliant, fragrant flowers of scarlet-red. Free blooming.

Margaret McGredy. Very large orange-scarlet flowers. Vigorous. Blooms all season.

Max Krause. Rich golden yellow. Strong, continuous bloomer.

McGredy's Ivory. Large creamy white flowers. Fragrant.

Mevrouw G. A. Van Rossem. Very fragrant orange-scarlet blooms, shaded bronzy crimson. A continuous bloomer.

Mme. Edouard Herriot. Brilliant orange-red flowers.

Mrs. Erskine Pembroke-Thom. Rich lemon-yellow flowers with a delicate fragrance.

Mrs. Henry Morse. Sweet-scented bright pink blossoms, with silver shading.

Mrs. Pierre S. Du Pont. Deep golden yellow. A steady bloomer, moderately fragrant.

President Herbert Hoover. Splendid combination of maroon and orange; large flowers. Vigorous.

Radiance. Intensely fragrant deep pink blossoms. Large. Double. A continuous bloomer.

Red Radiance. Brilliant red sport of Radiance. Like its parent with exception of color.

Rev. F. Page-Roberts. Coppery red buds opening to large golden yellow flowers. Unusually fragrant. Continuous bloomer.

Ville de Paris. Clear bright yellow.

Willowmere. Brilliant pink flowers suffused with golden yellow.

Yellow Gloria (Plant Pat. No. 240). Our own introduction. Pure golden yellow. One of the best sports of Talisman. A long pointed bud, opening to a fine tightly formed flower. **\$1.00 each.**

STANDARD ROSES

Finest varieties. Assorted. **\$3.50 each, \$40.00 per doz.**

HARDY CLIMBING AND RAMBLER ROSES

The better varieties. **\$9.00 per doz.**

FLOWER AND LAWN SEED

HYPONEX. The handiest, most convenient and effective plant food. Sold in 3 oz. and 1 lb. sizes. **40c.** and **\$1.00.** Also in larger quantities. Prices on request.

THE WHEATLEY GARDENS
NORTH ROSLYN, LONG ISLAND, NEW YORK