

Historic, Archive Document

Do not assume content reflects current scientific knowledge, policies, or practices.



CORREVON-AMERICAN

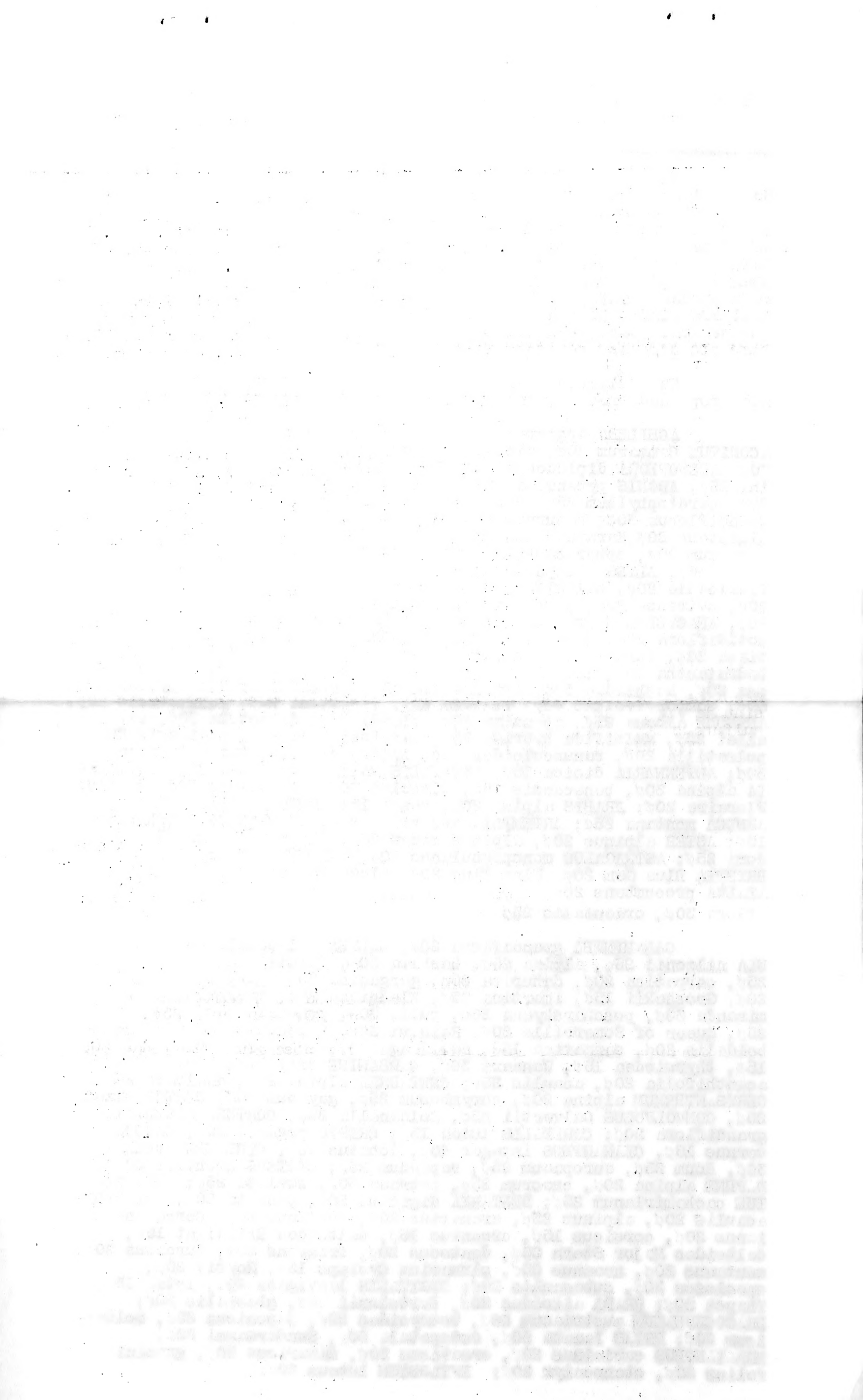
Bridgeboro, New Jersey

Here is a list of Correvon original seeds, packeted in Switzerland, all of the 1940 crop, and all in stock now in this country. The regular catalog prices are given, but after Nov. 1, 1941, all orders of \$1.00 or more are entitled to a discount of 25% from these figures, as long as the items last. (It would be well to give a second choice when ordering.) This may be your last chance to get seeds of many of these rare and unusual alpine and rock garden plants, at least until after the war - and maybe not then. Most are kinds which hold at least a percentage of their viability for several years, and some germinate just as well, or better, from year old seed as from that just harvested.

New bulletins will be issued as soon as any quantity of new crop seed arrives, and you will automatically receive copies.

ACHILLEA argentea 20¢, setacea 20¢, tanacetifolia 20¢; ACONITUM Cammarum 20¢, variegatum 20¢, Wilsoni 20¢; ACTAEA spicata 20¢; ADENOPHORA diploidonta 20¢, Farreri 20¢, lilifolia 20¢, Potanini 25¢; ADONIS pyrenaica 30¢, AETHIONEMA antilibani 30¢, armenum 30¢, cardiophyllum 25¢, cordatum 30¢, creticum 25¢, Diatrophis 20¢, grandiflorum 30¢, recurvum 25¢, schistosum 25¢, ALLIUM cyaneum 20¢, giganteum 20¢, Karataviense 30¢, Moly 25¢, Ostrowskianum 20¢, pedemontanum 20¢, spheroccephalum 20¢; ALSINE caucasica 15¢, juniperifolia 15¢, ALYSSUM alpestre 15¢, diffusum 20¢, floribundum 20¢, flexicaule 20¢, halimifolium 20¢, moellendorffianum 20¢, montanum 20¢, ovirense 20¢, petraeum 20¢, spinosum roseum 25¢, Wulfenianum 20¢; ANACYCLUS depressus 50¢; ANAGALLIS linifolia 30¢; ANCHUSA myosotidiflora 20¢, sempervirens 20¢; ANDROSACE armeniaca 30¢, brigantia 30¢, carnea 30¢, cyindrica 50¢, foliosa 30¢, Halleri 20¢, hedraiantha 30¢, lactea 25¢, lactiflora 20¢, Laggeri 30¢, lanuginosa 20¢, Mathildae 30¢, obtusifolia 25¢, primuloides 20¢, pyrenaica 50¢, sempervivoides 30¢, villosa 25¢, vitaliana 25¢, yunnanensis 20¢; ANEMONE albana 25¢, apennina 20¢, blanda 30¢, dichotoma 20¢, Lavalleyi 20¢, multifida hybrida 25¢, narcissiflora 20¢, pratensis 20¢, pulsatilla 20¢, ranunculoides 20¢, sylvestris 25¢, transylvanica 30¢; ANTENNARIA dioica 15¢; ANTHYLLIS montana carminea 20¢; AQUILEGIA alpina 30¢, benecensis 25¢, discolor 30¢, glandulosa 30¢, hybrids Floraire 20¢; ARABIS alpina 20¢, rosea 15¢; ARMERIA alpina 20¢; ARNICA montana 25¢; ARTEMISIA austriaca 20¢; ASPHODELUS delphinensis 15¢; ASTER alpinus 20¢, alpinus mixed 20¢, alpinus roseus 25¢, Purdomi 25¢; ASTRAGALUS monspessulanus 20¢, ATRAGENE alpina 20¢; AUBRIETIA Blue Gem 20¢, Fire King 20¢, Lloyd Edward 20¢, mixed 20¢; AZALEA procumbens 20¢; BERTONIA densiflora alba 20¢; BORRAGO laxiflora 30¢, orientalis 25¢.

CALAMINTHA grandiflora 20¢, CALTHA polypetala 25¢; CAMPANULA Allionii 25¢, alpina 25¢, barbata 20¢, Bolusii 25¢, carneolica 25¢, carpatica 20¢, dahurica 20¢, garganica 20¢, garganica hirsuta 20¢, Grosseii 15¢, imertina 25¢, Kladrniana 25¢, macrorrhiza 20¢, miranda 30¢, poscharskyana 20¢, pulla 30¢, punctata 20¢, pusilla 25¢, Queen of Somerville 20¢, Raineri 30¢, rapunculoides 20¢, rhomboidalis 20¢, sarmatica 15¢, Saxifraga 30¢, scheuczeri 20¢, spicata 15¢, thyrsiodea 15¢, Wanneri 30¢; CARDAMINE trifoliata 20¢; CARLINA acanthifolia 20¢, acaulis 20¢; CENTAUREA alpina 20¢, dealbata 20¢; CHRYSANTHEMUM alpina 20¢, corymbosum 25¢, gayanum 30¢; CISTUS mixed 20¢, CONVULVULUS Calvertii 25¢, Soldanella 25¢; CORTUSA Matthiola grandiflora 20¢; CORYDALIS lutea 15¢; CREPIS pygmaea 25¢; CROCUS vernus 15¢, CYANANTHUS integer 40¢, lobatus 40¢; CYCLAMEN Atkinsi 30¢, Coum 25¢, europaeum 25¢, repandum 25¢; CYTISUS Rochelii 20¢; DAPHNE alpina 20¢, cneorum 25¢, petraea 30¢, striata 25¢; DELPHINIUM cachemirianum 25¢; DENTARIA digitata 20¢, pinnata 20¢; DIANTHUS acaulis 20¢, alpinus 25¢, arenarius 20¢, collinus 20¢, Correvonianus 20¢, corsicus 15¢, cruentus 15¢, deltoides Brilliant 15¢, deltoides Major Stern 20¢, dentosus 20¢, fragrans 20¢, furcatus 20¢, montanus 20¢, noeanus 25¢, plumarius Cyclops 15¢, Roysii 25¢, speciosus 20¢, subacaulis 20¢; DIGITALIS laevigata 20¢, lutea 15¢, Thapsi 20¢; BRADA aizoides 20¢, Bertolonii 20¢, glacialis 20¢; DRACOCEPHALUM austriacum 20¢, botryoides 25¢, japonicum 25¢, moldavicum 20¢; DRYAS lanata 20¢, octopetala 20¢, Sundermanni 20¢; EDRAIANTHUS caricinus 20¢, croaticus 20¢, dinaricus 20¢, graminifolius 20¢, stenocalyx 20¢; EPILOBIUM luteum 20¢;



ERIGERON caucasicus 20¢, trifidus 20¢, ERINUS alpinus 20¢, alpinus albus 20¢, alpinus carmineus 20¢, Dr. Hanelle 25¢; ERIOGONUM Allionii 25¢; ERITRICHIMUM nanum 50¢, strictum 40¢; ERYNGIUM alpinum 15¢, Bourgatii 20¢, giganteum 10¢, giganteum dble. 10¢; ERYSIMUM ochroleucum 15¢, pachycarpum 20¢, pumilum 25¢; ERYTHRONIUM Dens Canis 20¢; EUPATORIUM ageratoides 15¢; EUPHORBIA ageratoides 15¢; EUPHORBIA polychroma 20¢, Wulfeni 20¢; FARSETIA eriocarpa 20¢; FRITILLARIA drehnowski 25¢, pyrenaica 25¢, tenella 25¢.

GALANTHUS Elwesii 20¢; GENISTA alba 10¢, anxantina 20¢, dalmatica 25¢, hispanica 20¢, horrida 25¢, pilosa 25¢, polygalae-folia 20¢, radiata 20¢, sagittalis 20¢, sulphurea 20¢; GENTIANA acaulis 20¢, asclepiadea 20¢, asclepiadea alba 20¢, Farreri 30¢, Hascombensis 20¢, Lagodechiana 20¢, pneumonanthe 20¢, punctata 20¢, Purdomii 20¢, purpurea nana 20¢, septemfida splendida 20¢, verna 20¢; GERANIUM argenteum 25¢, argenteum roseum 25¢, armenum 25¢, cinereum 20¢, Farreri 30¢, ibericum 20¢, lancastriense 30¢, macrorrhizum 20¢, platypetalum 20¢, pratense 20¢, Renardii 25¢, sanguineum 20¢, sanguineum album 20¢, subcaulescens 30¢; GEUM magellanicum 20¢, rhaeticum 25¢, triflorum 20¢; GILIA coronopifolia 15¢; GLADIOLUS palustris 20¢, segetum 25¢; GLOBULARIA cordifolia 20¢; GYPSOPHILA cerastoides 30¢, petraea 25¢; HABERLEA Ferdinandi-Coburgii 30¢; HELIANTHEMUM atrosanguineum 20¢, canum 15¢, roseum 20¢, vulgare 20¢, mixed 20¢; HIERACIUM bombycinum 20¢, lanatum 20¢; HORMINIUM pyrenaicum 20¢; HYPERICUM repens 20¢; HYSSOPUS officinalis ruber 20¢, officina;is 20¢; IBERIS Jordani 20¢, Little Gem 20¢, pygmaea 25¢, saxatilis 20¢, Snow Flake 15¢, Viandii 20¢, mixed 20¢; INDIGOFERA Potanini 15¢, IRIS aurea 20¢, chamaeiris 20¢, reticulata 30¢, sibirica 20¢, sibirica alba 20¢, mixed 10¢.

LACTUCA perennis 20¢; LAVANDULA delphinensis 20¢; LEONTOPODIUM alpinum 20¢; LILIUM Chaixii 25¢, pomponium 20¢, pyrenaicum 20¢, sulphur-gale 20¢; LINARIA alpina 20¢; LINUM alpinum 15¢, campanulatum 20¢, hirsutum 30¢, julicum 20¢, sal-soloides 20¢, viscosum 20¢; LITHOSPERMUM graminifolium 20¢, intermedium 20¢, petraeum 25¢, marrubium 20¢, rosmarinifolium 25¢, velutinum 20¢; LYCHNIS Lagascae 20¢; LYSIMACHIA Ephemera 20¢; MANDRAGORA officinalis 30¢; MARRUBIUM libanoticum 20¢; MATTHIOLA sinuata 20¢, valesciaca 25¢; MECONOPSIS Baileyi 20¢, cambrica sulfureus 20¢, Dhwojii 30¢, petiolata 25¢; MERENDERA Bulbocodium 25¢; MICROMERIA Piperella 20¢, rupestris 20¢; MONARDA didyma alba 20¢, kalmiana 20¢, superba 25¢; MYOSOTIS caespitosa 20¢, lithospermifolia 20¢, pulustris semperflorens 15¢, Rehsteineri 20¢; NARCISSUS bulbocodium 20¢, juncifolius 25¢, moschatus 25¢; NIEREMBERGIA coerulea 25¢, frutescens 25¢; OENOTHERA speciosa 20¢; OMPHOLODES nitida 25¢; ONONIS cenisia 30¢, fruticosa 20¢, Natrix 20¢, rotundifolia 25¢; ONOSMA nanum 25¢, Visiana 25¢, ORNITHOGALUM pyramidale 20¢; OROBUS vernus 10¢; OXYTROPIS argentea 20¢, campestris 15¢.

PARADISEA liliago 20¢; PEDEROTA Bona Rota 25¢; PENSTEMON alpinus 20¢, Richardsoni 20¢; PHLOMIS samia 15¢; PHYTEUMA comosum 30¢, Halleri 20¢, nigrum 20¢, orbiculare 20¢, spicatum 20¢; POLEMONIUM Farreri 20¢, Forrestii 20¢, humile 25¢, mixed 20¢; POLYGALA chamaebuxus 20¢; POTENTILLA alchemilloides 20¢, buccoana 20¢, Hippiana 25¢, Hookeriana 20¢, megalantha 25¢, multifida 20¢, Valderia 20¢, mixed 20¢; PRIMULA anisodora 20¢, auricula 25¢, Bulleyana 20¢, calycina 25¢, carniolica 25¢, chrysopa 20¢, Clusiana 25¢, cockburniana 20¢, cortusoides 30¢, farinosa 20¢, Florindae 20¢, heterochroma 20¢, longiflora 20¢, luteola 25¢, marginata 30¢, Poissonii 20¢, prionotes 25¢, pudibunda 25¢, rosea splendens 20¢, secundiflora 30¢, sibirica 25¢, sino-purpurea 20¢, spectabilis 25¢, vittata 20¢, Wardii 20¢, Wulfeniana 25¢; PTEROCEPHALUS Parnassii 25¢; PUSCHKINIA libanoyica 20¢; RAMONDIA Nayhaliae 30¢, pyrenaica 20¢; RANUNCULUS aconitifolius 20¢, alpestris 30¢, amplexicaulis 35¢, anemonaefolius 30¢, glacialis 30¢, gramineus 20¢, montanus 25¢, parnassifolius 35¢, Seguierei 30¢, Thora 20¢; RHODODENDRON chamaecistus 25¢, hirsutum 20¢; ROSA alpina 20¢.

SALVIA glutinosa 25¢; SAPONARIA caespitosa 20¢, ocymoides 20¢, Cypria 30¢; SAXIFRAGA bryoides 25¢, Burseriana 30¢, caesia 25¢, cochlearis 20¢, conifera 25¢, Geum 25¢, kabschia 25¢, lantoscana 25¢, longifolia 25¢, moosartige 20¢, mutata 25¢, oppositifolia 25¢, Rhei rosea 20¢, sarmentosa 20¢, tombeanensis 30¢; SCABIOSA Fischeri 20¢, graminifolia 20¢; SCILLA chinensis 25¢, japonica 25¢, nutans alba 20¢, patula 20¢, patula elegantissima 20¢, sibirica 20;

Faint, illegible text, possibly bleed-through from the reverse side of the page. The text is mirrored and difficult to decipher.

SCILLA sibirica 20¢; SCUTELLARIA orientalis 25¢, pinnatifida 25¢; SEDUM anacampseros 20¢, floriferum 20¢, Sempervivum 25¢, stoloniferum 20¢; SEMPERVIVUM alpinum 25¢, glaucum 25, Heuffelii 30¢, rubicundum 30¢, mixed 20¢; SENECIO Doronicum 25¢, Przewalskyi 25¢, tyrolensis 25¢; SIDERITIS eubaea 20¢, hyssopifolia 20¢; SILENE acaulis 30¢, alpestris 15¢, bryoides 25¢, Elizabethae 30¢, legoniensis 20¢, pumilio 25¢, quadrifida 20¢, Schafta 10¢, vallesia 25¢, mixed 15¢; SOLDANELLA alpina 20¢; SWERTIA perennis 25¢; TELEPHIUM Imperati 15¢; TEUCRIUM pseudo-chamaedrys 15¢, pyrenaicum 15¢, Regium 15¢; THALICTRUM japonicum 20¢; THLASPI stylosum 25¢; THYMUS ellipticus 25¢, serpyllum 10¢; TROLLIUS Dschungaricus 25¢, europaeus 15¢, hybridus 20¢, pumilis 25¢, sinensis 25¢, mixed 15¢, yunnanensis 25¢.

VALERIANA globulariaefolia 30¢; VERATRUM nigrum 20¢; VERBASCUM olympicum 15¢; VERBENA venosa 25¢; VERONICA Allionii 25¢, armena 25¢, carnea 20¢, fruticulosa 25¢, gentianoides 25¢, kotschyi 25¢, multifida 20¢, paniculata 20¢, prostrata 20¢, prostrata coelestris 20¢, Royal Blue 25¢, spicata nana 20¢, superba 20¢, Teucrium 20¢, True Blue 25¢; VIOLA arenaria 25¢, calcarata 20¢, cornuta Wermig 20¢, Florairensis 20¢, gracilis alba 25¢, gracilis lutea 20¢, gracilis purpurea 20¢, gracilis robusta 20¢, heterophylla 20¢, odorata rubra 20¢, pinnata 25¢, rothomagensis 20¢, splendida 20¢, mixed 20¢.

(After Nov. 1, 1942, the kinds on this list of which stock remains will be offered under the conditions and prices outlined below.

.....

The group below are all 1939 crop, and are offered at this rate: 7 pkts. (assorted) for 50¢; 15 pkts. for \$1.00, and 50 for \$3.00. Stocks are limited, so it will be well to give substitutes.

ACAENA Sanguisorba; ACHILLEA argentea, Clavennae, Sarracenia; ACONITUM paniculatum, variegatum; ACTAEA spicata; ADENOPHORA diploidonta, lilifolia, Potanini; ADONIS pyrenaica; AETHIONEMA antilibani, armenum, cordatum, creticum, grandiflorum, schistosum; Allium cyaneum, giganteum, karataviense, Moly, pedemontanum, sphaerocephalum; ALSINE caucasica, juniperifolia; ALYSSUM alpestre, diffusum, flexicaule, floribundum, halimifolium, montanum, ovirense, petraeum, repens; ANAGALLIS linifolia; ANCHUSA sempervirens; ANDROSACE albana, carnea, lactea, lactiflora, Mathildae, obtusifolia, praetutiana, sempervivoides, villosa, vitaliana; Anemone albana, angulosa, baldensis, blanda, dichotoma, Lavalley, montana, palmata, multifida hybrida, pratensis, sylvestris, transylvanica, vernalis; ANTENNARIA dioica; ANTHYLLIS montana carminea; AQUILEGIA alpina, benacensis, discolor, glandulosa, hybrids Floraire; ARABIS rosea; ARMERIA alpina, Six Hills, vulgaris; ARNICA montana; ARTEMISIA austriaca, glauca; ASPHODELUS delphinensis; ASTER alpinus roseus, Purdomii; ASTRAGALUS monspessulanus, Tragacantha; ATRAGENE (Clematis) alpina; BETONICA densiflora; Borrigo laxiflora, orientalis CALAMINTHA grandiflora; CALTHA polypetala; CAMPANULA Allionii, alpina, carniolica, carpatia Queen of Somerville, dahurica, garganica, garganica var. hirsuta, Grosseckii, inertina, macrorrhiza, miranda, pulla, Raineri, rapunculoides, sarmatica, spicata, thyrsoides; CARDAMINE trifolia; CARLINA acanthifolia, Cynara; CENTAUREA alpina, dealbata; CHRYSANTHEMUM alpinum; CISTUS mixed; CONVULVULUS Soldanella; COYRDALIS lutea; CROCUS vernus; CREPIS pygmaea; CYCLAMEN repandum; CYTISUS purpureus; DAPHNE alpina; DELPHINIUM cachemirianum; DENTARIA digitata, pinnata; DIANTHUS acaulis, Correvonianus, corsicus cruentus, deltoides Brilliant, furcatus, noeanus, plumarius var. Cyclope, Roysii; DIGITALIS laevigata, lutea, Thapsi; DRABA Bertolonii glacialis; DRACOCEPHALUM austriacum, botryoides, japonicum; DRYAS Sundermannii; EDRIANTHUS caricinus, croaticus, dinaricus, stenocalyx; EPILOBIUM hirsutum, rosmarinifolium; ERIGERON caucasicus, trifidus; ERINUS alpinus, alpinus albus, alpinus Dr. Hanelle; ERIOGONUM Allionii ERYNGIUM alpinum, Bourgati, florairensis, giganteum, maritimum; ERYSI-MUM ochroleucum, pachycarpum, pumilum; ERYTHRONIUM Dens Canis; EUPATORIUM ageratoides; EUPHORBIA Wulfeni; FARSETIA eriocarpa; FESTUCA glauca; FRITILLARIA delphinensis, Moggridgei, tenella; GALANTHUS Elwesii, robustus praecox; GENISTA alba, anxantina, dalmatica, hispanica, horrida, radiata, polygalaeifolia, sulphurea; GENTIANA dinarica, Farreri, punctata, purpurea nana, septemfida splendida; GERANIUM armenum, cinereum, ibericum, macrorrhizum, sanguineum album, platypetalum, subcaulescens, subcaulescens pallidum;

Faint, illegible text at the top of the page, possibly a header or introductory paragraph.

The group below are the 1952 group and the 1953 group. The group is limited to 1000 members, as it will be given priority.

- 1. *...*
- 2. *...*
- 3. *...*
- 4. *...*
- 5. *...*
- 6. *...*
- 7. *...*
- 8. *...*
- 9. *...*
- 10. *...*
- 11. *...*
- 12. *...*
- 13. *...*
- 14. *...*
- 15. *...*
- 16. *...*
- 17. *...*
- 18. *...*
- 19. *...*
- 20. *...*
- 21. *...*
- 22. *...*
- 23. *...*
- 24. *...*
- 25. *...*
- 26. *...*
- 27. *...*
- 28. *...*
- 29. *...*
- 30. *...*
- 31. *...*
- 32. *...*
- 33. *...*
- 34. *...*
- 35. *...*
- 36. *...*
- 37. *...*
- 38. *...*
- 39. *...*
- 40. *...*
- 41. *...*
- 42. *...*
- 43. *...*
- 44. *...*
- 45. *...*
- 46. *...*
- 47. *...*
- 48. *...*
- 49. *...*
- 50. *...*
- 51. *...*
- 52. *...*
- 53. *...*
- 54. *...*
- 55. *...*
- 56. *...*
- 57. *...*
- 58. *...*
- 59. *...*
- 60. *...*
- 61. *...*
- 62. *...*
- 63. *...*
- 64. *...*
- 65. *...*
- 66. *...*
- 67. *...*
- 68. *...*
- 69. *...*
- 70. *...*
- 71. *...*
- 72. *...*
- 73. *...*
- 74. *...*
- 75. *...*
- 76. *...*
- 77. *...*
- 78. *...*
- 79. *...*
- 80. *...*
- 81. *...*
- 82. *...*
- 83. *...*
- 84. *...*
- 85. *...*
- 86. *...*
- 87. *...*
- 88. *...*
- 89. *...*
- 90. *...*
- 91. *...*
- 92. *...*
- 93. *...*
- 94. *...*
- 95. *...*
- 96. *...*
- 97. *...*
- 98. *...*
- 99. *...*
- 100. *...*

GEUM montanum, rhaeticum, triflorum; GILIA coronopifolia; GLADIOLUS palustris, sogetum; GLOBULARIA vulgaris; GYPSOPHILA petraea; HELIANTHEMUM canum, grandiflorum; HELLEBORUS cupreus; HIERACIUM bonbycinum, lanatum; HORMINUM pyrenaicum; HYPERICUM repens; HYSSOPUS officinalis, officinalis ruber; IBERIS saxatilis, pygmaea, semper-virens Snow Flake; INDIGOFERA Potanini; IRIS chamaeiris, reticulata.

LACTUCA perennis; LAVANDULA delphinensis; LEONTOPODIUM alpinum; Liliium Chaixii, pomponium, pyrenaicum, Sargentiae, sutchuense; LINARIA alpina, pilosa; LINUM alpinum, campanulatum, julicum; LITHOSPERMUM Froebelii, intermedium, olaeifolium, rosmarinifolium, petraeum; LYSIMACHIA Ephemereum; MANDRAGORA officinalis; MARRUBIUM libanoticum, velutinum; MATTHIOLA sinuata, vallesiaca; MECONOPSIS cambrica sulphurea, petiolata; MENTHA piperita var. saxonis; MERENDERA bulbocodium; MICROMERIA Piperella; MONARDA didyma alba, kalmiana, superba; MYOSOTIS caespitosa, lithospermifolia, palustris semperflorens, Rehsteineri; NARCISSUS juncifolius, moschatus, radiflorus; OENOTHERA speciosa; OMPHALODES nitida; ONONIS cenisia, fruticosa, Natrix, rotundifolia; ONOSMA nanum, Visiana; OPUNTIA Rafinesquii; ORNITHOGALUM nutans, pyramidale; OROBUS vernus; OXYTROPIS campestris; OXALIS atropurpurea; PAPAVER alpinum; PARADISEA Liliago major; PENSTEMON Richardsoni, alpinus; PHELOMIS Samia; PHYTEUMA Halleri, spicatum; POLEMONIUM Farreri, humile; POLYGALA chamaebuxus, Vayredae; POTENTILLA alchemilloides, aurea, bussoana, Hippiana, Hookeriana, megalantha, multifida, speciosa, Valderia; PRIMULA auricula alpine type, calycina, carniolica, deorum, farinosa, heterochroma, clusiana, cortusoides, integrifolia, luteola, marginata, prionotes, Poissonii, sibirica, sino-purpurea mixed, spectabilis, Wulfeniana; PTEROCEPHALUS Parnassii; PUSCHKINIA libanotica alba; RANUNCULUS aconitifolius, alpestris, amplexicaulis, crenatus, glacialis, gramineus, montanus, parnassifolius, pyrenaicus, Seguieri, Thora; RHODODENDRON ferrugineum, hirsutum; ROSA alpina; RUDBECKIA speciosa; SALVIA glutinosa; SAPONARIA caespitosa, Cypria; SAXIFRAGA bryoides, caesia, cochlearis, conifera, exarata, florulenta, Geum, lantoscana, lingulata, longifolia, mutata, oppositifolia, Rhei rosea, sarmentosa, tombeanensis, sponhemica, kabschia mixed; SCABIOSA graminifolia; SCILLA chinensis, japonica, nutans, nutans alba, patula, pratensis, sibirica, sibirica alba; SCUTELLARIA orientalis, orientalis pinnatifida; SEDUM Anacamseros, floriferum, kamschaticum, Sempervivum, stoloniferum; SEMPERVIVUM alpinum, blandum, calcareum, Funckii, glaucum, Heuffelii, rubicundum; SENECEO abrotanifolius, carniolicus, Doronicum, incanus, Przewalskyi, tyrolensis; SIDERITIS eubaea, hyssopifolia; SILENE acaulis, bryoides, legionensis, pumilio, vallesia; SOLDANELIA alpina; SWERTIA perennis; TELEPHIUM Imperati; TEUCRIUM Regium, pseudo-chamaedrys, pyrenaicum; THALICTRUM Delavayi; THLASPI rotundifolium, stylosum; THYMUS ellipticus; TROLLIUS europaeus, pumilus, yunnanensis, best hort. hybrids mixed; VALERIANA globulariaefolia; VERATRUM album, nigrum; VERBASCUM olympicum; VERBENA venosa; VERONICA Allionii, carnea, fruticulosa, gentianoides, paniculata, Royal Blue, True Blue, spicata nana, Teucrium; VIOLA arenaria, cenisia, biflora, gracilis robusta, gracilis alba grandiflora, heterophylla, pinnata, Zoysii; VITTADENIA triloba.

Please make all remittances to

CORREYON-AMERICAN,

Bridgeboro, N. J.



CORREYON - AMERICAN
BRIDGEBORO, NEW JERSEY

SEC. 562 P. L. & R.

Miss Weaver

U. S. DEPARTMENT OF AGRICULTURE,

WASHINGTON, D. C.

BUREAU OF PLANT INDUSTRY
Fruit and Vegetable Crops and Diseases
M. R. N.

••• 8-3591