

Historic, Archive Document

Do not assume content reflects current scientific knowledge, policies, or practices.



62167

LIBRARY
RECEIVED
FEBRUARY 11 1941
U. S. Department of Agriculture



GOLDEN CITY

1941 - *Seventeenth Annual*

R A T E D

DAHLIA BOOK

a n d P R I C E L I S T



GOLDEN RULE DAHLIA FARM

HARLEY T. PECK & SONS » LEBANON, OHIO

FOR BEST RESULTS SPRAY YOUR DAHLIAS

PESTS

SUCKING INSECTS

THRIP, LEAFHOPPER, TARNISH BEETLE
(Very severe through midwestern and southern states from July until October. Blast young buds and prevent bloom.)

RED SPIDER

(Only under hot, dry conditions in most sections of the country.)

GRASSHOPPER

(Midwest, west and southern states.)

JAPANESE BEETLE

(Eastern states.)

EUROPEAN CORN BORER

(Eastern states.)

SPOTTED CUCUMBER AND BLACK BEETLE

(Prevalent in mid-summer.)

CONTROL

Wash plants with garden hose in evening to dislodge the insects. Spray with "Hitox" which contains rotenone and pyrethrum. For leafhopper, rotenone dust may be used, follow directions on can. Begin spraying when plants are one foot high, spray at least once a week until October.

Spray with pyrethrum, soap and water, Red Arrow or Hitox. Spray plants frequently with cold water using a garden hose.

Poison bran; (brown sugar, Paris green and bran mash). Cloth or screen wall around garden about 7 feet high.

Any pyrethrum and rotenone spray, fairly heavy concentration.

A bulletin, "Protection of Dahlias from Corn Borers", is issued on request by: U. S. Dept. of Agriculture, Bureau of Entomology and Plant Quarantine, Washington, D. C.

Brush insects from bloom into a shallow pan of kerosene.

To Our Dahlia Friends:

We on the American Continent are deeply thankful that war has not reached us, nor is likely to. We are much concerned for, and are busy helping those other Nations who are fighting for the freedom they and we believe in. In these times to help us maintain a sane viewpoint, we Americans still have our *Gardens*, our *Music*, our *Drama* and our Normal Social Contacts. Let us remain greatly appreciative of these blessings.

CONTENTS

Page				
3	Discounts	28-30	Bargains	
5	Golden Rule Introductions	30	Exhibition Dahlias	
6-7	Other New Dahlias	31	Cut Flower Dahlias	
8-16	Golden Rule Aristocrats	32-33	Principles of Dahlia Culture	
17-24	Select Standard Varieties	34-35	Index	
25-28	Small Flowered Dahlias			

FOR 1941

We are listing in this catalogue.

ROOTS. These are the standard "roots" of American growers, consisting of a division of a field or farm grown clumps and having at least one eye or sprout.

POT CLUMPS. Are produced from plants in four inch pots. They consist of small clumps of plump roots. They keep exceptionally well and are the standard root, in most cases, of the European growers.

OUR POT CLUMPS are grown by a superior process, they are suprisingly large and plump in comparison with other pot roots, and are *definitely greater in value* as planting and propagating stock than the ordinary root; for they will average more than one eye and in most cases may be divided. They are the most vigorous of any planting stock and are most excellent for propagation. *Unless directed otherwise*, with varities of which root stock is limited, we will not hesitate to substitute pot clumps for root divisions whenever available.

ROOTED CUTTINGS. These are well-rooted heel or base cuttings taken from the sand and shipped direct to customer before development into plants. If immediately planted out they cannot be expected to survive 100% and **are not so guaranteed.** Rooted cuttings are guaranteed only to be the variety represented, to have been taken from strong healthy stock and to arrive in growing condition. When received they should be repotted or transplanted to be grown into a well-developed plant before setting. Unless you have a greenhouse or conservatory or the equivalent we do not recommend the purchase of rooted cuttings.

Rooted cuttings may be purchased in all varieties of which plants are quoted at **one-third off plant prices.** (See Index for plant prices.)

Three rooted cuttings of one named dahlia (Plant Price \$1.00) would be \$3.00 less $\frac{1}{3}$ or \$2.00, less quantity discount of 10% or \$1.80; 6 rooted cuttings of the same would be \$3.20 and 10 rooted cuttings would be \$5.00. If this was part of a \$6.00 order it would again be subject to a discount of 10% etc. (See Discounts).

PLANTS. These are developed by us from selected rooted cuttings which have been transplanted to a good growing soil mixture in 2 $\frac{1}{4}$ " pots until well grown and hardened to light. They are shipped in their own dirt. When received they should be set in good dirt **without disturbing** the ball of earth. Water well. See Index for plant prices.

DISCOUNTS

The following generous discounts are offered:

Three (3) of any one named dahlia—less 10%.

Six (6) of any one named dahlia—less 20%.

Ten (10) or more of any one named dahlia—less 25%.

Orders of \$6.00 or more—less 10%. Orders of \$13.00 or more—less 15%.

Orders of \$25.00 or more—less 25%.

For instance; 3 roots of Begonia Rose would be \$15.00 less 10% or \$13.50. This amount being more than \$13.00 would again be subject to 15% discount or \$11.48 net. **Above discounts do not apply to Bargains, Collections or Dahlia Seed.**

GUARANTEE

All Roots, Pot Clumps, Plants and Rooted Cuttings are guaranteed to be healthy and true to name. If not, we will replace with true and healthy stock of the same or other varieties. **We guarantee Satisfaction under the Golden Rule.**



A new Miniature with
Outstanding Performance.

In a well chosen dahlia collection are as many different forms as are shown by nearly all other flowers combined and all colors and combinations of colors except true blue.

The Amazing Dahlia

In a drought which seriously affects all gardens there are always dahlia blooms. In a flood, likewise. Each fall, regardless of the kind of season, the dahlia shows throughout the country display an astounding array of gorgeous blooms. From the massive flowers twelve or more inches across and six or more deep down to the tiny pompons. In between are the artistic cactus forms, the medium decoratives, both so liked for cut flowers, and not the least of all are the miniatures, so useful for cutting, that display all the varied forms of the larger dahlias.

HOW TO ORDER

Order Early to prevent disappointments in case the variety selected is sold out.

Print your name and address PLAINLY.

Substitutions are not made unless authorized. If order is late, please indicate a second choice or if necessary permit us to substitute with equal or greater value.

Sales Tax. If residing within Ohio, orders for plants are subject to the Ohio sales tax, with which all are now familiar. Please include the tax with your remittance. Orders for ROOTS and SEEDS are exempt from sales tax.

Cash with Order, Please make money orders and checks payable to Harley T. Peck. Foreign Orders please remit by P. O. Money Order and include postage or express charges.

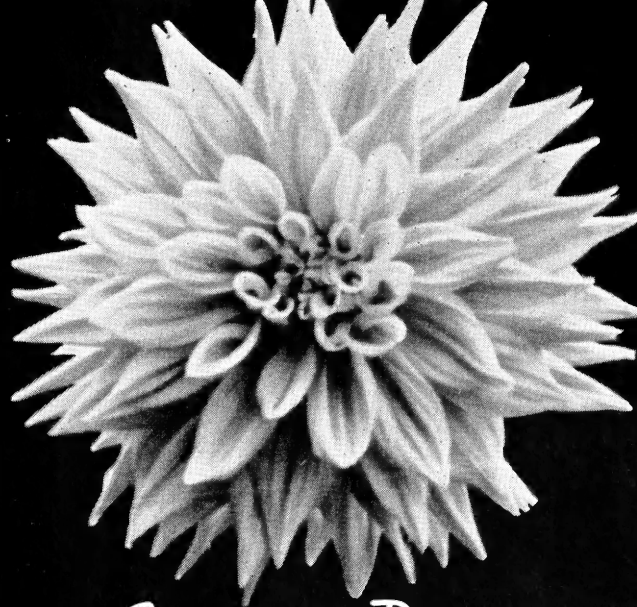
20c must be added to all orders of less than \$1.50 to cover shipping and packing charges. OUTSIDE THE U. S. remittances on all orders must include postage or express charges.

Deliveries. All stock will be shipped within the U. S. by prepaid parcel post or express during May unless otherwise directed.

To Guarantee Safe Arrival of Green Plants or Rooted Cuttings, 25 cents must be added to all such orders to cover "special delivery," if there is such service at your P. O. Otherwise 15c for "special handling." We pay the regular parcel post charges on all orders of \$1.50 or more.

A COLOR SPORT of a Dahlia Variety

Is That Variety in all respects except color of bloom. For instance, all plant habits, vigor and foliage of Golden City are identical with Queen City; Pink Amelia is the same in these respects as Amelia Earhart; Figaro the same as Satan, etc., etc.



Carpe Diem

GOLDEN RULE INTRODUCTIONS FOR 1941

CARPE DIEM. (Lamson—Golden Rule) S.C. to I.D. Size 10x6. Bush 6 ft. This outstanding new dahlia is the biggest true lavender we have seen to date. A slight overtone of mauve really makes this an entirely new shade, yet still a lavender in the truest sense. The stems are long, straight and strong and the big blooms are freely produced. On October 3rd as many as 6 blooms per plant on the average had been cut by Mrs. Lamson in her garden in Cincinnati. The bushes are husky and vigorous and producers of fine, big clumps. It's a good propagator.

It is certified at East Lansing, 1940, (85.5E) with blooms 11x7 and at Storrs, 1940, (85E) where it attracted much attention because of its unusual color and fine open habit of growth. It is on the Midwest Honor Roll.

We need an easily grown semi-cactus in lavender and a dependable informal lavender is equally in demand, especially a free bloomer, like Carpe Diem (meaning "Enjoy the Day.") We believe Carpe Diem will be winning next fall wherever exhibited.

Root, \$10.00; Plant, \$3.50

GOLDEN CITY. F.D. (Bibb—Golden Rule). Bloom 6x4. Bush 4 feet. Bicolor of scarlet pink penciled on golden yellow or, about 10% of blooms are a beautiful golden yellow suffused bronze. Both colors blend together and are enthusiastically welcomed by florists for it is a true color sport of Queen City. In fact, the bush, stem, substance of flower and growing habits are *Queen City*, since, being a sport from it, they cannot be anything else. Golden City is not a seedling.

It is a great acquisition for growers and florists in the Midwest and South especially; with us it is the first cut-flower in golden or bronze of any consequence. It is *Queen City* in a new and most attractive color. (87)

Root, \$10.00; Plant, \$3.50

See picture front cover.

JEANIE. Min. I.D. to F.D. (Wallace—Golden Rule). Bloom 4x2. Bush 2½ ft. Lemon yellow, very highly outlined and shaded on ends of florets with begonia rose. The productiveness and vigor of this miniature is unusually good and it will be a fine cut flower variety for the midwest. Award of Honor, Georgia, 1940. Plant, \$1.00



New Certified, Honor Roll and Foreign Dahlias

ALL-AMERICAN. S.C. 12x6. Rose doree with rose red flush and cadmium orange at base of petals. The only dahlia of the year that made three honor rolls. A giant artistic dahlia, completely different from anything else we have seen. Plant, **\$7.50**

BARBAROSSA RED. F.D., Holland. Size 7x4. A bright shining red about the size and formation of Begonia Rose. Very long stems, naturally free branching. Should be a fine cutflower. Plants, **\$2.00**

BILL'S GOLD. (Australian) I.D. Bloom 11x7. A giant informal. One of the best to date, color being a beautiful gold with blooms easily 12 inches. Long stems with flowers held at perfect angle. No exhibitor should miss this one. Height 5 feet. Plant, **\$2.50**

CAPTAIN CEDARQUIST. St. C. Two 1940 achievement medals. Without doubt one of the finest things in the cactus class. The blooms at Toledo this year were the finest thing at the show, keeping perfectly until the end. Color bright salmon orange, identical with the small flower "Andries Orange". Size 7x4. Height 4 to 5 ft. (Frank) Plant, **\$2.25**

CLASS. F.D. Color a brilliant yellow. This is said to be the largest formal ever raised. Habits of growth and stems are excellent. A formal "California Idol". (Salem) Plants, **\$7.50**

CONFUCIUS. S.C. Blooms twelve to fourteen inches. Probably the largest of this year's introductions. Flowers a beautiful coral red on medium tall plants. Achievement medal winner at California. (Ballay) Plants, **\$7.50**

DOROTHY LAMOUR. Str. C. 10x5. An outstanding dahlia of unusual color. Persimmon shading to gold at center. Winner of many prizes on the West Coast this year. (Ballay) Plants, **\$5.00**

F. W. BECKETT. (Australia). I.D. Bloom 10x5. A very large informal carried high above the foliage on long, stiff stems. A heavy prize winner in Australia this past year and recommended highly. Color is a clear, rich buff, blooms have remarkable substance. Height 5 feet. Plant, **\$1.50** Net

GOLDWYN. (Australia). F.D. Bloom 10x6. The winner of many first prizes and cups in Australia in 1940. A large, formal bloom of gold with buff shadings. In some soils the color deepens into reddish brown. Bushes grow about 3½ feet with a twenty inch stem, clear of foliage. A very large dahlia that doesn't need any undue forcing. Plant, **\$3.50**

GINGER ROGERS. I.D. 10x5. Color citron-yellow. A large, many petalled flower on extremely long stems that reminds one of "America's Sweetheart". Should go far in the yellow classes because of its perfection of flower and stem. (Ruschmohr) Plants, **\$5.00**

HILLSIDE JOY. S.C. 9x4. Color apricot to gold center with a suggestion of pink through the flower. Ivory reverse. Truly magnificent flowers bourne in profusion on strong growing plants. (Bissel) Plants, **\$3.50**

HILLSIDE BEAUTY. S.C. to I.C. Bloom 9x4. Rose-doree with base of petals shaded orange. Face of the flower overcast with dark gold, a very bright attractive cactus. Recommended for exhibition and cutting. (Bissel) Plant, **\$3.50**

HOUGHTEN GEM. (Australia). I.D. Bloom 10x6. Apricot, flushed salmon-orange. Blooms are held on long, strong stems. This dahlia is naturally large, so should be allowed to branch freely and not forced. Height 5½ feet. Plant, **\$2.00**

KATHLEEN HALL. (Australia). I.D. Another masterpiece by the well known breeder N. H. Sowton. Very large flowers of mallow pink, flushed purple and a buff blend in the general color. A startling color, quite different from anything else. Fine foliage and stems. Plant, **\$2.00**

MAID MARION. I.D. Bloom 11x6. A gorgeous blend of yellow with tips shaded phlox pink, suffused with mauve. Prolific bloomer, long straight stems and fine keeping qualities. An improved Freda George and winner of two achievement medals. (Dozier) Plant, **\$5.00**

MAFFIE. S.C. Bloom 12x6. A very large, semi-cactus with a distinctive, shaggy formation. Color is bright, glowing red, stems heavy, flowers held facing sideways. The largest of last year's introductions, it can easily be grown 12 inches. Bushes massive, with leathery, dark foliage. Height 6 feet. Plant, **\$3.00**

MAVIS TIERNEY. F.D. Blood red. Bloom 11x7. Bush 5 ft. This was for us the most spectacular and largest red dahlia we have yet grown. It was by far the biggest attraction in our garden and broke records for the number of requests for stock. We believe it will be found winning in most of the shows next fall. The habit of growth is most excellent and the blooms have the greatest of substance. From Australia. (88)

Plant, **\$1.50**

MARION SMITH. (Australia). I.D. 10x5. Tyrian pink overlaid mallow pink. A clear, bright flower held on stiff stems. A beauty. (Sowton)

Plants, **\$3.50**

MARY LYNN DUDLEY. S.C. A giant semi-cactus that will grow in any garden. Color bordeaux red shading to carmine on outer petals. Size 10 to 12 inches and 5 to 7 inches in depth. (Ruschmohr)

Plant, **\$3.50**

MARY TAYLOR. St. C. 7x4. Color grenadine pink with lemon yellow center. A bright, clear flower with perfect form and substance. Highest scoring dahlia at Storrs this year. Undoubtedly the leading medium cactus of the year. (Taylor)

Plants, **\$1.50**

NORMA MORTON. (Australia). I.D. 11x6. Color deep gold with each petal lined bronze or orange. Very vigorous, broad leaved plants with blooms held on long, straight stems. A valuable addition to the yellow class. Highly recommended. Plants, **\$1.50**

PINK JOSEPHINE. I.D. Bloom 12x6. Probably the largest true pink dahlia grown. A splendid, vigorous plant with perfect long stems. Flowers have a very loose formation and resemble Carl Dahl in form and size. Was the largest flower in the midwest show last year. An early and prolific flowering habit. Does not need forcing to produce large blooms. Height 5½ feet.

Plant, **\$2.00**

PRODUCER. I.D. Bloom 10x5. A glowing, honey-dew orange that attracts immediate attention. An early profuse bloomer, giving large quantities of flowers through the season. A very reliable strong grower and one that will succeed every where. (Dozier)

Plant, **\$2.00**

SNOW CREST. Inc. C. 6x3. A creamy-white cactus that should make a good cut flower. Free and early on the best of plants. (Dahliadel)

Plants, **\$2.50**

TROJAN. I.D. Carmine red overlaid yellow. Huge perfectly-formed blooms on cane-like stems. Truly one of the giants. (Salem)

Plants, **\$7.50**

WHITE GATE. (Lamson). S.C. Size 8x4. Pure shining white. Very uniform flowers, with tight closed centers. Long, strong stems hold the flowers in perfect placement. A valuable addition to the white semicactus class. Bushes strong and about 4 feet high.

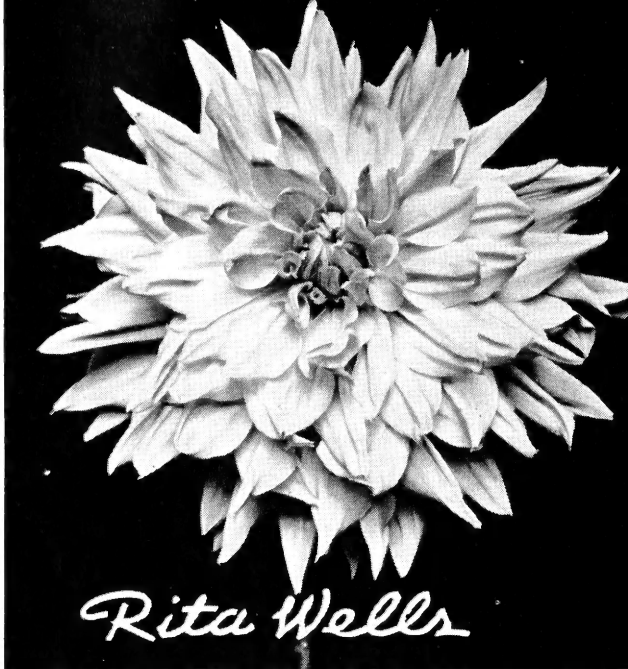
Plant, **\$1.00**

WHITE WINNER. I.D. 8x4. Blooms pure white of splendid substance on long, strong stems. Should be a good commercial. Honor Roll variety. (Wolfe)

Plants, **\$3.50**

WINNING WAYS. I.D. A new pink blend of great beauty. Flowers are yellow at base of petals blending to rose pink; at outer edge there is a thread of red. (Dixie)

Plants, **\$3.00**



The Biggest Dahlia We Have Grown

YOTO. I.D. Amber-yellow, lighted with peach. Of Japanese origin, the blooms are said to reach fourteen inches. Petals curl and twist. (Ballay)

Plants, **\$5.00**

YELLOW COMET. S.C. Light yellow with blooms easily ten inches. This dahlia should fill a long felt want, a semi-cactus, yellow, of free and early blooming qualities. Outstanding at Wisconsin show, also in the east. (Ruschmohr)

Plants, **\$3.50**

YELLOW DUCHESS. I.D. to F.D. Bloom 11x5. A new yellow importation that greatly surprised us because of its great size and rugged growth. Bushes are massive and wide spreading, foliage broad and heavy, blooms open out semi-cactus, later developing informal. If left on bushes petals roll back to the stem making a perfect formal. Color is soft sulphur yellow with centers always closed. This should succeed every where because of its rugged growth, and if shaded and watered will develop into a winner for the largest bloom class.

Root, **\$5.00**; Plant, **\$2.00**

LUXURY. I.D. Bloom 10x6. A large beautiful pale orange of unusual substance. Flowers are borne profusely on long cane-like stems. Extra sturdy. Bushes vigorous with heavy dark foliage. Received highest commendation in Achievement Medal class at Washington as runner-up. Listed on Honor Roll. (Dozier)

Plant, **\$3.50**

POWERHOUSE. I.D. Bloom 12x6. Color is unusual raspberry red with distinctive white stripings. Vigorous growth and long strong stems. Blue Ribbon winner at Baltimore show. Bush 5 ft. (Dozier)

Plant, **\$2.50**



Begonia Rose

GOLDEN RULE ARISTOCRATS DAHLIA HONOR ROLL OF TIME

Including only outstanding dahlias disseminated for one or more seasons. A Golden Rule Aristocrat must first be of such high vigor as to give reliable production of flowers under ordinary varying seasonal conditions. It must also have high qualities of beauty, stem and form.

(Numbers in Parantheses are the Ratings)

FORMAL DECORATIVE

BEGONIA ROSE. Florists of Dayton and Cincinnati ordered this dahlia by name in 1940, its year of introduction. As near as we can judge this is a record. Begonia Rose now has four certificates to its credit; one each from Cincinnati, E. Lansing, California and now, West Virginia. The extra long stems, the superb color of raspberry rose, and its keeping qualities, combined with extra freedom of bloom and insect resistant growth, make it a florists' flower extraordinary, and even a more reliable producer than Queen City. Extremely early. Bushes 4-5 feet. Flowers 5-7 inches. (90)

Root, **\$5.00**; Plant, **\$1.50**

BLUE RIVER. Deep bluish lavender. Early. Every plant strong and productive. On the farm it is quite dwarf but in sheltered gardens it is 4-5 feet. Size 8-9 inches. (85)

Root, **\$0.50**; Plant, **\$0.50**

BUCKEYE BRIDE. Geranium pink to light salmon. 6 inch. 5-6 feet. For beauty, stem, habit and freedom of bloom this dahlia is still supreme. It was the greatest favorite of the greatly beloved late Derrill Hart, and an Honor Roll dahlia for many years. (86)

Root, **\$0.75**; Plant, **\$0.50**

BUCKEYE KING. In our sheltered garden this is the largest, best keeping and the biggest producer of exhibition flowers in a formal, golden yellow. In its type and color Buckeye King is supreme in the Ohio Valley. 8-10 inches. 4-6 feet. Early flowers on the farm are strongly tinted bronze. Give it the attention accorded a new variety, and it will win. (87) Root, **\$0.50**; Plant, **\$0.50**

BUCKEYE PEACH. A combination of peach shades, golden yellow prevailing. Very prolific and very useful for cutting. The best bronze cut flower. A very big clump maker. 5-6 inches. 5-6 feet. (85) Root, **\$0.30**

BRITE LITES. Canary yellow. Medium size 4½-5 inches. Bush 4 feet. It has very lasting qualities as a cut flower and fine stems. (85) Root, **\$0.75**; Plant, **\$0.50**

CHARLES MASTICK. An almost pure gold with 8 inch flowers and great depth. Very profuse during midseason. Dwarf. This variety has been very satisfactory in all gardens. (86) Root, **\$0.75**; Plant, **\$0.50**

D'ARCY SAINSBURY. The most beautiful and the best exhibition white and truly wonderful for us in 1940. 10-11 inches. 5 feet. Root or Pot Clump, **\$0.75**; Plant, **\$0.50**

ELISSA LANDI. A clear orange of good substance; 7 inches. 4 feet. Plenty of flowers and big clumps. (86) Root, **\$0.50**

FIREBALL. True scarlet, a real fiery red. Ball shaped formal. Outstanding. 7 inches. 4½ feet. This is the best of the fire color dahlias ever originated. (85)

Root, **\$0.75**; Plant, **\$0.50**

GRAND MASTER. An autumn shade, blend of orange and gold. 9 in. x 5 deep. 4 feet. This is one of the most reliable of Dahlias being a very vigorous grower with plenty of fine large bloom. (85)

Root, **\$1.00**; Plant, **\$0.50**

GLORIA BACHER. 9x5 inches. 5 feet. Introduced last year as the best purple formal, we believe it to be the most vigorous and productive of the purples, excepting Jean Trimbee. In 1940, the blooms were nearly as large as Glamour and we had plenty. (85)

Plant, **\$2.00**

HONOR BRIGHT. Amber bronze. 7 inches. 4½ feet. In its habit of growth Honor Bright is the standard by which we judge other varieties. The long lasting blooms top long, upright canes and long stems, and are rapidly produced. It is the parent of Begonia Rose. (86)

Root or Pot Clump, **\$0.50**

JERSEY'S BEAUTY. 5 inches. 6 feet. This fine pink was the first truly florists' dahlia and still is a standard for cutting. Like the best cut-flower dahlias, the blooms should be cut promptly as soon as open and not allowed to fade on the bush. (87)

Root, **\$0.35**

KENTUCKY SUN. Bloom 8x5. Bright yellow. This is probably the healthiest grower of all the yellows, producing quantities of uniform flowers facing toward the heavens. Bush height about four feet. Stems inclined to be short at first but they grow out of this later in the season. Almost a sure winner on the show table.

Root, **\$0.50**

LOIS WALCHER. F.D. Bloom 6x4. A vivid contrast of purple, tipped white. A strong grower with perfect stems and an early and profuse bloomer. Lois Walcher is hard to beat in the formal bi-color class and will make a bright spot in any man's garden. Bush 3½ feet.

Root or Pot Clump, **\$1.50**; Plant, **\$0.50**

MARIE. A real pink of the most vigorous habits and a big root maker. 4-5 inches. 5 feet. Useful for cutting and one of the best garden dahlias. (87)

Root, **\$0.35**

OAKLEIGH MONARCH. Anna Benedict and Oakleigh Monarch are two reds we use for cutting. Probably the latter is the best all purpose red dahlia. It is the most uniform in its high vigor and reliability of bloom. 8-9 inches. 5 feet. (88)

Root or Pot Clump, **\$0.50**; Plant, **\$0.50**

PURPLE MIST. 8 inches. 4½ feet. Probably the freest bloomer of the good purples. Very reliable as an exhibition variety. (85)

Root, **\$0.75**; Plant, **\$0.50**



QUEEN CITY. The color that has no equal in any dahlia or any flower, scarlet pink. The dahlia that has revolutionized the cut-flower business for many dahlia growers in this section. From early July constantly till frost it produces and should be cut when blooms are two-thirds developed. For greatest production and highest quality the bushes should be always cut clean of flowers. Ball type formal, 6x4 inches. Bush 4 feet. (87)

Root, **\$0.75**; Plant, **\$0.50**

SALADINI. One of the oldest varieties. Free blooming orange. Dahlias like this are responsible for the great advance in the quality of dahlias in the last twenty years. Very early. 6 inches. 5 feet. (85)

Root, **\$0.30**





The Governor

THE GOVERNOR. F.D. Bloom 10x5. This is easily the best yellow formal. Light bright yellow of perfect form, uniform full centers with wide petals falling back to the stem. Early to bloom it gives a wealth of flowers until frost. An unusual quality of "Governor" is that the longer it blooms the larger the flowers become, many reaching the size of twelve inches. Bushes are massive and wide spreading, with flowers held facing on extra long stems. We believe this to be the most prolific bloomer of all the extra large dahlias. A good root maker. Height 5 feet. Root or Pot Clump, **\$2.65**; Plant, **\$1.50**

Tyrian Buckeye



TYRIAN BUCKEYE. Bloom 7x4. Bush 4 feet. As we compare this tyrian pink formal with other pink formals we realize that in respect to sure fire blooming properties it ranks near the top. In its freedom of bloom whether on the farm or in the garden it provides a wealth of color in pink that everybody wants to see. (86) Root, **\$1.50**; Plant, **\$0.50**

VOLCANO. 10 inches. 4 feet. A big orange with free blooming habits, very vigorous and good root producer. It has an enviable record as a show winner. (85) Root or Pot Clump, **\$0.75**; Plant, **\$0.50**

INFORMAL DECORATIVE

ADIRONDACK SUNSET. 8 inches. 4 feet. An attractive blend of scarlet and gold producing a bright orange effect. A grand dry weather variety. (86) Root, **\$0.50**

ADOLPH MAYER. The nearest to black-red and best of its color. Early and most reliable in bloom. A most excellent garden dahlia. 8 inches. 4 feet. (86) Root, **\$1.00**; Plant, **\$0.50**

ALICE MAY. The white Lord of Autumn. In size and performance it rivals and ranks with Sainsbury as the two best exhibition whites. We had many 10-12 inch flowers. 5 feet. (86) Pot Clump and Root, **\$2.00**; Plant, **\$0.75**

ANNA BENEDICT. Deep garnet red. This is one of the two reds we use for cutting. 7 inch. 5 feet. One of the most insect resistant of dahlias. We recommend it highly. (87) Root, **\$0.75**; Plant, **\$0.50**

BUCKEYE GLORY. Throughout the interior sections and the southern states this large orchid shade has been a big improvement on Warner. Bright orchid or lilac rose. 9-11 inches. 5 feet. A big root producer of the unbreakable kind. (85) Root, **\$0.50**

CALIFORNIA IDOL. Of the large, clear yellows this is the most reliable for exhibition. We used it in 1940 as a local cut-flower. It has fine substance. 9-10 inches. 4-5 inches deep. 4-5 feet. (88). Root or Pot Clump, **\$0.50**; Plant, **\$0.50**

CHEROKEE BRAVE. Bloom 10x5. Easily the best informal red in the midwest and south, or any other place where growing conditions are rather harsh. A rugged growing, good root making dahlia that can be grown up to 12 inches. Color is a beautiful ruby red which will not fade under the hottest sun. Height 5 feet. Foliage dark green and insect resistant. Root or Pot Clump, **\$1.25**; Plant, **\$0.50**

CHEROKEE ROSE. Bloom 8x4. Lavender rose. This variety produces an astonishing number of blooms from mid-season on. Bushes tall and naturally branching, resemble Jersey's Beauty. Plant is vigorous with long, erect stems and uniform, full centered flowers. Highly recommended as an exhibition or cut flower to anyone in the midwest and south. Bush 6 feet. Root, **\$0.50**

CARL G. DAHL. Bloom 12x6. One of the greatest winners of all large, modern exhibition dahlias. Carl Dahl can be easily grown twelve inches and has been grown sixteen. Blooms have a loose, open formation with large petals curled slightly. Color is apricot buff, shaded old rose on reverse of petals. Bush is about 5½ feet high with long, erect stems.

Root or Pot Clump, **\$0.75**; Plant, **\$0.50**

DEAN ANDERSON. Bloom 11x6. Color is a clear henna orange and will not fade under the hottest sun. A beautiful strong grower, throwing long stiff canes with flowers held facing. Bushes are massive with dark green foliage and are very easy to grow. Bush 6 feet.

Plant, **\$0.75**

DIXIE QUEEN. 8-9 inches. 4 feet. A clear, shining buff, a flower of greatest beauty produced unfailingly by a variety that has all the good qualities. Don't miss it. (87)

Root, **\$1.50**; Plant, **\$0.50**

DULCIE BLACK. Clear, deep salmon. 9-10 inches. 5 feet. This is one of the very best of all exhibition varieties being a wonderful producer and one of the best dahlias for the real midwest. Australian. (86)

Root, **\$1.50**; Plant, **\$0.50**

EVENTIDE. Flower 10x6. Bush 4½ feet. Here is a purple informal that with us set a mark in its first year that will be hard to beat. Its unusual production of big blooms, most excellent stem and free and vigorous habit of growth, high substance of bloom, marks it as one of the best of the new dahlias. (86)

Root, **\$4.00**; Plant, **\$1.25**

FREDA GEORGE. 9x5 inches. 5 feet. A beautiful blend of lavender pink and cream. This is a very abundant flowering dahlia so much so that we used it for a local cut flower. (85)

Root or Pot Clump, **\$0.75**; Plant, **\$0.50**

GEORGE WALLACE. One of the biggest of dahlias. A sulphur yellow with whitish reverse. 10-11 inches. 5½ feet. For us it has been one of the best of large yellows, for it has great vigor and is a good root producer. (86)

Root, **\$1.50**; Plant, **\$0.50**

GLAMOUR. 11-12 inches. 7-8 deep. 4½ feet. The biggest of the purples and a strong, vigorous variety. The flowers are veined a violet shade and it is a real show winner and a marvel in the garden. (86)

Root or Pot Clump, **\$1.75**; Plant, **\$0.75**

GOLDEN BEAUTY. 10 inches. 4 feet. Like a big gold chrysanthemum. A golden buff. It is a big producer of bloom and has great lasting qualities. (85)

Root, **\$1.00**; Plant, **\$0.50**

HILLCREST CINDERELLA. 8-9 inches. 5 feet. The largest true lavender, and by the law of survival of fittest the greatest lavender for the midwest. (85)

Root, **\$1.00**; Plant, **\$0.50**

JANE COWL. The original of the modern, vigorous, dependable dahlias. Golden bronze. 8-9 inches. 6 feet. Perhaps the most widely grown dahlia of all. (87)

Root, **\$0.30**



Alice May

JEAN TRIMBEE. Sometimes S.C. The best garden purple, a bright petunia shade and an unfailing great producer of bloom. We use it as a local cut flower, cutting young flowers. 8 inches. 5 feet. (87) Root, **\$0.50**

KENTUCKY SPORTSMAN. Bloom 10x5. Bush 4 feet. This seems the most popular of exhibition bi-colors. The color is quite unlike anything else. Yellow at center, outer petals golden amber, with rosy reverse, each petal tipped white. It blooms early and freely, and is without doubt the most beautiful bi-color. Root, **\$1.50**; Plant, **\$0.50**

KING COLE. I.D. Bloom 11x5. This is the largest of the black red dahlias. Although in 1940 its performance was only fair, we feel that in a normal season King Cole will prove to be an outstanding new variety. Bush vigorous and free branching, reaching seven feet in height with blooms held on perfect stems. (85) Plant, **\$2.00**



Eventide



Freda George

See Description P. 11

KING LEOPOLD. I.D. Bloom 8x4. Color, salmon flushed with rose pink, a little darker than Buckeye Bride. Exceptionally free and early with blooms covering the bush until frost. Highly recommended as a salmon pink garden flower. Bush 4 feet. (86)

Root, **\$1.50**; Plant, **\$0.50**

LORD OF AUTUMN. 10x5 inches. 5 feet. A clear lemon yellow. For us one of the best large yellows and everywhere the most beautiful. I don't believe there will ever be again in the midwest two such Lord of Autumn blooms as were displayed at the Cincinnati show by Mr. Durnil, of Louisville, and ourselves, in 1940. Both were twelve inches but the Louisville bloom beat ours by a hair. They were probably the nearest to perfection we shall see. (85)

Root or Pot Clump, **\$0.75**; Plant, **\$0.50**



Glamour

MAD. ALBERT LOIX. I.D. Bloom 9x5. A fine large foreign variety of creamy white which does not burn. A strong grower with flowers held on strong stems. A fine white for those who find this color hard to raise. Bush 3 feet. (85) Plant, **\$0.75**

MAESTRO. I.D. to S.C. Flower 10x6. Bush 4 feet. A bright cerise. This new dahlia is a worthy addition to our list. The big, strong bushes produce well and blooms are very close to perfection in a big, red I.D. or S.C. Stems are excellent. (85)

Root, **\$7.50**; Plant, **\$2.50**

MARGRACE. Scarlet red with a tan reverse. Bloom 10x5. Bush 5 feet. Very fine large flowers on excellent stems and it blooms and grows well under a variety of soils and conditions. (85) Root, **\$0.50**; Plant, **\$0.50**

MARY BAKER. A deep, butter yellow. Bloom 9x4. Bush 3½ feet. Here is a yellow that blooms very, very early and is exceedingly free throughout the season. It will grow and bloom well in any kind of a soil or situation if given half a chance. (88) Root, **\$0.35**

MARYLAND'S DELIGHT. A soft, true rose pink with exceedingly free blooming qualities and great vigor. Flower 8x4. Bush 3½ feet. It is very early too and stems are excellent. (87) Root, **\$0.75**; Plant, **\$0.50**

MILTON J. CROSS. During the difficult mid-summer of 1940 Milton Cross was one of the best varieties on the farm. Golden yellow shaded rose, 9x5 bloom, bush 5½ feet. The stems are perfect and are extra long and the plant vigor for us is perfect.

Root, **\$0.50**; Plant, **\$0.50**

MADAM ALBERT LEBRUN. Bloom 10x5, bush 5½ feet. A new and different color of deep orange bronze with a violet or lavender suffusion. We think this is one of the best dahlias of all time. Stems are perfect, very long and the flowers are produced early and continuously in great numbers. Those who saw our display at Louisville can appreciate this dahlia. (88)

Root, **\$2.00**; Plant, **\$0.75**

MAYOR FRANK OTIS. Bloom 11x5. Bush 5 feet. Almost a clear, buff yellow. The plants have wonderful vigor and make plenty of fine roots. It is a late bloomer, but we have always had very wonderful huge flowers about October 1st. (82)

Root or Pot Clump, **\$2.00**; Plant, **\$0.75**

MRS. GEORGE LeBOUTILLIER. Brilliant carmine red. Bloom 10x5. Bush 4 feet. This dahlia is outstanding for its utter disregard of any severe condition of weather or insects. Each season finds it showing a mass of red bloom at our farm all season long. (85)

Root, **\$0.35**

OPAL. A real pastel shade, large flowers and one of the most prolific. Silver and rose bloom 9x5. Bush 4½ feet. Of very artistic form and of the highest vigor and root producing qualities it will be one of the dahlias that will be with us beautifying our gardens for many years. (85) Root, **\$0.50**

PINK GIANT. Tyrian Pink. This brightest of pink shades has long been lacking in a good dahlia. Now we have it. Bloom 9x4. Bush 5 feet. Pink Giant is a grand garden dahlia, with big, strong, upright bushes, fine stems and plenty of bloom. Early. (86)

Root or Pot Clump, **\$3.00**; Plant, **\$1.00**

PREMIER'S WINSOME. A clear, light mellow pink. Bloom 11x6. Bush 4½ feet. This is a very reliable and free bloomer, many canes producing the very large and lasting flowers steadily over a long season. All plants for us are strong and vigorous. We rate it the highest of any large pink. (88)

Root or Pot Clump, **\$2.00**; Plant, **\$0.75**

RITA WELLS. Bloom 12x7. Bush 5 feet. The earlier flowers, in midseason, are a light pink blending on a clear buff. The later flowers almost clear buff. This was for us the producer of the biggest flowers we ever grew. Two of them were 14x8. It is a strong grower, a good root maker, and considering its great size of flower, a very free bloomer. (87)

Root or Pot Clump, **\$5.00**; Plant, **\$1.50**

ROBERT RIPLEY. 11x6 flowers. Bush 5 feet. A soft, golden purple with lilac rose blending. This is one of the greatest of show room champions, not only one of the largest but also one of the best for general results in the garden due to its superb habit of growth and bloom. Stems are long, straight, strong and flowers keep well. (85)

Pot Clump, **\$1.50**; Plant, **\$0.75**

SUNRAYS. 9x5 bloom. Bush 4½ feet. Buff with heavy red shadings, the same shade as old Amon Ra (sungod). It is truly a magnificent color in a large flower that stands out on the show table or in the garden. The variety is strong and vigorous. (85)

Pot Clumps, **\$2.00**; Plant, **\$0.75**

SILVER LADY. Bloom 10x5. Pure white edged and flushed with lavender pink. A beautiful kingly flower, well detached from the foliage. Massive, branching plants bloom profusely, from midseason on with uniform closed centers. One of the most beautiful of all pastels. Bush 5 feet. Plant, **\$1.50**

TOWER'S EMPIRE. 9x4 bloom. Bush 6 feet. Another grand garden and farm dahlia always showing color. A shining golden yellow, dark fern like foliage. It is always a strong grower and does well in all gardens. (85)

Root, **\$0.50**

WATCHUNG GIANT. 10x5 flowers. Bush 5 feet. A deep golden orange. A beautiful large flower freely produced from midseason on, and in general one of the most satisfactory varieties we grow. It is a great root maker. (86)

Root, **\$0.50**

AZTEC CHIEF. F.D. Bloom 11x5. A very large, peculiar shade of light tomato red. Plants are extremely vigorous and fast growing. A very easy dahlia to grow, doing well in all sections of the country. A mid-season bloomer. Root, **\$4.00**; Plant, **\$1.50**



Major Frank O. Lee

SEMI-CACTUS

BALLEGO'S SURPRISE. 8x5 flowers. Bush 4 feet. Truly this is the best of all white SC for exhibition. With us it is quite close to cactus in form. One of the best that has come out of Europe. Deep full centered flowers are on strong stems and bushes are uniformly vigorous and very productive. (86)

Root or Pot Clumps, **\$0.50**; Plant, **\$0.50**

BETTE DAVIS. Bloom, 7x4½. Bush 4 feet. Lilac rose or a deep orchid pink. For high quality of flower and stem; for reliability of performance in garden or field this dahlia has no superior. It has an almost perfect habit of growth and from midseason on it presents an astonishing array and abundance of flowers. It is not a big root maker, but we have no difficulty keeping the roots 100%. (87)

Root or Pot Clump, **\$1.00**; Plant, **\$0.50**



Pink Giant



Chamberlain

CHAMBERLAIN. Bloom 10x5. Bush 4 feet. Blended pink and lavender with gold shadings. A fine large imported Dahlia with the greatest of keeping qualities of flowers. It has the foliage, growth and general plant habits of Jane Cowl. (85)

Root, **\$0.75**; Plant, **\$0.50**

CHAUTAUQUA DAWN. Bloom 10x5. Bush 5½ feet. The color is a beautiful peach salmon. It is a strong, vigorous variety, and many fine, large flowers are presented by one plant in a season. Stems are long, and hold flowers well above foliage. (85)

Plant, **\$2.00**

ENKART PRIMA. Bloom 9x5. Bush 4 feet. The most perfect and largest of the many pink and yellow cactus that have come from Europe, but this is the best one for the midwest. When cut it is one of the longest keepers we know. Unsurpassed for exhibition. Bright salmon with gold center.

Root or Pot Clump, **\$1.50**; Plant, **\$0.50**



Evelyn Chandler

EVELYN CHANDLER. Bloom 11x7. Bush 5½ feet. Color is a bright golden orange, a self color. A free bloomer with huge flowers held far above foliage. Best of long stems. It is an early and constant bloomer and a good root maker. This was one of the best, earliest and most reliable of the new ones for 1940. (86)

Root or Pot Clump, **\$5.00**; Plant, **\$2.00**

FLASH. Bloom 7x5. Bush 4 feet. A most outstanding bicolor of scarlet red with white tips. We consider this one of the best of recent introductions due to its color and the great keeping qualities of the flowers. We needed an easily grown bicolor S.C. and this seems to fill the bill. (86)

Root, **\$7.50**; Plant, **\$2.50**

GRETEL. Bloom 6x3. Bush 3 feet. A bright henna red. It is a much more massive flower than Miss Belgium and is a better variety. We use it for cutting and that is the best recommendation for the midwest. (85)

Root, **\$0.35**

HILLSIDE GOLD. Bloom 8x4. Bush 3 feet. A very beautiful golden yellow, with apricot suffusion early in the season. This is one of the most dependable dahlias we know, since it blooms very early and continues faithfully all summer and up till frost, producing many flowers in rapid succession. The fine blooms have well nigh perfect substance and form. (87)

Root, **\$2.50**; Plant, **\$1.00**

KAY FRANCIS. Bloom 9x5. Soft lemon yellow, a shade darker than Frau Bracht. A very reliable performer in all sections of the country, both on the exhibition table and in the garden. Bushes tall and rugged reaching a height of 6 feet. Fine branching habits and free, early blooming make this one of the best of all yellows. Extra good.

Root, **\$0.50**

MICHIGAN WHITE. S.C. to I.D. Bloom 5x3 farm, 8x4 garden. Bush 4 feet. A fine, white cut-flower dahlia and the only one since Jean Kerr, for the Ohio Valley, for it meets the principle requirement of a white cut flower; produces unsullied flowers in hot weather. And for exhibition it is equally important for its fine form, substance and 8 inch flowers. It wins every fall. With all its good points it is also a big root producer. (87)

Root or Pot Clump, **\$0.75**; Plant, **\$0.50**

MISS GLORY. Bloom 10x5. Bush 4 feet. A real deep, bright yellow. The bushes are wide and massive and produce fine, big clumps. The blooms have perfect form and great substance. This fine dahlia fills a gap caused by the scarcity of reliable exhibition semi-cactus in deep yellow. (86)

Root, **\$0.50**

SCARLET LEADER. Flower 7x4. Bush 3½ feet. This is an outstanding dahlia in regard to long, strong stems, the most beautiful red shade we have and its great profusion of flowers, of great substance. Needless to say we use it for cutting as it produces as well on the farm as it does in the garden. (87)

Root, **\$1.50**; Plant, **\$0.50**

SCARLET WONDER. S.C. to I.D. Flower 6 x3. Bush 3 feet. One of the most reliable varieties imported from Europe. A bright, deep scarlet, nice long stems. We use this with Scarlet Leader for cutting. (85)

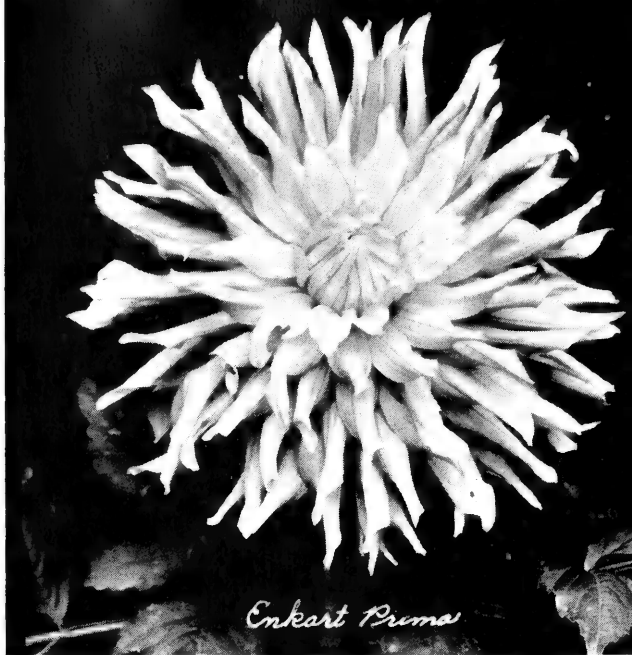
Root, **\$0.75**; Plant, **\$0.50**

TANNENBURG. Flower 6x4. Bush 6 feet. Almost a cardinal red, with small gold tips caused by the reverse yellow color. The blooms are really spectacular and make an outstanding display when cut. They are exceedingly long keeping. The big, strong bushes produce freely from mid season on and the clumps are big and strong too. (86)

Plant, **\$0.50**

YELLOW GLORY. Bloom 11x6. Bush 5 feet. A clear, lemon yellow and a superb, big flower that will be seen for many years in our dahlia shows. It produced well in the Ohio Valley, having big, strong bushes and magnificent blooms. The brilliant, clear yellow, the great depth of the flower and great substance makes this a great exhibition variety. (86)

Root, **\$5.00**; Plant, **\$1.50**



Enkart Prima

CACTUS

ANDRIES SUPERBA. Str. Cactus. Blood red. Flower 5x3. Bush 3 feet. A very free flowering cactus, stems long and straight and a very strong vigorous variety. One we can heartily recommend for the midwest. (85)

Root, **\$1.50**; Plant, **\$0.50**

BERGER'S JEWELL. Incurved. Flower 5x3. Bush 3½ feet. White tinted lavender. This is one of the most vigorous and free flowering of all cactus dahlias and the many highly artistic flowers are on fine, long stems and keep a long time after cutting. It is of great value as a florists' flower. (87)

Root, **\$0.50**; Plant, **\$0.50**

CARDINAL VON ROSSUM. Str. cactus. Flower 5x3. Bush 2½ feet. A deep violet purple. Another very dependable cactus, early blooming and very free flowering. Most excellent for exhibition. Stems are long and strong. One of the varieties that always blooms well, wherever planted. (86)

Root, **\$1.00**; Plant, **\$0.50**

CERISE BUCKEYE. Bloom 8x4. Bush 4 feet. A true cerise color, in an extremely perfect flower of the American type incurved cactus. Wherever shown in 1940 it won on the show table. It is a very vigorous dahlia with dark foliage and a long stem. (86)

Plant, **\$0.50**

COMETEER. Bloom 5x3. Bush 3½ feet. Str. cactus, bronzy gold. We cut more cactus flowers for florists from this variety than from all other cactus put together. A remarkable performer in dry weather. (87)

Root, **\$0.50**; Plant, **\$0.50**

DULCINEA. Str. cactus. A pure spectrum red. Bloom 5x3. Bush 3 feet. On account of its perfect form it is a great winner on the show table. It is also a prolific bloomer with many flowers at a time from midseason on. (85)

Root, **\$1.00**; Plant, **\$0.50**

FRAU IDA MANSFIELD. Str. cactus. A bloom of 6x3 inches. Bush 3 feet. A light lemon yellow. This is a variety that can be planted anywhere within reason and it will bloom early and keep on blooming throughout the season. It has great substance, and will outlast any other dahlia. (86)

Root, **\$0.75**; Plant, **\$0.50**

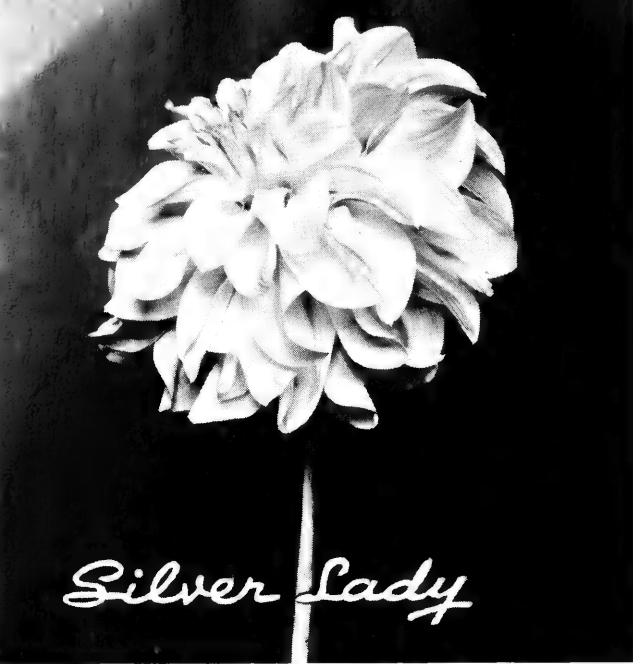
Plant, **\$2.00**

GOLDEN HORN. Incurved American Type. A deep, clear butter yellow. Bush 5 feet. Flower 8x4. Here is a dahlia in the much prized cactus form that always blooms from midseason on. On the farm or in the garden, wherever you find it, it will have strong bushes, fine flowers on long stems. (86)

Root, **\$1.00**; Plant, **\$0.50**



Flash



Silver Lady

See Description P. 13

GOLDEN STANDARD. Bloom 9x5. Bush 5 feet. A golden yellow shaded amber. One of the best of all exhibition cactus; it has won many prizes for several years. This dahlia seems peculiarly well adapted to garden cultivation in the Ohio Valley. (85)

Root, **\$0.75**; Plant, **\$0.50**

GREATER GLORY. Incurved Cactus to S.C. In our section nearly every bloom is cactus. Bloom 10x5. Bush 4 feet. A deep, rose pink with light yellow shadings at center. It nearly always wins in the pink cactus class at our shows. It blooms well at our farm too. (85)

Root or Pot Clump, **\$1.50**; Plant, **\$0.50**

See Description P. 11



Carl Dahl

JULIUS G. BUNGE. Flower 5x3. Bush 3 feet.

A Str. cactus of pure bright pink with no shading of any other color. An early and constant bloomer. A truly wonderful dahlia in the garden. This is another dahlia that can always be depended on for fine bloom. The stems are especially long and strong and the blooms have wonderful substance. (86)

Root, **\$1.00**; Plant, **\$0.50**

MAD. C. JUSSIANT. Bloom 6x4. Bush 3½ feet. This is a true cactus and is a true lavender color. An exceedingly sturdy variety with big, wide bushes, plenty of buds and flowers from midseason till frost. Stems are long, strong but graceful. It is a big winner in the shows. A good root producer. (86)

Root, **\$1.00**; Plant, **\$0.50**

MASCOTTE. Incurved. Bloom 5x3. Bush 3 feet. Deep rose pink with gold shading at center. Another member of that notable group of sturdier, more prolific modern cactus dahlias. Mascotte has the greatest of vigor, the ability to bloom under adverse conditions, long stems and the flowers, used for cutting, will keep. (87)

Root, **\$0.75**; Plant, **\$0.50**

NAGELS ORANGE. Str. cactus. Bloom 7x3.

True cactus of clear orange coloring. A fine free blooming variety, especially recommended for exhibition purposes. Petals are narrow and pointed with centers always uniform and full. Bush 3½ feet. (86)

Root, **\$1.50**; Plant, **\$0.50**

POLICHINELLE. Str. cactus. Pink with white center. Bushes are dwarf, at our farm two feet or less, but are filled with bloom about 4x2. This is a very dependable cactus. (85)

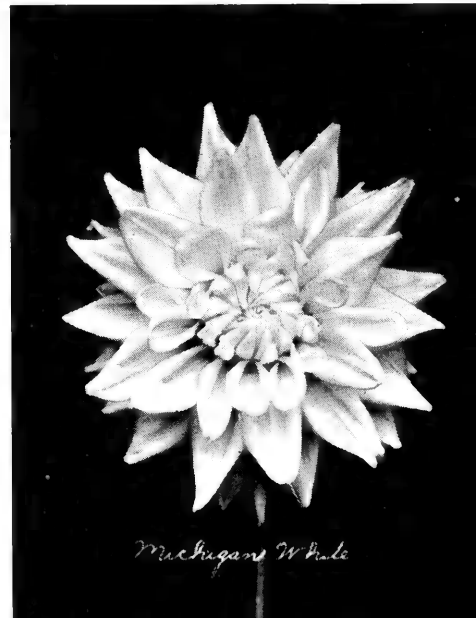
Root, **\$1.00**; Plant, **\$0.50**

ROYAL PURCHASE. Incurved. Flower 10x5.

Bush 4 feet. This is one of the largest of all cactus dahlias. A medium golden yellow color with some pink shading on outer petals early in season. The shaggy appearance of the big flowers is quite artistic, the number of these fine cactus flowers produced is amazing. Very vigorous and a good root maker. (87)

Root, **\$0.50**; Plant, **\$0.50**

See Description P. 14



Mackigans White

SELECT STANDARD VARIETIES

This includes many varieties that after further trial will undoubtedly be listed among the "Golden Rule Aristocrats."

A. G. GOODACRE. F.D. Lemon yellow, tipped white. Flowers 6x3. Bush 3½ feet. This is our favorite combination in a bicolor dahlia and is a strong, vigorous grower and a very floriferous variety. (83)

Root, **\$5.00**; Plant, **\$1.50**

AMELIA EARHART. S.C. Orange. Flowers 10x5. Bush 4 feet. This variety has been a great winner at shows for many years. Based on these performances it is a great exhibition variety. (81)

Root, **\$0.50**; Plant, **\$0.50**

AMERICA'S SWEETHEART. I.D. Pale lemon yellow of the most perfect form and the most beautiful of all big yellows. Equally well grown with Lord of Autumn and California Idol, America's Sweetheart will win. But it is temperamental in the Ohio Valley. (75)

Root, **\$0.75**

AMERICAN PURITY. S.C. White. Flower 10x6. Bush 4 feet. A fine, large deep white on very fine, erect stems. It has great keeping qualities and is a great exhibition variety. (75)

Root, **\$1.00**; Plant, **\$0.50**

ANTWERPEN. S.C. A bicolor of beautiful form and very different in color, a rosy red marked with pinkish lavender. Flower 8x4. Bush 4 feet. (84)

Root, **\$2.00**; Plant, **\$0.75**

BALLEGO'S GLORY. F.D. Red and gold. Bi. Flower 6x4. Bush 4 feet. This is the most spectacular and brightest of all bicolors of a blood red tipped gold and a very free flowering dahlia. (84)

Root, **\$0.50**

BUCKEYE STAR. S.C. Flower 6x4. Bush 5 feet. A deep flesh pink with yellow center. Called by florists *The Picardy Dahlia*. This is the most lasting bloom when cut that we know and one of the most beautiful, and these qualities make it one of the best of all cut flowers. A good root maker. (81)

Root, **\$0.50**

BRILLIANT LADY. F.D. Flower 10x4. Bush 6 feet. A very large purple red, a very strong variety and exceedingly free of bloom. (80)

Root, **\$1.50**; Plant, **\$0.50**

BANDOEG. I.D. to S.C. Bloom 9x5. A splendidly growing variety with the best of stems. Color bronzy orange overlaid rose. Bush healthy with deep green foliage. A good cut flower beginning midseason. Height 6 feet. (83)

Root, **\$0.50**

BURCH FORAKKER. I.D. Bloom 12x6. The largest of the brilliant reds or scarlets. Blooms are held facing on the best of stems and can easily be grown 12 inches. Bushes and foliage very satisfactory. Height 6 feet. (83)

Plant, **\$1.00**

CORNELL. I.D. Bloom 9x5. A splendid variety for the bicolor classes. Color red and white on excellent stems. Bush growth vigorous and free branching. Height 4½ feet.

Plant, **\$1.00**



CALIFORNIA PEACH. I.D. to S.C. Bloom 10x5. Dull peach pink. A very late bloomer with long, strong stems holding the flowers in perfect placement. Bushes vigorous and very tall, up to 7 feet. Hard to grow where season is short. (75)

Plant, **\$0.75**

CHEER LEADER. F.D. Bloom 7x4. A rose pink formal to informal, medium sized cut flower. Bushes are strong and easy to grow, stems strong and slender with plenty of foliage. Very profuse bloomer. Height 4½ feet.

Plant, **\$1.00**

CHAUTAUQUA SUNSET. A most beautiful shining color of coral and gold. A steady producer over a long season. Bloom 8 inches. Bush 4 feet. (85)

Root, **\$0.50**; Plant, **\$0.50**



A. G. Goodacre



Dominant

CHALLENGER. S.C. Bloom 8x4. A fine cardinal red with occasional white petals showing. Strong, rugged growth, straight stems and the best of keeping qualities. Blooms from midseason on, height 5 feet. (84)
Root, **\$0.50**

CESKE SKALICA. I.D. Bloom 10x5. Easily the largest of all the red and white bicolors. Bush is massive with light green foliage and extra heavy stems growing about 4½ feet high. This variety requires rather favorable growing conditions but will take force feeding. Color pure white, striped and blotched deep scarlet. (85) Plant, **\$0.50**



Ceske Skalica

CHEROKEE. S. C. Bloom 9x5. Clear, light lavender. Very pleasing in form with tight centers and twisted, even petals. Bush is very vigorous and naturally free-branching. Flowers are held in perfect placement on long stems and keep well when cut. Blooms rather late in the season, too late to be considered a cut flower, except where seasons are long. A worthy variety for the exhibition table and should be more widely grown. Bush 5 feet.
Root, **\$0.50**

CHINESE LANTERN. I.D. Bloom 10x6. Plant 4 feet. This is a very beautiful Chinese red, somewhat suggestive of Queen City in color. It is a strong vigorous variety and an early and free bloomer. (84) Root, **\$0.50**

CLARA CARDER. I.D. Bloom 9x5. A strong growing variety of soft Cyclamen pink. A profuse midseason bloomer that grows naturally large. Petals are unusually twisted and cupped. Height 3½ feet. Root, **\$0.30**

CORALLINA. S.C. Bloom 8x5. Beautiful brick red with a coral tone. A graceful, long stemmed flower with long, erect stems. Bush growth healthy and free branching, height 5 feet. (85) Plant, **\$0.50**

CORONADO. I.D. Bloom 10x6. Color is dark rose pink overcast with mauve. A naturally large dahlia that performs well year after year. Bush about 3½ feet with flowers held facing on strong, erect stems. Quite different from any other pink. (84) Root, **\$0.50**

DON SOWTON. I.D. Bloom 10x5. A huge color sport of the well known Mrs. Sowton. Bush and habit of growth identical with its parent. Color is a beautiful clear rose magenta, a shade lighter than Robert Ripley. This variety will take force feeding because of its dwarf habit of growth. Highly recommended. Plant, **\$1.00**

DR. VERHAGE. I.D. Bloom 9x5. Bright scarlet orange. A profuse bloomer, starting in August and giving great quantities of bloom through the season. Stems long with blooms facing sideways, a few slightly tipping. Habit of growth excellent, free and naturally branching. Height 4 feet. A poor root maker. (82) Root, **\$0.75**

D. W. MORROW. I.D. Bloom 9x5. Rich crimson red. One of the most beautiful of all reds. A perfectly formed flower with great keeping qualities. Flowers face sideways, some tipping. For best results D. W. Morrow should not be disbudded. Profuse bloomer. Bush growth, quick and early, height 5 feet. (85) Root, **\$0.30**

DISCOVERY. I.D. Flower 10x5. Bush 5 feet. This is a fine purple of light tone with red tints. The variety has excellent vigor. For exhibition. (83) Root, **\$1.50**; Plant, **\$0.50**

DOMINANT. Flower 9x4. Bush 4 feet. Incurved cactus of very artistic formation in soft pastel colors of light rose with lavender shadings. (85) Plant, **\$0.50**

ELLA MAE. Cactus. The best purple cactus. True royal purple the same color as Jean Trimbee. Do not confuse this with the reddish purple "Ella May" grown in considerable quantity in some parts of the country. Ella Mae gives great quantities of bloom from early till late with tight, uniform centers. Flowers 7x3. Bush 5 feet. Plant, **\$0.75**

EL RUBIO. I.D. Bloom 12x6. In our opinion El Rubio has the most beautiful color of the dark reds. Rich, glowing ruby red. A kingly flower carried high on long, thick stems. A few of the flowers may have irregular centers, but all are beautiful. Growth of plant is massive and vigorous with extra-heavy, dark-green foliage. Height 5½ feet. (86)

Plant, **\$1.50**

EVA HUNT. I.D. Bloom. 9x5. Creamy white with graceful, twisting petals that feel like wax. Centers are high and full and stems are heavy and extra long. Foliage very dark green, height 5½ feet. A very fine exhibition white and should be more widely grown.

Root, **\$0.50**

EVERYBODY'S FAVOURITE. I.D. Bloom 11 x6. Soft, frosty pink. A very large and graceful flower that has to be reckoned with in the pink class. Plants are wide and free branching, foliage very broad and rather light green. This is one of the largest and prettiest of the pinks but is considered rather hard to grow. Height 6 feet. (85)

Root, **\$4.00**; Plant, **\$1.25**

FIGARO. S.C. Bloom 12x6. The most spectacular and startling of all bicolors. A very large semi cactus of gold striped scarlet. This is a color sport of Satan, consequently when a flower comes solid color—as all bicolors sometimes do—the result is nothing more than Satan itself. Habit of growth and size of bloom all resemble Satan. Recommended for exhibition. (80)

Plant, **\$0.75**

FRAU BRACHT. S.C. to Cactus. Bloom 8x4. Very light lemon yellow. A perfectly formed flower with wonderful keeping qualities. Stems straight and long. Foliage is not insect resistant. Consequently Frau Bracht is not recommended for the midwest. Does very well in moist, cool climates. Height 4 feet. (80)

Root, **\$0.75**; Plant, **\$0.50**

GOOD NIGHT. I.D. Bloom 9x5. The most artistic and beautiful of all dark dahlias. Stems, foliage and blooming qualities are all that are to be desired. Color, rich garnet shaded maroon. Height 5 feet. Root, **\$0.50**

GREAT EASTERN. I.D. Bloom 12x6. This is rapidly becoming known as one of the largest of all dahlias. A bright gold shaded deep bronze. Bush is rugged with leathery foliage and straight stems. Height 4 feet. With proper care, rich ground and disbudding this can easily be grown 14 inches in diameter. A big root maker. (84)

Root, **\$0.50**

GRAND MARSHALL. S.C. to I.D. Bloom 11x6. A very unusual color of reddish violet. Flowers are gracefully formed and held facing the heavens on strong, thick stems. Bushes are massive with healthy, broad leaves, height 5 feet. A midseason to late bloomer. (80)

Root, **\$1.00**; Plant, **\$0.50**

HASLEROVA. F.D. Bloom 8x4. A fine formal bicolor for exhibition. Color, white, flecked with French purple. A profuse blooming bicolor with excellent stems and habit of growth. Height 4 feet. (84)

Root, **\$0.50**



Cherokee Brave

See Description P. 10

HELLY BOUDEWIJN. F.D. Bloom 5x3. The best of the medium whites. An extremely free-blooming dahlia just a little too large for a miniature. Bushes are uniform and covered with flowers early and late. Stems long and stiff, height 4 feet. Root, **\$0.50**

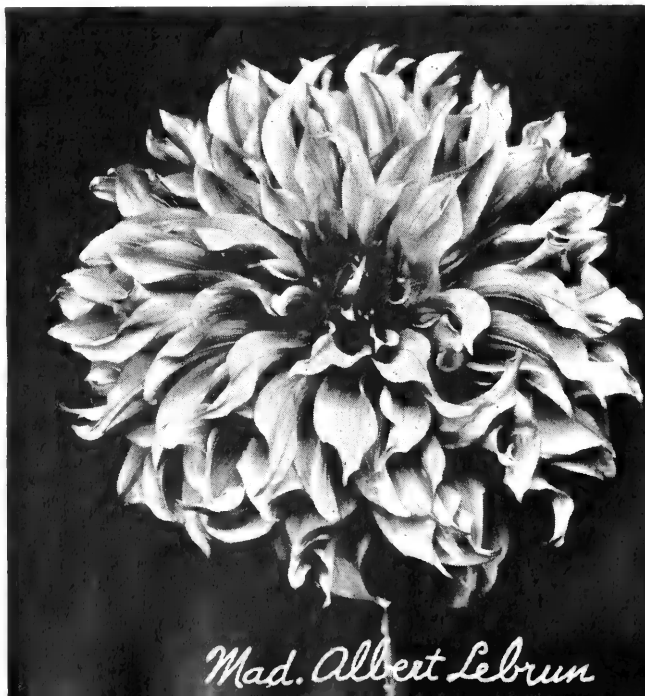
JANE DEW. I.D. Bloom 10x5. Probably the clearest rose pink color in the dahlia. Early and profuse, giving great quantities of blooms over the season. Bush 4 feet. Keeping qualities, excellent. (85)

Root, **\$0.75**; Plant, **\$0.50**

JIMMIE FOX; I.D. Bloom 10x5. Copper blended light red. Bushes are enormous with flowers held on very thick stems. A midseason bloomer, rather shy. Height 6½ feet. (80)

Root, **\$0.75**

See Description P. 12



Mad. Albert Lebrun



See Description P. 10



See Description P. 10

JERSEY DAINTY. Straight Cactus. Bloom 7x3. Pure white. Very good for cutting and exhibition, a prolific bloomer with long, straight stems beginning about midseason. Foliage dark and healthy. Height 4½ feet. (85) Root, **\$0.30**

JOSEPHINE G. I.D. to S.C. Bloom 8x4. Bright rose pink with petals faintly tipped gold. A prolific bloomer with flowers held on good, strong stems. Bushes rugged and healthy, height 4½ feet. Good root maker. (85) Root, **\$0.35**

KING PETER. F.D. 8x5. Delicate coloring of white and pink make up this very beautiful flower. Perfect stems and keeping quality. Blooms uniform and interesting. A fine variety for the blended color class. Plant, **\$0.75**

KARL BONAWITZ. S.C. Bloom 8x5. A long stemmed semi cactus of bright carmine coloring. One of the best for exhibition and cutting in the red cactus. Fast growing plants produce the blooms on excellent stems. Bush height 5½ feet. Root, **\$0.35**

KATHLEEN NORRIS. Very beautiful large rose pink. 10x7. Bush 4 feet. For many years we have seen this winning for where it grows well, it can't be beaten for exhibition. (85) Root, **\$0.35**

KING GEORGE. I.D. 10x5. Flaming scarlet with russet reverse. Petals are cupped giving the flower a huge water lily appearance. Tall, massive bushes and a fair bloomer. One of the best of English introductions. Bushes 6 feet. Root, **\$1.00**; Plant, **\$0.50**

LANGELOTH. I.D. Bloom 10x6. A striking red color with each petal tipped white. Long, cane-like stems, rugged growing bushes. An almost certain winner on the show table. Height 5 feet. Plant, **\$1.00**

LILAC TIME. F.D. Bloom 6x4. Bluish lilac. A very peculiar color, the nearest to blue we have seen. Outstanding, healthy bush growth with very insect resistant foliage. A Scottish novelty. Plant, **\$1.00**

LOUISE BATES. C. Bloom 11x5. Lavender with lilac blushes. Surely this old variety is the largest of all cactus. Blooms easily go ten inches with petals curving toward the center of the bloom. Some of the blooms face down. Bush 3 feet. (85) Root, **\$0.75**

LAETARE. S.C. Bloom 6x3. Color soft red shading into gold at tips of petals. A free blooming, fine-stemmed cactus that can be used for exhibition or cutting. A frequent winner on the show table where it is classified as bicolor semi-cactus. Bush 4 feet. Root, **\$0.50**

LA REINA. I.D. Bloom 10x5. A naturally large dahlia. Flowers a deep buff, carried on long stems slightly bending. A free, early blooming variety recommended to the novice who likes them big. Bush 4 feet. Plant, **\$0.50**

LA FIESTA. I.D. Bloom 10x5. Yellow, penciled orange. A huge flower facing to the side. Large, vigorous bushes are covered with blooms from midseason on. One of the largest bi-colors. Bush 5 feet. (83) Root, **\$0.35**

LEIDEN'S MEDAL. I.D. to S.C. Bloom 7x3. Color orange with each petal tipped white. A very startling color. Bushes are dwarf and carry flowers high over the leaves. A very outstanding color for a bicolor. (85) Root, **\$1.00**; Plant, **\$0.50**

LELAND STANFORD. I.D. Bloom 10x5. An outstanding cardinal red of very large size held above the foliage on stiff, erect stems. Bush massive and 6 feet. A wonderful bright color, one that is not often seen in a flower of this size. (82) Root, **\$1.00**; Plant, **\$0.50**

MAN O' WAR. I.D. Bloom 9x5. Bush 6 feet. Rich, dark carmine. A very early and free bloomer with perfect stems. Good foliage and branching habits not susceptible to insect injury. A grand, easy to grow dahlia. (84) Root, **\$0.50**

MARIETTA E. Cactus. Bloom 6x3. A clear canary yellow with perfect form and stems that do not burn or fade. A good exhibition dahlia, especially on the east coast. Not recommended for hot, dry climates. Bush 3½ feet. (80) Plant, **\$0.50**

MAY ROBSON. S.C. Bloom 9x5. A true pink with no shadings of lavender or salmon. A strong growing plant producing many blooms of perfect form over the entire season. Flowers held high over the foliage with perfect straight stems. Flowers face the side. An old variety that has to be reckoned with on the show table. Bush 5 feet. (85) Plant, **\$0.50**

MEGAN CALLAGHAN. F.D. to S.C. Bloom 11x5. A huge Australian white that has made many wins in this country. Although a very erratic grower and bloomer it has produced some outstanding blooms. Creamy white, bush about 5½ feet. (80) Plant, **\$1.50**

MIRIAM HOPKINS. S.C. Bloom 10x5. Soft orange with carmine pink suffusions. A seedling of Amelia Earhart and quite similar in color. A real giant and has performed better for us than its parent. Tall, robust bushes. (81) Root, **\$0.75**; Plant, **\$0.50**

MISS BELGIUM. Cactus. Bloom 5x3. A medium sized bright orange that blooms early and profusely on long wire stems. A good cut flower from the Atlantic to the Pacific. A fine keeper, it blends well with other colors. Bush 3½ feet. (85) Root, **\$0.35**

MISS ELSIE JANE. Semi-Cactus. Bloom 6x4. Shrimp pink with cream at the center. A good variety for basket or artistic arrangements. A good keeper on perfect stems. A fine cut flower, especially in cool, moist climates. Bushes 4 feet. (84) Root, **\$0.50**; Plant, **\$0.50**

MISS OAKLAND. F.D. Bloom 9x5. A clear crystal white on long, perfect stems. Bush about 4 feet with leathery foliage and stems branching from the bottom. A fine exhibition formal that can stand much adverse growing conditions. (82) Root, **\$0.50**

MISS OHIO. Inc. Bloom 6x3. Color, lilac suffused rose pink. Blooms are very uniform and are produced in great profusion. Keeping qualities and stems are excellent. We highly recommend Miss Ohio for cutting, especially where there are no tarnish plant beetles. Bush growth is healthy and fast, reaching a height of 5½ feet. Root, **\$0.50**

MISS WILRYCK. S.C. Bloom 8x4. A grand color of lilac pink with center of flower creamy yellow. Strong growing plants with healthy, dark green foliage. A welcome addition to the blended color class. Bush 4 feet. (82) Plant, **\$1.00**



MRS. C. J. SOWTON. I.D. Bloom 11x6. An enormous henna bronze of great substance. Bushes very dwarf, holding blooms on stiff short stems. Very easy to raise and recommended to the beginner who likes a large, easy to grow dahlia. Bushes very vigorous, reaching a height of 3 feet. (85) Root, **\$1.00**; Plant, **\$0.50**

MRS. H. O'CONNOR. I.D. to Cactus. Bloom 7x3. An informal of bright rose pink that comes cactus later in the season. Strong growing plants about 5½ feet high, with blooms held on long, strong stems. (81) Root, **\$0.50**

MRS. C. E. WILDON. F.D. Bloom 8x5. Color, deep orange overlaid bronze. Bush is massive and wide spreading with healthy broad foliage. Rather a shy bloomer, beginning about midseason. Height 4½ feet. (80) Root, **\$0.50**



- MONARCH OF THE EAST.** F.D. Bloom 11x5. Rich cadmium yellow. Probably the strongest grower of all dahlias. Bushes massive with heavy insect resistant foliage. Here is one for the beginner who likes them big. Easily grown eleven inches in diameter. Bushes 5 feet. (85) Root, **\$0.50**
- MOTHER MAYTROT.** I.D. Bloom 7x3. A very artistic and beautiful white that grows very well in sandy, moist climates. A good, free branching grower with healthy foliage, strong stems and remarkable keeping qualities. Petals curl and twist, reminding one of Alice May. Bushes grow about six feet with blooms beginning about midseason and covering the plants until frost. Plant, **\$0.75**
- MOTHER'S DAY.** I.D. Bloom 12x6. It seems this one is the largest white in commerce today. It has been grown up to 16 inches. A vigorous grower that, in most sections of the country, blooms too late for the shows. Stems and foliage very satisfactory. Height 6 feet. Plant, **\$2.00**
- MRS. IDA CHASE.** Cactus. Bloom 8x3. Color pink with light yellow center. This variety seems to perform very well, especially in sandy soils. Very rugged, healthy plants blooming from midseason until frost. Crown flower stem is short but laterals come well up to standard. Bush 5 feet. Plant, **\$0.50**
- MRS. JAMES ALBIN.** F.D. Bloom 7x5. Clear, deep yellow with the most perfect form to be found in a formal. Bush growth healthy and free branching. Should make a fine commercial cutter along the east coast, or where growing conditions are moist. Bush 4 feet. (75) Plant, **\$0.75**
- MRS. WM. KNUDSEN.** I.D. Bloom 9x5. A fine, large white exhibition dahlia. Massive, free branching plants coming into bloom rather late in the season. A good root maker and a very easy dahlia to grow. Bush 6 feet. (84) Root, **\$0.75**; Plant, **\$0.50**
- MRS. RUFUS DAWES.** I.D. Bloom 10x5. Deep rose pink shaded mauve. A giant, easy to grow dahlia blooming profusely from early till late. Long flower stems hold the large blooms well out of the foliage. This variety has not received the recognition it is entitled to. Bush 6 feet. (85) Plant, **\$0.50**
- MURPHY'S MASTERPIECE.** I.D. Bloom 11 x6. Color, dark red. Still one of the largest reds grown, especially suited to growing conditions on the east coast. A stocky grower, it is still winning in the red class in our dahlia shows. Bush 4 feet. (75) Plant, **\$0.50**
- MODERN TIMES.** F.D. Bloom 6x3. Bright orange with some of the petals tipped white. A very startling color combination. Plants are healthy and free branching, coming in to bloom very early. Bushes are about 6 feet in height. (81) Plant, **\$0.50**
- MUTSONOHKARA.** Cactus. Bloom 11x5. Probably the largest white cactus grown. A wonderful performer in dry, difficult growing conditions. Bush massive and free branching, flowers held on long, slim stems. Cannot take forcing, as this causes blooms to tip down. A fine, large white cactus for the novice. Bush 7 feet. (85) Root, **\$1.50**; Plant, **\$0.50**
- MY DELIGHT.** I.D. Bloom 8x4. Color, light purple shading to light lavender at center of flower. Very long stems hold the perfectly formed blooms well out of the foliage. Bushes about 5 feet. Root, **\$1.50**; Plant, **\$0.50**
- NAGEL'S GIANT.** I.D. Bloom 9x4. A rich coloring of clear, deep salmon. Very vigorous bushes with fine, lacy foliage. Stems are stiff and long, holding blooms well out of the foliage. Bushes are rather tall, reaching 6½ feet. Flowers are of good substance with uniform, full centers. (85) Root, **\$2.00**; Plant, **\$0.75**
- NEW GLORY.** S.C. Bloom 6x3. Bush 3½ feet. Color, garnet red tipped with white. An old variety still winning occasionally in the bicolor classes. Sturdy grower and good root maker. Blooms begin rather late in the season. (80) Root, **\$0.50**
- ORIENTAL GLORY.** I.D. Bloom 9x5. A brilliant deep orange color in a very large flower. Can easily be grown ten inches. A sturdy, massive plant bearing flowers both early and late. We recommend this very highly. Bush about 5½ feet. (85) Root, **\$0.50**
- PACIFICA.** S.C. Bloom 10x5. A very large light lemon yellow semi cactus with extra long stems. Bush growth vigorous and wide spreading, starting to bloom about midseason. This dahlia should be a big winner in the semi-cactus classes. Plant, **\$2.00**
- PALO ALTO.** S.C. Bloom 10x5. Color is clear, soft apricot suffused coral red. Stems straight and extra long with uniform flowers coming into bloom early in the season. Bush 6½ feet. Good for exhibition purposes. (84) Root, **\$0.50**
- PAUL PFITZER.** S.C. Bloom 7x3. Bright lilac pink with sulphur yellow center. A very beautiful flower with uniform full centered blooms. Considered rather hard to grow in hot climates. This variety has been a popular winner for many years. Bush 3½ feet. (80) Plant, **\$0.50**
- PEACE.** I.D. Bloom 9x5. Pure white, coming into bloom very early and blooming profusely through the season. Stems strong and erect and plants are healthy and free branching. Rather a dwarf grower, about 3 feet. (80) Root, **\$1.00**; Plant, **\$0.50**
- PHYLLIS KNIGHT.** F.D. Bloom 9x6. Clear, deep salmon pink with no other shadings. A vigorous, tall grower with extra strong stems. Blooms are held facing and are of great substance. Bush 5½ feet. (85) Root, **\$1.00**; Plant, **\$0.50**

PINK AMELIA. S.C. Bloom 11x6. Bright rose pink. This variety performs exactly as does "Amelia Earhart" of which it is a color sport. Extra large pink blooms, straight stems and healthy, free branching bushes. Is subject to stunt like Amelia in localities with unfavorable growing conditions, however in the pink semi-cactus class it simply cannot be beaten. Bush 5½ feet. (81)

Plant, **\$2.00**

PINK GRAND. I.D. Bloom 9x5. Rose pink, almost same color as Kathleen Norris. Strong, extra long stems, begins to bloom in August. Certified at E. Lansing and at Cincinnati. Recommended for those who cannot grow Kathleen Norris. Bushes 5½ feet. (85)

Root, **\$1.50**; Plant, **\$0.50**

PREMIER'S MAJESTIC. I.D. 10x5. Mulberry pink, suffused bronze. Blooms produced from early to frost on exceptionally fine, strong plants. Extra for exhibition. Bushes 5 feet.

Plant, **\$0.75**

PRIDE OF BURBANKIA. Peony. Bloom 5x8. Pure white with yellow center. Resembles a white sunflower. Rugged, strong growing plants with excellent stems hold the blooms well out of the foliage. Flowers have heavy artistic petals with great keeping qualities. Bush 4½ feet. (84)

Plant, **\$0.75**

PRES. DR. ED. BENES. I.D. Bloom 10x5. Color, orange shading to red. Huge, large petaled flowers on excellent stems, one of the largest of foreign introductions. Bush growth very rugged and somewhat dwarf. Height 3½ feet. (84) Root, **\$1.00**; Plant, **\$0.50**

PROGRESS. I.D. Bloom 9x5. A very strong growing lavender of large size. Plant growth rugged and naturally branching, carrying the blooms on good stems, with flowers facing sideways. Progress will be a strong contender in the lavender class. Height 4 feet. (82)

Plant, **\$2.00**

RITA BETTY. I.D. Bloom 10x5. A very peculiar shade of mahogany or cinnamon-henna, about a shade darker than Mrs. Sowton. Very prolific bloomer from midseason on. Bush healthy with light green foliage, height 4 feet. (84)

Plant, **\$1.00**

RICHARD CROOKS. Cactus. Bloom 7x3. Blood red. A very artistic, free blooming cactus with long, straight stems. Foliage light and somewhat susceptible to sucking insects. Should do well in cool climates. Bush 5 feet. (81)

Plant, **\$0.50**

RAINBOW'S END. I.D. Bloom 8x4. A beautiful blend of red and gold. A vigorous variety with a splendid habit of growth. Stems long and strong, blooming profusely early to late. Height 4 feet. (84)

Root, **\$0.35**

RENATE MULLER. Cactus. Bloom 8x5. A very beautiful flower with fine, long stems. Color violet rose pink with dark yellow center. Blooming habits are prolific and early. A fine dahlia, especially in the midwest under adverse growing conditions. Bush 5 feet. (84)

Root, **\$0.50**



Pink Amelia

RED JUG. Cactus to semi-cactus. Bloom 9x5. Brilliant crimson carmine with faint yellow tips. A tall growing, vigorous bush with long, stiff stems. Flowers are held facing, well out of the foliage. A very fine exhibition dahlia and a constant winner in all sections of the country. Bush 6 feet. Root, **\$0.50**

ROBERT EMMETT. I.D. Bloom 8x4. Clear cardinal red inclining to crimson. A very dependable grower with good stems and fine keeping qualities. Blooms from August till October. Bush about 4 feet. (84)

Root, **\$0.35**

RUBY TAYLOR. F.D. Bloom 8x4. A very brilliant dark carmine of perfect form. A perfect formal on long, strong stems. A fine, healthy grower coming into bloom quite early in the season. Bush 3½ feet. Plant, **\$0.50**

SAARLAND HEIMKEHR. Cactus. Bloom 7x3. Deep rose pink with yellow center. Very artistic blooms with long, slender petals. Uniform blooms on long, straight stems. This dahlia is rather hard to grow in some gardens but does quite well in the east. Bush 3 feet. (81)

Plant, **\$0.50**

SARACEN. F.D. Bloom 10x5. The most beautiful of all purple formals. The large, royal purple flowers are held well out of foliage on long, strong stems making a complete ball, with petals folding back to the stem. Bushes are rugged and of medium height, about 4 feet. Recommended for exhibition purposes. (84)

Plant, **\$0.75**

SATAN. S.C. Bloom 10x5. Color, scarlet with yellow on reverse of petals and sometimes showing at center of flower. Stems are very long, some bending in rich gardens. Flowers should be shaded to prevent fading, when used for exhibitions. Can easily be grown 12 inches. Bushes rugged and about 7 feet tall. (80)

Root, **\$0.50**



San Francisco

SAN FRANCISCO. I.D. Bloom 11x6. This is the largest of all salmon pinks and one of the largest of all formals. Tall, massive bushes with heavy, insect resistant foliage and flowers held on long, strong stems. Some of the blooms show centers when fully mature but all are massive. Bush 8 feet. (82)

Root, **\$2.00**; Plant, **\$0.75**

SLEEPY HOLLOW. Cactus. Bloom 8x5. Bright pink with pure white center. A beautiful color combination, especially in a cactus. Bushes are very tall and branching, but somewhat hard to grow because foliage is not insect resistant. Does best in cool, moist surrounding where there are no sucking insects. (75) Plant, **\$1.00**

SONNY BOY; I.D. Bloom 12x6. The seed parent of many of the largest varieties. Color, rose overcast with gold. Profuse bloomer, good stems. Height 5 feet. (82) Root, **\$0.75**



Victory

SON OF SATAN. Cactus to S.C. Bloom 11x5.

Bright scarlet cactus and easily the largest in its class. Huge flowers born on long stems well out of foliage. Plant rugged and free branching, blooming about midseason. Recommended for exhibition purposes. Bush 6 feet. (82) Root, **\$1.00**; Plant, **\$0.50**

STRAIGHT'S WHITE. I.D. 10x5. This dahlia has made a good record through the midwest. A low grower, it produces blooms of exhibition size on good stems. An easy growing dahlia for those who have trouble with whites. Plant, **\$0.75**

SUNSET NEEDLES. Straight Cactus. Bloom 8x4. Orange pink with a deep yellow center. Strong, rugged bushes with healthy dark foliage, coming into bloom about midseason. Long, straight stems with bushes about 4½ feet. (80) Plant, **\$1.00**

THUNDERBOLT. S.C. Bloom 10x5. Color, bright cardinal with petals twisted and clawed at ends. Both the flower and habit of the plant reminds one of Margrace. Bush is tall growing, foliage is not resistant to leafhopper and thrip injury. Probably will be excellent in surroundings devoid of sucking insects. Height 6 feet. (75) Plant, **\$1.50**

VELVET WONDER. I.D. Bloom 11x6. This is still the largest of the purples. Color is reddish purple or burgundy. Bush, healthy with flowers held facing the heavens on stiff, short stems. Velvet Wonder should be pinched out and grown from the laterals in order to get long stems. Bush 4 feet. (84)

Root, **\$0.50**; Plant, **\$0.50**

VICTORY. F.D. Bloom 9x5. A new color in pink, golden pink. Bush is vigorous and free branching with canes coming from the base of the plant. A gorgeous flower with many winnings to its credit. Victory is at its best from midseason until frost. Should win as formal pink as it will take quite a lot of force feeding. Bush 5 feet. (85)

Root, **\$4.00**; Plant, **\$1.50**

VOLKAERT'S CHAMPION. Cactus. Bloom 10x5. A large, rugged dahlia that is already supplanting Golden Standard where the latter cannot be grown. Color golden bronze suffused salmon pink. This dahlia has Jane Cowl foliage and resistance and is evidently a Jane Cowl seedling. Height 5½ feet. (85)

Root, **\$1.00**; Plant, **\$0.50**

VIN WELL BITTERSWEET. F.D. 9x5. A clear bittersweet color. A rugged grower blooming from early to frost. This dahlia is a credit to anyone's garden. Plant, **\$0.75**

VIN WELL ARISTOCRAT. F.D. Beautiful, deep scarlet. A splendidly performing dahlia which will reach 8 inches in diameter. A very satisfactory variety. Plant, **\$1.00**

VLAMMENSPEL. Cactus. Bloom 6x4. A fiery orange scarlet. A sturdy grower, giving quantities of blooms early and late. Stems straight and stiff. Bush 3 feet. (85)

Root, **\$0.50**

VIRGINIA RUTE. I.D. to S.C. Bloom 10x5. A huge maroon red informal, sometimes coming semi-cactus. Bush rugged and tall with blooms facing straight up on stiff, heavy stems. A new exhibition red and one that should make good everywhere. A midseason bloomer. Height 7 feet. (85) Plant, **\$1.00**

DAHLIAS WITH SMALLER FLOWERS



NEW SMALL FLOWERED DAHLIAS

EBONY. (Pom). The finest dark maroon pom we have seen. Almost black. Gold certificate at A. D. S. show. (Johnson)

Plants, **\$1.00**

IMP. (Orchid Fl.) Lemon yellow. Something we have needed a long time. A vase of these makes a startling arrangement indeed.

(Dahliadel)

Plants, **\$1.00**

CHURM'S RED. Min. F.D. A bright red miniature with fully double flowers having the same type foliage as "Bishop of Landaff". Intense dark black foliage. Completely different from any other variety. Early and free to bloom. Very new and outstanding.

Plant, **\$0.75**

JERRIANN. Orchid Fl. 1941. Bush 2½ ft. Flowers 3½ to 5 inches. A deep, true orchid color. A very artistic flower with ends of petals double-cleft or stag horn. A distinct improvement in this type. (Shutte)

Root, **\$1.00**; Plant, **\$0.50**

SATURN. Coll. A clear yellow collarette with a yellow collar. Another outstanding yellow variety in the small flowers. Award of Honor at Georgia. (Dahliadel)

Plants, **\$1.00**

BRASS BUTTON. (Pom). Light yellow. Very profuse bloomer, long stems and small flowers 1¼ inches. Certificate at Starrs, highly recommended. (Ruschmohr)

Plant, **\$1.00**

The small flowered dahlias including the **Miniatures**, not over 4 in. diameter; the **Pompons**, tiny ball dahlias not over 2 in.; the single types including the dainty **orchid flowering**, the **singles** and **collarettes**, especially adapt themselves to flower arrangements, table decorations, etc. They are prolific, bloom over a long season and keep long after cutting. These dahlias are becoming very popular and rightly so, for they are the most useful of all flowers and the easiest to grow.

BALL DAHLIAS

	<i>Roots</i>	<i>Plants</i>
Big Ben, red, 4-5 in.....	\$.50	.50
Charlotte Caldwell, orange, 4-5 in.....	.25
Jersey's Beacon Ball, gold bronze, 4-5 in.....	.25
Kentucky Snowball, white, 4-5 in.....50
Leah Pearl.....	3.50	1.00
Pink Ball, 4-5 ½ in.....50
Princess Aline, pink, 3-4 in.....	.25
Mary Helen, yellow, 4-5 in.....	.25
Supt. Amhryn, pink, 4-5 in.....	.75	.50
Tecumseh, red, 5-6 in.....	.75	.50

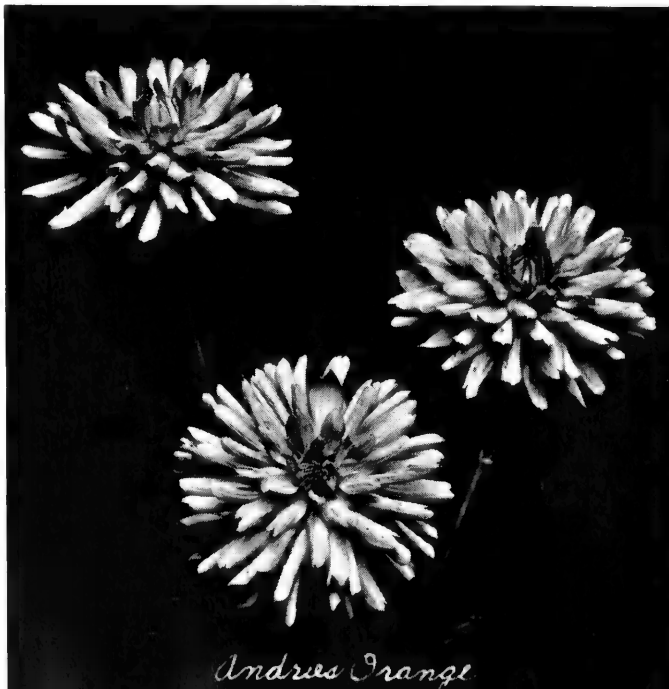
POMPON DAHLIAS

Betty Anne, soft rose pink. Very Good.....	.25
Betty Malone, white tpd. violet. Excellent.....	1.00	.50
Burwood, orange. Fine.....	.50
Canary, yellow.....	.50	.50
Doria, wine.....50
Fedora, French purple.....	1.00	.50
Honey, yellow and red. Excellent.....	.35
Jack, dark red.....50
Johnnie, dark red. Very fine.....50
Joe Fette, white.....	.25
Little Edith, yellow tpd. carmine.....	.25
Mary Munns, mallow purple.....	.25
Mike, burnt orange.....	.35
Morning Mist, white and lav. Excellent.....	.35
Mrs. J. Telfer, white. Fine.....50
Mrs. V. Brittain, orchid pink.....50
Nellie G., white.....	1.00	.50
Nerissa, best pink, long stems.....75
Sherry, bright purple. Fine.....	.25
Yellow Gem, yellow.....50

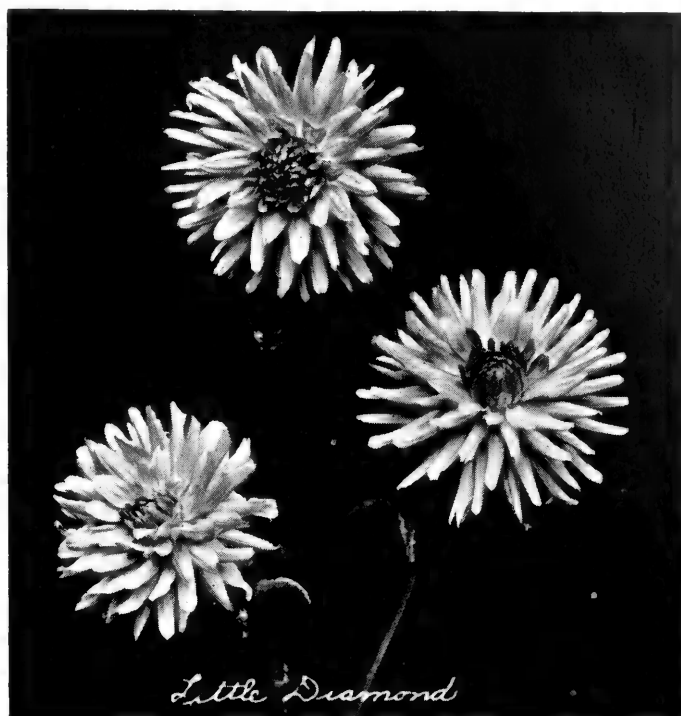
MINIATURE DAHLIAS

Abbreviations M—Miniature.

Andries Orange, M.S.C., bright orange.....	.50	.50
Baby Royal, M.S.C., salmon.....	.25
Baby Sagamore, M.F.D., orange.....	.35
Bishop of Llandaff, M.P., scarlet.....	.35



Andries Orange



	Root	Plant
Buckeye Baby, F.D., M.F.D., gold bronze.....	.35	
Chard's Vanity, M.S.C., pink.....	.75	.50
Charma, F.D., white penciled scarlet.....	.75	.50
Dahliadel Joy, M.C., yellow. Good.....	.50	.50
Diana Jean, M.F.D., yellow.....	.50	.50
Dubonnet, M.S.C., dark red. Very good.....	.50	.50
Easter Greetings, M.C., white.....	.50	.50
Eclipse, Jr., M.F.D., gold.....	.25	
Fairy, M.F.D., lav. rose.....	.50	.50
Joan, M.I.D., Tyrian rose. Good.....	.25	
Joyce Anne, M.F.D., pink.....	.50	
Julia S., M.C., pink and gold.....	.75	.50
Little Diamond, M.S.C., rose pink. Excellent.....	1.00	.50
Little Jennie, M.C., light pink. Excellent.....	.25	
Little Jewell, M.I.D., true pink.....	.25	
Little Snowqueen, M.C. white.....	.25	
Little Miss Prim, M.C., pink and white. Fine.....		.75
McKay's Purity, M.F.D., white.....	.50	.50
M. Pierre Lunden, M.S.C., rose pink. Good.....	.50	.50
Nida Senff, M.S.C., bronze. Good.....	.25	
Orchid Lady, M.F.D., lav. rose. Fine.....	.50	
Petite Prince, M.S.C., scarlet and yellow. Excellent.....	1.50	.50
Pytie Conway, M.F.D., lav. rose.....	.25	
Red Deaton, F.D., ball, deep scarlet.....	.75	
Red Head, M.I.D., orange scarlet. Excellent.....	.50	.50
Red Robin, M.F.D., scarlet red. Excellent.....	1.50	.50
Samaritin, M.S.C. white.....	.25	
Scarlet Pimpernelle, M.I.D., scarlet. Fine.....	.50	
Selbourne, M.P., scarlet.....	.25	
Snowsprite, M.S.C., white. Very fine.....	.25	
Sylvia, M.F.D., red. Fine.....	.25	
Violet Pearl, M.C., lav. pink.....	1.00	.50
Vermillion Brilliant, M.F.D., red. Fine.....	.50	
White Star, M.S.C., white.....		.75



See Description Page 17

BARGAINS IN SMALL FLOWERED DAHLIAS

A Great Bargain in a Garden full of Miniature Dahlias, the most prolific of all small flowered dahlias.

Two roots of each of the following: Andries Orange, Little Jennie, Buckeye Baby, Joan, Nida Senff, Snowsprite, for \$3.50.

SINGLE, ORCHID FLOWERING, COLLARETTE, ETC.

	<i>Root</i>	<i>Plant</i>
Croix du Sud, Anemone, yellow centered.....	.75	.50
Chancellor, single, light scarlet, dark center.....	.50	.50
Dahliadel Twinkle, orchid flowering, lavender and white.....	.35
Dahliadel Whisper, orchid fl., yellow and red.....	.35
Fragrance, single, white edged red.....50
Ivory Gem, orchid fl., ivory white.....50
Jet, mignon orange.....50
Pickaninny, orchid fl., very dark red. Excellent.....	1.50	.50
Pink Lassie, single, pink. Very fine.....	.50
Preakness, collarette, white.....	.25
Tribune, collarette, red and white. Very fine.....	.30

BARGAIN COLLECTION OF POMPON DAHLIAS

Two roots each of: Betty Ann, Burwood, Joe Fette, Mary Munns, Morning Mist, Sherry, for \$3.00.

One root each of the above for \$1.70.



BARGAIN COLLECTION OF ORCHID FLOWERING, SINGLES, COLLARETTES, ETC.

Two roots each of the following: Dahliadel Twinkle, Dahliadel Whisper, Pink Lassie, Tribune, for \$2.50.

One root of each of above, for \$1.35.

BALL DAHLIAS AND OTHER SMALL FLOWERED DAHLIAS AT LOW PRICES

25c each, any six for \$1.25

Eclipse, Jr., M.F.D., gold
Jersey Beacon Ball, Ball, orange
Joan, M.F.D., tyrian rose
Little Jennie, M.C., light pink
Mary Helen, ball, yellow
Nida Senff, M.S.C., bronze

Preakness, Coll., white
Princess Aline, ball, pink
Snowsprite, M.S.C., white
Sylvia, M.F.D., red
Samartin, M.S.C., white
Selbourne, M. Peo., scarlet

If sold out of any variety we reserve the right to substitute an equal or better one.

BARGAINS IN STANDARD LARGE FLOWERED DAHLIAS

(If necessary, right of substitution reserved)

Roots 35c each

Any ten or more @ 30c each.

Amy Martin Gardin, I.D., rose
American Legion, I.D., yellow
Andrea Erickson, S.C., white
Caesar, I.D., scarlet and yellow
Clara Barton, I.D., lav.
Dir. Plumcogq, I.D., gold
Edna Ferber, S.C., coral gold
Elizabeth Rethberg, I.D., rose pink
George Washington, I.D., pink
Gala California, C., orange
Josephine G., I.D., pink
Kathleen Norris, I.D., rose pink
Kemp's Monarch, F.D., orange
Marie, F.D., pink
Mary Baker, I.D., yellow
Mrs. Bruce Collins, C., yellow
Mrs. May Wallace, F.D., yellow
Patty Waugh, F.D., white
Prince of Persia, I.D., red
Stella Pozi, F.D., salmon pink
Verbena, S.C., orange

Roots 30c each

Any ten or more @ 25c each.

Andrea Baysseance, E.D., red
Adorable, I.D., pink and gold
Autumn Sunset, F.D., orange
Buckeye Peach, F.D., bronze
Cavalcade, F.D., old rose
City of Cleveland, S.C., bronze
Chaut. Salute, F.D., white
Clara Carder, I.D., pink
C. B. Pinchot, I.D., deep red
Dwight W. Morrow, F.D., red
Great Harbor, I.D., red
Hillcrest Royalist, I.D., purple
Jane Cowl, I.D., gold bronze
Jane Ross, F.D., purple
Jersey's Dainty, C., white
Jean Kerr, F.D., med. white
Miss Indiana, F.D., light pink
Monmouth Champion, F.D., flame
Mrs. I de Vere Warner, F.D., orchid
Royal Pennant, I.D., purple
Rockley Moon, F.D., gold
Saladini, F.D., orange
The Commodore, F.D., yellow
The World, F.D., purple

UNLABELED COLLECTION—10 large flowered Dahlias, each different, for **\$1.65** post paid.
At our farm **\$1.35.**

DAHLIA SEED

Seed of any three of the following varieties,
Begonia Rose, Freda George, Julius Bunge, Aztec Chief
5 seeds each—15 seeds—**\$1.00**

Mixed large Flowered Seed—20 seeds—**\$1.00**

GIANT FLOWERED COLLECTION

Mayor Otis	
Cherokee Brave	8 Roots (1 of each) for
Premier's Winsome	\$8.75
Glamour	Postpaid
San Francisco	
D'Arcy Sainsbury	8 Plants (1 of each) for
Aztec Chief	\$4.50
Freda George	Postpaid

THREE BEST EXHIBITION DAHLIAS OF EACH COLOR AND TYPE

	FD	ID	SC	CACTUS
WHITE	1 D. Sainsbury 2 Miss Oakland 3 Madame Loix	Alice May Straight's White Mother Maytrott	Mich. White Ball. Surprise Am. Purity	Jersey Dainty Snowcrest
YELLOW	1 The Governor 2 Ky. Sun 3 Buckeye King	Lord of Autumn Ginger Rogers Calif. Idol	Yellow Glory Miss Glory Kay Francis	Hillside Gold F. I. Mansfield Yellow Marvel
ORANGE	1 Volcano 2 Vin. Bittersweet 3 Chas. Mastick	Carl G. Dahl Sunrays Watch. Giant	Evelyn Chandler Bandoeg Amelia Earhart	Golden Standard Cometeer Miss Belgium
RED	1 Mavis Tierney 2 Oak. Monarch 3 Queen City	Cherokee Brave Burch Foraker King Cole	Adolph Mayer Maffie Scarlet Leader	Son of Satan Cerise Buckeye Dulcinea
PINK	1 J. Beauty 2 Victory 3 Marie	Rita Wells Prem. Winsome Pink Josephine	Greater Glory Pink Amelia May Robson	Julius Bunge Mascotte Bearne
LAVENDER	1 Blue River 2 Lilac Time 3	Rob't. Ripley Progress Hill. Cinderella	Bette Davis Carpe Diem Cherokee	Mad. Jussiant Miss Ohio
PURPLE	1 Gloria Bacher 2 Saracen 3 Purple Mist	Glamour Eventide Velvet Wonder	Jean Trimbee	Ella Mae Card. V. Rossum
BICOLOR	1 Golden City 2 Lois Walcher 3 Haslerova	Ky. Sportsman Mod. Times Cornell	Liden's Medal Figaro Antwerpen	Flash
BLENDED	1 King Peter 2 Rainbow's End 3	Freda George Silver Lady Opal	Enkart Prima Renate Muller Paul Pfitzer	Saar. Heimkehr Sunset Needles Dominant

CUT-FLOWER DAHLIAS

Many Dahlias that are good cut-flower varieties on our Eastern or Western Coasts are not entirely suitable for this purpose in the Midwest, South, or the great Central Valleys.

In our Index, pages 34 and 35, we have designated by "C" following the name, those Dahlias we have found satisfactory for cutting in the Ohio Valley.

These are:

Anna Benedict	Jersey's Dainty
*Begonia Rose	*Mary Baker
Berger's Jewell	*Michigan White
Brite Lites	Miss Belgium
Buckeye Bride	Oakleigh Monarch
*Buckeye Peach	*Queen City
Buckeye Star	*Saladin
*Cometeer	*Scarlet Leader
Honor Bright	Scarlet Wonder
*Golden City	Tannenburg
*Jersey's Beauty	White Abundance

Of the above, the ten we have found best for cutting are starred "*".

This data on cut-flowers is based on the performance of these Dahlias in open farm land without irrigation and no more than ordinary fertilizing and cultivation.

With more sheltered and smaller gardens, and with irrigation, these Dahlias will produce more and better flowers, and other varieties not mentioned here may also be satisfactory for cutting.

After sixteen years of experience during which time I have continuously been on the search for better cut flower Dahlias, I have concluded that many Dahlia growers miss the possibilities of many cut-flower as well as exhibition Dahlias because they leave the blooms on the plants too long. Unless one visited our patches of Queen City and Begonia Rose very early in the morning during July, Aug., Sept. & Oct. he would see no well developed blooms at all. They are cut as rapidly as they become two-thirds open, sometimes as many as three times a day. This stimulates the plants to produce more flowers and foliage and benefits root development too. Harley, Jr., has adopted this practice as far as possible with his exhibition garden and with extraordinary results.

Under this method of growing, sun-fading does not affect the quality of our flowers. The early morning cut is shipped that day together with the blooms cut in forenoon and afternoon of preceding day. They develop well in our cool cellars and are more acceptable to the florist than blooms just cut, especially in hot weather. All flowers for cutting are disbudded two or three nodes. Crown flowers of Queen City and Begonia Rose in early July are disbudded sometimes four nodes down. This produces more canes from base of plant.



Cometeer
The cut flower cactus.

HARLEY T. PECK

PRINCIPLES OF DAHLIA CULTURE

SOIL. Any type soil is suitable or may be made so. If too heavy with clay, sand may be added—not too coarse. Humus is very important. Peat moss, compost or purchased humus may be added. Since most soil is deficient in humus, one cannot go far wrong in adding it, preferably in the fall or very early spring. For the midwest, rye is almost the only successful cover crop; sow after Dahlias have been dug and plow under in the spring while still tender, before heads have well developed. If allowed to get too old and tough plowed-under rye may ruin your soil for a season. When weather and soil are right, plow deeply a few weeks before planting.

In many of the heavy soils in this section drainage is most important. Deep plowing, sufficient sand and humus to make the soil porous should suffice, but locations are found where tile drainage is necessary to protect against very heavy rainy spells.

Dahlias do well in a neutral to fairly acid soil. Liming however will do no harm and sometimes much good by releasing nutrient ingredients of the soil.

FERTILIZING. Nitrogen produces rank foliage and flowers. Phosphates produces tuber growth and fibrous roots. Potash makes for color of bloom and resistance of plants to disease. Any application of fertilizer should be well mixed with about 1000 times its weight of soil to prevent burning of fibrous roots. We use 2-10-6 (nitrogen-phosphate-potash) with our planting. Fertilizers mixed with soil at planting is the most efficient method. Top dressing is effective with potash and nitrogen but the phosphates do not get down to the roots until plowed under.

Manure is doubly important as a fertilizer and supplier of humus. Chicken manure should be applied sparingly or composted before using. Leaves composted till decayed are a valuable source of both humus and fertilizing elements. Most soils are deficient in potash, which may be supplied in wood ashes, muriate or sulphate of potassium.

It is better to use some reliable brand of mixed fertilizer at about six pounds for every ten to twelve hills of dahlias, well mixed with plenty of soil than to use a chemical fertilizer like sodium nitrate for it takes a chemist to know how little to use.

PLANTING. Thorough plowing or spading, with soil dry enough to break up well is the best preparation. April 15th to July 1st depending on the season is right for Ohio Valley. For cut-flowers plant as early as soil and season dictates. For exhibition, June 1st is right. In general, 4 ft. apart each way is a good rule. For the home garden 4 or 5 stakes should be provided. 4 by 5 ft. with two plants to a stake is also good. Roots should be 4 in. deep, set horizontally, in heavy soil and 6 in. deep in very sandy soil. Plants should be moistened and planted without disturbing the roots, about one-half inch deeper than they were in the pot. Water thoroughly. Plants will produce more plump tubers in a lean farm soil than in a rich garden. For best tuber production, let the soil dry out well between waterings.

DISBUDDING. This operation is valuable for the production of the best flowers and stems for either cutting or exhibition. Take out the "suckers" or small laterals for two or three nodes or joints (where leaf joins stalk) down from the terminal bud, starting with the first or crown bud of the plant. Cut bloom before back is wilted, thus stimulating development of fresh growth, buds and flowers. Visit us in July and August and we will give you a practical demonstration.

WATERING. In protracted drought the foliage should be well and forcibly sprayed with water to prevent red spider. In general, do not water till the ground becomes fairly dry and then soak to a good depth. When surface shows cracks and is dry enough, use rake or hoe to provide dust mulch to conserve soil moisture. A light daily watering is unnecessary and even injurious.

CULTIVATING. Working the ground between plants is beneficial to keep weeds in control and conserve soil moisture in dry weather. Dahlias will respond to cultivation whenever soil conditions are suitable. As plants grow larger, cultivation should be shallower so as not to cut surface feeder roots. Tie plants to stakes, once for every 18 inches of growth.

DIGGING should be about November 1st to 15th regardless of date of killing frost. Dig without bending or breaking necks of tubers. Cut stalk to within 2 inches of roots. Store in cool cellar immediately after digging, packing in peat moss, clean sawdust, sand or other suitable material. If tubers have been well nourished with balanced fertilizer and not over-fertilized and season has been such as to properly develop and ripen tubers, they will keep well. Big thick stems are more conducive to crown or stem rot than slimmer stems grown on leaner soils. Farm grown, not heavily fertilized, not watered dahlias, produce more tubers that almost always keep well through winter.

DIVIDING. In the spring divide clumps by splitting the stem and crown so as to leave one eye or sprout to each division of one or more roots.

HOW TO HANDLE ROOTED CUTTINGS

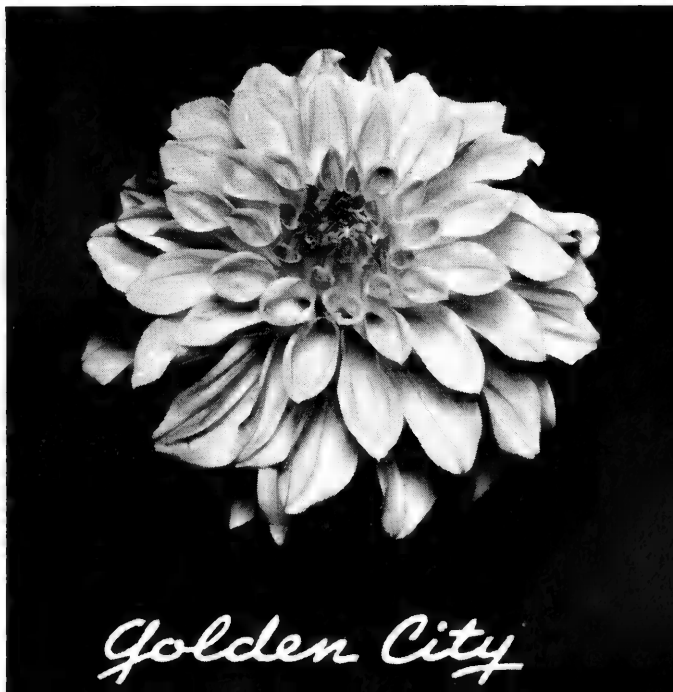
ROOTED CUTTINGS must be potted **immediately** in 3 inch or 4 inch pots. Use a light mixture of soil consisting of 1 part garden soil, 1 part leaf mold or decayed peat and $\frac{1}{4}$ part fine coal ashes or sand. Use no fertilizer. About half the cutting should be below the surface of the soil after potting.

Dahlia cuttings cannot be successfully grown indoors. If a cold frame or greenhouse is not available, a makeshift cold frame can be constructed with a few panes of glass and a wooden box.

After potting, bury pots to $\frac{3}{4}$ of their depth in ordinary soil in a cold frame. Coarse ashes underneath the pot may be necessary for drainage. Do not subject to excessive draft or heat until after ten days. Cold frames must be ventilated during heat of the day to prevent burning of plants.

When plants have doubled their size they may be subjected to more severe conditions for hardening off, and in about two weeks may be set out where they are to grow. They should be not too tall for best results. Water thoroughly.

Gold Queen City
Our first gold cut-flower.



LARGE FLOWERED DAHLIA RATED INDEX

The Clue as to how to raise the best Dahlias in the midwest is to be found in this Rated Index. Select the highest rated Dahlias for your own best results. There is no secret way of raising fine Dahlias. Selection of the most vigorous varieties, with due care as to ordinary agricultural principles, common sense as to location and a reasonable amount of work and care will result in the finest Dahlia Garden, the envy of your friends.

This is a complete alphabetical list, with type, brief color description, average rating (figure of merit) and prices.

SUCCESSFUL CUT FLOWER DAHLIAS, as grown on our farm, are designated with a "C" following color description.

GOOD ROOT MAKERS are designated with a "G"; Fair, "F"; Poor, "P."

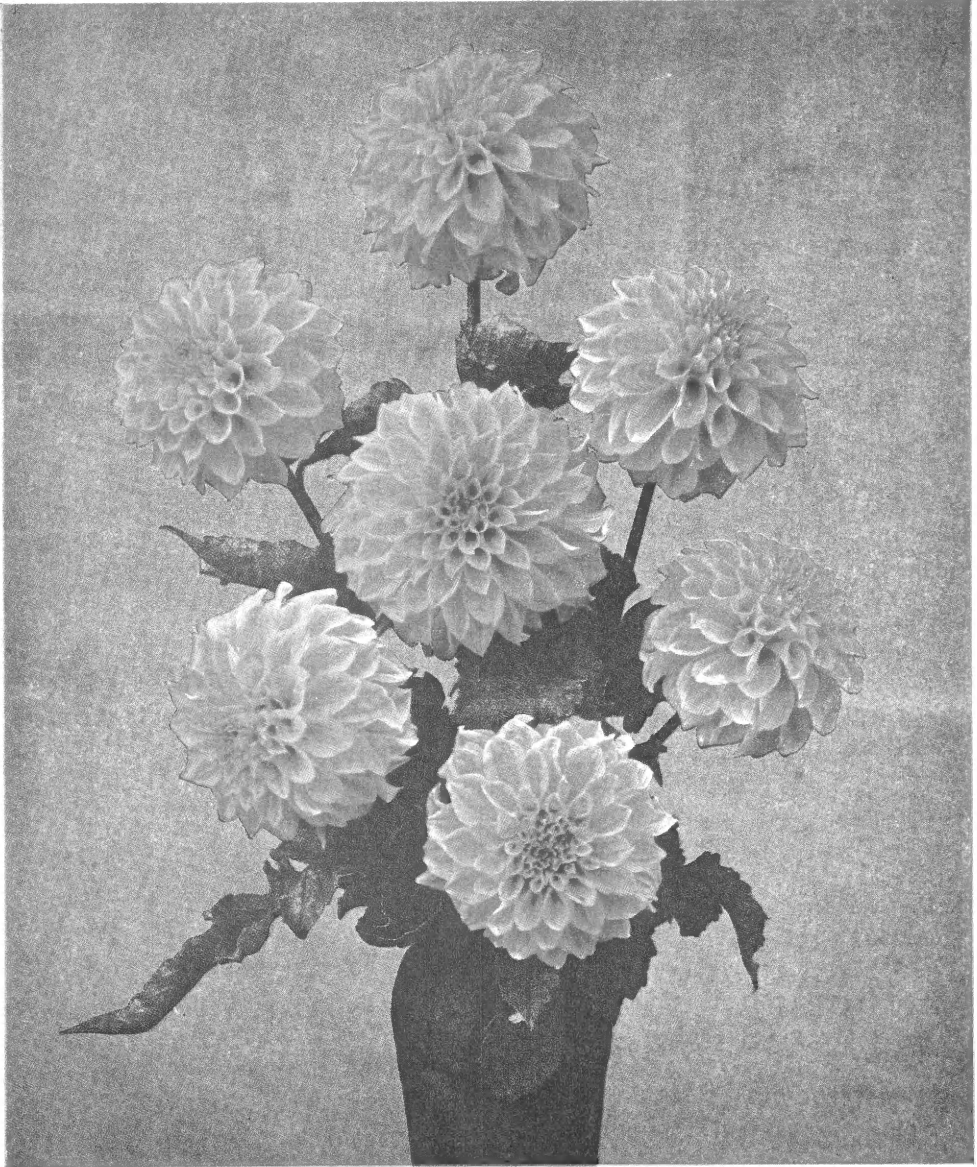
POT CLUMPS are indicated by *. Price same as for roots.

ABBREVIATIONS:—FD, Formal Decorative; ID, Informal Decorative; SC, Semi-Cactus; C, Cactus; Inc., Incurved; Str., Straight; Rts., Roots.

* Pot Clumps. Same Price As Roots.

Page	Rating	Roots	Plants	Page	Rating	Roots	Plants
10	86	\$.50	\$.50	18	84	.50	
10	86	1.00	.50	10	87	1.25	.50
29	83	.30		10	87	.50	
17	83	5.00	1.50	29	84	.35	
10	86	2.00	.75	18	83	.30	
17	81	.50	.50	15	87	.50	.50
29	80	.35		18	85		.50
17	75	.75		18	84	.50	
17	82	1.00	.50	17			1.00
29	85	.35		17			1.00
29	85	.35		6			7.50
29	80	.30		6			7.50
15	85	1.50	.50	8		.75	.50
10	87	.75	.50	11		2.00	.75
17	84	2.00	.75	29		.75	.35
29	83	.30		18		1.50	.50
13	84	4.00	1.50	11		1.50	.50
6	80	.50	.50	18		1.00	.50
6			7.50	18			1.00
6			2.00	18		.75	
17	80	.50		11		1.50	.50
17	84	.50		15		1.00	.50
13	86	.50	.50	18		.30	
17	83	.50		6		5.00	
13	84	1.00	.50	18			.75
8	90	5.00	1.50	9		.50	
15	87	.50	.50	19			1.50
8	83	.75		29		.35	
13	87	1.00	.50	29		.35	
8	85	.50	.50	14		1.50	.50
17	80	1.50	.50	19		.50	
8	85	.75	.50	19		5.00	2.00
8	86	.75	.50	11		4.00	1.25
10	85	.50		11		4.00	1.25
8	87	.50	.50	19		.75	
8	85	.30		9		.75	.50
17	81	.50		14		7.50	2.50
17	83		1.00	Fort Monmouth, ID, F	85	.50	.50
6			2.50	15		.75	.50
11			3.50	19		.75	.50
5	85	.75	.50	11		.75	.50
29	84	.35		6			1.50
10	88	.50	.50	6			5.00
17	88	.75	.75	6			3.50
15	81	1.00	.50	29		.35	
29	83	.30		11		1.50	.50
18	84	.50		29		.35	
14	85	7.50	2.00	11		1.75	.75
6			2.25	9			2.00
29	82	.30		19		.50	
29	82	.30		11		1.00	.50
17	85	.50	.50	15		1.00	.50
18	84	.50		16		.75	.50
14	85	.75	.50	5		10.00	3.50
14	86	.75	.50	29		.30	
15	86	.50	.50	19		.50	
18	85	.50	.50	16		1.50	.50
15	86		.50	14		.35	.50

Page	Rating	Roots	Plants	Page	Rating	Roots	Plants
19 Grand Marshall, SC, G	80	1.00	.50	7 Mary Lynn Dudley, SC, 1941			3.50
9 Grand Master, FD, F	85	1.00	.50	7 Mary Taylor, Str, C			1.50
19 Haslerova, FD, F	84	.50		22 Nagel's Giant, ID, G	85	2.00	.75
19 Helly Boudewijn, Med. FD, F	83	.50		16 Nagel's Orange, cactus, G	86	1.50	.50
11 Hillcrest Cinderella, ID, P	85	1.00	.50	22 New Glory, SC, G	80	.50	
6 Hillside Beauty, C, 1941			3.50	7 Norma Morton, ID			1.50
14 Hillside Gold, F	87	2.50	1.00	9 *Oakleigh Monarch, FD, CG	88	.50	.50
29 Hillcrest Royalist, ID, G	83	.30		12 Opal, ID, G	85	.50	
9 *Honor Bright, FD, CF	86	.50		22 Oriental Glory, ID, F	85	.50	
6 Hillside Joy, SC			3.50	29 Patty Waugh, FD, G	78	.35	
6 Houghten Gem, ID, 1941			2.00	22 Pacifica, SC, F	85		2.00
29 Jane Ross, FD, G	80	.30		22 Palo Alto, ID, G	84	.50	
11 Jane Cowl, ID, G	87	.30		22 Paul Pfitzer, SC, F	80		.50
19 Jane Dew, ID, P	85	.75	.50	22 Peace, ID, F	80	1.00	.50
29 Jean Kerr, FD, CF	86	.30		22 Phyllis Knight, FD, F	85	1.00	.50
11 Jean Trimbee, ID or SC, G	87	.50	.50	23 Pink Amelia, SC, G	81		2.00
9 Jersey's Beauty, FD, CG	87	.35		13 Pink Giant, FD, F	86	3.00	1.00
20 Jersey's Dainty, Med. cactus, CG	85	.30		23 Pink Grand, ID, G	86	1.50	.50
19 Jimmie Foxx, ID, G	80	.75		16 Polichinelle, cactus, F, D, G	85	1.00	.50
20 Josephine G., ID, G	85	.35		13 *Premier's Winsome, ID, G	88	2.00	.75
16 Julius G. Bunge, cactus, F	86	1.00	.50	23 Pride of Burbankia, Peo., F	84		.75
6 Kathleen Hall, ID			2.00	29 Prince of Persia, ID, G	84	.35	
20 Kathleen Norris, ID, G	85	.35		7 Pink Josephine, ID			2.00
20 Karl Bonawitz, SC, G	85	.35		23 Pres. Dr. Ed. Benes, ID, F	84	1.00	.50
14 Kay Francis, SC, G	86	.50	.50	23 Progress, ID, F	82		2.00
29 Kemp's Monarch, FD, G	82	.35		9 Purple Mist, FD, F	85	.75	.50
9 Kentucky Sun, FD, G	87	.50		7 Producer, ID			2.00
11 Kentucky Sportsman, ID, G	86	1.50	.50	23 Premier's Majestic, ID			.75
11 King Cole, ID, F	85		2.00	9 Queen City, FD, CF	87	.75	.50
12 King Leopold, ID, F	85	1.50	.50	Queen of Angels, SC, F	84	.75	
20 King George, ID, F	82	1.00	.50	23 Rainbow's End, FD, F	84	.35	
20 King Peter, FD			.75	Red Favorite, SC, F	82	.50	
20 Langeloth, ID			1.00	23 Rita Betty, ID, F	84		1.00
20 Laetare, SC, G	84	.50		13 *Rita Wells, SC, F	87	5.00	1.50
20 La Reina, FD, F	87		.50	23 Richard Crooks, cactus, P	81		.50
20 La Fiesta, ID, G	83	.35		23 Renate Muller, cactus, F	84	.50	
20 Leiden's Medal, Med. ID, G	85	1.00	.50	23 Red Jug, cactus, G	85	.50	
20 Leland Stanford, ID, F	82	1.00	.50	23 Robert Emmett, ID, G	84	.35	
20 Lilac Time, FD, F	82		1.00	13 *Robert Ripley, ID, F	85	1.50	.75
9 *Lois Walcher, FD, F	85	1.50	.50	29 Rockleigh Moon, FD, G	85	.30	
12 *Lord of Autumn, FD, F	85	.75	.50	29 Royal Pennant, FD, G	82	.30	
20 Louise Bates, SC, F	85	.75		16 Royal Purchase, cactus, G	87	.50	.50
6 Maid Marion, ID, 1941			5.00	23 Ruby Taylor, FD, F	84		.50
6 Maffie, SC			3.00	23 Saarland's Heimkehr, cactus, F	81		.50
12 Mad. Albert Lebrun, ID, F	88	2.00	.75	9 Saladini, FD, CF	85	.30	
12 Mad. Albert Loix, ID, F	85		.75	24 San Francisco, ID, F	82	2.00	.75
16 Mad. C. Jussiant, cactus, G	86	1.00	.50	23 Saracen, FD, F	84		.75
12 Maestro, SC, F	85	7.50	2.50	14 Scarlet Leader, SC, CP	87	1.50	.50
Major Bowes, ID, F	83		.50	15 Scarlet Wonder, SC, CG	85	.75	.50
21 Man O' War, ID, F	84	.50		23 Satan, SC, G	80	.50	
9 Marie, FD, CG	87	.35		13 Silver Lady, ID, F	86		1.50
21 Marietta E., cactus	80		.50	24 Sleepy Hollow, cactus, P	75		1.00
12 Margrace, ID, G	85	.50	.50	7 Snowcrest, Inc. C., 1941			2.50
12 Mary Baker, ID, CF	88	.35		24 Straight White, ID			.75
12 Maryland's Delight, ID, F	87	.75	.50	24 Son of Satan, SC, G	82	1.00	.50
16 Mascotte, cactus, CG	87	.75	.50	24 Sonny Boy, ID, F	82	.75	
7 Mavis Tierney, FD, F	88		1.50	13 *Sunrays, ID, F	85	2.00	.75
21 May Robson, SC, F	85		.75	24 Sunset Needles, cactus, F	80		1.00
12 *Mayor Frank Otis, ID, G	82	2.00	.50	29 Stella Pozzi, FD, F	83	.35	
21 Megan Callaghan, ID, F	80		1.50	15 Tannenburg, SC, CG	86		.50
14 *Michigan White, SC, CG	87	.75	.50	Thomas A. Edison, FD, F	82	.50	
12 Milton J. Cross, ID, F	87	.50	.50	10 The Governor, FD, G	88	2.65	1.50
21 Miriam Hopkins, SC, F	81	.75	.50	24 Thunderbolt, SC, P	75		1.50
21 Miss Belgium, cactus, CG	85	.35		29 The World, FD, G	84	.30	
14 Miss Glory, SC, G	86	.50		13 Tower's Empire, ID, F	85	.50	
21 Miss Elsie Jane, SC, F	84	.50	.50	10 Tyrian Buckeye, FD, F	86	1.50	.50
29 Miss Indiana, FD, G	81	.30		7 Trojan, ID, 1941			7.50
21 Miss Oakland, FD, F	82	.50		24 Velvet Wonder, ID, G	84	.50	.50
21 Miss Ohio, cactus, G	84	.50		24 *Victory, FD, G	85	4.00	1.50
21 Miss Wilryck, SC, F	82		1.00	24 Volkaert's Champion, cactus, F	85	1.00	.50
22 Modern Times, FD, P	81		.50	29 Verbena, SC, F	82	.35	
22 Monarch of the East, FD, G	85	.50		24 Vlammenspel, cactus, F	85	.50	
22 Mother Maytrott, ID, P	80		.75	24 Virginia Rute, ID, G	85		1.00
22 Mother's Day, ID			2.00	10 *Volcano, FD, G	85	.75	.50
21 Mrs. C. J. Sowton, ID, G	85	1.00	.50	24 Vin Well Bittersweet, FD			.75
21 Mrs. Herbert O'Connor, cactus, F	81	.50		24 Vin Well Aristocrat, FD			1.00
29 Mrs. I. de Vere Warner, FD, G	80	.30		13 Watchung Giant, ID, G	86	.50	
12 Mrs. Geo. LeBoutillier, ID, G	85	.35		7 White Winner, ID, 1941			3.50
22 Mrs. Ida Chase, cactus, F	75		.50	7 White Gate, SC			1.00
22 Mrs. James Albin, FD, F	75		.75	White Abundance, FD, CF	84	.50	.50
21 Mrs. C. E. Wildon, FD, G	80	.50		Wm. H. Hogan, FD, G	84	.50	
29 Mrs. Bruce Collins, cactus, G	84	.35		7 Winning Ways, ID, 1941			3.00
29 Mrs. May Wallace, ID, F	82	.35		7 Yellow Comet, SC, 1941			3.50
22 Mrs. Wm. Knudsen, ID, G	84	.75	.50	7 Yellow Duchess, ID, G	85	5.00	2.00
22 Mrs. Rufus Dawes, ID, G	85		.50	15 Yellow Glory, SC, G	86	5.00	1.50
22 *Murphy's Masterpiece, ID, G	75		.50	Yellow Marvel (Foreign) SC, G	84	1.00	.50
22 Mutsonohikara, cactus, G	85	1.50	.50	Yellow Marvel (Petrie) FD, G	80	.75	.50
22 My Delight, ID, F	80	1.50	.50	7 Yoto, ID, 1941			5.00
7 Marion Smith, ID, 1941			3.50				



Queen City
Always Welcomed By Florists As The Best Cut Flower

IN 1940 we experienced the most difficult growing season in twenty years. There was no rain during July and August. In spite of this the Golden Rule Dahlia Farm staged commercial exhibits at four of the leading Dahlia Shows in the country. First prize for best commercial exhibit was won at Toledo, Ohio, Louisville, Kentucky, Cincinnati, Ohio, and a bronze medal at New York.

The trial shipment of 100 Begonia Rose blooms staged at the New York show was carried by railway express without losing a bloom. These flowers were cut early Thursday morning and were out of water over 36 hours. They were still in perfect condition by Saturday night.

EACH ILLUSTRATION in this book is from a photograph of **Flowers from our Farm or Gardens**. These photos were taken by our local photographer and the plates were made for us by an old reliable Cincinnati firm.