

Historic, Archive Document

Do not assume content reflects current scientific knowledge, policies, or practices.

6225

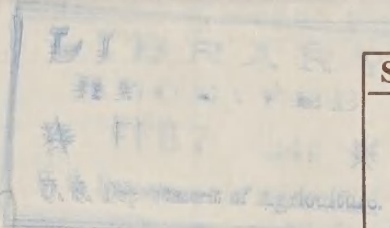
1941 SPECIAL OFFERS for YOUR WATER GARDEN

from

GRASSYFORK, Inc.
Martinsville, Ind.
Saddle River, N. J.

POSTMASTER:—Please note why returned by checking the proper reason in the following list. Return Postage Martinsville, Ind. Guaranteed.

<input type="checkbox"/> Deceased	<input type="checkbox"/> Refused	<input type="checkbox"/> Removed
<input type="checkbox"/> Does not receive mail here	<input type="checkbox"/> Unclaimed	



Sec. 562 P. L. & R.
U. S. Postage
PAID
Martinsville, Ind.
Permit No. 18

Bill Library

U. S. Department of Agri.,
Bureau of Plant Industry,
Fruit & Veg. Crops & Diseases,
Att: E. C. Auchter,
Washington, D. C.

GRASSYFORK

SPECIAL 1941 OFFERS

for YOUR WATER GARDEN



Grassyfork display building at Martinsville is a center of interest for thousands of visitors.

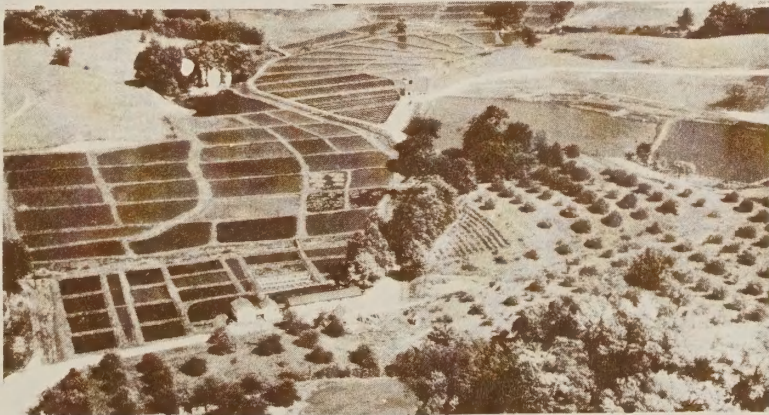
42 YEARS OF SERVICE MEAN EXTRA VALUES!

Since its foundation in 1899, Grassyfork has grown to be the world's largest producers of goldfish and water lilies. From the 645 ponds on its 1500 acres have come over a hundred million goldfish and the finest water lilies and plants for garden pools. Our most valued possession from these years of service has been the ever-increasing list of friends we are privileged to serve.

In presenting these Special 1941 Offers from Grassyfork, we have tried to show our appreciation by giving the greatest values to our customers—combining the highest quality with the lowest price. There is but one thing we cannot guarantee—that is our ability to fill late orders even from our present large stock. It will pay you to order promptly to insure getting your share of these really remarkable special offers.

S. H. Byram

GRASSYFORK, Inc.



An airplane view of some of the fish and lily ponds on the 1500 acres of the world's largest gold fish hatcheries and water lily growers.

OPPORTUNITY FOR YOUR GARDEN

From our finest stock of brilliant, beautiful Tropical and Hardy Water Lilies, described on following pages, we have selected these favorite combinations and offer the best quality at prices as Special 1941 Offers which will mean so much in savings on new thrills and pleasure from your garden pool.

SPECIAL 1941 OFFERS

MARLIAC TRIO

Last year's favorite combination consisting of the three marvelous blooms illustrated on this page—the beautiful yellow, white and pink Marliacs—ready to make your pool a center of pleasure—our 1941 Special Offer—all three—\$2.65.



and Rose Zanzibars—three Tropical bursts of beauty offered as a 1941 Special at only—\$3.35.

IDEAL TRIO

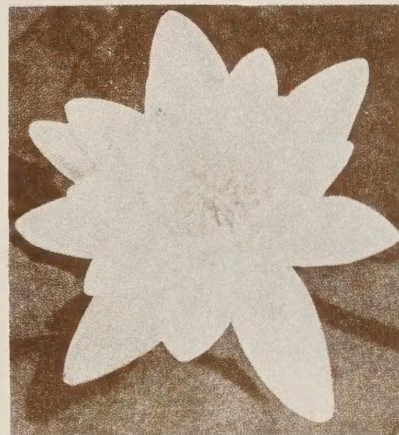
A wonder combination of colors, shapes and foliage in these three Hardy Lilies—Graziella, Lucida and Rose Arey—a leader for years and a 1941 Special Offer of—\$4.35.

POPULAR TRIO

Ready to rule your pool with their beauty: SUNRISE in yellow with the immense, red ATTRACTION and the pink MARLIAC ROSEA—the three as a 1941 Special Offer at \$4.65.

BEST CHOICE!

Choose two Hardy Lilies from ROSE AREY, GRAZIELLA or LUCIDA and combine them with the marvelous blue, Tropical COLONEL LINDBERGH—the three—1941 Special Offer—\$4.35.



SUPERB TRIO

Sunrise and Conqueror — two Hardy Lilies of immense size and gorgeous color contrast—with the marvelous, blue Tropical Colonel Lindbergh . . . the complete trio comes as a 1941 Special Offer at only \$4.95.

FIVE STAR SPECIAL

Five sensational Hardy Lilies—Marliac Albida, Eugenia De Land, Sioux, Gloriosa and Pink Opal—a blue ribbon display for any pool—offered as 1941 Specials at—\$5.75.

BIG FOUR EXTRA

The glorious white Marliac Albida, the yellow-orange Sioux, heavenly pink Opal and sunset red James Brydon . . . Four favorite Hardy Lilies, 1941 Special Offer—\$4.95.

ZANZIBAR TRIO

The native African Tropical purple huge-blooming lily with the Blue



GRASSYFORK TROPICAL WATER LILIES

TROPICAL LILIES provide twenty-four hours of continuous and beautiful bloom each day from settled weather in spring until fall. They adapt themselves to the largest Pools or the smallest Tub-Gardens. We ship only mature, potted plants, many already in flower, which produce fully developed plants giving a wealth of bloom in a surprisingly short time after setting out. Dayblooming Lilies open with the sun and close at evening, and the Nightblooming Lilies open in the afternoon and remain open until late the following morning.

DAY-FLOWERING SPECIALS

WHITE LILIES

MRS. GEORGE H. PRING—The best pure white Tropical Lily. Flowers very fragrant, 8 to 10 inches; long pointed petals and sepals; the golden-yellow stamens, borne in abundance all season. Produces equally well in scant or ample quarters; size of flower alone affected. \$1.50.

GRACILIS—\$1.50.

PINK LILIES

MRS. ROBT. SAWYER—Plant sturdy, producing young plants on the leaves; flowers in abundance; gorgeous, full-petaled, and of a delightful shade of pink. \$2.50.



ZANZIBAR ROSEA—Flowers rose pink of good size, bell shaped, and produced very freely. Adaptable to any size Pool or to Tub Gardens. \$1.25.

CHICAGO—A strong compact growing variety, producing an abundance of pink, medium sized blooms throughout the season. Mottled foliage, \$2.00.

GENERAL PERSHING — Broad, chalice-shaped flowers of a clear pink, delightfully fragrant. Foliage beautifully mottled. \$2.25.

STELLA GURNEY—\$2.

GRACILIS ROSEA—\$2.

MRS. C. W. WARD—Beautiful large flowers of a deep rose-pink on good stems. Petals and sepals long, pointed. Flowers produced very freely. \$2.

CASTALIFLORA—\$1.75.

PINK PEARL—Vigorous and rapid growth, large flowers of dark shell Pink, producing very freely. Large dark-green foliage, \$2.00.

Special Offer No. 100—

Sultan, Fring, Blue Beauty ----- \$4.85

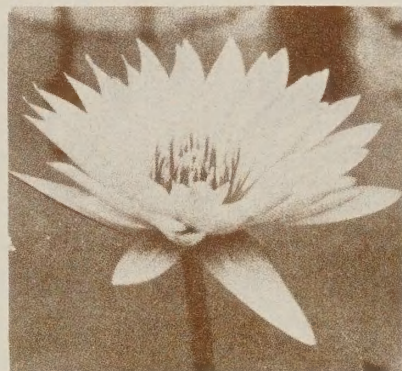
MRS. W. R. JAMES—Large flowers of a delightful shade of pink. More brilliant than any other yet offered. An unusual Lily, \$2.00.

PURPLE LILIES

ZANZIBARIENSIS — The native African purple lily. Flowers 6-8 inches, very fragrant, showy, and freely produced. \$1.50.

AUGUST KOCH—Flowers very fragrant and freely produced. 7-8 inches. Of a pale wisteria-violet; sepals lilac. Plant of stocky, compact habit adaptable to varying conditions. Foliage a dark green. \$2.

PANAMA-PACIFIC — Flowers a wine-purple with golden stamens. This variety is practically ever-blooming; of compact habit producing young plants on leaves. Leaves beautifully spotted and marked as are the bronze-green buds. \$2.



BLUE LILIES

BLUE BEAUTY (PENNSYLVANIA)—Flowers a deep rich blue; many petaled; stamens golden-yellow, tipped blue. Buds and leaves green beautifully splotched maroon. \$2.

MRS. ED. WHITAKER—Light lavender-blue flowers; long pointed petals; exceptionally free flowering. Very adaptable. Can be flowered in a small pot. Size of flower and foliage increased with additional allowance of water surface and soil. \$2.25.

CAERULEA—The original "Blue Lotus" of the Nile. Produces an endless succession of fragrant blooms until heavy frost. \$1.25.

DAUBEN—Flowers a light blue and very fragrant. Plant compact, suitable for Tub, Pool, or Aquarium culture. \$1.25.

Special Offer No. 500—
Aurora, Dauben ----- \$1.85



COL. LINDBERGH — Enormous deep cerulean blue flowers carried high above the water on good stems. Plant of strong growth, \$2.25.

MRS. WOODROW WILSON—Plant of compact habit, producing young plants on the leaves. Flowers a light lavender blue, cup-shaped, of medium size, and very freely produced. \$2.

GOVERNOR EMERSON—Exceptionally large flowers of medium blue. Foliage attractively marked with brown. \$2.00.

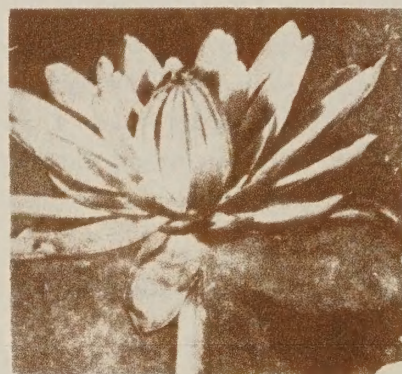
RED LILIES

PATRICIA—\$2.

GRACILIS RUBRA—\$2.

NIGHT-FLOWERING SPECIALS

RED LILIES



DEVONSHIRE—Very free blooming. Bright rosy red flowers 8-10 inches. Bronze-green foliage. \$1.25.

BISSET—\$1.50.

GEORGE HUSTER—\$2.

Special Offer No. 200—
Chromatella, Splendida,
Picciola ----- \$4.20

Special Offer No. 300—
Haarstick, Koch,
Meteor ----- \$4.15

Special Offer No. 400—
Pershing, C. W. Ward,
E. G. Hutchings ----- \$4.65

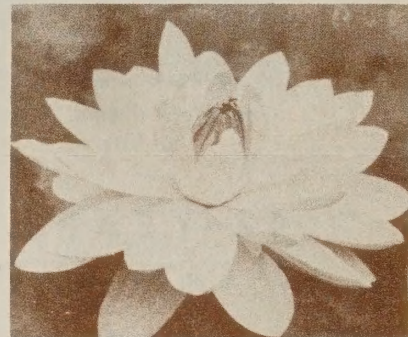
FRANK TRELEASE — Exquisite dark crimson flowers of good size; petals long, pointed, giving a starry effect. Stamens deep reddish brown. Leaves dark red. \$1.65.

H. C. HAARSTICK—A new red variety. It is a striking addition to the Night Flowering group of Water Lilies. Flowers are a clear rich red surrounded by large bronze foliage. Each \$2.

WHITE LILIES

JUNO—The largest flowered Night Bloomer. Broad snow-white petals around a center of yellow stamens. Large, glossy-green, dentate foliage. \$1.75.

DENTATA—\$1.25



MISSOURI—New White Night-Blooming Lily, a cross between Mrs. George C. Hitchcock and Sturtevantii. Pure white with large semi-double flowers. Unequaled for form and beauty. Will bloom much earlier than Juno. The leaves are first a light bronze, but later develop into a dark green. The leaves have fluted margins. \$3.00.

PINK LILIES

RUBRA ROSEA—One of the best. Large flowers of brilliant rose-carmine held well above the mottled foliage. \$1.50.

OMARA—A vigorous grower. Produces large flowers of deep rose lighted by a white stripe through each petal; stamens deep orange-red. \$1.50.

MRS. GEORGE C. HITCHCOCK—A new pink. The Mrs. Hitchcock has large deep rose-pink flowers borne above the water. A beautiful night-flowering hybrid. Each \$2.

EMILY GRANT HUTCHINGS—A new pink with large cup shaped blooms of a delightful clear pink. No collection is complete without this attractive new hybrid. Each \$2.

Special Offer No. 600—
Missouri, Panama Pa-
cific, Formosa ----- \$5.65

Special Offer No. 800—
Juno, Caerulea,
Vesuve ----- \$4.35

Special Offer No. 900—
Marliac White, Goliath,
Fulva ----- \$2.95

GRASSYFORK HARDY WATER LILIES

HARDY LILIES in their exotic color combinations are easy to grow and bloom best with full sunlight at least half the day. Tropical Lily blooms are borne on stems well above the water, whereas those of the Hardy Lilies float or are raised only slightly. Grassyfork Lilies are Northern grown and therefore exceptionally hardy.

WHITE LILIES

MARLIAC WHITE—(*Albida*)—Richly fragrant and broad-petaled flowers of a pure, waxy white with bright yellow stamens; continuous bloom. \$1.00.

LOOSE—\$0.85.

GLADSTONE—Large, pure-white, globular flowers. A strong, vigorous grower inclined to hold both leaves and flowers above water when crowded. \$1.50.

PYGMY ALBA—\$1.50.

ODORATA GIGANTEA (*Hopatcong*)—Flowers larger than *Odorata*. Unexcelled for naturalization in ponds and lakes. \$0.50 each; \$5 a dozen.

ALBA CANDIDISSIMA—\$1.

ODORATA MINOR—Excellent for planting along the edge of pools or in tubs. Tiny, fragrant, white lilies, 2 to 3 inches across. \$0.75.

LACTEA—\$2.

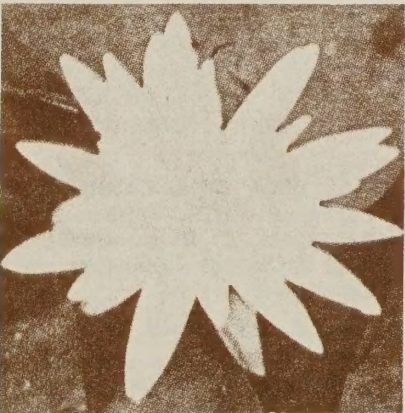
GONNERE—Very large double flowers of pure white. Stamens canary yellow. \$2.25.

PINK LILIES

ROSE AREY—Very free flowering and a strong grower. The flowers are very large, being eight or more inches across, fragrant, with long-pointed petals. A word picture falls short in describing the deep uniform pink color of this most satisfactory variety. One must see it growing and flowering to appreciate fully its merit. \$1.75.

AMABILIS—Tulip-shape with gigantic flesh pink white tinged flowers. Opening wide—up to 10 inches in diameter—and borne above the water. Truly a wonderful Lily. \$2.50.

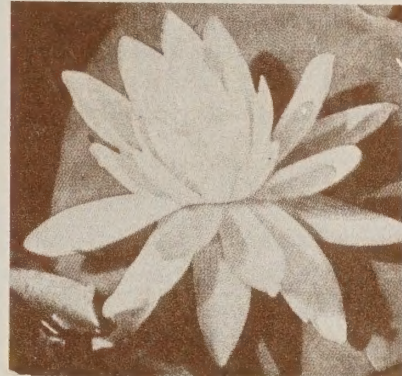
MARLIAC FLESH (*M. Carneae*)—\$1.25.



EUGENIA DE LAND—A vigorous and free-flowering variety of *Odorata* type. Flowers large, floating, of a deep rose-pink; petals long, pointed. \$1.50.

MARLIAC ROSEA (*M. Roseae*)—Fragrant, cup-shaped flowers of

deep rose. Free flowering and of good size. \$1.50.



HELEN FOWLER—Very adaptable to Tub-Gardens. Deep pink flowers of medium size borne above the water. \$1.25.

PINK OPAL—Full-petaled cup-shaped flowers of a deep, rich pink. Foliage, reddish-green, \$1.00.

W. B. SHAW—\$1.

SOMPTUOSA—Enormous, very full-petaled, fragrant flowers; petals rose-pink; stamens deep orange. Strong growing and free flowering. \$2.25.

NEPTUNE—Exceptionally free flowering. Broad, pink petals flushed with red at the base. A very attractive variety. \$3.50.

MASANIELLO—Large, fragrant flowers borne above the water. Petals rounded, pink dotted carmine. \$1.75.

ODORATA ROSEA—\$1.

WILLIAM DOOGUE—\$2.50.

ROSE MAGNOLIA—Ideal for naturalizing. Light, flesh-pink flowers, borne slightly above the water. \$1.00.

VENUSTA—\$2.

PINK LAYDEKER—(*Laydekeri lilacea*) \$1.75.

ODALISQUE—\$2.

GOLIATH—\$2.

GALATEE—\$1.50.

SPLENDIDA—Exceptionally free blooming. Large broad-petaled flowers of a rich pink deepening to red at base of petals. \$1.50.

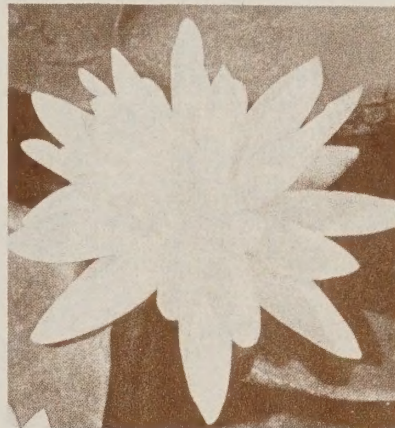
FORMOSA—Large flowers of delicate lilac pink. Fragrant. \$2.50.

YELLOW LILIES

CHROMATELLA—(*Marliac Yellow*)—Bright, chrome-yellow flowers. Leaves rich green, spotted bronze-red. Of compact habit, vigorous, and very free flowering. Ideal for Pool or Tub-Garden. \$1.25.

PYGMY YELLOW (*Helvola*)—Tiny, floating, light canary-yellow flowers in abundance. Adaptable to Tub-Gardens or the shallow water along the edge of Pools. \$1.00.

ODORATA SULPHUREA GRANDIFLORA—\$1.50.

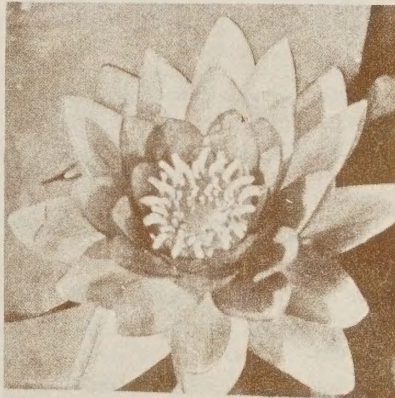


SUNRISE—Beautiful sulphur yellow flowers of large size borne slightly above the water; produced freely from early season until frost. \$2.25.

RED LILIES

GLORIOSA—One of the best. Flowers a beautiful clear red, deepening to dark red; full-petaled; very symmetrical and fragrant. For Pool or Tub-Gardens. Blooms continuously. \$2.25.

ATTRACTION—An immense flower, remarkably bright red in color and very free in bloom. We have counted fifty blossoms on a single box of them. \$2.50.



CONQUEROR—An immense flower; the bright red petals shaded with white on the inside change to deep red as the flower ages. Strong plants producing a wealth of bloom. \$2.

ESCARBOUCLE—Flowers an intense vermilion-red deepening on succeeding days; stamens garnet. Strong growing; should be included in every collection. \$2.50.

METEOR—The slender, flaring petals fold about garnet-colored stamens—a very pleasing flower that blooms abundantly. Each \$1.50.

ATROPURPUREA—\$3.50.

JAMES BRYDON—Handsome bronze-red foliage and large, cup-shaped flowers whose broad petals are an unique rose-crimson. An exceptional variety. \$2.50.

LUCIDA—Large flowers of a rich, warm red; petals long, pointed; stamens red-orange. Foliage green spotted maroon. \$2.50.

ROBINSONI—\$2.50.

SULTAN—Large flowers of a striking shade of red. Petals shade from light to deep red at base. Blooms continuously. \$3.00.

RENE GERARD—Flowers very large, many petaled of a deep old rose shading to rose crimson. A distinctive variety. \$2.

PICCIOLA—Rich green foliage spotted with red. Large dark crimson flowers borne above the water. \$3.

MARLIAC FIRE—\$3.

LAYDEKER PURPLE—\$2.

RED LAYDEKER—\$1.50.

VESUVE—\$3.



RED AND YELLOW LILIES

COMANCHE—The hardiest of all cultivated lilies. Large flowers of rich apricot with glowing red markings deepening to copper orange; olive green foliage flaked brown. Vigorous and free blooming. \$2.00.

AURORA—Very free flowering, of semi-dwarf habit suitable for small Pools or Tub-Gardens. Flowers amber-yellow, shading to red-orange on the second day and then deep red. \$1.25.

SIoux—Flowers a rich copper-yellow of good size; petals long, pointed, and tinged red along the sides. Flowers and central foliage raised slightly above the water. \$1.75.

FULVA—A new red and yellow flower of great beauty and abundant blooms. Each \$1.25.

PAUL HARIOT—Cup-shaped blooms of a delicate light yellow suffused with pink. Colors deepen on succeeding days to yellow and copper-red. Mottled foliage, \$2.00.

CHRYSANTHA—\$1.50.

GRAZIELLA—Charming orange pink flowers shading to a fine orange red with age. A splendid variety for the Tub Garden and one you will enjoy for its unique color and pretty cupped form. \$1.50.

SOLFATARE—\$1.50.

MOOREI—\$2.25.

Special Offer No. 700—

Pink Opal, Galatee,

Odorata Gigantea,

Paul Hariot -----\$3.65

GRASSYFORK WATER GARDEN SPECIALS

SMALL POOL

6 to 7 feet in diameter, or 4 x 6 feet, or 5 x 7 feet



1, 2 and 3—Water Lilies. A—Cattail, Arrowhead, Water Poppy. B—Umbrella Palm, Pontederia, Forget-me-not. C—Water Iris, Parrot's Feather, Umbrella Palm. D—Variegated Sweet Flag, Water Taro, Floating Heart. E—Paper Plant, Water Canna, Parrot's Feather. F—Water Hyacinth, Water Lettuce or Shellflower, Water Fern.

- 3 WATER LILIES to include: 1 Chromatella (best yellow, hardy); 1 Blue Beauty (ever blooming blue, tropical); 1 Pink Opal (deep pink, hardy).
- 23 AQUATIC PLANTS to include: 5 plants for centerpiece or background; 12 plants for corners or margins; 3 Floating Plants; 3 Submerged Plants.
- 16 ORNAMENTAL FISH to include: 12 Large 5-6-inch Common Goldfish; 2 (4-inch) Fantails; 2 (4-inch) Shubunkins or Calico Fish.
- 22 OF THE BEST SCAVENGERS to include: 6 Japanese Snails; 6 Tadpoles; 6 Black Ramshorn Snails; 2 Green Frogs; 2 Salamanders.
- 1 lb. Carton Grassyfork Goldfish Food; 1 Fish Bucket.
- Small Pool, 1941 Special Offer \$8.45.

MEDIUM POOL

6 x 9 feet, or 7 x 9, or 10 feet diameter

- 5 Water Lilies: Your choice of any one of the following three collections:
- 1 Hoosier Garden.
 - 2 Five Superb Hardy Lilies.
 - 3 Show Collection—Five Hardy Lilies.
- 38 Aquatic Plants, to include: 10 plants suitable for centerpiece or background; 16 plants for corners or margins; 6 submerged plants; 6 floating plants.
- 18 Fancy Fish, to include: 2 pairs 7-9-inch Young Giants; 6 Extra-large 6-inch Comets; 6 Extra-large 5-6-inch Shubunkins; 1 pair Large 5-6-inch Fantails.
- 40 of the best Scavengers, to include: 12 Tadpoles; 6 Japanese Snails; 12 Black Ramshorn Snails; 2 Salamanders; 4 Green Frogs; 4 Clams.
- 1 lb. Grassyfork Goldfish Food.
- Medium Pool, 1941 Special Offer —\$17.65.

POPULAR POOL

6 x 7 feet, or 8 feet in diameter



1 to 4 Water Lilies. A—Water Taro, Arrowhead, Water Poppy. B—Water Iris, Hedychium, Water Clover. C—Sweet Flag, Water Willow, Parrot's Feather. D—Umbrella Palm, Water Plantain, Wild Calla. E—Cattail, Paper Plant, Marsh Marigold. F—Water Hyacinth, Water Lettuce or Shellflower, Water Fern.

- WATER LILIES—Four Lilies, any one of the following Collections: Four Popular Hardy Lilies, or Unexcelled Collection, or Four Popular Tropical Lilies.
- 30 CHOICE AQUATIC PLANTS. To include: 8 plants for corners or backgrounds; 16 plants for corners or margins, 3 floating plants, 3 submerged plants.
- 16 BEAUTIFUL LARGE BREEDING FISH to include 2 pair 8 inch to 9 inch Young Giant Goldfish, 6 Large 5 inch to 6 inch Comets, and 6 large 5 inch to 6 inch Calico Fish or Shubunkins.
- 22 of the best Scavengers.
- 1 lb. carton Grassyfork Goldfish Food.
- Popular Pool, 1941 Special Offer —\$11.95.

WHITE CEDAR TUBS



We can supply those offered in our complete Tub-Garden Collection—White Cedar, galvanized hoops electrically welded. Ideal for a small Water Garden or Fish Pond; or as containers for Lilies, Lotus or Victorias in the large pool. (F. O.B. Martinsville or Saddle River.)

24" Diameter, 12" deep Each, \$1.95

20" Diameter, 9" deep Each, \$1.45

MINIATURE COLLECTIONS OF FISH AND SCAVENGERS

2 pair Goldfish (2½-inch); 1 pair Comets (2½-inch); 1 pair Japanese Snails; 6 Black Ramshorn Snails; 6 Tadpoles; 1 pair Green Frogs; 1 Fish Bucket. In Collection, \$1.75.

THE TUB GARDEN



A sunken tub will support a Water Lily and two or three other plants, and with a rock garden at its borders becomes a beauty spot.

TUB GARDEN COLLECTION

1941 Special Offer \$4.35
(Without Cedar Tub, \$2.95)

- 1 Water Lily—Choice of Light Pink, Dark Pink, Red, Yellow, Blue or White, or Red and Yellow Changeable.
- 1 White Cedar Tub—2 ft. in diameter, 1 ft. deep. White Cedar staves, electrically welded hoops.
- 6 Water Plants—An assortment of Floating, Submerged and Shallow Water or Bog Plants for planting in the Tub.
- 6 Perennial Plants—Your choice of Perennials or Dwarf Rock Garden varieties.
- 1 Pair Japanese Livebearing Snails—To keep the water clear.
- 1 Pair Goldfish 4 to 5 inches.
- 1 Fish Bucket.

1941 SPECIAL OFFERS

- EUGENIA DE LAND, SUNRISE, METEOR, Collection No. 103, \$4.00.
- TRIO COLLECTIONS — Selected First Quality Lilies, Outstanding Bargains—Trio 1—Lucida, Albida, Rose Arey, \$4.20; Trio 2—Gloriosa, Comanche, W. B. Shaw, \$4.20; Trio 3—Conqueror, Chromatella, Pink Opal, \$3.40; Trio 4—Sultan, Albida, James Brydon, \$5.20.

BLUE RIBBON COLLECTION—Capensis, (Dayflowering) Blue; Chromatella, Yellow; Hardy. Eugenia de Land, Pink; Hardy. Frank Trelease, (Nightflowering) Red. One of each, in Collection, \$4.50.

QUALITY FOUR — Chromatella, Paul Hariot, James Brydon, Eugenia de Land. Four excellent varieties, in Collection, \$5.75.

OUR SPECIAL COLLECTION—Consisting of seven Lilies; Conqueror, Chromatella, Pink Opal, Sultan, W. B. Shaw, Albida and Attraction. All Only \$9.50.

FOUR CHOICE DAYBLOOMING LILIES—Zanzibar Purple, Mrs. George H. Pring—White, General Pershing—Pink, Blue Beauty—Blue. One of each, in Collection, \$5.75.

BEAUTY TRIO—Mrs. Edwards-Whitaker—Light Blue. Blue Beauty (Dayflowering) — Blue. Panama - Pacific — Wine - Purple, \$5.00.

1941 SPECIAL OFFERS

CHROMATELLA, GALATEE, PAUL HARIOT, CONQUEROR. Collection 104-A—The Four, \$5.25. Collection 104B—Any Three, \$3.75. Collection 104C—Any Two, \$2.50.

FIVE SUPERB HARDY WATER LILIES—Aurora, Red-orange; William Doogue, soft pink; Chromatella, Yellow; Attraction, Rich red; Gladstone, White. One of each, in Collection \$7.25.

BOUQUET COLLECTION—Mrs. Edwards-Whitaker, Light blue; Pennsylvania Blue; Zanzibariensis, Purple; Stella Gurney, Pink; Gracilis, White. In Collection, \$7.25.

HOOSIER GARDEN COLLECTION—Panama-Pacific, Frank Trelease, Mrs. Edwards-Whitaker, Rose Arey, Comanche. \$7.75.

UNEXCELLED COLLECTION—Four beautiful varieties—a Water Garden Bouquet. Purple Star, Marliac Rose, Paul Hariot, George Huster. In Collection, \$5.50.

AMPHIBIA AND SNAILS

Free the pool or aquarium from decaying or other foreign matter, algae, and green scum, keeping the water at crystal clearness.

JAPANESE LIVE-BEARING SNAILS—3 for 25c; per dozen 75c; per hundred \$5.00.

BLACK RAMSHORN SNAILS—25c for three; 75c per dozen; \$5 per 100.

RED OR CORAL SNAILS—50c for three; \$1.75 per dozen.

GEOGRAPHIC TURTLES—50c for four; \$1.25 per dozen.

TADPOLES—50c per dozen; \$3.00 per 100. Shipping cans, 50c each.

GREEN FROGS—75c per pair; \$3 per dozen.

JAPANESE SALAMANDERS — black backs and fiery-red vests. 50c for two; \$2.50 per doz.

CLAMS OR FRESH WATER MUSSELS—25c for two; \$1.25 per dozen.

NOTE: Shipping cans are required for Tadpoles. Other scavengers may be shipped in damp moss. On order of \$2 or less, INCLUDE 25 cents for postage and packing.

SMALL POOL COLLECTION..\$1.95
6 Japanese Snails, 6 Tadpoles, 2 Salamanders, 6 Black Ramshorn Snails, 2 Clams. Collection, with shipping can.

POPULAR SIZE POOL COLLECTION\$3.45
12 Tadpoles, 12 Black Ramshorn Snails, 6 Japanese Snails, 4 Clams, 4 Green Frogs, 2 Salamanders. Collection, with shipping can.

LARGE POOL COLLECTION..\$4.95
24 Tadpoles, 24 Black Ramshorn Snails, 6 Clams, 6 Salamanders, 12 Japanese Snails, 6 Green Frogs. Collection, with shipping can.

GRASSYFORK LOTUS AND NILE GARDENS

The Lotus (*Nelumbium nucifera*) was grown for centuries along the Nile, and was worshipped by the early Egyptians, so that it was popularly known as the Sacred or Egyptian Lotus. All varieties of Lotus bear leaves and flowers well above the water and may be used as centerpiece and corner plantings. They grow and flower equally well in urns or other containers if moisture is abundantly supplied. Seed pods of the Lotus are almost as attractive as the flowers which precede them. Leaves and seed pods of Lotus plants are often gilded or painted and made into unique interior decorative pieces.

AMERICAN LOTUS (*N. lutea*). A native variety, popularly known as Water Chinquapin, having large cream-yellow flowers of a delightful fragrance. *Each, \$2.00.

SACRED OR EGYPTIAN LOTUS (*N. nucifera*). A hardy, vigorous, fragrant type having rose-tipped petals, shading to cream at the base. *Each, \$2.00.

SHIROMAN LOTUS (*N. Shiroman*). An outstanding variety, having large globular, many petaled or double flowers of purest white rising amongst the immense blue-green foliage. *Each, \$2.50.

CHINESE LOTUS (*N. Pekinensis rubrum plenum*). An exceptional type. This variety is the only Lotus having fully double flowers of a rich rose red. *Each, \$2.50.

*Add \$1.00 to above prices for potted plants after June 1st.

1941 SPECIAL LOTUS COLLECTION

A choice collection of delightfully contrasting and fragrant plants which we can ship together are: One American Lotus, One Sacred Lotus, One Chinese or Shiroman Lotus (your choice). Three strong tubers, one of each variety. 1941 Special Offer \$4.95.

CONCRETE PAINT

A splendid Robin's-Egg Blue. We supply in quarts, half-gallons and gallons a specially prepared paint which not only preserves but beautifies a concrete pool. This paint will preserve the concrete, prevent small leaks, and is non-injurious for plants or fish. The color is especially prepared to enhance the appearance of clear water. A quart will cover 110 to 160 square feet of concrete with one coat—a gallon 450 to 550 square feet. Three or more coats should be applied to insure a permanent and wholly satisfactory finish. F. O. B. Martinsville or Saddle River. Per quart, \$1.25; per half-gallon, \$2.35; per gallon, \$4.50.



1 and 2—Water Lilies, L—Lotus, A—Paper Plant and Cattails, B—Pontederia and Bulrush, C—Arrowhead and Sweet Flag, D—Floating Heart and Parrot's Feather, F—Water Hyacinth and Water Lettuce.

SPECIAL NILE GARDEN COLLECTION

2 Papyrus Plants, 2 Water Rushes, 2 Arrowhead, 2 Pontederia, 1 Sacred Lotus, 2 Water Hyacinth, 2 Water Lettuce, 2 Floating Heart, 2 Parrot's Feather, 2 Bulrush, 2 Sweet Flag, 1 White Lotus Water Lily, and 1 Blue Lotus Water Lily. Twenty-three plants, including two Water Lilies and a Sacred Lotus. 1941 Special Offer, \$5.95.

FISH AND SCAVENGERS FOR NILE GARDEN

12 Comet Goldfish, 4-5 inch; 6 Shubunkins, 3-4 inch; 6 Fantails, 2½ inch; 1 Small Pool Collection of Scavengers (6 Japanese Snails, 6 Black Ramshorn Snails, 6 Tadpoles, 2 Clams, 2 Salamanders). This collection, Special Offer, \$4.35.

OXYGENATING PLANT COLLECTIONS FOR POOLS AND AQUARIUMS

10 (Plants and bunches) your choice, \$0.75.
18 (Plants and bunches) your choice, \$1.25.
30 (Plants and bunches) your choice, \$2.00.

SHALLOW WATER AND MARSH PLANTS FLOATING AND OXYGENATING PLANTS

SHALLOW WATER PLANTS

ARROWHEAD (*S. latifolia*). 25 cts. each, \$1 for 5.
CATTAILS (*Typha latifolia*). \$1 per doz.
FLOATING-HEART (*Nymphoides peltatum*). \$1 per doz.
FLOWERING RUSH (*Butomus umbellatus*). \$1 for 3, \$2.50 per doz.
FORGET-ME-NOT (*Myositis palustris*). \$1 for 5, \$2 per doz.
WATER SNOWFLAKE—50 cents for 3.
MARSH MARIGOLD (*Caltha palustris*). 75 cts. for 4, \$2 per doz.
PARROT FEATHER (*Myriophyllum proserpinacoides*). 50 cts. for 6, \$1.00 per doz.
PICKEREL RUSH. 2 ft. 50 cents for 2, \$2.50 per doz.
PURPLE WATER HYACINTH (*Eichhornia azurea*). 35 cts. each, \$1.00 for 3.
SWEET FLAG, Variegated (*Acorus calamus variegata*). 2 to 3 ft., \$1 for 4, \$2.50 per doz.
WATER POPPY (*Hydrocleis nymphoides*). 25c for 3, per doz. 75c.
WILD CALLA (*Calla Palustris*). 75 cts. for 4, \$2 per doz.
VELVET LEAF (*Limnocharis flava*). 35c ea., 3 for \$1.00.
THALIA DIVARICATA. \$1.00 ea.
Collection of 7 Shallow Water Plants, \$1.
Collection of 15 Shallow-Water Plants, \$2.

BOG AND MARSH PLANTS

CRINUM C. (americanum)—35c each, \$1 for three.
GINGER or BUTTERFLY LILY (*Hedychium coronarium*)—35c each, \$1 for three.
YELLOW FLAG (*Iris pseudacorus*)—75 cts. for three, \$2.50 per doz.
MARSH IRIS (*I. versicolor*)—\$1 for five, \$2 per doz.
JAPANESE or WATER TARO (*C. antiquorum illustris*)—50c each, \$1.25 for three.
JAPANESE or WATER TARO (*Colocasia multiflora*)—75c each, \$2 for three.
PAPER PLANT EGYPTIAN (*Cyperus papyrus antiquorum*)—35c each, \$1.00 for three.
PRIMROSE WILLOW (*Jussiaea longifolia*)—35c each, three \$1.
THALIA (*T. dealbata*)—50c each, \$1.25 for three.
UMBRELLA PALM (*Cyperus alternifolius*)—\$1 for three, \$3 per doz.
WATER CLOVER—6 for 50c, \$1 per doz.
HEDYCHIUM CHRYSOLEUCUM \$1 for 3, \$3 per doz.
SPIDER LILY—\$1 for 3, \$3 per doz.

GREAT BULRUSH (*Scirpus lacustris*)—\$1 for three; \$2.50 per doz.

SWEET FLAG (*Acorus calamus*) \$1 for five; \$2 per doz.

CANNA FLACIDDA—Three \$1; doz., \$2.50.

Collection of 7 Bog and Marsh Plants, \$1.50.

Collection of 15 Bog and Marsh Plants, \$2.50.

FLOATING PLANTS

AZOLLA—25c per portion.
WATER FERN—50c for four; \$1.25 per dozen; small plants, 50c per portion.
DUCK WEED—25c per portion.
SALVINIA—25c per portion.
WATER LETTUCE OR SHELLFLOWER—25c for two; \$1.00 per doz.
WATER HYACINTH—50c for six; \$1.00 per doz.

FLOATING PLANT COLLECTIONS

1. Five assorted Floating Plants, 75c.
2. Twelve assorted Floating Plants, \$1.50.

OXYGENATING PLANTS

ANACHARIS—50c for six bunches; \$1.00 per doz.
SAGITTARIA SINENSIS—Six plants, 50c; doz., \$1.
VALLISNERIA—50c per doz.; \$1.00 for twenty-five plants.
CABOMBA—50c for six bunches; \$1.00 per doz.
MILFOIL; MYRIOPHYLLUM—50c for six bunches; \$1.00 per doz.
LUDWIGIA—Six bunches, 50c; doz., \$1.00.
JUSSEA—(Needle leaf Ludwigia)—50c for six bunches; \$1 per doz.

HARDY ORNAMENTAL GRASSES COLLECTION

Hardy Grasses, three each of three varieties of Miscanthus, nine strong clumps, \$2.50.

AQUATIC PLANT SPECIALS

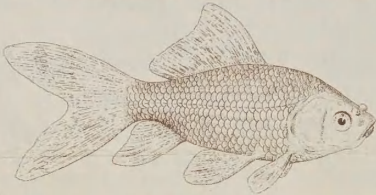
SMALL POOL COLLECTION—26 Choice Aquatic Plants, to include (our selection) 6 plants for centerpiece or background; 14 plants for corners or margins; 3 floating plants; 3 submerged plants... \$3
POPULAR POOL COLLECTION—30 Choice Aquatic Plants, to include (our selection) 8 plants for centerpiece or background; 16 plants for corners or margins; 3 floating plants; 3 submerged plants... \$4
MEDIUM POOL COLLECTION—38 Choice Aquatic Plants, to include (our selection) 10 plants for centerpiece or background; 16 plants for corners or margins; 6 submerged plants; 6 floating plants... \$5

GRASSYFORK GOLDFISH

SPECIAL PRICES ON CHOICE FISH FROM THE WORLD'S LARGEST PRODUCERS

WITH the tremendous resources of the world's largest commercial Goldfish Hatcheries at our command, we are able to offer you the utmost economy in these 1941 Special Offers of Goldfish for your Pool. Goldfish in your Pool contribute to its beauty and interest, and to easy maintenance as well. Almost any outdoor Pool gives suitable conditions for the fish to increase in size and also to reproduce. Goldfish bring life and color to the whole scene that could be had in no other way, and are especially effective in destroying mosquito and insect larvae.

1941 GOLDFISH OFFERS

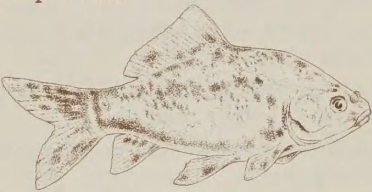


SELECT COMMON GOLDFISH

Unequaled for Pools or large ponds. 4-inch, \$1.25 per doz.; \$8 per 100. 5-inch, \$1.75 per doz.; \$12 per 100. 6-inch, 50c per pr.; \$2.50 per doz.

GIANT GOLDFISH

These fish are selected breeding stock. Just the thing for the larger Pool. 10-12-inch. \$3 per pr.; \$15 per doz.



SHUBUNKINS

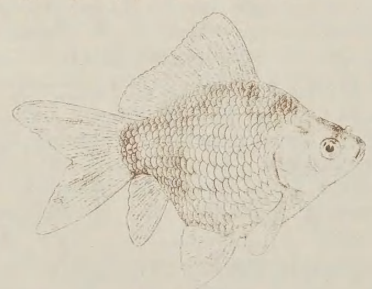
Beautifully colored in red, blue and black against a pearl background. Unusual and very striking. 2½-inch, 75c per doz. 3-inch, \$1.00 per doz. 4-inch, \$1.50 per doz. 5-inch, 50c per pr.; \$2.50 per doz.

EXTRA LARGE SHUBUNKINS

All the colors of the rainbow. Include a few of these 6-inch Shubunkins in your Pool Collection. \$2 per pair.

GIANT SHUBUNKINS

For a unique display in the larger Pool, Giant Shubunkins. 8 inches. \$5 per pair, \$25 per dozen.



NYMPHS

Very short egg-shaped bodies with large fins and broad tails. Active. 3-inch, \$1.25 per doz. 4-inch, \$2.50 per doz. 5-inch, 75c per pr.

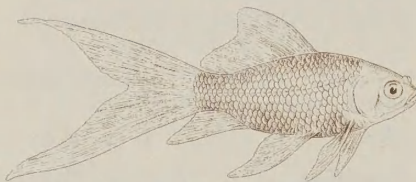
CHINESE MOORS

A unique and exotic fish with large, protruding "telescopic" eyes, short, plump bodies and fan-like tails. Color, a dense, velvety black. 2½-inch, \$2.00 per doz. 3-4-inch, \$1.00 per pr.; \$5 per doz. 4-5-inch, \$1.50 per pr.

YOUNG GIANTS

(Special)

Strong, hardy, well-colored Giant Goldfish of medium development, ranging in size from 7 to 9 inches. Excellent for spawning. Price \$1.00 per pair; \$5.00 per dozen.



SELECTED COMETS

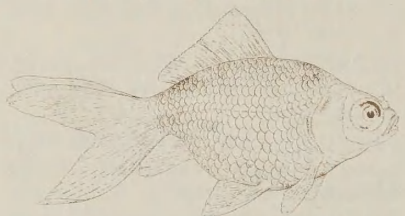
Similar to Common Goldfish, but with more slender bodies, longer tail and fin development. 3½-inch, \$1.25 per doz. 5-inch, 50c per pr.; \$2.50 per doz. 6-inch, \$1.00 per pr.; \$5 per doz.

EXTRA LARGE COMETS

These Comets are 6-7 inches in length. \$1.50 per pair; \$7 per dozen.

GIANT COMETS

Long, slender bodies, very active. 10-inch, \$3 per pr.; \$15 per doz. 12-inch, \$4 per pr.; \$20 per doz.

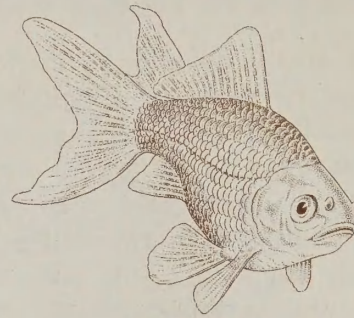


CHINESE RED TELESCOPES

Like the "Chinese Moors," except that these fish are red in color. 2½-inch, \$2.00 per doz. 3-4-inch, \$1.00 per pr.; \$5.00 per doz. 4-5-inch, \$1.50 per pr.

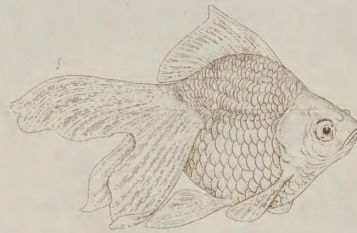
CALICO TELESCOPES

Like the Calico Fantails; having in addition the large, protruding "telescope" eyes. 2½-inch, \$2.00 per doz. 4-inch, \$1.50 per pr. 5-inch, \$2.50 per pr.



FANTAILS

The tail is double and spread fanlike, hence the name. 2½-inch, \$1.00 per doz. 3-inch, \$1.50 per doz. 4-inch, 75c per pr.; \$3.50 per doz. 5-inch, \$1.00 per pr.; \$5 per doz.



CALICO FANTAILS

Beautifully colored like the Shubunkins, but having a divided or "fan" tail. 2½-inch, \$2.00 per doz. 4-inch, \$1.50 per pr. 5-inch, \$2.50 per pr.

LARGE FANTAILS

Something different and just a little better. 6 inches. \$3 per pair; \$15 per dozen.

GIANT FANTAILS

For an exceptional display of Goldfish, there is nothing finer. 8 inches. \$5 per pair; \$25 per dozen.

COLLECTION OF YOUNG GIANTS

2 Pair (7-9-inch) Young Giant Goldfish \$3.00
2 Pair (6-7-inch) Extra Large Comets 3.00
2 Pair (6-inch) Extra Large Shubunkins 4.00
Develop the big ones yourself.
Collection Price, only \$7.50

1941 COMBINATION SPECIAL

6 Pair Fantails (5-inch), 1 pair Giant Goldfish (10-12-inch), 3 pair Shubunkins (5-inch), 1 pair Young Giants (7-9-inch), 1 pair Fantails (6-inch), 6 pair select Comets (6-inch). A \$22 Value,
1941 Special Offer \$14.95

1941 POOL ASSORTMENT No. 1

2 Pair Shubunkins (4-5-inch) \$2.00
2 Pair Fantails (4-inch) 1.50
1 Pair Red Telescopes (4-inch) 1.25
1 Pair Moors (4-inch) 1.50
A dozen fancy fish that will add to the attractiveness of the most complete Pool.
1941 Special Offer, only \$4.75

EXTRA SPECIAL

Any 8: 4-5" Calico Fantails, Moors, or Fantails. Your choice, \$3.95.

Any 6: 5-6" Calico Fantails, Moors, or Fantails. Your choice, \$5.95.

Any 4: 6-7" Calico Fantails, Moors, or Fantails. Your choice, \$7.95.

1941 POOL ASSORTMENT No. 2

3 Pairs Fantails (4-5-inch)
3 Pair Select Comets (5-6-inch)
1 Pair Young Giant Goldfish (7-9-inch)
1 Pair Shubunkins (4-5-inch)
16 Large Selected Goldfish \$4.50

1941 POOL ASSORTMENT No. 3

6 Pair Selected Comets (3½-inch)
6 Pair Fantails (3-inch)
6 Pair Shubunkins (3-4-inch)
36 Beautiful Goldfish \$5.50

1941 FISH ASSORTMENT No. 2

3 Pair Fantails (4-5-inch)
3 Pair Shubunkins (3-4-inch)
3 Pair Comets (4-5-inch)
3 Pair Chinese Telescopes (2½-inch)
24 Goldfish, only \$5.75

1941 FISH ASSORTMENT No. 4

1 Pair Giant Goldfish (10-12-inch)
2 Pair Giant Fantails (7-8-inch)
1 Pair Black Chinese Moors (4-5-inch)
1 Pair Giant Comets (9-10-inch)
10 Giant Wonders for \$14.50

1941 FISH ASSORTMENT No. 5

25 3-inch Fantails
25 3-inch Shubunkins
25 3-inch Select Comets
25 3-inch Moors, Telescopes, Calico Fantails
100 Goldfish, 1941 Special Offer \$9.75

Goldfish must be shipped in cans. All fish prices are f. o. b. Martinsville or Saddle River. On small orders a charge of 50 cents is made for each can. Large cans are returnable by prepaid express at a cost of 20 cents a can. We ship Goldfish every day of the year. See instructions for receiving express shipments on order blank.

Upon receipt from shipping company, fishes should be given a salt bath; or better, use our Health Dip before placing them in the Pool or Aquarium.

1941 SPECIAL OFFER ORDER FORM

CUT OFF ALONG THIS LINE AND MAIL TODAY

1941 SPECIAL OFFER ORDER BLANK



World's Largest Producers
Goldfish and Water Lilies
GRASSYFORK
(Established 1899) INC.
1500 ACRES - CARED FOR BY EXPERTS

WATERLILIES :- AQUATIC PLANTS :- GOLDFISH
AQUARIUMS AND SUPPLIES
ROCK GARDEN PLANTS :- PERENNIALS

MARTINSVILLE, IND., AND
SADDLE RIVER, N. J.

DATE	SHIP BY	PLEASE DO NOT WRITE HERE ORDER No. _____ AMOUNT ENCLOSED: CASH _____ CHECK _____ M. O. _____ AMOUNT OF ORDER _____ AMOUNT OF POSTAGE _____
STATE BY EXPRESS OR PARCEL POST		
NAME		
MR.—MRS.—MISS		
ADDRESS		
STREET—P.O. BOX—R.F.D.		
CITY		
EXPRESS OFFICE		
COUNTY	STATE	

TERMS: CASH WITH ORDER. NO C. O. D.
WATER LILIES, PLANTS, ETC., ARE SHIPPED WITH ALL CHARGES PREPAID

QUANTITY	NAMES OF ITEMS ORDERED HERE	DOLLARS	CENTS
AMOUNT OF ORDER			
PLUS 10% FOR HANDLING, PACKING AND FULLY PREPAID TRANSPORTATION CHARGES (25c MINIMUM CHARGE)			
TOTAL AMOUNT ENCLOSED			

BEFORE ORDERING — PLEASE READ THESE CONDITIONS OF SALE — SHIPPING INSTRUCTIONS

We guarantee our plants and fish to be of the highest quality obtainable anywhere, and we ask you to be the judge in making an unsparing comparison in any way you wish.

Terms: Please send funds sufficient to cover price of goods ordered including 50 cents for shipping can when fish are included with the order. Include ten per cent (10%) extra to the value of your order for handling, packing and fully prepaid transportation charges. When not included orders will be sent express collect.

Orders of \$2.50 or less require 25c for packing, handling and postage. This amount must be added to the value of the items ordered. Unless the 25c minimum or 10% for packing, handling and transportation charges is included the shipments will be made by express, charges collect. Prices subject to change without notice.

Payment may be made by check, draft, Post Office money order, or Express

money order. When cash is sent the letter should be registered. We do not ship C. O. D.

Order Early. Orders are shipped at the proper planting time for your locality in the order received. Early ordering will insure prompt delivery as soon as your planting season begins.

Canadian Shipments: Canadian customers must obtain a permit to import plants from the Destructive Insect and Pest Act Advising Board, Dept. of Agriculture, Ottawa. *Send us the Permit Number only* for such shipments. The permit is to be retained by purchaser.

Forwarding: All fish and tadpoles ordered must go by *Express* collect. Evergreens, Fertilizer, Chips, Shells, Aquarium Grit, Sand, Concrete or Pool Paint, Aquariums, Stands, Tubs, Planting Boxes, Galva Tanks and All-Steel Pools are shipped via express or freight collect.

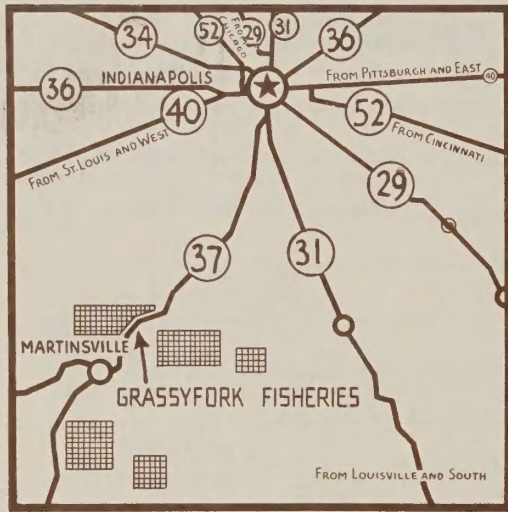
Claims: *Inspect your order before express agent leaves.* If shipment is not

in good condition, have him make out a bad order Report No. 679 and return it to us at once. All claims or complaints must be made within 10 days of accepting goods. We reserve the right to replace any merchandise considered unsatisfactory. Our liability in any case shall be limited to the replacement of such items as have been shipped.

Errors: Experienced packers handle all your orders. In the press of business, however, errors may occur. In such case we wish to be promptly informed of the fact, that we may make such corrections as will be satisfactory. Please keep copies of all your orders for comparison.

Name and Address: Please write on each order your *Name, Post Office, County, and State, Street, P. O. Box or R. F. D. Route:* your nearest *Express Office.*

We will be glad to mail copies of this folder or our FREE book "GRASSY-FORK WATER GARDENS" to any addresses you send us.

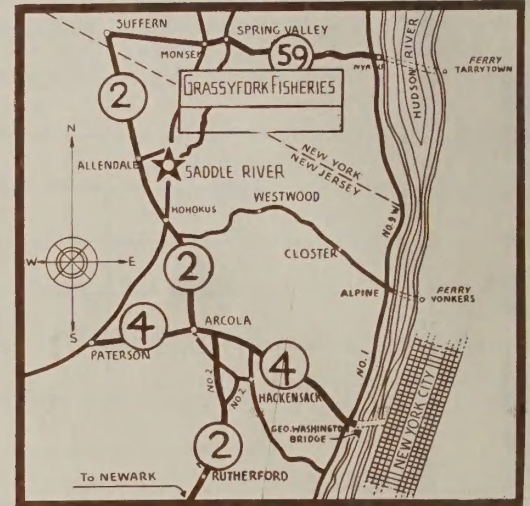


This map shows location of main Martinsville display on Indiana Highway No. 37.

YOU ARE INVITED

Every day in the year (including Sundays and Holidays), Grassyfork, at Martinsville and Saddle River, awaits a visit from you and your friends. Here you will see hundreds of Goldfish and Water Lily pools—covering over 1500 acres. The maps shown at right and left show the way. You will find this an interesting objective for a trip at any season of the year and we will be glad to see you at any time.

This map shows Saddle River display just off U. S. Highway No. 2.



GRASSYFORK WATER GARDENS

Sent You **FREE** *On Request*

A permanent, Reference Book of
Valuable Ideas for YOUR
Water Garden

Profusely illustrated in all the marvelous beauty of the original Water Lilies and Goldfish, with complete descriptions of water plants and life. Gives planting instructions, illustrated directions for building and stocking pools and a wealth of water garden information. We will gladly send it **FREE** to you or your friends if you will send us the addresses—**NOW**.

AQUARIUM AIRFLOS

Increase capacity of aquarium 8 times. These rotary Airflos (patent 2004866) for goldfish aquariums are simply placed in the aquarium and attached to electric socket. They circulate air through the water and filter it, thus making a fresh, invigorating, oxygenated water supply.

For Aquariums up to 20 gal.
Model A \$9.95.

For Aquariums 20 to 50 gal.
Model B \$23.45.