

Historic, Archive Document

Do not assume content reflects current scientific knowledge, policies, or practices.



Spring 1941

Sec. 562, P. L. & R.

U. S. POSTAGE

PAID

Permit No. 94

Lexington, Kentucky

U.S. Dept of Agriculture
Bureau of Plant Industry
Horticultural Corps
& Disease
Washington, D.C. 1

MAY 19 1941
U. S. DEPARTMENT OF AGRICULTURE

HILLENMEYER NURSERIES
Lexington, Kentucky *Return Postage Guaranteed*



STRAWBERRIES

We grow and sell the kinds which do well in Kentucky. Use Hillenmeyer's Tried and Tested Plants. All varieties listed are perfect flowering.

PREMIER

One of the most popular Strawberries ever introduced. Good plant maker, frost resistant and prolific. The bright red berries are large, bluntly conical, of good quality and hold up in size to the very end of the season is favorable. The leading berry for market or home. No variety ever tested has been so deservedly popular and we recommend it as the **best early and midseason kind.**

BLAKEMORE

Ripens a few days before Premier. Berries light red, conical and will remain firm a few days after ripening. Excellent for commercial or home use. Productive, good plant maker, and will do well on rather poor soil. Our plants are the Yellow-free Strain. Plant Blakemore for profit.

CATSKILL

A new outstanding variety of high quality which is rapidly growing in popularity. Bright red, midseason and excellent for home use.

Our prices permit you to make selection of any variety listed. This is important when comparing prices.

100	\$0.75	600	\$3.00
200	1.40	700	3.50
300	1.80	800	4.00
400	2.20	900	4.50
500	2.50	1000	4.75

1000 Strawberries Sent Prepaid Anywhere in Kentucky for \$5.00

WRITE FOR QUOTATION ON LARGER QUANTITIES
For parcel post and insurance, add 10 per cent

DORSETT

One of the most satisfactory varieties that has been introduced in years. Its high quality, bright colored berries with light red flesh are excellent both for home and local market purposes. Ripens a few days after Premier, and while by some is thought better, we are not yet ready to give it preference. It is a good plant maker.

FAIRFAX

Of highest quality and ripens about a week after Premier. Berries bluntly conical, dull red, yellow or greenish seed and dark red flesh. Juicy, firm and a fine home berry. It so overlaps Aroma and so much better quality we have discontinued growing the latter variety.

GANDY

Still the best late berry. Robust plants with fruit on strong stems, blossoming exceedingly late and thus frequently missing frosts that often kill the early bloomers. Conical berries with large caps, firm and rather acid. Excellent for preserving, canning or shipping. Prefers a moist clay soil.



Cultural Directions for Strawberries

WHEN PLANTS ARE RECEIVED. Plant at once if possible. If season is not favorable put in cool, moist place, BUT DO NOT WATER. They also may be unpacked and trenched in open ground.

WHEN TO PLANT. Late March or April is the chosen time. Fall planting usually results in a complete failure.

SOIL. Strawberries respond to good soil and you should choose a fertile location. However, do not plant immediately after turning under sod, as white grubs invariably cause trouble. Prepare the ground very thoroughly.

DISTANCE TO PLANT. The rows should be three and a half to four feet apart and the plants set about eighteen inches in the row. It requires about 7000 plants per acre.

CULTIVATION. During the summer keep the ground constantly stirred and free of weeds. Moisture preservation by dust mulch will conserve the vitality of your plants and produce a fine matted row. Keep the hoe and cultivator busy.

MULCHING. Protect by mulching with clean straw in fall or early winter after the ground is frozen. Do not apply too heavily, as this smothers the plants. Leave on during the fruiting season, as it conserves moisture and keeps the berries clean.

AFTER FRUITING. Immediately plow or narrow the original row to about a foot. Thoroughly cultivate the middle so as to give the new plants a chance to get established. Repeat the second year. We do not advise keeping beds more than two or three years.

FAMILY REQUIREMENTS. About three hundred, five hundred, or a thousand plants are required for a small, medium, or large family.

SELECTION OF VARIETIES. We shall be glad to make selection of suitable varieties if you want to leave this to us.

HOW TO PLANT STRAWBERRIES



TOO DEEP TOO SHALLOW JUST RIGHT

PANSIES

Big strong transplants. Grown from best seed obtainable. 50c per 12; \$2.00 per 50; \$3.50 per 100.

HILLENMEYER'S *Famous* Kentucky Blue Grass Seed

Here in the heart of the famed Blue Grass Section of Kentucky the best seed in the world is produced. Hillenmeyer's seed is from the best crops and highest quality. Why gamble with poor seed—plant the best.

SPECIAL LAWN MIXTURE

For sowing new lawns or where you have a thin stand we recommend our Special Lawn Mixture. This consists of Blue Grass and other varieties for quicker effect.

Sow 2-3 lbs. to 1000 square feet on thin lawns. Sow 4-6 lbs. to 1000 square feet on new lawns.

PRICES ON BLUE GRASS OR LAWN MIXTURE

1 pound	\$0.35
3 pounds	1.00
10 pounds	3.00

Ask for prices on larger quantities.

For parcel post and insurance, add 10 per cent.

SECOND CROP SEED POTATOES

Second crop seed is preferred and planted in this section by gardeners and those who grow potatoes for profit. They are grown from certified stock, medium size, no hollow ones, will go farther and give a better stand.

Prices F. O. B. Lexington until sold out:

1 bu. (60 lbs.)	\$1.25
100 lbs.	2.00

Larger quantities quoted on application.





ROSES — Queen of Flowers

MANY ROSES which succeed in the North and other parts of the country do not do so well in Kentucky. Almost every Rose listed in our catalog has been tested on our own grounds and proven satisfactory and dependable. We have discarded or do not carry many which will be described favorably in other lists. Why spend your money and time on doubtful kinds when you can buy our "Tried and Tested" Roses? No flower is so much loved, appreciated and enjoyed as the Rose. It is still the "Queen of Flowers." If properly sprayed and cultivated during summer, protected over winter, you will find a planting of Roses one of the most satisfactory expenditures for your garden.

QUALITY PLANTS. The price of a rose bush, like most other articles, should not determine its value. Good Roses are ones which are true to name—properly grown, which includes cultivation, spraying and under-stock—ripened by nature—handled so they will not be devitalized by exposure—free of leaf diseases—strong and with good roots.

HILLENMEYER ROSES GROW AND BLOOM BETTER — WE KNOW IT!

Hillmeyer's Tried and Tested Roses

There are more than 2000 Roses in general cultivation and to list any large percentage of these would be out of the question. We have, therefore, tried and tested all of the best to save you time and expense. The list which follows is the result of our effort and represents the "Cream of the Crop." Plant any of them with confidence.

Strong, two-year plants: 50c each \$2.25 for 5 40c each 50 or more
For postage and insurance, add 10 per cent.

Pink

BETTY UPRICHARD. H.T. Two-color, copper-red buds, opening into semi-double, salmon-pink blooms. A good bloomer and an outstanding variety.

BRIARCLIFF. Long-pointed buds of rose-pink taking on lighter shades as they open. Single stems and excellent for cutting. Fragrant.

EDITH NELLIE PERKINS. H.T. One of the best. Long-pointed buds of cream, orange, and pink, overspread with gold flush. Very prolific flowering; strong grower. Foliage healthy.

EDITOR McFARLAND. Deep pink. We think this the finest pink garden Rose grown today. Its pointed buds on nice long cutting stems last longer and retain their form wonderfully well. A Rose that should be in every garden.

RADIANCE. H.T. This is a most reliable Rose. It has no serious faults and is the best variety for this section. Brilliant rose-pink buds opening into well-formed blooms with silver tints on reverse of the petals. Blossoms are fragrant and plant makes vigorous growth. Our most outstanding reliable Rose.

Red

E. G. HILL. H.T. A great red Rose. Massive blooms of deep crimson and scarlet, velvety on inside. Splendid for cutting. Foliage unusually healthy. Of vigorous habit.

ETOILE DE HOLLANDE. H.T. It is said that this is the best red Hybrid Tea. Its gigantic flowers of velvety crimson color hold up remarkably well, getting lighter in shade instead of "bluing" with age. Thrives everywhere and produces a fine lot of blooms throughout season.

GRENOBLE. This Gold Medal variety is fast becoming popular. Glowing scarlet-crimson with long stems. Vigorous and healthy.

RED RADIANCE. H.T. Read the description of Radiance and apply the good things said of it to this variety, except the color, which is a deep rose-red. Blooms until frost and is the best all-around red Rose in existence.

Two-Tone

CONDESA DE SASTAGO. Vivid colorings of gold, copper, and yellow. This matchless Spanish novelty causes everyone to stop and admire it. Healthy and upright in growth. Admired by all.

DUQUESA de PENARANDA. Coppery apricot. A Spanish beauty with long-pointed buds which open into luminous shades defying description. A wonderful Rose.

HINRICH GAEDE. A brilliant colored Rose with long-pointed buds of rich luminous vermilion shaded with gold. A showy free bloomer; fragrant, with excellent foliage.

PRESIDENT HERBERT HOOVER. H.T. A most popular Rose. It is maroon, orange, and gold, rioting in a most contrasting fashion. Long, pointed buds; rigid stems. A fine garden Rose, blooming well in the autumn. By far the best of its color, and superior to Talisman as an outdoor Rose.

White

CALEDONIA. H.T. Purest white, perfectly formed buds on strong stems, opening to large flowers that retain their form until petals fall. No white Rose can surpass this perfect variety.

KAISERIN AUGUSTE VIKTORIA. H.T. Well-formed, cream-colored buds opening into white flowers. Free blooming; hardy.

McGREY'S IVORY. Creamy ivory-white, sometimes with a faint tinge of pink in the center. Large, fragrant and one of the best.

Yellow

GOLDEN RAPTURE. Long lasting, well-shaped buds and fully double blooms of rich yellow on long, strong stems. A vigorous grower. This has been wonderful in our gardens.

MRS. E. P. THOM. H.T. Superior yellow garden Rose. The fine long buds are perfectly shaped. Flowers rich lemon-yellow. Very vigorous and a constant bloomer.

MRS. PIERRE S. du PONT. H.T. Winner of more medals than any other outdoor Rose. Long, pointed, rich red-gold buds, opening to well-formed blossoms that hold long. Foliage ornamental, healthy, and disease-resistant.

SOEUR THERESE. Yellow. Long-pointed buds of chrome-yellow with markings of carmine. The open flower is rich Daffodil-yellow. Blooms freely on long cutting stems. One of the finest yellow Roses of recent introduction.



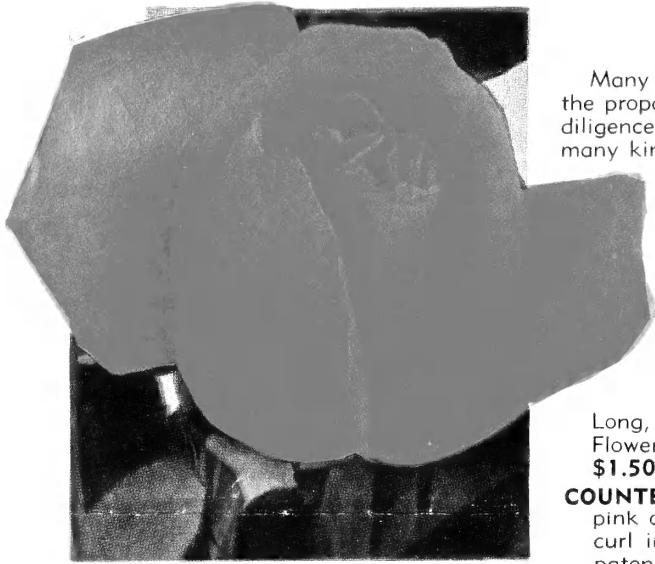
Grenoble

Edith
Nellie
PerkinsMrs.
Pierre S.
Du PontPresident
Herbert
HooverMcGredy's
IvoryEditor
McFarland

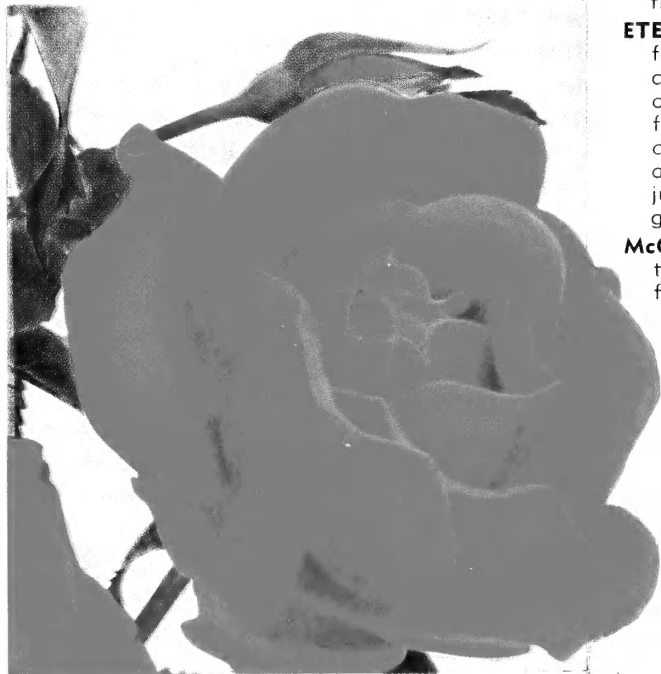
PATENTED ROSES

Many of the finest new Roses are now being patented. This naturally regulates, to a large extent, the propagation, description and sale. We are licensed to distribute the Roses and use the greatest diligence to see that they reach you in prime condition. Beyond this we have no control. Have tried many kinds and have selected twelve which, in our judgment, are the "cream of the crop". If you want other varieties not listed, we can supply them at prevailing prices.

**For a combination of 3 or more Patented Roses,
use 1/3 of the 3 price**



Signora



Hector Deane

McGREY'S SALMON. Patent No. 410. "Surely Ireland must be Heaven," for such Roses come from there. The exquisite, symmetrical buds of an appealing orange-pink shade unfold to a delightful apricot-salmon. The blooms are large with a rich, full, fascinating fragrance. Free bloomer. **\$1.50 each; 3 for \$3.75.**

SIGNORA. Patent No. 201. This Rose from the land of sunshine and Chianti wine, is a real masterpiece, in both plant and bloom. Long bud of a warm burnt-sienna opening to a lighter hue toward mandarine. The plant is tall-growing with every bloom on a long stem. Foliage is handsome. Indispensable to those who grow Roses mainly for cutting.

**\$1.00 each;
3 for \$2.50.**

Pink

ADORATION. Patent No. 453. Brilliant salmon-pink lightening with a splash of orange at base of petals. Long, pointed buds opening with high centers. Flowers accentuated by coppery green foliage. **\$1.50 each; 3 for \$3.75.**

COUNTESS VANDAL. Patent No. 38. Copper, pink and gold with long, pointed buds. Petals curl into a beautiful open blossom. The best patented Rose which has come under our observation. We recommend it with confidence. **\$1.00 each; 3 for \$2.50.**

ETERNAL YOUTH. Patent No. 332. Perfectly formed buds are long, pointed, colored a beautiful soft pink with yellow at the base of each petal. The full open flowers expose a large center of graceful deep yellow stamens. The color remains a clear pink throughout suffused with just a touch of salmon. Vigorous, with good foliage. **\$1.25 each; 3 for \$3.15.**

McGREY'S PINK. Patent No. 341. Beautiful bright rose. As the large, fragrant flowers unfold the outer petals shade to a pearly cream and pink with a saffron-yellow base. Blossoms borne on long stiff stems, with dark green foliage. Continuous bloomer, fine for cutting, exhibition or garden. **\$1.25 each; 3 for \$3.15.**

Two-Tone

MRS. CHAS. MALLERIN. Patent applied for. The long salmon-orange buds stand erect on thick sturdy stems above vigorous leathery ivy-green foliage. Blossoms open an iridescent orange-salmon with veil of scarlet. One of the best. **\$1.50 each; 3 for \$3.75.**

Red

DICKSON'S RED. Patent No. 376. First award "All-America Rose Selections," for hybrid teas 1940. A glowing scarlet-red from the Emerald Isle. Rich in fragrance and holds its color in the hottest sun's rays. Rugged in growth and beautiful in form and color. Looks like this is one of the Roses which is here to stay. You must try it. **\$1.25 each; 3 for \$3.15.**

HECTOR DEANE. Patent No. 361. So fragrant is this Rose that a single plant scents the whole garden with true old rose scent. The bud is crimson with a suggestion of orange in the depths, the orange diffusing as it opens, leaving at the heart only a clear circle of yellow. Bloom is informal in its opening, the petals reflexing in irregular and unusual manner. **\$1.50 each; 3 for \$3.75.**

ROSE BAMPTON. Patent No. 425. The new Red Rose for 1941. The charming petals reflex slightly as they open and the full flower resembles a Dahlia. The bloom is very double, slow in opening, holds a long time and has a delightful old rose perfume. **\$1.50 each; 3 for \$3.75.**

Yellow

ECLIPSE. Patent No. 172. The long streamlined bud, enhanced by ornamental sepals, is of rich gold without shading. International sensation of 1936. **\$1.00 each; 3 for \$2.50.**

McGREY'S SUNSET. Patent No. 317. A variety which is aptly named, with gorgeous sunset yellows. The outside of petals is a clear buttercup-yellow, tipped orange, while the inside is chrome-yellow, flushed with scarlet as it opens. A prolific bloomer, very sun-resistant and excellent in hot weather. Pleasing fragrance. **\$1.25 each; 3 for \$3.15.**



McGredy's Salmon

12

Outstanding
PATENTED ROSES

1 Each as Listed

\$13⁰⁰

Postpaid, 50c Extra

Twelve New and Select Roses

The following were selected as the best of the newer varieties. All have distinct merit, and we recommend them to those who are looking for something new and beautiful.

No. 1, 2-year plants, 75c each; \$3.50 for 5; \$8.00 per doz.
For postage and insurance, add 10 per cent.

Pink

Catherine Kordes. Bright glowing pink growing singly on erect strong stems. Rich bronzy foliage.

Picture. Beautiful with its warm undertone of salmon. Perfect form with pointed petals. Vigorous, continuous bloomer. Fragrant. It really is a picture.

Pink Dawn. Perfect formed buds, opening to a lovely shade of pink, tinged with orange.

The Doctor. Beautiful glowing silvery pink with satiny edges. Extra large bud and blossom which is delightfully fragrant.

Red

Christopher Stone. A thrilling scarlet-crimson from bud until petals fall. Vigorous, upright, free flowering. Looks like this one has come to stay.

Glowing Carmine. Its name is a good description of this new Rose. Strong grower, blooms freely, and is very showy.

Victoria Harrington. Pointed dark, almost black buds opening to non-fading velvety red. Warmed with golden flush in center of flower.

Two-Tone

Faience. Soft peach and cadmium yellow. Tapering bud, yellow at base, shading to shrimp-pink at edges. Exhibition blossoms.

Madame Joseph Perraud. Award of honor "The Most Beautiful Rose in France for 1934." The long slender buds when open shade from pink at the edges to orange at the center. Enraptured visitors were in accord as to its merits.

Yellow


Golden (or Yellow) Sastago. Buttercup-yellow with tints of apricot. Another Spanish Beauty of robust growth. Blossoms are set deep in superb dark foliage.

McGredy's Yellow. This bright buttercup-yellow is admired by all who see it. Good form, fragrant and strong grower.

Phyllis Gold. Beautiful clear yellow with nicely shaped buds, tinged red, opening to large, fragrant, high-pointed flowers of great substance. Strong upright grower with good foliage.



Mme. Joseph Perraud



Rose Sprays

CLOTRACIDE A complete, economical spray for Roses, etc. Contains powerful insecticides and fungicides. Easily mixed and applied. We recommend it.

Small size (makes 5 gallons) \$0.50
Medium size (makes 10 gallons)85
Large size (makes 20 gallons) 1.50
Nursery size (makes 80 gallons) 5.75

TRI-GEN — Combined Spray Treatment

Complete protection against plant Insects and Disease.

One of the most complete and satisfactory sprays for Roses. Controls leaf spot, mildew, and insects.
Nationally advertised and used.

PRICES	
A. Small Kit (makes 16 quarts)	\$ 1.50
B. Medium Kit (makes 64 quarts)	4.00
C. Large Kit (makes 32 gallons)	6.00
D. Estate Kit (makes 128 gallons)	20.00

For postage and insurance, add 10 per cent.

QUALITY STOCK
Do not confuse quality plants with cheap stock. There is a difference and you will be convinced if you plant HILLENMEYER'S ROSES.



Phyllis Gold



Pink Dawn



Hillenmeyer's HARDY PERENNIALS

Brighten Dull Days and Dull Gardens with These Colorful Flowers

These, like Roses, are in most cases better planted in the spring. Below is only a partial list with short descriptions. See our General Catalog for full descriptions.

PRICES ON ALL PERENNIALS (Except as Noted)
 20c each; 6 for \$1.00; \$2.00 per doz.; \$15.00 per 100.
 All perennials priced 30c are 4 for \$1.00
 All perennials priced 35c are 3 for 1.00
 All perennials priced 50c are 3 for 1.25
 For Parcel Post and Insurance, add 10 per cent

ANCHUSA italica. Tall spikes of beautiful blue flowers in June. 3-4 ft.
ANCHUSA myosotidiflora. Dwarf. Flowers resemble Forget-me-nots. 30c each.
ANEMONE. Japanese Windflower. Large open flowers, excellent for cutting. Prefer a moist soil and partial shade. 2-3 ft.
 A., **Queen Charlotte.** Semi-double; silvery pink. 30c each.
 A., **Whirlwind.** An excellent semi-double white. 30c each.
AQUILEGIA. Columbine. Long-spurred hybrids. Grow in either sun or shade.
ARTEMISIA, Silver King. Striking silver-leaved plant. Effective in border.
ASTER. Hardy Michaelmas Daisy.
 A., **Climax.** Lavender-blue with golden center. Tall growing. 3-4 ft.
 A., **frikarti.** New hybrid. Lavender-blue. July to frost. 2-2½ ft. 50c each.
 A., **Ronald.** Showy. Bright lilac-pink. 12 inches.
BAPTISIA. False Indigo. Dark pealike flowers in May and June. 2-3 ft.
CAMPANULA. Canterbury Bells. Garden favorite. Lovely mixed shades. 2-3 ft.
CERASTIUM tomentosum. Snow-in-Summer. Low, spreading, silvery foliage, white flowers. Fine for rockeries.
CHRYSANTHEMUMS.
 C., **Old-Fashioned.** Pink, Red, White, and Yellow.
 C., **Cushion.** Low, spreading. September to frost. 10-12 inches. Pink and Yellow. 30c.
 C., **Korean, Indian Summer.** Double, glowing orange flowers, 3 inches across. October 15. 35c each.
 C., **Korean, Judith Anderson.** Double, clear buttercup-yellow flowers, 1½ inches across. 35c each.
 C., **Korean, Daphne.** Single. An exquisite blending of Daphne-pink and lilac-rose. October. 35c each.
 C., **Korean, Mars.** Single. Deep amaranth-red, changing to wine-red. October. 35c each.
 C., **Korean, Apollo.** Single. Superb autumn colors, combination of bronze, red and gold. October. 35c each.
 C., **Korean, Saturn.** Single. Delightfully fragrant, sparkling orange and bronze. 35c each.
COREOPSIS. Yellow Daisy. Valuable for cutting or border. 2-3 ft.
DELPHINIUM. One of our finest and most popular garden flowers.
 D., **belladonna.** Light blue. The most popular of its shade. 2-3 ft.
 D., **bellamosum.** Improved dark blue. 2-3 ft.
 D., **English Hybrids.** Stately spikes with a wide range of colors. 3-4 ft.
DICENTRA. Bleeding Heart.
 D., **eximia.** Dwarf. Fernlike foliage. Blooms over a long period. 30c each.
 D., **spectabilis.** An old-fashioned favorite with its heart-shaped rose-colored flowers in drooping racemes. Semi-shade. 30c each.



Aster, Frikarti



Pentstemon, Garnet

5 New Outstanding Perennials FOR 1941

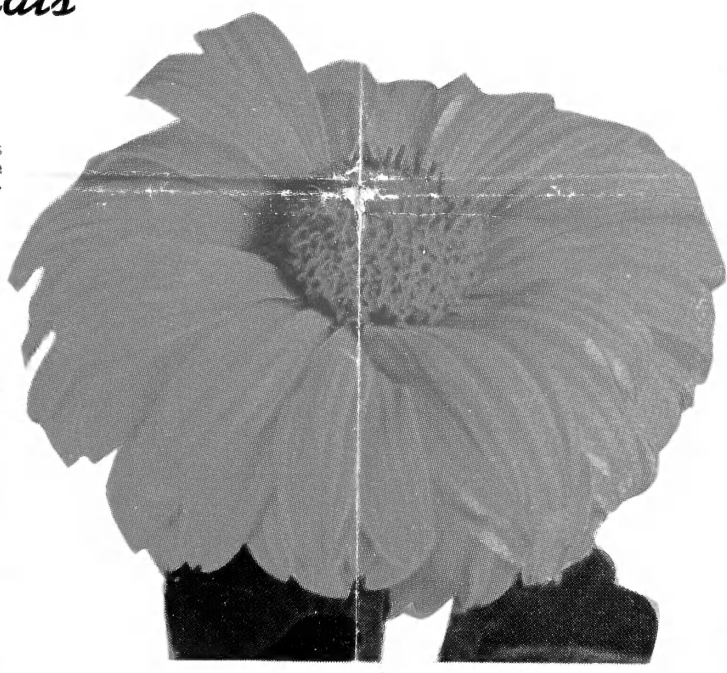
CHRYSANTHEMUM, Pygmy Gold
 A golden yellow carpet! This is one of our favorites. It blooms from August to frost, and has small, double, pompon flowers in successive masses. Grows 18 inches, fine for cutting. 3 for \$1.00.

HELIOPSIS, Summer Gold
 Large, semi-double Daisy-like flowers of rich gold. Glorious in a wealth of bloom from June to frost if old blossoms are removed. 3-3½ ft. 3 for \$1.00.

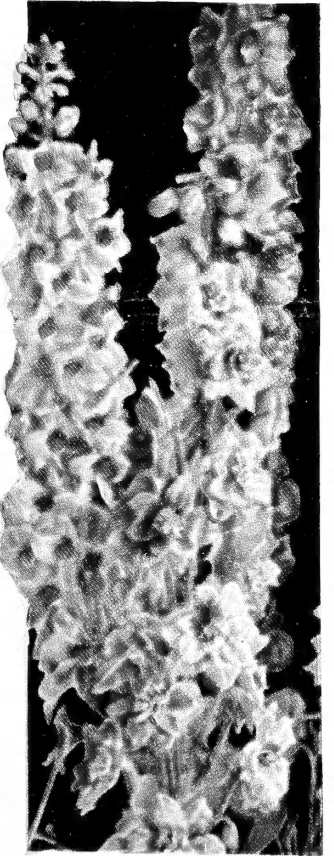
HEUCHERA, Queen of Hearts
 A stunning new variety with larger and deeper red, bell-like flowers. Blooms from spring until midseason. Height 18 inches. 3 for \$1.00.

PENTSTEMON, Garnet
 Large-Flowering Hardy Pentstemon. This is the first of a new strain of hardy, large-flowering Pentstemons. Pentstemon "Garnet" is of spreading habit and produces a succession of bloom from June until stopped by frost. Flowers a rich garnet color and are gracefully placed on stems 12 to 18 inches tall. Excellent for cutting. Perfectly hardy. 3 for \$1.00.

SHASTA DAISY, Snowbank
 A new, extra large, single-flowered Shasta Daisy with broad pure white stiff petals and clear small yellow centers. Blooms in spring and again in fall. 18-24 inches. 3 for \$1.00.



Heliosis, Summer Gold



Delphinium



Gaillardia, Burgundy



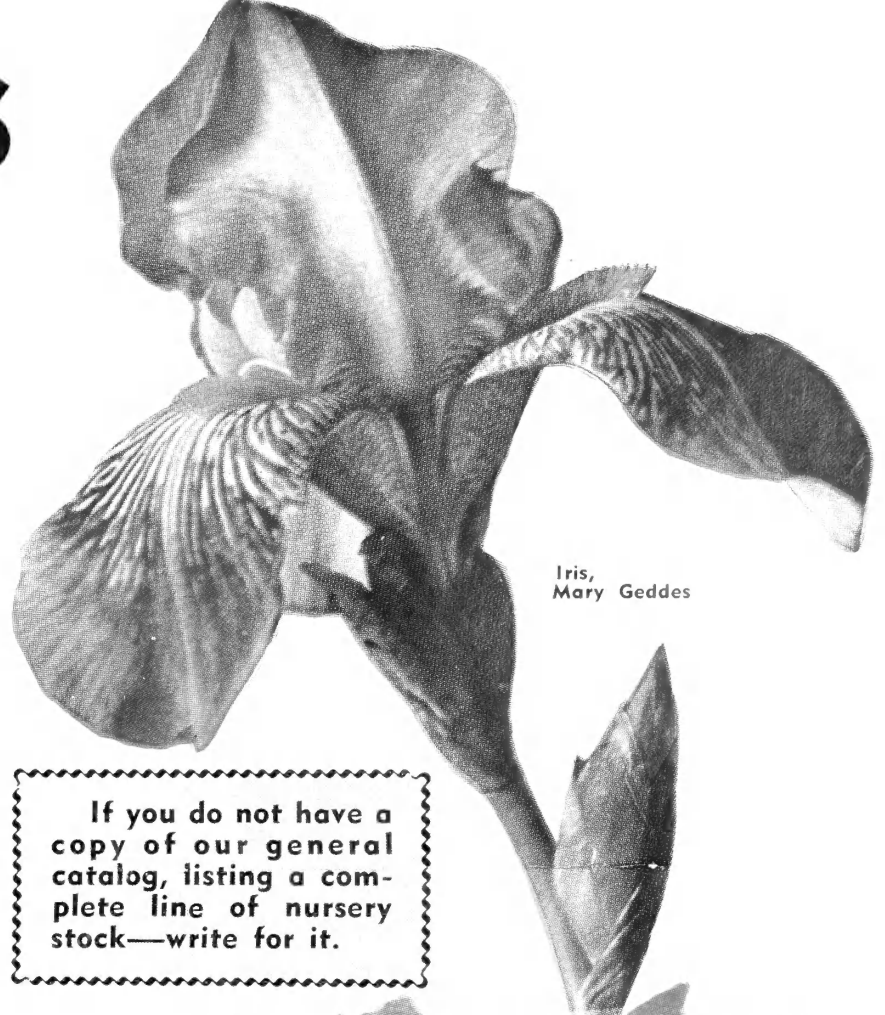
Peony, See Catalog for List

PHLOX, B. Compt. Unusual burgundy-red.
P., Beacon. Brilliant cherry-red.
P., Frau Van Lassburg. Late. White.
P., Miss Lingard. Earliest white.
P., Mrs. Milly Van Hoboken. Bright pink.
P., Thor. Deep salmon-pink.
P. subulata rosea. Moss or Mountain Phlox. Dwarf, early, pink. Fine for rockeries.

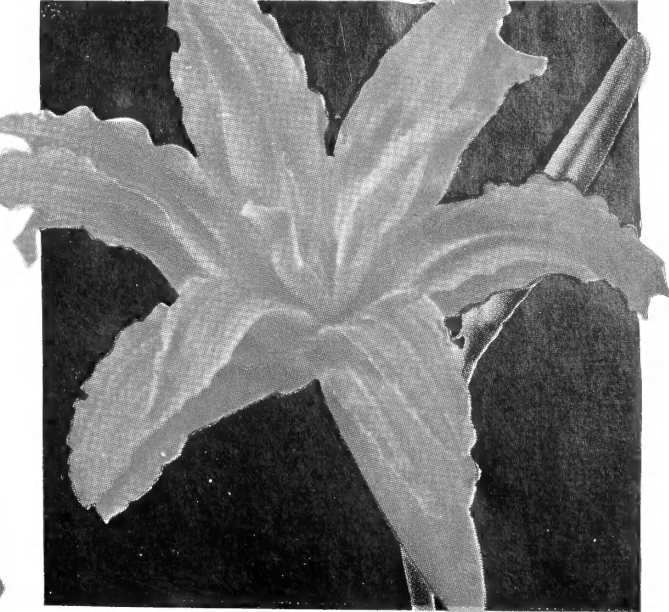
PHLOX, Augusta. Brilliant cherry-red.
PHLOX, Columbia. Loveliest pink. Introduced and patented by Wayside Gardens. Our plants come from the originators. 50c each; 3 for \$1.25.

PINKS. Old-fashioned hardy Pinks. Indispensable in both border and rockery. Mixed. 12 inches.
PRIMULA. Primrose. Attractive rosettes of foliage with clusters of single velvety flowers.
P., Moerheim Hybrids. Lovely pastel colors from cream to crimson. Semi-shade. 30c each.
P. vulgaris. The true old English Primrose with pale yellow flowers. Fragrant. 30c each.
PYRETHRUM. Painted Daisy. Daisy-like flowers excellent for cutting. Pink shades. 2 ft.
SEDUM. Thick cactus-like leaves; pink flowers. Fine for rockeries. August and September.
SEMPERVIVUM. Fleshy leaved plants with clusters of flowers. Fine for rockery. Mixed.
SHASTA DAISY, Alaska. Excellent. Large, glistening white flowers. May and June.
Shasta Daisy, Early Shasta. Hardest with smaller flowers than other varieties.
Shasta Daisy, Mrs. C. Lathian Bell. Large single white flowers, excellent for cutting.
STATICE latifolia. Sea Lavender. Minute purplish blue flowers in late summer. 2 ft.
SWEET WILLIAM. Old favorite. Sweet clove-scented flowers in May and June. Mixed.
Sweet William, Newport Pink. The best salmon-pink to date.
TRITOMA. Red Hot Poker. Bright red cone-like heads from July to frost. 2-3 ft.
VERONICA. Speedwell. One of the best hardy perennials. Fine for rockery, border or cutting.
V. incana. Deep blue, silvery foliage. July and August. 12-15 inches.
V. longifolia subsessilis. Blue. One of the best. July and August. 18-24 inches.
V. spicata. Violet-blue. Blooms all summer. Fine for hardy border. 2-2½ ft.
VINCA minor. Periwinkle or Trailing Myrtle. Old-fashioned trailing evergreen plant.
YUCCA filamentosa. Adam's Needle. Spikes of creamy white flowers on tall stems. June.

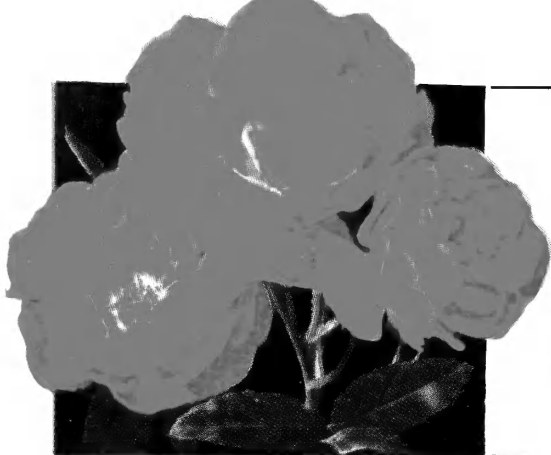
If you do not have a copy of our general catalog, listing a complete line of nursery stock—write for it.



Iris, Mary Geddes



Hemerocallis Kwanso



Orange Triumph

Polyantha Roses

These dwarf everblooming Roses are fine for bedding, edging, and are quite hardy. Can also be used with striking effect in landscape plantings.

50c each; \$2.25 for 5.

Cameo. (Shell-pink.) A distinct shade of shell-pink and salmon with a glow of gold.

Catherine Zeimet. (White.) Pure white fragrant blossoms in large clusters.

Miss Edith Cavell. (Red.) Semi-double scarlet-red. Good strong continuous bloomer.

Orange Triumph. (Orange.) Full, sparkling flowers of scarlet-orange borne in great clusters throughout the season.

Floribunda Roses

50c each; \$2.25 for 5

Floribundas may be best recognized and described as large Polyanthas, both as to size of blossoms and height of bush. They are vigorous, free-flowering and can be used for bedding, edging or as small shrubs in landscape designing. Becoming more and more popular.

Improved Lafayette. (Red.) Glowing red blossoms suffused a vivid crimson. Upright and vigorous.

Mrs. R. M. Finch. (Pink.) Handsome semi-double rose-pink flowers more than 2 inches across.

Patented Floribundas

85c each; 3 for \$2.15

We have selected three of the best new outstanding patented varieties.

Betty Prior. Exquisite single, light pink blossoms resembling a Dogwood.

Donald Prior. Semi-double glistening, glowing scarlet. Free bloomer.

Smiles. Double salmon-pink. Bright, cheery and pleasing.

1 each of the 5 above Floribundas, \$3.00.

For Postage and Insurance on all Roses, add 10 per cent.

Shrub Roses

**2-yr. plants, 50c each;
\$2.25 for 5**

Hugonis. "Golden Rose of China." The finest Shrub Rose known. Blooms in May, its arching branches covered to the tips with single, yellow, cup-shaped flowers. Unsurpassed for mass effects and in the shrub border.

Climbing Roses

Strong 2-yr. plants, 50c each;

**\$2.25 for 5, except the
patented varieties**

Chaplin's Pink Climber. (Pink.) Rich double pink with a touch of salmon. Holds its color and remains attractive longer than any Rose in our list.

Dr. W. Van Fleet. (Pink.) Large flowers of exquisite flesh-pink, borne on long stems. The outstanding large-flowered pink climber.

Mary Wallace. (Pink.) Clear brilliant pink. Large flowers and fine for cutting.

New Dawn. (Pink.) U. S. Plant Patent No. 1. An everblooming Dr. W. Van Fleet. \$1.50 each.

Climbing American Beauty. (Red.) Extremely beautiful in bud, and flowers of light crimson. Very fragrant.

Paul's Scarlet Climber. (Red.) Vivid scarlet-red that can be "seen a mile." Holds its color.

Silver Moon. (White.) Semi-double flowers. The showy yellow stamens make it doubly attractive.

Gardenia. (Yellow.) Buds rich creamy yellow, opening a pleasing yellow that fades to cream.

Mermaid. (Yellow.) Very large, single blooms of clear, light yellow. Very attractive.

DR. J. H. NICOLAS →

Propagation rights reserved. New Everblooming Pillar Rose. The flowers are large, 4 to 5 inches across, with 50 petals, of rose-pink color with lovely fragrance. Magnificent clusters, three or four to a long strong stem. Hardy and vigorous and resistant to most rose ills.

\$1.50 each; 3 for \$3.75.

