

Historic, Archive Document

Do not assume content reflects current scientific knowledge, policies, or practices.

KELSEY NURSERY SERVICE

F. W. KELSEY NURSERY CO.
L. E. MANNING, President
C. N. SKINNER, Vice President

FIFTY CHURCH STREET
NEW YORK, N. Y.

TELEPHONES
COntlandt 7-2660-2661
Established 1878

July 22, 1941

The Truth about Tulips in War-time

Due to shortages, there is great confusion in price and size. Many firms do not state size at all, merely "large flowering", "Jumbo" and such vague specifications. One centimetre in circumference (about 1/8 inch diameter) may seem a trifle but it affects price about 20% or more ! And has an equal effect upon the flower--as in the photo on the next page.

We are offering two sizes between 4 and 5 inches in circumference:- (1) The largest available in quantity, 11 to 12 centimetres full measure. (2) The next size lower--the smallest good flowering bulb--10 to 11 centimetres. Since many "bargain" offers are based on still smaller than these we suggest you insist on a guarantee of size before comparing price. Our prices are well in line for the same sizes.

British-American Bulbs this Autumn

With Holland supplies cut off, English growers are again shipping to America their entire supply--usually insufficient for themselves. These fine, healthy bulbs, together with the products of our own bulb farms of the better sort, provide the supply upon which our list is based. Quality is little if any below the finest Holland-grown Tulips. Many conservative gardeners wedded to "Dutch Bulbs" were agreeably surprised last spring.

The alliance of English and American growers cannot produce a tenth of the former Dutch supply. Therefore there will not be enough to go 'round. Order now !

Kelsey Nursery Service

PS: Our Autumn Price-list of evergreens, trees and shrubs will be mailed as usual about September 1st.

ORDER TULIPS NOW *All varieties are at the same low Prices*

50 at 100 rate: Minimum order 50 Tulip Bulbs

	10 to 11 centimetres	11 to 12 centimetres
per 100 all one kind	\$6.00	\$7.00
per 100 several kinds	7.00	8.50
(not less than 10 of one kind)		

Darwin Tulips

Extra strong vigorous stems and large showy blooms. The showiest tulips.

(SPECIAL MIXTURE 10-11 cm. bulbs all) (colors, 100 for \$4.95 100 minimum.)

- BARONNE DE LA TONNAYE
Bright rose with blush margins
- CLARA BUTT
Clear pink, flushed salmon. Inside much deeper. Blue base.
- EUROPE
Scarlet red. Good size blooms.
- GIANT
Reddish purple, shaded violet. White base
Enormous flower, tall stem.
- GLOW
Glowing crimson bloom.
- HARRY VEITCH
Dark red-brown with blue base.
- KING HAROLD
Deep ox-blood red; purple-black base.
- MRS. KRELLAGE
Lilac rose with paler edges.
- MRS. POTTER PALMER
Glowing purple. Good strong color.
- PHILLIPPE DE COMINES
Velvety dark purple.
- PRINCESS ELIZABETH
Lovely, clear, deep pink with white base.
- PROFESSOR RAUWENHOFF
Large cherry-red, scarlet inside. Bright blue base.
- REV. H. EW BANK
Shaded mauve. Superb with yellow tulips.
- THE SULTAN
Dark maroon, almost black. Popular.
- WILLIAM COPELAND
Lilac rose. A few days earlier.
- WILLIAM PITT
Dark crimson; white base starred blue.

Single Early Tulips

Bloom two weeks before the Darwins.
Gay, dainty and brilliant.

- ARTUS
Brilliant scarlet with yellow center.
- BRILLIANT STAR
Large crimson-scarlet.
- CALYPSO
Large pale primrose-yellow.
- CHRYSOLORA
Large golden-yellow.
- FRED MOORE
Deep, ruddy apricot, edged orange.
- PRIMROSE QUEEN
Pale yellow with thin red edge.
- PROSPERITY
Bright, deep pink. Good substance.
- WHITE SWAN
Large pure white. Strong stems.

Cottage Tulips

Long slender sturdy stems. Smaller than most Darwins, but last year after year in the flower border.

(SPECIAL MIXTURE 10-11 cm. bulbs all) (colors, 100 for \$4.95 100 minimum.)

- ARGO
Deep gold, pencilled orange.
- BOUTON D'OR
Showy yellow, striking black anthers.
- BRIGHTNESS
Bright scarlet with white center.
- CALEDONIA
Orange-scarlet with black center.
- ELLEN WILMOTT
Soft yellow, fragrant. Large flowers.
- GESNERIANA LUTEA
Pure golden yellow.
- GESNERIANA MAJOR
Crimson with striking black center.
- GOLDEN CROWN
Yellow with red line edging petals.
- GRENADE
Dazzling orange with yellow base.
- INGLESOMBE PINK
Bright salmon-pink with blue base.
As tall as most Darwins.
- INGLESOMBE YELLOW
Large glossy canary-yellow. Also tall.
- LA MERVEILLE
Orange-scarlet. Fragrant.
- PICOTEE
Long pointed white; thin pink edge.
- RED ROCKET
Luminous crimson-scarlet. Tall stem.

Triumph Tulips

Bloom between earlies and Darwins.

- ALGIBA
Purple mauve, paler edge.
- U.S.A.
Rosy red with orange edge. Sturdy.

Breeder Tulips

The most artistic of tulips. Sombre odd color tones.

- BRONZE QUEEN
Buff within, center bright lemon; outside purplish-fawn. Large bloom.
- PRINCE OF ORANGE
Terra-cotta, orange edge. Base yellow streaked green. Large. Good substance.

Parrot Tulips

- SUNDEW
Glowing crimson cup with petals beautifully fringed. Tall stem.

Photo shows two Tulip bulbs the same kind exactly

BUT

not the same size

Large bulbs give large flowers.



Grape Hyacinths - Muscari

Dainty flowers open with the Crocus and the drifts of blue are immensely effective in mass planting.

	(25)	(100)
ARMENIACUM (Early Giant)	\$1.75	\$6.00
BOTRYOIDES (Common Blue)	1.00	3.00
HEAVENLY BLUE	2.00	7.00

Wood Hyacinths - Scilla

Thrive in bare shady places, under evergreen trees, where few other plants will thrive. Fine naturalizing subjects or in rock gardens.

	(25)	(100)
CAMPANULATA WHITE	\$2.00	\$7.00
CAMPANULATA BLUE	1.75	6.50
NUTANS (Scots Bluebell)	1.75	6.00
NUTANS ALBA (White)	2.00	7.00
SIBERICA (Squill)	2.00	7.00

Lilies for Fall Planting

Here are easy-to-grow kinds for thrill next summer. All are available by or before early November and suitable for autumn planting.

	10 or more	25 or more
CANDIDUM (Madonna Lily)	\$2.50	
CANDIDUM (Madonna Lily)	25¢	20¢
Fragrant, pure white		
FORMOSANUM	23¢	18¢
Cream and emerald. Sept.		
HENRYI	30¢	28¢
Orange in August. Tall.		
REGALE	25¢	23¢
Large fragrant ivory.		
Shaded pink, based yellow.		
TENUIFOLIUM	18¢	14¢
Scarlet in June. Small.		
TIGRINUM flora plena	20¢	17¢
Native Tiger Lily, but double flowers.		
TIGRINUM splendens	16¢	13¢
Familiar orange and black but larger, brighter.		
UMBELLATUM ERECTUM	20¢	16¢
Reddish tones in July		

NARCISSUS *Our Prices are for Double-nose Bulbs*

Minimum order 10 narcissus bulbs of one kind. 50 at 100 rates.

Short Trumpet Narcissus

	(10)	(100)
Strong double-nose bulbs	\$.80	7.00

INCOMPARABILIS (Medium cup)

- AUTOCRAT
All yellow. Dainty.
- BERNARDINO
Creamy, edges orange stained. Fluted.
- GLORIA MUNDI
All yellow, red stain on cup.
- MACEBEARER
Orange crown and cream perianth.
- SIR WATKIN
Extra large yellow cup; primrose petals.

BARRI (Short cup)

- ALBATROS
Lemon cup on white perianth.
- BLOOD ORANGE
Orange cup on lemon-yellow perianth.
- CONSPICUOUS
Tall plant. Spreading perianth of yellow. Cup darker yellow, scarlet edged.
- FIREBRAND
Red cup on a creamy perianth.
- SEAGULL
Freeflowering, tall, late. Pure white perianth with yellow cup; red edged.

LEEDSI (White with white or primrose)

- EVANGELINE
Starry, white perianth. Lemon crown.
- MRS. LANGTRY
Primrose crown on creamy perianth.
- QUEEN OF THE NORTH
Fluted lemon cup on broad white perianth. Substantial flower.
- WHITE LADY
Nice yellow on white bloom.

POETICUS (Small flat crowns. Fragrant)

- GLORY OF LISSE
Red-rimmed cup on white perianth.
- HOMER
Red cup on white. Large flower.
- HORACE
White star-shaped perianth. Cup is yellow, red-rimmed. Free-blooming.
- RECURVUS (Pheasant's Eye)
Pure white recurving petals. Cup edged scarlet. Sweet scented.

We can quote Many Other Varieties not listed here

Spring Crocus

The Dutch Crocus is the showiest of all the really early flowers in spring. Not too plentiful, but enough for the early orders anyway. Mixtures only, no named kinds because of uncertainty of supply.

	(25)	(100)
BLUES AND PURPLES	\$2.00	\$7.00
WHITES	2.00	7.00
YELLOWS	2.00	7.00
STRIPED KINDS	2.00	7.00

Long Trumpets "Daffodils"

	(10)	(100)
Strong double-nose bulbs	\$1.20	10.00

CHRISTMAS GLORY

- Trumpet and perianth both yellow. Early.
- EMPEROR
Yellow trumpet, primrose perianth.
- EMPRESS
Creamy petals; canary-yellow trumpet.
- GOLDEN SPUR
All yellow. Vigorous. Popular.
- GLORY OF SASSENHEIM
Golden trumpet on white perianth.
- KING ALFRED
Gold throughout. Large. Vigorous.

Mixed by Classes

Fine assortments containing many expensive kinds, all double-nose bulbs.

	(100)
INCOMPARABILIS	\$5.00
BARRI	5.00
LEEDSI	4.00
TRUMPET TYPES ONLY	6.50

Narcissus Naturalizing Mixture

The greatest garden value is obtained by not confining Narcissus to the garden at all! Let them run along your driveway, in the meadow, under fences and around and among shrub groups.

They are prolific bloomers and last with no care at all for six to eight years where first placed. No special cultural specifications.

However not all varieties will thus take care of themselves. It is important that only the right kinds are in such a mixture. We offer the following very special assortment of all kinds suitable--trumpets and small cups both. These are round-nose bulbs, not double-nose, exactly right for the purpose:

100 for \$3.00

(1000, no less, for \$22.50)

Snowdrops - Galanthus

Bloom right after the Crocus. Remain a life-time in faithful bloom.

	(25)
GALANTHUS NIVALIS	\$2.00
(100 or more at 7½ cents each)	

Autumn Colchicum

	(25)
AUTUMNALE MAJOR	\$12.50
BORN MULLERI	12.00

6261

1 1/2 CENTS 1 1/2

DEPARTMENT OF AGRICULTURE
RECEIVED
★ JUL 25 A.M. ★
E. S. A.
Secretary's File

Kelsey Nursery Service
50 Church Street, New York, N. Y.
Established 1878

TERMS: Prices net, transportation at cost unless specially included in listed price.

DISCOUNTS: Large quantities will be quoted on request.

CLAIMS: Must be reported within 10 days. In no case are we responsible for more than original amount of invoice.

THIS IS YOUR COPY OF OUR
Fall 1941 **Bulb Price-list**

Miss Newman

U.S. Dept of Agriculture,
Washington,
D. C.

LIBRARY
RECEIVED
★ SEP 11 1941 ★
U. S. Department of Agriculture

Plant Industry

Everblooming Iris

Bloom in Fall as Well as Spring!

Three Best Everbloomers

Jean Siret—New Yellow dwarf, that begins early in spring with other miniatures and continues all spring. Then sporadically all summer they burst into bloom anew. When September comes, they begin a second long flowering season, being showy until late frost in November. (Postpaid 25c each.)

Souvenir de Lt. Chauvagnac—The same extraordinary blooming characteristics as Siret, but a rich violet and pleasantly fragrant. (Postpaid 40c each.)

Golden Cataract—Rich golden yellow. Grand. (Postpaid 60c.)

The second blooming, which lasts about a month in the autumn, is produced by the new root, offshoots formed in summer. Hence a little watering, cultivating and fertilizing in summer increases the fall show. Winter protection is good to prevent sun from striking the plants during thaws.

Bargains in Old-Fashioned "German" Iris

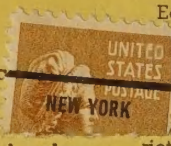
(Many originally sold from \$5.00 to \$25.00 each.)
2 for 30c (one kind); 10 (one kind) \$1.20; (Postpaid).

- Alice Horsfall—Red-purple.
- Aphrodite—Lilac-pink.
- Baldwin—Solid violet.
- Cinnabar—Violet; maroon.
- Coronation—Good yellow.
- Chrysol—Early yellow.
- Dr. Chas. Mayo—Pink tones.
- Euphony—Ruffled copper.
- Geo. P. Baker—Tall yellow.
- Gleam—Tall soft blue.
- Helios—Large yellow.
- Hermene—Soft rose pink.
- Indian Chief—Red-purple.
- King Tut—Red-brown.
- Magenta—Solid purple.

- Midgard—Yellow; pink.
- Morning Dove—Grey; blue.
- Morning Splendor—Purple.
- Nebraska—Late yellow.
- Princess Beatrice—Lavender.
- Princess Osra—White, dotted.
- Rene Cayeux—White; violet.
- Rheingauerie—Orchid-pink.
- Selene—Extra large white.
- Simone Vassiere—Large blue.
- Snow White—Large white.
- Spark—Early fiery red.
- Taj Mahal—Fine white.
- Thuratus—Solid purple.
- Vesper Gold—Yellow tones.

OTHER EVERBLOOMING IRIS

- 2 (one kind) for 30c { Autumn King. Typical lavender-blue bic good form. 36 in.
- 10 (one kind) for \$1.20 Postpaid { Autumn Surprise. All blue.
- { Eleanor Roosevelt. A deep red-violet, solid color.



MINIATURES (PUMILA)

Early and tiny. 2 for 35c, (postpaid), 10 for \$1.25 of any one kind: violacea, (purple); Fairy (Sky); Orange Queen; The Bride (ite).

JAPANESE IRIS

mixed, but all named, showy varieties (not labelled) 12 for \$2.25, postpaid.

IRIS CRISTA (Dwarf)

8 inches high, Light Blue in May. 25c each, postpaid.

IRIS SIBERICA

3 foot plants, bloom in June, Emperor (violet); Perry's Blue (blue); Snow Queen (white). 25c each, postpaid.

Six Solid Weeks of Peony Blooms

Plant in September

	WHITES	Size-(No. eyes)			Number eyes			REDS	Number eyes			
		2-3	3-5	5-8	2-3	3-5	5-8		2-3	3-5	5-8	
Mid-May	{ Festiva Maxima 9.3 Large white	\$.20	\$.30	\$.40	Mons. Jules Elie 9.2 Large, dark	\$.20	\$.30	\$.40	Richard Carvel 8.8 Bright crim.	\$.40	\$.50	\$.60
Late May	{ Boule de Nieve 8.0 Red edges	.20	.30	.40	Eugene Verdier 8.3 Hydr'gea-pink	.20	.30	.40	Mary Brand 8.7 Deep, silky red	.40	.50	.60
Early June	{ Kelway's Glorious 9.8 Fragrant, cream	1.00	1.25	1.40	Therese 9.8 world's best pk.	.40	.50	.60	Karl Rosenfield 8.8 Dark crimson	.30	.40	.50
Mid-June	{ Albatre 8.7 Blush-white	.20	.30	.40	Baroness Schroeder 9.0 Flesh-pink	.40	.50	.60	Mme. Gaudichau 8.2 Dark crimson	.50	.60	.70
Late June	{ Solange 9.7 Coffee & cream	.30	.40	.50	Albert Crousse 8.6 Salmon-pink	.20	.30	.40	Felix Crousse 8.4 Brilliant red	.20	.30	.40

No order for less than 5 Peonies.

Add 25¢ for postage etc. on order less than \$2.00