

Historic, Archive Document

Do not assume content reflects current scientific knowledge, policies, or practices.



62,27

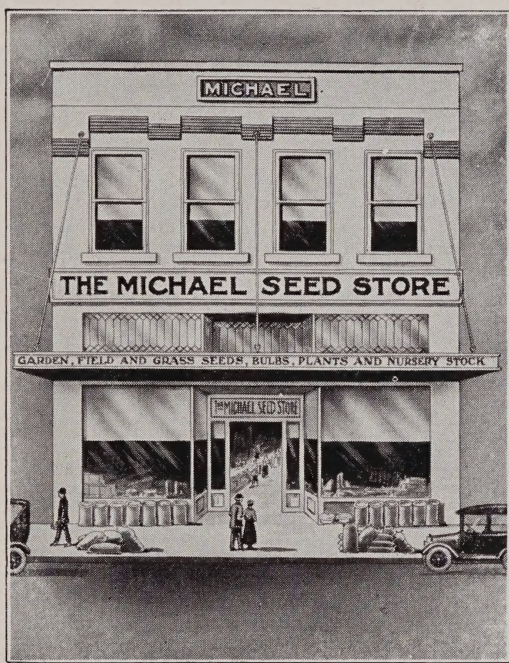
Ind.

LIBRARY
RECEIVED

U. S. Department of Agriculture

MICHAEL SEED STORE

1941



The HOME of GOOD SEEDS Bulbs, Plants and Nursery Stock

Farmer's Home and Rest — Warm Stove — Easy Chair
Established Forty-four Years Ago

A FRIENDLY TIP: Plant a home garden this spring. A healthful exercise and a swat at the High Cost of Living. The city man, the suburbanite and the farmer, too. Any farmer can save \$500.00 a year with a good home garden.

CATALOG: In handing you our Economy edition semi-descriptive catalog we wish to express our thanks and appreciation and good will in days gone by.

Disclaimer: While we exercise the greatest care to have all seeds pure and reliable, it is positively understood we sell no seeds, plants, bulbs or nursery stocks with any warranty expressed or implied in any respect and will not be in any way responsible for the crop.

316 Pearl Street :- Phone 8-8666
SIOUX CITY - - - - - - - IOWA



HOW to make a lawn

In preparing a seed bed so as to insure an everlasting lawn, it is well that the earth be stirred deeper than merely scratching the surface, either with a good stirring plow or spade to the depth of a foot or 15 inches, or even more. This is the first step to be taken, and the next consideration is the fertility of the soil where you are making the lawn. Among the various methods which increase the fertility of the soil we find that **Humus** plays a most important part. The very best time to do the work of preparing the soil for a lawn is in the autumn season and then left for the winter. The soil is solidified by the winter condition. Then in the spring the surface should be slightly stirred and the seed sown, well raked and rolled. When the summer is over and the winter comes on again, the lawn needs attention, and it is a wise plan after the ground is slightly frozen to cover it with a moderate coat of well rotted manure. In the springtime before the growth of grass has started, this coat of manure should be well raked in the soil, and the roughage raked off, giving the grass a chance to get plenty of sunlight. Should, however this be overlooked in the autumn, then in the springtime again it is well to apply a moderate amount of sheep manure, phosphate or ground bone fertilizer, well raked into the soil just as soon as is possible and at such time it is well to apply a sprinkle of our blend of **Reseeding Lawn grass seed**.

These suggestions in regard to the making of a lawn will well repay the time and expense by the increased growth of grass.

POSTAGE—PARCEL POST RATES

Weights	Zones				
	Local	1st 50 Miles	2nd 150 Miles	3rd 300 Miles	4th 600 Miles
1 lb.	.07	.08	.08	.09	.10
2 "	.08	.10	.10	.11	.14
3 "	.08	.11	.11	.13	.17
4 "	.09	.12	.12	.15	.21
5 "	.09	.13	.13	.17	.24
6 "	.10	.14	.14	.19	.28
7 "	.10	.15	.15	.21	.31
8 "	.11	.16	.16	.23	.35
9 "	.11	.17	.17	.25	.38
10 "	.12	.18	.18	.27	.42
15 "	.14	.24	.24	.37	.59

LAWN GRASS SEED

One pound **Superfine Blue Grass** will seed **300** square feet.

- Blue Grass Seed**, Michael's 30 lb. **Superfine**, Lawn Culture... **40c per lb.**
- Blue Grass Seed**, 25 lbs. **Fancy Fine**, Lawn Culture **35c per lb.**
- Blue Grass Seed**, **Poa-Trivialis** Shady Nook places..... **50c per lb.**
- White Clover**, Lawn use **90c per lb.**
- Magic Lawn Grass Seed**, Superfine Blend **Grass Seeds** **40c per lb.**
- Reseeding Lawn Grass Seed**, Superfine Blend **Grass Seeds** .. **40c per lb.**
- Deep Rooted Lawn Grass Seed** for **Terraces** **40c per lb.**
- Creeping Bent Grass Seed**, Oregon Grown Astoria' **\$1.00 per lb.**
- Rye Grass Seed**, Michael's **Short Seeded**, Lawn Culture **20c per lb.**

THE MICHAEL SEED STORE

316 Pearl St., Sioux City, Ia.

Phone 8-8666

The Michael Seed Store

Phone 8-8666

J. L. HOSELTON, Mgr.

316 Pearl St., SIOUX CITY, IOWA

INDEX

VEGETABLE SEEDS

	Page
Beans	4
Beets, Table	4
Cabbage	4
Carrots	5
Cauliflower	5
Celery	5
Cucumbers	5
Egg Plant	5
Lettuce	4
Mangel Wurzel	5
Muskmelon Seed	5
Onion Plants	12
Onion Seeds	6
Onion Sets	6
Parsley	7
Parsnip	7
Peas	4
Pepper	6
Pumpkin	7
Radish Seed	6
Rutabaga	7
Salsify	7
Spinach	7
Squash	7
Sweet Corn (Hybrid)	4
Tomato Seed	7
Turnips	7
Watermelon Seed	6

MISCELLANEOUS VEGETABLES

Asparagus	7
Broccoli	7
Brussels Sprouts	7
Endive	7
Kale	7
Kohl Rabi	7
Leek	7
Okra or Gumbo	7
Rhubarb Seed	7
Sweet Herbs	7

FLOWER SEEDS

Asters (Giant Branching)	8
Marigold	9
Nasturtiums	8
Pansies	8
Petunias Hybrida	8
Petunias Double	8
Petunias Balcony	8
Petunias Grandiflora	8
Petunias Nana Erecta (Dwarf)	8
Sweet Peas	9
Zinnia	9

FLOWER SEED Alphabetical order	10
--	----

EVERGREENS

Black Hill Spruce B&B	19
Dwarf Evergreen B&B	19
Evergreen Seedlings	19
Hardy Evergreens B&B	19

LAWN GRASS SEEDS

Inside front cover

FLOWER SEED

Alphabetical Order	10
--------------------------	----

PERENNIAL FLOWER SEEDS	10
---	----

MUSHROOM SPAWN

Bricks and Moulds	6
-------------------------	---

BULBS, ROOTS and FLOWER- ING PLANTS	
--	--

Potted Plants	13
---------------------	----

Page

Onion Plants	13
Canna Roots and Plants	11
Dahlias	11
Flowering Plants	13
Gladiolus Bulbs	11
Hardy Iris	11
Hardy Lily Bulbs	12
Misc. Perennial Plants	13
Not Hardy Lilies	12
Peonies	11
Vegetable Plants	13

AGRICULTURAL SEED

Alfalfa Seed	14
Field Seeds	14
Clover and Grass Seeds	14
Sweet Corn Hybrid Iowearth	14
Sweet Clover Seed	14

NURSERY DEPARTMENT

Apples	15
Apricots	15
Blackberries	15
Cherries	15
Crab Apples	15
Currants	15
Fall and Winter Apples	15
Gooseberries	15
Grape Vines	15
Peaches	15
Pears	15
Plums	15
Raspberries	15
Strawberry Plants—Outside back cover.	

ORNAMENTAL FLOWERING SHRUBS

Climbing Vines	18
Hedge Shrubs	18
Lilacs	16
Native Shade Trees	18
Spiraea, Bridal Wreath	16
Weeping Ornamental Trees	18

EVERGREENS

Dwarf Evergreens	19
Tall Evergreens	19
Black Hills Evergreens	19
Evergreen Seedlings	19

ROSES

Climbers	17
Hardy Perpetual	17

SUNDRIES

Bird Seed	20
Disinfectants	20
Dogzoff	12
Fertilizers	20
Insecticides	20
Bird Baths	21
Sun Dials	21
Jardeniere	21
Lawn Urns	21
Flower Pots	21
Hanging Baskets	21
Berry Boxes	9
Commercial Baskets	9
Plant Stakes	22
Lawn Roller	22
Plant Supports	22
Erosionnet	22
Tri-O-Gen	23
Vitamin B-1	23
Plantabs	23
Hot Kaps	23

VEGETABLE SEEDS

for the Home Garden

All garden seed prices subject to market changes.

BEANS

PRICES—Bulk Seed
½ lb. 1 lb. 25 lb.

Golden Wax	\$0.10	\$0.20	\$3.75
Black Wax10	.20	3.75
Sioux Wax, Ace O'Beans10	.20	3.75
Kidney Wax10	.20	3.75
Davis Wax10	.20	3.75
Purple Wax10	.20	3.75
Green Pod, Burpee10	.20	3.75
Red Valentine10	.20	3.75
Dwarf Lima, Burpee15	.25	
Henderson Lima10	.20	
Ky. Wonder10	.20	

PEAS

PRICES—Bulk Seed
½ lb. 1 lb. 25 lb.

Alaska, Earliest	\$0.10	\$0.20	\$3.75
Michael's Early June10	.20	3.75
Little Gem, Early Wrinkled ..	.10	.20	3.75
Little Marvel, Ey. Wrinkled ..	.10	.20	3.75
American Wonder, Wrinkled ..	.10	.20	3.75
Potlatch, Large Pod, 2nd Ey. ..	.10	.20	3.75
Telephone, Large Pod10	.20	3.75
Bliss Everbearing10	.20	3.75
Fill a Basket10	.20	3.75

TABLE BEETS

PRICES—Bulk Seed
1 Oz. ¼ lb. 1 lb.

Early Wonder, Best Early	\$0.10	\$0.30	\$0.85
Crosby's Improved Egyptain10	.30	.85
Detroit Dark Red, Early10	.30	.85
Half Long, Blood Red10	.30	.85
Swiss Chard, for Greens10	.30	.85

MANGEL WURZEL

PRICES—Bulk Seed
1 lb.

Half Sugar Mangel	\$0.65
Long Red Mammoth Mangel65
Golden Tankard, Yellow Mangel65
White French, Sugar Sweet Cattle Beet....	.65

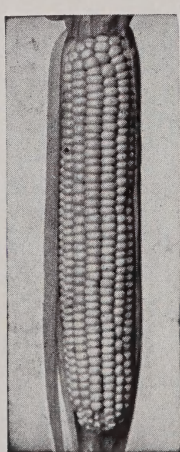
CABBAGE

PRICES—Bulk Seed
½ Oz. 1 lb.

COPPENHAGEN, Wilt Resistant Strain	\$0.15	\$4.00
Golden Acre15	4.00
Early Wakefield15	3.50
Early Flat Dutch15	3.50
Danish Ballhead15	4.00
Late Flat Dutch15	.350
Red Dutch15	3.50

Telephone Pea

PRICES—Bulk Seed
½ Oz. 1 lb.



Tendergold

HYBRID SWEET CORN

Hybrid sweet corn, like hybrid field corn, has wrought a revolution in the raising of sweet corn.

PRICES—Bulk Seed
½ lb. 1 lb.

Tendergold	\$0.15	\$0.30
Golden Cross15	.30
Soo-Bred20	.35
Aristogold Bantam20	.35
Hybrid Golden Hummer20	.35
Silver Cross Bantam20	.35

Both Hybrid Golden Hummer and Silver Cross Bantam are cold resistant and can be planted early in April.

Open Pollinated Sweet Corn

	½ lb.	1 lb.
Country Gentleman	\$0.10	\$0.15
Stowells Evergreen10	.15
Golden Bantam10	.15
Sunshine10	.15



Cucumber, Long Green

CUCUMBERS

PRICES—Bulk Seed

	Oz.	½ lb.	1 lb.
White Spine, for home garden	\$0.10	\$0.50	\$0.85
Davis Perfect, green slicing10	.50	.85
Longfellow, the longest10	.50	.85
Early Fortune, very early10	.50	.85
Boston Pickling10	.50	.85
Long Green, home garden variety10	.50	.85

CARROTS

	Oz.	½ lb.	1 lb.
Early Horn, Extra Early	\$0.15	\$0.75	\$1.25
Oxheart, Early Short15	.75	1.25
Danvers, Half Long15	.75	1.25
Chantenay, Half Long15	.75	1.25
Yellow Belgian Stock Carrot15	.75	1.25

CAULIFLOWER

	Pkt.	¼ oz.	1 oz.
Early Snowball	\$0.20	\$0.40	\$2.50

CELERY

	½ oz.	Oz.	1 lb.
White Plume, Early	\$0.10	\$0.20	\$2.00
Golden Self Blanching15	.25	3.00
Celeriac, Root Crop Only10	.20	

EGG PLANT

	½ oz.	1 oz.
New York Purple	\$0.20	\$0.35
Black Beauty20	.35

LETTUCE

	Oz.	¼ lb.	1 lb.
Black Seeded Simpson , Early Leaf Lettuce	\$0.10	\$0.25	\$0.85
Grand Rapids, Early Crinkle Leaf10	.25	.85
Prize Head, Early Reddish Leaf10	.25	.85
Iceberg, Early, Heading Variety10	.25	.85
New York , Popular Heading Variety10	.25	.85

MUSKMELON SEED

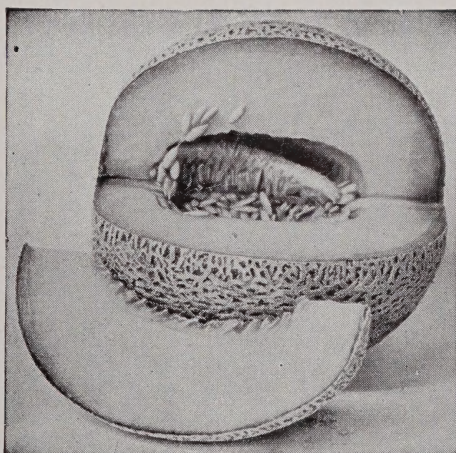
Our melons, both muskmelon and watermelon seeds are saved from select specimens of melons.

	Oz.	¼ lb.	1 lb.
Hearts of Gold , Salmon Flesh	\$0.10	\$0.25	\$0.85
Honey Ball, Small, Green Flesh10	.25	.85
Hale's Best, Early, Rich Salmon Flesh10	.25	.85
Honey Dew, Green Flesh, Extra Sweet10	.25	.85
Rocky Ford , Popular Green Meated10	.25	.85
Hackensack, Earliest Green Flesh10	.25	.85
Milwaukee Market , Large Salmon Flesh10	.25	.85
Emerald Gem, Early, Delicate Salmon Pink10	.25	.85

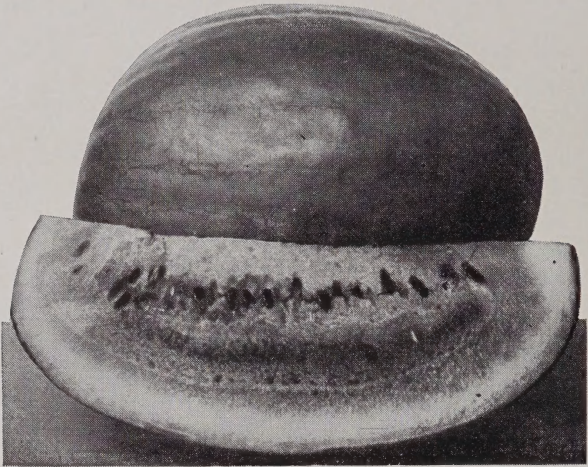
Parcel Post extra — see page 2.

MUSKMELON

Milwaukee Market



Very large melon. 8 in. diameter. Thick salmon flesh. Good shipper.



Dixie Bell Watermelon

Special Prices in Quantity

WATERMELON SEED

PRICES—Bulk Seed

	Oz.	¼ lb.	1 lb.
Dixie Bell, Extra Large, Very Early	\$0.10	\$0.25	\$0.75
Sun, Moon and Stars10	.25	.75
Cole's Early, Earliest Round Melon10	.25	.75
Kleckey's Sweet. Dark Green, Red Flesh10	.25	.75
Irish Gray, Grayish Green, Red Flesh10	.25	.75
Rattlesnake, Light Striped, White Seed10	.25	.75
Sweetheart, Light Green, Red Flesh10	.25	.75
Tom Watson, Long Green, Rich Red Flesh10	.25	.75
Golden Heart, Yellow Flesh Variety10	.25	.75
Dixie Queen10	.25	.90

ONION SEED

PRICES—Bulk Seed

	½ oz.	Oz.	1 lb.
Red Globe, Best Keeper	\$0.15	\$0.25	\$2.50
White Globe, Good Keeper15	.25	4.00
Red Weathersfield, Good Keeper15	.25	2.00
Valencia, Large Yellow Skin15	.25	4.00
Yellow Danvers, Good Keeper15	.25	4.00
Sweet Spanish15	.25	4.00

RADISH SEED

PRICES—Bulk Seed

	Oz.	½ lb.	1 lb.
Scarlet Turnip	\$0.10	\$0.40	\$0.75
Perfect White Tip10	.40	.75
Icicle, Long White10	.40	.75
Scarlet Globe, Round Red10	.40	.75
French Breakfast10	.40	.75
Crimson Giant, 2nd Early10	.40	.75
Rose China, Winter10	.40	.75

PEPPER

PRICES—Bulk Seed

	½ oz.	1 oz.	1 lb.
Bull Nose	\$0.15	\$0.25	\$3.00
Chinese Giant20	.35	3.50
Harris Early Giant15	.25	3.50
Ruby King15	.25	3.00
California Wonder15	.25	3.50
Pimento15	.25	3.00
Cayenne15	.25	3.00



Scarlet Globe Radish

ONION SETS

Prices Subject to Market Changes

Bottom Sets are raised from seed.
By parcel post, first pound 8c, each additional pound 6c extra.

	1 lb.	32 lbs.
Yellow Bottom	\$0.15	Ask
White Bottom15	Ask
Red Bottom15	Ask
Perennial Top Sets (28 lbs. Bus.)10	
Chives, Perennial	Per Clump	.10
Garlic Bulbs	Per Pound	.25

Onion Plants, see page 14

MUSHROOM SPAWN

Inoculated manure bricks\$0.45 each
Mushroom culture descriptive bulletin free.



Bison Best Early Tomato

TOMATO SEED

PRICES—Bulk Seed

½ Oz. ¼ lb. 1 lb.

Break O Day. New wilt resistant, red variety...	\$0.15	\$1.00	\$3.00
Bison. Best extra early red tomato, very earliest20	1.25	4.00
Bonny Best. Very early smooth fruit15	1.00	2.50
Rutgers. (Medium Fruit-Early)15	1.00	3.50
Dwarf Champion. Dwarf habit, tree like, purple fruit	.15	1.00	3.00
Earliana. One of the earliest red tomatoes15	1.00	3.00
Marglobe. Second early, red variety, canners favorite	.20	1.00	3.00
Pritchard. Wilt Resistant, Deep Scarlet10	1.00	3.00
Ponderosa. Popular large fruit, red variety20	1.50	3.00
Yellow Pear. Small pear shape fruit20	1.50	

Plants—See Page 14

PARSNIP

Hollow Crown	Oz. \$0.10	¼ lb. \$0.25	1 lb. \$0.75
--------------------	------------	--------------	--------------

PARSLEY

Moss, Double Curled	Pkt. \$0.05	Oz. \$0.15
Hamburg, Root Parsley05	.15

SALSIFY

Mammoth Variety	Pkt. \$0.05	Oz. \$0.15
-----------------------	-------------	------------

SPINACH

Long Standing	Oz. \$0.10	¼ lb. \$0.35	1 lb. \$0.85
New Zealand10	.35	.85

PUMPKIN

Sweet Sugar, Small yellow pie variety	Oz. \$0.10	¼ lb. \$0.25	1 lb. \$0.75
Quaker Pie, A very excellent pie variety10	.25	.75
Connecticut Field. Plant with corn05	.20	.50

SQUASH

Warty Hubbard, Large dark green, shell warty....	Oz. \$0.10	¼ lb. \$0.25	1 lb. \$0.85
Table Queen, Small acorn shape, flesh rich yellow..	.10	.25	.85
Mammoth Chili, Large Variety for fairs and shows..	.10	.35	1.00
Summer Crookneck, Yellow Summer Crookneck10	.30	1.00

TURNIPS

White Milan, Extra Early Variety	Oz. \$0.10	¼ lb. \$0.25	1 lb. \$0.60
Purple Milan, Extra Early Variety10	.20	.60
Purple Top, Strap Leaf, Flat Variety10	.20	.50
White Globe, Purple Top for field culture10	.20	.50

RUTABAGA

American, Purple Top	Oz. \$0.10	½ lb. \$0.30	1 lb. \$0.50
----------------------------	------------	--------------	--------------

Miscellaneous VEGETABLES

ASPARAGUS

Washington, Rust	Oz. \$0.10
Resistant10
Mammoth White10
Asparagus Roots—See Page 14	

BROCCOLI

White Vienna	Pkt. \$0.10	½ oz. \$0.15
Purple Vienna10	.15

BRUSSELS SPROUTS

Half Dwarf	Pkt. \$0.10	½ oz. \$0.15
------------------	-------------	--------------

ENDIVE

Per Ounce	\$0.10
-----------------	--------

KALE

Dwarf German	Pkt. \$0.05	Oz. \$0.10
Curled Scotch05	.10

KOHL RABI

White	Pkt. \$0.05	½ oz. \$0.10
Purple05	.10

LEEK

London Flag	Pkt. \$0.05	Oz. \$0.20
-------------------	-------------	------------

OKRA or GUMBO

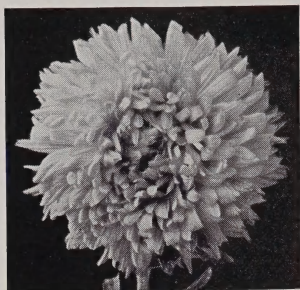
Early Dwarf, Green..	Pkt. \$0.10	¼ lb. \$0.25
White Velvet10	.25

RHUBARB SEED

Red Flare	Pkt. \$0.10	¼ lb. \$0.50
-----------------	-------------	--------------

SWEET HERBS

Dill (Annual)	Pkt. \$0.05	½ oz. \$0.10
Marjoram (Perennial)10	.20
Sage (Perennial)10	.15
Savoy (Perennial)10	.25
Thyme (Perennial)10	.25



American Aster



Double Nasturtium

FLOWER SEEDS

ZINNIAS, PETUNIAS, NASTURTIUMS, SWEET PEAS, ASTERS, PANSIES and MARIGOLDS according to our data of sales are the most used flower seeds. More of these varieties planted than most any other kind of flower seeds. Our selections listed here are of the best varieties of these kinds. The latest improved by cross fertilization known-grown by specialists in flower seed growing. Especially do we recommend our **Dahlia Type** of Zinnias. Blooms in June until frost.

ASTERS (Giant Branching)

PRICES—Bulk Seed

Pkt. $\frac{1}{8}$ oz. $\frac{1}{4}$ oz.

Crimson, Wilt Resistant	\$0.10	\$0.15	\$0.25
Purple, Wilt Resistant10	.15	.25
White, Wilt Resistant10	.15	.25
Giant Mixed, all colors, Wilt Resistant10	.15	.25
Early Beauty, all colors, Wilt Resistant10	.15	.25
American Beauty, all colors, Wilt Resistant10	.15	.25
New Creation, reddest red, Wilt Resistant10	.15	.25

NASTURTIUMS

$\frac{1}{2}$ oz. 1 oz. 1 lb.

Dwarf, mixed colors	\$0.05	\$0.10	\$1.00
Tall, mixed colors05	.10	1.00
Golden Gleam, double fragrant flower15	.25	1.50
Scarlet Gleam, double fragrant flower15	.25	1.50

PANSIES

Pkt. $\frac{1}{4}$ oz. 1 oz.

Michael's Colossal, largest flowers, all colors.....	\$0.10	\$1.50	\$5.00
Swiss Giant, improved variety colors10	1.50	5.00
DeLuxe, mixture, all variety of giants mixed10	1.50	5.00
Engelmann's Giant, huge flowers, early, different shades		$\frac{1}{8}$ oz.	\$0.75

PETUNIAS—Petunia Hybrida, 20 Inches

Pkt. $\frac{1}{8}$ oz. $\frac{1}{4}$ oz.

General Dodd, blood red	\$0.10	\$0.15	\$0.25
Howard's Star, improved, purple and white10	.20	.40
Cockatoo, violet with white spots10	.15	.35
Rose King, rich rose10	.15	.25
Baby Blue10	.15	.25
White, snow white10	.15	.25
Balcony, mixed10	.25	.45
Michael's 4 Cross, blend10	.15	.25

PETUNIA HYBRIDA (Dwarf 8 Inches)

Purple, white spots	\$0.10	\$0.25	\$0.75
Rose of Heaven10	.20	.35
Rosy Morn10	.25	.75
Violacea, deep violet10	.20	.50
Nana Erecta, mixed colors05	.15	.35

PETUNIA GRANDIFLORA

All Double mixed. 100 Seeds...\$0.50

Our all double triumphant petunia seed produces hundred percent double flowering plants.

PETUNIA NANA COMPACTA

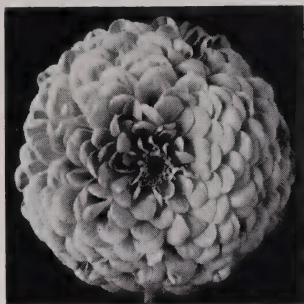
Martha Washington — (New petunia) Flowers ruffled and frilled. Plants 9 in. high forming ball effect, literally smothered with blooms, June till November.

PricePkt. 25c $\frac{1}{8}$ oz. \$1.50

Parcel Post extra — see page 2.



Petunia Hybrida



Giant Zinnia



Sweet Peas

SWEET PEAS (Spencer Type)

	1/2 oz.	1 oz.	1 lb.
Fluffy Ruffles, rose pink	\$0.10	\$0.20	\$1.50
Hawlmork, pink	.10	.20	1.50
Powerscourt, lavender	.10	.20	1.50
Blanche Ferry, pink	.10	.20	1.50
Etta Dyke, white	.10	.20	1.50
King Edward, red	.10	.20	1.50
President, orange	.10	.20	1.25
Michael's DeLuxe mixture	.10	.15	1.25

ZINNIA (California Giants)

	Pkt.	1/4 oz.	1 oz.
Brightness, bright pink	\$0.10	\$0.20	\$0.75
Golden Queen, yellow	.10	.20	.75
Grenadier, bright dark red	.10	.20	.75
Orange King, orange scarlet	.10	.20	.75
Purity, best white Zinnia	.10	.25	.75
Lilliput, Pompon, finest mixture	.05	.15	.50

ZINNIA (Dahlia Type)

Exquisite, light rose, deep rose center	\$0.10	\$0.25	\$0.75
Crimson Monarch, deep crimson, large flowers	.10	.25	.75
Meteor, darkest of all reds, deep red	.10	.25	.75
Oriole, golden bicolor, orange and gold	.10	.25	.75
Golden State, yellow orange	.10	.25	.75
Dream, Lavender flower	.10	.20	

MARIGOLD

	Pkt.	1/8 oz.	1/4 oz.
Gigantea, Sunset Giant Fragrant	\$0.15	\$0.50	\$1.00
Guinea Gold, double ruffled flowers	.10	.15	.25
Double Monarch, dwarf mixed shades	.10	.15	.25
Double Tall, Finest Mixed	.05	.10	.15

Marigold and Zinnia

Marigolds and Zinnias bloom longer in season, and as cut flowers in a vase last longer in bloom than any other combination of cut flowers.



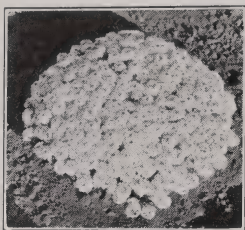
In Combination

Plant in a row, two red zinnias, one Prince Orange marigold, 18 in. apart. Gives when blooming the beautiful effect of the scarlet and the golden.

AMERICAN BERRY BOXES — COMMERCIAL BASKETS

For Cherries, Raspberries, Strawberries and other berries. **Pint** size, per 100, **85c**; per 500, **\$3.75**; per 1000, **\$7.50**. **Quart** size, per 100, **90c**; per 500, **\$4.00**; per 1000, **7.50**. **Crates**, 24 qt. size, each **15c**.

Grape Baskets, 8 qt., per doz. **60c**; per 100, **\$5.00**. Drop Handle Basket 1/2 Bu., per doz., **90c**; per 100, **\$7.00**; 1 Bu. Baskets, per doz., **\$1.25**. Repacking Baskets, per 100, **\$1.25**; per 1000 **\$10.00**.



Alyssum



Portulaca

FLOWER SEEDS (Alphabetical Order)

	Pkt.	$\frac{1}{16}$ oz.	Oz.
Acroclinium, Large Flower, Double Hybrids	\$0.10	\$0.25	
Alyssum , Procumbens, Compact Form, Carpet of Snow..	.05	.10	\$0.35
Antirrhinum (Snap Dragons) Majus Grandiflorum10	.15	1.00
Bachelor Buttons, (Centaurea) Mixed Colors05	.10	.25
Balsam, Double Camellia Flowered, Mixed05	.10	.25
Beans (Scarlet Runner) Beautiful Red Flowers05	.10	.15
Calendula , Ball's Golden, Improved Glorified10	.15	.75
Calendula, Crysanthus Sunshine, New Type10	.15	.75
Calliopsis, Hybrida Superba, New Shades, Mixed05	.10	.25
Candytuft, (Iberis) Hyacinth Flowered Strain, Mixed ..	.10	.25	.75
Carnation, Double Flowering, Chabaud's Giant Mixed..	.10	.25	1.50
Castor Beans, Ricinus, Zanzibariensis Enormis05	.10	.15
Celosia , (Coxcomb) Childsii, Chinese Wool Flower10	.25	1.00
Celosia, (Coxcomb) Empress, Bright Crimson10	.35	1.25
Clarkia, Elegans, Special, Double Mixed05	.10	.25
Cosmos, True Early Mammoth Single Mixed05	.10	.25
Cosmos , Hybrida, Early Klondyke , Orange Flare10	.15	.75
Cypress Vine, Attractive Scarlet, Fine Foliage05	.10	.30
Datura. (Angel's Trumpet), Extra Large Flowering ..	.05	.15	.60
Forget-Me-Not, (Myosotis), Star of Love, Very Dwarf	.15	.50	
Four-O-Clock (Marvel of Peru) Mixed Colors05	.10	.20
Helichrysum (Straw Flower) Everlasting , Double10	.15	.50
Ipomea (Moon Flower) Rapid, Nocturnal, White05	.10	.25
Ipomea (Moon Flower) Heavenly Blue10	.15	.75
Larkspur, Annual, Giant Imperial, Base Branching10	.25	.75
Lobelia, Dark Blue Border Plant05	.15	.75
Morning Bride (Scabiosa) Cushion Flowering, Feathery	.10	.15	.40
Morning Glory , Clark's Big Blue , Giant Climber10	.25	1.25
Nemesia, (Nana) Mixed, Large Flower, Bright Shades..	.10	.25	
Pinks (Dianthus) Chinese Double Mixed10	.25	.50
Poppy Rhoceas, Scarlet, " Flanders Poppy " " The Legion "	.05	.15	.50
Poppy, California Mammoth, Many Kinds, Mixed10	.15	.50
Portulaca, (Rose Moss) Single Large Flowering05	.15	.75
Portulaca (Rose Moss) Double Large Flowering, Mixed	.10	.25	1.50
Phlox Drummondii, Annual, Large Flowering Mixed..	.10	.15	1.25
Salpiglossis (Painted Tongue) Large Flowering, Mixed..	.10	.15	.75
Salvia Splendens (Scarlet Sage) Fire Cracker Plant10	.15	1.25
Stocks, Dwarf German, Double Flowering, Mixed10	.15	1.00
Summer Cypress, Climbing Vine, Profuse Red Bloomer	.05	.10	.25
Sweet William (Silene Orient)—From June to October	.05	.10	.25
Tritoma, (Red Hot Poker) Grand Fireball10	.25	
Verbena, Hybrida, Best Mixture05	.10	.60

PERENNIAL FLOWER SEEDS

	Pkt.	$\frac{1}{16}$ oz.
Aquilegia (Columbine), single mixed	\$0.10	\$0.25
Aquilegia (Columbine), double mixed10	.25
Armeria Formosa, Large Flowering Hybrid10	.25
Aster, Wild, Blue and Violet mixed05	.15
Campanula (Canterbury Bells)10	.25
Carnation, gennadin double mixed10	.25
Candytuft, Sempervirens, white10	.25
Coreopsis (Lanceolata) double yellow05	.10
Delphinium , Michael's Special mixed15	.40
Digitalis (Fox Glove)10	.15
Forget-Me-Nots (Myosotis) sky blue10	.15
Gaillardia, new hybrids10	.15
LINUM—Perennial Flax, Sky-blue blossom10	.15
Oriental Poppy (Papaver) scarlet10	.15
Phlox , Decussata, mixed, 2 ft. stems10	.25
Physalis, Chinese Lantern10	.25
Pinks, Allwoodii10	.25
Pyrethrum, single mixed10	.25
Pyrethrum , double mixed25	1.00
Shasta Daisy , best American white double10	.25
Sweet Peas, Lathyrus, mixed colors10	.25

Hollyhock, Fringed Petals, Alleghany (100 Seeds 10c).

Hollyhock, double type (100 Seeds 10c. Roots each 15c; doz. \$1.00.



Dahlia



Canna

BULBS, ROOTS and FLOWERING PLANTS

GLADIOLUS BULBS

	Each	Doz.
Picardy, Apricot Pink	\$0.05	\$0.50
Persia, Velvety Maroon05	.50
Orange Queen, Orange with red stripes05	.50
Betty Nuthall, Light Coral05	.50
Dr. Bennett, Brilliant Scarlet05	.50
Giant Nymph, Pink05	.50
Van Tienhoven, Brilliant Red05	.50
La Paloma, Orange05	.50
Golden Dream, Deep Yellow05	.50
Chas. Dickens, Purple Violet05	.50
Schwaben Girl, Pink05	.50
Maid of Orleans, Creamy White05	.50
Minuet, Light Lavender05	.50
Ave Maria, Medium Blue06	.65
Mother Machree, Soft Smoky Lavender06	.65
Pelegrina, Deep Blue06	.65
Vagabond Prince, Mahogany Brown08	.85
Star of Bethlehem, Snow White08	.85
Shirley Temple, Rich Cream08	.85
J. S. Bach, Red08	.85
Beacon, Salmon Scarlet, Cream Throat08	.85

DAHLIAS

Avalon, Yellow15
Jane Cowl, Bronzy Buff Salmon15
Jersey Beacon, Scarlet and Buff15
Jersey Beauty, Perfect Pink15
Mrs. E. DeVer Warner, Orchid Lavender15
La Crosse Better, Red15
White King, White15
Thomas Edison, Royal Purple25

CANNA ROOTS AND PLANTS—(4 in. pot)

	Each
President, Red, pot grown plants, dwarf	\$0.20
President, Dormant Roots, Dwarf10
Queen Helen, Yellow, Pot grown plants, dwarf20
Queen Helen, Yellow, Dormant Roots, dwarf10
Humbert, Bronze foliage, pot grown plants, dwarf20
Humbert, Dormant Roots, dwarf10
Eureka, Pure White, Pot grown plants, dwarf20
Eureka, Dormant Roots, dwarf10
Musifolia, Dormant roots, tall05

PEONIES

All Colors, Fancy wrapped roots25
---------------------------------------	-----

IRIS

ALL COLORS, Fancy stock, Ask for prices.



LILLIUM PHILIPPENENSE FORMOSANUM

Sturdy plant, long leaves, beautiful foliage, **ever blooming**. New spikes continually appearing from the mother bulb. Bearing flowers until frost in autumn. Regal lily type flowers. Price **25c each, 3 for 70c**.

HARDY LILY BULBS

Each

Regale, Pink Shaded, 6 to 7 inch20	3 for	\$0.55
Tiger Lily, Single10	4 for	.35
Tiger Lily, Double15	3 for	.40
Rubrum, (White-flushed pink)25		
Auratum, (Gold banded Lily)25		
Henryii, (Orange yellow)25		
Album Speciosum, (Pure white)35		
Tenuifolium, (Lovely Coral)15		

NOT HARDY

Begonias, Tuberous Rooted, different colors15	3 for	.40
Elephant's Ear (Caladium) Tropical foliage25	3 for	.70
Tuberoses, Sweet Scented flowers05	dozen	.50
Amaryllis Red50		
Amaryllis, Hybrid mixed40		



Helen Fowler

AQUATIC PLANTS

WATER LILIES TUBERS

Each

White Adorata, fragrant flowers	\$0.25		
Yellow (Advena)50		
Helen Fowler, pink	1.00		
Aurora, red flower	2.00		
Gigantea, large white ..	1.00		
American Lotus, creamy	2.00		
Water Hyacinth10	.25	
			\$1.00 doz.

Wild Rice, aquatic duck food	1.25	lb.
------------------------------------	------	-----

SAVE YOUR EVERGREENS



PROTECTION

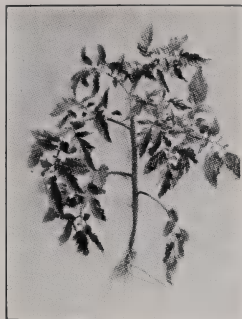
FROM DOGS,
RABBITS, CATS,
MOLES and MICE,

for Evergreens
and fruit trees.

Drives Dogs Away Never
to Return

"DOGZOFF"

DOGZOFF—Effective driving ants away, keeping rats and mice out of the house, as well as protecting trees from rabbits. **\$0.60** bottle.



Tomato Plant



Basket of Pansy Plants

PLANT DEPARTMENT

Picture each root wrapped	Name and Description	Each
	Baby Breath (Gypsophila), wrapped	\$0.20
	Bleeding Heart , (Dicentra) wrapped roots, Old fashioned	.25
	Campanula (Bell Flower), wrapped roots	.15
	Carnations, pink and scarlet, wrapped	.15
	Columbine, large, wrapped roots, good Rock Garden Plant	.15
	Coreopsis, large, wrapped roots	.15
	Delphinium hardy perennial, wrapped roots	.25
	Dianthus (Garden Pink), wrapped roots	.15
	Gaillardia , (Blanket flower) wrapped roots	.15
	Lupine, blue and pink, wrapped roots	.15
	Oriental Poppy (Papaver), wrapped roots	.25
	Phlox, mixed kinds, wrapped roots	.15
	Phlox, named varieties, wrapped roots	.15
	Physalis (Chinese Lantern), wrapped roots	.15
	Pyrethrum (Painted Daisy), wrapped roots	.15
	Seedum, rock garden plant, wrapped, rock garden use	.15
	Shasta Daisy, large clumps, wrapped roots	.15
	Sweet Pea , perennial, wrapped roots	.20

BASKET GROWN PLANTS

FLOWERING PLANTS (In Earth)

Aster Plants, Basket Grown	\$.35 doz.	Bulk \$2.50 per 100
Pansy Plants, Basket grown	.35 doz.	Bulk 2.50 per 100
Petunia Plants, Basket grown	.35 doz.	Bulk 2.50 per 100
Salvia Plants, Basket grown	.35 doz.	Bulk 2.50 per 100
Geranium Plants, 4 in., pot grown, dark red, pink and white	.25 each	2.50 doz.

VEGETABLE PLANTS

Cabbage Plants, frost proof, grown out doors	\$0.35 per 100
Cabbage Plants, transplanted, cold frame grown	1.00 per 100
Tomato Plants, frost proof, grown out doors	.50 per 100
Tomato Plants, transplanted, cold frame grown	1.00 per 100
Cauliflower Plants, early (Snowball)	2.00 per 100
Celery Plants, early variety	.75 per 100
Egg Plants, purple	1.50 per 100
Pepper Plants, giant bull nose	1.25 per 100
Sweet Potato Plants	Per 1000 \$5.00, \$0.75 per 100
Asparagus Roots, Washington, rust proof	.35 per doz. 1.50 per 100
Rhubarb Plants, 2 years old	.10 each .60 doz.

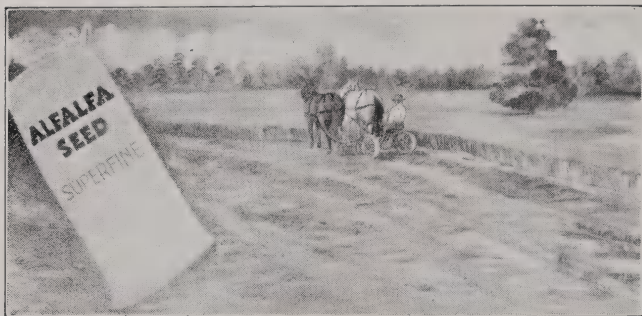
ONION PLANTS

Parcel Post: 1st lb. 8c, additional pound 6c extra.

	100	1000	6000
White Bermuda Plants	\$0.10	\$0.75	\$4.50
Yellow Bermuda Plants	.10	.75	4.50
Valencia Plants	.10	.75	4.50

VEGETABLE KINGDOM VS. ANIMAL KINGDOM

Life on this earth is divided into two great kingdoms; the vegetable kingdom and the animal kingdom. These two kingdoms are again divided into wild life and domestic life. Vegetable kingdom is the old kingdom. The animal kingdom lives on the vegetable kingdom. Everything that we eat and wear comes from Mother Earth through the activities of plant life—the Vegetable Kingdom. "All flesh is grass". Wild life is more resistant than domestic life which has been brought up to the high state of perfection we find it today from the wild life by the artificial effects of man's labor and ingenuity—up and out of the fathomless past. Insects prey on domestic life rather than wild life for the reason that domestic plants furnish more succulent food. We protect domestic plants against these inimical things by insecticides and other remedies. See page 21.



Mowing

Alfalfa

AGRICULTURAL SEEDS

ALL PRICES SUBJECT TO MARKET CHANGES

ALFALFA SEED

PRICES
Fair to Superfine Qualities

Common, Home Grown Seed	\$22.00 to \$25.00	Per 100 lbs.
Grimm, Affidavit, Home Grown Seed	24.00 to 26.00	Per 100 lbs.
Cossack, Affidavit, Home Grown Seed	25.00 to 27.00	Per 100 lbs.

SWEET CLOVER SEED

Fair to Superfine Quality

Common White, Biennial Variety	\$ 5.00 to \$ 6.50	Per 100 lbs.
Common Yellow, Biennial Variety	5.00 to 6.50	Per 100 lbs.
Hubam White, Annual Variety	15.00	Per 100 lbs.

CLOVER AND GRASS SEED

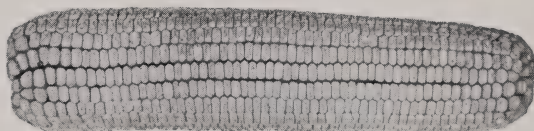
Fancy to Superfine

Medium Red Clover, Iowa	\$15.00 to \$18.00	Per 100 lbs.
Alsike, Minnesota Grown	\$10.50	Per Bushel
Timothy, Iowa Grown	6.00 to 7.00	Per 100 lbs.
Bromus Inermis, Early and Late Pasture	15.00 to 18.00	Per 100 lbs.
Blue Grass Strippers		Each \$1.50
Blue Grass Ky., Superfine, 30 lb. Quality		Per lb. \$0.40
Blue Grass Ky., Fancy Fine, 25 lb. Quality		Per lb. .35
Blue Grass Ky., 21 lb. Quality, Standard Field Culture ...		Per lb. .30
Blue Grass, for Shady Nooks, Poa Trivialis		Per lb. .50
Blue Grass (Meadow Fescue)		Per 100 lbs. 17.50
Creeping Bent Grass, Oregon Grown Astoria		1 lb. \$1.00
Rye Grass, Annual, Michael's Small Seeded	1 lb. .20,	10 lbs. \$1.50
Rye Grass, Native, Annual	\$ 9.00	Per 100 lbs.
Red Top, Fancy, Solid Seed	1 lb. .20	15.00 Per 100 lbs.
Pasture Mixture, Special Mixture		15.00 Per 100 lbs.

FIELD AND FORAGE SEED

Spring Wheat, Thatcher's Rust resistant	Per Bu.	\$1.15
Rosen Rye, Mammoth White seeded variety	Per Bu.	.75
Barley, Spartan (Two Row)	Per Bu.	.75
Oats—Kherson—Fulghum	Per Bu.	.65
Soy Beans, Early Manchu	Per Bu.	1.35
Flax, Minn. Grown, Wilt Resistant	Per Bu.	3.25
Rape Seed, Dwarf Essex	Per 100 lbs.	20.00
Sugar Cane, Ey. Black Amber	Per 100 lbs.	3.00
Kaffir Corn, True White variety	Per 100 lbs.	3.00
Ajlas Sorgo	Per 100 lbs.	3.50
Millet, True German variety	Per 100 lbs.	4.00
Japanese Millet	Per 100 lbs.	5.00
Sudan Grass Seed, great forager	Per 100 lbs.	4.50
Cyclone Seeders		\$2.50 each
Nitragin Inoculation 1/2 bu. size, 30c; 1 bu. size, 50c; 2 1/2 bu.		\$1.00

ORDER YOUR HYBRID CORN EARLY
"IOWEALTH" KING OF THE HYBRIDS



Flat Kernels—Large, Medium or Small	Per Bu.	\$7.25
Round Kernels—Large, Medium or Small	Per Bu.	5.25
Iowealth (Cold Resistant)	Per Bu.	8.25

A new thing in corn that will change corn planting as the automobile did travel over the horse and buggy age.

NURSERY DEPARTMENT

WE CARRY IN STOCK VARIETIES NOT QUOTED HERE

All prices subject to change without notice.

Specimen Sizes—Special Prices	Each	Five	Ten
Fruit Trees, Selected Stock, 11/16 up, 5 to 6 ft.	\$0.60	\$2.75	\$5.00
Fruit Trees, Second Size 9/16 up, 4 to 5 ft.50	2.25	4.00
Above prices apply to Apples and Crabs.			
Special Prices Plums, 11/16 up60	2.75	5.00
Special Prices Plums, Second Size, 7/16 up35	1.60	3.00
Prices Pears, Second Size, 7/16 up35		

APPLES

Size 11/16 up

Per Tree

Anoka , Extra Early, Subacid, Dwarf Habits, Bears Young.....	\$0.60
Duchess, Oldg., Early , Subacid, July , Large Fruit Striped60
Transparent, Extra Early, Yellow, Season August Subacid60
Delicious , Winter, Dark Red, Large Fruit, Conical Apple69
Delicious, Golden , Luscious, Fall and Winter Apple60
Jonathan, Red, Early Winter, Most Popular Apple Known60
Heraldson , Reddish, Winter Apple, First Degree Hardiness60
McIntosh, Winter, Red, Long Keeper— Canadian Origin, Hardy..	.60
No. West Greening, Winter, Green Apple, Long Keeper60
Wealthy , Red, Autumn and Winter, Superior , Eating , Cooking ..	.60
Winesap, Red, Winter, Good Keeper, Old Fashion But Good....	.60
Winesap, Golden , Luscious Winter, Yellow Fruit, Red Cheek.....	.60

CRAB APPLES

Size 11/16 up

Whitney, Hybrid, For Eating	\$0.60
Florence, Red Jelly, Prolific.....	.60

CHERRIES

Size 11/16 up

Richmond, Extra Early, Dark..	\$0.70
Montmorency, Later Variety70
Morello, Largest, Dark Red.....	.70
Tartarian, Sweet, Black Heart ..	.75
Compass, Plum-Cherry Cross....	.60
Bush Cherry, Hansen Hybrid....	.30

PLUMS

Size 11/16 up

Hanska, Hansen Hybrid , Red....	\$0.60
Opata, Hansen Hybrid, Green60
Sapa, Hansen Hybrid, Dark60
Waneta , Hansen Hybrid, Largest Fruit of the Plum Family60
German Prune, Dark Red60
Terry Chickasaw, Native Plum ..	.60
Omaha, Chickasaw, Native Plum	.60

APRICOTS

Each

Native Grown (Very hardy) ...	\$1.00
-------------------------------	--------

PEACHES

Size 11/16 up

Bokara, Hardy	\$0.50
---------------------	--------

PEARS

Size 11/16 up

Bartlett, Large Fruit, Summer..	.60
Flemish Beauty , Sweet Summer	.60
Flemish Beauty, Dwarf , 4 ft.75
Keiffer, Winter Variety, Hardy..	.60

CURRENTS, 2 yr. #1

PRICES
Each Per 10

Diploma , Large Fruit	\$0.20	\$1.75
Perfection, New hardy Cur- rant originated in Minn.		
Large berry25	2.00

GOOSEBERRIES, 2 yr.

Downing , Big Fruit	\$0.25	\$2.25
Houghton, Med. Fruit.....	.17	1.50

**BLACK BERRIES—Trans-
planted Plants)**

Per 10 100

Snyder	\$0.40	\$3.50
Eldora50	3.00

**RASPBERRIES—(Trans-
planted) 2 Yr. No. 1**

Chief, Red June bearing ..	\$0.50	\$4.00
Columbian, Purple June ..	.75	6.00
Cumberland, Black June ..	.65	5.00
Boysenberry, triple-cross, Each	\$0.10	Doz. \$1.00

GRAPEVINES—2 Yr. No. 1

Each 10 100

Concord , Common		
Black	\$0.10	\$0.90 \$7.50
Beta , Arbor Vines ..	.15	1.25 8.00
Concord15	1.25 8.50
Worden , Early, Con- cord15	1.15 8.50
Caco , Red, Very Hardy25	





Hydrangea P. G.

Our policy is to supply you with the best nursery stock that money can buy. It is up to you to plant it and take care of it properly. If any of it fails to grow and you report same by October 1st we will replace at half price.

ORNAMENTAL FLOWERING SHRUBS

Price Each

Almond, 2 to 3 ft., Double Pink, Early Flowers.....	\$0.45
Barberry , 18 to 24 in., Ornamental Red Leaf.....	.35
Beauty Bush , 2 ft. (Kolkwitzia) Double Pink Flowers.....	.40
Butterfly Bush, No. 1 Alternifolia, Purple Flowers30
Butterfly Bush (Buddleia) Ile de France, Sensational New35
Cercis, RED BUD , 2 to 3 ft., Early Red Flowers50
Cercis (Red Bud) 5/6 ft., Early Red Flowers	1.25
Cherry, 3 to 4 ft., Japanese Flowering (Pink Flowers).....	1.25
Cotoneaster, 2 to 3 ft., Dark Green Leaves35
Crab, 2 to 3 ft., Bechtel Flowering65
Cranberry, 2 to 3 ft., High Bush, White Flowers35
Dogwood (Cornus), 2 to 3 ft., Siberica, Red Bark35
Elder, 2 to 3 ft., Golden Yellow Foliage35
Forsythia, 2 to 3 ft., Spectabilis, Golden Flowers.....	.35
Honeysuckle, 2 to 3 ft., Bella Rosia, Pink Flowers25
Hydrangea , 2 to 3 ft., A. G. Everblooming.....	.40
Hydrangea, 2 to 3 ft., P. G. Summer Bloomer40
Plum (Prunus) Triloba, 2 to 3 ft., Double Pink50
Plum (Prunus) Pissardi, 2 to 3 ft., Purple leaf—white flower...	.50
Quince, 2 to 3 ft., Japanese Early Red Flowers30
Rhodotypos, 2 to 3 ft., Shiny Green Leaves, Shaded Places....	.35
Rose Acasia, 2 to 3 ft., Low Bushy Shrub, Pink Flowers50
Snowball (Viburnum), 2 to 3 ft., Common Snowball50
Snowberry (Symphoricarpus), 2 to 3 ft., Pink Flowers25
Sumac (Rhus), 2 to 3 ft., Crimson Berries, Clumps25
Syringa 18 to 24 in., Semi-dwarf, Golden Foliage50
Syringa, 18 to 24 in., Lemonie, Semi-dwarf, Green Foliage35
Syringa , 3 to 4 ft., Virginalis, Double Flowering50
Tamarix, 2 to 3 ft., Hispida, Coral Pink Flowers35
Tamarix, Africana, dark green foliage, pink, 2 to 3 ft.30
Weigelia, 2 to 3 ft., Eva Rathke, Red Flowers50
Yucca, Filamentos, 2 yr., Sword Leaf Foliage25
Yucca, Irish Green (Puya Alpestris) New Variety50

LILACS—2 to 3 ft.

Charles Joly , Double Purplish Red, French grafted stock75
Charles 10th, Single, Purplish Red, French grafted stock75
Mme. Perier, Double White, French grafted Stock75
Michael Buchner, Double Dwarf, Lavender Lilac75
Ludwig Spaeth, Single Purple, Most Profuse Bloomer75
Persian , Purple Flowers, Early Profuse Bloomer.....	.50
Common Purple, (Vulgaris) Old Fashion Variety25

SPIREA—(Bridal Wreath)

Anthony Waterer , 18 to 24 in., Dwarf, Crimson, Everblooming..	.25
Froebeli, 18 to 24 in., Similar to Anthony Waterer, Taller30
Prunifolia, 2 to 3 ft., Very Early Bridal Wreath50
Van Houte , 3 to 4 ft., Fragrant White Bridal Wreath35
Van Houte, 2 to 3 ft.25

See Page 20 for Hedge Size



American Beauty



Crimson Rambler

H. P. ROSES—(2 Yr. No. 1, field grown stock).

	Each	3 for
American Beauty , Fragrant, Soft Crimson	\$0.45	\$1.19
Druschki, Large Flower, Snow White45	1.19
Sweet Briar (Rubiginosa) Single Pink Flower40	1.05
Eugene Furst, Dark Crimson, Profuse Bloomer50	1.35
Gruss an Teplitz , Dark Red, Always Blooming.....	.50	1.29
Gen. Jacqueminot, Fragrant, Rich Crimson40	1.19
Paul Neyron, Fragrant, Largest Pink Flower40	1.19
Talisman, Copper Red, Blended Orange, Rose50	1.39
Briarcliff , Silvery Rose Pink40	1.19
Red Radiance, Bright Rose Red50	1.39
Lord Charlemont, Glowing Scarlet Red, Black Undertone .	.45	1.25
Mme. Butterfly, Light Pink, Fragrant45	1.25

CLIMBING ROSES

American Pillar, Single Pink Flowers35	.98
Climbing American Beauty, Purple Crimson Flower40	1.10
Crimson Rambler , Double Reddish Scarlet35	.89
Dorothy Perkins , Soft Shell Pink35	.89
Excelsa, Double Scarlet Crimson35	.89
Paul's Scarlet , Intense Scarlet Flower, Double45	1.19

RUGOSA ROSES—(Hardest Rose)

C. F. Worth , Double Crimson Flower40	1.10
Hugonis, Small Yellow Flowers35	.98
Rubra, Early Large Single Flower35	.98
Grootendorst, Small Red Fringed Flower40	1.10

BABY ROSES—(Dwarf Polyantha)

Crimson Baby, Semi-double Flower40	1.10
Ideal, Dark Scarlet, Profuse Bloomer40	1.10
Cecil Brunner, Dainty Clear Pink40	1.10
Golden Salmon, Bright Orange, Blooms Continually40	1.10

SENSATIONAL ROSES (Patented)—2 Yr. No. 1

Better Times , Bush, Brilliant, Cerise, Fragrant	\$1.25
Mary Hart, Bush, Deep Blood Red Flowers	1.00
Nigrette Bush , Black Red Flowers	1.50
Blaze, Climber, Everblooming, Scarlet Flowers	1.00
Golden Climber , Extremely Hardy Year Climber	1.50
New Dawn, Climber, Pink, Everbloomer	1.50

Parcel Post extra — See Page 2

ROSE DISEASES

The rose faces four deadly menaces, any one of which would destroy the rose garden if left unchecked. **Black Spot** presents the greatest Problem. Easily controlled if one starts making **exterminating** applications when the leaves first appear — additional applications week or ten days later if necessary. **Mildew**, **leaf-eating insects**, and **aphis** are the other controlled in the same way as Black Spot either by dusting or spraying will exterminate these diseases. Insecticide page 21.

Tri-Ogen, per Kit \$1.50



Chinese Elm

NATIVE SHADE TREES

Price Per Each

Ailanthus, 4 to 5 ft., Tree of Heaven, Very Rapid Grower.....	\$0.50
Elm, Chinese, 4 to 5 ft., Beautiful Tree, Rapid Grower35
Elm, Chinese , 6 to 8 ft., Beautiful Tree, Rapid Grower.....	.75
Elm, Chinese, 8 to 10 ft., Beautiful Tree, Rapid Grower	1.00
Elm, Native, 8 to 10 ft., Beautiful Tall Tree	1.00
Poplar, Bolleana , 5 to 6 ft., Silver Green Foliage70
Poplar, Bolleana, 6 to 8 ft., Silver Green Foliage	1.00
Poplar, Volga, 8 to 10 ft., Tall Spiral Like Tree75
Poplar, Volga, 6 to 8 ft., Tall Columnar Tree45
Poplar, Volga, 4 to 5 ft.,	20c each; 10 for 1.75

WEEPING ORNAMENTAL TREES

Birch, Weeping, 5 to 6 ft., White Bark	2.00
Catalpa, Bungei, 2 year head, 5 ft.	1.75
Maple, 5 to 6 ft., Purple Leaf Foliage, Schwedler	2.25
Silver Poplar, Often called Maple, 6 to 8 ft.75
Mountain Ash, 6 ft., Beautiful Red Berries	1.50
Mulberry, 6 ft., Tea's Weeping, Umbrella Foliage	2.00
Red Bud (Cercis) , 5 to 6 ft., Beautiful Red Flowers	1.25
Weeping Willow, 5 to 6 ft., Niobe, Golden Bark75
Weeping Willow, 4 to 5 ft., Niobe, Golden Bark50
Niobe Weeping Willow, 3 to 4 ft.	\$0.25 each 2 for .45

CLIMBING VINES

Ampelopsis, 2 yr., No. 1 (Engelmanni) Hardy Clinging Climber..	.20
Ampelopsis , 3 yr. No. 1 (Veitchi) Boston Ivy, Best Clinging....	.30
Trumpet Vine (Bugnonia), 2 yr., Scarlet Trumpet Flowers.....	.25
Clematis , 2 yr., No. 1 Jackmanni, Purple (Potted Plants)50
Clematis, 2 yr., No. 1, Mme. Andrea (Potted Plants)50
Clematis, 3 yr., No. 1, Paniculata, Fragrant White Flowers30
Honeysuckle , 2 yr., Scarlet Trumpet Shaped Flowers25
Honeysuckle, 2 yr., Belgica , Fragrant, Monthly Bloomer35
Honeysuckle, " Golden Flame "—Immense clusters, fragrant75
Lace Vine (Polygonum Aubetti), yr. No. 1, Foamy White35
Lycium, 2 yr., No. 1 Chinese Matrimony Vine, Purple25
Matrimony Vine, native American, Hardy25
Wisteria, 2 yr., No. 1 Lilac Purple Flowers35
Morning Glory , Annual, Large Blue Flowers (Potted Plants)....	.25

HEDGE SHRUBS

A Hedge can be trimmed always to the height you would prefer it to grow. Some varieties of Hedge Shrubs grow taller than others and we have noted it after each variety.

	Doz.	100
Barberry, Japanese 15 to 18 in.	\$0.60	\$ 4.00
Barberry, 18 to 24 in., Japanese, Med. Tall Hedge75	5.50
Barberry , Japanese, 2 to 3 ft.	Each \$0.25	2.50
Buckthorn , 18 to 24 in., Trims Med. Hedge, Natural Tall..	.75	4.00
Caragana75	4.00
Honeysuckle, 18 to 24 in., Tall Growing Hedge	1.50	10.50
Olive , 18 to 24 in. Hardy Russian, Med. Tall Hedge.....	.60	3.50
Privet, 18 to 24 in., Amoor River, Small Hedge	1.00	7.00
Spirea , 18 to 24 in., Bridal Wreath, Weeping Hedge	1.00	7.50

TRUEHEDGE COLUMNBERRY

Individual Specimen shrubs, Dense glossy foliage good for Window Boxes, individual plantings and also makes a beautiful hedge. **Truedge Columberry**, 15 to 18 in.

.....Ea. \$0.35. Per 5 \$1.35. Per 25 \$5.50

NEW MAC DONALD RED RHUBARB

Very highly colored, red stocks. Makes delicious sauce. Worth the price. Be sure and try it.

New McDonald Red RhubarbPer Root \$0.35 3 for \$0.95

Sheared
Juniper

Home Evergreen Setting

Sheared
Juniper**HARDY EVERGREENS—(Nursery Grown)**

Taken up with Ball and Burlapped

Evergreens newly planted should be well watered during the summer season and soaked down just before ground freezes when winter begins.

Price Each

Juniper, 3½ ft 4 ft., sheared, (Red Cedar) Virginiana	\$3.50
Juniper, 3 to 3½ ft., sheared, (Red Cedar) Virginiana	3.00
Juniper, 2 to 3 ft., Carnarti , Bird Cedar, Bears Blue Berries...	5.00
Juniper, Many sizes, Native Bird Cedar, Bears Berries ..	\$1.00 to \$3.00
Juniper Scopulorum, 2 to 3 ft., Silver Foliage, Upright Growth..	3.50
Juniper Shotti, 2 to 3 ft., Sheared, Yellowish Green	3.50
Spruce, 1½ to 2 ft., Black Hills, Hardest Spruce	1.75
Spruce, 2 to 2½ ft., Black Hills, Hardest Spruce	2.75
Spruce, 2 to 2½ ft., Moerheimi Blue, very beautiful	6.00
Spruce, 2½ to 3 ft., Colo. Green	3.50

DWARF EVERGREENS

Pfitzeriana Juniper (of the Cedar Family) is one of the hardiest, easiest to grow, and most satisfactory of all the dwarf varieties of evergreens.

Juniper, 15 to 18 in. spread, Pfitzeriana	\$2.50
Juniper, 18 to 24 in. spread, Pfitzeriana	3.00
Juniper, 18 to 24 in. spread, Sabina	2.50
Mugho Pine, 15 to 18 in. spread, Compact Growth Dark Green..	2.50
Mugho Pine, 18 to 24 in. spread	3.50

BLACK HILL SPRUCE SEEDLINGS

F. O. B. Black Hills, South Dakota

The forest grown **Black Hill** Spruce Seedlings are the easiest to grow and the hardiest of all spruces. Try them.

Black Hill Spruce, Seedlings, 15 to 20 inch, well Rooted.....	Per 100 \$12.00
---	--------------------

EVERGREEN SEEDLINGS—(Nursery Grown)

Price Per 100

Black Hill Spruce, 10 to 12 in. Transplanted Stock	\$12.50
Colorado Blue Spruce, 18 to 24 in., Seedlings, Blue and Green..	12.50
Norway Pine, 12 to 15 in., Tallest Lumber Evergreens	7.50
Pinus, Banksiana (Jack Pine) 12 to 18 ins. For windbreaks fast and hardy	7.50
Balsam Fir, 7 to 10 in., Seedlings, Tall Conical Tree.....	10.00

FOREST TREE SEEDLINGS—Forest Grown, 18 to 24 in.

	100	1000
Ash, Elm and Maple	\$2.00	\$15.00
Cottonwood and Willow	1.00	8.50

Nursery Grown, 18 to 24 in.

Mulberry, Russian Variety, Wind Break Tree.....	2.50	20.00
Black Walnut, Valuable Timber Tree	4.50	
Elm, Chinese, Most Beautiful Elm, Rapid Grower, 18-24..	1.75	15.00
Chinese Elm 2 to 3 ft.	2.50	
ELM, Chinese, special growth, 5 to 6 ft.	Each	.15
Catalpa, Valuable Timber, Shade and Ornamental Tree ..	2.50	20.00



Fertilizers, Insecticides and Poultry Foods

FERTILIZERS

Sheep Manure refined.....	5 lbs. 25c; 50 lbs. \$1.20; 100 lbs. \$ 2.00
Bone Meal	5 lbs. 25c; 25 lbs. \$1.15; 100 lbs. 3.75
Acid Phosphate, Available	5 lbs. 25c; 100 lbs. 3.00
Vigoro Mostly Stimulant ...	25 lbs. \$1.50; 50 lbs. \$2.50; 100 lbs. 4.00
Milorganite	25 lbs. \$1.25; 50 lbs. \$2.00; 100 lbs. 3.50
Stim-u-plant ...	30 Tablets 25c; 100 Tablets 75c; 1000 Tablets 3.50
Peat Moss	Half Bale, \$1.50; Large Bale 2.75
Lime, Ground	50 lbs. 75c; 100 lbs. 1.25
Animal Manure, Rich Sheep or Cow Manure, Per Truck Load..	2.50
Black Dirt, Pure Black Earth, Per Truck Load	2.00
Hormodin—Root forming chemical, price per package.....	1.00

INSECTICIDES

Lime Sulphur	1 lb. Pkg. 35c; 5 lbs. \$1.45
Arsenate of Lead	1 lb. Pkg. 30c; 4 lbs. .65
Paris Green	¼ lb. Pkg. 15c; 1 lb. 50c; 5 lbs. 2.25
Nicotine Sulphate (Black leaf 40)	1 oz. 35c; 5 oz. 1.00
Evergreen, for insects	1 oz. bottle 35c; 6 oz. 1.00
Tobacco Dust Fertilizer and Insecticide.....	10 lbs. 50c; 100 lbs. 4.00
Acme Dusting Sulphur (Fine for Roses).....	2 lb. Can .25
Garden Guard, Acme Rotenone	Per Can 35c; 4 lb. Bag. .65
Bordeau Mixture	1 lb. 35c; 4 lbs. .75
Red River Potato Mix	1 lb. 30c; 4 lbs. .75
London Purple	1 lb. 25c; 4 lbs. .45
Dogzoff, Spray for Evergreens and fruit trees, in Bottles, each	.60
Meo. 181 Dandelion Killer	Gal. \$1.55; 5 Gal 7.00
Black Flag, Fly Spray, Household Use ..	Pt. 25c; Qt. 45c; Gal. 1.50
Black Flag, Cattle Spray	Gal. 1.25
Harts—Verminox, Rat Kill	Pkg. .20
Harts—Mole Kill	Pkg. .25
Harts—Poison Wheat Kills Mice	Pkg. .15
Sure Death—Mole Bomb	10c each; 3 for .25

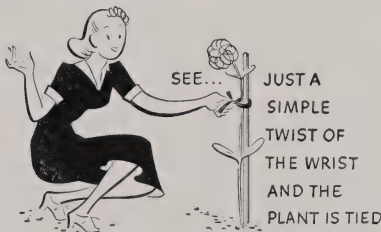
DISINFECTANTS

Semesan, Jr. (Corn)	lb. .75
Semesan Bel (Potatoes)	4 oz. 50c; 1 lb. 1.50
Ceresan (Grains)	1 lb. 75c; 5 lbs. 3.00

BLATCHFORD'S CALF MEAL 25 lbs., \$1.25 — 100 lbs. \$4.50

BIRD SEED

	1 lb.	10 lbs.	100 lbs.
Canary Seed, best bird food	\$0.15	\$1.25	\$9.00
Hemp Seed15	1.25	9.00
Rape Seed15	1.25	9.00
Mixed, All kinds mixed proportionately15	1.00	9.00
Sunflower Seed15	1.25	9.00



'TWIST-EMS'

250—4"\$0.25

125—8"25



BIRD BATH No. 752

Dull Brown.
Stone White
24 Inches High.
18 Inch in Diameter.

An attractive and enjoyable ornament for any lawn.

Price, each\$4.00

No. 721 SUN DIAL

36 Inches High.
Dull Brown Finish.
Accurate and Interesting.
Price, each\$5.00



WIRE HANGING BASKETS

- 12 Inch, each\$0.35
- 14 Inch, each50
- 16 Inch, each65
- 18 Inch, each75



LAWN URN No. 612

Tan; Stone White.
15 Inches High.
16 Inches in Diameter.
Price, each\$5.00

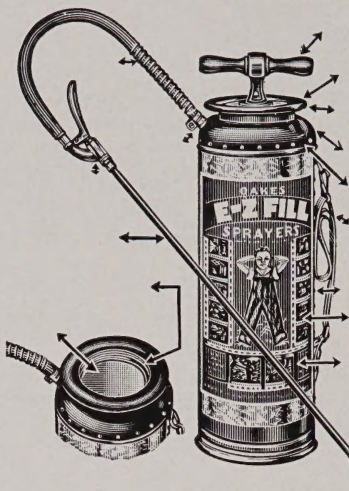
JARDINIERS ,with Saucers.

Dull Brown.
10 1/2 Inches High.
12 Inches in Diameter.
Price, each\$2.00



FLOWER POTS, with Saucers

- Durable Lacquer Finish, White-Green—Red-Yellow.
- 4 Inch15c each; 2 for 25c; Dozen \$1.35
 - 5 Inch20c each; 2 for 35c; Dozen \$1.85
 - 6 Inch25c each; Dozen \$2.50
 - 7 Inch30c each; Dozen \$3.00



NEPONSET PAPER POTS

2½ in. size, 75c per 100; \$6.00 per 1,000, 3 in. size \$1.00 per 100; \$7.50 per 1,000. Plant Boxes \$0.15 doz. with box.

E-Z FILL SPRAYER

Made of heavy galvanized steel. Sprays at any angle, especially underneath the leaves and lower growing plants. "Sturdy-boy".

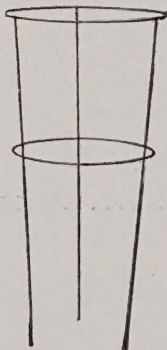
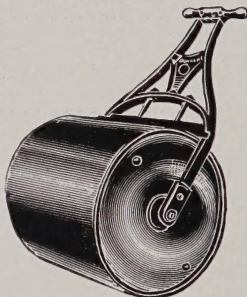
E-Z Fill No. 140, 3¼ gal. tank \$4.50 each
 E-Z Fill No. 135, 3½ gal. tank 3.50 each
 Hudson Long Stroke Liquid Sprayer....Price 50 cents each

LAWN ROLLER

Dunham (Ball Bearing) Water filling Lawn Roller. Heavy Steel Construction.

Diameter, 18"; Length 24"; Empty Weight, 85 lbs.; Filled with water 265 lbs. Pushes and Pulls with ease.

Price\$15.00



ADAMS PEONY AND TOMATO SUPPORTS

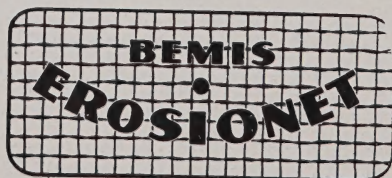
Twist pieces of cloth around stock near ground, and tie ends together. With piece of cloth loop up peony plants into a close bundle without injuring. Do tomato likewise. Best and cheapest plant supports. Diameter 18 in. Height 30 in. Each 30c, \$3.00 per dozen.

WIRE PLANT STAKE, 42 INCHES LONG

Wire Plant stakes for supporting flowers of all kinds—42" long.

Per dozen\$0.60
 Per hundred 4.50

Protect Lawn Seeding with EROSIONET' Mesh Fabric, 45 in. wide-full roll 800 yds. 250 yard and 500 yard roll also.



Fine on sloping terraces or stubborn places — use 4 in wire staples to hold fast to ground. Seed will not wash or blow. Price per yd \$0.10 100 yard roll,

per yard09

Write for sample.



Hotkaps

Gain three weeks on your early planting
Hotkaps are Cheap Insurance

Price per 25—\$0.50. Per 100—\$1.50. Per 1000—\$10.75



TRI-OGEN

Patents Pending

For all Rose Diseases.
Per Kit\$1.50

Rose Garden Spray Treatment

Most effective Plant Food for house plants.

Per pkt.10c and 25c



IN MEASURED EFFECTIVE AMOUNT

PAT. PENDING



Our most complete fertilizer.
For prices see page 20.

VITAMIN B-1

Zoom (Liquid), 2 oz. bottle\$1.00
Thompsons (Crystalline Powder, 1/10 Gram 1.00

The Michael Seed Store

316 Pearl St.

SIOUX CITY, IOWA

Phone 8-8666

*Serving the Trade for over
Forty Years*

REMEMBER MICHAEL SEEDS

316 Pearl Street



**MASTODON
EVERBEARING
STRAWBERRY
PLANTS**

STRAWBERRY PLANTS—Everybearing

	25	100
Mastodon, Home Grown	\$0.35	\$1.25
Gem—Drouth resistant. Wonder plant35	1.00
Wayzata75	2.00

JUNE BEARING

Dunlap25	.75
--------------	-----	-----