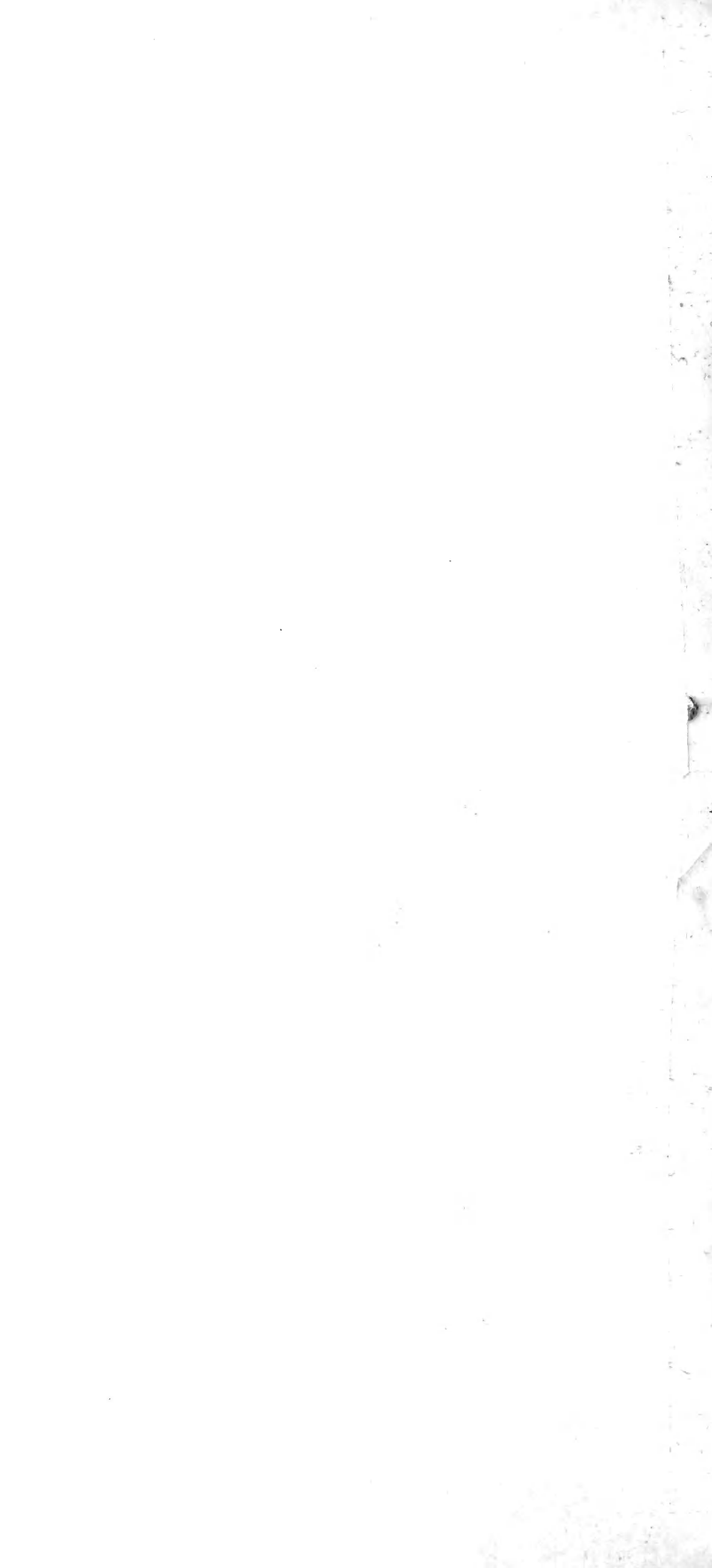


Historic, Archive Document

Do not assume content reflects current scientific knowledge, policies, or practices.





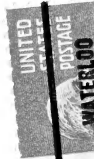
BULBS

"EXTRISTRONG"

Prize Winning

1941

- 
- 
- IRIS
 - DAHLIAS
 - GLADIOLUS
 - PEONIES
 - TULIPS

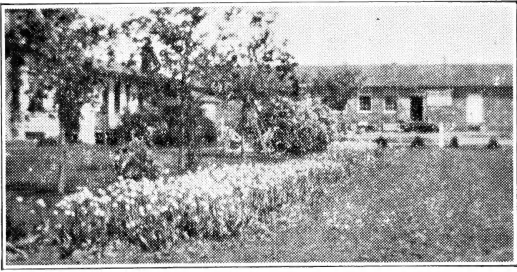


Direct From Our Farm To You!

You may buy cheaper bulbs, but better bulbs you cannot buy. We grow millions of them and give you all we can for your money.

Ray V. Moss
WATERLOO BULB FARMS
WATERLOO, IOWA





OUR HOME AND BULB STORAGE. 100,000 cubic feet of space, Built for Better Bulbs.

VISIT OUR GARDENS

We are located one and one-half miles S. E. of the Waterloo City limits on Highway 218.

You are always welcome to visit our gardens. Come any time—in the spring when tulips, iris, and peonies are in bloom; later, from July 15 to frost, we have acres of gladiolus and dahlias blooming.

The best way to select new varieties for your garden is to see them growing. We also have many perennial and annual plants which are very interesting. You are under no obligation to buy.

We also do a complete florist business during the summer season, furnishing flowers for any occasion—wedding, funeral designs, and so on.

Prepaid Gladiolus

Prices quoted are for Large, L.—1½ inches and up; Medium.—¾ to 1¼ inches; and Small, S.—½ inch or more. Three or more bulbs at ten rate **No item less than ten cents.** These prices are prepaid to you. For quantity prices see page . Dates given are average blooming time. Early plantings take longer; late plantings take shorter time.

ACOLADE Laciniated lavender rose. (L. 2 for 12c; 10 for 50c) M. 10 for 30c)

ACHILLES (76 days). Orange-red with fine large florets. (L. 2 for 12c; 10 for 50c) (M. 10 for 30c)

ADIRONDACK Massive rose red (L. 2 for 12; 10 for 50c) (M. 10 for 30c)

AFLAME (91 days). Begonia rose shading to orange flame; extremely large. This is one of the very best for exhibition. (L. 2 for 12c; 10 for 50c) (M. 10 for 25)

AIDA (70 days). A very early deep blue.

Large blooms. One of the best in its color. (L. 2 for 12c; 10 for 50c) (M. 10 for 25c)

ALBANIA (85 days). Fine pure white, good grower. Best commercial value. Plant many of these. (L. 2 for 12c; 10 for 50c) (M. 3 for 10c; 10 for 30c) (S. 10 for 15c)

ALBATROSS (80 to 90 days). Massive pure white. Very tall spike. One of the best whites. (L. 2 for 15c; 10 for 60c) (M. 3 for 10c; 10 for 25c)

ALICE TIPLADY (78 days). Beautiful orange saffron. Large primulinus. (L. 2 for 12c; 10 for 50c) (M. 10 for 25c)

AMBROSIA Novelty, smoky old rose. (L. 2 for 12c; 10 for 50c) (M. 10 for 30c)

AMADOR (75 days). A new red glad. Straight spike. Form and placement good. Highly recommended. Does not burn or fade. (L. 2 for 12c; 10 for 50c) (M. 10 for 25c)

APRICOT GLOW Long slender spike, fine decorative type for baskets and vases. (L. 2 for 12c; 10 for 50c) (M. 10 for 25c) (S. 10 for 15c)

ARIADNE Very tall ruffled white with red throat. (L. 2 for 12c; 10 for 50c) (M. 10 for 30c)

AVE MARIA Large near blue.. Tall straight spikes. (L. 2 for 12c; 10 for 50c) (M. 10 for 30c)

BAGDAD (90 days). Smoky old rose blending to a lighter throat, faint blotches on cream with penciling. Tall strong spike. Exhibition prize-winner. (L. 2 for 12c; 10 for 50c) (M. 10 for 25c) (S. 10 for 15c)

BEAUTIFUL OHIO Rose lavender. Best three spikes in Decorative division at 1939 Iowa State Glad Show. (L. 20c each; 10 for \$1.60)

BEOWULF Outstanding lavender. (L. 15c each; 10 for \$1.20)

BEACON Red salmon, with large cream center. (L. 1 for 10c; 10 for 80c)

BLUE ADMIRAL Late huge purple. (2 for 12c; 10 for 50c)

BLUE BEAUTY Exhibition light blue. (1 for 10c; 10 for 80c)

BERTY SNOW (82 days). Pink lavender-some times considered the best lavender. Extra wide open, fine exhibition variety. (L. 2 for 12c; 10 for 50c) (M. 10 for 25c) (S. 10 for 15c)

BETSY BOBUP Cream yellow-red line in throat. (L. 2 for 12c; 10 for 50c) (M. 10 for 30c)

BETTY BROWN EYES Orange maroon blotches on petals. (L. 2 for 12c; 10 for 50c) (M. 10 for 30c)

BETTY COED Soft creamy pink. (L. 2 for 12c; 10 for 50c) (M. 10 for 30c)



Bill with a bunch of bulbs ready to ship, you may buy 1 or 100,000 from us.

BETTY NUTHALL (111 days). Light apricot with pink tinge, soft salmon throat. Six to eight nicely arranged florets open on a tall straight spike. Exhibition type. (L. 2 for 12c; 10 for 50c) (M. 3 for 10c; 10 for 25c) (S. 10 for 15c)

BIG BLACK (84 days). Pure rich deep red. (L. 2 for 15c; 10 for 60c) (M. 10 for 30c)

BILL SOWDEN Large rich red Australian glad. Exhibition type. (L. 2 for 15c; 10 for 60c) (M. 10 for 30c)

BLEEDING HEART Light pink with large red blotch. Large decorative type. (L. 2 for 15cc; 10 for 60c) (M. 10 for 30c)

BLACK PANSY (77 days). Deep dark red. Small decorative. (L. 2 for 15c; 10 for 60c) (M. 10 for 30c)

BLUE DANUBE (90 days). Amethyst blue. Straight spike carrying many well placed blooms. (L. 2 for 15c; 10 for 60c) (M. 10 for 30c)

BOBBY (80 days). Immense deep rose blue-red blotch. (L. 2 for 15c; 10 for 60c) (M. 10 for 30c)

BOB WHITE Tall immense white, rose lines on petals. (L. 2 for 12c; 10 for 50c) (M. 10 for 25c)

BREAK O'DAY (73 days). LaFrance pink, pencil on yellow throat. An early glad much in demand. (L. 2 for 12c; 10 for 50c) (M. 10 for 25c) (S. 10 for 15c)

BRIGHTSIDES Canary yellow with apricot and orange-red shadings. (L. 2 for 15c; 10 for 60c) (M. 10 for 30c)

BROWN WINGS A good novelty, brown and tan. (L. 2 for 12c; 10 for 50c) (M. 10 for 30c)

CADILAC Tall golden apricot self color. (L. 2 for 12c; 10 for 50c) (M. 10 for 30c)

CALIFORNIA SUNSHINE Orange and yellow with red line throughout. (L. 2 for 12c; 10 for 50c) (M. 10 for 30c)

CAESAR Beautiful ruffled salmon pink. (L. 2 for 12c; 10 for 50c) (M. 10 for 30c)

CAPTAIN COURAGEOUS Dark red. (L. 2 for 15c; 10 for 50c) (M. 10 for 30c)

CARA MIA (70 days). Early deep shrimp pink Decorative type. Good growing habits. (L. 2 for 12c; 10 for 50c) (M. 10 for 25c) (S. 10 for 15c)

CARDINAL PRINCE (85 days). Large dark red Very early. (L. 2 for 12c; 10 for 50c) (M. 10 for 30c)

CARMEN SYLVA (99 days). A lily-like white glad. A thing of beauty when grown well. (L. 2 for 12c; 10 for 50c) (M. 10 for 30c)

CHALICE FLOWER (72 days). Light creamy blush white, tall decorative. (L. 2 for 12c; 10 for 50c) (M. 10 for 30c)

CHALLENGER (88 days). Very large rich dark velvety soft solid color. (L. 2 for 12c; 10 for 50c) (M. 10 for 30c)

CHARLES DICKENS (75 days). Large radiant purple. Very tall spike. A good show flower in its color class. (L. 2 for 15c; 10 for 50c)

CHERRY RED (65 days). Very early cherry red. Good commercial and cut flower. (L. 2 for 12c; 10 for 50c) (M. 10 for 25c)

CIRCE (75 days). Tall deep dark red. Early (L. 2 for 15c; 10 for 60c) (M. 10 for 30c)

COLONIAL MAID Tall, many open, charming lavender. (L. 35c each)

COMMANDER KOEHL (85 days). Very large clear scarlet red. Tall spike with many flowers open at one time. One of the best reds. (L. 2 for 12c; 10 for 60c) (M. 10 for 30c)

COPPER BRONZE (94 days). A true copper bronze shade. A glad often used by garden club members. (L. 2 for 12c; 10 for 50c) (M. 10 for 25c)

CORONATION Tall salmon yellow. (L. 2 for 12c; 10 for 50c) (M. 10 for 25c) (S. 10 for 15c)

CRINKLES (90 days). Tyrian rose—extremely ruffled—resembles rose buds. Many buds showing color. Very good. (L. 2 for 15c; 10 for 60c) (M. 10 for 30c)

D. A. HAY Decorative lovely soft pink. (L. 2 for 12c; 10 for 50c) (M. 10 for 30c)

DEBONAIR Tall LaFrance pink, cream and pink throat. (L. 2 for 12c; 10 for 50c) (M. 10 for 25c)

DELICACY (79 days). Delicate rose pink, small decorative. (L. 2 for 12c; 10 for 50c) (M. 10 for 25c)

DEW OF HEAVEN (96 days). Rich deep rose pink. (L. 2 for 12c; 10 for 50c)



Raymond III, Russell and Jimmy with some of the trophies won by us at the State and National shows in 1940. Several hundred ribbons were awarded us and we were high commercial exhibitors at all Iowa Glad Shows. We grow the varieties that will win for you.

DREAM (86 days). Large massive ruffled geranium red. (L. 2 for 12c; 10 for 50c)

DR. SHOOK (91 days). Deep tyrian rose, heavily ruffled. Strong spikes, best in its class. (L. 2 for 15c; 10 for 60c)

DR. HOEG Dark glossy red. New. Outstanding. (L. 2 for 12c; 10 for 50c) (M. 10 for 25c) (S. 10 for 15c)

DR. F. E. BENNETT (80 to 90 days). Bright scarlet. White pencil. (L. 2 for 12c; 10 for 50c) (M. 10 for 30c)

DR. MOODY (96 days). Light lavender with very fine penciling of darker shade. (L. 2 for 12c; 10 for 50c) (M. 10 for 30c)

DREAM OF BEAUTY (80 to 90 days). A dark rose red. Attracts much attention. (L. 2 for 12c; 10 for 50c) (M. 10 for 30c)

DUNA Lovely cream pink, very prolific. Large decorative. (L. 2 for 12c; 10 for 50c) (M. 10 for 25c)

DUCHESS OF YORK (Moir) Smoky novelty. (L. 2 for 12c; 10 for 50c) (M. 10 for 30c)

DUSKY Smoky old rose red. (L. 2 for 12c; 10 for 50c) (M. 10 for 30c)

EARLY DAWN (72 days). New. Tall large rich geranium pink. Color slightly deeper on lower petals. (L. 2 for 12c; 10 for 50c) (M. 10 for 25c) (S. 10 for 15c)

EARLY MELODY Tall light lavender. (L. 2 for 12c; 10 for 50c) (M. 10 for 30c)

E. J. SHAYLOR (75 days). Ruffled pure rose pink. Strong spike with large blooms. A very good glad. (L. 2 for 12c; 10 for 50c) (M. 10 for 30c)

EDITH ROBSON Salmon rose, reddish blotch. Tall strong plant—a prize winner. (L. 2 for 12c; 10 for 50c) (M. 10 for 30c)

EMILE AUBURN (88 days). Coppery rose overlaid with slate. Large red blotch. Many florets open at once. Well grown—very outstanding. (L. 2 for 12c; 10 for 50c) (M. 10 for 30c)

ENIGMA (77 days). Redland yellow throat, striped with white giving grayish effect. (L. 2 for 12c; 10 for 50c)

FRANK J. MC COY (89 days). Immense pink, many times winner of champion spike of shows. One of the best. (L. 10 each; 10 for 80c)

FERN KYLE (96 days). Large ruffled creamy white. Vigorous grower. (L. 2 for 12c; 10 for 50c) (M. 10 for 30c)

FLAMING METEOR Large bright deep red; one of the best reds, very fine. (L. 2 for 15c; 10 for 60c) (M. 10 for 30c)

FLAMING SWORD (84 days). Bright red. Lovely blooms. Decorative type. Stands heat and shipping. (L. 2 for 12c; 10 for 50c) (M. 10 for 25c) (S. 10 for 15c)

FLORENCE WINTER Large decorative. Lovely cream with cerise throat. (L. 2 for 15c; 10 for 60c) (M. 10 for 30c)

GATE OF HEAVEN Ruffled rich yellow. (L. 2 for 12c; 10 for 50c) (M. 10 for 30c)

GAY HUSSAR A large orange scarlet shading to strawberry pink. (L. 2 for 12c; 10 for 50c) (M. 10 for 25c) (S. 10 for 15c)

GERTRUDE SWENSON Tall lavender, many open, very fine. (L. 2 for 15c; 10 for 60c) (M. 10 for 40c)

GIANT NYMPH (88 days). Very large pink. Sure grower and bloomer. One of the best medium early pinks. Stands heat and shipping. (L. 2 for 12c; 10 for 50c) (M. 10 for 25c) (S. 10 for 25c)

GOLD (80 days). Clear yellow. One of the leading yellows. (L. 2 for 12c; 10 for 50c) (M. 10 for 25c)

GOLD EAGLE (70 days). Deep clear yellow. Slightly ruffled. Very early. (L. 2 for 12c; 10 for 50c) (M. 10 for 30c) (S. 10 for 15c)

GOLD BUG (79 days). Ruffled deep golden buttercup yellow, tall spike. (L. 2 for 12c; 10 for 50c) (M. 10 for 30c)



Ray Jr. and Mildred and their family.

GOLDEN CUP Deep yellow, tall straight spike. (L. 2 for 12c; 10 for 50c) (M. 10 for 25c)

GOLDEN DREAM (86 days). Very tall deep yellow. Their long spikes with many open blooms make beautiful baskets. (L. 2 for 12c; 10 for 50c) (M. 10 for 25c)

GOLDEN FLAME Tall orange salmon. (L. 2 for 12c; 10 for 50c) (M. 10 for 30c)

GOLDEN BROWN Chocolate brown. Slightly ruffled. (L. 2 for 12c; 10 for 50c) (M. 10 for 30c)

GOLDEN CHIMES Lovely soft yellow with darker throat. (L. 2 for 12c; 10 for 50c) (M. 10 for 30c)

GOLDEN GLORY (79 days). Ruffled rich golden yellow. Red blotch. (L. 2 for 12c; 10 for 50c) (M. 10 for 25c)

GOLDEN POPPY Rich yellow glad with lighter shades of orange. Small decorative. (L. 2 for 12c; 10 for 50c;) (M. 10 for 25c)

GOLDEN SLIPPERS (60 days). Early ruffled pink and yellow. Small decorative. (L. 2 for 12c; 10 for 50c) (M. 10 for 25c)

GORGEOUS Large rich rose red, deeper red blotch. (L. 2 for 12c; 10 for 50c) (M. 10 for 25c)

HALLOWEEN Beautiful orange, large, many open. (L. 2 for 12c; 10 for 50c)

HELEN WILLS (80 days). Clear large white shading to cream on lower petals. Fine substance. Vigorous, straight spike with fine placement. (L. 2 for 12c; 10 for 50c;) (M. 10 for 30c)

HELGA (85 days). Salmon pink decorative. Very strong, dependable drought resistant. (L. 2 for 12c; 10 for 50c) (M. 10 for 25c) (S. 10 for 25c)

HYE NYE (100 days). Very tall rose lavender. Many open florets. Something different. (L. 2 for 12c; 10 for 50c) (M. 10 for 25c)

HINEMOA Novelty rose and chocolate with white lines. (L. 1 for 10c; 10 for 80c)

HOOSIER PEARL (69 days). Apricot blushed pink, tall spike, small decorative. (L. 2 for 12c; 10 for 50c) (M. 10 for 25c)

HUMMER Deep ruffled red. (L. 2 for 12c; 10 for 50c) (M. 10 for 30c)

ILLUMINATOR (81 days). Brilliant carmine red with faint suffusion of blue. An intense French purple blotch on lower petals. A fine cut flower. (L. 2 for 12c; 10 for 50c) (M. 10 for 25c)

IROQUOIS (70 days). Large showy ruby red—darker throat. (L. 2 for 15c; 10 for 60c) (M. 10 for 30c)

JENNY LIND (90 days). Light salmon with cream throat. Fine grower, good placement. A popular cut flower. (L. 2 for 12c; 10 for 50c) (M. 10 for 25c)

JESSIE Tall deep rose pink. (L. 2 for 12c; 10 for 50c) (M. 10 for 30c)

J. H. McFARLAND (88 days). Extra tall golden ophelia rose. (L. 2 for 12c; 10 for 50c) (M. 10 for 25c)

JOE COLEMAN (73 days). Ruffled dark red rose. We can't grow enough of this one. (L. 2 for 12c; 10 for 50c) (M. 10 for 25c)

J. T. PIRIE (88 days). Mahogany smoky, brown blotch on yellow. A real novelty—one that attracts crowds. (L. 2 for 12c; 10 for 50c) (M. 10 for 25c)

KING ARTHUR Deep rose lavender. (L. 2 for 12c; 10 for 50c) (10 for 30c)

LADY LORENE Decorative Salmon Pink. (L. 2 for 12c; 10 for 50c) (M. 10 for 30c)

LADY MARIE Earliest bloomer in our field. Salmon pink. (L. 2 for 12c; 10 for 50c) (M. 10 for 30c)

LAVENDER DELIGHT (85 days). A clear lavender. (L. 2 for 12c; 10 for 50c) (M. 10 for 25c)

LAUGHTER (66 days). Flesh color. (L. 2 for 12c; 10 for 50c) (M. 10 for 25c)

LIBELLE Heliotrope blue, violet markings in throat. Large decorative. (L. 2 for 12c; 10 for 50c) (M. 10 for 25c)

LIGHTS OF GOLD One of the loveliest blending of salmon and cream shades; intensely ruffled; soft green overcast. (L. 2 for 12c; 10 for 50c) (M. 10 for 30c)

LINDESTRA Salmon rose with cream throat. Large decorative. (L. 2 for 12c; 10 for 50c) (M. 10 for 25c)

LONDONDERRY Immense Bronze orange. Exhibition type. (L. 2 for 12c; 10 for 50c) (M. 10 for 30c)

LOTUS Waxy white tinted pink and cream. (L. 2 for 15c; 10 for 60c) (M. 10 for 30c)



Alice and Guess Who

LOS ANGELES (87 days). Orange Salmon very popular for cut flowers. Many blooms open and stands heat well. (L. 2 for 12c; 10 for 50c) (M. 10 for 25c)

LOYALTY (94 days). Very fine yellow, good sized spike and good grower. (L. 2 for 12c; 10 for 50c) (M. 10 for 25c)

LUCIFER Bright scarlet, purplish-red blotch; large massive flower; straight spike. (L. 2 for 12c; 10 for 50c) (M. 10 for 30c)

LULU Cream and buff. (L. 2 for 12c; 10 for 50c) (M. 10 for 25c)

MAGNA BLANC Large lavender blue, purple blotch in throat; grows very tall. Should be staked. (L. 2 for 12c; 10 for 50c) (M. 10 for 25c)

MAGIC (70 days). Fine lavender blue, purple blotch in throat. Small decorative. (L. 2 for 12c; 10 for 50c) (M. 10 for 25c)

MAID OF ORLEANS Tall spike of lovely white creamy blooms, good placement. Large decorative. (L. 2 for 12c; 10 for 50c;) (M. 10 for 25c)

MAIDEN'S BLUSH (80 days). Dainty light pink. Very popular for baskets and floral work. (L. 2 for 12c; 10 for 50c) (M. 10 for 25c)

MAMMOTH WHITE (94 days). Immense white One of the very largest pure white; flowers five or more inches across. (L. 2 for 12c; 10 for 50c) (M. 10 for 25c)

MARGARET FULTON Coral pink. Very meritorious, decorative—stands heat, good grower. (L. 2 for 12c; 10 for 50c) (M. 10 for 25c) (S. 10 for 15c)

MARMORA (96 days). Smoky gray lavender with purple blotch. (L. 2 for 12c; 10 for 50c) (M. 10 for 25c)

MARY FREY (83 days). Lavender with a ruby throat. A wonder glad. One of the earliest lavers. (L. 2 for 12c; 10 for 50c) (M. 10 for 25c)

MARY JANE (80 days). Light silver lavender with lavender throat. A beauty in pastel shade Good grower. (L. 2 for 12c; 10 for 50c) (M. 10 for 25c)

MARY ELIZABETH Tall stately white blending to rich yellow throat. (L. 2 for 15c; 10 for 60c) (M. 10 for 30c)

MAUVE MAGIC (85 days). A good lavender (L. 2 for 12c; 10 for 50c) (M. 10 for 25c)

MAY DAVIDSON Smoky rose. (L. 2 for 12c; 10 for 50c)

MIBLOOM (75 days). Good sized florets on straight spike. Plenty of substance. Soft white with blotch on fine red in throat. (L. 2 for 12c; 10 for 50c) (M. 10 for 25c)

MINUET (95 days). Truest lilac lavender. A fine show flower, strong grower. Many large blooms with very good keeping quality. (L. 2 for 12c; 10 for 50c) (M. 10 for 25c)

MISS ALAMEDA Large deep salmon pink. (L. 2 for 12c; 10 for 50c) (M. 10 for 30c)

MISS GREELEY (85 days). Pink—similar to W. H. Phipps but three weeks earlier. Many open on good spikes. Very outstanding. (L. 2 for 12c; 10 for 50c) (M. 10 for 25c)

MISS JUDY Large botched salmon. (L. 10c each; 10 for 80c)

MISS MUSKEGON Late, dark velvety rose. (L. 2 for 15c; 10 for 60c)

MORAVIAN (75 days). Ruffled lavender, cream veined. Early decorative. (L. 2 for 12c; 10 for 50c) (M. 10 for 25c) (S. 10 for 15c)

MOTHER MACHREE (85 days). Soft smoky lavender combined with gray and orange. (L. 2 for 12c; 10 for 50c) (M. 10 for 25c)

MR. WM. CUTHBERTSON White with delicate rose pink at the ruffled edges. Eight to ten open at a time. (L. 2 for 12c; 10 for 50c) (M. 10 for 30c)

MR. W. H. PHIPPS (120 days). Beautiful La-France pink. As many as 14 to 16 blooms open on one spike at a time. Best to plant large bulbs of this variety. (L. 2 for 12c; 10 for 50c) (M. 10 for 25c)

MOROCCO (94 days). Novelty glad. Very dark red—Almost black. (L. 2 for 12c; 10 for 50c) (M. 10 for 25c) (S. 10 for 15c)



Part of Our Perennial Beds

MRS. ARTHUR MEEKER (83 days). American Beauty rose color. (L. 2 for 12c; 10 for 50c) (M. 10 for 25c)

MRS. COOLIDGE Soft cameo pink with canary markings. (L. 2 for 12c; 10 for 50c) (M. 10 for 25c)

MRS DR. BEVAN (76 days). Ruffled creamy white with rose pink thread. (L. 15c each; 10 for \$1.20)

MRS HEATON New deep salmon pink. (L. 2 for 12c; 10 for 50c) (M. 10 for 25c)

MRS. F. C. PETERS (90 days and over). Orchid with darker blotch. Many wide open blooms. Tall spike. (L. 2 for 12c; 10 for 50c) (M. 10 for 30c)

MRS. LEON DOUGLAS (94 days). Begonia rose flaked scarlet. Rather pointed petals, good placement. Fine exhibition type. (L. 2 for 12c; 10 for 50c) (M. 10 for 25c)

MRS P. W. SISSION (91 days). Ruffled delicate cameo pink. Many large blooms open at a time. (L. 2 for 12c; 10 for 50c) (M. 10 for 25c)

NANCY HANKS (65 days). Apricot orange with rose pencil on yellow throat. Straight spike. Resists heat. (L. 2 for 12c; 10 for 50c) (M. 10 for 25c)

NEW ERA Eosine pink with LaFrance pink blend. Soft creamy throat, ruffled petals, straight spike. Eighteen to twenty buds—ten open. (L. 15c each; 10 for \$1.20) (M. 10c each; 10 for 80c)

OLIVE MARIE BROWN Small decorative. Deep orange with cream and yellow. Eight to ten open at one time. (L. 2 for 12c; 10 for 50c) (M. 10 for 30c)

OLIVE GOODRICH Light pink with open blooms. (L. 2 for 12c; 10 for 50c)

ORANGE DELIGHT Small pleasing orange. (L. 2 for 20c; 10 for 70c) (M. 10 for 40c)

ORANGE PRINCESS Strong pleasing orange. (L. 2 for 12c; 10 for 50c) (M. 10 for 25c)

ORANGE QUEEN (80 days). Apricot orange with red pencil. Graceful spike. (L. 2 for 12c; 10 for 50c) (M. 10 for 25c)

ORANGE SOVEREIGN Beautiful orange buff. (L. 2 for 12c; 10 for 50c) (M. 10 for 25c)

ORANGE WONDER Tall strong growing dark orange. (L. 2 for 15c; 10 for 60c)

OUR SELECTION Smoky old rose. (L. 2 for 12c; 10 for 50c) (M. 10 for 25c)

OSOLIN (88 days). Coral pink with soft orange shadings in throat. Many open florets. (L. 2 for 12c; 10 for 50c) (M. 10 for 30c)

PARADISE Apricot buff with yellow throat. Tall vigorous spike, many open. (L. 2 for 12c; 10 for 50c) (M. 10 for 30c)

PEGGY LOU Shrimp pink with rose tint, same parentage as Picardy. (L. 15c each; 10 for \$1.20) (M. 2 for 15c; 10 for 60c)

PENDLETON (76 days). Rose pink on white background. Lower petals blotched carmine red. (L. 2 for 12c; 10 for 50c) (M. 10 for 25c)

PELLEGRINA (80 days). New near blue—finest deep blue, two lower petals a trifle darker. (L. 2 for 12c; 10 for 50c) (M. 10 for 25c)

PENSECOLA Scarlet red. (L. 2 for 15c; 10 for 60c) (M. 2 for 10c; 10 for 40c)

PHYLLIS McQUISTON Large beautiful light rose. (L. 2 for 12c; 10 for 50c) (M. 10 for 30c) (S. 10 for 15c)

PFITZERS TRIUMPH (92). Brilliant scarlet orange. Exhibition type. A real triumph. (L. 2 for 12c; 10 for 50c) (M. 10 for 25c)

PICARDY (90 days). Sensational salmon pink. The most widely grown glad today. (L. 2 for 12c; 10 for 50c) (M. 10 for 30c)

PIERIAN (70 days). Lacciniated canary yellow. Small decorative. (L. 2 for 12c; 10 for 50c) (M. 10 for 30c)

PIPPIN Coral Pink, good substance, an old favorite. (L. 2 for 12c; 10 for 50c) (M. 10 for 25c)

PRAIRIE GOLD Deep yellow, carmine tips,, tall straight spikes. (L. 2 for 15c; 10 for 60c) (M. 3 for 10c; 10 for 30c)

PRIDE OF WANAKA (93 days). Very beautiful large lavender rose. (L. 2 for 12c; 10 for 50c) (M. 10 for 25c)

PRIMROSE PRINCESS Light yellow. (L. 2 for 12c; 10 for 50c) (M. 10 for 30c)

PRIMROSE (65 days). Lacciniated lemon white Small decorative. (L. 2 for 12c; 10 for 50c) (M. 10 for 30c)

PURPLE SPOT (80 days). Violet red with dark blotches. (L. 2 for 12c; 10 for 50c) (M. 10 for 30c)

QUEEN OF BREMEN Early fine pink lavender, medium size. Should be grown everywhere. (L. 2 for 12c; 10 for 50c) (M. 10 for 30c)

QUEEN HELEN 2ND. Large salmon pink. (L. 2 for 12c; 10 for 50c) (M. 10 for 30c)

RAPTURE (90 days). Tall late salmon with creamy throat. Good spike with well placed blooms. (L. 2 for 12c; 10 for 50c) (M. 10 for 30c)

RECOVERY Tall salmon rose, many florets open. (L. 2 for 12c; 10 for 50c) (M. 10 for 30c)

RED LORY (100 days). Red purplish blotch. Exhibition type. (L. 2 for 15c; 10 for 60c) (M. 10 for 30c)

RED PHIPPS (80 days). A glowing self color red. Good substance.. Straight spike, 6 to 10 open at a time. (L. 2 for 12c; 10 for 50c) (M. 10 for 30c)

REVERIE Excellent light pink. (L. 2 for 12c; 10 for 50c) (M. 10 for 25c)

REWI FALLU Tall straight dark red, six or more massive blooms open with many buds. (L. 2 for 15c; 10 for 60c) (M. 10 for 40c)

RIDEAU Smoky salmon. (L. 2 for 12; 10 for 50c) (M. 10 for 40c)

RIMA New rose and lilac pastel blend, creamy throat, till straight spike. (L. 15c each; 1 0for \$1.20) (M. 2 for 14c; 10 for 60c)

ROBERT THE FIRST Large ruffled pale rose-purple, 8 to 10 open, 19 to 20 buds. (L. 10c each; 10 for 80c) (M. 2 for 10c; 10 for 40c)

ROMANCE (77 days). Smoky salmon red, yellow throat-blue edged. Novelty. (L. 2 for 12c; 10 for 50c) (M. 10 for 25c)

ROSE MIST (85 days). Lovely old rose bordered with buff. Its graceful spike and blooms create a fine arrangement. (L. 2 for 12c; 10 for 50c) (M. 10 for 25c)

SCARLET PRINCEPS (80 days). Scarlet, florists favorite. (L. 2 for 12c; 10 for 50c) (M. 10 for 25c)

SCARLANO Velvety red, very early. (L. 2 for 12c; 10 for 50c) (M. 10 for 30c)

SCHWABEN GIRL Pure pink, strong straight spikes. (L. 2 for 12c; 10 for 50c) (M. 10 for 30c)

SCHENECTADY, LaFrance pink, heavily flaked lighter pink. (L. 2 for 12c; 10 for 50c) (M. 10 for 30c)

SEÑORITA (90 days). Very clear wide open orange shading to salmon. Winged type of petals, very large. (L. 2 for 12c; 10 for 50c) (M. 10 for 30c)

SHIRLEY TEMPLE New, large ruffled cream, heavy substance, tall grower. (L. 2 for 14c; 10 for 60c) (M. 3 for 10c; 10 for 30c) (S. 10 for 20c)

SMILING MAESTRO Rich orange salmon, beautiful open flowers on straight spike. (L. 2 for 12c; 10 for 50c) (M. 10 for 30c)

SOLVEG Large ruffled white. Wonderful when well grown but variable. (L. 10c each; 10 for 80c) (M. 2 for 10c; 10 for 40c)

SONG OF THE LARK Ruffled salmon and rose. (L. 2 for 12c; 10 for 50c)

SOUTHERN CROSS Large deep red. (L. 2 for 12c; 10 for 50c) (M. 10 for 30c) (S. 10 for 15c)

SPIRIT OF ST. LOUIS (85 days). Orange saffron. Large blooms with good placement. (L. 2 for 12c; 10 for 50c) (M. 10 for 25c)

SPLENDORA (74 days). Large round flower. Cardinal red. (L. 2 for 12c; 10 for 50c) (M. 10 for 30c)

STAR LILY (84 days). Ruffled deep sulphur on canary yellow. (L. 2 for 12c; 10 for 50c) (M. 10 for 30c)

SUNNYMEDE Striking small orange with butterfly on lower petals. (L. 1 for 12c; 10 for 50c) (M. 10 for 30c)

SWEET ALIBI Very ruffled, lovely pink. Each 40c.

SWEETHEART Decorative white with pink edge. (L. 2 for 12c; 10 for 50c) (M. 10 for 30c)

SWEET ROSE (73 days). Massive flowers on tall plant. Purest deep rose. (L. 2 for 12c; 10 for 50c) (M. 10 for 30c)

SYMPHONY Pure light pink. (L. 2 for 12c; 10 for 50c) (M. 10 for 30c)

TAKINA New Zealand Giant, Massive rosiline purple, wide florets. (L. 2 for 14c; 10 for 60) (M. 3 for 12c; 10 for 35c)

TAURUS (66 days). Purple on purple violet. Small decorative. (L. 2 for 12c; 10 for 50c) (M. 10 for 30c)

THREE L. O. Smoky Rose with large blotch. (L. 2 for 12c; 10 for 50c)

TREVONIAN Very large outstanding lavender rose. Champion at shows. (L. 2 for 12c; 10 for 50c) (M. 10 for 30c)

THE ORCHID Charming lacinated lavender. decorative. (L. 2 for 15c; 10 for 60c) (M. 10 for 30c)

TOKEN Densely ruffled flame salmon. (L. 2 for 12c; 10 for 50c) (M. 10 for 30c)

VAGABOND PRINCE New bronze-red smoky with orange throat. Don't miss this one. (L. 2 for 15c; 10 for 60c) (M. 10 for 30c)

VEILCHENBLAU (75 days). Large dark blue decorative. (L. 2 for 12c; 10 for 50c) (M. 10 for 30c)

VIOLA GEM (79 days). Deep violet decorative. (L. 2 for 12c; 10 for 50c) (M. 10 for 30c)

WASAGA (85 days). Buff prim, wide open blooms, very delightful and a heavy winner at shows. (L. 2 for 12c; 10 for 50c) (10 for 30c)

WHITE BUTTERFLY (66 days). Slender white with soft cream and red throat. (L. 2 for 12c; 10 for 50c) (M. 10 for 30c)

WM. BOOTH (78 days). Tyrian rose shading to purple. (L. 2 for 12c; 10 for 50c) (M. 10 for 30c)

WINGED VICTORY Immense tall pink. (L. 2 for 12c; 10 for 50c) (M. 10 for 30c)

WURTEMBERGIA (75 days). Very large pleasing red with cream throat. Good substance. (L. 2 for 12c; 10 for 50c) (M. 10 for 30c)

YELLOW EMPEROR Rich yellow. (L. 2 for 12c; 10 for 50c) (M. 10 for 30c)

YELLOW FRILLS Small decorative canary yellow, very ruffled. (L. 2 for 12c; 10 for 50c) (M. 3 for 10c; 10 for 30c)

YELLOW PERFECTION Large good yellow. (L. 2 for 12c; 10 for 50c) (M. 10 for 25c)

YVONNE Flesh colored pink, blotched. (L. 2 for 12c; 10 for 50c) (M. 10 for 30c)

ZONA (67 days). Deep salmon rose, ruffled. (L. 2 for 12c; 10 for 50c) (M. 10 for 30c)

ZILLAH Tall massive ruffled yellow on a straight spike. (L. 2 for 12c; 10 for 50c) (M. 10 for 30c)

Please note that you may buy from our wholesale price list at very low prices. We can make these reasonable prices because of increased volume of bulbs and less trouble in packing and labeling them in small lots. Although you pay the express charges on wholesale orders, this is much cheaper on larger shipments. We advise increasing your orders to take advantage of these prices. You will never have too many glads.

No Substitutes Without Permission

If possible, please give second choice so that we may fill your order without delay if we are out of any variety. If you do not specify second choice or allow us to substitute a like or a better variety, we will refund the price of the item we cannot fill. We want you to be satisfied.

SPECIAL PLANT FOOD

We use a commercial fertilizer mixed for our needs. We can supply this in any quantity. Contains every mineral required for plant growth. Seven or eight pounds will furnish two applications for a 100-foot row. Price: 10 lbs., 3 cents per pound; 10 to 100 lbs., 2½ cents per pound; 100 lbs. or over 2 cents per pound, F. O. B., Waterloo. Express rates are extra but reasonable to Iowa points.

MRS. MOSS'S GLADIOLA COLLECTIONS

We are offering the following collections in either large or medium size bulbs. We have tried to include an even range of colors in each lot, changing the varieties each year as more suitable bulbs are available. We have set aside a large number of bulbs for these collections and



expect to be able to fill orders till the last of the season but do reserve the privilege of substituting late in the spring. Order as many collections as you like either the same or different.

THE EXHIBITION COLLECTION

12 Varieties — 3 Bulbs Each

Coronation, Debonair, Early Dawn, Golden Flame, Bagdad, Mammoth White, Mauve Magic, Orange Princess, Picardy, Southern Cross, Vagabond Prince and Yellow Emperor.

36 Large Bulbs Postpaid.....\$1.50
36 Medium Bulbs Postpaid.....1.00

THE BLUE NOVELTY COLLECTION

12 Varieties — 3 Bulbs Each

Ave Maria, Bagdad, Lavender Delight, Mauve Magic, Mother Machree, Pellegrina, Gertrude Swenson, Queen of Brennen, Taurus, Vagabond Prince and Viola Gem.

36 Large Bulbs, Prepaid for.....\$1.50
36 Medium Bulbs, Prepaid for.....1.00

THE DECORATIVE COLLECTION

12 Varieties — 3 Bulbs Each

Cara Mia, Delicacy, Dream, Mary Elizabeth, Moravian, Pellegrina, Betty Coed, Schwaben Girl, Star Lily, The Orchid, Wagsa and White Butterfly.

36 Large Bulbs, Postpaid.....\$1.50

36 Medium Bulbs, Postpaid..... 1.00

THE RUFFLED COLLECTION

12 Varieties — 3 Bulbs Each

Crinkles, Gold Bug, Golden Slipper, Joe Coleman, King Arthur, Lights of Gold, Mary Elizabeth, Moravian, Shirley Temple, Star Lily, Zillah and Zona.

36 Large Bulbs, Postpaid.....\$1.50

36 Medium Bulbs,, Postpaid..... 1.00

Any two of above collections, large bulbs.....\$2.75

Any two of above collections, medium bulbs.... 1.75

Any three of above collections, large bulbs.... 4.00

Any three of above collections, medium bulbs.. 2.50

Any four of above collections, large bulbs.... 5.00

Any four of above collections, medium bulbs.. 3.25

We advise early ordering as many varieties may be sold out early. Then, to, we are very busy at planting time and if we have your order before that time we can give better service and get them to you when you want them. You may reserve orders now for later shipments for 25% down, balance before shipment or C. O. D. We can reserve bulbs only until May 1.

We have glads eligible for almost every class. Check up on your entries and enter in more classes. We advise buying at our quantity prices—25 of a variety planted in two plantings about ten days apart should hit all the shows. Using No. 3 size bulbs at our low prices, a few dollars will bring home a lot of extra blue ribbons.

GLADIOLUS WHOLESALE PRICES

(F. O. B. WATERLOO)

Priced per 100, 25 or more at 100 rate, 1000 at 8 times the 100 rate. Quantity prices are for one variety only. At these prices bulbs are sent carrying charges collect, if you order other bulbs at pre-paid prices we will add enough bulbs to cover postage and send all collect if you permit us.

Bulbs sizes are larger than size mentioned.

	No.1 1½in.	No.2 1¼in.	No.3 1in.	No.4 ¾in.	No.5 ½in.	No.6 ¼in.
ACHILLES	\$2.00	1.60	1.40
ACCOLADE	2.40	2.00	1.60
AFLAME	2.00	1.60	1.40
ALBANIA	1.60	1.40	1.00	.80	.60	.50
APRICOT GLOW	1.60	1.40	1.00	.80	.60	.50
BAGDAD	1.60	1.40	1.00	.80	.60	.50
BERTY SNOW	2.00	1.60	1.40
BETTY COED	2.00	1.60	1.40	1.20	.90	.75
BETTY NUTHALL	1.60	1.40	1.40	.80	.60	.50
BLACK PANSY	2.40	2.00	1.60
BLEEDING HEART	1.60	1.40	1.00
BOB WHITE	2.00	1.60	1.40
BREAKODAY	1.60	1.40	1.00	.80	.60	.50
BRIGHTSIDES	2.00	1.60	1.40	1.20	.90	.75
CARA MIA	1.60	1.40	1.00	.80	.60	.50
CARDINAL PRINCE	2.00	1.60	1.40	1.20	.90	.75
CARMEN SYLVA	2.00	1.60	1.40	1.20	.90	.75
CHALICE FLOWER	2.00	1.60	1.40	1.20	.90	.75
CORONATION	1.60	1.40	1.00	.80	.60	.50
CREAM CUPS	2.00	1.60	1.40	1.20	.90	.75
DEBONAIRE	2.00	1.60	1.40	1.20	.90	.75
DELICACY	2.00	1.60	1.40	1.20	.90	.75
DR. BENNETT	2.40	2.00	1.60
DREAM	2.00	1.60	1.40
DREAM OF BEAUTY	2.00	1.60	1.40
DUCHESS OF YORK	2.40	2.00	1.60
EARLY DAWN	1.60	1.40	1.00
EARLY MELODY	2.40	2.00	1.60
EDITH ROBSON	2.40	2.00	1.60
E. J. SHAYLOR	2.00	1.60	1.40
ENIGMA	2.00	1.60	1.40	1.20	.90	.75
FLAMING SWORD	1.60	1.40	1.00	.80	.60	.50
GATE OF HEAVEN	2.00	1.60	1.40	1.20	.90	.75
GAY HUSSAR	1.60	1.40	1.00	.80	.60	.50
GIANT NYMPH	1.60	1.40	1.00	.80	.60	.50
GOLD	2.00	1.60	1.40	1.20	.90	.75
GOLD BUG	2.00	1.60	1.40	1.20	.90	.75
GOLD EAGLE	1.60	1.40	1.00	.80	.60	.50
GOLDEN CUP	2.00	1.60	1.40	1.20	.90	.75
GOLDEN DREAM	2.00	1.60	1.40
GOLDEN FLAME	2.00	1.60	1.40
GOLDEN POPPY	2.00	1.60	1.40	1.20	.90	.75
GOLDEN SLIPPERS	2.00	1.60	1.40
HELGA	1.60	1.40	1.00	.80	.60	.50
HOSSIER PEARL	2.00	1.60	1.40	1.20	.90	.75
ILLUMINATOR	2.00	1.60	1.40	1.20	.90	.75
JENNY LIND	2.00	1.60	1.40	1.20	.90	.75
JESSIE	2.00	1.60	1.40	1.20	.90	.75
KING ARTHUR	2.40	2.00	1.60

LADY LORENE	1.60	1.40	1.00	.80	.60	.50
LADY MARIE	2.00	1.60	1.40
LAVENDER DELIGHT	2.40	2.00	1.60
LIBELLA	2.40	2.00	1.60	1.40	1.00
LINDESTA	2.00	1.60	1.40	1.20	.90	.75
LIGHTS OF GOLD	2.00	1.60	1.40
LOTUS	2.00	1.60	1.40
LULU	2.00	1.60	1.40	1.20	.90	.75
MAGIC	2.00	1.60	1.40	1.20	.90	.75
MAUVE MAGIC	2.40	2.00	1.60	1.20	.90	.75
MAID OF ORLEANS	2.00	1.60	1.40	1.20	.90	.75
MAMMOTH WHITE	2.00	1.60	1.40	1.20	.90	.75
MARGARET FULTON	1.60	1.40	1.00	.80	.60	.50
MARY ELIZABETH	2.00	1.60	1.40	1.20	.90	.75
MAGNA BLANC	2.00	1.60	1.40	1.20	.90	.75
MIBLOOM	1.60	1.40	1.00
MORAVIAN	1.60	1.40	1.00	.80	.60	.50
MORROCCO	2.00	1.60	1.40	1.20	.90	.75
MRS. COOLIDGE	2.00	1.60	1.40
MRS. DOUGLAS	2.00	1.60	1.40
MRS. MEEKER	2.00	1.60	1.40
MRS. MUSKEGON	2.40	2.00	1.60
MRS. PENDELTON	2.00	1.60	1.40
NANCY HANKS	1.60	1.40	1.00	.80	.60	.50
OLIVE GOODRICH	2.40	2.00	1.60
OSSALIN	1.60	1.40	1.00
PARADISE	2.00	1.60	1.40	1.20	.90	.75
PELLIGRINA	2.40	2.00	1.60
PIERIAN	2.00	1.60	1.40
PICARDY	1.60	1.40	1.20	.80	.60	.50
PIPPEN	1.60	1.40	1.00
PRIMROSE	2.00	1.60	1.40
PRIMROSE PRINCESS	2.00	1.60	1.40
PRIDE OF WANAKA	1.60	1.40	1.00
PURPLE SPOT	2.00	1.60	1.40
QUEEN OF BRENNEN	1.60	1.40	1.00	.80	.60	.50
QUEEN HELEN	2.00	1.60	1.40
QUEEN MARY	2.00	1.60	1.40
RAPTURE	2.00	1.60	1.40
RED LORY	2.40	2.00	1.60
RED PHIPPS	2.40	2.00	1.60
REVERIE	2.00	1.60	1.40
REWI FALLU	4.00	3.00	2.40
RIDEAU	2.00	1.60	1.40
ROBERT THE 1ST	2.00	1.60	1.40
ROMANCE	2.00	1.60	1.40
SCARLET PRINCEPTS	2.00	1.60	1.40
SCHWABEN GIRL	2.00	1.60	1.40
SENIORITA	1.60	1.40	1.00
SHIRLEY TEMPLE	3.60	2.80	2.00	1.60	1.20
SMILING MAESTRO	2.80	2.40	2.00
SOUTHERN CROSS	2.00	1.60	1.40
SPLENDORA	2.40	2.00	1.60
SPIRIT OF ST. LOUIS.....	2.00	1.60	1.40
STAR LILY	2.00	1.60	1.40
SYMPHONY	2.00	1.60	1.40	1.20	.90	.75
SUNNYMEDE	2.00	1.60	1.40
TAURUS	2.00	1.60	1.40	1.20	.90	.75
THE ORCHID	2.00	1.60	1.40	1.20	.90	.75
VAGABOND PRINCE	3.20	2.60	2.00	1.60	1.20	.90
VIOLA GEM	2.00	1.60	1.40
WASAGA	2.00	1.60	1.40
WHITE BUTTERFLY	2.00	1.60	1.40	1.20	.90	.75
YELLOW EMPEROR	2.00	1.60	1.40
ZILLAH	2.00	1.60	1.40
ZONA	2.00	1.60	1.40

"EXTRISTRONG" DAHLIAS

These beautiful dahlias are the largest flowers that bloom in our gardens and are easy to grow from our strong divisions. Plant in open sunny places after danger of frost is over. To get the largest blooms disbud all but the center buds. Prices are for roots, we do not ship plants.

BEAUTY SUPREME Lavender. 50c each.

BLUE JERSEY Large lavender pink. 25c each.

BONNIE BLUE A good blue, resembles a giant zinnia. 25c each.

CAVALCADE Old rose, a free bloomer. 35c each.

CLARA BARTON Silvery lavender, many blooms. 75c each.

CLARA CARDER Cyclamen pink. 75c each.

COUNTESS OF LONSDALE Small rose pink cactus. 50c each.

DOROTHY STONE Charming violet rose. \$1.00 each.

DWIGHT MORROW Rich cardinal red; much admired in our garden. Very large on strong stems. 50c each.

FRAU O. BRACHT Beautiful cactus dahlia; light primrose yellow. 60c each.

JAMES KIRBY Brilliant scarlet with ruby shading, creates a sensation wherever shown, good grower. 50c each.

JANE COWL A glistening bronze buff and old gold. Petals curled and twisted. 25c each.

JERSEY BEACON Chinese scarlet. Flowers very large on strong stems. 25c each.

JERSEY BEAUTY Tall delight soft pink. 25c each.

KATHLEEN NORRIS One of the largest ever introduced. True rose pink deepening to mellow pink. 60c each.

KING OF COMMERCE Yellow and gold. 25c each.

KING OF BLACKS Extremely large dark velvety red blooms. Tall plant with a great many blooms. 50c each.

KING OF YELLOW Excellent yellow. 75c each.

KISS ME Cactus type of red and white. 25c each.

LE TOREADOR Lovely red. Full bloomer 25c each.

LORD OF AUTUMN Deep yellow with tremendously large blooms. A show winner everywhere, good keeper. \$1.00 each.

MRS. AUSTIN HUGHES Lovely lavender. 50c each.

MRS. I DE VER WARNER This dahlia with its beautiful self-color orchid blossoms is one of the most admired dahlias. 25c each.

MRS. WILSON Early opalescent pink. 50c each.

MONMOUTH CHAMPION A brilliant orange-flame dahlia. Blooms are very large. Very fine. 40c each.

OMAR KHAYYAM Chinese red at base of petals shading to orange tipped lighter. Very large and outstanding. 50c each.

ORIENTAL GLORY Deep reddish orange. Large. 40c each.

PENN CHARTER Old gold with a light shading of deep rose. Blooms are large; plant is sturdy grower. 25c each.

POT OF GOLD Immense large semi cactus, lovely clear yellow. 75c each.

PRIDE OF CALIFORNIA Lovely large red. 25c each.

SAGAMORE A golden color shading to orange orange buff in center. 40c each.

SATAN Flaming red with a touch of gold in the center. Strong grower. 75c each.

SULTAN OF HILLCREST Lovely old gold. 75c each.

THOMAS EDISON Royal purple. 50c each.

WHITE KING Lovely white decorative with stiff stems. 25c each.

WHITE WONDER Large white blooms, good keeper. 25c each.

YELLOW DUKE A lovely yellow. Free bloomer. 25c each.

POPULAR DAHLIA COLLECTION

One each of Bonnie Blue, Jane Cowl, Mrs. I. D. Ver Warner, Pride of California and Yellow Duke named and labeled—\$1.25 value sent postpaid for\$1.00

SPECIAL BIG SIX COLLECTION

Six dahlias, assorted colors but unlabeled.

Postpaid for only.....\$1.00

POMPOM DAHLIAS

ARTHUR—Brilliant scarlet.

BABY ROYAL—Miniature, pink shading to gold, beautiful mahogany foilage.

CARDINAL—Fiery scarlet.

FASHION—Orange.

FRANKIE—Golden apricot and crimson.

GANYMEDE—Fawn color.

GOLDEN BEAUTY—Yellow.

HAZEL—Buff to brown.

JOE FETTE—White.

KLEINE DOMITEA—Buff Pom-pom.

LITTLE DAVID—Deep orange.

MORNING MIST—Miniature, free bloomer, silvery lavender.

ROTHOUT—Miniature, charming dark red.

Pompoms: 25c each. Any five—your choice—labeled \$1.10;; five pompoms—our choice—\$1.00. Prepaid to you.

EXTRISTRONG IRIS

ALTA CALIFORNIA Deep yellow, faintly bronze. 25c each.

AMBASSADOR Smoky purple. Each 10c.

AMENTI Large grayish vinaceous standards, light mauve falls. Each 50c..

BLACK DOUGLAS Large black blue, very lovely velvety sheen. 35c each.

BLACK WINGS Large flowers if intense deep blue overlaid with a frost black luster. 25c each.

CAPRICE Reddish purple. 10c each.

CLARA NOYES Warm peach and apricot, blending like the tallman rose. 25c each..

CORRIDA Sky blue. 15c each.

CRUSADER Deep violet blue. 20c each.

DAUNTLESS One of the most popular so-called red iris, large blooms on tall heavy stems, rich velvety red. 25c each.

DEPUTE NOMBLLOT Rich rosy purple overlaid with gold. 35c each.

DORE Yellow and white combination. 35c each.

DESTINY Purple bronze, falls velvety black purple, large, tall. \$1.00 each.

DR. BERNIECE Coppery bronze. 10c each.

EDWARD MICHAEL Intense reddish purple. 15c each.

ETHELWYN DUBUAR An outstanding pink, huge ruffled blooms. 25c each.

FREDA MOHR One of the finest and largest Deep lilac rose. 15c each.

FAIRY Dainty white. 10c each.

INDIAN CHIEF A deep blood red, carries a bronzy overcast, large tall blooms. 25c each.

ISOLINE Lilac pink. 10c each.

KOCKII Very early purple. 10c each..

LENT A WILLIAMSON Violet. 10c each.

LOHENGREN White with rich pansy violet. 10c each.

MICHELANGELO Another new color in iris. The entire flower is a dark vinaceous gray. \$2.00 each.

MILDRED PRESBY White with rich pansy violet.. 10c each.

MME. CHEREAU Pure white. 10c each.
MONSIGNOR Bluish lavender. 10c each.
MOTHER OF PEARL Bluish lavender. 10c

each.

NARANJA A large flowered yellow, with an overcast or orange. Pleasing and different. 75c each.

OMAHA Coppery pink and brown cinnamon. 25c each.

PRINCESS BEATRICE Silvery lavender; very sturdy. 15c each.

PRINCESS VICTORIA LOUISE S—immense sulphur yellow, shaded primrose; F—plum color. 10c each.

PROSPER LAGUIRE Red and purple. Very attractive. 10c each.

QUAKER LADY S—Smoky lavender, shaded yellow; F—ageratum blue and old gold. 15c each.

QUEEN OF MAY Lilac pink. 10c each.

RAMESIS Rose pink. 15c each.

RED DOMINION One of the most beautiful red iris, standards slightly ruffled. 25c each.

RHEIN NIXE White. 10c each.

SAN FRANCISCO White feathered blue. 15c each.

SANTA BARBARA Violet blue. 15c each.

SEMINOLE Soft violet rose. 15c each.

SENSATION Cornflower blue. 25c each.

SHEKINA Clear soft yellow. 10c.

SIBERIAN IRIS Blue and white. Not labeled. 10 for \$1.00.

SIR MICHAEL S—Lavender; F—deep purple. 25c each.

SPOKAN Gleaming reddish brown, falls deeper shade. 40c each.

STORM CLOUD Slate blue. 10c each.

SWEET LAVENDER Pale lavender. 10c each.

TRAIL'S END Yellow-overlaid with orange red. 25c each.

WAR EAGLE A rich glowing red toned iris. 25c each.

WEDGEWOOD Pure blue or rare beauty. 15c each.

WHITE NIGHT A beautiful snow white iris. 24 inches high. 15c each.

WM. MOHR Large flowered lilac purple, purple veined immense flowers. 25c each.

SPECIAL IRIS COLLECTION

12 wonderful iriis—value over \$2.00. Unlabeled—\$1.00, labeled—\$1.25. Prepaid to you. Iris are shipped after July 1, 1941. You may reserve them now and we will send them C. O. D. when wanted.

The price of ten iris is eight times the price of one.

SPECIAL \$1 ASSORTMENT

Our "FRIEND MAKER" COLLECTION of 100 large gladiolus bulbs—30 to 40 different varieties—a fine assortment of colors and shades. They will be large young bulbs and will be sent carrying charges C. O. D. Do not send money for postage. Just send \$1.00 for each hundred desired. Mailing weight, ten pounds. No discount on this assortment.

CANNAS

Red and Yellow King Humberts, Fiery Cross Red, Burbank, The President, Scarlet, Hungaria, Peach Pink. Prices 3 for 25c; 12 for 75c.

MEXICAN TUBEROSES

Tall stiff stems, pure white flowers. Single, very fragrant. Free bloomers. Ready now. 2 for 10 cents. 50 cents per doz.

DAY LILLIES

Tall delicate, orange lily-like blooms; 6 to 12 open successively on each spike. July to August. 6 for 25c; 12 for 40c. Sent in spring. Prepaid.

JOIN A GLAD SOCIETY

Why not join your nearest society, attend the shows, see the new and old varieties and exhibit your blooms, ask us for your state society and show dates. We are members of Iowa Florists Society, American Society of Florists, The Iowa and New England Glad Societies and President of the National Gladiolus Society.

OUR MONEY-BACK GUARANTEE

Remember that if any bulb or root obtained from us is not exactly as represented to be or what you have a right to expect, they may be returned to us and all charges will be refunded to you at once.

Grow More Gladiolus
The National Flower

RAY V. MOSS

WATERLOO BULB FARMS WATERLOO, IOWA

RETURN POSTAGE GUARANTEED



The Twins, perfectly satisfied with life.

Sec. 562 P. L. & R.

U. S. Dept. of Agriculture
Bureau of Plant Industry
Washington, D. C.

