

## **Historic, Archive Document**

Do not assume content reflects current scientific knowledge, policies, or practices.



62,27

Index

LIBRARY  
RECEIVED  
★ JUL 10 1941  
U. S. Department of Agriculture

# Wholesale Trade List

February 10, 1941

*The*

# SHERMAN NURSERY COMPANY

CHARLES CITY, IOWA

PHONE 40

# INDEX

	Page
Apples .....	16
Blackberry .....	18
Currants .....	17
Dewberry .....	18
Evergreen—Liners .....	2-4 inc.
Evergreen-Specimens .....	5-9 inc.
Forest Tree Seedlings .....	10
Gooseberry .....	18
Grapes .....	17
Hedging .....	18
Lilies .....	27
Ornamental Trees .....	10-15 inc.
Pear .....	17
Peonies .....	27
Perennials .....	30-32 inc.
Phlox—Field grown .....	28-29 inc.
Phlox—Liners .....	29
Plum .....	17
Roses .....	26
Shade Trees .....	10-15 inc.
Shrubs .....	18-25 inc.
Vines .....	27

# Terms and Conditions of Sale

**WE ARE GROWERS OF HARDY, NORTHERN GROWN EVER-GREENS, SHRUBS, SHADE TREES, FRUITS, VINES AND PERENNIALS**

---

## TO THE TRADE:

We are pleased to send you this copy of our new Spring Wholesale Trade List. We carry a general line of stock and you will find our prices reasonable.

All of the stock we offer is thrifty, well-grown and first class in every way. It is our desire to dig the stock very carefully and grade according to the Grades of the American Association of Nurserymen. We are equipped to give you real service and will endeavor to handle your business in such a way as to merit your continued patronage.

Visitors are always welcome. Come and see our stock at any time. We extend to you a cordial invitation.

---

**TERMS:** 2% discount for payment in 10 days from date of invoice. Accounts **due first of second month following date of invoice.** These terms are offered to those with established credit; otherwise cash, security, or satisfactory references. C. O. D. orders must be accompanied by one-fourth cash.

3% discount will be given if check accompanies order.

---

**PRICES**—This list cancels all previous lists. Quotations are subject to change without notice.

**PACKING**—All packing charged at cost, as usual. No charge to pack bulk cars or trucks.

**SHIPPING**—Please give definite instruction. If no instructions are given, we will ship according to our best judgment.

**CLAIMS**—Make claims promptly upon receipt of goods. While our responsibility ends when we deliver the goods in first class condition to the carrier, we will help all we can in settling claims that are made within ten days after arrival of stock.

While we exercise the greatest care possible to have our nursery products all genuine and reliable, we will replace, on proper proof, all that prove untrue. We do not give any warranty expressed or implied, or guarantee them to live and grow, or give specific results. In case of error on our part, it is understood that we shall at no time be held responsible for a greater amount than the original price of the goods.

All sales and contracts are made subject to crop losses or other causes beyond our control.

All stock is offered subject to prior sale.

Write for special large quantity prices.

# Sherman Nursery Company

CHARLES CITY, IOWA

(Founded 1884)

## EVERGREENS — LINING OUT STOCK

We specialize in growing evergreens to line out and with our new modern irrigation system and large storage facilities we can assure you ONLY stock of good quality—properly dug and packed.

We store no evergreen seedlings but dig as we ship.

### ABIES—FIR

Per 100    Per 1000

Douglas (Douglasii). Large symmetrical tree with bluish green foliage. Very drought resistant.

2- 4 inch seedlings .....	\$ 1.70	\$12.00
4- 6 inch seedlings .....	2.50	20.00

### ARBOR VITAE (Thuja)

American (Occidentalis). Upright, dense, broad base.

4- 6 inch transplants .....	3.50	30.00
6-10 inch transplants .....	4.50	40.00
10-12 inch transplants .....	5.50	50.00

Orientalis (Chinese).

4- 6 inch seedlings .....	1.75	12.50
6-10 inch seedlings .....	2.10	16.00
10-12 inch seedlings .....	2.50	20.00
12-15 inch seedlings .....	3.00	25.00
15-18 inch seedlings .....	3.50	30.00
12-15 inch transplants .....	5.00	45.00

### JUNIPER (Juniperus)

Virginiana (Red Cedar). Upright growth, deep green foliage, sometimes silver. If kept sheared, makes an excellent pyramidal tree. Can be sheared into any form desired. Also valuable for windbreaks.

4- 6 inch seedlings .....	4.00	30.00
6-10 inch seedlings .....	5.00	40.00

### PINE (Pinus)

Austrian (Nigra). Rich dark green, vigorous, dense grower.

2- 4 inch seedlings .....	1.50	10.00
4- 6 inch transplants .....	4.50	40.00
6-10 inch transplants .....	5.50	50.00

Jack (Banksiana). Has no ornamental value, but a picturesque appearance. Very hardy and does well on sandy slopes. Excellent for reforestation.

6-10 inch seedlings .....	2.50	20.00
10-12 inch seedlings .....	3.00	25.00
12-15 inch seedlings .....	3.50	30.00
15-18 inch seedlings .....	4.00	35.00

Montana Uncinata. Large Swiss Pine.

2- 4 inch seedlings .....	2.00	15.00
---------------------------	------	-------

Mugho (Mughus). Excellent compact type.

2- 4 inch seedlings .....	3.50	30.00
4- 6 inch seedlings .....	4.00	37.00

Norway (Resinosa). (Red Pine). Very ornamental; quite hardy. Needles lustrous green, long and most often in pairs. It is free from insect pests. One of the best for reforesting purposes.

2- 4 inch seedlings .....	2.00	15.00
4- 6 inch seedlings .....	2.50	20.00
6-10 inch transplants .....	7.00	65.00
10-12 inch transplants .....	7.50	70.00
12-15 inch transplants .....	8.00	75.00

## EVERGREENS — LINING OUT STOCK ( Continued )

### PINE (Pinus) (Continued)

Ponderosa (Western Yellow Pine). (Bull Pine). Grows large; silvery green.		
	Per 100	Per 1000
2- 4 inch seedlings .....	1.50	10.00
4- 6 inch seedlings .....	2.00	15.00
6-10 inch seedlings .....	3.00	25.00
10-12 inch seedlings .....	4.00	35.00
6-10 inch transplants .....	5.50	50.00
10-12 inch transplants .....	6.50	60.00
Scotch (Sylvestris). Silver green; rapid grower.		
4- 6 inch seedlings .....	2.50	20.00
6-10 inch seedlings .....	3.00	25.00
10-12 inch seedlings .....	3.50	30.00
12-15 inch seedlings .....	3.75	32.00
12-15 inch transplants .....	8.50	80.00

### SPRUCE (Picea)

Black Hills (Canadensis Albertiana). Dense habit; bluish green. Slow growing—one of the best for specimen planting. Our type is particularly good.		
2- 4 inch seedlings .....	2.50	20.00
2- 4 inch transplants .....	3.50	30.00
4- 6 inch transplants .....	4.50	40.00
6-10 inch transplants .....	6.50	60.00
Colorado Blue (Pungens). Bluish green to silvery white or rarely dull green.		
1- 2 inch seedlings .....	1.50	10.00
2- 4 inch seedlings .....	2.00	15.00
4- 6 inch seedlings .....	2.50	20.00
2- 4 inch transplants .....	3.50	30.00
4- 6 inch transplants .....	4.50	40.00
Norway (Excelsa). Rich dark green foliage. Rapid grower. Popular for windbreaks.		
2- 4 inch seedlings .....	1.40	9.00
4- 6 inch seedlings .....	1.50	10.00
6-10 inch seedlings .....	2.50	20.00
10-12 inch seedlings .....	3.00	25.00
12-15 inch seedlings .....	3.50	30.00
15-18 inch seedlings .....	4.50	40.00
4- 6 inch transplants .....	3.00	25.00
6-10 inch transplants .....	4.00	35.00
10-12 inch transplants .....	5.00	45.00
12-15 inch transplants .....	5.50	50.00

### SPECIAL PRICES ON NORWAY SPRUCE IN QUANTITIES OF THREE THOUSAND OR OVER

2- 4 inch seedlings .....	\$ 8.00 per 1000
4- 6 inch seedlings .....	9.00 per 1000
6-10 inch seedlings .....	15.00 per 1000
10-12 inch seedlings .....	20.00 per 1000
12-15 inch seedlings .....	25.00 per 1000

White (Canadensis). Light silver green; one of the best.

2- 4 inch seedlings .....	1.50	10.00
4- 6 inch seedlings .....	2.00	15.00
6-10 inch seedlings .....	3.00	25.00
10-12 inch seedlings .....	4.00	35.00
12-15 inch seedlings .....	4.50	40.00
4- 6 inch transplants .....	3.00	25.00
6-10 inch transplants .....	4.00	35.00
10-12 inch transplants .....	5.50	50.00

## SPECIAL PACKING FOR LINING OUT EVERGREENS

For many years we have used our special method of grading and packing all smaller stock—a method which insures that your stock will be a uniform strong grade and delivered in perfect condition regardless of distance. The stock is dug fresh for each individual order, roots carefully puddled and graded in the fields, then brought to the packing shed, and regraded over the table.

Your stock is then tied in bundles carefully packed in damp moss and each bundle wrapped in waterproof paper. The middle of the bundle cannot dry out nor heat. The shipment can be taken directly to your fields and planted from the box without any risk of drying out or exposure to the air, because the bundle is small and of convenient size.

### EVERGREENS — ROOTED CUTTINGS

Varieties listed represent conifers grown from cuttings under glass. Transplanted and grown in open for one or more years.

<b>ARBOR VITAE (Thuja)</b>	Per 100	Per 1000
Compacta (Parson's Dwarf). Almost globe shaped; bright green.		
4- 6 inch .....	\$ 7.50	\$65.00
6-10 inch .....	10.00	90.00
Shermanii (Wareana Shermanii). Originated and propagated by the Sherman Nursery Company. Much heavier foliage than the common Arbor Vitae of pyramid habit. Very fine trees. Hardy and thrifty.		
6-10 inch .....	10.00	90.00
<b>JUNIPER (Juniperus)</b>		
Chinensis. A slender pyramidal tree, dark green.		
2- 4 inch .....	3.50	25.00
Chinensis Pfitzeriana (Pfitzer). Broad bushy habit; gray-green foliage. The most satisfactory of all spreading varieties of Junipers. Does well over a large territory. It is free from disease and is used extensively for foundation planting.		
4- 6 inch .....	11.00	90.00
Communis Hibernica (Irish). Foliage glaucous green. An old well known popular variety.		
4- 6 inch .....	12.00	100.00

### POTTED EVERGREEN LINERS

Well rooted stock—from 2¼ inch pots.

SPECIAL ATTENTION: Please note WE not only mention size of pot but most particularly SIZE OF STOCK.

<b>ARBOR VITAE (Thuja)</b>	Per 100	Per 1000
Compacta	6- 8 inch .....\$10.00	\$80.00
Douglas Golden	4- 6 inch ..... 8.00	60.00
George Peabody	4- 6 inch ..... 8.00	60.00
George Peabody	6-10 inch ..... 10.00	80.00
Globosa	4- 6 inch ..... 8.00	60.00
Globosa	6- 8 inch ..... 10.00	80.00
Hovey's Golden	4- 6 inch ..... 8.00	60.00
Little Gem	4- 6 inch ..... 8.00	60.00
Vervaeneana	6- 8 inch ..... 9.00	70.00
<b>JUNIPER (Juniperus)</b>		
Irish	4- 6 inch ..... 14.50	125.00
Irish	6-10 inch ..... 17.00	150.00
Pfitzeriana	2- 4 inch ..... 8.00	60.00
Pfitzeriana	6-10 inch ..... 12.00	100.00



## SPECIMEN EVERGREENS B & B

Our Evergreens have all been transplanted and root pruned. They have been properly sheared and are grown with plenty of room for development. Our prices are for Evergreens securely balled and burlapped. Special prices on car lots.

All Evergreens are sold with the distinct understanding that if they arrive in good condition and are accepted, our responsibility ceases. Due to weather conditions, method of handling and care of trees, we cannot assume responsibility for the successful transplanting of Evergreens.

**ABIES (See Fir)**

### ARBOR VITAE (Thuja)

Compacta (Parsons Dwarf). Almost globe shaped; bright green.	Per 10	Per 100
12-15 inch B&B .....	\$ 6.00	\$50.00
24-30 inch B&B .....	12.50	100.00
30-36 inch B&B .....	20.00	175.00
Douglas Golden (Douglasi Aurea). Broad pyramid with golden green foliage.		
18-24 inch B&B .....	7.50	60.00
2- 3 feet B&B .....	10.00	85.00
3- 4 feet B&B .....	12.50	110.00
4- 5 feet B&B .....	15.00	125.00
5- 6 feet B&B .....	25.00	200.00
6- 8 feet B&B .....	30.00	250.00
Douglas Pyramidal (Douglasi Pyramidalis). Dense pyramidal form with short, fern-like branches.		
12-18 inch B&B .....	8.50	
18-24 inch B&B .....	10.00	
2- 3 feet B&B .....	15.00	
Globosa (American Globe). Compact; globe shaped.		
12-15 inch B&B .....	7.50	60.00
Plicata (Occidentalis). Moss Arbor Vitae. Pyramidal tree, dark foliage, dense type.		
18-24 inch B&B .....	12.50	100.00
2- 3 feet B&B .....	16.50	150.00
3- 4 feet B&B .....	19.00	175.00
4- 5 feet B&B .....	25.00	
Pyramidal (Occidentalis Pyramidalis). Dark green.		
12-18 inch B&B .....	11.50	100.00
18-24 inch B&B .....	14.00	125.00
2- 3 feet B&B .....	16.50	150.00
Reidii (Occidentalis Reid). A spreading, large bushy form with smallish leaves. Looks very much like the Siberian.		
18-24 inch B&B .....	10.00	
24-30 inch B&B .....	12.50	
30-36 inch B&B .....	17.50	
Shermanii (Wareana Shermanii). Originated and propagated by the Sherman Nursery Company. Dark green and heavier foliage than the common Arbor Vitae of Pyramidal habit. Very fine trees. Hardy and thrifty.		
18-24 inch B&B .....	12.50	110.00
2- 3 feet B&B .....	15.00	125.00
Siberian (Wareana). Pyramidal tree; dense foliage, dark green. Very hardy, holds color in winter. Slow, compact grower. Highly recommended for foundation or specimen planting.		
12-18 inch B&B .....	8.00	65.00
18-24 inch B&B .....	10.00	85.00

## SPECIMEN EVERGREENS B&B (Continued)

### ARBOR VITAE (Thuja) (Continued)

Vervaeana (Occidentalis). The hardiest and bushiest  
Arbor Vitae, excellent for hedges.

	Per 10	Per 100
12-18 inch B&B .....	7.50	60.00
18-24 inch B&B .....	9.00	75.00
2- 3 feet B&B .....	10.00	90.00
3- 4 feet B&B .....	13.50	120.00
4- 5 feet B&B .....	16.50	150.00
5- 6 feet B&B .....	22.00	200.00

### FIR (Abies)

Balsam (Balsamae). Pyramidal form; foliage dark green.

18-24 inch B&B .....	9.50	75.00
2- 3 feet B&B .....	12.50	110.00
3- 4 feet B&B .....	16.00	140.00
4- 5 feet B&B .....	21.00	190.00
5- 6 feet B&B .....	27.50	250.00

Concolor Fir (White Fir). Pyramidal form; foliage varies  
in color from silvery blue to deep bluish green.

12-18 inch B&B .....	12.50	110.00
18-24 inch B&B .....	14.00	125.00
2- 3 feet B&B .....	20.00	175.00
3- 4 feet B&B .....	27.50	250.00
4- 5 feet B&B .....	35.00	325.00
5- 6 feet B&B .....	45.00	425.00
6- 7 feet B&B .....	55.00	525.00
7- 8 feet B&B .....	60.00	575.00
8- 9 feet B&B .....	70.00	650.00
9-10 feet B&B .....	80.00	750.00

Douglas (Douglasii). Large symmetrical tree with bluish  
green foliage. Very drought resistant.

18-24 inch B&B .....	10.00	90.00
2- 3 feet B&B .....	14.00	125.00
3- 4 feet B&B .....	20.00	175.00

Fraseri (Fraser Fir). The leaves are shining dark green  
above with broad white bands beneath.

12-18 inch B&B .....	11.00	90.00
18-24 inch B&B .....	13.00	120.00
2- 3 feet B&B .....	14.00	125.00
3- 4 feet B&B .....	16.50	
4- 5 feet B&B .....	19.00	
5- 6 feet B&B .....	25.00	
6- 8 feet B&B .....	30.00	

### JUNIPER (Juniperus)

Canadensis (Prostrate Juniper).

18-24 inch B&B .....	8.50	75.00
24-30 inch B&B .....	11.00	100.00
30-36 inch B&B .....	16.50	150.00
36-42 inch B&B .....	22.50	200.00

Chinensis. A slender pyramidal tree, dark green.

12-18 inch B&B .....	6.00	50.00
18-24 inch B&B .....	8.50	75.00
2- 3 feet B&B .....	11.00	100.00

Chinensis Mascula (Pyramidal Chinese Juniper). Pyra-  
midal grower with upright horizontal branches and dark  
blue-green foliage.

2- 3 feet B&B .....	20.00	
3- 4 feet B&B .....	25.00	
4- 5 feet B&B .....	30.00	

## SPECIMEN EVERGREENS B&B (Continued)

### JUNIPER (*Juniperus*) (Continued)

Chinensis Pfitzeriana (Pfitzer). Broad bushy habit; gray-green foliage. The most satisfactory of all spreading varieties of Junipers. Does well over a large territory. It is free from disease and is used extensively for foundation planting.		
15-18 inch B&B .....	Per 10 14.00	Per 100 125.00
18-24 inch B&B .....	15.00	
Chinensis Pfitzeriana. Staked Upright. The Pfitzeriana grown into an upright tree, supported by one main leader.		
12-18 inch B&B .....	11.50	100.00
18-24 inch B&B .....	16.50	150.00
24-30 inch B&B .....	21.00	200.00
Communis Hibernica (Irish Juniper). Upright columnar form with deep green foliage.		
2- 3 feet B&B .....	12.50	
3- 4 feet B&B .....	15.00	
Communis Suecica (Swedish Juniper). Narrow upright grower. Light bluish-green foliage. Compact form.		
2- 3 feet B&B .....	12.50	115.00
3- 4 feet B&B .....	15.00	125.00
Horizontalis Douglas (Waukegan Juniper). Rather slow, irregular growth, steely blue foliage turning purple in winter. Irregular trailing habit; effective in rocks.		
12-18 inch B&B .....	9.00	75.00
18-24 inch B&B .....	12.50	115.00
30-36 inch B&B .....	17.50	150.00
36-42 inch B&B .....	20.00	175.00
Sabina (Savin). Dense spreading branches; deep dark green.		
12-15 inch B&B .....	10.00	85.00
15-18 inch B&B .....	12.50	110.00
Sabina Fastigiata (Column Savin). Erect and of columnar habit, with dark green mostly scale-like leaves.		
12-18 inch B&B .....	17.50	150.00
18-24 inch B&B .....	20.00	
Sabina Horizontalis (Bar Harbor). Creeper-horizontal spreading branches. Soft blue in spring. One of the best for banks, rocky slopes, and rock gardens.		
12-18 inch B&B .....	10.00	85.00
18-24 inch B&B .....	12.50	110.00
30-36 inch B&B .....	16.50	150.00
36-42 inch B&B .....	20.00	175.00
42-48 inch B&B .....	25.00	225.00
Sabina Von Ehron. Although not so well known as some of the varieties of Savin Juniper, this tree has been in good demand in recent years. A fast growing tree, often makes a faster growth than the Pfitzer. It grows in a low, bushy habit, similar to the Savin. It has a deep, rich, green color.		
12-18 inch B&B .....	10.00	85.00
18-24 inch B&B .....	12.50	
Scopulorum (Colorado Juniper). A pyramidal tree with silvery foliage.		
24-30 inch B&B .....	20.00	175.00
30-36 inch B&B .....	22.50	200.00
Speciosa Pyramidalis. A slender pyramid tree, dark green.		
3- 4 feet B&B .....	25.00	
4- 5 feet B&B .....	30.00	

## SPECIMEN EVERGREENS B&B (Continued)

### JUNIPER (*Juniperus*) (Continued)

Virginiana (Red Cedar). Hardy native cedar with dark green foliage.	Per 10	Per 100
18-24 inch B&B .....	7.50	65.00
2- 3 feet B&B .....	10.00	90.00
Virginiana Elegantissima Lee (Goldtip Red Cedar). Low bushy spreaders with bright green foliage. Tips of branches gold in spring.		
18-24 inch B&B .....	16.50	
2- 3 feet B&B .....	27.50	
3- 4 feet B&B .....	32.50	
4- 5 feet B&B .....	45.00	
Virginiana Glauca (Silver Red Cedar). Of striking blue color all season. A rapid grower.		
18-24 inch B&B .....	17.50	150.00
2- 3 feet B&B .....	25.00	200.00
3- 4 feet B&B .....	30.00	250.00
Virginiana Keteleeri. Compact pyramidal form with ascending branches and dark green foliage.		
3- 4 feet B&B .....	30.00	
4- 5 feet B&B .....	35.00	
Virginiana Kosteri (Koster's Red Cedar). Semi-dwarf with half erect arching branches and bluish-green foliage.		
12-18 inch B&B .....	15.00	125.00
18-24 inch B&B .....	16.00	
Virginiana Pyramidiformia Hilli (Hill's Dundee Juniper) Tall compact narrow pyramidal grower with blue-gray foliage which becomes purplish in the fall and winter.		
18-24 inch B&B .....	17.50	
2- 3 feet B&B .....	25.00	
3- 4 feet B&B .....	30.00	

### LARCH (*Larix*)

Japanese (Kaempferi). Very broad horizontal branches curving upward. Leaves bluish-gray tinge. Hardy and one of the handsomest and most rapidly growing larches.		
12-18 inch B&B .....	6.00	50.00
18-24 inch B&B .....	9.50	75.00
2- 3 feet B&B .....	12.50	110.00
3- 4 feet B&B .....	15.00	135.00
4- 5 feet B&B .....	16.50	150.00

### PINE (*Pinus*)

Austrian (Nigra). Rich dark green; vigorous dense grower.		
12-18 inch B&B .....	9.00	80.00
18-24 inch B&B .....	11.00	100.00
Norway (Resinosa) (Red Pine). Foliage lustrous green. Free from insect pests. Excellent for specimen or screen planting.		
12-18 inch B&B .....	6.00	50.00
18-24 inch B&B .....	8.50	75.00
2- 3 feet B&B .....	12.50	100.00
3- 4 feet B&B .....	14.00	125.00
Ponderosa (Western Yellow Pine). (Bull Pine). Grows large; silvery green.		
12-18 inch B&B .....	7.00	60.00
18-24 inch B&B .....	9.00	80.00
Scotch ( <i>Sylvestris</i> ). Silver green; rapid grower.		
12-18 inch B&B .....	6.00	50.00
18-24 inch B&B .....	7.50	60.00
2- 3 feet B&B .....	10.00	90.00
3- 4 feet B&B .....	12.50	100.00

## SPECIMEN EVERGREENS B&B (Continued)

### SPRUCE (*Picea*)

Black Hills ( <i>Canadensis Albertiana</i> ). Dense habit; bluish-green. Our type is extra good. Shapely trees.	Per 10	Per 100
18-24 inch B&B .....	8.50	75.00
24-30 inch B&B .....	11.50	100.00
30-36 inch B&B .....	14.00	125.00
Colorado Green ( <i>Pungens</i> ). Symmetrical grower; light green foliage.		
12-18 inch B&B .....	7.50	60.00
2- 3 feet B&B .....	15.00	125.00
Colorado Blue ( <i>Pungens Glauca</i> ). Blush green to silvery white.		
24-30 inch B&B .....	16.50	150.00
30-36 inch B&B .....	22.50	200.00
Engelmann ( <i>Engelmanni</i> ). A tree of singular beauty, fine pyramidal form. Color varies from greenish to steely-blue.		
12-18 inch B&B .....	10.00	
18-24 inch B&B .....	12.50	
2- 3 feet B&B .....	15.00	
Koster's Blue Spruce ( <i>Picea Pungens Koster</i> ). A choice bright blue form of the Colorado Blue Spruce.		
2- 3 feet B&B .....	37.50	350.00
4- 5 feet B&B .....	75.00	700.00
5- 6 feet B&B .....	90.00	850.00
6- 7 feet B&B .....	105.00	1000.00
7- 8 feet B&B .....	120.00	
8-10 feet B&B .....	150.00	
Moerheim Blue ( <i>Pungen's Glauca Moerheimi</i> ). A symmetrical grafted type of Blue Spruce. Superior in color and compactness.		
24-30 inch B&B .....	37.50	
30-36 inch B&B .....	42.50	
36-42 inch B&B .....	50.00	
42-48 inch B&B .....	60.00	
4- 5 feet B&B .....	90.00	
Norway ( <i>Excelsa</i> ). Best type, bushy trees with excellent fibrous root system.		
12-18 inch B&B .....	5.00	40.00
18-24 inch B&B .....	7.00	60.00
4- 5 feet B&B .....	17.50	150.00
White ( <i>Canadensis</i> ). Light silver green; one of the best,		
18-24 inch B&B .....	7.50	65.00
2- 3 feet B&B .....	10.00	90.00
3- 4 feet B&B .....	12.50	100.00

### TAXUS

*Cuspidata Capitata*. Upright Japanese Yew. Typical deep-green foliage and broadly pyramidal shape.

18-24 inch B&B .....	25.00
24-30 inch B&B .....	32.50
30-36 inch B&B .....	45.00
36-42 inch B&B .....	55.00

### TSUGA

*Canadensis* (Canadian Hemlock). Good all-around evergreen. Unexcelled for creating quality hedges. Will grow in shade.

2- 3 feet B&B .....	30.00
3- 4 feet B&B .....	35.00
4- 5 feet B&B .....	45.00

## FOREST TREE SEEDLINGS

ASH, GREEN	Per 100	Per 1000
6-12 inch .....	\$ .40	\$ 3.00
12-18 inch .....	.50	4.00
18-24 inch .....	.80	6.00
2- 3 feet .....	1.00	8.00
3- 4 feet .....	1.50	11.00
4- 5 feet .....	2.00	15.00
5- 6 feet .....	2.50	20.00

### ELM, CHINESE

6-12 inch .....	.60	5.00
12-18 inch .....	.75	7.00

### LOCUST, BLACK

2- 3 feet .....	1.25	10.00
3- 4 feet .....	1.75	15.00
4- 5 feet .....	2.25	

## ONE YEAR FROM CUTTINGS

### WILLOW (Salix)

Russian Golden.	Per 100	Per 1000
2- 3 feet .....	\$ 2.00	\$17.50
3- 4 feet .....	2.75	25.00
4- 5 feet .....	3.50	30.00

## SHADE AND ORNAMENTAL TREES

### ASH (Fraxinus)

Green (Lanceolata). Especially valuable for planting in high altitudes and dry cold climates. Succeeds everywhere. Valuable on the farm.

	Per 10	Per 100
5- 6 feet .....	\$ 2.50	\$22.50
6- 8 feet .....	4.00	35.00
8-10 feet .....	5.50	50.00
10-12 feet .....	8.50	75.00
1½ to 2 inch .....	9.00	80.00
2 to 2½ inch .....	14.00	125.00
2½ to 3 inch .....	16.00	150.00
3 to 3½ inch .....	22.50	
3½ to 4 inch .....	30.00	
4 to 4½ inch .....	37.50	

### Wafer (Hop Tree)

A small tree or shrub, good for massing with coarse shrubbery. Glossy green leaves and most attractive in late summer or autumn, when large clusters of hop-like fruits are produced.

4- 5 feet .....	2.00	17.50
5- 6 feet .....	3.00	25.00
6- 8 feet .....	4.00	35.00

### BIRCH (Betula)

American. Hardy, attractive tree with white bark.

4- 5 feet .....	4.50	
5- 6 feet .....	6.50	60.00
6- 8 feet .....	9.50	85.00

Cut Leaf Weeping. A graceful, white barked tree with drooping limbs and cut-leaved foliage.

4- 5 feet .....	8.50	75.00
5- 6 feet .....	12.50	100.00
8-10 feet .....	20.00	180.00
10-12 feet .....	25.00	200.00

## SHADE AND ORNAMENTAL TREES (Continued)

### BIRCH (Continued)

European White (Betula Alba). A hardy attractive tree with white bark.		
	Per 10	Per 100
4- 5 feet .....	4.50	40.00
5- 6 feet .....	6.50	60.00
6- 8 feet .....	9.50	85.00

### BUTTERNUT (Juglans Cinera)

Spreading tree with large leaves, producing edible nuts. Does best on moist soil.		
1½ to 2 inch .....	12.50	100.00
2 to 2½ inch .....	14.00	125.00
2½ to 3 inch .....	16.50	150.00
3 to 3½ inch .....	19.00	175.00
3½ to 4 inch .....	21.00	200.00

### CATALPA (Speciosa)

(Western Catalpa). Well known, hardy tree.		
8-10 feet .....	4.00	35.00
10-12 feet .....	5.00	45.00

### CHESTNUT

Horse-American (Buckeye).		
5- 6 feet .....	4.00	

### CRAB FLOWERING (Malus)

Bechtel. Delicate pink flowers resembling roses. Fragrant.		
18-24 inch .....	2.50	20.00
2- 3 feet .....	3.00	25.00
3- 4 feet .....	4.00	35.00
4- 5 feet .....	6.00	50.00

Coronarius. A most attractive flowering crab. Pretty round headed tree with heart-shaped leaves. Blossoms large rose pink and sweet scented.		
5- 6 feet .....	4.50	

Dolgo. Beautiful ornamental tree. Produces great quantities of large pink flowers. Fruit bright red. Excellent for jelly.		
3- 4 feet .....	3.00	25.00
4- 5 feet .....	4.00	35.00
5- 6 feet .....	4.50	40.00

Flame. New. Abundance of fruit.		
4- 5 feet .....	4.00	35.00
5- 6 feet .....	4.50	40.00

Hopa. Rose pink flowers, red fruit; attractive foliage. One of the most desirable species.		
3- 4 feet .....	2.50	20.00
4- 5 feet .....	3.50	30.00
5- 6 feet .....	4.00	35.00

Ioensis (Wild). Pink flowers.		
3- 4 feet .....	3.00	25.00
4- 5 feet .....	3.50	30.00
5- 6 feet .....	4.00	35.00

Scheideckeri. Double red in bud changing to pink.		
4- 5 feet .....	4.00	30.00
5- 6 feet .....	4.50	40.00

## SHADE AND ORNAMENTAL TREES (Continued)

### ELM (*Ulmus*)

American (White). Good type, straight shanks—transplanted and pruned to eliminate bad crotches, etc. A block of specimen elm shade trees is one of the most profitable items in any retail nursery.

	Per 10	Per 100
4- 5 feet .....	2.00	15.00
5- 6 feet .....	2.50	20.00
6- 8 feet .....	3.00	25.00
8-10 feet .....	4.50	40.00
1¼ to 1½ inch .....	5.50	50.00
1½ to 1¾ inch .....	8.50	70.00
1¾ to 2 inch .....	10.00	80.00
2 to 2½ inch .....	11.00	100.00
2½ to 3 inch .....	13.50	125.00
3 to 3½ inch .....	20.00	185.00
3½ to 4 inch .....	30.00	275.00
4 to 4½ inch .....	37.50	350.00

Chinese (*Pumila*). A hardy, rapid grower. Slender branches, compact habit of growing with small attractive leaves. Highly recommended for dry climates.

5- 6 feet .....	2.50	20.00
6- 8 feet .....	4.00	35.00
8-10 feet .....	5.50	50.00
1½ to 2 inch .....	10.00	90.00
2 to 2½ inch .....	12.50	115.00
2½ to 3 inch .....	17.50	150.00
3 to 3½ inch .....	22.50	200.00
3½ to 4 inch .....	27.50	250.00
4 to 4½ inch .....	32.50	300.00
4½ to 5 inch .....	42.50	400.00
5 to 5½ inch .....	52.50	500.00
5½ to 6 inch .....	62.50	600.00

Lake City. Type of American Elm. Upright, closely branched, uniform tree. Very hardy.

8-10 feet .....	6.00	55.00
-----------------	------	-------

Moline. A pyramidal vigorous variety with large, handsome green foliage. Fine for street planting.

4- 5 feet .....	3.00	25.00
5- 6 feet .....	3.50	30.00
1½ to 2 inch .....	15.00	125.00
2 to 2½ inch .....	17.50	150.00
2½ to 3 inch .....	22.50	200.00
3 to 3½ inch .....	30.00	

Vase. An American Elm with vase formation of limbs. Uniform type. Rapid grower.

4- 5 feet .....	3.50	
5- 6 feet .....	4.00	
6- 8 feet .....	5.00	
1½ to 2 inch .....	12.50	
2 to 2½ inch .....	17.50	
2½ to 3 inch .....	22.50	

### HACKBERRY (*Celtic Occidentalis*)

A valuable shade tree of medium rapid growth. Limbs seldom broken by wind.

3- 4 feet .....	2.50	20.00
4- 5 feet .....	3.00	25.00
5- 6 feet .....	4.00	35.00
6- 8 feet .....	7.00	65.00
1½ to 2 inch .....	16.50	150.00
2 to 2½ inch .....	20.00	175.00



## SHADE AND ORNAMENTAL TREES (Continued)

### HAZELNUT (*Corylus Americana*)

Thrives in shady locations. Attractive foliage. Produces popular nuts.

	Per 10	Per 100
12-18 inch .....	1.50	12.50
18-24 inch .....	2.00	18.00

### LINDEN (*Tilia*)

American. Rather rapid growing tree forming spreading head. Fragrant yellow flowers in June.

4- 5 feet .....	4.50	35.00
5- 6 feet .....	5.50	45.00
6- 8 feet .....	6.50	60.00
1½ to 2 inch .....	12.50	100.00
2 to 2½ inch .....	15.00	135.00
2½ to 3 inch .....	17.50	160.00
3 to 3½ inch .....	25.00	225.00
3½ to 4 inch .....	30.00	275.00
4 to 4½ inch .....	40.00	
4½ to 5 inch .....	50.00	
5 to 6 inch .....	60.00	

### LOCUST (*Robinia*)

Black (*Pseudoacacia*). A valuable heat and drouth resisting tree. Fragrant white flowers in May followed by small dark seed pods in the autumn.

4- 5 feet .....	2.00	15.00
5- 6 feet .....	2.50	20.00
6- 8 feet .....	3.50	30.00
8-10 feet .....	4.50	40.00
10-12 feet .....	6.00	55.00
1½ to 2 inch .....	7.50	70.00
2 to 2½ inch .....	11.00	
2½ to 3 inch .....	14.00	

Honey (*Gleditsia*). Rapid grower with delicate fern-like foliage and fragrant white flowers.

4- 5 feet .....	3.00	25.00
5- 6 feet .....	4.00	35.00
6- 8 feet .....	5.00	45.00

Thornless. (*Gleditsia Triacanthos Inermis*). A variety of Honey Locust without thorns.

4- 5 feet .....	4.00	35.00
5- 6 feet .....	6.00	50.00
6- 8 feet .....	7.00	60.00
8-10 feet .....	8.00	70.00
10-12 feet .....	12.00	

### MAPLE (*Acer*)

Ginnala (*Amur*). Graceful small tree with bright green foliage, turning to brilliant red in Autumn.

3- 4 feet .....	3.00	25.00
4- 5 feet .....	3.50	30.00
5- 6 feet .....	5.00	45.00

Hard or Sugar. (*Saccharum*). Ornamental tree. Foliage beautiful—crimson and orange-yellow in the Autumn.

6- 8 feet .....	10.00	90.00
8-10 feet .....	12.50	100.00
1¼ to 1½ inch .....	14.00	120.00
1½ to 1¾ inch .....	16.00	150.00
1¾ to 2 inch .....	20.00	185.00
2 to 2½ inch .....	25.00	225.00
2½ to 3 inch .....	30.00	275.00

## SHADE AND ORNAMENTAL TREES (Continued)

### MAPLE (Acer) (Continued)

Soft (Silver) (Dasycarpum). A broad spreading tree of rapid growth.	Per 10	Per 100
4- 5 feet .....	2.50	18.00
Weir, Cut-leaved. Finely cut foliage and drooping limbs. A very graceful form of the soft maple.		
5- 6 feet .....	5.50	50.00
6- 8 feet .....	7.00	65.00

### MOUNTAIN ASH (Sorbus)

European (Aucuparia). Dense grower covered with large clusters of orange-red berries in midsummer.		
5- 6 feet .....	6.00	50.00
8-10 feet .....	9.50	90.00
Oak Leaf (Quercifolia). A broad, pyramidal tree with leaves resembling those of the oak.		
4- 5 feet .....	5.00	
5- 6 feet .....	6.00	

### OAK (Quercus)

Black (Velutina). Tall, handsome, shapely tree. Leaves bright red, fading to orange and dull red in autumn.		
5- 6 feet .....	6.00	
6- 8 feet .....	7.00	
8-10 feet .....	9.00	
10-12 feet .....	10.00	
Bur (Macrocarpa). Well shaped trees. We have had good success shipping and planting these trees, bare rooted.		
5- 6 feet .....	8.00	70.00
Pin (Palustris). More rapid grower than other varieties. Leaves deeply cut turning in Autumn to rich reds and yellows.		
1¼ to 1½ inch .....	25.00	200.00
Red (Rubra). An excellent tree for park and street planting. Beautiful foliage turning red in autumn.		
6- 8 feet .....	15.00	

### POPLAR (Populus)

Bolleana. Columnar tree with glossy foliage, silvery beneath.		
6- 8 feet .....	4.50	40.00
8-10 feet .....	5.50	50.00
Carolina. Extremely rapid grower. Succeeds well in all soils and climates. Sometimes known as Norway.		
8-10 feet .....	2.50	20.00
1¼ to 1½ inch .....	3.00	25.00
Lombardy. Tall, spire-like tree, fine for screen and formal planting.		
5- 6 feet .....	1.25	10.00
6- 8 feet .....	1.75	16.00
8-10 feet .....	2.25	20.00
10-12 feet .....	2.75	25.00
Richardii. Golden-leaf Poplar. Shrub form bushy trees.		
4- 5 feet .....	2.50	20.00
5- 6 feet .....	3.00	25.00
Silver-Leaf. Form of White Poplar. Under surface being snow-white.		
5- 6 feet .....	3.00	25.00
6- 8 feet .....	3.50	30.00
8-10 feet .....	4.00	35.00

## SHADE AND ORNAMENTAL TREES (Continued)

### PRUNUS (Plum). (Ornamental).

	Per 10	Per 100
Cistena. (Hansen's Purple Plum). Deep purple leaves, flowers open white. Dwarf growing. Tree or bush form.		
18-24 inch .....	2.50	20.00
3- 4 feet .....	4.00	35.00
4- 5 feet .....	4.50	40.00
Triloba. Flowering Plum. A handsome, hardy, vigorous, large shrub or small tree with double pink flowers.		
2- 3 feet .....	3.00	25.00
3- 4 feet .....	3.50	30.00
3- 4 feet Tree Form .....	3.50	30.00

### RUSSIAN OLIVE (Eleagnus Angustifolia)

Attractive silver gray leaves, grayish white berries. Desirable for mass planting. Used frequently for hedges and windbreaks. Very hardy.

3- 4 feet .....	2.00	15.00
4- 5 feet .....	2.40	20.00
5- 6 feet .....	3.50	30.00
6- 8 feet .....	4.00	35.00
8-10 feet .....	5.50	50.00

### WALNUT (Juglans)

Black (Nigra). Valuable tree for its wood and edible nuts.

3- 4 feet .....	2.00	15.00
4- 5 feet .....	2.40	20.00
5- 6 feet .....	3.00	25.00
6- 8 feet .....	4.00	35.00
8-10 feet .....	6.50	60.00
10-12 feet .....	8.00	75.00
1½ to 2 inch .....	11.00	100.00
2 to 2½ inch .....	16.00	150.00
2½ to 3 inch .....	22.50	200.00
3 to 3½ inch .....	30.00	250.00

### WILLOW (Salix)

Niobe. Very attractive golden bark. Splendid weeping habit.

5- 6 feet .....	2.50	20.00
6- 8 feet .....	3.50	30.00
8-10 feet .....	5.50	50.00

Laurel Leaved (Pentandra). Hardy, upright grower with large dark green leaves.

6- 8 feet .....	4.00	35.00
8-10 feet .....	6.00	50.00

Pussy (Discolor) (French). A very popular shrub on account of the catkins.

2- 3 feet .....	1.50	10.00
3- 4 feet .....	2.00	15.00
4- 5 feet .....	2.40	20.00
5- 6 feet .....	3.00	25.00

Russian Golden (Vitellina Aurea). Bush or tree form. Rapid growth. Golden yellow. Very hardy.

4- 5 feet .....	1.50	10.00
-----------------	------	-------

Wisconsin Weeping. A very hardy weeping tree.

4- 5 feet .....	2.50	20.00
5- 6 feet .....	3.00	25.00
6- 8 feet .....	3.50	30.00
8-10 feet .....	5.50	50.00

## APPLES

(Please note that in all cases caliper shall govern the size of fruit trees.  
The heights noted, represent the average height of most varieties).

	Per 10	Per 100	Per 1000
4½ feet and up 11/16 inch and up .....	\$ 2.50	\$22.00	\$200.00
4 feet and up 9/16 to 11/16 inch .....	2.00	18.00	160.00
3 feet and up 7/16 to 9/16 inch .....	1.80	16.00	140.00
	11-16 inch	9-16 inch	7-16 inch
Ames .....	40	10	3
Anisim .....	50	45	10
Anoka .....	700	300	65
Ben Davis .....	25		
Blue Pearmain .....	300	500	175
Brilliant .....	500	475	100
Delicious .....	950	250	30
Duchess .....		250	25
Early McIntosh .....	50	30	
Eastman .....	225	80	10
Gano .....		25	
Haralson .....	115	550	200
Hawkeye Greening .....	60	50	30
Hyslop .....	75	10	
Iowa Beauty .....	65	10	
Joan .....	175		10
Longfield .....	30	5	
McIntosh Red .....	1000	275	50
McMahon .....	10	5	
Malinda .....		90	50
Minnesota No. 700 .....	90	30	6
Minnesota No. 724 .....	68	7	
Minnesota No. 790 .....	15	40	
Minnesota No. 993 .....	100	20	3
Monona .....	65	40	
Newell's Winter .....	40		
N. W. Greening .....	400	100	
Okabena .....	15		
Patten's Greening .....	125	25	
Peter .....	6	10	
Prairie Spy (Minn. No. 1007) .....	50	75	25
Red Delicious .....	300		
Red Wing .....	120	40	
Salome .....		90	40
Sharon .....	800	250	35
Soulard .....	15		
Strawberry Crab .....	20	10	
Summer Pear .....	340	200	30
Tetofsky .....		60	70
Tolman Sweet .....		80	10
Transcendent .....	25		
University .....	300	140	15
Whitney .....	700	900	
Wolf River .....	30		
Yellow Delicious .....		75	20
Yellow Siberian .....	60	15	
Yellow Transparent .....		365	150
Varieties starred, 5c higher each grade.			
*Hibernal .....	365*	145*	
*Virginia .....	550*		

## PEAR

	Per 10	Per 100	Per 1000
11/16 inch and up .....	\$2.80	\$25.00	\$220.00
9/16 to 11/16 inch .....	2.20	20.00	180.00
7/16 to 9/16 inch .....	1.90	16.00	140.00
Mendel .....		Patten .....	Parker .....

## PLUM

	Per 10	Per 100
5 ft. & up 11/16 inch & up .....	\$ 2.80	\$ 25.00
4 ft. & up 9/16 to 11/16 inch .....	2.20	20.00
3 ft. & up 7/16 to 9/16 inch .....	2.00	16.00
Elliott .....		Loring Prize .....
Fiebing Prize .....		Nicollet .....
Hanska .....		Toka .....
Kahinta .....		Zumbra .....

## CHERRY

	Per 10	Per 100
11/16 inch & up .....	\$ 3.50	\$ 30.00
9/16 to 11/16 inch .....	3.00	26.00
7/16 to 9/16 inch .....	2.50	22.00
Early Richmond		Montmorency

## ROCKY MOUNTAIN DWARF CHERRY

	Per 10	Per 100
3-4 feet .....	\$ 1.80	\$ 15.00
4-5 feet .....	2.30	20.00

## GRAPES

	Per 100	Per 1000
Agawam, large red, 2 year No. 1 .....	\$ 6.00	\$ 50.00
Beta, black, 2 year No. 1 .....	5.00	45.00
Beta, black, 2 year No. 2 .....	3.50	30.00
Concord, black, 2 year No. 1 .....	4.50	40.00
Fredonia, black, early, 2 year No. 1 .....	7.50	62.50
Minnesota No. 11, black, 2 year No. 1 .....	5.00	45.00
Minnesota No. 11, black, 2 year No. 2 .....	3.50	30.00
Moore's Early, black, 2 year No. 1 .....	6.50	60.00
Niagara, white, 2 year No. 1 .....	6.00	50.00
Spurbeck, white, 2 year No. 1 .....	5.00	45.00
Spurbeck, white, 2 year No. 2 .....	3.50	30.00
Worden, black, 2 year No. 1 .....	6.00	50.00

## CURRANTS

	Per 10	Per 100	Per 1000
Cherry, dark red, 2 year No. 1 .....	\$ .70	\$ 5.50	\$ 50.00
Cherry, dark red, 2 year No. 2 .....	.45	4.00	35.00
Diploma, light red, 2 year No. 1 .....	.80	6.50	60.00
London Market, dark red, 2 year No. 1 .....	.70	5.50	50.00
London Market, dark red, 2 year No. 2 .....	.45	4.00	35.00
Long Bunch Holland, bright red, 2 year No. 1 .....	.80	6.50	60.00
Red Cross, bright red, 2 year No. 1 .....	.70	5.50	50.00
Red Cross, bright red, 2 year No. 2 .....	.45	4.00	35.00
Victoria, bright red, 2 year No. 1 .....	.70	5.50	50.00
Victoria, bright red, 2 year No. 2 .....	.45	4.00	35.00
Wilder, dark red, 2 year No. 1 .....	.70	5.50	50.00
Wilder, dark red, 2 year No. 2 .....	.45	4.00	35.00

## GOOSEBERRY

	Per 10	Per 100
Carrie, 2 year No. 2 .....	\$ .80	\$ 6.00
Houghton, 2 year No. 1 .....	.90	7.00

## BLACKBERRIES (From Root Cuttings)

	Per 100	Per 1000
Alfred No. 1 .....	\$ 2.00	\$ 15.00
Alfred No. 2 .....	1.50	12.00
Ancient Britton No. 1 .....	2.00	15.00
Ancient Britton No. 2 .....	1.50	12.00
Eldorado No. 1 .....	2.00	15.00
Eldorado No. 2 .....	1.50	12.00
Rathbun No. 1 .....	2.00	15.00
Rathbun No. 2 .....	1.50	12.00
Snyder No. 1 .....	2.00	15.00
Snyder No. 2 .....	1.50	12.00
Lucretia Dewberry No. 1 .....	2.00	15.00
Lucretia Dewberry No. 2 .....	1.50	12.00

## RASPBERRIES

	Per 100	Per 1000
Chief, red, suckers No. 1 .....	\$ 2.50	\$ 20.00
Chief, red, suckers No. 2 .....	2.00	15.00
Latham, red, suckers $\frac{1}{4}$ inch .....	3.00	25.00
Latham, red, suckers No. 1 .....	2.00	18.00
Latham, red, suckers No. 2 .....	1.50	12.00

## PLUM SEEDLINGS—NATIVE

	Per 100	Per 1000
Plum Seedlings No. 2, 2/16 to 3/16 inch .....	\$ .90	\$ 8.00
Plum Seedlings No. 3, about 2/16 inch .....	.60	5.00

## RHUBARB

	Per 100	Per 1000
$\frac{1}{2}$ to $\frac{5}{8}$ inch .....	\$ 1.20	\$ 10.00
$\frac{5}{8}$ to 1 inch .....	1.80	15.00
1 to $1\frac{1}{2}$ inch .....	2.40	20.00
$1\frac{1}{2}$ and up .....	3.50	30.00

## HEDGING

	Per 100	Per 1000
<b>PRIVET</b>		
Amoor River. Very hardy northern grown type.		
3/4 feet, 4 canes & up .....	\$ 7.50	\$ 60.00
4/4 $\frac{1}{2}$ feet, 4 canes & up .....	10.00	90.00
Ibota. Graceful, spreading growth. Black berries.		
18-24 inch .....	5.00	45.00
2- 3 feet .....	8.00	70.00

## ORNAMENTAL SHRUBS

	Per 100	Per 1000
<b>ALMOND</b>		
Pink Flowering (Prunus Glandulosa). Very ornamental with masses of deep pink flowers.		
18-24 inch .....	\$ 2.50	\$ 22.00
White Flowering, Same as pink, except bears white flowers.		
12-18 inch .....	2.00	15.00
18-24 inch .....	2.50	20.00
2- 3 feet .....	3.00	25.00
3- 4 feet .....	4.00	35.00

## ORNAMENTAL SHRUBS (Continued)

### AMELANCHIER

Canadensis (Dwarf Juneberry). Attractive white flowers early spring followed by dark red fruit.	Per 10	Per 100
12-18 inch .....	1.80	15.00
18-24 inch .....	2.20	20.00
2- 3 feet .....	3.00	25.00

### BARBERRY

Red Leaved ( <i>Atropurpurea</i> ). Resembles the Japanese Barberry, but the leaves are deep red and more lustrous.		
9-12 inch .....	1.00	8.00
12-15 inch .....	1.25	10.00
15-18 inch .....	1.75	15.00
Thunbergi (Japanese Barberry). A splendid hardy hedge plant. Brilliant red fruit and foliage in autumn.		
12-15 inch .....	.45	4.00
15-18 inch .....	.80	6.50
18-24 inch .....	1.20	9.00
24-30 inch .....	1.50	13.00

### BUCKTHORN (*Rhamnus Catharticus*).

Common. Black berries. Valuable for hedging, especially in the North.		
2- 3 feet .....	1.00	8.00
3- 4 feet .....	1.25	10.00
4- 5 feet .....	1.50	12.50

### BUTTERFLY BUSH (*Buddleia*).

Ile de France. Rich reddish purple flowers are borne in long panicles.		
No. 1 .....	1.50	12.00

### CORNUS (Dogwood)

Alternifolia (Summer Sweet). Spikes of fragrant white flowers.		
18-24 inch .....	2.00	15.00
2- 3 feet .....	2.50	20.00
Amomum (Silky). Branches deep red; fruit blue.		
2- 3 feet .....	2.00	15.00
3- 4 feet .....	2.50	20.00
Elegantissima (Variegated Cornelian Cherry). Silver and green foliage. Best variegated shrub. Very compact if pruned.		
12-18 inch .....	2.50	20.00
18-24 inch .....	3.00	25.00
Paniculata (Gray Dogwood). White berries.		
12-18 inch .....	1.25	10.00
18-24 inch .....	1.75	15.00
2- 3 feet .....	2.00	18.00
Sanguinea (Bloodtwig). Purplish red; white flowers.		
18-24 inch .....	1.00	8.00
2- 3 feet .....	1.25	10.00
3- 4 feet .....	1.75	15.00
4- 5 feet .....	2.00	
Sibirica Alba (Coral). Bright red bark, fruit blue.		
18-24 inch .....	1.00	8.00
2- 3 feet .....	1.30	10.00
3- 4 feet .....	1.80	15.00

## ORNAMENTAL SHRUBS (Continued)

### CORNUS (Dogwood) (Continued)

Stolonifera (Red Osier). Spreading but erect grower with dark red branches and white flowers.		
	Per 10	Per 100
2- 3 feet .....	1.50	12.00
3- 4 feet .....	1.80	15.00
Stolonifera Lutea (Gold Twig). A golden-yellow barked shrub that adds color contrast to any shrub planting.		
18-24 inch .....	1.30	10.00
2- 3 feet .....	1.50	12.50
3- 4 feet .....	1.80	15.00

### COTONEASTER

Acutifolia. Upright grower. Very attractive, dark green foliage.		
12-18 inch .....	1.50	12.00
18-24 inch .....	1.80	15.00
3- 4 feet .....	3.00	25.00

### CURRENT (Ribes)

Alpine. Thrifty, dense-growing dwarf. Can be kept pruned as low as 12 inches.		
12-15 inch .....	1.75	15.00
15-18 inch .....	2.50	20.00
18-24 inch .....	2.70	25.00
24-30 inch .....	3.25	30.00
30-36 inch .....	3.75	35.00

### CYDONIA (Quince)

Japonica. A very showy, popular shrub, which bears a profusion of dazzling scarlet flowers in early spring.		
12-18 inch .....	.80	6.00
18-24 inch .....	1.20	10.00
2- 3 feet .....	2.00	15.00

### ELDER (Sambucus)

Cut Leaf Golden. A variety of Golden with deeply cut foliage.		
2- 3 feet .....	1.20	10.00
3- 4 feet .....	1.40	12.00
Golden (Canadensis Aurea). Hardy, rapid growing shrub with outstanding golden yellow foliage.		
18-24 inch .....	1.20	10.00
2- 3 feet .....	1.50	13.00
3- 4 feet .....	2.00	16.00
4- 5 feet .....	2.50	22.00

### FORSYTHIA (Goldenbell)

Fortunei (Erect). Tallest and most slender of Forsythias. Excellent for tall backgrounds.		
18-24 inch .....	1.00	9.00
2- 3 feet .....	1.50	12.00
3- 4 feet .....	1.80	15.00
Intermedia (Border). Bright golden flowers before foliage.		
18-24 inch .....	1.50	12.00
2- 3 feet .....	1.80	15.00
3- 4 feet .....	2.00	18.00
Intermedia Spectabilis. Showy border Forsythia. Improved form of Intermedia. Rich golden yellow flowers.		
2- 3 feet .....	1.80	15.00
3- 4 feet .....	2.00	18.00
4- 5 feet .....	2.50	22.00



## ORNAMENTAL SHRUBS (Continued)

### FORSYTHIA (Goldenbell) (Continued)

Suspensa (Weeping). Drooping habit; flowers yellow. Very graceful; desirable near low rock garden or small pool.

	Per 10	Per 100
18-24 inch .....	1.50	12.00
2- 3 feet .....	1.80	15.00
3- 4 feet .....	2.25	20.00

### HONEYSUCKLE (Lonicera)

Fragrantissima (Winter Honeysuckle). Fragrant white flowers. Nearly evergreen. Semi-hardy.

2- 3 feet .....	1.80	16.00
3- 4 feet .....	2.20	20.00

Grandiflora Rosea, Bride. Flowers bright pink. One of the best upright honeysuckles. Hardy, strong, upright grower.

18-24 inch .....	1.20	9.00
2- 3 feet .....	1.50	12.50
3- 4 feet .....	1.80	16.00

Maacki. Upright shrub, leaves dark green above, lighter beneath; fragrant white flowers, red fruit.

2- 3 feet .....	1.80	15.00
3- 4 feet .....	2.00	18.00

Morrowi. Spreading form, creamy white flowers; red berries. Dense foliage for thick screen or hedge.

12-18 inch .....	1.00	8.00
18-24 inch .....	1.25	10.00
2- 3 feet .....	1.75	15.00
3- 4 feet .....	2.00	18.00
4- 5 feet .....	3.00	25.00

Tatarian Pink (Tatarica Rosea). Hardy, pink flowers, red fruit.

18-24 inch .....	1.00	8.00
2- 3 feet .....	1.20	10.00
3- 4 feet .....	1.80	15.00

Tatarian Red (Tatarica Rubra). Rosy-red flowers, red fruit.

12-18 inch .....	.75	6.00
18-24 inch .....	1.00	8.00
2- 3 feet .....	1.20	10.00
3- 4 feet .....	1.80	15.00

Tatarian White (Tatarica Alba). Upright, hardy grower. White flowers, crimson fruit.

2- 3 feet .....	1.20	10.00
3- 4 feet .....	1.80	15.00
4- 5 feet .....	2.50	20.00

### HYDRANGEA

Arborescens Grandiflora. Large, double white flowers. Thrives in shady places.

18-24 inch .....	2.00	18.00
2- 3 feet .....	2.50	23.00

Paniculata Grandiflora. Large white flowers turning to rose. Good type. Large blooms.

18-24 inch .....	2.20	18.00
2- 3 feet .....	3.00	25.00

## ORNAMENTAL SHRUBS (Continued)

### KERRIA

Japonica. Light green foliage, flowers golden yellow.

	Per 10	Per 100
12-18 inch .....	2.20	
18-24 inch .....	2.50	

### LILAC (Syringa)

Chinensis Alba (White). One of the finest.

4- 5 feet .....	3.50	30.00
5- 6 feet .....	5.00	45.00
6- 8 feet .....	7.00	60.00

Chinensis Rothomagensis. A grand improvement on the common Persian Lilac. Flowers are larger, of a reddish purple color and very fragrant.

12-18 inch .....	1.20	10.00
18-24 inch .....	1.80	15.00
2- 3 feet .....	2.20	18.00
3- 4 feet .....	3.00	25.00

Common Purple (Vulgaris). The well known, old-fashioned lilac.

18-24 inch .....	1.00	8.00
2- 3 feet .....	1.50	12.00
3- 4 feet .....	1.80	16.00

Common White (Vulgaris Alba). White form of above.

18-24 inch .....	1.50	12.00
2- 3 feet .....	1.90	16.00
3- 4 feet .....	3.00	25.00

Persian Purple (Persica). Slender arching branches, small leaves and lilac flowers.

18-24 inch .....	1.80	15.00
2- 3 feet .....	2.20	18.00
3- 4 feet .....	2.50	22.00

Persian White. Same as Persian Purple, except white flowers.

18-24 inch .....	2.50	20.00
2- 3 feet .....	3.00	25.00
3- 4 feet .....	3.50	30.00

Villosa. Bushy, compact grower. Large attractive leaves pale pink flowers.

18-24 inch .....	2.50	20.00
2- 3 feet .....	3.00	25.00
3- 4 feet .....	3.50	32.00

### LILAC (Syringa)

French Lilacs. Named varieties.

12-18 inch .....	2.50	20.00
18-24 inch .....	3.00	25.00
2- 3 feet .....	4.00	35.00
3- 4 feet .....	5.00	45.00

## ORNAMENTAL SHRUBS (Continued)

### LILAC (*Syringa*) (Continued)

	D—Double	S—Single	12 18"	18 24"	2 3'	3 4'
Aline Mocqueris, s, red .....						17
Alphonse LaValle, d, lavender violet .....				10		
Belle de Nancy, d, satiny rose .....				6	8	4
Buffon, s, mauve pink .....					5	5
Charles X, s, rich reddish purple .....			100	200	50	
Des Fontaines, d, violet .....				5	10	
Edmond Boissier, s, dark bluish purple .....					10	2
Gloire de Lorraine, s, dark lilac .....					25	9
Jacques Callot, s, light violet .....					4	12
Jean Mace, d, mauve changing to blue .....				5	20	10
Leon Simon, d, purple to pale mauve .....					10	
Ludwig Spaeth, s, deep purplish red .....			50	60		
Marie Le Graye, s, yellowish white .....			50	25		15
Michel Buchner, d, light purplish red .....			10	25		
Mme. Casimer Perier, d, white .....			20	30	5	10
President Grevy, d, light blue .....			7	5	25	25
President Viger, d, light pinkish lilac .....						10
Ville de Limoges, s, pink .....					4	
Volcan, s, deep purple .....					18	39
Waldeck Rousseau, d, deep violet .....					9	

### PHILADELPHUS (See *Syringa*)

### PHYSOCARPOS (See *Spirea Opulifolia*)

### RHUS (Sumac)

	Per 10	Per 100
Aromatica. Fragrant. Yellow flowers, red berries in June; leaves turn red. Very attractive.		
12-18 inch .....	1.50	12.00
18-24 inch .....	1.80	15.00
2- 3 feet .....	2.50	20.00
3- 4 feet .....	3.00	25.00
Cotinus (Purple Fringe). Rapid grower producing masses of filmy, smoky panicles of flowers.		
2- 3 feet .....	4.00	35.00
3- 4 feet .....	4.50	40.00
4- 5 feet .....	5.00	45.00

### ROSE ACACIA (*Robinia Hispida*)

Sometimes known as Moss Locust or Pink Flowering Locust. Very low and shrubby, with beautiful, clear pink flowers in loose racemes.		
2- 3 feet .....	2.50	20.00
3- 4 feet .....	3.00	25.00
4- 5 feet .....	3.50	30.00

### SNOW BALL (See *Viburnum Opulus Sterile*)

### SNOWBERRY (*Symphoricarpus*)

Chenaulti (Improved Coral Berry). New, very small leaves; gracefully arching branches; pink flowers; red fruit.		
18-24 inch .....	1.00	9.00
2- 3 feet .....	1.20	11.00
3- 4 feet .....	1.65	15.00

## ORNAMENTAL SHRUBS (Continued)

### SNOWBERRY (*Symphoricarpus*) (Continued)

Racemosus (Common Snowberry). Attractive green foliage, pink flowers. Large white fruit in clusters in autumn.

	Per 10	Per 100
12-18 inch .....	.70	6.00
18-24 inch .....	1.00	8.00
2- 3 feet .....	1.20	10.00

Vulgaris (Indian Currant). Red coral berries. Hardy shrub.

12-18 inch .....	.70	6.00
18-24 inch .....	1.00	8.00
2- 3 feet .....	1.20	10.00

### SORBARIA (*Sorbifolia*) (See *Spirea Sorbifolia*)

#### SPIREA

Anthony Waterer. A valuable dwarf shrub; bright red flowers.

12-15 inch .....	1.25	10.00
15-18 inch .....	1.75	15.00

Billardi Pink. Rose colored flowers in spikes.

18-24 inch .....	1.00	8.00
2- 3 feet .....	1.20	10.00
2- 3 feet Heavy .....	1.50	12.00

Bumalda (Dwarf). Attractive light pink flowers.

12-15 inch .....	1.00	8.00
15-18 inch .....	1.20	10.00

Froebeli (Froebel). Vigorous spreading grower. Bright pink flowers. Purplish tips in spring. Very hardy. Thrives in any location. One of the best spireas for foundation and hedge planting.

12-18 inch .....	1.00	8.00
18-24 inch .....	1.40	12.00
24-30 inch .....	1.75	15.00

Korean (*Trichocarpa*). Blooms in large dome-shaped clusters of white flowers in June.

18-24 inch .....	1.00	8.00
2- 3 feet .....	1.20	10.00
3- 4 feet .....	1.70	15.00

Opulifolia Nana (Dwarf Ninebark). Dwarf form, dense grower. Very attractive foliage and flowers. A valuable, hardy, low growing shrub.

18-24 inch .....	1.20	10.00
2- 3 feet .....	1.40	12.00
3- 4 feet .....	1.70	15.00

Sorbifolia (Ural False Spirea). Ash leaved foliage; white flowers.

12-18 inch .....	1.25	9.00
18-24 inch .....	1.50	12.00

Thunbergi. White flowers; slender arching branches. Holds foliage late in fall.

2- 3 feet .....	1.40	12.00
3- 4 feet .....	1.60	14.00

Van Houttei (Bridal Wreath). Most popular of the Spirea. Its graceful branches are a mass of fragrant white flowers.

18-24 inch .....	.50	4.50
2- 3 feet .....	.65	6.00
3- 4 feet .....	1.00	9.00
4- 5 feet .....	1.70	15.00

## ORNAMENTAL SHRUBS (Continued)

### SUMAC (See Rhus)

#### SYRINGA (Philadelphus)

	Per 10	Per 100
Albatre. Medium, bushy; double. Extra nice blooms.		
18-24 inch .....	1.20	10.00
2- 3 feet .....	1.40	12.00
3- 4 feet .....	1.60	
Coronarius (Sweet Scented). A vigorous growing hardy shrub. Blossoms pure white. A very profuse bloomer.		
12-18 inch .....	.80	6.00
18-24 inch .....	1.00	8.00
2- 3 feet .....	1.20	10.00
3- 4 feet .....	1.75	15.00
Grandiflora. Large flowering Mock Orange. Not fragrant.		
12-18 inch .....	.80	6.00
18-24 inch .....	1.00	8.00
2- 3 feet .....	1.20	10.00
Lemoinei. Semi-dwarf with attractive foliage, producing dense racemes of small fragrant flowers.		
12-18 inch .....	.70	6.00
18-24 inch .....	1.25	10.00
2- 3 feet .....	1.60	14.00
3- 4 feet .....	2.00	17.50

#### TAMARIX

Hispidia. Light blue foliage, dark pink flowers.		
18-24 inch .....	1.50	13.00
3- 4 feet .....	1.80	15.00
4- 5 feet .....	2.20	20.00
Odessana. Upright slender branches. Light silver foliage, light pink flowers in slender racemes.		
18-24 inch .....	1.25	10.00
2- 3 feet .....	1.40	12.00
3- 4 feet .....	1.60	14.00
4- 5 feet .....	2.20	20.00

#### VIBURNUM

Americanum (Highbush Cranberry). Handsome shrub, single white flowers. Bright scarlet berries hanging until spring. Pendant type. Edible.		
12-18 inch .....	1.80	15.00
18-24 inch .....	2.20	20.00
Dentatum (Arrow Wood). Single white flowers. Berries bluish black. Bushy growth. Attractive foliage.		
18-24 inch .....	1.75	15.00
2- 3 feet .....	2.50	20.00
3- 4 feet .....	3.00	25.00

#### WEIGELA

Floribunda. Crimson Weigela. Bright crimson flowers.		
18-24 inch .....	2.00	
2- 3 feet .....	2.50	
Hendersoni. One of the hardier varieties of Weigela. A splendid shrub; produces quantities of light crimson flowers.		
18-24 inch .....	1.50	12.00
2- 3 feet .....	1.75	15.00
3- 4 feet .....	2.20	20.00

## LINING OUT STOCK

In Storage; Can Ship Now — Our Own Growing.

		Per 1000
1000	Acer Ginnala—4- 6 inch .....	\$ 8.00
700	Acer Ginnala—6-12 inch .....	10.00
200	Ash, European Mt.—4- 6 inch .....	8.00
575	Ash, Wafer—4- 6 inch .....	8.00
320	Ash, Wafer—6-12 inch .....	10.00
450	Hackberry—4- 6 inch .....	10.00
545	Hackberry—12-18 inch .....	15.00
2000	Barberry Thunbergii—6-12 inch .....	6.00
200	Buckthorn Cathartica—4- 6 inch .....	5.00
3765	Buckthorn Cathartica—6-12 inch .....	7.00
860	Buckthorn Cathartica—12-18 inch .....	10.00
1350	Caragana Arborescens—6-12 inch .....	6.00
1175	Caragana Arborescens—12-18 inch .....	10.00
325	Prunus Tomentosa—18-24 inch .....	20.00
300	Cornus Amomum—6-12 inch .....	9.00
115	Cornus Amomum—12-18 inch .....	12.00
600	Euonymus Americana—4-6 inch .....	20.00
275	Exochorda Grandiflora—12-18 inch .....	15.00
300	Exochorda Grandiflora—18-24 inch .....	20.00
1660	Lilac Villosa—6-12 inch .....	15.00
875	Rose Lucida—6-12 inch .....	10.00
470	Rose Lucida—12-18 inch .....	15.00
400	Rose Nitida—6-12 inch .....	15.00
300	Rose Nitida—12-18 inch .....	17.50
1500	Rose Rubiginosa—6-12 inch .....	12.00
700	Rose Rubiginosa—12-18 inch .....	15.00
900	Rose Rubrifolia—6-12 inch .....	12.00
650	Bignonia Radicans—No. 1 .....	12.50
400	Bignonia Radicans—No. 2 .....	9.00

## ROSES

### RUGOSA

		Per 10	Per 100
Blanda, soft pink flowers borne in clusters.			
	18-24 inch .....	1.60	14.00
	2- 3 feet .....	1.80	16.00
	3- 4 feet .....	2.00	18.00
F J Grootendorst, small bright red flowers in clusters.			
	12-18 inch .....	2.50	20.00
	18-24 inch .....	3.00	25.00
Lucida, bright pink flowers followed by shining red fruit.			
	18-24 inch .....	1.50	12.00
	2- 3 feet .....	1.80	16.00
	3- 4 feet .....	2.00	18.00
Rubiginosa (Sweetbriar). Single pink flowers; orange-red fruit.			
	2- 3 feet .....	2.50	20.00
	3- 4 feet .....	3.00	25.00
Setigera, bright pink flowers, big clusters, blooms late.			
	18-24 inch .....	1.60	14.00
	2- 3 feet .....	2.00	18.00
	3- 4 feet .....	2.50	23.00

## LILIUM

<b>FUNKIA BLUE (Day Lily).</b> Flowers light blue.	Per 10	Per 100
No. 1 .....	\$ .60	\$ 5.00
<b>TIGER (Tigrinum).</b> Flowers orange-red and spotted purple.		
Single—No. 1 .....	1.00	8.00
Double—No. 1 .....	1.00	8.00

## CLIMBING VINES

<b>AMPELOPSIS</b>		
Engelmanni. Very hardy, self-climbing.	Per 10	Per 100
2 year No. 1 .....	\$ .90	\$ 8.00
2 year Medium .....	.70	6.00
Quinquifolia (American Ivy). Green foliage turning to crimson in fall. Rapid grower.		
2 year No. 1 .....	.90	8.00
2 year Medium .....	.70	6.00
<b>BIGNONIA (Radicans)</b>		
Trumpet Vine. Upright growing vine. Trumpet shaped scarlet flower.		
2 year No. 1 .....	1.40	12.00
2 year Medium .....	1.10	9.00
<b>BITTERSWEET (Celastrus)</b>		
Scandens. Yellow flowers; red and orange berries.		
2 year No. 1 .....	1.40	12.00
2 year Medium .....	1.10	9.00
<b>CLEMATIS</b>		
Paniculata (Sweet Japan Clematis). Small, dense foliage covered with starry white bloom in early fall.		
2 year No. 1 .....	1.20	10.00
2 year Medium .....	.80	6.00
<b>HONEYSUCKLE (Lonicera)</b>		
Scarlet Trumpet. Trumpet-shaped flowers.		
2 year No. 1 .....	1.40	12.00
<b>MATRIMONY VINE (Lycium-Chinese)</b>		
Hardy, woody vine. Purple flowers.		
2 year No. 1 .....	.90	7.00
2 year Medium .....	.70	5.00
<b>WISTERIA</b>		
Chinese Purple (Sinensis). Long racemes of purple flowers. (R. C.)		
2 year No. 1 .....	2.00	18.00

## PEONIES

(3 to 5 Eye)

	Per 10	Per 100
<b>Archie Brand.</b> Deep pink, with silvery border. Flower bomb type .....	\$ 3.00	\$ 25.00
<b>Caroline Mather.</b> Bright rosy red, Midseason .....	1.40	12.00
<b>Duchess de Nemours.</b> Sulphur white, turning to pure white. Very fine. Fragrant .....	1.40	12.00
<b>Festiva Maxima.</b> Creamy white with small center of crimson. Early .....	1.50	13.00
<b>LaMartine.</b> Deep rose, red double flowers .....	1.00	8.00
<b>Longfellow.</b> Brilliant cherry red; very large. Color does not fade or grow dark as most reds. Very early .....	2.00	15.00
<b>Louis Van Houette.</b> Deep velvety crimson. Late mid-season .....	1.50	12.00
<b>Mme. Ducl.</b> Pink. A perfect formed globular bomb. Bright silver pink, with a shade of salmon and silver reflex ....	2.00	15.00
<b>Modeste.</b> Deep rose, bright, showy, fragrant .....	1.20	10.00
<b>Sarah Bernhardt.</b> Flowers of remarkable size in clusters full and double. In color apple blossom pink with each petal silver tipped. Late .....	3.00	25.00

## PHLOX

Single Plants Transplanted, Individually Grows in the Nursery Row.  
Worth Double Divisions

They are field grown, true to name and very carefully graded.

		Per 10	Per 100	Per 1000
<b>Africa.</b>	Brilliant carmine red, blood red eye.			
	1300 No. 1 .....	\$.90	\$ 8.00	\$ 70.00
	300 No. 2 .....	.70	6.00	50.00
<b>B Compte.</b>	Wine color, very brilliant.			
	800 No. 1 .....	.80	7.00	55.00
<b>Baron von Heeckeren.</b>	Delicate salmon pink.			
	100 No. 1 .....	.80	7.00	55.00
<b>Blue Commander.</b>	Large bluish flowers.			
	800 No. 1 .....	.80	7.00	55.00
	75 No. 2 .....	.60	5.00	35.00
<b>Bridesmaid.</b>	White, large crimson center.			
	1000 No. 1 .....	.80	7.00	55.00
<b>Brilliant.</b>	Fiery scarlet with deep red eye.			
	2700 No. 1 .....	1.00	9.00	75.00
<b>Champs Elysees.</b>	Bright rose magenta. Very effective			
	1500 No. 1 .....	.80	7.00	55.00
<b>Coquelicot.</b>	Red with salmon eye.			
	1900 No. 1 .....	.80	7.00	55.00
	200 No. 2 .....	.60	5.00	35.00
<b>Dr. Chas. Mayo.</b>	White with crimson eye.			
	50 No. 2 .....	.60	5.00	35.00
<b>Eclairneur.</b>	Tall, brilliant, rosy-carmine, large white halo.			
	1450 No. 1 .....	.80	7.00	55.00
	125 No. 2 .....	.60	5.00	35.00
<b>Enchantress.</b>	Bright salmon pink, dark eye.			
	400 No. 1 .....	1.00	9.00	75.00
	275 No. 2 .....	.80	7.00	55.00
<b>E. I. Farrington.</b>	Bright salmon pink.			
	1875 No. 1 .....	1.00	9.00	75.00
	200 No. 2 .....	.80	7.00	55.00
<b>Fiancee.</b>	Pure. White.			
	250 No. 1 .....	.80	7.00	55.00
<b>General von Heutz.</b>	Salmon red, white center.			
	1500 No. 1 .....	.80	7.00	55.00
	100 No. 2 .....	.60	5.00	35.00
<b>H. O. Wijers.</b>	White red center.			
	875 No. 1 .....	.80	7.00	55.00
	75 No. 2 .....	.60	5.00	35.00
<b>Jules Sandeau.</b>	Dwarfish, large flower, pure pink, light center.			
	775 No. 1 .....	.90	8.00	65.00
<b>Lillian.</b>	Exquisite cameo pink with faint blue tinge.			
	100 No. 1 .....	1.20	11.00	95.00
	45 No. 2 .....	1.00	9.00	75.00
<b>Lothair.</b>	Bright crimson.			
	50 No. 1 .....	.80	7.00	55.00
	50 No. 2 .....	.60	5.00	35.00
<b>Marechal French.</b>	Deep scarlet, blood red eye.			
	250 No. 1 .....	.90	8.00	65.00
	50 No. 2 .....	.70	6.00	45.00
<b>Morgenrood.</b>	Bright rose shade with deeper eye.			
	2100 No. 1 .....	1.20	10.00	85.00
	90 No. 2 .....	1.00	8.00	65.00



## PHLOX (Continued)

	Per 10	Per 100	Per 1000
<b>Mrs. Jenkins.</b> Pure white.			
800 No. 1 .....	.80	7.00	55.00
<b>Mrs. W. Van Beuningen.</b> Large, rich salmon red without eye; free flowering.			
250 No. 1 .....	.90	8.00	65.00
75 No. 2 .....	.70	6.00	45.00
<b>Painted Lady.</b> Tall, delicate silver pink, cherry red eye.			
500 No. 1 .....	.80	7.00	55.00
<b>Prof. Virchow.</b> Bright salmon overlaid with orange- scarlet.			
900 No. 1 .....	.90	8.00	65.00
125 No. 2 .....	.70	6.00	45.00
<b>R. P. Struthers.</b> Rosy carmine with scarlet eye.			
1000 No. 1 .....	.80	7.00	55.00
<b>Rheinlander.</b> Salmon pink, deep red eye.			
500 No. 1 .....	.80	7.00	55.00
<b>Rokoko.</b> Large flowers of clear soft pink.			
800 No. 1 .....	.80	7.00	55.00
<b>Seiboldi.</b> Orange, scarlet red eye.			
60 No. 1 .....	.80	7.00	55.00
<b>Special French.</b> Beautiful clear pink.			
400 No. 1 .....	.80	7.00	55.00
<b>Tigress.</b> Brilliant orange scarlet.			
100 No. 1 .....	1.00	9.00	75.00
60 No. 2 .....	.80	7.00	55.00
<b>Thor.</b> Soft, ruddy salmon with mottled center.			
300 No. 1 .....	.80	7.00	55.00
50 No. 2 .....	.60	5.00	35.00
<b>Von Hockberg.</b> Brilliant red.			
1000 No. 2 .....	.70	6.00	45.00
<b>Widar.</b> Reddish violet with white eye.			
1300 No. 1 .....	.80	7.00	55.00
70 No. 2 .....	.60	5.00	35.00

## PHLOX — LINERS

Our lining out Baby Phlox are plants that have been grown in the greenhouse and will be ready for transplanting into the open field about April 15. They should be transplanted just as soon as the soil and weather conditions will permit. We have grown our Phlox in this manner for a number of years and we have had the best of success. They are not potted, but the roots will have sufficient dirt and they will be packed in such a way as to reach destination in prime condition.

Place your order now while our stock is complete. We offer the following varieties:

Africa	Enchantress	Pantheon
B. Compte	Feurbrand	Professor Virchow
Baron Von Heeckeren	Fiancee	R. P. Struthers
Bridesmaid	Gen. Von Heutz	Rheinlander
Brilliant	H. O. Wijers	Rijnstroom
Champs Elysees	Jules Sandeau	Rokoko
Colonial	Lothair	Saladin
Coquelicot	Marechal French	Seiboldi
Dr. Chas. H. Mayo	Mrs. Jenkins	Von Hockberg
Eclairer	Painted Lady	Widar

Do not order less than 25 of a variety.  
Price \$3.00 per 100 — \$20.00 per 1000

## HARDY PERENNIALS

	Per 10	Per 100
<b>ACHILLEA (Yarrow)</b>		
The Pearl. Pure white flowers in great profusion....	\$ .80	\$ 6.00
<b>ANCHUSA (Bugloss)</b>		
Italica (Dropmore) bright blue .....	.90	7.00
<b>ANEMONE (Windflower)</b>		
Pulsatilla, violet .....	1.20	10.00
Lilac shades .....	1.20	10.00
<b>ANTHEMIS (Chamomile)</b>		
Tinctoria, golden yellow .....	.80	6.00
<b>AQUILEGIA (Columbine)</b>		
Alpina-Blue .....	.80	6.00
Chrysantha—Golden yellow blooms .....	.80	6.00
Crimson Star — Red .....	1.00	8.00
Long Spurred Hybrids — Pink .....	.80	6.00
Long Spurred Hybrids — Mixed .....	.80	6.00
<b>ASTERS</b>		
Alpinus Albus — White flowers .....	1.00	8.00
Alpinus. Blue —Light blue .....	1.00	8.00
Amellus — Dark Beauty, purple .....	1.00	8.00
Amellus — Rosea, pink .....	1.00	8.00
Amellus — Beauty of Ronsdorf, rich rosy lilac .....	1.00	8.00
Amellus — Perry's Favorite, bright pink .....	1.00	8.00
<b>BOLTONIA (False Chamomile)</b>		
Asteroides. Single aster-like flowers; white .....	.90	7.00
Latisquama. Lavender pink. Good for cutting .....	.90	7.00
<b>CAMPANULA (Belleflower)</b>		
Medium (Canterbury Bells) Pink .....	.80	6.00
Medium (Canterbury Bells) White .....	.80	6.00
Medium (Canterbury Bells) Blue .....	.80	6.00
<b>CHRYSANTHEMUM (Hardy Outdoor)</b>		
Autumn Glow, glowing crimson .....	1.00	8.00
Bronze .....	1.00	8.00
Ruth Cumming, rich bronze terra-cotta in color .....	1.00	8.00
Pink Cushion, beautiful shade of pink .....	.90	7.00
<b>CHRYSANTHEMUM MAXIMUM (Shasta Daisy)</b>		
Alaska, large white flowers .....	.70	5.00
Diener's Double White. Hardy. Early. Double flowers of glistening white .....	.90	7.00
<b>COREOPSIS (Tickseed)</b>		
Lanceolata Grandiflora, golden yellow .....	.70	5.00
<b>DELPHINUM (Larkspur)</b>		
Belladonna, one of the best light blue Delphinums....	.80	6.00
Bellamosa, dark indigo blue .....	.80	6.00
Chinese Blue, fine feathery foliage, large blossoms of intense gentian blue .....	.90	7.00
<b>DIANTHUS</b>		
Barbatus (Sweet William).		
Copper Red .....	.80	6.00
Newport Pink .....	.80	6.00
Purple Beauty .....	.80	6.00
Scarlet Beauty .....	.80	6.00
<b>DIANTHUS</b>		
Plumarius (Hardy Garden Pinks).		
Alba Plena, double white .....	.80	6.00
Cyclops, single with red eyes .....	.90	7.00
Highland Rose Queen, scarlet .....	1.00	8.00
Spring Beauty, large double .....	.80	6.00
Special Mixture .....	.80	6.00

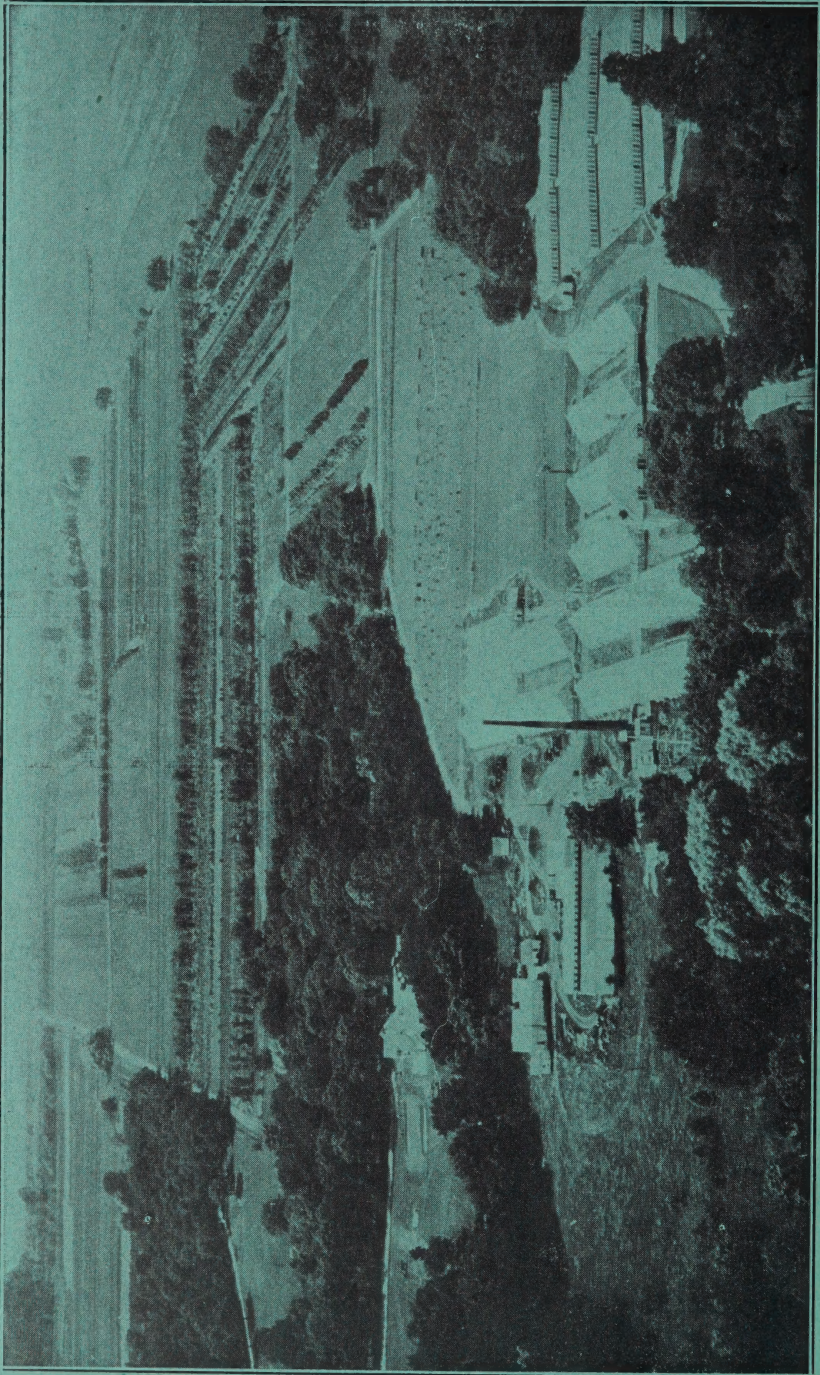
## HARDY PERENNIALS (Continued)

	Per 10	Per 100
<b>DICENTRA (Bleeding Heart)</b>		
Eximina, rose colored flowers produced all summer	.90	8.00
<b>DIGITALIS (Foxglove)</b>		
Shirley Hybrids .....	1.00	8.00
<b>GAILLARDIA (Blanket Flower)</b>		
Grandiflora, deep red with yellow border .....	.90	7.00
<b>HIBISCUS (Mallows) (Rosemallow)</b>		
Giant Pink .....	1.20	10.00
Giant Red .....	1.20	10.00
Giant White .....	1.20	10.00
<b>HOLLYHOCKS</b>		
Single, pink flowers .....	.90	7.00
Double, pink flowers .....	.90	7.00
Double, red flowers .....	.90	7.00
Single, white flowers .....	.90	7.00
Double, white flowers .....	.90	7.00
Double, yellow flowers .....	.90	7.00
<b>IRIS, German, S—Standard; F—Falls.</b>		
Abu Hassan, gold standard; falls streaked with brown and gold .....	.35	2.50
Albert Victor, rich blue self colored variety. Free blooming and vigorous .....	.50	4.00
Caprice, large rich rosy-lilac, very fragrant .....	.35	2.00
Colonial Candelot, S, bronze overlaid reddish lavender; F, rich dark velvety crimson .....	.50	4.00
Fairy, a dainty variety, white in effect, with delicate blue tones .....	.40	3.00
Her Majesty. The best of the older pinks .....	.50	4.00
Iroquoise. Smoky lavender, dotted brown. Black-maroon .....	.35	2.00
Juniata, clear blue, large .....	.35	2.50
Loreley, light yellow and purple bicolor. F, bordered yellow. Excellent for landscaping .....	.40	3.00
Mme Chereau, white with violet penciling on standards and falls. Vigorous .....	.35	2.50
Monsignor. S, rich satiny violet; F, mauve heavily veined and centered purple. Vigorous .....	.40	3.00
Mrs. A. W. Blakely, S, yellow tinged with pink; F, yellow with a line in center lighter border .....	.35	2.00
Mrs. Allen Gray, a delicate, pale rose-mauve, vigorous, free. Sometimes blooms twice a season .....	.35	2.00
Nuee d' Orage, pale purple .....	.40	3.00
Pallida Dalmatica, delicate lavender .....	.35	2.00
Prosper Laugier, S, fiery bronze; F, Indian purple .....	.40	3.00
Quaker Lady, S, smoky lavender with yellow shadings; F, blue and old gold .....	.35	2.00
Queen of May, soft rosy-violet, almost pink .....	.35	2.00
Rhein Nixe, white S; F, violet with white margin....	.35	2.50
Romany, S, pale dusky yellow; F, bright reddish brown. Very rich .....	.35	2.50
Sherwin Wright, bright deep yellow. One of the best of the old standard varieties .....	.35	2.00
Trojana, S, overlap. Light lavender violet; F, dark violet .....	.35	2.00
Zanardalia, light blue, beautifully shaped petals ....	.35	2.00

## HARDY PERENNIALS (Continued)

	Per 10	Per 100
<b>LATHYRUS LATIFOLIUS (Everlasting Sweet Peas)</b>		
Bloom all summer.		
Pink Beauty .....	.90	7.00
Red .....	.90	7.00
White .....	.90	7.00
<b>LINUM (Hardy Flax)</b>		
Perenne. Flowers beautiful pale blue on slender graceful stems .....	.80	6.00
<b>LOBELIA (Indian Paintbrush)</b>		
Cardinalis (Cardinal Flower) .....	1.00	9.00
<b>LUPINES (Polyphyllus)</b>		
Beautiful perennial. Pea-shaped flowers.		
Blue .....	1.20	10.00
Rose .....	1.20	10.00
White .....	1.20	10.00
<b>LYCHNIS</b>		
Chalcedonia (Maltese Cross) Scarlet .....	.80	6.00
<b>MYOSOTIS (Forget-me-not)</b>		
Palustris Semperflorens, bright blue .....	.70	5.00
<b>PHYSOSTEGIA (False Dragon Head)</b>		
Virginica, purple rose .....	.90	7.00
Virginica, alba, pure white .....	.90	7.00
<b>PLATYCODON (Balloon Flower)</b>		
Grandiflorum Album, pure white .....	.80	6.00
Grandiflorum Blue, blue flowers .....	.80	6.00
<b>POPPIES (Papaver) ORIENTAL</b>		
Beauty of Livermore, deep blood red, extra large ....	1.00	8.00
Mrs. Perry, salmon rose .....	.90	7.00
Oriental Scarlet .....	.80	6.00
<b>POPPIES (Papaver) NUDICAULE</b>		
Iceland Poppy, brilliant flowers blooming all summer .....	.80	6.00
<b>PYRETHRUM (Painted Daisy)</b>		
Alba, white flowers .....	1.00	8.00
Atrosanguineum, dark red shades .....	.80	6.00
Roseum, shades of rose and pink .....	.80	6.00
<b>THYMUS (Thyme)</b>		
Serpyllum Coccineus, bright red flowers .....	1.20	10.00
<b>TUNICA (Coat Flower)</b>		
Saxifraga, pretty tufted plants with lilac flowers ....	1.10	9.00
<b>VIOLAS</b>		
Apricot, yellow, blotched apricot and orange .....	.90	7.00
Arkwright Ruby, ruby-crimson with terracotta and darker markings .....	.90	7.00
Jersey Gem, the finest deep violet-blue .....	1.00	8.00
Rosea, pink .....	.90	7.00
<b>YUCCA (Adam's Needle)</b>		
Filamentosa. Creamy yellow, 2 year .....	1.20	10.00





**VIEW OF SHEEMAN NURSERY TAKEN FROM AEROPLANE**

Showing roof of underground storage at extreme right and greenhouse for propagation. Located in the fertile valley of the Cedar River. Good, rich soil, producing sturdy stock with plenty of fibre roots.