

Historic, Archive Document

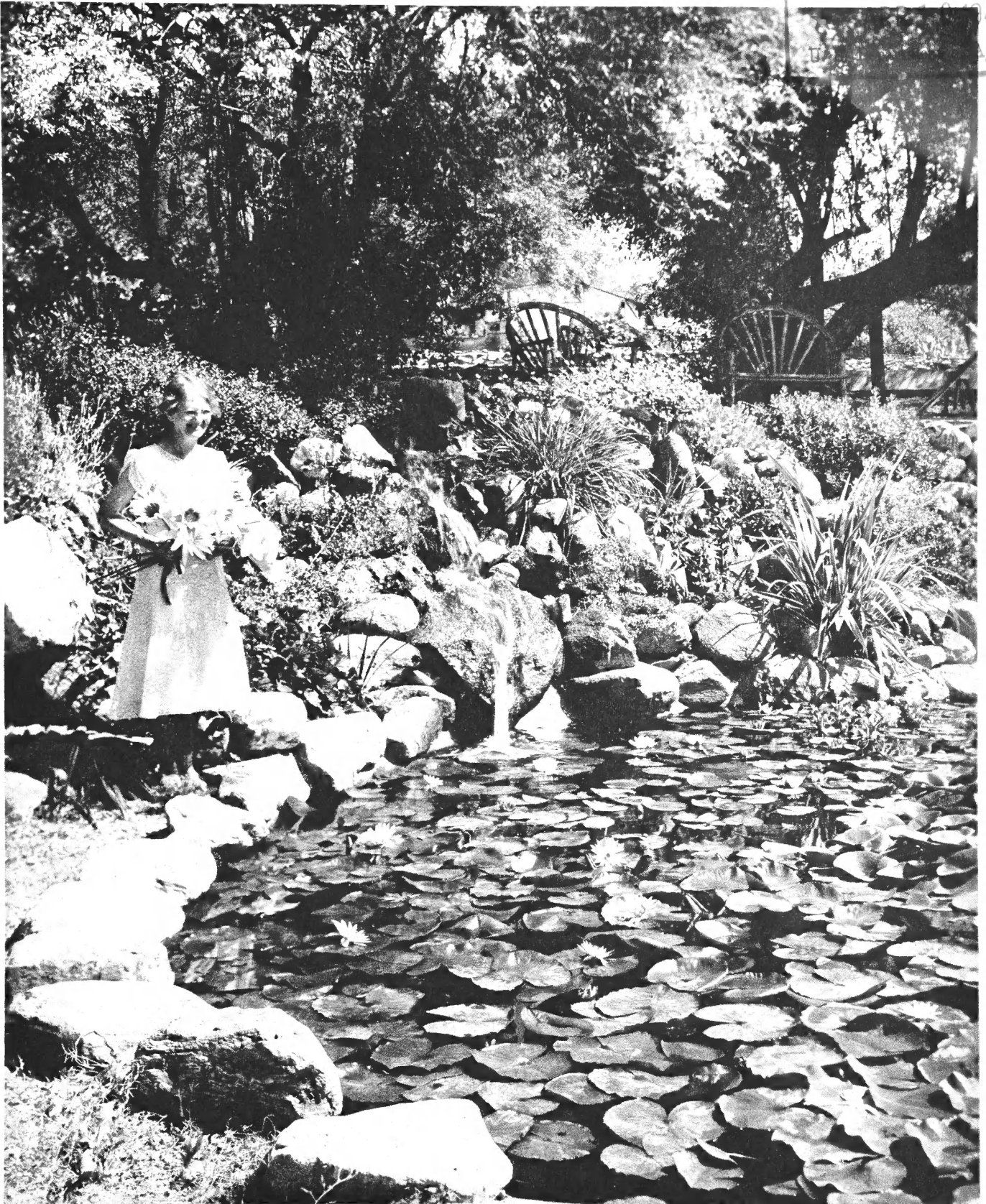
Do not assume content reflects current scientific knowledge, policies, or practices.



LIBRARY
RECEIVED

41 ★

Agriculture



Van Ness Water Gardens

UPLAND, CALIFORNIA



GREETINGS

DEAR FRIENDS:

Again we present our catalogue of water plants. We are happy to be able to give you an enlarged, and we hope a more useful one than ever before. We have gone to considerable expense to illustrate the building and planting of pools, making it easier for those intending to build one to know just how to go about it.

During the past year we have shipped our lilies to India, China, France, the Philippines, Honolulu, Canada, and all over the United States. Have received many letters thanking us for "the wonderful plants and expert packing".

We received First Premium for our display at the California State Fair; we also maintained an exhibit at the Golden Gate International exposition both in 1939 and 1940, receiving a Gold Certificate of Merit, also splendid letters of appreciation from the management.

Assuring you that we shall always give our best, both in plants and service, and trusting we may have the pleasure of serving you, we are,

Very sincerely,

R & Van Ness
Mrs R. E. Van Ness

Culture of Water Lilies

Water lilies are among the easiest flowers to grow. About the only attention they need after planting is to which the water level and break off dead leaves. No constant watering to think of, or worry about when planning a vacation. Just leave a drip in your pool and go away for a month, knowing that when you return you will find everything in perfect condition.

SOIL AND FERTILIZER. Any good garden soil will do for Water lilies. The best fertilizer is WELL ROTTED DAIRY. Be sure it is well rotted or it will ferment and rot the lily pads and muddy the pool.

Should you be unable to obtain well rotted manure, we can furnish a very satisfactory fertilizer, very concentrated so that ½ pound is sufficient for one lily box, or in spreading over entire pool ½ pound is sufficient for each wheelbarrow of soil. When using dairy fertilizer, place on bottom of pool or box to depth of 4 inches, then cover with 6 or 8 inches of soil according to depth of pool. Cover with 1 inch of clean sand.

In large pool, if desiring to plant in boxes, the boxes should be 2 x 2 feet square and 1 foot deep if possible. Lilies will grow with 4 inches of water over crown, but do better with at least 8 inches. Do not use red-wood as the acid is not good for the fish. Use pine which will last for years in water.

PLANTING. Hardy lilies should be planted HORIZONTALY and with the crown well out of the soil. Tropical lilies should be planted upright and at the same depth as before being shipped as growing plants. Be careful that leaves of Tropicals do not become dry or they may not recover. See illustration for planting on page 14.

LOTUS tubers should be planted HORIZONTALY, care being taken to not break the crown off. A space should be bricked off for Lotus, as they crowd other plants out if allowed to grow freely in pool.

In wild planting, to fill the pool for the first time, it is best to sprinkle the soil with a fine spray from the hose after lilies are set, then lay burlap sack down and place hose in this and fill very slowly; this does not disturb the planting and you will have a clear pool.

A pool 4 x 6 feet will accommodate 3 or 4 lilies and several water plants. When receiving water plants do not allow them to become dry before planting; place in tub of water or cover with a wet sack until planted.

Do not plant Tropic lilies in fresh water. Fill pool a few days before planting and allow water to become warm.

PLANTING TIME. Hardy lilies may be planted at any time in mild climates. In California they begin to grow early in January and we can ship at any time suited to your locality and you should be the judge as to when you should have them started growing. Tropical lilies should not be planted until an average temperature of 70° is maintained. Early planting only leads to disappointment. A good time to plant is after June 1st in all except the Southern States, where they may safely be planted around May 1st.

WINTER CARE. Hardy lilies may safely be wintered over in the pool, provided the roots do not freeze. In extreme cold climates cover with boards and give an extra covering of straw. Should it seem advisable to lift the lilies before cold weather arrives, they may be stored in a cool cellar, being careful that they do not dry out, as dry rot will be sure to attack them and they will be lost.

SPRING CLEANING. Early in the spring, before the lilies begin to grow, all debris should be cleaned out of the pool. It is not necessary to remove the soil or drain the pool oftener than once in two years.

All cleaning and re-planting should be done early in the spring or fishspawn will be destroyed.

INSECT ENEMIES. Water lilies are practically free from pests, Aphis being the most troublesome. This may be controlled by spraying with the hose early in the morning, then the fish will eat them. The main thing is to begin spraying at the first sign of Aphis.

MUDDY POOLS. The water in a new pool often becomes discolored. This will clear up in a short time if a quantity of oxygenating plants are used, such as Anacharis, Myriophyllum and Parrots-feather. Place a hose or drip in the pool which will help to overcome this condition. Do not change the water, as that will not help. Have a good supply of snails in pool to help clean up Algae and keep the water pure.

MOSQUITOS: There will be no trouble with mosquitos if you have a dozen fish for each 6 feet of pool. They very effectively keep out mosquito larvae.



Part of a group of five Tub Gardens, combined with Rock Garden, planted with Tropical Lilies and Succulents.

WATER LILIES

Have you ever noticed that, no difference what the beauty of the garden may be, in harmony of planting, in beauty of landscaping, the visitor drifts to the Water Lily Pool and there finds a sanctuary, a place where one can forget the trials of everyday life and find the charm and solace that only exquisite beauty can bestow.

SO EASY TO GROW

It's easy to have a Water garden, even in an apartment. Some of the Pygmae lilies will grow in a dishpan, providing you have a sunny window. Fill dishpan half full of good garden soil and plant Water Poppy, Water Hyacinth, Water Snowflake and some of the Water grasses and you will be pleased with the results.

Then you may have a real beauty spot by making a Tub garden. The one illustrated on page 2 has a group of 5 half barrels, and was made by sawing barrels in two, painting inside and out with a heavy coat of Asphaltum to preserve the wood. Sink barrels in the soil and pile rocks around them and plant with the smaller varieties of lilies. These will be found under the heading, Pygmae lilies, in another part of the Catalogue.

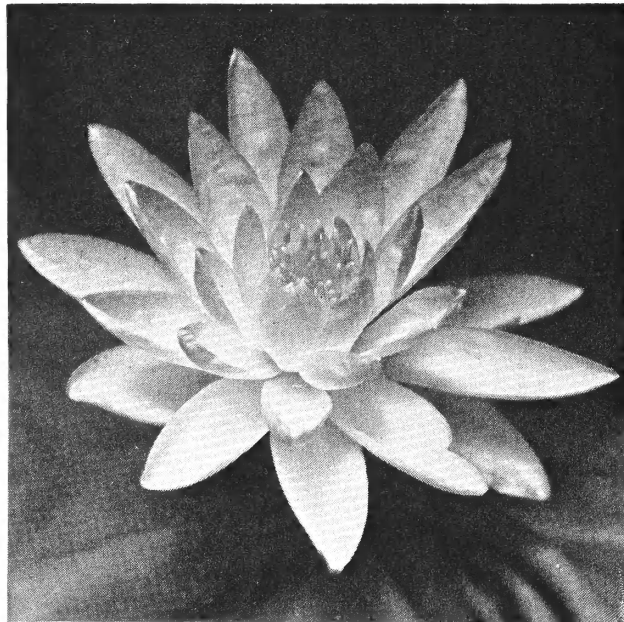
HARDY LILIES

The Hardy lilies are among the easiest grown of any flower. After planting they need no attention except to keep the water level right and break off dead leaves. They grow in a wonderful array of colors and shapes and are a constant joy to all who grow them.

California Water lilies have the advantage of our long, warm summers and put on a marvelous growth during this period, assuring you of strong plants, which will burst into bloom soon after being planted in your pool. The many letters from our customers telling us of this fact make us very happy, and we assure you nothing goes out from our Nursery that we would not be happy to receive.

We have the choicest of the varieties which we are offering at very attractive prices.

All Hardy lilies are at least 2 years old when shipped, assuring bloom the first year.



Sunrise

YELLOW

Sunrise. This magnificent lily with its canary yellow blossoms stands well above the water on graceful stems; the petals are crinkled like a chrysanthemum, is an excellent bloomer and much admired by all who see it. **\$1.75.**

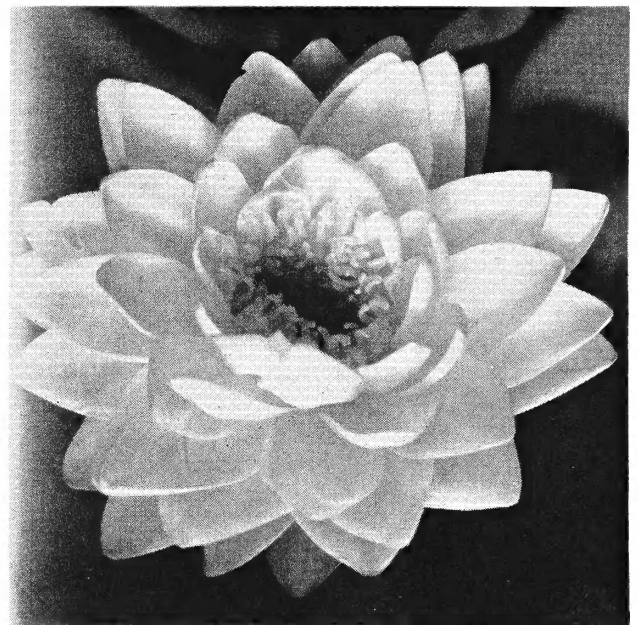
Chromatella (Marliac yellow). Bright yellow blossoms with broad curving petals. A good bloomer. The leaves are handsomely blotched and the plant a vigorous grower. **\$1.00.**

Moorei. A new lily from Australia, deeper in color than Marliac. A choice plant with large blossoms and showy leaves. **\$1.50.**

Pygmaea Helvola. This lily has small yellow flowers that float on the surface of the water, are about 2 inches in diameter. Leaves beautifully mottled. A free bloomer and well adapted to Tub garden culture. **50c.**

Mexicana. The wild Lily of Mexico. Blooms only in the early part of season. Increases from runners like a strawberry. **25c.**

WHITE



Gonnere

Gonnere. The finest of all white lilies. An enormous globe of snowy whiteness, nestling among green pads. A free blooming variety with small leaf spread, making it adaptable to the small pool. The blossoms average 80 petals to the blossom. **\$1.50.**

Marliac Albida. Large dazzling white blossoms, with yellow stamens. The sepals are pink. The plant is of free growth and blooms the whole season. **\$1.00.**

Gladstone. A fine lily of robust growth. The flowers are of purest white, cup shaped and very large. **\$1.00.**

Hermine. A dainty little white lily. The blossoms snuggle among the pads and are star shaped. **\$1.00.**

White Laydeker. A very pretty dwarf lily. Snow white with yellow center. Has a strong tea fragrance. **\$1.25.**

Virginalis. The purest white of all water lilies. A splendid bloomer over a long season. Will never be common as it multiplies very slowly. **\$5.00.**

Alba Candidissima. One of the largest lilies, with deep green strong growing foliage. **\$1.25.**

Albatross. A snow-white lily with many petals. One of the largest of the white varieties and a good bloomer. **\$2.00.**

WATER LILIES—Continued

SUNSET VARIETIES

- Comanche.** An old favorite. Brilliant orange-red; the color deepens with age; becoming a warm red. A sturdy growing variety but will adapt itself to a small space. Has bloomed steadily for 10 months in our gardens. **\$1.25.**
- Paul Hariot.** This lily is most pleasing, as the first day of opening the petals are a soft, yellowish pink, becoming darker each day to almost a deep red. Special. **75c.**
- Indiana.** A free growing variety, bearing beautiful copper-yellow flowers tinged with pink. A remarkable plant producing a constant succession of color changes in its freely produced flowers. Special. **75c.**
- Chrysantha.** A fine variety for the Tub garden as the leaf spread is small. The flowers open a soft yellow which deepens with age to almost a vermillion. **\$1.00.**
- Seignoureti.** A gorgeous colored lily, but propagates so slowly it will not become common. One of the finest, freest blooming lilies grown, with bright orange-yellow flowers. **\$2.50.**
- Aurora.** A very changeable colored lily. If you only have room for one lily you will be pleased with this one, as you may have as many as 5 shades at one time. Does not grow large, so is suitable for small pools. **\$1.00.**
- Solfatere.** Opens the first day an orange yellow. During third and fourth days the blossoms become reddish copper. A good bloomer. **\$1.00.**

PINK (Odorata)

- Rose Arey.** The blossoms are a bright, cerise pink, having pointed petals with a noticeable curl, giving a pleasing, shaded effect. A sweet scented lily; leaves have a reddish cast. Special. **75c.**
- Pink Opal.** A deep, rich pink lily with buds that are almost round, and open into a flower that is cup shaped. Special. **50c.**
- Venusta.** The flowers are of a good size with a charming cup shape, standing above the water. The most spicy fragrance of any of the odoratas. **\$1.50.**
- Eugene de Land.** A charming, sweet scented variety, with soft shell pink petals which are pointed. **\$1.00.**
- Gloire du Temple-Sur-Lot.** A remarkable and very double lily resembling an immense dahlia in form. Opens a soft shell pink, gradually changing to pure white. Frequently has over a hundred long, narrow curled petals. **\$3.00.**
- Odalesque.** An intensely fragrant, deep cerise pink, which opens earlier than almost any other lily. **\$1.50.**
- Fire Crest.** A flame colored Odorata lily, blooming very early in the spring. **\$1.50.**

OTHER PINK VARIETIES

- Rene Gerard.** The flowers of this variety often reach the enormous size of 10 inches across and are a deep rose in color. The petals are very numerous and the flower is star shaped. **\$1.50.**
- Splendida.** A rich, strawberry pink lily; blooming the entire season. Becomes darker towards fall, becoming almost a deep red. **\$1.25.**
- Formosa.** One of the best, blooming soon after planting and never without blossoms during the whole season. Blossoms are large and a clear, bright pink. A much admired lily. **\$2.00.**
- Wilfron Gonnere.** Very double pink lily, resembling Gonnere in size and shape. **\$1.50.**
- Mme. Julian Chiffлот.** A mammoth, star shaped lily, with soft pink petals and yellow stamens. One of the most beautiful of the pink hardys. **\$1.50.**



Amabilis

- Amabilis.** This lily is very similar to the Mme. Chiffлот, being star shaped, but is a larger lily. The bright pink blossoms are hard to describe for beauty, and the plant is a free bloomer. **\$2.00.**
- Marliac Carnea.** Opening early in the morning, this lily is of wonderful size, is a soft shell pink. Blooms over a long period, the flowers of good lasting quality, making them good for cut flowers. Special. **75c.**
- Sumptuosa.** This is a very attractive variety, the flowers being large, double and fragrant. The outer petals are a light rose, deepening toward the center. **\$1.00.**
- Massaneillo.** The flowers of this variety are very fragrant. The plant a free grower and needs plenty of room. The flowers are a rose pink and the sepals are white, making a wonderful contrast. **\$1.00.**
- Morning Glory.** An exquisite soft, shell-pink lily. Particularly beautiful as they first open in the morning, being so waxy in appearance. One of the largest of the hardy lilies. **\$1.25.**
- Esmeralda.** A French variety. The flowers are variegated, rose pink and white. The petals are star shaped, and the sepals are also variegated. **\$2.00.**
- Lustrous.** A large cup-shaped lily, rose pink in color with a host of yellow stamens. There is a silvery sheen to the petals, making a color hard to describe. The plant is a strong grower with short leaf stems, making it desirable for small pools. **\$2.00.**
- Mary Patricia.** The daintiest, deep peach blossom pink lily imaginable, one that is especially generous in bloom. Is especially good for Tub gardens. **\$1.25.**
- Rosy Morn.** A beautiful rosette pink lily with a true Water lily fragrance. Very large blossoms with spreading petals. A free bloomer. **\$2.00.**
- Mrs. Richmond.** A rare variety of singular beauty. Very large flowers of deep rose with lilac tints; petals broad and full; stamens a delicate canary yellow. A rare variety. **\$3.00.**
- Neptune.** A free blooming variety. The velvety blossoms are a shaded pink, the base of petals being quite dark and the tips much lighter in shade. Garnet stamens make a striking contrast. **\$1.50.**



The Immense Conqueror Hardy Lily

RED

Conqueror. One of the most beautiful lilies. The immense flowers are a deep crimson, shaded toward the ends of petals to a deep pink. Stamens are long and bright yellow, making a striking contrast. This is a continuous bloomer. **\$1.50.**

Robinsonoi. This is an old favorite with water gardeners. Flowers are a bright, coppery red with orange stamens. It is a constant bloomer with beautiful variegated foliage. Special. **\$1.00.**

Escarboucle. One of the most brilliant red lilies. Bright intense red, deepening into crimson. One of the hardiest of lilies. Also one of the best. **\$2.00.**

Gloriosa. All that its name implies. The flowers are above the average size. One of the earliest to bloom and continues all summer. One of the choicest of them all. **\$1.75**

Marliac red. Flowers of a deep carmine red, with cardinal stamens. The leaves are a rich bronze, changing to dark green with age. **\$1.75.**

James Bryden. The color is a rich rosy crimson, while the reverse of the petals has a silvery sheen. This variety will adapt itself to any sized pool. **\$1.50.**

Attraction. This lily is truly an attraction to any pool. The petals are a garnet red, the sepals white and the stamens a rich mahogany. Cannot be fully described. **\$2.00.**

Newton. Very large, star-shaped flowers, almost vermillion. Different from most of the red lilies. **\$2.00.**

William Falconer. The darkest red of all water lilies, being a velvety black-red. Leaves green, maroon spotted. **\$2.25.**

Sirius. The leaves of this variety are red, spotted with reddish brown. The flowers are huge and dark red. One of the lilies which are an addition to the pool, even when not blooming. **\$2.25.**

Vesuve. A dark red lily blooming very profusely. The blossoms are a good size and very double. **\$2.00.**

Picciola. A dark crimson variety, standing above the water and in several ways distinctly different from other red lilies. The leaves are spotted with red; plant a vigorous grower. **\$2.00.**

TUB GARDEN COLLECTION

No. 1

Paul Hariot. Water lily.
4 water grasses.
1 pair Trap door snails.

\$1.00

Prepaid

No. 2

Gloriosa. Water lily.
Water Hyacinth.
2 water grasses.
1 pair Trap door snails.

\$2.00

Prepaid

James Hudson. An exceptionally good, new variety. The tulip shaped blooms have sharp petals of rich red with mauve reflections. A rare European variety. **\$2.00.**

Sultan. A large, cherry-red lily; the outer petals being a light rose. One of the best blooming lilies and one of the most admired. A vigorous grower. **\$2.00.**

Arethusia. Deep, dark red blossoms; almost as dark as the William Falconer. **\$1.50.**

TROPICAL TUB GARDEN

Panama Pacific lily.
Primrose willow.
4 grasses.
Snails.

Postpaid....

\$2.00

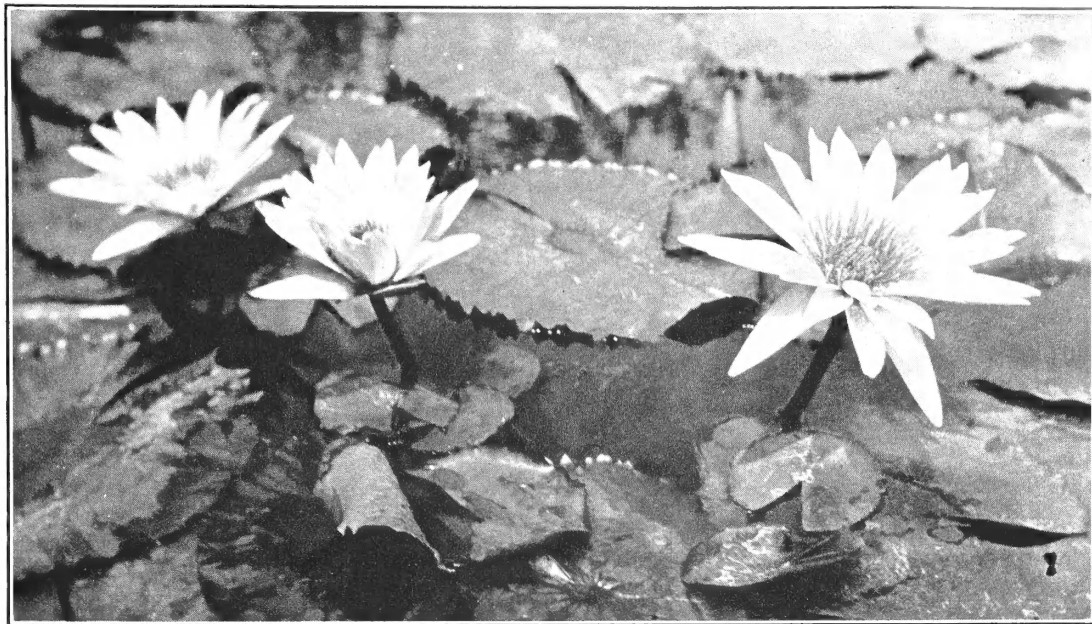
The Following Lilies May be Used in a Tub Garden

Panama Pacific	\$1.50
August Koch	1.50
Zanzabar Purple	1.50
Zan. Rosea	1.50
Francis B. Griffith	2.00
Mrs. Geo. H. Pring	1.25

HARDY PYGMAEA LILIES

Suitable for tub gardens. Descriptions will be found under color headings. Many of these do well in a large pool, but readily adapt themselves to their environment.

Gloriosa (red)	\$1.75
Pygmaea Helvola (yellow).....	.50
Gonnere (white)	1.50
White Laydeker (white)	1.25
Hermine (white)	1.00
Wilfron Gonnere (pink)	1.75
Mary Patricia (pink)	1.25
Odalesque (pink)	1.50
Paul Hariot (sunset)75
Aurora (sunset)	1.00
Chrysantha (sunset)	1.00
Indiana (sunset)75



The Mrs. Edwards Whitaker Tropic Lily. These lilies measure 11½ inches across; the plant being in bloom all summer.

TROPICAL LILIES

We are offering a limited number of TWO-YEAR-OLD PLANTS this year.

Immense Size — Exquisite Fragrance

If you are a real Water Garden enthusiast you will surely want some of these marvelous plants. Flowers the size of dinner plates, with a perfume so spicy as to permeate the whole garden. Only in the Tropicals can you obtain the exquisite blue and purple shades; and with the wonderful varieties offered one can find just the lily to fit their needs. Many of the varieties will adapt themselves either to large or small pools.

We do not ship Tropicals until the weather has become permanently warm, as early shipments are almost sure to go dormant. A safe date is after June first, except in the Southern states, where they may be shipped at an earlier date, from May 1st to 15th. Should we be instructed to ship at an earlier date, we do so at customer's risk.

We are happy to be able to offer a limited number of 2-year plants of the following varieties of Tropicals. Should you wish these, please mail your order early. We recommend the young plants for immense blooms but for quantity many prefer the 2-year plants, and we will endeavor to fill all orders with these if you will state your preference.

Pennsylvania. (Blue beauty.) (2-year plants.) A magnificent variety with rich blue flowers that are often 10 and 12 inches across. The buds are speckled with maroon, the stamens are tipped with blue. The flowers have a spicy perfume such as no other tropic has. The plant is a free and vigorous bloomer. **\$2.00.**

Pennsylvania. Young plants, in bud. **\$1.75.**

Blue Triumph. (2-year plants.) This is indeed a triumph as the name implies. Medium blue flowers of immense size blooming until frost comes. **\$2.00.**

Blue Triumph. Young plants, in bud. **\$1.75.**

Panama Pacific. (2-year plants.) These are of the viviporous variety, growing young plants at the base of the leaf. They are somewhat harder than other Tropicals and may be planted a little earlier. This variety is a free bloomer. Flowers a rich purple, the yellow stamens making a striking contrast. **\$1.75.**

Panama Pacific. Young plants, in bud. **\$1.50.**

August Koch. (2-year plants.) The fragrant blossoms are of good size and deep blue in color, the sepals a rich orchid shade. Is a free bloomer and easily established. **\$1.75.**

August Koch. Young plants, in bud. **\$1.50.**

Mrs. Edwards Whitaker. This lily is the largest in the day blooming class, having been known to measure 14 inches across. The flowers are a lavender-blue on first opening, but as flower ages becomes almost white. This lily stays open almost all day. **\$1.75.**

Col. Lindbergh. This is enormous with wide petals of deep blue. As the name implies, the flowers tower in the air, high above the water. The leaves are large and oval, marked with brown. **\$1.75.**

Governor Louis Emerson. Huge china-blue flowers with a wonderful fragrance. The foliage is very attractive, having handsome brown stripes on rich green. **\$2.00.**

Whitaker Gigantea. The largest of all tropic lilies. A very delicate shade of blue, turning to white as the flower ages. **\$2.00.**

Mrs. W. R. James. A new, deep pink lily. The blossoms are large and well formed. Blooms profusely all summer. **\$2.00.**

Chicago. A clear pink lily, with quantities of large blossoms; having as many as 8 blossoms at one time. The leaves are profusely spotted with mahogany, making a very attractive plant. **\$2.00.**

Pink Pearl. Large, silvery blossoms, pink with pure white throat. Exceptionally large and very attractive. **\$2.00.**

Mrs. Buskirk. One of the finest of pink water lilies, very distinct in color and a good bloomer. Awarded Gold Medal at Cleveland Flower Show. **\$2.00.**

Francis B. Griffith. The darkest purple of all water lilies; is of moderate growth, is a leaf propagator and a good bloomer. One of the most admired lilies for its rich coloring. **\$2.00.**

Zanzabar Purple. A splendid day blooming tropic. Rich blue-purple flowers. Stamens very numerous, dark crimson. Very fragrant. **\$1.50.**

Zanzabar Rosea. A lily very similar in type to Purple Zan., differing only in color. Blossoms rose colored with deep rose stamens. **\$1.50.**

Mrs. Geo. Pring. Immense white flowers, opening early and staying open until late in the afternoon. Bloom until frost comes. When given room, makes a wonderful growth, but adapts itself to a small space and blooms continually. **\$1.25.**

TROPICAL LILIES—Continued

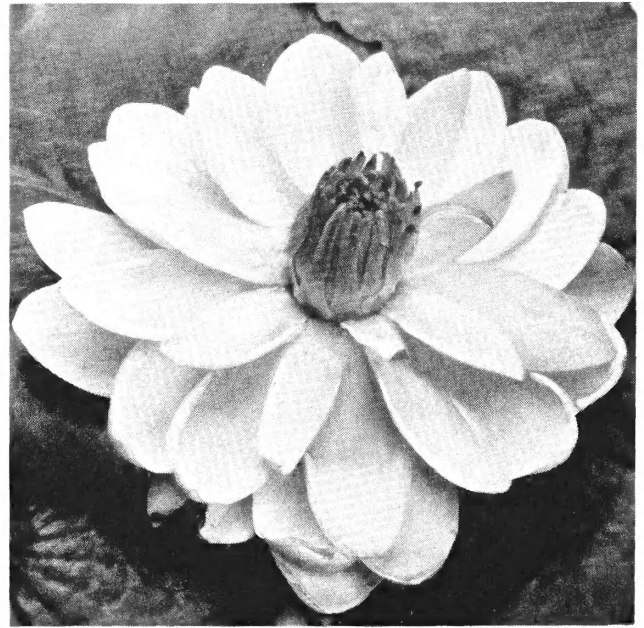
Wm. Stone. This is a particularly attractive violet-blue lily. Blossoms star shaped, yellow stamens tipped with blue. Special. **\$1.00.**

Marmorata. A lily similar in size and shape to Mrs. Whitaker, but has deeper blue flowers and the leaves are heavier blotched with dark red. The blossoms fade with age, but keep the blue tinge until blossom is gone. **\$1.75.**

General Pershing. This lily is undoubtedly the finest of the pink day-blooming Tropics. The flowers are 8 inches across and are very double. They open very early in the morning and stay open until late in the evening. The color is a deep orchid pink, with pink stamens. Very fragrant. **\$2.00.**

Independence. Very large bright pink flowers. Plant begins to bloom when very small, and blooms continuously until frost comes. Will do well either in tubs or large pool. **\$1.50.**

Patricia. A charming and free blooming lily. Beautiful crimson flowers, buds copper-red. A small growing lily suitable for the tub garden. **\$1.50.**



Missouri

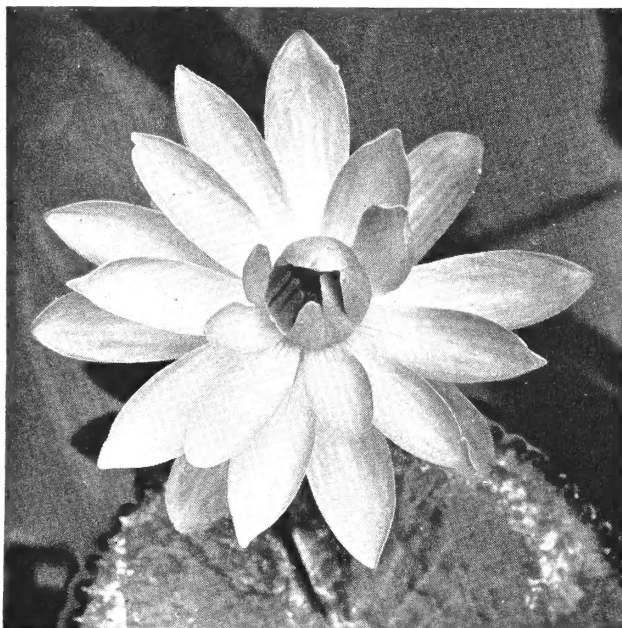
NIGHT BLOOMING TROPICALS

The Aristocrats of the Water Garden. Like many young maids, these flowers sleep during the day, to bloom gayly at night, and during the early morning hours are the most beautiful flower in the garden, often staying open until noon. The blossom begins to unfold as the sun goes down and is especially satisfactory for the working man or woman, who would not see the open blossom of a day blooming lily. Shipping time is the same as for Day-bloomers.

ROSE

Frank Trelease. A deep rose colored, narrow petaled variety. One of the hardiest and also one of the best bloomers. **\$1.50.**

Mrs. Geo. Hitchcock. This large, rose-pink flower is such a wonderful bloomer and so easy to grow it cannot help giving satisfaction. A very choice variety. **\$1.50.**



Mrs. George Hitchcock

RED

George Huster. A brilliant variety with large blossoms. The leaves are bronzy red, crimped at the edges. A strong, free bloomer. **\$1.50.**

H. C. Haarstick. A very choice variety. Well shaped blossoms, vivid red, shading to rose-pink. The stamens are rose color and the leaves rich, bronzy red. **\$1.75.**

Mars. Flowers of intense red. Petals rounded at the point; the leaves a deep rich red. Very attractive. **\$1.50.**

PINK

O'Marana. Rosy pink flowers of large size. Each petal having a white stripe; the effect being intensified by orange-red stamens. The flowers often measure 10 inches across. **\$1.50.**

Mrs. Emily Hutchings. Beautiful pink blossoms with curving petals. Bronze leaves so different as to be quite noticeable. **\$1.50.**

Dean. This is a shell-pink lily. Open cupped and has very wide petals. Bronze colored leaves. Very popular. **\$1.50.**

WHITE

Juno. Immense, pure white blossoms, opening very wide. Central disc solid mass of yellow stamens. A free bloomer with glossy, green leaves, finely toothed at edges. **\$1.50.**

Missouri. The finest white night blooming variety. The earliest to bloom and very dependable. A supreme beauty. **\$2.00.**

NOTE: Night bloomers are more tender than most day bloomers; are not apt to live over winter if freezing weather is prevalent.

Gentlemen:

Enclosed please find order for lilies. Last year I ordered several lilies and among those sent was one gratis, a plant of the Mrs. Geo. Hitchcock and a wonderful plant it was. I take this opportunity to thank you for it and the many thrills its bloom gave the whole family.

Yours truly,
MRS. E. H. DAUSS,
Indianapolis, Ind.

LOTUS

"The Lotus blooms below the barren peak:
The Lotus blows by ever-winding creek:
Let us swear an oath, and keep it with an equal mind,
In the Lotus-land to live and lie reclined."

—Lord Alfred Tennyson.



Sacred Lotus

STAR LILIES

These lilies are of the Tropical lily family, but are hardier. Splendid bloomers, often bearing over 100 blooms in a season. They are splendid for cut flowers, lasting for several days and filling the room with their delightful fragrance. Star lilies are shipped as tubers, and in planting be sure and plant bulb with fuzzy end up, in a warm, sunny location, away from Hardy lilies so bulb will not be shaded. They will start to grow only after weather becomes warm, but will put on an immense growth in a short time and will bloom most abundantly.

Blue Star. A clear blue, with blossoms standing high above the water. Rich green leaves. **\$1.25.**

Pink Star (Stella Gurney). A soft pink blossom. Splendid bloomer. **\$1.25.**

Rose Star. A deeper shade of pink but of same shape, and a good bloomer. **\$1.25.**

Red Star (Mrs. Ward). The deepest red of the Tropical varieties. **\$1.50.**

ALL 4 VARIETIES FOR \$4.00

Poets have sung of Lotus, nations have and do hold it in reverence: and small wonder that this is true. One has only to come upon a pool planted with these Oriental flowers to realize that they are God given: with their wonderous beauty, standing high above the water, their mammoth leaves and their queer seed pods all blending into a picture of such startling beauty as to be breath taking.

These plants are hardy and may be grown almost anywhere in the U. S., blooming better the second year than the first. The bulbs look like a peeled banana, the crown is at the long end of the bulb. The crown should be placed up, with the bulb placed horizontally. Great care should be taken not to break the crown off, as that renders the bulb worthless. Cover with 2 inches of soil, leaving growing point just out of the soil. Cover with 6 inches of water until growth begins, when the depth may be increased if necessary. While Lotus is hardy it should not be planted too early as growth should begin at once after planting or bulb is apt to decay. We have a method of holding bulbs so they may be planted as late as June 15.

Red Lotus. Mammoth double blossoms of an American beauty shade; not a deep red. Blossoms often a foot across and very double. A choice variety. **\$2.50.**

Nelumbium Speciosum (pink). Egyptian sacred Lotus. An excellent variety. Very hardy and free growing. Possesses a strange, haunting fragrance. **\$1.50.**

Nelumbium Flavens. A splendid variety that has cream colored flowers. A good bloomer. **\$1.25.**

Album Striatum. A striking variation of the Japanese Lotus. Flowers large and very fragrant. The white petals are tipped, edged and faintly striped with rosy carmine. **\$2.00.**

Lotus Seed Pods. These are used in many ways, for decorations, winter boquets, etc., resembling a wasp's nest. They are indeed a novelty. **25c, 35c and 50c per doz.**



Pink Star



Complete Your Pool With These Plants

Under this heading we list such plants as grow in water, but send up leaves and blossoms above the surface. These add to the beauty of the pool, being used as centerpieces or for corners. Many of them have beautiful blossoms, all have attractive foliage. THESE DO BEST PLANTED IN WATER FROM 2 TO 4 INCHES DEEP. Plant in box and raise to within a few inches of the surface of water. This is easily accomplished by nailing legs of proper length to box.

Sagittaria (*latifolia*). The leaves are broad with long basal lobes. The flowers are pure white, about an inch in diameter. 20c.

Azure Pickerel Plant (*Pontederia paniculata*). This attractive plant grows from 2 to 6 feet tall and each heart shaped leaf has a spike of Delphinium blue flowers coming from the base. The buds are covered with a silvery sheen. 35c.

Water Plantain (*Alisma plantago*). Almond shaped leaves of bright green, borne about 3 feet above the surface of the water. Beautiful clusters of flowers resembling Baby's Breath. 20c.

Double Arrowhead (*Sagittaria flora plena*). Leaves arrow shaped. Plant bears large spikes of pure white double flowers, about 2 feet tall. 35c.

Papyrus (Egyptian paper plant). The stalks are triangular and attain a height of from 5 to 8 feet, having a tuft of thread-like leaves a foot in diameter. Does equally well in two inches of water or in very wet soil. 25c.

Water Arum (*Peltandra virginica*). A hardy aquatic with leaves shaped like a Calla lily. 25c.

Umbrella Palm (*Cyperus alternifolius*). A beautiful plant, growing about 2 feet tall, has slender stems with tuft of leaves spreading out, umbrella shaped. Does well either in shallow water or moist ground. 20c.

Giant Umbrella Palm. Similar to above except it grows six feet tall. 25c.

Water Chestnut. Grows freely in shallow water. Has dull green quill-like leaves, growing two feet tall. 20c.

Yellow Iris (*Pseudacorus*). One of the necessary plants for your pool, the foliage making an artistic touch either in the center or in the corner. Has tall spikes of yellow blossoms. Will grow equally as well in very moist ground. 25c.

Iris Versicolor (Blue flag). Similar to above except in color, being a clear blue. 25c.

Iris Purpurea. A water Irish such a deep blue as to be almost purple. 25c.

(Pool Plants continued on next page.)



POOL PLANTS—Continued

THESE PLANTS DO WELL IF PLANTED SO ONLY THE ROOTS ARE IN THE WATER.

Iris Dorothy K. Williamson. Has graceful spikes of glowing royal purple flowers. One of the prettiest of the water plants. 25c.

Imperial Taro (*Colocasia antiquorum illustris*). The finest of the Taros. The leaves are almost a velvety black. They make an excellent centerpiece for the pool, also make a fine house plant if potted and set in jardiniere of water. 25c and 50c.

Violet stemmed Taro (*Colocasia violacea*). Leaves beautiful blue-green. The stems, mid-ribs and veins underneath leaves are a lovely lavender. \$1.00.

Elephant Ear. Large green leaves, often growing 6 feet tall. May be kept small by planting in small container. 35c.

Water forget-me-not (*Myosotis scorpiodes*). This will grow in any place that stays moist. Blooms freely and will keep as cut flowers. 15c.

Japanese Arrowhead. Similar in growth to the above, but with single flowers. 20c.

Pickerel rush (*Pontederia cordata*). Spikes of deep blue flowers borne in center of heart shaped leaves. Two feet tall. 15c.

Water Canna (*Thalia dealbata*). A tall, graceful plant with leaves similar to a canna, leaves maroon at the base. Flowers on tall, arching stems, purple, with silver dust. 35c.

Equisetum (Horse tail rush). The most attractive of the rushes. Shows distinct joints, is strong growing, not breaking so easily as other rushes. 35c.

Primrose willow (*Jussiaea longifolia*). A beautiful, tall plant with flowers like a primrose and leaves like a willow. 25c.

Cat tail (*typha augustifolia*). A handsome water plant with rich brown "cat-tails". 25c.

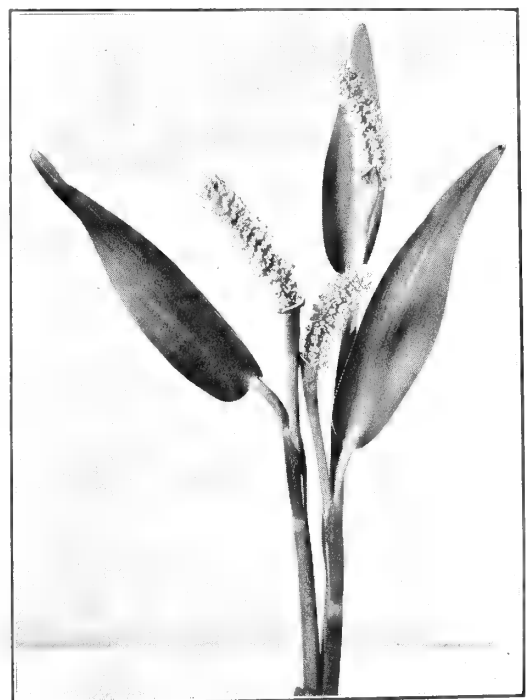
TESTIMONIALS

Dear Sir:

Received my shipment of water plants. I wish to thank you for the excellent quality of the plants as well as the care with which they were packed. Thanks.

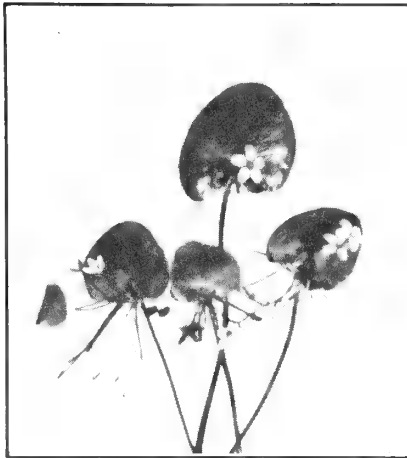
J. W. BANDEEN.

Portland, Ore.



Azure Pickerel Plant

Water Plants for the Small Water Garden

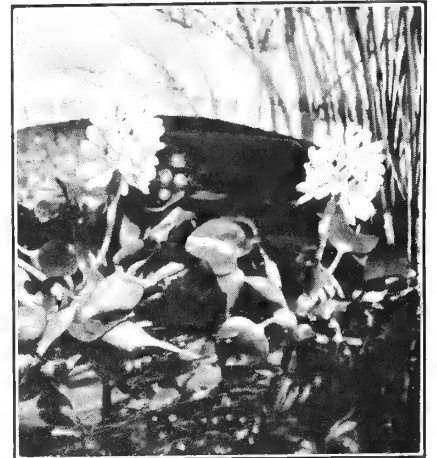


Snowflake

These plants may be used in dishpans, tubs and half-barrels as well as adding beauty to the larger pool.

Water Snowflake (*Nymphoides indicum*). A dainty little plant is the Water Snowflake. The flowers are about an inch across and have 5 petals, each resembling a flake of snow. They will do well in 6 inches of water, either in pool or dishpan. 25c.

Floating Heart (*Nymphoides peltatum*). Has bright yellow, fringed flowers of medium size, with leaves like a Pigmy lily. 20c; 3 for 50c.



Water Hyacinth

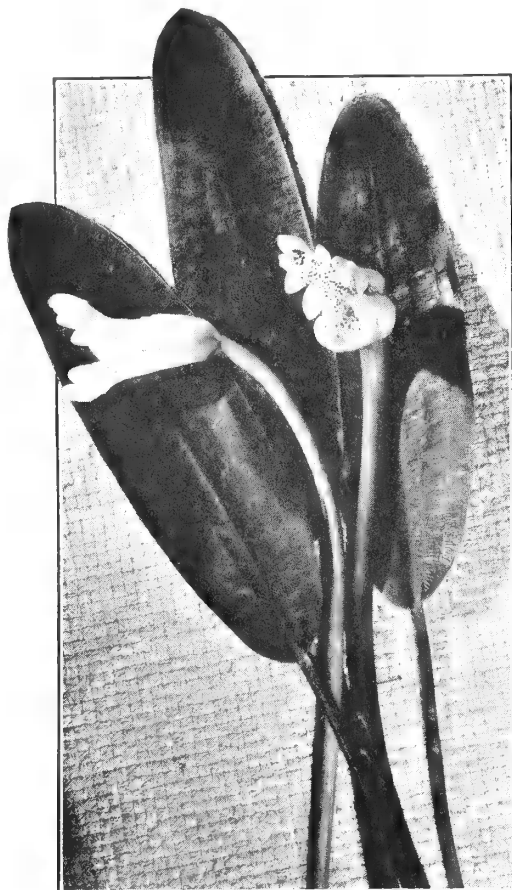
Water Poppy (*Linnocharis humboldti*). An old favorite, with blossoms like a California poppy. Each plant throws out runners bearing blossoms all summer. 10c; 3 for 25c.

Primrose creeper (*Jussiaea repens*). A trailing plant with bright glossy leaves and blossoms like a primrose. 3 for 25c.

Water Hawthorne (*Aponogeton distachyus*). Snowy white flowers with the fragrance of the English Hawthorne.

The flower is antler shaped and each antler flecked with black. The leaves are oblong and float on the water. Does well in either sun or shade. Blooms all winter in Southern California and the Southern states. 35c.

Azure Hyacinth (*Eichhornia azurea*). A trailing variety. Flowers a rich blue, with yellow eye. A rank grower, and makes a great showing soon after planting. Does well among the lilies. 35c; 3 for \$1.00.

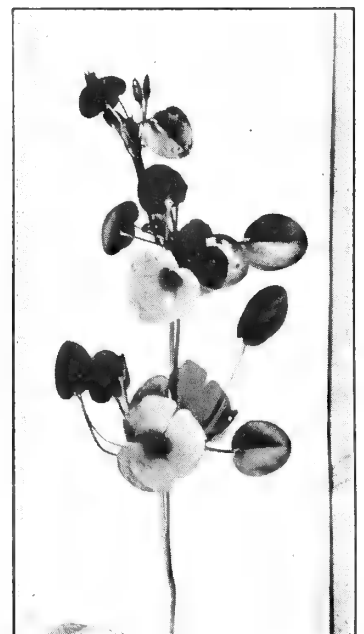


Hawthorne

Water Hyacinth (*Eichhornia crassipes major*). Flowers a delicate orchid, in trusses like a Hyacinth. Does best in partial shade. Splendid spawning bed for fish. 3 for 25c.

Water Chestnut (*Trapa natans*). A hardy plant resembling Water Fern, with mottled red leaves. The large seeds are spiked and armoured and fall to the bottom of the pool when ripe. 35c; 3 for \$1.00.

Water Lettuce (*Pistia stratiotes*). This is similar to Water Hyacinth in habit but more rare and delicate. It grows best in semi-shade and prefers a moist atmosphere, so should be sprinkled at times. Is a rosette of soft blue green leaves, sometimes measuring 10 inches in diameter. 2 for 25c.



Water Poppy

Bellingham, Wash.

Dear Mrs. Van Ness:

Just a card to let you know the lilies arrived in perfect shape, are planted and blooming. We are delighted with them, the buds were not injured at all in transportation.

Sincerely yours,

MRS. ROBERT GRAHAM.

TESTIMONIALS

Dear Mrs. Van Ness:

My order came through in fine shape and I wish to thank you for sending such fine plants, the way they were packed and for insuring the package; also for the promptness, which is especially important to me. I wish to place an order to be shipped April 29.

Yours sincerely,

MRS. E. H. ALLEN.

Las Vegas, Nev.

Dear Sirs:

I received the shipment of Lotus bulbs in good order and on schedule time for planting.

With reference to the Tropicals, I will send you an order for them about May 1st.

Yours truly,

W. F. SAMPSON.

Piedmont, Calif.



Display Pool Featuring Lotus and Tropical Lilies

FISH

We have a good assortment of Gold Fish which may be purchased at our gardens, at very reasonable prices. However, we do not ship fish.

FISH FOOD

We have a properly balanced fish food, which has all the ingredients necessary for keeping your fish in good health. They should only be fed twice a week as the most of the ills of fish are caused by over feeding. **Fish food, pint 25c.**

Tacoma Park, D. C.

Gentlemen:

Thank you for the roots for my order, and the beautiful Pennsylvania. As they did last year, these had come in perfect shape and are already blooming. Thank you.

Very truly yours,

B. Y. MORRISON.

VAN NESS' WATER LILY FERTILIZER

A very concentrated fertilizer especially good for water lily culture, which we ship with orders for water lilies.

Enough for Tub Garden.....25c
4-lb. bag, enough for four lilies.....75c

Plants for Your Fish

These very useful plants help to keep the pool in natural balance, supplying oxygen to the water. A few bunches among the lilies are indispensable for the health of the fish.

Vallisneria (Eel grass). Long, ribbon-like leaves that come to the surface of the water. Pretty in an aquarium. **Bunch 15c.**

Anacharis (giant). The most used for the aquarium. Graceful, long stems with whorls of deep green leaves. Very good for pool and necessary for health of fish. **Bunch 10c.**

Myriophyllum. A pretty aquatic with fine, hair-like leaves. Makes a good spawning bed for fish. **Bunch 10c.**

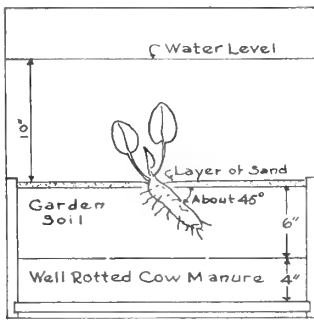
Parrots feather. A favorite aquatic plant, for aquarium and fountain basins. Can be used in water-tight hanging baskets. **Bunch 10c.**

Ludwigia. This is one of the important aquarium plants because of its decorative value. When kept in strong light the under side of leaves become a bright red. **Bunch 10c.**

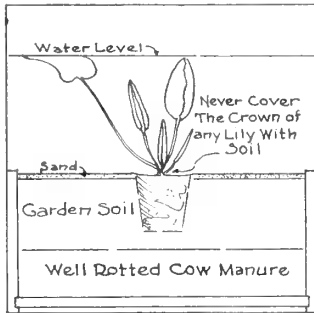
Cabomba. A useful plant for the aquarium, growing entirely submerged. Very ornamental. **Bunch 10c.**

Saggitaria (sinensis). Grows freely and a splendid plant for the aquarium. **3 for 25c.**

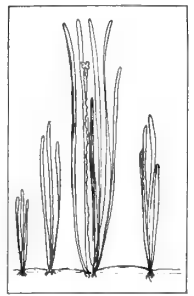
Azolla. A small, floating moss-like plant, similar to duck-weed but prettier. When exposed to sunlight the small leaves take on a reddish tinge. Useful in clearing up pool, also good for fish. **Portion 10c.**



Hardy Lily Planting



Tropical Lily Planting



Vallisneria



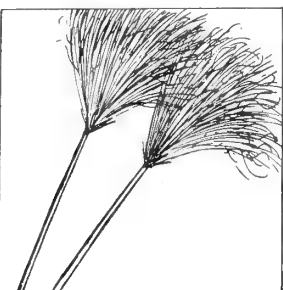
Anacharis



Umbrella Palm



Primrose Willow



Papyrus



Saggitaria

Scavengers for the Pool

Water snails are necessary for the pool, as they feed on the decayed vegetation, and clean up the green algae that forms on the walls. A few pair will soon stock your pool. Cannot be shipped during July, August or September.

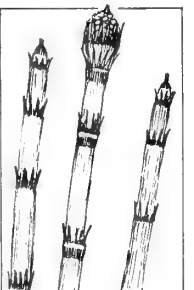
Japanese trap-door snails. The largest and hardiest of all snails. These are live bearing and we are careful in selecting them in pairs. Very prolific. **Pair 25c.**

Rams-horn snails. A very long lived water snail and especially good in clearing up the green scum in pools. **3 for 10c.**

Red Rams-horn snails. These snails are a coral red and very showy in an aquarium. **10c each.**



Ludwigia



Equisetum

FISH PLANT COLLECTION

8 Named Varieties

Large bunches, enough for ordinary sized pool.

75c

Postpaid

SCAVENGERS FOR POOL

24 Assorted Snails

\$1.00

The two above Collections

\$1.50

Postpaid

WATER PLANT COLLECTION

Floating Heart.
Water poppy.
Double Arrowhead.
Azure Pickerel plant.
Umbrella Palm.
Water Canna.
3 varieties water grasses.

\$1.50

Postpaid



Cattail



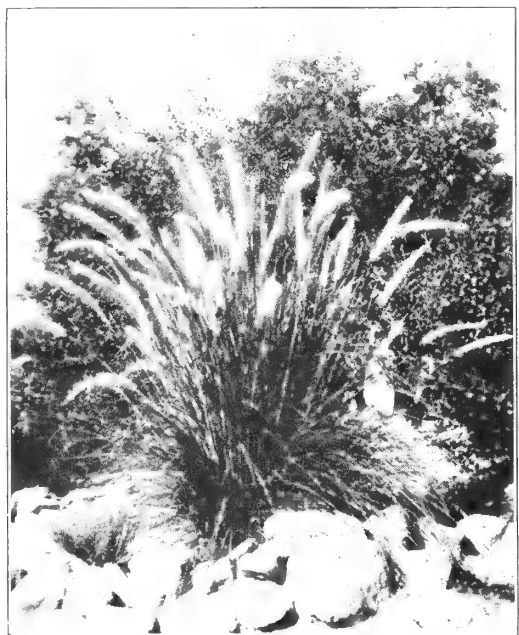
Papyrus, Umbrella Palm, Water Cannia and Azure Pickerel Plant are featured in this display pool. Fountain grass at margin of pool.

POOLSIDE PLANTS

- Torch lily** (*Tritoma*). Tall spikes of brilliant red flowers. One of the showiest of this group. 25c.
- Day lily**. Bright yellow, blooming in the spring. Foliage green the year round. 25c.
- Lopezia** (*Mosquito bush*). A pretty little trailing Mexican plant with fine, bronze leaves and small pink blossoms in great profusion. Flowers shaped like a mosquito. Should have plenty of sun. 15c.
- Mullen Pink** (*Lychnis coronaria*). A perennial which is most satisfactory, needing only good drainage and little water. A glow of cerise-pink blossoms in the spring. Foliage grey-green. 15c.



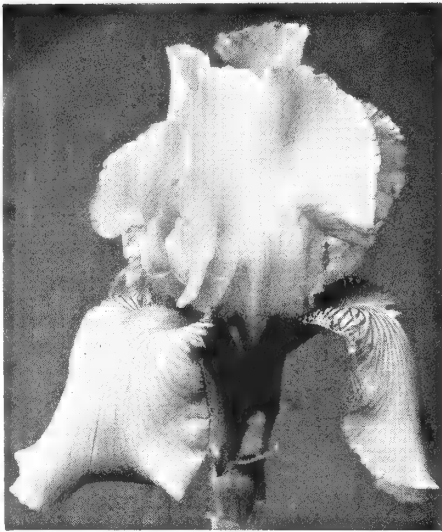
Zepheranthus (Autumn Crocus)



Fountain Grass

- Fountain grass** (*Pennisetum ruppeli*). Narrow, graceful blades. Grows in clump to height of two feet. Feathery plumes, shaded with red. One of the finest poolside plants. 25c.
- Phalaris** (*arundinacea variegata*). Ribbon grass. Excellent for borders. Height 12 inches. 15c; 2 for 25c.
- Phormium** (*cookianum*). Fine, long striped foliage. Leaves about 2 inches wide, often 5 feet long. Very striking near a pool. 50c.
- Carex** (*morrowi*). Leaves flat, striped and grass like. Six inches tall. 15c.
- Zephyranthus** (*candida*). Narrow leaves about 12 inches long. Blooming late spring and through the summer. White. 6 for 25c.
- Zephyranthus** (*carinata*). Flat, narrow leaves, flowers about 3 inches long, lily shaped; deep pink. 3 for 25c.

IRIS



Midgard

Iris is especially adapted to the poolside, seeming to belong there; when not in bloom the foliage is very attractive. We have several choice varieties, among them the following are listed:

- Baldwin** (H. P. Sass). One of the best of the dark blue-purple that belong in every collection. A huge manganese violet self with an electric sheen in the falls. 40 inches. **25c.**
- Buto** (H. P. Sass). A rich dark blue purple bicolor with velvety, nearly black falls. A good bloomer. **25c.**
- Balroudour**. Standards, soft bluish violet. Falls, deep olive buff, with olive-yellow blotch at end of beard. **25c.**
- Blackmoor** (Jacob Sass). Almost black when newly opened, lightening to blackish violet. A free bloomer of great size. **50c.**
- Challenger** (Jacob Sass). S. Dark purple. Falls, dark blackish violet with white beard, tipped with orange. A favorite wherever seen. **25c.**
- Cretone**. Standards blue. Falls, rich purple. One of the older varieties that is still popular. **10c; 3 for 25c.**
- Gray Cloud**. Blend of blue, gray, red, green and brown. Of the dwarf variety. **35c.**
- Jumbo** (Jacob Sass). An enormous bicolor with blue-violet standards and dark red-violet falls. Vivid yellow beard. Height 36 inches. **25c.**
- Kochi**. Deep, rich purple, the buds being nearly black. Blooms very early and sometimes the second time in a season. **10c; 3 for 25c.**
- Knysna**. Deep bronze standards and reddish brown falls. **15c; 2 for 25c.**

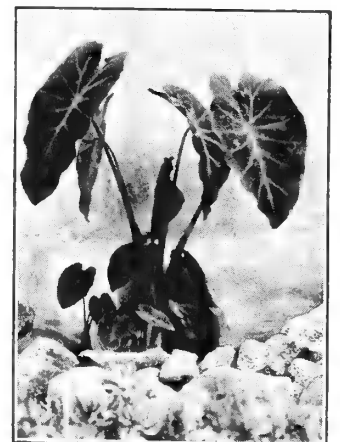
IRIS

- Japanese Iris**. These Iris are at their best during July. Are exquisite in their pleasing shades, varying from light, cool colors to rich dark ones. Do well in the pool, planted just so the roots are in the water. **Assorted colors, 50c; \$5.00 per doz.**
- Moraea iridoides**. Belongs to the Iris family and blooms from early spring until fall. Large white flowers with crests marked in blue. **25c.**

IRIS COLLECTION

Queen Catherine . . . Wacunda . . . Yolande . . . Lohengrin . . . Mme. Cherri **\$1.00**
 Knysna . . . Kochi. Shipped after June 1st. Postpaid.....

- Loreley**. Standards bright yellow. Falls, reddish blue. Very showy. 24 inches. **15c; 2 for 25c.**
- Lohengrin**. Lavender blue. Standards pale. Falls edged in deep blue in perfect "blanket stitch." **25c.**
- Matilda** (Jacob Sass). The bluest of all plicatas and a flower of beautiful pattern and coloring. White ground with a striping of bluish violet. 30 inches tall. **15c; 2 for 25c.**
- Midgard** (H.P. Sass). The best known and most popular pink and yellow blend. Both standards and falls yellow with a flush of clear pink. 30 inches. **25c.**
- Midwest** (H.P. Sass). Heavily ruffled large flowers, with a dotting of rose on a white ground. **15c; 2 for 25c.**
- Mme. Cherri**. One of the finest blended tones, being an orchid pink with a yellow undertone. At a distance the effect is a decided pink. **15c; 2 for 25c.**
- Nebraska** (H.P. Sass). The latest yellow Iris to bloom. One of the richest yellows. Standards ruffled apricot yellow, falls same color, with brown veinings. Requires good drainage. **25c.**
- Nymph** (H.P. Sass). An intermediate of empire yellow that is an amazingly free bloomer. One of the finest of the early yellows. **15c; 2 for 25c.**
- Neola** (Jacob Sass). A new departure in color in the dwarf bearded Iris. A beautiful brown toned blend. Standards vivid violet. Falls deep brown. Pale yellow beard. Medium flowers on 19 inch stems. **25c.**
- Pink Opal**. Tallest of the lavender pinks. In clump plantings it presents a solid mass of color as the blooms tend to bunch near the top. Blooms large. 48 inches. **35c; 3 for 75c.**
- Peaches**. A blend of peach, apricot and orange. **35c.**
- Purple Haze** (H.P. Sass). A large French gray self of medium height and of unusual tone. **15c; 2 for 25c.**
- Queen Caterina**. A superb variety growing 3 feet in height. Flowers a pale lavender blue. Splendid for tall planting. **25c.**
- Spokane** (Jacob Sass). A giant reddish-brown blend. Standards overlaid reddish-brown. Falls ox-blood red. A very rich Iris. **\$1.00.**
- Wambliska** (Jacob Sass). The largest, tallest and finest of the blue-white Irises. Snowy white standards with a blue tint in the heart of the flower. Clear snow-white falls. 38 to 45 inches. **25c.**
- Wacunda** (H.P. Sass). A much admired big red-purple self of deep tone. Makes a most effective garden group of deep red effect. **25c.**
- Yolande**. Falls, velvety pansy blue, black veins. Very beautifully formed flowers of heavy substance. Excellent for mass effect. **25c.**



Imperial Taro
 Described on page 11.



Queen of the Night

EPHYPHYLLUM

E. oxypetalum. (QUEEN OF THE NIGHT.) This marvelous plant bears blossoms of such beauty as to be breath-taking. Each blossom measures from 8 to 10 inches. The outside petals are a soft coral pink, the flower of snowy whiteness. The many stamens are placed so they look like a cradle. Because of this the flower is sometimes called "Angels cradle." Blooms from June to Sept. Small plants, 50c; large, \$1.00. Illustrated lower left.

E. Ackermannii. The bright red petals have a frosty appearance, cascades of white stemens. Spineless flat leaves with buds appearing at notches. 25c.

E. rosy morn. Leaves flat with masses of shell pink blossoms literally covering the plant, blossoms lasting for days. Blooms over a long period. 25c.

E. Padre. Beautiful rose pink blossoms of immense size. Vigorous grower and blooms over a long period. 75c.

CARE OF EPHYPHYLLUMS

These plants should have the same treatment as ferns. Do not keep in direct sun or allow them to become dry. Soil should be equal parts good garden soil, leaf mold and peat.

SAN ANTONI HEIGHTS SPECIAL

Rose Arey (cerise pink).
Gladstone (white).
Paul Harriot (sunset).

\$2.00

Postpaid

VAN NESS SPECIAL

Sunrise (yellow).
Robinsonii (red).
Carnea (shell pink).

\$2.75

Postpaid

POOLSIDE COLLECTION

Fountain grass.
Torch lily.
Day lily.
Ribbon grass.
Umbrella palm.
Three varieties of Iris as listed in catalogue.

\$1.25

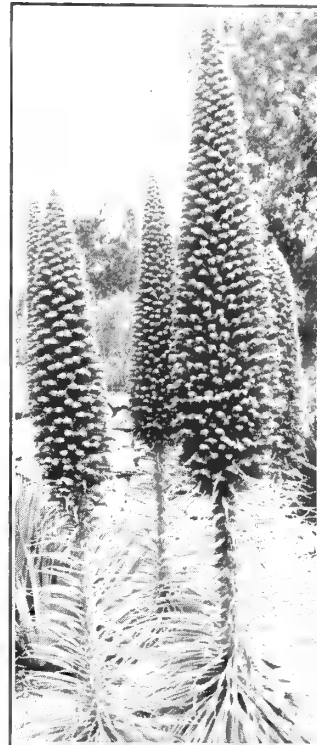
Postpaid.

PATRIOTIC COLLECTION

Gloriosa (red hardy).
Gonnere (white hardy).
Blue Star.

\$3.50

Postpaid



Echium

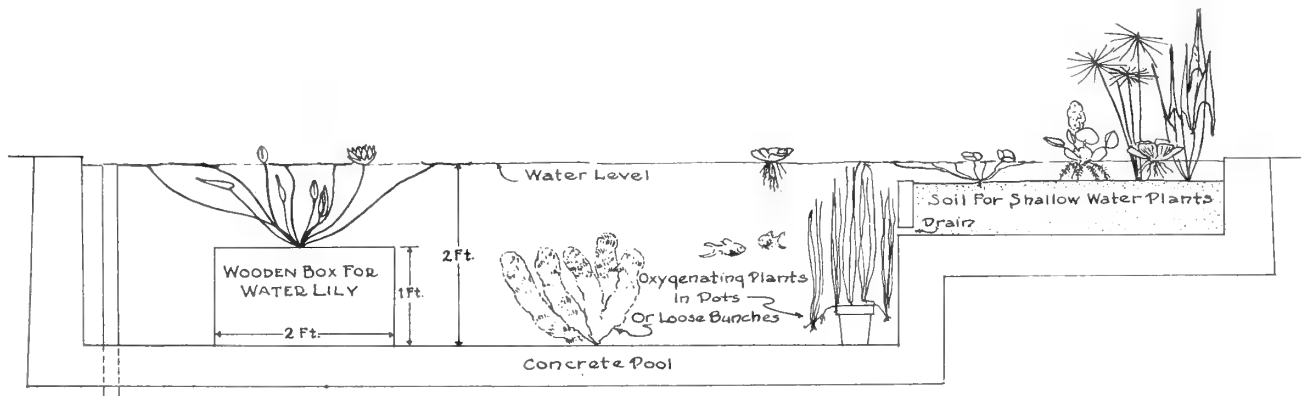
ECHIUM

Echium. One of the most magnificent plants for a sunny location, with good drainage. The blossom a glow of bright pink, often attaining a height of 8 feet. A clump, as shown here will stop traffic with its outstanding beauty. Somewhat tender, but can be grown anywhere in Southern California or the Southern states. Seed per pkt. 25c.

TROPIC LILY COLLECTION

August Koch (lavender blue).
Marmarata (blue).
Mrs. Ward (rose).
Stella Gurney (pink).
Mrs. Pring (white).
O'Marana (pink night bloomer).
Juno (white night bloomer).
Mars (white night bloomer).

This Collection will not be shipped until June 1st as they are all of the Tropical variety. Postpaid. . . . **\$8.50**



It's Easy to Build Your Own Pool

LOCATION. The pool should be exposed to full sun, and should not be built too close to such trees as Pepper, Walnut or Fig, as the leaves, having a strong acid content, falling into the pool will injure the fish.

Lilies cannot be expected to bloom unless the sun shines into the heart of them at least part of the day.

After deciding on location of pool, a very easy way to plan size and shape is to use the garden hose, tracing on the ground the exact plan you desire. We suggest that you make your pool as large as your space will permit, as there are so many water plants you will want room for.

For the front yard the formal pool will best fill the requirements of good design, but for the back yard the informal pool works out beautifully with a rock garden.

An informal pool is much easier and less expensive to build than a formal one, as it can be built without forms. For an informal pool, after deciding on size and shape, dig out soil to depth of 2 feet and level off. Shave side walls as near perpendicular as possible, as walls which slope are that much wasted space in your pool, and gather Algae making pool unsightly. Tamp walls and floor and reinforce with heavy fencing wire, covering walls and floor.

The concrete should be poured continuously, so there will be no joints, and as it is poured the reinforcing should be pulled up to center of concrete, thus making pool stronger and less apt to crack.

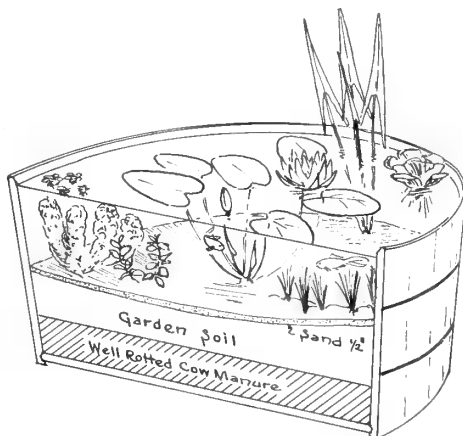
In building a formal pool, by excavating carefully to the exact shape and size of the pool and carefully trimming the edges there will be no necessity for an outside form. Allow about 6 inches space for wall and build inside form. The walls should be reinforced, and after it is poured, allow it to harden until the next day. Remove forms and pour bottom of the pool. Finish as directed below.

Cement. The proper mixture of cement is one shovel of cement to five of sand. Dry mix well, then add enough water to make a rather stiff mixture. In cold climates, where heavy freezing may be expected, the concrete should be 6 inches thick; in mild climates 3 inches is ample.

As concrete is poured, it should be well tamped to take out the porous places and insure yourself of a water tight pool. Allow cement to become thoroughly set, then apply a thin coat of 1 part cement and 3 parts sand which has been screened. When this is hardened apply a coat of pure WATERPROOF cement.

Be sure to keep moist as cement hardens, spraying with a very fine spray from hose, at intervals, as the slower cement hardens the stronger it becomes.

After it is thoroughly set it may be filled with water, filling very slowly. Allow water to stand in pool for a week to soak out the alkali; drain off and when dry, sweep thoroughly and the pool is ready for planting.



Tub Garden

Lilies will grow with 4 inches of water over crown, but will do better with at least 8 inches.

BOOKS ON GARDENING

These books go into detail on the subjects of pool design, planting and the culture of Aquatics.

Water Gardening. Pools large and small. 122 pages, 41 illustrations. L. W. Ramsey. **\$2.50 postpaid.**

Water Gardening. How to make garden pools. 96 pages, 28 drawings. William Longyear. **\$1.00 postpaid.**

Water Gardens and Goldfish. 272 pages, 126 illustrations. Robert Sawyer and E. W. Perkins. **\$2.00 postpaid.**

ORDER FORM

To VAN NESS WATER GARDENS

San Antonio Heights
UPLAND, CALIFORNIA

Please accept the following order, in accordance with terms and conditions given in the "General Information" section of your catalog:

Date.....
Our Order No.....

Name

St. Address

City State.....

Ship Via..... to.....

QUANTITY	DESCRIPTION	UNIT PRICE	AMOUNT

Amount Enclosed \$

TOTAL \$

Signed.....

HOW WE SHIP LILIES



WE SHIP PARCEL POST except on large orders which are shipped by Express. We guarantee safe arrival of all plants shipped. ALL ORDERS ARE SENT POSTPAID.

We guarantee our plants to be true to name and to be delivered to you in good condition. All complaints should be made within 10 days of delivery. Our climate permits us to dig lilies for early shipment, thus assuring purchaser of blossoms at least six weeks earlier than from colder climates. We can ship at any date suited to your locality.

We grow our own plants and our ideal climate causes the lilies to be stored with bloom, and they are ready to burst into bud with the first warm weather. We have lilies full of buds in February.

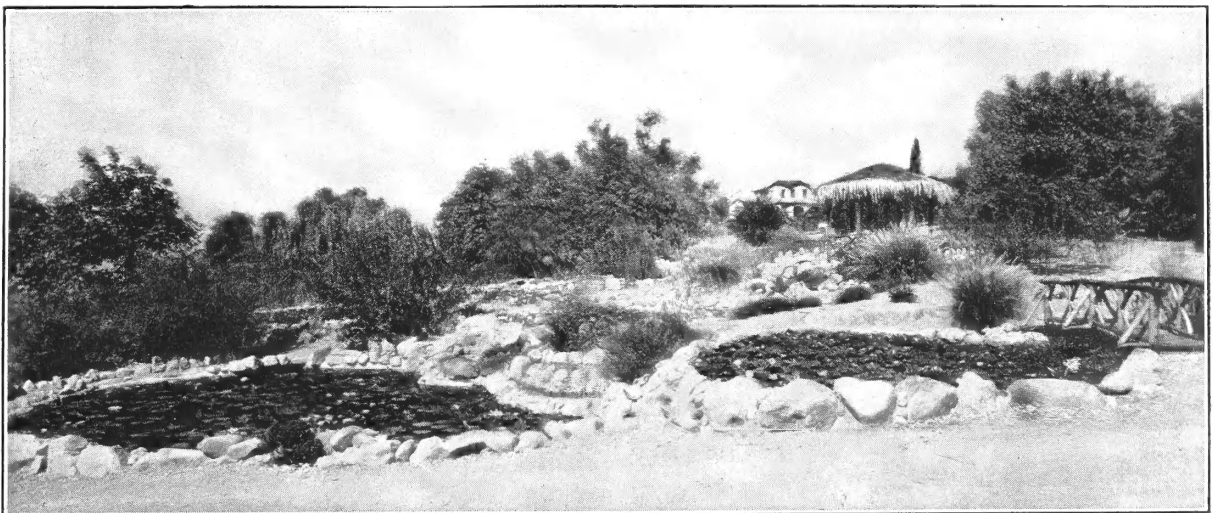
OUR TERMS: P. O. Order or Bank Draft must accompany each order. Make payable to VAN NESS WATER GARDENS, R. D. 1, Upland, Calif. No orders sent C. O. D. unless 50% of value of order is enclosed. REMEMBER, all orders are sent postpaid. Gift plants with all orders.

GUARANTEE: We guarantee our plants to be true to name, of the finest quality and to reach you in good condition, and we promise to replace any plant that fails to grow, the only requirement being that you notify us within 30 days of delivery. These plants will be sent postpaid when other plants are ordered, otherwise postage of 25c should be enclosed with complaint.

CALIFORNIA customers please add 3% sales tax. Orders for less than \$1.00 should add 10c for postage.

Those within driving distance will enjoy a visit to our gardens, which are becoming one of the beauty spots of the Southland, eastern visitors being brought here as part of a sight seeing trip. We are always glad to escort visitors over our display grounds, but during the busy season we invite you to come and enjoy yourself, even should we be too busy to accompany you.

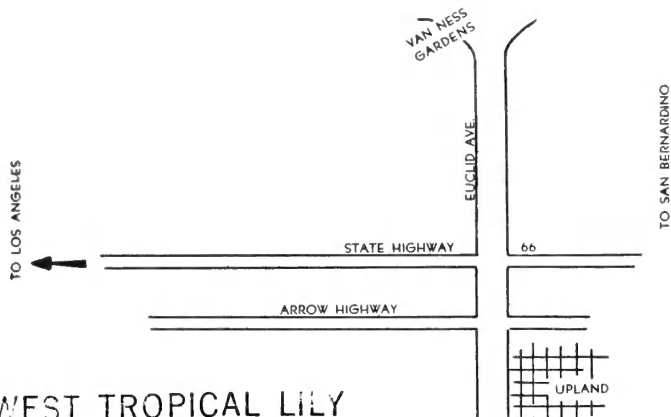
WRITE US REGARDING YOUR PROBLEMS. This catalogue gives full instruction for making a water garden, but should any problem arise upon which you wish advice, just send us a stamped envelope and we will be happy to help you in any way possible.



Lily pools at different levels and appropriate planting and accessories add to the beauty of our display grounds.



Greenhouses and Propagating Bed for Tropic Lilies



HOW TO GET TO OUR GARDENS

Coming on National Highway No. 66, turn north on beautiful Euclid Ave. (double drive). Take west drive at 24th St. (note curve). Follow drive past Community Church. First stop. Visitors welcome.

GOLDEN WEST TROPICAL LILY
 Sensational NEW Lily
 same color as Talisman rose.
 Supply limited. . . . \$3.50