

## **Historic, Archive Document**

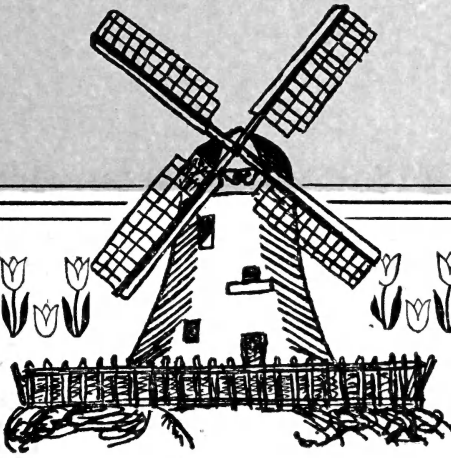
Do not assume content reflects current scientific knowledge, policies, or practices.



62.61

LIBRARY  
U. S. Department of Agriculture

GREETINGS  
FROM  
TULIPDOM  
1941

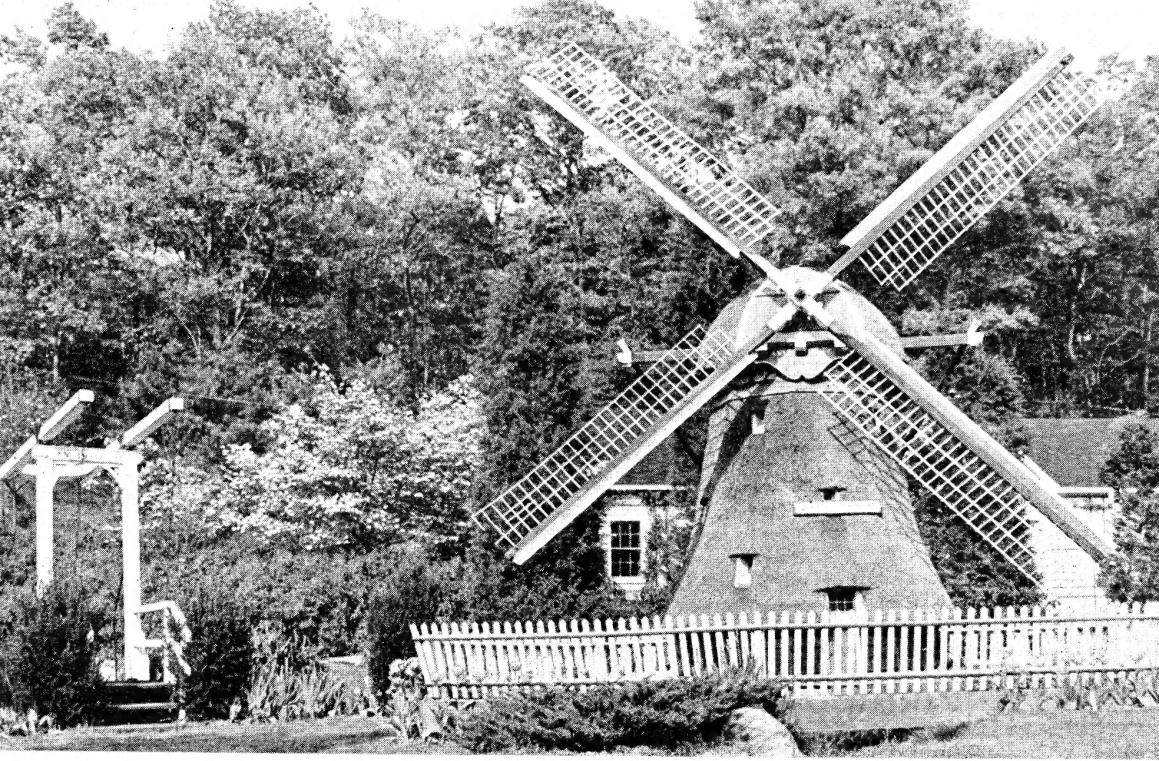


ZANDBERGEN BROS., INC.  
OYSTER BAY, LONG ISLAND, NEW YORK

RHYNLANDT BULB NURSERIES  
Valkenburg, near Leiden, Holland







*The above genuine Dutch windmill marks the entrance to our show grounds.*



*View in our show grounds during the latter part of May. Collage and Darwin Tulips make up this display.*

# Darwin Tulips

The chief characteristics of the Darwins are the perfect cup-shape of the flowers, fleshy substantial petals, tall stems and bright colors, ranging through all the shades of pink and red to purple. There are certain slaty blues and blue-violets which might almost be called a blue, while the black Tulip is nearly realized in some of the dark maroon varieties. There are comparatively few white or pure yellow varieties. Most Darwins can be forced by middle of February, many of them even earlier, provided that they are potted as soon as received.

The bulbs must be set farther apart than is the case with the early Tulips, and plenty of room on the benches must be given when vigorous growth begins. They should be grown slowly under a moderate temperature. Too high a temperature should be avoided, or poor flowers result.

Nearly all varieties, but especially the mauve-colored ones, lose their true color, becoming much paler when forced.

*An asterisk (\*) preceding the name indicates that it may be successfully forced. The figure following indicates the relative time of flowering.*

## *Red and Cherry-Rose*

### \*CITY OF HAARLEM 3:

Intense dark scarlet with dark bloom, large steel-blue base and white halo. One of the largest and finest red Darwins in existence, but prefers well-sheltered situations since the stem being brittle, breaks off easily. Height, 31 inches. \$1.60 per dozen, \$12 per 100.

### \*ECLIPSE 2:

Regarded as the best of all dark red Darwins and a consistent winner wherever shown. Glowing dark blood-red with steel-blue base. Particularly impressive alongside either a yellow or a deeply colored variety such as Faust. The huge, magnificent flowers of open form are supported by strong, tall stems. Height 30 inches. \$3.25 per dozen, \$25 per 100.

### \*KING GEORGE V 2:

A glowing salmon-scarlet, shaded bright rose, blue star at base. One of the finest among cherry-red Darwins and a gem in every way. Equally superb in the border or when grown indoors. The flowers are enormous and of great substance, carried on sturdy stems. Height 28 inches. \$1.60 per dozen, \$12 per 100.

### PRIDE OF HAARLEM 1:

Brilliant rose-carmine, blue base. Large stately flower. Superb for outdoor planting in the border and among shrubbery. One of the oldest Darwins. Height, 28 inches. \$1.25 per dozen, \$9 per 100.

### \*PROFESSOR RAUWENHOFF 2:

Bright cherry-red; inside glowing scarlet, blue center. Good-sized flower of great substance on a strong stem. Height, 28 inches. \$1.35 per dozen, \$10 per 100.

### \*WILLIAM PITT 2:

Very dark crimson, with purplish shade on outer petals, white base, starred dull blue. One of the best forcing varieties and invaluable for cutting. Height, 24 inches. \$1.35 per dozen, \$10 per 100.

## *Rose with Paler Margins*

### AFTERGLOW 4:

A well-named Tulip; the marvelous color combination brings us deep rosy orange with salmon highlights at the edge of the petals. Medium-sized flowers of lasting quality, borne on tall stems. Height, 30 inches. \$1.25 per dozen, \$9 per 100.

### \*PRINCESS ELIZABETH 2:

Clear deep pink, changing with age into rose-pink, with white base. A showy bedder and good forcer. Height, 28 inches. \$1.25 per dozen, \$9 per 100.

## *Rose without Paler Margins*

### CLARA BUTT 4:

Clear pink, flushed salmon-rose, with blue base and white halo. Medium-sized flower of good form; splendid for outdoor planting. Popular throughout entire world because of its color. Height, 22 inches. \$1.15 per dozen, \$8 per 100.

### FLAMINGO 3:

Delicate flesh-tinted rose; white base with a blue halo. Medium-sized, refined flower. Height, 25 inches. \$1.35 per dozen, \$10 per 100.

## *Yellow*

### **\*YELLOW GIANT 3:**

Rich deep golden yellow, faintly tipped dark bronze at tip of petals. Broad well-formed flower of imposing appearance on a very strong stem, lasting a very long time in bloom. This variety has a habit of producing two or more flowerbuds in addition to the main flower. In order to procure a perfect flower, these buds should be cut off at an early stage. Height, 30 inches. \$1.35 per dozen, \$10 per 100.

## *White*

### **ZWANENBURG 3:**

Pure white when in full bloom with black anthers. Medium-sized flower on a tall stem. Fine for the garden. Height, 23 inches. \$1.60 per dozen, \$12 per 100.

## *Purple*

### **\*FAUST 3:**

First choice among all dark-colored varieties. Dark satiny purple with white base. Enormous flower of fine form. Excels for exhibition purposes among the dark varieties. Height, 30 inches. \$1.60 per dozen, \$12 per 100.

## *Lilac*

### **BLEU AIMABLE 3:**

Pale lavender, shaded steel-blue, with white base, starred blue. Good-sized flower of a very distinct shape. Height, 26 inches. \$1.60 per dozen, \$12 per 100.

### **DREAM 2:**

Pale heliotrope. Medium-sized flower rather weak stem. Height, 26 inches. \$1.35 per dozen, \$10 per 100.

### **REVEREND EWBANK 2:**

Soft lavender-violet, lighter at edges; small flower. Height, 23 inches. \$1.25 per dozen, \$9 per 100.

### **ROSE COPELAND 2:**

A sport of the well-known William Copeland, with the same excellent forcing qualities. A lovely lilac rose. Height, 27 inches. \$1.25 per dozen, \$9 per 100.

### **\*WILLIAM COPELAND 1:**

Not recommended for outdoors, but of excellent early forcing qualities, when its color becomes a soft lavender. Height, 25 inches. \$1.25 per dozen, \$9 per 100.

### **\*ZEV 3:**

Silvery lavender, shading to purple tones at the base of the flower, with flushes of pink, gray, and silver to complete a most pleasing, bright coloring. The inside of the cup is white with royal purple stamens. Height, 26 inches. \$1.95 per dozen, \$15 per 100.

# *Breeder Tulips*

Breeders, formerly listed among the Cottage Tulips, form a distinct class by themselves, being "unbroken" forms of the old time "Florist" Tulips.

Discarded by their originators, the old Dutch gardeners, because they had no stripes or feathers, they were more or less neglected and grown only in some obscure corners, until a taste for the so-called "art colors" awakened, and with the revival of the taste for bronze, brown and buff tones, the attention was drawn to these Tulips, which have now become the most popular late Tulips.

And they deserve their popularity. Not only for their peculiar and odd colors, but also for their great lasting qualities. In size and height they frequently surpass even the finest Darwins.

## *Bronze and Buff*

### **\*BRONZE QUEEN 3:**

(Biscuit, Clio). Color, like a biscuit, soft buff, tinged inside with golden bronze; yellow base. Medium tall, large flower, fine for outdoor planting and for forcing. Height, 26 inches. \$1.25 per dozen, \$9 per 100.

## *Purple*

### **CODET PARFAIT 3:**

Dark blue-purple with white base and blue halo. Height, 30 inches. \$1.60 per dozen, \$12 per 100.

## *Lavender*

### **ILIAS 3:**

A cross between a Darwin and a Breeder. An almost pure lavender, with white base and purple stamens. Height, 26 inches. \$1.35 per dozen, \$10 per 100.

# Cottage Tulips

We venture to say that this type is of great antiquity, having probably originated in Persia where some species resembling them in shape are found growing wild today—*Tulipa Clusiana* among them. As far back as 1554 the Austrian Ambassador to the court of the Calif brought with him some of their seeds and Tulips became a fascinating hobby with many wealthy Viennese gardeners—for the seeds, as well as bulbs, were expensive.

The term "Cottage" Tulips is of quite recent origin. The fact that they are probably the longest lived and most lasting of all Tulips caused many of them to be planted around the country houses and cottages of England and France.

All colors imaginable can be found among them, and most of them have long stems, some of them gracefully drooping. They form excellent cut-flower material and are unsurpassed for garden decoration.

## White

### \*CARRARA 3:

A snow white glistening beauty which is greatly enhanced by prominent yellow stamens. The flowers are large, with broad, round petals of pronounced substance, hence the flowers last a long time. The best white for forcing. Height, 20 inches. \$1.35 per dozen, \$10 per 100.

### VESTA 3:

Pale sulphur on opening, turning to pure white when in full bloom. As already mentioned, this fits in with the Darwins, for outside, as there is not a satisfactory white Darwin at a medium price. One of the truly great pure white May-flowering Tulips. It is equally well adapted for bedding and cutting. The large, well-shaped flowers are carried on strong stems. Height, 28 inches. \$1.60 per dozen, \$12 per 100.

## Pink and Rose

### \*DIDO 3:

One of the outstanding Tulips in all classes. The deep, rich pink flowers are of glorious shape and color. Each petal is brightened by salmon-yellow shades, suffused with soft orange. And they are fragrant! Height, 30 inches. \$1.60 per dozen, \$12 per 100.

### INGLESCOMBE PINK 2:

(Salmon Queen). Soft rosy pink, flushed salmon, changing to rose as it ages. Graceful stem; fine for cutting. Height, 25 inches. \$1.35 per dozen, \$10 per 100.

## Orange

### \*ARGO 3:

Opening golden yellow, mottled red. Suffused orange when in full bloom. Large distinct flower on a tall strong stem. Equally fine for indoor or outdoor culture. Height, 28 inches. \$1.15 per dozen, \$8 per 100.

### GRENADIER 2:

A most beautiful bright orange color with rich yellow base. Very large, well-shaped flower on a sturdy stem. Height, 21 inches. \$1.35 per dozen, \$10 per 100.

### ORANGE KING 4:

Glistening deep orange, shaded rose; inside deep orange-scarlet, with yellow base. Sweet scented. Medium-sized flower, very attractive for the border. Height, 20 inches. \$1.25 per dozen, \$9 per 100.

## Yellow

### \*AVIS KENNICOTT 3:

One of the brightest yellow Cottage Tulips, rich chrome-yellow with black base and anthers. Its large flowers are of decidedly elongated shape. Height, 26 inches. \$1.35 per dozen, \$10 per 100.

### GESNERIANA LUTEA 3:

Deep yellow. Handsome flower on a strong stem. Fine for growing among shrubbery. Height, 26 inches. \$1.15 per dozen, \$8 per 100.

### \*INGLESCOMBE YELLOW 4:

Glossy canary-yellow occasionally edged and suffused scarlet when in full bloom. Medium-sized globular flower of perfect form on a strong stem. Height, 23 inches. \$1.05 per dozen, \$7.50 per 100.

### \*MRS. MOON 4:

Well formed vase-shaped flowers of rich golden yellow with recurving petals. Large flower of great beauty and substance, carried on a tall, strong stem. One of the most beautiful of all late Tulips. Fine for forcing and for outdoor planting. Height, 25 inches. \$1.60 per dozen, \$12 per 100.

### WALTER T. WARE 3:

The deepest golden yellow Cottage Tulip. Long but small flower with reflexing petals. \$1.05 per dozen, \$7.50 per 100.

## *Lemon and Red*

### **JEANNE DESOR 4:**

A strikingly beautiful hybrid. The daintily elongated shape proclaims its Cottage Tulip parentage. The strong, tall stem and bold flower show the Darwin blood. The color is a unique combination of deep orange-yellow, edged with a broad scarlet border. Height, 28 inches. \$1.95 per dozen, \$15 per 100.

### **\*MRS. F. E. DIXON 3:**

Soft-colored, sulphur-yellow bloom of large size and artistic form, carried on a strong stem. When in full bloom the edge of each petal is slightly suffused soft orange. One of the finest Hybrid Tulips and an excellent variety for forcing or the border. Height, 28 inches. \$2.35 per dozen, \$18 per 100.

### **ILLUMINATOR 3:**

A flower of deep yellow, flushed with scarlet. Height, 24 inches. \$1.05 per dozen, \$7.50 per 100.

## *Primrose*

### **\*ALASKA 4:**

Very elegant and graceful with slightly reflexed petals frequently 5 inches long. One of the most intriguing of all canary-yellow varieties, because of its beautiful shape. Height, 25 inches. \$1.35 per dozen, \$10 per 100.

### **LEMON QUEEN 3:**

A splendid variety of elegant form and one of the best in this color class; makes a splendid showing in masses. Color pure soft yellow changing to ivory-white when in full bloom; strong stems. Height, 26 inches. \$1.25 per dozen, \$9 per 100.

# *Parrot Tulips*

When still in bud the flower looks somewhat like the head of a parrot; hence the name. They can be forced slowly by the middle or end of February, but for that purpose only strong bulbs must be used.

### **\*FANTASY 3:**

The best of all pink Parrot Tulips. A sport from the well-known Darwin Tulip Clara Butt, with a strong erect stem and flowers simultaneously with Clara Butt. The petals are heavily lacinated. Its size is enormous,

but the stem carries the bloom erect. Inside, the cup is of velvety rose color, showing well through the open flower. Apple-green markings on outside make this one of the most unique among Tulips. Height, 20 inches. \$1.95 per dozen, \$15 per 100.



*A scene from "Tulipdom"*



# Triumph Tulips

Triumph tulips are a new race, hybrids of Early Single and Darwin Tulips. From the Early Single parents they inherit earliness and form the Darwins stateliness. Result:—Here we have something entirely novel and worthwhile. Tulips that bridge the gap between the early and late kinds. They bloom a week later than the early varieties, have strong, tall stems and some of the most beautiful colors are found in this class. All force readily.

**\*COLUMBIA:**

Amaranth red with yellowish white blue starred base; large compact flower. \$1.15 per dozen, \$8 per 100.

**\*COXA:**

Carmine red with a narrow border of buff yellow. A large flower which lasts a long time in bloom; very good forcer and one of the few sweet scented varieties. Height, 22 inches. \$3.20 per dozen, \$25 per 100.

**\*CRATER:**

Dark vermilion-red, shading lighter at edges. A beautifully shaped flower which forces very well. Height, 22 inches. \$1.95 per dozen, \$15 per 100.

**\*EXCELSIOR:**

Orange-red, a beautiful flower of round shape. \$1.35 per dozen, \$10 per 100.

**\*IDAHO:**

Soft salmon-rose with yellow-green bordered base, large flower of delicate coloring. \$1.35 per dozen, \$10 per 100.

**\*KANSAS:**

Large snow-white flower carried on a strong stem, one of the finest whites among the Triumphs. Good forcer. Height 22 inches. \$1.60 per dozen, \$12 per 100.

**\*TELESCOPIUM:**

Reddish violet. An elegantly shaped Tulip of large size carried on a very strong stem. Height, 24 inches. \$1.35 per dozen, \$10 per 100.

**\*URSA MINOR:**

Golden yellow, long elegantly shaped flower on a strong stem. Excellent forcer. Height, 18 inches. \$1.95 per dozen, \$15 per 100.

## MIXTURE ALL MAY FLOWERING TYPES

*Selected bulbs, all colors, representing many varieties. \$1.05 per dozen, \$7.50 per 100.*

# Tulips

### How Many Bulbs to Order for Beds of a Specific Size

Below we give the number of bulbs needed to plant a circular bed of dimensions as stated. Plant outside rows first, and place three inches from edge of bed. It is advisable to plant the outer rows more closely than those toward the center.

Diameter of bed	6 in. apart	8 in. apart	12 in. apart	Diameter of bed	6 in. apart	8 in. apart	12 in. apart
3 feet	28	16	7	12 feet	452	255	113
4 feet	48	27	12	13 feet	528	299	132
5 feet	80	44	20	14 feet	612	347	153
6 feet	112	64	28	15 feet	704	398	176
7 feet	152	87	38	16 feet	804	453	201
8 feet	200	113	50	17 feet	904	511	226
9 feet	256	143	64	18 feet	1016	573	254
10 feet	320	177	80	19 feet	1132	638	283
11 feet	380	214	95	20 feet	1256	707	314

To arrive at the number of bulbs required for an oval bed, add the length and breadth and divide by two using the result as the diameter in above table. A bed 6 feet wide by 8 feet long will require the same number of bulbs as a round bed 7 feet in diameter. (6 + 8 = 14; divided by 2 gives 7.)

# Daffodils Really Worth Growing

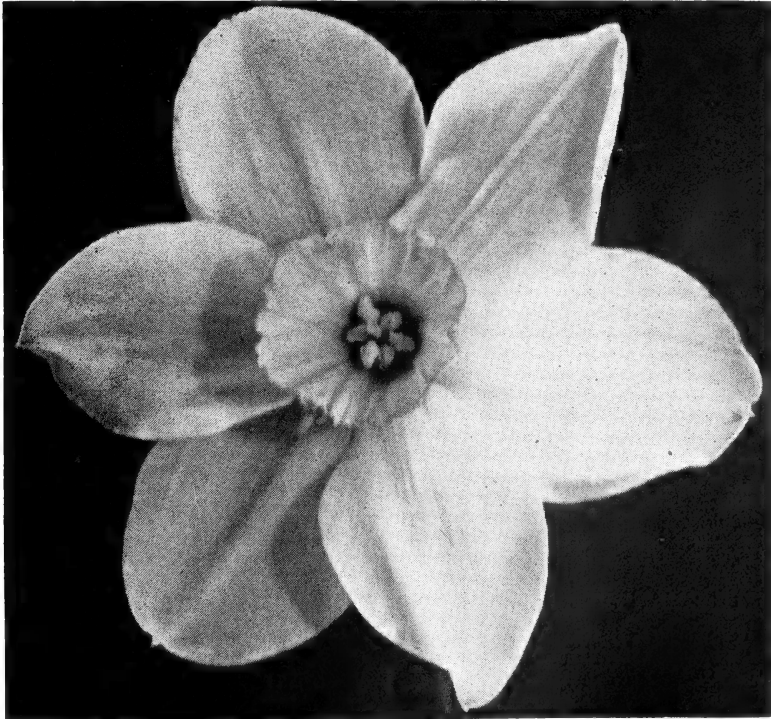
To have our customers get to know Daffodils better and grow more of them, we herewith offer two collections. Both include popular favorites as well as some of the choicer kinds of more recent introduction.

## De Luxe Collection

<b>KING ALFRED</b> —Trumpet, yellow	}	25 bulbs each of 10 choice sorts
<b>HELIOS</b> —Incomparabilis		250 bulbs for <b>\$35.00</b>
<b>GLORY OF SASSENHEIM</b> —Trumpet, bicolor		
<b>FIRETAIL</b> —Barrii	}	12 bulbs each of 10 choice sorts
<b>JOHN EVELYN</b> —Incomparabilis		120 bulbs for <b>\$20.00</b>
<b>ORANGE GLOW</b> —Incomparabilis		
<b>ORANGE CUP</b> —Poetaz		
<b>QUEEN OF THE NORTH</b> —Leedsii		
<b>ACTAEA</b> —Poeticus	}	6 bulbs each of 10 choice sorts
<b>CHEERFULNESS</b> —Double		60 bulbs for <b>\$10.00</b>

## Popular Collection

<b>EMPEROR</b> —Trumpet, yellow	}	25 bulbs each of 10 choice sorts
<b>SPRING GLORY</b> —Trumpet, bicolor		250 bulbs for <b>\$20.00</b>
<b>RED BEACON</b> —Barrii	}	12 bulbs each of 10 choice sorts
<b>CROESUS</b> —Incomparabilis		120 bulbs for <b>\$12.00</b>
<b>LUCIFER</b> —Incomparabilis		
<b>LAURENS KOSTER</b> —Poetaz		
<b>CASSANDRA</b> —Poeticus		
<b>RECURVUS</b> —Poeticus	}	6 bulbs each of 10 choice sorts
<b>CHEERFULNESS</b> —Double		60 bulbs for <b>\$6.25</b>
<b>HERA</b> —Leedsii		



“Queen of the North”

# *Bulbs for Forcing*

## *Daffodils Prepared for Early Forcing*

A special process in curing and precooling shortens the growing period for forcing Daffodils so that they may be brought into flower at least three weeks in advance of the untreated bulbs. They are therefore invaluable in that they can be flowered for Christmas and throughout the holiday season. The bulbs should be potted immediately on receipt, and buried outside with a good mulch to keep out the frost. In from seven to ten weeks, depending on the variety, the flower buds will have become sufficiently advanced that they may be noticed inside the foliage. The bulbs should not be brought into the greenhouse until they have developed sufficiently that the buds have appeared through the neck of the bulb. In the greenhouse at a temperature of sixty degrees they will bloom in from four to five weeks. Varieties most satisfactory for this purpose are offered below; they are listed in the order in which they can be flowered.

### **HELIOS:**

Incomparabilis, the earliest of all. Creamy yellow perianth, pale orange cup. Extra selected bulbs especially prepared to bloom before Christmas. \$2.75 per dozen, \$20 per 100.

### **THE FIRST:**

Trumpet, yellow, similar to Emperor but much larger. Extra selected bulbs which may be brought into bloom a week before Christmas. \$2.75 per dozen, \$20 per 100.

### **KING ALFRED:**

Trumpet, golden yellow. Extra selected bulbs prepared for Christmas flowering. \$2.75 per dozen, \$20 per 100.

### **LAURENS KOSTER:**

Poetaz. White perianth with yellow eye. Extra selected bulbs prepared for early January flowering. \$1.90 per dozen, \$14 per 100.

## *Tulips Prepared for Early Forcing*

By special treatment these tulips are made earlier and longer stemmed than ordinary stock, also they mature more quickly, providing cut flowers far in advance of other Tulips. The following varieties have proved most suitable for this purpose. (Orders should reach us not later than August 1).

### **ROSE COPELAND:**

Darwin, rosy lilac. \$11 per 100.

### **TELESCOPIUM:**

Triumph, deep pink. \$12 per 100.

### **WILLIAM COPELAND:**

Darwin, lavender. \$11 per 100.

### **WILLIAM PITT:**

Darwin, soft cherry red. \$12 per 100.

## *Polyanthus Narcissi*

Suitable for house culture only, for growing indoors in pots, as well as in pebbles and water. Should be started in a cool, dark place for a few weeks to induce good root growth. Plant in succession for a continuation of bloom.

### **PAPERWHITE GRANDIFLORA:**

The most popular of all Narcissi for indoor growing. Produces numerous pure white flowers on a single stem. May be had in bloom eight weeks from time of planting. Extra selected, 90 cts. per dozen, \$6 per 100. Selected, 70 cts. per dozen, \$5 per 100.

### **GRAND SOLEIL D'OR:**

Resembling Paperwhites in habit but yellow in color, bright orange cup. \$1.70 per dozen, \$12 per 100.



# Narcissi or Daffodils

The terms Narcissus and Daffodil are interchangeable, although there exists a tendency to apply the term Narcissi to the small-flowering groups like Poeticus, Leedsii, Barrii and Incomparabilis; while the larger-flowered Trumpet varieties are most frequently referred to as Daffodils.

*Soil and its Treatment.* Narcissi will thrive in any ordinary garden soil, but prefer a deep, rather moist, sandy loam. When the soil is of a dry and sandy nature, it should be deeply dug, if possible at least a season before planting the bulbs, composted leaves or well-rotted cow manure being added and a vegetable or annual crop grown on the ground. Before the bulbs are planted a sprinkling of lime should be spread on the surface and then raked in. It is also beneficial to add bone meal at the rate of 1½ oz. to the square yard while digging the soil. *Never* use fresh manure of any kind at planting time—it burns the roots! On very poor and dry sandy soils we recommend the addition of about 1 oz. per square yard of sulphate of potash to be sprinkled over the surface of the ground, after planting.

*Naturalizing in Grass, etc.* All Narcissi will grow equally well in the open or in partial shade. In the flower-border, to obtain the best effect, they should be planted in large groups of irregular outline, each group or clump to contain one variety only; avoid straight lines, circles, and symmetrical designs. Masses of Narcissi should always appear in the hardy flower border, where they can be planted between the clumps of herbaceous plants, which hide as well as shelter the foliage later in the season.

All varieties of Narcissi are listed in the logical order of their respective merits, regardless of price. The variety which in our opinion is the choicest of its class, is listed at the head of its class, the second best coming second, etc.

The number after each variety name indicates the relative time of flowering.

## Trumpet Narcissi

Trumpet or crown as long as or longer than the perianth segments.

We offer *only* finest quality Double Nosed Extra Selected bulbs true to name and nothing else! We guarantee that every one hundred bulbs will produce from 200 to 300 flowers, depending on the variety. Please consider this factor when comparing prices.

### Yellow

#### LORD WELLINGTON 3:

The largest and most beautiful Daffodil ever introduced. Both trumpet and perianth are rich golden yellow. The flowers are enormous in size, extraordinarily well formed and of good substance. The tall stems and broad foliage compare well with the exceptionally large flowers. \$5.25 per dozen, \$40 per 100.

#### INSURPASSABLE 3:

Winner in the race among the super giant yellow trumpets wherever shown. The enormous flower is beautifully proportioned, long, bold, rich golden-yellow trumpet with overlapping petals in the same color. Tall strong stem. \$2.50 each, \$25 per dozen.

#### DIOTIMA 3:

Considered one of the very best of the new yellow trumpets. Despite its huge size, the whole flower is beautifully proportioned and gracefully carried on its tapering stem. The broad overlapping petals form a star-shaped perianth of medium deep primrose. Trumpet is more deeply colored. \$2 each, \$20 per dozen.

#### KING ALFRED 1:

Considered the best among the yellow trumpets. Large, long lasting golden yellow flower of distinctly refined shape and deeply frilled trumpet elegantly recurved at mouth. One of the earliest and most valuable for forcing and the garden. \$2 per dozen, \$15 per 100.

Specially prepared selected bulbs for early forcing. \$2.75 per dozen, \$20 per 100.

#### CONCORDIA 2:

Huge flower. Both the perianth and very bold trumpet are golden yellow. Large open mouth deeply flanked at brim. Good early forcer. \$3.50 per dozen, \$25 per 100.

#### ROBERT SYDENHAM 2:

The trumpet is a beautiful golden yellow of immense size, heavily frilled and glittering as though sprinkled with gold dust. Soft, sulphur-yellow perianth of exceptional symmetry. \$3.50 per dozen, \$25 per 100.

### THE FIRST 1:

A sulphur-yellow trumpet with perianth of the same color, which ultimately will replace the old, popular Emperor. It blooms much earlier, is a very robust grower and bears its large beautiful flowers on very tall, strong stems. One of the first to bloom. \$2 per dozen, \$15 per 100.

Specially prepared selected bulbs for early forcing. \$2.75 per dozen, \$20 per 100.

### TRESSERVE 3:

A huge flower with a slightly campanulate canary-yellow perianth and a very bold rich yellow trumpet, with large open mouth deeply flanked at brim. \$1.70 per dozen, \$12 per 100.

### OLYMPIA 3:

Deep primrose-yellow twisted perianth, large straight trumpet of a slightly deeper shade. A much improved and enlarged Emperor. \$1.90 per dozen, \$14 per 100.

### EMPEROR 3:

Perianth deep primrose, trumpet full yellow. One of the most popular for the garden and for naturalizing. \$1.50 per dozen, \$10 per 100.

### *White or almost White*

Varieties with white or pale primrose trumpet and white perianth.

### BEERSHEBA 3:

A magnificent Daffodil rated as the choicest among the large white trumpet varieties. Trumpet and perianth are almost pure white and beautifully proportioned; either as a cut flower or in the garden it will last a long time in bloom. \$2 each, \$20 per dozen.

### ROXANE 3:

A magnificent flower considered by many as one of the most outstanding white Daffodils in existence. Large refined well formed perianth and broad trumpet almost white in color. \$10 per dozen, \$75 per 100.

### MRS. R. O. BACKHOUSE 3:

The famous pink Daffodil which has created a sensation wherever shown. The perianth is creamy white with a long, graceful, deeply fringed trumpet of clear pale apricot, tinged deeper at edges. A most unusual and charming variety and a worthy addition to any collection. \$2 each, \$20 per dozen.

### MRS. ERNST H. KRELAGE 3:

Described by connoisseurs as one of "the finest among the ivory white Daffodils." The flowers are of distinctive shape with elegantly disposed petals and creamy white trumpet. \$2.75 per dozen, \$20 per 100.

### W. P. MILNER 2:

Splendid for the rockery. A charming free-flowering variety with very distinct pale sulphur flowers. Dwarf. \$2.75 per dozen, \$20 per 100.

### *Bicolor*

Varieties with white or whitish perianth and a yellow or primrose trumpet.

### MADAME VAN WAVEREN 2:

This gorgeous variety is in a class with Lord Wellington with regard to both size and shape. The trumpet is deep golden yellow with broad over-lapping perianth of purest white. One of the finest among the bicolor trumpets. \$10 per dozen, \$75 per 100.

### AEOLUS 2:

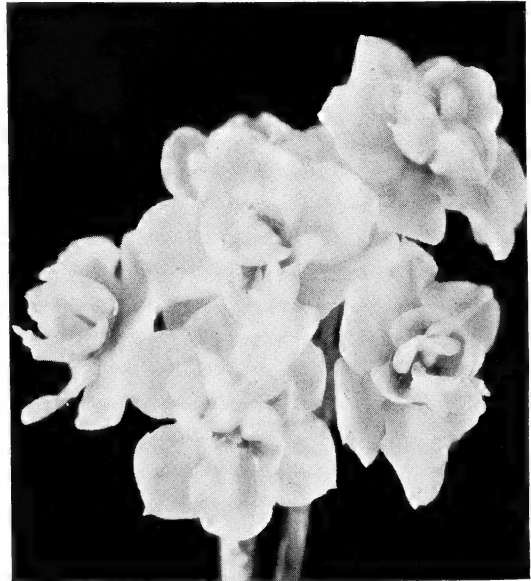
The snow-white petals are flung wide from the long yellow trumpet, which is heavily frilled and has recurved brim. This is one of the largest and most perfect Bicolors in existence today. The flower is slightly tilted upwards, presenting its beauty direct to the eye. \$4.50 per dozen, \$35 per 100.

### VAN WAVEREN'S GIANT 2:

Primrose perianth, bright yellow trumpet of immense size and substance, slightly frilled and artistically recurved. \$2.75 per dozen, \$20 per 100.

### SPRING GLORY 2:

Pure white perianth with deep golden yellow trumpet. Blooms early and lasts well, both outdoors and after cutting. \$1.70 per dozen, \$12 per 100.



*This is "Cheerfulness," the exquisite double Narcissus, bearing flowers in clusters. Blooms freely for everybody—and is fragrant!*

# *Barrii Narcissi*

Cup or crown measuring less than one third the length of the perianth segments.

## **POMONA 2:**

Smooth overlapping white perianth with deep orange cup, which holds its color exceptionally well. A most beautiful variety of great substance. A very handsome and outstanding novelty both for the garden and for exhibition. \$1 each, \$10 per dozen.

## **LATONIA 2:**

Large round pure white perianth with flat crown of deep orange-red. One of the best in this type and highly recommended for exhibition purposes. \$2 each, \$20 per dozen.

## **SERAGLIO 4:**

A most distinguished and strikingly beautiful flower of great substance carried on a tall, strong stem; considered one of the largest and most outstanding among the *Barrii* type. The well overlapping, creamy white perianth holds forth a well-proportioned cup of deep orange. \$1.50 each, \$15 per dozen.

## **LADY DIANA MANNERS 3:**

Broad, pure white perianth with a large fluted yellow cup frilled blood-red. Very free flowering and an excellent forcer. Highly recommended for exhibition purposes. \$2.75 per dozen, \$20 per 100.

## **FIRETAIL 3:**

This variety is becoming more popular the world over; broad petaled, creamy white perianth and large orange cup with scarlet-orange frill. Especially recommended for forcing. \$2.75 per dozen, \$20 per 100.

## **ALCIDA 3:**

Large flower with creamy-white perianth and broad citron-yellow cup, frilled blood-orange. A strong, free-flowering variety of fine substance. One of the latest of the *Barrii* group. \$2.40 per dozen, \$17.50 per 100.

## **EXPECTATION 3:**

An exquisite variety equally decorative grown in pots or in the garden. The large spreading, pure white perianth is of great substance. The cup is pure yellow with orange-red margin artistically fluted and frilled. \$2 per dozen, \$15 per 100.

## **NOBILITY 3:**

Large, perfectly formed flower; perianth creamy white, crown flat, deep orange-red. A beautiful novelty for the garden. \$3.50 per dozen, \$25 per 100.

## **SPARKLER 4:**

Its strong, robust constitution causes it to be one of the finest in its class. The color combination is exquisite—rich yellow perianth, fiery orange-scarlet crown, shaded gold. \$3.50 per dozen, \$25 per 100.

## **BRILLIANCY 3:**

Deep golden yellow perianth with yellow cup edged deep scarlet. Large flower, excellent for forcing. \$2 per dozen, \$15 per 100.

## **RED BEACON 3:**

Ivory-white perianth combined with an intense fiery orange cup makes this a showy variety. Cup has beautifully frilled edge. Fine for naturalizing in partly shaded places. \$1.15 per dozen, \$8 per 100.

# *Incomparabilis Narcissi*

Cup or crown measuring from one third to nearly equal the length of the perianth segments.

## **FORTUNE 1:**

Broad creamy-yellow perianth of very solid texture, crown of great size and elegant form opening at mouth and of a glowing soft orange color. Of perfect form, a good grower and early, as it opens about the same time as King Alfred. \$2 each, \$20 per dozen.

## **JOHN EVELYN 3:**

Deservedly an international favorite; outstanding among the *Incomparabilis* hybrids. The flatly opening perianth, pure white without a trace of shading, and the flat densely frilled cup of lemon yellow, fluted to the base, make it one of the greatest daffodils of the present day. It is a fine exhibition flower. \$2.75 per dozen, \$20 per 100.

## **STAR OF THE WEST 3:**

Large perianth of deep golden yellow, brilliant flame-orange cup. Of perfect form and good substance. It is one of the most outstanding varieties for exhibition. \$2 each, \$20 per dozen.

## **CARLTON 2:**

Both perianth and cup are of clear soft yellow, the flat perianth is broad and overlapping and the large expanded cup is nicely frilled. Free flowering, very good substance and especially recommended for exhibition as well as for the garden. \$9.25 per dozen, \$70 per 100.

## **AGRA 3:**

One of the finest of all recent introductions. The perianth is white and the large cup is brilliant orange-scarlet, which does not fade in full sun. It is a vigorous grower and a long-lasting free bloomer. One of the most outstanding varieties for the garden. \$2.50 each, \$25 per dozen.

**MERAPI 3:**

Creamy-yellow perianth, with large orange-red cup. A most unusual and outstanding flower, particularly suited to show purposes. \$2.50 each, \$25 per dozen.

**ABELARD 3:**

Broad yellow cup, edged orange with strong orange anthers. The primrose perianth is of exceptionally good substance, therefore long lasting. \$6.50 per dozen, \$50 per 100.

**ORANGE GLOW 2:**

One of the largest of the *Incomparabilis* *Narcissi*, measuring normally 4 inches in diameter. A golden-yellow with a deep orange cup beautifully frilled, which does not fade so readily in full sun. Fine forcer. \$3.50 per dozen, \$25 per 100.

**DORINE 3:**

One of the finest novelties. The slightly overlapping creamy yellow perianth has as its crowning glory a large, dark orange cup. Tall vigorous grower. \$6.50 per dozen, \$50 per 100.

**FRANCISCUS DRAKE 3:**

An unusual flower and very distinct. The twisted perianth is silvery white, while the large bold crown is of a bright orange-red deeply fluted and elegantly frilled. A striking and outstanding novelty on account of its brilliant cup. \$4.50 per dozen, \$35 per 100.

**ALCESTE 3:**

Superb, in snow-white and darkest yellow. Texture like soft parchment and perfection in points of symmetry. One of the best *Incomparabilis* which can be had at moderate price. \$2 per dozen, \$15 per 100.

**RED CROSS 3:**

The flowers are of great size, with primrose-yellow perianth and very large crown of deep yellow, densely frilled deep orange. Fine for both the garden and exhibition. \$2.75 per dozen, \$20 per 100.

**HELIOS 1:**

Creamy yellow star-shaped perianth, with slightly frilled pale orange cup which changes to a lovely deep yellow after flowers are fully open. Of very good substance and refined appearance. More free flowering than *Sir Watkin*, it is rapidly surpassing that variety for naturalizing purpose. Also valuable for the border and early forcing. \$2 per dozen, \$15 per 100. Specially prepared selected bulbs for early forcing. \$2.75 per dozen, \$20 per 100.

**LUCINIUS 3:**

A great garden variety. Clear, deep yellow perianth of star shape, broad, well-shaped cup of pale orange-yellow. A flower of unusual good form and excellent substance. \$2 per dozen, \$15 per 100.

**CROESUS 3:**

This variety prefers partial shade as the cup is apt to fade in full sunshine. The light, canary-yellow perianth is of perfect form and the broad fluted cup is rich orange-red so long as the weather is cool and dark. \$1.70 per dozen, \$12 per 100.

**BERNARDINO 3:**

Large creamy white perianth, pale yellow heavily frilled orange-apricot cup. Good grower. \$1.50 per dozen, \$10 per 100.

**WHITEWELL 2:**

The petals are pure creamy white while the crown is a strong yellow. Equally fine for forcing or for outdoor planting. \$1.50 per dozen, \$10 per 100.

**WILL SCARLETT 4:**

Fiery scarlet cup and elegantly frilled, creamy white perianth of a decidedly reflexing character. It prefers partly shaded spots and looks particularly lovely in clumps. \$1.50 per dozen, \$10 per 100.

**SIR WATKIN 1:**

Primrose-yellow perianth, large yellow cup, tinted orange. Has long been used extensively for naturalizing but is now superseded by *Helios*, which variety being of better substance has a longer period of bloom. \$1.60 per dozen, \$11 per 100.

**AUTOCRAT 3:**

Soft yellow cup with broad perianth of primrose-yellow. A very dainty flower of distinct form. Fine for naturalizing. \$1.60 per dozen, \$11 per 100.

**LUCIFER 2:**

White perianth; cup glowing orange-red, which stands the sun very well. \$1.10 per dozen, \$7.50 per 100.

## *Poetaz Narcissi*

A fine race of *Narcissi* resulting from a cross between *Poeticus Ornatus* and the finest varieties of *Polyanthus* or *Bunch-flowered Narcissi*. They are tall and vigorous growers, bearing heads of large well-formed fragrant flowers.

**GLORIOUS 3:**

Delightfully informal in habit; perianth white, with deep orange-yellow cup, edged scarlet. Fine for semi-shade; very early and excellent forcer. 3 to 4 large flowers of great substance borne on tall graceful stems. Highest standard for exhibition. \$6.50 per dozen, \$50 per 100.

**ADMIRATION 3:**

Sulphur-yellow perianth; sulphur-yellow eye with scarlet-red border. \$2 per dozen, \$15 per 100.

**ORANGE CUP 3:**

Perianth primrose-yellow, with a brilliant fiery orange cup shading down to gold, prettily frilled. \$1.70 per dozen, \$12 per 100.

**ELVIRA 4:**

Flowers with broad white petals of great substance and golden yellow cup, edged orange, delicately fragrant. \$1.10 per dozen \$7.50 per 100.

**LAURENS KOSTER 3:**

Pure-white petals, yellow eye; a sturdy grower, with 5 to 7 flowers on a stem. Excellent for forcing. \$1.35 per dozen, \$9 per 100.

Specially prepared selected bulbs for early forcing. \$1.90 per dozen, \$14 per 100.

## *Leedsii Narcissi*

Perianth white and cup or crown white, cream or pale citron, sometimes tinged with pale pink or apricot.

**DAISY SCHAFFER 3:**

Considered the best of the remarkable new Giant Leedsii type, this variety resembles a trumpet but is much more refined. The pure-white perianth with primrose cup is beautifully tinted a greenish yellow: as the flower ages the cup becomes a soft, canary yellow. \$2 each, \$20 per dozen.

**GERTIE MILLAR 3:**

Perianth is pure white with a beautiful primrose cup, deeply fluted and frilled. A most handsome flower which will stand out for years to come; one of the finest for exhibition. \$5.25 per dozen, \$40 per 100.

**TUNIS 3:**

Large tall robust grower of most distinct character and long lasting substance, broad waved white perianth and large bold ivory crown with handsome flanged and serrated brim, retaining a remarkable flush of pale coppery gold at the edge. \$5.25 per dozen, \$40 per 100.

**SUDA 3:**

A most beautiful show flower of fine substance, pure white perianth and well formed bell-shaped trumpet of a pale amber-rose color, very refined. Exceptional show variety. \$2.50 each, \$25 per dozen.

**MITYLENE 3:**

Broad overlapping snow-white perianth with flat primrose cup. Of perfect form and great substance. Especially recommended for the garden as well as for exhibition. \$6.50 per dozen, \$50 per 100.

**SILVER STAR 2:**

The earliest blooming of this type. Broad star-shaped perianth of creamy white, with finely proportioned wide cup of primrose. Very free flowering. \$2.75 per dozen, \$20 per 100.

**QUEEN OF THE NORTH 3:**

Broad glistening white perianth and soft primrose-yellow cup with finely crinkled edge. Its strong stems make it particularly desirable for naturalizing. \$1.50 per dozen, \$10 per 100.

**HERA 3:**

Well overlapping perianth of snowy white; cup creamy white, handsomely frilled and fluted at the edges. The margin of crown carries a faint apricot tinge. \$1.50 per dozen, \$10 per 100.

**LORD KITCHENER 3:**

Large pure-white perianth, broad and flat, of great substance; crown very large of a delicate pale primrose. \$1.50 per dozen, \$10 per 100.

## *Poeticus Narcissi*

These "Poets" Narcissi all have snowy white perianth segments or petals, and a flattened eye or crown, yellow or lemon, edged more or less deeply with scarlet or crimson, and sometimes mostly all scarlet. All are more or less sweetly scented. Having very highly colored crowns they should be cut young.

**ACTAEA 4:**

White perianth of broad and overlapping petals with a flat lemon-yellow cup frilled deep red. An outstanding variety; the largest and most beautiful of the new Poeticus. Good forcer and wonderful for exhibition. \$3.50 per dozen, \$25 per 100.

**HORACE 4:**

Snow white perianth; large cup, almost entirely blood scarlet. Very beautiful; one of the best. Free flowering and fine for forcing. \$1.50 per dozen, \$10 per 100.

**CASSANDRA 4:**

A noble Poeticus, with broad white perianth; cup deeply rimmed dark red. \$1.50 per dozen, \$10 per 100.

**HOMER 4:**

Snow-white perianth with golden yellow eye beautifully margined deep crimson. \$1.15 per dozen, \$8 per 100.

**RECURVUS 5:**

Narcissi may come and go, but old "Pheasants Eye" will go on forever. Pure white perianth, with cup of deep orange red. The latest flowering of this type. Excellent for massing and for naturalizing. \$1.15 per dozen, \$8 per 100.

**GLORY OF LISSE 4:**

Pure white perianth, orange center. Improved Ornatus, it is larger and earlier. \$1.10 per dozen, \$7.50 per 100.

# Double Narcissi

## VALENCIA 3:

Named for the delicious Valencia orange, of sunny Valencia in Spain, which it resembles so closely in color, creating a sensation wherever shown. Larger and more handsome than the variety Texas, it is worthy of a special word of praise. A most remarkable and charming novelty of exquisite beauty and huge dimensions, carried on a strong, tall stem. The double rows of perianth segments are composed of long golden yellow petals, interspersed with shorter petals of soft orange, giving the flower a most aristocratic appearance such as is not found in any other double variety. Of great substance and long lasting quality it is a magnificent specimen for exhibition purposes and the garden. The finest and most distinct double variety in existence. \$2 each, \$20 per dozen.

## TEXAS 3:

One of the finest double Daffodils; tall, of fine form and a late bloomer. The color is pale yellow interspersed with brilliant orange. \$1 each, \$10 per dozen.

## MARY COPELAND 3:

The most striking and exquisite variety of the semi-double type; unsurpassed for garden or show purpose. The longer petals of pure creamy white are interspersed with shorter petals of lemon and brilliant orange. \$10 per dozen, \$75 per 100.

## DAPHNE 4:

Snow-white. The most dainty and beautiful double sweet-scented. This will take the place of Albo Plena Odorato which variety often blasts bud unless planted in a damp cool location. \$1 each, \$10 per dozen.

## TWINK 1:

One of the finest of the semi-double type; very early and particularly suited for forcing. The longer petals of creamy white are interspersed with shorter petals of clear orange. \$2 per dozen, \$15 per 100.

## CHEERFULNESS 4:

Imagine 2 or 3 small Gardenias on elegantly erect stems 17 inches high and you have a fair picture of this remarkable variety. The creamy white perianth has broad, round, well-shaped petals, while the center consists of creamy yellow petals. The flowers are exquisitely scented. \$1.50 per dozen, \$10 per 100.

*Incomparabilis*  
Type



# Jonquil Narcissi

Very much prized for their delightfully scented flowers, perfectly hardy in gardens or naturalized, also well adapted to indoor culture in pots. The Jonquils are a distinctive type of the Narcissus family.

**TREVITHIAN 2:**

Broad overlapping, smooth-textured perianth with medium sized, shallow crown. Pale lemon yellow throughout. An extremely fine free-flowering variety. Fragrant. \$4 per dozen, \$30 per 100.

**GIGANTEUS 2:**

It has no equal when it comes to size, perfume or vigor of foliage; an exceedingly fine, fragrant flower for cutting; golden yellow clusters of impressive size. Easily and readily forced. \$1.70 per dozen, \$12 per 100.

**GOLDEN SCEPTRE 2:**

Excellent for both outdoor and indoor culture. Of deep orange-yellow color and one of the largest flowering in this class. \$1.50 per dozen, \$10 per 100.

**CAMPERNEL ODORUS RUGULOSUS 2:**

Rich yellow, single sweet scented Jonquil; beautiful star-shaped flowers. \$1.15 per dozen, \$8 per 100.

**CAMPERNEL RUGULOSUS FLORA PLENA 2:**

The double sweet-scented Jonquil; rich yellow double flowers, very fragrant, and prized for cutting. \$1.15 per dozen, \$8 per 100.

# Triandus Narcissi

**PEARLY QUEEN 4:**

Bearing 2 to 3 flowers on each stem, this star-shaped cream-white perianth and clear lemon-yellow short trumpet, the distinctly pearly sheen of which provides the name, is of drooping habit, free flowering and a strong grower. \$1.70 per dozen, \$12 per 100.

**THALIA 3:**

A very beautiful and most effective pure white flower which produces from 3 to 4 flowers on a single stem. The best of its class and fine for the rockery. \$3.50 per dozen, \$25 per 100.

## Mixed Narcissi

These mixed Narcissi are all well-selected bulbs; consisting of many varieties. Splendid for naturalizing in woods.

Mixture of	per dozen	per 100	1000
Fine varieties all types . . . . .	\$1.10	\$7.50	\$70
General collection all types . . . . .	.95	6	55
Fine short cups . . . . .	1.15	8	75
General collection of short cups . . . . .	.95	6	55
Fine trumpet types . . . . .	1.15	8	75
General collection trumpet types . . . . .	.95	6	55

# Crocuses

## Spring Flowering

The Crocus is one of the loveliest of all spring-flowering plants. Soon after the snow-drops have put in their appearance come the crocuses with their large showy blooms. They must be grown in a more or less sunny place, otherwise the blooms do not open up fully.

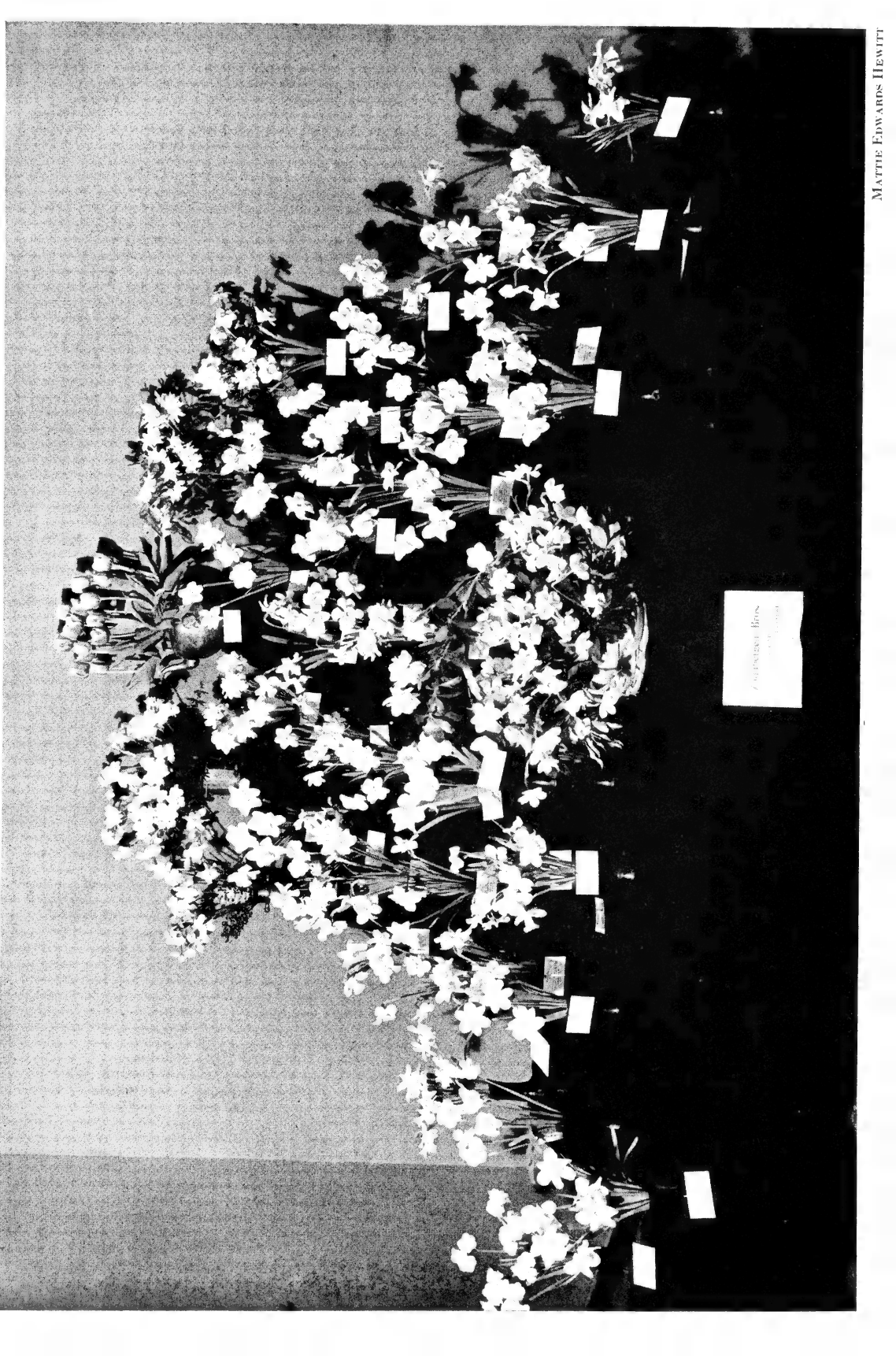
They are easily forced in a temperature of about 50 degrees.

**Purple**

**BARON BRUNOW:**

Deep purple. 65 cts. per dozen, \$4.50 per 100.





Daffodil Bunches  
1/2 doz. \$1.00  
1 doz. \$2.00  
2 doz. \$4.00



# *Eremurus*

A noble group of hardy plants which is just finding its way into the American gardens from the Himalayas. The enormous, stately flower stalks, often 6 to 10 feet tall, rise majestically from a tuft of long narrow leaves and are crowned by flower spikes 2 to 3 feet long. These spikes are composed of hundreds of closely set star-like flowers of beautiful shades of rose, yellow, bronze and white.

*Eremurus* should be planted in the early Fall, four inches deep. They enjoy a well-drained rich soil and a sunny location, and may be left undisturbed for years.

Although hardy they should have a heavy mulch of salt hay or leaves the first year after planting. When fully established a mulch of old cow manure is sufficient.

When flowering time is over, the plant disappears entirely, but reappears very early in the Spring, when it is advisable to place a paper bag or flower pot over the young crown to protect it from late frost.

## **BUNGEI:**

Golden yellow flowers borne on spikes 5 to 6 feet high. Very beautiful. \$2 each, \$20 per dozen.

## **ELWESIANUS:**

Pink flowers thickly set in enormous spikes. Very vigorous. Blooms the beginning of June. Height, 8 to 10 feet. \$2 each, \$20 per dozen.



*Eremurus Bungei*

**ELWESIANUS ALBUS:**

Pure white flowers on superb spikes. Same habits as Elwesianus, but blooms one week earlier. Height, 8 to 10 feet. \$2 each, \$20 per dozen.

**OLGAE:**

Deep pink, sweet scented and densely set. A pretty and distinct species from Turkestan, with narrow leaves. Height, 8 feet. \$2.50 each, \$25 per dozen.

**ROBUSTUS:**

Tall, strong plant and one of the finest. Flowers of rosy pink, a darker tone than that of Elwesianus. Will grow to a height of 10 feet when fully established. \$2.50 each, \$25 per dozen.

**SHELFORD:**

The exterior of the coppery yellow flowers is tinted ruddy bronze. The flower spikes are three feet in length and closely set as in Bungei. A beautiful hybrid of noble and rich coloring. Blooms just after Warei. Height, 6 to 7 feet. \$2.50 each, \$25 per dozen.

**WAREI:**

Myriads of fine coppery pink flowers shot with bronze cover the three-foot flower spikes. A grand, rare hybrid of rich coloring and tall stature. Flowers just before the Bungei. Height, 6 to 8 feet. \$2.50 each, \$25 per dozen.

**SEEDLINGS:**

We offer a wide selection of Robustus, Bungei and Elwesianus seedlings, which are certain to produce a wide range of fine form and novel coloring. \$2 each, \$20 per dozen.

Above prices are based on extra heavy roots which are guaranteed to bloom the first year after planting.

Strong good flowering roots of any of the above mentioned varieties or seedlings will be furnished at a discount of 25% from prices quoted above.

## Japanese Iris

The most showy and gorgeous of the Iris Family; they bloom in July, are perfectly hardy and flower in great profusion. The stately flowers are often ten inches in diameter and present most fascinating combinations. They prefer a rather rich, moist, light soil.

Our prices are based on heavy clumps, divisions at correspondingly lower prices.

**BETTY F. HOLMES:**

Double. This variety is by far the finest of the pure white Iris; very large with lemon-yellow midribs through each petal. Especially recommended. \$3.50 per dozen, \$25 per 100.

**KAMATA:**

Single. A most distinctive variety; dark sky-blue with white veins. \$3.50 per dozen, \$25 per 100.

**MARGARET:**

Nine petals. Deep blue with shadings of violet. \$3.50 per dozen, \$25 per 100.

**MARJORIE PARRY:**

Double. Delicate light mauve with tufted center. An extra fine variety. \$3.50 per dozen, \$25 per 100.

**MRS. J. A. HAYDEN:**

Double. White ground edged and shaded pale violet. White stigmata edged and tipped violet. \$3.50 per dozen, \$25 per 100.

**ROSE H. SCHEEPERS:**

Double. A lovely mauve-gray overlaid with blue. \$3.50 per dozen, \$25 per 100.

**VIOLET BEAUTY:**

Single. A lovely Pansy-violet with a conspicuous yellow center and blue halo. \$3.50 per dozen, \$25 per 100.

**VIOLET GIANT:**

Semi-double. A rich rose-violet, the largest Japanese Iris we have seen. \$4 per dozen, \$30 per 100.

## *Ochroleuca Iris*

The finest of all Iris for early summer cut flowers, blooming on Long Island from June 15th on; they last a long time, several blossoms coming out in succession. The flower resembles that of the Dutch Iris but is twice the size. As they resent being transplanted they do not produce flowers the first season but after a few years they produce numerous stems 3 feet in height with an abundance of flowers and become more prolific from year to year. The plants are extremely hardy and will succeed in almost any position, though they are benefited by a protection of old cow manure in winter.

White \$3.25 per dozen, \$25 per 100.  
Creamy yellow

\$3.25 per dozen, \$25 per 100.

Light blue  
\$3.25 per dozen, \$25 per 100.

# Dutch Iris

Their exquisite shades, ease of culture, and great dependability cause these to become increasingly popular from year to year. They are thoroughly at home in sandy soil, although they will do well in any soil that is not too heavy.

In color they range from the purest white to golden yellow and bronze, from heliotrope to light blue and to the darkest blues. Because of dainty form and having strong, wiry stems, they lend themselves particularly for artistic and decorative arrangements. In the garden they should be massed, grouping the different colors by themselves.

They readily force in moderate temperature. Outdoors they should not be planted in the same place in succession, new ground each year producing by far the best flowers.

## **CELESTIAL:**

China blue standards, falls warm dark blue. An extra strong growing variety. Suitable for late March forcing. \$1.35 per dozen, \$10 per 100.

## **DAVID BLESS:**

One of the earliest varieties, and readily forced as early as March. Most unusual flower, bound to attract attention. Standards of a pale pearly blue, with blue or heliotrope falls. \$1.15 per dozen, \$8 per 100.

## **D. HARING:**

Standards grayish white, falls pure white, very large flower of great substance. Early blooming. \$1.15 per dozen, \$8 per 100.

## **IMPERATOR:**

Of truly impressive size and purity of color. An intense, clear blue, a shade not found in any other variety. Truly a leader among Dutch Iris, and one exceptionally suitable for late March forcing. \$1.15 per dozen, \$8 per 100.



*Dutch Iris*

**INDIAN CHIEF:**

A beautiful shade, standards are violet tinged bronze, falls are bronze. \$1.15 per dozen, \$8 per 100.

**JACOB DE WIT:**

Very early and of remarkable substance. Standards and falls are uniform dark blue. 90 cts. per dozen, \$6 per 100.

**LEONARDO DA VINCI:**

Standards are creamy white, falls canary yellow with orange stripes. An early bloomer and a large flower. \$1.35 per dozen, \$10 per 100.

**THE FIRST:**

Besides being the earliest blooming of all, is an exceptionally strong grower, of a shade somewhere between lavender and light blue. It is a dependable grower both outdoors and under forcing conditions. \$1.15 per dozen, \$8 per 100.

**THERESA SCHWARTZ:**

Standards are pale cornflower blue, falls

white with narrow orange stripe. Of very good form and substance. \$1.15 per dozen, \$8 per 100.

**WEDGEWOOD:**

This particular hybrid is one of the best of all for forcing. It blooms readily and very early. The large flowers are borne on strong tall stems. Standards are blue, while the falls are of a paler shade, each having a yellow blotch. \$1.35 per dozen, \$10 per 100.

**WHITE EXCELSIOR:**

A splendid forcing variety which may be had in bloom as early as the end of February. Strong grower, bearing pure white flowers of elegant shade and enormous size. \$1.35 per dozen, \$10 per 100.

**YELLOW QUEEN:**

One of the most striking of all yellow varieties. The wiry stems carry large flowers of great substance. Standards are a pale yellow, while the somewhat smaller and rounded falls are of a golden yellow. \$1.15 per dozen, \$8 per 100.

## *Hardy Lilies*

Many of the late flowering Lily bulbs are not ready before the end of November. Where the ground is liable to freeze, we advise the preparation of the Lily beds or borders early in autumn, covering with 4 to 6 inches of leaves or other litter to prevent the ground freezing until the bulbs arrive.

See that they have a well-drained position, and without exception they prefer a half shady, moist position, protected against the hot sun.

The ground must be thoroughly spaded to a depth of 18 inches before planting Lilies and must be enriched by adding equal portions of leafmold, peat and rotten manure.

Plant the bulbs 6 to 8 inches deep, varieties like Speciosum require at least 8 inches, putting some sand under and around the bulbs to insure proper drainage.

Cover the beds with 6 to 8 inches of leaves or other litter which must be removed in late Spring.

**LILIUM AURATUM:**

The Gold-banded Lily of Japan. White, with a wide band of gold running through the center of each petal, and thickly studded with crimson spots. September flowering. Bulbs 11 to 13 inches in circumference. 65 cts. each, \$6.50 per dozen, \$50 per 100.

**LILIUM HANSONI:**

An extremely handsome Lily, producing numerous flowers of a deep, rich, orange-yellow shade, spotted brown. Does well in almost any soil but prefers partial shade as the color will bleach in full sun. Plant in fall, 8 to 10 inches deep. June flowering. Height, 4 to 5 feet. Extra selected bulbs, \$7.50 per dozen, \$60 per 100. Selected bulbs, \$5.25 per dozen, \$40 per 100.

**LILIUM HENRYI:**

The orange-yellow Speciosum. A splendid garden plant, vigorous in growth and of easy cultivation, reaching 6 feet or more in height when established. Plant in late fall or early spring, 10 inches deep. July-August flowering. Extra selected bulbs, \$7.50 per dozen, \$60 per 100. Selected bulbs, \$5.25 per dozen, \$40 per 100.

**LILIUM REGALE:**

A most beautiful pure white bloom, with bright, golden throat, outside white, tinted pink. Very wiry stem, growing from eighteen inches to three feet tall, with many blooms to each stem. Perfectly hardy and will thrive and do well in any well-drained soil. July flowering. \$3.50 per dozen, \$25 per 100. Extra selected, \$5.25 per dozen, \$40 per 100. Jumbo \$7.50 per dozen, 60 cts. per 100.

**LILIUM SPECIOSUM MAGNIFICUM:**

Rich ruby-carmine, margined white, massive flowers, measuring fully 8 inches across the petals and carried on a strong stout stem with dark green leaves. August flowering. Bulbs 11 to 13 in. in circ. 55 cts. each, \$5.25 per dozen, \$40 per 100.

**LILIUM TENUIFOLIUM:**

A charming little Lily with strongly recurving petals. The wiry stems carry numerous deep scarlet flowers. One of the most attractive Lilies for the rock garden or border. Likes a cool loam soil and partial shade. Plant in fall, 5 inches deep. June flowering. Extra selected bulbs, \$1.70 per dozen, \$12 per 100. Selected bulbs, \$1.50 per dozen, \$10 per 100.

**LILIUM TIGRINUM:**

Showy spotted red-orange flowers throughout August and into September. Prefers a sunny situation. Bulbs should not be set

deeper than 3 to 4 inches. 25 cts. each, \$2.50 per dozen, \$18 per 100.

# Calla Lilies

Special stock for greenhouse culture

**AETHIOPICA:**

The well-known white Lily of the Nile. \$6 per dozen, \$45 per 100.

**YELLOW ELLIOTTIANA:**

The deep golden yellow flowers are very beautiful and produced in abundance. The green leaves are spotted with creamy white. November-December delivery. Mammoth 3 to 3½ inch diam. \$6.50 per dozen, \$50 per 100. Top size 3½ in. up diam. \$9.50 per dozen, \$75 per 100.



*The Regal Lily—  
one of the most  
satisfactory for  
the home grounds  
because it is so  
easy to grow.*

# Lilies for Forcing

## FORMOSUM:

Erabu type. Pure white flowers larger than *Lilium Harrisii*. A strong, healthy grower with fragrance more delicate than that of other types. Extra selected bulbs 10 to 12 inches. \$5 per dozen, \$40 per 100. Jumbo bulbs, 11 to 13 inches. \$9 per dozen, \$70 per 100.

## LONGLIFLORUM GIGANTHEUM:

Long trumpet-shaped flowers of pure white, great substance and perfect form. Northern grown. Monster bulbs 10 to 12 inches. \$6 per dozen, \$45 per 100.

## HARRISSI:

The Bermuda Easter Lily. Strong, vigorous grower. Large glistening white trumpet-shaped lily. Extra selected 9 to 11 inches. \$6.50 per dozen, \$50 per 100. Jumbo 11 to 13 inches. \$11 per dozen, \$80 per 100.

# Double Peonies

## FESTIVE MAXIMA:

Large, ivory-white feathery flowers; splashed crimson in center. Mid-season. 50 cts. each, \$5 per dozen.

## INSPECTEUR LA VERGNE:

Vivid crimson with frilled center petals. The color shows a tinge of brown which is something quite new in Peonies. Tall grower and very free flowering; one of the best new reds. \$1.50 each, \$15 per dozen.

## JEANNOT:

Delicate lavender-pink shaded salmon-pink at the base of petals, changing to silvery white. Exquisite and delicate in color, it is one of the best pinks. Late. \$1.50 each, \$15 per dozen.

## JULES DESSERT:

Large perfect bloom of clear pink. Mid-season. \$1 each, \$10 per dozen.

## KELWAY'S GLORIOUS:

Large blooms of iridescent white with flesh tones and a few red flakes. Fragrant. Late mid-season. \$2.50 each, \$25 per dozen.

## KING OF ENGLAND:

Rich ruby carmine. Semidouble. Midseason. One of the finest. \$1 each, \$10 per dozen.

## LADY ALEXANDRA DUFF:

A beautiful, showy, free-flowering variety of delicate pale pink fading rapidly to white; yellow stamens. Free-flowering, mid-season. 50 cts. each, \$5 per dozen.

## LA FRANCE:

Large, compact rose type; uniform rose-white, richer in center and crimson splashed on outer petals. Tall, strong, free flowering. Late. \$1 each, \$10 per dozen.

## LE CYGNE:

Charming, very large, globular, milk-white flower without markings. Medium height, erect, strong stems. Early. \$2.50 each, \$25 per dozen.

## MARTHA BULLOCH:

Enormous cup-shaped flower of soft rose pink, carried on a strong erect stem. Free bloomer and vigorous grower. Perhaps the finest quality of any Peony of such large size. Late. \$1 each, \$10 per dozen.

## MRS. JULES ELIE:

Glossy pink shading to deep rose at base, with amber yellow tints. Very large and full globular flower, perfectly formed. Free flowering, strong and vigorous grower. A good cut flower and an excellent keeper. \$1 each, \$10 per dozen.

## QUEEN WILHELMINA:

Large, clear pink. Medium early. \$1 each, \$10 per dozen.

## REINE HORTENSE:

Very large, compact flower of uniform light shell-pink; center flecked crimson. Semi-rose type. A tall grower with tall, strong stems. Mid-season. 75 cts. each, \$7.50 per dozen.

## SARAH BERNHARDT:

Large flower of perfect form; apple-blossom pink with few center petals amber-white, tinged salmon. A tall, strong, free-flowering variety. Very late. \$1 each, \$10 per dozen.

## SOLANGE:

A beautiful distinct creamy white suffused buff and pale salmon-pink. Strong grower of medium height. Late. \$1.50 each, \$15 per dozen.

## THERESE:

Very large and most attractive; glossy flesh, slightly shaded pink and paling toward the base. Strong grower. Free flowering. Mid-season. \$1 each, \$10 per dozen.

# Single Peonies

## AMA-NO-SODE:

Bright rose pink, considered the finest of the pink Japanese Peonies. Very scarce. Mid-season. \$3.50 each, \$35 per dozen.

## CLAIRETTE:

Very large, pure white flowers; tall, strong stems. The center mass of stamens is bright yellow. \$1 each, \$10 per dozen.

## NYMPH:

Rosy white. \$1.50 each, \$15 per dozen.

## SHOGUN:

Rosy red; very strong, tall stems. 75 cts. each, \$7.50 per dozen.

## SOSHI:

Soft red with large yellow center. Very good. Late. \$2.50 each, \$25 per dozen.

## VESUVE:

Reddish purple. \$1 each, \$10 per dozen.

# Miscellaneous Bulbs Camassia

## ESCULENTA:

Perfectly hardy bulbous plants that thrive well in any situation and are excellent for naturalizing. They flower in the end of May, producing flower-spikes about two feet in height, bearing twelve to fifteen star-shaped flowers of a deep purplish blue color. They should be planted in early fall, about 4 to 5 inches deep, and may be left undisturbed for years. 65 cts. per dozen, \$5 per 100.

## LEICHTLINI:

A California specie. Comes in deep blue and white. \$1.35 per dozen, \$9 per 100.

# Dielytra

## SPECTABILIS:

Better known as Bleeding Heart. This delightful old favorite is assuming a new degree of popularity. Because of its forcing qualities, it makes a splendid potted plant for the window, blooming in either greenhouse or conservatory, but it is also an excellent plant for the hardy border, and especially valuable for shady situations. It bears long racemes of heart-shaped pink flowers and blooms as persistently as any hardy perennial flower we know. In addition it has extremely graceful foliage. Whether you intend to plant it indoors or use it in

your hardy border, here is one plant that we can conscientiously recommend. Not very particular as to soil. Strong clumps. \$4.50 per dozen, \$35 per 100.

# Cypripedium

## ACAULE:

Pink Lady's Slipper. Thick clusters of leaves flat on the ground. Large, bright purple-pink, upright flowers in early spring. One of the most beautiful and largest native Orchids. Height, 6 to 15 inches. Strong selected plants. \$4.50 per dozen, \$35 per 100. Flowering second size, \$2 per dozen, \$15 per 100.

## PARVIFLORUM:

Small Yellow Lady's Slipper. Fragrant, blooms in May. Strong selected plants. \$6.50 per dozen, \$50 per 100. Flowering second size, \$4.50 per dozen, \$35 per 100.

## PUBESCENS:

Common Lady's Slipper. Large bright yellow flowers in May. Very fragrant. Height 12 to 18 inches. Strong selected plants. \$4.50 per dozen, \$35 per 100. Flowering second size, \$2 per dozen, \$15 per 100.

## SPECTABILE:

Showy Lady's Slipper. Extra strong grower, the finest and most showy of all. White to rose-colored flowers in June and July. Height 1 to 2 feet. Strong selected plants \$1.25 each, \$12.50 per dozen. Flowering second size, \$6.50 per dozen, \$50 per 100.

# Erythroniums

## (Dog's-Tooth Violets)

These April blooming bulbs are perfectly hardy, the flowers are entrancingly beautiful and the richly mottled leaves very attractive. The bulbs should be planted immediately on receipt, 5 inches deep, any moist loamy or gritty soil will do and light shade is preferable. Two inches apart will be sufficient.

## CALIFORNICUM:

Large cream-colored flowers, leaves richly mottled. 90 cts. per dozen, \$6 per 100.

## CALIFORNICUM WHITE BEAUTY:

Lovely, large flowers, white, faintly tinged cream, usually banded maroon at the base. \$1.25 per dozen, \$10 per 100.

## CITRINUM:

More erect in habit, almost pure white in color with strongly contrasting deep citron center. \$1.35 per dozen, \$10 per 100.

**GRANDIFLORUM ROBUSTUM:**

The color is brightest butter-cup yellow, the leaves have no mottling but are plain green. Very attractive. \$1.35 per dozen, \$10 per 100.

**HENDERSONII:**

Lovely light purple, with centers deep maroon. 90 cts. per dozen, \$6 per 100.

**JOHNSONII:**

The large flowers are of an exquisite rose pink and the leaves are mottled white and green. Very attractive. \$1.60 per dozen, \$12 per 100.

**PINK BEAUTY:**

The very large flowers are white tinted lilac to purple with age. Very good grower. \$1.60 per dozen, \$12 per 100.

**PRAECOX:**

An early-blooming usually fine variety. The leaves are mottled in browns, the flowers are large and of a very fine rich-cream color, richly banded maroon. One of the finest. \$1.35 per dozen, \$10 per 100.

## *Leucojum*

**VERNUM:** We like to compare this to the Snowdrops, but the flowers are much larger, borne on taller, stronger stems and are of more upright habit. Under favorable conditions it grows about eight inches high and bears large white flowers, the petals of which are tipped with green. Late April. Excellent for cutting. \$1 per dozen, \$7 per 100.

## *Mertensia Virginica*

### (Virginia Blue Bells)

An early Spring-flowering plant. Indispensable for the garden and for color effect among naturalized Narcissi. The plants grow from 1 to 2 feet in height, with drooping panicles of handsome porcelain-blue flowers, turning pink with age. Extra heavy clumps. \$2 per dozen, \$15 per 100.

## *Muscari*

### (Grape Hyacinth)

Very beautiful flowers for planting in masses, either in shady places or where exposed to the full sun. Plant in bold groups about 3 inches deep and 1½ inches apart. They bloom outdoors during May.

**ARMENIACUM:**

Deep cobalt blue. The best type of the blue Muscari, larger than "Heavenly Blue." 60 cts. per dozen, \$4 per 100.

**BOTRYOIDES ALBUM** (White Grape Hyacinth):

White. 65 cts. per dozen, \$4.50 per 100.



*Muscari*



# Ranunculus

By far the largest and most magnificent strain of *Ranunculus* ever offered. Flowers are very double, blended with semi-double. Centers are usually light green. Prices quoted are for extra selected bulbs, prices on smaller bulbs upon application.

## TECOLETE GIANTS

Golden yellow shades	\$1.25 per dozen	\$ 9 per 100
Pink shades	\$1.35 per dozen	\$10 per 100
Red shades	\$1.25 per dozen	\$ 9 per 100
White, (white predominates)	\$1.35 per dozen	\$10 per 100
Yellow shades	\$1.25 per dozen	\$ 9 per 100
Mixed colors	\$1.00 per dozen	\$ 7 per 100

# Scillas

All the varieties of the *Scilla Campanulata* and *Nutans* family are splendid for naturalizing, because they will flower in shady places, where almost any other flower will die. As they are not expensive, they are among the most useful articles for naturalizing. Both have bells like small *Hyacinths*, and long and graceful spikes. The flowers of the *Campanulata* family are superior to those of the *Nutans* family, being of a larger size and brighter colors. Height, 15 inches. Plant bulbs from 2 to 3 inches deep (deeper in light soils) and about 2 inches apart.

## *Scilla Campanulata*

### (Wood Hyacinths)

#### ALBA MAXIMA:

Large pure white. 70 cts. per dozen, \$5 per 100.

#### BLUE QUEEN:

Large bright blue. One of the best. 70 cts. per dozen, \$5 per 100.

#### ROSE QUEEN:

Soft lilac-rose. Very free-flowering. 70 cts. per dozen, \$5 per 100.

## *Trillium*

(Bloom early in Spring and thrive best in moist, shady situations.)

#### ERECTUM:

Purple *Trillium*, with broad leaves. \$1.35 per dozen, \$10 per 100.

#### GRANDIFLORUM:

Large white flowers changing to lilac with age. \$1.35 per dozen, \$10 per 100.

#### STYLOSUM:

Rose *Trillium*, rose-pink flowers. \$1.60 per dozen, \$12 per 100.

## *Snowdrops*

These elegant little flowers, among the first to open in the Spring, should be found in every garden, not only because they are the earliest, but also the loveliest. They will thrive in almost any situation or soil, and should be planted as soon as possible in early Fall.

#### NIVALIS:

Single snowdrop. 60 cts. per dozen, \$4 per 100.

## *Tritoma*

Equally distinctive as a cut flower or in the garden, the old-fashioned Red Hot Poker, or Flame Flower, is enjoying renewed popularity. The plants are very showy, while the sturdy upright flowers, borne on thick stems, never fail to attract attention. Blooming season from August until frost.

#### PFITZERI:

Though an old variety, it is still one of the best. Profuse bloomer. Flowers flame-red. \$3.25 per dozen, \$25 per 100.

**PFITZERI HYBRIDS:**

Color, white, various shades of yellow and coral-pinks. \$2.60 per dozen, \$20 per 100.

**RUFA:**

Tall orange-yellow. \$2.60 per dozen, \$20 per 100.

*Cyclamen Persicum*

*Giganteum*

A truly mammoth type of new hybrid Cyclamen, a giant among giants. We offer choicest, hand-pollenized seeds from extra selected plants in the following colors:

White	Lilac	Variegated Rose
Frilled Red	Rose	Mixture of
Frilled Rose	Salmon	above shades

*We guarantee this seed to germinate 90% or better. Price per packet of 100 seeds, \$5.*

*Amaryllis Hippeastrum*  
*Seed*

**(Giant Leopoldi Strain)**

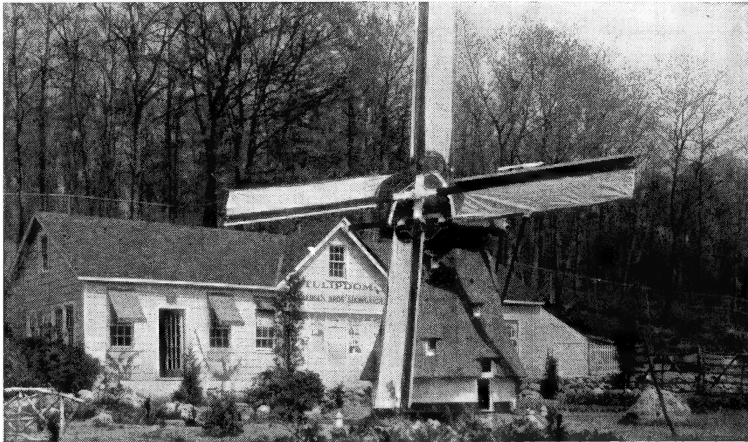
Collected from Holland Grown Exhibition Stock which was awarded first prize at the Great Flora Exhibition. Separate colors including snow white. \$5 per packet of 50 seeds.

*The Zandbergen Silver Dollar Strain of*  
*Glorious Delphiniums*

varies in color from light blue to deep ultramarine-blue and pinkish to lavender shades. Some are single, others semi-double and double, while many of them have centers or "bees" of contrasting colors. The habit of growth is most vigorous. Well developed plants rear flower spikes 2 to 3 feet long on stems 4 to 5 feet tall. The individual florets closely encircle the spikes and are of extraordinary size—generally two inches and larger in diameter. We offer it as The Silver Dollar Strain because individual flowers on spikes frequently measure as large as a silver dollar across.

*Price per package, postpaid, \$2. Should you fail to secure a reasonable number of thrifty seedlings we will replace the seeds another season Free of Charge!*

*One-year-old plants, from the above mentioned seed, 50 cts. each, \$4.50 per dozen, \$35 per 100.*



# General Index

	PAGE		PAGE
Amaryllis Hippeastrum . . . . .	26	Jonquils . . . . .	15
Camassia . . . . .	23	Leedsii . . . . .	13
Crocuses . . . . .	15	Mixture . . . . .	15
Cyclamen . . . . .	26	Poetaz . . . . .	12-13
Cypripedium . . . . .	23	Poeticus . . . . .	13
Daffodils, DeLuxe Collection . . . . .	7	Triandus . . . . .	15
Popular Collection . . . . .	7	Trumpets . . . . .	9-10
Delphinium . . . . .	26	Peonies, Double . . . . .	22
Dielytra . . . . .	23	Single . . . . .	23
Eremurus . . . . .	17-18	Ranunculus . . . . .	25
Erythroniums . . . . .	23-24	Scilla Campanulata . . . . .	25
Iris, Dutch . . . . .	19-20	Snowdrops . . . . .	25
Japanese . . . . .	18	Trillium . . . . .	25
Ochroleuca . . . . .	18	Tritoma . . . . .	25
Leucojum . . . . .	24	Tulips, Planting and Culture . . . . .	2
Lilies . . . . .	20-21	Breeder . . . . .	3
Mertensia Virginica . . . . .	24	Cottage . . . . .	4-5
Muscari . . . . .	24	Darwin . . . . .	2-3
Narcissi Barrii . . . . .	11	Mixture . . . . .	6
Culture . . . . .	9	Parrot . . . . .	5
Double . . . . .	14	Triumph . . . . .	6
Incomparabilis . . . . .	11-12		

## Detailed Index

On this and following page we list the different varieties of the principal classes of NARCISSI and TULIPS, together with page numbers where varieties may be found.

### Narcissi

	PAGE		PAGE
Abelard . . . . .	12	Diotima . . . . .	9
Actaea . . . . .	13	Dorine . . . . .	12
Admiration . . . . .	12	Elvira . . . . .	13
Aeolus . . . . .	10	Emperor . . . . .	10
Agra . . . . .	11	Expectation . . . . .	11
Alceste . . . . .	12	Firetail . . . . .	11
Alcida . . . . .	11	Fortune . . . . .	11
Autocrat . . . . .	12	Franciscus Drake . . . . .	12
Bernardino . . . . .	12	Gertie Miller . . . . .	13
Beersheba . . . . .	10	Giganteus . . . . .	15
Brilliancy . . . . .	11	Glorious . . . . .	12
Campernel Odorus . . . . .	15	Glory of Lisse . . . . .	13
Rug. Fl. Pl. . . . .	15	Golden Sceptre . . . . .	15
Carlton . . . . .	11	Helios . . . . .	12
Cassandra . . . . .	13	Hera . . . . .	13
Cheerfulness . . . . .	14	Homer . . . . .	13
Concordia . . . . .	9	Horace . . . . .	13
Croesus . . . . .	12	Insurpassable . . . . .	9
Daisy Schaffer . . . . .	13	John Evelyn . . . . .	11
Daphne . . . . .	14	King Alfred . . . . .	9

## NARCISSI—(Continued)

	PAGE		PAGE
Lady Diana Manners . . . . .	11	Red Beacon . . . . .	11
Latonia . . . . .	11	Red Cross . . . . .	12
Laurens Koster . . . . .	13	Robert Sydenham . . . . .	9
Lord Kitchener . . . . .	13	Roxane . . . . .	10
Lord Wellington . . . . .	9	Seraglio . . . . .	11
Lucifer . . . . .	12	Silver Star . . . . .	13
Lucinius . . . . .	12	Sir Watkin . . . . .	12
Madame Van Waveren . . . . .	10	Sparkler . . . . .	11
Mary Copeland . . . . .	14	Spring Glory . . . . .	10
Merapi . . . . .	12	Star of the West . . . . .	11
Mitylene . . . . .	13	Suda . . . . .	13
Mixed Narcissi . . . . .	15	Texas . . . . .	14
Mrs. Ernest H. Krelage . . . . .	10	Thalia . . . . .	15
Mrs. R. O. Backhouse . . . . .	10	The First . . . . .	10
Nobility . . . . .	11	Tresserve . . . . .	10
Olympia . . . . .	10	Trevithian . . . . .	15
Orange Cup . . . . .	13	Tunis . . . . .	13
Orange Glow . . . . .	12	Twink . . . . .	14
Pearly Queen . . . . .	15	Valencia . . . . .	14
Pheasant Eye (see <i>Recurvus</i> ) . . . . .	13	Van Waveren's Giant . . . . .	10
Pomona . . . . .	11	Whitewell . . . . .	12
Queen of the North . . . . .	13	Will Scarlett . . . . .	12
<i>Recurvus</i> . . . . .	13	W. P. Milner . . . . .	10

## *May Flowering Tulips*

*This includes the types: BREEDER, COTTAGE, DARWIN, and TRIUMPH (The letters following the names indicate class to which variety belongs: Thus: "B" stands for Breeder; "C" for Cottage; "D" for Darwin; "T" for Triumph, etc.)*

	PAGE		PAGE
Afterglow . . . . .	D 2	Inglescombe Yellow . . . . .	C 4
Alaska . . . . .	C 5	Jeanne Desor . . . . .	C 5
Argo . . . . .	C 4	Kansas . . . . .	T 6
Avis Kennicott . . . . .	D 3	King George V . . . . .	D 2
Bronze Queen . . . . .	B 3	Lemon Queen . . . . .	C 5
Carrara . . . . .	C 4	Mixture (Breeder)	
City of Haarlem . . . . .	D 2	All May-flowering types . . . . .	B 6
Clara Butt . . . . .	D 2	Mrs. F. E. Dixon . . . . .	C 5
Columbia-Amerand . . . . .	T 6	Mrs. Moon . . . . .	C 4
Coxa . . . . .	T 6	Orange King . . . . .	C 4
Crater . . . . .	T 6	Pride of Haarlem . . . . .	D 2
Dido . . . . .	C 4	Princess Elizabeth . . . . .	D 2
Dream . . . . .	D 3	Professor Rauwenhoff . . . . .	D 2
Eclipse . . . . .	D 2	Reverend Ewbank . . . . .	D 3
Excelsior . . . . .	T 6	Rose Copeland . . . . .	D 3
Fantasy . . . . .	P 5	Telescopium . . . . .	T 6
Faust . . . . .	D 3	Ursa Minor . . . . .	T 6
Flamingo . . . . .	D 2	Vesta . . . . .	C 4
Gesneriana Lutea . . . . .	C 4	Walter T. Ware . . . . .	C 4
Godet Parfait . . . . .	B 3	William Copeland . . . . .	D 3
Grenadier . . . . .	C 4	William Pitt . . . . .	D 2
Idaho . . . . .	T 6	Yellow Giant . . . . .	D 3
Ilias . . . . .	B 3	Zev . . . . .	D 3
Illuminator . . . . .	C 5	Zwanenburg . . . . .	D 3
Inglescombe Pink . . . . .	C 4		



TRADE



MARK