

Historic, Archive Document

Do not assume content reflects current scientific knowledge, policies, or practices.

62.51

1941
PRICE LIST
THE PEONY GARDENS

Ten miles northeast from Hastings
Twenty south from Grand Island

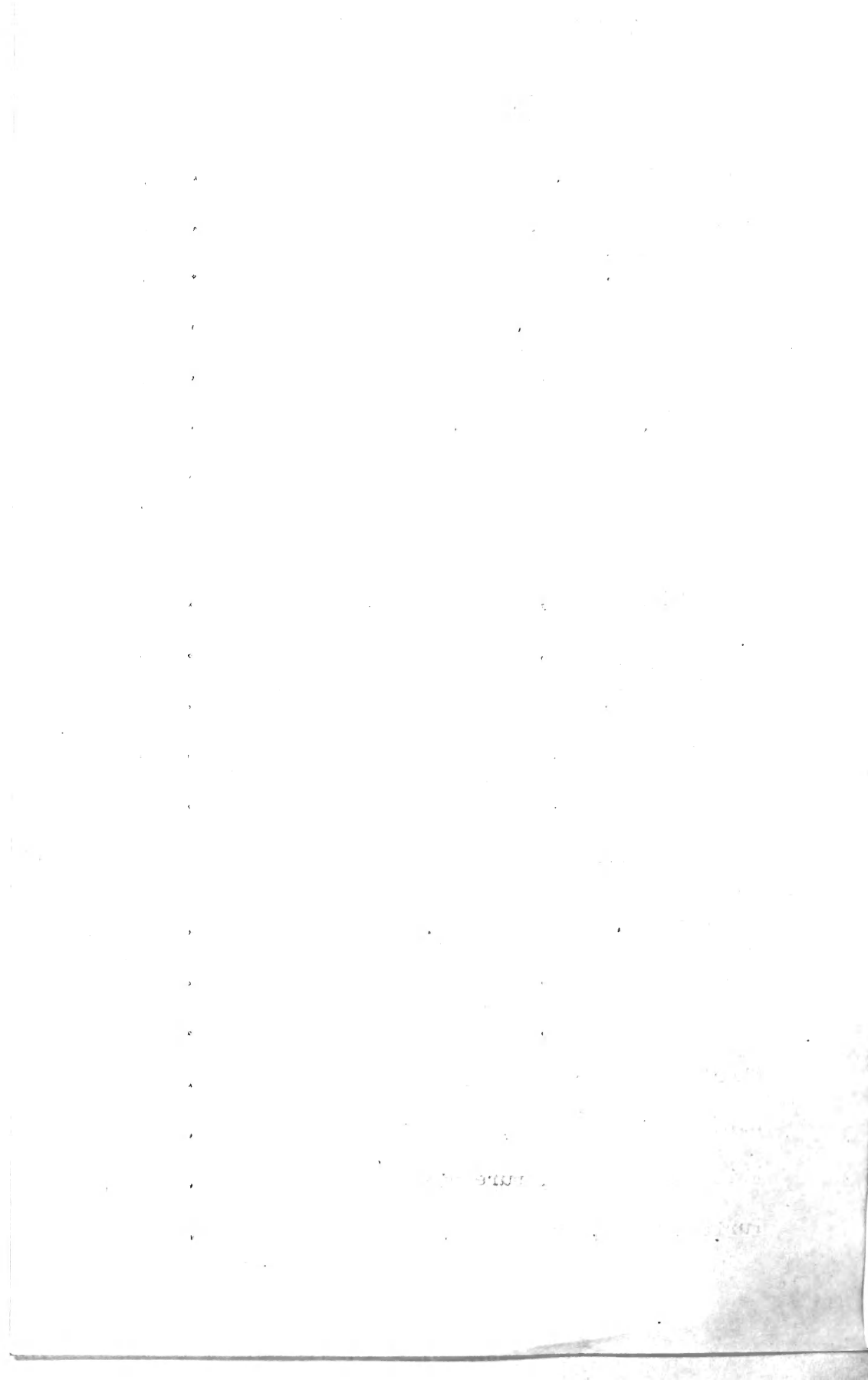
Herbert F. Warren
Trumbull, Nebraska

LIBRARY
RECEIVED
★ JUL 17 1941 ★
U. S. Department of Agriculture

	Each
Karl Heath (Late, light shell pink)	\$5.00
Pink Perfume (Late, dark scarlet pink)	5.00
Shelly (Late, white tinted shell pink)	5.00
Verda Skinner (Late, dark scarlet pink)	5.00
Cousin Kate (Late, milk white)	5.00
Herbert F. Warren (Early, dark crimson)	5.00
John Ayton (Late, pure white)	5.00

Leona (Mid season, milk white)	\$3.00
Henry Wolfe (Late, shell pink and sulphur)	3.00
Joseph (Late, white tinted shell)	3.00
My Darling (Late, light pink)	3.00
Burg Sloat (Late, solid medium dark pink)	3.00

Katharine A. Stanley (Late, cream white)	\$2.00
Anna Lanham (Late, dark shell pink)	2.00
Albert Rich (Late, solid milk white)	2.00
Charles Hawthorne (Late, light shell pink)	2.00
Herbert Kinner (Late, dark pink)	2.00
White Angel (Late, pure rich milk white)	2.00
Puritan (Late, pure white)	2.00



THE PEONY GARDENS

Ten miles northeast from Hastings
Twenty south from Grand Island

Herbert F. Warren
Trumbull, Nebraska

Femmy de Pink Ball (Late, apple blossom pink)	\$1.50
Francis Thornton (Late, solid medium pink)	1.50
Loys Ruyle (Late, solid light pink)	1.50
Ruby Ballue (Late, white with sulphur crown)	1.50
Olga Olson (Late, pure white)	1.50

Seishi Yasutake (Early, dark crimson)	\$1.00
Marie Topp (Early, light scarlet)	1.00
Warren's Queen Victoria (Early, white)	1.00
Emma (Early, milk white)	1.00
Missioner Scarlet (Early, very deep rose)	1.00
Peachblow (Late, solid peachblow pink)	1.00

Over 100 fifty cent varieties and a lot of cheaper ones.

We have best success with fall planting, beginning September first, if that date does not come on Sunday. Never plant peonies in soil where peonies have grown.

ROTATION IS ABSOLUTELY ESSENTIAL

We always clean summer fallow at least one year in preparation for peonies and leave nothing in or on the ground that can decay.

If you use winter mulch rake it all off before the plants begin to come up in the spring.

Never plant a root bent into an unnatural position.

Let the highest bud be the length of your thumb below the surface of the ground.

Faint, illegible text at the top of the page, possibly a header or introductory paragraph.

Second block of faint, illegible text in the middle of the page.

Third block of faint, illegible text at the bottom of the page, possibly a conclusion or footer.