

Historic, Archive Document

Do not assume content reflects current scientific knowledge, policies, or practices.

62.47

FRUITS, TREES AND FLOWERS

FALL 1941



Peaches bear the third year (page 31)

PLANT THIS FALL

Experience has shown there is a big advantage in fall planting of almost all varieties of hardy trees, shrubs and flowers. The earth becomes settled about the roots, new feeding rootlets are formed before severely cold weather, and they are ready to start into growth with the first coming of spring.

Planting of Peonies and Irises may begin in early September, other Hardy Flowers and Evergreens usually latter September or early October, Shade Trees and Shrubs when the leaves start dropping naturally.

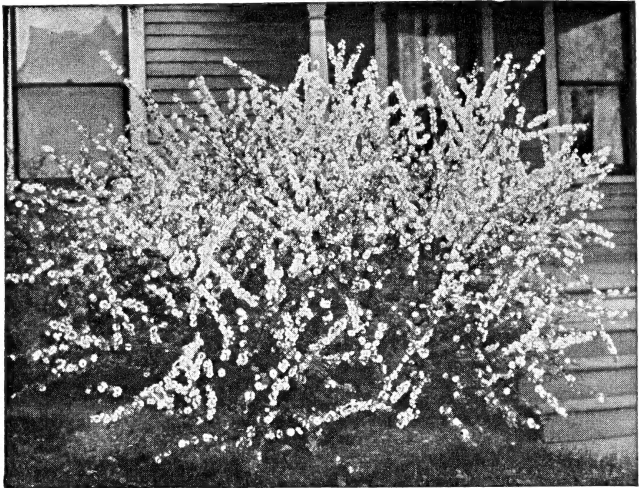
INDEX

Evergreens	12	Privet	6-9
Fruits	28-31	Roses	16
Hardy Flowers	18	Shade Trees	10
Irises	20	Shrubs	2
Lilies, Regal	15	Strawberries	29
Peonies	24	Vines	9

SARCOXIE NURSERIES
PEONY FIELDS

WILD BROS. NURSERY CO.

Sarcoxie, Missouri



Flowering Almond, very showy in early April

Hardy Flowering Shrubs

Mail sizes, postpaid. Mail sizes, while not as large as the other grades, are sturdy, well rooted young plants and, given time and reasonable care, give good results. If larger sizes are wanted by mail, postage is additional. Shrubs larger than 3 to 4 ft. can seldom be sent by mail.

Five or more of a kind at the 10 rate, less at each rate.

Almond, Double Flowering Pink. Many double pink flowers 1 in. across clustered thickly along the branches in early April, before the leaves are developed. 18 to 24 inches, 40c each; 2 to 3 feet, 50c each; 3 to 4 feet, 60c each.

Althea, Rose of Sharon. Hollyhock-like flowers in late summer; upright habit, attaining 10-15 ft.; easily grown. Color: Double Red.

3 to 4 feet40 each; 3.50 per 10

Barberry, Japanese or Thunberg. Dwarf, dense, compact, spreading habit; graceful spiny branches; small leaves coloring brilliantly in autumn; scarlet berries; excellent for foundations and hedges.

Mail size, postpaid08 each;	.60 per 10;	5.00 per 100
8 to 12 in.12 each;	.80 per 10;	6.00 per 100
12 to 15 in.15 each;	1.00 per 10;	7.00 per 100
15 to 18 in.20 each;	1.50 per 10;	10.00 per 100
18 to 24 inches25 each;	2.00 per 10;	12.00 per 100
24 to 30 inches30 each;	2.50 per 10;	20.00 per 100
30 to 36 inches50 each		

Barberry Mentorensis. Growth upright, rugged, strong, foliage heavy, thick, deep green, remaining until about Christmas. Patented. 24 to 30 inches, 90c each; 3 for \$2.60; \$6.00 per 10.

Barberry, Red-leaved Thunberg. Foliage a rich bronzy red throughout summer if planted in full sun; scarlet berries.

Mail size, postpaid12 each;	3 for .30;	1.00 per 10
8 to 12 inches15 each;	3 for .43;	1.40 per 10
12 to 15 inches20 each;	3 for .55;	1.75 per 10
15 to 18 inches30 each;	3 for .80;	2.50 per 10
18 to 24 inches40 each;	3 for 1.10;	3.50 per 10
24 to 30 inches45 each;	3 for 1.25;	4.00 per 10

Beautyberry. Tiny, pink-tinted flowers followed by lilac or purple berries in autumn. 18 to 24 inches, 30c each.

Beautybush; Kolkwitzia amabilis. The branches arch gracefully with clusters of Weigela-like flowers, pink mottled orange.

18 to 24 inches40 each;	3.50 per 10
2 to 3 feet60 each;	5.50 per 10

Buckeye, Scarlet. Odd, unusual scarlet flowers in narrow candle-like spikes 6 to 8 in. long in late April and May.

2 to 3 feet, B. & B.	\$1.75 each
----------------------	-------	-------------

Butterfly Bush, Charming. Lavender-pink to deep orchid; a pronounced pink effect on the plant in sun; fragrant.

Two year No. 140 each

Butterfly Bush, Ile de France; Summer Lilac. Covered in summer with fragrant, deep purple flowers resembling lilacs; grows 4 to 6 ft. high, may be pruned to keep lower and give more flowers. Mound with soil in winter, the same as you protect everblooming roses.

Two year No. 135 each; 3.00 per 10

Two year No. 225 each; 2.00 per 10

Calycanthus floridus. Odd, double, spicily fragrant chocolate-red flowers in latter spring; sun or shade.

18 to 24 inches30 each; 2.50 per 10

2 to 3 feet40 each; 3.50 per 10

Crab, Flowering, see Shade Trees.

Cranberry Bush. White flowers in flat clusters; scarlet berries in fall and early winter; endures partial shade.

2 to 3 feet60 each; 5.50 per 10

3 to 4 feet75 each; 7.00 per 10

4 to 5 feet90 each; 8.50 per 10

Crape Myrtle. Flowers with petals crinkled like crape, in profusion throughout latter summer. In this part of the country it is rather difficult to transplant. In the nursery, with the usual care, we have little trouble, but cannot assure growth. **Watermelon Red.**

12-18 in., bare roots .40 each 18-24 in., bare roots .60 each

12-18 in., B. & B. .60 each 18-24 in., B. & B. .80 each

Currant, Golden; Clove Bush. Many small clusters of tubular, golden, clove-scented flowers, when the leaves unfold.

Mail size, postpaid15 each; 1.20 per 10

2 to 3 feet35 each; 3.00 per 10

3 to 4 feet45 each; 4.00 per 10

Desmodium, Purple. Graceful arching branches covered in late summer with rose-purple, small, pea-shaped flowers.

2 year No. 145 each; 4.00 per 10

Desmodium, White. Similar to the Purple form except the flowers are white.

2 year No. 145 each; 4.00 per 10

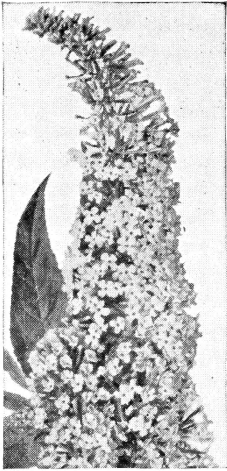
Missouri Sales Tax

Missouri customers please add two per cent sales tax, which we are required to collect and remit to the State Auditor. Price lists are necessarily issued subject to State or Federal regulations that may be hereafter enacted.



Foundation planting of Barberry and other shrubs

HARDY FLOWERING SHRUBS, continued



Butterfly Bush
(Page 3)



Bush Honeysuckle
(Page 4)

Deutzia Lemoine. Beautiful snow-white, starry flowers in cone-shaped clusters in May; upright, reaching 4 ft.

18 to 24 inches30 each; 2.50 per 10

Deutzia Pride of Rochester. Double tassel-like flowers, white outer petals rose; spikes 4-6 in. long in latter May.

2 to 3 feet35 each; 3.00 per 10

3 to 4 feet45 each; 4.00 per 10

Dogwood, Bailey's. Grown mainly for its bright coral-red branches in winter; succeeds in sun or partial shade.

Mail size, postpaid15 each; 1.20 per 10

3 to 4 feet40 each; 3.50 per 10

Elder, Golden. Intense yellow leaves, the color well retained during summer if planted in full sun and kept growing freely; flowers small, white, in large flat clusters.

2 to 3 feet35 each; 3.00 per 10

Euonymus alata compacta. More dwarf and compact than the ordinary *Euonymus alata*; excellent.

18 to 24 inches60 each; 5.50 per 10

2 to 3 feet75 each; 6.50 per 10

Forsythia. Golden-yellow 4-petaled flowers, somewhat bell-shaped, before the leaves develop, often in March.

Primulina. Light primrose-yellow; later than other varieties.

Spectabilis. Large, rich yellow, showy, one of the best.

Mail size, postpaid15 each; 1.20 per 10

3 to 4 feet45 each; 4.00 per 10

Fringe, White. Snowy white flowers; 4 narrow, fringe-like petals about 1 in. long in drooping clusters; very fragrant.

18 to 24 inches, 75c each.

Honeysuckle, Bush. Covered in early spring with dainty flowers, followed in late summer with red, rarely yellow berries, even more ornamental than the flowers; attains 6-8 ft. **Fragrantissima** or **Winter**, very fragrant creamy-white flowers in March. **Wheeling**, bright, deep pink, almost red. **White Bush**, white flowers, red berries.

Mail size, postpaid15 each; \$1.20 per 10

18 to 24 inches30 each; 2.50 per 10

2 to 3 feet35 each; 3.00 per 10

3 to 4 feet45 each; 4.00 per 10

4 to 5 feet55 each 5.00 per 10

Hydrangea Hills of Snow. Well named for its profusion of snow-white flowers in large, somewhat globular clusters, beginning in June; suitable for partial shade.

Mail size, postpaid15 each; 3 for .40; 1.20 per 10

1 year size35 each; 3 for .95; 3.00 per 10

2 year size45 each; 3 for 1.25; 4.00 per 10

3 year size55 each; 3 for 1.55; 5.00 per 10

Hydrangea paniculata grandiflora. Flowers in great cone-shaped clusters, white assuming rose tints, in profusion in August and September; attains 5-7 ft.; plant in sun.

Mail size, postpaid ----- .15 each; 3 for .40; 1.20 per 10
 12 to 18 inches ----- .35 each; 3 for .95; 3.00 per 10
 18 to 24 inches ----- .45 each; 3 for 1.25; 4.00 per 10

Hypericum aureum. Bright orange-yellow 5-petaled flowers 1 to 2 in. across at the ends of the branches in latter summer; dense habit, growing about 3 ft. high, attractive when not in bloom.

18 to 24 inches ----- .40 each; 3.50 per 10

Hypericum moserianum. A dwarf shrub with arching branches reaching about 2 ft.; golden yellow 5-petaled flowers about 2 in. across in summer; leaves dark green, retained late; good.

15 to 18 inches ----- .40 each; 3.50 per 10

HYBRID LILACS

The Hybrid Lilacs bloom younger than the old Common Lilacs, often the year after planting, and are more varied in color. For fragrance and freedom of bloom in April nothing can surpass Lilacs. A location in full sun is best.

Alphonse Laval. Light blue; double; early; fragrant.

Belle de Nancy. Satiny rose; white center; double.

Charles Joly. A bright dark purplish-red to wine-red; large; fragrant; semi-double to double; midseason.

Charles X. Dark purplish-red, becoming lilac as the flower ages; while not the largest it is one of the most reliable free bloomers and makes an excellent display; single.

Hugo Koster. Violet tinged red, becoming lilac-pink; large florets and good sized cluster; fragrant; single.

Ludwig Spaeth. Crimson-purple; one of the darkest; always admired; large; single; rather dwarf habit.

Madame Lemoine. Fine large double white; rather late.

Marie Legraye. Single; pure white; blooms freely.

Michel Buchner. Light lilac-blue; double; rather dwarf.

Mont Blanc. Pure white; large florets, very large clusters; very fragrant; single; a very fine lilac.

Mrs. Edward Harding. Double bright carmine.

Negro. Single to semi-double; reddish-purple; dwarfish.

Pascal. Single; lavender-pink to light lilac; fragrant; early.

Pres. Grevy. Soft blue; double; good size; tall.

Reaumur. Lavender-pink to light old-rose becoming deep lavender; single; very large flowers and clusters; fragrant.

Volcan. Red tinged purple, becoming deep ruby-purple; large florets, rather long clusters; single; excellent.

We have limited quantities of other varieties. A list will be sent on request.

PRICES OF ABOVE LILACS

Mail size, postpaid ----- .20 each; 1.50 per 10
 18 to 24 inches ----- .40 each; 3.00 per 10
 2 to 3 feet ----- .60 each; 5.00 per 10
 3 to 4 feet ----- .80 each; 7.50 per 10

Lilac, Hungarian. Very late; blooms profusely in latter May; single, lilac-violet; grows 10-12 ft. high.

Mail size, postpaid ----- .20 each; 1.50 per 10
 2 to 3 feet ----- .30 each; 2.50 per 10
 3 to 4 feet ----- .40 each; 3.50 per 10
 4 to 5 feet ----- .50 each; 4.50 per 10

Lilac, Persian. Lilac tinged pink; trusses 3 to 4 in. long; fragrant.

Mail size, postpaid ----- .20 each; 1.50 per 10
 2 to 3 feet ----- .30 each; 2.50 per 10
 3 to 4 feet ----- .40 each; 3.50 per 10

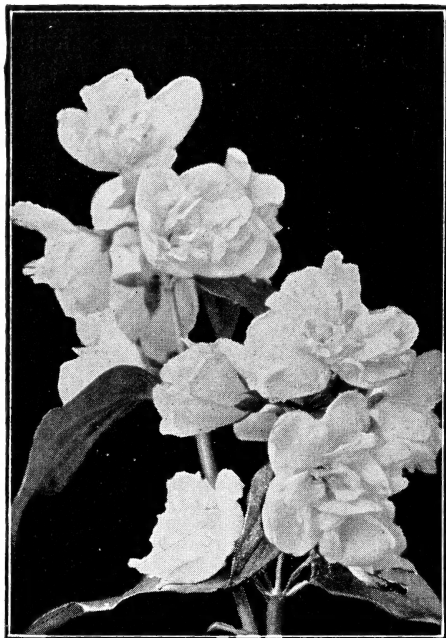
Mock Orange, Large Flowered. Larger flowers than Sweet Scented; makes a larger bush.

Mail size, postpaid ----- .15 each; 1.20 per 10
 3 to 4 feet ----- .45 each; 4.00 per 10
 4 to 5 feet ----- .60 each; 5.50 per 10

Mock Orange, Sweet Scented. The name is almost a description; creamy-white 4-petaled flowers; sun or partial shade.

Mail size, postpaid ----- .15 each; \$1.20 per 10
 18 to 24 inches ----- .30 each; 2.50 per 10
 2 to 3 feet ----- .35 each; 3.00 per 10

HARDY FLOWERING SHRUBS, continued



Virginal Mock Orange (Page 6)

Mock Orange, Virginal. Large semi-double, fragrant white flowers $1\frac{1}{2}$ - $2\frac{1}{2}$ in. across; moderately tall.

18 to 24 inches	.30 each; 2.50 per 10
2 to 3 feet	.40 each; 3.50 per 10
3 to 4 feet	.50 each; 4.50 per 10
4 to 5 feet	.60 each; 5.50 per 10

Olive, Russian. Leaves grayish-green above, silvery beneath; flowers tiny, fragrant; fruit $\frac{1}{2}$ in. long, yellow.

18 to 24 inches	.25 each; 2.00 per 10
2 to 3 feet	.30 each; 2.50 per 10
3 to 4 feet	.40 each; 3.50 per 10

Pearl Bush. Pearl-like buds, 5-petaled white flowers 2 in. across in latter April; autumn foliage yellowish.

3 to 4 feet	.50 each; 4.50 per 10
4 to 5 feet	.75 each; 7.00 per 10

Privet, Chinese. Of bushy, spreading habit with small, neat foliage; tiny white flowers like lilacs, followed by blue berries; excellent as a decorative shrub and for hedges.

18 to 24 inches	.25 each; 2.00 per 10
2 to 3 feet	.30 each; 2.50 per 10
3 to 4 feet	.40 each; 3.50 per 10
4 to 5 feet	.50 each; 4.50 per 10

Privet, Regel. Dense, spreading growth; valuable for shrub plantings; white flowers like tiny lilacs; blue-black berries.

12 to 18 inches	.20 each; 1.50 per 10
18 to 24 inches	.30 each; 2.50 per 10
24 to 30 inches	.35 each; 3.00 per 10
30 to 36 inches	.40 each; 3.50 per 10

Quince, Japan; Cydonia Japonica. Covered with brilliant scarlet five-petaled flowers $1\frac{1}{2}$ in. across before the leaves are developed. The true old-fashioned red.

Mail size, postpaid	.15 each; 1.20 per 10
12 to 18 inches	.20 each; 1.50 per 10
18 to 24 inches	.30 each; 2.50 per 10

Snowball, Common. Covered in early May with clusters of white snowballs 4 in. across; sun or partial shade.

18 to 24 inches	.40 each; 3.50 per 10
2 to 3 feet	.50 each; 4.50 per 10
3 to 4 feet	.75 each; 7.00 per 10

HARDY FLOWERING SHRUBS, continued

Spirea Anthony Waterer. Crimson flowers in flat clusters in late May and at intervals until fall; grows 3 ft. high.

15 to 18 inches	.35 each; 3.00 per 10
18 to 24 inches	.45 each; 4.00 per 10
24 to 30 inches	.60 each; 5.50 per 10

Spirea Bethlehemensis. Similar to Billardi; a little taller; pink flowers in June and at intervals during summer.

3 to 4 feet	.45 each; 4.00 per 10
-------------	-----------------------

Spirea Billardi Pink. Finger-like panicles of pink flowers.

3 to 4 feet	.45 each; 4.00 per 10
4 to 5 feet	.60 each; 5.50 per 10

Spirea Froebeli. Similar to Anthony Waterer, but broader, darker leaves, and about 4 ft. tall.

Mail size, postpaid	.15 each; 1.20 per 10
18 to 24 inches	.30 each; 2.50 per 10
24 to 30 inches	.35 each; 3.00 per 10
30 to 36 inches	.45 each; 4.00 per 10

Spirea Golden. Foliage golden-yellow in early spring, bronze-yellow in summer, green in latter summer; valuable for its color effect.

Mail size, postpaid	.15 each; 1.20 per 10
2 to 3 feet	.35 each; 3.00 per 10
3 to 4 feet	.45 each; 3.50 per 10

Spirea, Korean. Similar to Van Houttei but later, prolonging the blooming season; flower buds very hardy and blooms when some other flowers are injured by late frosts.

2 to 3 feet	.35 each; 3.00 per 10
3 to 4 feet	.45 each; 4.00 per 10

Spirea Van Houttei. A fountain of white in May with its dense drifts of flowers on graceful arching branches; attains 6-7 feet.

Mail size, postpaid	.10 each; .90 per 10; 7.50 per 100
12 to 18 inches	.15 each; 1.25 per 10; 9.00 per 100
18 to 24 inches	.20 each; 1.50 per 10; 10.00 per 100
2 to 3 feet	.25 each; 2.00 per 10; 12.00 per 100
3 to 4 feet	.30 each; 2.50 per 10; 18.00 per 100
4 to 5 feet	.50 each; 4.00 per 10; 35.00 per 100

Sumac, Fragrant. Spikes of small yellowish flowers; red berries; autumn foliage orange or scarlet; aromatic.

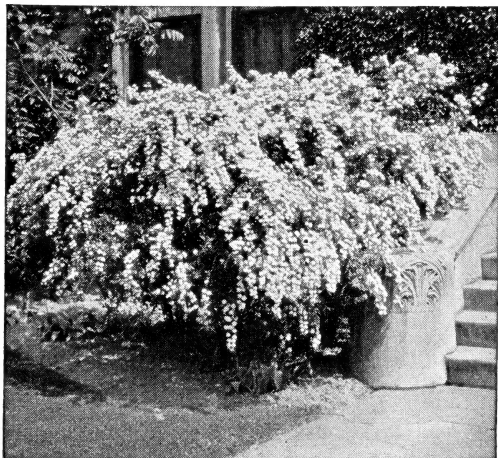
3 to 4 feet	.45 each; 4.00 per 10
4 to 5 feet	.60 each; 5.00 per 10

Tamarix. Delicate feathery foliage, somewhat resembling asparagus; tiny pink flowers; prune severely each year.

Africana. Green foliage; pink flowers in early spring.

Hispid. Silvery-green foliage; blooms in latter summer.

2 to 3 feet	.35 each; 3.00 per 10
3 to 4 feet	.45 each; 4.00 per 10



Spirea Van Houttei, a fountain of white in April and May

Viburnum lantana (Wayfaring Tree). Upright tree-like shrub; 2 to 3 inch clusters of small white flowers in latter spring; bright red berries changing to black in latter summer.

2 to 3 feet	-----	.40 each; 3.50 per 10
3 to 4 feet	-----	.50 each; 4.50 per 10
4 to 5 feet	-----	.65 each; 6.00 per 10

Viburnum molle; Kentucky Viburnum. Small white flowers in clusters in June; bluish-black berries in autumn.

2 to 3 feet	-----	.40 each; 3.50 per 10
3 to 4 feet	-----	.50 each; 4.50 per 10

Vitex agnus castus. Similar to macrophylla but more dwarf.

4 to 5 feet	-----	.45 each; 4.00 per 10
-------------	-------	-----------------------

Weigela. Very showy in latter May or early June with its trumpet-shaped flowers, clustered thickly along the wide spreading branches; attains 6-8 ft.

Weigela, Rose Color

18 to 24 inches	-----	.30 each; 2.50 per 10
2 to 3 feet	-----	.40 each; 3.50 per 10
3 to 4 feet	-----	.50 each; 4.50 per 10

Weigela Abel Carrierre.. Rosy-carmine flowers spotted orange; strong upright growth.

2 to 3 feet	-----	.40 each; 3.50 per 10
-------------	-------	-----------------------

Weigela, Eva Rathke. Brilliant carmine-red; grows about 4 ft. high; will succeed in partial shade.

2 to 3 feet	-----	.50 each; 4.50 per 10
-------------	-------	-----------------------

Weigela, Floribunda. Crimson; vigorous.

2 to 3 feet	-----	.40 each; 3.50 per 10
-------------	-------	-----------------------

Weigela, Hendersoni. Deep rose; vigorous.

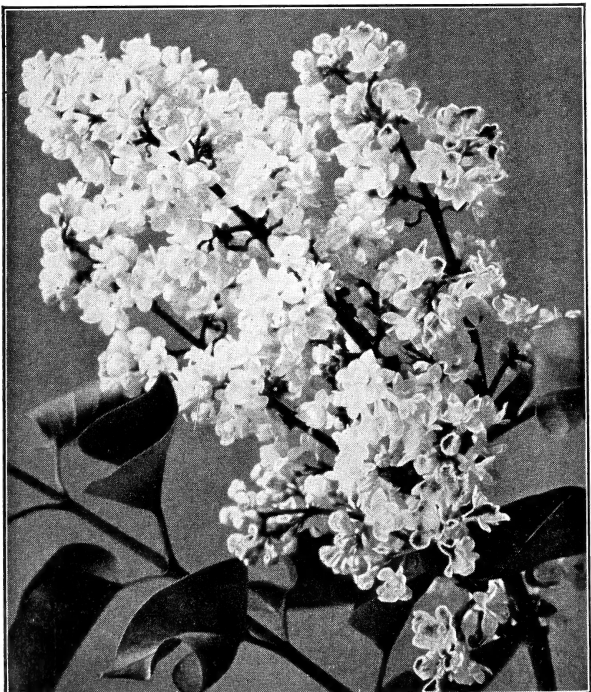
2 to 3 feet	-----	.40 each; 3.50 per 10
-------------	-------	-----------------------

Willow, Flowering; Desert Willow. Large shrub; long, narrow, willow-like leaves; flowers resemble a catalpa in shape; white tinted lilac-pink, 1 to 2 in. long, at end of branches in summer. 3 to 4 feet, 50c each.

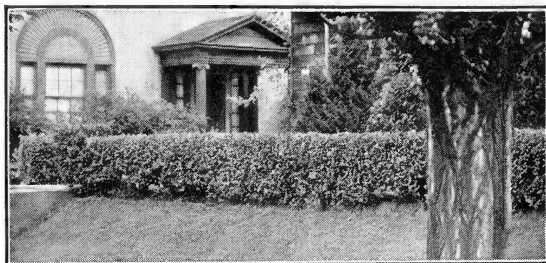
Willow, Pussy. See Shade Trees.

Witch Hazel, Ozark. Odd fragrant flowers; 4 narrow petals, 1/2 to 5/8 in. long. yellow, often red base, Jan.-Mar.

4 to 5 feet	-----	\$1.00 each
-------------	-------	-------------



For fragrance in April nothing can displace the Lilacs (Page 5)



Privet, the living fence

Privet for Hedging

Plant 10-12 in. apart. Prune to 4-6 in. to make them branch low and thickly.

Amoor River North. Growth rapid; upright habit; very hardy.

Prices each in lots of	50	100
12 to 18 inches, 2 canes -----	.04 $\frac{1}{2}$.04
18 to 24 inches, 2 canes -----	.05 $\frac{1}{2}$.05
2 to 3 feet, 2 and 3 canes -----	.08 $\frac{1}{2}$.08

Privet, Chinese. Of bushy, spreading habit, with small, neat foliage; excellent at a decorative shrub and for hedges.

Prices each in lots of	50	100
18 to 24 inches, well branched hedging grade ---	.13	.12 $\frac{1}{2}$
2 to 3 feet, well branched hedging grade ----	.16	.15

Ibodium. A hybrid of Ibodium and California. Hardier than California; valuable where California winter injures.

Prices each in lots of	50	100
18 to 24 in., well branched -----	.06 $\frac{1}{2}$.06
2 to 3 feet, well branched -----	.08 $\frac{1}{2}$.08

Hardy Vines

When planting cut the tops back severely, particularly clinging vines such as *Euonymus radicans* and Boston and English Ivy, as it is the new growth which clings. Twining vines must have a support they can twine around. If the soil near the foundation is poor, replace with good soil.

5 or more at the 10 rate. less at the each rate.

Bittersweet, American. Orange-yellow seed pods with bright red seed in autumn, clustered at the end instead of all along the branches. Twining. 2 year, 35c each.

Boston Ivy; Ampelopsis Veitchi. A graceful vine clinging to wood, brick or stone, 3 year 40c each; \$3.50 per 10.

Clematis paniculata; Japanese Clematis. Thousands of fragrant pure white four-petaled starry flowers 1-1 $\frac{1}{2}$ in. across, in Aug. and Sept. 2 year, 40c each. \$3.50 per 10.

Honeysuckle, Yellow (flava). Orange-yellow flowers clustered at tips of branches; latter April-May. 2 year. 35c each.

Honeysuckle, Heckrotti. A compact vine blooming almost all summer; flowers in clusters, deep rose outside, yellow inside. 2 year No. 1, 45c each, \$4.00 per 10.

Honeysuckle, Scarlet Trumpet. Flowers trumpet-shaped, scarlet outside buff within, 1 $\frac{1}{2}$ -2 in. long in clusters at tips of branches. 2 year No. 1, 35c each, 3 for 90c.

Wisteria, American Purple. A tall, rapid climber; numerous drooping clusters of lavender-purple pea-shaped flowers. More compact clusters than Chinese. 2 year, 30c each, \$2.50 per 10.

Wisteria, Chinese Blue. Clusters of violet-blue flowers, longer than those of the American and not quite so thick on the cluster. 2 year No. 1, 50c each.

Wisteria, Chinese White. 2 year No. 1, 50c each.

Water Lilies all Summer

To have hardy Water Lilies blooming all summer, beginning in May, you need only a pool, 8-12 in. of soil, a foot of water and sun. When grown in boxes they should be about 8 in. deep and 14 to 16 inches square. Prices 40c up. Write for list.

Shade Trees

Five or more of a kind at the 10 rate, less at the each rate.

Ash, American White. A lofty tree of fairly rapid growth, forming a conical to round-topped crown; leaves dark green.

5 to 6 feet80 each; 3 for 1.95
6 to 8 feet 1.15 each; 3 for 3.00

Ash Green. A tree of medium height, forming a compact broad crown leaves bright green, in autumn yellow.

5 to 6 feet80 each; 3 for 1.95
6 to 8 feet 1.15 each; 3 for 3.00

Birch, European White. A graceful tree of peculiar charm with chalky white bark and delicate bright light green foliage.

6 to 8 ft., B. & B., 2.50 each 10 to 12 ft., B. & B., 4.00 each

Catalpa Umbrella (Bungei). Forms a dense, round, umbrella-like head, on a straight, upright stem; very seldom blooms.

5 to 6 feet stems, 2-year heads 1.75 each; 2 for 3.30

Crab, Hopa. Carmine-rose flowers 1¼-1½ in. across in latter April; twigs, new leaves and fruit red.

3 to 4 feet60 each
4 to 5 feet75 each
5 to 6 feet 1.00 each

Crab, Scheideckeri. Covered with semi-double flowers, deep pink on a white ground, in latter April, followed by tiny crabs; very showy; upright habit, growing about 8 ft. high.

3 to 4 feet60 each
4 to 5 feet75 each
5 to 6 feet 1.00 each

Cypress, Bald. A beautiful tall tree; conical habit; evergreen-like foliage, which drops in autumn.

5 to 6 ft., B. & B. \$2.00 each 6 to 8 ft., B. & B. \$3.00 each

Dogwood, White Flowering. Showy 4-petaled white flowers 3 to 4 in. across in latter April; scarlet berries and autumn foliage.

3 to 4 feet \$1.50 each 4 to 5 feet \$2.00 each

Elm, American White. The well known native Elm.

4 to 5 feet50 each 5 to 6 feet65 each
6 to 8 feet 1.15 each 8 to 10 feet 1.50 each
10 to 12 feet 2.00 each

Elm, Chinese; Ulmus pumila. A rapid grower; slender branches; leaves much smaller than those of the American Elm.

Mail size, postpaid 12½ each
4 to 5 feet45 each; 3.50 per 10
5 to 6 feet60 each; 5.00 per 10
6 to 8 feet90 each; 8.00 per 10
8 to 10 feet 1.25 each; 11.00 per 10
10 to 12 feet 2.00 each; 18.50 per 10
12 to 15 feet 2.50 each; 20.00 per 10
2 to 2½ inch caliper 3.50 each; 30.00 per 10

Elm, Moline. More erect than American; effect similar to Lombardy Poplar but not so slender.

8 to 10 feet \$1.75 each

Gum, Sweet. Picturesque pyramidal habit; leaves 5-7 lobed, starry, shiny green, in autumn orange and crimson.

6 to 8 ft., B. & B., \$3.00 each 8 to 10 ft., B. & B., \$5.00 each

Koelreuteria paniculata; Golden Rain; Varnish Tree. A tree from China and Japan growing 30 feet high; leaves pinnate 1¼ to 3 inches long; flowers yellow 3/8 inches wide in clusters in summer.

5 to 6 feet75 each

Linden, American. Leaves heart-shaped, 4 to 6 in. long, yellow in autumn; small fragrant yellowish flowers in summer.

5 to 6 ft. 1.15 each 6 to 8 ft. 1.50 each

Maple, Soft or Silver. Very rapid growth; for quick shade; leaves bright green, silvery beneath, yellow in autumn.

6 to 8 ft.90 each 8 to 10 ft. 1.25 each
10 to 12 feet 1.75 each

Maple, Sugar, Rock or Hard. Deeply rooted, allowing grass to grow about the trunk; beautiful autumn foliage.

4 to 5 feet 1.00 each; 9.00 per 10
5 to 6 feet 1.50 each; 13.50 per 10
6 to 8 feet 2.00 each; 17.50 per 10
8 to 10 feet 3.00 each; 27.50 per 10

Mimosa; Chinese Silk Tree; Albizzia Julibrissin. A tropical effect; flat crown; tiny feathery foliage; pink Acacia-like flowers at tips of branches mid-June to Sep.

6 to 8 ft. 1.50 each 8 to 10 ft. 2.00 each

Peach, Double Red. In April every twig and branch is bright with perfectly formed double red flowers; blooms young.
 3 to 4 ft. ----- .35 each 4 to 5 ft. ----- .50 each
 5 to 6 feet ----- .70 each

Peach, Double White. Especially beautiful when planted near the Double Red for contrast. Same sizes and prices.

Plum, Double Flowering. Flowers like small pink roses 1-1½ in. across cover every twig before the leaves appear.
 3 to 4 ft. ----- .50 each 4 to 5 ft. ----- .75 each

Plum, Pissardi. Foliage deep purplish-red, in summer bronze to greenish-red, deep purplish-red in autumn, fruit magenta-red, of fair size and quality, in early July; grows 12-15 ft.
 2 to 3 ft. ----- .30 each 4 to 5 ft. ----- .50 each
 3 to 4 ft. ----- .40 each 5 to 6 ft. ----- .65 each

Poplar, Bolle's Silver. Similar to Lombardy, but leaves dark glossy green above, downy white beneath.
 5 to 6 ft. ----- .75 each 6 to 8 ft. ----- 1.00 each

Poplar, Lombardy. Tall and columnar; rapid growth; useful as an accent tree and to screen objectionable views.
 4 to 5 feet ----- .25 each; 2.00 per 10
 5 to 6 feet ----- .40 each; 3.50 per 10
 6 to 8 feet ----- .50 each; 4.50 per 10
 8 to 10 feet ----- .75 each; 6.50 per 10

Red Bud. Tiny pea-shaped rose-pink flowers cover the leafless branches in early April; autumn foliage bright yellow.
 3 to 4 ft. ----- .50 each 5 to 6 ft. ----- 1.00 each
 4 to 5 ft. ----- .75 each 6 to 8 ft. ----- 1.35 each

Tulip Tree. Leaves bluish-green, in autumn yellow; tulip-like flowers, greenish-yellow blotched orange; rapid growth.
 6 to 8 ft. ----- 1.50 each 8 to 10 ft. ----- 2.00 each

Willow, Babylon Weeping. A large, graceful tree with long, slender, drooping branches; growth rapid.
 Mail size, postpaid ----- .15 each; 1.20 per 10
 5 to 6 ft. ----- .75 each 6 to 8 ft. ----- 1.00 each

Willow, Niobe Weeping. A graceful tree; slender, drooping yellow-barked branches; leaves lustrous green; very hardy.
 Mail size, postpaid ----- .15 each; 1.20 per 10
 4 to 5 ft. ----- .50 each 5 to 6 ft. ----- .75 each

Willow, Pussy, Lemoine. A shrub or small tree, its furry catkins appearing before the leaves; easily grown.
 2 to 3 ft. ----- .25 each 3 to 4 ft. ----- .35 each



Sugar or Hard Maple (Page 10)
 Courtesy Better Homes and Gardens

Hardy Evergreens



Evergreens add winter beauty to the planting

Our evergreens are grown with plenty of room and are compact, well filled trees of their size and variety. They have been transplanted and root pruned and are well rooted. They are not grown rapidly and soft but are firm and easily transplanted. They are liberally graded. With the exception of the "mail size" they will be dug with a ball of earth wrapped in burlap, termed "balled and burlapped" or B. & B.

MAIL SIZES, POSTPAID

Our mail size are transplanted, sturdy little trees, not balled and burlapped as these sizes do not require it. The value of trees cannot be shown in a catalog. A mail size evergreen may be worth a dime or a dollar. It may be a spindling little tree that requires petting, or a well grown tree that with reasonable care gives good results. We intend to give you your money's worth. Plant these mail sizes **firmly**, water them as the season requires and they should give you good results. They are not yet old enough and large enough to give the immediate effect of balled and burlapped sizes. Give them time to grow into larger sizes and we think they will please you. B. & B. trees cannot be sent by mail.

Five or more of a kind at the 10 rate, less at each rate.

Arborvitae, American Pyramidal. Compact and narrowly pyramidal, covered with deep rich green foliage; attains a height of 18 to 20 ft.

Mail size, postpaid .30 each 18 to 24 in., B. & B. 1.00 each
2 to 3 ft., B. & B. 1.75 each 3 to 4 ft., B. & B. 2.25 each

Arborvitae, Baker's Pyramidal. Upright Chinese type; grows about 8 feet high and fairly rapid; foliage light green.

2 to 3 ft., B. & B. 1.75 each 3 to 4 ft., B. & B. 2.50 each

Arborvitae, Berckmans; Chinese Golden Dwarf. Of superb somewhat ovate form; dwarf; compact, slow growth, attaining 7 ft.; in spring gold suffused with green, in winter green to bronze green: a gem for both large and small grounds.

15 - 18 in., B. & B. 1.50 each 18 - 24 in., B. & B. 1.95 each
24 - 30 in., B. & B. 2.75 each 30 - 36 in., B. & B. 3.25 each

Arborvitae, Bonita. Broadley conical with rounded top; compact dwarf habit growing about 4 ft. high; rich green.

15 - 18 in., B. & B. 1.25 each 18 - 24 in., B. & B. 1.50 each
24 - 30 in., B. & B. ----- 2.00 each

Arborvitae, Goldspire. An excellent erect, conical, golden Chinese evergreen growing about 15 to 18 feet high; fairly rapid growth.

18 to 24 inches, B. & B. ----- 1.50 each

Arborvitae, Woodward Globe. A low compact form, naturally globular in outline, growing 3-3½ ft. high.

Mail size, postpaid .30 each 12 to 15 in., B. & B. .80 each
15 - 18 in., B. & B., 1.00 each 18 - 24 in., B. & B. 1.50 each

Juniper, Andorra. Dwarf, spreading, seldom over 12 in. high; rich, bright green, in autumn rich reddish-purple.

Mail size, postpaid30 each; 2.50 per 10
 12 - 15 in., B. & B. 1.00 each 15 - 18 in., B. & B. 1.75 each
 18 - 24 in., B. & B. 2.25 each 24 - 30 in., B. & B. 2.75 each

Juniper, Blue or Silver; Juniperus virginiana glauca. Broadly pyramidal habit, new growth silvery, becoming bluish-green; growth rather rapid, attains 15-20 ft.; fine.

2 to 3 ft., B. & B. 3.00 each 3 to 4 ft., B. & B. 4.00 each
 4 to 5 feet, B. & B. 5.00 each

Juniper, Burki. A silvery-blue Juniper of more rapid growth than virginiana glauca.

3 to 4 ft., B. & B. 3.50 each 4 to 5 ft., B. & B. 4.50 each

Juniper, Cannart. A broadly pyramidal tree attaining 15-20 ft.; deep, rich green, heavily tufted foliage; silver berries on some trees.

2 to 3 ft., B. & B. 2.50 each 3 to 4 ft., B. & B. 3.50 each
 4 to 5 ft., B. & B. 5.50 each

Juniper, Chinese Silver Spire. Narrow, distinctly columnar habit; very beautiful silvery, sharp-pointed foliage.

3 to 4 ft., B. & B. 3.75 each 4 to 5 ft., B. & B. 5.00 each

Juniper, Dundee. Narrowly pyramidal, reaching a probable height of 15 ft.; foliage bluish-green, in winter plum color.

2 to 3 ft., B. & B. 3.00 each 3 to 4 ft., B. & B. 4.00 each
 4 to 5 ft., B. & B. 5.00 each

Juniper, Gold-tipped, Lee's. New spring growth rich, gleaming gold, gradually becoming green; attains a height of 10-15 ft.

3 to 4 ft., B. & B. 3.50 each 4 to 5 ft., B. & B. 4.50 each

Juniper, Henry's. This form of the hardy Virginia Juniper retains its green color all winter. It forms a dense, almost columnar tree and by shearing may be grown 12-15 ft. high with a base of 3 ft. or less.

3 to 4 ft., B. & B. 3.50 each 4 to 5 ft., B. & B. 4.50 each
 5 to 6 ft., B. & B. 6.00 each

Juniper, Irish. Finely cut bluish-green foliage; a dense, slender, columnar tree; fairly rapid growth, attaining 8 ft.

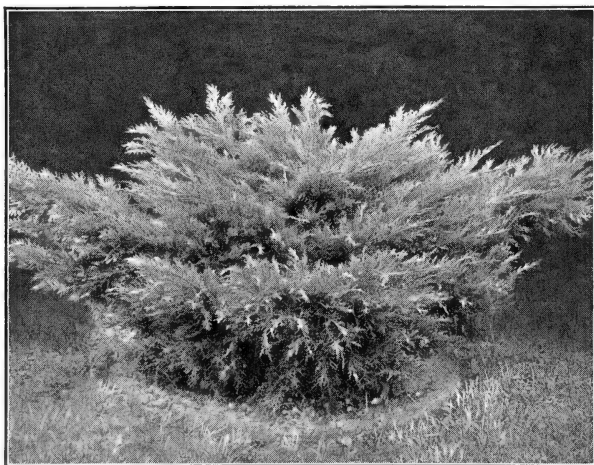
Mail size, postpaid .40 each 18 to 24 in., B. & B. 1.25 each
 2 to 2½ ft., B. & B. 1.75 each 2½ to 3 ft., B. & B. 2.25 each

Juniper Keteleeri. A bright green Juniper enduring partial shade; rapid upright growth.

2 to 3 ft., B. & B. 2.50 each 3 to 4 ft., B. & B. 3.50 each
 4 to 5 ft., B. & B. 4.50 each

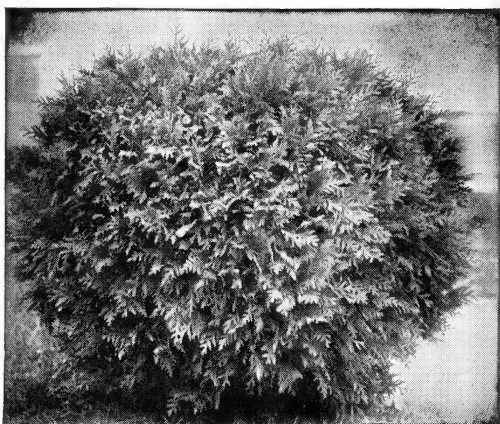
Juniper, Pfitzer. Wide spreading horizontal branches forming a broad, irregular, low tree; foliage light olive-green; fine; thrives in almost every location.

Mail size, postpaid .40 each 12 - 15 in., B. & B. 1.00 each
 15 - 18 in., B. & B. 1.35 each 18 - 24 in., B. & B. 2.00 each
 24 - 30 in., B. & B. 2.50 each 30 - 36 in., B. & B. 3.25 each
 3 - 3½ ft., B. & B. 5.00 each 3½ - 4 ft., B. & B. 6.00 each



Pfitzer Juniper thrives in almost every location

HARDY EVERGREENS, continued



Woodward Globe Arborvitae is naturally globular in form.
(Page 12)

Juniper, Savin. Thickly branched, low and spreading; an excellent unusual tree for foundation planting and to border taller evergreens, in a sunny situation.

Mail size, postpaid .35 each	15 - 18 in., B. & B. 1.25 each
18 - 24 in., B. & B. 1.75 each	2 - 2 $\frac{1}{2}$ ft., B. & B. 2.50 each
2 $\frac{1}{2}$ - 3 ft., B. & B. 3.00 each	3 - 3 $\frac{1}{2}$ ft., B. & B. 4.50 each

Juniper, Silver Moon. A compact, narrowly upright Colorado Juniper; unusually beautiful silvery foliage; our own introduction.

18 - 24 in, B. & B. 2.00 each	2 - 2 $\frac{1}{2}$ ft., B. & B. 2.50 each
2 $\frac{1}{2}$ - 3 ft., B. & B. 3.50 each	3 - 3 $\frac{1}{2}$ ft., B. & B. 4.00 each
3 $\frac{1}{2}$ - 4 ft., B. & B. 5.00 each	4 - 4 $\frac{1}{2}$ ft., B. & B. 6.00 each
4 $\frac{1}{2}$ - 5 ft, B. & B. -----	7.50 each

Juniper, Spiny Greek. Dense and narrowly conical, tapering to a sharp point; spiny grayish-green foliage.

18 - 24 in., B. & B. 2.00 each	24 - 30 in., B. & B. 2.50 each
--------------------------------	--------------------------------

Juniper, Sylvestris. Bluish-green spiny foliage; beautiful irregular form when not sheared; sun.

2 to 3 feet, B. & B. -----	2.00 each
----------------------------	-----------

Juniper, Virginia. The well known native red cedar; foliage sharp-pointed, usually dark green; berries blue; fairly rapid growth. These trees are trained columnar.

2 - 3 ft., B. & B. 2.00 each	3 - 4 ft., B. & B. 3.00 each
4 - 5 ft., B. & B. 4.00 each	5 - 6 ft., B. & B. 5.00 each

Juniper, Waukegan. Low, trailing, becoming about 6 to 8 in. high; foliage soft bluish-green.

18 - 24 in., B. & B. 2.00 each	24 - 30 in., B. & B. 2.50 each
--------------------------------	--------------------------------

Juniper, Winter Green. Broadly pyramidal, retaining its bright yellowish-green color throughout the winter, making a sharp contrast with other trees.

3 - 4 ft., B. & B. 3.50 each	4 - 5 ft., B. & B. 4.50 each
------------------------------	------------------------------

Pine, Mugho. A many-stemmed, low-branched, dense, dwarf tree never growing over 4-5 ft. high; dark green needles; excellent for foundations, rock gardens and in front of taller trees.

12 - 15 in., B. & B. 2.00 each	15 - 18 in., B. & B. 2.50 each
18 - 24 in., B. & B. -----	3.00 each

Pine, White. A symmetrical pyramidal tree with regular whorls of horizontal branches; needles in 5's, soft bluish-green.

3 - 4 ft., B. & B. 3.00 each	4 - 5 ft., B. & B. 4.00 each
5 - 6 ft., B. & B. -----	5.00 each

Retinospora plumosa aurea; Golden Plume Cypress. Conical; foliage plume-like, grayish-green, new growth tipped golden.

18 - 24 in., B. & B. 1.50 each	2 - 3 ft., B. & B. 2.00 each
--------------------------------	------------------------------

Spruce, White. Compact, upright, broadly conical habit; ascending branches; needles bluish-green, 1/3 to 3/4 in. long.

2 - 3 ft., B. & B. 2.50 each	3 - 4 ft., B. & B. 3.75 each
------------------------------	------------------------------

Broad Leaved Evergreens

Euonymus Patens. A broad, compact, shapely bush, with large, somewhat leathery glossy leaves, usually retained throughout winter; scarlet berries; suitable for partial shade.

18 - 24 in., B. & B. 1.75 each 24 - 30 in., B. & B. 2.00 each

Euonymus Patens, Small Leaf. Similar to above, but the leaves are more dainty.

12 - 15 in., B. & B. 1.00 each 15 - 18 in., B. & B. 1.25 each

Mahonia Aquifolium; Oregon Hollygrape. A handsome broad leaved evergreen of medium height; holly-like leaves $1\frac{1}{2}$ -3 in. long, as shiny as if stamped from polished metal; 5-9 leaflets on a stem, bronzy when young, becoming deep green, in autumn purplish, bronze and red; excellent in semi-shade.

12 - 15 in., B. & B. 1.00 each 15 - 18 in., B. & B. 1.50 each

18 - 24 in., B. & B. 2.00 each 24 - 30 in., B. & B. 2.50 each

Privet, Lodense. A desirable, very dwarf shrub; leaves leathery, dark green, 1 to $1\frac{1}{2}$ inch long, half as broad.

15 - 18 in., B. & B. .75 each 18 - 24 in., B. & B. 1.00 each

Viburnum, Leatherleaf; Viburnum rhytidophyllum. An attractive evergreen shrub of bushy habit; leaves oblong, dark green, gray beneath; berries red, changing to black.

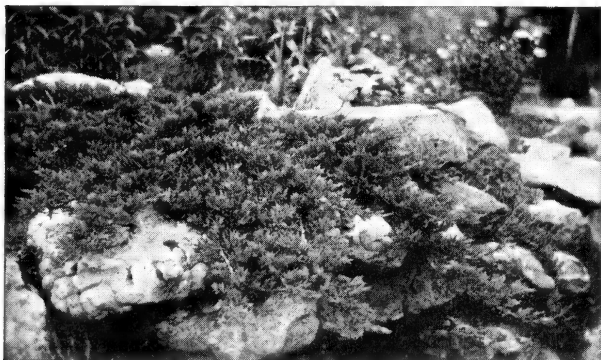
18 to 24 in., B. & B. ----- 2.50 each



Regal Lilies at Sarcoxie Nurseries

Lily, Regal

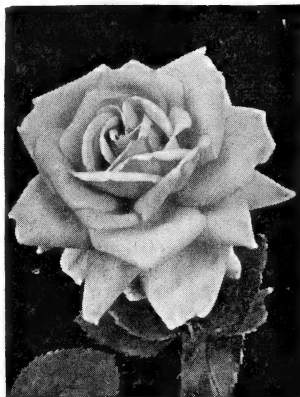
A magnificent Chinese lily; white, center flushed yellow, outside of petals tinged purplish; delightful fragrance; easily grown. Bulbs 5 - 6 in. around, 12c each, 3 for 35c, \$1.25 per doz. Postpaid, 3 for 45c, \$1.45 per doz. Bulbs 6 - 7 in. around, 15c each, 3 for 40c, \$1.50 per doz. Postpaid, 3 for 50c, \$1.70 per doz.



Andorra and Waukegan are trailing Junipers (Pages 13, 14)



Etoile de Hollande



Briarcliff

Everblooming or Monthly Roses

BLOOM THE FIRST SUMMER

ROSE PRICES

Except as noted, one for 55c; two or more at 50c each; five or more at 47c each; ten or more at 45c each; 25 or more at 42c each. Spring shipment only.

ROSE SURPRISE COLLECTION

Our selection, all good named varieties, and a good assortment of colors, 5 or more at 44c each, 10 or more at 40c each. Spring shipment only.

For best results you want the best plants. These are No. 1, 2-year field grown, budded plants, the very best grade. They have been properly grown and well matured. We feel sure they will please you. We do not handle Southern roses.

Rose orders for \$2.00 or more postpaid in Missouri and adjoining States. For other states add 3c each.

Ami Quinard. Blackish buds opening velvety dark crimson-maroon; semi-double; fragrant; blooms freely; vigorous.

Betty Uprichard. Outside coppery-pink, inner surface rosy-salmon; spicy fragrance; attractive form; blooms freely.

Briarcliff. Brilliant rose-pink; fragrant; blooms freely; long, stiff stems; pointed buds, resistant to disease.

Caledonia. Long tapering buds; large white flowers.

Catherine Zeimet. A white Baby Rambler; blooms profusely.

Condesa de Sastago. Golden buds striped red, when open the inside of the petals is a fiery-coppery red, outside gold.

Dainty Bess. A charming single rose, 3 to 4 inches across.

Dequesa de Penaranda. Apricot-orange buds opening coppery apricot, in autumn cinnamon-peach; large.

Editor McFarland. Brilliant clear deep pink; good form.

E. G. Hill. Immense, very double, fragrant flowers, dark velvety dazzling scarlet-crimson; excellent.

Else Poulsen. Single bright rose-pink; good size, produced in large clusters on erect, thrifty, tall plants. Polyantha.

Etoile de Hollande Long pointed buds; brilliant velvety crimson-scarlet; spicy perfume; vigorous.

Faience. Large; yellow, edges shaded pink. 60c each.

Gloria Mundi. A brilliant orange-scarlet Baby Rambler.

Golden Dawn. Large; pointed buds; bright yellow sometimes tinged red.

Golden Rapture. Golden yellow; long stems; richly fragrant.

Grenoble, Large; crimson buds opening brilliant red, almost scarlet, globular flowers; vigorous; blooms freely.

Ideal. Large clusters of dark scarlet blooms like Ramblers on dwarf plants all summer long.

Joanna Hill. Long buds; creamy-yellow flushed orange.

Kaiserin Auguste Viktoria. Large; very double white flowers; pointed buds; one of the most perfect in form.

Lady Hillingdon. Apricot-yellow; slender pointed buds.

Margaret McGredy. Light scarlet to orange-vermillion.

Mrs. Chas. Bell. A lovely shell-pink Radiance.

Mrs. Joseph Perraud. Nasturtium-buff flushed shell-pink, opening carmine-pink; fragrant.

Mrs. Pierre S. du Pont. Golden yellow; long pointed buds; fragrant.

Pink Dawn. Deep rose-pink; large; fragrant.

Pink Radiance. Inner surface of petals light pink, outer carmine-pink; fragrant; vigorous, blooms profusely.

President Herbert Hoover. Large; pink, salmon, apricot, orange and yellow; one of the most popular.

Red Radiance. A bright cerise-red sport of Radiance.

Snowbird. Large; pure white; fragrant. 60c each.

Soeur Therese; Sister Therese. Beautiful long pointed buds, chrome yellow marked carmine; moderately double, rich daffodil-yellow flowers 4-4½ inches across.

Southport. Brilliant unshaded scarlet; tea fragrance.

Sunburst. Orange-copper to golden orange; fragrant.

Talisman. Brilliant red and gold buds opening scarlet-orange, coral-pink and old-rose; blooms freely.

Texas Centennial. Sport of President Hoover; rich blood-red ageing to carmine-red. Patented. 60c each, 3 for \$1.50.

Treasure Island. Large; flaming coppery-pink. 60c each.

Triomphe d'Orleans. A large Baby Rambler; light red.

Vesuvius. Rich dark velvety crimson; an excellent single.

Willowmere. Rich salmon-pink; large; fragrant.

Hardy Bush Roses

Hugonis. A gorgeous bush of soft yellow single roses 2-2½ in. across in early spring, often mid-April. Strong 2 yr. No. 1, 50c each, 5 or more at 47c, 10 or more at 45c each.

Hardy Rambler and Climbing Roses

No. 1, strong 2-year field grown, the very best grade.

Five or more 50c varieties for 48c each, ten or more at 46c each. Five or more 45c varieties at 42c each, ten or more at 40c each. May be combined with everblooming roses for postpaid rates. Fall or Spring shipment.

Climbing American Beauty. Almost the same color and fragrance as bush American Beauty; early Climber. 45c each.

Dr. W. Van Fleet. Delicate flesh-pink, center rosy-flesh; medium early to midseason. Climber. 45c each.

Gardenia. Rather large yellow buds, creamy-yellow flowers. 50c each.

Mary Wallace. One of the best; often 4 in. across; bright rose-pink; early; fragrant. Climber. 45c each.

Paul's Scarlet. Vivid scarlet shaded crimson. 50c each.

Silver Moon. Large; beautiful semi-double white flowers. 50c each.

Spanish Beauty. Long pointed crimson buds opening into large pink blooms marked carmine on the outside; long stems. 50c each.

Grass, Bermuda

Especially adapted to arid conditions in Southern Missouri and farther south. Stolons, ½ bu., 75c; 1 bu. \$1.25.

Hardy Flowers

Easily grown flowers that live from year to year. Good strong outdoor-grown plants, not the tiny plants offered in cheap collections by parcel post.

Plants by Parcel Post. Plants vary in weight and there are 8 zones. For Missouri and adjoining states allow 10c for the first and 1½c to 3c for each additional plant. Any surplus will be refunded.

Six or more of a kind at the dozen rate.

Alyssum rostratum. Golden-yellow flowers in dense heads in summer; prostrate habit. 20c each, 3 for 45c, \$1.50 per doz.

Alyssum saxatile compactum; Basket of Gold. Broad masses of bright yellow flowers in early spring; dwarf; easy culture. 20c each, 3 for 45c, \$1.50 per doz.

Anchusa Dropmore. Deep blue Forget-me-not-like flowers in latter May; stems 3 ft. high. 20c each, 3 for 55c, \$2.00 per doz.

Azaleamum. See Chrysanthemum Pink Cushion.

Baby's Breath, Bristol Fairy. Dainty double white flowers ¼ in. across in large, loosely arranged clusters in June. Strong plants, 35c each, 3 for \$1.00.

Balloon Flower; Chinese Bell Flower. Balloon-like buds, opening into deep blue bell-shaped flowers 2 to 3 in. across, in latter June. 20c each, 3 for 45c, \$1.50 per doz.

Blanket Flower; Gaillardia grandiflora. Flowers 2 to 3 in. across, maroon bordered yellow; late May till fall; easily grown. 15c each, 3 for 40c, \$1.50 per doz.

Bleeding Heart. Heart-shaped rosy-carmine flowers tipped white. 40c each, 3 for \$1.00.

Canterbury Bells. Spikes of somewhat bell-shaped flowers 2 in. long; latter May-June. Single, mixed, 20c each, 3 for 45c, \$1.50 per doz.

Cerastium tomentosum; Snow-in-Summer. A creeping mat of silvery foliage, covered in early summer with small snowwhite flowers. 20c each, 3 for 45c, \$1.50 per doz.

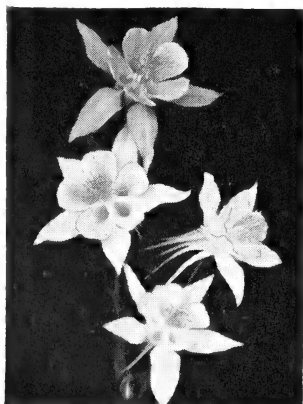
Chrysanthemum Pink Cushion. Sometimes called Azaleamum. Dwarf; covered in late summer and fall with orchid-pink flowers, becoming soft pink to almost white. 1 yr., 20c each, 3 for 45c, \$1.50 per doz. Heavy clumps, 50c each. Extra Heavy clumps, \$1.00 each.

Columbine. Dainty spurred flowers in April and May. Mixed colors. 20c each, 3 for 45c, \$1.50 per doz.

Coreopsis. Pure yellow, daisy-like flowers 2 to 3 in. across on 2 to 3 ft. stems all summer if not allowed to seed. 20c each, 3 for 45c, \$1.50 per doz.

Daisy, Arctic. Flowers 2 to 2½ in. across in Oct. on 12 to 15 in. stems. 15c each, 3 for 30c, \$1.00 per doz.

Daisy, Early Elder. Flowers 2 to 3 in. across on 20-30 in. stems in early May. 15c each, 3 for 30c, \$1.00 per doz.



Columbine (Page 18)



Blanket Flower (Page 18)

Daisy, Painted; Pyrethrum. Red and Pink daisies $1\frac{1}{2}$ to $2\frac{1}{2}$ in. across on 1 to 2 ft. stems. 20c each, 3 for 55c, \$2.00 per doz.

Daisy, Shasta Alaska. Large, 3 in. or more across, in summer; 15-24 in. stems. 15c each, 3 for 30c, \$1.00 per doz.

Delphinium. Spikes of dainty spurred flowers in May and at intervals during summer if the old flowers are cut off. Plant in full sun, in well drained, preferably sandy, loam; the addition of ground lime helps.

Delphinium Belladonna Improved. Unrivalled for persistent blooming; the delightful blue of the skies; spikes $1\frac{1}{2}$ to 3 ft. tall. 20c each, 3 for 50c, \$2.00 per doz.

Delphinium Bellamosum. A dark blue form of Belladonna. 20c each, 3 for 50c, \$2.00 per doz.

Hollyhock. Excellent massed against fences, buildings and at angles of walks. Assorted double, Red, Pink, White and Yellow, 20c each, 3 for 55c, \$2.00 per doz.

Hollyhock, Single. Mixed colors. 15c each, 3 for 40c \$1.50 per doz.

Larkspur, see Delphinium.

Lily, Day. Lily-like 6-petaled flowers; very hardy, easily grown, adapted to full sun and partial shade. 15c each, \$1.50 per doz. Varieties, see below.

Florham. $4\frac{1}{2}$ -5 in. across; golden to orange-yellow; summer, fragrant.

Middendorffi. Rich orange-yellow; fragrant; early; grows $1\frac{1}{2}$ ft.

Minor; Dwarf Lemon Lily. Deep golden yellow; delightfully fragrant flowers in May.

Sovereign. Soft chrome-yellow, outside shaded brown.

Thunbergi. Rich yellow flowers on 2 to 3 ft. stems in summer.

Price of above Day Lilies, 15c each, \$1.50 per doz.

Phlox brighten the garden after the spring flowers are gone and before summer flowers arrive in abundance. **Field grown plants to bloom the first summer, 20c each, 3 for 55c, \$2.00 per doz., except as noted.**

Champs Elysee. Rich purple, compact heads, medium height.

Daily Sketch. Light salmon-pink, carmine eye; large.

Firebrand. Cerise, vermilion and orange.

Hauptman Koehl. Glowing red, large trusses, strong stems.

Lillian. Exquisite cameo-pink; early.

Miss Lingard. Early; white, faint lilac eye; large.

Mrs. R. P. Struthers. Clear cherry-red, darker eye; fine.

P. D. Williams. Soft apple-blossom-pink striped darker; enormous flowers.

Starlight. Violet-red shading to lilac, white eye.

Von Lassburg. Pure white; very large trusses.

Above Phlox 20c each, 3 for 55c, \$2.00 per doz. except as noted.

Phlox subulata; Moss Pink. A mat of somewhat moss-like leaves, covered in early spring with flowers an inch across. Rosea (pink), 20c each, 3 for 45c, \$1.50 per doz.

Pyrethrum, see Daisy, Painted.

Rock Cress, Alpine; Arabis alpina. A mass of small snowy flowers in spring. 20c each, 3 for 45c, \$1.50 per doz.

Sedum kamtschaticum. About 6 in. high; triangular leaves; starry yellow flowers during summer. 15c each, 3 for 40c, \$1.50 per doz.

Sedum sarmentosum. Slender creeping shoots covered in late May with bright yellow, starry flowers $\frac{1}{2}$ in. across; sun or dense shade. 15c each, 3 for 40c, \$1.50 per doz.

Sedum Spectabile Brilliant. Starry rosy-red flowers $\frac{1}{2}$ in. across in large clusters; 18 in. high; September. 20c each, 3 for 45c, \$1.50 per doz.

Stokesia cyanea; Stoke's Aster. Lavender-blue cornflower-like blooms 3 to 4 in. across in summer. 20c each, 3 for 45c, \$1.50 per doz.

Sweet William. Gorgeous in mid-May; flat-topped clusters; flowers pure white through shades of pink to deep red; stems 12-18 in.; fragrant, Mixed, 20c each, 3 for 45c, \$1.50 per doz.

HARDY FLOWERS, continued

Veronica, Royal Blue. Similar to *rupestris*, a little taller; bright blue flowers in small spikes. 20c each, 3 for 45c, \$1.50 per doz.

Veronica rupestris. A mat of small, deep green foliage covered in late spring with spikes of tiny bright blue flowers on 3 to 4 in. stems. 20c each, 3 for 45c, \$1.50 per doz.

Violets, Coast. One of the most showy violets in latter March, with rich purple flowers 1-1½ in. broad; the flower stems are as long or longer than the leaves so the flowers are well displayed. 15c each, 3 for 40c, \$1.50 per doz.

Violets, Sweet Russian. Deep, rich violets; very hardy; easily grown. 15c each, 3 for 30c, 12 for \$1.00, 25 for \$1.75.

Liberty Irises; Fleur de lis

Plant lots of Irises for their grand and royal colors and their beauty of form and texture. Mass them at the borders of the lawn, or among shrubbery. Plant them along walks and drives, and in the herbaceous border.

They are perfectly hardy.

They are easy to grow.

They usually bloom the first season.

They increase rapidly.

They grow in almost any soil.

They furnish a wealth of color in May.

The standards are the upright or standing petals, the falls the lower or drooping petals. The inches or feet in the descriptions is the height of the flower stems.

Prices: 15c each, 3 of a kind for 30c, \$1.00 per doz., except as noted. Six or more of a kind at dozen rates. Postage additional if by parcel post, 2c each, not less than 10c per package, for Missouri and adjoining states.

Alcazar. Very large; standards light bluish-violet, falls deep reddish-purple; fragrant; midseason; blooms freely; 3-3½ ft.

Alta California. A very large, tall canary-yellow; well branched; fragrant. 20c each, 3 for 55c, 6 for \$1.00.

Ambassadeur. Large; standards smoky reddish-lavender, falls dark velvety purple-maroon; late; strong stems; 3-3½ ft.; vigorous. 15c each, 3 for 40c, \$1.50 per doz.

Black Douglass. Very large; general effect intense blackish pansy-violet; blooms freely. 25c each, 3 for 60c, 6 for \$1.10.

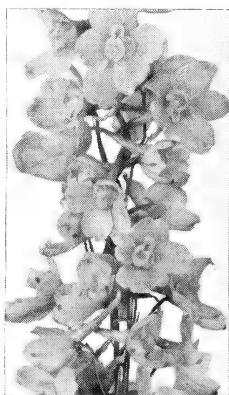
Black Wings. A near black; standards deep purple tinged blue, falls deep velvety purple, black sheen. 30c each.

Bruno. Large, standards bronze shaded yellow, at base falls deep rich velvety red-purple; fragrant. 15c each, 3 for 40c, \$1.50 per doz.

Buechley's Giant. A very large, brilliant medium blue Iris; tall; early. 20c each, 3 for 50c.



Coreopsis (Page 18)



Delphinium (Page 19)



Liberty Irises, perfectly hardy and easy to grow, furnish a wealth of rainbow colors in May

Prices: 15c each, 3 of a kind for 30c, \$1.00 per doz., except as noted. Six or more of a kind at dozen rates. Postage additional if by parcel post, 2c each, not less than 10c per package, for Missouri and adjoining states.

California Gold. Large; brilliant deep yellow; of excellent form; tall; blooms freely. 40c each, 3 for \$1.00.

Canopus. Standards light purple, falls velvety prune-purple; large; 3 ft.

Capri. An unusual blend of yellow, buff and tan tones; good form and substance; medium height. 25c each, 3 for 65c.

Celeste. Large; sky blue, falls slightly deeper; 30-40 in.; midseason; vigorous; blooms freely.

Cheerio. Standards soft rose flushed yellow; falls ruby red; good form and size; tall. 25c each, 3 for 65c.

Clara Noyes. Standards reddish-suntan; falls reddish-bronze; medium large. 20c each, 3 for 55c.

Cluny. Very large; standards soft bluish-lavender, falls deeper; fragrant; early; tall.

Colonel Candelot. Standards bronze overlaid reddish-lavender, falls rich dark velvety crimson; fragrant; 30 in.; a good red-bronze.

Corrida. Almost sky-blue, falls slightly deeper. 15c each, 3 for 40c, \$1.50 per doz.

Crimson King. Standards rich claret-purple, falls a little deeper; fragrant; early; 2 ft.; blooms freely.

Dauntless. Large; standards bronze-red, falls velvety rose-red; fragrant; tall; fine. 30c each, 3 for 75c.

Depute Nomblot. Very large, perfect form and texture; standards purplish suntan dusted with sparkles of gold, falls rich claret crimson; very fragrant. 35c each.

Destiny. Standards deep purple; falls blackish plum-purple; gold beard; tall; blooms freely. 50c each, 3 for \$1.25.

Dr. Bernice. Standards reddish or coppery-bronze shaded yellow, falls light ruby-purple; 2 ft.

Dr. C. H. Mayo. Very large; lavender-pink veined deep lavender; fragrant; early, tall; fine. 15c each, 3 for 40c, \$1.50 doz.

Dream. Large; soft pink tinged lavender, falls veined darker; fragrant; midseason; vigorous; blooms freely; 3-3½ ft.

LIBERTY IRISES, continued

El Capitan. Very large; standards violet-blue; falls deeper; unusual fragrance; very fine. 25c each, 3 for 65c.

Fairy. Dainty white delicately shaded soft blue; early; 2½ ft.

Florida; Pumila Yellow. Dwarf, yellow; early; fragrant; blooms freely. 20c each, 3 for 55c, \$2.00 per doz.

Frieda Mohr. Very large; standards ruffled, light lilac with a pink effect; falls rose tinged lilac; fragrant; tall, well branched; fine. 20c each, 3 for 55c, \$2.00 per doz.

Gudrun. Very large; lustrous, velvety snow-white; orange beard; fragrant; blooms freely. 30c each, 3 for 75c.

Happy Days. Very large; standards canary, falls deeper; fragrant; well branched; blooms freely. 30c each, 3 for 75c.

Henri Riviere. Very large; standards lemon-yellow, falls rosy lilac edged cream; fragrant. 20c each, 3 for 50c.

Indian Chief. Very large; standards suntan tinged lavender and pink, falls velvety crimson; fragrant; tall, well branched; midseason. 20c each, 3 for 55c.

Juniata. Large; lavender-blue, falls slightly deeper, almost violet-blue, deeper than Pallida Dalmatica; fragrant; 3-3½ ft.

Kochi. A velvety royal deep reddish-purple or claret-purple, falls slightly deeper, a color greatly admired; good size; fragrant; blooms freely; very early; vigorous.

Lent A. Williamson. Very large; standards lavender-violet, falls drooping, velvety violet-purple; early midseason; 3-3½ ft.; very fine.

Lord Lambourne. Large; standards slightly smoky lavender, barely tinged pink; falls reddish-crimson; tall; blooms freely.

Lucrezia Bori. Very large; standards ruffled, golden yellow; falls deeper; fragrant; very tall. 35c each, 3 for 90c.

Magnifica. Standards light violet-blue, falls rich dark reddish violet; very large, fragrant. 25c each, \$2.50 per doz.

Majestic. Very large; standards light lavender, falls broad, rich velvety raisin-purple; fragrant; tall. 25c each, 3 for 65c, \$2.50 per doz.

Mary Barnet. Large; light, almost sky blue tinged lavender; fragrant; tall; early midseason. 20c each, 3 for 55c, \$2.00 per doz.

Melodric. Large; rich blue-black. 20c each, 3 for 55c.

Michel Angelo. Very large; standards smoky deep lavender; falls slightly deeper; light fragrance; tall. 50c each.

Midwest Pride. Large; rich deep amethyst; tall. 20c each.

Morning Glory. Large; red-violet to amethyst; fine form; vigorous; blooms freely. 20c each, 3 for 50c.

Morning Splendor. Fine; very large; standards deep lavender-violet, falls velvety reddish-purple; good substance; delightful fragrance; midseason; tall. 15c each, 3 for 40c, \$1.50 per doz.

Mrs. Valerie West. Very large; good substance; standards broad, massive, bronze flushed lavender, falls deep, rich velvety red purple; midseason; fine. 20c each, 3 for 55c, \$2.00 per doz.

Naranja. Yellow, falls overcast subdued orange. 35c each.

Nene. Immense; standards light lavender tinged pink; falls old-rose to maroon; fragrant. 30c each, 3 for 75c.

Noweta. General effect a beautifully frilled soft pink, slightly orchid; light fragrance. 20c each, 3 for 55c.

Opera. Standards violet-red, falls velvety mahogany-red, a bright bronze-red; 2½ ft. 20c each, 3 for 55c, \$2.00 per doz.

Orientalis Blue. Intense blue, almost purple; small flowers; blooms freely; excellent for naturalized planting, in the rocky and at the borders of pools; 2-2½ ft.

Pallida Dalmatica. Very large; standards clear lavender-blue, falls slightly deeper; broad, heavy foliage; blooms freely.

Pink Satin. Large; standards decided pink, tinged lavender; falls a little deeper; attractive; tall. 25c each, 3 for 65c.

Pluie d'Or (Golden Rain). A fine deep clear yellow; tall; large; blooms freely; excellent for landscape work. 20c each, \$2.00 doz.

LIBERTY IRIS, continued

Prices: 15c each, 3 of a kind for 30c, \$1.00 per doz., except as noted. Six or more of a kind at dozen rates. Postage additional if by parcel post, 2c each, not less than 10c per package, for Missouri and adjoining states.

Prairie Gold. Deep rich golden yellow; fragrant; medium early; blooms freely. 15c each, 3 for 40c, \$1.50 per doz.

Prosper Laugier. Standards reddish-bronze, sometimes called fiery-bronze, falls velvety ruby-purple; fragrant; good size; midseason; 2½ ft.

Prospero. Very large; standards lavender suffused yellow toward the base; falls purple, slightly shaded reddish; fragrant; late midseason; fine; 3½ ft. 15c each, 3 for 40c, \$1.50 doz.

Pumila Blue. Dwarf; excellent for rock garden and border; bluish-purple; early. 20c each, 3 for 55c, \$2.00 per doz.

Queen of May. Large; lilac-pink to orchid-pink, falls deeper; fragrant; blooms freely; early midseason; one of the best of the pink class; 2½-3 ft.

Rameses. Rose-pink and buff shading to yellow near the edges; tall; blooms freely. 15c each, 3 for 40c.

Red Dominion. Standards violet-red; falls rich, velvety purplish-red; medium height. 20c each, 3 for 55c.

Roseway. Standards purplish-rose, falls deeper; fragrant; vigorous; blooms freely.

San Francisco. White, distinctly edged blue and lavender; one of the largest and best of this color. 30c each.

Seminole. Standards violet-red, falls velvety mahogany-red to deep crimson; one of the deepest and brightest red Irises; 2-2½ ft.

Sensation. Very large; blue tinted violet, falls deeper; effect, cornflower-blue; tall. 25c each, 3 for 65c.

Shekinah. Clear soft yellow, base shaded deeper; falls veined olive; fragrant; midseason; blooms freely; one of the best yellows; 2½-3 ft.

Sherwin Wright. Pure golden-yellow, slightly netted brown at base; fragrant; vigorous; blooms freely; 1½-2 ft.

Snow King. Very large, glistening, waxy white; beautiful form; very fragrant; tall; fine. 60c each, 3 for \$1.50.

Snow White. Excellent medium-priced white. 20c each.

Souv. de Madame Gaudichau. A rich deep velvety purple iris of fine form; tall; early. 20c each, \$2.00 per doz.

Treasure Island. Very large; canary yellow; standards ruffled; fragrant; tall; well branched; fine. \$1.00 each.

Venus de Milo. Very large; glistening snow-white; standards slightly ruffled; fragrant; tall. 25c each; 3 for 65c.

Violacea grandiflora. Large; standards lavender-blue, falls slightly deeper, almost violet-blue; late; vigorous; good growth; blooms freely; excellent; 3 ft.

War Eagle. Large; standards Daphne-pink, falls dahlia-carmine; general effect deep red; large; tall. 35c each.

Yellow Hammar. Clear primrose yellow; very fragrant; 18 in.; medium early; blooms freely. 15c each, 3 for 40c, \$1.50 doz.

Zuni. Very large; standards suntan; falls rich velvety red-purple, almost light mahogany; tall; well branched; blooms freely; one of the best of its color. 25c each, 3 for 65c.

Special Iris Collection

Liberty Irises, assorted, our selection, named: Half dozen, 3 varieties, 50c (postpaid, 60c); one dozen, 6 varieties, \$1.00 (postpaid, \$1.15); twenty-five, 3 varieties, \$1.75 (postpaid, \$2.00); one hundred, 8 varieties, \$5.00 (postpaid, \$6.00).

Complete Landscape Service

We have a competent landscape architect and are prepared to render complete service, from the drawing of the plans to furnishing and planting the trees and plants. If interested in this service write us for particulars, giving the size of your property.

Peonies are Easily Grown

Hardy as the oak, Peonies are so easily grown that little need be said. Often, in neglected gardens, one sees large clumps that have flourished and bloomed for years. Yet they amply repay all attention given them. They thrive in almost any good, well drained soil, are best in full sun but succeed with shade part of the day. Plant 3 feet apart. The early varieties usually begin blooming here about May 5 to 8.

The name and date in parenthesis is the originator or introducer and date of introduction. The guards are the wide outer petals. The type of flower is designated as follows:

Crown. Wide center or crown petals with narrower, shorter petals forming a collar or ring between them and the guards.

Bomb. Center petals of uniform width but narrower than the guards and forming a globe within the guards.

Semi-rose. Flowers that would be classed as rose but for an occasional pollen bearing stamen.

Rose. Perfectly full, all petals wide, no stamens. The center petals may not be as wide as the guards but if quite distinct it would be a bomb.

PEONY SIZES AND PRICES

Prices quoted are for good strong divisions of 3 to 5 eyes from blooming plants. We consider them fully equal to one-year plants usually sent out. If you want something larger order 5 to 8 eyes at fifty per cent advance or 8 to 10 eyes at double the printed price. 3 of a kind at dozen rates.

PEONIES BY PARCEL POST

If wanted by parcel post allow 8c for the first plant and 2c for each additional plant if within 150 miles of Sarcoxie. For the balance of Missouri and adjoining states 10c for the first plant and 3c for each additional plant. For more distant states 15c for the first plant and 8c for each additional plant. Any balance will be refunded.

Agnes Mary Kelway (Kelway). Large, light pink; slightly violaceous, creamy collar; fragrant; crown type; midseason; tall; vigorous; blooms freely. 50c each, \$5.00 per doz.

Alsace Lorraine (Lemoine, 1906). Pointed creamy-white petals suffused with a golden light from the stamens, and somewhat suggesting a water lily. A good lawn variety; late. 50c each.

Augustin d'Hour (Calot, 1867). Deep rich, brilliant solferino-red, slight silvery reflex; large; bomb type; midseason; vigorous, medium tall; fine. 50c each, \$5.00 per doz.

Baroness Schroeder (Kelway, 1889). Large, delicate flesh becoming white; globular, compact, rose type flowers; fragrant; midseason; blooms freely. 50c each, \$5.00 per doz.

Canari (Guerin, 1861). Large; guards white, barely tinted flesh, center sulphur-white, becoming pure white; fragrant; bomb type; long, strong stems; late midseason; blooms freely. 25c each, \$2.50 per doz.

Cherry Hill. (Thurlow, 1915). Very deep garnet; semi-rose type; midseason; long stems. 50c each.

Claire Dubois (Crousse, 1886). Very large, clear satiny-pink, edged silvery; globular rose type flowers; broad incurved petals; fragrant; late; long stems. 50c each \$5.00 per doz.

Cornelia Shaylor. Outer petals faint pink softening to white, center deeper shell pink; well formed; late. 60c each.

Crown of Gold; Couronne d'Or (Calot, 1873). Snowy-white, reflecting the golden stamens and lighting up the flower; center petals flecked and edged carmine; large; semi-rose type; fragrant; late; upright, vigorous with strong stems. 35c each, \$3.50 per doz.

Duc de Cazes (Guerin, 1850). Broad lively carmine-red guards, center rose; fragrant; crown type; midseason; blooms freely. 25c each, \$2.50 per doz.

Duchesse de Nemours (Calot, 1856). Superb ivory white, greenish markings towards center, becoming pure white; especially beautiful in the half open bud; medium to large; crown type; medium early; strong; vigorous; good stems; blooms freely. 30c each, \$3.00 per doz.

Duchesse d'Orleans (Guerin, 1846). Large carmine pink guards, center soft pink and salmon, becoming amber-yellow; medium to large; bomb type; fragrant; midseason; strong, vigorous; very tall; blooms freely. 25c each, \$2.50 per doz.



Peonies are easily grown.

Duke of Wellington (Calot, 1859). Broad white guards, center very full, sulphur-white becoming pure white; fragrant; bomb type; late; blooms freely; vigorous; long, strong stems; very large. 25c each, \$2.50 per doz.

Edulis superba (Lemon, 1824). Beautiful bright, deep rose-pink; very fragrant; large; of good form; one of the earliest; crown type; strong, vigorous; blooms freely over a long season; excellent both for the lawn and cut flowers; long stems. 30c each, \$3.00 per dozen.

Elwood Pleas. Delicate pink, or white tinged pink; midseason; growth strong. 60c each, \$6.00 per doz.

Felix Crousse (Crousse, 1881). Brilliant, rich, even dazzling ruby-red; large, globular, solidly and compactly built; bomb type; fragrant; midseason; growth strong; vigorous; blooms freely; fine. 40c each, \$4.00 per doz.

Festiva maxima (Mieliez, 1851). For enormous size combined with wondrous beauty it has stood unsurpassed for 80 years; pure paper white, some center petals flecked purplish-carmine; early; rose type; very fragrant; vigorous; very long, heavy stems. 35c each; \$3.50 per doz.

Frances Willard (Brand, 1907). Large, semi-rose type flowers, opening blush-white with an occasional carmine touch, and becoming pure white; midseason. 60c each.

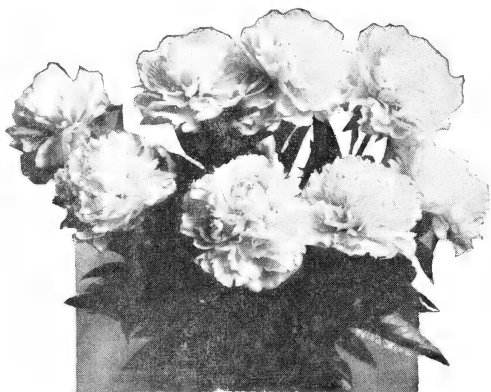
Francois Ortegat (Parmentier, 1850). Deep purplish-crimson; golden stamens; semi-rose type; midseason to late; medium size; blooms freely. 40c each, \$4.00 per doz.

Georgiana Shaylor (Shaylor 1908). A very large, flat flower, light rose-pink with a few flakes of crimson; pleasing fragrance; medium height; late-midseason. 50c each.

Jeanne d'Arc. Broad soft pink outer petals, center sulphur white and blush, striped light crimson; midseason. 40c each, \$4.00 per doz.

Jubilee (Pleas, 1908). Very large, flat ivory-white flowers; petals long, narrow and loosely arranged; midseason. 50c each.

PEONIES, continued



Crown of Gold, famous for its beauty (Page 24)

Judge Berry (Brand, 1907). Very large, flat flowers of a delicate flesh pink; growth strong, blooms freely, very early. 75c each, \$7.50 per doz.

Karl Rosenfield (Rosenfield, 1908). Very large; dark crimson; globular, compact, semi-rose type flowers; midseason; tall; blooms freely. 40c each, \$4.00 per doz.

Kelway's Glorious (Kelway, 1909). Immense, full double, rose-type blooms; creamy-white barely tinted rose; very fragrant; late midseason. \$1.25 each.

Lady Alexandra Duff. Immense; light blush becoming white; fragrant; midseason; blooms freely. 45c each, \$4.50 per doz.

La France (Lemoine, 1901). Very large; soft apple blossom pink, guards with a splash of crimson through the center; rose type; fragrant; midseason; medium tall; blooms freely. 90c each.

La Perle (Crousse, 1885). Large, compact globular rose-type bloom, white tinted lilac, blush center, flecked carmine; fragrant; midseason; vigorous. 40c each, \$4.00 per doz.

La Cygne (Lemoine, 1907). Large, globular, semi-rose type; pure white; delightfully fragrant; erect; medium tall, stiff stems; midseason. \$1.25 each.

Lillian Wild (Wild, 1933). Very large; delicate flesh becoming pure white; compact rose type flowers; late; blooms freely. In common with other very large varieties, it takes three years for it to reach its maximum size. \$1.00 each.

Loveliness (Hollis, 1907). Large compact, flat rose-type; hydrangea-pink becoming blush-pink; tall; late. \$1.00 each.

Madame Calot (Miellez, 1856). Very delicate pink becoming white; fragrant; large; rose-type; early; strong stems; blooms freely. 35c each, \$3.50 per doz.

Madame de Verneville (Crousse, 1885). An enormous producer of fine, large, compact flowers literally packed with petals; broad white guards, center slightly blush becoming pure white, flecked carmine; delightfully fragrant; bomb type; early; vigorous; medium height; good stems. 25c each, \$2.50 per doz.

Madame Ducl (Mechin, 1880). A very large, very double, perfectly formed, globular bloom, the center petals as beautifully incurved as in a chrysanthemum. Bright, silvery-pink; fragrant, bomb type; midseason to late; vigorous; blooms freely. 50c each, \$5.00 per doz.

Marguerite Gerard (Crousse, 1882). Large, light hydrangea-pink; semi-rose type; late; blooms freely. 40c each, \$4.00 per doz.

Marie Jacquin (Verdier). Large, globular; creamy-white tinted flesh; when fully open the golden stamens at the center suggest the name Water Lily Peony; semi-double; midseason; strong; vigorous; blooms freely. 50c each, \$5.00 per doz.

Marie Lemoine (Calot, 1869). Massive very compact, rose type blooms, with a somewhat flat center; ivory white, an occasional carmine line on the central petals; fragrant; very late; vigorous. 50c each, \$5.00 per doz.

Martha Bullock (Brand). Bright old-rose-pink, center lighter rose and pink; fragrant; large; tall. \$1.00 each.

Masterpiece (Keyway, 1895). Large, intense, brilliant cerise; semi-rose type; fragrant; midseason. 50c each, \$5.00 per doz.

Modeste Guerin (Guerin, 1845). Lively, bright, very deep pink with a purplish cast (solferino-red); very fragrant; bomb type; excellent form; midseason; upright habit; blooms freely. 50c each, \$5.00 per doz.

Mons. Jules Elie (Crousse, 1888). Immense, globular, very full, bomb type flowers, on strong stems; glossy flesh-pink shading to deeper rose at base; very fragrant; early midseason; blooms freely. 50c each, \$5.00 per doz.

Mons. Martin Cahuzac (Dessert, 1899). Globular, semi-rose type; dark purple-garnet, with a black reflex; one of the darkest; midseason. 75c each.

Octave Demay (Calot, 1867). Large; delicate hydrangea-pink; fragrant; crown type; early; blooms freely; medium height; strong stems. 35c each, \$3.50 per doz.

Queen Emma. A very large, very full, fragrant, bright, light pink rose type flower; midseason to late; blooms freely; erect habit; compact growth; stems medium long; the flowers keep and ship well. 40c each, \$4.00 per doz.

Reine Hortense (Pres. Taft) (Calot). Large hydrangea-pink minutely splashed on a white background, center flecked crimson; fragrant; semi-rose type; tall; midseason. 75c each.

Rosa Bonheur (Dessert, 1905). Soft flesh-pink, very large, flat, rose-type; growth strong, but rather dwarf; blooms freely; midseason. \$1.00 each.

Sarah Bernhardt (Lemoine). Apple blossom pink, the petals tipped white; compact, semi-rose type; fragrant; late midseason. 75c each, \$7.50 per doz.

Sarcoxie. A lustrous dark rich red; broad guards, center petals narrow; tall, thrifty; long stems. 75c each.

Single Red. Similar in shape to Oriental Poppies. 50c each.

Therese (Dessert, 1904). Very large, rich satiny-pink, center becoming lilac-white; compact, rose type; very fragrant; midseason; medium tall. 60c each.

Venus. Very large; hydrangea-pink; fragrant; crown type; midseason; tall; blooms freely. 50c each, \$5.00 per doz.

Walter Faxon (Richardson). Bright, delicate, uniform rose-pink; medium size but fine color; globular semi-rose type; slightly fragrant; midseason; blooms freely. \$1.00 each.

Zoe Calot (Miellez, 1855). Very large, very full, globular bloom, soft pink tinted lilac; fragrant; midseason; growth strong, medium height; very stiff stems; blooms freely. 30c each, \$3.00 per doz.

PENNANT MIXED PEONIES

If you want something good at a moderate price and are not particular what varieties and colors, just so they are nice, order Pennant Mixed. This is not a cheap lot of undesirable varieties, but a really good mixture of named Peonies, the leading commercial varieties predominating. Do not ask for certain colors of these as they are grown mixed. 25c each, \$2.00 per doz.; 50 or more at 16c each.

PEONY COLLECTIONS

PEONY COLLECTION A, \$1.10 PREPAID

2 pink, 1 white and 2 red, our selection, prepaid \$1.10

PEONY COLLECTION B, \$2.00 PREPAID

1	Festive maxima. Early; white flecked carmine	.35
1	Crown of Gold. Late; white flecked carmine	.35
1	Madame Calot. Delicate pink becoming white	.35
1	Duchesse de Nemours. Superb ivory-white	.30
1	Edulis superba. Early; deep rose-pink	.30
1	Duchesse d'Orleans. Pink and salmon becoming amber	.25
1	Francois Orgeat. Deep purplish-crimson	.40

Regular price, not prepaid ----- \$2.30
SPECIAL: The 7 prepaid for ----- \$2.00

PEONY COLLECTIONS continued on next page

PEONY COLLECTION C, \$3.75 PREPAID

1	Madame de Verneville. Early; white flecked carmine	.25
1	Festiva maxima. Early; white flecked carmine	.35
1	Crown of Gold. Late; white flecked carmine	.35
1	Duchess de Nemours. Superb ivory-white	.30
1	Canari. Large; white; late midseason	.25
1	Mons. Jules Elie. Bright silvery lilac-pink	.60
1	Edulis superba. Early; deep rose-pink	.30
1	Zoe Calot. Very large; soft pink, tinted lilac	.30
1	Queen Emma. Very large; bright light pink	.40
1	Francois Ortegat. Deep purplish-crimson	.40
1	Felix Crousse. Brilliant, dazzling ruby-red	.40
1	Augustin d'Hour. Rich, brilliant solferino-red	.50
	Regular price, not prepaid	\$4.40
	SPECIAL: The 12 prepaid for	\$3.75

PEONY COLLECTION D, \$9.00 PREPAID

1	Baroness Schroeder. Delicate flesh becoming white	.50
1	Kelway's Glorious. Immense creamy white; rose-type	1.25
1	La Cygne. Pure white; midseason; tall	1.25
1	Reine Hortense. Large hydrangea pink; midseason	.75
1	Lillian Wild. Very large; white; late; fine	1.00
1	Rosa Bonheur. Very large; flesh pink; midseason	1.00
1	Sarah Bernhardt. Apple-blossom pink tipped white	.75
1	Therese. Very large; rich satiny pink; fragrant	.60
1	Walter Faxon. Bright delicate rose-pink	1.00
1	Karl Rosenfield. Very large; dark crimson	.40
1	Modeste Guerin. Very deep pink, almost red	.50
1	Mons. Martin Cahuzac. Dark purple-garnet	.75
	Regular price, not prepaid	\$9.75
	SPECIAL: The 12 prepaid for	\$9.00

Gooseberries

Houghton. Medium size but bears profusely; resistant to mildew; a northern slope or slight shade is best. 2 yr., No. 1 25c each. 5 or more at 18c each.

Champion (Oregon). Large; green; productive; late. 2 yr. No. 1, 25c each, 5 or more at 18c each.

Youngberry

A cross between Loganberry and Dewberry; flavor much like Red Raspberry. Tip plants, 50c per 10, 90c per 25, \$3.00 per 100.

Boysenberry

Very large; said to be a hybrid of Blackberry, Raspberry and Logan berry; too new to tell how it is adapted to this section. Tip plants, 5 for 30c, 10 for 55c, \$1.00 for 25, 50 or more at \$3.50 per 100, 500 or more at \$30.00 per 1000.

Raspberries

50 or more of a kind at 100 rate, 500 or more at 1000 rate..

Chief. Red; excellent; about 10 days earlier than Latham. 50c per 10, 90c per 25, \$3.00 per 100, \$25.00 per 1000.

Cumberland. One of the best blackcaps; large, firm; excellent quality; early to midseason; hardy, vigorous, productive; plant 4 x 7 ft. 50c per 10, 90c per 25, 50 or more at \$3.00 per 100, 500 or more at \$25.00 per 1000.

Latham. Large; brilliant red; hardy, productive. 50c per 10, 90c per 25, \$3.00 per 100, \$25.00 per 1000.

Blackberries

Early Harvest. Medium size but juicy; sweet; hardy; very early. 50c per 10, 90c per 25, 50 or more at \$3.00 per 100, 500 or more at \$25.00 per 1000.

Eldorado. Medium to large; oblong-conical; juicy, sweet, mid-season. 60c per 10, \$1.25 per 25, 50 or more at \$4.00 per 100, 500 or more at \$35.00 per 1000.

Dewberries

Lucretia. Large, often 1½ in. long; sweet; early. 50c per 10, 90c per 25, \$3.00 per 100, \$25.00 per 1000.

Strawberries

In Southern Missouri and farther north strawberries usually give better results when planted in the spring. They will be quoted in the spring catalog, or by letter on request.

Currants

Should have partial shade or a nothern slope. Red and white, 2 yr., 1 for 25c. 2 for 45c. 3 or more at 20c each.

Asparagus

Mary Washington. Large; productive; resistent to rust; an excellent variety. 1 yr., 20c per doz.; 35c per 25; 90c per 100. 2 yr., 30c per doz.; 50c per 25; \$1.50 per 100.

Rhubarb or Pie Plant

Large, tender, delicately flavored stalks; productive. 1 yr., 10c each; 3 for 20c; 6 or more at 50c per doz. 2- yr., 12c each; 3 for 30c; 6 or more at 75c per doz. Jumbo size, 15c each; 3 for 40c, 6 or more at \$1.50 per doz.

Grape Vines

Agawam. Dark reddish-brown; large; juicy, rich; productive.

Concord. Large; the most popular black grape; juicy; sweet; hardy; productive; vigorous; mid to late August.

Fredonia. Black; bunch and berries large; good flavor; productive; early; has given good results in Missouri.

Moore Early. Black; large; valued for size, hardiness; productiveness and season, about 2 weeks before Concord.

Niagara. Greenish-white to pale yellow; sweet; productive.

Prices of Grapes	Each	5 at	25 at	50 at
Agawam, 2 yr. No. 1.....	.20	.15	.12	.10
Concord, 2 yr. No. 1.....	.10	.08	.07	.06
Fredonia, 2 yr. No 1.....	.25	.22	.20	.18
Moore Early, 2 yr. No. 1.....	.12	.10	.08	.07
Niagara, 2 yr. No. 1.....	.20	.15	.12	.10

Pear Trees, Standard

Prices of Pear	Each	Per 10
X size, 2 year, 9/16 to 11/16 in. caliper, about 4 to 5 feet50	4.50

Any 5 or more at the 10 rate; 50 or more at 100 rate.

Bartlett. Large; good quality; latter August.

Garber. Large; resistent to blight; early September.

Kieffer. Large; resists blight; plant Garber to pollenize.

Seckel. Yellowish-brown, russety-red cheeks; autumn; small but very best quality; productive; resistent to blight.

Apricots

Superb. Large; yellow; ripens between cherries and peaches.

Prices of Apricots	Each	5 at
X size, 9/16 to 11/16 in. caliper, about 4 to 6 feet60	.50
Standard size, 7/16 to 9/16 in .caliper about 3 to 3½ feet45	.40
Medium size, about 3 to 4 feet35	.30

Almond, Hard Shelled

As hardy as the peach; flavor much like bitter almond.

Prices of Almond, Hard Shelled	Each	5 at
X size, 9/16 to 11/16 in. caliper, about 4 to 6 feet60	.50
Standard size, 7/16 to 9/16 in caliper, about 3 to 3½ feet45	.40

Apple Trees

Prices of Two-Year Apple	Each	5 at	25 at	100 at
XX size 11/16 in. caliper up, about 5 to 6 feet	.55	.50	.45	.42
X size, 9/16 to 11/16 in. caliper, about 4 to 6 feet	.45	.40	.35	.33
Standard size, 7/16 to 9/16 in. caliper, about 3½ to 4½ feet	.35	.30	.27	.24
Medium size, about 3 to 4 feet	.25	.23	.20	.18
Whips	.15	.12½	.10	.08

Any 5 or more at the 5 rate; any 50 at the 100 rate.

Cortland. Dark red; sweet, juicy; Oct.; bears young.

Florence Crab. Large; white overspread red; latter summer.

Grimes Golden. Beautiful yellow; fine quality; Oct.-Dec.

Livland. Waxy white striped light crimson; crisp, fine-grained, juicy, fine quality; bears young; latter June.

Maiden Blush. A large, clear yellow autumn apple.

Red Delicious. Colors early and is red almost all over..

Red Duchess. Yellow overspread with red; summer; bears young.

Red Jonathan. Deep red; fine quality; October and later.

Red June. Very red; juicy; subacid; good; bears young; June-July.

Red Rome Beauty. Large; bright red; good; early winter.

Red McIntosh. Deep red; good size; excellent; latter summer.

Red Stayman Winesap. Deeper red than the old Stayman; firm, juicy, subacid; good; keeps late; bears young.

Transcendent Crab. Yellow, crimson cheek; Aug.-Sept.

Wealthy. Medium to large; brilliant red striped; crisp, very juicy.

Winesap. Bright deep red; flesh yellow; very rich, firm; very juicy; sprightly subacid; very good; winter.

Yellow Delicious. Large; golden yellow; late winter; excellent.

Yellow Transparent. Yellowish-white; fine grained; juicy; sprightly subacid; mid-June; hardy; very young, abundant bearer.

Plum Trees

Prices of Plum Trees	Each	5 at	25 at	100 at
XX size, 11/16 in. caliper up, about 5 to 6 feet	.50	.45	.40	.37
X size, 9/16 to 11/16 in caliper up, about 4 to 5 feet	.40	.35	.33	.30
Standard size, 7/16 to 9/16 in. caliper, about 3½ to 4½ feet	.35	.30	.27	.25
Medium size, 5/16 to 7/16 in. caliper, about 3 to 4 feet	.25	.22	.20	.18
Light size, about 1½ to 3 feet	.20	.17	.15	.14

Any 5 or more at the 5 rate; any 50 at the 100 rate.

America. Large; yellow with red cheek; juicy; cling; hardy; productive; bears young; one of the most reliable.

Black Beauty. Dark red to black; medium size but bears young and abundantly; ripens about mid-July.

Burbank; Japan. Large; bright dark red on yellow ground; cling; flesh yellow, firm, juicy; latter July; bears young and profusely.

Deck's Damson. Blue; free-stone when thoroughly ripe; larger than common Damson; esteemed for canning and preserving.

Omaha. Large, red with slight yellow cheek; firm; semi-cling; moderately productive; early August; upright growth.

Opata. Dark purplish-red with blue bloom; flesh green, firm, sprightly acid; medium size but bears young and freely.

Sapa. Early; rich dark purple-red skin, flesh and juice; medium to medium large; bears very young; very hardy.



Cherries give quick results

Cherry Trees

Prices of Cherry Trees	Each	5 at	25 at
XXX size 2 year, 11/16 in. caliper, up about 3½ to 4½ feet-----	.60	.55	.50
Early Richmond; May Cherry. Bright red; May-June.			
English Morello. Dark red, nearly black; latter June-July.			
Montmorency. A week to 10 days later than Early Richmond.			

Peach Trees

Prices of One-Year Peach	Each	5 at	25 at	100 at
XX size, 11/16 in. caliper up, about 5 to 6 feet-----	.45	.35	.28	.25
X size, 9/16 to 11/16 in. caliper, about 4 to 6 feet-----	.35	.30	.25	.22
Standard size, 7/16 to 9/16 in caliper, about 3½ to 4½ feet-----	.30	.25	.20	.17
Medium size, about 3 to 4 feet-----	.25	.20	.15	.12
Light size, about 1½ to 2 feet-----	.20	.15	.12	.10

Any 5 or more at the 5 rate; any 50 at the 100 rate.

Belle of Georgia. Very large; white, red cheek; flesh white, firm, juicy, good; freestone; mid August; productive.

Carman. Large; creamy white, splashed red; flesh white, juicy, rich, sweet; nearly a freestone; early; productive.

Champion. Large; white, red cheek; freestone; flesh white, sweet, juicy, rich; early August; one of the hardiest peaches.

Crawford Early. Very large; yellow, deep crimson cheek; freestone; flesh yellow, rich, slightly subacid; early August.

Early Elberta. Freestone; about a week earlier than Elberta.

Elberta. Very large; yellow, crimson cheek; flesh yellow, firm, juicy, good; freestone; mid August; productive.

Greensboro. Large; creamy white and crimson; semi-cling; flesh white, very juicy; mid-June; excellent, bears well.

Hale Haven. Large; yellow; freestone of high quality, ripening about ten days or two weeks ahead of Elberta.

Heath Cling. Very large; creamy white, sometimes faintly blushed; flesh white, rich, very juicy; fine; latter Sept.

Indian Blood Cling. The old fashioned variety with blood-red flesh which is esteemed for canning and preserving; late.

J. H. Hale. Large; yellow with red cheek; fine grained; a little earlier and more round than Elberta.

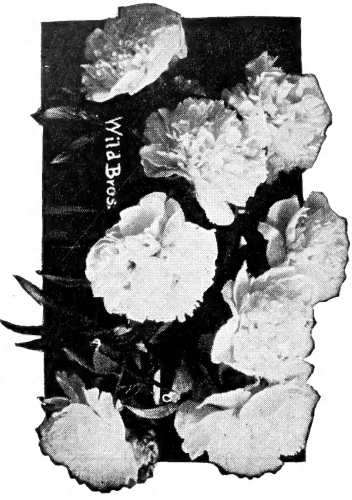
Oldmixon Cling. Large; creamy white, red cheek; flesh white, red at pit; juicy, sweet, rich, fine flavor; latter August.

Victor Early. Very early; white with pink cheek; freestone.

Postmaster: Notify sender (Form 3547)
if addressee has moved; give new address
Return if unknown. Postage guaranteed.
Catalog 3rd class. May be opened for
postal inspection.

SARCOXIE NURSERIES **PEONY FIELDS**

WILD BROS. NURSERY CO.
SARCOXIE, MO.



Duchesse de Nemours Peony (Page 24)

Plant Fruits, Trees, Flowers, This Fall

Division Fruit & Vegetable Crops
Bureau of Plant Industry
U. S. Dept. of Agriculture
Washington, D. C.

SEC. 562 P. L. & R.

U. S. POSTAGE
PAID
Sarcoxie, Mo.
Permit No. 2

71-111-100-10