

## **Historic, Archive Document**

Do not assume content reflects current scientific knowledge, policies, or practices.



62,89

1927



# AMERICA MORE BEAUTIFUL



**W. T. HOOD & CO.**

**Ginter Park**

**Richmond, Virginia**

We take pleasure in presenting herewith our revised price list. We have, as you will note, materially improved the list in that we have arranged the various fruits in order of ripening as well as describing in a concise manner their qualities. This we feel will very much aid the purchaser in selecting his trees.

**SHIPPING.**—We begin shipping the stock about November 1st and continue until about April.

**MISTAKES** are avoided every possible way, but when they do occur, and when we are promptly notified of such mistakes on receipt of shipment we gladly correct them, and if any stock proves not true to name we will replace it with the genuine or return the price paid for same, but it is mutually agreed between ourselves and our purchasers that we are not to be held liable to pay any more than the original price received for the goods.

**LOCATION.**—Our office and packing grounds are at 3025 Chamberlayne Avenue, Ginter Park, Richmond, Va.

**TERMS**—Cash.

**MONEY** should be sent by Postal or Express Money Orders, Check or Registered Letter.

### Distance for Planting

Often trees are planted too close, thereby retarding their growth and development. The following we consider advisable:

	Feet apart each way.
Standard Apples .....	25 to 35
Peaches .....	15 to 20
Standard Pears .....	20
Dwarf Pears .....	10
Sour Cherries and Nectarines.....	20
Sweet Cherries .....	25 to 40
Plums and Apricots .....	20
Japanese Plums .....	20
Quinces .....	10
Grape Vines .....	8 to 10
Gooseberries and Raspberries.....	4
Pecans .....	40 to 60

### Number of Trees or Plants Required Per Acre When Planted Various Distances Apart

1 foot apart each way.....	43,560
2 feet apart each way.....	10,890
3 feet apart each way.....	4,840
4 feet apart each way.....	2,725
5 feet apart each way.....	1,742
6 feet apart each way.....	1,210
7 feet apart each way.....	888
8 feet apart each way.....	680
9 feet apart each way.....	537
10 feet apart each way.....	435
11 feet apart each way.....	360
12 feet apart each way.....	302
13 feet apart each way.....	257
14 feet apart each way.....	222
15 feet apart each way.....	193
16 feet apart each way.....	170
17 feet apart each way.....	150
18 feet apart each way.....	134
19 feet apart each way.....	120
20 feet apart each way.....	108
25 feet apart each way.....	69
30 feet apart each way.....	48
40 feet apart each way.....	27
50 feet apart each way.....	17
60 feet apart each way.....	12

If it is desired to plant a certain number of feet apart in the rows, and have the rows a different number of feet apart, then multiply the distance in feet between the rows by the distance apart the plants are in the rows, the product of which divided into 43,560 will give the number of trees, etc., required per acre.

# Hardy Trees

*and* PLANTS *for*  
EVERY PLACE  
AND PURPOSE

## C O N T E N T S

Preparation for Planting.....	4
Fruit Department .....	7
Nut Bearing Trees .....	21
Ornamental Department .....	23
Trees and Plants for Special Purposes.....	25
Evergreens .....	29
Shrubs .....	37
Roses .....	41
Climbing Vines .....	46
Peonies .....	47
Bulbs and Hardy Perennials.....	48

W. T. HOOD & CO.

Ginter Park

Richmond, Va.

# Introductory



## Responsibility

After an experience of fifty years in the nursery business, all of which time has been spent in business at this place, we take pleasure in presenting this new edition of our catalogue to our friends and patrons, hoping that they will accept our thanks for the generous patronage and confidence they have bestowed upon us in the past. It will be our aim in the future, by strict attention to business and honest dealing in all transactions, to merit a continuance of the same. We will direct our efforts and spare no time or money to produce the very best stock than can be grown, and recommend such fruits as have proven to be of value. New fruits that have not been fully tested, we will recommend planting only in small lots, which will be the means of disseminating them, and may be the cause of having many new fruits that will prove to do as well and be as popular all over the country as the old and well known varieties.

## Quality

Our motto is to send out only the highest grade stock. While we do not claim to sell cheaper trees than any other nurseryman, we are satisfied that our stock will compare favorably with other reputable concerns.

## Service

While we endeavor to secure only the best class of help, and use every effort to satisfy our patrons, if mistakes occur, we are always willing to correct same.

Our nurseries are located five miles north of the city and we employ throughout the year in propagating and cultivation of our stock, a large force of hands and teams.

We have now under cultivation 300 acres of land which is well adapted to the production of vigorous trees and plants. We have recently added a greenhouse department, where we are producing a general line of greenhouse, bedding and perennial plants.

## Prices

We have priced our stock moderately. No one wants to pay more for an article than it is worth, but price alone should not be the only basis on which to place your order. In addition to the quantity and quality of the articles you purchase, prices should include, as it does with us, a certain responsibility as to trueness of variety, a feeling of confidence in case you have cause for adjustment, as well as a right to advice before and after planting.

Agents must not sell at any less price than listed in this price list.



**A Good Foundation Planting.**

## Remarks

To the planter or purchaser of Nursery Stock at least three things are indispensable: First, varieties true to name; second, healthy, vigorous, well-matured trees or plants; and, third, careful and judicious packing, without which all may be lost.

We give the most careful scrutiny to the propagation of varieties, endeavoring by all methods known to us to protect ourselves from error or imposition, and rejecting anything of which we have reason to feel suspicious. By such careful and constant watchings and attention we are warranted in offering our stock as pure and absolutely true to name.

Our soil being of a character best suited to produce the healthiest conditions of growth—that solid, firm texture of the wood, with abundant fibrous roots, so necessary to successful transplanting—we are enabled to offer the products of our Nurseries with entire confidence to planters in all sections of the country.

We give to our packing and shipping careful personal supervision, and to still further protect our patrons, as well as ourselves, against loss in this direction, we employ the most skilled and competent hands to assist us.

By careful consideration of the wants of our trade and faithful attention to business, we hope to continue to merit and receive a share of the patronage of lovers and buyers of choice fruits and ornamentals.

## Guarantee of Genuineness

While we exercise the greatest diligence and care to have all our trees, plants and vines true to label, and hold ourselves in readiness, on proper proof, to replace all that may prove untrue to label free of charge, or to refund the amount paid, it is mutually understood and agreed to, between the purchaser and ourselves, that our guarantee of genuineness shall in no case make us liable for any sum greater than that originally received for said trees, etc., that shall prove untrue.

## Advice to Planters

Select thrifty young trees in preference to old or very large ones; the roots are more tender and fibrous, and they bear transplanting better and are far more apt to live; they can also be more easily trimmed and shaped to any desired form, and, in the course of a few years will usually outstrip the older ones in growth.

## Selection of Varieties

Be careful to choose such as you know to be suited to your section; or leave the selection to us. It is fair to presume that, with the experience of more than forty-five years, giving all our time and talent to the subject, our information must be at least equal to that of the average planter. Varieties are almost innumerable, and many of them either worthless or of little value. Great injustice has been done by the compilation of long lists, which serve only to induce the orchardist to plant a large assortment, many of which generally fail to give satisfaction. A few good varieties, ripening in succession throughout the season, are far preferable for all purposes. What the planter particularly needs is a sufficient number of those varieties which have been tried and have proven themselves worthy of cultivation.

It is our determination to propagate and recommend only such as we confidently believe to be of superior quality.

A few words as to quality of stock may not be inappropriate. Some are induced by low prices to plant second- or third-class trees, saying: "Your first-class stock costs more." Now this is as it should be. It costs more simply because it is worth more—worth more to the nurseryman, and worth tenfold more to the planter.

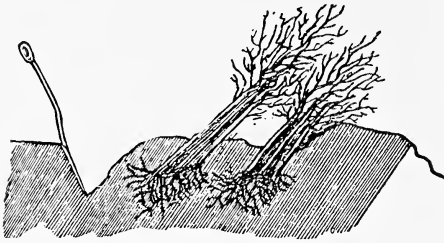
It is useless, yea absurd, to expect a nice, thrifty, productive tree from a poor, weak, stunted scion. Men deal not so in the animal kingdom; the best of the flock is always the choice of the well-informed breeder.

Let us insist upon it that you plant nothing but strictly first-class trees, which will always cost first-class prices.

## The Soil

A rich loam is the best for fruit, made sufficiently dry by artificial draining, if necessary; but all soils can be made available by judicious treatment.

Please do not sell any varieties not listed in this price list.



The right way to heel-in trees.

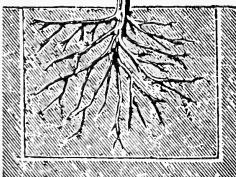
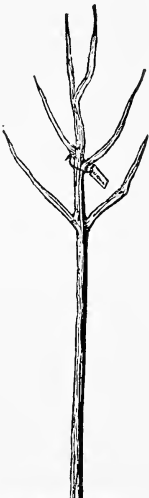
shorten the tops to half a dozen good buds, except for fall planting, when it is better to defer top-pruning until the following spring, which should be done before the buds begin to push. If not prepared to plant when your stock arrives, "heel-in," by digging a trench deep enough to admit all the roots, and setting the tree therein at an angle of about 45 degrees, carefully packing all earth about the roots and body of tree about one foot above ground, taking up when required. Never leave the roots exposed to the sun and air.

## Preparation for Planting

Plow and subsoil repeatedly, so as to thoroughly pulverize to a depth of 12 to 15 inches. When planting upon the lawn or grass plots, remove the sod for a diameter of 4 or 5 feet, and keep this space well worked and free from weeds. Dig the hole deeper and larger than seems necessary, to admit all the roots in their natural position, keeping the surface soil and subsoil separate. Cut off broken and bruised roots and

## Preparing the Roots

Immediately before planting, all the bruised or wounded parts, where cut with the spade, should be pared off smoothly, to prevent decay and to enable them to heal over by granulation during the growth of the tree. Then dip them in a bed of thin mud, which will coat over every part evenly, and leave no portion in contact with the air, which accidentally might not be reached by the earth in filling the hole. The use of water in setting the earth amongst the roots will be found eminently serviceable. Let there be a few quarts poured in while the hole is being filled. If the trees have been out of the ground for a long time, and become dry and shriveled, they should be immersed in water twenty-four hours before planting. Fruit trees sometimes remain with fresh and green branches, but with unswollen buds, till midsummer; instead of watering such at the roots, let the body and branches be wet every evening regularly, about sun-down, with a water-pot or spray, and it will in nearly all cases bring them into active growth.



The right way to prune and plant a tree.

## Shortening-in the Branches

However carefully trees may be taken up, they will lose a portion of their roots, and if the whole top is allowed to remain the demand will be so great upon the roots that in many cases it will prove fatal to the tree. To obviate this it becomes necessary to shorten-in the branches, which should be done at the time of planting, and in a manner to correspond with the loss of roots. If the tree has lost the greater portion of its roots, a severe shortening-in of the branches will be necessary; if only a small portion of the roots have been cut off, more moderate pruning will be sufficient. Particular attention to this matter will save many trees that otherwise would perish.

## Planting

Fill up the hole with surface soil, so that the tree will stand as it did when in the nursery, after the earth is settled, except Dwarf Pears, which should be planted deep enough to cover the Quince stock, upon which they are budded, 2 or 3 inches. Work the soil thoroughly among the roots, and when well covered tramp or ram firmly with the feet or a post rammer. Set the tree as firmly as a post, but leave the surface filling (of poorer soil) light and loose. No staking will be required except



Wrong way to plant a tree.

with very tall trees. Never let manure come in contact with the roots.



### Mulching

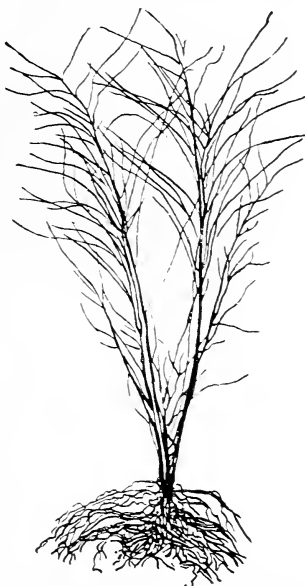
The value of mulching cannot be over-estimated. It increases the fertility of the soil, protects the tree alike from drought and frost, and adds materially to the growth and vigor of young orchards. The trifling cost of material and labor, and the immense benefits derived, commend it to every one. Pine tags, straw, leaves, coarse manure, shavings or tan-bark may be used. Some of these may be produced by every-one.

Remove the mulching from the stems of the tree during the winter, otherwise mice may harbor there and injure it.

We also advise removing the mulch several times during the growing season and loosening up the soil about the trees.

### Cultivating

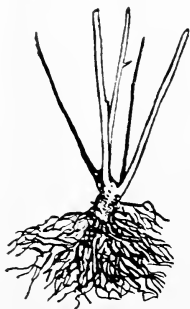
When the transplanting is finished, many persons are under the impression that their work is done, and they can do nothing more for the tree; but this is a very mistaken idea. It is an important matter to have them well planted, but doubly important to have them well cultivated afterwards. Enveloped in weeds and grass, what plant can flourish? What farmer, for an instant, would think of raising a crop of Indian corn in the thick and tall grass of a meadow? Such an idea, he would at once say, would be preposterous. We will say that it is no more impossible than the idea of raising a thrifty orchard under the same treatment. It is indispensably necessary that the ground should be well cultivated to obtain fine fruit. From the neglect of this arises so much of the dissatisfaction of tree-planters. Give to your trees for a few years a clean, mellow and fertile soil, and they will bend under copious loads of fine fruit, and yield to the cultivator his reward. The experiment only is enough to convince any one of the advantage of good culture. Dwarf Pears, more than any other tree, require a deep, rich soil and clean cultivation. In cultivating, great care should be taken not to injure the trees by rubbing the bark off, which will often happen if careless hands (or those that are not) use long singletrees. We use a singletree 18 inches long, always wrapping the end and trace next to the row, and seldom bark a tree. The best tools are a one-horse turn-plow (which every farmer or fruit-grower should have) and a cultivator. We try to cultivate our Nursery after every rain from April to October. The best crops for an orchard are those requiring summer culture—such as potatoes, beans, etc. Winter crops are little better than no culture. Rye is decidedly injurious.



A dormant shrub as it is sent out by the nurseryman.

### Pruning

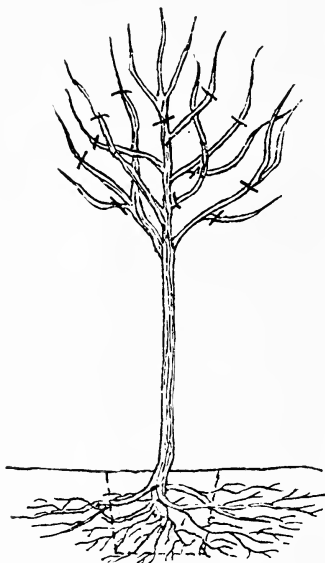
We recommend the greatest care and moderation in this operation, believing, as we do, that upon the whole there is more injury done by the use of pruning instruments in unskilful hands than would result from its entire neglect. Some of the objects sought are to diminish the thick growth, to increase the vigor of the branches, to admit light and air, and to form a well-shaped top. We are opposed to the common practice of trimming trees as high as a man's head, leaving a long, naked stem, exposed to the ravages of insects and the deleterious effects of sun and wind, as well as other sudden and extreme changes of the atmosphere. If a tree be allowed to branch near the ground, its danger from these ills will be lessened, and it will grow much stronger and faster, bear more fruit, which will be more easily gathered, is less liable to be blown down, and, we may add, every way better. If watched closely when young and growing, it will never become necessary to take off large limbs. Occasional pinching or cropping off the ends of a branch to give the tree proper shape, and removing those that cross or crowd each other, will be all that will be needed by most trees. Peach trees would be greatly benefited by an annual shortening-in of the branches, say one-half of the previous year's growth; this may be done at any time after the fall of the leaf until the buds commence swelling



The same shrub properly trimmed for planting.

in the spring. If this is left to be done in the spring, be sure to do it not later than February. Dwarf Pears also need careful attention annu-

ally, to keep them in shape, by cutting back the rampant and straggling shoots; they should be pruned down instead of up, never allowing them to grow high; or the top will become too heavy for the roots, and increase the danger of blowing down.



**The right way to prune a tree.**

### How to Winter Trees Procured in the Fall

The practice of procuring supplies of trees in the fall is becoming more and more general as each season demonstrates its wisdom. It is a more favorable time than spring, because of the colder weather, and the lighter pressure of business with nurserymen, the freighting companies and the planter. Even when fall planting is not desirable, by reason of severity of the climate, the stock may be procured in the fall, and thus be on hand ready for the opportune moment in the spring. To insure success, you have only to get the trees before freezing weather and bury them in the following manner: Choose a dry spot where no water will stand during the winter, with no grass near it to invite mice. Dig a trench, throwing out enough dirt to admit one layer of roots below the surface, and place the trees in it, inclined to an angle of forty-five degrees or more. Widen the trench, throwing the soil among the roots in position, firming well by tramping with foot; place another layer in the trench, reclining the tops on the others, and so on until all are in the trench; then finish by throwing up more soil until the tops of the trees are nearly or quite covered. It is also well to bank up the earth around the sides to insure more thorough protection. The exposed tops should then be covered with

pine boughs, which insures them against any possibility of injury. Care should be taken to fill solid all the interstices among the roots. In the spring the roots will be found to have formed the granulation necessary to the production of new spongioles, and, when planted at the proper time, will start to immediate growth.

### Treatment of Trees Coming to Hand Out of Season

It sometimes happens that trees are received in a frosted state, but if they are properly managed they will not be injured by it. Let the package be put, unopened, in a cellar or some such place—cool, but free from frost—until it is perfectly thawed, when it can be unpacked, and either planted or placed in a trench until convenient to plant. Trees received in the fall for spring planting should at once be unpacked, and a trench dug in a rather dry, sheltered position, when the roots should be well covered. So treated, they will be preserved without the least injury until spring. If they should come to hand late in the spring, and appear much dried, plunge the bundle into a pool of water, there to remain for twenty-four hours or more, if very much wilted, after which it should be unpacked, and the roots and half the stems should be buried in soil made quite wet by watering; there let them remain until the bark expands to its natural fullness, when they may be taken up and planted as before directed, and we will guarantee you a good reward for your labor.

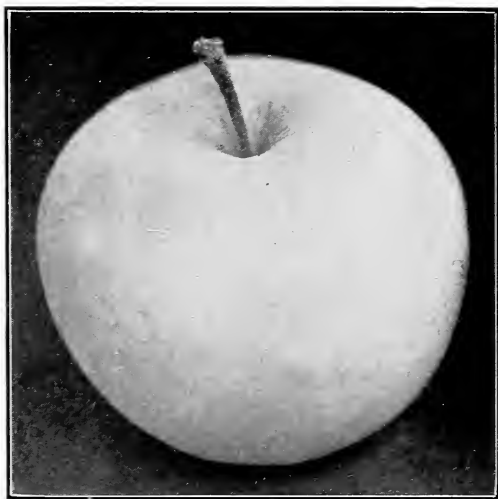
### Plant Young Trees

We cannot too strongly recommend to our customers the procuring of young trees, especially for orchard planting, instead of selecting the largest that can be had, to secure a more immediate effect. They can be taken up with more perfect roots, and will become sooner established in a new location. They can also be more readily trained to any desired shape. The largest and most successful planters invariably select young, thrifty trees, as the surest to give thorough satisfaction in the end, not only in vigor of growth, but in productiveness.

For small grounds, or street planting, when it is necessary to make a show as soon as possible, large trees are often desirable, and when handled with care should not fail to do well; but with the general planter the average of loss will be much less, and both time and money will be saved if young trees are selected to commence with.

# Fruit Department

Since our last Catalogue was issued we have taken several varieties from our lists as not proving worthy of cultivation, and others we have taken from our descriptive list, as we consider that it was too large; but we shall still continue to grow them in limited numbers, and if any of these varieties do well in any particular locality we shall be able to furnish them, but would advise confining your list to the descriptive kinds.



## Select Apples

The first fruit, both in importance and general culture, is the Apple. Its period, unlike that of other fruits, extends nearly or quite through the year. By planting judicious selections of summer, autumn and winter sorts, a constant succession of this indispensable fruit for family use can easily be obtained.

### Prices for Apples

	Each.	Dozen.	25 Trees.	100 Trees.
4 to 5 feet.....	\$1.25	\$13.80	\$25.00	\$75.00
3 to 4 feet.....	1.00	10.80	20.00	60.00

### Early Summer

**EARLY HARVEST.** Rather round; yellow; flesh nearly white, tender, juicy, crisp, with a rich, sprightly, subacid flavor. Tree is a moderate grower and very productive. It has no superior among early Apples, June and July.

**EARLY RIPE.** Its large size, handsome appearance and good bearing qualities combine to make it the most profitable market variety of its season. The tree is hardy and of vigorous growth. Fruit large; yellowish white; flesh juicy; fine for the table or cooking. First of July.

**SOUTH CAROLINA SUMMER.** Medium to large; bright red; flesh white, firm and crisp, very juicy, rich. This Apple is high-colored and as bright as if varnished, and we know of no other variety as showy at the same season. The surest bearer we know of, two-year-old trees having produced full crops in the nursery rows; when other varieties fail, the South Carolina Summer produces fruit. It ripens, where it originated, in Spartanburg County, S. C., from June 15 to the middle of August. Introduced by us.

**WILSON RED (JULY).** A beautiful large red, excellent quality; ripens last of July.

**YELLOW TRANSPARENT.** It ripens fully ten days in advance of Early Harvest. Size medium; light, transparent lemon-yellow; smooth, waxy surface; flesh white, melting, juicy and of excellent quality. For an early Apple an exceptionally good keeper and shipper. Tree a free, upright grower, prolific, and a remarkably early bearer.

### Mid-Summer

**MAIDEN'S BLUSH.** Rather large, oblate, smooth and regular, with a fine, evenly shaded red cheek, or blush on a clear pale yellow ground; flesh white, tender, sprightly, with a pleasant, subacid flavor. Its handsome appearance and fine flavor make it one of the very best dessert Apples. August to October.

**SUMMER RAMBO OF PENNSYLVANIA.** Large to very large, round, somewhat flattened; yellow and beautifully striped with red; flesh tender and rich, with a subacid flavor. August and September.

### Autumn Apples

**BONUM.** Medium, oblate; color light to dark red; flesh yellow, firm, breaking, fine-grained; flavor rich, subacid; first quality for dessert; a most excellent Apple. Originated in North Carolina and deserves more general attention. September to December.

**DELICIOUS.** A remarkable variety introduced in the West several years ago, where it is being largely planted and rapidly taking first rank both for commercial and home orchards. No new variety has ever so quickly gained popularity in so many different Apple sections of our country. Fruit large; nearly covered with brilliant, dark red; flesh fine grained, crisp and melting, juicy, with a delightful aroma; of very highest quality. A splendid keeper and shipper.

**FALL CHEESE, or FALL QUEEN.** Virginia Apple; very popular. Size large; green, beautifully striped with red; flesh white, subacid flavor and rich aroma. Tree a vigorous grower and very productive. September to December. Popular in Albemarle County, Va.

**FALL PIPPIN.** Very large, roundish oblong; yellow, rich and excellent. Tree vigorous and a fine bearer. Esteemed everywhere. In Virginia it is very popular as an early winter Apple. September to December.

**GRIMES' GOLDEN.** Medium; rich golden yellow; crisp, tender, juicy, with a peculiar aroma. Good grower and early bearer; very popular. November to March. One of the highest class Apples grown.

**SMOKEHOUSE.** Fruit large, oblate; striped with red on yellow ground; flesh yellowish white, firm, juicy, crisp and rich, with a fine aromatic, subacid flavor; unsurpassed for culinary purposes; productive. September to December.

### Winter Apples

**JOHNSON'S FINE WINTER, or YORK IMPERIAL.** Medium size, truncated oval, angular; skin greenish yellow, nearly covered with bright red; flesh tender, crisp, juicy, aromatic; an enormous bearer and hangs well on the tree; a good keeper, retaining its flavor to the last. Splendid market variety. We cannot say too much in favor of this Apple. October to April.

**MAMMOTH BLACK TWIG, or PARAGON.** Tree very vigorous, hardy, productive; roots much stronger than Winesap; has larger leaves and twigs a shade darker. Fruit about the same color as Winesap but larger; flavor fully equal to Winesap; believed to be a better keeper.

**McINTOSH RED.** Large; skin yellow, nearly covered with bright red; flesh white.

**MORGAN'S CHRISTMAS.** Medium to large, somewhat flattened at the ends; color rather peculiar, at the stem being dark red or black, which fades to yellow below the center to blossom end; but its crowning excellence is its flavor. We have never eaten any other Apple to equal it in its season. December to March.

**LOWRY, or MOSBY'S BEST.** This is a native of Piedmont, Va. Beautiful red on yellow ground; flavor nearly sweet, very slightly acid, delicious. Will ship well and sell at a fancy price as a dessert Apple in any market. The tree is a rapid grower, healthy and vigorous; comes into bearing very young, and has no off years.

**STAYMAN'S WINESAP.** It has large size, bright red color, great productiveness and best quality to commend it. The tree is a vigorous grower, and is irregular and drooping.

**WINESAP.** Fruit medium size, rather oblong; skin smooth, of a fine, dark red, with a few streaks and a little yellow ground appearing on the shady side; flesh yellow, firm, crisp, with a rich, high flavor. November to March.

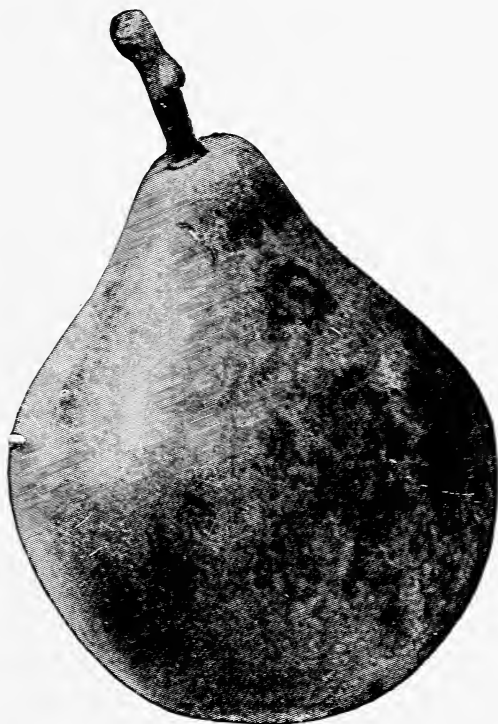
### Crab Apple

The Crab Apple is valuable for preserving, jellies, cooking and cider, and some varieties are also desirable for table use.

Price, \$1.50 each.

**HYSLOP.** Fruit large for its class, produced in clusters; dark rich red, covered with a thick blue bloom. Good for culinary uses and for cider.

**TRANSCENDENT.** Fruit large for its class; golden yellow, with a beautiful rich crimson cheek; when ripe the red or crimson nearly covers the fruit; flesh creamy yellow, crisp, subacid, pleasant and agreeable. Tree a rapid grower and productive. September.



### Standard Pears

All varieties of Pears are much better when picked a short time before they are ripe and matured in a cool, dark room.

Prices: 4 to 6 feet, \$1.50 each; \$15.00 per dozen.

#### Early Pears

**BARTLETT.** Large; yellow, with a soft blush on the sunny side; flesh white, exceedingly fine grained and buttery, sweet, very juicy, with a highly perfumed, vinous flavor. Tree bears early and well. July and August.

**CLAPP'S FAVORITE.** Resembles the Bartlett in appearance, but ripens a week or ten days earlier; one of the best native sorts; fruit large; skin smooth, yellowish-green, becoming yellow, dotted and shaded with red next the sun; flesh yellowish-white, juicy and melting; of very good quality. Last of July.

**EARLY HARVEST.** Tree is a very thrifty grower and good bearer. The earliest of the large pears; a month earlier than Clapp's or Bartlett. Fruit not especially good.

**KOONCE.** Tree a vigorous grower and a heavy and annual bearer. One of the earliest pears of any size. From samples received we do not class it as first quality, but its size and handsome appearance will make it sell as an early market pear.

## Summer and Autumn Pears

**ANGOULEME (Duchess d'Angouleme).** Very large; dull greenish yellow, streaked and spotted, with russet; flesh white, buttery and very juicy, with a rich and very excellent flavor. The large size and fine appearance of this fruit make it a general favorite. Should be planted as a dwarf. September to November.

**SECKEL.** Small; skin brownish green at first, becoming dull yellowish brown, with a lively russet-red cheek; flesh whitish, buttery, very juicy and melting with a peculiarly rich, spicy flavor and aroma. August and September.

**LE CONTE.** Fruit large, pyriform; skin smooth. Tree of remarkable vigor and rapid growth; foliage luxuriant; has so far been nearly free from blight. Quality variable; ripens a few days before Bartlett. Grown only as a standard.

**GARBER'S HYBRID.** Tree an upright grower, with heavy, dark green, glittering foliage, which is nearly or quite free from blight; fruit as yellow as an orange; larger than Kieffer, better in quality and four weeks earlier. September. Origin, Pennsylvania.

**JAPAN GOLDEN RUSSETT.** The tree is a luxuriant grower, with an abundance of thick, tough, leathery foliage, enabling it to endure great heat and drought without injury. It is an extremely early bearer, and bears enormously every year. Ripens in September.

## Winter Pears

**DEWEY'S PREMIUM.** A large, fine and showy fruit. November to January.

**KIEFFER.** Tree a very vigorous grower and an early and abundant bearer. Fruit medium to large; skin yellow, with a bright vermilion cheek; flesh brittle, very juicy; of good quality. Valuable for market or family use; succeeds best as a standard. \$1.25 each; \$12.00 per dozen.

## Dwarf Pears

Prices: \$1.50 each; \$15.00 per dozen.

The pear, budded on the root of the quince as a stock, assumes a dwarf habit, and seldom grows above ten feet in height, when properly trained. For this reason the dwarf pear is specially recommended for small gardens. It comes into bearing quicker than the standard sorts, and a few trees in the back yard will produce an abundance of fine fruit.

**BARTLETT                  DUCHESS                  SECKLE**

## Peaches

Extra selected, budded on natural seed to insure health, vigor and productiveness, and grown with the greatest care to insure purity in variety. Our peach trees are of superior quality and excellence, and must not be compared with trees of cheap propagation offered at low prices.

**F, Free; C, Cling; S C, Semi Cling.**

Size.	Each.	Dozen.	25 Trees.	100 Trees.
3½ to 6 feet.....	\$.75	\$6.50	\$12.00	\$40.00
2½ to 3½ feet.....	.50	4.50	8.00	30.00



**Elberta Peach.**

Agents must not sell at any less price than listed in this price list.

### June to July

**ARP BEAUTY.** Originated in Texas. Valuable for home orchard and market. Fruit medium to large; flesh yellow; quality best of its season. Nearly free.

**MAYFLOWER.** The earliest Peach—earliest to ripen and the earliest to bear; the latest to bloom; red all over; medium to large, slightly oblong and pointed; juicy and good. It sets too much fruit and in order to keep it from overbearing, and to have large fruit, it is very necessary to thin this variety. Splendid for the early markets where it always commands good prices. June 1st to 15th. C.

**EARLY WHEELER, or RED BIRD CLING.** Earliness, glorious color and splendid quality make it the greatest of the very early peaches. Creamy white, overspread with bright glowing red; large size, of exquisite beauty and of excellent quality. June 5th to 15th.

### July to August

**CARMAN.** A large, roundish peach with a pale yellow skin, red blush on sunny side; white flesh, tender and melting, rich, sweet. One of our best early market peaches. A big, early, yellow-skinned peach of high quality; is sure to be in great demand. Don't miss the Carman. Ripens in Albemarle County, Va., July 10th to 20th. S. C.

**GREENSBORO.** A peach as large as common July peaches, and beautifully colored; ripening with Alexander. The flesh is white, very juicy, and of excellent quality. One of the best early peaches. July 20th. S. C.

**CONNETT'S EARLY.** Beautiful bright red, flesh white. S. C.

**HILEY (Early Belle).** A seedling of Belle of Georgia, but ten days earlier. Rich, creamy white, with fine blush; firm; excellent quality. Free. This is a commercial variety. July 25th to August 10th.

### August to September

**BELLE OF GEORGIA.** Very large; skin white, with red cheek; flesh white, firm and of excellent flavor. The fruit is uniform in size and showy. Tree a rapid grower and very prolific. Ripens August 1st to 15th. Freestone.

**CHINESE CLING.** Fruit large, roundish oval; skin transparent cream color, with marbling of red next to the sun; flesh creamy white, very juicy and melting, with a rich, agreeable flavor. August 1st.

**J. H. HALE.** The fruit as we have seen it is: Color a deep yellow overspread with carmine, except on the under side; the skin is smooth without much fuzz; flesh yellow, firm, fine-grained and unusually solid, parts freely from the stone; flavor is most delicious, much better than yellow peaches usually run. It ripens several days before Elberta.

**CHAMPION.** Remarkable for size and good quality; skin is of a rich, creamy white, with a red cheek; exceedingly handsome; flesh creamy white, firm, sweet and delicious, rich and juicy. Ripens July 25th to August 10th. S. C.

**ELBERTA.** An exceedingly large, high colored yellow peach, a cross between Crawford's and Chinese Cling; juicy, well flavored; said to be probably the finest yellow freestone in existence. Ripens early in August.

**LORENTZ.** A yellow-fleshed freestone, and its handsome appearance has been a surprise to all who have seen it. Does not crack, is very firm, keeps well, and is a fine shipper. August 20th to September 1st.

**RAY.** White with red blush; flesh white, firm, meaty, highly flavored; most excellent shipper and always attracts attention in market. August. Freestone.

### September to October

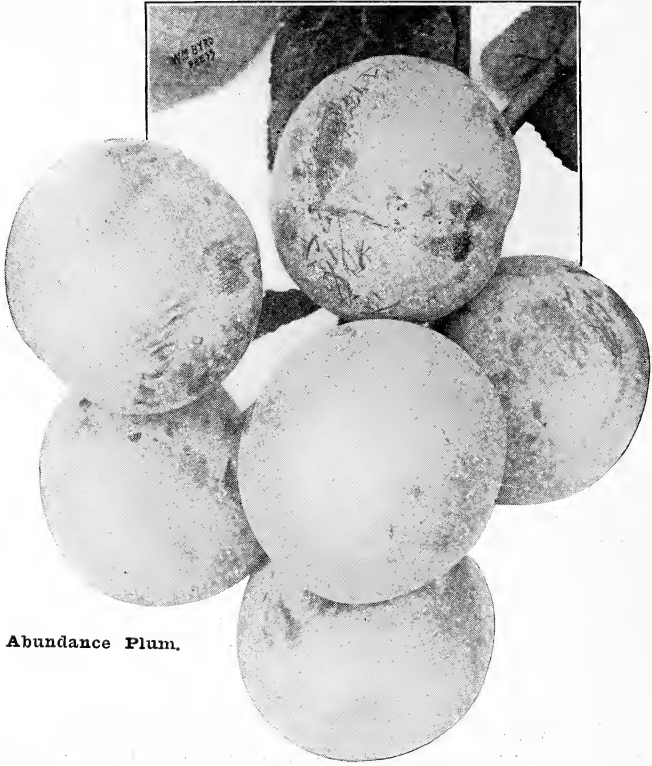
**ALLBRIGHT'S.** October. C.

**BUTLER'S LATE.** This magnificent new freestone peach originated in the garden of J. T. Butler, Richmond, Va. Fruit of the very largest size; skin greenish white, with red cheek; flesh white, firm and of very good flavor; tree vigorous and very productive. September 15th to October 1st.

**BILYEU'S LATE.** Ripens after Smock and Salway; fruit of large size; white, a beautiful blush cheek; flesh white.

**FOX SEEDLING.** Large; white, with whole side red; melting, sweet, high quality and high flavor. Good for home use, market and canning. Trees bear very regularly. Free. September 1st to 15th.

**HEATH CLING (White Heath or White English).** Fruit very large; skin pale, yellowish white with a faint blush or tinge of red in the sun; flesh greenish white, very tender and melting.



**Abundance Plum.**

## Select Plums

The Plum will grow vigorously in almost every part of this country, but it bears its finest and most abundant crops in heavy loams, or where there is considerable clay; it will bloom and set a fine crop in a sandy soil, but in such soils it generally falls a prey to the curculio, and drops prematurely. There are, however, some varieties that succeed very well in such situations.

### Japanese Varieties

**Prices:** 4 to 6 feet, \$1.50 each; \$15.00 per dozen.

This class of fruit is attracting the attention of all fruit-growers, and is remarkable for its beauty, size and productiveness and early bearing. The trees often bear at two years in the nursery row, and we think this fruit will supercede the European varieties here and further South.

**ABUNDANCE, or BOTAN.** It is as near curculio-proof as can be expected. Fruit large and showy; color amber, turning to a rich cherry-color, with a white bloom; flesh light yellow, juicy, tender, sweet and excellent; stone small and parts readily from the flesh. One of the best Plums for canning. July.

**BURBANK.** Fruit large, ranging from 5 to 5½ inches in circumference, nearly globular, clear cherry-red, with a thin lilac bloom; flesh a deep yellow, very sweet, with a peculiar and very agreeable flavor; tree vigorous, with large and rather broad leaves; commences to bear usually at two years old. July.

**RED JUNE.** Fruit medium to large, cordate and very prominently elongated at the apex; suture deep, generally lopsided; deep vermilion-red all over, with a handsome bloom; very showy; flesh light lemon-yellow or whitish, firm and moderately juicy, not stringy, slightly subacid to sweetish; cling to half cling; pit small. Tree vigorous and productive.

**SHIRO.** Finest quality, yellow.



**WICKSON.** The fruit is evenly distributed all over the tree, and from the time it is half grown until a few days before ripening is of a pearly white color, but all at once soft pink shadings creep over it, and in a few days it has changed to a glowing carmine, with a heavy white bloom; the stone is small and the flesh is of fine texture, firm, sugary and delicious, and will keep two weeks or more after ripening, or can be picked when hard and white, and will color and ripen almost as well as if left on the tree.

### European Varieties

Prices: 4 to 6 feet, \$1.75 each; \$19.20 per dozen.

**GERMAN PRUNE.** A valuable Plum of fair quality for the table, but most esteemed for drying and preserving; fruit long and oval; skin purple, with a thick blue bloom; flesh firm, green, sweet and pleasant; separates from the stone. Tree is strong, vigorous and prolific.

**REINE CLAUDE DE BAVAY (Green Gage).** Large; greenish yellow, spotted with red; flesh rather firm, juicy, sugary, rich, of fine quality; adheres slightly to the stone; a vigorous grower, very productive, and a valuable addition to the late varieties. September.

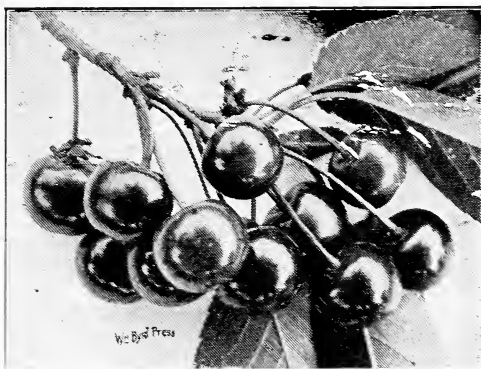
**SHIPPER'S PRIDE.** Large, dark purple, flesh firm and sweet.

## Damsons

Price: \$1.50 each.

**RED DAMSON.** This is a valuable fruit, ripening later than Shropshire Damson. For jelly and preserves it has no superior among Damsons. It comes into bearing the second year after transplanting, and bears annually heavy crops. The tree is a strong, robust grower, making quite a large tree. When in bloom it is one mass of white flowers, without a leaf; later it is clothed with broad, dark green foliage. It is really a beautiful tree, free from black knot or any other disease. A certain bearer.

**SHROPSHIRE DAMSON.** An improvement on the common Damson, being of the largest size of its class; dark purple; highly esteemed for preserving; tree vigorous and enormous productive. September.



Governor Wood Cherries.

## Select Cherries

The Cherry succeeds on most soils, and in nearly all localities throughout this country, but attains its greatest perfection upon those of a light, gravelly or sandy nature, provided it be in good condition. In planting the Hearts and Bigarreus, avoid wet or damp situations. The Dukes and Morellos will bear more moisture, but will flourish best in a soil that grows the others to the greatest perfection.

### Heart and Bigarreau

Price: 4 to 6 feet, \$2.50 each.

**BLACK TARTARIAN.** Very large, purplish black; half tender; flavor mild and pleasant. Tree a remarkably vigorous, erect and beautiful grower and an immense bearer. June.

**SCHMIDT'S BIGARREAU.** This noble Cherry was introduced into England from Belgium by Mr. Rivers, and is by far the largest of all black Bigarreau Cherries. Fruit grows in clusters and is of large size, round and somewhat oblate; skin is of a deep black; flesh dark, tender, very juicy, with a fine, rich flavor. The stone is very small for the size of the fruit.

**GOVERNOR WOOD.** One of the best of Dr. Kirkland's seedlings, and deserves a place in every good collection; fruit large, skin light yellow, shaded with bright red; flesh nearly tender, juicy, sweet, rich and delicious. Tree vigorous, productive and hardy. June.

**NAPOLEON BIGARREAU.** A magnificent Cherry of the largest size; pale yellow, with a bright red cheek; flesh very firm, juicy and sweet. Tree a vigorous, erect grower, and bears enormous crops. Profitable for marketing. June.

### Duke and Morello Cherries

Price: 3½ to 5 feet, \$2.00 each.

The Dukes and Morellos are not so vigorous and upright in their growth as the Hearts and Bigarreaus, forming low, spreading heads, with acid or subacid fruit.

**DYEHOUSE.** Produces regular annual crops; fruit medium; skin bright red, darkened in the sun; flesh soft, juicy, tender, sprightly subacid, rather rich; partakes of both the Morello and Duke in growth, wood and fruit; is very productive. We consider it superior to Early Richmond.

**EARLY RICHMOND, or KENTISH.** Medium size, red; flesh melting, juicy.

**MONTMORENCY.** A beautiful, large red, acid Cherry; larger than Early Richmond and fully ten days later; very prolific and hardy; a variety of great value; free grower.

**WRAGG.** Supposed to hail from North Germany; a good grower and an immense bearer; quite late, and a valuable Cherry.

### Select Apricots

Price: 3½ to 5 feet, \$2.00 each.

This beautiful and excellent fruit needs only to be known to be appreciated. It ripens a month or more before the best early peaches and partakes largely of their luscious flavor. The tree is even more hardy than the peach and requires about the same treatment. To make a crop more certain, plant on the north or west side of a wall, fence or building.

**ALEXANDER.** An immense bearer; fruit of large size; oblong; yellow, flecked with red; flavor sweet and delicious. Tree hardy; one of the best. July 1st.

**EARLY GOLDEN (Dubois Early Golden).** Small; pale orange; flesh orange, juicy and sweet; productive. Last of June.

**LARGE EARLY.** Large, excellent, early.

**MOORPARK.** One of the largest and finest Apricots; yellow, with red cheek; flesh rather firm, orange, parting from the stone; sweet, juicy and rich, with a luscious flavor. July.

### Select Nectarines

Price: 3½ to 6 feet, \$1.50 each.

The Nectarine requires the same culture, soil and management as the peach, from which it differs only in having a smooth skin, like the plum.

**DOWNTON**

**ELRUGE**

**BOSTON**

**RED ROMAN**

### Select Quinces

Price: 3 to 4 feet, \$2.00 each.

The Quince is attracting a great deal of attention as a market fruit. Scarcely any fruit will pay better in the orchard. The tree is hardy and compact in growth, requires but little space, is productive, gives regular crops, and comes early into bearing. The fruit is much sought after for canning for winter use. When put up in the proportion of about one quart of Quinces to four of other fruit in parts to them a most delicious flavor.

It flourishes in any good garden soil, which should be kept mellow and well enriched. Prune off all the dead and surplus branches, and thin out the fruit if bearing too freely.



Champion Quince.

**CHAMPION.** This variety originated in Georgetown, Conn.; said to be larger than the Orange; fair, smooth, of fine quality and a late keeper.

**MEECH'S PROLIFIC.** Certainly a fine variety, and cooks very tender. The fruit is very large, exceedingly handsome and attractive, with a most delightful fragrance. The tree is strong, sturdy and very prolific.

**ORANGE, or APPLE.** Large, roundish, with a short neck; color light yellow; tree very productive; this is the most popular variety in the country; a great bearer. Ripens in October.

## Mulberries

Price: 80c each; \$7.20 dozen; \$22.50 for 50.

This fruit is getting very popular, especially South, where it is fine food for hogs and poultry. The tree is also fine for shade, as it grows rapidly and is very hardy.

**HICKS' or EVERBEARING BLACK.** This variety is very popular South, as the tree is a very rapid grower, bears very young and has a long season, very often from June 1st until the middle of August. Very sweet.

## Select Grapes

Price: 50c each; \$5.00 dozen.

The vine comes quickly into bearing, yielding fruit usually the third year after planting, but sometimes on the second; requires but little space, and when properly trained is an ornament to the yard, garden or vineyard.

The soil for the Grape should be dry; when not naturally so should be thoroughly drained. It should be deeply worked and well manured, always bearing in mind that it is an essential point to secure a warm, sunny exposure.

The best Grape trellis is probably the wire trellis. This is constructed by planting posts as far apart as you choose to have the length of your trellis; stretch the wires, four in number, about eighteen inches apart, letting them pass through stakes at proper distances from each other to support the wire.

To secure the best results, annual and careful pruning is essential. The following is regarded as the best method: Commencing with a good, strong vine, such as we furnish, cut back to two buds when planted. The following spring allow but two of the strongest buds to throw out shoots. These, in the fall, will be from 7 to 10 feet long, and should be cut back to within 4 or 5 feet of the root. The next spring the vine should be fastened to the lower part of the trellis. When growth commences, pinch the buds off, so that the shoots will be from 10 to 12 inches apart. As these grow, train them perpendicularly to the second, third and



Caco Grapes.

fourth bars of the trellis. No fruit should be allowed to set above the second bar of the trellis.

During the season when the shoots have reached the upper part of the trellis they may be pinched, to prevent further growth. After the fruit is gathered and the vine has shed its foliage, the cane should then be cut back to two buds. The following spring allow but one bud to throw out a shoot, and treat as in the previous year. This system of pruning should be followed each year. After the vine has undergone the fall pruning it may be laid upon the ground and covered with boughs, to protect it through the winter. Grape vines should be top-dressed in the spring.

Price: 50c each; \$5.00 dozen.

**BRIGHTON.** Bunch large, rather irregular; berries above medium, round, dark red; quality best. Ripens early.

**CAMPBELL'S EARLY.** Vine strong, vigorous and very productive; clusters large and perfect; berries large, black, with a perfect bloom; skin thin; an admirable keeper and shipper; flavor rich, sweet, slightly vinous. Early September.

**CONCORD.** There is no Grape in the catalog so popular or planted so extensively as this. It succeeds well in almost all parts of the country, and although of Northern origin, it is better here than in its native place. Vine a very vigorous grower and enormously productive; comparatively free from disease; bunches large, compact; berries large, round, black, with a blue bloom; a profitable market sort.

**CATAWBA.** Bunches and berries large; skin pale red; flesh juicy, sweet, aromatic; productive. September.

**GOETHE.** Bunch medium; berries large, oblong, very sweet, one of the highest quality of American Grapes. Well suited for Virginia and Southern States. Quality best. Color pink. Late season—requires close pruning.

**MARTHA.** This is one of the most reliable white Grapes yet known; bunch medium, compact, shouldered; berry white or greenish, turning to pale yellow when fully ripe.

**MOORE'S DIAMOND.** A pure native; bunch large, compact; berry medium size; color greenish white, with a yellow tinge when fully ripe; flesh juicy, almost without pulp; very good; vine vigorous and productive.

**MOORE'S EARLY.** A seedling of the Concord, combining the vigor, health and productiveness of its parent, and ripening a few days earlier than the Hartford; bunch medium; berry quite large; color black, with heavy blue bloom. Its extreme hardiness and size will render it a popular market sort.

**NIAGARA.** Bunch large, generally shouldered; berry large, roundish; color greenish white, turning to light yellow; skin thin but tough; flesh slightly pulpy, tender and sweet; has a decidedly foxy flavor before fully ripe, which it pretty well loses at maturity. Ripens with Concord.

**WORDEN.** Said to be a seedling of Concord, and is a slight improvement on that variety; ripens a few days earlier; bunch large and compact; berry large, black and of good quality; vine vigorous and productive.

Price: 75c each; \$7.50 dozen.

**JAMES, or BLACK SCUPPERNONG.** Berry of large size and good quality, black; vine very prolific. Commences to ripen about the first of August and continues until frost.

**VERGENNES.** Clusters large; berries large; color light amber; flavor rich and delicious; ripening here fully as early as Hartford. Its keeping qualities are superior.

**LUTIE.** Dark red. Bunch and berry medium to large; skin tough and thick; flesh pulpy, sweet and quite juicy; quality only fair; vine hardy, vigorous and productive. It sells well as an early red Grape, ripening about with Moore's Early.

**CACO—The New Red Grape.** In appearance it is the most beautiful of hardy grapes. Wine red in color with abundant bloom. Berries are unusually large, bunches good size, compact and of good form. The vines are very hardy, vigorous growers, healthy and prolific. This variety is a cross between the Concord and Catawba, and is said by expert growers to have all the good qualities of both these varieties without the defects of either.

**SCUPPERNONG.** A Southern Grape, too tender for a more northern latitude than Virginia; does not succeed even in Virginia much above the tidewater line, but southward it is quite hardy and valuable; vine a vigorous grower; requires no pruning; bunch small, loose, not often containing more than six berries; fruit large round; skin thick, light green; flesh pulpy, juicy, sweet; produces enormous crops. Continues in season about six weeks. A popular Southern Grape of the Muscadine type, and where it thrives is the most luscious and satisfactory Grape grown, either for table use or for the making of a high-quality wine.

## Small Fruits

The small fruits, such as Strawberries, Raspberries, Blackberries, Gooseberries, Currants, etc., ripening from the first of June till fall, are everywhere capable of successful cultivation, and yield large returns at comparatively small expense. They should have a place in every garden. Since the introduction of self-sealing jars and cans, they can be had throughout the year almost as fresh as when gathered.

### Select Currants

Price: 75c each; \$6.50 dozen.

**CHERRY.** Very large; red; strong grower and moderately productive; fine for preserving, and a valuable market variety.

**FAY'S PROLIFIC.** Color rich red; as compared with the Cherry Currant, Fay's Prolific is equal in size, better in flavor, containing less acid, and five times as prolific, and from its long, peculiar stem, less expensive to pick.

**NORTH STAB.** This new Currant is of remarkably vigorous growth and wonderfully prolific; the stems of fruit thickly set average 4 inches in length. The fruit is very sweet and rich, a fine dessert fruit and unequaled for jelly. It is extremely hardy; bears early.

**PERFECTION.** In color it is a beautiful bright red and a size larger than Fay; the clusters average longer and the size of the berries is maintained to the end of the bunch. It is one of the most productive Currants we have ever known, and in quality it is superior to anything in the market, being of a rich, mild, subacid flavor and having plenty of pulp with few seeds.

**POMONA.** Is a strong grower; hardy and very productive. Bright, transparent red, and very sweet; few and very small seeds. A very valuable sort.

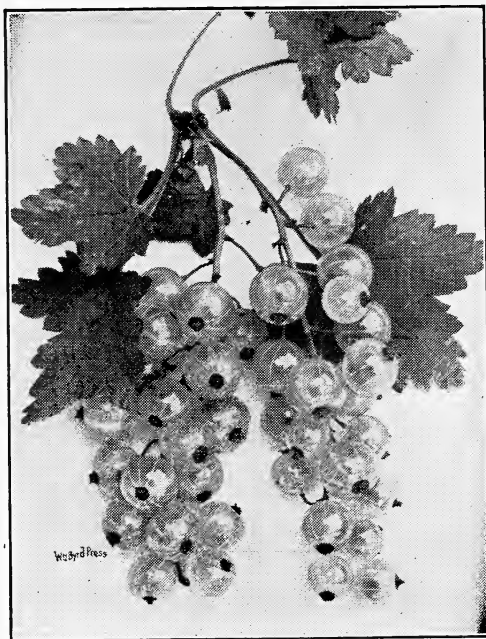
**WHITE GRAPE.** The best white currant; bunch moderately long; berries large; very productive; less acid than the red currants; fine for table.

## Gooseberries

Price: 75c each; \$8.00 dozen.

Until quite recently no interest has been felt in the cultivation of this fruit further than to grow a meager supply for home consumption, yet there are few crops that will yield as satisfactory returns; certainly none more certain with so little expense in cultivation.

**DOWNING.** A seedling of the Houghton; an upright, vigorous-growing plant; fruit larger than its parent; color whitish green; flesh rather soft, juicy, very good; productive. Valuable market sort.



Downing Gooseberry.

**HOUGHTON'S SEEDLING.** Rather small; pale red; flesh tender, juicy, sweet and pleasant; produces enormous crops; free from mildew. Most profitable market variety.

**PEARL.** Very highly commended after extensive testing; good in all respects. Very similar to Downing, in fact, some growers have claimed there is no difference, but the two sorts are certainly distinct. Berries round or slightly oval, smooth, light yellowish green. Has all of Downing's good traits, a little larger, more prolific. July 10th.

**RED JACKET (JOSSELYN).** As large as the largest; berry smooth; very prolific and hardy; quality and foliage the best. For many years it has stood close to Triumph, Crown Bob, White Smith, Smith's Improved, Downing, and a dozen other English sorts, and while all these have mildewed more or less in leaf and fruit, mildew has never yet appeared on Red Jacket.

## Raspberries

Price: 30c each; \$3.00 dozen; \$10.00 for 100.

Both red and blackcap Raspberries are very easily grown. Blackcaps should be planted in rows 3x7 feet and the red 3x6 or 5 feet each way, and if particular in planting to work both ways will cost very little for cultivation. They will do well on almost any good, well-drained soil, and the richer the better. One of our gardeners received from one acre of Cuthbert \$405 at wholesale price.

### Red Raspberries

**CUTHBERT (Queen of the Market).** Canes strong, upright, very vigorous, sometimes branching; foliage luxuriant; fruit large to very large; red; moderately firm, with high, sprightly flavor; very productive. Its many valuable qualities render it desirable for home or market culture. It succeeds well generally, and is almost the only one that can be relied on in the cotton states. We commend it to planters in all sections.

**COLUMBIAN.** An improvement on Shaffer's, which it resembles, but the berry is firmer; adheres to the bush much longer and retains its shape better, both on the market and in canning; bush a strong grower, attaining a very large size; one of the hardiest, and wonderfully prolific; unexcelled for productiveness, and stands at the head for canning, making jam, jelly, etc.; fruit very large, dark red.

**ST. REGIS.** Is the only Raspberry, thus far known, that will yield a crop of fruit the season planted. The berries are of a bright crimson, of large size and of surpassing quality—rich and sugary with full Raspberry flavor. They are of exceedingly meaty, firm texture and keep in good condition longer, after being gathered, than any other red Raspberry. As a shipper it is unexcelled, making it one of the valuable Raspberries for market.

### Black Raspberries

**CUMBERLAND.** Large berry; hardy, firm and productive. It is a strong, vigorous grower, and fully equal to the Gregg, ripening a little in advance of that well-known standard variety. For those who prefer a black Raspberry, Cumberland will prove one of the most satisfactory and profitable to plant. The plant is particularly strong and vigorous.

**GREGG.** This is one of the largest, if not the largest, of the Black-cap family; fruit large, black, with a slight bloom; flesh quite firm, moderately juicy, sweet and rich; the fruit ripens late and very evenly, making the picking season short; it is a very strong grower and good bearer; very desirable.

**KANSAS.** Strong, vigorous grower, standing extremes of drought and cold, and bearing immense crops; early, ripening just after Palmer; berries size of Gregg, of better color; jet black and almost free from bloom; firm, of best quality; presents a handsome appearance and brings highest price in market.

**MUNGER.** Resembles Gregg very much. It is a better-flavored berry than Gregg, tougher in texture, and therefore a better shipper. Its season of ripening is from five to eight days later than Gregg, and has a special faculty of withstanding drought and hot sun. The canes, too, resemble Gregg, are free from disease, upright in growth and have never yet been affected by the cold of winter. One of the best black Raspberries.

### Yellow Raspberry

**GOLDEN QUEEN.** A seedling or "sport" of the Cuthbert, and in hardiness and vigorous growth of plant resembles that variety; fruit of large size; color beautiful yellow; flavor excellent.

## Blackberries and Dewberries

Price: 30c each; \$3.00 dozen; \$10.00 for 100.

Should be planted in rows 6 to 7 feet apart, 3 to 5 feet in the rows. Keep the ground light and rich. Pinch the canes back when they have reached 4 feet in height.

**AUSTIN'S DEWBERRY.** Fruit very large. Enormous bearer. The most productive market variety we have ever grown, and is eight to ten days ahead of any other. Strong and vigorous grower, and stands our hottest summers perfectly. Free from rust.

**BLOWERS.** Among the very hardiest. Large, jet black, sweet; ships well, handles well. We recommend it.

**EARLY HARVEST.** One of the earliest, if not the very earliest Blackberry yet introduced, ripening two weeks before Wilson's Early; berry medium size, good quality and very prolific; it is firm and very attractive in appearance.

**ELDORADO.** Berries are very large, jet-black, borne in large clusters, and ripen well together; they are very sweet, melting and pleasing to the taste, have no hard core, and keep for eight or ten days after picking with quality unimpaired.

**KITTATINNY.** Has the habit of continuing long in bearing, and yielding its fruit through a period of six to eight weeks. Very large and productive, and of good quality.

**LUCRETIA.** This is a trailing Blackberry, or Dewberry; a good grower and productive; fruit large and of good flavor.

**WILSON'S EARLY.** A well-known and most valuable sort; it is of very large size and very productive, ripening its fruit quite early and maturing the whole crop in a short time, adding thereby greatly to its value as a berry for early marketing.

## Strawberries

We think there is no fruit that is more healthful and will give better satisfaction. No home or garden should be without them, and should have fresh berries from three to five weeks. Strawberries should be planted either in the fall or spring. We have better success in planting in early spring, although we plant up to the time that berries are nearly ripe, and we always succeed. Before planting we clip the roots off, and if it is late in the spring we cut all foliage off and dip roots in a thin puddle of mud before planting.

The blossoms of most varieties are perfect, or bisexual, except those marked P., which are destitute of stamens, and are termed pistillate, or imperfect-flowering varieties. They must be planted near some perfect-flowering sort or they will produce little or no fruit. Bubach is of this class, but among the most productive when plants of such varieties as Tennessee Prolific, Lady Thompson, Missionary, and other perfect-flowering sorts are planted in the same field alternately. At least every fifth row in a field of pistillates should be planted with some perfect-flowering sort; while, if as many of a perfect-flowering sort are to be planted, it is better to plant in alternate rows. Klondyke is perfect-flowering but does not fertilize itself well, and needs other perfect-flowering sorts planted with it.

To grow fine berries, they should be cultivated well from spring to fall, running a light cultivator after each rain, and also keep all weeds pulled out of rows. If the row is kept from 15 to 18 inches wide, and the plants thinned out in the rows, the result will be much larger and finer berries. 25 for \$1.00; 100, \$3.00; 500, \$10.00; \$15.00 per 1000.

**AROMA. (Per.)** Plant shows no weakness of any kind. Fruit very large, roundish, conical, rarely misshapen; glossy red, of excellent quality, and produces in abundance.

**PREMIER.** The very best of all extra-early varieties. We have never found anything to equal it. Berries are large, beautifully formed, bright red through and through. It is delicious in flavor and a splendid shipper. We have fruited it three years and consider it the money-making king of all early varieties. It produces a very heavy crop and you should plant heavily, whether growing for home use, local market or distant shipment. If Premier has any weak points, we have not found them and we advise all those in sections where early berries are in demand to include Premier.

**GANDY.** One of the latest berries we have. The berries are large, uniform in size, and of bright and firm color; very popular as a market variety, coming in when other varieties are run down and small. It is fine for home market.

**KLONDYKE. (Per.)** Berries uniform, shapely, handsome; dark red; mild and delicious, very juicy; sell quickly. Plants make a remarkable growth, are tall, compact, stalks strong, leaves light green; makes abundant runners and an unusual number of crowns. Yields are wonderful. Blossoms are perfect, but do not fully fertilize themselves and need other sorts near.

**LADY THOMPSON.** Origin, North Carolina. It has more good points than any berry ever grown, being very early, very large, a perfect bloomer and good shipper. It is of good color and fine flavor.

**MISSIONARY. (Per.)** Early; medium size. Originated in the vicinity of our city, where it has given general satisfaction. The originator describes it as follows: "Large size, beautiful color, with the appearance of being varnished; large double calyx, like Gandy; immensely productive. Its season is from four to five weeks. Very richest and best quality; best shipper, has a very tough skin, not easily broken by handling."

**TENNESSEE PROLIFIC.** A seedling of Crescent crossed with Sharpless, clearly showing parentage of both; perfect flowering, vigorous, stock plant, healthy in every way; very productive of medium to large bright scarlet berries of fine quality; ripens medium to early; is a fine market or family berry, thriving well on quite light, dry soil.

### Fall-Bearing Strawberries

A new departure in this, the most delicious of fruits. The Fall-Bearing Strawberry is a decided success and making a great hit.

**PROGRESSIVE. (Perfect.)** A good plant maker, strong, with healthy foliage. Bears a crop the same season set. Fruit large, sweet and of the choicest flavor. Plant it and you will have strawberries from June until November. 25 for \$2.00; 100, \$5.00; 500, \$15.00; \$25.00 per 1000.

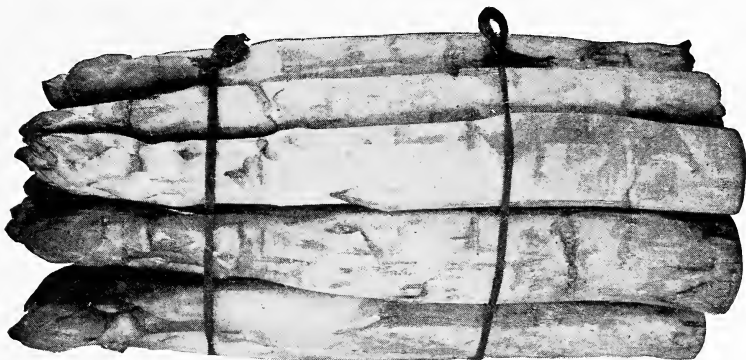
## Figs

Price: \$1.00 each; \$10.00 dozen.

**BRUNSWICK.** Very large; violet; quality excellent; very reliable. Bears young, often fruiting in the nursery rows, and is very productive. Equally valuable as a dessert fruit or for preserving.

**BROWN TURKEY.** Medium; brown; sweet and excellent; very prolific. Most reliable for field culture. One of the best varieties for preserving.





Palmetto Asparagus.

## Asparagus

Price: \$2.00 for 100; \$12.00 for 1,000.

**BARE'S MAMMOTH.** A fine large sort, grown largely for the Philadelphia market, where it is a favorite. The stalks are often an inch in diameter, and retain their thickness nearly to the top. Although large, it is tender and of fine flavor.

**PALMETTO, or FRENCH.** Southern origin; ten days earlier than other kinds; valuable for home or market; largest, tender; regular growth. One of the best.

**Preparation.**—For early production, choose a light land, and plant rows running north and south. Open out with plow, running both ways rows 6 feet apart, as deep as possible, and if not deep enough, subsoil and dig out to 15 or 18 inches with spade or shovel; then fill in with well-worked manure to about 10 inches of the top; plant crown on top of manure and cover lightly with earth. Keep all weeds down first year, and at each working fill in a little soil, and in the fall cover with manure, and as soon as weather in the following spring will permit, ridge up as high as you can with double plow and rake off smooth with rake.

## Rhubarb (Pie Plant)

Price: 25c root; \$2.50 dozen; \$10.00 for 100.

## Horse Radish

Price: 25c root; \$2.00 dozen.

## Japan Persimmon

Price: \$1.50 each.

**HIYAKUME.** Very large, one of the best varieties.

**TANE-NASHI.** Large, light yellow.

**AMONG or YEMON.** Large, flat, fine quality.

## Nuts

### Almonds

Price: \$1.00 each.

**SOFT SHELL.** Kernels sweet and rich.

**HARD SHELL.** Fine hardy variety, large kernel.

**Butternuts**

Price: \$1.50 each.

Oblong nuts with rich meat.

**Chestnuts**

Price: \$2.50 each.

**AMERICAN.** 4 to 5 feet. Sweet and good quality.**JAPAN.** 3 to 4 feet. Large nut, bears young.**Filberts (Hazel Nut)**

Price: \$1.00 each.

Large nut, good flavor.

**Pecans (Budded or Grafted)**

Price: 2 to 3 feet, \$2.50; 3 to 4 feet, \$3.00.

**STUART.** Large, averaging forty to fifty to the pound; shell moderately thin; cracking quality good; kernel bright, plump; flavor rich and good. Tree strong, upright, spreading grower and an abundant bearer.**VAN DEMAN.** Large, averaging forty-five to fifty-five to the pound; form long; shell moderately thin, cracks easily; quality rich and good. Tree strong, moderately erect, productive.**MONEYMAKER.** Large, roundish, good. Tree a good grower and very productive; one of the earliest to come into bearing.

There are many other well-known varieties, such as Russell, Bolton, Schley and others, but it seems to be the general opinion that there is nothing that will surpass Stuart, Van Deman and Moneymaker.

**Walnuts****AMERICAN BLACK.** Valuable for timber and nuts. \$1.50.**ENGLISH.** Thin shell. \$3.50.**JAPAN.** Shell harder than English, kernel sweet and good. \$1.50.

Pecan.

# Ornamental Department



**An Effective Planting of Lombardy Poplars.**

While most people appreciate well-arranged and kept grounds, large or small, many fail to realize that they can have equally fine grounds. These have had a few shrubs or roses growing in thick turf, with no attention given to pruning or cultivation. Under such circumstances, good results cannot be expected.

Aside from the pleasure of having fine trees, shrubs, vines and flowers in the grounds surrounding a home, few realize how much these add to the commercial value of the place. A purchaser having to decide between a house with bare and unkempt grounds and one surrounded by fine ornamentals, invariably chooses the latter at a marked advance in price, because he sees that he will at once enjoy what it would otherwise take some years to secure. Sagacious men are led by a knowledge of these facts to plant fine trees and shrubs about vacant lots they are intending to put upon the market. Such lots readily secure purchasers at good prices, when the bare grounds go begging for buyers. The planting of trees and shrubbery about the home grounds has, therefore, a strongly practical side.

## Landscaping

Anyone who tries to outline certain plans and ideas to fit every lawn or door-step immediately takes the individuality from such a planting. Let your lawn reflect your own ingenuity and ideas. You, remember, are the one to be pleased. We take much more pleasure and interest in the things we create ourselves. Plan your lawn planting, with the aid of our condensed Special Purpose List. Read our general suggestions on Landscaping and Foundation Planting. If your case needs personal attention, advise us, we can help you as we have helped others.

## General Plan

Start out with a definite object in view, making a mental picture of just what effect you want and then carefully plan your requirements, keeping in mind the ultimate development of the varieties used. Haphazard planting, random arrangements and unsatisfactory impression often detract rather than embellish the grounds on which such work is done. Some general rules follow:

Locate your walks and roadways, arranging them for service and beauty, avoiding straight lines and sharp angles as far as possible, as graceful curves are more pleasing to the eye. Avoid terraces and steep grades but rather plan longer natural slopes, as maintenance is easier and the effect is better. Plan to give the home an inviting approach. It is here that arrangement rather than promiscuous planting counts the most. Since the attractiveness of the home depends on the lawn features, arrange to leave the lawn open, plant along the drives and borders using taller trees in the rear to give background and character and also to the sides of the house to shade, frame and accentuate the view.

Specimen trees should be used for this character planting and along the borders, masses of shrubs arranged so the taller ones of bolder outline will be in the rear, while lower growing and choice varieties will add grace and beauty to the front of the group. Remember do not plant varieties that will shut off vistas or hide objects of merit nor plant low growing plants where an objectionable sight should be screened. Frequently unexposed or private areas are desirable, and this can be accomplished with taller or "King Plants" around which should be massed suitable low growing shrubs. Also do not use too many varieties in border planting for the general effect is much better where at least five plants of a single variety are used.



A House is Not a Home Until It's Planted.

## The Foundation Planting

Next of consideration is the foundation planting. This unconsciously binds the house to the grounds and softens the abrupt transition so noticeable on homes not so treated. This has of late become the most popular form of exterior home adornment.

**What to Use.** Planters' tastes and ideas are as variable as the plants themselves. Some prefer deciduous shrubs, others evergreens and some a combination—a happy effect may be had from all, but plan and plant carefully and give them attention. Plan your beds as follows: Plant the taller growing varieties between windows, in front of pillars and in the corners of background, so as not to obstruct the natural outlook, but rather to soften the bare wells, to seek the stiffness of symmetrical pillars and all the nooks with a massed growth so as to allow hard lines. Under the windows and between the pillars of the veranda use medium height plants. This combination gives an excellent effect and a substantial background for edging or bordering. Arrange these to alternate with the back row and plant so as to avoid perfectly straight lines for this is what you are planning to eliminate. Where sufficient space exists, and ten feet is ample, some curvature in the border is more pleasing than a straight line. Rounding corners and filling angles often requires as many as three rows of plants and in each instance maintain graceful lines as it means much in the general appearance of the bed.

**Spacing.** This general rule may be applied: Height and spread of deciduous shrubs almost approximate each other, therefore, for mass effect on plants six feet high, plant 4 to 4½ feet apart, those 4 to 5 feet high, plant 3 to 3½ feet apart, etc. This is a general deduction, exceptions very few.

In planting where service and private areas are wanted, these too can be made attractive, whether they are laundry yards, garage courts, service entrances or kitchen gardens. Perennial borders, pergolas, rose arbors, cozy seats, bird baths, fountains, etc., can all be included harmoniously as integral parts of the home grounds. Good grouping of trees and shrubs will hide the bad features and bring out the good ones.

As we devote considerable acreage to ornamental trees and plants and that stock is of such high quality we solicit your patronage, fully confident of the good results our stock will bring. We are at your service—and will gladly advise you what to plant if you need our assistance.



A Pleasing Combination of Evergreens and Shade Trees.

## Quick Reference List of Trees and Plants for Special Purposes

### For Street or Avenue Planting

Pin Oak.	Norway Maple.	Elm.
Sugar Maple.	Sycamore.	Lombardy Poplar.
	European Linden.	

### Trees for Quick Effect

Catalpa.	Weeping Willow.	Lombardy Poplar.
Russian Mulberry.	Silver Maple.	Sycamore.

### Trees That Flower

Catalpa.	Horse Chestnut.	Tulip Poplar.
Dogwood.	Linden.	Flowering Crab Apple.
Red Bud.	Magnolia.	Hawthorn.

### Foundation or Base Plantings

#### THOSE SUITED FOR "FRONT LINE PLANTING"

Japanese Barberry.	Cotoneaster horizontalis.	Mugho Pine.
Spirea Thunbergii.	Abelia.	Savins Juniper.
Spirea Anthony Waterer.	Deutzia gracilis.	Pfitzeri Juniper.
Hypericum.	Globe Arbor-vitae.	

#### FOR INTERMEDIATE

Spirea Van Houttei.	Mahonia.	Retinispora in variety.
Spirea Reevesii.	Abelia.	Junipers in variety.
Purple-leaved Barberry.	Calycanthus.	Holly.
Hydrangeas.	Kerria.	Boxwood.
Golden Bell.	Snowberry.	Japanese Snowball.
Weigelas.	Arbor-vitae in variety.	

#### TALLER GROWING FOR HEAVY PLANTING OR CORNERS

Tamarix aestavalis.	Viburnum lantana.	Spirea prunifolia.
Amoor River Privet.	Althea.	Loniceras.
Regel's Privet.	Mock Orange.	

### Plants That Color in the Fall

Dogwood.	Barberry.	Tulip Poplar.
Sugar Maple.	Snowball.	Spirea prunifolia.
	Oaks.	

**For Screen Planting**

Lombardy Poplar.  
 Willow.  
 Practically all shade trees.  
 Norway Spruce.  
 Hemlock.  
 Pines.

Bush Honeysuckle.  
 Altheas.  
 Deutzia.  
 Mock Orange.  
 Snowballs.  
 Privets.  
 Bamboo.  
 Weigela.

Golden Bell.  
 Snowball.  
 Kerria.  
 Calycanthus.  
 White Fringe.  
 Mock Orange.  
 Azalias.

**For Dry Places**

Junipers in variety.  
 Mugho Pine.  
 Aralia.

Barberry.  
 Privets.  
 Bush Honeysuckle.

Yucca.  
 Deutzia.  
 Sumac.

**For Moist Places**

Birch.  
 Maple.  
 Sweet Gum.  
 Sycamore.  
 Willow.  
 Tulip Poplar.

Lombardy Poplar.  
 Red-twigged Dogwood.  
 Spirea Billiardii.  
 Spirea Douglasii.  
 Elder.  
 Elm.

Oak.  
 Hemlock.  
 Arbor-vitae.  
 Snowball.  
 Tamarix.  
 Linden.

**Ornamental Trees**

Ash, Mountain—8 to 10 feet.....	Each. \$2.50
Beech—Purple leaf, 3 to 4 feet.....	3.50
Deep purple leaves.	



Catalpa Bungei.

**Catalpa**

**UMBRELLA CATALPA (C. Bungei).** This tree has become popular because of its straight stems and symmetrical roundish heads which resemble an umbrella. The tops are dwarf and while they do not grow very rapidly their wide leaves give them the appearance of much larger trees. Then foliage is very pleasing and the effect obtained when planted in pairs along walks, drives or entrances is greatly admired.

Grafted, 5 to 6 feet.....\$4.00 each; per pair, \$7.00

### Catalpa

**Speciosa.** This desirable and attractive tree is now widely known. It is planted for shade, also for its blossoms, and on account of its value as a timber tree. Whole tracts of land have been planted in the West for this purpose, as it is a very rapid grower, and found to be very desirable for railroad ties, etc. 7 to 8 feet.....\$1.50

### Dogwood

**Common.** A small-sized native tree of great beauty when in bloom. Floral covering (incorrectly flowers) large, pure white, followed by brilliant scarlet fruit in autumn. 3 feet.....\$1.50

**Pink.** Similar to the Common except that its flowers are beautiful pink. The two varieties planted together make a charming combination. 2 feet..... \$3.50

### Shade Trees

	Each.
<b>Elms</b> —American, 8 to 10 feet.....	\$2.50
A tall stately tree with graceful branches.	
<b>European Larch</b> —This is a deciduous tree bearing cones like evergreens. Foliage very fine, needle-like, appearing earlier in spring than any other tree, and stays until very late fall. Pyramidal in shape, conspicuous because of bright green color. Unusual needle and branching habits. 3 feet.....	3.00
<b>Ginko</b> —Maiden Hair, 8 to 10 feet.....	1.50
A fine shade tree, leaves resemble the maiden hair fern.	
<b>Horse Chestnuts</b> —White flowering, 5 to 6 feet.....	3.50
<b>Judas (Red Bud)</b> —5 to 6 feet.....	1.25
Covered with deep pink flowers in spring before the leaves.	
<b>Pin Oak</b> —8 to 10 feet.....	3.00
The most popular of all oaks and a rapid grower.	
<b>Red Oak</b> —8 to 10 feet.....	3.00
In autumn the foliage turns a rich purplish red.	
<b>Oriental Planes</b> —7 to 8 feet.....	2.00
A hardy rapid growing tree.	
<b>Carolina Poplar</b> —8 to 10 feet.....	1.00
A large sized tree of very rapid growth.	
<b>Lombardy Poplar</b> —7 to 8 feet.....	1.25
8 to 10 feet.....	1.50
A tall, pyramidal, compact growing tree; rapid grower and very hardy. Widely planted in the southern part of Europe. Especially useful for screening effects.	
<b>Tulip Poplar</b> —8 to 10 feet.....	1.50
A magnificent native tree.	
<b>Texas Umbrella</b> —3 to 4 feet.....	2.50
It assumes a spreading head, resembling a gigantic umbrella.	
A desirable shade tree, but not entirely hardy here.	
<b>American Linden</b> —8 to 10 feet.....	2.50
A valuable lawn or street tree, large leaves and fragrant blooms.	
<b>Ash Leaf Maple</b> —8 to 10 feet.....	2.00
A rapid growing tree, the foliage resembles the ash.	
<b>Silver Maple</b> —5 to 7 feet.....	1.50
7 to 8 feet.....	2.00
8 to 10 feet.....	2.50
A rapid growing tree with light green leaves.	
<b>Sugar Maple</b> —8 to 10 feet.....	3.50
10 to 12 feet.....	5.00
Tall and stately with richly colored foliage in fall.	
<b>Mimosa</b> —4 to 5 feet.....	1.50
An ornamental tree with spreading branches and feathery foliage.	

### Weeping Trees

**Japan Weeping Cherry**—4 to 5 feet..... 5.00  
One of the handsomest flowering trees. Pink flowers.

### Mulberry

This is one of the most graceful and hardy among the weeping trees, and has only to be known to be appreciated; the foliage is a beautiful glossy green and very abundant, and the tree a rapid grower. No weeping tree is so well adapted to our Southern climate as this, or gives such general satisfaction.

**Teas' Weeping Mulberry**..... 4.00  
**Weeping Willow**—7 to 8 feet..... 1.25  
A graceful rapid growing tree.

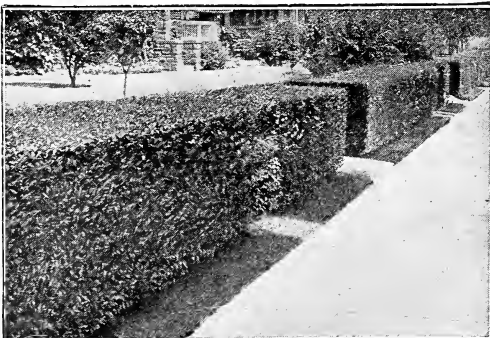
Agents must not sell at any less price than listed in this price list.



Tea's Weeping Mulberry.

**Hedge Plants**

	Each	10	100	1000
<b>Abelia Grandiflora</b> —15 to 18 ins.....	\$1.00	\$9.00	\$75.00	.....
<b>Barberry Thunbergii</b> —12 to 18 ins.....	.50	5.00	35.00	.....
<b>Barberry Thunbergii</b> —18 to 24 ins.....	.60	6.00	40.00	.....
<b>Box Barberry</b> —Dwf. 2 yr.....	.75	6.00	40.00	.....
<b>Boxwood</b> —6 inches .....	1.00	7.50	65.00	.....
<b>Boxwood</b> —8 inches .....	1.50	11.00	100.00	.....
<b>Suffruticosa (Dwarf Boxwood)</b> —A very attractive variety, of slow growth—remains dwarf and compact. It is the form used for edging in Old Colonial Gardens and Cemeteries. Bushy plants—4 to 6 inches.....	.75	5 00	.....	.....
<b>Amoor River Privet, South</b> —18 to 24 ins... ..	.....	.....	10.00	80.00
<b>Amoor River Privet, South</b> —24 to 30 ins... ..	.....	.....	12.00	100.00
<b>California Privet</b> —18 to 24 ins.....	.....	.....	9.00	70.00
<b>California Privet</b> —24 to 30 ins.....	.....	.....	10.00	75.00
<b>Spirea Van Houttei</b> —12 to 18 ins.....	.....	.....	35.00	.....
<b>Amoor River Privet, North</b> —18 to 24 ins... ..	.....	.....	12.00	100.00
<b>Amoor River Privet, North</b> —24 to 30 ins... ..	.....	.....	15.00	120.00
<b>Chinese Privet</b> —18 to 24 ins.....	.....	.....	10.00	.....



California Privet.





Norway Spruce, Barberry and Ivy Effectively Used.

## Evergreens

Here we have a group of plants that embrace a wide variety in character, habitat and color—greens of every shade and hue, charmingly contrasted with blue, gold or gray. They are a symbol of the never dying, able to adapt themselves to all types of soil and always clamouring for fresh air. In groups, for screening, shelter and hedges or as specimens, they are advantageously used. In the summer they are attractive but in the black, dreary days of winter how they liven the lawn under the weight of snow and sleet, their great drooping boughs of green seem to always cheer. Evergreens have no rival. Out on the lawn the larger growing Spruce, Hemlock, Pines and Junipers arranged in groups with lower growing and finer-foliage plants surrounding them, prove the most attractive planting on larger lawns. The smaller premises, too, have places for them, as a background, screen, or specimen, these taller plants prove serviceable. Then for a planting along the foundation walls they lend themselves to great advantage. They are expensive because of limited supply but may be made permanent with extra care in planting and caretaking afterwards, making the investment worth while. Our plants are dug with balls of soil and securely burlapped to insure perfect transplanting. The soil should be tramped well around the balls in replanting, removing the burlap. Broad-leaved evergreens without soil should have their roots dipped in thin mud before planting and all leaves clipped off. Prices quoted include balling and burlapping as no extra charge is now made for same.

All evergreens are inclined to grow "open" and where compact specimens are wanted (and this is especially true of evergreens used along foundation walls), shearing should be done occasionally. In May or June just as or after the new growth has shown, go over the whole tree with an ordinary hedge shear, clipping in the terminals. This causes the inside branches to develop and also new buds are formed where the cut is made. Thus a number of new branches are formed that hide the unsightly interior of open trees.

### Arborvitae

**American**—Sometimes called White Cedar. A well-known, native species of great value, forming an upright, conical tree of medium size. Valuable for screens and hedges.

	Each
18 inches .....	2.50
24 inches .....	3.00
30 inches .....	4.00

**Berckman's Golden (*Biota aurea nana*)**—Very dwarf, compact and symmetrical habit; a perfect gem for small gardens or cemetery lots. It far surpasses, in every way, its parent, the old *Biota aurea*. For window-boxes and vases this plant is most effective. It is certainly desirable where it is too cold for palms and other decorative plants.

	Each
12 inches .....	4.00
15 inches .....	5.00



A Grouping of Sheared Retinosporas.

	Each
<b>Biota Orientalis Pyramidalis</b> —Of well formed, compact, uniform, pyramidal habit. Broad at base tapering to point at top; deep green in color. 30 inches.....	6.50
<b>Biota Orientalis Taxana Glauca</b> —A beautiful new biota with soft blue foliage, strong growing, upright, pyramidal. A new variety of worthy merit. 30 inches.....	6.50
<b>Douglas Golden</b> —A really valuable golden form—originated by Robt. H. Douglas. A good golden color, a superior grower, forming a broad, bushy, heavy specimen. Its bright golden color adds contrast and a novel touch when planted with other Evergreens. Can be easily sheared and kept at any height or form desired. This tree should be used with a background of good dark varieties. 30 inches.....	6.50
<b>Chinese</b> —This is the most elegant and charming, and justly becoming the most popular of the Arborvitae; the beautiful foliage and the compact and regular outline of its habit render it unusually attractive.	
18 inches .....	2.50
24 inches .....	3.00
30 inches .....	4.00
<b>Siberian</b> —A well-known, popular variety, very dark green in color and compact in growth. Outline regularly conical; very hardy.	
15 inches .....	4.00
18 inches .....	5.00
<b>Pyramidalis</b> —Upright. A remarkably erect form, dark green, compact and very desirable, and as conspicuous as the Irish Yew.	
15 inches .....	3.00
18 inches .....	4.00
24 inches .....	5.00
30 inches .....	6.50
<b>Compacta</b> —A round compact dense green foliage.	
18 inches .....	5.00
24 inches .....	6.00
<b>Ellwangerii (Tom Thumb)</b> —Forms a low broad pyramid, dark green foliage.	
15 inches .....	3.75
18 inches .....	5.00
<b>Globosa</b> —Globe shape.	
12 inches .....	4.00
15 inches .....	5.00
18 inches .....	6.00



Pfitzer's Juniper.

Each

**Cedrus Deodara** (Himalayan, or Deodar Cedar)—The Great Cedar of the Himalayan Mountains. A stately tree, attaining a height of 50 to 75 feet; foliage glaucous green; branches feathery and spreading; perfectly adapted to this climate.

18 inches .....	3.50
24 inches .....	5.00

**Fir**

**Douglas**—A rapid grower; regular in outline; foliage massive, dark green; one of the finest of the Silver Firs.

18 inches .....	5.00
-----------------	------

**Juniper**

**Juniperus Hibernica** (Irish Juniper)—Columnar in habit and quite compact in growth, and on this account useful in formal gardening and wherever a break in rounded lines is wanted. Foliage bluish-green. Likes a cool climate.

15 inches .....	2.00
18 inches .....	2.50
24 inches .....	3.00

**J. Canadensis**—This is a rather low spreading plant, extending along the surface of the ground, for a distance of 7 or 8 feet. The extremities of the branches are usually ascending—but rarely to a greater height than 3 feet. It is very vigorous, many stemmed trees at home on sandy or gravelly hillsides fully exposed to the sun. It grows rapidly but may be kept small by trimming. 24 inches.....

7.00

**J. Sabina** (Savin Juniper)—A dark, rich, green Juniper of low, spreading habit. Splendid for where a dwarf plant is wanted in beds or groups or in rock gardens.

15 inches .....	4.00
18 inches .....	5.00



Austrian Pine.

- Silver**—Narrow compact and symmetrical. It has one single stem, in contrast to some varieties of Junipers with several stems. The inner foliage does not turn brown, as in the Irish and Swedish Junipers, but remains a good healthy color throughout the tree. It berries in the Fall months—some clear sky blue, others darker and silver colored. This variety can be used anywhere Junipers are needed in landscaping. It can also be used for foundation planting, borders, groups, masses or individually. Its narrow habit of growth also makes it desirable in formal plantings or wherever a narrow evergreen is needed. We have a limited number to offer for Fall. 30 inches..... 6.00
- J. Virginiana glauca (Blue Virginia Cedar)**—Beautiful silvery-blue foliage. Grows tall and somewhat slender, developing into a pleasing specimen. Very popular.
- |                 |      |
|-----------------|------|
| 18 inches ..... | 5.00 |
| 24 inches ..... | 6.50 |
- J. communis vulgaris (English Juniper)**—A handsome, compact, small tree.
- |                 |      |
|-----------------|------|
| 18 inches ..... | 4.00 |
| 24 inches ..... | 5.00 |
- Var. suecica (Swedish Juniper)**—Grows much like Irish Juniper, but more bushy.
- |                 |      |
|-----------------|------|
| 18 inches ..... | 4.00 |
| 24 inches ..... | 5.00 |
- Pfitzer's Juniper, var. Pfitzeriana**—Vase-shaped, spreading growth and light green foliage producing a beautiful soft effect. Extremely hardy. Thrives under city conditions.
- |                 |      |
|-----------------|------|
| 15 inches ..... | 4.00 |
| 18 inches ..... | 5.00 |
| 24 inches ..... | 7.50 |
- Cedrus Atlantica Glauca (Blue Mount Atlas Cedar)**—Pyramidal tree with silvery green needles, used as specimen.
- Cedrus Libani (Cedar of Lebanon)**—Horizontal branches make it a picturesque specimen.
- Cryptomeria Japonica (Japanese Temple Cedar)**—Oriental in effect; used as specimen or in groups.

## Pines

<b>Austrian</b> —Spreading habit with long, stiff, dark green needles.	Each
2 feet .....	4.00
<b>Scotch</b> —A quick growing evergreen, with blueish green needles.	
2 feet .....	4.00
<b>White</b> —The most graceful of all pines.	
2 feet .....	4.00
30 inches .....	5.00
<b>Mugho</b> —Broad spreading bush, much broader than it is high.	
Dwarf, 15 inches .....	5.00

## Spruce

<b>Norway Spruce (P. excelsa)</b> —Rapid in growth, gracefully drooping in habit, dense in structure, regular in outline and perfectly hardy.	
18 inches .....	2.00
24 inches .....	3.00
30 inches .....	3.50
3 feet .....	4.50

Please do not sell any varieties that are not listed in this price list.

<b>Common Hemlock (Tsuga Canadensis)</b> —Magnificent native trees, extremely useful for ornamental planting. As lawn specimens in full sunlight, the lower branches sweep the ground. They tolerate partial shade also, and their endurance of shearing adapts them for limited areas and for use in hedges. By shearing they become very dense and compact.	Each
18 inches .....	5.00
24 inches .....	6.00
30 inches .....	7.00
<b>Retinospora Plumosa</b> —A dense, heavily branched tree, plume-like foliage of a soft green color; responds to pruning, and is particularly useful for hedges and bedding.	
18 inches .....	4.00
24 inches .....	5.00
<b>R. aurea</b> —A distinct variation from <i>R. plumosa</i> , the shoots and younger foliage being of a light golden yellow.	
18 inches .....	4.00
24 inches .....	5.00
<b>R. squarrosa</b> —Has a soft, steel-colored foliage which is very effective. The plant stands pruning, and can be kept to any height.	
15 inches .....	3.00
18 inches .....	3.50
24 inches .....	4.00
30 inches .....	5.00
<b>R. filifera (Thread Branched Japan Cypress)</b> —A low tree with irregular outline and very elegant appearance. Its long, drooping foliage and pretty form are very pleasing.	
18 inches .....	4.00
24 inches .....	5.00

## BROAD-LEAF EVERGREENS

## THE BUSH ARBUTUS—ABELIA

<b>Abelia Grandiflora Syn. Rupestris</b> —Dainty white flowers flushed with pink that deck the graceful arching branches from early July until frost, and small glossy leaves that glance and shimmer in the sunlight, make this shrub a great favorite. As the flowers are borne on the new wood, severe trimming each spring should be practiced, so that the slight winter killing of the tips of the branches that sometimes occurs usually does no harm. A shrub 2 to 4 feet high; it is splendid for foundation planting and in grouping with other Evergreens. An Asiatic native.	
Each .....	1.00
<b>Azalea Amoena</b> —Dwarf and bushy, with small green leaves, a copery hue in winter. Always attractive, but doubly so in April or May, when clothed in a mass of dark pink or magenta flowers. Easy to transplant and maintain.	
8 to 10 inches .....	4.00
10 to 12 inches .....	5.00



English Laurel.

- Azalea Hinode-Giri**—Vivid red flowers in spring make this plant extremely showy and desirable. Its deep green leaves turn reddish in the fall. An appealing plant to the garden lover and one deserving a place on any lawn.
- |                       |      |
|-----------------------|------|
| 6 to 8 inches .....   | 3.00 |
| 8 to 10 inches .....  | 4.00 |
| 10 to 12 inches ..... | 5.00 |
- Bamboo, Japanese**—An attractive tall growing evergreen, canes fine for screening .....
- |  |     |
|--|-----|
|  | .75 |
|--|-----|
- Boxwood**—Bush,
- |                 |      |
|-----------------|------|
| 6 inches .....  | 1.00 |
| 8 inches .....  | 1.50 |
| 10 inches ..... | 2.00 |
| 12 inches ..... | 3.00 |
| 15 inches ..... | 4.50 |
- Carolina Laurel**—An attractive tree with small green leaves.
- |                   |      |
|-------------------|------|
| 2 to 3 feet ..... | 3.50 |
|-------------------|------|
- Chinese Privet**—An excellent privet for trimming to shape.
- |                       |     |
|-----------------------|-----|
| 18 to 24 inches ..... | .75 |
|-----------------------|-----|
- Euonymus, Japonica**—Large glossy green leaves, holding their color all winter.
- |                   |      |
|-------------------|------|
| 2 to 3 feet ..... | 2.00 |
|-------------------|------|
- Euonymus, Varigated**—Similar to the above, except the varigated leaves.
- |                   |      |
|-------------------|------|
| 2 to 3 feet ..... | 2.50 |
|-------------------|------|
- Japanses Spurge (Pachysandra) Ground Cover**—An evergreen vine. This is one of the few hardy broad-leaved evergreens that thrive in the North. Has thick glossy foliage which remains on the plant the entire year. Grows about six inches high; spreads out and soon forms a dense ground cover or underplanting; also can be used as a low edging plant. Does well in dense shade where grass will not grow; also thrives in sunny location.



**Magnolia Grandiflora.**

- English Laurel (*Laurocerasus Officinalis*)**—These are valuable shrubs. Their principal merits are great vigor; beautiful, broad shining foliage; of easy cultivation, and thrive in any ordinary, good, well-drained garden soil. Not hardy north of Washington, D. C. They attain a height from 12 to 15 feet with a corresponding breadth. The plants do not bloom until they are several years old, when they produce spikes of small, white flowers. For massing or for single specimens, few plants possess more advantages than the English Laurel.
- |                      |      |
|----------------------|------|
| 24 to 30 inches..... | 5.00 |
| 18 to 24 inches..... | 4.00 |
- Ilex Crenati (Japan Holly)**—A shrub with small glossy green leaves.
- |                      |      |
|----------------------|------|
| 18 to 24 inches..... | 5.00 |
|----------------------|------|
- Japanese Privet**—A broad-leaved evergreen shrub.
- |                   |      |
|-------------------|------|
| 2 to 3 feet ..... | 2.50 |
|-------------------|------|
- L. Lucidum**—A beautiful form of Japanese Privet. Leaves large, thick, ovate, lanceolate, of a very dark shining green. Large heads of white flowers produced in May, followed by black berries, which are retained throughout the winter. Hardy at Baltimore. A most desirable variety. Attains a height of 20 feet.
- |                 |      |
|-----------------|------|
| 15 inches ..... | 1.50 |
| 18 inches ..... | 2.00 |
| 24 inches ..... | 2.50 |
| 30 inches ..... | 3.50 |
- Mahonia Japonica**—Holly-leaved barberry, glossy green foliage with pointed edges to the leaf.
- |                       |      |
|-----------------------|------|
| 12 to 18 inches ..... | 5.00 |
|-----------------------|------|
- Mahonia Aquifolia**—Bright glossy green foliage, turning in autumn to rich bronze shade.
- |                       |      |
|-----------------------|------|
| 12 to 18 inches ..... | 5.00 |
|-----------------------|------|
- Virburnum, Rhytidophyllum**—An attractive Chinese evergreen shrub, with broad tapering leaves, flowers yellowish white.
- |                       |      |
|-----------------------|------|
| 18 to 24 inches ..... | 3.50 |
|-----------------------|------|
- Virburnum Tinus**—Beautiful evergreen shrub, bearing clusters of white or pinkish white flowers.
- |                       |      |
|-----------------------|------|
| 12 to 18 inches ..... | 3.50 |
|-----------------------|------|
- Pyracantha Coccinea**—An evergreen shrub with low spreading habit.
- |                      |      |
|----------------------|------|
| 18 to 24 inches..... | 2.50 |
|----------------------|------|
- Rhododendron Catawbiense (Rose Bay, Catawba Rhododendron)**—This is our native variety from the Alleghany Mountains, and those who have visited these mountains can appreciate this grand plant. Flowers lilac-purple.
- |                 |      |
|-----------------|------|
| 18 inches ..... | 6.00 |
|-----------------|------|



**Spirea Thunbergii**

<b>R. Maximum (Great Laurel)</b> —Natives of the Alleghany Mountains. Produces large trusses of pure white flowers. Blooms later than R. Catawbiense.	<b>Each</b>
18 inches .....	<b>6.00</b>

<b>Magnolia Grandiflora</b> —This magnificent Southern evergreen may be called the Queen of the Magnolias. It is really a grand tree, but, unfortunately, too tender to stand the winters well north of the Potomac, and even the climate along the mountains of Virginia is rather too severe for it to do well; but east of Richmond and south of the James River it flourishes finely. The tree is of rapid and handsome growth; leaves 8 to 10 inches long, which are retained the whole year; flowers large, white and very fragrant.	
3 feet .....	<b>5.00</b>
4 feet .....	<b>6.00</b>
Write for prices on large size Magnolia.	



**Barberry Thunbergii.**





Van Houttei Spirea.

## Shrubs

	Each.
<b>Altheas, Rose of Sharon</b> —Double assorted colors, a very desirable shrub, flowers large in late summer.....	.75
<b>Barberry Thunbergii (Thunberg's Barberry)</b> —It is a native of China, but was introduced from Japan. It forms a compact bush 3 to 4 feet high, with neat little leaves that change to rich scarlet in autumn. The abundance of bright red fruit is exceedingly attractive. It bears shearing well and makes a dense hedge....	.60
<b>Box Barberry</b> —Dwarf, makes a beautiful low hedge, \$7.50 dozen....	.75
<b>Butterfly Bush</b> —Very hardy. Blooms the first season. Flowers from early summer until late frost. Rich, striking color. Splendid for cutting. Will thrive anywhere. This bush attracts butterflies in large numbers.....	.60
<b>Callecarpa, Americana</b> —A low growing shrub, bearing clusters of purple berries in fall .....	.75
<b>Calycanthus</b> —Sweet shrub, flowers double, chocolate color fragrant .....	.75
<b>Caryopteris</b> —Blue Spirea, showy blue flowers in late summer.....	1.00
<b>Cape Jessamine (Gardenia)</b> —A very tender evergreen with glossy green foliage .....	1.50
<b>Crepe Myrtle</b> —The finest shrub for the South, commences blooming in July and last until frost.	
Pink .....	1.00
Red .....	1.00
Purple .....	1.00
White—The white is not as hardy as the other colors.....	1.50
<b>Deutzia Crenata</b> —Clear white flowers of large size.....	.60
<b>Deutzia Pride of Rochester</b> —Double pinkish white.....	.60
<b>Deutzia Lemcoinei (Dwarf)</b> —Early profuse bloomer, flower white..	.75
<b>Deutzia Gracilis</b> —Dwarf, flowers white.....	.75
<b>Deutzia Waterer</b> .....	.60
<b>Exochordia Grandiflora (Pearl Bush)</b> —A beautiful shrub with white flowers .....	1.00
<b>Forsythia (Golden Bell).</b>	
<b>Intermedia</b> —Early flowering shrub with bright golden flowers.....	.75



A Crepe Myrtle Bordered Drive.

	Each
<b>Suspensa, Drooping Forsythia</b> —Slender drooping branches, dark green leave, flower yellow.....	.75
<b>Fortunei</b> —A more erect larger grower than the above.....	.75
<b>Virdissima</b> —Erect green branches, yellow flowers.....	.75
<b>Fringe</b> —	
Purple (smoke tree), an elegant large shrub with pale purplish flowers .....	1.00
White—A native shrub with large glossy leaves, drooping pure white flowers .....	1.50
<b>Flowering Almond</b> —White; it blooms early, before the leaves appear.	1.00
<b>Flowering Almond</b> —Pink, very handsome, double pink flower.....	1.00
<b>Flowering Crab (Japanese)</b> —Handsome deep pink flowers.....	1.50
<b>Bechtel's Double Flowering</b> —Double, pink flower, very fragrant....	2.00
<b>Double Flowering Cherry (Japanese)</b> —Producing deep rose flowers in early spring .....	3.50
<b>Double Flowering Peach</b> .....	1.00
Pink, flowers double.	
Red, flowers double.	
White, flowers double	
<b>Golden Elder</b> —Golden leaved, flowers white.....	.75
<b>Golden Privet</b> —This is a very strong grower with beautiful golden foliage. Used for specimen planting, it is decidedly attractive.	
<b>Halesia</b> —A neat shrub with dark green foliage and beautiful white flowers .....	1.50



Butterfly Bush.



*Hydrangea Paniculata Grandiflora.*

**Honeysuckle Bush**

	Each
<b>Fragrantissima</b> —Fragrant almost an evergreen, flowers white.....	.75
<b>Tartarica</b> —Pink flowers.....	1.00
<b>Morrowi, Japanese</b> —White flower, valuable for the handsome red fruit .....	.75

**Hypericum**

<b>H. Aureum</b> —Low shrub, useful for edging borders, yellow flowers..	.75
<b>H. Mosorianum (Gold Flower)</b> —A beautiful dwarf shrub, large single golden yellow flower.....	.60
<b>H. Prolicicum</b> —Medium tall, covered with yellow flowers in summer.	.75

**Hydrangeas**

<b>Large-panicled (Hydrangea paniculata grandiflora)</b> —This is one of the finest of all shrubs, growing 8 to 10 feet high, producing immense pyramidal panicles of white flowers. Blooms in August and September .....	1.00
<b>Hydrangea Tree</b> —Same as the above, confined to a single stem....	1.50
<b>Arborescens grandiflora alba</b> —A recent introduction of great value. Blooms are of very large size; snowy white. A valuable acquisition, as it begins to bloom in April and lasts almost the entire summer. In form, the panicles are similar to the tender Hydrangeas .....	1.00
<b>Otaska Tender Hydrangea</b> —An improved variety of Hortensis; flower-heads very large; pale rose or blue, according to soil. This variety is extensively used in growing in pots or tubs....	.75
<b>New French Hydrangea</b> —In pink, rose and white.....	1.00
<b>Jasminum Yellow</b> —Slender green branches, pretty yellow flowers in early spring.....	.75
<b>Jasminum Humile</b> —Nearly an evergreen; almost a continual bloomer	1.00
<b>Japan Quince</b> —Bright green leaves, flowers red, large and showy..	.75
<b>Kerria Japonica, Flora Pleno</b> —Double yellow flower.....	.75
<b>Kerria White</b> —Pure white flowers, blue black berries in winter.....	.75

**Lilacs**

<b>Purple or White Lilac</b> .....	.75
<b>Charles X</b> —Reddish purple, single.....	1.00
<b>Mme. Lemoine</b> —Fine double white.....	1.00
<b>M. Buchner</b> —Large double pale lilac.....	1.00
<b>Ovalifolium Aureum (Golden-leaved Privet)</b> —A beautiful golden variegated form and very effective for associating with other dwarf shrubs .....	.75

<b>Paul's Thorn (Red)</b> —A tall quick growing shrub, flowers red....	Each	3.00
<b>Paul's Thorn (White)</b> —A tall quick growing shrub, flowers white..		2.00
<b>Purple Filbert</b> —A large bush with dark purple leaves.....		1.00
<b>Russian Olive</b> —Silvery foliage and yellow berries.....		.75
<b>Syringa</b> —Mock orange, creamy white flowers, fargrant.....		.75

### Spireas

<b>Anthony Waterer</b> —A compact shrub, red flowers, continuous bloomer	.75
<b>Billardi</b> —Erect growing shrub, with rose pink flowers.....	.60
<b>Bridal Wreath, Prunifolia</b> —Hardy old-fashioned shrub.....	.75
<b>Douglasi</b> —Deep pink .....	.60
<b>Opulifolia Aurea</b> —Golden foliage.....	.75
<b>Thunbergii</b> —Small white flowers and tiny leaves.....	.75
<b>Van Houttei</b> —Among the finest shrubs, graceful drooping habit, good foliage, flowers white.....	.75

### Snowberry

<b>Red</b> —Red flower in summer, purple berries in winter.....	.75
<b>White</b> —Flowers white followed by snowy white berries.....	.75

### Snowballs and Other Virburnums

<b>American</b> —Well-known shrubs, bearing large white flowers.....	1.00
<b>Japanese</b> —A very choice shrub, pure white flowers.....	1.25
<b>Sebolds Virburnum</b> —Vigorous grower, rich green foliage, white flowers .....	1.25
<b>Tomentosum</b> —Large white flowers, good foliage.....	1.25
<b>Tamarix</b> —Tall growing shrub with fine feathery foliage, pink flower	1.25

### Weigelas

<b>Eva Rathke</b> —Flowers deep red.....	1.00
<b>Floribunda</b> —Numerous crimson flowers.....	1.50
<b>Rosea</b> —Deep pink flowers.....	1.00
<b>Variegated</b> —Pink flower variegated leaf... ..	1.00



Japanese Snowball.

## Roses

Roses are the most beautiful of flowers, and they are among the easiest to raise to perfection. They require plenty of manure and good cultivation. Old and decayed branches, and at least half the previous season's growth, should be cut away early each spring, and a little cutting back after the first blooming will insure more late flowers.



Rose Ophelia.

## Everblooming Pink Roses

\$1.00 each; \$10.00 per dozen.

**Alexander Hill Gray**—Pale lemon deepening in the center of its perfectly formed fragrant bloom. One of the hardiest and the most beautiful of the tea roses. Best in order.

**Bridesmaid**—It is a charming, clear bright pink in color, and much superior to its well-known parent.

**Bon Silene (Hardy, 1839)**—Color bright rose, delicately tinted with fawn, sometimes quite light. Deliciously scented.

**Catherine Mermet (Guillot, 1869)**—Light rosy-flesh color; large, full and globular; a charming sort.

**Columbia**—A large rose with long stiff stem peach blow pink; deepening as it opens.

**Columbia**—Bright pink, sweetly scented exquisite shape and strong stiff petals, deepening in color as they expand. good growth and healthy foliage.

**Columbia White**—An offspring of the Great Columbia with which it is identical, color silvery pink deepening towards the center, remarkably hardy and a strong grower.

**Helen Gould (Balduin) (H. T.)**—Rosy pink; long; pointed buds. Fine.

**Jonkheer J. L. Mock (Leenders, 1910)**—The blooms are of largest size, highly perfumed. Color clear imperial-pink. Awarded two gold medals.

**Killarney (Alex. Dickson, 1898)**—The finest pink forcing Rose ever introduced. In coloring it is especially beautiful.

**Madame Caroline Testout (Pernet Ducher, 1890)**—Clear bright satiny-pink; flowers very large and extremely showy.

**Radiance (Cook, 1909)**—A brilliant rosy-carmine, displaying beautiful rich and opaline-pink tints in the open flower.

**Maman Cochet (Cochet, 1893)**—This is the famous Pink Cochet. Light pink shaded with salmon-yellow, outer petals splashed with bright rose; extremely large and full.



Rose Columbia.

**Ophelia**—Creamy white and pale pink blooms, with a glint of golden yellow in the folds of its petals, very fragrant producing its blooms very liberally.

**William E. Smith (Shellum, 1908)**—The soft blending of the salmon-pinks and the rose-pinks and the beautiful flesh tints in this Rose give it a singular resemblance to the entrancing flush on a maiden's cheek.

## Everblooming Red Roses

\$1.00 each; \$10.00 per dozen.

**Etoile De France (Pernet Ducher, 1905)**—Color a lovely shade of clear, red-crimson velvet; very fragrant.

**Gruss An Teplitz (Geschwindt, 1898)**—Bright crimson, white, fiery-red center; cup-shaped; semi-double; flowers in clusters; so free in bloom as to present a blaze of scarlet.

**Hadley (H. T.)**—Deep, rich, velvety crimson. Well formed buds on long stiff stems. Very fragrant.

**Hoosier Beauty (H. T.)**—Crimson scarlet with darker shadings. Buds of good length with stiff stems. A strong grower.

**Meteor (Geschwindt, 1887)**—Dark velvety crimson, shaded maroon. A grand garden Rose.

**Radiance (H. T.)**—Rosy carmine reverse of petals, beautiful silver tint, large, full, fragrant. Vigorous grower, free bloomer, long, stiff stems. This is one of the best we have seen in the South.

**Maman Cochet (Red)**—It is claimed to be the largest flowering and freest blooming Hybrid Tea Rose in existence, and the most beautiful and satisfactory rose for general planting ever offered. Color is a rich, vinous crimson.

**Rhea Reid**—Rich, dark velvety red double flowers, of large size. A very desirable garden sort.

**Richmond (Hill, 1905)**—Pure rich scarlet; very free and continuous flowering; splendid forcer.

## Everblooming White Roses

\$1.00 each; \$10.00 per dozen.

**White Maman Cochet (Cook, 1897)**—A sport from Maman Cochet, with creamy-white flowers faintly tinged with blush.

**Kaiserin Augusta Victoria (Lambert & Reiter, 1891)**—Pure white, with shadings of primrose-yellow.

**White American Beauty, or Frau Karl Druschki**—This magnificent variety has taken first prize at all the great flower shows of Europe. Pure snow-white, with long buds and immense, perfectly double flowers, 4 to 5 inches across, with waxy-like petals and very durable. It is one of the most continuous flowering roses in this excellent class. The bush is a vigorous grower, of upright habit and luxuriant foliage. Hardy everywhere that roses grow.



Kaiserin Augusta Victoria.

## Yellow Roses

\$1.25 each; \$12.00 per dozen.

**Etoile De Lyon**—Bright sulphur-yellow; buds very large and full; constant bloomer.

**Harrison's Yellow (Harrisoni)**—A slender but vigorous grower, with distinct golden yellow flowers.

**Lady Hillingdon (Lowe & Shawyer, 1910)**—Pointed bud of brilliant deep golden-yellow. Awarded gold medal, N. R. S.

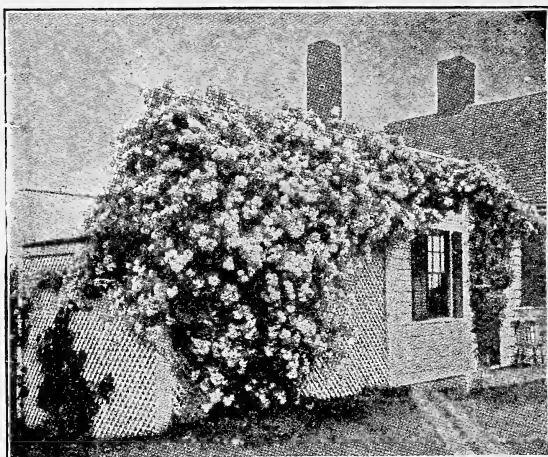
**Sunburst (T.)**—This beautiful Rose has been thoroughly tested, and it easily stands at the head of all sorts of its color. The color is a most pleasing shade of yellow and orange; buds long and pointed; plant vigorous and healthy; blooms keep for a long time after being cut. A grand Rose.

**Safrano**—Saffron and apricot; one of the oldest and best Roses; in the bud shape it can hardly be surpassed.

**Yellow Cochet, or Madame Derepas Matrat**—A pure Tea Rose, very free-growing and hardy in character, withstanding ten degrees below zero. It throws up fine, strong stems, crowned by solitary buds of grand size; the color is a good sulphur-yellow, blooms very large, perfectly double, splendid form and freely produced. It has every quality necessary to make the ideal yellow bedder, ranking with the White and Pink Cochets in value as a Summer Rose.

## Rosa Hugonis

**Rosa Hugonis (A Rare New Rose)**—Known to be in bloom during a snowstorm! The color is intense canary-yellow, very bright and attractive. When in bloom the entire plant is covered with bright, sunshiny yellow blooms and buds making a wonderful early spring show. It later forms rich, scarlet berries which remain until winter and are very noticeable. Very rare. \$150.



Climbing Killarney.

## Climbing Everblooming Roses

\$1.00 each; \$10.00 per dozen.

**Cl. Caroline Testout (Cl. T.)**—Vigorous climber, producing abundance of large cup-shaped blooms of most beautiful delicate pink color. No collection is complete without this splendid variety.

**Climbing Helen Gould (Good & Reese, 1912) (C. H. T.)**—Probably no red Rose has held its place secure in the hearts of Rose lovers for so long a period as has the beautiful Helen Gould. We have now the pleasure of introducing this famous Rose in climbing form. Everybody is familiar with the warm watermelon-red color of its charming flowers. This is a grand climber. Be sure and try it.

**Climbing Killarney (Geo. Reinberg, 1908) (C. H. T.)**—An exact counterpart of Killarney in every respect except that it is of vigorous climbing habit; deep shell-pink.

**Climbing Papa Gontier (Cherrier, 1904) (C. T.)**—A climbing sport of Papa Gontier. Color rich red; a beauty.

**Etoile de France (C. T. H.)**—One of the very best dark velvety crimson Climbing Roses; very hardy climber.

**Climbing Meteor**—Grows 10 to 15 feet in a season; blooms freely and persistently; deep, rich, velvety crimson; hardy with protection.

**Clothilde Soupert (Soupert & Notting, 1890) (H. Poly.)**—Known the world over as one of the very best of all bedding Roses. The only rival of "Hermosa" as a bedder and market pot plant. The color effect is beautiful ivory-white, shading towards the center to bright silvery-pink. Everybody's Rose.

**Climbing Kaiserin Augusta Victoria (Dingee, 1896) (C. H. T.)**—A strong climbing form of the variety of the same name. Pure white.

**Dr. W. Van Fleet**—Pale pink bud and flowers equal in form and size to the finest hybrid teas, borne on long individual stems, flowering through three weeks or more. Its long stems and blooms are ideal for cutting.

**Marechal Niel (Pradel, 1864) (C. T.)**—This is the old standby yellow Rose in the South, where it is hardy; indeed, it will bloom in any garden, but is not hardy in the North. Immense deep golden-yellow flowers with the deepest, richest tea fragrance of all Roses.

**Paul's Scarlet Climber**—Intense scarlet flowers of excellent shape and moderate size, borne in small trusses. The flowers are purest scarlet of any climber and lasts a long time and making a brilliant display for several weeks.

**Wichuraiana (Memorial Rose)**—Handsome for covering rockeries, mounds or embankments. The pure white single flowers appear in the greatest profusion during the month of July.

**Climbing American Beauty**—Rosy crimson, similar to its parent, the famous American Beauty; flower 3 to 4 inches in diameter and fragrant; finely formed, on long stems. Blooms very freely in May and June, and occasionally during the summer. The plant is a strong grower, making shoots 10 to 12 feet in a season, and perfectly hardy. Foliage of good size, deep glossy green color; does not mildew; is not subject to black spot, and remains on until frost.





Paul Neyron

## Hybrid Roses

\$1.00 each; \$9.00 per dozen.

**General Jacqueminot**—Brilliant, velvety crimson; large, showy, and a fine grower; a magnificent variety.

**Madame Charles Wood (E. Verdier, 1861)**—Bright cherry-red; extremely free bloomer. A grand garden Rose. This is the same Rose as Dinsmore.

**Prince Camille de Rohan**—Deep velvety crimson; large; moderately full, a splendid rose.

**Ulrich Brunner (Levet, 1881)**—Cherry-red, of immense size, fine form and most effective in the garden.

**Magna Charta (W. Paul, 1876)**—Bright rose, very large and double, of good form and fragrant; extra.

**Paul Neyron**—Deep rose-color; splendid foliage and habit, with larger flowers than any other variety; a valuable acquisition.

**Madame Plantier (Plantier, 1835)**—Extremely hardy; completely hides itself in June with its lovely pure white, sweet scented flowers; fine.

## Ramblers

\$1.00 each; \$9.00 per dozen.

**The Blue Rambler Rose (Schmidt, 1909) (C. P.)**—This is a much better Rose than some give it credit for. It opens a reddish-violet, quickly changing to violet-blue.

**Baltimore Belle**—Pale blush, variegated carmine, rose and white; double.

**Crimson Rambler**—Especially adapted for covering trellises, training to side of the house, or can be cut back and grown in bush form.

**Yellow Rambler**—This is a very strong grower producing an abundance of attractive yellow flowers.

**Dorothy Perkins**—The greatest climbing rose ever introduced. The flowers are borne in the greatest profusion in large trusses, and are of a most exquisite shade of shell-pink with beautifully quilled petals. The foliage is strong and bright green, and the plant, even when not in bloom, is a handsome adornment to the porch.



Beautiful Wall Planting of Roses.

**White Dorothy Perkins**—Double white flowers in large clusters. Foliage deep glossy green.

**Lady Gay**—Flowers cherry-pink, fading to white; vigorous grower; hardy.

**Philadelphia Rambler**—An improvement on Crimson Rambler. The flowers are larger, more double and of a darker crimson color.

**Silver Moon**—Pure silvery white; large blooms; vigorous growth. 1 and 2 years.

**Red Dorothy Perkins**—This is identical with Pink and White Dorothy Perkins in growth and blooming qualities. The color is a brilliant crimson, making it one of the most showy Roses grown.

## Baby Ramblers

\$1.00 each; \$9.00 per dozen.

**Baby Pink Rambler**—Same as White Rambler, except color of flowers, which are brilliant light carmine.

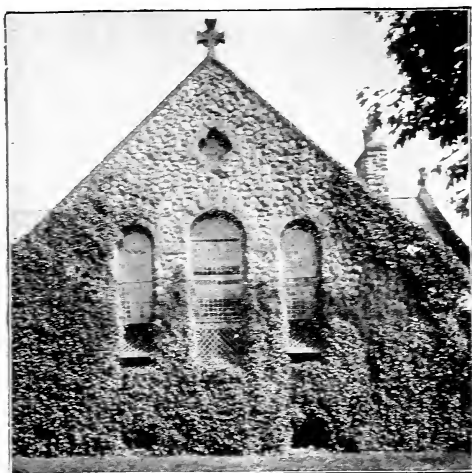
**Red Baby Rambler**—This is the original Baby Rambler Rose. A compact dwarf variety covered with a wealth of crimson flowers during the entire season. Very showy and useful for massing.

**White Baby Rambler (Lambert, 1901)**—Grows to a height of twenty inches and produces double pure white flowers in abundance.

**Orleans (Levavasseur, 1910)**—Showiest and prettiest of all Baby Ramblers. This charming and dainty Rose is of beautiful rounded habit and is a huge bouquet of deep cerise or Geranium-pink with distinct showy center of pure white; florets not crowded, but of beautiful arrangement, and cannot be beaten. The color is irresistible.

## Climbing Vines

	Each.	Doz.
<b>Ampelopsis Veitchii (Boston Ivy)</b> —Rapid growth, leaves bright green, very dense, turning red in fall.....	.50	5.00
<b>Ampelopsis Quinquefolia (Virginia Creeper)</b> —Large handsome leaves turning red in fall.....	.75	7.50
<b>Dutchman's Pipe</b> —Well adapted for porches and arbors, broad bright green leaves, purple flowers.....	1.25	....
<b>Clematis Paniculata</b> —From Japan, Panicles of small white fragrant flower, in late summer, good foliage.....	.75	....
<b>Clematis, Ed. Andre</b> —Large bright red.....	1.25	....



English Ivy.

	Each.	Doz.
<b>Clematis, Henryii</b> —Creamy white, large.....	1.25	....
<b>Clematis, Jackmanii</b> —Dark violet purple.....	1.25	....
<b>Honeysuckle, Halls Japan</b> —Fragrant, constant bloomer (evergreen) .....	.75	6.00
<b>Ivy, English</b> —Bright green foliage (evergreen).....	.50	3.50
<b>Kudzu Vine</b> —Most rapid growing vine, violet flowers.....	.75	....
<b>Trumpet Vine</b> —Trumpet shaped, yellowish red flower.....	.75	....
<b>Wistaria, Purple</b> —A fine climber with purple flowers, borne in long open clusters.....	1.00	....
<b>Wistaria, White</b> —Same as above, except flowers are white..	1.00	....

## Peonies, Herbaceous

A very showy and most useful class of hardy plants; will flourish in any section. They grow and flower well in almost any soil with very little care, but the flower will be finer and colors brighter if given a deep, rich loam, well manured. Even when not in bloom the peony is a distinct ornament to the garden, as it forms a beautiful bush.

Select Named Varieties of Peonies, \$1.50 each.

**Andre Lauries**—Dark Tyrian-rose or purple, shading deeper.

**Festiva Maxima**—The grandest of the whites. Early. The flowers are extra large, color a pure white save carmine tipped petals. Has no equal.

**Francois Ortegat**—A midseason to late variety, being very dark rose color with yellow stamens, flowers large on strong stems. Extra good.

**Fulgida**—Purplish red, silver tipped, medium size, late season.

**Humei**—The best late pink, American Beauty shade. Plants graceful and free flowering.

Please do not sell any varieties that are not listed in this price list.

**Rosea Superba**—Deep cerise pink. blooms compact and perfectly formed, long stems, keeps well. early.

Select Unnamed Varieties of Peonies by Colors—

Red—Pink--White—\$1.00 each.

## A Hardy Carnation

Price, 75c each; \$7.50 dozen.

We are offering this year a new Hardy Carnation. This Hardy Carnation has crimson flowers, lives out doors all winter and blooms continually from May until frost.



A Bed of Choice Peonies.

## Bulbs and Hardy Perennials

### Sell for Spring Only

	Each.	Doz.
<b>Canna</b> —A very attractive bedding flower.....	.40	3.50
<b>Chrysanthemums</b> —One of the most popular autumn flowers.	.40	3.50
<b>Dahlias</b> —A beautiful late summer and autumn flower.....	.40	3.50
<b>Gaillardia</b> —The most attractive and useful of all summer flowers .....	.30	3.00
<b>Gladiolus</b> —The popularity of the Gladiolus is sure to continue and increase, as they are, without doubt, the most attractive and useful of all summer flowering bulbs, and as a cut flower through the summer and autumn months, holds a place that cannot be taken by any other flower. Colors: Red, pink, white and variegated.....	.30	3.00

### For Spring or Fall

	Each.	Doz.
<b>Anemone Japonica</b> .....	.25	2.50
<b>Golden Glow</b> .....	.25	2.50
<b>Iris, German</b> .....	.25	2.50
<b>Iris, Japan</b> .....	.50	5.00
<b>Phlox Hardy</b> .....	.35	3.50

### Sell for Fall Only

	Each.	Doz.
<b>Crocus</b> .....	.20	2.00
<b>Hyacinth, assorted</b> .....	.25	2.50
<b>Hyacinth, Double</b> .....	.30	3.00
<b>Tulips, Double</b> .....	.25	2.50
<b>Tulips, Single</b> .....	.25	2.50
<b>Narcissus</b> .....	.25	2.50

**WE USE AND RECOMMEND SCALECIDE:**

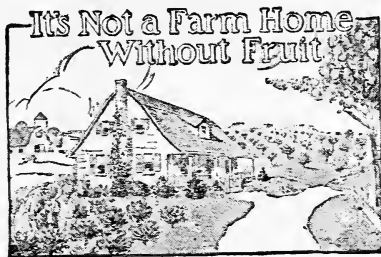
## What Scalecide Is

Scalecide is a dormant spray for fruit trees that will kill every scale that you hit with it and some that you do not actually hit because of its crawling nature.

It is not an emulsion, but a miscible oil that mixes instantly with cold water and stays mixed without agitation. Its continuous use for the past twenty years throughout the fruit growing world has proven that it will not do injury such as has been so often attributed to oil emulsions and improperly made miscible oils.

No other oil spray is made like Scalecide or from the same material, or will do what Scalecide is guaranteed to do. This spray is sold only under the trademark name Scalecide.

**WRITE FOR PRICES**



It's Not a Farm Home  
Without Fruit.

