

## **Historic, Archive Document**

Do not assume content reflects current scientific knowledge, policies, or practices.



*Bofferding*

**SEEDS**

62.43

U. S. Department of Agriculture

**1942**

**QUALITY VEGETABLE,  
FLOWER SEEDS,  
BULBS AND SUPPLIES  
SINCE 1890**

**BOFFERDING SEED CO.**

652 SECOND AVE. NORTH

MINNEAPOLIS, MINN.

# LAWN GRASS SEED

## HOW TO MAKE A LAWN

**Preparation of Soil**—A fine seed bed is essential and the soil should be spaded deeply removing large lumps. Roll or tamp to make the area even.

**Fertilizing**—Use a reliable commercial fertilizer and mix thoroughly with the soil; for quantity follow the directions on the container. Wet the soil and leave for about two days. Never sow seed immediately after applying a fertilizer as the seedlings will burn.

**Seeding**—Use a good mixture of lawn grass seed. Seed may be sown any time, preferably in the spring. Choose a quiet day and sow the seed half one way and half the other way to insure a more even stand. Sow one pound of seed to every 250-300 square feet, then roll or tamp again. Wet thoroughly in the evenings until the sod is well established.

**Bofferding Super Select Mixture.** We feel no other factor is more important than the quality of the grass seed and we pride ourselves on the excellent quality of our own lawn grass seed mixtures. Only the heaviest re-cleaned seed is used. This mixture will give you a rich, smooth, velvety sod. **Price: lb. 40c; 5 lbs. \$1.90; 25 lbs. \$8.50; 100 lbs. \$32.00.**

**Bofferding Shady Place Mixture.** Our special mixture of hardy, quick growing grasses best suited for the shady places in your lawn. The regular feeding and watering of areas shaded by trees is of utmost importance. **Price: lb. 60c; 5 lbs. \$2.75.**

## MISCELLANEOUS GRASSES

	Lb.	5 Lbs.
Kentucky Blue Grass. One of the best grasses.....	.40	1.75
White Clover .....	1.15	5.50
Seaside Creeping Bent. Extra fancy grade.....	1.10	5.00
Red Top .....	.25	1.10
Perennial Rye Grass. Quick growing.....	.25	1.10
Rough Stalked Meadow. For shade. (Poa Trivialis).....	1.50	
Chewings Fescue. Also for shade.....	.75	3.50

**SPECIAL FORMULAS**—We shall be pleased at all times to prepare special mixtures according to our customers own formula.

**LAWN PESTS**—Moles. Place "Forces Mole Killers" in runways.

Ants. Use "Cyanogas" in the special ant kill container.

Add postage if to go by mail. Ask for prices in larger quantities.

**SPIKE-TAMP** soon pays for itself in saving of seed, fertilizer and water. Should always be used when seeding or when spreading fertilizer. Spiking aerates the soil, improves the drainage and cultivates the soil. Endorsed by the U. S. Dept. of Agriculture, who recommend its use for tamping grass seed and pulverizing the soil.

## SPIKE-TAMP

This two-in-one tool which can be used as a spiker or tamper, is endorsed by the U. S. Dept. of Agriculture. When the plate is set for spiking there are thirty-six spikes nearly two inches long. Using any type of wrench a single nut is turned and the nine inch plate is reversed to a tamper. For tamping seeded areas and leveling uneven places in the lawn the tool is invaluable. In spiking position it is useful to aerate the soil and cultivate the grass preventing hard dry brown spots. Spiking is recommended instead of raking when reseeding a lawn.

**Price: \$4.50**

AN INDESTRUCTIBLE  
ALL METAL TOOL  
MADE OF QUALITY  
MATERIALS.  
WEIGHT 11½ POUNDS  
OVERALL LENGTH 4  
FT. PLATE 9 INCHES  
SQUARE. SPIKES 1½  
INCHES LONG.



# GENERAL LIST

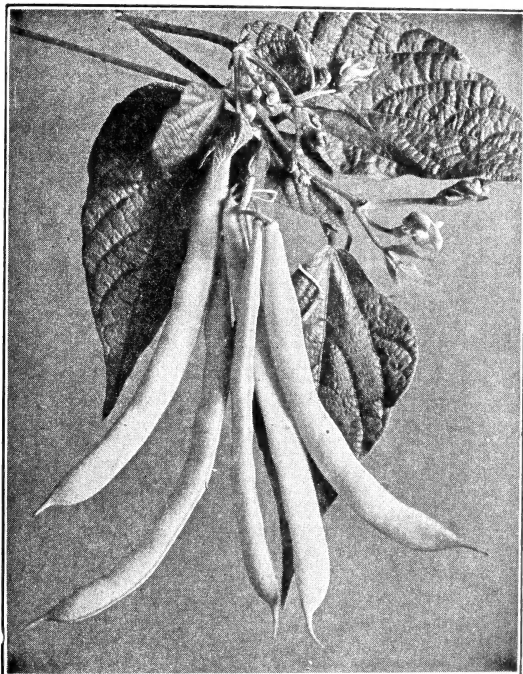
## Bofferding Vegetable Seeds

Our list comprises only the tried and best varieties and our stocks are secured from the most reliable sources; every lot of seed tested for germination.

Packets, ounces and quarter pounds, post paid at prices listed.

### ASPARAGUS—

	Oz.	¼ Lb.	Lb.
Mary Washington. Long, thick, heavy rich green stalks.....	\$0.15	\$0.30	\$1.00



Unrivald Wax

### BEANS, Yellow Podded Bush—

2 lbs. 100 feet drill; 60 lbs. to the acre.

Packet 10c

<b>Unrivald Wax.</b> Very early. Pods narrow, thick, flat, brittle and stringless .....	1 Lb.	5 Lbs.	15 Lbs.
<b>Pencil Pod Black Wax.</b> Early. Pods round, slightly curved. Tender, stringless .....	.25	1.00	2.50
<b>Round Pod Kidney Wax.</b> Also known as Brittle Wax. Best for home garden. Pods round and of the highest quality.....	.25	1.00	2.50
<b>Webber Wax.</b> Early market garden sort. Pods flat.....	.25	1.00	2.50

### BEANS, Green Podded Bush—

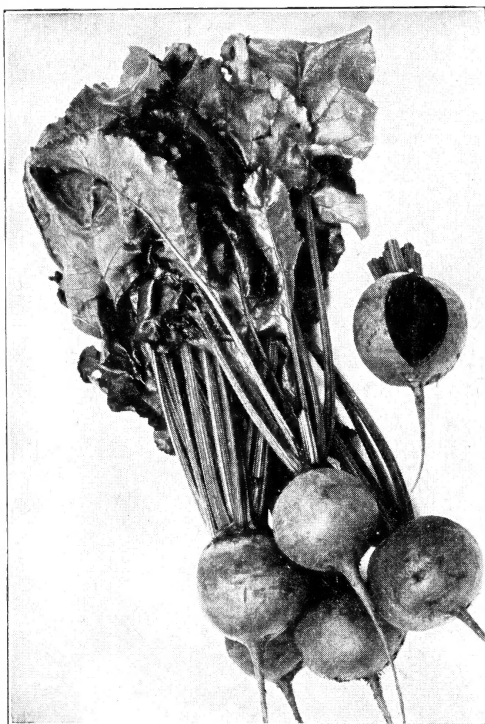
<b>Tendergreen.</b> Pods round, fleshy, dark green, strictly stringless, of fine quality .....	.25	1.00	2.50
<b>Stringless Black Valentine.</b> Very early. Pods oval, dark green, stringless .....	.25	1.00	2.50
<b>Bountiful.</b> Very early. Pods flat, light green, slightly stringless	.25	1.00	2.50
<b>Longfellow.</b> Intermediate in season. Pods round, slight fiber and string, of good quality.....	.25	1.00	2.50

**BEANS, Dwarf Lima—**

<b>Burpee's Bush Lima.</b> Improved. Very productive. Pods contain 4 to 5 beans. 75 days.....	1 Lb.	5 Lbs.	15 Lbs.
	.30	1.35	3.50
<b>Henderson's Bush Lima.</b> Also called Baby Lima. Pods contain 3 to 4 beans. Excellent quality. 65 days.....	.25	1.10	2.85
<b>Fordhook Bush Lima.</b> Most used by market gardeners. Potato lima type. Contain 3 to 4 large beans. 75 days.....	.35	1.25	4.00
<b>Mc Crea Bush Lima.</b> Thick potato type. Pods contain 3 to 5 large beans. Excellent quality .....	.30	1.25	.....

**BEANS, Pole—**

<b>King of the Garden Lima.</b> Heavily productive, pods contain 4 to 5 large beans. 88 days.....	.30	1.35	.....
<b>Kentucky Wonder, Green.</b> Most popular pole green bean. Pods round, meaty .....	.30	1.35	.....
<b>Kentucky Wonder, Wax.</b> Pods flat, nearly stringless.....	.30	1.35	.....

**Detroit Dark Red****BEET, Mangels for Stock—**

<b>Giant Sludstrup.</b> Roots long, oval, reddish yellow. Grows half above ground.....	Oz.	¼ Lb.	Lb.
	.20	.75	
<b>Giant Half Sugar, Rose.</b> Roots long, oval; skin white with rose shoulders .....	.20	.75	
<b>Mammoth Long Red, Improved.</b> Roots large, slightly tapering. Red outside, flesh white tinged rose.....	.20	.75	

**BROCCOLI—**

<b>Italian Green Sprouting, Calabrese.</b> Cultivated like cabbage, it bears a succession of sprouting heads which if kept cut, will be replaced by others. Each sprout ends in a head of deep green buds. One of the most delicious green vegetables. Pkt. 5c	.60	1.50	
--	-----	------	--

**BEANS, Bush Shell Bean—**

<b>Broad Windsor.</b> At eating stage beans are light green, broad and flat .....	1 Lb.	5 Lbs.	15 Lbs.
	.30	.....	.....

**BEANS, For Baking—**

<b>Great Northern.</b> The very best .....	.20	.90	.....
--	-----	-----	-------

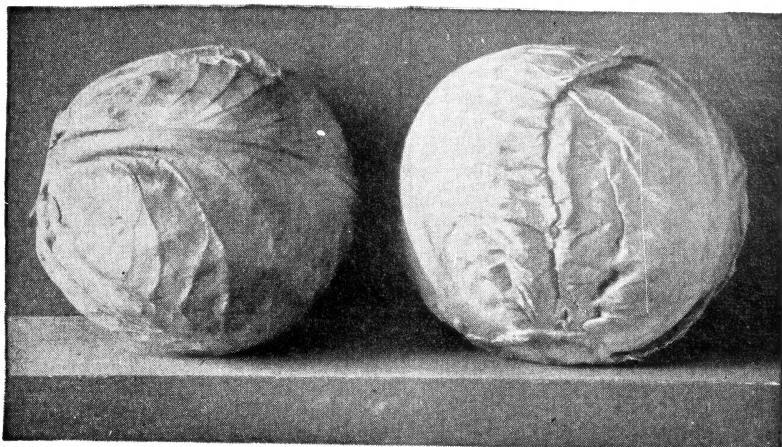
**BEETS—**

1 oz. to 50 feet drill; 6 to 7 lbs. per acre.

**PRICES SUBJECT TO CHANGE  
WITHOUT NOTICE**

<b>Asgrow Wonder.</b> About 10 days earlier than Detroit. Roots semi-globular, deep red, smooth with small neck. Slightly lighter zoning .....	Pkt. 10c.	.25	.65	2.15
--	-----------	-----	-----	------

<b>Perfected Detroit.</b> Superior to the Detroit Dark Red in deep red color of interior and lack of white zoning. Leaves dark green tinged with red.	Pkt. 10c	.25	.75	2.50
<b>For Greens</b> .....		.30	1.00	



Hollander, Ferry Type—Our Own Grown Stock

**CABBAGE, Early and Second Early Varieties—**

1 oz. about 2,000 plants.  $\frac{1}{4}$  to  $\frac{1}{2}$  lb. per acre.

**Packet 5c**

	Oz.	$\frac{1}{4}$ Lb.	Lb.
<b>Golden Acre.</b> The earliest round headed cabbage. Similar to Copenhagen Market, but earlier. Heads solid, hard, of medium size .....	.30	.80	3.00
<b>Golden Acre, Selected Strain.</b> Seed selected from the very finest heads. Best seed obtainable.....	.50	1.75	6.00
<b>Copenhagen Market.</b> Our very early strain. Short stem, heads large, round and solid. Excellent quality.....	.35	1.25	4.00
<b>Copenhagen Market.</b> Our late strain. Especially good for kraut cabbage .....	.35	1.25	4.00
<b>Glory of Enkhuizen.</b> Second early variety. Short stemmed, solid heads of excellent quality.....	.30	1.00	3.50
<b>All Seasons.</b> Popular kraut cabbage.....	.30	.80	3.00
<b>Earliest Round Red.</b> Earliest red cabbage.....	.25	.85	

**CABBAGE, Late Varieties—**

<b>Hollander, Ferry Type, Our Own Grown.</b> Our recommendation as the very best late cabbage. Medium stem, round solid heads of the finest quality. Good shipper and for storing.....	.35	1.15	4.00
<b>Hollander, Ferry's Own Grown</b> .....	.35	1.15	4.00
<b>Danish Ballhead.</b> Short stemmed. Heads large, flattened globe-shape .....	.35	1.15	4.00
<b>Penn State Ballhead.</b> Extremely heavy yielder.....	.35	1.15	4.00
<b>Danish Stonehead.</b> Late red cabbage.....	.30	1.00	.....
<b>Mammoth Rock Red.</b> Largest and best red cabbage.....	.30	1.00	.....
<b>Savoy, Improved American.</b> Leaves curled. Heads globe-shaped, slightly flattened .....	.30	1.00	.....

**CABBAGE—Yellows Resistant Strains—**

<b>Golden Acre, Yellows Resistant.</b> Earliest round headed yellows resistant variety .....	.60	2.00	7.00
<b>Marion Market.</b> Round, hard heads like Copenhagen.....	.55	1.75	6.00
<b>Globe.</b> Improved. Resistant strain of Glory of Enkhuizen.....	.40	1.50	5.00
<b>Wisconsin Hollander No. 8.</b> Excellent for winter storage.....	.35	1.00	3.50
<b>Wisconsin Ballhead.</b> Medium late variety of the Ballhead type. Yellows resistance was very good. One of the best Yellows Resistant varieties .....	.35	1.25	4.50

**BRUSSELS SPROUTS—**

<b>Long Island Improved.</b> Cultivated like late cabbage. The small "cabbages" cluster around main stem. Mature in autumn .....	Pkt. 10c	Oz. .40	¼ Lb. 1.35	Lb. ....
--	----------	---------	------------	----------

**CAULIFLOWER**

1 oz. to 3,000 plants.

<b>White Mountain.</b> Where other first quality strains have failed, White Mountain, because of its unusual qualities and resistance to adverse weather conditions has produced nearly perfect crops. The heads are of fine texture with pure white curd of great depth. Short stem. Foliage is medium sized, but fully protects the head .....	Pkt. 3.75	Oz. 3.75	¼ Lb. 14.00	Lb. 50.00
--	-----------	----------	-------------	-----------

**Early Snowball.** Best early variety. Dependable header. Heads firm, medium, solid and pure white.....Pkt. 25c 3.00 10.00

**Super-Snowball.** Desirable main crop variety, also used for early planting as plants start heading early. Heads medium large, compact and white.....Pkt. 25c 3.00 10.00

**Snowdrift.** Head slightly larger than Snowball, firm, solid, white, well protected with leaves..... 3.75 14.00

**Danish Giant or Dryweather.** Later than Early Snowball and of larger growth. Heads creamy white. Adapted to dry weather conditions .....

**Purple Bronzino.** Heads tinged purple.....Pkt. 10c .90 (Sold Out) .....

**CARROTS—**

1 oz. 100 feet row;  
3 to 4 lbs. per acre.

Packet 10c

**Chantenay Half Long, Special** ..... .30 1.00 3.50

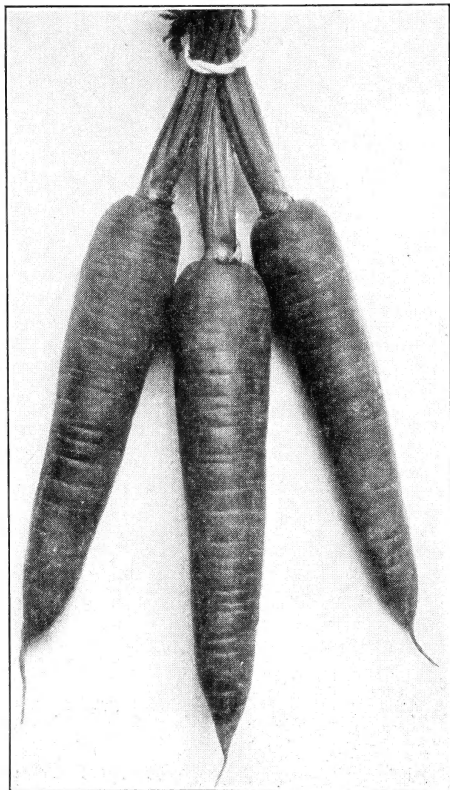
**Chantenay Long.**  
Like Chantenay Half Long except that roots are 1½ in. longer. Tops will not break in bunching ..... .35 1.25 4.00

**Nantes Coreless.**  
Flesh red, sweet and mild ..... .35 1.25 4.00

**Danvers Half Long** .30 1.00 3.75

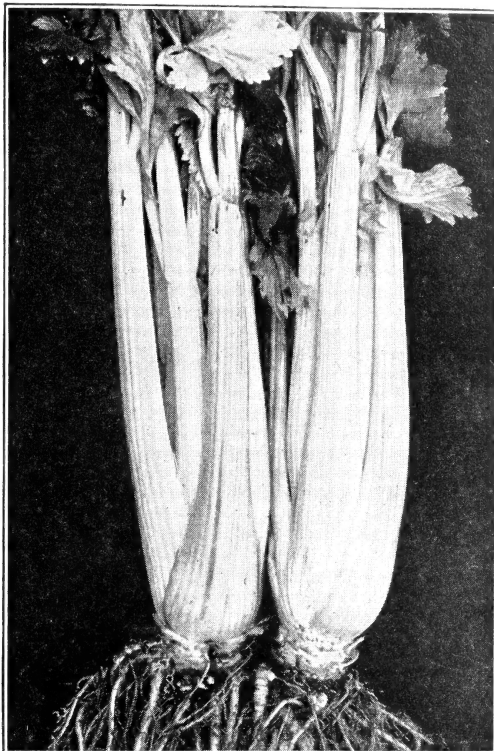
**Morse's Bunching.**  
Roots slightly tapered with half stump points. Flesh deep orange and coreless ..... .35 1.25 4.00

**Imperator.** Recommended for peat and muck soil. Flesh orange with indistinct core. Roots tapered to semi-blunt end. Excellent for either bunching or bushing ..... .35 1.25 4.00



**Imperator**





Golden Self-Blanching Celery

**CELERY—**

3 ozs. per acre.

	Pkt.	Oz.	¼ Lb.	Lb.
<b>Tall Golden Self-Blanching. American Grown Seed.</b> Earlier and taller than old strain. Long heavy hearts.....	.25	.60	2.00	.....
<b>Golden Plume.</b> New selected strain. Resembles Golden Self-Blanching, but earlier .....	.10	1.00	3.50	.....
<b>Supreme Golden.</b> (New) Taller and earlier than Golden Self-Blanching, stems long thick and make a good heart. We have reports from growers that this variety is wilt resistant .....	.15	1.20	3.75	.....
<b>Michigan Golden.</b> Yellows Resistant .....	.25	1.50	5.00	.....
<b>Summer Pascal.</b> New early green celery of superior quality. Summer blanching is already highly popular wherever green celery is grown.....	.15	.40	1.25	.....

**CORN, Sweet—**

12 lbs. per acre.

Packet 10c

	Lb.	5 Lbs.	12 Lbs.	100 Lbs.
<b>Kingcrost, Hybrid M13.</b> Eight-row hybrid out of Golden Bantam. Ears 6 to 7 inches long, uniform, excellent quality and good color, 72 days to maturity.....	.45	.....	5.00	.....
<b>Golden Sunshine.</b> Earlier than Golden Bantam. Large ears 10 to 12 rowed .....	.25	1.00	2.15	.....
<b>Golden Hummer.</b> Earlier than Golden Bantam. Large 8 to 12 rowed ears .....	.25	1.10	2.25	15.00

## CORN, Sweet—Continued

	Lb.	5 Lbs.	12 Lbs.	100 Lbs.
Golden Early Market .....	.25	1.10	2.25	.....
Spanish Gold. Extra early variety. Good quality.....	.25	1.10	2.40	.....
Tendergold. Also known as Top Cross Sunshine. 12 to 16 rowed, deep wide kernels.....	.40	1.75	3.25	.....
Golden Bantam. Improved. 12 rowed.....	.25	1.00	2.15	.....
Golden Bantam. Regular 8 rowed. Very good.....	.25	1.00	2.15	15.00
Golden Cross Bantam. Ears 10 to 14 rowed. Resistant to Stewart's disease .....	.40	1.75	3.25	.....
Whipple's Early Yellow. Second early. 12 to 14 rowed..	.25	1.00	2.25	15.00
Bantam Evergreen. Late. 14 to 18 rowed.....	.25	1.00	2.25	14.00
Kingscrot. Earlier than Golden Bantam. Matures uniformly at one time. Recommended for Market Gardener	.35	1.60	3.35	25.00
Stowell's Evergreen. White corn .....	.25	1.00	2.15	15.00

## CELERIC OR ROOT CELERY—

	Pkt.	Oz.	.....	.....
Large Smooth Prague. Roots smooth, spherical with white flesh. Used for its celery-like flavor.....	.05	.30	.....	.....

## CHINESE CABBAGE—

Sow seed in July or August, half-inch deep in the row and rows about 24 inches apart. When plant is 5 or 6 inches high thin out to 10 inches apart. When large enough they should be bleached by earthing up and tying closely with raffia. Heads best in rich black soil.

**Chihili.** Early and dependable in heading. Heads 3 to 4 inches thick, somewhat tapered and solid..Pkt. 10c

Oz.	¼ Lb.	Lb.
.35	.95	3.50

## CRESS—

**Extra Curled.** Pepper-grass. Pungent flavor..... Pkt. .05 Oz. .15 ¼ Lb. .25

**True Water Cress.** For growing along banks of ponds or streams..... .10 .45 1.35

## DILL—

1 oz. to 100 feet of row.

Pkt.	Oz.	¼ Lb.	Lb.
Long Island Mammoth .....	.05	.15	.35 1.00

## EGG PLANT—

1 oz. to 1,000 plants.

**Black Beauty.** Egg-shaped fruits. Dark purple..... .05 .40 1.25 .....

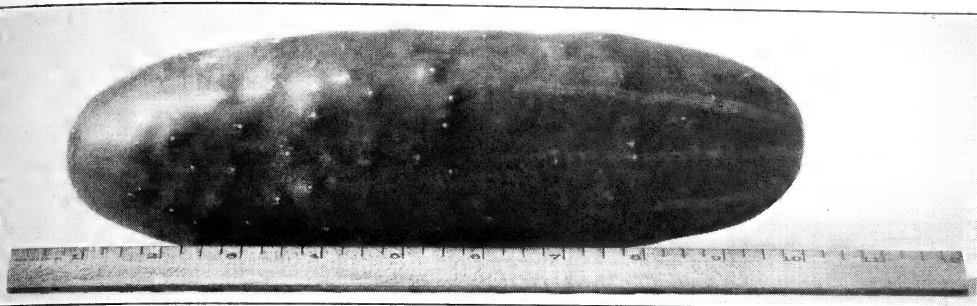
## ENDIVE—

1 oz. to 100 feet of row.

Green Curled, Giant .....	.05	.15	.40	1.25
Florida Deepheart. Broad leaved .....	.05	.15	.40	1.25



J.B.R.S.Co.



### Early Fortune

#### CUCUMBER—

1 oz. to about 60 hills; 2 to 3 lbs. per acre.

Packet 5c unless otherwise noted

	Oz.	¼ Lb.	Lb.
Davis Perfect. Fruit dark green, tapered at both ends. Fairly good quality .....	.10	.30	1.00
Early Fortune. Fruits medium deep green, slightly tapering....	.15	.40	1.25
Long Green, Improved.....	.15	.75	1.50
Longfellow. Fruits long, slender and dark green.....	.20	.60	1.75
Clark's Special. Early. Fruits long dark green .....	.15	.40	1.25
B. Co. Pickling. Early. Fruits blocky, medium green .....	.10	.30	1.00
Jersey Pickling. Pickles long and slender .....	.10	.30	.90
Snow's Perfected Pickling. Fruits small square ended .....	.10	.30	.90
Chicago Pickling. Largest in size of pickling sorts. Square ended .....	.10	.30	.90
National Pickling. Our recommendation as the best pickling sort. Fruits dark green; full ended.....	.10	.30	1.00

**COLORADO**—The finest slicing cucumber. Long, dark green cucumber popular because of its excellent shape and intense coloring which is retained longer than in any other variety. Fruits taper at stem end; highly productive and resistant to unfavorable weather.

Pkt. 10c — Oz. 20c — ¼ Lb. 65c — Lb. \$2.00

Straight 8. Medium green, cylindrical fruits, rounded at both ends .....	Pkt. 10c	.15	.50	1.50
No. 645. Forcing cucumber for greenhouses and hotbeds. Fruits about 12 inches in length, slender and of a deep green color .....	Pkt. 50c	4.00	.....	.....

#### KALE—

1 oz. 200 feet.

	Pkt.	Oz.	¼ Lb.	Lb.
Dwarf Curled Scotch.....	.05	.20	.50	.....
Tall Curled Scotch.....	.05	.20	.50	.....

#### KOHL RABI—

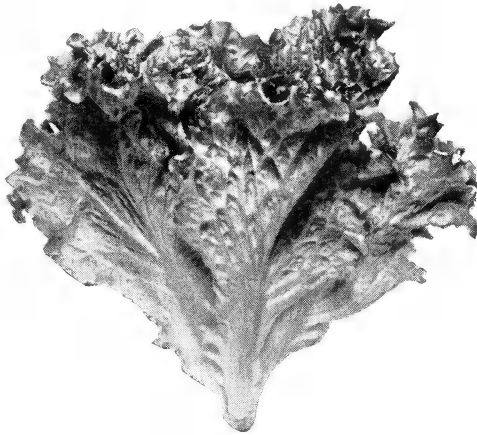
1 oz. 200 feet.

Early White Vienna.....	.05	.35	.....	.....
Early Purple Vienna.....	.05	.35	.....	.....

## LEEK—

1 oz. to 100 feet of row.

	Pkt.	Oz.	¼ Lb.	Lb.
Carentan .....	.10	.20	.60	2.00



Grand Rapids

## LETTUCE—

**Black Seeded Simpson.**

Best home garden variety.... .05 .15 .35 1.25

**Grand Rapids.**

Selected greenhouse stock for forcing .. .05 .15 .45 1.50

**Grand Rapids.**

Outdoor strain..... .05 .15 .40 1.25

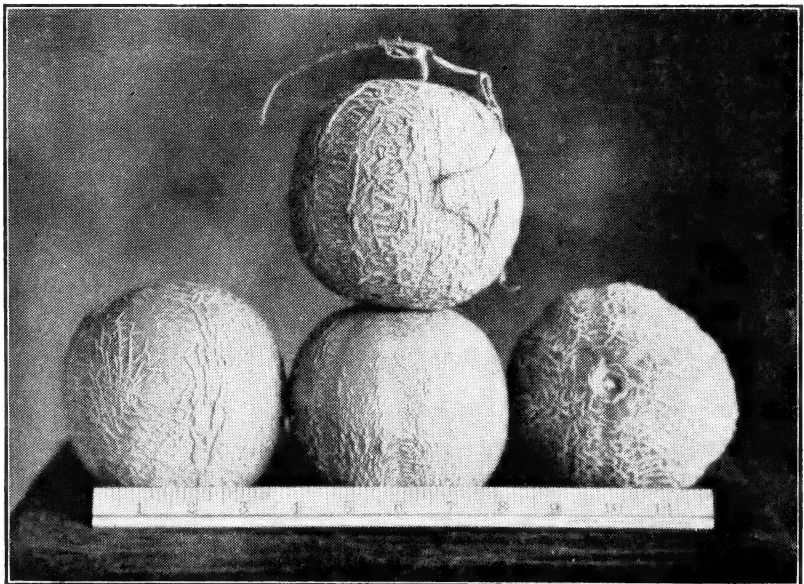
**Prizehead.**

Green, loose-leaved variety with a slight tinge of reddish-brown on leaves .... .05 .15 .45 1.50

Chicken Lettuce .....	.05	.15	.45	1.25
Cos or Romaine. White Paris .....	.05	.15	.50	.....
New York No. 12. Excellent strain of head lettuce.....	.05	.20	.60	2.00

**NEW YORK No. 515**—An improved New York No. 12. Heads medium large, dark green, crisp and tender. Resistant to tip burn.

Pkt. 10c — Oz. 25c — ¼ Lb. 70c — Lb. \$2.25



Honey Rock

**MUSKMELON—**

1 oz. to 30 hills; 4 to 5 lbs. per acre.

**Packet 5c**

	Oz.	¼ Lb.	Lb.
<b>Honey Rock.</b> Heavily netted rind. Thick, deep salmon flesh	.20	.50	1.50
<b>Golden Osage.</b> Coarse netting, distinct ribs; flesh salmon-pink	.10	.30	1.00
<b>Golden Delicious.</b> Smaller, earlier type of Golden Osage.....	.20	.50	1.50
<b>Hales Best No. 36.</b> Ideal size, heavily netted with a faint rib. Deep flesh .....	.10	.35	1.10
<b>Hales Best No. 936.</b> Jumbo type of 36 strain. Slightly more oval shaped, but otherwise having the identical characteristics	.10	.35	1.25
<b>Hearts of Gold.</b> Deep gold flesh. Rind netted with shallow rib	.10	.25	1.00
<b>Lake Champlain.</b> Early. Average quality .....	.10	.30	1.00
<b>Milwaukee Market</b> .....	.10	.30	1.00
<b>Honey Dew</b> .....	.10	.35	1.25
<b>Banana.</b> Long banana shaped. Late.....	.10	.35	1.25
<b>Juicy Fruit.</b> Medium early .....	.15	.45	1.50
<b>Sunrise.</b> Very early melon resembling Golden Delicious.....	.10	.35	1.25

**Queen of Colorado, Improved No. 1939.** Flesh deep orange, unusually thick with small triangular seed cavity. Faint rib, distinct heavy netting.  
Oz. 10c — ¼ Lb. 35c — Lb. \$1.25



**Angelino**

**WATERMELON—**

**Packet 5c**

	Oz.	¼ Lb.	Lb.
<b>No. 522.</b> Earliest of all watermelons. Rind almost white with fine green veining. Flesh is bright red.....	.15	.45	1.50
<b>Northern Sweet.</b> Early. Medium size. Flesh dark pink.....	.15	.35	1.25
<b>Will Rogers.</b> Stone Mountain type .....	.10	.35	1.25
<b>Red Russian.</b> Dark green, alternate stripes of lighter green. Flesh dark red. Excellent quality .....	.10	.30	1.00
<b>Stone Mountain.</b> Blocky shaped melon, dark green rind with finer green veining. Flesh crimson .....	.10	.30	1.00
<b>Winter Queen.</b> Flesh red. Rind light cream with faint green striping. Properly stored will remain edible for several months	.10	.30	1.00
<b>Tom Watson.</b> Long melon, rind dark green, flesh red.....	.10	.25	.75
<b>Angelino.</b> Round. Dark green rind, scarlet flesh. Seeds black	.10	.25	.75
<b>Improved Kleckley Sweet.</b> Long melon. Excellent quality.....	.10	.25	.75
<b>Citron, Red Seeded.</b> For preserves.....	.10	.30	1.00

**WATERMELON—Continued**

**IMPROVED KLECKLEY SWEET No. 6.** Kleckley melon for **Wilt-Sick Soil**, which has proven almost fully resistant to fusarium wilt. Same appearance as the Improved Kleckley Sweet.

**Oz. 10c — ¼ Lb. 35c — Lb. \$1.15**

**Striped Klondike.** Selected from Klondike for fruit that are striped like the old Georgia Rattlesnake. Flesh scarlet with a high sugar content .....

Oz.	¼ Lb.	Lb.
<b>.10</b>	<b>.30</b>	<b>1.00</b>

**OKRA—**

**Dwarf Green.** Adapted to more northerly climate.....

Pkt.	Oz.	Lb.
<b>.05</b>	<b>.15</b>	<b>.75</b>

**Perkins' Mammoth.** Market and canning variety.....

<b>.05</b>	<b>.15</b>	<b>.75</b>
------------	------------	------------



**Mountain Danvers**

**ONION—**

1 oz. to 100 feet of row. 4 lbs. per acre.

**Packet 10c**

**Mountain Danvers.** Especially adapted for peat and muck soils. Earlier than Southport Yellow Globe. Bulbs medium globe-shaped, small neck, good color and long keeping.....

Oz.	¼ Lb.	Lb.	5 Lbs.
	(Sold Out)		

**Southport White Globe.** Selected strain.....

<b>.65</b>	<b>2.00</b>		
------------	-------------	--	--

**Southport Red Globe.** Selected strain.....

	(Sold Out)		
--	------------	--	--

**Southport Yellow Globe. Brigham Strain.** Bulbs globular with rounded bottom, well covered with tight fitting skins. Partially resistant to aphids.....

<b>.65</b>	<b>2.25</b>	<b>8.00</b>	
------------	-------------	-------------	--

**White Sweet Spanish.** Largest white onion. Bulbs globular, mild flavor.....

<b>.60</b>	<b>1.95</b>	<b>7.00</b>	
------------	-------------	-------------	--

**White Portugal or Silverskin.** Excellent for pickling or sets. Standard bunching onion. Mature bulbs thick-flat. White .....

<b>.60</b>	<b>1.95</b>		
------------	-------------	--	--

**ONION—Continued**

	Oz.	¼ Lb.	Lb.	5 Lbs.
<b>Ebenezer.</b> Used for growing sets. Flat, yellow.....		(Sold Out)		
<b>White Bunching.</b> Used for bunching.....		(Sold Out)		
<b>Japanese or Delas Bunching.</b> Does not form a bulb. Rapid grower and mild.....	.50	1.50	5.00	.....
<b>Extra Early Yellow Globe.</b> About three weeks earlier than Southport Yellow Globe.....	.60	1.95	7.00	.....

**UTAH SWEET SPANISH.** A giant globe-shaped yellow onion. Mild flavor.  
More resistant to thrip, and skin does not break easily.  
Oz. 60c — ¼ Lb. \$2.25 — Lb. \$8.00

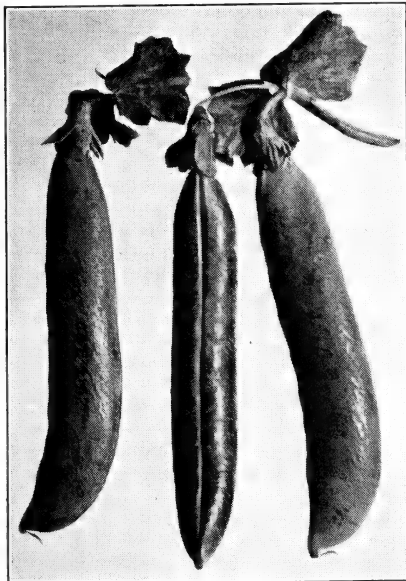
**PARSLEY—**

	Pkt.	Oz.	¼ Lb.	Lb.
<b>Champion Moss Curled</b> .....	.05	.10	.25	.80
<b>No. 622.</b> A fine selection of Moss Curled type. Recommended for market gardener .....	.05	.15	.50	1.50
<b>Plain or Single.</b> Leaves not curled.....	.05	.10	.35	1.00
<b>Hamburg, Rooted.</b> Forms thick edible roots.....	.05	.10	.25	.80

**PARSNIP—**

1 oz. 200 feet of row. 3 lbs. per acre.

<b>B. Co. Special Hollow Crown.</b> Shoulders wide, deep crown. Roots clear white, clean and of fine texture. Recommended for market gardeners.....	.05	.20	.40	1.35
<b>Hollow Crown.</b> Very good strain.....	.05	.20	.35	1.25



**Asgrow No. 40**

**PEAS—**

2 lbs. to 100 feet of row.  
150 lbs. dwarf—50  
lbs. tall per acre.

**Packet 10c**

**Laxton's Superb.**

Earliest large podded, dwarf variety	Lb.	5 Lbs.	14 Lbs.	100 Lbs.
	.25	1.00	2.35	15.00

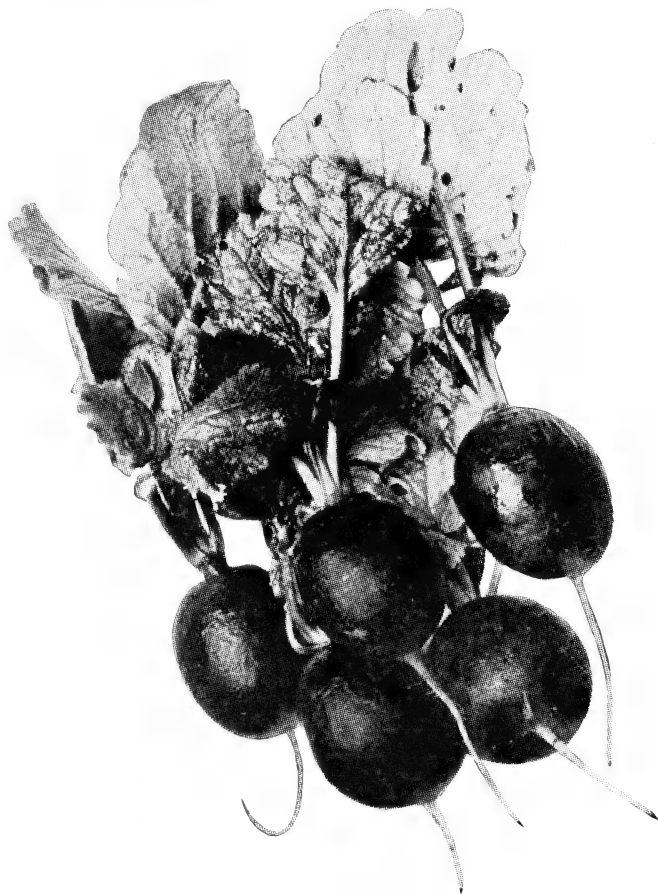
**Laxton's Progress.**

Vines 18 inches. Pods 4½ to 5 inches. One of the finest market garden varieties	.25	1.00	2.25	15.00
<b>Little Marvel.</b> Vines 18 inches. Pods 3 in. Very sweet and tender	.25	1.10	2.50	17.00

<b>Thomas Laxton.</b> Vines 30 to 36 inches. Pods 3½ to 3¾ inches. One of the first early kinds.....	.25	1.00	2.35	15.00
<b>Mammoth Pod Extra Early.</b> Excellent for Market Gardener. Matures same time as Alaska, but is sweeter and the pods are twice as large. Vines slightly taller than Alaska.....	.25	1.00	2.35	15.00
<b>Hundredfold.</b> Early large podded variety.....	.25	1.00	2.35	16.00

## PEAS—Continued

	Lb.	5 Lbs.	14 Lbs.	100 Lbs.
Potlach. Late. Vines 26 inches. Pods very large.....	.25	1.00	2.35	16.00
Asgrow No. 40. Mid-season. Vines 26 inches. Pods 5 to 6½ inches long. Excellent quality.....	.25	1.00	2.35	15.00
Wyoming Wonder. Resembles Asgrow No. 40.....	.25	1.00	2.35	15.00
Mammoth Melting Sugar. Edible pods.....	.35	1.50	.....	.....



## RADISH—

## Super Select, Early Scarlet Globe

1 oz. to 100 feet of row. 8 to 10 lbs. per acre.

## Packet 5c

**Early Scarlet Globe.** We have exceptionally fine stocks of this superb variety. It is one of the very earliest of the forcing radishes and does very well outside. Roots are of fair size, globe-shaped and with a small top. Always crisp and tender; color bright scarlet. Samples are drawn from every bag, sown in greenhouses and proven for variety and germination.

	Oz.	¼ Lb.	Lb.	10 Lbs
Early Scarlet Globe, Forcing. Seed grown from transplanted roots .....	.15	.30	1.00	9.00
Early Scarlet Globe. Selected strain for market and home gardener .....	.10	.25	.75	7.00



## RADISH—Continued

	Oz.	¼ Lb.	Lb.	10 Lbs.
<b>Crimson Giant.</b> Extremely large.....	.10	.35	1.25	.....
<b>White Icicle.</b> Long white.....	.15	.40	1.00	.....
<b>Sparkler White Tipped.</b> Round, white tip.....	.10	.25	.80	.....
<b>Round Black Spanish.</b> White flesh. Winter variety.....	.10	.25	.80	.....



Giant Leaved Nobel

## SPINACH—

		¼ Lb.	Lb.	10 Lbs.
1 oz. to 100 feet of row. 12 to 15 lbs. per acre.				
<b>Giant Leaved Nobel.</b> Smooth leaved variety.....	Pkt. 10c	.40	1.35	12.50
<b>Long Standing Bloomsdale.</b> Later than the Dark Green, but will stand longer before bolting.....		.30	1.00	9.50
<b>Juliana.</b> Second early variety. Grows close to the ground. Dark green crumpled leaves.....		.30	1.00	9.50
<b>Bloomsdale, Virginia Blight Resistant.</b> Should not be planted early in the season. Dark green leaves well crumpled .....		.30	1.00	9.50
<b>Summer Savoy.</b> Special New Long Standing variety. Dark green, very curly leaves. Excellent for summer use as it is a heat resistant kind.....		.30	1.00	9.50
<b>New Zealand.</b> Sometimes called "Everlasting Spinach." Leaves may be picked repeatedly.....	Oz. 15c	.50	1.50	.....

## PEPPER—

1 oz. to 1500 plants.

## Packet 5c

	Oz.	¼ Lb.	Lb.
<b>Harris Giant, Selected Strain.</b> Very early sweet variety. 3 lobed, slightly tapered, deep green changing to red.....	.45	1.50	5.00
<b>World Beater, Selected Strain.</b> Flesh thick and very mild. 4 lobed fruits. Later than above.....	.40	1.10	3.75
<b>Rocky Ford.</b> Earlier than California Wonder and a more prolific bearer. 3 and 4 lobed. Recommended where a heavy yield of peppers is desired .....	.60	1.85	.....
<b>California Wonder.</b> Fruits mostly 4 lobed. Thick, sweet flesh .....	.40	1.25	4.00
<b>Bull Nose Sweet.</b> Not so large as California Wonder, but matures earlier, more prolific .....	.40	1.25	4.50
<b>Asgrow King.</b> Resembles Ruby King. 3 lobed, tapered, long fruits. Early.....	.35	1.00	.....
<b>Pimento. Sunnybrook Strain.</b> Fruits tomato-shaped borne upright. Deep red. Mild.....	.50	1.75	.....
<b>Long Thick Red, Selected Strain.</b> Hot pepper, finger-shaped	.50	1.75	.....
<b>Hungarian Yellow.</b> Waxy yellow tapering fruits.....	.40	1.25	.....

## PUMPKIN—

¼ lb. 100 hills — 4 to 5 lbs. per acre.

	Oz.	¼ Lb.	Lb.
<b>Sugar or New England Pie.</b> Small, round, orange colored.....	.10	.25	.75
<b>Connecticut Field.</b> Large field pumpkin, orange.....	.10	.20	.65
<b>King of the Mammoth.</b> Largest of pumpkins. Used for exhibition purposes .....	.10	.30	.90

## SALSIFY OR VEGETABLE OYSTER—

1 oz. to 60 feet of row — 10 lbs. per acre.

	Pkt.	Oz.	¼ Lb.	Lb.
<b>Mammoth Sandwich Island.</b> Smooth, cream yellow roots .....	Pkt.	.20	.50	1.50

## SWISS CHARD—

1 oz. to 100 feet of row.

	Pkt.	Oz.	¼ Lb.	Lb.
<b>Fordhook.</b> Used for greens. Tall, leaves broad, crumpled, dark green; stems broad, thick and white.....	Pkt.	.05	.20	.65
				1.75

## TURNIP—

1 oz. to 100 feet of row — 2 lbs. per acre.

	Oz.	¼ Lb.	Lb.
<b>Purple Top White Globe.</b> Globe-shaped.....	.05	.10	.20
<b>Snowball.</b> White, Globe-shaped.....	.05	.10	.30
<b>White Egg.</b> White, egg-shaped.....	.05	.10	.20
			.60

## RUTABAGA—

1 oz. to 100 feet of row — 2 to 4 lbs. per acre.

	Oz.	¼ Lb.	Lb.
<b>American Purple Top.</b> Roots yellow below the ground, reddish purple above. Flesh yellow and sweet.....	.05	.20	.45
<b>Neckless, Purple Top</b> .....	.05	.20	.50
			1.35
			1.50

## HERBS—

	Oz.	¼ Lb.	Lb.
<b>Saffron.</b> Flowers used for coloring and flavoring.....	.10	.25	.....
<b>Sage.</b> Broad leaved .....	.....	.....	.....
<b>Summer Savory</b> .....	.05	.20	.....
<b>Lavender.</b> Flowers and leaves scented.....	.15	.....	.....
<b>Sweet Marjoram</b> .....	.15	.....	.....
<b>Coriander.</b> Seeds used for flavoring.....	.....	.....	.....
<b>Dill</b> .....	.05	.15	.35
<b>Caraway.</b> Seeds used for flavoring.....	.....	.....	.....
<b>Sweet Fennel.</b> Seeds used for flavoring.....	.05	.15	.....
<b>Thyme</b> .....	.05	.40	.....



**SQUASH—**

**Warted Hubbard**

2 oz. to 100 hills — 3 to 4 lbs. per acre.

**Packet 5c**

	Oz.	¼ Lb.	Lb.	5 Lbs.
<b>Warted Hubbard.</b> Our strain is heavily warted, dark green outside with deep orange-yellow flesh.....	.10	.35	1.25	5.50
<b>Blue Hubbard.</b> Blue-grey. Large.....	.10	.35	1.25	5.50
<b>Kitchenette Hubbard.</b> Small Green Hubbard Squash....	.10	.40	1.25	.....
<b>Table Queen.</b> Acorn-shaped, dark green outside with deep furrows. Flesh rich yellow.....	.10	.30	1.00	.....
<b>Sweet Potato.</b> Fruits striped yellow and green.....	.15	.45	1.50	.....
<b>Buttercup.</b> Small turban-shaped squash. Green, flesh orange-yellow .....	.15	.35	1.25	.....
<b>Early Summer Crookneck.</b> Long, yellow Summer squash .....	.15	.30	1.00	.....
<b>Giant Summer Straightneck.</b> Straight neck.....	.15	.40	1.25	.....
<b>Cocozelle, Green Bush.</b> Also called Italian Vegetable Marrow. Long, cylindrical, striped green and gold.....	.15	.50	1.50	.....
<b>Early White Bush Scallop.</b> Rather small, quite flat, with ridged or scalloped edges.....	.15	.40	1.25	.....
<b>Zucchini, Black.</b> Black-green in color. Fruit long and slender showing slight ridges.....	.15	.50	1.50	.....



The Standard Red Copper Oxide

**CUPROCID**

**Semesan.** Seed disinfectant for seeds. Dissolved in water for damping-off of seedlings, and as a cleanser of soil. Treatment for control of brown patch in lawn. 2 ozs. 35c; 1 lb. \$2.25.

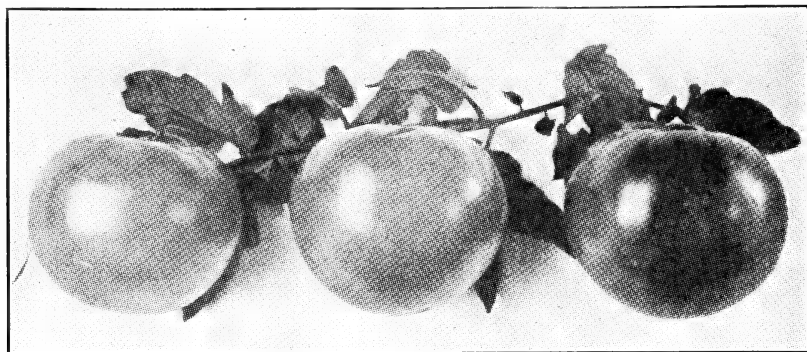
**Semesan Jr.** Treatment for seed corn. 2 ozs. treats 1 bushel corn. 2 ozs. 15c; 4 ozs. 30c; 1 lb. 75c.

**Semesan Bel.** Dipping potatoes and bulbs before planting. 1 lb. treats 60 bushels. 4 ozs. 50c; 1 lb. \$1.50; 5 lbs. \$6.50.

**Ceresan.** For Wheat, Barley and Oats. 1 lb. treats 30 bushels... 1 lb. 70c.

**Cuprocide** as a dust on seeds and a spray on seedlings prevents damping-off. 4 ozs. 35c; 1 lb. 90c.

**Cuprocide "54".** Treatment for "damping-off" of seedlings. 3 lb. package \$1.10.



### Earliana, Super Select

#### TOMATO—

1 oz. 1500 plants.

	Pkt.	Oz.	¼ Lb.
<b>Earliana, Selected Strain.</b> First early sort. Our strain bred for smooth, thick fruits, slightly flattened, medium size.....	.10	.75	2.50
<b>Earliana.</b> Regular strain. Very good.....	.05	.40	1.25
<b>Early Avon.</b> Resembles Earliana.....	.05	.40	1.35
<b>Bonny Best, Selected Strain.</b> Second early. Fruits medium sized, smooth, bright red; excellent quality.....	.25	.75	2.50
<b>Bonny Best, Regular Strain.</b> Very good.....	.05	.40	1.25
<b>John Baer, Selected Strain.</b> Best main crop tomato. Fruits medium sized, smooth, firm and bright red.....	.05	.45	1.50
<b>Valient</b> .....	.15	.75	2.50
<b>Victor.</b> New extra early tomato; plant close (2x3 feet). Smooth and solid, no green spots.....	.15	.70	2.10
<b>Pritchard or Scarlet Topper.</b> Heavily productive, large, smooth, globular with thick walls and cross sections. Scarlet....	.10	.40	1.50
<b>Rutgers.</b> Second early. Fruits similar to Marglobe, but flatter at stem end. Bright red, thick walls, small seed cavities, ripens from center out. Certified seed.....	.05	.40	1.40
<b>Marglobe.</b> Disease resistant. Fine quality.....	.05	.40	1.40
<b>Oxheart.</b> Large heart-shaped fruits.....	.05	.50	1.75
<b>Dwarf Champion.</b> Pink fruits.....	.05	.35	1.25
<b>Stone.</b> Late variety. Excellent quality.....	.05	.40	1.25
<b>Break-O-Day.</b> Disease resistant. Orange-red.....	.05	.40	1.25
<b>Redhead.</b> Globe-shaped. Bright red.....	.05	.35	1.25
<b>Bison.</b> Very early for Northern growers.....	.10	.40	1.35
<b>Ponderosa.</b> Large, pink tomato.....	.10	.50	1.75
<b>Michigan State Forcing.</b> Medium sized, deep scarlet fruits. Flesh thick and firm.....	.10	.60	.....
<b>Golden Queen.</b> Large yellow.....	.05	.40	.....
<b>Yellow Plum.</b> Plum-shaped, yellow .....	.05	.40	1.50
<b>Yellow Pear.</b> Pear-shaped, yellow.....	.05	.40	1.50
<b>Red Cherry.</b> Small, round red fruits.....	.05	.50	.....
<b>Yellow Husk or Ground Cherry.</b> Not a true tomato. Fruits small, round, enclosed in a papery envelope. Used for preserves .....	.05	.50	1.50

# Our Selections from the Newer Novelties

**SWEET PEAS.** New Spring flowering, they have more vigorous vines and larger flowers than the Early flowering Spencers, blossom earlier than the late varieties and withstand the summer heat much better. Rose, Pink and Lavender. **Pkts. 25c.**

**SNAPDRAGON.** New, Rosalie. Tall, large flowered and rust resistant. Base branching, color deep rose with an underlying tone of amber. **Pkt. 25c.**

**PETUNIA.** Glow (New). All American Silver Medal. Dwarf compact variety of carmine-rose, free flowering and uniform. **Pkt. 25c; Tr. Pkt. 75c.**

**NIEREMBERGIA.** Hippomanica (Dwarf Cup Flower). With the exception of Zinnia Linearis this little flower will outbloom any flower we know of. The cups are a lovely lavender-blue heightened by a touch of yellow in the center. Half hardy perennial. **Pkt. 50c.**

**BALSAM.** Bush Flowered Mixed. The flowers are produced above the foliage on an even bush shaped plant. Resemble Camellia. **Pkt. 25c.**

**MORNING GLORY.** Scarlett O'Hara. This is an entirely new color in a Morning Glory. Rich deep wine red or rosy crimson. Plants do not have a heavy growth of foliage, and though the flowers are not so large as the Heavenly Blue they are worthy of a prominent place in the garden. **Pkt. 15c.**

**COSMOS.** Sensation Pinkie and Purity. The size and earliness of bloom still make these two colors a sensation. **Pkt., separate colors, 10c.**

**NASTURTIUM.** Mahogany. Semi-Double sweet scented dark mahogany red. **Pkt. 5c.**

**GOURDS.** For the gardener looking for the "different" we would recommend the Horned Cucumber, Malabar Melon and Cave Man's Club. Each, **Pkt. 5c.**

**BACHELOR BUTTONS.** Entirely different from the single these all double large flowered Bachelor Buttons in separate colors have caused a great deal of favorable comment. Pinkie, Snowman, Red Boy, Blue Boy and Black Boy (deep maroon). Each, **Pkt. 5c.**

**GAILLARDIA.** Burgundy. Coppery wine red. Perennial. Makes an outstanding color for bouquets. **Pkt. 10c.**

**DELPHINIUM.** Giant Pacific Hybrids. Undoubtedly the most outstanding Delphinium. Long stems, very large well formed flowers with charming color combinations. **Pkt. 50c.**

**RUDBECKIA.** Hirta Hybrids. Fine long stemmed variety for cutting. Shades from clear yellow through variegated types to brown. Pure color with no center zone. **Pkt. 10c.**

**HOLLYHOCK.** Scarlet Beauty. Double intense pure scarlet. Annual. **Pkt. 15c.**

**CYNOGLOSSUM.** Blue Bird. An improved strain giving a blue cut flower. An old favorite which is regaining popularity. **Pkt. 10c.**

**DAHLIA.** Unwin's Dwarf Hybrids. Semi-double and double with a wide range of attractive colors. Excellent for bedding. Forms tubers which may be stored much as the other Dahlias. **Pkt. 25c.**

**TAHOKA DAISY.** Charming lilac-blue daisy with yellow eye. Makes a fine cut flower. **Pkt. 25c.**

**ZINNIA.** Lilliput Pastel Mixture. For the gardener who likes pastel shades this mixture has no equal. **Pkt. 10c.**

**LUPINES.** Russell Strain. The unusually long closely set spikes of flowers and the widest range of colors ever seen in Hardy Lupines. 20 seeds, 20c; 65 seeds, 50c; 150 seeds, \$1.00; 350 seeds \$2.00.

# Outstanding Vegetable Seed Varieties

**MUSKMELON—Skoon's Hard Shelled (New).** This new excellent flavored melon may be best described as a hard shelled Late Golden Osage or Benders' Surprise. The hard shell makes it desirable for market. Skin beautiful yellow, flesh medium in grain, red salmon. Weight 6 to 7 pounds. Pkt. 10c; Oz. 20c; ¼ Lb. 60c; Lb. \$2.00.

**LETTUCE—Imperial 847.** Resistant to brown blight. Crisp heading plants of medium size. Leaves smooth, thick, medium light green, heads round. Pkt. 10c; Oz. 20c; ¼ lb. 60c; Lb. \$2.00.

**BEANS—Plentiful.** Of all flat pods this is the freest from strings and fibre. Black seed, heavy producer, bearing pods 8 to 10 inches long. 48 days. Pkt. 10c; Lb. 30c. 5 lbs. \$1.25.

**BEEF—Green Top Bunching** is an early, extremely attractive bunching beet. Tops are medium sized and erect. The foliage is quite plain and of a clean, rather grayish green that does not turn red or brown but keeps its fresh color in fall. The roots reach a diameter of 2½ to 3 inches in 50 to 60 days. Pkt. 5c; Oz. 10c; ¼ lb. 30c; Lb. 90c; 5 lbs. \$4.00.

**WATERMELON—Florida Giant.** Vines vigorous and very productive. Fruits dark green, nearly round; flesh firm and red; of excellent quality. Ships well, weight 40 pounds and is one of the best all-purpose varieties. Seed dark brownish black. Pkt. 10c; Oz. 15c; ¼ lb. 50c; Lb. \$1.50.

**CARROT—Streamliner.** A recent introduction, ideal for bunching and therefore particularly desirable for commercial growers. Roots 8 to 10 in. long, 1½ in. at shoulder and tapered. Very deep orange color, core small and red. Pkt. 10c; Oz. 30c; ¼ Lb. \$1.00; Lb. \$3.50.

**SWEET CORN—Woodruff's Earligold.** New, early hybrid sweet corn, ears 6½ to 7 inches long, slightly tapering, well filled with 12 to 16 rows of kernels. Plant sturdy 5 to 5½ feet tall with few suckers. Somewhat resistant to wilt. Lb. 40c; 12 lbs. \$4.25; 100 lbs. \$30.00.

**LETTUCE—New York P. W. 55.** 70 days. Crisp hard heading of the highest quality. Sure heading and having considerable resistance to tip burn. Pkt. 15c; Oz. 40c.

---

Bofferding Seed Co. gives no warranty, express or implied, as to description, purity, productiveness or any other matter of any seeds, plants or bulbs we send out, and we will not be in any way responsible for the crop.

**TERMS—**We deliver orders over \$10.00 provided at least half of the order is for small seed (other than Peas, Beans and Corn). No charge for bags and other containers.

All prices subject to change and unsold and all orders subject to approval and acceptance by the Bofferding Seed Co., at Minneapolis, Minn.

Let us quote our special prices for large quantities.







**'TWIST-EMS'**

**TWIST-EMS**—The handiest plant tie ever invented. Simply put around the stem, twist and it is tied.

The deep green color of the Twist-ems blends well with the foliage and the wire re-enforcement to the green tape.

4-inch lengths, 250 roll 25c; 1000 \$0.75.

8-inch lengths, 125 roll 25c; 1000 \$1.50.

**PLANET JR.**

WHEEL HOES, CULTIVATORS AND SEEDERS



Planet Jr. tools save time, lighten labor and get bigger, better crops at less cost. Designed by a practical farmer and manufacturer with 40 years experience. Lasts a life time. Fully guaranteed. 72 Page Planet Jr. Catalog Free. Send for copy today.

**RAFFIA—**

For tying up plants—does not damage plants by cutting.

Natural .....1 lb. 60c; 10 lbs. \$5.00

Green .....About 1 lb. \$1.35

**POT LABELS—Painted, 1000 in a carton.**

4 x $\frac{11}{16}$ inches.....	100	1000
5 x $\frac{11}{16}$ inches.....	.35	2.40
6 x $\frac{11}{16}$ inches.....	.40	2.75
6 x $\frac{11}{16}$ inches.....	.50	3.00

**GARDEN LABELS—Painted, 250 in a carton.**

8 x 1 inch .....	100	250	1000
10 x 1 inch .....	.75	1.40	5.50
10 x 1 inch .....	.90	1.75	6.75

**TREE LABELS—Copper Wired, Painted. 1000 in a carton.**

$3\frac{1}{2}$ x $\frac{5}{8}$ inches.....	.50	.....	2.50
--	-----	-------	------

You will find our labels still best values. Extra width for marking two lines if necessary. Smooth finish for easy marking. Durable coating on painted labels.

**PLANT STAKES — BAMBOO — Dyed green and Natural color.**

$1\frac{1}{2}$ foot.....	100 40c; 1000 \$3.00	4 foot.....	100 \$1.10; 1000 \$7.00
3 foot.....	100 90c; 1000 5.00	6 foot.....	100 1.25; 1000 10.00

**CHINESE HEAVY TONKIN STAKES—Natural Color.**

4 ft., $\frac{5}{8}$ to $\frac{3}{4}$ . Per 100 .....	\$4.00
5 ft., $\frac{5}{8}$ to $\frac{3}{4}$ . Per 100 .....	5.00
6 ft., $\frac{5}{8}$ to $\frac{3}{4}$ . Per 100 .....	7.00

For outdoor staking of plants like dahlias, tomatoes, etc. Of even diameter throughout. Withstand weather conditions better than wood. They are stronger and better in appearance than the wooden stakes and much better.

## BOFFERDING FLOWER SEEDS

We recommend the following for your 1942 garden, all leaders in their class:

**ACHILLEA—Perennial**

**The Pearl.** Small, white double flower. Pkt. 10c.

**ACONITUM—Perennial**

**Napellus.** Long spikes of dark blue flowers. Pkt. 10c; ¼ oz. 50c.

**AGERATUM—**

**Little Blue Star.** Dwarf blue. Pkt. 10c; ¼ oz. 60c.

**Dwarf Blue Ball.** Deep blue. Pkt. 10c; ¼ oz. 30c.

**Purple Perfection.** Deepest shade of blue. Pkt. 10c; ¼ oz. 25c.

**Blue Perfection.** Semi-dwarf medium blue, large flowers. Pkt. 10c; ¼ oz. 20c.

**ANCHUSA—Perennial**

**Capensis, Blue Bird.** 18 to 24 inches. Deep blue. Pkt. 10c; ¼ oz. 20c.

**ALYSSUM—**

**Little Gem.** Pure white. Pkt. 5c; ¼ oz. 15c; oz. 50c.

**Lilac Queen.** Lilac. Pkt. 5c; ¼ oz. 20c; oz. 60c.

**Saxatile Compactum.** Yellow. Perennial. Pkt. 10c; ¼ oz. 25c.

**Snowcloth.** Dwarf pure white. Pkt. 5c; ¼ oz. 25c; oz. 75c.

**AQUILEGIA—Perennial**

**Dobbies Imperial Hybrids.** Long spurred dark shades. Pkt. 15c; ¼ oz. \$1.00.

**Mrs. Scott Elliot's Strain.** Long spurred light shades. Pkt. 15c; ¼ oz. \$1.00.

**Chrysantha.** Yellow. Pkt. 10c.

**Orange and Scarlet Shades.** Pkt. 25c.

**ARCTOTIS—**

**Grandis.** African Lilac Daisy. Pkt. 5c; ¼ oz. 15c.

**ASTERS—**

We recommend the following list of choice **Wilt Resistant** strains.

**Separate Colors.** Pkt. 10c; ¼ oz. 50c; oz. \$1.75.

**Mixtures.** Pkt. 10c; ¼ oz. 40c; oz. \$1.50.

**Early Beauty.** Blooms from early September until frost. Large flowers and good keeping qualities.

Azure Fairy or Dark Lavender.

Purple.

Crimson.

White.

September Beauty or Shell Pink.

Mixed.

**Queen of the Market.** Blooms from early August.

Crimson.

Dark Blue or Purple.

Peachblossom.

Flesh Pink.

Scarlet.

Light Blue or Medium Blue.

White.

Mixed.

**Improved Crego.** Finest variety for all purposes.

Mid-September.

Azure Blue.

White.

Rose or Light Rose.

Mixed.

Deep Rose.

Purple.

**American Branching.** Flowers large and double.

Early September.

Azure Blue or Deep Lavender.

Rose.

Crimson.

White.

Purple.

Mixed.

**Perennial Aster.** Michaelmas Daisy. Newest varieties mixed. Pkt. 10c; ¼ oz. 60c.

**BALSAM—**

**Camellia Flowered.** Mixed. Pkt. 5c; ¼ oz. 20c; oz. 60c.

**Rose Flowered.** Mixed. Pkt. 5c; ¼ oz. 20c; oz. 60c.

**Double Bush Flowering.** Mixed colors. Flowers borne above foliage. Pkt. 25c; ¼ oz. 50c; oz. \$1.75.

**BEANS—**

Scarlet Runner. Quick growing vine. Pkt. 5c; oz. 10c.

**BELLIS (English Daisy)—Perennial**

Monstrosa. Giant double.

Deep Rose.

Pink.

White.

Mixed. Separate colors and mixed. Pkt. 15c; ¼ oz. 60c.

**BOLTONIA—Perennial**

Asteroides. White daisy-like flowers. Pkt. 10c.

Latisquama. Dainty pale pink daisy-like flowers. Pkt. 10c.

**BRACHYCOME (Swan River Daisy)—**

Iberidifolia. Blue. Pkt. 10c.

Finest Mixed. Pkt. 10c; oz. 65c.



Campanula

Angelus Bell. Deep Rose. Annual. Pkt. 15c; ¼ oz. 30c.

Liberty Bell. Cambridge blue. Annual. Pkt. 15c; ¼ oz. 30c.

Annual. Finest mixed. Pkt. 10c; ¼ oz. 35c.

**CANDYTUFT—**

Giant White Hyacinth Flowered. Pkt. 5c; ¼ oz. 25c; oz. 75c.

Umbellata Lilac. Pkt. 5c; ¼ oz. 15c; oz. 40c.

Umbellata Rose Cardinal, Imp. Pkt. 5c; oz. 50c.

Umbellata White. Pkt. 5c; ¼ oz. 30c.

Mixed. All colors. Pkt. 5c; oz. 30c.

Gibraltarica. Perennial Lilac. Pkt. 10c; ¼ oz. 35c.

**CANARY BIRD VINE—**

Canary yellow. Pkt. 5c; oz. 25c.

**CARDINAL CLIMBER—**

Cardinal red trumpet shape flowers. Pkt. 10c; ¼ oz. 25c.

**CARNATION—**

Chabauds. Finest mixed. Giant double. Pkt. 10c; ¼ oz. 65c; oz. \$2.25.

Marguerite. Finest mixed. Double. Pkt. 10c; ¼ oz. 40c.

**CASTOR BEANS—**

Red Spire. Dwarf. Foliage and pods red. Pkt. 5c; oz. 25c.

Zanzibariensis. Mixed. Pkt. 5c; oz. 15c.

**BROWALLIA—**

Elata Blue. Pkt. 5c; ¼ oz. 30c.

Elata White. Pkt. 5c; ¼ oz. 30c.

**CALENDULA—**

Ball's Lemon Queen. Pkt. 10c; ¼ oz. 50c.

Ball's Long Orange. Pkt. 10c; ¼ oz. 50c.

Chrysantha. Yellow. Flower resembles a

Chrysanthemum. Pkt. 5c; ¼ oz. 35c; oz. \$1.00.

Lemon Queen. Ordinary strain. Pkt. 5c; oz. 80c.

Orange King. Ordinary strain. Pkt. 5c; oz. 80c.

Orange Shaggy. Orange, petals deeply fringed. Pkt. 5c; ¼ oz. 35c.

Pastel Bedding Mixture. Pastel shades. Dwarf. Pkt. 5c; ¼ oz. 15c; oz. 50c.

**CALLIOPSIS—**

Semi-Double. Mixed colors. Pkt. 5c; ¼ oz. 20c.

Single. Mixed colors. Pkt. 5c; ¼ oz. 20c.

**CAMPANULA (Canterbury Bells)—Biennial**

Calycanthema. (Cup and Saucer). Mixed colors. Pkt. 10c; ¼ oz. 35c.

Carpatica. (Hare Bell). Light Violet. Pkt. 10c; ¼ oz. 35c.

Pyramidalis Blue. (Chimney Bell). Pkt. 10c; ¼ oz. 50c.

Medium Double Mixed. Pkt. 10c; ¼ oz. 20c.

**CELOSIA—**

- Cristata.** Cockscomb. Dwarf. Pkt. 10c;  $\frac{1}{4}$  oz. 50c.  
**Plumosa Thompsonii.** Red. Pkt. 10c;  $\frac{1}{4}$  oz. 25c.  
**Plumosa Mixed.** All colors. Pkt. 10c;  $\frac{1}{4}$  oz. 25c.  
**Childsii.** Chinese wool flower. Pkt. 10c;  $\frac{1}{4}$  oz. 35c.  
**Plumosa Fire Feather.** 12 in. Ideal for borders. Pkt. 15c;  $\frac{1}{8}$  oz. 60c.

**CENTAUREA—**

- Cyanus (Bachelor Button).** All double large flowered.  
     Blue Boy.           Black Boy (Deep maroon)       Snowman.  
     Red Boy.           Pinkie.                               Mixed.  
 Pkt. 5c;  $\frac{1}{4}$  oz. 15c; oz. 40c.  
**Jubilee Gem.** Dwarf blue. Pkt. 10c;  $\frac{1}{4}$  oz. 60c.  
**Imperialis. (Sweet Sultan) Mixed.** Our own special mixture. Pkt. 5c;  $\frac{1}{4}$  oz. 15c; oz. 50c.  
**Gymnocarpa. (Dusty Miller).** White foliage plant. Pkt. 10c; oz. 50c.  
**Montana.** Perennial. Large blue. Pkt. 10c;  $\frac{1}{4}$  oz. 25c.

**CHRYSANTHEMUM—**

- Large, daisy-like flowers in a variety of colors. Fine for cutting.  
**Carinatum.** Tri-color finest mixed. Single. Pkt. 5c;  $\frac{1}{4}$  oz. 10c; oz. 30c.  
**Coronarum.** Mixed. Double. Pkt. 5c;  $\frac{1}{4}$  oz. 10c; oz. 30c.

**CLARKIA—**

- Elegans.** Double finest mixed. Pkt. 5c;  $\frac{1}{4}$  oz. 25c.

**COBEA SCANDENS. (Cathedral Bells)—**

- Blue. Good climber. Pkt. 10c; oz. 50c.

**COLEUS—**

- Hybridus.** Choice range of brilliantly colored leaves. Pkt. 10c;  $\frac{1}{8}$  oz. 60c.

**COREOPSIS—Perennial**

- Semi-Double.** Yellow. Pkt. 5c;  $\frac{1}{4}$  oz. 20c; oz. 60c.

**CORN—**

- Ornamental Indian.** Squaw. Pkt. 10c;  $\frac{1}{4}$  lb. 25c.  
**Ornamental Rainbow.** All colors. Pkt. 10c;  $\frac{1}{4}$  lb. 25c.

**COSMOS—**

- Sensation. Pinkie.** Pink. **Purity.** White. Pkt. 10c;  $\frac{1}{4}$  oz. 35c; oz. \$1.00.  
**Sensation.** Mixed white and pink. Pkt. 10c;  $\frac{1}{4}$  oz. 30c; oz. 80c.  
**Early Flowering Mammoth.** Pink, crimson, white, mixed. Pkt. 5c;  $\frac{1}{4}$  oz. 15c; oz. 50c.  
**Double Crested.** Double mixed. Pkt. 10c;  $\frac{1}{4}$  oz. 50c; oz. \$1.75.  
**Orange Flare.** Showy orange flower. Pkt. 5c;  $\frac{1}{4}$  oz. 35c; oz. \$1.00.

**CYNOGLOSSUM—**

- Amabile Blue Bird.** Improved strain. Bright blue. Pkt. 10c;  $\frac{1}{4}$  oz. 30c.

**CYPRESS VINE—**

- Mixed. Feathery foliage with star-shaped flowers. Pkt. 5c;  $\frac{1}{4}$  oz. 10c; oz. 30c.

**CUPHEA—**

- Firefly.** Dwarf compact plants. Flowers fiery red. Pkt. 25c;  $\frac{1}{8}$  oz. \$1.00.

**DAHLIA—**

- Coltness Hybrids.** Dwarf. Single flowers. Pkt. 10c;  $\frac{1}{4}$  oz. 60c.  
**Unwin's Dwarf Hybrids.** Semi-double and single. Pkt. 25c;  $\frac{1}{4}$  oz. 65c; oz. \$2.50.  
**DATURA. (Angels Trumpet)—**  
**Cornucopia. (Horn of Plenty).** Triplicate, with one flower within the other.  
 Violet outside, white inside. Pkt. 10c.  
**Double White.** Pkt. 10c.

**DELPHINIUM—Perennial.**

- Belladonna Improved.** Light blue. Pkt. 10c;  $\frac{1}{4}$  oz. 50c; oz. \$1.85.  
**Bellamosum Improved.** Dark blue. Pkt. 10c;  $\frac{1}{4}$  oz. 50c; oz. \$1.85.  
**Blackmore and Langdon Strain.** Choice colors, long stemmed. Pkt. 25c;  $\frac{1}{4}$  oz. 90c.  
**Wrexham Hollyhock Strain.** Blend of light and dark shades. Pkt. 25c;  $\frac{1}{4}$  oz. \$1.50; oz. \$5.00.  
**Giant Pacific Hybrids.** Flowers extremely large. Tall spikes. The very finest strain of delphinium. Pkt. 50c;  $\frac{1}{8}$  oz. \$2.00;  $\frac{1}{4}$  oz. \$3.50.

**DIDISCUS—**

- Blue Lace Flower.** Pkt. 5c;  $\frac{1}{4}$  oz. 25c.

**DIGITALIS. (Fox Glove)—Biennial**

The Shirley. Giant hybrids. Pkt. 10c;  $\frac{1}{4}$  oz. 25c.

**DIANTHUS—**

Chinensis. (China Pinks). Double mixed. Pkt. 5c;  $\frac{1}{4}$  oz. 15c.

Heddewigi. (Jap. Pinks). Double mixed. Pkt. 5c;  $\frac{1}{4}$  oz. 20c.

Caesius. (Cheddar Pink). Pink. Pkt. 10c.

Deltoides. (Maiden Pink). Deep rose. Pkt. 10c;  $\frac{1}{4}$  oz. 45c.

Latifolius Atro-Coccineus. Double scarlet. Pkt. 10c;  $\frac{1}{4}$  oz. 25c.

Plumarius. (Grass Pinks). Double. Pkt. 10c;  $\frac{1}{4}$  oz. 20c.

Plumarius. Single. Pkt. 10c

Sweet Wivelsfield. Annual. Resembles Sweet William. Pkt. 10c.

**DIMORPHOTHECA. (African Golden Daisy)—**

Orange. Pkt. 5c;  $\frac{1}{4}$  oz. 35c.

Mixed. Orange and yellow. Pkt. 5c;  $\frac{1}{4}$  oz. 30c.

**DOLICHOS. (Hyacinth Bean)—**

Darkness. Rich purple. Pkt. 5c; oz. 20c.

Mixed. Purple and white. Pkt. 5c; oz. 20c.

**ESCHSCHOLTZIA—**

Aurantiaea. Orange. True California Poppy. Pkt. 5c;  $\frac{1}{4}$  oz. 10c; oz. 30c.

Brilliant Mixed. White, yellow, orange and pink. Pkt. 5c;  $\frac{1}{4}$  oz. 10c; oz. 30c.

**EUPHORBIA—**

Variegata. Snow on the Mountain. Pkt. 10c;  $\frac{1}{4}$  oz. 15c.

**EVERLASTING FLOWERS. (Straw Flowers)—**

Acroclinum. Double Mixed. Pkt. 5c;  $\frac{1}{4}$  oz. 15c; oz. 40c.

Globe Amaranth. Mixed. Pkt. 5c;  $\frac{1}{4}$  oz. 15c; oz. 40c.

Helichrysum. Mixed. Pkt. 5c;  $\frac{1}{4}$  oz. 15c; oz. 40c.

Rodanthe. Mixed. Pkt. 5c;  $\frac{1}{4}$  oz. 15c; oz. 50c.

Xeranthemum. Mixed. Pkt. 5c;  $\frac{1}{4}$  oz. 15c; oz. 40c.

Statice. Latifolia. Sea Lavender. Pkt. 10c.

Statice. Blue. Pkt. 10c.

Static. Suworowii. Crimson. Pkt. 10c.

**FOUR O'CLOCK—**

Mirabilis. Annual. Pkt. 5c; oz. 25c.

**GAILLARDIA—Annual**

Indian Chief. Bronzy red. Pkt. 5c;  $\frac{1}{4}$  oz. 15c; oz. 50c.

Picta Single Mixed. Yellow and copper red. Pkt. 5c;  $\frac{1}{4}$  oz. 15c.

Lorenziana Double Mixed. Pkt. 5c;  $\frac{1}{4}$  oz. 15c.

**GAILLARDIA—Perennial**

Burgundy. Coppery scarlet. Pkt. 10c;  $\frac{1}{4}$  oz. 60c; oz. \$2.00.

The Dazzler. Golden yellow, maroon red zone. Pkt. 10c;  $\frac{1}{4}$  oz. 40c; oz. \$1.50.

Portola Hybrids Mixed. Standard mixture. Pkt. 10c;  $\frac{1}{4}$  oz. 45c; oz. \$1.45.

Monarch Strain Finest Mixed. Superior mixture of large flowers with unusually bright colors. Pkt. 10c;  $\frac{1}{4}$  oz. 50c; oz. \$1.75.

**GODETIA—**

Choice Mixed. Pkt. 5c;  $\frac{1}{4}$  oz. 15c; oz. 50c.

**GOURDS. (Ornamental)—**

Small Fruited:

Apple.

Bicolor. Pear-shaped, half orange, half green.

Bottle. Bottle-shaped.

Japanese Nestegg. White.

Spoon. Ball-shaped, long slender neck.

Orange. Color and shape.

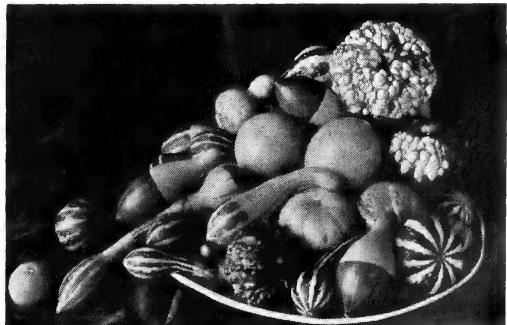
Pear Bicolor. Striped green and white.

Pear Striped. Yellow and green.

Horned Cucumber. oz. 35c.

Small Turk's Turban.

Warted Varieties Mixed. oz. 30c.



Gourds—Small Varieties Mixed

**GOURDS. (Ornamental)—Continued****Large Fruited:****Cave Man's Club.** Knobby, club-shaped. oz. 30c.**Dish Cloth.** Or Bath Sponge.**Giant Water Bottle.** Or Chinese Water Jug.**Calabash.** Or Penguin Gourd.**Dipper.****Hercules Club.****Longissima.** 5 to 6 feet long, edible.**Malabar Melon.** Edible. oz. 30c.**Sugar Trough.****Large Varieties Mixed.****Pkt. 5c; ¼ oz. 10c; oz. 25c.** Except where noted.**GYPSOPHILA. (Baby's Breath)—****Grandiflora.** London Market Im-**Proved.** Pkt. 5c; oz. 25c; lb. \$2.00.**Paniculata.** Single mixed. Pkt.

10c; ¼ oz. 15c.

**Oldhamiana.** Perennial. Very

fine light rose-pink. Pkt. 15c; ¼

oz. 60c.

**HOLLYHOCK—Annual****Double Scarlet Beauty.** Pure in-

tense scarlet. Pkt. 15c; ¼ oz. 50c.

**Semi-Double Annual Mixed.** Ex-

ceptionally fine mixture. Pkt. 5c;

oz. 50c.

**HOLLYHOCK—Perennial****Double Triumph Finest Mixed.**

Beautifully fringed rosette flow-

ers. Pkt. 10c; ¼ oz. 50c.

**Double Chater's.** Newport Pink,

Scarlet, White, Maroon, Yellow

and Mixed. Pkt. 10; ¼ oz. 35c;

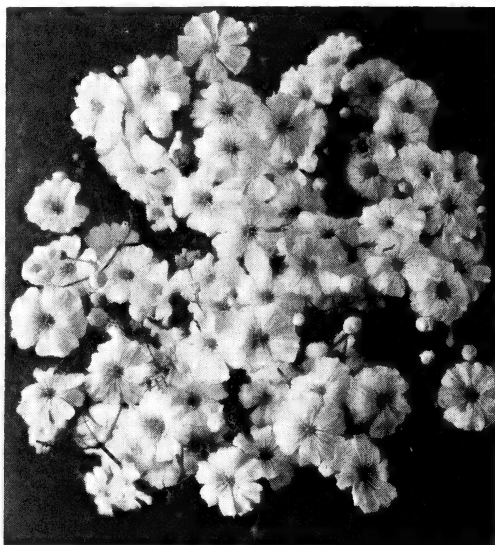
oz. \$1.25.

**HUNNEMANNIA. (Mexican Tulip****Poppy)—****Fumariefolia.** Yellow. Pkt. 5c;

¼ oz. 15c; oz. 45.

**Sunlite.** Semi-double. Pkt. 5c; ¼ oz. 45c; oz. \$1.50.**KOCHIA—****Childsii.** Pkt. 5c; oz. 25c.**LANTANA—****Dwarf Hybrids Mixed.** Pkt. 10c; oz. 60c.**LARKSPUR—Giant Imperial or Base Branching.****Blue Bell.** Azure blue.**Gloria.** Improved. Bright rose-pink.**Lilac Spire.** Lilac-lavender.**White King.** Glistening pure white.**Mixed.** Finest mixture.

Prices on above varieties: Pkt. 10c; ¼ oz. 35c; oz. \$1.00.

**LATHYRUS—****Mixed.** Perennial Sweet Peas. Pkt. 10c; oz. 50c.**Gypsophila, London Market**

**LILIUM—**

**Philippinense Formosanum.** Blooms about ten months after seeding. Resembles Easter Lily. Pkt. 25c; ¼ oz. 75c.

**Regale.** Blooms 2 or 3 years after seeding. Pkt. 10c; oz. 50c.

**LINUM. (Flax)—**

**Perrene.** Bright blue flowers. Perennial. Pkt. 10c; ¼ oz. 20c.

**Annual Scarlet.** Pkt. 5c; ¼ oz. 20c.

**LOBELIA—**

**Bedding Queen.** Blue. White eye. Pkt. 10c; ¼ oz. 60c.

**Crystal Palace Compacta.** Dark blue, dark foliage. Pkt. 10c; ¼ oz. 50c.

**Blue Stone Reselected.** Compact. Mid-blue. Pkt. 10c; ¼ oz. 75c.

**Hamburgia.** Sky blue, trailing. Pkt. 10c; ¼ oz. 60c.

**Sapphire.** Dark blue, trailing. White eye. Pkt. 10c; ¼ oz. 50c.

**LUNARIA—Biennial**

**Biennis White.** Pkt. 10c; ¼ oz. 25c.

**LUPINES—Annual**

**Hartwegii Giant King. Blue.** Excellent blue. Pkt. 10c; oz. 50c.

**Hartwegii Giant King Mixed.** Pkt. 10c; oz. 50c.

**LUPINES—Perennial**

**Polyphyllus. Lavender Queen.** Pkt. 10c; oz. 50c.

**Polyphyllus. Princess Juliana.** Pink. Pkt. 10c; oz. 50c.

**Polyphyllus. Harkness Regal Mixed.** Pkt. 10c; oz. 50c; 4 ozs. \$1.65.

**MIGNONETTE—**

**New York Market.** Pkt. 10c; ¼ oz. 45c.

**Large Flowering Sorts Mixed.** Pkt. 5c; ¼ oz. 15c.

**MARIGOLD—**

**Collarette Crown of Gold.** Orange, crested center with broad guard petals. Odorless foliage. Pkt. 10c; ¼ oz. 35c.

**Gigantea Sunset Giants.** Huge new Marigold. Sweet scented. Pkt. 10c; ¼ oz. 50c.

**Guinea Gold.** Re-selected seed. Pkt. 10c; ¼ oz. 45c.

**Harmony.** Orange center petals, flanked by broader maroon-brown guard petals. Dwarf. Pkt. 10c; ¼ oz. 30c.

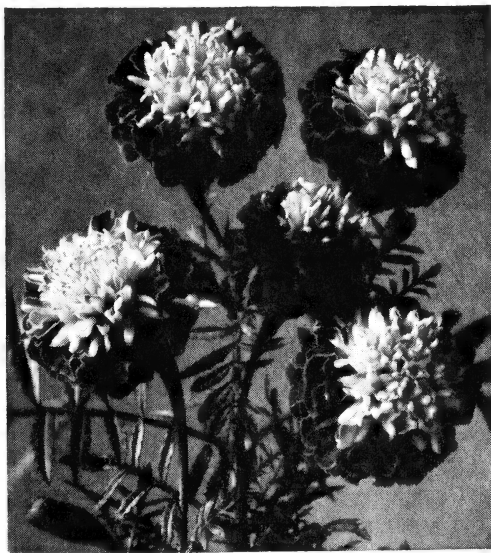
**Royal Scot.** Double, Mahogany red and gold striped flowers. Dwarf. Pkt. 10c; ¼ oz. 50c.

**Tagates.** Signata Pumila, Gnome, Good for borders. Bush-shaped plant covered with deep yellow flowers. Pkt. 10c; ¼ oz. 35c.

**Tall African.** Orange Prince, Lemon Queen and Finest Mixed. Pkt. 5c; ¼ oz. 15c; oz. 50c.

**Yellow Supreme.** Carnation flowered yellow. Pkt. 10c; ¼ oz. 40c.

**Monarch Dwarf French Strain.** Double flowers. Pkt. 10c; ¼ oz. 25c.



Marigold, Harmony

**MARIGOLD—Continued**

**Dwarf Double French.** Mixed. Pkt. 5c; ¼ oz. 20c.

**Tall Double French.** Mixed. Pkt. 5c; ¼ oz. 20c.

**Winter Flowering:**

**Australian Tree.** Tr. Pkt. 25c; ½ oz. 60c.

**Lieb's Winter.** Tr. Pkt. 50c.

**MATTHIOLA. (Evening Scented Stocks)—**

**Bicornis.** Lilac. Pkt. 5c; ¼ oz. 10c.

**MIMOSA. (Sensitive Plant)—**

**Pudica.** Foliage closes when touched. Pkt. 10c; oz. 40c.

**MARTYNIA—**

**Proboscidea.** Interesting for ornamental seed pods. Pkt. 10c.

**MORNING GLORY—**

**SCARLETT O'HARA.** Entirely new color—rich dark wine-red. Blooms within 65 days after seed is sown. We urge our customers to try this new novelty. Pkt. 15c; ¼ oz. 40c.

**Clark's Earliest Heavenly Blue.** Sky-blue. Pkt. 10c; ¼ oz. 20c; oz. 65c.

**Crimson Rambler—**The best red Morning Glory. Pkt. 10c; ¼ oz. 30c; Oz. \$1.00.

**Imperialis Mixed.** Japanese Morning Glory. Pkt. 5c; oz. 25c.

**B. Co. Mixed.** Special mixture of named varieties of large flowering Japanese Morning Glories. Pkt. 25c.

**MYOSOTIS—Perennial**

**Palustris Blue.** Pkt. 10c; ¼ oz. 50c.

**NASTURTIUM—**

**Golden Gleam.** Double, sweet scented, yellow. Pkt. 5c; oz. 20c.

**Scarlet Gleam.** Sweet scented, double, scarlet. Pkt. 5c; oz. 20c.

**Mahogany.** Mahogany red. Double sweet scented. Pkt. 5c; oz. 20c.

**Double Gleam Hybrids.** Mixed. Pkt. 5c; oz. 20c.

**Gem Mixture.** Dwarf gem-like plants. Sweet scented. Pkt. 5c; oz. 20c.

**Tall Mixed.** Pkt. 5c; oz. 15c.

**Dwarf Mixed.** Pkt. 5c; oz. 15c.

**NICOTIANA. (Sweet Scented Tobacco)—**

**Crimson Bedder.** Compact deep crimson. Pkt. 10c; ¼ oz. 50c.

**Pink and Rose Shades.** 3 ft. Pkt. 5c; ¼ oz. 20c.

**White.** 3 ft. Pkt. 5c; ¼ oz. 20c.

**Affinis Hybrids.** Sweet scented mixed. Pkt. 10c; oz. 40c.

**NIEREMBERGIA—**

**Hippomanica.** Dwarf Cup Flower. Lovely lavender-blue shade with touch of yellow in center. Has no equal for rockery in border. Pkt. 50c.





**PETUNIA Ramona Strain Mixed**

**Dwarf Single Bedding—**

- Celestial Rose.** Deep rose. Pkt. 25c;  $\frac{1}{8}$  oz. 75c.  
**Howard's Star, Improved.** Reddish purple with white star. Pkt. 25c;  $\frac{1}{8}$  oz. 75c.  
**General Dodds.** Blood red. Pkt. 10c;  $\frac{1}{8}$  oz. 25c.  
**Heavenly Blue.** Light blue. Pkt. 25c;  $\frac{1}{8}$  oz. 90c.  
**Inimitable.** Striped and blotched. Pkt. 10c;  $\frac{1}{8}$  oz. 30c.  
**Pink Gem.** Pink. 6 inches high. Pkt. 25c;  $\frac{1}{8}$  oz. 60c.  
**Rose Gem.** Bright rose. Also 6 inches high. Pkt. 25c;  $\frac{1}{8}$  oz. \$1.00.  
**Rose of Heaven.** Improved strain. Rose pink. Pkt. 25c;  $\frac{1}{8}$  oz. 70c.  
**Rose of Heaven.** Regular strain. Pkt. 10c;  $\frac{1}{8}$  oz. 40c.  
**Rosy Morn.** Rose with white throat. Pkt. 10c;  $\frac{1}{8}$  oz. 50.  
**Snow Queen.** Pure white. Pkt. 10c;  $\frac{1}{8}$  oz. 30c.  
**Violacea.** Rich violet. Pkt. 10c;  $\frac{1}{8}$  oz. 40c.  
**Norma.** Dark blue with white star. Pkt. 25c;  $\frac{1}{8}$  oz. 50c.  
**Velvet Ball.** Velvety crimson, similar to Black Prince except that it is a dwarf compact plant. Pkt. 25c;  $\frac{1}{32}$  oz. \$1.35.  
**Nana Compacta Mixed.** Our own mixture. Pkt. 10c;  $\frac{1}{8}$  oz. 50c.

**Large Flowering Single—**

- Lace Veil.** Dwarf pure white, heavily fringed. Pkt. 25c; 1000 seeds \$1.00.  
**Setting Sun.** Single fringed. Brilliant rose, dark throats. Compact. Valuable for potting. Pkt. 25c; 1000 seeds \$1.00.  
**Theodosia.** Rose pink, yellow throat. Pkt. 25c; 1000 seeds 75c.  
**Dwarf Giants of California.** Ramona strain. Giant ruffled flowers with veined throats. Pkt. 25c; 1000 seeds \$1.00.

**Large Flowering Double—**

- Victorious.** All double flowers heavily fringed. Pkt. 50c; 1000 seeds \$2.00.  
**Victorious.** In separate colors. **Gaiety** (pink and white), **Orchid Beauty**, **Amaranth Red**, **Purple**, **World Beauty** (Rose) and **White**. Pkt. \$2.00 (1000 seeds).  
**Shepard's.** Double finest fringed. Special range of colors. Pkt. 50c; 1000 seeds \$1.50.

**Balcony—**

**Balcony.** Blue, crimson, rose, white and mixed. Pkt. 10c;  $\frac{1}{8}$  oz. 60c.

**Black Prince.** Deep velvety red. Pkt. 25c;  $\frac{1}{8}$  oz. \$1.00.

**Hybrida.** Mixed all colors. 1½ feet high. Pkt. 5c;  $\frac{1}{8}$  oz. 25c.

**NIGELLA. (Love-in-the-Mist)—**

**Damascena Blue.** Pkt. 5c.

**Damascena Mixed.** Pkt. 5c.

**OENOTHERA. (Evening Primrose)—**

**Lamarckiana.** Tall yellow. Pkt. 5c;  $\frac{1}{4}$  oz. 10c.

**PANSY—**

**Steele's Mastodon Jumbo Mixed.** Early, extra large flowers and fine range of colors. Tr. Pkt. 75c;  $\frac{1}{8}$  oz. \$1.75;  $\frac{1}{4}$  oz. \$3.25; oz. \$12.00.

**Steele's Mastodon Maple Leaf Mixed.** Large flowering strain. Tr. Pkt. 50c;  $\frac{1}{8}$  oz. \$1.25;  $\frac{1}{4}$  oz. \$2.50; oz. \$9.00.

**Dwarf Swiss Giants.** Dwarf compact plants. Large flowers. Pkt. 25c;  $\frac{1}{4}$  oz. \$1.75; oz. \$6.00.

**Improved Swiss Giants.** Mixed. Choice colors and flowers. Pkt. 25c;  $\frac{1}{4}$  oz. \$1.25; oz. \$4.50.

**Improved Swiss Giants. Coronation Gold.** (Golden yellow) Tr. Pkt. 50c;  $\frac{1}{8}$  oz. \$1.25.

**Improved Swiss Giants. Rheingold.** (Yellow with brown blotch). Lake of Thun. (Deep blue with darker center). Pkt. 25c;  $\frac{1}{4}$  oz. \$1.50; oz. \$5.00.

**Maple Leaf Giants Mixed.** Large flowering. Pkt. 50c;  $\frac{1}{4}$  oz. \$1.75; oz. \$6.00.

**Giant Trimardeau.** Pure white, pure yellow, Lord Beaconsfield and King of the Blacks. Pkt. 10c;  $\frac{1}{4}$  oz. 45c; oz. \$1.50.

**PENNISETUM. (Ornamental Grass)—**

**Rueppelianum.** Purple. Pkt. 10c.

**Tricholaena Rosea.** Pkt. 10c.

**PENSTEMON—**

**Sensation.** Mixed. Large flowered. Pkt. 10c;  $\frac{1}{4}$  oz. 80c.

**PHLOX—**

**Decusata.** Hardy Phlox. Pkt. 10c;  $\frac{1}{4}$  oz. 50c.

**Drummondii Gigantea Art Shades.** Exquisite pastel shades. Pkt. 25c;  $\frac{1}{4}$  oz. 50c.

**Drummondii Grandiflora.** Mixed. Pkt. 10c;  $\frac{1}{4}$  oz. 30c.

**Drummondii Dwarf Mixed.** Pkt. 10c;  $\frac{1}{4}$  oz. 60c.

**PLATYCODON. (Japanese Bell Flower)—Perennial**

**Mariesi.** Blue balloon-shaped flowers. Pkt. 10c;  $\frac{1}{4}$  oz. 30c.

**POPPY. (Annual)—**

**American Legion.** Scarlet, white Maltese cross. Pkt. 5c; oz. 25c.

**Flanders Poppy.** Scarlet, black Maltese cross. Pkt. 5c; oz. 40c.

**Paeony Flowered.** Double. Plain edge. Pkt. 5c; oz. 20c.

**Carnation Flowered.** Double. Fringed edge. Pkt. 5c; oz. 20c.

**Shirley.** Single mixed. Pkt. 5c; oz. 35c.

**Shirley.** Double mixed. Pkt. 5c; oz. 60c.

**POPPY (Perennial)—**

**Oriental Scarlet.** Pkt. 10c;  $\frac{1}{4}$  oz. 25c.

**Oriental Mixed Hybrids.** Pkt. 10c;  $\frac{1}{4}$  oz. 35c.

**Iceland.** Single Sunbeam mixed. Pkt. 5c;  $\frac{1}{4}$  oz. 50c.

**Iceland.** Double finest mixed. Pkt. 10c;  $\frac{1}{4}$  oz. 60c.

**PORTULACA. (Moss Rose)—**

**Single Mixed.** Pkt. 5c;  $\frac{1}{4}$  oz. 20c.

**Double Mixed.** Pkt. 5c;  $\frac{1}{4}$  oz. 60c.

**PYRETHRUM. (Painted Daisy)—Perennial.**

**James Kelway.** Deep scarlet. Pkt. 25c;  $\frac{1}{4}$  oz. \$1.25.

**Single Mixed.** Pkt. 10c;  $\frac{1}{4}$  oz. 80c.

**Double Mixed.** Pkt. 25c;  $\frac{1}{8}$  oz. 50c.

**RUDBECKIA. (Cone Flower)—Perennial**

**Purpurea.** Reddish purple. Pkt. 10c;  $\frac{1}{4}$  oz. 35c.

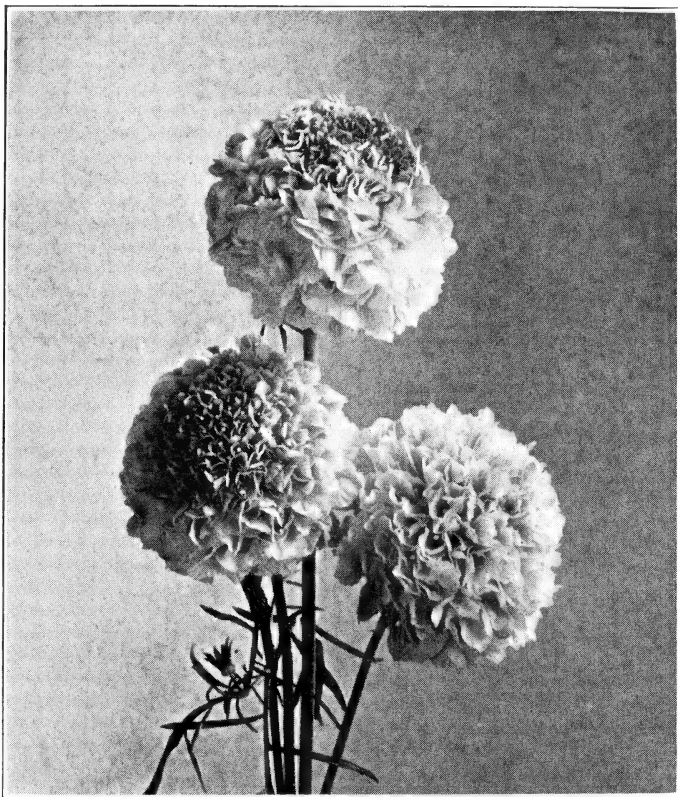
**Hirta Hybrids.** Annual. Deep mahogany through lighter bronze, deep and light shades of yellow and orange. Pure color with no center zone. Pkt. 10c;  $\frac{1}{4}$  oz. 50c.

**SALPIGLOSSIS—**

**Gloxiniaflora.** Mixed. Veined varieties. Pkt. 10c;  $\frac{1}{4}$  oz. 40c.

## SALVIA—

- Firebrand.** Early Harbinger. Dwarf, compact plants that do not get ragged looking. Pkt. 10; ¼ oz. 90c; oz. \$3.35.  
**Harbinger.** Early scarlet. (Sold Out)  
**Bonfire.** Medium tall scarlet. (Sold Out)  
**Zurich.** Very dwarf scarlet. Pkt. 10c; ¼ oz. 85c; oz. \$3.00.  
**Splendens.** Tall scarlet. Pkt. 10c; ¼ oz. 85c; oz. \$3.00.  
**Farinacea Blue Bedder.** Blue. 3 ft. Pkt. 10c; ¼ oz. 85c.



Scabiosa (Mourning Bride)

## SCABIOSA. (Mourning Bride)—

- Ageratum Blue.** Mid-blue.  
**Black Prince.** Maroon red, white anthers.  
**Blue Cockade.** Deep blue with white anthers.  
**Fire King.** Fiery scarlet.  
**Flesh Pink.**  
**Loveliness.** Salmon rose shades.  
**Rose.** Rich rose.  
**Snowball.** White.  
**Sulphur Yellow.**  
**Mixed.** All colors.  
 Pkt. 5c; ¼ oz. 20c; oz. 60c.  
**Blue Moon.** New. Attractive lavender blue. Extra large fully double flowers. Pkt. 10c; ¼ oz. 65c.  
**House's Hybrids.** Perennial. Blue to lavender. Pkt. 25c; ¼ oz. 75c.

**SHASTA DAISY—Perennial**

Alaska. Pure white. Pkt. 10c;  $\frac{1}{4}$  oz. 35c.

Conqueror. Flowers very large pure white. Pkt. 10c;  $\frac{1}{4}$  oz. 40c.

**SCHIZANTHUS. (Butterfly Flower)—**

Excelsior Compactus Mixed. Popular shades. Free flowering. Pkt. 25c.

Wisetonensis Mixed. Bright shades. Pkt. 10c;  $\frac{1}{4}$  oz. 45c.

Pansy Flowered. Mixed. Pansy shaped flowers. Excellent florist strain. Pkt. 25c;  $\frac{1}{8}$  oz. \$1.00.

**SNAPDRAGON—**

Afterglow. Fine golden orange.

Ceylon Court. Standard canary yellow.

Cheviot Maid Supreme. Popular rose-pink.

New Cincinnati. Light rose-pink.

White Rock. Pure white. Tr. Pkt. 50c.

Tr. Pkt. \$1.00; 3 Tr. Pkts. \$2.50. Except where noted.

University of California DeLuxe Mixture. Long stemmed rustproof. Pkt. 10c;  $\frac{1}{4}$  oz. 50c.

Nanum Grandiflorum Rustproof.

Indian Girl. Deep scarlet with orange lip. Pkt. 10c;  $\frac{1}{4}$  oz. 60c.

Salmon Pink. Salmon rose. Pkt. 10c;  $\frac{1}{4}$  oz. 85c.

Finest Mixed. For bedding or borders. Pkt. 10c;  $\frac{1}{4}$  oz. 40c.

Dwarf Mixed. Not rustproof. Pkt. 10c;  $\frac{1}{4}$  oz. 40c.

Tall Mixed. Not rustproof. Pkt. 10c;  $\frac{1}{4}$  oz. 40c.

**SWEET PEAS—**

**PRICES ON WINTER  
FLOWERING VARIETIES**

Except the varieties priced differently are as follows:

$\frac{1}{2}$  oz. 20c; oz. 30c; 4 ozs. \$1.00.

Ball's Blue Improved. Bright mid-blue.

Ball's Orange Improved. Clear deep orange. Oz. 35c; 4 ozs. \$1.20.

Ball's Rose Improved. Bright rose.

Boon. Salmon rose on cream.

Bridesmaid. Silvery pink.

Eileen. Begonia rose shaded salmon.

Grenadier. Poppy scarlet.

Harmony. Best lavender.

Hope. Black-seeded white.

Jeanne Mamitsch. Clear rose.

Josie. Clear rose pink.

Laddie Improved. Extra large rose.

Mrs. Herbert Hoover. Best long stemmed blue.

Orange King. Intense orange. Best orange.

Princess Blue. Light lavender blue, extra large. Oz. 40c.

Sequoia. Salmon rose.

Spring song. Salmon pink.

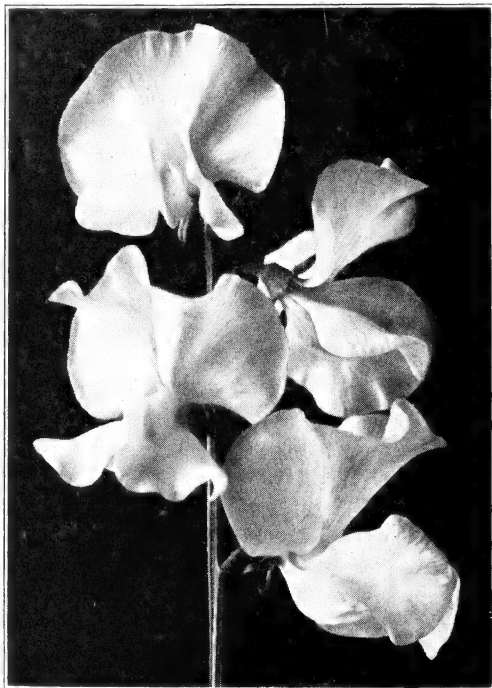
Triumph. Lilac mauve.

Vogue. Light bluish lavender.

Zvolanek's Rose. Large rose.

White Harmony. Black-seeded white.

Mixture of above colors. Oz. 30c; 4 ozs. \$1.00.



Sweet Peas

**SWEET PEAS—Continued****Summer Flowering Spencer.**

Ascot. Pink.

Austin Frederick. Giant lavender.

Avalanche. White.

Fortune. Navy blue.

Hawlmart Salmon Pink.

Hercules. Pink.

Jumbo. Deep cerise.

Pinkie. Large fine rose pink.

Powerscourt. Large lavender.

Prince of Orange. Best deep orange.

Ruffled Mixed. Extra fine.

Warrior. Chocolate maroon.

Welcome. Dazzling scarlet.

Mixture of Above Colors. Exceptionally fine mixture.

Pkt. 5c; oz. 20c; 4 ozs. 60c; lb. \$1.75.

**STOCKS—IMPROVED BISMARCKS—**

Blood Red.

Chamois. Buff.

Elk's Pride. Rich, deep purple.

Golden Rose.

Lavender. Standard color.

Shasta. New giant white.

Tr. Pkt. 35c; ¼ oz. \$1.00; 1 oz. \$3.00.

Mixed. All colors of above. Tr. Pkt. 25c; ¼ oz. 60c; oz. \$2.25.

Ten Weeks Mixed. Pkt. 10c; ¼ oz. 60c.

**SUNFLOWER—**

Maroon Prince. Pkt. 5c; oz. 20c.

Stella. Yellow. Large flowered. 5 ft. Pkt. 5c; oz. 20c.

Cucumerifolius. Miniature type. Pkt. 5c; oz. 35c.

**SWEET WILLIAM—Perennial**

Scarlet. Single. Pkt. 10c; ¼ oz. 25c.

Crimson. Single. Pkt. 10c; ¼ oz. 25c.

Newport Pink. Single. Pkt. 10c; ¼ oz. 20c.

Double Mixed. Pkt. 10c; ¼ oz. 20c.

Double and Single Mixed. Pkt. 10c; ¼ oz. 25c.

**TAHOKA DAISY—**

Lilac Blue. Lilac blue daisy with yellow eye. Fine cut flower. Pkt. 25c.

**THUNBERGIA—**

Alata. Mixed. Excellent for baskets or rock garden. Pkt. 10c.

**TORENIA—**

Fournieri. Blue. Pkt. 25c.

**TRITOMA—Perennial.**

Pfitzer's Hybrids. Very large. Brilliant red. Pkt. 25c.

**VENIDIUM—**

Fastuosum. Orange daisy-like flower with brown center zone. Pkt. 25c; ¼ oz. 85c.

**VERBENA—**

Grandiflora. Large flowered and spreading growth.

Lavender Glory. Lavender with cream eye. Pkt. 10c; ¼ oz. 70c; oz. \$2.25.

Spectrum Red. Intense bright red. Pkt. 10c; ¼ oz. 55c; oz. \$1.75.

Beauty of Oxford Hybrids. Shades of rose pink to rose red. Pkt. 10c; ¼ oz. 75c; oz. \$2.50.

Finest Mixed. Pkt. 10c; ¼ oz. 40c; oz. \$1.50.

Compacta. Free flowering for bedding or pots.

Fireball. Fiery bright scarlet. Pkt. 10c; ¼ oz. 65c; oz. \$2.25.

Finest Mixed. Pkt. 10c; ¼ oz. 65c; oz. \$2.25.

**VINCA. (Periwinkle)—**

Rosea Mixed. Pkt. 10c; ¼ oz. 25c; oz. 75c.

**VIOLA. (Tufted Pansy)—**

Blue Perfection. Fine blue. Pkt. 10c; ¼ oz. 30c; oz. \$1.50.

Mixed. Pkt. 10c; ¼ oz. 50c. Lutea Splendens. Yellow. Pkt. 10c; ¼ oz. 50c.

## ZINNIA—

**Giant Double Dahlia Flowered.**

- Canary Bird.** Rich canary yellow.  
**Crimson Monarch.** Deep crimson.  
**Dream.** Rosy lavender.  
**Exquisite.** Rose with deeper rose center.  
**Illumination.** Deep rose.  
**Meteor.** Darkest of all reds.  
**Scarlet Flame.** Bright scarlet.  
**Polar Bear.** Pure white.  
**Purple Prince.** Deep purple.  
**Oriole.** Orange and gold bicolor.  
**Choice Mixture of Above Colors.**

Price: Pkt. 10c; ¼ oz. 35c; oz. \$1.00

**California Giants.**

- Cerise Queen.** Orange rose.  
**Daffodil Improved.** Canary yellow.  
**Grenadier.** Dark red.  
**Lavender Queen.** Deep rosy lavender.  
**Miss Willmott.** Soft pink.  
**Orange King.** Orange scarlet.  
**Purity.** Pure white.  
**Scarlet Queen.** Glowing deep scarlet.  
**Violet Queen.** Deep purple.  
**Choice Mixture of Above Colors.**

Price: Pkt. 10c; ¼ oz. 30c; oz. 85c

**Lilliput.**

- Pastel Shades.** Lovely soft shades. No harsh colors. Pkt. 10c; ¼ oz. 30c.  
**Rosebud.** Rose pink. **Salmon Gem.**  
**Scarlet Gem.** **Choice Mixed Colors.**

Price each: Pkt. 10c; ¼ oz. 30c; oz. 85c.

- Tom Thumb Mixed.** Dwarf for rock gardens. Pkt. 10c; ¼ oz. 30c; oz. \$1.00.  
**Gracillima. (Red Riding Hood).** Deep scarlet. Pkt. 10c; ¼ oz. 30c.

**Fantasy.**

- Star Dust.** Shaggy petaled golden yellow. Pkt. 10c; ¼ oz. 50c.  
**Finest Mixed.** Colorful mixture of shaggy petaled flowers. Pkt. 10c; ¼ oz. 35c.  
**Scabious Flowered.** Mixed. Resembles annual Scabiosa. Pkt. 10c.  
**Haageana Double. (Mexican Hybrids).** Dwarf. Pkt. 10c.  
**Sanvitalia.** Yellow creeping Zinnia. Pkt. 10c; ¼ oz. 35c.  
**Linearis.** Orange. New. Dwarf, early flowering single flowers. Orange with light yellow stripe, dark center. Pkt. 25c.  
**Gaillardia Flowered.** Resembles Picta Gaillardia. Flowers two-toned with a darker ring of color toward the center of the flower. Pkt. 10c; ¼ oz. 35c.



Zinnia, Lilliput

**CALIFORNIA NATIVE FLOWERS.** An unusually gay and interesting mixture of wild flowers. Be sure and include at least one packet of this seed with your order.

Pkt. 5c; ½ oz. 30c; oz. 50c

## TRANSPLANTONE

### A Vitamin-Hormone Stimulant for Plants

Invigorates old roots — Multiplies new roots — Reduces wilting. For Ornamentals, Seedlings, Garden Plants and Rooted Cuttings.

Shrubs, trees and grass seed.

One ounce can 50c; three ounce can \$1.00; one pound can \$4.00.

# Germāco Hotkaps

Frost can't Hurt  
Rain can't Harm  
Insects can't Touch



**HOTKAPS—An Individual  
Hothouse for Every Plant!**

Prices: 1000 Pkg. \$11.00.

250 Pkg. Including Setter and Tamper, \$4.25.

100 Pkg. Including Setter and Tamper, \$2.85.

Steel Setter and Tamper, \$1.60.

Weights: 1000 Pkg. HOTKAPS, 28 lbs.; 250 Pkg. 9 lbs.; 100 Pkg. 5 lbs.

Steel Setter and Tamper, 3 lbs.

## 2 AIDS TO GARDENING SUCCESS

### VIGORO

Complete plant food

... assures finest results with lawn, flowers, shrubs, trees and vegetables.

Supplies plants with all 11 elements scientists have proved plants require from soil.

#### Prices

100 lbs. .... \$4.00  
50 lbs. .... 2.50  
25 lbs. .... 1.50  
10 lb. Pkg... .85  
5 lb. Pkg... .45  
1 lb. Pkg... .10

F. O. B. Minneapolis



### VIGORO SPREADERS

... the easy way to apply Vigoro evenly. Use it for seeding, etc. Quickly pays for itself in savings of Vigoro and seed. Assures finer results.

All models sturdy, and well made practical garden tools.

#### Prices and Descriptions

Model B. .... \$3.25  
Junior ..... \$7.45  
Standard ... \$15.35  
Special ..... \$22.80

**VIGORO IS IDEAL FOR LAWNS, FLOWERS, SHRUBS, TREES**

**RUBBER BANDS**

We have a complete line of rubber bands for bunching vegetables. Large wrapping bands for vegetables and red Celery Bands.

Write for Prices and Samples.

**NITRAGIN**  
The Original Legume Inoculant

**INOCULATOR PRICES**

When Ordering, Always Specify Name of Seed

**ALFALFA, all CLOVERS**

Size	Retail
1/2 bu. ea.	\$.30
1 bu. ea.	.50
2 1/2 bu. ea.	1.00

**VETCH, AUSTRIAN PEAS, CANADIAN PEAS, BEANS**

1/2 bu. ea.	\$.25
1 bu. ea.	.35
*1 1/3 bu. ea.	.55
5 bu. ea.	1.50
**12 1/2 bu. ea.	2.40
**100 lb. & 12 1/2 bu. size, packed only for Vetch & Peas	

**NITRAGIN GARDEN SIZE** for Garden Peas, Beans, Sweet Peas, Lima Beans and Lupines. Enough for 4 lbs. seed.  
Retail Price.....10c each.

**LESPEDEZA**

Size	Retail
Small 50 lbs. ea.	\$.45
Large 100 lbs. ea.	.65

**PEANUTS, SOY BEANS, COW PEAS, LIMA BEANS**

2 bu. ea.	\$.30
5 bu. ea.	.58
*25 bu. ea.	2.60
*25 bu. size packed only for Soy Beans, Cow Peas, Peanuts	

**FIELD AND GRAIN SEEDS**

Latest Price List sent on request.

Our policy is to stock only the best varieties and the best quality. We endeavor to give prompt service and the best seed money can buy for the lowest possible price.

All prices are for

**BOFFERDING STANDARD QUALITY**



The Arnold Garden Hose Insecticide and Fertilizer Sprayer is a special mixing and spraying device attached to your garden hose in place of the regular nozzle. Used with the various Arnold Insecticide Cartridges it provides a uniformly mixed spray which controls fungus growths, plant diseases and both sucking and chewing insects. Each Cartridge is equivalent to from 5 to 6 gallons of hand mixed spray. Write for leaflet. Price: Combination Set — Arnold Sprayer with six assorted Cartridges \$5.00. Cartridges 35c each.

**CELERY-TOMATO DUST**

Use on squash, broccoli, celery, beans, tomatoes, potatoes, peppers, eggplants, peas, cucumbers, for downy mildew, nail head fungus, early and late blight, leaf spot and rust.

100 lbs. \$6.00.

PRICE SUBJECT TO CHANGE WITHOUT NOTICE.



NAME \_\_\_\_\_

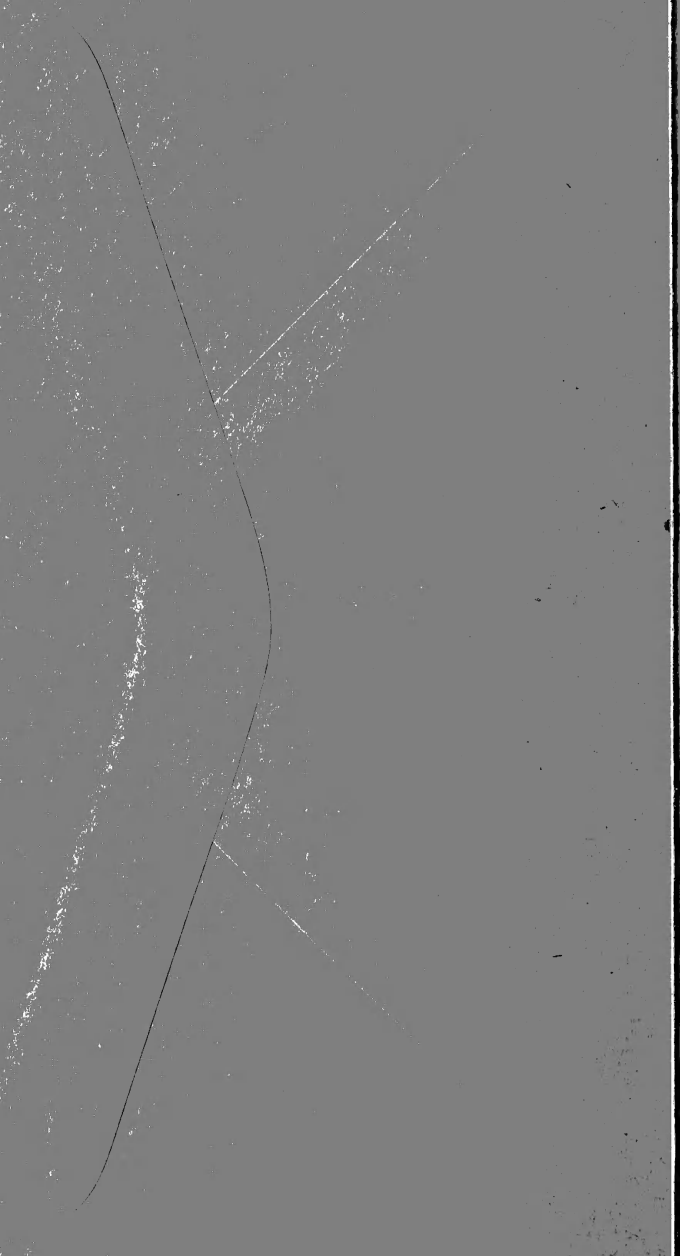
P. O. \_\_\_\_\_

STATE \_\_\_\_\_

**BOFFERDING SEED CO.**

**652 Second Ave. North**

**Minneapolis, Minn.**



# INSECTICIDES — FUNGICIDES — DISINFECTANTS

- New Evergreen.** Contains spreader; add only water as directed. Non-poisonous. 1 oz. 35c; 6 ozs. \$1.00; 16 ozs. \$2.00; gallon \$11.00.
- Acme All-round Spray.** Contains Bordeaux Mixture, Arsenate of Lead and small bottle of Nicotine. Controls fungus diseases, chewing and sucking insects. ¼ lb. 15c.
- Arsenate of Lead.** Control of worms and chewing insects. ½ lb. 20c; 1 lb. 30c; 4 lb. bag 80c.
- Bordeaux Mixture.** Prevents blight. Used as a general fungicide. 1 lb. 30c; 4 lb. bag 95c.
- Lime Sulphur.** Dry. 1 lb. 30c; 5 lbs. \$1.35.
- Calcium Arsenate.** Cheapest arsenical poison. 1 lb. 20c; 4 lbs. 45c; 24 lbs. \$2.50.
- Black Leaf "40".** A 40% Nicotine Sulphate spray for killing insects. Also for painting roosts for killing lice on chickens. 1-oz. 35c; 5 ozs. \$1.05; 1 lb. \$2.50; 2 lbs. \$3.70; 5 lbs. \$6.90.
- Paris Green.** Killing Potato Bugs and other large leaf eating insects. Used in Poison bait for killing Cut Worms. ¼ lb. 15c; 1 lb. 55c; 5 lbs. \$2.50; 14 lbs. \$6.00.
- Dusting Sulphur.** For Mildew, Black Spot and other plant diseases. 3 lbs. 35c.
- Spray Soap "Fish Oil".** Used as a spreader for mixing with other insecticides. May be used alone as an insecticide. Lb. 30c; 5 lbs. \$1.25.
- Kolodust.** An improved fine grade fungicide. 1 lb. 25c; 10 lbs. \$1.50.
- Dutox.** Non-arsenical insecticide used on Cabbage, Corn, Cucumbers and Melons. 1 lb. 30c; 6 lbs. \$1.20.
- Nico-Fume Powder Pressure Fumigator.** Nico-Fume burned under pressure in can in which it is packed. ½ lb. can 45c; dozen \$4.20; 1 lb. can 75c; dozen \$7.00.
- Alticide.** Weed killer. 5 lbs. 85c; 10 lbs. \$1.50; 50 lbs. \$6.75.

**COPPER-CALCIUM DUST.** For the control of striped Cucumber beetle and curcurbit wilt on melons and cucumbers. Dust plants soon as they are up and every five days thereafter. Melons 6 applications, cucumber 8 to 10. Lb. 25c; 5 lbs. 65c; 100 lbs. \$7.00; 500 lbs. \$32.50.

PRICES SUBJECT TO CHANGE WITHOUT NOTICE.

## Rootone

A hormone powder that will aid materially in the formation of roots and cuttings and in the germination of seeds. No solutions necessary. Descriptive pamphlet will be sent upon request. 2 oz. bottle \$1.00; lb. (enough for 30,000 cuttings) \$5.00.

## Vitamin B-1

The sensational new discovery which has given almost unbelievable results by re-invigorating root growth on various plants. Small vial containing 1/10 gram, enough Vitamin B-1 to make 2,000 gallons of solution, for \$1.00.

# BOFFERDING SEED COMPANY R - C DUST

**WE BELIEVE R-C NON-POISONOUS DUST IS THE BEST ON THE MARKET**

R-C DUST has proven most efficient in the control of Mexican Bean Beetles on beans; Cabbage Worms; Loopers; and Aphis on plants in the cabbage, kale and cauliflower variety; Horn Worm on tomatoes; Potato Beetles; Cucumber Beetles and Red Spiders on cucumbers; Thrip on onions and gladioli.

R-C DUST is also recommended in combating Leaf Tyers, Celery Worms, Chrysanthemum Midge, Caterpillars, White Flies, Leaf Hoppers and many other insects.

**DIRECTIONS**—Dust thoroughly, covering all surfaces with a light layer of R-C DUST. Be sure and cover new growth. Dust after watering or when dew is on plants in the early morning or late afternoon. Re-apply after rains.

**ANTS**—Shake a little dust into the ant hills and along the walks.

<b>PRICES</b> }	1 lb. ....	\$0.25	100 lbs. ....	\$10.00
	5 lbs. ....	.75	500 lbs. ....	45.00

R-S WET SPRAY may be used where a wet spray is desired and is also more effective in killing Woolly Aphis as the dust does not penetrate the waxy covering on this Aphis.

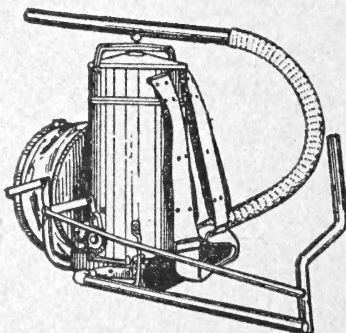
2½ lbs. make up 100 gallons of spray.

**PRICES:** 1 lb. 60c; 2½ lb. package \$1.25.

No Poisonous Residues — No Arsenic — No Lead — No Flourine

## AMERICAN BEAUTY DUSTER

**PRICE**  
\$25.00



**Net Weight—**  
15 pounds.  
**Shipping Weight—**  
18 pounds

Carried and operated by one man. The Duster is equipped with shoulder straps and backrest heavily padded, insuring the maximum of comfort. The bellows is operated by the right hand, and delivers the largest cloud of any one man duster. The spreader, when attached to the end, deflects the dust upward. In this way the lower sides of leaves on low growing plants are easily reached without stooping. By means of the rubber hose and tubing it is possible to dust trees up to twenty-five feet. The bellows places the cloud under constant control where you want it and when you want it. No material is wasted.