

Historic, Archive Document

Do not assume content reflects current scientific knowledge, policies, or practices.

FEBRUARY 19, 1942

WHOLESALE PRICE LIST

OF

Keystone Vegetable Seeds

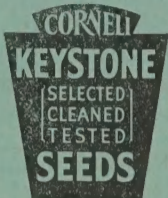
For prompt Order, Immediate Shipment

— FROM —

CORNELI SEED COMPANY

413—WHOLESALE SEEDSMEN—MISSOURI PERMIT No. 2

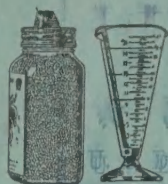
Breeding Farms
and Growing Stations
in Northern and
Western States



T. M. Reg., U. S. Pat. Off.

Proving Grounds
and Test Fields
Keystone Valley Farm
St. Louis County

General Offices: 101 CHOUTEAU AVE., ST. LOUIS, MO.



MAR 5 1942

RAPID SELLING AIDS

- 1-Qt. Square Jar with pouring spout cap packed, 1 doz. per case. Per dozen..... \$0.85
- Pouring Spout and Cap only. Per dozen..... .30
- Measuring Glass with Chart. Each..... .35
- New Lithographed Jar Labels for Keystone Bulk Garden seeds (send for list) 1c each or complete set of 267 labels. Per set..... 1.00
- New Catalog with accurate descriptions of Vegetables, imprinted with your name. Per 100..... 5.00
- Proof sheet of free newspaper mats..... Free

Printed with your Firm Name, Keystone Emblem and Non-Warranty Per 1000

PAPER SEED BAGS

- | 1-oz. Special Bag; flat, gummed kraft. Ready printed with Keystone Ad and non-warranty..... | PLAIN | | |
|---|-----------------------|----------|-----------|
| | Not Imprinted Per 100 | Per 1000 | Per 10000 |
| 1-oz. Flat, Gummed..... | 20 | 1.10 | 1.50 |
| 2-oz. Flat, Gummed..... | 40 | 2.50 | 3.50 |
| 4-oz. Flat, Gummed..... | 50 | 3.00 | 4.00 |
| 1-pint Satchel Bottom..... | 60 | 4.50 | 5.50 |
| 1-quart Satchel Bottom..... | 75 | 5.00 | 6.00 |
- No order of less than 1,000 imprinted. 5,000 or more imprinted at one time 25c per 1,000 less.

We give no warranty, express or implied as to description, quality, productiveness, or any other matter of any seeds, bulbs or plants, we send out, and we will not be in any way responsible for the crop. CORNELI SEED COMPANY

BEANS

Selected—Field Rogued—Hand Picked
Green Pod Dwarf
(120 lbs. per bag)

100 bags 1/2c per lb. less 50 bags 1/4c per lb. less	5 to 49		1 to 4		30 to 119		1 to 29	
	Bags	Per Lb.	Bags	Per Lb.	Lbs.	Per Lb.	Lbs.	Per Lb.
Black Valentine (Old Type).....	11 1/2	13 1/4	12 1/2	14 1/4	13 1/2	15 1/4	14 1/2	16 1/4
Black Valentine Stringless.....	12 1/2	14	13 1/2	15 1/4	14 1/2	16 1/4	15 1/2	17 1/4
Black Valentine Stringless, Round Pod.....	13	14 1/2	14 1/2	16 1/4	15 1/2	17 1/4	16 1/2	18 1/4
Bountiful.....	13	14 1/2	14 1/2	16 1/4	15 1/2	17 1/4	16 1/2	18 1/4
Burpee's Stringless Green Pod.....	14 1/2	16 1/4	15	16 1/4	16	17 1/4	16	17 1/4
Commodore (Dwarf Kentucky Wonder).....	11	12 1/2	11 1/2	13 1/4	12 1/2	14 1/4	13 1/2	15 1/4
Dixie White.....	11	12 1/2	11 1/2	13 1/4	12 1/2	14 1/4	13 1/2	15 1/4
Dwarf Horticultural.....	14 1/2	16 1/4	15	16 1/4	16	17 1/4	16	17 1/4
Fordhook Favorite.....	15 1/2	17 1/4	16	17 1/4	17	18 1/4	17	18 1/4
Full Measure.....	15 1/2	17 1/4	16	17 1/4	17	18 1/4	17	18 1/4
Giant Stringless Green Pod (Long Pod).....	14 1/2	16 1/4	15	16 1/4	16	17 1/4	16	17 1/4
Keystone Valley Stringless.....	14 1/2	16 1/4	15	16 1/4	16	17 1/4	16	17 1/4
Lanreth Stringless.....	14 1/2	16 1/4	15	16 1/4	16	17 1/4	16	17 1/4
Plentiful.....	13 1/2	15 1/4	14	15 1/4	15	16 1/4	14 1/2	16 1/4
Red Valentine.....	13	14 1/2	13 1/2	15 1/4	14 1/2	16 1/4	15 1/2	17 1/4
Red Valentine Stringless.....	13	14 1/2	13 1/2	15 1/4	14 1/2	16 1/4	15 1/2	17 1/4
Refugee, Stringless U. S. No. 5.....	13	14 1/2	13 1/2	15 1/4	14 1/2	16 1/4	15 1/2	17 1/4
Refugee, Mosaic Resistant (Idaho).....	13	14 1/2	13 1/2	15 1/4	14 1/2	16 1/4	15 1/2	17 1/4
Tendergreen or New Stringless Green Pod.....	13	14 1/2	13 1/2	15 1/4	14 1/2	16 1/4	15 1/2	17 1/4
Tennessee Green Pod.....	12 1/2	14 1/4	13 1/4	15 1/4	14 1/4	16 1/4	15 1/4	17 1/4

Field Beans (Hand Picked)

Fava, Giant Seville.....	17	18		
Great Northern.....	9 1/2	10	11	12
Michigan Navy (Michelite).....	10 1/2	11	12	13
Pinto Beans.....	9 1/2	10	11	12
Red Kidney (Dark).....	13	14 1/2	15 1/2	16 1/2
White Kidney.....	11 1/2	12	13	14
White Marrow.....	11 1/2	12	13	14

Wax Pod Dwarf

Black Wax (Pencil Pod).....	12 1/2	13	14	15
Brittle Wax (Round Pod Kidney Wax).....	16 1/2	17	18	19
Currie's Rust Proof Black Wax.....	12 1/2	13	14	15
Davis Stringless Wax.....	12 1/2	13	14	15
Golden Wax, Improved.....	13 1/2	14	15	16
Golden Wax, Top Notch.....	13 1/2	14	15	16
Improved Stringless Kidney Wax.....	16 1/2	17	18	19
Sure Crop Wax.....	13	14 1/2	15 1/2	16 1/2
Unrivalled Wax.....	14 1/2	15	16	17
Wardwell's Kidney Wax.....	14 1/2	15	16	17
Webber Wax.....	14 1/2	15	16	17

Dwarf Lima Beans

Baby Fordhook.....	12 1/2	13	14	15
Baby Potato.....	12 1/2	13	14	15
Early Baby Potato.....	12 1/2	13	14	15
Burpee's Large Bush Lima.....	13 1/2	14	15	16
Burpee's Improved Bush Lima.....	14 1/2	15	16	17
FORDHOOK BUSH LIMA.....	16	16 1/2	17 1/2	18 1/2
Henderson's Bush Lima.....	13	13 1/2	14 1/2	15 1/2
Illinois Large Podded.....	12 1/2	13	14	15
Jackson Wonder Speckled.....	11 1/2	12	13	14
Maryland Thick Seeded.....	12 1/2	13	14	15
Old Florida Bush Butter.....	11 1/2	12	13	14
U. S. No. 2.....	13	13 1/2	14 1/2	15 1/2
Woods Prolific.....	13 1/2	14	15	16

Pole Beans

Blue Lake.....	12 1/2	13	14	15
Burger's Stringless (Wh. Seed Ky. Won.).....	12 1/2	13	14	15
Dutch Caseknife.....	12 1/2	13	14	15
Golden Cluster Wax.....	12	12 1/2	13 1/2	14 1/2
Ideal Market.....	12	12 1/2	13 1/2	14 1/2
Kentucky Wonder.....	14	14 1/2	15 1/2	16 1/2
Kentucky Wonder Rust Resist (Brown).....	14	14 1/2	15	16
Kentucky Wonder Wax.....	13	13 1/2	14 1/2	15 1/2
Lazy Wife.....	11 1/2	12	13	14
London Horticultural.....	12 1/2	13	14	15
McCaslan.....	12 1/2	13	14	15
Missouri Wonder.....	12 1/2	13	14	15
Red Speckled Out Short.....	12 1/2	13	14	15
St. Louis Perfection White.....	14	14 1/2	15 1/2	16 1/2
Scarlet Runner.....	16 1/2	17	18	19
Striped Creaseback.....	12 1/2	13	14	15
Tennessee Wonder (Egg Harbor).....	12 1/2	13	14	15
White Cornfield, Improved.....	14	14 1/2	15 1/2	16 1/2
White Creaseback.....	12 1/2	13	14	15
Yardlong.....	25 1/2	26	27	28

Pole Lima Beans

CHRISTMAS LIMA (Large Speckled).....	12 1/2	13	14	15
Florida Butter Speckled.....	14 1/2	15	16	17
King of the Garden Lima.....	14 1/2	15	16	17
Large White Lima or Butter.....	14 1/2	15	16	17
Old Florida Butter.....	12 1/2	13	14	15
Leviathan.....	13	13 1/2	14 1/2	15 1/2
Small White Lima or Sieva.....	13 1/2	14	15	16

Edible Soybeans

For descriptions, see page 17 of our descriptive catalog of vegetables.				
Aoda (Large Green).....	17 1/2	18	19	20
Bansel.....	16 1/2	17	18	19
Hokkaido.....				
Willoni.....				
Imperial.....				
Higan.....				

SWEET CORN

Yellow Hybrids (100 lbs. per bag)

100 bags 1/2c per lb. less 50 bags 1/4c per lb. less	5 to 49		1 to 4		25 to 99		1 to 24	
	Bags	Per Lb.	Bags	Per Lb.	Lbs.	Per Lb.	Lbs.	Per Lb.
Carmelcross.....	21 1/2	22	23	24	25	26	27	28
Corneli's Gold Rush (Reg. U. S. Pat. Off.).....	22 1/2	23	24	25	26	27	28	29
Golden Cross Bantam.....	25 1/2	26	27	28	29	30	31	32
Ioana.....	23 1/2	24	25	26	27	28	29	30
Marcross 39.....	20 1/2	21	22	23	24	25	26	27
Marcross 13x6.....	20 1/2	21	22	23	24	25	26	27

White Hybrids

Country Gentleman 8x6.....	28 1/2	29	30	31
Country Gentleman 8x6.....	28 1/2	29	30	31
Keystone Evergreen Hybrid.....	25 1/2	26	27	28
Narrow Grain Evergreen 14x13.....	28 1/2	29	30	31
Narrow Grain Evergreen 14x11.....	28 1/2	29	30	31

(100 lbs. per bag)

White Varieties (open pollinated)

Black Mexican.....	9 1/2	10	11	12
Country Gentleman.....	17 1/2	18	19	20
Early Evergreen.....	16 1/2	17	18	19
Honey June.....	16 1/2	17	18	19
Howling Mob.....	10	10 1/2	11 1/2	12 1/2
Long Island Beauty (Late Mammoth).....	10 1/2	11	12	13
Stowell's Evergreen.....	16 1/2	17	18	19
Stowell's Evergreen (Canner Strain).....	17	17 1/2	18 1/2	19 1/2
Vanguard.....	9 1/2	10	11	12

(100 lbs. per bag)

Yellow Varieties (open pollinated)

Golden Bantam (8 row).....	9 1/2	10	11	12
Golden Evergreen, Mid Season.....	10	10 1/2	11 1/2	12 1/2
Wonder Bantam, Barden's (8 row).....	9 1/2	10	11	12
Whipples, Yellow.....	10	10 1/2	11 1/2	12 1/2

Early White Table Varieties

(112 lbs. per bag)

Early Adams.....	5 1/2	6	7	8
Extra Early Adams.....	6	6 1/2	7 1/2	8 1/2
Ohio Champion.....	5	5 1/2	6 1/2	7 1/2
Snowflake.....	5	5 1/2	6 1/2	7 1/2
Trucker's Favorite.....	5	5 1/2	6 1/2	7 1/2

POP CORN SEED

Japanese Hulless (white).....	10 1/2	11	12	13
Golden Queen (yellow).....	9 1/2	10	11	12
South American Dynamite (yellow).....	9 1/2	10	11	12

GARDEN PEAS

Wrinkled Varieties Marked*

(Wrinkled Peas, 112 lbs., Smooth Peas, 120 lbs. per bag)

Extra Early and Early Varieties

100 bags 1/2c per lb. less 50 bags 1/4c per lb. less	5 to 49		1 to 4		30 to 119		1 to 29	
	Bags	Per Lb.	Bags	Per Lb.	Lbs.	Per Lb.	Lbs.	Per Lb.
Alaska, Wilt Resistant.....	11	11 1/2	12 1/2	13 1/2	13 1/2	14	14	15
Ameer (Claudit, Mam. Pod Alaska).....	13	13 1/2	14 1/2	15 1/2	15 1/2	16 1/2	16 1/2	17 1/2
*American Wonder.....	13	13 1/2	14 1/2	15 1/2	15 1/2	16 1/2	16 1/2	17 1/2
Dwarf Tom Thumb.....	11 1/2	12	13	14	14	15	15	16
First and Best.....	10 1/2	11	12	13	13	14	14	15
*Gradus.....	15	15 1/2	16 1/2	17 1/2	17 1/2	18 1/2	18 1/2	19 1/2
*Hundredfold.....	15	15 1/2	16 1/2	17 1/2	17 1/2	18 1/2	18 1/2	19 1/2
*Laxtonian.....	16	16 1/2	17 1/2	18 1/2	18 1/2	19 1/2	19 1/2	

BEETS

	300 lbs. 1c per lb. less			
	50 to 299 Lbs. Per Lb.	25 to 49 Lbs. Per Lb.	5 to 24 Lbs. Per Lb.	1 to 4 Lbs. Per Lb.
Crimson Globe				
Crosby's Egyptian	\$ 1.26	\$ 1.28	\$ 1.30	\$ 1.35
Detroit Dark Red	1.51	1.53	1.55	1.60
Detroit Dark Red, Perfected (excellent canner)	1.76	1.78	1.80	1.85
Early Blood Turnip	1.21	1.23	1.25	1.30
Early Eclipse	1.26	1.28	1.30	1.35
Early Wonder	1.26	1.28	1.30	1.35
Edmand's Blood Turnip	1.21	1.23	1.25	1.30
Extra Early Egyptian Dark Red	1.11	1.13	1.15	1.20
Strawberry Crosby (Light Red)			1.15	1.20
Swiss Chard, Com. Green (Spinach Beet)				
Swiss Chard (Lucullus)	1.11	1.13	1.15	1.20
Swiss Chard, French Dark Green				
Broad Wh. Rib	1.21	1.23	1.25	1.30
Swiss Chard, Fordhook Giant	1.21	1.23	1.25	1.30
Sugar Beets and Mangel Wurzel				
Giant Half Sugar, Rose	\$ 0.86	\$ 0.88	\$ 0.90	\$ 0.95
Golden Tankard	.86	.88	.90	.95
Mammoth Long Red	.86	.88	.90	.95
Improved White Sugar	.66	.68	.70	.75
Klein Wanzleben	.66	.68	.70	.75

BROCCOLI

Italian Green Sprouting

	25 to 99 Lbs. Per Lb.	5 to 24 Lbs. Per Lb.	1 to 4 Lbs. Per Lb.
Italian Early Calabrese	\$ 4.00	\$ 4.10	\$ 4.20

BRUSSELS SPROUTS

Long Island Improved	4.00	4.10	4.20
----------------------	------	------	------

CABBAGE

	300 lbs. 5c per lb. less 100 lbs. 3c per lb. less		
	25 to 99 Lbs. Per Lb.	5 to 24 Lbs. Per Lb.	1 to 4 Lbs. Per Lb.
All Head Early	\$ 1.45	\$ 1.50	\$ 1.60
All Seasons	1.55	1.60	1.70
Charleston Wakefield	1.55	1.60	1.70
Openhagen Market	2.80	2.85	2.95
KEYSTONE OPENHAGEN MARKET (Extra Select, Danish Grown)			
Cornell's Late Flat Dutch	3.55	3.60	3.70
Danish Ball Head, Short Stem	1.45	1.50	1.60
KEYSTONE DANISH ROUNDHEAD, Short Stem (Extra Select Danish)			
Early Drumhead	3.05	3.10	3.20
Early Dwarf Flat Dutch	1.30	1.35	1.45
Early Jersey Wakefield	1.30	1.35	1.45
Early Jersey Wakefield	1.55	1.60	1.70
Glory of Enkhuizen	2.80	2.85	2.95
Golden Acre	3.55	3.60	3.70
KEYSTONE GOLDEN ACRE (Extra Select Danish)			
Large Late Drumhead	4.05	4.10	4.20
Late St. Louis Market	1.30	1.35	1.45
Premium Late Flat Dutch	1.30	1.35	1.45
Savoy-Early Dwarf Elm	1.80	1.85	1.95
Savoy-Perfection Late Drumhead	2.05	2.10	2.20
Steins Early Flat Dutch	1.30	1.35	1.45
Succession	1.45	1.50	1.60

Yellows Resistant Varieties

All Head Select	\$ 2.55	\$ 2.60	\$ 2.70
Globe (Glory of Enkhuizen)	2.80	2.85	2.95
Golden Acre, Yellow Resistant (Detroit)	2.80	2.85	2.95
Jersey Queen	1.80	1.85	1.95
Marion Market	2.80	2.85	2.95
Peerless			
Wisconsin All Seasons	2.55	2.60	2.70
Wisconsin Ballhead	2.05	2.10	2.20
Wisconsin Hollander No. 8	2.55	2.60	2.70

Red Cabbage

Keystone Red Rock, Medium	2.55	2.60	2.70
Mammoth Red Rock (Danish)	3.05	3.10	3.20

Chinese Cabbage

Wong Bok	1.15	1.20	1.30
Chihli	1.15	1.20	1.30
Pe Tsai	1.15	1.20	1.30

CARROTS

	300 lbs. 2c per lb. less			
	75 to 299 Lbs. Per Lb.	25 to 74 Lbs. Per Lb.	5 to 24 Lbs. Per Lb.	1 to 4 Lbs. Per Lb.
Chantenay	\$ 3.52	\$ 3.55	\$ 3.60	\$ 3.65
Chantenay Red Core	3.77	3.80	3.85	3.90
Chantenay Long Type (Perfection)	3.77	3.80	3.85	3.90
Cornell's Coreless	4.02	4.05	4.10	4.15
Danver's Half Long	3.52	3.55	3.60	3.65
Danver's Red Core	3.77	3.80	3.85	3.90
Imperator	3.77	3.80	3.85	3.90
Improved Long Orange				
Nantes	4.02	4.05	4.10	4.15
Ox Heart or Guerande	3.52	3.55	3.60	3.65
Streamliner				
Tendersweet	3.52	3.55	3.60	3.65
Touchon	4.02	4.05	4.10	4.15
White Belgian	.77	.80	.85	.90
Yellow Belgian	.77	.80	.85	.90

CAULIFLOWER

	5 Lbs. & Over Per Lb.	1/2 to 4 Lbs. Per Lb.	Per Oz.
Early Snowball (Danish Grown)	\$30.00	\$31.00	\$ 3.00
Early Snowball (Amer. Grown)	25.00	26.00	2.50
Earliest Dwarf Erfurt (Danish Grown)	30.00	31.00	3.00
Super Snowball (Danish Grown)	35.00	36.00	3.50
Snowdrift (Danish Grown)	32.00	33.00	3.25
Snowdrift (Amer. Grown)	25.00	26.00	2.50

CELERY

	25 lbs. 10c less		
	1 to 4 Lbs. Per Lb.	5 to 24 Lbs. Per Lb.	25 to 99 Lbs. Per Lb.
Easy Blanching	\$ 1.70	\$ 1.90	\$ 0.20
Fordhook or Emperor	1.60	1.80	.20
Giant Pascal	3.10	3.30	.30
Golden Plume, Blocky	2.60	2.80	.30
Golden Plume, Long Heart	4.10	4.30	.50
Golden Self Blanching (Dwarf)	3.10	3.30	.30
Utah Pascal	3.10	3.30	.30
White Plume	2.10	2.30	.25
Celeriac, Turnip Rooted Celery	1.60	1.80	.20
Old Seed (for flavoring)		.60	.10

COLLARDS

	25 to 99 Lbs. Per Lb.	5 to 24 Lbs. Per Lb.	1 to 4 Lbs. Per Lb.
100 lbs. 2c per lb. less			
Cabbage	\$ 0.27	\$ 0.29	\$ 0.31
Georgia	.22	.24	.26
Blue Stem	.27	.29	.31

CORN SALAD

	5 Lbs. & Over Per Lb.	1 to 4 Lbs. Per Lb.
Large Leaved		

CUCUMBERS

Varieties listed in Capitals can be supplied in 1-pound Keystone cotton bags, sealed with Keystone seal at 3c per pound extra.

	300 lbs. 2c less			
	100 to 299 Lbs. Per Lb.	25 to 99 Lbs. Per Lb.	5 to 24 Lbs. Per Lb.	1 to 4 Lbs. Per Lb.
A & C	\$ 1.52	\$ 1.54	\$ 1.57	\$ 1.62
Arlington White Spine	.77	.79	.82	.87
Black Diamond (Stays Green)	1.27	1.29	1.32	1.37
BLACK DIAMOND (Long Strain)	1.27	1.29	1.32	1.37
Boston Pickling (Green Prolific)	1.27	1.29	1.32	1.37
Chicago Pickling	1.27	1.29	1.32	1.37
CLARK'S SPECIAL	.77	.79	.82	.87
Colorado	1.52	1.54	1.57	1.62
DAVIS PERFECT	.77	.79	.82	.87
DELTA, Long Dark Green	1.27	1.29	1.32	1.37
Earliest of All	1.02	1.04	1.07	1.12
EARLY FORTUNE	.77	.79	.82	.87
Early Green Cluster	1.27	1.29	1.32	1.37
Early Short Green	1.27	1.29	1.32	1.37
Early White Spine	.77	.79	.82	.87
Evergreen White Spine, (Extra Long)	.77	.79	.82	.87
Gherkin or Burr	1.02	1.04	1.07	1.12
Japanese Climbing	.92	.94	.97	1.02
LONGFELLOW	1.27	1.29	1.32	1.37
LONG GREEN, IMPROVED	1.27	1.29	1.32	1.37
National Pickle	1.27	1.29	1.32	1.37
Snow's Perfection Pickling	1.27	1.29	1.32	1.37
STRAIGHT EIGHT	1.52	1.54	1.57	1.62
Taxpayer	.77	.79	.82	.87
White Wonder	1.17	1.19	1.22	1.27
WOODRUFFS HYBRID	.77	.79	.82	.87

EGG PLANT

	75 lbs. 5c less		
	25 to 74 Lbs. Per Lb.	5 to 24 Lbs. Per Lb.	1 to 4 Lbs. Per Lb.
Black Beauty	\$ 3.05	\$ 3.15	\$ 3.30
Early Long Purple	3.05	3.15	3.30
Florida High Bush	3.05	3.15	3.30
Fort Myers Market	3.05	3.15	3.30
New Orleans Market	3.05	3.15	3.30
New York, Improved	3.05	3.15	3.30

ENDIVE

	25 lbs. 5c less		
	Per Lb.	Per Lb.	Per Lb.
Batavian Full-Hearted		.80	.85
Florida Deep Heart		.80	.85
Green Curled (Ruffec)		.70	.75
Green Curled, Pink Ribbed (Pancalier)		.70	.75
White Curled		.70	.75
French or Witloof Chicory			

FLOWER SEED

Send for new complete Bulk Flower Seed Price List

	25 Lbs. Per Lb.	5 to 24 Lbs. Per Lb.	1 to 4 Lbs. Per Lb.	Per Oz.
Sweet Peas, Cornell's Prize Spencer				
Mixed	\$ 0.68	\$ 0.70	\$ 0.75	\$ 0.10
Sweet Peas, Spencer Mixed	.48	.50	.55	.10
Sweet Peas, Spencer Mixed, Special Blend				
	.53	.55	.60	.10
Sweet Peas, Cupid or Dwarf, Mixed	.73	.75	.80	.10
Sweet Peas Ea. Flowering Spencer				
Mixed	.88	.90	.95	.10
Nasturtium, Dwarf Mixed	.60	.62	.67	.10
Nasturtium, Tall Mixed	.65	.67	.72	.10
Nasturtium, Golden Gleam	1.10	1.12	1.17	.15
Nasturtium, Double Gleam Hybrids	1.30	1.32	1.37	.15
Nasturtium, Double Scarlet Gleam	1.30	1.32	1.37	.15
Zinnia, Giants of California, Mixed		2.50	2.5	.25
Zinnia, Dahlia Flowering, Mixed		2.50	2.5	.25
Zinnia, Lilliput, Mixed		2.50	2.5	.25

For Separate Colors, See Bulk Flower Seed Price List.

HERBS

Herbs can also be supplied in packet at \$2.50 per 100

	Per Lb.	Per Lb.
Basil Sweet		
Oaraway		
Cardoon		
Dandelion, Imp. Thick Leaf		
Castor Bean (Large)	\$0.10	
Chives	5.00	
Coriander	.80	
Cress, Curled	1.00	
Florence Fennel	1.35	
Dill, Long Island Mam		\$ 0.75
Poppy or Maw		
Sage Breadleaf		
Sorrel Breadleaf		
Summer Savory		
Sweet Marjoram		
Sweet Thyme		
Upland Cress		4.00
Water Cress		

KALE

	300 lbs. 1c less			
	100 to 299 Lbs. Per Lb.	25 to 99 Lbs. Per Lb.	5 to 24 Lbs. Per Lb.	1 to 4 Lbs. Per Lb.
Dwarf Blue Curled Scotch				
Dwarf German Greens	\$ 0.80	\$ 0.82	\$ 0.85	\$ 0.90
Dwarf Green Moss Curled Scotch				
Siberian, Improved	.80	.82	.85	.90
Tall Green Curled Scotch			.76	.81

KOHLRABI

Early Purple Vienna	\$ 4.10	\$ 4.20
Early White Vienna	6.10	6.20

LEEK

Giant Musselburg		
Large London Flag		\$ 3.20

LETTUCE

Non-Heading or loose-leaved varieties marked*

	100 lbs. 3c per lb. less		
	25 to 99 Lbs. Per Lb.	5 to 24 Lbs. Per Lb.	1 to 4 Lbs. Per Lb.
Big Boston	\$ 0.70	\$ 0.75	\$ 0.80
*Black Seeded Simpson	.50	.55	.60
Brown Dutch Winter	.73	.78	.83
Cabbage or Butter	.65	.70	.75
California Cream Butter	.75	.80	.85
*Chicken	.45	.50	.55
Cornell's No. 16	.70	.75	.80
Crisp as Ice	.80	.85	.90
*Early Curled Simpson (White Seed)	.50	.55	.60
*Grand Rapids, Forcing	.45	.50	.55
Hanson	.50	.55	.60
Hardy Green Winter	.70	.75	.80
Iceberg	.65	.70	

CANTALOUPE AND MUSKMELON

Our Cantaloupe seed is grown in the Rocky Ford district of Colorado and is saved from hand selected HAND OUT melons (not machine threshed). Varieties listed in Capitals can be supplied in 1-pound Keystone cotton bags sealed with Keystone seal at 3c per pound extra.

Green Fleshed Varieties

Hand Cut	300 lbs. 2c less	75 to 299 Lbs. Per Lb.	25 to 74 Lbs. Per Lb.	5 to 24 Lbs. Per Lb.	1 to 4 Lbs. Per Lb.
Oasaba, Golden Beauty		\$ 0.77	\$ 0.79	\$ 0.82	\$ 0.87
Eden Gem or Netted Gem		.77	.79	.82	.87
*Hackensack, Large		.77	.79	.82	.87
*Hackensack, Extra Early		.77	.79	.82	.87
Honey Dew		.77	.79	.82	.87
Honey Dew, Gold Bld.		.45	.47	.50	.55
Rocky Ford		.77	.79	.82	.89

Pink or Orange Fleshed Varieties

*Banana	.92	.94	.97	1.02
*Benders Surprise	.92	.94	.97	1.02
Burrell's Gem	.77	.79	.82	.87
*Emerald Gem	.77	.79	.82	.87
HALE'S BEST, Jumbo	.77	.79	.82	.87
HALE'S BEST IMPROVED No. 36	.62	.64	.67	.72
HALE'S BEST No. 936	.72	.74	.77	.82
HALE'S BEST No. 45 (Mildew Res.)	.92	.94	.97	1.02
HEARTS OF GOLD	.92	.94	.97	1.02
Honey Rock (Sugar Rock)				
KEYSTONE WINNER (New H. B.)	.62	.64	.67	.72
*Osage (Salmon Flesh) (Millers Cream)	.77	.79	.82	.87
PERFECTO IMPROVED	.55	.57	.60	.65
POLLOCK 10-25				
Pride of Wisconsin				
*Tip Top	.70	.72	.75	.80

*These are Muskmelon type, others are Cantaloupes.

CANTALOUPE SEED, CROWN SET

To meet a demand for cantaloupe seed of commercial varieties in stock seed grade we offer the following strains. This seed is from the first of crown set of fruits only.

	25-lb. Sealed Bags Per Lb.	1-lb. Sealed Bags
(300 lbs. 5c per lb. less)		
HALE'S BEST, Jumbo Strain	\$ 0.95	\$ 1.00
Very large roadside market melon.		
HALE'S BEST, IMPROVED, No. 36, Crown set	.80	.85
Medium, shipping size; round or short oval; heavily netted; thick flesh.		
HALE'S BEST No. 936	.90	.95
New, very uniform, medium large.		
KEYSTONE WINNER (New H. B.), Crown Set	.80	.85
The newest and finest cantaloupe of Hale's Best type.		
PERFECTO IMPROVED, Crown Set	.80	.85
HALE'S BEST No. 45, Mildew Resistant	1.00	1.05

WATERMELON

Varieties marked (*) Available in Gilberts 25-lb. Sealed Bags.

	75 to 299 Lbs. Per Lb.	25 to 74 Lbs. Per Lb.	5 to 24 Lbs. Per Lb.	1 to 4 Lbs. Per Lb.
(300 lbs. 1c less)				
Alabama Sweet	\$ 0.36	\$ 0.38	\$ 0.40	\$ 0.45
Black Watson	.36	.38	.40	.45
CALIFORNIA HONEY (New, Ice-Box)	.41	.43	.45	.50
*OLETEX, Spotted Watson	.39	.41	.43	.48
*Cuban Queen (Black Seed)	.36	.38	.40	.45
*DIXIE QUEEN (Small White Seed)	.49	.51	.53	.58
*Early Kansas	.36	.38	.40	.45
*Florida Giant or Black Diamond	.51	.53	.55	.60
Georgia Rattlesnake	.36	.38	.40	.45
Golden Honey	.36	.38	.40	.45
Graystone	.61	.63	.65	.70
Halbert's Honey	.36	.38	.40	.45
Harris' Early	.36	.38	.40	.45
*Irish Grey	.38	.40	.42	.47
Kleckley's Sweet or Monte Cristo	.36	.38	.40	.45
Red Citron	.41	.43	.45	.50
Round Light Icing	.36	.38	.40	.45
Schochler	.36	.38	.40	.45
*Stone Mountain or Dixie Bell	.36	.38	.40	.45
Sweheart	.36	.38	.40	.45
*Tom Watson, Improved	.36	.38	.40	.45
*Wondermelon (Imp. Kleckley's Sweet)	.36	.38	.40	.45

Wilt-Resistant Strains

Improved Hawkesbury (Grey Shipper)	.46	.48	.50	.55
Kleckley's Sweet No. 6	.39	.41	.43	.48
Klondike Dark Green R7	.54	.56	.58	.63
*Leesburg	.36	.38	.40	.45
Stone Mountain No. 5	.39	.41	.43	.48

State Certified Watermelon

	1-lb. sealed bags only
Certified Dixie Queen	.66 .68 .70 .75
Certified Kleckley's Sweet	.61 .63 .65 .70
Certified Stone Mountain	.61 .63 .65 .70
Certified Florida Giant	.66 .68 .70 .75

MUSTARD

	100 to 299 Lbs. Per Lb.	25 to 99 Lbs. Per Lb.	5 to 24 Lbs. Per Lb.	1 to 4 Lbs. Per Lb.
(300 lbs. 1c less)				
Chinese Broad Leaf				
Florida Broad Leaf				
Fordhook Fancy (Ostrich Plume)	\$ 0.74	\$ 0.75	\$ 0.77	\$ 0.80
Southern Giant Curled	.74	.75	.77	.80
SOUTHERN GIANT CURLED (LONG STANDING)				
Yellow or White London	.85	.81	.83	.86
TENDERGREEN (JAP. MUSTARD SPINACH)	.55	.56	.58	.61
Black or Brown				

OKRA OR GUMBO

	300 lbs. 1c less
Olemson Spineless	.21 .22 .24 .26
Dwarf Green	.17 .18 .20 .22
Louisiana Velvet Lady Finger	.19 .20 .22 .24
Dwarf Long Pod, Green	
Long Green (Perkins Mammoth Tall)	.17 .18 .20 .22
White Velvet	.17 .18 .20 .22
Louisiana Green Velvet	

ONION

	300 lbs. 2c per lb. less
Australian Brown	\$3.40 \$3.50
Bermuda Yellow (Teneriffe)	
Crystal Wax (Teneriffe)	6.10 6.20
Danver's Yellow Globe	4.60 4.70
Ebenezer or Japanese Yellow	4.10 4.20
Mammoth Silver King (Imported)	
Mountain Danvers (Yellow Globe)	\$4.52 \$4.55 4.60 4.70
Philadelphia White Silver Skin	5.10 5.20
Red Wethersfield	4.02 4.05 4.10 4.20
Southport Red Globe	4.10 4.20
Southport White Globe	
Southport Yellow Globe	5.10 5.20
Sweet Spanish, Yellow (Utah Strain)	
Keystone Yellow Sweet Spanish, No. 6	8.60 8.70
White Sweet Spanish	6.60 6.70
White Lisbon	
White Portugal	5.10 5.20
Yellow Giant Prizetaker	

PARSLEY

	100 to 299 Lbs. Per Lb.	25 to 99 Lbs. Per Lb.	5 to 24 Lbs. Per Lb.	1 to 4 Lbs. Per Lb.
(300 lbs. 1c less)				
Double Curled	\$ 0.61	\$ 0.63	\$ 0.65	\$ 0.70
Hamburg (Edible Root)	.66	.68	.70	.75
Moss Curled	.61	.63	.65	.70
Plain	.61	.63	.65	.70

PARSNIP

	50 Lbs. Per Lb.	25 to 49 Lbs. Per Lb.	5 to 24 Lbs. Per Lb.	1 to 4 Lbs. Per Lb.
(300 lbs. 1c less)				
Harris Model	\$ 0.91	\$ 0.93	\$ 0.95	\$ 1.00
Improved Guernsey	.91	.93	.95	1.00
Hollow Crown	.91	.93	.95	1.00
Short Thick				

PEPPER

	75 Lbs. Per Lb.	25 to 74 Lbs. Per Lb.	5 to 24 Lbs. Per Lb.	1 to 4 Lbs. Per Lb.
Pungent or "Hot" Varieties				
Anaheim Chile	\$ 1.80	\$ 1.85	\$ 1.95	\$ 2.05
Hungarian Wax	2.40	2.45	2.55	2.65
Long Red Cayenne (Slim)	1.70	1.75	1.85	1.95
Red Chile	2.50	2.55	2.65	2.75
Tobasco	3.00	3.05	3.15	3.25

Sweet Varieties

California Wonder	2.50	2.55	2.65	2.75
Calwonder, Early	3.00	3.05	3.15	3.25
Chinese Giant	2.85	2.90	3.00	3.10
CORNELI'S SPECIAL (New Improved)	2.00	2.05	2.15	2.25
Florida Giant	2.50	2.55	2.65	2.75
Fordhook	3.00	3.05	3.15	3.25
Golden Queen, Large Yellow, Sweet	3.50	3.55	3.65	3.75
Harris' Early Giant	1.75	1.80	1.90	2.00
King of the North	1.75	1.80	1.90	2.00
Large Bell or Bullnose	1.70	1.75	1.85	1.95
Pimiento or Perfection	1.75	1.80	1.90	2.00
Red Cherry	2.80	2.85	2.95	3.05
Ruby Giant	1.75	1.80	1.90	2.00
Ruby King (Select)	1.70	1.75	1.85	1.95
Sunnybrook or Tomato	2.50	2.55	2.65	2.75
SWEET BANANA (All America)	per lb. 3.00	3.05	3.15	3.25
Windsor A	1.75	1.80	1.90	2.00
World Beater	1.75	1.80	1.90	2.00
Wonder Giant	5.00	5.05	5.15	5.25
Bird (Feed) Sweet	.30	.35	.40	.45
Bird (Feed) Hot	.30	.35	.40	.45

PUMPKIN

	75 to 299 Lbs. Per Lb.	25 to 74 Lbs. Per Lb.	5 to 24 Lbs. Per Lb.	1 to 4 Lbs. Per Lb.
(300 lbs. 1c less)				
Connecticut Field (Big Tom)	\$ 0.25	\$ 0.27	\$ 0.30	\$ 0.35
Oshaw Crookneck, Golden	.39	.41	.44	.49
Oshaw Crookneck, Green Striped	.44	.46	.49	.54
Oshaw Crookneck, White	.45	.47	.50	.55
Early Sugar	.36	.38	.41	.46
Japanese Pie	.45	.47	.50	.55
KENTUCKY FIELD	.16	.17	.19	.21
King of the Mammoth	.60	.62	.65	.70
Large Cheese (Cheese Box Type)	.34	.36	.39	.44
Tennessee Sweet Potato	.45	.47	.50	.55

RADISH

	100 to 299 Lbs. Per Lb.	25 to 99 Lbs. Per Lb.	5 to 24 Lbs. Per Lb.	1 to 4 Lbs. Per Lb.
(300 lbs. 1c less)				
Crimson Giant	\$ 0.41	\$ 0.43	\$ 0.45	\$ 0.50
Early Long Scarlet, Short Top	.36	.38	.40	.45
Early Scarlet Turnip	.41	.43	.45	.50
Early Scarlet Turnip, White Tip	.51	.53	.55	.60
Early White Turnip			.50	.55
French Breakfast			.55	.60
Iceole	.36	.38	.40	.45
Long Brightest Scarlet, Cardinal	.36	.38	.40	.45
Long White Lady Finger	.36	.38	.40	.45
Philadelphia White Box			.55	.60
Saxa			.55	.60
SCARLET BALL	.36	.38	.40	.45
Scarlet Globe, Early	.41	.43	.45	.50
Scarlet Globe Early, Special (Short Top)	.41	.43	.45	.50
Scarlet Globe, Vick's (Med. Top)	.39	.41	.43	.48
SPARKLER WHITE TIP	.51	.53	.55	.60
St. Louis White Summer	.36	.38	.40	.45
Strasburg White Summer	.36	.38	.40	.45
Yellow Summer Turnip			.44	.49

Fall and Winter Varieties

California White Mammoth	.33	.35	.37	.42
Long Black Spanish	.46	.48	.50	.55
Round Black Spanish	.46	.48	.50	.55
Rose-Colored China	.51	.53	.55	.60

RHUBARB

	25 lbs. 10c per lb. less
Victoria	\$.95 \$ 1.05
Linneus (Red)	.95 1.05

SALSIFY

	25 lbs. 5c per lb. less
Mammoth Sandwich Island	\$ 1.00 \$ 1.05

SPINACH

Our SPINACH strains are selected from the finest Holland grown stock by TRIAL GROUND TESTS on our Keystone Valley Farm

	300 lbs. & Over Per Lb.	100 to 299 Lbs. Per Lb.	25 to 99 Lbs. Per Lb.	5 to 24 Lbs. Per Lb.	1 to 4 Lbs. Per Lb.
BLOOMSDALE, SAVOY RE-SELECTED	\$ 0.74	\$ 0.75	\$ 0.76	\$ 0.78	\$ 0.80
Bloomdale, Dark Green					
Bloomdale, Blight Resistant	.65	.66	.67	.69	.71
BLOOMSDALE, LONG STANDING			.87	.89	.91
Flanders Broad Leaf	.65	.66	.67	.69	.71
GIANT NOBEL	.75	.76	.77	.79	.81
Heavy Pack					
King of Denmark			.78	.80	
New Zealand			.98	1.00	
Old Dominion (Blight Resistant)	.65	.66	.67	.69	.71
Giant Smooth Leaf	.50	.51	.52	.54	.56
Viking	.75	.76	.77	.79	.81
Virginia Savoy (Blight Resistant) (Amer. Grown)	.65	.66	.67	.69	.71
Viroflay	.75	.76	.77	.79	.81

Prickly Seeded Varieties

CORNELI'S GIANT	.60	.61	.62	.64	.66
-----------------	-----	-----	-----	-----	-----

SQUASH

Summer Varieties

	75 to 299 Lbs. Per Lb.	25 to 74 Lbs. Per Lb.	5 to 24 Lbs. Per Lb.	1 to 4 Lbs. Per Lb.
300 lbs. 1c less				
EARLY WHITE BUSH SCALLOP.....	\$ 0.41	\$ 0.43	\$ 0.46	\$ 0.51
EARLY SUMMER CROOKNECK, YELLOW.....	.55	.57	.60	.65
Ocozelle or Italian Vegetable Marrow (bush).....	.50	.52	.55	.60
Fordhook (bush).....	.51	.53	.56	.61
Mammoth White Bush Scallop.....	.41	.43	.46	.51
Early Prolific Straightneck.....	.49	.51	.54	.59
Early Yellow Bush Scallop.....	.41	.43	.46	.51
Giant Summer Crookneck, Yellow.....	.49	.51	.54	.59
Giant Straightneck, Yellow.....	.49	.51	.54	.59
Woods Earliest Prolific.....	.46	.48	.51	.56
Zucchini, Gray Green.....	.50	.52	.55	.60
Zucchini, Black.....	.51	.53	.56	.61

Fall and Winter Varieties

Banana, Pink.....	.55	.57	.60	.65
Boston Marrow.....	.36	.38	.41	.46
Delicious, Golden.....				
Des Moines or Table Queen.....	.50	.52	.55	.60
Hubbard, Blue.....	.76	.78	.81	.86
Hubbard, Golden.....	.76	.78	.81	.86
Hubbard, Improved.....	.71	.73	.76	.81
Hubbard, Chicago Warded.....	.76	.78	.81	.86
Winter Crookneck, Golden.....	.51	.53	.56	.61

TOMATO

All varieties can be supplied Semesan treated, packed in 1/4-lb., 2-oz. and 1-oz. packages at no extra charge.

FAMOUS KEYSTONE STRAINS

	50 Lbs. & over Per Lb.	5 to 49 Lbs. Per Lb.	1 to 4 Lbs. Per Lb.
BONNY BEST.....	\$ 1.75	\$ 1.80	\$ 1.90
BREAK O'DAY (Wilt Res.).....	2.50	2.55	2.65
Brimmer.....	2.60	2.65	2.75
Chalk's Early Jewel.....	1.75	1.80	1.90
Dwarf Champion (Tree Tomato).....			
Dwarf Ponderosa.....	2.25	2.30	2.40
Dwarf Stone.....	2.50	2.55	2.65
EARLIANA.....	2.00	2.05	2.15
EARLY BALTIMORE (Wilt Res.).....			
Golden Queen.....	3.50	3.55	3.65
GREATHER BALTIMORE.....	1.25	1.30	1.40
GROTHEN'S (RED GLOBE) (Wilt Res.).....	2.25	2.30	2.40
GULF STATE MARKET.....	2.25	2.30	2.40
Illinois Baltimore.....	2.00	2.05	2.15
Indiana Baltimore.....	1.50	1.55	1.65
John Bear.....	1.75	1.80	1.90
JUNE PINK.....	2.00	2.05	2.15
King Humbert.....	4.50	4.55	4.65
Livingston's Beauty.....	2.10	2.15	2.25
LIVINGSTON'S GLOBE.....	2.00	2.05	2.15
Louisiana Pink.....	2.25	2.30	2.40
Louisiana Red.....	2.25	2.30	2.40
MARGLOBE (Wilt Res.).....	1.50	1.55	1.65
MASTER MARGLOBE (Wilt Res.).....	1.75	1.80	1.90
MARHIO (NEW PINK MARGLOBE).....	2.50	2.55	2.65
Matchless.....	1.50	1.55	1.65
NORTON (STONE) (Wilt Res.).....	1.75	1.80	1.90
Oxheart.....	4.00	4.05	4.15
Pan American.....			
Penn State Self-Topper.....	2.50	2.55	2.65
Ponderosa, Yellow.....	2.75	2.80	2.90
PRITCHARD (Scarlet Topper) (Wilt Res.).....	1.75	1.80	1.90
RED ROCK.....	1.50	1.55	1.65
RUTGERS (Wilt Res.).....	1.75	1.80	1.90
San Marzano.....	7.75	7.80	7.90
Stokesdale.....	1.75	1.80	1.90
STONE, IMPROVED.....	1.50	1.55	1.65
Red Cherry.....	2.85	2.90	3.00
Red Pear.....			
Red Plum.....	2.85	2.90	3.00
Victor.....	4.00	4.05	4.15
Yellow Pear.....	2.85	2.90	3.00
Yellow Plum.....	2.85	2.90	3.00

STATE CERTIFIED TOMATO SEED

	Sealed Packages	Origin	50 Lbs. & over Per Lb.	10 to 49 Lbs. Per Lb.	1 to 9 Lbs. Per Lb.
Break O'Day... 1/4-lb. Box or 1-lb. Bag		N. J.	\$ 2.75	\$ 2.80	\$ 2.90
Early Baltimore, W. R..... 1/4-lb. Box		Mich.	1.50	1.55	1.60
Greater Baltimore..... 1/4-lb. Box		Mich.	2.50	2.55	2.65
Grothens Red Globe..... 1/4 lb. Box		Mich.	2.25	2.30	2.40
Illinois Baltimore..... 1/4 lb. Box		Mich.	1.75	1.80	1.90
Ind. Greater Baltimore..... 1/4-lb. Box		Mich.	1.75	1.80	1.90
Marglobe, W. R..... 1/4-lb. Box		Mich.	1.75	1.80	1.90
Master Marglobe, W. R. 1/4-lb. Box or 1-lb. Bag		N. J.	2.00	2.05	2.15
Pritchard, W. R..... 1/4-lb. Box or 1-lb. Bag		N. J.	2.00	2.05	2.15
Rutgers, W. R. 1/4-lb. Box or 1-lb. Bag		N. J.	2.00	2.05	2.15
Rutgers, W. R..... 1/4-lb. Box		Mich.	2.00	2.05	2.15
Stokesdale... 1/4-lb. Box or 1-lb. Bag		N. J.	2.00	2.05	2.15
Stone Improved..... 1/4-lb. Box		Mich.	1.75	1.80	1.90

TOBACCO SEED

	Per Lb.
Connecticut Seed Leaf.....	\$ 2.50
Havana.....	2.50
Missouri Broad Leaf.....	2.50
White Burley.....	2.50
Judy's Pride.....	2.50

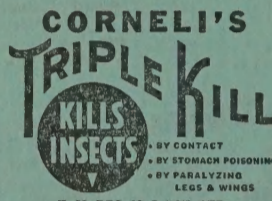
TURNIP

1941 Crop Now Ready

	300 Lbs. & over Per Lb.	100 to 299 Lbs. Per Lb.	25 to 99 Lbs. Per Lb.	5 to 24 Lbs. Per Lb.	1 to 4 Lbs. Per Lb.
Aberdeen (Purple Top).....	\$ 0.29	\$ 0.30	\$ 0.31	\$ 0.33	\$ 0.35
Amber Globe (Green Top).....	.25	.26	.27	.29	.31
Broccoli Rab (Italian Turnip).....					
Extra Early Purple Top Milan.....	.55	.56	.57	.59	.61
Extra Early White Milan.....	.50	.51	.52	.54	.56
Japanese Shogoin.....					
Long White Cowhorn.....	.29	.30	.31	.33	.35
Pomeranian White Globe.....	.22	.23	.24	.26	.28
Purple Top, Strap Leaved.....	.22	.23	.24	.26	.28
Purple Top, White Globe.....	.20	.21	.22	.24	.26
Purple Top, White Globe (English Grown).....	.25	.26	.27	.29	.31
Red Top, White Globe (Early).....	.25	.26	.27	.29	.31
Snow Ball.....	.25	.26	.27	.29	.31
Southern Prize.....	.17	.18	.19	.21	.23
Seven Top or Winter Greens.....	.16	.17	.18	.20	.22
White Egg.....	.22	.23	.24	.26	.28
White Flat Dutch.....	.30	.31	.32	.34	.36

RUTABAGA

American Yellow, Purple Top.....	.89	.90	.91	.93	.95
Golden Neckless.....	.75	.76	.77	.79	.81
Sweet German.....	.45	.46	.47	.49	.51



THIS IS THE ONE

If you could sell or use only one insecticide for Vegetables, Flowers and Fruits, This IS The One.

Highly concentrated, this new, safe, super-powerful liquid spray presents the wonder working properties of Rotenone and Derris in a new patented form: Activated, Stabilized, Scientifically Compounded, and far more Effective.

In addition to Killing insects by outside contact and as a stomach poison it also effectively controlled by spraying. Insects so paralyzed that cannot fly or walk do not recover and the U. S. Department of Agriculture considers them dead. (See U. S. Treasury Specification No. 311.) Actual tests have shown effective control of the following stubborn insects:

- | | | |
|----------------------------|-------------------|---------------------|
| Red Spider | Mealy Bugs | Leaf Hoppers |
| White Fly | Leaf Roller | Aphids (Plant Lice) |
| Green Fly | Rose Chafer | Colo. Potato Beetle |
| Mexican Bean Beetle | Cucumber Beetles | Cabbage Worms |
| Japanese Beetle | Harlequin Cabbage | Thrip |
| Spanish Fly (Bl or Beetle) | Bug | Flea Beetle |
| Tomato Worms | Coddling Moth | and certain others. |

Dilutions vary from 1 part in 200 to 1 part in 1,000. TripleKill is harmless to persons or animals if spilled on skin and may be sprayed on edible fruits and vegetables without leaving a dangerous poison residue.

No soap or spreader necessary; mixes readily with either hard or soft water.

DEALER PRICES

	No. Per Case	Weight Lbs. Per Case	Full Cases Per Doz.	Broken Cases Each	Retail Price Each
1-oz. Glass.....	12	3	1.80		\$ 0.25
8-oz. Tin.....	12	3 1/2	7.20	.65	1.00
1-gal. Tin.....	1	10	6.50ea		8.50 ea.
5-gal. Tin.....	1	50	30.00ea		37.50 ea.

Transportation Charges PREPAID on Full Cases. All Sizes.

BLACK LEAF "40"

Sells the year 'round. The Old Reliable Nicotine Sulphate (Liquid)—Kills Plant Lice (Aphis) and Poultry Lice. Keeps dogs away from shrubbery and trees.

	No. Per Case	Wholesale Price Doz.	Retail Price Each
1-oz. Bottle.....	24	\$ 2.79	\$ 0.36
5-oz. Bottle.....	12	8.55	1.05
1-lb. Bottle.....	12	20.70	2.50
2-lb. Can.....	12	31.65	3.70
5-lb. Can.....	6	5.55ea	6.90

VIGORO

New style attractive bags.

	Per Lb.	Per Case
100-lb. Sack.....	\$ 2.75	\$ 4.00
50-lb. Sack.....	1.70	2.50
25-lb. Sack.....	1.00	1.50
10-lb. (6 to case) (per case).....	3.36	.85
5-lb. (14 to case) (per case).....	4.06	.45
1-lb. (32 to case) (per case).....	1.92	.10

NOTE: By special arrangement with the manufacturers, the above Vigoro prices are delivered your station on orders totaling 300 pounds or more for shipment by rail only in all states except Texas and New Mexico. No allowance on truck shipments or call orders.

CONDITIONS OF SALE: This list cancels all previous quotations. These prices are for prompt acceptance, subject to prior sale and our further confirmation, and to change without notice. Prices are f. o. b. St. Louis, Mo.

NO CHARGE will be made for small cotton bags used in packing garden and flower seeds in broken bag lots, other than the quantity differential price. Heavy seamless cotton bags will be charged at value and are not returnable.

TERMS: Garden and flower seeds 2 per cent for cash in 10 days, net 60 days to firms of approved credit; otherwise C. O. D. or sight draft less 2%. Other items net cash. All accounts subject to demand draft when due. NOTE: To avoid delay when sending money orders or cash in advance for orders to be sent parcel post, please include postage covering your shipment.

NOTICE: The total quantity of a kind or species shipped at one time will determine the quantity classification in which all varieties in that kind or species will be priced except that broken bag lots shall not be considered in determining the quantity class, and each variety bought in less than bag quantity shall be priced by itself.

In determining quantity classification the following kinds of seed will be considered as of the same species:

- | | | |
|------------------------------|---|-------------------------|
| I. Beans and Peas | III. Beet, Swiss Chard, Mangel & Sugar Beet | V. Onion and Leek |
| II. Corn: Table, Pop & Sweet | IV. Celery and Celeriac | VI. Turnip and Rutabaga |

