

Historic, Archive Document

Do not assume content reflects current scientific knowledge, policies, or practices.

Have-a-Look
GARDENS

SO. BILLERICA, MASS.

GEORGE L. FISH

Dahlia Specialist - Gladioli Enthusiast

P. O. BEDFORD, MASS.



FOREWORD

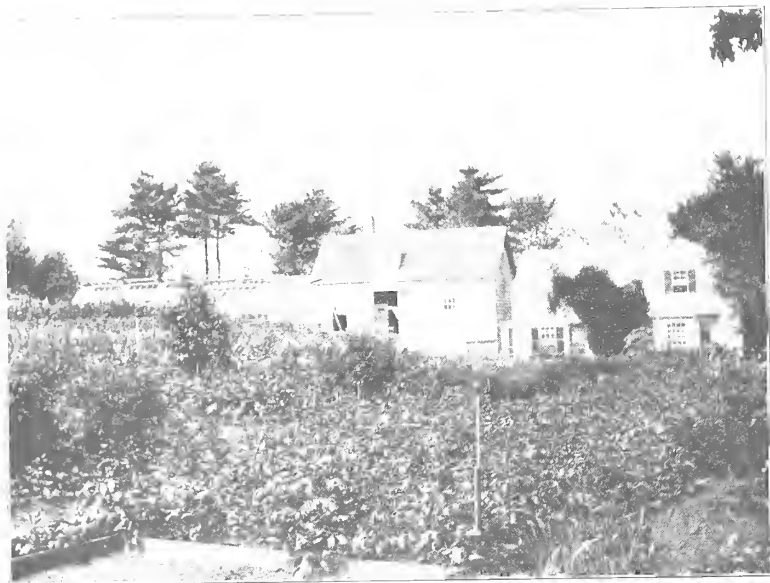
ONCE again it is a great pleasure to offer my Dahlia loving friends and patrons a few more of Hav-a-Look Gardens, newer seedlings, which I sincerely trust may prove an acquisition to the honor list of the many meritorious introductions of the past few years. I only hope that such of you as elect to grow them the coming season may at least realize a part of the enjoyment I have derived from producing them.

It was my good fortune to receive two firsts and a special prize on seedlings at the last combined show of the Massachusetts Horticultural Society and Dahlia Society of New England at Boston, September, 1924—as follows: 1st Prize. For best seedling Dahlia never before exhibited with Frances Cooper of Hav-a-Look. 1st and Special prize for the three best named or unnamed seedlings of New England origin shown by the originator never before exhibited; with Frances Cooper of Hav-a-Look. Hav-a-Look Dazzler and Mrs. George A. Sexton of Hav-a-Look, of these three seedlings of more than usual merit, I have only sufficient stock to offer one variety the coming season, namely, Mrs. George A. Sexton of Hav-a-Look. The other two I trust to be able to deceninate in the Spring of 1926. My offering this season, however, includes one more 1st prize seedling, having won the distinction of best new seedling of the same society's show in 1922 with Lena Rivers Champlin of Hav-a-Look. The several other new seedlings offered at this time have never been exhibited, but I can assure you they are all worthy of Hav-a-Look Gardens, and your consideration.

Yours for more and better Dahlias,

A handwritten signature in cursive script, appearing to read "W. J. Fish". The signature is written in dark ink and is positioned in the lower right corner of the page.

Scenes at Hav-a-Look



Lena Rivers Champlin of Hav-a-Look (New)

A wonderfully rich red purple Hybrid Decorative flower, averaging better than eight inches diameter, on strong stiff stems of good length that always face you. This flower is inclined to sport somewhat from a solid color and is sometimes inclined to show streaks of white in the center petals with an occasional white tip. I won 1st prize at Boston 1922, for best undecimated seedling in the show with this variety, it was at that time the most perfect white tipped flower ever shown in New England. I could have booked orders for every bulb I had of it at any price within reason, and was offered \$1000 the following summer for the 27 clumps I had of it growing, but alas—when it bloomed it refused to show a perfect white tipped flower, and it has never come true since with one or two exceptions. I have consistently refused to sell any of it until now, but it is a Dahlia that everyone wants that sees it, and my friends have finally persuaded me to let it out. So I offer it as is, for

The supply is still somewhat limited. . . . \$15.00

Mrs. George A. Sexton of Hav-a-Look (New)

On first opening the bud of this remarkable flower is a velvety darkest (almost black) maroon which with age gradually grows lighter to a rich crimson maroon shading to a plum purple, with lighter purple veining on the reverse petals, has a nice twist to the petals which are wonderfully broad, and average $4\frac{1}{2}$ to 5 inches long. The flower will average 9 to 10 inches diameter and is of nice depth, borne on remarkable stiff stems of good length and looks right at you all the time. One of the finest and largest Dahlias yet produced in the East. Can be easily grown 11 inches or more. I have always considered this flower a Hybrid Decorative with a full tight center—but the past season all the later flowers showed a decided tendency to open centers. Hence we will just call it a Hybrid. . . . Price \$10.00

Hav-a-Look Queen of the Autumn (New)

Hybrid Decorative flower, very large and deep on good stiff stems will average eight inches or better, a very difficult coloring to describe, a combination of all the different autumn shades with a rosy pink predominating, has never shown center with me. Truly a wonderfully choice flower every way and an acquisition to any garden. The above description does not do this flower justice. It must be grown to thoroughly appreciate it. . . . \$10.00

Hav-a-Look King Tut (Peony, New)

A tall growing plant of fine habit and a great bloomer, producing flowers that will average eight inches with nine inch flowers common, wonderful shades of orange yellow combined with rosy buff tones. A very striking flower with good stiff stems, but are not upright—its only fault. . . . \$5.00 each

Hav-a-Look Queen Thi (Peony, New)

A fitting consort to King Tut. An Autumn shaded Peony of large size, eight inches, and good long stems, for two years this flower came an absolutely true Hybrid Decorative, but the past season has shown a tendency to come with open centers. Like all of the autumn shades it is somewhat difficult to describe its coloring, which is a very pleasing combination of the different shades and tones of yellow, pink, and soft browns. . . . \$5.00

Plants only-

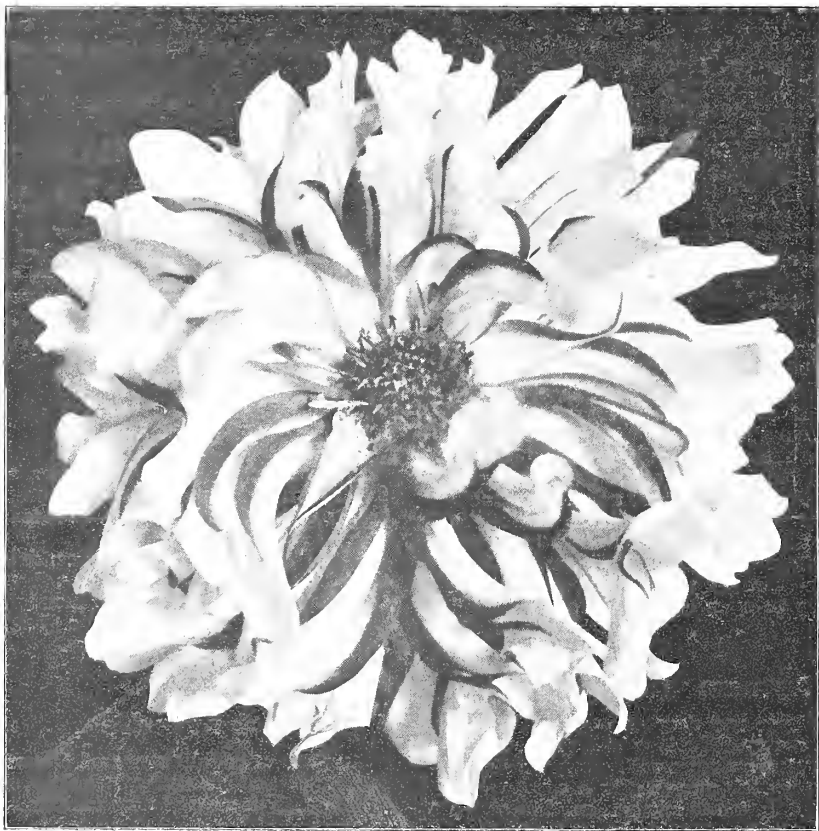
Esther of Hav-a-Look

A true type of Hybrid Decorative, nice high center formation, a very full flower, that practically does not open, grows universally seven one half to eight inches diameter, fine stem, and a flower that looks right at you.

This Dahlia is nearer a true cerise in coloring than any other before the public today. Even with age, shows only a slight trace of magenta; the reverse is silvery and occasionally shows through the petals, which slightly twist at the ends, thus giving it a silver tip effect. Truly a remarkable Dahlia in every way. . . . \$5.00 each

Hav-a-Look Noontide

Another wonderful stemmed Decorative Dahlia, of brightest orange red, tinged and streaked with yellow, averages seven to seven and a half inches with occasional nine inch flowers, tall grower, and one of the best for the back row in the garden. Always up and looking at you. . . . \$3.00 each



Hav-a-Look Gem

Hav-a-Look Crimson King

A large fine decorative of exceptional quality of petals, full to center, flowers, that will average seven and often eight inches, perfectly placed on remarkably long stiff stems, always facing the front, and as its name indicates, is a rich dark Harvard crimson, and is absolutely the best decorative of its color I know.

Stock limited. \$3.00 each

Ethel J. Smith, of Hav-a-Look

This is one of the most unique Dahlias yet introduced, both in make up, as well as coloring. A Hybrid pure and simple, opens as a decorative; petals wide and long, which rapidly begin incurving, and with age looks like a big Chrysanthemum; many of the petals have a small spine like the barb of a fish hook, pointing to the center, and is altogether the most unique petal I have ever seen. Ends of petals split. The color is like no other Dahlia, being the color of rich old port wine (of lamented memory) with a silvery reverse, occasionally throws a sport flower with beautiful cream white petals in center, which is remarkably attractive.

Stock limited. \$3.00 each

Hav-a-Look Gem

This as is indicated by its name, is truly a Gem. A creamy colored incurved hybrid cactus type, the edges of the petals are a bright vermilion shading to orange and changing again to henna with age, the petals also incurving still more ball like.

This Dahlia created a furore at the Exhibition held by the Massachusetts Horticultural and Dahlia Societies of New England at Boston in September, 1921, and was awarded Honorable mention by the Massachusetts Horticultural Society, as being a distinct departure in Dahlia production. I did not show for competition being one of the judges for the New England Society.

There is something particularly alluring about this Gem; the more you see it, the more you want it. Of average size, grows about four feet high, does better in a dry season, and will stand considerable pruning.

\$2.00 each

Hav-a-Look Rosy Morn

A round decorative showing a little of the show type of petals, good size and stems, with all the colorings of a Rosy morn, soft rose, shading through to the yellows, toward the center, which is full. A flower everyone likes.

\$2.00 each

Hav-a-Look Pond Lily

I hesitated considerably about putting out this seedling, as the stem is not to my liking. It is stiff enough, but not large enough to hold the blossoms up-right. In color and quality of flowers it is exquisite. A fine flat decorative often seven and one half inches, the softest of salmon pink, outer petals suffused rosy pink, with a very soft yellow center, nearly every visitor who sees it exclaims, "I must have it even if it does hang its head." So I have decided to let it out to those who want it.

\$2.00 each

Hav-a-Look Glorious Sunrise

The name describes the flower, it is truly a glorious sunrise, the brightest vermilion, and brightest yellow, of any flower combining these two colors, petals are broad and much split at the ends, giving it a fringed appearance—would be classed as a peony type, good stems and size, and a constant bloomer.

A low grower. \$1.00 each

These prices are for field grown bulb divisions except where noted and will be shipped anytime desired after danger of frost has passed.



Yours truly,
and Hav-a-Look Noontide

Massachusetts Horticultural Society,
FIRST CLASS CERTIFICATE.

George L. Fish

for the
Collection of Seedling Tuberos
submitted September 30, 1924

It is certified that in the opinion
of the Society the collection of seedling Tuberos shown
contained numerous distinct and meritorious
varieties.

Elizabeth D. Hatfield

Secretary of the
Society

100 State St.

Boston

Massachusetts Horticultural Society,

CERTIFICATE OF
HONORABLE MENTION

Awarded to **G. L. Fish**
For Tuberos, Mar. a. to Ch. June

Boston, Sept. 30, 1924

Elizabeth D. Hatfield
Chairman, Committee

100 State St., Boston

Have-a-Look
GARDENS

50 BILLERICA, MASS.

GEORGE L FISH

Dahlia Specialist - Gladioli Enthusiast

P O BEDFORD MASS

