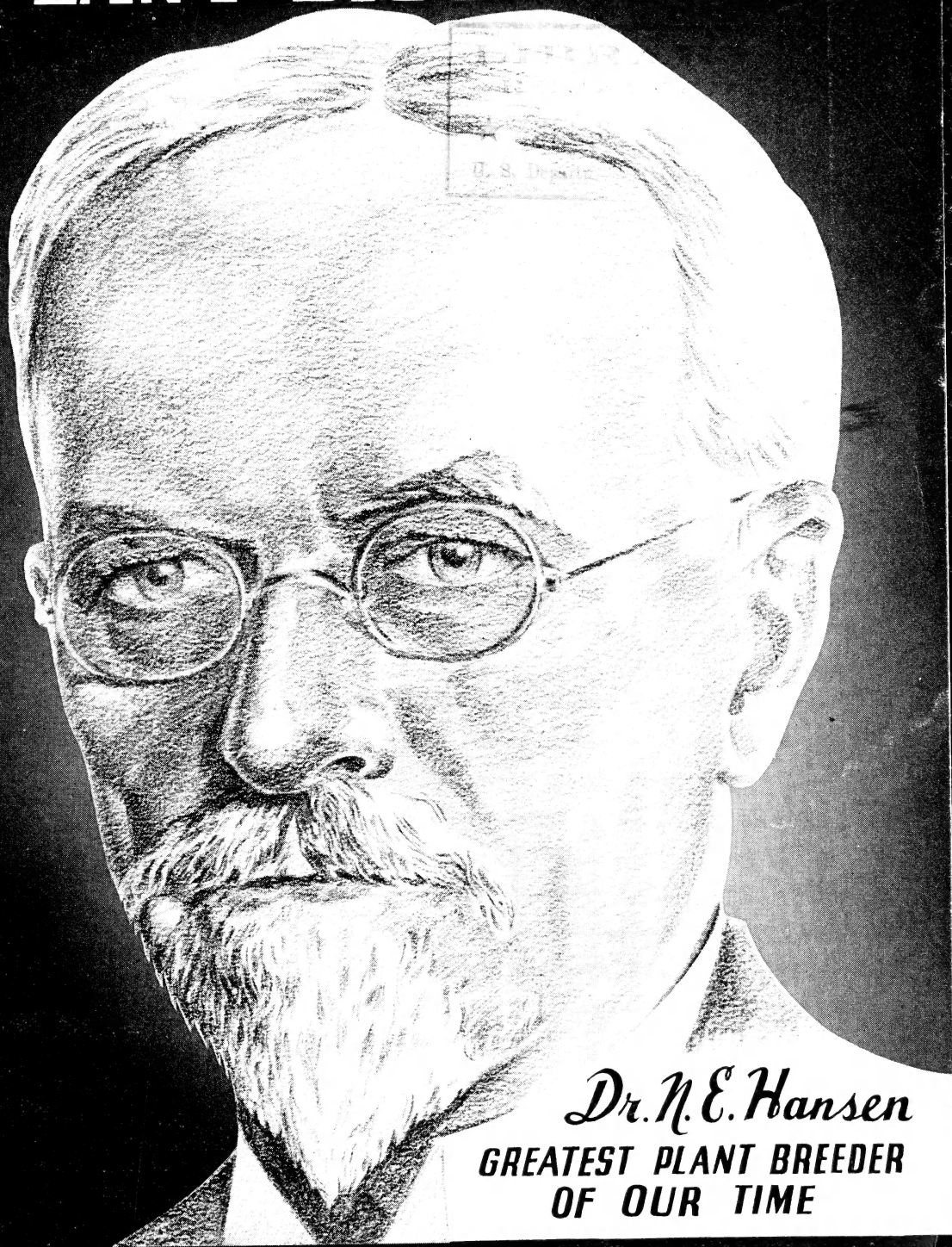


Historic, Archive Document

Do not assume content reflects current scientific knowledge, policies, or practices.



Newest Hardest
PLANT DISCOVERIES



Dr. N. E. Hansen
**GREATEST PLANT BREEDER
OF OUR TIME**

CARL A. HANSEN NURSERY
BROOKINGS, SOUTH DAKOTA

3 Generations of HANSENS

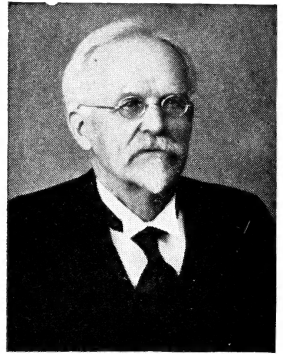


Carl Andreas Hansen

FORWARD

This year as never before, more gardens and better gardens is the watchword of the day.

Food and plenty of it, is going to be a vital thing for our fighting forces, for our allies, and for ourselves. Fruits and vegetables are essentials of a proper diet.



Niels Ebbesen Hansen



Paul Robert Hansen

Flowers are food for the soul—a morale builder, something to bring peace and quiet to the mind. The garden is a place to get away from all the turmoil of today, a place to rejuvenate yourself and still be doing something that will play a vital part to help build up a vast store of a needed ammunition—food! Food for yourself and family. Food with which we may help others in far corners of the world.

Every seed, every plant, that produces the needs of life will help just that much more.

Plant wisely, but plant plenty! Better too much than too little.

We've got to win the war!

CARL A. HANSEN.

A FEW OF THE FAMOUS HANSEN INTRODUCTIONS

Anoka Apple	Opata Plum	Hardy Apricots
Hansen Bush Cherry	Oka Cherry	Red Silver Crab
Waneta Plum	Cossack Alfalfa	Hopa Crab
Sapa Plum	Hansen Proso	Dolgo Crab

TERMS

Send remittance with your order, by cash, money order, or check. If by check, please add 5 cents extra for bank float charges. No C. O. D. orders accepted.

Packing free on all orders of \$2.00 or more, and on orders for less than that amount please add 25c for packing.

All shipments of Plants and Seeds will be sent collect for the delivery charges unless otherwise stated, by what we consider the best and cheapest way. If you want a small package to be sent by parcel post prepaid, be sure to add enough more for postage (usually about 10% will cover it), with a minimum of 25c per parcel. If seed or plant shipments must be sent to a prepaid station, be sure to include the shipping charges in your remittance.

South Dakota Customers please add the 2% Sales Tax.

DOLGO CRAB APPLE

The World's Best Jelly Crab

A MOST REMARKABLE FRUIT

The most wonderful jelly and pickling crab on the market. Fruit is good size, conical in shape, with a most brilliant, flaming red skin color, a very beautiful sight on the tree. Fruits are full of juice and have a superb, sprightly sweet flavor. With Dolgo it is easy to make bright clear red jelly of the most delicious flavor, often as high as 45 glasses of jelly and 8 pints of jam to a single peck of fruit, without a bit of additional fruit pectin.

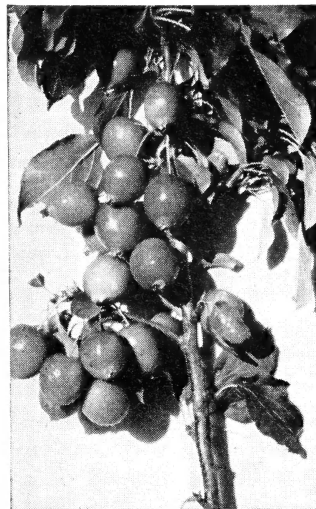
FREE FROM BLIGHT—VERY STRONG

The tree of Dolgo has so far proved free from blight. It makes a very strong growth and forms strong, wide-spreading forks and strong shouldered limbs, which can bear heavy crops without injury.

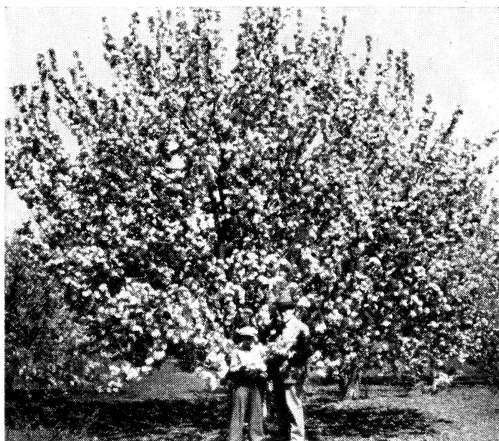
BLOSSOMS FROST HARDY

Another remarkable characteristic of Dolgo, expressed by A. F. Yeager, formerly of the North

Dakota State Experiment Station: "Dolgo Crab, even when in full blossom, survived freezes which killed all other varieties." Dolgo is perfectly hardy far north into Canada, and is almost a sure annual producer.



Dolgo Crabs Make Beautiful Clear Red Jelly



Beautiful, Fragrant Flowers

WORTHY OF HIGHEST PRAISE

Dolgo is one of the very best of Prof. N. E. Hansen's crab apple introductions and is worthy of the highest praise. It is both a distinctive and splendid ornamental and a fruit tree of great value. Everyone should have at least a few trees of Dolgo.

BEARS VERY YOUNG

It is the nature of Dolgo to bear early and it usually bears the second or third year after planting — almost as soon as Anoka.

Extra Special Offer

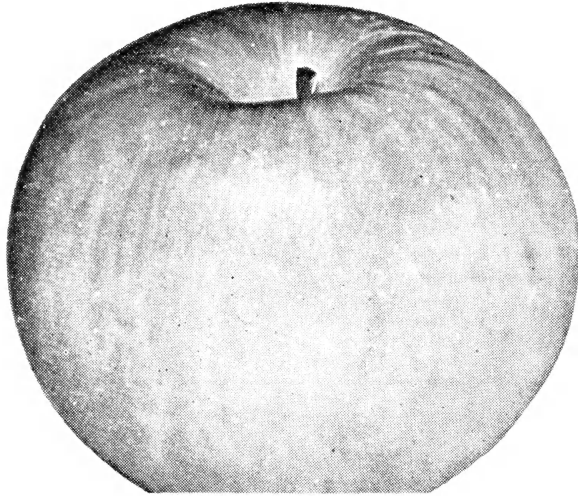
This year we have one splendid lot of extra fine, large, well branched trees. They are all 3 years old, 5 to 6 foot trees and are ready to bear this year. While they last we offer them at the following low prices.

DOLGO CRAB
Large 3 Yr., Ready to Bear

75¢ Each;

3 For \$2.00; 6 For \$3.50

ANOKA—The



ANOKA—The Best of 10,000 Seedlings

One of Prof. N. E. Hansen's A MASTERPIECE

The Anoka is truly the wonder apple of this generation. It is the best of over 10,000 seedling apples produced by Dr. N. E. Hansen in his endeavor to originate some better and hardier apples. It is truly a wonder apple because it forms fruit buds on one year old wood so that a one year old tree will bear fruit the second year after planting, and keep it up every year.

BEARS EARLIEST OF ALL

Anoka has the most remarkable ability in that it will bear on one-year wood and annually, thereafter, the second year after planting. Four-year trees have been known to have borne three crops of fruit.

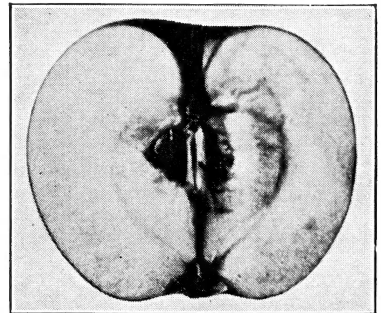
Anoka upsets all the ordinary ideas about apple trees and introduces a new era in apple culture, for in Anoka the whole nature of the tree is changed, so that early bearing of fruit is secured and the tree remains of moderate size to permit easy spraying.

FINE EATING—VERY PRODUCTIVE

Anoka is a round, red-striped apple of attractive appearance and of good quality. The fruit ripens early, and it is really a very good, early summer eating apple, with very juicy, pleasant, sub-acid flesh of peculiar characteristic flavor that pleases everybody.

Anoka is surprisingly productive, often loading its branches till they bend nearly to the ground, yet due to its sturdy habit, seldom breaks under the great weight.

Because Anoka is an excellent early summer eating apple, it will be welcome in many places where the tender fleshed summer apples do not reach in long distance shipping.



An Inside View of Anoka.
About One-Third Natural Size.

ANOKA—A Masterpiece

Be Sure to Include It in

Wonder Apple

Greatest Introductions

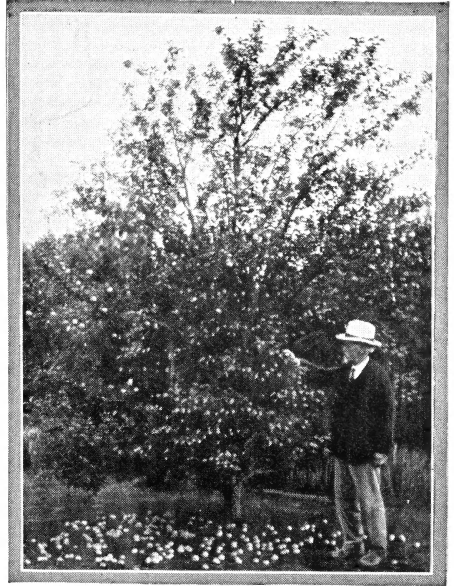
VERY STURDY—HARDY EVERYWHERE

The sturdy growth of Anoka is one of its outstanding characteristics, and it is hardy and disease resistant throughout the Northwest.

The tree is of round topped habit, beautiful in flower and fruit. In thousands of small gardens in country and town the Anoka will be planted where no apples were planted before because of their slow fruiting and large size trees.

Anoka will no doubt become the leading apple in many states both for the home orchard and for ornament on the lawn.

A one-year-old tree of Anoka apple sent to the Agricultural Experiment Station at Fargo, North Dakota, bore 26 good sized apples the second year and bore again the next year and the next. In other words, five years planted and three crops of fruit. Can you beat this on Dakota prairies? Other very favorable reports have been made from widely separated localities so it is now definitely known that Anoka is the outstanding apple of merit for the Northwest.



Prof. N. E. Hansen, the Plant Wizard, and a Mature Anoka Apple Tree.

Anoka is the outstanding apple of

PLANT THE ANOKA APPLE

The Wonder of the Age—Because:

- 1—Anoka bears the second year after planting.
- 2—Anoka bears large crops of apples every year.

- 3—Anoka is an excellent early summer eating apple.
- 4—Anoka may be planted closer than other apples.
- 5—Anoka is hardy and disease resistant.

ANOKA APPLE TREE PRICES

Size	Each	Per 3	Per 6	Per 12	Per 25
Large	\$.75	\$2.00	\$3.50	\$6.50	\$12.50
Medium50	1.35	2.65	5.00	9.50
Small35	1.00	1.85	3.50	6.50

ANOKA SPECIAL!

Large 3-Yr. Anoka Trees, Ready to Bear This Year: Each, \$1.25.

3 Extra Large 3-Yr. Trees . . . \$3.50



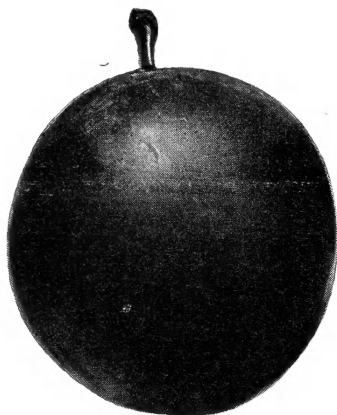
Three-Year Anoka Tree Bearing a Good Crop of Fruit.

of the Fruit World!

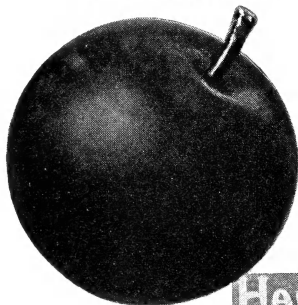
Your Order for Fruit Trees

World Famous

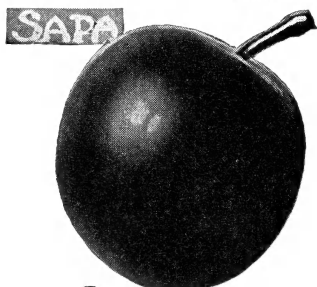
The plums described below are the four Hansen Plums which have without a doubt gained the most fame generally and have been propagated the most extensively. Millions of them have been set out all over the northwest and many have gone to all parts of the world. And there is a good reason for all of this. Because they are the best all around plums, bearing when very young, hardiest of all, and more sure to produce year after year than any other plums grown in the northwest.



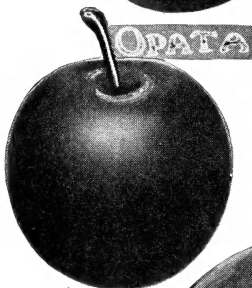
WANETA



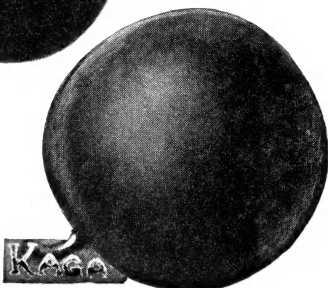
HANSKA



SAPA



OPATA



KAGA

HANSEN PLUM SPECIAL

Your Choice of Any 6 Hansen Plums
and 2 Dakota Producer Plums

All 8 For Only \$3.50

4-6 Ft. Trees

WANETA PLUM. The Giant of the Hardy Plums. The largest of over 10,000 seedlings. These large plums measure up to two inches in diameter. Waneta plums are highly flavored, of delicious, dessert quality. They have a richly colored red skin, free from acerbity, a comparatively small pit, and fine firm yellow flesh.

The tree is a very vigorous and strong grower, making a sturdy, upright tree. It is an early and persistent bearer of enormous crops of delicious large plums.

Waneta's widespread popularity throughout the world shows that it is considered by many the finest and best of the Hansen Hybrid Plums and the champion of the northwest. At fruit exhibits, Waneta takes the prizes.

HANSKA APRICOT PLUM. Hanska is the Sioux word for "tall." The name was given in allusion to its extraordinary rapid growth, as three-year-old trees have attained a height of twelve feet. It is a hybrid of the wild northwestern plum and the large, firm fleshed, fragrant apricot plum of China. In fruit the Hanska closely resembles its Chinese parent in form, color, fragrance, quality and firmness of flesh. The pit is very small.

The fruit of this variety has been much admired for its color, which is a bright red with a blue bloom, firm yellow flesh and good quality. When cooked, the strong apricot flavor is brought out to perfection.

SAPA CHERRY-PLUM. Sapa is the Sioux Indian word for "black," and alludes to the skin, flesh and the juice of this remarkable hybrid. The fruit has rich, dark purple-red skin, flesh and juice. The tree is bush cherry like in habit, forming fruit buds freely on one-year trees. The rich purple color of the skin is dulled at first by being overspread with a thin gray, which will disappear as soon as the fruit has ripened thoroughly. Sapa bears freely on one-year shoots and has attained much popularity.

Sapa is early, large, productive, and very hardy; very good to eat fresh, and makes delightful preserves and jams.

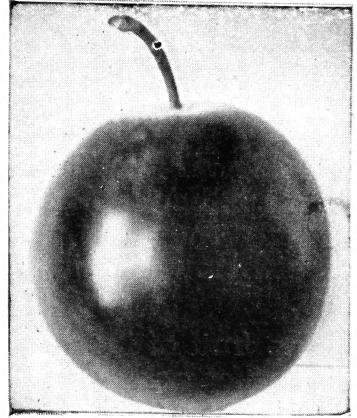
OPATA CHERRY-PLUM. The excellent quality of the Opata makes it worthy of wide popularity for table and culinary use. Opata is a plum tree in habit of vigorous growth and forms buds freely on one-year-old shoots. The foliage is large and glossy. The fruit is a dark purplish red with a blue bloom, the flesh being green and firm, flavor very pleasant, combining the sprightly acid of the Sand Cherry with the rich sweetness of the Gold Plum. It is excellent for eating out of hand. The thin skin can be eaten as it is entirely free from acerbity. Pit is very small, season very early.

Hansen PLUMS

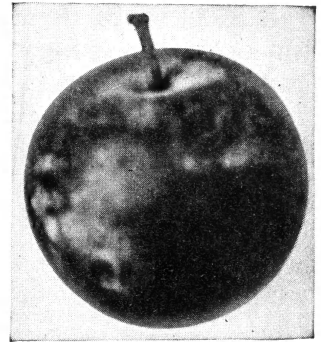
KAHINTA PLUM. Kahinta has fruit of excellent quality, approximating that of the peach in excellence. The fruit is dark red, roundish, slightly oval, very heavy. Thin skin with no acerbity. The flesh is firm, yellow and very sweet. It is a good deal like Waneta, as large or larger, but not as heavy a bearer, though it is a more consistent bearer and is freestone. Has a very good flavor and quality. This plum is worthy of a place in the finest of orchards.

TOKA PLUM. This plum is very much like Hanska in fruit but the tree has a somewhat different habit. Toka has such erect, strong, and stocky growth, really a model tree. One of the nicest looking fruit trees you will see. It is an early and very heavy bearer. It has large and remarkably firm fruit of a most rich fragrance and excellent quality, which makes it a good plum for the market. It is a very fine plum for eating fresh and for canning.

KAGA PLUM. Another superb plum of apricot flavor and fragrance. It is a heavy annual bearer of fruit that is regular in form, roundish, slightly oval, freestone. The flesh is a rich orange-red color and very firm. When cooked a few minutes in sugar syrup, the sauce has a rich Chinese apricot flavor, which is superior to all the native plums and to the ordinary California plums received in this market. The tree is of good upright habit.

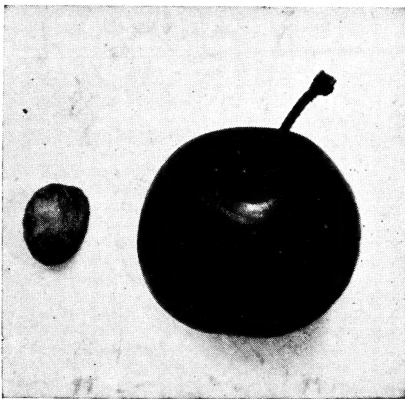


Kahinta Plum



Toka Plum

Special New Low Prices on Hansen Plum Trees					
Size	Each	Per 3	Per 6	Per 12	Per 25
Large, 4 to 6 feet.....	\$.65	\$1.75	\$3.35	\$6.50	\$11.50
Medium, 3 to 5 feet.....	.50	1.35	2.60	5.00	9.50
Small, 2 to 4 feet.....	.35	1.00	1.85	3.50	6.50



Tom Thumb Cherry

Tom Thumb Cherry

Hardiness - Flavor - Productiveness

This new fruit has had a surprisingly quick leap to fame. Nothing like it anywhere. Though growing but knee high can bear a bushel of fruit. Exceedingly sweet flesh. Delicious in sauce and jams.

For canning, they are perhaps the best of any of the Hansen Hybrid Cherries in preserving the shape of the whole fruit, much the same as the canned cherries you buy. Fruit good sized. Flesh dark reddish purple. Hardy far north into Canada.

Tom Thumb is a low bush just right for protection by snow drifts, bearing an abundant crop of fruit the year after planting and annually thereafter. Everyone should plant more Tom Thumb Cherries for sure results and good quality.

LARGE BEARING SIZE TREES

\$1.00 Each; 3 for \$2.50

Special ORCHARD ASSORTMENT

1 Anoka Apple, 1 Dolgo Crab, 1 Oka Cherry, 1 Hansen Bush Cherry, 1 Hansen Apricot, 1 Manchurian Apricot and 6 of your choice of other Hansen fruit trees, which we will follow in so far as possible.

12
Large Size
Fruit Trees
Only \$6.50

Dakota Producer Plums

HANSEN IMPROVED

These are plums which we have been selecting and improving for a number of plant generations. They are all hardy and good to eat. They will stand temperatures of downwards to 40 degrees below zero in winter and upwards to 115 degrees in summer.

The fruit of these plums varies in size, from about $\frac{3}{4}$ -inch to $1\frac{1}{2}$ inches and over. They have been developed from the native wild plums of the Dakotas, Minnesota and Canada. Their yield is abundant—plenty for eating, plenty for preserves.

It is hard to beat good old fashioned plum jam as a spread for bread. Our aim with Dakota Producer Plums has been to improve this; to improve one of nature's best, rich foods.



Beautiful in Flower; Plentiful in Fruit.

Because of the natural vigor of growth and fruiting power, they are especially good to pollinate the various hybrid plums in your yard and orchards. They will help all of your plums to set their full crop capacity of fruit, which they now sometimes don't, because of weak pollen.

Now, especially when we are called on to produce great quantities of food for our armies, our allies, and ourselves—plant a plentiful supply of these Dakota Producer Plums and they will do their part to help.

If you have a corner in your yard or in a neighboring yard, that is not being used to capacity, or a little spare acreage on the farm, plant at least a few Dakota Producer Plums. Much better still, plant them in large numbers, 25 to 100 or more.

At the real low prices on these, everyone should be able to plant plenty of these Dakota Producer Plums.

All sizes offered are strong, sturdy, nice, well rooted and well branched trees. The two larger sizes are Ready to Bear This Year!

2-3 Ft., 10c Each; 10 For \$.75; 25 For \$1.50; 100 For \$ 5.00

3-4 Ft., 15c Each; 10 For \$1.25; 25 For \$2.50; 100 For \$ 7.50

4-5 Ft., 25c Each; 10 For \$2.00; 25 For \$4.00; 100 For \$12.50

Hansen's OKA CHERRY

DWARF HABIT . . . EARLY BEARING . . . LARGE LUSCIOUS FRUIT

PROCLAIMED THE GREATEST!

The many who have already had the opportunity to taste this wonderful plum-cherry hybrid of delicious sweetness proclaim it by far the best they have ever tasted. Prof. N. E. Hansen, the originator, himself considers Oka Cherry his best plum-cherry hybrid.



Dwarf and Bushy

DELICIOUS FLAVOR!

NEWEST AND BEST

One of Prof. N. E. Hansen's latest cherry-plum introductions and considered his best so far. It is a Bush Cherry hybrid with the Champa Cherry. The fruit is rounder than Sapa and has a somewhat brighter skin color, which is a rich dark purplish red.

DARK, LUSCIOUS, WINE-RED FLESH

The flesh color is a rich, intense purplish black red. It is in all a very remarkable fruit to look at and surely a delight to eat. Jelly and jam made from Oka Cherries are as deliciously sweet as they are beautiful to look at.

The tree of Oka has a dwarf bushy habit and bears from the ground up. This remarkable feature is of unique value when harvesting the fruit. No need for a stepladder for all the fruit is within easy reach. But the dwarf size in no way indicates the size of the crop of cherries. For the strength of the plant goes into fruit production and not into surplus tree growth, and so consequently the limbs and branches burden themselves with fruit. The leaves are small, sort of a pointed oval shape, and a bright, shiny green color.

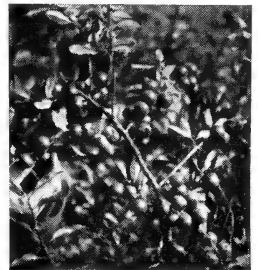
Early Bearing . . . Very Hardy . . . Prolific

Oka Cherry, like the other of Prof. N. E. Hansen's Bush Cherry hybrids, bear extremely early—always, if the season is at all favorable, the year after planting.

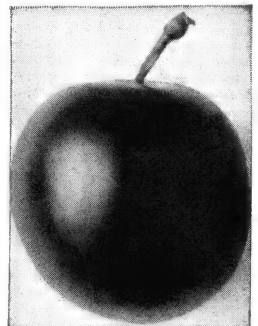
The buds come in groups of three and are rather closely set together on the branches. Thus in a good fruit year at each bud group are two cherries and one leaf, making the branches an almost solid mass of fruit.

Oka is an annual bearer and hardy throughout the northwest. It is indeed an extraordinary fruit, to which too much praise cannot be given.

SPECIAL NOTE! Due to the big demand we have always been short on Oka Cherry. This year for once we have a good supply and have been able to make you these very low prices.



Bears Very Heavily



Large and Fine Wine Red Flesh

SPECIAL! EXTRA LARGE OKA

Each	Ready to Bear	3 For
\$1.25	This Year	\$3.50

**6 Bearing \$5.00
Size Trees**

PRICES for OKA CHERRY

Size	Each	3	6	12
Large	\$.75	\$2.00	\$3.50	\$6.50
Medium	.50	1.35	2.65	5.00
Small	.35	1.00	1.85	3.50

25 Large Trees, \$12.50

HANSEN IMPROVED

Easy to Grow...

Good Flavor--Highly Productive--Hardy



Beautiful in Spring Flower.

The Development of Years. Hansen Improved Bush Cherries are the result of over forty years of untiring selection work by the great plant wizard, Prof. N. E. Hansen at South Dakota State College, Brookings. He has developed what was formerly the rather small, little known, western South Dakota Dwarf Bush Cherry, into a fruit of large size, desirable taste, good habits, wonderful bearing, and beautiful in flower, fruit and foliage.

Fruit of Good Quality. The fruit is good to eat from the bush, is fine in sauce and makes a wonderful jam of the most superb flavor and rich color imaginable.

Grows Bush-Like. Though the fruit of this cherry resembles a cherry in size and shape, the plant itself grows in a bush form, branching and bearing from the ground up. Usually bears the year after planting. It always retains its dwarf stature which is of fine value for planting in the garden, as it doesn't take up near the room of an ordinary plum tree and yet often bears more.

Beautiful in Plantings. In landscape planting a few of the bush cherries are very desirable as they are dwarf and bushy, and a great aid in foundation covering.

The foliage, a beautiful silvery green, turns to a rich red and gold in fall, adding a very desirable color touch to landscape plantings.



N. E. Hansen With Branches of the Hansen Bush Cherry.

The profuse masses of white flowers in early spring, completely covering the bushes, are a glorious sight. The fruit later is ornamental as well as useful.

FRUITS IN ONE YEAR!

EXTRA SPECIAL !!!

Large Three-Year Old
BUSH CHERRIES

Ready to Bear This Year
65c Each; 3 for \$1.50;
6 for \$2.75

POSTPAID TO YOU

A Desirable Good Fruit and Ornamental for Extensive Planting

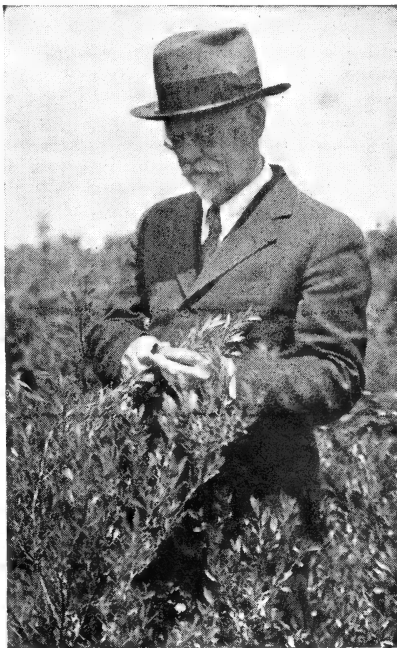
BUSH CHERRIES

Sure to Produce

Everywhere--Disease Resistant

Makes a Good Low Hedge. Because of their dwarf bushy habit these Hansen Improved Bush Cherries make a most beautiful silvery green ornamental low hedge for the front lawn, as well as in the garden.

Hardy Everywhere—Disease Resistant. The hardiness of these Bush Cherries is unquestioned. They have been used as the sires in a number of Prof. N. E. Hansen's introductions, because he knew it would give the new variety the hardiness they need to withstand the cold and adverse weather conditions we often get. Their sturdiness and resistance to disease is another outstanding characteristic.



N. E. Hansen Selecting Bush Cherries.

Plant These Hansen Bush Cherries Because

- 1—They are easy to grow and perfectly hardy everywhere.
- 2—Good to eat fresh and make the most delicious preserves.
- 3—Quick to bear. Bear heavy, and annually.
- 4—Are dwarf growing, bushy, need little room.
- 5—Are excellent for hedges or ornamental shrubs.

RECOMMENDATION FOR PLANTING

For best results for fruiting these new Improved Hansen Bush Cherries should be planted 2 to 4 feet apart, in rows 4 to 6 feet apart.

Around the home for beauty and use, plant them singly and in groups.

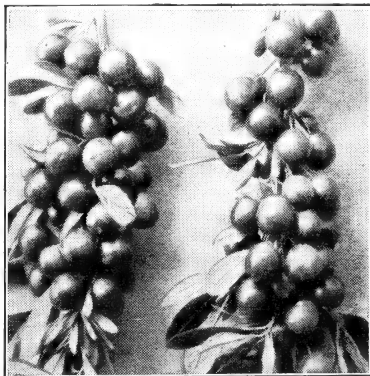
As a hedge they may be planted close, 1 to 1½ feet apart, and may be kept trimmed, though they won't bear as much that way.

Plant them in abundance and have fine fruit for years to come.

NEW LOW PRICES ON HANSEN BUSH CHERRIES

All Heavy, Well Branched, Strong Rooted, Bushy Trees.

Size	Each	Per 3	Per 6	Per 12	Per 25
Large, Two-Year.....	\$0.50	\$1.25	\$2.25	\$4.00	\$7.50
Medium, Two-Year..	.35	1.00	1.75	2.75	5.00
Small, Two-Year.....	.25	.65	1.25	2.00	3.50

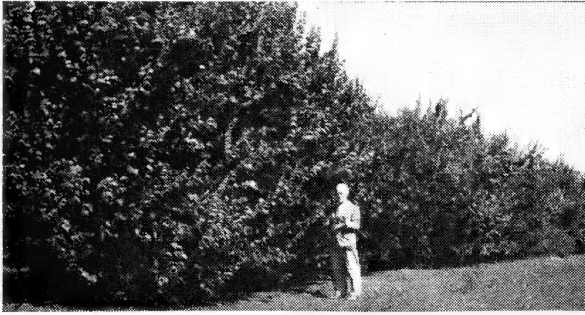


Masses of Fruit Completely Cover the Branches.

Everywhere—Will Be Planted by the Millions Thruout the World!

Manchurian Apricots

FRUIT IN ABUNDANCE FOR EVERYONE



Dr. N. E. Hansen and a Group of Manchurian Apricots

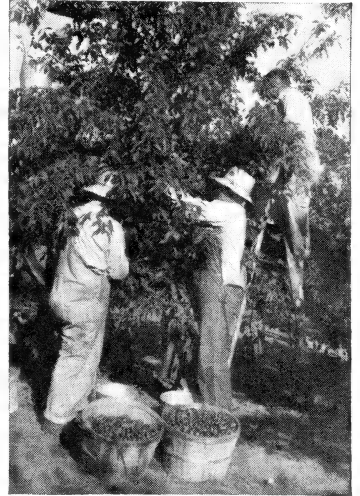
**Hardy—Vigorous
Quick to Bear**

No fruit has jumped into popularity and had such sudden fame as have Prof. N. E. Hansen's new Hardy Manchurian Apricots. We offer here some plants from the original strain from which he introduced his famous twelve varieties, listed and described on the opposite page.

If you like good fresh fruit, picked from your own trees, you should have at least a few of these new hardy Apricot trees. They will afford you the greatest satisfaction and pleasure with their abundance of good, tree-ripened fruit. It is hard to beat their dependable fruit production year after year.

The Manchurian Apricots are hardy in the coldest places. Like the other Hansen Apricots, they apparently have an almost frost-proof blossom, as they can set fruit even if the blossoms are caught in a late spring frost. They came from a country where temperatures get as low as 50 and 60 degrees below zero in winter with late spring frosts as a rule, and where hot dry weather prevails in summer, up to 115 degrees during long periods without rain. Yet even these adversities do not seem to bother these hardy apricots from thriving and bearing heavy annual crops of fine large fruit.

If you want really good fruit at the right time, early in July before the plums come on, get some of these new Manchurian Apricot trees now! We have only a comparatively small supply available this year, so be sure to order early.



Plenty of Fruit—Always

PRICES ON HANSEN NEW HARDY MANCHURIAN APRICOTS

Each, 50c 3 For \$1.35 6 For \$2.60 12 For \$5.00 25 For \$9.50

BIG SPECIAL COMBINATION OFFER

2—Hansen Apricots, Your Selection of Those } only \$2.50
Described on Page 13

1—Hansen Manchurian Apricot

4—Hansen Apricots, Your Selection of Those } only \$4.50
Described on Page 13

2—Hansen Manchurian Apricots



The New HANSEN APRICOTS

*Extremely Hardy
... Very Drouth Resistant*

*Large
Fine
Fruit*

Dr. N. E. Hansen's
granddaughter,
Carlene, standing
by one of his new
young Hardy Apricots,
which bear as
early as his famous
Sapa Plums.

We offer for a short time, Hansen's new sensational Northwest hardy apricots. Just recently introduced by Prof. N. E. Hansen, of South Dakota State College, who has been working for many years to produce hardy apricots that would be good eating and large size and still would withstand the rigors of Dakota's cold and drouth.

Those offered herewith are his best introductions to date. We give a brief description of each, though they are all good and it is rather hard to say just which one is best. Only time, experience, and tests can best prove that.

Two very important points of interest stand out in regard to these new apricots. One is that they are perhaps one of the most drouth resistant of all trees, coming through the terrible drouths of 1933, 1934 and 1935 with flying colors—full foliage and no apparent effect whatever from the dry, hot weather, and with a great crop of fruit. The second point is that they are hardy almost anywhere in America, standing and bearing well in climates getting as low as 50 to 60 below zero.

PLANT AN ORCHARD OF
HANSEN APRICOTS
AND REAP YOUR REWARD
FOR YEARS TO COME!

CHOW. Very heavy producer. Yellow fruit that is good to eat fresh and when cooked makes a delightful sauce of quality.

SING. Abundant crops of large rich orange fruit. Flavor stronger than some of the others, especially cooked. Very good.

ANDA. Heavy crops in late season. Freestone. Fruit of good size. Stays firm even when cooked. One of the best in quality.

ZUN. Fruit is round, freestone, and it has an unusually small pit. The quality of this one is nearly excellent. Mid-season.

MANCHU. Large fruit in heavy crop. Yellow. Tops in size and quality. Cooks up into excellent, pale yellow sauce.

SINO. Fruit has an excellent flavor, especially cooked. It is somewhat smaller but produces heavily on small trees.

LALIN. Good quality fruit for eating fresh. Comes on early in season. Heavy crops of large yellow fruit with red blush.

TOLA. Large, freestone fruit. Very good flavor. Makes excellent quality sauce. This one ripens early in the season.

SANSIN. Fresh fruit of excellent quality and flavor. Makes a richly colored orange-yellow sauce. Large fruit, heavy crop.

HULAN. Ripens early in season. Very heavy crops of large fruit. When cooked makes a good flavored sauce.

NINGUTA. One of the mildest and best in flavor. Very heavy crop, ripening late in season. Large, yellow, with red blush.

MANDARIN. Rich yellow, large fruit. One of the best in quality for eating fresh or for making into delicious sauce.

**Hansen Hardy
Apricot Prices**

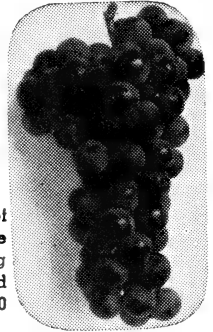
1.25 EACH

3 For \$3.50; 6 For \$6.50;
12 For \$12.00.

RASPBERRIES

FLAMING GIANT. This is Prof. Hansen's best and most popular red raspberry. Originally called Ohta, which in the Sioux Indian language means "much" or "many." In later years it has been called Flaming Giant, because of the large size and flaming red color of the fruit. Berries are purplish red, large, excellent flavor and good keepers. Is called everbearing by some because it bears very heavily and annually and over a long period of time. Hardy and drouth resistant. Makes a splendid berry for market and for home use. Early. Hardest of red raspberries. Does not winter kill. Will stand 30 below without damage. 10 Plants, \$1.00; 25 Plants, \$1.75; 100 Plants, \$4.50.

LATHAM. Generally considered the best market berry because of its enormous size and good color, its fine flavor and extra heavy bearing. Bushes are just loaded to the ground with their great crop of fruit. A great favorite everywhere. Very productive, long bearer. 10 Plants, 75c; 25 Plants, \$1.50; 100 Plants, \$4.00.



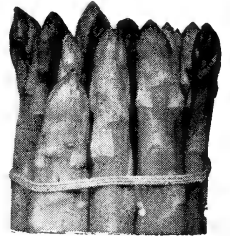
GRAPES

BETA GRAPE. The best known and hardest of the popular grapes. Producing amazingly large crops of fine large fruit which are good eating and make excellent preserves, splendid jelly and tasty grape juice. 25c Each; 5 Vines, \$1.00; 10 Vines, \$1.75; 25 Vines, \$4.00.



ASPARAGUS

The earliest and best green of the garden. Contains those proper vitamins one needs to remain in good health. Fine, large succulent stalks can be cut from early spring till late fall if the bed is properly mulched and cared for. 2-Year Heavy Large Roots, 25 for 75c; 50 for \$1.35; 100 for \$2.50.



RHUBARB

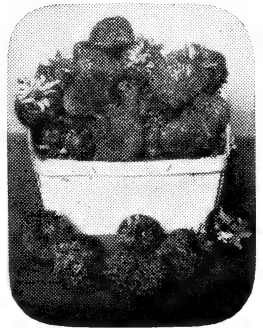
VICTORIA. The sweetest and best of them all. A vigorous grower of rich red, stems of extra fine quality. Nice Large 2-Year Roots, Each 15c; 3 for 40c; 8 for 75c; 12 for \$1.35; 25 for \$2.50. SPECIAL! Heavy 3-Year Clumps, 35c Each; 4 for \$1.00.

STRAWBERRIES

GEM EVERBEARING. One of the very best all around of the everbearing varieties. A good producer of fine large berries of excellent quality from early spring till late fall. 25 Plants, \$1.00; 100 Plants, \$3.50.

SENATOR DUNLAP. No doubt the very largest and best of the June bearing varieties. 25 Plants, 75c; 100 Plants, \$2.00.

MASTODON EVERBEARING. The biggest and best of the recently introduced strawberries. A tremendous bearer and very sweet. 25 Plants, \$1.50; 50 Plants, \$2.50; 100 Plants, \$4.00.



HANSEN HARDY PEARS

Hardy—Productive—Good

These pears were introduced from Siberia and Northern China by Prof. N. E. Hansen and improved by him. They are perfectly hardy anywhere in the Northwest, free from disease and resistant to fire blight, the dreaded disease of the standard varieties.

HARBIN PEAR. Large, vigorous growing tree. Fruit of fair size and quality. Good for eating fresh and cooks into fine sauce and preserves well. 75c Each; 3 for \$2.00.

HANSEN SIBERIAN PEAR. Hardest pear introduced from Siberia by Prof. N. E. Hansen. Of the Russian sand pear type of fruit and the hardest pear for the North. 50c Each; 3 for \$1.25.



Hansen's SUCCESS ORCHARD



Bigger Crops... More Variety

Mixed orchards pay best and are also best to give us fruit in variety of kinds and flavor throughout the season from early till late, for eating, cooking, preserving and keeping for the winter. This assortment will give you a lifetime of satisfaction and pleasure.

It contains some of the best of Prof. N. E. Hansen's introductions and will be composed of apples, crabs, plums, cherries, apricots and pears. One to three of a kind and fifteen varieties in all, our selection, with a total of twenty-five strong and healthy trees. You may state your preferences, we'll fill your orders as nearly as we can.

FRUITS TO PLEASE EVERYONE. Some of your family may not like a certain variety of fruit, but they need not be disappointed if you get our Hansen's Success Orchard for in these selections are fruits that everyone in the family will like.

We have sold a good many of these collections the past few years and have very good reports on them. Get your orchard started this year, and in a few years you will get fruit crops that will more than repay the original cost of the trees.

LARGE **25** TREES

15 VARIETIES
PLUMS, CHERRIES,
APPLES, CRABS,
APRICOTS, PEARS.

ONLY
\$10⁰⁰

SPECIAL!
SMALL SIZE TREE OFFER
25 Assorted
Small Fruit Trees **\$6.50**

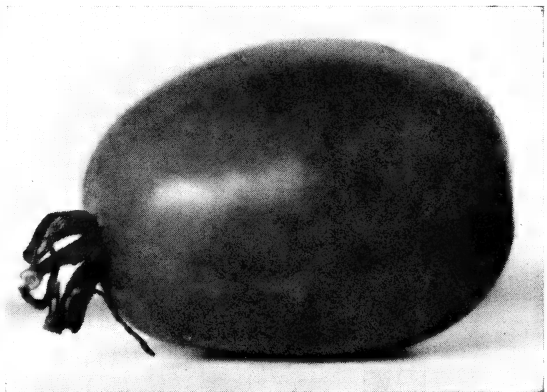
SWEET GOLD TOMATO

A Carl A. Hansen Introduction

Its name describes it exactly. Its texture is fine and smooth; size, 1½ to 2 inches across and 2 to 3 inches long; color, a pretty yellow, both inside and out. Its mild, sweet flavor and firm flesh make this a delicious and beautiful slicing tomato.

Sweet Gold has a high sugar content and keeps remarkably well after it has been picked. Delicious to eat right off the vine, needs no salt or sugar, and makes a wonderful preserve.

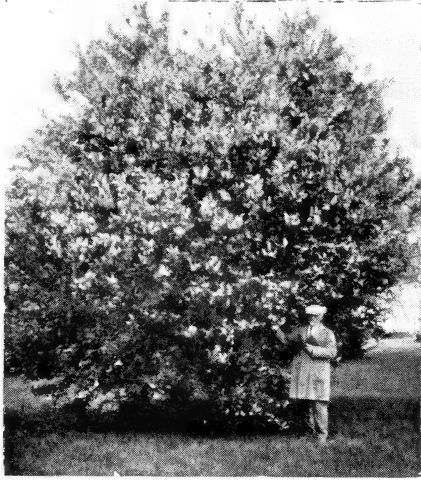
Those who find the acidity of the ordinary tomato disagreeing with them should try Sweet Gold. Send for your seed as soon as possible. Our stock may not last until the end of the sowing season.



Sweet Gold Tomato
Per Packet, 15c; 3 Packets, 40c.

MAY DAY

THE BEAUTIFUL FLOWERING TREE



Prof. N. E. Hansen and a May Day Tree.

**GLORIOUS
ALLURING
WONDERFUL**

For superb flowering beauty on the lawn or boulevard, none excels May Day Tree. Its fragrant, fine white flowers early in spring create a massive bouquet of loveliness. The individual flowers are fully a half inch across. A few days later the leaves unfold in all their glossy beauty, far ahead of all the other trees.

As this tree is always in bloom by the first of May here it was well named the May Day Tree, and the long racemes of fragrant white flowers, so thickly set on fine branches, may well be used for garlands and to crown the Queen of May. The mass-like clusters are a beautiful sight and are well adapted to cutting for the house or for early spring lawn festivals.

The shiny black cherry fruits which follow the lovely blossoms are small and though edible and good for jelly, are soon claimed by the birds in preference to what we consider better fruit. Thus our good fruit is spared, yet the birds are fed.



Lovely Large Open Flowers.

PINK GIANT . . *Lovely New*

Pink Flowering Crab

A CARL A. HANSEN INTRODUCTION

We have seen many flowering crabs, but this is the first one at which we are completely awed. The flowers are huge, brilliantly pink and the showiest things imaginable. Among our many groups of flowering crabs, Pink Giant, with its gaudy blossoms, outshines all the rest. In addition to their large size, they open wide, which tends to make them look even bigger. After its gorgeous flowers, come small, brilliantly red fruits which hang on well into the winter and make fine feed for the birds.

The tree is of strong, upright growth with heavy branches and main trunk. The leaves on the tips of the branches are tinted with red, giving the whole tree an unusually decorative effect, even when not in bloom.

Pink Giant is of a very hardy strain, and tests so far have proved it should thrive to the Canadian line and beyond. In the nursery it is a very vigorous and an unusually fast growing tree, and as far as we know immune to fire blight. **Large, 4-5 Ft., \$1.25 Each; Medium, 3-4 Ft., \$1.00 Each; Small, 2-3 Ft., 65c Each.**

Y TREE

WERING LAWN TREE

May Day may be trimmed up for a street or lawn shade tree, or left in bush form as shown. It grows rapidly, reaching a height of fifteen to twenty feet at maturity. When used as a specimen plant on the open lawn it reaches its full majesty, but it may be used in the background of shrub groups as well.

Having come from eastern Siberia and Manchuria, there is no doubt as to its hardiness. The scientific name of this remarkable tree is *Prunus Padus Commutata*, but better call it May Day Tree for everyday. It is highly recommended by the Arnold Arboretum at Boston where records show that it is in bloom about three weeks in advance of any other bird cherry.

For the lawn the superb beauty of the May Day Tree will please and impress everyone.



Close-Up View of the Flowers of the May Day Tree.

LOVELY
FRAGRANT
HARDY
VIGOROUS

PRICES ON MAY DAY TREES

1-1½ ft.....	Each, \$.35; 3 For \$1.00; 6 For \$1.75
1½-2 ft.....	Each, .50; 3 For 1.35; 6 For 2.50
2-3 ft.....	Each, .75; 3 For 2.00; 6 For 3.50
3-4 ft.....	Each, 1.25; 3 For 3.50; 6 For 6.50

HOPA . . . Rose Flowering Crab

Attractive Cheery Desirable

A NIELS E. HANSEN INTRODUCTION

A remarkable tree which is entirely covered with beautiful rose colored blossoms in May. It is a cross of *Niedzwetzkyana*, a red fleshed, red-flowering apple from Turkestan, and the Siberian Crab. Hopa is very hardy, blooms when but five feet in height, and is of such striking beauty that it deserves a place on every lawn. The fruit is red inside and out, and is very ornamental.

The tree makes a very strong, well balanced growth. The color of the leaves and bark livens up the landscape and gives it a cheerful aspect throughout the year. The foliage for summer color and the reddish colored bark for winter scenery.

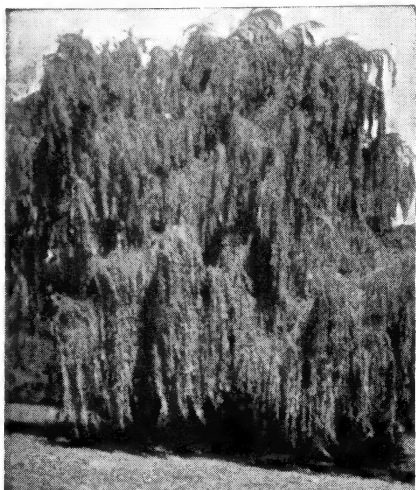
For the best effect and to bring out its beauty Hopa may be planted in a group with other tall growing shrubbery or trees, or it may be planted as a specimen tree with excellent results, for as such it shows up splendidly.



Beautiful Rose-Red Flowers in Early Spring

Size	Each	Per 2	Per 6
Large,			
4-5 ft.....	\$1.00	\$1.80	\$5.00
Medium,			
3-4 ft.....	.75	1.40	4.00
Small,			
2-3 ft.....	.50	.90	2.50

NIOBE WEeping WILLOW



Graceful Beauty Every Lawn Should Have Some

INTRODUCED BY PROFESSOR N. E. HANSEN

The superb, graceful beauty of the Niobe Weeping Willow is near to the utmost in distinctive specimen ornamental planting. There is no doubt that their beauty will be a continual joy to those who are fortunate enough to have these lovely trees on their home grounds. In winter and summer their graceful branches sway in the gentlest breeze and wave their beauty to all.

Prof. N. E. Hansen introduced Niobe Weeping Willow from the colder parts of Europe and so it is perfectly hardy far north into Canada. Beautify your grounds with this fine, hardy Weeping Willow.

3-4 Ft. Trees, Each 50c; 2 For 90c; 6 For \$2.50
 4-5 Ft. Trees, Each 75c; 2 For \$1.35; 6 For \$3.50
 5-6 Ft. Trees, Each \$1.00; 2 For \$1.75; 6 For \$4.75
 6-8 Ft. Trees, Each \$1.25; 2 For \$2.25; 6 For \$6.00

CISTENA PURPLE LEAF SHRUB—For Beauty of Color

Shrubs with colored foliage are needed for contrast and variety on the lawn. Cistena, with its purple leaves is especially striking and because it is also very hardy it has gained sudden popularity since Prof. N. E. Hansen introduced it.

The leaf color is a reddish purple, or wine color, and the branches are reddish brown. Among other tall growing shrubs it strikes a delightful gay note.



Cistena Adds Color and Beauty to the Lawn

Attractive All Year

When not trimmed, Cistena makes a low, bushy, round topped growth. The illustration shows how well Cistena may be used in a foundation planting around the house. Its beautifully colored foliage adds much color to the other plantings and brightens up the lawn in summer. In winter the reddish colored bark enriches the landscape.

Small Size.....	Per Shrub, 45c	2 Shrubs, 80c	6 Shrubs, \$2.10
Medium Size.....	Per Shrub, 60c	2 Shrubs, \$1.10	6 Shrubs, \$3.00
Large Size.....	Per Shrub, 75c	2 Shrubs, \$1.40	6 Shrubs, \$3.90



PRUNUS TRILOBA DOUBLE FLOWERING PLUM

This beautiful ornamental is worthy of a place in everyone's yard. A most unique tree, as the very youngest of them will put out the loveliest pink rose-like flowers you ever saw, even before it has begun to leaf out. It does look like a rose tree, and many people have given it the name of "Rose Tree of China." It is hardy everywhere and popular with those who have seen it.

Prunus Triloba is a small tree when grown, and might be called a shrub. The foliage, coming after flowers, is decidedly attractive and this plant will work in splendidly with most foundation and group plantings.

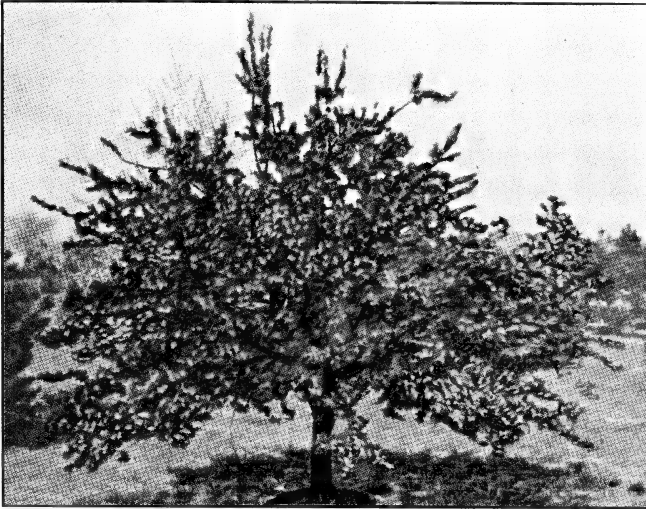
4-5 Ft. Trees, Each, 75c; 2 For \$1.35; 6 For \$3.50
 3-4 Ft. Trees, Each, 60c; 2 For \$1.10; 6 For \$3.00
 2-3 Ft. Trees, Each, 50c; 2 For 90c; 6 For \$2.50

RED SILVER

Flowering Crab

A CARL A. HANSEN INTRODUCTION

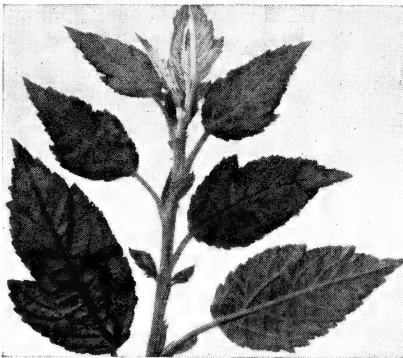
A REAL WORTHWHILE ORNAMENTAL



Large, Gorgeous, Dark Red Flowers—Beauty You Dream About.

The glorious flowering crab that is completely red in flower, leaf, bark and fruit. Makes a fine lawn tree. Rich maroon red from top to bottom. This is a very remarkable new ornamental recently introduced by Carl A. Hansen. Most flowering crabs are desirable because of the mass of blooms which they have in such profusion for a short time, but the Red Silver is beautiful

from spring until late fall because of its all-over red color.



Maroon-Red Cut-Leaf Foliage
Tintseled With Silver

The under side of the leaves are tintseled with silver, a touch that makes it all the more beautiful as the blend of maroon and silver is a unique combination throughout the season. The leaves are somewhat cut-leaf, adding to the striking beauty of this new ornamental.

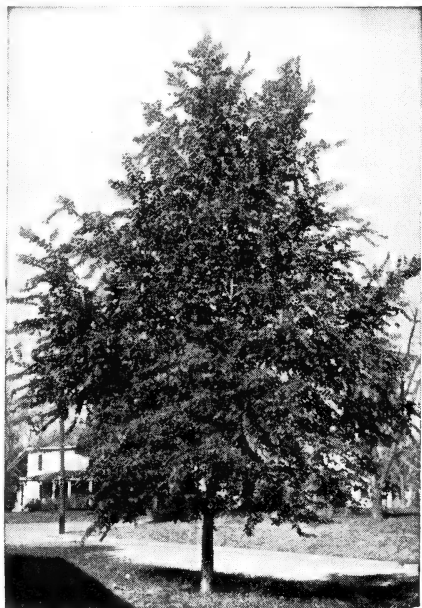
This small tree, graceful in its lines, with such strikingly beautiful foliage, has a color so intense that it is little affected by the summer heat. The wonderfully fragrant red flowers are large, partially double and altogether lovely. One of the greatest hardy flowering crabs ever introduced. Showy and different.

The Marvel of All Flowering Crabs

Size	Each	Per 2	Per 6
Large, 4-5 Ft.....	\$1.00	\$1.80	\$5.00
Medium, 3-4 Ft.....	.75	1.40	4.00
Small, 2-3 Ft.....	.50	.90	2.50

CHINESE ELM

The Fastest Growing Permanent Tree Known



HARDY—EASY TO GROW

This remarkable Elm for street and lawn is fast becoming the leading Elm throughout America. It grows faster, is more drouth resistant, longer lived, grows larger and is hardier than any other shade or street tree grown. It is much finer than the ordinary Elm, the foliage is fine and feathery, a bright green, and very dense, and the branches make almost right angles with the trunk instead of being in sprays like the common Elm.

MAKE A FINE HEDGE

This tree has been sweeping the country by leaps and bounds, because of its fast growth, drouth resistance, and resistance to the Dutch Elm Disease, which is rapidly killing so many of the old common American Elm in many parts of the country.

More and more people are using Chinese Elm as a hedge plant because they have proved very suitable for this purpose. They will withstand being trimmed down to almost any desired height or can be left to grow naturally for a taller hedge or background. The fine, dense foliage and bushy, evenly balanced branches make a splendid hedge of real worth. For a hedge, plant about 1 to 2 feet apart.

SHADE «» «» BEAUTY «» «» WINDBREAK PLANT ABUNDANTLY WITH CHINESE ELM

We have a splendid stock this year that we are proud to be able to offer to you at prices so low, yet consistent with high quality.

In Chinese Elm Transplanted trees we have an exceptionally fine, large block of trees which we must move this year to make room for new stock. For quick sale we offer these to you, while they last, at the following prices.

NEW SPECIAL LOWEST PRICES ON NICE WELL BRANCHED, HEAVY ROOTED, TRANSPLANTED STOCK OF CHINESE ELM

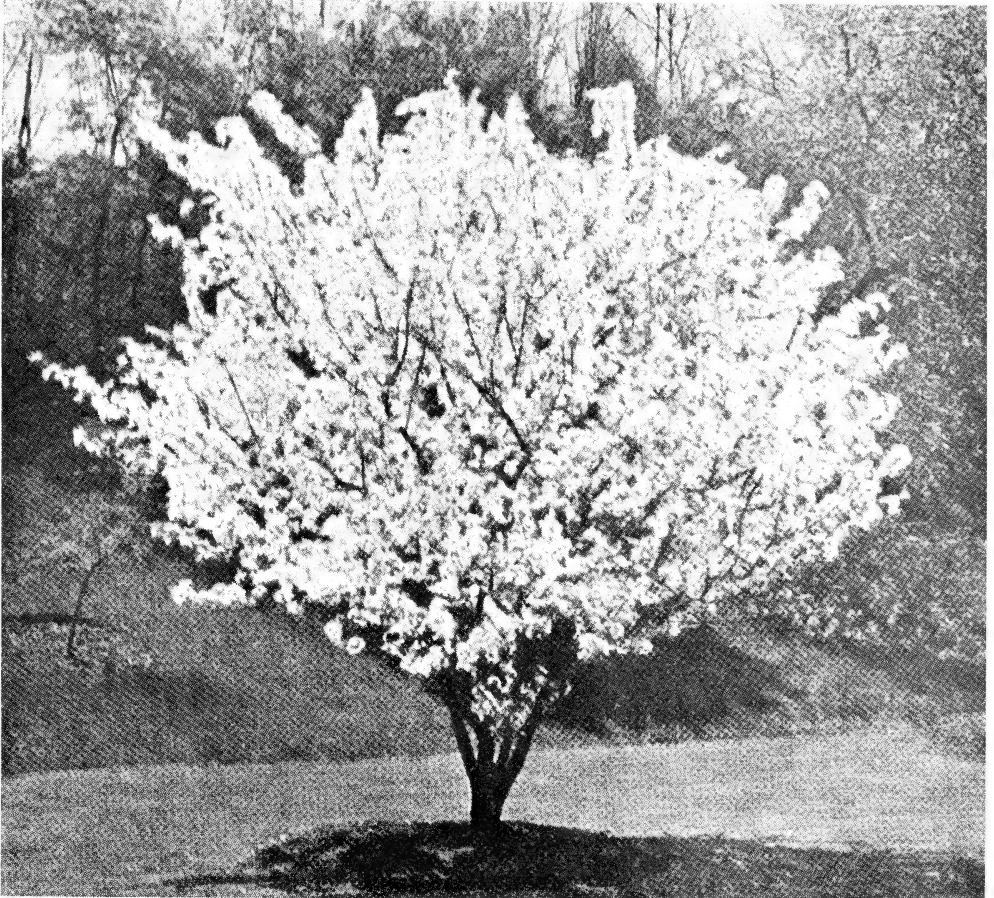
Size	Each	Per 3	Per 6	Per 12	Per 25	Per 100
3-4 ft. Trees.....	\$0.10	\$0.25	\$0.50	\$1.00	\$ 1.75	\$ 6.50
4-5 ft. Trees.....	.15	.40	.75	1.50	2.75	10.00
5-6 ft. Trees.....	.25	.65	1.25	2.50	5.00	20.00
6-8 ft. Trees.....	.40	1.15	2.25	4.50	8.00	30.00
8-10 ft. Trees.....	.65	1.75	3.50	7.00	13.50	50.00

THRIFTY YOUNG SEEDLING STOCK FOR WINDBREAK, GROVE AND HEDGE

Size	Per 25	Per 100	Per 200	Per 500	Per 1000
6-12 inch.....	\$0.25	\$0.75	\$1.25	\$2.75	\$ 5.00
12-18 inch.....	.35	1.00	1.75	4.00	7.50
18-24 inch.....	.50	1.75	2.75	6.25	11.50
2-3 feet.....	.75	2.50	3.75	8.75	16.50

Manchurian Beauty

Glorious Flowering Crab



In All Its Springtime Glory

SHADE TREE . . FRUIT TREE . . ORNAMENTAL

Easy to Grow . . Blossoms Early . . Hardy Everywhere
Beautiful Flowers . . Wonderful Shade

This lovely flowering lawn tree, introduced from the mountains of interior Manchuria, is one of the first to blossom in the early spring, with an avalanche of beautiful pink and white flowers, followed by a mass of fine dense foliage and bright red fruits. One of the hardiest Flowering Crabs known, it is fast growing, sturdy and vigorous, with a natural resistance to disease, cold and drouth. Long lived and absolutely hardy anywhere.

Plant them on lawns as specimen trees, along walks and drives, in fact everywhere that you want abundant beauty.

**PRICES FOR STURDY, WELL BRANCHED,
HEAVY ROOTED TREES**

}	2 to 3 feet.....	Each, 35c; 3 for \$1.00; 6 for \$1.75
	3 to 4 feet.....	Each, 50c; 3 for \$1.35; 6 for \$2.50
	4 to 5 feet.....	Each, 75c; 3 for \$2.00; 6 for \$3.50

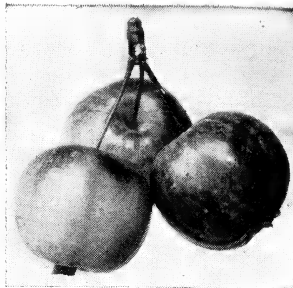


Glorious Springtime Blossoms

Siberian FLOWERING CRAB

GLORIOUSLY BEAUTIFUL

Its glorious, gorgeous, early spring magnificence adorned in an avalanche of large pink and white flowers of superb fragrance begins its alluring loveliness. This unquestionably makes it both a fine specimen ornamental for the lawn and wonderful as a street tree. Used in a windbreak, it gives the whole place a living frame of beauty.



Fruit Fair Size. Good Flavor.
Makes Fine Jams, Jelly, Cider.

A commendable tree for ornamental and utility. It must be seen and used to be fully appreciated.

FOR THE LAWN OR BOULEVARD

The blossoming is followed by a mass of dense, bright green foliage, covering heavily shouldered and wide spreading branches, thus making it a fine shade tree for the street or lawn.

A FINE FRUIT TREE—BEARS EARLY

Then comes the bright red and yellow fruits which can be used for jelly, or pickling, or are best pressed out and the juice added as the desired flavor in other fruit jams and jellies. The juice also makes remarkable cider. The tree usually bears when about three years old.

PRICES FOR STRONG, BRANCHED TRANSPLANTED, WELL ROOTED TREES

Size	Each	2	5	10
Large, 3-4 Ft.	35c	60c	\$1.40	\$2.75
Medium, 2-3 Ft.	25c	40c	.90	1.75
Small, 1½-2 Ft.	15c	25c	.60	1.15

WINDBREAK STOCK

Size	Per 10	Per 25	Per 100
Large	.75c	\$1.50	\$5.00
Medium	.50c	1.00	3.50
Small	.35c	.70	2.50

CARAGANA or SIBERIAN PEA TREE

ONE OF THE BEST WINDBREAK AND HEDGE PLANTS FOR THE NORTHWEST

By far the hardiest and best windbreak and hedge plant for the most exposed prairies is Caragana, and one which will endure severe drouth. This plant is recognized by the Canadian Government as the best snow-catcher and hedge plant from Manitoba, Saskatchewan, and Alberta. Its full name is Caragana arborescens, the latter name referring to the tree-like habit. It is not really a tree but a shrub of tree-like habit growing to a height of about twenty feet when not trimmed.

In Russia, Siberia, and northern Europe generally, Caragana is the great favorite for hedges and for single specimens or in groups on the lawn.

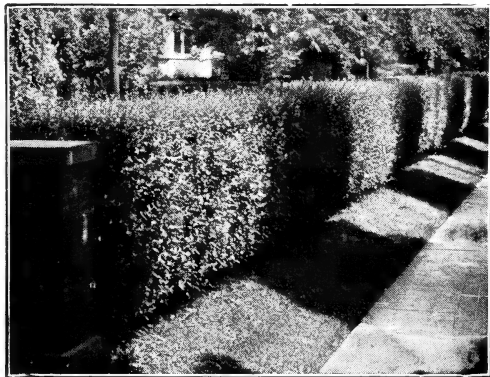
Throughout the Northwest generally, Caragana is found especially desirable as a protecting hedge around gardens and orchards on exposed prairies. This makes a tight wind-proof wall of living green foliage in summer and in the winter the tough branches resist the drifting snow and do not break down as do so many other shrubs and trees. The great value of Caragana is outstanding and it should be on every lawn, because of its utility, its beautiful green foliage, feathery leaves, and abundant yellow blossoms.

The stock we have to offer is young, strong, thrifty, and has all been headed back, thus an excellent root system, nicely branched plants and a rapid sure growth are assured.

PRICES FOR STRONG, HEAVY, WELL ROOTED PLANTS

Size	Each	Per 10	Per 25	Per 100
6-12 Inch	\$.05	\$0.25	\$0.50	\$1.25
12-18 Inch	.10	.40	.75	2.00
18-24 Inch	.15	.50	1.00	3.50
2-3 Feet	.20	.75	1.50	5.00

Extra Large, Select Shrubs, for Specimen Planting, 25c Each.



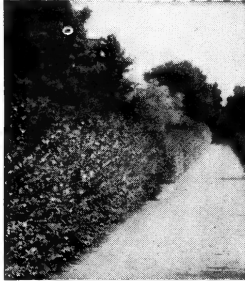
Trimmed Hedge to Surround the Lawn.

SIBERIAN BUSH HONEYSUCKLE

For Beauty and Protection

Their great loads of beautiful rose-pink and white flowers in spring delight everyone. These Siberian Bush Honeysuckles are among the first plants to blossom in the early spring, and their bright green foliage, appearing almost at the same time as the flowers, make them very popular for hedges and specimen shrubs.

Following the blossoms, the whole plant is covered with brilliantly colored red and orange berries, adding to the ornamental value of this hardy shrub. The birds relish these fruits and come in great numbers to feast on them.



Trimmed—A Wall of Beauty

A GOOD HEDGE

Siberian Bush Honeysuckle makes a lovely, dense hedge, one which may be trimmed or left to grow into a natural screen. It sends up new shoots from the crown of the plant, keeping it filled from the ground up, yet it does not send out root suckers to bother in your lawn or other plantings. Plant a row of them wherever you wish a screen to hide unsightly views or service yard, in country and town. Trim them down or let them grow naturally to their full height of about fifteen to twenty feet.

AN EXCELLENT SHRUB

The Siberian Bush Honeysuckle should be used freely in group plantings, as a foundation cover, and as single specimen shrubs on an open lawn. They leaf out early in the spring, have dense foliage, and are about the last to shed their leaves in the fall. Not only are they suitable for home plantings but also for schools, churches, libraries, and other community buildings. They do not require much care, will grow in most any soil, and are long lived.

PRICES FOR STRONG BUSHY PLANTS

Size	Each	Per 10	Per 25	Per 100
12-18 inch	\$.15	\$.75	\$1.75	\$ 6.50
18-24 inch20	1.00	2.25	8.50
2-3 feet.....	.25	1.25	2.75	10.00

Extra Large Plants for Specimen Planting, 35c Each; 4 For \$1.00; 12 For \$2.50.

The planting of shelter belts on farms has now become one of the essential things. Much money is saved by farmers in planting good windbreaks, but most plantings grow too tall with age, leaving the lower trunks bare, unless care is taken to plant a few outside rows of bushy plants that will retain their lower branches to catch the ground winds and stop the snow. Siberian Bush Honeysuckle is of the greatest value for this purpose, as their tough branches are not broken by heavy snows, and they keep their lower branches always,

stopping the wind perfectly the first fifteen or twenty feet next to the ground.

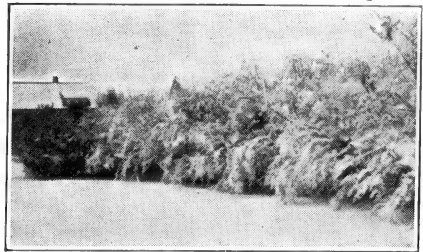
Plant a single row on the outside of your windbreak on the north and west to catch the snow. Plant another row on the inside to give further protection and to furnish beautiful flowers in early spring.

FAST GROWING

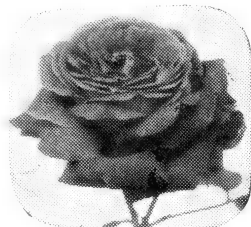
Siberian Bush Honeysuckle is fast growing and long lived. Even the smaller sizes which we offer should give good protection in two years time, and the larger sizes in a year. There are some Bush Honeysuckle hedge rows in this vicinity that are over twenty-five years old and they are still in their prime.

NATURALLY HARDY

Since these Bush Honeysuckles come from Siberia, you need not fear that they will be killed out by the coldest winters or the hottest, driest summers. The region they come from is very dry, with temperatures ranging from 50 below in the winter to 100 or more above in summer, and with only 8 inches annual rainfall. They will not winter kill or suffer from drouth, and will give you protection and beauty for many, many years.



A Beautiful Sight in Winter

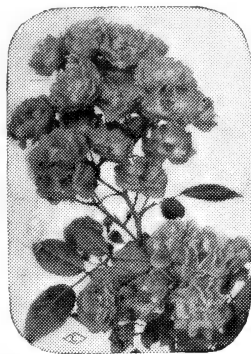


Hansa Rose

HARDY ROSES

Make Your Dreams Come True

To many there is no flower in the garden lovelier than a rose, yet, contrary to the opinion of many, they are easy to grow and their culture can be successful if the proper simple care and attention is given them. We sell only the hardiest sorts that have proven themselves in home gardens throughout the Northwest.



Crimson Rambler

HANSA. Best Hardy Red Rose! Large, double flowers over an unusually long blooming season. Sturdy growth and absolute hardiness.

SIR THOMAS LIPTON. Best Hardy White Rose. Large, double, pure white. Profuse bloomer.

CONRAD F. MEYER. Best Hardy Pink Rose. Very large, double, fragrant flowers of a bright silvery rose-pink.

HARISON'S YELLOW. Best of hardy yellows. Large, fragrant, double blossoms in June and July.

F. J. GROOTENDORST. Bright crimson, in clusters. Blooms all summer. Best in mass plantings and hedges.

CRIMSON RAMBLER. Famous everywhere. Vigorous grower, glossy foliage, panicles of blooms, large and perfect for weeks.

HANSEN SIBERIAN ROSE. Beautiful pink blossoms all summer long. Sturdy, large growing, for background in group plantings, or as single shrubs.

PRICES FOR ABOVE ROSES
40c Each, 3 for \$1.00
SPECIAL ASSORTMENT
1 of Each Kind, \$1.75

CLIMBING VINES ENGELMANI IVY

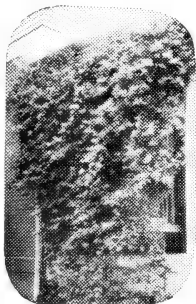
The hardiest vine. Will climb without a trellis as it has small sudopads that cling tightly. The large shiny green leaves turn to brilliant hues of red with the first light frost.

Large 3-Year Plants: Each, 35c; 3 for 75c; 6 for \$1.25.

HALL'S HONEYSUCKLE

Rapid growing vine with beautiful foliage and fragrant, creamy white flowers. Especially fine for covering caves, terraces and trellises.

Large 3-Year Plants: Each, 25c; 3 for 50c; 6 for 85c.



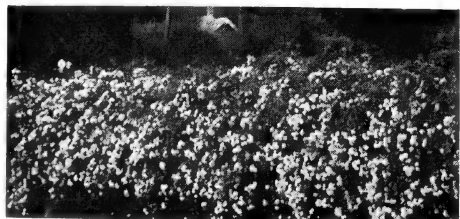
Hall's Honeysuckle

The New Hansen Hedge Rose

THE STALELY, BEAUTIFUL HEDGE

The most beautiful of all hedges. These roses were introduced from Siberia some years ago by Prof. Hansen and have been developed by him for years to improve their

size and beauty. The flowers are quite large, fragrant and beautiful. With a hedge of these roses around your lawn you will have a flowering border of beauty to frame your home which will be a continual joy and everlasting pleasure throughout the years to come. Buy them now and beautify your place beyond your fondest dreams.



**HEDGE ROSE
 PRICES**
Strong 2 and 3 Yr. Plants
100 Plants, \$5.00
25 For \$1.50; 10 For \$1.00

A Sensational New Rose

HANSEN'S THORNLESS

A Rose Without Thorns!

Prof. N. E. Hansen is working with thousands of rose seedlings and is attracting nation wide attention for his efforts toward producing lovely, hardy roses without thorns.

His Thornless Rose we offer here is really thornless! Not only on the main stems, but on the branches as well. The plant is of sturdy upright growth with attractive foliage, which makes it desirable as a shrub, and it is perfectly hardy as it will stand fifty degrees below zero without protection.

The flowers are of a delicate pink color and very fragrant. The bright red seed pods clinging to the red twigs, against the white snow in winter is very ornamental.



N. E. Hansen and
His Thornless Rose

New Rose Special

1 Alika and 1 Thornless, 75c

6 ROSES \$1.90
Three of Each

THORNLESS ROSE PRICES
LARGE SIZE PLANTS
Each, 40c; 3 for \$1.00
6 Roses, \$1.75

ALIKA ROSE

Most Vivid Cerise Hardy Rose Known

Alika has in its pedigree some of Rosa Gallica, which is considered one of the most intense of all reds. It is exceptionally hardy and it has been known to grow with excellent success in some of the worst soils and climates of our western prairies. This new Rose makes a most excellent addition to any rose planting, it is sturdy and strong growing and blooms over a very long season.

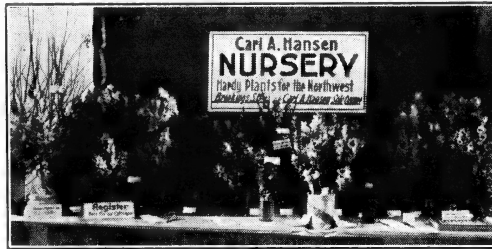
Flowers are of good size and quite double, fragrant and lovely and altogether entrancing. Its long stems are almost thornless and so make an excellent cut-flower for bouquets of beauty in your home.

Alika is a recent introduction of Dr. N. E. Hansen and its demand has grown faster than its supply, but this year, for the first time we have to offer a fair supply of nice strong and well-branched 2-year-old plants which should all bloom for you this coming season.

**Large 2 and 3-year, Well Branched Plants, 40c Each; 3 for \$1.00;
6 for \$1.75; 12 for \$3.00.**

Gladiolus THE QUEEN OF SUMMER FLOWERS

The Glory of the Garden. A flower supreme. Desirable and easy to grow everywhere. A wide range of many attractive colors. We have hundreds of varieties and our assortments are sure to please you for they contain a wonderful array of many colors and kinds which will produce many glorious blooms from early in the season till late in the summer.



Part of a Collection of Over 400 Varieties

Our assortments are made up of only our choicest varieties and contain a great many different kinds covering a wide range of colors and shades.

CHOICE ASSORTMENT OF LARGE BLOOMING SIZE BULBS:

6 Bulbs.....	25c
12 Bulbs.....	40c
25 Bulbs.....	75c

SPECIAL LARGE SIZE ASSORTMENT

Made up of some 50 to 75 of our choicest varieties selected from the 400 and over varieties of Gladiolus we have. This assortment is sure to please you for it contains a wonderful array of many colors and kinds and will produce many glorious blooms from early in the season till late in the summer.

100 CHOICE LARGE BLOOMING SIZE BULBS, ONLY \$2.25.

Packed and Delivered FREE.



Peonies FOR EVERLASTING BEAUTY

The superb flower of the garden that holds sway with the most gorgeous array of gloriously colored flowers, giving to the garden the effect of fairyland. Hardest of perennials and will grow for years almost anywhere with scarcely any care or attention. Peonies are a priceless pleasure that all should have.

Prices for Strong 3 to 5 Eye Divisions
By Colors—Pink, Red, Dark Red, White.

50c Each; 3 for \$1.35; 6 for \$2.50.

Choice Assorted Peonies

40c Each; 3 for \$1.10; 6 for \$2.00.

HARDY PERENNIALS

PHLOX. A hardy and very desirable perennial. Gives a vivid, alluring touch of color to the home grounds that is so much in demand by all lovers of flower beauty. No flower garden is really complete without Phlox. Each, 25c; 3, 65c; 12, \$2.00.

WESTERN YUCCA. Has beautiful long stalks of cream-colored, bell-shaped flowers. Fine for rock gardens. Very drought resistant. Each, 20c; 3, 50c; 12, \$1.75.

BLEEDING HEART. The old fashioned variety. May and June. 18 inch. 3 to 5 eye divisions. Each, 40c; 3 for \$1.00.

IRIS, Large Flowered. Rare choice of many hues just at a time when the garden or lawn is without much color. Very hardy and do well on even the poorest soil. Best Large Assorted Iris: Each, 10c; 6 for 55c; 12 for \$1.00.

IRIS PUMILA. The prettiest dwarf blue Iris. Grows readily anywhere. Each, 5c; 12 for 35c; 100 for \$1.50.

HOLLYHOCK. An old fashioned perennial which adds beauty and color to the background of any flower garden. Can also be used successfully to screen off unsightly views because of their height and dense foliage. Each, 20c; 3, 50c; 12, \$1.75.

DAKOTA PENSTEMON. One of the most beautiful native perennials. Reigns in queenly beauty on the driest hills. Its large cup-shaped flowers are a pretty lilac-blue borne on tall spikes. Plant is low growing and is suitable for rock gardens as well as perennial flower plantings. Each, 25c; 3, 65c; 12, \$2.00.

DAHLIAS. Dahlias are very easy to grow, require but little care and are very productive of beautiful flowers. Large Assorted Tubers, 15c each; 3 for 40c; 6 for 75c; 12 for \$1.35.



Phlox

Shilka Orchid Iris

HANSEN'S NEW SHILKA Everblooming ORCHID IRIS

From the wilds of Siberia, near the town of Shilka, comes this new, hardy, Everblooming Orchid Iris, which was brought to this country by Carl A. Hansen from one of his world-wide plant exploration expeditions.

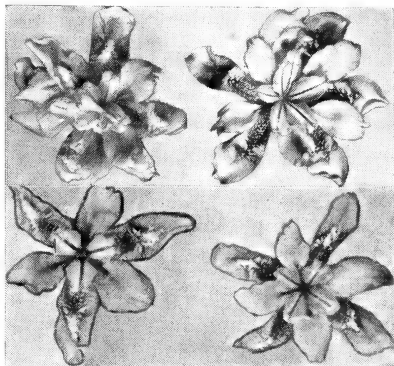
A real hardy outdoor perennial for the Northwest. It blooms continuously for six to eight weeks after all other Irises are gone. Its wide, spreading blooms possess lovely, delicate tones of superb orchid and blue, mingled with creamy white as found in the finest orchids.

With this latest addition to the Iris family, it is now possible for everyone to have flowers growing in their own gardens, so like the expensive orchids. Long slender stems bear as many as twelve to fifteen superbly beautiful flowers on each plant, all at one time, hundreds before the season is over.

The flowers of the new Shilka are delicately fragrant, a remarkable attribute to an already beautiful flower. Many of the blossoms come double.

The foliage, like other Irises, is attractive all through the season, in beds or in border plantings.

Everyone who likes Irises should plant this newest and finest, Shilka Iris.

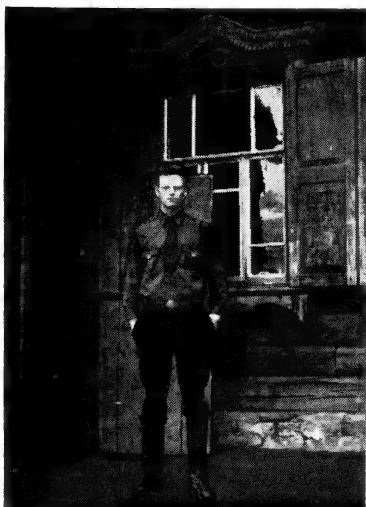


Shilka Iris Flowers

PRICES ON SHILKA IRIS	
SMALL SIZE ROOTS	
Each, 20c; 3, 50c; 12, \$1.75	
LARGE SIZE ROOTS	
Ea., 35c; 3, \$1.00; 12, \$2.75	
LARGE 3 YR. CLUMPS	
Ea., 75c; 3, \$2.00; 6, \$3.50	

HANSEN GRASS

Defies Drouth . . . Green All Summer



Carl A. Hansen taken in Siberia shortly after he had found this new grass.

Ohl for a lawn that will stay green, without watering, all summer. Yet this is exactly what Hansen Grass will do! Even in the driest weather. It has the brightest green color of any grass I have ever seen and it will keep this color throughout the season even through the driest weather, whether you water it or not.

I originally found this grass growing in the wild, in a semi-arid region in the heart of cold central East Siberia. Its unique beauty and brilliant green first caught my attention because it stood out from all the other vegetation which was in a rather dried up condition. After closer observation, its dwarf nature and fine stems really enthused me, and I decided that here was a grass that had real possibilities.

Not until I had brought this new grass safely back to America and had it in my nursery for further tests and propagation did I realize what I find it really was. Nature had given this new grass the inherent qualities for a hardier, finer, dwarf growing, drouth resistant lawn covering, all wrapped up, as it were, in one small package.

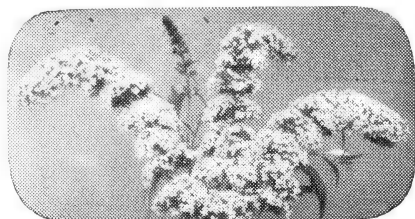
Since then we have been growing and propagating it as rapidly as possible so that others can enjoy it too.

We only have a few plants available this year but while they last and to those who get their order in early we offer them out.

Place your order now. Plants will be shipped at the proper time when ready, alone in a separate package from your other nursery stock order.

Price on Hansen Grass: Per Plant, 35c; 4 for \$1.00.

Best Ornamental Shrubs



SPIREA BILLARDI. One of the most popular shrubs for groups and foundation planting. Bright reddish pink flower spikes. July-September. Large 3-year plants, 35c each; 3 for 80c.



SPIREA VAN HOUTTE. The most popular of all shrubs. Known also as Bridal Wreath. Extremely hardy and easy to grow. The foliage is fine and dense making it an ideal ornamental for foundation plantings, for hedges, for a specimen shrub, or in groups with other ornamentals. It blooms profusely and the small white flowers are borne in tiny clusters all along the slender, pendant branches. These long sprays of flowers are ideal for mixed bouquets.

SPIREA VAN HOUTTE PRICES

Size	Each	Per 3	Per 6	Per 12
Large 2-yr., 3-4 ft.	\$.35	\$.75	\$1.35	\$2.50
Medium 2-yr., 2-3 ft.	.25	.60	1.00	1.75
Small 2-yr., 18-24 inches	.15	.40	.75	1.25
Hedging Stock, \$1.75 per 25; \$6.00 per 100.				

SIBERIAN FLOWERING ALMOND THE HARDIEST DWARF ORNAMENTAL



The first shrub to bloom in spring. Covered with bright rose-pink, fragrant flowers, that last nearly three weeks. You will eagerly await each spring for them to blossom. Its slender, dark green foliage turns to a flame of radiant gold and red in the fall. For a low, hardy flowering hedge none can excel the Siberian Flowering Almond. Plant them 12 to 18 inches apart, and they will form a matted flowering hedge. If left untrimmed they will make a beautifully symmetrical, natural hedge about three feet high. Plant them freely in front of larger shrubs, as they are desirable all season. Each, 40c; 3 for \$1.00.

TAMARIX. Myriads of tiny, individual, almost invisible pink flowers on the tips of the branches, from a distance make a radiant rosy glow like a fluffy cloud at sunset. Very unique, cypress-like, feathery silver foliage. The long, graceful branches dancing in the breeze lend a gay and fantastic effect.

GOLDEN ELDER. A large shrub with heavy, large, yellow leaves. Bears flat clusters of white blossoms and later produces heavy bunches of shiny dark fruit that attracts birds. Especially hardy and strong growing.

HYDRANGEA, P. G. A very beautiful shrub with heavy foliage. Blossoms in late summer and fall, having many huge clusters of creamy white flowers that turn to pink and rose. Especially fine for cutting—last so long.

JAPANESE BARBERRY. A low growing shrub with drooping sprays of bright green foliage. Turns to brilliant hues in autumn. Red berries hang on in winter. Excellent for borders.

PERSIAN LILAC. A fine leaved lilac with large panicles of reddish purple flowers in spring. Does not sprout from the roots, making it better for group plantings.

SPIREA, A. W. A very dwarf ornamental shrub that makes a lovely low hedge, or may be planted in front of other shrubs. Has small bunches of bright red flowers from June until September.

MOCK ORANGE. An upright growing shrub, producing an abundance of large white, fragrant flowers in May and June. One of the taller shrubs.

SIBERIAN DOGWOOD. A large growing shrub with bright red bark and green leaves. Has flat bunches of white flowers followed by white berries.

Prices for Above Shrubs

Size	Each	Per 3	Per 6	Per 12
Large	40c	\$1.00	\$1.75	\$3.00
Medium	30c	.75	1.35	2.25
Small	25c	.60	1.10	2.00

Shrub Collection

12 ALL DIFFERENT
1 Each of All Shrubs
This Page and 1 Bush
Honeysuckle—All Large

Only \$2.75

COSSACK ALFALFA

GREAT PRODUCER, EXTREMELY HARDY, DROUTH RESISTANT

N. E. HANSEN'S MOST FAMOUS ALFALFA INTRODUCTION

Cossack Alfalfa is famous throughout the world for its hardiness and great production of forage even under the worst conditions of drouth, heat and cold. Every farm should have a pasture and hayland of it. There are a number of alfalfas grown, but Cossack is the marvel of them all in hardiness and forage production.

It is absolutely hardy on the most exposed prairie, and does well and produces an abundance of forage and seed in the driest years. Year after year it will outyield the common varieties of alfalfa, and is harder than any of them. Prof. N. E. Hansen, the plant wizard, introduced this alfalfa from Siberia, from a region with only eight inches annual rainfall with temperatures running to 60 degrees below zero in winter with little or no snow.

He has added millions of dollars of value to the farms of the Northwest with this one kind of alfalfa—Cossack. Extensive planting of this king of the alfalfas will pay you big dividends in return. As there is a ready market for the seed at a good price and the surplus hay you get can easily be sold at top prices.

Plant 8 to 12 pounds to the acre for a solid field of alfalfa, or less per acre according to the percentage you want in a mixed pasture.

NEW REDUCED PRICES on Hansen COSSACK ALFALFA SEED

OUR BEST GRADE NORTHERN GROWN SEED

Large Packet, 20c; 4 oz., 40c; 1 lb., 85c, Postpaid.

By Express or Freight Collect: 10 lbs., \$5.50; 25 lbs., \$12.50; 100 lbs., \$48.50.

CRESTED WHEAT GRASS

FORAGE FOREVER

FIRST INTRODUCED BY N. E. HANSEN

Crested Wheat Grass is fast becoming the leading forage grass in areas where it is necessary to plant crops that will withstand the hot drying winds of summer and the rigors of winter. Crested Wheat Grass is being widely planted in those parts of the prairie states where a few years back the land was plowed for wheat but was found unsuitable and has been unproductive since as the native grasses were destroyed and most crops would not thrive. Crested Wheat Grass will establish a good permanent growth and protect the soil from devastating wind erosion.



CRESTED WHEAT GRASS
Hundreds of Long Succulent Stems Per Plant

The Canadian government has planted millions of acres of Crested Wheat Grass because they consider it one of the hardiest and best grasses for permanent forage and pasture.

It has a heavy fibrous root system that enables it to withstand drouth. With very little moisture it produces a very palatable hay that has a high protein content.

The season of pasturing is extended by a month or more with Crested Wheat Grass as it starts earlier in spring and continues later in fall.

For pasture and forage, sow with a grain drill or a seeder, using 10 to 15 pounds per acre, soon after the ground thaws out in spring.

Crested Wheat Grass is a native of the cold dry plains of Russia and Siberia. It was first introduced into America by Prof. N. E. Hansen of South Dakota State College, from a farther north, drier region than some of the later importations.

NEW LOW PRICES ON CRESTED WHEAT

Best Grade Northern Grown Seed

Postpaid: Large Pkt., 15c; 4 oz., 35c; 1 lb., 70c.

By Express or Freight, Collect: 10 lbs., \$3.50;

25 lbs., \$7.50; 100 lbs., \$25.00.

Hansen Perennial Wheat Grass

NEWEST GRAIN-GRASS

The plant the world has been waiting for. An amazing new grain that will, by hybridization, produce perennial wheat. However, in its own right this plant is a remarkable new grain and forage grass. Kernels are long, resembling wheat, though somewhat smaller.

This plant is a most vigorous grower and one of the hardest of grasses through cold and drouth. It will grow to a height of 4 to 5 feet in a season. It can be cut several times for hay, may be pastured, or it may be left to grow and mature the seed crop. It will thrive in semi-arid regions and in poor soils, yet in better soils and with more moisture it will produce more luxuriantly with the biggest of yields. The grass stems and leaves are very succulent and a great feed for livestock.

Being perennial, this plant when once planted will be there for good if not disturbed. It spreads by stooling out, and not by underground shoots, so it can be easily removed by plowing it under when you wish to change your fields.

Prof. N. E. Hansen and Carl A. Hansen brought this new plant from Siberia on one of their recent world-wide plant collecting trips and we offer it in small quantities this year.

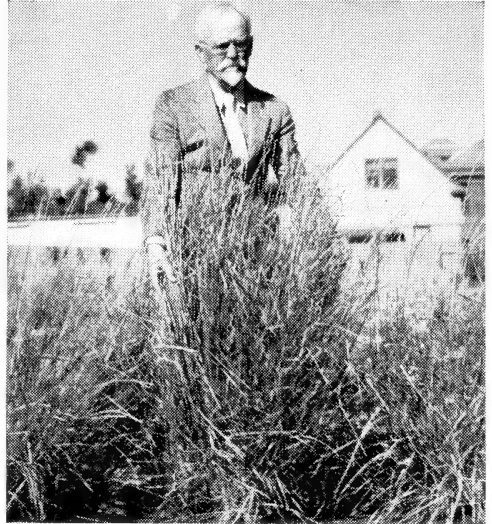
Only a very limited supply of seed available this year, so order early.

PRICE: Per Packet of Seed, 50c. Postpaid.
3 Packets for \$1.00, Postpaid.

CHEE GRASS

A NEW FORAGE GRASS THAT DEFIES DROUTH

Introduced by Prof. N. E. Hansen of South Dakota State College, from one of the driest spots of Siberia. Since then it has been planted in many parts of the country and we have received some mighty fine reports on its behavior as it will thrive and produce a forage crop on land that before had been useless.



Dr. N. E. Hansen and a Clump of Perennial Wheat Grass, 3 Years Old From One Seed.

SPECIAL NOTICE!

There is undoubtedly a great future for this plant, both for forage and seed crops. There will doubtless be a big rush for the seed and it will surely command a good price for many years. It will be well to get a start in this new grain-grass now and reap the wealth in the years to come.

The leaves are quite wide, somewhat resembling a marsh hay. It will grow to a height of 8 to 10 feet in a season with even less than 8 inches annual rainfall on an almost pure alkali soil. Something in its nature makes it like what we might consider a poor type of soil, though this does not in any way affect its feed value or growth on good soil. On ordinary soil it grows with equal vigor though not quite as tall but more bushy. It makes excellent hay if cut two or three times, though it gets rather tough if left uncut all season. At no stage of its growth is it harmful as a stock feed.

It may be pastured, but will produce forage if grown and cut for hay. It is perennial, spreads rapidly by means of stolons or runners, and will last for years after once being started. It is established best by the plant method as root stolons soon make a solid field of it, though it is readily plowed under when the field is to be put into other crops.

We offer plants only, as the seed is very light and does not germinate well. We recommend setting the plants about 6 to 12 inches apart and in rows 12 inches to 3 feet apart. With one year's cultivating like corn, the result will be a much greater growth the following season, soon making a solid field.

PRICES: 12 Plants, 35c; 50 Plants, \$1.00;
100 Plants, \$1.75; 1,000 Plants, \$10.00.

FROM

PLACE
STAMP
HERE

CARL A. HANSEN NURSERY,

Brookings,

South Dakota

of Siberia. Since then it has been planted in many parts of the world. It is a common tree. It is less than 20 feet high.



HANSEN PROSO

THE DRY LAND WONDER GRAIN !



One Bundle of Proso
Grown in Western S. Dak.

The Best Catch Crop for the Northwest—Matures in 60 Days. Can Be Planted Later and Will Stand More Dry Weather Than Any Other Grain.

Here is an all-purpose grain that farmers have been looking for. It matures quickly, is an abundant producer, very drouth resistant, makes good forage, can be planted late, has white kernels, is good food for live stock and poultry, makes a fine breakfast food, is a heavy grain, and grows in any soil.

Best Catch Crop. Proso matures in 60 to 70 days, and should not be sown until after the middle of May. It may even be planted as late as July.

Stands More Dry Weather Than Any Other Grain. During the drouth, many farmers seeded Proso after the other crops had failed, and when the late rains came they had plenty of feed.

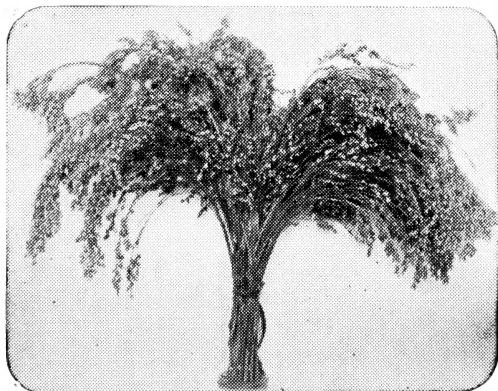
Pasture and Forage. Proso may be pastured until it heads out. It is equally good pasture after harvest until frost. If planted real early, Proso furnishes pasture for those who are short on feed. Proso straw makes a wonderful forage because it retains its green color and does not chaff.

Ideal for Cattle and Hogs. Proso grain is considered one of the best feeds for live stock, equal to or better than wheat. Farmers tell us that ground Proso is equal to corn in finishing off live stock for market.

Ideal for Poultry. In a very interesting poultry feeding test with White Proso mixed with corn, oats, barley and wheat, none of the others were touched until the Proso was gone. It is very valuable because of its high protein content. Proso does not have to be threshed for poultry feeding, but may be fed in shock.

Makes Fine Breakfast Food. Carl A. Hansen, while studying seeds and plant life in Russia, noticed that Proso was used extensively as a food. He experimented with it and by puffing it obtained a very tasty breakfast food, which he named Proso Puffs.

White Kernel. Improved Strain. Prof. N. E. Hansen, the famous plant wizard, introduced the Hansen Proso from Siberia, and selected it for its white color, large kernels, and greater productivity. The seed is round, pure white, several times the size of millet, growing in a sprangly head. It should not be confused with the colored prosos, as Hansen's Proso is superior in every way: size, color, and production.



HOW TO PLANT. Proso may be planted on any kind of land, either broadcast or drilled. Weeds may be plowed under two or three times and killed before it is time to plant Hansen Proso. Many farmers report that by planting Hansen Proso in late May or June, the plants will produce 15 to 25 stems each. When the heads first begin to turn while the straw is still green, it should be cut with a binder and threshed as soon as possible. Average yield of Hansen Proso is from 40 to 60 bushels per acre with a seeding of 20 to 30 lbs. per acre. The grain averages 60 to 64 lbs. per bushel.

PRICES ON HANSEN PROSO

BY MAIL POSTPAID

Large Pkt., 10c; 4 oz., 30c;
5 lbs., \$1.25.

BY EXPRESS OR FREIGHT COLLECT

10 lbs., \$1.00; 25 lbs., \$1.75; 50 lbs., \$3.00;
100 lbs., \$5.00; 500 lbs., \$20.00;
1,000 lbs., \$35.00.

"To Plant the Prairies and the Plains"

A Biographical Story of Horticultural Adventure of

Dr. N. E. Hansen

By MRS. H. J. TAYLOR



DR. N. E. HANSEN
Greatest Plant Breeder of Our Time.

Here is a story of interest to student and layman alike—a saga of adventure and success in a field not usually considered in terms of physical courage and determination, as well as scientific acumen.

It deals with the remarkable work of Dr. Niels Ebbesen Hansen in exploring for, developing, improving and hybridizing plants, fruits and grains with which to make our bleaker northern and western prairies productive and prosperous in spite of adverse climatic conditions. It details how foodstuffs for both man and beast have been introduced and made to thrive by Dr. N. E. Hansen in territory hitherto producing little but drouth, high temperatures in summer and extremely low ones in winter.

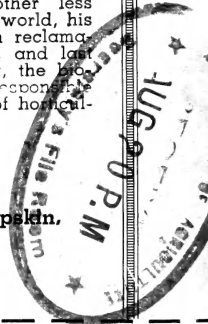
It tells of his many trips to foreign lands in the search for new, different and better plants, of his work in hybridizing and of the countless plant combinations with which he has experimented. It tells of his hundreds of plant introductions and of the intriguing way in which they have been made.

You will be extremely interested in his incidental work for Russia, China and other less known countries of the world, his wonderful assistance in reclamation of the Dust Bowl, and last but decidedly not least, the biographical background responsible for this splendid type of horticultural adventure.

This Limited Special First Edition, Beautifully Bound in Brown Sheepskin.

ONLY \$1.75 PREPAID

(ORDER EARLY TO AVOID DISAPPOINTMENT)



ORDER BLANK

Carl A. Hansen Nursery,
Brookings, South Dakota.

Gentlemen:

Please send me.....book(s) of the story of the life of Niels Ebbesen Hansen, for which I enclose \$.....

(Name).....

(Address).....