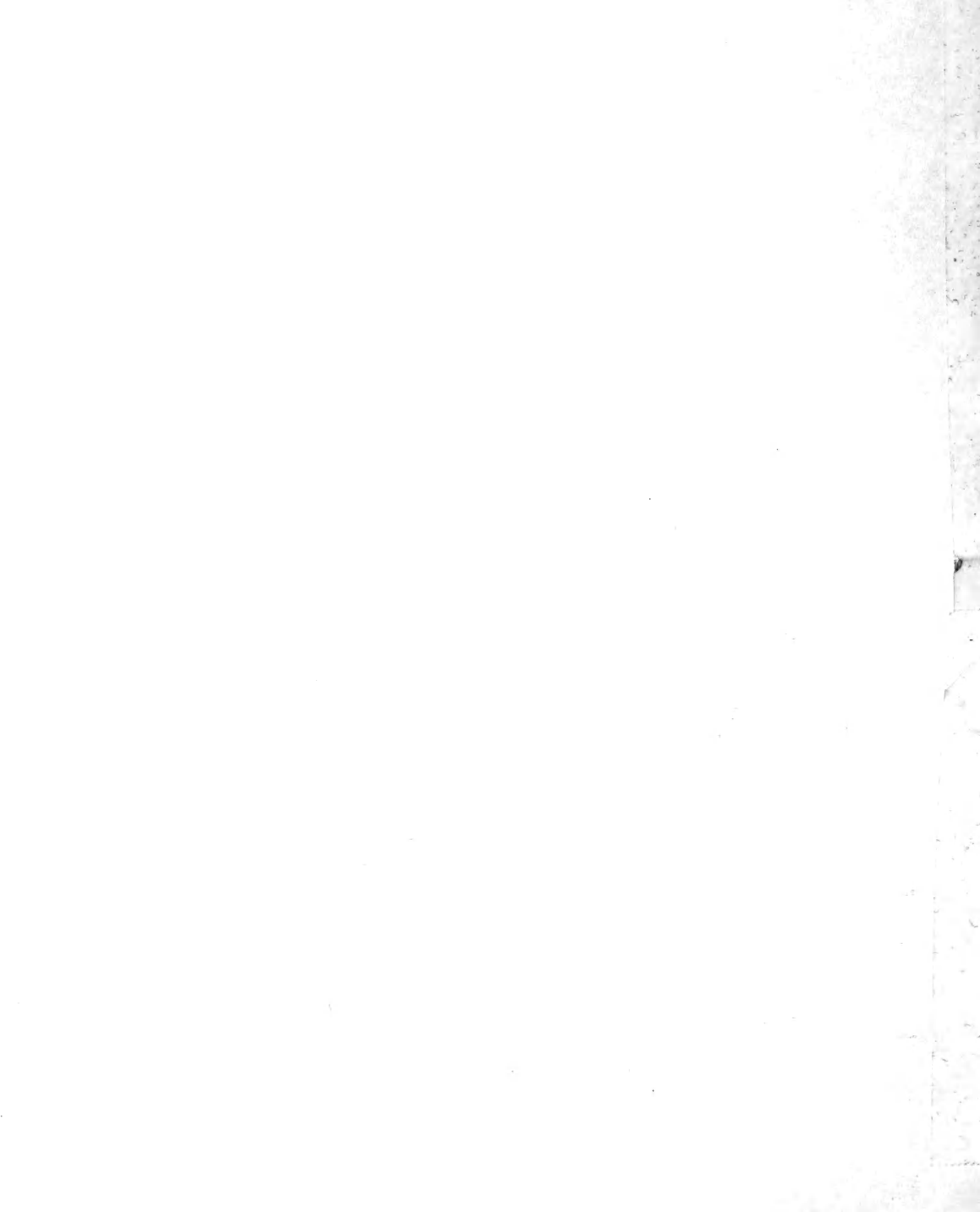


Historic, Archive Document

Do not assume content reflects current scientific knowledge, policies, or practices.





HOME LANDSCAPES

SPRING 1942

H O L M & O L S O N

S A I N T P A U L , M I N N E S O T A

A GUIDE TO MORE ATTRACTIVE HOME YARDS *and* GARDENS

HOW WE SERVE YOU

Please Read Our Liberal Terms and Policies

When to Order. Try to make up your order and send it in soon after this catalog reaches you. Early orders enable us to reserve for you the plants wanted and to give you the first selections. **Your order will be shipped just when the weather is most favorable** and at just the right time for planting.

How to Order. Send in your orders by whatever means you prefer and we assure you of prompt, careful attention. For your convenience our order blank is placed in this catalog, ready for your use. See page 11.

Give Shipping Instructions. Tell us how you want shipments made; whether by Freight, Parcel Post (suitable only for small packages) or Express, and indicate any special routing. We recommend Express as most advantageous and desirable excepting on heavy, bulky shipments. When not instructed we will use our best judgment.

No Packing Charge. Catalog prices are all based on stock F. O. B. St. Paul and no charge is made for packing. Twin-City deliveries are made to any St. Paul or Minneapolis address.

Terms. Cash with order is expected and money should be sent by check, post office order or bank draft. If credit is to be arranged please advise us in ample time and furnish the usual business references. All accounts are due by the 10th of the month following date of purchase.

Our Liberal Payment Plan. For those who are budgeting their landscape, plant and gardening expense for the year 1942 and feel they cannot afford to pay the entire cost at one time we will be pleased to arrange a deferred payment plan. Tell us about your plans, the amount of plant material you want to order, how much you want to pay at a time, credit references and no doubt suitable arrangements can be made.

The H. & O. Liberal Plant Guarantee

First. You are assured that you will receive the best quality of live, healthy plants, properly packed to reach you safely. If any plant ordered proves untrue to variety it will be re-supplied without charge.

Second. We agree to re-supply any plants that may fail to become established the first season after planting at one-half of the original cataloged purchase price. Requests for any such replacements must reach us before October 1st of that season and the account must be paid in full when due.

Our very liberal replacement agreement is possible only because we have full confidence in the vitality and sturdiness of our plants and know they will succeed with normal care and attention.

Full Planting Instructions are sent with the acknowledgment of every order. Consult us freely for any further information you may need. We want the opportunity to help you and no expense will be spared to make every order we send you give entire satisfaction.

Your Correspondence Is Always Welcome

Holm & Olson—The Park Nurseries

Offices—20-24 W. 5th St., Saint Paul.

A copy of "HOME LANDSCAPES" for your friends. Just send us the name and address of your neighbor or friend who is interested in better gardening. We will be pleased to send them a copy of "HOME LANDSCAPES".

You are welcome at our Display Gardens and Nursery where you can make personal selections of Trees, Evergreens, Perennials, Roses and Shrubs. Come often and bring your friends.

"HOME LANDSCAPES" 1942



The beauty of appropriate evergreen plantings add permanently to the charm of this attractive home. Planned and planted by Holm & Olson Landscape Gardeners. Property of Albert P. Dreves, St. Paul.

This new catalog will tell you about many choice and hardy trees, shrubs and plants, the growth and beauty of which you can enjoy right in your own home yard. The varieties are those that are adapted to the soils and climate of these North-Central States.

With over forty-six years in the nursery and gardening business, the Park Nurseries, Holm & Olson, have not only assembled the greatest commercial collection of plant materials and carried out the most outstanding gardening developments in this Northwest, but through the years have acquired a mass of information about plants and gardening that is of inestimable value. Our men have been trained in all branches of horticulture and landscape gardening. Our advice and services are at the disposal of our customers and friends at all times.

*For Your Increased Enjoyment of Your Grounds . . .
May We Help You With . . .*

1 Selected PLANT MATERIALS.

Shrubs and Hedges
Evergreens and Shade Trees
Perennials and Roses
Vines and Hardy Fruits
Lawn Seed and Fertilizers

2 Complete GARDENING SERVICE

Landscape Designing
Construction and Planting
Maintenance and Supervision
Tree Surgery and Repair
Consultation and Advice

All available within one organization and at moderate cost

Your Inquiries Are Always Welcome

The Park Nurseries . . . Holm & Olson, Inc.

20-24 West Fifth St. - - - Saint Paul, Minnesota
(Established 1895)

(Local branch of Landscape and Nursery Departments at Rochester, Minn.)



Beauty is
Complete
Unity

Note the remarkable results of well planned landscape improvements. Property of H. D. Wells, Minneapolis.
Planned and planted by Holm & Olson, Inc.

Your own home
grounds can be
made equally at-
tractive.

Practical Landscaping Advice—

Let HOLM and OLSON Help You Plan . . .

That's Part of Our Service

Your greatest satisfaction and pleasure with your yard is made certain when the landscaping is properly planned and planted.

Make full use of our experienced designers. Let us outline ways for you to get the most pleasing results on your grounds quickly and economically.

Start right. We will help you with a definite, complete plan prepared to meet your own personal situation. Careful cost estimates will be given. Please note page 12.

The plan can be followed in part each season if you prefer.

The helpful advice of our Landscape Architects is available to all our customers. Please ask us for full information.

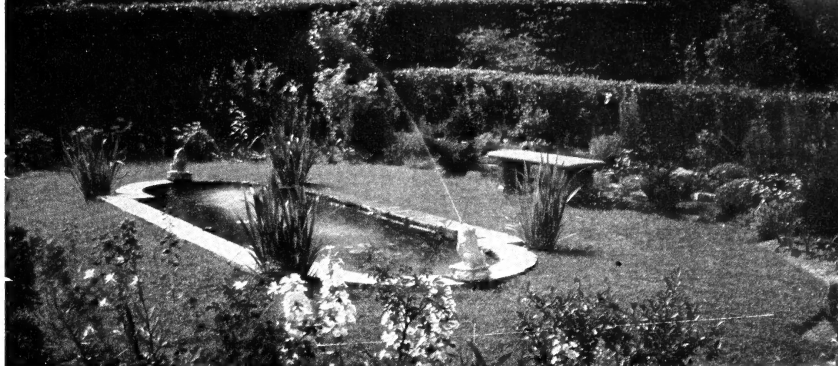
COMPLETE GARDENING SERVICE FOR TWIN-CITY PROPERTIES. In the Twin-Cities, Rochester and vicinity our local organizations of skilled gardeners are ready to serve you on call. Cost estimates will be given on **Planting, Garden Construction, Lawn Making, Tree Repair, Trimming of Trees and Shrubs and General Maintenance.**

(Important Note: For your protection we carry full workmen's liability insurance.)

FOR OUR CUSTOMERS OUT-OF-TOWN. We help you **Plan-By-Mail.** Send us a sketch and measurements of your grounds. We will suggest ways of making your property most attractive. Experienced foremen can be sent to oversee the actual planting and construction if you so desire.

Special Out-of-Town Consultation. For larger public and private properties a personal call by our Landscape Architects may be to your advantage. These special trips can be arranged by appointment. The charges are moderate.

The Art of "Living Out- of-Doors"



A garden spot that represents ease, leisure, space and outdoor beauty.

Right in your own home yard, no matter what its size, there is an opportunity to create a shelter-spot. There, in sheltered seclusion, you can find rest and ease in the quiet beauty of the out-of-doors.

Simplicity of Arrangement

A delightful "out-of-doors living room" can be made without elaborate settings. All that is needed is a tasteful and proper arrangement of plantings and simple accessories that provide comfort and relaxation.

Home Grounds Should Have Privacy

A sense of privacy in the yard, some shelter from the public gaze, is much to be desired. This partial seclusion can readily be secured through taller plantings made along the lot boundaries.



You, too, can make your yard your out-door living room. Developed by Holm & Olson.

Within this sheltering "wall-of-green" there are ideal locations, in an inner border, for all those flowering plants you particularly love.

While protecting and sheltering the private lawn area the lot boundary planting can be a border of both flower and foliage of unusual beauty.

You Can Develop Your Yard So That it Invites Use

An open central area of well-kept lawn beckons the foot-steps. A shapely tree or two for protection with suitable garden seat or chairs in their cool shadows will create a lure to the garden that is irresistible.

Children play safely in such a foliage-protected yard and the entire household turns gratefully to such surroundings for healthful pleasure and recreation.

Let us help you plan and develop your grounds for your greatest use and enjoyment. For over 46 years we have been of service to home owners throughout the Northwest. Your inquiries are invited. Please note page 12.

Our Liberal Payment Plan

For those who are budgeting their landscape, plant and gardening expense for the year 1942 and feel they cannot afford to pay the entire cost at one time we will be pleased to arrange a deferred payment plan. Tell us about your plans, the amount of plant material you want to order, how much you want to pay at a time, credit references and no doubt suitable arrangements can be made.



For
All-Year-
Around
Beauty —

Note the remarkable results of well planned landscape improvements.
Planned and planted by Holm & Olson.

EVERGREENS are the aristocrats of the plant world. They give dignity and charm to the home grounds.

In summer and winter alike Evergreens will bring the freshness and beauty of the woods right into the yard about your home.

Some years ago Evergreens were used only sparingly but today—

Modern Gardening Favors Evergreens

The striking attractiveness that is so evident in the surroundings of the newly-landscaped homes is largely the result of the generous use of evergreens in the planting. The present moderate cost and the compelling beauty of the evergreens gives them this deserving popularity.

The New Evergreen Varieties

Fortunate we are indeed to have available many new evergreen varieties that were unknown in the past. By a wise selection and arrangement of these modern evergreen forms, a fresh interest and beauty can be given to older plantings and an unusual attractiveness to new ones.

We Help You Make Selections

Whether your yard plantings are now established or still to be placed you have equal opportunity to use evergreens to heighten the attractiveness of your home. We will be happy to help you make suitable selections.

Evergreens for the Lawn

For lot boundary and screen plantings and for lawn groups and specimens the taller-growing and spreading evergreens are needed. The Pines, the Spruces and untrimmed Red Cedars and American Arborvitae are suitable to this use.

Evergreens for the House Foundation Planting

The dwarf-type evergreens with compact growth and refined foliage are particularly suited for plant-

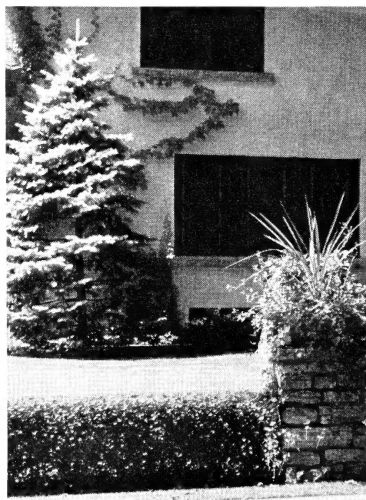
ing about the building. For this purpose use such varieties as the Pfitzer, Savin and Bar Harbor Junipers, Mugho Pines, and Dwarf Yews.

At house corners and by the doorway where taller evergreens are desired the *Scopulorum Juniper*, Red Cedar and American and Pyramidal *Arborvitae* are adapted.

Trim Evergreens

Remove the previous year's central terminal buds to a strong bud on the main branches of Spruce, Pine and Fir. This will produce a thick, dense lateral growth.

To develop dense and thick growth on *Arborvitae* and *Pyramidal Cedars* shear or clip in early spring before growth starts.



Evergreens add year round beauty.

Plant Cheerful Evergreens



A well planned Evergreen planting makes this home unusually attractive. Property of R. F. Kennedy, Minneapolis. Planted by Holm & Olson.

EVERGREENS grow naturally in our northern soil and climate. They are, therefore, particularly appropriate and well suited for use in the landscape plantings throughout this section. We will be pleased to help you select suitable varieties for your grounds.

At the Park Nurseries the Evergreens are given particular attention to develop their full beauty and symmetrical growth. They are dug with solid root balls so that they can be moved without loss of vitality. Full planting directions are always given to assure you the best results.

To help you realize how much growing-time you can save when you plant Evergreens of substantial size WE GIVE THE AGE, AS WELL AS THE SIZE, OF THE OLDER TREES along with their prices.

NOTE: The figures following the name show the approximate height at maturity.

The Arborvitae—Thuya

American Arborvitae (*Thuya occidentalis*). 20 ft. A native evergreen with soft, lacy, fan-shaped foliage. The tree is bushy at the bottom and tapers toward the top. Stands trimming well.

2 to 3 ft., 8 yr.-----	\$3.50	3 to 4 ft., 10 yr.-----	\$4.50
4 to 5 ft., 11 yr.-----	6.00	5 to 6 ft., 12 yr.-----	8.00
6 to 7 ft., 13 yr.-----	\$9.50		

Larger trees priced on request.

Pyramidal Arborvitae (*Thuya occidentalis pyramidalis*). 18 ft. An attractive, solid pyramid of soft green that retains its outline without shearing. Useful in foundation plantings.

18 to 24 in., 7 yr.-----	\$2.50	2 to 2½ ft., 9 yr. -----	\$3.50
2½ to 3 ft., 10 yr.-----	4.00	3 to 4 ft., 12 yr.-----	5.50
4 to 5 ft., 13 yr.-----	8.00	5 to 6 ft., 14 yr.-----	10.00

Siberian Arborvitae (*Thuya wareana siberica*). 8 ft. A symmetrical, compact evergreen of conical outline with broad base. Rich green leaves. Very useful in foundation plantings.

18 to 24 in., 10 yr.-----	\$4.50	2 to 2½ ft., 11 yr.-----	\$6.50
2½ to 3 ft., 13 yr.-----	8.00	3 to 3½ ft., 15 yr.-----	10.00

The Cedars and Junipers

Bar Harbor Juniper (*Juniperus sabina horizontalis*). 2 ft. A true creeper, resting close to the ground, of a beautiful greenish-blue color. A native of the coast of Maine, it has unusual hardiness. Introduced by the Arnold Arboretum. A perfect dwarf evergreen.

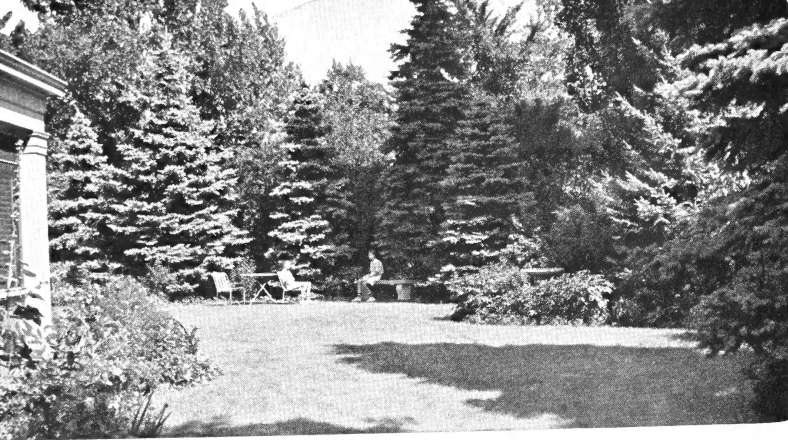
18 to 24 in., 9 yr.-----	\$3.50	24 to 30 in., 11 yr.-----	\$4.50
30 to 36 in., 13 yr.-----	\$5.50		

Chandler's Silver Cedar (*Juniperus scopulorum chandleri*). 15 ft. A new, pyramidal type Cedar of striking beauty. Bright silvery-green foliage that holds its color all year through. The growth is compact and symmetrical making it a superb, ornamental evergreen. Very hardy and drought resistant.

2 to 3 ft., 8 yr.-----	\$ 6.50	3 to 4 ft., 10 yr.-----	\$ 9.00
4 to 5 ft., 11 yr.-----	12.00	5 to 6 ft., 12 yr.-----	15.00

Chinese Cedar (*J. Chinensis*). 15 ft. A broad-based, pyramidal evergreen with bright green foliage. Native of Asia. Stands cold winter and summer drought. A splendid ornamental evergreen for planting on each side of the doorway, at the house corners or as background or accent points in the garden.

2 to 3 ft., 7 yr.-----	\$3.50	3 to 4 ft., 9 yr.-----	\$5.00
4 to 5 ft., 10 yr.-----	6.50	5 to 6 ft., 11 yr.-----	8.00
6 to 7 ft., 13 yr.-----	\$10.00		



The rich color of stately Colorado Spruce makes a gorgeous background and shelter for this secluded garden spot. Grounds of Mr. Clyde Williams, Minneapolis.

Spread Beauty All-Year Around

Golden Juniper (*Juniperus communis depressa aurea*). 2 ft. A dwarf-growing evergreen with many erect, spreading stems. Its brilliant golden color makes it a bright spot in evergreen groups.
18 to 24 in., 9 yr.-----\$4.00 24 to 30 in., 10 yr.-----\$5.50

Pfitzer's Juniper (*Juniperus pfitzeriana*). 6 ft. A graceful, bushy evergreen suited to foreground plantings and particularly adapted to house foundation Evergreen groups. Foliage is an attractive greenish-hue. The branches are spreading and gracefully drooping. Stands the city's dust and soot well.
12 to 18 in., 7 yr.-----\$3.00 18 to 24 in., 9 yr.-----\$3.75
24 to 30 in., 10 yr.-----4.50 30 to 36 in., 12 yr.-----5.50
3 to 4 ft., 13 yr.-----\$8.00
Large specimen plants, \$10.00 to \$15.00

Prostrate Juniper (*Juniperus canadensis depressa*). 3 ft. A low, much-branched evergreen shrub that grows closely to the ground. Excellent in the rock garden and for planting in the foreground.
12 to 18 in., 5 yr.-----\$2.50 18 to 24 in., 7 yr.-----\$3.50
24 to 30 in., 8 yr.-----4.50 30 to 36 in., 10 yr.-----6.00

Red Cedar (*Juniperus virginiana*). 25 ft. Useful wherever a pyramid of rich green is wanted. Probably the most useful of all evergreens because of its beauty, hardiness and adaptability. Can be kept trimmed and shaped to most any outline. Grows naturally to a tall pyramid with broad base.
24 to 30 in., 7 yr.-----\$3.00 30 to 36 in., 8 yr.-----\$4.00
3 to 4 ft., 9 yr.-----5.50 4 to 5 ft., 10 yr.-----8.00
5 to 6 ft., 11 yr.-----10.00 6 to 7 ft., 12 yr.-----12.50
Large specimen Cedars priced on request.

Sargent's Juniper (*Juniperus Sargentii*). 15 in. A new perfect dwarf evergreen. Makes a neat, low, wide-spreading growth of bright green. The most valuable of all junipers for a close ground cover. A rare variety of distinct character from northern Japan by Prof. Sargent.
18 to 24 in., 10 yr.-----\$3.75 24 to 30 in., 12 yr.-----\$4.50

Savin's Juniper (*Juniperus sabina*). 3 ft. A thickly branched, low-spreading shrub form. Hardy and very desirable wherever a low type evergreen is wanted. A native of Alpine mountain regions and thrives well under Minnesota conditions. Stands city atmospheric conditions.
12 to 18 in., 8 yr.-----\$3.00 18 to 24 in., 9 yr.-----\$3.50
24 to 30 in., 10 yr.-----4.50 30 to 36 in., 12 yr.-----6.00
Larger, mature specimens-----\$8.00 to \$15.00

Scopulorum Juniper (Black Hills Blue Cedar) (Colorado Juniper). 15 ft. A close-growing, pyramidal evergreen of light-blue to silvery color. Stands drought and intense heat and cold. A very hardy ornamental of unusual beauty.
18 to 24 in., 6 yr.-----\$4.00 24 to 30 in., 7 yr.-----\$5.50
30 to 36 in., 8 yr.-----6.50 3 to 3½ ft., 9 yr.-----7.50
3½ to 4 ft., 10 yr.-----8.50 4 to 5 ft., 11 yr.-----9.50
5 to 6 ft., 12 yr.-----\$12.50

The Douglas Fir

Douglas Fir (*Pseudotsuga douglasii*). 40 ft. The large bluish-green needles are soft and fragrant. A dependable and handsome large-growing tree of conical shape. Splendid for lawn specimen or in the background of an evergreen group.
2 to 3 ft., 9 yr.-----\$3.50 3 to 4 ft., 11 yr.-----\$4.50
4 to 5 ft., 13 yr.-----6.00 5 to 6 ft., 14 yr.-----9.00
6 to 7 ft., 16 yr.-----\$12.00

The Pines

Austrian Pine (*Pinus nigra*). 50 ft. A decorative, vigorous and tall-growing tree. Long, slender, dark-green needles. Its rapid growth and highly ornamental foliage make it very desirable wherever a tall evergreen on the lawn is wanted.
2 to 3 ft., 8 yr.-----\$3.50 3 to 4 ft., 9 yr.-----\$5.00
4 to 5 ft., 11 yr.-----7.50 5 to 6 ft., 12 yr.-----10.00

Dwarf Mugho Pine (*Pinus mughus*). 3 ft. Very popular compact and dwarf-growing evergreen. Unexcelled for planting about the foundation lines or in front of taller evergreens. In the spring the new growth resembles miniature candles at the end of each branch.
12 to 15 in. spread, 6 yr.-----\$2.75
15 to 18 in. spread, 8 yr.-----3.25
18 to 24 in. spread, 9 yr.-----4.00
24 to 30 in. spread, 12 yr.-----5.50
30 to 36 in. spread, 13 yr.-----7.00

Mountain Pine (*Pinus montana*). 6 ft. Taller and more open growing than the Mugho pine. Desirable as a lawn specimen or in the foreground of taller varieties.
24 to 30 in., 9 yr.-----\$5.50 2½ to 3 ft., 10 yr.-----\$7.00
3 to 3½ ft., 12 yr.-----\$8.50

Scotch Pine (*Pinus sylvestris*). 60 ft. A hardy, tall pine of picturesque growth. Very suitable for background and windbreak plantings. The needles are dark green, shorter and stiffer than the Austrian Pine. Stands dry and exposed situations.
2 to 3 ft., 8 yr.-----\$3.00 3 to 4 ft., 9 yr.-----\$4.50
4 to 5 ft., 11 yr.-----\$7.00

With Evergreens



The beauty of appropriate shrub and evergreen plantings add permanently to the charm of this attractive home planned and planted by Holm & Olson.

The Spruces—Picea

Black Hills Spruce (*Picea canadensis albertiana*). 30 ft. A native of the Black Hills and the hardiest of all spruces. The growth is a rounded, compact pyramid with branches low to the ground. Foliage is a bright fresh green. Stands dry soils and open exposures and is always an ornamental specimen.

12 to 18 in., 8 yr.-----\$2.00	18 to 24 in., 10 yr.-----\$2.50
24 to 30 in., 11 yr.----- 3.00	30 to 36 in., 12 yr.----- 4.25
3 to 4 ft., 13 yr.----- 6.00	4 to 5 ft., 15 yr.----- 8.00
5 to 6 ft., 17 yr.----- \$10.00	

Blue Spruce, "Colorado" (*Picea pungens glauca*). 35 ft. The most admired of all evergreens because of its luxuriant, rich, silvery-blue needles. Outstanding as a lawn specimen. Our Blue Spruce trees have an unusually bright color and are full branched and solid specimens.

18 to 24 in., 10 yr.-----\$ 3.50	2 to 2½ ft., 11 yr.-----\$ 5.50
2½ to 3 ft., 12 yr.----- 7.00	3 to 3½ ft., 13 yr.----- 8.00
3½ to 4 ft., 15 yr.----- 9.50	4 to 4½ ft., 16 yr.----- 12.00
4½ to 5 ft., 18 yr.----- 14.00	5 to 5½ ft., 19 yr.----- 16.00
5½ to 6 ft., 20 yr.----- 20.00	6 to 7 ft., 22 yr.----- 25.00

Larger, full-grown trees priced on request.



Evergreens add interest to the grounds of Mr. W. H. Riedel.

Colorado Spruce (*Picea pungens*). 35 ft. An attractive, hardy spruce of even full-branched growth. Similar to the Blue Spruce but with less blue color. Grows easily in most any situation and makes a shapely, sturdy tree.

18 to 24 in., 10 yr.-----\$ 3.00	24 to 30 in., 11 yr.-----\$ 4.00
30 to 36 in., 12 yr.----- 5.00	3 to 3½ ft., 13 yr.----- 6.00
3½ to 4 ft., 15 yr.----- 7.00	4 to 4½ ft., 16 yr.----- 9.00
4½ to 5 ft., 18 yr.----- 12.00	5 to 6 ft., 20 yr.----- 14.00
6 to 7 ft., 22 yr.----- \$18.00	

Larger, full-grown trees priced on request.

Norway Spruce (*Picea excelsa*). 50 ft. Rapid growing evergreen of open, graceful outline. Deep-green foliage; wide-spreading and drooping. A tall, picturesque tree.

3 to 4 ft., 9 yr.-----\$4.00	4 to 5 ft., 11 yr.-----\$6.00
------------------------------	-------------------------------

The Yews—Taxus

Interest in Yew trees is fast increasing. No family of Evergreens has such popularity in recent years as the Yews. This interest is easily accounted for. The answer is the outstanding merit of the trees in richness of color, variation of form, thriftiness of growth and adaptability to various soils and planting locations.

Yew, Japanese (*Taxus cuspidata*). 5 ft. A very ornamental, medium-size Evergreen with clean, waxy, dark-green leaves. Grows close, upright and compact. The fruit is a red berry.

12 to 18 in., 9 yr.-----\$3.00	18 to 24 in., 10 yr.-----\$5.00
2 to 3 ft., 12 yr.----- \$7.00	

Yew, Dwarf Japanese (*Taxus cuspidata nana*). 2½ ft. A dwarf and very compact Yew with rich, dark-green foliage.

10 to 12 in., 9 yr.-----\$3.00	12 to 15 in., 10 yr.-----\$4.50
18 to 24 in., 12 yr.----- \$7.00	

Modernize with Evergreens

You can add fresh color and new interest to older plantings with a few choice Evergreens.

Full Grown Evergreens

We have many choice, older and larger Evergreens not catalogued. Prices given on request.



Shade and Ornamental Trees

Trees should be planted to frame the view of the house as well as to give shade where needed.
This property planned and planted by Holm & Olson.

THE attractiveness and comfort needed to complete a landscape setting is the proper placing of desirable trees. Thought given to selecting the best varieties for a particular use is important. In the border they may be used as accents, on the lawn to provide welcome shade, to cast interesting shadows, to supply flowers, fruit and foliage effects. A tree or group of trees add a feeling of quiet thoughtful repose to home atmosphere. We will gladly help you select suitable varieties for your grounds.

Since trees reach their maturity slowly you can save years of waiting by using larger sizes. That you may better judge the time saved by planting older stock we give both the sizes and the approximate age with the prices in our catalog listing.

PLEASE NOTE: In the descriptions the figures following the name indicate the approximate height of growth.

The Ash

American White Ash (*Fraxinus americana*). 60 ft. A native tree of straight, trim growth. Splendid for lawn or boulevard. A clean tree not troubled generally by insects and dependably hardy through the north.

6 to 8 ft.	\$1.00	8 to 10 ft.	\$1.25
10 to 12 ft., 7 yr.	2.50	2 in. diam., 8 yr.	3.50
2½ to 3 in. diam., 10 yr.	\$4.00		

The Birches

Cutleaf Weeping Birch. 35 ft. A graceful white-barked, weeping tree. Tall and slender with branches bending to the ground. Delicately-cut leaves. Very popular for lawn planting.

5 to 6 ft.	\$2.50	6 to 8 ft.	\$3.50
-----------------	--------	-----------------	--------

White or Paper Birch. 40 ft. Upright and rapidly growing with grayish-white bark. Very attractive as a specimen or when planted near Evergreens.

5 to 6 ft.	\$1.50	6 to 8 ft.	\$2.00
-----------------	--------	-----------------	--------

New Flowering Crabs

Bechtel's Double Flowering Crab. 15 ft. Covered in spring with rose-like double pink flowers. A splendid, symmetrical, small lawn tree, and very attractive when planted with tall shrubbery.

3 to 4 ft.	\$1.50	4 to 5 ft.	\$2.50
5 to 6 ft.	\$3.50		

Dolgo Crab. 15 ft. A splendid lawn tree of symmetrical shape that is beautiful in both flower and fruit. Fruit is an intense bright red and covers the tree.

4 to 5 ft.	\$1.50	5 to 6 ft.	\$2.00
-----------------	--------	-----------------	--------

Flame Crab. New. A medium size, profusely-flowering tree. The brilliant red, edible fruits cover the branches from September to January.

3 to 4 ft.	\$1.50	4 to 5 ft.	\$2.00
5 to 6 ft.	\$2.50		

Hopa Crab. 15 ft. A new ornamental tree with abundant rose-colored flowers that cover the branches in May. Strikingly ornamental red fruits that hang on until late fall.

3 to 4 ft.	\$1.25	4 to 5 ft.	\$1.50
5 to 6 ft.	\$2.00		

Red Silver Crab. 12 ft. A new ornamental tree with silver cut leaved foliage, ornamental red fruit in abundance.

4 to 5 ft.	\$1.50		
-----------------	--------	--	--

The Catalpa

Western Catalpa (*Catalpa speciosa*). 40 ft. Unusually large heart-shaped leaves and fragrant white flowers. An interesting lawn tree.

6 to 8 ft.	\$1.25	8 to 10 ft.	\$2.00
2 to 2½ in. diam., 7 yr.	\$3.00		

The Hackberry

Hackberry (*Celtis occidentalis*). 50 ft. A hardy, native long-lived tree with rough bark. The foliage somewhat resembles the Elm. Wide spreading tops giving good shade.

6 to 8 ft.	\$1.00	8 to 10 ft.	\$1.50
1 to 1½ in. diam.	2.50	2 to 2½ in. diam., 12 yr.	4.50
2½ to 3 in. diam., 14 yr.	\$6.00		

The Horsechestnut

Horsechestnut (Buckeye) (*Aesculus hippocastanum*). 40 ft. Five-fingered leaves. Covered in May with white flowers that stand up like candles. A most unusual and desirable lawn tree.

6 to 8 ft.	\$4.00	8 to 10 ft.	\$5.00
2½ in. diam.	\$8.00		

**FOR SHADE, SHELTER and
LASTING BEAUTY ABOUT
YOUR HOME**



Trees are the foundation of permanent beauty. Planned and planted by Holm & Olson.

Your grounds are not complete without the use of trees. They give elevation against the sky and produce shadows on the lawn; frame beautiful vistas and shut out undesirable views.

The Elms

American Elm (*Ulmus americana*). 60 ft. A gracefully-arching and wide-spreading tree that is unquestionably the most popular tree in America for shade, street and lawn planting. It is tough grained and fast growing which places it at the head of the "permanent" class of ornamental trees. Very hardy.

6 to 8 ft. -----	\$1.00	8 to 10 ft. -----	\$1.50
1 1/2 to 2 in. diam., 7 yr. -----	2.25	2 to 2 1/2 in. diam., 9 yr. -----	3.00
2 1/2 to 3 in. diam., 11 yr. -----	4.00	3 to 3 1/2 in. diam., 14 yr. -----	6.00

Larger specimen Elms priced on request.

Chinese Elm (*Ulmus pumila*). 40 ft. A new and valuable tree from Asia. Bushy head and smaller leaves than the American Elm. Suited for lawn planting and windbreaks. Grows rapidly and stands poor soils and dry conditions.

6 to 8 ft. -----	\$1.00	8 to 10 ft. -----	\$1.25
1 1/2 to 2 in. diam., 5 yr. -----	2.25	2 to 2 1/2 in. diam., 7 yr. -----	2.75
2 1/2 to 3 in. diam., 9 yr. -----	\$3.50		

Larger Chinese Elms priced on request.

The Maples

Norway Maple (*Acer platanoides*). 50 ft. A handsome lawn and shade tree forming a perfect rounded head of broad, dark green leaves.

6 to 8 ft. -----	\$2.25	8 to 10 ft. -----	\$3.50
1 1/2 to 2 in. diam., 8 yr. -----	4.50	2 to 2 1/2 in. diam., 10 yr. -----	6.00
2 1/2 to 3 in. diam., 12 yr. -----	\$7.50		

Larger Norway Maples priced on request.

Purple Leaf Maple (*Acer platanoides* Schwedler). 40 ft. Leaves are bright reddish-purple in spring toning to a deep purplish-green later. Highly prized for lawn planting.

6 to 8 ft. -----	\$3.50	8 to 10 ft. -----	\$5.00
1 1/2 to 2 in. diam., 10 yr. -----	6.50	2 to 2 1/2 in. diam., 12 yr. -----	10.00

Silver Maple (*Acer dasycarpum*). 60 ft. The leaves are light green with silvery green beneath. A native rapid-growing tree that succeeds anywhere.

6 to 8 ft. -----	\$1.25	8 to 10 ft. -----	\$1.50
1 1/2 to 2 in. diam., 5 yr. -----	2.50	2 to 2 1/2 in. diam., 7 yr. -----	3.00

Sugar Maple (Hard Maple) (*Acer saccharum*). 70 ft. A symmetrical hardy native tree of great beauty. Forms a dense oval head of dark green leaves. Brilliant fall coloration.

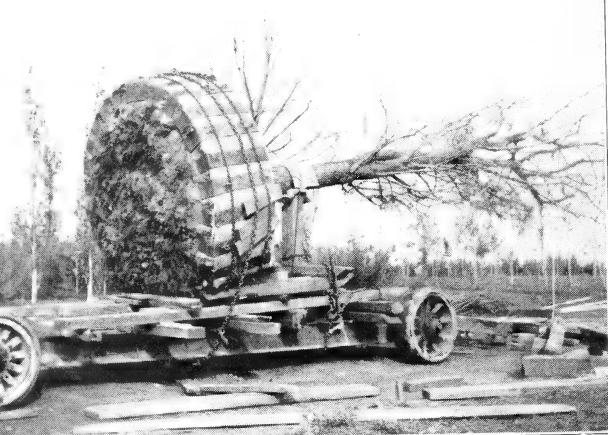
6 to 8 ft. -----	\$2.25	8 to 10 ft. -----	\$3.50
1 1/2 to 2 in. diam., 10 yr. -----	4.50	2 to 2 1/2 in. diam., 12 yr. -----	6.50

Tatarian Maple (*Acer tataricum* Ginnala). 15 ft. A very hardy, shrub-like tree for lawn specimen or with tall shrubs in the border. Fall coloring a bright red.

3 to 4 ft., bushy -----	\$0.75	4 to 5 ft., bushy -----	\$1.00
5 to 6 ft., bushy -----	\$1.50		



A young tree from our Nursery. Note the well-developed top and the full fibrous root growth.



The photograph shows a forty foot Elm ready to be moved from our nursery. It provided shade immediately and saved our customer over 25 years of waiting.

Ornamental Trees

WHY WAIT FOR SHADE?

Plant large trees and save years of waiting.

With our modern equipment and experienced workmen we can safely move fully-grown shade trees to your grounds.

Ask Us For Details and Costs

Linden—Basswood

American Linden (Basswood) (*Tilia americana*). 70 ft. A stately tree with broad, heart-shaped leaves; fragrant white flowers. Quite hardy, native; fine for lawn or street planting.

6 to 8 ft.	\$1.50	8 to 10 ft.	\$1.75
1 1/4 to 2 in. diam., 7 yr.	3.00	2 in. diam., 9 yr.	3.50
2 1/2 to 3 in. diam., 11 yr.	\$4.50		

Larger specimen Lindens priced on request.

The Mountain Ash

Mountain Ash (*Sorbus aucuparia*). 30 ft. White flowers in May followed by bright orange-red berries, which hang on for months. Very ornamental. Used as a specimen on the lawn or as an accent in the border.

8 to 10 ft.	\$2.50	1 to 1 1/2 in. diam.	\$3.50
------------------	--------	---------------------------	--------

PLUM, Purple Leaf. Please see under shrubs—page 18.

The Poplars

Bolleana Poplar (*Populus bolleana*). 40 ft. Upright, columnar growth with smooth, gray-green bark. Glossy, green leaves with downy white undersides. Makes a strong vertical accent.

6 to 8 ft.	\$1.00	8 to 10 ft.	\$1.75
10 to 12 ft.	2.25	2 to 2 1/2 in. diam., 6 yr.	3.00

Carolina Poplar—Norway Variety (*Populus eugenei*). 50 ft. A hardy, quick-growing tree with bright-green and dense foliage. Grows anywhere.

6 to 8 ft.	\$0.75	8 to 10 ft.	\$1.00
10 to 12 ft.	2.00	Larger sizes	\$3.00 to 10.00

Lombardy Poplar (*Populus fastigiata*). 40 ft. A tall picturesque, spike-like tree. Erect and pyramidal in form. Planted for landscape effect, as an accent or for screening purposes. Grows quickly. Seldom spreads over 8 ft. wide and can be used to advantage in places of restricted size between buildings, in small lawns and along narrow avenues.

6 to 8 ft.	\$0.75	8 to 10 ft.	\$1.00
10 to 12 ft.	\$1.50		

The Willows

Golden Willow (*Salix vitellina aurea*). 35 ft. A symmetrical, round-topped tree. Rapidly growing with branches of rich golden yellow. Very hardy.

6 to 8 ft.	\$1.75	8 to 10 ft.	\$2.25
-----------------	--------	------------------	--------

Laurel-Leaf Willow. 20 ft. Shiny dark green foliage resembling the laurel. The best willow for shade and screen.

6 to 8 ft.	\$1.50	8 to 10 ft.	\$2.00
-----------------	--------	------------------	--------

Niobe Weeping Willow. 30 ft.

Golden bark and graceful weeping branches that sweep the ground. A much-admired lawn tree.

6 to 8 ft.	\$1.75
8 to 10 ft.	2.25

Wisconsin Weeping Willow. 30 ft.

The hardest of the weeping willows. Very desirable for a quick growing, ornamental lawn specimen. Dark colored bark.

6 to 8 ft.	\$1.50
8 to 10 ft.	2.00

The Black Walnut

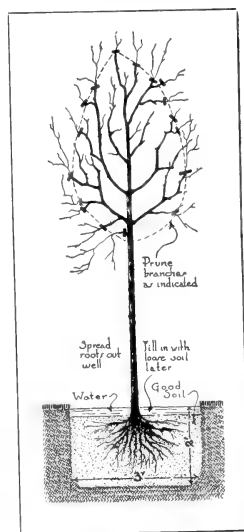
Black Walnut (*Juglans nigra*).

The familiar nut-bearing tree. Grows slowly to majestic size.

6 to 8 ft.	\$2.25
-----------------	--------

HOW TO PLANT A TREE

Plant firmly, trim the tops and water well.



Our booklet of practical planting information will be sent with your order.

You Will Benefit by ordering early so that your stock can be reserved for you. Shipment will be made at the best planting time.

Order Early and be assured of a choice selection and a timely planting.

Planting Instructions are sent with our acknowledgment of your order.

ORDER SHEET

THE PARK NURSERIES

HOLM & OLSON, INC.

20-24 W. 5th St.

St. Paul, Minn.

Date Ordered _____

Ship to _____

Street _____

City _____

County _____ State _____

Ship By: Exp. Freight Name of R. R. _____

(IF DIFFERENT)

Charge to _____

Address _____

CATALOG PRICES ARE NET, F. O. B. SAINT PAUL
 PARCEL POST—Allow for postage if you want shipment by mail.

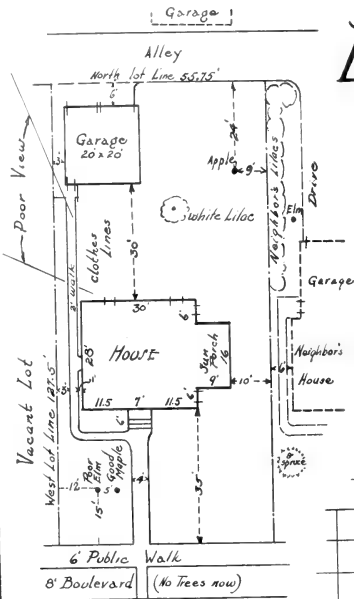
QUANTITY	NAME OF VARIETY	SIZE	Price Each	TOTAL

May we substitute an equally good variety if any of kinds ordered are exhausted? No. _____ Yes _____

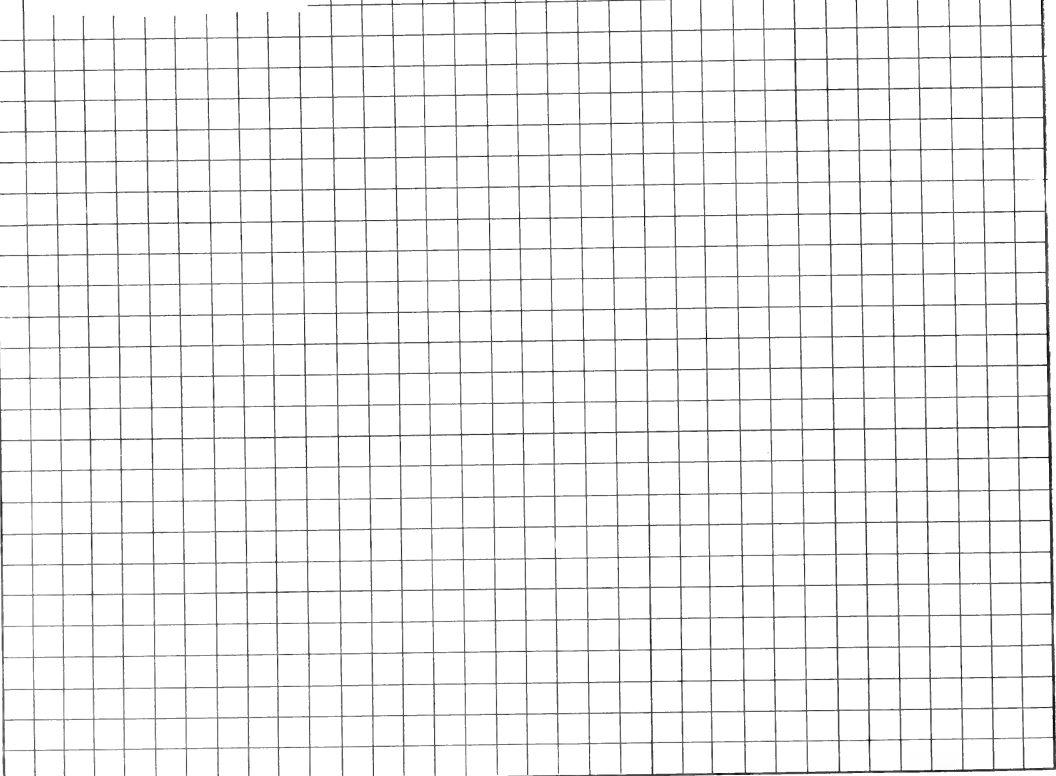
Write below the names and addresses of your friends who would like a copy of our catalog:

LET HOLM & OLSON HELP YOU PLAN

Make full use of our experienced designers. Send us a sketch, measurements and if possible a photo of your house and grounds. For the average city lot send us the information as indicated on the adjoining plan. Show the size of grounds or that part of the grounds you are planning to improve and plant, location of drive, walks, house, garage, trees and present plantings. This information will enable us to furnish you with a detailed planting plan. This cross-section page is to be used for making survey. Scale—one square equaling a definite unit of measure.



EXAMPLE OF SURVEY



Hardy Hedges

**FOR ORNAMENT AND
PROTECTION**



Hedges properly chosen, planted, and maintained become dense and solid as a wall.

A hedge makes an ornamental wall-of-green that will protect and give privacy to your yard. The varieties we list are all sturdy-growing shrubs adapted for hedges. All are of proven hardiness. Space the plants one foot apart for a close, tight hedge.

PLEASE NOTE—25 or more plants sold at the 100 rate.

ALPINE CURRANT. A dense, low and close-growing hedge. Stands shade and heavy shearing. The most popular of the low, hardy hedge plants.

12 to 18 in.-----\$25.00 per 100
18 to 24 in.----- 30.00 per 100

BUCKTHORN. A very hardy and dense-growing ornamental hedge. Rich green leaves that are always attractive. Highly recommended.

2 to 3 ft., bushy plants...\$15.00 per 100
3 to 4 ft., bushy plants... 20.00 per 100

COLUMNBERRY—True Hedge. A new and excellent low hedge. A close-growing and upright Barberry that needs no trimming.

12 to 15 in.-----\$18.00 per 100
15 to 18 in.----- 21.00 per 100

BARBERRY, Japanese. Makes a neat low boundary. Small leaves. Red berries. Stands trimming.

12 to 18 in.-----\$20.00 per 100
18 to 24 in.----- 25.00 per 100

COTONEASTER. A close growth of deep green, glossy foliage. A very hardy

plant that is unusually ornamental.

2 to 3 ft.-----\$20.00 per 100
3 to 4 ft.----- 35.00 per 100

HONEYSUCKLE (Tartarian). A rapid-growing tall hedge with pink flowers and red berries.

2 to 3 ft.-----\$30.00 per 100
3 to 4 ft.----- 35.00 per 100

SIBERIAN PEA (Caragana). Very popular for a tall, strong-growing hedge. Unusually hardy even in exposed situations.

2 to 3 ft.-----\$15.00 per 100
3 to 4 ft.----- 20.00 per 100

Climbing and Flowering Vines For Shade and Beauty

Vines contribute very much to the attractiveness of garden plantings. Use them to soften harsh angles, to frame vistas and to screen undesirable views. Their flowers are produced in masses, important in providing color.

BITTERSWEET (*Celastrus scandens*). A hardy rapid-growing native climber with glossy leaves and often with red berries in the fall. Strong 2 yr. plants-----\$0.50 Extra size-----\$0.75

BOSTON IVY (*Ampelopsis veitchii*). A small-leaved ivy that clings to walls closely. Needs protection in Minnesota. Excellent for low walls or piers. Strong 2 yr. plants-----\$0.60 Extra size-----\$0.85

DUTCHMAN'S PIPE (*Aristolochia siphon*). The heavy, heart-shaped, close-growing leaves make this vine unexcelled for shade and screens. Strong 2 yr. plants-----\$1.00

ENGELMAN'S IVY (*Ampelopsis engelmannii*). Clings without support to brick, stone or plaster. Grows rapidly and is absolutely hardy. Crimson fall color. Strong 2 yr. plants-----\$0.50 Extra size-----\$0.75

GRAPE, Hardy Beta. A rapid growing vine with handsome foliage for pergolas, arbors and fences. Desirable fruit of tart flavor for eating or preserving. Strong 2 yr. plants-----\$0.35

HONEYSUCKLE, Scarlet Trumpet (*Lonicera sempervirens*). A graceful twining vine for small lattices. The bright, scarlet flowers are very attractive. Strong plants-----\$0.60

MATRIMONY VINE (*Lycium chinensis*). A good trailer to cover slopes. Large red berries follow the bright purple flowers. Strong 2 yr. plants-----\$0.50

VIRGINIA CREEPER (*Ampelopsis quinquefolia*). A useful native, vigorous vine for covering fences and arbors. Strong plants-----\$0.50

We Start Your Clematis Vines for You

For your best results we supply all Clematis in strong plants that are potted and in active growth when delivered. Remove the plant from the pot and plant the top of the earth ball three inches below the ground level.

Clematis—Queen of Flowering Vines

Purple Clematis (Jackmani). The popular, large-flowering clematis with gorgeous flowers of velvety, violet-purple. Beautiful on a trellis or lattice.

Strong, potted plants-----\$1.25 Extra size-----\$1.50

Red Clematis (Mme. Ed. Andre). Large, rosy-carmine flowers. Strong, potted plants-----\$1.25

Scarlet Clematis (Coccinea). Has bell-shaped, closed flowers of coral red. Delightful on a small trellis.

Strong, potted growing plants-----\$1.25

Sweet Clematis (Paniculata). A dependable flowering vine for fence or lattice. In late summer it is covered with great sheets of fragrant, white starry flowers.

Strong, growing plants-----\$1.00



The beauty of appropriate shrub and evergreen plantings add permanently to the charm of this attractive home. Developed by Holm & Olson.

Shrubs for Flower and Foliage

A LARGE area of our nursery and the skill of experienced gardeners is devoted to developing our shrubs into sturdy, handsome plants that will quickly bring attractiveness to your home grounds.

Much of the beauty and charm in landscape planting comes from the free use of flowering shrubs. Their delicate coloring, fragrance and profusion of bloom entitles them to an important place in your home yard.

It is the softening grace of the dwarf and medium height shrubs when planted about the foundations that creates the transformation from bareness to beauty. The taller shrubs find their proper place as specimens in the lawn or in the border along the lot boundaries to give privacy or to screen out unattractive views. Allow us to help select suitable varieties for your grounds.

PLEASE NOTE: The figures following the shrub name show the approximate height of growth.

Flowering Almond

Double Flowering Almond (*Amygdalus rosea*). 4 to 5 ft. A symmetrical upright shrub with a striking display of pink, rose-like flowers along the branches in early spring. One of the earliest shrubs to bloom. A white-flowering variety is also offered.

2 to 3 ft.	\$0.75	3 to 4 ft.	\$1.00
-----------------	--------	-----------------	--------

Buckthorn

Buckthorn (*Rhamnus cathartica*). 8 to 10 ft. Very dependable dense-growing shrub with lustrous leaves and black berries. A twiggly growth that permits of trimming to any desired form or outline. (See page 18 for hedge prices and sizes.)

2 to 3 ft.	\$0.35	3 to 4 ft.	\$0.50
-----------------	--------	-----------------	--------

Caragana

Caragana. See Siberian Pea Tree, page 18.

Barberry

Japanese Barberry (*Berberis thunbergii*). 2½ ft. The most popular hardy dwarf shrub with low, spreading growth to form a dense bush. Red berries, brilliant fall foliage color. Grows most anywhere—in partial shade, sunny, moist or dry places. (For hedges please see page 13.)

12 to 18 in.	\$0.30	18 to 24 in.	\$0.40
-------------------	--------	-------------------	--------

Koreana Barberry. 4 ft. A new compact shrub, medium height, foliage dark green to bright red. Fruit red. A shrub recommended for planting about buildings.

18 to 24 in.	\$0.75	24 to 36 in.	\$1.00
-------------------	--------	-------------------	--------

The New Red-Leaved Barberry

Red-Leaved Barberry. 2½ ft. Similar in growth to the Japanese Barberry but has rich, bronze-red leaves that hold their red color all summer. A bright contrast to other shrubs. Plant in full sun for best leaf color. One of the best of the newer plants.

12 to 18 in.	\$0.50	18 to 24 in.	\$0.75
-------------------	--------	-------------------	--------

Bridal Wreath

Bridal Wreath. See under *Spiraea*, page 19.

The True-Hedge Columberry A New Ornamental Plant

This splendid shrub (Plant Patent No. 110) is a very hardy, dense and upright-growing Barberry. Its handsome, glossy leaves thickly cover its pyramidal form. Perfect for a low hedge or as specimen plants in the garden or shrub borders.

12 to 15 in.	\$0.30 each;	10 for \$2.75
15 to 18 in.35 each;	10 for 3.00
18 to 24 in.40 each;	10 for 3.50

OUR LIBERAL PAYMENT PLAN

For those who are budgeting their landscape, plant and gardening expense for the year 1942 and feel they cannot afford to pay the entire cost at one time we will be pleased to arrange a deferred payment plan. Tell us about your plans, the amount of plant material you want to order, how much you want to pay at a time, credit references and no doubt suitable arrangements can be made.

Sturdy Varieties for Northern Gardens



The border planting of flowering shrubs, evergreens, and perennials gives privacy and makes this yard inviting for use.

Coralberry

Coralberry (*Symphoricarpos vulgaris*). 3 to 4 ft. A medium height, graceful, native shrub that grows well in sun or shade. Red berries cluster the ends of the branches in late summer.

2 to 3 ft.-----	\$0.50	3 to 4 ft.-----	\$0.75
-----------------	--------	-----------------	--------

Cotoneaster

Cotoneaster acutifolia. QUINCE BERRY. 6 ft. A neat, clean shrub with dark, glossy green leaves. A dense-growing and highly ornamental bush all season with a striking, bright yellow fall coloration.

18 to 24 in.-----	\$0.35	2 to 3 ft.-----	\$0.50
		3 to 4 ft.-----	\$0.75

Cotoneaster integerrima. 4 ft. A new decorative shrub, leaves shiny, dark green above, whitish beneath, holds leaves late into the fall. Very hardy. Red fruit.

18 to 24 in.-----	\$0.60
-------------------	--------

Currants (Ornamental)

Mountain Currant (*Ribes alpinum*). 4 ft. Excellent, dense-growing, very hardy ornamental shrub. Stands shearing and will grow in shade. Probably the most generally useful of all the dwarf shrubs. (For hedges see page 18.)

12 to 18 in.-----	\$0.35	18 to 24 in.-----	\$0.50
		24 to 30 in.-----	\$0.80

Yellow-Flowering Currant (*Ribes aureum*). 6 ft. A substantial, spreading bush with large, yellow, fragrant flowers in spring. Stands shade. A very popular old-fashioned shrub.

2 to 3 ft.-----	\$0.60	3 to 4 ft.-----	\$0.80
-----------------	--------	-----------------	--------

Dogwood (Cornus)

Golden Dogwood (*Cornus sibirica aurea*). 6 ft. Highly valued for its bright yellow branches in fall and winter and particularly attractive when planted near the red-barked variety. White flowers.

2 to 3 ft.-----	\$0.50	3 to 4 ft.-----	\$0.75
-----------------	--------	-----------------	--------

Red-Twigged Dogwood (*Cornus sibirica*). 6 ft. A hardy, vigorous bush with bright coral-red branches which make the sturdy shrub attractive in all seasons. Strong and erect in growth.

2 to 3 ft.-----	\$0.50	3 to 4 ft.-----	\$0.75
-----------------	--------	-----------------	--------

Variiegated Dogwood (*Cornus elegantissima*). 6 ft. The green leaves are striped and margined with white. Red colored bark. An unusual plant making a bright spot of color in the shrub group.

2 to 3 ft.-----	\$0.75	3 to 4 ft.-----	\$1.00
-----------------	--------	-----------------	--------

Elderberry (Sambucus)

Black-Fruited Elder (*Sambucus canadensis*). 6 ft. The old-fashioned favorite with large clusters of fragrant white flowers and edible black fruit. A rapid-growing hardy shrub that stands partial shade.

2 to 3 ft.-----	\$0.50	3 to 4 ft.-----	\$0.80
-----------------	--------	-----------------	--------

Cut-Leaved Elder (*Sambucus nigra laciniata*). 6 ft. Lacy, fern-like leaves that make a pleasing contrast with other shrubs. The branches are spreading and gracefully drooping.

2 to 3 ft.-----	\$0.50	3 to 4 ft.-----	\$0.80
-----------------	--------	-----------------	--------

Golden Elder (*Sambucus aurea*). 7 ft. A handsome wide-spreading shrub with bright yellow leaves all season. It shows its brightest color when planted in a sunny spot.

2 to 3 ft.-----	\$0.50	3 to 4 ft.-----	\$0.80
-----------------	--------	-----------------	--------

Red-Berried Elder (*Sambucus racemosa*). 7 ft. Big clusters of bright red berries in July. A large native shrub of spreading growth.

2 to 3 ft.-----	\$0.50	3 to 4 ft.-----	\$0.80
-----------------	--------	-----------------	--------

Euonymus (Strawberry Bush)

Euonymus alatus. WINGED STRAWBERRY BUSH. 6 to 8 ft. The bark on its horizontally-growing branches has a curious winged development. The leaves are clean and lustrous and have a brilliant fall color. Rose colored berries in fall.

2 to 3 ft.-----	\$1.50	3 to 4 ft.-----	\$1.75
-----------------	--------	-----------------	--------

Euonymus americana. STRAWBERRY BUSH. 8 ft. An admirable, hardy shrub with upright, slender, green branches; neat foliage and pink colored fruits. Bright fall foliage color.

2 to 3 ft.-----	\$0.60	3 to 4 ft.-----	\$0.90
-----------------	--------	-----------------	--------

4 to 5 ft.-----	\$1.00
-----------------	--------



Flowering Shrubs

Through the proper planting of medium height shrubs this house and small grounds are blended into a pleasing picture.

Golden Bell (Forsythia)

FORSYTHIA, suspensa. GOLDEN BELL. 5 ft. A graceful, drooping shrub with golden, bell-shaped flowers in spring. Needs winter protection in Minnesota.
2 to 3 ft. -----\$.60

Forsythia ovata. 5 ft. A new, distinctive and handsome variety from Korea, early to bloom, stands extreme cold, blooms every year, flower yellow.
18 to 24 in. -----\$.60

HIGHBUSH CRANBERRY. See Viburnum, page 20.

The Honeysuckles (Lonicera)

Pink Honeysuckle (Lonicera tatarica rosea). The popular pink to rose flowering Honeysuckle bush. Bright red berries follow the blossoms. Very hardy, rapid-growing shrub that thrives well in sun or partial shade.
18 to 24 in. -----\$.35 2 to 3 ft. -----\$.50
3 to 4 ft. ----- .75 4 to 5 ft. ----- 1.00

Morrow's Honeysuckle (Lonicera Morrowi). 5 to 6 ft. Compact yet spreading growth with gracefully curved branches. Cream-yellow flowers cover the stems in May followed by red berries in July.
2 to 3 ft. -----\$.50 3 to 4 ft. -----\$.75
4 to 5 ft. -----\$1.00

White Honeysuckle (L. tatarica alba). 8 ft. A hardy bush honeysuckle with white flowers. The general appearance and type of growth is similar to the Pink flowering variety.
2 to 3 ft. -----\$.50 3 to 4 ft. -----\$.75

The Hydrangeas

Hydrangea, Large Flowering (H. paniculata grandiflora). 4 ft. Magnificent, conical flowers of white that have a pink color in fall and are often cut for winter house decoration. The largest and most handsome flowers of all hardy shrubs.
18 to 24 in. -----\$.60 2 to 3 ft. -----\$.80

Hydrangea Snowhill (H. arborescens grandiflora). 3½ ft. Large white snowball-like flowers from June to frost. A pleasing bush in every way with large leaves and spreading growth. Likes partial shade. Always admired in house-foundation plantings.
18 to 24 in. -----\$.60 2 to 3 ft. -----\$.80

Tree Form Hydrangea. A single-stemmed, tree form of the large-flowering Hydrangea.
2 to 3 ft. -----\$1.50 3 to 4 ft. -----\$2.00

Juneberry (Amelanchier)

Juneberry (Amelanchier canadensis). 15 ft. Good native shrub with white flowers early in spring and black fruit that attracts birds. A tall and desirable background shrub.
2 to 3 ft. -----\$.60 3 to 4 ft. -----\$.75



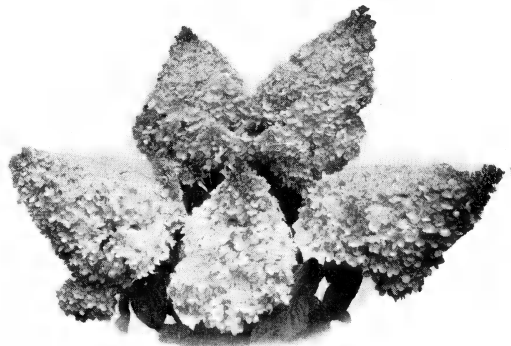
The Mockoranges (Syringa)

Double-Flowering (Virginal) Mockorange. 4 to 5 ft. Magnificent new variety with large, creamy-white and fragrant double flowers. Full bloom in spring followed by occasional flowers all season. Excellent foliage and a shrub that always attracts attention.
18 to 24 in. -----\$.60 2 to 3 ft. -----\$.80
3 to 4 ft. -----\$.90

Golden Mockorange (Philadelphus aureus). 3 ft. Bright golden yellow leaves made this dwarf shrub valuable to color shrub groups. Cheerful and attractive all through the summer.
12 to 18 in. -----\$.75 18 to 24 in. -----\$1.00
24 to 30 in. -----\$1.25

Lemoine's Mockorange (Philadelphus Lemoinei). 5 ft. A hardy erect fine-leaved shrub. Its slender branches bear an abundance of fragrant white flowers in June. Particularly desirable in house foundation plantings.
18 to 24 in. -----\$.50 2 to 3 ft. -----\$.60
3 to 4 ft. -----\$.80

Sweet Mockorange (Philadelphus coronarius). 8 ft. A popular, old-time favorite. Big, pure-white and delightfully fragrant flowers in June that give the plant its name. A splendid ornamental and hardy tall shrub.
18 to 24 in. -----\$.40 2 to 3 ft. -----\$.60
3 to 4 ft. ----- .80 4 to 5 ft. ----- 1.00



The Large-Flowered Hydrangea.

Lilacs

FOR FRAGRANT BEAUTY



Much charm of home grounds comes from the free use of flowering and fruiting shrubs. This planting planned and planted by Holm & Olson.

Dependable and absolutely hardy, the growth and beauty of the Lilac is enjoyed and admired by everyone. Throughout our northern states the Lilac thrives splendidly and quickly grows into a magnificent shrub.

ENJOY THE NEW FRENCH LILACS

French Hybrid Lilacs are modern improvements of the old-fashioned lilac. The flowers are gorgeous in coloring and much larger in size. The French Lilacs bloom when young and bear year after year a profusion of delightful blossoms.

Selected French Lilacs for 1942

Alphonse Lavalle. Flowers double, of medium size, color blue changing to a lavender violet. Deeper within than without. Clusters large, shapely and compact. A recommended variety.
2 to 3 ft. -----\$1.00 3 to 4 ft. -----\$1.50
4 to 5 ft. -----\$2.00

Belle de Nancy. Flowers large, double, developing into large compact clusters. Satiny pink in color. A splendid variety for both flower and foliage. Blooms in profusion.
2 to 3 ft. -----\$1.00 3 to 4 ft. -----\$1.50
4 to 5 ft. -----\$2.00

Charles Joly. Flowers double, large. A very dark purple red with silver reflex. Clusters open of medium size. A favorite variety, one of the best all-around double dark colored French lilacs.
2 to 3 ft. -----\$1.50 3 to 4 ft. -----\$2.00
4 to 5 ft. -----\$2.50

Charles X. A free flowering favorite. Flowers single of medium size, color reddish violet with a bluish tinge, compact clusters of medium size. One of the most free flowering of all French lilacs.
2 to 3 ft. -----\$1.00 3 to 4 ft. -----\$1.50
4 to 5 ft. -----\$2.00

Ludwig Spaeth. Flowers single in large well filled clusters, very deep maroon-red. A free bloomer and of strong thrifty growth. A very popular variety and without question the best all-around dark colored lilac.
2 to 3 ft. -----\$1.50 3 to 4 ft. -----\$2.00
4 to 5 ft. -----\$2.50

Marie Legraye. Flowers large, single, creamy white. Clusters of medium size. A strong, erect and very profuse bloomer. Note: this plant blooms when very young.
2 to 3 ft. -----\$1.00 3 to 4 ft. -----\$1.50
4 to 5 ft. -----\$2.00

Michael Buchner. Flowers double, medium to large, color pinkish lilac differing from most varieties in the blending of its colors. Clusters long and narrow. A well known and one of the most popular varieties.
2 to 3 ft. -----\$1.00 3 to 4 ft. -----\$1.50
4 to 5 ft. -----\$2.00

Madame Lemoine. Flowers large, double, pure white. Clusters narrow, medium to large. One of the most satisfactory and popular of the double whites. A very vigorous and dependable bloomer.
2 to 3 ft. -----\$1.00 3 to 4 ft. -----\$1.50
4 to 5 ft. -----\$2.00

Miss Ellen Wilmott. Large flowers, double to very double. Creamy white in very large and long panicles. A strong grower and a free bloomer, generally rated as the best of the double white lilacs.
2 to 3 ft. -----\$1.50 3 to 4 ft. -----\$2.00
4 to 5 ft. -----\$2.50

President Grey. Flowers large, semi double to double in large pyramidal clusters. A clear soft delicate blue. A favorite variety and one of the best of its color.
2 to 3 ft. -----\$1.00 3 to 4 ft. -----\$1.50
4 to 5 ft. -----\$2.00

Persian Lilac (*Syringa persica*). 7 ft. Has small leaves and open graceful growth. Light purple flowers in May. Lacks the heavy coarse appearance of the common lilac.
2 to 3 ft. -----\$0.60 3 to 4 ft. -----\$0.90
4 to 5 ft. -----\$1.25

Purple Lilac (*Syringa vulgaris*). 10 ft. The old-fashioned, fragrant lilac. A hardy and dependable shrub that everyone admires. Offered also in white-flowering variety.
18 to 24 in. -----\$0.35 2 to 3 ft. -----\$0.50
3 to 4 ft. ----- .75 4 to 5 ft. ----- 1.00

Villosa Pink-Flowering Lilac. 10 ft. Unusually ornamental in rich dark foliage with pinkish-lilac flowers in June. A choice Japanese variety that flowers two weeks later than the other types.
2 to 3 ft. -----\$0.60 3 to 4 ft. -----\$0.90
4 to 5 ft. -----\$1.25

CARE OF LILACS

French Lilacs flourish in good garden soil. They prefer plenty of lime and deep planting. Heavy feedings of cow manure and bone meal will keep them thriving. Pruning of Lilacs should take place immediately after the flowering season so that next year's flower buds have time to form.

This throws strength into new wood and results in stronger branches and larger flowers for next year.



The use of flowering shrubs and evergreens has given the owner a wealth of pleasure and enjoyment. Planned and planted by Holm & Olson.

Colorful Shrubs

Spotlight your shrub and flower border with pink flowering and Purple-leaf Plums, easily grown, exceptionally hardy.

The Plums—Ornamental Varieties

Pink-Flowering Plum (*Prunus triloba*). 5 ft. A great attraction in early Spring when the branches carry clusters of large, double pink rose-like flowers. Similar to the Flowering Almond but a more desirable and hardier shrub.

2 to 3 ft. -----\$0.60 3 to 4 ft. -----\$1.00
4 to 5 ft. -----\$1.25

Purple-Leaf Plum (Newport). 10 ft. A shrub of substantial size that has dark, purple-colored leaves all summer. Makes a striking color contrast in shrub plantings or as a lawn specimen.

2 to 3 ft. -----\$0.60 3 to 4 ft. -----\$1.00
4 to 5 ft. -----\$1.25

Snowberry (*Symphoricarpos*)

White Snowberry (*Symphoricarpos racemosus*). 4 ft. Slender, graceful shrub with large waxy white berries in September that remain far into the winter. Splendid for planting in front of larger shrubs and under trees.

2 to 3 ft. -----\$0.50 3 to 4 ft. -----\$0.75

Siberian Pea (*Caragana*)

Siberian Pea Tree (*Caragana arborescens*). 8 ft. A tall shrub of upright growth with bright green pea-like leaves. Yellow flowers in May followed by ornamental seed pods. Stands poor soils and dry locations.

2 to 3 ft. -----\$0.50 3 to 4 ft. -----\$0.75
4 to 5 ft. -----\$1.00

Russian Olive (*Oleaster*)

Russian Olive (*Elaeagnus angustifolia*). 12 ft. A hardy tall shrub with willow-like leaves of rich silvery white. Suited for background plantings and very hardy. Yellow fruits follow the inconspicuous flowers of spring.

2 to 3 ft. -----\$0.50 3 to 4 ft. -----\$0.75
4 to 5 ft. -----\$1.00

Roses—Hardy Bush Varieties

Rose, Red Leaved (*Rosa rubrifolia*). 3 ft. A hardy rose with red leaves all summer. Makes a beautiful contrast in the shrub groups. The blossoms are of a bright pink and are followed by red fruits. Upright in growth with slender, purple branches. Strong plants -----\$0.50 Extra size -----\$0.75

Rugosa Rose. 4 ft. A splendid shrub with the unusual attraction of large, pink flowers, handsome deep green foliage and bright fruit pods. Introduced from Japan and has proven extremely hardy and vigorous in growth.

Strong plants -----\$0.50 Extra size -----\$0.75

Smooth Wild Rose (*Rosa blanda*). 5 ft. A sturdy, native shrub rose with dark red stems almost without prickles. The abundant pink flowers are followed by scarlet fruits. Splendid in the shrub border or on exposed slopes.

Strong Plants -----\$0.60 Extra Size -----\$0.75

PLEASE SEE PAGES 21, 22, 23 FOR COMPLETE LIST OF ROSES.



Snowberry has pendulous clusters of large, white berries.

Early Flowering Spiraeas



The beauty of this dooryard pleasingly welcomes you to the home of Mrs. William Kuetfner. Planned and planted by Holm & Olson.

The many varied and interesting types of Spiraeas make them, as a group, the most popular and most generally planted of all the hardy shrubs. We list the better and dependable varieties that are all easy to grow.

Bridal Wreath (*Spiraea Van Houttei*). 5½ ft. Most admired of all shrubs. A graceful bush with arching branches that is a snow-bank of flowers in late May. Grows well in most any situation.
 18 to 24 in. -----\$0.30 2 to 3 ft. -----\$0.40
 3 to 4 ft. ----- .60 4 to 5 ft. ----- .85

Callosa Rosea Spiraea. 3 ft. Rose colored flowers in flat-topped clusters all season. A splendid medium height shrub. Well suited for house-foundation plantings.
 12 to 18 in. -----\$0.40 18 to 24 in. -----\$0.60
 24 to 30 in. -----\$0.80

Crimson Spiraea (*S. Anthony Waterer*). 2 ft. A free-flowering dwarf shrub of compact form. Rosy-crimson flowers in flat-top clusters all summer. A pleasing color combination planted with Snow-hill Hydrangea.
 12 to 18 in. -----\$0.40 18 to 24 in. -----\$0.60
 24 to 30 in. -----\$0.80

Garland Spiraea (*S. Arguta*). A cloud of dainty white blossoms in May. Graceful and attractive all season with long light-green leaves.
 18 to 24 in. -----\$0.40 2 to 3 ft. -----\$0.60
 3 to 4 ft. -----\$0.80

Japonica Spiraea (*Callosa alba*). 2½ ft. A good dwarf shrub with white flowers all summer. A white-flowering companion plant to the Crimson Spiraea.
 12 to 18 in. -----\$0.40 18 to 24 in. -----\$0.60

Pink Summer Spiraea (*S. Billardi*). 5 ft. Spikes of pink flowers at the end of the stems in July and August. Blooms when other shrubs are out of flower.
 2 to 3 ft. -----\$0.50 3 to 4 ft. -----\$0.75

Plume Spiraea (*S. Sorbifolia*). 4 ft. Leaves resemble a Mountain Ash. Flowers are in plummy spikes of white in July.
 2 to 3 ft. -----\$0.50 3 to 4 ft. -----\$0.75

Snow Garland (*S. Thunbergii*). 3 ft. Light, feathery leaves on slender branches that are mass of white blossoms in early spring. A refined appearance all summer.
 18 to 24 in. -----\$0.50 2 to 3 ft. -----\$0.75

The Ninebarks (*Physocarpus*)

Dwarf Ninebark (*Physocarpus monogynus*). 3½ ft. A desirable addition to the list of hardy, dwarf shrubs. Native of Colorado. Makes a full bush of upright growth with small leaves. Bears white flowers in spring. Grows well in most any soil.
 2 to 3 ft. -----\$0.60 3 to 4 ft. -----\$0.75

Golden Ninebark (*Physocarpus aureus*). 6 ft. A full-branched bushy, golden-leaved shrub. Makes a pleasing color contrast in shrub groups.
 2 to 3 ft. -----\$0.50 3 to 4 ft. -----\$0.75
 4 to 5 ft. -----\$1.00

Tall Ninebark (*Physocarpus opulifolius*). 7 ft. A vigorous, large-leaved shrub that is excellent for use as a screen or background planting. The white flowers of spring are followed by red seed pods.
 2 to 3 ft. -----\$0.50 3 to 4 ft. -----\$0.75
 4 to 5 ft. -----\$1.00

SHRUBS THAT ATTRACT BIRDS

There are a number of Shrubs, which produce edible seeds and fruit attractive to birds. The ones enumerated below are amongst the most important, and ornamental.

Japanese Barberry.	Viburnum. In variety.
Red Dogwood.	Buckthorn.
Snowberry.	Rugosa Rose.
Coral Berry.	Mountain Ash.
Elderberry. In variety.	Crataegus. In variety.



A finished flowering shrub effect the second season from planting.
Planned and planted by Holm & Olson.

Shrubs

— FOR SPRING
BEAUTY

For color, fragrance and profusion of bloom in spring, plant more flowering shrubs.

FLOWERING SHRUBS

The Sumacs (Rhus)

Fragrant Sumac (*Rhus aromatica*). 3 ft. Excellent, medium height hardy shrub. Three-parted, fragrant leaves and bright autumn color. Stands shade.

18 to 24 in.\$0.40 2 to 3 ft.\$0.60

Tall Fern-Leaved Sumac (*Rhus typhina laciniata*). 9 ft. Has fronds of delicate, lacy leaves that turn crimson in fall. A hardy, tall shrub to make a pleasing foliage variation in shrub groups.

2 to 3 ft.\$0.50 3 to 4 ft.\$0.75

Tamarix

Tamarix Pentandra. SUMMER TAMARIX. 7 ft. A striking plant with feathery leaves and open clusters of pink flowers at the end of the branches in June and July. Useful in bouquets. The foliage is unlike any other shrub and makes a striking picture.

2 to 3 ft.\$0.60 3 to 4 ft.\$0.80

Thorn Apple

Thorn Apple, Red Haw (*Crataegus*). 10 to 12 ft. A native white-flowering Hawthorn. Very handsome red fruits that are favored by the birds. A splendid specimen or background shrub with horizontally spreading branches.

4 to 5 ft.\$1.50

The Weigelas

(Weigelas need favorable and protected positions—not recommended for planting north of the Twin-Cities.)

Eva Rathke Weigela. 4 ft. Well covered with crimson trumpet-shaped flowers in July. Very free blooming.

18 to 24 in.\$0.60 2 to 3 ft.\$0.75

Weigela Rosea. 5 ft. Well rounded bush that has a profusion of bright pink bell-shaped flowers in late June.

18 to 24 in.\$0.60 2 to 3 ft.\$0.75

PLANTING INSTRUCTIONS ALWAYS SUPPLIED

Our booklet of practical planting information that makes it easy for you to do your planting properly will be sent without charge, with your order.

The Viburnums (Snowball)

Viburnums are hardy, full-shaped bushes. Very ornamental in foliage, flower and fruit.

Arrow-Wood (*Viburnum dentatum*). 8 ft. An upright bush with glossy green leaves. The flat clusters of creamy-white flowers in June are followed by ornamental black berries. A tall shrub, handsome in every way.

2 to 3 ft.\$0.60 3 to 4 ft.\$0.80
4 to 5 ft.\$1.00

Highbush Cranberry (*Viburnum opulus*). 8 ft. Named for its big clusters of edible red berries that follow the flat-topped white flowers. A full, handsome shrub with brilliant fall foliage color.

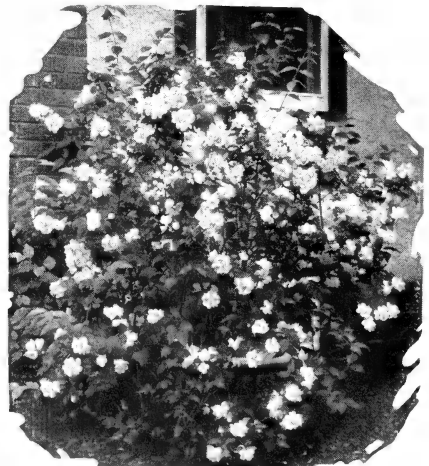
2 to 3 ft.\$0.60 3 to 4 ft.\$0.80
4 to 5 ft.\$1.00

Snowball (*Viburnum opulus sterile*). 8 ft. The popular, familiar "snowball" bush with white flowers in June.

2 to 3 ft.\$0.60 3 to 4 ft.\$0.80

Wayfaring-Tree (*Viburnum lantana*). 9 ft. Unusual, leathery, dark green, crinkled leaves. Red berries that ripen to black follow the white flowers. An excellent, tall, full, border shrub.

2 to 3 ft.\$0.75 3 to 4 ft.\$1.00
4 to 5 ft.\$1.25



The new double-flowering Mock Orange

New Hardy Rugosa Roses

BLOSSOM ALL SUMMER



Roses in a naturalistic planting to festoon a wall.

THE new Rugosa Roses are full and double, sweetly fragrant and the flowers appear abundantly and almost continuously from June until October. The plants are particularly valuable for hardiness, healthiness and ability to thrive under most adverse conditions of soil and climate, withstanding Minnesota winters without covering.

We offer strong, dormant plants that will bloom this year.

- Amelia Gravereaux.** Double fragrant flowers of bright cerise red. Price, strong plants, 75 cts.; extra size, \$1.00.
- Belle Poitvine.** Clusters of double, magenta-pink roses over a long season. Price, strong plants, 75 cts.; extra size, \$1.00.
- Dr. Eckener (New).** Large semi-double flowers of salmon-pink with gold at base of petals. A new and unusual rugosa hybrid. Price, 75 cts. each.
- F. J. Grootendorst.** Full clusters of smaller, bright-crimson roses. Always in bloom. Price, strong plants, 75 cts.; extra size, \$1.00.
- Hansa.** Double, fragrant, wine-red flowers. Handsome dark green foliage. Sturdy growth and long season of bloom. Price, 60 cts.; extra size, 80 cts.
- Hugonis.** An early flowering shrub rose with sprays of light yellow roses along the graceful branches. Strong plants, 75 cts.
- Rugosa Rubra.** Japan Rose. Handsome crinkled leaves and large, single rose flowers of pink to rosy red. Red fruit. Price, 50 cts.; extra size, 75 cts.
- Sarah Van Fleet (New).** Semi-double, soft, rose-pink flowers. Continuous in bloom. Price, 75 cts.
- Sir Thos. Lipton.** A free-blooming, fragrant double white. Price, 75 cts.; extra size, \$1.00.

THE HARDY BUSH-ROSES

These hardy bush or shrubby roses are very useful for planting in with the usual flowering shrubs in borders or in boundary groups. They are particularly suited for planting on banks, slopes and in locations where a naturalistic effect is desired.

Blanda. Soft pink flowers on thornless stems 3 to 4 ft. high. Red fruit in fall. Price, strong plants, 50 cts.; extra size, 60 cts.

Harrison's Yellow. The best hardy yellow-flowering bush rose. Semi-double golden yellow. Price, strong plants, 75 cts.

Rubrifolia. Pink flowers. Reddish-purple leaves all summer. Price, strong plants, 50 cts.; extra size, 75 cts.

Sweet Briar, Rubiginosa. The old favorite Sweet Briar fragrant pink rose with aromatic leaves. Price, strong plants, 75 cts.

SPECIAL COLLECTION—DOUBLE FLOWERING RUGOSA ROSES

Hardy Roses that bloom all season. Need no winter covering. Plant them in a sunny spot near house or in the garden.

- | | |
|--------------------------|----------------------------|
| 1 GROOTENDORST—Crimson | 1 BELLE POITVINE—Rosy Pink |
| 1 SIR THOS. LIPTON—White | 1 HANSA—Wine Red |

4 STRONG STURDY PLANTS TO BLOOM THIS YEAR.....\$2.50

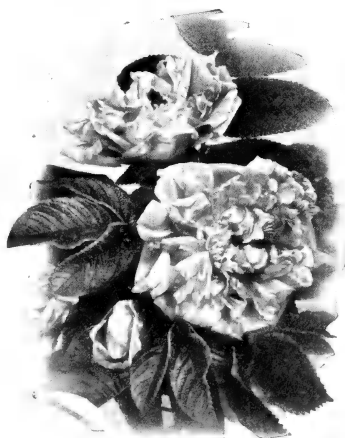
THE BABY RAMBLER ROSES (Dwarf Polyantha)

The Baby Ramblers are small size bushes, very popular because of their dwarf size and heavy flowering. The roses are borne in full clusters and are in bloom continuously throughout the summer.

Plant the Baby Ramblers in beds alone or in front of the taller roses.

Pink Baby Rambler (Ellen Poulsen). Clusters of deep, brilliant-pink, quite fragrant flowers until frost. **Potted, growing plants, \$1.00.**

Red Baby Rambler (Miss Edith Cavell). Bears heavy, open clusters of crimson-scarlet roses. **Potted, growing plants, \$1.00.**



Rosa Rugosa—Japanese Rose.



H. & O. Roses

"QUEEN of FLOWERS"

Any garden is made more colorful and more attractive by the addition of Everblooming Roses.

Make Your Garden Glow With Color

A Choice Assortment of the Better Roses for Outdoor Planting

THE REASONS WHY H. & O. PREPARED, POTTED ROSES ARE BETTER

These **Specially Prepared Roses** are all carefully selected 2 and 3 year old field plants. They have been started early in 6 inch pots and are in healthy, active growth when you receive them. Plant them right into your garden and they will produce results quickly. **With these started potted rose plants you are certain of beautiful roses to enjoy this season.**

The Hybrid-Tea Roses MONTHLY EVERBLOOMING

These Everblooming Varieties will flower for you all summer.

PRICES—Strong plants—started and growing in pots—\$1.00 each; 5 for \$4.50.

Pink and Rose Colors

- BETTY UPRICHARD.** Very fragrant flowers of salmon-pink tinted with copper pink on outside. Long-pointed buds.
- CONDESA DE SASTAGO.** Deep coppery pink, golden yellow reverse.
- DAME EDITH HELEN.** A brilliant soft pink. Long pointed buds and huge, full flowers. Highly perfumed.
- LOS ANGELES.** Luminous flame-pink, toned with coral and gold. Fragrant. The pointed buds expand into perfect flowers.
- PICTURE.** Velvety clear rose-pink with undertones of salmon. Very double.
- RADIANCE.** Large, double blooms of bright rose pink. A popular variety that succeeds everywhere. Long blooming season.

Scarlet and Crimson Roses

- E. G. HILL.** Full double flowers of deep, maroon-red.
- ETOILE DE HOLLANDE.** Large, bright crimson red. Free bloomer. The most popular red garden rose. Well-formed flowers.
- GRUSS AN TEPLITZ.** Lovely, fragrant, bright crimson. Always in bloom and succeeds everywhere. Large, bushy plants.
- MARGARET MCGREDY.** Opens a vivid scarlet turning later to brick red. Seldom out of bloom. Large, long-pointed buds.
- MCGREDY'S SCARLET.** Large, fragrant, full, double flowers of brilliant scarlet with orange base. Vigorous.
- RED RADIANCE.** Bright rosy red. Very large full flowers on a vigorous plant. Very free in blooming.
- ROUGE MALARIN.** Double, lasting deep red.

White Monthly Roses

- KAISERIN AUGUSTE VIKTORIA.** Creamy buds developing into bright snow-white blooms. Fragrant. The perfect white rose.
- MCGREDY'S IVORY.** Very large, double, soft creamy white.

Yellow and Copper Shades

- AUTUMN.** Deep old-gold flowers. Leaves dark and glossy.
- GOLDEN DAWN.** Very double, fragrant lemon-yellow blossoms. Remarkably fine foliage. Vigorous and free-flowering.
- HINRICH GAEDE.** Bud pointed, nasturtium red opening orange-yellow with nasturtium yellow glow.
- JOANNA HILL.** Deep creamy white tinted with salmon and ochre-yellow. Strong stems. Popular as a cut flower.
- MME. ED. HERRIOT.** Coral-red, shaded yellow and rosy scarlet.
- MRS. AARON WARD.** Little buds of golden buff opening to double flowers of Indian-yellow. Unusually abundant flowers.
- MRS. E. P. THOM.** A superior yellow garden rose. Rich unfolding lemon-yellow flowers. Fine, long buds.
- PADRE.** Bright coppery scarlet with yellow center. Free-flowering variety. Vigorous, upright grower.
- PRESIDENT HOOVER.** Long pointed buds opening to various shades of orange. Spice fragrance.
- SOUVENIR DE CLAUDIUS PERNET.** One of the best of the modern yellow everblooming roses. Striking sunflower yellow.
- TALISMAN.** Fragrant flowers of glowing golden-yellow, tinted copper, red and orange. The most vividly colored rose.

A Special Rose Collection 4 MONTHLY ROSES

All choice varieties

1 Pink 1 White 1 Yellow 1 Red

4 Growing Rose Plants

SPECIAL PRICE ----- \$3.50

(Express extra)

The Climbing Roses

For House-Wall and Garden-Trellis

H. & O. SPECIALLY PREPARED POTTED PLANTS

Plant Climbing Roses near the porch or on the house walls to have their fragrance and color close at hand. Use them in the garden to decorate lattices, arbors, pillars, pergolas and as festoons over walls.

PRICES H. & O. POTTED, GROWING CLIMBERS

Each \$1.00; 5 for \$4.50—unless otherwise noted.

- Climbing American Beauty.** Large, double flowers of bright rose pink. Strong grower.
- Dorothy Perkins.** Big clusters of soft, shell-pink roses. Flowers profusely.
- Dr. Van Fleet.** Exquisite, large, light pink flowers on long etms. Fragrant.
- Excelsa.** Double crimson flowers in clusters. (The improved "Crimson Rambler.")
- Paul's Scarlet Climber.** Loose clusters of large-sized, double flowers of bright scarlet red. Unexcelled brilliance.
- Primrose.** Canary yellow roses of double form in profusion. Fine for cutting.



Climbing Roses for the garden trellis.

The New "Patented Roses"

A CAREFULLY selected assortment of the most recent "patented" Rose varieties—for those who want something new and different.

Selected from the best of the NEW ROSES in America and Europe, these improved varieties will bring a refreshing note to old gardens and a thrill to the beginner.

WE SUPPLY THESE NEW ROSES IN POTTED, GROWING PLANTS SURE TO BLOOM FOR YOU THIS SEASON.

- BLAZE.** (Plant Patent No. 10.) A marvelous everblooming scarlet red climbing rose, vigorous grower and blooms over a long season. Price, potted plants, \$1.25 each.
- CRIMSON GLORY.** (Plant Patent No. 105.) Large, full, deep velvety crimson. Fragrant. Continuously in bloom. Price \$1.25 each.
- COUNTESS VANDAL.** (Plant Patent No. 38.) Lovely, coppery pink and gold with long, pointed buds. Potted plants \$1.10.
- GOLDEN CLIMBER.** (Plant Patent No. 28.) Rich, golden blooms 4 to 5 inches in diameter, produced singly on long stems. Rich, glossy leaves. Price, potted plants, \$1.10 each.
- HERCULES.** (Plant Patent No. 267.) A climber having huge flowers 5 to 6 inches across of a clear deep rose-pink like Dame Edith Helen. In spite of size, has refinements of the finest Hybrid Tea. Flowers hold their heads high on sturdy stems. By far the greatest of pink climbers. 2 year old plants, \$2.00 each.
- MABEL STEARNS.** (Plant Patent No. 297.) Fragrant blooms are a peach blossom pink with center showing a lovely orange undertone. Flowers freely from June 'till frost. Grand for cutting. 2 ft. high with a mat-like spread of 6 to 8 ft. 2 year old plants, \$2.00 each.
- NEW DAWN.** (Plant Patent No. 1.) Everblooming climber; large exquisite flowers of delicate pink on long stems. Fragrant blossoms; bronze-green foliage. Potted plants, \$1.60.
- PINK PROFUSION.** (Plant Patent No. 298.) 3 to 4 ft. high with spread 2 to 3 ft. The Camellia-like blooms are a charming two-tone pink, borne singly and in clusters, which completely cover the plant. Ideal for cutting. Last a week in water. Charming for corsage. 2 year old plants \$1.25 each.
- SIGNORA.** (Plant Patent No. 201.) A masterpiece in plant growth and bloom. Long bud of a warm sienna opening to a lighter hue. Excellent for cutting. Price \$1.25 each.
- WHITE BRIARCLIFF.** (Plant Patent No. 108.) A supreme white rose of finest form. Vigorous, free flowering and ideal for cutting. Price \$1.00 each.



The "Queen of Flowers."

The June Flowering Roses —"Hybrid Perpetuals"

These are the hardiest of the large-flowering Garden roses, with blooming season largely in June and July. Their extremely large flowers on strong sturdy bushes make June the month of Roses.

PRICES—H. & O. Specially Prepared, Growing, Potted Plants—\$1.00 each; 5 for \$4.50.

- Frau Karl Druschki.** A large silvery white. The ideal white rose.
- General Jacqueminot.** Brilliant crimson. Very fragrant.
- Magna Charta.** Fragrant, bright pink tinted with carmine.
- Paul Neyron.** Beautiful deep rose. The largest of all.
- Mme. Albert Barbier (New).** Full cupped flowers of fawn-yellow, shaded white and pink. Fragrant, strong growing and long season of bloom. A new and unusual color for a Hybrid Perpetual.
- Prince Camille de Rohan.** Very dark red. Delicate fragrance.
- Ulrich Brunner.** Bright cherry crimson. An old favorite.



A partial view of Mr. Phil J. Noonan's home grounds—"A Little Bit o' Heaven"—at Alexandria, Minn., planned by Holm & Olson, Landscape Architects. An outstanding Minnesota garden of rare charm and beauty maintained by Mr. Noonan and generously shared with his friends and the public.

Flowering Perennials

FLOWERING perennials are the backbone of the flower garden, most of them repeating faithfully each year with a minimum of attention. These plants live in the open ground. Many are useful as cut flowers, others for border displays or the Rock Garden. The best effect is usually produced by setting the plants out in separate groups of three or five of one variety.

You will find listed here not only the older favorites but many new, choice varieties and novelties. The height, season and color of flowers is given. Note page 30.

H. & O. Perennials are sturdy 2 year old, field-grown plants that are dug freshly to your order. We make no attempt to compete with the ordinary offerings of Perennial plants. H. & O. grow and distribute the better strains of quality plants.

***ROCK GARDEN PLANTS. Varieties marked with a star (*) are adapted to rockeries.**

1942 PRICES FOR PERENNIALS

(unless otherwise noted)

Strong, 2 yr. field plants 30 cents each.

Extra size, 50 cents.

(For shipment by parcel post please add 10%)

ACHILLEA. PERRY'S BALL-OF-SNOW. 1½ ft. Pure white flowers like a small pompon chrysanthemum. Blooms June to September.

***ANEMONE pulsatilla. PASQUE FLOWER.** 9 in. Cupped flowers of violet to purple in April and May. 35 cts.; 3 for \$1.00.

ANTHEMIS tinctoria kelwayi. HARDY MARGUERITE. 1½ ft. Daisy-like flowers of golden yellow. June to October.

***AQUILEGIA canadensis. NATIVE CANADA COLUMBINE.** 2 ft. Flowers red and yellow. June to August.

Aquilegia chrysantha. GOLDEN COLUMBINE. 2 ft. Yellow flowers with long spurs. June to August.

Aquilegia, "Crimson Star." (New). 2 ft. Entirely new color in Columbines—crimson and white combination. Unusual and effective. Large flowers. 35 cts. each; 3 for \$1.00.

Aquilegia helence. BLUE COLUMBINE. 1½ ft. June to August. Bright blue with long white spurs.

Aquilegia Hybrids. Long-spurred flowers in a variety of beautiful colors. Choice for garden display or cutting.

***ARABIS alpina. ROCKCRESS.** An early blooming dwarf border plant. Covered with white flowers in April and May.

ACONITUM fischeri. MONKSHOOD. 3 ft. Strong spikes of dark blue, helmet-shaped flowers. September and October. 35 cts.

ALASKA DAISY. Large white and yellow daisy.

***ALYSSUM saxatile compactum. GOLDEN TUFT.** 12 in. Masses of yellow flowers in early spring. For rockery or border.

ANCHUSA italica, Dropmore. ALKANET. 4 to 5 ft. Turquoise blue flowers in June and July. Large heavy leaves.

***Anchusa Myosotidiflora.** 12 in. Unusual perennial from Russia. Light blue, forget-me-not flowers rise above the clump of heart-shaped leaves. Sun or shade. Blooms May and June.

***ARMERIA Laucheana.** 9 in. A dwarf variety of Sea Pink with bright rosy-red flowers in May and June.

ARTEMISIA lactiflora. 3 to 4 ft. MOUNTAIN FRINGE. Plumes of sweetly scented creamy white flowers. August to September.

A Specially Priced Collection HARDY ROCK GARDEN PLANTS

A careful selection of 15 choice perennials—3 each of 5 of the best rock-garden varieties.

SPECIAL GROUP—15 Plants—Price\$2.50
(Please state if for sun or shade)

**DEPENDABLE and
HARDY ALL THROUGH
the NORTH**



You too can have flowers to enjoy all summer from a border of perennial plants. This border planned and planted by Holm & Olson.

HARDY ASTERS

- Aster, "Amethyst."** 3 to 4 ft. Purple-blue flowers produced by the hundreds in September and October. 40 cts. each; 4 for \$1.50.
- Aster, "Dazzler."** 3 to 4 ft. Entirely new color. Semi-double rosy red. September and October. 40 cts. each; 4 for \$1.50.
- Aster Frikarti.** New. 3 ft. Large, lavender-blue asters from July to frost. A delightful flower for display and cutting. 50 cts. each.
- Aster novae-angliae.** NEW ENGLAND ASTER (Michaelmas Daisy). 4 to 5 ft. Hardy purple Aster. September and October.
- Aster, Lil Fardell.** 4 to 5 ft. Showy flowers are rich, mauve pink. September and October.
- Aster, Mt. Everest.** (New). 3 ft. Pyramids of pure white, which flower right down to the ground. September. 50 cts. each.
- Aster, Red Rover.** (New). 3 to 4 ft. Deep rosy red flowers with golden center. A novelty for the fall garden. September. 50 cts. each.
- ASTILBE, "Betsy Cuperus."** (New). 4 ft. Dainty flowers of white with pink centers in graceful spikes 18 inches long. June. 50 cts. each.
- Astilbe, "Peach Blossom."** (New). 2 ft. Bears long plumes of delicate light-pink flowers. Excellent flower border plant. June. 50 cts. each.
- Astilbe, Hybrids.** 3½ ft. Showy garden plant of easy culture. Airy plumes of pink or white flowers. June and July. 50 cts.; 3 yr., 75 cts.

BABYSBREATH. See *Gypsophila*, page 27.

BLEEDING HEART (*Dicentra spectabilis*). 18 in. Rose-crimson heart-shaped flowers. The old garden favorite. April and May. 40 cts.; extra size, 75 cts.

BOCCONIA cordata. PLUME POPPY. 6 ft. Fine for background. Creamy white plummy flowers in August.

BOLTONIA asteroides. FALSE STARWORTH. 4 to 5 ft. Pure white, aster-like flowers. August.

***CAMPANULA carpatica.** CARPATHIAN HAREBELL. 8 to 10 in. Bell-shaped, light blue flowers in July and August.

Campanula calycanthema. CUP-AND-SAUCE. 3 ft. Erect plants. Large cup and saucer flowers. June and July. Colors mixed in rose, white and blue.

***Campanula gargancia.** (New). Compact rosette of glossy foliage from which spread branches 10 to 12 inches long bearing light blue, star-shaped flowers. June. Excellent for the rock garden. 40 cts. each; 3 for \$1.00.

Campanula glomerata. CLUSTERED BELLFLOWER. 18 in. Globular dark blue flowers topping each stem. June and July.

NEW HARDY GARDEN CHRYSANTHEMUMS

Your garden can afford to be extravagant with the New Fall flowering Chrysanthemums. They are most attractive in pastel colors, easy to grow and bloom profusely. Extend your flowering season six weeks by planting these new gems of the garden.

Cushion or Azaleamums. Low growing, 10 to 12 in. high, spreading to 2 ft. or more, forming cushions of bloom. Start flowering early in September. **Bronze, Pink, Red, White and Yellow.** 35 cts. each; 3 for \$1.00.

LARGE FLOWERING

Dean Kay. A pleasing lavender-pink, semi-double, commences to bloom early, and continues until stopped by hard frost. 50 cts. each; 3 for \$1.25.

Mrs. Pierre S. duPont III. Considered one of the finest. A shade of soft peach blended with mauve, overcast with a luminous sheen. 50 cts. each; 3 for \$1.25.

Early blooming, large flowering kinds in yellow, bronze, red, lavender and pink. 35 cts. each; 3 for \$1.00.

SPECIAL MUM COLLECTION

Collection of one each, six different varieties-----\$2.00

Campanula medium. CANTERBURY BELLS. 3 ft. A biennial. Large bell-shaped flowers of rose, blue and white. July.

CENTAUREA montana. PERENNIAL CORNFLOWER. 1½ ft. Violet blue flowers. July to September.

***CERASTIUM tomentosum.** SNOW-IN-SUMMER. 6 in. Creeping, branching perennial with silvery-white leaves and a mass of snow white flowers in May.

A NEW CUT-FLOWER CLEMATIS

Clematis Mandschurica. 3 ft. Bears abundantly attractive white Clematis flowers July to September. Unexcelled for cutting. Always attracts attention. Strong plants, 50 cts.; 3 for \$1.40.

CLEMATIS davidiana and Clematis recta. 3 to 4 ft. Bush forms of Clematis with blue and white flowers respectively. Very desirable in the perennial border. 50 cts. each; extra size, 75 cts. each.

COREOPSIS lanceolata grandiflora. TICKSEED. 2 ft. Golden yellow flowers on long graceful stems from June until frost. Fine for cutting.



Flowering Perennials

Perennials are the permanent plants for the flower borders and the cutting beds. Most of them like a rich sandy loam with good drainage.

- DAISY, Alaska.** 12 to 15 in. An improved Daisy that blooms in middle to late summer. White flowers with yellow center.
- Daisy, Shasta.** 18 in. The popular June flowering white daisy.

DELPHINIUM—LARKSPUR

- DELPHINIUM Belladonna.** LARKSPUR. 3 to 4 ft. Clear turquoise blue flowers of delicate beauty. Blooms freely over a long period.
- Delphinium Bellamosum.** 3 to 4 ft. A dark blue Larkspur of free-blooming habit.
- Delphinium chinense.** SLENDER LARKSPUR. 3 ft. Heads of bright blue flowers in open sprays from June until frost. Finely cut, fern-like foliage.
- Delphinium chinense alba.** White flowering form of Slender Larkspur.
- Delphinium, "H. & O. Hybrids."** 4 to 5 ft. Our own selected strain of large flowering Larkspurs in a wide range of light and dark colors.
- Delphinium "ICEBERG."** NEW WHITE LARKSPUR. 4 to 5 ft. Semi-double white flowers on sturdy plants. Striking in contrast when planted with the blues. Strong plants 50 cts. each; 4 for \$1.50.
- Delphinium, LAMARTINE.** 4 ft. Deep blue with white eye. Foliage good; disease resistant. 35 cts. each; 3 for \$1.00.
- Delphinium, NEW HOLLYHOCK.** Very full spire-shaped (like a hollyhock) heads of single and double flowers in many shades of blue. Tall and sturdy growth. Unusual. The best of the English selections. Price 50 cts. each; 4 for \$1.50.
- DIANTHUS barbatus.** SWEET WILLIAM. 18 in. Flowers in variation of red, white and rose colors. May to July.

- *Dianthus caesius.** CHEDDAR PINK. 7 in. Fragrant rose colored flowers cover this globular little plant in June.
- *Dianthus deltoides.** MAIDEN PINK. 9 in. A profusion of small crimson flowers cover a dwarf plant in June and July.
- *Dianthus plumarius.** CLOVE PINK. 9 in. The fragrant white to scarlet flowers bloom in early summer. Grass-like leaves.

Prices—unless noted—30 cents each.
Extra size—50 cents each.
(For parcel post add 10% postage)

DICTAMNUS—GAS PLANT

- DICTAMNUS fraxinella albus.** WHITE GAS PLANT. 3 ft. Heavy spikes of white flowers in June and July. Flowers and foliage intensely aromatic. Especially useful where Lupines do not thrive. 35 cts. each; 3 for \$1.00.
- Dictamnus fraxinella.** GAS PLANT. 3 ft. Heavy spikes of deep pink, purple-veined flowers in June and July. Flowers and foliage both fragrant. 35 cts. each; 3 for \$1.00.
- *DICENTRA eximia.** PLUMY BLEEDING HEART. 9 to 12 in. Rosy pink heart-shaped flower in bloom from May through August. Delicate, finely cut foliage. 40 cts. each.
- Dicentra spectabilis.** BLEEDINGHEART. 18 in. 40 cts.; extra size, 75 cts.
- DIGITALIS.** GIANT SHIRLY FOXGLOVE. 4 ft. Long flower heads of bell-shaped blossoms. Colors, rose, shell pink and blue mixed. July.
- ECHINOPS ritro.** GLOBE THISTLE. 3 ft. Bell-shaped metallic blue flowers, thistle-like foliage. July to September.
- *EUPHORBIA polychroma.** A rare border and rock garden plant. Grows to 1 ft. in compact form. Covered in June with lemon-yellow rose-like flowers.
- *FERNS, Hardy.** We offer a selection of the best strong-growing native hardy ferns suitable for yard plantings.
- *FORGET-ME-NOT** (*Myosotis semperflorens*). 10 in. Dainty blue flowers with yellow eye from May to September. Fine dwarf border plants. Likes shade and moist places.
- *FUNKIA (Hosta) caerulea.** BLUE PLANTAIN LILY. 15 in. Drooping flowers of blue in July and August. Excellent border plant. Dark green glossy foliage. Stands shade.
- Funkia subcordata.** WHITE PLANTAIN LILY. 18 in. Fragrant white, lily-like flowers in August and September. Bright glossy foliage. 50 cts.
- *Funkia Variegata.** STRIPED PLANTAIN LILY. 15 in. Broad, waxy foliage, beautifully variegated with white. Very attractive border plant. Blue flowers in July. Stands shade.

GOLDEN GLOW. See *Rudbeckia*, page 29.

**THE HARDY GARDEN
FLOWERS THAT
BLOOM FROM
YEAR TO YEAR**



The most successful and colorful perennial borders are those planted in early spring and where three to five plants of one kind have been planted in a good sized single group.

- GALLARDIA grandiflora.** BLANKET FLOWER. 2 ft. Rich red and crimson petals with broad border of yellow. June to October. Unsurpassed for cutting.
- GYPSOPHILA paniculata.** BABYSBREATH. 2 to 3 ft. Unexcelled cut flowers. Tiny white blossoms cover the plant through July and August.
- DOUBLE BABYSBREATH Gypsophila.** BRISTOL FAIRY. Full, double, snow-white flowers in large sprays. True, grafted variety 50 cts.; extra strong 75 cts.
- HELENIUM autumnale superbum.** YELLOW STAR. 4 to 5 ft. Golden-yellow flowers in August and September. Excellent cut flower. 35 cts.; 3 for \$1.00.
- Helenium Riverton Gem.** 3 ft. Old gold shaped with terra cotta and red. For cutting or garden show. August to frost. 35 cts. each; 3 for \$1.00.
- HELIOPSIS pitcheriana.** ORANGE SUNFLOWER. 3 ft. Single, thick-textured flowers of deep golden yellow. June to September.

A ROCK GARDEN AND POOL need only take a moderate area and can be enjoyed in even a small yard. We can supply the rocks, soil, plants and helpful suggestions.



A SPECIAL ROCK GARDEN BOOKLET

Tells how to properly place, build and plant a rock garden on the home grounds. Sent on request—without charge.

HEMEROCALLIS

- HEMEROCALLIS Dumortieri.** STRIPED DAYLILY. 20 in. A medium-height, rich cadmium yellow lily with brown stripes on the outside of flower. June.
- Hemerocallis flava.** LEMON DAYLILY. 2½ ft. Sweetly scented lemon-yellow flowers in June and July.
- Hemerocallis fulva.** TAWNY DAYLILY. 3 ft. Orange lily. July. Strong growing and sturdy.
- Hemerocallis, Judge Orr.** A large-flowering, tall, free-blooming golden yellow lily. June.
- Hemerocallis Middendorffii.** 2 ft. Rich yellow lilies in July. Follows Flava variety in blooming.
- Hemerocallis Thunbergii.** 2½ ft. A late, yellow-blooming lily. July.

NEW DAYLILY, HYBRIDS

New, Colorful, Giant-Flowering Types

- Anna Betscher.** Round, broad petaled, rich buttercup yellow. July. 75 cts.
- Goldeni.** Well-rounded, deep golden-flowers. July. 75 cts.
- Gypsy.** Deep orange with red shadings. Late June. \$1.00.
- Hyperion.** Outstanding in flower and growth. Immense lemon-yellow. Late July. \$1.00.
- Mikado.** Striking deep-orange with maroon bars. June. \$1.00.
- Mrs. Austin.** Broad-petaled round flowers of deep orange. Mid-July. 75 cts.

Lilies

- Lily Elegans.** ORANGE CANDLESTICK LILY. 18 in. Very hardy variety producing orange-red flowers in great numbers. July. Bulbs, 30 cts.; 4 for \$1.00.
- Regale.** REGAL LILY. Large fragrant white flowers that are striped pink outside and have yellow shadings within the cup. July. Large bulbs, 30 cts.; 4 for \$1.00. **Started plants 60 cts.; 4 for \$3.00.**
- *Lily Tenuifolium.** CORAL LILY. 12 to 18 in. A graceful little plant bearing many coral-red lilies in June. Hardy. Fine for rock gardens. Large bulbs, 30 cts. each; 4 for \$1.00.
- Lily Tigrinum, fl. pl.** DOUBLE TIGER LILY. 3 to 4 ft. An improved variety of this old favorite. Orange-red spotted black. July and August. Large bulbs, 30 cts. each; 4 for \$1.00.

Hardy Garden Flowers that

No home landscape is complete without hardy garden flowers. A garden of perennials is a continuous pleasure from early spring until late fall. They give great satisfaction when arranged in clumps, masses and drifts of one kind.



Hardy Larkspur (Delphinium Hybrids).



Rudbeckia Purpurea—Purple Cone Flower.



Aconitum gives a note of blue to the garden in late summer.

* **HEUCHERA Pleu-de-Feu.** ALUMROOT. 18 in. Tuft of handsome evergreen leaves with delicate, crimson flower bells on slender stems. July. 35 cts.; extra strong, 50 cts.

* **Heuchera sanguinea.** CORALBELLS. 18 in. A variety of the above with bright coral-red flowers. 35 cts.; 3 for \$1.00.

HIBISCUS. ROSEMALLOW. 4 to 5 ft. Giant, funnel-shaped flowers of red, white or pink on sturdy plants. July and August. 35 cts.; 3 for \$1.00.

HOLLYHOCKS

HOLLYHOCK, single. ALLEGHENY MAMMOTH. 5 to 7 ft. Single flowers of delicately fringed petals. Mixed colors. July and August.

Hollyhock. DOUBLE FLOWERING. 5 to 7 ft. Yellow, white, pink and red colors. July and August.

IRIS. Fleur-de-Lis. See list, page 32.

LARKSPUR. See Delphinium, page 26.

LATHYRUS latifolius. PERENNIAL SWEET PEA. Semi-climbing plants with showy pea-flowers of deep pink over a long season. 35 cts.; 3 for \$1.00.

LILY-OF-THE-VALLEY. 8 to 10 in. Pure white dainty bell-shaped flowers in May and June. Bulb clusters, 25 cts. each. Heavy clumps 40 cts.

* **LINUM perenne.** BLUE FLAX. 18 in. Graceful foliage with delicate flowers of pearly blue. May to August.

LUPINUS Polyphyllus. LUPINE. 3 to 4 ft. Azure blue, pea-shaped flowers in long spikes. Late May and June.

LYCHNIS chalcedonia. JERUSALEM CROSS. 2½ ft. Flowers of vermilion scarlet in immense heads. June to mid-July.

ORIENTAL POPPIES IN NEW COLORS

Poppy, Oriental. New Named Varieties—40 cts. each, as follows:

Beauty of Livermore. Crimson with dark shadings.

Mrs. J. Harkness. Bright salmon, rose scarlet.

Mrs. Perry. Salmon pink, shaded apricot. "Best Pink Poppy."

Olympia. Brilliant flame-scarlet shaded with golden salmon. Semi-double.

POPPY, Oriental (Papaver orientale). 2½ ft. Massive cup-shaped flowers of deep scarlet.

* **Poppy, Iceland** (Papaver nudicaule). 12 in. Cup-shaped flowers of clear colors, white, yellow and orange scarlet. Bloom all summer.

LYTHRUM roseum. ROSE LOOSESTRIFE. 3 to 4 ft. Tall spikes of rose-colored flowers. July to September.

MONARDA didyma. OSWEGO TEA. 3 ft. Compact heads of bright red flowers. Aromatic foliage. June to September.

* **OENOTHERA Fraseri.** EVENING PRIMROSE. 12 in. Large golden-yellow poppy-like flowers from June to August.

PACHYSANDRA terminalis. 6 to 9 in. A handsome trailing plant for ground cover. Stands shade, 25 cts. each; 12 for \$2.50.

PEONIES. See list, page 31.

PEROVSKIA atriplicifolia (New). RUSSIAN SAGE. 2½ ft. Whorls of silver blue flowers. Foliage silvery gray. Good for cutting. 50 cts. each.

PHLOX. See complete list, page 33.

PHYSALIS francheti. CHINESE LANTERN PLANT. 2 ft. Brilliant orange colored seed pods or "lanterns" in September.

PHYSOSTEGIA. ROSY SPIRE. 3 ft. Spikes of ball-like flowers, color rosy-crimson. Blooms in September.

Physostegia "vivid." FALSE DRAGONHEAD. 2 ft. Spikes of deep pink, bell-like flowers in September. Excellent cut flowers. 35 cts.; 3 for \$1.00.

PLATYCODON grandiflorum. BALLOON FLOWER. 18 in. Star-shaped blue or white flowers at the tip of each branch. Compact, bushy growth. June to September.

PYRETHRUM Hybridum. PERSIAN DAISY. 2½ ft. Daisy-shaped flowers in white to shades of pink, rose and red. Splendid for cutting. May and June.

Bloom From Year to Year

Prices—unless noted—30 cts. each.
 Extra size—50 cts. each.
 (For parcel post shipment please add 10%)

Pyrethrum Uliginosum. GIANT DAISY. 4 to 5 ft. Large white flowers in August and September. Splendid for cutting.

RUBECKIA laciniata. GOLDEN GLOW. 5 to 6 ft. The popular, double yellow blossoms of August and September.

Rudbeckia purpurea. PURPLE CONE FLOWER. 3 to 4 ft. Rose-purple flowers with tall, brown center. August to October.

SALVIA pitcheri. MEADOW SAGE. 3 to 4 ft. Every stem tipped with spikes of pretty sky-blue flowers. August and September.

*SEDUM—Stonecrop

The best of the hardy plants for rockeries.

***Sedum Acre.** GOLDEN MOSS. Bright yellow flowers cover the dwarf plant in June and July. 25 cts.; 5 for \$1.00.

***Sedum Album.** 2 to 3 in. A spreading plant with thick, waxy round leaves. White flowers in May. 25 cts.; 5 for \$1.00.

***Sedum Ewersi.** 8 in. Blue-gray leaves, large heads of rose-colored flowers. September and October. 25 cts.; 5 for \$1.00.

***Sedum Kamchaticum.** Prostrate plant with orange-yellow flowers. Golden fall foliage. 25 cts.; 5 for \$1.00.

***Sedum Sarmatosum.** Low and spreading. Excellent for filling seams between rocks. Yellow flowers in June. 25 cts.; 5 for \$1.00.

***Sedum Stoleniferum.** Flat succulent leaves on stems that cling to the ground, pink flowers in August. 25 cts.; 5 for \$1.00.

***Sedum Spectabile.** BRILLIANT STONECROP. 18 in. Pink and rosy red flowers in heavy, flat clusters. August and September. 30 cts.

***Sedum Spurium.** "BRONZE CARPET." 6 in. Rapidly-spreading with rosy-crimson flowers. July and August. 25 cts.

***SEMPERVIVUM "Hardy Hen and Chickens."** Produces small rosettes of thick and rubbery leaves. A splendid rock garden plant. 25 cts.; 5 for \$1.00.

STATICE latifolia. SEA LAVENDER. 2 ft. Delicate purple-blue flowers cover the branching top in August and September. 35 cts.; 3 for \$1.00.

THALICTRUM adiantifolium. MEADOW RUE. 2½ ft. Graceful foliage like a Maiden Hair fern. Clusters of open, white flower balls in June. 35 cts.; 3 for \$1.00.

Thalicttrum dipterocarpum. 3½ ft. Dainty flowers of lilac mauve with yellow center, in graceful sprays. August and September. Unexcelled cut flowers. Likes partial shade and needs winter protection. 40 cts.; extra size 60 cts.

TROLLIUS, Asiaticus. YELLOW GLOBE FLOWER. 2 ft. A glorified Buttercup. Handsome dark green foliage with yellow cup-like flowers in May and June. 40 cts.; extra size 60 cts.

Trollius ledebouri. ORANGE GLOBE FLOWER. 2½ ft. Strong-growing, hardy perennial with handsome foliage and large orange flowers. 40 cts. each; extra size 60 cts. each.

VALERIANA officinalis. HARDY GARDEN HELIOTROPE. 3 ft. Sweetly fragrant, gray-pink flowers in June and July.

VERONICA longifolia. JAPANESE SPEEDWELL. 2 ft. Long spikes of attractive blue-violet flowers. August and September. A good garden and cut flower.

Veronica blue spires. 2 ft. Improved variety, deep blue spikes. Upright, continuous bloomer, withstands heat. 50 cts. each; 3 for \$1.40.

***Veronica rupestris.** Grows 3 in. high with thickly matted, deep green foliage. Excellent for rock garden plantings. Well covered with bright blue flowers in early June.

***Veronica Spicata.** SPEEDWELL. 1½ ft. Spikes of blue flowers. June to September. Excellent garden plant.

***VIOLA.** JERSEY GEM. 8 in. Rich green foliage with blue flowers like small pansies. May to September. Splendid border plant and a delightful, dainty cut flower. 25 cts.; 5 for \$1.00.

***YUCCA filamentosa.** ADAM'S NEEDLE. 4 ft. Stiff sword-shaped leaves with tall spikes of white, drooping flowers in July. 50 cts. each; extra size 75 cts.



Hardy Aster. Blooms in Sept. and Oct.



Trollius ledebouri (Orange Globe Flower).



Viola "Jersey Gem"—a delightful violet-blue border plant.

Varieties marked with a star () are adapted to rockeries.

A Chart of Hardy Flowering Perennials

This chart makes it easy to plan your flower plantings. The height of growth, general color and the season of bloom of the more popular perennials is shown.

SEASON					VARIETY NAME	HEIGHT (IN FEET 1. 2. 3. 4. 5.)	COLOR					
MAY	JUNE	JULY	AUGUST	SEPT. OCT.			WHITE	PINK	YELLOW	ORANGE	RED	BLUE
					ACHILLEA - BALL OF SNOW							
					ACONITUM - MONKSHOOD							
					ANCHUSA - ALKANET							
					ANTHEMIS - HARDY MARGUERITE							
					AQUILEGIA - IN VARS - COLUMBINE							
					ASCLEPIAS - BUTTERFLY WEEED							
					ASTER - NEW ENGLAND							
					ASTILBE - HYBRID VARIETIES							
					BOCCONIA - PLUME POPPY							
					BOLTONIA ASTEROIDES							
					CAMPANULA - HARE BELL							
					CHRYSANTHEMUM - ALASKA DAISY							
					COREOPSIS - TICKSLED							
					DILPHINIUM - IN VARS - LARKSPUR							
					DIELYTRA - BLEEDING HEART							
					DIANTHUS - SWEET WILLIAM							
					DIANTHUS - SCOTCH PINK							
					FUNKIA - WHITE PLANTAIN LILY							
					FUNKIA - BLUE PLANTAIN LILY							
					GALLARDIA - BLANKET FLOWER							
					GYPSOPHILA - BABY'S BREATH							
					HELIOPSIS - ORANGE SUNFLOWER							
					HEUCHERA - CORAL BELLS							
					HEMEROCALLIS - LEMON DAY LILY							
					HOLLYHOCKS - IN VARS.							
					IRIS - GERMANICA - IN VARS							
					LILIUM - TIGER LILY							
					LILY-OF-THE-VALLEY							
					LYCHNIS - JERUSALEM CROSS							
					LYTHRUM - LOOSESTRIPE							
					MONARDA - OSWEGO TIA							
					MYOSOTIS - FORGET-ME-NOT							
					PEONIES - IN VAR.							
					PAPAVER - ORIENTAL POPPY							
					PHLOX - IN VARS.							
					PLATYCODON - BELLFLOWER							
					PYRETHRUM - PERSIAN DAISY							
					PYRETHRUM - OX-EYE DAISY							
					RUDBECKIA - GOLDEN GLOW							
					SEDUM - STONE CROP							
					STATICE - SEA-LAVENDER							
					TROLLIUS - GLOBE FLOWER							
					YUCCA - ADAM'S NEEDLE							

A copy of "HOME LANDSCAPES" for your friends. Just send us the name and address of your neighbor or friend who is interested in better gardening. We will be pleased to send them a copy of "HOME LANDSCAPES."

Gorgeous Peonies

ALWAYS HARDY



A collection of many of the world's finest Peony creations are listed here at moderate prices. We supply Peonies in the best planting size—all strong, healthy 3 to 5 eye divisions and all freshly dug.

Planting Peonies—Plant in good soil with the top of the roots about 2 inches under the surface.

QUANTITY PRICE—5 or more Peonies (your selection) sold at 10% discount from the each price.

For parcel post shipments add 6c per root.

WHITE DOUBLE-PEONIES

Alsace Lorraine —A rich, creamy-white. Mid-season.....	\$0.75
Avalanche —Large cone-shaped ivory-white. Strong grower75
Couronne d'Or —Snow white with golden stamens.....	.60
Enchantresse —Big, globular, late creamy-white. Showy75
Festiva Maxima —Splendid white with crimson flakes.....	.60
Frances Willard —Mid-season, exquisite pure white.....	.75
Le Cygne —A large, perfect flower of pure white. The world's highest-rated peony. Always a prize-winner	2.00
Mme. Jules Dessert —Cream tinted with buff and salmon.....	.75
Mons. Dupont —Large flower with crimson blotch. Tall.....	.50
Mrs. A. M. Brand —Large, glistening, fragrant, pure white.....	2.00
Primevere —The best yellow-tinted peony. Very beautiful.....	1.00

PINK DOUBLE-PEONIES

Blanche King (New) —A glowing, large deep pink. Late.....	3.00
Claire Dubois —A globular, clear violet-rose. Late.....	.75
Florence Macbeth —Very large, soft blush-pink	2.00
Kelway's Queen —Large double, bright rose pink75
Lady Alexandria Duff —Very large, pale soft pink. Showy.....	.75
La Fee —A strikingly beautiful soft, pink blend	1.00
La France —Fragrant, apple-blossom pink. Tall, sturdy.....	1.00
Lamartine (Le Moine) —Dark, old-rose pink. Late	1.50
Martha Bulloch —Enormous, shell-pink fragrant flowers	1.50
Mons. Jules Elie —Like a giant pink chrysanthemum.....	.75
Mrs. John Kleitsch (New) —A glorious, fragrant, deep rose pink	2.00
Myrtle Gentry (New) —Clear pink with salmon tint. Fragrant	2.00
Phoebe Cary —A large, soft, rose pink. Fragrant	1.00
President Wilson —A soft, rose to shell pink. Very large.....	1.00
Reine Hortense —Delicate pink with crimson flecks.....	.75
Sarah Bernhardt —Bright apple-blossom pink, silver tipped.....	.75
Solange —Cream with soft orange-salmon pink.....	1.00
Souv. de Louis Bigot —A striking rich salmon pink.....	.75
Therese —Exquisite lovely bright, light pink. Early. Large.....	1.00
Walter Faxon —Vivid and outstanding salmon pink.....	1.00

RED DOUBLE-PEONIES

Auguste Dessert —Brilliant, velvety-red with silver tips.....	\$1.00
Brand's Magnificent —Deep dark red; abundant flowers75
Cherry Hill —Deep garnet with bright sheen. Tall growing.....	1.00
Grover Cleveland —Large dark crimson	1.00
Karl Rosefield —Rich, glowing crimson. Large flowers.....	.75
Longfellow —Cherry, with crimson tones. Strong stems.....	.75
Lora Dexeimer —An intense, flaming, crimson-red75
Mary Brand —Abundant blooming; clear red. Long lasting.....	.75
Mons. Martin Cahuzac —Darkest maroon-red peony	1.25
Officinalis Rubra —Popular, very early-blooming red	1.00
Philippe Rivoire —The best rose-scented, dark, crimson.....	2.00
Tenuifolia Fl. Pl. —(FERN-LEAF PEONY). Very early, double, crimson with fern-like leaves. Blooms in late May.....	2.00

HOME-YARD PEONY COLLECTION

A selected assortment of six choice, large-flowering, double Peonies. 6 varieties, all different,—2 white, 2 pink, 2 red.
SPECIAL PRICE—6 Choice Plants..... \$2.50 (Postage 25c)

THE NEW JAP and SINGLE PEONIES

Unusually Lovely Flowers of Great Charm and Beauty

The outer row of large petals surrounds a center of smaller petals or brilliant yellow stamens. The flowers are strikingly decorative both in the garden and for cutting.

Albiflora —Silky white with yellow center. Fragrant.....	\$0.50
Exquisite (Jap) —Pure white border petals with center of white and yellow. Sturdy growth	1.00
Laciniata —Early-flowering red with cut-leaf foliage.....	.75
Le Jour —Largest single white peony. Gold center75
L'Etincelante —Deep clear pink, cup-shaped with silvery tips.....	.75
Mikado (Jap) —Crimson. Like a giant red poppy.....	.75
Pride of Langport —Brilliant soft peach-pink, very large.....	1.00

Iris—Rainbow Flower

"ORCHIDS OF THE GARDEN" is a name often given to the hardy Iris. Everyone succeeds with Iris for it will thrive and bloom abundantly in most any soil. There are few garden flowers that are as gay and colorful.

PLANTING DIRECTIONS—Plant the roots just below the surface in an open, sunny spot. Protect with a light covering of hay or straw in late fall.

In the description the "S" refers to the "standards" (upright petals) and "F" to the "falls" (lower petals). The varieties are grouped according to color effect.



SPECIAL—RAINBOW IRIS COLLECTION

A choice collection of colorful Iris. **Eight strong roots**—one each of pink-toned, white, red-toned, lavender, yellow, blue, purple and pastel. All roots carefully labeled.

A "Rainbow Collection"—8 plants (\$2.00 value) for.....\$1.50
(Parcel postage 15c extra.)

Pink-Toned Iris

	Price Each
Dream —Lovely rose-pink with orange beard	\$0.25
Frieda Mohr —(S) light pink-lilac; (F) lilac rose25
Midgard —A delightful rose-pink effect with yellow shadings..	.25
Rameses —A new pink-buff blend25
Susan Bliss —A deep pink tone25
No-We-Ta —A warm pink tone. "The best pink"25

Red-Toned Iris

Caprice —(S) red purple; (F) deeper claret	\$0.25
Cardinal —A true red35
Dauntless —Brilliant bronze-red effect. Large self color.....	.25
Medrano —Red maroon in effect25
Seminole —Wine red in effect25
Mary Geddes —Salmon orange35

Dark Blues and Purples

Blue Banner —A bright and cheery blue	\$0.25
Lent Williamson —(S) soft violet; (F) royal purple25
Majestic —(S) blue violet; (F) velvety raisin purple.....	.25
Morning Splendor —(S) Petunia violet; (F) red purple25
Motif —A rich glossy pansy purple40
Mrs. Valery West —Bronzy purple and red brown25
Souvenir de Mme. Gaudichau —Rich deep purple25

Light Blue Iris

El Capitan —Majestic bloom, soft lavender blue.....	\$0.30
Pallida Dalmatica Fol. Variegata —Lavender blue, each leaf striped green and yellow50
Princess Beatrice —Silvery blue-lavender25
Sensation —Remarkable crisp corn-flower blue.....	.30
Valor —Tall deep-blue violet25

Brown-Purple Iris

Bruno —(S) bronzy heliotrope; (F) rich, violet purple	\$0.25
Depute Nomblot —Purple, bronze and claret-crimson.....	.25
Evolution —Bronze buff and heliotrope blue25

For shipment by Parcel Post please add 3c per root to Iris for postage.

Pastel Shades

	Price Each
Asia —A soft, silvery lavender-violet blend. Fragrant.....	\$0.25
Dolly Madison —Light mauve-lilac shaded gold25
Jean Cayeux —Large flowers of orange brown and buff.....	.50
Mother of Pearl —Soft lavender with pearly sheen25
Pres. Pilkington —Pastel blend of pale buff and rose flush.....	.25

White Iris

Los Angeles —Snowy white with blue touch. Giant flowers.....	\$0.35
Snow White —A hardy, tall, strong, large pure white.....	.25
Taj Mahal —A tall white of pure color25
Venus de Milo —A warm tone of creamy-white. Tall.....	.25

Yellow Iris

Coronation —Large flowers of deep golden yellow25
Eclador —Beautiful new canary yellow50
Gold Imperial —Clear yellow with bright orange beard25
Phebus —A fine, large, bright lemon-yellow25
Prairie Gold —A deep rich yellow25
Shekinah —Clear soft yellow25
Talisman —Blend of yellow and peach rose shades.....	.25

"IRIS ORCHIDS" COLLECTION

Superb New Varieties that Excel in Size and Color

Black Wings —Rich, velvety blue-black. Very dark.....	\$0.50
Buechly's Giant —A giant in size and bloom, medium blue... .	.50
Crystal Beauty —Gorgeous stately pure white50
Golden Light —Red-cinnamon and orange. Very unusual.....	.50
Imperial Blush —Large, splendid orchid-pink. Filled.....	.50
Missouri —Large, tall, true blue	1.00
Shah Jehan —Extravaganza of rich hues from creamy buff to copper, chestnut and purple. Rich oriental coloring.....	.50
Sierra Blue —Magnificent blue. Dyke's medal winner.....	.75
Spokane —Large deep chestnut red75
Wm. Mohr —Immense frilled flower of soft lilac and violet.....	.30
Special Collection 1 each 10 varieties	\$3.50

The Dwarf Iris (Pumila)

The very early-flowering, low-growing Iris. Well suited for rock gardens and to edge beds and borders. **Colors—choice of yellow, blue, purple and white. Each 20c; 6 for \$1.00.**

Hardy Phlox

FOR BRILLIANT
FLOWERS
in MIDSUMMER



For color and profusion of bloom in midsummer plant more hardy perennial Phlox.

The Phlox is without doubt the most colorful and most popular of all the perennials. The showy flowers are the brightest spot in the garden during middle to late summer.

The recent Phlox introductions are marked improvements over the older types. We offer a very careful selection of the better and newer varieties.

Planting—Space Phlox roots 15 to 18 inches apart and cover the roots with 1½ inches of soil. Always keep Phlox well watered.

PRICES OF PHLOX (Unless otherwise noted)

Strong Plants—30 Cts. Each; 2 Yr. Clumps 50 Cts. Each.

(For shipment by parcel post please add 10% for postage.)

The Red Phlox

Augusta (New Plant Patent). The finest, vividly colored American Beauty red phlox. 50 cts. each.

B. Comte. A deep shade of red-plum. Tall growing.

Beacon. A pleasing cherry-red. Tall growing. Large flowers.

Comus (New). Clear cherry-red overspread with bright scarlet. Medium height; flowers very large. 35 cts.; 3 for \$1.00.

Fireglow. A new, brilliant color. Flaming scarlet that is often vermilion. Large flowers freely produced. 35 cts.; 3 for \$1.00.

Leo Schlageter (New). One of the most pleasing full rich scarlets with orange cast. Tall. 3 ft. 35 cts.

R. P. Struthers. A choice soft red. Tall and free blooming.

Saladin (New). Brilliant orange-scarlet red with deeper eye. Strong growing. Blooms freely. 35 cts.; 3 for \$1.00.

Lavender and Blue Phlox

Border Gem. Dark purple, strong grower.

Caroline Vandenberg (New). Very large flowers of light-blue tones. 35 cts.; 3 for \$1.00.

Miss Ethel Pritchard. A new French-mauve colored phlox. General color effect is light blue. Good sized flowers in large clusters. 35 cts.; 3 for \$1.00.

The White Phlox

Bridesmaid. White flowers with a crimson-carmine eye.

Frau Anton Buchner. Considered one of the finest white Phlox. The flowers are large and perfectly formed.

Innocence (New). A tall, sturdy plant with unusually large white flowers.

Mary Louise (New). Pure white, exceptionally large. Good grower, free bloomer, medium height. 50 cts. each.

Miss Lingard. Very early blooming and fragrant. Glossy green foliage. Immense heads of white flowers.

Mt. Hood. Tall, large panicles, white.

The Pink Phlox

Columbia (New Plant Patent). Soft cameo-pink flowers. Borne profusely and long lasting. Rich foliage. 40 cts. each; 3 for \$1.10.

Daily Sketch (New). English novelty. Grows to 3 ft. Big flower heads with extra large florets. A bright salmon pink with vivid crimson eye. 35 cts. each; 3 for \$1.00.

Enchantress. A strong-growing plant with clear salmon-pink flowers that have a darker eye.

Lilian. Soft cameo pink. Strong grower.

Mrs. Harding (New). A deep rose-pink with salmon shadings. Large heads of flowers. 35 cts. each; 3 for \$1.00.

Pantheon. Deep salmon-pink petals with lighter centers.

Rheinlander. A very beautiful salmon-pink with deeper center. Flower heads are large and held on strong stems.

Rijnstroom. A lovely rose-pink, much like Paul Neyron rose. Very large flower heads. Strong grower.

Salmon Glow (New). Large, rich, pink, shaded salmon. 35 cts.; 3 for \$1.00.

Thor. Rich, salmon-pink with crimson eye.

The Dwarf Early Phlox

For Borders and for Rock Gardens

PHLOX SUBULATA. A mass of bloom in early spring covers the delicate moss-like foliage. Excellent for rockery and border, and invaluable for carpeting the ground or covering graves.

<p>Pink Dwarf Phlox White Dwarf Phlox Lilacina—lovely pale blue</p>	}	30 cts. each; 4 for \$1.00.
--	---	-----------------------------

"VIVID" (New). An improved early, dwarf pink with unusually brilliant clear pink flowers. 30 cts. each; 4 for \$1.00.

PHLOX DIVARICATA (Wild Sweet William). Large fragrant lavender flowers on 9 inch stems in April and May. Likes shade.

SPECIAL—HOME YARD PHLOX COLLECTION

Ten field-grown roots, 2 each of 5 popular varieties—light pink; white; deep pink; red and lavender.

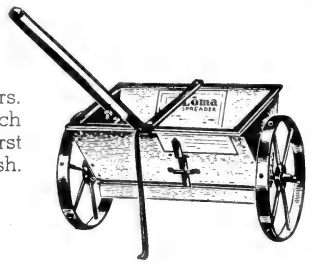
SPECIAL GROUP PRICE—10 Plants.....\$2.25
(Postage 15 cts. extra)

Fertilizers and Mulches

There are three chemical elements of plant food commonly used in fertilizers. They are Nitrogen, Phosphate and Potash. A balanced fertilizer is one which contains all three, commonly expressed in a formula of three numbers. The first indicates the proportion of Nitrogen, the second Phosphate and the third Potash.

For the Lawn. Allow 40 lbs. to 1000 sq. ft.

For the Garden. Apply along the rows and around the plants.



Lōma *for Everything Green that Grows*

LOMA contains all the necessary plant foods needed to properly nourish grass, flowers, evergreens, trees and shrubs.

10 lbs., 85 cts.; 25 lbs., \$1.50; 50 lbs., \$2.50; 100 lbs., \$4.00.

H. & O. NEW PLANT FOOD (Park Nurseries Fertilizer)

An important aid to more attractive lawns and flower gardens. Contains all the needed plant foods and is free of weed seeds.

25 lbs., \$1.50; 50 lbs., \$2.50; 100 lbs., \$4.00.

Vigoro—A Good General Fertilizer

VIGORO. A prepared plant food for lawns, vegetables and flower gardens. Directions on package. Allow 40 lbs. per 1,000 sq. ft. for lawns. Odorless—easy to use.

25 lbs., \$1.50; 50 lbs., \$2.50; 100 lbs., \$4.00.

TREE FEEDING

Promotes new growth, more foliage and healthy trees.

The most important care of trees is feeding with a well balanced fertilizer.

The Park Nurseries prepare a concentrated fertilizer especially for shade trees.

Apply fertilizer by punching holes with a round iron bar one inch in diameter. Start preparing holes a short distance from the trunk of tree and continuing to the outside circumference of tree branches.

The holes are 18 in. to 20 in. apart and 2 feet deep. In each hole place ¼ lb. of fertilizer, soak with water and fill with soil.

Tree Fertilizer—50 lbs., \$3.00; 100 lbs., \$5.00

METHODS OF CONTROLLING INSECTS

Chewing Insects. Arsenate of Lead kills all eating and chewing insects. Example, grubs. 1 to 2 tablespoons of arsenate of lead to 1 gallon of water. 1 lb., 35 cts.; 4 lbs., \$1.00.

Sucking Insects. Nicotine 40% kills all sucking insects. Example, plant lice. 1 tablespoon to 3 gallons of water. 5 ounces, \$1.00.

Fungus Diseases. Bordeaux prevents blight, rot, mildew and fungus. 1 to 2 tablespoons to 1 gallon of water. 1 lb., 35 cts.

Dormant Spray. Lime-Sulphur for scale, scabs and soot blotch. 1 lb. to 1 gallon of water. 1 lb., 35 cts.

Black Spot and Mildew. Dusting Sulphur for roses and other plants. 2 lbs., 25 cts.

SPREADERS

Useful—Well-built. Easy to operate. Spreads Loma evenly and accurately.

New Disc Wheels, Larger Hopper, Foot Rest and Selective Feed Control.

16 inch, spreading width 18 inches, holds 22 lbs. Price \$4.00.

Bone Meal

BONE MEAL. A selected, finely-ground meal of animal bone that contains valuable nitrogen and phosphoric acid plant food. A safe and excellent fertilizer for peonies, roses and all garden plants. Our Bone Meal has been slightly steamed to soften it and to hasten its fertilizing action. Apply to flower borders one lb. to 15 sq. ft. and cultivate in. Use generously around trees and shrubs.

10 lbs., 85c; 25 lbs., \$1.50; 50 lbs., \$2.50; 100 lbs., \$4.00.

Sulphate of Ammonia

SULPHATE OF AMMONIA. A quick-acting plant growth stimulant. 10 lbs., 65 cts.; 25 lbs., \$1.10; 50 lbs., \$1.75; 100 lbs., \$3.00.

H. & O. DOG AND CAT REPELLENT. Keeps dogs and cats away from Shrubs, Evergreens, posts or any place where they are not wanted. Has an odor scarcely noticeable to humans yet very offensive to animals. Spray on trunk and on ground under branches. Not harmful to animals.

Price, 4 oz. bottle, 60c. Small sprayer, 20c.

NUTRIA PEAT—the Mulch That Improves Soils

NUTRIA PEAT makes a splendid top dressing for both new and old lawns. It is exceedingly valuable for mulching around garden plants, trees, evergreens and shrubs.

Per bag (about 3 bu.), \$1.25; 2 bags, \$2.25.

(1 bag weighs 90 to 100 lbs. and covers 100 sq. ft. to depth of ½ in.)

Bulk Peat 2 cu. yd. load, (Twin City delivery only), \$5.00.

The Improved Water Lance

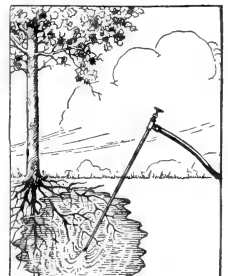
For watering the roots of trees and shrubs. Saves time—saves water—gets results.

This handy device is very simple to use. It connects right to your garden hose.

In 2 minutes use it supplies more water right to the plant roots where it is needed than by 2 hours of the old surface watering. We recommend it.

Price—\$2.00

(Postage 20c extra)



H. & O. "HIGH TEST"

Lawn Grass Seed



Sow "Velvet Sod"—the best grass seed. "Velvet Sod" makes a lawn of lasting beauty.

GOOD lawns can only follow the use of clean, pure seed of high germination test. H. & O. High Test Seed is dependably good—selected, re-cleaned seed that is the best in quality that we can secure.

SPECIAL MIXTURES. For general use and for "shady spots" and "terraces" we offer special seed mixtures. These are prepared from our own actual experiences of many years in gardening and lawn making. The seed varieties and the proportions used are based on these actual tests.

There are no cheap annual or short-lived grasses such as Timothy in H. & O. mixtures.

AMOUNT OF SEED TO SOW—Allow one pound of seed to every 200 square feet of new lawn area. For re-seeding on old lawns one pound of seed to 400 square feet will be sufficient.

Send for "HOW TO MAKE A LAWN." This booklet tells you how to make and care for a lawn. It gives practical and helpful information. Mailed on request.

Prices are given for seed packed and ready to ship. Please add 6c per lb. for parcel post if shipment of seed by mail is wanted.

"Velvet Sod" Seed

"Velvet Sod" contains Creeping Bent seed.

"Velvet Sod" Lawn Seed is an unusually high grade and careful mixture of permanent fine-bladed, rich green grasses. Specially prepared to meet the climatic conditions of our northern states. Its high weight of 25 lbs. per bushel indicates its purity and freeness from chaff and adulteration. We use this seed on all our own gardening work and recommend it as the best seed obtainable.

1 lb. 55c; 5 lbs. \$2.25; 10 lbs. \$4.00; 20 lbs. \$7.50

Shady-Side Seed

Where ordinary grasses will not grow we suggest sowing this special "shady-side" mixture which contains varieties naturally tolerant to shade. (Extra attention to fertilizing and watering is very important under these shade conditions and a light re-seeding each spring helps maintain the sod.)

1 lb. 65c; 5 lbs. \$2.75; 10 lbs. \$5.00; 20 lbs. \$9.50

Terrace Seed

On a slope the usual lawn mixtures are disappointing. For terraces we suggest this special mixture of spreading, deep rooting grasses that are resistant to drought and will thrive under unfavorable conditions.

1 lb. 55c; 5 lbs. \$2.50; 10 lbs. \$4.75; 20 lbs. \$9.00.

White Clover Seed

The best imported white Dutch clover with small leaves and dense growth. Very often sown with other grasses, particularly in a new lawn, where it helps cover the ground, thicken the sod and so tends to crowd out weeds.

½ lb. 75c; 1 lb. \$1.25; 5 lbs. \$6.00; 10 lbs. \$11.50

Kentucky Blue Grass

A beautiful grass that should be the main constituent of every good lawn here in the north. It is sometimes used alone but as it develops slowly, it becomes better established if sown in a mixture. Our seed is a very choice grade of carefully re-cleaned extra heavy seed with an average weight of 25 lbs. per bushel.

1 lb. 50c; 5 lbs. \$2.25; 10 lbs. \$4.00; 20 lbs. \$7.50

Extra Heavy Re-cleaned Seed

Weight 30 lbs. per bushel.

1 lb. 60c; 5 lbs. \$2.75; 10 lbs. \$5.00; 20 lbs. \$9.00

Red Top Grass

Red Top is a fine-leaved grass that germinates and develops very quickly. It is of particular value in getting a new sod established. For a permanent lawn it should not be sown alone.

1 lb. 35c; 5 lbs. \$1.50; 10 lbs. \$2.90; 20 lbs. \$5.40.

Creeping Bent Grass

Sea Side Bent—A true, unmixed creeping bent seed. It produces a thick, low and close-growing turf for lawns and golf greens. (Creeping Bent sod requires often and close cutting and special attention in fertilizing.)

1 lb. \$1.35; 5 lbs. \$6.25; 10 lbs. \$12.00; 20 lbs. \$22.00.

Method of Controlling Grubs and Earth Worms in Your Established Lawn

Arsenate of Lead applied either dry or mixed with water at the rate of 5 lbs. to 1000 square feet of lawn surface.

In building a new lawn apply 15 lbs. to 1000 square feet before seeding.

4 lbs. \$1.00

Delicious Fruits

For Your VICTORY GARDEN

Know the Delight of Eating Fruit Fresh from Your Own Garden.

The Hardy Apples

Price—Strong Trees, 4½ to 6 feet, 75 cts. each.
6 to 7 feet, \$1.00 each.

ANOKA. Large yellow, red-striped fruit of fine flavor in August. Bears early on young trees—often fruiting second year after planting.

BEACON. (New Minn. Variety.) An early-ripening, highly-colored, deep red apple of good size. Valued for both eating and cooking.

DUCHESS. Yellow with red stripes. Ripens early. A large size popular September fruit. Bears heavily. Free from blight.

HARALSON. Deep red winter apple. Fine quality. A new hardy and dependable Minnesota apple.

NORTHWESTERN GREENING. Large fruit of pale green. A high-quality, long-keeping, cooking apple.

PRAIRIE SPY (New Minn. variety). Bright red over a yellow ground, medium size, late. Excellent keeper.

WEALTHY. A fine-quality red apple that fruits abundantly. A very popular Minnesota variety. Season, September to January.

Hardy Crab Apples

Price—Strong Trees, 4½ to 6 feet, 75 cts. each.

DOLGO. Good flavored, highly ornamental bright red fruit. Makes excellent jelly. Ripe in September. \$1.50 each.

STRAWBERRY CRAB. Early. Very hardy, good yielder. Good for eating and canning.

WHITNEY. Best of the sweet crabapples. Large, well flavored and early red fruit.

Hardy Plums

The best from the Minnesota State Fruit-breeding farm.

Price—Strong Trees, 4½ to 6 feet, 75 cts. each.

FIEBING. Hardy, of vigorous growth. Bears large red fruit abundantly each year.

LaCRESCENT. Our best quality yellow plum. Sweet and juicy fine-grained flesh.

SUPERIOR. (New introduction.) Large, conic-shaped, deep red juicy fruit. Small pit. Nearly free-stone.

SURPRISE. Fruit attractive red and of high quality. Good for pollinizing.

UNDERWOOD. Early ripening attractive red plum. A very popular hardy variety. Trees bear annually.

Cherries & Cherry-Plums

Price—Strong Trees, 75 cts. each.

OKA CHERRY. New hardy and productive hybrid from So. Dak. Low-headed tree producing tremendous crops of large red fruit. Color, rich purple-red inside and out. Flavor delicious for dessert or preserving.

ZUMBRA. Large dark red fruit with small pit. Ripens in August. Often bears second year after planting.

NICOLLET. Very close in color, size and flavor to a true cherry and much hardier.

WRAGG. Heavy bearer of dark red, meaty fruit. The hardiest true cherry.

New Hansen Bush-Cherries

A hardy, ornamental shrub, grows to 4 ft. Attractive white flowers in spring with abundance of plum-like fruit in fall. For eating and preserving. Price—2 to 3 ft. size—60 cts. each.

Hardy Pears

PATTENS No. 5. The hardiest of the pears and, after extensive trial, now recommended for Minnesota. Produces abundant, rather small but excellent quality fruit. 4 to 5 ft., \$1.00.



Duchess of Oldenburg Apple.

Grapes

Price—Strong Plants, 35 cts. each; \$2.50 per 10.

BETA. A medium size, black grape with sprightly flavor. Unusual hardness and a heavy bearer.

CONCORD. The large, black grape. Always popular.

Raspberries

Price—\$1.00 for 12; \$4.00 per 100.

CHIEF. The new Minnesota introduction. Early and heavy crops of firm, red berries. Very hardy.

LATHAM. Large red berries in abundance. Later than Chief. A hardy Minnesota variety with fruit of very attractive color.

Currants

Price—Strong 2-year Plants, 50 cts.; \$4.00 per 10.

PERFECTION. Heavy clusters of very large, red fruit.

RED LAKE. New Minnesota currant. Erect bush. Large red fruit in heavy clusters. Excellent flavor.

Gooseberries

Price—Strong 2-year Plants, 50 cts.; \$4.00 per 10.

CARRIE. A popular, dependable, heavily-fruiting variety that ripens red. Often called the Thornless Gooseberry.

PIXWELL. Very productive, large, light green when immature, ripening to pink. It is the abundance of fruit which hangs away from the stems making it easy to pick, that gives it its name.

Strawberries

SENATOR DUNLAP. June-bearing. Considered the most dependable, all-purpose strawberry. Large crops of big, deep red berries.

Price—Strong Plants, 25 cts. dozen; \$1.00 per 100.

MASTODON. Everbearing (New). Largest berries of any variety. Gives ripe strawberries 40 days after planting.

Price—Strong Plants, 50 cts. dozen; \$2.00 per 100.

Apricots

APRICOTS. Hardy Manchurian variety recently introduced by Prof. Hansen of So. Dak.

Price, strong trees 4 to 5 feet, \$1.50 each

Asparagus

Washington Rust Proof. An excellent green asparagus.

Price—Strong Roots, 30 cts. dozen; \$2.00 per 100.

Rhubarb or Pie Plant

STRAWBERRY. Early and tender. 20 cts. each; dozen \$2.00.

McDONALD. (New). Highly colored red stalk, very succulent and tender. A splendid improved variety. Yields heavily and plants will last a life-time. Price 35 cts. each; 3 for \$1.00.

1942 General Catalog Index

	Page		Page		Page		Page		
A		Coneflower, Purple..	29	Globe Thistle	26	Marquerite, Hardy..	24	Rudbeckia	29
Acer	9	Coral Bell	28	Golden Bell	16	Matrimony Vine	13	Russian Olive	18
Achillea	24	Coralberry	15	Golden Glow	29	Mock Orange	16	S	
Aconitum	24	Coreopsis	25	Golden Tuft	24	Monarda	28		
Adam's Needle	29	Cornflower, Peren-		Gooseberries	36	Monkshood	24	Salix	10
Aesculus	8	nial	25	Grapes	13-36	Mountain Ash	10	Salvia	29
Alaska Daisy	26	Cornus	12	Grass Seed	35	Mountain Currant..	15-18	Sambucus	12
Almond, Flowering..	14	Cotoneaster	13-15	Gypsophila	27	Myosotis	26	Sedum	29
Alyssum	24	Crab, Flowering ..	8	H		N		Sempervivum	29
Amelanchier	16	Cranberry, High-		Hackberry	8	Ninebark	19	Shasta Daisy	26
Ampelopsis	13	bush	20	Harebell	25			Shrubs	14
Anchusa	24	Crataegus	20	Hedger	13			Siberian Pea Tree	13-18
Anemone	24	Creeping Bent Grass	35	Helenium	27			Snowball	20
Anthemis	24	Currant, Flowering..	15	Heliopsis	27	O		Snowberry	18
Apples	36	Currant, Moun-		Heliotope, Garden..	29	Oenothera	28	Sorbus	10
Aquilegia	24	tain	15-18	Hemerocallis	27	Oleaster	18	Speedwell	29
Arabis	24	Currants, Fruiting..	36	Hen and Chickens..	29	Olive, Russian	18	Spiraea	19
Arborvitae	5	D		Heuchera	28	Oswego Tea	28	Spruce	7
Aristolochia	13			Hibiscus	28			Statice	29
Armeria	24	Daisy, Alaska and		Highbush Cranberry	20	P		Stoncrop	29
Arrowwood	20	Shasta	26	Hollyhocks	28	Pachysandra	28	Strawberries	36
Artemisia	24	Daisy, Giant	29	Honeysuckle	13-16	Papaver	28	Strawberry Bush..	15
Ash	8	Daisy, Persian	28	Horsechestnut	8	Pears	36	Sumac	20
Asparagus	36	Day Lily	27	Hydrangea	16	Pea Tree, Siber-		Sweet William	26
Asters	25	Delphinium	26	I		ian	13-18	Symphoricarpus ..	15
Astilbe	25	Dianthus	26	Iris	32	Peat	34	Syringa	13-14
B		Dictamnus	26	Ivy	13	Peonies	31	T	
		Dicentra	25-26	Insecticides	34	Perennials, Hardy..	24	Tamarix	20
Babysbreath	27	Digitalis	26	J		Perovskia	28	Taxus	7
Balloon Flower	28	Dogwood	15	Jerusalem Cross	28	Philadelphia	16	Thalictrum	29
Barberry	13-14	Dutchman's Pipe ..	13	Juglans	10	Phlox	33	Thorn Apple	20
Basswood	10	E		Juneberry	16	Physocarpus	19	Thuja	5
Betula	8			Juniper	5-6	Physostegia	28	Tilia	10
Birch	8	Echinops	26	L		Physalis	28	Trees	8-10
Bittersweet	13	Elaeagnus	18	Lantern Plant, Chi-		Picea	7	Trollius	29
Blanket Flower	27	Elderberry	15	nese (Physalis)	28	Pie Plant	36	U	
Bleeding Heart..	25-30	Elm	9	Larkspur	26	Pines	6	Ulmus	9
Bocconia	25	Engleman's Ivy	18	Lathyus	28	Pinks	26	V	
Boltonia	25	Euonymus	15	Lavender, Sea	29	Plantain Lily	26	Valeriana	29
Bone Meal	34	Euphorbia	26	Lawn Grass Seed..	35	Platycodon	28	Veronica	29
Boston Ivy	13	Evergreens	4-7	Lilac	17	Plum, Flowering	18	Viburnum	20
Bridal Wreath	19	F		Lilies	27	Plum, Purple Leaf..	18	Vines and Creepers	13
Buckthorn	13-14			Lily-of-the-Valley ..	28	Plums, Fruiting	36	Viola	29
C		Ferns	26	Linden	10	Poplar	10	Virginia Creeper ..	13
Campanula	25	Fertilizers	34	Linum	28	Poppy	28	W	
Canterbury Bell..	25	Fir	6	Loma	34	Primrose, Evening ..	32	Walnut, Black	10
Caragana	13-18	Flax	28	Lonicera	13-16	Pyrethrum	28-29	Water Lance	34
Catalpa	8	Forget-me-not	26	Locsestrife	28	Prunus Triloba	18	Wayfaring Tree	20
Cedar	5-6	Forsythia	16	Lupine	28	R		Weigela	20
Celastrus	13	Foxglove	26	Lychnis	28	Raspberries	36	Willow	10
Celtis	8	Fraxinus	8	Lycium	13	Regal Lily	27		
Centaurea	25	Fruits	36	Lythrum	28	Rhamnus	13-14		
Cerastium	25	Funkia	26	M		Rhubarb	36		
Cherries	36	G		Mallow	28	Rhus	20		
Chinese Lantern..	28			Maple	9	Ribes	15-18		
Chrysanthemum ..	29	Gaillardia	27	N		Rock Gardens	27		
Clematis	13-25	Gas Plant	26	Marquerite, Hardy..	24	Rosa Rugosa	18-26	Yellow Star	27
Columnberry	13-14	Globe Flower	29	Matrimony Vine	13	Rose, Red Leaved ..	18-26	Yew	7
Columbine	24			Mock Orange	16	Roses	18-21-22-23	Yucca	29
				Monarda	28				
				Monkshood	24				
				Mountain Ash	10				
				Mountain Currant..	15-18				
				Myosotis	26				

"H. & O." Tree, Lawn and Garden Care

A DEPENDABLE AND RESPONSIBLE GARDENING
AND LANDSCAPE SERVICE

Entrust the care of your valuable trees, lawn and
landscape plantings to our skilled and
experienced gardeners.



We Specialize in

All Types of Landscape Gardening

TREE TRIMMING	SHRUB PRUNING
HEDGE TRIMMING	LAWN FERTILIZING
LAWN MAKING	GARDEN CONSTRUCTION
ROCK GARDENS	GENERAL CARE OF LAWN
TREE REPAIR WORK	AND GARDEN



ESTIMATES GIVEN

HOLM & OLSON, Inc.

SAINT PAUL

The Park Nurseries — Landscape Architects

Phone Minneapolis Midway 2772 . . . St. Paul Cedar 7335

(Nurseries and Display Gardens—1200 St. Clair Ave.)



A copy of "HOME LANDSCAPES"
for your friends. Just send us the
name and address of your neighbor
or friend who is interested in better
gardening. We will be pleased to
send them a copy of "HOME LAND-
SCAPES".