

Historic, Archive Document

Do not assume content reflects current scientific knowledge, policies, or practices.

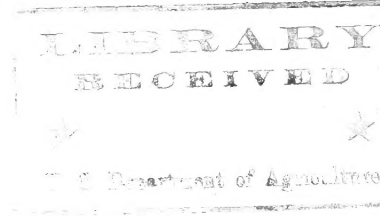


6527

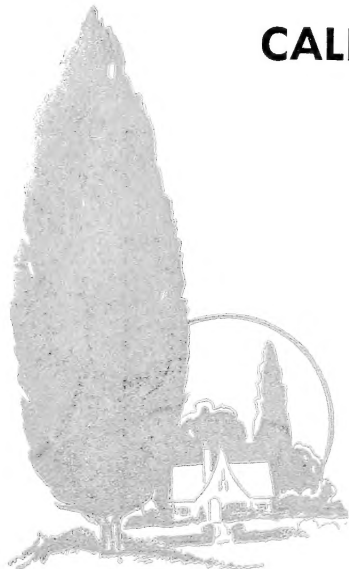
C7D+25 12/1/20

Northern Grown Ornamentals...

Sec. 562, P.L.&R.



**CALIFORNIA ROSES
SHADE TREES
SHRUBS**



MOUNT ARBOR NURSERIES

E. S. Welch, Pres.

Shenandoah, Iowa

U. S. Horticultural Sta.
Beltsville, Md.

Return and Forwarding Postage Guaranteed



Deciduous Trees

For other Varieties and Descriptions, see our Fall Wholesale Trade List.

		Per 100			Per 100			Per 100	
ELM, CHINESE Transplants	5/6'	20.00	HONEYLOCUST	5/6'	40.00	THORN, Cordata	5/6'	110.00	
	6/8'	30.00		6/8'	60.00		6/8'	150.00	
	8/10'	45.00		8/10'	85.00		8/10'	200.00	
	1 1/4"	60.00		1 1/2-2"	125.00	THORN, Crusgalli	3/4'	50.00	
	1 1/2-2"	80.00		LINDEN, American	6/8'		60.00	4/5'	80.00
Root Pruned Trees	4/5'-7/16"	7.00	8/10'		80.00		5/6'	110.00	
	5/6'-9/16"	14.00	1 1/2-2"		110.00	6/8'	175.00		
	6/8'-11/16"	18.00	OAK, Laurel		5/6'	115.00	THORN, Mollis	3/4'	40.00
	8/10'-7/8"	27.00			6/8'	150.00		4/5'	60.00
1 1/4-1 1/2"	35.00	5/6'		120.00	5/6'	90.00			
CRAB, FLOWERING Bechtel's Ioensis & Theifera	3/4'	35.00	OAK, White	6/8'	150.00	6/8'	125.00		
	4/5'	50.00		8/10'	200.00	8/10'	150.00		
	5/6'	75.00		POPLAR, LOMBARDY	6/8'	20.00	SEEDLINGS Elm, Chinese	2/3'	\$12.00
Eleyi & Hopa	5/6'	40.00	8/10'		25.00	3/4'		18.00	
	6/8'	60.00	1 1/4-1 1/2"		30.00	4/5'		28.00	
HACKBERRY	5/6'	40.00	THORN, Coccinea	3/4'	50.00	Oak, Pin	5/6'	50.00	
	6/8'	60.00		4/5'	30.00		12/18"	35.00	
	8/10'	90.00		5/6'	110.00		18/24"	50.00	
	1 1/2-2"	135.00	6/8'	175.00	2/3'	65.00			
	2-2 1/2"	190.00			3/4'	120.00			

Ornamental Shrubs

For other Varieties and Descriptions, see our Fall Wholesale Trade List.

		Per 100			Per 100			Per 100
ALMOND, Pink Flowering Own Root	18/24"	\$20.00	HONEYSUCKLE	2/3'	14.00	PRUNUS, Newport	3/4'	30.00
	" "	22.00		Bella Albida	3/4'		18.00	4/5'
	" "	27.50		Grand. Rosea	2/3'	14.00	SORB. SORBIFOLIA	18/24"
ALMOND, White Flowering	2/3'	30.00	3/4'	18.00	2/3'	14.00		
	3/4'	35.00	Pink Tatarian	2/3'	14.00	3/4'		20.00
BARBERRY Thunbergi	12/15"	4.50	3/4'	18.00	SPIREA Arguta	18/24"	10.00	
	15/18"	6.00	Red Tatarian	2/3'		14.00	2/3'	14.00
	18/24"	8.00	3/4'	18.00		Billardi	18/24"	8.50
	2-2 1/2'	11.00	ILEX, Verticillata	18/24"	20.00	2/3'	12.00	
	Red Leaved	12/15"		7.00	2/3'	25.00	Froebel	12/18"
15/18"		11.00	LILAC Common Purple	18/24"	11.00	18/24"	10.00	
18/24"		15.00		2/3'	15.00	2-2 1/2'	14.00	
BUDDLEIA, Ile de France Medium	10.00	Common White		3/4'	20.00	2 1/2-3'	18.00	
	No. 1		12.00	18/24"	16.00	Korean	18/24"	10.00
	COTONEASTER, Acutifolia		18/24"	14.00	2/3'		22.00	2/3'
2/3'		18.00	Rothomagensis	18/24"	15.00		3/4'	18.00
3/4'	28.00	NINEBARK, Common	2/3'	15.00	Thunbergi	18/24"	12.00	
COTONEASTER, Divaricata (B & B 50% extra)	18/24"		30.00	3/4'		20.00	2-2 1/2'	16.00
	2/3'		40.00	NINEBARK, Dwarf	18/24"	14.00	Vanhoutte	18/24"
EUONYMUS, European	18/24"	18.00	2/3'		16.00	2/3'		8.00
	2/3'	25.00	3/4'		20.00	3/4'	12.00	
	3/4'	32.00	NINEBARK, Goldleaf	2/3'	14.00	TAMARIX, Hispida	18/24"	10.00
EXOCHORDA, Grandiflora	2/3'	20.00		3/4'	18.00		2/3'	14.00
	3/4'	25.00		PHILADELPHUS Coronarius	4/5'		25.00	3/4'
	4/5'	35.00	18/24"		10.00	VIBURNUM Dentatum	18/24"	15.00
HYDRANGEA, A. G. Heavy	2/3'	20.00	2/3'		15.00		2/3'	18.00
	2 1/2-3'	25.00	3-3 1/2'	22.00	3/4'		22.00	
	HYDRANGEA, P. G.	18/24"	18.00	PRIVET, Eur. Vulgare	12/18"	4.50	Lantana	18/24"
2/3'		25.00	18/24"		6.00	2/3'		20.00
PRUNUS, Cistena		3/4'	30.00		2/3'	8.00		3/4'
	4/5'	40.00	PRUNUS, Cistena	18/24"	10.00	Opulus Sterilis	18/24"	22.00
	BARBERRY SEEDLINGS Thunbergi, Branched 2 yr.	12/18"		16.00	2/3'		15.00	2/3'
" "		18/24"		3-3 1/2'	22.00		3/4'	35.00
3 yr.		35.00	PRUNUS, Cistena	12/18"	4.50	BARBERRY SEEDLINGS Thunbergi, Branched 2 yr.	9/12"	30.00
Red Leaved 2 yr.	12/15"	45.00		18/24"	6.00		12/15"	45.00
	15/18"	60.00		2/3'	8.00		15/18"	60.00



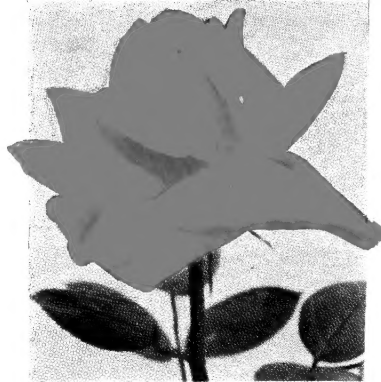
"One of America's Foremost Nurseries"

MOUNT ARBOR NURSERIES
SHENANDOAH, IOWA

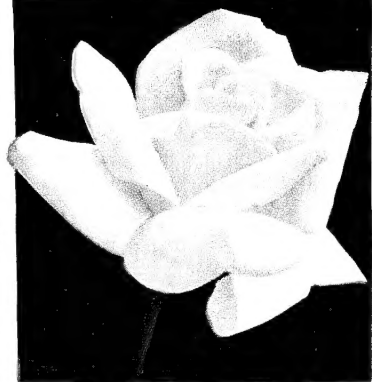
E.S. Welch PRES.



PINK RADIANCE



McGREDY'S SCARLET



McGREDY'S IVORY



TE

California

Grown, under irrigation,

READY FOR SHIPMENT FROM

See Our Fall Wholesale Trade Li

Roses grown, under irrigation, in Northern California are recognized as being the best of all Roses. We operate our own Rose Nursery at Gustine, California with the planting, cultivating, spraying and grading under our own management. Our Roses are not dug until thoroughly ripened and we are confident they will please.

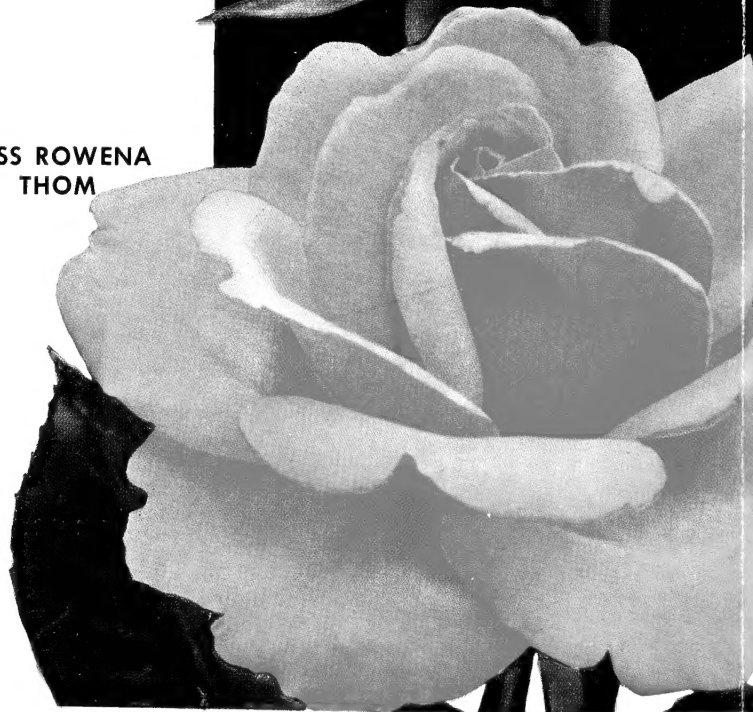
GOLDEN RAPTURE



MRS. P. S. DUPONT



MISS ROWENA THOM



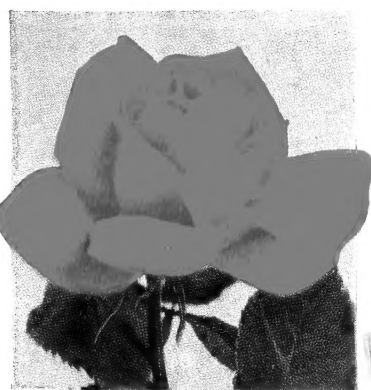
Your Customers Will Buy These Roses—
If You Hang Up This Circular



MNO



TALISMAN



SYRACUSE

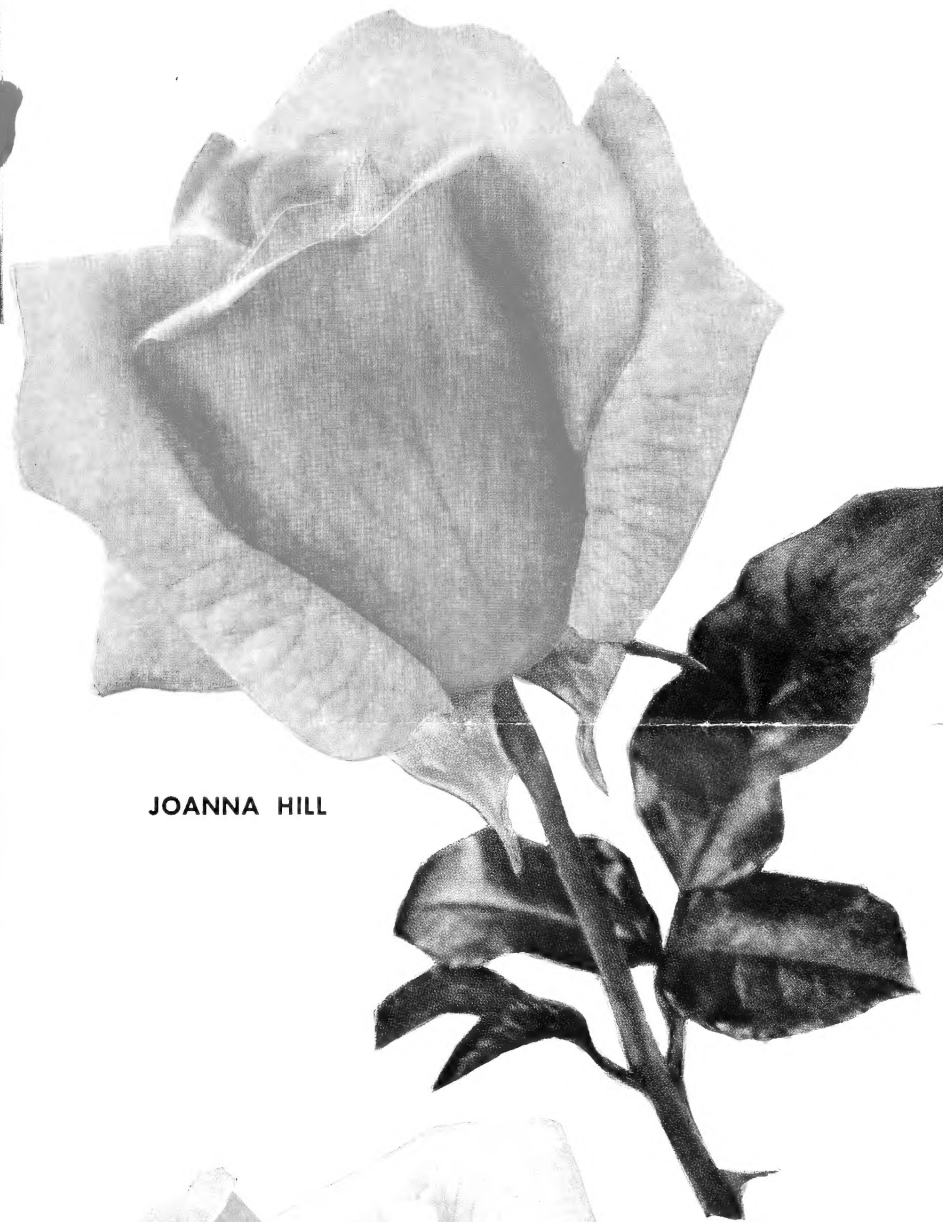
California Roses

in Northern California.

FROM SHENANDOAH IN JANUARY

Best, for Varieties and Low Prices.

We are now harvesting more than 1,000,000 of the finest Roses ever grown in California. Extra well furnished plants with heavy canes and excellent root system. We offer a complete assortment of Climbers, mostly own root, and Rugosa, Hybrids and Miscellaneous Roses. More than 240 varieties, in all grades.



JOANNA HILL



SUNBURST

HINRICH GAEDE



EDITH NELLIE PERKINS

PRESIDENT HERBERT HOOVER

Your Customers Will Buy These Roses—
If You Hang Up This Circular

Prices are going up!

I regret but it will be necessary to raise the price of many varieties of stock, in the near future. The low prices in our Fall Wholesale Trade List will be maintained as long as possible but some varieties are getting very scarce and the cost of labor and supplies is steadily advancing. Many varieties must soon carry higher prices!

I urge you to consult our Fall Wholesale Trade List and cover your requirements while prices are still low.

E. S. Welch



Modern Facilities

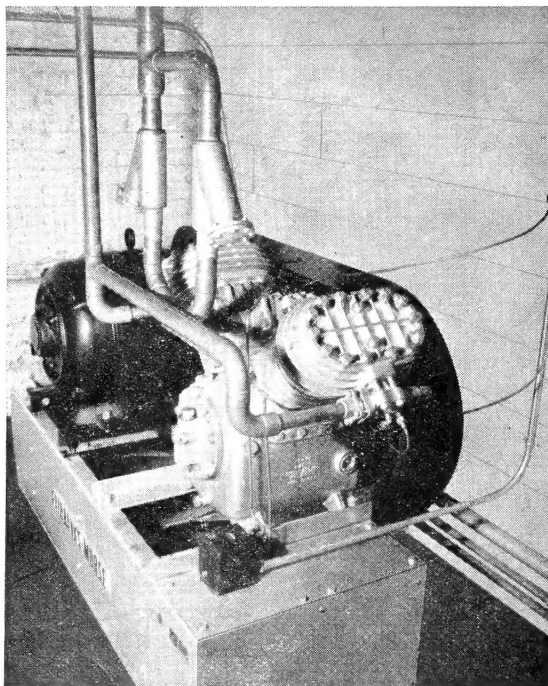
for

Storing Roses

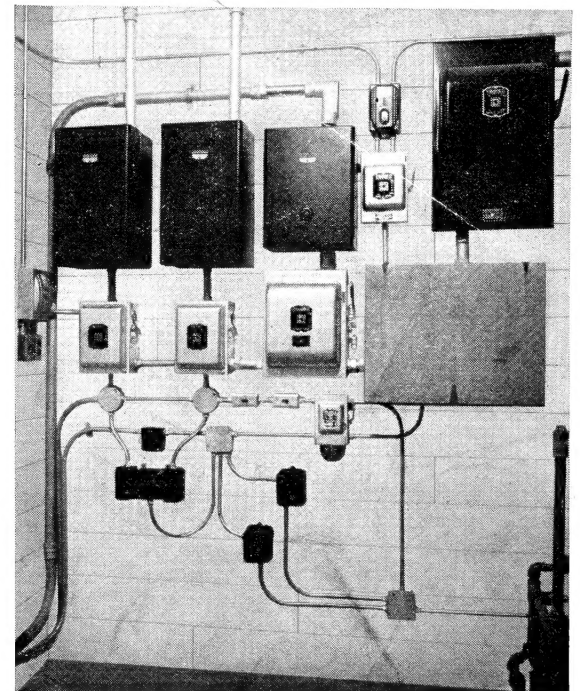
There is no guess-work in our modern Rose Storage at Shenandoah. Our new Cooling and Air Conditioning equipment is completely automatically controlled. Accurate Thermostats control the temperature, the humidity, and the air circulation.

Being grown under irrigation, our California Roses are uniformly well ripened and in perfect condition when received at Shenandoah. Our cooled and air conditioned Rose storage preserves them in this perfect condition until after May 1st.

Order your Roses at once, for shipment from Shenandoah, any time you want them after early January to late April.



Heavy Compressor Unit



Automatic Control Panel