

## **Historic, Archive Document**

Do not assume content reflects current scientific knowledge, policies, or practices.



**SOUTH HAVEN PEACH**

An excellent Peach for canning. An early bearer that will produce a heavy crop every year. See page 10.



**BARTLETT PEAR**

A superior strain of one of the oldest but still the leading varieties of commercial Pears. Large, golden yellow, excellent to eat fresh or canned. See page 7.

*Our Catalog*

of

**FRUITS**

**Ornamental Trees**

**Evergreens**

**SHRUBS**

**ROSES**

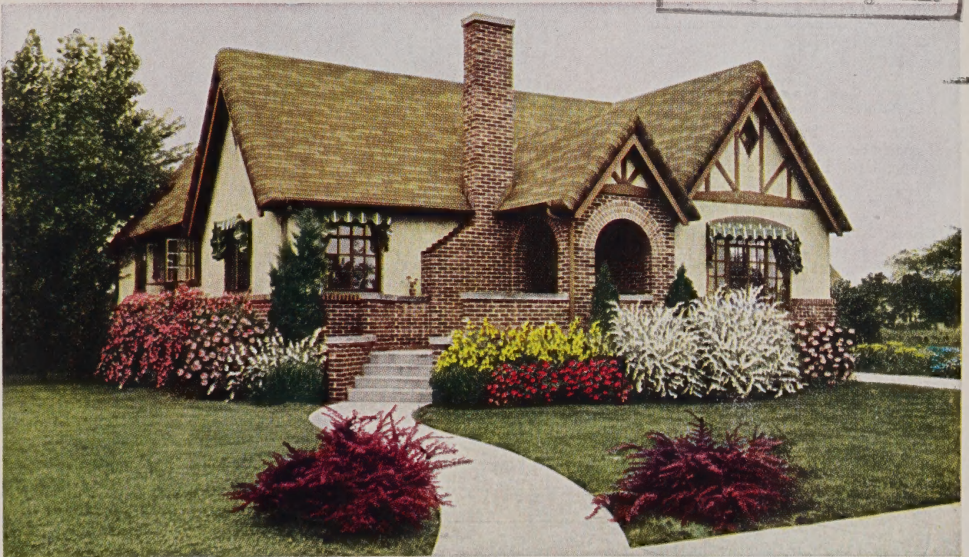
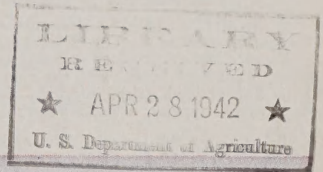
for

*City - Farm*

*Suburban Homes*

**Success With Your Planting**

Depends upon the quality of the trees, plants, vines, shrubs, etc., you buy. You save time, money and disappointment when you get the best nursery stock available. Our stock will come to you hardy, healthy, vigorous and true-to-name!



**THE WILSON NURSERIES · Thomas Marks & Son**

*Growers and Distributors of High Grade Nursery Products*

**WILSON, Niagara County, NEW YORK**

# New Fruits of Outstanding Merit

**DEPENDABLE - UNEXCELLED QUALITY  
HIGHLY PRODUCTIVE**

Recently introduced by the different Experimental Stations in the United States and Canada.

## **GOLDEN MUSCAT**

*The Grape Deluxe*

**Big Meaty Fruits — with the  
Californian - European Flavor**

For years experimental breeding has been carried on to produce a Grape similar in quality and texture to the white California Grape, sold at our fruit markets. At last, these experiments have been successful. Today we have the Golden Muscat which approaches these desirable qualities of the European Grape nearer than any other hardy sort. The berries are large and meaty, have very few seeds, excellent flavor — a new type for home use, introduced by the New York State Fruit Testing Association.

Prices: 2-yr., No. 1 grade, 50c each; 3 for \$1.40.



One of Our Super-red Strain Apples, Double Red Delicious

## **DELICIOUS APPLE**

**The Famous 5-Knobbed Variety**

We sing the praises of this wonderful all-red variety, because of its unusual "appetite appeal." Not only is it an excellent variety for the commercial grower but also finds much popularity with the home grower. Delicious is fine grained, crisp, juicy and delightfully aromatic. Excellent quality, a good keeper and shipper.

Prices: 2-yr., 5-7 ft., cal.  $\frac{3}{4}$  in. and up, 65c ea.; 10 for \$6.00. 5 at 10 rate. 2-yr., medium size, 50c ea.; 10 for \$4.50.

## **STANLEY PRUNE**

Introduced by New York State Experimental Station, large, prune shape, dark blue, becoming bluish black. Flesh greenish-yellow, juicy, fine grained, sweet; mid-season.

Prices: 2-yr., 5-7 ft.,  $\frac{3}{4}$  in. cal. and up, 65c ea.; 10 for \$6.00. 5 at 10 rate. 2-yr., medium size, 50c ea.; 10 for \$4.50.



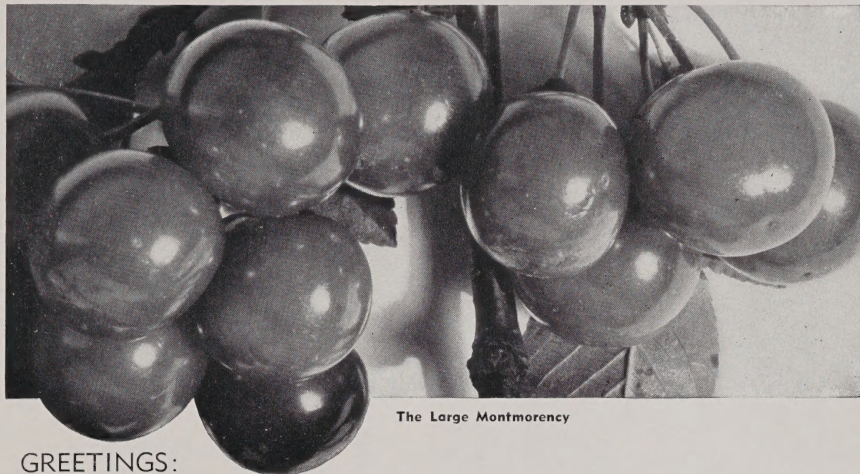
The Superior Stanley Prune



Golden Muscat Grape

# The Wilson Nurseries ~

*The Home of Good Nursery Stock*



The Large Montmorency

## GREETINGS:

THANKS A LOT.

To our legion of satisfied customers who for the past thirty years have sent us repeat orders from time to time, founded on **QUALITY, TRUE-TO-NAME** Stock.

To those unacquainted with us, we suggest a trial order. Confidence begets confidence, resulting in mutual benefit to both the buyer and seller.

We do not claim to be the largest or the smallest nursery, but we do claim to send out hardy, thrifty, fibrous-rooted trees and plants that in every way it would be a pleasure to plant and watch them develop into the purpose they were intended for.

---

**Freshly Dug Trees.** True-to-Name and guaranteed to reach you in a good, healthy, growing condition. Our trees remain in the ground all winter. We usually commence digging about April 1st.

**Order Early.** As soon as this Catalog reaches you, send in your complete order with shipping instructions. We will then reserve the varieties for you and forward at the proper time for successful transplanting in your locality.

**Use Order Sheet.** Please make out your order on order sheet enclosed, writing your name, post office and R. R. station plainly, so as to avoid delay at shipping time.

### TERMS — HOW TO REMIT

Cash with order, except in large orders when satisfactory reference is given. We will ship trees and plants C.O.D., if 25% of the total amount of your order is sent in cash. The balance to be collected on delivery of stock.

Remittances should be made by check, post office money-order, express money-order, draft on New York bank, or registered letter.

Our nurseries are Government Inspected and Certificate of Inspection by the Department of Agriculture and Markets, Albany, N. Y., accompanies every shipment.

**References.** Dun-Bradstreet Commercial Agency, Buffalo, N. Y.; Niagara County National Bank & Trust Co., Lockport, N. Y.; Newfane State Bank, Newfane, N. Y.; any business house in Wilson, N. Y.

---

# THE WILSON NURSERIES

THOMAS MARKS & SON - WILSON, N. Y.

**Growers and Distributors of High Grade Nursery Products**

Located in the center of the Famous Fruit Belt of Niagara County for the past 30 years

# APPLES Well - Rooted

## Prices of All Varieties of Apple Trees

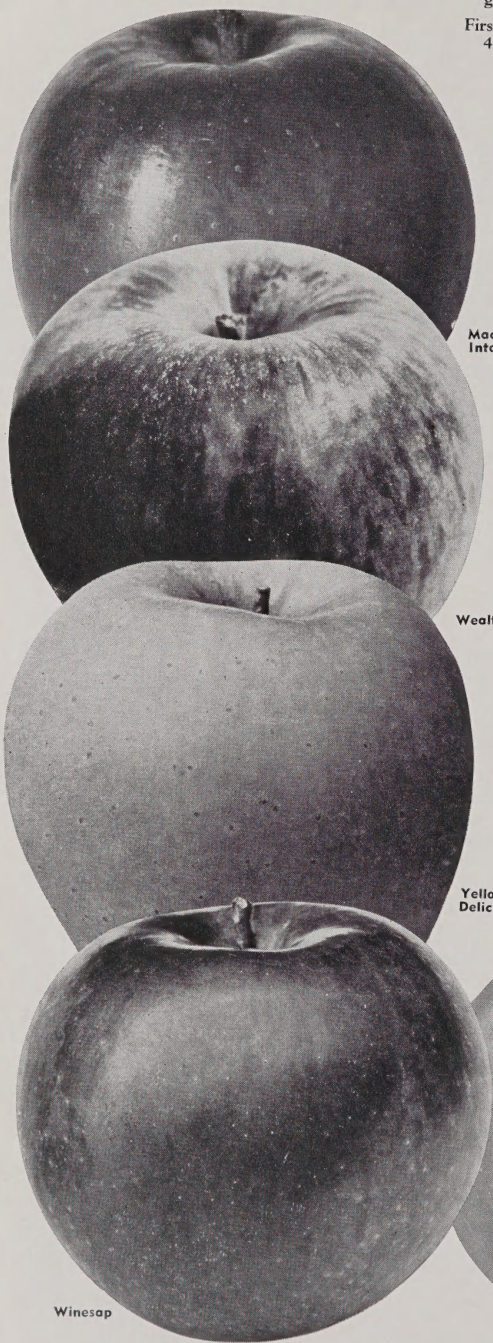
	Each	10	100
First Class, large size, 2-yr. No. 1 grade, 5 to 7 ft., $\frac{3}{4}$ in. up . . . . .	\$.50	\$4.00	\$30.00
First Class, medium size, 2-yr., 4 to 6 ft., $\frac{5}{8}$ to $\frac{3}{4}$ in. . . . .	.40	3.00	25.00
Five or more at 10 rate. Twenty or more at 100 rate.			

### Select Summer Apples

- Early Harvest.** Large pale yellow Apple of good flavor. Good bearer. August.
- Early McIntosh.** A handsome new early red Apple, high quality, similar to McIntosh Red in flavor. Trees are vigorous, productive and bear annually. August.
- Lodi.** A new fruit that closely resembles one of its parents, Yellow Transparent, but the fruits are larger and ripen a little later. An annual bearer that is becoming a commercial variety. Tends to bear young. August.
- Melba.** A new McIntosh seedling from Canada. Fruit is attractive, with bright crimson over pale yellow color. Good size and pleasantly flavored. Season shortly ahead of Early McIntosh, adapted for roadside stand and home.
- Red Astrachan.** A handsome deep crimson Apple, excellent for cooking. Very prolific. August.
- Sweet Bough.** Large, pale yellow, sweet. August.
- Yellow Transparent.** The best early yellow Apple. Excellent flavor. Trees hardy and abundant bearers. August.

### Select Autumn Apples

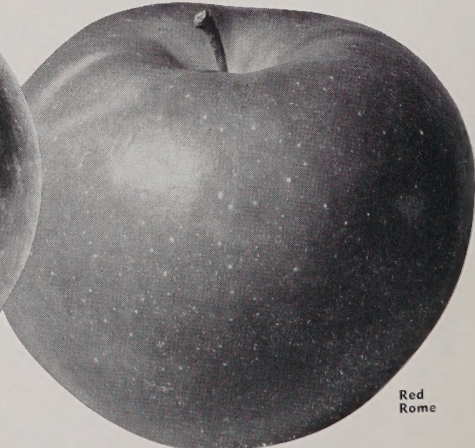
- Duchess of Oldenburg.** Large red striped Apple of good flavor. Very hardy. September.
- Fall Pippin.** Very large, yellow and juicy. Excellent for cooking. Hardy and productive. October to December.
- Fameuse (Snow Apple).** Medium size, crimson with snow-white flesh. Excellent quality. November.
- Gravenstein.** Large, handsome, red streaked Apple of excellent quality. September to November.
- Maiden's Blush.** Large attractive red blushed Apple of fair quality. Heavy bearer. September.
- Milton.** A very handsome new Apple of the McIntosh type. Fruit a beautiful pinkish red with tender, crisp, white flesh of excellent flavor. Trees hardy and vigorous. Ripens a month ahead of McIntosh.



Mac-  
Intosh

Wealthy

Yellow  
Delicious



Winesap

Red  
Rome

The Varieties Described Here Are the Best Known Sorts. Their Value Has Been Proved and They Will Produce Fine Fruit in Abundance.

### Select Autumn Apples

**Pound Sweet** (Pumpkin Sweet). Large yellow russeted Apple. Very sweet. October and November.

**Red Gravenstein.** A new red sport, much more attractive than its parent. Differs from the old Gravenstein only in the solid dark red color of the fruit. Should be planted in place of Gravenstein.

**Wealthy.** Beautiful, brilliant red Apple of fine quality. Exceptionally hardy and an early bearer. Excellent filler. October to January.

**Wolf River.** Very large, yellow striped with bright crimson. September to December.

### Select Winter Varieties

**Baldwin.** Large, bright red. Tree vigorous and productive. November to May.

**Ben Davis.** Large, splashed with bright red on yellowish ground. Juicy, mild, pleasant flavor. January to June.

**Cortland.** The most promising of the tree fruits that have originated at the New York State Experiment Station. Resembles the popular McIntosh Red, but fruits are larger, brighter in color, of richer flavor and the flesh is firmer, more juicy and keeps better. An excellent variety to plant with McIntosh as cross pollinator. November to March.

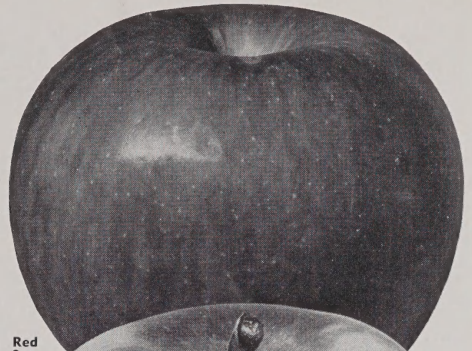
**Delicious.** Fruit large, nearly covered with brilliant dark red, flesh fine grained, crisp and melting, juicy with a delightful aroma, of very highest quality. A splendid keeper and shipper. Trees vigorous and hardy. November to April.

**Golden Russet.** Medium size. Attractive russeted Apple. Long keeper. November to April.

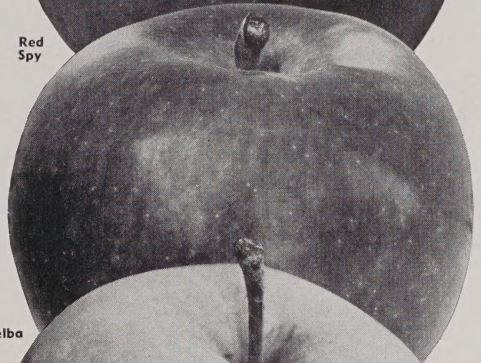
**Gallia Beauty.** A new red sport identical with Rome Beauty, except that fruit is solid red in color.

**Grimes Golden.** Medium to large, golden yellow, good quality. December to April.

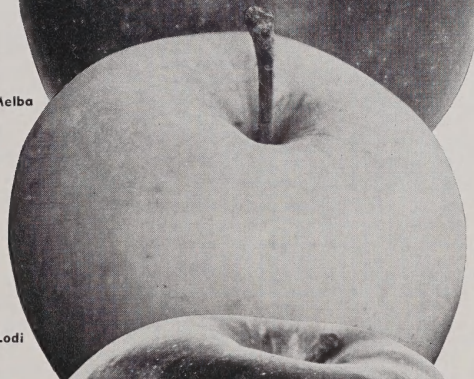
**Hubbardston Nonesuch.** Large, round, yellow and red striped, juicy. Tree a strong grower and productive. November to January.



Red Spy



Melba



Lodi



Jonathan



Red Delicious

# APPLES

This catalog is our only salesman  
-Buy Direct and Save Money



A Young Delicious Apple Tree — Showing the Productivity of Marks' Trees

## Select Winter Varieties—Continued

**Jonathan.** Beautiful red Apple of excellent quality, medium size. Productive early bearer. November to April.

**King.** Very large, round; an attractive Apple. December to April.

**McIntosh Red.** Solid Red Strain. A very attractive Apple of the highest quality. A leading profitable, commercial Apple for New York and New England. Trees hardy, bears young and annually.

**Northern Spy.** Large red and yellow Apple of fine quality. A leading commercial sort. December to April.

**Red Spy.** A solid bright red Spy, without stripes or splashes. Much handsomer than the Northern Spy. An excellent commercial sort. December to April.

**Rhode Island Greening.** Large yellowish green Apple of fine quality. An abundant yielder and excellent keeper. One of the leading commercial sorts. March to April.

**Rome Beauty.** Yellow and red striped Apple of excellent quality. Prolific annual bearer. Profitable commercial sort for New York, Ohio, and Pennsylvania. December to May.

**Red Rome.** Another new red sport of Rome Beauty and like Gallia Beauty is identical with its parent in all characteristics except fruit is a solid red in color.

**Roxbury Russet.** Yellow, russeted Apple of excellent quality. December to June.

**Spitzenburg.** High flavored, dark red. November to April.

**Stayman's Winesap.** Yellow striped with red. Excellent quality. Productive and an early bearer. December to March.

**Tolman Sweet.** Yellow tinged with red. Very sweet. Hardy and productive. November to April.

**Twenty Ounce.** Very large, red and yellow striped. October to January.

**Wagener.** A bright light red Apple of excellent quality. Very productive. October to January.

**Winter Banana.** Beautiful pale yellow Apple with bright pinkish blush. Excellent quality. Prolific and an early bearer. November to March.

**Yellow Delicious.** A bright golden yellow Apple of excellent quality. Firm, crisp, and very juicy. Splendid keeper. October to April. See page 4 for illustration.

If you are planning on setting out an orchard for commercial purposes, we recommend: Baldwin, Cortland, Delicious, McIntosh Red, Northern Spy, Red Spy, Rome Beauty, and Wealthy. These varieties will produce excellent returns on the investment over a long period of years. For best results plant 40 feet apart each way—27 trees to an acre.

## CRAB APPLES

**Hyslop.** Large, brilliant dark red. Hardy, reliable cropper. September and October.

**Transcendent.** Bright yellow with bright red cheek. Productive. August and September.

To those unacquainted with us, we briefly state that our nurseries are located in the center of the Famous Fruit Belt of Niagara County, close to the shores of Lake Ontario, where the soil and climate not only produce fruit of excellent flavor and quality, but fruit trees and all kinds of nursery stock, hardy, thrifty, fibrous-rooted, and well developed.

Fredonia, N. Y.,  
May 3, 1941.

Gentlemen:  
Trees arrived in good shape. Nice stock. Check enclosed for \$45.00. Thank you.

Very truly yours,  
Fred A. Howell.



# Pear Trees

## PRICES OF ALL VARIETIES OF PEAR TREES

First Class, large size, Each 10 100  
 2-yr., No. 1 grade,  
 5 to 7 ft.,  $\frac{3}{4}$  in. up... \$0.50 \$4.50 \$40.00

First Class, medium size,  
 2-yr., 4 to 5 ft.,  
 $\frac{9}{8}$  to  $\frac{3}{4}$  in. .... .40 3.50 30.00  
 Five at 10 rate. Twenty or more at 100 rate.

**Anjou.** Large, green to yellowish in color. Excellent quality. Hardy and productive. October to January.

**Bartlett.** Justly the leading commercial Pear. Large, golden yellow with reddish blush. Tender, melting and juicy. September.

**Beurre Bosc.** Very large, gourd shaped Pear, brownish yellow in color. Delicious flavor. Very productive. October.

**Clapp's Favorite.** Large, pale lemon-yellow with brown dots. Rich and sweet. Early August.

**Duchess d' Angouleme.** Very large, greenish yellow, russeted. Early bearer and very productive. October to November.

**Flemish Beauty.** Large, russeted pale yellow. Exceptionally good quality. September and October.

**Gorham.** Yellow, large, very good quality, Bartlett type and flavor, ripens from two to three weeks later, excellent for canning; tree vigorous, productive, promising to extend the Bartlett season. Introduced by the New York Experiment Station.

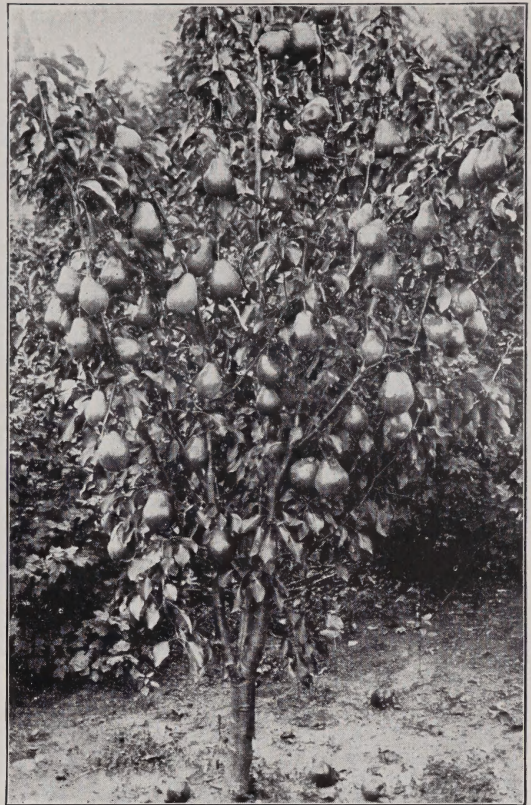
**Kieffer.** Very large, yellow with vermilion cheek. Should have Garber or Le Conte planted with it as cross pollinizer. Very vigorous and productive. October to November.

**Seckel.** Very delicious and of excellent quality. Yellowish brown with red cheek. Buttery and spicy. Very productive. August to October.

**Sheldon.** Large, round, russet and red Pear. Very rich and delicious. October.

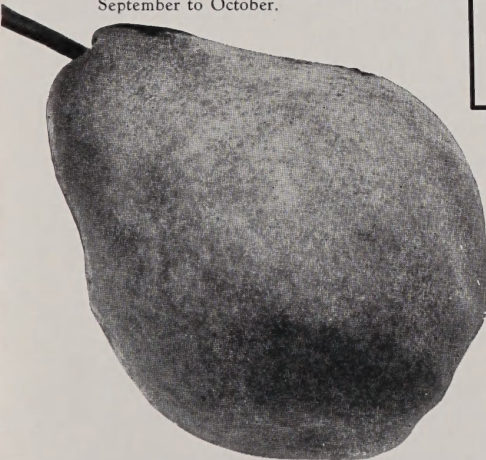
**Vermont Beauty.** Medium, yellow shaded with carmine. Good cropper. October.

**Worden Seckel.** Larger than Seckel. Yellowish brown with red cheek. Excellent quality. Bears early and is very productive. September to October.

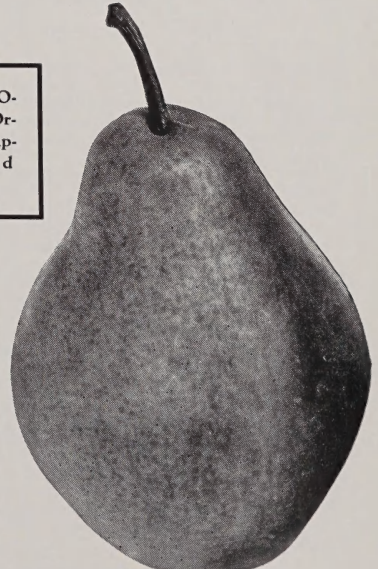


5-Year-Old Gorham Pear Tree

SPECIAL QUOTATIONS on Orchard Orders. Apple, Pear and Peach



Sheldon



Clapp's Favorite

=====  
 We have  
 faith in our  
 Products  
 and know  
 they will  
 make good.  
 =====

This Catalog is Our Only Salesman - - - Buy Direct



Fellenburg

# PLUMS and PRUNES Strong Rooted 2-Year Selected Specimens

Plums of European Type

## PRICES OF ALL VARIETIES OF PLUM TREES

	Each	10	100
First Class, large size, 2-year, No. 1 Grade, 5 to 7 ft., $\frac{3}{4}$ in. up. . . . .	\$.065	\$6.00	\$50.00
First Class, medium size, 2-year, 4 to 5 ft., $\frac{5}{8}$ to $\frac{3}{4}$ in. . . . .	.50	4.50	40.00

Five or more at 10 rate; twenty or more at 100 rate.

**Bradshaw.** A very large, oval, dark violet-red; juicy, sweet and good; a valuable market variety. Tree very vigorous, erect and productive. Middle of August.

**Fellenburg (Prune).** A fine late plum; oval, purple; flesh juicy and delicious; parts from the stone; fine for drying. Tree very productive. September.

**German Prune.** Fruit long, oval, purple with thick bloom. Flesh firm, sweet and delicious. Excellent commercial sort. September. Freestone.

**Grand Duke.** Large, dark violet-red. Last of September.

**Imperial Gage.** Large, greenish yellow. Very productive. August.

**Lombard.** Medium, dark red. Hardy. August.

**Monarch.** Very large, bluish purple. Bears young. September.

**Reine Claude (Bavay's Green Gage).** Large, pale yellow marked with red. Fine quality. Middle of September.

**Shipper's Pride.** Large, dark purple. Excellent for canning. September.

**Shropshire Damson.** A delicious little plum much esteemed for canning. Dark purple. Enormously productive. October.

**Stanley Prune.** Introduced by the N. Y. State Experimental Station, and is becoming a valuable commercial variety. Large, dark blue with thick bloom. Flesh greenish yellow, juicy, and sweet. Bears annually. Midseason.

**Yellow Egg.** Golden yellow covered with thick bloom. Very productive. September.

**York State Prune.** One of the largest and best. Dark blue, with purple bloom. Delicious. Last week in September. Freestone.

### Oriental Varieties

**Abundance (Botan).** Beautiful lemon-yellow ground, nearly overspread with bright cherry and with a heavy bloom; large to very large, oblong, tapering to the point. Flesh orange-yellow.

**Burbank.** Large and beautiful, clear cherry-red with a thin lilac bloom; flesh a deep yellow, very sweet with a peculiar and very agreeable flavor. Ripens later than the Abundance; end of August.

**Red June.** An early ripening plum; medium to large; roundish, conical, purplish red, handsome; flesh yellow, quality good.

**Wickson.** A sturdy, upright grower; fruit remarkably handsome, deep maroon-red, covered with white bloom; stone small; flesh fine texture, firm, sugary and delicious; excellent keeper and shipper.

---

Our Nurseries are Government Inspected. Buyers are protected by receiving Certified, Government Inspected Nursery Stock. Certificate of Inspection accompanies every shipment.

**SAVE 25% ON YOUR ORDERS—BUY DIRECT FROM THE GROWER**

# BEST CHERRIES

For Home Garden and Orchard

## PRICES OF ALL VARIETIES OF SWEET CHERRIES

	Each	10	100
First class, large size, 2-year, No. 1 grade, 5 to 7 ft., 3/4 in. up	.....	\$0.65	\$6.00
First class, medium size, 2-year, 4 to 5 ft., 3/8 to 3/4 in.	.....	.50	4.50
Five or more at 10 rates.			

### Sweet Cherries

#### Heart and Bigarreau

**Bing.** One of the most delicious sweet cherries. Fruit is large, black, and of very fine quality.

**Black Tartarian.** Very large, bright purplish black; half tender, juicy, very rich, excellent flavor; productive. Free. First or middle of July.

**Governor Wood.** Large, yellow marbled with light red. Sweet and rich. Productive. June.

**Lambert.** Very large, purplish red. Firm and rich. Very productive. Late July.

**Napoleon (Royal Ann).** Large, pale yellow with bright red cheek. July.

**Schmidt's Biggareau.** Very large, deep mahogany color. Very juicy. July.

**Windsor.** Large, very dark red, firm and rich. July.

**Yellow Spanish.** Pale yellow with bright red cheek. Productive. June.

Trees on Mazzard roots, 5c per tree additional.

### Sour Cherries

#### PRICES OF ALL VARIETIES OF SOUR CHERRIES

	Each	10	100
First class, large size, 2-year, No. 1 grade, 5 to 6 ft.	.....	\$0.60	\$5.50 \$50.00
First class, medium size, 2-year 4 to 5 ft.	.....	.50	4.50 40.00
Five or more at 10 rate, twenty or more at 100 rate.			

**Early Richmond.** Medium size; dark red; melting, juicy, sprightly, acid flavor. This is unsurpassed for cooking purposes, and is exceedingly productive. Free. June.

**English Morello.** Medium to large; blackish red; acid, juicy and good; very productive. August.

**Montmorency.** A large red, acid cherry, larger than Early Richmond and fully 10 days later. Very profitable. Last of June. The leading commercial variety, and the best canning Cherry.

Trees on Mazzard roots, 5c per tree additional.



Orange Quince

cheek: firm, juicy, with a rich flavor; productive. August.

### QUINCES

The Quince is highly valued for preserves, marmalades, jellies and flavoring purposes, and is worthy of more extensive planting.

Large size, 4-5 ft., 60c each.

**Champion.** Fruit very large; flesh cooks tender. Tree vigorous; bears young; season two weeks later than the Orange; keeps until January.

**Orange.** Fruit large, round, with a short neck; color bright yellow; flesh firm and tough until cooked, when it becomes tender, juicy and of excellent flavor.



Black Tartarian

## NUT TREES

**Black Walnut.** Grows from 40 to 60 feet high. Large crops of nuts with rough hard shell containing rich, oily kernels of fine flavor. Trees 4 to 5 ft. high. \$1.50 each.

**Butternut.** Large longish nuts with sweet, oily, nutritious kernels. Trees 4 to 5 ft. \$1.50 each.

**English Walnut.** A fine lofty growing tree, producing large crops of thin shelled delicious nuts. Trees 3 to 4 ft. high. \$1.50 each.

## APRICOTS

Beautiful and delicious fruit. In quality and appearance is between the plum and peach, combining qualities of both. Ripening early, together with its delightful flavor, makes it one of the most valuable fruits for the garden.

### PRICES OF ALL VARIETIES OF APRICOT TREES

Each 10  
Largest size, 1 year, 4 to 5 ft., 9/16 and up, XXX ..... \$0.60 \$5.00

**Alexander.** Fruit yellow, flecked with red, very beautiful and delicious. July.

**Alexis.** Very hardy; an abundant bearer; yellow, with red cheek; large; slightly acid, rich and luscious.

**Budd.** Medium to large; light orange with blush on sunny side; flesh sweet, juicy, with flavor of the peach; hardy and productive.

**Royal.** Hardy and abundant bearer; yellow, with red cheek; large; slightly acid, rich and luscious. July.

**Moorpark.** One of the largest. Orange-red cheek; firm, juicy, with a rich flavor; productive. August.



Apricot, Alexander

"Plant a Tree, Jock, It'll Be Growing While Ye're Sleeping"—Bobbie Burns

# PEACHES

For QUICK PROFITS, Plant Northern Grown PEACHES — THEY GROW FAST AND PRODUCE BIG CROPS



A Young Peach Orchard Planted 20 Feet Apart

## PRICES OF ALL VARIETIES OF PEACH TREES

	Each	10	100
First Class, large size, No. 1 Grade, 4 to 6 ft. . .	\$0.30	\$0.25	\$0.20
First Class, medium size, 3 to 4 ft. . . . .	.25	.20	.15
First Class, smaller size, 2 to 3 ft. . . . .	.20	.15	.10
Five or more at 10 rate. Twenty or more at 100 rate.			

The most universally planted fruit for home use. Peach trees are being planted profitably as fillers in apple orchards, for they make ground space that is practically idle, pay well until the apples come into bearing. Peach trees will thrive wherever corn or potatoes can be raised. In planting, prune the tops to a clean whip, and each succeeding year prune the shoots of last year's growth.

- Belle of Georgia.** Large, white with red cheek. July. Free.
- Carman.** Large, creamy white with deep blush; skin tough, flesh tender, fine flavor and quite juicy. August.
- Champion.** An extremely large, handsome early variety, creamy white with red cheek, sweet, rich and juicy. August.
- Crawford, Early.** A large yellow quality Peach. September.
- Crawford, Late.** A superb, large yellow Peach. Late September.
- Elberta.** Large, oval, yellow with red cheek; flesh yellow, firm, juicy and of high quality. Leading Peach in all sections. Early September. Free.
- Golden Jubilee.** Extremely attractive. Has proven its leadership as one of the greatest peaches of its season and ranks first in profits to the grower of early yellow peaches. A great Peach wherever it is grown. Large, early yellow Peach of Elberta type. Ripens three weeks earlier. Skin yellow blushed red; flesh yellow, juicy, sweet. Free.
- Hale-Haven.** Large, new yellow Freestone. Its high color even before complete ripening gives it great market value because of the advantage of premature picking, packing and shipping without loss. Hardy and productive. Ripens two weeks before Elberta.

- Hale, J. H.** Large, beautiful golden yellow with deep carmine blush. Heavy bearer when planting with it South Haven or Rochester for pollen. Late August. Free.
- Oriole.** Fruit medium to large, yellow; one week ahead of Rochester. Notable as an early Peach of high quality. Free.
- Rochester.** Fruit large, yellow, with attractive red blush; juicy and delicious. An annual and prolific bearer. Mid-August. Free.
- South Haven.** Exceptionally prolific; deep golden yellow with attractive crimson cheek. Flesh yellow, juicy, and delicious. Excellent for canning, or home use.
- Valiant.** Large, roundish oblate fruit, blushed with an appetizing red, meets with instant favor. Its juicy flesh is blessed with a rich delightful flavor. Ripens around the first of September, about three weeks later than the Golden Jubilee, just at the time when Peaches are in the biggest demand and sell at highest market prices.
- Vedette.** From Elberta seed; large, yellow fleshed freestone, superior to Elberta in quality and color. Early September.
- Veteran.** Cross between Vaughan and Early Elberta; large, yellow flesh, superior to Elberta in quality; ripens about September 1st. Free.



Golden Jubilee Peach. Early August.

# Peach Leaders

**Outstanding New Varieties  
for Home Garden  
and Profitable Orchards**

Dependable, Productive, Luscious, High  
Quality, Unequalled for Roadside  
and Local Markets.



J. H. Hale Peach. Late August.



Hale-Haven. Middle of August.

**Have a Succession of Fruit All  
Through August and Into  
September**

### RIPENING ORDER

1. Golden Jubilee
2. Hale-Haven
3. J. H. Hale
4. Valiant



Valiant  
September.



Marcy Raspberry

## RASPBERRIES

Produce Quick Profits On a Small Investment



Latham Red Raspberry

# MARKS' "CERTIFIED" R

None Better Grown-Freshly Dug Outst

### PRICES OF STRONG, HEALTHY PLANTS

Except Otherwise Noted

Twenty-five	Hundred	Thousand
\$1.00	\$3.00	\$25.00

300 or over at 1000 rates.

**Chief. (Red.)** The finest early Red Raspberry for general planting. Large, firm and a very heavy yielder. Ripens 10 days before Latham.

**Cumberland. (Black.)** Large, glossy black, firm, of excellent quality. Hardy and productive. Early to midseason.

**Columbian. (Purple.)** A fine commercial sort. Vigorous, very productive, excellent canner. Fruit large, purple, firm. Midseason.

**Indian Summer. New Everbearing Red Raspberry.** Berries large, conical, much superior in quality and size to any of this type. Prices: \$1.25 per 25; \$4.00 per 100.

**Latham. (Red.)** Large, round, firm, brilliant red. Most profitable commercial variety. Hardy, very prolific, an excellent shipper and a perfect variety for canning. Early. Ripens evenly over a very long season.

**Marcy.** This variety was offered for the first time in 1936. The berries, the largest of any variety in the Station collection. The plants are tall, vigorous, healthy and hardy. Worth trying for market and home use, being especially noteworthy for the very large berries, vigor and productiveness of the plants.

Every home and farm should grow Raspberries this year. It's a patriotic duty to grow more fruit and vegetables.



Taylor R

# RASPBERRY PLANTS

Standing Varieties that Bring Top Market Prices

**Newburgh.** (Red.) A new variety of excellent color and quality. Very large and firm. Fine keeper and shipper. Vigorous, hardy and very productive. Three or four days earlier than Cuthbert.

**Plum Farmer.** (Black.) One of the best commercial sorts. Berries large, thick meated, firm. Very productive. Early midseason.

**St. Regis.** (Everbearing.) A bright crimson berry of excellent quality. Fruit commences to ripen with the earliest and continues to ripen on young canes until October. Price: \$1.25 per 25; \$4.00 per 100.

**Sodus.** New Purple Raspberry from New York Experimental Station. Fruit is large, firm, medium purple color, and does not crumble. Plants hardy and very productive. Prices: \$1.25 per 25; \$4.00 per 100.

**Taylor.** A new Red Raspberry introduced by the New York State Experimental Station. Plants are vigorous, hardy and productive. Long, conical shape, firm, thick flesh. Excellent quality, ripens just before Latham.



Indian Summer Everbearing

## NEW LOGAN BLACK CAP

Most dependable Black Raspberry. Highest prices on early market. It ripens one week earlier than Cumberland, heavy yielder and the glossy black berries are as large as that variety. It holds well through drought and the last picking has always proven as fresh as the early picking.

Strong tip plants, \$1.25 for 25; \$4.00 per 100.



New Logan Black Cap

Plant an acre or two. Three by four feet, 3,600 plants to an acre.

Build a roadside stand and sell ripened Raspberries.

The motoring public will call again and again for these luscious berries.



Sodus Purple Cap

raspberry

## CURRENTS

PRICE OF ALL VARIETIES  
OF CURRANT BUSHES,  
EXCEPT PERFECTION  
AND RED LAKE

Extra Size, 2 Year, Strong  
Bushes, 20c each; 10 for  
\$1.50.

**Cherry.** (Red.) Very large;  
deep red; rather acid; bunches  
short.

**Fay's Prolific.** (Red.) Of large  
size, fine flavor and twice as  
prolific as the Cherry.

**Perfection.** (New.) Color, bright  
red. Larger than Fay and  
Cherry. Very productive.  
Quality fine. Not as acid as  
Fay. 25c each; 10 for \$2.00.

### Red Lake

The new giant red Currant.  
The berries are a pleasure to  
pick, being large, dark red in  
color, and on long well-filled  
branches. Very hardy. Ripens  
over a long season.

2 yr. No. 1 plants: 30c each;  
10 for \$2.50.

Red Lake Currants

## RHUBARB — Pieplant

Excellent for pies or sauce, and very desirable for  
canning. Plant 3 or 4 feet apart in rich garden soil.

Prices of extra strong 2-year roots: 20c each; \$1.75  
per 10; \$10.00 per 100.

**Myatt's Linnaeus.** The best known and most widely  
planted variety. Large, early, tender—not the least  
tough or stringy—with mild sub-acid flavor.

### MacDONALD RED RHUBARB

Prof. L. G. Bunting,  
MacDonald College, Que-  
bec, where this variety was  
originated, writes: "Mac-  
Donald is very highly col-  
ored, attractive, red stalk,  
of large size, productive,  
very tender and succulent,  
particularly valuable for  
pies and desserts. Its color,  
when cooked without peel-  
ing, is as attractive as that  
of raspberries."

Another great improve-  
ment in the new MacDon-  
ald is its excellent quality,  
sweeter than common  
Rhubarb and requiring  
less sugar.

2-yr. roots: 25c each;  
3 for 65c; 10 for \$2.00.

Mayville, N. Y.,  
April 30, 1941.  
Wilson Nurseries:  
The fruit trees arrived  
yesterday. I cry satisfac-  
torily.

Yours truly,  
ERNEST MAHER.

MacDonald  
Red Rhubarb



Alfred Blackberry

## BLACKBERRIES

PRICES OF No. 1 STRONG PLANTS,  
BEST SELECTED VARIETIES  
25 for \$1.25; 100 for \$4.00.

**Alfred.** Mammoth New Blackberry, practically core-  
less, highest quality. Large jet black berries. Ex-  
ceedingly productive. A top-notch for blackberry  
pie or jam.

**Eldorado.** Largest hardy blackberry; free from rust.  
Berries large, jet black, borne in clusters; sweet,  
melting, no hard core.

## GOOSEBERRIES

FINE FOR PIES—EASY TO GROW—  
VERY PRODUCTIVE

**Downing.** Medium to large, pale green. Quality good.  
Upright productive bush. Midseason. The most  
widely grown variety.

**Houghton.** Small, dull reddish brown fruit; tender,  
juicy, sweet, and pleasant, ripening soon after mid-  
summer. Profuse bearer.

**Josselyn.** Marvelously productive. Large size dark red.

PRICES OF  
GOOSEBERRIES

Two year, extra fine:  
25c each; \$2.00 per 10;  
\$8.00 per 50; \$15.00 per  
100.

### ASPARAGUS Mary Washington

The Outstanding  
Variety

This is, without  
doubt, the best variety  
grown at this time. It  
is a very strong grower,  
stock of giant size,  
green color, rich and  
tender. In addition to  
being very productive,  
it is rust resistant and  
a bed will last for years.

PRICES: Extra  
strong, 2 year, 75c per  
25; \$2.00 per 100;  
\$10.00 per 1000; 500  
at 1000 rates.



Mary Washington

## GROW YOUR OWN FRUIT

THE WILSON NURSERIES, WILSON, NIAGARA CO., NEW YORK





Van Buren — A Superior New Grape

# GRAPES

## SELECTED VARIETIES

### Easy to Grow and Very Profitable

Four new outstanding varieties originated at New York State Experimental Station, Geneva. Early, luscious, productive, filling a long felt want for home and commercial purposes.

**Extra Size 2-Year-Old Vines**  
**PRICES OF ALL VARIETIES EXCEPT OTHERWISE NOTED**

	Each	10	100
2 year, No. 1 .....	\$0.20	\$1.60	\$14.00
5 at 10 rate, 20 or more at 100 rate.			

**CONCORD**

	Each	10	100
2 year, No. 1 .....	\$0.15	\$1.00	\$ 8.00
1 year, No. 1 .....	.10	.75	5.00
Twenty or more at 100 rate.			

- Brighton.** (Red.) Bunch medium to large, quite compact; flesh rich, sweet and best quality; color dark crimson or brownish red; vine vigorous and hardy.
- Caco.** (Red.) This new red Grape has a most delicious flavor, and is of the highest quality. It is one of the earliest grapes in ripening. 35c each; 10 for \$3.00.
- Campbell's Early.** (Black.) A strong, vigorous and hardy sort; ripens early and bears abundantly; berry large, black with blue bloom; tender, sweet and rich; good market berry; it is a good shipper and long keeper.
- Catawba.** (Red.) Dark red. Bunches large, berries medium. Best quality for table and wine. Late.
- Concord.** (Black.) The leading commercial Grape. Color blue-black. Bunches and berries large. Hardy, productive and an excellent shipper. Succeeds over large area. Excellent for grape juice. Midseason.

- Delaware.** (Red.) Bunches and berries small. Light red, unusually sweet and delicious. Early.
- Fredonia.** The best early black Grape now grown. Berries large, juicy and sweet, borne in large, compact clusters. The fruit is covered with a blue bloom which renders the bunches very attractive. Price, 35c each.
- Portland.** A new white and earliest of all Grapes. Large bunch and berry; flesh sweet, juicy and of fine flavor. A valuable early grape for home gardens and already holds first place as the best early market variety. Price, 35c each.
- Moore's Early.** (Black.) Berries and bunches large. Black with blue bloom. Fine quality. Early.
- Niagara.** (White.) The most popular white Grape. Bunches and berries extra large. Vigorous, productive and a good keeper. Midseason.
- Worden.** (Black.) A large early black Grape of fine quality. Berries and bunches large.
- Van Buren.** Most promising very early, black Grape introduced, clusters medium, compact. Berry similar to Concord and equal if not superior to Concord in quality. Price, 35c each.
- Ontario.** Another new white Grape. Follows Portland very closely in ripening. An excellent blending of acid and sugar, hence the taste is sprightly and yet sweet. Vine a strong vigorous grower and very productive. Especially recommended for home use. Price, 35c each.
- Special 4 for \$1.25—2-Year No. 1 Grade.**

# STRAWBERRIES

The following two recent introductions of the U. S. Department of Agriculture, Dorsett and Fairfax, are considered by most Strawberry growers as superior to other standard varieties both for home and commercial use.

Prices, 100 plants, \$1.00; 500 plants, \$4.50; 1000 plants, \$8.00.

- Dorsett.** An extra early self-pollenizing offspring of Premier. Does well on poor soil. Berries large, evenly matured, light bright red. Excellent for market or home use.
- Fairfax.** Another excellent new variety, ripening early, about the same time as Premier. Very vigorous and a fine plant maker.
- Premier.** An early, productive variety of unsurpassed quality.

**Catskill.** Plants large, very vigorous, yield very heavy crops. Berries very large, slightly irregular in shape, moderately firm, dark red, but glossy and attractive, mild subacid and good quality.

## Everbearing Varieties

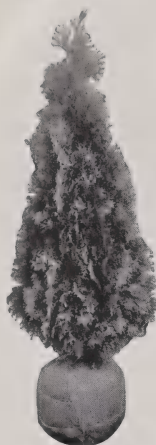
Prices: 25 for 75c; 50 for \$1.25; 100 for \$2.00; 1000 for \$11.00.

- Gem.** Very hardy, plants freely. Berry is dark red, large, sweetish tart flavor. Plants medium in size and immune to disease.
- Mastodon.** Without question the finest of the fall or everbearing varieties. It produces an immense crop in June and an abundant crop in the fall. Most prolific of all the fall varieties.
- Strawberry Plants Sent by Parcel Post or Express.**

**A Little Investment Yields a Big Profit**

# EVERGREENS *The Aristocrats of the Lawn*

All Evergreens offered in this catalog have been twice or three times transplanted and are guaranteed to be taken up balled and burlapped and shipped in such a careful manner as to insure their safe arrival anywhere in the United States.



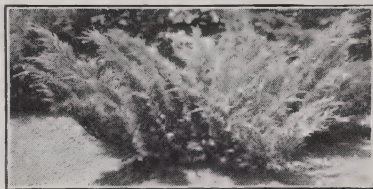
Pyramidal  
Arbor-Vitae

## The Popular ARBOR-VITAE

**American Arbor-Vitae** (White Cedar). Soft bright green foliage. Erect, broadly pyramidal habit—a rapid grower. Can be trimmed and kept to any form or height. 3 to 4 ft., \$2.00 each.

**Globe Arbor-Vitae.** A dense, low, natural globe-shaped evergreen, excellent for foundation planting or planting along walks or driveways. 15 to 18 in., \$1.25 each.

**Pyramidal Arbor-Vitae.** A densely compact pyramidal type with deep green foliage. The most popular columnar type for home beautification. 2 to 3 ft., \$1.25 each; 3 to 4 ft., \$2.50; 6 to 8 ft., \$4.00 each.



Savin Juniper

## The Feathery JUNIPERS

**Irish Juniper.** A splendid columnar shaped Evergreen with fine sage-green foliage. Erect, compact, slender and formal in habit. 2 to 3 ft., \$1.50 each.

**Pfitzer's Juniper.** A striking, low-growing, spreading Evergreen, with fine dark green foliage. Fine for foundation and general-purpose planting. 18 to 24 in., \$2.50 each.

**Savin Juniper.** -Low growing, very dwarf. Dark green foliage, very desirable. Can be kept trimmed to any desired height. 18 to 24 in., \$2.50 each.

**Spiny Greek Juniper.** Dwarf pyramidal tree with compact bluish green foliage. 12-18 in., \$1.50 each; 18-24 in., \$2.50 each.



Colorado Blue Spruce

## The Stately SPRUCES

**Colorado Blue Spruce.** One of the showiest and most impressive Evergreens. A broad pyramidal shaped tree with beautiful foliage of bright silvery blue color. 2 1/2 to 3 ft., \$4.00 each.

**Norway Spruce.** The Evergreen most commonly used for Christmas trees. Tall, open, pyramidal shaped tree with dark green foliage. Can be kept trimmed to any size or shape. 2 to 3 ft., \$1.50 each.

## EVERGREENS and Plenty of Them Are a Part of the American Home

The attractive "outside" leads to an "inviting interior," for you, the home owner, who plants with an eye for economy as well as success and beauty.

No one realizes better than yourself how bare corners and shabby entrances rob a home of that neat and well-kept look, associated with the ideal American home. For a small investment you can own the balled Evergreens listed below. They include:

- 2 Norway Spruce, 2 1/2-3 ft.
- 2 Am. Arbor-Vitae, 3-4 ft.
- 2 Pfitzer's Junipers, 18-24 in.
- 2 Globe Arbor-Vitae, 15-18 in.

(Reg. value, \$14.50)

**8 for only \$13.00**

**Koster's Blue Grafted.** The aristocrat of the Evergreen family; expressing the nearest to perfection in symmetry, uniform development and broadly pyramidal grace. Its color is the truest, most persistent blue found in any known tree. 3 to 4 feet, \$7.00; 4 to 5 feet, \$10.00.

## Marks' Specimen EVERGREENS

These evergreens are well equipped for the most particular need. Fine developed specimens for permanent effect and lasting beauty. Carefully cultivated for many years, they are now ready to help you with your beautifying activities.

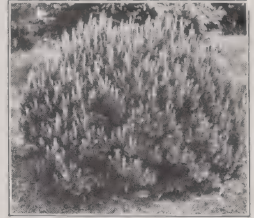


# Evergreens Attract Attention — Admired the Year Around

## YEW (*Taxus*)

**Cuspidata Capitata.** The beautiful upright Japanese Yew of moderate bushy growth, the upright-spreading branches densely clothed with short leaves on dull green. 1½ to 2 ft., \$2.50 each.

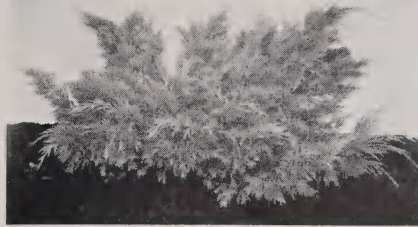
**Cuspidata Brevifolia.** Dwarf and compact, with short, richly dark green leaves, dense bushy habit. Hardy, close set, slow growing; one of the best dwarf Evergreens. 12 to 15 inches, \$2.50 each.



Mugho Pine



Deep Green Upright Taxus



Pfitzer Juniper

## MUGHO PINE

A genuine dwarf Pine. Very dense. Assumes a general globular form. Leaves short, stiff, and rich green color. Fine for punctuating walls and driveways and for foundation planting. 15 to 18 inches, \$2.50 each.

# Hardy Garden Perennials For Best Results Plant 3 or More of a Variety

FOR BEAUTY — PERMANENCE — PLEASURE  
Our plants are all field-grown and freshly dug.

## HARDY PHLOX

25c each; 3 for 60c, postpaid.

No garden is complete without Phlox. The color range is large, and the colors bright. The period of bloom is long and will add to the garden over a long period.

**Africa.** Brilliant carmine-red with blood-red eye. Large flowers, strong stems. One of the best dark reds.

**B. Comte.** Has large heads of rich satiny amaranth flowers. Very brilliant.

**Bridesmaid.** A very strong grower. Large white flower with a vermilion-red eye.

**Mrs. Jenkins.** Pure white; late; medium height. Splendid for mass planting.

**Rheinlander.** Beautiful salmon-pink with claret eye. Flowers of immense size.

**Widar.** Large violet-blue flowers with a clear white eye. Medium height, vigorous growth.

## LARKSPUR

30c each; 2 for 50c, prepaid.

**Belladonna.** Light sky-blue.

**Bellamosa.** Dark blue.

## PEONIES

Named Varieties, \$1.00 each; 3 for \$2.50, prepaid.

**Felix Crousse.** One of the finest reds and always a winner. Blooms medium season.

**Mme. Emile Lemoine.** A rare beautiful white. Blooms near end of season. A splendid show flower.

**Sarah Bernhardt.** A true apple-blossom-pink with silvery tips on the petals. Blossoms midseason.

Assorted Colors: Red, pink, and white, 50c each; 5 for \$2.00, prepaid.



A Planting of the Showy Large Flowered Peonies

# Trees for Shade and Ornamental Purposes

## THEY BEAUTIFY YOUR HOME GROUNDS

**W**HAT is more pleasing than a proper planting of Shrubbery, Evergreens and Shade Trees around a home. They beautify and make it more attractive. Have you not noticed the shrubbery and evergreens around the homes of a number of your friends, how they add to the appearance, and how you were attracted to them? An investment of a few dollars will bring about the desired results.



Silver Maple

**American Elm.** Tall vase shaped. Fine for street planting. 8 to 10 feet. \$1.50 each.

**Bechtel's Flowering Crab.** Lawn tree. Medium grower. Double rose shaped pink blossoms. 3 to 4 ft. \$1.00 each.

**Gold Bark Willow.** An upright growing tree with showy golden bark conspicuous during the winter. 6 to 8 ft. Price, \$1.25 each.

**Norway Maple.** Excellent street and shade tree. Strong, fast grower. 8 to 10 ft. \$2.00 each.

**Carolina Poplar.** Hardy, fast growing tree with large leaves. 6 to 8 ft., 60c each. 8 to 10 ft., 85c each.

**Catalpa Bungei (Umbrella Tree.)** Large, heart-shaped leaves making symmetrical umbrella-shaped top. Two-year heads. 6 to 8 ft. \$1.25 each.

**Chinese Elm.** A very rapid grower with small dense foliage. Resembles Norway Maple in shape. 8 to 10 ft., \$1.50 each. 6 to 8 ft., \$1.25 each.

**Cut-Leaved Weeping Birch.** Tall, slender, weeping tree. Silvery white bark. 6 to 8 ft., \$2.00 each. 8 to 10 ft., \$2.75 each.

**Lombardy Poplar.** Tall, fast growing spirelike tree. Fine for marking lanes or boundaries. 8 to 10 ft., \$1.00 each; \$8.50 per 10. 6 to 8 ft., 75c each; \$6.00 per 10.

**Mountain Ash.** Handsome small tree with clusters of bright red berries. 6 to 8 ft., \$1.50 each.

**Silver-Leaved Maple.** Large spreading tree. Foliage silvery underneath. 8 to 10 ft., \$1.25 each. 10 to 12 ft., \$1.50.

**Oriental Plane (European Sycamore).** A rapid growing, lofty, wide spreading tree. Very desirable for street planting. 8 to 10 ft., \$2.00 each.

**Maple, Schwedler.** Reddish purple foliage in early spring, changing to deep bronze in fall. 6 to 8 ft. Price, \$2.00 each.

**Maple, Wier's Cut-Leaved.** One of the most remarkable and beautiful trees, with cut or dissected foliage. Its growth is rapid, shoots slender and drooping, as graceful as cut-leaved birch. 8 to 10 ft., \$2.50.

**Mulberry, Downing.** This tree is not alone valuable for the large, refreshing berries it bears, but is very handsome as a lawn or street tree. This should be in every yard or garden. 5 to 7 ft., \$1.00 each.

**Mulberry, Russian.** Very hardy, vigorous grower, very productive; fruit black and of medium size. 5 to 7 ft., \$1.00 each.



Bechtel's Flowering Crab

**Thorn, Double Pink.** Double pink or rose flowers with white tips. 4 to 5 ft., \$2.00 each.

**Thorn, Paul's Double Scarlet.** Flowers deep crimson with scarlet shade; very double. 4 to 5 ft., \$1.50 each.

**Willow, Babylonic.** Our common well-known weeping variety; forms a large round-headed, graceful tree; requires plenty of room, and where space can be spared, is quite desirable. 8 to 10 ft., \$1.50 each.

Myerstown, Pa.,  
May 4, 1940.

Gentlemen:  
Received nursery stock in fine shape and wish to thank you very kindly for more than fair treatment I received from you.  
Very truly yours,  
Miss Maggie L. Zellers.

"Plant a  
Tree,  
Jock,  
It'll Be  
Growing  
While  
Ye're  
Sleeping"  
—Bobbie  
Burns



Chinese Elm

# Beautiful Fast Growing Hedges

## THE FORMAL PRIVET

### Make a Dense, Good Looking Hedge

**Amur River Privet.** A hardy vigorous grower recommended for sections too cold for California Privet. Strong bushes, 18 to 24 inches. \$7.00 per 100, 50 at 100 rates.

**California Privet.** A rapid and vigorous grower. It has handsome, glossy, oval-shaped leaves which remain well into the winter. Very popular for ornamental hedges. Can be trimmed to any desired shape or height. Extra well-branched. Set in single rows, 1 foot apart.

#### SPECIAL PRICES

	10	100
12 to 18 in., 2 years .....	\$0.75	\$5.00
18 to 24 in., 2 years .....	1.00	6.00
2 to 3 ft., 2 years .....	1.25	7.00
	50 at 100 rates.	

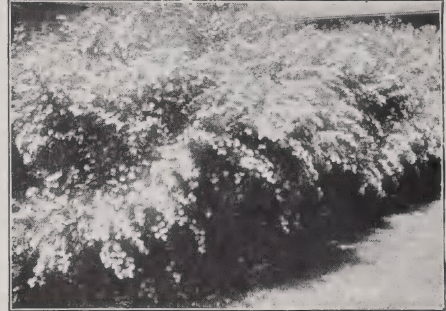


**Barberis Thunbergi — Green Barberry**

## The Protective Hedge— GREEN BARBERRY

**Barberry Thunbergi.** Best for informal hedge 2 to 3 ft. high. Plant 2 feet apart. Extra strong bushes.

	Each	10	100
15 to 18 in. ....	\$0.20	\$1.75	\$15.00
2 to 3 ft. ....	.25	2.25	20.00



## The Flowering Hedge— SPIREA VAN HOUTTEI

18 to 24 in., \$1.50 per 10; \$12.00 per 100. 2 to 3 ft., \$2.00 per 10; \$15.00 per 100. 50 at 100 rate.

### How to Plant a Neat Hedge

TO GET A DENSE HEDGE AT BOTTOM  
SET HEDGE SLIGHTLY LOWER THAN  
PLANTS GREW IN NURSERY.

TO GET A STRAIGHT HEDGE DIG ONE  
SIDE OF TRENCH STRAIGHT AND  
PLACE PLANTS AGAINST THIS SIDE



## Amur River Privet

Very hardy and dense. Recommended for planting where winters are extremely severe. For exceptional beauty select Amur River Privet because of its compact, low-branching growth. For single row plant 1 foot apart. For quick results and a compact, bushy hedge, plant in double rows, 1 foot between the rows and 18 inches apart in the row and staggered. Can be trimmed to any height or shape desired.

# HARDY CLIMBING VINES

Beautiful for Softening Bare Walls, Fences and Trellises

STRONG, THRIFTY, WELL-ROOTED,  
2-YEAR-OLD VINES



The Graceful Wisteria

**Chinese Purple Wisteria.** A very beautiful, popular species, with racemes of pale lilac flowers borne in great profusion in May. An exceedingly graceful climber for training on porches or arbors. The stems grow quite large, climb high and twine tightly. Their growth is very rapid. **75c each.**

**Chinese Matrimony Vine.** Vigorous and hardy climber, flowers bright purple, succeeded by scarlet berries, nearly 1 inch long. Excellent for trellises. **50c each.**

**Ampelopsis Veitchi (Boston Ivy).** For covering buildings of brick and stone; clings tightly to the smoothest surface. Bright green leaves, changing to brilliant colorings in fall. **40c each.**

**Clematis Henryi.** Single; the finest white Clematis; very large, fine flowers; grows rapidly; blooms freely during summer and autumn. **75c each.**

**Clematis Jackmani.** Single. Very large; deep purple; forms a perfect mass of richest bloom. **75c each.**

**Clematis Paniculata (Sweet-Scented Japan Clematis).** The flowers are of medium size, fragrant, pure white, borne in immense sheets in September, when very few other vines are in bloom. **40c each.**

**Dutchman's Pipe (Birthwort).** Large, heart-shaped leaves and quaint, pipe-shaped green flowers. **75c each.**

**Hall's Japan Honeysuckle.** Flowers white, bloom from July until winter. Fine climber. **25c each.**

**Trumpet Vine (Bignonia Radicans).** A robust, woody vine. Its orange-scarlet, trumpet-shaped flowers cluster at the tips of the branches. **75c each.**

**Mme. Edouard Andre Clematis.** The flowers are a distinct crimson-red. **75c each.**

## Climbing and Rambler Roses

ROSES "THE QUEEN OF THE GARDEN"

PRICE: 2-Year No. 1 Bushes, 40c each; 3 for \$1.10.

**Climbing American Beauty.** Rich carmine pink, the large, finely shaped flowers being borne singly or in threes. Rambler type.

**Crimson Rambler.** Vigorous, hardy and extremely prolific. It blooms in clusters of a beautiful crimson color and lasts a long time.

**Dorothy Perkins.** Beautiful shell-pink. Flowers double, large, usually 2 inches across and borne in loose clusters.

**Dr. W. Van Fleet.** Large flowers of exquisite pale pink on fine, long stems. Extremely vigorous, and has marvelously fine foliage. One of our most popular of all climbers.

**Paul's Scarlet Climber.** Vivid scarlet, good size, semi-double, freely produced in clusters of from 3 to 20 flowers each, the plants being literally covered from top to bottom with bloom.

We employ the most scientific and up-to-date methods in the operation of our Nursery, thereby assuring our customers of choice and superior quality materials.



The Ramblers are very popular for vigor and hardiness, and for their thousands of blooms

Ovid, N. Y.,  
April, 24, 1941.

Gentlemen:

The nursery stock arrived today in fine condition. Will say that I have been buying nursery stock occasionally for the past 50 years and I never saw better plants or trees from any place at any time regardless of price.

Yours truly,  
A. E. Faughan.

**HYBRID  
Everblooming  
ROSES**

**Hardy,  
Field-Grown  
Roses Blooming  
from June to  
October**



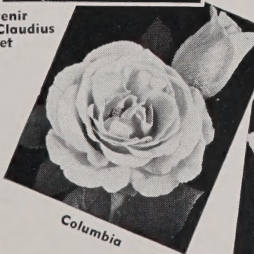
American Beauty



Red Radiance



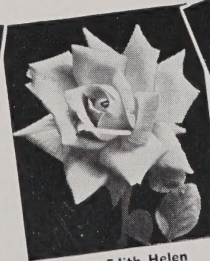
Souvenir  
de Claudius  
Pernet



Columbia



Rev. F. Page Roberts



Dame Edith Helen



Golden Emblem

# Hybrid Tea Roses

The varieties that we offer for sale are strong, thrifty, two-year-old, field-grown, bloomed in the nurseries the past season — the very best that skill and experience can produce.

**American Beauty.** A very fine dark pink Rose shaded with carmine. One of the best.

**Betty Uprichard.** Semi-double salmon-pink stained with copper-pink on outside. A novelty Rose and very popular.

**Columbia.** A beautiful glowing pink Rose. A strong grower and a very free bloomer. Almost thornless. One of the most popular sorts.

**Dame Edith Helen.** A pure glowing pink Rose without any shadings or markings. The most highly perfumed of all pink Roses.

**E. G. Hill.** Beautiful buds on long stems which open into large full, fragrant crimson blooms.

**Etoile de France.** Clean red to velvety crimson. One of the most charming red Roses.

**Francis Scott Key.** Large extremely double flowers of rich crimson.

**Frau Karl Druschki (Snow Queen).** Pure snow-white. A continuous bloomer.

**General McArthur.** Brilliant crimson-scarlet.

**Golden Emblem.** Rich deep golden yellow.

**Hadley.** Velvety crimson.

**J. L. Mock.** Outside of petals deep pink, inside silvery rose.

**Lady Ashtown.** Shining pink shading to yellow.

**Lady Hillingdon.** Deep apricot-yellow.

**Los Angeles.** Luminous flame-pink, toned coral, shaded translucent gold at base of petals.

**Mme. Butterfly.** Bright pink, apricot and gold.

**Mme. Edouard Herriot.** Coral-red, shaded yellow and scarlet.

**Miss Lolita Armour.** Coral, golden and coppery yellow.

**Mrs. Aaron Ward.** Yellow, sometimes shaded salmon and rose.

**Mrs. John Laing.** Very free flowering; commences early and continues to bloom profusely until fall. Delicate pink color. Very fragrant.

**Rev. F. Page-Roberts.** Marvelously colored Rose of golden yellow, stained with carmine.

**Red Radiance.** Dazzling crimson-scarlet.

**Roslyn.** Orange buds, full golden yellow flowers.

**Sunburst.** Light sulphur-yellow. Strong, spreading grower.

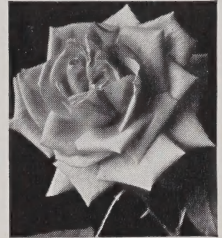
**Souvenir de Claudius Pernet.** New, sunflower-yellow.

**Souvenir de Georges Pernet.** Brick-red buds opening terra-cotta-pink.

**Talisman.** Brilliant red and gold buds, opening to well-shaped blooms of scarlet-orange and rich yellow.

**PRICES**

**All Varieties,  
2-Year  
Strong Bushes  
Each 50c  
10 for \$4.50  
5 at 10 rate**



Etoile de France



Los Angeles



Betty  
Uprichard

**ROSES. THE VERY NAME SUGGESTS BEAUTY AND FRAGRANCE**

THE WILSON NURSERIES, WILSON, NIAGARA CO., NEW YORK

# Charming Effects with **FLOWERING SHRUBS**

Are Quickly Secured and Become More Beautiful with the Years

The planting of shrubs adds greatly to the beauty and value of the home. In the following list of shrubs, you will find sorts that will bloom from early spring until late summer and some of the sorts will follow with ornamental berries until late in the winter.

## PRICES OF ALL FLOWERING SHRUBS

(except as noted)

2 to 3 ft. Strong Bushes, 35c each

**Almond, Double Pink.** Small, double pink flowers borne in abundance in May. 2½ to 3½ ft., 50c each.

**Almond, Double White.** Small, double white flowers borne in abundance in May. 2½ to 3½ ft., 50c each.

**Altheas, Double.** Bloom freely from midsummer until frost. We offer double flowering varieties in purple, red, white and pink.

**Butterfly Bush (Buddleia, Ile de France).** A new variety of more uniform moderate growth. Violet-purple clusters bloom in great abundance in midsummer. Sweet, fragrant. 4 to 5 feet.

**Barberry, Red-Leaved.** Foliage rich bronzy red. Brilliant throughout the summer and fall. Scarlet berries remain on the plant the entire winter. Plant in full exposure to sun. 3 ft.

**Barberry, Thunbergi.** Dwarf habit, very graceful. Foliage turns beautiful red in fall. Red berries remain during winter.

**Deutzia, Double Flowering.** Double white flowers tinged with rose.

**Deutzia, Gracilis.** Dwarf growing. White flowers in June. 18 to 24 inches.

**Deutzia, Pride of Rochester.** Double white flowers tinged with rose in May.

**Forsythia (Golden Bell).** Branches are literally covered in early spring with golden bell-shaped flowers. The finest early blooming shrub. 6 feet.

**Honeysuckle, Tartarian.** In May and June it is covered with charming pink flowers, followed by clusters of red berries. Attains a height of 8 feet.

**Hydrangea Arborescens (Everblooming Snowball Hydrangea).** Beautiful ball-shaped clusters of pure white flowers from July to September.



Hydrangea Arborescens

**Hydrangea P. G.** Immense cone-shaped clusters of pink and white flowers turning to bronze in autumn.

**Japan Quince.** Completely covered with dazzling scarlet flowers in May. 18 to 24 in., 40c each.

**Lilac Purple.** An old favorite; purple flowers. 40c each.

**Lilac, White.** A well-known favorite. 40c each.

## MOCK ORANGE OR SYRINGA

**Coronarius flore-pleno (Garland Syringa).** Flowers pure white; highly scented. Double. Grows 6 to 8 feet.

**Foliis Aureis (Golden Syringa).** Yellow foliage, white flowers. Very sweet-scented. Grows 3 to 5 feet. 40c each.

**Lemoinei.** Small white flowers. May. Grows 6 to 8 ft.

**Virginal.** Very large, double white flowers in clusters of five to seven; blooms in June. 5 to 7 feet.

**Snowberry.** Waxy milk-white berries which remain all winter.

**Snowball.** Globular clusters of white flowers in late May. 40c each.

**Spiraea Anthony Waterer.** Dwarf growing. Deep pink blossoms late in June. 18 to 24 inches.

**Spiraea Callosa Rosea.** Deep rosy blossoms nearly all summer.

**Spiraea Prunifolia.** Profusion of double white flowers in May.

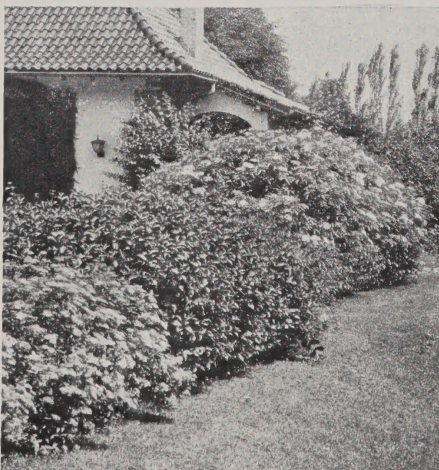
**Spiraea Van Houttei.** Sometimes called Bridal Wreath. Masses of pure white blossoms in May and June. 3 to 4 ft., 25c each; \$2.00 per 10.

**Syringa, Lemoine.** Creamy white, fragrant flowers in June.

**Weigela Candida.** Pure white flowers from June to fall.

**Weigela, Eva Rathke.** Deep scarlet blossoms in June and intermittently all summer.

**Weigela Rosea.** Dwarf. Green leaves broadly margined with creamy white. Pink flowers.



An Effective Planting of Shrubbery



# Blooming Shrubs of Distinction



Forsythia

## BEST FRENCH HYBRID LILACS

Unsurpassed for the fragrance and beauty of their flowers, their large trusses are marvels of beauty and elegance  
3 to 4 ft.,  
\$1.00 each;  
4 for \$3.75.



### The Best Hybrid French Lilacs Delightfully Fragrant

Adelaide Dunbar. Flowers large, double, violet-red.

Chas. Joly. Double, dark purple-red.

Ludwig Spaeth. Deep maroon-red.

Paul Thirion. Large, double violet.

Wm. Robinson. Deep red in bud, opening light crimson.

President Grevy. Double, blue.

Miss Ellen Willmott. Large, double white.

Leon Gambetta. Double, pink.



## Syringa Virginalis

Lovely, double, unusually large, sweet-scented, pure snow-white flowers in May and June, continuing into the fall. Individual flowers measure 2 inches and more in diameter. Excellent for cut flowers. Ultimate height, 4 to 6 feet.



Weigela, Eva Rathke

# A New Vogue for Home Beautification



## EVERGREEN DOOR ENTRANCE OFFER AS ABOVE

2 Trees, 2 to 3 ft. Pyramidal Arbor-Vitae  
2 Trees, 18 to 24 in. Pfitzer's Juniper  
Regular Price, \$7.50      Special Price, \$7.00

## is Sweeping the Country Through the Planting of Evergreens and Flowering Shrubs

The truest happiness is in the home. All of us are interested in making our homes more attractive. Fine Evergreens or Shrubbery around the house are as essential as fine furniture inside the house.

Our Evergreens and Shrubs make you proud of your home while their attractive beauty will appeal to all who pass by.

A reminder: **Order early.** Don't wait until planting time as a great, great many do. Give us a chance to select and reserve the stock so that shipment can be made when wanted.

## Foundation Planting Collection of 10 Fine Evergreen Specimens

1 Tall American Arbor-Vitae, 3 to 4 ft. ....	\$ 2.00	1 Spiny Greek Juniper, 12 to 18 in. ....	\$ 1.50
1 Dwarf Savin Juniper, 18 to 24 in. ....	2.50	1 Tall Pyramidal Arbor-Vitae, 2 to 3 ft. ....	1.25
1 Upright Yew, 1½ to 2 ft. ....	2.00	2 Dwarf Mugho Pine, 15 to 18 in. ....	5.00
2 Dwarf Globe Arbor-Vitae, 15 to 18 in. ....	2.50		
1 Spreading Pfitzer's Juniper, 18 to 24 in. ....	2.50	Regular Value .....	\$19.25

10 EVERGREENS—Our Price for Collection— **\$17.50**  
Only .....



American Arbor-Vitae  
Savin Juniper

Upright Yew  
Globe Arbor-Vitae

Greek Juniper  
Pfitzer's Juniper

Pyramidal Arbor-Vitae  
Mugho Pine

Globe Arbor-Vitae  
Mugho Pine

We Have Faith in Our Products and Know They Will Make Good

# THE WILSON NURSERIES

THOMAS MARKS & SON

WILSON, NEW YORK

"The Home of Good Nursery Stock"

Located In the Center of the Famous Fruit Belt of Niagara County