

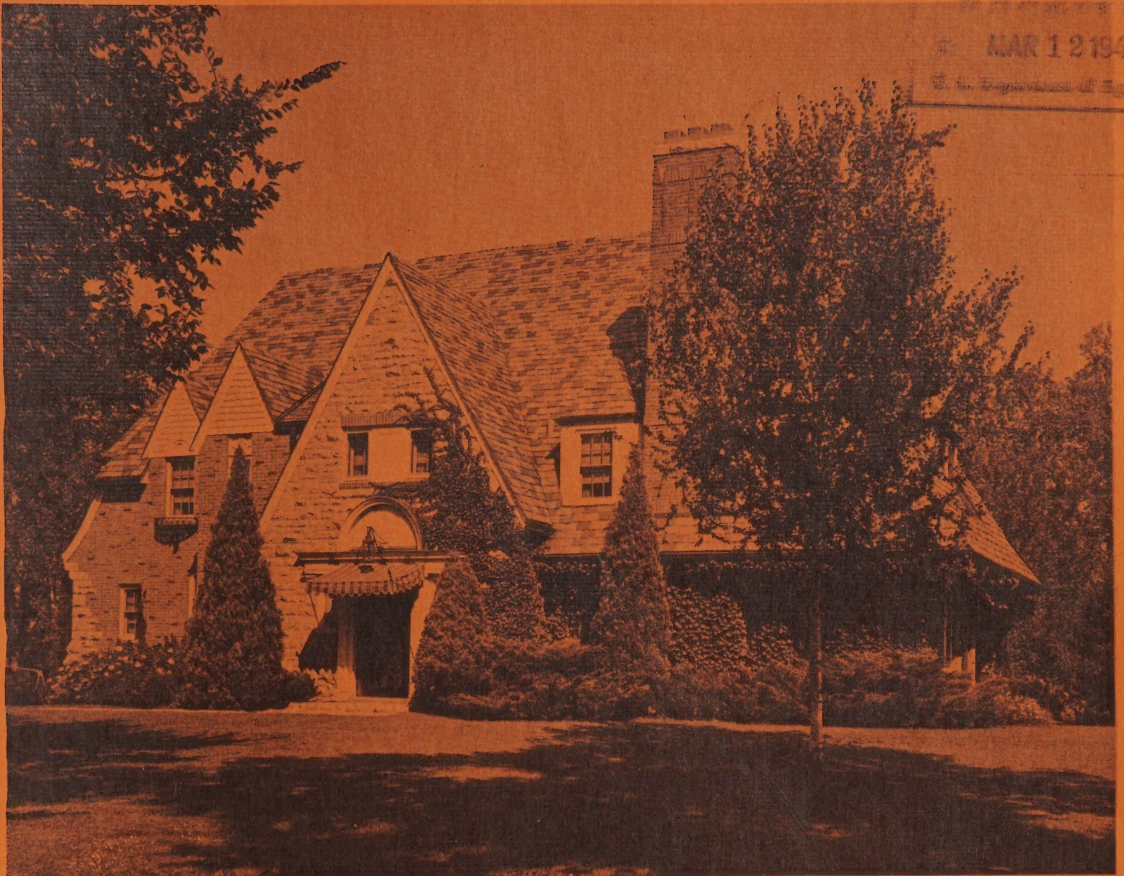
## **Historic, Archive Document**

Do not assume content reflects current scientific knowledge, policies, or practices.



62.51

LIBRARY  
MAR 12 1942  
U. S. Department of Agriculture



ONE OF OUR WELL PLANTED HOMES.

# *The Plumfield Nurseries*

2105 North Nye Ave. . . . . Phone 102

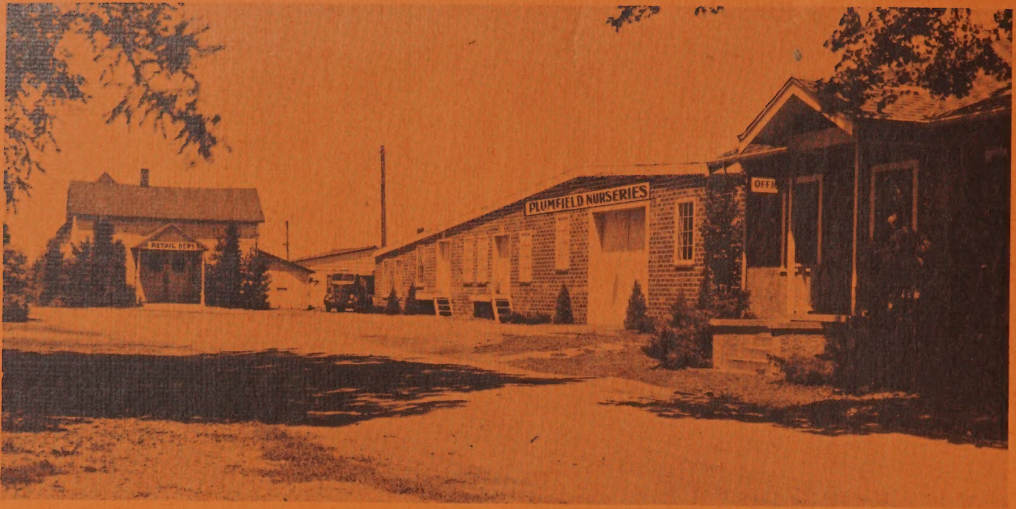
**Fremont, Nebraska**

**1942**

**Trees That Please**



**Nebraska Grown**



SOME OF THE ADVANTAGES OF BUYING FROM *Plumfield Nurseries . . .*

Years of experience in growing Nursery Stock and solving many of your planning problems. A large organization of trained help. Twelve of our employees have a total of 360 years' experience. Improved modern warehouse, ventilated and temperatures controlled, keeping stock in healthy growing condition. Modern equipment enables us to grow Nursery Stock that gives satisfaction to the most particular buyer. Our stock grown at Fremont, Nebraska, in clean, cultivated fields under ideal climatic conditions for replanting. A new Certificate of Inspection from State Inspector each year. Stock handled with the least possible exposure assuring high survival results. Low prices for fine quality guaranteed Nursery Stock.

### HOW TO ORDER

Please name second choice. In case we are out of variety or grade wanted, this will help us to make prompt shipment.

### PLEASE STATE HOW TO SHIP

Express or Freight. If mail shipment is desired, add 10 per cent to order unless it is under \$1.00, then add 10 cents.

Trees over 3-4 feet high must travel by Express or Freight.

Our NURSERY STOCK is grown on the best land in the Platte and Elkhorn valleys. We use modern machinery; have modern FROST-PROOF STORAGE, and life-long TRAINED HELP. Our office and packing grounds are located one block south of U. S. Highway No. 30, on Nye Avenue.

We extend you a personal invitation to visit our NURSERIES AND STORAGEES at any time of the year.

## OUR GUARANTEE

Our NURSERY STOCK is guaranteed to reach you in a healthy, growing condition. Stock that fails to show growth will be replaced, if notified by July 1st following delivery. After this date, we will replace at one-half the current price, if notified by October 1st, following delivery, F. O. B. our packing grounds.

Replacements will be made of same size as originally bought. Planting service at cost.

### SHORTAGES OR COMPLAINTS MUST BE REPORTED AT ONCE

If any NURSERY STOCK proves untrue to description, we hold ourselves in readiness, on proper proof, to replace it or refund the amount paid, but we shall, in no case, be liable for any sum greater than the amount originally received for said NURSERY STOCK.

★  
*Largest  
 and  
 Finest  
 Selection  
 in the  
 Mid-West*



★  
*We Urge  
 You  
 to Visit  
 Our  
 Nurseries*

ONE OF OUR EVERGREEN PLANTINGS

# Plumfield EVERGREENS

SPECIMEN STOCK

We offer one of the finest assortments of Evergreens in the West. They are all transplanted from time to time, to develop the required root system and pruned to give them shape. We invite you to visit our fields and tag your selection of Evergreens. We have thousands of Evergreens from which to make your selection.

NOTE—Evergreens are dug with ball of earth and burlapped. They will be shipped by freight or truck unless otherwise instructed. Can not be mailed. The burlap, next to the earth, should be left on when planted. Low and spreading types of Evergreens are measured across.

The most popular and hardy Evergreens in the Middle West are the various types of Junipers. In form they vary from those growing flat on the ground to those growing 80 to 100 feet tall.

You may select an assortment of Evergreens and deduct the following:

- 4% on 4 or more.
- 6% on 6 or more.
- 8% on 8 or more.
- 10% on 10 or more.

Above Discounts Applied Where No Special Service Is Required.  
 Does Not Apply to Windbreak Stock.



DOUGLAS FIR

## DOUGLAS FIR

The Douglas Fir are well known, however, the type listed here differs from the Western type as well as the Northern and Southern types. This one is native of Colorado, stands considerable drouth. Foliage is bluish-green, grows 1 to 2 ft. per year, is symmetrical and fairly compact. Makes a nice yard tree, also used extensively for windbreaks.

See page 9 for windbreak sizes.

18-24 in.....	\$2.50
2-2½ ft.....	3.00
2½-3 ft.....	3.75
3-3½ ft.....	4.50



CONCOLOR FIR

## CONCOLOR FIR

Has silvery toned foliage, dull pointed needles, soft to touch. Grows compact and symmetrical making a very fine tree for the yard. Is also planted for windbreak protection. Will grow 6 to 12 inches a year when established. Ultimate height 50 to 60 feet. Roots deep where soil conditions permit—this habit aids in vigor. Needs little pruning, if any.

18-24 in.....	\$3.50
2-2½ ft.....	4.50
2½-3 ft.....	5.50
3-3½ ft.....	6.50

## Evergreen Windbreaks

You will find varieties and prices listed on Page 9.

## Why Not Plant a Living Christmas Tree



A BLOCK OF GRAFTED EVERGREENS

# Plumfield NEW GRAFTED



**JUNIPER PATHFINDER**

This tree found favor almost instantly by reason of its outstanding silver foliage. It is upright in habit, full at base, limbs curved upward covered with shining silver-blue foliage making it an outstanding tree of the times. Will grow about one foot a year. Ultimate height 20 to 30 feet. You can shear this tree if necessary.



**MOFFETI**

## Why We Grow Grafted Evergreens



Evergreens, like other varieties of trees, are being improved and we have devoted a number of years producing trees that are outstanding in color and habit of growth. To obtain these results we graft from trees that we have carefully selected and held under observation long enough to prove their superior qualities. Evergreens are often planted in pairs and in many cases one or more pairs are desired on a landscape planting. If grafted types are planted in pairs or in any amount of the same variety they will always grow and look alike. We can assure you that no finer grafted evergreens are produced than we offer in this catalog. The price of grafted evergreens is slightly higher than common seedling types as the cost of producing them is more.

**JUNIPER MOFFETI**

Another wonderful tree selected from the Rocky Mountains of Colorado and is a dandy tree. Foliage sharp, light greenish-silver color, tips of branches are more silver. Habit is upright and pyramidal, branches grow close together making a very dense tree. Grows about 12 inches a year. Can be sheared if desired.

**JUNIPER WELCHI**

The Welchi is the most satisfactory columnar type *Scopulorum* on the market today. Foliage is a light, evenly mixed greenish-silver. Leaves sharp but lay very close to the stem. Branches are very full and tufted at the base tapering out to a prominent point, yet they are sharply curved upward forming a fine outstanding columnar tree. Grows about one foot a year. Ultimate height 20 to 25 feet. Can be sheared if necessary.



**JUNIPER SILVER BEAUTY**

A native of the San Isabel Forest region, and truly a beautiful tree. It is upright, full at base, branches have upward trend, foliage is greenish-silver, more silver on the exposed tips of branches. Grows about one foot a year. Ultimate height 20 to 30 feet. Can be sheared if necessary.



**WELCHI**

**PRICES on PATHFINDER, SILVER BEAUTY, MOFFETI and WELCHI JUNIPERS**

2-2½ ft.	2½-3 ft.	3-3½ ft.	3½-4 ft.	4-4½ ft.	4½-5 ft.	5-5½ ft.	5½-6 ft.
\$5.00	\$5.50	\$6.50	\$7.50	\$9.00	\$10.00	\$11.00	\$12.50

# EVERGREENS . . . . . Fremont, Nebraska



**JUNIPER DECUMBENS**

This tree will not display its beauty until it has attained a growth of six feet or more, displaying more beauty each year. It has shining silver-green foliage. Each year the new branches, while soft, grow downward and as the season goes on the branches stiffen and turn directly upward. As the tree develops it becomes a mass of well clothed horizontal branches with their tips perpendicular with the leader.



**JUNIPER FULGENS**

This tree is a native of Colorado. Its habit is upright, pyramidal, full at base and grows compact. Bicolor foliage, bluish-green becoming more silver at the ends of the branches. The branches grow more or less opposite, forming flat Arbor Vitae like limbs. Will grow about one foot a year. Ultimate height 20 to 30 ft. Can be sheared if necessary.



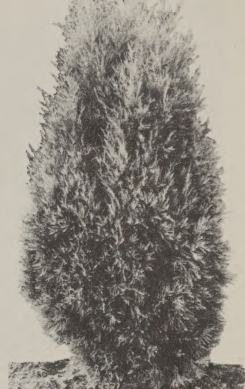
**JUNIPER FUNALIS**

This variety has (if possible) proved to be more vigorous than most of the Scopulorum. Whipcord, bluish-green foliage. Straight stem with close set branches. Branches grow nearly horizontal but will retain more compactness if sheared once a year. Grows one foot a year. Ultimate height 20 to 30 feet.



**JUNIPER WEIRI**

A true blue color foliage. This tree has sharp pointed leaves that are blue throughout. The tree grows upright, limbs semi-horizontal, short, and tufted at the tip. Making a very dense growth, full at base, takes on shape when young and retains its pyramidal habit well throughout the years. Grows about 8 to 12 inches a year. Ultimate height 18 to 25 feet. Can be sheared if necessary.



**JUNIPER SUTHERLAND**

This type of evergreen is definitely green in color as compared to the other varieties of Scopulorum. It is bushier in growth habit than the others, and consequently wider at the various given heights, than is the case with other varieties of the same size. Its beauty in our opinion is to allow it to grow in a natural manner, without shearing.

**PRICES ON DECUMBENS, FULGENS, FUNALIS, WEIRI AND SUTHERLAND VARIETIES**

2-2½ ft.	2½-3 ft.	3-3½ ft.	3½-4 ft.	4-4½ ft.	4½-5 ft.	5-5½ ft.	5½-6 ft.
\$5.00	\$5.50	\$6.50	\$7.50	\$9.00	\$10.00	\$11.00	\$12.50

**VIRGINIANA TYPES**

**VIRGINIANA BLUE RAPIDS (Grafted) 30-40 ft.**

Foliage bluish-green color. Leaves not so sharp, growing on stout, coarse, horizontal branches which set close to each other on a straight, rugged, fast-growing stem. Hardy and one of the best grafted Juniper Virginiana varieties. Northern origin. Retains its color in winter.

2½-3 ft.	3-3½ ft.	3½-4 ft.	4-4½ ft.	4½-5 ft.	5-5½ ft.	5½-6 ft.	6-7 ft.
\$3.75	\$4.50	\$5.25	\$6.50	7.50	\$9.00	\$11.00	\$12.50

**VIRGINIANA CANNARTI, Cannart's Red Cedar, 20-30 ft.**

Foliage deep, rich green. Main stem very straight. Branches almost horizontal. Requires shearing to attain compactness.

2-2½ ft.	2½-3 ft.	3-3½ ft.	3½-4 ft.
\$5.00	\$5.50	\$6.50	\$7.50

**VIRGINIANA GLAUCA, Silver Red Cedar, 15-20 ft.**

An old variety. Pyramidal tree of moderate size. Silver blue color. Brightest in spring, darkening as season progresses. Stands trimming well.

2-2½ ft.	2½-3 ft.	3-3½ ft.	3½-4 ft.
\$5.00	\$5.50	\$6.50	\$7.50

**VIRGINIANA PYRAMIDIFORMIS (Dundee Juniper)**

Compact, symmetrical growth. Green foliage changing to purple in winter. A very desirable, pyramidal tree.

2-2½ ft.	2½-3 ft.	3-3½ ft.	3½-4 ft.
\$5.00	\$5.50	\$6.50	\$7.50



**JUNIPER CANNARTI**

# EVERGREENS . . . Juniper Varieties



A DISPLAY PLANTING ON PLUMFIELD GROUNDS

## JUNIPERS

**CHINENSIS, Chinese Juniper**—A native Juniper of Asia where it covers large areas. The needles are sharp and prickly, light green with a slightly bluish cast. It averages 15 to 20 feet, narrow and columnar cone-like specimens. Recommended for all sections of the country.

2-2½ ft.....	<b>\$2.25</b>	2½-3 ft.....	<b>\$2.85</b>
3-3½ ft.....			<b>3.50</b>



CHINESE JUNIPER

**SCOPULORUM, Colorado Silver Juniper. 25-30 ft.**—Silvery foliage and close symmetrical upright growth. Thrives in hot, dry weather, when the color is the brightest. Very hardy. Grown from seed.

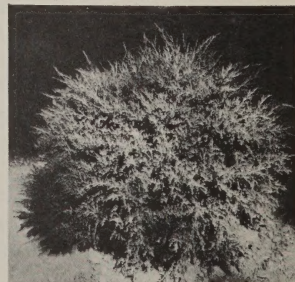
18-24 in.....	<b>\$2.75</b>	3½-4 ft.....	<b>\$5.50</b>
2-2½ ft.....	<b>3.50</b>	4-4½ ft.....	<b>6.50</b>
2½-3 ft.....	<b>4.00</b>	4½-5 ft.....	<b>8.00</b>
3-3½ ft.....	<b>4.50</b>	5-5½ ft.....	<b>9.50</b>



JUNIPER SCOPULORUM

**VIRGINIANA, Red Cedar (Platte River Type). 30-40 ft.**—This variety is well known throughout the country. The Platte River type seems to give the most satisfaction. Dense and columnar. Has bluish-green foliage turning to a reddish-purple in late fall or winter. This variety is used extensively in landscape work and also for windbreak protection.

2-2½ ft.....	<b>\$2.35</b>	4-4½ ft.....	<b>\$5.00</b>
2½-3 ft.....	<b>2.75</b>	4½-5 ft.....	<b>6.00</b>
3-3½ ft.....	<b>3.25</b>	5-5½ ft.....	<b>7.50</b>
3½-4 ft.....	<b>4.00</b>	5½-6 ft.....	<b>9.00</b>
6-7 ft.....			<b>12.00</b>



GLOBE SCOPULORUM



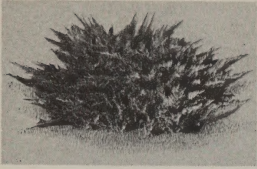
JUNIPER VIRGINIANA  
(Red Cedar)

**JUNIPER SCOPULORUM, Globe Shape**—Compact globose form of Scopulorum Juniper. Silvery foliage, very hardy.

12-15 in.....	<b>\$2.00</b>	15-18 in.....	<b>\$2.50</b>
18-24 in.....			<b>3.25</b>



# Prostrate and Spreading JUNIPERS



## JUNIPER ADMIRABILIS

This juniper belongs to a specie found in the Rocky Mountains. Its habit of growth is horizontal but it is so compact that it makes a solid mat of evergreen, covering the ground completely. Foliage bluish green. Grows 6 to 8 inches high. Spreads rapidly, yet retains its compactness. A very fine plant to use for covering graves, terraces or any place where a low beautiful covering is wanted.

12-15 in.....	\$1.35
15-18 in.....	1.75
18-24 in.....	2.00

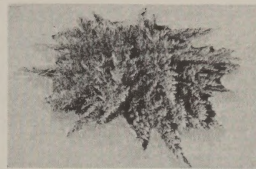


## ANDORRA JUNIPER

A horizontal juniper with grayish-green foliage turning to a reddish purple in early winter. Spreads rapidly, making a fine ground cover eight to ten inches high.

12-15 in.....	\$1.35
15-18 in.....	1.75
18-24 in.....	2.00

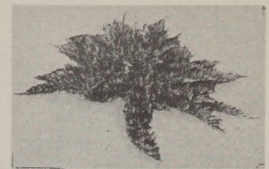
The above Junipers are used for terrace, rock garden and grave covering.



## JUNIPER FILICINUS MINIMUS

This pretty little juniper is also a variety of the Rocky Mountains. It is one of the finest foliaged evergreens of the juniper family. Its short horizontal limbs covered with delicate small branchlets forming fern shaped branches makes it a gem for the rock garden or any other place that a slow growing prostrate evergreen is desired. Grows 4 to 6 inches high, spreads slowly and is very compact. Green foliage.

12-15 in.....	\$1.35
15-18 in.....	1.75
18-24 in.....	2.00



## JUNIPER LIVIDUS

This is another fine variety of the Rocky Mountain region. Foliage is bluish-green with a silver cast. Branches more slender but very well furnished and does make a remarkable plant. It grows 4 to 6 inches high and spreads reasonably fast, making it very desirable to use.

12-15 in.....	\$1.35
15-18 in.....	1.75
18-24 in.....	2.00



## SABINA JUNIPER

Grows a trifle more upright than Pfitzer with fan-shaped branches. Is equally as hardy and has deep green foliage. Withstands smoky conditions in cities.

12-15 in.....	\$1.50
15-18 in.....	2.25
18-24 in.....	3.00
2-2½ ft.....	4.00
2½-3 ft.....	5.00
3-3½ ft.....	6.50

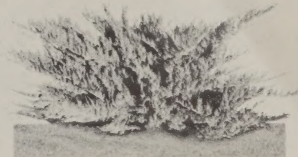


## PFITZER'S JUNIPER

(*Juniperus chinensis pfitzeriana*)

Exceptionally beautiful, graceful and hardy—no wonder it is one of the most popular. Handsome, feathery, gray-green foliage covers the arching, spreading branches as it develops its broad, picturesque form. Hardy everywhere, and does well in shade as well as sunlight.

12-15 in.....	\$1.75
15-18 in.....	2.75
18-24 in.....	3.50
2-2½ ft.....	4.50
2½-3 ft.....	6.00
3-3½ ft.....	7.50



## VON EHRON JUNIPER

Belongs to the Savin family. An extremely rapid grower clothed with dark green foliage. Many nurserymen consider it better than Savin.

12-15 in.....	\$1.50
15-18 in.....	2.25
18-24 in.....	3.00
2-2½ ft.....	4.00
2½-3 ft.....	5.00
3-3½ ft.....	6.50

## SPREADING JUNIPERS for Foundation and Border Plantings

### KOSTER'S JUNIPER (*Juniperus virginiana kosteri*)

Here you will find the same handsome, arching characteristic of the Pfitzer's Juniper, its spreading, graceful stems often 2 to 3 feet in length, and covered with rich foliage of bluish green. Very hardy, fine sort, ideal for the rockery, edging the pool, or bordering the foundation planting.

12-15 in.....	\$1.75
15-18 in.....	2.75
18-24 in.....	3.50
2-2½ ft.....	4.50
2½-3 ft.....	6.00
3-3½ ft.....	7.50

### VIRGINIANA ELEGANTISSIMA LEE Gold Tip

Dark green foliage. Golden tipped, more so in autumn. The natural tendency is to grow low and spreading. Very hardy and desirable, where color is required.

15-18 in.....	\$2.50
18-24 in.....	3.25
2-2½ ft.....	4.25

### VASE SHAPED COMMUNIS JUNIPER

Sharp green leaves with line in center giving a silvery effect to the plant. Grows fairly fast, hardy.

18-24 in.....	\$2.75
2-2½ ft.....	3.50

Visit Our Nurseries

# Plumfield PINES and SPRUCES

All Evergreens on this page and preceding pages dug with ball of earth and burlapped. Cannot be shipped by Parcel Post.



**PINUS NIGRA**  
(Austrian Pine)

An outstanding Pine in the Middle West. Quite resistant to smoky atmosphere and irregular weather conditions. Has long needles, rich dark green. The dormant eyes at tips of branches are white and resemble candles. Grows about 12 inches a year. Ultimate height 50 to 60 feet.

18-24 in.....	\$2.00
2-2½ ft.....	2.50
2½-3 ft.....	3.00
3-3½ ft.....	3.75
3½-4 ft.....	4.25
4-4½ ft.....	4.75



**PINE MUGHO**

Very hardy. Spreading, dwarf, compact habit. Fine for rockeries, foundation plantings, used in front of larger growing varieties.

12-15 in.....	\$2.75
15-18 in.....	3.50
18-24 in.....	4.50



**PINUS PONDEROSA**  
(Bull or Western Yellow Pine)

Native of North America. Nebraska's only conspicuous native Pine. Has extremely long glaucous needles. Very attractive. Stands almost unlimited drought. Develops into a pyramidal compact tree. Grows ten to fifteen inches a year. Ultimate height 50 to 60 feet.

18-24 in.....	\$2.00
2-2½ ft.....	2.50
2½-3 ft.....	3.00
3-3½ ft.....	3.75

**PINUS STROBUS**  
(White Pine)

Native of the North and planted extensively in the Middle West. Grows from 12 to 18 inches a year. Ultimate height 60 to 80 feet. Foliage bluish green, needles soft, 2 to 3 inches long.

18-24 in.....	\$3.00
2-2½ ft.....	3.50
2½-3 ft.....	4.00
3-3½ ft.....	4.65
3½-4 ft.....	5.25

**PINUS REGENSIS SYLVESTRIS**  
(Scotch Pine)

This variety has superiority over other Scotch Pines. Very hardy. Grows straight and fast, does well on light, dry soils. Grows from 12 to 18 inches a year. Ultimate height 60 to 80 feet. Foliage light green, needles 2 to 3 inches long, buds brown.

18-24 in.....	\$1.75
2-2½ ft.....	2.25
2½-3 ft.....	2.75
3-3½ ft.....	3.25
3½-4 ft.....	4.00
4-5 ft.....	4.75
5-6 ft.....	6.00

**TAXUS, YEW**  
*Brevifolia, Upright*

Broad base, pyramidal tree. Waxy green foliage. A very good tree for planting on the north or shady places.

15-18 in.....	\$3.00
18-24 in.....	4.00
2-2½ ft.....	5.00
2½-3 ft.....	6.00



**CANADENSIS ALBERTIANA**  
Black Hills Spruce

Native of the Black Hills of South Dakota. Foliage varies from dark green to blue. One of the most hardy Spruce. Grows symmetrical, compact and very shapely.

15-18 in.....	\$2.00
18-24 in.....	2.50
2-2½ ft.....	3.25
2½-3 ft.....	4.50
3-3½ ft.....	5.25



**COLORADO BLUE SPRUCE**  
COLORADO SELECTED BLUE

A selected, blue-colored type. Taken from the Colorado Blue variety.

18-24 in.....	\$5.00
2-2½ ft.....	6.00
2½-3 ft.....	7.00
3-3½ ft.....	8.00
3½-4 ft.....	9.50

**COLORADO MEDIUM BLUE**

Medium in color. Gets more blue as it attains age.

18-24 in.....	\$4.00
2-2½ ft.....	5.00
2½-3 ft.....	6.00
3-3½ ft.....	7.00
3½-4 ft.....	8.25

# Windbreak and Timber Lot Stocks



Think of them as matured and the protection they afford against the cold and hot winds. They are everlasting. Our Evergreens are dug fresh from the Evergreen beds at planting time and shipped immediately. The crucial time for Evergreens is usually July and August, following spring planting, therefore, they should be well protected, cultivated, mulched with straw, and watered through this period.

Evergreens cannot be packed with other stock, but will be shipped separate.

## BARE ROOTED EVERGREENS FOR WINDBREAK

KEY: TT—Twice transplanted.  
KEY: T—Once transplanted.



### ★ CEDARS

	Per 10	Per 25	Per 50	Per 100
Cedar Red, 2-3 ft. TT.....	\$5.00	\$11.00	\$21.00	\$40.00
Cedar Red, 18-24 in. TT.....	3.50	8.50	16.50	32.00
Cedar Red, 12-18 in. T.....	1.70	4.00	7.50	14.50
Cedar Red, 9-12 in. T.....	1.45	3.35	6.50	12.00
Cedar Silver, 12-18 in. TT.....	3.50	8.50	16.50	32.00
Cedar Silver, 9-12 in. T.....	1.70	4.00	7.50	14.50
Cedar Silver, 6-9 in. T.....	1.45	3.35	6.50	12.00

### FIRS

Fir Balsam, 9-12 in. T.....	\$1.80	\$ 4.25	\$ 8.00	\$15.00
Fir Balsam, 6-9 in. T.....	1.65	3.50	6.75	12.80
Fir Concolor, 9-12 in. T.....	1.45	3.35	6.50	12.00
Fir Concolor, 6-9 in. T.....	1.20	2.75	5.00	9.60
Fir Douglas, 9-12 in. T.....	1.20	2.75	5.00	9.60
Fir Douglas, 6-9 in. T.....	1.00	2.35	4.25	8.00

### PINES

Pine Jack, 18-24 in. T.....	\$1.20	\$ 2.75	\$ 5.00	\$ 9.60
Pine Jack, 12-18 in. T.....	.85	2.00	3.50	6.50
Pine Lodgepole, 12-18 in. T.....	1.20	2.75	5.00	9.60

	Per 10	Per 25	Per 50	Per 100
Pine Austrian, 2-3 ft. TT.....	6.00	15.00	27.50	50.00
Pine Austrian, 18-24 in. TT.....	5.00	11.00	21.00	40.00
Pine Austrian, 18-24 in. T.....	2.00	4.75	9.00	16.80
Pine Austrian, 12-18 in. T.....	1.40	3.25	6.00	11.20
Pine Austrian, 9-12 in. T.....	1.20	2.75	5.00	9.60
Pine Ponderosa, 2-3 ft. TT.....	5.50	12.50	24.00	45.00
Pine Ponderosa, 18-24 in. TT.....	4.00	9.25	18.00	35.00
Pine Ponderosa, 18-24 in. T.....	1.65	3.50	6.75	12.80
Pine Ponderosa, 12-18 in. T.....	1.40	3.25	6.00	11.20
Pine Ponderosa, 9-12 in. T.....	1.20	2.75	5.00	9.60
Pine White, 18-24 in. TT.....	4.00	9.25	18.00	35.00
Pine White, 12-18 in. TT.....	2.25	5.25	10.00	19.00
Pine White, 12-18 in. T.....	1.40	3.25	6.00	11.20
Pine White, 9-12 in. T.....	1.20	2.75	5.00	9.60
Pine Scotch, 2-3 ft. T.....	1.65	3.50	6.75	12.80
Pine Scotch, 12-18 in. T.....	1.40	3.25	6.00	11.20
Pine Scotch, 9-12 in. T.....	1.20	2.75	5.00	9.60

### SPRUCE

Spruce Black Hill, 12-18 in. T.....	\$1.80	\$ 4.25	\$ 8.00	\$15.00
Spruce Black Hill, 9-12 in. T.....	1.65	3.50	6.75	12.80
Spruce Black Hill, 6-9 in. T.....	1.40	3.25	6.00	11.20
Spruce Colorado Blue, 9-12 in. T.....	1.80	4.25	8.00	15.00
Spruce Colorado Blue, 6-9 in. T.....	1.65	3.50	6.75	12.80
Spruce Norway, 12-18 in. T.....	1.65	3.50	6.75	12.50
Spruce Norway, 9-12 in. T.....	1.30	3.00	5.50	10.50

Add 10% to the total amount of the above evergreens if you want them shipped via mail. Otherwise they will be shipped best and cheapest way with carrier charges collect.

## Apples



One of the most used fruits in the world. Can be easily grown, and should be planted extensively. Varieties we are listing are of the best sorts and recommended for this locality. You may make a selection of varieties and obtain quantity prices on Apples.

	Each	Lots of 4 each	Lots of 8 each	Lots of 12 each	Lots of 25 each
11/16 in. caliper, 5-7 ft., select.	\$0.60	\$0.58	\$0.56	\$0.54	\$0.50
9/16 in. caliper, 4-6 ft., stand...	.50	.48	.46	.44	.40
7/16 in. caliper, 3-4 ft.....	.40	.38	.36	.34	.30

THESE PRICES APPLY TO ALL VARIETIES OF APPLES AND CRAB APPLES AS LISTED BELOW.

### SUMMER VARIETIES

- ANOKA**—July to August. This variety fruits very young. Red and yellow striped.
- DUCHESS**—August. An old variety, but still one of the best. A good cooking apple.
- EARLY HARVEST**—July. The earliest summer apple. Pale yellow fruit.

- RED DUCHESS**—All red color. Season and quality same as Duchess.
- RED JUNE**—Late July. Medium size, round, deep red fruit.
- YELLOW TRANSPARENT**—July to August. Fruits quite young. Large clear yellow.

### FALL VARIETIES

- CHENANGO STRAWBERRY**—September. Pale yellow splashed red. Fruits young.
- FAMEUSE or SNOW**—August. Light red fruit; delicious flavor.

- LIVELAND**—Red striped. Hardy. Should be planted more. Very good.
- WEALTHY**—Early September. One of the old standard varieties. Bears young and is very hardy.

### WINTER VARIETIES

- BLACK BEN DAVIS**—Dark red. An old standard. Good keeper.
- BLACKJON**—The new dark red Jonathan. Colors two to three weeks earlier than Jonathan, and a deeper red.
- CORTLAND**—Deep red. Good commercial variety. Comes into bearing young.
- DOUBLE RED DELICIOUS**—Solid red. One of the most popular apples. Fruit large, flesh white, tender and juicy.
- GOLDEN WINESAP**—Golden yellow, red cheek. Large fruit, with the spicy Winesap flavor.

- GANO**—Red. Very similar to Ben Davis.
- GRIMES GOLDEN**—Rich golden color. An extra good all-round apple.
- HARALSON**—Solid red. Fruit is of excellent quality, and a good keeper.
- JONATHAN**—Red. The best apple of all. Should be included in every planting.
- MAMMOTH BLACK TWIG**—Dark red. Fruit large, good quality. Late keeper.
- NORTHWESTERN GREENING**—Yellowish green. Flesh crisp and juicy. Very hardy.
- STAYMAN WINESAP**—Deep red. Good commercial variety.
- TOLMAN SWEET**—Green. The best of the sweet winter varieties.
- TURLEY**—Red. Similar to Stayman Winesap but of superior quality.
- WINESAP**—Red. A medium sized apple of fine flavor.
- YELLOW DELICIOUS**—Golden yellow. Sweet, spicy flavor.
- YORK IMPERIAL**—Greenish yellow and red. Large fruit of distinctive form. Good keeper.



JONATHAN

SOLID RED DELICIOUS

## Crab Apples

- DOLGO**—Fiery red. Bears young and abundantly. Tree very ornamental.
- RED SIBERIAN**—Small jelly crab, grows in clusters. Bears young.
- HYSLOP**—Dark purplish-red. Very good for pickling and jelly.
- WHITNEY**—Light yellow striped red. Large fruit.
- YELLOW SIBERIAN**—Jelly crab. Medium round, golden yellow. Vigorous grower.

# ITS

..... Fremont, Nebraska

## Apricots

Apricots bloom early and many times are caught by frost. Heavy mulching after the ground freezes solid will retard their early blooming.

**CHINESE**—Yellow. Large fruit, and very hardy.

**SUPERB**—Light salmon. Medium size. One of the best flavored.

**MOORPARK**—Orange-yellow. Fruit large, with rich, sweet flavor.

	Each	Lots of 4 each	Lots of 8 each	Lots of 12 each
11/16 in. caliper, 5-7 ft., select.....	\$0.85	\$0.83	\$0.82	\$0.80
9/16 in. caliper, 4-6 ft., standard.....	.75	.73	.72	.70
7/16 in. caliper, 3-4 ft.....	.60	.58	.57	.55

## Cherries

There is no fruit tree more profitable than the Cherry, especially the sour varieties, which are very desirable for pies and canning. They bear fruit very soon after planting and bring good returns on your investment. Cherries are easily raised, as they are adaptable to almost any kind of soil, and should be planted in large enough quantities to insure plenty of this desirable fruit for the family. You may select varieties and obtain quantity prices.

### SOUR CHERRIES

	Each	Lots of 4 each	Lots of 8 each	Lots of 12 each	Lots of 25 each
11/16 in. caliper, 5-6 ft., select.....	\$0.70	\$0.68	\$0.66	\$0.64	\$0.60
9/16 in. caliper, 4-5 ft., standard.....	.60	.58	.56	.54	.50
7/16 in. caliper, 3-4 ft. ....	.55	.53	.51	.49	.45

**EARLY RICHMOND**—Bright red. Earliest, and a good pie cherry.

**ENGLISH MORELLO**—Blackish red when fully ripe. Tart, but very rich for canning.

**MONTMORENCY**—Large, red. The best all-purpose cherry.

**OSTHEIM**—Black when ripe. Red meat inside.

### SWEET CHERRIES

We are listing only the Yellow Glass as this is the only variety of Sweet Cherry that is a dependable yielder in this climate.

	Each	Lots of 4 each	Lots of 8 each	Lots of 12 each
11/16 in. caliper, 5-7 ft., select.....	\$0.80	\$0.78	\$0.76	\$0.74
9/16 in. caliper, 4-5 ft., standard.....	.75	.73	.70	.68

**YELLOW GLASS**—Golden yellow. A hardy and productive sweet cherry.



MONTMORENCY

## Pears

Easy to grow. Every home should have a few Pear trees.

**BARTLETT** (Summer)—Golden yellow, red cheek. Excellent flavor.

**CLAPP'S FAVORITE** (Summer)—Large pear. Excellent quality, smooth flesh. Hardy and bears young.

**DOUGLAS** (Winter)—The best winter pear. Hardy. Bears young and productive.

**DUCHESS** (Autumn)—Large greenish yellow. Flesh white. Excellent flavor. Hardy and productive.

**FLEMISH BEAUTY** (Autumn)—Large, beautiful, excellent quality, juicy. Hardy and productive.

**SECKEL** (Summer)—Small sugary fruit. Splendid for home use.

	Each	Lots of 4 each	Lots of 8 each	Lots of 12 each
11/16 in. caliper, 5-7 ft., select.....	\$0.70	\$0.67	\$0.64	\$0.60
9/16 in. caliper, 4-6 ft., standard.....	.60	.57	.54	.50
7/16 in. caliper, 3-4 ft.....	.50	.47	.44	.40



BARTLETT

The varieties listed have been proven best for this territory. It is important for the fruit to be gathered at the proper time.

Write us for Varieties of fruits not listed as space does not permit us to list all kinds.

# Plumfield FRUIT TREES . . . Continued

## Plums

We wish to call your attention especially to the Hansen Hybrids and Minnesota Hybrids. These varieties will produce an abundance of high quality fruit. Usually bear the second year after planting. You should arrange to plant some of these. You may make a selection of varieties and obtain quantity prices.

	Each	Lots of 4 each	Lots of 8 each	Lots of 12 each
11/16 in. caliper, 5-7 ft. select.....	\$0.60	\$0.57	\$0.54	\$0.50
9/16 in. caliper, 4-5 ft. standard .....	.50	.47	.44	.40
7/16 in. caliper, 3-4 ft. ....	.40	.37	.34	.30

### MINNESOTA HYBRIDS

**GOLDEN ROD**—August. Large, yellow. Very hardy and productive. Good quality.

**MONITOR**—August. Large. Red, very hardy and productive. High quality.

**UNDERWOOD**—August. Large, rich red, rather oval and juicy. One of the best.

### NATIVE VARIETIES

**OMAHA**—August. Large, red and sweet. Productive and valuable.

**QUAKER**—August. Medium size. Red. Very heavy producer. Excellent for butter and jelly.

**WILD GOOSE**—July. One of the older varieties but very desirable. Large, red and prolific.

### HANSEN HYBRIDS

**COMPASS**—August. Cherry-Plum. Small fruit, dark red when ripe.

**HANSKA**—August. Large red, apricot flavor. Very good quality.

**KAHINTA**—August. Large red, yellow flesh. Very productive. Good quality.

**OKA**—Small Cherry-Plum. Good producer. Good quality.

**OPATA**—July. Medium size. Fruit purplish-red, with green flesh.

**SAPA**—July. Medium size. Fruit purple with red flesh. Juicy and very good.



WANETA

**TOKA**—August. Large, red and very desirable. Similar to Hanska.

**WANETA**—August. Large, red and very productive.

### NEWER VARIETIES

**GOLDEN EMBER**—August and September. Good canning. Large rich golden yellow. Good keeper. Very hardy and productive.

**SUPERIOR**—Ripens over a long period. Large red fruit, yellow flesh, juicy and sweet. We recommend this variety.

## Peaches

Next to Apples, Peaches are used for more purposes than most other fruits. Peaches picked from your own orchard are the finest flavored and best. One crop of fruit pays the grower many, many times the original cost of the trees. Peach can be profitably used as fillers in Apple orchards. We carry a long list of varieties and are listing only a few of the most popular.

**ALTON**—Mid-season. White, overspread with red; semi-free.

**BELLE OF GEORGIA**—Mid-season. Greenish white with blush. Freestone.

**CARMAN**—Early. Yellowish white, blushed with red. Freestone.

**CHAMPION**—Early. White with brilliant red cheek. Freestone.

**EARLY ELBERTA**—Early. Resembles Elberta in color and shape, but ripens two or three weeks earlier.

**EARLY WHEELER (Red Bird)**—Early. Creamy white, blushed with red. Cling.

**ELBERTA**—Mid-season. Deep yellow with brilliant blush. Freestone.

**GOLDEN JUBILEE**—Early. Apricot yellow with blush. Freestone.

**HEATH CLING**—Late. Large white fruit. Cling.

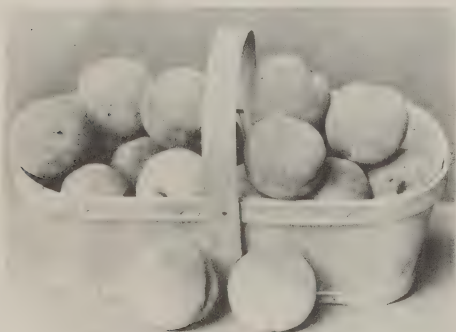
**HALE HAVEN**—Mid-season. Orange yellow overspread with red. Freestone.

**J. H. HALE**—Mid-season. Yellow; almost free from fuzz. Freestone.

**POLLY**—Early. Creamy white with red blush. Freestone. Very hardy.

**ROCHESTER**—Mid-season. Yellow freestone. A good variety for the home orchard.

**SOUTH HAVEN**—Mid-season. Yellow with red cheek. Freestone.



CHAMPION

	Each	Lots of 4 each	Lots of 8 each	Lots of 12 each
11/16 in. caliper, 5-7 ft. select.....	\$0.60	\$0.57	\$0.54	\$0.50
9/16 in. caliper, 4-6 ft. standard.....	.50	.47	.44	.40
7/16 in. caliper, 3-4 ft. ....	.40	.37	.34	.30

# Plumfield SMALL FRUITS

## Currants



RED LAKE CURRANTS

**CHERRY**—Dark red fruit produced in short clusters. Good quality.

**FAY'S PROLIFIC**—Not quite so large as Cherry, but one of the old dependable varieties.

### CHERRY AND FAY'S PROLIFIC

	Each	Lots of 4 each	Lots of 8 each	Lots of 12 each
Two-year heavy	\$0.18	\$0.17	\$0.16	\$0.15
One-year	.15	.14	.13	.12

**PERFECTION**—Bright red, extra large fruit. Good market variety.

**RED LAKE**—From Minnesota Breeding Farm. Red, large berries. Very hardy. One of the very best.

### PERFECTION AND RED LAKE

	\$0.23	\$0.22	\$0.21	\$0.20
Two-year heavy				
One-year	.18	.17	.16	.15

## Gooseberries



PEARL GOOSEBERRIES

**DOWNING**—Light green. Large fruit, of good size and appearance.

**HOUGHTON**—Green, turning pale red when ripe. Heavy producer.

**PEARL**—Similar to Downing, but larger and more productive.

**OREGON CHAMPION**—Medium sized berries. One of the best varieties for pias.

	Each	Lots of 4 each	Lots of 8 each	Lots of 12 each
Two-year	\$0.23	\$0.22	\$0.21	\$0.20
One-year	.18	.17	.16	.15

## Boysenberries

**BOYSENBERRY**—Huge berries of sweet, delicious flavor. Almost seedless. Bears heavily over a long season.

Per 5	Per 10	Per 25
\$0.45	\$0.85	\$1.50

## Grapes

Grapes should be planted in every home garden. There is always a place for Grape Vines to cover a fence or trellis and get quick results in fruit.

**BETA**—A small black grape. One of the hardiest varieties.

**CACO**—Red. A new variety, excellent for table use.

**CONCORD**—The old reliable all-purpose grape. Black, hardy and very productive.

**MOORE'S EARLY**—Blue-black. Popular home and market variety.

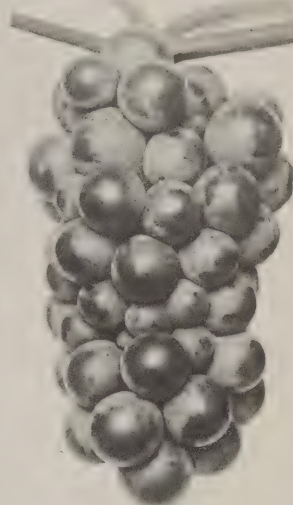
**NIAGARA**—White. Large berries in compact bunches. Excellent for jelly or wine.

**WORDEN**—Black. Similar to Concord, but ripens about ten days earlier.

### NEW VARIETIES

**FREDONIA**—A new early black, good producer of high quality. Ideal for home planting.

**SHERIDAN**—Black fruit. Heavy bunches of delicious sweet fruit. You should plant some of this variety.



CONCORD

	Each	Lots of 4 each	Lots of 8 each	Lots of 12 each	Lots of 25 each
Beta, two-year	\$0.18	\$0.17	\$0.16	\$0.15	\$0.13
Caco, two-year	.29	.26	.23	.21	.19
Caco, one-year	.19	.18	.17	.15	.14
Concord, two-year	.15	.14	.13	.11	.10
Concord, one-year	.12	.11	.10	.09	.07
Fredonia and Sheridan, 2-yr.	.25	.24	.23	.21	.18
Fredonia and Sheridan, 1-yr.	.18	.17	.16	.14	.12
Moore's Early, two-year	.18	.17	.16	.15	.13
Niagara, two-year	.13	.12	.11	.10	.09
Worden, two-year	.13	.12	.11	.10	.09

For larger quantities, write for special prices.

## Raspberries

Raspberries do well in most any soil. It is best to plant them where they are protected from the hot summer winds as they ripen in July. Raspberries are a very profitable crop.

**CUMBERLAND**—Black.

One of the most reliable varieties, and widely planted.

**CHIEF**—Red. About ten days earlier than Latham; very productive.

**LATHAM**—Red. A fine fruit for home or market. Large fruit, bears heavily.



LATHAM RASPBERRIES

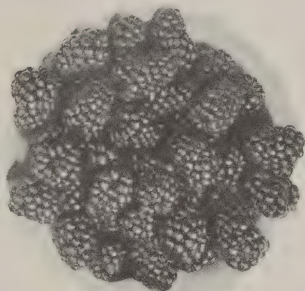
	Per 5	Per 10	Per 25	Per 100
Cumberland, 2-yr., transplants	\$0.50	\$0.80	\$1.60	\$5.50
Cumberland, tip-plants, No. 1	.30	.50	1.00	3.50
Chief and Latham	.35	.60	1.20	4.00

# Plumfield SMALL FRUITS... Continued

## Blackberries

**SNYDER AND ELDORA-DO**—These are the hardiest and a favorite with fruit growers. Will stand cold winters and are good market varieties. Fruit medium to large. No. 1 root cutting plants.

Per 5	Per 10
<b>\$0.35</b>	<b>\$0.60</b>
Per 25	Per 100
<b>\$1.20</b>	<b>\$4.25</b>



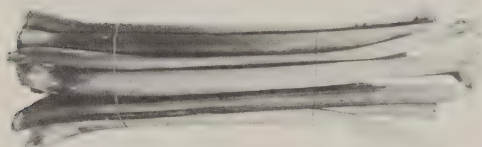
SNYDER BLACKBERRIES

## Strawberries



MASTODON

## Rhubarb or Pie-Plant



### RHUBARB—VICTORIA

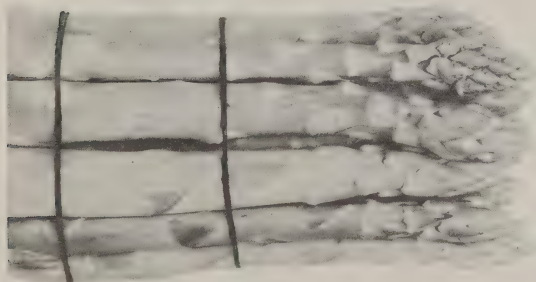
	Per 3	Per 10	Per 25	Per 100
Large, 2-year roots.....	<b>\$0.30</b>	<b>\$0.75</b>	<b>\$1.50</b>	<b>\$5.50</b>

### NEW RHUBARB

**McDONALD'S CHERRY**—Originated in Canada. Grows 3 feet tall, nearly seedless. Fine sweet flavor and most beautiful sauce. Can pick all summer. **35c each; 3 for 95c.**

**RUBY RED**—Seedless. Red all the way through. Extra fine flavor, and very beautiful red sauce. Can be picked all summer. **35c each; 3 for 95c.**

## Asparagus



**MARTHA WASHINGTON**—Rustproof. This is undoubtedly the best Asparagus grown. Plant so that crowns will be about four inches deep in the ground, enabling you to cut the stalks below the ground. For best results plant two-year, heavy plants.

	Per 10	Per 25	Per 50	Per 100	Per 200	Per 500
2-year heavy plants.....	<b>\$0.25</b>	<b>\$0.50</b>	<b>\$0.85</b>	<b>\$1.65</b>	<b>\$3.00</b>	<b>\$7.00</b>

## Home-Grown JUNE-BEARING STRAWBERRIES

**AROMA**—A very large berry, productive and hardy

**BLAKEMORE**—Large, solid berries; stand dry weather.

**SENATOR DUNLAP**—The best strawberry for home use. Large, well shaped berries of delicious flavor.

Prices on above:

Per 25	Per 50	Per 100	Per 200	Per 500
<b>\$0.35</b>	<b>\$0.60</b>	<b>\$0.85</b>	<b>\$1.40</b>	<b>\$3.00</b>

**DORSETT**—Large, bright red. Early.

**FAIRFAX**—Large, firm, deep red. Long fruiting.

**PREMIER**—Early, resistant to frost. Berries are large and run uniform in size.

Prices on Dorsett, Fairfax and Premier:

Per 25	Per 50	Per 100	Per 200	Per 500
<b>\$0.40</b>	<b>\$0.70</b>	<b>\$1.00</b>	<b>\$1.75</b>	<b>\$3.50</b>

## EVERBEARING STRAWBERRIES

**GEM**—Large, firm, deep red fruit. A good commercial variety.

**MASTODON**—A leading Everbearing variety. Large fruit, productive.

Per 25	Per 50	Per 100	Per 200	Per 500
<b>\$0.50</b>	<b>\$0.85</b>	<b>\$1.50</b>	<b>\$2.75</b>	<b>\$6.50</b>

## Horseradish

Plant a few crowns or cuttings and grow your own. Crowns will produce the first year.

	Per 3	Per 10	Per 25	Per 100
Crowns .....	<b>\$0.30</b>	<b>\$0.80</b>	<b>\$1.60</b>	<b>\$5.50</b>
Cuttings .....	<b>.15</b>	<b>.30</b>	<b>.70</b>	<b>2.50</b>

Visit Our Nurseries.





ONE OF OUR WELL PLANTED HOMES

## Plumfield SHRUBS

Beautify your home and add value to your property. The grades of shrubs that we are listing are standard grades, and are good strong plants, well branched. We have a complete assortment, and invite you to come to our storage and select your stock.



FLOWERING ALMOND

**ALMONDS (Pink or White)**—A dwarf early flowering shrub. Branches covered with beautiful rose-colored flowers.

18-24 in.....\$0.50 2-3 ft.....\$0.65

**ALTHEA (Rose of Sharon)**—Late summer. Colors: Pink, purple, red, and white. Large brightly colored ruffled flowers.

12-18 in.....\$0.25 2-3 ft.....\$0.50

18-24 in......35 3-4 ft......65

**BARBERRY (Red Leaved)**—Red foliage, with red berries in the winter. Must be planted in the sun in order to bring out the color of the foliage.

12-15 in.....\$0.25 15-18 in.....\$0.35

18-24 in......50

**BARBERRY THUNBERGI**—Green leaved. A useful shrub for border and foundation planting. Leaves change to brilliant crimson scarlet and gold in the fall and red berries remain almost all winter.

12-15 in.....\$0.15 15-18 in.....\$0.20

18-24 in......25

**BEAUTY BUSH**—Blooms in early summer. Long arching branches covered with clusters of pale pink trumpet-shaped flowers.

18-24 in.....\$0.60 2-3 ft.....\$0.75

**BUTTERFLY BUSH**—A perennial-topped shrub, dying to the ground in winter. Produces many spikes of lavender or purple blossoms, from August until frost.

No. 1.....\$0.25 3 for.....\$0.65

### Tall Growing Shrubs

- Beauty Bush
- †Dogwoods
- †Elders
- \*Forsythias
- †Honeysuckles
- Lilacs
- \*Mock-orange
- Sumacs
- Snowball
- †Cranberry Bush
- Tamarix
- Golden Leaf Ninebark

(\*Shrubs suitable for shady place)

(†Shrubs with attractive berries)

### Medium Height Shrubs

- Flowering Quince
- †Cotoneaster
- \*Deutzia, Pride of Rochester
- \*Hydrangea
- Rhodolypas
- †Golden Currants
- Sorbaria
- Spirea Arguta
- Spirea Billardi
- Spirea Prunifolia
- \*Spirea Van Houtte
- Weigelas

### Dwarf Growing Shrubs

- †Barberry
- \*Deutzia Lemoine
- Golden Mock Orange
- Potentilla Fruticosa
- Spirea Anthony Waterer
- Spirea Frosbelli
- Spirea Callosa Alba
- Spirea Thunbergi
- †Snowberry, White
- †Snowberry, Red

On six or more shrubs deduct.....5%

On twelve or more shrubs deduct.....10%

On twenty-five or more shrubs deduct.....15%

**BUTTERFLY BUSH. (Charming).** A new patented variety.

Long sprays of lavender-pink blooms which are quite pink compared with other varieties of Butterfly Bush.

No. 1.....\$0.45 3 for.....\$1.25



THUNBERGI BARBERRY

# Flowering SHRUBS

**COTONEASTER**—Glossy, dark green leaves turning to brilliant shades in the fall. Black fruit.

12-18 in.....	\$0.30	2-3 ft.....	\$0.50
18-24 in.....	.40	3-4 ft.....	.65

**DIVARICATA, SPREADING COTONEASTER.** 5-6 ft. Handsome shrub bearing pink flowers and red berries. Foliage nearly evergreen.

18-24 in.....	\$0.65	2-3 ft.....	\$0.90
---------------	--------	-------------	--------

**DEUTZIA LEMOINE**—A dwarf shrub. Very compact, white blooms. Very beautiful and is good for locations where you do not care for height.

12-18 in.....	\$0.30	18-24 in.....	\$0.50
---------------	--------	---------------	--------

**DOGWOOD (Goldentwig)**—Yellow branches and canes. Small white flowers followed by silver berries.

12-18 in.....	\$0.20	2-3 ft.....	\$0.50
18-24 in.....	.35	3-4 ft.....	.65

**DOGWOOD (Red Bark)**—A favorite shrub because of the red bark on twigs and canes during the winter. Silver berries.

12-18 in.....	\$0.20	2-3 ft.....	\$0.50
18-24 in.....	.35	3-4 ft.....	.65

**ELDER (Golden Leaved)**—Bright yellow foliage throughout the summer. The berries attract the birds.

18-24 in.....	\$0.35	2-3 ft.....	\$0.50
3-4 ft.....			.65

**ELDER (Fern Leaved)**—The dark green leaves are fern-like and leathery. Small white flowers.

18-24 in.....	\$0.30	2-3 ft.....	\$0.40
3-4 ft.....			.50

**ELEAGNUS, argentea, Silverberry.** 12-18 ft. Erect spineless shrub or small tree giving silvery appearance. Leaves evergreen, usually flowering in fall.

18-24 in.....	\$0.45	2-3 ft.....	\$0.60
3-4 ft.....			.75

**EUONYMUS, atropurpureus, Wahoo.** 12-15 ft. Native, hardy, vigorous shrub or small tree producing an abundance of scarlet berries. Attractive colored foliage in autumn.

18-24 in.....	\$0.50	2-3 ft.....	\$0.60
3-4 ft.....			.75



**HONEYSUCKLE BUSH**

**HONEYSUCKLE GRANDIFLORA ROSEA**—One of the best pink bush Honeysuckles. Flowers bright pink in spring.

18-24 in.....	\$0.30	2-3 ft.....	\$0.40
3-4 ft.....			.50

**HONEYSUCKLE MORROWI**—A vigorous growing shrub. Foliage dark green. White blossoms borne profusely in the spring.

18-24 in.....	\$0.30	2-3 ft.....	\$0.40
3-4 ft.....			.50

**HONEYSUCKLE RED or PINK TARTARIAN**—The most extensively used Bush Honeysuckle. Blooms freely and carries loads of bright red berries in midsummer.

18-24 in.....	\$0.30	2-3 ft.....	\$0.40
3-4 ft.....			.50



**FORSYTHIA**

**FORSYTHIA or GOLDEN BELL (Intermedia)**—Early blooming shrub of a spreading habit of growth. Very free blooming.

18-24 in.....	\$0.35	2-3 ft.....	\$0.45
3-4 ft.....			.65

**FORSYTHIA FORTUNEI**—Upright, tall-growing shrub. Branches arching and bearing clusters of golden yellow blossoms.

18-24 in.....	\$0.35	2-3 ft.....	\$0.45
3-4 ft.....			.65

**HONEYSUCKLE BELLA ALBIDA**—Spreading shrub with large leaves and producing an abundance of white, fragrant flowers in spring. Red berries.

18-24 in.....	\$0.30	2-3 ft.....	\$0.40
3-4 ft.....			.50

**HONEYSUCKLE BELLA ROSEA**—Hardy, spreading shrub of medium height. Attractive pink flowers, red fruit.

18-24 in.....	\$0.30	2-3 ft.....	\$0.40
3-4 ft.....			.50



**HYDRANGEA P. G.**

**HYDRANGEA PANICULATA GRANDIFLORA**—Large showy panicles of creamy white flowers, changing to rose, then purple and bronze. Blooms late summer.

12-18 in.....	\$0.35	18-24 in.....	\$0.50
2-3 ft.....			.65

**HYDRANGEA ARBORESCENS GRANDIFLORA**—Blooms in midsummer. Blossoms resemble huge snowballs.

12-18 in.....	\$0.35	18-24 in.....	\$0.50
2-3 ft.....			.65

**FLOWERING QUINCE (Cydonia Japonica)**—Scarlet flowers appear before the leaves. A very popular shrub.

12-18 in.....	\$0.30	18-24 in.....	\$0.40
2-3 ft.....			.50

# Plumfield Flowering SHRUBS...Cont'd



LILAC

**LILAC PURPLE (Old Fashioned Lilac)**—Purple blossoms in April and May.

18-24 in.....\$0.30 2-3 ft.....\$0.40  
3-4 ft......60

**LILAC COMMON WHITE**—Hardy vigorous shrub. Attractive foliage, single white flowers.

18-24 in.....\$0.35 2-3 ft.....\$0.50

**CHINESE TREE (Native of China)**—Large shrub to small tree 20 to 30 ft. Does not sucker. Flowers creamy white, borne in long panicles 10 to 18 inches in June.

18-24 in.....\$0.35 2-3 ft.....\$0.50  
3-4 ft......65

**KOREAN (Korean Islands)**—A shrub growing 8 to 10 ft. Broad glabrous leaves turning vinous-red in autumn. Blooms earlier than most Lilacs. Flowers of pale pink to lilac, borne in large, loose panicles.

18-24 in.....\$0.35 2-3 ft.....\$0.50  
3-4 ft......65

**LILAC ROTHOMAGENSIS (Chinese)**—A tall growing shrub with slender, arching branches producing purplish-red flowers.

18-24 in.....\$0.35 2-3 ft.....\$0.50  
3-4 ft......65

**LILAC RED PERSIAN**—Similar to Rothomagensis, except that the flowers are more nearly red.

18-24 in.....\$0.35 2-3 ft.....\$0.50  
3-4 ft......65



SPIREA ANTHONY WATERER



PHILADELPHUS VIRGINAL

**LILAC BUDED or FRENCH**—A large assortment of named varieties, in various shades of lilac, purple, pink and white.

18-24 in.....\$0.50 2-3 ft.....\$0.75  
3-4 ft.....1.00

Belle de Nancy, rose	Mme. Lemoine, white
Chas. X, reddish purple	Pres. Grevy, light blue
Michael Buchner, pale lilac	Rubra de Marley, rosy red

**PHILADELPHUS GLACIER**—Large, white flowers, very double, sweet scented. Shrub hardy, symmetrical and compact. Leaves bluish green. Does not grow as fast as standard varieties of Philadelphus, therefore more desirable for average garden or lawn.

18-24 in.....\$0.40 2-3 ft.....\$0.50  
3-4 ft. heavy......65

**PHILADELPHUS VIRGINAL**—Snowy white, semi-double blossoms produced over a long season, beginning in May.

12-18 in.....\$0.35 2-3 ft.....\$0.65  
18-24 in......50 3-4 ft. heavy......80

**GRANDIFLORUS, LARGE FLOWERING MOCKORANGE**—Hardy, vigorous, upright grower producing an abundance of large flowers May-June. Not fragrant.

18-24 in.....\$0.30 2-3 ft.....\$0.40  
3-4 ft. heavy......60

**LEMOINE, LEMOINE MOCKORANGE.** 4-5 ft.—Semi-dwarf with attractive foliage, producing dense racemes of small fragrant white flowers.

12-18 in.....\$0.25 18-24 in.....\$0.35  
2-3 ft......50

**PHILADELPHUS CORONARIUS (Sweet Mock Orange)**—Tall growing, producing a profusion of large white, fragrant blossoms. Blooms in late spring.

18-24 in.....\$0.30 2-3 ft.....\$0.40  
3-4 ft. heavy......60

**PHYSOCARPUS or GOLDLEAF NINE BARK (Spirea Aurea)**—Strong growing shrub with light yellow foliage. Brightly colored pods.

18-24 in.....\$0.30 2-3 ft.....\$0.45  
3-4 ft. heavy......60

**PRIVET, AMUR RIVER**—See Hedging.

**RIBES AUREUM (Golden Currant)**—Quantities of yellow flowers in early spring, followed by black fruit. Glossy foliage.

18-24 in.....\$0.40 2-3 ft.....\$0.50  
3-4 ft. heavy......65

**RHUS TYPHINA LACINIATA (Shredded or Fern-Leaved Sumac)**—Has long, feathery leaves, finely cut. Very attractive coloring in the fall.

18-24 in.....\$0.35 2-3 ft.....\$0.45  
3-4 ft......60

**SNOWBALL**—See Viburnum Opulus Sterilis.

**SPIREA ANTHONY WATERER**—A popular low-growing shrub, in bloom constantly all summer. Large, flat clusters of deep rose colored blossoms.

12-18 in.....\$0.25 15-18 in.....\$0.35  
18-24 in. heavy......50

# Plumfield Flowering SHRUBS...Cont'd



SPIREA VANHOUTTE



HIGH BUSH CRANBERRY



SNOWBALL

**SPIREA ARGUTA (Garland Spirea)**—Upright growing shrub. Covered with small white flowers in early spring, before the leaves appear.

12-18 in. ....	\$0.20	18-24 in. ....	\$0.30
2-3 ft. heavy ..			.40

**SPIREA BILLARDI (Billard's Spirea)**—Long feathery plumes of dainty pink. Blooms in mid-summer.

18-24 in. ....	\$0.30	2-3 ft. ....	\$0.40
3-4 ft. heavy ..			.50

**SPIREA FROEBELI (Froebel's Spirea)**—Dwarf, vigorous grower. Young foliage tinged red, flowers rose color.

12-18 in. ....	\$0.25	18-24 in. ....	\$0.35
2-3 ft. heavy ..			.50

**SPIREA MULTIFLORA**—Very early flowering shrub. Bright green foliage. Leaves short and narrow. Grows well in both shady and sunny places. Makes a fine hedge or foundation planting. Flowers white.

18-24 in. ....	\$0.25	2-3 ft. ....	\$0.35
3-4 ft. heavy ..			.50

**SPIREA THUNBERGI**—Graceful, early flowering shrub. Pure white flowers, bright green feathery foliage.

12-18 in. ....	\$0.20	18-24 in. ....	\$0.30
2-3 ft. heavy ..			.40

**SPIREA VANHOUTTE**—The most popular of all the Spiraea. Arching branches covered with white blossoms in spring.

12-18 in. ....	\$0.10	2-3 ft. ....	\$0.20
18-24 in. ....	.15	3-4 ft. heavy ..	.35

**SYMPHORICARPUS RACEMOSUS (White Snowberry)**—Pink flowers in mid-summer, followed by large berries of snow white color.

12-18 in. ....	\$0.20	18-24 in. ....	\$0.25
2-3 ft. heavy ..			.35

**SYMPHORICARPUS VULGARIS or CORALBERRY (Red Snowberry)**—Dwarf native shrub. Loaded with red berries that remain on the branches all winter.

12-18 in. ....	\$0.20	18-24 in. ....	\$0.25
2-3 ft. heavy ..			.35

**VIBURNUM OPULUS (Cranberry Bush)**—Single white flowers in spring, followed by red berries that hang on almost all winter.

12-18 in. ....	\$0.35	18-24 in. ....	\$0.50
2-3 ft. heavy ..			.65

**VIBURNUM OPULUS STERILIS (Snowball)**—One of the best loved of spring flowering shrubs. Large ball-like clusters of flowers. Does not produce fruits or seeds.

12-18 in. ....	\$0.35	18-24 in. ....	\$0.50
2-3 ft. heavy ..			.65

**TAMARIX HISPIDA (Kashgar Tamarix)**—Soft, feathery silver foliage. Bright pink flowers freely produced.

18-24 in. ....	\$0.25	2-3 ft. ....	\$0.35
3-4 ft. heavy ..			.50

**TAMARIX INDICA (Green Tamarix)**—Upright growing shrub, dull green foliage. Pink flowers.

18-24 in. ....	\$0.25	2-3 ft. ....	\$0.35
3-4 ft. heavy ..			.50

**WEIGELA EVA RATHKE (Red Flowering Weigela)**—Red flowers produced freely in early summer. Does well in shade.

18-24 in. ....	\$0.40	2-3 ft. ....	\$0.60
----------------	--------	--------------	--------

**WEIGELA ROSEA (Pink Weigela)**—Produces a mass of brilliant pink flowers in early spring.

18-24 in. ....	\$0.30	2-3 ft. ....	\$0.50
----------------	--------	--------------	--------

## HEDGING

This is a lighter grade of stock than our standard grades but it is young, healthy stock and will do well.

**PRIVET, AMUR RIVER**—These are used almost exclusively for hedges.

	Per 10	Per 25	Per 100
12-18 in. light. ....	\$0.75	\$1.60	\$ 5.00
12-18 in. heavy ..	1.25	2.25	7.50
18-24 in. ....	1.35	2.50	9.00
3-3 ft., extra heavy ..	1.50	3.00	11.00

**BARBERRY, THUNBERGI**—Two-year-old plants.

	\$0.40	\$0.85	\$3.00
9-12 in. ....			
12-18 in. ....	.55	1.10	4.00
18-24 in. ....	1.00	2.00	7.00

**COTONEASTER (Acutifolia)**—A very hardy drought resisting plant. Glossy dark green foliage, changing to brilliant shades in fall. Can be sheared.

	\$0.75	\$1.50	\$5.00
9-12 in. ....			
12-18 in. ....	1.00	2.00	7.50

**HONEYSUCKLE**—Makes a good tall hedge.

	Per 10	Per 25	Per 100
12-18 in. ....	\$1.00	\$2.00	\$ 7.50
18-24 in. ....	1.50	3.00	10.50

**SPIREA ANTHONY WATERER**—A good border plant or hedge. Bright red flowers, June-Sept. Should be trimmed some.

	\$2.00	\$4.25	\$16.00
9-12 in. ....			
12-18 in. ....	3.00	6.50	24.00

**SPIREA FROEBELI (Froebel's Spirea)**—Makes a real hedge. Grows about two to three feet high. Trims well but doesn't need much. Pink flowers.

	\$2.00	\$4.25	\$16.00
12-18 in. ....			

**SPIREA VANHOUTTE (Bridal Wreath)**—Makes a nice hedge, when trimmed.

	\$0.85	\$1.75	\$6.00
12-18 in. ....			
18-24 in. ....	1.15	2.20	8.00

# Plumfield VINES



**CLEMATIS PANICULATA**



**HONEYSUCKLE VINE**

Plant  
Hardy  
Climbing  
Vines  
to Make  
Your  
Home  
Inviting

**CLEMATIS PANICULATA (Sweet scented Clematis)**—Small fragrant white flowers freely produced in autumn.

2 year.....\$0.25    2 year heavy.....\$0.35

Large Flowering Clematis should be grown on trellises.

**CLEMATIS HENRYI**—Large white flowers.

2 year.....\$0.65    2 year heavy.....\$0.75

**CLEMATIS JACKMANI**—Large purple flowers.

2 year.....\$0.65    2 year heavy.....\$0.75

**CLEMATIS MME. ED. ANDRE**—Large red flowers.

2 year.....\$0.65    2 year heavy.....\$0.75

**CLEMATIS RAMONA**—Large light blue flowers.

2 year.....\$0.65    2 year heavy.....\$0.75

**BIGNONIA RADICANS (Trumpet Vine)**—A strong growing, hardy vine, good for pillars and fences. Large trumpet-shaped flowers, loved by humming birds.

2 year old.....\$0.30    3 year old.....\$0.40

**CELASTRUS SCANDENS (Bittersweet)**—A native twining vine. Large clusters of berries in fall, with orange husks and bright red berries.

2 year old.....\$0.30    3 year old.....\$0.45

**EUONYMUS RADICANS COLORATA (Bigleaf Wintercreeper)**—Thick dark green leaves, coloring beautifully in the fall. Useful for covering stone or brick walls.

2 year.....\$0.50    2 year heavy.....\$0.65

**AMPELOPSIS VEITCHII (Boston Ivy)**—A graceful vine that clings tightly to stone or brick walls. Does best on the east or north. Glossy, three-lobed leaves.

2 year old.....\$0.30    3 year old.....\$0.45

**AMPELOPSIS ENGELMANI (Engleman's Creeper)**—A vigorous growing, clinging vine. Very hardy. Brilliant fall coloring.

2 year old.....\$0.25    3 year old.....\$0.35

**AMPELOPSIS QUINQUEFOLIA (Virginia Creeper)**—A splendid vine for trellises and arbors. Foliage changes to rich tints of crimson in the fall.

2 year old.....\$0.25    3 year old.....\$0.35

**WISTARIA AMERICAN (Frutescens)**—Long clusters of lilac purple flowers in June and July. Much used on arbors and trellises.

2 year.....\$0.30    3 year.....\$0.45

**HONEYSUCKLE HALLEANA**—White blossoms fading to a deep yellow, produced in profusion over a long blooming season. Very fragrant.

2 year.....\$0.20    3 year.....\$0.35

**HONEYSUCKLE, Lonicera (Gold Flame)**—Everblooming honeysuckle, blooming from early summer until killing frost. Showy, tubular flowers with recurving petals, flame red outside, bright yellow inside. Very fragrant and hardy.

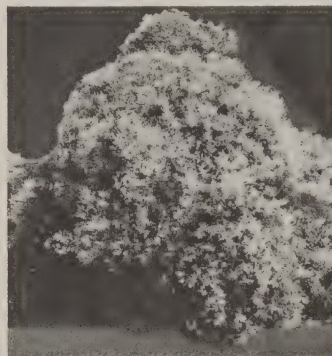
2 year.....\$0.65

**HECKROTTI**—Everblooming trumpet-shaped flowers. Fragrant, bright red outside, yellow inside. Hardy.

2 year.....\$0.50

**HONEYSUCKLE SEMPERVIRENS (Scarlet Trumpet)**—Foliage of deep, bluish green. Flowers are scarlet, freely produced.

2 year.....\$0.35



**SILVER LACE VINE**

**POLYGONUM AUBERTI (China Fleecevine or Lace Vine)**—Large feathery sprays of creamy white flowers produced in late summer and fall. Rapid grower.

2 year.....\$0.50    3 year.....\$0.65

**We Solicit Your Inquiries for Varieties Not Listed.**

# Plumfield . . . . SHADE



**CUTLEAF WEEPING WHITE BIRCH**

**BIRCH, CUT LEAF WEEPING**—A tall white-barked tree with gracefully drooping branches. Leaves deeply cut.

4-5 ft.....	\$1.50
5-6 ft.....	2.00
6-8 ft.....	3.00
8-10 ft.....	4.50

**BIRCH, COMMON WHITE**—Upright grower. Bark very white in mature trees.

5-6 ft.....	\$1.25
6-8 ft.....	1.75
8-10 ft.....	2.50

**ASH, AMERICAN GREEN**—Tall growing tree. Foliage dark green, changing to gorgeous shades of purple and yellow in fall.

5-6 ft.....	\$0.60
5-8 ft.....	.80
8-10 ft.....	1.50

**BUCKEYE, COMMON**—A small tree that has long, slim, smooth leaves and greenish-yellow flowers followed by prickly burs that contain the buckeye in the fall.

4-5 ft.....	\$1.50
5-6 ft.....	2.50
6-8 ft.....	3.50

**CRAB, BECHTEL'S DOUBLE FLOWERING**—Profuse bloomer. Flowers very double, dainty pink and exceeding fragrant.

18-24 in.....	\$0.60
2-3 ft.....	.75
3-4 ft.....	1.00

**CRAB, HOPA (Red Flowering)**—An upright growing tree with beautiful foliage. Loaded with rose-colored flowers in April. Fruit is red inside and out, and hangs on until late autumn. Hardy and free from disease.

3-4 ft.....	\$0.75
4-5 ft.....	.90
5-6 ft.....	1.20
5-8 ft.....	1.50

**FLORIBUNDA PURPUREA (Purple Crab)** 25-30 ft.—Attractive red foliage in spring; single crimson flowers.

3-4 ft.....	\$1.00
4-5 ft.....	1.25

**RED SILVER.** 18-20 ft.—Fruit rich maroon red, foliage somewhat cut-leaved with silver and red color. A remarkable combination.

3-4 ft.....	\$1.00
4-5 ft.....	1.25
5-6 ft.....	1.50
5-8 ft.....	1.75

**REDVEIN CRAB (Niedzwezkzyana).** 20-25 ft.—A large growing Russian Turkestan variety. Has remarkable large red flowers in April followed by large purplish red fruit and leaves.

3-4 ft.....	\$1.00
4-5 ft.....	1.25
5-6 ft.....	1.50

**CATALPA BUNGEI (Umbrella Catalpa)**—Has an umbrella-like head of large heart-shaped leaves. These trees will not grow any taller.

4-5 ft.....	\$1.00
5-6 ft.....	1.50
6-7 ft.....	2.25

**COFFEETREE, KENTUCKY (Gymnocladus dioica).** 50-70 ft.—A rather slender tree, hardy, green leaflets on long stems, flowers greenish white in June. Leathery reddish-brown pods that hang on all winter.

4-5 ft.....	\$0.75
5-6 ft.....	1.15
6-8 ft.....	1.50



**AMERICAN ELM**

**ELM, AMERICAN WHITE**—The grandest of all trees for this region. Tall wide-spreading tops.

5-6 ft.....	\$0.50
6-8 ft.....	.75
8-10 ft.....	1.20
10-12 ft.....	1.60

**ELM, CHINESE**—A rapid growing tree with slender branches covered with dark green foliage. Does well in dry territory. Prices listed here are for transplanted trees.

4-5 ft.....	\$0.35
5-6 ft.....	.50
6-8 ft.....	.75
8-10 ft.....	1.00
10-12 ft.....	1.50
2 in. caliper.....	3.00

**HYBRID ELM**—Cross of Chinese and Red Elm. Very uniform habit in growth.

6-8 ft.....	\$1.25
8-10 ft.....	1.75
10-12 ft.....	2.25
2 in. caliper.....	3.25

**ELM, VASE**—A budded form of Elm, with graceful vase shape. Good for landscape and street planting.

5-6 ft.....	\$1.00
5-8 ft.....	1.50
8-10 ft.....	2.00
10-12 ft.....	2.50

Plumfield shade and ornamental trees are first-class, well shaped, young and vigorous. Grown in soil that specially develops fibrous roots, which insures good results. All grades are based on standardized grades, where caliper and height are both important.



**HACKBERRY**

**HACKBERRY**—Grows into a large tree, with luxuriant foliage. Limbs are seldom broken by wind.

5-6 ft.....	\$1.00
6-8 ft.....	1.50
8-10 ft.....	2.00
10-12 ft.....	2.50



**MOLINE ELM**

The Moline Elm is a budded tree and is recommended for street and yard plantings where uniform trees are desired. Habit of growth is pyramidal. Very attractive large, waxy green leaves.

5-6 ft.....	\$1.00
6-8 ft.....	1.50
9-10 ft.....	2.00
10-12 ft.....	2.50

# TREES . . . . . *Fremont*

Grown in nursery rows, root pruned, transplanted and spaced to insure best root system and specimen trees.

Where caliper grades are shown, as 1 inch, 2 inch, 3 inch, etc., it means the diameter six inches above the ground.



LINDEN

**LINDEN, AMERICAN (Basswood)**—A tree of beautiful form and size, good for street or lawn planting. Fragrant, yellow flowers affording nectar for bees.

5-6 ft.....	\$1.25
6-8 ft.....	1.65
8-10 ft.....	2.00
10-12 ft.....	3.00

**LOCUST, THORNLESS HONEY**—Same as Honey Locust but thornless. Makes a very good street or shade tree.

5-6 ft.....	\$1.10
6-8 ft.....	1.60
8-10 ft.....	2.25

**MAPLE, NORWAY**—A round topped tree of beautiful appearance. Foliage of deep, rich green.

5-6 ft.....	\$1.25
6-8 ft.....	1.75
8-10 ft.....	2.50

**MAPLE, SCHWEDLER (Schwedleri) (Purple Leaf Maple)**—40-50 ft. A perfectly shaped tree. Gleaming red and purple in spring. Purplish-green in mid-summer and in autumn golden yellow.

5-6 ft.....	\$2.00
6-8 ft.....	3.00
8-10 ft.....	4.50

**MAPLE, SILVER (Soft Maple)**—The fastest growing and largest of the maples. Leaves are silver underneath.

5-6 ft.....	\$0.65
6-8 ft.....	1.00
8-10 ft.....	1.35
10-12 ft.....	1.75

**MAPLE, SUGAR (Hard Maple)**—Tall, stately trees of great beauty. Foliage turns to brilliant shades of yellow, orange and scarlet in autumn.

6-8 ft.....	\$2.00
8-10 ft.....	2.75



PIN OAK

**OAK, PIN**—Tall, pyramidal shape. Foliage glossy green, becoming brilliantly colored in autumn.

5-6 ft.....	\$2.50
6-8 ft.....	3.00
8-10 ft.....	4.00

**OAK, RED (Quercus rubra)**. 60-80 ft.—An excellent tree for park and street planting. Beautiful foliage turning red in autumn.

5-6 ft.....	\$2.50
6-8 ft.....	3.00
8-10 ft.....	4.00

**OAK, BUR (Quercus Macrocarpa)**—Well known in Nebraska and Iowa. A very hardy rugged tree.

5-6 ft.....	\$1.50
5-8 ft.....	2.00

**RUSSIAN OLIVE**—Attractive, silvery gray leaves and grayish-white berries. Used frequently for hedges and windbreaks.

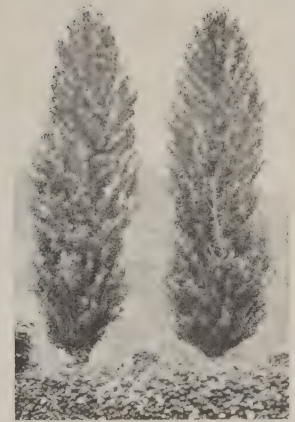
4-5 ft.....	\$0.50
5-6 ft.....	.65
6-8 ft.....	.90
8-10 ft.....	1.25

**SYCAMORE, AMERICAN**—One of the tallest of our native trees. Very shapely, much admired because of its white spotted bark.

5-6 ft.....	\$0.75
6-8 ft.....	1.10
8-10 ft.....	1.65

**WILD BLACK CHERRY (Serotina)**—40-50 ft. A native of the Middle West. White flowers in May followed by small black cherries borne in clusters.

6-8 ft.....	\$0.90
8-10 ft.....	1.25
10-12 ft.....	1.50



LOMBARDY POPLAR

**POPLAR, LOMBARDY (2 Year)**—A tall, pyramidal tree, limbs from the ground up. Fine for screens, and does not seed.

5-6 ft.....	\$0.40
6-8 ft.....	.60
8-10 ft.....	.75
10-12 ft.....	1.00

**POPLAR, NORWAY**—A fast growing tree, and very hardy. Useful for windbreaks and shelter belts.

5-6 ft.....	\$0.40
6-8 ft.....	.60
8-10 ft.....	.75
10-12 ft.....	1.00

**POPLAR, SILVER ALBA**—White. Well known as Silver Poplar, spreading habit, leaves woolly white underneath. Very hardy. Succeeds in cold, dry climates.

5-6 ft.....	\$0.65
6-8 ft.....	1.00
8-10 ft.....	1.35



NIOBE WEeping WILLOW

**WILLOW, NIOBE WEeping**—Bark on twigs and branches of a golden yellow color, giving the tree a handsome appearance both winter and summer.

4-5 ft.....	\$0.50
5-6 ft.....	.75
6-8 ft.....	1.00
8-10 ft.....	1.50

**WILLOW, PUSSY**—Small tree, with catkins on the branches in early spring.

18-24 in.....	\$0.25
2-3 ft.....	.40
3-4 ft.....	.50

Write for Prices on  
Grades and Varieties  
Not Listed.

# Plumfield Ornamental Flowering Trees

**PRUNUS, CISTENA (Hansen's Purple Leaved Plum)**—Dwarf grower, with rich purple-red foliage. Pink flowers and purple fruit.

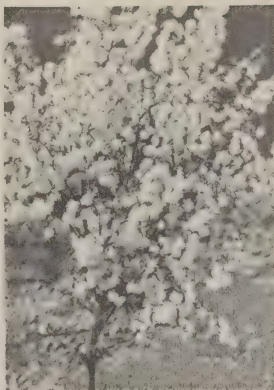
18-24 in.....	\$0.50
2-3 ft.....	.65
3-4 ft.....	.85

**PRUNUS, MINNESOTA PURPLE**—A hardy, purple leaved tree. Its rich, purplish-red foliage makes it a desirable tree. We grow it in bush form. Pink flowers and purple fruit.

18-24 in.....	\$0.50
2-3 ft.....	.65
3-4 ft.....	.85

**PRUNUS TRILOBA (Flowering Plum)**—A profusion of handsome, double pink flowers. Vigorous shrub or small tree.

2-3 ft.....	\$0.65
3-4 ft.....	.85
4-5 ft.....	1.00



PRUNUS TRILOBA

**PRUNUS, NEWPORT (Purple Leaved)**—Hardy, upright grower. Foliage reddish purple with bright red tips. Pink flowers and purple fruit.

2-3 ft.....	\$0.65
3-4 ft.....	.85
4-5 ft.....	1.00

**PRUNUS TOMENTOSA (Nanking Cherry)**—Very hardy. Remarkable showy red flowers. Red fruit. Fine flavor for jams and preserves.

3-4 ft.....	\$0.85
4-5 ft.....	1.00

**RED BUD**—Small native tree. Pinkish red flowers appear in spring before the leaves.

2-3 ft.....	\$0.50
3-4 ft.....	.75
4-5 ft.....	1.00
5-6 ft.....	1.50
6-8 ft.....	2.00

## Forest Tree Seedlings for Woodlot and Windbreak Plantings

Deciduous trees for windbreaks and timber lots, fence lines, lanes, etc. This kind of stock planted in rows on fence lines, and through cultivated field at intervals of 20 to 40 rods will pay greater dividends for the amount of money spent than any other improvement or operation that can be applied to cultivated fields.

Consult us for planting distances and varieties. Also ask your agricultural conservation committee about tree planting credits; it will pay you.

If sent by mail add 10c on less than \$1.00 orders. 10% on orders more than \$1.00. Otherwise we will ship best way charges collect.

	Per 50	Per 100	Per 200	Per 500		Per 50	Per 100	Per 200	Per 500
Ash Green, 3-4 ft.....	\$1.85	\$ 3.50	\$ 6.00	\$14.00	Hackberry, 6-12 in.....	.80	1.40	2.40	5.50
Ash Green, 2-3 ft.....	1.30	2.40	4.00	9.00	Locust Black, 3-4 ft.....	2.00	3.80	6.40	15.00
Ash Green, 18-24 in.....	1.00	1.80	3.20	7.50	Locust Black, 2-3 ft.....	1.50	2.80	4.80	11.50
Ash Green, 12-18 in.....	.65	1.20	2.00	4.50	Locust Black, 18-24 in.....	1.10	2.00	3.60	8.50
Ash Green, 6-12 in.....	.45	.80	1.40	3.25	Locust Black, 12-18 in.....	.80	1.40	2.40	5.50
Box Elder, 12-18 in.....	.65	1.20	2.00	4.50	Locust Honey Thornless, 18-24 in.....	1.50	2.80	4.80	11.50
Box Elder, 6-12 in.....	.40	.70	1.20	2.75	Locust Honey Thornless, 12-18 in.....	1.00	1.80	3.20	7.50
Caragana, 2-3 ft.....	2.15	4.00	7.00	17.00	Locust Honey Thornless, 6-12 in.....	.55	1.00	1.80	4.50
Caragana, 18-24 in.....	1.80	3.40	5.50	13.50	Maple Soft, 2-3 ft.....	1.50	2.80	4.80	11.50
Caragana, 12-18 in.....	1.30	2.40	4.00	9.50	Maple Soft, 18-24 in.....	1.00	1.80	3.20	7.50
Caragana, 6-12 in.....	.90	1.60	2.80	6.50	Maple Soft, 12-18 in.....	.65	1.20	2.00	4.50
Catalpa, 3-4 ft.....	1.80	3.40	5.50	13.50	Maple Soft, 6-12 in.....	.40	.70	1.20	2.75
Catalpa, 2-3 ft.....	1.30	2.40	4.00	9.50	Mulberry, 3-4 ft.....	2.00	3.80	6.40	15.00
Catalpa, 18-24 in.....	1.00	1.80	3.20	7.50	Mulberry, 2-3 ft.....	1.50	2.80	4.80	11.50
Catalpa, 12-18 in.....	.65	1.20	2.00	4.50	Mulberry, 18-24 in.....	1.10	2.00	3.60	8.50
Cottonwood, 2-3 ft.....	.90	1.60	2.70	6.50	Mulberry, 12-18 in.....	.80	1.40	2.40	5.50
Cottonwood, 18-24 in.....	.55	1.00	1.75	4.00	Mulberry, 6-12 in.....	.40	.70	1.20	2.75
Cottonwood, 12-18 in.....	.40	.75	1.30	3.00	Oak Bur, 12-18 in.....	4.00	7.50	14.00	.....
Elm American, 2-3 ft.....	1.30	2.40	4.00	9.50	Oak Bur, 6-12 in.....	3.25	6.00	11.00	.....
Elm American, 18-24 in.....	1.00	1.80	3.20	7.50	Oak Pin, 12-18 in.....	4.00	7.50	14.00	.....
Elm American, 12-18 in.....	.65	1.20	2.00	4.50	Oak Pin, 6-12 in.....	3.25	6.00	11.00	.....
Elm American, 6-12 in.....	.40	.70	1.20	2.75	Oak Red, 18-24 in.....	5.50	10.00	18.00	.....
Elm Chinese, 3-4 ft.....	2.00	3.80	6.40	15.50	Oak Red, 12-18 in.....	4.00	7.50	14.00	.....
Elm Chinese, 2-3 ft.....	1.30	2.40	4.00	9.50	Oak Red, 6-12 in.....	3.25	6.00	11.00	.....
Elm Chinese, 18-24 in.....	1.00	1.80	3.20	7.50	Olive Russian, 3-4 ft.....	3.75	7.00	12.80	30.00
Elm Chinese, 12-18 in.....	.65	1.20	2.00	4.50	Olive Russian, 2-3 ft.....	2.65	5.00	9.50	23.00
Elm Chinese, 6-12 in.....	.45	.80	1.40	3.25	Olive Russian, 18-24 in.....	2.00	3.80	6.40	15.00
Hackberry, 3-4 ft.....	3.75	7.00	12.00	29.00	Olive Russian, 12-18 in.....	1.30	2.40	4.00	9.50
Hackberry, 2-3 ft.....	2.50	4.80	8.00	19.50	Olive Russian, 6-12 in.....	.90	1.60	3.00	7.00
Hackberry, 18-24 in.....	1.80	3.40	5.60	13.50	Walnut Black, 12-18 in.....	2.00	3.60	6.00	14.50
Hackberry, 12-18 in.....	1.30	2.40	4.00	9.50	Walnut Black, 6-12 in.....	1.30	2.40	4.00	9.50



ORDER SHEET

Plumfield Nurseries

FREMONT, NEBRASKA

Date.....194.....

Your Name.....  
Write Very Plainly

Postoffice.....

State.....

Street, P. O. Box  
or Rural Delivery.....

AMOUNT ENCLOSED

\$.....

( ) Check ( ) Money  
Order

( ) Draft ( ) Cash

Mark X in Proper ( )

How Goods are to be sent? Mail..... Express..... Freight.....

Express: what town..... Freight: what town.....

BE SURE TO GIVE KIND, SIZE AND COLOR

QUANTITY	NAME OF VARIETY	SIZE	PRICE	TOTAL
TOTAL AMOUNT - - - - -				

USE BACK OF SHEET IF NECESSARY

If stock is to be sent by mail, include 10% to cover postage



FROM

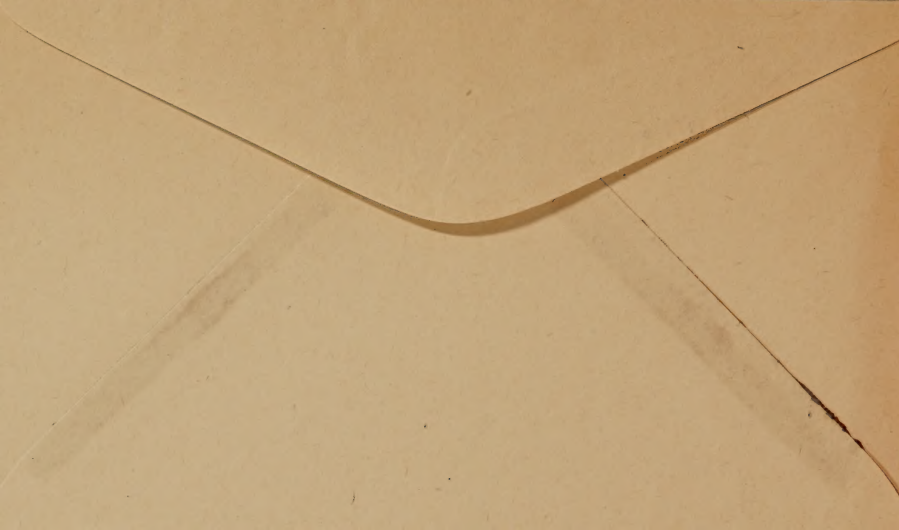
---

---

**PLUMFIELD NURSERIES**

**FREMONT,**

**NEBRASKA**



# Plumfield ROSES

2 year heavy selected plants, 50c each; 3 for \$1.35; 12 for \$5.00; 2 year standard plants, 40c each; 3 for \$1.10; 12 for \$3.85.

## HYBRID PERPETUALS

More hardy than most of the Tea Roses. Do not bloom continuously but will bloom satisfactorily.

- AMERICAN BEAUTY**—A very popular cerise-red variety.  
**FRAU KARL DRUSCHKI**—Very popular, large, pure white.  
**GENERAL JACQUEMINOT (Gen. Jack)**—Old favorite, dark red garden rose.  
**PAUL NEYRON**—Large rose-pink flowers. Almost thornless.

## BABY ROSES

### BABY ROSES OR DWARF POLYANTHA

- CATHERINE ZEIMET**—Double, pure white, fragrant. Borne in large clusters.  
**CRIMSON BABY**—Small, semi-double, light crimson. Dense clusters.  
**EDITH CAVELL**—Brilliant scarlet, overlaid velvety crimson.  
**ELLEN PAULSEN**—Rather large, fairly full flowers of bright rose-pink. Slightly fragrant.  
**GEORGE ELGER**—Medium sized. Very double, golden-yellow flowers, borne in big clusters.  
**GOLDEN SALMON**—New, bright orange-salmon, very attractive. Fine for mass planting. Blooms continuously.  
**IDEAL**—Dark scarlet, borne in profusion. Immense, compact bunches. Vigorous and blooms continuously.



PAUL'S SCARLET

## CLIMBING ROSES

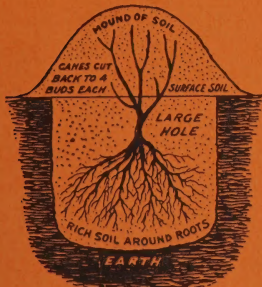
- CLIMBING AMERICAN BEAUTY**—Brilliant carmine-red.  
**CRIMSON RAMBLER**—Deep crimson.  
**DOROTHY PERKINS**—Shell pink.  
**DR. VAN VLEET**—Pale pink buds and flowers borne on long, individual stems.  
**GARDENIA**—Rich creamy yellow. Borne in small sprays.  
**PAUL'S SCARLET**—Intense scarlet flowers of excellent shape and moderate size. Borne in small trusses.  
**SILVER MOON**—Large, semi-double, silvery-white flowers.

## RUGOSA, RUGOSA HYBRID AND MISCELLANEOUS ROSES

- AMELIA GRAVEREAUX**—Rich carmine-purple.  
**BELLE POITEVINE**—Bright pink, borne in clusters. Semi-dwarf.  
**F. J. GROOTENDORST**—Double, bright crimson in large clusters.  
**HANSA**—Double reddish-violet flowers of large size.  
**HUGONIS**—Light yellow flowers borne profusely on slender branches.  
**PERSIAN YELLOW**—Double, small, golden-yellow.  
**SARAH VAN VLEET**—Double, wild rose-pink. Fragrant. Vigorous grower.  
**SIR THOMAS LIPTON**—Large, double, pure white. Profuse bloomer.

## HOW TO PLANT

In planting in yard, garden, or field, the ground should be well prepared, and stock should be handled with least possible exposure. We offer the following suggestions on some of the more important plants.



How to Plant Roses



How to Plant Balled Evergreens



Wrong Way



Right Way

To determine the number of plants required per acre for any distance multiply the two plant distances and divide the product into 43,560 (the number of square feet per acre).

## PLANTING DISTANCE OF FRUIT TREES

	Usual recommended distance	Best average distance	Number Per acre at average distance	Usual recommended distance	Best average distance	Number Per acre at average distance
Apple	25 to 32 feet	30x30 feet	48	Blackberry	1 1/2 to 3x7 feet	3110
Plum and Apricots	16 to 22 feet	20x20 feet	108	Gooseberry	4x6 feet	1815
Pear	22 to 30 feet	25x25 feet	69	Currant	4x6 feet	1815
Cherries and Peaches	12 to 16 feet	14x14 feet	147	Grape	8x8 feet	680
Raspberry—(Hill)	4x6 or 5x5 feet	4x 6 feet	1815	Strawberry—		
(Hedge)	1 1/2x3 by 6 to 7 feet	2x 6 feet	3630	Everbearing	15 to 18 in. x 3 to 4 ft.	1 1/2x3 feet 9680
				June bearing	18 to 24 in. x 4 ft.	2x4 feet 5445

# Plumfield ROSES

HYBRID TEA ROSES



E. G. HILL



BETTY UPRICHARD



RED RADIANCE

Write Us About Varieties Not Listed.

Plumfield's hardy 2-year-old field grown roses will bloom the same year they are planted. We offer a complete assortment of the finest everblooming roses.

	Each	Lot of 3 Each	Lot of 12 Each
2-year heavy selected plants.....	\$0.50	\$1.35	\$5.00
2-year standard plants.....	.40	1.10	3.85



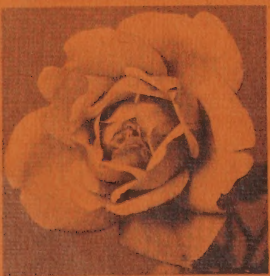
TALISMAN



PINK RADIANCE

- LADY HILLINGDON—Deep apricot yellow, large flowers.
- LADY MARGARET STEWART—Deep sunflower yellow veined and splashed with orange scarlet.
- LOS ANGELES—Luminous flame pink shaded with coral and gold.
- LUXEMBOURG—Rich golden yellow, fully double.
- MARGARET MCGREDDY—Oriental red, shading to carmine rose.
- MRS. CHAS. RUSSELL—Beautiful shade of soft pink.
- MRS. E. P. THOM—Rich lemon yellow, sweetly scented.
- MRS. PIERRE S. du PONT—Bud reddish gold, flower deep golden yellow becoming lighter with age.
- OPHELIA GOLDEN—Golden yellow seedling of Ophelia.
- PRES. HERBERT HOOVER—Orange and pink, flamed and suffused with vivid rose pink.
- RADIANCE, PINK—Rosy carmine pink, large, beautiful form.
- RADIANCE, RED—Bright rose red form of Radiance.
- ROSLYN—Large, double, deep golden yellow. Vigorous grower.
- SUNBURST—Orange copper-shaded golden yellow.

- TALISMAN—A combination of shadings of gold, apricot, yellow, and deep pink.
- BETTY UPRICHARD—Delicate salmon pink shaded with coppery orange.
- BRIARCLIFF—Brilliant pink, long bud.
- CALEDONIA—Large, double white, borne singly on long, strong stems.
- COLUMBIA—Peach-blow pink, deepening as it opens.
- DAME EDITH HELEN—Pure glowing pink, fragrant.
- DUCHESS OF WELLINGTON—Saffron yellow, stained with rich crimson.
- EDITH NELLIE PERKINS—Cream and blush shaded orange outside, salmon pink inside of petals.
- E. G. HILL—Dazzling scarlet, shading to a deeper pure red.
- ETOILE DE HOLLANDE—Bright, dark red, deliciously perfumed.
- FRANCIS SCOTT KEY—Large, deep red flowers, very double.
- GRUSS AN TEPLITZ—Vivid, fiery crimson, sweetly fragrant.
- J. L. MOCK—Clear pink, reverse of petals silvery rose.
- JOANNA HILL—Clear yellow, deepening at the center.
- K. A. VIKTORIA—White, faintly suffused lemon.



K. A. VIKTORIA



MRS. CHAS. RUSSELL



LADY MARG. STEWART



MRS. PIERRE S. du PONT