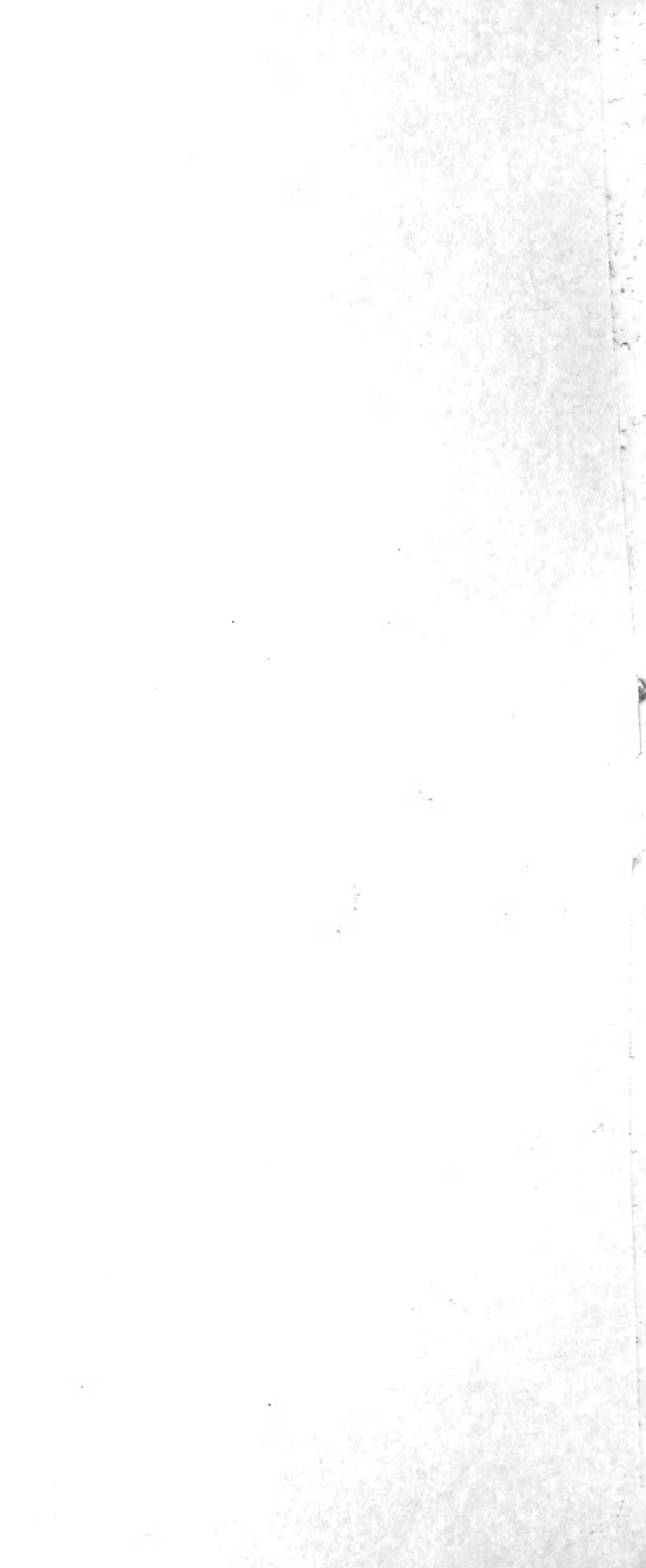


Historic, Archive Document

Do not assume content reflects current scientific knowledge, policies, or practices.



LIBRARY
RECEIVED

★ OCT 13 1942 ★

U. S. Department of Agriculture



PURPLE EMPEROR



Fall 1942 • Spring 1943

PRICE-LIST

Wholesale Only

BLACKWELL NURSERIES, Inc.
SEMMES • ALABAMA

Phone: Mobile 6-9937



JARVIS RED

WE TAKE pride in offering our specialties, Azaleas and Camellias, to Southern growers. Our stock is the best quality that you will be able to find anywhere; our lining-out stock will be a profitable investment for you and will provide a "backlog" for the future.

All the vegetables grown this year were a great help in the Nation's war effort, but we believe a fine planting of Azaleas and Camellias has its value too. They provide the beauty and color, the charm and stimulation that everyone needs after a day's work.

Promote the use of Southern plants for Southern gardens. Azaleas and Camellias are old-time shrubs of the South. Those who plant them now have an eye for the future, for they increase in value as they get older. They are prime favorites that will add a great deal to any planting. Once established they do not require much care, but provide more than their share of beauty for the home-grounds.

Blackwell Nurseries, Inc.

SEMMES, ALABAMA

Wholesale Only

FALL, 1942 . SPRING, 1943

SHIPPING POINT, SEMMES
TELEGRAPH AND TELEPHONE,
MOBILE 6-9937

Our nurseries are located at Semmes, 15 miles west of Mobile, on Moffat Road. Pay us a visit any time; we will be glad to see you.

Our Business Terms

Payments. Cash, with 3% discount and free packing on all stock. If you come for your stock in your truck, or for carload lots where we do not have to crate, we will allow 20% discount on balled stock, but not on *Rare Camellias*. Where this 20% is allowed, no other discount is given.

Charge accounts. From unknown persons who have not had credit with us, we ask for well-known trade references and time for investigating. All accounts due in 30 days unless other arrangements are made when order is filled.

C.O.D. shipments must be accompanied by 20% deposit as a guarantee of acceptance. If you want us to hold certain items for you, we require a deposit; usually 10% will be sufficient.

Shipments. Please specify by what method you want your order shipped. If you are within 500 miles of Mobile and unless Government orders prohibit, we are in position to deliver full truckloads to your door. Our charges for this will be very reasonable.

We endeavor to send out all shipments the day the order is received, and will do everything in our power to insure satisfactory delivery to our customers, but our responsibility ceases upon delivery to carrier in good condition, insofar as damages in transit are concerned. However, we are here to please our customers and will at all times do all we possibly can to help, should you have to file claim for any damages.

If you have any reason to complain, or if there is any mistake in the order, please let us know at once so that we can rectify the mistake.

It is to be thoroughly understood that we accept any and all orders with the provision that they shall be void, should any injury befall our stock over which we have no control; all orders are subject to any new Government regulations.

Reference. As to our standing and responsibility, we refer you to any bank or business house in Mobile, as well as some of the well-known Florists and Nurserymen in the country.

We are members of the American Association of Nurserymen, Southern Nurserymen's Association and Alabama's Florists' and Nurserymen's Association.



AZALEAS

Azaleas can be moved at any time during the year, but we recommend doing it before they come into bloom, that is, September through February. In doing this you will have the benefit of the flowers the first year. Also the plants will have become established in the ground before the summer heat.

We are offering what we call lining-out stock from beds, which is only for growing on, and should be planted after danger of frost is over. The florist should plant them after Easter, when there will be more room in the houses for them. These plants were rooted in late spring and moved to our beds outside, to grow and make good root systems all summer and winter. They are far superior to most pot plants, as they have more room to develop better root systems.

We are growing this season excellent plants of this size, having had an early start, and we have had the best growing season for several years. We suggest that you book your order with us early, and let us ship to you whenever you are ready in the spring. We are prepared to protect these plants during the winter, and will harden them off in early spring, so that you will have excellent plants.

Good drainage is absolutely necessary, so be sure that the beds for the plants are drained well before planting, to prevent water from standing in them at any time. The beds should be kept moist always, but not soaking wet. During dry weather, it is better to water in late afternoon with a strong force from the hose. We might also add—do not be too sparing with good soil and fertilizer, as you will find it pays in the long run.

Azaleas are plants that can be set in full sun or in shade. Partial shade is ideal for growing them, as all of our small plants are grown in the lathhouse. Larger plants can be put in the open field if proper care is given them, and you

AZALEAS, continued

will have many more flower buds, but the flower buds will be more susceptible to frost injury. During dry weather they will have to be watered more often, and will have to be mulched heavier. The plants in the shade will have some protection from the cold injury, but will have fewer flowers. Kurume varieties will bloom more profusely in the shade than the Indicas, but never attain the size of the latter.

We would like to suggest that you grow more of these flowering shrubs. When they come into bloom in the winter and spring months you will be amply rewarded for your foresight in planting them. They are the quickest turnover of any investment you could make, and are easy to handle, once you get the knack of it. Nothing, to our mind, is more beautiful than an Azalea Garden in full bloom.

AZALEA INDICA

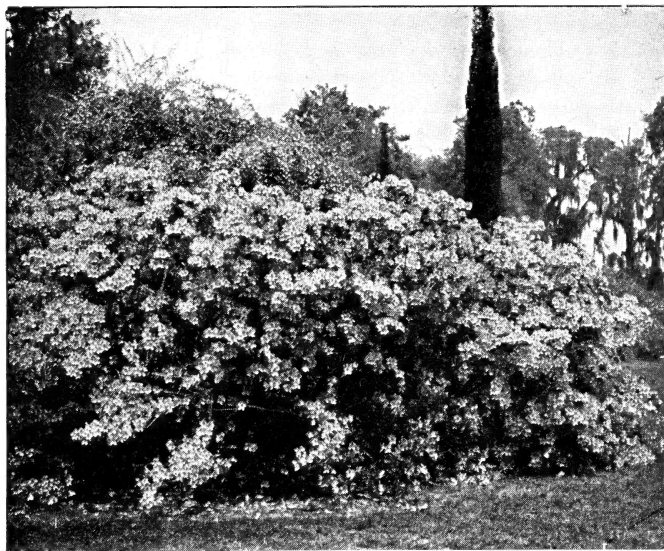
These Azaleas are for the most part, the most showy of all in the gardens of the lower South and along the Atlantic coast line. They are ideal for landscape work in this section, for they make nice, thick, green foliage plants and are a mass of color in late winter and spring. They require no pruning after they get established. We suggest that you use them more extensively in your work, and you will have the thanks of your customers for many years to come. An Azalea in bloom is all the advertisement you need to sell it and other plants to go with it.

This season we have some fine plants of Indicas, as we have pinched them back many times. We know you will be well pleased with our plants, and we invite your inquiries. Our liners are better than any we have seen, and besides getting repeat orders from last season's customers, we are getting a great many letters from others in regard to our liners.

Alba Maculata. Nice white. Very compact growth. Excellent bloomer.

Duc de Rohan. Salmon-colored flowers. Compact growth.

Elegance. Light pink. Heavy foliage; fast-growing, well-shaped plant. Early bloomer.



Azalea indica



Azalea, Pride of Mobile

AZALEA INDICA, continued

- Fielder's White.** One of the best whites of the Indicas. Dark green, hairy foliage; excellent growth.
- Fisher Pink.** Light pink. Blooms about the same time as Pride of Mobile; very good, compact growth.
- Formosa.** Large purple flowers, somewhat lighter than Phoenicia. Large, thick foliage; probably the fastest grower of all the Azaleas.
- Indica Alba.** Pure white. Light green, hairy foliage; upright growth. Very hardy.
- Orchid.** Light orchid. Light-colored foliage; tall growth.
- Phoenicia.** Light purple. Dark green foliage; good growth. A very fine variety.
- President Clay.** Orange-red. Fast, upright growth; midseason bloomer. Very good.
- Pride of Mobile.** Beautiful watermelon-pink—probably the most popular of all indicas. Large foliage; fast growth, similar to that of Formosa. In Mobile there are plants nearly one hundred years old that are still blooming profusely. The blooms so completely cover the plants at the height of the season that scarcely a leaf is to be seen.
- Prince of Orange.** Orange-red. Spreading growth that covers the ground and makes a fine showy mound.
- Salmon.** Medium-sized, salmon-colored flowers. Good upright growth. One of the best; known to nurserymen in the South as Daphne Salmon.

PRICES OF AZALEA INDICA:	10	100	1000
12 to 18 in., without burlap....	\$5 00	\$40 00	
10 to 12 in., without burlap....	3 50	30 00	
8 to 10 in., without burlap....	2 50	20 00	
Liners from beds.....		7 00	\$60 00

Due to the scarcity of burlap, we have discontinued using burlap on Azaleas. We did this last season with success and fully believe that even after the war is over our customers will not want us to go back to using burlap.



Lathhouse scene showing 80,000 Azaleas, mostly Kurume.

KURUME AZALEAS

Perhaps the most popular group of Azaleas, as they have such a wide use. The easiest moneymaker of any pot plant, they are easy to grow and if not disposed of the first season, will only be more valuable the next. One plant in a pot will make a nice show and is sure to please your customers. For outside planting, they will stand more cold than the Indicas, and can be planted outdoors in almost all sections of the South and even farther north with a little protection.

Kurumes are very easy to handle in the greenhouse. Pot them up in acid soil, using a good amount of peat moss. Place in a moderately warm house and spray frequently with a strong force of water. This will tend to keep down red spiders and thrips. They will come into full bloom in from 50 to 75 days, depending on the season.

Our 4 to 6-inch liners make excellent plants to pot up and grow for another season's sale. The cost is very low and you will have some really nice plants to offer your customers in less than a year. If you have never grown any, you should by all means order some at once.

Bridesmaid. Large, pleasing salmon-colored flowers in large clusters. Excellent growth. Very showy.

Cattleya.³ Hose-in-hose; lilac, with tips of petals lighter. Fast growth.

Cherry Blossom. Hose-in-hose; light pink, fading white near center.

Christmas Cheer. Hose-in-hose; small, deepest red. Small foliage; compact growth. One of the best for florists' use.

Coral Bells. Hose-in-hose; small, bell-shaped flowers of a beautiful shade of pink. Small glossy foliage; very compact growth. The favorite of florists for pot culture. We have excellent liners of this variety.

Double Mauve. Hose-in-hose; light mauve flowers entirely cover the plant. Its compactness makes it very good for florist use.

Hexe. Hose-in-hose; large, deep red. Excellent dwarf compact growth. Very much in demand.

KURUME AZALEAS, continued

Hinodegiri. This is a very popular bright red variety. The blossoms cover the plant in such a manner that you can hardly find a leaf when in full bloom. Compact, slow growth. Very desirable as a pot plant.

Hortensia. Hose-in-hose; medium-sized, delicate pink. Round, fairly large, shiny foliage; heavy but not tall grower.

Lavender Queen. Light lavender, with very prominent white stamens. Very showy when in bloom.

Mauve Beauty. Light lilac flowers cover the entire plant and make an excellent show in pots. Slow compact growth.

Salmon Beauty. Hose-in-hose; large, salmon color. Compact growth. Very showy plant and an excellent variety for pot culture.

Salmon Queen. Larger-sized flowers than above, but single and lighter in color. This is a good variety, very popular as a pot plant.

Snow. Hose-in-hose; pure white flowers that cover the plant. Fairly large dark green leaves. Very popular with the florist.

Sweet Brier. Medium-sized, light pink, single flowers. Very hardy and good grower.

Vesuvius. Large orange-red flowers, single but very showy. Fast grower; dark green foliage.

PRICES OF KURUME AZALEAS:

	10	100
10 to 12 in., with buds, without burlap..	\$6 50	\$60 00
8 to 10 in., with buds, without burlap..	5 50	45 00
6 to 8 in., with buds, without burlap..	4 00	35 00
*Liners from beds.	\$60.00 per 1000 . .	7 00

*These are our bed-grown plants for growing on, and do not have flower buds. Spring shipment is better, as you will not have the expense of carrying them through the winter months. We have given these plants plenty of room to develop good root systems, also have kept them pinched back many times to make them bushy. None better are to be found anywhere.



8 to 10-inch Azaleas, Coral Bells and Hinodegiri



Azalea kaempferi

HARDY JAPANESE AZALEAS

We are listing here the most hardy of all Azaleas for this section. To make ordering simpler, we offer them here separately. These Azaleas can be grown in a large part of the country, and should be in every nursery that cannot grow the Indicas. We urge you to try some if you have not already done so. They are not as dwarf as the Kurumes nor as large as the Indicas. We offer them in a variety of colors.

Hardy Firefly. Single, fiery red of good size. Good, compact growth.

Hinomayo. Pleasing light pink. Light foliage; upright growth. Ideal for making a solid, showy bed of Azaleas.

Kaempferi. Large, rose-colored blooms. Fast, upright growth. The hardiest Azalea we grow; will stand Boston winters without protection.

Macrantha, Double-flowering. Rose-colored, hose-in-hose flowers as large as those of most Indicas. Small foliage; compact growth.

Macrantha, Orange. Orange-red. Small, narrow foliage; dwarf growth. Very good.

Maxwelli. Flowers carmine-red, quite large. Foliage medium-sized, light green. One of the best.

PRICES OF HARDY JAPANESE AZALEAS:

	10	100	1000
12 to 18 in., without burlap...	\$5 00	40 00	
10 to 12 in., without burlap...	4 00	30 00	
8 to 10 in., without burlap...	3 00	20 00	
Liners from beds.....		7 00	\$60 00



CAMELLIA JAPONICA

A year has passed since we sent out our last price-list, offering Camellias. We have added some new varieties to our list and are able to offer larger sizes than last year. We hope to increase the number of our varieties each year, until we have as complete a list as anyone in the business.

We have some excellent plants in our rare varieties and know that we can please you with these. Ours are mostly grafted plants with the exception of the 8 to 15-inch size; some of these are grafted on two-year potted understock. We will supply grafted plants on all orders until the supply is exhausted. We are growing a good many varieties that we cannot list because of an insufficient supply; we hope to list most of them another year. In the meantime if you will let us know the name of any of the rarer varieties that you are interested in, we might be able to let you have one this year or graft one for you another year.

We can graft the following for you next season, Spring 1943: C. N. Hastie, Mrs. Chas. Cobb, Duncan Bell, Donkelaari (three types), Eleanor of Fairoaks, Elizabeth Boardman, Eleanor Haygood, Elizabeth Arden, Firebrand, Flame, Firegold, Gardeniaeflora, H. A. Downing (true), Lady Hume Blush, Margaret Higdon, Marion Mitchell, Rev. John Bennett (true), Variegated La Reine, and possibly some others not listed. Nearly all of the above varieties are tops in any man's garden and no collection would be complete without them.

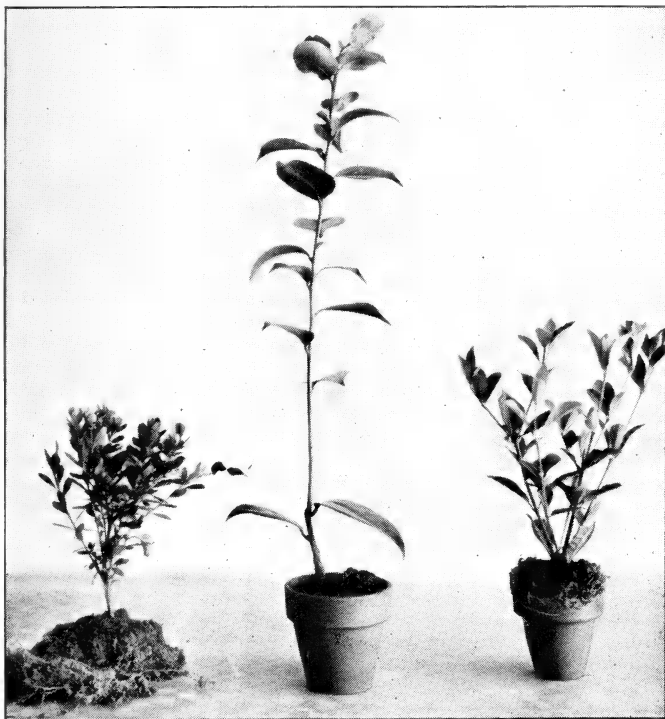
In the standard varieties we have a few in larger sizes than we had last season and in larger quantity. Our 8 to 12-inch plants are about the best that can be had anywhere. They are well developed, grown in full sun and thus superior to any shade-grown plants. We have grown our small plants in full sun for some time and have

CAMELLIA JAPONICA, continued

found that we not only get a better plant, with more root system, but one that will better stand early moving to the outdoors. We will be glad to send you a sample for your inspection and comparison with any other plants in the same size. On most varieties we are in position to give much larger plants in the 8 to 12-inch size than you would expect. We have most varieties in 3-inch pots that can be shipped with no damage to the root systems, although they will go with bare root without any damage, as we have successfully shipped this way many times.

We also have excellent 18 to 24-inch field-grown plants. We will send as many with buds as possible, but cannot guarantee buds on them. Our 12 to 18-inch plants are in open beds, not in lathhouses. They are very nice and can be moved with bare roots if wanted this way; if handled carefully they will transplant as well as when balled. We have a good many customers who take this size without any soil at all, and they never have made any complaints. When we move them from the beds to the field, we always bare-root every one, and the stand in our rows will show that we never lose any because of moving them this way.

We know that we can please you with our plants; all orders will be given our very best attention. Many customers who started buying from us the first year we were in business are still buying every year. We do not have the largest nursery in this section, and for that matter are not trying to outdo anyone in that respect, but we do try to produce the best plant for the money, and will continue to do so. A trial shipment will convince you, but if you are not entirely satisfied, we are ready and willing to make any reasonable adjustments.



Azalea, Coral Bells, liner. Camellia, 8 to 12 inch, in 3-inch pot; and Gardenia veitchi in 2½-inch pot

CAMELLIAS

Rare Varieties, Group I

- Davis' Rose Dawn.** A very beautiful rose-pink Camellia of large size, introduced by one of our local nurserymen. Very vigorous grower with dark green foliage. Much in demand. Each
24 to 30-in. graft on 10-year stock \$15 00
- Glen 40.** Beautiful, large, deep flower of very dark red. Slow grower but one of the best double red Camellias. Each
18 to 24-in. graft on 8-year stock \$10 00
12 to 18-in. graft on 4-year stock 5 00
- Imura White.** Very showy semi-double flower about 5 to 6 inches across with large petals. Fast grower with long, narrow, shiny leaves. Each
24 to 30-in. graft on 10-year stock \$15 00
- Laurel Leaf.** A very large full double variety of beautiful texture; incurved petals. Most flowers have rose-pink centers and fade into deeper pink at edge, but sometimes come with white blotches. Excellent variety for greenhouse culture. Each
18 to 24-in. graft on 8-year stock \$10 00
12 to 18-in. graft on 4-year stock 4 00
10 to 15 in. from 3-in. pots 1 50
- Lotus.** Very large pure white, semi-double. Long, narrow, light green leaves. One of the very best semi-double types, and one of the largest. Each
24 to 30-in. graft on 10-year stock \$20 00
- Magnoliaeflora.** Beautiful blush color, semi-double. Good, compact grower with very shiny leaves. This is the most prized of all Camellias that we have to offer in any quantity and should be in every collection. Each
18 to 24-in. graft on 8-year stock \$15 00
18 to 24-in. graft on 4-year stock 10 00
12 to 18-in. graft on 4-year stock 7 50

Rare Varieties, Group II

- Alba Superba.** Large, semi-double, pure white; large petals with yellow stamens showing in center. Fast grower with large dull green leaves. 24 to 30 in.; 18 to 24 in.; 12 to 18 in. and 10 to 15 in.
- Cardinal Richelieu.** Semi-double dark red of medium size. Fast grower and excellent bloomer. Magnolia Gardens variety. 10 to 15-in. grafts in 3-in. pots.
- C. M. Hovey.** Very large-flowering type, similar to Purple Emperor except for white blotches through the flower. One of the very best in flowering as well as growth. Large dark green foliage with some variegation. 24 to 30 in.; 18 to 24 in.; 12 to 18 in. and 10 to 15 in.
- Colonel Firey.** Very double, beautifully shaped flower, 5 to 6 inches across of brilliant crimson. One of the best red Camellias. 18 to 24 in.; 12 to 18 in. and 10 to 15 in.
- Daikagura.** One of the very earliest Camellias to bloom. Deep rose-pink flowers, sometimes streaked and blotched with white. 18 to 24 in. and 12 to 18 in.
- Empress (Lady Clare; Grandiflora Rosea).** Clear rose-pink, with two rows of petals and golden stamens. One of the largest, sometimes measuring 6 inches across. Dark green foliage; spreading growth. 18 to 24 in. and 10 to 15 in.



RARE CAMELLIAS, GROUP II, continued

- Fanny Bollis.** Very large, almost single red flowers, blotched with white. Large dark green foliage; good growth. 24 to 30 in.; 18 to 24 in. and 10 to 15 in.
- Goshoguruma.** Single deep velvety red with golden stamens. Medium-sized dull green foliage. Slow, very upright growth. 18 to 24 in.; 12 to 18 in. and 10 to 15 in.
- Kumasaka.** Large, semi-double, deep pink, showing stamens. Good growth and bloom. 18 to 24 in. and 10 to 15 in.
- Marchioness of Exeter.** Large pink flowers of peony form, resembling a bouquet. Early blooming. 12 to 18 in. only.
- Maraschino.** Bright red, round petals forming a cup-shaped cluster, opening like a rose. Free blooming. 10 to 15 in. only.
- Monjisu.** Very nice Camellia. Deep red, splashed with white; very prominent stamens. Dwarf grower but will bloom while young. 18 to 24 in.; 12 to 18 in. and 10 to 15 in.
- Mrs. Wm. Thompson.** Medium to large, semi-double, white. 12 to 18 in. only.
- Pink Ball.** Light pink, medium round flowers with regular outer petals and inner petaloids interspersed with stamens. Dull green foliage of medium size. Very prolific bloomer and starts blooming while young. 18 to 24 in.; 12 to 18 in. and 10 to 15 in.
- Pink Star.** Semi-double rose-pink flowers. Very compact grower with dark green foliage. Choice variety. 10 to 15 in. only.
- Purple Emperor (Purple Dawn; Mathotiana Rubra).** Very large deep red flowers turning purple as they age, and showing some stamens when fully open. Fast grower with large, dark green foliage. 18 to 24 in.; 12 to 18 in. and 10 to 15 in.

RARE CAMELLIAS, GROUP II, continued

Snowdrift. Large, semi-double, very nice pure white Camellia. 10 to 15 in. only.

Victor Emanuel. Very large, peony form, very deep red. Most spectacular of all red Camellias and probably one that will sell at higher price for many years to come. Excellent grower and late bloomer. We have some exceptionally good buys in this variety. 30 to 36 in.; 24 to 30 in.; 18 to 24 in. and 10 to 15 in.

PRICES OF RARE VARIETIES, GROUP II:	Each
30 to 36-in. specimens, B&B.....	\$17 50
24 to 30-in. specimens, B&B.....	12 50
24 to 30 in., B&B.....	6 50
18 to 24 in., B&B.....	4 00
12 to 18 in., B&B.....	2 50
10 to 15 in., 3-in. pots.....	1 50

No discounts allowed on rare varieties regardless of number of plants ordered. Some varieties are exceptional values and probably will not last all season. We suggest that you order early to avoid disappointment. For a small deposit we will select, tag and hold any plant for later shipment.

Standard Varieties, Group I

Alba Plena. Pure white, large. This is the best white that can be bought, but is a very slow grower and susceptible to cold. We advise you to place your order early for this one, as quantity is limited. 12 to 18 in.; 8 to 12 in.; 6 to 8 in. and 3 to 5 in.

Brilliant (local name). An excellent variety. Large, very double, bright red. Compact grower with dark green foliage. 18 to 24 in. field; 12 to 18 in.; 8 to 12 in.; 6 to 8 in. and 3 to 5 in.

Chandleri Elegans. Rich cherry-red with white variegation. Large flower, 5 to 6 inches in diameter, some of loose peony form and others thick peony flowers, all on the same plant. Leaves are rich shiny green. One of the best and most popular of all. 18 to 24 in. field; 12 to 18 in.; 8 to 12 in.; 6 to 8 in. and 3 to 5 in.

Monarch. Very large, deep pink with white variegation. The stamens are so intermixed that often one single flower will resemble a bouquet. Very compact growth; dark green foliage. 12 to 18 in.; 8 to 12 in.; 6 to 8 in. and 3 to 5 in.

Pink Perfection. Very popular shell-pink that is early and blooms very freely. 18 to 24 in., field; 12 to 18 in.; 8 to 12 in.; 6 to 8 in. and 3 to 5 in.

Prof. Sargent. Crimson flowers of peony form. Excellent grower; early blooming. 12 to 18 in.; 8 to 12 in.; 6 to 8 in. and 3 to 5 in.

Waratah. Medium-sized blood-red flowers having a single row of petals surrounding a center cluster of petaloids and stamens. 8 to 12 in.; 6 to 8 in. and 3 to 5 in.

PRICES OF STANDARD VARIETIES, GROUP I:

	Each	10	100
18 to 24 in., B&B, field-grown..	\$2 25	\$20 00	
12 to 18 in., B&B, open beds...		6 00	\$50 00
8 to 12 in., beds or 3-in. pots..		4 00	35 00
6 to 8 in., beds or pots.....		3 00	25 00
3 to 5 in., beds.....		2 00	15 00



ALBA PLENA



FANNY BOLLIS

Specializing in
CAMELLIAS
and
AZALEAS



**MAGNOLIAE-
FLORA**

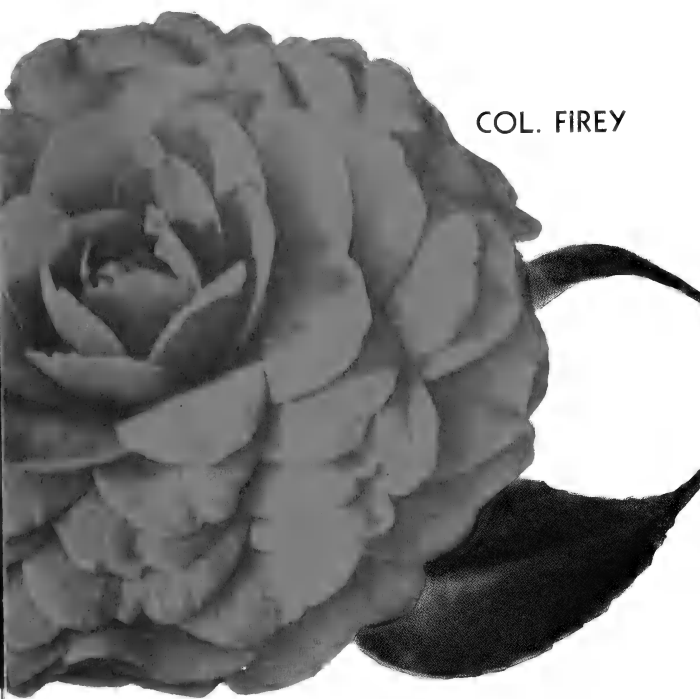
**HOW TO REACH
OUR NURSERY
FROM MOBILE**

To get to our Nursery from Mobile, come out Moffatt Road to Semmes, then **CROSS** the viaduct over the G. M. & O. Railroad tracks and turn left. We have excellent growing and balling soil here and invite you to pay us a visit, without any obligation whatever to buy.



HERMES

The Camellias pictured here are among the best. With little attention they will do well throughout the Lower South.



COL. FIREY



PINK PERFECTION

You cannot do better than to plant some of our lining-out stock. They are fine for spring shipment and should be ordered as soon as possible.



VICTOR EMANUEL

Standard Camellias, Group II

- Abby Wilder.** Medium-sized flowers of peony form, white with splashes of pink intermixed. Fast grower. 12 to 18 in.; 8 to 12 in.; 6 to 8 in. and 3 to 5 in.
- Beali Rosea.** Very double, deep pink flowers about 4 inches across. Very compact, fast growth. 12 to 18 in.; 8 to 12 in.; 6 to 8 in. and 3 to 5 in.
- Christine Lee.** Semi-double, pink, with stamens in center. Small glossy leaves; fast, upright growth. Late flowering. 12 to 18 in.; 8 to 12 in.; 6 to 8 in. and 3 to 5 in.
- Colonial Pink.** Dark pink, peony form. Good growth; free bloom. 12 to 18 in.; 8 to 12 in.; 6 to 8 in. and 3 to 5 in.
- Jarvis Red.** Large, semi-double deep red flower with the stamens showing very prominently. Dark green foliage. 12 to 18 in.; 6 to 8 in. and 3 to 5 in.
- Prince Eugene Napoleon (Pope Pius IX).** Large, double red flowers. Good growth; light-colored foliage. Very popular, and profitable to grow. 18 to 24 in., field; 12 to 18 in.; 8 to 12 in.; 6 to 8 in. and 3 to 5 in.
- Sarah Frost.** One of the most common and hardiest of this section, always gives you some flowers. Rose-pink, of medium size. Very compact-growing plant. 8 to 12 in.; 6 to 8 in. and 3 to 5 in.
- Standard.** Medium-sized double flower of pink and white. Slow but compact growth. 18 to 24 in., field; 12 to 18 in.; 8 to 12 in. and 6 to 8 in.

PRICES OF GROUP II:

	Each	10	100
18 to 24 in., B&B, field-grown..	\$2 00	\$17 50	
12 to 18 in., B&B, open beds...		5 00	\$40 00
8 to 12 in., beds or 3-in. pots..		3 00	25 00
6 to 8 in., beds or pots.....		2 50	20 00
3 to 5 in., from beds.....		1 50	12 50

Camellia Sasanqua



Camellia sasanqua rosea

- CAMELLIA sasanqua, Apple Blossom.** This is a seedling that we have been propagating from and is a very nice single flower of apple-blossom-pink. Good grower.
- C. sasanqua, Mixed.** These are rooted cuttings from some seedling plants and are excellent to grow for understock for grafting purposes.
- C. sasanqua rosea.** Large flower of deep pink. Fast grower, ideal for screens.

PRICES OF ABOVE SASANQUAS:

	10	100
12 to 18 in., CT.....	\$2 00	\$17 50
8 to 12 in., CT.....	1 75	15 00
6 to 8 in., CT.....	1 50	12 50
3 to 5 in., from beds.....	1 25	10 00



Field scene showing one of our fields

Broad-Leaved and Coniferous Evergreens, Vines, and Deciduous Stock

S—seedling; C—cutting; T—transplanted, also designates number of times transplanted, that is: TT—twice transplanted; CT—cutting transplanted; B&B—balled and burlapped; BR—bare root.

ABELIA grandiflora.	10	100
2 to 3 ft., bushy, BR.....	\$3 00	\$25 00
18 to 24 in., bushy, BR.....	2 00	15 00
12 to 18 in., bushy, BR.....	1 50	12 00

We can ball any of above for 15c per plant, but advise ordering bare root to save on transportation. You will have just about the same results either way.

AMPELOPSIS veitchi. Boston Ivy. Well-known vine used extensively in northern section of the country.

6 to 8 in. and up, from seed-beds.....	100	\$3 00
--	-----	--------

ARDISIA crenulata. Tender berry-bearing plant for pot culture. Has wavy dark green leaves and large clusters of fair-sized deep red berries.

3-in. pots.....	10	100
3 to 5-in. seedlings.....	\$1 75	\$15 00
		2 50

AUCUBA japonica, Variegated. Dark green leaves with white spots. Very attractive plant grown extensively in Atlanta section.

2½-in. pots.....	10	100
	\$1 25	\$10 00

BERBERIS thunbergi atropurpurea. Red-leaf Barberry. Very attractive dark bronze-red leaves. Used very much in North for hedges, and would do well if used more in this manner in the South. All cutting grown.

18 to 24 in., B&B.....	Each	10	100
12 to 18 in., B&B.....	\$0 75	\$6 00	
Bare root at half price.	60	5 00	
8 to 12 in., CT from beds.....		75	\$6 00

BUXUS japonica. Fast-growing Boxwood with round leaves. Does well in shade or sun. We have excellent plants of this variety.

B. sempervirens. Slow, very compact-growing Boxwood. Small, very dark green leaves. Ideal for a low border.

PRICES OF BOTH BOXWOODS:

	10	100
10 to 12 in., CTT, field.....	\$2 00	\$15 00
8 to 10 in., CT.....	1 00	8 00
6 to 8 in., CT.....	75	6 00
4 to 6 in., CT.....	65	5 00

CALLISTEMON. Bottlebrush. Tender plant with long narrow leaves. Long spikes of red flowers resembling the bottlebrush.

	10	100
2½-in. pots.....	\$1 25	\$10 00

CLEYERA japonica. Medium-sized evergreen with bright glossy leaves. Small white flowers in late spring.

	10	100
12 to 18 in., CTT, field.....	\$2 00	\$15 00

CORNUS florida. White-flowering Dogwood.

	100
8 to 12-in. S.....	\$2 50
6 to 8-in. S.....	2 00
4 to 6-in. S.....	1 50

COTONEASTER francheti. Compact semi-upright Cotoneaster with orange berries. Free bearer.

C. pannosa. Similar to above with silvery leaves and red berries.

C. Parneyi. One of the best and hardiest of evergreen Cotoneasters. Flowers white, followed by clusters of large red berries.

PRICES OF ALL COTONEASTERS:

	10	100
2 to 3 ft., B&B.....	\$7 50	
8 to 12 in., ST.....	1 00	\$8 00
6 to 8 in., ST.....	75	6 00



Buxus sempervirens (Boxwood)

ELÆAGNUS pungens. Light green leaves with underside silvery.

		10	100
18 to 24 in., B&B, field.....	\$5 00		
8 to 12 in., CT.....	1 00	\$8 00	

EUONYMUS japonicus. A useful and ornamental shrub with dense glossy foliage. Can be pruned to any desired height.

E. japonicus variegatus. Variegated form of above. Has highly colored yellow and green leaves.

PRICES OF ABOVE TWO EUONYMUS:

		10	100
18 to 24 in., B&B, field.....	\$5 00		
8 to 12 in., CT.....	1 00	\$7 50	
6 to 8 in., CT.....	75	6 00	

EURYA japonica. Very compact-growing plant of highly ornamental value. Being used more and more each year.

		10	100
6 to 8 in., CT.....	\$0 75	\$6 00	

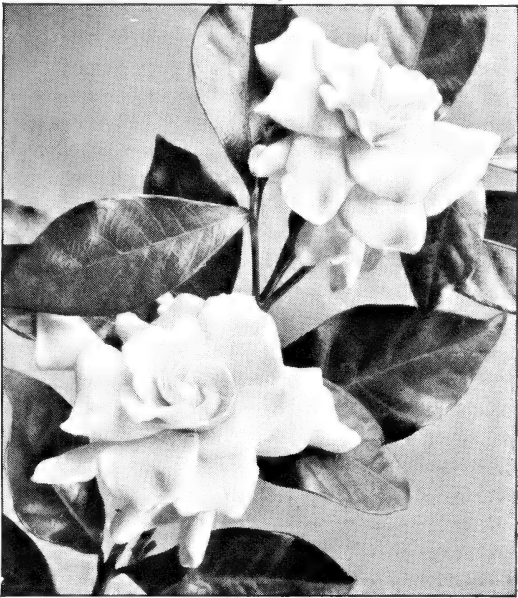


8-12 inch liners, Gardenia, Mystery and Feijoa sellowiana

FEIJOA sellowiana. Pineapple Guava. A very compact shrub with light green leaves, underside silvery. Small purple flowers in late spring followed by edible fruit in the milder climates.

	Each	10	100
18 to 24 in., B&B.....	\$1 00	\$7 50	
8 to 12 in., ST.....		1 25	\$10 00
6 to 8 in., ST.....		1 00	8 00
4 to 6 in., ST.....		75	6 00

Please note that we are offering field-grown liners this year. Some of these will be large enough for small planting jobs. We will be glad to send samples of any you are interested in. They will be shipped bare root and will cost very little for transportation.



Gardenia

GARDENIA florida. Cape Jasmine. Very popular flowering plant. Our varieties bloom very profusely in the spring and have a few flowers all during the summer months.

	Each	10	100
2 to 3 ft., B&B.....	\$0 75	\$6 00	
18 to 24 in., B&B.....	50	4 00	
8 to 12 in., CT.....		85	\$7 00
6 to 8 in., CT.....		60	5 00

G. fortunei. Very glossy foliage; good grower. Blooms more than other varieties.

	Each	10	100
18 to 24 in., B&B.....	\$0 50	\$4 00	
8 to 12 in., CT.....		1 00	\$7 00
6 to 8 in., CT.....		75	5 00

G., Hadley. Large-flowering forcing variety of late introduction. Flowers are larger than Veitchi.

	Each	10	100
18 to 24 in., B&B.....	\$0 50	\$4 00	
3-in. pots.....		1 50	\$12 50
2½-in. pots.....		1 25	9 00
8 to 12 in., CT.....		1 00	7 00
6 to 8 in., CT.....		60	5 00

G. radicans. Dwarf Cape Jasmine with *dark green* leaves and small, very fragrant flowers. Our variety **does not** have any variegation in leaves and is superior to the ones that have.

	Each	10	100
12-in. spread, B&B.....	\$0 65	\$5 00	
2½-in. pots.....		1 00	\$9 00
8 to 12 in., CT.....		1 00	8 00
6 to 8 in., CT.....		75	6 00
4 to 6 in., CT.....		60	5 00

G. veitchi. Winter-flowering Gardenia used by florists all over the country. Our plants are strong, healthy and sure to please.

	10	100
3-in. pots, strong.....	\$1 75	\$15 00
2½-in. pots.....	1 25	9 00
Strong rooted cuttings.....		3 50



18 to 24-inch Balled and Burlapped plants of *Ligustrum lucidum compactum* and *Gardenia, Mystery*

GARDENIA, Mystery. Very fast grower with large flowers, larger than *Gardenia florida*.

	Each	10	100
18 to 24 in., B&B.....	\$0 50	\$4 00	
2½-in. pots.....		1 25	\$9 00
8 to 12 in., CT.....		1 00	7 50
6 to 8 in., CT.....		75	5 00
Strong rooted cuttings.....			3 50



8 to 12-inch liners: *Juniperus chinensis pfitzeriana*, *Ginkgo biloba* and *Cedrus deodara*

GINKGO biloba. Maidenhair Tree. A very popular shade tree in almost all sections of this country.

	10	100
8 to 12-in. S.....	\$1 00	\$6 00
6 to 8-in. S.....	75	5 00

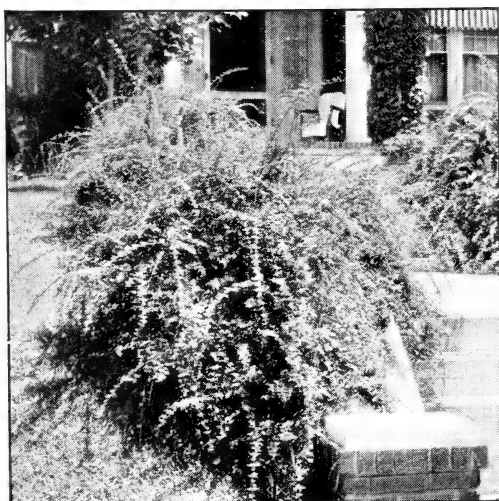


Hedera helix (English Ivy)

HEDERA helix. English Ivy.	10	100
2½-in. pots.....	\$1 00	\$8 00
12 to 18 in., CT.....	75	5 00

ILEX crenata rotundifolia. Medium-sized round leaves similar to boxwood. Very hardy and is extensively used.	10	100
12 to 18 in., B&B, field.....	\$5 00	
8 to 12 in., CT.....	1 00	\$8 00
6 to 8 in., CT.....	75	6 00

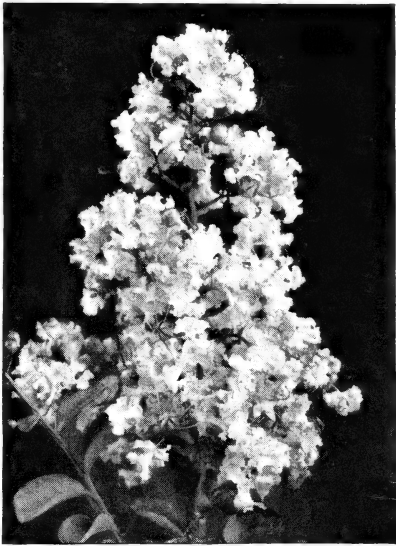
ILLICIUM anisatum. Anise Tree. Very upright-growing shrub, with light green leaves that are scented when bruised.	10	100
18 to 24 in., B&B, field.....	\$5 00	
12 to 18 in., CT.....	1 25	\$10 00
8 to 12 in., CT.....	1 00	8 00



Jasminum

JASMINUM floridum. Very hardy Jasmine with dark green foliage and yellow flowers practically all summer.

	Each	10	100
18 to 24 in., B&B, heavy.....	\$0 50	\$4 00	
12 to 18 in., B&B.....	40	3 00	
12 to 18 in., CT, beds.....		1 00	\$9 00
8 to 12 in., CT.....		85	7 00
6 to 8 in., CT.....		75	5 00



Crape Myrtle (*Lagerstræmia indica*)

LAGERSTROEMIA indica. Crape Myrtle. We have the bright crimson-red only—no other color to offer. All of our plants were cut back heavy and are very bushy this season.

	10	100
2 to 3 ft., extra heavy.....	\$1 75	\$15 00
18 to 24 in., extra heavy.....	1 50	12 00

Ask for quantity prices



Ligustrum japonicum. See page 27

LAUROCERASUS caroliniana. Cherry Laurel. Well-known evergreen that can be sheared to any shape, or if left alone will make nice plants for screen. Ours are really nice plants for the price.

	10	100
2 to 3 ft., B&B, field.....	\$5 00	
8 to 12 in., S.....	75	\$5 00

LIGUSTRUM japonicum. Japanese Privet. Large-leaved plants that grow very fast. Ideal for making screen or background.

	Each	10	100
3 to 4 ft., B&B.....	\$0 75	\$5 00	
2 to 3 ft., B&B.....	50	4 00	
12 to 18 in., S.....		75	\$5 00
8 to 12 in., S.....		50	3 00
6 to 8 in., S.....		30	2 00

L. lucidum. Wax Privet. Very glossy leaves and not such a fast grower as Japanese Privet.

	Each	10	100
2 to 3 ft., B&B.....	\$0 65	\$5 00	
18 to 24 in., B&B.....	50	4 00	
18 to 24 in., CTT, field.....		2 00	\$17 50
12 to 18 in., CTT, field.....		1 75	15 00
12 to 18 in., CT.....		1 25	9 00
8 to 12 in., CT.....		85	7 00
4 to 6 in., CT.....		50	3 00

LONICERA fragrantissima. Winter Honeysuckle. Strong, fast grower with creamy white fragrant flowers.

	10	100
2 to 3 ft., BR.....	\$2 50	\$20 00



Magnolia grandiflora

MAGNOLIA grandiflora. Bull Bay.

	10	100
4 to 6-in., S.....	\$0 75	\$6 00

NANDINA domestica. Well-known plant bearing bright red berries.

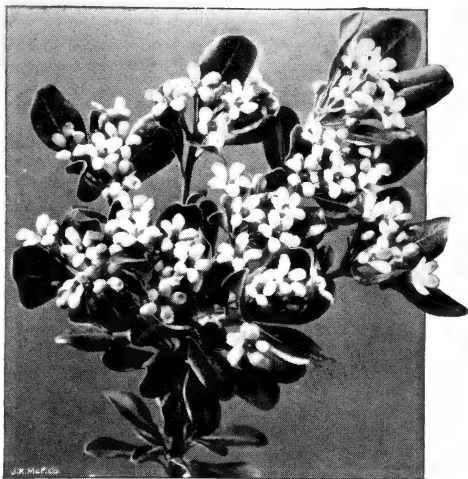
	Each	10	100
18 to 24 in., B&B, field.....	\$0 75	\$6 00	
12 to 18 in., B&B.....	60	5 00	
8 to 12 in., STT.....		1 25	\$10 00
6 to 8 in., ST.....		1 00	8 00

PHOTINIA glabra. Very attractive plant that shoots out new growth of brilliant red. Can stand much pruning, and the more it is pruned, the more color you have.

	10	100
2 to 3 ft., B&B, field.....	\$7 50	
8 to 12 in., CT.....	1 00	\$8 00

P. serrulata. Large serrated leaves; fast grower. Has clusters of small white flowers which are followed by red berries.

	10	100
18 to 24 in., B&B, field.....	\$7 50	
8 to 12 in., ST.....	1 50	\$12 00
6 to 8 in., ST.....	1 25	10 00



Pittosporum tobira

PITTOSPORUM tobira. Very ornamental shrub with glossy large round leaves. We have extra-well-grown plants of this variety.

	10	100
18 to 24 in., B&B, field.....	\$7 50	
12 to 18 in., CT.....	1 00	\$8 00
8 to 12 in., CT.....	85	7 00
6 to 8 in., CT.....	60	5 00

PYRACANTHA rogersiana aurantiaca. Said to be one of the most prolific flowering varieties. Also noted as being less susceptible to pear blight than most other varieties. Orange berries.

	10	100
12 to 18 in., CT.....	\$1 25	\$10 00

VIBURNUM macrophyllum. Fast-growing shrub with large, pointed dark green leaves.

V. odoratissimum. Somewhat similar to above but with round leaves and not so dark. Fast grower.

	10	100
18 to 24 in., B&B.....	\$5 00	
8 to 12 in., CT.....	1 00	\$8 00
6 to 8 in., CT.....	75	6 00



Cunninghamia lanceolata, 18 to 24-inch

CUNNINGHAMIA lanceolata. Chinese Fir. Well-known plant that will make quite a tree if left alone.

	10	100
2 to 3 ft., B&B.....	\$6 00	
18 to 24 in., B&B.....	5 00	
12 to 18 in., ST.....	1 50	\$12 50
8 to 12 in., ST.....	1 25	10 00

JUNIPERUS chinensis pfitzeriana. Probably the best-known Juniper to the trade. Our plants are well grown and are sure to please you.

	10	100
18 to 24 in., B&B.....	\$7 50	
12 to 18 in., B&B.....	5 00	
8 to 12 in., CT.....	1 50	\$12 50
6 to 8 in., CT.....	1 25	10 00
4 to 6 in., CT.....	1 00	8 00

J. conferta. Shore Juniper. Spreading Juniper with light green foliage. Does not turn brown during winter.

	10	100
18 to 24 in., B&B.....	\$5 00	
8 to 12 in.....	1 25	\$10 00

J. excelsa stricta. Another well-known hardy Juniper that needs no description.

	10	100
8 to 12 in., CTT, field.....	\$1 75	\$15 00
6 to 8 in., CT, beds.....	1 00	8 00



Cedrus deodara

CEDRUS deodara. We have nice seedlings with excellent foliage.	10	100
18 to 24 in., B&B.....	\$5 00	
12 to 18 in., ST.....	1 50	\$12 50
8 to 12 in., ST.....	1 25	\$10 00

RETINOSPORA plumosa. Very nice plants that are sure to please. Excellent root system.	10	100
8 to 12 in., CT.....	\$1 00	\$7 50
6 to 8 in., CT.....	75	6 00

THUYA orientalis aurea nana. Berckmann's Golden Arborvitae. Well-known arborvitae. We are offering for the first time field-grown liners, grown in the open field and ready to move with no danger of any loss.

	10	100
12 to 18 in., B&B.....	\$5 00	\$40 00
12 to 18 in., CTT, field.....	2 50	20 00
8 to 12 in., CTT, field.....	2 00	17 50
6 to 8 in., CTT, field.....	1 75	15 00

Please remember these liners are not bed-grown plants, but direct from nursery row in the field.

T. orientalis bakeri. Baker's Pyramidal Arborvitae. Upright dark green pyramidal Arborvitae.	10	100
18 to 24 in., B&B, field.....	\$5 00	\$40 00
12 to 18 in., CTT, field.....	2 00	17 50
8 to 12 in., CTT, field.....	1 75	15 00
6 to 8 in., CTT, beds.....	1 00	8 00

T. orientalis, Bonita. Well-known dark green Arborvitae. Stays green entire year. Round shape.	10	100
6 to 8 in., CTT, field.....	\$1 50	\$12 00



AZALEA . CORAL BELLS

The bell-shaped, hose-in-hose pink flowers and small glossy foliage make this an excellent plant for pot culture. A favorite everywhere.



NANDINA DOMESTICA

An evergreen shrub with bright red berries. Thrives in either sun or shade but likes plenty of water.

Fall 1942
Spring 1943



PROF. SARGENT



CHANDLERI ELEGANS

BLACKWELL NURSERIES, Inc.

Wholesale Only

SEMMES • ALABAMA

Phone: Mobile 6-9937