

## **Historic, Archive Document**

Do not assume content reflects current scientific knowledge, policies, or practices.



62.47

LIBRARY  
RECEIVED  
★ SEP 7 1942 ★  
U. S. Department of Agriculture

# CHANDLER LANDSCAPE & FLORAL CO.

## PRICE LIST...

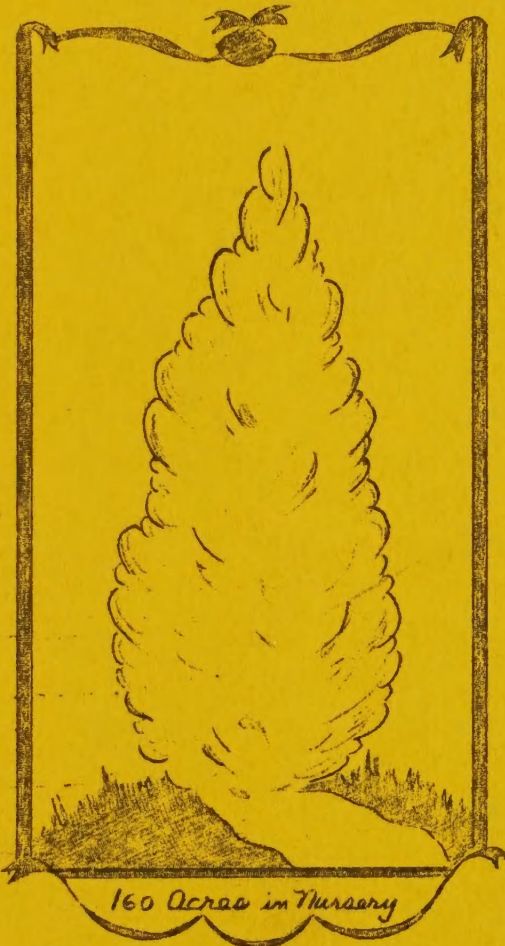
FALL 1942 - SPRING 1943

PROPAGATORS  
*and* GROWERS *of*

TREES  
SHRUBS  
PERENNIALS  
AND  
EVERGREENS

QUALITY - SERVICE - PRICE

50% DISCOUNT  
TO THE TRADE



*Specimen Evergreens*  
NURSERY  
94TH & MISSION ROAD

OFFICES  
101 W. 47<sup>th</sup> ST.



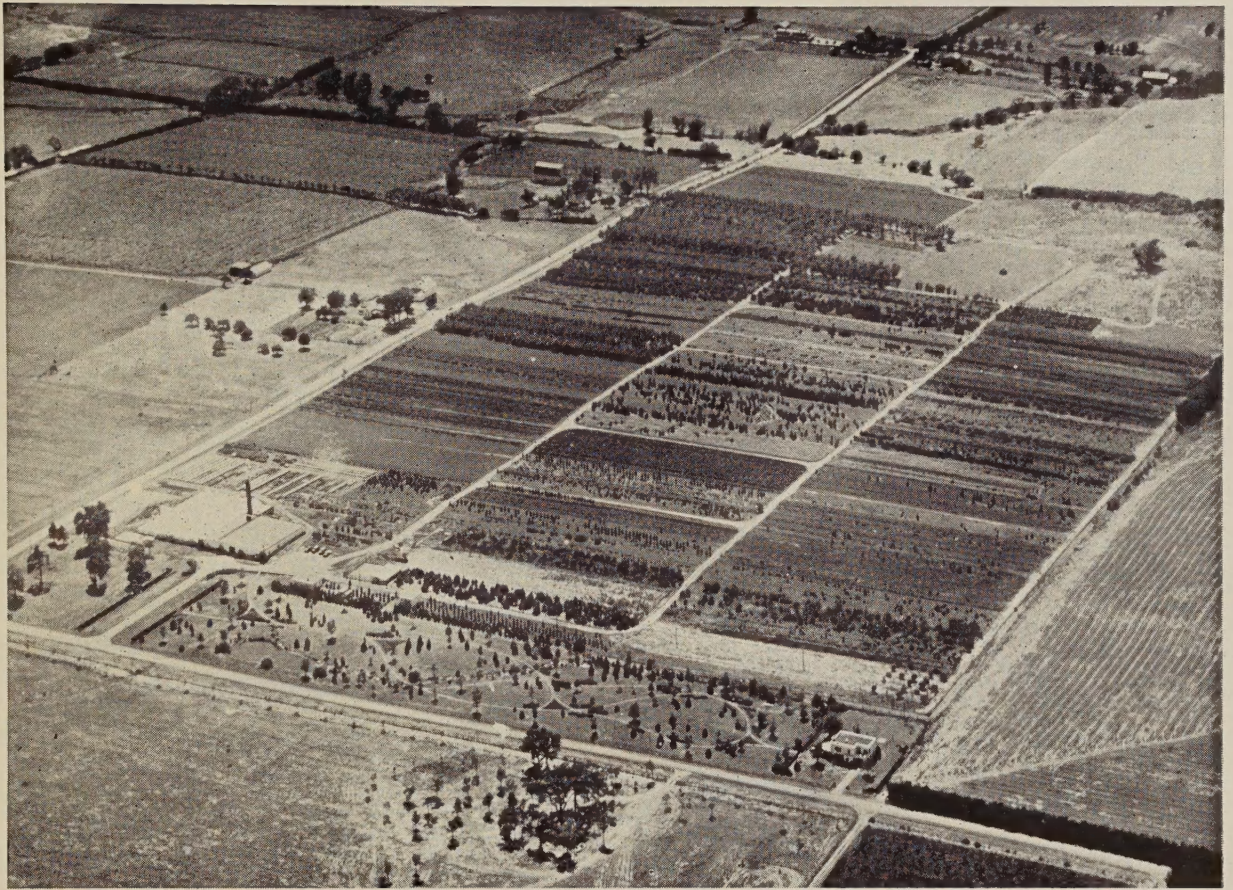
TELEPHONE  
WE. 5800

COUNTRY CLUB PLAZA

*Kansas City, Mo.*

MEMBERS AMERICAN ASSOCIATION OF NURSERYMEN





Airplane views of the 160 acre nursery of  
CHANDLER LANDSCAPE & FLORAL COMPANY, 94th Street and Mission Road





I N D E X

<u>EVERGREENS</u>	<u>PAGE</u>
Abies (Fir) . . . . .	1
Junipers (Cedar) . . . . .	1 to 13
Picea (Spruce) . . . . .	14
Pinus (Pine) . . . . .	14 & 15
Thuja (Arborvitae) . . . . .	16 & 17
EVERGREEN GRAFTS . . . . .	18 to 20
TREES . . . . .	21 to 27
SHRUBS . . . . .	28 to 34
GRASSES . . . . .	34
VINES . . . . .	35
PERENNIALS . . . . .	36 to 39

#####

PRICES PRINTED IN THIS LIST

SUBJECT TO CHANGE

WITHOUT NOTICE





EVERGREENS

		SIZE	EACH	PER 10	PER 100
ABIES CONCOLOR (Concolor Fir)	Compact symmetrical tree with silvery foliage varying from sea-green to deep blue.	70 to 80 ft.			
	1 . . . . .	B&B 2 $\frac{1}{2}$ -3'	\$3.50	\$	\$
	2 . . . . .	B&B 3 $\frac{1}{2}$ -4'	5.00		
	3 . . . . .	B&B 4-5'	7.50		
	4 . . . . .	B&B 5-6'	10.00		
	5 . . . . .	B&B 6-7'	14.00	135.00	
	10 . . . . .	B&B 7-8'	18.00	175.00	
	12 . . . . .	B&B 8-9'	22.50	215.00	
	26 . . . . .	B&B 9-10'	30.00	290.00	
	21 . . . . .	B&B 10-12'	37.50	365.00	
	4 . . . . .	B&B 12-14'	50.00		
	1 . . . . .	B&B 14-16'	65.00		
ABIES NORDMANNIANA (Nordmann Fir)					
	2 . . . . .	B&B 12-14'	50.00		
JUNIPERUS CHINENSIS (Chinese Juniper)	Very hardy, gray-green foliage, slender branches and pointed leaves.				
	12 . . . . .	B&B 2-3'	3.50	32.50	
	18 . . . . .	B&B 3-4'	4.50	42.50	
	10 . . . . .	B&B 4-5'	6.50	62.50	
	3 . . . . .	B&B 7-8'	12.00		
	3 . . . . .	B&B 8-9'	13.50		
	5 . . . . .	B&B 9-10'	17.00	165.00	
	7 . . . . .	B&B 10-12'	20.00	195.00	
	2 . . . . .	B&B 14-16'	30.00		
	2 . . . . .	B&B 18-20'	40.00		
	1 . . . . .	B&B 20-22'	50.00		
JUNIPERUS CHINENSIS COLUMNARIS BLUE	- An extremely narrow pyramidal tree with very decorative foliage.	15 to 20 ft.			
	802 . . . . .	B&B 18-24"	3.00	27.50	250.00
	1205 . . . . .	B&B 2-3'	3.50	32.50	300.00
	146 . . . . .	B&B 3-4'	4.50	42.50	400.00
	62 . . . . .	B&B 4-5'	6.50	62.50	600.00
	37 . . . . .	B&B 5-6'	8.50	82.50	800.00
	5 . . . . .	B&B 6-7'	10.50	100.00	
	4 . . . . .	B&B 9-10'	17.00		
	20 . . . . .	B&B 10-12'	20.00	195.00	
	2 . . . . .	B&B 12-14'	25.00		
JUNIPERUS CHINENSIS COLUMNARIS GREEN	- Very narrow, hardy and with bright green foliage.				
	745 . . . . .	B&B 18-24"	3.00	27.50	250.00
	458 . . . . .	B&B 2-3'	3.50	32.50	300.00
	156 . . . . .	B&B 3-4'	4.50	42.50	400.00
	11 . . . . .	B&B 4-5'	6.50	62.50	
	9 . . . . .	B&B 5-6'	8.50	82.50	
	1 . . . . .	B&B 6-7'	10.50		
	9 . . . . .	B&B 9-10'	17.00	165.00	
	1 . . . . .	B&B 10-12'	20.00		
	1 . . . . .	B&B 12-14'	25.00		
	4 . . . . .	B&B 14-16'	30.00		
	3 . . . . .	B&B 16-18'	35.00		



	SIZE	EACH	PER 10	PER 100
JUNIPERUS CHINENSIS EXCELSIOR - Broad upright with dense gray-green foliage.				
2 . . . . .	B&B 3-4'	4.00		
1 . . . . .	B&B 4-5'	5.00		
1 . . . . .	B&B 6-7'	6.00		
JUNIPERUS CHINENSIS GLOBOSA				
29 . . . . .	B&B 12-15"	2.50	23.00	
120 . . . . .	B&B 15-18"	3.00	27.00	250.00
167 . . . . .	B&B 18-24"	3.50	33.00	300.00
3 . . . . .	B&B 2-2½'	5.00		
1 . . . . .	B&B 3½-4'	10.00		
2 . . . . .	B&B 4-5'	12.50		
JUNIPERUS CHINENSIS JAPONICA (Japanese J.) Long trailing branches, blue-grey needle-like foliage.				
335 . . . . .	B&B 12-18"	2.30	20.00	180.00
159 . . . . .	B&B 18-24"	3.00	28.00	250.00
53 . . . . .	B&B 2-2½'	4.00	35.00	300.00
20 . . . . .	B&B 2½-3'	5.00	45.00	
1 . . . . .	B&B 3-3½'	6.00		
11 . . . . .	B&B 3½-4'	7.00	65.00	
14 . . . . .	B&B 4-5'	8.00	75.00	
6 . . . . .	B&B 5-6'	10.00	95.00	
JUNIPERUS CHINENSIS MASCULA (Pyramidal Chinese Juniper) Pyramidal grower with upright horizontal branches and dark blue-green foliage.				
110 . . . . .	B&B 18-24"	3.00	28.00	250.00
172 . . . . .	B&B 2-3'	3.50	33.00	300.00
12 . . . . .	B&B 3-4'	4.50	43.00	
3 . . . . .	B&B 4-5'	6.00		
1 . . . . .	B&B 5-6'	7.50		
2 . . . . .	B&B 6-7'	9.00		
8 . . . . .	B&B 7-8'	10.00	95.00	
2 . . . . .	B&B 8-9'	11.50		
JUNIPERUS CHINENSIS NEABORIENSIS - See Juniperus virginiana keteleeri				
JUNIPERUS CHINENSIS PFITZERIANA (Pfitzer Juniper) Low spreading branches with drooping tips and gray-green foliage.				
1771 . . . . .	B&B 12-15"	2.00	18.00	150.00
3089 . . . . .	B&B 15-18"	2.50	23.00	200.00
999 . . . . .	B&B 18-24"	3.00	28.00	250.00
339 . . . . .	B&B 2-2½'	4.00	38.00	350.00
79 . . . . .	B&B 2½-3'	5.50	53.00	500.00
93 . . . . .	B&B 3-3½'	7.00	68.00	650.00
87 . . . . .	B&B 3½-4'	8.50	80.00	750.00
64 . . . . .	B&B 4-5'	10.00	95.00	900.00
7 . . . . .	B&B 5-6'	12.50	120.00	
3 . . . . .	B&B 6-7'	15.00		
3 . . . . .	B&B 9-10'	20.00		
5 . . . . .	B&B 10-12'	25.00	240.00	
JUNIPERUS CHINENSIS PROCUMBENS (Creeping Chinese J.) Bright bluish foliage.				
113 . . . . .	B&B 10-12"	1.50	13.00	100.00
100 . . . . .	B&B 12-15"	2.00	18.00	150.00

DATE	DESCRIPTION	AMOUNT	BALANCE
00.01	...	...	...
00.02	...	...	...
00.03	...	...	...
00.04	...	...	...
00.05	...	...	...
00.06	...	...	...
00.07	...	...	...
00.08	...	...	...
00.09	...	...	...
00.10	...	...	...
00.11	...	...	...
00.12	...	...	...
00.13	...	...	...
00.14	...	...	...
00.15	...	...	...
00.16	...	...	...
00.17	...	...	...
00.18	...	...	...
00.19	...	...	...
00.20	...	...	...
00.21	...	...	...
00.22	...	...	...
00.23	...	...	...
00.24	...	...	...
00.25	...	...	...
00.26	...	...	...
00.27	...	...	...
00.28	...	...	...
00.29	...	...	...
00.30	...	...	...
00.31	...	...	...
00.32	...	...	...
00.33	...	...	...
00.34	...	...	...
00.35	...	...	...
00.36	...	...	...
00.37	...	...	...
00.38	...	...	...
00.39	...	...	...
00.40	...	...	...
00.41	...	...	...
00.42	...	...	...
00.43	...	...	...
00.44	...	...	...
00.45	...	...	...
00.46	...	...	...
00.47	...	...	...
00.48	...	...	...
00.49	...	...	...
00.50	...	...	...

	SIZE	EACH	PER 10	PER 100
<b>JUNIPERUS CHINENSIS SARGENTI (Sargent J.)</b> Makes a low dense mat. The wide spreading branches have small dark green scale-like leaves and some pointed ones.				
	4 . . . . .	B&B 10-12"	1.50	
	16 . . . . .	B&B 12-15"	2.00	18.00
	26 . . . . .	B&B 15-18"	2.50	23.00
	20 . . . . .	B&B 18-24"	3.00	28.00
	2 . . . . .	B&B 2-2½'	4.00	
	10 . . . . .	B&B 4-5'	10.00	
<b>JUNIPERUS CHINENSIS SARGENTI BLUE</b> - The blue type of the above.				
	29 . . . . .	B&B 12-15"	2.00	18.00
	33 . . . . .	B&B 15-18"	2.50	23.00
	27 . . . . .	B&B 18-24"	3.50	28.00
	7 . . . . .	B&B 2-2½'	4.00	38.00
	1 . . . . .	B&B 2½-3'	5.50	
	6 . . . . .	B&B 3-3½'	7.00	68.00
	6 . . . . .	B&B 3½-4'	8.50	80.00
	5 . . . . .	B&B 4-5'	10.00	95.00
<b>JUNIPERUS COMMUNIS COLUMNARIS (Common Upright Juniper)</b> Spiny pointed leaves of dark blue color.				
	1 . . . . .	B&B 9-10'	15.00	
	2 . . . . .	B&B 10-12'	18.00	
<b>JUNIPERUS COMMUNIS DEPRESSA (Prostrate Juniper)</b> Low spreading habit. Light green foliage with purplish tints in the winter.				
	132 . . . . .	B&B 12-18"	1.70	15.00
	87 . . . . .	B&B 18-24"	2.00	18.00
	86 . . . . .	B&B 2-2½'	2.50	23.00
	30 . . . . .	B&B 2½-3'	3.00	28.00
	15 . . . . .	B&B 3-3½'	4.00	35.00
	3 . . . . .	B&B 3½-4'	5.00	
	20 . . . . .	B&B 4-5'	6.00	55.00
	6 . . . . .	B&B 5-6'	8.00	75.00
	1 . . . . .	B&B 6-7'	10.00	
<b>JUNIPERUS COMMUNIS DEPRESSA AUREA (Golden Prostrate Juniper)</b> Bright yellow foliage gradually darkening to a deep gold color.				
	205 . . . . .	B&B 12-18"	2.00	18.00
	50 . . . . .	B&B 18-24"	2.50	23.00
	59 . . . . .	B&B 2-2½'	3.00	28.00
	30 . . . . .	B&B 2½-3'	3.50	33.00
	4 . . . . .	B&B 4-5'	6.50	
	5 . . . . .	B&B 5-6'	8.50	80.00
	4 . . . . .	B&B 6-7'	10.50	
	1 . . . . .	B&B 7-8'	15.00	
	2 . . . . .	B&B 8-9'	17.50	
<b>JUNIPERUS COMMUNIS HIBERNICA (Irish Juniper)</b> Upright columnar form with deep green foliage. 7 to 8 ft.				
	139 . . . . .	B&B 2-2½'	2.00	18.00
	288 . . . . .	B&B 2½-3'	2.50	23.00
	1044 . . . . .	B&B 3-4'	3.00	28.00
	27 . . . . .	B&B 4-5'	3.50	33.00
	16 . . . . .	B&B 5-6'	4.50	40.00
	12 . . . . .	B&B 6-7'	6.50	60.00
	2 . . . . .	B&B 7-8'	10.00	
<b>JUNIPERUS COMMUNIS HIBERNICA GLOBE</b>				
	6 . . . . .	B&B 15-18"	2.30	20.00
	10 . . . . .	B&B 18-24"	2.70	25.00



	SIZE	EACH	PER 10	PER 100
JUNIPERUS COMMUNIS SUECICA (Swedish J.)	Broad columnar form,	silvery foliage.		
4 . . . . .	B&B 3-4'	3.50		
4 . . . . .	B&B 4-5'	5.00		
JUNIPERUS EXCELSA STRICTA (Spiny Greek J.)	Broad pyramidal form,	dense and compact with gray-green foliage.		
80 . . . . .	B&B 10-12"	1.50	13.00	100.00
51 . . . . .	B&B 12-18"	2.00	18.00	150.00
5 . . . . .	B&B 2½-3'	3.50	30.00	
4 . . . . .	B&B 5-6'	12.50		
6 . . . . .	B&B 6-7'	15.00	140.00	
7 . . . . .	B&B 7-8'	17.50	170.00	
JUNIPERUS HORIZONTALIS DOUGLASI (Waukegan J.)	Very low compact creeping Juniper	which makes a dense mat of soft bluish-green. 8 to 12 ft.		
31 . . . . .	B&B 12-15"	1.50	14.00	130.00
85 . . . . .	B&B 15-18"	2.00	17.50	150.00
12 . . . . .	B&B 18-24"	2.50	22.00	
JUNIPERUS HORIZONTALIS PLUMOSA (Andorra J.)	A rapid growing dwarf type with rich	green foliage which has a reddish tint in the winter.		
80 . . . . .	B&B 15-18"	2.00	18.00	150.00
113 . . . . .	B&B 18-24"	2.50	23.00	200.00
57 . . . . .	B&B 2-2½'	3.00	28.00	250.00
3 . . . . .	B&B 2½-3'	3.50		
9 . . . . .	B&B 3-3½'	4.00	35.00	
26 . . . . .	B&B 3½-4'	4.50	40.00	
28 . . . . .	B&B 4-5'	5.50	50.00	
JUNIPERUS SABINA (Savin J.)	Low spreading branches with dark green foliage.			
363 . . . . .	B&B 10-12"	1.50	13.00	100.00
220 . . . . .	B&B 12-15"	1.80	16.00	130.00
53 . . . . .	B&B 15-18"	2.20	20.00	170.00
104 . . . . .	B&B 18-24"	2.70	25.00	230.00
224 . . . . .	B&B 2-2½'	3.50	33.00	300.00
126 . . . . .	B&B 2½-3'	4.50	43.00	400.00
13 . . . . .	B&B 3-3½'	5.50	50.00	
1 . . . . .	B&B 3½-4'	6.50		
4 . . . . .	B&B 4-5'	7.50		
9 . . . . .	B&B 5-6'	9.50	90.00	
1 . . . . .	B&B 6-7'	12.50		
JUNIPERUS SABINA TAMARISCIFOLIA (Tamarix Savin Juniper)	Low spreading type with	dark green compact foliage.		
360 . . . . .	B&B 10-12"	2.00	18.00	150.00
93 . . . . .	B&B 12-15"	2.50	23.00	200.00
180 . . . . .	B&B 15-18"	3.00	28.00	250.00
319 . . . . .	B&B 18-24"	3.50	33.00	300.00
59 . . . . .	B&B 2-2½'	4.50	40.00	350.00
2 . . . . .	B&B 2½-3'	6.00		
JUNIPERUS SABINA VON EHROH	An unusual upright Savin of deep rich color which is a	very fast grower. Quite loose and open in appearance.		
176 . . . . .	B&B 12-18"	2.50	22.50	200.00
61 . . . . .	B&B 24-30"	3.50	32.50	300.00
61 . . . . .	B&B 2½-3'	4.00	37.50	350.00
106 . . . . .	B&B 3-3½'	4.50	42.50	400.00
107 . . . . .	B&B 3½-4'	5.50	52.50	500.00
5 . . . . .	B&B 4-5'	6.50	62.50	
5 . . . . .	B&B 5-6'	8.50	82.50	





	SIZE	EACH	PER 10	PER 100
<b>JUNIPERUS SABINA VON EHROH SPREADER</b>				
21 . . . . .	B&B 15-18"	3.00	28.00	
49 . . . . .	B&B 18-24"	3.50	33.00	300.00
29 . . . . .	B&B 2-2½'	4.50	40.00	
22 . . . . .	B&B 2½-3'	6.00		
<b>JUNIPERUS SCOPULORUM ALBA</b>				
242 . . . . .	B&B 18-24"	3.00	27.50	250.00
400 . . . . .	B&B 2-2½'	3.50	32.50	300.00
53 . . . . .	B&B 2½-3'	4.00	37.50	350.00
10 . . . . .	B&B 3-3½'	4.50	42.50	
83 . . . . .	B&B 3½-4'	5.50	52.50	500.00
158 . . . . .	B&B 4-5'	6.50	62.50	600.00
86 . . . . .	B&B 5-6'	8.50	82.50	800.00
3 . . . . .	B&B 6-7'	10.50		
<b>JUNIPERUS SCOPULORUM BLUE BUSH</b>				
277 . . . . .	B&B 12-18"	2.50	22.50	200.00
212 . . . . .	B&B 18-24"	3.00	27.50	250.00
250 . . . . .	B&B 2-2½'	3.50	32.50	300.00
245 . . . . .	B&B 2½-3'	4.00	37.50	350.00
9 . . . . .	B&B 4-5'	6.50	62.50	
33 . . . . .	B&B 5-6'	8.50	82.50	800.00
<b>JUNIPERUS SCOPULORUM CHANDLER'S SILVER - A compact grower, very silvery in color.</b>				
3199 . . . . .	B&B 18-24"	3.00	27.50	250.00
6250 . . . . .	B&B 2-2½'	3.50	32.50	300.00
458 . . . . .	B&B 2½-3'	4.00	37.50	350.00
303 . . . . .	B&B 3-3½'	4.50	42.50	400.00
604 . . . . .	B&B 3½-4'	5.50	52.50	500.00
1935 . . . . .	B&B 4-5'	6.50	62.50	600.00
326 . . . . .	B&B 5-6'	8.50	82.50	800.00
6 . . . . .	B&B 6-7'	10.50	100.00	
<b>JUNIPERUS SCOPULORUM COLUMNARIS</b>				
255 . . . . .	B&B 12-18"	2.50	22.50	200.00
571 . . . . .	B&B 18-24"	3.00	27.50	250.00
192 . . . . .	B&B 2-2½'	3.50	32.50	300.00
207 . . . . .	B&B 2½-3'	4.00	37.50	350.00
47 . . . . .	B&B 3-3½'	4.50	42.50	400.00
55 . . . . .	B&B 3½-4'	5.50	52.50	500.00
46 . . . . .	B&B 4-5'	6.50	62.50	600.00
128 . . . . .	B&B 5-6'	8.50	82.50	800.00
123 . . . . .	B&B 6-7'	10.50	100.00	950.00
35 . . . . .	B&B 7-8'	12.00	115.00	1100.00
7 . . . . .	B&B 9-10'	17.00	165.00	
3 . . . . .	B&B 10-12'	20.00		
<b>JUNIPERUS SCOPULORUM EXTRA GREEN</b>				
127 . . . . .	B&B 18-24"	3.00	27.50	250.00
170 . . . . .	B&B 2-2½'	3.50	32.50	300.00
113 . . . . .	B&B 2½-3'	4.00	37.50	350.00
119 . . . . .	B&B 3-3½'	4.50	42.50	400.00
203 . . . . .	B&B 3½-4'	5.50	52.50	500.00
199 . . . . .	B&B 4-5'	6.50	62.50	600.00
87 . . . . .	B&B 5-6'	8.50	82.50	800.00
33 . . . . .	B&B 6-7'	10.50	100.00	950.00
6 . . . . .	B&B 7-8'	12.00	115.00	



	SIZE	EACH	PER 10	PER 100
JUNIPERUS SCOPULORUM GAREEI - Low spreading form somewhat similar to Juniperus Pfitzeriana. Bluish-green foliage.				
42 . . . . .	B&B 15-18"	2.50	22.50	200.00
312 . . . . .	B&B 18-24"	3.00	27.50	250.00
18 . . . . .	B&B 2-2½'	3.50	32.50	
19 . . . . .	B&B 2½-3'	4.00	37.50	
61 . . . . .	B&B 3-3½'	4.50	42.50	400.00
JUNIPERUS SCOPULORUM HOLMAN'S LIGHT GREEN				
20 . . . . .	B&B 12-18"	2.50	22.50	200.00
20 . . . . .	B&B 18-24"	3.00	27.50	250.00
99 . . . . .	B&B 2-3'	3.50	32.50	300.00
15 . . . . .	B&B 3-3½'	4.50	42.50	
29 . . . . .	B&B 3½-4'	5.50	52.50	
42 . . . . .	B&B 4-5'	6.50	62.50	600.00
5 . . . . .	B&B 5-6'	8.50	82.50	
JUNIPERUS SCOPULORUM HORIZONTALIS - Upright, bright blue, introduced by Hill's.				
226 . . . . .	B&B 18-24"	3.00	27.50	250.00
531 . . . . .	B&B 2-2½'	3.50	32.50	300.00
135 . . . . .	B&B 2½-3'	4.00	37.50	350.00
58 . . . . .	B&B 3-3½'	4.50	42.50	400.00
55 . . . . .	B&B 3½-4'	5.50	52.50	500.00
89 . . . . .	B&B 4-5'	6.50	62.50	600.00
40 . . . . .	B&B 5-6'	8.50	82.50	800.00
JUNIPERUS SCOPULORUM LIGHT GREEN				
181 . . . . .	B&B 12-18"	2.50	22.50	200.00
236 . . . . .	B&B 18-24"	3.00	27.50	250.00
190 . . . . .	B&B 2-2½'	3.50	32.50	300.00
26 . . . . .	B&B 2½-3'	4.00	37.50	
12 . . . . .	B&B 3-3½'	4.50	42.50	
7 . . . . .	B&B 3½-4'	5.50	52.50	
29 . . . . .	B&B 4-5'	6.50	62.50	
49 . . . . .	B&B 5-6'	8.50	82.50	800.00
9 . . . . .	B&B 6-7'	10.50	100.00	950.00
3 . . . . .	B&B 7-8'	12.00		
JUNIPERUS SCOPULORUM LINWOOD (1934 Blue)				
271 . . . . .	B&B 18-24"	3.00	27.50	250.00
196 . . . . .	B&B 2-2½'	3.50	32.50	300.00
492 . . . . .	B&B 2½-3'	4.00	37.50	350.00
450 . . . . .	B&B 3-3½'	4.50	42.50	400.00
362 . . . . .	B&B 3½-4'	5.50	52.50	500.00
363 . . . . .	B&B 4-5'	6.50	62.50	600.00
220 . . . . .	B&B 5-6'	8.50	82.50	800.00
10 . . . . .	B&B 6-7'	10.50	100.00	
JUNIPERUS SCOPULORUM MADORA				
19 . . . . .	B&B 3½-4'	5.50	52.50	
114 . . . . .	B&B 4-5'	6.50	62.50	600.00
30 . . . . .	B&B 5-6'	8.50	82.50	800.00
1 . . . . .	B&B 6-7'	10.50		
JUNIPERUS SCOPULORUM MARSHALL - A columnar form.				
100 . . . . .	B&B 12-18"	2.50	22.50	200.00
27 . . . . .	B&B 18-24"	3.00	27.50	
181 . . . . .	B&B 2-2½'	3.50	32.50	300.00
204 . . . . .	B&B 2½-3'	4.00	37.50	350.00
63 . . . . .	B&B 3-3½'	4.50	42.50	400.00

CONTINUED ON THE NEXT PAGE



	SIZE	EACH	PER 10	PER 100
JUNIPERUS SCOPULORUM MARSHALL - CONTINUED				
95 . . . . .	B&B 3½-4'	5.50	52.50	500.00
92 . . . . .	B&B 4-5'	6.50	62.50	600.00
122 . . . . .	B&B 5-6'	8.50	82.50	800.00
32 . . . . .	B&B 6-7'	10.50	100.00	950.00
2 . . . . .	B&B 8-9'	13.50		
5 . . . . .	B&B 9-10'	17.00	165.00	
20 . . . . .	B&B 10-12'	20.00	195.00	
2 . . . . .	B&B 12-14'	25.00		
JUNIPERUS SCOPULORUM MISSION (1931)				
883 . . . . .	B&B 12-18"	2.50	22.50	200.00
424 . . . . .	B&B 18-24"	3.00	27.50	250.00
991 . . . . .	B&B 2-2½'	3.50	32.50	300.00
421 . . . . .	B&B 2½-3'	4.00	37.50	350.00
617 . . . . .	B&B 3-3½'	4.50	42.50	400.00
616 . . . . .	B&B 3½-4'	5.50	52.50	500.00
331 . . . . .	B&B 4-5'	6.50	62.50	600.00
4 . . . . .	B&B 5-6'	8.50		
JUNIPERUS SCOPULORUM PATHFINDER				
3 . . . . .	B&B 3-3½'	4.50		
34 . . . . .	B&B 3½-4'	5.50	52.50	500.00
15 . . . . .	B&B 4-5'	6.50	62.50	
JUNIPERUS SCOPULORUM PROSTRATE				
24 . . . . .	B&B 12-18"	2.50	22.50	
38 . . . . .	B&B 18-24"	3.00	27.50	250.00
36 . . . . .	B&B 2-2½'	3.50	32.50	300.00
15 . . . . .	B&B 2½-3'	4.00	37.50	
JUNIPERUS SCOPULORUM SALINA				
150 . . . . .	B&B 12-18"	2.50	22.50	200.00
50 . . . . .	B&B 18-24"	3.00	27.50	250.00
JUNIPERUS SCOPULORUM SILVER GRAY (1933)				
206 . . . . .	B&B 12-18"	2.50	22.50	200.00
111 . . . . .	B&B 18-24"	3.00	27.50	250.00
10 . . . . .	B&B 2-2½'	3.50	32.50	
8 . . . . .	B&B 3-3½'	4.50	42.50	
28 . . . . .	B&B 3½-4'	5.50	52.50	
59 . . . . .	B&B 4-5'	6.50	62.50	600.00
JUNIPERUS SCOPULORUM STEEL BLUE (1932)				
1203 . . . . .	B&B 12-18"	2.50	22.50	200.00
358 . . . . .	B&B 18-24"	3.00	27.50	250.00
552 . . . . .	B&B 2-2½'	3.50	32.50	300.00
139 . . . . .	B&B 2½-3'	4.00	37.50	350.00
155 . . . . .	B&B 3-3½'	4.50	42.50	400.00
208 . . . . .	B&B 3½-4'	5.50	52.50	500.00
50 . . . . .	B&B 4-5'	6.50	62.50	600.00
JUNIPERUS SCOPULORUM SUTHERLAND - Green cone-shaped.				
585 . . . . .	B&B 12-18"	2.50	22.50	200.00
22 . . . . .	B&B 18-24"	3.00	27.50	
177 . . . . .	B&B 2-2½'	3.50	32.50	300.00
242 . . . . .	B&B 2½-3'	4.00	37.50	350.00
93 . . . . .	B&B 3-3½'	4.50	42.50	400.00
185 . . . . .	B&B 3½-4'	5.50	52.50	500.00
382 . . . . .	B&B 4-5'	6.50	62.50	600.00
82 . . . . .	B&B 5-6'	8.50	82.50	800.00



	SIZE	EACH	PER 10	PER 100
<u>JUNIPERUS SCOPULORUM VARIOUS MIXED</u>				
667 . . . . .	B&B 12-18"	2.50	22.50	200.00
283 . . . . .	B&B 18-24"	3.00	27.50	250.00
176 . . . . .	B&B 2-2½'	3.50	32.50	300.00
145 . . . . .	B&B 2½-3'	4.00	37.50	350.00
94 . . . . .	B&B 3-3½'	4.50	42.50	400.00
108 . . . . .	B&B 3½-4'	5.50	52.50	500.00
159 . . . . .	B&B 4-5'	6.50	62.50	600.00
90 . . . . .	B&B 5-6'	8.50	82.50	800.00
63 . . . . .	B&B 6-7'	10.50	100.00	950.00
21 . . . . .	B&B 7-8'	12.00	115.00	
10 . . . . .	B&B 8-9'	13.50	130.00	
43 . . . . .	B&B 9-10'	17.00	165.00	1600.00
20 . . . . .	B&B 10-12'	20.00	195.00	
3 . . . . .	B&B 12-14'	25.00		
2 . . . . .	B&B 14-16'	30.00		
2 . . . . .	B&B 16-18'	34.00		
<u>JUNIPERUS SCOPULORUM GLOBES</u>				
<u>JUNIPERUS SCOPULORUM ALBA GLOBE</u>				
16 . . . . .	B&B 15-18"	4.00	35.00	
9 . . . . .	B&B 18-24"	5.00	45.00	
1 . . . . .	B&B 2-2½'	6.00		
<u>JUNIPERUS SCOPULORUM BLUE BUSH GLOBE</u>				
2 . . . . .	B&B 15-18"	4.00		
7 . . . . .	B&B 18-24"	5.00	45.00	
6 . . . . .	B&B 2-2½'	6.00		
<u>JUNIPERUS SCOPULORUM CHANDLER'S SILVER GLOBE</u>				
15 . . . . .	B&B 12-15"	3.00	25.00	
309 . . . . .	B&B 15-18"	4.00	35.00	300.00
451 . . . . .	B&B 18-24"	5.00	45.00	400.00
62 . . . . .	B&B 2-2½'	6.00	55.00	500.00
<u>JUNIPERUS SCOPULORUM EXTRA GREEN GLOBE</u>				
16 . . . . .	B&B 15-18"	4.00	35.00	
17 . . . . .	B&B 18-24"	5.00	45.00	
2 . . . . .	B&B 2-2½'	6.00		
<u>JUNIPERUS SCOPULORUM HORIZONTALIS GLOBE</u>				
25 . . . . .	B&B 15-18"	4.00	35.00	
49 . . . . .	B&B 18-24"	5.00	45.00	400.00
3 . . . . .	B&B 2-2½'	6.00		
<u>JUNIPERUS SCOPULORUM LINWOOD GLOBE</u>				
5 . . . . .	B&B 15-18"	4.00	35.00	
7 . . . . .	B&B 18-24"	5.00	45.00	
<u>JUNIPERUS SCOPULORUM MARSHALL GLOBE</u>				
3 . . . . .	B&B 15-18"	4.00		
13 . . . . .	B&B 18-24"	5.00	45.00	
2 . . . . .	B&B 2-2½'	6.00		
<u>JUNIPERUS SCOPULORUM MISSION GLOBE</u>				
6 . . . . .	B&B 12-15"	3.00	25.00	
31 . . . . .	B&B 15-18"	4.00	35.00	300.00
35 . . . . .	B&B 18-24"	5.00	45.00	400.00
<u>JUNIPERUS SCOPULORUM STEEL BLUE GLOBE</u>				
22 . . . . .	B&B 15-18"	4.00	35.00	
36 . . . . .	B&B 18-24"	5.00	45.00	400.00
1 . . . . .	B&B 2-2½'	6.00		





		SIZE	EACH	PER 10	PER 100
<u>JUNIPERUS SCOPULORUM GLOBES CONTINUED</u>					
JUNIPERUS SCOPULORUM SUTHERLAND GLOBE					
40	. . . . .	B&B 12-15"	3.00	25.00	200.00
94	. . . . .	B&B 15-18"	4.00	35.00	300.00
83	. . . . .	B&B 18-24"	5.00	45.00	400.00
JUNIPERUS SCOPULORUM VARIOUS MIXED GLOBE					
2	. . . . .	B&B 12-15"	3.00		
9	. . . . .	B&B 15-18"	4.00	35.00	
16	. . . . .	B&B 18-24"	5.00	45.00	
2	. . . . .	B&B 2-2½'	6.00		
JUNIPERUS VIRGINIANA (Red Cedar) Hardy native Cedar with dark green foliage.					
3	. . . . .	B&B 8-9'	13.50		
3	. . . . .	B&B 9-10'	17.00		
8	. . . . .	B&B 10-12'	20.00	195.00	
10	. . . . .	B&B 12-14'	25.00	240.00	
4	. . . . .	B&B 14-16'	30.00	290.00	
11	. . . . .	B&B 16-18'	35.00	340.00	
1	. . . . .	B&B 18-20'	40.00		
JUNIPERUS VIRGINIANA BLUE NO. 1					
152	. . . . .	B&B 12-18"	2.50	22.50	200.00
100	. . . . .	B&B 18-24"	3.00	27.50	250.00
608	. . . . .	B&B 2-3'	3.50	32.50	300.00
532	. . . . .	B&B 3-4'	4.50	42.50	400.00
77	. . . . .	B&B 4-5'	6.50	62.50	600.00
2	. . . . .	B&B 5-6'	8.50		
5	. . . . .	B&B 7-8'	12.00	115.00	
21	. . . . .	B&B 8-9'	13.50	130.00	
17	. . . . .	B&B 9-10'	17.00	165.00	
8	. . . . .	B&B 10-12'	20.00	195.00	
3	. . . . .	B&B 12-14'	25.00		
JUNIPERUS VIRGINIANA BLUE NO. 2					
4	. . . . .	B&B 12-14'	25.00		
JUNIPERUS VIRGINIANA BURKI (Burk's Juniper) Compact pyramidal, dark green foliage. Fine for hedge.					
400	. . . . .	B&B 15-18"	2.50	22.50	200.00
753	. . . . .	B&B 18-24"	3.00	27.50	250.00
7	. . . . .	B&B 2-3'	3.50	32.50	
64	. . . . .	B&B 3-4'	4.50	42.50	400.00
76	. . . . .	B&B 4-5'	6.50	62.50	600.00
26	. . . . .	B&B 5-6'	8.50	82.50	
3	. . . . .	B&B 6-7'	10.50		
2	. . . . .	B&B 10-12'	20.00		
JUNIPERUS VIRGINIANA CANAERTI (Cannarti Cedar) Semi-dwarf pyramidal type with dark green tufted foliage.					
2385	. . . . .	B&B 12-18"	2.50	22.50	200.00
938	. . . . .	B&B 2-3'	3.50	32.50	300.00
859	. . . . .	B&B 3-4'	4.50	42.50	400.00
184	. . . . .	B&B 4-5'	6.50	62.50	600.00
41	. . . . .	B&B 5-6'	8.50	82.50	800.00
16	. . . . .	B&B 6-7'	10.50	100.00	
63	. . . . .	B&B 7-8'	12.00	115.00	1100.00
35	. . . . .	B&B 8-9'	13.50	130.00	1250.00

CONTINUED ON THE NEXT PAGE



	SIZE	EACH	PER 10	PER 100
<b>JUNIPERUS VIRGINIANA CANAERTI CONTINUED</b>				
22 . . . . .	B&B 9-10'	17.00	165.00	
3 . . . . .	B&B 10-12'	20.00		
5 . . . . .	B&B 12-14'	25.00	240.00	
16 . . . . .	B&B 14-16'	30.00	290.00	
7 . . . . .	B&B 16-18'	35.00		
2 . . . . .	B&B 18-20'	40.00		
2 . . . . .	B&B 20-22'	50.00		
1 . . . . .	B&B 22-24'	65.00		
<b>JUNIPERUS VIRGINIANA COLUMNARIS</b>				
438 . . . . .	B&B 18-24"	3.00	27.50	250.00
183 . . . . .	B&B 2-3'	3.50	32.50	300.00
227 . . . . .	B&B 3-4'	4.50	42.50	400.00
108 . . . . .	B&B 4-5'	6.50	62.50	600.00
62 . . . . .	B&B 5-6'	8.50	82.50	800.00
4 . . . . .	B&B 6-7'	10.50	100.00	
1 . . . . .	B&B 7-8'	12.00		
1 . . . . .	B&B 8-9'	13.50		
5 . . . . .	B&B 9-10'	17.00	165.00	
15 . . . . .	B&B 10-12'	20.00	195.00	
7 . . . . .	B&B 12-14'	25.00	240.00	
2 . . . . .	B&B 14-16'	30.00		
1 . . . . .	B&B 16-18'	35.00		
<b>JUNIPERUS VIRGINIANA DE FOREST GREEN</b>				
526 . . . . .	B&B 18-24"	3.00	27.50	250.00
77 . . . . .	B&B 2-3'	3.50	32.50	300.00
53 . . . . .	B&B 3-4'	4.50	42.50	400.00
38 . . . . .	B&B 4-5'	6.50	62.50	600.00
5 . . . . .	B&B 5-6'	8.50	82.50	
1 . . . . .	B&B 7-8'	12.00		
1 . . . . .	B&B 8-9'	13.50		
2 . . . . .	B&B 9-10'	17.00		
8 . . . . .	B&B 10-12'	20.00	195.00	
3 . . . . .	B&B 12-14'	25.00		
<b>JUNIPERUS VIRGINIANA ELEGANTISSIMA (Goldtip Red Cedar) Low bushyspreader with bright green foliage. Tips of branches bright gold in the Spring.</b>				
136 . . . . .	B&B 18-24"	2.50	23.00	200.00
103 . . . . .	B&B 2-3'	3.70	35.00	320.00
49 . . . . .	B&B 3-4'	5.00	48.00	450.00
4 . . . . .	B&B 4-5'	6.50		
12 . . . . .	B&B 5-6'	8.00	75.00	
14 . . . . .	B&B 6-7'	10.00	95.00	
8 . . . . .	B&B 7-8'	12.50	120.00	
3 . . . . .	B&B 8-9'	15.00		
1 . . . . .	B&B 9-10'	20.00		
<b>JUNIPERUS VIRGINIANA GLAUCA (Silver Cedar) Tall broad pyramidal type with spreading branches and soft silvery-blue foliage.</b>				
700 . . . . .	B&B 12-18"	2.50	22.50	200.00
300 . . . . .	B&B 18-24"	3.00	27.50	250.00
56 . . . . .	B&B 2-3'	3.50	32.50	300.00
560 . . . . .	B&B 3-4'	4.50	42.50	400.00
100 . . . . .	B&B 4-5'	6.50	62.50	600.00
11 . . . . .	B&B 5-6'	8.50	82.50	800.00

CONTINUED ON THE NEXT PAGE



	SIZE	EACH	PER 10	PER 100
JUNIPERUS VIRGINIANA GLAUCA (Silver Cedar) CONTINUED				
	6 . . . . . B&B 6-7'	10.50	100.00	
	18 . . . . . B&B 7-8'	12.00	115.00	
	34 . . . . . B&B 8-9'	13.50	130.00	1250.00
	33 . . . . . B&B 9-10'	17.00	165.00	1600.00
	18 . . . . . B&B 10-12'	20.00	195.00	
	2 . . . . . B&B 12-14'	25.00		
	2 . . . . . B&B 14-16'	30.00		
JUNIPERUS VIRGINIANA GLOBOSA (Globe Red Cedar) Dwarf compact globe form with bright green foliage.				
	106 . . . . . B&B 12-15"	2.50	23.00	200.00
	85 . . . . . B&B 15-18"	3.00	27.00	250.00
	70 . . . . . B&B 18-24"	3.50	33.00	300.00
	6 . . . . . B&B 2-2½'	5.00	48.00	
	3 . . . . . B&B 2½-3'	6.50		
	4 . . . . . B&B 3-4'	10.00		
	4 . . . . . B&B 4-5'	13.50		
	1 . . . . . B&B 5-6'	15.00		
JUNIPERUS VIRGINIANA KETELEERI (Often confused with CHINENSIS NEABORIENSIS)(Conical Chinese J.) Narrow pyramidal tree with prickly dark gray-green foliage and large berries.				
	965 . . . . . B&B 15-18"	2.50	22.50	200.00
	1586 . . . . . B&B 18-24"	3.00	27.50	250.00
	24 . . . . . B&B 2-3'	3.50	32.50	
	31 . . . . . B&B 3-4'	4.50	42.50	400.00
	13 . . . . . B&B 4-5'	6.50	62.50	
	11 . . . . . B&B 5-6'	8.50	82.50	
	12 . . . . . B&B 6-7'	10.50	100.00	
	15 . . . . . B&B 7-8'	12.00	115.00	
	35 . . . . . B&B 8-9'	13.50	130.00	1250.00
	48 . . . . . B&B 9-10'	17.00	165.00	1600.00
	10 . . . . . B&B 10-12'	20.00	195.00	
JUNIPERUS VIRGINIANA KOSTERI (Koster Red Cedar) Semi-dwarf with half erect arching branches and bluish green foliage.				
	230 . . . . . B&B 15-18"	2.50	23.00	200.00
	9 . . . . . B&B 18-24"	3.00	28.00	250.00
	77 . . . . . B&B 2-2½'	4.00	38.00	350.00
	73 . . . . . B&B 2½-3'	5.50	53.00	500.00
	68 . . . . . B&B 3-3½'	7.00	68.00	650.00
	56 . . . . . B&B 3½-4'	8.50	80.00	750.00
	17 . . . . . B&B 4-5'	10.00	95.00	
	2 . . . . . B&B 5-6'	12.50		
	5 . . . . . B&B 10-12'	25.00	240.00	
JUNIPERUS VIRGINIANA NEVIN'S BLUE				
	315 . . . . . B&B 12-18"	2.50	22.50	200.00
	466 . . . . . B&B 18-24"	3.00	27.50	250.00
	1707 . . . . . B&B 2-3'	3.50	32.50	300.00
	126 . . . . . B&B 3-4'	4.50	42.50	400.00
	163 . . . . . B&B 4-5'	6.50	62.50	600.00
	17 . . . . . B&B 5-6'	8.50	82.50	
	1 . . . . . B&B 9-10'	17.00		
JUNIPERUS VIRGINIANA PLATTE RIVER - An Improved Red Cedar.				
	7 . . . . . B&B 18-24"	3.00	27.50	
	29 . . . . . B&B 2-3'	3.50	32.50	

CONTINUED ON THE NEXT PAGE



	SIZE	EACH	PER 10	PER 100
<b>JUNIPERUS VIRGINIANA PLATTE RIVER CONTINUED</b>				
83 . . . . .	B&B 3-4'	4.50	42.50	400.00
147 . . . . .	B&B 4-5'	6.50	62.50	600.00
24 . . . . .	B&B 5-6'	8.50	82.50	
11 . . . . .	B&B 6-7'	10.50	100.00	
7 . . . . .	B&B 7-8'	12.00	115.00	
5 . . . . .	B&B 8-9'	13.50	130.00	
4 . . . . .	B&B 9-10'	17.00		
12 . . . . .	B&B 10-12'	20.00	190.00	
13 . . . . .	B&B 12-14'	25.00	240.00	
11 . . . . .	B&B 14-16'	30.00	290.00	
4 . . . . .	B&B 16-18'	35.00		
6 . . . . .	B&B 18-20'	45.00		
<b>JUNIPERUS VIRGINIANA PLATTE RIVER BLUE</b>				
174 . . . . .	B&B 12-18"	2.50	22.50	200.00
137 . . . . .	B&B 2-3'	3.50	32.50	300.00
74 . . . . .	B&B 3-4'	4.50	42.50	400.00
27 . . . . .	B&B 4-5'	6.50	62.50	
1 . . . . .	B&B 6-7'	10.50		
<b>JUNIPERUS VIRGINIANA PYRAMIDALIS</b>				
325 . . . . .	B&B 12-18"	2.50	22.50	200.00
9 . . . . .	B&B 18-24"	3.00	27.50	
34 . . . . .	B&B 2-3'	3.50	32.50	300.00
36 . . . . .	B&B 3-4'	4.50	42.50	400.00
98 . . . . .	B&B 4-5'	6.50	62.50	600.00
11 . . . . .	B&B 5-6'	8.50	82.50	
3 . . . . .	B&B 7-8'	12.00		
2 . . . . .	B&B 8-9'	13.50		
<b>JUNIPERUS VIRGINIANA PYRAMIDIFORMIA HILLI (Hill's Dundee Juniper) Tall compact narrow pyramidal grower with blue-gray foliage which becomes purplish in Fall and Winter.</b>				
630 . . . . .	B&B 12-18"	2.50	22.50	200.00
159 . . . . .	B&B 18-24"	3.00	27.50	250.00
1227 . . . . .	B&B 2-3'	3.50	32.50	300.00
259 . . . . .	B&B 3-4'	4.50	42.50	400.00
230 . . . . .	B&B 4-5'	6.50	62.50	600.00
42 . . . . .	B&B 5-6'	8.50	82.50	800.00
21 . . . . .	B&B 6-7'	10.50	100.00	
17 . . . . .	B&B 7-8'	12.00	115.00	
60 . . . . .	B&B 8-9'	13.50	130.00	1250.00
71 . . . . .	B&B 9-10'	17.00	165.00	1600.00
54 . . . . .	B&B 10-12'	20.00	195.00	1900.00
12 . . . . .	B&B 12-14'	25.00	240.00	
<b>JUNIPERUS VIRGINIANA SCHOTTI (Scott Red Cedar) Dwarf dense pyramidal form with bright green foliage which hold its color during the winter.</b>				
97 . . . . .	B&B 12-18"	2.50	22.50	200.00
2 . . . . .	B&B 18-24"	3.00		
22 . . . . .	B&B 2-3'	3.50	32.50	
17 . . . . .	B&B 3-4'	4.50	42.50	
3 . . . . .	B&B 4-5'	6.50		
11 . . . . .	B&B 5-6'	8.50	82.50	
8 . . . . .	B&B 6-7'	10.50	100.00	
38 . . . . .	B&B 7-8'	12.00	115.00	1100.00
36 . . . . .	B&B 8-9'	13.50	130.00	1250.00
41 . . . . .	B&B 9-10'	17.00	165.00	1600.00

CONTINUED ON THE NEXT PAGE





	SIZE	EACH	PER 10	PER 100
JUNIPERUS VIRGINIANA SCHOTTI CONTINUED				
6 . . . . .	B&B 10-12'	20.00	195.00	
1 . . . . .	B&B 12-14'	25.00		
17 . . . . .	B&B 14-16'	30.00	290.00	
24 . . . . .	B&B 16-18'	35.00	340.00	
3 . . . . .	B&B 18-20'	44.00		
JUNIPERUS VIRGINIANA SCOTT MANHATTAN BLUE				
90 . . . . .	B&B 2-3'	3.50	32.50	300.00
27 . . . . .	B&B 3-4'	4.50	42.50	
23 . . . . .	B&B 4-5'	6.50	62.50	
11 . . . . .	B&B 5-6'	8.50	82.50	
4 . . . . .	B&B 9-10'	17.00		
7 . . . . .	B&B 10-12'	20.00	195.00	
JUNIPERUS VIRGINIANA SCOTT SILVER PYRAMIDAL				
1 . . . . .	B&B 6-7'	10.50		
2 . . . . .	B&B 8-9'	13.50		
1 . . . . .	B&B 9-10'	17.00		
3 . . . . .	B&B 10-12'	20.00		
JUNIPERUS VIRGINIANA WILD'S GLAUCA				
22 . . . . .	B&B 4-5'	6.50	62.50	
11 . . . . .	B&B 5-6'	8.50	82.50	
JUNIPERUS VIRGINIANA GLOBES				
JUNIPERUS VIRGINIANA BLUE NO. 1 GLOBE				
82 . . . . .	B&B 15-18"	4.00	35.00	300.00
3 . . . . .	B&B 18-24"	5.00		
10 . . . . .	B&B 2-2½'	6.00		
1 . . . . .	B&B 3½-4'	12.50		
1 . . . . .	B&B 4-5'	13.50		
JUNIPERUS VIRGINIANA BURKI GLOBE				
2 . . . . .	B&B 18-24"	5.00		
4 . . . . .	B&B 2-2½'	6.00		
2 . . . . .	B&B 2½-3'	8.00		
JUNIPERUS VIRGINIANA COLUMNARIS GLOBE				
2 . . . . .	B&B 15-18"	4.00		
3 . . . . .	B&B 18-24"	5.00		
JUNIPERUS VIRGINIANA ELEGANTISSIMA GLOBE				
2 . . . . .	B&B 3½-4'	12.00		
1 . . . . .	B&B 10 X 7'	17.50		
1 . . . . .	B&B 10 X 12'	22.50		
JUNIPERUS VIRGINIANA NEVIN'S BLUE GLOBE				
14 . . . . .	B&B 18-24"	5.00		
3 . . . . .	B&B 2-2½'	6.00		
2 . . . . .	B&B 2½-3'	8.00		
JUNIPERUS VIRGINIANA PLATTE RIVER GLOBE				
53 . . . . .	B&B 18-24"	5.00	45.00	400.00
42 . . . . .	B&B 2-2½'	6.00	55.00	500.00
46 . . . . .	B&B 2½-3'	8.00	75.00	700.00
5 . . . . .	B&B 3-3½'	10.00	95.00	
1 . . . . .	B&B 3½-4'	12.50		
1 . . . . .	B&B 5 X 5'	15.00		
1 . . . . .	B&B 6 X 7'	17.50		
1 . . . . .	B&B 12 X 14'	22.50		
1 . . . . .	B&B 14 X 16'	25.00		



SIZE                      EACH                      PER 10                      PER 100

JUNIPERUS VIRGINIANA GLOBES CONTINUED

JUNIPERUS VIRGINIANA PYRAMIDIFORMIA HILLI GLOBE

13 . . . . .	B&B 15-18"	4.00	35.00	
35 . . . . .	B&B 18-24"	5.00	45.00	400.00
2 . . . . .	B&B 2-2½'	6.00		

PICEA ABIES (P. excelsa)(Norway Spruce) Tall hardy and rapid grower with dark green foliage. Excellent for windbreaks and general planting. 70 to 80 ft.

146 . . . . .	B&B 12-18"	1.60	15.00	130.00
100 . . . . .	B&B 18-24"	2.00	18.00	150.00
1 . . . . .	B&B 8-9'	15.00		
3 . . . . .	B&B 10-12'	24.00		
1 . . . . .	B&B 12-14'	30.00		
5 . . . . .	B&B 14-16'	40.00	395.00	
5 . . . . .	B&B 16-18'	50.00		
1 . . . . .	B&B 20-22'	65.00		

PICEA GLAUCA DENSATA (P. canadensis albertiana)(Black Hills Spruce) Hardest of all Spruces. 40 to 50 ft. Symmetrical upright and bushy. Foliage varying from green to a bluish tint.

75 . . . . .	B&B 12-18"	2.20	20.00	170.00
1 . . . . .	B&B 3-4'	5.50		
1 . . . . .	B&B 5-6'	9.00		
2 . . . . .	B&B 6-7'	12.50		
3 . . . . .	B&B 7-8'	15.00		
6 . . . . .	B&B 8-9'	17.50		
15 . . . . .	B&B 9-10'	21.50	210.00	
6 . . . . .	B&B 10-12'	27.50		
2 . . . . .	B&B 14-16'	42.50		

PICEA PUNGENS (Colorado Green Spruce)

1 . . . . .	B&B 3-3½'	5.00		
5 . . . . .	B&B 3½-4'	6.00	55.00	
13 . . . . .	B&B 4-5'	7.00	65.00	
14 . . . . .	B&B 5-6'	9.00	85.00	
24 . . . . .	B&B 6-7'	12.50	120.00	
15 . . . . .	B&B 7-8'	15.00	145.00	
10 . . . . .	B&B 8-9'	18.00	175.00	
17 . . . . .	B&B 9-10'	21.00	205.00	
6 . . . . .	B&B 10-12'	30.00	295.00	
1 . . . . .	B&B 12-14'	40.00		

PICEA PUNGENS GLAUCA (Colorado Blue Spruce) Hardy attractive tree with rich blue foliage. 60 to 80 ft.

1 . . . . .	B&B 2½-3'	5.00		
6 . . . . .	B&B 3-3½'	6.50	60.00	
7 . . . . .	B&B 3½-4'	8.50	80.00	
5 . . . . .	B&B 4-5'	11.00	105.00	
16 . . . . .	B&B 5-6'	15.00	145.00	
15 . . . . .	B&B 6-7'	22.50	220.00	
14 . . . . .	B&B 7-8'	32.50	320.00	
17 . . . . .	B&B 8-9'	40.00	390.00	
22 . . . . .	B&B 9-10'	50.00	490.00	
10 . . . . .	B&B 10-12'	65.00	640.00	
1 . . . . .	B&B 12-14'	75.00		

PINUS BANKSIANA (Jack Pine) Valuable tree for planting in barren localities.

1 . . . . .	B&B 12-14'	35.00		
4 . . . . .	B&B 14-16'	45.00		



	SIZE	EACH	PER 10	PER 100
PINUS FLEXILIS (Limber Pine) Branches extremely flexible. Peculiar twist of each group of leaves in a different direction.				
	1 . . . . . B&B 14-16'	45.00		
	1 . . . . . B&B 18-20'	65.00		
PINUS MUGO MUGHUS (P. Montana Mughus)(Mugho Pine) Dwarf spreader with round top. Short dark green needles. Small cones resembling candles set over the tree in Spring.				
	437 . . . . . B&B 8-10"	2.00	18.00	150.00
	174 . . . . . B&B 10-12"	2.50	23.00	200.00
	121 . . . . . B&B 12-15"	2.70	25.00	230.00
	130 . . . . . B&B 15-18"	3.20	30.00	270.00
	54 . . . . . B&B 18-24"	3.70	35.00	320.00
	1 . . . . . B&B 2-2½'	4.50		
	1 . . . . . B&B 2½-3'	5.00		
	4 . . . . . B&B 3-4'	7.50		
	24 . . . . . B&B 4-5'	10.00	90.00	
	13 . . . . . B&B 5-6'	13.50	130.00	
	5 . . . . . B&B 6-7'	17.50	165.00	
PINUS NIGRA (Austrian Pine) Sturdy symmetrical tree attaining great height. Long glossy green needles.				
	90 . . . . . B&B 18-24"	2.00	18.00	150.00
	825 . . . . . B&B 2-3'	3.00	28.00	250.00
	552 . . . . . B&B 3-4'	4.50	40.00	350.00
	170 . . . . . B&B 4-5'	6.00	55.00	500.00
	5 . . . . . B&B 5-6'	8.00	75.00	
	7 . . . . . B&B 6-7'	10.50	100.00	
	5 . . . . . B&B 7-8'	12.50	120.00	
	4 . . . . . B&B 8-9'	16.00		
	13 . . . . . B&B 9-10'	20.00	190.00	
	32 . . . . . B&B 10-12'	27.50	270.00	2650.00
	47 . . . . . B&B 12-14'	35.00	340.00	3300.00
	30 . . . . . B&B 14-16'	45.00	440.00	4300.00
	6 . . . . . B&B 16-18'	55.00	540.00	
	2 . . . . . B&B 18-20'	65.00		
	2 . . . . . B&B 20-22'	85.00		
	1 . . . . . B&B 22-24'	105.00		
PINUS PONDEROSA (Western Yellow Pine) Straight trunk. Coarse long heavy needles.				
	25 . . . . . B&B 18-24"	2.00	18.00	
	3 . . . . . B&B 16-18'	55.00		
PINUS STROBUS (White Pine) A symmetrical tree with silvery green foliage. Fine for screen planting.				
	350 . . . . . B&B 18-24"	2.00	18.00	150.00
	4 . . . . . B&B 4-5'	7.00	65.00	
	7 . . . . . B&B 5-6'	9.00	85.00	
	1 . . . . . B&B 18-20'	65.00		
	1 . . . . . B&B 22-24'	105.00		
PINUS SYLVESTRIS (Scotch Pine) Rapid grower, rough bark, dark gray-green foliage.				
	20 . . . . . B&B 18-24"	1.90	17.00	150.00
	72 . . . . . B&B 2-3'	2.50	23.00	200.00
	185 . . . . . B&B 3-4'	3.00	28.00	250.00
	381 . . . . . B&B 4-5'	4.50	40.00	350.00
	481 . . . . . B&B 5-6'	6.00	55.00	500.00

CONTINUED ON THE NEXT PAGE



	SIZE	EACH	PER 10	PER 100
PINUS SYLVESTRIS - CONTINUED				
204 . . . . .	B&B 6-7'	7.50	70.00	650.00
145 . . . . .	B&B 7-8'	9.00	85.00	800.00
102 . . . . .	B&B 8-9'	11.00	105.00	1000.00
130 . . . . .	B&B 9-10'	13.00	125.00	1200.00
85 . . . . .	B&B 10-12'	17.50	170.00	1650.00
58 . . . . .	B&B 12-14'	25.00	245.00	2400.00
50 . . . . .	B&B 14-16'	35.00	345.00	3400.00
36 . . . . .	B&B 16-18'	45.00	440.00	4350.00
27 . . . . .	B&B 18-20'	65.00	625.00	
8 . . . . .	B&B 20-22'	85.00	825.00	
PSEUDOTSUGA (Douglas Fir) Large symmetrical tree with bluish-green foliage. Very drought resistant.				
8 . . . . .	B&B 18-24"	1.80	16.00	
12 . . . . .	B&B 2-3'	3.00	25.00	
8 . . . . .	B&B 3-4'	4.50	40.00	
5 . . . . .	B&B 4-5'	6.00	55.00	
13 . . . . .	B&B 5-6'	8.00	75.00	
12 . . . . .	B&B 6-7'	10.00	95.00	
8 . . . . .	B&B 8-9'	17.50	165.00	
24 . . . . .	B&B 9-10'	21.50	205.00	
16 . . . . .	B&B 10-12'	27.50	265.00	
1 . . . . .	B&B 14-16'	45.00		
1 . . . . .	B&B 16-18'	60.00		
TAXUS CUSPIDATA CAPITATA (Japanese Yew) Narrow leaved Evergreens, symmetrical branched tree, which thrives in the shade.				
5 Upright . . .	B&B 3-4'	8.50		
5 Spreaders . .	B&B 3-4'	9.00		
6 Spreaders . .	B&B 2-3'	6.00		
THUJA OCCIDENTALIS GLOBOSA				
49 . . . . .	B&B 10-12"	1.50	13.00	100.00
THUJA OCCIDENTALIS PYRAMIDALIS (Pyramidal American Arborvitae)				
511 . . . . .	B&B 18-24"	2.50	23.00	200.00
170 . . . . .	B&B 2-3'	3.50	33.00	300.00
163 . . . . .	B&B 3-4'	5.00	45.00	400.00
75 . . . . .	B&B 4-5'	6.50	60.00	550.00
1 . . . . .	B&B 5-6'	8.00		
1 . . . . .	B&B 6-7'	10.00		
THUJA ORIENTALIS (Chinese Arborvitae) Tall slender tree with flat dark green foliage.				
1 . . . . .	B&B 3-4'	2.50		
3 . . . . .	B&B 5-6'	4.00		
15 . . . . .	B&B 10-12'	12.50		
17 . . . . .	B&B 12-14'	16.00		
10 . . . . .	B&B 14-16'	20.00		
THUJA ORIENTALIS AUREA CONSPICUA (Goldspire Arborvitae) Tall columnar tree with bright green foliage tipped golden yellow.				
12 . . . . .	B&B 2-3'	3.50	30.00	
2 . . . . .	B&B 5-6'	5.50		
31 . . . . .	B&B 6-7'	6.50	60.00	550.00
16 . . . . .	B&B 7-8'	7.50	75.00	
2 . . . . .	B&B 8-9'	9.00		
4 . . . . .	B&B 9-10'	12.50		
15 . . . . .	B&B 10-12'	15.00	145.00	





	SIZE	EACH	PER 10	PER 100
THUJA ORIENTALIS AUREA NANA (Berckman's Golden Arborvitae) Dwarf compact and almost globular. Foliage yellowish green tipped gold in the Spring.				
318	B&B 15-18"	2.00	18.00	150.00
220	B&B 18-24"	2.50	23.00	200.00
5	B&B 2-2½'	3.50	30.00	
6	B&B 2½-3'	4.00	35.00	
2	B&B 3-3½'	5.00		
16	B&B 5-6'	8.00	75.00	
51	B&B 6-7'	10.00	95.00	900.00
82	B&B 7-8'	15.50	130.00	1250.00
28	B&B 8-9'	17.50	165.00	
THUJA ORIENTALIS BAKERI (Baker's Pyramidal Arborvitae) Compact, pyramidal and with bright green foliage.				
100	B&B 12-18"	2.00	18.00	150.00
122	B&B 18-24"	2.50	23.00	200.00
THUJA ORIENTALIS BONITA - Dwarf globe shaped dark green foliage. Suitable for urns.				
200	B&B 12-18"	1.50	13.00	100.00
212	B&B 18-24"	2.00	18.00	150.00
THUJA ORIENTALIS COMPACTA				
270	B&B 18-24"	2.00	18.00	150.00
6	B&B 2-3'	2.50	23.00	
10	B&B 3-4'	3.00	25.00	
2	B&B 4-5'	4.00		
6	B&B 9-10'	12.50	120.00	
4	B&B 10-12'	15.00		
THUJA ORIENTALIS COMPACTA LIGHT GREEN				
184	B&B 18-24"	2.00	18.00	150.00
171	B&B 2-3'	2.50	23.00	200.00
2	B&B 7-8'	7.50		
THUJA ORIENTALIS HOLMAN'S				
184	B&B 18-24"	2.00	18.00	150.00
1	B&B 2-3'	3.00		
11	B&B 3-4'	3.50	30.00	
10	B&B 4-5'	4.50	40.00	
4	B&B 5-6'	6.00		
THUJA ORIENTALIS LIGHT GREEN				
17	B&B 2-3'	3.00	25.00	
3	B&B 5-6'	6.00		
1	B&B 7-8'	7.50		
THUJA ORIENTALIS PYRAMIDALIS AUREA				
15	B&B 7-8'	7.50	70.00	
TSUGA CANADENSIS (Canadian Hemlock) Light green needles. 75 ft.				
6	B&B 3-4'	7.50		
16	B&B 4-5'	10.00		
11	B&B 5-6'	12.50		



# EVERGREEN GRAFTS

## SPRING 1943 DELIVERY

CHANDLER  
LANDSCAPE AND FLORAL CO.  
101 WEST 47<sup>TH</sup> STREET KANSAS CITY, MO.

### WHY OUR GRAFTS ARE THE BEST THAT CAN BE GROWN

THEY ARE MADE BY EXPERT LABOR ONLY.

MADE ON STRONG THRIFTY UNDERSTOCK WITH PROPER ROOT GROWTH ESTABLISHED IN 2½ INCH POTS.

MADE WITH LONG YOUNG SCIONS.

PROPER HEAT AND VENTILATION TO INSURE PROPER CALLOUSING.

THESE ARE ONLY A FEW OF THE REASONS WHY CHANDLER'S GRAFTS MAKE SUCH RAPID GROWTH WHEN LINED OUT IN THE FIELD.

DIRECTIONS FOR PLANTING - PLANT DIRECTLY IN THE FIELD AFTER FREEZING WEATHER IS OVER. HAVE SOIL WELL PREPARED. REMOVE RUBBER BANDS AND PLANT ONLY DEEP ENOUGH TO COVER THE GRAFT UNION.

CULTIVATION - BE SURE TO KEEP A DUST MULCH IN DRY WEATHER, NEVER ALLOWING THE GROUND TO BECOME HARD AND BAKED.

TIME OF SHIPMENT - THESE GRAFTS ARE READY IN MARCH BUT WE WOULD ADVISE WAITING UNTIL FREEZING WEATHER IS OVER BEFORE MAKING SHIPMENT.

PRICES - OUR PRICES ARE REASONABLE. THIRTY OF THE SAME VARIETY ARE PRICED AT THE 100 RATE, 300 AT THE 1000 RATE.

WE ALLOW 3% DISCOUNT AND BOXING FREE WHEN CASH ACCOMPANIES THE ORDER.



GRAFTS

	<u>PER 100</u>	<u>PER 1000</u>
JUNIPERUS chinensis columnaris	\$60.00	\$500.00
JUNIPERUS chinensis columnaris Green	60.00	500.00
JUNIPERUS chinensis excelsior	60.00	500.00
JUNIPERUS chinensis femina	60.00	500.00
JUNIPERUS chinensis globosa	60.00	500.00
JUNIPERUS chinensis pfitzeriana	60.00	500.00
JUNIPERUS chinensis procumbens	60.00	500.00
JUNIPERUS chinensis stricta	60.00	500.00
JUNIPERUS communis columnaris	60.00	500.00
JUNIPERUS communis depressa	60.00	500.00
JUNIPERUS communis depressa aurea	60.00	500.00
JUNIPERUS communis hibernica	60.00	500.00
JUNIPERUS communis suecica	60.00	500.00
JUNIPERUS excelsa stricta	60.00	500.00
JUNIPERUS horizontalis douglasi (Waukegan)	60.00	500.00
JUNIPERUS japonica	60.00	500.00
JUNIPERUS mascula	60.00	500.00
JUNIPERUS neaboriensis	60.00	500.00
JUNIPERUS sabina	60.00	500.00
JUNIPERUS sabina horizontalis	60.00	500.00
JUNIPERUS sabina tamariscifolia	60.00	500.00
JUNIPERUS scopulorum Blue Bush	60.00	500.00
JUNIPERUS scopulorum Chandler's Silver	60.00	500.00
JUNIPERUS scopulorum columnaris	60.00	500.00
JUNIPERUS scopulorum gareei	60.00	500.00
JUNIPERUS scopulorum horizontalis	60.00	500.00



	PER 100	PER 1000
JUNIPERUS scopulorum Marshall	\$60.00	\$500.00
JUNIPERUS scopulorum Mission	60.00	500.00
JUNIPERUS scopulorum Sutherland	60.00	500.00
JUNIPERUS virginiana Chandler's Blue	60.00	500.00
JUNIPERUS virginiana canmarti	60.00	500.00
JUNIPERUS virginiana columnaris	60.00	500.00
JUNIPERUS virginiana elegantissima	60.00	500.00
JUNIPERUS virginiana glauca	60.00	500.00
JUNIPERUS virginiana globosa	60.00	500.00
JUNIPERUS virginiana keteleeri	60.00	500.00
JUNIPERUS virginiana kosteri	60.00	500.00
JUNIPERUS virginiana pyramidalis	60.00	500.00
JUNIPERUS VIRGINIANA Pyramidiformia hilli	60.00	500.00
JUNIPERUS virginiana schotti	60.00	500.00
THUJA occidentalis douglasi	60.00	500.00
THUJA occidentalis douglasi aurea	60.00	500.00
THUJA occidentalis Little Gem	60.00	500.00
THUJA occidentalis lutea (Geo. Peabody)	60.00	500.00
THUJA occidentalis pyramidalis	60.00	500.00
THUJA occidentalis spicata alba	60.00	500.00
THUJA orientalis aurea	60.00	500.00
THUJA orientalis aurea conspicua	60.00	500.00
THUJA orientalis aurea nana	60.00	500.00
THUJA orientalis compacta	60.00	500.00
THUJA orientalis pyramidalis aurea	60.00	500.00





T R E E S

Our trees are listed at Bare Root prices. Most trees  $3\frac{1}{2}$  to 4 inch and up in caliper should be balled and burlapped to be moved successfully. Elms may be moved at the proper time of year bare rooted, up to and including the 4 to 5 inch size. All trees transplanted during the winter when the ground is frozen, should be moved with a ball. Pin Oak, Birch, Magnolia, Ilex, Flowering Peach and a few other varieties should be moved with a ball regardless of the season.

The extra charge for balling, if required, on the smaller sized trees is as follows. Planting will be charged additional at 25% of the Bare Root or List price of the Trees.

3 to 4 ft. . . . .	\$0.25
4 to 5 ft. . . . .	.35
5 to 6 ft. . . . .	.50
6 to 8 ft. . . . .	.65
8 to 10 ft . . . . .	1.00
$1\frac{1}{4}$ to $1\frac{1}{2}$ in. . . . .	1.25
$1\frac{1}{2}$ to 2 in . . . . .	1.50
2 to $2\frac{1}{2}$ in . . . . .	2.00
$2\frac{1}{2}$ to 3 in . . . . .	2.50

The additional charge for Balling and Burlapping the larger size trees includes also the price of planting in Greater Kansas City, as follows:

3 to $3\frac{1}{2}$ in . . . . .	\$4.00
$3\frac{1}{2}$ to 4 in . . . . .	5.00
4 to 5 in. . . . .	8.00
5 to 6 in. . . . .	10.00
6 to 7 in. . . . .	12.50
7 to 8 in. . . . .	15.00
8 to 9 in. . . . .	17.50
9 to 10 in . . . . .	20.00

Extra labor which might be necessary in case we encounter objectionable material such as rock, which must be removed before the planting can be done will be furnished at the rate of 75¢ per hour.

ALL PRICES AND LABOR CHARGES SUBJECT TO CHANGE WITHOUT NOTICE



TREES

	SIZE	EACH	PER 10	PER 100
ACER PLATANOIDES (Norway Maple) Most popular street tree. Retains its green leaves until late Autumn. Dense globe shaped heads. 50 to 75 ft.				
	7 . . . . .	1-1 $\frac{1}{4}$ "	3.50	30.00
	2 . . . . .	7-8"	55.00	
	2 . . . . .	8-9"	65.00	
	2 . . . . .	9-10"	75.00	
	2 . . . . .	10-12"	100.00	
ACER SACCHARINUM (A. Dasycarpum)(Silver or Soft Maple) Quick growing graceful shade tree. Leaves silvery underneath.				
	7 . . . . .	7-8"	35.00	340.00
	4 . . . . .	8-9"	45.00	
	3 . . . . .	9-10"	60.00	
ACER SACCHARINUM LACINIATUM (Cutleaf Silver Maple)				
	1 . . . . .	5-6'	17.50	
	1 . . . . .	9-10"	65.00	
ACER SACCHARUM (Hard or Sugar Maple) Hardest and longest lived on the Maples. Magnificent yellow fall coloring. Excellent for street or lawn. 50-75 ft.				
	600 . . . . .	2-3'	.60	5.00 40.00
	750 . . . . .	3-4'	.70	6.50 50.00
	1365 . . . . .	4-5'	.80	7.50 65.00
	35 . . . . .	5-6'	1.50	14.00 120.00
	9 . . . . .	1-1 $\frac{1}{4}$ "	3.00	28.00
	14 . . . . .	1 $\frac{1}{4}$ -1 $\frac{1}{2}$ "	3.50	33.00
	25 . . . . .	1 $\frac{1}{2}$ -1 $\frac{3}{4}$ "	4.50	43.00
	24 . . . . .	1 $\frac{3}{4}$ -2"	5.50	50.00
	30 . . . . .	2-2 $\frac{1}{2}$ "	7.00	65.00 600.00
	19 . . . . .	2 $\frac{1}{2}$ -3"	8.50	80.00
	21 . . . . .	3-3 $\frac{1}{2}$ "	12.50	120.00
	35 . . . . .	3 $\frac{1}{2}$ -4"	17.50	170.00 1650.00
	10 . . . . .	4-5"	25.00	245.00
	1 . . . . .	6-7"	45.00	
	1 . . . . .	9-10"	75.00	
	1 . . . . .	10-12"	100.00	
BETULA PENDULA (B. alba)(European White Birch) Creamy white bark, most effective against a background of Evergreens. Graceful habit. 40 to 50 ft.				
	3 . . . . .	1 $\frac{1}{4}$ -1 $\frac{1}{2}$ "	4.00	
	12 . . . . .	1 $\frac{1}{2}$ -1 $\frac{3}{4}$ "	5.00	45.00
	18 . . . . .	1 $\frac{3}{4}$ -2"	6.00	55.00
	3 . . . . .	2-2 $\frac{1}{2}$ "	7.50	
	1 . . . . .	4-5"	25.00	
BETULA PENDULA CLUMPS - Two to three trunks each.				
	3 . . . . .	1-1 $\frac{1}{4}$ "	6.50	
	13 . . . . .	1 $\frac{1}{4}$ -1 $\frac{1}{2}$ "	7.50	70.00
	22 . . . . .	1 $\frac{1}{2}$ -1 $\frac{3}{4}$ "	10.00	95.00
	4 . . . . .	1 $\frac{3}{4}$ -2"	12.50	
	11 . . . . .	2-2 $\frac{1}{2}$ "	15.00	145.00
	4 . . . . .	2 $\frac{1}{2}$ -3"	17.50	

REFER TO PAGE 21 for BALLED AND BURLAPPED PRICES



	SIZE	EACH	PER 10	PER 100
BETULA PENDULA LACINIATA (Cutleaf Birch)	Graceful drooping tree with silvery bark and deeply cut leaves. 30 to 40 ft.			
237 . . . . .	6-7'	3.00	28.00	250.00
90 . . . . .	8-10'	3.50	33.00	300.00
108 . . . . .	1-1 $\frac{1}{4}$ "	4.50	40.00	350.00
133 . . . . .	1 $\frac{1}{4}$ -1 $\frac{1}{2}$ "	6.00	55.00	500.00
48 . . . . .	1 $\frac{1}{2}$ -1 $\frac{3}{4}$ "	8.00	75.00	700.00
10 . . . . .	1 $\frac{3}{4}$ -2"	10.00	95.00	
9 . . . . .	2-2 $\frac{1}{2}$ "	12.50	120.00	
4 . . . . .	2 $\frac{1}{2}$ -3"	15.00		
1 . . . . .	3-3 $\frac{1}{2}$ "	17.50		
CELTIS OCCIDENTALIS (Hackberry)	A valuable shade tree with slender spreading branches. Limbs seldom broken by the wind.			
1 . . . . .	2-2 $\frac{1}{2}$ "	5.00		
2 . . . . .	2 $\frac{1}{2}$ -3"	7.50		
1 . . . . .	6-7"	40.00		
1 . . . . .	9-10"	55.00		
3 . . . . .	10-12"	75.00		
CERCIS CANADENSIS (American Redbud)	Heart shaped leaves and delicate reddish-lavender flowers in Spring before the leaves appear.			
3 . . . . .	6-8'	2.00		
1 . . . . .	1 $\frac{1}{2}$ -1 $\frac{3}{4}$ "	3.50		
2 . . . . .	2-2 $\frac{1}{2}$ "	5.00		
CORNUS FLORIDA (White Flowering Dogwood)	Attractive symmetrical tree covered with single white flowers in Spring. Thrives in sun or shade. Grows about 25 ft. tall.			
1 . . . . .	B&B 3-4'	1.75		
10 . . . . .	B&B 4-5'	2.50	23.00	
8 . . . . .	B&B 5-6'	3.50	30.00	
1 . . . . .	B&B 6-7'	5.00		
ELEAGNUS ANGUSTIFOLIA (Russian Olive)	Silvery gray leaves and branchlets. Yellow berries. Good for massing. 15 to 18 ft.			
71 . . . . .	2-3'	.35	3.00	25.00
17 . . . . .	3-4'	.50	4.00	
21 . . . . .	4-5'	.75	6.00	
22 . . . . .	5-6'	1.00	8.00	
37 . . . . .	6-8'	1.25	11.50	100.00
48 . . . . .	1-1 $\frac{1}{4}$ "	1.70	15.00	120.00
55 . . . . .	1 $\frac{1}{4}$ -1 $\frac{1}{2}$ "	2.20	20.00	170.00
29 . . . . .	1 $\frac{1}{2}$ -1 $\frac{3}{4}$ "	2.70	25.00	
29 . . . . .	1 $\frac{3}{4}$ -2"	3.30	30.00	
26 . . . . .	2-2 $\frac{1}{2}$ "	4.00	35.00	
11 . . . . .	2 $\frac{1}{2}$ -3"	5.00	45.00	
10 . . . . .	3-3 $\frac{1}{2}$ "	7.00	65.00	
9 . . . . .	4-5"	12.50	120.00	
22 . . . . .	5-6"	15.00	140.00	

REFER TO PAGE 21 FOR BALLED AND BURLAPPED PRICES



	SIZE	EACH	PER 10	PER 100
FRAXINUS AMERICANA (White Ash) The compound leaves take on a distinct metallic purple tinge before yellowing in the Autumn. Fairly rapid grower. 70 to 80 ft. high.				
	6 . . . . .	4-5'	.65	5.00
	19 . . . . .	5-6'	.75	6.50
	45 . . . . .	6-8'	1.10	10.00 80.00
	12 . . . . .	1-1 $\frac{1}{4}$ "	1.65	15.00
	17 . . . . .	1 $\frac{1}{4}$ -1 $\frac{1}{2}$ "	2.30	20.00
	4 . . . . .	1 $\frac{1}{2}$ -1 $\frac{3}{4}$ "	2.50	
	2 . . . . .	1 $\frac{3}{4}$ -2"	3.00	
	1 . . . . .	2-2 $\frac{1}{2}$ "	4.00	
	5 . . . . .	6-7"	32.50	315.00
	10 . . . . .	7-8"	40.00	390.00
	1 . . . . .	10-12"	100.00	
GINKGO BILOBA (Maidenhair Tree) Fan-shaped leaves with turn bright yellow in the Fall. 70 ft.				
	9 . . . . .	18-24"	.75	6.50
	7 . . . . .	2-3'	1.00	7.50
	9 . . . . .	3-4'	1.50	13.50
	5 . . . . .	4-5'	2.00	17.50
KOELREUTERIA PANICULATA (Goldenrain Tree) (Varnish Tree) Small valuable tree with bright yellow flowers in July. 25 to 30 ft.				
	27 . . . . .	4-5'	1.00	9.00 75.00
	24 . . . . .	5-6'	1.50	12.50
	17 . . . . .	6-8'	2.00	15.00
	3 . . . . .	1 $\frac{3}{4}$ -2"	4.00	
	1 . . . . .	2 $\frac{1}{2}$ -3"	7.50	
	5 . . . . .	3 $\frac{1}{2}$ -4"	12.50	120.00
	3 . . . . .	4-5"	15.00	
	5 . . . . .	5-6"	17.50	165.00
	1 . . . . .	7-8"	20.00	
	1 . . . . .	9-10"	50.00	
	1 . . . . .	10-12"	75.00	
LIQUIDAMBAR STRYACIFLUA (Sweet Gum) Majestic tree, glossy green maple-like, aromatic foliage which turns bright red in Autumn. 140 ft.				
	2 . . . . .	1 $\frac{1}{2}$ -1 $\frac{3}{4}$ "	8.50	
	10 . . . . .	1 $\frac{3}{4}$ -2"	12.50	
LIRIODENDRON TULIPIFERA (Tulip Tree) Excellent street tree with clean straight trunk. Tulip shaped flowers. Spring planting only.				
	3 . . . . .	4-5'	1.75	
	9 . . . . .	1-1 $\frac{1}{4}$ "	4.00	35.00
	2 . . . . .	1 $\frac{1}{4}$ -1 $\frac{1}{2}$ "	5.00	
MAGNOLIA SOULANGEANA (Saucer Magnolia) Flowers creamy white inside, rosy pink on outside, blooming in March before the leaves appear. 20 ft.				
	5 . . . . .	B&B 3-4'	6.00	
	4 . . . . .	B&B 4-5'	7.50	
	5 . . . . .	B&B 5-6'	10.00	
	3 . . . . .	B&B 6-7'	13.00	

REFER TO PAGE 21 FOR BALLED AND BURLAPPED PRICES





	SIZE	EACH	PER 10	PER 100
<b>PLATANUS OCCIDENTALIS (American Sycamore)</b> Large rapid growing tree with shapely head and white trunk. Makes a splendid lawn tree. 100 ft.				
6	6-7'	1.50	13.00	
33	1-1 $\frac{1}{4}$ "	2.00	18.00	150.00
26	1 $\frac{1}{4}$ -1 $\frac{1}{2}$ "	2.50	23.00	
15	1 $\frac{1}{2}$ -1 $\frac{3}{4}$ "	3.00	25.00	
2	1 $\frac{3}{4}$ -2"	3.50		
6	2-2 $\frac{1}{2}$ "	4.50	40.00	
15	2 $\frac{1}{2}$ -3"	6.00	55.00	
8	3-3 $\frac{1}{2}$ "	8.50	80.00	
15	3 $\frac{1}{2}$ -4"	12.50	120.00	
12	4-5"	16.50	160.00	
1	5-6"	25.00		
<b>POPULUS CANADENSIS EUGENEI (Carolina Poplar)</b> A rapid grower which succeeds well in all soils and climates. 75 to 100 ft.				
3	1 $\frac{1}{4}$ -1 $\frac{1}{2}$ "	1.00		
13	1 $\frac{1}{4}$ -2"	1.70	15.00	
22	2-2 $\frac{1}{2}$ "	2.50	23.00	
26	2 $\frac{1}{2}$ -3"	3.00	25.00	
18	3-3 $\frac{1}{2}$ "	3.50	30.00	
23	3 $\frac{1}{2}$ -4"	5.00	40.00	
9	4-5"	8.00	75.00	
2	5-6"	12.50		
<b>POPULUS NIGRA ITALICA (Lombardy Poplar)</b> Columnar tree with limbs from the ground. Restless light green leaves. 60 to 80 ft. Used for landscape work and screens.				
300	5-6'	.35	3.00	25.00
700	6-7'	.50	4.00	35.00
15	1-1 $\frac{1}{4}$ "	.60	5.00	45.00
44	1 $\frac{1}{4}$ -1 $\frac{1}{2}$ "	.75	7.00	65.00
102	1 $\frac{1}{2}$ -1 $\frac{3}{4}$ "	1.00	7.50	70.00
185	1 $\frac{3}{4}$ -2"	1.20	10.00	85.00
790	2-2 $\frac{1}{2}$ "	1.50	13.00	110.00
497	2 $\frac{1}{2}$ -3"	2.00	15.00	130.00
316	3-3 $\frac{1}{2}$ "	2.50	20.00	150.00
185	3 $\frac{1}{2}$ -4"	3.50	30.00	250.00
75	4-5"	7.50	70.00	650.00
40	5-6"	12.50	120.00	1150.00
17	6-7"	20.00	195.00	
<b>PRUNUS CERASIFERA PISSARDI (Purple Leaf Plum)</b> Reddish purple leaves. 15 ft.				
6	2-3'	.65	6.00	
15	3-4'	.85	7.50	
10	4-5'	1.25	10.00	
4	5-6'	1.50		
9	6-8'	2.50	20.00	
<b>PRUNUS PERSICA RUBRA (Red Flowering Peach)</b> Double red flowers in early Spring.				
10	3-4'	.85	7.50	
<b>PRUNUS SERRULATA KWANZAN (Japanese Flowering Cherry)</b> Double deep pink flowers.				
5	3-4'	1.25		

REFER TO PAGE 21 FOR BALLED AND BURLAPPED PRICES



	SIZE	EACH	PER 10	PER 100
QUERCUS PALUSTRIS (Pin Oak) Tall straight trunk, trim pyramidal head, quick grower. Deeply cut shiny foliage, turning crimson in the Fall. 70-80 ft.				
500	3-4'	1.50	13.00	100.00
1	1 $\frac{1}{4}$ -1 $\frac{1}{2}$ "	4.50		
2	1 $\frac{1}{2}$ -1 $\frac{3}{4}$ "	5.50		
1	1 $\frac{3}{4}$ -2"	6.50		
1	2-2 $\frac{1}{2}$ "	7.50		
3	3 $\frac{1}{2}$ -4"	17.50		
6	4-5"	27.00	265.00	
20	5-6"	37.50	370.00	
3	6-7"	47.50		
1	7-8"	57.50		
SALIX PENDULA AUREA (Golden Weeping Willow) Splendid weeping habit, golden bark.				
25	6-7'	1.75	15.00	
90	1-1 $\frac{1}{2}$ "	2.00	18.00	150.00
150	1 $\frac{1}{2}$ -2"	3.00	27.00	250.00
250	2-2 $\frac{1}{2}$ "	4.00	38.00	350.00
240	2 $\frac{1}{2}$ -3"	6.00	55.00	500.00
60	3-3 $\frac{1}{2}$ "	8.50	80.00	750.00
1	4-5"	15.00		
SORBUS AUCUPARIA (European Mountain Ash) Scarlet berries in August and September. Height 40 ft.				
10	1 $\frac{1}{4}$ -1 $\frac{1}{2}$ "	3.00	25.00	
3	1 $\frac{1}{2}$ -1 $\frac{3}{4}$ "	4.00		
ULMUS AMERICANA (American Elm) Typical native tree of regal proportions and grace.				
99	6-8'	.75	7.00	65.00
119	1-1 $\frac{1}{4}$ "	1.00	9.00	85.00
250	1 $\frac{1}{4}$ -1 $\frac{1}{2}$ "	1.35	12.50	115.00
260	1 $\frac{1}{2}$ -1 $\frac{3}{4}$ "	1.70	16.00	150.00
170	1 $\frac{3}{4}$ -2"	2.00	18.00	160.00
144	2-2 $\frac{1}{2}$ "	2.50	23.00	200.00
39	2 $\frac{1}{2}$ -3"	3.30	31.00	280.00
46	3-3 $\frac{1}{2}$ "	4.50	40.00	370.00
55	3 $\frac{1}{2}$ -4"	6.50	60.00	550.00
38	4-5"	10.00	95.00	900.00
15	5-6"	15.00	145.00	
30	6-7"	24.00	230.00	2200.00
33	7-8"	35.00	340.00	3300.00
34	8-9"	45.00	440.00	4300.00
10	9-10"	57.50	560.00	
2	10-12"	70.00		
3	12-14"	100.00		
ULMUS AMERICANA LAKE CITY				
5	4-5"	11.00		
9	5-6"	17.50	170.00	
4	6-7"	27.50		

REFER TO PAGE 21 FOR BALLED AND BURLAPPED PRICES



	SIZE	EACH	PER 10	PER 100
ULMUS AMERICANA MOLINE (Moline Elm) Narrow pyramidal rapid growing tree with large foliage. 80 to 100 ft.				
6	1-1 $\frac{1}{4}$ "	1.20	11.00	
11	1 $\frac{1}{4}$ -1 $\frac{1}{2}$ "	1.60	15.00	
76	1 $\frac{1}{2}$ -1 $\frac{3}{4}$ "	2.00	17.50	160.00
147	1 $\frac{3}{4}$ -2"	2.25	20.00	185.00
380	2-2 $\frac{1}{2}$ "	2.75	25.00	225.00
35	2 $\frac{1}{2}$ -3"	3.75	35.00	325.00
8	3-3 $\frac{1}{2}$ "	5.50		
20	3 $\frac{1}{2}$ -4"	7.50	72.50	
141	4-5"	11.00	105.00	1000.00
73	5-6"	17.50	170.00	1650.00
18	6-7"	27.50	270.00	
1	7-8"	37.50		
ULMUS CARPINIFOLIA SUPEROSA (Corkbark Elm)				
3	6-7"	27.50		
4	7-8"	37.50		
1	9-10"	60.00		
ULMUS PUMILA (Siberian Elm - Commonly known as Chinese Elm here.)				
32	4-5'	.50	4.00	30.00
45	5-6'	.70	5.00	40.00
12	6-8'	1.00	8.00	
100	1-1 $\frac{1}{4}$ "	1.50	13.00	100.00
111	1 $\frac{1}{4}$ -1 $\frac{1}{2}$ "	2.00	18.00	150.00
24	1 $\frac{1}{2}$ -1 $\frac{3}{4}$ "	2.50	20.00	
3	2-2 $\frac{1}{2}$ "	3.00		
4	2 $\frac{1}{2}$ -3"	4.00		
10	3-3 $\frac{1}{2}$ "	6.00	55.00	
15	3 $\frac{1}{2}$ -4"	8.00	75.00	
12	4-5"	12.00	110.00	
11	5-6"	17.50	165.00	
1	7-8"	35.00		
ULMUS AMERICANA VASE (Vase Elm)				
4	3 $\frac{1}{2}$ -4"	7.50		
2	4-5"	11.00		
6	5-6"	17.50		
15	6-7"	27.50		
2	7-8"	37.50		

REFER TO PAGE 21 FOR BALLED AND BURLAPPED PRICES



SHRUBS

	SIZE	EACH	PER 10	PER 100
ACANTHOPANAX SIEBOLDIANUS (A. Pentaphyllum)(Aralia)	Graceful shrubs with arching branches and shiny bright green leaves. Flowers greenish. Excellent for banks and slopes. 5 to 10 ft.			
	16 . . . . . 6-8'	1.50	13.00	
ARONIA ARBUTIFOLIA (Chokecherry)	Pinkish-white flowers, bright red berries and red foliage in the Fall. Blooms in April and May. 8 to 10 ft.			
	15 . . . . . 3-4'	.85	6.00	
	35 . . . . . 4-5'	1.00	9.00	75.00
BERBERIS MENTORENSIS (Plant Patent No. 99)	Deep green foliage turning coppery bronze in the late Fall. 5 ft.			
	295 . . . . . 8-12"	.50	4.00	35.00
	27 . . . . . 2-2½'	1.00	7.50	
BERBERIS THUNBERGI (Japanese Barberry)	Splendid hardy hedge plant with brilliant red fruit and foliage in the Fall. 4 to 5 ft. May be kept trimmed.			
	352 . . . . . 15-18"	.20	1.75	15.00
	655 . . . . . 18-24"	.30	2.50	20.00
	50 . . . . . 2-2½'	.50	3.00	25.00
	12 . . . . . 2½-3'	.65	4.50	
BERBERIS THUNBERGI ATROPURPUREA (Red Leaved Barberry)	Bronzy-red foliage. Needs sun.			
	147 . . . . . 15-18"	.50	3.50	30.00
	140 . . . . . 18-24"	.65	5.00	40.00
BUDDLEIA DAVIDI MAGNIFICA (Butterfly Bush)	Dies to ground each winter.			
	241 LAVENDER . . . . . 1 yr.	.35	2.50	20.00
	42 DARK RED . . . . . 1 yr.	.40	3.00	25.00
CALYCANTHUS FLORIDUS (Common Sweetshrub)	An old favorite with spicy reddish brown flowers in May. 4 to 6 ft.			
	17 . . . . . 3-4'	.75	6.00	
CARAGANA ARBORESCENS (Siberian Pea-tree)	Dwarf tree with yellow pea-shaped flowers in May and June. Finely cut foliage. Very hardy. 12 to 15 ft.			
	40 . . . . . 18-24"	.30	2.50	20.00
	15 . . . . . 2-3'	.40	3.00	
	15 . . . . . 3-4'	.50	4.00	
	12 . . . . . 4-5'	.65	5.00	
	25 . . . . . 5-6'	.75	6.50	
	25 . . . . . 6-8'	1.50		
CHAENOMELES JAPONICA (Japanese Flowering Quince)	Bright red flowers in early Spring, followed by aromatic fruit.			
	268 . . . . . 2-3'	.60	5.00	40.00
	200 . . . . . 3-4'	.75	6.50	60.00
CORNUS ALBA SIBERICA (Red Dogwood)	Vigorous upright shrub with small white flowers in April and May. Porcelain blue fruit, blood red bark in winter.			
	20 . . . . . 2-3'	.50	4.00	
	30 . . . . . 3-4'	.60	4.50	40.00
	68 . . . . . 4-5'	.75	6.00	50.00
	20 . . . . . 5-6'	.85	7.50	
	25 . . . . . 6-8'	1.50	13.00	





	SIZE	EACH	PER 10	PER 100
COTINUS COGGYRIA (Smoketree)(Purple Fringe)	Fearhery purplish flowers in smoky panicles in June or July. Good foliage and brilliant autumn coloring. Rapid grower. 10 to 12 ft.			
	5 . . . . .	5-6'	1.25	10.00
	1 . . . . .	8-10'	3.50	
COTONEASTER ACUTIFOLIA (Peking C.)	Dark glossy leaves, black berries. 4 to 10 ft.			
	60 . . . . .	15-18"	.40	3.50 30.00
DESMODIUM (Bush Clover)	Long arching branches with reddish-purple pea-shaped flowers during September. Dies to the ground in winter.			
	150 . . . . .	2 yr.	.50	3.50 30.00
DEUTZIA GRACILIS - Dwarf	hardy shrubs with a mass of small pure white flowers in May. 3 ft. high.			
	6 . . . . .	18-24"	.60	5.00
DEUTZIA MAGNIFICA - Robust grower	with large panicles of double white flowers.			
	75 . . . . .	5-6'	.60	5.00 40.00
DEUTZIA ROSEA - Slightly larger than D.Gracilis	with pink flowers. 5 ft.			
	47 . . . . .	5-6'	.60	5.00 40.00
EUONYMUS ALATUS (Winged Euonymus)	Small leaves, cork-barked branches, yellow flowers, red fruit. Foliage brilliant crimson in Fall. Blooms May or June. 8 to 10 ft.			
	6 . . . . .	3-4'	1.75	15.00
EUONYMUS ATROPURPUREUS (Burningbush)	Purple flowers, scarlet fruit.			
	6 . . . . .	4-5'	.75	6.50
	4 . . . . .	5-6'	.85	
EUONYMUS EUROPAEUS (European Burningbush)	Bright yellow flowers in drooping clusters in May and June. Rose colored berries. Foliage scarlet in the Fall. 12 to 15 ft.			
	61 . . . . .	4-5'	.75	6.50 50.00
	32 . . . . .	5-6'	.85	7.50 65.00
EUONYMUS KIAUTSCHOVICUS (E. patens)(Spreading Euonymus)	Vigorous broad evergreen shrub, particularly free from insect pests.			
	1654 . . . . .	6-8"	.20	1.50 12.00
	2000 . . . . .	8-10"	.30	2.50 20.00
	36 . . . . .	12-15"	.50	4.00 35.00
EXOCHORDA RACEMOSA (E. grandiflora) (Common Pearlbush)	Clusters of pure white flowers in May. The buds look like small pearl beads. 6 to 9 ft.			
	5 . . . . .	5-6'	1.25	10.00
FORSYTHIA INTERMEDIA SPECTABILIS (Showy Border Forsythia)	Most profuse bloomer. Large golden yellow flowers in April and May. 8 to 10 ft.			
	210 . . . . .	2-3'	.50	3.50 30.00
	62 . . . . .	3-4'	.60	5.00 40.00
	20 . . . . .	4-5'	.75	6.50
	16 . . . . .	5-6'	1.00	7.50
FORSYTHIA VIRIDISSIMA (Green Stem Forsythia)	Foliage deep green. Later blooming than the others - April or May. 8 to 10 ft.			
	30 . . . . .	4-5'	.75	6.50 50.00
	8 . . . . .	5-6'	1.00	7.50
HYDRANGEA ARBORESCENS GRANDIFLORA (Snowhill Hydrangea)	Large flat heads of double white blooms in June and July. Thrives in the shade. 3 to 6 ft.			
	39 . . . . .	18-24"	.50	4.50 40.00
	50 . . . . .	2-3'	.65	6.00 50.00
HYDRANGEA PANICULATA GRANDIFLORA (P.G. or Fall Hydrangea)	Large loose panicles of white flowers from August to Oct. which blend into pink and bronze in Fall.			
	307 . . . . .	2-3'	.65	6.00 50.00



	SIZE	EACH	PER 10	PER 100
KOLKWITZIA AMABILIS (Beautybush)	Handsome shrub of graceful habit similar to the Weigelia. Funnell shaped pink flowers cover the entire shrubs after thoroughly established. 4 to 6 ft.			
	6 . . . . . 4-5'	1.00	8.50	
LIGUSTRUM AMURENSE (Amur Privet)	Upright semi-evergreen plant, very hardy and well adapted to the Northern States. Grows 14 to 15 ft. tall but usually kept well trimmed. Has insignificant white flowers.			
	1138 . . . . . 18-24"	.15	1.20	8.00
	5580 . . . . . 2-3'	.20	1.50	12.00
	1500 . . . . . 3-4'	.30	2.00	15.00
	15 . . . . . 4-5'	.50	4.00	
LIGUSTRUM IBOLIUM (Ibodium Privet)	Upright vigorous grower similar to the California Privet but much hardier. 8 to 10 ft.			
	235 . . . . . 2-3'	.15	1.20	10.00
	20 . . . . . 5-6'	.75	6.50	
LIGUSTRUM OBTUSIFOLIUM REGELIANUM (Regal Privet)	Desirable low dense hedge plant. Also good in shrubbery on Evergreen plantings. 5 to 6 ft. Can be used on the north side of a building or in a shady location.			
	370 . . . . . 18-24"	.50	4.50	40.00
	475 . . . . . 2-3'	.65	6.00	55.00
	108 . . . . . 3-4'	.75	7.00	60.00
	25 . . . . . 4-5'	1.00	8.50	
LIGUSTRUM THOMPSON'S (Thompson's Privet)	New variety with small dark green leaves. Compact grower especially desirable for low hedges.			
	784 . . . . . 12-18"	.10	.80	6.00
	462 . . . . . 18-24"	.15	1.20	8.00
	146 . . . . . 2-3'	.20	1.50	12.00
	130 . . . . . 3-4'	.30	2.50	20.00
	25 . . . . . 4-5'	.50	4.00	
	15 . . . . . 5-6'	.65	5.00	
LONICERA BELLA DLBIDA (White Belle Honeysuckle)	Vigorous upright grower with white blooms and red fruit. Makes a splendid hedge or screen. 10 to 12 ft.			
	100 . . . . . 6-8'	.85	6.00	40.00
LONICERA FRAGRANTISSIMA (Fragrant Honeysuckle)	Fragrant white flowers in April and May. Holds its foliage very late. 6 to 8 ft. Can be used in the shade.			
	222 . . . . . 3-4'	.60	4.00	35.00
	1100 . . . . . 4-5'	.65	5.50	40.00
	150 . . . . . 5-6'	.85	6.50	55.00
LONICERA MORROWI (Morrow Honeysuckle)	Wide spreading branches. White flowers in May and June. Red and yellow berries from August to late Fall. 7 to 8 ft.			
	150 . . . . . 3-4'	.50	3.00	25.00
	200 . . . . . 4-5'	.60	3.50	30.00
	200 . . . . . 5-6'	.75	5.00	35.00
LONICERA TATARICA (Tatarian Honeysuckle)	Pink flowers in April and May. Small red fruits produced freely. 10 to 12 ft.			
	33 . . . . . 2-3'	.40	2.50	15.00
	1049 . . . . . 3-4'	.50	3.00	20.00
	600 . . . . . 4-5'	.60	3.50	25.00
	1000 . . . . . 5-6'	.75	5.00	35.00
	300 . . . . . 6-7'	.85	6.00	40.00



	SIZE	EACH	PER 10	PER 100
<b>MAHONIA AQUIFOLIUM (Oregon Hollygrape)</b> Evergreen shrub with shiny green leaves which turn rich scarlet in the Autumn. Yellow blooms in May followed by blue-black fruit. Grows best in semi-shady locations. 4 to 5 ft.				
	75 . . . . . 8-10"	1.00	9.50	85.00
	300 . . . . . B&B 10-12"	1.35	12.50	110.00
	310 . . . . . B&B 12-15"	1.60	15.00	130.00
	612 . . . . . B&B 15-18"	2.00	18.00	150.00
	378 . . . . . B&B 18-24"	2.70	25.00	220.00
	14 . . . . . B&B 2-2½'	3.50	30.00	
	6 . . . . . B&B 2½-3'	4.50	40.00	
<b>PHILADELPHUS CORONARIUS (Sweet Mockorange)</b> Fragrant white flowers borne profusely in May and June. 9 to 10 ft. May be used in the shade.				
	79 . . . . . 18-24"	.35	3.00	25.00
	400 . . . . . 2-3'	.50	3.50	30.00
	115 . . . . . 4-5'	.65	4.50	35.00
	100 . . . . . 5-6'	.75	5.00	40.00
<b>PHILADELPHUS GRANDIFLORUS (Big Scentless Mockorange)</b> Large showy white flowers in June. 10 to 12 ft. Vigorous upright grower that does well in the shade.				
	211 . . . . . 18-24"	.35	3.00	25.00
	297 . . . . . 2-3'	.50	3.50	30.00
	80 . . . . . 4-5'	.65	4.50	35.00
	88 . . . . . 5-6'	.75	5.00	40.00
<b>PHILADELPHUS LEMOINEI (Lemoine Mockorange)</b> Semi-dwarf compact habit. Dense racemes of sweetly scented white flowers. 4 to 5 ft.				
	82 . . . . . 2-3'	.60	4.00	35.00
	16 . . . . . 4-5'	.85	7.50	
<b>PHILADELPHUS VIRGINALIS (Virginal Mockorange)</b> Beautiful semi-double flowers produced intermittently all summer. Fragrant, 7 to 8 ft.				
	214 . . . . . 18-24"	.50	4.00	35.00
	299 . . . . . 2-3'	.65	5.00	40.00
	88 . . . . . 3-4'	.75	6.00	50.00
<b>PHILADELPHUS VIRGINALIS BOUQUET BLANC</b> - Branches covered with double white fragrant flowers in May. 5 ft. tall.				
	10 . . . . . 2-3'	.65	5.00	
	52 . . . . . 4-5'	.85	7.50	65.00
<b>PHILADELPHUS - UNNAMED VARIETY</b>				
	15 . . . . . 4-5'	.65	4.50	
	45 . . . . . 5-6'	.75	5.00	40.00
<b>PRUNUS GLANDULOSA (Flowering Almond)</b> Double pink or white flowers set on slender branches, blooming in May. An excellent lawn specimen. 8 to 10 ft.				
	41 . . . . . 2-3'	.75	6.00	50.00
	47 . . . . . 3-4'	1.00	7.50	60.00
<b>PRUNUS TRILOBA (Double Flowering Plum)</b> Completely covered with pink rose-like flowers in April and May.				
	13 . . . . . 2-3'	.75	6.00	
<b>RHODOTYPOS SCANDENS ( R. kerrioides)(White Kerria or Jetbead)</b> Fresh green foliage, pure white flowers in May and June. Shining black bead-like berries all winter.				
	150 . . . . . 3-4'	.60	4.00	35.00
	330 . . . . . 4-5'	.75	5.00	40.00
<b>RHUS TYPHINA (Staghorn Sumac)</b> Crimson torch-like fruit. Showy stems. 8 ft. tall.				
	7 . . . . . 6-7'	1.25	10.00	



		SIZE	EACH	PER 10	PER 100
SALIX DISCOLOR (Pussywillow)	The American variety with gray catkins early in the Spring.				
		15 . . . . . 3-4'	.50	4.00	
		35 . . . . . 4-5'	.65	6.00	50.00
		20 . . . . . 5-6'	.75	6.50	
		30 . . . . . 6-8'	1.50	12.50	100.00
SAMBUCUS CANADENSIS ACUTILOBA (Cutleaf American Elder)	Dark green deeply cut foliage.				
		10 . . . . . 5-6'	1.25	10.00	
SAMBUCUS CANADENSIS AUREA (Golden American Elder)					
		25 . . . . . 4-5'	.85	7.50	
SPIRAEA ARGUTA (Garland Spirea)	Semi-dwarf shrub with light green feathery foliage. Covered with single white flowers in April or May. 5 to 6 ft.				
		231 . . . . . 2-3'	.50	3.00	25.00
		150 . . . . . 4-5'	.75	6.00	45.00
SPIRAEA BILLIARDI (Billiard Spirea)	Bright fluffy pink flower spikes from July to September. Valuable for dry places. 5 to 6 ft.				
		25 . . . . . 3-4'	.50	2.50	
		400 . . . . . 4-5'	.60	3.00	20.00
		200 . . . . . 5-6'	.65	3.50	30.00
SPIRAEA BUMALDA ANTHONY WATERER (A.W. Spirea)	Dwarf free flowering variety growing three to four feet tall. Bright red flowers from June to September.				
		88 . . . . . 12-15"	.30	2.50	20.00
		960 . . . . . 15-18"	.50	3.50	30.00
		591 . . . . . 18-24"	.65	5.00	40.00
		175 . . . . . 2-2½'	.75	6.50	55.00
SPIRAEA BUMALDA FROEBELI (Froebel Spirea)	Bright pink flowers from June to Sept.				
		26 . . . . . 15-18"	.30	2.50	
		222 . . . . . 18-24"	.50	3.00	25.00
		64 . . . . . 2-2½'	.65	5.00	40.00
SPIRAEA PRUNIFOLIA (Bridalwreath)	Pure white double flowers in May. Free flowering Handsome shining dark green foliage turning orange in the Fall. 5 to 6 ft.				
		85 . . . . . 3-4'	.75	6.00	50.00
		6 . . . . . 4-5'	.85	7.50	
SPIRAEA THUNBERGI (Thunberg Spirea)	Slender arching branches covered with small white flowers in April and May. Small feathery light green leaves. 3-4 ft.				
		1326 . . . . . 18-24"	.35	3.00	25.00
		95 . . . . . 2-2½'	.50	3.50	30.00
		50 . . . . . 2½-3'	.85	7.50	65.00
SPIRAEA VANHOUTTEI (Van Houtte Spirea)	Most popular variety often called "Bridal Wreath" Profusion of white flowers in May and June. 5 to 6 ft.				
		600 . . . . . 18-24"	.20	1.50	12.00
		70 . . . . . 2-3'	.25	2.00	17.00
		475 . . . . . 3-4'	.50	3.00	25.00
		770 . . . . . 4-5'	.65	4.00	30.00
SYRINGA (Lilac)	FRENCH NAMED VARIETIES - These named varieties are popular due to their attractive flowers of various colors and handsome foliage. The height varies from 6 to 15 ft. according to location and climate.				
	ALPHONSE LAVALEE - Double violet-blue.				
		20 . . . . . 4-5'	1.50	13.50	





SYRINGA (Lilac) FRENCH NAMED VARIETIES - CONTINUED	SIZE	EACH	PER 10	PER 100
<b>BELLE DE NANCY - Double rose with white center</b>				
3 . . . . .	18-24"	.75		
4 . . . . .	3-4'	1.25		
134 . . . . .	4-5'	1.50	13.50	125.00
100 . . . . .	5-6'	2.00	17.50	150.00
<b>CHARLES JOLLY - Semi-double reddish-purple.</b>				
47 . . . . .	2-3'	1.00	8.50	75.00
88 . . . . .	3-4'	1.25	11.50	100.00
30 . . . . .	4-5'	1.50	13.50	125.00
10 . . . . .	5-6'	2.00	17.50	
31 . . . . .	6-8'	3.50	30.00	275.00
<b>CHARLES THE TENTH - Single reddish-purple.</b>				
100 . . . . .	18-24"	.75	6.50	50.00
150 . . . . .	2-3'	1.00	8.50	75.00
59 . . . . .	3-4'	1.25	11.50	100.00
100 . . . . .	4-5'	1.50	13.50	125.00
<b>LA TOUR D'AUVERGNE - Double dark reddish-purple.</b>				
27 . . . . .	18-24"	.75	6.50	50.00
5 . . . . .	2-3'	1.00	8.50	
<b>MARIE LE GRAYE - Single white.</b>				
18 . . . . .	18-24"	.75	6.50	
40 . . . . .	2-3'	1.00	8.50	75.00
10 . . . . .	3-4'	1.25	11.50	
3 . . . . .	4-5'	1.50		
<b>MICHEL BUCHNER - Double pinkish-lilac.</b>				
45 . . . . .	18-24"	.75	6.50	50.00
50 . . . . .	2-3'	1.00	8.50	75.00
18 . . . . .	3-4'	1.25	11.50	
26 . . . . .	4-5'	1.50	13.50	
16 . . . . .	5-6'	2.00	17.50	
<b>MME. LEMOINE - Double pure white.</b>				
17 . . . . .	18-24"	.75	6.50	
40 . . . . .	2-3'	1.00	8.50	75.00
60 . . . . .	3-4'	1.25	11.50	100.00
<b>PRESIDENT GREVY - Double clear delicate blue.</b>				
30 . . . . .	18-24"	.75	6.50	50.00
40 . . . . .	2-3'	1.00	8.50	75.00
60 . . . . .	4-5'	1.50	13.50	125.00
20 . . . . .	5-6'	2.00	17.50	
<b>UN-NAMED VARIETY</b>				
27 . . . . .	18-24"	.75	6.50	
62 . . . . .	2-3'	1.00	8.50	75.00
9 . . . . .	3-4'	1.25	11.50	
4 . . . . .	4-5'	1.50	13.50	
<b>SYRINGA CHINENSIS (S. rothomagensis)(Chinese Lilac) Vigorous grower and dependable bloomer. Reddish lilac flowers in April and May. 8 to 10 ft.</b>				
32 . . . . .	3-4'	.75	5.50	45.00
<b>SYRINGA PERSICA (Persian Lilac) Single pale purple flowers in April and May. Leaves small. Spreading habit. 8 to 10 ft.</b>				
174 . . . . .	18-24"	.40	3.50	30.00
220 . . . . .	3-4'	.75	5.50	45.00



	SIZE	EACH	PER 10	PER 100
SYRINGA VULGARIS (Common Lilac)	Large panicles of fragrant single light purple flowers in April and May. Very hardy. 12 to 15 ft.			
	42 . . . . .	3-4'	.65	4.50
	85 . . . . .	4-5'	.75	6.00
	65 . . . . .	5-6'	1.25	11.50
	30 . . . . .	6-8'	1.50	13.50
TAMARIX HISPIDA (Tamarack)	Feathery gray-green foliage. Pink flowers in dense racemes in late summer. 6 to 8 ft.			
	75 . . . . .	2-3'	.40	3.00
	90 . . . . .	6-8'	1.00	8.50
VIBURNUM CARLESI (Fragrant Viburnum)	Fragrant delicate pink flowers borne on a semi-dwarf shrub. Nice foliage. Very desirable. 4 ft.			
	1 . . . . .	B&B 3-4'	3.50	
	1 . . . . .	B&B 4-5'	5.00	
VIBURNUM OPULUS (European Highbush Cranberry)	Bright scarlet berries in large bunches which persist all winter. 9 to 10 ft. Single white flowers in April and May.			
	100 . . . . .	3-4'	.75	7.00
	121 . . . . .	4-5'	.85	8.00
VIBURNUM OPULUS ROSEUM (V. opulus sterile)(Common Snowball)	Showy heads of white flowers in May and June. Popular shrubs and a profuse bloomer which does well in the shade. 9 to 10 ft.			
	12 . . . . .	4-5'	1.00	8.50
WEIGELA FLORIDA (W. rosea)(Pink Weigelia)	Brilliant pink flowers freely produced in June. A vigorous grower. 7 to 8 ft. high.			
	75 . . . . .	2-3'	.60	5.00
	72 . . . . .	3-4'	.75	6.00
WEIGELA EVA RATHKE (Red Flowered Weigelia)	Brilliant crimson flowers blooming freely throughout the summer and autumn. 4 to 5 ft.			
	74 . . . . .	2-3'	.65	6.00

ORNAMENTAL GRASSES

MISCANTHUS SINENSIS (Eulalia japonica)	Large narrow graceful green foliage with silvery gray plumes. 6 to 7 ft. Good for wet places.			
	150 . . . . .	Clumps	.35	3.00
MISCANTHUS SINENSIS GRACILLIMUS (Maiden Grass)	Fine for damp places. Narrow bright green foliage. 6 ft.			
	35 . . . . .	Clumps	.35	3.00



VINES

	SIZE	EACH	PER 10	PER 100
CAMPSIS RADICANS (Bignonia r.) (Trumpet creeper)	Showy trumpet shaped scarlet and orange flowers in July.			
	100 . . . . . 1 yr.	.30	2.00	15.00
	95 . . . . . 2 yr.	.35	2.50	20.00
	75 . . . . . 3 yr.	.40	3.00	25.00
CELASTRUS ORBICULATA (Oriental Bittersweet)	Orange berries with red seeds.			
	7 . . . . . 4 yr.	.75	6.50	
CELASTRUS SCANDENS (American Bittersweet)	Yellow-green foliage, yellow flowers in June, crimson berries in bunches, used for winter bouquets.			
	4 . . . . . 3 yr.	.50	3.50	
CLEMATIS JACKMANI (Purple Clematis)	Beautiful climber with large purple flowers.			
	160 . . . . . 2 yr.	1.00		
CLEMATIS PANICULATA (Sweet Autumn Clematis)	Light but vigorous grower with attractive small white fragrant flowers in the Fall.			
	250 . . . . . 2 yr.	.35	2.50	20.00
EUONYMUS FORTUNEI RADICANS (Winter creeper)	Evergreen vine, clings to brick or stone. Rose red berries. 15 to 20 ft.			
	25 . . . . . 8-10"	.35		
EUONYMUS FORTUNEI VEGETUS (Big Leaf Winter creeper)	Large glossy green foliage. Scarlet berries. Evergreen. 15 to 20 ft.			
	28 . . . . . 8-10"	.35		
LATHYRUS LATIFOLIUS (Hardy Sweet Pea)	RED - Trailing plant blooming all summer.			
	20 . . . . . 1 yr.	.20	1.50	
	35 . . . . . 2 yr.	.25	2.00	15.00
LATHYRUS LATIFOLIUS WHITE				
	25 . . . . . 1 yr.	.20	1.50	
	10 . . . . . 2 yr.	.25	2.00	
LONICERA HECKROTTI (Everblooming Honeysuckle)	Flower yellow inside, flame red on outside, blooming from early summer to frost. Partial climber 15 to 20 ft.			
	4 . . . . . 3 yr.	.75		
LONICERA HECKROTTI GOLDFLAME	Showy clusters of flame-coral trumpets lined with gold, blooming from May until frost.			
	6 . . . . . 1 yr.	.60	5.00	
LONICERA JAPONICA HALLIANA (Hall's Honeysuckle)	Vigorous rapid grower with fragrant yellow and white flowers borne profusely all summer.			
	52 . . . . . 2 yr.	.30	2.50	20.00
LYCIUM CHINENSE (Chinese Matrimony Vine)	Violet flowers in June followed by bright red fruits. Useful for holding banks or hanging over retaining walls.			
	125 . . . . . 2 yr.	.25	2.00	15.00
	210 . . . . . 3 yr.	.30	2.50	20.00
PARTHENOCISSUS QUINQUEFOLIA (Virginia Creeper)	Hardy rapid climber with large five-lobed leaves which turn bright scarlet in Autumn. 30 to 40 ft.			
	40 . . . . . 2 yr.	.25	2.00	15.00
PARTHENOCISSUS TRICUSPIDATA VEITCHI (Ampelopsis v.) (Boston Ivy)	Dark green leaves, usually three-lobed. Changes to orange and scarlet in the Autumn.			
	150 . . . . . 1 yr.	.25	2.00	15.00
	80 . . . . . 2 yr.	.35	2.50	20.00
WISTARIA SINENSIS (Chinese Wisteria)	Drooping clusters of lavender pea-shaped fls.			
	50 . . . . . 3 yr.	.50	3.50	30.00
	40 GRAFTED . . . . . 2-3 yrs.	.60	4.50	40.00
	200 GRAFTED . . . . . 3-4 yrs.	.75	6.50	50.00
	55 GRAFTED . . . . . 4-5 yrs.	1.25	10.00	75.00

INDEX

PLANT NAME	PRICE PER UNIT	UNIT	PRICE PER UNIT	UNIT
... ..	1.00	100	100.00	...
... ..	2.00	50	100.00	...
... ..	3.00	33	100.00	...
... ..	4.00	25	100.00	...
... ..	5.00	20	100.00	...
... ..	6.00	17	100.00	...
... ..	7.00	14	100.00	...
... ..	8.00	13	100.00	...
... ..	9.00	11	100.00	...
... ..	10.00	10	100.00	...
... ..	11.00	9	100.00	...
... ..	12.00	8	100.00	...
... ..	13.00	8	100.00	...
... ..	14.00	7	100.00	...
... ..	15.00	7	100.00	...
... ..	16.00	6	100.00	...
... ..	17.00	6	100.00	...
... ..	18.00	5	100.00	...
... ..	19.00	5	100.00	...
... ..	20.00	4	100.00	...
... ..	21.00	4	100.00	...
... ..	22.00	3	100.00	...
... ..	23.00	3	100.00	...
... ..	24.00	2	100.00	...
... ..	25.00	2	100.00	...

### QUANTITIES

Quantities of 1 to 4 at the each rate; 5 to 29 at the 10 rate; 30 and over at the 100 rate. Please send us your list of Wants. On some items in quantities we can quote lower than the printed prices.

### SHIPMENTS

All shipments are at the risk of the purchaser after being delivered in good condition to the forwarders. Purchasers must be responsible for any loss or delay that may occur through the negligence of the forwarders. We will use every means possible to secure prompt delivery but are not liable for delays in transit, and our responsibility ceases upon delivery in good order to the carrier, and the remedy, if any, must lay between the buyer and the carrier.

### CLAIMS

We are not liable for injury to stock from frost, hail, fire, or other causes beyond our control. Claims for any cause must be made promptly upon receipt of stock. We will not entertain claims when reported later than ten days after arrival of stock.

### GUARANTEE

We give no warranty, expressed or implied, as to the life, description, quality, productiveness, or any other matter of any nursery stock, seeds or plants that we sell. However, if any nursery stock, etc. proves untrue to the description under which it sold, we hold ourselves in readiness on proper proof to replace all such nursery stock, etc., that may prove otherwise, or refund the amount paid, but we shall in no case be liable for any sum greater than the amount originally received for said stock.

### PLANTING GUARANTEE

All stock planted by us carries our guarantee to replace at half price, any of the planting which might fail to grow the first year.

### TERMS

Cash or satisfactory security, except to known responsible Nurserymen to whom we extend the usual terms of credit. Parties wishing to open an account with us should submit their latest financial statement and at least two references.

On all wholesale accounts we allow a discount of 2% for payment in full within ten days from date of invoice, or 1% for payment within 30 days from date of invoice. Retail accounts are 30 days net.

C.O.D. shipments will be made if 25% of the total amount of the shipment accompanies the order.

We allow 3% discount and boxing free when cash accompanies the order.

INTEREST AT THE RATE OF 6% WILL BE CHARGED ON ALL ACCOUNTS NOT PAID WHEN DUE.

### PRICES

This list cancels all previous prices and is subject to change without notice. The prices are for first class stock, fully up to grade and as represented, F.O.B. cars, Dodson Switch, Kansas City, Missouri; Boxing and Baling additional on less than carload shipments.

