

Historic, Archive Document

Do not assume content reflects current scientific knowledge, policies, or practices.

62.55

=17+32

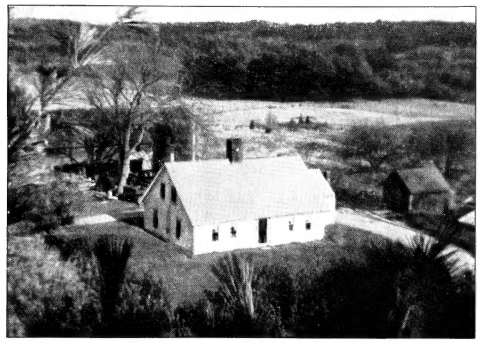
COLPRIT'S NURSERY

DOVER, N. H.

JUN 5 1913
U. S. Department of Agriculture

Plant Specialties

New Hampshire Mums



COLPRIT'S NURSERY, located among the pines of New Hampshire and subjected to extremes of heat and cold, is an ideal spot to test the hardiness of plant material. Varieties which prove hardy here should be grown successfully in any climate in the temperate zone.

Our home, shown above, is typical of early New Hampshire farm homes and was built some two hundred years ago. The interior is quaint with its wainscoting, panelling, fireplaces and brick oven. Here we are trying to "Keep the home-fires burning till the boys come home."



UNCONDITIONAL SURRENDER

Because of the necessity of winning the war, we are surrendering a large part of our ornamental plant business for the duration. We are abandoning all landscape contracting in order to increase our production of poultry, vegetables and seed specialties.

This booklet is the only list we shall issue this season. However, we will be glad to furnish estimates on any list of nursery stock which you may require.

The hybridizing and growing of new hardy Chrysanthemums has become a specialty with us. We have developed the Arcticum hybrids to the point where they are the finest Chrysanthemums for northern planting because of their extreme hardiness and early blooming habit.

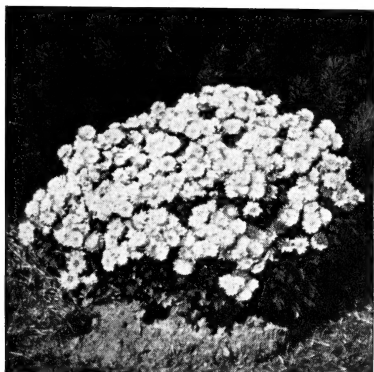
The varieties which we introduce this year are fully tested and formed a part of our FIRST PRIZE EXHIBIT at the Massachusetts Horticultural Society Show last fall.

We invite you to visit our nursery, if possible, in September or early October to see our attractive display garden. There you will see not only the Mums listed in this booklet but also many others including new hybrids and seedlings still in the testing stage.

Very truly yours,

Colprit's Nursery
Dover, N. H.

ERNEST S. COLPRIT



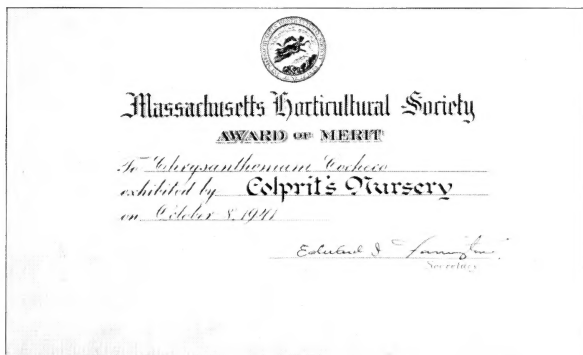
Introducing COCHECO

Our Newest Arcticum Hybrid Chrysanthemum

A new and unique type of Chrysanthemum of iron-clad hardiness, its blooms are remarkably frost-resistant. It is easy to grow, requires no pinching, and its foliage is attractive and not liable to disease. Its compact habit makes it desirable as a pot or bedding plant. Although the florets are similar to those of the Cushion Mums the plant is upright and has none of the floppiness seen in these varieties. The unfolding buds are purplish in color, opening to a most brilliant pink and remaining in good condition for several weeks. For profusion of bloom it surpasses any Chrysanthemum we have yet seen.

Cochecho is the Indian name of our near-by river.

Priced at 50c each, \$5.00 per doz., \$30.00 per 100



FOUR *New* **INTRODUCTIONS**

These have never been offered before. At the Massachusetts Horticultural Society Show last fall these four varieties attracted considerable attention. Their compact habit of growth and profusion of good-sized blooms in the early part of the season especially recommend them.

Priced at 50c each, \$5.00 per doz.



ARBUTUS

TOP KICK

A large Pompon Chrysanthemum, fully double, and of a clear soft tan color. The plant is of medium height, well branched, with good healthy foliage. The name was suggested by its superior and outstanding quality. In bloom in mid-September.

ARBUTUS

The delicate pink of this variety is much like the color of the mayflower. It is one of our earliest bloomers, coming in late August and early September. It makes a valuable cut-flower. An unusual and very attractive variety.

TANGERINE

Large aster-type flowers of a brilliant tangerine color make this variety quite distinctive. The plants are medium in height and well branched, furnishing an abundance of bloom from the middle of September on.

TRIUMPH

We have long sought for a red Mum showing neither yellow nor bronze shadings. This is it. The bloom is large and with the color of the Heart of France aster. Give it good cultivation and plenty of water and it will surprise you. In bloom with us in early September.

CHRYSANTHEMUM

ARCTICUM HYBRIDS

•
**Originating
with us**
•

Priced at 25c each, \$2.50 per doz.



WINNIPESAUKEE

DURHAM

Named for our near-by New Hampshire University town. A medium-sized double bloom of intense orange which is practically non-fading. Very hardy plant of medium height and compact habit. Its season is late September and early October.

OLD DOVER

A dwarf plant with large double blooms of a pleasing golden bronze shading at times to yellow. This is one of our earliest and most continuous flowering varieties. It retains many of the characteristics of its Arcticum parent.

WINNIPESAUKEE

Fully double blooms in great profusion in late September. Coral-red at first but gradually changing to glowing salmon. These blooms retain their beauty for a long season. The foliage is clean and very attractive.

ROCHESTER

This dark red variety is a vigorous grower coming into bloom in late September or early October. Semi-double to double.

KOREAN HYBRIDS

Taller than the preceding varieties, these Chrysanthemums make excellent cutting material. Since we originated them several years ago they have become popular with florists in many parts of the country and with home-owners wherever they have been grown. **Priced at 25c each, \$2.50 per doz.**

MADBURY MAID

A tall variety with double and semi-double blooms of a deep bronzy pink color. This is one of our hardiest and most satisfactory Mums and has been successfully grown in several of our northern states. In bloom from early September into October.

TREASURE TROVE

Another very hardy Chrysanthemum originated by us and introduced to the public by the Bay State Nurseries. A fine cutting variety which has been popular for several years and is grown by many florists throughout the country. Its soft clear yellow blooms are in season in late September or early October.

GOOD SPORT

This is becoming a favorite Mum for cutting because of its tall straight stems which are topped with clusters of good-sized flowers. The double and semi-double blooms are a soft bronze-yellow shade. The season is late September and October.



TREASURE
TROVE

Coming to Us from Minnesota

The following two varieties, originated at the University of Minnesota, have proved as hardy here as in their native state. We are pleased to recommend them as very desirable early blooming Chrysanthemums.

Priced at 50c each, \$5.00 per doz.

DULUTH

A large-sized double bloom of creamy yellow color first appearing in August. With good cultivation a second crop will be obtained about a month later.

WELCOME

Here we have a new and unusual shade best described as mallow-purple. In bloom in early September. We consider this a very attractive and worth-while variety.



From the U. S. Department of Agriculture

Two early-blooming varieties of great merit and popularity.

Priced at 25c each, \$2.50 per doz.

SEMINOLE

Aster-type white blooms in great profusion in late August.

ALGONQUIN

Bright golden yellow. Aster type. Early September.



The Cushion Mums

Often called Amelia or Azaleamum. Very profuse bloomers forming mounds of color. The pink, bronze and white varieties are very early bloomers—August and early September. Red Cushion is an especially brilliant color but is later blooming than the others.

Priced at 25c each, \$2.50 per doz.

**PINK CUSHION
BRONZE CUSHION**

**WHITE CUSHION
RED CUSHION**

GLADIOLUS

Glads are common, oh so common, but not ours. We have discarded the common ones. These are all exhibition varieties. The spikes and the individual florets are large and the colors are the very finest.

Priced at 75c per doz., postpaid

- Alice Tiplady.** Orange.
Amador. Rich sparkling red.
Charles Dickens. Radiant purple.
Commander Koehl. Blood-red.
Gate of Heaven. Ruffled; yellow.
Maid of Orleans. Creamy white.
Minuet. Delicate lavender.
Peggy Lou. Shrimp-pink.
Pelegrina. Deep blue-violet.
Phyllis McQuiston. Pure pink, light throat.
Rosa van Lima. Light rose.
Shirley Temple. Cream, yellow throat.



PLEASE ADD POSTAGE

For Parcel Post shipment of Chrysanthemums and Phlox please add 10c per plant, 15c for 3 plants, and 25c for 5 plants.

Express shipment is best for six or more plants. Such shipments need not be prepaid.

HARDY PHLOX



Into the discard go many varieties of perennials as we make room for vegetables for victory. In the Phlox section these are the survivors. Some are old, some are new, but all are most desirable in the garden.

**Priced at 25c each,
\$2.50 per doz.**

- B. Comte.** Darkest amaranth-red.
Daily Sketch. Enormous trusses of salmon with crimson eye.
E. I. Farrington. Salmon-pink with deeper eye.
George Stipp. Glowing salmon with lighter eye.
Leo Schlageter. The best brilliant scarlet.
Mary Louise. Finest white; immense florets.
Miss Lingard. Early. White; universal favorite.
Morgenrood. Bright rose. New and striking.
Mrs. Mily van Hoboken. Giant blooms of clear pink.
Nordlicht. Glowing lilac—a new shade. One of the best.

COLPRIT'S NURSERY • DOVER, N. H.