

Historic, Archive Document

Do not assume content reflects current scientific knowledge, policies, or practices.



6209

1343

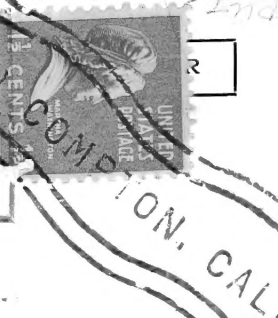
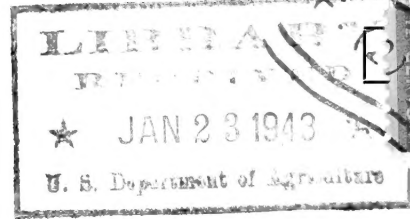


CAMELLIA
PINK PERFECTION



DEL AMO NURSERIES
"Gardenland of the West"

MAIL ADDRESS: POST OFFICE BOX 389, COMPTON, CALIF.
PHONES: LOS ANGELES, NEVADA 6-1188; COMPTON, NEWMARK 1-1131



Miss Newman
 BPI South Bldg.
 Washington
 D.C.

U. S. Dept. of Agriculture
 Washington, D.C.

Bureau of Plant Industry
 Fruit & Vegetable Crops and Diseases



VICTORY GARDEN CONFERENCE LEADERS SAY . . .

"At no time than now does it seem more important that home and municipal ornamental gardening be stressed. By devoting their energy to the growing of flowers and ornamental shrubs and trees, people will find a release in these times, and develop morale, and also render very valuable service in improving the appearance of the community. This seems a far wiser outlet than to tear up backyards, playgrounds, public parks and spaces for the sake of growing vegetables. Our school grounds, church yards, roadsides, towns, new defense areas as well as home grounds generally, still need much improvement in the way of ornamental gardening."—U. S. Department of Agriculture, Garden Committee.

"It is recognized that city gardening has certain health and recreational value, but it should also be recognized that the money, time, and energy expended on city vegetable gardening is usually far in excess of the value of the vegetables produced."

—Dr. M. L. Wilson.

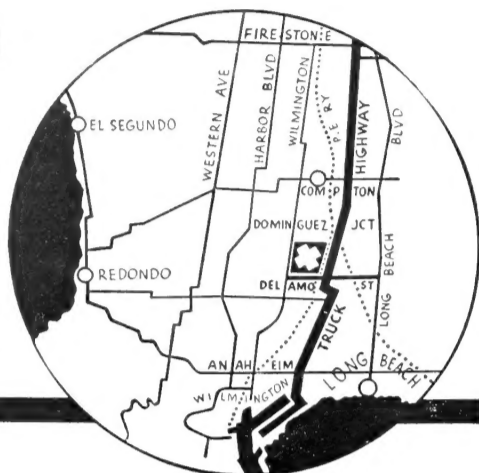
"Any program for the development of gardens for Victory must include the growing of trees, shrubs and flowers, for the health of the mind, as well as vegetables for the health of the body; because ornamental gardening is a vital and absolutely essential part of American life today, and its value as a stimulus to national, physical and spiritual well-being is beyond calculation."

—Andrew Wing, Editor Garden Digest.

***You may help in the Victory Garden effort and enjoy doing it, by investing in Del Amo quality trees, shrubs, fruits . . . Everything for Gardening.**

HOW TO REACH DEL AMO NURSERIES

The nurseries are about 3 miles South of Compton at Alameda (Truck Boulevard) and Del Amo Street . . . turn right across P. E. tracks at the first street South of Dominguez Junction. Del Amo Street connects Wilmington and Long Beach Boulevard.



★ ★ ★

Gardenland Quality Grown

ORNAMENTAL TREES, SHRUBS and VINES

Camellia japonica. CAMELLIA. No flowering shrub presents more varied or more pleasing possibilities for landscaping, home beautification or personal adornment. Camellias are easily grown if given a location in semi-shade, protected from the afternoon sun in a well drained soil with an acid condition. Our assortment includes many of the finer varieties. Prices and varieties on request.

Cassia splendida. GOLDEN WONDER. Best of the Cassias for California, producing many clusters of golden yellow flowers in mid-winter. Grows to 8 or 10 feet across unless pruned after flowering. Foliage is pale green, evergreen; makes excellent informal hedge; is resistant to frost. gc 50c; 5gc \$1.75.

Chamaelacium ciliatum. GERALTON WAX FLOWER. This Australian shrub is becoming popular for cutting. Its pink waxy flowers are borne in airy racemes and last two weeks when cut. Leaves are needle-like. Does not like acid soil. Plant in full sun; requires little water. Specimen border plant. gc \$1.00.

Cistus purpureus. ORCHID ROCK ROSE. Flowers of this low spreading plant resemble single roses. For brilliant color in your garden in early summer this evergreen shrub is tops. Blossoms are brilliant rose-pink with maroon spots at the base of the petals. Completely hardy, must have good drainage. gc 50c; 5gc \$1.75. Use as foreground shrub in the screen planting.

FLOWERING EUCALYPTUS

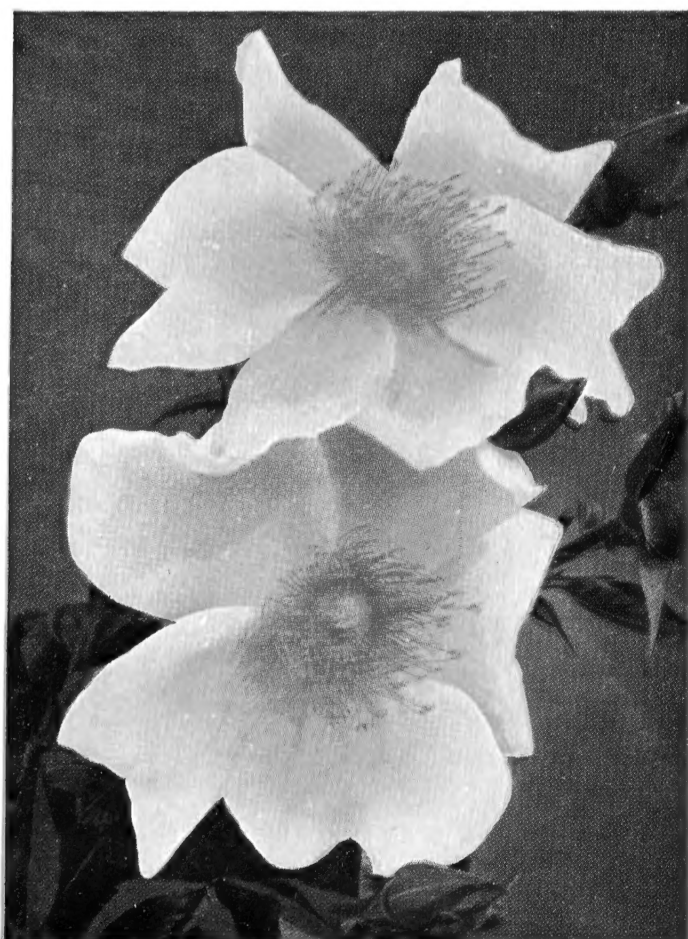
These small trees of Australia are most happy in Southern California. They are very easy to grow, being always neat in habit, although sometimes picturesque. Dependable for spectacular bloom which may be cut for bouquets. Useful in the screen planting or as small street trees.

Eucalyptus caesia. Graceful, weeping, white barked branches, silver grey foliage and russet brown trunk make a beautiful background for the rose-pink flowers with golden stamens. gc \$1.00; 5gc \$2.00.

Eucalyptus erythrocorys. Spectacular flowers with vivid scarlet flower-caps revealing huge puff balls of lemon-yellow stamens. white trunk; long narrow leaves. gc \$1.00; 5gc \$2.00.

CLIMBING ROSE MERMAID

This sulphur-yellow rose can be used to advantage in many places. As a pillar rose, on fences, pergolas and as a bank cover, anywhere in the sun that a thick cover of glistening foliage is needed this rose is unsurpassed. 5gc \$1.00.



ROSE, MERMAID

Eucalyptus macrocarpa. Slow growing variety with large silvery leaves. The sensational flowers are fluffy bright red, the stamens tipped with gold, 4 inches across! Use where it can have some support such as espaliered on a wall. gc \$1.00; 5gc \$2.00.

Eucalyptus torquata. Handsome small tree with curious red and yellow lantern-like flower buds opening to light red fuzzy flowers. Blooms every day of the year. gc 70c; 5gc \$2.00.

Helianthemum ocyroides. PORTUGUESE SUNROSE. Dainty sun-loving plant to 3 feet, with slender branches and silvery-gray foliage bearing continuously, bright yellow flowers, each bloom with a maroon-red center. Hardy, needs sun, little water and good drainage. gc 50c; 5gc \$1.75. Good for color in the foundation planting.

Holmskioldia sanguinea. CHINESE HAT PLANT. Imagine a plant covered with miniature, orange-red Chinese coolie hats an inch or so across and you'll have Holmskioldia. The curious flowers are excellent for cutting; foliage is bright green. Likes full sun and plenty of water. Blooms almost the entire year including the winter months. Choice plant for the patio. gc 60c; 5gc \$1.85.

Hydrangea domotoi. DOUBLE PINK HYDRANGEA. A low growing shrub with large heads of pink flowers and bright green foliage. Grows to 3 or 4 feet tall, making an excellent plant for foundation planting on the north side as it likes shade. Give it plenty of water. gc 50c; 5gc \$1.85.

Juniperus torulosa. TWISTED JUNIPER OF CHINA. Most attractive and beautiful of the Junipers for specimen planting. It often assumes irregular picturesque shapes, which may be helped by careful pruning and training. The close tight foliage remains a rich dark green all the year. A very good plant for Southern California; not particular to soil and disease free. Becomes more lovely with age. We are the largest growers of this plant and offer a wide range of sizes and shapes to fit any location in the garden. gc 70c; B&B 2-3 ft. \$2.15.

Leptospermum roseum plenum. DWARF FLOWERING TEA TREE. Beautiful little flowering shrub with small double rose flowers blooming throughout the entire winter and early spring. The finely cut foliage is soft gray-green. Excellent for cutting. Likes little water, full sun. This is the best winter flowering shrub we know. gc 50c; 5gc \$1.75. Specimen plant for the border.

Leucophyllum frutescens (texanum). TEXAS SILVERLEAF SAGE. This is the real Purple Sage of Texas. In late summer and fall it is completely covered with bell-shaped violet flowers. Foliage is silver-gray, evergreen, makes a compact shrub about 5 to 6 feet tall. Give it full sun and little water. gc 50c; 5gc \$1.75. Fine for color contrast in the border.

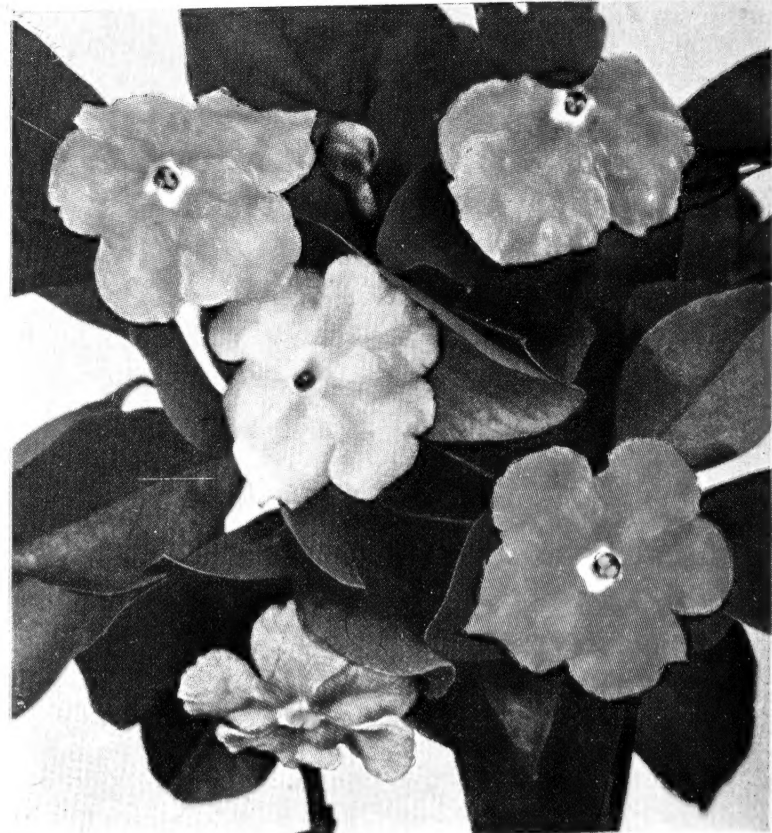
Raphiolepis delacouri. PINK INDIA-HAWTHORN. Fine evergreen shrub with dark green foliage and clusters of glowing pink fragrant flowers throughout the year, with the greatest show in spring and summer. Truly a garden aristocrat, it is perfectly hardy, slow growing and quite dwarf in habit. Full sun or half shade; choice foundation plant. gc \$1.00.

Solanum rantonnети. PARAGUAY NIGHTSHADE. Sometimes called the Blue Potato Vine, this plant can be grown as a shrub or vine. The lovely violet flowers are an inch across in large clusters, blooming almost the year around. Likes a warm sunny location and a moderate amount of water. Excellent seacoast plant, not recommended for colder sections. Use as vine, screen plant, or keep bushy for foundation planting. gc 40c; 5gc \$1.65.

Strelitzia reginae. BIRD OF PARADISE FLOWER. The exotic flowers of this plant resemble the brilliant plumage of tropical birds. Well established clumps bloom almost continually. Has many uses in the garden; as an accent plant where color and distinctive form is needed; as a tub plant or patio plant, and as a foundation plant. Flowers last for days when cut; makes unusual flower arrangements. Single division blooming size, \$2.50.

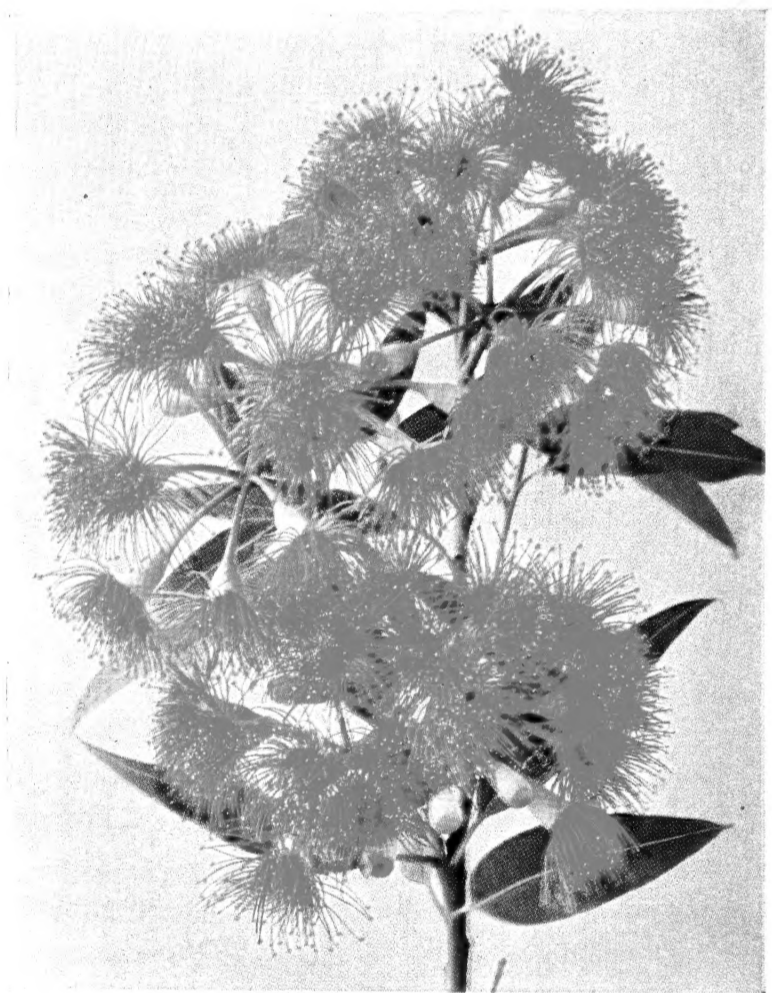
Thevetia nereifolia. LUCKYNUT THEVETIA. This is the Yellow Oleander. Foliage is narrow bright green, flowers soft clear yellow through the summer. Makes a medium sized spreading shrub. Requires warm soil and ordinary watering. Should be headed back in late winter. Specimen or foundation plant. gc 60c; 5gc \$1.85.

For explanation of how to use shrubs in the home planting for Victory, see inside pages.



BRUNFELSIA FLORIBUNDA

Brunfelsia floribunda. YESTERDAY, TODAY AND TOMORROW. This delightful new shrub was introduced from Brazil. The fragrant blossoms are dark blue-purple fading to lavender and turning white before they fall. Evergreen and hardy, with good foliage, may be planted in sun or shade. Needs good drainage. Excellent foundation plant. gc 60c; 5gc \$1.85.



EUCALYPTUS FICIFOLIA

Eucalyptus ficifolia. SCARLET FLOWERING EUCALYPTUS. Spectacular flowering tree with sparkling masses of flame-red flowers. A medium fast growing tree with dark furrowed bark and large leathery leaves. Stands heat and some drought but grows faster with plenty of water. Excellent for street trees. gc 60c; 5gc \$2.00.

Prunus persica. FLOWERING PEACH. Nothing equals the flowering peaches for spring color. They grow well in all Southern California gardens, producing a great profusion of bloom over a long period. The fragrant blossoms last a long time when cut. Herald the event of spring in your garden with a flowering tree. Red, white, pink and variegated red and white. 5gc \$1.50.



FLOWERING PEACH



Hibiscus rosa-sinensis. HIBISCUS. Showy evergreen shrubs having no superiors in areas free from heavy frosts. Hardy down to 25 degrees, they like plenty of sunshine and moisture and if given these conditions they will produce their immense bright colored flowers throughout almost the entire year. We offer the following standard colors: large single apricot, pink, scarlet, white and yellow; double scarlet and rose. New and rare varieties priced on request. Standard varieties, 50c; 5gc \$1.75.



MEYER LEMON

VINES

Vines for arbors, pergolas, fences, walls and trellis work supply luxuriant foliage for screening unsightly views. They give a "homey" atmosphere and welcome shade when planted on arbors and over doorways. Glorious displays of bloom are the reward for a little care. Unless otherwise noted prices on following vines—gc 50c; 5gc \$2.00.

Antigonon leptopus. MOUNTAINROSE CORALVINE. Sometimes called Queen's Wreath, this delightful flowering vine from Mexico grows as much as 20 feet in one season after it becomes established. The heavy clusters of dainty rose-pink flowers last for months. Should be cut back severely in the winter.

Bignonia cherere. MEXICAN BLOODTRUMPET. Gorgeous flowering vine producing huge clusters of blood-red trumpet shaped flowers throughout spring and summer. A strong growing vine with evenly distributed, glossy, dark green foliage. Will climb over anything. Because of its dense habit can be used as a shade vine over a pergola.

Bignonia violacea. PAINTED TRUMPET. From Bolivia comes this tropical flowering vine. The luxuriant glossy foliage makes a beautiful background for the delicate violet trumpets in spring and summer. Fast growing, it likes to have its roots shaded.

Clerodendron thomsonae. BLEEDINGHEART GLORYBOWER. A rare tropical vine with clusters of white and red flowers that resemble Bleeding Hearts. Blooms throughout the whole year; climb by twining. Thrives best in partial shade and can be trained as a shrub. Protect from frost. gc \$1.00.

Gelsemium sempervirens. CAROLINA YELLOW JESSAMINE. Flaunting its topaz-yellow flowers gayly through winter and spring, this slender twining vine is indeed a garden jewel. The small leaves are bright green and waxy. Evergreen and hardy, it is good when space is at a premium.

Hardenbergia comptoniana. PURPLE VINELILAC. An Australian vine that never becomes coarse or woody; has attractive narrow evergreen foliage. In the late winter and spring bears quantities of violet-blue, pealike flowers. An excellent light vine for training on posts or for a sunny location where a medium sized vine is indicated.

Tecomaria capensis. CAPE HONEYSUCKLE. One of our most colorful vines with glistening dark green foliage and many clusters of bright, orange-scarlet, spectacular flowers into the winter and spring. May be grown in tubs or other restricted places. May also be grown as a shrub. gc 40c; 5gc \$1.85.

Trachelospermum jasminoides. STAR JASMINE. Fragrant clusters of star-shaped flowers give this vine its common name. Leaves are dark green, leathery. A hardy vine flourishing equally well in sun, shade or part shade. Also can be grown as a bushy small shrub.

CALIFORNIA NATIVES

Ideal screen plants for well drained dry soils in full sun. They require little care after they are established.

Ceanothus cyaneus. MOUNTAIN LILAC. Tall shrub; spreading, dark green shiny foliage, soft deep blue flowers through the summer. gc 50c; 5gc \$1.85.

Fremontia mexicana. FLANNEL FLOWER. Large shrub, glorious in spring with many single orange and gold flowers. Likes hillside location. Leaves are fuzzy, olive green. gc 50c; 5gc \$2.00.

Photinia arbutifolia. CALIFORNIA TOYON BERRY. Handsome small tree or large shrub with slightly toothed, dark green leaves. Produces quantities of brilliant red berries at Christmastime. gc 70c; 5gc \$2.00.

Romneya coulteri. MATILJA POPPY. Silvery gray shrub with very large crinkled white flowers having a tassled yellow button in the center. gc 70c; 5gc \$2.00.

For explanation of how to use shrubs in the home planting for Victory, see inside pages

VISIT THE GARDENLAND OF THE WEST

Situated in the heart of the historic Rancho San Pedro, Del Amo Nurseries have been proclaimed the most beautiful nursery in the West. For more than 20 years Del Amo Nurseries have been renowned for fine quality plant material; no finer plants can be obtained in the entire United States. Landscape architects have utilized Gardenland plants in many of the most beautiful estates in the Southland.

Because of our wide selection of hundreds of varieties you can be sure we have just the plant you need for that particular location. Come to us with your garden problems; let us help you plan a beautiful garden.

Del Amo Nurseries are within easy access of metropolitan Los Angeles, about three miles south of Compton, California, at Alameda and Del Amo Streets. You are always welcome at this garden wonderland of the West.

TERMS AND CONDITIONS

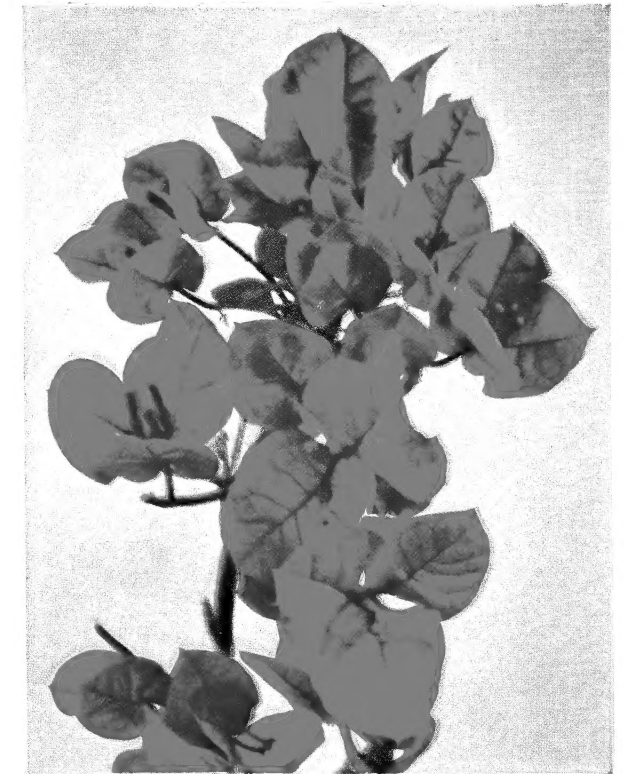
PRICES: All prices are f.o.b. Compton, California (except as noted below) and are subject to change without notice. On retail purchases in California, please add 3% sales tax.

DELIVERIES: Free delivery within metropolitan Los Angeles on our regular truck routes, at our convenience. Other deliveries made at nominal charge.

GUARANTEE: We guarantee all plants to be in perfect condition when delivered, but accept no responsibility after goods have been accepted in good order.

CONTINGENCIES: All orders and agreements contingent upon any cause beyond control of Del Amo Nurseries.

NOTE: Abbreviations used in this list are: gc, one gallon can; 5gc, five gallon can; B&B, balled and burlapped from the field; flat, flat of 100 plants.



BOUGAINVILLEA crimson lake. Southern California's most spectacular vine. Crimson flower bracts give a gorgeous display of color from summer into the winter. Keep comparatively dry during the middle of summer and prune severely in spring for best color effects. gc 50c; 5gc \$2.00.